

## **Historic, Archive Document**

Do not assume content reflects current scientific knowledge, policies, or practices.



6267

c-1929

LIBRARY  
RECEIVED  
★ MAY 21 1929 ★  
U. S. Department of Agriculture

# Floral Gardens



*Bulbs and Plants  
that Grow*

Irises  
Peonies  
Gladioli  
Tulips

*Eaton, Ohio*





## INDEX

Boxwood .....	5
Broad leafed evergreen .....	5
Cannas .....	6
Climbing Vines .....	19
Evergreen Trees .....	18
Fall Bulbs	
Chionodoxa .....	28
Crocus .....	28
Eranthus .....	28
Galanthus .....	28
Gladiolus Bulbs .....	21, 22, 23, 24
Hyacinths .....	28
Scillia .....	28
Tulips, Breeder .....	26
Tulips, Darwin .....	27
Tulips, Cottage .....	26
Narcissus .....	29
Fertilizers .....	29
Hardy Perennials .....	2, 3
Hedge Plants .....	17
Iris, German, Tall Bearded .....	10, 11, 12, 13
Iris, Siberian, Beardless .....	13
Iris, Dwarf .....	13
Iris, Spanish .....	14
Iris, Japanese .....	14
Lawn Grass Seed .....	29
Landscape Service .....	20
Limestone, For Lawns .....	29
Peonies .....	6, 7, 8, 9, 10
Peonies, Single .....	10
Peonies, Japanese .....	10
Roses, Hybrid Tea .....	19
Roses, Climbers .....	19
Rock Garden Plants .....	4, 5
Regal Lilies .....	29
Rock Garden Evergreen .....	5
Peat, For Mulching .....	29
Shrubs, Deciduous .....	15, 16
Trees, Ornamental .....	17







# Floral Gardens

## EATON, OHIO



VIEW OF OUR OFFICE

### TERMS.

The prices in this catalogue are for bulbs, plants and trees properly packed and delivered to the Express or Freight office at Eaton, Ohio, free of all charges. Express or Freight charges for transportation from Eaton, Ohio, must be paid by the purchaser.

It is our custom to ship all our bulbs and plants by express, which we believe is the quickest method possible. We have found this service in the past to be very satisfactory. However, if any customer wishes, we shall be glad to ship small packages by Parcel Post, provided sufficient postage is remitted with the order. All in excess will be gladly returned to customer. Or we can ship Parcel Post C.O.D., which costs about fifteen cents extra on each package.

While we guarantee our bulbs and plants to be true to name and absolutely free from disease, we do not, however, hold ourselves responsible for the failure of any to grow or to thrive, as such failure may result from causes wholly beyond our control, such as holding bulbs in warm room before planting, thus drying them too much; unfavorable weather, soil or climate. Yet, should an error occur thru any fault of our own, we stand back of every order we send out and will gladly rectify the mistake made.

### SERVICE.

Our service department is organized for those customers who need general landscape service where grading, preparation of the beds, building rock gardens, building pools, rustic work, seeding of lawns, laying out of walks and drives are required. We are always pleased to give customers estimates on such work.

All preparation of beds, supplying new black soil etc., extra.

### REPLACEMENT.

Owing to hazards over which we have no control, we do not guarantee our stock, but will replace stock planted by our Landscape Service, which proves unsatisfactory at the end of the first growing season—provided one-third of list price accompanies the order for replacement.





# General List of Hardy Perennials

We have found that the demand for Perennials and Perennial Gardens is greater every year. Lovers of flowers are planning perennial borders and planting these flowers which stay in the ground year after year in front of homes and on the edge of their garden plots as never before. We are listing varieties which if planted in such a border will give bloom the entire summer. Some little care is required of course, such as cultivation, watering and fertilizing to realize the best results from a planting no matter how large or small.

All the plants offered to the public are once transplanted in beds where they have grown under water for one or two years. Thus the public is given plants with a good heavy root system.

**ACHILLEA (The Pearl).** Pure white double flowers all summer. Does well in dry sunny places. Good for cutting.-----  
Height 24", Each 15c, Doz. \$1.50

**ANCHUSA (Alkanet).** Italica Dropmore. Tall spikes of pure gentian blue flowers. Blooms all summer. Broad foliage.-----  
Height 48", Each 25c, Doz. \$2.50

**ANEMONE (Windflower).**  
**Japonica alba.** Glistening white flowers in fall. Fine for cutting.-----  
Height 36", Each 25c, Doz. \$2.50

**Queen Charlotte.** Semi-double deep pink flowers. Desirable for cutting.-----  
Height 36", Each 25c, Doz. \$2.50

**Whirlwind.** Large semi-double, snowy white with whorl of green at base.-----  
Height 36", Each 25c, Doz. \$2.50

**AQUILEGIA (Columbine).**  
**Mrs. Scott Elliot's Strain.** Very long spurs of all colors.

3 Year old.....Each 35c, Doz. \$3.50

2 Year old.....Each 20c, Doz. \$2.00

1 Year old.....Each 15c, Doz. \$1.50

**Mixture Double.** All colors with shorter spurs, but more blooms.

2 Year old.....Each 20c, Doz. \$2.00

**Skinnerii.** A pure yellow variety. Fine.-----  
Each 20c, Doz. \$2.00

**Anthemis (Camomile).** Has a bushy habit with daisy-like golden yellow flowers. Blooms June to November.-----  
Height 24", Each 15c, Doz. \$1.50

**Aster (Hardy).** Pyramidalis. Light blue tinted with rose. Very fine.-----  
Height 24", Each 25c, Doz. \$2.50

**BUDDLEIA (Summer Lilac).** *Varibalis magnifica.* Fine lilac purple flowers blooming all summer.-----  
Height 36", Each 50c

**CATANANCHE (Cupids Dart).** *Caerulea.* Blooms in July and August. Flowers deep blue.-----  
Height 18", Each 20c, Doz. \$2.00

**DICENTRA (Bleeding Heart).** Heart shaped pink flowers. Blooms all summer.-----  
Height 24", Each 50c

**DELPHINIUM (Hardy Larkspur).**  
**Balladona,** clear sky blue.-----  
Height 36", Each 20c, Doz. \$2.00.

**Bellamosa,** very dark blue. Good for cutting.-----  
Height 36", Each 20c, Doz. \$2.00

**ENGLISH HYBRIDS. Kelway's Strain.** All colors ranging from light blue in the single to very dark blue in the double varieties. Mauve and cream shaded also present. We have 20,000 year-old plants in one field under water of Kelway (EnglishHybrids). Come to see them after June 1st. It will pay you.

Extra Large Plants.....Each \$1.50

Medium sized plants.....Each .75

Fine 1 Yr.-old plants.....Each .50

**DIGITALIS (Foxglove).** Colors rose to deep pink. Height 35", Each 20c, Doz. \$2.00

**DIANTHUS (Pinks).**  
**Deltoides**—crimson flowers. Good for Rockeries.-----  
Height 8", Each 20c, Doz. \$2.00

**Johnson's Giant**—Red flowers late in August.-----  
Height 30", Each 20c, Doz. \$2.00

**DAISIES (Hartje & Elder)** Blooms early at Decoration Day.-----  
Height 24", Each 20c, Doz. \$2.00

**Shasta**—Very large. White with yellow centre.-----  
Height 30", Each 20c, Doz. \$2.00

**GAILLARDA GRANDIFLORA (Blanket Flowers).** Gay colors of red and yellow.-----  
Height 24", Each 20c, Doz. \$2.00

**GYOPHILA (Paniculata).** *Babys breath.* Very fine for everlasting flowers when dried and used during winter.-----  
Each 25c, Doz. \$2.50

**PYRETHRUM (Painted Daisy).** Single  
Height 18", Each 20c, Doz. \$2.00

**Double Flowers,** all colors  
Height 18", Each 25c, Doz. \$2.50

**LIATRIS (Blazing Star).** Mid-summer with spikes of rich purple flowers.-----  
Height 30", Each 25c





## Hardy Perennials (Continued)

### PHLOX (Hardy Phlox)

- Bridesmaid—flushed white with crimson eye.----- Height 40", Each 25c
- B. Compte—brilliant rich purple.----- Height 24", Each 25c
- Champes Elysee—Fine dark purple.----- Height 24", Each 25c
- Elizabeth Campbell—Light salmon.----- Height 24", Each 30c
- G. A. Strohlein—Orange scarlet.----- Height 28", Each 25c
- Imperator—Brilliant dark carmine. New. Very dark eye.----- Height 32", Each 35c
- Mrs. Chas. Door—Blue mauve.----- Height 42", Each 25c
- Mrs. R. P. Struthers—Bright rosy-red with crimson eye.----- Height 24", Each 25c
- Pantheon—clear deep carmine pink.----- Height 30", Each 25c
- Prof. Virchow—bright carmine overlaid with orange scarlet.----- Height 32", Each 25c
- Ryndstrom—Solid color, rose pink.----- Height 48", Each 25c
- Sir Edw. Lanseer—Red tinged rose.----- Height 32", Each 25c

- Sunset—Glowing Salmon.----- Height 24", Each 25c
- Thor—Soft ruddy salmon, mottled center.----- Height 32", Each 25c
- Mixed—Varieties in separate colors.----- Each 20c

**SPIREA ASTILBE (Perennial Spirea).** Every one should have some of these beautiful Spireas growing in a moist or shady position in their garden. The flowers are of a beautiful feathery head and foliage a deep green. Fine for forcing in the house.

- America. Fine deep pink beautiful for forcing.----- 50c each, 5 for \$2.25
- Emeden.----- 75c each, 5 for \$3.50
- Gloria. Dwarf plants with dense plumes of a beautiful light pink color.----- 50c each, 5 for \$2.00
- Queen Alexandria, fine light pink.----- 50c each, 5 for \$2.25
- Rhineland.----- 75c each, 5 for \$3.50

### TRITOMA (Red Hot Poker)

**Pfitzers.** Blooms during August to October with head of rich orange-scarlet. Very free bloomer and is hardy if given some protection. Best to winter in cellar.----- Each 25c, Doz. \$2.50



BORDER PLANTING OF PERENNIALS IN A BACK YARD.

## The Construction of Rock Gardens and Pools



ROCK GARDEN CONSTRUCTED SUMMER 1928

We construct Rock Gardens and Pools. Call our Landscape Service and have us to figure on the building of a Naturalistic Garden. See Page 20 for complete information on Landscape Service.

### Plants for Rock Gardens and Pools

**ALYSSUM SAXITILE** (Madwort)

Yellow flowers all summer.-----  
 -----Height 12", Each 20c, Doz. \$2.00

**ALYSSUM AGERATUM** (Madwort)

Leaves silver, flowers in clustered yellow heads.-----Height 15", Each 20c, Doz. \$2.00

**ARABIS** (Rock Cress) Alpina—pure

white flowers early in spring. Very beautiful.-----  
 -----Height 10", Each 20c, Doz. \$2.00

**ARMERIA** (Round Head Thrift). Cep-

haloites—Deep rose shade.-----  
 -----Height 10", Each 20c, Doz. \$2.00

**Ruby**—Red shades, varies-----

-----Height 10", Each 20c, Doz. \$2.00

**ANEMONE SYLVESTRIS** (Snowdrop

Anemone) Creamy white shade.-----  
 -----Height 8", Each 20c, Doz. \$2.00

**GERASTIUM TOMENTOSUM** (Snow-

in-summer) Silvery colored foliage, with white blooms very early in spring.-----

-----Height 10", Each 20c, Doz. \$2.00

**DIANTHUS DELTOIDES** (Maiden's

Pink) Dwarf and dainty pink flowers.-----  
 -----Height 8", Each 15c, Doz. \$1.50

**GEUM** (Avens) Mrs. Bradshaw—large

double flowers of fiery red.-----  
 -----Height 18", Each 15c, Doz. \$1.50

**MYSOTIS** (For-get-me-nots).

**Palustris**—Dwarf border blue.-----

-----Height 8", Each 15c, Doz. \$1.50

**Rosea**—rose shade of above.-----

-----Height 8", Each 20c, Doz. \$2.00





## Plants for Rock Gardens and Pools (Con.)

**PHLOX (Dwarf and Creeping Phlox)**  
**Subulata Alba**—White moss-like.-----**Each 25c**  
**Subulata Rosea**—Bright rose variety.-----**Each 25c**  
**Subulata Lilacena**—Light blue. **Each 30c**  
**Ovata—Dwarf**—Rosy red flowers.-----**Height 15", Each 25c**  
**Divaricata Canadensis**—Native dwarf phlox with fragrant lavender flowers.-----**Height 10", Each 30c**  
**Amoena**—Fine variety for carpeting ground. Rich pink flowers.-----**Each 30c**

**SEDUM (Stonecrop).**  
 Fine rock plants  
**Acre**—bright green foliage, yellow.-----**Each 25c, Doz. \$2.50**  
**Album**—thick waxy foliage, white. **Each 25c**  
**Kamschaticum**—prostrate green foliage turns golden in fall. Flowers orange yellow. Fine for rock walls.-----**Each 25c**

**Obtusatum**—Golden yellow flowers with emerald-green foliage.-----**Each 25c**  
**Spurium**—beautiful rosy crimson. **Each 25c**  
**Stoloniferum**—Evergreen leaves. Flowers purplish pink. July and August.-----**Each 25c**  
**VERONICA (Speedwell).** **Incana**—Foliage is silvery in color. Blooms are numerous with blue shade. **Height 12", Each 25c**

**VIOLA (Tufted Pansies) Hardy**  
**Cornuta Lutea**—Golden yellow. Blooms all summer, wet or dry, in shade or sunshine. Very beautiful.-----**Each 15c, Doz. \$1.50**  
**Admiration**—A dark blue hardy pansy, blooms very abundant all summer and fall.-----**Each 20c, Doz. \$2.00**  
**Rose Queen**—fine shade of rose.-----**Each 20c**  
**Black Prince**—very dark blue almost black.-----**Each 15c, Doz. \$1.50**  
**Jersey Gem**—Excellent pure rich violet.-----**Each 35c**

## Rock Garden Evergreens

These Evergreen are of the dwarf growing varieties and will be very suitable for the rock garden where plants of dwarf growing habit are required and most generally used.

**JUNIPER SAVINES.** Half-erect plants having deep green foliage. Fine on hillsides and exposed places. **10-12 in., \$2.00; 12-15 in., \$3.00; 15-18 in., \$3.50.**

**JUNIPER (Tom Thumb).** Very dwarf and slow growing. Heads of round compact shape. Light green foliage. **10-12 in., \$2.00; 12-15 in., \$3.00 each.**

**MUGO PINE**—Dwarf habit and very slow

growing. Foliage dark green. Very hardy. **8-10 in., \$2.50 each.**

**THUYA PYRAMIDALIS**—pyramidal shape growth. Foliage bright glossy green. **12-15 in., \$2.00; 15-18 in., \$2.50; 18-24 in., \$3.00.**

**THUYA GLOBOSA (Globe Arborvita).** Grows in shape of globe. Very dense and fine for rock gardens. **10-12 in., \$2.50; 12-15 in., \$3.00.**

**BIOTA AUREA NANA (The Chinese Golden Arborvita).** Foliage is a beautiful golden color. Slow growing and one of the finest in our Garden. **10-12 in., \$3.75**

## Broad Leafed Evergreen Shrubs

**Mahonia aquifolium (Oregon Holley-grape).** A handsome evergreen shrub with glossy green leaves and yellow flowers blooming in May. **8-10 in., 75c each; 10-15 in., \$1.00**

**BOXWOOD (Buxus sempervirens).** A slow growing dwarf boxwood. Fine for urns and boxes on verandas. Can be used for hedges. Best to protect slightly for the first two or three years. **10-12 in., \$1.75 each; 12-15 in., \$2.25 each.**



## Best Varieties of Cannas

A recognized authority indicates that Cannas are becoming more popular as bedders each year. Everywhere Cannas are grown in beds with the dwarf perennials edging the beds, by using some of the highly colored varieties, many beautiful color combinations can be secured. Groups of one kind or color are best planted by themselves rather than planting many different colors together. Plant a bed of beautiful KING HUMBERT, growing 4 feet, having an orange scarlet color and edge bed with dwarf light blue Ageratum.

**APRICOT.** Rich apricot grows about four feet tall.-----**Each 15c, Doz. \$1.50**

**BEACON.** Grows about four feet flowers rich cardinal red. Fine for large groups in beds.-----**Each 15c, Doz. \$1.50**

**FLAG OF TRUCE.** 4 ft. Creamy white with faint creamy pink dots.-----**Each 20c, Doz. \$2.00**

**GOLDEN WEDDING.** 3 ft. Good bedding variety. Flowers a beautiful golden yellow. Dwarf grower.-----**Each 50c**

**HONOLULU.** (New 1927). Bronze leaf city of Portland. Flowers warm rose pink. Grows 3 ft. tall.-----**Each 75c**

**KING HUMBERT.** 4 ft. Orange scarlet streaked crimson.-----**Each 15c, Doz. \$1.50**

**KING MIDAS.** 5 ft. Flowers are glorious trusses of golden yellow. The very best of the yellows.-----**Each 50c**

**PANAMA.** 3 ft. Large flowers of rich orange red.-----**Each 15c, Doz. \$1.50**

**THE PRESIDENT.** 4 ft. The very best red. Flowers are very large and of extra good quality.-----**Each 25c, Doz. \$2.50**

**VICTORY.** 3 ft. An improved APRICOT shade. Very much in demand and very popular. Good for bedding.-----**Each 15c, Doz. \$1.50**

## Floral Garden Peonies (Hardy Perennials)

### Ratings

Peonies and Iris have been rated by the American Peony Society and the American Iris Society, these societies having published Symposiums of votes by their members upon the merits of the different varieties in general cultivation. Ten points means that the variety is perfect, 9 nearly perfect, 8 extra good, 7 good, and 6 medium. In some cases the variety has not been voted on and there is no rating.

**Planting and Care:** Peonies may be shipped in April or May, just so the growth has not started, however the best time is in the Fall of the year. Our regular shipping dates are Sept. 1 st., to Nov. 1st. Plant Peonies in the finest garden soil that you have with not more than two to three inches of soil over the eyes. Do not allow fresh manure of any kind to come in contact with the root.

### General List of PEONIES

**Flowering from May 25th to July 1st,  
depending on variety.**

Peonies are one of the most beautiful of herbaceous plants. They thrive well in almost all kinds of soil and require but little attention. They will withstand intensely



PEONY PLANT IN FULL BLOOM



## Peonies (Continued)

cold winters and only require covering the first winter.

Our stock of Peonies has been selected from the highest rated varieties that are grown. Every year we add new varieties and introduce these new varieties after the second year.

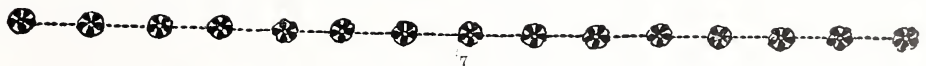
We send our customers only divisions of three to five eyes, from two and three year old plants. Our prices for these divisions are just as low as we can possibly make them in view of the correctness and quality of stock furnished. Any stock which by mistake might prove untrue to name will be replaced free.



View of Two Year Old Peony Field

- 7.5 ARCHIE BRAND (Brand) Beautiful deep sea-shell pink..... \$1.00
- 7.9 AVIATEUR RAYMOND (Dessert) Bright cherry-red shaded garnet and brilliant amaranth..... \$2.00
- 9.0 BARONESS SCHRODER (Kel) Opens bluish and changes to a pure white. Delicate odor..... \$1.25
- 7.0 BERLOIZ (Crousse). Carmine rose. petals silver..... \$1.00
- 8.0 BOULE DE NEIGE (Calot). Milk white fecked crimson..... \$1.25
- 8.4 CHESTINE GOWDY (Brand). Shell pink with broad cream collar. Petals splashed with crimson. Fragrant..... \$2.00
- CHRYSANTHEMAFLORA. Clear pink shaded cream..... \$ .75
- 8.7 CLAIRE DUBOISE (Crousse). Deep violet rose, tipped silvery white. Profuse bloomer..... \$1.00
- 8.1 COURONNE D'OR (Calot). Pure white with yellow stamens..... \$ .50
- 7.1 DELACHEI (Delache). Violet crimson tipped silver..... \$ .50

- 7.6 DELICATISSIMA. Pale lilac rose. Good strong grower..... \$ .50
- 7.8 DUCHESS DE WELLINGTON (Calot). White petals with sulphur centre. Vigorous tall growing peony..... \$ .50
- 7.6 EDULIS SUPERBA (Lemoine). Early bright mauve pink. One of the best for Decoration Day blooms..... \$ .50
- 8.7 ELWOOD PLEAS (Pleas). Large full double shell pink..... \$3.50
- 7.8 ESTAFETTE (Dessert). Very early bloomer. Clear purple carmine with silvery margin..... \$1.50
- 8.6 EUGENIE VERDIER (Calot). Pale hydrangia pink. Extra beautiful flowers. Free bloomer. Midseason..... \$1.25
- 8.4 FELIX CROUSSE (Crousse). Ball-shaped bloom. Very brilliant red. Ruby flame centre..... \$ .75
- 9.3 FESTIVA MAXIMA (Miellez). Snow white centre petals splashed crimson. Very tall..... \$ .50
- 9.1 FRANCES WILLARD (Brand). Cream white flowers of very delicate texture. Fragrant. Fine..... \$3.50
- 8.9 GEORGIANA SHAYLOR (Shaylor). Pale rose pink. Centre slightly splashed crimson..... \$4.50
- 8.6 GRANDIFLORA (Richardson). Immense double silvery pink. Very fragrant. Late..... \$1.50
- 8.7 JAMES KELWAY (Kelway). Very large rose type. White changing to milk white. Midseason..... \$2.25
- 8.9 JUBILEE (Pleas). Extremely large flat pure white flowers. Greatly admired favorite..... \$2.50
- 8.8 KARL ROSEFIELD (Rosefield) Very dark crimson. Free bloomer and very upright growing..... \$1.50
- 9.8 KELWAYS GLORIOUS (Kelway). Very full flower of enormous size and exquisite beauty. Gleaming white with rosy streak on petals..... \$18.00
- 9.1 LADY ALEX. DUFF (Kelway). Magnificent bloom and very large. Very delicate flesh pink fading to creamy-white in centre. Outside petals tinted light pink on opening..... \$5.00
- 7.8 LADY BERESFORD (Kelway). Soft pink. Delicate and very beautiful. Strong grower..... \$2.00
- LA COQUETTE (Gueriu). Bright rose pink. Fine..... \$1.50



## Peonies (Continued)

9.9 **LA CYGNE (Lemoine)**. Pure white Peony with incurved petals of most excellent quality. The blooms are of good size and when perfectly grown look as tho they had been carved from the purest marble. Plants are very vigorous growing and this variety has been voted on by the American Peony Society as the most perfect peony in the world.-----\$10.00

9.0 **LA FRANCE (Lemoine)**. Very best, large, light pink, double Peony blooming late in season.-----\$6.00

**LA LORRAINE** A creamy white Peony which shades to a very soft pink-----\$4.00

7.5 **LA TULIP (Calot)**. Very large flesh pink shaded to ivory white. Centre petals striped carmine.-----\$ .50

8.1 **LIVINGSTON (Crousse)**. A very choice late blooming variety of large rose pink blooms. Stems stiff.-----\$ .75

8.8 **LOVLINESS (Hollis)**. Uniform hydrangia-pink changing to lilac white. Mid-season.-----\$3.00

9.0 **LONGFELLOW (Brand)**. Considered by its originators to be the brightest red Peony in existence.-----\$4.00

8.4 **LORA DEXHEIMER (Brand)**. Very fine bright red Peony. Stems are strong and good bloomer.-----\$4.00

7.8 **LUCY HOLLIS (Hollis)** Very late blooming pink Peony. Blooms are as prolific late in the season as Elwood Pleas is early. Very fine.-----\$3.00

8.9 **MARIE CROUSSE (Crousse)**. Soft blush pink.-----\$2.00

7.8 **MARIE STEWART (Calot)** Pink and cream early.-----\$ .50

8.5 **MARIE LEMOINE (Calot)** Ivory white with occasional marking of carmine on petals.-----\$1.00

8.7 **MARY BRAND (Brand)**. Vivid crimson. Golden stamen scattered thru centre of bloom. One of the best dark red peonies.-----\$3.50

8.2 **MME. GAUDICHAU (Millet)**. Next to M. Martin Cahuzac this is the darkest Peony in the world. It has the most beautiful dark red foliage of any peony that we have in our garden. Good bloomer and sturdy grower.-----\$10.00

8.2 **MME. D. TREYERAN (Dessert)**. Medium dwarf variety with extra large bloom. Petals white with lilac-pink dot on them.-----\$3.50



PEONY FIELD AT FLORAL GARDENS



## Peonies (Continued)

7.9 **MME. GEISSLER (Dessert)**. Large flowers of wonderful coloring. Violet rose, tipped silver and very fragrant.-----\$2.00

9.4 **MME. JULES DESSERT (Dessert)**. A very delicate shade of pink. If buds are covered with paper bags and then taken into the house will open into a very wonderful bloom of exquisite beauty. Grows tall and holds up its bloom very well. A great favorite in our Gardens.-----\$3.00

8.5 **MME EMILE GALLE (Crousse)**. Large double cup-shaped flowers of a delicate sea-shell pink with touches of heliotrope and lavender.-----\$1.25

7.9 **MME. DE VERNEVILLE (Crousse)**. Pure white flower with petals tipped carmine. Vigorous grower and extra free bloomer. Has true June rose fragrance.-----\$ .75

8.1 **MME. CALOT (Miellez)**. Hydrangia pink and early bloomer. Blooms freely and in clusters.-----\$ .50

9.1 **MARTHA BULLOCK (Brand)**. A very deep pink Peony of very extra large size, blooming late with Solange. Stems are rather weak to hold so large a bloom, but when cut will hold their color extra well. Worthy of a support during its blooming season. A favorite and a winner.-----\$10.00

9.3 **MRS. EDWARD HARDING (Shaylor)**. This is the "One hundred dollar Peony", when first shown in 1917. On plants two and three years old the large white blooms of such a splendid pure white always attract the attention of the most critical. You will certainly love this wonderful white Peony.-----\$20.00

7.4 **MASTERPIECE (Producer Unknown)** Medium sized Brilliant Tyrian Rose. Fragrant. Very Distinct and a beautiful variety.-----\$2.00

8.7 **MIGNON (Lemoine)**. Excellent dwarf Peony blooms of a soft shade of pink. Guard petals are almost white. Late.-----\$4.50

9.2 **M. JULES ELIE (Crousse)**. One of the most beautiful Peonies in our Gardens. Blooms very large of a silvery pink, with wide guard petals surrounding a large bunch of incurved petals of a beautiful pink shading to white. Wonderful show Peony.-----\$1.25

7.6 **M. CHARLES L'EVEQUE**. Beautiful pinkish white.-----\$1.00

8.8 **M. MARTIN CAHUZAC (Dessert)**. This is the very darkest red Peony in the world. On young plants the blooms are semi-double, on two and three year old plants the

red petals completely hide the golden stamens The only rival is Mme. Gaudichau.-----\$3.50

8.5 **OPAL (Opal)**. A beautiful very light pink Peony. Very valuable for its show bloom and landscape effect. We recommend it.-----\$3.50

**OFFICINALIS RUBRA**. This is probably the very earliest red blooming peony that we have in our Gardens. Blooms about May 15 to 20th.-----\$1.00

8.4 **PASTEUR (Crousse)**. This is probably the tallest light pink Peony in the world. Stems are rather strong but in most cases should be slightly supported. Later than Therese.-----\$2.50

9.0 **PHYLLIS KELWAY (Kelway)**. Very large, loosely built flower of exquisite beauty. Color is lavender-flesh, passing to white in centre.-----\$15.00

8.6 **PRIMEVERE (Lemoine)**. One of the two best yellow Peonies in the world. Very tall grower. Cover the buds with paper bags and then cut and open inside to get the real beauty.-----\$7.50

8.5 **QUEEN VICTORIA (Syn. Whitleyi)**. A full strong white with a creamy centre. Extra for very beautiful cut flowers.-----\$ .75

8.7 **REINE HORTENSE (Calot)**. Syn. Pres. Taft. A very large, flat, semi-rose type. Uniform hydrangia-pink. Centre is flecked crimson. Very tall on long extra stiff stems. Fine for landscape effect and cut flowers.-----\$1.50

9.0 **SARAH BERNHART (Lemoine)**. One of the very largest pink Peony. Blooms on long stems and extra large. Very prolific bloomer. Be sure to include this one in your list.-----\$2.50

9.1 **SOUV. DE LOUIS BIGOT (Desert)**. One of the most beautiful and largest Peonies. Blooms are midseason pink with delightful color of Walter Faxon. Very fine for show room.-----\$5.00

9.7 **SOLANGE (Lemoine)**. A very late blooming Peony. The buds are often very ugly, but later develop into one of the most perfect blooms that any one could possibly conceive. The color is a peculiar yellow-pink with a slight tan tone. As a cut flower it has most excellent lasting qualities. We recommend it very highly.-----\$5.00

8.2 **SUZETTE (Dessert)**. A most beautiful deep rose color with perfect stems and a wonderful plant for landscape effect.-----\$4.00





## Peonies (Continued)

9.8 **THERESE (Dessert)**. This is really the greatest pink show peony in the world. Plant is a medium grower, but the immense flowers which come on these plants are blooms that are wonderful. The odor of this flower is better than the most exquisite rose. Lateral blooms last for ten days to two weeks after main bloom.-----**\$5.00**

9.4 **TOURANGELLE (Denis)**. This is a midseason to late blooming Peony which has an entrancing tint of pink in its petals, which in order to enjoy to the greatest extent must be covered with paper bags and opened on the inside.-----**\$4.50**

7.4 **UMBELLATA ROSEA (Dessert)**. A very early blooming light pink Peony. It is almost a full double and with very stiff stems. Excellent landscape use.-----**\$1.50**

8.3 **VENUS (Kelway)**. Large delicate shell-pink blooms. Makes a very beautiful cut-flower. Fragrant.-----**\$1.50**

9.3 **WALTER FAXON (Richardson)**. A very soft pink bloom on fine graceful stems. Popularity is ever increasing. We recommend it to the highest degree.-----**\$5.00**

7.8 **WELCOME GUEST (Hollis)**. This bloom is rather very loosely built and of about the same as that of Phyllis Kelway. Excellent for landscape purpose.-----**\$3.50**

## Single and Japanese Peonies

8.4 **ALBIFLORA (The Bride)**. The earliest single Peony that we have in our Gardens. Tall and free bloomer.-----**\$1.50**

8.5 **ALMA (Shaylor)**. Large pink Japanese Peony, with a bunch of very narrow petaloids in the centre.-----**\$2.50**

8.4 **CARNOT (Dessert)**. A very early red single.-----**\$1.25**

8.4 **L'ETINCELANTE (Dessert)**. A very fine deep lilac-pink single Peony. Considered by some growers as the best single pink.-----**\$2.00**

**KAMAKURAKO**. Japanese peony of a light lilac.-----**\$2.00**

8.6 **MIKADO (Barr)**. This is one of the best tall very deep rose or medium red Japanese Peonies. Blooms early and laterals last long extending the blooming season many days longer.-----**\$3.00**

**MAGNIFICANCE (Kelway)**. A medium tall light pink Jap. with a bunch of stamenoids in centre.-----**\$2.50**

**PERLE ROSE (Dessert)**. A beautiful single pink peony which we do not hesitate to recommend. Extra fine.-----**\$2.50**

**PRINCESS MATHILDA**. Medium growing single china pink Peony. Blooms are very beautiful.-----**\$1.00**

**PETITE RENEE**. Japanese with light lilac pink blooms. Centre of blooms have large bunch of narrow petals intermingled with broad pink petaloids.-----**\$1.50**

**TOGO-NO TSUKO**. Japanese Peony of a very dainty blush pink. Fine for landscape effects. Plant in groups.-----**\$1.50**

7.7 **YESSO, Japanese**. Faint blush outer petals. Tuft of thread-like petals in the centre.-----**\$1.00**

7.3 **VELOUTINE (Dessert)**. Tyrian-rose with velvety reflex single peony.-----**\$1.00**

**VENISE (Dessert)**. Single, clear pink tinted carmine.-----**\$1.00**

7.6 **VESUVE (Dessert)**. Single with very dark red blooms.-----**\$1.25**

## Tall Bearded Iris (German)

### LATE MAY AND JUNE FLOWERING IRIS—Fleur-de-lis.

Iris at our Gardens start blooming about the middle of May and continue thruout the month of June. In walking about the Gardens during this time of the year you will note the large and exceedingly handsome blooms with their delicious fragrance. You will say that their beauty outrivals that of the Orchid in their delicacy of structure and wide range of colors. Here are the richest yellows you have ever beheld; the

most intense purple, the most delicate blues, and there the most beautiful scarlet-red. Then there are the pure whites, primrose shades, gold and smoky-lavender, in fact there is every shade and combination of shades imaginable.

You will find that Iris are particularly well adapted for massed plantings for flower borders, shrubberies, woodland paths, creek banks, wild gardens and surrounding lakes and pools.





## Tall Bearded Iris (Continued)



IRIS FIELD 1928.

Plant the Rhizomes just below the surface of the soil and very little care is required, but much joy will be returned.

S—in the descriptions below signifies Standards; F—the Falls.

**ABENDA (Perry).** S, light lilac. F, cherry red.-----Each \$2.00

**8.6 AFTERGLOW (Sturtevant).** Soft grey-lavender shading to buff and yellow. The color you see when the sun goes down in the evening sky.-----Each 50c, Five \$2.00

**8.9 ALCAZAR (Vilmorin).** S, are light blue; F, are a brilliant purple, with bronze penciling in throat.-----Each 35c, Five \$1.50

**9.4 AMBASSADOR (Vilmorin).** S, are bronze; F, a beautiful velvety maroon. Tall grower and a fine flower.-----Each \$1.00

**8.3 ARCHEVEQUE (Vilmorin).** Deep velvety purple.-----Each 50c, Five \$2.00

**8.2 AZURE (Bliss).** Splendid rich red-purple Iris.-----Each 50c, Five \$2.00

**9.4 Ballerine (Vilm).** S, pale blue-violet; F, wisteria veined red-brown on cream base. Grand.-----Each \$1.00

**7.9 BARTON HARRINGTON (Fryer).** Golden yellow to velvety brown. One you must have.-----Each 75c

**BROOKSIANA.** A beautiful pink Iris.-----Each 20c, Five 75c

**BLUE JAY.** Clear blue to dark blue. Good in masses.-----Each 20c, Five 75c

**8.8 B. Y. MORRISON.** Standards violet and falls purple.-----Each 75c, Five \$2.75

**9.1 Canopsis (Bliss).** Dominion Seedling with pansy violet falls. Flower very large.-----Each \$2.50

**8.0 COL. CANDELLOT (Millet).** S, are bronze overlaid with lavender. F, a rich velvety crimson.-----Each 50c, Five \$2.00

**6.9 CHESTER HUNT.** Celestial Blue to marine.-----Each 15c, Five 50c

**CLEARANCE WEDGE.** Heliotrope to purplish-red.-----Each 20c, Five 75c

**8.7 CRUSADER.** Light blue to deep violet Very fine.-----Each \$1.00

**DARIUS,** Canary yellow to lilac.-----Each 20c, Five 75c.

**8.5 DREAM (Sturt).** Very near to a perfect pink, self color. Large flowers.-----Each \$1.00

**8.0 DALILA (Dennis).** S, pale flesh white; F, rich red purple. Very striking.-----Each \$1.00

**8.0 FAIRY.** White, delicately suffused soft blue. Popular and sweet smelling.-----Each 25c





## Tall Bearded Iris (Continued)

8.9 **GEORGIA** (Farr). Beautiful cattleya rose.-----**Each \$1.00**

7.6 **GLORY OF HILLEGOM.** Very clear light blue.-----**Each 20c, Five 80c**

**GOLD IMPERIAL.** New. Wonderful gold shade.-----**Not for Sale.**

**GOLIATH.** Large violet and purple flower.-----**Each 50c**

**GAGUS.** Clear yellow to crimson. Fine.-----**Each 25c, Five 80c**

7.3 **HER MAJESTY** (Perry). Lovely rose-lilac standards with falls of same color.-----**Each 25c, Five 80c**

**HIAWATHA.** Lavender and pale lavender.-----**Each 20c, Five 60c**

7.9 **IRIS KING** (Goos). S, clear lemon yellow with F—a rich maroon bordered yellow-----**Each 25c, Five 80c**

**IRIQUOIS.** S, smoky lavender; F, dark maroon.-----**Each 25c, Five 80c**

8.1 **JUNIATA** (Farr). Clear blue self color.-----**Each 20c, Five 75c**

**JAC. Gullot.** New. Not for Sale.

**KHEDIVE.** Soft Lavender with orange beard.-----**Each 20c, Five 75c**

8.2 **LOHENGRIN** (G&K). Ruffled pinkish lavender.-----**Each 15c, Five 60c**

**LEDA.** White frilled rose lilac.-----**Each 15c, Five 60c**

7.9 **LORLEY.** S, yellow; F, marine blue.-----**Each 20c, Five 75c.**

9.1 **LORD OF JUNE** (Yeld). Massive lavender blue-----**Each 75c, Five \$3.00**

9.0 **LENT A WILLIAMSON** (W'Mson). Very large violet and purple. Tall grower.-----**Each 75c, Five \$2.50**

8.1 **MAMIE** (Cayeux). Ruffled white, penciled blue.-----**Each 50c**

9.1 **MAGNIFICA** (Vilm). Very large 6-inch blooms fragrant, violet hues.-----**Each \$1.00**

7.8 **MARY GARDEN** (Farr). S, pale yellow flushed lavender; F, creamy white dotted and veined maroon.-----**Each 25c, Five 80c**

**MORNING SPLENDOR** (Shull.) S, Rich red-violet with Falls of a richer red-violet.-----**Each \$5.00**

**MOTHER OF PEARL** (Sturt.) Soft iridescent shades of pearl. A very beautiful Iris.-----**Each \$1.00, Five \$4.00**

6.8 **MRS. HORACE DARWIN** White frilled brown.-----**Each 50c**

**MRS. TINLEY** (Bliss). Very lovely lilac-blue.-----**Each \$1.50**

8.4 **MONSIGNIOR** (Vilm). Rich violet and purple.-----**Each 25c, Five \$1.00**

**MRS. ALAN GRAY.** Fine pink good for massing.-----**Each 25c, Five 80c**

**MME. CHOBAUT.** Creamy dotted bronze.-----**Each 25c, Five \$1.00**

7.4 **MME. CHEREAU.** White frilled with a wide border of pale blue. Very handsome.-----**Each 25c, Five 80c**

7.8 **MME. DE SEVIGNE** (Dennis). Mme. Chateau type with violet purple markings.-----**Each 35c, Five \$1.25**

**NAKOMIS.** S, pale lavender; F, dark violet. Very fine.-----**Each 25c, Five \$1.00**

**NAIJO.** S, light bronze; F, deep maroon.-----**Each 25c, Five 80c**

**NIBELUNGEN.** S, fawn; F, violet purple.-----**Each 25c, Five 80c**

8.7 **OPERA** (Vilm). S, dark purplish bronze; F, much deeper and richer in color.-----**Each \$1.00**

8.8 **PALLIDA DALMATICA.** Clear deep lavender. Very large flowers. Tall grower.-----**Each 20c, Five 80c**

8.1 **PARC DE NEUILLY.** (Verdier). Rich purple self approaching plum color. Large blooms.-----**Each 35c, Five \$1.40**

**PETIT VATRY.** Deep lavender shade. Semi-dwarf grower. Beautiful flower for edging.-----**Each 20c, Five 75c**

**PLUMERI.** Deep copper color, shaded red.-----**Each 15c, Five 50c**

7.7 **POCAHONTAS.** (Farr). Pure white faintly bordered blue on edges.-----**Each 20c, Five 75c**

8.5 **PROSPERO.** Vigorous tall growing bearing very large flowers. Pale lavender flowers to deep red-purple.-----**Each \$1.00, Five \$4.50**

7.2 **PRINCESS VICTORIA LOUISE** (G & K). S, soft primrose yellow; F, reddish purple.-----**Each 25c, Five 75c**

8.3 **PROSPER LAUGIER** (Ver). Very broad deep velvety crimson, richly veined at throat.-----**Each 50c**

**PRINCESS TOTO** (Bliss). New. Extra large white. Dainty shaded Iris. Very fine.-----**Each \$2.00**

8.4 **QUAKER LADY** (Farr). S, smoky lavender with yellow shadings; F, ageratum blue. Good for massed plantings.-----**Each 20c, Five 60c**





## Tall Bearded Iris (Continued)

- QUEEN FLAVIA.** Beautiful primrose yellow.-----Each 25c, Five 75c
- 7.5 **QUEEN ALEXANDRIA (Barr).** S, fawnshaded lilac. F, lilac with yellow beard.-----Each 20c, Five 60c
- 9.1 **QUEEN CATRINA (Sturt).** Pale lavender violet with white in the haft.-----Each \$1.50
- ROSE MADDER.** New-----Each \$2.00
- 8.4 **RHEINIXIE (G & R).** S, White and very large. F, rich violet purple with narrow distinct edge. Very good bloomer. Tall.-----Each 25c, Five 75c
- 8.3 **SEMINOLE (Farr).** S, soft violet rose; F, rich velvety crimson. Best red.-----Each 75c
- 7.6 **SHERWIN WRIGHT (Koh).** Bright yellow.-----Each 25c, Five 80c
- 8.7 **SHEKINAH (Sturt).** Pale lemon yellow deepening toward centre. 36 in.-----Each 50c, Five \$2.00
- 9.3 **SOUV. DE MME. GAUDICHAU (Mil).** A tall early and very distinct variety. A deep purple bicolor of unusual appearance. One of the finest Iris.-----Each \$2.00
- SUSAN BLISS (Bliss).** New. Pink tone.-----Each \$5.00
- SIMONNE VAISSAIRE (Millet).** S, white strongly shaded azure blue; F, brilliant analine blue. Very fine.-----Each \$2.50
- SILVER MIST (Dykes).** Midseason best light blue Iris in the world. Stock very scarce.-----Each \$6.00
- TENEBRAE (Bliss).** Dominion Seedling. S, rich violet-purple overlaid with transparent sheen. F, velvety black red-purple with red-brown markings on a white base. Good orange beard.-----Each \$7.00
- TROPIC SEAS.** S, beautiful violet with falls having a blue purple shade. Very distinct and attractive flower. Very new.-----Each \$6.00
- TRUE CHARM.** New Iris.-----Each \$5.00
- TRAUTLIEB.** A Beauty-----Each 25c
- 8.3 **UTE CHIEF (Farr).** S, light blue-violet; F, rich royal purple. Extra large.-----Each 75c
- 8.0 **VIOLACEA GRANDIFLORA.** Rich clear blue to violet blue. Handsome.-----Each 25c, Five 75c
- 7.2 **WYOMISSING (Farr).** Creamy white.-----Each 20c, Five 60c
- W. F. FRYER (Fryer).** Yellow and maroon.-----Each 75c, Five \$2.50
- 8.3 **WHITE KNIGHT.** Pure white. Very good.-----Each 40c, Five \$1.50
- 7.5 **ZUA (Crawford).** Standards and fall very much like silk crepe. S, delicate lilac tint. F, slightly deeper.-----Each 50c, Five \$2.00

## Beardless Iris

We are listing the Siberian Iris and the Dwarf Iris in the group as listed below. Their height and prolific blooming habit adapt them very much to landscape work. Especially are they at home near pools and lakes. In planning your Rock Gardens, do not forget to include the dwarf varieties.

### SIBERIAN

- DOROTHEA K. WILLIAMSON.** This is a very valuable Iris for cut flowers. Blooms are large and foliage is very striking. Color is a rich vivid purple.-----Each 75c, Five \$3.00
- MONSEUR LORD WOOLSEY.** Violet tinted rose and yellow. Grows to 36 inches. Stiff stems with large attractive flower. Siberian.-----Each 75c
- PERRY'S BLUE.** Sky blue and white. Grows to 45 inches. Very attractive flower. Siberian.-----Each 50c, Five \$2.00
- ORIENATLIS (Snow Queen).** Large very white bloom. Grows 27 to 30 inches tall. A beauty.-----Each 60c

### DWARF IRISES

- Dwarf Iris are particularly adapted to Rock Gardens and near pools when a low border of plants is desired. They prolong the Iris blooming season, as color is often shown late in March or the first of April.
- DIXMUNDE.** Violet-purple. One of the very best of dwarfs. Flowers covering the entire plant.-----Each 50c
- GRAMINEA.** Red-violet. Very profuse bloomer with flowers of very large size on very short stems.-----Each 75c
- FLORIDA.** Very light yellow.-----Each 35c
- MAROCAIN.** Violet. Very rich color.-----Each 75c
- ORANGE QUEEN.** Pure yellow. Each 50c
- THE BRIDE.** Pure white.-----Each 50c





## Spanish Iris

We started growing Spanish Iris about three years ago and found that this specie does very well in this locality. If planted in rich soil blooms will be abundant the second year.

**PURITY.** Pure white flowers. Blooms after German Iris is thru. Petals narrow but are much more lasting than the former variety. Very fine for cut flowers.

## Japanese Iris (Iris Kaempferi)

A description of Japanese Iris is very difficult, as no description will do justice to this most wonderful flower. Individual blooms will often measure 8 to 10 inches. They may be planted along the waters-edge or on dry land, if well cultivated. Fine for growing along margin of streams. Japanese Iris must always be mulched during the winter months.

**GOLD BOND.** A fine double pure white, creamy glow at the gold-banded centre. ....  
..... **Each 75c**

**MAHOGANY.** Purple mahogany-red. Large double flowers the latest to bloom. Fine. ....  
..... **Each 75c**

**PURPLE AND GOLD.** Double flowers. Early to bloom. Color rich violet purple with white petaloides, tipped violet. ....  
..... **Each 75c**

**NEPTUNE.** Single. Violet overlaid with dark blue. ....  
..... **Each 75c**

**BLUE DANUBE.** Pure rich blue, yellow centre. Six petals. A very beautiful Japanese .....  
..... **Each 75c.**

**ASTARTE.** Double; beautiful dark violet .....  
..... **Each 60c**

**GEKKA-NO-NAMI.** Dense, pure white with yellow blotches on petals. ....  
..... **Each 75c**

**KUMO-FUNGI.** Purple, overlaid with navy-blue, large yellow blotches. ....  
..... **Each 75c**

**KURO-KUMO.** Purple, overlaid with dark blue, yellow and white flowers. Very fine. ....  
..... **Each 70c**

**PYRAMID.** Purple, overlaid with cerulian blue, yellow blotches radiating into white veins. ....  
..... **Each 75c**

**UCHIU.** Coerulean blue with gold centre. One of the largest of Japanese Iris. **Each 75c**

### Special Dwarf Collection No. I

Four varieties Dwarf Iris: our selection..... **\$1.50**

### Special Siberian Collection No. II

Four varieties of the above Siberian..... **\$2.25**

### Special Japanese Collection No. III

Collection of FIVE (5) Japanese Iris. Our Selection, valued at not less than \$3.50. Collection..... **\$2.75**



## Deciduous Shrubs



**WEIGELIA ROSEA**

In this section we include a great group of interesting plants that will add much to the appearance of your home property and grounds. In fact we make the statement that, "A home is not a home until it is planted." These shrubs include all these flowering species admired for their autumn and winter fruits, or for the color of autumn foliage, or for their interesting shapes and forms.

Shrubs should always be planted in masses, groups or borders; as isolated specimens, unless very large, look lonesome and forlorn. A good arrangement invariably provides

for open stretches of lawn bordered with irregular groups and masses of shrubs against the boundary lines or buildings. Don't plant too many different kinds together in any one group. Their outline and habits differ so very much that best effects always come from planting large restful groups of one kind or closely related sorts.

Before planting a shrubbery border along drives or a building, first, well cultivate the soil and then plant shrubs after ground is well worked. No plant can be expected to do well if merely stuck into a hole in the sod.

**ARALEO PENTAPHALIA.** Beautiful dark green foliage. Best for background plantings. Limbs rather thorny. **2 to 3 ft., 50 cts. each**  
**3 to 4 ft., 75 cts. each**

**BERBERIS THUNBERGI.** Japan Barberry. This is a very suitable shrub for hedges or specimen planting. Special price. **15 to 18 in., 25 cts.; \$2 for 10; \$12 per 100**  
**18 to 24 in., 35 cts.; \$3 for 10; \$18 per 100**  
**2 to 2½ ft., 45 cts.; \$4 for 10; \$30 per 100**

**BERBERIS THUNBERGI ATROPURPUREA.** Red Leaf Barberry. The NEW RED LEAF barberry. Leaves are a glowing red and stays that way all summer. A very beautiful plant.....**9 to 12 ins., 50 cts.,**  
**12 to 15 ins., 75 cts. each.**

**CORNUS SIBERICA.** Red Twigg Dogwood. Best variety, as its limbs are so showy during winter months. Large bushy plants, **2 to 3 ft., 50c each; 3 to 4 ft., 60 cts. each**





## Deciduous Shrubs (Continued)

**CORNUS LUTEA.** **Yellow Dogwood.**  
Yellow twigs in winter. Very effective when  
planted with Red Dogwood.-----  
2 to 3 ft., 60 cts.; 3 to 4 ft., 75 cts. each.

**BUDDLEIA MAGNIFICA.** **Butterfly  
Bush.** Sometimes called summer lilac.  
Grows about four feet tall and has dark  
lavender blooms.-----  
18 to 24 ins., plants 50 cts. each

**DEUTZIA CANDISSIMA.** (**Snowflake  
Deutzia.**) Very dainty and graceful. Has  
immense and fluffy sprays of pure white  
flowers.-----  
3 to 4 ft., plants well branched. 45 cts. each

**DEUTZIA GRACILLIS.** **Slender Deutzia.**  
Slender branches are covered with white  
flowers early in summer.-----  
15 to 18 ins., 60 cts., each

**FORSYTHIA VERIDISSIMA.** **Golden  
Bell.** A very popular yellow blooming plant  
before leaves appear in spring. Good in  
massed plantings.-----  
2 to 3 ft., 40 cts. each  
3 to 4 ft., 50 cts. each

**HYDRANGIA ARBORESCENCE  
GRANDIFLORA.** Blooms in June and  
July, and has large flat white bloom.-----  
18 to 24 ins., 50 cts.

**HYDRANGIA PANICULATE GRANDI-  
FLORA.** Blooms in August and September.  
Panicaled shaped bloom.-----  
18 to 24 ins., 60 cts. each;  
2 to 2½ ft., 75 cts. each

**LONICERA MORROWII,** **Bush Honey-  
suckle.** Blooms in May, flowers creamy  
white and very showy.-----  
2 to 3 ft., 40 cts.;  
3 to 4 ft., 50 cts. each

**KERRIA JAPONICA.** Single yellow flowers  
on branches with bright green foliage. Very  
attractive and good.-----  
18 to 24 ins., plants 50 cts. each;  
2 to 3 ft., 75 cts. each

**LONICERA TARTARICA.** Graceful bush  
bearing light red berries late in fall and winter.  
-----  
2 to 3 ft., 60 cts. each.

**LILAC.** Common white and purple.-----  
3 to 4 ft. plants; 50 cts. each.

**LILAC.** Persian.-----  
2 to 3 ft., 75 cts. each.

**PHILADELPHIA MT. BLANC.** **Mock  
Orange.** Sweet scented Syringa. Does not  
grow tall. Covered with white blooms during  
month of June. Better than old variety.-----  
2 to 3 ft., 50 cts. ea.; 3 to 4 ft., 60 cts. ea.

**PHILADELPHIA LEMOINE.** Grows in  
columnar shape. White flowers in great  
clusters.-----  
3 to 4 ft., 60 cts. each

**PHILADELPHIA VIRGINAL.** The largest  
and most handsome of the newer varieties of

Mock Orange. Flowers are very large and  
double.-----  
3 to 4 ft., \$1.00 each.

**SAPIX CAPRAE.** **French Pussy Willow.**  
The cultivated Pussy Willow. Cut your own  
Pussy Willows and force them into bloom  
during winter months.-----  
3 to 4 ft., 50 cts. each

**SNOWBERRY, WHITE.** Best for shady  
places. Beautiful white berries during fall  
of year.-----  
2 to 3 ft., 50 cts. each.

**SNOWBERRY, RED.** Sometimes called  
Corralberry. Beautiful because of the abun-  
dance of bright red berries on branches during  
Fall of year.-----  
2 to 3 ft. plants, 50 cts. ea.

**SNOWBERRY SCHNULTAE.** The New  
**Snowberry.** Attractive upright growing  
plant with pink and white berries on during  
fall of the year-----  
18 to 24 ins., 50 cts.;  
2 to 3 ft., 75 cts.

**SPIRES ANTHONY WATERER.** The  
**dwarf Spirea.** Rose colored blooms on  
plants that grow dwarf and are fine for  
foundation planting. Good among Evergreen.  
-----  
18 to 24 ins., 60 cts.

**SPIREA OPULIFOLIUS AUREUS.** Tall  
growing Spirea with large leaf that keeps its  
golden color all summer. White flowers.  
-----  
3 to 4 ft. plants, 50 cts. each

**SPIREA THUNBERGI.** A feathery foliage  
plant. Blooms are white early in June.  
-----  
12 to 15 ins. plants 50 cts.

**SPIREA VAN HOUTTI.** This is one of  
the most popular shrubs that we grow.  
Blooms in May are very attractive as the  
entire shrub is covered with a mass of white  
blooms. Often so densely loaded with blooms  
causes the branches to bend to the ground.  
-----  
18 to 24 ins., 25c; 2 to 3 ft., 35c;  
3 to 4 ft., 50c

**TAMARIX AFRICANA.** Tall growing  
plant with feathery foliage having pinkish  
blooms early in May-----  
3 to 4 ft., 50 cts.  
4 to 5 ft., 60 cts.

**VIBURNUM OPULUS.** **High Bush Cran-  
berry.** Grows high and is noted for its  
bright red berries during fall of year.-----  
3 to 4 ft. plants, 75 cts. each

**VIBURNUM TOMENTOSUM PPLICATUM**  
**Japan Snowball.** Handsome leaves and  
globular heads of white flowers in June.  
Better than the Common Snowball.-----  
15 to 18 ins., plants 75 cts. each

**VIBURNUM OPULUS STERILE.** **Com-  
mon Snowball.** The well known shrub  
producing the snowball-like flowers.-----  
2 to 3 ft., 50 cts.

**WEIGELIA ROSEA**-----  
2 to 3 ft., 50 cts.  
-----  
18 to 24 ins., 40 cts.





## Hedge Plants

**IBOTA PRIVET.** Hardy Chinese Privet. Will stand very low temperature and will not freeze back. Very hard. Carries its leaves well into the winter.  
-----2 to 3 ft. plants; \$15 per 100

**REGALS PRIVET.** Very hardy and has a drooping effect. Beautiful for hedges.  
-----18 to 24 inch plants, 35 cts. each  
For hedge work  
-----18 to 24 inch plants, \$15 per 100

## Ornamental Trees

**ASH. European Mountain.** Native tree with spreading branches having an abundance of large bright red berries in August  
-----5 to 6 ft., \$1.50 each; 6 to 8 ft., \$2 each

**BOX ELDER.** Very fast growing tree with large leaves. Will grow in almost any location  
-----6 to 8 ft., trees \$1.25  
8 to 10 ft., trees \$2.00

**BIRCH. Cut Leaf Weeping.** Unusually attractive tree of drooping branches and well adapted to lawns  
-----6 to 8 ft., \$3.50

**CATALPA SPECIOSA.** Western Catalpa. Tall and very hardy. Good for background planting  
-----6 to 8 ft., \$1.50 each

**CERCIS CANADENSIS. American Red-bud.** One of the finest ornamental trees. Grows to medium size, with large heart shaped leaves. A profusion of deep pink flowers cover the entire tree before the leaves come out in spring  
-----2 to 3 ft., 50 cts;  
3 to 4 ft., 75 cts.; 5 to 6 ft., \$1.50;  
6 to 8 ft., \$2.25; 8 to 10 ft., \$3.50

**CORNUS FLORIDA. White flowering Dogwood.** Native tree with open spreading top. Covered with showy white blooms in early May  
-----3 to 4 ft. trees, \$1.50  
5 to 6 ft. trees, \$3; 6 to 8 ft. trees, \$4

**CORNUS FLORIDA RUBRA. Red Flowering Dogwood.** Blooms when quite young, producing deep, rose-colored flowers in spring. Balled & Burlaped  
-----2 to 3 ft., \$4.50 each

**CRAB BECTAL'S FLOWERING CRAB.** One of the best of flowering Crabs, Double fragrant flowers of delicate pink  
-----3 to 4 ft., \$1.50

**CRAB ATROPURPUREA. Purple Leaf**

**Crab.** Leaves are purple and make a beautiful effect on lawn  
-----3 to 4 ft., \$1.50

**CRATAGUS. Washington Hawthorn.** Very desirable tree, with beautiful autumn coloring and large clusters of bright red fruit  
-----3 to 4 ft., \$2 each

**CRATAGEOUS OXYCANTHA SPLENDENS. Paul's Scarlet Thorn.** Small tree of fine habit, with rich luxuriant foliage very double, deep crimson flowers  
-----3 to 4 ft., \$2.50

**ELM. American.** Needs no description. The most beautiful of Ornamental trees  
-----6 to 8 ft., \$1.50; 8 to 10 ft., \$2

**ELM. Chinese.** The New Elm from China. This is a very graceful growing tree and makes a very quick growth. Will make quicker growth than any good shade tree that can be planted  
-----5 to 6 ft., \$2

**MAPLE. Sugar.** Excellent street and shade tree  
-----8 to 10 ft., \$2.00

**MAPLE. Norway.** Best tree for street and shade  
-----8 to 10 ft., \$3.50

**MAPLE. Wier's Cut Leaf Maple.** Graceful and remarkable for the drooping branches. Foliage deeply and delicately cut. Attractive as a tall specimen lawn tree  
-----6 to 8 ft., \$3.50

**POPLAR. Chinese Lombardy.** This is not the fast growing South Carolina Poplar, but the new Chinese Lombardy. Branches are square stemmed and much more hardy than the ordinary Lombardies  
-----4 to 5 ft., 75c  
6 to 8 ft., \$1

**STRAWBERRY TREE.** Handsome little tree for border plantings and lawn specimens. In fall have an abundance of bright red fruit hanging on all the branches  
-----3 to 4 ft. trees, \$1.50



## Evergreen Trees

**ARBOR VITAE AMERICAN.** Upright growing evergreen. Rather dense growth with broad base ..... **2 to 3 ft., \$3.00**  
 3 to 4 ft., \$4.25

**ARBOR VITAE AUREA NANA.** Beautiful golden foliage. Slow grower but one of the finest for foundation plantings ..... **10 to 12 ins., \$4; 12 to 15 ins., \$5**

**ARBOR VITAE COMPACTA.** Very dwarf growing of a bright green foliage. Shaped like a Globe ..... **12 to 15 ins., \$2.50;**  
 15 to 18 ins., \$3.50

**ARBOR VITAE Douglas Golden.** Pyramidal shaped evergreen with bright golden foliage. Broad at base of plant ..... **15 to 18 ins., \$3; 18 to 24 ins., \$4;**  
 2 to 3 ft., \$5

**JUNIPER. Savine.** A beautiful dense spreading evergreen. Best for dwarf plantings. Dark green foliage ..... **12 to 15 ins., \$2;**  
**15 to 18 ins., \$3; 18 to 24 ins., \$4.50 spread.**

**JUNIPER. Virginia.** Common name is Red Cedar. Grows tall with red cast to foliage. Especially red during fall and winter. Foliage is more or less feathery. Can be sheared into Pyramidal shapes ..... **2 to 3 ft., \$3.50; 3 to 4 ft., \$4.50; 4 to 5 ft., \$6**

**PINE. Sylvestrus.** Very rapid grower. Good for lawn specimen planting. Foliage silvery green. **18 to 24 ins., \$3; 2 to 3 ft., \$4**

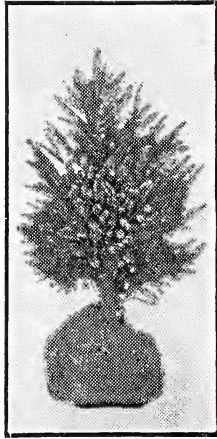
**PINE. Mugo.** Very dwarf growing evergreen. Has dark green foliage. Fine for foundation

plantings **10 to 12 ins., \$3; 12 to 15 ins., \$4**  
**ARBOR VITAE. Pyramidal.** Beautiful Pyramidal shaped evergreen. Grows tall but always maintains its true shape ..... **12 to 18 ins., \$2.50; 18 to 24 ins., \$3.50;**  
 2 to 3 ft., \$4.50

**ARBOR VITAE. Tom Thumb.** Very dwarf deep green foliage. Good for border plantings ..... **10 to 12 ins., \$2;**  
 12 to 15 ins., \$3

**ARBOR VITAE. Woodward Globe.** Fine globe forms. Grows very dwarf. Fine for edging planting ..... **10 to 12 ins., \$3;**  
 12 to 15 ins., \$4

**JUNIPER. Irish.** Tall growing evergreen with bright green foliage. Fine for background plantings ..... **18 to 24 ins., \$3;**  
 2 to 3 ft., \$4



Norway Spruce

**RETINISPORA PSIFERA SQUARROSA. Moss Retino-Spora.** An ornamental Japanese tree with bluish green foliage ..... **18 to 24 ins., \$4; 2 to 3 ft., \$5**

**RETINISPORA. Thread.** Slow growing evergreen with a more or less drooping of long thread-like branches. Light green foliage ..... **15 to 18 ins., \$3.25;**  
 18 to 24 ins., \$4.25

**SPRUCE. Norway.** Blue-green foliage. Good for wind brakes ..... **18 to 24 ins., \$2;**  
 2 to 3 ft., \$3.25

**SPRUCE. Colorado.** Blue spruce with silvery sheen, very symmetrical in shape, good for lawn specimen ..... **18 to 24 ins., \$7**  
 24 to 30 ins., \$10

## FLORAL GARDEN SHRUB SPECIAL COLLECTION

**20 SHRUBS FOR \$5.00**

- 4 BERBERIS THUNBERGI (Japan Barberry) ..... 12-18 ins.
- 4 SPIREA VAN HOUTTI ..... 2-3 feet
- 2 DEUTZIA CANDIDISSIMA ..... 3-4 feet
- 4 HYDRANGIA ABORESENCE GRANDIFLORA ..... 2-3 feet
- 2 SPIREA ANTHONY WATERER (Dwarf

- Spirea) ..... 12-15 ins.
- 1 SALIX CAPRAE (French Pussy Willow)
- 2 PHILADELPHIA MT. BLANC (Syringa) ..... 2-3 ft.
- 1 WEIGELIA ROSEA ..... 2-3 ft

All two and three years old

Total Value—\$8.30—All For \$5.00





## ROSES ALL POTTED IN SIX-INCH POTS AND GROWING.

In the past years we have found that most people want a growing and a living Rose bush with a bloom or a bud all ready to bloom. To meet this demand we have potted all the Roses that we are offering this year. All are potted in six-inch clay pots cut back as they should be when pruned in spring. You can get these roses at our Gardens any time during the spring or summer blooming in pots. Come and see them for your selves. They cost more but give a lot better satisfaction. Break the pots and plant the rose. Get our rose insect spray formulac.

### HYBRID TEAS. Everblooming Roses

- Columbia.** Beautiful lively pink. Potted \$1.25
- Duchess of Wellington.** Saffron yellow 1.25
- Hadley.** Deep velvety crimson ..... 1.50
- Jonkheer. J. L. Mock.** Deep pink. Very fine..... 1.50
- Souv. De Gladius Pernet.** Bright Clear Yellow..... 1.50
- Kaiserine Augusta Victoria.** Very best white..... 1.35
- HYBRID POLYANTHA. Baby Ramblers.**
- Ideal.** Best brilliant red baby..... \$1.25
- Korrie Koster.** Salmon pink in large clusters..... 1.25

### CLIMBERS

All staked and potted

- American Beauty Cl.** American Beauty shade of red. A good stand-by..... \$1.25
- Dr. Van Fleet.** The best flesh pink climber..... 1.25
- Mary Wallace.** Soft salmon pink. Very vigorous grower. Does well on trellis and pergola..... 1.25
- Pauls Scarlet Climber.** Best scarlet roses..... 1.25

### CLIMBING VINES

All potted ready to GROW

- Ampelopsis Vetchei.** (Boston Ivy). Clings firmly to walls, rocks and stumps, covering them very densely. Foliage turns to orange and scarlet in fall..... 2 yr. plants, 50c
- Clematis Paniculata** (Sweet autumn clematis). Very showy on verandas with its fine white flowers..... 2 yr., 50c
- Clematis (Major Andre).** The nearest to



ROSES POTTED 6 in. Pots

- a bright red clematis. Free bloomer and very satisfactory..... 2 yr. old plants \$1.00
- Wisteria (Chinensis).** Pale green leaves and bears dense, drooping clusters of purplish, pea-shaped flowers..... 2 yr. old, 75c

## THIS PERENNIAL CUT FLOWER GARDEN

35 Plants .....\$5.00

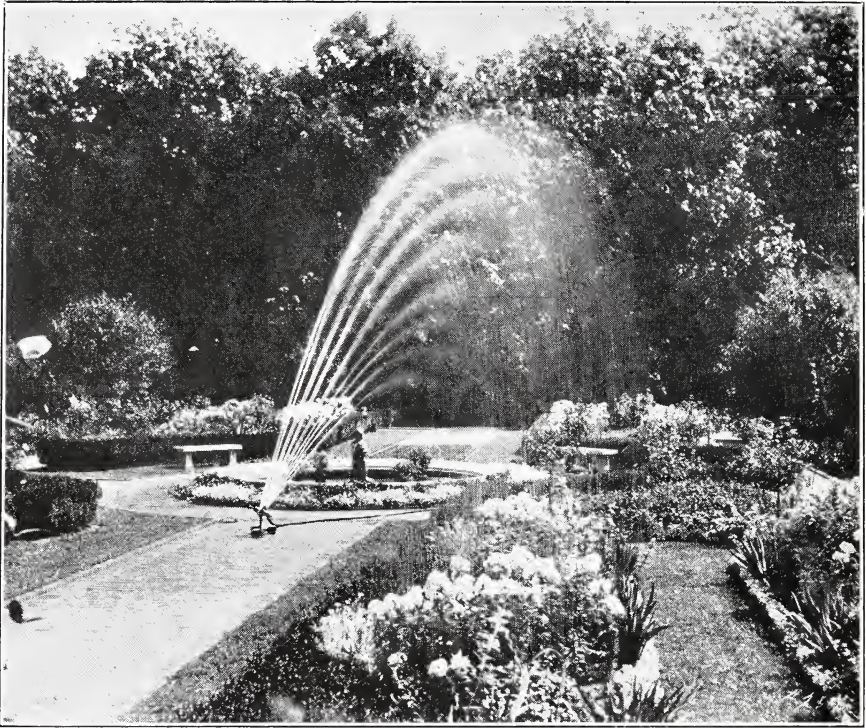
With your order for the above plants, send us a sketch and measurements of the spot you have selected for these plants and we will return with the plants suggestions as how to "best place" these perennials for the best effect.

- |   |  |
|---|--|
| <ul style="list-style-type: none"> <li>4 <b>AQUILEGIA</b> (Columbine)</li> <li>2 <b>ALPINE ARABIS</b> (Rock Cress)</li> <li>4 <b>DELPHINIUM</b> (Assorted Colors)</li> <li>4 <b>DIANTHUS</b> (Garden Pinks)</li> <li>4 <b>GAILLARDI</b> (Blanket Flower)</li> </ul> | <ul style="list-style-type: none"> <li>5 <b>PYRETHRUMS</b> (Painted Daisy)</li> <li>2 <b>PHLOX</b> (Hardy)</li> <li>2 <b>SPIREA ASTILBI</b></li> <li>4 <b>SEDUMS</b> (Stone crop)</li> <li>4 <b>VIOLAS</b> (Tufted Pansy)</li> </ul> |
|---|--|

These plants well rooted year old plants.



## Landscape Service



**THIS CAN BE YOUR FLOWER GARDEN.**

We wish at this time to announce to the public that we will operate a LANDSCAPE SERVICE DEPARTMENT. This department has been organized for all customers needing landscape work, where grading, preparation of beds, laying out of walks, drives and building pools, rock gardens and rustic work, seeding of lawns and care of same.

However it is very important that you call our Department and have a man who is competent in advising you and in making your plans for the planting that your home

would require. A sketch if first made and then a penciled drawing with the entire layout and planting plan. This penciled plan is shown you for your acceptance. A blue print is then made. Every customer is given a blue print of home which is a permanent record of planting plan.

Attractive Landscape effects are not mere guess-work, but are the result of careful and painstaking study. Ask our Department for estimates on your Rock Garden or Rock pool. We shall be pleased to call. Remember that Garden-making is our business.



## Gladioli Bulbs



**"MRS. FREDERICK C. PETERS"**  
**ORCHID LAVENDER**.....25c each

We are specializing in Gladiolus Bulbs, last year we grew about sixteen acres. We are growers of great quantities of the commercial cut flower varieties and every year add to our new list of the later varieties which are being introduced to the public year by year by some of the greatest hybridizers in the country.

Our bulbs are treated with Semesen, a wonderful disinfectant that insures the public the best bulbs possible. No bulbs are grown on ground two successive seasons. This also insures greater freedom from disease of any kind. During the summer we maintain a high state of cultivation in our bulb fields which is the only possible way to

produce a high crowned, vigorous growing bulb.

The earliest blooms may be seen at our Gardens about the 10th to 15th of June and from then on, with successive plantings up to July, we have great quantities of blooms for the cut flower market until October 15th, or about time of late heavy frosts. The public is always welcome to our Gardens at all times, however we do not solicit business on Sunday, we are pleased to have visitors to inspect our blooming plants and to enjoy our Gardens.

### SIZES OFFERED IN THIS CATALOGUE

**LARGE BULBS.** We are offering the following sized bulbs. Large bulbs 1 $\frac{1}{4}$  ins. to 2 ins. indicated by letter "L".

**MEDIUM BULBS.** Indicated by the letter "M", bulbs will be  $\frac{3}{4}$  ins. to 1 $\frac{1}{4}$  ins. in size. This makes a fine planting and blooming bulb. Will make a better bulb for next year than a larger bulb.

**SMALL BULBS.** Indicated by the letter "S". These bulbs will be  $\frac{3}{4}$  ins. to  $\frac{1}{2}$  ins. in size. Some will make blooms the first year and all will make good blooming bulbs for next year.

**EACH.** Where sizes are not indicated bulbs will be 1 $\frac{1}{4}$  ins. approximately.

**ALBANIA (Kemp).** Pure, glistening white, with broad well rounded petals. A midseason bloomer.....each 15c; doz. \$1.50

**ALICE TIPLADY (Prim) (Kunderd).** Bittersweet pink, suffused scarlet giving it an orange saffron self color.....each 8c; doz., 75 cts.

**ADORATION (Kunderd).** Very large, grand saffron or Lincoln red. Deeper in throat.....each 25c; doz., \$2.50

**ANNA EBERIUS (Deiner).** Beautiful dark velvety purple throat dark amaranth purple.....each 7c; doz., 70c

**BUTTER BOY (Prim).** Golden yellow and very free bloomer. One of the best yellow Primulinus.....each 8c; doz., 75c

**BENGAL TIGER (Pratt).** A novelty flower. Orange-red shade with stripes of dark maroon thru centre...each 10c; doz., \$1

**BREAK OF DAY (Bill).** Large soft La France pink, flushed with deeper pink on edges.....L 50c each; M 30c each

**BYRON L. SMITH (Kunderd).** White, delicately suffused mallow purple, deeper on the edges.....each 15c; doz., \$1.50





## Gladioli Bulbs (Sizes Offered)

**CARMEN SYLVIA (Prestgard).** Pure snow white, throat slightly penciled lilac, almost a self color..... **L each 20c; M each 10c**

**CRIMSON GLOW (Beltscher).** Wide open glowing crimson. A very vigorous grower. One of the best crimson..... **L each 25 cts.; M each 10 cts.**

**CRINKLES (Kunderd).** Intensely ruffled deep peach blossom pink. A beautiful Gladiolus..... **L each 20 cts.; M each 10 cts.**

**DOROTHY McKIBBIN (Kunderd).** Rose pink shaded, deep rose pink. Throat apple blossom pink, blotched red... **L 20c; M 10c**

**DR. VAN FLEET (Kunderd).** Delicate rose pink, deepening at edges. Throat softest canary yellow **L each 25c; M each 10c**

**DR. J. H. NEELY (Kunderd).** Tall, and massive plant. Refined flower of finest bluish white..... **each 25c; doz., \$2.50**

**DR. F. E. BENNETT (Diener).** Deep peach red, overlaid flame scarlet. Very large bright and attractive red..... **L each 50c; M each 30c; S each 15 cts.**

**DR. ELKINS (Kunderd).** A sport from Mrs. Frank Pendleton. White with large throat blotches shading to lilac blue. Very beautiful..... **S each 20 cts.; doz., \$2.00**

**E. J. SHAYLOR (Kunderd).** Beautifully ruffled deep rose pink, throat of lower petals delicately penciled..... **L each 15c; doz. \$1.50; M each 10c; doz. \$1**

**EVELYN KIRTLAND (Austin).** Deep pink with large open petals..... **L each 10c; doz. \$1; M each 5c; doz. 50c**

**ELIZABETH TABOR (Hinkle).** Delicate rosy pink on white ground with throat blotched rich dark crimson. Very early. **L each 15c; doz. \$1.50; M each 8c; doz. 75c**

**EDA (Kunderd).** Very dark red with darker pencilings in throat.... **L each 12c doz. \$1.20; M each 8 cts.; doz. 75c**

**EMPRESS OF INDIA.** A very dark red flower, almost black... **each 10c; doz. \$1.00**

**F. J. SYMMS.** A beautiful peach rose shade and a very prolific bloomer..... **M each 15 cts.; doz. \$1.50**

**GIANT NYMPH (Coleman).** Immense rose-pink flowers with creamy yellow throat borne on tall, erect stems..... **L each 20c; M each 15c; S each 10c**

**GLADDIE BOY (Bill).** This is a semi-primulinus type. Has all of delicate shadings but very much more massive. Color is very distinct, being a Grenadine-pink, gradually blending with straw yellow, deeper in centre..... **L each \$1.00; doz. \$10.00**

**GLENDALE (W. B. Davis).** Somewhat darker than American Beauty rose. Good because of its strength and splendid keeping qualities..... **each 20 cts.; doz. \$2**



ONE OF OUR GLADIOLUS FIELDS.





## Gladioli Bulbs (Continued)

**GOV. HANLEY (Kunderd).** A very dark red with a rather open bloom.....

L each 10c; doz. \$1; M each 5c; doz. 50c

**GOLD (Hoeg).** Pure golden yellow, throat a deeper yellow. Large flowers many open at a time. A real prize winner.....each 50c

**GOLD EAGLE (Austin).** A new yellow in the Gladiolus world. Blooms of good size and a deep rich yellow, beautifully ruffled.....each \$2.50

**GOLDEN MEASURE (Kelway).** Large fine yellow, with a good fine spike of flowers. Many open at one time.....

L each 20c, doz. \$2; M each 10c, doz. \$1

**GOLDEN GLORY (Kunderd).** Rich primrose yellow with a striking blotch, and carmine markings in throat.....each 15c, doz. \$1.50

**GOLDEN DREAM (Groff).** Sensational yellow and perhaps the very best yellow in the world today. A prize winner in many shows which proves that it is in a class by itself.....each \$3.00

**GOLDEN SALMON (Kunderds).** Beautiful ruffled gladiolus of a golden yellow and salmon-red to pink shade.....each \$1.00

**HALLEY.** Beautiful salmon pink with pencilings in throat.....each 5c, doz. 50c

**HERADA (Austin).** Pure lavender mauve.....each 5c, doz. 50c

**J. A. GARABONE (Diener).** Orange salmon, very iridescent, darker shadings toward the outer petals.....each 50c

**HELGA (Kunderd).** Geranium pink, deepening to rose, throat creamy yellow with light pencilings of dull magenta purple.....each 20c, doz. \$2.00

**JEWELL (Zeestraten).** A new primulinus, flower of a clear salmon-pink with golden throat.....each 15c, doz. \$1.50

**LOUISE (Wright).** Large well open orchid-like flower. Color is an attractive bright blue lavender, with wine-colored blotch in throat. One of the best lavenders.....

L each 10c, doz. \$1.00; M 5c, doz. 50c

**MAIDEN'S BLUSH (Prim) (Gruellmans).** Flesh pink lightly flaked with pale old rose.....each 5c, doz. 50c

**MARIE KUNDERD (Kunderd).** An early pure glistening white of graceful form. Well ruffled and very delicate.....each 20c, doz. \$2.00

**MASTERPIECE (Kunderd).** A magnificent beautiful ruffled American Beauty shade. Giant flower and plant.....each 20c, doz. \$2.00

**MARY STEARNS BURKE (Diener).** Canary yellow, overlaid with apricot and tinged rose. Deeper canary yellow and ruby throat.....M each 20c, doz. \$2.00

**MRS. J. K. ARMSBY (Diener).** Delicate coral pink, with pencilings of vermilion near the edges. This is one of Dieners finest productions and will be sure to satisfy any critic.....each \$1.00

**MRS. LEON DOUGLAS (Diener).** Ground color begonia rose striped with flame and brilliant scarlet. Lip pale lemon, slightly speckled with ruby. Flowers of this variety are the largest flowers we have ever seen on any Gladioli. Many open at one time and all are well set on spike.....each 50c

**MRS. P. W. SISSONS.** A seedling of wondrous beauty. First shown at A. G. S. show at New York, 1924, where it won A. G. S. First Class Certificate. A very lovely pink.....each \$3.00

**MRS. F. C. HORNBERGER (F. C. H.).** The purest clear white without any markings in throat. Tall grower with many flowers open at one time.....each \$3.50

**MRS. J. C. GROSSMAN (Grossman).** One of the best deep salmon primulinus that we grow in our Gardens.....each 60c

**MRS. H. E. BOTHAN (Diener).** Light geranium pink highly ruffled. Flame scarlet centre. Fine for cut flowers. One of the loveliest of Gladioli.....each 15c, doz. \$1.50

**MRS. RICHARD LOHRMAN (Diener).** Creamy shell pink with pale yellow lip. A color rivaling the finest orchid.....each 25c

**MRS. FRANK PENDLETON.** Very early light pink with dark crimson throat. Fine for cut flowers.....each 5c, doz. 50c

**MRS. FRANCES KING.** One of the best early reds that we have growing in our Gardens.....each 5c, doz. 50c

**MRS. DR. NORTON (Kunderd).** Finest cream and pink with large wide open flowers that grow on tall stems.....each 5c, doz. 50c

**MONE LISA (Kunderd).** Large flesh pink on long straight stems. Very fine flowers.....each 10c, doz. \$1.00

**ORANGE GLORY (Kunderd).** Peach red suffused scarlet. Very vigorous grower, with heavy foliage.....each 10c, doz. \$1.00

**PEEP OF DAY (Kunderd).** Tall beautiful blush pink on white ground.....each 25c

**PEACH ROSE (Kunderd).** A distinct extra choice deep rose pink of remarkable color and appearance. each 20c, doz. \$2.00





## Gladioli Bulbs (Continued)

- PEACH BLOW (Kunderd).** A grand blush pink Gladioli..... **each 25c**
- POLLYANA (Prestgard).** A clear ruffled yellow primulinus..... **each 20c**
- PRIDE OF GOSHEN (Kunderd).** A beautiful salmon flesh pink..... **each 15c**
- PRIMULINUS BEAUTY.** Primulinus. Clear yellow, good bloomer..... **each 5c, doz. 50c**
- PINK WONDER (Kunderd).** Large light pink flower..... **each 10c**
- PURITY.** Pure white with large very open flowers..... **each 10c**
- ROANOKE.** Very early yellow primulinus..... **each 5c, doz. 50c**
- ROSE 1910 (Kunderd).** A bright rose with white pencilings in middle of each flower..... **each 5c, doz. 50c**
- ROSE ASH (Diener).** Corinthian red, shading into ashes of roses color. Lower petals light yellow, flecked with ruby..... **each 10c, doz. \$1.00**
- ROSE GLORY (Kunderd).** A strong and vigorous grower of pure rose pink and deeper pink in throat. Fine for cut flowers in the average garden..... **each 10c, doz. \$1.00**
- ROSY GLOW (Kunderd).** Giant plant with massive flower of rose-pink on white ground..... **each 15c, doz. \$1.50**
- RED COPPER (Kunderd).** Large flower, deep salmon-rose, heavily flaked blue. A very choice variety..... **each 10c, doz. \$1.00**
- SALMON BEAUTY (Kunderd).** One of the best deep salmon Primulinus with rich salmon yellow throat..... **each 10c, doz. \$1.00**
- SCARLANO (Kunderd).** Scarlet, throat of lower petal blotched ox-blood red. Very brilliant color..... **each 15c, doz. \$1.50**
- SUNSET GLOW (Gibbs).** A clear scarlet blended to a throat of purest yellow..... **each 25c, doz. \$2.00**
- SWEET LAVENDER (Coleman).** White, suffused light violet, with beautiful garnet blotch. Very striking..... **each 15c**
- SULPHUR GLOW (Kunderd).** A heavily ruffled sulphur-cream..... **each 15c, doz. \$1.50**
- TOPAZ.** A beautiful pink and buff Primulinus..... **each 10c, doz. \$1.00**
- TWILIGHT (Kunderd).** Tall vigorous grower with creamy white flowers, suffused pink on the outer edges. Very delicate combination of colors..... **each 8c, doz. 75c**
- VIOLET GLORY (Kunderd).** Massive flower of deep violet-self color. Deeper in throat..... **each 10c, doz. \$1.00**
- VIRGINIA M. FISHER (Diener).** A grand Martha Washington Geranium pink flower..... **each 20c**
- WHITE GLORY (Kunderd).** A large ruffled white, with a beautiful blotch of dull violet in throat..... **each 15c, doz. \$1.50**



## Gladiolus Mixtures

We are listing below the following mixtures, some for the first time. The mixtures of Mr. Kunderd's variety have some of the finest individual blooms that can be found in any Gladiolus mixture. Some bulbs are worth the cost of the entire dozen, or one hundred. These may be tagged and saved with all the bulbets and more grown from this variety year to year. Do not miss this offer.

**WONDER MIXTURE (Kunderd).** The best Kunderd Mixture and with the greatest number of very fine blooms..... **each 10c, doz. \$1.00, per 100 \$7.00**

**GLORY MIXTURE (Kunderd).** This is a fine mixture and is full of surprises when the flowers bloom in spring..... **each 8c, doz. 75c, per 100 \$5.00**

**STANDARD MIXTURE.** This mixture contains some of all the varieties that we grow at our Gardens. You will be pleased with them when they bloom in the summer..... **each 5c, doz. 50c, per 100 \$2.50**

**PRIMULINUS MIXTURE.** This mixture contains all of the Primulinus varieties that we grow in mixture. Bulbs are large and you will be pleased with them..... **each 3c, doz. 35c, per 100 \$2.00**



# FALL BULBS

Tulips, Narcissus, Hyacinths  
*Will Bring*  
Joy to Your Own Garden Next Spring



TULIP FIELD AT FLORAL GARDENS

We have over fifty thousand blooming Bulbs in our Gardens that will burst into bloom the later part of April and the first of May. Visitors are always welcome at our Gardens at this time of the year to make their selections of Fall Bulbs. Your order of bulbs should be taken while these varieties are in bloom. You will find this method much more satisfactory than to select from a catalogue. These orders will be shipped you

during September in plenty of time to plant them for next year's bloom.

We have all varieties arranged in beds, three feet in width with all names to each variety. Leaflets will be handed you with name and price of the varieties and all you need to do is to decide on the varieties and mark the number that you want shipped. Hand this slip in at the Office and a duplicate order will be given you. Plan to visit our Gardens when Tulips are in bloom this year.





## Breeder or "Art" Tulips

The Breeders are a most interesting class of Tulips, because of the wonderful color combinations in harmonious blendings of purple and bronze, yellow and bronze, brown and orange, and various shades of buff and bronze. Plant four to five inches deep and six inches apart in the row.

- APRICOT.** Bronzy-buff, shaded apricot. Large flower... **\$1.00 per doz., \$7.00 per 100**
- BRONZE QUEEN.** 26 ins. Soft buff tinted apricot... **75c per doz., \$5.00 per 100**
- CORIDION.** 24 ins. Clear yellow; apricot-red thru petal centers. A wonderful blending... **\$1.50 per doz.**
- GOLDEN BRONZE.** 22 ins. Old gold shaded bronze. Very striking... **\$1.00 per doz.**

- INDIAN CHIEF (Meyerbeer).** Coppery-red, very large flower of exquisite form long stem... **\$1.00 each**
- LOUIS XIV.** 30 ins. Deep purple flushed bronze, with broad margin of golden brown. A grand tulip with broad petals of enormous size. A very striking bloom in our collection... **\$2.50 per doz.**
- PANAROMA.** Orange-red, shaded mahogany. Large flower... **\$1.50 per doz.**
- VULCAIN.** Reddish-apricot with broad, buff-yellow margin. A very distinct and different Tulip... **doz. \$2.00**
- CAESAR.** A coffee brown shade. Grows about 20 ins... **doz. \$1.00**
- CARDINAL MANNING.** Wine-red, flushed rosy-bronze. Large flower and an odd color that is very attractive... **doz. 75c**



## May Flowering or Cottage Tulips

This is a variety of Tulips that are well adapted to naturalizing. Many of these varieties are found growing in around the cottages of England and France for years and years. A very wide range of colors are found in this variety and with the pointed petals and with the elongated flowers make this a very fine variety. Plant the same way as the Breeders, four to five inches deep and six inches in the row. Best to plant in groups of twenty-five.

- BOUTON D'OR.** 24 ins. Pure golden yellow... **doz. 75c**
- COTTAGE MAID.** Dark rose with white shadings... **doz. 75c**
- CRAMOISI BRILLIANT.** Brilliant red, very large flower. Good bedding and forcing variety... **doz. \$1.00**
- ELLEN WILMOTT.** 20 ins. Primrose-yellow. Straight stems with very narrow flower... **doz. \$1.00**
- FAIRY QUEEN.** 22 ins. Rosy heliotrope, with broad amber-yellow margin... **doz. 75c**
- GESNERIANA SPATHULATA.** 20 ins. Rich crimson-scarlet, with blue-black centre... **doz. \$1.00**

- GENERAL DE WET.** Beautiful Orange. Very exquisite flower... **doz. \$2.50**
- FLAMINGO.** Brilliant dark rose, slightly lighter rose edge... **doz. \$1.50**
- HERMAN SHLEGAL.** Sulphur yellow and when fully developed shaded slightly orange... **doz. \$1.50**
- KEIZERSKROON.** Bright red with broad golden border, extra large flower on tall strong stem. Fine for forcing... **doz. \$1.00**
- MRS. MOON.** Golden yellow and one of the most beautiful... **doz. \$1.00**
- MOONLIGHT.** Very soft yellow. Oval-shaped flower of great substance. Very fine... **doz. 80c**
- PICOTEE.** White with rose-pink margin that gradually suffuses the entire flower. One of the most dainty Tulips that grows in our Gardens... **doz. \$1.00**
- PRINCE OF AUSTRIA.** Very fine orange-red outside, brilliant scarlet inside of flower. Extra large flower of great substance, very sweet scented... **doz. \$1.50**
- WHITE HAWK.** Pure white flowers of great substance. Grand market variety... **doz. 75c**







# The Beautiful Darwin Tulips

The DARWINS are so beautiful because of the great varieties of colors, however not so many combinations as with the Breeders, but we do have a multitude of selfs in the type, and the tall stems bearing the fine stately blooms. No garden is complete without some of the handsome Darwins. Plant same as any of the other varieties.

- AFTERGLOW.** New. 26 ins. Deep orange-red with buff border. Very showy and very beautiful.....doz. **\$1.50**
- ANTON ROOZEN.** 23 ins. Vivid rose-pink with white base.....doz. **75c**
- BARONNE DE LA TONNAYE.** 26 ins. Bright rose margined blush-rose.....doz. **60c, \$3.50 per 100**
- BLEU AIMABLE.** New. 26 ins. Bright violet-purple.....doz. **\$1.00**
- CLARA BUTT.** 21 ins. One of the very best salmon-rose. Midseason bloomer. Lasts very long as cut flowers.....doz. **50c, \$3.00 per 100**
- EUTERPE.** 26 ins. Very beautiful brilliant clear lilac.....doz. **\$1.00**
- EDMEE BEAUTY.** 25 ins. Vivid cherry-rose, edged soft old rose.....doz. **\$1.25**
- FARNCOMBE SAUNDERS.** 25 ins. Fiery rose-scarlet, with white centre marked blue. Splendid forcer.....doz. **\$1.00**
- GRETCHEN.** Silvery pale rose, flushed white.....doz. **50c, \$3.00 per 100**
- HARRY VETCH.** Rich blood red. Very strong stem.....doz. **70c**
- KING HERALD.** 24 ins. Deep mahogany red. Good forcer.....doz. **75c**
- KING GEORGE V.** New. Bright salmon-scarlet. Tall stem and large flower. A new variety of great merit.....each **\$1.00**
- LA CANDEUR.** Flesh-pink fading to almost white.....doz. **75c**
- LA TULIP NOIRE (The Black Tulip).** 25 inches. Very large flower of almost a truss black. It is so red it's black.....doz. **60c**
- LA TRISTESSE.** Very distinct dull blue with white base.....doz. **80c**
- LA NOTRAE.** 24 ins. Bright rose on long stems.....doz. **75c**
- LIVINGSTON.** New. Lilac with broad light edge.....doz. **\$1.00**
- LEONARDO DE VINCI.** Shining violet black.....doz. **50c**
- LORD HERTSFORD.** Wonderful shade of violet. Tall flower.....doz. **\$1.75**
- MME. KRELAGE.** Large lilac with pale broad edge.....doz. **75c**
- MRS. POTTER PALMER.** 28 ins. Bright rosy violet.....doz. **\$1.00**
- MATCHLESS.** Very New Darwin. We cannot describe the beauty of this Darwin Tulip.....doz. **\$2.50**
- PRIDE OF HARLEM.** 30 ins. Brilliant rosy-carmine. This is one of the most popular of the Darwins. Extra fine for bedding purposes and forcing as well. Very reasonable in price.....doz. **50c, \$3.00 per 100**
- PRINCE OF NETHERLANDS.** New. 30 ins. Cerise red. Vigorous grower and very large flower. Extra fine forcer.....doz. **75c, \$4.50 per 100**
- PRINCESS ELIZABETH.** 26 ins. Deep pink. Very large flower and one of the most popular forcers.....doz. **60c**
- PROF. RAUWENHOFF.** Cherry-rose. Fine for all purposes.....doz. **\$1.00**
- REMEMBERANCE.** Dark lavender rose.....doz. **70c**
- REV. EWBANK.** 26 ins. Lavender-violet with lighter shadings on edges of petals. Fine flower for Mother's Day.....doz. **70c, \$4.25 per 100**
- ROLAND GUNN.** Clear violet with white centre.....doz. **\$1.00**
- SALMON KING.** Rich deep salmon-rose. Very attractive.....doz. **\$1.00**
- SULTAN.** Maroon-black. Good popular priced variety.....doz. **50c, \$2.50 per 100**
- SIERAAD VAN FLORA.** Vivid rosy red with blue base.....doz. **75c**
- WILLIAM COPELAND.** 26 ins. Lilac-rose. This is the earliest Darwin and can be forced even in the middle of February. A bed of 100 makes a very wonderful show.....doz. **70c, \$4.00 per 100**
- WEDDING VALE.** Silvery white flushed lilac.....doz. **60c**
- YELLOW DARWIN.** The only pure yellow Darwin that we grow and the only yellow that we can get at a popular price. This flower is a very beautiful one and we are glad to offer it to the public.....doz. **\$1.50**





## Our Special Tulip Border Collection

**CLARA BUTT.** Salmon-pink Darwin. One of the best ..... **\$3.00 per 100**  
**PICOTEE.** White edged pink. Reflexed petals ..... **\$7.00 per 100**  
**MOONLIGHT.** Very soft yellow cottage Tulip ..... **\$5.00 per 100**  
**PRIDE OF HARLEM.** Brilliant rosy-carmine. Darwin ..... **\$3.00 per 100**  
**SULTAN.** Maroon black. Very popular priced Darwin ..... **\$2.50 per 100**

**REV. EWBANK.** Lavender violet with lighter shades ..... **\$4.25 per 100**  
 10 bulbs each of 6 varieties ( 60 bulbs in all) ..... **\$2.25**  
 25 bulbs each of 6 varieties (150 bulbs in all) ..... **\$5.00**  
 100 bulbs each of 6 varieties (600 bulbs in all) ..... **\$22.00**

## Miscellaneous Bulbs For Fall Planting

**CHIONODOXA (Glory of the Snow).** Dainty little star-shaped flowers blooming in clusters.

**Euciliae.** Lovely blue, white centre. Dutch grown ..... **doz. 40c**

**Sardensis.** Intense dark blue ..... **doz. 40c**

### CROCUS

Gay harbingers of the Spring. Plant them in the borders and rock gardens. Wonderful spring surprises will be in store for you.

**BARON VIN BRUNOW.** Beautiful large blue crocus ..... **doz. 60c**

**KING OF THE BLUES.** Very dark bluish purple ..... **doz. 60c**

**MAXIMILIAN.** Pure porcelain blue. Extra large ..... **doz. 50c**

**PRESIDENT LINCOLN.** Very large dark purple ..... **doz. 50c**

**ALBION.** Lavender striped violet and white ..... **doz. 50c**

**MME. MINA.** Greyish white striped purple ..... **doz. 50c**

**SIR WALTER SCOTT.** Beautiful white striped purple ..... **doz. 50c**

**SUSIANUS (Cloth of Gold).** Beautiful golden yellow ..... **doz. 50c**

**QUEEN OF THE WHITES.** Pure glistening white ..... **doz. 50c**

**CROCUS MIXTURE.** All colors ..... **doz. 30c**

**ERANTHUS. (Winter Aconite).**

Early spring flowers of bright yellow.  
**HYEMALIS.** Beautiful golden yellow ..... **doz. 40c**

**GALANTHIUS. (Snowdrops).**

Dainty little bells opening early in spring.  
**NIVALIS SIMPLEX (Single).** Pure white ..... **doz. 35c**

**SCILLIA. (Squills).**

Resemble small Hyacinths. Bloom very early in the spring.

**SIBERICA.** Very brilliant blue. The earliest ..... **doz. 45c**

**SIBERICA ALBA.** Pure white ..... **doz. 50c**

**CAMPANULATA ROSEA.** Rose shade, beautiful ..... **doz. 60c**

### HYACINTHS

We import all our Hyacinths direct from growers in Holland. These bulbs are all sound, plump and well matured, producing the finest of flowers for both indoor planting and out-door culture.

**BISMARCK.** Light sky-blue, large flower ..... **each 20c, doz. \$2.00**

**GERTRUDE.** Rosy pink, very compact flower ..... **each 20c, doz. \$2.00**

**CITY OF HARLEM.** Bright golden yellow. Very large spike. One of the best ..... **each 20c, doz. \$2.00**

**LA VICTOIRE.** Brilliant carmine red ..... **each 20c, doz. \$2.00**

**L'INNOCENCE.** Beautiful pure white ..... **each 20c, doz. \$2.00**





## Miscellaneous Bulbs (Continued)

### REGAL LILIES

We grow all our own Regal Lilies, from seeds to the mature bulbs. This Lily is a real rival of the beautiful Madona Lily. Blooms somewhat later in the season, which is a good thing as it prolongs the blooming season for our lilies. Plant a bed of Delphiniums and Regal Lilies and you will have the most beautiful flower bed you have ever beheld. The Regal blooms with three to twelve

blooms, depending upon the size of bulbs planted, which are trumpet-like in shape with throats of canary yellow shading to pearly white borne on stately stems four to five feet tall. They are native to China and are perfectly hardy, but should always be planted in a sunny spot. They will come up each year yielding larger and larger numbers of flowers and bulbs.

12 bulbs extra large in size	
6 to 8 ins., cir. ....	\$7.50; each 75c
12 bulbs large in size	
5 to 6 ins., cir. ....	\$5.00; each 50c
12 bulbs medium size	
3 to 5 ins., cir. ....	\$2.50; each 25c

### American Grown Daffodils (Narcissus)

**EMPEROR.** Very large flower with golden-yellow trumpet and deep primrose perianth. One of the most popular.....doz. **\$3.00**  
**EMPRESS.** Bicolor, pure white perianth with a deep yellow trumpet. Very popular out-door flowering Daffodil.....doz. **\$3.00**  
**KING ALFRED.** Uniform golden yellow. The size and great beauty of the Daffodil has made it the leading variety...doz. **\$3.00**

**SPRING GLORY.** Fine new bicolor Daffodil with white perianth and yellow trumpet. Good forcer inside.....doz. **\$3.25**  
**WHITE LADY.** Broad white perianth; soft yellow cup. Very dainty.....doz. **\$3.00**  
**PHEASANT'S EYE (Poeticus).** White perianth with white cup.....doz. **\$2.50**

### LAWN GRASS SEEDS, FERTILIZERS, PEAT AND LIMESTONE.

**BEST LAWN GRASS SEED.** Best standard mixture used in Chicago Parks for 50 years .....1 Lb. Carton **50c**; 5 Lbs. **\$2.25**

**LIMESTONE.** Highly recommended for acid soils and improves the texture and makes soil sweet.....doz. **50 Lbs. 75c**

**MANURE.** Pulverized sheep manure. A high grade natural fertilizer. Especially fine for lawns and gardens. Not offensive and perfectly dry...25 Lbs. **90c**; 100 Lbs. **\$2.50**

**PEAT.** American or Foreign. Finely pul-

verized and very fine for mulching lawns and garden plots. Holds moisture very well. Good as a manure. 25 Lbs. **\$1.25**; 100 Lbs. **\$4**

**SEMESEN.** Deu Pons Disinfectant for seed and tubers. Disinfect your Glads and Garden seeds will cause greater percentage of germination and more thrifty growth of plants .....2 Oz. **50c**; 1 Lb. **\$2.75**

**VIGERO.** Concentrated blood and bone meal. Directions with cartons. Fine for fertilizing lawns .....5 Lb. Carton **50c**; 25 Lb. **\$1.75**







