

ALID 15 of Business Development

59 V74 lopment Branch

CAZ ALID 15 1959V74  
Survey of Vulcan.

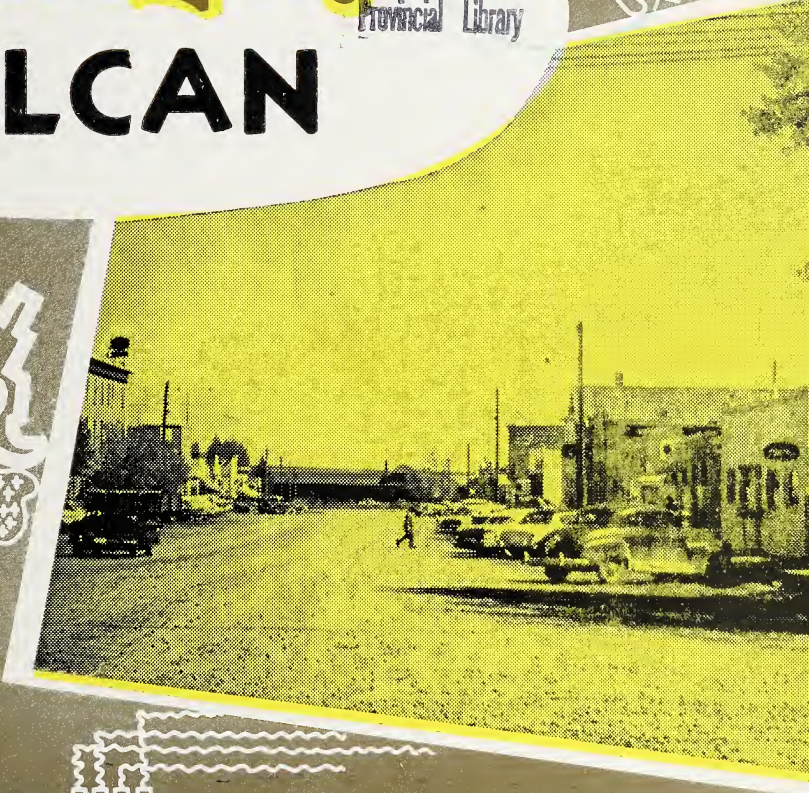


3 3398 00137 3603

# Survey of

Alberta  
Provincial Library

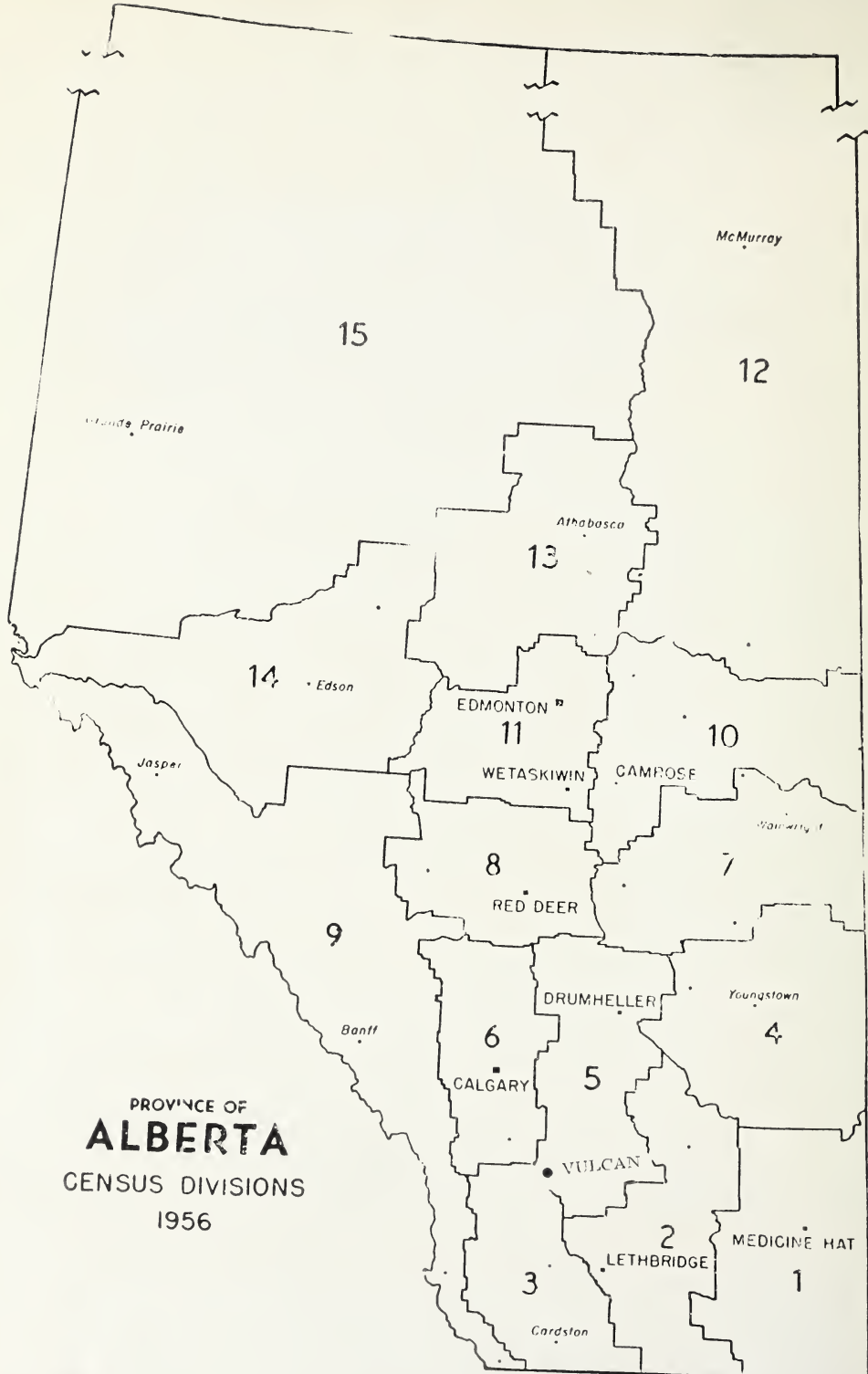
# VULCAN



*Prepared By*



INDUSTRIAL DEVELOPMENT BRANCH  
DEPARTMENT OF ECONOMIC AFFAIRS  
Government of the Province of Alberta



PROVINCE OF  
**ALBERTA**  
CENSUS DIVISIONS  
1956

# Town of Vulcan

## 1. LOCATION

Section 5-17-24-W4 in Census Division No. 5. This location is 80 miles southeast of Calgary and 51 miles northwest of Lethbridge, on Highway No. 23 and on the branch line of the Canadian Pacific Railway from Calgary to Lethbridge.

## 2. ALTITUDE

3,442 ft.                      Latitude 50/24                      Longitude 113/16

## 3. TEMPERATURE

Mean summer temperature, 56°F.

Mean winter temperature 28°F

Mean yearly temperature 38°F

## 4. RAINFALL

Mean annual rainfall 10.5 inches

Mean annual snowfall 50 inches

Mean annual total precipitation 15.2 inches

## 5. GEOLOGY

The underlying rocks in the Vulcan district are shales and sandstone which were deposited by streams in lakes and deltas. They are thus fresh-water in origin, and are several hundred feet thick in that area. The rocks are grouped together by geologists, who call them the Paskapoo Formation and who give them an early Tertiary Age, which began some fifty million years ago. Since these rocks were deposited the North American continent has been uplifted; consequently the rocks have been eroded and only a fraction of their original thickness remains.

## 6. SOIL

The soil in the Vulcan district is in the dark brown soil zone.

### Soil Profile

In the normal profile, the surface (A) averages about seven inches in depth and is dark brown in color. The (B) horizon is brownish, and the lime layer (Bca) is usually found at depths of 20 to 24 inches below the surface. In this zone as in other zones, the (B) horizon, having received some finer materials from the (A) is usually somewhat heavier and more compact than the (A) horizon.

### Fertility

Moisture continues to be the principal limiting factor in crop production. Soils in this zone are relatively low in nitrogen and organic matter, but are higher in these constituents than soils of the brown zone.

### Vegetation

Chiefly short prairie grass. The grass makes a more dense cover and taller growth than in the brown zone.

### Land Use

Only the better soil types can be considered arable. The remainder generally is good pasture land. Wheat is grown almost to the exclusion of all other crops. Cropping practices must provide for conser-

vation of moisture and control of soil drifting. The best quality wheat in the province is grown in this and the other grassland zones.

## 7. HISTORY

Vulcan, in Roman mythology, was the God of Fire.

The history of Vulcan and district is the transformation of grass covered plains, over which vast herds of buffalo roamed, to a famous wheat growing district centering around a thriving town.

In 1904, several outfits were engaged in ranching in the immediate district surrounding what is now Vulcan. Among these were John and Will Bateman, R. Jarvis and Collins, George Todd, Andrew Bryant, Williard Snow and D. H. Galbraith. In 1905 many more families arrived. Very few fences were in evidence and herds of many thousands of cattle roamed over the prairie.

During the next two years there was a rush for homesteads and some cultivation was started. Supplies were hauled in wagon trains from Nanton and lumber and logs for the first homes were hauled in by wagon, chiefly from High River.

The winter of 1906-07, known to the old-timers as the "hard winter," was long and extremely cold. It featured a three-day blizzard which brought many feet of snow on top of which a hard crust formed. Cattle were unable to break through the snow to reach the grass and thousands of head perished. Many of the ranchers went bankrupt and the majority of those who did not, changed from ranching to farming. In 1907, another calamity struck. On August 10th a heavy snow flattened all the crops. The weather cleared soon afterwards and the grain was all harvested even though it had to be cut one way. A hailstorm struck in August of 1909 and destroyed the crops over a six-mile wide stretch, but with all these heartaches some of the farmers still had faith in their community and today the few that remained or their descendants have prosperous, up-to-date farms.

The railway grade came through the district in 1910, crews working from both Calgary and Lethbridge. The same year the C.P.R. planned the townsite and erected a tent for an office from which the first lots were sold. The first lot was bought by the Bank of Hamilton and the second by the Elves Brothers who built a general store.

The steel reached Vulcan from the north on September 12th, 1911 and the first regular train arrived on November 6th, 1911. Practically everybody in the town and district met this first train.

The Vulcan post office opened in 1910 and R. L. Elves was the first postmaster. The original post office took up a corner in the Elves Brothers store, but a new post office building was soon erected.

Vulcan was incorporated a village on January 1st, 1913, with E. M. Clark being elected reeve. A. J. Flood was appointed secretary-treasurer at the first meeting.

Vulcan was incorporated a town on July 1st, 1921. W. E. Butchart was the first mayor.

The Vulcan Light and Power Co., managed by A. Mutz and P. Whitock, supplied the light and power for the hotel and the town. This

company started in 1910 and carried on until January 1931 when the franchise was taken over by Calgary Power Company Limited.

The first church service was held in the school and the first ministers were Mr. Fletcher of the Presbyterian Church; Mr. McKenzie, a Methodist; and Mr. Melrose, an Anglican. Services were held by these men on different Sundays. The first ordained and inducted minister was the Reverend D. K. Allan of the United Church.

Something should be mentioned of the hotel which was moved from Frank, Alberta, after the slide. Scars where chips were taken out of the window frames by the slide, may still be seen.

The first school was built in 1907.

Although Vulcan is thousands of miles from any regular cyclone area, a cyclone struck the town and district on July 8th, 1927. Owing to rain the annual Sports Day (July 1st) had been postponed that year until the 8th. A large crowd had gathered in the town for the sports day. The day was hot. In the early part of the afternoon an ominous looking cloud made its appearance in the southwest. It was watched by the crowds as it approached the town. It was narrow at the bottom and gradually increased in size until it reached the swiftly churning clouds in the sky. It had a spiral action and revolved with a frightening velocity. It approached slowly so the people had a chance to seek cover. As the cyclone reached the town it lost some its velocity, otherwise, little would have been left of Vulcan. As it was, a considerable amount of damage was caused in the business section.

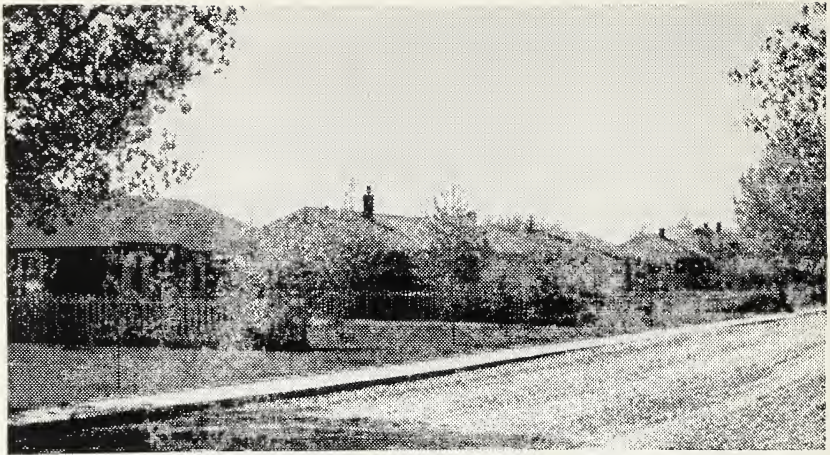
#### **8. LIVING CONDITIONS**

Lake McGregor, 25 miles east of Vulcan, provides the summer and fall activities for the local residents. Good fishing, boating and shooting can be provided at this lake. In winter months commercial fishing for whitefish is carried on there.

Excellent school and hospital facilities are available in the town.



A MODERN 36-BED HOSPITAL SERVES THE DISTRICT



ONE OF THE RESIDENTIAL STREETS

Approximately 400 houses are in the town with the average rent for a house, with all utilities, being \$60.00 per month. However, 90% are owner occupied. Number of houses built in 1954 — 23, in 1955 — 14.

#### **9. ADMINISTRATION**

The town is governed by a council consisting of a mayor elected every two years, and six councillors, two elected each year for three year terms. The secretary-treasurer carries out the policy set by the council.

#### **10. LAWS AND REGULATIONS**

All new buildings, repairs to buildings and removal of buildings, must be approved by the council after which a permit is issued.

The electrical code conforms to the requirements of the Alberta Electrical Protection Act.

The sanitary regulations conform to the Alberta Public Health Regulations.

The town hires its own police constable and assistant.  
Garbage is collected weekly.

#### **11. FIRE PROTECTION**

The fire brigade consists of a fire chief and twenty volunteer firemen who are paid for fighting fires and attending fire practices.

##### **Equipment**

One 1944, 2 ton Chevrolet Truck with front mounted centrifugal pump (500 U.S. gallons per minute), 1,500 feet of 2½ inch hose, 450 gallon booster tank, one 20 foot extension ladder, one 12 foot roof ladder, 1 fog and straight steam nozzle and applicator, 40 feet hard suction hose, 350 feet 1½ inch hose, 2-2½ gallon soda and acid extinguishers, 1-10 lb. CO2 fire extinguisher, 2-20 lb. dry chemical, 2 first aid kits, 2 masks and one inhalator.

One 1929, 1½ ton Ford hose truck which has a Bickle Seagrave mounted pump (250 Imperial gallons per minute), 3 inch inlet and 2½ inch outlet, one 12 foot roof ladder, one 20 foot extension ladder, play-

pipes, wye connection for 1½ inch hose and open nozzles, axes, crow-bars, etc.

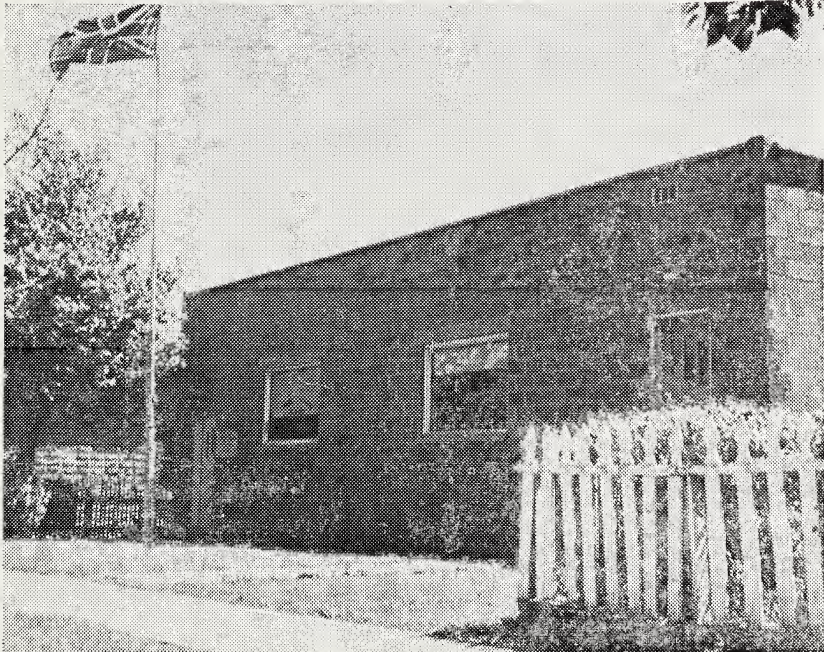
Water is pumped into a 280,000 gallon cistern and a water tower of 50,000 gallons. There are 14 fire hydrants conveniently located throughout the town.

**12. TAX STRUCTURE**

	<b>1957 Assessment</b>
Land 100% of value	\$ 231,940.
Improvements 100% of fair value	650,390.
Business	499,890.
Power	40,100.
<b>TOTAL</b>	<b>\$1,422,320.</b>

**Mill Rate**

School	27
Municipal	19
Hospital	4
<b>TOTAL</b>	<b>50 mills</b>



A NEW BUILDING HOUSES THE TOWN OFFICE AND POLICE OFFICE

### 13. AREAS

Area of town	231.03	acres
Streets and lanes	36	acres
Public Parks	12	acres

### Miles of Streets, Roads and Alleys

	Gravel	Unpaved	Unopened	Total
Provincial Main	1			1
Streets and roads	1.5	3.5		5
Lanes		1.5		1.5
<b>TOTAL</b>				<b>7.5</b>

There are three miles of cement sidewalks and four miles of board or cinder sidewalks.

### 14. SEWER AND WATER MAIN MILEAGE

Sanitary Sewers	6	miles
Water mains	6	miles

### 15. POWER

Three phase 60 cycle electric power is supplied under a ten year franchise by Calgary Power Company Limited.

#### Rates

Domestic Service is available only for lighting, heating, cooking, domestic power and ordinary uses in private houses, and those apartments used exclusively for residential purposes.

First 20 KWH (or less) per month \$2.60 gross minimum.

Subject to 30c prompt payment discount making \$2.30 net minimum.

All over 20 KWH used per month 1.5c net per KWH.

Note: Discount of 30c applies on all bills paid within discount period.

Connection charge for new customers \$1 00

Reconnection charge \$4.60.

Commercial Service is available where other rates listed do not apply.

Service Charge is First 500 watts of installed capacity 30c per month. Each additional 250 watts of installed capacity 10c per month.

Energy Charge for first 50 KWH per month per KW of installation 10c per KWH. Next 150 KWH per month per KW of installation 5c per KWH. All over 200 KWH per month per KW of installation 2¼c per KWH.

Discount: 10% if paid within discount period, based on the even dollars only of total bill, with a minimum discount of 30c.

Minimum charge \$1.80 gross, \$1.50 net per month. Minimum deposit \$3.60. Reconnection charge \$3.00.

#### Power Service

(A.C.) Available for motors, rectifiers, commercial heating apparatus, etc., in commercial establishments.

#### Service Charge

\$1.00 per month per kilowatt-ampere (KVA) of installation --



(one motor horsepower or one kilowatt in heating apparatus to be considered equivalent to one KVA).

### Energy Charge

First 50 KWH per month per KVA of installation 5c per KWH; next 50 KWH per month per KVA of installation 3 $\frac{1}{4}$ c per KWH; and over 100 KWH per month per KVA of installation 1 $\frac{2}{3}$ c per KWH.

Discount: 10% if paid within discount period, based on the even dollars only of total bill, with a minimum discount of 30c.

Minimum charge \$3.30 gross, \$3.00 net per month. Minimum deposit \$2.00 per HP with a minimum of \$6.00. Reconnection charge \$6.00.

### 16. WATER

Water is obtained from three local wells and is pumped into a 50,000 gallon elevated tower. Sewer and water mains were installed in the year 1949.

#### Rates

Residence — flat rate of \$3.75 per month.

Commercial and Industrial establishments — first 2,000 gallons used per month — \$3.75 per month. Next 3,000 gallons used per month \$1.10 per M. gallons. All over 5,000 gallons used per month 80c per M. gallons.

#### Water Analysis

	Parts per Million
Total solids	2,538
Ignition loss	80
Hardness	100
Sulphates	1,214
Chlorides	48
Alkalinity	265
Nature of Alkalinity — bicarbonate of soda, lime and magnesium	
Nitrites	Trace
Nitrates	8.0
Iron	0.2
Fluorine	.3

#### Remarks

This water contains 12 grains per gallon soda and 150 grains per gallon glauber's salt. Chemically, it is unsuitable due to the high glauber's salt contents.

### 17. FUELS

Gas — Air-mix Propane system

### 18. L.P. GAS

Heat value 2,521 b.t.u. per cu. ft. at 60° F.

Bulk 16c

100 lb. cylinder \$6.50

There is no bulk storage tank in the town.

### 19. DIESEL FUEL

Heat value 135,000 to 140,000 b.t.u. per gallon at 60°F.

Summer grade, 17.1c plus one cent tax per gallon.

Winter grade, 18.6c plus one cent tax per gallon.

Storage capacity 11,200 gallons.

## 20.—COAL

Coal is secured from the Lethbridge mines and from local coal fields.

	Lump	Egg	Slack
Lethbridge (per ton)	\$11.15	\$10.15	\$9.15
Local (per ton)	\$10.15	\$ 9.25	\$8.00

## 21. LOCAL RESOURCES

Cereals  
Horses, cattle, sheep and hogs  
Poultry and eggs  
Sand  
Gravel  
Straw

## 22. GOVERNMENT OFFICES AND SERVICES

### Federal

R.C.M.P. Detachment  
Army Drill hall

### Provincial

Treasury Branch  
Alberta Government Telephones  
District Agriculturist — non resident  
County of Vulcan No. 2

### Municipal

Town office  
Town secretary-treasurer  
Town foreman  
Fire hall  
County of Vulcan No. 2  
Town library

## 23. HEALTH SERVICES

Vulcan Municipal Hospital No. 19 has 36 beds. It is staffed by a Matron, eight graduate nurses and four nurses' aides. The hospital is operated under the Municipal Hospital Act.

Rates	Ratepayers	Non-ratepayers
Public Ward	\$1.60 per day	\$10.50 per day
Children under 16	.95 per day	

There are also three private practising physicians, one dentist and two drug stores.

## 24. PROFESSIONAL AND SKILLED PERSONAL SERVICES

(not including health services)

Type of Service	Number of Establishments
Public Accountants	1
Barristers and Lawyers	2
Beauty Parlors	1
Barber Shops	3
Watch repairs	1



**25. TRANSPORTATION**

Canadian Pacific Railway — Calgary to Lethbridge via Vulcan  
Greyhound Bus, daily  
Daily truck service to and from Calgary and Lethbridge

**26. NEWSPAPERS**

Vulcan Advocate — circulation 2,544, weekly

**27. COMMUNICATIONS**

Canadian Pacific Telegraphs  
Alberta Government Telephones  
Post Office  
Airmail through post office  
Nearest radio station — Lethbridge, CJOC  
Nearest television station — Lethbridge CJLH-TV

**28. FINANCIAL FACILITIES**

Canadian Bank of Commerce  
Alberta Treasury Branch

**29. HOTELS**

	No. of rooms	Single Rate	Licensed
Imperial Hotel	57	\$2.50 and up	yes

**30. TOURIST CAMPS**

NIL

**31. CHURCHES**

Anglican, Roman Catholic, United, Church of Christ, Lutheran, Evangelical.

**32. LODGES**

Masons, I.O.O.F., B.P.O.E., Rebecca, Eastern Star, Royal Purple.

**33. SERVICE CLUBS**

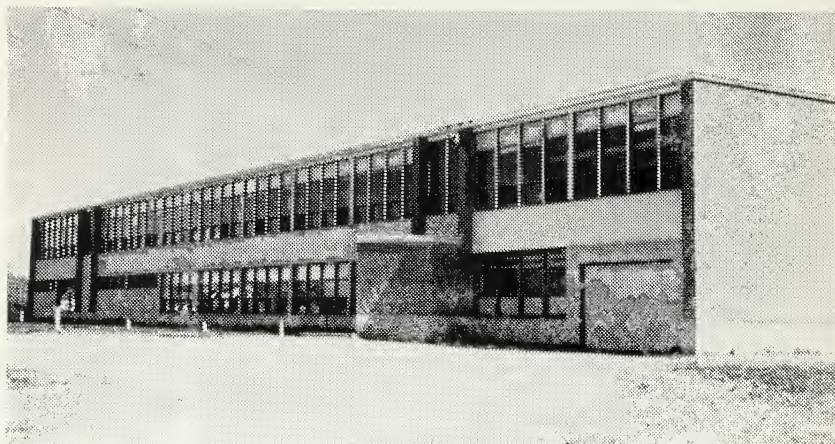
Canadian Legion, Ladies' Auxiliary Canadian Legion, Lions, Board of Trade, Ladies' Hospital Aid, Lionettes.

**34. SOCIETIES**

Home and School Association  
Red Cross

**35. EDUCATION**

The town schools come under the jurisdiction of the County



A VIEW OF VULCAN'S NEW HIGH SCHOOL

School No. 2. There are two school buildings with twenty classrooms and 19 teachers. There are 493 pupils attending the town school and school vans transport the rural students.

Grades 1 - 12 are taught along with the following subjects  
Home Economics, Shop, Typing, Bookkeeping, Art, Music and Drama.

### 36. THEATRES AND HALLS

	Capacity	Stage	Piano
Vulcan Theatre	300	yes	one
Canadian Legion	200	no	one
I.O.O.F. Hall	250	yes	two
Drill Hall	500	yes	one

### 37. CULTURAL ACTIVITIES

The Vulcan Public Library is supported by the Town, Provincial Government Grant and Membership fees. There are over 3,160 volumes and the library is open on Monday, 4-5 p.m.; Tuesday, 2-5 p.m.; Thursday, 4-5 p.m.; Friday, 4-5 p.m., and Saturday from 2-5 and 7-9 p.m.

There are three music teachers located in the town. At the school art and drama classes are held.

### 38. YOUTH ACTIVITIES

Boys	Girls
Boy Scouts	C.G.I.T.
Wolf Cubs	Brownies
Calf Club	Girl Guides
Army Cadets	

### 39. SPORTS

Baseball, senior and junior; hockey, senior and junior; softball, girls; bowling; curling; nine-hole golf course; covered curling rink with six sheets of natural ice; covered hockey and skating rink; Lions swimming and wading pools; exhibition grounds for sports.

**40. FAIRS**

Sports day only.

**41. HISTORIC SITES**

Nil

**42. CO-OPERATIVES**

Alberta Wheat Pool; United Grain Growers; United Farmers' Association, Co-op Farm Machinery Distributor; United Farmers of Alberta Co-op Oil Distributor.

**43. INDUSTRY AND BUSINESS**

Type of Business	Number of Establishments	Producer or Manufacturer	Wholesale	Retail	Type of Business	Number of Establishments	Producer or Manufacturer	Wholesale	Retail
Bakeries .....	1	1	1	1	Hair dressers .....	2	—	—	—
Banks .....	2	—	—	—	Hardware .....	3	—	—	3
Barbers .....	3	—	—	—	Hotels .....	1	—	—	—
Bowling Alleys .....	1	—	—	—	Implements .....	6	—	—	6
Butchers .....	2	—	2	2	Insurance & Real Estate .....	2	—	—	—
Building Contractors .....	6	—	—	—	Jewellers .....	1	—	—	1
Blacksmith .....	1	—	—	—	Law offices .....	1	—	—	—
Cartage Delivery .....	6	—	—	—	Laundry .....	1	—	—	—
Clothing —					Laundry —dry cleaners .....	1	—	—	—
Men's .....	3	—	—	1	Lumber yards .....	2	—	2	2
Women's & Children's .....	3	—	—	3	Milk distributors .....	1	—	1	1
Concrete works .....	2	—	—	—	Optometrist .....	1	—	—	—
Coal Dealers .....	8	—	—	8	(calls monthly)				
Cold storage lockers .....	1	—	1	1	Oil distributors .....	7	—	—	7
Dentists .....	1	—	—	—	Painters & decorators .....	3	—	—	—
Doctors .....	3	—	—	—	Photographers .....	1	—	—	—
Drugs .....	2	—	—	2	Plumbers .....	2	—	—	—
Dry cleaners .....	3	—	—	3	Pool rooms .....	2	—	—	—
Dry goods store .....	2	—	—	2	Printing shops .....	1	—	—	—
Egg grading station .....	1	—	1	1	Propane gas agencies .....	2	—	—	2
Electrical appliances .....	3	—	3	3	Radio repair .....	2	—	—	—
Electrical contractors .....	3	—	—	—	Restaurants .....	4	—	—	—
Florists — none, only agencies at 2 drug stores					Shoe repairs .....	2	—	—	2
Furniture stores .....	1	—	—	1	Tailor shops .....	2	—	—	2
Foundry & Machine Shop .....	1	1	1	1	Theatres .....	1	—	—	—
Garage & Service stations .....	11	—	—	11	Tinsmiths .....	2	—	—	—
Grain elevators .....	9	—	—	—	Variety stores .....	1	—	—	1
Total Capacity 1,500,000 bushels.					Welding & machine shops .....	1	—	—	1
Groceries .....	4	—	—	4					

#### 44. SITES

Vulcan can offer excellent industrial sites that are served with all utilities except gas.

#### 45. INDUSTRIAL DEVELOPMENT

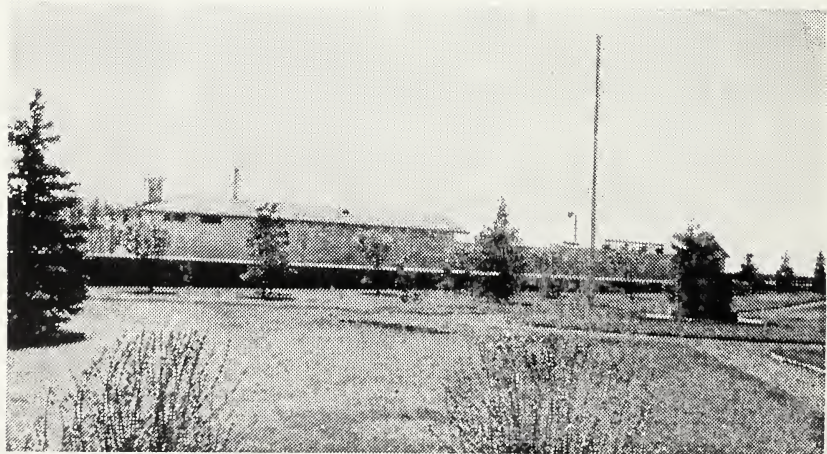
Vulcan can provide good living conditions and an opportunity for any industry that can use the district's natural resources or provide a needed service for the trading area.

#### 46. TRADING AREA

On the north for 25 miles; on the west for 15 miles; on the south for 10 miles; and on the east for 25 miles.

#### 47. POPULATION

Trading area population, 1956 census	5,181
Town population, 1956	1,203



THE PRETTY ELKS' MEMORIAL PARK WITH THE LIONS' MEMORIAL SWIMMING POOL IN THE BACKGROUND



