



LIBRARY OF

Dr. Z. P. Metcalf

1885-1956

LIST OF PLATES

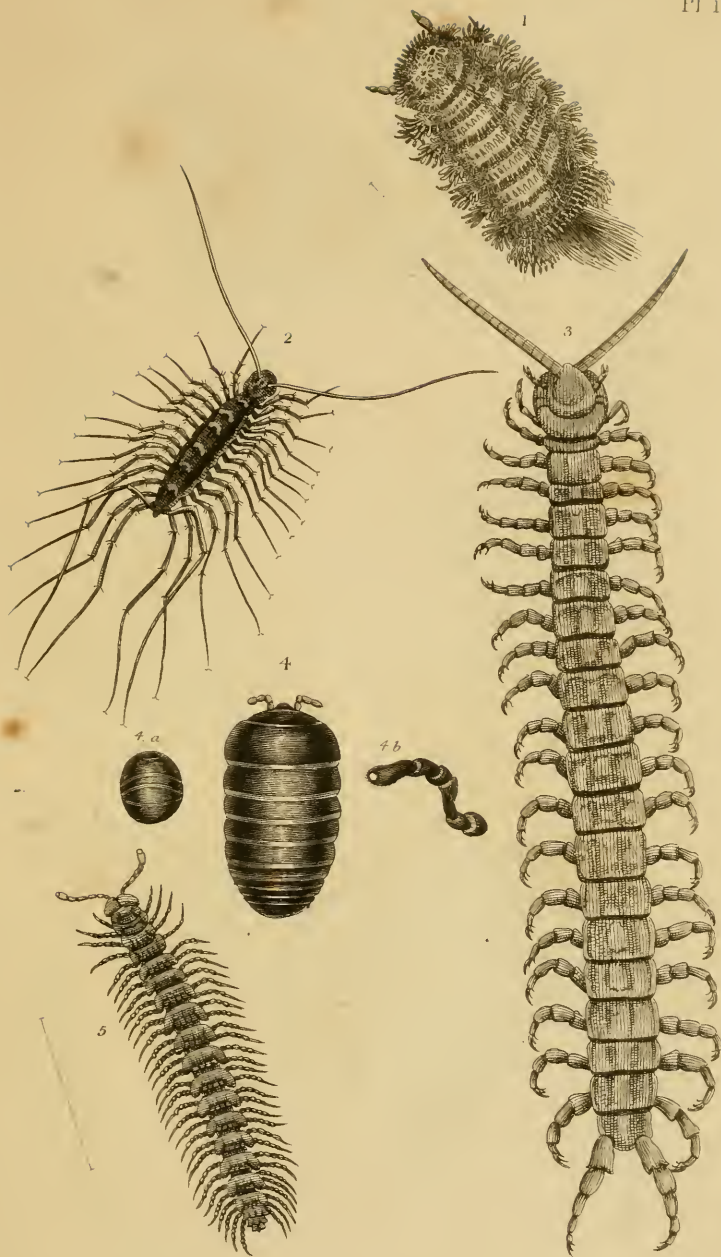
OF INSECTS.

PLATE	VOL.	To face page
I.	xiv.	129
II.	xv.	587
III.	xiv.	583
IV.	xiv.	515
V.	xiv.	534
VI.	xv.	115
VII.	xiv.	246
VIII.	xiv.	198
IX.	xiv.	311
X.	xiv.	42
XI.	xiv.	230
XII.	xiv.	274
XIII.	xiv.	270
XIV.	xv.	115
XV.	xiv.	276
XVI.	xiv.	316
XVII.	xiv.	42
XVIII.	xiv.	43
XIX.	xiv.	271
XX.	xiv.	324
XXI.	xv.	588
XXII.	xiv.	296
XXIII.	xiv.	460
XXIV.	xiv.	468
XXV.	xiv.	210
XXVI.	xiv.	184
XXVII.	xiv.	176

PLATE	VOL.	To face page
XXVIII.	xiv.	48
XXIX.	xiv.	264
XXX.	xiv.	232
XXXI.	xiv.	258
XXXII.	xiv.	284
XXXIII.	xiv.	470
XXXIV.	xiv.	271
XXXV.	xiv.	493
XXXVI.	xiv.	330
XXXVII.	xiv.	473
XXXVIII.	xiv.	673
XXXIX.	xiv.	365
XL.	xiv.	452
XLI.	xiv.	49
XLII.	xiv.	487
XLIII.	xv.	591
XLIV.	xiv.	483
XLV.	xiv.	452
XLVI.	xiv.	516
XLVII. . . .	xv.	590
XLVIII.	xiv.	375
XLIX.	xv.	65
L.	xv.	91
LI.	xiv.	498
LII.	xiv.	290
LIII.	xv.	596
LIV.	xiv.	606
LV.	xiv.	477
LVI.	xiv.	542
LVII.	xiv.	544
LVIII.	xv.	592
LIX.	xv.	579
LX.	xv.	93
LXI.	xiv.	365
LXII.	xv.	774
LXIII.	xv.	191
LXIV.	xv.	215
LXV.	xv.	113
LXVI.	xv.	406

PLATE	VOL.	To face page
LXVII.	xv.	126
LXVIII.	xv.	218
LXIX.	xv.	91
LXX.	xv.	116
LXXI.	xv.	516
LXXII.	xv.	331
LXXIII.	xv.	113
LXXIV.	xv.	22
LXXV.	xv.	93
LXXVI.	xv.	515
LXXVII.	xv.	432
LXXVIII.	xv.	184
LXXIX.	xv.	675
LXXX.	xv.	22
LXXXI.	xv.	630
LXXXII.	xv.	610
LXXXIII.	xv.	598
*LXXXIII.	xv.	631
LXXXIV.	xv.	604
LXXXV.	xv.	99
LXXXVI.	xv.	672
LXXXVII.	xv.	676
LXXXVIII.	xv.	101
LXXXIX.	xv.	111
XC.	xv.	259
XCI.	xv.	243
XCII.	xv.	233
XCIII.	xv.	239
XCIV.	xv.	296
XCV.	xv.	107
XCVI.	xiv.	532
XCVII.	xv.	241
XCVIII.	xiv.	559
XCIX.	xv.	594
C.	xv.	104
CI.	xv.	126
CII.	xv.	677
CIII.	xv.	609
CIV.	xv.	171

PLATE	VOL.	To face page
CV.	xv.	324
CVI.	xv.	402
CVII.	xv.	576
CVIII.	xv.	261
CIX.	xv.	262
CX.	xv.	173
CXI.	xv.	574
CXII.	xv.	677
CXIII.	xv.	174
CXIV.	xv.	696
CXV.	xv.	670
CXVI.	xv.	254
CXVII.	xv.	388
CXVIII.	xv.	674
CXIX.	xv.	117
CXX.	xv.	600
CXXI.	xv.	228
CXXII.	xv.	721
CXXIII.	xv.	530
CXXIV.	xiv.	544
CXXV.	xv.	774
CXXVI.	xv.	625
CXXVII.	xv.	298
CXXVIII.	xv.	779
CXXIX.	xv.	603
CXXX.	xv.	196
CXXXI.	xv.	196
CXXXII.	xv.	388
CXXXIII.	xv.	679
CXXXIV.	xv.	227
CXXXV.	xiv.	142
CXXXVI.	xv.	680
CXXXVII.	xv.	680
CXXXVIII.	xv.	259
CXL.	xv.	634



1. *Polyxenus lagurus*. 2. *Scutigera livida*. 3. *Scolopendra alternans*.
Leach. 4. *Glomeris marginata*. *Leach*. 5. *Polydesmus complanatus*.





1. *Argynnis callithea*. God. 2. *Argynnis moneta*. Geyer. 3. Caterpillar & chrysalis, of *Argyn paphia*. God. 4. *Nymphalis detha*. God. 5. Caterpillar & chrysalis of *Nymphalis*. God.



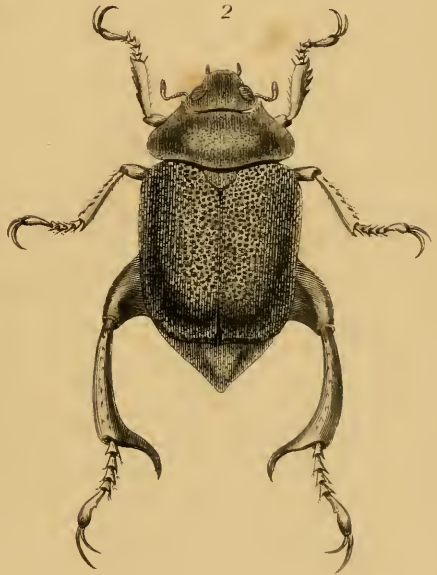


1 *Papilio Labralii*. God. 2 Caterpillar & chrysalis of *Pap machaon*. L. 3. *Parnassius phaeus*. Fabr. God. 4. *Thais Arisyi*. God.

1



2



3



1. *Scarabaeus macropus*. Sh. Nat. Mss.
2. Male. 3. Fem. of *Melolontha chrysochlorata*.



Coll. J. G. Children, Esq.

Trictenotoma Childreni. G. R. Vay.



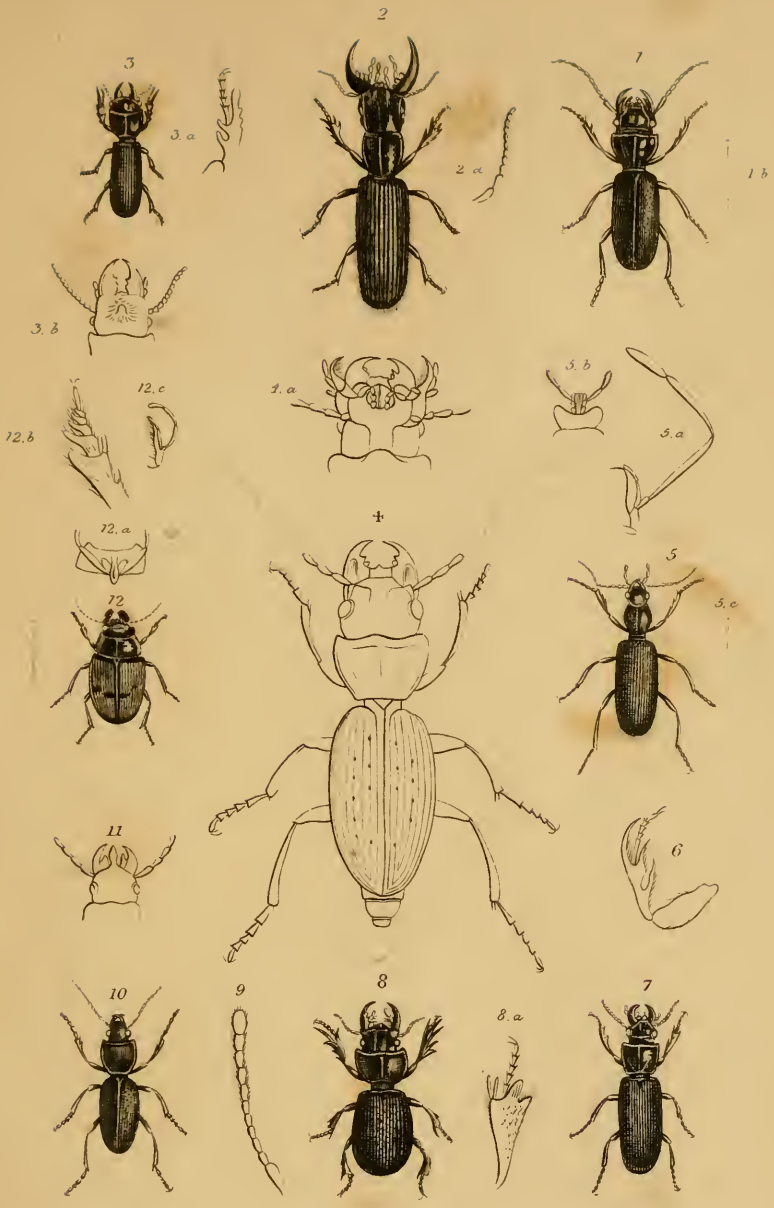
Coll. J. G. Childron, Esq.^r

I. O. Westwood, del.^b

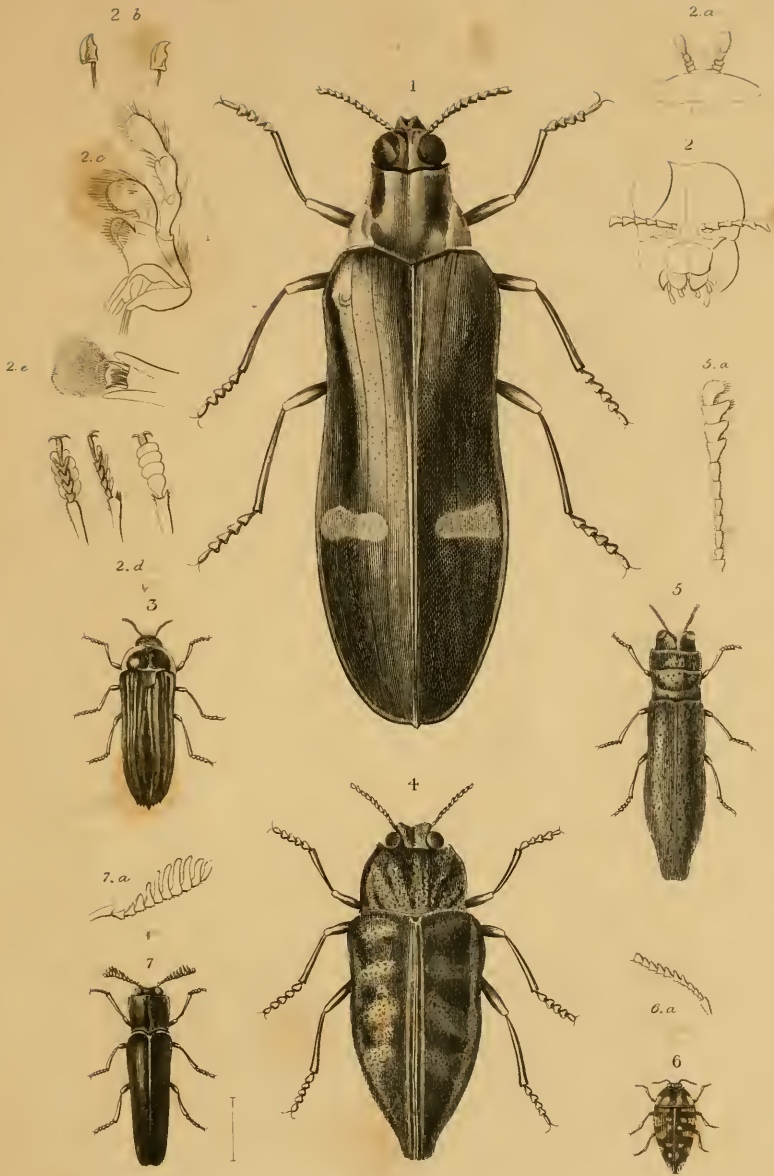
Psalidognathus Friendii. G. R. Gray.



1. *Dytiscus Iherminieri*. Chev. 2. *Id. serricornis* Pusk. 3. Ant. tarsus of *Colymbetes*.
 4. *Id.* of *Hydroporus planus*. Latr. 5. *Hygrobia Hermannii*. Latr. 6. *Noterus crassicornis* Clair. 7. *Haliphys devalus*. 8. *Gyrinus sulcatus*. Dej.



1. *Siagoua Europaea*. Dej. 2. *Oxystomus Sancti-Hilarii*. Lat. 3. *Scapterus Guerinii*. Dej.
 4. *Enceladus gigas*. Bon. 5. *Apotomus rufus*. Lat. 6. *Fore tarsi of Dischirius thoracicus*. Lat.
 7. *Morio simplex*. Dej. 8. *Acanthocelis ruficornis*. Lat. 9. *Antenna of Ozæna Rogerii*. Dej.
 10. *Ditonus violaceus*. Lat. 11. *Head of Ditonus calydonius*. Lat. 12. *Cyclosomus flexuosus*.
 Lat.



1. *Buprestis bicolor*; Lat. 2. Details of *Bup. gigas*. Fab. 3. *Buprestis rubripennis*. 4. *Buprestis lalandii*. Guér. 5. *Aphanisticus emarginatus*. Lat. 6. *Trachys cruentata*. Fab. 7. *Melasis buprestivide*. Oth.



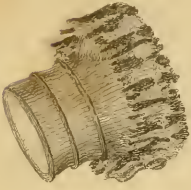
7



10



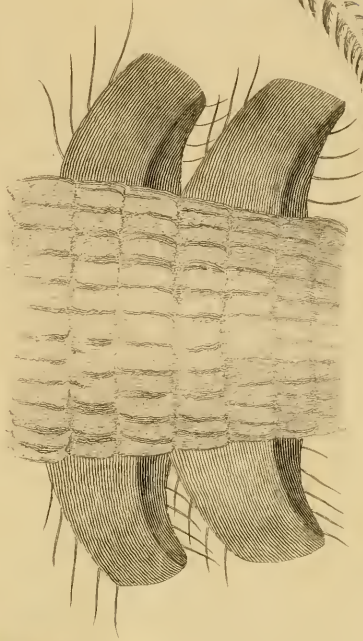
11



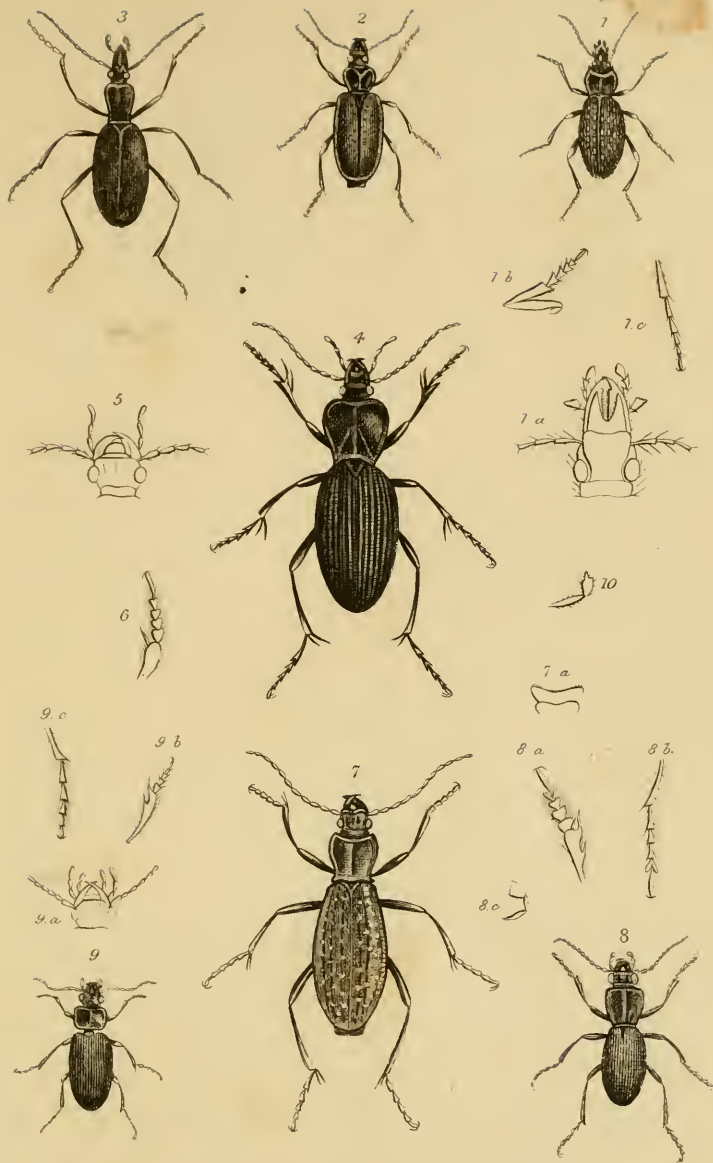
9



8



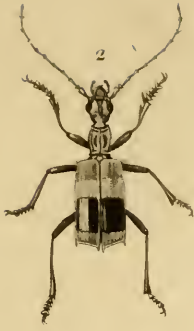
Antennæ magnified. — Pl. 2



1. *Sphaeroderus nitidicollis*. Chevrol. 2. *Calosoma rufipennis*. Dg. 3. *Cychrus italicus*. Bonelli
 4. *Pamboros alternans*. Lat. 5. Head of *Pogonophorus*. 6. Anterior tarsus of *Pelophilus*. 7. *Carabus rutilans*. Lat. 8. *Pelichium cyanipes*. Kirby. 9. *Masoreus luteatus*. Dg. 10. Maxillary palpi of *Bembidion*.



1. *Pasinaclus Mexicanus*. G.R. Gray. 2. *Goniotropis Brasiliensis*. G.R. Gray. 3. *Catadromus tenuibrivoides* Mac Leay



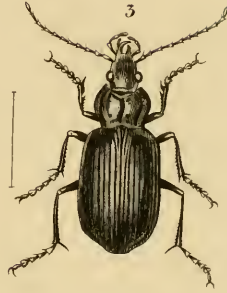
1. *Anthia Burchellii*. Hope. 2. *Cordistes ancus*. G.R.Gray. 3. *Pleuracanthus sulcatus*.
G.R.Gray. 4. *Orthogonius Hopi*. G.R.Gray. 5. *Aximophorus Brasiliensis*. G.R.Gray.



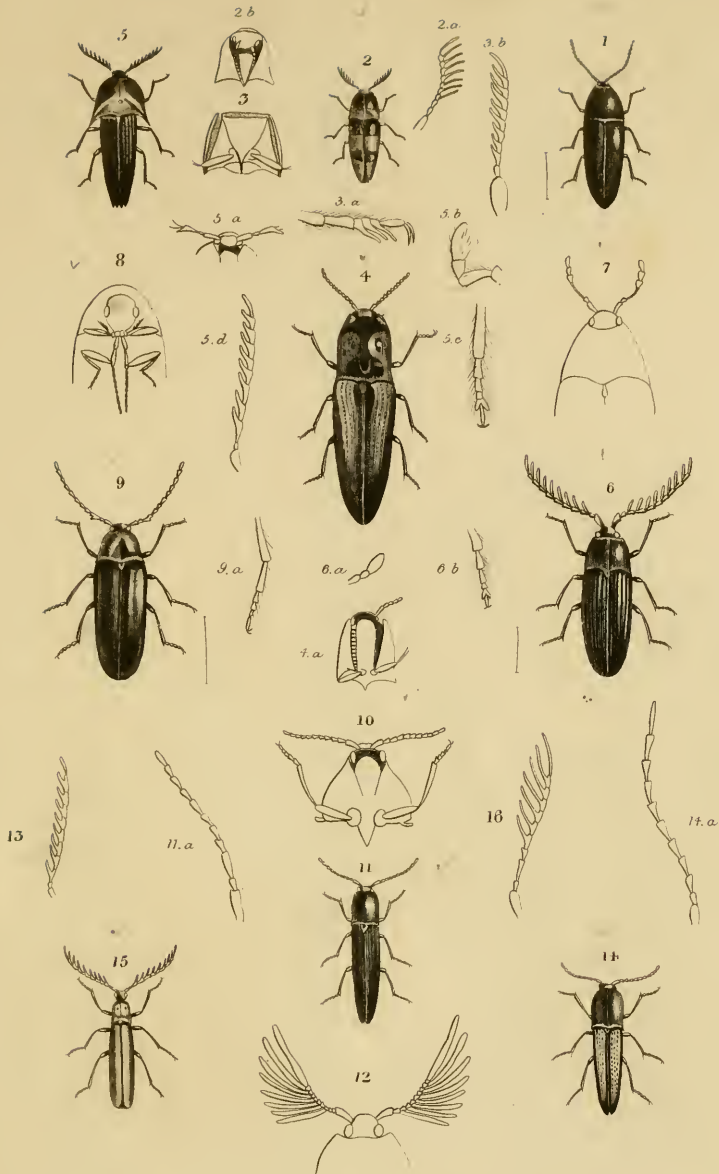


I. O. Westwood, del.

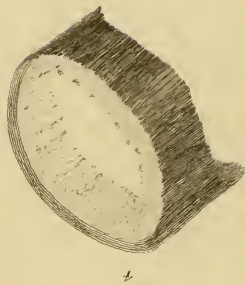
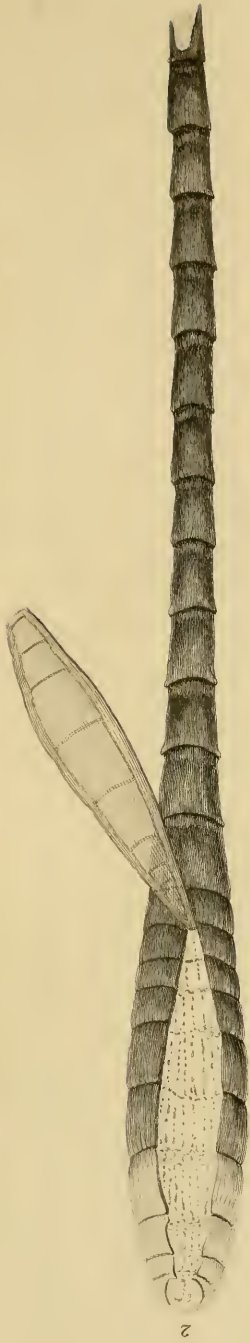
Details of Psalidognathus Friendii.



1. *Chemaecanthus gibbosus*. G. R. Gray. 2. *Pericatus cicindloides*. Mac Leay. 3. *Colpodes brunneus*. Mac Leay. 4. *Scaphinotus elevatus*. Latr. 5. *Epomis Goryi*. G. R. Gray.



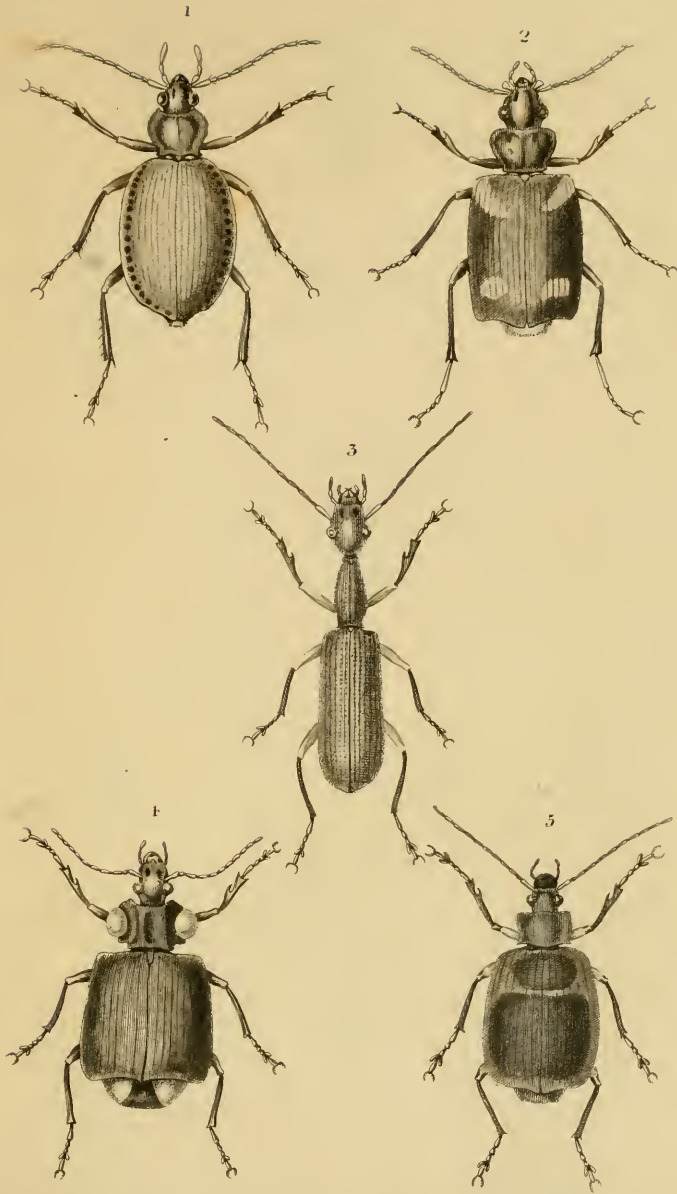
1. *Eucnemis ruficornis*. Man. 2. *Pterotarsus histrio*. Latr. 3. Details of *Galba marmorata*. Guér. 4. *Ade-
locera chubanni*. Guér. 5. *Pachyderes ruficollis*. Guér. 6. *Cerophytum dataroides* Latr. 7. *Tiroscus
dennestoides*. Latr. 8. *Chelonarium undatum*. Latr. 9. *Cryptostoma denticornis*. Fabr. 10. Head and
corset of *Loboderus monilicornis*. Guér. 11. *Nematodes filum*. Latr. 12. Head of *Hemirrhypus flabel-
liformis* Latr. 13. Antenna of *Ctenicera hamatodes*. Latr. 14. *Elatер plagiatus*. Germ. 15. *Campytus denti-
collis*. Fischer. 16. Antenna of *Phyllocerus flavipennis*. Dej.



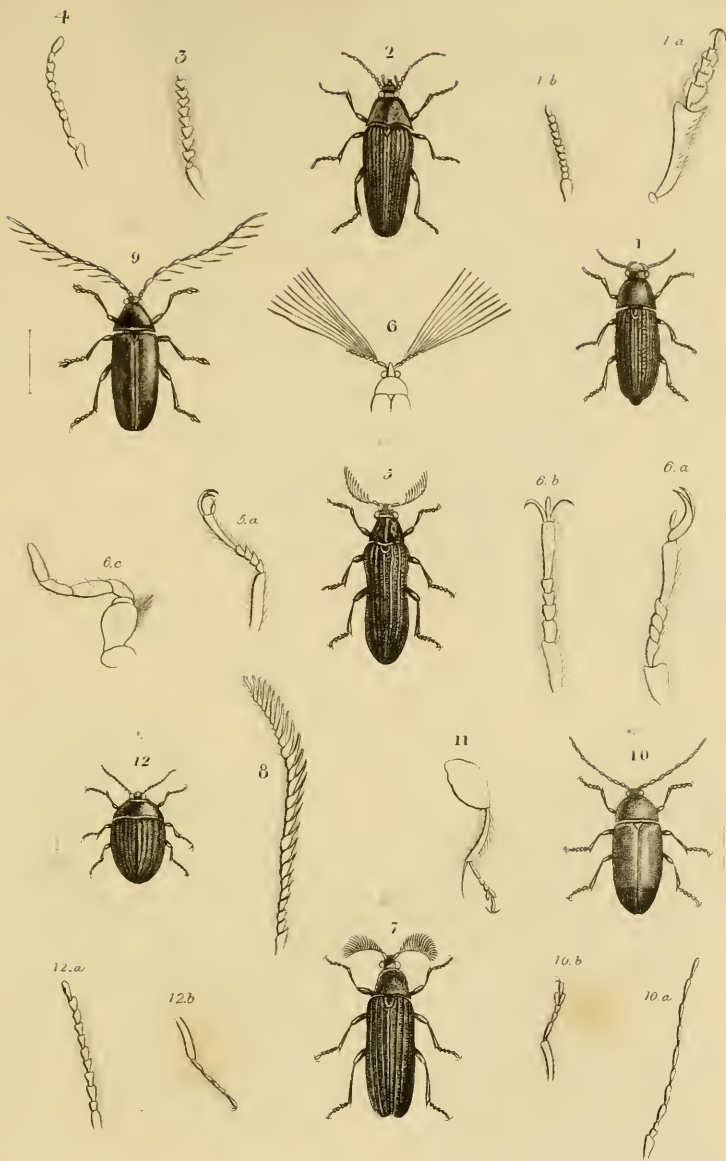
Antennae magnified. — PLI

London, Published by Whitaker, C. & A. Nisbet, Lane, 1831





1. *Loxocrepis ruficeps*. 2. *Plochiomus fnotatus*. 3. *Rhagoerepis Riedtii*.
 4. *Physodera Dejeanii*. 5. *Lia dorsalis*.



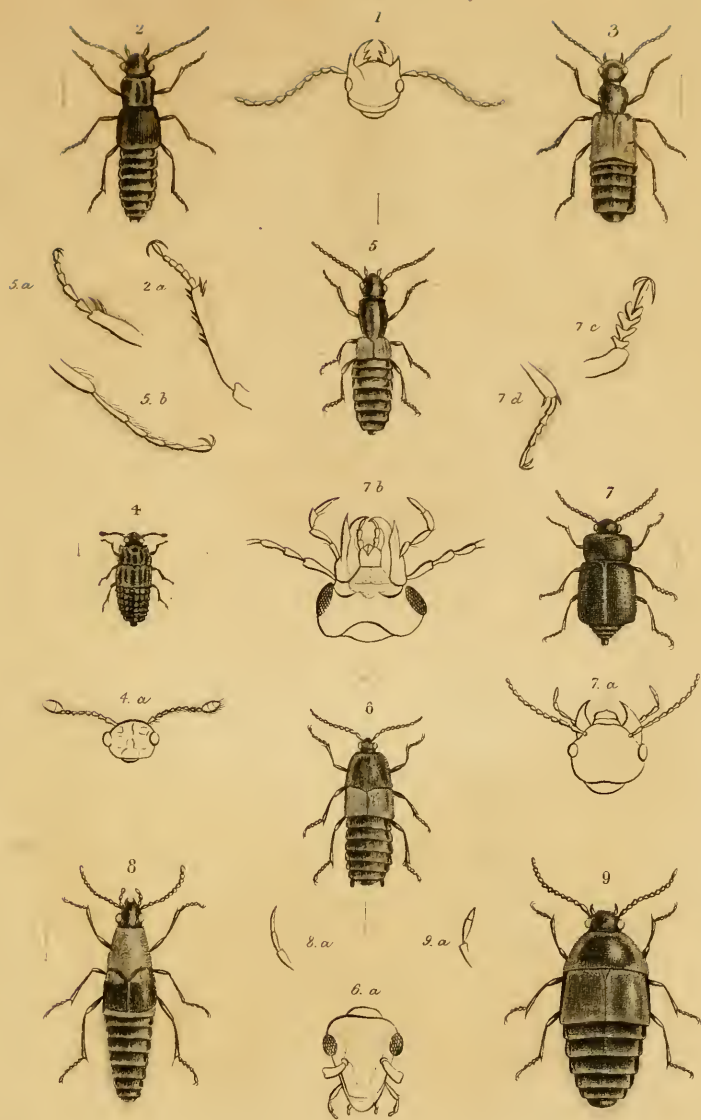
1. *Physodactylus Henningii*, Fisch. 2. *Cebrio thersites*, Gory. 3. Ant. of *Cebrio thersites*, Fam. 4. Ant. of *Anelastes Drurii*, Koby. 5. *Callirhipis Goryi*, Guarin. 6. Elytra of *Call. Dejeani*, Lat. 7. *Rhipicera cayana*, Gory. 8. Ant. of *Rhipicera*. 9. *Ptilodactyla daterma*, Mq. 10. *Elodes pallidus*, Lat. 11. Post. tarsus of *Scyrtes*. 12. *Eubriapalustris*, Germ.



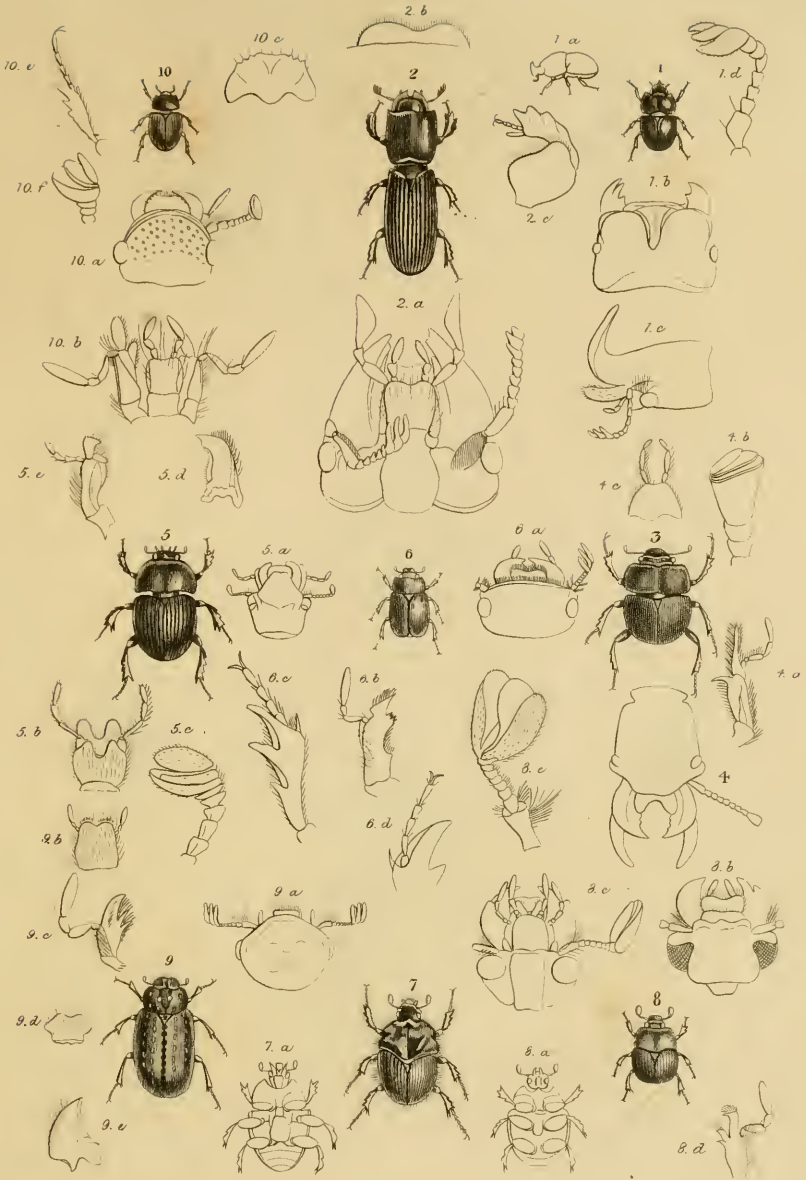


1. *Pieris thiria*. God. 2. Caterpillar & chrysalis of *Pieris brassicae*. L. 3. *Helicomia Langsdorfi* God. 4. *Denaida avice*. God.

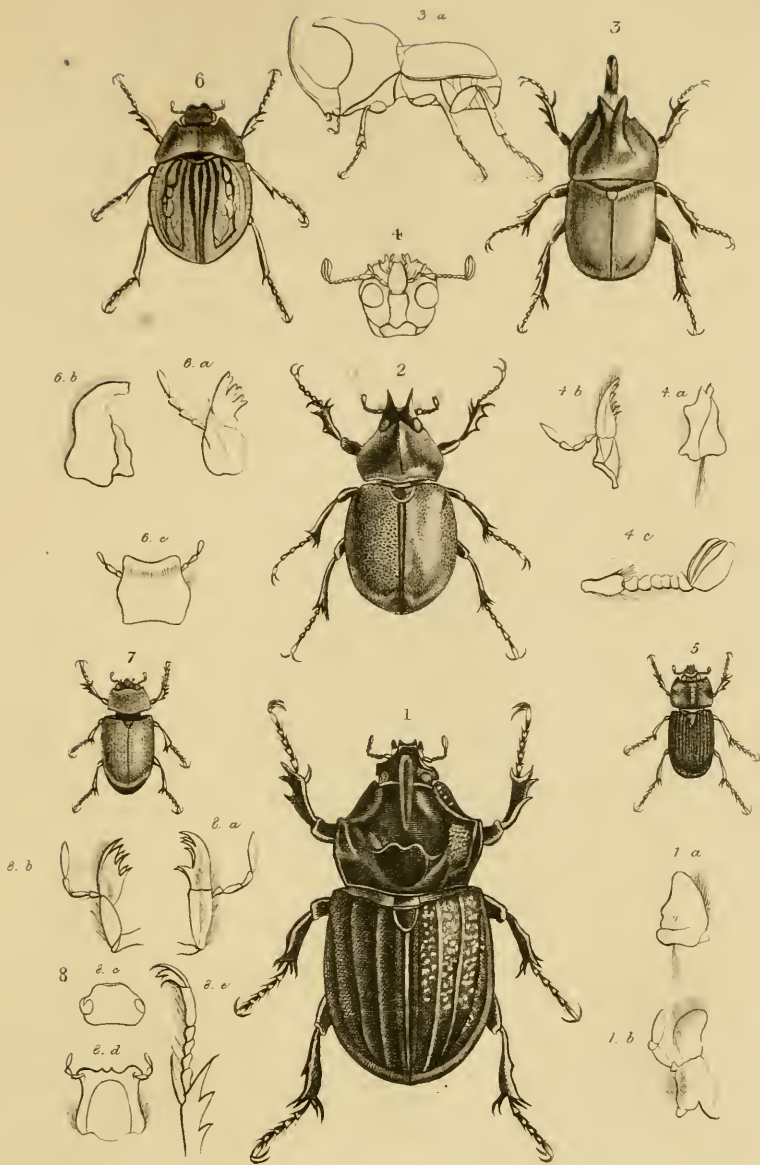




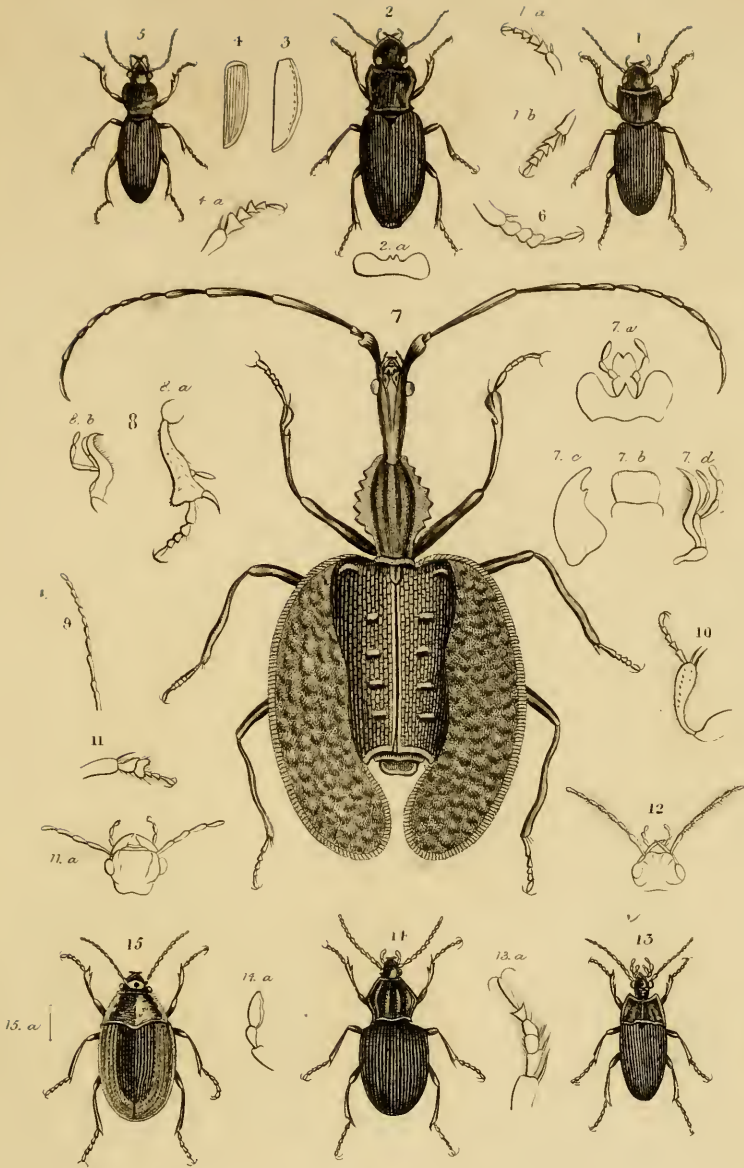
Head of *Prognatha rufipennis*. Lat. 2. *Coprophilus rugosus*. Grav. 3. *Lesteva dichroa*. Lat.
 4. *Micropeplus mallei*. Dej. 5. *Aleochara canaliculata*. Fab. 6. *Lomechusa paradoxica*. Grav.
 7. *Onalium blattoides*. Grav. 8. *Tachinus atricapillus*. Fab. 9. *Tachiporus marginatus*. Grav.



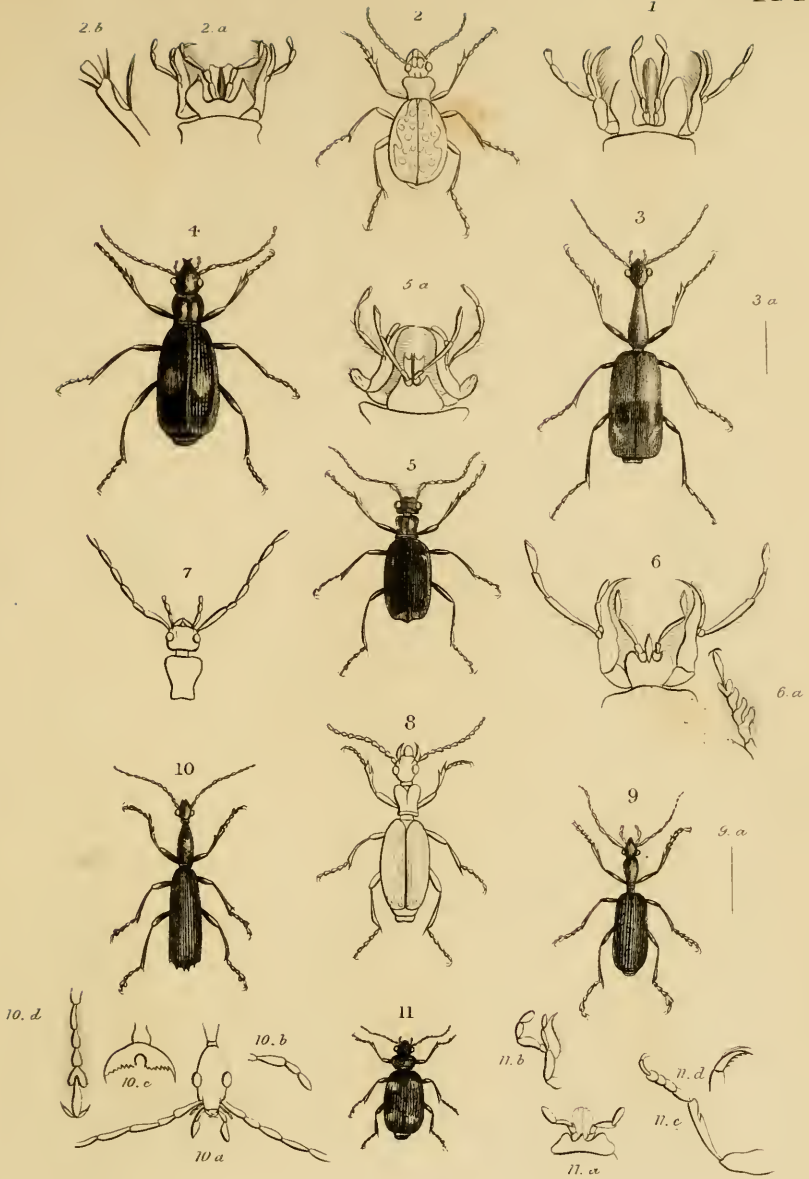
1. *Ægialia cornifrons*. Guér. 2. *Chiron grandis*. Gory. 3. *Lethrus Eversmannii*. Faldern
 4. Details of *Lethrus cephalotes*. Fabr. 5. *Geotrupes Blackburnii* Fab. 6. *Ochodeus ru-*
fus. Guér. 7. *Athyreus castaneus*. Guér. 8. *Bolboceras fulvipes*. Gory. 9. Troz. Eger. Guér.
 10. *Hybosorus arator*. Fabr.



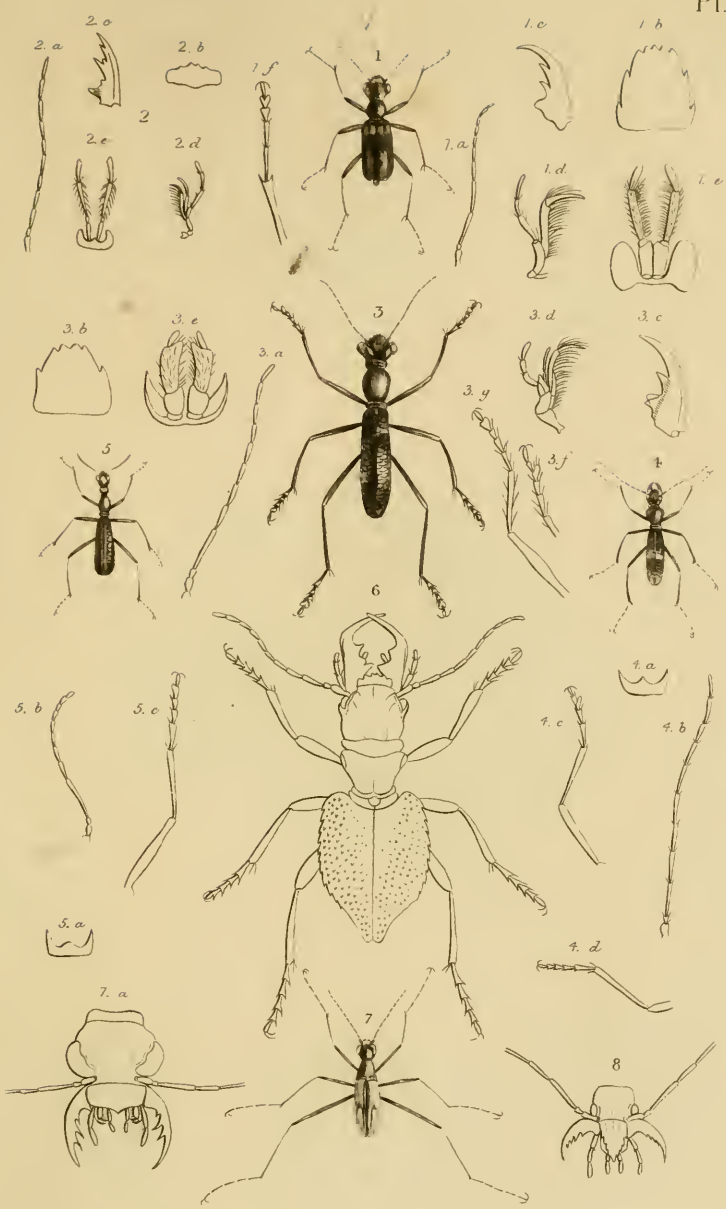
1. *Oryctes Chevrolatii*. Guer. 2. *Agacephala furecata*. Guer. 3. *Scarabaeus menton*. Guer.
 4. Details of *Sc. gedeon*. Fabr. 5. *Phileurus cribralus*. Chev. 6. *Hexodon reticulatus*.
Olivier. 7. *Cyclocephala frontalis*. Chev. 8. Details of *Cycl. geminata*. Fabr.



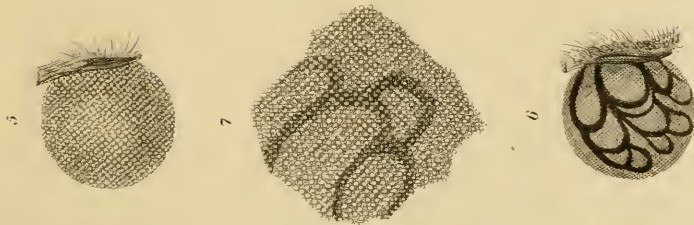
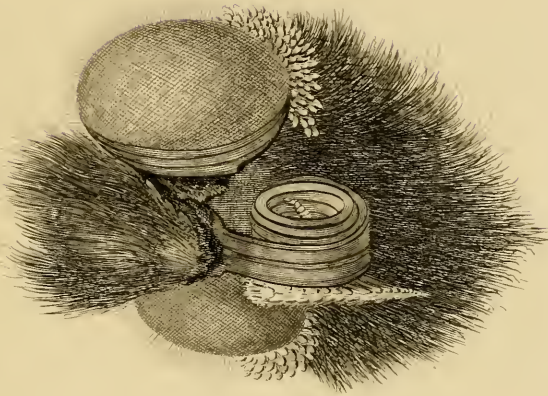
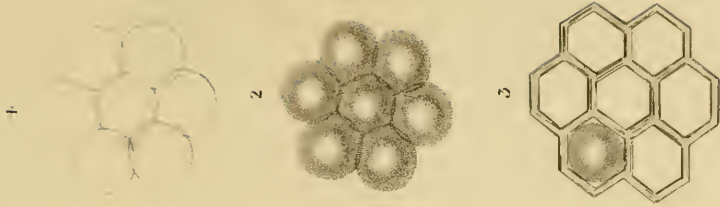
1. *Harpalus tricolor*. Guer. 2. *Trigonotoma viridicollis*. Dej. 3. Elytra of *Feronia navarica*. Lat. Elytra and tarsus of *Feronia melanaria*. Lat. 5. *Cephalotes rufipes*. Lat. 6. Ant. tarsus of *Palobus rufipes*. Male. 7. *Mormolyce phyllodes*. Hag. 8. Ant. tarsus & jaw of *Zabrus gibbus*. Lat. 9. Antenna of *Sphodrus terricola*. Lat. 10. Ant. tarsus of *Feronia hollentota*. Lat. 11. Ant. tarsus & Head of *Licinus agricola*. Male. 12. Head of *Loricera pilicornis*. Lat. 13. *Cynthia abaxoides*. Lat. 14. *Panagæus fulgipennis*. Lat. 15. *Omophron suluratis*. Guer.



1. Mouth of *Anthia 10 guttata*. Latr. 2. *Craplipterus multiguttatus*. Latr. 3. *Casnonia Senega-
lensis*. St Farg et Serv. 4. *Brachinus Jurinæ*. Dej. 5. *Trichognathus marginatus*. Latr. 6. Mouth
and tarsi of *Galerita americana*. Latr. 7. Head & corselet of *Zuphiuma olus*. Latr. 8. *Helluo
costatus*. Latr. 9. *Driptaruficollis*. Dej. 10. *Agra splenitida*. Latr. 11. *Lebia flavomaculata*. Cur.

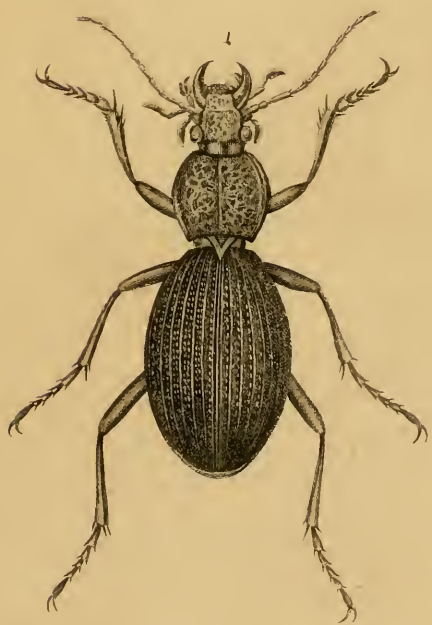
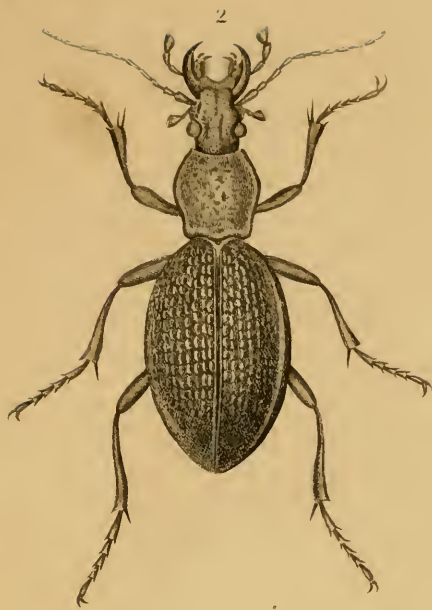


1. *Therates basalis*. d'Urv. 2. *Details of Megacephala carolina*. Latr. 3. *Trycondyla aptera*. Latr. 4. *Clenostoma Ichneumonum*. Dej. 5. *Colluris modesta*. Dej. 6. *Mantidora macillosa*. Latr. 7. *Ciciudela tenuipes*. Guex. 8. *Head of Oxycheila tristis*. Dej.



Compound eyes of insects. Pl. 1

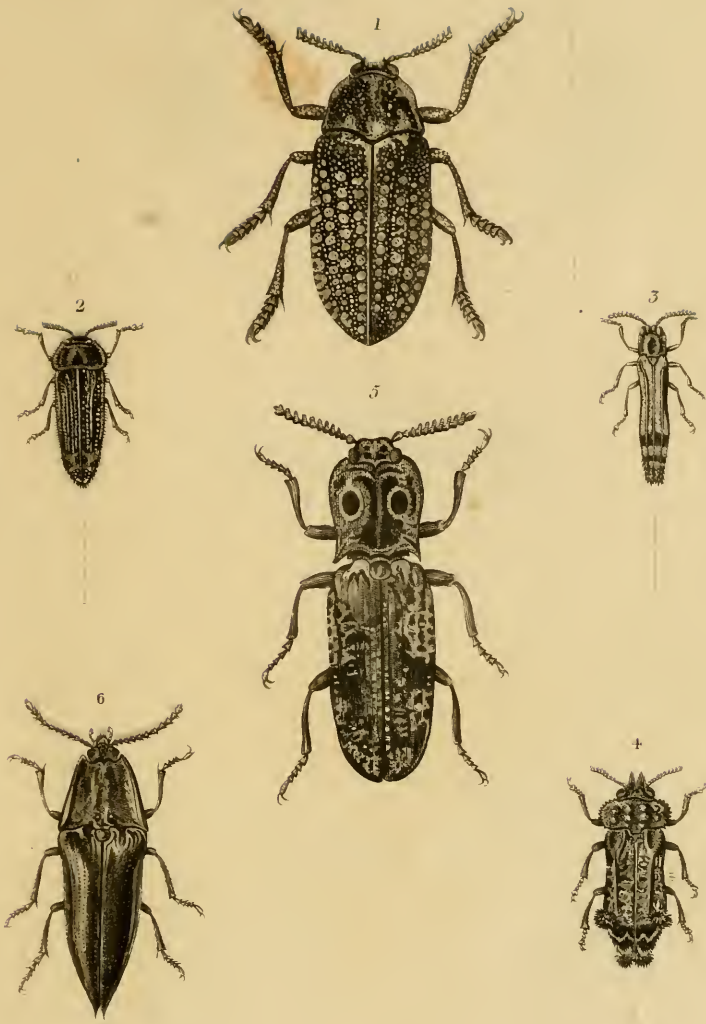
Plate 28. Compound eyes of insects. Pl. 1.



Ed. M. d. de

1. *Telfus Megerlei*, Leach.

2. *Procerus Olivieri*, Dej.



1. *Buprestis Whitcilli*. Hope. 2. *Buprestis flavomarginata*. G. R. Gray.
 3. *Buprestis bifasciata*. G. R. Gray. 4. *Buprestis penicillata*. Kuhl. 5. *Ela-
 ter lusciosus*. Hope. 6. *Elaeter aurcolus*. Hope.



1. *Colymbetes marmoratus*, Hope. 2. *Colymbetes Lowei*, G. R. Gray. 3. *Schizochilus brasiliensis*, G. R. Gray. 4. *Zirophorus coriaceus*, Lacord. 5. *Trichocoryne striatata*, G. R. Gray.



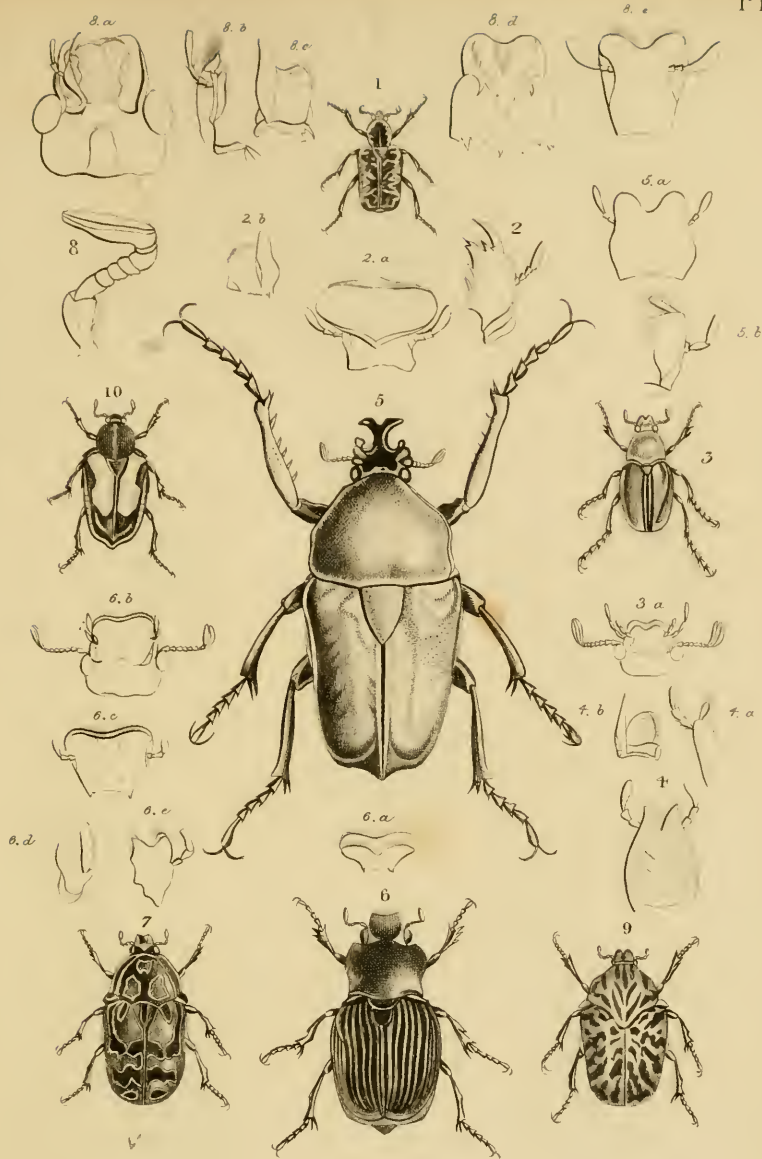
I. D. Westwood del^t
Brit. Mus.

J. Bull. sculpsit

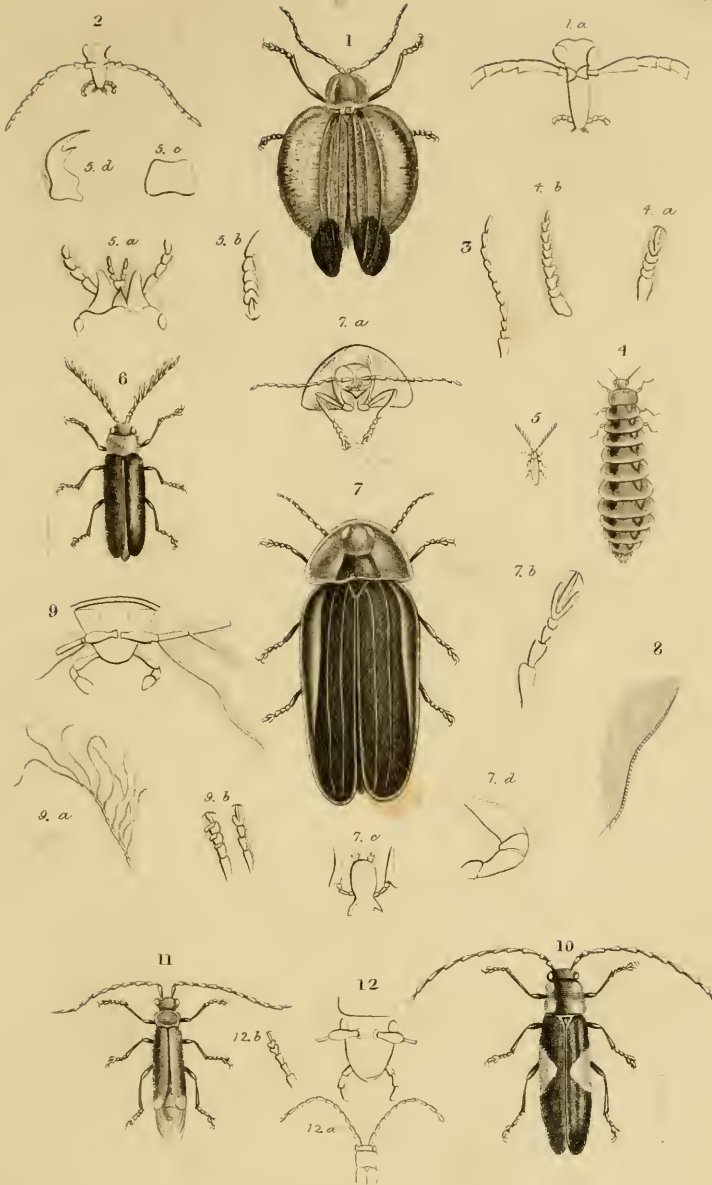
Geotrupes longimanus.



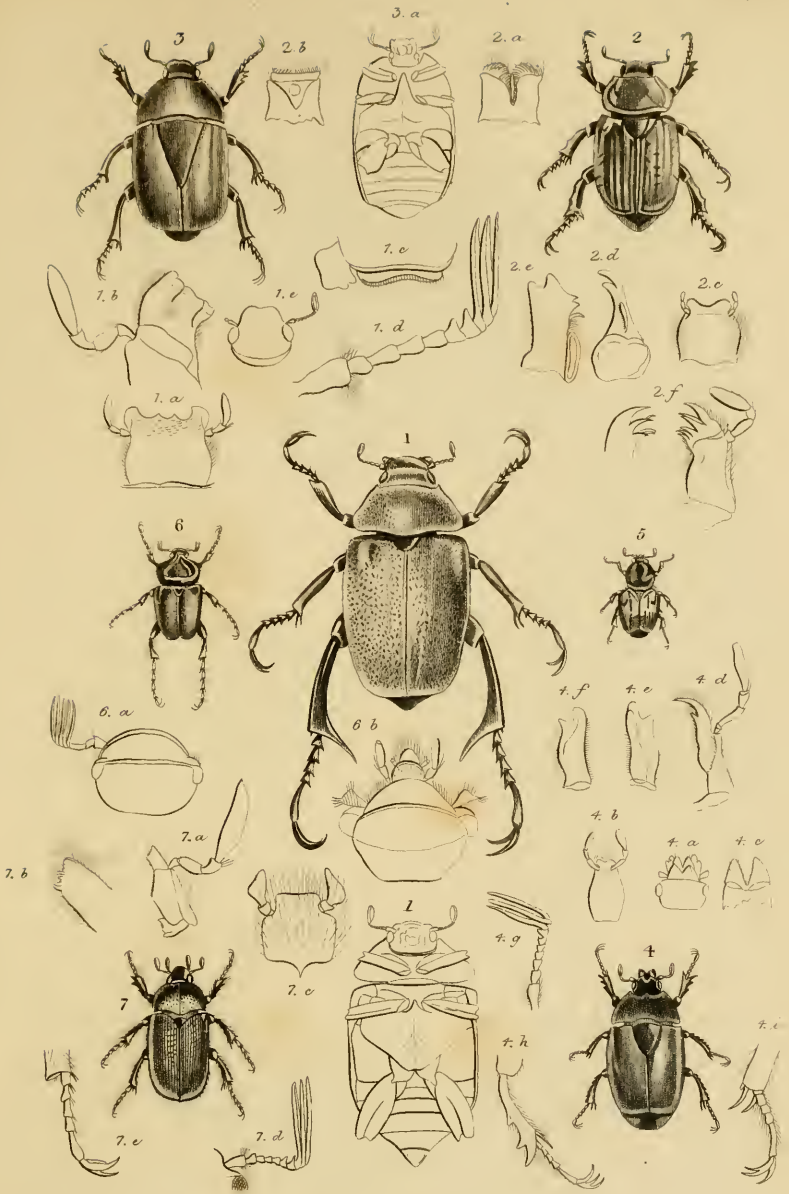
1. Details of *Pleuracanthus salipani*.
 2. _____ *Axinophorus Brasiliensis*.
 3. _____ *Cordistes auctus*.
 4. _____ *Scaphinotus elevatus*.
 5. _____ *Cnemacanthus gibbosus*.



1. *Cre mastocheilus hirtus*, Gory & Fanch. monogr. 2. Details of *Cre mast. longu-*
tus, Oliv. 3. *Trichius zebra*, Oliv. 4. Details of *Trich. fasciatus*, F. 5. *Goliath mi-*
cans, G & P. Oliv. 6. *Platygenia zairica*, Mac. Leay. 7. *Cetonia Buxii* G & P. 8. De-
 tails of *Cet. aurata*, F. 9. *Gymnetis nervosa*, G & P. 10. *Macronota aegyptia*, G & P.



1. *Lycus latissimus*, Fab. 2. Head of *Dictyoptera sanguinea*, Lat. 3. Antenna of *Omalisus saturata*, Geoff. 4. *Drilus flavescens*, Tem. 5. Id. male. 6. *Drilus ruficollis*, Dej. 7. *Lampyris Savignyi*, Kirby. 8. Antenna of *Armydetes*, Hoff. 9. Details of *Cladophorus ruficollis*, Guér. 10. *Silis tricolor*, Guér. 11. *Malthinus biguttatus*, Oliv. 12. *Cordylocera antennata*, Guér.



1. *Chrysophora chrysochlora*. Lat. 2. *Rutelanitidissima*. Guér. 3. *Maccaspis splendida*. Fab. 4. *Chasmodia brunnea*. Sav. & S. Farg. 5. *Ometis pictus*. Guér. 6. *Pachypus excavatus*. Fab. 7. *Amblyteres geminatus*. Mac Leay.



I. O. Westwood. del.

I. B. Smith. sculp.

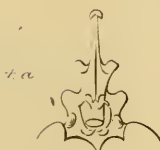
1. *Papilio Childreus*. G.R. Gray. 2. *Pieris Euterpe Swainsoni*. Gray.



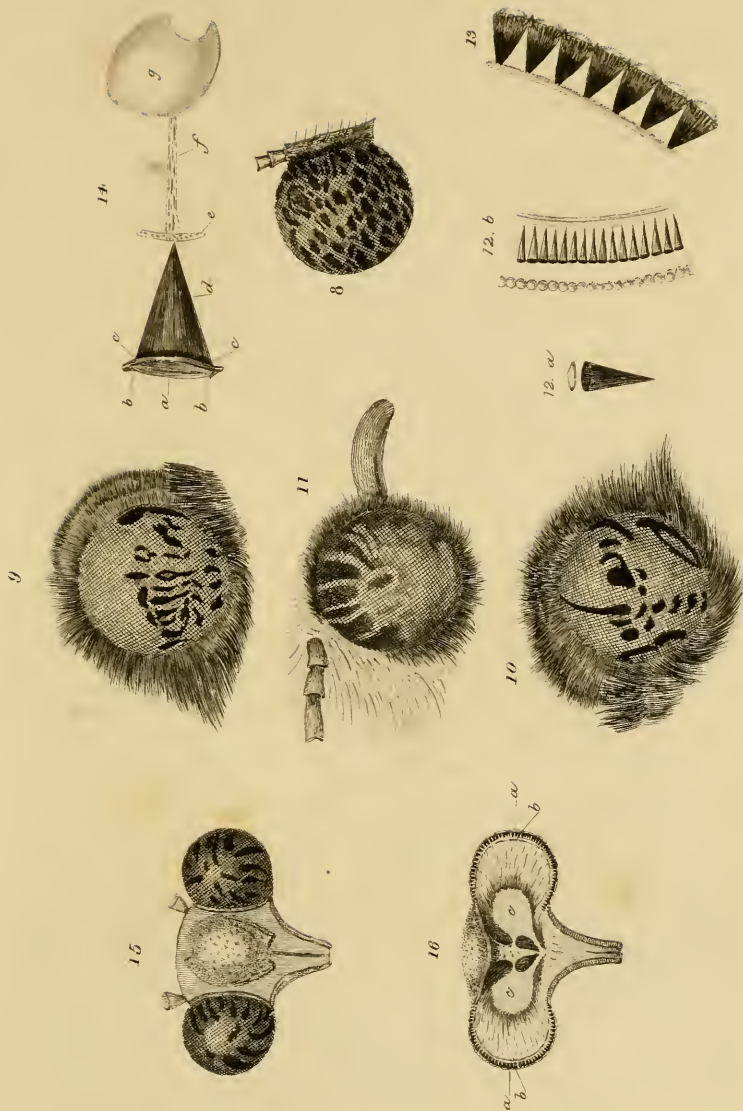
L. Westwood. del.

L. Ball.

1. *Callirhipis Childrevi*. G.R.Gray. 2. *Callirhipis ruficornis*. G.R.Gray. 3. *Phenogodes plumicornis*. Hoffm. 4. *Cladophorus marginalis*. G.R.Gray.
 5. *Calyptocephalus fasciatus*. G.R.Gray. 6. *Megolophthalmus Bauvettii*. Gray.

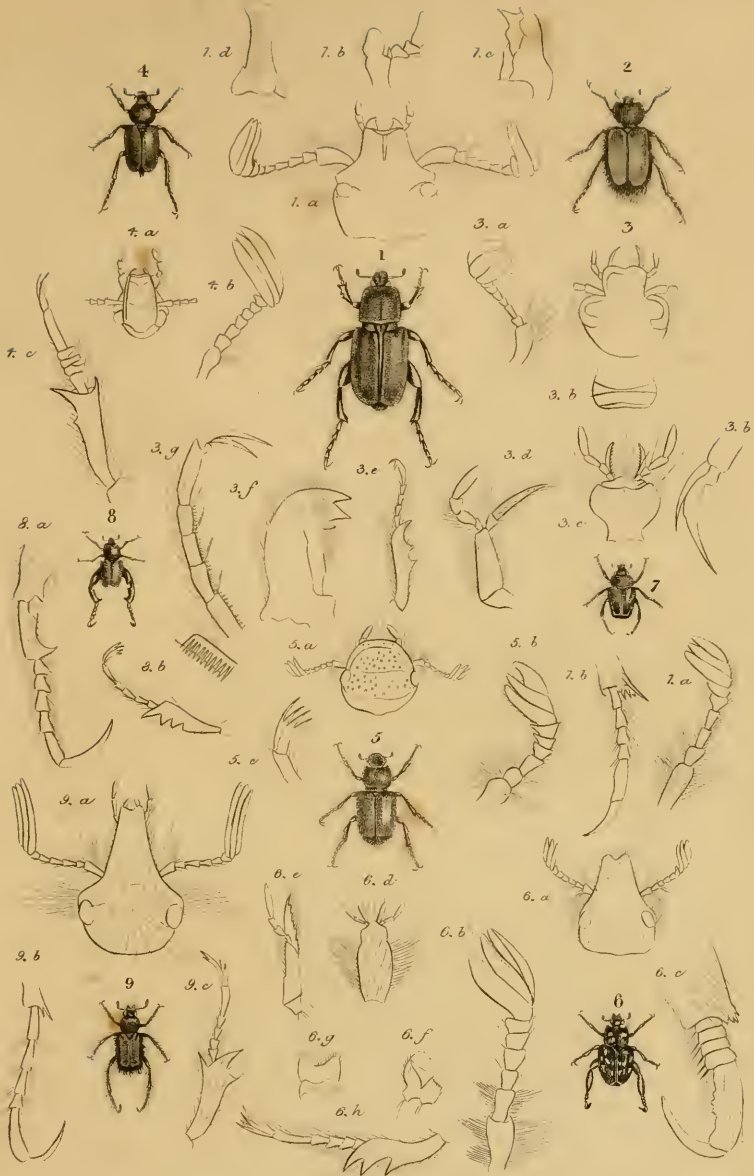


1. *Pachysoma Esculapius*. Kirby. 2. *Mnematinum silenus*. Kirby. 3. *Athyreus Bilbergii*. G.R. Gray. 4. *Elephāntomus probosciderus*. Mulsant.



Compound eyes of Insects. Pl. 2

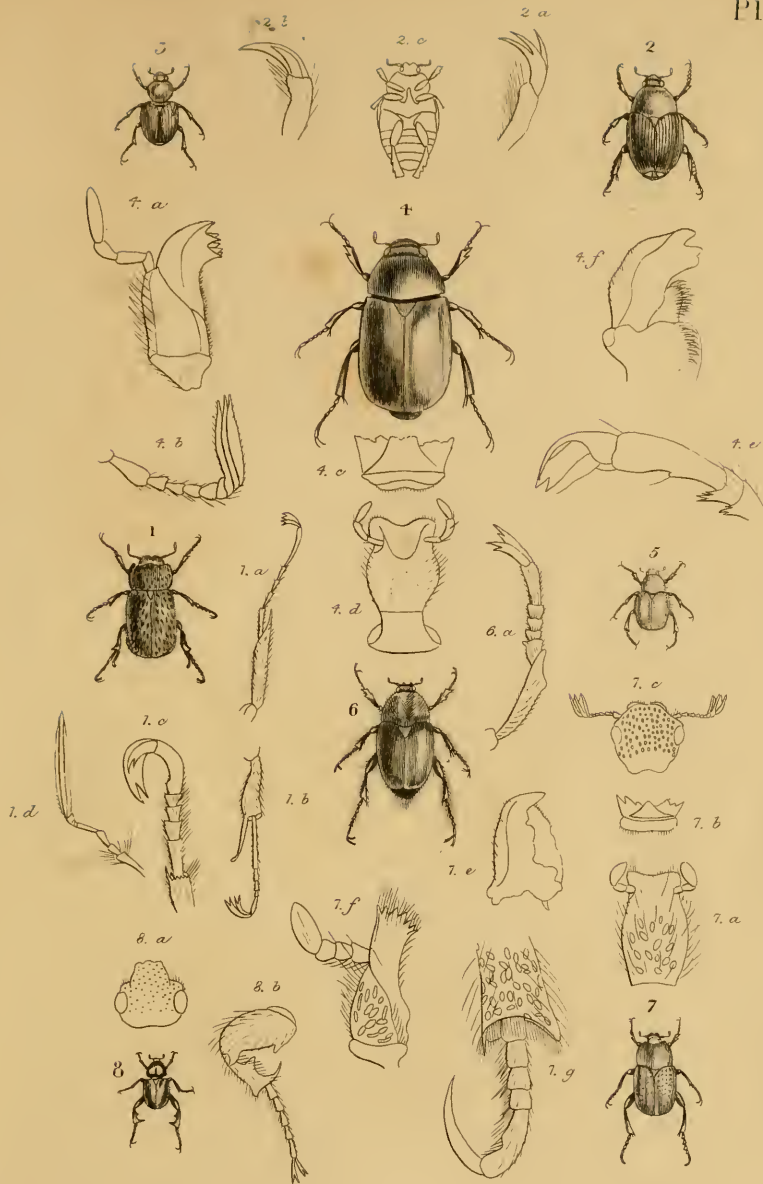
Published by Whittaker & Co. Ave Maria Lane, London. 1831



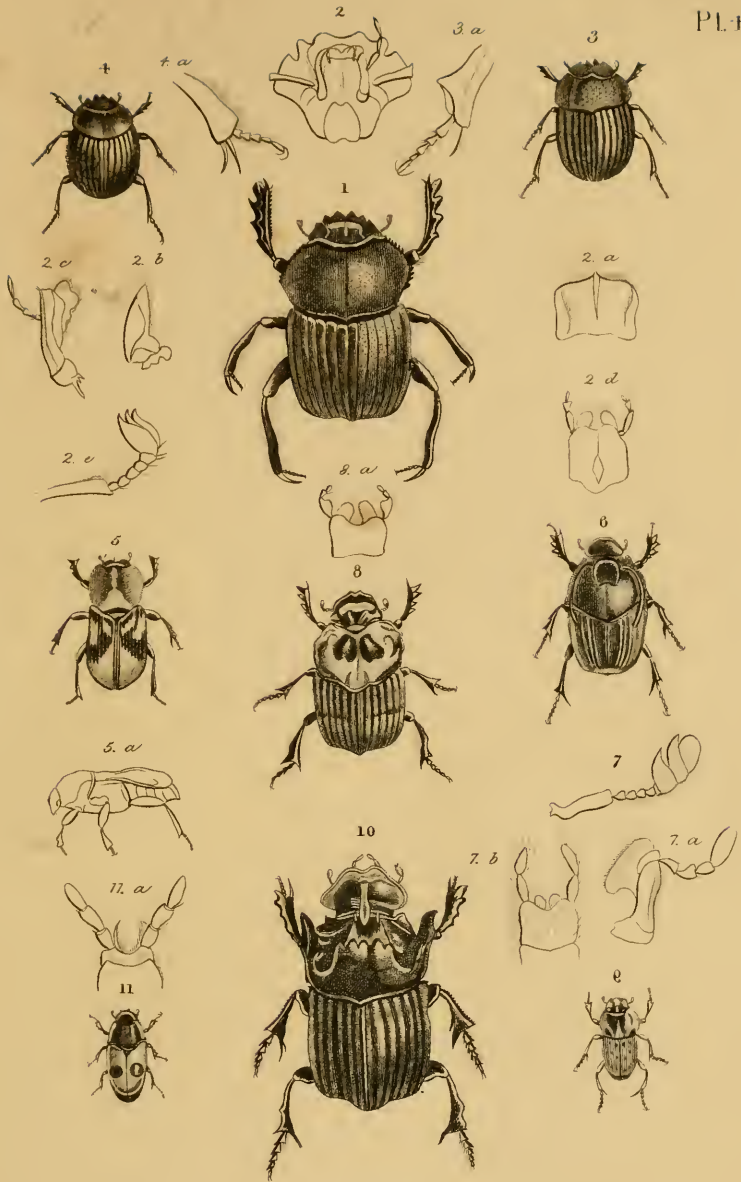
1. *Glaphyrus rufipennis*. Gory. 2. *Amphicoma bombytiformis*. Pall. 3. *Details of Amph. Lasseri*. 4. *Anthipna abdominalis*. Esch. 5. *Chasmopterus hirtulus*. Sliig. 6. *Pachycnemus crassipes*. Serv. 7. *Lepitrix abbreviatus* Serv. 8. *Monochelus gonäger* Serv. 9. *Anisonyx nasuta*. Wied.



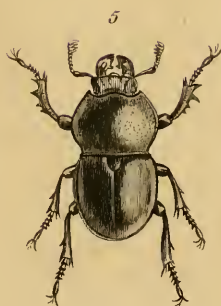
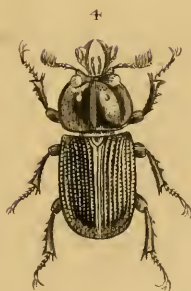
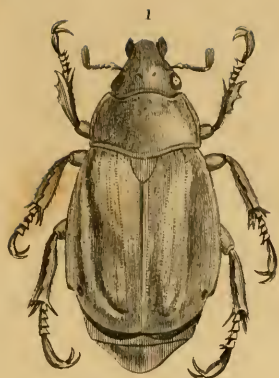
1. *Satyrus Balder*. *Boisd.* 2. *Cat. & Chrys. of Satyrus jurina*. *Cod.* 3. *Eumonia toxca*. *Godard.* 4. *Erybia carolina*. *Godard.*



1. *Plectris tomentosa*, Lap. & Serv. 2. *Popilia nitidicollis*, Gory. 3. *Amisoplia saturalis*, Guér. 4. *Euchlora viridana*, Guér. 5. *Lepisia rupticola* Serv. 6. *Dicrania velutina*, Gory. 7. *Hoplia farinosa*, Fabr. 8. *Dichelus dentipes*, Serv.

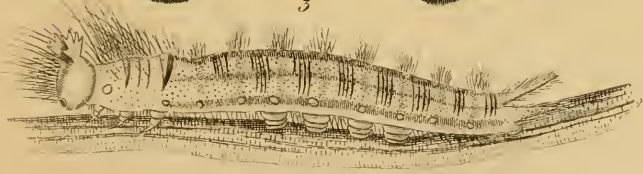
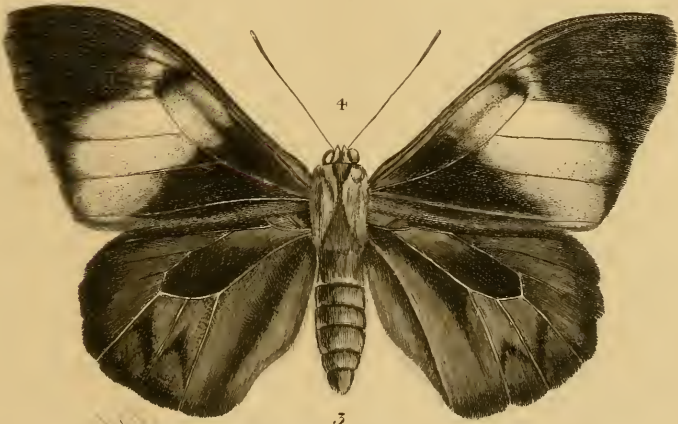


1. *Ateuchus Aegyptiorum*, Latr. 2. Details of *Ateuchus sacre*, Latr. 3. *Circellium hemisphaericum*, Latr. 4. *Coprobium viridis*, Latr. 5. *Eurysternus fuscus*, Guér. 6. *Ontophagus rarus*, Guér. 7. Details of *Ontop. variet.*, Latr. 8. *Phanencus imperator*, Chevrol. 9. *Oniticellus formosus*, Chevrol. 10. *Copris billator*, Chevrol. 11. *Aphodius bipunctatus*, Fabr.



1 *Chrysina Macicana*. G.R.Gray. 2. *Chrysophora Kirbyi*. G.R.Gray. 3. *Syndesus comutus*. Madag. 4. *Hexaphyllum Brasiliensis*. G.R.Gray. 5. *Colophon Westwoodii*. G.R.Gray.





1. *Pavonia acadina*. God. 2. *Morpho actorion*. God. 3. *Morpho phidippus*. God. 4. *Bras solis astyra*. God.



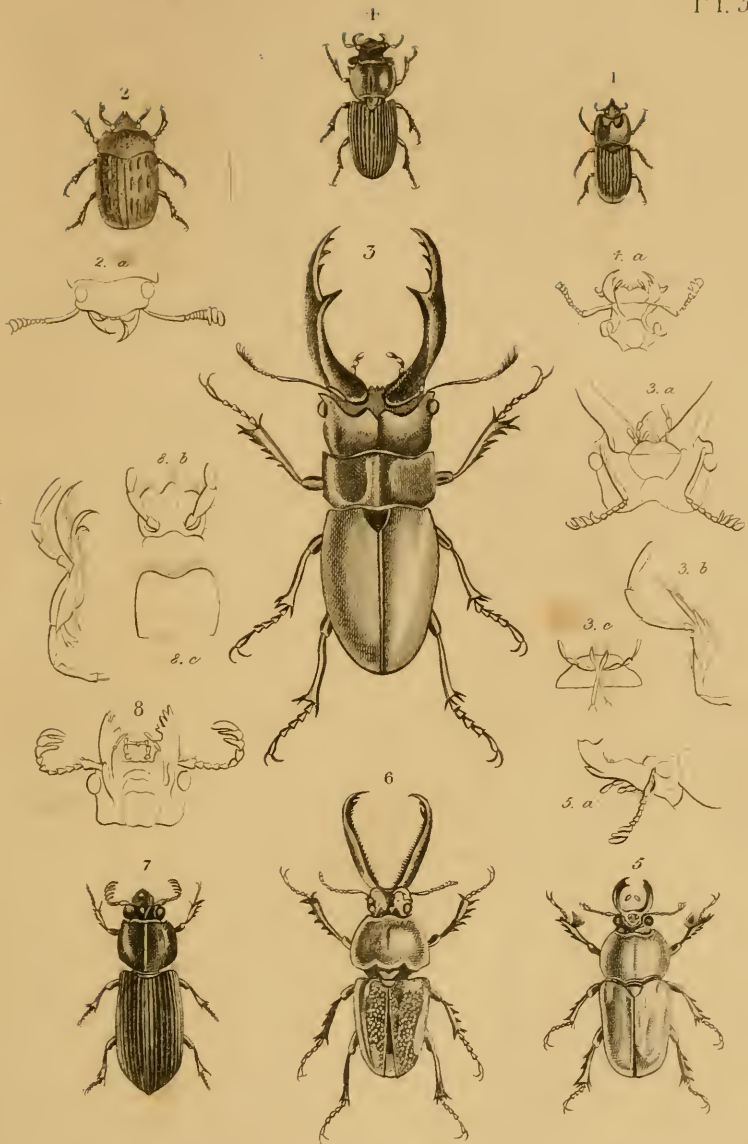
1. *Cymatodera Hopei*. G. R. Gray. 2. *Stygmaticum acindeloides*. G. R. Gray. 3. *Lasiodera Kirbii*. G. R. Gray. † *Hololepta glabra*. Gray. 5. *Stilpnonotus curviformis*. G. R. Gray. 6. *Tyrpanæus denticollis*. G. R. Gray.



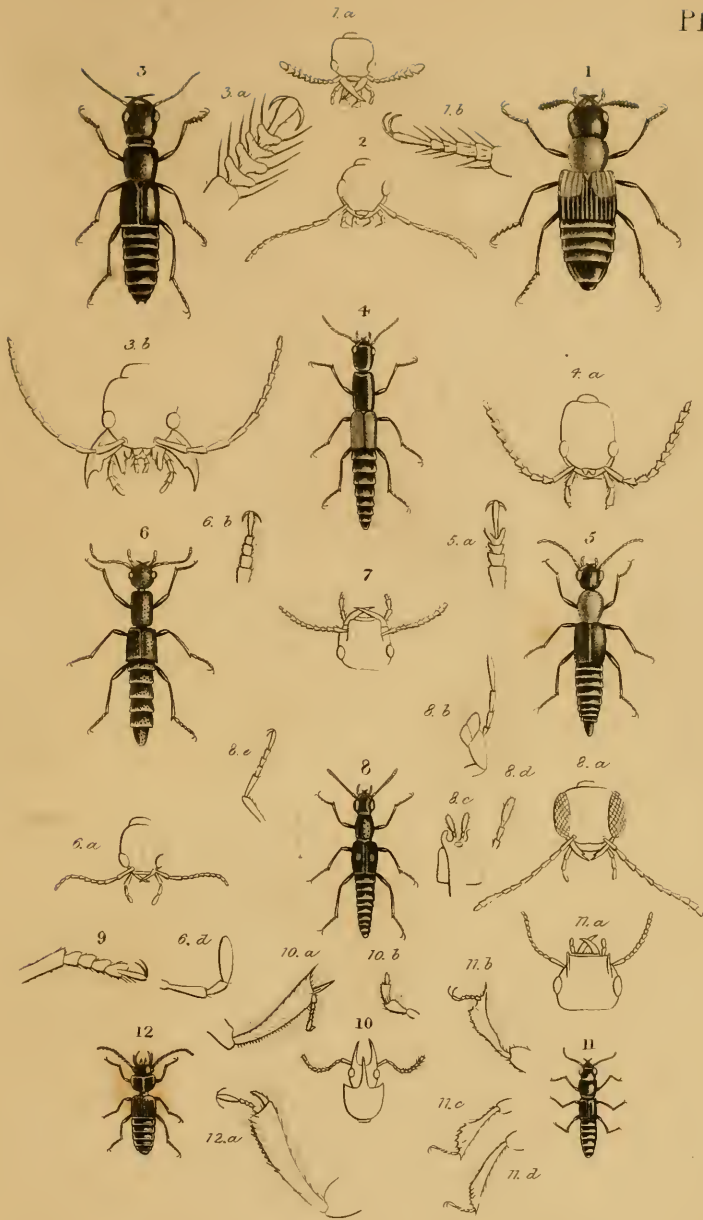
1. *Dolichocera Childreni*. G. R. Gray: 2. *Brenthus Temminckii*. Kuhl.
 3. *Chlorima cyanipes*. G. R. Gray: 4. *Curculio spectabilis*. G. R. Gray.



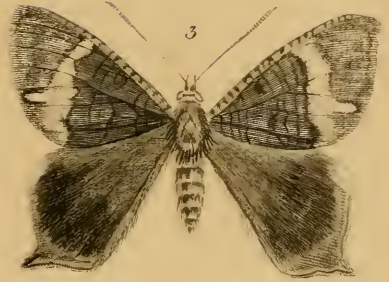
1. *Phrenapates Bennettii*. Kirby. 2. *Antinachus cornutus*. Gbl. 3. *Toxicum Richesiacum*. Latr. 4. *Ryfschoeton politus* G.R.Gray. 5. *Zopherus Mexicana*. Hope. 6. *Nyctelia Hopci*. G.R.Gray.



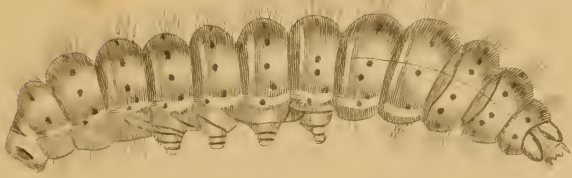
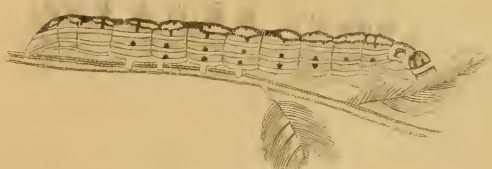
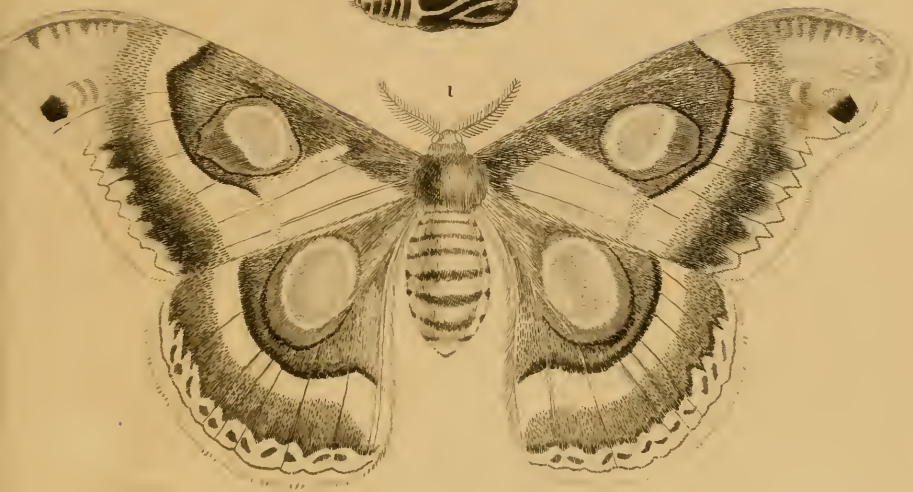
1. *Sinodendron cylindricum*. L. Fab. 2. *Cesalus scaraboides*. Fab. 3. *Lucanus cinnamomus*. Guér. 4. *Platycerus auriculatus*. Gory. 5. *Lamprima cœneu*. Latr. 6. *Pholidotus Humboldtii*. Sch. 7. *Passalus pentaphyllus*. Pals.-Baix. 8. Details of *Pass. interruptus*. Fab.



1. *Oxyporus rufus*, Lin. 2. Head of *Astrapocerus ulminatus*, Oliv. 3. *Staphylinus tataricus*, Fisc. 4. *Lathrobium longatum*, Lin. 5. *Paederus ruficollis*, Fab. 6. *Procirrus Leléburi*, Lat. 7. Head of *Evaesthetus*. 8. *Stenus biguttatus*, Lin. 9. Ant. Claw of *Stilicis*. 10. *Oxytelus tricornis*, Fab. 11. *Orosius brasiliensis*, Guex. 12. *Zyrophorus striatus*, Leach.



1. *Agarista Pales*. 2. *Cat. & Chrys. of Agar glycinea*. 3. *Coronis Leachii*. 4. *Castnia acraoides*.



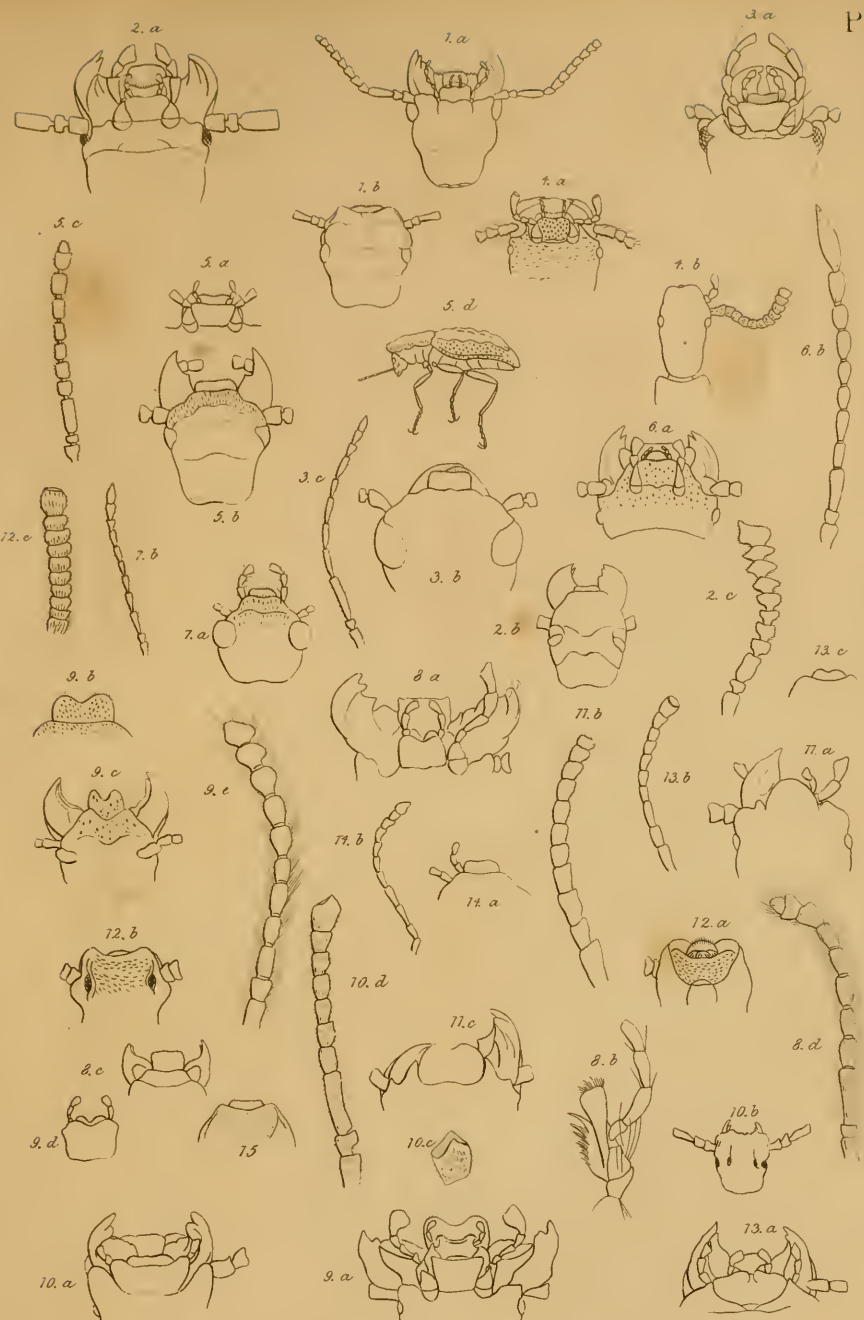
1. *Saturnia bauthiniae*. 2. *Cat. of Sat. luna*. 3. *Cocoon & Chrysalis of Sat. pavonia minor*. 4. *Bombyx digramma*. 5. *Cat. of Bombyx pennsylvanica*. 6. *Lasiocampa proboscidea*.



1. *Leucothyreus nitidicollis*. Guér. 2. Details of *Anoplognathus Latreillei*. Sch. 3. *Gemiatetis barbatus*. Kirby. 4. *Apogonia gemellata*. Kirby. 5. *Melolontha flavida*. Gory. 6. Antenna of *Melol. vulgaris*. 7. Ant. of *Rhisotrogus pinii*. Latr. 8. *Ceraspis decora*. Gory. 9. Details of *Cer. albida*. Serv. 10. *Areoda Kirbyi*. MacLeay. 11. *Sericia flavimana*. Gory. 12. Details of *Seric. variabilis*. Lat. 13. *Diphucephala fuscata*. Guér. 14. *Macrodaetylus saturalis*. Chev.



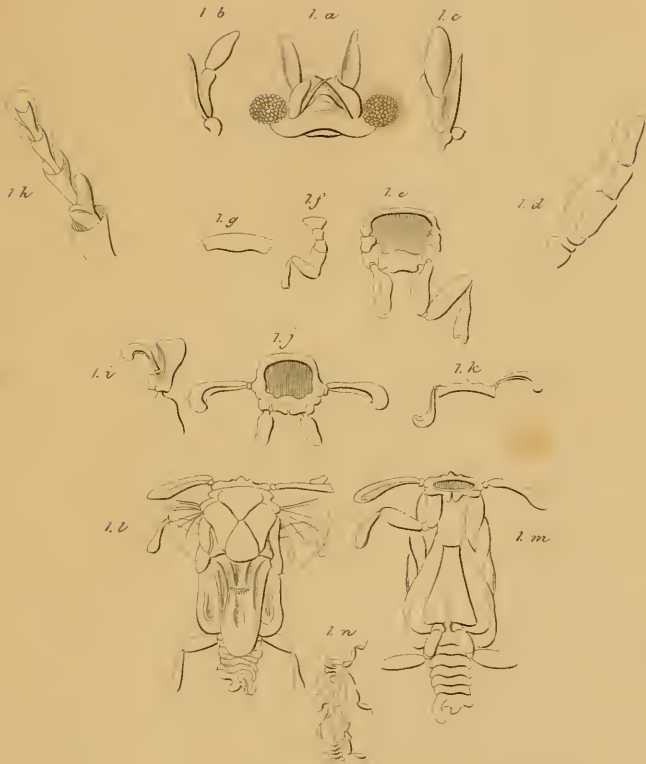
1. *Pimelia vestita*, Gory. 2. *Erodius gibbus*, Fabr. 3. *Zophosis testulinarius*, Oliv. 4. *Nyctelia luczotii*, Chev. 5. *Hegeter tagenioides*, Gory. 6. *Tentyria junctipennis*, Latbr. 7. *Akis Goryi*, Guen. 8. *Elenophorus americanus*, Lacord. 9. *Eurychora rugosula*, Guen. 10. *Adlostoma rugosa*, Gory. 11. *Tagenia orientalis*, Gory. 12. *Psanmeticus costatus*, Guen. 13. *Scarus rugosus*, Latr. 14. *Scotobius granosus*, Lacord. 15. *Sepidium vestitan*, Gory. 16. *Trachynobus villatus*, Latr. 17. *Mohuris luteipes*, Guen.



1. *Psammeticus costatus* 2. *Scotobius granosus* 3. *Moluris luteipes* Guér. 4. *Tageia orientalis*
 5. *Sepidium vestitum* 6. *Scaurus rugosus* 7. *Trachynotus villatus* 8. *Fimcha sarica* 9. *Nycteha Luczotti*
 10. *Eurychora rugosula* 11. *Hegeter tagaioides* 12. *Adelostoma rugosa* 13. *Erodus gibbus*
 14. *Zophosis testudinarius* 15. *Akis Coryz.*



1. *Erycinavirginiensis*. Boisd. 2. *Cat. & Chrys. of Erycina lucina*. 3. *Myrina fallax*. God. 4. *Polyommatus Thoe*. Boisd. 5. *Cat. & Chrys. of Polyompruni*. God. 6. *Zephyrius amor*. Daln. 7. Details of *Polyomroxus*. God. *a. Lycana horsti*



Stylops Childreni.

O. Westwood del.



1. *Temnoscheila splendens*. G.R. Gray. 2. *Parandra fasciata*. G.R. Gray. 3. *Tropositas squamosa*. G.R. Gray. 4. *Cucujus Dejani*. G.R. Gray. 5. *Tripalomavariegata*. Westwood. 6. *Eumorphus tetraspilotus*. Hope.



1 *Callirhipis Childroni*. 2 *Megalophthalmus Bonnetii*. 3 *Calyptocephalus fasciatus*
 4 *Stegmatium lindeloides*. 5 *Gymatodera Hopii*. 6 *Stilpnonotus curvifemoralis*.
 7 *Lasiodera Kirbyi*. 8 *Hololepta glabra*. 9 *Trypanocus denticollis*.





1. *Plagiocephalus lobularis*. Wiedem. 2. *Diopsis brevicornis*. Say. 3. *Zygothrica dispar*. Wiedem.





Westwood del.

Bull. sc.

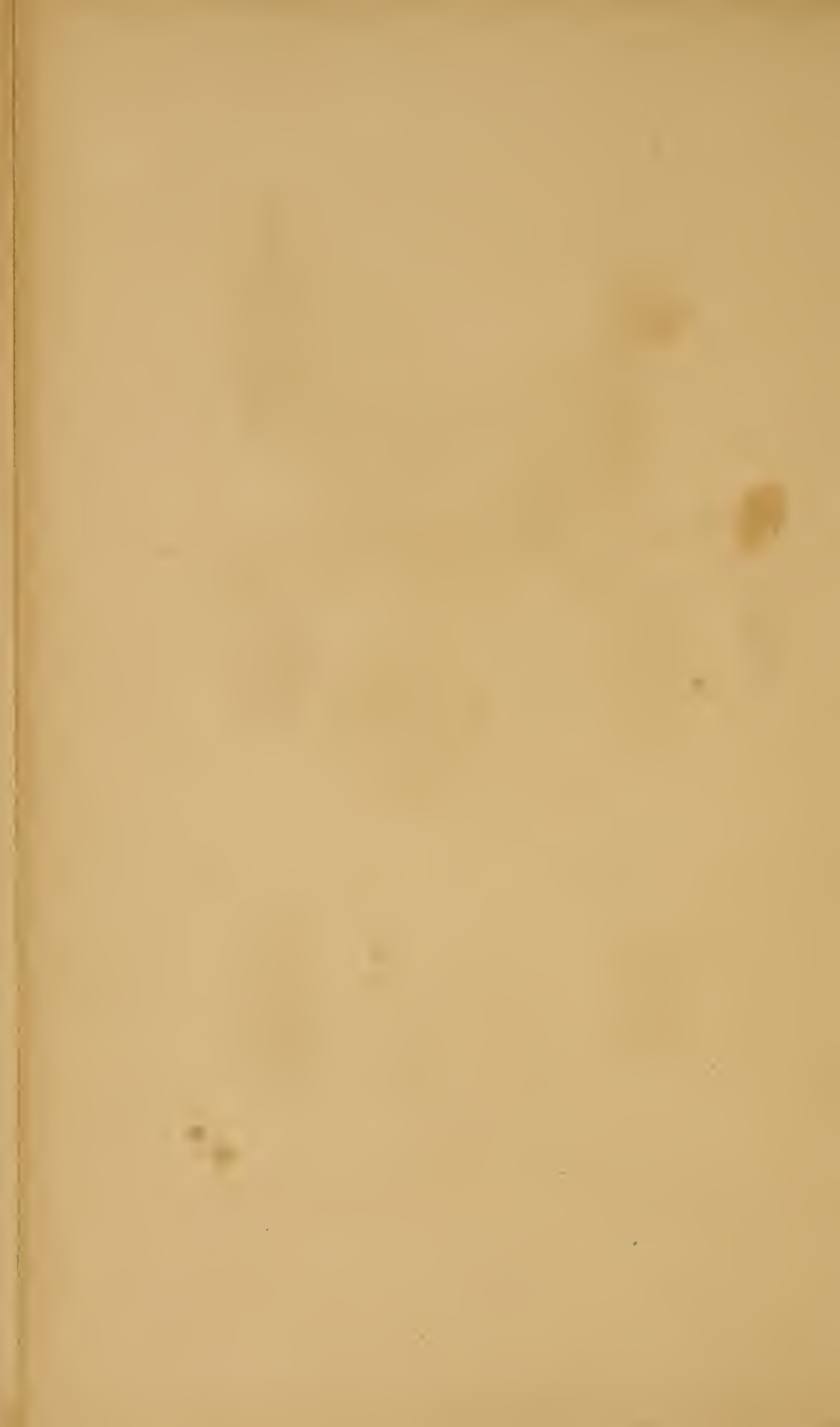
1. *Scaphura Kirbiti*. Westw. 2. *Gryllus umbraculatus*. Lin. 3. *Phyllium bioculatum*. G.R. Gray.





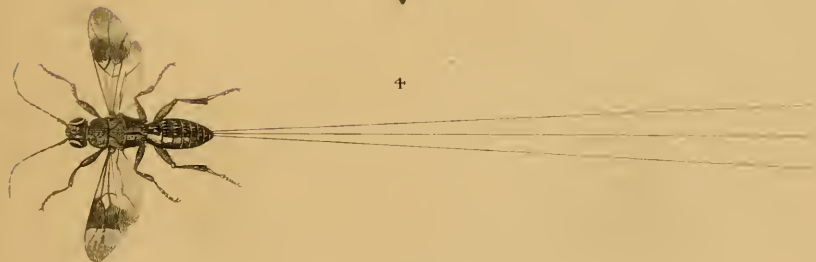
Weswood, del.

Gryllus monticollis. G.R. Gray.





1. *Eucodes Fichteli*. G.R.Gray. 2. *Coptocephalus Brasiliensis*. G.R.Gray. 3. *Phænicocerus Dejeani*
 Lat. †. *Anacolus Lugubris*. Serv. 5. *Eurycephalus niger*. G.R.Gray. 6. *Clytus Hayii*. G.R.Gray



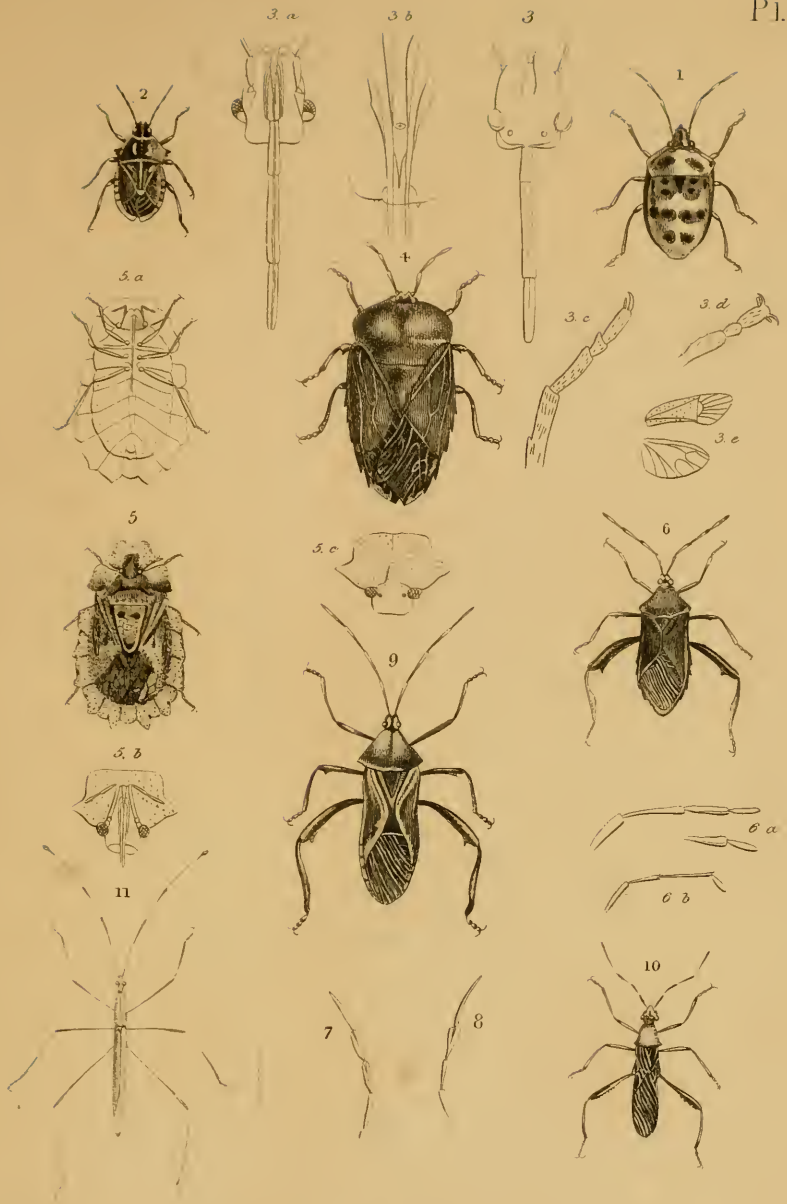
L.O. Westwood, del.

1. *Schizocerus Pelterii*, G. R. Gray. 2. *Perga scutellata*, Westw. 3. *Stephanus Brasiliensis*, Westw. 4. *Megalyra fascipennis*, Westw.



I. O. Westwood, del.

1. *Megamerus Kingii*. Mac. Leay. 2. *Carphagus Banksii*. Mac. Leay. 3. *Goniopleura auricoma*. Westw. 4. *Chelobasis bicolor*. G. R. Gray. 5. *Crytocephalus rugicollis*. G. R. Gray. 6. *Doryphora prinops*. G. R. Gray.



1. *Scutellera Dives*, Guér. 2. *Pentatomayolofa*, Guér. 3. *Details of Pent. grisea*, Latr. 4. *Tessera-
toma Sennerutii*, Serv. & St. Farg. 5. *Phlaea cassidoides* Serv. & St. Farg. 6. *Coreus rubiginosus*, Guér.
6a. *Ant. of Gonocerus*. 6b. *Ant. of Syromastes*. 7. *Ant. of Pachlis*. 8. *Ant. of Hollymnesia*. 9
Anisoscelis profanus, Fab. 10. *Alydus annulicornis*, Guér. 11. *Nedes bipularia*, Latr.



L. O. Westwood, del.

1. *Phrenapates Bowditchi*. 2. *Rhyssochiton politus*. 3. *Antimachus cornutus*. 4. *Zopherus Mexicana*.
 5. *Toxicum Ruchesiachum*. 6. *Nictelia Hoppi*.



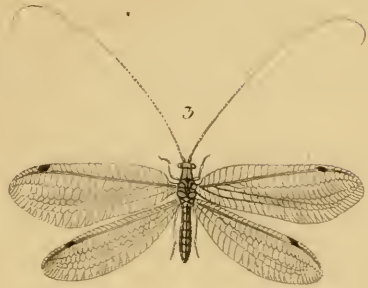
I. O. Westw. scd. del.

1. *Anacolus quadri punctatus*. GRöngv. 2. *Gnoma suturata*. Westw.



L. J. Westwood del.

1. *Scolia fulva*. O.R. Gray. 2. *Mutilla Klugii* O.R. Gray. 3. *Myrmecodes australis*. Leach.



L. J. Westwood, del.

1. *Chauliodes maculipennis*. G. R. Gray. 2. *Embius brasiliensis*. G. R. Gray. 3. *Heurobates longicollis*. G. R. Gray. 4. *Eusthenia spectabilis*. Westw.

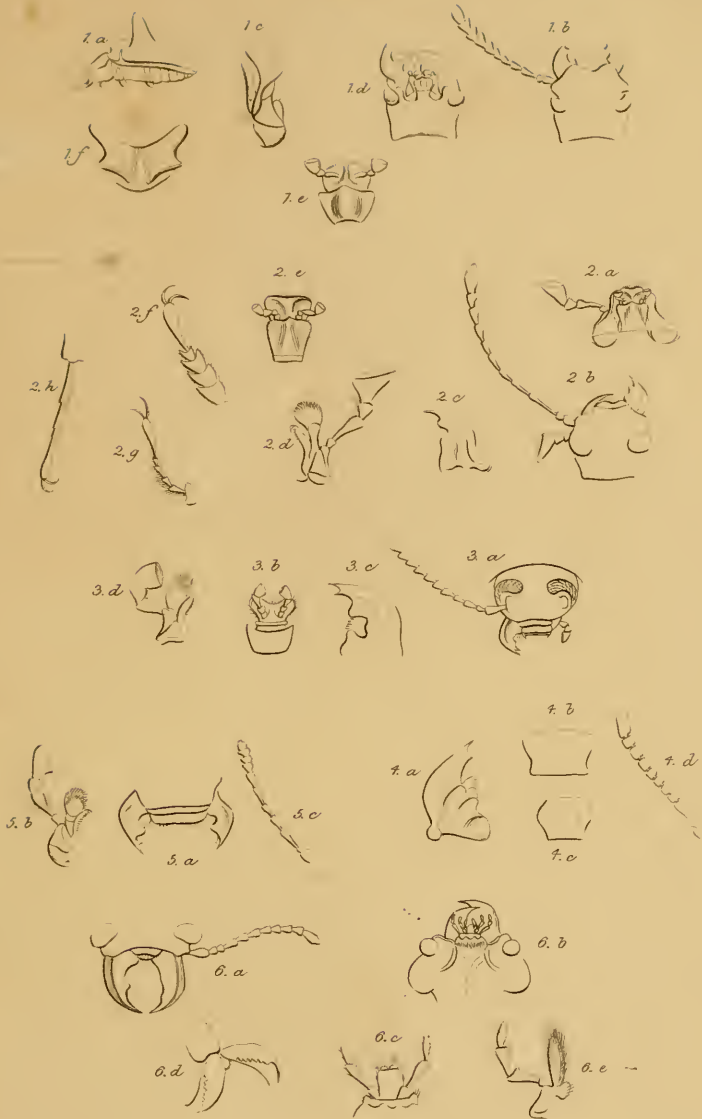




L. Westwood, del.

1. *Coptocephalus Erasilionis*. 2. *Enicodes Fichteli*. 3. *Anacolus luytbrisi*. 4. *Phanicoceus Dejémi*. 5. *Eurycephalus niger*. 6. *Clytus Huxii*.





1. *Cnodonodosum*. 2. *Adelium cupreum*. 3. *Diaperis nigro punctatus*
 4. *Lagriia nbbosus*. 5. *Helops atorinus*. 6. *Horia maculata*.



1. *Temnoscheila splendens*. 2. *Parandra fasciata*. 3. *Cucujus Dejani*. 4. *Proposita squamosa*. 5. *Triplatomia variegata*. 6. *Eumorphus tetraspilobus*.





1. *Pepsis apicalis*, G.R. Gray. 2. *Pompilus bifasciatus*, G.R. Gray. 3. *Podium nigripes*, Westw.
 4. *Camptognatha testacea*, Leach, Mss. 5. *Apteropyga Ehenbergii*, G.R. Gray.





1. *Stilbum princeps*, G.R. Gray. 2. *Phasgonophora sulcata*, Westw. 3. *Epistenia caeruleata*, Westw.



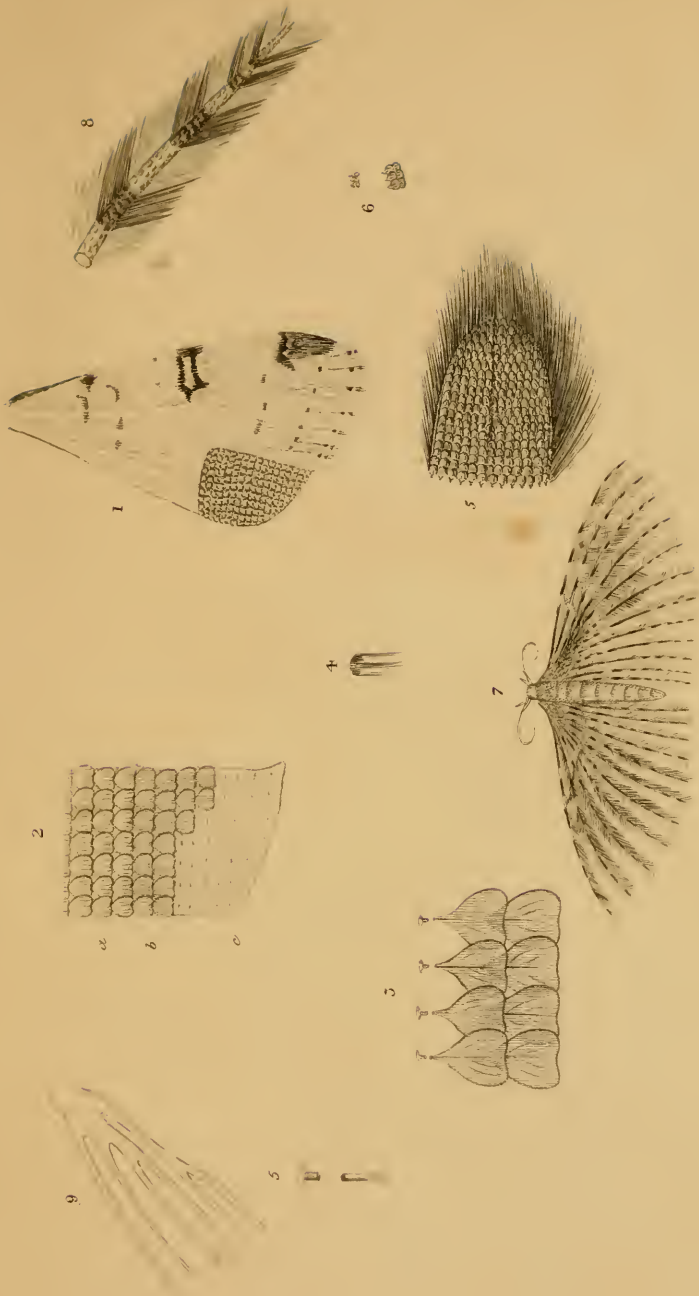
1. *Blatta maculata*. *Willd.* 2. *Forsicula Brasiliensis*. *G. R. Gray.* 3. *Blepharis elegans*. *Westw.*



1. *Nymphalis Thamyris*. Lat. 2. *Nymphalis chrysis*. Lat. 3. *Nymphalis leucophthalma* Lat

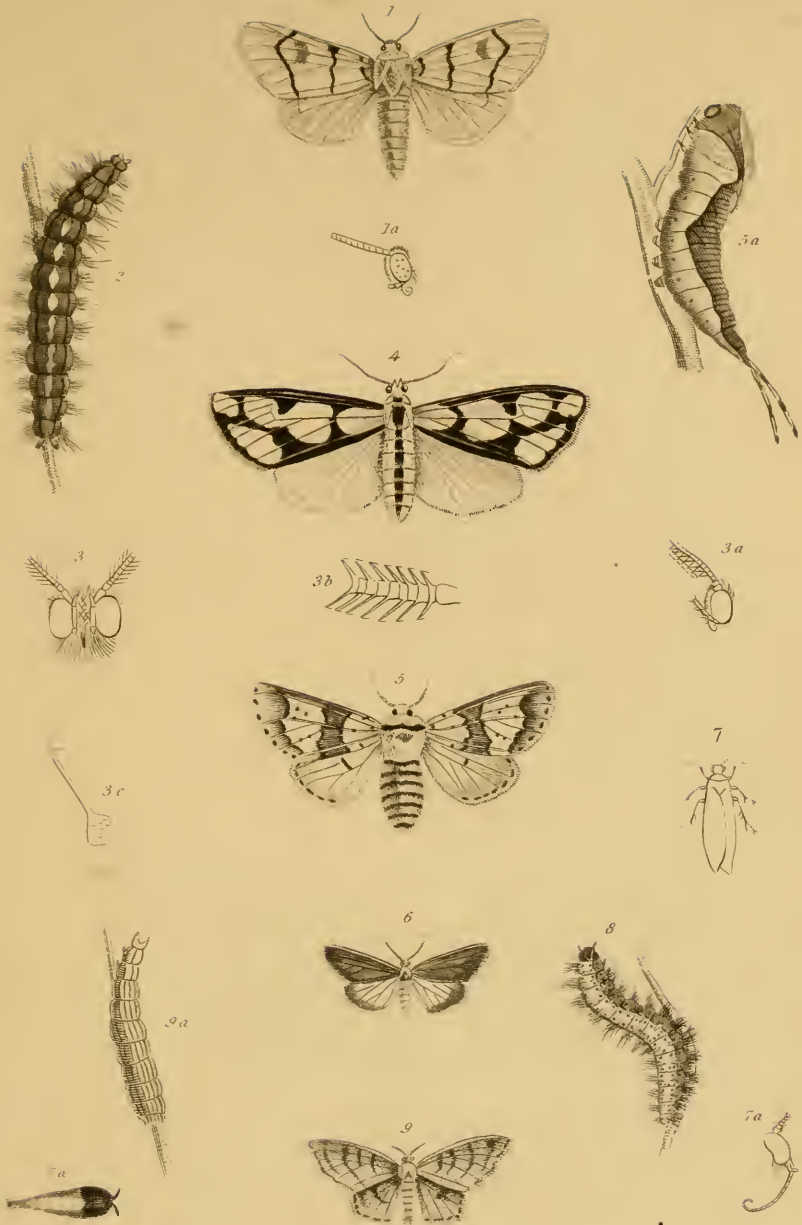


1. *Cnodalium nodosum*, G. R. Gray. 2. *Adeliium cupreum*, G. R. Gray. 3. *Helops nigromaculatus*, G. R. Gray. 4. *Metallonotus denticollis*, G. R. Gray. 5. *Helops rufogustus*, G. R. Gray. 6. *Horia maculata*, Fabr.

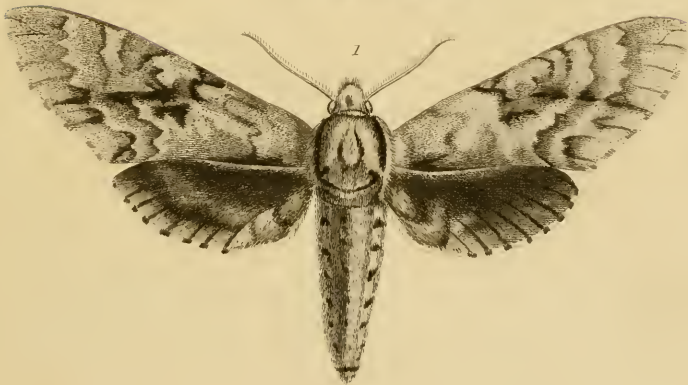
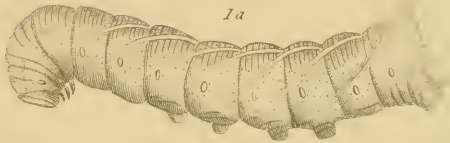
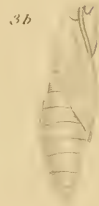


Scales or Feathers of Lepidoptera.— Pl. 2.

Published by Whatteker & Co. Ave Maria, London, 1852.



- | | |
|---|---|
| 1. <i>Chelonia evidens</i> .—Bdv. | 5. <i>Dicranoura borealis</i> .—Bdv. |
| 2. Caterpillar of <i>Chel. nubilis</i> .—Bdv. | 6. <i>Lithosia leta</i> .—Bdv. |
| 3. Details of <i>Chel. chrysothæa</i> . | 7. <i>Lithosia luteola</i> . |
| 4. <i>Callimorpha Lecontei</i> . | 8. Caterpillar of <i>Lithosia pulchella</i> . |
| 9. <i>Platyptericæ globularia</i> .—Bdv. | |

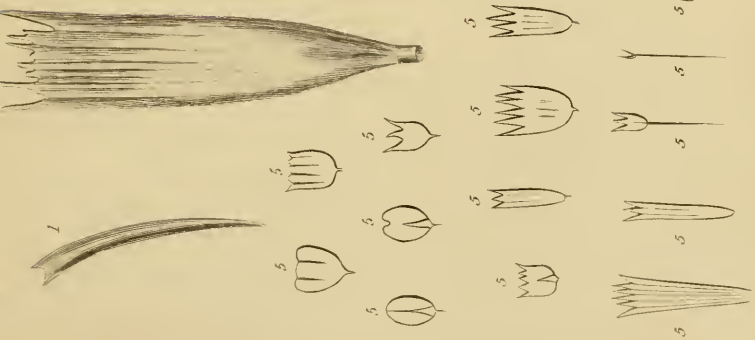


1 *Sphinx jasminearum* .Bdv

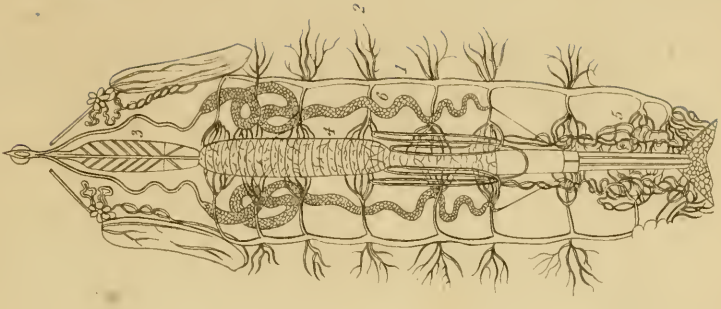
2 *Smerinthus lo* .Bdv.

3. *Sestia asilpennis* .Bdv





Interior of *Cefsus ligniperda*

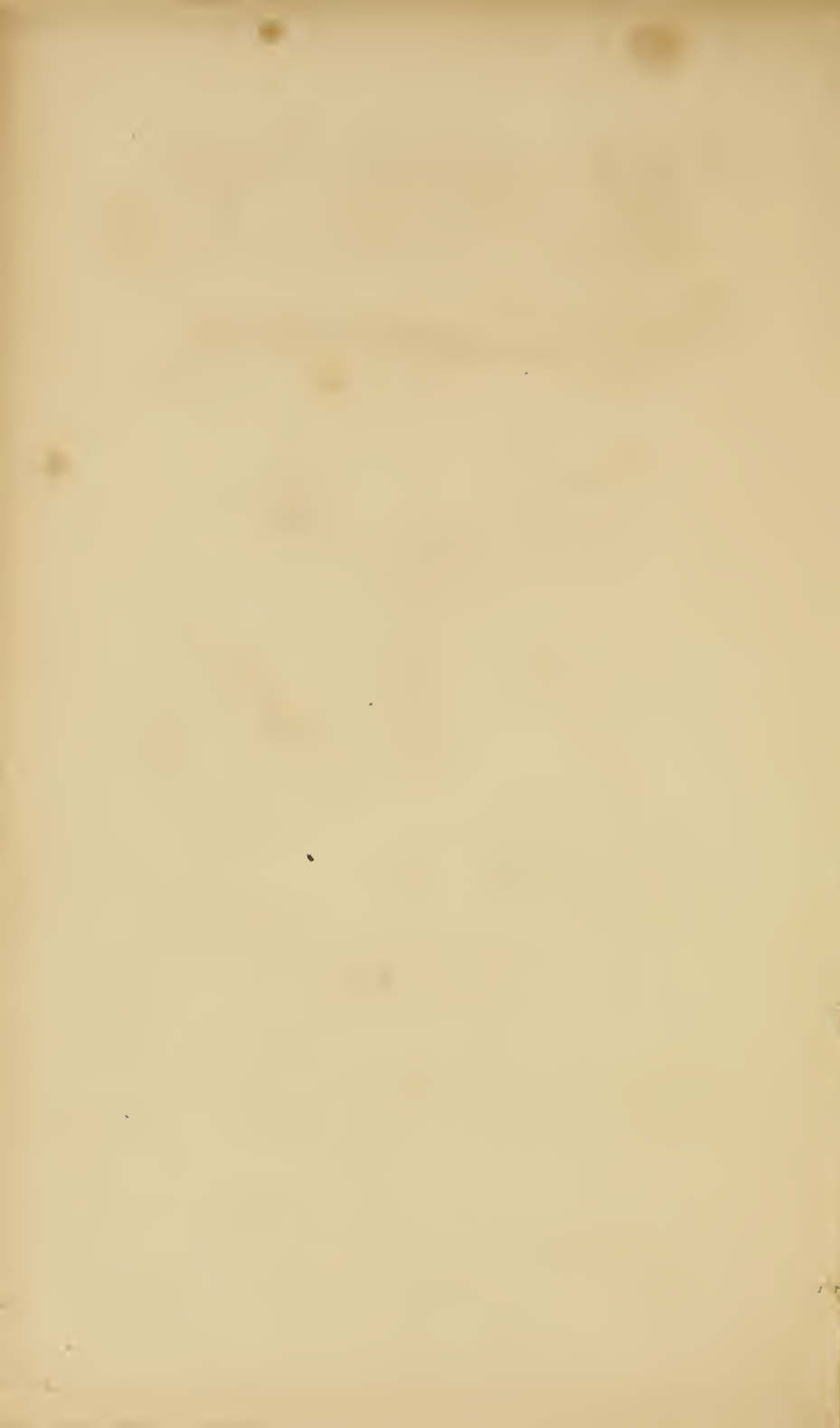


1 Trachea. 4 Stomach.

2 Bronchiae. 5 Lewor Tubeshins.

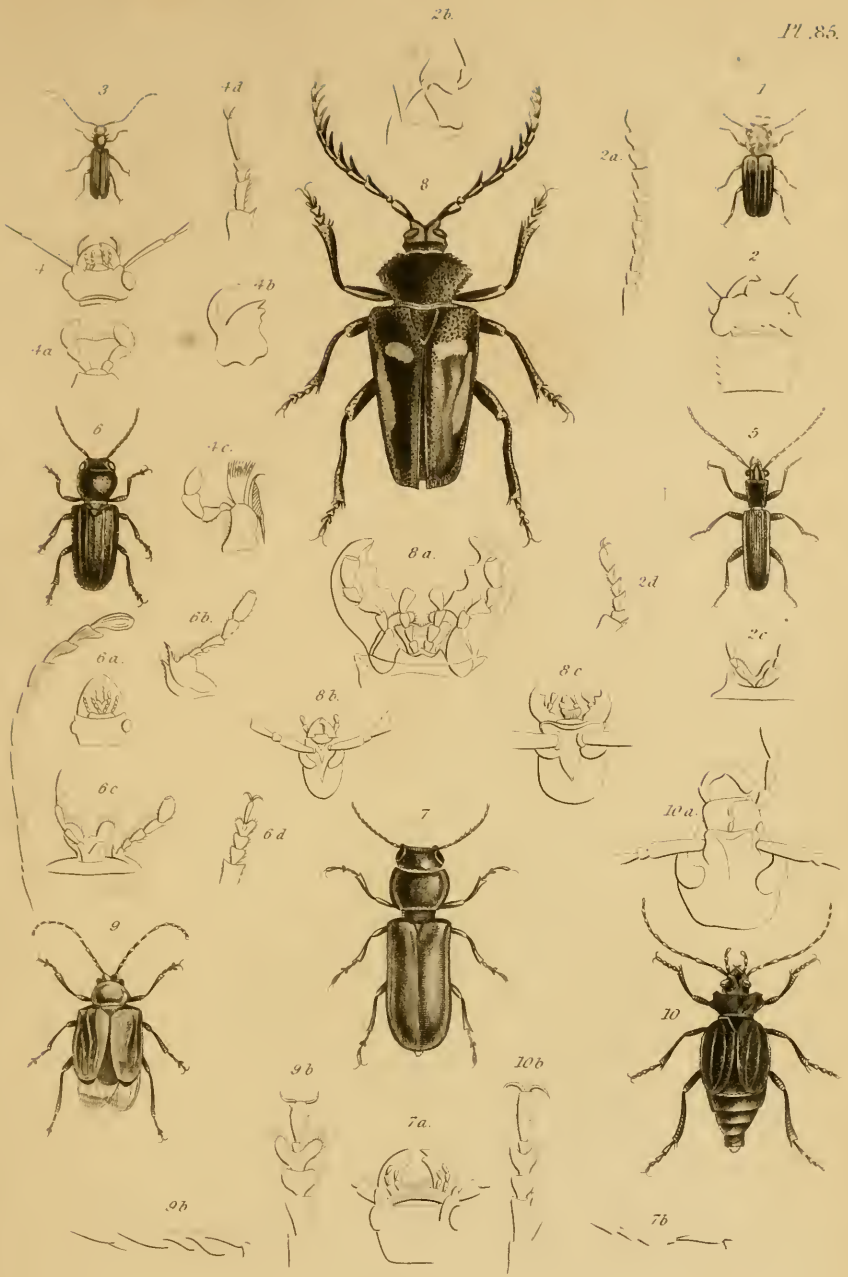
3. Esophagus. 6. Silk Reservoir.

Feathers or Scales of Lepidoptera — Pl. 1





1, *Hepialus lupulinus*. Fab. 4 *Stygia australis*. Latr.
 2, *Cossus Macmurtrei*. B. & V. 5, *Zeuzera scalaris*. Donov.
 3 Caterpillar of *Cossus ligniperda*. Fab. 6, caterpillar of *Zeuzera asculi*. Fab.
 7, caterpillar of *Hepialus humuli*. Fab.



1. *Ucujus mandibularis*. Gory.

2. Details of *Ucujus depressus*. Fab.

3. *Brontes spinicollis*. Gory.

4. Details of *Brontes flavipes*. Fab.

5. *Dendrophagus crenatus*. Foyt.

6. *Spondylus buprestoides*. Fab.

7. *Paranda lineola*. Gory.

8. *Prionus Desmarestii*. Guér.

9. *Anacolus sanguineus*. Serv.

10. *Prionapterus staphulinus*. Guér.



L. O. Westwood del^s

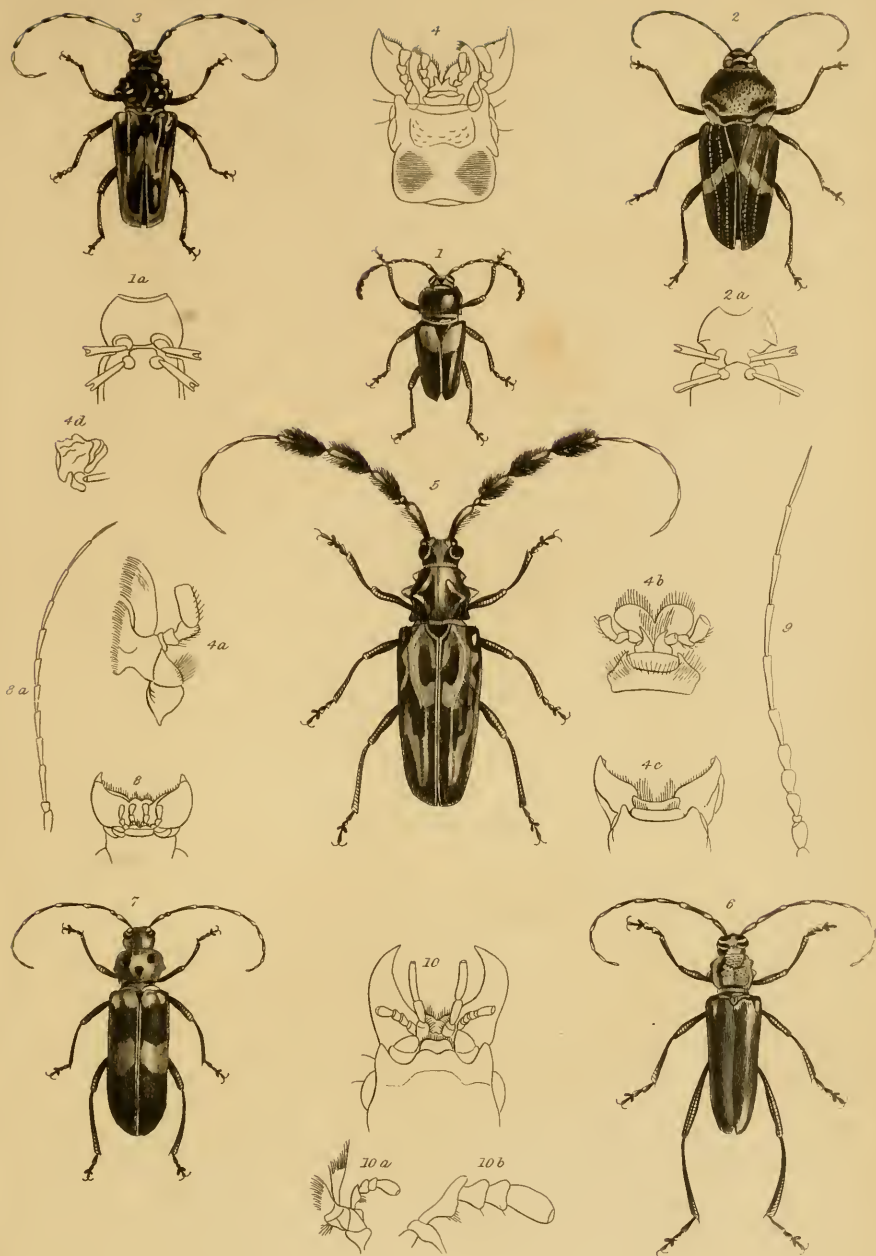
Papilio cleotas. G. R. Gray.

London. Published by Whittaker & Co. Ave Maria Lane. 1832.



I.O. Weswood del.

Nymphalis Annetta...G.R. Gray.



1. *Lissonotus unifasciatus*.—Gory.

2. *Megaderus stigma*.—Fab.

3. *Trachyderes nigrofasciatus*.—Gory.

4. Details of *Trachyderes succinctus*.—Fab.

5. *Lophonocerus barbicornis*.—Oliv.

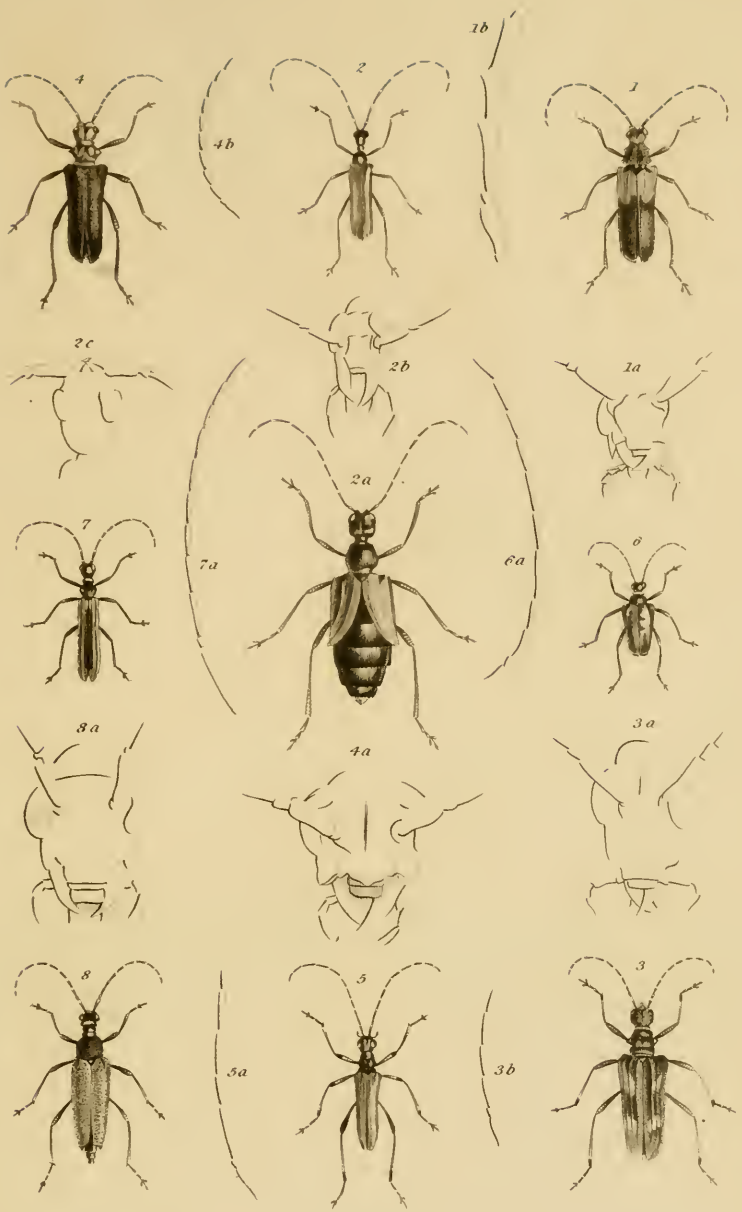
6. *Callichroma speciosa*.—Gory.

7. *Acanthopterus tripunctatus*.—Gory.

8. Details of *Acanthopterus hulensis*.—Goeze.

9. Ant. of *Cerambyx heros*.—Fab.

10. Details of *Corus* (*Callichroma*) *hemipterus*.—Oliv.



1 *Desmocerus cyaneus* Fab
 2 *Vesperus graxus*, nov.
 3 *Rhamnum bitarsiatum* Fab.
 4 *Rhamnusium salicis*, Fab.

5 *Toxotus meridianus* Fab.
 6 *Lichyta Laportii*, Guér.
 7 *Stenoderus ceramboides*, Kirby
 8 *Leptura annulata*, Gory.



L.O. Westwood del.

- 1 *Fulgora punctata* - G.R. Gray 4 *Pezoloptera antica* Westw
 2 *Fulgora pallida* - G.R. Gray 5 *Lustria pulchra* - G.R. Gray
 3 *Trophora Handwickii* - D. 6 *Fulgora nigromaculata* D.



I. O. Westwood del.

- 1 *Reduvius spini dorsis* G. R. Gray.
- 2 *Reduvius dorsalis* G. R. Gray.
- 3 *Reduvius tuberculatus* G. R. Gray.

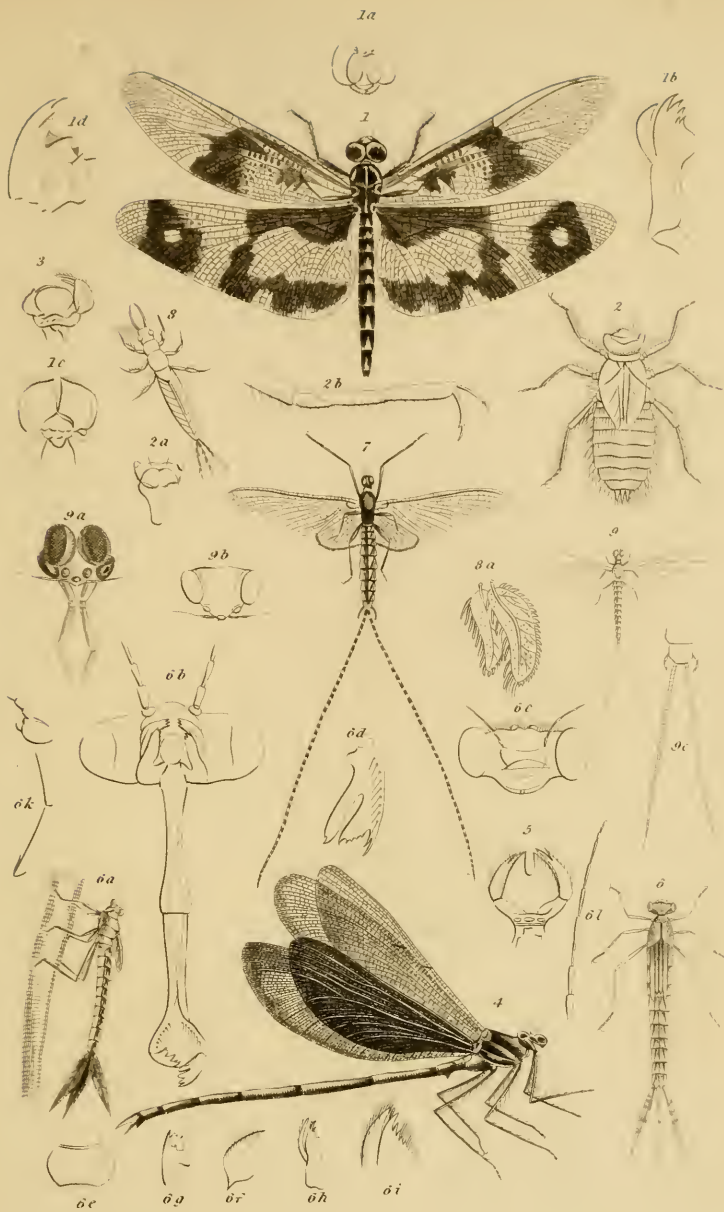


1. *Scutellera basalis*. G.R.Gray. 3. *Lygaeus grandis*. G.R.Gray.
 2. *Canopus punctatus*. Leach's MSS 4. *Coreus bicolor*. G.R.Gray.
 5. *Alidus pellucidus*. G.R.Gray.



J. O. Westwood del.

1. *Tesseratoma ossa-eruenta* Hope MSS
2. *Gerris laticauda* Haldw
3. *Belostoma marginata* Giray
4. *Syrns fasciata* Giray.



1 *Libellula Indica* Fab.

2 Nymph of *Libellula depressa* Lin.

3 Lower lip of *Aeshne* of Egypt

4 *Agrion chinensis* Guér. Fab.

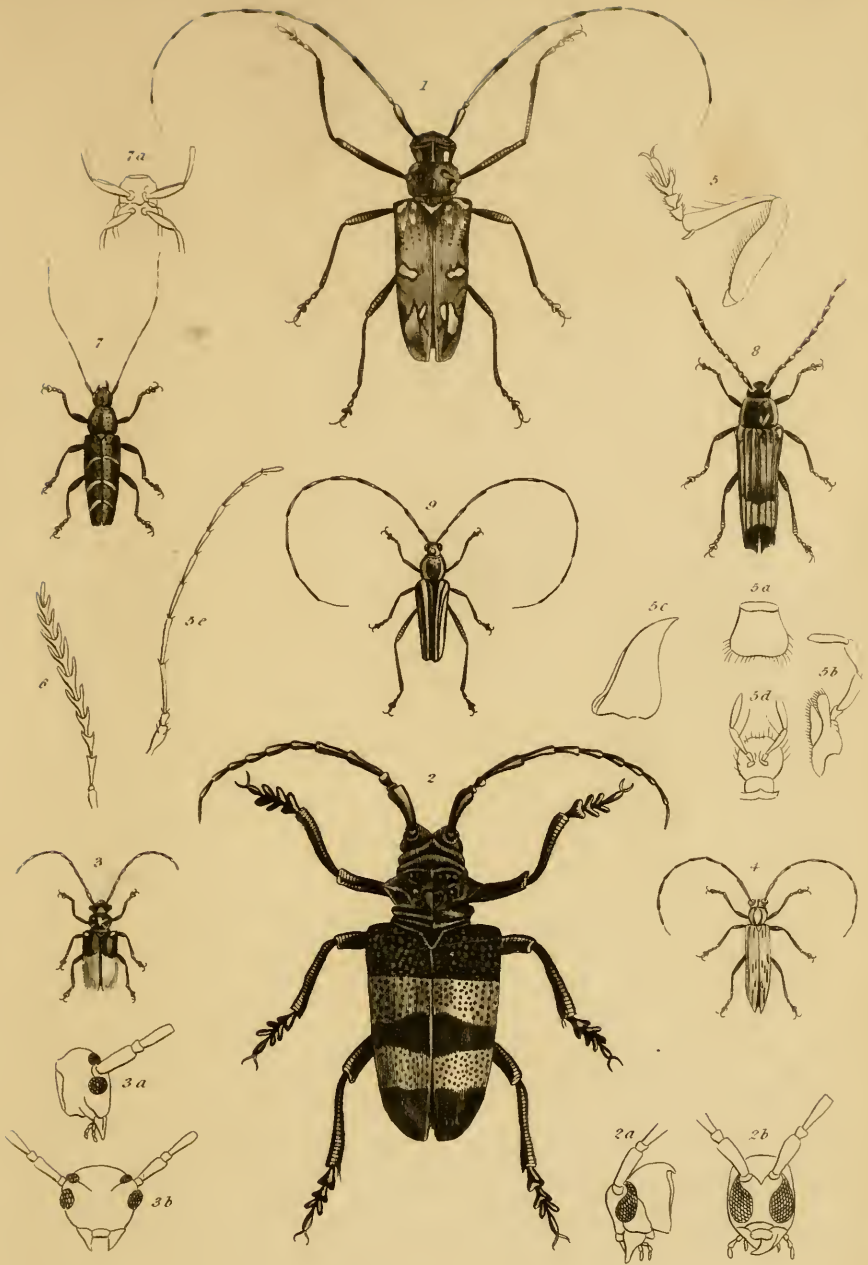
9. *Ephemera bioculata* Fab.

5 Lower lip of *Agrion virgo* Fab.

6 Nymph & details of *Agrion puella* Lin.

7. *Ephemera limbata*, Serv.

8. Larva of *Ephemera vulgata* Lin.



1. *Acrocyus trochlearis*. - Gory.

2. *Lamia aurocincta*. - Gory.

3. *Tetraopes dimidiata*. - Gory.

4. *Saperda albicans*. - Guér.

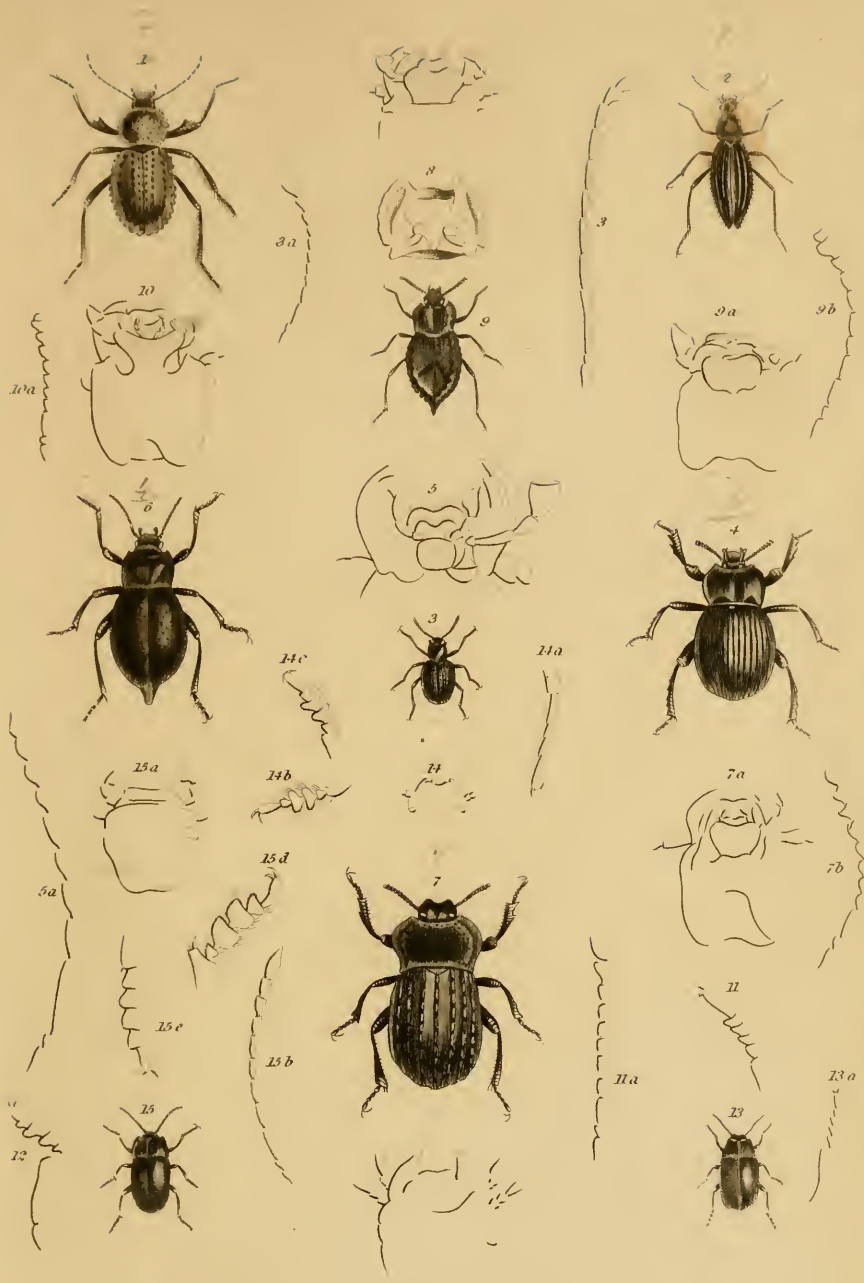
9. *Leptocera bilineata*. - Gory.

5. Details of *Saperda Atkinsoni*. - Curtis.

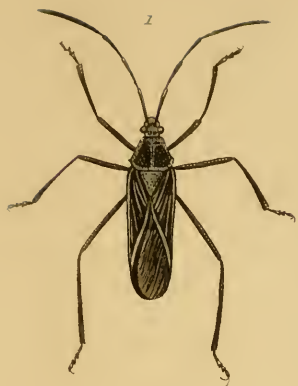
6. Ant. of *Distichocera maculicollis*. - Kirby.

7. *Imesisternus bizonulatus*. - Guér.

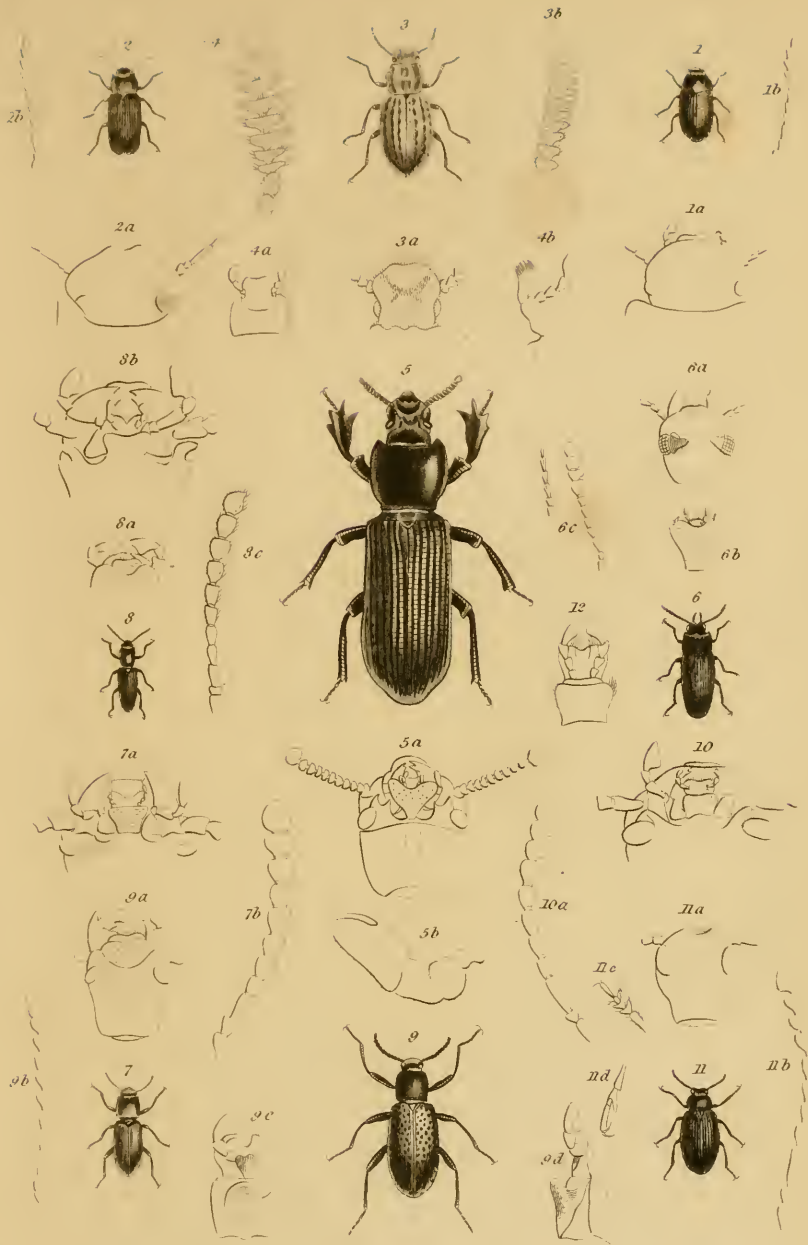
8. *Tragocerus bidentatus*. - Donov.



Cyrua setosa. Kirby
Acanthomera gracilla. Guér Herbst.
Mesolampus Herimansgüi. Latr
Blaps mortisaja. Fab.
 Mouth & Ant of *Blaps sulcata*. Fab. 10. Mth & Ant of *Ascyda larvifera*. Fab. 13. *Platyscolis gages*. Fisch.
6. Genopus tibialis. Latr
7. Anomalipes dentipes. Lat Fab
8. Corslet of Machla villosa. Herbst.
9. Scutinus brasiliensis. Gory.
11. Tarse & Ant of Epatrius chl^s Dej.
12. D^s of Heliophilus Hispanicus. Dej
13. Peltinus gibbosus. Gory.
14. Details of Blapsinus punct^s Sch.



1. *Nematopus rufoscutellatus*. — G. R. Gray.
2. *Zelus rufescens*. — G. R. Gray.
3. *Ethesia filum*? — Fab.



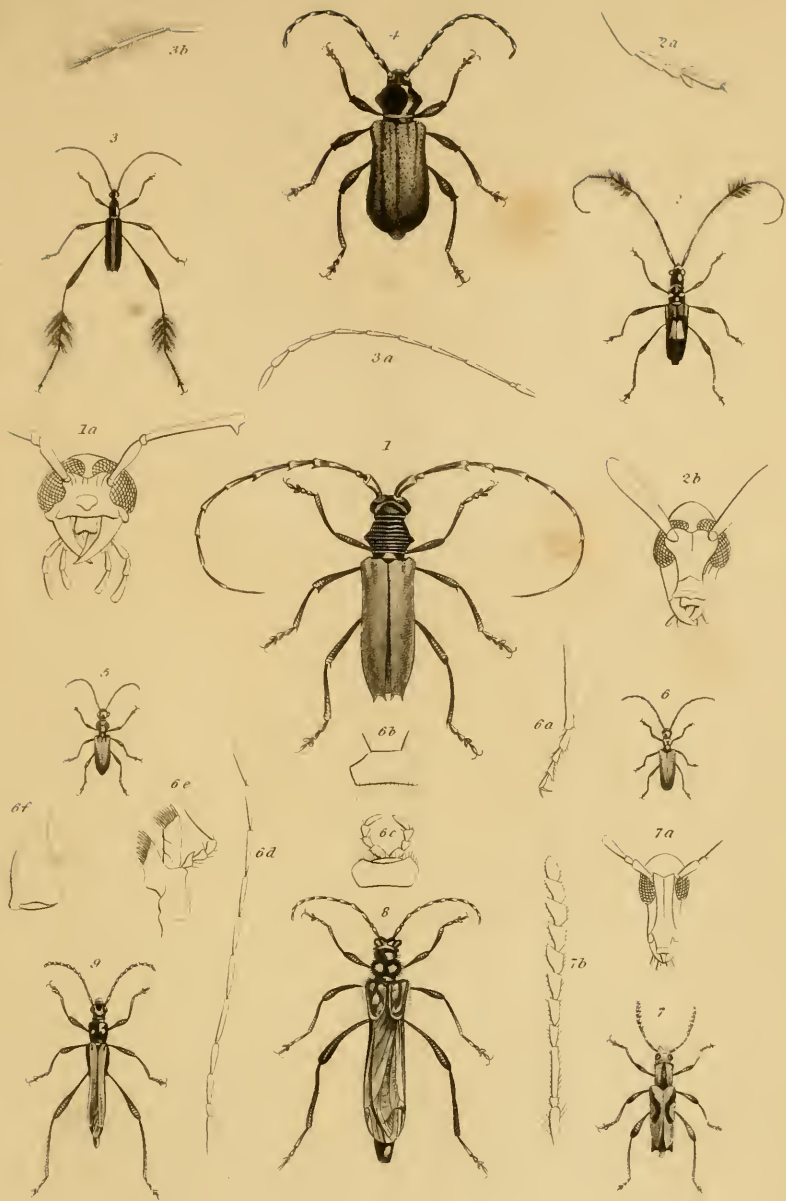
1 *Crypticus subbulbus* Sch
 2 *Opotrium elongatum* Guér.
 3 *Corticus celtis* Germ.
 4 Details of *Orthocerus muticus* Lat. 8 *Calcar elongatus* Herbst

5 *Charoescelis bienestrata* Lam.
 6 *Toxicum curvicoxne* Chev.
 7 *Beros thoracicus* Grav.
 8 *Calcar elongatus* Herbst

9 *Upis ceramboides* Fab.
 10 Details of *Tenebrio molitor* Linn.
 11 *Heterotarsus tenebrioides* Guér.
 12 *Tenebrio obscurus* Fab.



1. *Urania Boisduvalii*, G.
 2. *Hesperia sabadins*, Bdv.
 3. Cat & Chryx of *Hesperia tages*, Fab.
 4. do of *Hesperia Linca*, Fab.



1. *Cerambyx rufipennis*.—Gory.

2. *Cerambyx specularis*—Gory.

3. *Cerambyx lurtipes*—Gory.

4. *Callidum insubrecum* Ziegler

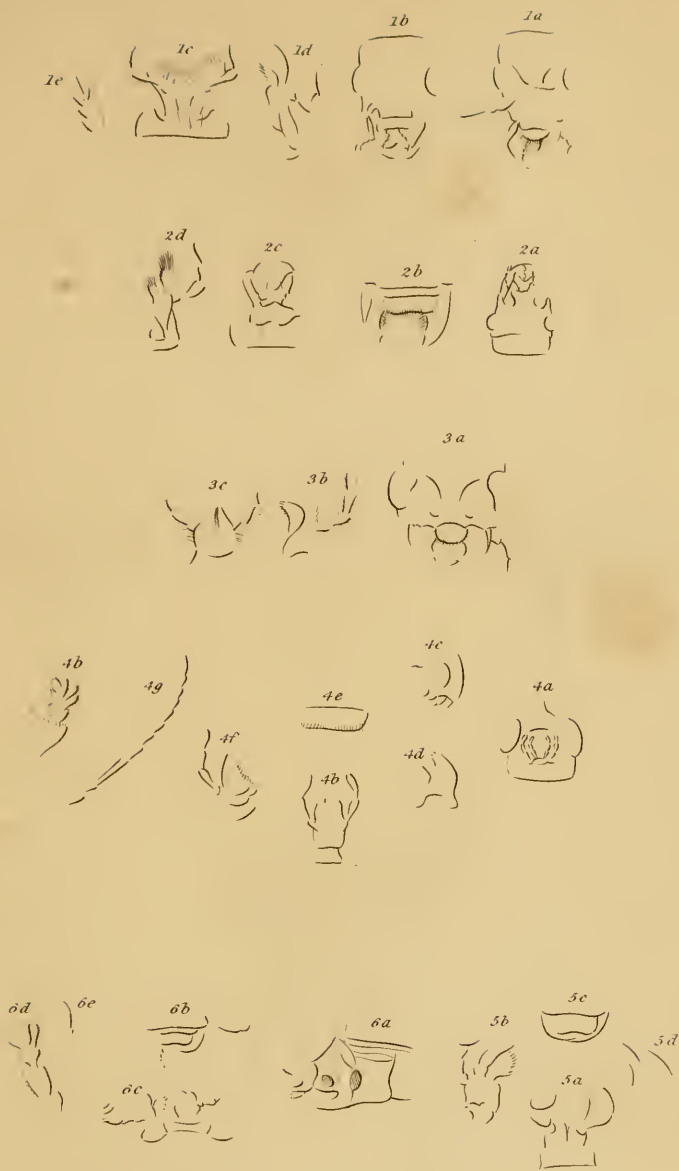
5. *Certallum ruficollis*—Fab.

6. *Obrivum ferrugineum*—Fab.

7. *Rhinotrachus coccineus*—Gory.

8. *Necydalis major*—Lin.

9. *Stenopterus elegans*—Blug.



1. *Meramerus Kingii*.

4. *Chelobasis bicolor*.

2. *Larophagus Banksiae*.

5. *Cryptocephalus rugicollis*.

3. *Gonioptera auricoma*.

6. *Doryphora princeps*.



1 *Erycina chorinca* Xanthippe & R. Gray

2 *Erycina lorila* Jasteris & R. Gray

3 *Barbicornis chroma* basalis Lat. Gei

4 *Erycina (Lamproptera) curius* & R. Gray





1 *Sericaria raniceps* Bdr.

2 *Serie tessellata*

3 *Notodonta ziezae* Lin.

4 *Oryzia detrita* Bdr.

5 *Ory gonostigma*

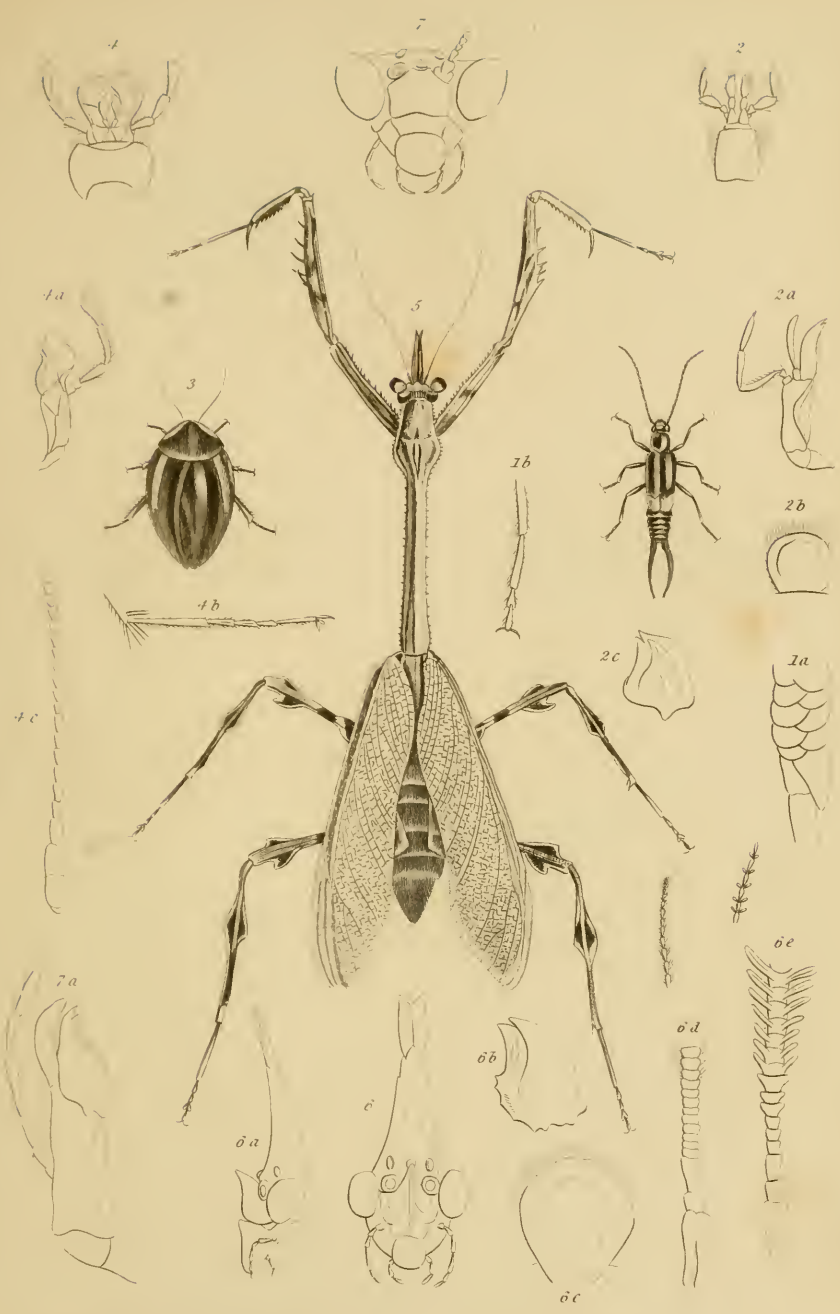
6 *Limacodes delphiniæ*

7 *Limac strigata*

8 *Lim indeterminus*

9 *Psyche cavella*

10 *Psyche nitidella*





1 *Delia* (*Sphenophora*) *Servidocarpus*..Serv. 4 Details of *Blatta* *Aegyptiaca*..Fab.
 2 Details of *Forficula* *auricularia*..Lin 5 *Empusa* *lobipes*..Olivier.
 3 *Blatta* (*Pheraspis* *Servipicta*..Fab. 6 Details of *Empusa* *pauperata*..Fab.
 7 Details of *Blatta* *religiosa*..Lin.



1 *Myrmeleon erythrocephalum* Leach 3 *Ascalaphus barbarus* Fab.
 2 *Panorpa rufa* G.R. Gray. 4 *Nemoptera Africana* Leach.



J. O. Westwood del.

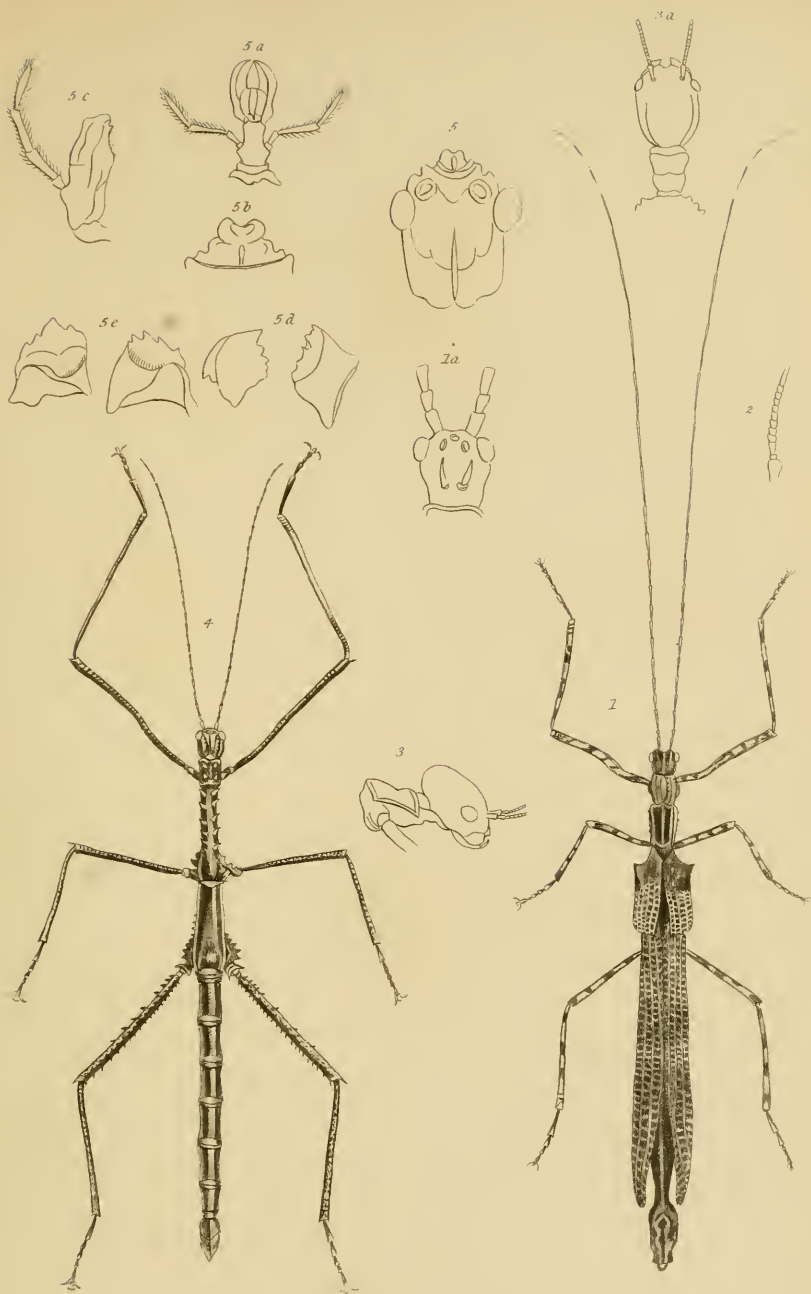
-  1 *Centrotus furcatus* — G. R. Gray
 2. *Centrotus globularis* — Pallas



J. O. Westwood del.

- ♂ 1 *Orthorhiza cassidivides* — Westwood
 ♂ 2 *Carpus fulvoscutellata* — G. R. Gray
 ♂ 3 *Darus camelus* — G. R. Gray
 ♂ 4 *Cicada fulvofasciata* — G. R. Gray





1 *Phasma annulata* Serv

2 Ant of *Bacillus*

3 Head of *Cyphocrana*.

4 *Bacteria scabrosa* Perdi

5 Details of *Cladoxerus rosapennis* Guér

1 *Synargris cornutus*3 *Perga scutellata*2 *Stephanus Brasiliensis*4 *Megalyra facipennis*



1a



J. Westwood del^t

1 *Alphaneara rufescens* —Westwood.

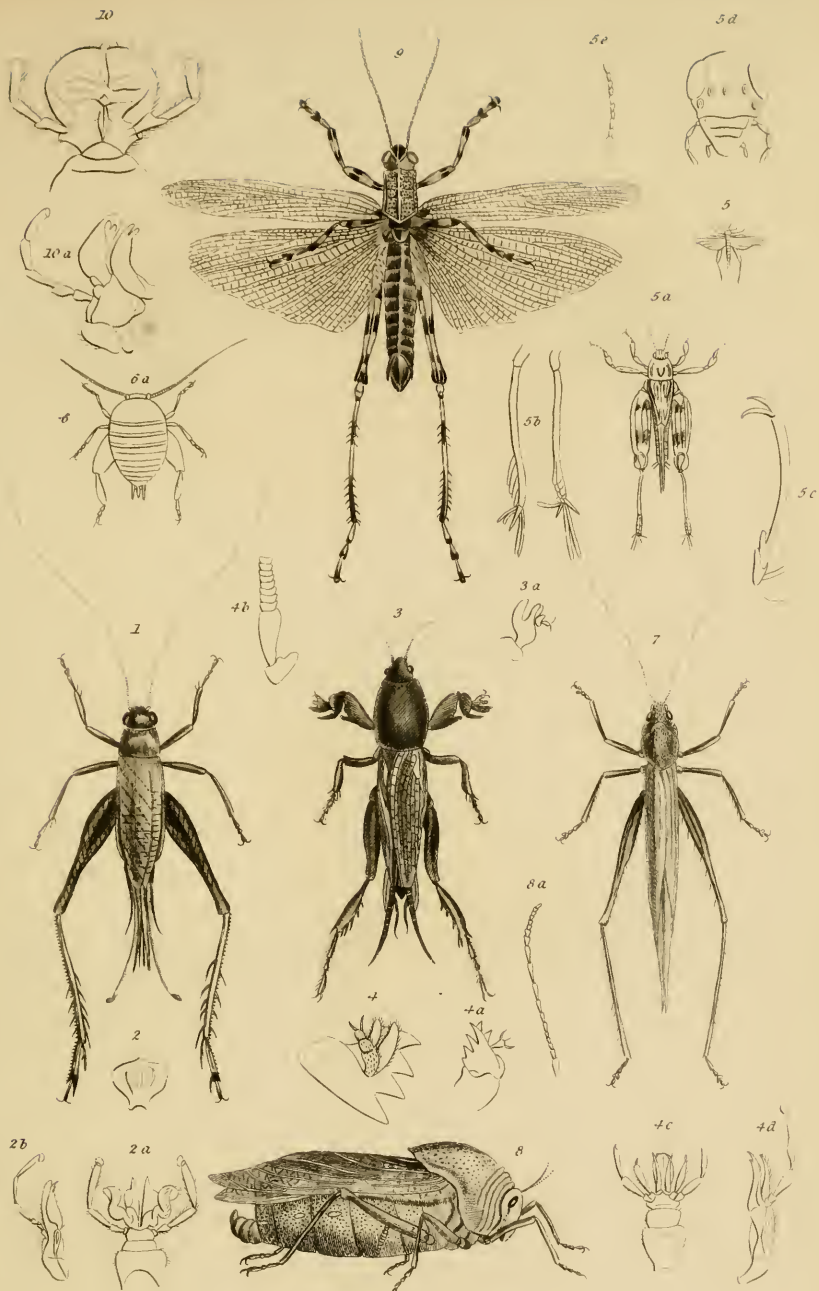
2 *Crocisa nitidula* —Jurine

3 *Polistes apicalis* —G.R. Gray.



J. O. Westwood del^t

Eriomera Childersæ — G. R. Gray



1. *Gryllus servillii* Guér.
 2. Details of *Gryllus campestris* Fab
 3. *Gryllotalpa didactylus* Latr
 4. Details of *Gryllus vulgaris*
 5. *Didactylus tarsatus* Perch.

6. *Mormonacris acerorum* Panzer.
 7. *Locusta erythrosoma* Eucyd.
 8. *Pezomera inanis* Fab
 9. *Acrydium tarsatum* Serv.
 10. Details of *Acrydium migratorum*



1. *Eutilia Australasia* G.R.Gray

2. *Boris violaceus* G.R.Gray.

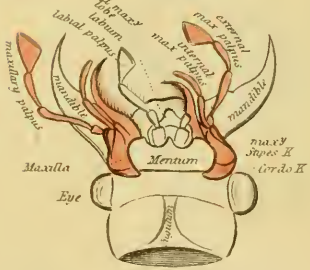
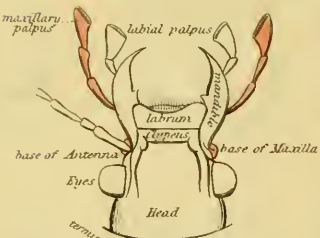
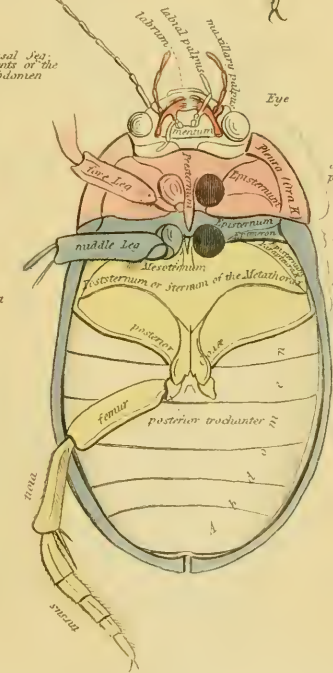
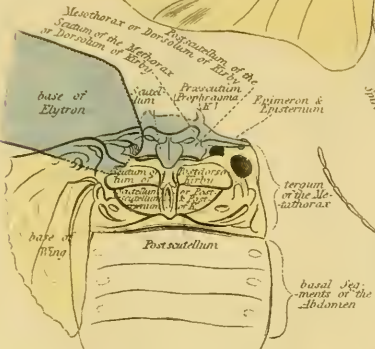
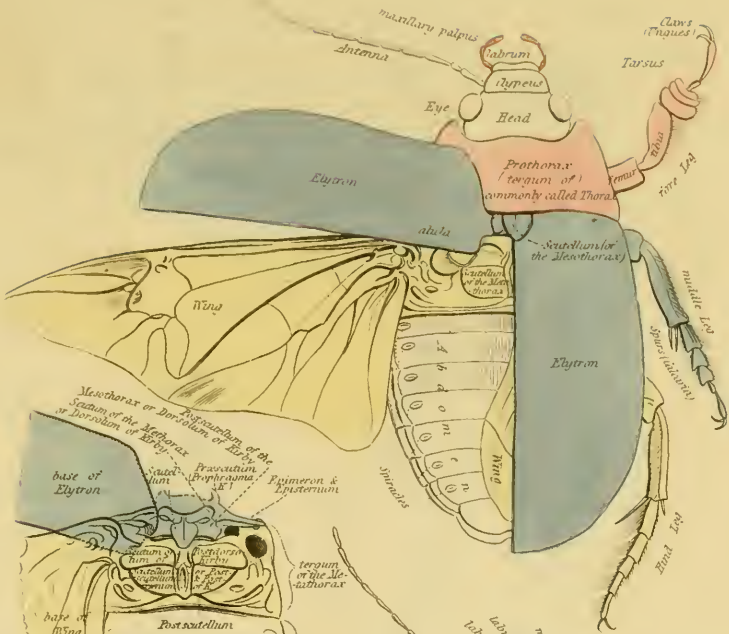
3. *Panonia longirostris* Harw.

4. *Hannatopeta lunata* G.R.Gray.

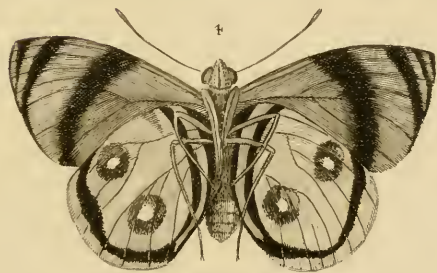
5. *Tabanus Africanus* G.R.Gray.



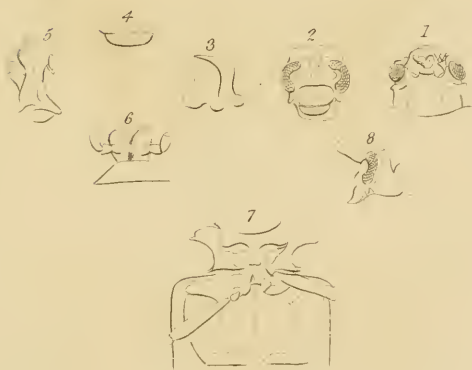
Transformations of the Butterfly



Westwood FLS. sc del



1. *Pieris Aeneas*. Lat. 2. *Heliconius cyrene*. Lat. 3. & 4. *Nymphalis Pitheas*. Lat.



J. O. Westwood, del.

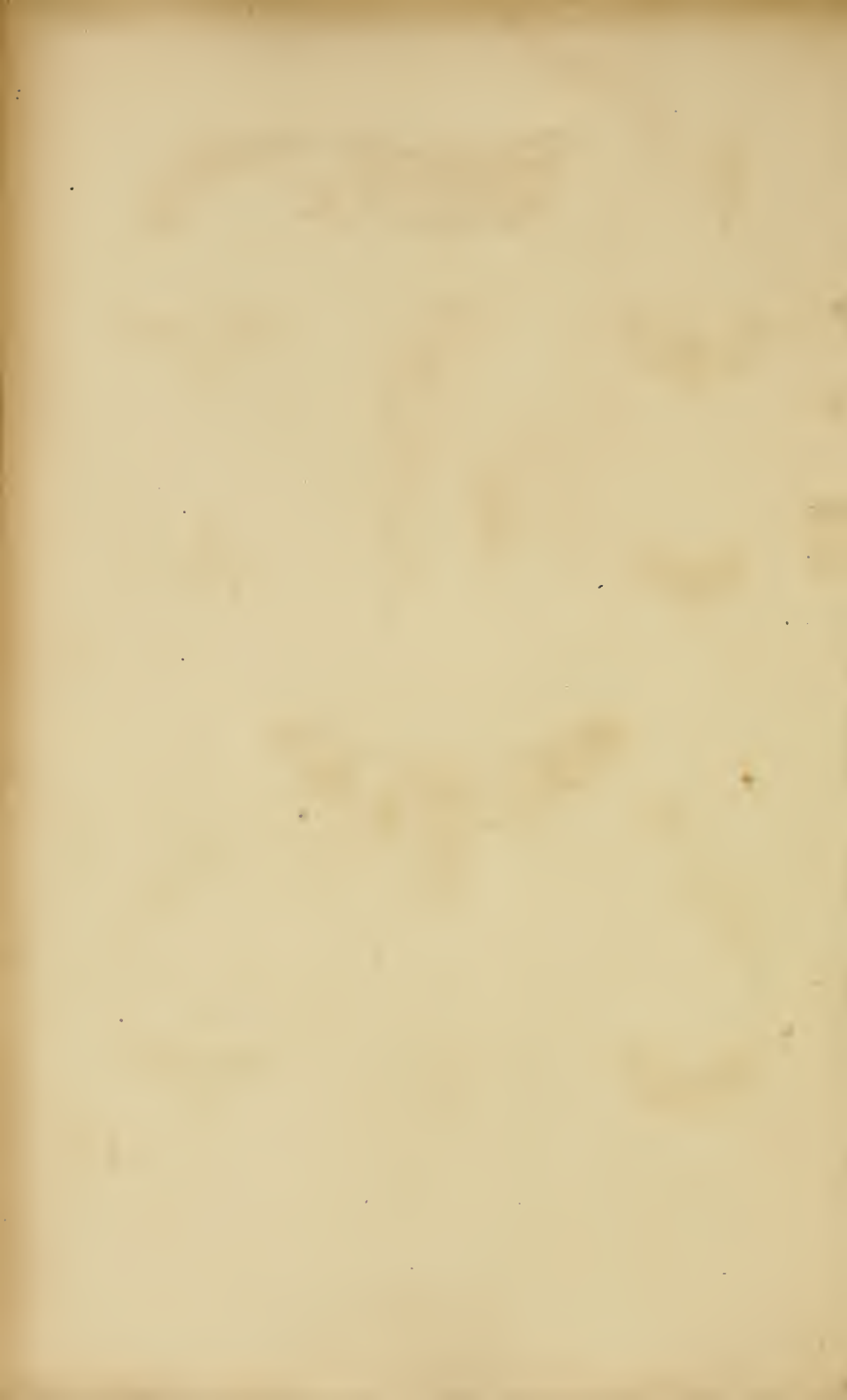
Cetoderus Childroni. G. & L. Gray



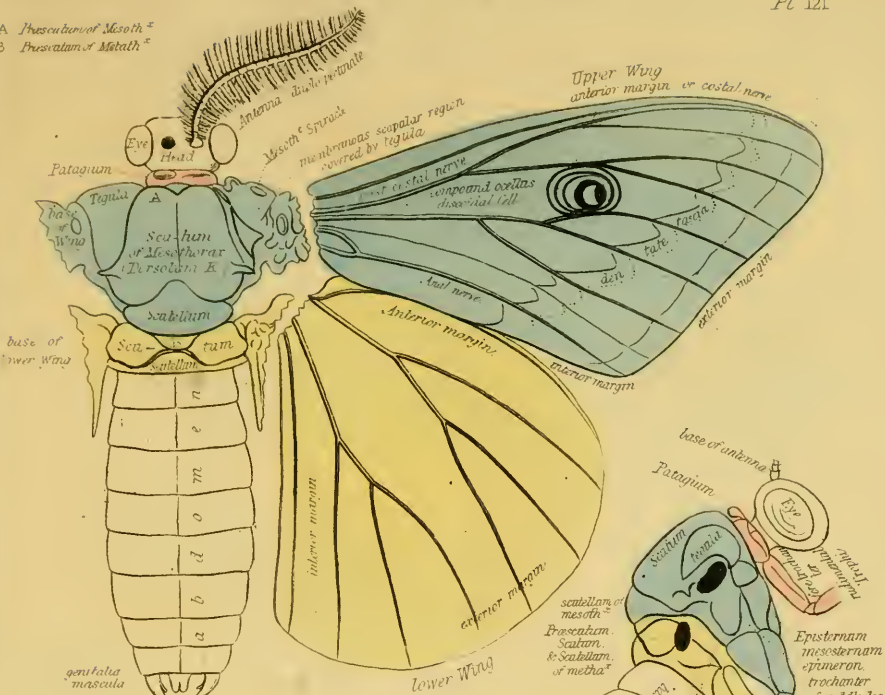


1. *Thyris sepulchralis*. Bdv.
 2. *Elocera rectinera*. Bdv.
 3. *Zigena pulchella*. Bdv.
 4. *Zigena filipendulæ*. Lin.
 5. *Procris nebulosa* ♀ Hlug.

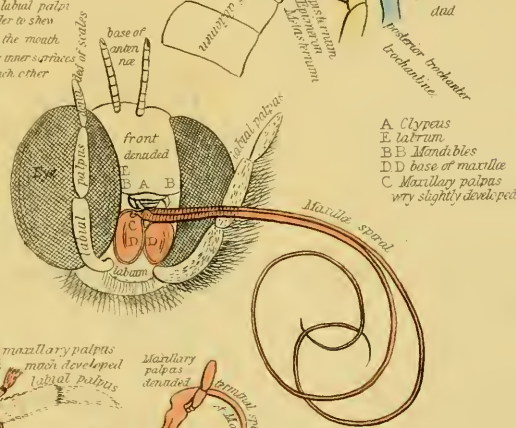
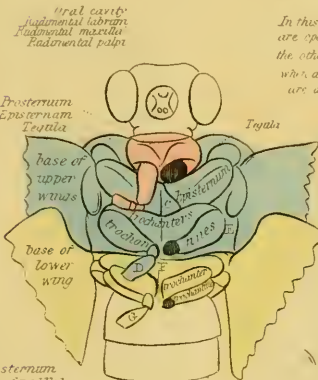
6. *Syntomis myodes*. Bdv.
 7. *Syn. phægea*. Fab.
 8. *Atydia pumila*. Ch. Lat. 3 5
 9. Cat & Chrys. of *Uphloape infousta*
 10. *Glaucopsis Follétii*. Fäst.
 11. *Aglaope americani*. Bdv.



A Presentation of Mesoth.
B Presentation of Metath.

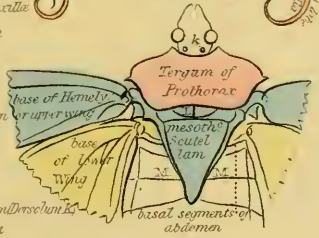
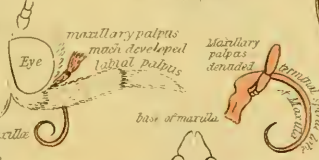
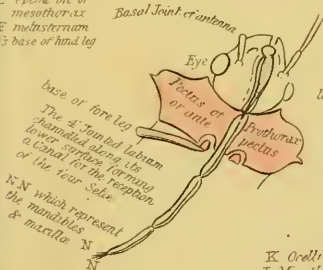


In this figure the labial palps are spread in order to show the other parts of the mouth which at rest their inner surfaces are applied to each other



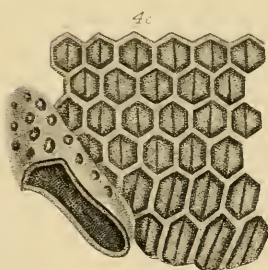
A Clypeus
E Labrum
BB Mandibles
DD base of maxillae
C Maxillary palpus very slightly developed

C mesosternum
D base of middle leg
E Epimeron or mesothorax
F mesosternum
G base of hind leg



K Ocelli
L Mesoth. Scutum Dorsolateral K
M Postscutellum





1. *Xylocopa violacea* - Carpenter Bee

4. *Apis mellifica* - Worker

2. *Bombus ruderata* - Lat

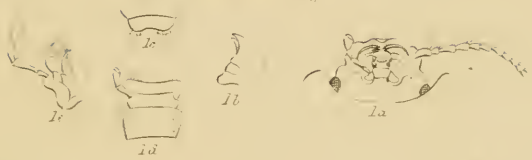
4a Female of same

3. *Apis centuncularis* Leaf-calling Bee

4b Male or drone

3a. *Tidus* of Rose leaves of same

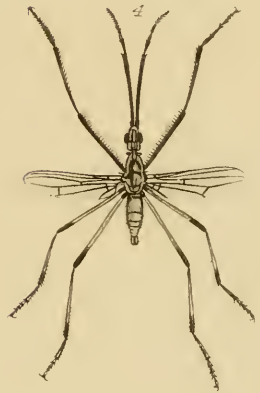
4c. Part of the Honeycomb with the Queen's cell



2e



- 1 *Anthicus chilensis* G. R. Gray
- 2 *Cyphonotus drumularius* Grav.
- 3 *Zophorus chilensis* G. R. Gray.



1 *Celyphus obtectus* - Holm

4 *Diatena holymenoides* - Westw

2 *Microdon englossoides* - G. R. Gray

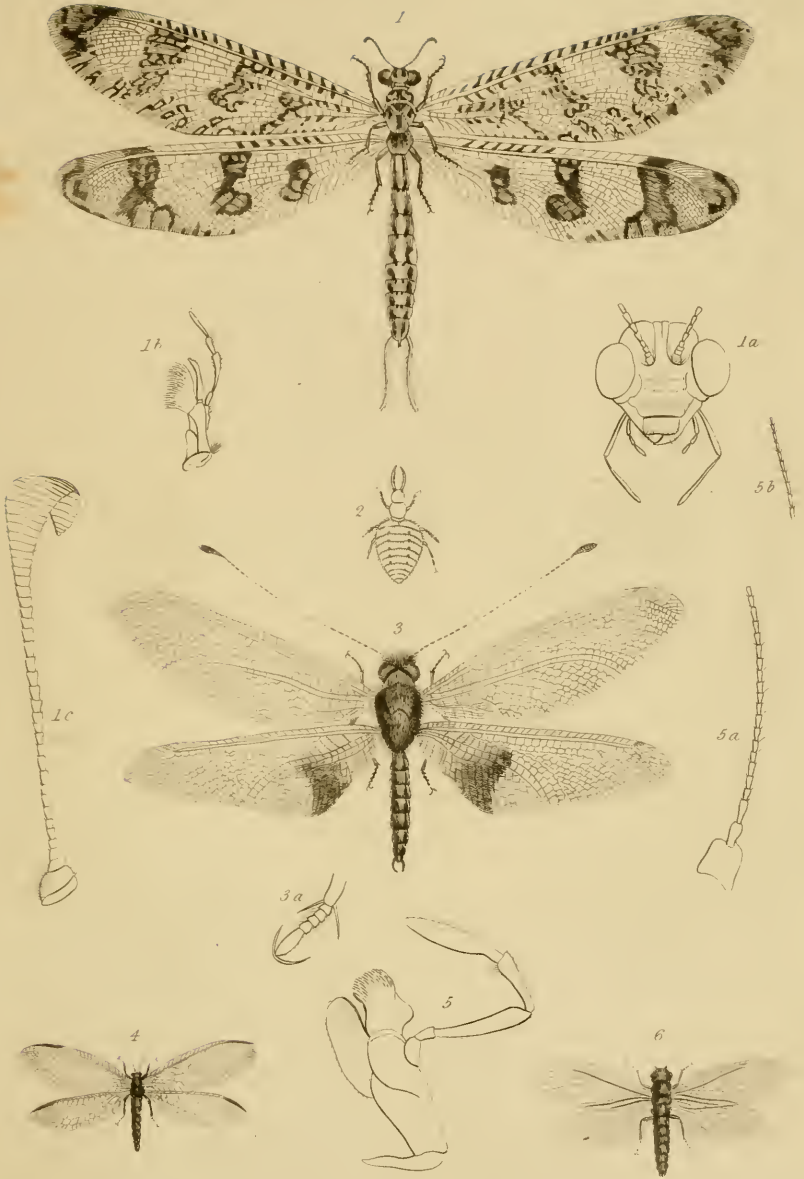
5 *Myopa nigripennis* - G. R. Gray

3 *Diopsis fuscata* - G. R. Gray

6 *Anthrax marginicollis* - G. R. Gray



1. *Alacris asperella* Hüb
 2. *Eaplocamas anthracinus* Hüb
 3. *Tana bipazata* Fab 3. a. Head of *Tan longicornis* Curtis
 4. *Rethia curvis* Latr 4. a. b. Heads of *R. pugnas* Curtis
 5. *Yponomeuta pusella* Hüb 5. a. b. Cat. & Chrys. of *Y. plumbella* H.
 6. *Ecophora Lunella* Clark a. b. Cat. & Chrys. of *Ec. majorella* Hüb
 7. *Adela Begorella* Fab
 8. *Pterophora phloboclytus* Hüb 8. a. b. Under Pter. *spulochlytus* Curtis
 9. *Orneodes hexalecylus* Latr



1. *Myrmaleo Percheronii* Guér

4. *Henrabiatus capilobus* Fabr.

2. Larva of *Myrm. formicarius* L.

5. Details of Hem of Egypt

3. *Acolaphus Erashonus* Guér.

6. *Stabus lularius* Latr



1. *Tephritis violacea* - G. R. Gray.

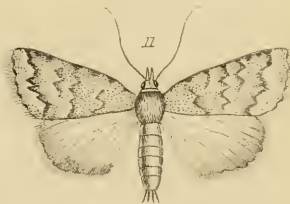
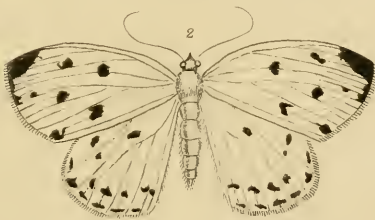
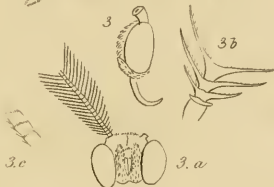
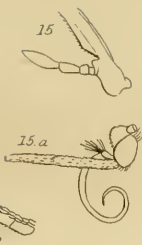
4. *Psilodera capensis* - G. R. Gray.

2. *Trixenosoma perilampiformis* - G. R. Gray.

5. *Toxophora fulva* - G. R. Gray.

3. *Pterodontia flavipes* - G. R. Gray.

6. *Phas' Egeriiformis* - G. R. Gray.



1 *Phalena muscaevaria*, Edv
 2 *Ph. gatharia*, Edv
 3 Details of *Ph. flavilacca*, Hab.
 4 Caterpillar of *Ph. grossalarusta*, L.
 5 *Hermia sidentia*, Cram.
 6 Head & antennæ of *Herm. crispata*, Fab.
 7 *Betya dilacidalis*, Edv.
 8 Head of *Betya cinghalis*, Hab.
 9 *Hydrampa aquatilis*, Edv.
 10 Caterpillar of *Hydr. nymphæata*, Lat.
 11 *Aglossa dilacidalis*, Edv.
 12 *Callera creana*, Fab.
 13 Cat. of *Cal. colonella*, Hab.
 14 *Crambus reticulata*, Edv.
 15 Details of *Cr. radiatus*, Hab.



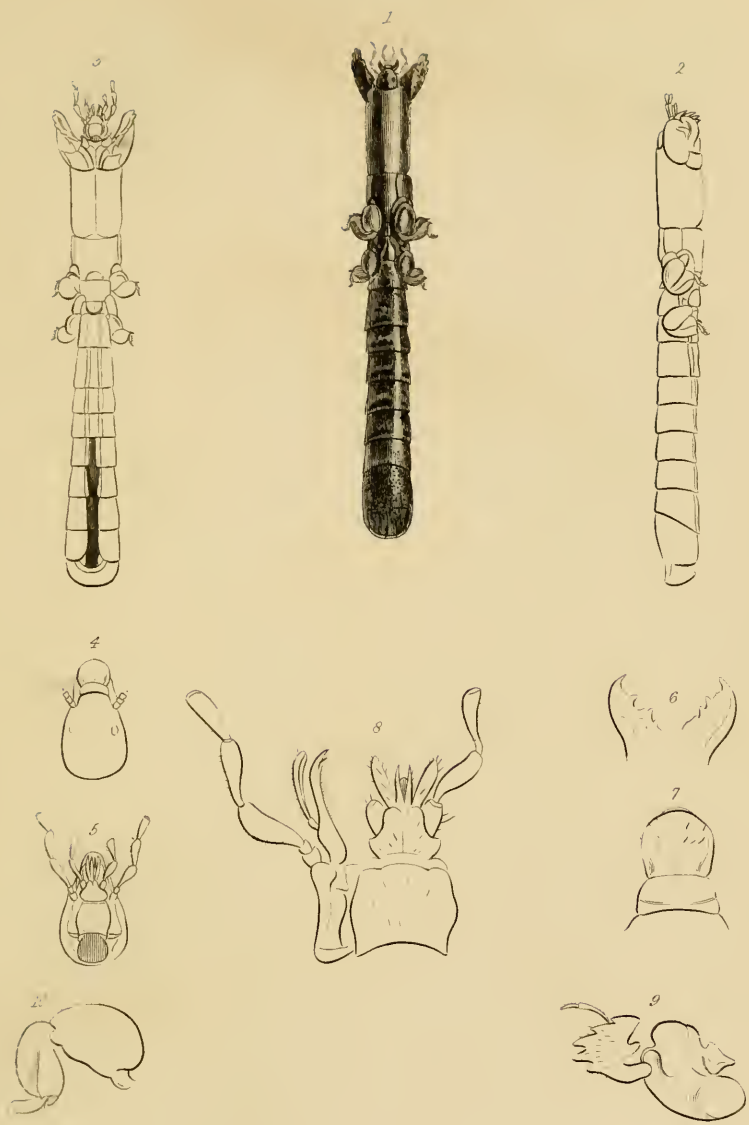
1 *Gryllus migratri*. 2 *Tetraepodum*

3 *Tetraepodum*. 4 *Gryllus domesticus*

2 *Gryllus Gryllo-talpa* The Me's Cricket

4 *Gryllus domesticus* The House Cricket

5 & 5a *Tridactylus paradoxus*



Cylindrodes Campbelli - G.R.Gry.



1 *Englossa dentata*

4 *Andrena pilipes*

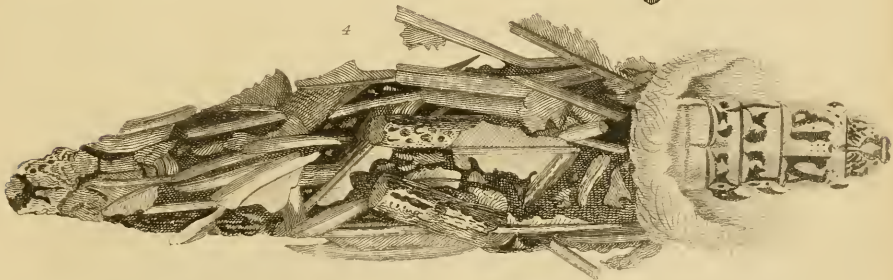
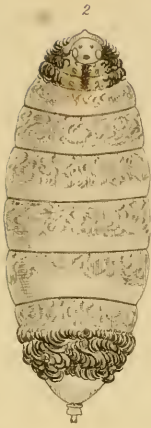
2 *Eucera antennata*.

5 *Bombar restrata*.

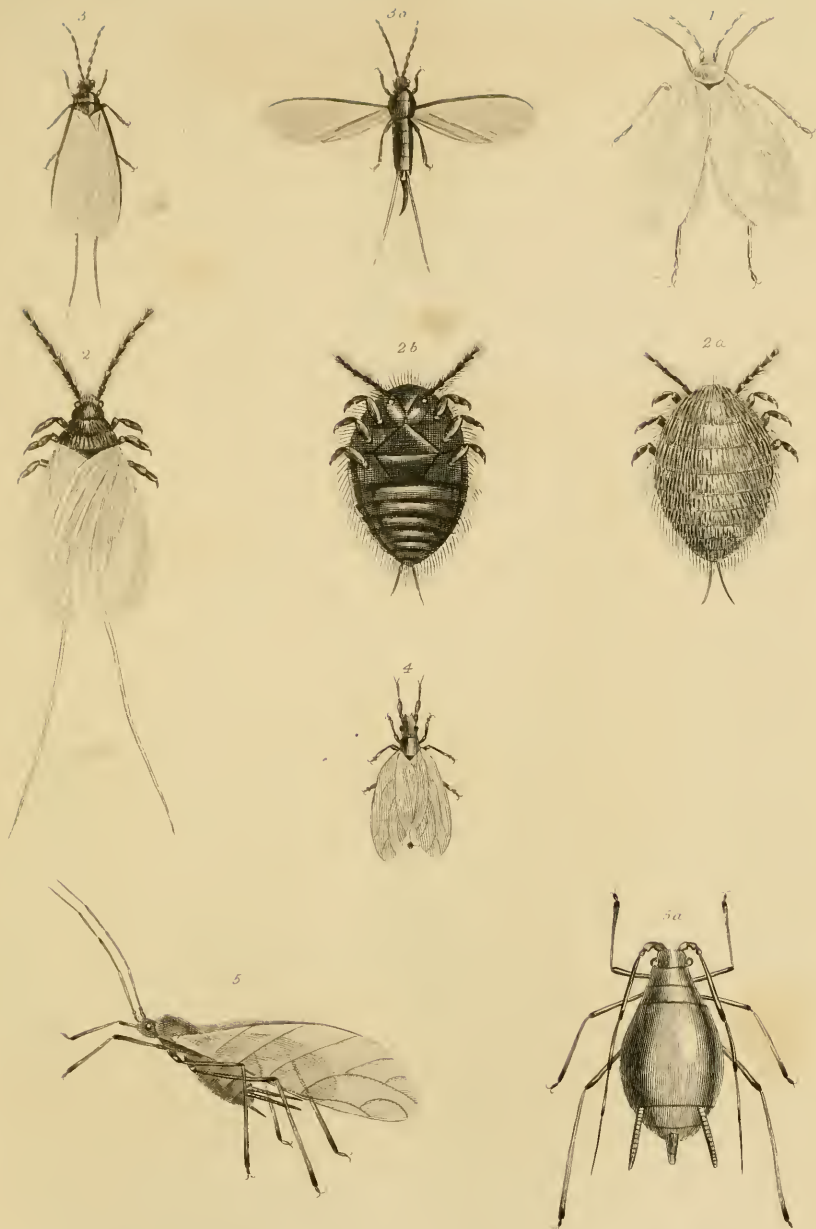
3 *Nomada miniata*

6 *Hylæus albipes*.





1 *Oikobius Kirbii* male 3 Habitaculum of the male before his metamorphosis
 2 Female of same 4 Larva of female
 5 The same withdrawn from the habitaculum



1. *Menodes* (*Aphis*) *Chelidonii*.

2. *Coccus* *Cacti* (*The Cichinad*) male.

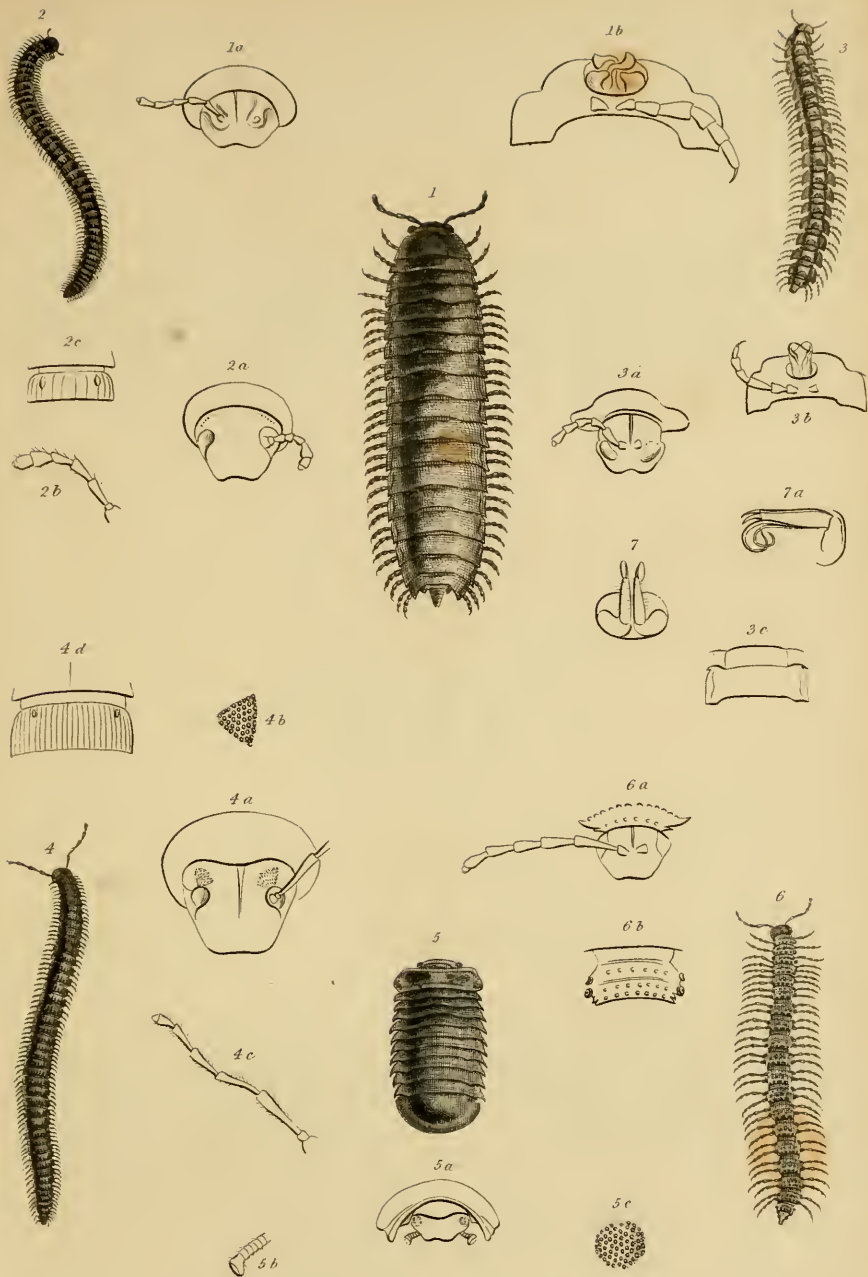
2a. The female upper side. 2b. *Ecnote* under side

3. *Kermes* *Persica*. 3a with extended Wings

4. *Livna* Lat (*Aphis*) *Juncorum*.

5. *Aphis* *Rosa*. 5a. Larva of same.





1 *Fontaria Virginiana*. T.E. Gray.

4 *Craspedosoma Richi* - T.E. Gray.

2 *Cambola lactarius*. T.E. Gray.

5 *Zephronia ovalis*. T.E. Gray.

3 *Polydesmus Leachi*. T.E. Gray.

6 *Polydesmus elegans*. T.E. Gray.

7 Male organs of *Polyd. Drurii*.





1 *Noctua Anceia*.

3 *N. Damonia* - female

2 *N. Damonia* - male

4 *N. Euristea*.

5 *N. ocellata*

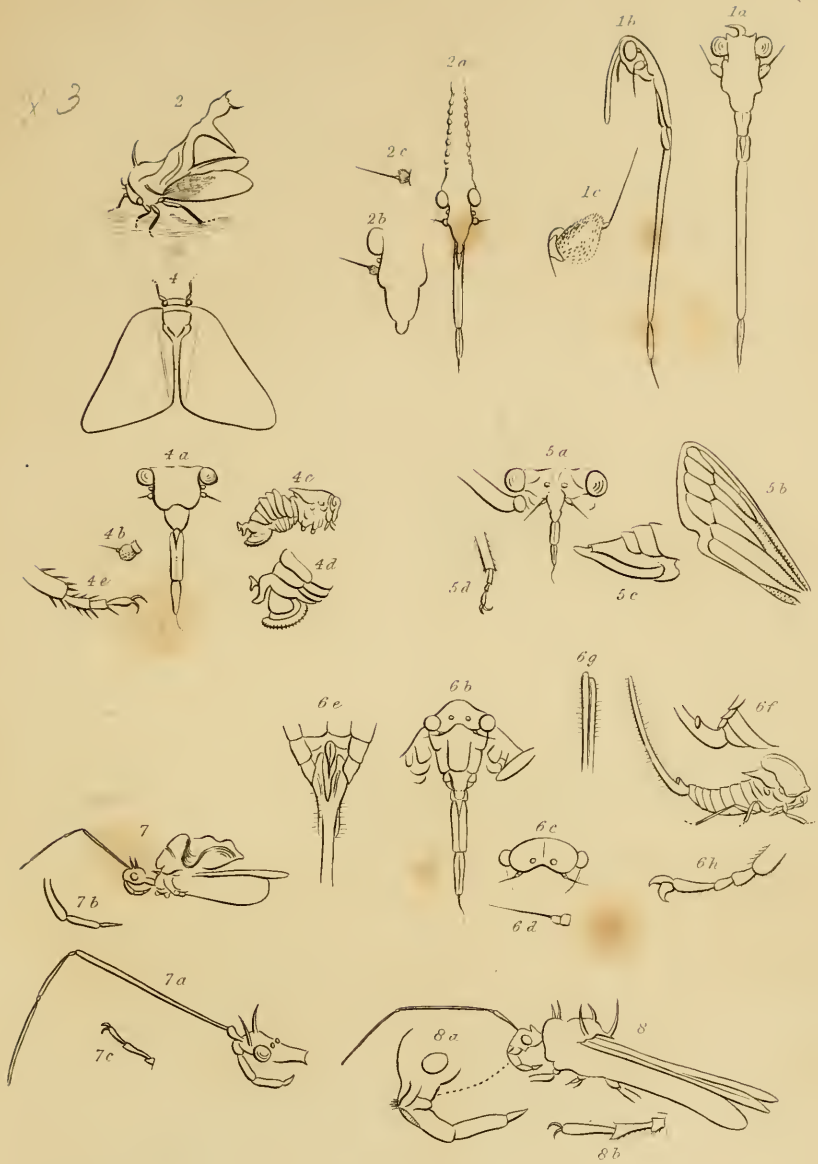




1 *Sphinx atthemendes.* 3 *Thalena tita.*

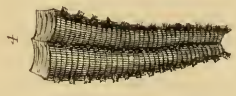
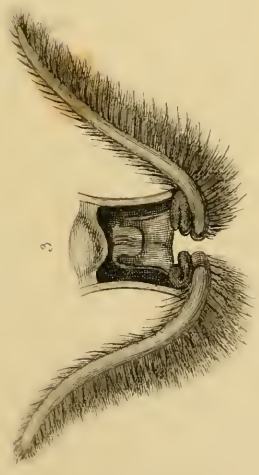
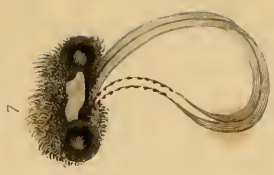
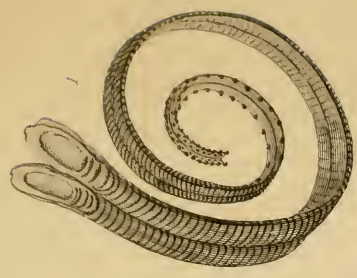
2 *Thalena cresea.* 4 *Sphinx atropos.*





- | | |
|----------------------------------|-----------------------------------|
| ○ 1 <i>Fulgora nigromaculata</i> | ◇ 5 <i>Darnis Canelus</i> . |
| ○ 2 <i>Fulgora punctata</i> | ◇ 6 <i>Trophera Hardwickii</i> |
| ○ 3 <i>Centrotus furcatus</i> . | ✓ 7 <i>Reduvius dorsalis</i> . |
| ✓ ○ 4 <i>Pacileptera antea</i> . | ✓ 8 <i>Reduvius spinidorsti</i> . |





Tomie or Eroboscis, Anthe Kirby, of Lepidoptera.

PLATE II. 1843.



