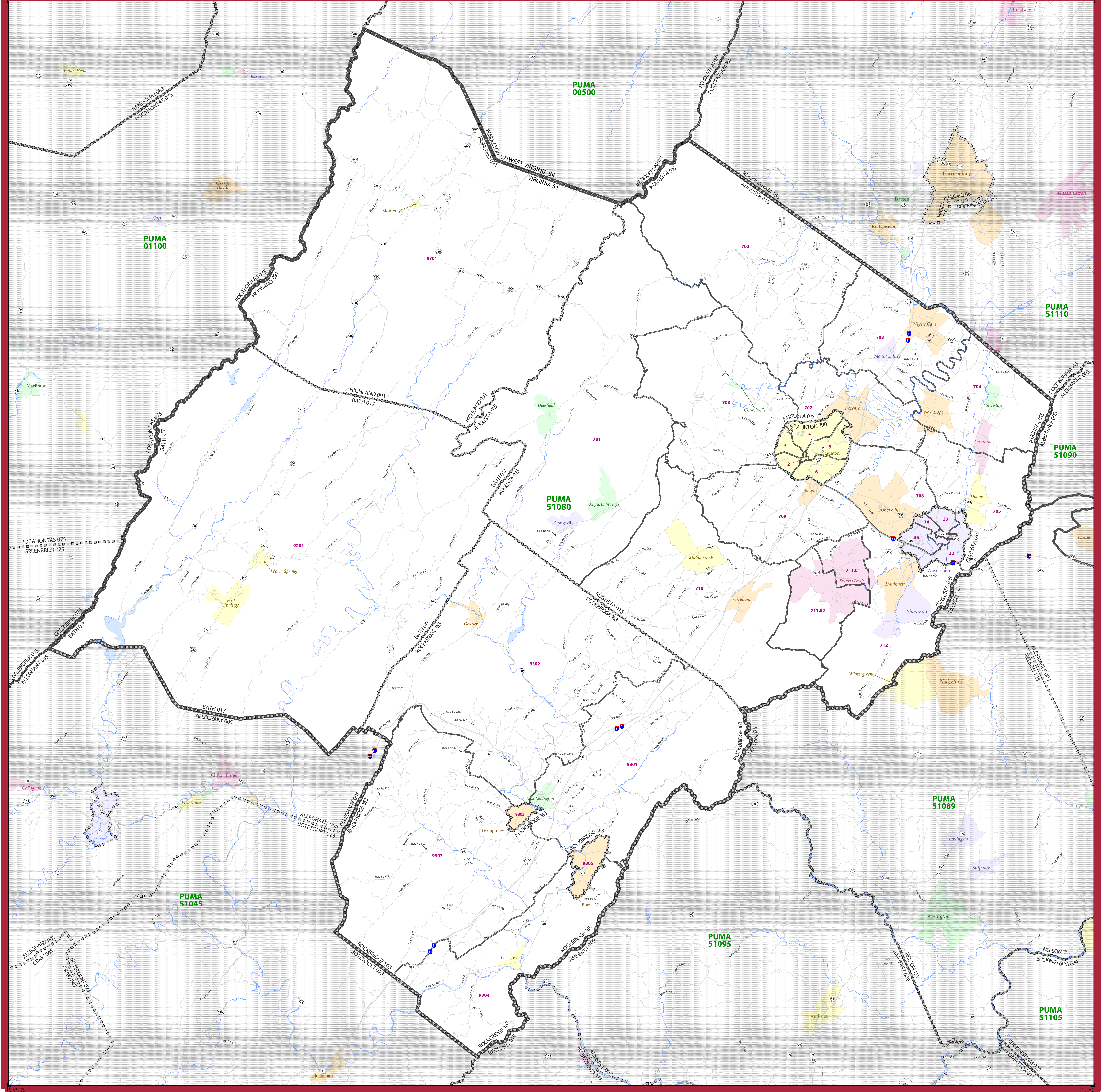


2010 CENSUS - PUMA REFERENCE MAP: Central Shenandoah Planning District Commission (Southwest)



LEGEND

SYMBOL DESCRIPTION	SYMBOL	LABEL STYLE
International	☆☆☆☆☆	CANADA
Federal American Indian Reservation	⬢⬢⬢⬢⬢	L'ANSE RES
Off-Reservation Trust Land	⬢⬢⬢⬢⬢	T1880
Alaska Native Regional Corporation	▲▲▲▲▲	NANA ANRC
Public Use Microdata Area (PUMA)	████████	PUMA 00300
Census Tract	————	183.01
State (or statistically equivalent entity)		NEW YORK 36
County (or statistically equivalent entity)	□□□□	ERIE 029
Minor Civil Division (MCD)	-----	Bristol town
Consolidated City	⦿⦿⦿⦿	MILFORD
Incorporated Place ²	■■■■	Davis
Census Designated Place (CDP) ²	■■■■	Incline Village

DESCRIPTION	SYMBOL	DESCRIPTION	SYMBOL
Interstate	— — — — —	Water Body	Blue Area
U.S. Highway	— — — —	Outside Subject Area	Grey Area
State Highway	— — —		
Nonvisible Boundary or Feature Not Elsewhere Classified	-----		

Where international, state, and/or county boundaries coincide, the map shows the boundary symbol for only the highest-ranking of these boundaries.

Geographic areas outside the subject PUMA are labeled only as space allows.

1 MCD boundaries are shown in the following states in which some or all MCDs function as general-purpose governmental units: Connecticut, Illinois, Indiana, Kansas, Maine, Massachusetts, Michigan, Minnesota, Missouri, Nebraska, New Hampshire, New Jersey, New York, North Dakota, Ohio, Pennsylvania, Rhode Island, South Dakota, Vermont, and Wisconsin. Only governmental MCDs in the subject PUMA are labeled.

2 Place label color corresponds to the place fill color.
Label colors: Davis Davis Davis Davis Davis

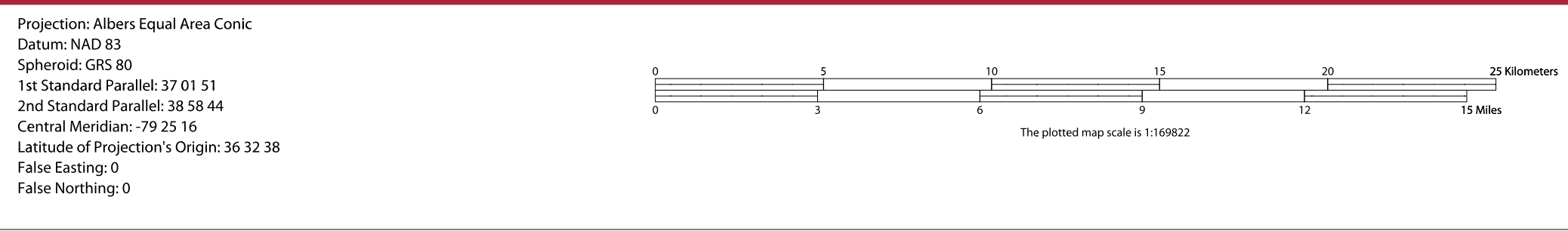
SUBJECT AREA COUNTIES ON MAP SHEET

51015	Augusta	51678	Lexington
51017	Bath	51790	Staunton
51091	Highland	51820	Waynesboro
51163	Rockbridge		
51530	Buena Vista		

Public Use Microdata Areas (PUMAs) are delineated based on the results of the 2010 Decennial Census; all other legal boundaries and names are as of January 1, 2010. The boundaries shown on this map are for Census Bureau statistical data collection and tabulation purposes only; their depiction and designation for statistical purposes does not constitute a determination of jurisdictional authority or rights of ownership or entitlement.

Geographic Vintage: 2010 Census (reference date: January 1, 2010)
Data Source: U.S. Census Bureau's MA/TIGER database (ACS13)
Map Created by Geography Division: December 13, 2013

U.S. DEPARTMENT OF COMMERCE Economics and Statistics Administration U.S. Census Bureau



PARENT SHEET 1
Total Sheets: 1
Index Sheets: 0
Parent Sheets: 1
Inset Sheets: 0

PUMA NAME: Central Shenandoah Planning District Commission (Southwest)
PUMA CODE: 51080
STATE: Virginia (51)