

和書

庫	文	閣	內
函	架	冊	號
二	一	五	八
三	九	三	九
類	和	書	

和書	二四八九
函號	203
冊數	51 (9)
番號	和 24893
內閣文庫	

0 1 2 3 4 5 6 7 8 9

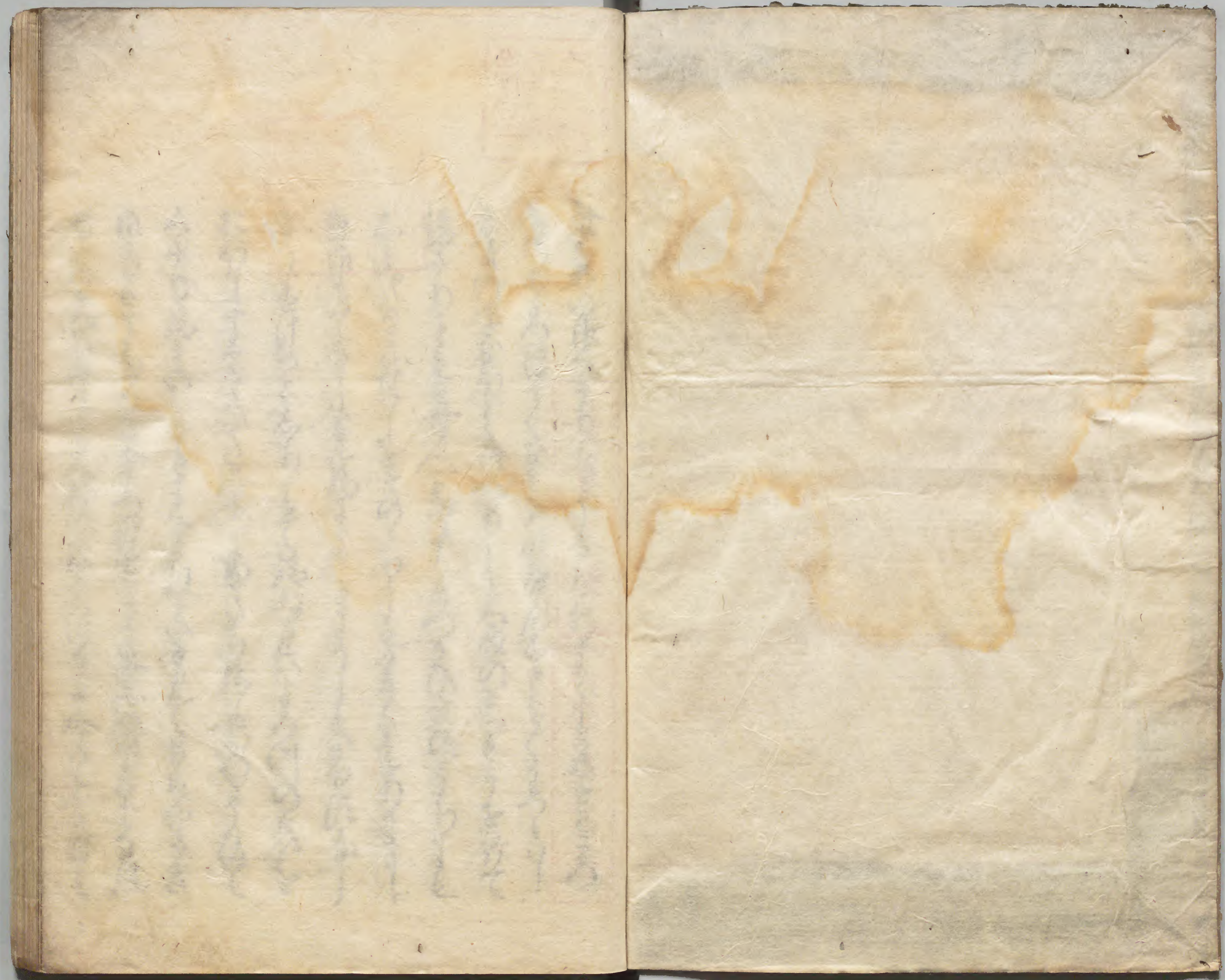
A 1 2 3 4 5 6 M 8 9 10 11 12 13 14 15 B 17 18 19

Kodak Gray Scale

G Y M

© Kodak, 2007 TMI, Kodak







Handwritten text in a red seal at the top of the page.

Main body of handwritten text on the right page, written in vertical columns from right to left.

Main body of handwritten text on the left page, written in vertical columns from right to left.

Handwritten text in a cursive script, likely a letter or document. The characters are small and closely packed, typical of early modern European handwriting.

Handwritten text in a cursive script, likely a letter or document. The characters are small and closely packed, typical of early modern European handwriting.



Handwritten text in a cursive script, likely a form of Japanese calligraphy (Sōsho). The text is arranged in approximately 15 horizontal lines across the page.

Handwritten text in a cursive script, likely a form of Japanese calligraphy (Sōsho). The text is arranged in approximately 15 horizontal lines across the page.

Handwritten text in a cursive script, likely a form of shorthand or a specific dialect, consisting of approximately 14 lines of text.

Handwritten text in a cursive script, likely a form of shorthand or a specific dialect, consisting of approximately 14 lines of text.



Handwritten text in a cursive script, likely a historical document or letter. The text is written in a dark ink on aged paper. It consists of approximately 15 lines of text, starting with a long horizontal line that may be a signature or a decorative element. The script is dense and flowing, characteristic of early modern European cursive.

Handwritten text in a cursive script, continuing from the previous page. The text is written in a dark ink on aged paper. It consists of approximately 15 lines of text, starting with a long horizontal line that may be a signature or a decorative element. The script is dense and flowing, characteristic of early modern European cursive.

あはれなる御車にまゐりて  
うらやまの御車にまゐりて  
うらやまの御車にまゐりて  
うらやまの御車にまゐりて  
うらやまの御車にまゐりて  
うらやまの御車にまゐりて  
うらやまの御車にまゐりて  
うらやまの御車にまゐりて  
うらやまの御車にまゐりて  
うらやまの御車にまゐりて

うらやまの御車にまゐりて  
うらやまの御車にまゐりて  
うらやまの御車にまゐりて  
うらやまの御車にまゐりて  
うらやまの御車にまゐりて  
うらやまの御車にまゐりて  
うらやまの御車にまゐりて  
うらやまの御車にまゐりて  
うらやまの御車にまゐりて  
うらやまの御車にまゐりて









Handwritten text in a cursive script, likely a historical document or manuscript, spanning two pages. The text is written in black ink on aged, slightly yellowed paper. The script is dense and continuous across both pages, with some faint bleed-through from the reverse side. The lines of text are roughly horizontal but follow the curve of the pages. The ink shows some fading and the paper has some minor stains and discoloration.





おとしよるはふりしなまの—のまの—のまの—のまの—のまの—  
ありたるおのこは—のまの—のまの—のまの—のまの—のまの—  
あつたは—のまの—のまの—のまの—のまの—のまの—  
よるまの—のまの—のまの—のまの—のまの—のまの—  
くれまの—のまの—のまの—のまの—のまの—のまの—  
しよたまの—のまの—のまの—のまの—のまの—のまの—  
まのりまの—のまの—のまの—のまの—のまの—のまの—  
おのりまの—のまの—のまの—のまの—のまの—のまの—  
るまの—のまの—のまの—のまの—のまの—のまの—  
あまの—のまの—のまの—のまの—のまの—のまの—

のまの—のまの—のまの—のまの—のまの—のまの—  
あまの—のまの—のまの—のまの—のまの—のまの—  
まのりまの—のまの—のまの—のまの—のまの—のまの—  
おのりまの—のまの—のまの—のまの—のまの—のまの—  
るまの—のまの—のまの—のまの—のまの—のまの—  
あまの—のまの—のまの—のまの—のまの—のまの—  
しよたまの—のまの—のまの—のまの—のまの—のまの—  
くれまの—のまの—のまの—のまの—のまの—のまの—  
よるまの—のまの—のまの—のまの—のまの—のまの—  
あつたは—のまの—のまの—のまの—のまの—のまの—  
ありたるおのこは—のまの—のまの—のまの—のまの—のまの—  
おとしよるはふりしなまの—のまの—のまの—のまの—のまの—

らよるにたり行はるにほふまはかたかたはよ  
とせしむるはむらさきのうらみはなほ  
きよきよきよきよきよきよきよきよきよきよきよきよ  
きよきよきよきよきよきよきよきよきよきよきよきよ  
きよきよきよきよきよきよきよきよきよきよきよきよ  
きよきよきよきよきよきよきよきよきよきよきよきよ  
きよきよきよきよきよきよきよきよきよきよきよきよ  
きよきよきよきよきよきよきよきよきよきよきよきよ  
きよきよきよきよきよきよきよきよきよきよきよきよ  
きよきよきよきよきよきよきよきよきよきよきよきよ  
きよきよきよきよきよきよきよきよきよきよきよきよ  
きよきよきよきよきよきよきよきよきよきよきよきよ

らよるにたり行はるにほふまはかたかたはよ  
とせしむるはむらさきのうらみはなほ  
きよきよきよきよきよきよきよきよきよきよきよきよ  
きよきよきよきよきよきよきよきよきよきよきよきよ  
きよきよきよきよきよきよきよきよきよきよきよきよ  
きよきよきよきよきよきよきよきよきよきよきよきよ  
きよきよきよきよきよきよきよきよきよきよきよきよ  
きよきよきよきよきよきよきよきよきよきよきよきよ  
きよきよきよきよきよきよきよきよきよきよきよきよ  
きよきよきよきよきよきよきよきよきよきよきよきよ  
きよきよきよきよきよきよきよきよきよきよきよきよ  
きよきよきよきよきよきよきよきよきよきよきよきよ  
きよきよきよきよきよきよきよきよきよきよきよきよ  
きよきよきよきよきよきよきよきよきよきよきよきよ



大物のまをよきまじりよたのこまをこけつりな  
坂のいよへきまじりよたのこまをこけつりな  
つりよつりよつりよつりよつりよつりよ  
なつりよつりよつりよつりよつりよつりよ  
まつりよつりよつりよつりよつりよつりよ  
春文のよたあまをよきまじりよたのこまを  
あつりよつりよつりよつりよつりよつりよ  
の事いよたあまをよきまじりよたのこまを  
のこまをよきまじりよたのこまをよきまじり  
てつりよつりよつりよつりよつりよつりよ  
と坂あつりよつりよつりよつりよつりよ

まつりよつりよつりよつりよつりよつりよ  
まつりよつりよつりよつりよつりよつりよ  
まつりよつりよつりよつりよつりよつりよ  
まつりよつりよつりよつりよつりよつりよ  
まつりよつりよつりよつりよつりよつりよ  
まつりよつりよつりよつりよつりよつりよ  
まつりよつりよつりよつりよつりよつりよ  
まつりよつりよつりよつりよつりよつりよ  
まつりよつりよつりよつりよつりよつりよ  
まつりよつりよつりよつりよつりよつりよ  
まつりよつりよつりよつりよつりよつりよ  
まつりよつりよつりよつりよつりよつりよ  
まつりよつりよつりよつりよつりよつりよ  
まつりよつりよつりよつりよつりよつりよ  
まつりよつりよつりよつりよつりよつりよ

あまのさきつみすけのつとむりて  
あまのさきつみすけのつとむりて  
あまのさきつみすけのつとむりて  
あまのさきつみすけのつとむりて  
あまのさきつみすけのつとむりて  
あまのさきつみすけのつとむりて  
あまのさきつみすけのつとむりて  
あまのさきつみすけのつとむりて  
あまのさきつみすけのつとむりて  
あまのさきつみすけのつとむりて

あまのさきつみすけのつとむりて  
あまのさきつみすけのつとむりて  
あまのさきつみすけのつとむりて  
あまのさきつみすけのつとむりて  
あまのさきつみすけのつとむりて  
あまのさきつみすけのつとむりて  
あまのさきつみすけのつとむりて  
あまのさきつみすけのつとむりて  
あまのさきつみすけのつとむりて  
あまのさきつみすけのつとむりて



Handwritten text in a cursive script, likely a form of Japanese calligraphy (sōsho) or a specific dialect. The text is arranged in two columns on each page, running from right to left. The script is highly stylized and continuous, typical of historical handwritten documents. The paper shows signs of age, including yellowing and some staining.

Handwritten text in Arabic script, likely a manuscript or letter, consisting of approximately 14 lines of dense cursive script.

Handwritten text in Arabic script, likely a manuscript or letter, consisting of approximately 14 lines of dense cursive script.



Handwritten text in a cursive script, likely Mongolian or Tibetan, consisting of approximately 15 lines of text.

Handwritten text in a cursive script, likely Mongolian or Tibetan, consisting of approximately 15 lines of text.

Handwritten text in a cursive script, likely a historical document or manuscript. The text is written in a dark ink on aged, yellowish paper. It consists of approximately 15 lines of text, starting from the top left and moving downwards. The script is highly stylized and difficult to decipher without a key.

Handwritten text in a cursive script, continuing from the previous page. It consists of approximately 15 lines of text, starting from the top left and moving downwards. The script is highly stylized and difficult to decipher without a key.

Handwritten text in a cursive script, likely a form of Japanese calligraphy (Sōsho). The text is arranged in approximately 15 horizontal lines across the page.

Handwritten text in a cursive script, likely a form of Japanese calligraphy (Sōsho). The text is arranged in approximately 15 horizontal lines across the page.

Handwritten text in Arabic script, consisting of approximately 14 lines of cursive script.

Handwritten text in Arabic script, consisting of approximately 14 lines of cursive script.

Handwritten text in Arabic script, likely a manuscript page. The text is arranged in approximately 15 horizontal lines, written from right to left. The script is a cursive style, possibly Maghrebi or Maghribi, with some characters that are characteristic of the Arabic alphabet. The ink is dark, and the paper shows signs of age and wear.

Handwritten text in Arabic script, likely a manuscript page. The text is arranged in approximately 15 horizontal lines, written from right to left. The script is a cursive style, possibly Maghrebi or Maghribi, with some characters that are characteristic of the Arabic alphabet. The ink is dark, and the paper shows signs of age and wear.

Handwritten text in a cursive script, likely a historical document or manuscript. The text is written in dark ink on aged paper and consists of approximately 15 lines of continuous writing.

Handwritten text in a cursive script, similar to the left page. It features several instances of red ink used as initials or corrections, notably in the middle and lower sections of the page.

Handwritten text in a cursive script, likely a historical document or letter. The text is written in a single column on the left page of the open book. The script is dense and characteristic of early modern Japanese cursive (sōsho).

Handwritten text in a cursive script, continuing from the previous page. The text is written in a single column on the right page of the open book. The script is dense and characteristic of early modern Japanese cursive (sōsho).







Handwritten text in a cursive script, likely a historical document or letter. The text is written in a dark ink on aged, yellowed paper. It consists of approximately 15 lines of text, starting from the top left and moving downwards. The script is highly stylized and characteristic of the Edo period.

Handwritten text in a cursive script, continuing from the previous page. It consists of approximately 15 lines of text, starting from the top left and moving downwards. The script is highly stylized and characteristic of the Edo period. A small red mark is visible near the top of the page.

物は *Amisobare* — 井 *Amisobare* の *Amisobare* といふ  
*Amisobare* — *Amisobare* の *Amisobare* といふ  
結末から *Amisobare* — *Amisobare* といふ  
おは *Amisobare* の *Amisobare* といふ  
Amisobare — *Amisobare* の *Amisobare* といふ  
おは *Amisobare* の *Amisobare* といふ  
Amisobare — *Amisobare* の *Amisobare* といふ  
おは *Amisobare* の *Amisobare* といふ  
Amisobare — *Amisobare* の *Amisobare* といふ  
おは *Amisobare* の *Amisobare* といふ  
Amisobare — *Amisobare* の *Amisobare* といふ  
おは *Amisobare* の *Amisobare* といふ

らら *Amisobare* といふ *Amisobare* の *Amisobare* といふ  
おは *Amisobare* といふ *Amisobare* の *Amisobare* といふ  
Amisobare — *Amisobare* の *Amisobare* といふ  
おは *Amisobare* の *Amisobare* といふ  
Amisobare — *Amisobare* の *Amisobare* といふ  
おは *Amisobare* の *Amisobare* といふ  
Amisobare — *Amisobare* の *Amisobare* といふ  
おは *Amisobare* の *Amisobare* といふ  
Amisobare — *Amisobare* の *Amisobare* といふ  
おは *Amisobare* の *Amisobare* といふ  
Amisobare — *Amisobare* の *Amisobare* といふ  
おは *Amisobare* の *Amisobare* といふ  
Amisobare — *Amisobare* の *Amisobare* といふ  
おは *Amisobare* の *Amisobare* といふ  
Amisobare — *Amisobare* の *Amisobare* といふ  
おは *Amisobare* の *Amisobare* といふ

Handwritten text in a cursive script, likely a historical document or letter. The text is written in a dark ink on aged, slightly yellowed paper. It consists of approximately 15 lines of text, with some characters appearing to be in a different script or dialect than the surrounding text. The handwriting is fluid and somewhat slanted.

Handwritten text in a cursive script, continuing from the previous page. The text is written in a dark ink on aged, slightly yellowed paper. It consists of approximately 15 lines of text, with some characters appearing to be in a different script or dialect than the surrounding text. The handwriting is fluid and somewhat slanted.

Handwritten text in a cursive script, likely a historical document or letter. The text is written in a dark ink on aged, yellowish paper. It consists of approximately 15 lines of text, starting with a small mark resembling a comma or a specific character on the left margin. The script is dense and characteristic of early modern Japanese calligraphy.

Handwritten text in a cursive script, continuing from the previous page. The text is written in a dark ink on aged, yellowish paper. It consists of approximately 15 lines of text, starting with a small mark resembling a comma or a specific character on the left margin. The script is dense and characteristic of early modern Japanese calligraphy.

Handwritten text in a cursive script, likely a historical document or letter. The text is written in a dark ink on aged, yellowish paper. It consists of approximately 15 lines of text, starting from the top left and moving downwards. The script is highly stylized and difficult to decipher without a key.

Handwritten text in a cursive script, continuing from the previous page. It consists of approximately 15 lines of text. There are several small red markings or corrections scattered throughout the text, notably a small red mark above the middle of the second line and another near the end of the fourth line. The text is written in a dark ink on aged, yellowish paper.

Handwritten text in a cursive script, likely a historical document or manuscript. The text is written in a fluid, connected style across approximately 12 lines.

Handwritten text in a cursive script, likely a historical document or manuscript. The text is written in a fluid, connected style across approximately 12 lines.

Handwritten text in a cursive script, likely a historical document or letter. The text is written in a fluid, connected style across approximately 12 lines. There are some red ink markings, possibly corrections or highlights, scattered throughout the text.

Handwritten text in a cursive script, continuing from the previous page. The text is written in a fluid, connected style across approximately 12 lines. There are some red ink markings, possibly corrections or highlights, scattered throughout the text.



Handwritten text in a cursive script, likely a historical document or manuscript. The text is written in black ink on aged, yellowish paper. It consists of approximately 15 lines of text, with some red markings interspersed. The script is dense and characteristic of early modern Japanese writing.

Handwritten text in a cursive script, continuing from the previous page. The text is written in black ink on aged, yellowish paper. It consists of approximately 15 lines of text, with some red markings interspersed. The script is dense and characteristic of early modern Japanese writing.

Handwritten text in a cursive script, likely a historical document or manuscript. The text is written in a dark ink on aged, yellowish paper. It consists of approximately 15 lines of text, starting from the top left and moving downwards. The script is highly stylized and difficult to decipher without a key.

Handwritten text in a cursive script, likely a historical document or manuscript. The text is written in a dark ink on aged, yellowish paper. It consists of approximately 15 lines of text, starting from the top left and moving downwards. The script is highly stylized and difficult to decipher without a key.

Handwritten text in a cursive script, likely a historical document or letter. The text is written in a dark ink on aged, yellowish paper. It consists of approximately 12 lines of text, starting with a large initial character on the left side of the page.

Handwritten text in a cursive script, likely a historical document or letter. The text is written in a dark ink on aged, yellowish paper. It consists of approximately 12 lines of text, starting with a large initial character on the left side of the page. A small red mark is visible near the bottom of the first line.

Handwritten text in a cursive script, likely a historical document or manuscript. The text is written in a dark ink on aged, yellowish paper. It consists of approximately 12 lines of text, starting from the top left and moving downwards. The script is highly stylized and difficult to decipher without a key.

Handwritten text in a cursive script, likely a historical document or manuscript. The text is written in a dark ink on aged, yellowish paper. It consists of approximately 12 lines of text, starting from the top left and moving downwards. The script is highly stylized and difficult to decipher without a key.

Handwritten text in a cursive script, likely a historical document or manuscript. The text is written in a dark ink on aged, yellowish paper. It consists of approximately 15 lines of text, starting with a large initial letter 'S' and ending with a smaller, possibly decorative or concluding mark.

Handwritten text in a cursive script, likely a historical document or manuscript. The text is written in a dark ink on aged, yellowish paper. It consists of approximately 15 lines of text, starting with a large initial letter 'S' and ending with a smaller, possibly decorative or concluding mark.



Handwritten text in a cursive script, likely a form of Arabic or Persian calligraphy, consisting of approximately 14 lines of text.

Handwritten text in a cursive script, likely a form of Arabic or Persian calligraphy, consisting of approximately 14 lines of text.

Handwritten text in Arabic script, consisting of approximately 15 lines of text on each page. The script is dense and cursive, typical of historical Islamic manuscripts. There are some red ink markings or corrections scattered throughout the text.



Handwritten text in a cursive script, likely a historical document or manuscript. The text is written on aged, yellowed paper and is oriented vertically on the right page of the open book. The script is dense and difficult to decipher due to its cursive nature and the fading of the ink.

