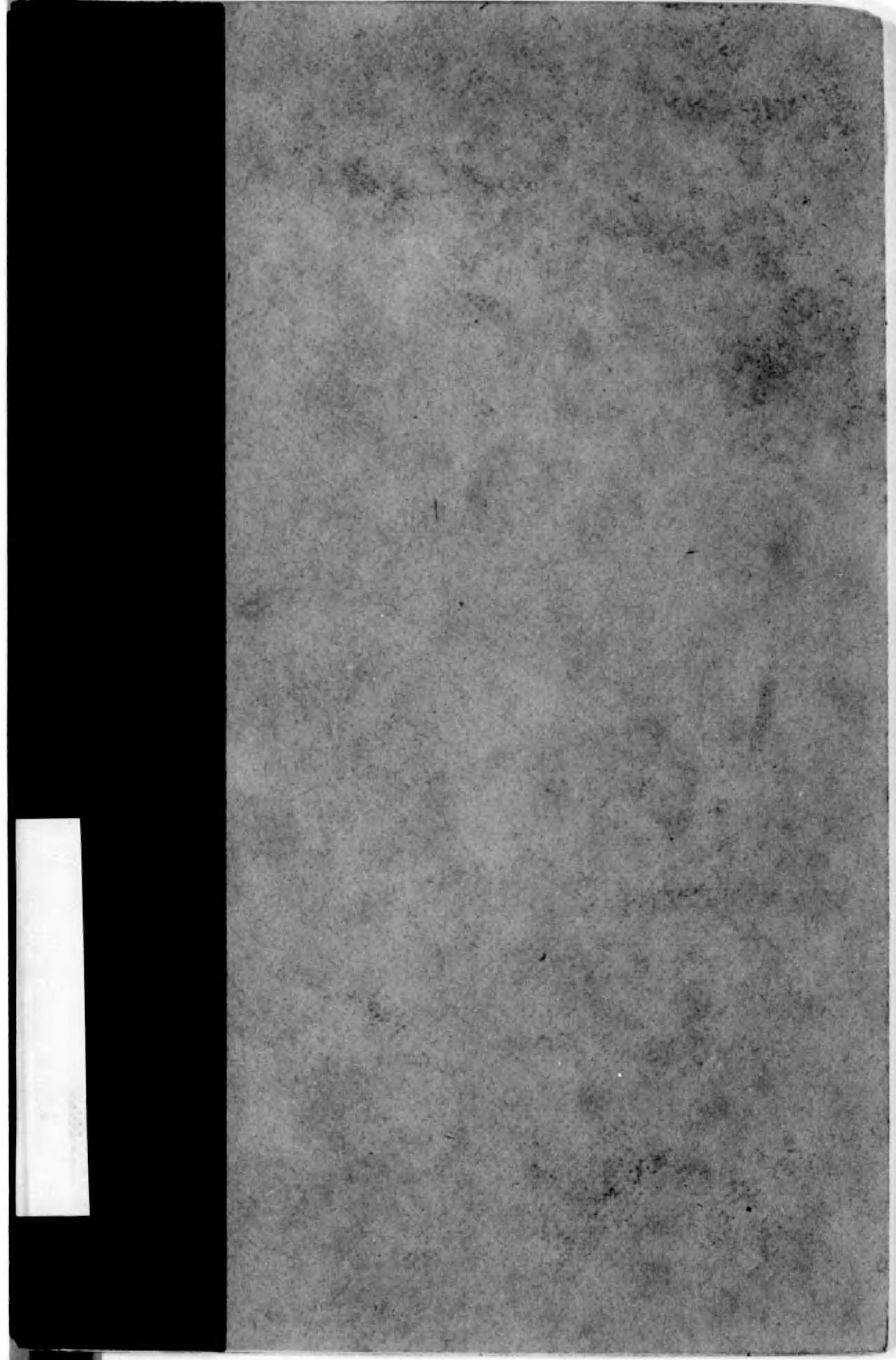
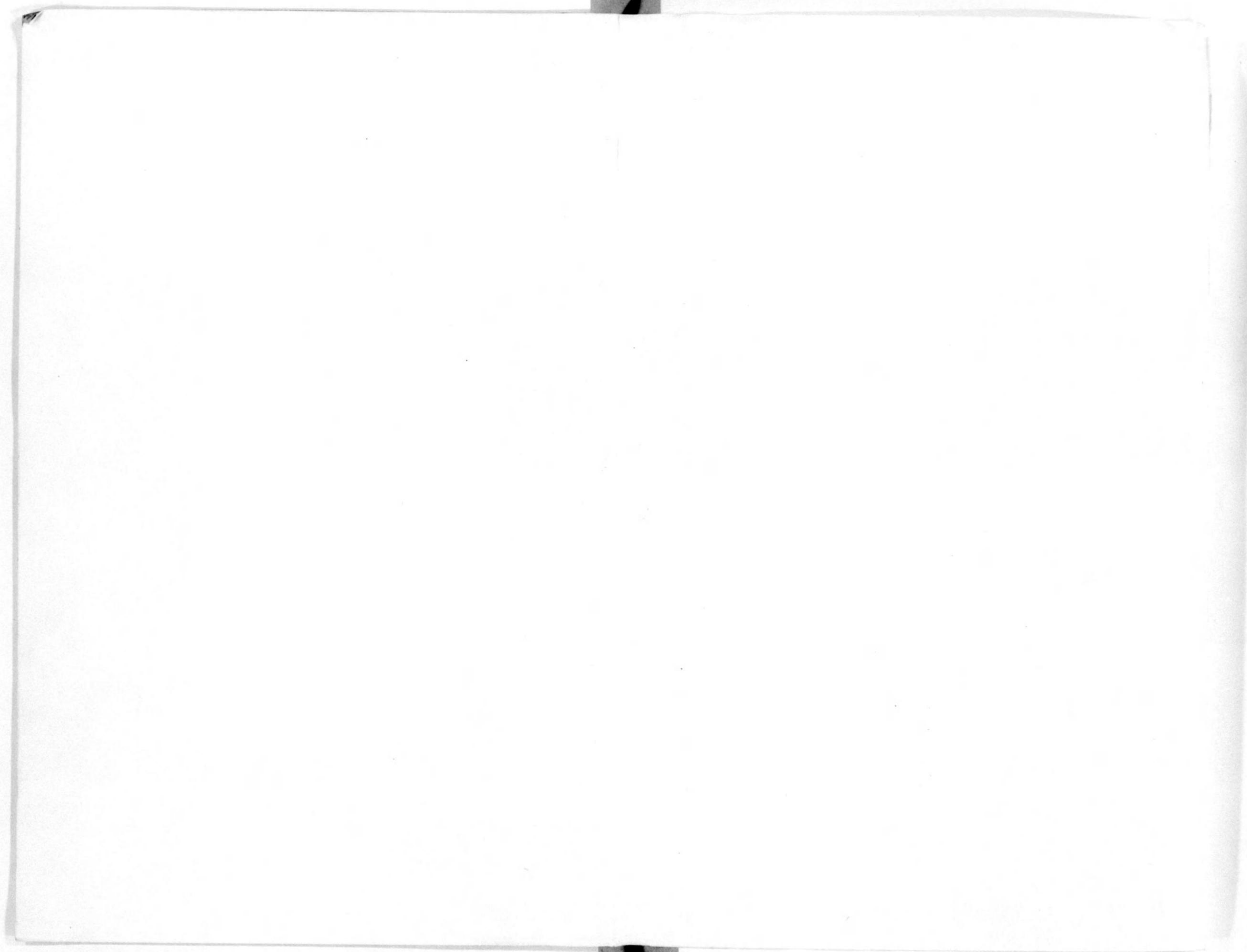




始





14.4

E 5M-11

454

臺灣對支那香港及南洋方面貿易一覽

臺灣總督府稅關

昭和五年六月迄分及前年對照

Table showing trade statistics for Taiwan against China, Hong Kong, and Southeast Asia from 1930 to 1935. Columns include trade type (import/export), region, and monthly/annual totals.

輸出品仕向地別價額 (支那及香港方面)

Detailed table of export values by destination region (China, Hong Kong, etc.) from 1930 to 1935. Includes sub-regions like Manchuria, North China, etc.

輸入品仕出地別價額 (支那及香港方面)

Detailed table of import values by origin region (China, Hong Kong, etc.) from 1930 to 1935. Includes sub-regions like Manchuria, North China, etc.

發行所寄贈本

備考 本表中大正十五年と昭和五年及昭和六年と... 凡そ基礎額は計上と... 凡そ基礎額は計上と...

輸出品往各地別價額		英國海峽殖民地及英屬		荷屬印度		比律賓		英領印度		佛領印度支那		暹羅		深太利利		合計
(南洋方面)		新加坡	其他	蘇門答臘	其他	馬尼拉	其他	孟買	其他	西貢	海防	暹羅	其他	深太利利	其他	
五年(六月止累計)	5,806	3,146	2,660	48,139	19,904	271,456	24,673	251	1,004	172	910	468	4,048	297	103,921	
四年()	5,511	3,041	2,469	46,935	22,104	290,372	23,428	1,004	1,004	172	910	468	4,048	297	1,002,206	
三年()	52,719	19,145	9,647	130,169	48,647	509,944	121,545	2,109	1,135	1,086	412	158	3,112	246,439	1,992,988	
二年()	22,179	44,710	164,779	76,298	68,265	423,669	314,435	2,286	2,386	412	158	3,112	246,439	2,411,843		
十五年()	27,622	42,289	1,139,342	82,570	54,707	464,949	1,736	174,712	147	1,769	96,294	3,588	5,818	492,519	2,745,024	

輸入品出地別價額		英國海峽殖民地及英屬		荷屬印度		比律賓		英領印度		佛領印度支那		暹羅		深太利利		合計
(南洋方面)		新加坡	其他	蘇門答臘	其他	馬尼拉	其他	孟買	其他	西貢	海防	暹羅	其他	深太利利	其他	
五年(六月止累計)	141	62	6,888	4,488	5,263	21,166	6,676	7,225	52,640	79,154	41	69,545	10,157	8	309,911	
四年()	476	139	3,936	295	1,780	42,709	833	24	6,400,971	7,122	305,266,159	12,651	7,500	169,106	306,259	
三年()	3,244	48,761	3,918	104	4,088	16,841	1,480	60	1,003,926	10,011	107	81,068	11,206	220,000	404,428	
二年()	289	41,168	3,082	1,171	1,220	1,511	1,031	168	10,004,550	43,468	25,517	99,425	18,758	120,283	304,271	
十五年()	4,233	60,615	28	925	3,255	136	817	107	5,600,971	308,695	84,456	18,892	6,211	164	470,925	

輸出品		英國海峽殖民地及英屬		荷屬印度		比律賓		英領印度		佛領印度支那		暹羅		深太利利		合計
(五年六月止累計)		新加坡	其他	蘇門答臘	其他	馬尼拉	其他	孟買	其他	西貢	海防	暹羅	其他	深太利利	其他	
1 生絲	14,539	4,767	290,720	15,045	27,286	1,000	1,000	1,000	1,000	1,000	1,000	1,000	1,000	1,000	1,000	
2 棉織品	42,300	3,284	21,400	1,257	1,257	1,257	1,257	1,257	1,257	1,257	1,257	1,257	1,257	1,257	1,257	
3 絲織品	11,750	6,474	477,600	56,474	56,474	56,474	56,474	56,474	56,474	56,474	56,474	56,474	56,474	56,474	56,474	
4 雜貨	12,001	2,067	11,000	5,471	5,471	5,471	5,471	5,471	5,471	5,471	5,471	5,471	5,471	5,471	5,471	
5 糖	2,080,010	2,067	11,000	5,471	5,471	5,471	5,471	5,471	5,471	5,471	5,471	5,471	5,471	5,471	5,471	
6 錫	496,610	81,845	3,231	31,283	31,283	31,283	31,283	31,283	31,283	31,283	31,283	31,283	31,283	31,283	31,283	
7 胡椒	282,814	29,067	562,969	13,614	13,614	13,614	13,614	13,614	13,614	13,614	13,614	13,614	13,614	13,614	13,614	
8 咖啡	69,672	14,537	562,969	13,614	13,614	13,614	13,614	13,614	13,614	13,614	13,614	13,614	13,614	13,614	13,614	
9 橡膠	188,049	43,889	196,485	79,559	79,559	79,559	79,559	79,559	79,559	79,559	79,559	79,559	79,559	79,559	79,559	
10 錫	67,749	4,462	188	79	79	79	79	79	79	79	79	79	79	79	79	
11 錫	198,229	7,651	145,069	7,964	7,964	7,964	7,964	7,964	7,964	7,964	7,964	7,964	7,964	7,964	7,964	
12 錫	3,856	12,128	1,616	4,628	4,628	4,628	4,628	4,628	4,628	4,628	4,628	4,628	4,628	4,628	4,628	
13 錫	1,000	1,000	1,000	1,000	1,000	1,000	1,000	1,000	1,000	1,000	1,000	1,000	1,000	1,000	1,000	
14 錫	1,000	1,000	1,000	1,000	1,000	1,000	1,000	1,000	1,000	1,000	1,000	1,000	1,000	1,000	1,000	
15 錫	1,000	1,000	1,000	1,000	1,000	1,000	1,000	1,000	1,000	1,000	1,000	1,000	1,000	1,000	1,000	
16 錫	1,000	1,000	1,000	1,000	1,000	1,000	1,000	1,000	1,000	1,000	1,000	1,000	1,000	1,000	1,000	
17 錫	1,000	1,000	1,000	1,000	1,000	1,000	1,000	1,000	1,000	1,000	1,000	1,000	1,000	1,000	1,000	
18 錫	1,000	1,000	1,000	1,000	1,000	1,000	1,000	1,000	1,000	1,000	1,000	1,000	1,000	1,000	1,000	
19 錫	1,000	1,000	1,000	1,000	1,000	1,000	1,000	1,000	1,000	1,000	1,000	1,000	1,000	1,000	1,000	
20 錫	1,000	1,000	1,000	1,000	1,000	1,000	1,000	1,000	1,000	1,000	1,000	1,000	1,000	1,000	1,000	
21 錫	1,000	1,000	1,000	1,000	1,000	1,000	1,000	1,000	1,000	1,000	1,000	1,000	1,000	1,000	1,000	
22 錫	1,000	1,000	1,000	1,000	1,000	1,000	1,000	1,000	1,000	1,000	1,000	1,000	1,000	1,000	1,000	
23 錫	1,000	1,000	1,000	1,000	1,000	1,000	1,000	1,000	1,000	1,000	1,000	1,000	1,000	1,000	1,000	
24 錫	1,000	1,000	1,000	1,000	1,000	1,000	1,000	1,000	1,000	1,000	1,000	1,000	1,000	1,000	1,000	
25 錫	1,000	1,000	1,000	1,000	1,000	1,000	1,000	1,000	1,000	1,000	1,000	1,000	1,000	1,000	1,000	
26 錫	1,000	1,000	1,000	1,000	1,000	1,000	1,000	1,000	1,000	1,000	1,000	1,000	1,000	1,000	1,000	
27 錫	1,000	1,000	1,000	1,000	1,000	1,000	1,000	1,000	1,000	1,000	1,000	1,000	1,000	1,000	1,000	
28 錫	1,000	1,000	1,000	1,000	1,000	1,000	1,000	1,000	1,000	1,000	1,000	1,000	1,000	1,000	1,000	
29 錫	1,000	1,000	1,000	1,000	1,000	1,000	1,000	1,000	1,000	1,000	1,000	1,000	1,000	1,000	1,000	
30 錫	1,000	1,000	1,000	1,000	1,000	1,000	1,000	1,000	1,000	1,000	1,000	1,000	1,000	1,000	1,000	
31 錫	1,000	1,000	1,000	1,000	1,000	1,000	1,000	1,000	1,000	1,000	1,000	1,000	1,000	1,000	1,000	
32 錫	1,000	1,000	1,000	1,000	1,000	1,000	1,000	1,000	1,000	1,000	1,000	1,000	1,000	1,000	1,000	
33 錫	1,000	1,000	1,000	1,000	1,000	1,000	1,000	1,000	1,000	1,000	1,000	1,000	1,000	1,000	1,000	
34 錫	1,000	1,000	1,000	1,000	1,000	1,000	1,000	1,000	1,000	1,000	1,000	1,000	1,000	1,000	1,000	
35 錫	1,000	1,000	1,000	1,000	1,000	1,000	1,000	1,000	1,000	1,000	1,000	1,000	1,000	1,000	1,000	
36 錫	1,000	1,000	1,000	1,000	1,000	1,000	1,000	1,000	1,000	1,000	1,000	1,000	1,000	1,000	1,000	
37 錫	1,000	1,000	1,000	1,000	1,000	1,000	1,000	1,000	1,000	1,000	1,000	1,000	1,000	1,000	1,000	
38 錫	1,000	1,000	1,000	1,000	1,000	1,000	1,000	1,000	1,000	1,000	1,000	1,000	1,000	1,000	1,000	
39 錫	1,000	1,000	1,000	1,000	1,000	1,000	1,000	1,000	1,000	1,000	1,000	1,000	1,000	1,000	1,000	
40 錫	1,000	1,000	1,000	1,000	1,000	1,000	1,000	1,000	1,000	1,000	1,000	1,000	1,000	1,000	1,000	
41 錫	1,000	1,000	1,000	1,000	1,000	1,000	1,000	1,000	1,000	1,000	1,000	1,000	1,000	1,000	1,000	
42 錫	1,000	1,000	1,000	1,000	1,000	1,000	1,000	1,000	1,000	1,000	1,000	1,000	1,000	1,000	1,000	
43 錫	1,000	1,000	1,000	1,000	1,000	1,000	1,000	1,000	1,000	1,000	1,000	1,000	1,000	1,000	1,000	
44 錫	1,000	1,000	1,000	1,000	1,000	1,000	1,000	1,000	1,000	1,000	1,000	1,000	1,000	1,000	1,000	
45 錫	1,000	1,000	1,000	1,000	1,000	1,000	1,000	1,000	1,000	1,000	1,000	1,000	1,000	1,000	1,000	
46 錫	1,000	1,000	1,000	1,000	1,000	1,000	1,000	1,000	1,000	1,000	1,000	1,000	1,000	1,000	1,000	

輸入品		英國海峽殖民地及英屬		荷屬印度		比律賓		英領印度		佛領印度支那		暹羅		深太利利		合計
(五年六月止累計)		新加坡	其他	蘇門答臘	其他	馬尼拉	其他	孟買	其他	西貢	海防	暹羅	其他	深太利利	其他	
1 生絲	14,539	4,767	290,720	15,045	27,286	1,000	1,000	1,000	1,000	1,000	1,000	1,000	1,000	1,000	1,000	
2 棉織品	42,300	3,284	21,400	1,257	1,257	1,257	1,257	1,257	1,257	1,257	1,257	1,257	1,257	1,257	1,257	
3 絲織品	11,750	6,474	477,600	56,474	56,474	56,474	56,474	56,474	56,474	56,474	56,474	56,474	56,474	56,474	56,474	
4 雜貨	12,001	2,067	11,000	5,471	5,471	5,471	5,471	5,471	5,471	5,471	5,471	5,471	5,471	5,471	5,471	
5 糖	2,080,010	2,067	11,000	5,471	5,471	5,471</										

輸入品

(按品別及品類別)

Table with columns for item names and values, including sub-totals for various categories.

輸出品

(按品別及品類別)

Table with columns for item names and values, including sub-totals for various categories.

合計

(按品別及品類別)

Summary table for the entire page, showing total values for various categories.

輸入品

(按品別及品類別)

Table with columns for item names and values, including sub-totals for various categories.

輸出品

(按品別及品類別)

Table with columns for item names and values, including sub-totals for various categories.

合計

(按品別及品類別)

Summary table for the entire page, showing total values for various categories.

輸入品

(按品別及品類別)

Table with columns for item names and values, including sub-totals for various categories.

輸出品

(按品別及品類別)

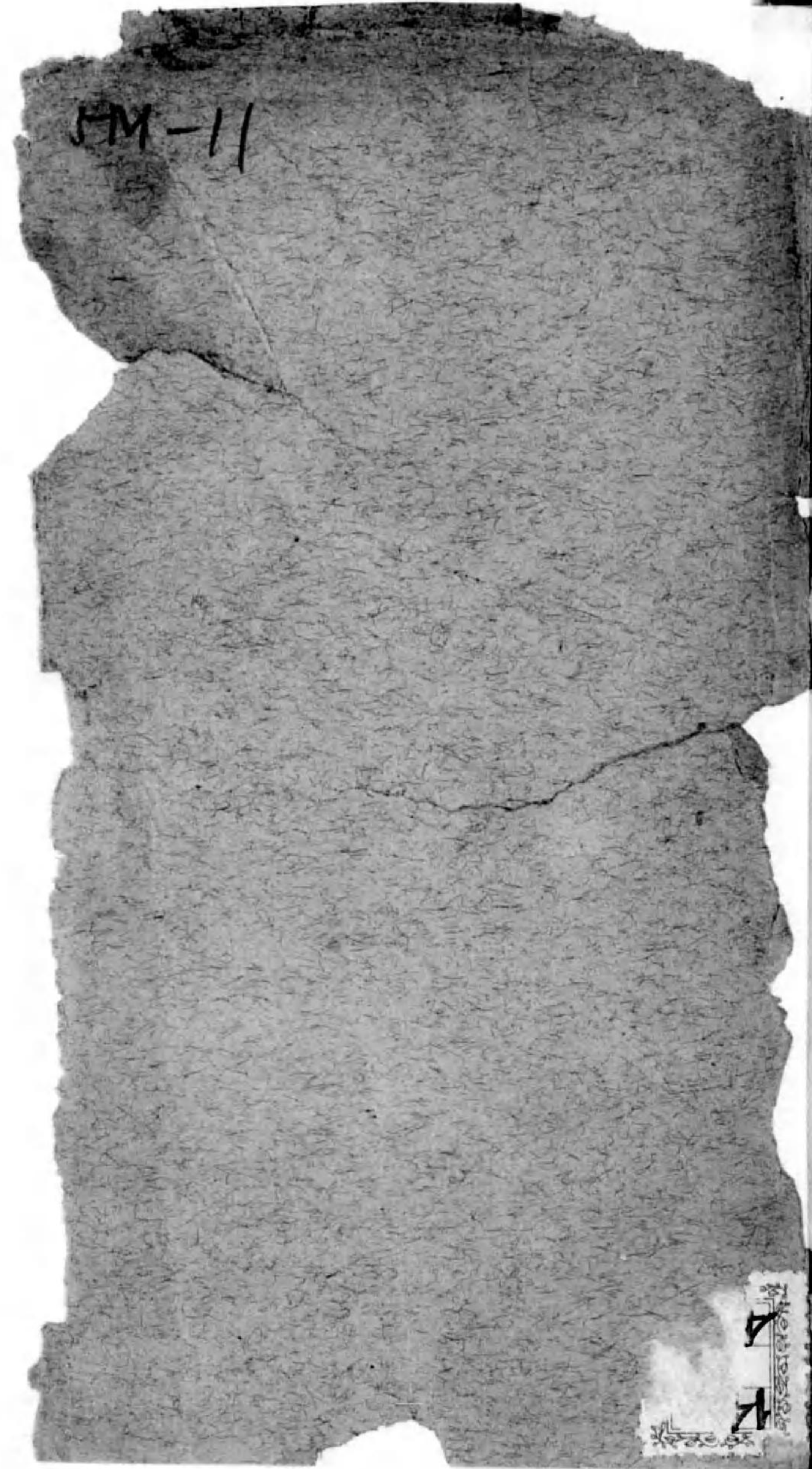
Table with columns for item names and values, including sub-totals for various categories.

合計

(按品別及品類別)

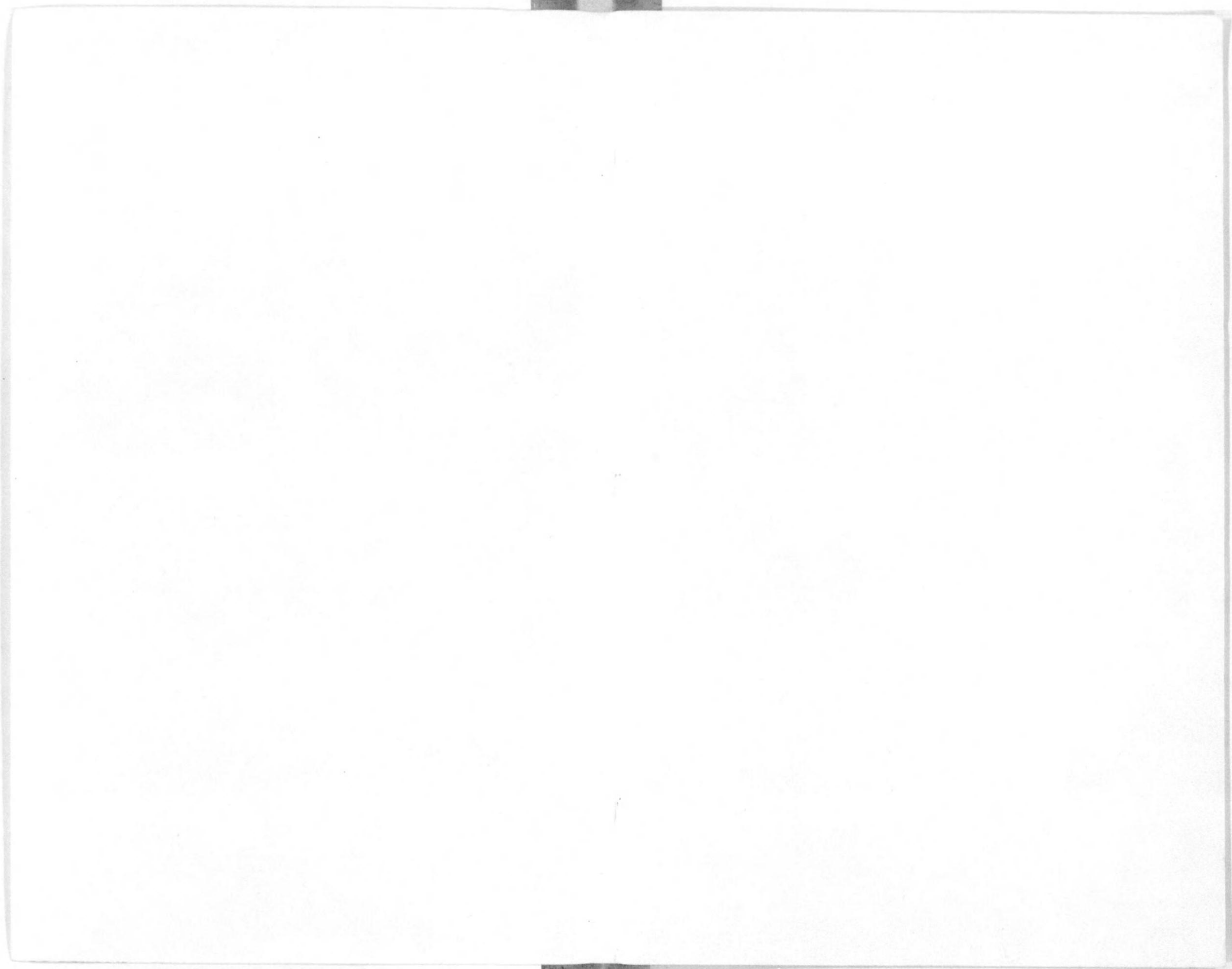
Summary table for the entire page, showing total values for various categories.

0 1 2 3 4 5 6 7 8 9 10 11 12 13 14 15



PM-11

Small label with illegible text and a logo at the bottom right corner of the paper.



14. 4-454



1200600152163

14.4

454

終