

GHQ/SCAP Records(RG 331)
Description of contents

- (1) Box no. 2061
- (2) Folder title/number: (92)
Konnichi No Mondai
- (3) Date: ?

(4) Subject:

Classification	Type of record
340	c

(5) Item description and comment:

(6) Reproduction: Yes No

(7) Film no.

Sheet no.

Staff of
KONNICHU-NO-MONDAI-SHA,
the book publisher,
July 1937 - Dec.
1941

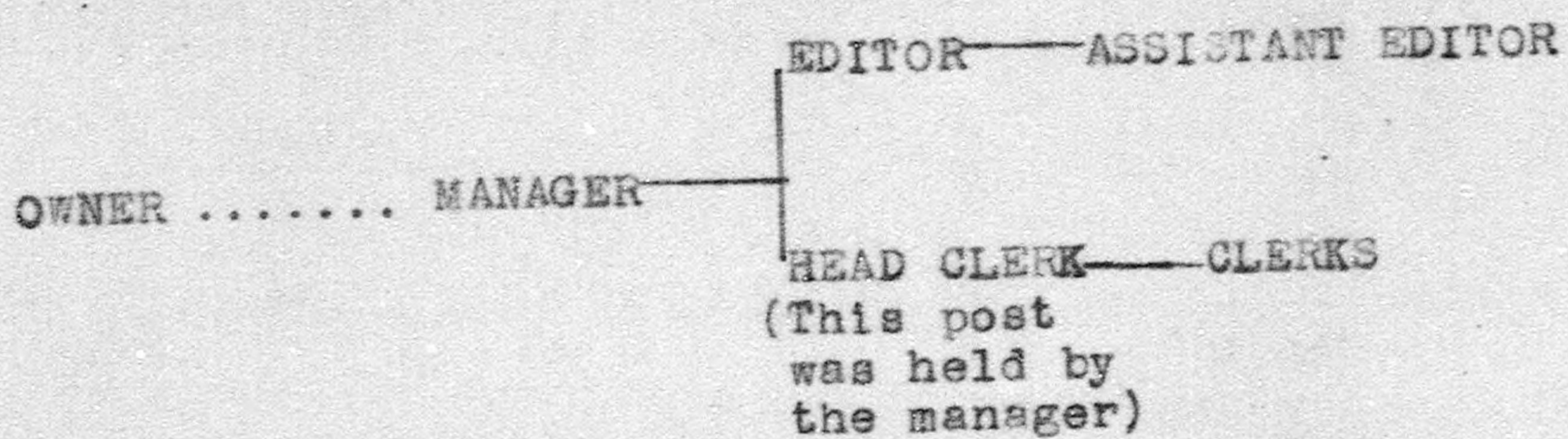
Position	Name	Date of assumption	Date of resignation	Present profession	Present address	Remarks
Owner ✓	ITO, Takabumi	Oct 1936	Jan 1943	none	103 Sifukucho, suginakiku Tokyo	Retired when closed shop accepting governmental suggestion
Manager	YAMANASHI, Yoshitaka	Oct 1936	Jan 1943	dead		Died of illness, May 1945
Editor	KINJO, Yosuke	Feb 1937	May 1941	dead		Died of illness, Feb 1942
Assistant Editor	EGAWA, Shinya	Aug 1938	Jan 1943	dead		Died of illness, Aug 1946
Head Clerk	YAMANASHI, Yoshitaka	Oct 1936	Jan 1943	dead		Died of illness, May 1945
Clerk	ONO, Takehiko	Oct 1936	Jan 1942	Clog maker	3, Kamitatsunomachi Kagoshima	Also worked as office-boy
Clerk	MOCHIZUKI, Yokichi	Nov 1936	Jan 1942	Workman	321, Mizumoto-koicho, Katsushika Tokyo	Also worked as Office-boy
Clerk	IGARASHI, Shimpachi	Feb 1938	Mar. 1941	Workman	1289, Uehara, Shibuya, Tokyo	Also worked as office-boy

Organization of
KONNICHU-NO-MONDAI-SHA,
July 1937 - Dec. 1941

Being a publishing agent of smaller scale, the Konnichi-no-Mondai-Sha had followed no rigid rules in making out its business. Duties of the staff could be classified roughly as follows.

- 1) Owner (ITO, T.): Responsible for finance, and mainly attended, being the managing director of a printing company (THE TOTO PRESS, Ltd.), to business of printing and binding of books compiled by the editor.
- 2) Editor (KINJO, Y.): Made plans of publication and edited books and periodicals.
- 3) Assistant Editor (EGAWA, S.): Assistant to the editor.
- 4) Manager (YAMANASHI, Y.): Responsible for general management and for distribution of books, holding additionally the post of head clerk and giving advice to the editor.
- 5) Clerks (ONO, MOCHIZUKI, and IGARASHI): Assistant to the manager.

Diagram of organization of
KONNICHI-NO-MONDAI-
SHA,
July 1937 - Dec. 1941



REMARKS: The shop was closed in 1943 as it accepted forcible suggestions given by the government which intended to re-organize Japanese publishers.