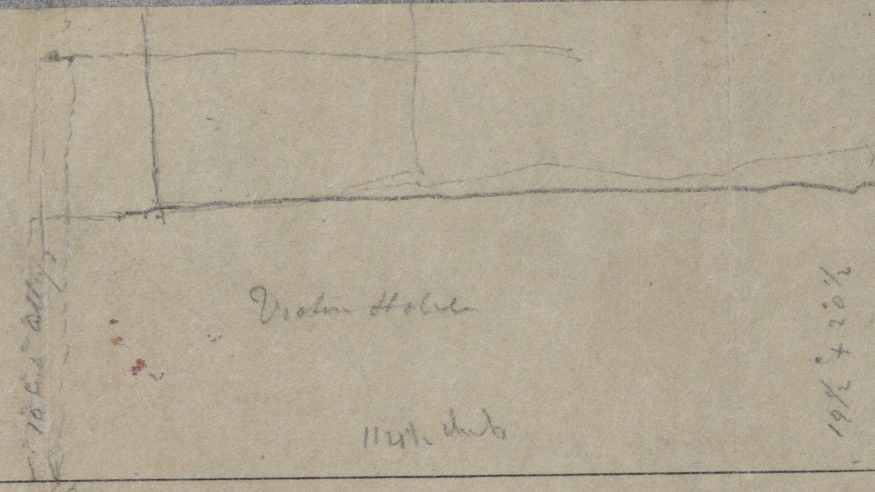
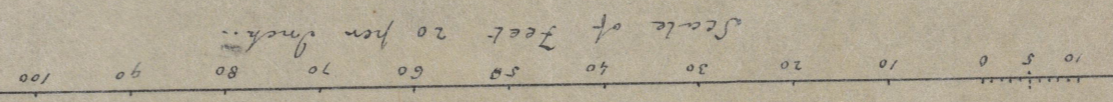


42.3	21.6	106.5
62	62	42.3
104.3	9.8 Alley	228.8
20.10		113.9
104.3	Victoria H.	114.11
9.6		
113.9		

So 114.11 = Victoria Hotel & Truck about 40 feet
 8.4 = Alley
 105.5 = Train Lots each 26.1
 228.8 = whole distance

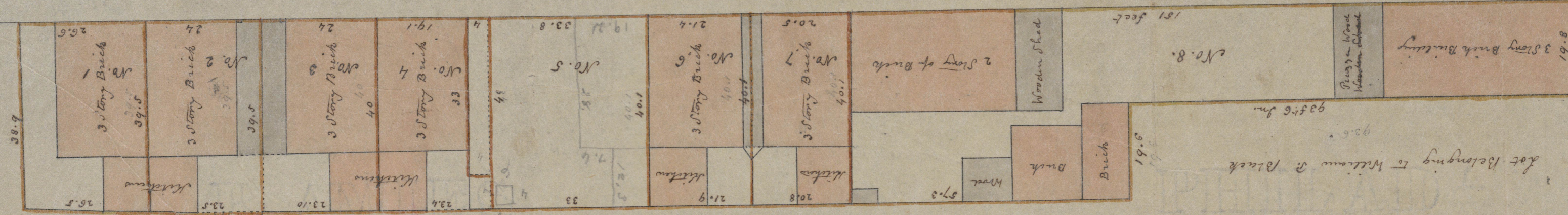
21.1	186.5
5	42.3
105.5	228.8
10	
114.6	
23.0	

Surveyed by order of Council in January 1846
 by Charles Parker
 City Surveyor



Princeds Street 20 feet wide

Lot Belonging to
 Christopher Williams



Lot Belonging to William R Black

94c

King Street