

## Historic, archived document

Do not assume content reflects current scientific knowledge, policies, or practices.



Index\*  
237 **STRAWBERRIES - BLUEBERRIES**  
FRUIT TREES • SMALL FRUITS • FLOWERS

# RAYNER'S

1954

*BERRY*

*BOOK*

LIBRARY  
RECEIVED  
★ JAN 27 1954 ★  
U. S. Department of Agriculture



RAYNER BROTHERS, SALISBURY, MD.



# Azaleas

## Natural Soil Companions to Your Blueberries

Today's most desired flowering shrub, the Azalea is so popular that plants are seldom sufficient to meet the demand. Ideal for foundation and border plantings. Azaleas make successful growth and flowering if given an acid soil. Mulch materials such as peat moss, rotted oak leaves or woods leaf mold keep them happy and acidity may be improved by feeding 4 to 8 ounces of aluminum sulfate a square yard. (See Blueberry section this catalog.)



### THREE GREAT VARIETIES

CORAL BELLS - Dainty, Shell-pink

HINODEGIRI - Brilliant scarlet

SNOW - Large, pure white

2 yr. Plants

**90c ea.**

3 for \$2.50

Plants are from twice transplanted field beds. Much hardier than forced growth hothouse plants.

**NEW**  
*Amazing!*

PLANT PAT 993

**red rich**

EVERBEARING

TRADE MARK

**Leads Them All!**

*Pick and Pick and Pick  
Big, Sugar Sweet Red Rich  
Summer Long Until Frost*

The plant discovery of the century! An ever-bearing variety so unusually good it has been granted a plant patent. Sweetest of all everbearing strawberries and the most productive. Strong, vigorous plants that grow and grow and fruit and fruit.

ONLY GENUINE IN THIS  
CARTON



PAT. No. 993

Red Rich Postpaid Prices:

12 plants for.....	\$ 2.95
25 plants for.....	5.00
50 plants for.....	8.50
100 plants for.....	15.00

**Be Sure . . . PLANT RED RICH  
It's Delicious!**





# Rayner Brothers Offer You A Complete Nursery Service

We are specialists in berry plants and are recognized as leading growers of Strawberry and Blueberry plants. Now we have expanded our operations and offer a complete line of nursery stock to supply the entire needs of our customers.

## *This Catalog Lists*

COMPLETE LINE OF STRAWBERRY PLANTS, Pages 4-17

BEST KNOWN BLUEBERRY PLANT VARIETIES, Pages 36-37

STANDARD AND DWARF FRUIT TREES, Pages 28-29

CHESTNUT, WALNUT, OTHER NUT TREES, Page 30

FLOWERING TREES AND SHRUBS, Pages 32-33

EVERGREENS, RHODODENDRONS, HOLLY, Pages 34-35

GRAPES, RASPBERRIES, BLACKBERRIES, Pages 25-27

MULTIFLORA ROSE, SHADE TREES, Page 31

ASPARAGUS, RHUBARB, Page 24

FERTILIZER, INSECTICIDES, BASKETS, Pages 20-21

## RAYNER BROTHERS OFFER YOU . . .

1. The Best in Nursery Grown Plants.
2. Complete Planting Instructions With Your Order.
3. Our Exclusive "Better Berries" Bulletins Mailed to You at Timely Intervals at No Charge.

RAYNER BROTHERS HAVE A CONTINUING INTEREST IN YOUR PLANTINGS.  
YOU NEED NO PREVIOUS EXPERIENCE TO BECOME A SUCCESSFUL

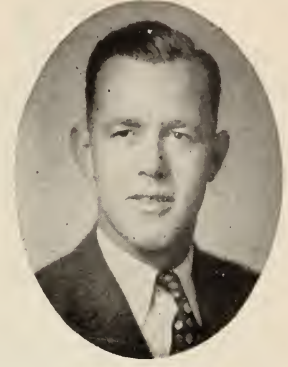




# To Our Friends and Customers



H. JACK W. RAYNER



S. H. (BOB) RAYNER

It is with pleasure we send you our catalog. In this book we do our best to describe the berry plants and trees we have grown for your planting needs. Of course, we hope you will buy Rayner's plants and trees. We have made as true a description of each variety as is humanly possible, with actual photos wherever we could so that you can judge for yourselves the varieties you may wish to plant.

By working with the U. S. Dept. of Agriculture, Rayner's are one of the first Nurseries to offer the New Virus Free strawberry plants. The

varieties we have to offer are described throughout this catalog. This we believe will be a boom to strawberry growing, larger crops of bigger berries, with better fruiting beds will be the rule. Rayner's are always looking for better plants and methods to improve our customers berry crops and enlarge his profits.

Due to hot dry weather of the past summer strawberry plants will again be on the scarce side. We did have irrigation on 80 acres of our plants thus we do have a fair supply. However we do not expect to have any surplus and advise placing your order early.

We thank you for the orders you have sent us in the past, and regret that we had to return so many last year because of the shortage of plants. With an increased acreage we expect to be able to fill all orders this year. But, to be sure please order early.

## Rayner Brothers

**NO MATTER HOW MUCH YOU PAY**

You will never buy berries as good as the fresh harvests of your own locality. With "shipped-in" berries the quality and flavor cannot match the vine-ripened perfection right out of the patch. That's why more and more folks grown their own. Grow more! Save more! Have more!

### RAYNER'S PLANTS PLEASE THE GROWER.



Harvesting A Good Crop of Fine Berries from Rayner's Plants

Clay, N. Y.

As you can see this picture did not come out too good — the plants to the left are Scarlet Beauty. I am standing in the Fairland rows, they were wonderful, almost like picking grapes. This is the patch I talked to Jack Rayner about. They were fine.

C. C. Farling

### Fortune Fortunate In Berry Growing

Harry Fortune, of Virjesmar Heights laid claim today to having the largest strawberry in the Covington area.

He brought up to the Virginian office a group of 31 strawberries which completely filled up one basket.

The largest berry, which will be presented to Mayor H. W. Robertson, measures eight inches in circumference.

### Local Paper Reports Success Customer Had With Rayner's Plants

Covington, Va.

Sending you a clipping from our local paper, these berries were Fair-peak variety. Your plants have always done fine for me and I hope you can put this in your catalog.

Harry Fortune

PLANTING SUCCESS BEGINS WITH AN ORDER FROM RAYNER BROTHERS



**Grow Hundreds of Quarts of Luscious**

# Strawberries

**in Your Own Backyard!**

No idle boast - no empty promise! A quart of marvelous, vine-ripened, red-ripe, juicy-sweet strawberries from each plant set . . . 100 qts. harvested from a 20'x25' garden plot set to 100 plants is not a rare accomplishment as our customers attest in the pages of this catalog. Surveys show an average of one pint to one quart per plant set.

**Ideal Garden Collections - All Postpaid!**

<p><b>No. 1 Northern Garden</b></p> <p>25 PREMIER 25 ROBINSON 25 CATSKILL 25 TENN. BEAUTY</p> <hr/> <p>100 Plants (\$5.19 Value) <b>\$3.79</b></p> <p>2 Gardens 200 plants \$5.95 POSTPAID</p>	<p><b>No. 2 All Season Garden</b></p> <p>25 TEMPLE 25 FAIRFAX 25 REDCROP 25 SUPERFECTION</p> <hr/> <p>100 Plants (\$6.29 Value) <b>\$4.69</b></p> <p>2 Gardens 200 plants \$7.59 POSTPAID</p>	<p><b>No. 3 Vigor Garden</b></p> <p>25 TEMPLE 25 SPARKLE 25 FAIRLAND 25 ROBINSON</p> <hr/> <p>100 Plants (\$5.39 Value) <b>\$3.98</b></p> <p>2 Gardens 200 plants \$5.99 POSTPAID</p>	<p><b>No. 8 Everbearing Garden</b></p> <p>25 GEM 25 MASTODON 25 SUPERFECTION</p> <hr/> <p>75 Plants (\$7.09 Value) <b>\$5.25</b></p> <p>2 Gardens 150 plants \$9.25 POSTPAID</p>
--	---	---	--



## Tops in Flavor



**ORDER THESE GREAT GARDEN COLLECTIONS**

Are you seeking the very best in strawberry flavor? Listed here are the choice varieties of flavor-conscious growers in New York, Ohio, Penna., New Jersey, Maryland, Virginia, West Va., the New England States and the Middle West. Completely described in this catalog.

<p><b>No. 4 Garden</b></p> <p>25 FAIRFAX 25 TEMPLE 25 SPARKLE 25 FAIRPEAKE 25 REDSTAR</p> <hr/> <p>125 Plants (\$6.74 Value) <b>\$5.10</b></p> <p>POSTPAID</p>	<p><b>No. 5 Garden</b></p> <p>50 FAIRFAX 50 TEMPLE 50 SPARKLE 50 FAIRPEAKE 50 REDSTAR</p> <hr/> <p>250 Plants (\$11.29 Value) <b>\$8.30</b></p> <p>POSTPAID</p>	<p><b>No. 6 Garden</b></p> <p>100 FAIRFAX 100 TEMPLE 100 SPARKLE 100 FAIRPEAKE 100 REDSTAR</p> <hr/> <p>500 Plants (\$18.26 Value) <b>\$13.50</b></p> <p>POSTPAID</p>	<p><b>No. 7 Garden</b></p> <p>200 FAIRFAX 200 TEMPLE 200 SPARKLE 200 FAIRPEAKE 200 REDSTAR</p> <hr/> <p>1000 Plants (\$32.09 Value) <b>\$23.69</b></p> <p>POSTPAID</p>
--	---	---	--

**Discover for Yourself the Pleasure and Profits of a Strawberry Garden**

# **NEW!! POCAHONTAS**

Introduced this year by U. S. D. A. Bureau of Plant Industry, and Va. Truck Experiment Station. Pocahontas was tested as US-3745 cross of Tennessee Shipper and Midland, raised in Beltsville Md., in 1947 selected during the fruiting season of 1948.

Pocahontas ripens about a week later than Blakemore, berries average large in size and maintain their size well throughout the picking season. Color of the berries is a strong vivid red, a little deeper red than Blakemore, are glossy have a tough skin, as firm as Blakemore, with slightly sunken seeds. Uniform in shape. Good tart flavor.

Makes a vigorous plant growth, very productive, you will have no trouble growing a good fruiting bed. Pocahontas produces a much larger crop than Blakemore at tests made at U. S. D. A., Beltsville, Md. station.

Has proven satisfactory from New Jersey to North Carolina and west to Arkansas. Ideal for freezing or canning.

This new variety has looked good to us for some time, and we heartily recommend it. Plant some this year and be the first in your community to have this new sort.

**PRICES: 100 plants \$4.00; 500 plants \$12.50. Complete price list on page 19.**



## ***New!* DIXIELAND**



Introduced this year by U.S.D.A. Bureau of plant Industry, and North Carolina Experiment Station, Raleigh, N. C. Dixieland was tested as US-3758. Also a cross of Tem. Shipper and Midland. Raised in 1947, selected during the season of 1948.

Ripening season is about the same as Blakemore. Berries average medium to large, considerably larger than Blakemore. They are very glossy with a vivid red color, slightly deeper red than Blakemore, have a tough skin, firmer than Blakemore. Ideal for long shipment, canning or freezing. Delicious flavor, slightly acid. Rates high with the frozen package trade.

Plants are vigorous and productive. Yields better than most varieties from Washington, D. C., to North Carolina and West to Missouri. In tests at Beltsville, Md., Dixieland yielded 403 crates to Blakemore 241.

Has been tested from New Jersey to North Carolina and westward to Arkansas, and is promising throughout this area. As plants will be scarce this year we urge you to order a trial quantity of these plants now. We will be sold out early and they do look good.

**DIXIELAND PRICES: 100 plants \$4.00; 500 plants \$12.50. Complete price list page 19.**

## ***New!* ALBRITTON**

Introduced by the N. C. Experiment Station in 1952, this variety has become very popular in North Carolina and as far North as Maryland. We have not seen it growing in any other sections, however it is quite promising for the Southeastern and Central Atlantic States. It out-yielded both Massey and Blakemore in the Wallace section.

Berries are large, average larger than Massey, ripens early, and have been very productive. Have a light red color and makes a very attractive package, bringing top market prices at all markets.

We have a nice supply of Virus Free plants to offer this spring. The parent stock was supplied by the U. S. Dept. of Agriculture. They have made wonderful beds even in the dry weather. This variety is truly worthy of a trial. Plant some this spring.

**ALBRITTON PRICES: 100 plants \$3.20; 1000 plants \$16.00. Complete price list page 19.**



# TEMPLE

Leading **Early**  
In Many Sections

- GREAT PRODUCER
- LONG FRUITING
- FINE FLAVOR
- LARGE BERRIES
- FIRM BEAUTY
- VERY VIGOROUS
- WIDE SOIL RANGE
- GOOD SHIPPERS
- EXCELLENT FROST RESISTANCE
- RED STELE RESISTANT



- Growers from North Carolina to Maine report excellent production.
- As many as 12 pickings over a period of 25 days.

## Second only to Premier Throughout the Northeast

Rayner Brothers was one of the first nurseries in the United States to introduce TEMPLE. In a relatively short time it has become a sales leader and growers from Virginia to Maine are calling it the best all around strawberry.

TEMPLE productiveness ranks well up with Premier and it rates better than Premier in flavor and firmness. The vigor of TEMPLE has to be seen to be fully appreciated. Plants have a healthy, robust appearance and just grow, grow and grow while supporting tremendous runner growth.

TEMPLE has what you want in an early strawberry—quality production of beautiful berries that will SELL THEMSELVES — a long fruiting season and excellent frost resistance.

**Wide Soil Range**—Does well in moist, poorly drained soil and is also successful in higher, upland soils. Excellent frost resistance.

**Space Wide In Row**—Free bedding habit of TEMPLE suggests spacing wide in row, a minimum of 18 inches and up to 24 inches. Planting too close may cause such dense beds that berry size, yield and quality may be affected.

**Use Fertilizer Sparingly**—The best practice is an early fall fertilizing with little or no fertilizing in the spring. Heavy spring applications may cause too dense foliage growth.

Temple Prices	
25 for	\$ 1.20
50 for	2.05
100 for	3.25
200 for	5.70
250 for	6.55
300 for	7.40
500 for	10.25
750 for	13.60
1000 for	16.50
In 5000 lots	14.50

Complete Price List and Ordering Information on Pages 18 & 19.

**STRAWBERRIES MAKE MONEY**

One of the best cash crops with growers through out the country.

A profitable crop for small gardener as well as commercial grower. You can make BIG returns on a small investment.

Bethlehem, Pa.

The Temple plants I bought of you last year have developed a wonderful bed of matted rows, and will produce a fine crop this year.

One of the dwarf pears I got from you two years ago had 7 beautiful pears. Was going to send you a picture of the tree but a wind storm ruined my plans.

W. F. Reader

**Strawberries  
Are As Easy to Grow  
as Any Garden Crop**

Strawberries are the most widely adapted fruit crop and grow in a wide range of soils and climates. A good crop may be expected in any soil that will produce a satisfactory vegetable crop. Strawberries require no special tools or equipment for cultivation other than used in the average garden.



# Most Widely Planted Strawberry

*Rayner's  
Surecrop*

**PREMIER**  
(or Howard 17)

**BIG YIELDS  
PROFITS**

**THE FROST PROOF  
EARLY STRAWBERRY**



PREMIER leads all strawberry varieties in total acreage throughout the Northeast. From the southern range of the Blue Ridge Mountains to the most northern States — in Pennsylvania, New York, Ohio, New England and areas of similar climate — PREMIER is sure to be included in the plantings of large berry growers.

Strawberry beds from Rayner's "Sure-Crop" PREMIER will make a crop under the most trying conditions. They are as nearly frost-proof as a strawberry can be and no other variety has proved more reliable and productive over the past 26 years.

Profit from the experience of thousands of successful growers. Be sure to include some PREMIER in your plant order!

Premier Prices	
25 for .....	\$ 1.20
50 for .....	2.00
100 for .....	3.20
250 for .....	5.60
500 for .....	6.40
750 for .....	7.20
1000 for .....	10.00
1500 for .....	13.20
2000 for .....	16.00
In 5000 lots .....	15.00

Complete Price List and Ordering Information on pages 18 & 19.

This year we are offering a new strain of VIRUS FREE PREMIER. The parent stock was furnished us by the U. S. Department of Agriculture, Beltsville, Maryland.

This virus free strain is a much more vigorous grower than any other Premier. When they are growing throughout the summer the plants look like a different variety, however, the berries are much the same as regular Premier at harvest, runners somewhat larger and are more productive.

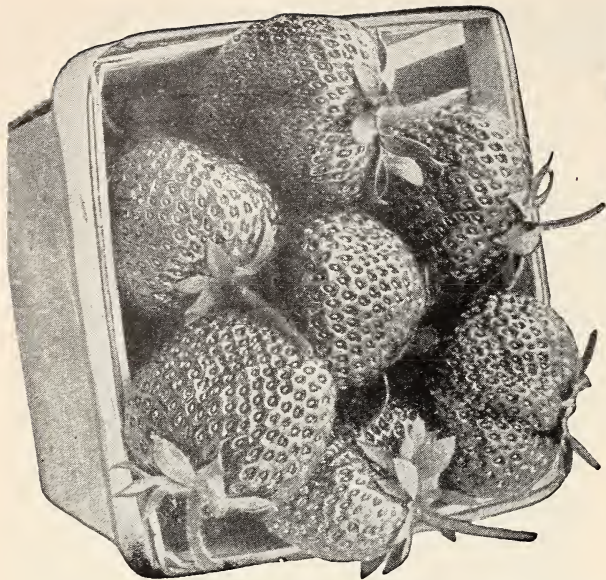
**LARGE BERRIES** — Fruit runs large to very large at first pickings to medium toward end of a long fruiting season.

**GOOD QUALITY**—Bright red berries ripen evenly and natural glossiness is set off by healthy green caps. Good market berry; satisfactory freezer.

**Rayner Brothers Success Has Been Built  
Around Our Famous Premier Strain**

There is no long waiting between  
**PLANTING AND PROFITS**  
with strawberries. Plants set this Spring will  
make a good cash crop next Spring.  
Be sure to plant Strawberries this Spring!

**HAS NICE PATCH**  
Mt. Pleasant, Pa.  
I bought some strawberry plants from you last spring, they are doing very good, will have a nice patch for this year. In 1925 I got some Premier plants from you certainly had a fine crop. Sold \$435.00 worth of berries, beside what we used and it was less than 1/6 of an acre.  
John B. Truxel



# FAIRFAX

**Best Flavored  
Strawberry**

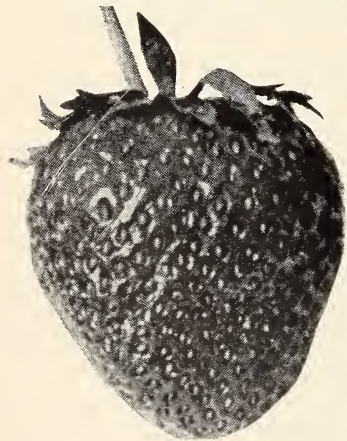
**First Choice With Home  
and Market Gardeners  
Everybody Loves These  
Beautiful Large Berries  
EXCELLENT FREEZER**

We can't help drooling a bit when we start to write about FAIRFAX. When we think about FAIRFAX we can just see a patch of the most beautiful glossy, large plants filled with lovely blossoms and then we can hardly wait for the blossoms to present their bountiful offerings of the best strawberries we've ever tasted.

FAIRFAX has all the qualities you want for your own table — superb flavor — a dessert that requires no sugar — exceptional firmness — and a long fruiting season. That's why roadside markets and local trade growers consider FAIRFAX the A-1 strawberry for bringing customers back for more and more. It looks so good—it smells so good—it tastes so GOOD!

FAIRFAX does well, just about anywhere. Popular through the North and as far South as North Carolina. Excellent crops are grown in all Premier growing areas and some of the most enthusiastic boosters are in Pennsylvania, New York, Ohio, New Jersey and the Virginias. Grown from the Atlantic to the Pacific, from the Carolinas to New England. You're missing a treat if you haven't tried FAIRFAX.

**FAIRFAX Prices: 100 Plants \$3.40; 1000 Plants \$17.00. Complete Price List page 19.**



# REDCROP

**Early  
Midseason**

Redcrop is an introduction of the New Jersey Agricultural Experiment Station and is proving a good producer, particularly in central and southern New Jersey where some growers pick as high as 8,000 quarts per acre and a reported average of between 3,000 to 5,000 quarts per acre.

REDCROP makes an excellent frozen product because it is deep red clear to the center and is a most attractive fresh market berry of medium to large size and good flavor. It should be picked regularly to prevent over-ripening and darkening.

REDCROP is vigorous and makes a well matted row. Also shows good red stele resistance. Recommended in Temple growing areas as far north as Connecticut.

**REDCROP Prices: 100 Plants \$3.25; 1000 Plants \$16.50. Complete Price List page 19.**

"Plants referred to as "virus-free" in this catalog have been field grown by us from virus free foundation stock furnished by the U. S. Department of Agriculture Bureau of Plant Industry, Soils and Agricultural Engineering, Beltsville, Maryland. Our field-grown stock has been dusted with parathion to control aphids which transmit the virus diseases. It has also been grown at considerable distances from any other strawberry plants. Since viruses do not produce clear-cut symptoms in most strawberry varieties, but simply weaken and devitalize the plants, no guarantee can be made that these plants are 100 percent free of viruses. Because of the measures that we have used to protect these plants from virus infection, we believe them to be substantially virus-free."



# SPARKLE

## Superior Freezing Variety



A Great All-Purpose Strawberry with growers in New York, New Jersey, Ohio, Pennsylvania and other Northern sections.

### SO GLOSSY RED FOLKS THINK IT'S WAXED!

SPARKLE has the better qualities of its Fairfax parent as it resembles Fairfax in appearance and firmness and the color is a solid red, so glossy that it has the appearance of being waxed. However, it does not tend to darken on holding and the deep red color runs solidly through the meaty flesh which marks it as one of the very best varieties for quick freezing. Same parentage as Temple and as productive and vigorous.

SPARKLE was originally introduced in New Jersey but its high production, excellent flavor and good freezing qualities were found to be just as good in areas north and south. Today it is widely planted throughout the Middle and North Atlantic States and is particularly favored in New York State.

This year we are offering for the first time new VIRUS FREE SPARKLE. The parent plants were supplied to us by U. S. Department of Agriculture. They have been grown under their recommendation. We have a beautiful field of virus free Sparkle plants, they are much more vigorous than the old strain making taller and larger plants, they produce more berries and larger berries than any Sparkle you have ever planted. All our early orders will be filled with this strain.

**UNUSUALLY VIGOROUS** — Medium to large plants make an abundance of runners. Sets a great number of flowers per cluster and practically all develop into fruit of marketable size.

**EXCELLENT RESISTANCE** — Not bothered with leaf spot and scorch and is resistant to root disease.

#### Sparkle Prices

25 for	.....\$ 1.20
50 for	..... 2.00
100 for	..... 3.20
200 for	..... 5.60
250 for	..... 6.80
300 for	..... 7.20
500 for	..... 10.00
750 for	..... 13.20
1000 for	..... 16.00
In 5000 lots	..... 15.00

Complete Price List and Ordering Information on Pages 18 & 19.

#### 124 QUARTS FROM 100 PLANTS

Hamilton, Ohio

The plants I got from you in 1951 were excellent, every plant lived. Picked 124 quarts of beautiful berries from 100 plants set. We had a very dry season or would have done a lot better. Redcrop was as nice as any I have ever seen, I have raised berries for the last 50 years.

Nathan Dungan

#### CALLED STRAWBERRY KING

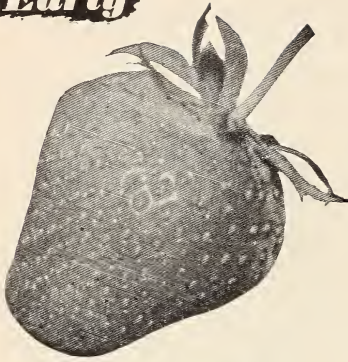
Montgomery, Pa.

I want to tell you what wonderful berries we produced from your plants. They can't be beat in the Williamsburg area, where we market them. In fact they called my husband the strawberry king. My young son and I still raise them, they are really a sight to look at for beauty, size and productivity. I thought you would like to know how pleased we are with them.

Mrs. Carl Emick



**Early**



# BLAKEMORE

● FAVORITE EARLY VARIETY OF GROWERS FROM GEORGIA TO SOUTHERN PENNSYLVANIA.

BLAKEMORE is the most widely planted variety throughout the Eastern United States, except in the deep south and most Northern States. This year we are offering all VIRUS FREE BLAKEMORE plants. Plants were furnished to us by the U. S. Department of Agriculture to propagate under their recommendations for our customers. This new virus free strain is far ahead of all other sorts. No yellows have been seen, the plants are taller in growth and much more vigorous, may need thinning. The fruit is larger, and produces larger crops of better berries.

Complete Price List on page 19

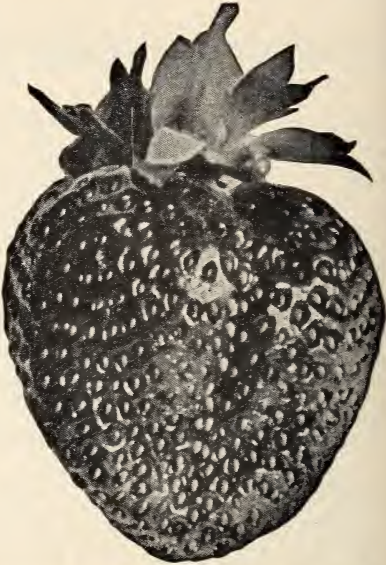
**Abundant Growth**—Under practically all conditions and soils Blakemore will make an abundant growth. Free of leaf troubles. Free bedding habit makes a good fruiting row even in the driest season.

**Long Distant Shipper** — One of the firmest varieties. Good skin, with light red color, that does not darken when over ripe. Favorite with the canners and freezers. Rather tart, needs sugar for fresh dessert.

**BLAKEMORE Prices:** 100 Plants \$2.95; 1000 Plants \$15.00. Complete Price List Page 19.

# BIG JOE

A TWENTY YEAR FAVORITE MIDSEASON FROM VIRGINIA NORTHWARD



BIG JOE ripens just as earlier varieties have finished fruiting and ripens a major portion of crop in three big pickings, usually when large, attractive berries are at a premium. Try Rayner's BIG JOE and you will have BIG JOE at its best.

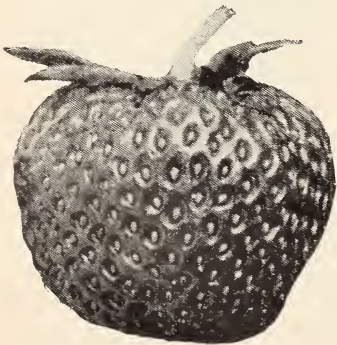
**Abundant Growth** — Strong, vigorous plants with unusually healthy foliage in abundance. Fruit stalks strong and upstanding.

**Large, Light Red Berries** — Fine, full-bodied, tangy flavored berries run large to very large and with sufficient moisture berries size up well to last of crop.

**Good Shipper** — Heavy Producer

**BIG JOE Prices:** 100 plants \$3.50; 1000 plants \$17.50

Complete Price List on page 19



# MIDLAND

**Excellent Freezing Variety**

Beautiful, very large berries of deep, glossy red color that runs all through the berry. Very good to excellent dessert quality, mildly sub-acid. These qualities make MIDLAND a most attractive frozen product with that fresh-off-the-vine goodness.

**Good Shipper**—Very glossy, firm skin, excellent keeping and shipping quality. Appearance brings top market prices.

**Highly Productive**—Excellent producer as far south as Virginia and westward to Missouri and Iowa and northward to Connecticut and Michigan. Plants have large, healthy leaves resistant to leaf spot and scorch, but do not set a heavy fruiting bed.

**MIDLAND PRICES**—100 plants \$3.60; 1000 plants \$18.00 Complete Price List on Page 19.

10 PLANTING SUCCESS BEGINS WITH AN ORDER FROM RAYNER BROTHERS

# FAIRLAND

A New Early Midseason  
that is Setting  
Production Records  
throughout Premier and  
Catskill growing areas



Here is a variety that some growers unhesitatingly rate the best they've ever fruited.

FAIRLAND is the latest addition to that top-producing strawberry family that also includes Temple and Sparkle. It is of the same parentage and has the same vigorous characteristics as Temple and Sparkle.

Growing trials in Massachusetts over a period of four years showed that FAIRLAND would out-produce Premier and Catskill with yields of 10,000 quarts per acre and a four year average of 7500 quarts. Heavy yields are reported by growers throughout the Northeast and this variety is definitely at its best in Ohio, New York, Pennsylvania, West Virginia and States northward.

**Bright Red Berries** — Average larger in size than Sparkle and have a beautiful light color that does not tend to darken on holding.

**Excellent Flavor** — A good dessert berry with much of the sweetness of its Fairfax parentage.

**Vigorous Grower** — Makes robust plant growth and produces runner plants freely. Excellent red-stem resistance.

100 plants \$3.50; 1000 plants \$17.50. Price list page 19.

## MASSEY

OUTSTANDING MIDSEASON  
WITH MANY GROWERS

MASSEY has become a favorite with many growers in the coastal regions of Carolina's, Maryland, Virginia and other berry growing sections. We have a complete planting of Virus Free Massey plants to offer this year. These plants were given us by the U. S. D. A. to propagate for berry growers. The new vigor that Virus Free plants have will make Massey an outstanding variety, both in vigorous growth and heavy production. It has all the qualities a berry needs, large size, mouth-watering beauty, and a flavor that never disappoints.

**Thrifty Grower** — Makes a good fruiting row of large vigorous plants resistant to spot and scorch.

**Uniform Berries** — Large flowers carry abundant pollen, assuring well-developed berries of large to very large size.

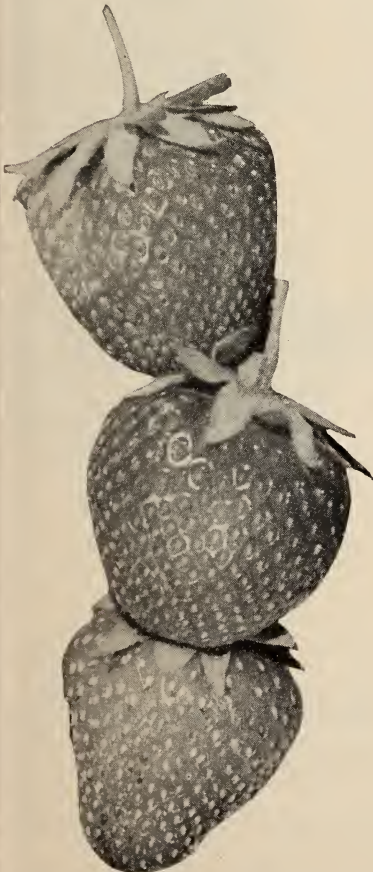
**Glossy Bright Red** — Vivid green cap and small yellow seed provide fitting contrast to the high, glossy red making a berry of unusual beauty.

**Delicious Flavor** — Fine dessert quality and flavor fully retained several days after picking.

**Excellent Shipper** — Firm berries hold up exceptionally well in shipment.

**Good Producer** — Large size of berries account for high yield of NUMBER ONE fruit.

100 plants \$2.40; 1000 plants \$12.00. Price list page 19.







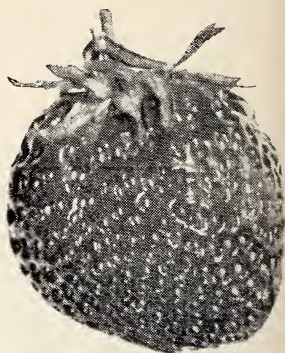
# **New** ARMORE

Introduced by the Missouri Experiment Station this variety has proved more productive than 60 others in actual growing tests. Berries are of good size, a beautiful red and of excellent flavor and dessert quality. Most distinctive feature is the unusually uniform shape of the fruit. Firm, good keeping, good shipping variety. Recommended throughout Premier, Blakemore growing areas.

**ARMORE PRICES:** 100 plants \$3.20; 1000 plants \$16.00. Complete price list page 19.

# **New** EMPIRE

Introduced by the New York Experimental Station as a real challenger to Premier. Since its introduction in 1950 it has become a real favorite with many Premier growers. From our observations, on our nursery, at U.S.D.A. field station at Beltsville, Md., University of Maryland test fields, and in other states, we feel at last Premier does have a real challenger for the leadership in the early varieties. Empire berries average larger than Premier, firm, color bright red, hold their color well after picking, delicious flavor, and very productive, having long stems that make picking easy. Good freezer. Empire should be included in your order this spring, we know you will like them.



**EMPIRE PRICES:** 100 plants \$3.50; 1000 plants \$17.50. Complete Price List page 19.



# **New** TENNESSEAN

Developed by the University of Tennessee, this variety is gaining quick acceptance through Blakemore growing areas and has qualities that should prove most desirable in Premier growing areas. A cross of northern seedlings and a southern variety favored for its great shipping and freezing quality. Heavy producer of bright, attractive berries of good size and flavor. Considered superior to Blakemore in these respects.

**TENNESSEAN PRICES:** 100 plants \$2.40; 1000 plants \$12.00. Complete price list page 19.

## **DORSETT Favorite Early of Many Growers!**

Foliage is quite similar to Premier and fruit is more attractive, of better flavor and usually a bit firmer than Premier. It is most productive when the runners formed late in the season are picked off.

DORSETT'S beauty, flavor and high production for many growers is well worth the additional care it may require.

**DORSETT PRICES:** 100 plants \$3.50; 1000 plants \$17.50. Complete price list page 19.



# ROBINSON

(Also Called  
Scarlet Beauty)

"PRETTY AS A PICTURE AND GROWS  
LIKE THE WIND"

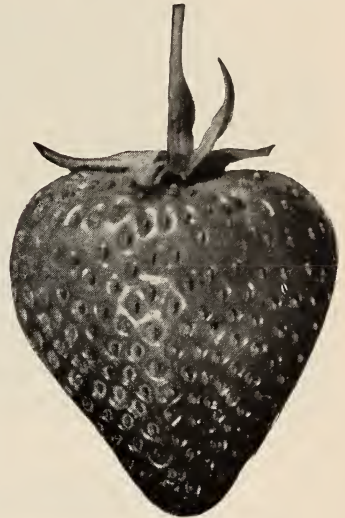
**Mid-Season**

ROBINSON has really "gone to town" since it was introduced in Michigan several years ago. It is already the Number One midseason in many areas and is causing excitement throughout Premier growing states.

SCARLET BEAUTY truly describes this strawberry. The most uniformly large size of any variety we offer, the cardinal red color makes it a sight to behold.

ROBINSON (or Scarlet Beauty) is an excellent producer over a long fruiting season that begins soon after Premier. A better plant maker than Premier, the unusually small plants set an amazingly good fruiting row of healthy foliage. Grows just about anywhere and is particularly good in light soils.

If you've grown ROBINSON you'll agree that we just don't have enough space to tell all its good features. If you haven't planted ROBINSON we urge you to do so. We know you'll be tickled when you begin to harvest those beautiful, tangy-rich berries so popular with growers and at auction markets from Virginia to Maine.



Prices: 100 plants \$3.25; 1000 plants \$16.50. Complete Price List on page 19.

**Mid-Season**



# CATSKILL

YOU'LL PICK THE LARGEST BERRIES  
YOU'VE EVER SEEN

CATSKILL is a great midseason from Virginia to Missouri and is the most widely planted midseason in New York, Pennsylvania and other Northern States.

It lost some of its popularity to newer sorts, because of virus which U. S. D. A. specialists tell us is in all varieties. Because of this Dr. Geo. M. Darrow, Dr. Don Scott and others produced a virus free Catskill a few years ago. They gave us this stock in 1952 and we have propagated enough plants of this Virus Free Catskill to supply our customers this spring. All orders for Catskill will come from this stock. Berries from Virus Free Catskill will be as they were when they were first introduced, plants grow much larger than normal, their berries are big, and a 10,000 quart crop per acre will be common during favorable weather and soil conditions. Be sure to plant some of Rayner's Catskill this spring for we know they will please you.

### Catskill Prices

25 for	\$ 1.20
50 for	2.00
100 for	3.20
200 for	5.60
250 for	6.40
300 for	7.20
500 for	10.00
750 for	13.20
1000 for	16.00
In 5000 lots	15.00

Complete Price List and Ordering Information on Pages 18 & 19.

### ARRIVED IN PERFECT CONDITION

Received my order of strawberry plants and they were the best looking plants I have ever bought. They arrived in perfect condition, and I know they will give good results. Thanks for sending such nice plants.

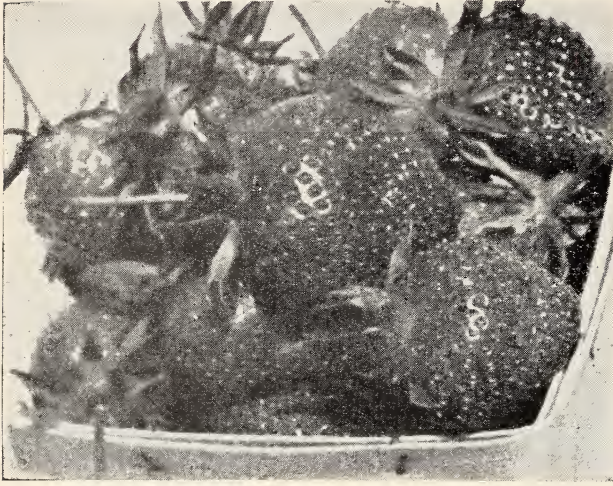
Ralph O. Newman

### BIG CROPS OF FINE BERRIES

I have been buying strawberry plants from you for over five years and have had very good success with them every year. The big crops of berries are really grand.

Mrs. W. L. King

# Tennessee Beauty



This variety is fast becoming a favorite with many growers. Has proven successful from central Ohio southward, giving good results in Pennsylvania, New Jersey, and may be satisfactory farther north.

Tennessee Beauty is a very vigorous grower, makes a good fruiting row. Is a heavy producer of large berries bright red in color, firm. If you are delayed in picking they will hang on the vines two or three days and still be in top shape. Flavor is very good, they have a beautiful glossy appearance, which makes them bring top prices.

For a good midseason variety we recommend Tennessee Beauty for we know it will please you.

## AMBROSIA

### VERY LATE STRAWBERRY

This very late variety now deserves to be listed with other outstanding strawberries. Introduced several years ago, it has held its own with the best late varieties and is a healthy grower and great producer.

Berries are very large and there is an excellent production on a good fruiting row of healthy plants. AMBROSIA is the easiest to grow of all late varieties we have tried. If you have experienced any problem with getting a good stand and good production on a very late variety, we recommend AMBROSIA — not just for trial — but as a dependable late berry. These firm, very pretty berries will really fill the bill just when other strawberries are getting scarce. And your customers will like them for fresh dessert, freezing or jams and preserves.



## KLONMORE

KLONMORE is a Klondike-Blakemore cross of exceptional vigor and high resistance where leaf spot has been a problem. Medium size berries are light, bright red with yellow seeds and real beauty. Good dessert quality and firm enough for shipment.

## TENNESSEE SHIPPER

This early fruiting variety is rated ace high for its firm berries. Produces an excellent crop of fruit ideal for freezing, canning and preserving. Attractive, evenly-colored, good flavor

## KLONDIKE

A fine early commercial berry for the South and South Central States, KLONDIKE is very popular and widely grown. Vigorous growth of clean foliage with medium large, smooth and uniform bright red berries that are firm, excellent shippers

## SENATOR DUNLAP

An old favorite variety, has been successfully grown in the Northern States for many years. Is a free plant maker setting a good fruiting row, will stand coldest climate. A heavy producer of bright red berries medium size, of fine quality. Our plants are of the virus free strain supplied us by U. S. D. A. last spring.

Prices of All Varieties on Page 19



**Late**

# FAIRPEAKE

## Marvelous Unforgettable Flavor

This cross of Fairfax and Chesapeake offers you a combination of the best qualities of these fine flavored parents. The result is a strawberry considered the best flavored of all varieties, very sweet with a high aroma. If you sell direct to a select list of customers you will find FAIRPEAKE in great demand at premium prices to the very last picking.

**Vigorous Plants** — Does not make too many runners, however the plants are large, vigorous, and free from leaf spot and scorch. Prefers the same moist soil as other late varieties.

**Rich Red Berries** — Beautiful, medium to large berries, rich red skin and dark green cap. Very sweet, best dessert quality.



**Good Cropper** — Production compares well with other late varieties. Follows Catskill and Sparkle to provide an unusually long and profitable berry harvest. **Excellent marketer.**

100 plants \$3.60; 1000 plants \$18.00. Complete Price List on page 19.

Scherr, W. Va.

Regardless of hot dry weather I sold a nice crop of berries off my Fairpeake plants, thanks to good deep rooted plants.

Mrs. Erma A. Hawk

Lancaster, Pa.

We got 100 strawberry plants from you two years ago. Last year we picked over a hundred quarts from our patch.

Richard E. Coin



# REDSTAR

## Exceptional Beauty and Dessert Quality

### in a Very Late Fruiting Berry

Plant REDSTAR and you will have strawberries of the finest flavor and quality after other strawberry varieties are gone. Ripens latest of all regular varieties to give the berry grower a continuing supply of superb fruit that will bring premium prices. Beauty, favor and firmness make REDSTAR the choice of berry growers from Maryland to Maine and west to Missouri.

**Vigorous Grower**—Healthy plants, spot and scorch resistant, always develop a good fruiting row. When planted in moist soils (as all late varieties should be) REDSTAR is a heavy producer.

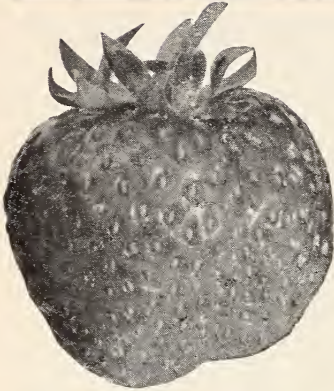
**Very Large, Glossy Red Berries**—Light, bright red berries hold size well to end of season. When fully ripe dessert quality compares with the best. Firm, excellent shipper and a good canner and freezer. Retains shape perfectly for preserving.

100 plants \$3.60; 1000 plants \$18.00. Complete Price List on page 19.

PLANTING SUCCESS BEGINS WITH PLANTS FROM RAYNER BROTHERS

# EVERBEARING

## SUPERFECTION



The Everbearer that Produces Like Magic

SUPERFECTION is undoubtedly the best of the everbearers. Mr. P. Congedo, of Hackettstown, N. J. writes, "They produce like Magic." Many of our customers report wonderful success with Superfection. It has become one of the most popular everbearing varieties.

Superfection is a vigorous grower, making many runner plants, is a continuous producer of large, uniform berries, of fine quality, with beautiful light red color. Firm enough to stand shipping well. Excellent for off the vine eating, or canning and freezing.

Superfection is one of the best varieties to grow under the sawdust system (described below). Be sure to include Superfection in your order this year. You will like them.

100 Plants \$6.00; 1000 Plants \$30.00; Complete Price  
75 Plants for Terrace \$4.50 List on Page 19

We consider SUPERFECTION one of the greatest contributions to everbearing history. It is remarkably vigorous and a great producer of quality fruit of excellent flavor.

## MASTODON

OLD RELIABLE  
EVERBEARING VARIETY

MASTODON is grown successfully as far South as the high elevations of North Carolina and throughout the North. Produces a crop during summer and fall of first year and a yield equal to many regular varieties the following spring which alone justifies it. Fall bearing qualities of this double-duty strawberry have made many friends and provided large profits to berry growers.

100 Plants \$6.00; 1000 Plants \$30.00 Complete Price List on Page 19.  
75 Plants for Terrace \$4.50

## New RED-RICH Everbearing

SEE DESCRIPTION  
AND PRICES  
on  
Inside Front Cover

### Strawberries

In June  
In August  
In September  
In October

Enjoy your own Strawberries picked fresh off the vines four months of the year.

Spring, Summer, Fall

### HOW TO PRODUCE RECORD HARVESTS

Tremendous crops of strawberries are being grown by a simplified method of controlling runner growth, soil moisture and weeds. Known as the sawdust mulch method, it works like this:

1.—Plants are set one foot apart with four lines of plants to the row and a two foot alley between rows for walking. 2.—After first cultivation the area is covered with a layer of sawdust one inch thick. Weeds that grow through mulch must be pulled by hand. IT IS IMPORTANT that hoeing be discontinued entirely to avoid mixing with soil. Mulch will do much toward control of weed growth. 3.—All runners are removed from plants as fast as they develop. 4.—Blossoms from newly set plants are removed until early July. 5.—Sawdust mulch will also give adequate winter protection if the one inch depth is maintained.

THIS METHOD IS RECOMMENDED WITH  
EVERBEARING VARIETIES ONLY



# Strawberries in 60 to 90 Days

## GEM

### OLD RELIABLE EVERBEARING MAKES A GOOD PLANT BED WITH HEAVY PRODUCTION

GEM shares the popularity spotlight with Mastodon in many areas because it sets a really worthwhile fall crop if not allowed to bed too thick. It is adapted to a wider range of soils than most everbearers. Fruit sizes up well, although not as large as Mastodon, but flavor is superior under adverse weather conditions.

GEM is an amazing plant maker and can be depended upon to set runner plants that become hardy, vigorous specimens and producers of fruit in an unusually short time. Thinning of abundant runner plants will enable setting a tremendous crop.

100 plants \$6.00; 1000 plants \$30.00. Prices page 19.



#### THANKS FOR FINE PLANTS

LaPlata, Md.  
Thanks for the fine plants you sent me. The Mastodon and Gem are looking fine. A friend of mine bought Gem and Superfection from two other places, your plants made theirs look like "nothing". The Red Rich I got from you sure are looking nice, big green leaves, and berries! I've never seen so many big berries on a plant.

C. H. Carries

## 20th CENTURY

This new variety of everbearing strawberry comes to us highly recommended by Experiment Stations in many states. We had them on trial this year. The berries here are large, firm, with a very good flavor. In fact they are delicious. They are vigorous growers, making large healthy plants, that start fruiting early and continue until frost. We only have a limited supply of plants, so please order early, you will be delighted with them.

100 plants \$10.00

#### WHEN TO PLANT STRAWBERRIES

Early Spring planting is the most important single factor in strawberry culture. Plants may be set as early as ground can be worked. Commercial growers prefer these planting dates: In the South November to April; Carolinas, Virginias—February to April 15; Maryland, New Jersey; Ohio—March to May; Pennsylvania, New York—April to May 25; New England—April 15 to June 1. We ship from November to June 15 (depending on plant supply).

The Largest Northern Growers Depend on Rayner's Hardy Plants

# Ordering Information

## HOW to FIGURE PARCEL POST RATES

Your Parcel Post ZONE is listed below with your State. Locate this ZONE number in the Parcel Post Rate Chart below and include postage for total weight of your shipment. Please note weights of each type of plant is listed. Please include this amount with your order. It will save you the C.O.D. collection charge made by the Postoffice on Parcel Post Collect shipments. If you prefer shipment by Express do not send money for shipping charges as delivery man will collect at your door. If you do not indicate method of shipment or include charges we will ship best way, charges collect.

### YOUR ZONE NUMBER IS LISTED WITH YOUR STATE

Alabama 5	Indiana 4	North Dakota 7	Montana 7	Texas 6
Arizona 8	Iowa 5	Ohio 4	Nebraska 6	Utah 6
Arkansas 5	Kansas 6	Oklahoma 6	Nevada 8	Vermont 4
California 8	Kentucky 4	Oregon 8	New Hampshire 4	Virginia 3
Colorado 7	Louisiana 5	Pennsylvania 3	New Jersey 2	(east of Staunton,
Connecticut 3	Maine 4	(Counties south	(north of New	Danville 1 & 2)
Delaware 1 & 2	Maryland 1 & 2	and east of	Brunswick 3)	Washington 8
Dt. Columbia 2	Massachusetts 4	Harrisburg 2)	New Mexico 7	West Virginia 3
Florida 5	Michigan 4	Rhode Island 4	New York 3	(Charleston and
Georgia 4	Minnesota 5	South Carolina 4	(north of	south and west 4)
Idaho 8	Mississippi 5	South Dakota 6	Albany 4)	Wisconsin 5
Illinois 5	Missouri 5	Tennessee 5	North Carolina 3	Wyoming 7

### WEIGHT TABLE

STRAWBERRIES		BLACKBERRIES	
Quantity of Plants	Weight in lbs.	Quantity	Weight
25 Plants	1 lb.	6 Plants	3 lbs.
50 Plants	2 lbs.	12 Plants	6 lbs.
100 Plants	4 lbs.	25 Plants	10 lbs.
200 Plants	8 lbs.	50 Plants	15 lbs.
300 Plants	12 lbs.	100 Plants	20 lbs.
400 Plants	16 lbs.	250 Plants	50 lbs.
500 Plants	20 lbs.		
750 Plants	30 lbs.		
1000 Plants	40 lbs.		

RASPBERRIES		GRAPES, RHUBARB	
Quantity	Weight	Quantity	Weight
3 Plants	1 lb.	3 Vines (or	4 lbs.
6 Plants	2 lbs.	roots)	
12 Plants	4 lbs.	each additional	12 ounces
25 Plants	8 lbs.	add	

ASPARAGUS		BLUEBERRIES	
Quantity	Weight	Quantity	Weight
1 yr. Plants double the Strawberry Rate.		6 Plants 1 yr., 3-6"	2 lbs.
2 yr. Plants, 3 times the Strawberry rate.		each additional plant add	2 ounces
		6 Plants 2 yr., 6-9" or 9-12"	5 lbs.
		each additional plant add	3 ounces
		6 Plants 3 yr., 12-18"	12 lbs.
		each additional plant add	1 lb.
		6 Plants 3 yr., 18-24"	15 lbs.
		each additional plant add	1½ lbs.

### ORNAMENTAL SHRUBS

Use same weight as 3 yr., 12-18' Blueberries

### DWARF TREES, CHESTNUT, SHADE TREES

Use same weight as 18-24" Blueberries

EVERGREENS — Same as 2 yr. Blueberries

### ALL TREES UNDER 4 FEET HEIGHT

Same as Dwarf Trees

### MULTIFLORA ROSE

Conservation size	10 lbs. per 100 plants
Jumbo size	25 lbs. per 100 plants

### ANY OVER PAYMENTS ON POSTAGE

PROMPTLY REBATED AT SHIPMENT TIME

18

PLANTING SUCCESS BEGINS WITH AN ORDER FROM RAYNER BROTHERS

### PLEASE INCLUDE POSTAGE WITH ORDER

If you send too much we will promptly rebate at time of shipment.

FOR SPECIAL DELIVERY, please add 45c and mark on order, "Ship Special Delivery".

### PARCEL POST RATES

Weight in pounds	Zones 1-2	Zone 3	Zone 4	Zone 5	Zone 8
1	\$.23	\$.23	\$.24	\$.26	\$.32
2	.27	.29	.31	.36	.51
3	.31	.34	.38	.45	.69
4	.35	.39	.45	.54	.87
5	.39	.44	.52	.63	1.05
6	.43	.49	.59	.73	1.23
7	.47	.54	.66	.82	1.41
8	.51	.60	.73	.91	1.59
9	.55	.65	.80	1.00	1.77
10	.59	.70	.87	1.10	1.95
11	.63	.75	.93	1.19	2.13
12	.67	.80	1.00	1.28	2.31
13	.71	.85	1.07	1.37	2.49
14	.75	.90	1.14	1.47	2.67
15	.79	.96	1.21	1.56	2.85
20	.99	1.21	1.56	2.02	3.75
21	1.02	1.26	1.62	2.11	3.93
22	1.06	1.32	1.69	2.21	4.12
23	1.10	1.37	1.76	2.30	4.30
24	1.14	1.42	1.83	2.39	4.48
25	1.18	1.47	1.90	2.48	4.66
30	1.38	1.73	2.25	2.95	5.56
35	1.58	1.99	2.59	3.41	6.46
40	1.78	2.24	2.94	3.87	7.36
45	1.97	2.50	3.28	4.33	8.27
50	2.17	2.76	3.63	4.80	9.17
55	2.37	3.02	3.97	5.26	10.07
60	2.57	3.27	4.32	5.72	10.97
65	2.76	3.53	4.66	6.18	11.88
70	2.96	3.79	5.01	6.65	12.78

### BASKETS

100 Pints	8 lbs.
100 Quarts	12 lbs.
200 Pints	12 lbs.
200 Quarts	18 lbs.
300 Pints	20 lbs.
300 Quarts	35 lbs.

Because of Postal Regulations baskets cannot be shipped in larger lots than 300. On larger orders figure postage in 300 units. Standard cartons of 500 baskets are shipped Freight or Express collect.



BETTER BERRIES  
BUILT  
OUR BUSINESS

# PRICE LIST

SATISFACTION  
OR  
YOUR MONEY BACK

## Rayner's High Quality Strawberry Plants

(Prices on Blueberries, Raspberries, Grapes and other Plants on Descriptive Pages)

5000  
lots  
per  
1000

	25 Plants	50 Plants	100 Plants	200 Plants	300 Plants	500 Plants	750 Plants	1000 Plants	
<b>Early Varieties</b>									
ALBRITTON.....	\$1.20	\$2.00	\$3.20	\$5.60	\$7.20	\$10.00	\$13.20	\$16.00	—
BLAKEMORE.....	1.10	1.90	2.95	5.25	6.75	9.40	12.40	15.00	13.00
DIXIELAND.....	1.50	2.50	4.00	7.00	9.00	12.50	—	—	—
DORSETT.....	1.30	2.15	3.50	6.10	7.85	10.90	14.30	17.50	15.50
EMPIRE.....	1.30	2.15	3.50	6.10	7.85	10.90	14.30	17.50	15.50
FAIRFAX.....	1.25	2.10	3.40	5.95	7.65	10.60	13.95	17.00	16.00
KLONDYKE.....	1.00	1.50	2.25	3.50	4.50	6.25	8.25	10.00	9.00
KLONMORE.....	1.00	1.50	2.25	3.50	4.50	6.25	8.25	10.00	9.00
MIDLAND.....	1.35	2.25	3.60	6.30	8.10	11.25	14.85	18.00	16.00
PREMIER.....	1.20	2.00	3.20	5.60	7.20	10.00	13.20	16.00	15.00
HOWARD 17.....	1.20	2.00	3.20	5.60	7.20	10.00	13.20	16.00	15.00
TEMPLE.....	1.20	2.05	3.25	5.70	7.40	10.25	13.60	16.50	14.50
TENNESSEAN.....	1.00	1.60	2.40	4.20	5.40	7.50	9.90	12.00	11.00
TENN. SHIPPER.....	1.00	1.60	2.40	4.20	5.40	7.50	9.90	12.00	11.00
<b>Midseason Varieties</b>									
BIG JOE.....	1.30	2.15	3.50	6.10	7.85	10.90	14.30	17.50	15.50
CATSKILL.....	1.20	2.00	3.20	5.60	7.20	10.00	13.20	16.00	15.00
FAIRLAND.....	1.30	2.15	3.50	6.10	7.85	10.90	14.30	17.50	15.50
MARSEY.....	1.00	1.60	2.40	4.20	5.40	7.50	9.90	12.00	11.00
POCAHONTAS.....	1.50	2.50	4.00	7.00	9.00	12.50	—	—	—
REDCROP.....	1.20	2.05	3.25	5.70	7.40	10.25	13.60	16.50	14.50
ROBINSON.....	1.20	2.05	3.25	5.70	7.40	10.25	13.60	16.50	14.50
SCARLET BEAUTY.....	1.20	2.05	3.25	5.70	7.40	10.25	13.60	16.50	14.50
SEN. DUNLAP.....	1.00	1.60	2.40	4.20	5.40	7.50	9.90	12.00	11.00
TENN. BEAUTY.....	1.10	1.90	2.95	5.25	6.75	9.40	12.40	15.00	13.00
<b>Late Varieties</b>									
AMBROSIA.....	1.25	2.10	3.40	5.95	7.65	10.60	13.95	17.00	15.00
ARMORE.....	1.20	2.00	3.20	5.60	7.20	10.00	13.20	16.00	15.00
FAIRPEAKE.....	1.35	2.25	3.60	6.30	8.10	11.25	14.85	18.00	16.00
REDSTAR.....	1.35	2.25	3.60	6.30	8.10	11.25	14.85	18.00	16.00
SPARKLE.....	1.20	2.00	3.20	5.60	7.20	10.00	13.20	16.00	15.00
<b>Everbearing Varieties</b>									
GEM.....	2.25	3.75	6.00	10.50	13.50	18.75	24.75	30.00	—
MASTODON.....	2.25	3.75	6.00	10.50	13.50	18.75	24.75	30.00	—
RED-RICH.....	5.00	8.50	15.00	26.75	36.50	55.50	80.50	97.50	—
SUPERPERFECTION.....	2.25	3.75	6.00	10.50	13.50	18.75	24.75	30.00	—
20TH CENTURY.....	4.25	7.00	10.00	—	—	—	—	—	—

**QUANTITY DISCOUNTS**  
 2000 Plants of a variety—Deduct 29c from 1000 rate quoted above.  
 3000 Plants of a variety—Deduct 40c from 1000 rate quoted above.  
 4000 Plants of a variety—Deduct 70c from 1000 rate quoted above.


**OUR GUARANTEE.** We Guarantee: 1. Plants True-to-Name. 2. Perfect delivery condition. 3. Sizes and grades as ordered. Any plants not entirely satisfactory will be replaced or money refunded. Guarantee covers full purchase price of stock - does not imply further liability.

**TERMS** — One-fourth with order; balance before shipment.

**BONUS OFFER**  
**\$1.00 Worth of Strawberry Plants**  
 See Back of Order Sheet For Particulars

UNIVERSITY OF MARYLAND

COLLEGE PARK, MARYLAND



DATE: October 9, 1953

**STATE HORTICULTURAL DEPARTMENT**  
**Certificate of Inspection**

Duplicate of Number..... 47

Examined by..... This on the 14th day of September 1953.

Nursery stock of..... Salisbury..... City of..... Wicomico.....  
 State of Maryland, in accordance with the laws of Maryland, 1950, Chapter 285, Section 56, and that said nurseries and premises are apparently free, so far as can be determined by inspection, from the San Jose Scale, Peach Yellow, Pear Blight and other dangerous quarantine insect pests and plant diseases.

This Certificate is valid until September 30, 1954 unless sooner revoked and does not include nursery stock not grown within this State, unless such stock is previously certified by the State Entomologist and State Pathologist.

EDWIN S. CRAWFORD, State Entomologist  
 H. W. WEARD, State Pathologist

**OUR PLANTS ARE CERTIFIED**  
**A COPY OF OUR STATE CERTIFICATE ACCOMPANIES EVERY SHIPMENT**

**WE WILL BE GLAD TO QUOTE DELIVERED PRICES**  
 All Varieties F.O.B. Salisbury, Maryland. See Page 20 for Parcel Post Rates. 19

## DU PONT FRUIT TREE SPRAY



- Easy to use.
- Simple spray schedule on package.
- Contains methoxychlor, Fermate® and sulfur.

Combined insecticide - fungicide for use on home plantings of Apples, Peaches, Cherries, Pears, Plums, Quince, Strawberries, Currants and Gooseberries. Controls many fruit diseases and insects. Use this one product all season. Comes in 1-lb. cans and 3-lb. bags.

1 lb. can \$1.15; 3 lb. bag \$2.75

NOTE: Because Fruit Tree Spray contains sulfur, do not use on grape and raspberries. Use Methoxychlor as insecticide and "Fermate" as fungicide.



Makes berries grow much larger, meatier, sweeter, most luscious tasting. Increases yields. Strawberries have fewer seeds. Sprayed berry plants bear ripe fruits over a longer period of time. This new scientific "Hormone" powder effective on ALL berries. 1 oz. package makes 4 gallons. 1 oz., 50c; 3 oz., \$1.00 postpaid.

## Simple, Easy-to-Use Dusts and Sprays by



### METHOXYCHLOR (50%) Wettable

Controls many insects with exceptional safety and long-lasting action. May be used on all common vegetables, fruits, flowers, ornamentals, shade trees. Does not cause plant injury and can be used on livestock, dairy cattle and household pets. As effective as DDT but less toxic than rotenone.

8 ounce can 75c



### "FERMATE FUNGICIDE"

Controls fungous diseases causing leaf spot, black spot, rust, anthracnose, etc., that may affect raspberries, grapes, roses, tomatoes, string beans. Effective only for disease control. Use Methoxychlor for insects.

8 ounce can 75c



### VEGETABLE GARDEN DUST

Safe to use close to harvest. Safe control for blights of tomatoes, potatoes; downy mildew on squash, melons and cucumbers.

Also contains Methoxychlor for controlling bean beetle, Japanese beetle and other insects. Use as a dust or spray. Won't burn plants.

1 lb. canister \$1.15; 3 lb. bag \$2.65



### FLORAL DUST

For roses and many other flowers. Contains "Fermate" and sulfur to control diseases of roses and other flowers. Also contains Methoxychlor and rotenone for control of insects including Japanese beetles, rose chafers, aphids and many others.

1 lb. canister \$1.15

## HIGH-QUALITY AMERICAN BASKETS

### QUARTS

100 baskets for .....\$2.00  
500 carton for .....\$8.50

### PINTS

100 baskets for .....\$1.90  
500 carton for .....\$8.00



(Prices F.O.B. Salisbury, Md. See postage chart for Parcel Post charges. 500 Basket cartons will be shipped Freight or Express Collect because of Postal limitations governing size of package. Where only Parcel Post is available cartons may be split in 2 shipments. Early orders of 1,000 baskets or more may be shipped by Freight for cheapest transportation.)



# NOW

## You Don't Need

## A Garden

## to Grow Big

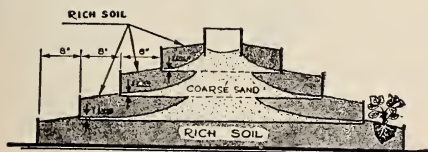
## Strawberry Crops



# BERRY TERRACE

*Provides 50 feet of Row  
in a 6 foot space*

Not just a novelty but a practical method of producing loads of luscious berries. The Terrace is made of aluminum to hold its beauty for years. It will accommodate 75 Everbearing plants, and the ease of watering and fertilizing enables much more production of fruit than would normally be realized. The beauty of foliage and blossoms and the harvest of berries from Spring to frost will prove a constant delight. Not an experiment. Already used by thousands of enthusiastic growers. You can use any of the Everbearers described on pages 16, 17 and RED-RICH on inside front cover.



This is a "cut-away" showing simple construction. Large step-by-step drawing included with Terrace.

### A Scranton, Pa., Grower Says:

"My compliments on the excellence of your Superfection everbearing strawberries, also upon the efficiency of your berry terrace. They have provided me with an abundant supply of delicious berries."

J. L. Justin

### BERRY TERRACE COMPLETE

Includes 4 aluminum bands, bolts, nuts  
and instructions. Plants are extra.

**\$ 9.95** POSTPAID



With

Without

Use Ra-Pid-Gro for trees  
shrubs, evergreens, berries,  
potted plants.

Use Ra-Pid-Gro to dip  
plants before setting.

# RA-PID-GRO

"THE MIRACLE PLANT FOOD"

1 pound of this miracle plant food mixed with 22 gallons of water makes 176 lbs. of liquid fertilizer. You mix it only as you need it — 1 teaspoon to a quart of water, and you apply it direct to your plants, vegetables where it is immediately absorbed by the plant roots. Feeding directions on package.

### PRICES:

- 1 pound Ra-Pid-Gro makes 22 gallons - \$1.25 postpaid
- 2 pounds Ra-Pid-Gro makes 44 gallons - \$2.35 postpaid
- 5 pounds Ra-Pid-Gro makes 110 gallons - \$4.50 postpaid
- 2 ounce trial package makes 11 quarts - 25c postpaid

PLANTING SUCCESS BEGINS WITH AN ORDER FROM RAYNER BROTHERS

# Growing Strawberries

Strawberries are one of the easiest fruits to grow. Good plants set at the proper season in good soil will respond with ordinary care and cultivation. There is nothing complicated about growing strawberries, and by following these easy instructions the beginner can assure good results.

**Soil Requirements**—Strawberries can be produced in abundance on any good garden soil or land that has produced satisfactory crops of garden or regular field crops. Land that has had thorough cultivation is best but if vacant lot, garden space or field that has been unattended has a rank growth of weeds and grass this is an indication that the soil is fertile enough to grow excellent crops of strawberries.

**Preparing The Land**—The land should be plowed or dug as early in the spring as possible and worked until a level plant bed is formed. When available an application of horse, cow, hog or sheep manure at the rate of 1 bushel for every 50 square feet is good if applied before plowing or worked well into the soil. However, if previous crops have been well fertilized, good results may be expected without further fertilizing. (See paragraph on Fertilizer and Manure).

**Planting Methods**—If plants are to be set in rows, mark off rows 3½ to 4 feet apart from center to center so that rows will be about 2 feet wide when bedded and ample alleys will be left for cultivation. For the small garden and hand cultivation spacing may be narrower if desired. Plants should be set about 18 inches apart. Free bedding varieties are often set 24 inches apart.

**Time To Plant**—Early spring, just as early as the ground can be worked, is the best time to set strawberry plants. Light frosts that do not heave the ground will not injure the newly set plants. **PLANT EARLY** while plants are fully dormant and the weather is most favorable to good growth. **Early planting is the most important single factor in successful strawberry culture.** April in the North; to May 15 in the far North; March and April in the Middle States; November to April in the South.

**Fertilizer and Manure**—Barnyard manure may be applied in fall, winter or very early spring at the rate of about 10 tons or more per acre. It may be applied after plowing on light soils and then disced in, or before plowing on heavy soils. If strawberries are grown on land following crops that have been fertilized, it is not usually necessary to apply any manure or fertilizer. If plants are making a strong, vigorous growth and have dark-green foliage throughout the summer this indicates the supply is adequate and no additional supply is needed.

Complete commercial fertilizers (approximately 5-10-5 or 5-10-10 mixture) give good results and are used by many commercial growers. To aid plants in getting a vigorous start fertilizer may be applied broadcast and thoroughly worked in the soil a week ahead of setting plants, or may be applied as a top dressing at the first cultivation after plants are set. Apply evenly and brush off any that may be on the leaves. Six pounds per 100 feet of row or 700 pounds per acre is ample.

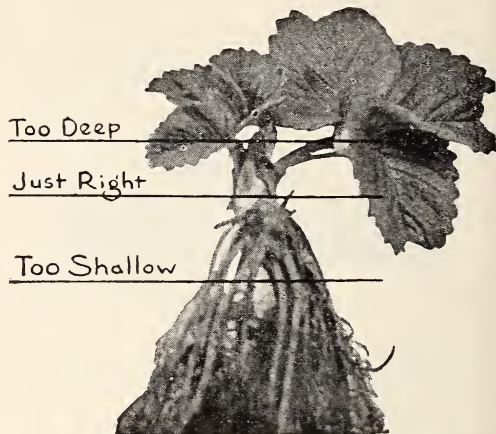
**Where Fall Fertilizing Is Indicated** on moderately fertile soils where growth of plants is not very vigorous, 5 to 7 pounds of fertilizer per 100 feet of row or 600 to 800 pounds per acre will give good results when applied in late August or September.

**Spraying and Dusting**—Strawberries are seldom subject to any serious damage from disease or insects. Healthy plants of varieties immune or resistant to disease are your best assurance.

## Plants Required Per Acre

Plants required per acre at various planting distances:

Rows	Distance in Row	Plants per Acre
3½ feet apart	15 inches	10,000
3½ feet apart	18 inches	8,325
3½ feet apart	24 inches	6,225
3½ feet apart	30 inches	5,000
4 feet apart	15 inches	8,750
4 feet apart	18 inches	7,300
4 feet apart	24 inches	5,425
4 feet apart	30 inches	4,375



## COMPLETE PLANTING INSTRUCTIONS AND SPECIAL CUSTOMER SERVICE

In addition to planting instructions included with each order, special bulletins are available on pruning, plant care after fruiting, spraying, trellising, winter mulching and other subjects.

**THIS INFORMATION IS ALWAYS AVAILABLE TO OUR CUSTOMERS.**

## Selecting Best Strawberry Varieties For Your Area

Capital Letters Indicate Leaders In Areas Listed. Small Type Indicates These Varieties Also Planted.

**PENNSYLVANIA**—PREMIER, TEMPLE, FAIRFAX, MIDLAND, BIG JOE, CATSKILL, FAIRLAND, ROBINSON, SPARKLE, FAIRPEAKE, REDSTAR and Everbearing varieties. Also Empire, Armore, Ambrosia, Rederop, Pocahontas.

**NEW YORK**—Same as Pennsylvania.

**OHIO**—(Northern) Same as Pennsylvania. (Southern) Also BLAKEMORE, Tenn. Beauty, Tenn. Shipper, Tennessean, Pocahontas.

**NEW JERSEY**—(Northern) Same as Pennsylvania. (Southern) Also BLAKEMORE, Tenn. Beauty, Tenn. Shipper, Tennessean, Dixieland, Pocahontas.

**MICHIGAN**—Same as Pennsylvania.

**MARYLAND**—(Eastern) BLAKEMORE, TEMPLE, FAIRFAX, MIDLAND, BIG JOE, FAIRPEAKE, Red Star, Tenn. Beauty, Tenn. Shipper, Tennessean, Albriton, Dixieland, Pocahontas. (Western) Same as Pennsylvania.

**DELAWARE**—Same as Eastern Maryland.

**DIST. COLUMBIA**—Same as Eastern Maryland.

**VIRGINIA**—(Eastern) Same as Eastern Maryland. (Western) Same as Pennsylvania. Also Blakemore, Tenn. Beauty, Tenn. Shipper, Tennessean, Albriton, Dixieland, Pocahontas.

**WEST VIRGINIA**—Same as Pennsylvania. Also Blakemore, Tenn. Beauty, Tenn. Shipper, Tennessean, Albriton, Dixieland, Pocahontas.



## NEW ENGLAND STATES

PREMIER, FAIRFAX, TEMPLE, CATSKILL, ROBINSON, SPARKLE, MIDLAND, REDSTAR, FAIRPEAKE, FAIRLAND and all Everbearing. Also Ambrosia, Rederop, Empire, Armore, Sen. Dumlap.

ALL OTHER STATES—Consult listing of State or climate nearest you.

# Growing Blueberries

**Adaptability**—Cultivated blueberries are being successfully grown from North Carolina to the Northern boundaries of the Country. The best indication that blueberries may succeed on a soil is that they or some related plants, such as huckleberries, azaleas, or laurel, are found growing there naturally. We do not feel any exact limit of adaptability has been established and would suggest trial plantings anywhere except in the deep South or where the soil is alkaline or very dry.

**Soils—VERY IMPORTANT**—Natural blueberry soils have a pH value from 3.8 to 5.5 with best growth occurring between pH 4.1 to pH 5. These soils have an abundance of humus and a fairly constant high water table. Such soils must have a good surface drainage, as flooding during the growing season may cause serious injury. Planting on this type soil is usually done on wide ridges, six to seven inches high. **DO NOT PLANT BLUEBERRIES IN RICH GARDEN SOIL THAT HAS HAD THE BENEFIT OF LIME, STABLE MANURE OR OTHER SOIL SWEETENERS.** If you set blueberry plants in your garden or lawn the best method is to dig a large hole where each plant is to be set and fill with woods leaf mold (the decayed leaf and straw matter found in woodland). If this material is not readily available mix your soil with generous proportions of peat, sawdust (preferably rotting hardwood sawdust), or similar humus materials. **UNDER NO CIRCUMSTANCES** should lime or stable manure be permitted to come into contact with the area in which plants are set. It should be borne in mind that the productiveness of a blueberry planting depends largely on the moisture supplied in the upper soil.

**Mulching**—On all but natural blueberry soil, a permanent mulch should be applied as soon as the plants are set. Such materials as straw, sawdust, salt hay, sudan grass, pine needles or leaves should be spread around the plants about six inches deep. Further applications should be made each year in sufficient quantities to maintain the mulch. With individual plants mulch should be applied over an area six to eight feet square.

**Fertilizer**—The application of commercial fertilizer has given a very marked increase in the yield and size of fruit. Applications of  $\frac{1}{4}$  to  $\frac{3}{4}$  lb. per bush have been very successful. We are using a standard 5-10-5 fertilizer with very good results. Application should be made in a wide band spread evenly around the plant about 10 inches from the plant. Where sawdust mulch is used, 2 oz. sulphate ammonia per bush should be added the second and third years to supply necessary nitrogen. Also note paragraph 2 on bottom of this page. **NO FERTILIZER SHOULD BE APPLIED THE FIRST YEAR PLANT IS SET.**

**PLANTING**—For commercial planting, plants are set every four feet in rows eight to ten feet apart as many varieties of blueberries reach a height of six to seven feet and a width of five to six feet.

All nursery stock listed in this catalog are perennial in habit. They live throughout the year, making growth in the growing season and becoming dormant in the Winter months. They do best when transplanted during this dormant stage in Spring and in late Fall. Unlike annuals (such as vegetables and flowers) you do not have to consider frost damage and may plant as early as the ground can be worked in Spring and as late as the ground can be worked in the Fall. Any exceptions to Fall planting are so noted on descriptive pages. Early planting always gives best results.

## CENTRAL STATES

KENTUCKY — ILLINOIS — INDIANA — IOWA  
KANSAS — MISSOURI — AROMA, BLAKE-  
MORE, ROBINSON, PREMIER, FAIRFAX,  
TENNESSEE BEAUTY, SHIPPER, TEMPLE,  
CATSKILL, TENNESSEAN, POCAHONTAS,  
DIXIELAND, SEN. DUNLAP.

TENNESSEE — ARKANSAS — OKLAHOMA —  
BLAKEMORE, TENN. BEAUTY, SHIPPER,  
FAIRFAX, ROBINSON, TENNESSEAN, POCA-  
HONTAS, DIXIELAND.



Plants should be set slightly deeper than they grew in the nursery, with the roots well spread out. When planting, we place a thin layer of pulverized peat and sand, which has been soaked and mixed half and half, below and above the roots. We feel this makes an ideal rooting medium, and will keep the plant well supplied with moisture until it becomes established. Before planting, one-half to two-thirds of the top growth should be pruned off. Should some of the buds be missed the blossoms may be pinched off first year as they appear. For the home planting, plants may be set in whatever manner is convenient, giving them about thirty-two square feet of space to each plant.

**Yields**—On good blueberry soil, yields of 6 to 8 pints per plant may be expected from mature plants and with medium pruning plants may produce 12 to 20 pints. However, most varieties will tend to overbear and after the third year it is the practice of commercial growers to prune the plants to keep up the size of the berries and encourage vigorous new growth for the next year's crop. Individual bushes will produce some fruit after being planted 1 year. A good rule of thumb is to estimate 1 pint per year of age of well established bushes; for example, 6 pints from a 6 year bush, etc. Present records indicate that blueberry plantings, with proper care, will be profitably productive for fifty to seventy-five years, and possibly longer.

### IMPORTANT POINTS

1. Plant at least two varieties to provide for cross pollination. Cultivated blueberries are considered self-sterile. Do not permit to fruit first year. Be sure to follow instructions in planting paragraph above.
2. Blueberries should not be planted on soils limed in recent years unless actual tests show soils are still acid enough for blueberries. For less acid soils, decaying leaves or acid peat, rotting straw, sawdust, etc., may be mixed into soil to make conditions suitable. This is important if you are planting in your garden or on your lawn. Aluminum sulphate at rate of 5 lbs. per 100 sq. ft. and up to 10 lbs. on heavy loams is excellent for garden plantings. See page 36.
3. Do not permit lime or stable manure to come into contact with immediate area in which Blueberry plants are set. See directions on Soils and Fertilizers on this page.

WHY IT PAYS  
TO PLANT  
EARLY

Tender, Fresh

# ASPARAGUS

from Your Own Plantings  
Year After Year

Asparagus is one of the first vegetables to make appearance in the Spring and its succulent, green stalks are a welcome change to the table. Because of its earliness, asparagus can be depended upon to realize a profit and there is an ever increasing demand for canning and freezing.

Any home gardener can enjoy delicious, healthful asparagus fresh from his garden six to ten weeks each spring. Cooked, frozen or canned immediately after it is cut is the way to really enjoy asparagus. You won't believe the difference until you try it from your own plantings.

## Plant This Great Strain of Mary Washington Roots

Favorite heavy yielder developed by the U. S. Department of Agriculture. The best you can plant for high production and quality. Our MARY WASHINGTON is from the "Roberts" seed selections, very early, a strong grower, and produces shoots of finest quality, more uniform in size, shape and color than others. Healthy green color, rich flavor and juicy tenderness.

50 to 100 roots supplies an average family. 200 roots will take care of canning, freezing needs, too.

**TRY THIS EASY MULCH METHOD IN YOUR GARDEN** — set plants 16 to 18 inches apart each way and deep enough to have crowns  $\frac{1}{2}$  inch below surface. Keep cultivated for six weeks or until growth starts. Apply a fine manure mulch up to 2 inches deep all over bed. Discontinue cultivating, pulling weeds by hand until mulch stops weed growth. Spread fertilizer and some lime on mulch each spring. To control annual weeds on mulch spread a little salt on them on a dewy morning. Will not hurt asparagus. Add a bit of mulch each year.

### ASPARAGUS PRICES FOR SPRING PLANTING

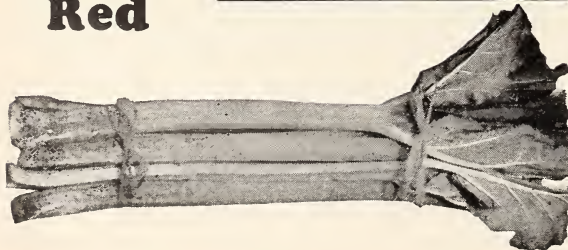
Big two year roots will produce stalks large enough for cutting the second year and a big crop each year thereafter. Produces 15 to 20 years. Complete planting instructions with order.

	25	50	100	250	500	1000
2 year No. 1 Roots.....	\$2.25	\$3.75	\$6.00	\$12.00	\$18.75	\$30.00
1 year No. 1 Roots.....	1.50	2.50	4.00	8.00	12.50	20.00



MacDonald  
Red

## RHUBARB



RHUBARB is a very popular perennial where winters are sufficiently cold to freeze ground 3 to 4 inches. A few plants well tended make an excellent supply of sauce and pies.

We offer only the MacDonald Red variety because of its marked superiority. Matures earlier, sweeter, and one planting lasts a lifetime. Plant in Spring, 3 to 4 feet apart.

### PRICES

75c each - 3 for \$2.00 - 10 for \$6.00



# Rayner's Hardy, Heavy Bearing Vines

## Grapes

### A "Life-time" Vineyard on a Tiny Investment

#### ✓ CONCORD—The Best Blue

CONCORD originated in Massachusetts more than 100 years ago and is still today the most widely grown of American varieties because it is hardy in many varying climatic conditions. The berries are very dark with an abundant blue bloom. CONCORD is of good dessert quality with a high aroma and firm juiciness that makes it a favorite for the table, juice, jam and jelly. These qualities also make it one of the outstanding commercial varieties.

#### ✓ CACO—The Best Red

CACO is recognized as the best red grape variety because of its extreme vigor and general hardiness. The berries are a light red with thin skin and tender juiciness. The dessert quality is as good as the high aroma suggests. CACO is an excellent home and market grape that does well in the same area as Concord, from the middle South to the Northern boundaries of this Country.

#### ✓ NIAGARA—The Best White

We consider NIAGARA the best of the white grapes because it has the vigor and hardiness that makes it a popular producer throughout the Concord, Caco area and it meets the demand for a good white dessert grape. The skin is thin and tender and the flesh has a juicy sweetness and a strong winey flavor. The berries are of an amber color with a light dusty gray bloom. Grapes hold up well when fully ripe and are therefore popular commercially as well as in the home.



CONCORD

Illustration about two-thirds actual size

### GRAPES ARE EASY TO GROW AND LAST FOR YEARS

Grape vines may be planted in early Spring or in the Fall in November and December. Grapes should be set in a well-drained soil that would produce garden crops.

Vines are usually planted 8 to 10 feet apart in the home garden and where a vineyard is planned the rows should be 10 feet apart. Grapes may be trained along a garden fence or a regular arbor may be constructed to suit the desired arrangement in the garden.

A simple method of support is followed by commercial growers. Wires are strung from posts with top wire 5 feet above the ground and the lower wire 2½ feet above the ground.

Pruning is one of the most important factors in obtaining marvelous grape harvests. Our Better Berries Bulletin No. 3 completely outlines most popular pruning methods: also illustrates simple support methods.

COMPLETE PLANTING INSTRUCTIONS will be shipped with your order.

#### PRICE LIST CONCORD, NIAGARA, CACO VARIETIES

Each	3 Vines	10 Vines
55c	\$1.50	\$4.05
25 Vines	50 Vines	100 Vines
\$8.45	\$14.05	\$22.50

PLANTING SUCCESS BEGINS WITH PLANTS FROM RAYNER BROTHERS

# Rayner's CERTIFIED Raspberries

**BEST VARIETIES  
HARDY NORTHERN STOCK**

*"What a thrill  
to eat red-ripe  
raspberries right  
from the vine.  
yum! yum!"*

## LATHAM

**Most Popular and Widely  
Planted Red Raspberry**

The most widely grown of all red raspberry varieties. A strong grower with sturdy, vigorous canes that support enormous loads of rich, deep red berries. Often produces berries an inch in diameter. Quality excellent fresh, frozen or cooked. Thrives in wide range of soils and has excellent disease resistance. Originated in Minnesota and is extremely hardy, withstanding very low temperatures. Production often exceeds 5,000 quarts per acre.

## NEWBURGH

This variety is of New York origin and is very popular throughout the North. Large, beautiful red fruit is of outstanding quality. Highly productive of very firm, mild-flavored raspberries. Hardy in coldest climates. Growers of raspberries for many years are most enthusiastic about NEWBURGH. Recommended from Virginia to Canada. Excellent disease resistance.

## INDIAN SUMMER

**Acknowledged the Best Red Everbearer**

A tremendous June crop of flavorful red raspberries followed by a bumper Fall crop makes INDIAN SUMMER the "extra dividend" producer everbearing raspberry. Long fruiting season for both crops with Fall crop continuing until hard frost. INDIAN SUMMER truly deserves its good reputation with home and market gardeners. Vigorous, upright, hardy, healthy and productive.

### PLANTING RED RASPBERRIES

Red raspberries are set in early spring and may also be set in November and December. In the hill system red raspberries are usually set about 5 feet apart each way. In the row system the rows are made 8 feet apart and plants are 3 feet apart in the row. Raspberries do well in any well-drained soil that would produce such crops as corn or potatoes. Growth responds readily to fertile soil and sufficient fertilizer or manure should be used to keep soil in a fertile condition. COMPLETE PLANTING INSTRUCTIONS with order.

### PLANTING BLACK RASPBERRIES

Black raspberries are set in early spring. In hill system the plants are set 5 to 6 feet apart in each direction. In row system plants are set 3 to 4 feet apart in rows 8 to 10 feet apart. The soil requirements are the same as red raspberries. Raspberries are easy to plant by following the COMPLETE PLANTING INSTRUCTIONS and illustrations included with shipment. Complete information on supports in Better Berries Bulletin No. 3 available on request. You will find it easy to grow your own delicious Black Raspberries.

**New**

# SEPTEMBER

**Red Raspberry  
Everbearing**

**EARLIEST.  
BEST.  
LARGEST  
FRUIT**

This new red everbearing raspberry produces a crop in September equal to its abundant June crop and it ripens earlier in the fall — in September — up to 4 weeks earlier than any other everbearing raspberry.

SEPTEMBER was developed, named and introduced by New York State Experiment Station and is considered superior in size and quality to any other red raspberry. **Quantity very limited.**

6 plants \$3.45; 12 plants \$4.95; 25 plants \$8.95



## Cumberland Favorite Black

It is our guess that an accurate census of all black raspberry plantings in the East would show more CUMBERLAND planted than all other black varieties combined. What higher recommendation could any variety have than this popular acclaim from commercial growers as well as home gardeners. Very dependable heavy cropper of large, fine quality raspberries that are firm, sweet and of beautiful jet-black color. Hardy, strong grower.

## Morrison Best New Black

Growers on the alert for improved black raspberry varieties rate MORRISON as the greatest introduction of recent years. Extends the raspberry fruiting season as it is later than Cumberland. Sets an excellent crop of large, fine-flavored raspberries on strong healthy canes. MORRISON is the ideal companion to Cumberland for the utmost in raspberry enjoyment and greater profits.



PLANT BLACK RASPBERRIES

IN SPRING FOR BEST RESULTS

### Price List of Certified Raspberry Plants

	6	12	25	50	100	250	500	1,000
Cumberland, 1 yr., No. 1 (Black) ...	\$1.70	\$2.45	\$3.90	\$6.65	\$11.55	\$24.95	\$40.25	\$70.00
Morrison, 1 Yr., No. 1 (Black) .....	1.70	2.45	3.90	6.65	11.55	24.95	40.25	70.00
Latham, 1 Yr., No. 1 (Red) .....	2.05	2.95	4.70	8.10	14.00	30.30	48.85	85.00
Newburgh, 1 Yr., No. 1 (Red) .....	2.05	2.95	4.70	8.10	14.00	30.30	48.85	85.00
Indian Summer, 1 Yr., No. 1 (Red) ..	2.05	2.95	4.70	8.10	14.00	30.30	48.85	85.00



**New**

## HEDRICK BLACKBERRY

Introduced by the New York Experiment Station after years of work trying to obtain a variety that would eliminate the conditions of sterility so common in many Blackberry varieties. Hedrick was selected and introduced to give the gardener and commercial grower a blackberry that would be dependable. The berries are larger than Eldorado, of excellent quality and firm for their large size. Delicious to eat fresh, canned or preserved. Try this new variety we know you will be delighted.

6 plants ..	\$2.10	25 plants ..	\$ 7.25
12 plants ..	3.95	50 plants ..	13.50

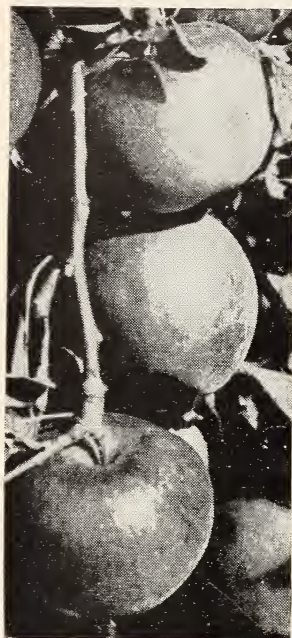
Plant them 3 or 4 feet apart along the fence line or the back of the lot. 12 to 15 plants will provide a generous supply of fruit.

## Blackberries

Plant Them Along the Fence Line  
or in That Extra Corner

# FRUIT TREES

## APPLE TREES



- ✓ **STAYMAN'S DOUBLE RED WINESAP.** Beautiful deep red color. Vigorous, hardy, productive, early bearing. Rich flavor. Crisp, tender apples of long-keeping quality. Enjoy through winter.
- ✓ **GRIME'S GOLDEN.** A vigorous producer of excellent Fall apples. Big golden yellow, tender, crisp apples of fancy dessert quality.
- ✓ **YELLOW DELICIOUS.** Heavy yielding, early bearing. Bright golden yellow, crisp, juicy apples. National favorite.
- ✓ **RED McINTOSH.** A leading commercial variety. Fancy red apples with white, tender flesh of high quality and aroma. Tree very hardy and vigorous.
- ✓ **RED DELICIOUS.** Large apples of rich red color and excellent flavor and aroma. Uniform fruit. Tree very hardy. Great favorite with home gardeners as well as orchardists.
- ✓ **RED ROME.** Has all the good qualities of Rome Beauty, but superior in color. Regularly bears big crops of excellent large apples of unexcelled keeping quality. Comes into bearing early.

PARCEL POST SIZES		EXPRESS SHIPMENT SIZES	
3 to 4 ft.	\$1.25 each	5 to 6 ft.	\$1.95 each
2 yr.	10 to 49 trees 95c ea.	2 yr.	10 to 49 trees \$1.55 ea.
Apple	50 trees or more 75c ea.	Apple	50 trees or more \$1.10 ea.

You may combine all apple varieties for quantity rate. Plant two or more apple varieties for best results.

## PEACH TREES



- ✓ **RED HAVEN.** A new peach that is well adapted to cold climates. Extra early, brilliant color and has fine juicy flavor.
- ✓ **GOLDEN JUBILEE.** An unusually hardy tree unequalled for production of early yellow, freestone peaches of exceptional quality. 3 to 4 weeks before Elberta.
- ✓ **HALE HAVEN.** A deep crimson freestone peach, flesh is golden-yellow, firm and of unusually good flavor. Strong, thrifty.
- ✓ **BELLE OF GEORGIA.** Considered the best of white-fleshed peaches. Large size, freestone. Delicious flavor.
- ✓ **ELBERTA.** This variety is most widely planted because it is adaptable to a wide range of soils and climates. Most popular market peach. Beautifully colored, firm, juicy.

PARCEL POST SIZES		EXPRESS SHIPMENT SIZES	
3 to 4 ft.	\$1.25 each	5 to 6 ft.	\$1.95 each
Peach	10 to 49 trees 95c ea.	Peach	10 to 49 trees \$1.55 ea.
	50 trees or more 75c ea.		50 trees or more \$1.10 ea.

You may combine all peach varieties for quantity rate.

PLEASE NOTE — Trees listed as EXPRESS SHIPMENT SIZES are too large to be shipped by Parcel Post. Trees listed as PARCEL POST SIZES may be shipped either way.

### PLANTING TIME FOR ALL FRUIT TREES

**SPRING**—Just as early as ground can be broken.

Our trees are shipped fully dormant and will not be affected by cold weather.

**FALL**—November and until hard freezing weather stops digging.

### PLANTING DISTANCES FOR TREES

APPLES, regular — 40 feet apart  
 APPLES, Dwarf — 15 feet apart  
 CHERRIES, Sour — 20 feet apart  
 NUT TREES, Walnuts — 40 to 50 feet apart  
 Filberts, Chestnuts — 25 to 30 feet apart  
 PEACHES — 20 to 25 feet apart  
 PEARS, regular — 20 to 25 feet apart  
 PEARS, Dwarf — 15 feet apart



# PEAR TREES

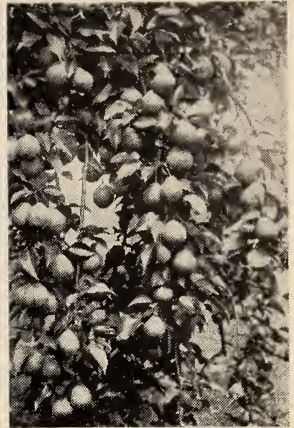
- ▷ **BARTLETT.** Old favorite pear considered best for home garden and market throughout the northern half of country. Large, golden yellow pears have a reddish blush. Flavor excellent. Vigorous, highly productive.
- ▷ **CLAPP'S FAVORITE.** An excellent producer of large, lemon-colored pears with dotted brown markings. Flavor delicate, juicy, sweet. Hardy, vigorous. Pollinator for Bartlett and Seckel.
- ▷ **SECKEL.** A pear of excellent flavor, fruiting in September and October. Fruit medium-sized with a deep brown, reddish cheek when fully ripe. Vigorous, disease resistant.
- ▷ **DUCHESS D'ANGOULEME.** Beautiful tree and heavy bearer of large, greenish-yellow pears of buttery, melting-sweet quality in October. Self-fruitful.
- ▷ **KEIFFER.** A consistent heavy producer of large, golden-yellow juicy pears. Practically immune to blight. Beautiful blossoms and natural grace of tree makes it a favorite.

## PARCEL POST SIZES

2 yr. 10 to 49 trees \$1.35 ea.  
3-4 ft. 50 trees or more 90c ea.

## EXPRESS SHIPMENT SIZES

2 yr. 10 to 49 trees \$1.75 each  
4-5 ft. 50 trees or more \$1.25 ea.



**IMPORTANT** — Plant Duchess or Clapp's Favorite with Bartlett or Seckel for Pollination.

# SOUR CHERRY TREES

- ▷ **MONTMORENCY.** The finest sour cherry. Vigorous tree is heavy producer of large, rich-red cherries. Considered one of the heaviest sour cherry croppers. Self-pollinating.
- ▷ **EARLY RICHMOND.** A grand old variety unsurpassed for cooking quality. Marvelous cropper and very popular because of extreme hardiness to coldest winters. Self-pollinating.

## PARCEL POST SIZES

2 yr. \$1.80 each  
2-4 ft. 10 trees or more \$1.45 ea.

## EXPRESS SHIPMENT SIZES

2 yr. \$2.45 each  
4-6 ft. 10 trees or more \$1.80 ea.



**PLEASE NOTE** — Trees listed as EXPRESS SHIPMENT SIZES are too large to be shipped by Parcel Post. Trees listed PARCEL POST SIZES may be shipped either way.

# DWARF FRUIT TREES FULL SIZE FRUIT ON "BABY" TREES

Dwarf trees are produced by propagating them on certain stocks which restrict the size of the tops that have been grafted or budded on them. Fruiting is usually earlier than on standard trees of same variety. Dwarf trees are very popular with gardeners who wish to limit the space devoted to fruit trees. Available in apple and pear varieties.

**IMPORTANT** — When planting Dwarf Trees do not cover the graft or bud with soil. To do so may cause tree to revert to large size.



## Dwarf Pear Trees

Bartlett, Clapp's Favorite, Seckel, Duchess varieties. Same fruit as large pear trees. See variety descriptions above.

3 feet up, \$2.75 each

3 trees for \$7.25      10 trees for \$22.50

## Dwarf Apple Trees

Winesap, Yellow Delicious, McIntosh, Red Delicious varieties.

Same fruit as large apple trees. See variety descriptions on Apple page.

3 feet up, \$2.95 each

3 trees for \$7.50      10 trees for \$22.50



FAST GROWING EARLY PRODUCING

## Chinese Chestnut

HARDY BLIGHT RESISTANT

Here is the most popular of all nut trees. In a short time it becomes one of the most beautiful trees on your place and you'll look forward to each Fall harvest of delicious nuts.

Chestnuts fully as good as native American and larger in size. Production begins in two or three years after planting these new blight resistant trees. Vigorous, fast-growing in a wide range of soils. Train easily to single trunk type.

### Parcel Post Size

2 to 3 ft. \$1.60 each  
10 to 49 trees: \$1.40 each  
50 or more: \$1.25 each

### Express Shipment Sizes

4 to 5 ft. \$2.95 each  
10 to 49 trees: \$2.75 each  
50 or more: \$2.60 each



HARDY ENGLISH WALNUT

## ENGLISH WALNUT

The Walnut is a practical, desirable tree. Valuable for shade and production of thin-shelled, delicious nuts. Hardy trees come into production early. Pollinate with JAPAN WALNUT.

2 to 3 ft. trees \$2.25 each; 3 for \$5.85

## JAPAN WALNUT

A valuable shade tree used largely as a pollinizer of English Walnuts. Good producer of nuts of distinctive walnut flavor.

2 to 3 ft. trees \$1.25 each

## BLACK WALNUT

THOMAS, one of the best Black Walnuts we know. Kernels large, light colored, and crack out meat with most halves intact. Tree extremely vigorous and hardy.

2 to 4 ft. trees \$1.65 each; 3 for \$4.60

## FILBERTS

AMERICAN FILBERT (Hazel Nut) — The great favorite. An attractive small tree yielding an abundance of nuts. Bears young. Use DuChilly or Barcelona as pollinizer.

2 to 3 ft. trees \$1.25 each; 3 for \$3.45

BARCELONA FILBERT—Most widely planted commercial type in many sections. Large nuts and a consistent heavy bearer. Price same as DuChilly. See below.

DU CHILLY FILBERT — A very popular tree. Large, attractive nuts. Widely used as a pollinator.

2 to 3 ft. trees \$1.90 each; 3 for \$5.10



BLACK WALNUT



*Nature's Own Lovely Rose*

# Living Grows Rapidly

Needs No **Fence**  
Special Care

In All Types of Soil The Cheapest  
Fencing You Can Buy — It Mends Itself  
— It Lasts A Lifetime!



Want a living fence that will give natural beauty to property lines, pastures and fields — an ideal windbreak — a fence that will keep in cattle, horses, sheep and goats — that will grow rapidly to cover up unsightly spots or scenes?

Multiflora rose is highly recommended by State and Government conservationists because it adds so much beauty and does a great job of soil and game conservation.

This living fence is a very thorny, tough, hardy shrub. It grows 2 to 3 feet a season until it reaches full 6 to 8 feet at maturity. 30 days lovely pinkish-white flowers are followed by loads of red berries to feed the birds. Insect resistant. Disease resistant.

For very thick growth set plants 1 foot apart. Can be kept to desired height and width or just let it grow naturally. Because of the demand we suggest you place your order early. Can be planted as early in Spring as ground can be worked — also in late Fall.

## MULTIFLORA ROSE

### PRICE LIST

#### Vigorous 12-18" Plants

25 plants ....	\$2.25	100 plants ....	\$ 7.50
50 plants ....	4.15	500 plants ....	30.00

#### Heavy Branched 18" up

10 plants ....	\$2.50	50 plants ....	\$ 8.30
25 plants ....	4.50	100 plants ....	15.00
500 plants .....	60.00		



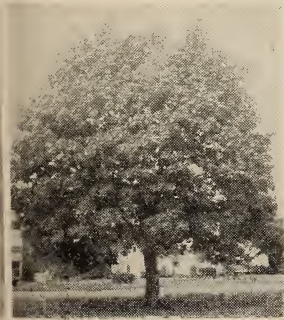
### LOVELY FLOWERS LIKE THESE

completely cover your fence in June. No painting! No expensive repairs! Nature decorates it and keeps it in constant healthy condition.

# SHADE TREES

## IT PAYS TO PLANT SMALLER SIZES

You get more complete root systems. You pay less for transportation. You pay only a fraction of the price of large stock.



NORWAY MAPLE

### WEeping WILLOW

One of the fastest growing ornamental shade trees. Long, graceful, arching branches.

3-4 ft. Trees 95c each; 3 for \$2.40

### CHINESE ELM

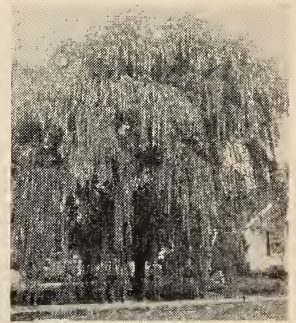
This hardy, rapid-growing tree is one of most popular types for shade.

3-4 ft. Trees 95c each; 3 for \$2.40

### NORWAY MAPLE

Most widely planted lawn and street tree. Beautiful shape. Dense growth.

12-15" 70c each; 3 for \$1.85



WEeping WILLOW

### PLANTING DATES

Early Spring to May 1st.

Fall after November 1st.

Plant in Spring as early as ground can be dug!

Plant early! Order Now!

PLANTING SUCCESS BEGINS WITH AN ORDER FROM RAYNER BROTHERS



# FLOWERING TREES

## RED DOGWOOD

A truly beautiful small tree growing from Florida to Massachusetts. A year round beauty with red flowers in Spring, heavy foliage in Summer, scarlet leaf coloring in Fall and red berries in Winter.

2 to 3 ft. trees \$3.95 each.

## WHITE DOGWOOD

The white flowers have unusually beautiful markings and the tree is clothed with the beauty of these flowers so closely placed that they seem to touch. Red leaf coloring lends much to the Fall landscape, followed by clusters of red berries.

3 to 4 ft. trees \$1.95 each.



FLOWERING CRAB

**New**

## ALMEY Flowering Crab

We believe ALMEY flowering crab the most beautiful variety in America. Fiery crimson blossoms the size of a silver dollar just cover the tree when it is in full bloom. At base of each petal is white marking giving flowers a starred effect in center.

ALMEY blooms young, earlier than others and the tree is upright, vigorous and hardy. Does well anywhere. Maroon fruits last into the winter season.

3 foot trees \$2.95 each; 3 for \$7.50

## SAUCER MAGNOLIA

Very popular because of beautiful 6 inch blooms resembling cup and saucer. Flowers in early Spring before leafing out. Grows to 12 feet in height. Very hardy.

12-18" Size \$2.95 each; 3 for \$8.25

## EUROPEAN MOUNTAIN ASH

A most popular tree because of clusters of showy orange berries in late Summer and a familiar sight from North Carolina to Canada. Grows 25 feet to maturity. Not particular as to soil and can endure dry conditions.

3 to 4 ft. trees \$2.00 each; 3 for \$5.65



SAUCER MAGNOLIA — Soulangeana



# FLOWERING SHRUBS

## PINK TARTARIAN HONEYSUCKLE

Not a vine, but a beautiful bush that grows 6 to 8 feet tall. A profusion of lovely flowers followed by waxy-red berries to give beautiful contrast to the bright green leaves.

## SPIREA VanHOUTTEI

Popular, easy-growing shrub often called "Bridal Wreath". A snowbank of white flowers in May and June. Dark green foliage. Drooping branches. Grows 4 to 6 feet.

## FORSYTHIA (Golden Bell)

This variety has very deep golden-yellow, bell-shaped flowers in early Spring. Often called Golden Bell. Long, slender branches. Grows very erect with drooping tips.

## WEIGELA (Newport Red)

Very popular for its brilliant red, trumpet-shaped flowers throughout 60 days of late spring. Grows to 6 feet.

## ABELIA — Grandiflora

A most versatile shrub for background plantings and hedges. Often called "Bush Arbutus", the white flowers are an attraction from June to Fall. Leaves turn glorious bronze in Fall. Stands clipping as hedge. Grows naturally to 6 feet.



FORSYTHIA



WEIGELA

Any Shrub  
on this  
page  
\$1.25 each

Save up to \$5.00 on Dozen lots

Any 3 Shrubs  
\$3.25

Any 6 Shrubs  
\$6.00

Any 12 Shrubs  
\$10.00

Choose as many varieties as you wish. Dress up your lawn and garden with these bargains.

## ROYAL BLUE HYDRANGEA

Color of blooms depends upon soil acidity. Will bloom pink unless the soil is sufficiently acid. Use Aluminum sulfate (see page 36) for acidifying.

## SNOWBALL BUSH

The old-fashioned snowball bush. Loads of pure white flowers in tremendous flower heads in May and June. Grows 5 to 6 feet high. Popularity increases through the years.

## STRAWBERRY SWEET SHRUB

Rich, chocolate-covered blooms have a delightful odor. Often called Strawberry Shrub. One of the grandest of the old-fashioned shrubs with beautiful foliage.

## ALTHEA — Rose of Sharon

A very hardy, upright shrub of unusual beauty. Begins flowering in early summer and continues through the fall months.



ALTHEA — Rose of Sharon

PLANTING DATES — Early Spring to May 1st. Fall after November 1st.

Plant in Spring as early as ground can be dug! Plant Early! Order Now!

PLANTING SUCCESS BEGINS WITH PLANTS FROM RAYNER BROTHERS

# Rayner's True American HOLLY

This is the true American Holly—so popular at Christmas-time and considered one of our most handsome native shrubs. Because it seems to breathe the very air of Christmas is has been collected almost to the point of depletion in its native areas.

Holly is valued so highly that it is not unusual for a large tree to sell for hundreds of dollars. And in any size that requires balling and burlaping for moving, Holly is one of the most expensive shrubs to buy.

Now you can have Holly as inexpensively as many shrubs by buying in the transplant size just as many nurserymen do. In this size it transplants readily and successfully. Thrives from Georgia to Massachusetts.

## POTTED HOLLY PLANTS

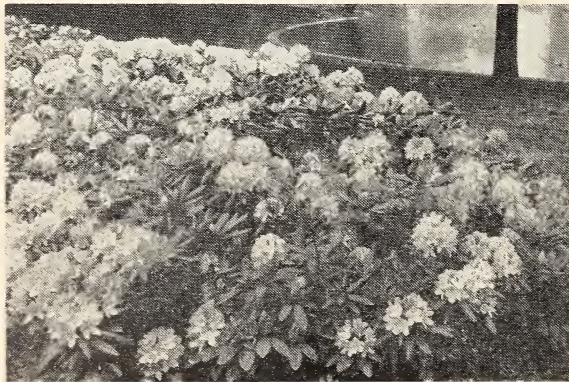
Grown in 3" pots and shipped to you with the earth ball it grew in. 2 female plants and 1 male plant for pollination. Sold in this combination only.

3 HOLLY PLANTS from pots \$3.95

Also 6-12" seedlings approximately half each sex. Roots treated and shipped in moss.

6 for \$2.95; 25 for \$9.00

## Hardy Hybrid Rhododendrons



If you have a shady spot that has not been too kind to many types of shrubs then you can be sure that rhododendrons will promptly call this spot "home" and show their appreciation with their magnificent foliage and gorgeous flowers.

Rhododendrons prefer acid soil and a good moisture supply. Soil is prepared in same manner as blueberries (see Blueberry Culture on page 23).

8-10" plants 1.65 each — 3 for \$4.25

## Magnolia Grandiflora

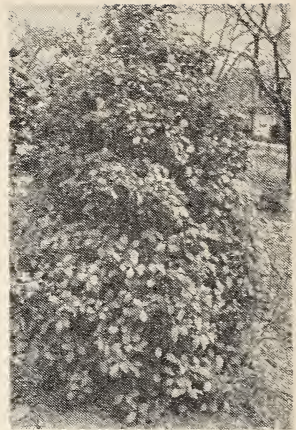
Grandest of Magnolias growing into a large tree. Handsome large, waxy evergreen leaves give background to magnificent flowers April to August. Called the most beautiful of all evergreen trees.

We do not recommend planting in the North beyond southern New York.

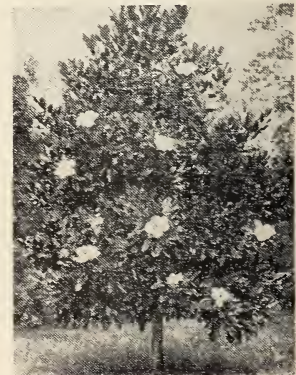
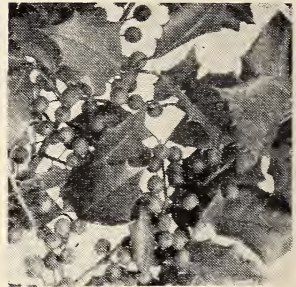
12-15" size \$2.50 each — 3 for \$6.95

PLANT MAGNOLIAS AND RHODODENDRONS IN SPRING.

PLANT HOLLY IN SPRING AND LATE FALL.



Closeup of Holly Cluster below.





# Colorful EVERGREENS at Bargain Prices

These small sized evergreens are of the finest type transplants, that will grow into beautiful specimen plants. At these low prices you will save many dollars on your planting needs.

## JAPANESE YEWS (Taxus)

The Yews are in greatest demand because they do equally well in shade or sun. Leaves are broader than other evergreens, are not prickly, and have a flat, glossy deep-green hue that remains all year around. Yews stand hard clipping and are of dense habit. Do well in ordinary soil and prefer plenty of humus. 8-10' sizes.

85c each; 3 for \$2.25

Upright Yew — Use at entrances, corners and for drive entrances.

Spreader Yew — Use under windows, around low porches or low foundations.

Be sure to specify Upright or Spreading.

All evergreens shipped in Spring to May 1, and in Fall beginning October 15.



Upright Yew



Spreader Yew

## PYRAMIDAL ARBORVITAE

The flat, soft foliage of Arborvitae makes it most popular. Foliage is dense, waxy to the touch and has a nice fragrance. Growth is relatively slow and requires a minimum of clipping. Makes excellent hedge effects as well as for individual plantings. A favorite for entrances and corners 8-10".

85c each; 3 for \$2.25

## BOXWOOD

(Old English Dwarf)

The favorite so often seen at Washington's Mount Vernon and other gardens of the Middle Atlantic. Grows in any well-drained soil. Prefers some shade. At left, 4-6".

50c each; 12 for \$5.00



Globe Arborvitae

The globes have a variety of uses in foundation groups and along walks and borders. 8-10".

85c each; 3 for \$2.25



PYRAMIDAL ARBORVITAE

## IRISH JUNIPER

One of the best shaped natural growing evergreens. Holds columnar shape for years with little shearing. Popular for entrances. Closely matted, silvery-green foliage. Prefers sun. Illustrated at left. 8-10".

85c each; 3 for \$2.25



## PFITZER JUNIPER

This evergreen is considered indispensable in foundation plantings. Handsome, feathery green foliage. Prefers sun but tolerant to some shade. Ideal under windows. Hardy, free-growing. Stand close shearing. 8-10".

85c each; 3 for \$2.25

## CREEPING JUNIPER

The Andorra is unexcelled where a very low planting is desired for steep banks, rock garden or borders. Finely cut, bright, silvery-green foliage in spring and summer and with frost develops a delightful pink hue. Not illustrated. 8-10".

90c each; 3 for \$2.50



Pfitzer Juniper

## Gorgeous PHLOX Collection

Wide color range: white, pink, salmon pink, salmon orange, scarlet red, rosy blue.

Dazzling colors on great sturdy flower heads will greet you for several summer months when you plant this phlox collection. All are hardy growers and will flower for years. We have arranged with one of America's great phlox specialists to ship these plants direct from his gardens to you.

6 PHLOX PLANTS \$1.95 POSTPAID  
1 of each color





# Rayner's **EASY TO GROW** **BIG** YIELDS! PROFITS! **BLUEBERRIES**

## Beautiful Ornamental Shrubs - Lead All Bush Fruit in Profit

Our blueberry plants are grown here on our nurseries, and propagated from carefully selected cuttings of the heaviest yielding plants. This is your assurance that Rayner's Blueberry Plants are best, for size, vigor, yield and profit.



Giant Berries Big as Nickels, Picked From Our 1953 Crop

### ALUMINUM SULPHATE

Prices f.o.b. Salisbury, Md. See Parcel Post Rates on page 18 for small shipments. 100 lb. bags shipped by Freight or Express Collect only.

5 Pound Bag 79c; 10 Pound Bag \$1.30  
100 Pound Bag \$5.95

### GROWING BEAUTIFULLY

Deposit, N. Y.

Two years ago I purchased from you two dozen Blueberry plants. I am happy to inform you that all plants are growing beautifully.

R. Tholfsen

You will never believe just how incredibly wonderful it is to behold a blueberry bush in fruit, to pick and eat these marvelous berries until you experience it yourself.

And this rich experience can be enjoyed from your own lawn or garden.

Blueberry bushes can be pruned and adapted to any landscaping plan.

Full instructions with every order. Add beauty to your home and grow fruit that will be the sensation of your neighborhood.





# Big Yields Two Year Plants Produce Following Year Big Profits

Production Increases as Plants Mature  
Pick 8 to 16 Pints from Mature Bushes

## COMPLETE SELECTION OF BEST KNOWN VARIETIES

**JUNE** (Early, Fast Ripening). Liked because it fruits early and ripens entire crop quickly. Medium high bush with medium size fruit. Popular from North Carolina to Maine.

**WEYMOUTH** (Earliest of All). Very popular commercially because it is first to ripen and makes entire crop for early market prices. Dark blue, medium berries of fair flavor.

**CONCORD** (Early Midseason). Medium berries ripen about 2 weeks after June. Tall, vigorous, attractive bush. Sets, a tremendous crop of firm fruit with good flavor.

**STANLEY** (Early Midseason). Tall, vigorous bush with large, thick shiny leaves. Good producer of large berries, considered best flavored of all varieties.

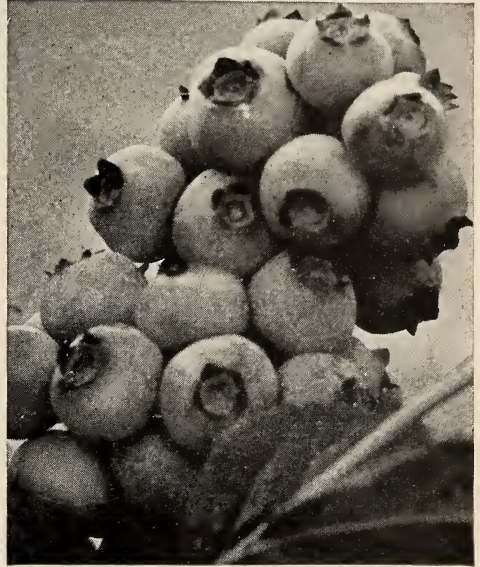
**RANCOCAS** (Midseason Beauty). Upright bush often exceeds six feet at maturity. A favorite for lawn and garden plantings because of unusual beauty. Good producer of fine flavored fruit.

**DIXI** (Largest Fruit). Largest of all cultivated blueberries; firm, fine blue color, high aroma. Bush very vigorous and productive. Late season, slightly before Jersey.

**PEMBERTON** (Most Vigorous). Considered the most vigorous grower of all varieties. Good production of large berries, firm, slight aroma, good dessert quality. Midseason.

**JERSEY** (Ideal Late Variety). Large, light-blue berries of best shipping quality. Vigorous, fine bush with excellent growth characteristics. Erect, productive, beautiful foliage.

**ATLANTIC** (Next to Dixi in Size). An unusually vigorous bush, very productive. Large berries, good color, firm, good dessert quality. Late fruiting variety.



**RUBEL** (Widely Planted Late). Bush is upright, very vigorous, hardy and productive. Medium fruit, light blue, very firm. Well liked because of its productiveness, firmness and desirable growth characteristics.

**BURLINGTON** (Lateset Of All). Medium size berries on vigorous upright bush. Good blue color, firm, aromatic, good dessert quality. Promising for its lateness, color and excellent shipping quality.

Complete Planting Instructions Sent With Order

## PRICE LIST

Plant At Any Time Ground Is Not Too Frozen To Work

Plant 2 Varieties for Pollination. F.O.B. Salisbury, Maryland

Varieties may be combined to take advantage of quantity prices.

	Single Each	3 to 9 Each	10 to 29 Each	30 to 99 Each	100 or more Each
1 yr. 3-6" rooted cuttings	\$.45	\$.35	\$.30	\$.25	\$.20
2 yr. 6-9" liner grade	.70	.65	.55	.50	.45
2 yr. 9-12", 2 branches	1.00	.90	.80	.70	.60
3 yr. 12-18", 2 branches	1.35	1.10	1.00	.90	.80
3 yr. and 4 yr. 18-24" 3 branches	1.90	1.65	1.40	1.25	1.15

Write us for prompt quotations on large quantities.

ALL PLANTS PROPAGATE FROM OUR OWN RECORD PRODUCING FRUITING STOCK

### Jumbo Size Blueberry Plants 5 yr. 24" to 36" Plants

We have a limited supply of these large plants in Stanley, Concord, Rancocas, Jersey, and Rubel varieties. They have already fruited for two years in the nursery. Will bear fruit this year!

\$2.65 each; 3 for \$6.75; 10 for \$20.00

WE ARE MARYLAND'S LARGEST GROWERS OF BLUEBERRY NURSERY PLANTS  
FOR COMPLETE CULTURAL DIRECTIONS SEE PAGE 23



# LOOK WHAT \$19.50 BUYS

YOUR CHOICE OF FOUR GREAT BARGAIN OFFERS	<b>40</b>	2 yr. 9-12" Blueberry Plants	<b>\$19.50</b>
	<b>30</b>	3 yr. 12-18" Blueberry Plants	<b>\$19.50</b>
	<b>20</b>	3 yr. 18-24" Blueberry Plants	<b>\$19.50</b>
	<b>12</b>	4 yr. 24-36" Blueberry Plants	<b>\$19.50</b>

We select varieties guaranteed suitable for your area and climate. All top-grade stock labeled with name. Please be sure to indicate size plants desired.

## Superb GLADIOLUS

Best, Latest Imported HOLLAND varieties

Per 10 bulbs

ARANJUEZ. Sparkling orange golden throat	.85
ELIZABETH THE QUEEN. Lavender	.90
GENERAL EISENHOWER. Begonia rose	.95
HAWAII. Brown-red with red blotch	1.00
HOPMAN'S GLORY. Pure golden yellow	.85
JO WAGENAAR. A real beauty. Carmine-red	1.10
JUNEBELLS. Snow-white, large florets	.80
LEEUWENHORST. Pure salmon-pink	.80
LILAC TIME. Lilac purple-red blotch	.95
MANSOER. Ruby-red, velvety sheen	.95
MODERN TIMES. Uniform carmine-purple	.95
NEW EUROPE. Bright red, dazzling	.80
PALET. "Artist's palet" red, blue blotch	1.00
PAUL RUBENS. The finest purple	.85
PRINCE CHARMING. Creamy-white, rose	1.15
PICARDY. Immense apricot-pink	.90
ROSA VAN LIMA. Light rose, dark throat	.75
SNOW PRINCESS. Pure white beauty	.75
SPIC & SPAN. Deep pink, light salmon shade	.95
SPOTLIGHT. Yellow, scarlet throat	.95



### SUPERB GLADIOLUS COLLECTION A60

3 bulbs each of varieties listed at left

60 bulbs - Postpaid - \$5.15

(100 bulbs - COLLECTION A100—\$8.00)

### DeLuxe GLADIOLUS Mixture

An exceptionally fine blend of only the choicest large-flowered Gladiolus in a wide array of colors.

25 for \$1.95 - Postpaid - 100 for \$6.25

### OUR GUARANTEE

Rayner's plants and trees are grown on proper soils. Correctly dug and packed to arrive in perfect growing condition. We guarantee you will receive top quality stock. If your plants arrive in poor condition, or you are not pleased with our stock, write us within ten days and we will replace plants, or refund the purchase price. After planting we cannot be responsible for continued growth, for we have no control of weather or other growing conditions. However we will replace stock that dies at one half price if notified within three months after shipment arrives. Guarantee covers full purchase price of stock, does not imply further responsibility or liability.

### REFERENCES:

American Association of Nurserymen  
Washington, D. C.

Your Own State Experimental Station  
or County Agent

Farmers & Merchants Bank and County Trust Co.  
Salisbury, Md.

Dun & Bradstreet





# WRITE NAMES HERE FOR BONUS PLANT OFFER

List Names and Addresses Here. Please Print or Write Legibly.  
Please be sure to include Street Address or R.F.D. Number. Also note whether Mr., Mrs. or Miss.

1. \_\_\_\_\_
2. \_\_\_\_\_
3. \_\_\_\_\_
4. \_\_\_\_\_

▲  
**WRITE  
NAMES  
ABOVE**

**\$ |**

**BONUS  
PLANT OFFER**

**\$ |**

▲  
**WRITE  
NAMES  
ABOVE**

Send us the names and addresses of four persons who grow berries or who have a garden and may be interested in receiving information on berry growing. We will include \$1.00 worth of strawberry plants FREE. We must reserve right to choose variety of plants, but are sure you will be well pleased. Plants will be shipped with order.

If you do not wish to supply names for Free Plant Offer, but have a friend or neighbor whom you would like to receive a catalog we will appreciate your interest in supplying name and address.

HOW MANY	VARIETY OF STOCK ORDERED (Also use for remarks or special instructions)	PRICE	
		Dollars	Cents

**ABOVE SPACE IS FOR ADDITIONAL ITEMS OR REMARKS.**

## INSTRUCTIONS TO PURCHASERS

**TIME TO ORDER**—As soon as convenient after receiving this catalogue. Late in the season we may be out of some varieties, but if you order early, plants will be reserved until you are ready for them. Be sure to **PLANT EARLY!**

**TIME OF SHIPMENT**—From October 15th to May 15th. All orders filled after May 15th will be at purchaser's risk. We will use every precaution in our power to put the plants through in good condition.

**PAYMENT**—Cash with order, Money Order, Registered Letter, or Personal Check. Or one-fourth cash with order and balance before date of shipment.

**REFERENCES**—The Farmers & Merchants Bank, County Trust Co., Salisbury, Md., Dun & Bradstreet, your own State Experiment Station or County Agent.

**GUARANTEE**—100% satisfaction or your money back. Claims, if any, must be made within 10 days after receipt of goods. We cannot be responsible for flood, drought, insects or other conditions over which we have no control.

**TRUE-TO-NAME**—We use every precaution to have our plants true-to-name. Should any prove otherwise we will replace them or refund the purchase price, but at no time will we be responsible for any sum greater than that paid for the stock.

**SHIPMENT**—(Express) Shipment by Express is generally cheaper on 1000 plants or more beyond the third zone and on all large orders.

**PARCEL POST**—On all orders under 1000 Parcel Post is generally cheaper. Postage rates are given on page 18. Be sure to send enough postage or plants will be sent C.O.D. for balance, any excess postage will be returned.

**WRITE ON OTHER SIDE OF THIS SHEET.**



# *Loads of Delicious*

# Blueberries

## Order From These Great Bargain Gardens!

*from Beautiful Shrubs  
that Last A Lifetime!*

Enjoy Blueberries in all their  
juicy "ripened - on - the - bush"  
goodness for weeks and weeks  
each year.

Great for fresh dessert, Pies,  
and perfect for freezing.

No. 9 Bearing  
Age Garden  
3 CONCORD  
3 RANCOCAS  
3 RUBEL

9 plants 18-24"

**\$10.98**  
Postpaid

No. 10 Ideal  
Garden

2 RANCOCAS  
2 RUBEL  
2 JERSEY  
2 CONCORD

8 plants 2 yr.  
9-12"

**\$8.49**  
Postpaid

No. 11  
Bargain Jumbo  
Offer

2 RANCOCAS  
2 STANLEY  
2 JERSEY

6 plants 21"-36"

**\$10.98**  
Postpaid

No. 12 Bargain  
Garden

5 RANCOCAS  
5 RUBEL  
5 CONCORD

15 Plants 12-18"

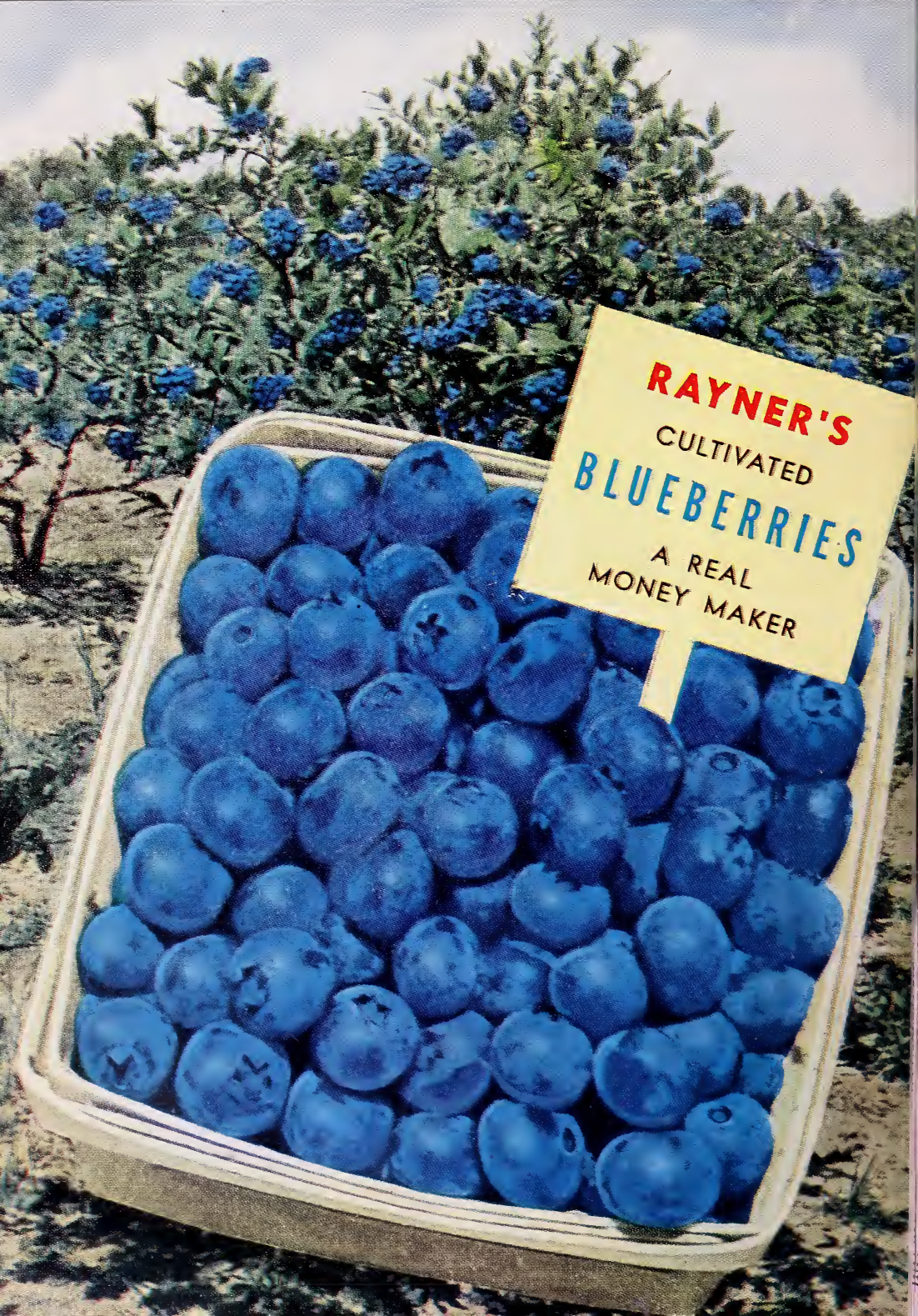
**\$11.69**  
Postpaid



**Lifetime Beauty for Lawn and Garden**



RAYNER BROTHERS, SALISBURY, MD.



**RAYNER'S**  
CULTIVATED  
**BLUEBERRIES**  
A REAL  
MONEY MAKER