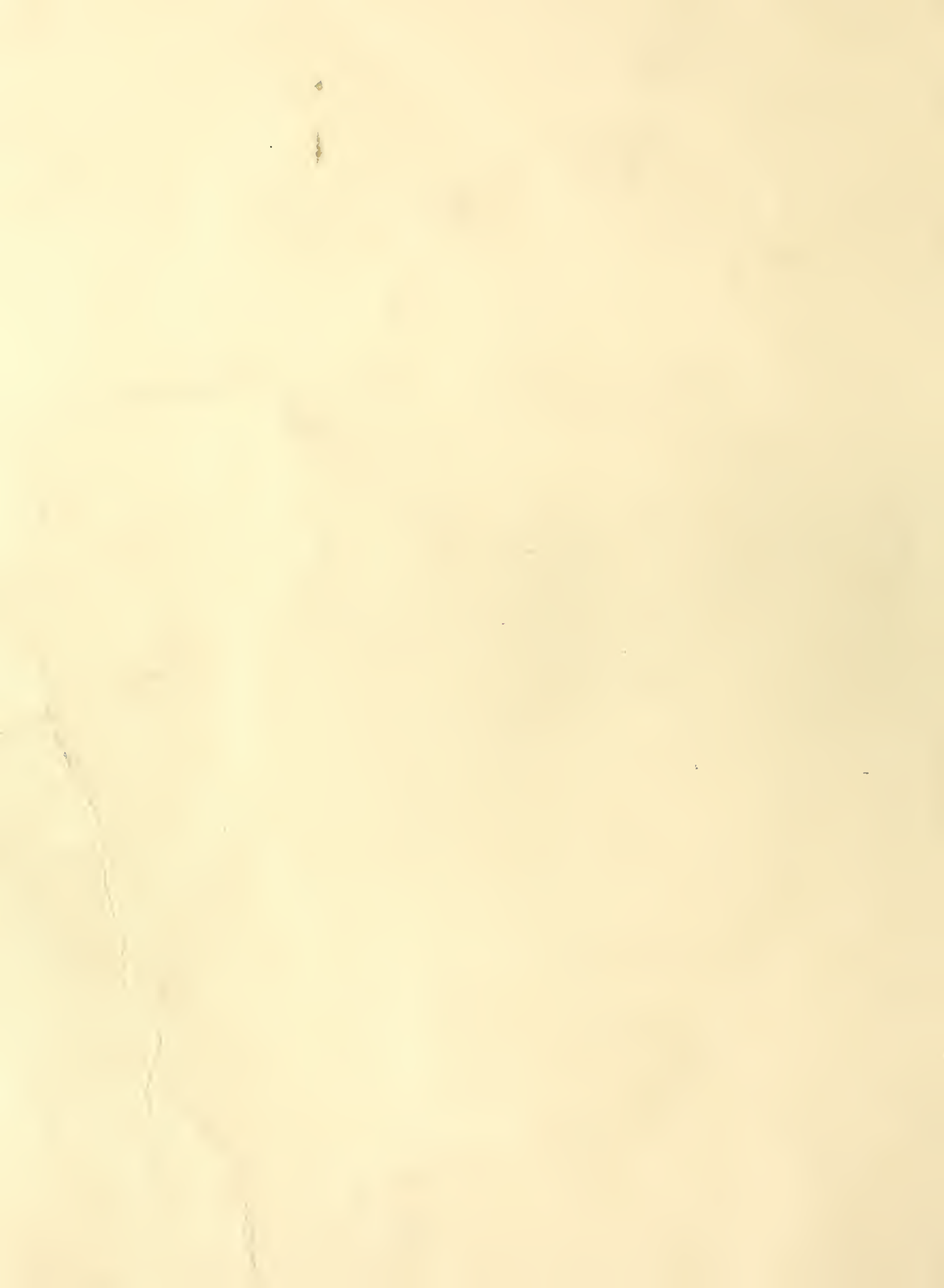


Historic, archived document

Do not assume content reflects current scientific knowledge, policies, or practices.



62.23
1947



Vaughan's Rainbow Garden of Tulips, Awarded Gold Medal
at National Flower and Garden Show, Chicago, Ill., 1947.

Vaughan's **SPRING FLOWERING BULBS**
CHICAGO • NEW YORK

**Peony Flowered Tulip
Mt. Tacoma.**

The Group of these tall, late double tulips shown in the illustration just above this offer, were the focal point of interest in our tulip garden at the National Flower Show. See inside back cover for large illustration, and description.

Varieties illustrated below cover the complete range of color variation found in tall, late tulips. All flower in May together, except Gen. DeWet, which is a late early, preceding the Darwins and often overlapping their season.

9 Giant Tulips \$1.60

No. 1 Bulb of each variety illustrated hereon (9 Bulbs) prepaid.

Two each (18 bulbs).....	\$ 2.80
Three each (27 bulbs).....	3.50
Six each (54 bulbs).....	6.75
Twelve each (108 bulbs).....	13.00

Most fragrant of all tulips are Gen. DeWet and Don Pedro. Louis XIV is unrivaled in the Breeder clan, Glacier the largest white Darwin, Mrs. Scheepers the finest yellow Cottage. Each variety illustrated is a leader in its color class.



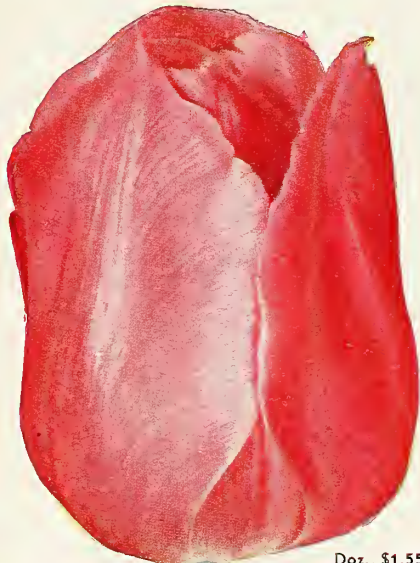
GLACIER (Darwin) Doz., \$1.65; 100, \$11.75



MARJORIE BOWEN (Cottage) Doz., \$1.65; 100, \$11.75



MRS. J. T. SCHEEPERS (Cottage) Doz., \$1.65; 100, \$11.75



PRINCESS ELIZABETH (Darwin) Doz., \$1.55; 100, \$10.75



FAUST (Darwin) Doz., \$1.65; 100, \$11.75



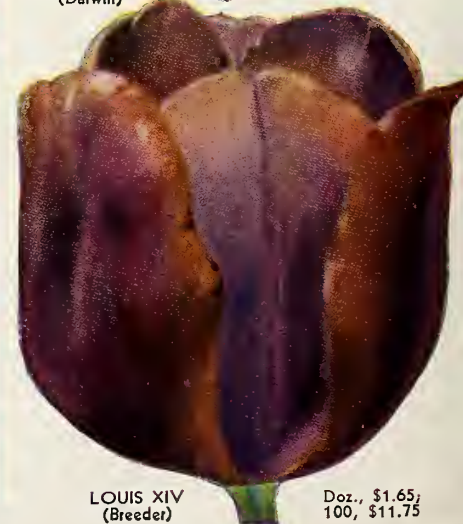
CITY OF HAARLEM (Darwin) Doz., \$1.65; 100, \$11.75



DON PEDRO (Breeder) Doz., \$1.65; 100, \$11.75



GEN. DE WET (Single) Doz., \$1.55; 100, \$10.75



LOUIS XIV (Breeder) Doz., \$1.65; 100, \$11.75



Vaughan's Famous RAINBOW GARDEN OF GIANT TULIPS

42 Flowering Size Bulbs, seven each of six named varieties, \$3
separately bagged and labeled. Prepaid for - - - - -

Almost alone among flowers, the tulip provides the garden with every color in the rainbow. This amazing color-range is one of its chief merits, and the most attractive tulip plantings take full advantage of it.

In our Rainbow Garden of Tulips, which for years we have made the best fall bulb value available to home gardens,

the complete color range of the tulip family is represented by an example of each color. We offer 42 bulbs, 7 each of the six varieties described below, prepaid for \$3.

The low price of this collection does not mean small bulbs. They measure 11-12 centimeters and will bear flowers of the largest size, in suitable locations.

Our 1947 Rainbow Garden of Tulips . . . Seven Each of These Six varieties.

Violet

Greuze, Darwin, of deep blue-violet. Its huge cup-shaped flower is held on strong 26-inch stems, and its dark color forms a striking contrast with bright yellow and pink companions, bringing out their beauty while they in turn enhance its own rich tones.

Red

Farncombe Sanders. Of all the Darwins this is the most fiery scarlet. It has large flowers of the typical Darwin cup-shape, on strong stems 25 inches tall. Its color is clear and vivid; when the flowers are opened the inside shows a white center marked with a blue cross.

Yellow

Mrs. John T. Scheepers, Cottage. Enormous oblong flower of clear chrome-yellow, tallest and one of the largest of all yellow tulips, 30 inches high. Its vivid color serves as the highlight of the rainbow tulip border.

Orange

Dillenburg. Breeder. The best examples of orange coloring are found among the Breeder tulips, where rich blends rather than primary hues are the rule. Almost every Breeder has a touch of orange (brown), rare color among flowers. In this huge flower, 27 inches tall, it is blended with salmon and rose, in a glowing-bronze effect.

Pink

Princess Elizabeth. Queen of the pink Darwins, dominating all others in size, and lovely pastel coloring. A rose pink, with silvery edging, cup-shaped, 26 inches tall. In France this variety is known as Julie Vinot.

White

Kansas. There is no white in the rainbow, but a group of white flowers is needed in every border planting. This Darwin hybrid of the Triumph clan, has the typical Darwin shape, and pure white, glistening petals. It blossoms a little early, but holds its petals well throughout the Darwin season.

4 GREAT PEONIES \$4.50

Catalogue Value \$6.00
(Postage 15c Additional)

Of all the new varieties introduced, relatively few survive the test of garden culture and take their place among the acknowledged leaders. The peonies you plant may outlive you, so it is important to choose varieties for permanent planting which have demonstrated lasting merit. The four offered on this page are among the world's best, for display in the garden, or in the flower show. The flowers of each will last for days if cut in the bud stage and allowed to open in the house.

BARONESS SCHROEDER (9.0) One of the finest Peonies in existence. Immense flowers of great substance with high chalice-shaped center. Opens a delicate flesh-white, sometimes a soft baby pink, changing to creamy-white. One of our best cut-flower varieties and an excellent keeper. June rose fragrance, late. \$1.50.

MARY BRAND. (8.7) A vivid crimson of huge size, always found among the winning reds in flower shows. It comes into bloom in midseason and the flowers last a long time and hold their color perfectly in the sun. An excellent variety for the garden or for cut-flowers. \$1.50.

MONS. JULES ELIE (9.2) By many considered most beautiful of all Peonies. The flowers are an immense ball of imbricated petals incurved like a chrysanthemum; the color a glistening lilac-pink shading to deeper rose at the base, all overlaid with a sheen of silver. Comes into bloom early and is one of our finest varieties for cutting. Very fragrant. \$1.50.

SARAH BERNHARDT (9.0) One of the largest and most beautiful of all pink Peonies. It is a vigorous grower and a prolific bloomer, carrying its perfectly formed flowers gracefully on tall stems. The color is a deep rose-pink, with lighter edging; center flecked crimson. An extra good cut-flower variety. Late mid-season; fragrant. \$1.50.



MARY BRAND PEONY

8 IRIS ARISTOCRATS \$3.00



GUDRUN

Catalogue Value \$4.45
(Postage 10c Additional)

These are among the finest Irises in cultivation. Each is rated close to perfection and not long ago not one could have been purchased for the price of the collection. Your Iris display is lacking if you have not these varieties; and our low prices make it possible to own them for less than the cost of ordinary plants.

CALIFORNIA GOLD. 36 in. A super novelty with magnificent, large flowers of dazzling, deep golden yellow which does not fade. 55c; 3 for \$1.35.

ETHELWYN DUBUAR. 38 in. Very fine large flowers of deep pink with delightful ruffling. Decidedly bigger and better than any other in its color class. 55c; 3 for \$1.35.

EXCLUSIVE. 40 in. Exclusive, yes—for no other blue is quite like it. The pure light blue color is overlaid with a silvery mist which produces a "powder blue" effect that is very beautiful. 60c; 3 for \$1.50.

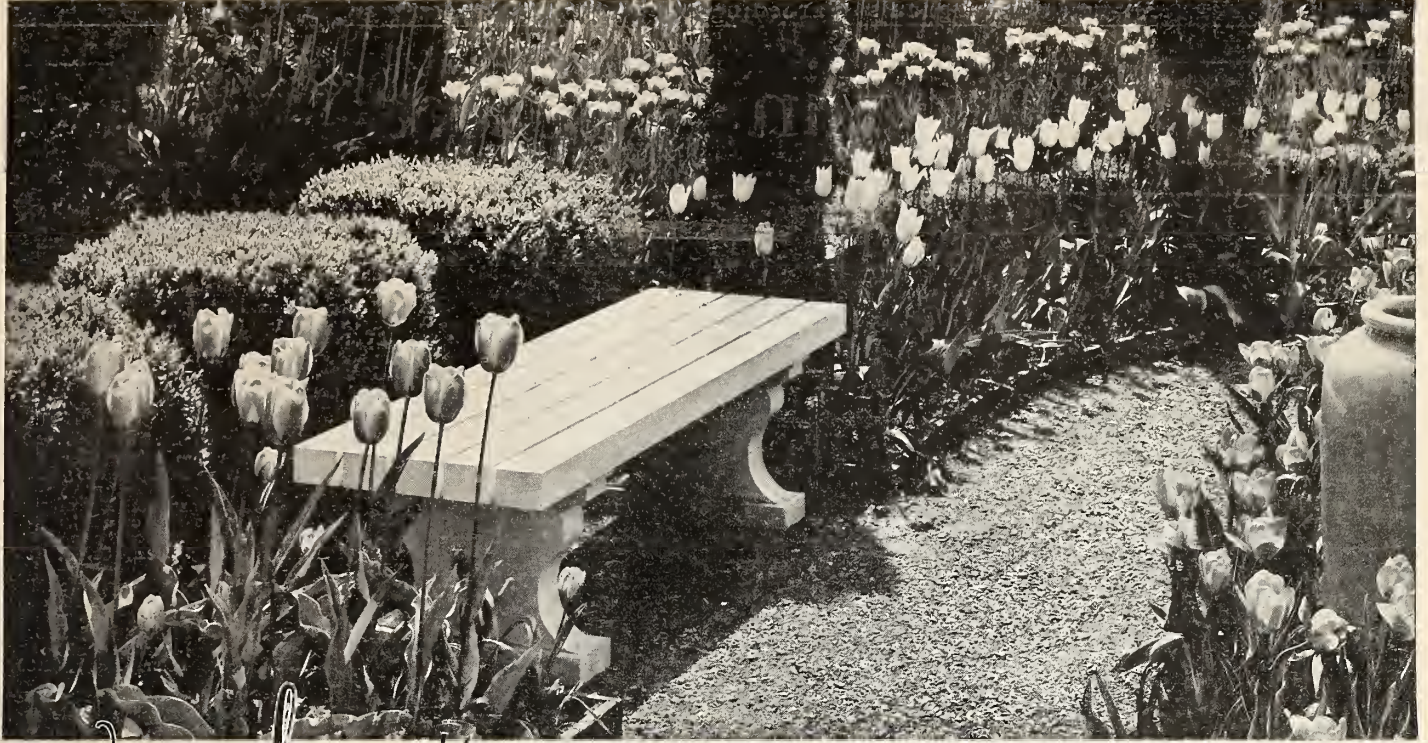
INDIAN HILLS. 37 in. A stunning Iris of clear rich wine purple. Its large blooms are of good substance and fine, oval form. They have great carrying power and make a glorious mass of color in the garden. 55c; 3 for \$1.35.

GUDRUN. 36 in. Enormous, well shaped flowers of lovely pure white, dusted with soft gold at the throat. 55c; 3 for \$1.35.

JUNALUSKA. 40 in. One of the most beautiful Irises in existence. S. rosy copper threaded with gold; F. brilliant copper-red. Huge flowers of perfect form and heavy substance. 55c; 3 for \$1.35.

RED DOMINION. 40 in. S. clear lustrous deep red, slightly frilled, F. broad, horizontal, velvety red; nearly black. One of the most popular Irises grown. 50c; 3 for \$1.25.

TIFFANY. 36 in. A sensational plicata creation in creamy yellow gaily stitched in a burnished rosy bronze. Hardy, free blooming plants that will create a refreshing atmosphere in your garden. 60c.



Vaughan's Tall, Late, Giant Tulips

ALL varieties of the tall, late-flowering giant tulips are likely to be grouped in popular language as "Darwin tulips". They are often sold that way, though among them there are several clans, each having definite family resemblances, of which the Darwin, Darwin hybrids, Cottage and Breeder are most numerous.

All these bloom about the same time, and harmonize perfectly in garden plantings. They can be selected by color, height, and form for use in the garden border without regard to their ancestry. The distinction between these various clans tends to become less definite, as they are interbred by growers seeking improved varieties. We continue to list each tulip clan separately, however, to aid you in identifying favorite varieties, and also to give additional descriptive information. For an interesting planting varieties of all types should be used.

Planning a tulip garden is made easy by the fact that you may count so surely upon each flower blooming as planned. The height, color and flowering season are all so dependable, it is a pleasure to plan a color effect and see it develop in the spring, just as imagined the previous fall.

Imports from Holland will constitute most of the bulbs available to Americans this fall. Of these we are one of the largest importers, and have purchased the cream of the crop. Adverse weather conditions greatly reduced the yield of Dutch tulips and the supply may be quickly sold out. We recommend early ordering, and suggest that customers authorize us to send the nearest similar variety in case one preferred is not available.

Red Darwins

Bartigon. (22 in.) Large flowers of fiery crimson with bright scarlet margin. One of the best of its color. Doz., \$1.40; 100, \$9.50.

Charles Needham. (28 in.) Large, glowing vermilion-red, extra novelty. Doz. \$1.60; 100, \$11.75.

City of Haarlem. (27 in.) Considered by many the finest red Darwin. It can always be depended upon to make an excellent show, with its immense cups of cardinal red, shading to scarlet at edges. Doz., \$1.60; 100, \$11.75. (Illustrated in Color on Inside Front Cover)

Eclipse. (27 in.) Rich, glowing dark red, with a blue base circled by white. A giant tulip of good form on a tall, strong stem, which does not easily snap in stormy weather. Doz., \$1.60; 100, \$11.75.

Farncombe Sanders. (25 in.) Fiery rose scarlet with white center marked blue; flowers perfectly shaped. Doz., \$1.50; 100, \$10.75.

Gloria Swanson. (32 in.) An enormous crimson-red, with bluish base. Very strong stem, flower has great lasting qualities. This is really a giant in the garden, also an excellent early forcing variety. Doz., \$1.50; 100, \$10.75.

Margaux. (30 in.) Tremendous flower, deep wine red, broadly edged with lighter shade blue base, carried on a strong stiff stem. Rich and intriguing. Doz. \$1.60; 100, \$11.75.

DARWIN, Red—Continued

President Taft. (27 in.) (Sealing Wax.) Deep crimson-maroon, superb for border and one of the most beautiful varieties for late forcing. Doz., \$1.60; 100, \$11.75.

Pride of Haarlem. (28 in.) Vivid rose. An old variety of a place in the best gardens. Unsurpassable for fine coloring, reliable performance and enormous flower. Doz., \$1.50; 100, \$10.75.

Scarlet Beauty. (28 in.) Beautiful fiery scarlet, for outside planting, possessing a straight, strong stem and a flower that lasts long. Doz., \$1.60; 100, \$11.75.

Utopia. (26 in.) Brilliant cherry-red. One of loveliest new Darwin Tulips for forcing. Far better than Wm. Pitt. A good garden variety. Doz., \$1.60; 100, \$11.75.

Pink and Rose Darwins

Afterglow. (26 in.) All the splendor of a glorious sunset is suggested by this wonderful tulip with its deep orange tints suffused with salmon, and edged apricot orange. Tall, stately grower. Doz., \$1.60; 100, \$11.75.

Clara Butt. (20 in.) Newer and larger pinks may be found, but Clara Butt remains a favorite. It is a true pink, wholly free from lavender, a rare color and a charming flower. Doz., \$1.50; 100, \$10.75.

All America Collection

100 GIANT TULIPS \$12

Ten each of the following outstanding varieties. (100 bulbs) will be sent postpaid for \$12.00.

- Blue Eagle. Brilliant purple.
- Chas. Needham. Vermillion-red.
- Golden Harvest. Golden yellow.
- Grenadier. Light orange.
- Indian Chief. Mahogany red.
- Insurpassable. Lilac.
- Niphetos. Light lemon yellow—turning creamy white.
- Philip Snowdon. Delicate-red.
- Rose Copeland. Lilac-rose.
- Zwanenburg. Pure white.

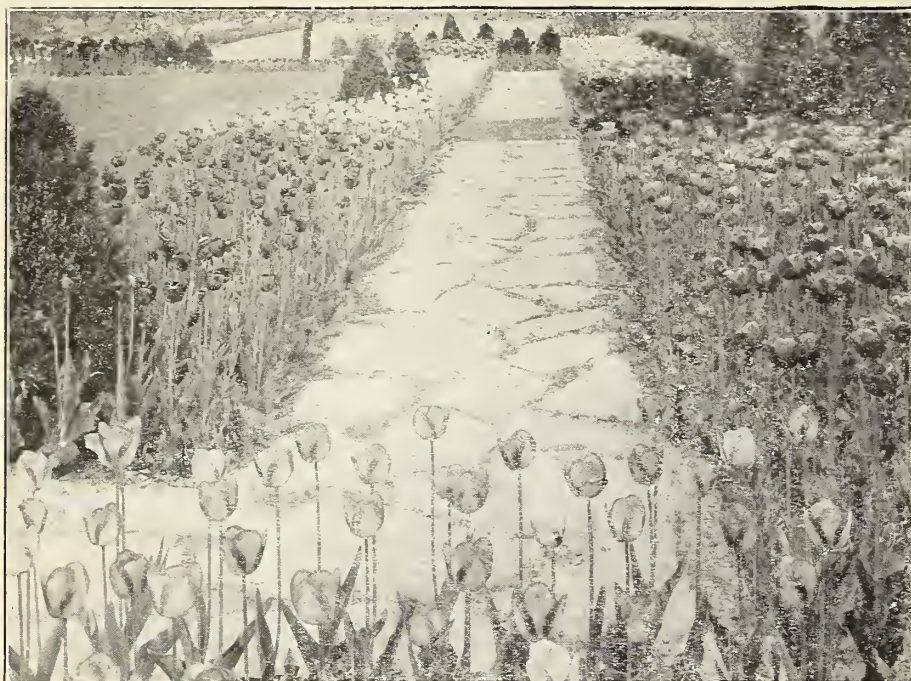
This collection of 100 bulbs of wonderfully blended colors will provide your garden with a display of which you may well be proud.

Darwin tulips are characterized by a soft overtone which gives their colors a pastel effect. The flowers are cup-shaped and carried on tall, stiff stems. In color range they include all the rainbow hues, in amazing variety. Yellow, which long was missing from the Darwins, is now represented by several fine varieties; and new varieties include splendid giant whites.

Included in the variety lists on this and the following pages are many newly introduced varieties which show improvement in color, height, size or in some other important respect. But we retain the best of the old varieties, many of which may never be surpassed.



Darwin Tulips



COTTAGE TULIPS HAVE MANY TWO-TONED FLOWERS

PINK AND ROSE—Continued

King George V. (28 in.) An immense flower of brilliant rose with a light blue base. The color is dazzling in its brilliance, and this is without doubt one of the finest and most beautifully formed Darwins. Doz., \$1.60; 100, \$9.50.

Philip Snowden. (25 in.) Delicate rose, very large flower. Doz., \$1.40; 100, \$9.50.

Princess Elizabeth. (26 in.) (Syn. Julie Vinot.) Large flower, soft rich rose toning to silvery rose at edges. Inside deep rose, white base. One of the largest and finest pinks. Doz., \$1.55; 100, \$10.75. (Illustrated in Color on Inside Front Cover.)

Princess Mary. (28 in.) Bright carmine-rose with margin of rose-pink; inside clear carmine-rose with blue base and white halo. One of the largest flowers in this color. Doz., \$1.70; 100, \$12.00.

Pride of Zwanenburg. (29 in.) Rose-pink, flushed salmon, inside light red, very large flower of strong texture on strong stem. Doz., \$1.60; 100, \$11.75.

Prunus. (25 in.) A delightful rose-pink large strong flower. Doz., \$1.50; 100, \$10.75.

Queen of Hearts. (28 in.) (Formerly Apple Blossom) A beautiful soft rose sport of the old standby Farncombe Sanders, with steel blue anthers and pure white base. The flower is enormous with a rich texture, the stem is tall and straight, yet graceful. Doz., \$1.60; 100, \$11.75.

Rose Copeland. (27 in.) A very fine lilac-rose can also be forced. Doz., \$1.40; 100, \$9.50.

Venus. (32 in.) One of the most wonderful tulips of recent introduction. The large flower is of exquisite rose, with a white center slightly edged light blue. The entire flower bares a beautiful silvery sheen. The stem is always long and strong, making it a grand exhibition variety. Doz., \$1.60; 100, \$11.75.

White and Blush

Glacier. (28 in.) A giant white with white base and anthers, oval shaped with substantial petals. Does not open as wide as most Tulips do when placed in warm room. We do not know of another tulip of its size and with same lasting qualities. Doz., \$1.65; 100, \$11.75. (Illustrated in Color on Inside Front Cover.)

Kriemhilde. (29 in.) Delicate white somewhat shaded cream. White base and anthers. Good for forcing or bedding. Doz., \$1.70; 100, \$12.00.



Mixture of Darwin Tulips

Vaughan's Special, made up by ourselves from best varieties, First size, 25 for \$2.75; 50 for \$5.00; 100 for \$10.00.



WHITE AND BLUSH—Continued

White City. (28 in.) Pure white with black anthers. Large and strong flower, carried on a stiff, straight stem. Recommended for bedding purposes. Doz., \$1.60; 100, \$11.75.

Zwanenburg. (28 in.) Pure white with black anthers. Large flower, highly recommended for both bedding and forcing. Doz., \$1.50; 100, \$10.75.



Violet, Black and Purple

Bleu Aimable. (26 in.) Bright violet-purple, with distinct steel blue shading, inside dark violet-purple, with blue base starred white; a very distinct and handsome tulip of large size and shapely form. Doz., \$1.60; 100, \$11.75.

Blue Eagle. (29 in.) (Black Eagle.) Extra large cup-shaped flowers of the richest and most intense deep but brilliant purple. Doz., \$1.60; 100, \$11.75.

Faust. (30 in.) Dark satiny purple with blue base, very large and well formed, good forcer. Doz., \$1.65; 100, \$11.75. (Illustrated in Color on Inside Front Cover.)

Greuze. (26 in.) Large cup shaped flower of bluish-violet. Very showy in the garden. Doz., \$1.50; 100, \$10.75.

Insurpassable. (27 in.) A mammoth lilac of great substance carried on a tall, strong stem. One of the best of this color for the garden or for early February forcing. Doz., \$1.60; 100, \$11.75.

Jubilee. (28 in.) A magnificent blue-purple tulip. The flower is beautifully formed, deep rich bluish-violet. A flower of great beauty and long keeping qualities. Doz., \$1.60; 100, \$11.75.

La Tulipe Noire. (25 in.) Nearest of all to the black color. Doz., \$1.60; 100, \$11.75.

Scotch Lassie. (29 in.) Of purest deep lavender with darker shade inside and dark blue base. Among the best lavenders in our collection. Doz., \$1.60; 100, \$11.75.

The Bishop. (29 in.) A magnificent flower of clear, deep violet, with a blue base circled by a white halo. A beautiful garden variety. Doz., \$1.60; 100, \$11.75.

William Copeland. (25 in.) (Sweet Lavender). Outside this variety produces flowers of fine rosy lilac, but is at its best when grown indoors during the winter. When forced indoors the flowers are the purest lavender of all tulips. Doz., \$1.40; 100, \$9.50.



DARWIN TULIP YELLOW GIANT

Yellow Darwins

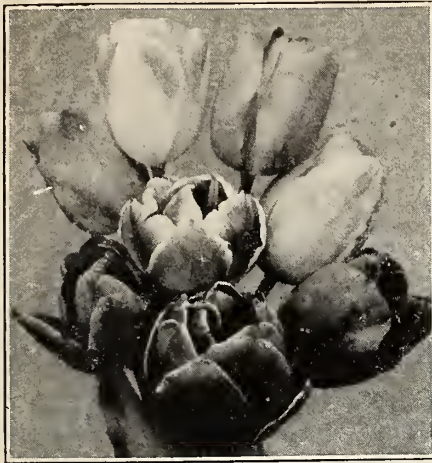
Yellow Giant. (29 in.) This was the first yellow of the Darwin clan to be introduced; and the flower has the true Darwin cup-shape. It is large, produced on tall, strong stems, and completes the color balance in Darwin plantings. Doz., \$1.55; 100, \$11.00.

Niphetos. (30 in.) Light lemon yellow turning to creamy-white as flower ages; perfect form, well lasting. Doz., \$1.60; 100, \$11.75.

Lacinated Darwin

Sundew. (25 in.) This flower is something entirely new in tulips. The curved petals are provided with barbs, giving the edges of the flower a fringed effect. It is said to be a natural sport of the popular variety Bartigon, retaining the brilliant crimson coloring and magnificent size of its parent. Doz., \$1.70; 100, \$12.00.

All shipments of flowering bulbs ordered from this catalogue at dozen or less than dozen rates will be prepaid. Orders at 100 rate will be shipped by express, charges collect, except that special offers will be prepaid where it is so specified in the offer.



EARLY DARWIN HYBRIDS



DARWIN, COTTAGE AND BREEDER TULIPS BLOOM TOGETHER

New Race of Early Darwin Hybrids

TRIUMPH STRAIN

NOT since the Darwin race was introduced, has so great an improvement been made in the tulip family, as in the new Triumph class. Here are early tulips—coming at a time when every bit of color in the garden is more precious because there is so little of it—with stems as tall flowers as large and colors even more brilliant than the Darwins. A hybrid of the Darwin and early singles, the Triumph tulips have a distinctive beauty of their own, and a clear luminous color quality which will make you treasure them. Two full weeks are added to the tall tulip season by planting these.

Alberio. (26 in.) Glossy cherry-red with very small yellow rim around petals. Large flower, good bedder. Doz., \$1.45; 100, \$10.00.

Corniforus. Brilliant red, base white, early forcer, one of the most outstanding triumphs, very large flower. Doz. \$1.45; 100, \$10.00.

Crater. Dark vermilion-red, edging lighter, good forcer. Doz., \$1.55; 100, \$11.00.

Elisabeth Evers. Rose with pure white base. Doz., \$1.55; 100, \$11.00.

Kansas. Pure white. Doz., \$1.55; 100, \$11.00.

Telescopium. (23 in.) Violet rose, strong flower on stiff stem. Doz., \$1.55; 100, \$11.00.

Ursa Minor. (17 in.) Deep golden yellow. Doz., \$1.55; 100, \$11.00.

Species Tulips

For the Rock Garden and Hardy Plant Border.

The general characteristics of the various species, all of which are natives of Asia Minor and Central Asia, are bright colors and recurved petals.

Clusiana "Lady" or "Candystick" Tulip, Outer petals bright cherry red, inner petals creamy white, with violet base, small flower, but very distinct. It should be planted in light soil 6 or 9 inches deep, in the rock garden or among stones in the front of the herbaceous border. A warm and sheltered situation should be chosen, where it will prove to be a gem among early flowers. Flowering season late April, Height, 8 inches. Doz., \$1.60; 100, \$11.75.

Fosteriana (Red Emperor). Fosteriana is a majestic tulip of great size; the dazzling scarlet flowers are borne upon stout stems, 18 inches and even as much as 24 inches high. Vermilion will perhaps best describe their intense and lovely color. Drainage must be perfect, and the sunniest place possible should be apportioned to it. It flowers in late April. Each, 20c; Doz., \$1.90; 100, \$14.00.



TULIP CLUSIANA (CANDY-STICK)

Cottage Tulips

COTTAGE tulips are rapidly losing their uniformity in shape, characterized by egg-shaped blooms, with pointed, even reflexed petals; since they have been used extensively in hybridizing with other types. As a result of these crosses, this class now includes the largest of all tulips, the variety Advance, and many other newer varieties which have the typical cup-shaped form of the Darwin and Breeder types, combined with the brilliant clear coloring, in which the Cottage type has always excelled. In general Cottage tulips blossom a few days later than the Darwins, and carry their flowering period into the early days of June, especially if planted in a shady position. But they harmonize perfectly with the Darwin and Breeder varieties, and supply a quality of clear, bright color which the others lack.

Largest Yellow Tulip

Golden Harvest. (28 in.) This is the largest yellow tulip that we offer and perhaps the largest of all yet developed. It blooms early and its flowers last through a long season, growing in size and beauty. Its color is a deep yellow with petals of great substance, borne on tall, stiff stems. We know of no yellow that equals it. Doz., \$1.50; 100, \$10.75.



GOLDEN HARVEST, LARGEST YELLOW TULIP

Yellow Cottage

Belle Jaune. (30 in.) Fine deep yellow, a very large and long flower of excellent form. Doz., \$1.50; 100, \$10.75.

Inglescombe Yellow. (18 in.) A fine large, cup-shaped flower, color full rich yellow. Doz., \$1.50; 100, \$10.75.

Moonlight. (20 in.) Long, narrow flower of beautiful pale yellow. Opens two or three days sooner than most yellow Cottage tulips. Doz., \$1.70; 100, \$12.00.

Mrs. Moon. (26 in.) This is one of the finest late yellow tulips in existence. The blooms are long and pointed, outer petals reflexed. Distinctly perfumed. Doz., \$1.60; 100, \$11.75.

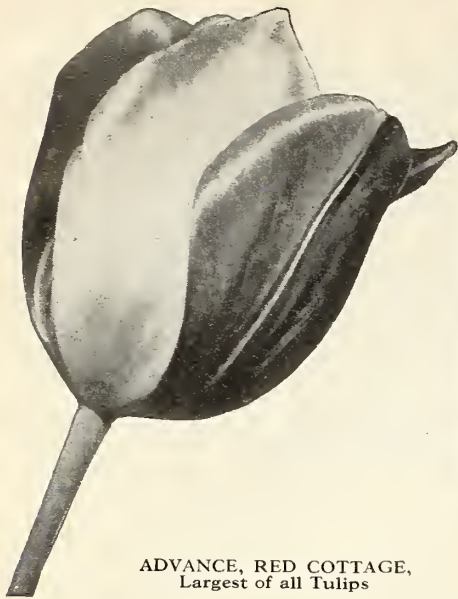
Mrs. John T. Scheepers. (30 in.) Clear chrome-yellow erect, tall stem. Enormous oblong flower. One of the largest of yellow tulips. Doz., \$1.65; 100, \$11.75. (Illustrated in Color on Inside Front Cover).

MIXTURE

Cottage Tulips

Vaughan's Special

AN excellent collection of named varieties, giving a dazzling display in mass. Splendid for cutting. Doz., \$1.40; per 100, \$10.00.



ADVANCE, RED COTTAGE,
Largest of all Tulips

Red and Orange, Cottage

Advance. (28 in.) This is the largest of all tulips, equal in size to Mayflower and of the same color; but with a strong stem which holds the huge flower upright. It is an orange scarlet, with black center, which grow more vivid in color and larger in size as the flower develops. As an exhibition flower it is not surpassed, and it is outstanding in any garden. Doz., \$1.55; 100, \$11.00.

Grenadier. (20 in.) Magnificent light orange. When the sun shines on a fully expanded flower of this variety the color is dazzling. Flower long, on graceful stem. Doz., \$1.50; 100, \$10.75.

Mazeppa. (23 in.) Bright cochineal-red, large white center. Novelty. Doz., \$1.60; 100, \$11.75.

Red Rocket. (24 in.) From the time of opening until the petals fall, this tulip makes a marvelous display. The flowers are typical Cottage form; long, egg-shaped, deep red in color, with dark blue base. Doz., \$1.70; 100, \$12.00.

Pink and Rose

Barbara Pratt. (32 in.) Rich light cochineal carmine, edges lilac-rose. A very beautiful tulip with slightly reflexed petals. Highly recommended. Doz., \$1.70; 100, \$12.00.

Dido. (26 in.) Superb in form, poised erect on a straight stem, and fragrant. It is a deep, rich pink with salmon lights, suffused and slightly edged orange. Doz., \$1.50; 100, \$10.75.

Marjorie Bowen. (24 in.) A very unusual combination of buff and salmon which passes to deep rose-pink with salmon shading. A charming blend. Doz., \$1.65; 100, \$11.75. (Illustrated in color on Inside Front Cover.)

Rosabella. (18 in.) This graceful tulip can be compared to the loveliness of a rose-bud. Pure pink in color, it possesses great charm both as a cut flower and in the garden. Doz., \$1.60; 100, \$11.75.

White

Albino. (22 in.) A fine pure white, with large flower, which has rounded petals. It blooms early and last long in good condition, and is most effective in border grouping. It is a favorite with florists for early forcing. Doz., \$1.70; 100, \$12.00.

Carrara. (22 in.) Having rounded rather than pointed petals, this pure white variety is exceptionally large and resembles the Darwin type. It is not as early as Albino, and combines well with all types of tall, late tulips in border plantings. Doz., \$1.50; 100, \$10.75.

Mount Erebus. (30 in.) Creamy-white flower, clear base, sulphur anthers. Turning pure white with age. Doz., \$1.70; 100, \$12.00.

All shipments of flowering bulbs ordered from this catalogue at dozen or less than dozen rates will be prepaid.

Orders at 100 rate will be shipped by express, charges collect, except that special offers will be prepaid where it is so specified in the offer.



EARLY TULIPS ADD TWO WEEKS OF BRILLIANT COLOR

Breeder Tulips

FROM Breeder tulips, most of the tall, large flowered types have been developed. These were the "mother bulbs" of ancient Dutch breeders, grown not for their own rich beauty, but because among them would appear flowers of the striped and blotched coloring then esteemed so highly.

These stripes and blotches are now known to have been caused by a virus disease; and the Breeder tulips are valued for their own beauty. Among them are some of the tallest and largest varieties of all, and many colors rare among flowers—browns, bronzes, purples, dull gold and dark lilac, exquisitely blended. One of the most fragrant of all tulips is Don Pedro, a coffee-brown.

Alice Keith. (27 in.) Very bright orange-yellow edged golden with small olive green base. Large flower on strong stem. One of the finest Breeder Tulip for bedding. The flower becomes more beautiful as it ages. Doz., \$1.70; 100, \$12.00.

Bacchus. (28 in.) Though introduced over 300 years ago, it has no superior in clear, richness of color and beauty of form. The color is very similar to the purple of Concord grapes. Doz., \$1.70; 100, \$12.00.

Cherbourg. (30 in.) Undoubtedly one of the finest Breeder Tulips. A deep tone of golden yellow, with a suffusion of terra cotta, the deeper tone of yellow growing stronger toward the edges of the petals. Doz., \$1.70; 100, \$12.00.

Dillenburg. (27 in.) A glorious salmon orange, shaded rose. The flowers are large and borne on strong, stiff stems. Highly recommended for exhibition purposes but should not be used for early forcing. Doz., \$1.55; 100, \$11.00.

Don Pedro. (27 in.) A beautiful shade of coffee-brown, shaded maroon, inside rich mahogany. It is one of the few fragrant tulips, with a strong but delightful odor that perfumes the garden. Doz., \$1.65; 100, \$11.75. (Illustrated in Color on Inside Front Cover.)

Louis XIV. (36 in.) Considered by many good judges to be the finest of all tulips. Others may match it in height, in size, or in rich coloring; but a rival which equals it in all these qualities is yet to appear. In the garden it is always magnificent, and as a cut flower its rich blend of purple and gold is truly royal. Doz., \$1.65; 100, \$11.75. (Illustrated in Color on Inside Front Cover.)



TULIP
INDIAN
CHIEF

Indian Chief. (38 in.) The flower is enormous, very widely opened and squarely built. The flower is mahogany red in color, the petals are of very heavy texture, the stem extremely heavy and straight as a ramrod. A magnificent flower of richest coloring. Doz., \$1.60; 100, \$11.75.

Lucifer. (28 in.) Most beautiful of the orange-red tulips. Very late flowering, tall stem, and very brilliant color. Good form and excellent substance. Doz., \$1.70; 100, \$12.00.

Panorama. (24 in.) (Fairy) Rich deep red of beautiful form, strong stem and good substance. Excellent cut flower. Doz., \$1.70; 100, \$12.00.

Prince of Orange. (25 in.) Orange-scarlet, edged light yellow flower of striking beauty. Doz., \$1.70; 100, \$12.00.

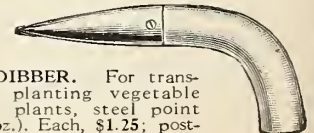
Yellow Perfection. (26 in.) Light bronze-yellow, edged golden yellow, interior, bronze-brown, yellow base starred green. Doz., \$1.70; 100, \$12.00.

HOLE-IN-ONE PLANTING TOOL

Make a hole in one operation. Simply cut the tool into the soil, remove it with a twisting motion, and with the tool comes a plug of soil, leaving a perfectly flat-bottomed hole. Small hand tool for cultivated soil. Each, 75c; postpaid, 85c.



(weight, 10 oz.). Each, \$1.25; postpaid, \$1.35.



DIBBER. For transplanting vegetable plants, steel point

Vaughan's Special Mixture of Breeder Tulips

An excellent collection of this popular class of Tulips, including many rare colors. Doz., \$1.60; per 100, \$11.75.

Single Early Tulips

TWO OR THREE weeks of brilliant color in April, following the daffodils and preceding the Darwin tulips, are worth much to any garden. The early tulips alone can supply it; and among them can be found varieties of delicate tints and shades, as beautiful and with flowers as large as anything the May-flowering classes can produce. In height, 12 inches is not uncommon, and a graceful carriage fits these taller kinds to serve in any role a Darwin would grace.

Explanatory. The number following the name of the variety denotes the height in inches, while the (a) and (b) indicate their earliness of bloom—the (a's) flower together and are earliest; the (b's) flower together, but are somewhat late.

Couleur Cardinal. 8a. As its name denotes this variety possesses the brilliant red coloring called Cardinal. Immense blooms of good cup form open later. Doz., \$1.60; 100, \$11.75.

Fred Moore. 10b. Beautiful, large orange scarlet flowers with lighter. Doz., \$1.45; 100 \$10.00.

General DeWet. 10a. Beautiful deep orange, shaded golden yellow at the base of the petals. A very fragrant flower and one of the finest varieties in cultivation. There is no other orange variety which equals it in brilliancy. It is therefore one of the showiest bedders, and as it forces splendidly we can recommend it for all purposes. Doz., \$1.55; 100, \$10.75.

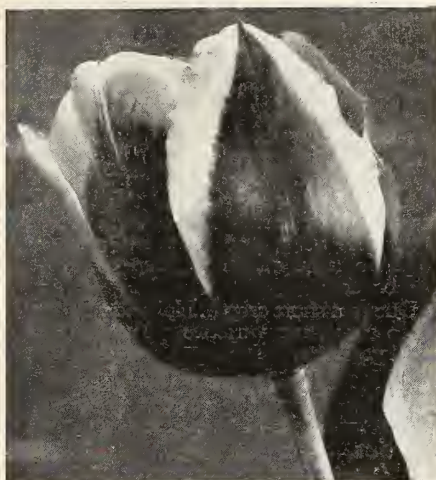
(Illustrated in Color on Inside Front Cover.)

Keizerskroon. 10b. This is one of the oldest, as it is, assuredly, one of the best early varieties. The huge flower is bright red, nearly scarlet, edged with yellow; the margin is broad and clearly defined, the flower is seen and recognized from afar. It is a strong, healthy grower, and a bed of it will bring into the early spring garden some of the color and joy for which we will have longed for many months. Doz., \$1.80; 100, \$13.00.

Pink Beauty. 12b. Bright rose-pink shading to blush-white. Doz., \$1.70; 100, \$12.00.

Rose Luisante. 7b. Brilliant deep pink. Doz., \$1.60; 100, \$11.75.

Rising Sun. 8a. The brilliance of its namesake is seen in the golden beauty of this magnificent tulip. Large, of good form, and sturdy growth, it is an ideal tulip for bedding and border. Doz., \$1.60; 100, \$11.75.



TULIP KEIZERSKROON

Sunburst. 12a. Yellow, flushed with red. A beautiful tulip for bedding or forcing. Doz., \$1.60; 100, \$11.75.

White Hawk. 8a. Pure white. Doz., \$1.55; 100, \$11.00.

Double Tulips

Many new varieties have been developed in the late flowering double tulips, which produce the largest flowers of all. They differ from the more familiar early double tulips in much the same way that early singles, differ from the tall, late flowering giants. Blossoming at the same time with the Darwin, Cottage and Breeder types, they have much longer stems and larger flowers than the early doubles. Early doubles on the other hand flower two or three weeks earlier.

New Late Varieties

Bleu Celeste. (Blue Flag.) (17 in.) An attractive tone of pale bluish purple, which combines with other colors beautifully. They give a striking effect when planted in mass. Doz., \$1.70; 100, \$12.00.

Coxa. (2 in.) Carmine-red. Vermilion edged very small white border. Large flower. Very fine for border planting. Doz., \$1.60; 100, \$11.75.

Epicure. (21 in.) Salmon rose shading to old gold near edges of petals. Very large flower and sturdy grower. Doz., \$1.70; 100, \$12.00.

Eros. (20 in.) The large double flowers are of a deep true pink with silvery high-lights. Its double flowers, borne on tall, strong stems, are compared to peonies by all who see them, but we do not know any peony which has its lovely coloring. A group planted in any garden will be arouse admiration. Doz., \$1.60; 100, \$11.75.

(Illustrated in Color on Inside Back Cover)

Mount Tacoma. (24 in.) A magnificent giant double white Tulip which reminds one of a peony in full bloom; superb for beds. Doz., \$1.70; 100, \$12.00.

(Illustrated in Color on Inside Back Cover)

Early Double

Couronne d'Or (Crown of Gold)
10a. Beautiful rich, golden yellow, flushed orange. Doz., \$1.70; 100, \$12.00.

Electra. 8b. Magnificent, enormous flower; beautiful rose, feathered violet; a handsome novelty, unexcelled for exhibition purposes. Doz., \$1.60; 100, \$11.75.

Mr. Van der Hoef. 12a. Yellow sport of Murillo with all its superb qualities. One of the very finest of the primrose-yellow double tulips. Doz., \$1.50; 100, \$10.75.

Orange Nassau. 10b. Bright orange-scarlet with a margin of orange. Outer petals shaded cherry-red. Doz., \$1.60; 100, \$11.75.

Peach Blossom. 8a. Deep rosy pink, deepening with age to a deep rose. A very fine flower with a wonderful color. A new variety of superb quality. Doz., \$1.50; 100, \$10.75.

Rubra Maxima. 8b. Dazzling scarlet. Doz., \$1.50; 100, \$10.75.

Schoonoord (White Murillo). 12b. Pure white. Extra fine. Doz., \$1.50; 100, \$10.75.

Toreador. 8a. Reddish orange and yellow. Doz., \$1.70; 100, \$12.00.

Triumphator. 9b. Magnificent bright pink, the best of the several sports of the popular "Murillo." It is an improvement upon the variety "Peach Blossom" which has long been recognized as one of the best double pink tulips. It is more double, the color is much softer, and the form better. Doz., \$1.60; 100, \$11.75.

Vuurbaak. 9b. Bright scarlet, suffused orange. Doz., \$1.60; 100, \$11.75.



PARROT TULIP MARGRAVE

Parrot Tulips

THEIR fringed and corrugated petals make these the most curious of all tulips. Flowering at the same time as other late sorts, the flowers are thick-petaled with extra long stems, and keep extremely well after being cut. The average height is 15 inches.

See illustrations on Inside Back Cover.

New Named Varieties

Blue Parrot. Petals bright purple blue, Parrot of Darwin Blue Aimable, strong stem. Each 20c; Doz., \$2.00; 100, \$15.00.

Red Champion. Parrot of Darwin Bartigon, borne on strong stem, deep red color. Each 20c; Doz., \$2.00; 100, \$15.00. (Illustrated in Color on Inside Back Cover).

Sunshine. Pure butter yellow. Parrot of Cottage Bouton d'Or. Each, 35c; Doz., \$3.50; 100, \$25.00.

Violet Queen. Sport from Opal Queen, violet. Each 20c; Doz., \$2.00; 100, \$15.00. (Illustrated in Color on Inside Back Cover).

FANTASY

A remarkable Parrot Tulip with a straight, strong stem, a quality which has always been lacking in Parrot tulips. This variety is a sport of the well-known Darwin tulip, Clara Butt, and has the same clear pink color as its parent, combined with artistic form of a Parrot tulip. Each petal is over three inches long, and two inches across. The center of the petals on the outside are marked emerald green. Doz., \$1.55; 100, \$11.00. (Illustrated on Inside Back Cover).

Standard Types

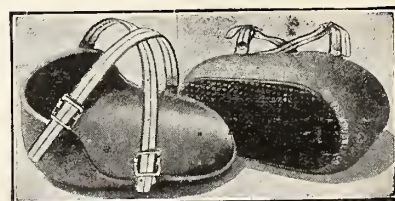
Lutea Major. Bright yellow; large. Doz., \$1.35; 100, \$9.00.

Markgrave. Yellow, striped scarlet and green. Doz., \$1.35; 100, \$9.00.

Couleur Cafe. Brown and yellow. Doz., \$1.35; 100, \$9.00.

Cramoisie Brilliant. Deep crimson with large dark center. Doz., \$1.35; 100, \$9.00.

For Knee Comfort Knee Pads, \$2.10, prepaid \$2.25



All rubber cushion pads constructed of solid and sponge rubber with adjustable straps; fit any knee, will not slip down. A gift any dirt gardner wil welcome.

All shipments of flowering bulbs ordered from this catalogue at dozen or less than dozen rates will be prepaid.

Orders at 100 rate will be shipped by express, charges collect, except that special offers will be prepaid where it is so specified in the offer.



HYACINTH
GRAND
MAITRE

Hyacinths in Pots

For Winter Blooming

LIGHT, rich soil produces the best flowers. Place each bulb one inch deep, an inch and one-half from each other bulb or edge of pot. Water well, and set away in a dark, cool cellar, or an outdoor pit which is well drained. If outside, cover with three or four inches of sand or ashes. Let them remain there for eight or ten weeks to root, then bring them into a warm room, but keep them in the dark (cover the pot with a paper bag, cloth, etc.). Then when the flower spike is three or four inches out of the bulb, they may be exposed to the light, and will open beautifully.

Exhibition Hyacinths (Mammoth Bulbs)

These are the bulbs 19 centimeters and over listed in the center column on this page. They are not recommended for outdoor planting but should be used for forcing in glasses, or in pots or pans. We have arranged with one of our Dutch growers to select these bulbs for their ability to give huge spikes of flowers, suitable for flower shows, or for striking decorative effects.

Dutch Roman or Miniature Hyacinths

These are small bulbs of the varieties listed in the first column on this page, and they are excellent for growing by amateurs in pots, pans, bowls or window boxes. They give flower spikes much larger than would be expected from their size, which is from 14 to 15 centimeters in circumference. Your selection of named varieties, chosen from the list in first column. Each, 20c; doz., \$2.00; 100, \$15.00.

Hyacinths

HYACINTHS are again available for gardens. Blossoming with the early tulips, they contribute to the spring garden fragrance as well as colors which at that time no other flowers can give so well. Indeed, it is doubtful whether at any time of the garden year lovelier true pinks and blues can be found than those which hyacinths provide.

They serve to border paths, near all garden architecture, including ornaments such as bird baths, pools and fountains, and groups of hyacinths may well be worked into the border planting, where they will provide a needed color foil or accent.

For garden planting, it is not necessary to use the largest forcing sizes. Bulbs of third and bedding sizes will do well. Take especial care to plant them in well drained soil, and if there is any doubt, elevate the bed a few inches to keep them above water. Plant bulbs six inches deep, and after the ground has frozen a light mulch to keep the frost in, will benefit.

Due to a short crop in Holland please allow us to substitute varieties. They will all be good varieties.

RED AND ROSE

Gertrude.—Rose-Pink, one of the best pot varieties

Jan Bos.—Scarlet early forcer.

La Victoire.—Brilliant red.

Pink Pearl.—Rosy pink.

Queen of Pinks.—Rose, pink, choice.

WHITE

Arentine Arendsen.—Pure white, large bells, splendid spike, best for outdoor planting.

L'Innocence.—Pure white, best for growing in pots indoors.

YELLOW

City of Haarlem.—Golden Yellow.

BLUE

Bismarck.—Lavender.

Grand Maitre.—Dark porcelain blue

King of Blues.—Very dark blue.

Queen of Blues.—Very light blue.

	Each	Doz.	100
Mammoth Bulbs. (19 Ctm.)	\$0.45	\$4.50	\$32.50
First Size (18-19 Ctm.)	.40	4.00	27.50
Second Size (17-18 Ctm.)	.35	3.50	22.50
Third Size (16-17 Ctm.)	.30	3.00	20.00
Bedding Size (15-16 Ctm.)	.25	2.50	17.00

Above prices are for your selection of named varieties.



DUTCH ROMAN HYACINTHS



ENGLISH IRIS

Hardy Bulbous Garden Iris

ADMIRERS of the iris will find this group to be valuable additions to their collections. Flowering in late June and early July, they follow the bearded and Siberian irises, prolonging the display and producing flowers of a distinct type and quality of coloring. The colors are clear and brilliant, and the petals are delicate, but of excellent substance. They make quality cut flowers, lasting fully a week in water.

Bulbs should be dug each year after foliage has turned brown. They should be cured quickly in a dry location, and only the largest bulbs should be replanted for flowering. The smaller bulbs can be grown in a nursery row until they reach flowering size.

Iris Tingitana Wedgewood

For indoor use and protected plantings. A seedling of the old favorite Tingitana that is just as early, but a much more reliable bloomer. The small cultivator will do better to plant his bulbs, six or eight according to size, in a seven- or eight-inch pot, rather than in ordinary shallow boxes. They must be kept cool, 45 degrees or so, until the buds are out of the neck. A great cut flower. Light blue in color. 8-9 ctms for outdoor planting. Doz., 75c; 100, \$5.00; 1000, \$45.00. 10 ctms. up for indoor growing, doz., \$2.00; 100, \$15.00; 1,000, \$140.00.

English Iris

These magnificent bulbous Irises thrive in any ordinary garden soil but prefer a good loam. The earlier the planting, after beginning of September, the greater the success; the bulbs should be planted 4 inches deep. They flower from end of June to beginning of July thus succeeding the Bearded Flag Irises, Early Xiphium and Spanish Irises.

KING OF THE BLUES. Dark blue.

LAMARTINE. White, carmine rosy flakes.

LUCINDA. Porcelain blue, flaked darker.

IDEAL. Pale mauve.

PRINCE ALBERT. Delicate silvery blue.

MONT BLANC. Pure white.

PURPLE KING. Deep purple.

QUEEN OF THE BLUES. Light blue.

Each, 25c; doz., \$2.50; 100, \$18.00.

Iris Reticulata

Fragrant Iris—Hardy with Protection
RETICULATA. This lovely species is one of the treasures of the garden or rock garden. It may be forced into bloom in the house with ease. Six or eight bulbs put into a 4 or 5-inch pot when received will bloom about Christmas time. The fragrant blossoms remind one of a bunch of fresh violets. Perfectly hardy with reasonable protection. It is one of the loveliest early flowering bulbs for the rockery. To show it off well, plant a number of bulbs under the white Arabis Alpina: Each, 15c. doz., \$1.10; 100, \$7.50.

Bulbs You Can Flower Indoors

Lilies of the Valley

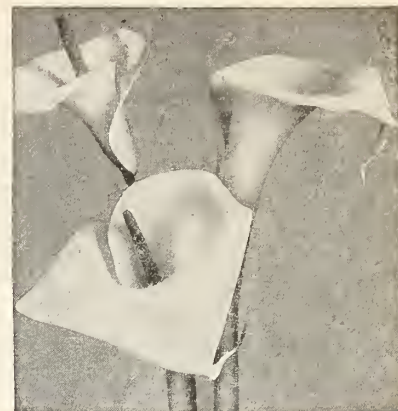
Ready to Ship November and December.

We can again offer imported lily of the valley pips prepared for forcing into flower in bowls. These beautiful, fragrant flowers may be brought to flower in 18 to 21 days, if pips from cold storage are used. They are easily forced in a bowl, if planted in sphagnum moss and kept well watered. Their dainty fragrance is preferred by many to the large Paper White Narcissi, and they are much quicker to flower. Do not order more than you intend to use at once as the cold storage pips will not keep. Plant about 25 pips in a 7-inch bowl, place in a warm temperature, 65 degrees Fahrenheit and shade from light until leaves and spikes are well developed, then admit light gradually. Increase temperature to 75 degrees or 80 degrees if possible. An inverted pot over each bowl answers admirably to shade them. They may be forced in soil the same way, in a 7-inch pot or pan. This is the treatment for cold storage pips only.

COLD STORAGE PIPS. 12 for \$2.75; 25 for \$5.50, postpaid.
SPHAGNUM MOSS, sufficient for 25 pips, 10c, postpaid



Lily of the Valley Grown in Sphagnum Moss



WHITE CALLA LILIES



OXALIS GRAND DUCHESS

Amaryllis

(Illustrated in Color on Cover F)

OUR strain of giant flowered amaryllis is rich in brilliant red, and lovely white flowers, with many in which the white ground is vividly marked with contrasting tones of red, pink and salmon. In size, this strain has never been surpassed.

Of all bulbs which the amateur can grow successfully indoors, the Amaryllis is the largest, most beautiful, surest to flower and most easily handled. Our new hybrids, especially, are so gorgeous in size and coloring as to amaze those not familiar with them.

Place only one bulb in each pot, covering it as far as the neck or upper narrow part. Water sparingly at first until the flower shoots begin to appear. Some growers keep them in the dark until the flower stems are four or five inches long, and then bring to light.

After flowering they should be placed in a warm window, or set outside in sand or cinders and watered every day (sometimes twice a day), until the end of August when water should be gradually withheld and the bulbs allowed to go to rest. In the fall they can be forced again as with new bulbs.

MIXED Flowers are immense, in an amazing range of color blends, splashed and striped in a manner not seen in other strains.

	Each	Doz.	100
2 1/4-2 1/2 in. Dia.	\$0.40	\$4.00	\$27.50
2 1/2-2 3/4 in. Dia.55	5.50	40.00
2 3/4-3 in. Dia.75	7.50	55.00
3-3 1/4 in. and up Dia.90	9.00	65.00

Lachenalias

For Indoor Growing

Lachenalias are useful as pot plants because of their bright flowers and interesting foliage.

Culture. Plant six or seven bulbs in a five or six inch pot with cool culture similar to freesias produce blossoms during late February and March. They do not need support.

AUREA. The flowers are pendulous long bells forming a loose spike up to one foot high. The young flower spike is usually red toned and the deep golden blossoms often have red margined petals. Blooms in late January and February. As a cut flower it normally lasts two weeks in the house. Three Bulbs for 60c; Doz., \$2.15; 100, \$15.00.

PENDULA SUPERBA. Bright red. Early fire-cracker like flowers one inch long on 6 to 9 inch stems; bloom in December and January. Three Bulbs for \$1.10, doz., \$3.00; 100, \$22.50.

Calla Lilies

REHMANNII, Superba. Ready in November. The rare Pink Calla Lily. Rather dwarfier and smaller flowered than the White Calla, but of alluring coloring, palest blush to pure rose. Each, 50c; doz., \$5.00.

WHITE, Ready Now. A well-known plant of easy culture for winter bloom, and makes a handsome house or window plant. To aid profuse blooming keep dormant from the middle of June until the last of September; pot on receipt in good, rich soil, using 6 to 8-inch pot, give light and heat in abundance. Both foliage and flowers are attractive in this desirable winter bloomer.

First Size (1 1/4 to 1 1/2 in.)...Each, 25c; doz., \$2.50; 100, \$18.00.
Select Size (1 1/2 to 1 3/4 in.)...Each, 45c; doz., \$4.50; 100, \$30.00.
Mammoth (1 3/4 to 2 in.)...Each, 55c; doz., \$5.50; 100, \$40.00.
Jumbo (2 in. and over)....Each, 80c; doz., \$8.00; 100, \$60.00.

Calla Golden Yellow Elliottiana

Ready in November

New and beautiful variety; same habit of growth as ordinary white Calla; flowers same size and shape, rich, clear, lustrous golden yellow; foliage dark green, with translucent creamy spots, strong bulbs.

First Size (2 to 2 1/2 in.)....Each, 35c; doz., \$3.50; 100, \$25.00.
Mammoth (2 1/2 to 3 in.)....Each, 60c; doz., \$6.00; 100, \$45.00.
Jumbo (3 in. and up)....Each, 90c; doz., \$9.00; 100, \$65.00.

Chinese Sacred Lily (Narcissus)

THIS narcissus is called by the Chinese the "Joss Flower." The flowers are white, with yellow cup, and very fragrant. Each bulb produces several flower-spikes. Plant like Paper White Narcissi in bowl of bulb fibre, or pebbles and water. Avoid dry, hot rooms. A kitchen window may be best until flowers come. Recommended for Christmas flowering.

Large bulbs. Three for 40c; per dozen, \$1.30; 100, \$8.50.

Ixias

The Ixia colors are rich, the center always differing in color from the petals. Very desirable for pots. If planted outside be sure to cover with straw or leaves. **Mixed.** Doz., 95c; 100, \$6.50; 1,000, \$60.00.

Oxalis

For Indoor Planting Only

Most of these Oxalis flower from October until Christmas, and later. Easily grown, requiring only a good, somewhat peaty soil.

BERMUDA BUTTERCUP. Doz., 60c; 100, \$4.00; 1,000, \$35.00.
GRAND DUCHESS. Lavender and pink. Doz., 60c; 100, \$4.00; 1,000, \$35.00.
HIRTA. Deep pink, very fine for hanging baskets. Doz., 60c; 100, \$4.00; 1,000, \$35.00.

Paper White Narcissi

(Illustrated in Color on Cover F)

THESE have been favorites for ages as a decoration for the living room during the coldest winter months when flowers are scarce. Their culture is simple, and with good strong bulbs such as we supply, flowering is sure. Plant bulbs in shallow bowls filled with pebbles, or fibre, and water. Keep in the dark until roots form (about 2 weeks) then bring into light. A day temperature of not over 70° is best.

Fancy selected bulbs (13 ctm.). Three bulbs for 30c; Dozen, \$1.00; 100, \$7.00; 1,000, \$65.00.
Mammoth bulbs (14 ctm.). Three bulbs for 40c; Dozen, \$1.35; 100, \$9.00; 1,000, \$80.00.
Jumbo bulbs (15 ctm.). Three bulbs for 45c; Dozen, \$1.55; 100, \$11.00; 1,000, \$100.00.

The Yellow Paper White (Grand Soleil D'or)

A larger, stronger scented form of the Paper White Narcissus colored a beautiful golden yellow with a darker cup.

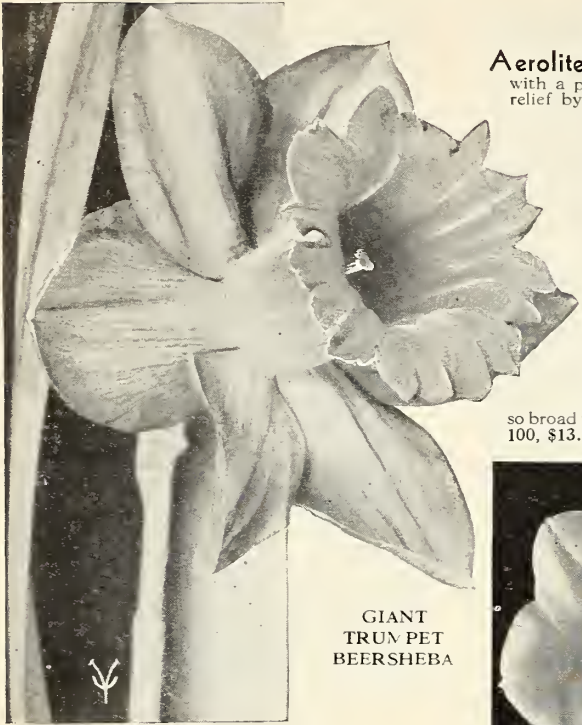
Mammoth bulbs. Per three, 40c; dozen, \$1.50; 100, \$10.00.

Leucocoryne (Glory of the Sun)

Flowers exquisite light blue on tall, wiry stems and of very long-lasting quality with faint heliotrope fragrance. For indoor culture except in warm states. Three bulbs for 50c; doz., \$1.75; 100, \$12.00.



Daffodils or Narcissi



GIANT
TRUMPET
BEERSHEBA

DAFFODILS are the first of the major garden flowers to blossom in the spring. This makes them doubly precious, as heralds of a season of joy, after the long winter.

Great advancement has been made in breeding new varieties, which are indicated by stars.

Culture of the Daffodil

The daffodil tribe likes a cool root run and its flowers are at their best in the cooler days of spring. Therefore it is essential to dig the soil deeply and provide humus. Like the tulip, the daffodil will not thrive if there is fresh manure in the soil and commercial plant food should be used when the bulb is planted. It likes a moist soil but it must have excellent drainage. The plant food should be mixed in the soil below the bulb and if the soil is heavy, a cushion of sand is advisable.

Where to Plant Them

Daffodils are particularly fine subjects to plant under the edge of bushes or among perennials in the hardy border as they seem to like to nestle among the roots of their neighbors. A clump of golden trumpets peeping from beneath the overhanging branches of Spiraea Van Houttei or nestling in a sheltered angle of a building are one of the gladsome sights of early spring.

A few bulbs can be tucked into odd corners all about the garden and they will repay mightily when the first sunny days of spring bring their sturdy shoots breaking through the earth.

Daffodils and narcissus need not be moved for several years if they are flourishing, in fact not until the clump becomes so large that it is evident it needs to be divided and they should be replanted at once.

Graceful Jonquils

Jonquils are graceful, sweet-scented flowers which thrive well in a moist, shady position in borders. Flowers are arranged on the stem in a cluster.

Jonquilla Simplex. The true single sweet jonquil, of light elegant growth, bearing out of doors in May clusters of numerous small rich yellow flowers of delicious scent. Each, 15c; doz., \$1.50; 100, \$10.00.

Jonquilla Flore-Pleno. The old double sweet jonquil, produces in May little heads of rich yellow double flowers, very fragrant and attractive for cutting. Each, 15c; doz., \$1.50; 100, \$10.00.

Golden Sceptre. A medium-sized perfectly built flower of deep Jonquil yellow, 3 inches or more in diameter. The whole flower, as with the others in this class, is of the greatest substance, keeping in perfect condition exceptionally long both in the garden and when cut. Each, 20c; doz., \$1.70; 100, \$12.00.

Giant Trumpets

Aerolite. A golden giant with flowers beautifully proportioned, perianth deep primrose, with a pure medium yellow trumpet left in bold relief by outer petals, an inch and a half wide; medium early, but one of the longest lasting of all. Each, 30c; doz., \$2.55; 100, \$18.00.

Beersheba. A magnificent flower. Large, perfectly flat perianth, trumpet long and beautifully flanged at mouth. A flower of great size, measuring nearly five inches across; a vigorous grower and a grand exhibition variety. Each, 50c; Doz., \$5.00; 100, \$38.00.

Dawson City. Broad overlapping perianth with long-formed deep golden yellow trumpet. Each, 30c; Doz., \$2.55; 100, \$18.00.

Emperor. A magnificent sort. The entire flower is a rich yellow trumpet of immense size and petals so broad that they overlap. Each, 20c; doz., \$1.80; 100, \$13.00.



LEEDSII MRS. NETTIE O'MELVENY

Golden Harvest. Undoubtedly one of the largest trumpet varieties in existence. The perianth is well formed and overlapping; the trumpet is of good shape and proportion, rolled back at the brim. The color is deep golden-yellow. Each, 30c; Doz., \$2.75; 100, \$20.00. (Illustrated in color on back cover.)

King Alfred. "The King of Yellow Daffodils." Tall, vigorous, golden yellow flower, of elegant form. The expanded trumpet measures 2½ inches in diameter, the perianth proportionally large and segments gracefully twisted. Height, 24 inches. Double Nose Bulbs. Each, 30c; doz., \$2.75; 100, \$20.00. First size Bulbs, Each, 20c; doz., \$2.00; 100, \$14.00.

Mrs. E. H. Krelage. Known as the White King Alfred. Charming and exquisite new variety. Perianth of purest white. Trumpet creamy yellow changing to white. Each, 30c; doz., \$3.00; 100, \$21.00.

Spring Glory. A very early showy bicolor daffodil with large white perianth, trumpet bright yellow with open frilled mouth. Each, 25c; doz., \$2.30; 100, \$15.00.

All shipments of flowering bulbs ordered from this catalogue at dozen or less than dozen rates will be prepaid.

Orders at 100 rate will be shipped by express, charges collect, except that special offers will be prepaid where it is so specified in the offer.



JOHN EVELYN (Incomparabilis)

Attractive Leedsii

Have white perianths with white or sulphur trumpets. Most beautiful class for cutting.

Daisy Schaffer. One of the best of the remarkable new Giant Leedsii type; the flower 4½ inches across, with cup nearly 2 inches resembles a Giant Trumpet, but much more graceful in form; perianth pure white, with cup opening primrose and turning to light canary-yellow, deeper at the base. Each, 30c; doz., \$2.75; 100, \$20.00.

Hera. Broad-petalled creamy white perianth, star-shaped and deeply frilled cup of creamy white with a dainty edging of light primrose. Each, 20c; doz., \$1.70; 100, \$12.00.

(Illustrated in Color on Back Cover)

Mrs. Nette O'Melveny. A dancing daffodil with pure white perianth and cup of clear lemon-yellow, with orange picotee; splendid foliage, tall, graceful stem, and good neck; in every way a delightful flower. Each, 20c; doz., \$1.80; 100, \$13.00.

Silver Star. Perfect broad-petalled star-shaped perianth of pure cream-white, with finely proportioned, wide mouthed trumpet of primrose, changing to cream white, just a shade deeper than the perianth. Each, 25c; doz., \$2.25; 100, \$15.00.

Tunis. A large, tall, robust-growing Leedsii of most distinct character and great lasting substance, broad waved white perianth and large bold ivory crown with handsome flanged and serrated brim, retaining a remarkable flush of pale coppery gold at the edge. Each, 30c; doz., \$2.75; 100, \$20.00.

Incomparabilis

This class includes many of the most beautiful and useful Daffodils for bedding, naturalizing and border planting. Strong growers, hardy and free bloomers. Forced for winter flowers, they are splendid.

Croesus. Universally popular both for the garden and for exhibition; light canary-yellow perianth of perfect form, with outer petals nearly touching, the inner ones overlapping, opening flat; broad fluted cup of rich orange to base; substantial, free-flowering. Each, 20c; doz., \$1.90; 100, \$14.00.

John Evelyn. Deservedly an international favorite; outstanding among the new, Incomparabilis hybrids; flatly opening perianth, 4 to 5 inches across, with a flat cup nearly 2 inches in diameter, densely frilled, the perianth being pure white, without trace of shading, and the cup lemon yellow and fluted or shirred to the base. Each, 25c; doz., \$2.30; 100, \$16.00.

Francisca Drake. It is impossible to describe adequately the beauty of this unusual flower of a distinct new type; the pure white perianth petals are of unusual substance, an inch and a half wide, and tinted gold at the base, which shows through on the outside, the cup, wide and deep, is golden yellow at the base, changing gradually to flame-orange at the densely frilled edge. Each, 25c; doz., \$2.25; 100, \$15.00. (Illustrated in Color on Back Cover)

INCOMPARABILIS—Continued

Dick Wellband. One of the finest of recent introductions. Very strong grower and exceptionally free flowering. The perianth is pure white and the cup a brilliant flame-orange. One of its most remarkable qualities is that the color does not fade but rather intensifies with age. The flower has unusual lasting qualities. Each, 30c, doz., \$2.55; 100, \$18.00.

(Illustrated in color on back cover.)

Vividly Colored Barrii

Thanks to the brilliant contrast effects due to color in the cup, the Barrii type is contributing many improved varieties to the daffodil list and it is here that further progress may be expected. The flowers have a character and grace which make them charming either for cutting or garden display.

Baths Flame. A fine variety yellow-perianth with darker cup deeply edged orange-scarlet. Each, 20c; doz., \$1.80; 100, \$13.00.

Diana Kasner. A pure white perianth and a large fluted yellow cup with blood-red frill, very free-flowering and an excellent forcer. We consider this variety as one of the most valuable introductions and cannot recommend it too highly for show purposes. Each, 20c; doz., \$1.75; 100, \$12.00.

Firetail. Deservedly popular the world over, broad petalled creamy-white perianth and large orange cup with scarlet-orange frill. Each, 20c; doz., \$1.75; 100, \$12.00.

(Illustrated in Color on Back Cover.)

Poeticus Narcissi

The pure white perianth and all-red or picoteed cup, and delicious perfume, peculiar to itself, makes this one of the most popular of all Narcissi.

Of all the hardy types this is probably the one most likely to thrive and multiply in the garden. Bulbs should not be lifted for several years until they appear to be crowding, then they may be lifted, divided and replanted over a much larger area. Avoid poorly drained places.

Actea. Large Poeticus pure white perianth with scarlet edged eye. Each, .20; doz., \$1.75; 100, \$12.00. (Illustrated in Color on Back Cover)

Ornatus Maximus. A much improved form of the ordinary Poeticus, producing larger flowers and appearing two weeks earlier. Each, 20c, doz., \$1.60; 100, \$11.00.

Poeticus (Common Pheasant's Eye). Narcissus for garden planting; pure white with scarlet-edged cup or eye. Fine for naturalizing, being hardy and increases readily in numbers; late. Each, 20c; doz., \$1.60; 100, \$11.00.

Cluster Flowered Poetaz

Crossing of Poeticus and Polyanthus varieties produced this perfectly hardy strain of bunch-flowering Narcissus. Do well planted in pots for winter flowers.

Cheerfulness. The double Elvira, a very pleasing double white Poetaz, good stems, a fine garden and show flower. Each, 20c, doz., \$1.75; 100, \$12.00.

Elvira. Pure white perianth with golden yellow eye. Each, 20c; doz., \$1.90; 100, \$14.00.

Early Perfection. Very early Poetaz. Perianth white cup yellow. Good for growing indoors. Each, 20c; doz., \$1.75; 100, \$12.00.

Geranium. Pure white perianth with deep red cup. One of the best of all Poetaz and highly recommended. Each 25c; Doz., \$2.25; 100, \$15.00. (Illustrated in color on back cover.)

Laurens Koster. Perianth white, cup light orange-yellow. Each, 20c; doz., \$1.60; 100, \$11.00.

12 Daffodils for \$1.50 Naturalizing

12 Bulbs, \$1.50; 100 Bulbs, \$9.50; 1,000 Bulbs, \$85.00, Prepaid.

DAFFODILS are the first major flowers to bloom in the spring. By nature they are informal flowers, and look best when grown in drifts, in the shrubbery or under trees. They like to nestle among the roots of shrubs, and as they bloom before the leaves develop, they thrive in places which later in the season are well shaded. Our naturalizing mixture is an exceptional value, containing many of the best named Trumpet, Leedsii, Star and Poeticus varieties. Plant them and do not disturb until they crowd; the bulbs may then be lifted and replanted over a much larger area. A purchase of bulbs is an investment which will pay in bloom for a lifetime.

25 Daffodils for \$2.00; 12 for \$1.00. Smaller bulbs but of flowering size, packed in a special decorated bag with cultural instructions. Prepaid.

NARCISSI NATURALIZED IN THE WOODLAND



The "Pink Daffodil"

Mrs. R. O. Backhouse. Perianth of ivory white, and long trumpet of apricot pink, changing to shell pink at the deeply fringed edge; exceptional substance, long lasting; early. Each, 60c; doz. \$6.00; 100, \$45.00.



MINIATURE DAFFODIL THALIA



TWINK

Miniature Daffodils

The following are charming little subjects for rock work, where their dainty flowers are seen to perfection. They should be left undisturbed for years, and if happy will soon establish themselves and afford a lovely picture in early spring. All the Bulbocodium like moisture, and should therefore be planted at the foot of the rockery. When in bud water freely.

Moonshine. A beautiful Triandrus hybrid, star-shaped creamy white flower, often 3 to a stem, drooping gracefully, very beautiful and a great favorite, especially for the rock garden or for naturalizing in the shade. Each, 25c, doz., \$2.50; 100, \$18.00.

Thalia. Two or three lovely pure white flowers per stem, 2 inches or more across, making a beautiful cluster. Very suitable for the rock-garden or for forcing. Each, 35c; doz., \$3.50; 100, \$25.00.

Cyclamineus Hybrids

Cyclamineus hybrids have perianths reflexed as in a cyclamen

February Gold. Perianth golden yellow, trumpet fringed orange; very early. Each, 25c; doz. \$2.25; 100, \$15.00.

Double Varieties

Alba Plena Odorata. The well-known double white, scented form of Poeticus; sometimes called the gardenia-flowered Narcissus. Late-flowering, and will not force. Each, 25c; doz., \$2.25; 100, \$15.00.

Indian Chief. Very large and very double, bright yellow interspersed with orange; the petals curled and twisted. Each, 25c; doz., \$2.30; 100, \$16.00.

Inglescombe. Pure yellow resembling a yellow rose. Each, 25c; doz., \$2.25; 100, \$15.00. (Illustrated in Color on Back Cover.)

Mary Copeland. One of the famous varieties of the new semi-double type, cream-white with a golden ray down the center, interspersed with shorter petals of lemon and brilliant orange, giving a three-color effect; unsurpassed for garden or show. Each, 30c; doz., \$2.75; 100, \$20.00.

Texas. Large yellow and scarlet-orange interwoven petals. Very choice variety. Each, 35c; doz., \$3.50; 100, \$25.00.

Twink. It is double, of the semi-full type, the petals alternating a soft primrose and clear orange, free-flowering and hardy. Each, 30c; doz., \$2.55; 100, \$18.00.

BIRD SEED

RAPE. Large—sweet (not bitter like the small black). 1 lb., 35c; 5 lbs., \$1.70; 10 lbs., \$3.30; 25 lbs., \$7.00.

SUNFLOWER. 1 lb., 35c; 5 lbs., \$1.70; 10 lbs., \$3.30; 25 lbs., \$7.00.

CANARY SEED 1 lb., 30c; 5 lbs., \$1.45; 10 lbs., \$2.80; 25 lbs., \$6.25.

VAUGHAN'S CANARY MIXTURE 1 lb., 30c; 5 lbs., \$1.45; 10 lbs., \$2.80; 25 lbs., \$6.25.

FINCH SEED 1 lb., 25c; 5 lbs., \$1.15; 10 lbs., \$2.25.

PARRAKEET SEED 1 lb., 30c; 5 lbs., \$1.45; 10 lbs., \$2.80; 25 lbs., \$6.25.

VAUGHAN'S WILD BIRD FEEDING MIXTURE. (as recommended by the Illinois Audubon Society). 1 lb., 15c; 2 lbs., 30c; 5 lbs., 70c; 10 lbs., \$1.30; 25 lbs., \$3.10; 100 lbs., \$11.50. Prices do not include Postage. See table at the back of book for rates.



Miscellaneous Bulbs



Weeks before the daffodils appear, snowdrops, chionodoxas, scillas and crocuses blossom in the garden, often peeping through late snow. These and other early bulbs are the first of all flowers to bloom, and precious for that reason. Every garden should have at least a small group, visible from a window, where their beauty can be enjoyed in cool weather.



FRITILLARIA
MELEAGRIS



RANUNCULUS



SCILLA CAMPANULATA



MUSCARI -
GRAPE HYACINTH

Allium

Perfectly hardy, easily grown, and well adapted to rock gardens or to plant with other small bulbs.

NEAPOLITANUM. White. Three bulbs for 40c; doz., \$1.50; 100, \$10.00.

Anemone (Windflower)

They succeed best in light, rich, well-drained loam. Plant in early October. Mulch after freezing.

DE CAEN. A real selected strain. This mixture contains many fine shades of blue, white and reds. Mixed. Doz., \$1.00; 100, \$7.00; 1,000, \$65.00.

ST. BRIGID. Flowers range from the deepest crimson to the purest white, embracing cobalt, scarlet, rose, salmon-pink, and heliotrope. Most are semi-double. Doz., \$1.25; 100, \$8.00; 1,000, \$75.00.

Brodiaeas

CAPITATA. California Hyacinths. The stem is slender, capped with a head of violet-blue flowers. They revel in hot, dry places, and flower early. Doz., \$1.00; 100, \$7.00; 1,000, \$65.00.

BRIDGESII. A very fine reddish violet color. Doz., \$1.25; 100, \$8.00; 1,000, \$75.00.

Calochortus

True Mariposa, or Butterfly Tulips

Cup-shaped flowers, one to many on a stem, marked with eyes and dots and pencilings in rich colors.

MIXED. From 1 to 2 feet high, flowers vary through white, yellow, lilac to purple and pink to deep claret-red. They thrive best in porous soil, sandy or gritty, either in sun or light shade. Flowers are 2 to 4 in. Doz., \$1.00; 100, \$7.00; 1,000, \$65.00.

Camassia

Camassias go four inches underground, about five inches apart. The flowers are starlike.

ESCULENTA. Light blue flowers borne gracefully erect. Height, 18 inches to 2 feet. Each, 10c; doz., 60c; 100, \$4.00; 1,000, \$35.00.

Chionodoxa

(Glory of the Snow)

One of our loveliest Spring flowers, when established its sheets of blue in very early Spring are a great attraction in borders or massed on rock-work.

LUCILLEA. Bright blue with large clear white center. Doz., 55c; 100, \$3.50; 1,000, \$30.00.

SARDENSIS. Deep blue. Doz., 55c; 100, \$3.50; 1,000, \$30.00.

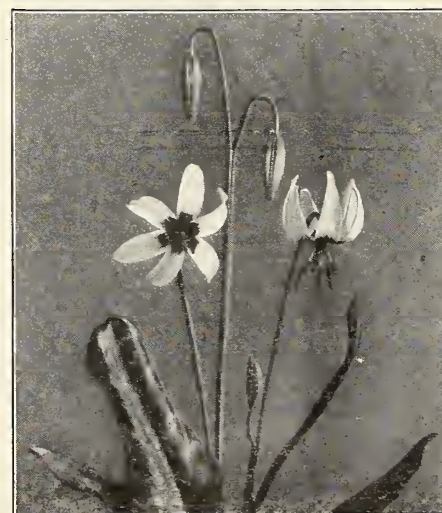


SPRING FLOWERING CROCUS

Spring-Flowering Crocus

Flowering soon after snowdrops and before the daffodils, crocuses in groups or masses present a delightful picture. We offer four colors: **White, Blue, Yellow and Striped**. Order by color, or in a balanced mixture, which will include an equal quantity of each color.

	Doz.	100	1000
Top size, single color or mixed....	\$0.65	\$4.50	\$40.00
First size, single color or mixed....	.50	3.00	25.00



ERYTHRONIUM HENDERSONII

Dog Tooth Violet (Erythroniums)

If they had no other beauty than that of their richly mottled leaves, they would be well worth a place in the shady corner. Their flowers are 3 inches across, with stems 6 to 18 inches high. The colors run in delicate tints of white, pink, cream, bright yellow and rose. They are hardy in the coldest States, and while they are at their best in a loose, gritty soil, rich in leaf mold, they also thrive in woodlands, in shaded corners, or in the crevices of rockwork in shade.

AMERICANUM. It produces in April, small, lily-like flowers, which vary through white, pink, bright yellow, rose, and cream. Bulbs should be planted about 5 inches deep. Doz., 85c; 100, \$6.00; 1,000, \$55.00.

CALIFORNICUM has large cream-colored flowers. Doz., \$1.00; 100, \$7.00; 1,000, \$65.00.

CALIFORNICUM BI-COLOR. Creamy, yellow centre, tall stems. Doz., \$1.00; 100, \$7.00; 1,000, \$65.00.

CITRINUM is rather more erect in habit, with flowers almost pure white with strongly contrasting deep citron. Doz., \$1.00; 100, \$7.00; 1,000, \$65.00.

HARTWEGGII is as pretty as Californicum, with more yellow in the flower, and each flower on a separate stalk. Very early and stands much heat. Good for pots. Doz., \$1.20; 100, \$8.00; 1,000, \$75.00.

HENDERSONII. Like Californicum, but the flowers are a lovely light purple, with centers a deep maroon. Doz., \$1.10; 100, \$7.50; 1,000, \$70.00.

TUOLUMNENSIS is quite new to both the garden and science. Large leaves, not mottled, and golden yellow flowers. The bulbs are very large and by offsetting form large clumps. Not too free flowering, but very distinct. Doz., \$1.75; 100, \$12.00.

Mixed. Doz., 95c; 100, \$6.50; 1,000, \$60.00.

Eranthis Hyemalis (Winter Aconite)

Early in Spring the golden blossoms of Winter Aconite look charming, resting on an emerald-green cushion of leaves, forming a striking contrast to the Snowdrop, Scilla and Chionodoxa. The foliage remains long after the flowers, making the plant especially valuable in moist situations, such as under trees. Height 8 inches.

Doz., 60c; 100, \$4.00; 1,000, \$35.00.

Fritillaria

RECURVA (Mission Bells). A beautiful woodland plant from Southern California. 1½ to 2 feet, and producing dainty orange scarlet flowers. They prefer partial shade and a loose soil. Each, 20c; doz., \$1.80; 100, \$13.00.

MELEAGRIS. Singular dwarf spring-flowering plants bearing, large pendant, bell-shaped flowers of various colors: yellow, white, black, purple, striped and splashed and checkered in the most curious way. Invaluable and exceedingly pretty when grown in large groups in the garden border or wild dry situation. Doz., 60c; 100, \$4.00; 1,000, \$25.00.



Miscellaneous Bulbs



MUSCARI (Grape Hyacinths)



SPRING SNOWFLAKES



SNOWDROPS

FRITILLARIA—Continued

IMPERIALIS (The Crown Imperial) is a stately hardy border-plant, very effective in Spring when grouped in woodlands wild gardens, orchards. Bell-shaped flowers, orange, red and checkered. Plant 12 inches deep, in well drained, location. Each, 75c; doz., \$7.50; 100, \$55.00.

Grape Hyacinths (Muscari)

Muscari, or Grape Hyacinths, are a race of spring-flowering bulbous plants which thrive in American gardens. They are not showy when only a few are seen together, but a drift of them presents a picture of beauty, especially if planted with late tulips, for which purpose they are well adapted. The species also look charming in clumps in the rock garden or border, and the Feather Hyacinth (*M. plumosum*), in particular, may be employed, with great gain, in pots in the cold greenhouse. In fact, pot culture gives this Grape Hyacinth such delicate and uncommon coloring, that it might well be grown anywhere under glass. All are very accommodating in their requirements, but prefer a good loam with a little old manure dug into it, and, in the case of the Feather Hyacinth alluded to, a rather warmer position. The bulbs should be planted during autumn at a depth of about three inches and about two inches apart.

ARMENIACUM. Deep blue, large flowers. 8-9 Cms. Doz., 55c; 100, \$3.50; 1,000, \$30.00. 9-10 Cms. Doz., 60c; 100, \$4.00; 1,000, \$35.00.

EARLY GIANT. Improved Armeniacum. Larger bells and a little lighter in color. Blooms about 10 days earlier. 8-9 Cms. Doz., 60c; 100, \$4.00; 1,000, \$35.00. 9-10 Cms. Doz., 65c; 100, \$4.50; 1,000, \$40.00.

ALBA (Pure White). This is a beautiful companion to the above, and they make a striking show when planted together. Doz., 75c; 100, \$5.00; 1,000, \$45.00.

PLUMOSUM. Bearing in May handsome feathery plumes of violet colored flowers, very attractive. Doz., 75c; 100, \$5.00; 1,000, \$45.00.

Ornithogalum

ARABICUM. Throws up a tall stem with a cluster of star-shaped flowers; pure white with dark centers. Excellent for cutting, lasting a long time in water. Hardy in the South and other mild climates, but they should be given protection when planted outdoors in the North. Culture in the house is about the same as for Hyacinths. Each, 15c; doz., \$1.30; 100, \$9.00; 1,000, \$85.00.

UMBELLATUM. This is the small white hardy variety that is seen in great profusion and around many of the old gardens. It propagates readily and adapts itself splendidly to naturalizing. It does well over a wide temperature range and blooms profusely each season with little or no care. Each, 15c; doz., \$1.25; 100, \$8.00; 1,000, \$75.00.

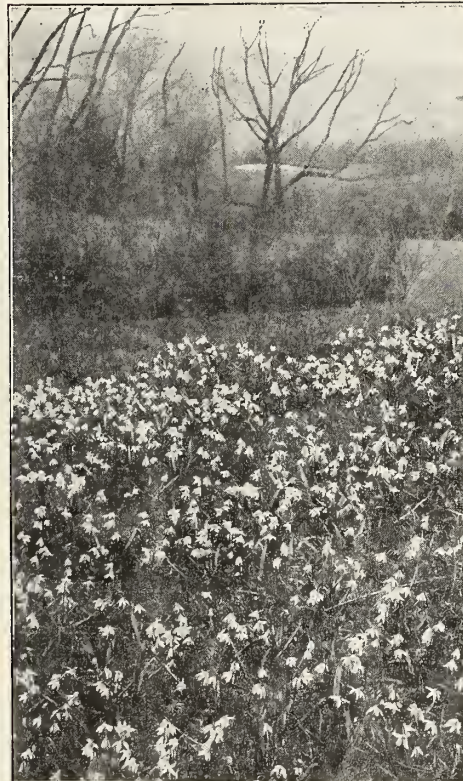
Spiraea (Astilbe)

(Ready November)

Beautiful, hardy garden subjects, attractive, not only for their gayly colored, feathery plumes, but also for their glaucous foliage. June and July flowering. Pink and White Varieties. Each, 60c; doz., \$6.00; 100, \$45.00.

Spring Snowflake (Leucojum Vernum)

A favorite little early spring flower having drooping, bell-shaped flowers, white, with small brown tips. Once planted in a favorable environment, they come up every spring, bearing more flowers each time. Excellent for rock gardens and naturalizing. Each, 15c; Doz., \$1.25; 100, \$8.00; 1,000, \$75.00.



SCILLAS SELF-SEED AND MULTIPLY

Ranunculus (Buttercup)

Plant in November for early spring bloom in frames Set 3 or 4 inches apart, pressing firmly into the soil, claws downward and cover them with sand, then with soil, keep the crown of the tubers four inches under the surface. Water them well.

VICTORIA HYBRID MIXED. Far superior to any Ranunculus that we know. Flowers are double and large. Doz., \$1.10; 100, \$7.50; 1,000, \$70.00.

Snowdrops (Galanthus)

Snowdrops flower while Tulips are just sprouting, and when the flowers are over, there remains a groundwork of green foliage.

Single. (Largest Bulbs.) Doz., 95c; 100, \$6.50; 1,000, \$60.00.

Double. (Largest Bulbs.) Doz., \$1.10; 100, \$7.50; 1,000, \$70.00.

Scillas (Squills)

As edgings and masses in beds and borders, Scillas are most valuable. They succeed in shady flower borders and bare shady places and odd corners.

SCILLA SPRING BEAUTY. Spring Beauty is a giant by comparison with the ordinary Siberica, very free blooming and ideal for growing in pans or pots. Brought into a 50 to 55 deg. house after being well rooted, it flowers within two weeks, the glorious blue spikes having stems 6 to 8 in. long. Perhaps there is nothing so truly blue that will bloom at that time. Outdoors it is a trifle later than the ordinary but decidedly superior. Large bulbs, doz., 95c; 100, \$6.50; 1,000, \$60.00.

SIBERICA (The Blue Squill). Bright blue, nothing more beautiful for edgings or pots in early Spring, flowering with the Snowdrop. Height, 4 inches. Mammoth Bulbs. Doz., 80c; 100, \$5.50; 1,000, \$50.00.

CAMPANULATA (Clear Blue). Very erect in habit (15 inches). Doz., 65c; 100, \$4.50; 1,000, \$40.00.

Alba. Pure white (12 in.). Doz., 65c; 100, \$4.50; 1,000, \$40.00.

Rosea. Fine rose (15 in.). Doz., 65c; 100, \$4.50; 1,000, \$40.00.

NUTANS Blue. The true English blue-bell. In its native habitat it abounds in woodlands literally carpeting the ground. Gracefully arching stem carrying many violet blue flowers, opening after most other Scillas are gone. Very hardy. Doz., 60c; 100, \$4.00; 1,000, \$35.00.

NUTANS Alba. Pure white companion to the above, with long arching stem. Beautiful when naturalized in copses, shady walks, etc. Also prized for cutting. Doz., 60c; 100, \$4.00; 1,000, \$35.00.

Sparaxis, Mixed

Graceful spikes 6 to 8 inches high; flowers of the brightest colors, tigered, streaked and flushed—a riot of color. Excellent for indoor winter flowering—about 12 bulbs to a 6-inch pot. Do not plant outdoors in cold sections. In cool localities, give winter protection. For southern gardens, especially in rockeries, Sparaxis are indispensable.

Doz., 90c; 100, \$6.00; 1,000, \$55.00.

Fritelleia

UNIFLORA VIOLACEA. A rootlike bulb which produces in early spring a pale violet-blue flower with white center, delightfully fragrant. They spread rapidly in the rockery or in masses under shrubs, perfectly hardy. About 3 inches high. Doz., 65c; 100, \$4.50; 1,000, \$40.00.

Hardy Lilies

Collection of Five Hardy Garden Lilies \$1³⁵

One each of the following varieties: Canadense, Regale, Superbum, Tenuifolium, Umbellatum. \$1.35
Two each variety as above. \$2.50 Six each variety as above. 6.75
Twelve ea. var. as above. \$13.50 All prepaid 600 miles.

LILIES are hardy, thrifty flowers, capable of surviving conditions which would overcome flowers much less beautiful. Grow them in the border in small groups, with background, where their beauty has a suitable setting for its display. They blossom, as a rule, in midsummer, when fine flowers are at a premium. With each order a leaflet giving instructions for growing them in the garden will be sent. All our lily bulbs are American grown. They should be planted on receipt to enable the bulbs to begin root growth this fall.

Outdoor Culture—When planting lilies out-of-doors, see that they have a well drained position, and where they will be shaded from very hot sun. Such places can usually be found around the shrub borders, and in the hardy plant border. Never mix manure in the soil around lilies, but enrich with a standard commercial plant food or with bone meal. Many varieties are termed "stemrooters" that is, they develop roots on the stem up to two or three inches from the ground. These roots are voracious feeders, and on them depend greatly the number and size of flowers. When they appear, the plant should receive a top-dressing of good rich soil on which they can feed freely. Spade over the ground thoroughly to a depth of 18 inches before planting lilies. Plant the bulbs 4 to 8 inches deep, depending on their size and the soil, deeper in light soil.

Late planting—Some varieties of lilies do not become fully dormant, so they can be dug, until so late that delivery of the bulbs may be delayed until Nov. 1. To keep the soil from freezing, so that late planting may be done, select the location where bulbs are to go and cover the surface with a mulch of leaves, straw, glass wool, or other effective material. Applied before freezing sets in, this will be sufficient to protect the soil below it from late autumn temperatures.

Lilium Canadense

Ready in September

The whole plant has a downward, graceful movement and looks like a slender, tiered green belfry ringing golden bells. The flowers are nodding, bell-shaped, with petals flaring out and turning back slightly. They are heavily dotted on the inside with purplish brown dots. Blooms the end of June to July. Should be planted five inches deep. It is an excellent lily for naturalizing. Height, 3 to 5 ft.

Canadense Mixed—Each, 25c; dozen, \$2.50; 100, \$18.00.

Lilium Centifolium.

Ready in October

A giant among lilies, with long, trumpet-shaped white flowers, streaked outside with brown and flushed inside with yellow at the base.

Bulbs—6-7 inches, each, 55c; doz., \$5.50; 7-8 inches, each, 65c; doz., \$6.50.

Lilium Phillipinense Formosanum

Ready in October

A reared and graceful Lily with long grassy foliage, and long wide-mouthed trumpet flowers of the purest white, slightly marked externally with reddish brown. The plants grow to a height of 2-3 feet, are very robust and offer great resistance to wind and weather. It is hardy, very fragrant and one of the loveliest of the new varieties.

Each, 45c; doz., \$4.50; 100, \$30.00.

Lilium Regale

Ready in October

The large, trumpet-shaped flowers are snowy white, with a pure yellow center, while the exterior of the petals is slightly tinged pink. It is a strong grower, attaining the height of three or four feet. The flowers are beautiful, possessing a delightful fragrance. The bulb usually presents a dried, shriveled appearance.

First Size, 6-7 in. in circumference. Each, 25c; doz., \$2.50; 100, \$18.00.

Select Size, 7-8 in. in circumference. Each, 35c; doz., \$3.50; 100, \$25.00.

Mammoth Size, 8-9 in. in circumference. Each, 45c; doz., \$4.50; 100, \$32.00.

Jumbo Size, 9-10 in. in circumference. Each, 60c; doz., \$6.00; 100, \$45.00.

Extra Jumbo, 10-11 in. Each, 80c; dozen, \$8.00; 100, \$60.00.

Lilium Speciosum Rubrum (Magnificum)

Ready in November

The typical form is white, flushed pink, and heavily spotted with carmine. The stem is about four feet high and has fresh, green, lance-shaped leaves, and the frilly flowers face downward and carelessly roll back their petals, while the stamens and pistil curl way out. A very beautiful lily, perfectly hardy, very seldom diseased, and a late Aug. and early Sept. bloomer. Plant the bulbs eight to ten inches deep.

Each, 75c; dozen, \$7.50.

Album, a pure white form. Each, \$1.00; dozen, \$10.00.



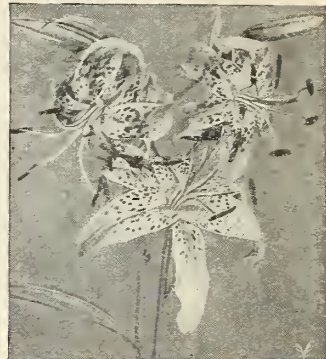
LILIUM Canadense



LILIUM Regale



LILIUM Tenuifolium



LILIUM Rubrum

Lilium Superbum

Ready in September

(American Turk's Cap, Swamp Lily)—The most magnificent and showy of the native North American species, well worthy of extensive culture. This splendid lily produces from ten to forty flowers of brilliant orange-scarlet, shaded yellow and spotted purplish brown at the base, with red anthers, in late July and August. This lily requires an acid condition and should be planted at least 8 inches deep. Height, 3-8 feet. Each, 30c; dozen, \$3.00; 100, \$22.00.

Lilium Tenuifolium

Ready in September

The lovely Coral Lily of Siberia. A great beauty. The brightest of all lilies. Grows 20 inches high, with finely cut foliage, slender stems and beautifully shaded coral-red flowers. One ought to grow them by the dozen, they are so fine for cutting and making clumps for the lawn. Blooms very early. Each, 30c; dozen, \$3.00; 100, \$20.00.

Lilium Umbellatum

Ready in October

This group of lilies is of hybrid origin, and thrives in American garden borders, multiplying and enduring. They are early flowering, blooming during the first part of June. Usually attaining the height of two to three feet, they carry four to six flowers of cup-shape.

Mixed, Each, 40c; doz., \$4.00; 100, \$27.00.

Lily of the Valley

Ready in October

Lily of the Valley is one of the best ground covers for shady places in the home grounds. It spreads rapidly, crowding out weeds, and the fragrant blossoms come early in the spring in great abundance.

Clumps. Each, 60c., three for \$1.50; doz., \$5.50.

Sunset Lily

Ready in October

Because of its ease of culture, rapidity of increase and its extreme hardiness, the new Sunset Lily is certain to achieve widespread favor. Height 5-6 ft. with 10 or more flowers to the stalk. This lily is bright red, it's throat, bright yellow with dark spots. Stems are straight and strong with no tendency to droop. Not particular as to soil, it will thrive in full sun or partial shade. July flowering.

5-6 inch. Each, 45c; doz., \$4.50; 100, \$30.00.

6-7 inch. Each, 55c; doz., \$5.50; 100, \$40.00.

Lilium Willmottiae

Ready in September

A beautiful and rather rare lily from China. Well grown specimens often carry more than twenty brilliant orange-red flowers, three inches across. The entire plant has a slender, graceful appearance.

Each, 50c; doz., \$5.00; 100, \$35.00.



Autumn IS THE BEST TIME TO SOW



1/2 Lb.....	\$0.45
1 Lb.....	.80
2 Lbs.....	1.60
3 Lbs....	2.35
5 Lbs.....	3.85
10 Lbs. \$	7.50
15 Lbs....	11.15
20 Lbs....	14.75
25 Lbs....	18.25
100 Lbs....	69.00
Prepaid in U. S. A.	

AUTUMN is the most favorable time to sow lawn seed, the earlier the better. In the short days and cool nights the seedling plants make vigorous growth. Give them all the time possible to become established before freezing weather arrives.

In the fall it is more important than ever to sow only permanent grasses, free from short-lived, coarse growing types. For a lawn of permanence and beauty, our famous Chicago Parks mixture is recommended, containing only fancy, re-cleaned seed of fine leaved, hardy, lasting grasses of high purity and germination. It contains no timothy, or other coarse adulterants. We are adding to our mixture a liberal amount of the new Creeping Red Fescue, a strain developed by scientific breeding methods. This fine leaved grass spreads from the roots and so helps thicken the turf as to help crowd out weeds. See prices above.

We offer Chicago Parks mixture without Clover as "Fairway Mixture" at Chicago Parks prices, as quoted above.

Vaughan's "Private Estate" Bent Formula

For those interested in a deluxe mixture we highly recommend our Private Estate formula. This formula contains over 98% pure seed and is free of all noxious weeds.

In addition to Kentucky Blue Grass of the highest quality, to insure a durable and resistant foundation for your lawn, Private Estate formula includes an important proportion of bent. It produces a heavy turf of very fine texture. This mixture is equal or better in purity to the highest priced mixtures and is the best value on the market.

Price, 1 lb., 90c; 2 lbs., \$1.80; 3 lbs., \$2.65; 5 lbs., \$4.35; 10 lbs., \$8.50; 15 lbs., \$12.65; 20 lbs., \$16.75; 25 lbs., \$20.75; 100 lbs., \$79.00.

Vaughan's "Columbian"

When making a lawn on sandy soil or in moderate shade, Vaughan's "Columbian" is the correct blend.

Price, 1/2 lb., 45c; 1 lb., 80c; 2 lbs., \$1.60; 3 lbs., \$2.35; 5 lbs., \$3.85; 10 lbs., \$7.50; 15 lbs., \$11.15; 20 lbs., \$14.75; 25 lbs., \$18.25; 100 lbs., \$69.00.

Vaughan's Dense Shade Formula

Composed of grasses most suited for growing in heavily shaded situations. A splendid mixture. It is also satisfactory in light shade.

Price, 1/2 lb., 50c; 1 lb., 85c; 2 lbs., \$1.70; 3 lbs., \$2.50; 5 lbs., \$4.10; 10 lbs., \$8.00; 15 lbs., \$11.90; 20 lbs., \$15.75; 25 lbs., \$19.50; 100 lbs., \$74.00.

Vaughan's No. 25 Lawn Formula

An economy blend for new seedings and quick results which should be followed by reseeding with a more permanent blend like our "Chicago Parks." In spite of its low price, this blend does not contain timothy. Sow at the rate of 1 lb. to every 200 sq. ft. Begin cutting when grass is 3 to 4 inches high and continue to cut regularly to keep turf fine.

Price, 1 lb., 55c; 2 lbs., \$1.10; 3 lbs., \$1.60; 5 lbs., \$2.60; 10 lbs., \$5.00; 15 lbs., \$7.35; 20 lbs., \$9.75; 25 lbs., \$12.00; 100 lbs., \$44.00.

White Clover For Lawns

Extra fancy seed. Price, 1/4 lb., 35c; 1/2 lb., 65c; 1 lb., \$1.25; 2 lbs., \$2.50; 3 lbs., \$3.75; 5 lbs., \$6.05; 10 lbs., \$11.90; 15 lbs., \$17.50; 20 lbs., \$23.00; 25 lbs., \$28.25.

Kentucky Blue Grass (*Poa pratensis*)

EXTRA HEAVY SUN-CURED SEED—Specially re-cleaned. 1/2 lb., 50c; 1 lb., 90c; 2 lbs., \$1.80; 3 lbs., \$2.65; 5 lbs., \$4.35; 10 lbs., \$8.50; 15 lbs., \$12.65; 20 lbs., \$16.75; 25 lbs., \$20.75; 50 lbs., \$41.00.

Fancy Seed—(Standard grade of re-cleaned blue grass.) Price, 1/2 lb., 45c; 1 lb., 80c; 2 lbs., \$1.60; 3 lbs., \$2.35; 5 lbs., \$3.85; 10 lbs., \$7.50; 15 lbs., \$11.15; 20 lbs., \$14.75; 25 lbs., \$18.25; 50 lbs., \$36.00.

Creeping Red Fescue

Developed by scientific methods, this spreads from the roots making a dense turf which tends to crowd out weeds. Does well in shade and is good on sandy soil. Price, 1 lb., \$1.35; 2 lbs., \$2.70; 3 lbs., \$4.00; 5 lbs., \$6.50; 10 lbs., \$12.75; 15 lbs., \$18.75; 20 lbs., \$24.50; 25 lbs., \$30.00; 50 lbs., \$58.00.

Chewing's Fescue

This is valuable on sandy soils and in shade, perennial with afine blade and a spreading root system. 5 lbs. to 1,000 sq. ft.—1 lb., \$1.25; 2 lbs., \$2.50; 3 lbs., \$3.75; 5 lbs., \$6.05; 10 lbs., \$11.90; 15 lbs., \$17.50; 20 lbs., \$23.00; 25 lbs., \$28.25; 50 lbs., \$55.00.

Alta Fescue

This recent development has a deep root system and is drought resistant. It stands up under traffic and though coarse is excellent for athletic fields, airports, roadsides, etc. 1 lb., \$1.00; 5 lbs., \$4.85; 10 lbs., \$9.50.

Poa trivialis (Rough Blue Grass)

A grass for moist, shady spots. Prices same as Chewing's Fescue.

Red Top Grass (*Argrostis alba*)

Extra fancy re-cleaned solid seed—Price, 1/2 lb., 25c; 1 lb., 45c; 2 lbs., 90c; 3 lbs., \$1.30; 5 lbs., \$2.10; 10 lbs., \$4.00; 15 lbs., \$5.60; 20 lbs., \$7.25; 25 lbs., \$8.50; 50 lbs., \$16.00.

Seed of the Bent Grasses

For lawns Bent grass from seed is preferred to creeping Bent stolons because it does not grow so rapidly or require so much cutting and top dressing. Seed 3 to 4 lbs. per 1000 square feet.

ASTORIA BENT GRASS. This grass has creeping roots which throw up new shoots and make a very thick turf. It makes a splendid lawn and golf grass. Requires less care than the aggressive surface creepers. Price, 1/4 lb., 50c; 1/2 lb., 85c; 1 lb., \$1.65; 2 lbs., \$3.30; 3 lbs., \$4.90; 5 lbs., \$8.00; 10 lbs., \$15.75; 15 lbs., \$23.25; 20 lbs., \$30.60; 25 lbs., \$37.50.

SEASIDE CREEPING BENT GRASS. This is a true creeping Bent grass seed. One or two top dressings a year will keep it in good condition. Does not require as much cutting as the varieties of bent grown from plugs and stolons. 1/4 lb., 45c; 1/2 lb., 80c; 1 lb., \$1.60; 2 lbs., \$3.20; 3 lbs., \$4.75; 5 lbs., \$7.75; 10 lbs., \$15.25; 15 lbs., \$22.50; 20 lbs., \$29.60; 25 lbs., \$36.25.

Perennial Rye Grass

A rather broad bladed grass, good where a quick, heavy turf is wanted. Price, 1 lb., 45c; 2 lbs., 90c; 3 lbs., \$1.30; 5 lbs., \$2.10; 10 lbs., \$4.00; 15 lbs., \$5.90; 20 lbs., \$7.70; 25 lbs., \$9.50; 50 lbs., \$18.25; 100 lbs., \$35.00.

All Grass Seed is Prepaid to Any Part of the U. S. A.—There is an Extra Charge by Post Office for Collection on C. O. D. Packages

Hardy Perennial Plants for Fall Planting

HARDY perennials may be set out this fall in time to become well established before winter sets in; and next year will see them better developed, and bearing finer flowers than can be obtained from plants set in your border next spring.

This advantage is accompanied with very little extra risk. We

do not list the kinds which need special protection through the winter. It is always well to apply a light mulch of straw or excelsior over newly planted perennials after the ground has frozen. This will tend to prevent winter thaws and frost heaving. Plants should never be planted where water stands or where there is poor drainage.

UNCONDITIONAL GUARANTEE

We guarantee that all perennial plants are properly matured for use of the home gardener and that they will reach the customer in good condition.

Any complaint as to quality or condition of plants must be made at once upon receipt of shipment, and letter accompanied by packing sheet.

CHECK YOUR ORDER

Check your order carefully before mailing. It is almost impossible to make changes on orders after they have been placed in process of filling.

Add Postage for Plant Orders

Prices on this page do not include postage. For 12 plants or less include in your remittance postage in the following amounts: Single plants, 12c; 3 plants 16c; 6 plants, 20c; 12 plants, 25c. Shipments larger than 12 plants will be made by express collect, unless otherwise instructed.

AQUILEGIA (Columbine) Crimson Star.

Bright red outer petals with white center. Long spurred 3-inch flowers on 2 foot stems. A must in any perennial garden. 60c each; 3 for \$1.50; Doz. \$4.75.

Mrs. Scott Elliott's Hybrids. The finest color mixture grown. Flowers are large, have long spurs, and the colors cover all shades of lavender, purple, red, white, yellow, blue and pink. 50c each; 3 for \$1.25; Doz. \$4.25.

ARTEMISIA Silver King. A striking contrast plant with light silver gray foliage. May be cut and dried for winter use. 60c each; 3 for \$1.50; Doz. \$4.75.

ASTERS (Michaelmas Daisy)

Beechwood Challenger. Darkest red of all.

Harrington's Pink. Finest true pink. Large flowers of luminous pink on bushy plant.

Royal Blue. A deep blue. Produces myriads of large, showy flowers.

White Lady. Large, graceful white flowers in profusion.

All above 60c each; 3 for \$1.50; Doz. \$4.75.

COLLECTION. One of each of the above four varieties, \$2.00.

CARNATIONS Hardy Grenadin Mixed. Old time favorite. Blooms always an available table bouquet. 50c each; 3 for \$1.25; Doz. \$4.25.

CARNATION Crimson King. 2 ft. Closely resembling a greenhouse Carnation in size and habit of growth. Large, fragrant, bright crimson blooms of velvety appearance borne in profusion in June and continuing until frost. Each, 75c; 3 for \$1.95; doz., \$5.75.

COREOPSIS. Double Sunburst. Brilliant double yellow flowers 1½ inch to 2 inch in diameter. 50c each; 3 for \$1.25; Doz. \$4.25.

CAMPANULA

Persicifolia, White. True perennial variety, growing about two feet high. Large blue bell-shaped blooms, attractive for contrast either in beds or in bouquets. Long blooming period. 60c each; 3 for \$1.50; Doz. \$4.75.

DICENTRA Spectabilis. (Bleeding Heart) Its long racemes of graceful, heart-shaped pink flowers are always attractive. A fine plant for that shady spot. \$1.00 each; 3 for \$2.75; Doz. \$7.25.

DASIES G. Marconi Giant Double. Flowers up to 4 inch in diameter. Long flowering season. Each 50c; 3 for \$1.25; Doz. \$4.25.

Mt. Shasta. Lovely fully double, pure white, one of the best "frilled" Shasta Daisies. Somewhat tender, but worth all the care you give it. Each 75c; 3 for \$1.95; Doz. \$5.75.



AQUILEGIA Mrs. Scott Elliott's Strain



SHASTA DAISY Giant Double

DELPHINIUM

Vetterle and Reinelt Pacific Hybrids. This elegant strain of Delphinium is almost beyond description. Flower spikes 3 to 5 feet long, closely packed with individual flowers from 2 to 3 inches across; many are double, semi-double, some single. Plants resistant to mildew. Stems wiry and strong enough to resist high winds. Strong, well-rooted plants.

Black Knight. Darkest royal violet.

Blue Bird. Clear medium blue, with white bee.

Guinevere. Light pink-lavender, with white bee.

King Arthur. Royal violet, large white bee.

Summer Skies. Clearest light blue with white bee.

All of the above, Each, 75c; 3 for \$1.95; doz., \$5.75.

Collection. One of each of the above five varieties, \$3.25



DELPHINIUM Pacific Giants

Other Hybrids

Belladonna Improved Cliveden Beauty. 2 ft. June-July. Exquisite turquoise blue. These and *Thermopsis Carolina* (Yellow) are charming when combined in bouquets. Each, 50c; 3 for \$1.25; doz., \$4.25.

Bellamosum Improved. Large deep blue flowers, uniform in color, with a white bee. Blooms 2½ inches across. Each 50c; 3 for \$1.25; doz., \$4.25.

GALLARDIA Burgundy. 2 ft. Shining wine-red flowers, 2½ in., from July until fall. Blooms same year, sown early. Each, 50c; 3 for \$1.25; doz., \$4.25.

GYPSOPHILA

Paniculata Bristol Fairy (Double Baby's Breath).

Early double pure white large flowering perennial *Baby's Breath*. Produces a second crop of spikes. Each, 75c; 3 for \$2.00; doz., \$5.75.

NEW HEMEROCALLIS (Day Lilies)

Bagdad. Rich Mahogany red. 42 in. Blooming June and July. Each, 75c; 3 for \$1.95; doz., \$5.75.

Calypso. Large Light Cadmium Yellow. 40 in. Blooming July and August. Each, 60c; 3 for \$1.50; doz., \$4.75.

Hyperion. The finest Citron yellow available. Delightfully fragrant. 40 in. Blooming July. Each, \$1.00; 3 for \$2.65; doz., \$7.25.

Imperator. Star Shaped blooms of orange red lined with sulphur. 40 in. Blooming July and August. Each, 60c; 3 for \$1.50; doz., \$4.75.

Margaret Perry. Brilliant orange scarlet, lined with yellow. 48 in. Blooming July and August. Each, 60c; 3 for \$1.50; doz., \$4.75.

Modesty. Large flowering pale yellow. 30 in. Blooming June and July. Each, 75c; 3 for \$1.95; doz., \$5.75.

Collection: One of each of the above varieties \$3.85.

HOLLYHOCKS. Newport Pink. Rich, shimmering pink blooms on tall stems.

Scarlet Beauty. Brilliant scarlet color for bold backgrounds. Price of above. Each, 45c; 3 for \$1.15; doz., \$3.75

SPECIAL VARIETIES OF PHLOX

- Charles Curtis.** Brilliant cherry red. Very showy.
 - Flash.** Rich carmine-rose with orange-scarlet center.
 - Harvest Fire.** A brilliant salmon orange.
 - July Lights.** A brilliant carmine red with blood red eye.
 - Miss Lingard.** Long accepted as one of the best cutting varieties, pure white. Splendid for bouquets and mixed floral arrangements.
 - Salmon Beauty.** Rich salmon pink with white eye.
- Your choice of the above varieties, .75 each; 3 for \$2.00; doz., \$6.25; or one each of the above 6 for \$3.95.**

STANDARD VARIETIES

- × **Africa.** The favorite deep red. Good grower and sure, heavy bloomer.
 - Annie Laurie.** One of the best new salmon-reds. Sturdy grower.
 - × **Border Queen.** Dwarf variety good for foreground plantings. Massive well formed heads. Deep watermelon pink.
 - × **Caroline Vandenburg.** The nearest to blue color to be found among the Phlox. Large flowering type providing a distinct contrast in color values.
 - × **Count Zeppelin.** Very strong grower and free flowering. Large white blooms with vivid bright red eye.
 - Daily Sketch.** One of the best introductions of recent years. Immense flowers of light salmon pink with carmine eye.
 - × **E. I. Farrington.** A Phlox of distinctive beauty. Flower trusses are extremely large and color is a delightful salmon shade with slightly darker eye.
 - Ethel Pritchard.** Rich bluish-violet which blends well with other colors.
 - Leo Schlageter.** One of the brightest and flashiest of all red Phlox. Sturdy grower and very free bloomer.
 - × **Lillian.** One of the most distinctive new Phlox ever introduced. Unusually large trusses of charming soft pink.
 - Moonlight Dream.** Medium grower. Large trusses of rich creamy white.
 - Prime Minister.** Clear pure white, brilliant red center.
 - Salmon Glow.** Teamed with Daily Sketch this variety has swept to a high place in the Phlox world. Its robust growth and blooms of deep salmon recommend it to all.
- On all of above. Each, 60c; 3 for \$1.50; doz., \$4.75.
- Collection.** One each of varieties marked X, \$3.00.

VAUGHAN'S

Natural Floral

PERFUMES

THE QUALITY of Vaughan's Natural Floral Perfumes is attested by the many women of prominence in society, on the stage, and radio, who regularly purchase our perfumes and colognes for their own use and for gifts to their friends. They have found in these perfumes a recreation of the fragrances they prefer, truer than was provided by the best imported perfumes.

We invite women of taste and discrimination to compare them directly with their favorite imports regardless of brand, price or name. Examine them critically. Then apply this final test—compare them with the freshly opened flower for which they are named—there can be no more difficult test than this.



PERFUME SAMPLER

1/8 dram each of 10 favorites **\$1.25**
Postpaid, Tax Included

We have packed ten of our most popular odors so that you can test the high quality of Vaughan's True Floral Perfumes. As these are pre-packed to reduce cost, we cannot make changes in the assortment. Each vial contains 1/8 dram.

COLOGNE SAMPLER

1/2 oz. each of six most popular odors **\$1.25**
Postpaid, Tax Included

Attractive as a gift. Particularly suitable for 'teen agers as well as for the mature woman of taste. Prepacked, our selection of odors.

Size	Perfume	Size	Cologne
1 dram...	\$.78	1 oz.	\$.60
2 drams...	1.50	4 oz.	1.50
1/2 oz.	2.70	1/2 pint...	2.82
1 oz.	4.80	1 pint...	5.40

These prices are prepaid. Do not add Federal Excise tax: Above prices include the tax.

Available in Either Cologne or Perfume

- Cologne is about one-eighth the strength of perfumes (about double the strength of ordinary toilet water).
- Appleblossom:** Soft, yet fresh and clean.
 - Bouquet S:** A delicately feminine blend of rich floral oils.
 - Bouquet X:** Another blend, slightly "drier" and less sweet. An exotic fragrance.
 - Carnation:** Many acknowledge it as the best recreation of this beloved old favorite.
 - Wild Rose:** Like the breeze through a Sweet Briar hedge in June.
 - Zanzibar:** Like a clipper ship laden with the spices of the Indies.
 - Forest Breeze:** A smoky, piney fragrance.
 - Freesia:** the most accurate reproduction available of this elusive fragrance.
 - Gardenia:** Not sweet like so many "Gardenia" perfumes—a rich, intense odor.
 - Geranium:** Like a crushed geranium leaf.
 - Hawaiian Lei:** A lovely blend of exotic tropical flowers.
 - Heather:** A rich "smoky" or "peaty" fragrance that goes well with sport clothes.
 - Lavender:** The well-known English type, not sweet or "musky" like so many near-lavenders.
 - Lilac:** This outstanding fragrance is again available. Like lilacs wet with morning dew.
 - Lily of the Valley:** At last, a satisfactory reproduction of this elusive scent.
 - Parma Violet:** The full richness of this famous old time luxury perfume.
 - Red Rose:** The Damask Rose type.
 - Sweet Pea:** The true fragrance of the original Spencer sweet pea.
 - Violet:** The English violet.
 - White Rose:** Once more available.

PYRETHRUM (Painted Daisies) Robinson's Hybrids Mixed.

Foliage is fernlike and ornamental. No other perennial flower possesses such color, hardness, and general usefulness as these gorgeous blooms. The mixed colors blend and contrast with one another in a most pleasing profusion of gay bloom. This is a really great new strain. 60c each; 3 for \$1.50; Doz. \$4.75.

RUDBECKIA Purpurea. Reddish purple flowers, large brown cone-shaped center. Two to 3 foot stems. Blooms July to October. 60c each; 3 for \$1.50; Doz. \$4.75.

SCABIOSA (Pincushion Flower) Caucasica Perfecta. Do well in any ordinary garden soil. Stems 18 to 24 inches long topped by charming flowers in a soft lilac lavender shade. In bloom from June to September. Each, 60c; 3 for \$1.50; doz., \$4.75.

STATICE (Great Sea Lavender) Latifolia. 2 ft. Purplish blue minute flowers produced all summer. Each, 50c; 3 for \$1.25; doz., \$4.25.

TRITOMA (Red Hot Poker) Pfitzeri. Orange and red spear heads 3 feet tall. Very attractive. 60c each; 3 for \$1.50; Doz. \$4.75.

VINCA Minor (Grave Myrtle) Bowles Variety. A fine ground cover for shady places. Flowers of an intense blue. 45c each; 3 for \$1.15; Doz. \$3.75.

VIOLET Royal Robe. Lustrous violet blue, huge, very fragrant flowers, opening like a pansy. 60c each; 3 for \$1.50; Doz. \$4.75.

"Personalized Perfumes"

Cost of Perfume Federal Tax Included
Dram. \$1.80 Ounce. \$12.00

Calcutta: The fragrance is that of the rich, opulent bouquets for which the French are famous, yet it is so dry and woody that it is not cloying. Outstanding.

Victoria Regina: Based on the formula for the consecrated oil used in anointing Queen Victoria at her coronation. Rich and fragrant. Not for the ingenue.

Song of the Heart: While it is extraordinarily rich, at the same time it is so dry and woody that there is no feeling of cloying heaviness. It has had unusual acceptance from women of taste and discrimination. We recommend it without reservation.

Annual Flower Seed for Fall Sowing

WHEN you sow seeds of annuals in Fall, you imitate Nature's method. Practically all hardy annuals will produce stronger, sturdier plants with earlier bloom by this method. Even when spring sowing is desirable experienced gardeners also sow in fall because they then have a continuous season of bloom. Also, they can sow at their leisure instead of trying to plant everything in a few short weeks. Do not be in too much of a hurry to sow.

- 255 ★ **Alyssum. Vaughan's Little Gem.** Snow-white carpet plant. Pkt., 10c; $\frac{1}{4}$ oz., 40c.
- 259 **Alyssum Violet Queen.** A beautiful, fragrant sweet Alyssum, of bright clear violet hue. Pkt., 15c; $\frac{1}{4}$ oz., 60c; 1 oz., \$2.00.
- 348 **Antirrhinum.** (Snapdragon). Rust-resistant Maximum Mixed. Pkt., 25c; 3 pkts., 65c.
- 1287 ★ **Candytuft.** Mixed all colors. Pkt., 10c; $\frac{1}{4}$ oz., 30c.

★CENTAUREA CYANUS SUPER-DOUBLE (Bachelor's Button)

- 1506 **Blue Boy.** The true corn-flower blue.
- 1507 **Pinkie.** Lovely true pink.
- 1508 **Red Boy.** Deep glowing red.
- 1509 **Snowman.** Pure white.
Each of above, pkt., 15c; any 2 pkts. for 25c; $\frac{1}{4}$ oz., 30c.
- 1522 **Vaughan's Special Super Double Mixed.** Pkt., 15c; $\frac{1}{4}$ oz., 25c; $\frac{1}{2}$ oz., 40c.

- 1966 **Cosmos. Sensation Special Mixed.** Giant early strain. Pkt., 25c.
- 2015 **Cynoglossum Blue Bird.** (Chinese Forget-Me-Not). 18 to 24 in. Large sprays of brilliant blue Forget-Me-Not like flowers. Pkt., 10c; $\frac{1}{8}$ oz., 25c.
- 2259 **Dianthus Heddewigii Gaiety.** Very large, showy fringed flowers; wide range of lovely colors; pure white to crimson. Pkt., 25c.
- 2861 **Hunnemannia Sunlite.** Gorgeous, semi-double, clear canary-yellow blooms. The extra rows of short petals are on the outside instead of the inside of the Tulip-shaped flowers. Light gray-green foliage. Pkt., 15c; $\frac{1}{8}$ oz., 50c.
- ★ **Larkspur Giant Imperial (Base Branching).** These Larkspurs are ideal for cut flowers as the flower stems, three to four feet long, branch from the base of the plants.

- 2151 **Blue Bell.** A fine medium blue.
- 2172 **Dazzler.** A rich scarlet base.
- 2155 **Exquisite Pink Improved.** Soft pink.
- 2163 **Sweet Lavender.** Light lavender blue.
- 2158 **Montrose.** Clear rose pink.
- 2175 **White King.** Pure glistening white.
Any of the above. Pkt., 15c; 3 Pkts. for 35c.
- 2159 **Giant Imperial Mixed.** The above and others. Pkt., 15c; $\frac{1}{4}$ oz., 50c; oz., \$1.60.
- 3390 **Nicotiana. Affinis.** (Sweet-scented Tobacco plant). White. Pkt., 10c.
- 3393 **Nicotiana. Crimson Bedder.** The flowers are of rich deep crimson. Pkt., 15c.
- 3420 **Nigella. Miss Jekyll Dark Blue.** Bearing on long stems, large semi-double flowers of a charming intense dark blue nestling in fine feathery foliage. Pkt., 10c.
- 4018 **Petunia Rose of Heaven Select.** Rich brilliant rose, with inconspicuous white throat, darker than Rosy Morn. Pkt., 25c; $\frac{1}{8}$ oz., 75c.
- 4025 **Petunia. Vaughan's Special Mixture of Dwarf Small Flowering Varieties.** Will be a revelation to those who plant a packet, in furnishing an unending supply of flowers in a most bewildering combination of colors. Pkt., 25c; $\frac{1}{8}$ oz., 75c; $\frac{1}{4}$ oz., \$1.25.
- 4370 ★ **Poppy. Vaughan's Special Shirley Mixed.** Pkt., 15c; $\frac{1}{4}$ oz., 30c.

The ideal time is just before the ground freezes for the winter. November 15th is early enough in normal seasons in the vicinity of Chicago and New York. If the ground has been prepared in advance, sowings can also be made during winter thaws.

A fine seed bed is desirable. No covering of any kind is needed unless there is danger of washing or from birds, in which case a light,

loose covering of evergreen boughs can be used. Plant at half the depth used when sowing seed in spring. Broadcast all small seed. ★ Varieties preceded by star are especially recommended for sowing in the fall above your bulbs. They will grow in the spring and blossom after the bulbs. Their shallow roots will not interfere with the bulbs maturing properly; their growth will conceal the bulb foliage after it grows yellow and unsightly.

Delphinium



DELPHINIUM PACIFIC GIANT HYBRIDS

Giant Pansies

GIANT SWISS VARIETIES

- 3892 **Alpenglow.** Rich wine-red shades. Pkt., 25c.
- 3896 **Berna.** Dark violet blue. Pkt., 25c.
- 3891 **Blue (Ullswater) (Thuner Sea).** Deep blue flower with blue-black blotches. Pkt., 25c.
- 3820 **Coronation Gold.** The largest pure gold self. Pkt., 50c.
- 3900 **Pure White.** Pkt., 50c.
- 3894 **Vaughan's Super Swiss Giant Mixture.** $\frac{1}{8}$ oz., \$1.25; pkt., 35c.
- 3901 **Pansy Swiss Raspberry Rose.** A lovely tint of pink best described as Raspberry Rose. It has a suggestion of a lighter tone on the edges of the petals and is marked with a velvety blotch in a deeper tone. Pkt., (100 seeds), 75c.

SPECIAL MIXTURES

- 3794 **Vaughan's Super Maple Leaf Giant Mixture (Canadian Giants).** The leaves are of giant size and flowers up to 4 inches across, of wonderful substance and fine form. Many charming colors. $\frac{1}{8}$ oz., \$1.50; $\frac{1}{4}$ oz., \$2.50; Pkt., 50c.
- 3875 **Vaughan's Giant Mixture.** This mixture contains all the self-colors, such as white, yellow, blue, purple, red, bronze, etc. All the flowers are of the Giant type and of good shape and texture. $\frac{1}{8}$ oz., \$1.50; Pkt., 25c.

PACIFIC GIANT HYBRIDS

The new strain produces plants that are 60 to 65 percent mildew resistant. The flowers are of immense size, tightly set on straight stems that are strong and whippy. The flowers do not shatter.

- 7559B **Blue Bird.** A clear medium blue with white bee with high tall spikes. Pkt., about 200 seeds \$1.00; pkt., about 100 seeds, 50c.
- 7563 **Black Knight.** Large flowers of varying dark violet shade. Pkt., about 200 seeds, \$1.00; pkt., about 100 seeds, 50c.
- 7559A **Blue Jay.** From medium to dark blue with dark bee. Pkt., about 200 seeds, \$1.00; pkt., about 100 seeds, 50c.
- 7563A **Cameliard Series.** This is a pure lavender self with white bee. Pkt., about 200 seeds, \$1.00; pkt., about 100 seeds, 50c.
- 7560 **Galahad.** Clear white, highly mildew resistant. Pkt., about 200 seeds, \$1.00; pkt., about 100 seeds, 50c.
- 7561 **King Arthur.** Royal violet, large white bee. Pkt., about 200 seeds, 75c; pkt., about 100 seeds, 40c.
- 7561A **Guinevere.** Light pink lavender with white bee. Pkt., about 200 seeds, 75c; pkt., about 100 seeds, 40c.
- 7562 **Summer Skies.** Light blue with white bee. Pkt., about 200 seeds, 75c; pkt., about 100 seeds, 40c.
- 7562A **Clear White.** Of glistening texture. Pkt., about 200 seeds, 75c; pkt., about 100 seeds, 40c.
- 7559 **Round Table Series.** As the name implies this represents all of the color combinations of the above Knights and their Ladies. Pkt., about 200 seeds, 75c; pkt., about 100 seeds, 40c.

Viola Cornuta

- 5790 **Blue Perfection.** Light blue. Pkt., 15c.
- 5789A **Blue Beauty.** Bright blue. Pkt., 15c.
- 5804 **Chantreland.** Apricot. Pkt., 25c.
- 5802A **King Henry (Purple King).** Deep purple violet with lighter center and yellow eye. Pkt., 25c.
- 5796 **Jersey Gem.** Flowers of rich pure violet, large, fragrant. Pkt., 25c.
- 5806 **White Perfection.** Finest white. Pkt., 15c.
- 5795 **Nosegay.** A blend of bright gay colors, red, yellow, blue and apricot, combined with many blotched combinations. Pkt., 25c.
- 8582 **Super Large Flowering Scotch.** The flowers are large, all two toned without blotches and have a complete color range. Pkt., 25c.

CORNUTA HYBRIDA (Large Flowers)

- 5787 **Arkwright Ruby.** Bright ruby crimson shaded terra-cotta; fragrant. Pkt., 25c.
- 5789 **Blue Butterfly.** Vivid mid-blue shading to white in the upper petals. Pkt., 25c.
- 5790A **Chinese Blue.** A round-faced type. According to the Royal Horticultural Chart, is French Blue. It is the nearest substitute to the famous Viola Maggie Mott. Pkt., 25c.
- 5798 **Lutea Splendens.** 8 in. Bright yellow. 10c.

5813 **VIOLA** Vaughan's Special Mixture. A charming and delightful mixture of these bright and everblooming Violas in a complete color range, shading from pale lavender to rich purple-black, yellow, white, terra-cotta, apricot and rose. Pkt. 25c

Vaughan's Irises

PLANTS BY PARCEL POST—If to be sent by parcel post, add postage as follows: Single plants, 5c; 3 plants, 10c; 6 plants, 15c; 12 plants, 25c. We accept no responsibility for delays or conditions that may prove injurious to the contents.

PLANTS BY EXPRESS—We recommend this mode of transit where quantities are over 18 to 24 plants. We pack carefully, but accept no responsibility for delays over which we have no control that may cause injury to the contents.

"S" refers to the three standard or upright curling petals; "F" to falls or drooping petals.

Irises are most effective if planted 3 of a kind in a clump.

DYKES MEMORIAL MEDAL. This is an award made annually in America, France and England for the best Iris of the year.

As soon as iris plants are received, plant them in a sunny, well drained place. Each plant should have at least eighteen inches clear space from other irises, as it will grow in a circle and many varieties spread rapidly. The rhizome, or fleshy root stock from which the leaves and roots grow, should be barely covered with soil, with the roots properly spread below, and the soil well firmed about them. Until the plant is established, give it frequent attention, watering in dry spells. In the first winter, after the ground has frozen, a light mulch to prevent thawing and heaving will be beneficial.



RED DOMINION

Outstanding Varieties

Berkeley Gold. 38 in. This top ranking yellow Iris should sell for more. It is a large deep clear yellow self of fine form, heavy substance and smooth texture. Stands rain, hot weather, does not fade. \$4.00.

Black Wings. 38 in. Velvety black buds opening to large flowers of intense midnight blue overlaid with a frosty black luster. A striking variety that is easily grown and deliciously fragrant. 55c; 3 for \$1.35.

Buechly Giant. 40 in. This variety has the largest flowers of any Iris we grow. It is a clear lavender blue bicolor that has perfect form and will create a sensation in any garden. 50c; 3 for \$1.25.

California Gold. 36 in. A super novelty with dazzling, deep golden yellow. Good garden variety as it does not fade. Late. 55c; 3 for \$1.35.

Cheerio. 40 in. Considered the most brilliant of all the red toned Irises. S. golden tan flushed rose; F. rich, glowing velvety red. A "must have" for your garden. 50c; 3 for \$1.25.

Caroline Burr. 40 in. Very large flowers of a fascinating new color and perfection of form. A cool ivory self overlaid with a soft elusive green and a frosty iridescent sheen. \$3.50.

China Maid. 48 in. Words are inadequate to describe this new, intriguing blend of pink, golden copper and soft lilac. Besides having a beautiful color, it has large size, fine form and a smooth even texture that is outstanding. 75c.

City of Lincoln. 40 in. A magnificent bi-color that is a "standout" in the garden. The dome-shaped standards of clear, vivid yellow make a striking contrast with the golden edged, rich velvety red of its flaring falls. \$1.00.

Claribel. 40 in. A giant flowered, snow-white plicata, leather-stitched in soft blue. Similar to the famous Los Angeles. 50c; 3 for \$1.25.

Copper Lustre. 36 in. Dykes Medal, 1938. Considered "the Iris of the Century." Its flowers are of huge size and its color a blend of glowing copper and gold with iridescent sheen. Nothing quite like it. 60c; 3 for \$1.50.

Daybreak. 40 in. A huge golden pink with slight undertones of copper. The flowers are well shaped, with closed standards and falls that are semi-flaring, but there is a suggestion of ruffling about the entire flower. It has excellent branching stems. \$5.00.

Depute Nomblot. 50 in. Dykes Medal 1930. A magnificent Iris of great size. S. coppery-red, flushed golden bronze; F. rich claret crimson. The entire flower seems lightly dusted with gold which sparkles in the sun. 50c; 3 for \$1.25.

Destiny. 38 in. A great, heavy, dark toned Iris with deep purple standards and well shaped falls of bright, blackish red-purple. 50c.

E. B. Williamson. 36 in. An excellent Iris of rich, glowing coppery-red, almost a self, with a silky, lustrous finish. Unusual in color, perfect in form, and strong in growth, it is one of the finest of all Irises. 60c.

Elsa Sass. 38 in. Exquisite, ruffled flowers that are the color of lemon-ice, a most unusual shade that has a startling effect. Blooms of good size and good form. \$1.00; 3 for \$2.50.

Ethelwyn Dubuar. 38 in. Very fine large flowers of deep pink with delightful ruffling. 55c; 3 for \$1.35.

Exclusive. 40 in. Exclusive, yes—for no other blue is quite like it. The pure light blue color is overlaid with a silvery mist which produces a "powder blue" effect that is very beautiful. 60c; 3 for \$1.50.

Garden Magic. 44 in. Deep, smooth, very dark velvety red self. Its color is almost a maroon, warm and glowing, with a lustrous finish. Flowers are very large and bloom late. Always in demand. \$1.00.

ELMOHR The Colossal New Iris.

36 in. A super Iris. Iris seedling of Wm. Mohr that has magnificent, richly colored, rounded blooms of heavy texture. Their color is reddish mulberry with a pinkish glow that gives it great brilliance. A sensational Iris that is hardy and thrives everywhere. When you see Elmoehr in bloom, it will thrill you as no other Iris has to date. Dykes medal 1945. \$2.00; 3 for \$5.00.

Golden Majesty. 42 in. A truly superb Iris which is "tops" in its color class. It is a gleaming, deep rich, pure yellow self which does not fade. The flowers are large and of thick substance, have beautifully rounded domes and flaring falls. \$1.00; 3 for \$2.50.

Golden Treasure. 38 in. An exquisite creamy yellow Iris with a glowing golden heart and rich yellow beard. Huge flowers; perfectly branched stems. 60c; 3 for \$1.50.

Great Lakes. 48 in. An exquisite pure blue, the shade of an unclouded sky reflected in crystal waters. It is almost perfection, having crisp petal texture, widely branched, strong stems, and ideally formed blooms with widely flaring falls. Winner of the Dykes Medal 1942. \$1.50.

Gudrun. 36 in. Enormous, well shaped flowers of lovely pure white, dusted with soft gold at the throat. Very fine. Early. 55c; 3 for \$1.35.

Happy Days. 40 in. An immense clear yellow with flowers over 7 inches from top to bottom. 50c; 3 for \$1.25.

Indian Hills. 37 in. A stunning Iris of clear rich wine purple. 55c; 3 for \$1.35.

Jasmania. 38 in. S. clear chrome-yellow, slightly ruffled and domed; F. flaring, of deeper yellow flushed darker on upper part. 50c; 3 for \$1.25.

Jean Cayeux. 38 in. Dykes Medal 1931. This Iris is a masterpiece. A beautiful blending of coffee or Havana brown with a golden glint that is enchanting. The flowers are of perfect shape. 50c; 3 for \$1.25.

Junaluska. 40 in. One of the most beautiful Irises in existence. S. rosy copper threaded with gold; F. brilliant copper-red. Huge flowers of perfect form and heavy substance. Fine garden variety. 55c; 3 for \$1.35.

Los Angeles. 40 in. Giant, snowy-white flowers of satin texture; the standards faintly edged lavender blue. One of the finest of all white Irises. 50c; 3 for \$1.25.

Maid of Astolat. 45 in. One of our finest plicatas. Large alabaster white daintily marked with clear blue. Fragrant. 55c; 3 for \$1.35.

Marquita. 38 in. Enormous, beautifully formed flowers of luminous ivory yellow; falls heavily veined maroon. 60c; 3 for \$1.50.

Midwest Gem. 36 in. Truly a gem and one of the very best Sass varieties. Immense ruffled flowers of luminous apricot, flushed pink, on strong branching stalks. Very fragrant, unusual and beautiful. 75c; 3 for \$2.00.

Ming Yellow. 50 in. The perfect yellow Iris. The gigantic blooms remind one of a smooth, rich flawless carpeting of deep, yellow velvet. Vigorous in growth, it has strong foliage and stout, well branched stems. \$1.00.

One each of
De Luxe Iris Collection. Great Lakes, Ming Yellow, Morocco Rose, The Red Douglas, and Wabash (value \$5.50) for \$4.75. (Postage 10c additional). (After Oct. 1st it may be necessary to change this collection).

Missouri. 36 in. Dykes Medal, 1937. Of sensational size and unquestionably one of the best of all blue Irises. S. clear vivid blue; F. slightly darker; semi-flaring. 60c; 3 for \$1.50.

Morocco Rose. 38 in. S. lustrous pale pink, flushed deeper; F. deep rose-lavender pink, long and flaring. A beautiful creation of amazing size. \$1.00; 3 for \$2.50.

Mulberry Rose. 40 in. Huge flowers of radiant, lovely, mulberry rose with a bronze beard. A new and unusual shade in the deep pink class that stands out from afar in the garden. \$4.00.

Naranja. 40 in. One of the most talked of Iris originations. A large flowered yellow with a distinct orange overcast on the falls. Decidedly different. 55c; 3 for \$1.35.

Ormohr. 40 in. The flowers are of gigantic size, the standards beautifully domed, the falls broad and semi-flaring; substance excellent. The color is a soft gray lavender-veined violet with a rosy glow over all. 75c; 3 for \$2.00.

Pink Satin. 42 in. Large, finely shaped flowers of a very delicate and smooth, yet glistening pink. 50c; 3 for \$1.25.

Prairie Sunset. 37 in. Dykes Medal 1943. A gorgeous new blend of peach apricot, rose, copper and gold that captures and holds within itself all the warm, glowing colors of the western sunset. \$2.50.

Rebellion. 38 in. S. coppery-rose; F. glowing deep blood-red. A vividly colored Iris of faultless form and rainproof substance. 50c.

Red Brick. 31 in. Gigantic flowers of brick red on rather short stalks. S. orange-red; F. pure brick red with red veining on amber ground at haft. 50c; 3 for \$1.25.

Red Dominion. 40 in. S. clear lustrous, deep red, slightly flirled, F. velvety red, nearly black. 50c; 3 for \$1.25.

Royal Coach. 36 in. S. chamois yellow with faint cinnamon dotting; F. bright yellow, bordered and dotted brown. €0c.

Sable. 40 in. Excellent form, hardness, and good bloom every year are some of the qualities which make this variety a prize-winner. An almost perfectly black Iris with a lustrous, silky sheen and an intense depth of color never before seen. \$1.50.

Sensation. 38 in. Corn-flower blue flowers of perfect form and heavy substance. A perfect flower, the standards beautifully arched, the falls flaring and the stems tall and sturdy. 50c; 3 for \$1.50.

Sierra Blue. 48 in. Dykes Medal 1935. Enormous flowers of soft clear enamel-like blue, reminding one of the blue of the Sierra mountains. It has widely flaring falls, good substance, and a refined finish and graceful form that is really exceptional. 55c; 3 for \$1.35.

Spun Gold. 38 in. Dykes Medal 1944. A gorgeous yellow that is eagerly sought after because of its fine record. It is a deep, pure golden yellow self with a velvety lustre that adds to its beauty and depth of color. \$4.00.

Snow Flurry. 40 in. Enormous, beautifully ruffled flowers of pure icy white, very faintly flushed with blue. The flowers come early, last over a long period and literally cover the strong stems. \$2.00.

Snowing. 40 in. A great beauty and The King of the white Irises. Giant snow-white flowers of fine form and heavy substance; very hardy. 50c; 3 for \$1.25.

Spring Cloud. 42 in. A striking plicata. S. white heavily dotted and edged blue; F. clear white faintly marked blue. 50c.

See our Iris Aristocrat collection on page 2.

IRIS Outstanding Varieties—Continued

Surprise Iris Collection. 24 Irises, 3 each of 8 named varieties, our selection, in a rainbow of colors, for \$3.00. Use these for borders or mass color effects. They are worth many times the price. (If wanted by parcel post, send 25c additional).

Stardom. 34 in. Unusual in its blending of coppery-pink and apricot-buff. Bright orange beard. Very free flowering. \$1.50.

The Red Douglas. 40 in. Dykes Medal 1941. Sensational new vibrant red-purple of colossal size, gorgeously rich in color, like a piece of fine plush. Grows and blooms well everywhere, and the experts agree that it is one of the finest Irises ever raised. \$1.00.

Tiffany. 36 in. A sensational picata creation in creamy yellow gaily stitched in a burnished rosy bronze. Hardy, free blooming plants that will create a refreshing atmosphere in your garden. 60c. 3 for \$1.50.

Tobacco Road. 34 in. A very distinctive Iris of rich golden tobacco brown. The large flowers are compact and firm with very heavy substance and trim flaring form. An Iris that has exceptionally rich glowing tones and is the very best of the deep browns. \$7.50.

Wabash. 39 in. Dykes Medal 1940. S. snowy white, delightfully ruffled at the edges; F. wide and flaring, deep hyacinth violet with a definite white edge. Has wonderful substance and orchid-like beauty. Voted by the Iris experts in 1940, 1941 and again in 1942 as the best Iris in commerce. \$1.00; 3 for \$2.50.

Fall Blooming Irises

These varieties bloom in the Spring and have a habit of blooming again in the Autumn.

Autumn King. 30 in. A blue-purple bicolor of fine size. 45c; 3 for \$1.15.

Autumn Queen. 18 in. Pure white flowers of good size and quality. 55c.

Eleanor Roosevelt. 28 in. An outstanding variety of very fine deep velvety purple. Profuse bloomer twice a year. 50c.

October Blaze. 34 in. Big, glowing red-purple, somewhat on the order of Indian Chief. Late. 60c; 3 for \$1.50.

Southland. 28 in. Clear deep chrome yellow of large size and heavy substance. Lovely planted with Eleanor Roosevelt. 50c.

Special Offer No. 20-A. 6 Fall Irises, 2 Autumn King, 1 Autumn Queen, 2 Eleanor Roosevelt, and 1 Southland (value \$2.95) for \$2.00. (Postage 10c additional.)

Dwarf Irises (Pumila Hybrida)

Dwarf varieties, that bloom two weeks in advance of the tall bearded Iris.

Atroviolacea. 5 in. Red-purple with white tipped beard. Very early. 35c; 3 for 90c; 12 for \$3.00.

Keepsake. 8 in. Bright golden yellow on slender stalks. Narrow foliage. 50c; 3 for \$1.25.

Spring Skies. 6 in. Lovely light blue, the shade of the Belladonna Larkspur. 35c; 3 for 90c; 12 for \$3.00.

Tampa. 8 in. Clear wine red on slender stalks. Narrow foliage. 50c; 3 for \$1.25.

Siberian Irises

The most delicate and elegant of all small flowered Irises. They grow on tall stems, have graceful, grass-like foliage, and are excellent for cutting.

Price, except where noted, 45c each; 3 of one kind for \$1.15.

Caesar. 30 in. Brilliant red-purple of large size and fine form.

Emperor. 48 in. Large flowers of a deep rich, dark violet-blue. Very fine.

Perry's Blue. 48 in. Large, well formed flower of a beautiful shade of sky-blue. One of the most popular and finest of Siberian Irises.

Snow Queen. 30 in. Large ivory white with rich yellow blotch at the throat. 60c; 3 for \$1.50.

Special Offer No. 20-B. 8 Siberian Irises, 2 each Caesar, Emperor, Perry's Blue and Snow Queen (value \$2.90) for \$2.00 (Postage 20c additional).

Ten Fine Irises

Price of the following, except where noted. Each, 50c. 3 of one kind for \$1.25. (Note, we cannot supply 3 different kinds for \$1.25.)

Alta California. 48 in. Superb flowers of deep golden yellow, faintly bronzed, on strong branched stems.

Blue Triumph. 42 in. A magnificent Iris of fine light blue. Huge stalks, carrying from 12 to 15 flowers.

Crystal Beauty. 40 in. Large, perfectly shaped flowers of pure snow white on well branched stalks.

Destiny. 18 in. A great, heavy, dark toned Iris with deep purple standards and well shaped falls of bright, blackish red-purple. 50c.

Frieda Mohr. 42 in. A gigantic lilac-pink bicolor 6½ inches from the top of the standards to the tip of the falls and 6 inches horizontally.

Indian Chief. 40 in. Every garden should have this fine red. S. pinkish red F. glowing velvety red. Large well-shaped flowers of heavy substance. A prolific bloomer.

No-We-Ta. 35 in. A beautiful, true pink self in center. The whole flower is softly frilled. An exquisite Iris, fine for cutting.

Rameses. 36 in. Dykes Medal 1932. A large blend of russet rose, pink and buff.

The Black Douglas. 48 in. S. dark violet; F. blackish violet. Very fine, richly colored Iris of good form.

Wm. Mohr. 26 in. One of the most remarkable is pale lilac, the standard flushed darker, and the whole flower is beautifully veined manganese-violet. The plants are small, but the blooms are simply immense.

Vaughan's Peonies

PEONIES, especially the modern introductions, are probably the most valuable, and most beloved of all perennial plants. Planted in sun or semi-shade in single clumps or long beds; or bordering lawns, shrub rows, and drives, they give a grand display of large fragrant blossoms of brilliant colors during June, followed by their exquisite foliage which is very ornamental during summer months. They are also most effective for home and table decorations, and last longer in water than many other perennials. Avoid buying cheap Peonies; they require just as much care as the better kinds, and are disappointing in the end.

★Varieties indicated by star are of outstanding merit and are especially recommended by us for garden planting.



PEONY THERESE

Light and Dark Pink and Rose

★**Claire Dubois.** (8.7) Very large double, globular flowers; color rich clear satiny pink, with glossy reflex. Late midseason. \$1.00.

★**Edulis Superba** (7.6) Usually blooms for Decoration Day. The large flowers are a beautiful deep, vivid pink, and are borne profusely on tall, strong stems. One of the most fragrant of all Peonies and one of the best for cut flowers in its color and season. \$1.00.

★**Georgiana Shaylor** (8.9) Large, flat, pale rose-pink with a few flecks of crimson. Strong grower and midseason bloomer. \$1.00.

Hansina Brand. (9.1) A flower of beautiful form and really giant size. Color deep flesh pink, shading darker at the base of the petals with a salmon reflex. Resembles Solange but has a better stem and flowers that always open. Late. \$5.00.

Deluxe Peony Collection

Six of the world's finest varieties
9.4 Le Cygne, white 9.4 Tourangelle, white.
9.2 Philippe Rivoire, red 9.5 Therese, pink
9.2 Solange, cream 9.3 Walter Faxon, pink
One each of above (value \$12.00) for \$9.50

Peonies may be planted from September first until May. We offer **Divided roots**, natural divisions, having 3 to 5 eyes of blooming size.

The figures following the varieties are the latest ratings given to them by the American Peony Society, based on a scale giving 10 points for perfection.

Roots by Parcel Post.—If to be sent by parcel post, add postage as follows: Single roots, 8c; two roots, 12c; 3 roots, 16c.

★**Martha Bullock** (9.1) A real peony aristocrat, gigantic in size and exquisitely beautiful. Its immense cupped shaped flowers of bright old-rose pink are often 9 to 12 inches in diameter and are held well above the foliage on tall, stout stems. Rose-like fragrance; late. As a garden, cut-flower or show variety, this one is hard to beat. \$1.75.

★**Mons. Jules Elie.** (9.2) By many considered most beautiful of all Peonies. Described on page 1. \$1.50.

Mrs. F. D. Roosevelt (9.3) Like the person it is named for, this Peony is going places. It is a strong grower and a dependable, free bloomer. Flowers double with extra long loose petals of soft rose-pink. A wonderful variety that competes with Tourangelle for the honor of being called "The world's most beautiful Peony." \$5.00.

Mrs. John M. Kleitsch. (9.0) Very large exceptional substance on tall heavy stems very late in the season. Color old-rose-pink. \$2.50.

★**Myrtle Gentry.** (9.1) Immense flowers of perfect rose form and wonderful substance on stiff stems. Color beautiful light pink, changing to rosy white, with tints of flesh and salmon. Tea rose fragrance. Late midseason. Often called "the perfect peony" for it has no faults and has all you could wish for in a flower. \$3.00.

Nick Shaylor. We think this is one of the very finest most beautiful of the new Peonies. Has very large globular blooms of perfect form and color is bluish pink with deeper pink and salmon lights at the base of the petals. \$5.00.

President Wilson. (9.7) A beautiful peony that resembles an enormous rose, its many petals cupped in a huge shell-pink ball. Large and very fragrant. \$1.50.

★**Reine Hortense (President Taft)** (8.7) One of the finest Peonies in our Nursery. A vigorous, strong grower; a profuse bloomer, and an excellent cut-flower variety, cut blooms lasting a week or more. Its flowers are among the largest of any variety that we grow and the color is a beautiful uniform light pink, center flecked crimson. Midseason. This variety is a consistent prize winner at the large peony shows. \$1.25.

★**Sarah Bernhardt** (9.0) This fine variety is a dark rose-pink, edged lighter pink; center flecked crimson. Described on page 00. \$1.50.

★**Therese** (9.5) A wonderful Peony of perfect habits with immense blooms that are truly splendid in form, texture and color. Enormous petals of pale, translucent, old-rose-pink, paling toward the base and illumined by a golden yellow glow in the depths. Early midseason. \$2.00.

Walter Faxon (9.3) Ranked by Mrs. Hardnig as the three finest peonies. "Here is the most delectable hue of pink displayed by any of the peonies outside of the tree peonies," she writes. It is a free-blooming variety and grows strongly. Should be cut and allowed to open in the house where it will last for days in increasing beauty. Midseason. \$1.50

Vaughan's Peonies

White and Light Varieties

Alsace Lorraine (8.8) One of the most charming and beautiful in our collection. Its large flowers borne in clusters, have petals long and slightly cupped, which radiate symmetrically from the center like a water-lily. The color is a rich, creamy white, center delicately tinted Havana brown. \$1.00.

Avalanche (8.7) A magnificent flower which opens like a rose. Pure white with a few pencillings of carmine. A chaste and beautiful variety of perfect form, delightfully fragrant; late midseason. An excellent cut-flower and landscape variety. \$1.00.

Baroness Schroeder (9.0) One of the finest Peonies in existence. Described on page 1. \$1.50.

Festiva Maxima (9.3) An old variety which Mrs. Edward Harding says, "should be in every garden, large or small, lavishly arrayed or economically furnished." Flowers white, dotted carmine, are often 7 to 8 inches in diameter. Very fragrant. Early. \$1.25.

Frances Willard (9.1) A perfectly-formed flower that is found among the winning classes in every show-room. Very large blooms, often having a raised, cup-shaped center inclosing golden stamens. Opens an exquisite blush-white, with an occasional carmine touch, changing to pure white. Of good substance and a fine cut-flower variety. Late midseason. \$1.50.

Kelway's Glorious (9.5) An extremely large flower, full of glistening white petals, the outer edges of which are slightly crinkled and curved inward. Very fragrant. Late midseason. \$2.75.

La Lorraine (9.1) Enormous globular blooms of creamy-white, overlaid with soft pink. A beautiful flower that ranks with Le Cygne and Solange in the show room. Midseason. \$2.00.

LeCygne (9.4) (The Swan). "One of the three finest peonies," says Mrs. Harding. The curving petals of this magnificent flower are arranged like the feathers on a swan's wing. "Symmetrical, globular, of great size, fragrant, free-blooming, and milk-white," continues Mrs. Harding, "Le Cygne stands by itself." Early midseason \$3.00.

Mme. de Verneville (7.9) Very full and double, pure white, center tinted blush. Exquisite rose fragrance. Very beautiful reliable bloomer; early. \$1.00.

Mme. Jules Dessert (9.4) A strong-growing, free-blooming plant, of delicate coloring. When the flower is cut just as the bud unfolds, and is allowed to open in a shaded room, wonderful tints of flesh, straw and white can be seen to perfection. Midseason. \$1.50.

Mrs. A. M. Brand (9.0) The very large flowers of pure glistening white have remarkable substance and perfect rose form, and they come very late in the season. The plants are nearly perfect too, being medium tall and vigorous with strong upright stems and beautiful dark green foliage. \$4.00.

Mrs. J. V. Edlund (9.5) Unquestionably one of the finest of all Peonies with large, pure white blooms of perfect form. Excellent for exhibition, having won first prize for the 3 best white blooms for about six consecutive years at the Minnesota Peony Show. Tall; vigorous; floriferous; sweet fragrance. \$7.50.

Primevere (8.6) "Finest of the yellow herbaceous peonies and one of the most fragrant," says Mrs. Harding. "Striking and ornamental in the garden, it is still more satisfying as a cut flower. Then its color is safely guarded, and its perfume fully enjoyed. Midseason. \$1.50.

Solange (9.2) Of this variety Mrs. Harding writes: "Until the lover of peonies knows Solange, his life is wasted, bare, uninteresting, improvised, and lonely beyond all words to tell. Its flower is high built, compact, and composed of large, thick petals which closely overlap. The color is deep cream, tinged with amber throughout, with a touch of soft, salmon-pink glowing from its heart." Late. \$1.50.

Tourangelle (9.4) Most of the experts agree that this is the most beautifully colored of all Peonies. Pearl-white, overlaid with delicate shades of salmon; flowers flat, borne on long stems. Exquisite in its color tints if shaded from the sun when opening. Late. \$1.50.

Red and Crimson Sorts

Cherry Hill (8.6) Deep garnet with a glistening sheen, brightened by golden stamens. The flowers come very early, are unaffected by weather and last a long time, holding their rich bright color until the last petals fall. Excellent garden variety. \$1.50.

Felix Crousse (8.4) Its large, globular flowers, solid and compactly built from edge to center, are a rich, even, brilliant, dazzling ruby-red. Late midseason. \$1.25.

Grover Cleveland (8.2) Large, compact flowers of rich bright crimson on stiff stems. It has excellent foliage and is one of our most desirable, late midseason reds. \$1.25.

Karl Rosefield (8.8) Very tall, compact grower of stately habit and an excellent bloomer, every stem carrying a huge ball-like flower of rich velvety-crimson. Very brilliant and striking. We consider it the best all-round red Peony. Early midseason. \$1.50.

Longfellow (9.0) Perhaps the most brilliant of all the red peonies, as striking in the garden as in the showroom. It blooms in early midseason, has excellent foliage and strong, stiff stems. Very popular on account of its dependability and its vivid fadeless color. \$1.75.

Mary Brand (8.7) Vivid crimson of immense size; full double. \$1.50.

Mons. Martin Cahuzac (8.8) Medium sized, globular blooms. Dark purple-garnet with black reflex. The darkest peony known. Strong, vigorous grower; free-bloomer; midseason. \$2.00.

Officinalis Rubra Plena (8.6) This is the old-fashioned red, the most brilliant of all red peonies; early and splendid cut flower. \$1.50.

Philippe Rivoire (9.2) Very dark crimson with velvety sheen. Perfectly formed, cup-shaped flowers with incurved center; delightfully fragrant; late. It is distinctly different and is the most beautiful and highest rated of all red Peonies. \$2.50.

Richard Carvel (8.8) Large globular flowers, all one shade of bright crimson. Tall, very stout stems, annual and profuse bloomer. Delicate fragrance. Early, usually in bloom for Decoration Day. \$1.75.

Tenuifolia Flore Pleno A very early species, in bloom two weeks ahead of any other Peony. Flowers are a full-double brilliant crimson and the foliage is finely cut like that of the Cosmos. Very rare and always scarce. Should be mulched the first winter after planting. \$2.50.

UNNAMED PEONIES TO COLOR
Double Pink—Double White. Each, 75c; 3 for \$2.00. Double Red. Each, 90c; 3 for \$2.25. Postage additional.

Tree Peonies

Rare shrub-like plants. They are hardy, free-blooming, have rich coloring and thrive in an average soil in part or full sun. They should be mulched the first winter. Plants offered are in 5 inch pots.

Lactea Pure white, blotched carmine. \$5.00.

Reine Elizabeth One of the best of the double-flowered varieties. Very large, bright salmon-pink; free flowering. \$5.00.

Souv. De Ducher Large, globular bloom; bright reddish violet with silvery reflex. \$5.00.

Souv. De Maxime Cornu 8 inches or more across, with wrinkled petals of deep yellow, heavily shaded orange; fragrant. \$10.00.

Oriental Flowered Peonies

These are entirely without pollen. The inner petals are a mass of filaments surrounded by a guard of petals.

Ama-No-Sode (9.2) Considered by many the handsomest pink Oriental peony. The flowers are large, of bright rose, shading lighter toward the edge of the petals. \$2.50.

Fuyajo (9.2) Outer petals dark, rich, mahogany-red with velvety shading. Petaloids dark red striped and tipped buff. \$1.25.

Gold Mine (8.2) Cup-shaped flowers of dark rose-pink with deep golden center. A strong grower and profuse bloomer. Mid-season \$1.00; 3 for \$2.00.

Mikado (8.6) Guards velvety crimson, forming a cup enclosing a filigree cushion of crimson petaloids, edged and tipped gold. \$1.25.

Toro-No-Maki (9.0) Very large lilac-white with amber yellow center. Spectacular and very beautiful. \$3.50.



Hybrid Tea Roses

Roses ready for Fall planting about November first. If wanted by Parcel Post, remit postage, allowing 1 lb. per plant.

For complete list of Roses, including the best of the "New Varieties", ask for our "Spring Gardening Illustrated Catalogue" ready in January.

The Hybrid Tea Roses bear their glorious blooms profusely from June until late fall. In severe winter climates they need proper winter protection.

2 Year No. 1, \$1.35; 3 of one kind for \$3.85

Christopher Stone. Produces quantities of brilliant, velvety scarlet blooms all season. Delicious fragrance.

Duquesa de Penaranda. This glorious Rose produces blooms of a coppery apricot color in summer; in autumn a luscious cinnamon-peach color.

Etoile de Hollande. A brilliant dark red Rose of magnificent size and perfect form; flowers delicately fragrant.

Editor McFarland. Perfectly formed lasting, brilliant rose-pink flowers, excellent for cutting.

Joanna Hill. One of our most popular Roses and the best of its color. Rich cream and ivory with a yellow-orange heart.

Mme. Jules Bouche. Long, pointed, shapely buds; excellent for cutting, opening into superb white flowers, slightly shaded at times with blush pink; fragrant.

Mrs. Erskine Pembroke Thom. An unfading yellow with dark, healthy foliage. Slender buds open to perfectly shaped flowers of canary yellow.

Picture. Each lovely flower is a picture. The nicely formed buds open into flowers of velvety rose-pink with a warm salmon undertone.

Red Radiance. Flowers clear cerise-red. Size, foliage, growth and habit same as in the parent Radiance. Hardy; strong grower.

Talisman. A remarkable blending of gold, apricot, yellow, deep pink, and old rose. The rose of many Gold Medals and one of the most popular of all roses for cutting.

Special Offer No. 21-A: 6 named varieties of Everblooming Hybrid Tea Roses, our selection, all different, for \$6.50.

FLORIBUNDA ROSES

These Roses are among the hardiest and most continuous blooming hybrids offered giving a spectacular display from June until frost. Their flowers are borne in clusters.

Dormant Roses, \$1.35; 3 of one kind for \$3.85

Dagmar Spath. Large trusses of pure white semi-double flowers, produced freely all summer.

Improved LaFayette. An unusually prolific large flowering variety; very showy and fine for mass plantings. Flowers deep brilliant red, richly suffused crimson.

Rosenelfe. Unusually beautiful, silvery rose-pink flowers of Gardenia-like form. They are very double, about 2 1/2 inches across, and are produced freely all summer.

Special Offer No. 21-B: One each the above 3 Floribunda Roses (value \$4.05) for \$3.85.

CLIMBING ROSES

Paul's Scarlet Climber. A most important addition to the Climbing Roses; none can compare with it for brilliancy of color, which is a vivid scarlet. \$1.35.

3 Extra Fine Peonies \$2.50

One each *Edulis Superba* (pink), *Felix Crousse* (red) and *Mad. de Verneville* (white) (value \$3.25) for \$2.50, postage 15c additional.



DWARF BURNING BUSH

All Prices Are F. O. B. Our Nurseries, Western Springs, Ill.

The figures in italics following each variety indicate in feet the average height of the plant at maturity. B. & B. indicates "Balled and Burlapped."

BARBERRY (Berberis)

Green-leaved Barberry (Berberis Thunbergii). 4 ft. Popular hedge plant. Scarlet berries in fall and winter. 18 to 24 in., 75c; 3, \$2.10; 10, \$6.50; 100, \$55.00.

Red-leaved Barberry (Berberis Thunbergii Atropurpurea). 4 ft. Similar in all respects to the green-leaved Japanese Barberry, but the foliage is a rich, bronzy red, similar to the red-leaved Japanese Maples. Plant in full sun to develop its coloring. 18 to 24 in., \$1.00; 3, \$2.75; 10, \$8.50; 2 to 2½ ft., \$1.25; 3, \$3.45.

BEAUTY BUSH (Kolkwitzia Amabilis)

6 to 8 ft. A graceful shrub that is well named, for it is one of the most beautiful in our Nursery. It makes a wonderful showing in June when its long arching branches are usually completely covered with masses of pink snapdragon-like flowers. A hardy and reliable shrub for better home and landscape plantings. 2 to 3 ft., \$1.50; 3, \$4.20; 4 to 5 ft., \$2.25; 3, \$6.00.

BRIDALWREATH (Spiraea)

5 to 6 ft. One of the most beautiful and useful shrubs. White flowers in June. 2 to 3 ft., 75c; 3, \$2.10; 10, \$6.50. 3 to 4 ft., 90c; 3, \$2.50; 10, \$7.50.

BRILLIANT CHOKEBERRY

Aronia Brilliantissima. 6 to 8 ft. Clusters of small white flowers in May succeeded in August by brilliant red berries that remain until winter. Bright crimson autumn foliage. 3 to 4 ft., \$1.00; 3 for \$2.85.

BURNING BUSH (Euonymus)

Winged Burning Bush (Euonymus Alatus). 6 to 8 ft. Bark cork-like and curiously winged; leaves small; fruit red; in autumn, foliage bright red. One of our best shrubs for specimen plantings and for growing in shady locations. 2 to 3 ft., \$2.00; 3, \$5.25; 3 to 4 ft., \$2.50; 3, \$7.00; 4 to 5 ft., \$4.00.

Dwarf Burning Bush (Euonymus Alatus Compacta). 4 to 6 ft. A compact shrub that is especially attractive in the fall when the foliage turns crimson, and the whole bush resembles a ball of fire. Fine for formal effects as it may be kept trimmed to the size and height desired. 18 to 24 in., \$2.00; 3, \$5.50; 2 to 2½ ft., \$2.50; 3, \$6.75; 2½ to 3 ft., specimens \$3.50; 3, \$9.75; 3 to 3½ ft., specimens, \$5.00.

COTONEASTER

Peking Cotoneaster (Acutifolia). 5 to 10 ft. Small leathery leaves of rich glossy green on willow brown branches closely set with small pink flowers in May; jet black berries in fall. It is a beautiful shrub and makes one of our finest hedges, due to its upright growth and adaptability to dry situations. Can be trimmed like Privet. Recommended in the North where hedge plants must be extremely hardy. 2 to 3 ft., 90c; 3, \$2.50; 10, \$7.50; 100, \$65.00; 3 to 4 ft., \$1.00; 3, \$2.70; 10, \$8.50.

CRANBERRYBUSH (Viburnum)

European Cranberrybush (Viburnum Opulus). 10 ft. A handsome shrub with dense green foliage. The single white flowers, borne in flat imperfect clusters in May are succeeded with showy cranberry-like berries that cling to the leafless branches all winter. 2 to 3 ft., \$1.00; 3, \$2.85; 10, \$8.50; 3 to 4 ft., \$1.25; 3, \$3.60; 10, \$10.00; 4 to 5 ft., \$1.50.

Flowering Trees and Shrubs

DOGWOOD (Cornus)

Coral Dogwood (Cornus Alba Sibirica). 6 to 10 ft. Bright coral-red branches. 2 to 3 ft., 75c; 3, \$2.10; 3 to 4 ft., \$1.00; 3, \$2.85.

Goldentwig Dogwood (Cornus Stol. Flaviramea). 6 to 10 ft. Attractive golden yellow bark. 3 to 4 ft., \$1.00; 3, \$2.85.

ELM (Ulmus)

3 Quick Growing Varieties

American Elm, Moline Type (Ulmus Americana Molini). 80 to 100 ft. Exceedingly large foliage. Of upright habit, taking up little room. Splendid tree for the street or for small yards.

American Elm, Vase Type (Ulmus Americana Urmi). 80 to 100 ft. A beautiful tree for landscape or boulevard planting where grace, dignity and uniformity are desired. A true vase-shaped tree.

Chinese or Siberian Elm (Ulmus Pumila). 75 ft. On account of its rapid growth, resistance to disease and ability to thrive in almost any situation, this new variety is already one of the most popular shade and street trees in America. A tree of rare beauty with small, dark green foliage.

Height	Caliper	Each	3 for
8 to 10 ft.	1 to 1¼ inch	\$3.75	\$10.50
8 to 10 ft.	1¼ to 1½ inch	4.50	12.75
8 to 10 ft.	1½ to 1¾ inch	5.00	14.25
10 to 12 ft.	1¾ to 2 inch	5.50	15.45

Larger sizes, prices on application.

FIREBUSH OR FLOWERING QUINCE

Firebush or Flowering Quince (Cydonia Japonica). 4 to 5 ft. Very showy in April when its branches are covered with brilliant orange scarlet flowers, followed by yellowish green, quince-shaped, fragrant fruits. 18 to 24 in., \$1.10; 3 for \$2.95.

GOLDEN BELL (Forsythia)

Showy Border Golden Bell (Forsythia Intermedia Spectabilis). 6 to 8 ft. Considered the best of the Forsythias on account of its larger and richer yellow blossoms, which completely cover the wide spreading branches in early spring. 2 to 3 ft., 90c; 3, \$2.50; 3 to 4 ft., \$1.25; 3, \$3.60; 10, \$11.00.

HANSEN BUSH CHERRY

Prunus Besseyi. 4 to 5 ft. Hardy, quick-bearing cherry. Fruit resembles a small plum, massed in clusters from the ground up; good to eat fresh and makes delicious preserves. Have striking ornamental value, dwarf, bush nature, fragrant white flowers in spring and beautiful silvery green foliage which turns rich red and gold color in fall. 2 to 3 ft., 90c; 3 for \$2.50; per 10, \$8.00.

HAWTHORN (Crataegus)

Beautiful Fruiting Trees

C. Carrieri. 15 to 20 ft. Of erect growth with deep green foliage that hangs on late in fall. Makes a beautiful show when covered with clusters of large, red berries. 4 to 5 ft., \$3.25; 3, \$9.00; 5 to 6 ft., \$4.50; 3, \$12.75; 6 to 8 ft., \$5.50; 3, \$15.45.

C. Coccinea (Scarlet-fruited Thorn). 15 to 20 ft. Showy white flowers in June followed by brilliant red fruits in autumn. Glossy foliage that is attractive all season. 4 to 5 ft., \$3.25; 3, \$9.00; 5 to 6 ft., \$4.50; 3, \$12.75.

HONEYLOCUST (Gleditsia)

Thornless Honeylocust (G. Triacanthos Inermis). 50 to 70 ft. A large, vigorous tree with spreading branches, thornless or nearly so, and handsome feathery fern-like leaves. Good for yard or street planting and will withstand the dust and smoke of the city well. Thrives in any soil and will endure drought. 8 to 10 ft., 1 to 1¼ in. caliper, \$3.50; 3, \$9.75; 8 to 10 ft., 1¼ to 1½ in. caliper, \$4.00; 3, \$11.25; 8 to 10 ft., 1½ to 1¾ in., \$4.75; 3, \$13.50; 10 to 12 ft., 1¾ to 2 in., \$6.50.

HONEYSUCKLE (Lonicera)

Pink Tatarian Honeysuckle (Lonicera Tartarica Rosea). 9 to 10 ft. One of our best shrubs for screen and border planting. 3 to 4 ft., 90c; 3 for \$2.40; 10, \$7.50; 4 to 5 ft., \$1.10; 3 for \$2.95; 10, \$9.00.

Zabel Red Honeysuckle (L. Korolkowi Zabeli). 10 ft. A dense upright shrub. This variety produces a grand display of red flowers in spring followed by red fruits in summer. It is probably the darkest colored bush honeysuckle. We consider Zabeli one of the really worthwhile recent introductions. 3 to 4 ft., \$1.25; 3 for \$3.45; 4 to 5 ft., \$1.50; 3, \$4.20.

LILAC SPECIES

Common Purple Lilac (Syringa Vulg. Purpurea). 12 to 15 ft. The old-fashioned Lilac. It is hardy and vigorous, endures neglect and blooms abundantly. Purple flowers early in May. 2 to 3 ft., \$1.00; 3, \$2.75; 10, \$8.50; 3 to 4 ft., \$1.25; 3, \$3.60.

Persian Purple (Syringa Persica). 8 to 10 ft. The most graceful and freely flowering of the Lilacs and one of the most beautiful hedge and screen plants in existence. The leaves are long and narrow; the branches drooping and willowy; and the purple-lavender flowers, in loose panicles, come in such profusion that they completely cover the plants. 2 to 3 ft., \$1.00; 3, \$2.75; 3 to 4 ft., \$1.35; 3, \$3.75.

FRENCH HYBRID LILACS (Syringa)

Belle de Nancy. Double. Large satiny rose showing some white towards the center. Free blooming; extra fragrant. 2 to 3 ft., \$2.00; 3, \$5.25.

Charles Joly. Double flowers of dark wine-red with silvery reverse. 2 to 3 ft., \$2.50; 3, \$6.75.

Edith Cavell. Very showy, creamy white flowers in extra large, long, cone-shaped panicles. Buds of deep, rich cream color. A favorite of Lilac connoisseurs. 3 to 4 ft., \$4.00; 3, \$11.25.

Marceau. Broad and large sized panicles; enormous single flowers of dark violet-red. Dwarf; late. 3 to 4 ft., \$4.00; 3, \$11.25.

Marchal Lannes. Extra large trusses of double or semi-double flowers of beautiful bluish violet. Very showy; fragrant. 4 to 5 ft., \$5.00.

Marie Legraye. Its large, single, pure white flowers are borne in very large panicles and are very beautiful. Blooms profusely and is a fine cut-flower variety. 3 to 4 ft., \$2.75; 3, \$8.25; 4 to 5 ft., \$4.00; 3, \$11.25.

Pres. Grevy. Large compact clusters of double flowers of very fine blue. 2 to 3 ft., \$2.00; 3, \$5.25.

Vestale. Perfectly shaped, single white. 18 to 24 in. \$2.00; 3 for \$5.25.

HYDRANGEA

Peegee Hydrangea (H. Paniculata Grandiflora). 8 to 10 ft. Immense panicles of bloom a foot long, white turning to rose, commencing to bloom in August. 18 to 24 in., \$1.10; 3, \$2.95; 10, \$9.00.

Snowball Hydrangea (H. Arborescens Grandiflora). 4 ft. Large, flat heads of snow-white flowers in June and July. Thrives in shade. 2 to 3 ft., \$1.50; 3 for \$4.20.

MAPLE (Acer)

Columnar Norway Maple (Acer Platanoides Columnare). 50 to 60 ft. Compact columnar form of the Norway Maple. 8 to 10 ft., 1 to 1¼ in. caliper, \$6.50; 8 to 10 ft., 1¼ to 1½ in., \$9.00.

Norway Maple (Acer Platanoides). 50 to 75 ft. A large and handsome tree with spreading branches, and compact, round head. Broad, dark green foliage, fading with tones of yellow and gold in autumn. 8 to 10 ft., 1 to 1¼ in. caliper, \$5.00; 3, \$14.25; 8 to 10 ft., 1¼ to 1½ in. caliper, \$6.50; 3, \$18.45; 10 to 12 ft. 1½ to 1¾ in. caliper, \$7.50; 3, \$21.45.

Larger sizes, prices on application.

DWARF NINEBARK

Physocarpus Monogynus. 5 ft. One of our finest low-growing hedge plants. Of dense, upright growth, it requires little shearing. The leaves are small, three to five lobed, and in color are a dark, glossy green. Ideal for growing in shady places or in full sun. 2 to 3 ft., 75c; 3, \$1.95; 10, \$6.00; 100, \$55.00.



SNOWBALL

MOCK ORANGE (Philadelphus)

Common Mock Orange. The free flowering single white found in the old-fashioned gardens. Of rapid growth, forming a large bush. 2 to 3 ft., 90c; 3, \$2.55; 3 to 4 ft., \$1.10; 3, \$2.95; 10, \$9.00; 4 to 5 ft., \$1.25; 3, \$3.60; 10, \$11.00; 5 to 6 ft., \$1.50; 3, \$4.20.

Virginalis. 7 to 8 ft. One of the most beautiful shrubs grown. In June the plants appear as a huge bouquet, being completely covered with extra large, single and semi-double flowers that are pure white and sweet-scented. It has a long blooming season, the new wood producing large individual flowers often 3 inches across, throughout the summer. 2 to 3 ft., \$1.50; 3, \$4.20; 3 to 4 ft., \$1.75; 3, \$4.80.

PRIVET HEDGES

Amur Privet (Ligustrum Amurense). 12 ft. One of the best hardy hedge plants. 18 to 24 ft., 40c; 10, \$3.00; 100, \$25.00; 2 to 3 ft., 50c; 10, \$4.00; 100, \$35.00.

Regal Privet (Ligustrum Iboata Regelianum). 8 to 10 ft. Dark, glossy green leaves; spreading graceful habit. Grows well in sun or shade. 3 to 4 ft., \$1.00; 3, \$2.85.

PLUM (Prunus)

Newport Purple-leaf Plum (Prunus Cerasifera Newport). 12 to 15 ft. A small tree shrub. The young branches are a dark purple; the leaves, when young, are lustrous crimson, changing to a dark purple, and retain this beautiful tint until they drop, late in autumn. The tree is covered early in the spring with small, single pink flowers, which appear before the leaves. 3 to 4 ft., \$2.25; 3, \$6.00; 4 to 5 ft., \$2.50; 3, \$6.75; 5 to 6 ft., \$3.50.

EVERBLOOMING SPIRAEA

Spiraea Froebeli. 3 ft. Round, flat clusters of rosy-pink flowers from June to October. Beautiful foliage all season. One of our best low growing shrubs for general use and for flowering hedges. 18 to 24 in., 90c; 3 for \$2.55; 10, \$8.00; 24 to 30 in., \$1.00; 3 for \$2.75; 10, \$8.50.

SNOWGARLAND (Spiraea Arguta)

4 to 5 ft. A remarkable floriferous and showy shrub. Leaves narrow, bright green fading with tones of yellow and orange in fall. The flowers are small, pure white, and borne in early spring in such great profusion that the whole shrub appears laden with snow. 3 to 4 ft., \$1.00; 3, \$2.85; 10, \$8.50.

SNOWBALL

Old-Fashioned Snowball (V. Opulus Sterile). 8 to 10 ft. Large balls of white flowers in May. 3 to 4 ft., \$1.25; 3, \$3.45; 4 to 5 ft., \$1.50; 3, \$4.20.

WINTERCREEPER (Euonymus)

Bigleaf Wintercreeper (Euonymus Radicans Vegetus). This hardy evergreen trailer has round leaves and is sometimes called "Evergreen Bittersweet" on account of its gorgeous red berries, which are resplendent all winter against a rich deep evergreen foliage. Makes a useful ground cover or will climb on brick or stone. 18 to 24 in. B. & B., \$3.75; 2 to 2½ ft. B. & B., \$4.50.

We have a large assortment of the most popular and meritorious ornamental shrubs, shade trees, evergreens, vines and fruit trees. If you wish stock not listed in this catalogue or stock in large sizes, send us your list for quotation or ask for "Nursery Price List," ready about Oct. 1st.

Grapes

Prices of the following varieties, 2 yr. No. 1 each, 75c; 3 of one kind for \$1.75; 10 for \$5.00; 3 year, 90c; 3 of one kind for \$2.50.

Caco (Red). The most beautiful of the hardy grapes. Bunches large and compact, fruit sweet and palatable weeks before fully ripe.

Concord (Black). The most popular grape in America. Large, handsome bunches of large, luscious berries; juicy, sweet and tender. Very productive.

Fredonia (Black). The earliest good black grape, ripening about three weeks before most varieties. Clusters medium; berries large, of very good quality.

Niagara (White). Large, handsome, very sweet.

Sheridan (Black). Valuable new grape that is expected to replace Concord, which it surpasses in many regions. Large in bunch and berry; keeps and ships well. Good quality.

SPECIAL OFFER No. 23. One each of grapes Caco, Fredonia, Niagara and Sheridan 2 yr., (value \$3.00) for \$1.95, one each, 3 yr. (value \$3.60) for \$2.50. (Postage and packing, 15c additional).

VIBURNUM

Noted for their Beautiful Autumn Fruits

Arrow Wood (Viburnum Dentatum). 10 to 12 ft. Of upright habit; dark green foliage which changes to purple and red in autumn. White flowers in flat clusters in June; dark blue fruits in autumn. Succeeds in shade. 2 to 3 ft., 80c; 3, \$2.25.

Wayfaring Tree (Viburnum Lantana). 15 ft. Large robust shrub with soft, heavy leaves, silvery beneath. Clusters of white flowers in May succeeded by red fruit, turning black in autumn, retains its foliage very late. 2 to 3 ft., 80c; 3, \$2.25; 3 to 4 ft., \$1.00; 3, \$2.75; 4 to 5 ft., \$1.25; 3, \$3.30.



PHILADELPHUS Virginalis

VINES FOR FALL PLANTING BITTERSWEET (Celastrus Scandens)

A native climbing or twining plant with handsome large leaves; yellow flowers in May and June and clusters of ornamental orange-capsuled fruit in autumn. Succeeds well in shade. We recommend planting 2 or more in a group. 2 yr., \$1.00; 3 for \$2.50; 3 yr., \$1.25; 3, \$3.45.

CREEPER (Ampelopsis)

Boston Ivy (Ampelopsis Tricuspidata or Veitchei). The grandest hardy climbing vine in existence for covering houses, churches, schools, etc. Its glossy, ivy leaves overlap each other, and its long delicate young shoots stretch up the walls with free and rapid growth. The tendrils at nearly every point cling firmly to the smoothest surface of rock or brick. 2 year, \$1.00; 3 for \$2.75; doz., \$10.00; 3 year, \$1.25; 3 for \$3.45; doz., \$12.00.

LARGE-FLOWERING CLEMATIS

Henryi. Pure white flowers, usually eight-petaled, 4 to 6 inches in diameter and pure white. Very hardy. 2 yr. \$1.35.

Jackmani. This variety, with its strong, healthy growth, hardy nature and rich, deep velvety purple flowers, is the most satisfactory of its class. 2 yr. \$1.35.

Mme. Edward Andre. Beautiful bright velvety red, free-flowering and continuous bloomer. 2 yr., \$1.35.

Gold Medal Collection. each, Jackmani, Henryi and Mad. Edward Andre, \$3.50.

DUTCHMAN'S PIPE

Aristolochia Siphon. A vigorous growing climber, bearing striking brownish colored flowers, resembling a miniature pipe in shape. Its large, dark green heart-shaped leaves give a tropical foliage effect and produce a splendid shade. It thrives in sun or shade. 2 yr., grafted \$1.75.

HONEYSUCKLE (Lonicera)

Everblooming Honeysuckle (Lonicera Heckrottii). Remarkable for large size and distinct appearance of its flowers, crimson-carmine without and golden apricot inside. They are very beautiful and fragrant and are in bloom from the middle of June until frost. 2 yr. \$1.25; 3 for \$3.25.

Vaughan's Evergreens

All Prices Are F. O. B. Our Nurseries, Western Springs, Ill.

When Personal Selection of Stock is made, We Charge for According to Its Value.

ARBORVITAE (Thuja)

American Arborvitae (T. Occidentalis). A broad pyramidal tree. 3½ to 4 ft., \$4.50; 4 to 4½ ft., \$6.00; 4½ to 5 ft., \$6.50; 5 to 5½ ft., \$7.50; 5½ to 6 ft., \$8.50.

Globe Arborvitae (T. Occidentalis Globosa). A round, compact form with deep green foliage. 15 in., \$3.00; 18 in., \$3.50; 24 in., \$4.00.

Pyramidal Arborvitae (T. Occidentalis Pyramidalis). A compact, narrow pyramidal tree. 3 to 3½ ft., \$5.00; 3½ to 4 ft., \$5.75; 4 to 4½ ft., \$6.50; 4½ to 5 ft., \$7.50; 5 to 5½ ft., \$8.50.

JUNIPER (Juniperus)

Andorra Juniper (J. Horizontalis Plumosa). Of prostrate habit; foliage bright green in summer, rich reddish purple in winter. 18 to 24 in., \$5.00; 3 for \$14.25; 2 to 2½ ft., \$6.00.

Blue Column Chinese Juniper (J. Chinensis Columnaris). A dense narrow steel gray column; a formal Evergreen for accent points. 5 to 5½ ft., \$12.00; 5½ to 6 ft., \$14.50.

Burk Redcedar (J. Virg. Burki). An improved form of Silver Redcedar. 5 to 5½ ft., \$13.50; 5½ to 6 ft., \$15.00.

Canaert Redcedar (J. Virg. Canaerti). Fine Pyramidal form with heavily tufted deep green foliage. 4 to 4½ ft., \$11.50; 4½ to 5 ft., \$12.50; 5 to 5½ ft., \$15.00.

Pfitzer Juniper (J. Chin. Pfitzeriana). One of the best Junipers. Of broad, bushy growth, with thick, rich green foliage. 15 to 18 in., \$3.75; 3 for \$10.50; 18 to 24 in., \$5.00; 3 for \$14.25; 2 to 2½ ft., \$6.75; 2½ to 3 ft., \$8.50.

Redcedar (J. Virginiana). Tall growing, one of the best known evergreens, 6 to 6½ ft., \$11.50.

Savin Juniper (J. Sabina). A dwarf evergreen with semi-erect spreading branches. 18 to 24 in., \$4.00; 3 for \$11.25; 2 to 2½ ft., \$5.00.

Silver Redcedar (J. Virg. Glauca). One of our choicest evergreens with attractive blue tinged foliage. 4 to 4½ ft., \$11.50; 4½ to 5 ft., \$12.50; 5 to 5½ ft., \$15.00; 5½ to 6 ft., \$16.50; 6 to 6½ ft., \$18.00.

Von Ehron Savin Juniper (J. Sabina Von Ehron). Semi-spreading; very dark green foliage. 2 to 2½ ft., \$6.00; 2½ to 3 ft., \$6.75.

JUNIPER—Continued

Dundee Juniper (J. Virg. Hilli). Dense conical form; bluish gray-green foliage, plum colored in winter. 4½ to 5 ft., \$12.50; 5 to 5½ ft., \$15.00; 5½ to 6 ft., \$16.50.

Keteleer Juniper (J. Chin. Keteleeri). Similar to Canaert Redcedar, but of more open growth and pyramidal habit. 4 to 4½ ft., \$10.00; 4½ to 5 ft., \$12.00; 5 to 5½ ft., \$13.00; 5½ to 6 ft., \$14.50.

PINE (Pinus)

Austrian Pine (P. Nigra). A good tree for city planting. A distinctive variety with stout spreading branches and long rich green needles. 3 to 3½ ft., \$6.75; 3½ to 4 ft., \$8.00; 4 to 4½ ft., \$9.00.

Mugho Pine (P. Mont. Mughus). Good low growing evergreen. 12 in., \$2.25; 3 for \$6.30; 15 in., \$3.50; 3 for \$9.75; 18 in., \$4.25; 3 for \$12.00; 2 ft., \$5.00; 2½ ft., \$6.50.

SPRUCE (Picea)

Black Hill Spruce (P. Canadensis Albertiana). A very dense, compact growing spruce with green or bluish foliage. 2½ to 3 ft., \$6.00; 3 for \$17.25; 3 to 3½ ft., \$7.00; 3 for \$20.25.

Norway Spruce (P. Excelsa). A pyramidal tree of rapid growth and dark green foliage. 2 to 2½ ft., \$3.25; 2½ to 3 ft., \$3.75; 3 to 3½ ft., \$4.50.

Colorado Green Spruce (Picea Pungens). The abundance of heavy rich green foliage makes this variety a most impressive and popular evergreen. Splendid for specimen planting. 2 to 2½ ft., \$7.00; 2½ to 3 ft., \$7.75; 3 to 3½ ft., \$8.50; 3½ to 4 ft., \$10.00.

YEW (Taxus)

Spreading Yew (T. Cuspidata). Of dense, spreading growth, with heavy, dark green foliage. 15 to 18 in., \$7.50; 3 for \$21.75; 18 to 24 in., \$9.00; 3 for \$26.25; 2 ft., \$10.75; 2½ ft., \$15.00; 3½ ft., \$22.50.

Upright Yew (T. Cusp. Capitata). An upright, or pyramidal form with glossy, deep green foliage. 2 ft., \$12.00; 2½ ft., \$15.00; 3 ft., \$22.50; 3½ ft., \$27.50.

Hick's Yew (T. Media Hicksi). A distinct columnar form with rich, deep green foliage. 2½ ft., \$12.00; 3 ft., \$15.00; 3½ ft., \$20.00.

Supplies for Fall and Winter Gardens

Special Chemical Aids

STIMROOT

STIMROOT. An improved rooting compound which has been developed after extensive testing by a well known research organization. It contains several different hormone-like chemicals in sufficient quantities to produce root stimulation in the hard type of cuttings, and still is safe to use on the softer, more easily injured plants. Also contains a fungicide that helps retard the development of many kinds of fungi that contribute to the rot of cutting while in the cutting bench. It is so formulated that a small amount of dust will effect a complete and even coating on each cutting. In this way a pound of dust will go further. Price $\frac{1}{4}$ oz., pkt., 25c; 2 oz., \$1.00; lb., \$5.00.

ROOTONE

A hormone powder easy to use, anyone can apply safely, no skill is needed to apply Rootone, no measurements, no vials, no elaborate charts to follow, just dip and plant. Price, $\frac{1}{4}$ oz. pkg., 25c; 2 oz. jar, enough to treat 3,000 cuttings, \$1.00; 1 lb. jar will treat up to 30,000 cuttings, \$5.00.

Rootone No. 10. For rooting of Azaleas, and other woody cuttings. 2 oz. jar, \$2.00; 1 lb. can, \$10.00.

Write for leaflet; all postpaid.

FRUITONE

The hormone spray for stopping pre-harvest drop. $\frac{2}{5}$ oz. pkt., 25c; 2 oz., \$1.00; 8 oz., \$2.00.

TRANSPLANTONE

For treatment of transplants of all kinds it contains the root forming hormones and Vitamin B-1. $\frac{1}{2}$ oz., 25c; 3 oz., \$1.00; lb., \$4.00.

PLANT STIM

This is a complete Hormone, including necessary vitamins for treating of transplants of all kinds. Besides containing root forming Hormones and Vitamin B1 and other members of the Vitamin B Complex which are important in plant growth, it has fungicidal value. Stimulates quick growth of transplants and prevents wilt. Price, 3 oz. jar, 50c; lb. jar, \$2.00, postpaid.

Floralife Keeps Cut Flowers Longer

Just stir patented Floralife into vase of water. More than doubles life of florist or home grown bouquets. Maintains color and fragrance. Acts like magic Floralife also stimulates; makes buds open wide and expands size of blossoms. No need to change water or re-clip stems. Fully guaranteed. 3 packets (each packet treats two quarts water) 25c.

An excellent gift to all flower lovers and hospital patients, contains 15 colorful packets, \$1.00 . . . 30 qt. economy Handy-Home box, \$1.00; 100 qt. size big drum, \$3.00; postpaid, \$3.25.

Magic Soil Substitute for Starting Plants.

Mikamagic is a prepared form of vermiculite, cleansed of all impurities which might injure plants, and of the correct sizes for horticultural use. Completely sterile, and free of all organisms which might cause damping off, it is one-tenth the weight of soil and has remarkable ability to retain both water and air; both of which are vital to plant growth.

In addition to being an unsurpassed medium for starting seeds and rooting cuttings, it is effective as a soil conditioner.

Material is made in three grades, coarse for base or foundation; medium, for the center layers, and fine for using on the surface of seed starters.

Prices, $\frac{1}{2}$ peck bag, 50c; $\frac{1}{2}$ bushel bag, \$1.75; 1 bushel bag, \$2.95. All shipped by express, charges collect.

We prepay all light items listed on this page, and where price does not include delivery, the additional amount required for postage is specifically noted. If this amount is not forwarded delivery of such items will be by express, charged collect.

Bowls for Growing Bulbs

BULBS which are easily forced in bowls are described and illustrated on Pages 11 and 13. Attractive and inexpensive floral decorations for the living room and sunparlor can be produced by anyone who will follow the simple directions supplied.



F. L. STYLE BOWLS

(Not illustrated). A pottery with slightly rolled top in matt green, blue or jet black glaze finish. Prices: 6-inch (wt. 2 lbs.), 60c; 7-inch (wt. 3 lbs.), 75c; 8 $\frac{1}{2}$ -inch (wt. 4 lbs.), \$1.00.

For parcel post delivery add 10c per bowl postage.

PEARL CHIPS AND BULB FIBRE

Pearl Chips, white, per lb., 10c; 10 lbs., 75c. Colored, per lb., 15c; 10 lbs., 85c; add 10c per lb. for postage.

Vaughan's Prepared Fibre

For Growing Bulbs in Bowls, without Drainage. Per lb., 20c; 3 lbs., 50c; 10 lbs., \$1.00; add 10c per lb. for postage.

HOT-BED MATS

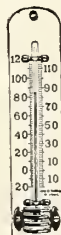
For protecting hotbeds Made of poplin materials, vat dyed and Sanforized to make them damp proof. 7x6 $\frac{1}{2}$ inch—\$9.00 each; dozen \$99.00.

PUTTIROPE. A great improvement for glazing, and caulking. Easy to apply, won't deteriorate, run or get brittle. 100 ft. \$1.35; 1000 ft., \$6.75.



Glass Wool. Protection and perfect mulch for your prized Plants and Shrubs, has been proved superior to all other mulches for the winter protection of plants. A snowy white blanket composed of extremely fine glass fibres, put up in bats, 24" x 96" in size and are an approximate 1 $\frac{1}{2}$ inches thick at 2 $\frac{1}{2}$ lbs. per cubic ft. density. Price, per bat, 95c; three for \$2.65; carton of 12, \$9.95.

GLAZING POINTS, Vaughan's Perfection. No rights or lefts. No. 2, small, single thick glass; No. 2 $\frac{1}{2}$, double thick, for greenhouse and skylights. Per lb. (approximately 900), 75c; postage extra.



Siebert's Improved, $\frac{3}{8}$ and $\frac{1}{2}$, price per lb., 75c.

THERMOMETERS. White Porcelain, 8-inch. Each, \$1.50.

Tin Case, standard grade tested, 12-inch. Each, \$3.25.

Hotbed, all glass heavy point, \$1.35.

Self-Registering with magnet to set it, 8-inch, registers highest and lowest temperature, Each, \$10.50.

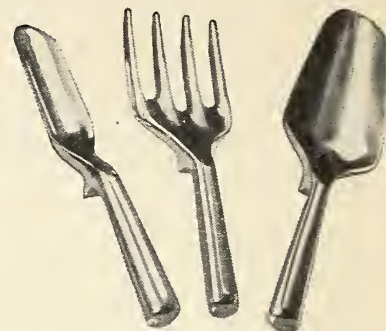
LABELS, Wooden, for Pots. Per 100 1000
4 in., painted \$0.60 \$2.75
6 in., painted75 4.35
Tree (copper wired) 3 $\frac{1}{2}$ in.75 4.25

RODENT ROCKETS

Novel, effective destroyers; light like a roman candle and blitz out whole families of gophers, moles, rats, field mice, ants etc., at one "shot." Safe sure, efficient aids to hunters in "un-treeing" hold-up woodchucks, raccoons, etc. 3 for 25c; dozen, 95c.

Gift Suggestions

Shipped in gift wrapping when requested



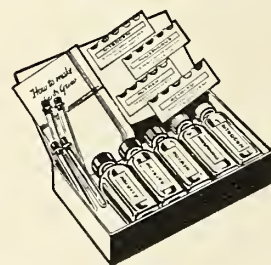
Aluminum Hand Tools

Set of 3 for \$4.95, postpaid \$5.25

Made of cast aluminum as strong as steel, these tools are light as a feather, and moulded to fit your hand. They are absolutely rust-proof, and easily cleansed and polished, so they will be beautiful as well as useful as long as they last, which will be for many years. A large trowel, small transplanting trowel, and hand-fork for cultivating are included in the set of three.

Soil Testers Easy to Use

Home Gardeners' Kit, \$2.50, postpaid \$2.60



This simple, practical, easy-to-use kit is your best insurance of gardening success. Made by the maker of professional field test kits used by nurserymen, growers and greenkeepers throughout the country. Tests for nitrogen, phosphorus, potash and acidity. It will make at least three separate tests for each element. No technical skill required. Results of tests are apparent immediately. The Sudbury Home Gardener's Soil Test Kit, complete with instructions and data on plant needs, \$2.50, postpaid, \$2.60.

Testing Fluid for Refill—Specify whether for nitrogen, phosphorus, potash, or acidity. When ordering the above, it requires No. 2 and No. 3 to make Nitrogen Tests, No. 4 and No. 5 for Phosphorus Tests and No. 6 and No. 7 to make Potash Tests, therefore when ordering, please order two numbers. 2 oz., \$1.00; 6 oz., \$1.50, both postpaid.

Advanced Amateur Kit

\$4.75, postpaid \$5.00

An advanced amateur, or a garden club, 4-H club, or neighborhood group, will find this larger kit invaluable. It is housed in an attractive case of imitation leather and contains sufficient material for many accurate tests.

Handiest of All Sprayers

\$4.00, prepaid \$4.25

This is a special mixing and spraying nozzle which attaches to the garden hose. Insert insecticide cartridge and spray—as easy as watering your lawn. Brass finish, each, \$3.50. Chrome finish, each, \$4.00.

36 inch extension, straight chrome finish, \$1.75.

We can supply a complete line of cartridges, Rotenone, Nicotine, Pyrethrum, D. D. T., Sulphur, Bordo or Arsenate of Lead. Price, each, 35c; three for \$1.00; doz., \$3.85.

Fertilizers and Insecticides

FERTILIZERS (F. O. B. Chicago)

Fertilizer prices include delivery within 25 miles of Chicago on 25, 50, 100, 125 and 250 lb. lots. Smaller quantities delivered with orders of seeds, bulbs and supplies of \$2.00 or more. On larger quantities than 250 pounds the customer pays all freight or express charges.

ADCO ARTIFICIAL STABLE MANURE. Make it yourself, in your own garden. To each ton of straw, hay, cornstalks or dried leaves add 150 lbs. Adco to make four tons of fresh or three tons of rotted manure. Shipments accompanied by full directions, 7½ lbs., \$1.25; 25 lb. bag, \$2.95; 150 lbs., \$13.50.

ACTIVO. Make your own fertilizer from waste materials with Activo. No. 2 size treats 450 lbs. compact price, \$1.00. No. 7 size treats 1800 lbs. price, \$2.00. No. 25 size treats up to three tons price, \$6.00.

BONE MEAL, "Regular Grade." 25 lbs., \$2.00; 50 lbs., \$3.25; 100 lbs., \$5.95.

CATTLE MANURE (Shredded). Fertilizer for all general purposes. If applied to the lawn in the fall it protects grass roots through the winter. As easy and clean to handle as grain. Price: 50 lbs., \$2.25; 100 lbs., \$3.25; 500 lbs., \$13.00; 1,000 lbs., \$25.00



LOMA. A plant food for lawns, flowers, vegetables, shrubbery and potted plants. Rich in nitrates, phosphate and potash; contains no filler. Price, 5 lbs., 45c; 10 lbs., 85c; 25 lbs., \$1.50; 50 lbs., \$2.50; 100 lbs., \$4.00.

MILORGANITE. A plant food free of weeds provides plant food over a long period. 25 lbs., \$1.25; 50 lbs., \$2.00; 100 lbs., \$3.25; 500 lbs., \$14.00.

SHEEP MANURE (Pulverized). Excellent for mixing with soil for greenhouse plants; one part manure and six parts soil. 5 lbs., 40c; 10 lbs., 70c; 25 lbs., \$1.45; 50 lbs., \$2.10; 100 lbs., \$3.25; 500 lbs., \$13.00; 1000 lbs., \$24.00, ton, \$42.00.

VAUGHAN'S LAWN AND GARDEN FERTILIZER (4-12-4). This mixture is composed of plant foods in mineral form.

For a new lawn, broadcast evenly 30 to 40 lbs. per 1,000 square feet. To stimulate an old lawn, apply 20 to 30 lbs. per 1,000 square feet. For flowers and vegetables, use from 4 to 6 lbs. per 100 square feet. 5 lbs., 45c; 10 lbs., 85c; 25 lbs., \$1.45; 50 lbs., \$2.35; 100 lbs., \$3.70; 500 lbs., \$17.75.

VIGORO. Complete Plant Food. Supplies in balanced form the eleven vital plant food elements for hardy, beautiful plants. Clean, odorless, sanitary, and easy to use. Vigoro has brought gardening success to millions of home owners everywhere. Price, 5 lbs. 45c; 10 lbs., 85c; 25 lbs., \$1.50; 50 lbs., \$2.50; 100 lbs., \$4.00.

SPECIAL BALANCED ROSE FOOD

(ALL ORGANIC). 5-7-4. An organic, no filler, 100% Plant Food of Dried Blood, Fish Scraps, Bone Meal, Potash, Cottonseed Meal and Phosphate. This is a special mixture for growing roses and is a balanced, all purpose fertilizer which can also be used on all flowers, shrubbery, etc. This type mixture has been used by commercial growers and florists for many years and has given excellent results. Price, per 5 lb. bag, 75c. postpaid, 90c; 10 lbs., \$1.35, postpaid, \$1.60; 25 lbs., \$2.85; 100 lbs., \$8.95.



PEAT MOSS—Granulated. A moisture retaining humus, an important aid in saving soil fertility. Better than manure. Garden size bale of about 5 bushels, \$2.95; bale about 15 bushels, \$5.45.

ORCHID PEAT. (Fern roots). For Orchids and Azaleas, sack, about 2 bushels, \$5.25.

Saxolin Duplex Crinkled Waterproof Tree Wrap

For covering the trunks of transplanted and newly set fruit and shade trees. Helps your stock to get off to a healthy start. Rolls, 4 inches wide, about 155 ft., to a roll. Weight, about 2½ lbs. Each, 85c; postpaid, 95c; doz., \$8.40.

FOLDAWAY INCINERATOR

All welded construction, painted green enamel. Ideal for burning leaves, paper, etc. Folds away flat. Height 24½ inches, depth 17½ inches, width 18½ inches. Price each \$2.15.

INSECTICIDES AND FUNGICIDES

Weights—By mail ½ pt., 1 lb.; pt., 2 lbs.; qt., 3 lbs.; add 10 cents per lb. for postage; otherwise shipment will be by express charges collect.

DRY LIME SULPHUR. For dormant spraying use 12 to 15 lbs., to 50 gals., water. 1b., 35c; 5 lbs., \$1.50; 25 lbs., \$4.50; 100 lbs., \$12.50.

DOGZOFF. Breaks dogs of bad habits, spray underneath evergreen or shrubs. Price, bottle, 60c.

FLOWERS OF SULPHUR. For mildew on roses, etc. 1b., 15c; 10 lbs., \$1.00; 25 lbs., \$2.00.

KALITE. Rotenone impregnated dust. 1lb. pkg., 35c; 4 lb. bag, \$1.00; 25 lb. bag, \$4.50.

LEMON OIL. Destroys mealy bug, scale, thrip, red spider, etc. ½ pint, 35c; pint, 60c; quart, \$1.00; ½ gal., \$1.75; gal., \$3.00; 5 gals., \$12.00.

ROTOTEC with 5% D.D.T. For controlling chewing and sucking insects. 4 oz. bottle, \$1.00; pint, \$2.75.

SCALECIDE. An oil preparation for San Jose scale. Qt., 75c; gal., \$2.00; 5 gallons, \$6.75.

TOBACCO STEMS. For fumigating. 5 lbs., 35c; 100 lbs., \$2.75.

TOBACCO DUST. One of the best remedies for green and black aphid, fleas, beetles, etc., also for insects in the ground. 1b., 15c; 5 lbs., 60c; 10 lbs., \$1.25; 100 lbs., \$5.35.

DOG-CHECK. The ideal repellent. Safe and harmless to use. New formula will permit spraying on new growth. Unaffected by rain. one spraying lasts from two to three week. 3 oz., 60c; 8-oz., \$1.00; 32-oz., \$3.00; gallon, \$11.50.

RAT-NOTS. Safe way to exterminate rats. Prepared Bait, contains Squill. Can be used without fear of harming humans, dogs, live stock, etc. Trial size of 9 Nots, 25c; Estate size, 50 Nots, \$1.00.

D. D. T. DUST

The Wonder Insecticide

Remarkable results on many insects, both leaf eating and juice drinking, are reported for this insecticide, which has now been released for civilian use.

We offer a dust intended for outdoor use on plants, and not suitable for indoor use. Like arsenic and nicotine, D. D. T. is toxic and should be used with the same precautions as the others.

ACTIVE INGREDIENTS

Dichloro-diphenyl-trichloroethane.....	5.0%
Inert Ingredients.....	95.0%
1 lb., 35c; prepaid, 45c.	100.0%
5 lbs., \$1.25; prepaid, \$1.50.	
10 lbs., \$2.25; by express, charges collect.	

For Home and Summer Camp

D.D.T. Household Spray

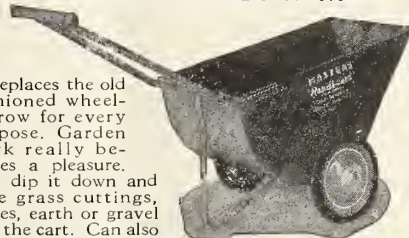
An oil spray for spraying or brushing on screens and porch walls and for general household use. Quart, 65c; prepaid for 75c. Gallon, \$1.85. Shipped by express charges collect.



D.D.T. Aerosol Bomb

When released from the bomb in 5 to 7 seconds, non-poisonous Freon gas impregnated with 3% D.D.T. and 2% pyrethrum completely fills a room, killing insect life and leaving a deadly deposit which will protect from pests for weeks. Aerosol bomb, contents 16 oz., \$3; postpaid, \$3.25.

MASTERS HANDI-CART



Replaces the old fashioned wheelbarrow for every purpose. Garden work really becomes a pleasure. Just dip it down and rake grass cuttings, leaves, earth or gravel into the cart. Can also mix cement right in the cart. No. 18-S, size of wheels 10 in. diameter. Extreme overall width of cart 20 in. Size of hopper body 26½ x 16 x 12½ in. Price each, \$7.25. No. 20-D, size of wheels 10 in. diameter. Extreme overall width of Cart 25 in. Size of hopper body 27½ x 21 x 13½ in. Price each, \$9.50.

No. FS 21. Garden Craft Feeding Station

This is one of the most successful and appreciated bird feeders. It is equipped with a spindle for mounting, and the double weather vane keeps the sheltered end headed into the wind, thus keeping the food dry in rainy or snowy weather.



Size 24x12x12. Shipping weight 16 lbs.
 Price stained brown \$ 7.50
 Price stained with glass back 10.75
 Erection Post bore 1 for mounting rod 1.75
 Shipped by express, charges collect.

AUTOMATIC BIRD FEEDERS

(Patented)
 An economical feeder for all kinds of seeds, cracked corn or other small food.

If filled with sunflower seeds, it unfailingly attracts Cardinals, rose-breasted Grosbeaks, Finches and many other large as well as small pretty birds all year round.

Birds enjoy swinging with the feeder. Each, \$2.50; postpaid, \$2.60; 3 for \$6.50.



No. FS. 10. Garden Craft Bird Feeder

This cleverly constructed feeder will provide endless pleasure and satisfaction for bird lovers. You will be more than repaid for your generosity in providing food for your feathered friends during the early spring, late fall and winter, by their appreciation. Size 8x3x10 in. Shipping weight, 3 lbs. Price, \$2.15; postpaid, \$2.35.

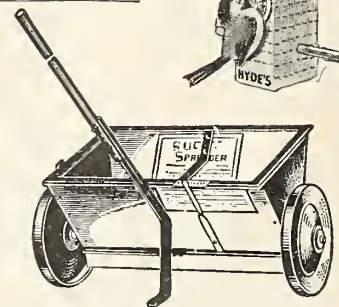
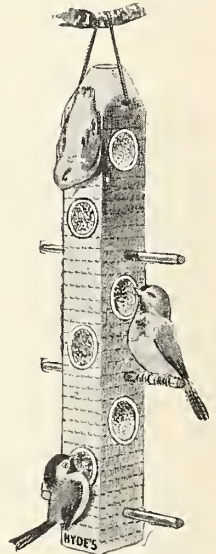


Erection pole with arm, \$1.25; postpaid, \$1.35.

COMMUNITY DINER No. CDD

Aerial picnic grounds for Clinging and Perching Birds, i.e., Chickadees, Nuthatches, Woodpeckers, etc. and Juncos, Song Sparrows, Rose-Breasted Grosbeaks, Catbirds, Mockingbirds, Purple Finches, etc. No. CDD, price each filled \$1.50; postpaid \$1.75; No. CDE filled and 24 extra Tidbits \$2.45 each, postpaid \$2.75. Both Gift boxed.

Except where specified otherwise items listed on this page will be shipped by exp. charges collect.



FERTILIZER SPREADERS

Will spread any kind of commercial fertilizer, grass seed or top dressing. Has new disc wheels, foot rest and selective feed control. 16 inch, hopper capacity about 20 lbs., price each, \$5.95; 20 inch, hopper capacity about 40 lbs., each \$9.95; 30 inch, hopper capacity, about 80 lbs., each, \$16.75. Super Heavy 36 inch, hopper capacity over 100 lbs., each, \$29.75.

18 Bulbs for Beginners \$1.35

3 EACH OF 6 DIFFERENT VARIETIES

*Pointers on
Planting
Fall Bulbs*

The first two months of spring, when garden beauty is most welcome, yet most rare, hardy bulbs supply the dominant flowers. And of all flowers, they offer the easiest, surest success. Provided he plants quality bulbs, with attention to a few simple rules, even a beginner can hardly fail to produce blossoms of the first rank.

Spring flowering bulbs prolong the garden season for a month at least; and in most sections they bloom at a time when all their surroundings are fresh and beautiful; when moisture is ample, weeds have not yet grown, and few if any insects bother them.

The greatest enemy of fall bulbs is poor drainage; they must be planted in locations where water drains away quickly, and if there is any doubt about this, beds should be raised above the surrounding surface sufficiently to insure it.

Bulbs will grow well in any reasonably good garden soil, but it should be well prepared to a depth of at least twelve inches. The depth of planting varies with the kind of bulb, but the depths shown on the accompanying planting chart are minimums, with deeper planting advisable in many cases.

When tulips are to be left for several years without lifting, bulbs should be placed 10 to 12 inches deep, where they will be cooler, will produce fewer "splits" and continue to maintain blooming size for long periods. Use no manure on bulbs unless it has been thoroughly rotted and can be spaded into the ground several weeks previous to planting. A balanced plant food applied to the soil at the rate of 5 lbs. to 100 square feet and spaded into the soil will benefit the bulbs.

The earlier bulbs blossom in the spring, the more important it is to plant them early in the fall, so they will have time to make root growth in their new location. Daffodils and hyacinths especially benefit from early planting.

After the soil has been prepared, bulbs may be planted with a trowel, or by the use of a blunt-end dibber. Avoid using a pointed dibber, or any device which will permit the bulb to be caught by the sides of the hole with air beneath it. The bulb should rest on the bottom with soil packed firmly around it.

What is known as the Dutch method is sometimes followed in planting beds. Soil is thrown out to the proper planting depth, bulbs are then placed where they are wanted and the soil filled in above them. This is a convenient method where a formal pattern is followed in placing the bulbs.

In case of necessity, however, fall bulbs can be planted as late as the ground can be worked. It is a good rule to plant all bulbs as soon as you receive them and you are willing to disturb established beds. Tulips should go

18 Bulbs, 3 Each of 6 Different Varieties, \$1.35 prepaid

3 Scilla Siberica, 3 Grape Hyacinths, 3 Giant Tulips, 3 Hardy Daffodils, 3 Crocus, 3 Erythroniums—18 Bulbs.

36 Bulbs, 6 Each of 6 Different Varieties, \$2.70 prepaid

6 Scilla Siberica, 6 Grape Hyacinths, 6 Giant Tulips, 6 Hardy Daffodils, 6 Crocus, 6 Spring Snowflakes—36 bulbs.

72 Bulbs, 12 Each of 6 Different Varieties, \$5.25 prepaid

12 Scilla Siberica, 12 Grape Hyacinths, 12 Giant Tulips, 12 Hardy Daffodils, 12 Spring Snowflakes, 12 Crocus—72 bulbs.

156 Bulbs, 24 Each of 6 Different Varieties, 12 of a seventh variety, \$11.25 prepaid

24 Scilla Siberica, 24 Grape Hyacinths, 24 Giant Tulips, 24 Hardy Daffodils, 24 Snowdrops, 24 Crocus, 12 Ornithogalum Umbellatum—156 bulbs.

A Winter Window Garden

18 Bulbs Including Six Different Subjects With \$2.25
Vaughan's Prepared Bulb Fibre. Prepaid 300 Miles

INCLUDED IN THIS OFFER

- 3 Narcissus King Alfred.
- 3 Mammoth Paper White Narcissus bulbs, 14 ctms.
- 3 Yellow Paper Whites (Grand Soleil D'Or) mammoth bulbs.
- 2 Chinese Sacred Lilies, mammoth bulbs.
- 6 Oxalis Grand Duchess Mixed.
- 1 Calla Lily White bulb, first size.
- 2 Pounds of Vaughan's Prepared Bulb Fibre.

Most of you know how easy it is to force into flower the beautiful, fragrant, Paper White Narcissi, in bowls of water. By using Vaughan's prepared bulb fibre in place of pebbles, the variety of bulbs that can be forced is widely increased.

METHOD OF FORCING BULBS IN FIBRE. Moisten Vaughan's Prepared Bulb Fibre to saturation, fill the bowl with wet fibre, and plant the bulbs allowing their necks to emerge from the fibre, but without pressing the fibre too firmly around them. Place the bowl in a cool, airy place where the light is dim or dark, and preferably the temperature does not rise above 55 degrees. Keep the fibre moist, since if it dries out the flower buds may go blind. But water sparingly until good roots have formed. When strong top growth has been made in the dark, take the bowl to a sunny window, where it will have fresh air, all the sunlight possible especially in the morning, and preferably a temperature not less than 55 nor more than 70 degrees.

Complete Directions for Planting and Forcing. All These Subjects Are Included.

in when the leaves fall. Bulbs planted early enough to make root growth will anchor themselves in the new location, and resist frost heaving, which is likely to be severe in the newly turned soil. When late planting is necessary, cover the bed with a mulch of leaves after the ground has frozen. This will prevent winter thaws, and consequent frost heaving.

After bulbous plants have flowered, their leaves should not be cut or disturbed until they turn yellow, which indicates that the bulbs have ripened, and the leaves may then be removed. Premature removal will prevent the maturing of the bulbs and may destroy them. For example, crocuses planted in the lawn, which is mowed before the crocus leaves turn yellow, seldom last a second year.

Figures given in this table are minimums, and in some cases should be greater. See discussion in column to left, headed "Pointers on Planting Bulbs."

VAUGHAN'S BULB PLANTING CHART	
1 in.	
2 in.	
3 in.	CROCUS 3 in. APART
4 in.	SCILLAS 3 in. APART
5 in.	LILIIUM CANDIDUM 12 in. APART
6 in.	HYACINTHS 8 in. APART
7 in.	NARCISSUS 6 to 8 in. APART
8 in.	GIAINT TULIPS 5 to 8 in. APART
9 in.	HARDY LILIES 12 to 15 in. APART
	SNOWDROPS 3 in. APART
	GRAPE HYACINTHS 3 in. APART

FROM _____

P. O. _____

STATE _____

STAMP
HERE

Vaughan's Seed Store

601 West Jackson Blvd.,

Chicago 6, Ill.

Vaughan's Seed Store, 601 W. Jackson Blvd., Chicago 6, Illinois

Please send Vaughan's Fall Catalog listing Tulips and everything else for Fall planting, for 1947, to the following friends who are garden owners.



FANTASY
Doz., \$1.55; 100, \$11.00



VIOLET QUEEN
Doz., \$2.00; 100, \$15.00



RED CHAMPION
Doz., \$2.00; 100, \$15.00

New Parrot Tulips, Outstanding Post-war Novelties

Parrot Tulips have the largest blossoms, with long, deeply fringed petals and more of them. Prior to the world war, named varieties were few, and the new ones listed in this catalogue together with the new late double tulips are the outstanding post-war novelties. Groups in the border will attract every eye, and their cut flowers rival orchids in arrangements.

FANTASY. Not new, but still unrivaled in its color class. A mutant of the Darwin Clara Butt, it has the same rare salmon pink, in enormous flowers, on sturdy 27 inch stems.

VIOLET QUEEN. (Opal Queen.) All the beauty of form which is found in Fantasy, is here reproduced in a pearly violet blend with truly opalescent quality. The flower is huge, all petals deeply fringed, and the center white with violet markings. This is a mutant of the Darwin tulip Glory of Waltham, the original bulb having appeared in a planting of that variety, as a gift of nature. The stem is strong, holding the heavy bloom well upright, 26 inches high.

RED CHAMPION. In a planting of the fiery crimson Darwin tulip Bartigon, which many consider the brightest red of all, this variety appeared, with exactly the color of its companions, but bearing a flower of the characteristic Parrot type. Its long petals are waved, with edges deeply cut and fringed, with the bright red color persisting on both sides, except in the white throat. It is the deepest red among the Parrots. Stems are 21 inches tall.



PEONY FLOWERED TULIP EROS. Offered first in this catalogue two years ago and illustrated on the front cover last year, we were unable to fill the great demand for this lovely flower of deep true pink with silvery high-lights. A group of its large flowers, on 20 inch stems, blossoming with the Darwin tulips in May, will prove the star attraction in any border. We have made special provision for an ample supply to fill all orders this year. Doz., \$1.60; 100, \$11.75.



PEONY FLOWERED TULIP MOUNT TACOMA. Blossoming at the same time as the Darwin tulips, held upright on 23-inch stems, these huge white flowers are easily mistaken for peonies, which they resemble in size and form. They are an entirely distinct type from the early double tulips, excelling not only in size and height, but also in beauty. This is pure white, with occasional markings of emerald green on the outer petals. Doz., \$1.70; 100, \$12.00.

8 Modern \$1.70 8 Daffodils

One Each of the Eight Varieties Illustrated on This Page, Prepaid



VARIETIES illustrated on this page are outstanding representatives of their types, recently introduced. In favorable locations they will continue to bloom for years, and multiply if lifted and replanted, when they become too crowded.

Back Cover Collection H

Two each of the varieties illustrated on this page (16 bulbs)..... \$ 3.00
 Three each (24 Bulbs)..... 4.25
 Six each (48 Bulbs)..... 8.00
 Twelve each (96 Bulbs)..... 15.50

Prices of Separate Varieties

	Doz.	100
Top left, Actaea.....	\$1.75	\$12.00
Middle left, Francisca Drake.....	2.25	15.00
Bottom left, Golden Havrest.....	2.75	20.00
Top center, Inglecombe.....	2.25	15.00
Bottom center, Firetail.....	1.75	12.00
Top right, Dick Wellband.....	2.55	18.00
Middle right, Hera.....	1.70	12.00
Bottom right, Geranium.....	2.25	15.00

ALL ABOVE PRICES PREPAID

