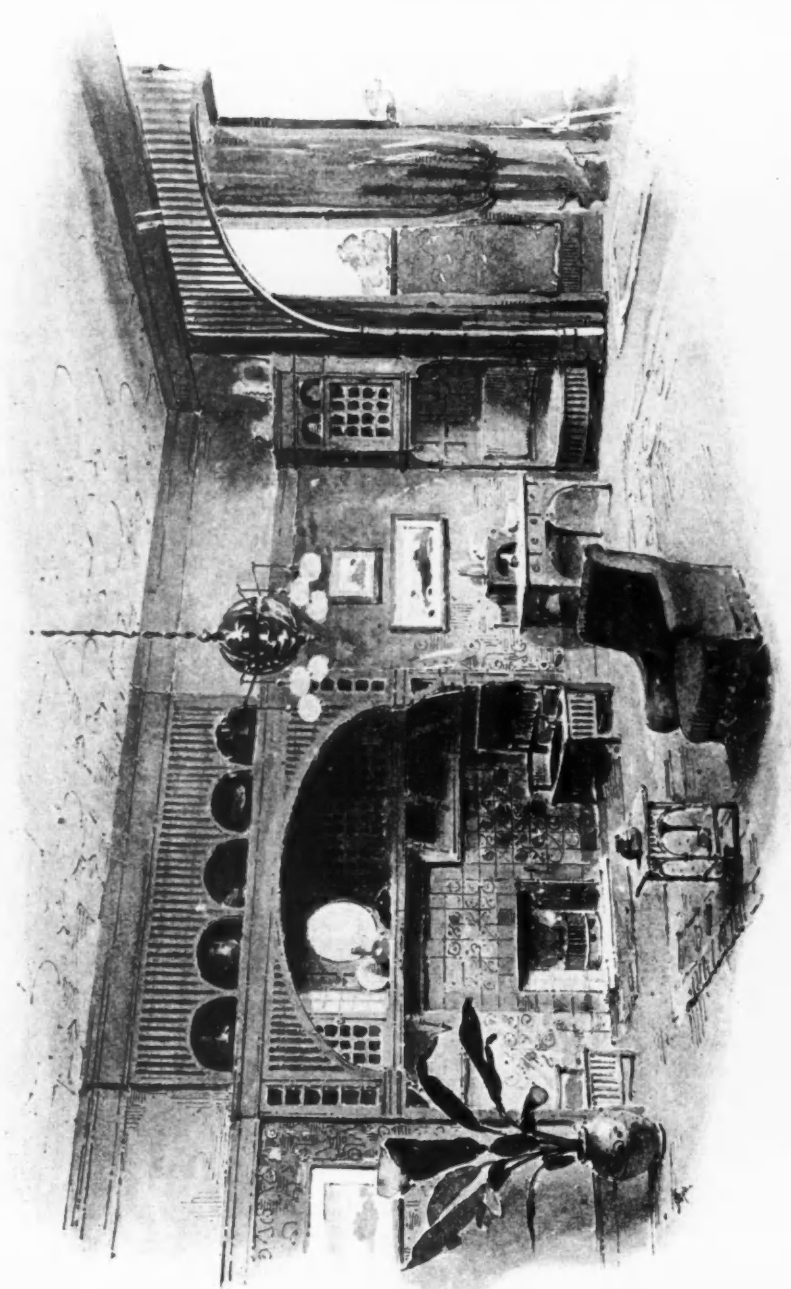


SUPPLEMENT TO  
ACADEMY ARCHITECTURE, 1891.



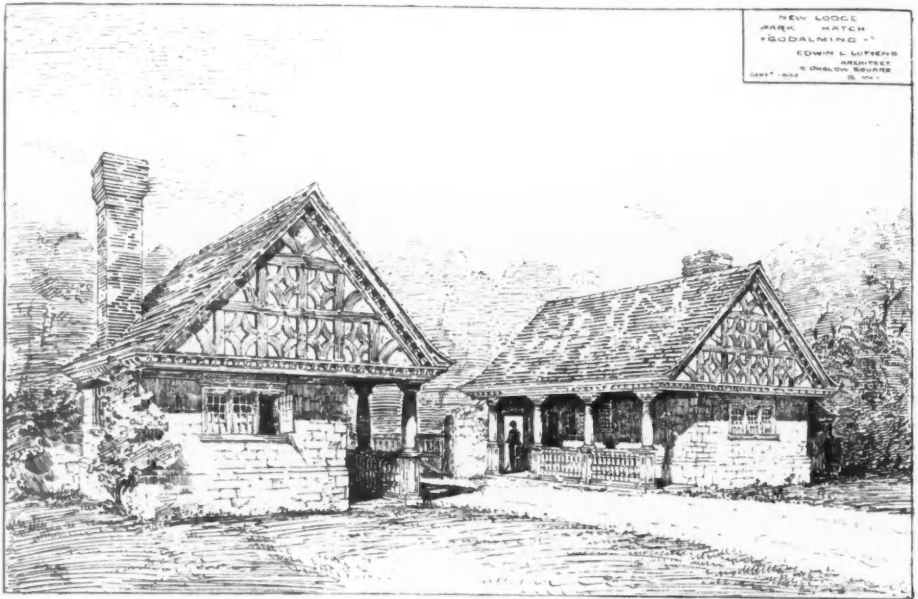
*The Four Evangelists, PERCY C. H. BACON.*

*Drawing-room, by LIBERTY & Co.*

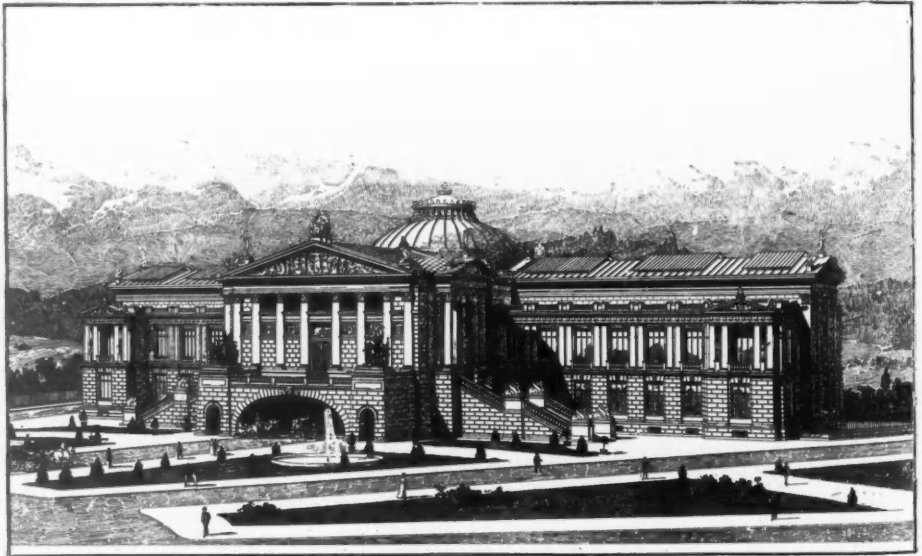


*Interior, Park Circus, Glasgow, for John Anderson, Esq., WM. LEIPER, F.R.I.B.A., Architect.*

**Modelling and Plaster Work—R. A. McGilvray, 219 West Regent Street, Glasgow.**



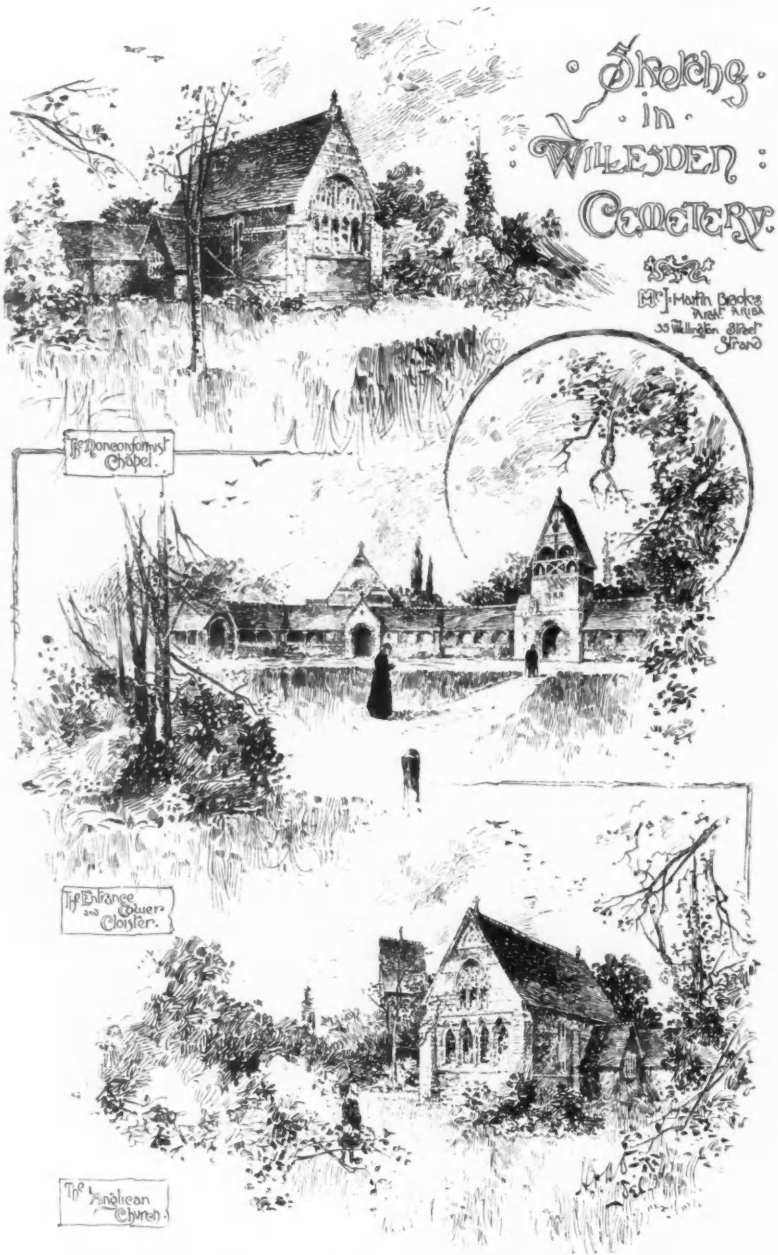
*New Lodge, Park Hatch, Godalming, EDWIN L. LUTYENS, Architect.*



*Competitive Design for the National Museum, Berne, Switzerland, from a suggestion by Lawrence Harvey,  
ALEX. KOCH Architect.*



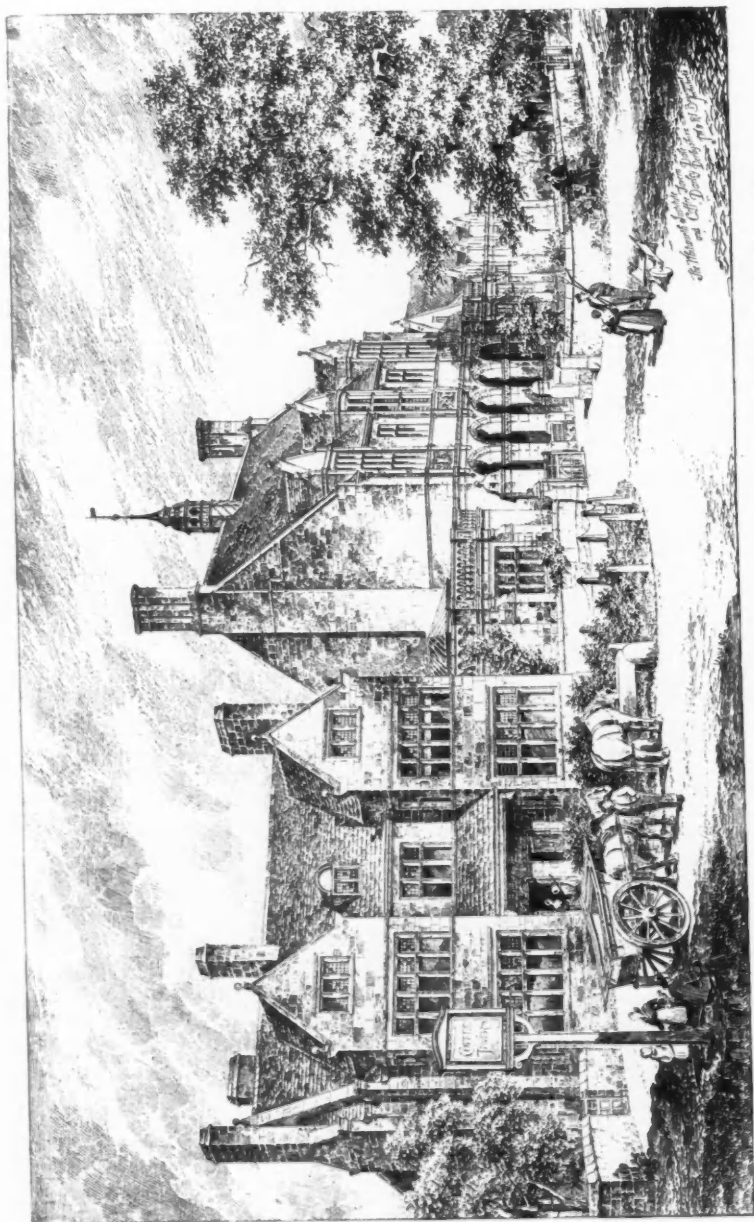
Mansfield College, Oxford (Sketches from the Interior as completed March 1891),  
BASIL CHAMPNEYS, B.A., Architect.



Sketches in Willesden Cemetery, J. MARTIN BROOKS, A.R.I.B.A., Architect.

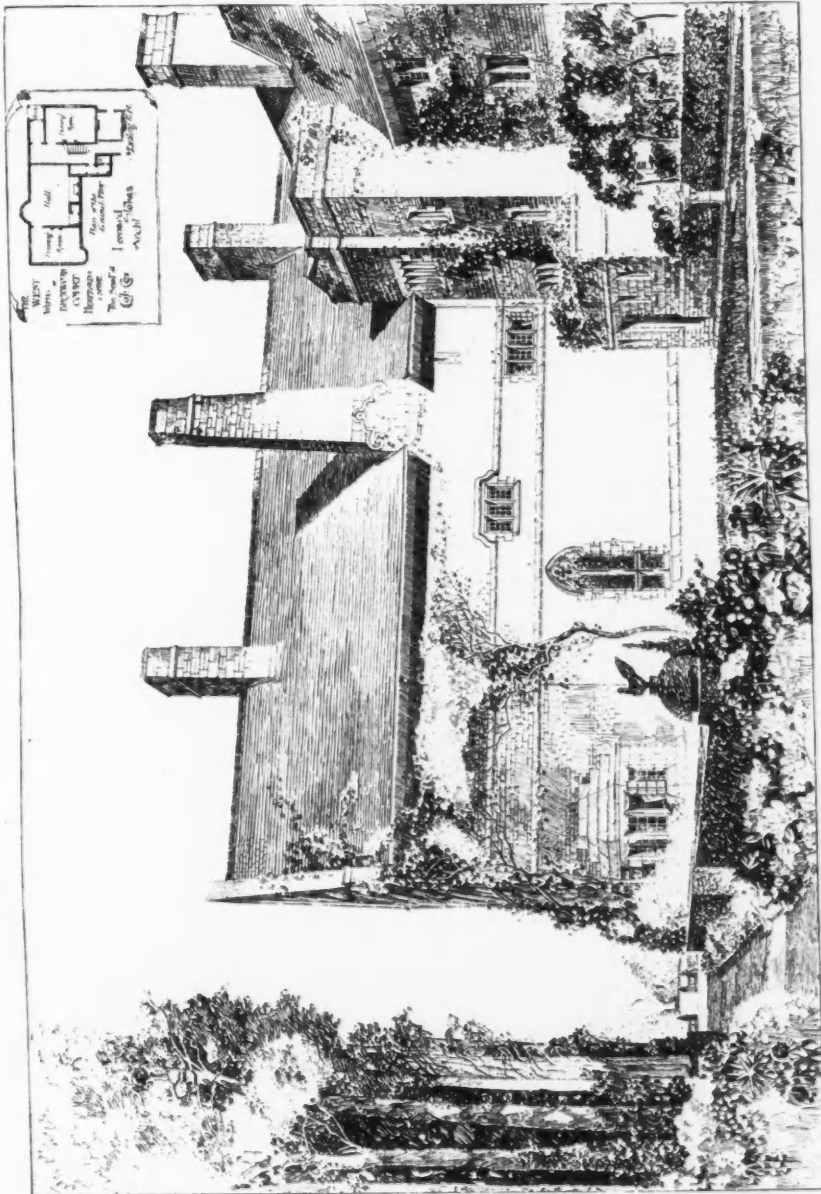


Proposed Building in St. Vincent Street, Glasgow, JOHN BURNET, SON AND CAMPBELL, Architects.

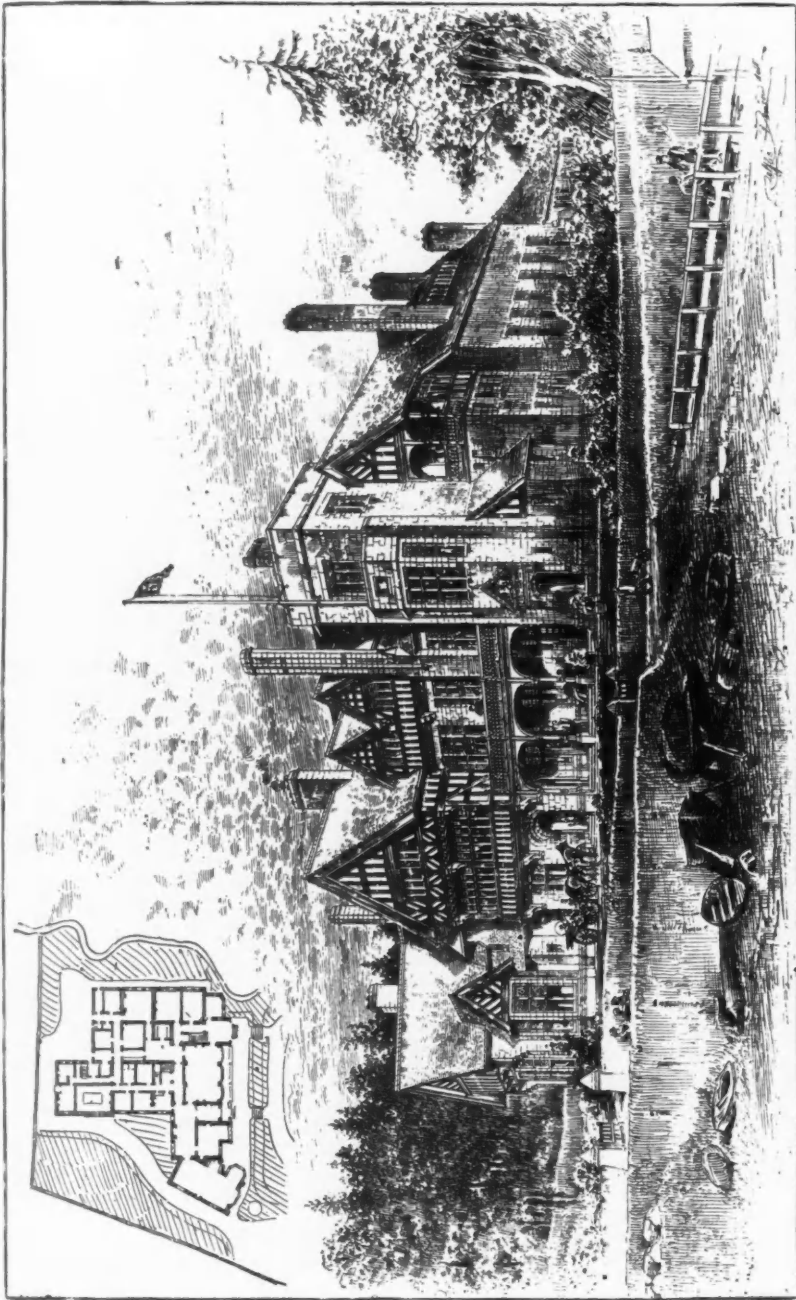


*The Waistworth Institute and Coffee Tavern, Darby Dale, Derbyshire, J. W. AND R. F. BEAUMONT, Architects.*



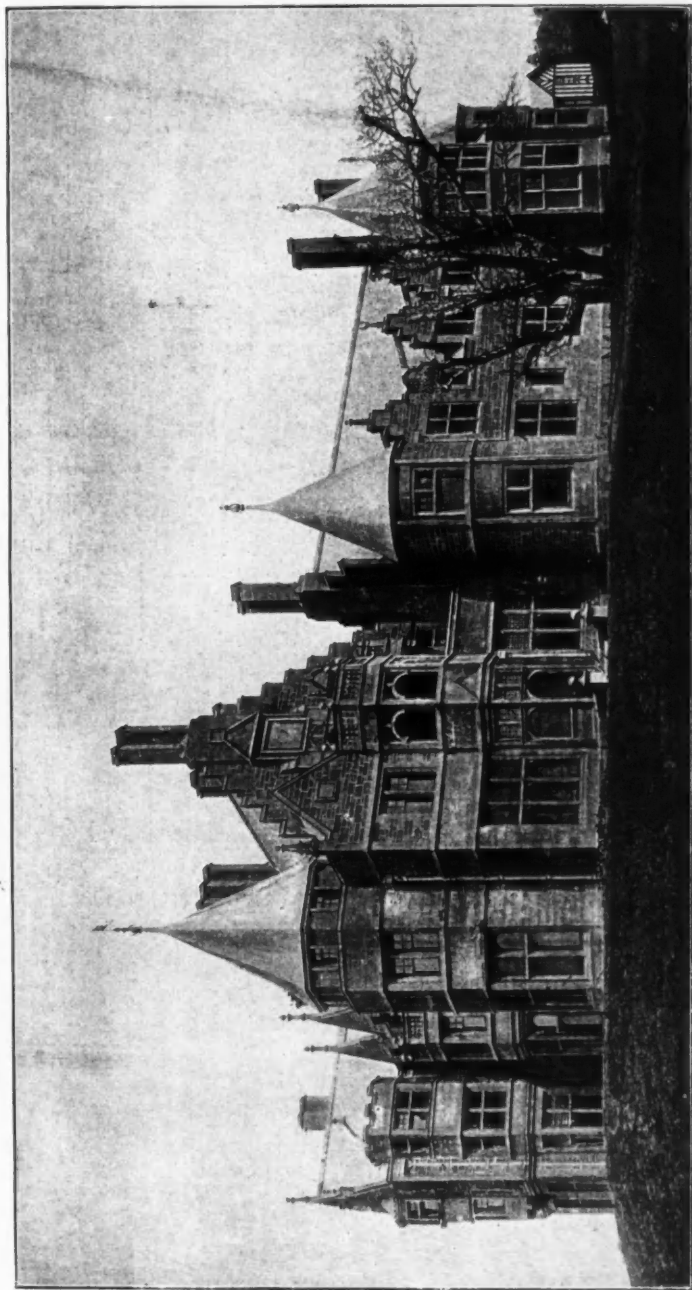


The West Wing of Broxwood Court, Herefordshire, the Seat of Col. Cor, LEONARD STOKES, Architect.



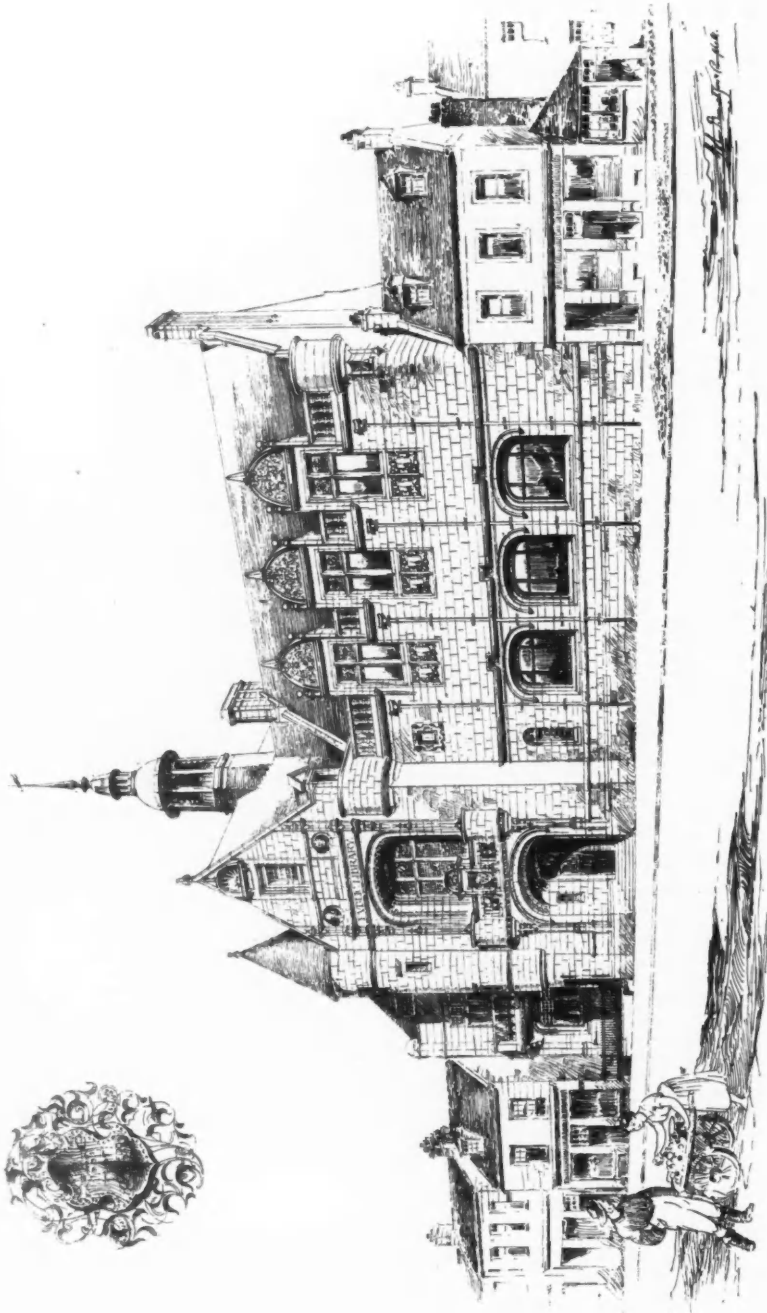
*Royal Clyde Yacht Club House, Hunter's Quay, Glasgow, THOMAS L. WATSON, F.R.I.B.A., Architect.*

Gasfitter Work, Electric Bells and Speaking Tubes—D. & G. Graham, 140 Douglas Street, Glasgow.

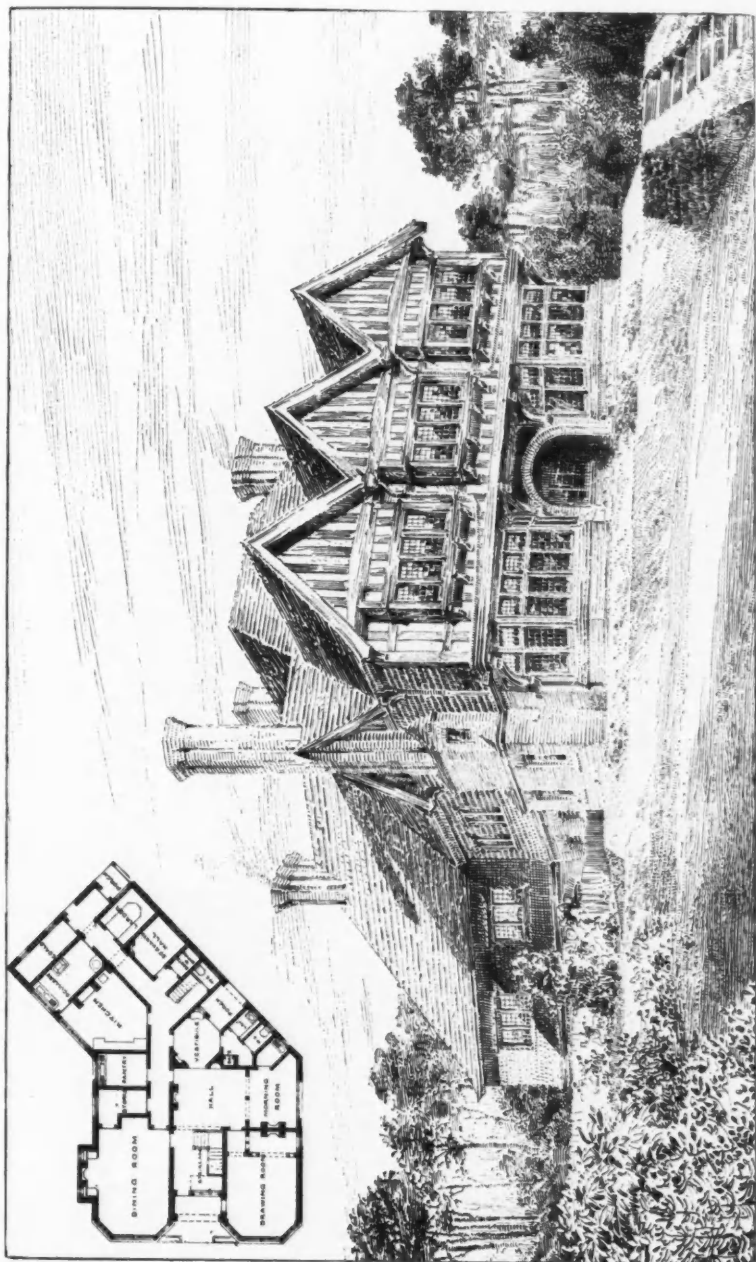


*Kelly Mansion on the Clyde, WM. LEIPER, F.R.I.B.A., Architect*

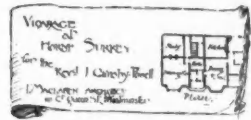
Plasterers—James Caird & Co., 136 Waterloo Street, Glasgow.



Ayr Public Library, Competitive Design, JOHN BURNET, SON, AND CAMPBELL, Architects.



Country House, Enfield, T. W. CUTLER, F.R.I.B.A., Architect.



*Vicarage at Horne, Surrey, for the Rev. J. Ormsby Powell, T. MACLAREN, Architect.*

*A Lodge at Moor Park  
for Sir William Rose Bart  
Paxton A. Watson A.R.I.B.A.  
27 Wallisram, E.C.*



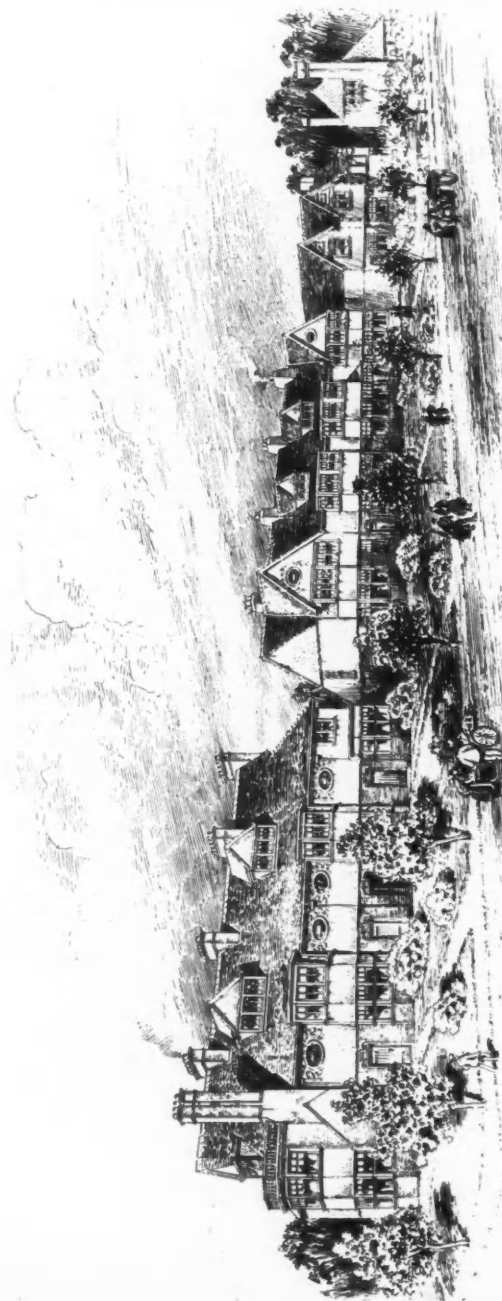
*A Lodge at Moor Park for Sir William Rose, Bart., PAXTON A. WATSON, A.R.I.B.A., Architect.*



*House at Beckenham, Kent, ALFRED COX, Architect.*



*Residence for George Eastwood, Esq., ARTHUR W. COOKSEY, A.R.I.B.A., Architect.*



*Workmen's Cottages, Port Sunlight, for Messrs. Lever Bros., Ltd., WILLIAM OWEN, F. R. I. B. A., Architect.*

General Contractor—Alex. Bleakley, 41 & 43 Claughton Road, Birkenhead.



