

Historic, archived document

Do not assume content reflects current scientific knowledge, policies, or practices.

WEEBER & DON.

62 61

1896

⊕ AUTUMN ⊕

1896

ANNUAL CATALOGUE

OF

BULBS, ROOTS ^{AND} SEEDS

FOR FALL PLANTING.

WEEBER & DON,

Seed Merchants and Growers,

114 CHAMBERS STREET, = = = NEW YORK.

THE HYACINTH.

DIRECTIONS FOR CULTURE.

Pot Culture.—Plant the bulbs in rich garden mould, mixed with one-third sand, leaving only the top of bulb exposed. Water freely, and place the pot in a dark, cool place (away from frost), for six or seven weeks, to allow a vigorous growth of roots. Then they should be placed in a light, warm room, care being taken not to place in the full rays of the sun for a day or two. Six or seven inch pots are the most useful sizes.

Glass Culture.—For this purpose single hyacinths are preferable; they flower more freely, earlier, and produce finer colors. Place the bulb in the glass, allowing the water to be as close to the bulb as possible without touching; place in a dark, cool closet till the roots have made a growth of from five to six inches deep, when they should be removed to a light, warm room. As the water evaporates, fill up as before, and change every two weeks. A small piece of charcoal in the water is beneficial.

Open-Ground Culture.—For a good effect they should be grown in beds or clumps. Plant in October, six inches apart each way and five inches deep, using rich soil, well manured. Care must be taken not to press the earth too firmly around the bulbs, so as to allow of free drainage. At the approach of freezing weather, cover to the depth of four or five inches with straw or litter, removing same early in the spring.



WEEBER & DON,

Seed Merchants and Growers,

114 CHAMBERS STREET, - - NEW YORK.

Choice Named Hyacinths.

FOR POTS AND GLASSES.

We have selected the following list of Choice Named Single and Double Hyacinths, using care to include such varieties as are best adapted for growing in pots and glasses.

The Single-Flowered varieties, as a rule, flower more freely than the Double, in glasses.

Choice Named Single Hyacinths.

SINGLE BLUE.

Baron Von Thuyll. Violet blue, large spike.
Blue Mourant. Dark blue, large truss.
Charles Dickens. Deep blue, shaded light.
Czar Peter. Light blue, fine.
Emicus. Dark, white centre, early.
Grand Lilas. Porcelain lilac, fine truss and bells.
Leonidas. Porcelain blue, fine spike.
Marie. Light blue, fine spike.
Mimosa. Dark purple, large spike.
Queen of the Blue. Large light blue, splendid truss.
Uncle Tom. Blackish purple.

Price, 10c. each ; \$1.00 per doz.

SINGLE RED.

Amy. Deep red, fine spike.
Cosmos. Dark rose, large spike.
Fireball. Dark red, dwarf.
Gertrude. Rosy pink, large compact truss.
Gigantea. Delicate rose, large spike.
Incomparable. Crimson.
Jennie Lind. Fine red, good spike.
Lord Macaulay. Bright red.
Norma. Delicate pink, fine truss.
Robert Steiger. Deep crimson, very showy.
Sultan's Favorite. Pink, large flowers.
Veronica. Dark, large spike.
Victoria Alexandrina. Crimson, large bells.

Price, 10c. each ; \$1.00 per doz.

SINGLE WHITE.

Alba Superbissima. Clear white, large truss.
Baroness Von Thuyll. Snow white, compact spike.
Blanchard. Pure white, fine.
Grandeur à Merveille. Magnificent blush white.
Grand Vedette. Pure white, large bells.
La Candeur. Pure white.
La Franchise. Creamy white, fine spike.
La Grandesse. Pure white, large spike.
La Vestale. Pure white.
Lord Gray. Blush white.
Mont Blanc. Pure white, large truss.
Voltaire. Waxy blush, fine spike.

Price, 10c. each ; \$1.00 per doz.

SINGLE YELLOW.

Anna Carolina. Pure yellow.
Herman. Orange, large bells.
Heroine. Bright citron, green tips.
L'Or d'Australie. Deep yellow.
La Pluie d'Or. Light yellow, large spike.
Prince of Orange. Orange.
Price, 10c. each ; \$1.00 per doz.

Hyacinth Glasses in great variety of colors. Price, 15c. each ; \$1.50 per doz.



TYE'S
HYACINTH GLASS.



SINGLE HYACINTH.

Choice Named Double Hyacinths.

DOUBLE BLUE.

Bloeksberg. Light blue, good truss.
Charles Dickens. Dark blue, extra large.
Crown Prince of Sweden. Lavender.
Garrick. Deep blue, large truss.
Lord Raglan. Dark blue, large spike.
Lord Wellington. Blue.
Othello. Silky black.
Prince of Saxe Weimar. Dark blue.
Robert Burns. Dark blue.
Van Speyk. Bright blue. Compact truss.
 Price, 10c. each ; \$1.00 per doz.

DOUBLE RED.

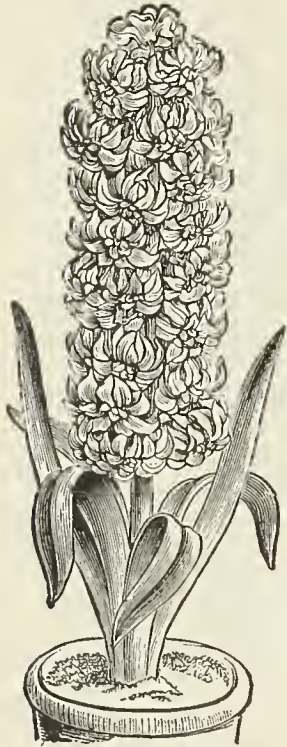
Bouquet Royal. Bright Rose. Dark eye.
Czar Nicholas. Delicate rose, large.
Groot Voorst. Blush, large bells.
Lord Wellington. Double pink, large.
Maria Louise. Large bells, dark rose.
Panorama. Bright carmine rose, fine bells.
Princess Royale. Red, purple centre.
Regina Victoria. Rosy pink, large truss.
Sir Walter Scott. Rose, large bells.
The First. Bright rose, very fine, early.
 Price, 10c. each ; \$1.00 per doz.

DOUBLE WHITE.

Anna Maria. Blush, purple eye.
Bouquet Royal. Pure white.
Couronne Blanche. White, large bells.
Duchesse de Bedford. Pure white, fine.
La Déesse Pure white, yellow centre.
La Tour de Auvergne. Snow white, fine spike.
La Virginité. Pale blush. fine spike.
Prince of Waterloo. Pure white, large truss.
Triumph Blandine. Rosy white, early.
Venus. Extra, with yellow centre.
 Price, 10c. each : \$1.00 per doz.

DOUBLE YELLOW.

Bouquet d'Orange. Dark orange, fine.
Goethe. Bright yellow, fine truss, large bells.
Jaune Supreme. Canary yellow, fine.
Louis d'Or. Canary yellow, dark centre.
Piet Hein. Pale Yellow.
William III. Apricot yellow.
 Price, 10c. each ; \$1.00 per doz.



DOUBLE HYACINTH.



SINGLE HYACINTH.

Mixed Hyacinths for Bedding and Forcing.

MIXED SINGLE VARIETIES.

	COLORS SEPARATE.	
	Per Doz.	Per 100.
Dark red.....	\$0 50	\$3 00
Red and rose.....	50	3 00
Pure white.....	50	3 00
Creamy white and tints.....	50	3 00
Dark blue and violet.....	50	3 00
Light blue.....	50	3 00
Yellow, all shades.....	50	3 00
All colors mixed.....	50	3 00

MIXED DOUBLE VARIETIES.

	COLORS SEPARATE.	
	Per Doz.	Per 100.
Dark red.....	\$0 50	\$3 00
Red and rose.....	50	3 00
Pure white.....	50	3 00
Creamy white and tints.....	50	3 00
Dark blue and violet.....	50	3 00
Light blue.....	50	3 00
Yellow, all shades.....	60	3 50
All colors mixed.....	50	3 00



WHITE ROMAN HYACINTH.



ROSE ROMAN HYACINTH.

Early White Roman Hyacinths.

These are now extensively used for forcing in private and florists' establishments, and are extremely desirable. Their remarkably easy culture, earliness, delightful fragrance and pure white color are points which recommend them alike to the professional and amateur.

The flowers are produced in great profusion, each bulb sending up from three to four spikes.

FIRST SIZE BULBS.

Price, 5c. each; 50c. per doz.: \$3.50 per 100; \$30.00 per 1,000.

ROSE ROMAN HYACINTHS.

Flowers from two to three weeks later than the White Roman. Price, 40c. per doz.; \$2.50 per 100.

BLUE ROMAN HYACINTHS.

Semi-double, of a pale blue color. Price, 40c. per doz.; \$2.50 per 100.

DOUBLE ROSE PINK ROMANS.

A lovely color; very double flowers. Price, 40c. per doz.; \$2.50 per 100.

FEATHERED HYACINTHS.

In this variety the spikes are 10 inches high, producing feathery-like flowers which are useful for cutting. Price, 25c. per doz.; \$1.50 per 100.

MUSK HYACINTHS.

A small hyacinth of purplish color, emitting, when in flower, a strong musky odor. Price, 10c. each; \$1.00 per doz.

CAPE HYACINTH.

Hyacinthus Candicans.

A beautiful, hardy plant, with flower stems 3 to 4 feet high, bearing from 20 to 30 large, pure white drooping flowers. Price, 10c. each; 75c. per doz.

BLUE GRAPE HYACINTHS.

A variety producing flowering spikes about 8 inches high; with small round bells, so arranged as to resemble a bunch of grapes. Price, 15c. per doz.; \$1.00 per 100.



GRAPE HYACINTH.



FEATHERED HYACINTH.

Early Single Tulips.

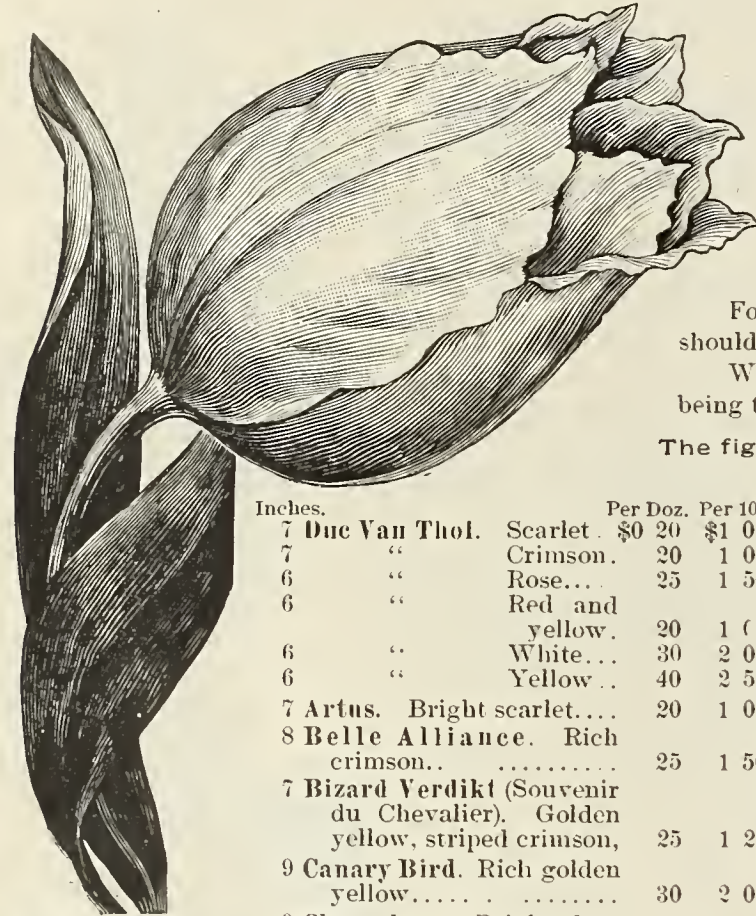
The form and beauty of the tulips have been improved, until now almost every shade of color is found in them, including the most delicate and gorgeous hues.

Being perfectly hardy, their ease of culture, combined with beauty of form and gorgeous coloring, renders them the most popular bulbs grown for spring bedding, as well as for winter flowering in the greenhouse and winter garden.

For planting in the open ground, October and November are the best months; the bulbs should be planted from 5 to 6 inches apart, and from 3 to 4 inches deep.

When grown in pots, they should be potted from 3 to 5 in a pot, the soil and treatment being the same as for hyacinths.

The figures indicating the average height are given before each variety, to aid selection for beds.



SINGLE TULIP.

Inches.		Per Doz.	Per 100.	Inches.		Per Doz.	Per 100.	Inches.		Per Doz.	Per 100.
7	Duc Van Thol. Scarlet	\$0 20	\$1 00	7	Crimson King. Bright crimson	\$0 20	\$1 00	8	Rosa Mundi. Rose and white	\$0 30	\$2 00
7	" Crimson	20	1 00		crimson	20	1 00	8	Rosa Mundi Huikman. Rose and white	30	2 00
6	" Rose	25	1 50	6	Duc de Berlin. Red and yellow	25	1 75	5	Rose Grisdelin. Rose, shaded white	30	2 00
6	" Red and yellow	20	1 00	10	Keizerskroon. Deep crimson, margined with yellow	30	2 00	7	Snowball. Snow white, extra	25	1 50
6	" White	30	2 00	7	L'Immaculee. Pure white, very early and fine, excellent for forcing	20	1 00	7	Staudard Royal Golden. Crimson, yellow striped and shaded	30	2 00
6	" Yellow	40	2 50	10	Pottbakker. Yellow	30	2 00	10	Thomas Moore. Orange, fine, sweet scented	35	2 25
7	Artus. Bright scarlet	20	1 00	8	" White	30	2 00	7	Vermilion Brilliant. Bright vermilion, extra	35	2 75
8	Belle Alliance. Rich crimson	25	1 50	8	" Scarlet	25	1 50	8	White Swan. Pure white	30	2 00
7	Bizard Verdikt (Souvenir du Chevalier). Golden yellow, striped crimson	25	1 25	8	Proserpine. Cherry rose, extra	40	3 00	7	Yellow Prince. Bright yellow, large and showy	30	2 00
9	Canary Bird. Rich golden yellow	30	2 00	8	Queen Victoria (La Reine) White tinted rose	20	1 00				
9	Chrysolora. Bright clear yellow	30	1 75	8	Rembrandt. Scarlet	25	1 75				

SINGLE MIXED TULIPS.

This mixture contains an elegant assortment of all the colors. Price, 15c. per doz.; 75c. per 100; \$6.00 per 1,000.

Early Double Tulips.

The earlier varieties of this class of tulips are admirably adapted for forcing. Many of the other varieties make a fine display when grown in pots, but they require to be forced slowly. The later kinds are very effective for bedding, producing a dense mass of gorgeous colors, which remain in bloom a long time.

Inches.		Per doz.	Per 100.
6	Duc Van Thol Red and yellow, fine forcing.....	\$0 20	\$1 00
8	Duc Van Thol . Dazzling scarlet.. ..	30	1 50
10	Duke of York Dark rose, bordered with white.....	20	1 00
8	Gloria Solis Bronze crimson, with yellow margin.....	20	1 00
8	Grisdelin Pale, violet and white	30	1 50
9	Helianthus . Yellow and scarlet, fine.	25	1 50
8	Imperator rubrorum . Scarlet.....	40	2 50
5	La Candeur . Pure white, erect habit, excellent for beds.	20	1 00
5	Lady Grandison . Dwarf, bright scarlet, early.....	25	1 50
9	Rex Rubrorum . Bright red, large and showy: excellent for beds.. ..	30	2 00
7	Rosine . White and rose.	30	2 00
7	Titian . Red, edged with gold.....	25	1 25
8	Tournesol . Red and yellow; very beautiful; one of the best for forcing.....	£0	2 00
8	Tournesol . Yellow. Orange yellow.....	45	3 00

DOUBLE MIXED TULIPS.

A fine assortment of mixed colors for outdoor culture. Price, 20c. per doz.; \$1.00 per 100; \$3.00 per 1,000.

DARWIN TULIPS. (New.)

These beautiful *Single* Tulips belong to the May flowering family, are easy of culture, and comprise the most brilliant and beautiful shades of color conceivable. Flowering at same time as other late varieties, thus making them a valuable addition to the Tulip lover's collection.

An assortment of six named varieties (our selection), comprising only the newest varieties. Price, \$1.00 per doz.; \$5.50 per 100.

PRICE: Mixed colors, 25c. per doz.; \$1.50 per 100.

Miscellaneous Tulips.

PARROT TULIPS.

These are distinguished by their feathery edged flowers, which comprise all known colors, and make an effective show in beds or masses. Price, 20c. per doz; \$1.00 per 100.

	Per doz.	Per 100.
Admiral de Constantinople . Red.....	\$0 25	\$2 00
Glorieuse . Yellow and orange.	25	2 00
Luteo . Yellow.. ...	25	2 00
Perfecta Yellow spotted, red.....	25	2 00
Markgraf . Orange	25	2 00
Craunois Brilliant . Deep crimson with large black star-shaped centre flowers ..	50	3 50
Finest Mixed . Strong bulbs.....	20	1 25

LATE FLOWERING SINGLE TULIPS.

This class is very showy, and is often grown exclusively for exhibition, the colors and markings being exquisitely beautiful.

	Per doz.	Per 100.
Bizarres . Yellow ground, with crimson, red or white markings	\$0 20	\$1 00
Bybloemens White ground, with purple lilac or black markings	20	1 00

LATE FLOWERING DOUBLE TULIPS.

	Per doz.	Per 100.
Buonaparte . Brown orange.....	\$0 25	\$1 25
Gesneriana . Scarlet	20	1 00
Gloriamundi . Purple variegated	30	2 00
Louis d'Or . Yellow and red ..	30	2 25
Mariage de ma fille . White and red, striped, extra fine...	50	3 50
Paeonie . Red.....	25	1 25
Yellow Rose . Pure golden yellow.....	25	1 25



TRUMPET MAJOR NARCISSUS.

Biflorus. Pure white perianth, with soft yellow crown, two flowers on each scape; late flowering. Price, 20c. per doz.; \$1.00 per 100.

Bulbocodium. (Hoop Petticoat). Rich golden yellow, distinct, free flowering variety, dwarf, and excellent for borders and pot culture. Price, 50c. per doz.; \$3.50 per 100.

Golden Spur. Rich golden yellow flowers, one of the largest, fine for forcing. Price, 10c. each; \$1.00 per doz.; \$6.00 per 100.

Narcissus, or Daffodils.

SINGLE VARIETIES.

These beautiful flowers love shade and rich soil. They may be planted any time from September to January, in pots or open border: treat in the same manner as hyacinths. Many of the varieties are sweet-scented, and valuable for cut flowers in the early spring.

Leedsii. Silvery white cup, spotted yellow. Price, 25c. per doz.; \$1.25 per 100.

Obvallarius (Tenby Daffodil). Bright yellow dwarf, and one of the earliest to bloom, upright trumpet, with broad, short perianth; excellent for forcing. Price, 50c. per doz.; \$3.00 per 100.

Ornatus (Poeticus). Large, beautifully formed, pure white flowers, with saffron cup tinged with rosy scarlet, very early. Price, 20c. per doz.; \$1.50 per 100.

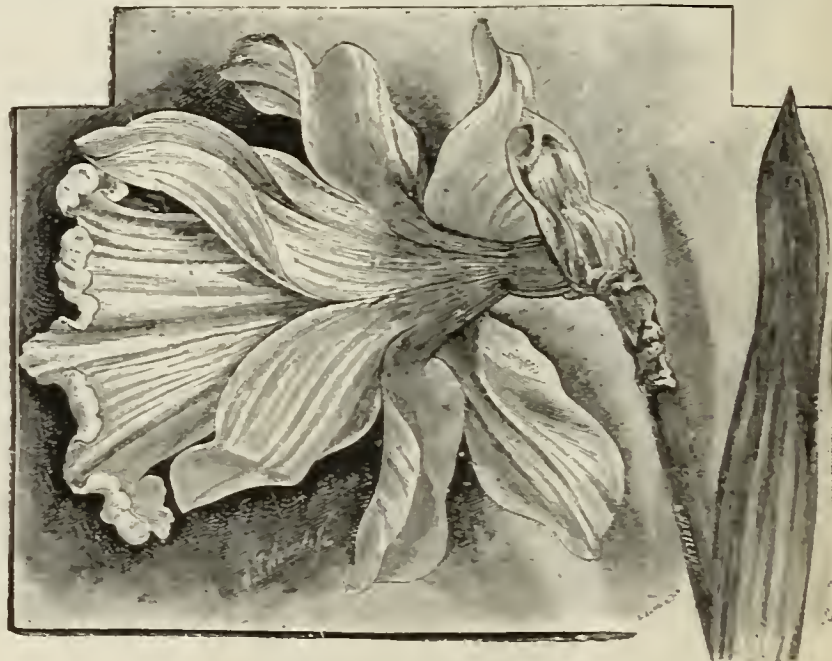
Poeticus (Pheasant's Eye, or Poet's Narcissus). Pure white, with red crown, fragrant, good for forcing. Price, 15c. per doz.; 75c. per 100.

Scoticus (The Scotch Garland Flower). Large flowers of creamy white, bright yellow trumpet. Price 30c. per doz.; \$2.00 per 100.

Stella. Pure white, yellow crown, valuable for forcing. Price, 25c. per doz.; \$1.50 per 100.

Trumpet Major. Large flowers of soft yellow, trumpet imbricated, early, distinct, fine for cutting. Price, 30c. per doz.; \$2.00 per 100.

Trumpet Major (Spurious). Yellow imbricated perianth and large yellow trumpet, a fine and distinct form, early, and grand for cutting. Price 30c. per doz.; \$2.00 per 100.



GOLDEN SPUR NARCISSUS.

Narcissus, or Daffodils.—Continued.

DOUBLE VARIETIES.

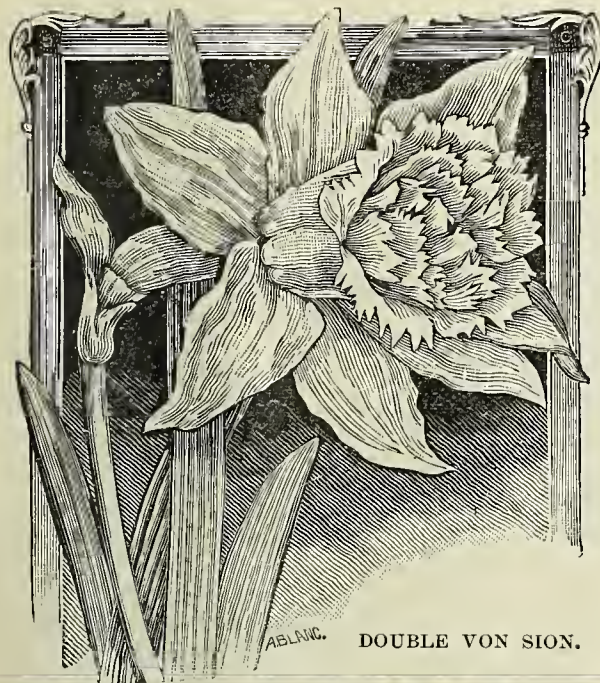
- Alba Plena Odorata** (The double White Poet's Narcissus). Snow-white gardenia-like flowers, exquisitely scented, fine for forcing. Price, 20c. per doz.; \$1.00 per 100.
- Incomparabilis**, fl. pl. (Butter and Eggs). Yellow, very double. Price, 25c. per doz.; \$1.50 per 100.
- Orange Phoenix** (Eggs and Bacon). Beautiful, large double white flowers, with rich orange scarlet segments. Price, 35c. per doz.; \$2.50 per 100.
- Von Sion** (Telamonus Plenus). The double yellow daffodil, one of the best for forcing. Price, 30c. per doz.; \$2.00 per 100.

POLYANTHUS NARCISSUS.

(Or Bunch Flowered Daffodils.)

- Paper White** (Totus Albus). Pure snow white, free flowering and valuable for very early forcing. Price, 25c. per doz.; \$1.50 per 100.
- Paper White** (Large Flowering Grandiflora). The trusses as well as the individual flowers are much larger and earlier than in the old Paper White. Price, 35c. per doz.; \$2.00 per 100.
- Early Double Roman**. White, with orange colored cup, very fragrant. Price, 30c. per doz.; \$1.50 per \$100.
- Gloriosa**. White, with orange cup.
- Grand Monarque**. White, with pale yellow cup.
- Grand Primo**. White and citron.
- Soleil d'Or**. Yellow, with orange cup.
- States General**. Creamy white, citron cup.
Price, 50c. per doz.; \$3.50 per 100.

Mixed Polyanthus Narcissus All colors.
Price, 20c. per doz.; \$1.00 per 100.



CHINESE SACRED LILY.

CHINESE NEW YEAR'S LILY.

(Oriental Narcissus, or Fairy Flower.)

This popular variety of Narcissus, which is grown by the Chinese for their New Year's festivals, comes into flower four or five weeks from time of planting. The flowers are white, with yellow cups, produced in bunches of from five to six on each stem. An open dish half filled with pebbles is the most suitable and convenient way to grow them. Price, 10c. each; \$1.00 per doz.



POLYANTHUS NARCISSUS.

Crocus.

The Crocus is the earliest and most popular of spring flowers, and will thrive in any soil or situation. The bulbs should be planted from September to the end of November. Plant three inches deep, in lines, clumps, or masses, as taste may require, setting the bulbs two inches apart.

HYBRID NAMED CROCUS.

These are composed of all the best and most beautiful varieties, and are remarkable for richness of color and the immense size of their flowers.

	Per Doz.	Per 100.	Per 1,000.
David Rizzio. Dark purple..	\$0 15	\$0 60	\$5 00
Golden Yellow. Large.....	15	60	5 00
Mont Blanc. Large pure white.....	15	60	5 00
Non Plus Ultra. Purple, white top.....	15	60	5 00
Prince Albert. Bright purple.....	15	60	5 00
Sir Walter Scott. White, striped lilac.	15	60	5 00
Yellow Prince. Large, golden yellow..	15	60	5 00
Queen Victoria. Pure white.....	15	60	5 00



CAMPERNELLE JONQUILS.

MIXED CROCUS.

	Per Doz.	Per 100.	Per 1000.
Blue and Purple. Mixed shades.....	\$0 10	\$0 40	\$3 00
Striped and Variegated. Mixed shades.....	10	40	3 00
White. Mixed shades.....	10	40	3 00
Mixed. All colors.....	10	40	3 00
Large Yellow.....	10	40	3 00

Freesia.

This bulb is fast becoming one of the most popular and profitable grown for early winter flowers, and the ready facility with which it can be forced into bloom makes it highly prized by both amateur and florist.

- Refracta Alba.** Pure white, blotched with yellow.
Extra Large Bulbs. Price, 20c. per doz. ; \$1.00 per 100.
- Leichtlini Major.** Beautiful golden yellow flowers.
First Size Bulbs. Price, 40c. per doz. ; \$2.00 per 100.

Jonquils.

These are charming yellow flowers of the Narcissus order, and are highly prized for their delicious perfume. They are excellent for pot culture and, being perfectly hardy, may be planted in the open borders, and are exceedingly useful for cutting for bouquets.

	Per Doz.	Per 100.
Single Campernelle. Yellow large flowers.....	\$0 20	\$1 00
Single Sweet Scented. Rich yellow, fragrant.....	20	1 00
Double Sweet Scented. Golden yellow, fine.. . . .	50	3 50



CROCUS.



FREESIA REFRACTA ALBA.

Bermuda Easter Lily.

LILIUM HARRISII.

This well-known and popular variety has large snow white trumpet-shaped flowers, of rich fragrance and good substance.

For early forcing the bulbs should be planted in August, and by successive planting a profusion of bloom can be had from Christmas until spring.

First size (5 to 7 inches). Price, 10c. each; 60c. per doz.; \$3.50 per 100.

Extra size (7 to 9 inches). Price, 15c. each; \$1.00 per doz., \$8.00 per 100.

Mammoth size (9 to 11 inches). Price, 25c. each; \$2.50 per doz.; \$15.00 per 100.

Lilies.

Auratum (The Golden Lily of Japan). Delicate white, thickly studded with crimson spots, and through the centre of each petal is a bright gold band; large and fragrant. **Extra strong bulbs,**

Each.	Per Doz.
\$0 15	\$1 50

Brownii. Creamy white, shaded with chocolate, extra.....

1 00	8 00
------	------

Candidum (St. Joseph's Lily). Snow white, very fragrant.....

10	1 00
----	------

Canadense. A native lily, with bell shaped drooping yellow and red flowers.....

10	1 00
----	------

Chalcedonicum. Bright scarlet, recurved flowers,

30	3 00
----	------

Excelsum. A delicate light buff color, very fragrant,

40	4 00
----	------

Leichtlinii (from Japan). Pure canary yellow, with crimson spots.....

40	4 00
----	------

Longiflorum. One of the best for forcing, snow white, fragrant.....

15	1 50
----	------

Martagon. Various colors, mixed.....

15	1 50
----	------

Superbum. Deep orange red.....

10	1 00
----	------

Tenuifolium (Coral Lily of Siberia). Brilliant scarlet flowers, very early.....

25	2 50
----	------

Tigrinum (Tiger Lily). Orange salmon, 3 feet high.

10	1 00
----	------

Tigrinum Flore Pleno (New Double Tiger Lily),

10	1 00
----	------

Umbellatum. Mixed colors.....

10	1 00
----	------

Wallacei. A magnificent Japanese variety, clear buff flowers, spotted with black.....

20	2 00
----	------



LILIUM HARRISII.



LILIUM AURATUM.

LILIES (Lancifolium).—Continued.

The varieties of Lancifolium are, perhaps, the most popular lilies grown, being easy of cultivation, very showy, distinct and fragrant.

Album. Pure white and very fragrant. Price, 20c. each; \$2.00 per doz.

Album Præcox. Pure white, with a rose tint on the ends of the petals: form perfect. Price, 20c. each; \$2.00 per doz.

Monstrosum Album. Distinct variety, pure white flowers, very floriferous. Price, 20c. each; \$2.00 per doz.

Roseum White, spotted with rose. Price, 15c. each; \$1.50 per doz.

Rubrum Rose, spotted with crimson. Price, 15c. each; \$1.50 per doz.



LILY OF THE VALLEY.

from 6 to 12 in each, watering freely, keeping in a cold cellar, and starting from week to week to keep up a succession: they usually flower three or four weeks after planting.

Strong Berlin Pips, 25c. per doz.; \$1.50 per 100; \$10.00 per 1,000. **Selected Clumps,** 25c. each; \$2.50 per doz.

Calla Lilies.

WHITE CALLA, or LILY OF THE NILE.

(RICHARDIA ÆTHIOPICA.)

We offer dry bulbs for forcing and winter flowering purposes. Dry bulbs planted in 4-inch pots will give better results than plants in 6-inch pots that have been kept growing.

Dry Bulbs, extra large, 20c. each; \$2.00 per doz.

SPOTTED LEAF CALLA.

(RICHARDIA ALBA MACULATA.)

This variety is always ornamental, even when not in flower, the dark green leaves being beautifully spotted with white. **Dry Roots,** 15c. each; \$1.50 per doz.

DWARF CALLA LILY, "THE GEM."

(RICHARDIA NANA.)

The flowers are somewhat smaller than the ordinary variety, and it is in every way its superior for a pot plant. It is very prolific in flowering, throwing four to five blooms from one medium-sized bulb, and seldom grows higher than 1½ feet. 25c. each; \$2.50 per doz.

LILY OF THE VALLEY.

(Ready for delivery about 1st of November.)

The lily of the valley is one of the most useful and popular flowers grown. Snow white color, and very sweet scented. It is now a most popular plant for forcing, which is easily done by planting the pips in pots,



WHITE CALLA LILY.



AMARYLLIS BELLADONNA.

ARUMS.

Peculiar hardy plant, with large and distinct foliage, and flowers of a dark maroon color, long smooth stem, beautifully mottled and handsome palmlike flowers.

Dracuncululus (Dragon Flower).....15c. each.

Amaryllis.

These bulbs are the most gorgeous of bulbous plants. They should be cultivated under glass, using care in watering, unless when in flower. The spikes measure from two to three feet, bearing from two to five trumpet-shaped flowers, comprising the most beautiful colors.

	Each.		Each.
Aulica (Lily of the Palace). Crimson, shaded with green.....	\$1 25	Regina. Orange, scarlet and white,	\$1 50
Belladonna. Violet and white.....	20	Treatæ (Florida Fairy Lily).	10
Belladonna Major. Large; violet and white.....	20	Vittata. Scarlet, striped pure white,	35
Cleopatra. Dark red white margin,	2 00	FINE MIXED HYBRID. Brilliant colors.....	60
Crocea. Orange scarlet, with white,	1 25		
Falcata. Splendid; purplish red....	3 00		
Formosissima (Jacobean Lily). Scarlet.....	15		
Graveana. Orange red and white... ..	60		
Johnsonii. Crimson, striped with white.....	60		
Longifolia Rosea. Rose; hardy....	25		
“ Alba. White; hardy... ..	30		
Lutea (Stenbergia). Bright yellow..	10		
Prince of Orange. Bright orange..	1 50		



HYBRID AMARYLLIS.

Miscellaneous Bulbs.

ANEMONES.

The anemone is unsurpassed among spring flowers for brilliancy of color and duration of blooming.

Finest Mixed. Single. Price, 25c. per doz.; \$1.00 per 100.

“ “ Double. Price, 30c. per doz.; \$1.50 per 100

Anemone Fulgens (Scarlet Wind Flower). The most brilliant of all winter and spring flowering anemones. The rich, dazzling scarlet flowers render it the most attractive scarlet flower of spring. It is valuable for cutting, as it lasts a long time in water. Price, 35c. per doz.; \$2.50 per 100.

ACHIMENES.

Ready in November.

These are splendid and profuse summer blooming plants for the conservatory or warm-window decoration: flowers of many charming colors, ranging through all shades from white to crimson, including many beautifully spotted Mixed Varieties. Price, 10c each; \$1.00 per doz.



ANEMONE FULGENS.

AGAPANTHUS UMBELLATUS.

A fine bulbous rooted plant, with flower stalk about three feet high, crowned with a head of twenty or thirty bright blue flowers, which open in succession during the summer. They should be grown in a sandy loam, enriched with well rotted manure, and liberally supplied with water while growing.

Price, 20c. each.



WINTER ACONITE.

ACONITE, WINTER.

One of the earliest of spring flowers, the golden flowers forming a charming picture against the dark green leaves.

The foliage remains green long after the flowers, making it valuable more especially in shady places. Price, 30c. per doz.; \$1.25 per 100.



ALLIUM NEAPOLITANUM.

ALLIUM NEAPOLITANUM.

A splendid variety for winter flowering, pure white flowers, with green stamens, borne in large umbels, very easily forced, and good for cut flowers.

Price, 25c. per doz.; \$1.25 per 100.

BRODIAEAS.

Half-hardy California bulbs. They have long tubular flowers, borne in clusters, of easy culture, and succeed well in pots.

Mixed colors, 30c. per doz. ; \$2.00 per 100.

BABIANAS.

This group has showy flowers of various colors, ranging through various shades of blue or rich crimson. They may be grown in pots for flowering during the winter, or planted in cold frame for spring blooming.

Price, 35c. per doz. ; \$2.50 per 100.

CHIONODOXA.

(Glory of the Snow.)

One of the most charming of spring flowering bulbs, producing spikes of lovely azure blue flowers, with pure white centres. It is easily cultivated and perfectly hardy.

Price, 20c. per doz. ; \$1.00 per 100.



SPIREA JAPONICA.

ASTILBE—SPIREA.

(Ready in November.)

Japonica. A perfectly hardy herbaceous plant with large feathery white flowers, largely grown for forcing in pots, and splendid for cutting. Price, 10c. each ; \$1.00 per doz. ; \$6.00 per 100.

Nana Compacta Multiflora. Compact in growth, foliage brilliant green, free flowering, pure white. Price, 15c. each ; \$1.50 per doz.

Palmata. Crimson, very showy. Price, 15c. each ; \$1.50 per doz.



CHIONODOXA.



SINGLE BEGONIA.

TUBEROUS BEGONIAS.

This magnificent strain of double and single begonias, which we now offer, surpasses all the European introductions. The mammoth flowers comprise the most gorgeous colors, ranging from deep blood crimson through all shades of scarlet, yellow and white. They are easily forced, and for cut flowers the double has no equal.

NAMED VARIETIES, DOUBLE AND SINGLE.

Extra Large Bulbs. 40c. each ; \$4.00 per doz.

Mixed Shades. Colors separate. 20c. each ; \$2.00 per doz.

Choice Mixed. 15c. each ; \$1.50 per doz.,

GLADIOLUS.**Early Flowering.**

These are being used more largely every year for forcing and planting in open ground; should always be planted in the Fall; although hardy they are better to have a slight covering of hay or straw when planted in the open border.

Colvili. Purple and straw. Price, 20c. per doz.; \$1.00 per 100.

Colvili Alba (The Bride). White; used for forcing. 20c. per doz.; \$1.00 per 100.

DIELYTRA SPECTABILIS.**(Bleeding Heart.)**

A tuberous rooted spring flowering plant, producing long drooping racemes of delicate white and pink heart-shaped flowers.

Large Clumps, 15c. each; \$1.50 per doz.

CROWN IMPERIALS.

Stately growing plants for outdoor culture, with dark green foliage and flowers of various shades of yellow and crimson.

Mixed Colors, 15c. each; \$1.00 per doz.

**FRITILLARIA MELEAGRIS.****Snake's-Head or Guinea Hen Flower.**

A beautiful group of spring flowering plants, bearing bell shaped flowers of various colors: yellow, white, black, purple, striped and splashed. They are very effective in mixed flower borders, where they can remain undisturbed for several years.

Mixed Colors, 25c. per doz.; \$1.25 per 100.



CYCLAMEN

CYCLAMEN.

A valuable greenhouse plant, the rich blooms of which are largely used by bouquet makers to give variety when making up baskets and bouquets. Their orchid-like blooms possess great beauty and fragrance.

Cyclamen Persicum. In colors, 10c. each; \$1.00 per doz.

Cyclamen Persicum Gigantum. In colors. Price, 20c. each; \$2.00 per doz.



FRITILLARIA MELEAGRIS.

ERYTHRONIUM. (Dog's Tooth Violets.)

DOG'S-TOOTH VIOLET.

A charming group of spring flowering bulbous plants, perfectly hardy; the foliage is variegated, and the numerous cyclamen-like flowers are large, varying in color from white to deep purple.

Mixed Colors, 30c. per doz.; \$2.00 per 100.

IRIS. (Fleur de Lis.)**The Orchid of the Garden.**

(Ready in November.)

This magnificent class of flowering bulbs are well adapted for pot or outdoor culture. They are easily cultivated, hardy, and when well established the bulbs will stand for years.

Anglica (English). Mixed colors. Price, 5c. each; 25c. per doz.; \$1.50 per 100.

Germanica (German Iris). Well known species, with numerous elegant varieties, mixed colors. Price, 10c. each; \$1.00 per doz.

Hispanica (Spanish). Mixed colors. Price, 5c. each; 15c. per doz.; \$1.00 per 100.

Kampferii (Japanese Iris). Assorted varieties. Price, 10c. each; \$1.00 per doz.; \$5.00 per 100.

Kampferii. Double, valuable for forcing and cut flowers. Price, 25c. each; \$2.50 per doz.

Kampferii. Named Sorts, 25c. each; \$2.50 per doz.

Morea Pavonia (Peacock). Pure white with blue spots. Price, 10c. each; 75c. per doz.; \$5.00 per 100

Reticulata. Violet blue, spotted with white, yellow and black. Price, 10c. each; \$1.00 per doz.

Susiana Major (Chalcedonian Iris). Blush, tinted brown, dark lines. Price, 20c. each; \$2.00 per doz.

IXIAS.

These charming half-hardy bulbs are very ornamental for indoor culture, or outdoors in well protected borders. They are graceful in habit, and the flowers are of the most brilliant and varied hues, and when fully expanded they make a charming display.

Mixed Varieties. Price, 20c. per doz.; \$1.00 per 100.



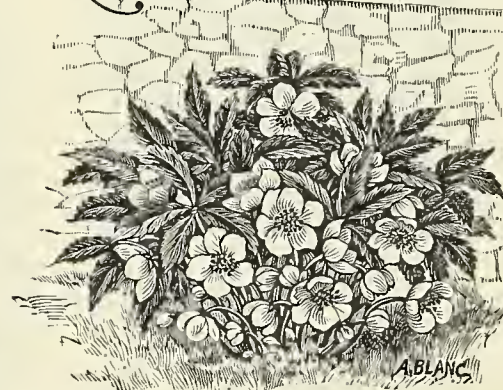
IXIA.

**LEUCOJUM VERNUM.****(Spring Snowflake.)**

A charming early blooming plant, resembling the snowdrop, but of taller growth, pure white flowers with a green spot on each petal. Price, 30c. per dozen; \$2.00 per 100.

ORNITHOGALUM ARABICUM.**(Star of Bethlehem.)**

Large pure white flowers, with black centre, borne in clusters on stalks from 15 to 18 inches high. Hardy and suitable for the open border. Price, 50c. per doz.; \$3.00 per 100.

**HELLEBORUS NIGER.****(The Christmas Rose.)**

One of the most useful of our winter-blooming plants, quite hardy, readily forced. Great care must be taken to avoid giving them heat. The flowers range through all shades of white, red, rose and purple.

Price, 25c. each; \$2.50 per doz.



OXALIS.

These very interesting little plants are particularly adapted for pot culture; they are of dwarf habit, growing about a foot high, lovely in color, and flower without intermission.

Named Varieties, 30c. per doz. : \$2.00 per 100.

Mixed Colors, 20c. per doz. ; \$1.50 per 100.

Buttercup. A splendid winter blooming plant, for pot culture. The flowers are pure bright yellow, and produced in great abundance. It is very easily cultivated. 10c. each; 75c. per doz. ; \$5.00 per 100.

SCILLAS.

Very beautiful early spring flowering bulbs of dwarf habit, from 6 to 8 inches in height, with drooping bell-shaped blossoms. They are quite hardy and easily cultivated.

Amœna. Very fine blue. Price, 15c. per doz. ; 75c. per 100.

Campanulata. Large flowers on spikes, two feet high, three colors, blue, rose and white. Price, 25c. per doz. ; \$1.50 per 100.

Peruviana Alba. Pure white. Price, 25c. each : \$1.50 per doz.

Peruviana. Large pyramidal heads of bright blue flowers, excellent for pot culture. 10c. each : \$1.00 per doz.

Siberica. Blue, very early. Price, 15c. per doz. : 75c. per 100.

SNOWDROPS. (Galanthus Nivalis.)

These beautiful little snow-white flowers, the earliest of all spring flowering bulbs, are most suitable for planting on margins of beds or borders, and on lawns where a fine effect may be obtained by dibbling holes into the grass about a foot apart and four inches deep, and planting a bulb in each hole.

Single Flowering. 15c. per doz. ; 85c. per 100; \$6.00 per 1,000.

Double Flowering. 25c. per doz. ; \$1.50 per 100 ; \$12.00 per 1,000.

GIANT SNOWDROP.

(Galanthus Elwesii.)

This gigantic snowdrop is at least three times the size of the ordinary sort. The flowers are large, pure white, marked with green spots; fine for cutting.

Price, 15c. per doz. ; \$1.00 per 100.

SPARAXIS.

These differ from the Ixia in their dwarf habit, time of flowering and brilliancy of color, ranging through the various shades, crimson, scarlet, white, and striped. • **Mixed colors.**

Price, 20c. per doz. ; \$1.25 per 100.



SINGLE SNOWDROP.

DOUBLE RANUNCULUS.

Brilliant, showy flowers, blooming in June, requiring deep, rich, loamy soil.

Turban. Very double, colors comprise nearly every shade of white, crimson, yellow, purple.

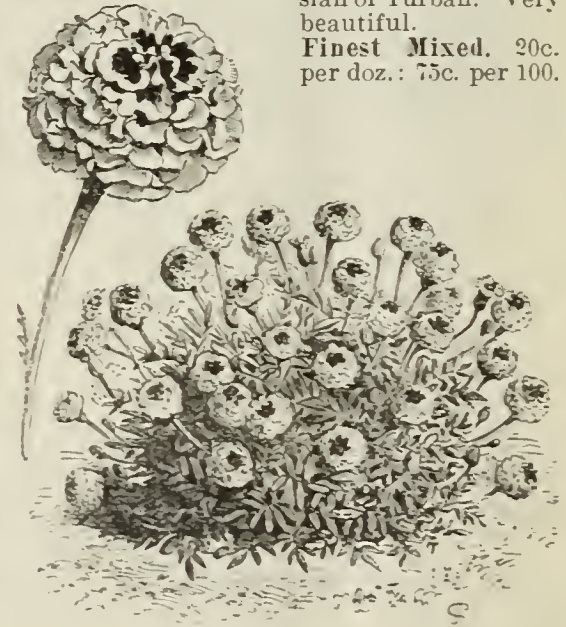
Finest Mixed, 20c. per doz. : 75c. per 100.

Persian. These are quite distinct, producing smaller flowers and blooming later than the Turban.

Finest Mixed, 20c. per doz. : 75c. per 100.

French. More vigorous in growth and larger flowered than the Persian or Turban. Very beautiful.

Finest Mixed, 20c. per doz. : 75c. per 100.



DOUBLE RANUNCULUS.

Vegetable Seeds for Fall Sowing.

ASPARAGUS ROOTS.

Conover's Colossal (2 years old).
Price, \$1.00 per 100; \$7.00 per 1,000.

BEANS.

	Qt.	Peck.
Early Red Valentine,	\$0 25	\$1 25
“ Mohawk.....	25	1 25
Dwarf Black Wax.....	30	1 50
Golden Wax	30	1 50
Refugee Wax	30	2 00

BEET.

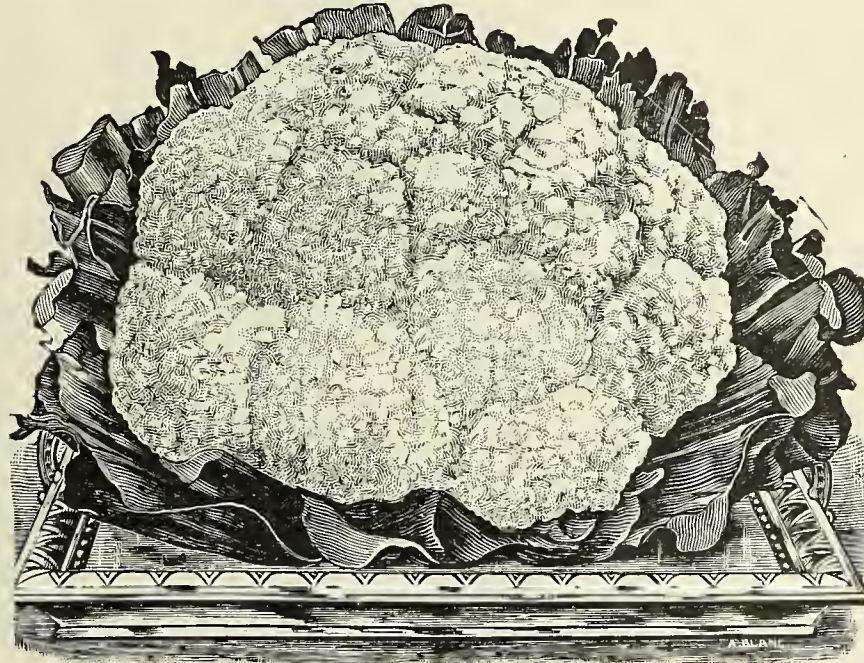
	Pkt.	Oz.	Lb.
Egyptian.....	\$0 05	\$0 10	\$0 50
Eclipse.....	05	10	50
Early Bl'd Turnip,	05	10	50
Bastian's Blood Turnip.....	05	10	50

CABBAGE.

	Pkt.	Oz.	Lb.
Select Early Jersey Wakefield.....	\$0 05	\$0 30	\$3 00
Improved Early Summer.....	05	25	3 00
Newark Early Flat Dutch.....	05	30	3 00
All Seasons.....	05	20	3 00
Red Drumhead....	05	25	2 50
Perfection Drum- head, Savoy.....	10	30	3 00

CARROT.

	Pkt.	Oz.	Lb.
Early French Forc- ing	\$0 05	\$0 15	\$1 25
Early Scarl't Horn,	05	10	1 00
Early Half Long Red (Stump Rooted),	05	10	90
Danvers Half L'ng,	05	10	80
Imp'd Long Orange,	05	10	75



FIRST AND BEST CAULIFLOWER.

LETTUCE.

	Pkt.	Oz.	Lb.
All the Year Round.....	\$0 05	\$0 15	\$1 25
Boston Market. Best for forcing.....	05	15	1 25
Early Curled Simpson.....	05	15	1 25
Hardy Green Winter.....	05	15	1 25
Large White Summer.....	05	15	1 25
Paris White Cos.....	05	15	1 25
Salamander.....	05	15	1 25
Tennis Ball (Black seeded).....	05	15	1 25
Big Boston.....	05	15	1 25
Golden Queen.....	05	15	1 25

CAULIFLOWER.

First and Best, New;
surest header; best
for forcing and out-
door planting; a grand

	Pkt.	Oz.
cauliflower	\$0 50	\$10 00
Erfurt Earliest Dwarf,	50	10 00
Carrara Rock.....	50	10 00
Early Snowball.....	25	3 50

CORN SALAD, OR FETTICUS.

	Pkt.	Oz.	Lb.
Large Seeded.....	\$0 05	\$0 10	\$0 75

CUCUMBER.

	Pkt.	Oz.	Lb.
Bennett's Improv'd White Spine ...	\$0 05	\$0 10	\$1 00
Early White Spine,	05	10	75
Nichol's Medium Green	05	10	75
Tailby's Hybrid...	05	10	75
English Frame or Forcing Sorts...	25		

ENDIVE.

	Pkt.	Oz.	Lb.
Green Curled.....	\$0 05	\$0 15	\$1 15
Moss "	05	15	1 50
Broad Leaved Ba- tavian (Escarolle)	05	15	1 50

KALE, OR BORECOLE.

	Pkt.	Oz.	Lb.
German Greens or Winter Sprouts,	\$0 05	\$0 10	\$0 60
Brown German Curled	05	10	1 00
Green Curled Scotch.....	05	10	1 00

MUSHROOM SPAWN.

English. Price, 15c. per lb.; 8 lbs. for \$1.00.
 French. Price, box of 2 lbs., 75c.

ONION (ITALIAN VARIETIES).

	Pkt.	Oz.	Lb.
Red Bermuda.....	\$0 05	\$0 20	\$2 25
Red Italian Tripoli.....	05	20	1 75
White Bermuda.....	05	20	2 25
White Italian Tripoli.....	05	20	1 75

PARSLEY.

	Pkt.	Oz.	Lb.
Double Curled.....	\$0 05	\$0 10	\$0 75
Fern Leaved.....	05	10	80
Plain.....	05	10	75

PEAS.

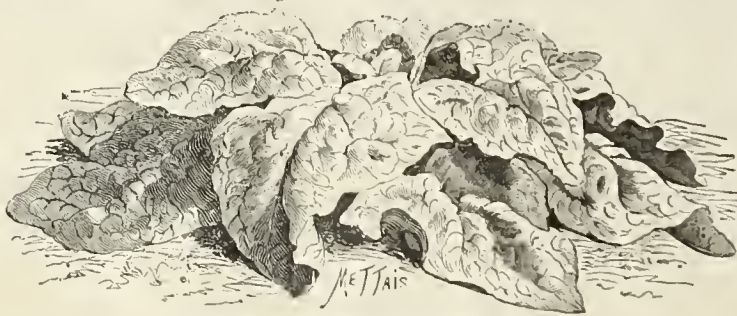
	Quart.	Peck.
American Wonder.....	\$0 30	\$2 00
Black-Eyed Marrowfat.....	20	1 00
Champion of England.....	20	1 25
Improved Daniel O'Rourke.....	25	1 15
McLean's Advancer.....	25	1 25
McLean's Little Gem.....	30	1 60
New York Market. The earliest and best cropper.....	25	1 25
Philadelphia Extra Early.....	25	1 15
Premium Gem.....	30	1 75
Pride of the Market.....	30	1 75
Yorkshire Hero.....	25	1 25



EARLIEST CARMINE FORCING RADISH.

RADISH.

	Pkt.	Oz.	Lb.
Earliest Carmine Forcing.....	\$0 05	\$0 10	\$1 00
Earliest Searlet Turnip.....			
White Tip Forcing.....	05	10	1 00
Earliest Scarlet Globe.....			
Forcing.....	05	10	1 00
Non Plus Ultra Forcing.....	05	10	1 00
Earliest Deep Searlet.....			
Turnip Forcing.....	05	10	1 00
Early Searlet Turnip.....	05	10	65
Early White Turnip.....	05	10	75
French Breakfast.....	05	10	75
Long Searlet Short Top.....	05	10	65
White Tipped Searlet.....			
Turnip.....	05	10	75
Rose China Winter.....	05	10	75
Black Spanish Winter.....	05	10	75
California Mammoth.....			
White Winter. A white-fleshed radish of excellent quality.....	05	10	1 00



LARGE THICK-LEAVED SPINACH.

SPINACH.

	Pkt.	Oz.	Lb.
Bloomsdale Savoy.....			
Leaved.....	\$0 05	\$0 10	\$0 40
Large Round Leaf.....			
Viroflay.....	05	10	35
Priekly.....	05	10	35
Round Leaf.....	05	10	35

TOMATO.

	Pkt.	Oz.	Lb.
Acme.....	\$0 05	\$0 20	\$2 00
Early Ruby.....	10	25	2 50
Livingston's Favorite.....	05	20	2 00
Perfection.....	05	20	2 00
The Lorillard.....	05	20	2 50
Trophy Extra.....			
Selected.....	05	20	2 50

TURNIP.

	Pkt.	Oz.	Lb.
Early White Strap.....			
Leaf.....	\$0 05	\$0 10	\$0 50
Golden Ball.....	05	10	50
Purple Top White.....			
Globe.....	05	10	50
Red Top Strap Leaf.....	05	10	50
White Egg.....	05	10	50
Yellow Aberdeen.....	05	10	50
Yellow Globe.....	05	10	50
Yellow Stone.....	05	10	50

RUTA BAGA TURNIP.

	Pkt.	Oz.	Lb.
Improved American.....			
(Purple Top).....	\$0 05	\$0 10	\$0 50
Long White French.....	05	10	50
Skirring's (Purple Top).....	05	10	50

Flower Seeds for Fall Sowing.



MIGNONETTE LEVIATHAN.

MIGNONETTE LEVIATHAN.

This is, without doubt, the largest, most compact and odoriferous mignonette yet introduced. The seed we offer was saved from selected spikes measuring from 15 to 20 inches.

Price, 15c. per pkt.; \$1.00 per oz.

Auricula. Choice.....	Per Pkt.	\$0 25
Begonia, Double. Tuberous rooted.....		25
“ Single, “ “		15

Bellis Perennis, fl. pl. (Daisy) mixed.....	Per Pkt.	\$0 10
Calceolaria Hybrida Superba. Mixed....		25
Campanula Media (Canterbury Bells) Single		05
“ “ “ Double		05
Candytuft Dwarf Hybrid. Mixed.....		10
“ Perennial.....		10
Carnation. Choice mixed.....		25
“ Perpetual or tree.....		25
Centaurea Candidissima (1,000 seeds \$1.50),		10
“ Gymnocarpa (1 oz. for \$2.00)....		10
Chrysanthemum. Perennial, finest mixed,		50
Cineraria. Finest mixed.....		25
Cyclamen. Persicum, choice		10
“ “ giganteum.....		25
Delphinium Hybridum. Mixed.....		10
Dianthus of Sorts.		05
Digitalis (Foxglove). Mixed.....		05
Gloxinia Hybrida. Choice.....		25
Hollyhock. Double mixed, choice		10
“ “ white		10
Lobelia Erinus C. P. Compacta		10
Lychuis Chalcedonica		05
Mignonette, Large Flowering Pyramidal..		05
“ Machet. Dwarf red		10
“ Miles Hybrid Spiral, large white		05
Myosotis Palustris (Forget-me-not).....		05
“ Azorica		10
Pentstemon. Finest mixed.. ..		10
Petunia Hybrida. Grand, Pleno.....		25
“ New German Hybrid.....		10
Primula Fringed. Red, white and mixed, ea.,		25
“ “ Alba Magnifica		35
“ “ Double white and red, each		50
Polyanthus. Extra choice, mixed.....		10
Picotee. “ “ “		25
Smilax		10
Stock. Intermediate. scarlet. white, each,		10
“ Brompton and Emperor		10
“ Perpetual, Princess Alice.....		10

Sweet William. Mixed.....	Per Pkt.	\$0 05
“ “ Double.....		05
Verbena Hybrida. Extra choice....		10
Wall Flower. Mixed, Single.....		05
“ “ Double.....		10



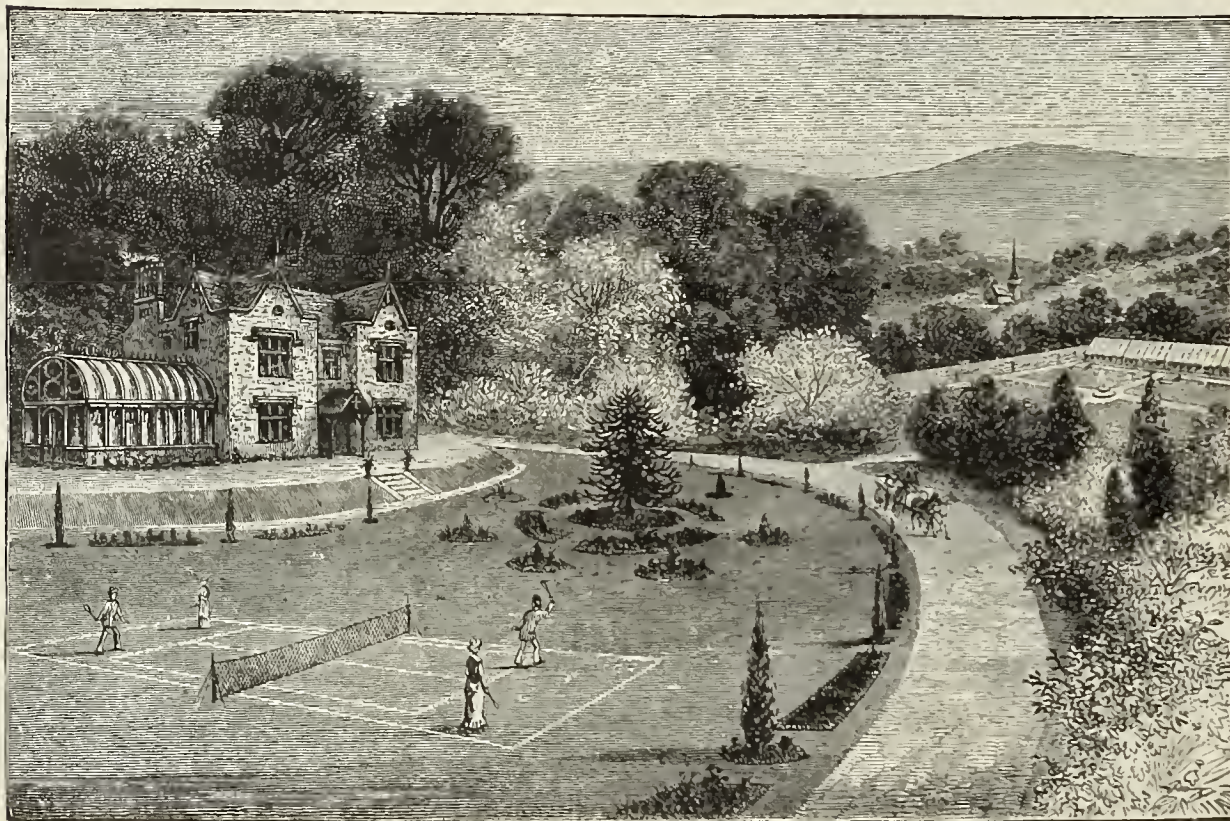
AMERICAN SHOW PANSY.

PANSIES.

American Show. The largest and most	Per Pkt.	\$0 25
superb; colors unequalled.. ..		25
Fancy. Extra choice, mixed.....		15
English. “ “		15
Trimardeau. “ “		15
French. Finest colors.....		10

WEEBER & DON'S CENTRAL PARK LAWN GRASS.

WEIGHT, 20 POUNDS PER BUSHEL.



This lawn mixture is composed entirely of the finest quality of fine-leaved dwarf (evergreen) growing grasses, in such proportions as will enable it to withstand the extreme heat of our summer. We give special attention to the recleaning of our grass seeds, removing all obnoxious weeds and foreign substances, thus insuring a perfect and clean lawn.

We recommend four bushels of seed to the acre: the thicker the seed is sown the sooner a smooth, velvety lawn will be obtained.

One Quart of Seed will sow 15 x 20 feet.

Price, 25c. per quart; \$1.25 per peck; \$4.50 per bushel (20 lbs.); \$20.00 per 100 lbs.

FRENCH LAWN GRASS.

Good Mixture.

Price, 25c. per quart; \$1.00 per peck; \$3.50 per bushel (15 lbs.).

WEEBER & DON'S LAWN GRASS.

For Terraces.

Price, 30c. per quart; \$1.75 per peck, \$7.00 per bushel (20 lbs.).

WEEBER & DON'S LAWN GRASS.

For Shady Places and Under Trees.

Price, 30c. per quart; \$2.00 per peck; \$7.00 per bushel (20 lbs.).

FULL DIRECTIONS FOR MAKING A LAWN PRINTED ON EACH BOX.

Weeber & Don's Special Mixture of Grasses and Clovers

FOR HAY AND PERMANENT PASTURE.

In our Special Mixture we include the following varieties of grass seed, adjusted in such proportions to suit the various soils: Orchard Grass, Meadow Foxtail, Sheep, Hard and Meadow Fescue, Timothy, Rhode Island Bent, Sweet Vernal (Perennial), English and Italian Rye Grass, Red Top and Kentucky Blue Grass.

This special mixture may be sown either in the spring or fall, using three bushels of seed to one acre, with an additional ten pounds of mixed Clover, sown in the spring.

Special Mixture, per bushel (14 lbs.), \$2.50.

Mixed Clover, per lb., 20c. Special quotations for large quantities.

GENERAL LIST OF GRASSES AND CLOVERS.

Prices Subject to Change.

Red Top (*Agrostis Vulgaris*). Valuable for either pastures or lawns. Per bush. (14 lbs.), \$2.00; bag (50 lbs.), \$7.00.

Fancy Red Top. Clean seed, free from chaff. Per lb., 30c.; bush. (30 lbs.), \$7.50.

Kentucky Blue Grass (*Poa Pratensis*). Well known and extensively grown in all parts of the country; thrives well in a variety of soils, and endures the hottest summers. Per bush. (14 lbs.), \$2.50.

Orchard Grass (*Dactylis Glomerata*). A valuable pasture grass, relished by stocks of all kinds, particularly adapted for growing in shady, moist places, under trees, etc. Per bush. (14 lbs.), \$2.00.

Timothy or Herd Grass (*Phleum Pratense*). A variety well known and highly appreciated, producing a profitable hay crop in almost any soil. Per bush. (45 lbs.), \$3.50.

Meadow Foxtail (*Alopecurus Pratensis*). One of the earliest and best pasture grasses, grows rapidly when cut or eaten down by stock. Per lb., 40c.

Sweet Vernal Grass (*Anthoxanthum Odoratum*). Prized more for its early growth than nutritive value. Per lb., 40c.

Tall Oat Grass (*Avena Elatior*). Producing an early and luxuriant growth, this is a valuable variety for pastures. Per bush. (10 lbs.), \$2.50.

Rhode Island Bent (*Agrostis* Var.). Excellent for lawns and pastures. Per bush. (14 lbs.), \$3.00.

Crested Dogtail (*Cynosurus Cristatus*). An excellent grass for hard, dry soils. Valuable for pastures and lawns. Per lb., 40c.

Hard Fescue (*Festuca Duriuscula*). One of the most desirable dwarf grasses, excellent for dry soils. Per lb., 25c.

Meadow Fescue (*Festuca Pratensis*). A valuable grass for permanent pastures, very productive and nutritious. Per lb., 20c.

Sheep Fescue (*Festuca Ovina*). An excellent grass for sheep pastures. Per lb., 25c.

English Rye Grass (*Lolium Perenne*). A very nutritious, rapid growing variety, valuable for meadows and pastures. Per bush. (24 lbs.), \$2.00.

Italian Rye Grass (*Lolium Italicum*). A valuable European variety, adapted to any climate, and produces large and nutritive crops. Per bush. (18 lbs.), \$2.00.

Rough Stalked Meadow Grass (*Poa Trivialis*). Valuable for either moist or dry soils. Per lb., 40c.

Wood Meadow Grass (*Poa Nemoralis*). A very productive and nutritive grass, adapted for lawns or pastures. Thrives well under trees. Per lb., 40c.

CLOVERS.

White (*Trifolium Repens*). Per lb., 30c.

Medium Red (*Trifolium Pratense*). Per lb., 15c.

RYE.

Excelsior (Winter). Per bush., \$1.50.

WHEAT.

Early Red Clawson (Winter). Per bush., \$2.00.

Hybrid Mediterranean (Winter). Per bush., \$2.00.

Fultz (Winter). Per bush., \$2.00.



ORCHARD GRASS.



RED TOP GRASS.

Flower Pot Scrubbers or Brushes.

Strong and durable. Price, 15c. each ; \$1.50 per doz.



The Acme Brass Pump.

This is the simplest, easiest worked, and most effective pump ever made for sprinkling purposes. It is applicable to all horticultural purposes, for watering gardens, conservatories, orchards, or washing houses, windows, carriages, etc.

The Acme Pump. Price, \$5.00 each.

Rustic Hanging Baskets.

	Each.
8 inch diameter	\$1 00
10 " "	1 25
12 " "	1 50

Green Painted Flower Stakes.

	Per Doz.	Per 100.
4 feet long.....	\$0 70	\$5 00
3 " 6 inches long.....	60	4 00
3 " long	50	3 00
2 " 6 inches long.....	40	2 50
2 " long	30	2 00
1 foot 6 inches long.....	20	1 00

Dahlia Stakes (Painted Green).

	Per Doz.	Per 100.
Extra strong, 5 feet	\$1 00	\$7 00
" " 6 "	1 25	9 00

Tying Material.

Raffia, best quality.....	per lb.,	\$0 25
Green and White Twine.....	per ball,	15
" " " "	per doz.,	1 50

Protecting Cloth.

Valuable for protecting early plants from frosts, covering hotbeds and frames in spring, in lieu of glass, and for throwing over bedding plants at night in fall; for Chrysanthemum houses, etc., at one-tenth the cost of glass. Pieces contain from 40 to 60 yards.

Heavy Grade, per yard, 12c.; by piece, per yard, 11c.

Medium Grade, for general purposes, per yard, 10c., by piece, per yard, 9c.

Light Grade, mostly used in south for tobacco plants, per yard, 6c.. by piece, per yard, 5c

Cane Plant Stakes.

These form a valuable substitute for the more expensive plant stakes in use. They are from 5 to 8 feet in length, and can be cut to any desired size. Being light and durable, they are adapted for supporting roses, carnations, gladioli, etc.

Price, \$1.25 per 100; \$10.00 per 1,000.



Wiss's Hand Pruning Shears.

Very useful in the grapery, and for pruning small fruit, vines, etc. Four sizes.

Price, 7-inch, \$1.25; 7½-inch, \$1.50; 8¼-inch, \$1.75; and 9-inch, \$2.00 each.

Trowels.

Forged Steel (American), 6 inch	each,	\$0 45
" " " " 7 "	"	50
Cast Steel, common.....	"	15

Saws.

Double-Edged Pruning. Price, 14-in., 65c.; 16-in., 75c.; 18-in., 85c.; 20-inch, 95c.

Syringes, Brass Garden.



	Each.
No. 1 Length of barrel, 14 inches; diameter, 1 inch; with one stream and two spray roses.....	\$3 00
No. 2. Length of barrel, 16 inches, diameter, 1¼ inch; with one stream and two spray roses	4 00
No. 3. Length of barrel 18 inches diameter; 1½ inch; with one stream and two spray roses....	5 00
No. 5. Patent Ball Valve. Length of barrel, 18 inches; diameter, 1½ inch; with one stream and two spray roses,	7 00

Scissors.

Flower Gatherers, 6-inch,	\$1 00;	7-inch,	\$1.25
Grape Thinners, 6-inch;	1.00;	7-inch,	1.25
Propagating		1.25

Waters' Tree Pruner.

4 feet, \$1.25; 6 feet, \$1.50; 8 feet, \$1.75; 10 feet, \$2.00.

Eagle Tree Pruner.

The knife and guard of this tool are so shaped as to allow the limb to rest on the joint, so that in cutting it cannot injure the bark or the wood. It cuts easier than any other in use. Price, \$1.25

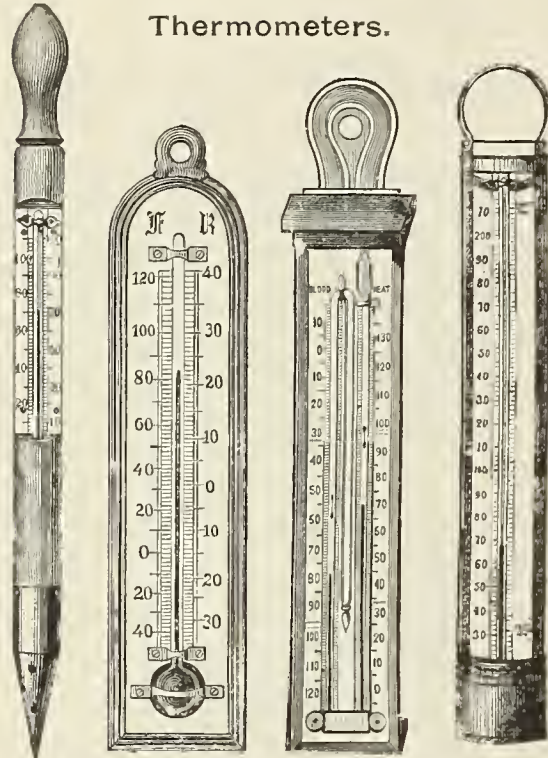
Wolff's Indelible Pencils.

Black. For marking on wood labels for garden purposes. Price, 15c. each.

Wooden Lawn Rakes.

3-bow, 22 teeth. Price, 35c. each.

Thermometers.



- No. 1. Hotbed, boxwood, brass tips, 20 in \$2 00
- No. 2. For conservatory, porcelain.... 1 50
- No. 3. Self-registering, maximum and minimum..... 3 00
- No. 4. Tin case, metal frame, 8 inches, 20
- No. 4. " " " 10 " 25
- No. 4. " " " 12 " 30

Wood Labels.

	Per 100.	Per 1000.		Per 100.	Per 1000.
4 inch, plain,	\$0 10	\$0 50	4 in painted.	\$0 15	\$0 70
5 " " "	15	70	5 " " "	20	85
6 " " "	20	90	6 " " "	25	1 25
7 " " "	30	2 00	Tree Labels,		
8 " " "	35	3 00	Notched..... 10 50		
12 " " "	45	3 50			

Tin Foil.

Price, per lb., 20c.; per 100 lbs.. \$18.00.

Sash.

Hotbed, Unglazed. Size, 3x6 feet, using 6x8 inch glass. Each, \$1.00; per doz, \$11.00.

Tooth Picks (For Stemming).

No. 1. Double-pointed, hardwood 15c. per box; \$1 50 per dozen boxes; \$10.00 per 100 boxes.
 No. 2. Flat-pointed, hardwood, 15c. per box; \$1.50 per dozen boxes; \$10.00 per 100 boxes.

Watering Pots.

Watering Pots. Galvanized iron. 6 qts., 75c.; 8 qts., 85c.; 10 qts., \$1.00; 12 qts., \$1.25; 16 qts., \$1.50.
Watering Pots. French, with long spout and bow handle. 6 qts., \$1.25; 8 qts., \$1.50.
Watering Pots. Philadelphia pattern, with two copper-faced roses. 4 qts., \$1.65; 6 qts., \$1.80; 8 qts., \$1.90; 10 qts., \$2.00; 12 qts., \$2.25.
Watering Pots. Strawberry (Jap. tin). 3 qts. \$2.00.

Stemming Wire.

Coarse or Camellia Wire. Per lb., 25c.
Hair Wire. For Stemming. Per lb., 35c.

Grafting Wax.

Put up in 1, 1/2, and 1/4 lb. packets. This has been in use for a number of years, and is highly recommended. Price, 1/4 lb., 10c.; 1/2 lb., 20c.; 1 lb., 30c.

Excelsior Standard Flower Pots.

These pots are all "Standard" shapes and sizes, the same as adopted and recommended by the Society of American Florists, and are far superior to any other flower pots.

Sizes.	Price Per doz.	Price Per 100.	Price Per 1000.
2 in. Height and Width Inside,	\$0 12	\$0 75	\$6 00
2 1/2 " " " " " " " "	15	90	8 00
3 " " " " " " " "	20	1 25	9 50
3 1/2 " " " " " " " "	25	1 75	14 00
4 " " " " " " " "	35	2 00	18 00
4 1/2 " " " " " " " "	40	2 50	23 00
5 " " " " " " " "	45	2 75	30 00
6 " " " " " " " "	75	4 25	40 00
7 " " " " " " " "	1 25	6 50	58 00
8 " " " " " " " "	1 50	9 00	75 00
9 " " " " " " " "	2 50	16 00	140 00
10 " " " " " " " "	3 00	18 00	160 00
11 " " " " " " " "	3 50	25 00	225 00
12 " " " " " " " "	4 00	27 00	300 00
14 " " " " " " " "	6 00	45 00	400 00

Tissue Paper.

Per ream (480 sheets).....\$2 00

Mats, Straw.

For covering hotbed sashes, etc.: 6 feet by 6 feet. \$1.50 each.

Improved Bellows.



These bellows are the best for distributing powders for the destruction of insects in the garden or orchard. Small size, \$1.00 each. Large size, \$1.25 each.

FERTILIZERS AND INSECTICIDES.

ANT DESTROYER.

A non-poisonous powder which will destroy or drive away black ants from lawns, trees, plants, houses or other affected locality. Price, $\frac{3}{4}$ lb. can, 50c.

BOWKER'S FOOD FOR FLOWERS.

An excellent fertilizer for house plants. Easily applied by dissolving in water. Clean to handle, without odor, produces rich green growth and profusion of flowers. Price, small package, 15 cts.; large package, 25 cts.

FIR TREE OIL.

For destroying all insects and parasites that infest fruit trees and plants, such as Mealy Bugs, American Blight, Red Spider, Green and Black Fly, Caterpillars, Worms, Lice, etc. $\frac{1}{2}$ pt., 40 cts.; 1 pt., 75 cts.; qt., \$1.40; $\frac{1}{2}$ gal., \$2.50; gal., \$4.25.

FLOUR OF SULPHUR.

A preventive and cure for mildew on Grape Vines, Rose Bushes, etc., in or out doors, and for the destruction of insects on plants. Per lb., 19 cts.; 10-lb. lots, 60 cts.

FOSTITE.

A splendid preventive and cure of fungous diseases, against mildew, black rot, leaf blight, rust, etc., affecting vines, fruits, and vegetables. Per 5 lb. package, 50 cts.; 25 lb. box, \$2.00; 50 lb. box, \$3.50; 100 lb. box, \$6.50; per bag of 220 lbs., \$8.75.

GISHURST COMPOUND.

A preparation highly recommended for preventing and destroying Red Spider, Mealy Bug, Thrip, Green and Brown Fly, etc. Per box, 50 cts.

HAMMOND'S GRAPE DUST.

A powder especially prepared to kill grape rot and mildew on Grapes, Gooseberries, Rose Bushes, etc. Apply with a powder bellows. 5-lb. package, 30 cts.; 100-lb. keg, \$5.00.

HAMMOND'S SLUG SHOT.

An Insecticide and Fertilizer Guaranteed to Destroy Potato Bugs, and those on Tomato and Egg Plants, Currant Worms, Cabbage Lice and Worms, and Striped Bugs on Melons, Squash, Turnips, Beets, Onions, etc. Per lb., 10 cts.; 5-lb. package, 25 cts.; 19-lb. package, 45 cts.

LITTLE'S ANTIPEST.

A sure destroyer of all insect pests, non-poisonous and harmless to vegetation. Price, 1 qt. can, \$1.25; $\frac{1}{2}$ gal., \$1.75; 1 gal., \$3.25.

NEW JERSEY PEAT.

Of great value for hothouse and greenhouse plants, and especially for orchids. Per bbl., \$2.25.

NITRATE OF SODA

This is valuable solely for the nitrogen it contains, equal to twenty per cent. of ammonia. It is very quick in action, and hastens the maturity of crops fully two weeks. It is valuable for grain, corn, beets, potatoes, grasses, peas, beans, clover, etc.

Quantity Required.—Being extremely soluble, it should not be applied until the plants are above ground, using 100 to 500 pounds per acre, mixed with wood ashes or land plaster.

Price, 5-lb. package, 30 cts.; 10-lb. package, 50 cts.; 25-lb. bag, \$1.25; 50-lb. bag, \$2.00; 100 lb. bag, \$3.50; 300-lb. bag, \$9.00; \$55.00 per ton.

PULVERIZED SHEEP MANURE.

Mixed with soil or used as a liquid, it has no equal as a plant invigorator. It differs from guano in effect, as it does not overstimulate nor cause an unhealthy reaction. Per bag (100 lbs.), \$3.00; per ton, \$40.00; in packages, 25 and 50 cts. each.

PURE BONE MEAL.

This is a very pure, finely pulverized form of ground bone, especially prepared for rose culture, top dressing for lawns, and for potted plants. Per lb., 10 cts.; 10 lbs., 50 cts.; 100 lbs., \$3.00. In bbls., about 235 lbs., \$2.50 per 100 lbs.; per ton, \$43.00.

PURE CRUSHED BONE.

A coarse grade, well adapted for grape vine borders. Per bbl., about 235 lbs., \$2.50 per 100 lbs.; per ton, \$43.00.

SPHAGNUM MOSS.

Very useful for mixing in soil for potting, also for mulching, packing, etc. Per bbl., \$2.00.

TOBACCO SOAP.

The most convenient and cheap specific for the destruction of Insects, Parasites and their Eggs. Per lb., 35 cts.

WHALE OIL SOAP.

Excellent for destroying and preventing insects on plants, vines, etc. Per lb., 15 cts.; 3-lb. boxes, 40 cts.

WHITE HELLEBORE POWDER.

For destroying the Currant Worm, Rose Slug, etc. Dust on while the foliage is moist. Per lb., 25 cts.

WEEBER & DON'S LAWN INVIGORATOR.

This fertilizer is especially prepared for use on lawns, meadows and pasture lands as a top dressing. It contains, in proper proportions, the ingredients required to supply the wants of the various grasses. Its application will induce a luxuriant growth and impart a beautiful dark green color without the aid of any other manure, and land on which it is used will increase in fertility from year to year. Use from 600 to 1,000 pounds per acre when seeding down, and from 400 to 600 pounds per acre as a top dressing. 5 lbs., 30 cents.; 10 lbs., 50 cts.; 25 lbs., \$1.00; 50 lbs., \$2.00; 100 lbs., \$3.75; 200 lbs., \$7.00; ton of 2,000 lbs., \$60.00.

WEEBER & DON,

Seed Merchants and Growers, - - - 114 Chambers Street, New York.

WEEBER & DON'S SURE CROP MUSHROOM SPAWN.

GERMAN—Champignon. FRENCH—Champignon. SPANISH—Seta. 10 Pounds will Spawn 10 Feet Square.

A FEW DIRECTIONS FOR FORMING MUSHROOM BEDS.

The Mushroom is one of the most profitable crops grown, especially in the vicinity of large cities, where the demand at all seasons is far in excess of the supply.

The best time for making Mushroom beds is in August and September, as in the Fall months the natural heat is sufficient to cause the spawn to germinate freely, and the beds made then ought to bear freely before and up to Christmas. Mushrooms can be grown in sheds, cellars, caves, under benches in greenhouses, and in regular Mushroom houses.

In preparing the materials, collect sufficient fresh horse droppings to form the desired size of bed, spreading them out in an airy shed, and turning them frequently. When in a proper state as to dryness, which will soon be learned by experience, make these into a bed from nine inches to one foot thick, beating them firmly together. If the droppings have been properly prepared, gentle fermentation will soon commence, and when the temperature of the bed is from 75° to 80°, with no danger of it rising higher, put in the spawn. This is done by making shallow holes about nine inches apart, inserting pieces of spawn about the size of a hen's egg, and covering with the dung, pressing this closely about the spawn. It is of the greatest importance that the temperature of the bed should not decline below 75° nor rise above 80° for a month after spawning. Within a fortnight after putting in the spawn, cover the bed about two inches thick with good mellow moist soil; making this firm; and if under this a covering one or two inches thick of cow dung, in about the same state as to moisture as the soil, can be afforded, this will cause the bed to last longer, and also to produce a larger crop than if covered with soil only. The most suitable temperature for beds in bearing is 50° to 55°, and as a high temperature causes the Mushrooms to come small, this should be avoided. Watering beds in bearing often causes the small Mushrooms to damp off; therefore, water only when the bed ceases to be productive, and then use the water about the same temperature as the bed.

Be sure that the *Mushroom Spawn* you buy is good. Half of the failures can be traced to the use of cheap, worthless spawn.

ENGLISH MUSHROOM SPAWN (in bricks), the finest quality. Per lb., 15 cts.; 8 lbs. for \$1.00.

FRENCH MUSHROOM SPAWN, more bulky than the English, being packed loosely in boxes. In 2-lb. boxes, 75 cts. each. In bulk, 35 cts. per lb.



MUSHROOMS IN GREENHOUSE.

WEEBER & DON,

Seed Merchants and Growers,

114 Chambers Street, New York.