

THE GLENDALE EVENING NEWS

Published Daily Except Sunday

A. T. COWAN - Publisher and Proprietor
Office of Publication, 139 South Brand Boulevard
PHONE GLENDALE 132

THE GLENDALE EVENING NEWS HAS THE COMPLETE LEASED WIRE REPORT OF THE INTERNATIONAL NEWS SERVICE

Entered as second-class matter, Jan. 12, 1922, at the Postoffice at Glendale, Cal., under the Act of March 3, 1879

SUBSCRIPTION RATE—Single Copy, 5 Cents; One Year, \$5.00; Six Months, \$2.75; Three Months, \$1.40; Two Months, \$1.00; One Month, 60c

GLENDALE, CALIFORNIA, FRIDAY, FEBRUARY 17, 1922

OFFICIAL MINUTES OF CITY COUNCIL

Following are the official minutes of the City Council which met in session at the city hall Thursday night:

Council assembled at 8 o'clock p. m., all members present. Minutes of the regular meeting of Feb. 9th, 1922, were read and approved.

Cast Iron Pipe
In accordance with advertisement calling for same, bids were opened at this time, read and publicly declared from the following bidders:

Turbine Pump
In accordance with advertisement calling for same, bids were opened at this time read and publicly declared from the following bidders:

Electric Motors
In accordance with advertisement calling for same, bids were opened at this time, read and publicly declared from the following bidders:

calling for same, bids were opened at this time, read and publicly declared to furnish the city with one Elliott-Fisher Bookkeeping and Billing Machine, from the following bidder: Elliott-Fisher Company.

Is Ordered
On motion of Councilman Stephenson, the chief of police was instructed to place a light at the intersection of Brand Blvd., and San Fernando road, all voting aye.

No Bids Received
Bids were called for this time, in accordance with advertisement calling for same, for the improvement of Brand and San Fernando road intersection with concrete. The clerk reported no bids received.

Improvement of Elk
Bids were called for at this time in accordance with advertisement calling for same, for the improvement of Elk Ave., between Pacific and San Fernando road, from the following bidder: Napier & Simpson.

Improvement of San Fernando
Bids were called for at this time for the improvement of San Fernando road (Vine to Pacific) with water pipe, in accordance with advertisement calling for same, from the following bidder: Sidney Smith, City of Glendale.

Water Pipe Bids
Bids called for at this time in accordance with advertisement calling for same, for the improvement of a portion of Wilson, Everett and Cedar with water pipe. The clerk reported no bids received.

School Invitation
Communication was received from Mrs. Myrtle B. Buckman, chairman of the school committee and others, inviting the council to attend the dedication exercises of the new school property, Wednesday, February 22, 1922.

New Ladder Truck
Communication was received from the chief of the fire department, and on motion of Councilman Lapham, the communication was ordered to be spread upon the minutes. The letter is given elsewhere in The News tonight.

Refund to M. F. Kelley
Communication was received from the city clerk in which he advised that Mr. Kelley desires a refund of \$1 on an erroneous municipal search made on October 31, 1922.

From Glendale Music Club
Communication was received from the Glendale Music club requesting the presence of the council and wives at the celebration of its first birthday on Friday evening, February 17.

Communication on Sign
Communication was received from Glendale Dry Goods company, asking permission to extend their electric sign. On motion, communication was ordered filed.

Communication and deed was received from J. B. Treadwell and on motion of Councilman Davis, same was referred to the city attorney for investigation and report.

Improvement of Central
The city manager reported regarding the condition of Central avenue from Colorado to Broadway. On motion of Councilman Davis, the city engineer and city attorney were instructed to draft the necessary proceedings for the improvement of Central avenue from Broadway to San Fernando Road.

Pacific Electric Crossings
The city manager recommended that the city engineer and city attorney be instructed to look up the ownership of Pacific Electric crossings on Brand boulevard from Colorado street to southern city limits, with a view of placing the council in a position to consider the advisability of bringing said crossings down to grade.

Martin-Lord Case
On motion of Councilman Lapham, recommendation of the city manager was accepted and the city engineer and city attorney be so instructed.

Jitney Bus Permit
Application received by James L. Gross, 201-203 East Broadway, to conduct a business of transporting passengers for hire, having been signed by the Chief of Police, was, on motion, granted.

Contract of George Hanna
On motion of Councilman Stephenson, the following was ordered to be spread in full on the minutes of the council:
Feb. 10, 1922.

Mr. George Hanna, 639 Van Nuys Bldg., Los Angeles. Dear Sir:

I am directed by the Council of the City of Glendale to notify you that the city of Glendale has sufficient funds available to comply with the terms of that certain contract under date of May 8, 1919, by and between the city of Glendale, the party of the first part, and yourself as the party of the second part.

Very truly yours, (Signed) WM. H. REEVES, City Manager. Roll call, all voting aye.

Councilman Stephenson moved that the city attorney make a demand upon George Hanna for the conveyance of properties referred to in said regular meeting. Roll call, all voting aye.

Petitions
Petition was received signed by Albert J. Ewald and eighteen other property owners fronting on Geneva street, that beginning at the north line of Doran street and running north to the south line of lot H of tract No. 1645, including both sides of Geneva street be set aside as a first-class residential district.

Petition presented signed by Ella O. Francy and others requesting that the following territory be established as a first-class residential district. Beginning one hundred and fifty feet north of the north line of Wilson avenue, and running north to the south line of Doran street including both sides of Kenwood street, excepting that portion of Kenwood owned by the Glendale Grammar school. On motion, petition was referred to the city attorney to draft necessary proceedings.

Petition received signed by C. N. Cordary and others, requesting certain territory on Lexington and Millerton from Columbus to Pacific, be established as a two family residential section, was, on motion, referred to the city attorney to draft the necessary proceedings.

Petition signed by Barton Joseph and five others regarding storm waters on West Stocker from San Rafael to Columbus, was, on motion of Councilman Stephenson, referred to the city manager for investigation and report.

Petition from Davis Glendale company received asking that the council include property owned by them on San Fernando Road in the Industrial District. Referred to city attorney to draft the necessary proceedings.

Consolidating Precincts
On motion of Councilman Stephenson, the city clerk was instructed to prepare for recommendation consolidation of Los Angeles county precincts, in the city of Glendale, for use at future city elections and to secure a list of election officers for said precincts, all voting aye.

To Repave Brand
Petition was received, signed by S. Berman and others, requesting the council to repave Brand boulevard between Colorado street and Windsor Road with a pavement of white or similar material. On motion of Councilman Davis, the city engineer and city attorney were instructed to draft proceedings for the paving of Brand boulevard, in accordance with petition. Roll call, all voting aye.

To Maintain Hospital
Application was received from F. Cronwell Bishop requesting permission to erect a hospital at 1457 North Sycamore Canyon Road. On motion of Councilman Stephenson, same was referred to the health officer for investigation and report, all voting aye.

License Ordinance
Communication was received from the Master Plumbers' association regarding changing the fee of license for plumbers. On motion of Councilman Stephenson, the city attorney was instructed to draft an amendment to the city ordinance covering licensing plumbers to comply with the request from the Master Plumbers' association with the exception that they recommend a license of \$60 and that same be changed to \$75 per year with a bond. Roll call. Ayes: Davis, Kimlin, Robinson, Stephenson.

Ordinances Adopted
On motion of Councilman Stephenson adopted as Ordinance No. 540: "An ordinance of the city of Glendale calling a special election to be held on the 7th day of March, 1922, in that certain territory contained within the boundaries of proposed municipal improvement district No. 5 of said city, providing for submitting to the qualified electors of said district the proposition of incurring a debt by issuance of bonds of such district for the purpose of acquiring and constructing works for distributing and supplying water to the inhabitants of such district including the acquisition of lands, waters, water rights, easements, rights of way, structures, pipes, pipe lines, apparatus and all other property and the construction of mains, conduits and other works necessary for such bonds for such purposes and for the levying of a tax for payment of such bonds; and establishing election precincts and polling places in said territory and appointing the officers of election for said special election.

A Helpful "Investor's Primer"

Obtain a Free Copy Today

Contents include:

- Warrants
Municipals
Industrials
Prior Liens
Senior Bonds
Sinking Fund
Discount Bonds
Mortgage Bonds
Collateral Trust
Equipment Issues
First Refunding
Farm Land Bonds
Irrigation Dist.
Stocks vs. Bonds
Government Bonds
Convertible Issues
Philadelphia Plan
Foreign Govt. Bonds
Bonds vs. Mortgages
First Mortgage Fund

"First Refunding" and "First and Refunding" Mortgage Bonds—do you know the difference between them? Can you discuss the "Philadelphia Plan" intelligently? What are "Prior Liens," "Senior Bonds," "Discount Bonds," "District Bonds," "Convertible Issues?"

Our INVESTOR'S PRIMER explains these and all the common types of Bonds in a manner easily understood by the most inexperienced investor. It is a primer that ALL investors should have for its contents embrace practically all the better known forms of investment securities.

Full knowledge of the technical character of a prospective investment may protect you from losses. The Investor's Primer has been compiled by thoroughly trained bond house specialists. Guide your future investments by securing the benefit of this sound experience.

HUNTER, DULIN & CO.

GOVERNMENT, MUNICIPAL AND CORPORATION BONDS

PASADENA
210 East Colorado St.
HOLLYWOOD
6465 Hollywood Blvd.
SAN FRANCISCO

I. N. Van Nuys Building
Los Angeles
Phone Main 6801

SAN DIEGO
First National Bank Bldg.
SANTA BARBARA
1119 State St.
OAKLAND

NEW BUNGALOW

\$1450

Pay \$250 Cash and Move In

Best home proposition ever offered in Glendale. To make it easy for you to own your own home, we have arranged for the erection of a limited number of classy three-room bungalows with garage, at above price, including plumbing, etc. Just think of it, a house and lot ready to move in for \$1450. In order to make this price the interiors are unfinished and can be done to suit the individual tastes of the purchasers. The initial payment of \$250 includes the initial payment on the lot. Balance at \$30 per month and interest.

One of these little homes is ready for inspection Sunday and we can take orders for a few more. Why pay rent when you can get a proposition like this? Come out and investigate. Bring a deposit with you.

Automobiles leave 203 West Broadway Sunday at 10 a. m. and 2 p. m.

HAMLIN & HEPBURN

203 West Broadway

Tract Office, Vine Avenue at P. E. Car Line

AMERICA

Suction Sweeper

THE name "America" on your electrical sweeper is your guarantee of the most powerful suction sweeper on the market. It is even more—it is the mark of highest efficiency and perfection and—coupled with the name "CLARKE" assures you of perfect performance and unquestioned responsibility on our part to keep you satisfied. There is an "AMERICA" Sweeper here for you—obtainable on easy monthly payments and backed to the full CLARKE SERVICE.

Phone Glendale 470 for demonstration.

Tomorrow—Saturday—night we can demonstrate for you up to 9 o'Clock.



310 E. Broadway
Glendale 470
C. W. Hamman, Mgr.

Preopening Sale

SEVENTH UNIT AT

FAIRVIEW

Large Lots as Low as \$385

Up to \$855—None higher

A cash down payment as low as \$25, and monthly payments from \$10 to \$15 per month will secure your lot in this beautiful tract.

We have already placed on the market and sold six units or nearly 400 lots, one after another, just as fast as we could get them ready, and this unit is the choicest property we have yet offered.

Fairview is located on a beautiful slope in the famous Northwest section of Glendale, one block from the P. E. car line and about one-half mile from the magnificent estate of L. C. Brand.

For desirability Fairview lots must not be confused with any other subdivision. They are not low, or damp; they have good drainage, rich, sandy loam soil, close to the new Grand View School, stores, churches, etc., and yet priced so low they will astonish you for this class of property.

No district or values like this in all Glendale. Come out and see for yourself.

Don't waste your money paying rent, buy a lot, put up a temporary home 50 ft. back from the street, and live in it at once.

A great development is taking place at Fairview, over sixty homes have been built by our purchasers and lots in the first unit are already selling for \$200 more than they cost a few months ago.

Neighboring lots are being sold at from \$825 to \$1450, but we do not believe in asking the highest price for this beautiful property; we want our purchasers to make money and it is a source of great satisfaction to us that resales in our earlier units are showing handsome profits in so short a time.

There are only 56 lots in this seventh unit and people who know the exceptional values we offer are waiting for this announcement. Don't delay. Come out today or come out Sunday if you can't before.

Drive out West Broadway and San Fernando Road to Vine Avenue; then one block up to tract headquarters at Vine Avenue and Fourth Street. Our cars will leave 203 West Broadway at 10 o'clock Sunday morning, and 2 o'clock p. m.

Hamlin & Hepburn

203 West Broadway

Residence Phones: 2304-W and 1099-J

GRAY & GRAY

Your Neighborhood Grocers

Glendale 369 1127 N. Central

Sugar, 18 lbs. \$1.00

(Limit 18 lbs. to a Customer)

Butter Best Creamery 51c lb.

Eggs Fresh Ranch 28c doz.

Potatoes Idaho 10 lbs. 25c

Apples Fancy Winesaps 4 lbs. 25c

Peaches No. 2 1/2 Yellow Free 3 for 57c

Apricots Wilson's Certified 25c

Brooms A Good One 55c

Oats Alber's Small Pkg. 10c

Real Lively Music

for

DANCING

at

The Chamber of Commerce Auditorium

Saturday Night

8:30 to 12 o'clock
\$1.00 per couple

TICKETS AT GLEN INN

ANNOUNCING

The Opening of

RENTFROW'S Barber Shop

In the New Rentfrow Building
119 West Broadway Glendale, Cal.

Monday, Feb. 20th

The building was built especially for a Barber Shop and is modern, convenient and up-to-date in every particular

Evening News Want Ads Bring Quick Results

DR. BIRD DECLARES SOUTH IS WORLD BEAUTY PLACE

Dr. Henry R. Harrower Presides Over Meeting; Program Is Satisfying

(Continued from Page 1)
Veda Knapp accompanied both numbers.

In introducing Dr. Bird, Dr. Harrower said that he was thrilled as he sat next to a real live college president—the same thrill he enjoyed when talking to President Harding in the White House at Washington last fall.

Most Beautiful Place
"As one of the hundreds of thousands coming during the last twelve-month," said Dr. Bird, "I can testify that I regard Southern California as the most beautiful place in the world and the people as the best in the world and the future the greatest of any part of this world. Those are testimonies from the heart!"

Launching into a discourse on the art of neighborliness, the speaker stated he had recently read the theme of a Reed college address, the subject of which was "Fit for Freedom." That is a greater phrase than "Safe for democracy."

"If mankind is to be fit for freedom, you must have learned the glorious art of neighborliness," he declared, referring to the "Life of Edward Bok" as symbolical of what he was saying.

Better Citizenship
"By the action of the Chamber of Commerce," he concluded, "let it be the spirit of Glendale that this place of all places shall be dedicated to the production of a better citizenship, known for its friendship, co-operation and productivity."

"Now, then, what are you going to do tomorrow?" asked Dr. Harrower of the audience after which Secretary Rhoades had no trouble in organizing the "Ten o'clock club" with a membership of five who will go out and get more co-operators. The club is composed of the following:

Nelson S. Parker, 411 Myrtle street; Ira J. Herbert, 107 South Maryland avenue; H. P. Sibley, 224 West Milford street; Joseph Wagner, 416 West Myrtle street, and Ralph W. Brown, 215 North Brand boulevard.

Contest with Pasadena
In outlining their duties, Mr. Rhoades stated that William Dunkerly, secretary of the Pasadena chamber, was present, and that quite a race was being staged between the two cities although Dunkerly had three times as many prospects.

"I want you five people to meet with E. F. Sanders, the membership secretary, every Tuesday morning at 10 o'clock, and put in two hours' work—then I'll give you a dinner with the directors. When you get a member you will have someone take your place on the committee to do his part."

The open forum followed and Charles H. Toll, well-known Glendale and Los Angeles banker, stated that steps should be taken toward improving conditions at the Southern Pacific station as it gives a very improper idea of Glendale to those passing through.

Suggestions Are Made
Assistant Secretary Sanders commented on the large number of strangers and urged people to get acquainted with their neighbors, stating that he knew of twenty to thirty cases where families had moved away from Glendale because they "didn't know anyone."

Mattison B. Jones pointed to the intolerable condition of Brand boulevard between Colorado boulevard and the northern limits of old Tropic and related the inability of the local improvement association to secure the slightest co-operation.

"This problem concerns every citizen," said Mr. Jones, "and our committees are going before the city council to see if we cannot at least bring the tracks down to grade at the street intersections, thereby forcing them to lower the right-of-way."

Favor Clean Up Week
Edgar M. Cutting declared that a clean up week was necessary and sure enough those present agreed and passed a motion to that effect, telling the civic committee they were behind any effort to get rid of the rubbish in the backyards, etc.

Dr. Harrower said he would like to have a camera to make a series of pictures of what Glendale needs to do along that and other lines. Harry Girard led the audience in singing "America" as the closing number after which everybody lingered a little longer to get acquainted to show that "spirit of neighborliness."

New Draperies

Just Arrived at the Irish Linen Store
New Ginghams and Suitings with the fast color guarantee.

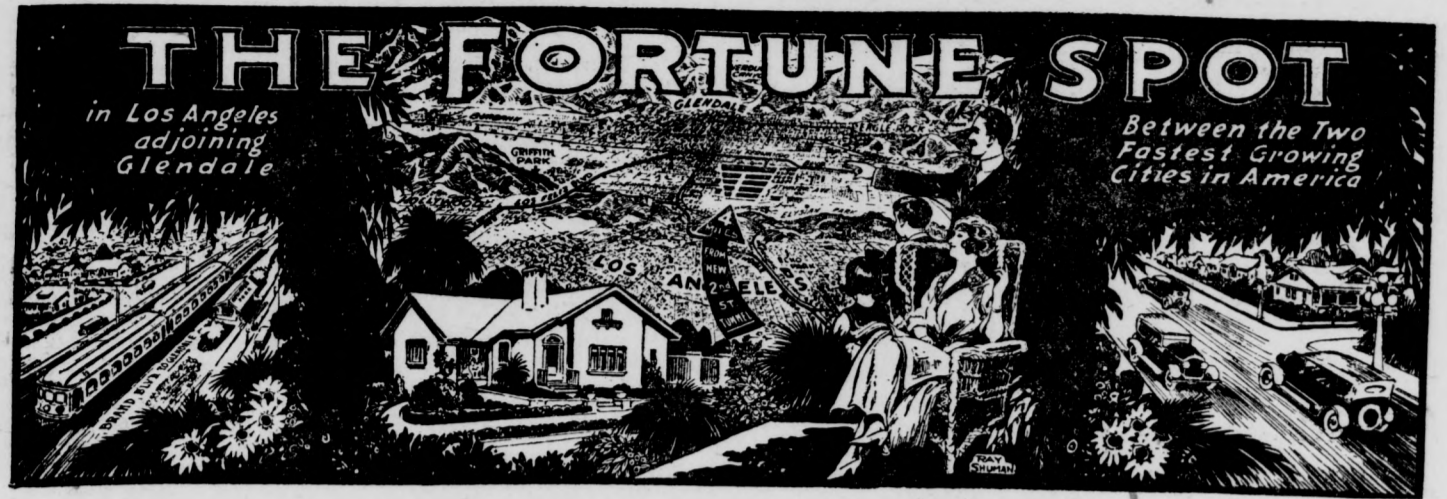
Large assortment of Jap Crepes35c
Closing out broken line of infants' hose15c

The Irish Linen Store

GO, GET A HOME

The First Step in Home Owning Is to Secure a Site

Even the little birdies own their homes—the aborigine his tepee—the primitive man his cave. Surely you are as resourceful as the birds and the caveman, who, stripped of all civilization, yet realize the first requisite, a shelter for their families. Don't say you can't afford to own your home for with our easy terms we have paved the way to progress and profit for the man of moderate means. Our ridiculously low prices and easy payment plans have removed every excuse and exploded every theory to the contrary.



GLENDALE MANOR

(TRACT NO. 4689)

In Los Angeles Adjoining Glendale—With the Advantages of Both

Glendale Manor is situated in the heart of the greatest building activities in America almost completely surrounded by thriving, modern, residential, growing communities, and a chain of prominent boulevards, car lines and parks. Only 18 minutes' ride from the New Second Street Tunnel, but five blocks from the Junction of Brand and San Fernando Boulevards—the new Gateway business district of Glendale, convenient to schools, churches and stores, essential improvements being put in by us. A truly close-in residential wonder sale at prices way less than many outlying subdivisions.

ADVANCE SHOWING LOT SALE

If You Cannot Come Today, Come Tomorrow, or Come Sunday, if You Cannot Come Before

Terms for All: \$10 Per Month None to Exceed \$15

A TRIVIAL DEPOSIT AS LOW AS \$25.00 WILL SECURE A LOT

Notice These Vital Facts

Interest included in payments. No payments required when sick, injured or out of employment. All payments made to Los Angeles Trust & Savings Bank. Liberal discounts for cash payments—Building discounts. Immediate possession given. Build when you like. Protective building restrictions but temporary building permitted on rear of lot.

Homeseekers—Investors—Builders

As an investment we defy all comparison. Glendale Manor is almost the geographical center of the two greatest growing districts in America. A close-in, strategically located, money-making spot offered to suit all pocketbooks. Special discount and assistance given immediate home builders or building contractors.

Everybody invited and will be shown around by courteous representatives whether they purchase or not.

Prices That Stagger All Belief **\$495 to \$995** None Higher

Including Building Discounts, Race Restrictions—Temporary Homes Permitted on Rear of Lots

LOS ANGELES AND GLENDALE The Magic Cities

There can be but just one fastest growing city in the United States per capita, and that is Glendale. The eyes of a nation were turned toward this little wonder city when the National Census bureau pronounced it the fastest growing and building community in the United States. A 400 per cent increase in ten years! A growth supported by an amount of building three times as great per capita as that of Los Angeles and fourteen times as great as Detroit, Chicago or Boston. Glendale is a concrete reality, and between it and Los Angeles lies Glendale Manor, the Fortune Spot for your savings and a home. We have no desire to hurry your decision, but we would advise an early inspection if you would avoid disappointment, as building contractors and speculators usually buy in large numbers during the first hours of the sale, which assures a hurry sale.

HOW TO GET THERE

COME EARLY FOR A CHOICE SELECTION

Board any Glendale P. E. car anywhere on Brand Boulevard, Glendale, south-bound; get off at Atwater Station, or, if driving, go south on Brand Boulevard to Tract Office at Atwater Avenue, where courteous representatives will meet you. Follow the signs. Or join our free private auto trips from our Glendale offices at 130 South Brand Boulevard at 10:30 a. m. and 2 p. m. daily. We will be glad to have our automobiles call for you at any time and take you to the tract and return without obligation.

Dickinson & Gillespie OWNERS

Roy L. Kent Co., Glendale Representatives.
C. W. Bowen, General Agent,
No. 130 So. Brand Blvd. Phone Glendale 408.

COME ON OUT!

IF YOU CANNOT COME TODAY, COME SUNDAY



ATTENTION CONTRACTORS!

Washed Rock, Concrete and Plaster Sand; Pea Gravel, Any Mixture for Work Desired

FULL LINE OF BUILDING MATERIALS

Arden Plaster, Bear Brand Cement, Lime, Metal and Wood Lath, Button Lath, Etc.

Our Price is Right and Service Better
Get Our Special on Wood Lath

GORDON & HARRISON

Office 131 So. Brand. Glendale 1117. Pit, Glendale 2048-J-5

All Deliveries from our Glendale Warehouse
Absolute Service Guaranteed

Buy your Coffee in Glass-Lined Bags
ORANGE BLOSSOM COFFEE
"It's always fresh"
Saves you the price of expensive tins



The Staff of Life

Know how the nourishment in a Loaf of our Bread compares to Meat or Eggs or "most anything else nutritious?"

It's chuck full of muscle-building, blood-making nourishment. And so appetizing and tasty—your family will relish our bread. Try it.

Here you can secure Salt Rising Bread and 100% Whole Wheat Products

Fancy Bakery

Henry Walsma, Prop.

142 N. Brand Blvd. Glendale, Cal.

Closed All Day Sundays. Gl. 2060

JOHN MARQUARDT IS BUSY ORGANIZING CITY ORCHESTRA

Musicians Being Recruited by Leader; Third Rehearsal to Be Held Tuesday Night

John Marquardt, 110 West Burchett street, is radiant with optimism about the new municipal orchestra, which he is organizing.

To him belongs credit for unbounded faith in musical Glendale. He is behind the enterprise with both his time and skill and has no doubt whatever of its immediate success.

Both Mr. and Mrs. Marquardt are well known in musical circles of southern California, having lived in the vicinity of Los Angeles for the past eight years. A few days ago they moved to their present address in the lap of the foothills where they may derive inspiration from the changing shadows of the Verdugo Hills. About a month ago they returned to Glendale after a year and a half's absence in Sierra Madre. This is the third time they have responded to the lure of Glendale.

At Head of Orchestras

Mrs. Marquardt is a concert harpist and her husband is a well known violinist. At one time he was second concert master for the Thomas orchestra of Chicago.

Also, he has headed orchestras of his own in Philadelphia and San Francisco. Mr. Marquardt has participated in several local programs recently and will play at Sunday's twilight recital at the Glendale theatre in behalf of the organ fund for the Holy Family church.

The purpose of the municipal orchestra, according to Mr. Marquardt, is "for the advancement of music in general in Glendale." He says that an orchestra "is something which the community should have."

Practically all of Mr. Marquardt's life has been spent in musical activities. He has acquired a reputation as a teacher of the violin, but says that there is no connection between this fact and the orchestra for the reason that he is now retired.

Rehearsals Being Held

Recruiting is now going forward for the proposed orchestra which held its second rehearsal Tuesday night at the high school and expects to hold one there every Tuesday night in the future until further notice. Eighteen skilled musicians have registered so far and Mr. Marquardt expects to increase this number to forty without difficulty.

"Some musicians are timid about coming out at first," he remarked. "They wait until they see things going. Then the players of certain instruments always seem to wait until the last minute before coming forward."

Most of those who have reported so far are violin players. Mr. Marquardt stated that it was necessary to teach them to play in unison before they could be combined with other members of the orchestra. However, he declared that this training would be accomplished simultaneously with the coaching of the players of other instruments.

What is Required

According to Mr. Marquardt's plans, the full orchestra would consist of twelve first violins, six second violins, four violas, two cellos, two bass violas, two flutes, two clarinets, two bassoons, two French horns, two cornets, from one to three trombones, one oboe and the necessary drums.

"In time we will get all those instruments," asserted Mr. Marquardt. "I am not at all pessimistic."

Mr. Marquardt stated that the orchestra's immediate need was for viola, clarinet and flute players. He knows of two French horn players residing in Glendale but believes it will be necessary to hire an oboe player and two bassoon players in Los Angeles for each concert.

And Then First Appearance

Before the month is over Mr. Marquardt expects to have the orchestra well organized. A number of weekly rehearsals will follow and then the municipal orchestra will be able to make its debut to the music lovers of Glendale.

"I think the public will be surprised at the fine program," ventured Mr. Marquardt. "There is a lot of talent here. The only thing is to get it interested."

"Certain people have cautioned me that an orchestra here would never be a success. I have never made a failure in this work in my life and I don't trust their arguments. Always I have been optimistic and I find that is the best thing in this world."

Germany Plans Trade Boom in Russia, Said

BERLIN—In order to secure a better grip on Russian trade, German business interests have decided to establish an "Economic Institute for Russia and the Border States." Announcement of this fact was made today by the Eastern Fair management at Koenigsberg, which is to be the seat of the institute.

The institute is to be organized along university lines and will be controlled by the Government of East Prussia and the Municipality of Koenigsberg. Exhaustive courses dealing with all phases of Russian trade and also dealing with the culture and present economic organization of the territory of the old Russian Empire will shortly be organized.

A "Good Will Ship" is to sail to France next August, bearing delegates from all parts of the United States to the battle fields on which American soldiers fought. The delegation will present to France a purse to be used for rehabilitation work in the sections which American troops helped to defend.



You Can Point With Pride to

A HOME IN

"GLENDALE VILLA"

Open for Reservations

Saturday & Sunday, Feb. 18 & 19

On the high plateau, between Tenth Street and Mountain Drive Boulevard. East and west lines being Laurel and Alameda.

One-Half Acre Family Home Sites

Room for the kiddies, the chickens, the fruit and the garden. Ample restrictions, but temporary homes allowed for six months.

Good soil, no waste land, every site a gorgeous view of mountains and valley.

Every city convenience.

Only 37 of these beautiful homesites. You will have to act promptly.

REMEMBER—1/2 of an acre for the price of a 50-ft. city lot.

Price \$1100 to \$1600

Easy Terms

SEE

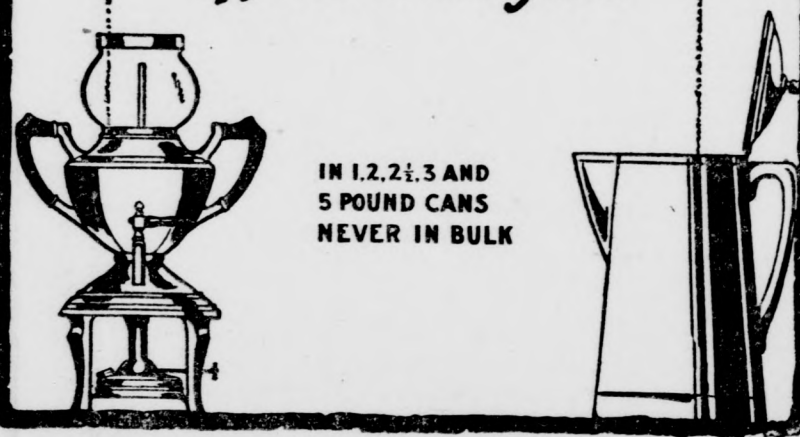
Kjergaard & Mullaly

(Sole Agents)

207 West Broadway, Glendale, Calif. Phone Glen. 643-W
Tract Office Tenth Street Boulevard and Alameda



It tastes just as good when made in one as the other. It is the quality that counts. CHASE & SANBORN'S SEAL BRAND COFFEE appeals to everyone.



A. W. PERRY CALIFORNIA REPRESENTATIVE

Phone Glendale 66-W Glendale, Calif.

THE ORANGE SHOW

12th Annual Citrus Exhibition

SAN BERNARDINO 17-27 FEBRUARY

Thousands of Golden Oranges Woven Into a Fairyland of Beautiful Feature Exhibits

AMPLE SERVICE VIA ALL LINES PACIFIC ELECTRIC RAILWAY

Automobile speeders brought before the municipal court in Detroit will be given five days in jail, regardless of whether it is the first or second offense, according to reports issued from the municipal court.

The steel-head trout is classed as a salmon by fishertalk and the fishing trade, and it is said that it was named "steel-head" because of the hardness of its skull.

The old-time miner with his primitive methods of operation is not extinct. Two miners working with an old-fashioned rocker took out \$10,000 worth of gold in six weeks recently in the Cedar Creek country of the Caribou mining district of British Columbia.

In Japan workmen wear upon their caps an inscription stating the names and business of their employers.

Safe Milk for INFANTS and INVALIDS
ASK FOR Horlick's the Original
Avoid Imitations and Substitutes

For Infants, Invalids and Growing Children Rich milk, malted grain extract in Powder
The Original Food-Drink For All Ages No Cooking — Nourishing — Digestible



A Jolly Place for Luncheon

Or a little after-the-show or after-the-dance supper is the White Inn. It is the favorite restaurant of those who are discriminating in their choice of dining places outside of their own homes. They know why.

THE WHITE INN

Mrs. Jack Thomas
Cor. Broadway and Glendale Ave. Ph. Gl. 650-W. Glendale.

For Quality Job Printing Call The Evening News

Glendale Gardens

LOTS ON SALE

10% Cash 3% Monthly

Beautifully Situated on High Ground.

On Red Car Line.

On Bus Line.

New 8-in. Water Mains In.

Gas, Electricity.

Sidewalks, Curbs, Street Work Paid.

Excellent Soil, No Sand.

Restricted, No Shacks.

What more could you ask for in a residence district?

Get in now before prices go up.

Motor to tract any time or call main office and arrange for salesman to take you up.

Tract Location: Corner Vine Avenue and San Fernando Boulevard.

Roy L. Kent Co.

130 South Brand Blvd.

Established 1910

Phone 408

MARYLAND HEIGHTS EAST BROADWAY

TWO BLOCKS EAST FROM NEW HIGH SCHOOL SITE. BEAUTIFUL HIGH SCENIC HOME SITES WITHIN MODERATE MEANS. LARGE RESTRICTED LOTS \$1150.00 TO \$1250.00. BALANCE EASY TERMS. STREET WORK, SIDEWALKS, WATER AND GAS ALL INCLUDED IN ABOVE PRICE. THESE BEAUTIFUL, SLIGHTLY, PICTURESQUE HOME SITES ARE ONLY A SHORT DISTANCE FROM THE EAGLE ROCK FIVE-CENT (BY BOOK) CAR LINE. GLENDALE-EAGLE ROCK CAR LINE PASSES IN FRONT OF THE PROPERTY WITH ITS THREE AND A HALF CENT FARE, ELIMINATING THE COMMUTATION OF RATES. THE PASADENA-OCEAN PARK BUS LINE PASSES THE PROPERTY, GIVING SERVICE TO HOLLYWOOD AND THE BEACHES. ONE LOOK AT THESE HOME SITES WILL CONVINCING YOU THAT OTHER LOTS COSTING A GREAT DEAL MORE ARE NOT MORE BEAUTIFUL, NOR DO THEY GIVE MORE BEAUTIFUL COMMANDING VIEW OF THE SURROUNDING COUNTRY.

COME TO TRACT OFFICE, TWO BLOCKS EAST OF NEW HIGH SCHOOL SITE.

MONOGRAM REALTY CO.

1022 STORY BLDG.

PHONE 63973

GLENDALE (EVENINGS) 2220-J

SHIPPING BOARD IS DRUMMING TRADE BY ADVERTISING

Policy Is Under Discussion in Congress; Farm Loan Is Record, Says Secretary

By U. S. Press Association. WASHINGTON, D. C., Feb. 17.—

The Shipping Board is advertising heavily, and in this respect is a keen competitor in "drumming up trade" for its ships. It is calculated that a million dollars will be spent in Shipping Board advertising this year. Recently an attempt by Representative Byrnes of South Carolina, to limit to \$500,000 the amount the Shipping Board could spend during the coming fiscal year on advertising, was defeated by a four-vote margin.

During discussion of the Shipping Board's advertising policy, certain congressmen proposed that it be forbidden to award advertising contracts on which the companies were to receive more than 5 per cent commission, but an amendment to this effect was lost. Declaring that ocean travelers were refusing to make bookings on American vessels on which no liquor was sold, Representative Gallivan of Massachusetts, said the Shipping Board, in advertising worked under tremendous handicaps. The board, he asserted, has been "hamstrung by Dr. Volstead," and is suffering loss of business as a result.

Farm Loan Bonds
The twelve federal land banks of the country have just offered \$75,000,000 of 5 per cent federal farm loan bonds at the price of 102 3-8 and accrued interest, at which price they will yield approximately 4.70 per cent to callable date and 5 per cent thereafter.

Secretary of the Treasury Mellon said: "This is the largest offering of farm loan bonds ever made, but in view of the generally favorable trend of the investment market and the continued strong showing of the federal loan banks, it is believed that it will be readily absorbed, and as the funds will go direct to the farmers of the country it should do much to improve the agricultural situation."

Presidents and Ex-Presidents
President Harding, former President Wilson and Chief Justice Taft will speak at the Lincoln Memorial dedication exercises in Washington, May 30, according to the plans of the memorial commission. The spectacle of a president and two former presidents appearing at the same function will be without precedent in the history of the country.

Packers and "Unrelated Lines"
The resolution of Senator La Follette, Wisconsin, designed to prevent modification of the federal court decree requiring the "big five" meat packers to relinquish their unrelated lines of business has been adopted by the Senate.

Stocks of Coal
A number of branches of the government have prepared a joint report, which shows the total commercial stock of bituminous coal on January 1, 1922, to have been approximately 47,000,000 tons. This was 25 per cent less than the amount in storage at the end of the year. The present stock is sufficient to last about forty-one days, if perfectly distributed. Retail yards have bituminous coal enough to last 33 days and anthracite sufficient for forty-four days.

Supplementing its statistics of man-days lost on account of strikes, the United States Geological Survey presented data as to the man-days lost through other causes. In the twenty-year period, 1900-1919 the operators reported a total loss of 124,747,199 man-days through strikes, but the loss attributable to other causes was 1,053,576,000 man-days, or eight and a half times as great as the strike loss. To put it another way, in two decades American coal miners lost one and a sixth billion working days, of which 10.5 per cent was ascribable to strikes and 89.5 per cent to other causes, chief of which are no market, car shortage, and mine disability.

These statistics of strikes are based upon annual reports furnished by the operators which give "Number of men on strike," and "Average number of days on strike." The man-days lost on account of other causes are calculated from the operator's reports of number of days of mine operation, the full working year being taken as 308 days.

The statistics of strikes include time lost through "suspension" during the period of the biennial wage negotiations, between the termination of one agreement and the signing of another. That the greater part of the strike loss is associated with such "suspensions" is seen from the fact that with few exceptions the years of large strike losses are the "even" years when the wage negotiations occur; particularly 1902, 1906, 1910, 1912, and 1914. In the "odd" years strike losses have been by comparison small, except in 1919, in which year a general strike of union bituminous miners was called. Statistics of strikes in 1920 and 1921 are not yet available, but enough information is at hand to show that in comparison with earlier years the figures for 1920 will not be large, while that for 1921 will be unusually small.

The record year in point of man-days lost on account of strikes was 1910, yet the 19,250,524 days sacrificed to strikes in that year were only 30 per cent of the total loss, for the causes other than strikes were responsible for a loss of 44,693,242 man-days. The total loss for all causes in that year was slightly less than in either the year before or the year after. In fact, 1910 established a new record for production. These facts illustrate what is well known, that American soft-coal mines are developed so far above the annual demand that full-time operation, year in and year out, is not attainable.



Paint not only improves the appearance and the value of your buildings, but lengthens the term of usefulness as well.

And it is because of these important features that

you should choose Paint of the best quality,

Such as the

BASS-HUETER

Just try this store next time you need anything in the way of hardware, paints or plumbing supplies

GLENDALE HARDWARE CO.

601 East Broadway. Phone Glendale 490

Theatre Runs Busses to Cut Taxi Charges

PHILADELPHIA—In an effort to compel a bus driver to cease charging exorbitant rates, a suburban theatre here has installed a bus line for its patrons. The owners of the motion picture house plan to run enough busses to cope with the number of patrons going to and from the theatre.

John Drew, the negro bus driver at whom the company is directing its plan, recently raised his fare from five to fifteen cents. This was done by zoning his route. When patrons of the theatre complained of the high fare the theatre appealed to the Public Service Commission to reduce the rates. Failing to secure a favorable verdict the company hit upon the plan to run its own busses, now in effect.

One hundred and twenty-six thousand officers and men are now enrolled in the National Guard of the United States.

BREAK CHEST COLDS WITH RED PEPPER

Ease your tight, aching chest. Stop the pain. Break up the congestion. Feel a bad cold loosen up in just a short time.

"Red Pepper Rub" is the cold remedy that brings quickest relief. It cannot hurt you and it certainly seems to end the tightness and drive the congestion and soreness right out.

Nothing has such concentrated, penetrating heat as red peppers, and when heat penetrates right down into colds, congestion, aching muscles and sore, stiff joints relief comes at once. The moment you apply Red Pepper Rub you feel the tingling heat. In three minutes the congested spot is warmed through and through. When you are suffering from a cold, rheumatism, backache, stiff neck or sore muscles, just get a jar of Rowles Red Pepper Rub, made from red peppers, at any drug store. You will have the quickest relief known. Always say "Rowles."—Advertisement.

Four radio telegraph stations are in operation in Venezuela and two more are being constructed.

In 1919 there were 200,000 farm lighting plants in use. Now, it is said there are 340,000.

There are a few high bluffs in the west from which an Indian princess did not leap.



The Highest Quality Lumber and Building Supplies at the Lowest Possible Prices. We Guarantee Your Satisfaction.

Shingles as an all-round Roofing have never been surpassed. Our present stock of clear butt Cedar Shingles is the best we have ever had.

Laths of clear timber, accurately cut and full count but low in price, affords you an opportunity to save on this item of building cost.

"Service on the Dot"

GLENDALE LUMBER CO.

314-328 N. San Fernando Rd.

Phone Glendale 800

Ask for Mr. Boyd—He Will Advise You Right!



Opportunities worth looking after in the J. B. Doner Tract. West Doran

Strictly modern Bungalows of 4 and 5 rooms, fine garage with each bungalow, and something that will please you. Small payment down and monthly installments turn your rent receipts into a home of your own.

A Few Other Good Buys

- 6 Room modern, close in.....\$6900
- 6 Rooms, modern, West Doran..... 6500
- 5 Rooms, modern, new..... 5500
- 5 Rooms, modern, on Salem..... 5250
- 5 Rooms, Orange Grove Avenue..... 4000
- 4 Rooms and Garage, modern, new..... 4250
- 4 Rooms, Sleeping Porch, garage, new..... 4500

Vacant Lots

- Lot on N. Brand, 50x160.....\$5500
- Lot on N. Kenwood, 50x160..... 2050
- Lot on W. Milford, 50x145..... 900

DONER, HEMENWAY & BURN

110 So. Brand

Phone Gl. 832



The World Over By Franklin B. Morse. Pacific Sports Service

One boxing fan suggests that, in view of the fact that no one heavy-weight boxer seems capable of making a showing against champion Jack Dempsey in the ring, three of the best be selected to try the trick. His plan is to have each man go one round with Dempsey alternately. In the event that one of them is knocked out, the other two to continue, alternating rounds either until both are knocked out or one of them turns the trick on Dempsey. This is a very radical proposition which is never likely to take place, but, at least, Mr. Dempsey could in all probability name his own price from any promoter to engage in the stunt, and the public probably would be willing to pay the price to see it. The suggestion has the merit of being interesting.

While, in the past, the universities of California and Stanford have only sent four or five men to compete in the east in the annual intercollegiate track and field championships, it is planned by Stanford this season to send a team composed of as many men as are likely to be returned point winners in the meet. This means that something approaching a regular team will go out from the Pacific coast this next June in the attempt to keep the cup emblematic of the championship on this rim of the continent, where it was brought last year by the team of the University of California. Stanford is not likely to be the only team from these parts for the University of California has a well-defined notion to keep a hold of that trophy itself, if it is possible.

In the event that the Ohio State University basketball team accepts the invitation of the Oregon Agricultural college to play at Corvallis during the latter part of this month, the Ohioans will not lack for competition if they are inclined to extend their itinerary. Both the University of California and Stanford university fives are anxious to see what they can do against them. By accepting the University of California challenge the Ohioans might perhaps succeed in getting some measure of revenge for what the Californians did to their football team down at Pasadena a couple of seasons ago.

The increased number of games shown on the baseball schedules of the various universities for the coming spring indicate that the colleges last season also participated in the general success and prosperity which the game enjoyed in professional circles. Practically every varsity list contains additions of from two to four and six games more than was played during 1921.

The intercollegiate rowing schedule for 1922 presents one of the most interesting series of competitions that the followers of this sport will have enjoyed. While the Pacific coast furnishes only one event, the annual race between the eights of the Universities of California and Washington, the eastern schedule is replete with matches which will furnish the keenest kind of competition. With either Washington or California, providing who wins, again going east in June to row, a fitting climax is presented.



Sports Chatter By Bill Unmack. Pacific Sports Service

Once again the girls' world's fifty-yard swimming record has been broken, this time by a New Zealander, a Miss Elizabeth Hoelt of Wellington, N. Z., who has taken one-fifth of a second off the mark held jointly by Ethelda Bleibtrey of New York and Mariechen Wehselan of Honolulu. The new record of 28 3-5 seconds was made February 6 at Wellington, N. Z.

Through Olga Dorfner in 1917, the United States shared honors of holding this fifty-yard girls' world record with Fanny Durack of Australia. Since then until last year Dorfner and Durack reigned supreme as the world record holders, but it was in May of last year that Misses Bleibtrey and Wehselan swam a dead heat in 28 4-5, thus breaking a record which had stood for eight years and incidentally giving the United States clear title to the world record without any "foreign alliances." Now another foreign girl in Miss Hoelt of New Zealand has shown that girl swimming in Australasia is once more on the up grade and this record has been lost to the United States, and not only the fifty yards but in the same meet, Miss Shand, also of New Zealand, swam the 440 yards in a tank in 6 minutes 26 2-5 seconds as against the record of 6:30, 1-5 held jointly by Frances Cowells and Ethelda Bleibtrey.

That girl swimmers are fast approaching that stage where record times are down to a standard which a few years ago were considered capable only of men swimmers is quite evident. This fact is further borne out by the analysis of different records and the steady cracking of them, particularly in the years since 1915.

Take the fifty yards, for instance, and as far back as 1904 the world record was 47 seconds for a girl swimmer, and at that time a "fifty" was an unusual race as the minimum standard distance was considered one hundred yards. Even today European countries do not recognize the fifty yards as a standard distance. By 1907 the record had been reduced to 39 seconds and it stood at that until that great Australian swimmer, Fanny Durack, came upon the scene and first made 35 seconds and a year later, in 1912, did 31 seconds.

From 1912 to date the development of girl swimming all over the world has been steady and "speed" has been brought out in a ratio comparable with the increasing large number of girls who went in for competition. The "women's rights" in swimming were first recognized by the A. A. U. of the U. S. in 1915 and since then the sport went ahead by leaps and bounds in this country. In 1915 the A. A. U. first recognized girl swimming records and the first fifty-yard "officially" recorded was 33 2-5 by Frances Cowells at San Francisco. Since that time the American record was quickly reduced by various girls including Miss Cowells herself, Olga Dorfner, Claire Galligan, Charlotte Boyle, Ethelda Bleibtrey and Mariechen Wehselan, and it was these girls who, through their rivalry and competition, brought the American record down to 28 4-5, which up to a week ago stood as the world record. Now they have lost it, and it is up to Miss Bleibtrey and others to go after it, and it would not be surprising to find the United States once more holding the record before the year 1922 has spent itself.

NEW COUNTERFEIT COINS

HONOLULU, T. H. "Pushers of the Queer" have invaded Honolulu with something new in the line of counterfeit coins—a zinc dollar which has the "ring" of the genuine article. They are built around an iron washer, the thing which gives them the "ring" which the old "lead dollar" lacked.

No trace of the gang of counterfeiters who are placing the spurious coins in circulation has as yet been found.

SHE WEARS MAN'S CLOTHES

BOSTON—Many persons who believed they had a working knowledge of law were surprised when court proceedings in the case of Ethel Kimball, who had successfully masqueraded as a man for two years, revealed that it is not a misdemeanor in this state for a woman to dress in man's clothing, or for a man to don feminine attire. Miss Kimball had also played the part of bridegroom two months without arousing the suspicions of the bride, according to the latter.

PAINT UP

And while you are Painting be sure that the Paints used are of the best quality, such as we carry.

The amount of work involved is the same, but better Paint gives many times the service of poor Paint.

We are exclusive agent for Ky-anize varnishes and enamels. We also carry a full and complete line of Sun Set Paint Company products.

Wall Paper, Paints, Oils, Varnishes, Glass, Glazing and Artist Materials.

Harry Moore Co.

304 E. Bdwy. Phone 328



Closing-Out Sale!

ENTIRE STOCK GOING AT 1/2 PRICE

Line of Children's Beautiful Dresses, Rompers, Hats and Sweaters ALL HALF PRICE

A few Dolls and Novelty Toys AT HALF PRICE

All baby garments, and all gifts suitable to children or grown-ups AT HALF PRICE

Entire Stock Included in Sale

Glendale Woman's Exchange

122 West Broadway

Good News in Every Bank Book



Small though the Bank Book is, if you practice Thrift, it will always hold more good news for you than even the daily papers.

It will always bring a smile and strengthen your hopes of a prosperous future.

If you want such an incentive, just take what few dollars you can spare this week, bring them to us and start a Savings Account.

Glendale Savings Bank

W. S. PERRIN, Pres. H. E. FRANCY, Cashier
S.W. Corner Brand and Broadway, Glendale, Calif.

Sash and Doors at a Right Price

The Dixon Sash and Door Company

have opened an office at 205 East Broadway

to better take care of your sash, door and plate glass needs

Estimates on your requirements gladly given - Phone Glendale 424

or step into our office with your lists.

Hundreds of Glendale, Eagle Rock and Burbank home builders will vouch for our promptness and accuracy.

Sash, Doors, Plate Glass, Window Glass, Mirrors, etc., at a right price

MISINTERPRETED SIGNAL

CRANFORD, N. J.—A red light in Connecticut means a sharp turn, but in New Jersey it means a railroad crossing. Misinterpretation of a red light signal cost the life of John Wolf, of Rockville Centre, Conn., when his automobile was demolished by an express train at a crossing here.

WOMEN DYE FINGERTIPS

LONDON—Dyeing the fingertips is the latest feminine fashion craze. The idea is said to have originated in Persia.

Street car seats hinged so as to be raised like those in theatres have been invented with a view to saving time in unloading passengers.

IN AFTER TWENTY YEARS

DETROIT—"Speeding a horse twenty years old at the terrific rate of twelve miles an hour" proved the undoing of William Paige, a policeman, who was found lying under a milk wagon near his home, in a far from proper condition as the result of violating the prohibition law.

House Building Time Is Here

The time to build the home that you have been planning is here. You will want the plans made and work started as soon as possible, so that you may enjoy a home of your own this summer.

May we assist you in your preparations?

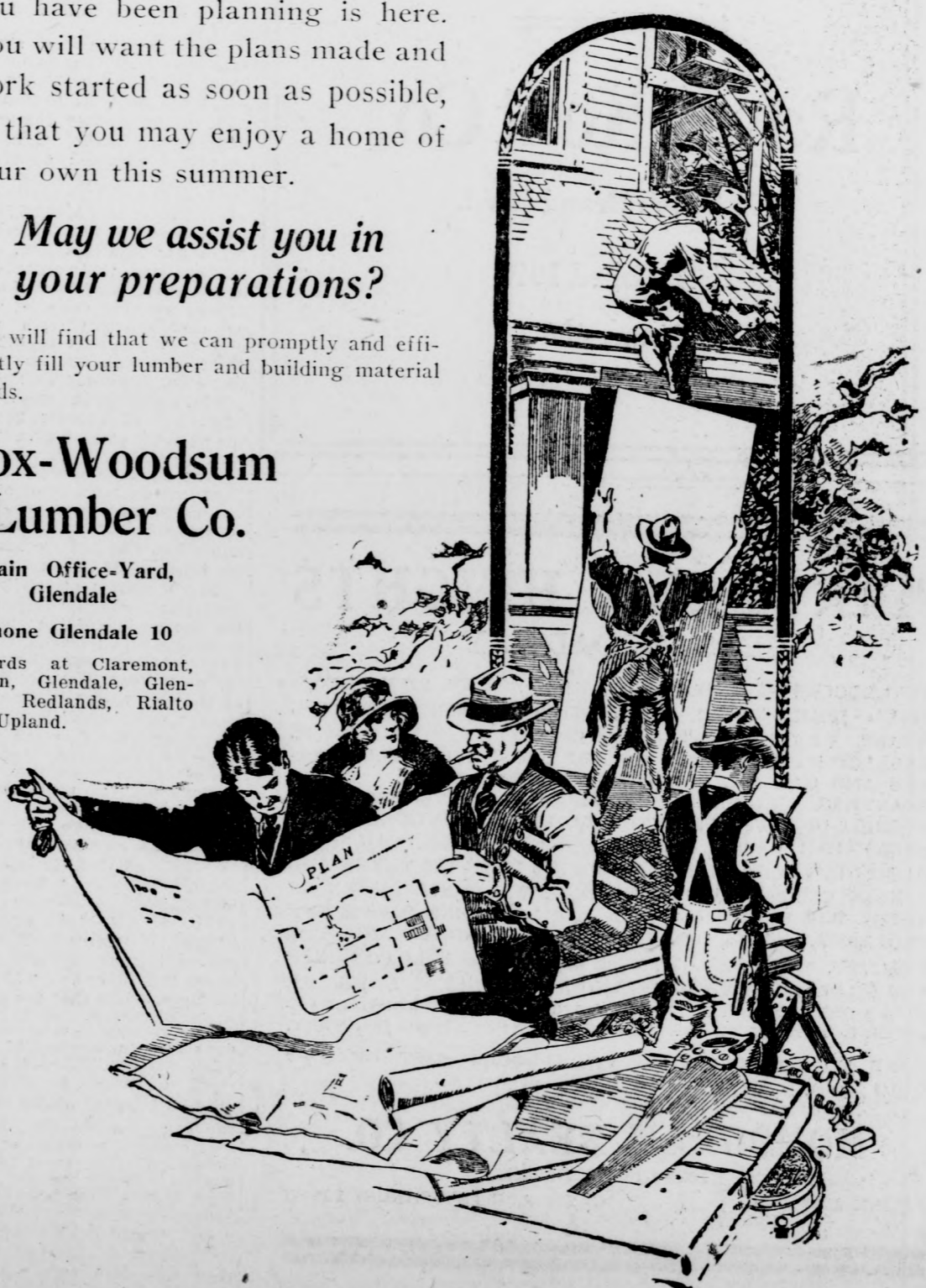
You will find that we can promptly and efficiently fill your lumber and building material needs.

Fox-Woodsum Lumber Co.

Main Office-Yard, Glendale

Phone Glendale 10

Yards at Claremont, Colton, Glendale, Glendora, Redlands, Rialto and Upland.



NEAR EAST RELIEF SUBJECT OF TALK BY F. L. SIMS

Executive Secretary to Relate
Needs at Meeting Monday
At Methodist Church

F. L. Sims, executive secretary for the Near East relief, will speak Monday night at the First Methodist church.

Rev. R. W. Mottern, 211 North Adams street, who is the representative of this humanitarian movement in Glendale, states that many inquiries have been made regarding the gathering of cast-off clothing by the Near East relief this spring. He says that a drive will be made early in May for all kinds of inner and outer clothing. He suggests that householders begin to save articles of wearing apparel for this collection.

Ship Sails March 28
A ship will depart from America about March 28 for Bible lands, according to Rev. Mottern. This will be loaded with provisions and clothing for needy refugees and orphans who are suffering beyond description. He stated that he would be glad to receive clothing to send on this vessel.

Rev. Mottern reports that the Esther Dollar, which was loaded last June for Asia Minor, landed safely in Constantinople and Batoum. He asserts that the thousands of tons of provisions and clothing for the hungry and destitute Christians there proved to be a divine blessing.

Farm Expert Is Helping to Buy Grain for Russians



Photo by Harris & Ewing
DON LIVINGSTON

Don Livingston, representative of the U. S. Farm Bureau, and State Agricultural Commissioner for South Dakota, is one of the men appointed by President Harding on the Purchasing Commission for Russian Relief.

This commission is now engaged, in conjunction with the American Relief administration, in purchasing, shipping and distributing food and seed wheat and corn for the Russian famine sufferers.

Herbert Hoover, secretary of commerce and chairman of the American Relief administration, is head of the commission. Other members are Former Governor James P. Goodrich of Indiana, E. M. Flesh, treasurer of the U. S. Grain corporation, and Edgar Rickard, director of the ARA.

Under the provisions of the act, signed by the president, appropriating \$20,000,000 for Russian relief, large quantities of food and grain have been bought and at present are being rushed by ships to Russian ports, where the American Relief administration is handling the distribution.

The purchasing commission for Russian relief is bending every effort towards facilitating the speedy shipment of the needed commodities to the famine regions. Large quantities of supplies, grown and purchased in America are being sent as fast as American ships can be chartered and loaded.

Secretary Hoover has announced that 3,000,000 bushels of grain have been shipped as of January 25 and instructions given to rush the shipment of further cargoes.

Girls Told to Dress by 'Own Conscience'

EVANSTON, Ill.—Girls, in deciding what to wear and what not to wear, let conscience be your only guide.

This is the advice of a learned judge—Justice of the Peace Max Witkower, of this sedate little town, whose judicial duties have been such as to warrant the statement that what he says on the subject can be accepted as authoritative. Many of this town's important cases affecting ladies' attire he has settled.

"Girls know best what they want to wear and nobody else, not even their fond parents, should interfere," said Judge Witkower.

The occasion for his remarks had to do with the case of Elizabeth Foreach, fourteen years old. Elizabeth "dressed herself up" in her mother's silk stockings rolled beneath her knees, a tucked-up skirt which displayed dimpled knees; powder and rouge, perhaps applied a little too thickly, and her brother's low rubber boots, in lieu of galoshes.

Elizabeth crossed the yard to test her get-up on Homer Anderson, an interior decorator.

Mr. Anderson's decorative sense was outraged. His remarks shocked Elizabeth, who returned home crying. Her father hurried to Anderson's presence for an explanation. A quarrel ensued which landed both before Judge Witkower on the charge of disorderly conduct.

The judge, after offering some advice to the men, dismissed the case.

"Don't ever interfere with a woman's idea of how to adorn herself, that's her own business," was the judge's parting shot.

Stole Auto to Save Life of Sweetheart

DENVER, Col.—Catherine Lions was ill at her home in Tulsa, Okla. Physicians said she would have to be sent to a higher climate. That was the only hope they held out for checking the "white plague." But the Lions family did not have the funds with which to carry out the doctors' recommendations.

Catherine told her story to her sweetheart, Leo Howe.

Howe found a way to bring the girl to the mountains. He "borrowed" an automobile in which the couple made the journey to Colorado.

Miss Lions and Howe told their story in the Federal District Court, where the young man was tried for transporting a stolen car from one state to another.

Judge T. Blake Kennedy imposed the minimum sentence of sixty days in jail.

Fish tails, cleaned, deodorized and dried are a novel trimming for ladies' hats now being tried by milliners.

Wearing on Good Looks!

"You know that hard mountain water is wearing on good looks.

"Chapping, chafing, removing natural oils from the skin—it is necessary to take care to replace such oils, with proper creams, and proper care.

"Marinello methods of beauty service will be helpful in your study of YOUR beauty problems, facial or scalp."

Marinello Beauty Shop

123 West Broadway
Phone 492-J

ZITE-LEEN'S A Pair of Shoes Free

To the wearer who finds paper in the heels, soles or counters of a pair of PETERS DIAMOND BRAND SHOES and you can buy this shoe that will wear better than any other make for less than you have to pay for inferior shoes.

GIRLS' HIGH SHOES

In Brown or Black from 8 1-2 to 11 \$2.95
In Brown, 11 1-2 to 2 \$3.45
Men's Calif. Brown, at \$5.00

Headquarters for Walk Over Shoes for Men and Women

ZITE-LEEN'S

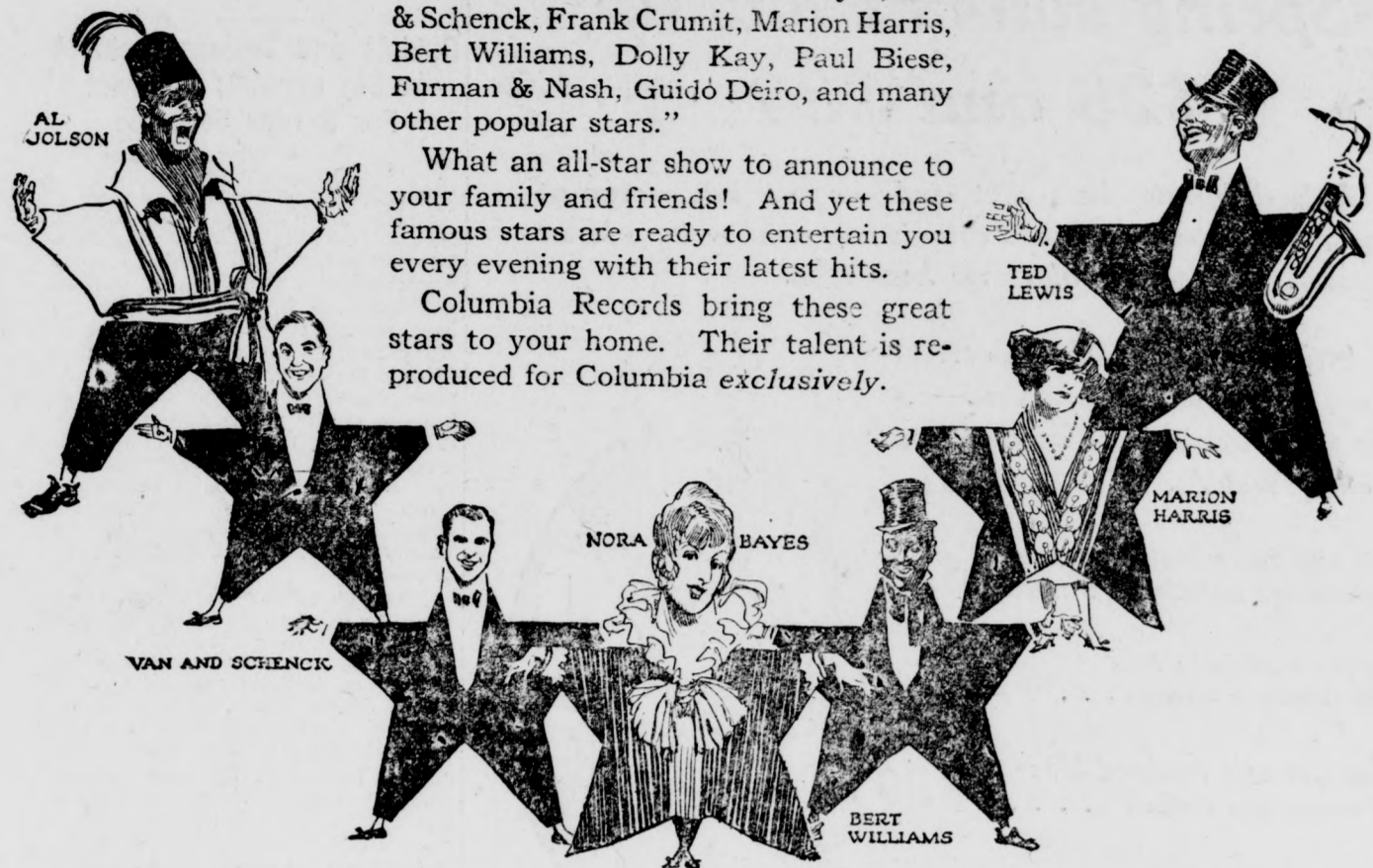
140 North Brand Blvd.
The Store That Sells for Less

"We have with us tonight—"

Al Jolson, Ted Lewis, Nora Bayes, Van & Schenck, Frank Crumit, Marion Harris, Bert Williams, Dolly Kay, Paul Biese, Furman & Nash, Guido Deiro, and many other popular stars."

What an all-star show to announce to your family and friends! And yet these famous stars are ready to entertain you every evening with their latest hits.

Columbia Records bring these great stars to your home. Their talent is reproduced for Columbia exclusively.



You follow the crowd to find a good show. Follow the popular record fans and you'll find what you want at some Columbia store

Columbia Records

Here's the Pick of the List

DANCES	NOVELTIES	PIANO	VIOLIN
Ty-Tee (Tahiti) Fox-Trot Eddie Elkins' Orchestra A-3528 75c	Blue Diamonds Fox-Trot Accordion Guido Deiro A-3969 75c	Valse Brillante (Chopin) Josef Hofmann A-6045 \$1.50	Zapateado Spanish Dance 79456 Duci de Kerkjarto \$1.00
When Buddha Smiles Fox-Trot Eddie Elkins' Orchestra Craney Fox-Trot The Columbians A-3532 75c	(a) Irish Washerwoman (b) Wearing of the Green (c) Rakes of Mallow Don Richardson A-3424 75c	Rigoletto Paraphrase Leopold Godowsky A-5996 \$1.50	Caprice Viennois (Kreisler) 49449 Toscha Seidel \$1.50
She Loves Me, She Loves Me Not from The Perfect Fool Medley Fox-Trot The Columbians A-3533 75c	(a) Dance Wid' a Gal, Hole in 'Er Stockings (b) Annie Laurie (c) White Cockade Don Richardson A-2610 75c	Cradle Song Leopold Godowsky A-6000 \$1.50	Minuet in G, No. II (Bach) Kathleen Parlow A-2162 Valse Bluette (Air de Ballet) Kathleen Parlow \$1.00
Dapper Dan Fox-Trot Knickerbocker Orchestra I Want You Morning, Noon and Night Medley Fox-Trot Knickerbocker Orchestra A-6203 \$1.25	Messenger Boy March Xylophone Solo Howard Kopp A-2610 75c	Second Hungarian Rhapsody Part I Percy Grainger A-6090 Second Hungarian Rhapsody Part II Percy Grainger A-5915 \$1.50	Serenade from Les Millions D'Arlequin Sascha Jacobsen A-2779 Souvenir (Drda) Sascha Jacobsen \$1.00
When Francis Dances With Me Medley Waltz Prince's Dance Orchestra Love's Ship Intro "Say You'll Be Mine" Prince's Dance Orchestra A-3519 75c	Royal Flying Corps March Accordion Guido Deiro A-2695 75c	Venezia e Napoli (Liszt) Josef Hofmann A-5915 \$1.50	Valse Bleue Toscha Seidel 78760 \$1.00
The Sheik Fox-Trot Ray Miller and His Black and White Melody Boys Weep No More (My Mammy) Fox-Trot Ray Miller and His Black and White Melody Boys A-3473 75c	Barcarolle from Tales of Hoffmann Saxophone Duet Clyde Doerr and Bert Ralton A-3342 75c	Minuet in G (Paderewski) Josef Hofmann A-6125 \$1.50	Jota de Pablo Duci de Kerkjarto 49903 \$1.50
Ma Intro "When the Honey-moon Was Over" Medley Fox-Trot Ted Lewis and His Band Bimini Bay Fox-Trot Ted Lewis and His Band A-3386 75c	Put On De Golden Sword Harry C. Browne and Male Quartet A-3386 75c	(a) Valse Gracie (b) Birds At Dawn (c) Sharp Minor (Rachmaninoff) Josef Hofmann A-6174 \$1.50	Elégie (Massenet) Eddy Brown A-5904 Cavatina (Raff) Eddy Brown \$1.50
	Bright Eyes Jess Libonati Underneath Hawaiian Skies Xylophone Solo Jess Libonati A-3389 75c	Fantaisie Impromptu Josef Hofmann A-6174 \$1.50	
	Get Yo' Ticket Harry C. Browne Turley in the Straw Percy Grainger A-3381 \$1.00	The Rustling of the Woods Josef Hofmann The Gum-Suckers March Percy Grainger	

All Columbia Grafonola Prices Reduced

Prices on all Columbia Grafonolas have been reduced as shown here. You can get a modern Grafonola with all improvements for less than you would pay for an old-fashioned unimproved phonograph.

Visit the Columbia Dealer nearest you. He will gladly play for you any Columbia Record you wish on any Columbia Grafonola.

COLUMBIA GRAPHOPHONE COMPANY, New York



\$275 Model Reduced to \$175 \$140 Model Reduced to \$100

225 " " " 150 125 " " " 85

165 " " " 140 75 " " " 60

150 " " " 125 50 " " " 45

\$32.50 Model Reduced to \$30

\$100
DOWN

And Offer Columbia Grafonolas
A Complete Stock

Easy Payments—See Us
For Sale in Glendale Exclusively by

\$200
a WEEK

KENNY'S Music Shop

203 No. Brand Boulevard

Open Evenings

Phone Glendale 65-W

Webbshop for Men

Spring suits as low as
\$25 and \$30

Judged by the best that could be sold last season at those prices, these suits are astonishing values—the closest approach to pre-war values we have seen.

Strictly all-wool fabrics, correctly cut and splendidly tailored—else they never would have been allowed to enter Webb's.

Two and three-button models in handsome, unfinished worsteds **\$25**

Similar models in fine herringbone weaves . . . **\$27.50**

Others of soft textured blue weaves, pin striped **\$30**

Sold in Glendale Exclusively at Webb's:

- Stetson hats
- Manhattan shirts
- Interwoven hose
- Hart Shaffner & Marx clothes
- Vassar underwear
- Cooper underwear

H. S. Webb & Co.

Broadway and Brand.

Phone Glen. 713



CASABA BATTLE ON FEBRUARY 28 TO DECIDE TITLE

Cublets and Trojans to Meet In Big Contest; Contract For 6-Year Schedule

By HOWARD M'GILLIS
Sporting Editor The Evening News
Southern California basketball fans are looking forward with keen interest toward the coming casaba brawl between the U. C. S. Cublets and the U. S. C. Trojans, which has been tentatively scheduled for February 28. As the Southern Branch quintet has already clinched the conference championship by winning all but one of the nine contests to date, it is expected to give the Methodists a real argument when they meet for the intercollegiate title of the Southland. The game will probably be staged in the newly-constructed University of Southern California gymnasium.

Although most athletic teams produced by the Cub institution are considered a joke and a "set-up" by their opponents, the court game seems to come as a so-called "second nature" to the Junior Bears, as is evidenced by their copping the conference gonfalon for the past two years. Not only is basketball the only sport in which the Cubs finished in first place, but it is the only branch of conference competition in which it has been able to complete the season out of the cellar.

Contract for Six Years
Coach Elmer "Gloomy Gus" Henderson of the University of Southern California recently announced that the athletic authorities of Stanford university had presented a contract to the officials of the Red and Gold school calling for a six years' schedule of contests in all lines of sports. This fact alone is sufficient proof of the fact that Trojan athletes have established themselves on a level with those of any western institution. The excellent showings made by Henderson's 1920 and 1921 gridiron squads is largely due to the increased amount of athletic recognition that has been exhibited during the past six months.

Quits Organized Baseball
Jack Quinn, former well-known pitcher for the Vernon Tigers, and who has been performing in a Yankee uniform for the past few seasons, has recently given up organized baseball and has signed a contract to hurl for a semi-professional nine in Chicago during the coming season. Quinn was sold several months ago to the Boston Red Sox, with whom he is said to have jumped his contract.

Tune for Big Race
With drivers arriving in Los Angeles every day for the big annual Washington's birthday 250-mile race at the Beverly Hills speedway racing followers all over the country are rapidly becoming interested in the coming classic. It is expected that approximately 100,000 speed enthusiasts will be on hand on the afternoon of February 22 when the start of the flag is waved to a dozen of the fastest drivers in the world.

U. S. Warships Will Not Ignore Submarines
WASHINGTON—Although under the rules adopted by the Arms Conference the submarine has been technically robbed of some of its principal terrors the United States Navy is losing no time in preparing to deal with that weapon should another emergency arise.

The American Navy during the World War had ample opportunity to get first-hand information as to the deadliness of the undersea craft, and among the officers having such war experience there are no illusions as to that vessel's ability.

Two of the most efficient weapons against the German submarines were developed by Americans during the war, and these weapons are still regarded as of maximum effect. They are the depth bomb and the mine. American naval officers used both in the war with considerable effect, and one of the outstanding feats of that conflict was the North Sea barrage of mines, in which work the Americans had a major share.

Accordingly all destroyers not already equipped are now being supplied with an allowance of depth charges. No new manufacture of this device has been undertaken since the war, but ordnance experts are working on improved types and are making satisfactory progress in this development.

The armistice found the Navy with considerable material for mine operations on hand. These mines were manufactured primarily for use against German submarines. Since the war experts have overhauled all this material, effecting improvements and otherwise putting in condition the mines and mining equipment for future use if necessary.

New suggestions are constantly pouring in regarding all sorts of war devices, and in these have been ideas on mines which have all found their use in the navy scheme.

Incidentally the same naval experts are working constantly now on details of aircraft attack and defense from the naval viewpoint. Especial attention has been given to illuminating devices, new sights and similar material.

Webb's -- your home store

- The Glendale Home of --
- Athena Underwear
 - Perrin's Gloves
 - Kaysar Gloves
 - Gossard Corsets
 - De Bevoise Brassieres
 - Phoenix Hosiery
 - Kapock Draperies
 - Foster Cretomnes
 - Botany and Jamestown Mills Dress Woolens

The store that leaves a Glendalian no excuse for trading elsewhere
--because--
--the nationally advertised merchandise, which you know is ultimately the most economical to buy, is here at the same prices charged elsewhere
--and because--
to go elsewhere means either high car fares or loss of time and temper in auto traffic congestion.



Individuality in Outer Apparel

Webb's presents a select few out-of-the-ordinary garments, rather than a great number of duplicates
--makes available, right at home, a splendid selection of decidedly smart wearables at surprisingly moderate prices.



Polo coat of "Camelair" cloth of delightfully soft texture, with leather buttons and leather buckle.

\$42.50

Sports coat of smart Irish homespun, lined throughout with Radium silk.

\$25



Princeton Sweaters

— new shipment — fancy weaves with Angora collars and cuffs — wide choice of Spring colorings.

\$10.95 to \$12.50

Spring frocks of taffeta in black, blue and browns — some profusely tucked, others gracefully draped; trimmed with fine laces or embroidered organdy.

\$26.50 to \$49.50

Silk crepes in dainty shades at the same prices.

H. S. Webb & Co.

Broadway and Brand.

Phone Glen. 713

Campaign Is Started to Make War Crime

CHICAGO—Make war a crime, punishable by the law of nations; abolish soldiers and reduce all armaments to the lowest point consistent with domestic safety. Thus abolish war.

This is the plan, voiced in 20,000 appeals for peace and scattered broadcast over the civilized world by Chicagoans, who seek lasting peace among nations. The Washington conference, foreign capitals and the universities of the world are among recipients of the resolutions drafted by Chicagoans and sent out in booklet form in the interest of peace.

Salmon Levinson, railroad organizer and corporation builder, and Mrs. B. F. Langworthy, clubwoman, are the leaders of the movement in Chicago. Their plan, based upon a plan worked out by Levinson, in conjunction with the late Senator Knox, would call for the codification of international law, establishment of an international court and compulsory arbitration on international disputes. Among the resolutions drafted are the following:

First—War as an institution for the settlement of international disputes to be abolished and declared a public crime, punishable by the law of nations.

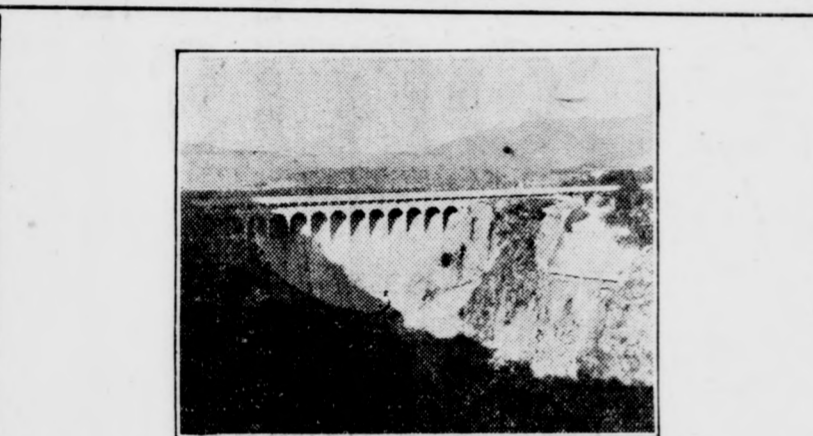
Second—All annexations, exactions, or seizures by force, duress or fraud to be declared null and void.

Third—An international court with affirmative jurisdiction, modeled as nearly as possible on the Supreme Court of the United States, to be instituted on the understanding that its orders, decrees and decisions shall be obeyed by all nations of the earth. The court is to sit in the hemisphere of the contending nations.

Fourth—Abolition of professional soldiery and the substitution of a potential army through citizen soldiery on the Swiss model.

Fifth—All nations shall make public reports once a year setting forth fully their military and naval armaments, structural and chemical. These reports to be verified by authorized committees.

Sixth—National armaments to be reduced to the lowest point consistent with domestic safety.



A SENSATIONAL AUCTION of 500 Beautiful Home Sites One Lot Given FREE CORONA DEL MONTE

(Crown of the Woodlands)
OPPOSITE FLINTRIDGE COUNTRY CLUB
One chance to get a lot FREE—500 chances to buy one at a bargain. Nothing like it ever offered before—you can set your own price and bid accordingly. You can pay 20% down and \$10.00 per month. Less than \$100 cash will handle one lot. Be on hand to get that FREE lot and buy one more at your own price.

Sale Saturday and Sunday
11 a. m. on Property
DIRECTIONS: From Los Angeles, drive out Verdugo Canyon Road to Montrose, turn to right and follow main road to Flintridge Country Club. From Pasadena, drive to Devil's Gate Dam and follow main boulevard to Flintridge Country Club.
F. J. RAVEN, AGENT
C. H. O'Connor & Son, Auctioneers
626 Pantages Bldg., L. A. Phone 64282

ROBINSON BROS. TRANSFER
and
FIRE-PROOF STORAGE CO.
Phone Glendale 428 Night Phone 1023-J
304-306 S. BRAND BOULEVARD, GLENDALE
PACKING MOVING VANS SHIPPING

INCOME TAX RETURNS
For Individuals and Business
PUBLIC ACCOUNTANT **R. E. OLIN** AUDITOR
Systems Installed Books Kept
Room 1, 150 So. Brand Blvd. Glendale 1176-W

G. Washington's COFFEE

ORIGINATED BY MR. WASHINGTON IN 1909

Make Coffee the Improved Way—
In the Cup at the Table

G. Washington's Coffee dissolves instantly when water is added. Put it in the cup just as you do sugar.

The bulky, woody fibre which makes the coffee grounds and the digestion-disturbing acids have been refined away by Mr. Washington's special process which makes G. Washington's Coffee 100% pure. No coffee pot or percolator needed. No waste.

It is estimated that more than 25% of all bean coffee made is wasted.

Measure the cost by the cup
—Not by the size of the can

One can of G. Washington's Coffee is equivalent to ten times its weight in roasted bean coffee.

For greatest economy buy the larger size cans.

No trouble—no waiting—no grounds. Always delicious. Every can guaranteed to give satisfaction.

Booklet free. Send 10c for special trial size.

G. WASHINGTON COFFEE REFINING COMPANY
522 Fifth Avenue, New York

Baseball players as a rule are not poetical, but most of them believe that a home run in time saves the nine.

A man doesn't have to marry thirteen times to have had luck in the matrimonial market.

Fireproof building bricks are being made in Germany from slag, coal cinders and other waste materials from gas plants and railroad yards.

The way of the transgressor may be hard, but he can generally afford to pay for new tires.

Banjos, which originated in India, were taken to England from America.

FREE

—With every New Vacuum Sweeper sold during our Big Clean-Up Sale we will give FREE a valuable premium. Six different Sweepers to select from. Price ranges from \$45 to \$65, on terms of \$10 cash and \$5 per month.

VACUUM CUP and DOLLY TYPE

WASHERS

During this Big Clean-Up Sale we offer you your choice of either a Vacuum Cup or Dolly Type Electric Washer, complete with swinging reversible wringer and large motor, at the Bargain Price of \$59.00. As we have only a limited number to sell at this Bed Rock figure, we ask you to act quickly. Monthly payments at small additional cost.

\$59

Cylinder and Oscillating Washers

\$110.00 Each

While Our Big Clean-Up Sale is in progress we offer you your choice of ten of our highest grade electric washer models at the extremely low price of \$110. Understand, some of these are copper tub cabinet washers, while others are complete with gas burners. Every machine fully guaranteed. Sold on easy monthly payments at a small additional cost. Valuable premium given free with every \$110 washer.

Electric Irons \$ 3.65
Electric Sewing Machines..... \$49.00

WASHER WILSON

Glendale Store, 140 S. Brand
Phone Glendale 530

Huntington Park, 154 Pac. Blvd.
Los Angeles, 612 So. Spring St.
Pasadena Store, 822 E. Colorado
Long Beach Store, 136 E. Third
Fresno Store, 1243 Jay Street

Plenty of Money for Building Loans

—Building a new home or apartment house requires ready money. To expedite its immediate erection we are prepared to make liberal loans. Loans on any projected or recently completed residence or apartment house that is well located in Glendale or its immediate vicinity will be

Closed Immediately Without Delay

—Loans to any amount will be made on apartment houses, but on residences the limit is \$5000. Each loan is made for 15 years and may be paid off on or after three years without bonus. Interest is payable June 1 and December 1 in each year, and principal is reduced by the payment semi-annually of 3 per cent of the face of the loan. When "Building loans" are made, papers must be recorded before any material is delivered or labor performed. Details will be furnished on application.

Interest Rate, 7 Per Cent
Bond Investment Co.
626 S. Spring St.
10707 Main 6507

Hand & Co. MEN'S FURNISHINGS

HARRY J. SYMS and HENRY A. BROWN

You will find here as good merchandise in men's fine furnishings as you will find in any big city store—in most cases you will pay LESS for it here—you will NEVER be asked to pay MORE.

Come In
148 South Brand



We will place this 4 room house on your property, complete as shown, ready to move into for—

\$370000

Get our 50c Book of 100 New Designs and Pick Your Home.

PACIFIC HOMES

We have under construction several Ready Cut Homes, in Glendale, which we invite the public to inspect. Call at our office and let us show you these homes, and also take you to Los Angeles to inspect the Exposition Houses there.

We can save you—15% to 30% approximate labor saving; 10% approximate freight saving; 3 to 5 weeks' approximate time saving. Only one small profit to pay on all material including lumber, roofing, millwork, paints, hardware, etc. Call and get our Complete Prices.

LOW BUILDING COMPANY CONTRACTORS & BUILDERS

629 East Broadway Phone Glendale 226

GLENDALE 201

PULLIAM & KIEFER UNDERTAKERS

Lady Assistant Always in Attendance. Limousine Ambulance Service. Lungmotor and First Aid Service. 305 E. Broadway

Complete List of Telephone Additions and Changes Made During Month of January, As Reported by Local Office of Pacific Co.

Telephone changes for the month of January are announced by the Glendale office of the Pacific Telephone & Telegraph company. Here they are; cut out the list and paste in your phone book:

Alexander, Arthur S., 202 N. Central. Glendale 35-J.
Anderson, Alvin E., 1145 N. Columbus. Glendale 2088-M.
Atwood, B. B., 227 N. Louise. Glendale 2153-R.
Bainbridge, Randolph, 518 E. Cypress. Glendale 929-W.
Baldwin & Richardson, Glendale 126-W.
Ball, L. W., 363 Elk. Glendale 2372-W.
Bentley-Schoeneman Lumber Co., 450 Los Feliz. Glendale 49.
Biddlecom, Roy, 1008 Virginia Pl. Glendale 2346-W.
Bloor, John, 204 N. Cedar. Glendale 1132-R.
Bolen Realty Co., 206 W. Broadway. Glendale 2163.
Bradbury, R., 804 E. Acacia. Glendale 1224-M.
Brandstater, C. A., 401 W. Wilson. Glendale 802-J.
Brier, Emma, 1128 E. Lexington. Glendale 1089-M.
Brinkhoff, H., 317 W. Oak. Glendale 1521-W.
Bruce, Mrs. Dan, 321 1/2 W. Vine. Glendale 2126-M.
Burnett, A., 705 W. Adams. Glendale 2085-R.
Byerly, James, 1010 Florence Pl. Glendale 2346-M.
California Finance & Housing Co., 144 S. Brand. Glendale 2252-J.
Camerer, J. D., 311 W. Garfield. Glendale 359-R.
Carman, Myron, 371 Salem. Glendale 1246-J.
Caswell, C., 230 N. Central. Glendale 2374-J.
Chapin, E. D., 229 S. Kentworth. Glendale 2271-J.
Club Garage, 107 E. Colorado. Glendale 646.
Coggins, H., 400 W. Oak. Glendale 2271-M.
Cooley, I. C., 312 S. Brand. Glendale 566-W.
Cordary, H., 229 N. Louise. Glendale 2153-W.
Cox Dry Goods and Furniture, 1510 S. San Fernando. Glendale 1687-J.
Coye, C. Milford, 1416 E. California. Glendale 2375-W.
Creighton, O. A., 1629 Virginia. Glendale 2109-M.
Custer, Porter M., 1119 S. Brand. Glendale 281-M.
Danielson, Mrs. Jens, 442 W. Maple. Glendale 2007-W.
Daugherty, Mrs. J. H., 700 W. Harvard. Glendale 2331-W.
Davis, E. R., 368 W. Doran. Glendale 1156-M.
Davis, R. R., 406 N. Adams. Glendale 34-M.
Dibbern, J. D., 514 S. Glendale. Glendale 2170-J.
Diederich, P., 1526 E. Colorado. Glendale 74.
Donley, Emma M., 215 S. Central. Glendale 844-W.
Doty, I. E., 608 S. Pacific. Glendale 1491-M.
Dunning, Edmonds & Cole, 152 S. Brand. Glendale 2376-J.
Dunning, G. A., 145 S. Everett. Glendale 755-J.
Eastern Ladies' and Men's Tailors, 1192 E. Broadway. Glendale 737-J.
Eckhardt, W. B., 1145 N. Louise. Glendale 1052-W.
Ekstrand, J. C., 445 W. Colorado. Glendale 2128-R.
Elihas, E. B., 104 W. Cypress. Glendale 1292.
Ellis, Mrs. Hattie B., 351 1/2 W. Hawthorne. Glendale 228-M.
Felton, Paul, 446 W. Stocker. Glendale 1210-M.
Fendtmacher, W. W., 479 W. Maple. Glendale 2260-J.
Fish, F. J., 357 W. California. Glendale 453-M.
Fowler, Harry N., Los Angeles. Glendale 2048-B-5.
Franklin, Eben, 620 E. Broadway. Glendale 2345-W.
Freitag, Fred, 1231 E. Broadway. Glendale 305-W.
Fridt, Dr. Paul D., 124 S. Brand. Glendale 1432.
Fridt, Dr. Paul D., 541 W. Lexington. Glendale 1473-M.
Fromm, Mrs. J., 1249 E. Wilson. Glendale 305-J.
Frost, H. C., 667 Patterson. Glendale 1059-J.
Fulton, J. E., 130 Franklin Ct. Glendale 572-M.
Furst, T. M., 400 N. Glendale. Glendale 1471-M.
Gateway Market, 1744 San Fernando. Glendale 2361-W.
Gibbons, S. J., 245 W. Stocker. Glendale 1489-M.
Gilbert, Jessie B., 211 N. Cedar. Glendale 2033-W.
Girard, Harry, 245 S. Orange. Glendale 491-W.
Glendale Branch Post Office, 124 N. Brand. Glendale 109-W.
Glendale Market, 632 E. Broadway. Glendale 1230.
Glendale Zone Taxi Service, 108 N. Maryland. Glendale 2251-J.
Glen Inn, The Conf., 152 S. Brand. Glendale 2376-J.
Golden State Market, 436 E. Colorado. Glendale 111-W.
Gordon & Harrison, Los Angeles. Glendale 2048-J-5.
Greaves, J. M., 541 W. Vine. Glendale 2365-W.
Green, Max L., 528 N. Maryland. Glendale 1452-R.
Green, Wm., 518 N. Central. Glendale 2336-J.
Greene, G. G., 814 E. Broadway. Glendale 1280-J.
Grishy, C. W., 1336 Valley View. Glendale 2353-J.
Grossman-Miller Furniture Co., 246 N. Brand. Glendale 847.
Grow, Wm. J., 925 N. Louise. Glendale 2113-R.
Gulick, C. D., 1237 N. Central. Glendale 1676-R.
Heines, Walter T., 144 S. Brand. Glendale 2252-J.
Hall, Mrs. Geo., 414 E. Broadway. Glendale 527-R.
Hamlin, Edwin D., 627 N. Maryland. Glendale 2304-W.
Harris, W. C., 905 S. Mariposa. Glendale 1469.
Harrison, M. P., 223 N. Maryland. Glendale 1086-W.
Heinmiller, Mary E., 1016 E. Lo-

mita. Glendale 1085-J.
Henry's Garage, 924 S. Brand. Glendale 833.
Hills, E. K., 608 W. Elk. Glendale 2256.
Holen, Annette, 319 W. Cerritos. Glendale 2335-W.
Holiday & Way, 402 E. Broadway. Glendale 2043.
Holmes, S. S., 621 W. Vine. Glendale 1680-J.
Houdysh, I. S., 308 N. Orange. Glendale 2117-J.
Howell, W. E., 624 E. Acacia. Glendale 1414-W.
Hupmobile Agency, 201 S. Brand. Glendale 1667.
Himan, Adelaide P., 1830 E. Gardena. Glendale 2303-R.
Jefferies, Geo. E., 330 E. Salem. Glendale 610-R.
Jellison, E. V., 554 W. Broadway. Glendale 815-W.
Johnson, Emil, 463 Myrtle. Glendale 661-J.
Johnson, J. C., 530 E. Cypress. Glendale 2230-R.
Jones, H. H., Los Angeles. Glendale 2046-4.
Jones, Mathison B., Kenneth road. Glendale 1448-J.
Judd, M. S., 600 E. Chestnut. Glendale 2371-W.
Kennedy, Geo. H., 464 W. Wilson. Glendale 1054-J.
Keyes, P. V., 114 S. Glendale. Glendale 581-J.
Kiersgaard & Mullaly, 207 W. Broadway. Glendale 643-W.
Knapp, C. H., 828 E. Colorado. Glendale 2112-W.
Koepke, Henry, 1315 S. Central. Glendale 849-R.
Kohl, Mrs. Harry, 332 Arden. Glendale 2349-W.
Kuntz, Walter D., 325 W. Broadway. Glendale 928-W.
Kurihara, K., 516 W. Riverdale. Glendale 763-J.
La Crescenta Feed & Fuel Co., Los Angeles. Glendale 208-R-1.
Ladies' Toggery Shop, 135 S. Brand. Glendale 887-W.
Lee, Alice J., 326 W. Cypress. Glendale 1676-M.
Lingham, T. G., 201 E. Acacia. Glendale 548-W.
Little Mill, 1211 San Fernando. Glendale 1067-W.
Loomis-Shuck Music Co., 211 N. Brand. Glendale 2329.
L. A. Milo Wheat Co., 1501 S. San Fernando. Glendale 1685-W.
Lucy, Dennis L., 207 1/2 E. Broadway. Glendale 2000-R.
McBain's Grocery, 634 E. Broadway. Glendale 136.
Macgregor, John, 430 W. Wilson. Glendale 1054-M.
Mason, Geo., 918 E. Windsor. Glendale 1905-R.
May, O. H., 548 W. Oak. Glendale 2271-R.
Mayne, A. H., 115 Acacia. Glendale 270.
McBurney, R. R., 1408 San Fernando. Glendale 1670-M.
McClellan, F. W., 738 N. Brand. Glendale 1086-M.
Medick, Miss Lillian, 245 Dayton. Glendale 2362-W.
Miller, C. D., 303 N. Central. Glendale 2349-J.
Miller, Wm. A., 508 Granada. Glendale 633-M.
Morris, Dr. C. J., 607 E. Wilson. Glendale 2359-J.
Morse, S. B., 143 S. Everett. Glendale 84-M.
Nozier, Mabelle, 132 S. Orange. Glendale 1679-M.
Mustard, S. C., 616 W. Myrtle. Glendale 2132-R.
Neithardt & Sword, 135 S. Brand. Glendale 887-W.
O'Conner, J., 331 W. Elk. Glendale 2220-R.
Okey, F. W., 328 Mira Loma. Glendale 2238-J.
Olin, R. E., 150 S. Brand. Glendale 1431-R.
Oliver, J. A., 335 Ivy. Glendale 1431-R.
Page, Harlan A., Jr., 408 E. Acacia. Glendale 2082-R.
Parish & Burton, 105 N. Brand. Glendale 291-R.
Parker, H. M., 361 W. Vine. Glendale 1552-M.
Parker, Roy W., 836 S. Glendale. Glendale 2299-W.
Parker, W. P., 450 Hawthorne. Glendale 1324-M.
Peterson, E. H., 1410 E. California. Glendale 1278-M.

No. 17, 108 So. Brand
No. 30, 115 No. Brand
Glendale
Consolidation Sale
Chaffees
WHERE CASH BEATS CREDIT

Saturday
February
18th
Consolidation Sale

GROCERIES

Strictly Fresh Pullet Eggs Dozen, 25c	Darigold Milk 3 tins 25c	Golden Age Products 3 pkgs. 20c
Bradco Iowa Corn 2 tins 25c	H-O Oats 2 pkgs. 25c	Shredded Wheat Package, 10c
Kellogg's Corn Flakes 3 pkgs. 25c	Wilson Early June Peas 2 tins 25c	Eagle Premium Cake Chocolate 1 lb. 25c

Chaffees All Bread, 2 for 15c **Chaffees**

Pierce, Geo. W., 207 E. Maple. Glendale 375-M.
Pilling, Frank H., 227 N. Central. Glendale 2013-J.
Pomeroy, C. M., 1212 E. Windsor. Glendale 586-M.
Redd, Harry L., 214 E. Garfield. Glendale 385-W.
Rennecker, Mrs. Eliz., 323 W. Elk. Glendale 911-W.
Reuter, H., 356 W. Acacia. Glendale 1937-W.
Rondou & Libert, 1211 San Fernando. Glendale 1067-W.
Russell, D., Jessie A., 1124 Viola. Glendale 1136-J.
Saunders Paint Co., 138 N. Brand. Glendale 2298.
Sawyer, W. E., 350 W. Lomita. Glendale 1386-W.
Scales, John C., 909 E. Colorado. Glendale 1627-J.
Scott, Geo. H., 607 E. Chestnut. Glendale 2366-J.
Scarless, John M., 643 N. Maryland. Glendale 278-W.
Schastian, R. M., 1212 Viola. Glendale 513-M.
Sheehy, C. J., 800 Raleigh. Glendale 2114-W.
Shiffer, C. G., 809 E. Elk. Glendale 168-M.
Smith, C. Birdsall, 467 Patterson. Glendale 919-M.
Smith Electrical Co., 631 E. Broadway. Glendale 936-W.
Smith, Mrs. Helen F., 505 N. Louise. Glendale 1938-M.
Smith, J. F., 1014 Melrose. Glendale 2134-J.
Smith, Mary E., real estate, 104 S. Brand. Glendale 2377.
Smith, Mrs. K., 212 S. Maryland. Glendale 2268-W.
Smith, T. L., 1100 N. Central. Glendale 310-W.
Snyder, R., 1102 E. Broadway. Glendale 737-J.
South Glen Bakery, 1408 San Fernando. Glendale 1670-M.
Sperry, D. R., 636 E. Orange. Glendale 1908-J.
Spindler, Alfred R., 314 W. Oak. Glendale 2333-W.
Stave, H. J., 927 S. Brand. Glendale 375-M.
Stiepler, Minnie, 1032 Winchester. Glendale 560-J.
Strong, I. C., Altura. Glendale 2045-R-4.
Sudlow, M., 202 E. Garfield. Glendale 548-J.
Sutton, Geo. W., 462 W. Burchett. Glendale 1524-R.
Syms, H. J., 450 W. Myrtle. Glendale 829-J.
Tartling, Mrs. A. V., 426 S. Adams. Glendale 807-R.
Teters, W. S., 351 W. Hawthorne. Glendale 1534-R.
Thomas, James, Honolulu. Glendale 2123-K-1.
Tom Cat Transfer, 103 W. Broadway. Glendale 1454-R.
Torrey, Mrs. Esther A., 218 W. Doran. Glendale 2262-J.
Wallace, Geo. A., Prospect. Glendale 2045-J-13.
Ware Transfer, 1127 S. Brand. Glendale 1927.
Warner, Emory, 724 E. Acacia. Glendale 1414-J.
Watrin, Fred, 106 S. Maryland. Glendale 1663-J.
Watson, T. W., 612 S. Brand. Glendale 329.
Wells, Chas., 328 N. Howard. Glendale 1577-J.
White, E. H., 465 Patterson. Glendale 2364-R.
White, Richardson D., 1220 S. Brand. Glendale 808.
Whitefield, W. H., 351 W. Burchett. Glendale 2349-J.
Wilde, F. H., 623 Orange Grove. Glendale 169-J.
Wyvell, James, 1215 N. Brand. Glendale 2145-W.
Yeo, W. F., 334 El Bonita. Glendale 2335-J.
Young's Hardware, Verdugo road. Glendale 2122-J-4.
The electric cell is the most powerful of electric fishes. Its electric shock is sufficient to paralyze temporarily a man or large animal.



Margaret B. Lane
"Exclusive Millinery"
(Formerly With Mrs. C. H. Eudemiller)
Orders taken for Hand Bags, Lamp Shades, Lingerie and Art Novelties
312 N. Louise Street.
Glendale, Calif.
Phone Glen. 1008-W

Messrs. Charles F. Hahn and Robert R. McKenzie
Associated As

HAHN & MCKENZIE

137 South Brand Boulevard

Announce the Opening of Glendale's Finest and Most Complete
REAL ESTATE OFFICE

Saturday, February Eighteenth, Nineteen Twenty-Two

Reception Four to Eight.

Join Us on This Occasion

**—Only 9 more days for you to participate in the year's biggest food sale event—
SAM SEELIG'S "13" SALE**

The New Dessert
JELL - WELL
In Assorted Flavors
12 Pkgs. for
\$1.20
—ONE PKG. FREE—

MILK
Your Choice
Libby's Alpine
Carnation or Borden's
12 Large Cans
\$1.20
—ONE CAN FREE—

BEN HUR SOAP
12 Bars For
54c
—ONE BAR FREE—

—out of our "13" Sale we have selected three assortments that should be on the pantry shelves of every house, and the quality of these items combined with low dozen price makes another reason why you should buy at Sam Seelig Stores.

ASSORTMENT NO. 1
CANNED FRUIT
4 Cans of Each
Royal Taste Apricots
California Growers' Sliced Peaches
Libby's Sliced Pineapples
The 12 Cans for
\$2.85
AND ONE CAN FREE

ASSORTMENT NO. 2
Flag Brand
CANNED VEGETABLES
3 Cans of Each
Baby Green Lima Beans
Refugee Beans
Golden Bantam Corn
Succotash
12 Cans for
\$3.42
And 1 Can of Flag Brand Red Kidney Beans FREE

ASSORTMENT NO. 3
4 Packages of
JELL-WELL LUX
4 Cans of
LIBBY'S BEANS
The 12 Cans for
\$1.20
And 1 Free—Your Choice



'Fog Flu' Found to Kill London Plants

LONDON—"Fog flu" is the latest even on fogs. Dr. Owens, London's leading fog expert, declares that "fog flu" which is killing off plant life, is probably caused by the presence of sulphur in the fogs, which closes the pores of plants.

Pay of Death Dealer Drops at Sing Sing

OSSINING, N. Y.—Nineteen twenty-one was a poor year for State Executioner John Hulbert. His income fell off \$750 from the previous year, when he had sixteen electrocutions. Last year he had only eleven. For each person he puts to death in the electric chair Hulbert gets \$150. In addition to these fees he draws a salary of \$1,500 for serving the state in another capacity. Prospects are for a more prosperous year for Hulbert in 1922. So far this year he has had three jobs. Three other men are to be executed soon, and twenty-five condemned men are now in the death-house.

Marconi Perfecting New Wireless Alarm

LONDON—A new wireless-operated bell-alarm is being tested to take the place, on certain ships, of the usual "S. O. S." signal. "Our experiments," said an official of the Marconi Wireless company, have proved most satisfactory. "We have produced an instrument of the 'you touch the button and we do the rest' kind, with the use of which small ships need only carry one wireless operator instead of three. Briefly, the instrument is a four second bell-alarm. By merely touching a key and repeating a four-second beat three times a bell is rung on all similarly-fitted ships within a range of a hundred miles. "This range is by no means final, we hope to extend it to two hundred.

PIGGLY WIGGLY

All Over the World

GLENDALE STORE -- -- -- -- -- 115 SO. BRAND

WHERE

HERE you find food products of highest quality at lowest prices.
HERE you do not pay salaries of bookkeepers, collectors, solicitors, telephone charges, delivery expense or contribute to bad debt account.
HERE the saving in operating expense is given to the customer.
HERE you find clean, fresh goods and clean surroundings.
HERE you find a thousand items marked plainly with a swinging price tag, no necessity to ask the price.
HERE there are no delays, no arguments, no waiting for other customers to be waited on, no "just as good" brands forced upon you.
HERE you select with your own hands what you want, not what somebody wants to hand you.
HERE a dollar buys a full dollar's worth.

Piggly Wiggly stores are price makers. They stand as a barrier against extortionate prices and are a stepping stone to better living at less cost

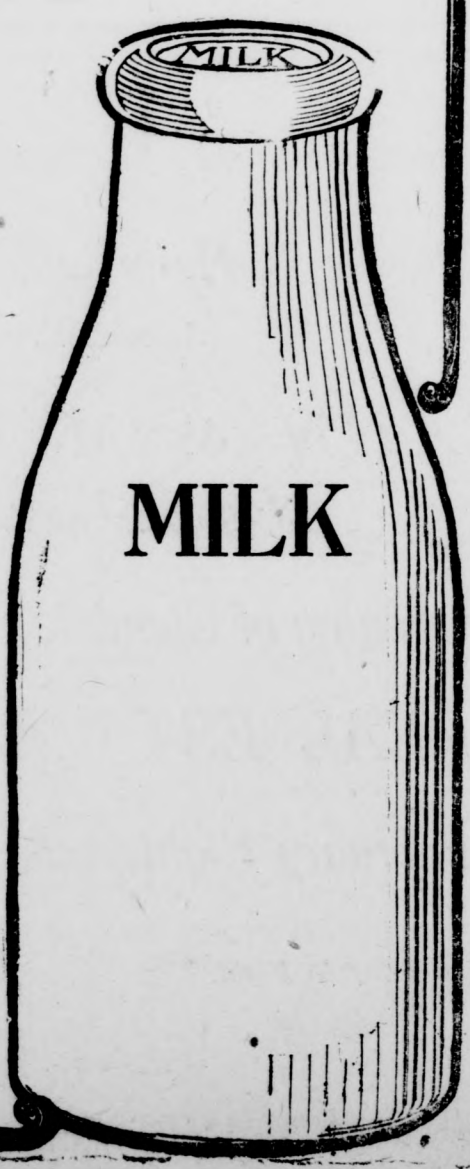
Here Are A Few Examples of Our Low Prices

PEACHES Del Monte Sliced Yel. Cling, 2 1/2 25c Del Monte Yellow Cling, 2 1/2 25c	Milk Borden's Lge. 9c Alpine Lge. 9c Libby's Lge. 9c Borden's Eagle Brand 18c	SOAPS Ivory, small 7c Ivory, large 12 1/2 c P. & G. White Naphtha 6 1/2 c Pearline, large 23c
PINEAPPLE Del Monte Sliced No. 2 25c Del Monte Sliced No. 2 1/2 30c Del Monte Grated No. 2 18c Del Monte Grated No. 2 1/2 20c	Coffee M J B 1-lb. can 39c M J B 3-lb. can \$1.15 M J B 5-lb. can \$1.85	COCOA Hershey, 1/2 lb. 16c Hershey, 1 lb. 31c Baker's, 1/2 lb. 20c Baker's, 1 lb. 40c
Solid Pack Tomatoes Del Monte No. 2 1/2 17c Libby's No. 2 12 1/2 c Libby's No. 2 1/2 16c	SWIFT'S PREMIUM BACON 1-lb. Sliced in Carton 59c	ROLLED OATS Armour's, small 12c Armour's, large 27 1/2 c Quaker Oats, small 12 1/2 c Quaker Oats, large 28c
MAPLE SYRUP Moore's Barrel Syrup, small 28c Moore's Barrel Syrup, large 55c Log Cabin, small 24c Log Cabin, medium 49c Log Cabin, large 98c	Peas Eagle 15c Tropic 16c Rambler, sm. 25c Iris 30c	Corn Audubon 15c Velvet 18c Iris 19c Shoe Peg 20c
SALAD DRESSING Premier, large 40c Jevne's, large 60c		Breakfast Foods Cream of Wheat 24c Malto Meal 25c
		Pancake Flour Armour's 12c Encore, large 25c



Our Milk is Nutritious!

Milk from well-fed, healthy cows is purer and of greater health-giving value than that from animals less so.
Our cows are a happy, contented lot, well cared for and kindly treated. As a consequence our milk is pure and rich in food value. The kind most desirable for infants and the growing youngsters. It is equally as valuable for the grown-ups; in fact, it is the best milk for everybody.



The Calla Lily Creamery Co.
"A Dairy with a Conscience"
1245 E. Windsor Road
Phone Glendale 306
We Deliver to All Parts of Glendale and Eagle Rock

Bandit Steals Pants and Prevents Pursuit

KANSAS CITY, Mo. — Shame on such a bandit—he robbed Morris Bluestein and then stole his pants to prevent pursuit. "It was awful, terrible, something fierce," Bluestein told the police. "There I stood, in my stocking feet, garbed in my shirt-tail." The bandit held up Bluestein in his toggery shop, where the stock of goods does not include trousers. Pointing to the snow outside, the bandit opined that a man would have to be "dressed warm to go out there." Then he made Bluestein take off his shoes and trousers, and tucking them under his arm departed. A lunch consisting of gold-filled sandwiches and "hard boiled" eggs containing diamonds was taken from a passenger traveling between Eydtkuhen, Upper Silesia, and Berlin. Pores of the bread had been filled with gold and carefully covered with butter, and the eggs had been emptied and refilled with diamonds. To become a magnate, be magnetic.

Masons Plan Large Tubercular Hospital

SAN ANTONIO, Tex.—Taking cognizance of the great number of deaths from consumption annually among Masons throughout the country, steps have been taken by the Masonic Grand Lodge of Texas toward the location of a large Masonic Tuberculosis sanitarium in the Southwest. Grand Master D. Frank Johnson, of the Texas Grand Lodge, has named Robert J. Newton, chairman; B. P. Berkeley and F. P. Miller as a committee to confer with the Grand Lodges of New Mexico and Arizona for the purpose of preparing a plan for the establishment and operation of a tubercular sanitarium. The sanitarium will be national in scope. Figures tabulated by the National Tuberculosis association show that there are approximately 42,300 Masons suffering from tuberculosis throughout the country and that approximately 4,700 die of this disease annually. An electrically operated can opener that cuts out their tops has a capacity of 12 cans a minute.



HARDWOOD FLOORS

Add To The Value Of Your Home
Save Rugs—Save Work
Phone Glen. 557 for Estimates on New Floors
Old Floors Scraped and Refinished
Glendale Hardwood Flooring Co.
Oak, Maple and Birch Flooring
304 East Broadway Phone Glen. 723-W

At Ease While the Miles Fly By!

Los Angeles Limited
Luxuriously cushioned chairs—splendid roadbed—every detail of comfort combine to make pleasant the hours you spend on the Los Angeles Limited. This fast through train to Chicago includes—
Drawing room - compartment sleeping cars, observation-buffet, faultless diner cuisine, tonorial and valet service. Leaves Los Angeles 10:50 a. m. Reaches Chicago 8:50—just 68 hours later—making all morning connections for the east.
Continental Limited
Another through fast train to Chicago. Leaves Los Angeles 4 p. m. Arrives Chicago 3:55 p. m.—making all evening connections for the east.

UNION PACIFIC
A. J. VAIL, Agent
301 North Glendale Avenue
Telephone: Glendale 231

Do Your Shoes Need Fixing?
Take Them to
The Modern Shoe Repair Shop
114 East Broadway
Expert Repair Work
Mrs. J. D. Spence, Prop.

I am paying \$15.00 for this space because I have something to SAY to you in which I believe we are mutually interested--and I want you to see it and read it. I want to tell you some things about Meat.

A great many people think that meat is meat and all should sell alike. One butcher's meat is no better than another's. But to the man or woman who has studied the matter there is a wide difference.

I wish I could take you with me through the different packing houses when I go down to select and mark the meat for the Glendale Market. It would settle the matter of quality for all time with you. You would see hanging there in those great coolers line after line of dressed carcasses ready to be selected and taken to the different markets to be sold for human consumption. At first glance each carcass looks alike, but, as you walk down between those lines and inspect each one separately, you will notice a wide difference. A great many of them are poor and very dark in color, showing that for some reason or other, lack of good feed and care or physical condition, the animal has failed to take on fat.

Then a great many of them you will notice are fat enough but the fat is yellow and the meat dark, denoting age, and you will be told if you do not know, these are cows that, because of age or some other cause, have ceased to be profitable for giving milk or raising calves, and have been sold to the butcher. Then another class that you will notice on close inspection, is the bruised carcass. Owing to all stock being shipped into this market this class is very large. Cattle that would otherwise pass inspection and be suitable for sale in the "Glendale Market" are disqualified.

Some of them have great pieces torn from their sides, others bruised on hips and shoulders, and the whole side is inflamed and discolored. All these different classes of meat are passed by us as being unfit for our customers to eat, and our stamp is placed only on A No. 1 steers. These other classes we can buy for as much as 8c per pound less than the ones we mark, but we have the reputation at all packing houses of being a regular crank for buying nothing but the best. Sometimes out of 100 carcasses we inspect there will be only 2 or 3 that we feel are good enough for our trade.

Our friends who know us and have dealt with us for years, know these things are true, but you who are newcomers to Glendale and do not know us, satisfy yourselves by calling any of the big packers of Los Angeles and they will tell you that what I am saying is true.

Notwithstanding the fact that I pay the highest price for my meats and sell nothing but the very best quality of everything, because of organization and economy in overhead expense, I am enabled to sell this high grade meat at almost the same price the others charge for inferior grades as you will notice by the prices we submit here for Saturday:

These prices not delivered and Saturday only. We want you to come and see how well we are equipped to handle our business.

We make a specialty of hotel and restaurants, having added a hotel and restaurant supply department.

BEEF	
Prime Rib Roast	20c
Prime Rump Roast	18c
Good Steak	20c
Pot Roast 10c to 15c	Boiling Meat 3 lb. 25c

PORK	
Leg of Pork Roast	19c
Shoulder Pork Roast	15c
Pork Chops	25c
Fancy Pork Sausage	25c

Our own open kettle rendered lard, 2 lb	25c
Only 2 lb. to a customer	
Our Own Make of Compound	10c

THE GLENDALE MARKET

IN THE BROADWAY PUBLIC MARKET

COR. BROADWAY AND GLENDALE AVE.



Valley Pride Butter, lb.	50c
Nucoa, lb.	28c
Burbank Potatoes, 10 lbs.	25c
Tall Cans Milk—Carnation, Libby's,	
Sego—Each	10c
Curtis White Meat Tuna	20c

MEATS

Prime Rib Roasts, Fancy Steer Beef	20c
Choice Roasts, Fancy Steer Beef	15c-18c
Fancy Pork Chops, Small Ones	28c
Sugar Cured Corned Beef	15c
Good Bacon, by half or whole	27c
Pure Pork Sausage	25c

We Have Fancy Chickens for Saturday
Phone Glen. 91—Free Delivery—244 N. Brand

GOVERNMENT COSTS SUBJECT OF TALK BY SUPERVISOR

Henry W. Wright Gives Talk to Thursday Afternoon Club; Details Tax Methods

(Continued from Page 1)
"It will cost an additional \$10,000,000 or \$12,000,000 to govern the city of Los Angeles for a similar term."
"In other words, it costs as much to govern Los Angeles city and county combined as it does to govern the state of California for one year."

Much for Education
"Let it be understood, however, that more than 50 per cent of these expenditures in both state and county goes to the support of education."

"Los Angeles county will receive this year from the state treasury several million dollars to be spent in our own county for schools, flood control, conservation, tuberculosis subsidy and other purposes, which, if not borne by the state, would necessarily be raised by an added tax levied upon the homes of the people of this county."

"In view of the fact that the state government is supported by a tax upon the public service corporations, great stress is being placed on the claim that these taxes paid by the corporations are transferred directly to the people."

"But so are the taxes of the merchant, the manufacturer, the editor, and the farmer, and yet no one would argue that the corporations of the individuals should be exempt from their just and equal share of taxes so long as property continues to be the basis of our system of taxation."
"The public has a right to insist and should insist that every dollar spent in taxes by either state or county must return its full value of service to the public."

Questions Discussed
At the close of the address, several questions of general interest were brought up for discussion, among them the King tax bill, and the criticism brought down upon the supervisors by the emptying of the Devil's Gate dam. Mr. Wright stated, that

John M. Eyerick Is With Emil O. Kiefer

John M. Eyerick is now associated with Emil O. Kiefer at 305 East Broadway in the direction of the Pulliam & Kiefer Funeral Parlors.

Mr. and Mrs. Eyerick came to this community to make their home last week and have established a residence at 107 East Chestnut street.

For the past nine months Mr. Eyerick has been connected with the Bradley-Woolman Undertaking company, San Diego. Before that he was assistant to Arthur E. Cressey in the Highland Park Undertaking company.

Glendale is not entirely a stranger to Mr. Eyerick as he has watched the growth of this city with great interest during the eleven years he has lived in California. His only regret seems to be that he did not come here sooner.

Mr. and Mrs. Eyerick expect to transfer their membership to the local Presbyterian church. Mr. Eyerick is a Mason and a Knight of Pythias. Before coming west they lived in Elyria, Ohio.

Mr. Kiefer, who now resides at 511 East Wilson avenue, is glad to welcome Mr. Eyerick into the firm. He announced, however, that they would retain the name of Pulliam & Kiefer.

HAVE YOUR GOWNS MADE TO ORDER
By Modern Geraldine at the Fashion Shoppe, 406 South Brand Blvd. Workmanship and style guaranteed. PHONE GLENDALE 2182-W.—Adv.

under the King tax law, not one cent was added to the tax paid by corporations, and that only time would prove whether the officials took the proper course with the dam, when confronted by the unexpected flood waters.

Before the speaker was introduced the club held a short business session with the president, Mrs. E. V. Bacon, in the chair. It was announced that they would hold a cooked food sale March 4, at the old city hall, the proceeds from which will go to the program fund. In April they will entertain the gentlemen at a social meeting. Their regular open forum will be held the first Wednesday of the month, program to be announced later.
At the close of the meeting, very delicious refreshments were served by the social committee, of which Mrs. William C. Mabry is chairman.

MacBAIN'S For Saturday

WHITE KING SOAP, 14 BARS (Limit 14 Bars to a Customer)	55c
LIBBY'S CANNED MILK, 5 LARGE CANS	47c
JELLO, PER PACKAGE	9c
JIFFY JELL, PER PACKAGE	9c
KELLOGG CORN FLAKES, PACKAGE	9c
POST TOASTIES, PACKAGE	9c
LUX, PACKAGE	9c
MERMAID POWDER (LARGE PACKAGE)	23c
EXTRA LARGE RIPE OLIVES, 1-GAL. CAN	\$1.35

Dance to Be Enjoyed At Eagle Rock City

A dance will be given by the Bird Rock club on Saturday evening, February 18, at the Women's Club House, Eagle Rock. Music will be furnished by the Antrim Syncopated Quartet, a real orchestra for good music. You are invited to enjoy a pleasant evening there and live up to the old town. Dancing from 8:30 to 12.—Advertisement.

The halibut feeds on the bottom of the sea, and when hooked permits itself to be drawn toward the top without very much of a protest. The struggle commences the instant its nose emerges from the water.
Crawfish by their burrowing habits often injure the levees of the Mississippi river.



For a Quick, Economical Meal
we recommend the C. & S. Cafeteria. If you don't mind taking a tray and waiting on yourself, you will get the choicest foods in town, well cooked, and at a moderate cost. High Cost of Living won't trouble you here!

C. & S. CAFETERIA
111 North Brand Blvd. Glendale, Cal.

For Quality Job Printing Call The Evening News



Quality Counts

With us—any article not up to our rigid standard of Quality cannot gain a place in this store.

Let us prove our ability to satisfy YOU. ~
Free Delivery to All Glendale.

Quality Grocery & Market

PHONES 59-377-378
Corner Brand and East Wilson, Glendale, Cal.

Drink "Aquazone"
The Oxygen Water for Health
Ask Us About It

GOLDEN STATE MEAT MARKET

436 East Colorado at Cor. Glendale Avenue.

SPECIAL TOMORROW

Boiling Beef, per lb.	8c
Pot Roast, per lb.	12½c-15c
Nice Young Pork Shoulders, lb.	16c
Pork Sausage, lb.	20c
Boneless Corned Beef, lb.	17½c

SPECIALS ON CHICKENS, RABBITS AND FISH

JOSEPH WAGNER, PROP.

SATURDAY'S SPECIALS at the Little Premium Market

123 North Glendale Ave. Phone Glendale 128

YOUNG HENS, LB.	38c
FRESH DRESSED RABBITS, LB.	39c

BEEF		PORK	
Prime Rib Roast, lb.	20c	Pork Loins, lb.	23c
Top Sirloin Roast, lb.	20c	Pork Legs, lb.	20½c
Boneless Rump Roast, lb.	20c	Lean Pork Shoulders, lb.	15½c
Pot Roast of Corn Fed Steer, lb.	12½c	LAMB	
Eastern Bacon, lb.	27c	Legs of Baby Lamb, lb.	28c
Compound, lb.	10c	Shoulders of Baby Lamb, lb.	16½c

BUTTER—CLEAR BROOK CREAMERY, LB.	45c
FRESH OYSTERS, N. Y. COUNTS, DOZ.	25c

OUR MOTTO— { We Do Not Sell Cheap Products;
We Sell Good Products Cheap.
Yours Truly, DAVID DONWELL.

CLASSIFIED ADS.

To assure proper classification copy for classified ads should be in this office before 11:30 a. m.

First Insertion—Minimum charge, 30 cents including four lines counting six words to the line.

Office Hours—6:30 a. m. to 9:30 p. m., except Sunday.

REAL ESTATE FOR SALE

GLENDALE PROPERTY F. P. NEWPORT CO. Owner Verdugo Woodlands Homes FOOTHILL Homesites GENERAL REAL ESTATE

FOR SALE—Well built, six room bungalow, lot 50x150; room for a small house in rear.

FOR SALE—Attractive, 4-room modern house on rear of well-improved lot, garage, fruit, flowers, lawn and chicken corrals.

MR. HOUSE HUNTER—We will build you all complete with sidewalks, cesspool, plumbing and electric fixtures.

"I SELL THE EARTH"—Owner wants smaller house and will accept 5 or 6 room bungalow well located on this wonderful home.

COMFORTABLE HOME FOR ELDERLY PEOPLE \$3900—\$850 down. Balance \$2500 per mo.

EDWARD HENNES "When Prices Are Right" 719 So. Brand Glendale 114-R

R. N. STRYKER 217 No. Brand Blvd. Glendale 846.

WHY PAY RENT?

4-room and b. nook and garage, oak floors, built-in features, set tubs, large cement porch, fine location.

FOR SALE—By owner, five room modern bungalow, hardwood floors throughout, breakfast nook, all built-in features.

GENUINE BARGAINS

5 rooms and sleeping porch, h. w. floors, immediate possession; close in; a pick up at \$4000; \$1000 down; balance easy.

LOOK AT THIS 5-room modern house, lot 64x164, fine garden, 3 blocks from bus line.

LOOKING FOR A BARGAIN? If you are looking for the fellow who is hard up and will sacrifice for cash see this artistically furnished 6-room bungalow in choice northwest section.

FOR SALE—New English Colonial, 5 rooms on fine corner lot, hardwood floors throughout, fireplace, fine built-in features, and a real home, built by owner, 650 West Lexington Drive.

ROSENBERGER & KELLOGG 1420 S. Glendale Ave. Glendale 1418

BEAUTIFUL LARGE HOME—Close in on Maryland. Great buy at \$8500. Terms, Bellhurst, the TRACT BEAUTIFUL for particular people. Ask us about it.

W. WALLACE PLUMB CO. 229 N. BRAND BLVD.

EASY TERMS Brand new 3-room, all modern home on fine corner lot, oak floors, garage; owner anxious to sell and will take \$1500 for this on terms to suit responsible buyer, or will take as first and small cash payment as first payment.

A FEW OF OUR SPECIALS

New 6-room, modern, one of the best located homes in east Glendale, 1 block to P. E. cars. Possession at once. Price reduced to \$6000 with \$1000 cash.

FOR SALE—New 5 rooms, hardwood floors throughout, tile fireplace, bookcase, writing desk, buffet, built-in bath, cabinet kitchen, breakfast nook, automatic heater, garage, cement work all in, situated on one of Glendale's most exclusive streets.

ASK EARL WELCH 513 1/2 E. Broadway Phone Glendale 908-J

HERE IS YOUR CHANCE TO OWN A NICE little house on lot 65x58, most of plumbing in, for only \$1000.

WORTH WHILE SPECIALS Three 5-room new modern bungalows, \$4100, \$4200, \$4300; \$500 to \$700 down; low monthly payments.

AND CAN'T BE BEATEN AT THE PRICE. Extra well built artistic 5 room bungalow, beautifully located on the finest view site in Glendale.

FOR SALE—\$4000—\$750 DOWN Large 4-room with breakfast nook, 2 bedrooms, tile drain, hardwood floors throughout, Lincoln in kitchen.

FOR SALE—By owner, 5-room house and garage, no presents acceptable. 359 Burchett; Glendale 206-R.

FOR SALE—New 5-room modern home, new garage, lot 70x290 feet, some fruit, chicken pens, get this at \$4750—terms, H. S. Parker, 118-A W. Broadway.

A REAL SNAP—New and strictly modern five-room home, hardwood floors throughout, all built-in features.

A SACRIFICE OWNER GOING TO Scotland and must sell four-room plastered bungalow on large lot 54x175, small assorted fruit trees.

7-room new bungalow located on Brand Blvd.

FOR SALE BY OWNER—Modern 6-room bungalow, half block from Broadway car; \$6000; \$2750 cash; lot 50x150 to alley.

GOOD LOTS CHEAP Between Broadway and Harvard \$1000. Also some very good buys left in GLENDALE HEIGHTS

W. WALLACE PLUMB CO. 229 N. BRAND BLVD.

5 ACRES—5 YEAR LEASE 5-ACRE CHICKEN RANCH Rare Opportunity

7 ROOM COLONIAL 106 S. Brand Blvd. Glendale 1065

PARISH & BURTON REALTORS SUITE 6, RIDY BLDG. PHONE GLENDALE 291-R

KROEHL REALTY CO. 205 E. Broadway, Glendale 424.

FOR SALE—New 5-room modern home, new garage, lot 70x290 feet, some fruit, chicken pens, get this at \$4750—terms, H. S. Parker, 118-A W. Broadway.

FOR SALE—CHOICE RESIDENCE lot 80x167, close to foothills, wonderful view, for quick sale \$1700—\$900 cash, balance easy terms.

A REAL SNAP—New and strictly modern five-room home, hardwood floors throughout, all built-in features.

FOR SALE—Modern 8 room bungalow, 5 bedrooms, 2 baths, cement driveway and garage, terms, 506 E. Maple St., Phone Glendale 2926-R.

FOR SALE BY OWNER—Modern 6-room bungalow.

FOR SALE BY OWNER—Modern 6-room bungalow, half block from Broadway car; \$6000; \$2750 cash; lot 50x150 to alley.

W. WALLACE PLUMB CO. 229 N. BRAND BLVD.

5 ACRES—5 YEAR LEASE 5-ACRE CHICKEN RANCH Rare Opportunity

7 ROOM COLONIAL 106 S. Brand Blvd. Glendale 1065

PARISH & BURTON REALTORS SUITE 6, RIDY BLDG. PHONE GLENDALE 291-R

KROEHL REALTY CO. 205 E. Broadway, Glendale 424.

FOR SALE—New 5-room modern home, new garage, lot 70x290 feet, some fruit, chicken pens, get this at \$4750—terms, H. S. Parker, 118-A W. Broadway.

FOR SALE—CHOICE RESIDENCE lot 80x167, close to foothills, wonderful view, for quick sale \$1700—\$900 cash, balance easy terms.

A REAL SNAP—New and strictly modern five-room home, hardwood floors throughout, all built-in features.

FOR SALE—Modern 8 room bungalow, 5 bedrooms, 2 baths, cement driveway and garage, terms, 506 E. Maple St., Phone Glendale 2926-R.

KELLY & VAN ARSDOLL

Six room house, partly furnished.

Six room house, partly furnished, all improvements, garage, \$5300; terms. Will sell new furniture with house for \$200.

GLORIA HEIGHTS You'll have to hurry if you want to get in on the ground floor in this beautiful view subdivision.

W. WALLACE PLUMB CO. 229 N. BRAND BLVD.

5 ACRES—5 YEAR LEASE 5-ACRE CHICKEN RANCH Rare Opportunity

7 ROOM COLONIAL 106 S. Brand Blvd. Glendale 1065

PARISH & BURTON REALTORS SUITE 6, RIDY BLDG. PHONE GLENDALE 291-R

KROEHL REALTY CO. 205 E. Broadway, Glendale 424.

FOR SALE—New 5-room modern home, new garage, lot 70x290 feet, some fruit, chicken pens, get this at \$4750—terms, H. S. Parker, 118-A W. Broadway.

FOR SALE—CHOICE RESIDENCE lot 80x167, close to foothills, wonderful view, for quick sale \$1700—\$900 cash, balance easy terms.

A REAL SNAP—New and strictly modern five-room home, hardwood floors throughout, all built-in features.

FOR SALE—Modern 8 room bungalow, 5 bedrooms, 2 baths, cement driveway and garage, terms, 506 E. Maple St., Phone Glendale 2926-R.

A BUY—50 foot lot near Kenneth Road covered with orange trees.

A BUY—50 foot lot near Kenneth Road covered with orange trees. Only \$1650, one-quarter cash. EDWARDS & WILDEY CO. 139 No. Brand Blvd.

Splendid close in lot, north section, priced at \$1000 for quick sale. Better hurry. EDWARDS & WILDEY CO. 139 S. Brand Glendale 44.

CHOICE RESIDENCE LOT Close in on North, Kenwood, 50x150, to 20 foot alley, for sale, Glendale 1664-R.

BUILDERS' ATTENTION We have eight very desirable south front lots, in best section of city, which eastern owner is anxious to sell, either separately or together.

We will loan you money to buy lumber, build small house and sell you quarter acre lot on wide graded street one block from street cars near Montrose for \$400, only \$200 down and \$15 month. You cannot buy as nice lots elsewhere and beautiful view, no matter how much you pay.

W. WALLACE PLUMB CO. 229 N. BRAND BLVD.

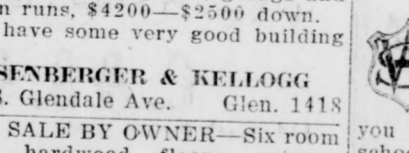
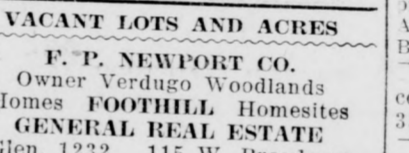
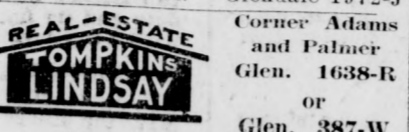
FOR SALE—New English Colonial, 5 rooms on fine corner lot, hardwood floors throughout, fireplace, fine built-in features, and a real home, built by owner, 650 West Lexington Drive.

FOR SALE—New 5-room modern home, new garage, lot 70x290 feet, some fruit, chicken pens, get this at \$4750—terms, H. S. Parker, 118-A W. Broadway.

FOR SALE—CHOICE RESIDENCE lot 80x167, close to foothills, wonderful view, for quick sale \$1700—\$900 cash, balance easy terms.

A REAL SNAP—New and strictly modern five-room home, hardwood floors throughout, all built-in features.

FOR SALE—Modern 8 room bungalow, 5 bedrooms, 2 baths, cement driveway and garage, terms, 506 E. Maple St., Phone Glendale 2926-R.



THE T. D. & L. THEATRE
Phone Glendale 1161

TODAY AND TOMORROW

Meiklejohn & Dunn Road Show

VAUDEVILLE

5 ACTS 5 STANDARD VAUDEVILLE 5 ACTS 5

And On The Screen **"HABIT"**

A Great Drama Of Life
A First National Attraction

REGULAR PRICES

Sebastian Grocery
"Saves You Money" 145 N. Glendale Ave.

Sugar, 10 pounds	55c
Fancy Potatoes, 10 pounds	25c
Full Cream Cheese, lb.	25c
Best Creamery Butter, lb.	50c
Fresh Bread, 24-oz. loaf	9c
Pure Ranch Eggs, Large Size, doz.	30c
Pure Tomatoes, No. 2 1/2 Cans	10c

Many Other Specials on All Staple Groceries
Glendale 1013—PHONE—Glendale 1013

PHONE FOR YOUR MEATS

Best Grade Lean Eastern Bacon, lb.	30c
Fresh Ground Hamburg, lb.	15c
Very Best Pot Roasts, lb.	15c-18c
Legs of Milk Lamb, lb.	30c
Weiners and Frankfurters, lb.	20c
Sauer Kraut, lb.	10c
Lard and Compound, 2 lbs.	25c

We Deliver Free
Glendale 1013—PHONE—Glendale 1013

Brains in Prescriptions

Good drugs, care, plenty of thought and time and—**Brains**. These are the elements of perfect prescription compounding here. Where the importance of good drugs, carefully put together are so well understood, no person should jeopardize health or safety by having medicines put up anywhere except here.

Becker's Drug Store
The Prescription Store
114 N. Brand. Near Post Office. We Deliver. Glendale 2171

Back East Weather Calls For Back East Fuel

We Have Coal Briquets, Wood and Kindling.

Phone Your Order

Glendale Feed and Fuel Company
R. M. Brown, Prop.

PHONE GLENDAL 258-J 106 SO. GLENDAL AVE.

HOME BUILT TRUCK FOR FIRE FORCE DEMONSTRATED

Chief Lankford Complimented On Saving to City and Efficient Apparatus

Demonstration of the ladder truck just completed by A. H. Lankford, chief of the fire department, was given city officials last night after the city council had adjourned. Chief Lankford drove the truck, with councilmen and other officials aboard, up East Broadway and back to fire station No. 1. The truck "behaved" perfectly, the officials declared, and complimented the chief upon his workmanship and the big saving of money made to the city.

It is said that outside of New York City, this is the first time a truck has been built by any department in the United States. A truck similar to the one now possessed by Glendale would cost \$9,500, so, as pointed out by officials last night, Chief Lankford has "made" his salary for several years to come.

Communication to Council
In turning over the truck to the city, Chief Lankford filed the following communication with the council last night:

"Gentlemen—For the last few months the fire department have been building a ladder truck. We now have this completed awaiting your approval. It would be my desire for your honorable body to set a definite date to meet at Station No. 1 and inspect same.

"This has been an improvement that I have figured on for about four years. About three and one-half years ago the city purchased a pump and hose combination truck. In writing up the specifications I specified as extra equipment some smoke helmets, ladders and other equipment. About seven months ago the city purchased another pump and hose combination. I also specified as extra equipment some more ladders and equipment, this making a complete ladder equipment, which was thrown in with each machine with no extra cost to the city, about five hundred dollars' worth of ladders and equipment of which was used on this truck.

Big Saving to City
"Some few months ago I asked permission of your honorable body to overhaul and build a ladder truck out of the oldest truck the city has of which I received permission. In our opinion, we now have a very nice ladder truck with very little expense to the city. A new truck similar to this one would cost \$9,500.

"This has been a very large undertaking to build a truck of this kind. To my knowledge, a truck of this kind has never been built by any department in the United States with the exception of New York fire department, which some few years ago built a truck similar to this one.

"This equipment has been needed in the fire department for some time. We now feel that we can give better protection to our city than ever before in the way of equipment.

"It would be very much appreciated by the department if this honorable body would set a date and meet as a whole to inspect this truck.

"Yours very truly,
"A. H. LANKFORD,
"Fire Chief."

The jellyfish shrld mfwy mfwy The jellyfish eats by wrapping itself around food and absorbing it.

Student Government On School Grounds

A system of student government has been established on the grounds of the Intermediate school to facilitate the work involved in keeping the playground in order, which has become a great problem, in the present crowded condition of the school. The yard officers, are appointed by class teachers and wear a badge of authority upon the arm.

Student officers just appointed are: Class B-7-I, Edward Collins; Ely Christiansen; B-7-II, Lawrence McIntyre, Martha Sibberell; B-7-III, Ralph Gilman, Ethel Knapp; B-8-I, Nathan Finch, Marie Warren; B-8-II, Albert Barnes, Margaret Farmer; B-8-III, James Vor Werk, Madeline Quackenbush; A-8-I, Albert Plasterer, Milo Sherrick; A-8-II, Clarice Anderson, Earl Burris; A-8-III, Meredith Brown, Janice Fletcher; A-8-IV, Lawrence Reynolds, James Smith, Ruth Willis; A-8-V, Lester Newberry, Mary Sanger; A-7-I, Joe Edwards, Betty Glade; A-7-II, Burton Heinmiller, Alma Johnson; A-7-III, Henry Brummel, Eleanor Harris; A-7-IV, Harry Becker, Madeline Guglielmino.

Five Vaudeville Acts Offered by T. D. & L.

The T. D. & L. theatre offers today and tomorrow its regular week-end variety vaudeville road show of five standard acts and the Louis B. Mayer feature production "Habit," a cyclonic drama of life, not just a photoplay—nor romance, but a gorgeous spectacle as well—

The vaudeville bill this week presents novelties, the Kelton review of music, song and dance, comprising numerous artists of exceptional merit—special scenery and costumes. Comedy sketch and special numbers.

Sunday and Monday the T. D. & L. will present one of the most beautiful of pictures, "The Law and the Woman," featuring Betty Compson, whose performance in "The Little Minister" here a few weeks back won her the hearts of all who saw her.

Basket Grocery

Phone Glendale 599 108 E. Broadway
Free Delivery

Creamery Butter, lb.	49c
Del Monte Tomato Sauce (Limit 4 Cans to Customer)	5c
Dried Eastern String Beans, 4 lbs.	25c
Prunes, 50-60, 2 lbs.	25c
Prunes, 80-90, 3 lbs.	25c
Prunes, 20-30, 1 lb.	30c
Budded Walnuts, 1 lb.	40c
Fresh Roasted Peanuts, 2 lbs.	35c
Crepe Toilet Paper, 6 rolls	25c
Cream Chocolate, per lb.	29c
Olives, 3-oz. bottle	15c
Seedless Raisins, 9 oz.	15c
Bulk Seedless Raisins	20c
Cluster Raisins, 1 lb.	22c
Small Can Milk	5c
Large Can Milk	10c

We Also Have a Full Line of Vegetables and Meats

CALL MEETING ON SCHOOL BUILDING DEVELOPMENTS

Trustees Ask Committee of Nineteen to Conference on Next Tuesday Night

(Continued from Page 1.)
Intendent Whitt was requested to instruct newly-enrolled pupils living in Los Angeles and Eagle Rock to attend school elsewhere unless it would work considerable hardship upon them.

Applications to teach summer school were received from Mrs. Elsie Hoskins Harwood, 208 East Cypress street, of Central school, and Miss Mary Jenkins, 745 East Wilson avenue, of the Broadway faculty.

On account of the light, it was decided to have the transoms of the west rooms at the Intermediate school painted.

Members of the Citizens' Committee of Nineteen are the following: Oliver O. Clark, 346 North Louise street; C. H. Crawford, 1319 North Central avenue; Roy L. Kent, 522 North Central avenue; Rev. C. A. Cole, 132 South Kenwood street; H. V. Henry, 327 Patterson avenue; George H. Moore, 221 West Elk avenue; William C. Wattle, 1218 South Glendale avenue; F. E. Wilkinson, 1140 Stanley avenue; Harry Hague, 1227 South Central avenue; Mrs. Peter Diederich, 327 North Belmont street; Mrs. R. C. Horner, 240 North Belmont street; Mrs. Eustace B. Moore, 1259 South Maryland avenue; Mrs. W. E. Halstead, 338 West Elk avenue; Mrs. Amy I. Campbell, 1420 Lorraine street; Mrs. Gladys Esselman, 1100 South Glendale avenue; Charles L. Chandler, 2320 Canada boulevard; Mrs. E. S. McKee, 130 West Chestnut street; Mrs. H. V. Brown, 144 North Orange street; Mrs. E. H. Learned, 1543 Glenwood Road, and Ernest J. Morgan, 1125 South Central avenue.

More hydro-electric power is generated and utilized in Canada, than in any other country of the world except Norway. The development amounts to 274 horse power per 1000 inhabitants.

SATURDAY SPECIALS

Beef Boil, lb.	12 1/2c
Pot Roast, lb.	15c
Pure Lard, lb.	12 1/2c
Compound, lb.	12 1/2c
Pork Shoulder Roast, 17 1/2c	
Picnic Hams, lb.	23c
Eastern Bacon, lb.	28c-30c

ACME MEAT MARKET
—At Chaffee Store No. 30—
113 N. Brand Glendale

Buttons Pinking
Let Us Do Your **PLEATING**
We Know How
HEMSTITCHING, 10c Yd.
BROOK'S SHOPPE
Near T. D. & L. Theatre 123 No. Brand

**A Garbage Can on the Back Porch
A Player Piano in the Living Room**

Everything else needed between the two in the cute little bungalow.

Living room 14x20 with honest-to-goodness fireplace with andirons, poker and tongs and hammered brass woodbox; big, easy Stickley Morris chair, two solid oak rockers, Bridge table and four chairs, rugs, and the Autopiano Player with more than fifty rolls—bench and piano lamp.

Two bed rooms with bath and hall and closets between—outside windows and electric lights in closets—shelves and drawers for linen—coat closet.

Kitchen with breakfast nook and everything built in. Elegant inlaid linoleum in kitchen, nook and screen porch. Ever-ready Heater—two laundry trays—broom closet.

All completely furnished including dishes, silver, linen, 'everything, all ready to move into and go to living.

House faces west with beautiful view of the mountains and is within two blocks of the mountains north of the city.

Lot is 50x150 with 7 small fruit trees, front lawn in and flowers and shrubs started. Garage with electric light.

Everything brand new—finished since Jan. 1st, and we have really no more than moved in and gotten settled.

1150 NORTH LOUISE STREET
GEORGE B. KARR, Owner

The price? Oh, yes! \$7,500 for it all. \$3,000 to \$5,000 cash. Assume mortgage of \$2,500 and a Trust Deed for any difference.

There are three beautiful lots just across the street—50x150 each—making a fine, large corner 150 ft. on both Louise and Stocker, that can be bought for \$2,000 each for the inside ones and \$2,500 for the corner—all cash prices. Just in case you might have friends or family who would like to buy and build near you, if you bought 1150 North Louise.

Glendale Theatre
Wm. A. Howe Lessee and Manager

TODAY ONLY
MATINEE 2:30 NIGHT 7 & 9

FRANK MAYO

—in—
"ACROSS THE DEADLINE"

PATHE REVIEW MUTT AND JEFF

Harry Sweet
—in—
"AN IDLE ROOMER"

ADDED ATTRACTION
EVENING ONLY
THE YORKTOWN FOUR
ORPHEUM-PANTAGES HEADLINERS

Notice—Owing to the illness of Mr. Gardner Dresser & Gardner will not appear tonight

HIGHEST QUALITY STEER BEEF AT LOWEST CASH PRICES

ROCK BOTTOM MARKET
231 South Central Avenue

Sirloin Steak, extra choice steer, lb.	28c
Morrill's Iowa Hams, 1/2 or whole, lb.	38c
Pure Pork Sausage, our own make, lb.	25c
Pure Kettle Rendered Lard, 2 lbs.	25c

Fresh Fish, Shrimp, Lobsters and Oysters, Rabbits and Poultry