

Historic, Archive Document

Do not assume content reflects current scientific knowledge, policies, or practices.

LIBRARY,
U. S. Department of Agriculture,
Washington, D. C.

Royal Palm
Nurseries
1909



Greenhouse View at the Royal Palm Nurseries.



Interior View 7 ft. Bath House, Royal Palm Nurseries.

1883-1909

ANNUAL CATALOG

Royal Palm Nurseries
for 1909

To Our Correspondents:

WE AGAIN take pleasure in presenting our annual catalog for your consideration. You will find many interesting and valuable plants and trees listed, new to you, as well as old standbys, worthy of extended planting. In looking over contemporary catalogs of well-known firms you will see many things listed which we were first to introduce in America; this work of introduction is still being pushed and many extra choice novelties are continually coming forward.

Our stock was never in a better condition; both in plant houses and open field nurseries the growing plants and trees are in splendid shape, and in unusually large supply. We suggest early orders, however, as in some lines our supply will not fill the growing demand.

Note our change in arrangement of catalog. We trust you will find it perfectly convenient for reference.

Our plants, taken as a whole, are far superior to the common run of nursery plants; we cultivate, transplant, fertilize, spray and handle them intelligently and with an eye to their continuing in vigor. Our pot-grown plants are especially vigorous and may be handled at any time of year.

Packing is done in the very best manner so as to insure safety for the longest distances. We ship to every part of the tropics and sub-tropics all around the globe.

As to time of ordering, note remarks at head of each department.

We thank all customers for their patronage, which has been much appreciated and solicit a continuation of their business, promising to do our best to merit future good will.

REASONER BROTHERS,

Oneco, Florida.

CONTENTS

To Our Correspondents.....	1	IX. Foliage and Decorative Plants.....	26
Remarks and Suggestions.....	2	X. Tropical Flowering Plants and Shrubs.....	29
I. Tropical Fruit Plants and Trees.....	4	XI. Hardy and Half-Hardy Flowering Plants and Shrubs.....	31
II. Semi-Tropical and Temperate Fruit Trees and Plants.....	7	XII. Tropical and Sub-Tropical Vines and Creepers.....	34
III. Economical, Medicinal and Useful Trees and Plants.....	10	XIII. Hardy and Half-Hardy Vines and Creepers.....	35
IV. Bamboos and Grasses.....	13	XIV. Tuberos, Bulbous and Herbaceous Plants.....	36
V. Aquatics.....	14	XV. Tropical Shade Trees.....	40
VI. Conifers.....	16	XVI. Hardy and Half-Hardy Shade Trees.....	41
VII. Palms and Cycads.....	17	XVII. Succulents and Epiphytes.....	43
VIII. Ferns and Selaginellas.....	23		

Remarks and Suggestions.

1. **It has been repeatedly proved** by cultivators in the States above Florida—both amateurs and commercial florists—that our naturally-grown plants (those produced without fire heat) are absolutely more vigorous, better rooted and healthier than those grown under artificial conditions from their start; hence are more likely to succeed under greenhouse culture or in the living room than weaker stock from hothouses.

2. **Our location** here in South Florida where we have excellent choice of soils, is admirably placed as to climate, also in having quick rail and water transportation to all parts of the world.

3. **Our annual catalog** is prepared in early Autumn and is ready for distribution in October or November: at this time it is sent out to customers in the tropics, Florida, California, and the lower South West. To more Northern customers it is sent in January. We are always willing to send extra copies when requested. **If the recipient is not interested in our line we shall esteem it a favor if he will hand this catalog to an interested party.**

4. **Orders are promptly filled:** we pack daily (except Sunday) all the year around and strive to keep orders cleared up closely. The majority are filled the day of their receipt.

5. **Should there be any dissatisfaction** over plants or any other matter kindly write us fully, immediately on receipt of goods, that everything may be fully rectified.

6. **Seeds, Dutch bulbs, Geraniums,** and some soft wooded plants commonly grown as house plants in cold climates are not grown or sold by us. Do not order such stock, or in fact anything not listed herewith.

7. **While we exercise the greatest care** to have our plants true to label, and hold ourselves prepared, on proper proof, to replace any that may prove otherwise, we do not give a warranty, expressed or implied, and, in case of error on our part, it is mutually agreed between the purchaser and ourselves that we shall not at any time be held responsible for a greater amount than was paid for them.

8. **As to packing:** We have perfected our system of packing so that we ship in safety to all parts of the world. Parcel Post and domestic mail packages being sent **everywhere daily**, and large shipments by express and freight likewise. We use specially thin material for shipment by express. We use our best judgment when forwarding stock, whether by express or freight, working for the best interest of each customer as to safety of delivery and least cost. We make no charge for proper packing or pruning, if desired.

9. **After delivering goods to the carriers,** we cannot hold ourselves responsible for any loss or injury to trees or plants which have been carefully packed and shipped; but we shall do everything in our power, if any loss should occur, for the protection and recovery of our customers' property. If any mistakes are made in filling orders, we shall carefully rectify the same, but must respectfully request a prompt notification on receipt of goods.

10. **Plants by Parcel Post and domestic mail:** (a.) We send small and medium sized plants by this method to all parts of the United States, Cuba, Porto Rico, Hawaii, the Canal Zone and the Philippines at catalog prices postpaid.

(b.) To Canada, Mexico, Central America, South America, West Indies, and other countries which have a standard parcel post service, at 10 per cent. (one-tenth) in addition to catalog rates.

(c.) We do not care to fill orders by mail under a total value of 50 cents. Please do not ask us to send one small plant alone, **unless** you add 10 cents extra.

11. **Terms, cash with the order.** Remit in any **safe** way. Postoffice money order on Oneco, Bank draft, express order, or currency by registered letter. Foreigners may remit by **International** Postoffice orders on **Bradentown, Florida,** or by Bank exchange.

12. **Applying Prices.** Not less than six of a sort will be sold at the dozen rate, nor 40 at the 100, nor 400 at the 1,000 rate.

13. **In ordering,** please state whether **substitution** will be permitted, as we feel at liberty, when no instructions accompany the order, to replace with other sorts as nearly similar as possible. Those not acquainted with the different varieties will do well to leave the selection to us, as we shall send them only such as we know to be adapted to their locality. **A list of second choice,** accompanying each order, would be appreciated by us.

14. **Special discounts** on stock by express or freight. Orders amounting to \$2.25 at list prices will be filled for \$2.00; \$3.00 for \$2.60; \$4.00 for \$3.30; \$5.00 for \$4.00. And all above this in proportion of 20 per cent. discount (or one-fifth) off list prices. **No discounts on goods by mail.**

15. **We always send receipt for money;** so if one remits us and fails to get a receipt in a reasonable time, he should look up original order, ascertaining if it had been properly posted; if the letter had been sent us, then write stating necessary details. We get orders frequently with no name attached.

16. **This present Catalog abrogates** all previous terms, conditions and prices. Dealers, or others desiring to buy in **quantity,** will be given special prices for large lots, on application.

17. **To those getting up club orders,** we make special terms; after allowing such discounts to each party as our Rule 8 enumerates, the club raiser may select extra plants to the value of 10

per cent. of the gross total amount. For instance, if Mrs. A sends us **net** orders for Mrs. B of \$2.00; for Mrs. C of 3.00; for Mrs. D of \$1.00; for Miss E of \$5.00; for Miss F of \$3.00—a total of \$14.00—she is entitled to \$1.40 worth of plants, and it is usual for the club raiser's collection to be sent **free**, the **other parties paying express charges pro rata**. All orders packed separately and shipped in one case.

Collections of Plants.

See end of each department in this Catalog for bargain lists. We make up valuable collections of choice plants at a very low price, and have given satisfaction and pleasure to hundreds of customers. If you don't know **just what you want**, let us select for you. We know what will thrive with you, and can choose from good-sized plants, which are bound to more than please you. Try them.

Treatment of Plants on Arrival.

The plants should be removed from the package as soon as possible after they reach their destination. Should they be in the least wilted, they should be placed in lukewarm water, with the packing moss still about the roots, and in half an hour they will be ready to pot. This treatment will increase vitality and vigor, whether they be wilted or not. Large trees and shrubs from open ground may be simply "heeled-in" on the shady side of a building, the roots well watered, and if not set permanently for a week afterward, they will be all the better for it.

Setting. It is, of course, understood that the soil has been made in proper condition by digging, manuring, etc., and plants and trees can be set in their proper spaces at once. If plants are from pots, let them be set considerably deeper than before! If soil is still around the roots set without disturbing or removing it. **Don't try to straighten out the roots of pot-grown plants!** Plants or trees from open ground should be pruned, if necessary, and roots looked over and broken ends trimmed smooth. After setting, draw soil around and firm down thoroughly by **tramping with the feet**. Then water well, after which rake fresh soil about, shade if necessary, and mulch with straw or like material. The plant may not be stocky, so if it needs a stake do not forget to tie it thoroughly to the support given. When it is necessary to water plants outdoors, give them enough to soak down to moist soil; every few days should be often enough.

Potting. At first, while plants are small, use pots one size larger than they were last removed from. As they increase in size, they should be repotted when it is found that the pots are full of roots. In using small pots, it is only necessary to use a small piece of broken pot over the hole in the bottom, but when the size runs up to 7 or 8 inches, several pieces of pots, some pebbles or pieces of charcoal should be put in, that it may have ample drainage. Fill the pots with earth and plant, leaving about half an inch space to hold the water; water thoroughly, and place the plants in a sheltered position, where they will not be exposed to wind or sun, until they show signs of recuperation.

Watering. This is one of the most important points in the successful cultivation of all plants. During the growing season they should have enough water to keep the soil moist to the bottom of the pot, but should not be kept in a soggy state; plenty may be applied to the foliage at all times. During the winter the soil should be kept drier, and in some cases nearly or quite dry. A plant will generally show when it needs water and more are killed by overwatering than through lack of it.



A border of Crape Myrtles in bloom.

I. Tropical Fruit Plants and Trees.

In this department will be found only strictly tropical subjects, none of which can bear much frost, but many recuperate quickly from the roots should tops be frosted, throwing up strong shoots which bear again after a reasonable time. In this class, of special value to Florida, are guavas, *Aberia* Gardneri, Surinam cherry, pineapples, bananas, avocados, sugar-apple, rose-apple, and others, all of which should be grown above the "frost line" even for occasional crops.

Explanation of starring.—* Suitable for conservatories, or plant sheds. ** Suitable for warmest portions of Florida, tropical regions, or large conservatories. *** Suitable for South Florida generally, with or without protection, according to locality.

All, except pineapples and bananas, are **pot-grown**, enabling one to transplant stock any time of year, and always in safety.

ABERIA Caffra *** **Kai-Apple**. A large, thorny shrub. The acid fruits used for preserving; may be grown as a hedge; **stands some frost**. 2 yr. 20c, \$2.00 per doz.; 3 yr. 35c, \$3.50 per doz.

A. Gardneri *** If frosted down, comes up and bears same year. Fruit tastes like the cranberry; very prolific. 1 yr. 25c, 2 yr. 50c.

ACHRAS Sapota. * * **Sapodilla**. A broad-leaved evergreen tree with medium-sized russet fruit; very sweet. 2 yr. 20c, \$2.00 per doz.; 3 yr. 35c, \$3.50 per doz.

St. Croix. A white-fruited Sapodilla, of finest flavor. 3 yr. 35c.

ANACARDIUM occidentale. * * **Cashew Apple**, or **Cashew Nut**. Juicy, sub-acid fruits, red, white or yellow, bearing seeds on outside of the fruit. Seeds edible when roasted, and also used for flavoring wine, chocolate, etc. We have **red, yellow, and mixed fruited forms**, all 1 yr. 25c, \$2.50 per doz.

ANANASSA sativa. * and * * **The Pineapple**. Those desiring large quantities of either slips or suckers should write us, stating number required, and get a net estimate. Rooted plants in stock as follows:

Abachi. 10c, \$1.00 per doz. \$6.00 per 100.

Ceylon, both Red and Green. 15c, \$1.50 per doz.

Charlotte Rothschild. 20c, \$2.00 per doz.

Pernambuco. 20c, \$2.00 doz.

Porto Rico. 15c, \$1.50 per doz.; \$10.00 per 100.

Queen. 10c, \$1.00 per doz.; \$8.00 per 100.

Red Spanish. 10c, 85c per doz.; \$5.00 per 100.

Smooth Cayenne. 10c, \$1 per doz.; \$8.00 per 100.

Sugar Loaf. 10c, \$1.00 per doz.; \$8.00 per 100.

Variigated Leaved. Two kinds, both ornamental and useful. 35c and 50c.

ANONA muricata. * * **Sour Sop**. Large, prickly, juicy fruit, used in making sherbet. 1 yr. 15c, \$1.50 per doz.; 2 yr. 25c, \$2.50 per doz. Extra large, 50c.

A. reticulata. * * **Custard Apple** or **Bullock's heart**. (In Calif. all, or nearly all, the so-called cherimoyas are in reality this species). Large, rough fruit, sub-acid; bears two crops yearly. 2 yr. 35c, \$3.50 per doz.

A. squamosa. * and * * * **Sugar-apple**. Shrub, deciduous; medium-sized fruit, very sweet. 1 yr. 20c, \$2.00 per doz.

ANTIDESMA Bunius. * * **Quick-growing**, small tree, bearing sub-acid fruit of small size, used chiefly for preserving. 1 yr. 50c, \$5.00 per doz.

AVERRHOA carambola. * * **Carambola**, of India. Small tree of handsome appearance, bearing five-angled, acid fruits. \$1.00.

BERTHOLLETIA excelsa. * * **The Brazil Nut** tree. 1 yr. 50c.

CARICA papaya. * and * * **Papaw**, or **Melon Fruit**. A fine decorative plant, with large palmate leaves. Being dioecious, one should set several specimens to be sure of getting fruit. Seedlings of the finest fruit only are offered. 20c, \$2.00 per doz.

CARISSA acuminata. * and * * * **Spiny shrub**, red fruit, sub-acid in flavor. 25c.

C. Arduina. * and * * * **Amatungula**, of Natal. Fruit is well liked, and handsome in appearance; about 1½ inches long, scarlet. 25c, \$2.50 per doz.



Aberia Caffra. About one-half nat. size.

CASIMIROA edulis. * * **White Sapota**, of Mexico. Fruit tastes like a peach. Tree large and handsome. 1 yr. 20c, \$2.00 per doz.; 2 yr. 30c, \$3.00 per doz.

CECROPIA palmata. * * **Shake wood tree**. Handsome palmate foliage, silvery on under side. Fruit curiously like fingers, soft, similar to a fig, minute seeds; sweet. **Dioecious**. 1 yr. 15c, \$1.50 per doz.; 2 yr. 25c, \$2.50 per doz.; 3 yr. large, 35c, \$3.50 per doz.

CHRYSOPHYLLUM Cainito. * * **Star Apple**. Good-sized tree; fruits 2½ to 3 inches in diam. Mixed seedlings, 1 yr. 15c; 3 yr. 25c, \$2.50 per doz. **White**, and **Brown fruited**, 3 yr. 25c, \$2.50 per doz.

CICCA disticha. * * **Otaheite Gooseberry**. Tree with magnificent compound leaves; fruit small, white and very acid. 2 yr. 35c.

COCCOLOBA uvifera. * * **Sea Grape**. A low, bushy tree, growing near salt water. The roundish leaves are veined red, making a beautiful



Rose Apples. About one-third nat. size.

appearance. Fruit in spires, purple, used in preserving. 2 yr. 25c, \$2.50 per doz.

CUPANIA sapida. ** Akee tree. Red fruits, used only when cooked. 50c.

EUGENIA Jambos. *** Rose Apple. A good-sized tree, with handsome appearance. Fruits medium-sized, rose-flavored, crisp and delicious when fresh. 1 yr. 15c, \$1.50 per doz.; 2 yr. 25c, \$2.50 per doz.; 3 yr. 35c, \$3.50 per doz.

E. Malaccensis. ** Malay Apple. Foliage broad; fruits white and pink, about 3 inches long, rose-scented. 1 yr. 50c, \$5.00 per doz.

E. Micheli. * and *** Surinam cherry. A large shrub; fruit small, bright red and agreeably acid. Under high culture bears two enormous crops yearly. 2 yr. 10c, \$1.00 per doz.; 3 yr. 25c, \$2.50 per doz.

Black-Fruited Surinam Cherry. Fruit very dark-colored, almost black. 3 yr. 35c, \$3.50 per doz.

FICUS glomerata ** Cluster Fig from Queensland, and India. Leaves may be used for fodder. Fruit not first class. Tree large, useful for shade. 1 yr. from cuttings, 15c, \$1.50 per doz.; 2 yr. 25c, \$2.50 per doz.

GENIPA Americana. ** Marmalade Box. 3 yr. 75c.

HARPEPHYLLUM Caffrum. ** Kafir Plum. New and well recommended. 2 yr. \$1.00.

LUCUMA mammosa. ** Mammee Sapota. Very large fruits, rich and sweet. Tree tall and vigorous. 2 yr. 50c, \$5.00 per doz.; 3 yr. 75c, \$7.50 per doz.

L. species from South Cuba. ** Undescribed. 3 yr. 50c, \$5.00 per doz.

MACADAMIA ternifolia. ** Queensland Nut. Tree slightly resembling the chestnut, bearing delicious nuts twice the size of filberts, rich and highly valued. 1 yr. 50c, \$5.00 per doz.

MAMMEA Americana. ** Mammee Apple. Large tree, bearing very large fruits 3 to 6 inches in diam. Does well in extreme South Florida. 1 yr. 40c, \$4.00 per doz.

MANGIFERA Indica. * and ** Mango. One of the most important tropical fruits for South Florida. We have been importing the delicious East Indian varieties for years and were the first to inarch these

in Florida, beginning in 1887. Our stock is probably the largest in Florida. All sorts named, with exception of Red Eleven, are East Indian varieties of exceptional value, almost or entirely devoid of fibre. Our plants are all inarched (or grafted) on to pot-grown 2-year old seedlings, and may be set safely any time of year.

Red Number Eleven. A West Indian descendant of a fine Indian sort, having high color, but is small in size and somewhat fibrous. \$1.50. Number Eleven seedlings, 1 yr. 25c, \$2.50 per doz.

Amini. Imported by Dept. of Agriculture. \$3.50.

Arbuthnot. Our own importation. \$3.50.

Bennett (Bennett's Alphonse). Considered one of the best yet fruited in Florida. Medium sized. \$5.00.

Bhadouria. Our own importation. \$5.00.

Cambodiana. Very rank grower. Fruit large, early, and entirely devoid of fibre. First class. \$3.50.

Ennuria. Our own importation. Medium-sized, exquisitely flavored, mid-season in ripening; has a little fibre. \$2.50.

Gopal Bhog. Our own importation. \$5.00.

Gordon. Imported by Dept. of Agriculture. Small delicious fruits. \$3.50.

Late Mulcarri. Our own importation. Fruit small, yellow, highly flavored, late ripening, containing but little fibre. \$2.50.

Mulgoa. Imported by Dept. of Agriculture. Differs from Mulgoba. \$3.50.

Mulgoba. Large, very fine fruit, deliciously flavored, devoid of fibre, highly colored; one of the best. The first of the Indian varieties to fruit in Florida. \$2.50.

Faheri. Imported by Dept. of Agriculture. \$5.00.

Peters No. 1. Rather late ripening; very small seed; highly colored. \$5.00.

Rajpurj. Imported by Dept. of Agriculture. \$5.00.

Singapur. Our own importation. Very promising. \$5.00.

Soondersha. So far as known the latest to ripen. Fruit extremely large. \$5.00.

Strawberry. Our own importation. A fine grower. \$3.50.



Ennuria Mangos. About two-fifths nat. size.



A grafted mango worked at Royal Palm Nurseries.

Seedlings. From named Indian sorts. 1 yr. 50c; common mixed, 1 yr. 20c, \$2.00 per doz.

MELICocca bijuga. * * **Ginep**, or **Spanish Lime.** Yellow, plum-like fruits. A large tree. 1 yr. 20c, \$2.00 per doz.; 3 yr. 40c, \$4.00 per doz.

MONSTERA deliciosa. * and * * **Ceriman.** An aroid plant, with enormous leaves. Fruit very valuable. Large specimen plants \$2.50.

MUSA. **The Banana.** All sorts of great value to South Florida for fruit and to colder climates as decorative plants, being used freely in lawn and park planting.

Cavendish. * and * * **Dwarf**, very tender. Fruit rich and fine. Suckers, 25c, \$2.00 per doz.

Hart's Choice, or **Lady-Finger.** * * * One of the most hardy sorts, and the most valuable for Florida planting. Fruit is most delicious. Suckers, 25c, \$2.00 per doz.

Orinoco. * * * or **Horse Banana.** A sort of plantain, fine for cooking, but liked by many raw. Very hardy. Suckers 25c, \$2.00 per doz.

Large Fig. * * Rather tender. Fruit very rich. A tall grower. Suckers 50c, \$5 per doz.

NEPHELIUM longanum. * * **Longan.** Fruit small, in large bunches, very sweet, not first class. Tree handsome and may be used as a shade tree. 1 yr. 25c, \$2.50 per doz.; 3 yr. 40c.

PASSIFLOBA edulis. * and * * **Granadilla.** A vine bearing subacid fruits two to three inches long. 25c.

PERSEA gratissima. * * **Avocado**, or **Avocado Pear.** The most valuable fruit on the American market. Fruit is used exclusively as a salad, with various dressings. We can only offer seedlings from the finest large green and purple sorts this year. These are from Cuban origin mostly, and are strictly first class. 1 yr. 35c, \$3.50 per doz.

Mexican. Seedlings from small and inferior varieties, but con-

sidered able to stand more cold than others. 1 yr. 25c, \$2.50 per doz.

NAMED VARIETIES priced for delivery late this year, on application.

PSIDIUM. **The Guava.** Very valuable for South Florida, requiring but one year after severe freezing for the young sprouts to bear heavily. The fruit is very variable in size and quality, but always in demand for home use and factory for preserving.

P. Araca * * From Brazil. Fruit extremely acid. New. 2 yr. 30c, \$3.00 per doz.

P. Fredrichstalianum. * * Costa Rican guava. Extremely acid fruit, similar to the preceding. Of value in cookery. 1 yr. 15c, \$1.50 per doz.; 2 yr. 25c, \$2.50 per doz.

P. Guaiava. * and * * * The common sort, embracing round, and pear-shaped, sweet, subacid and sour fruits, used largely in making jelly, etc. We try to select the very finest for propagation and keep sweet and sour varieties separate. Please indicate your preference. 1 yr. 10c, \$1.00 per doz.; 2 yr. 15c, \$1.50 per doz.; 3 yr. 20c, \$2.00 per doz.

P. Guineense. * and * * * **The Guinea guava.** Large fruit, very thick-meated, fewest seeds of any sort known, very sweet. Fine for pickling and canning, as well as dessert. 1 yr. 10c, \$1.00 per doz.; 2 yr. 15c, \$1.50 per doz.

P. Molle. * and * * **The Sour Guisaro** of Central America. Fruit small, very acid, useful for jelly-making. 2 yr. 15c, \$1.25 per doz.; 3 yr. 20c, \$1.75 per doz.

For Hardy Guavas, see page 9.

RUBUS flavus. * * **Yellow Raspberry**, from India. An immensely strong bush, one specimen able to bear several pecks of fruit. 35c.

SPONDIAS dulcis. * * **Otaheite apple.** A large tree, very tender, producing plum-like fruits three inches long, of a peculiar flavor. 1 yr. 50c, \$5.00 per doz.

S. pleiogyne. New, and unknown to us as yet. 1 yr. \$1.00.

TAMARINDUS Indica. * * **Tamarind.** Tree large, very ornamental; fruit consists of fleshy pods, the acid pulp surrounding the seeds used



Cambodiana Mangos. About one-third nat. size.

in preserving and in making a delicious drink. 1 yr. 15c, \$1.50 per doz.

TRIPHASIA trifoliata. * * * **Bergamot,** or **Limeberry.** A bush, quite thorny, useful for

hedging. Fruit small, red, used in making a famous conserve in the Philippines. Small plants 35c, \$3.50 per doz.

COLLECTIONS OF TROPICAL FRUIT PLANTS.

We make up collections of the foregoing plants to suit the location of our customers, sending the most suitable in every case. For the northern conservatory we, of course, send the finest in appearance, and species that can thrive under adverse conditions. We do not confine ourselves to a set list, but choose for every applicant. If the purchasers will kindly state what sorts they already have, we shall try not to duplicate them. This applies to all our collections.

No. 1. Six distinct sorts, postpaid, \$1.00. **No. 2. Ten distinct sorts, very fine collection, \$2.00.**

II. Semi-Tropical and Temperate Fruit Trees and Plants.

Explanation of symbols for this section.—* Hardy throughout the South. * * Adapted to coast regions where temperature seldom falls under 20 degrees Fahr. * * * Most tender semi-tropical sorts, not being able to withstand a lower temperature than 26 degrees Fahr. without injury. **D** Deciduous species. **E** Evergreen.

The majority of plants and trees named in this department should be set in winter, and not later than March 1st. Citrus trees, Opuntias, **pot-grown** guavas and other plants, however, may be set in Spring, Summer and Autumn, in fact at any time convenient. For discounts note paragraph 14, page 2.

CITRUS aurantium dulcis. * * **E** The **Sweet Orange.** This is grown on various stocks for all soils and locations, sour orange, rough lemon, trifoliata, etc. Our stock is in good order and fair supply; at this date (early autumn) many thousands have already been engaged by prudent buyers. We ship trees to all parts of the world, our export business increasing steadily. Write for special rates, or varieties needed, for autumn of 1909.

Our list of varieties is reduced to only the very best, and no one will make a mistake in planting these sorts.

Prices of Sweet Orange trees and all other Citrus, except where noted, budded low on rough lemon and sour orange stock, all **stake-trained:**

Note cash discounts as per par. 14 page 2.

Height.	Each.	Dozen.	Per 100
2 to 3 ft.	30c	\$3.00	\$22.00
3 to 4 ft.	35c	3.50	25.00
4 to 5 ft.	40c	4.00	30.00
5 ft. and up	50c	5.00	35.00

Owing to large calls for trees on trifoliata roots, our trees have been early engaged and we cannot furnish for this year a large quantity of any kind. We have a few each of the following, small trees, at 25c: **Jaffa, Foster, Oneco, Satsuma, Pernambuco pomelo, and Oblong Kumquat.**

Centennial. One of the best native varieties, ripening early, but holding juice well. Grown on rough lemon and sour orange.

Foster. A fine Florida variety, quite early. On rough lemon, sour orange and trifoliata.

Jaffa. A Mediterranean variety of fine quality, practically seedless, ripening midseason to late. Tree thornless. On rough lemon, sour orange and trifoliata.

Majorca. One of the finest Mediterranean sorts, seedless, and a good bearer. Tree thornless. Midseason to late. On rough lemon, and sour orange.

Parson Brown. A very early native variety. On rough lemon and sour orange.

Pineapple. A distinctively flavored fruit of great merit. Midseason to fairly late. On rough lemon and sour orange.

Ruby. A very early orange, showing blood markings when entirely ripe. A very heavy bearer. Probably the best blood orange for Florida. On rough lemon and sour orange.

Star-Calyx. The adherent, enlarged calyx around the stem makes it distinctly marked. A

heavy annual bearer. Midseason. On **sour orange.**

Tangerona. Very early, but small fruit; skin deep orange, highly colored. On **rough lemon.**

Tardif. (Hart's Late). Very late keeper, season being from March to July or even later. A fine, heavy orange of exceptional value. On **rough lemon and sour orange.**

Washington Navel. Fruit early, large and with the characteristic navel mark on flower end. Quality the best. On **rough lemon and sour orange.**

CITRUS aurantium nobilis. * * **E** The **Mandarin, or Mandarin orange.** All in this group have usually flattened fruit, with fruit segments and skin loosely adherent; sometimes called "kid-glove" oranges.

Dancy (Tangerine). Fruit of delicious, sparkling quality, midseason in ripening; skin orange-red, very highly colored. Grown on **sour orange.**

Oneco. A good fruit of our introduction. Growth and general appearance of tree resembling Dancy, but the fruit is rounder, and later ripening; of the most exquisite flavor. More hardy than Dancy. On **rough lemon, sour orange and trifoliata.**

Satsuma. A very early fruit, entirely seedless; tree thornless. Quality poor, but as the fruit ripens early can be sold before good fruit is available. Tree very hardy. On **trifoliata.**

Budwood of all sorts of Citrus trees, standard Oranges, Lemons, Limes, Pomeles, etc., 10c per doz, 75c per 100, \$5.00 per 1,000, postpaid. New or rare sorts, 15c and 20c per doz., \$1.00 to \$1.50 per 100.

CITRUS Japonica. * * **E** The **Kumquat.** A small fruit, and dwarf tree; admirable for small plots of ground or for conservatories. Fruit eatable either raw or cooked. Very ornamental. There are two forms, the Oblong and Round; the Oblong being preferred. Price of either sort, on **rough lemon roots, 35c and 50c. On trifoliata roots 50c.**

CITRUS limonum. * * **E** The **Lemon.** We only grow one sort of a great many commercial varieties, the **Genoa,** usually considered the best. Grown on **rough lemon and sour orange,** with prices same as the Sweet Orange.

CITRUS limetta. The **Lime.** The fruit of limes usually is very acid like the better-known

lemon, and smaller in size. We offer two sorts of exceptional value, as follows:

Sour Rangpur. * * * **E** Resembles a mandarin in shape and high coloring, with segments rather easily parted. Pulp reddish; juice very acid and finely flavored. A heavy bearer. Tree almost as hardy as the Sweet Orange. On rough lemon roots. Prices same as for orange trees.

Thornless. * * * **E** A great novelty from Trinidad introduced simultaneously by Dept. of Agriculture and ourselves. We consider it of sterling value. On rough lemon. Prices same as for orange trees.

CITRUS medica cedra. * * * **E** The commercial Citron. The thick rind of the fruit when preserved constitutes its value. This is a large, scrambling bush, with fruit from two to five lbs. in wgt. Grown from cuttings. 2 yr. 25c, \$2.50 per doz.

CITRUS pomelanus. * * * **E** The Pomelo, or Grape Fruit. The culture of this valuable fruit is fully as important in Florida as that of the Sweet Orange, as it does so well and produces such a delicious product in our climate. We offer four varieties at same prices as the Sweet Orange.

Ellen. A splendid new sort originating on our own grounds. Size large; skin thin; in shape slightly flattened; very juicy, with average number of seeds; not excessively bitter; take it all around, the finest pomelo we have eaten so far. In season it is late. On sour orange stock.

Pernambuco. Has been the leading sort in demand in this section for some years. Large size; late in ripening; bitter but fine. On rough lemon, sour orange and trifoliata.

Royal. One of our early introductions. Early ripening, sweet, not quite large enough for the general market. On rough lemon and sour orange.

Marsh. (Seedless). Practically a seedless fruit of medium size. Mid-season to late. Fairly bitter. On rough lemon and sour orange.

When Citrus trees are ordered sent by mail we select smaller trees than for express or freight, but of good size and well rooted. We can please you in these trees, whether you live in California, Maine, or Cuba, as they travel safely under our sure mode of packing.

DIOSPYROS Kaki. * **D** Kaki, or Japan Persimmon. A hardy, deciduous tree of small size, bearing large fruits which ripen in Autumn. The following sorts are of the very best. Prices: 2 to 3 ft. 25c, \$2.50 per doz.; 4 to 5 ft. 35c, \$3.50 per doz., \$25.00 per 100.

Costata. Skin salmon-yellow; usually seedless. Late to ripen and a good keeper.

Hyakume. Very large-sized fruit; flesh dark and meaty.

Okame. Very large fruit, of a bright red

color. Flesh light-colored, somewhat seedy. First-class quality.

Triumph. Tomato-shaped, rather small; skin deep yellow to red. The tree is a splendid grower, and immensely productive. Season lasts from Sept. till Dec.

Tsuru. Large, rather slender; skin bright red. Flesh orange, darker around the few seeds. The latest of all, keeping into January.

Zengi. Small fruit, with dark flesh. Very early to ripen, and not astringent. All other sorts must be dead ripe before being eaten.

OLEAGNUS Simoni. * * * **E** (possibly *) An evergreen shrub of graceful habit. The long growths bear quantities of acid fruits, bright red. Fine for preserving. Pot-grown, 2 yr. 25c; 3 yr. 35c.

ERIOTRYA Japonica. * * * **E** Loquat (Medlar, or "Japan Plum.") A most valuable winter and spring ripening fruit, yellow, size of plums, deliciously flavored, and fine for preserving. The tree is a fine, broad-leaved evergreen. Pot-grown, 1 yr. 10c \$1.00 per doz.; 3 yr. 35c, \$3.00 per doz.

FICUS Carica. * **D** The Fig. One of the most delicious of all fruits, which does well along the Gulf Coast. In Florida, owing to prevalence of nematodes, care must be taken in heavy mulching as a preventive. The following are well-known sorts of best quality, all at these prices:

1 to 2 ft. 20c,
\$2.00 per doz.; 2 to
3 ft. 30c, \$3.00 per
doz.

**Brown Turkey,
Brunswick, Celestial,
and Lemon.**

HICKOBIA pecan. * **D** The Pecan. Pecan nuts form a staple crop in the South and fine, large nuts bring high prices. The industry is a safe one in the proper latitude. The lower South has an immense area of excellent soil suitable for these trees. The sorts we offer are the cream of the best named varieties, and priced as follows: 2 to 3 ft., 65c, \$6.50 per doz.;

3 to 4 feet 85c, \$8.50 per doz., \$65.00 per 100.

Centennial. Large size nuts, pointed at ends; of good flavor. A fine grower and bearer.

Columbian. (or **Pride of the Coast.**) Perhaps the largest of all sorts, 35 to 40 nuts to the pound. A strong grower.

Frotscher. Nuts of large size and thin shells. Meat of fine quality. One of the best sorts.

Stuart. One of the oldest named sorts. Nuts of large size and of splendid flavor. A heavy bearer.

Van Deman. A large nut, 45 to 50 per lb., oblong in form. Quality good, and tree a prolific bearer.

HOVENIA dulcis. * **D** A good-sized, round-headed tree, which bears small globular fruits of reddish flesh, with edible peduncles. Makes a good shade tree. Pot-grown, 1 yr. 10c, \$1.00



The New Thornless Lime; size very much reduced.

per doz.; 2 yr. 20c, \$2.00 per doz. Extra large 50c.

JUGLANS cordiformis. * **D** The **Japanese Walnut.** Tree forms a large spreading head, with enormous leaves, growing very rapidly in the South. Nuts large and sweet, abundantly produced. 1 to 2 ft. 25c, \$2.50 per doz.; 3 to 4 ft. 40c, \$4.00 per doz.

MORUS alba. * **D** The **Mulberry.** Very useful trees for shade, and bearing enormous quantities of fruit, especially useful for feeding poultry and swine. Prices: 2 to 4 ft 15c, \$1.50 per doz.; 4 to 6 ft. 25c, \$2.50 per doz.; 6 to 8 ft. 35c, \$3.50 per doz.

Chinese. Fruit medium-sized, borne in enormous quantity, ripening very early.

French. A large tree with extra large leaves; fruit large, ripening after the Chinese.

Hicks. A very productive sort lasting through a season of about four months. Especially valuable for poultry and swine.

Stubbs. Decidedly the best we have seen. Tree large; fruit extra large and fine, borne very plentifully. The fruit of this is best for culinary use, or eating out of hand.

OPUNTIA ficus-Indica. * * **E** **Indian Fig Cactus.** This grows sturdily upright with very large heavy sections, and bears fruits about 3 inches long; pale-yellow in color. Is liked by many. Large cuttings 30c, \$3.00 per doz.

O. tuna. * * **E** **Tuna Cactus.** This is a giant prickly pear, growing up to five feet, and

with red. Flesh white. Free stone. Ripens in June.

Dorothy N. Size medium; color of skin a rich yellow, tinged red in the sun; very prolific. Semi-cling. Ripens in July and should be in every South Florida garden.

Florida Gem. A freestone of good size, rather pointed; skin yellow, tinged red. Sweet and juicy. Ripens in late June.

Hall's Yellow. A fine, yellow-fleshed fruit of good appearance, ripening usually early in June. Freestone.

Jewel. Almost identical with Waldo, but ripens earlier. A good market peach of nice color, ripening very early. Freestone.

Peento. The flat peach of China, being the pioneer of this strain. Unless well grown is apt to be bitter, but when highly fertilized is a delicious peach, the earliest of all to ripen. Clingstone.

Red Ceylon. A fine variety from Ceylon, introduced by us some years ago. The best of all peaches for preserving, having a peculiarly rich and agreeable flavor. The fruit bears heavily; color green, tinged with red. Flesh deep red around the pit. Freestone. Very early to ripen.

Suber. A large-sized cling of exceptional value and handsome appearance. Ripens early.

Waldo. This is a great market peach of medium size and good color, ripens early. Quality first class. Freestone.

PYRUS communis. * **D** The **Pear.** The only pears of value to Florida are those of Chinese origin, as named below. Prices: 4 to 6 ft., standard size, 25c, \$2.50 per doz., \$20.00 per 100.

Cincinnati. A large pear something like Keiffer, but bears, enormously, farther south than any other kind. Of special value to So. Fla.

Keiffer. Large hard fruits, ripening late and slowly. Of value for cooking.

LeConte. Ripening here in July and August. Fruit small to medium, pale-yellow, juicy and good. Must be ripened off the tree.

Smith. An improvement over LeConte which it resembles in larger size. Prolific and valuable. Ripens with the LeConte, and exceeds it in flavor and appearance.

PSIDIUM Cattleyanum. * * **E** The **Cattley guava.** A vigorous evergreen shrub, standing sharp frosts, having handsome broad leaves. Fruit small, averaging about an inch in diam.; borne in enormous masses, ripening in August. Color a pretty red. Fruit is juicy and sub-acid, good in many ways. A fine house plant. Pot-grown, 1 yr. 10c, \$1.00 per doz., \$7.00 per 100; 2 yr. 15c, \$1.50 per doz., \$10.00 per 100; 3 yr. 25c, \$2.50 per doz.

P. lucidum. * * **E** The **Yellow, or Chinese guava.** Resembles the preceding rather closely in growth, bearing an abundance of yellow fruit somewhat larger than Cattley and sweeter. Same prices as for the Cattley, in fine pot plants.

PUNICA granatum. * **E** The famous **Pomegranate.** A large shrub, bearing seedy fruits of large size eaten out of hand, or used in making sherbet. Good bushy stock, 2 to 3 ft. 25c, \$2.50 per doz.

Common Sweet, and Spanish Ruby.

RUBUS cuneifolius. * **E** Our native **Blackberry.** A good strain of fine-sized fruit. 15c, \$1.00 per doz., \$6.00 per 100.



Japanese Persimmons.

bearing quantities of purple fruits 2½ inches long; used in preserving and for furnishing a fine coloring for cakes and ices. Large cuttings, spines sheared off, 15c, \$1.50 per doz.

PRUNUS. * **D** The **Plum.** Of the many kinds of plums grown in the South, the following sorts are the best for South Florida. At least two varieties which bloom simultaneously should be set in close proximity to ensure cross-pollination of the flowers. Many common sorts may be utilized as pollen-bearers. Price of strong trees on Marianna plum stock, 3 to 4 ft. 25c, \$2.50 per doz.

Excelsior. Fruit of fair size, about 1½ inches in diam.; color reddish purple. Quality first class. All sorts ripen in June here.

Howe. Fruit medium to large, rich reddish-purple in color, with heavy bloom. Highly recommended.

Terrell. Fruit large, up to 2 inches in diam.; sweet and juicy. Color reddish-yellow, somewhat mottled.

PRUNUS Persica. * **D** The **Peach.** The choice hybrid peaches now grown in Florida, mostly from the Chinese peach parentage, have come to the front in market value. They are so rich and luscious in quality that their culture is spreading farther West and North. The varieties we offer are the best grown. Prices, on peach roots, 3 to 4 ft. 15c, \$1.50 per doz., \$12.00 per 100.

Angel. Of good size, with yellow skin, washed

R. hybridus. * E The **Northey Berry**. Resembles the Dewberry in growth, but is more vigorous and difficult to propagate. Fruit purplish in color, good-sized, and of exquisite flavor. Pot-plants 25c, \$2.50 per doz.

R. trivialis. * E The **Manatee Dewberry**. A delicious black fruit of great value. 10c, 85c per doz., \$5.00 per 100.

VITIS rotundifolia. * D The **Muscadine grape**. A very vigorous type of grape, needing large arbors, well built, for its loads of fruit. The varieties we offer are the best of the type and the most delicious of all grapes. Price, 1 yr., from layers, 15c, \$1.50 per doz., \$10.00 per 100.

James. Berry very large, black, or purplish-black, very sweet. Ripens here in August and frequently has a second crop in October or November.

Meisch. A new sort of medium size, in color purple. The earliest to ripen here, coming last of July. Has a delicate but rich flavor of the very highest quality.

Scuppernong. Greenish-amber in color, of a delicious and distinct flavor, this famous grape is high in the estimation of all horticulturists, both as a fruit and wine-maker. The berry is very large, ripening in August and early September.

SPECIAL COLLECTION

A special collection of five (5) **Semi-Tropical fruit trees**, our selection only, eminently suitable for growing in pots or tubs in the home, or conservatory, will be sent for \$1.00, postpaid.



James Grapes.

III. Economical, Medicinal and Useful Trees and Plants.

MOSTLY OF AN ORNAMENTAL CHARACTER, AND NEARLY ALL POT-GROWN.

Explanation of symbols and letters: * Hardy throughout Lower South. ** Semi-tropical, not being able to withstand a lower temperature than 16 degrees Fahr. **without injury.** *** Tropical, adapted only to extreme South Florida and California, or for greenhouse culture. **E** Evergreen. **D** Deciduous. **S** Shrub, or small plant. **T** Tree. **V** Vine.

Nearly the entire list of plants in this department may be planted at any convenient time of the year. Most of them are pot-grown. We take pains to avoid sending plants of any sort at unsuitable times of the year.

ADENANTHERA pavonina. * E T** The **Circassian Bean**. Strong plants 50c.

AGAVE rigida, var. elongata. * E S** Small plants 15c, \$1.50 per doz.

A. rigida, var. Sisalana. * E S** The **Sisal Hemp**. A very valuable fibre plant from Yucatan. Should be grown on large scale for fibre on cheap, frostless lands. Large quantities priced on application. As a decorative plant we offer strong stock 12 to 18 inches high at 25c, \$2.50 per doz. Smaller at 10c, \$1.00 per doz., \$4.00 per 100.

ALEURITES triloba. * E T** The **Candle Nut Tree**. Does well in extreme South Florida. Young stock 50c, \$5.00 per doz.

ALOE vulgaris. * E S** **Bitter**, or **Barbados Aloe**. A valuable succulent; also ornamental flowering. 25c.

AMOMUM cardamomum. * E S** The **Cardamom Plant**, which produces the Cardamom seeds. Thick, leathery leaves; useful as a decorative plant. 10c, \$1.00 per doz. Large, 20c, \$2.00 per doz.

ANDROPOGON citratus. * E S** The **Lemon Grass** of India, which furnishes oil of citronella. Makes clumps five feet high. 10c, \$1.00 per doz.

BIXA orellana. * E S** The **Annatto** plant famous for its orange-red dye. It makes an ornamental shrub. 2 yr. 20c, \$2.00 per doz. Large, 3 yr. 30c, \$3.00 per doz.

CAESALPINIA sappan. * E T** An East Indian tree; pinnate leaves; flowers yellow; furnishes Sappan wood and dye. 25c. Very large, 75c.

CALATHEA allouya. ** D S The **Lleren** of West Indies. "Tubers are delicious when boiled

and eaten hot with butter, having a taste of sweet corn." Needs moist soil. 20c, \$2.00 per doz.

CALOPHYLLUM Calaba. * * * **E T** The **Calaba Tree** of the West Indies. This grows to 30 ft. high, bearing white blooms. 75c.

C. inophyllum. * * * **E T** A large tree from the East Indies, with broad, glossy leaves and snow-white flowers. Bark, gum and fruit of economic and medicinal value. Fine large plants, \$1.00.

CAMELLIA Thea. * **E S** **Tea Plant.** This is now being grown commercially in the South in a few gardens. Our stock is of the **Assam hybrid** variety. 1 yr. 15c, \$1.50 per doz.; 2 yr. 25c, \$2.50 per doz.

CANANGA odorata. * * * **E V** The true **Ylang Ylang**, from the Philippines. The large flowers are highly prized. Rare and new. Pot plants \$2.50.

CASSIA fistula. * * * **E T** **Pudding Pipe Tree**, from India, which produces the Cassia pods. Flowers in graceful racemes; yellow. 25c, \$2.50 per doz.

CASTILLOA elastica. * * * **E T** The famed **Rubber Tree** of Mexico. Perhaps the best rubber-producer for large plantations. We have a nice stock of pot-grown trees. 2 to 3 ft. 25c, \$2.50 per doz.; 3 to 4 ft. 35c, \$3.50 per doz.

CEDELEA odorata. * * * **E T** **Cedar** of Jamaica and South America, where it furnishes most valuable lumber. Makes a fine shade tree of quick growth. 2 yr. 25c, \$2.50 per doz.; 3 yr. (4 to 6 ft.) 30c, \$3.00 per doz. Extra large at 50c each.

C. toona. * * * **E T** The **Bastard Cedar**. Valuable wood; flowers have scent of honey. Extra strong trees 35c, 50c and 75c.

CINNAMOMUM camphora. * **E T** The **Camphor Tree**. Exceedingly valuable for Florida and the Gulf Coast for gum production and shade. Grows well on light sandy soil. Fine pot-grown

plants; 1 yr. 10c, \$1.00 per doz., \$7.00 per 100; 2 yr. 20c, \$2.00 per doz., \$15.00 per 100; 3 yr. 30c, \$3.00 per doz., \$20.00 per 100.

C. Cassia. * **E T** **Chinese Cinnamon**, or **Cassia lignea**. Much like camphor, but has narrower leaves; is a magnificent shelter tree, very dense, and of quick growth. Furnishes a cheap Cinnamon bark (not the true article), cassia buds, cassia oil, etc. Very valuable for Florida. Fine pot-grown stock. 1 yr. 10c, 85c per doz., \$6.00 per 100; 2 yr. 20c, \$1.75 per doz., \$12.00 per 100; 3 yr. 35c, \$3.50 per doz.

COFFEA Arabica. * * * **E T** **Arabian**, or **Commercial Coffee**. Our stock is grown from the Blue Mountain strain of Jamaica. A fine decorative plant; handsome foliage, resembling the chestnut; flowers white like Jessamine. Pot-grown, 2 yr. 15c, \$1.50 per doz., \$10.00 per 100; 3 yr. 25c, \$2.50 per doz.; 4 yr. very strong specimens, 50c; 5 yr., 4 to 4½ ft., \$1.00.

C. Liberica. * * * **E T** **Liberian Coffee**. This has large, glossy leaves; very handsome. Coffee strong and rich. Pot-grown. 2 yr. 25c, \$2.50 per doz.; 3 yr. 35c, \$3.50 per doz.; 4 yr. 50c, \$5.00 per doz.

C. Zanzibarensis. * * * **E S** A new and rare species. Leaves very small. 2 yr. 35c, \$3.50 per doz.; 3 yr. 50c, \$5.00 per doz.

CRESCENTIA cujete. * * * **E T** **Calabash Tree**, of the West Indies, from the warty fruits of which are made bottles, dippers, etc. A large tree with curious foliage. Strong, 25c, \$2.50 per doz. Extra large, 40c.

CRYPTOSTEGIA grandiflora. * * * **E V** A vining shrub, furnishing caoutchouc. The plant is fine, with handsome, allamanda-like, purple flowers. Strong plants 20c, 35c and 50c.

CURCUMA longa. * * **D S** The **East Indian Turmeric**. 35c.

ERIOLENDRON anfractuosum. * * * **D T** **Silk-Cotton**, or **Ceiba** tree of the West Indies.



A dense row of Chinese Cinnamon Trees in our grounds.

A large tree with buttressed trunk. Seed capsules filled with silky material. Of very quick growth, valuable as shade. Fine, pot-grown trees. 2 yr. 25c, \$2.50 per doz.; 3 yr. (4 ft) 35c, \$3.50 per doz.

FICUS elastica. * * * E T The Indian Rubber Tree. A valuable rubber-producer. The tree is largely used when small as a house plant, and in South Florida attains great size and beauty. Beautiful plants, pot-grown, 1 ft, 40c, 18 inches 60c, 2 ft. 75c; 3 to 4 ft. \$1.00.

GARCINIA morella. * * * E T Gamboge Tree of Ceylon. Small, 50c.

GELSEMIUM sempervirens. * E V The Carolina Yellow Jessamine. A valuable medicinal plant, and splendid winter-flowering vine. Beautiful, yellow, bell-shaped flowers, exquisitely perfumed. 1 yr. 15c, \$1.50 per doz.; 2 yr. clumps 25c, \$2.50 per doz.

GMELENA Asiatica. * * E T A large tree from India. Timber, bark and roots all of value. Large specimens in pots \$1.00.

HYMENAEA Coubaril. * * * E T West Indian Locust, or Algaroba of Panama. An immense tree, exuding valuable resin. The pulp around the seeds is edible. Fine plants 75c.

INGA dulcis. * * * E T A handsome small tree. The sweet pulp of the seed pods is a brilliant orange color, edible and wholesome. Very strong, 35c and 50c.

JATROPHA curcas. * * * E S French Physic Nut. Very strong, 30c and 50c.

LAWSONIA alba. * * * E S The famous Henna Bush of the Orient. Also known as the Camphire of Solomon. Aside from its use as a cosmetic, the flowers are grown for sale in Cairo and other cities. Small, white flowers in spikes, scented somewhat like the Rose. Small, 15c. \$1.50 per doz. 2 yr. 25c, \$2.50 per doz.

MARANTA arundinacea. * D S Bermuda Arrow-root plant. Easily grown, the roots should be produced in Florida more largely. 10c, \$1.00 per doz.

MYRICA cerifera. * E T Wax Myrtle. A

native tree bearing slate-colored berries, which produce marketable wax. Grows in either well-drained or swampy soil. 15c to 50c.

PARTIUM elatum. * * * E T Cuban Bast Tree. A quick-growing tree with large, simple leaves and showy, orange-yellow blooms. Fine for shade. 1 yr. 20c, \$2.00 per doz. 3 ft. high, 35c. 4 to 5 ft. 50c. 6 to 8 ft. 75c. (All pot-grown.)

PIMENTO officinalis. * * * E S The Allspice tree, or bush, of Jamaica. Nice plants 25c, \$2.50 per doz.

PIPER Futokadsura. * * * E V Japanese Pepper. A climber, adhering to wood or stone. 15c.

SANSEVIERA Guineensis. * * * E S African Bow-String Hemp. A quick growing and valuable fiber plant. Leaves are long and sword-shaped, mottled a greenish white. This and following species are undoubtedly the toughest plants known that may be used as decorative subjects. They live in water, or dry soil, for weeks, and in dark rooms for months without attention! Fine plants 15c, \$1.50 per doz. Large and fine, 25c; \$2.50 per doz. Ask for price on large quantities of both species.

S. Zeylanica. * * * E S Ceylon Bow-String Hemp. As a fibre plant this has been prized from remote antiquity. A finer decorative plant even than the preceding at same prices.

SAPINDUS mukorossi. * E T (Formerly called a variety of *S. utilis*.) The Soap-berry tree. Said to be the most valuable sort for Florida, and likely to be planted extensively. Pot plants of good size 25c and 50c.

S. saponaria. * * E T An interesting tree of the West Indies; the fatty coating over the seeds used as soap for many years. May be commercially valuable. 2 ft. 15c, \$1.50 per doz., \$10.00 per 100. 3 to 4 ft. 25c, \$2.50 per doz., \$15.00 per 100.

SWIETENIA mahogani. * * * E T Mahogany tree. Famous for centuries for its beautiful wood. 25c to 75c.



Our nursery of Sansevieras, showing both species.

THEOBROMA cacao. *** **E T Chocolate tree.** This furnishes cacao (or "cocoa") as well as chocolate. Our stock is of the fine variety called **Yellow Forestero.** Strong plants 35c, \$3.50 per doz.

VANILLA planifolia. * * * **E V Vanilla**

A collection of 9 of the economic plants will be mailed for \$1. We do not hold to a set list for any of our special collections, but use our judgment in sending the various plants to the location of each purchaser. Customers may state what they already have in this particular line, whether economic plants or palms, etc., and we will endeavor not to send duplicates. See paragraph 14, page 2, for discounts.

plant, the only orchid possessing economic value. 25c.

ZINGIBER officinale. The **Ginger plant.** May be grown like a canna during summer, dried off, and roots kept over winter in dry sand. 15c. \$1.50 per doz.

IV. Bamboos and Grasses.

USEFUL AND ORNAMENTAL.

The liberal planting of this class of plants creates a luxuriant semi-tropical effect. The more hardy sorts are very effective in masses even as far north as Ohio and Pennsylvania, where they stand the winters safely. In the South they may be planted freely with perfect success. The foliage, besides being of an ornamental character, is relished by stock, and may be used as pasturage. The bamboos proper are very useful for the florist in very many ways—decoration, design work, etc.

Explanation of symbols: * Those most hardy, standing the climate as far north as Ohio, or farther. ** Hardy all along the Gulf coast, standing a temperature as low as 12 or 15 degrees without serious if any injury. *** Tropical species, withstanding but light frosts unharmed. Roots will throw up growth, however, if tops are frozen.

Grasses and Bamboos may be set out any time of the year. On a large scale of planting, summer is to be preferred, or late spring in this climate. For northern and western locations, we should recommend the spring.

ANDROPOGON citratus. See Department III.

ARUNDO donax variegata. * **Gardener's Garter.** A beautiful bamboo reed attaining a height of 12 feet, beautifully variegated with white, especially during its early growth. Makes large clumps and is useful for bedding. Has immense flower plumes. 20c, \$2.00 per doz.

ARUNDINARIA fasciata. * * A rather dwarf bamboo, reaching a height of 10 feet, and forming dense clumps. Foliage extremely small and narrow. Individual canes with their foliage are effective in decorations, and may be used by the florist. Single canes, rooted, 10c, 85c per doz.; \$6.00 per 100. Clumps, 25c to 75c

BAMBUSA argentea. * * A fine Japanese species reaching a possible height of 35 or 40 feet. It makes great thick clumps and the shoots bend outward very gracefully. Foliage small. Needs a large space to show off its beauty like all large bamboos. Single canes, rooted, 15c, \$1.25 per doz., \$8.00 per 100. clumps 25c to \$5.00.

B. argentea striata. * * Like the preceding but has foliage striped with white, especially noticeable during rapid growth. Grows even larger and more vigorously than the type. Single canes, rooted, 15c, \$1.50 per doz., \$10 per 100. Clumps, 25c to \$5.00.

B. aurea. * (*Phyllostachys*.) Very hardy species with under-ground running stems which throw up canes irregularly. Unless confined, it makes a straggling appearance. Fine for tubs, or for odd places; prefers a good, moist soil. Hardy to the Ohio river at least. Attains a height of 8 to 12 feet. Strong plants 25c, \$2.50 per doz. A few in pots at 50c.

B. Metake. * A very broadleaved hardy species, rarely exceeding 10 feet in height, very suitable for tubs as a house plant. It forms naturally large masses like the preceding species, but may be confined to clumps effectively. Single canes, rooted, 10c, 85c per doz.; \$6.00 per 100. Small clumps 25c; larger 50c.

B. spinosa. *** This is an East Indian sort with thorny growth along the stems and branches. Makes very graceful, gigantic clumps, 50 feet high, with canes 3 inches thick. Can only stand light frosts. 1 yr. from seed, 10c, \$1.00 per doz. Large pot plants 4 to 5 feet 50c, \$5.00 per doz. Extra large 75c.

B. verticillata. * * A handsome species much like *B. argentea*, but larger and with canes striped with yellow. Good clumps 75c.

B. verticillata No. 2. Identical with the preceding excepting that the canes are plain green. Very vigorous. Good clumps 25c and 50c.

B. violescens. * A rather dwarf Chinese species with leaves green above and bluish-gray beneath. Stems blackish violet; habit like *B. Metake*. 30c to 75c.

B. vulgaris. * * * The common giant bamboo of the West Indies, here attaining a height of 60 feet frequently, with canes 4 inches in diameter. The

magnificent clumps surpass almost everything except palms in beauty. Of very quick growth on good soil. Pot grown 35c.

CYNODON dactylon variety. * * **St. Lucie Grass.** A fine leaved lawn grass, the favorite generally in South Florida. It grows very quickly from surface runners but as it seldom perfects seed must be grown from bits of sod. Clean



Bambusa Metake.

sod, soil removed, 65c per bushel, by express only. Small lots by mail 25c and upward.

CYPERUS alternifolius. * * * **Umbrella Grass.** Long known as a graceful house plant. Certainly a beautiful subject when well grown. 15c and 25c for strong pot plants.

DENDROCALAMUS strictus. * * * A wonderful giant bamboo of great beauty, having solid canes until very large, and reaching a height of 80 feet; will stand more frost than most tropical plants and recommended for South Florida generally. A rare plant. Pot grown, 50c.

EULALIA Japonica zebrina. * **Zebra Grass.** Forms small clumps of a total height of about 6 feet; leaves striped crosswise with white. 15c, \$1.50 per doz.

ERIANTHUS Ravennae. * A large plume grass something like the Pampas grass. Clumps 25c.

GYNERIUM Argenteum variety. * **Flesh Tinted Pampas Grass.** The plumes are large and feathery. Clumps reach a large size, and a total height of about 8 feet. 25c.

PANICUM molle. * * **Para Grass.** One of the greatest forage grasses for Florida and the Gulf coast. Will grow on very indifferent soil, wet or dry, and produces wonderfully. Seldom perfects seed and is grown by plowing under the growing tops, preferably in the rainy season. Cut tops, by express, 25 lbs. for 50c, 100 lbs. for \$1.50. By mail, roots, at 25c per doz.

P. excurrens. * * A grand, broad-leaved grass, resembling a palm in the young state. In fact, commonly called **Palm Grass.** The leaves are 4 to 6 inches wide, gracefully recurved. Clumps grow to a height of 6 feet in a summer season. (A magnificent grass for the lawn or border.) A fine conservatory plant. 15c and 25c.

STENOTAPHRUM glabrum. * * **St. Augustine Grass.** A good lawn grass. Thrives even under shade, and will grow on almost any soil. Does not need so much water as Bermuda or St. Lucie Grass. 40c per 100 cuttings; by express \$1.00 per bushel.

A collection of 6 choice Bamboos and Grasses sent to any address for \$1.00.

V. Aquatics.

* Specially adapted for aquariums, or for growth in restricted places. * * Large, showy, species. **H** Hardy where the roots are kept below ice; some species with no protection. **T** Tropical species, easily grown anywhere during summer. **S T** Sub-Tropical.

The species of **Caladium**, **Alocasia**, **Musa**, **Maranta**, **Hedychium**, **Heliconia**, **Amomum**, **Zingiber**, **Iris**, **Canna**, and others, can be grown with good effect on the low, moist ground surrounding lakes and ponds, and in similar damp locations.

The best time to plant Aquatics is during warm spring weather, or summer. Nymphaeas may be planted along the edges of ponds or streams, in not over a foot of water, and manure can be dug into the soil with advantage. You can not make the soil too rich. For tubs, use very rich soil and manure, with gravel or sand on top, to keep the water clean.

EICHHOENIA azurea. * **T** The **Blue Creeping Water Hyacinth.** 15c, \$1.50 per doz.

E. crassipes. * **T** The famous **Water Hyacinth.** A beautiful floating plant, with very bright flowers in spikes, lilac, blue and yellow, 2 inches across. Will grow in clear water in the house admirably. A valuable forage plant for cattle; will grow in ponds and streams all along the Gulf coast. Special price for large quantities. 10c, 75c per doz.

E. Martiana. * **T** A choice plant, requiring good soil, not necessarily under water, but very wet. Spikes of small deep blue flowers. 15c, \$1.50 per doz

LIMNOCHARIS Humboldtii. * **T** The **Water**

Poppy. Floating leaves; bright yellow flowers 2 to 3 inches across; very fine. 10c, 85c per doz.

L. Plumieri. * **T** An erect plant, with pale yellow flowers of small size. 10c, 85c per doz.

MYRIOPHYLLUM Proserpinacoides. * **T** **Parrot's Feather** or **Milfoil.** An elegant trailing plant, the stems covered with whorls of very delicate foliage. 10c, 50c per doz.

NELUMBIUM speciosum. * * **H** The **Sacred Lotus.** Large leaves stand well above the water with flowers above them on strong stems, large, rosy pink and sweet scented. 50c.

N. roseum plenum. * * **H** Double pink flowered. Rare and fine. \$1.50.



Water Poppies.

N. Album plenissimum. * * **H** Double white flowered. \$1.50.

NYMPHAEA. The Water Lily, or Pond Lily. The most desirable genus of all aquatics, comprising a great variety of species, with flowers of all colors, richly scented and lasting well when cut.

N. dentata. * * **T** Largest and best white night-blooming species. 50c.

N. Devoniensis. * * **T** A very choice plant with glowing, rosy-red flowers opening in the evening. 50c.

N. marliacea chrcmatella * * **H** Flowers lemon-yellow; freely produced. 75c.

N. marliacea carnea. * * **H** Flowers a beautiful rose pink. \$1.00

N. odorata gigantea. * * **H** The native white pond lily, with very large leaves, and charming pure white flowers 4 to 7 inches across. 20c, \$2.00 per doz.

N. odorata rosea. * * **T** The Cape Cod Pink Pond Lily. Very handsome and fragrant. 50c.

N. tubercsa rosea. * * **H** Flowers a fine shade of pink, standing above the water. Vigorous. 50c.

N. Zanzibarensis. * * **T** Flowers blue, or pink. Our seedlings are mixed. 50c.

PAPYRUS antiquorum. * * **T** Egyptian Paper Reed, or Moses' Bullrush. The triangular stalks support a large tuft of long, thread-like leaves; exceedingly graceful. Forms large clumps 4 to 7 feet high in rich soil. 25c, \$2.50 per doz.

FELTANDREA Virginia. * * **S T** Arrow Arum. Arrow-leaved plant growing about a foot high. 25c.

PISTIA stratiotes. * * **S T** Water Lettuce. A pretty, floating plant, sometimes 6 to 8 inches across the rosette of velvety leaves. 10c, 85c per doz.

SAGITTARIA Montevidiensis. * * **T** The Giant Arrow Head. Broad arrow shaped leaves; white flowers in spikes. 20c.

THALIA divaricata. * * **S T** A magnificent native, ornamental bog plant, which may be grown at the north as easily as a canna. The enormous leaves with red midribs, resemble the banana and are 2 to 4 feet long. Flowers purplish borne high on stems 6 to 10 feet tall. 20c, \$1.50 per doz.

TYPHA latifolia. * * **H** Cat-Tail Flag. A very decorative bog plant well known everywhere. 15c, \$1.00 per doz.

IS A collection of 5 choice Aquatics our selection, for \$1.00. Remember, postage is paid by us on plants ordered by mail, and we send strong, vigorous plants, sure to please you.



An Aquatic Garden.

VI. Conifers.

All the following Coniferous Evergreens are entirely hardy in Florida and the Lower South, except *Araucaria excelsa*. This may be grown outdoors in South Florida, in protected places, south of Orlando and Tampa. Our conifers are carefully grown, having plenty of space allowed for proper development, and are healthy and vigorous. Write for special rates for stock in quantity. All are pot-grown, excepting *Thuja orientalis*, and *T. compacta*, and may be transplanted safely any month in the year.

ARAUCARIA excelsa. The "Norfolk Island Pine." A grand decorative subject both for pots when small, and open air in the Tropics. Will stand but little frost. Fine plants, about a 1.00 high, \$1.00.

CALLITRIS robusta. The Cypress Pine. Small plants, \$1.00 each.

CEDEUS Deodara. The Deodar, or Great Cedar of the Himalayas. Foliage somewhat like a pine, blue-green. 2 yr. old, 25c, \$2.50 per doz.

CUPRESSUS. The Cypress. A genus of most beautiful trees, varying in size, but all we offer are very desirable species. They do well in Florida and are highly recommended.

C. Bedfordiana. Quite slender, resembling the *C. sempervirens*. Fine young stock 25c, \$2.50 per doz.

C. funebris. Funereal Cypress from China. Foliage and branches pendulous. 20c and 40c.

C. Goveniana. Reaches a height of 50 feet with a broad pyramidal head. 25c and 50c.

C. Knightiana. A fine Mexican variety with the young branches of a violet or glaucous color. 50c.

C. Lawsoniana. A graceful California variety; drooping branches; silvery green foliage. 50c.

C. Lusitanica. The Cedar of Goa, from Portugal. Very handsome, with spreading branches. Foliage glaucous. Grows very fast, even on poor, sandy land. 50c and 75c.

C. sempervirens. Common Cypress of Western Asia and Southern Europe. The tree is exceedingly slender, grows straight and is indispensable in much landscape gardening. It reaches a height of 80 feet. 2 yr. 20c, \$2.00 per doz.; 3 yr. 30c, \$3.00 per doz.

C. torulosa. Twisted, or Botan Cypress. A dense, cone-shaped tree with lower limbs touching the ground. Of very fast growth. 20c, \$2.00 per doz.

JUNIPERUS Barbadosensis. Our native Red Cedar. Differs but slightly from the Virginia Cedar. A splendid, evergreen ornamental when allowed sufficient room for development. Grows on any soil. 20c, \$2.00 per doz.

PINUS Canariensis. The great Canary Island Pine. Foliage light bluish green, soft and delicate in appearance. 2 yr. 20c, \$2.50 per doz.

P. excelsa. The Lofty or Botan Pine, from the Himalayas. Leaves fine, long, and frequently blue-green. 2 yr. 20c, \$2.00 per doz. 3 yr. 30c, \$3.00 per doz.

P. Halepensis. The Aleppo or Jerusalem Pine. The most common pine of Palestine, a low spreading tree 20 to 30 feet high; its resin is used to preserve wine. 2 yr. 15c, \$1.25 per doz.; 3 yr. 25c, \$2.50 per doz.

P. Laricio. Corsican Pine. A grand species reaching a height of 150 feet, with a very erect habit, and freely branched. Leaves 6 inches long, glaucous-green. 2 yr. 15c, \$1.25 per doz.

P. longifolia. The Emodi, or Cheer Pine from India. A large tree, which does well in Florida. 1 yr. 10c, \$1.00 per doz. Larger 25c and 50c.

P. Massoniana. Japan Pine. This reaches a height of fifty feet and furnishes excellent lumber of a deep-red color. 2 yr. 15c, \$1.25 per doz.; 3 yr. 25c, \$2.50 per doz.

RETINOSPORA plumosa. Japan Cypress. Strong plants 35c and 50c.

TAXODIUM imbricarium. One of the two native Southern Cyresses. A great timber tree, it is also a beautiful ornament when well grown. 3 yr. 25c, \$2.50 per doz.

THUYA (or Biota.) This well-known genus contains some choice species for Florida and the South. They grow on any fairly well-drained land, and are all especially suitable for forming hedges.

T. occidentalis. American Arborvitae. A



Sabal umbraculifera and *S. Palmetto* in open ground.

large bush, or small tree, admirable for hedges. Foliage flat and very dense, highly odorous. 14 to 18 inches high. 25c, \$2.25 per doz., \$16.00 per 100. 18 to 24 inches high, 35c, \$3.25 per doz., \$20.00 per 100.

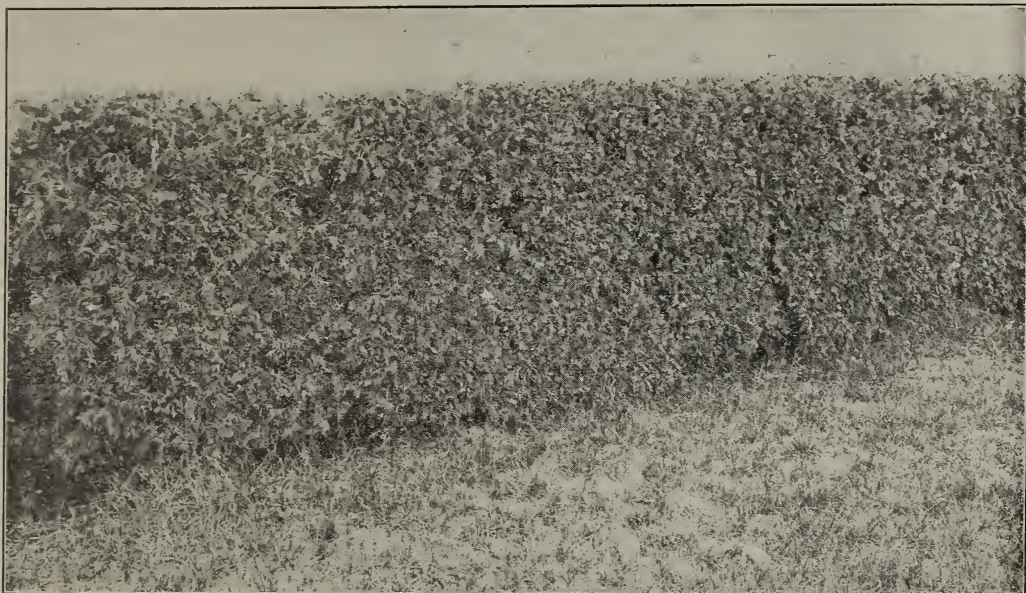
T. orientalis. Chinese Arborvitae. A slender tree, with flat foliage, rather open in its natural state, but very suitable for hedges, as by shearing it gets to be very dense. 12-18 inches high, 20c, \$2.00 per doz., \$14.00 per 100. 18 to 30 inches high, 30c, \$3.00 per doz., \$20.00 per 100. 30 to 48 inches high, 40c, \$4.00 per doz., \$25.00 per 100.

T. orientalis compacta. Conical in form, exceedingly dense and regular. A fine dwarf species

suitable for cemetery, park and general planting in many ways. 8 to 12 inches high 15c, \$1.50 per doz.; \$10.00 per 100. 12 to 15 inches high 20c, \$2.00 per doz, \$15.00 per 100. 18 to 24 inches high 30c, \$3.00 per doz.

T. "Rosedale Hybrid." A very unique and handsome dwarf species, with dark green, sometimes glaucous, sometimes bronze, foliage of dense habit and conical shape. 5 to 7 inches high 15c, \$1.50 per doz., \$10.00 per 100. 8 to 10 inches high 20c, \$2.00 per doz., \$15.00 per 100. 10 to 12 inches high 25c, \$2.50 per doz. Larger, 50c and 75c.

A collection of 6 choice Conifers, our selection, will be sent postpaid for \$1.00. Ask for prices on large quantities of any stock needed. See discounts under paragraph 14, page 2.



A Hedge of Arborvitae.

VII. Palms and Cycads.

"THE PRINCES OF THE VEGETABLE KINGDOM."

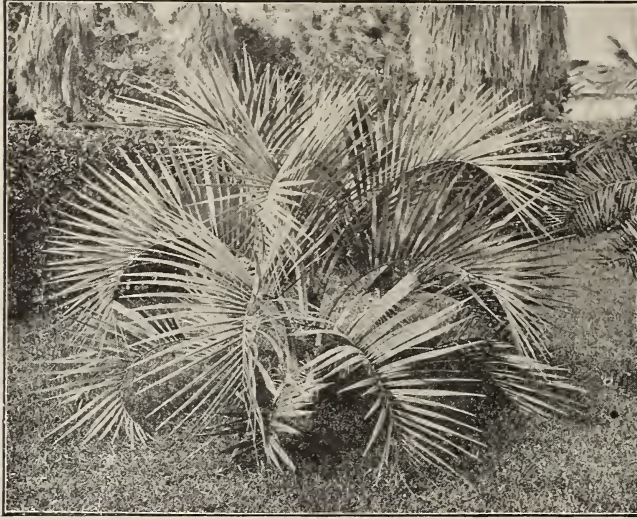
Palms form one of our specialties, and we grow thousands of plants. They are kept growing in pots, enabling them to be moved or transplanted at any time without trouble. We use no heat except for a few most tender tropical sorts, during a few days of winter, and consequently our plants are in fit condition to be shipped every day in the year, and are healthy and stocky. For outdoor planting, we recommend their being set in spring or summer, so that they may be established before cooler weather. No class of plants makes such a tropical and elegant display as Palms. Make the soil very rich. A plant in open ground when once established cannot be fertilized too heavily. Where dry, mulching and watering must be attended to in their earlier stages; later, they can take care of themselves. In the autumn, in semi-tropical climates, Palms should not be cultivated so late as to cause rank growth in the winter. In fertilizing, use considerable sulphate of potash, which will help Palms harden their growth and thus put them in good condition to stand freezing weather; if too much nitrogeous manure is used it causes a sappy growth liable to be damaged by cold.

For culture in pots, see that the soil is rich, but not enriched too heavily, and that drainage is perfect. Do not try to grow a small plant in an extremely large pot. As a general rule, use 4-inch pots for plants 10 to 15 inches high; 6-inch pots for plants 20 to 24 inches high, etc., and always in such size that the roots will have plenty of soil, without its turning sour. Cover the drainage holes with broken pottery or small stones or similar material, to keep the soil from dropping through, and to keep the waterway open. Palms in the house need some sunshine, and will do best with the morning and afternoon sunlight every day, only avoiding the heat of noon. They will exist and live for years with but little light, but are not healthy, nor will they grow fast. An even, rather high temperature suits them best, without drafts of air. The hardier sorts will be able to stand a temperature of 60 degrees and do very well, but below this they will not make much growth. Even an occasional drop to 45 degrees will not kill them, but they would prefer 70 degrees most of the time. In summer, Palms will appreciate plunging in the ground to the top of the pots, in a half shady, moist situation. Sponge the leaves occasionally to keep them clean and free from insects.

Explanation of symbols: * Those hardy enough to grow outdoors along the Gulf coast or Southern California, etc., or in a temperature not lower than 15 degrees Fahr. ** Tropical

species, not being able to withstand more than light frosts without more or less injury. **D** Especially recommended for cultivation in greenhouses or for house decoration, although all sorts named may be thus grown if given suitable temperature. All Palms pot-grown, so may be shipped at any time of year.

All measurements are taken in natural position, above the pots.



Cocos Australis.

ACROCOMIA sclerocarpa. ** The **Groo-Groo** Palm of Trinidad. Tall, pinnate and spiny. Young plants \$1.00.

ARECA lutescens. * **D** A favorite for the greenhouse and home. Grows bushy and has elegant pinnate leaves nicely recurved. Small, 15c. Bushy plants about 20 inches high 75c; larger, in fine decorative size, \$1.50.

ATTALEA Cohune. * **Cohune** or **Monaco** Palm. \$1.00.

BACTRIS aurantiaca. * **D** Pinnate Palm from Mexico; dwarf and spiny but beautiful. Nice plants 35c, 75c and \$1.50.

CARYOTA Blancoi. * **D** A very rare species of the "Fish-tail" Palms. Young plants at 35c.

C. mitis. * **D** This forms dense clumps, suckering from the base, and has splendid bipinnate leaves with delta-shaped leaflets. Very interesting and of quick growth. Nice plants 35c and 50c.

CHAMAEDOREA glaucifolia (?) * **D** A new Palm from Guatemala, pinnate-leaved, of quick growth. With character, strong, 50c to \$1.00.

CHAMAEROPS excelsa. * **Chusan** Palm from China. Very hardy, enduring sharp freezing and living in middle Georgia with slight protection. A dwarf fan Palm of slow growth. 1 yr. 10c, \$1.00 per doz. Larger, with character, 25c, \$2.50 per doz.

COCOS. A very large genus of pinnate-leaved Palms, mainly from South America, containing both tropical and hardy species. The hardy trees are especially desirable for Florida and the Gulf Coast for planting out on lawns and avenues.

C. Australis. * Very hardy, slow growing; leaves bluish-green. A small tree said to reach 30 feet. Small, 20c, \$2.00 per doz.

C. Bonneti. * **D** Quite hardy, gray-green in color unless in deep shade, and very desirable for either pots or open ground culture. This is a beautiful Palm. Small, 15c, \$1.50 per doz. Larger, no character, 25c, \$2.50 per doz.

C. coronata. * **D** A tall, fast-growing species confused with *C. plumosa*, which it closely resembles. The two species are invaluable for scenic planting in South Florida, as they are tall, elegant-appearing trees, somewhat resembling

the Royal Palm and being able to stand severe frost after they are well established. In the cooler places of South Florida they need to be protected through cold snaps for two or three seasons only. A fine stock of young plants without character, at 15c, \$1.50 per doz. Larger, no character, 25c, \$2.50 per doz. Plants 2 to 3 feet, ready to characterize, 40c, \$4.00 per doz.

C. —? "Dwarf Cocoanut" from Cuba. 50c.

C. eriopathe. * A larger Palm of the *Australis* type; very hardy and beautiful. Young plants, 25c, \$2.50 per doz. Beginning character, 50c.

C. Gaertneri. * Similar to *C. Australis*. 25c, \$2.50 per doz. Beginning character, 50c.

C. plumosa. * **D** A perfectly magnificent palm, resembling a Royal Palm, but of slightly smaller size (reaching a height of 50 feet or more), with great plummy leaves from 10 to 15 feet long, dark shining green. There is nothing to approach this and *C. coronata*, for planting in semi-tropical regions, as the two similar palms will stand hard frosts after they attain some age, and beautify any landscape. They are beautiful as single specimens, in clumps, or as avenue subjects. Fine young plants, without character, 15c, \$1.50 per doz. Larger, 25c, \$2.50 per doz. Plants 2 to 3 feet high, ready to characterize, 40c, \$4.00 per doz.

C. Normanbyana. * A rare hardy species. Small, 35c.



Martezia Caryotaefolia.



Neowashingtonia Sonorae.



Latania Borbonica.

quiring same culture as *Areca lutescens*. Leaves finely tinted with red. A small palm with slender trunk. Nice plants 25c, \$2.50 per doz.

ELAEIS Guineensis. * * **D** The famous **Oil Palm** of the Guinea Coast. A splendid pinnate palm. Fine plants 75c, \$1.00 and \$1.50.

ENCEPHALARTOS brachyphyllus. * * **D** Small plants \$3.00.

GUILIELMA speciosa. * * The rare **Peach Palm** of the Amazon. Young plants, no character, \$2.50.

HYDRIASTELE Wendlandii. * * **D** A rare and dwarf pinnate palm. Small plants 50c.

HYOPHOBEA Amaricaulis. * * **D** A splendid palm with pinnate leaves; the leaves and leaf-stems colored with maroon and orange tints. Young plants 50c.

H. Verschaffeltii. * * **D** A middle-sized palm allied to *Areca* and requiring same culture. Pinnate leaves from 4 to 6 feet long, the midribs striped with orange-yellow on under side. A fine plant. Fully characterized specimens from 50c to \$3.00.

INODES causiarum. The **Hat Palm** of Porto Rico. This is probably perfectly hardy here, as it is closely allied to our cabbage palmetto. Commencing character, 35c.

LATANIA Borbonica. * **D** The well-known **Chinese Fan Palm**. Formerly more widely used as a house palm than any other kind. It is a hardy, rather slow-growing plant, with broad leaves, usually of a drooping habit. Makes a fine decorative plant for either indoors or open air in the extreme South. Strong plants, no character, 15c, \$1.25 per doz.; with character, 12 to 15 inches high, 25c, \$2.50 per doz.; 15 to 20 inches high, 40c, \$4.00 per doz. Larger but with imperfect foliage, 50c and 75c.

L. glaucophylla. * * **D** A rare species with deeply divided glaucous leaves, tinged red. A magnificent palm, which ought to be in every choice collection, as the massive, reddish leaves are absolutely different from any other palm. Nice, young plants 50c, \$5.00 per doz.

LICUALA peltata. * * **D** Small plants of this rare fan palm 35c.

MARTINEZIA caryotaefolia. * * **D** An elegant palm with foliage like the *Caryotas*, but spiny. Trunk slender, about two inches thick. Fine young plants, no character, 35c; larger, with character forming, 50c.

NEOWASHINGTONIA Sonorae. * The best strain of the **California Fan Palm**, sometimes called "*Washingtonia robusta*," "*Thread Palm*," etc. A fine hardy palm with reddish-brown, blunt



Cocos Plumosa.

C. nucifera. * * The **Cocoanut Palm**. Young plants 50c, \$5.00 per doz. (Unmailable.)

C. species from Entre Rios. * A strong grower of the **Australis** type. Small plants 25c, \$2.50 per doz.

C. Weddelliana. * * **D** A very dwarf, elegant pot palm, used largely with ferns in ferneries and dishes. Nice plants fully characterized, 25c, \$2.50 per doz.

C. Yatai. * A very hardy species similar to **C. Australis**. Small, 25c. Beginning character, 50c.

COCOTHRINAX Garberi. * * **D** This dwarf fan palm, a native of extreme South Florida, has been called *Thrinax argentea* for years. A neat plant, with leaves silvery on their under surfaces. Characterizes when very small. Nice plants 25c and 35c.

CYCAS revoluta. * **D** The so-called **Sago Palm**. A splendid dwarf plant for house, or grounds in the South, enduring much cold. Small plants 25c, \$2.50 per doz. Imported plants, with 3 to 5 leaves, 50c, \$5.00 per doz.; 5 to 8 leaves, 75c, 8 to 12 leaves, \$1.00; 10 to 15 leaves, \$2.00. Larger elegant specimens at \$3.00, \$4.00 and \$5.00.

DICTYOSPERMA rubrum. * * **D** Commonly listed as *Areca rubra*. A fine pinnate palm re-



Thrinax Barbadosensis.

spines on the leaf-stems, and threads hanging from the leaves; used largely as a street tree. Small plants, 1 yr. old, 10c, 55c per doz., larger 2 yr. old, 20c, \$2.00 per doz.

OREODOXA Borinquena. * * **Porto Rican Royal Palm**, differing somewhat from the Cuban species, in being more vigorous and stocky. Does well in extreme South Florida outdoors. Fine young stock 2 to 3 feet, 30c, \$3.00 per doz.; from 3 to 4 feet, 50c, \$5.00 per doz.

O. oleracea. * * **D The Palmiste, or Cabbage Palm of Jamaica.** A noble palm, much like *O. regia*, having coarser leaves and even more robust character, but requiring more heat for successful growth. Reaches a height of 100 feet or more. Vigorous young stock 2½ to 3 feet high, 35c, \$3.50 per doz.

O. regia. * * **D The Royal Palm.** This is one of the grandest of all pinnate-leaved palms, reaching a height of 125 feet in the Florida Everglades, where it is rarely found wild. The great leaves are 15 feet or more in length. Our main nurseries were named from this choice palm, beautiful specimens of which had been transplanted here but were lost some years later by frost. When young this palm is tall and slender. Young plants, no character, 15c, \$1.50 per doz.; larger, beginning character, 25c, \$2.50 per doz.; about 3 feet high, 35c, \$3.50 per doz.

PHOENIX. The Date Palms. Pinnate-leaved palms of hardy character, many species of which will endure severe freezing unharmed. We recommend the various species for open-air planting on a large scale in Florida and protected Gulf Coast spots.

P. Canariensis. * **D The Canary Island Date.** One of the finest and most hardy for open-air planting. Leaves long and pinnate closely set; trunk very large. Splendid for lawn and park planting along the Gulf Coast, as it is hardy and vigorous. Small plants only, 1 yr. 15c, \$1.25 per doz.

P. dactylifera. * **The Commercial Date Palm.** Does not fruit much in Florida or the West Indies owing to humidity, but is a great success in Arizona and Southern California. Young plants only, 15c, \$1.50 per doz.

P. farinifera. * **D A dwarf species admirable for house decoration.** The seeds are covered with a sweet, mealy pulp. Our stock is true to name. Fine plants fully characterized, 25c, 50c and \$1.00.

P. paludosa. * **D Swamp Phoenix.** Resem-

bles *P. reclinata* somewhat. Fine plants, with character, 25c and 50c.

P. pumila. * **D A quick grower, with a slender trunk not over 6 inches in diameter.** Fine for street planting. Nice plants, with character, 15 to 20 inches high, 25c, \$2.50 per doz.; larger, over 2 feet, 50c, \$5.00 per doz.

P. reclinata. * **D A splendid palm for the house, or for open-air planting in South Florida and other warm regions.** Leaves are arched and very dark green; tree grows quickly, having a trunk 5 to 8 inches in diameter, but unless the suckers are removed the plant makes an immense plummy clump, the trunk or trunks not being visible. It is especially fine when allowed to grow at will. Can be used for street planting by cutting off the small suckers for a few years, when they cease to sprout out. We grow this in quantity. Small plants 1 yr. old, 10c, \$1.00 per doz.; 2 yr., no character, 15c, \$1.50 per doz.; 3 yr., with character, about 15 to 18 inches high, 25c, \$2.50 per doz. About 2 feet high, 50c, \$5.00 per doz.; about 3 feet high, 75c, \$7.50 per doz. Larger, \$1.00, \$2.00 and \$3.00.

P. reclinata var. Leonensis. * A stronger grower with more spines along the leaf-stems than the type. Strong plants 25c, \$2.50 per doz.

P. Roebelenii. * **D A new and dwarf species, especially fine for house decoration.** Small, 20c, characterized, 50c.

P. rupicola. * **D One of the finest species for growing in pots for the house or conservatory.** Wide-spreading, arching leaves, the pinnae set closely along the midrib, and the plant carrying a larger number of fronds. We have some grand plants this year, all true to name. Small, no character, 15c. Commencing character, 30c. Nice decorative sizes, 50c, \$1.00 and \$2.00.

PRITCHARDIA Pacifica. * * **D A rare fan palm from the southern seas.** Small plants, 35c.

P. species from British Guiana. * * **D This closely resembles the preceding.** A very fine, broad-leaved palm of quick growth, requiring heat. Plants with character 50c to \$2.00.

P. Thurstoni. * * **D A tall species from Fiji.** With character \$1.00.

PTYCHOSPERMA Alexandrae. * * **D A beautiful, smooth, pinnate-leaved palm, resembling Seaforthia elegans, but the pinnae are finer, with under surfaces of a silvery color.** Characterized specimens \$1.00 to \$2.00. A pair of fine plants about 5 feet high, \$8.00 each; the two for \$15.00.

P. McArthurii. * * **D (Incorrectly Kentia McArthurii.) A dwarf species, which throws up numerous suckers, forming bushy plants.** Small plants 50c; large, with character, 2 to 8 feet high, \$2.00 to \$10.00.

RHAPIDOPHYLLUM hystrix. * **D The "Porcupine Palmetto."** Nice young plants, 35c and 50c.

SABAL Adansonii. * **D Dwarf Palmetto or Blue Palm, of Florida and So. Georgia.** A stemless species, with dark, blue-green, fan leaves, growing 4 or 5 feet high. Small, 3 yr. old, 15 cts, \$1.50 per doz.

S. Blackburniana. * One of the West Indian giant palmettos, with enormous leaves. Very choice and hardy. 1 yr. old, 10c, \$1.00 per doz.; 2 yr. old, 15c, \$1.50 per doz.; 3 yr. beginning character, 25c.

S. mauritiaformis. * * **D Perhaps hardy! Savana Palm of Venezuela and Trinidad.** T h e



Phoenix Rupicola.

largest of all Sabals, having gigantic leaves, 12 feet across. Small plants 2 yr. 25c; larger, 75c.

S. Mexicana. * **Mexican Palmetto.** Resembles S. Palmetto but is heavier and more stocky. Strong plants, 35c.

S. Palmetto. * The famed **Cabbage Palmetto** of the South. A tall tree with a large head of fan leaves. Has a number of economic uses. Young plants, no character, 10c, 85c per doz.; better, about 3 yr. old, 15c, \$1.50 per doz.; making character, 25c.

S. umbraculifera. * The tallest species known, reaching a height of 80 feet in the West Indies, having immense leaves with drooping habit, and long stems. 3 yr., no character, 25c; larger 35c.

SEAFORTHIA elegans. * * **D** A most graceful palm, eminently adapted for decorative uses. The beautiful pinnate leaves are from 2 to 3 feet in length, dark-green and smooth, and the plant always carries a goodly number, making a superb subject for house decoration, and for the lawn in warm countries. This is really one of the finest palms for the South, standing chilly rooms in winter without dying at the tips. We grow it in large quantity and find it a universal success, judging from our customers' letters. 1 yr. old, no character, 10c, \$1.00 per doz.; 3-inch pot plants, no character, 15c, \$1.50 per doz. About 15 to 18 inches high, with some character, 25c;

about 18 to 24 inches high, fine, 50c; about 2 to 2½ ft., 75c; about 3 ft., \$1.00; about 4 ft., \$2.00; large specimens, 5½ to 10 ft., \$6.00 to \$15.00.

THRINAX **Barbadensis.** * * **D** Without doubt one of the handsomest of all small fan palms. A dwarf species with very slender trunk; leaves deeply cleft, almost circular, dark-green, on slender, graceful stems. Each specimen carries a full head of fine leaves and is always a beautiful object. One of the finest palms for house decoration and for florists' use. Small, partly characterized, 15c, \$1.50 per doz.; 6 to 8 inches high, with character, 25c; 10 to 12 inches high, fully characterized, 50c; 12 to 15 inches high, 75c; 15 to 20 inches high, \$1.00.

T. excelsa. * * Small plants 25c.

T. Morrissi. * * **D** A new palm from the West Indies, exceedingly small when mature, not being over 2½ feet in height. Of slow growth and great beauty, this is very fine for small tables or for fern dishes. Nice plants, with character, 25c and 50c.

T. parviflora. * * **D** **Thatch Palm.** Resembles T. Barbadensis but is larger and has broader leaf-segments. Very fine. Nice plants, 25c to 75c.

ZAMIA integrifolia. * **D** (or Z. Florida.) Our native cycad, the **Comptie.** A dwarf, rarely over 18 inches high. Strong plants, 20c to 35c.

For other choice decorative plants often listed with Palms, see Pandanus, page 28, Dracaena, page 27, and Curculigo, page 27.

Collection A.—Five small Palms, good sorts, all different, by mail for 50 cents.

Collection No. 1.—Ten Palms, all different, in nice plants, sent by mail to any address for \$1.00.

Collection No. 2.—Ten Palms, in larger sizes than above, sent by mail for \$2.00.

Collection No. 3.—Five Palms, all different, showing character, and ready for immediate decorative effect, for \$2.50.

State whether wanted for outdoor planting or for pots. We will mail a suitable selection.

Above offers are of Palms of our choice only.

As all Palms are pot-grown, they may be transplanted any time, or shipped any distance safely.



Seaforthia Elegans, showing the 25c, 50c and 75c sizes.

VIII. Ferns and Selaginellas.

Varieties with the asterisk (*) are the more hardy sorts. Others should be kept from hard frosts, being tropical. Our list embraces a very choice collection and will be found quite complete. See special offers of collections of Ferns, at end of Department.

Ferns are becoming more generally grown as mens for greenhouse or home, in groups in fer etc. Most of the sorts we list can be grown in baskets, if desired, and will be found useful for In house culture these should all be given som get the more frail and weak they become. Soil or very old, well-rotted manure. Too much man with considerable added as a top-dressing. Con Ferns as for more rank-growing plants. Ferns are nearly all pot-grown.

ADIANTUM cuneatum. One of the Maiden-hair ferns, long a favorite with florists for cutting. Makes a nice specimen plant. Foliage very delicate and beautiful. 15c to 35c.

A. hispidulum. A spreading, rather dwarf species with narrow fronds. 15c and 25c.

A. hybridum. (The same as listed by some as "croweanum.") A splendid new species similar in style to cuneatum but has heavier and larger foliage; the finest sort known for florists' use for cutting, and also the best for amateurs in the South, growing well for everyone. A grand acquisition for house growth. Fine plants 15c to \$1.00.

A. lunulatum. A "walking fern," rooting at the tips of fronds. A small, graceful plant. 10c and 20c.

ALSOPHILA Australis. Australian Tree Fern. Small plants only, 25c.

ASPIDIUM tsussimense. A fine dwarf fern for either single specimens or for filling fern-dishes. Grows compactly and has very dark-green, finely-cut fronds. Strong plants 10 and 35c.

A. Thelypteris. A delicate native fern, with narrow fronds. 10c and 20c.

A. unitum-glabrum.* A common native fern, growing 2 to 3 ft. high. Very rank grower, with long fronds. 10c, 35c per doz.

ASPLENIUM lanceum. A small climbing fern, growing on tree trunks; has narrow, simple leaves. 25c.

BLECHNUM Braziliense. The Brazilian Tree Fern. Narrow, heavy fronds, red-bronze when young, dark-green when mature, a large number per plant, on a slender trunk; in all a fine palm-like plant. Strong plants 15c to 50c.

B. occidentale. A dwarf plant with rich-colored new foliage, of easy growth. 10c and 20c.

B. serrulatum.* Larger than the preceding species, this handsome native plant works in well, in large ferneries. Grows from 2 to 3 feet high. 15c.

CIBOTIUM Barometz. This belongs to the tree ferns but has no trunk. The broad, elegant fronds are very beautiful and lace-like, with a delightful fragrance at times. Of quick and easy growth, this is a very popular house plant. 10c to 35c.

CYRTOMIUM falcatum. The Holly Fern. This has dark-green, very broad pinnæ and makes a fine specimen, up to 18 inches high. 15c.

DAVALLIA stricta. An exceptionally pretty fern, always well furnished with beautiful, lacy fronds. 25c.

GYMNOGRAMME tartarea. The Silver Fern. Tall and vigorous, with white powder on under surfaces of the fronds. Needs plenty of light and heat. 10c to 25c.

LASTREA opaca. A very vigorous-growing plant from 18 to 24 inches high. Fronds broad, and bronze-red when young. 25c.

L. species from Jamaica. A good grower, and beautiful. 25c and 35c.

LOMARIA gibba. A dwarf tree-fern from



Adiantum Hybridum.



Fronds of "Stag Horn Boston" and the "Shaking Fern."

New Caledonia, something like *Blechnum Braziliense* in appearance but smaller. Very interesting. 25c and 35c.

LYGODIUM Scandens. * Japanese Climbing Fern. A rare thing—a real vine that happens to be a true fern. Grows up vigorously to a height of 10 to 15 feet and makes a mass of the most charming lace-like growth, admirable as a specimen plant or when cut for decorations. Very useful to the florist. 15c, \$1.50 per doz.

MICROLEPIA hispida. A rather dwarf plant not over 10 to 15 inches high, spreading rapidly, making good clumps. 15c and 25c.

NEPHRODIUM hertipes. Narrow fronds, with pinnae finely serrated. Reaches a height of two feet, making fine clumps. Strong plants 40c.

NEPHROLEPIS. The Sword Fern. The various species of this popular genus are the best-known house ferns, growing under adverse conditions well and giving satisfaction to all.

N. Amerpohlii. The "Lace Fern." A new form of the popular ruffled sword fern, with very broad fronds having exceedingly finely-cut subdivided pinnae, overlapping and giving a heavy, rich effect. A splendid new plant of the highest merit. Should be grown on a pedestal, or in a

basket, that the fronds may droop over to best advantage. Fine plants 25c.

N. cordata compacta. Stocky and dwarf, with beautiful dark-green leaves; a splendid plant. Fine plants 25c.

N. cordifolia. Something like the preceding but with longer fronds not usually so dark-green, and growing up to 2 feet high. A fine species of easy growth for baskets. 10c to 35c for fine plants.

N. Davallioides furcans. The "Stag-Horn-Boston Fern." A grand decorative plant, with the ends of the leaves and leaflets curiously divided and crested. A magnificent subject for a jardiniere, growing up to 4 feet high and 6 feet across! Fine plants 25c to \$1.00.

N. Duffii. A tufted dwarf species with branched fronds, growing up to 2 feet high rarely. 15c to \$1.00.

N. exaltata. The Sword Fern of the Tropics, growing all around the earth. Formerly largely grown as a basket plant but now superseded by the more popular variety, the Boston Sword Fern. 10c and 20c.

N. exaltata Bostoniensis. The Boston Fern. Widely grown and a general favorite. A grand plant for general decorative use, always fine and beautiful. Good plants 10c and 50c.

N. exaltata cristata. The Crested Boston Fern. More dwarf than, but similar to the *N. Davallioides furcans* in general appearance. Rare and choice. 25c and 50c.

N. pectinata. Dwarf Sword Fern. This only

grows up to about a foot high. Pretty and desirable. 15c and 25c.

N. rufescens tripinnatifida. The Ostrich Feather Fern. Elegant, long fronds four feet in length, finely cut, of a peculiarly charming color when young. Grows more upright than most sword ferns, forming good specimens, adapted for general decorative use. Needs a warm, light situation. Strong plants 15c and 50c.

N. Scottii. Scott's Compact Boston Fern. A good form of the sword fern with broader fronds and a greater number per plant than the common sort. Very choice. 25c to 50c.

N. Whitmani. One of the widely advertised ruffled sword ferns of great beauty. The fronds are extra wide with subdivided pinnae, and are admirable when grown in baskets. Very fine and beautiful in all sizes. 15c and 35c.

OSMUNDA cinnamomea. * The Cinnamon Fern. A hardy native fern of very large size—3 to 5 feet—with fronds bearing spores, without any green foliage, coming up in the spring. 15c and 25c.

OSMUNDA regalis. * The Royal Fern. This has broad, elegant, subdivided fronds of great beauty, growing up to 5 feet. 15c and 25c.

POLYPODIUM aureum. The Golden Polypody.

This has broad, coarse fronds, and grows in the fibre on palmetto trees. Distinct. 20c.

P. incanum. * **Resurrection Fern.** A small plant with short fronds 6 inches long, growing freely on rough-barked trees in Florida. In dry weather the fronds curl and look brown; in moist weather they uncurl and grow. 10c and 25c.

P. Phyllitidis. Our native **Hart's Tongue Fern.** Leaves simple, about 18 inches long by 2 inches broad, each plant well furnished. 10c and 25c.

POLYSTICHUM capense. A large fern; rare and beautiful. 40c.

P. setosum. Fine plants 40c.

PTERIS cretica albolineata. A low-growing plant with coarsely divided leaves striped with white. The best variegated-leaved fern we know. 15c and 25c.

P. serrulata. A small, tufted plant with slender, loose fronds with very long divisions. 10c and 20c.

P. serrulata cristata. This has crested ends on the fronds, making a pretty variation from the type. 15c and 35c.

P. Sieboldii. A fine fern for dishes and window boxes, rather upright, growing about a foot high; dark-green. 15c and 25c.

P. Tremula. **Shaking Fern.** Triangular-shaped fronds; plants grow about 18 inches high. Is of very rapid growth. 25c.

P. Victoriae. A small plant, with foliage striped with white. 15c and 25c.

Selaginella. **Club Moss.** Very delicate fern-like plants, reminders of the pre-historic coal age. They need heat and moisture, and very little sunlight. Fine for wardian cases.

S. Braunii. Erect species with curving fronds a foot long. 25c.

S. caulescens Japonica. Upright, resembling *Emmelliana*. 25c.

S. Emmelliana. A charming variety, making a dense clump with many stems. One of the best. 25c.

S. Kraussiana. A fine creeping sort, admirable for covering soil in tubs, for baskets, or rockwork. 10c.

S. Schottii. A rank creeping sort with free growths a foot long. 10c.

S. uncinata. **Rainbow Moss.** A creeping species, lying very flat, the fronds showing peacock-blue and bronze tints. Fine for edging, or tubs, baskets, etc. 10c and 25c.

S. Vogelii. A fine erect species with leaves from 1 to 2 feet high, and showing bronze coloration at times. 25c.

WOODWARDIA augustifolia. * A native creeping species with coarse leaves about 10 inches high. Distinct. 10c.

W. Virginica. * A large fern found in the South generally. It is suitable for collections of hardy kinds. 15c.

No. 1 Collection of five strong Ferns, all labeled, for 40c, postpaid. (Our selection only.)

No. 2 Collection of ten Ferns, including some of the rarer sorts, all very choice sorts, all labeled, for \$1.00, postpaid. (Our selection only.)

No. 3 Collection of five Ferns in large size, of great decorative value, fine sorts, all labeled, \$1.25, postpaid. (Our selection only.)

No. 4 Collection of ten sorts, all different, suitable for a fernery, strong, showy plants, not labeled, for 75c, postpaid.



View in our Tropical Fruit Shed.

IX. Foliage and Decorative Plants.

Mostly tropical, suitable for greenhouses, the living-room, warm business offices, for bedding out in the summer at the North, or planting permanently in open ground in the tropics, and along our southern and western coast regions where only a slight protection from frost will be necessary. The surest method of protecting the stem and roots is to bank up with soil as high as one chooses, to keep out actual freezing; do this at the signs of the first hard frost and leave until growth starts in the spring. Nearly all are pot-grown, so may all be shipped any time of the year.

ACALYPHA Godsefiana. A dwarf species. Leaves broad, green, margined yellow, and suffused more or less with pink. 25c.

A. marginata. The largest sort in the genus growing in open ground up to 8 feet high. Fast growing. Leaves green-margined with varying shades of red, pink and cream. In cool weather is exceptionally gorgeous! Fine plants 10c to 35c.

A. Miltoniana. Of medium growth, with narrow, cut leaves, green and cream-colored. 15c and 25c.

A. Mosaica. Mosaic-leaved. A most gorgeous plant, foliage showing all shades of green, yellow and red, with curious markings. A fine plant. 15c to 35c.

A. tricolor. Resembling the preceding but with regular foliage mostly of a rich red effect. 15c and 25c.

ACHYRANTHUS. A well-known foliage plant, resembling Coleus. Purplish-red foliage. 10c, 85c per doz.

AMAGLYPTUS. A purple-leaved plant of trailing habit. Fine for baskets or as a cover plant. 10c, 75c per doz.

ANANASSA. Variegated Pine Apple. See Dept. I.

AREALIA filicifolia. A fine shrubby plant, growing up to 8 feet high. Valuable in all sizes. Foliage fern-like, exceedingly attractive. 25c and 50c.

A. Guilfoylei. A handsome species with compound leaves which are variegated green, white and cream. Very showy for both pots and bedding. 15c to 75c.

ARDISIA crenulata. A half-hardy, broad-leaved shrub, bearing a profusion of scarlet berries which last for months. Fine for Christmas decorations. 1 yr. 15c, \$1.25 per doz.; 2 yr. 25c. Fruiting specimens, fine, 75c and \$1.00.

A. crenulata alba. Berries white; when old they turn pink. 1 yr. 10c, 85c per doz.; 2 yr. 15c, \$1.50 per doz.; 3 yr. 25c.

A. Pickeringii. Our native Spiceberry Bush. A pretty shrub with broad, simple leaves, bearing black berries of pleasant flavor. 1 yr. 15c, \$1.25 per doz. Bearing plants 35c to 50c.

ASPARAGUS plumosus. A very fine, fern-leaved, climbing plant, particularly adapted for bouquets and all cut-flower work, etc. Lasts for days without water. May be grown outdoors in Florida and warm regions. A fine pot-plant for any climate. 15c, 25c and 35c.

A. species, Natal. A vigorous climber, with attractive foliage; and flowers in appearance and scent like the "Madeira Vine." Rare and new. 25c and 50c.

A. Sprengeri. One of our introductions from South Africa in 1888. Indispensable to every florist. The plant is best grown in baskets or on pedestals, so the long shoots may hang. A grand plant in any size. 10c to 75c for strong stock.

A. variegatus. New, resembles the well-

known tenuissimus somewhat. Very dark-green color; attractive and promising. Fine plants 35c.

ASPIDISTRA lurida variegata. A grand old decorative plant from Japan. Leaves broad and Canna-like, variegated white and green. Grows about 18 inches high and forms splendid clumps. 50c and \$1.00.

BROMELIA pinguin. Has the appearance of a large Pandanus, with deeply serrated leaves, and crimson center when mature. 35c and 50c.

CCLEUS. The unequalled bedding foliage plant. Also useful for window and porch boxes, etc. A good variety of colors and kinds. Fine plants 10c, 85c per doz, \$5.00 per 100; large plants 15c, \$1.50 per doz.

COSTUS speciosus. A curious spiral flag, with orange-colored flower heads. Makes a good shrubby plant in open ground here. 20c to \$1.00.

CROTONS. Splendid shrubby plants with variegated foliage, both narrow and broad, requiring plenty of heat and moisture. No other genus of decorative plants can furnish such a variety of color! Grand plants for bedding out, and for growing on in pots or tubs. Mixed plants not labeled, small, all different. 10c, \$1.00 per doz. Large, 6 to 10 inches high, 15c, \$1.50 per doz. Better, 25c, \$2.50 per doz.

Amabile. Broad-leaved; foliage pink, purple, green and yellow. 20c and 35c.

Angustifolium. Very narrow-leaved; green and yellow. 20c.

Andreanum. Broad-leaved, high color; orange, pale-yellow, etc. 25c and 50c.

Aucubaefolium. Broad and short in leaf; green, with yellow dots and bronze under surface. 15c and 25c.

Barryi. Broad, green leaves, with veins and blotches of bright yellow, and red stems. 25c and 35c.

Cooperii. Leaves yellow, veined and blotched, changing to red. 15c and 35c.

Cornutum. Leaves narrow, wavy-margined, dark-green, mottled yellow, midribs projecting at tips. 20c and 35c.

Evansianum. Leaves three-lobed, veined yellow and mottled yellow, bronze and orange. 15c to 50c.

Gen. Paget. Exceedingly large-leaved, green and yellow. 50c.

Hawkeri. Medium narrow leaf, mostly yellow. 15c and 25c.

Inimitabilis. A very bright Croton with wide leaves colored crimson, yellow and green. 25c and 35c.

Interruptum. Purplish-green above, with twisted midrib; broad-leaved. 15c to 35c.

Irregularae. Medium broad, rather oblong; shining green with yellow blotches and midrib. 15c to 35c.

Johannis. Long, narrow leaves; green, ribbed and margined yellow. 15c to 35c.



Asparagus Sprengeri.



Ficus Altissima.

Maculatum-Katoni. Broad, three-lobed leaves, green with circular yellow spots. 25c and 35c.

Majesticum. Leaves narrow and long, mottled green and yellow, shaded crimson. 15c to 35c.

Makoyanum. Broad-leaved, with chocolate and carmine markings. 15c and 35c.

Maximum. Large, broad leaves, cream-colored and green. 25c and 35c.

Morti. Broad, long leaves, green and yellow. 15c to 35c.

Picturatum. Narrow, long leaves, green, carmine, yellow, orange, etc. Very rich-colored. 15c to 35c.

Prince of Wales. Long, twisted leaves of yellow, green and red. 25c and 35c.

Queen Victoria. Broad leaves, beautifully colored green, yellow, magenta and crimson. 15c to 35c.

Regina. Broad, short leaves; crimson, brown, green and yellow. 15c to 35c.

Splendens. Broad leaves, yellow and dull-red on a green ground. 15c to 35c.

Stewartii. Broad leaves, yellow, green and red. 25c to 50c.

Tortilis. Curious, twisted leaves, red, green and yellow. 25c and 35c.

Veitchii. Broad-leaved, green, pink and crimson. 25c and 35c.

Volutum. Medium broad, curled leaves, with occasional yellow markings. 20c and 35c.

No. 2. Rather narrow leaves something like Irregular, well colored; has prominent bare midribs with hanging tips. 50c.

CURCULIGO recurvata. A palm-like plant much used by florists. 15c and 25c.

DIFFENBACHIA nobilis. A fine evergreen resembling a dwarfed Musa, with broad leaves profusely blotched with creamy white. Needs heat and moisture. 25c and 35c.

DRACAENA Haageana. A small sort with dark-green leaves. 50c.

D. Hookeriana. Very broad foliage; an imposing specimen plant. Small, \$2.00.

D. fragrans. A large sort with heavy, green foliage. 25c. Very large, \$2.50 per doz.

D. Guilfoylei. Of medium size and quick growth. Leaves light green, suffused with creamy yellow and pink in cool weather. 15c to 75c.

D. terminalis. The most generally grown "Dragon Tree." A fine sort highly colored with red and pink. Small plants 10c, \$1.00 per doz.

DRACONTIUM asperum. A rare aroid, with a single pertuse leaf. 50c.

EUPHORBIA pulcherrima. The **Poinsettia**. Now well known and generally grown by florists for decorating from November till March. The great scarlet bracts from 6 to 12 inches across remain vivid for many weeks. A great plant for warm countries. Very strong plants 10c, \$1.00 per doz. Extra large 20c, \$2.00 per doz.

E. sanguinea. A shrubby plant with broad, pointed leaves of a rich, bronzy red, or purple. 15c and 25c.

FICUS altissima. This is catalogued by a few prominent European firms as *F. Chauvierii*. A magnificent new rubber plant of our introduction from India. Large roundish-oblong leaves, with prominent veins. A fine specimen plant in all sizes. Beautiful plants 40c to \$1.00.

F. elastica. See also Dept. III. Fine plants 40c to \$1.00.

GREVILLEA robusta. See also Dept. XV. Fine plants 10c to 25c.

HELICONIA Bihai. Wild Plantain, or **Balisier** of Tropical America. Resembles a Musa and grows up to 8 feet high. Blossom sheaths are scarlet and black. 50c.

H. Lehmanni variegata. A fine variegated plant, leaves striped with creamy yellow and having yellow stems. 50c to \$2.00.

MARANTA arundinacea variegata. Commonly known as "Phrynium variegatum." A summer grower only. Leaves white and green, growing 2 to 3 feet high. Tubers (or plants) 15c, \$1.50 per doz.

NEPHTHYTIS Liberica. A quick-growing climber, with fleshy stems, like *Philodendron* in habit, having trilobed leaves. 20c.

N. triphylla. Resembling the preceding but having leaves variegated with white. Fine. 25c.

PANAX aureum. This and following species allied to *Aralia*, which they closely resemble. A fine foliage plant growing up to several feet high,



Ficus Elastica.



Foliage of the "Snow-Bush."

but useful when small. Compound leaves highly colored with yellow. 25c to 50c.

P. excelsum. Foliage very finely cut. Makes a fine, bushy plant of elegant appearance. 25c and 50c.

P. plumatum. This has fern-like leaves and is of quicker growth than most others. The foliage is grayish-green, with suggestions of white in it. 25c.

P. species. A new, green-leaved sort, with very pretty, serrated foliage of distinct character and good habit. 35c and 50c.

P. Victoriae. This has more white in the foliage than most variegated plants and is a splendid decorative plant in every size. 25c and 50c.

PANDANUS utilis. The well-known **Screw Pine.** Resembles a pineapple plant when small, having leaves with small red spines along the edges. A very symmetrical and handsome plant suitable for vases, etc. Beautiful plants in several sizes; small at 10c; better at 15c; about 8 inches high at 25c; 10 to 12 inches high at 35c; 10 to 12 inches high at 50c; about 18 inches high, 75c.

P. Veitchii. Leaves beautifully striped



Maranta ar. var.

with white. A magnificent plant. Fine plants of decorative sizes, 35c, 50c and 75c. A few large specimens without much white striping, at \$1.00 to \$3.00.

PHYLLANTHUS nivosus, var. roseo-pictus. Snow Bush. Shrub with loose, rather wiry branches, somewhat zigzag. Leaves compound, mottled with white and pink. A splendid plant for low hedges, borders, etc., or as a single specimen. The coloring is very fine especially in hot, wet weather. Fine plants 2 1/2 inch pots, 10c, \$1.00 per doz., \$5.00 per 100. About a foot high 15c, \$1.50 per doz., \$10.00 per 100; 2 to 3 feet high, 25c, \$2.50 per doz., \$18.00 per 100. (All pot-grown.)

POTHOS aurea. A clinging aroid plant with heartshaped leaves, 6 to 8 inches across, green and golden-yellow. Fine! Strong plants 15c.

SANSEVIERA. See Dept. III.

SANCHEZIA nobilis glaucophylla. A fine green house shrub from Ecuador. Leaves glaucous green, with yellow nerves. 15c and 25c.

SANTOLINA alba. A very small plant, adapted for borders, of a grayish-white color. 15c, \$1.50 per doz.

STROBILANTHES Dyerianus. A plant growing up to 1 1/2 or 2 feet high, with broad, pointed leaves of the richest purple. A splendid bedder for lightly shaded locations, having a rare color. 15c, \$1.50 per doz.

TALINUM patens variegatum. A fine bedder with almost pure white foliage and interesting little pink and yellow flowers. Grows a foot or more high. 10c, \$1.00 per doz. Larger, 20c, \$2.00 per doz.

TRADESCANTIA discolor. This resembles an agave; leaves green on the upper, rich purple on under surfaces. Fine for vases either in shade or sunshine. 15c and 25c.

T. zebrina. Wandering Jew. A creeping plant, fine for baskets or for covering large surfaces. Foliage green and purple. 5c. Sufficient for small basket, 10c.

SPIDER Plant. Botanical name unknown. Resembles a small yucca, but not spiny. Bears young plants on the flower stalks. Leaves green. 10c and 25c.



Croton picturatum.

COLLECTION D. Five choice foliage plants, our selection, all labeled, sent postpaid, for 50c.

COLLECTION D1. Ten choice foliage plants, our selection, all labeled, sent postpaid, for \$1.00.

See Index for plants you are hunting for, at the back of this book.

X. Tropical Flowering Plants and Shrubs.

Suitable for the greenhouse, living-room, warm offices, the tropics, Gulf and warm coast regions of the United States from South Carolina around to upper California, with slight protection in the coldest parts. Protect from freezing by banking stems liberally with soil at signs of first hard frost. The tops will be lost but shoots will come again in spring. Nearly all plants in this section are pot-grown and may be transplanted at any time of year.

ABROMA augusta. 50c.

ACALYPHEA Sanderi. **Chenille Plant.** Broad green foliage, with bright red flower spikes like a cat-tail up to 2 feet long, from axil of every leaf. The plant grows up to 10 feet high, but blooms when very small, and forms a strikingly brilliant picture. 15c and 25c.

ACHANIA malvaviscus. Resembles an Abutilon. Scarlet flowers. 15c.

ALLAMANDA nerifolia. A choice bush; flowers golden-yellow, freely produced, bell-shaped about 2 inches across. 25c.

ALPINIA nutans. **Shell-Flower.** A lily-like plant growing 4 to 6 ft high, with gorgeous orange, yellow and white flowers. 50c.

ARTOBOTEYS odoratissimus. The **False Ylang-Ylang**, or **Cinnamon Jasmine.** A choice flowering shrub, semi-climbing in habit, with broad, glossy leaves, bearing yellow flowers delightfully scented with the fragrance of ripe bananas and pineapples. The fruit is also highly fragrant but unedible. Fine plants 25c, \$2.00 per doz.

BARLERIA flava. An Indian plant growing about 3 feet high, with yellow flowers in terminal heads. New. 35c.

BAUHINIA. **Mountain Ebony.** An extensive genus of tropical plants, creepers, shrubs and trees. These we offer, however, are all shrubs or small trees. Very desirable subjects for planting in warm regions for their beautiful flowers and interesting evergreen foliage.

B. alba. A tall shrub, or small tree, blooming in early spring. Large, pure-white flowers 3 to 4 inches across in profusion. 15c, \$1.50 per doz.

B. furfuracea. A new, thorny shrub, with cream-colored flowers in summer. 35c.

B. Krugii. **From Cuba.** Said to be the finest West Indian species. 25c.

B. purpurea. One of the most showy flowering shrubs, or small trees, we ever saw. The flowers which come freely in early spring continue opening for weeks and are about 3 inches across, resembling a costly orchid in color and shape. The color at a distance is deeply lavender, but an examination will reveal tones of mauve and purple, with a touch of white. It is magnificent. Fine 1 yr. old 15c, \$1.50 per doz.

B. tomentosa. The **St. Thomas Tree.** A fine small tree with charming yellow flowers. 25c, \$2.50 per doz.

B. species, Leeward Islands. A shrub with small leaves. 1 yr. 10c, 85c per doz.; 3 yr. 20c, \$2.00 per doz.

B. variegata. A very fine species resembling *purpurea* but flowering in autumn. Flowers pink and very attractive. The large two-lobed leaves are very peculiar, closing at night. 20c, \$2.00 per doz.

BAPHIA racemosa. 50c.

BOHEA amherstiana. Canary Island shrub. 35c.

CAESALPINIA Nagu. Rare and new. \$1.00.

C. pulcherrima. **Dwarf Poinciana** or **Barbados Flower Fence.** A grand shrub for warm countries, or adapted to bedding out in summer in the North. Foliage decomposed, very tropical in appearance; flowers in great terminal spikes of the richest red and yellow imaginable. The fine foliage alone would be well worth planting

for, but the flowers are unique and exceedingly bright. Fine plants 15c, \$1.50 per doz.

CALPURNIA lasiogyne. A fine shrub with compound leaves; flowers something like the pea, in large drooping spikes of the richest yellow. 35c.

CASSIA grandis. A beautiful shrub with bronze-red, pinnate leaves, bearing pink flowers freely. A fine, fast grower. 15c and 25c.

CESTRUM aurantiacum. A medium-growing shrub, with rich lemon-yellow to orange-colored



Bauhinia Purpurea.

flowers in terminal panicles. Very attractive. Flowers in spring. 15c and 25c.

C. diurnum. The "**Day Jessamine.**" A quick-growing, large shrub, producing quantities of small, white flowers at intervals through the year, valuable for cut flower work. 15c and 25c.

C. elegans. Flowers rose-pink and carmine. Very choice. 15c and 25c.

C. nocturnum. **Night-Blooming Jessamine.** Small, greenish-yellow flowers produced at intervals through the year in prodigious numbers, overpoweringly fragrant. 15c and 25c.

CLERODENDRON foetidum. New. 25c.

CORDIA Sebestena. **Sebesten Plum**, or **Geiger Tree.** A very beautiful shrub or small tree, with large, rough leaves, and immense, flaming trusses of flowers. Blooms at 3 years of age.



Strobilanthes isophylla.

1 year 20c; 2 year (2 to 3 feet) 30c, \$3.00 per doz.

CROSSANDRA undulaefolia. A thorny, yellow-flowered, shrubby plant. 15c.

CUPHEA micropetala. A shrubby plant from 3 to 4 feet high; narrow, small leaves; small tubular flowers continually borne, scarlet and yellow in color. Quite showy. 15c, \$1.25 per doz.

DOMBEYA spectabilis. A tall shrub with straw-colored and pink flowers. Rare and new. 75c.

D. Wallichii. Very beautiful pink flowers in an enormous head, closely set. Foliage large and velvety. New. \$1.00.

DURANTA Plumieri. Golden Dewdrop. Delicate lilac flowers in racemes, followed by closely set yellow berries which hang on for a long time, and are very ornamental. Bushy. 2 yr. 25c.

EDGEWORTHIA chrysantha. A small plant from China, about 1 foot high, allied to Daphne. Golden-yellow flowers produced in February. 50c.

ERANTHEMUM pulchellum. Grows about 4 feet high; dark-blue flowers in spikes, produced in winter. 20c.

ERYTHRINA species. Coral tree. 25c.

E. umbrosa. The Pinon of Cuba. 35c.

GALPHIMIA nitida. A small, bushy plant from 3 to 4 feet high; leaves small, with spikes of small starry yellow flowers continually blooming. 10c, \$1.00 per doz.

GARDENIA Thunbergia. Flowers single, cream-colored. 50c.

GLYCOSMIS pentaphylla. Glossy evergreen related to Citrus. 20c and 50c.

HAMELIA patens. Foliage reddish, distinct and pleasing. Flowers continually; orange-colored. 25c.

H. sphaerocarpa. Flowers orange-yellow, and leaves greener than preceding. 25c.

HIBISCUS rosa-Sinensis. Chinese Hibiscus. Very valuable shrubs for warm regions, etc.; well known. We have a good stock of following sorts: **Single Scarlet**, **Single Pink**, **Single Salmon**, **Versicolor** (single), **Double Scarlet**, **Double Pink**, **Peachblow** (Double pale pink). Strong plants 15c, \$1.50 per doz. Extra strong, 25c, \$2.50 per doz.

IKORA coccinea. Flame of the Woods. Flowers bright red, very lasting. 25c.

JACOBINIA velutina. Plant with large heads of soft pink flowers. 20c.

J. coccinea. Commonly known as **Justicia**. Grows 4 feet high. A fine bedder with deep scarlet flowers in spikes, blooming constantly. 10c, \$1.00 per doz. Large, 25c.

J. species. Flowers yellow. Grows up to 5 feet. 10c and 20c.

JASMINUM Sambac. Arabian Jessamine. Flowers single, very fragrant, pure white, almost an inch across. Plant is shrubby or scrambling. Flowers constantly. Very fine plants 10c, 15c and 25c.

J. S., var. "Grand Duke." With erect habit and very double flowers. 15c.

J. S., var. "Maid of Orleans." Semi-double flowers, 1¼ to 2 inches wide, very fragrant and constantly in flower. Fine. 10c, 15c and 25c.

JATROPHA multifida. 50c.

KOPSIA species. Shrub, related to oleanders with white or pink flowers. Very ornamental. 20c.



At the left—*Tabernaemontana Wallichiana*; at the right—*T. species Cashmere*.

LASIANDRA macrantha. Royal purple flowers 2½ inches across. 35c.

LAWSONIA alba. See Dept. III.

LINIOCERA ramiflora. A new shrub with broad, evergreen leaves. 15c, \$1.50 per doz.

MABA Natalensis. Much-branched with glossy, evergreen leaves, and quantities of shining black fruit holding for a long time. Large plants 25c and 35c.

MACKAYA bella. A fine shrubby plant of easy growth here, flowering in spring. Flowers in racemes, pale lilac, about 2 inches long. Large plants 15c, 25c and 40c.

MELIA floribunda. Everblooming, dwarf, **Indian Lilac.** 50c.

MEYENIA erecta. Gloxinia-like flowers of the brightest blue, 2 inches across, flowering almost constantly. Very fine. Large plants 10c, 15c and 25c.

M. erecta alba. Flowers white, with yellow throat. 10c, 15c and 25c.

MURRAYA exotica. "Orange Jessamine." A grand shrub; leaves compound; flowers in racemes, individually resembling orange blooms, coming several times a year. Very useful to the florist. Strong plants 15c, \$1.50 per doz. Larger, 25c, \$2.50 per doz.

ORMOSIA dasycarpa. The **Necklace Tree.** A large shrub; pinnate leaves; large blue flowers in June. 50c.

OXYANTHUS Isthmia. A splendid flowering shrub similar to the following but with larger calyces and possibly more fragrance. New. 50c.

O. Natalensis. Related to Gardenia; with large, glossy leaves and elegant flowers in racemes. 50c.

PITTIOSPORUM viridiflorum. Flowers greenish-yellow, jessamine-scented. Large plants, 25c and \$1.00.

PLUMBAGO Capensis. Flowers sky-blue, constantly in bloom. Charming old plant. 25c.

P. Capensis alba. Flowers white. 25c.

PLUMIERIA acutifolia. One of the West Indian **Frangipanis.** Leaves large, flowers white with lemon-yellow center, faintly sweet. 40c to \$1.00.

P. alba. The famous white **Frangipani.** Flowers in bunches, very sweet; shrub semi-deciduous, 25c and \$1.50.

P. tricolor. Flowers with yellow throat, white above the yellow part and red around margins of segments, blooming in summer and autumn. 50c.



Jacobinia coccinea.

RENEALMIA species, Porto Rico. Related to *Alpinia*. Flowers yellowish in scarlet bracts which remain indefinitely. 50c.

RUSSELLIA juncea. Fountain Plant, or Coral Flower. Has a wiry mass of foliage, with scarlet tubular flowers. 10c and 25c.

SOLANUM. Rantonetti. The True Blue *Solanum*. Flowers deep blue, with yellow centers. Blooms most of the year. 15c and 25c.

STEMMADENIA bella. A large shrub, or small tree, from lower Mexico. Leaves large, evergreen; flowers pure white in great clusters freely borne. Grand! 20c and 35c.

STROBILANTHES anisophylla. A small bush with narrow leaves producing countless light-blue flowers in very early spring. A fine pot plant also. 10c, 25c and 35c.

S. isophylla. Not so bushy as the preceding but bearing constantly, single purplish-blue flowers, about 1¼ inches across. 10c. and 20c.

TABERNAEMONTANA coronaria, fl. pl. Crape Jasmine, or Rose Bay. Large, pure white, scented, double flowers produced at intervals. Leaves glossy, broad, evergreen. 15c and 25c.

T. "grandifolia." A heavier plant than the preceding, equally fine, 15c and 25c.

T. species Cashmere. A beautiful shrub flowering constantly. The blooms are single white, with a yellow dot in the centers, about 2 inches across, not scented. 15 and 25c.

T. Wallichiana. Rather similar to the preceding, smaller in all its parts. New. 25c.

THEVETIA nerifolia. Trumpet Flower. Flowers bell-shaped, yellow or salmon, about 2 inches across. Foliage long and very narrow. A fine large shrub. The seeds are known by sailors as "lucky seeds." Fine plants 15 and 25c.

TRIPHASIA monophylla. From Timor. Berries black, and leaves simple; the flowers inconspicuous. A dwarf shrub, related to the orange tribe. 1 yr. 10c, \$1.00 per doz. Large, 50c and 75c.



Tabernaemontana Coronaria fl. pl.

COLLECTION TS. Five plants from this section, our choice, sent postpaid, for 50c.

COLLECTION TSL. Ten plants, our choice, some rare species, sent postpaid, for \$1.00. See Index for any plants you are hunting for, and par. 14, page 2, for discounts.

XI. Hardy and Half-Hardy Flowering Plants and Shrubs.

Such as will stand the winters of the lower South without injury, or, if damaged by freezes, will come up again in the spring vigorously. Those marked **P** are pot-grown and may be transplanted at any time; the others should only be set in cool weather—say from November till March.

AZALEA Indica. P The well-known Indian or Chinese Azalea grown so largely for Easter decorations. We have a variety of colors, and white, both single and double. Heads a foot across. \$1.00.

BUXUS sempervirens. P Dwarf Tree Box. Used for edging or dwarf hedges. Nice plants 15c, \$1.50 per doz., \$10.00 per 100.

CALYCANTHUS floridus. Sweet shrub. Deciduous. 2 yr. 15c, \$1.50 per doz.

CAMELLIA Japonica. P The magnificent Camellia (or commonly called "Japonica"), so well known over the South. Flowers in winter and early spring. Fine, imported, bushy plants, very strong, 16 to 24 inches high; double white and a variety of colored sorts, \$1.00.

DEUTZIA crenata. A fine spring flowering, deciduous shrub, double pink in color. Fine. 1 to 2 feet, 15c, \$1.50 per doz.; 2 to 4 feet, 25c, \$2.50 per doz.

Double White. Same sizes and prices.

EUONYMUS Japonicus. P Hardy shrub, with evergreen, glossy leaves, used for hedging. 3 yr. 25c, \$2.50 per doz.

E. Japonicus argenteus. P Leaves variegated white and green. 25c, \$2.50 per doz.

HYDRANGEA. Otaksa. P The best for general growth. Flowers in very large, round heads, pink or blue. 15c and 25c.

E. Thomas Hogg. P A pure white Hydrangea. 15c and 25c.

JASMINUM humile. P A hardy yellow-flowered shrub. 25c.

J. primulinum. P A new species; foliage small and pretty; flowers yellow, scented. 25c.

LAGESTROEMIA Indica. Crape Myrtle. Too much cannot be said in praise of this beautiful deciduous Indian shrub. The masses of flowers are profusely borne from spring until autumn, on small as well as large plants. A splendid plant for bedding out in the North even, where it gives perfect satisfaction. Grand for hedges, single specimens, or masses, in general Southern planting. We have it in three shades of color: **Carmine, Light Pink, and Purple.** 1 yr. old, 1 to 2 feet high, 10c, \$1.00 per doz., \$6.00 per 100; 2 yr., 2 to 4 feet, 20c, \$2.00 per doz., \$12.00 per 100. Large specimens 4 to 8 feet, 25c, 35c, 50c and 75c.

White. 1 yr. 25c.

LEONOTIS leonurus. P Lion's Tail. A quick-

growing, shrubby plant with soft foliage, and queer, heavy, tufted spikes of orange-yellow flowers. 10c, \$1.00 per doz. Large, 25c, \$2.50 per doz.

LIGUSTRUM Amurense. Amoor River Privet. A white-flowered shrub, evergreen and hardy, used largely for hedges. Heavy, 1 yr. 10c, \$1.00 per doz., \$6.50 per 100. Extra large 15c and 25c.

L. ovalifolium. P California Privet. Broad-leaved. Generally used for hedges. Strong plants 25c, \$2.50 per doz.

L. ovalifolium variegatum. P This is variegated with yellow. Fine. 15c, \$1.50 per doz. Extra large, 25c, \$2.50 per doz.

NERIUM oleander. The famous Oleander. A

splendid subject for tall hedges, masses, or single specimens in the Lower South, as well as for tubs at the North. Our collection is unequalled in the South. Prices, except when noted, 1 yr. (mostly 12 to 18 inches high), 15c, \$1.50 per doz. 2 yr. (mostly 2 to 3 feet), 25c, \$2.50 per doz.

Atropurpureum plenum. Double, purplish-red. 1 yr. 25c, \$2.50 per doz.

Carneum. Single; flesh with pink lines in throat; very floriferous. 1 and 2 yr. sizes.

Debrun. Double carmine, with occasional white streaks. 1 yr. 35c.

Double Cream. Flower rather small but very attractive. One yr. 25c, \$2.50 doz.

Frederick Guibert. Single flowers; light pink with crimson throat. 1 yr. 25c.

Lillian Henderson. Pure white, double, medium sized flowers. 1 and 2 yr. sizes.

Madonna grandiflora. Pure white, double, large-sized, very fragrant. 1 yr. size only.

Savort. Double, small flower, pale-pink very fine. 1 and 2 yr. sizes.

Single Cream. Flowers rather small. 1 and 2 yr. sizes.

Single Pink. Shell-pink color; very large trusses; scented. A grand sort. 1 and 2 yr. sizes.

Single White. A most hardy sort, blooming very profusely. Fine. 1 yr. size.

Splendens. The old-fashioned, double, pink variety. A splendid large flower, sweet-scented. 1 yr. size.



Flowers of Crape Myrtle.

XII. Tropical and Sub-Tropical Vines and Creepers.

Suitable for the greenhouse, living-room, warm offices, the tropics, and the extreme lower South, where slight protection may be necessary. Plants are all pot-grown, with two exceptions, and may be transplanted at any time. All need a wire or other support except the two species of *Ficus*, which cling to any solid object.

ABBUS precatorius. Crab's Eye Vine, or Weather Plant. Delicate pinnate leaves; small flowers in bunches followed by beautiful scarlet and black beans which are highly decorative. 10c, \$1.00 per doz.

Cream-Colored Bean Variety. Something new and rare. 15c.

ALLAMANDA Hendersonii. A splendid climbing shrub with most gorgeous golden flowers 4 to 6 inches across. 25c.

A. Williamsii. Flowers smaller, sometimes slightly fragrant. 25c.

ANTIGONON leptopus. The Rosa de Montana

CLERODENDRON Balfouri. Quick growing; of unusual merit; flower bright scarlet, enclosed partly in a bag-like calyx of pure white. The flowers last for many weeks and are produced in quantity. A fine plant anywhere. Strong, 1 yr. 15c, \$1.50 per doz.; very strong, 2 yr. 25c, \$2.50 per doz.

C. delicatum. Like the preceding, except that the calyx is greenish, instead of white, and turns a reddish-bronze with age. 15c and 25c.

CRYPTOSTEGIA grandiflora. See Dept. III.

FICUS barbata. Resembles the repens but with larger leaves. 25c, \$2.50 per doz.

F. repens. A creeper which attaches itself to stone, brick, wood, etc., and makes a dense cover. Admirable for concrete houses, etc., lending a rich effect similar to English Ivy. 1 yr. 10c, \$1.00 per doz.; 2 yr. 25c, \$2.50 per doz.

JACQUEMONTIA penthanta. A charming, blue-flowered Morning-Glory native of Florida Keys. Rather delicate vine but very floriferous. 35c.

JASMINUM gracillimum. The Graceful Jessamine. Very distinct and graceful habit; pretty foliage; many clusters of good-sized starry-white flowers, nearly always in bloom. First-class. Very strong plants 15c and 25c.

J. grandiflorum. Catalonian Jessamine. Intensely fragrant, white flowers. 25c.

J. pubescens. Somewhat similar to gracillimum but larger in plant

and with heavier flowers which are freely produced. Of rapid growth. Strong plants 10c, 15c and 25c.

OPERCULINA tuberosa. A tuberous-rooted perennial Morning Glory, having handsome palmate leaves and yellow flowers. 25c.

PEPTADENIA odbensis (?) A pinnate-leaved twining plant from India. New. .50c.

QUISQUALIS Indica. Rangoon Creeper. A large, twining shrub of rapid growth, having a profusion of star-shaped flowers in bunches on long stems. The flowers are white in the morning, changing to red before night, and have a rich, fruity fragrance. Fine plants, 2 yr. 25c.; 3 yr. 35c.

SOLANUM Seafortianum. A medium-sized, delicate vine with compound leaves and bunches of sky-blue flowers, which are followed by scarlet berries greatly liked by birds. Called in Mexico, "Tomatillo." 15c, \$1.50 per doz. Extra large, 25c.

S. Wendlandii. A very large vine with coarse pinnate leaves, but most elegant, lilac-blue, sometimes sky-blue, flowers borne in great clusters of 10 to 15 inches across, and lasting well. 15c and 25c.



Antigonon Leptopus.

of Mexico. A beautiful vine with heart-shaped leaves bearing great racemes of rose-pink flowers for most of the year in Florida. Roots tuberous. A great flower for bees. Fine plants 1 yr. 10c, 85c per doz., \$6.50 per 100.

ARISTOLOCHIA elegans. A rather dwarf plant, fine for small screens, etc. Flowers purple, blotched and waved with creamy white. Sometimes called "Dutchman's Pipe Vine." 10c, \$1.00 per doz.

BIGNONIA Venusta. A grand, tropical, trumpet creeper, growing on high trellises or trees up to 70 feet or more, and producing countless tubular flowers of a bright orange-red in winter and spring; sometimes followed by a second crop in June. 25c, \$2.50 per doz.

BOUGAINVILLEA glabra Sanderiana. Paper Flower. A very conspicuous plant with masses of magenta flowers, usually in winter and spring, but showing some bloom most of the year. 35c.

B. spectabilis. A strong grower; flowers rich purple. 50c.

CAESALPINIA Bonduc. A prickly climber; seeds called Nicker Beans. 25c.

STEPHANOTIS floribunda. A slow-growing vine with broad, simple leaves. Flowers in bunches, pure white, bell-shaped, highly fragrant. 15c and 25c.

TECOMA capensis. This has pretty pinnate leaves, and produces constantly an abundance of bright red, showy flowers. 15c and 25c.

T. McKenii-rosea. More delicate than the preceding in both foliage and flowers; very fine

COLLECTION TV. Five splendid vines, our choice, sent postpaid for 50 cents. Index at back of this Catalog.

in both. The flowers are large, purplish-pink. 15c and 25c.

THUNBERGIA fragrans. A perennial climber with pure white, fragrant flowers about 2 inches across. 15c.

T. grandiflora. Large flowers of a sky-blue color. 25c.

VALLARIS dichotoma. Leaves smooth, dark-green; flowers white. A quick grower with attractive appearance. 15c and 25c.

XIII. Hardy and Half-Hardy Vines and Creepers.

Such as will stand the winters of the South with little or no injury. All need wire or some kind of support, except *Bignonia capreolata*, *B. Tweediana*, *Euonymus*, and *Hedera*; these cling to any solid support. Those marked P are pot-grown, the others in open ground. All may be transplanted at any time, except *Wistarias* and *Bignonia grandiflora*; set these in winter. These exceptions are deciduous; all others evergreen.

BIGNONIA capreolata. Cross vine. A native plant with dark-green foliage, and orange-red flowers. Clings to walls or tree trunks closely. 15c.

B. grandiflora. Deciduous. A low grower, with gorgeous, orange-yellow flowers in bunches in summer, three inches across. 35c.

B. speciosa. P A magnificent vine with glossy, dark leaves, and great clusters of large, purplish, trumpet-shaped flowers, blooming here from March to May. A fast grower. 1 yr. old, 15c, \$1.50 per doz.; 2 yr. 25c, \$2.50 per doz.

B. Tweediana. P An elegant vine of delicate appearance, exceptionally fine for covering stone and brick houses—or wooden if you choose—with splendid, bright yellow flowers 2 inches across, in early spring. 10c, \$1.00 per doz.

CLEMATIS paniculata. P A very vigorous creeper, almost smothering itself in bloom in summer. Flowers an inch across, pure white, star-shaped, followed by feathery seed-vessels. 15c.

EUONYMUS radicans. P This has small, green leaves, which turn bronze in winter. Clings to any solid support unaided. 15c and 25c.

GELSEMIUM sempervirens. Carolina Yellow Jessamine. Winter blooming. Flowers are bell-shaped, pure yellow, fragrant. Strong plants 15c and 25c.

HEDERA Helix. P True English Ivy. 15c, \$1.50 per doz.

JASMINUM officinale. P (or *J. poeticum*.) Hardy Jessamine. Small dark-green leaves; fragrant white flowers of small size, in summer. Strong plants, 10c, 20c and 35c.

LONICERA Halleana. Hall's Japan Honeysuckle. A very strong grower with handsome foliage, which turns a pleasing bronze in very cold weather. Fine for covering rocks, the ground, or for trellises, etc. The flowers are pure white, changing to creamy yellow, fragrant, and are almost everblooming. 1 yr. 15c, \$1.25 per doz.; 2 yr. 25c, \$2.00 per doz.

L. sempervirens. P The well-known Coral Honeysuckle. Flowers are scarlet, tubular, in small bunches. 25c, \$2.50 per doz.

PITHECOCTENUM clematideum. P (Formerly listed as *Bignonia alba*.) A pure white, spring bloomer. Foliage compound. 15c, \$1.50 per doz.

P. muricatum. P Flowers of good size, white and cream-colored, in loose panicles—lovely. A very choice new plant, which flowers in summer. 25c.

RHYNOSPERMUM jasminoides. P "Star Jessamine." Small, leathery leaves; flowers star-shaped, small, pure white, fragrant, in spring. 15c.

R. jasminoides variegatum. P Foliage variegated, green-white and often pink. Very choice and attractive. 25c and 35c.



Bignonia Tweediana.

ROSA bracteata. Macartney Rose. This is largely used as a hedge or fence plant. Leaves rather small; flowers large, single, pure white; grows on a great variety of soils. Light, 1 yr. 15c, \$1.00 per doz., \$6.50 per 100. Heavy plants 25c, \$2.50 per doz.

R. setigera. Queen of the Prairie. Flowers a soft pink, medium-sized, very double, coming only in May or June. Throws very strong shoots. 1 yr. 15c, \$1.25 per doz.; 2 yr. 25c, \$2.00 per doz.

R. Sinica. Cherokee Rose. An old southern plant with very glossy leaves and single white flowers. Very rampant in growth, suitable for tall screens or large, dense hedges. 1 yr. 15c, \$1.50 per doz., \$10.00 per 100.

For other roses see Dept. XI.



Pithecoctenium muricatum.

SMILAX. Our native evergreen "Green brier" or "Bamboo creeper." Don't confound the name with the green-house vine, *Myrsiphyllum*. This hardy plant is prickly, and bears quantities of black or green berries; the cut masses of vines are used in large decorations, being shipped from

COLLECTION HV. Five strong vines, our

the South largely. Strong roots 15c, \$1.00 per doz.

WISTARIA brachybotrya rubra. A vine of easy growth, with compound leaves and drooping spikes of rich, blue flowers produced all summer freely. 1 yr. 15c, \$1.25 per doz.; 2 yr. 25c, \$2.00 per doz.



Hall's Japan Honeysuckle.

W. Sinensis. White-Flowered. A most remarkable Chinese vine, bearing immense bunches of flowers which droop down like bunches of grapes. Grafted plants 1 yr. 25c.

W. Sinensis. Blue-Flowered. Similar to preceding but flowers colored a pleasing, light blue. Grafted, 1 yr. 25c.

choice from this section, sent postpaid for 50 cts.

XIV. Tuberos, Bulbous and Herbaceous Plants.

Explanation of the starring system: * Those of a tropical nature, useful in frostless regions or for bedding out during the summer at the North. ** Those of a semi-tropical nature, standing sharp frosts without serious damage. *** Hardy as far North as the Ohio river (or farther) in the open ground. The best time to set this stock is in winter or early spring, although it would not be fatal to transplant at any time of year.

ALOCASIA violacea. * A rare aroid, with evergreen leaves of a violet bronze, and classic outline. Pot-plants, 25c and 35c.

A. illustris. * Leaves green, marked with great blotches of velvety black. Very fine. Needs partial shade. 15c, \$1.25 per doz.

See *Xanthosoma*, end of this Dept., for allied plants.

AMARYLLIS Johnsonii. ** Large, crimson flowers in early spring. 20c and 35c.

A. equestris. ** Flowers large, bright red; of easy growth. 15c, \$1.50 per doz.

A. Nehrling's Hybrids. *** Exceptionally elegant flowers, scarlet, crimson, pink, white, striped, etc., and very often fragrant. They are something grand! Bloom in spring only. Fine for pots and boxes. Flowering size, 75c, \$7.50 per doz.

CALADIUM bulbosum. ** **Fancy Caladiums.** Splendid ornamental foliage, dying down through the winter. Leaves arrow-shaped, marked with the brightest colors, red, green, yellow, purplish, and sometimes almost a transparent white. No other plant possesses more richness or delicacy in coloring. Prefers a moist and half-shaded place with rich soil. They are grand house plants and fine for window boxes, etc. Mixed bulbs, without labels, 10c, \$1.00 per doz. Named varieties follow:

Alice Fleming. New. Transparent pink zone along red ribs, followed by a zone of brownish or bronze-green, with a yellowish hue; narrow, green edge. 30c.

Alfred Bleu. Brilliant pink center, green edge, white spots, 20c.

Annibal. Carmine ribs and center, bordered golden-green. 20c.

Bayard Taylor. New. Bright, deep pink ribs,

zone narrow, pink, transparent, bordered by a yellowish-brown zone; narrow green border. 30c.

Belleymei. Long leaf, bluish-green, densely freckled white. 15c.

Bilontra. Green with large, beautiful, transparent violet centers. 20c.

Coacoochee. Bright deep pink, changing to a deep metallic green, becoming almost pure white with a green border. Vigorous, fine for bedding. 10c.

Chantini. Deep red center, bright red midrib and nerves, edge green, colored densely with white spots. Vigorous and beautiful. 20c.

Comtesse de Maille. New. Metallic green lustre, suffused with deep, glowing red, ribs red, edge green, spotted pink. 30c.

Coupe d'Hebe. Leaf large and cup-like; ground color a beautiful lilac rose with green midrib and main nerves brownish-black. 20c.

Diamantina. A transparent pink with deep red midrib and veins. The green edge is densely covered with pink spots. 25c.

Dr. Wilhelm Miller. Red predominates at all times, with a little green, finally the leaves attain a very deep glowing pink color. 25c.

Dona Carmen de Macedo. Transparent rosy-red with conspicuous green midrib and veins which are narrowly bordered by a thread-like, white stripe. 20c.

Duchess de Mortemart. Grand. Whole leaf



Fancy Caladium Foliage.

glossy, marbled creamy-white and green. A most refined color combination. 20c.

Duc de Batibor. Shell-like, rather small leaf with edge turned up. Bluish-green with light red midrib and many white spots. 15c.

Duchartrei. Variable. White ground with pink tinge, green veins, now and then an orange-red spot. 20c.

Elsa. Changing from a deep green to a most intense deep pink, densely freckled with crimson. 25c.

Erythraeum. (Formerly Countess of Warwick.) Leaf arrow-shaped, beautiful red center and narrow green edge. 20c.

Estacio de Sa. Ebony black leaf-stems, large green leaf, suffused with a tinge of deep brown and covered with white freckles. Short midrib and nerves chocolate brown. 25c.

Emile Verdier. Gray-green ground; ribs pale green; center full red, changing to a beautiful creamy-white, bordered gray; deep crimson spots. 20c.

Geo. Huster. Leaf large and very glossy. Center deep red with broad creamy-white edge which is covered with a mosaic of very deep velvety green spots. 25c.

Grandum. Green ground mottled, spotted and shaded pink. Light crimson ribs bordered rich crimson. 20c.

Hildegard Nehrling. Broad leaves, white, clouded green with deep red midrib and main nerves. In half-shade almost pure white, in full sun suffused with a beautiful deep pink color. 30c.

Houletti. Deep green ground; white ribs and center, bordered gray; thickly spotted white. 15c.

Harold. Medium green ground, spotted and splashed white; center of leaf gray, ribs deep crimson. 20c.

L'Albane. Variable. Silky white center with a pink tinge. 20c.

L'Insalite. New. Fiery red, often suffused with green and yellow; a few deep red spots. Entirely new shade. 30c.



Austria Canna.

Lord Derby. Leaves wavy-edged, mostly a rich pink in color, and very attractive. 25c.

Mayor Benson. Deep, lustrous green ground overspread with a net-work of the crimson veins and nerves. Entire leaf showing numerous bright crimson spots. 20c.

Mme. D'Ombraïn. New. Transparent pink zone along deep red mid and side ribs. Ground color light green, in center yellowish-green, densely dotted white. 30c.

Mrs. E. G. Uihlein. New. Ground color varying from light to deep pink, transparent; ribs and veins green. Very refined. 30c.

Osceola. Large, deep-green leaf with violet-crimson center, crimson midrib and nerves. Whole leaf appears as if covered with a tinge of violet and metallic colors. 20c.

Orense. Light pink ribs and veins bordered white and gray. Green ground shaded and veined gray. 20c.

Pictum. Rather long, light-green leaf, with a number of creamy-white and a few pure white

Boncador. Pink and white ground, green ribs and veins. 15c.

Seminole. Large, rounded leaf, green; red center and midrib, large red spots. Fine for massing. Vigorous. 10c.

Trahiras. Large, pure white leaf, with green veins. 20c.

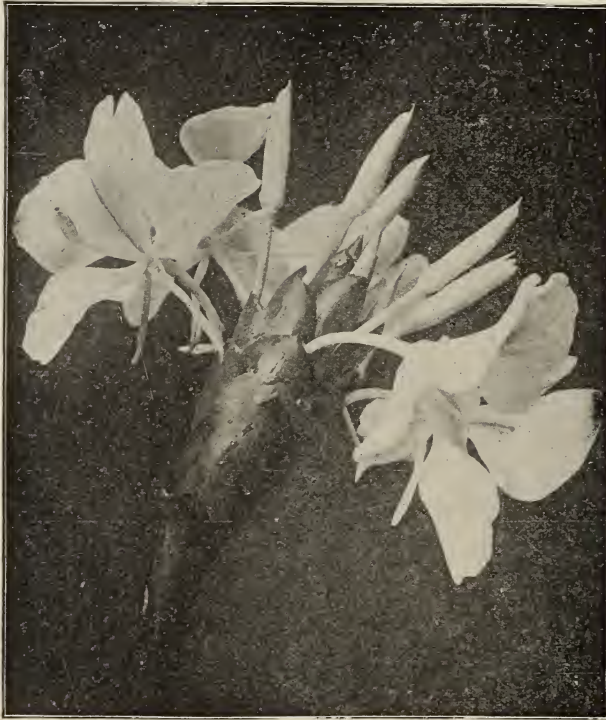
Triumphe de l'Exposition. Leaves immense, brilliant red in center, deep-red zone, green border. 25c.

Truce. New. White, with red ribs. The white is often suffused with pink. A gem. 30c.

Venosum. Deep green with metallic and steel-blue reflections. Lobes wanting; sinews whitish; leaf with a narrow red edge, and distinct, narrow, white midrib. 15c.

Vesta. Green ground, greenish-white ribs and veins, surrounded by salmon-red, spotted white. 25c.

Wightii. Large, glossy green, with large, pure white and a lesser number of large scarlet spots; fine for massing. Vigorous. 10c.



Ginger Lilies.

spots. Attains a height of from 4 to 6 feet in good soil. 15c.

Picturatum. Pointed leaves, green, with red centers and veins. 20c.

Porto Novo. Leaf triangular, somewhat undulated. Light red center bordered by a white zone, edge green. Covered profusely with a number of rather large blackish-red spots. 20c.

P. W. Reasoner. New and not as yet disseminated in the trade. A gigantic grower, reaching 5 feet in height. Immense leaves of a cheerful, light-green ground color, profusely spotted snowy-white. Midrib and part of other ribs crimson-brown, a narrow light-green zone along ribs. Very distinct. 40c, \$4.00 per doz.

Reine Victoria. Deep metallic, glossy green with blue reflections, densely spotted white, finally almost pure white; now and then a red spot. 15c.

Rio Clara. Light green ground thickly spotted and splashed white; center of leaf light violet, ribs and nerves deep pink. 20c.

Cannas. ** Splendid broad-leaved plants which give a tropical effect in bedding. One of the finest plants for general planting we know. Suitable for almost any and every place, no matter how limited. Their growth is so easy and flowers so freely produced that we wonder why they are not grown more widely. Rich soil, plenty of water, and a sunny location are essential. After flowering cut out each matured stalk to allow young suckers to come into blossom. Our collection embraces the best sorts, with both green and bronze foliage. All have exceedingly gorgeous flowers. **Strong roots without naming, mixed, all different, 85c per doz. (All started plants after March 1st.)**

Alsace. Almost white; pale cream color. Grows about 4½ feet high. Foliage green. 10c, \$1.00 per doz.

Austria. The gorgeous, orchid-flowered Canna, a hybrid with Canna fiacida as one parent. Flowers of immense size, 5 or 6 inches across. Golden-yellow. 10c, \$1.00 per doz.

Charles Henderson. One of the finest crimson sorts. Rarely grows over 3½ feet high. Large flowers in compact trusses; very effective. 10c, \$1.00 per doz.

Cinnabar. Cinnabar-red edged golden-yellow. Grows about 4½ feet high. Fine. 10c, \$1.00 per doz.

David Harum. A new sort, having bronze foliage not too dark; flowers a pleasing orange scarlet. Very attractive. 15c, \$1.50 per doz.

Duke of Marlborough. "The finest of the very deep crimsons, fine individual blooms in large trusses." Foliage green. Grows about 4 feet high. 15c, \$1.50 per doz.

Florence Vaughan. One of the finest yellow-spotted varieties. Rich golden-yellow, spotted with bright red. Large flowers; dwarf plant. 10c, \$1.00 per doz.

Harry Laing. "Exceedingly large, well-rounded flowers of rich, glowing scarlet suffused with orange." Foliage green. 15c, \$1.50 per doz.

Italia. Orchid-flowered; of immense size. Gorgeous flowers; golden-yellow, blotched with orange-scarlet in the upper petals; lower petals scarlet, with yellow edge. 10c, \$1.00 per doz.

Jas. Veitch. Tall grower, with bronze foliage. Flowers rather small, rich scarlet. 15c, \$1.50 per doz.

John Laing. Bright orange; very large and fine. A choice sort. 10c, \$1.00 per doz.

John White. This seems to be similar to Robusta, but when young and thrifty has variegated leaves. 10c, \$1.00 per doz.

Maiden Blush. Pink-flowered. A very attractive variety. 10c, \$1.00 per doz.

Marechal Vaillante. Plant medium size, with the richest bronze-red leaves. This has the darkest foliage we have ever seen in a Canna. The leaves are long and pointed. 10c, \$1.00 per doz.

Miss Berthine Brunner. "Large, open panicles of pure yellow flowers, minutely spotted with orange-scarlet." Very fine new sort. 10c, \$1.00 per doz.

Mrs. Kate Gray. Very robust sort, with extra large green leaves; flowers orange-scarlet overlaid with gold, and measure from 5 to 7 inches across. 10c, \$1.00 per doz.

Pennsylvania. One of the orchid-flowering Cannas with enormous flowers from 5 to 7 inches across, of an intense vermilion scarlet, overlaid with an orange sheen. Foliage green. Plant grows 6 to 8 feet high. 15c, \$1.50 per doz.

Queen Charlotte. Flowers rich scarlet-crimson, broadly banded with canary yellow and scattered dots of red on the yellow. Dwarf. 10c.

Robusta. A large variety with bronze-red and green foliage. A grand foliage sort. Small red flowers. 10c, \$1.00 per doz.

Rubin. Flowers ruby-carmine, very rich and glowing; foliage dark bronzy-green. One of the finest new sorts. 20c, \$2.00 per doz.

Secretaire Chabanne. Flowers in great clusters, distinct and pleasing salmon, of large size. Always in bloom, sometimes three clusters on a single stalk at once. Foliage green. New. 15c, \$1.50 per doz.

C. flaccida. Our native *Orchid Canna*. Dwarf habit, with clear, yellow flower 3 to 5 inches across. Light green leaves. 10c, 75c per doz.

CRINUM. * * * These magnificent flowering bulbs are closely related to *Amaryllis* and *Pancratium*. Evergreen of easy culture; in Florida in the open ground, in the North in the greenhouse. Many of the choice sorts rarely produce new bulbs, and consequently are very high-priced.

C. Americanum. A most beautiful plant, producing umbels of large, white, lily-like flowers, often six or eight to the spike. A native of the Florida swamps, but, like most of the *Crinums*, not particular as to soil or situation. 10c, 85c per doz.

C. Sp. from Assam. Flowers white, striped with soft pink, about the size of those of *C. Kunthianum*. Strong. 25c to 50c.

C. Capense. A beautiful sort from Cape of Good Hope. Flowers waxy pink and white, and borne in profusion; sometimes pure white. Foliage a bluish-green. 15c.

C. crassifolium. Very rare species. Flowers in large bunches on strong stems, about Easter, or later; color waxy-white, with pale pink stripes; form full, bell-shaped. One of the finest. 50c.

C. erubescens. Has long, drooping leaves, and flowers resembling *C. Kirkii*. Strong bulbs. 40c.

C. fimbriatulum, Nassau, or Milk and Wine Lily. A strong grower, not particular as to soil. Flowers in umbels, large and showy; striped white and carmine; 3 to 4 inches in diameter. Exceedingly choice and desirable as a pot-plant or for bedding out during summer at the North. We offer two sizes. Small bulbs will bloom next year, 5c, 50c per doz. Blooming size, 15c, \$1.25 per doz.

C. giganteum. Flowers of a vanilla fragrance, pure white. Very scarce. A fine species. 35c.

C. hybridum, J. C. Harvey. A fine vigorous hybrid (*C. Moorei* X *C. Kirkii*) evergreen, partaking in habit almost equally of both parents; harder than *C. Kirkii*; adapted as well to tropical conditions as to more temperate climes. Flowers rose-pink, nearly as large as *C. Moorei*; more drooping in habit; not unlike *Amaryllis Belladonna*; exceedingly fragrant; very floriferous and of good substance, a single bulb often producing three flower-stalks in one season. \$2.00.

C. hybridum, W. C. Steele. Another nice hybrid, raised by Mr. W. C. Steele, of Florida. It is *C. pedunculatum* X *C. Kirkii*, and plants show some characteristics of both parents, being almost as hardy as *C. pedunculatum*. Also able to stand white frosts. Flowers striped flesh-pink (almost white) and rose-pink, freely produced and deliciously scented. 25c.

C. hybridum, Empress of India. Flowers open wide, with recurved petals; the tube usually long. Color of petals white, but showing a flush of pink through from the backs, which are striped bright rose. 75c.

C. Kirkii. The flowers are large, white, with a reddish-purple on the outside of each petal, which, showing through, gives the flower a pink tinge on the inside; some ten or fifteen of these flowers are produced at the top of a tall purple spike, and there are frequently two or more spikes of bloom from the bulb during the season. In addition, the foliage is very handsome, the numerous, wavy-edged leaves forming a perfect rosette. Flowering bulbs, 25c; extra large, 35c.

C. Kunthianum. Vigorous growing and abundant bloomer from New Granada. This is a grand species, with splendid flowers, dull white, tinged with rosy-red. 20c to 35c.

C. Virgineum. A choice hybrid, originated in England; flowers very large and widely opened, white and rosy-pink. 25c to 50c.

CURCUMA petiolata. * * **Queen Lily.** A choice plant with broad leaves like a canna, but strongly veined and arched. Flowers in large, torch-like bunches, white, tinted pink, which last for weeks. 10c, \$1.00 per doz.

GLORIOSA superba. * * A gorgeous, lily-like plant, growing 4 to 5 feet high and bearing quantities of deep orange and yellow flowers during the summer. It blooms for months and is a first-class ornament for screens; it requires a slight training. Tubers, 20c, \$2.00 per doz.

G. virescens. * * * This has similar color to above, but petals are not wavy. Very vigorous. Fine. 20c, \$2.00 per doz.

HEDYCHIUM coronarium. * * **Ginger Lily, Butterfly Lily.** This magnificent plant flourishes best on low, moist land, where it will form a dense clump 3 to 6 feet high. The roots are tuberous, and the plant may be safely grown over the entire South. The masses of fragrant, pure white flowers, looking much like large white butterflies, are borne in large clusters, terminal on every stalk. If kept in the house in a growing state, it blooms continuously. 10c, 85c per doz.; larger plants may be sent by express than by mail.

HEMERCALLIS Kwanso fl. pl. * * * **Day Lily.** A popular hardy plant, with lily-like flowers in bloom all through the summer; orange-yellow. The flowers of this variety are double and freely produced. Prefers partial shade. 15c, \$1.50 per doz.

H. Kwanso. Single-flowered. * * * 15c.

IRIS hexagona. * * * **Blue Flag.** Evergreen. A hardy southern variety of the greatest possible beauty. The loveliest flowers of the whole South. Rich purple and blue with yellow markings; 3 to 4 inches across; resembles the costliest and rarest orchid flowers. Blooms in spring. 10c, \$1.00 per doz.

I. hexagona alba. * * * A very rare form of the common Flag, with pure white flowers. 15c, \$1.50 per doz.

I. Kaempferi. * * * Japanese Iris. The finest flowered of all the Irises in many shades of color, and flowers often a foot wide. Strong plants. Mixed varieties, 15c, \$1.50 per doz.

KAEMPFERIA rotunda. * * Flowers appear early in spring before any foliage; are of a lilac, tinged rose color of good size. The leaves resemble a Maranta and are bronze and purplish, growing about a foot high. 20c, \$2.00 per doz.

MOROEIA iridioides. * * "**Natal Lily.**" An iris-like plant, succeeding here perfectly. Has beautiful white flowers, touched with yellow and purple. Exceedingly elegant, and easily grown. Fine for massing, and produces flowers all the year. Is practically hardy all over middle Florida, succeeding in either sunshine or shade. A splendid cemetery plant, and useful for borders anywhere. 10c, \$1.00 per doz.; larger clumps, 25c, \$2.50 per doz.

PANCRATIUM Caribbaeum. * * The **Spider Lily, or Spanish Lily.** A bulb of easiest culture, producing large clusters, a few plants giving a succession of bloom all summer. Color pure

white. 10c, 85c per doz. Very large, 15c to 25c.

P. rotatum. * * Florida. Plant smaller than *P. Caribbaeum*; spikes bearing one or two large, white, fragrant flowers. 10c, 85c per doz.

POLYANTHES tuberosa. * * **The Tuberose.** Double-flowered. The well-known Tuberose with its very sweet, pure white flowers in spikes. Strong bulbs, 15c.

Single-flowered. A grand novelty, blooming much more freely than the double sort. Equally fragrant. Fine bulbs, 15c, \$1.50 per doz.

REINECKIA carnea. * * A tufted plant with creeping root-stalk, grassy leaves and rose-colored, fragrant flowers from China. A useful plant for small borders. 10c, \$1.00 per doz.

RICHARDIA Africana. * * **Calla Lily.** A good, old-fashioned plant, always popular. From August to November we can supply dry bulbs at 10c and 15c, which will flower winter and spring. Later these plants are 25c.

XANTHOSOMA Bataviensis. The Xantho-

Collection B. R. Five plants, our selection, labeled, sent postpaid for 40c.

Collection B. R. I. Ten plants, our selection, sent postpaid, and labeled, for 75c.

somas are similar to *Caladiums* and *Alocasias*, having great, arrow-shaped leaves, and many with edible tubers. This species has purple stems and dark-green leaves. 20c, \$2.00 per doz.

X. Javanica. * A grand species, of large size, with deep, bluish-green foliage and very dark stems. A superb decorative subject; evergreen habit. 35c, \$3.50 per doz.

X. Marshalli. * Very quick-growing, of medium size. Green leaves and dark stems; an especially good bedder for all parts of the States, having warm summers. Quite different from the common "Elephant Ears" so often seen, and being of easy growth cannot fail to give satisfaction. Strong tubers (started after March 1st), 10c, 85c per doz.

X. sagittifolium. * This has been grown in Florida for years—possibly by the Seminoles, and the tubers are excellent for culinary purposes. Leaves light-green; plant vigorous. A very beautiful bedding plant. 15c, \$1.50 per doz.

XV. Tropical Shade Trees.

Suitable only for frostless regions, or for growth in large conservatories. A few are used as decorative pot-plants when small, as *Ficus*, *Grevillea*, *Jacaranda*, and others. There are also some fruit and economic trees suitable for shade; note especially *Lucuma mammosa*, *Mammea Americana*, *Mangifera Indica*, *Nephelium longanum*, *Persea gratissima*, *Spondias dulcis*, *Tamarindus Indica*, in Department I: *Adenanthera pavonina*, *Aleurites triloba*, *Baphia racemosa*, *Caesalpinia sappan*, *Calophyllum inophyllum*, *Cedrela odorata*, *C. Toona*, *Eriodendron*, *Gmelina Asiatica*, *Hymenaea coubaril*, *Paritium elatum*, *Pterocarpus macrocarpus*, *Sapindus saponaria*, *Swietenia*. These are all pot-grown, except *Bignonia suaveolens*, and may be transplanted any time of year.

ACACIA intzia. Of very quick growth. Leaves finely decomposed. 6 to 8 feet, \$1.00.

ALBIZZIA Lebbek. Woman's Tongue Tree. A handsome, pinnate leaved shade tree from Jamaica. Does well here; of quick growth. Resembles the Royal Poinciana, but leaves are not so finely cut, 2 to 3 feet high, 25c, \$2.50 per doz.; 3 to 5 feet, 35c, \$3.50 per doz.; 5 to 7 feet, 50c, \$5.00 per doz.; larger, 75c.

A. fastigiata. A new species from Africa, with very handsome leaves. \$1.50.

ANDIRA inermis. The Cabbage Tree. Foliage compound, evergreen; flowers in huge racemes, lilac-like, with a peculiar smell. Rare. 50c and \$2.00.

BIGNONIA suaveolens. A tree with immense, spreading, compound leaves, and dull crimson; very fragrant flowers. 50c.

B. Adenophylla. New and rare. 50c.

BISCHOFIA Javanica. An East Indian tree, growing freely in our sandy soil. The foliage is of a bronze-green, distinct and handsome; compound. 25c, \$2.50 per doz.

BEACHYCHITON acerifolium. Leaves 5 to 7 lobed; flowers bright red. Fine for street planting. 50c.

CAROLINEA princeps. A large tree of quick growth from South and Central America. Leaves shining green, palmate; flowers pink and white, of large size. \$1.00.

CASTANOSPERMUM Australe. The **Moreton Bay Chestnut**, from Australia. Has immense compound leaves; is of rapid growth, and handsome. 75c.

COLUBRINA ferruginosa. The **Martinique Greenheart**, or **Porto Rico Snakewood tree**. 50c.

DIOSPYROS discolor. Evergreen. Rare. \$2.00.

FICUS altissima. New. From India. This is a large-sized tree, which does well in extreme South Florida outdoors. The beautiful leaves are oblong and beautifully veined. It resembles the new *F. pandurata*. Splendid plants 40c, 60c and \$1.00.

F. Cunninghamii. A new species, lately introduced. This and *F. infectoria* are specially

recommended as shade trees for extreme South Florida. 25c; larger, 5 to 7 feet, \$1.00.

F. elastica. India Rubber Tree. See Department III.

F. infectoria. From India. One of the finest shade trees, with long, glossy leaves. Will do well in extreme South Florida outdoors. Trees in several sizes from 35c up to very large specimens, 5 to 7 feet, at \$1.25.

F. macrophylla. Moreton Bay Fig Tree, from Australia. Resembles *F. elastica* slightly, but has pointed leaves and yellow sheaths and petioles. A splendid species. Fine plants 50c, 75c and \$1.00.

GLIBICIDIA platycarpa. From Cuba. A tree of about 20 to 25 feet in height; has lovely, pink flowers. 50c.

GREVILLEA robusta. Australian Silk Oak. A splendid, fern-leaved tree, growing 120 feet in height. Evergreen, and especially adapted as a shade tree for South Florida and South California, as it is as hardy as an orange tree. Also used in decorating apartments, etc.; magnificent pot-plant. Strong plants 10c, \$1.00 per doz.; larger (about 12 to 18 inches high) 15c, \$1.50 per doz.; 2 to 3 feet 25c, \$2.50 per doz.; 3 to 4 feet 35c, \$3.50 per doz.

HURA crepitans. The Sand Box Tree, of the West Indies. A medium-sized tree, reaching about 40 feet, with poplar-like leaves and large, curious seed vessels, which when ripe burst with a loud noise, scattering seeds in all directions. 1 yr., 18 to 24 inches high, 20c, \$2.00 per doz.; 2 to 3 feet, 30c, \$3.00 per doz.; larger, 40c, \$4.00 per doz.

JACARANDA mimosaeifolia. A splendid tree with large, decomposed, fern-like leaves, allied to *Caesalpinia*. The handsome foliage justifies its growth as a house plant in the small sizes. Flowers handsome, rich blue. 1 yr. 25c, \$2.50 per doz.; 3 yr., large, 50c.

LONCHOCARPUS Sp. Cuba. A tree with large, compound leaves; evergreen. Fine stock, 3 to 4 feet high, 50c, \$5.00 per doz.

PENCILLARIA spicata. Pot-plants, \$1.00.

POINCIANA regia. The Royal Poinciana.

This is a beautiful, deciduous, tropical tree, bearing quantities of brilliant, scarlet flowers in the spring. The leaves are large, decompose, and a pleasing green. Of very rapid growth. Gives a striking, tropical effect. 12 to 18 inches high, 15c, \$1.50 per doz.; 2 to 3 feet 25c, \$2.50 per doz.

BRUNUS sclerocarpa. (Incorrectly listed, previously, as *Spondias sclerocarpa*.) A dense-growing tree, with very small, pointed leaves differing from anything we have seen. From India. Very stocky, large plants 75c and \$1.00.

SARACA Indica. A small tree, with compound leaves; flowers brilliant scarlet, and very attractive in spring. \$1.00.

SCHIZOLOBIUM excelsum. A tall, magnificent foliage tree from Brazil. The stem shoots up straight, like a palm, with enormous, pinnate leaves (like a gigantic Royal Poinciana), often 6 or 8 feet long. In the young state the tree does not readily branch. Strong, 50c and \$1.00.

STERCULIA alata. New. From India. Large, pointed, cordate leaves of striking beauty. This quickly reaches maturity, forming a large, fine shade tree for frostless places. Evergreen. 35c, 50c, 75c and \$1.00.

S. fulgens. New. From India. \$1.00.

THESPIA populnea. Commonly called "Poplar" in Cuba. A small to medium-sized tree of quick growth. Fine. 25c, \$2.50 per doz.

TRICHILIA spondioides. Butter-wood tree. Leaves pinnate; flowers greenish-yellow. A small-sized tree of tropical America.

TRIPLARIS Americana. 1 yr. 35c; 2 yr. 50c; large, 7 to 9 feet, \$1.00.

COLLECTION TT. Five trees, our selection, will be sent, postpaid, all labeled, for \$1.00.



The Silk Oak at Royal Palm Nurseries.

XVI. Hardy and Half-Hardy Shade Trees.

For Florida, California and the lower South. The following list may be used as shade trees also: *Hickoria pecan*, see Department II; *Cinnamomum camphora*, *C. cassia*, and *Sapindus mukorossi*. Most of this stock is grown in open ground and should be transplanted in winter.

CATALPA speciosa. The true, hardy *Catalpa*, so much in demand for growing in plantations for posts and timber. A quick-growing, deciduous tree, with large leaves and creamy-white, scented flowers. 1 to 3 feet high, 20c, \$2.00 per doz.; 3 to 4 feet, 25c, \$2.50 per doz.; 6 to 8 feet, 40c, \$4.00 per doz.; 8 to 10 feet, 60c, \$6.00 per doz.

CELTIS Bentharii. Light, 2 yr. old 15c, \$1.50 per doz.

C. occidentalis. Our hardy *Hackberry Tree*. Excellent for avenue planting. A fine shade tree, having a very dense, round top. Light, 2 yr. old, 15c, \$1.50 per doz.; 2 to 3 feet, 25c, \$2.50 per doz.; 4 to 6 feet, 50c, \$5.00 per doz.; 8 to 10 feet, 75c, \$7.50 per doz.

C. orientalis. 10 to 15 inches high, 15c, \$1.50 per doz.; 18 to 24 inches high, 20c, \$2.00 per doz.

EXCAECARIA sebifera. *Chinese Tallow Tree*. Resembles a poplar in foliage, which turns vivid colors in autumn. Seeds are coated with a kind of vegetable tallow. Pot-grown, 15c, \$1.50 per doz.

GORDONIA lasianthus. *Loblolly Bay*. A native tree which ought to be more cultivated. A handsome, evergreen tree, with lovely, snow-white flowers, 3 inches in diameter, produced all summer. Will bloom when very small. Hardy

as far north as Virginia, perhaps farther. 25c, \$2.50 per doz.

ILEX Dahoon. *Dahoon Holly* of the Southern States. One of the most valuable, broad-leaved evergreens. Leaves richest glossy green; tree covered with bright, shining red berries in fall or winter. 15c, \$1.50 per doz.; larger, 25c.

I. opaca. The *Southern Holly*. Leaves prickly; berries scarlet, and always in demand for Christmas decorations. Small, 2 yr., 25c, \$2.50 per doz.

LAURUS nobilis. *Apollo's Laurel*. A choice, hardy, shrubby, evergreen tree, with beautiful leaves. Much grown into decorative specimens as standards and pyramids. Large ones, perfectly grown, can be had at \$10.00 to \$50.00; small plants, 15c.

LIQUIDAMBAR styraciflua. *Sweet-Gum Tree*. Hardy throughout the South. Naturally grows in a swamp but thrives on high land as well. A splendid tree for street planting. Leaves handsome; maple-shaped, deciduous. 3 to 4 feet, 25c; 4 to 5 feet, 35c; 5 to 7 feet, 50c; 7 to 9 feet, 75c; 10 to 12 feet, \$1.00.

MAGNOLIA grandiflora. The *Magnolia*. The most magnificent of all our southern broad-leaved evergreens. Flowers six inches across, pure white, waxen, and lemon-scented. Pot-grown



The Sweet Gum.

plants 35c and 50c. From open ground, 1 to 1½ feet, 25c; 2 to 3 feet, 50c; 3 to 4 feet, 75c; 4 to 5 feet, \$1.00.

MELIA Azedarach, var. umbraculiformis. Umbrella China Tree. A more shapely form of the old Indian species, widely advertised under the name of Texas Umbrella Tree, etc. One of our very best, hardy, deciduous trees; leaves very rich green, and hanging on later than the old China tree. Shade dense; form of tree an almost perfect umbrella. 1 to 2 feet, 10c, \$1.00 per doz.; 2 to 3 feet, 15c, \$1.50 per doz.; 3 to 4 feet, 20c, \$2.00 per doz.; 4 to 5 feet, 25c, \$2.50 per doz.

PERSEA Carolinensis. Red Bay, or Sweet Bay. A handsome native broad-leaved evergreen. Wood very valuable for cabinet work, etc. 25c, \$2.50 per doz.

PLATANUS occidentalis. Plane Tree, or Sycamore. An immense American tree of quick growth and deciduous habit. Does well generally in the South and has few insect enemies. Fine trees, 3 to 4 feet high, 25c, \$2.50 per doz.; 6 to 8 feet, 40c, \$4.00 per doz.; 8 to 12 feet, 60c, \$6.00 per doz.

P. orientalis. Oriental Plane. Resembles the preceding. A fine street tree, having very few insect enemies. 2 to 3 feet, 20c, \$2.00 per doz.; 3 to 4 feet, 25c, \$2.50 per doz.; 4 to 6 feet, 40c, \$4.00 per doz.

POPULUS deltoides. Carolina Poplar. A straight, upright tree with pyramidal crown. Very vigorous and in favor as a street tree, as it forms a fine-sized specimen in three to five years; deciduous, 5 to 7 feet, 40c, \$4.00 per doz.

P. Italica. The Lombardy Poplar. Tall, narrow growth; one of the most

striking and picturesque of trees. Makes a handsome avenue tree of great decorative value. Deciduous. Fine trees, 2 to 3 feet, 20c, \$2.00 per doz.; 3 to 4 feet, 25c, \$2.50 per doz.; 5 to 7 feet, 40c, \$4.00 per doz.

QUERCUS coccinea. Scarlet Oak. A splendid tree for street planting; leaves large, deeply cut like the Black Jack, or White Oak, turning richest red in autumn. Deciduous. 1 to 2 feet, 25c, \$2.50 per doz.; 2 to 4 feet, 40c, \$4.00 per doz.; 4 to 6 feet, 60c, \$6.00 per doz.

Q. nigra aquatica. Our evergreen Water Oak, largely used in Florida as a street tree. Quick-growing and vigorous. Fine trees, nursery-grown. 1 yr. 15c, \$1.50 per doz.; 12 to 16 feet, \$2.00, \$22.00 per doz.

SOPHORA Japonica. The famed Pagoda Tree of China and Japan, reaching a height of 40 feet. Leaves compound; deciduous. 2 yr. 15c.

STERCULIA diversifolia. Handsome, cut-leaved tree extensively used in California for street planting. 35c.

S. plantanifolia. Japan Varnish or Umbrella tree. A grand shade tree, from 20 to 40 feet high, sometimes called "Chinese Parasol Tree." Deciduous. The large leaves are formed like the maple or sycamore, and the tree has a splendid dome shape, with dense foliage. 1 to 1½ feet, 25c.

VITEX Agnus-castus. Chaste Tree. A low-growing tree, with palmate leaves, scented like lavender. Flowers blue, in pretty spikes. A fine, hardy, desirable tree. Light, 2 yr. old, open ground, 15c, \$1.50 per doz. Larger, 25c and 50c.

COLLECTION HT. Five small trees from this section will be sent postpaid (our choice, all labeled) for \$1.00; or larger, by express or freight, at same price.



Flowers and Foliage of the Chaste Tree.

XVII. Succulents and Epiphytes.

Mostly tropical; suitable for the greenhouse, living room, offices, the tropics and warm coast regions of the United States. These may be transplanted at any time of year safely.

AGAVE. The *Agaves*, or **Century Plants**, are among the most valuable and striking plants that can be used in semi-tropical gardening. Many of them are useful as hedge plants, and the genus contains several of the most valuable fibre plants of commerce. They are all of great decorative value. The first three sorts named will stand considerable frost.

A. Americana variegata. Leaves beautifully striped with cream color. A splendid ornamental. 25c and 35c.

A. neglecta. Rich, blue-green leaves, wide and gracefully recurved. The handsomest large sort in our collection. A magnificent plant, beautiful in all sizes, and surpassingly fine for all decorative purposes. Fine plants, with beautiful leaves, 15c, 25c, 50c, to \$3.00.

A. decipiens. A native plant with dark-green leaves, furnished with spines along the edges, forming a good-sized plant ultimately 2 to 4 feet high; flower spike 12 to 18 feet high. Very decorative. Fine plants 10c, \$1.00 per doz. Stronger, 15c. \$1.50 per doz.

A. Sisalana. See Economic Plants, Dept. III.

ALOE fruticosa. A very ornamental plant with sharply-serrated leaves. Flowers bright-yellow on a spike 2 feet or more tall. 25c and 50c.

A few unnamed Aloes, rare, 50c and 75c.

BRYOPHYLLUM calycinum. An odd and rapid-growing succulent. Flowers green and reddish bronze, in form of bladders. One of those strange plants that are propagated from leaves. Extremely curious. The leaves may be pinned on the wall, and will throw out sprouts from every notch without watering. 10c, \$1.00 per doz.

CEREUS triangularis. A true Night-blooming *Cereus*, sometimes called strawberry pear, from the handsome fruit. Large, triangled stems, with great, creamy-white flowers 6 to 8 inches across, heavily perfumed. Plant clings to walls or any support. 15c and 25c.

DASYLIION serratifolium. A yucca-like plant from northern Mexico. Fine plant, growing 3 feet high. Leaves narrow, armed. Large, 75c to \$2.00. Smaller plants, 25c and 35c.

DYCKIA brevifolia. A dwarf succulent plant, looking like a small agave, with many short, spiny leaves. Rare. From Brazil. Fine plants, 75c.



View in the Grounds of the Royal Palm Nurseries.

EPIDENDRUM Tampense. A very pretty native orchid, growing on the bark of oaks, etc. Is called **Butterfly Orchid**. Neat spikes of flowers in spring; pink, chocolate and green, lasting a long time in perfection. 15c, 25c and 50c.

EUPHORBIA splendens. Sometimes called **Crown of Thorns**. A low grower, having long, bronze stems, many spines, and brilliant, deep scarlet flowers, blooming all the year. Will thrive in an exposed, sunny, dry situation. 15c, \$1.50 per doz.; larger, 25c.

For **Poinsettia**, see Dept. IX.

FURCRAEA. The *Furcraeas* are very desirable plants for the center of large tubs and pots of plants, for room, hall or outdoor summer decoration North. Will make a splendid specimen planted out in South Florida. They very much resemble some species of agaves, though the leaves are generally more upright-growing. Also highly recommended as fibre plants. Magnificent when in bloom, the flower-spike reaching a height of 20 to 30 feet, with thousands of yucca-like whitish flowers.

F. foetida-gigantea. Strong plants, 25c \$2.50 per doz.

F. Lindenii. A splendid, variegated species of peculiarly elegant appearance. The broad stripes of white show off very clearly. Rare new plant of recent acquisition, valuable as a house plant. Beautiful plants, 50c, 75c and \$1.00.

F. tuberosa. Leaves longer and narrower than the preceding, spineless. A great many leaves to each plant. Strong plants 25c and 50.

OPUNTIA leucotricha. Upright, almost tree-like, with long, white spines on the leaves; flowers yellow. 25c.

O. vulgaris. The **Common Prickly Pear**. Hardy well



Agave Neglecta.

up into the Middle States. A low-growing, very spiny species, with most gorgeous flowers of a bright-yellow color, three inches across. 10c, \$1.00 per doz.

For other Opuntias, see Dept. II.

PEDILANTHUS tithymaloides. "Red Bird Cactus." A West Indian plant, with thick, fleshy leaves and small, red, showy flowers. Not a true cactus at all, but an Euphorbiad. Very curious plant in frostless locations, especially where the soil is dry, as it grows almost as well in dry soil as damp. Fine plants, 10c, \$1.00 per doz.; large plants, 20c, \$2.00 per doz.

PERESKIA aculeata. The Lemon Vine, or Barbadoes Gooseberry. A climbing cactus, with true leaves and producing edible fruit. Stems fleshy, with spines at the base of each leaf. Very fast growing; much used as a stock upon which to graft epiphyllums and other low-growing cacti. Flowers borne periodically in immense numbers; 1½ inches wide, of a creamy white, with a green tinge. 10c, \$1.00 per doz. Large standard stocks for grafting, price on application. (State size and height wanted.)

P. Bleo. A larger, stouter shrubby plant than the preceding; spiny, with leaves often 5 inches long. The flowers are a soft pink-purple very showy, from 1½ to 2 inches across. The fruit pear-shaped, 2 inches long. One of our late importations. 25c.

PHYLLOCACTUS. Perhaps the most gorgeous-flowering genus of Cactus, and certainly most satisfactory as house plants. In Florida and the tropics they grow finely when set in the leaf stems of palmettos and other slow-growing palms; the partial shade being beneficial.

P. Ackermanni. "King Cactus." One of the handsomest. Flowers crimson, produced freely. 25c.

P. latifrons. Erroneously sometimes called "Night-blooming Cereus;" properly the "Queen Cactus." The largest of the genus, growing 8 to 10 feet high; the stems 4 or 5 inches broad, and flat. Flowers are a fine creamy-white, with a reddish tube, produced at night. 20c and 35c.

PITCAIRNEA Karwinskiana. This resembles a Bromelia or Tillandsia, with leaves up to 2 feet long. Flowers red, small, in dense racemes. Fine plants, 25c and 50c.

COLLECTION S. Five plants, our choice, all labeled, sent postpaid for 50c.

TILLANDSIA. Air Plant, or Wild Pine. A very large genus of ornamental plants of the easiest culture, requiring only to be attached to a block of wood and to be watered with the other plants. Tie with wire on rough bark; the plants hold water in their leaves. We list only native Florida species.

T. bracteata. One of the largest Wild Pines, or Air Plants. Full-grown plants are 1 and 2 feet in diameter and height, spikes often 18 inches or more in length; the large, brilliant, crimson bracts and flower-stalks and purple blossoms are very showy, and remain beautiful for weeks. A most valuable plant for conservatory or bay window, enduring a low temperature (though but little frost), requiring no care except an occasional watering. Attach to wood or hang in a small wire basket. 15c and 25c.

T. caespitosa. A species with long, grass-like leaves varying in color from gray to red; usually found in moist places. 10c.

T. usneoides. * The Long Moss, Gray Moss or Spanish Moss of the South. Very effective in decorations. The effect of this moss hanging on the trees of the South is indescribable. The only species which will stand sharp freezing unharmed. A nice quantity for 10c. Per pound, 25c postpaid.

T. utriculata. The largest native species. Leaves an inch or two in width, and 2 feet or more in length in full-grown plants. Stems very tall, 3 to 5 feet, branched and many-flowered, but not so showy as *T. bracteata*. A very rapid grower. Is easily established on a piece of wood, bark, or in a wire basket. Fine plants, 10c; larger, 25 to 50c.

YUCCA aloifolia. Spanish Bayonet; Spanish Dagger. Seacoast of Southern States and West Indies. Probably not hardy north of middle Georgia. Flowers resemble those of *Y. filamentosa*, but are borne on a shorter stalk. Stem arborescent, sometimes 10 to 20 feet high. Very ornamental, even when small. Will bear much neglect. 15c, 25c, 50c and \$1.00.

Y. aloifolia variegata. Similar to above but the leaves are beautifully striped with white. Fine plants, 50c to \$2.00.

Y. gloriosa. More stocky, and with heavier, broader leaves than *Y. aloifolia*. 50c.



The Royal Palm.

INDEX.

PAGE.		PAGE.	
Abrus	34	Antigonon	34
Aberia	4	Aralia	26
Abroma	29	Araucaria	16
Acacia	40	Arborvitae	16, 17
Acalypha	26, 29	Ardisia	26
Achania	29	Areca	18
Achras	4	Aristolochia	34
Achyranthus	26	Arrow Arum	15
Acrocomia	18	Arrow-root Plant	12
Adenantha	10	Artobotrys	29
Adiantum	23	Arundinaria	13
African Bowstring Hemp.....	12	Arundo	13
Agave	10, 43	Asparagus	26
Air Plant	44	Aspidium	23
Akee Tree	5	Aspidistra	26
Alocasia	36	Asplenium	23
Allamanda	29	Attalea	18
Allspice Tree	12	Australian Silk Oak	40
Alpinia	29	Averrhoa	4
Alsophila	23	Avocado	6
Albizia	40	Azalea	32
Aleurites	10	Bactris	18
Aloe	10, 43	Banana	6
Allamanda	34	Bamboo	13, 14
Amaglyptus	26	Bambusa	13
Amaryllis	3F	Baphia	29
Amomum	10	Barbados Flower Fence	29
Amoor River Privet	32	Barleria	29
Ananassa	4, 26	Bastard Cedar	11
Andira	40	Bast Tree	12
Andropogon	10, 13	Bauhinia	29
Anacardium	4	Bergamot Berry	7
Annatto Plant	10	Bertholletia	4
Anona	4	Bignonia	34, 35, 40
Antidesma	4	Bischofia	40
		Bixa	10
		Blackberry	9
		Blechnum	23
		Blue Flag	39
		Bohea	29
		Boston Fern	24
		Bougainvillea	34
		Brachychiton	40
		Brazil Nut	4
		Bridal Wreath	33
		Bromelia	26
		Bryophyllum	43
		Bullock's Heart	4
		Butterfly Lily	39
		Buxus	32
		Cactus	44
		Caesalpinia	10, 29, 34
		Cajadium	36, 37, 38
		Calathea	10
		Calla Lily	40
		Callitris	16
		Calophyllum	11
		Calpurnea	20
		Calycanthus	32
		Camellia	11, 32
		Camphor Tree	11
		Cananga	11
		Candle Nut Tree	10
		Cannas	38, 39
		Cape Jasmine	31
		Carambola	4
		Cardamon Plant	10
		Carolina Laurel Cherry	33
		Carolina	40
		Caryota	18



Thuja compacta, at Royal Palm Nurseries.

	PAGE.		PAGE.		PAGE.
Carica	4	Clerodendron	29, 34	Dasyliirion	43
Carissa	4	Club Moss	25	Date Palm	21
Castanospermum	40	Cocoanut	20	Davallia	23
Cashew Apple	4	Cocos	18	Day Lily	39
Cashew Nut	4	Coccoloba	4	Dendrocalamus	14
Casimiroa	4	Coccothrinax	20	Deodar	16
Cassia	11, 29	Coffea	11	Dewberry	10
Castilloa	11	Coffee	11	Dictyosperma	20
Catalpa	41	Cohune	18	Dieffenbachia	27
Cat-tail Flag	15	Coleus	26	Diospyros	8, 40
Cattley Guava	9	Colubrina	40	Dombeya	30
Cedar	11, 16	Coral Tree	30	Dracaena	27
Cedrela	11	Cordia	29	Dracontium	27
Cedrus	16	Costus	26	Duranta	30
Cecropia	4	Crab's-eye Vine	34	Dyckia	43
Century Plant	43	Crape Myrtle	32	Dwarf Tree Box	32
Cereus	43	Crescentia	11	Edgeworthia	30
Ceriman	6	Crinum	39	Egyptian Paper	15
Cestrum	29	Crossandra	30	Eichhornia	14
Chamaerops	18	Crotons	26	Elaeis	20
Chamaedorea	18	Cryptostegia	11, 34	Eleagnus	8
Chaste Tree	42	Cupania	5	Encephalartos	20
Chenille Plant	29	Cuphea	30	Epidendrum	43
Cherimoya	4	Curcuma	11, 39	Eranthemum	30
Cherry	5	Curculigo	27	Erianthus	14
Chocolate Tree	13	Cupressus	16	Eriobotrya	8
Cherokee Rose	35	Custard Apple	4	Eriodendron	11
Chrysophyllum	4	Cycas	20	Erythrina	30
Cibotium	23	Cyperus	14	Eugenia	5
Cicca	4	Cypress	16	Eulalia	14
Citrus	7	Cynodon	13	Euphorbia	27, 43
Cinnamomum	11	Cyrtomium	23	Euonymus	32, 35
Circassian Bean	10	Deutzia	32	Excaecaria	41
Clematis	35	Dahoon Holly	41	Fan-Palm	20



A group of choice Palms.

	PAGE.		PAGE.		PAGE.
Ferns	23, 25	Hibiscus	30	Laurus	41
Ficus	5, 8, 12, 27, 34, 40	Hickoria	8	Lawsonia	12, 31
Fig	5, 8	Holly	41	Lemon	7
Fountain Plant	31	Honeysuckle	35	Lemon Grass	10
Frangipani	31	Hovenia	8	Leonotis	32
French Physic Nut	12	Hura	40	Licuala	20
Furcraea	43	Hydrangea	32	Ligustrum	32
Galphimia	30	Hydrastele	20	Lime	7, 8
Gamboge Tree	12	Hymenaea	12	Limeberry	7
Garcinia	12	Hyophorbe	20	Limnocharis	14
Gardener's Garter	13	Ilex	41	Liniocera	31
Gardenia	30	Indian Lilac	31	Liquidambar	41
Gelsemium	12, 35	Indian Rubber Tree	12, 40	Lieren	10
Genipa	5	Inga	12	Loblolly Bay	41
Giant Arrow-head	15	Inodes	20	Lomaria	23
Ginger Plant	13	Iris	39	Lonicera	35
Gliricidia	40	Ixora	30	Lonchocarpus	40
Gloriosa	39	Jacaranda	40	Loquat	8
Glycosmis	30	Jacobinia	30	Lucuma	5
Gmelina	12	Jacquemontia	34	Lygodium	24
Gordonia	41	Japan Persimmon	8	Maba	31
Grape	10	Japanese Pepper	12	Macadamia	5
Grapefruit	8	Japanese Walnut	9	Macartney Rose	35
Grevillea	27, 40	Jasminum	30, 32, 34, 35	Mackaya	31
Groo-groo Palm	18	Jatropha	12, 30	Magnolia	41
Guava	6, 9	Jessamine	12, 30, 31, 35	Mahogany Tree	12
Guilielma	20	Juglans	9	Maidenhair Fern	23
Gymnogramme	23	Juniperus	16	Malay Apple	5
Gynerium	14	Kaempferia	39	Mammea	5
Hackberry Tree	41	Kaffir Plum	5	Mammee Apple	5
Hat Palm	20	Kai Apple	4	Mandarin	7
Hamelia	30	Kopsia	30	Mango	5
Harpephyllum	5	Kumquat	7	Mangifera	5
Hedera	35	Lagerstroemia	32	Maranta	12, 27
Hedychium	39	Lasiandra	31	Marmalade Box	5
Heliconia	27	Latania	20	Martinezia	20
Hemerocallis	39	Lastrea	23	Melia	31, 42



View in Our Grounds—No. 1, *Cocos eriospathe*; No. 2, *Phoenix pumila*; No. 3, *Phoenix Leonensis*.

	PAGE.		PAGE.		PAGE.
Melicocca	6	Pithecoctenium	35	Snow Bush	28
Melon Fruit	4	Pittosporum	31, 33	Soap-Berry Tree	12
Meyenia	31	Plantain	27	Solanum	31, 34
Microlepis	24	Plumbago	31	Sophora	42
Mock Orange	33	Plumeria	31	Sour Sop	4
Morning Glory	34	Platanus	42	Spanish Bayonet	44
Moroeca	39	Plum	9	Spanish Lime	6
Morus	9	Pomegranate	9	Spanish Moss	44
Mulberry	9	Pomelo	8	Spiceberry	26
Murraya	31	Poinciana	40	Spider Plant	28
Musa	6	Polyanthes	40	Splendens	33
Muscadine Grape	10	Poplar	42	Spondias	6
Myrica	12	Populus	42	Star Apple	4
Myriophyllum	14	Polypodium	24	Stenotaphrum	14
Natal Lily	39	Polystichum	25	Sterculia	41, 42
Necklace Tree	31	Pothos	28	Stephanotis	34
Nelumbium	14	Prickly Pear	43	Strobilanthes	28, 31
Neowashingtonia	20	Pritchardia	21	St. Lucie Grass	13
Nephelium	6	Privet	32	St. Augustine Grass	14
Nephrodium	24	Prunus	9, 33, 40	Sugar Apple	4
Nephrolepis	24	Psidium	6, 9	Surinam Cherry	5
Nephtytis	27	Pteris	25	Sweet Gum Tree	41
Nerium	32	Ptychosperma	21	Sword Fern	24
Night Blooming Cereus	43	Pudding Pipe Tree	11	Swietenia	12
Norfolk Island Pine	16	Punica	9	Syringa	33
Northey Berry	10	Pyrus	9	Tabernaemontana	31
Nymphaea	14	Queensland Nut	5	Talinum	28
Oak	42	Quercus	42	Tamarindus	6
Oleander	32	Queen Plant	39	Taxodium	16
Operculina	34	Quisqualis	34	Tea Plant	11
Opuntia	9, 43	Rainbow Moss	25	Tecoma	34
Orange	7	Rangoon Creeper	34	Thalia	15
Oreodoxa	21	Raspberry	6	Theobroma	13
Ormosia	31	Reineckia	40	Thespesia	41
Osmunda	24	Renalmia	31	Thevetia	31
Otaheite Apple	6	Retinospora	16	Thrinax	22
Otaheite Gooseberry	4	Rhapidophyllum	21	Thunbergia	35
Oxyanthus	31	Raphiolepis	33	Thuya	16
Palmetto	22	Rhynchospermum	35	Tillandsia	44
Pagoda Tree	42	Richardia	40	Tradescantia	28
Palm Grass	14	Rosa	35	Trichilia	41
Pampas Grass	14	Rosa de Montana	34	Triplaris	41
Panax	27	Roses	33	Triphasia	7, 31
Pancratium	39	Rose Apple	5	Trumpet Flower	31
Panicum	14	Royal Palm	21	Tuberose	40
Papaw	4	Rubber Tree	12, 40	Turmeric	11
Paper Flower	34	Rubus	6, 9	Typha	15
Papyrus	15	Russellia	31	Umbrella China Tree	42
Para Grass	14	Sabal	21	Umbrella Grass	14
Paritium	12	Sacred Lotus	14	Vanilla	13
Passiflora	6	Sagittaria	15	Vallisneria	35
Peach	9	Sago Palm	20	Vitis	10
Pear	9	Sand Box Tree	40	Vitex	42
Pecan	8	Sansevieria	12, 28	Wandering Jew	28
Peltrandra	15	Santolina	28	Water Hyacinth	14
Pedilanthus	44	Sapindus	12	Water Lettuce	15
Pencilaria	40	Sapodilla	4	Water Lily	15
Peptadenia	34	Sapota	4, 5	Water Poppy	14
Persea	6, 42	Saraca	41	Wax Myrtle	12
Pereskia	44	Schizolobium	41	Wistaria	36
Persimmon	8	Screw Pine	28	Woodwardia	25
Philadelphia	33	Sea Grape	4	Woman's Tongue Tree	40
Phoenix	21	Seaforthia	22	Xanthosoma	40
Phyllocactus	44	Sebesten Plum	29	Yellow Jessamine	12
Phyllanthus	28	Selaginella	23, 25	Ylang-Ylang	29
Pimento	12	Shell-Flower	29	Yucca	44
Pineapple	4	Silk-Cotton Tree	11	Zamia	22
Pinus	16	Sisal Hemp	10	Zebra Grass	14
Piper	12	Smilax	36	Zingiber	13
Pistia	15	Shakewood Tree	4		
Pitcairnea	44				



Water Tank, Greenhouses and Plant Packing House.



Interior View 10 ft. Lath House, Royal Palm Nurseries.

