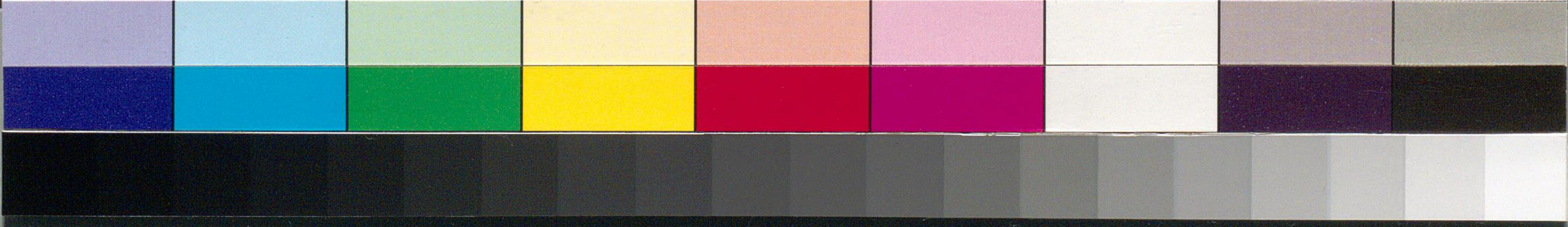


東海道  
寺島宗則  
御書

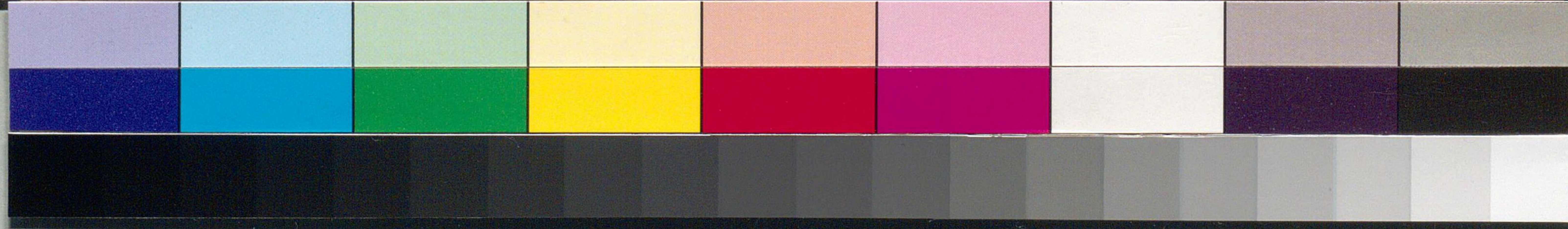
宗則

宗則



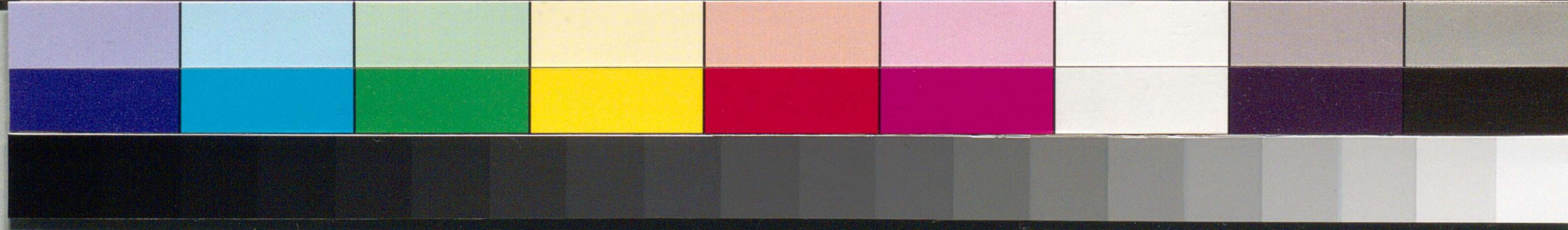


戒音  
肥後守





Handwritten Japanese characters on a vertical strip of aged paper. The characters are arranged vertically and appear to be a signature or a short note. The top character is '寺' (Temple), followed by '島' (Shima), and '宗' (Mune). Below these are several smaller characters, including '則' (Nori) and '文' (Bun), which together form '宗則文書' (Munonori Bunko).





五ノ前漢文ノ序ノ書

後行拙著ノ序ノ書

帯九ノ書ノ序ノ書

ノ序ノ書

ノ序ノ書

ノ序ノ書

ノ序ノ書

ノ序ノ書

ノ序ノ書

ノ序ノ書

ノ序ノ書

ノ序ノ書

ノ序ノ書

ノ序ノ書

ノ序ノ書

