

Table des navires partis pour la Nouvelle-Orléans.

Table listing ship departures with columns for ship name, destination, and departure date. Includes entries like 'NEW YORK', 'LIVERPOOL', 'BORDEAUX', 'PALERME', 'HULL', 'VICTORIA', 'ST LUCIA', 'SWANSEA', 'DARTMOUTH'.

Liste des navires dans le port.

Table listing ships in port with columns for ship name, origin, and arrival date. Includes entries like 'STEAMERS', 'MONTAGNE', 'ALGER', 'LIVERPOOL', 'STUYVOK', 'NEW YORK', 'COSTA RICA', 'HONDURAS', 'PORT LIMON', 'BRÉME', 'HONDURAS', 'PORT LIMON', 'HONDURAS', 'PORT LIMON'.

BULLETIN FLUVIAL.

Table with columns for 'Fluvial Bulletin' and 'Fluvial Bulletin', listing various items and their prices.

NAVIGATION FLUVIALE.

Text providing information about river navigation, including dates and routes.

MARCHE AUX BESTIAUX.

Text detailing the livestock market, including prices for various types of animals.

ANNONCES JUDICIAIRES.

Legal notices regarding property sales and court proceedings. Includes 'VENTES PAR LE SHERIFF' and 'ANNONCE JUDICIAIRE'.

ANNONCE JUDICIAIRE.

Specific legal notice regarding a property sale or court order.

ANNONCE JUDICIAIRE.

Another specific legal notice regarding a property sale or court order.

ANNONCES JUDICIAIRES.

Final legal notice in this section regarding a property sale or court order.

VENTES PAR LE CONSTABLE.

Notice regarding public sales conducted by a constable.

AVIS DE SUCCESSIONS.

Succession notices for various individuals, including names and addresses.

AVIS DE SUCCESSIONS.

Another set of succession notices for different individuals.

AVIS DE SUCCESSIONS.

Third set of succession notices.

AVIS DE SUCCESSIONS.

Final set of succession notices in this column.

AVIS DE SUCCESSIONS.

Succession notice for William Schwark.

AVIS DE SUCCESSIONS.

Succession notice for Thomas L. Lamer.

AVIS DE SUCCESSIONS.

Succession notice for J. W. Werrick.

AVIS DE SUCCESSIONS.

Succession notice for Nicholas Kremer.

AVIS DE SUCCESSIONS.

Succession notice for Pierre Cannelle.

AVIS DE SUCCESSIONS.

Succession notice for Anna Maria Gartner.

AVIS DE SUCCESSIONS.

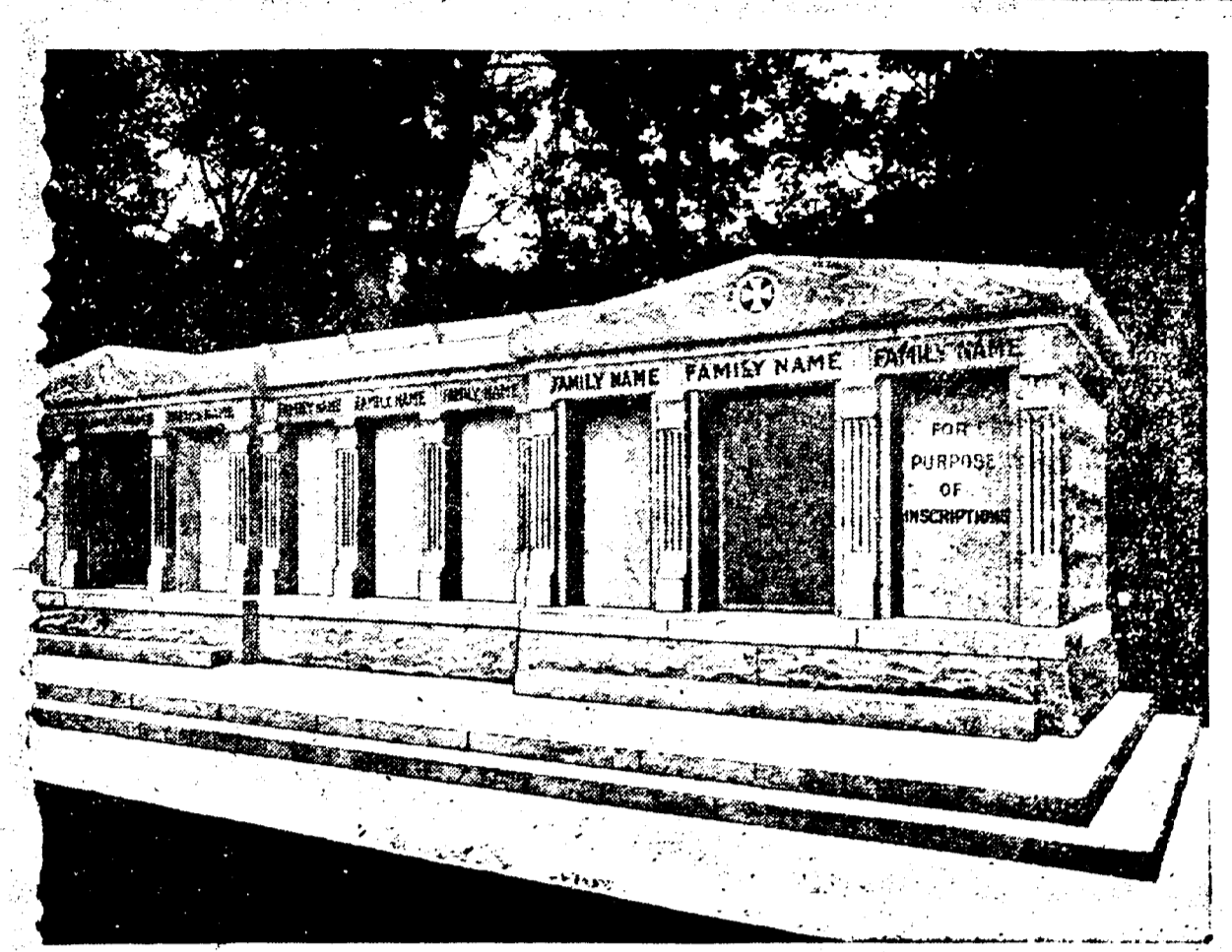
Succession notice for Henry Heletta.

AVIS DE SUCCESSIONS.

Succession notice for Elizabeth Mary Brack.

AVIS DE SUCCESSIONS.

Succession notice for T. E. Hearn.



A VENDRE - Les caveaux dont on voit ci-dessus la gravure. Ils sont en granit, au ci-melière St-Louis No 3, Avenue de l'Esplanade. Il en est ont une contenance de 12 grands cercueils et d'autres de 6. Chacun est distinct des autres, et tous seront vendus séparément à des prix très réduits. S'adresser à CHAS. A. ORLEANS, No 319 Rue Carondelet ou au Gardien.

Rapport Annuel DE LA

Indemnity Fire Insurance Company

De la Ville de New York. Pour l'année finissant le 31 décembre 1906.

Table showing financial data for Indemnity Fire Insurance Company, including capital, assets, and liabilities.

VENTES A L'ENCAIN.

Carrère & Keeney.

Notice regarding real estate sales and property management.

AVIS DE SUCCESSIONS.

Succession notice for Joseph Oscar Tardif.

AVIS DE SUCCESSIONS.

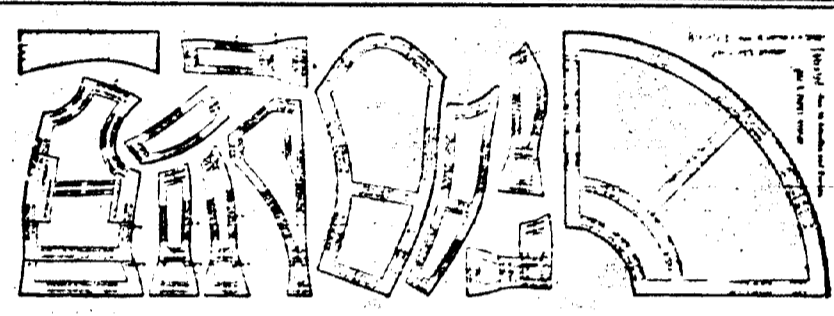
Succession notice for W. B. J. Weber.

AVIS DE SUCCESSIONS.

Succession notice for A. F. Pizassa.

AVIS DE SUCCESSIONS.

Succession notice for Henry R. Ricca.



Le conformateur Peyry A LA NOUVELLE-ORLEANS.

Text describing the services of the tailor, including custom clothing and alterations.

AVIS DE SUCCESSIONS.

Succession notice for Charles Joseph Tardif.

AVIS DE SUCCESSIONS.

Succession notice for W. B. J. Weber.

AVIS DE SUCCESSIONS.

Succession notice for A. F. Pizassa.

AVIS DE SUCCESSIONS.

Succession notice for Henry R. Ricca.

AVIS DE SUCCESSIONS.

Succession notice for Henry R. Ricca.

CHEMINS DE FER

"Ozono Route"

Table listing train routes and schedules for the 'Ozono Route'.

EXCURSIONS

Text describing various excursion packages and their prices.

Q. & C. Change de

ROUTE Tableau

Text regarding route changes and schedules.

Dimanche, 10 Février 1907

Text providing information about train services on a specific date.

BUREAU DES BILLETS.

Text regarding ticket office information.

ILLINOIS CENTRAL R. R.

Text describing the Illinois Central Railroad services.

NOUVELLE-ORLEANS ET ST-LOUIS.

Text providing information about routes between New Orleans and St. Louis.

NEW YORK.

Text regarding train services to New York.

L'Agent des Billets en Ville.

Text regarding ticket agents in the city.

Yazoo & Mississippi Valley.

Table listing train schedules for the Yazoo & Mississippi Valley Railroad.

BUREAU DES TICKETS.

Text regarding ticket office information.

LOUISVILLE & NASHVILLE

Text describing the Louisville & Nashville Railroad services.

SCIENTIFIC AMERICAN.

Text regarding the Scientific American publication.

CHATELAIN & CO.

Text regarding the Chatelain & Co. business.

W. G. COYLE & CO.

Text regarding the W. G. Coyle & Co. business.

VAPEURS.

Text regarding steamship services.

LIGNE FRANÇAISE.

Text regarding the French Line shipping services.