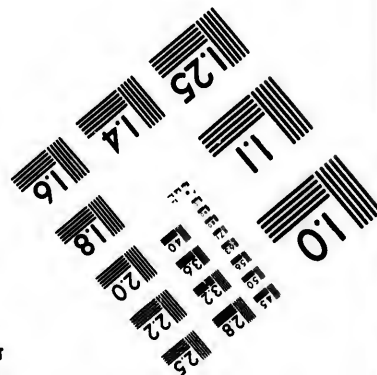
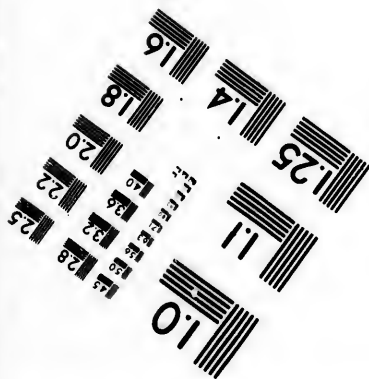
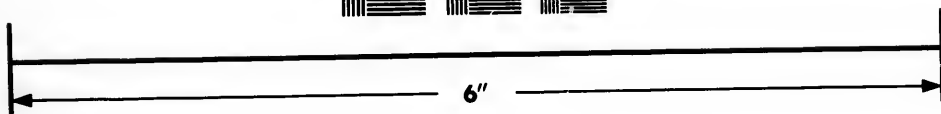
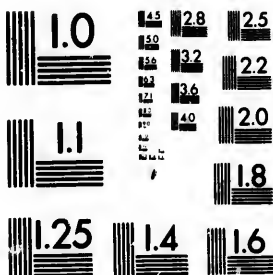


**IMAGE EVALUATION
TEST TARGET (MT-3)**



**Photographic
Sciences
Corporation**

23 WEST MAIN STREET
WEBSTER, N.Y. 14580
(716) 872-4503



**CIHM/ICMH
Microfiche
Series.**

**CIHM/ICMH
Collection de
microfiches.**



Canadian Institute for Historical Microreproductions / Institut canadien de microreproductions historiques



© 1984

Technical and Bibliographic Notes/Notes techniques et bibliographiques

The Institute has attempted to obtain the best original copy available for filming. Features of this copy which may be bibliographically unique, which may alter any of the images in the reproduction, or which may significantly change the usual method of filming, are checked below.

L'institut a microfilmé le meilleur exemplaire qu'il lui a été possible de se procurer. Les détails de cet exemplaire qui sont peut-être uniques du point de vue bibliographique, qui peuvent modifier une image reproduite, ou qui peuvent exiger une modification dans la méthode normale de filmage sont indiqués ci-dessous.

- Coloured covers/
Couverture de couleur
- Covers damaged/
Couverture endommagée
- Covers restored and/or laminated/
Couverture restaurée et/ou pelliculée
- Cover title missing/
Le titre de couverture manque
- Coloured maps/
Cartes géographiques en couleur
- Coloured ink (i.e. other than blue or black)/
Encre de couleur (i.e. autre que bleue ou noire)
- Coloured plates and/or illustrations/
Planches et/ou illustrations en couleur
- Bound with other material/
Relié avec d'autres documents
- Tight binding may cause shadows or distortion
along interior margin/
La reliure serrée peut causer de l'ombre ou de la
distortion le long de la marge intérieure
- Blank leaves added during restoration may
appear within the text. Whenever possible, these
have been omitted from filming/
Il se peut que certaines pages blanches ajoutées
lors d'une restauration apparaissent dans le texte,
mais, lorsque cela était possible, ces pages n'ont
pas été filmées.
- Additional comments:/
Commentaires supplémentaires:

- Coloured pages/
Pages de couleur
- Pages damaged/
Pages endommagées
- Pages restored and/or laminated/
Pages restaurées et/ou pelliculées
- Pages discoloured, stained or foxed/
Pages décolorées, tachetées ou piquées
- Pages detached/
Pages détachées
- Showthrough/
Transparence
- Quality of print varies/
Qualité inégale de l'impression
- Includes supplementary material/
Comprend du matériel supplémentaire
- Only edition available/
Seule édition disponible
- Pages wholly or partially obscured by errata
slips, tissues, etc., have been refilmed to
ensure the best possible image/
Les pages totalement ou partiellement
obscurcies par un feuillet d'errata, une pelure,
etc., ont été filmées à nouveau de façon à
obtenir la meilleure image possible.

This item is filmed at the reduction ratio checked below/
Ce document est filmé au taux de réduction indiqué ci-dessous.

10X	14X	18X	22X	26X	30X
<input type="checkbox"/>	<input type="checkbox"/>	<input type="checkbox"/>	<input checked="" type="checkbox"/>	<input type="checkbox"/>	<input type="checkbox"/>
12X	16X	20X	24X	28X	32X

The copy filmed here has been reproduced thanks to the generosity of:

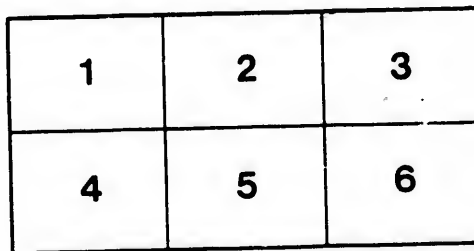
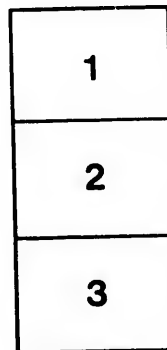
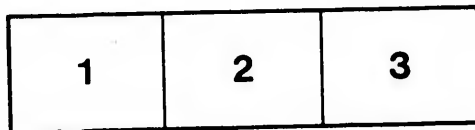
Seminary of Quebec
Library

The images appearing here are the best quality possible considering the condition and legibility of the original copy and in keeping with the filming contract specifications.

Original copies in printed paper covers are filmed beginning with the front cover and ending on the last page with a printed or illustrated impression, or the back cover when appropriate. All other original copies are filmed beginning on the first page with a printed or illustrated impression, and ending on the last page with a printed or illustrated impression.

The last recorded frame on each microfiche shall contain the symbol \rightarrow (meaning "CONTINUED"), or the symbol ∇ (meaning "END"), whichever applies.

Maps, plates, charts, etc., may be filmed at different reduction ratios. Those too large to be entirely included in one exposure are filmed beginning in the upper left hand corner, left to right and top to bottom, as many frames as required. The following diagrams illustrate the method:



L'exemplaire filmé fut reproduit grâce à la générosité de:

Séminaire de Québec
Bibliothèque

Les images suivantes ont été reproduites avec le plus grand soin, compte tenu de la condition et de la netteté de l'exemplaire filmé, et en conformité avec les conditions du contrat de filmage.

Les exemplaires originaux dont la couverture en papier est imprimée sont filmés en commençant par le premier plat et en terminant soit par la dernière page qui comporte une empreinte d'impression ou d'illustration, soit par le second plat, selon le cas. Tous les autres exemplaires originaux sont filmés en commençant par la première page qui comporte une empreinte d'impression ou d'illustration et en terminant par la dernière page qui comporte une telle empreinte.

Un des symboles suivants apparaîtra sur la dernière image de chaque microfiche, selon le cas: le symbole \rightarrow signifie "A SUIVRE", le symbole ∇ signifie "FIN".

Les cartes, planches, tableaux, etc., peuvent être filmés à des taux de réduction différents. Lorsque le document est trop grand pour être reproduit en un seul cliché, il est filmé à partir de l'angle supérieur gauche, de gauche à droite, et de haut en bas, en prenant le nombre d'images nécessaire. Les diagrammes suivants illustrent la méthode.

ails
du
odifier
une
mage

s

errata
to

pelure,
on à



32X

1865 Expositions N° 1



CATALOGUE
OF THE
CANADIAN CONTRIBUTIONS
TO THE
DUBLIN EXHIBITION,
1865.



Bibliothèque,
Le Séminaire de Québec,
3, rue de l'Université,
Québec 4, QUE.

CATALOGUE
OF THE
CANADIAN CONTRIBUTIONS
TO THE
DUBLIN EXHIBITION,
1865.

These contributions have been collected by the Department of Agriculture, Statistics and Patents, in less than a month, with the help of the Boards of Agriculture, and the Boards of Arts and Manufactures, of Upper and Lower Canada; and the officers of the Geological Commission of Canada.

The Grant made by the Legislature was only available for the purpose on the 17th of March, and on the 15th of April thirty five packages were shipped for Dublin on board the steamship *Nova Scotian* at Portland, and on the 22nd the remainder of the whole collection (save some packages not delivered in time by the Grand Trunk Railway Company) were dispatched on board the *Moravian*.

The sum of five thousand dollars is the amount granted by Parliament for the object of the Dublin Exhibition. Such a Grant, although exceedingly generous under the circumstances in which the country is involved, is nevertheless small, when the various expenses connected with such an undertaking are taken into consideration, for nearly all the articles sent have had to be purchased.

The present catalogue is drawn up according to the classification adopted by the Dublin Exhibition Executive Committee, which classification is almost similar to the division made for the London Exhibition of 1851, at the suggestion of His late Royal Highness Prince Albert.

Class A.

RAW MATERIALS.

Section 1, Mineral Products.

1. The CROWN LAND DEPARTMENT, Quebec : 70 specimens of amethystine quartz, 20 specimens of copper ore and 30 specimens of native copper.

NOTE. Besides the Provincial Collection sent to Dublin by authority of the Honorable the Minister of Agriculture, a local independent collection has been forwarded by a Committee organized in the Eastern Townships at Sherbrooke. The information conveyed to the Bureau of Agriculture is to the effect that it is composed of the following articles :—

- 18 samples of grain of various kinds.
- 5 samples of Maple sugar.
- 28 specimens of domestic manufactures, cloths, flannels, &c.
- Maps of the districts of Bedford and St. Francis.
- A section of a maple tree with spout, sugar pan, &c., &c.
- Specimens of flax in straw, in fibre, and flax seed.
- 44 specimens of as many varieties of wood.
- 4 specimens of tools.
- Specimens of photography.
- And 20 specimens of Eastern Township's copper ore.

2. **THE OFFICERS OF THE PROVINCIAL GEOLOGICAL SURVEY, Montreal :** A collection of minerals and mineral products from different parts of Canada ; see appendix A for details.

Section 2, Chemical and other Products.

3. **J. MILLAN, Montreal :** Concentrated extract of hemlock bark for tanning purposes.

Section 3, substances used as Food

4. **The BOARD OF AGRICULTURE OF UPPER CANADA, Toronto :** A collection of specimens of grain and other agricultural products : see appendix B for details.
5. **The BOARD OF AGRICULTURE OF LOWER CANADA, Montreal :** two collections of specimens of grain and other agricultural products, one in quart glass jars and one in half-bushel barrels : see appendix C for details.

Section 4, Vegetable and Animal Substances.

6. **L'ABBÉ BRUNET, Professor of Botany at the Laval University, Quebec :** A collection of forty-eight large specimens of woods, showing a varnished and polished sheet of veneer fixed on a solid board of the same variety of wood : see appendix D for details.
7. **LYMAN CLARE AND Co., Montreal :** specimens of flax seed and linseed.

Class B.

MACHINERY.

Section 5, Carriages, &c.

8. **R. MCKINLEY, St. Catherines, C. W. :** specimens of different parts of carriage making.

Section 6, Machines and certain tools.

9. THOMAS MOORE, Etobicoke, C. W.: a collection of 36 wooden tool handles.
10. SELIVERY, IREDALE AND WARD, Toronto: 10 specimens of boot-trees and lasts.
11. G. W. REED, Montreal: 35 specimens of boot-lasts and trees.

Section 7, Agricultural Implements.

12. The BOARD OF AGRICULTURE OF UPPER CANADA, Toronto: 43 specimens of hand tools used in horticultural and agricultural operations; see appendix B for details.

Section 10, Philosophical and other special Instruments.

13. CHARLES POTTER, Toronto: an ophthalmoscope.
14. DEPARTMENT OF PUBLIC INSTRUCTION OF UPPER CANADA, Toronto: a collection of philosophical and other school instruments, maps and books; see appendix E for details.
15. DEPARTMENT OF PUBLIC INSTRUCTION OF LOWER CANADA, Montreal: a series of the "Journal of Education" and "Journal de l'Instruction Publique."

Class C.
TEXTILE FABRICS.*Section 12, Woollen and Worsted.*

16. BARBER BROTHERS, Streetville, C. W: Samples of cloths.

17. J. G. CRANE, Ancaster, C. W: Specimens of articles of clothing.
18. A. ROBERTSON AND Co., Montreal: 40 specimens of Canadian tweeds manufactured at Peterborough, C. W.
19. MRS. J. MARTIN, Stanstead: Ornamented infant shawl.
20. R. MILLER, Montreal: Worked counterpane.

Section 14, Manufactures from Flax and Hemp.

21. J. A. DONALDSON, Toronto: Specimens of prepared flax, cordage and linen.
22. LYMAN, CLARE AND Co., Montreal: Prepared flax and fibre.

Section 16, Leather, Skins, Furs, Feathers and Hair.

23. U. E. CLARKE, Toronto: 1 leather trunk.
24. ALFRED GREEN, Hamilton: A collection of 7 specimens of brush manufacturing.
25. CHARLES BOECKH, Toronto: 7 specimens of brushes.
26. SHAW AND Co., Montreal: Specimens of sole leather.
27. J. BOYD, Montreal: A collection of brushes.
28. J. C. McLAREN, Montreal: Fire hose, pipes and couplings.
29. DONOVAN, MORAN AND Co., Montreal: Specimens of leather.
30. BROWN AND CHILD, Montreal: A collection of boots and shoes.

Section 17, Printing, Stationery and Book-binding.

31. LÉGER BROUSSEAU, Quebec: A large and rich col-

lection of Book-binding; see appendix F for details.

32. GEORGE E. DESBARATS, Quebec: A large and rich collection of Book-binding; see appendix G for details.
33. ROLLO AND ADAMS, Toronto: Five specimens of Book-binding. Scadding's Shakespere, Edgar's Insolvent Act, British American Magazine 2 volumes, Upper Canada Queen's Bench Reports and Taylor's Chancery orders.
34. W. C. CHEWETT AND Co., Toronto: Seven specimens of Book-binding. Canada Directory, Toronto Directory, 4 volumes of Journals, 1 volume containing Almanacs for 5 years, and an assortment of frames for photographs.
35. JOHN LOVELL, Montreal: A collection of school Books; see appendix H for details.
36. BROWN BROTHERS, Toronto: A collection of stationery.
37. A. BUNTIN, Montreal: A collection of stationery.
38. J. DEWITT, Montreal: A collection of mits and gloves.

Section 19, Embroidery, Fancy and Industrial works.

39. OLIVIER CÔTÉ, Quebec: A large collection of mosaïc of furs, indian vestments, indian moose-deer and porcupine embroidery, and other various fancy works; see appendix I for details.

NOTE. These different collections of printing and book-binding have been made the occasion to exhibit the works of the Canadian authors of the day, both French and English. Besides separate books, several Reviews and other periodicals containing papers on literature and science form also part of those collections, the whole being a pretty fair illustration of the way the English and French languages are dealt with in the valley of the St. Lawrence.

40. PAUL TAHOURHENCHÉ (*Point-du-jour*), Indian Huron Chief, Lorette near Quebec: A collection composed of 2 hunter's tobagans with drawing collars, 4 pairs of snow shoes, 12 pairs of mocassins, 6 ornamented hunting knives and sheaths of caribou skin, 3 pairs of embroidered caribou paws, and eighteen cluster specimens of natural white, blue, yellow, red, purple and green dyed moose-deer hairs for fancy indian embroidery.

Class D.

METALLIC MANUFACTURES.

Section 21, Edge tools, &c.

41. GALT EDGE TOOLS COMPANY, Galt C. W.: A collection of 42 edge tools of various descriptions.

42. J. DAWSON, Montreal: A collection of planes.

Section 22, General Hardware.

43. RICE LEWIS AND SON, Toronto: 7 specimens of skates, hinges and saws.

44. THOMAS PECK, Montreal: A collection of nails of various sizes.

Section 24. Glass.

- 45 J. McCAUSLAND, Toronto: Specimens of stained glass, shown in the form of the Canadian arms.

Class E.

MISCELLANEOUS MANUFACTURES.

Section 26, Furniture &c.

46. PIERRE ROY, Quebec: A gueridon mosaic of Canadian woods.

47. JACQUES and HAY, Toronto : An inlaid table top.

Section 28, Manufacture from animal and vegetable substances.

48. TORONTO LINSEED OIL MILLS : A collection of 12 specimens of linseed oil and cakes.

49. PETRIE and STRONGER, Roslin Glen. C. W. : 15 specimens of starch.

50. NELSON and WOOD, Montreal : A collection of corn brooms, dusters, pails and wash-boards.

51. JÉRÉMIE NOISEUX, Montreal : one dozen of manilla dusters.

Section 29, Miscellaneous Manufactures.

52. HURD AND LEIGH, Toronto : 6 plates and 6 cups and saucers.

53. CHARLES HEISE, Preston C. W. samples of waved mouldings.

54. R. MITCHELL AND Co., Montreal : small pumps and valves.

Class F.

FINE ARTS.

Section 30, Painting, Drawing, Photographs, &c.

55. W. ARMSTRONG, Toronto : A collection of water color drawings composed of 28 views of the country extending between Canada and Vancouver's Island ; portraits of 27 Indian Chiefs ; 2 large pictures in frames and 41 stereoscopic views of Lake Superior.

56. R. DUNCANSON, Montreal : 2 oil paintings, Land of the lotus eaters, and Chaudière Falls near Quebec.
57. J. B. LIVERNOIS, Quebec : A collection of 44 large historical photographs, known under the name of *Album historique Livernois*; see Appendix J for details (the cover of the album belongs to Mr. Brouseau's exhibition of Book binding).
58. WAYS' scenery photographed by NOTMAN, Montreal : These twelve views are bound in an album, the cover of which forms part of the collection of Book-binding of Mr. Desbarats of Quebec.
59. The BOARD OF WORKS, Quebec : A collection of photographs of divers public buildings of Canada.
60. ELISSON AND COMPANY, Quebec : A collection of photographed landscapes and portraits; see appendix K for details.
61. A. HENDERSON, Montreal : 23 photographs of Canadian scenery.
62. M. HOLLINGSWORTH, Toronto : 46 small photographic views of Toronto in three frames.
63. W. B. BUTLER, Toronto : One map of Upper Canada and one map of Toronto.
64. M. ORR, Toronto : 4 specimens of penmanship.
65. JOHN JONES, Quebec : A large and elaborate specimen of card board artistical cutting.

APPENDIX A.

A SELECTION OF THE
MINERAL PRODUCTS OF CANADA,

SENT TO THE
DUBLIN EXHIBITION, 1865,

UNDER THE AUSPICES OF THE
Board of Arts of Lower Canada.

No. 2 of the Catalogue.

IRON ORES.

Bog Ore. Radnor Furnaces, Batiscan.

With specimens of cast and wrought iron made from the ore which is found in many places in the vicinity.

St. Vallier, Co. Bellechasse.

Similar ores abound in Vaudreuil on the Ottawa, and many other places.

Red Hematite. McNab. lot 6. ranges C. and D.

A bed thirty feet thick, on the Ottawa River.

Sutton, lot 9, range 11,

A bed seven feet thick of iron-slate.

Sutton, lot 6, range 9.

A bed seven feet thick of iron-slate.

Brome, lot 3, range 1.

A bed of five feet. Similar beds of iron-slate are abundant in the townships just named.

Magnetic Ore. Sutton, lot 9 range 9.

A bed twelve feet thick holding the crystallized ore in dolomite.

Marmora mine, Belmont, lot 8, range 1.

A succession of beds occurs here, one of them 100 feet thick. This ore has been smelted, and is of great purity and very abundant.

Newboro, South Crosby, lots 26, 27, range 6.

A bed of 200 feet thick, which has been quarried and Shipped to Pennsylvania, for smelting. It is on the Rideau Canal.

Hull, lot 11, range 7.

A bed of about ninety feet thick, which was at one time, like the last, mined and sent by the Rideau Canal and Lake Ontario to Pittsburg, Pennsylvania.

Bathurst, lot 11, range 8.**South Sherbrooke, lot 19, range 3.**

Of these two localities the latter is on Myers's Lake, and is said to be sixty feet in thickness,

Madoc, lot 11, range 5,

A bed of twenty-five feet, which was at one time quarried for smelting in the neighborhood.

Titanic Iron Ore or Ilmenite, St. Urbain, Bay St Paul,

A bed of about ninety feet which contains 48.6 per cent of titanica acid.

LEAD ORE.

Galena, Indian Cove, Gaspé.
 Ramsay Mine, Ramsay, lot 3, range 6.
 Landsdowne, lot 3, range 8.

TUDOR.

Bedford, lot 19, range 7.

COPPER ORES.

Sulphurets of Copper. Escott, lot 7, range 2.
 Bruce Mines, Lake Huron.
 Wellington Mine, do.
 Upton Mine, Upton, lot 51, range 20.
 Bissonnette's Mine, Upton, lot 49, range 20.
 Black River Mine, St. Flavien.
 Harvey Hill Mine, Leeds, lot 18, range 15.
 Coldspring Mine, Melbourne, lot 6, range 2.
 Sweet's Mine, Sutton, lot 8, range 10.
 Haskell Hill Mine, Ascott, lot 8 range 8.

Native Copper. St. Ignace Island. Lake Superior.
 Michipicoten Island, do.
 Mainse, do.

Chromic Iron Ore. Mount Albert, Gaspé.
 Ham, lot 4, range 2.

Bolton, lot 23, range 6.

Melbourne, lot 22, range 6.

Iron Pyrites, with Cobalt. Elizabethtown, near Brockville.

A large bed which contains one two hundredth of Cobalt.

Carbonate of Magnesia. Sutton, lot 12, range 7.

Bolton, lot 17, range 9.

This mineral forms in the second locality a bed of great extent.

Phosphate of Lime. North Elmsley, lot 25, range 8.

South Burgess, lot 9, range 5.

Similar deposits of this mineral are found in a great many localities in the above named and in adjacent townships.

Soapstone. Sutton, lot 12, range 7.

Potstone. Bolton, lot 26, range 2.

The two minerals just mentioned, of which the first is a compact talc or steatite, and the second a chlorite, are abundant in many parts of the Eastern Townships,

Mica. Augmentation of Grenville.

North Burgess, lot 17, range 9.

Mica of a similar quality is found abundantly in several places in the township just named, and in the adjacent one of South Burgess.

Plumbago. Pointe du Chêne, Argenteuil.

Augmentation of Grenville, lot 3, range 6

Lochaber.

This mineral is found in many other localities in the Laurentian region of Canada.

BUILDING STONES.

Limestone. Arnprior, McNab,*lot 4, range O.

Portage du Fort.

Pointe Claire.

Montreal.

Gloucester.

The first two of these are from the Laurentian limestones; the others, from the Lower Silurian. The Pointe Claire stone was employed for the piers of the Victoria Bridge, and that from Montreal is the common building stone of the city, while that from Gloucester is largely used at Ottawa.

Dolomite. Owen Sound.

This specimen represents a band of dolomite or magnesian limestone, which is also quarried at Guelph, Rockwood and many other points in Western Canada, and is extensively used.

Sandstone. Lynn, Elizabethtown.

Quin's Point, Petite Nation.

Georgetown, Esquesing.

The first two of these are from the Potsdam formation. The last is from what is called the Grey-Band, which is quarried in many parts of Western Canada, and greatly esteemed as a building stone at Toronto and Hamilton.

Labradorite. Abercrombie.

The labradorite rock is abundant in many parts of the Laurentian region, and is well fitted for decoration.

Gneiss. Grenville.

Syenite. Barrow Island, near Gananoque.

A red syenite similar to the above occurs also at Grenville, and in other parts of the Laurentian region.

Granite. Barnston.

Granite precisely similar to the above is abundant in Barnston, Stanstead, Hereford, and many other points in the Eastern Townships.

MARBLES.

Light and dark gray.	Arnprior.
White.	Elzevir.
Yellowish-white	Grenville.
White.	St. Armand.
Dove-gray and white.	do.
Red and white.	St. Joseph.
Grey and red.	Caughnawaga.
Dove-grey.	St. Dominique.
Brownish-black.	Pointe Claire.
Black.	Cornwall.
Grey.	Montreal.
Cream-colored and yellow.	Dudswell.
Grey and yellow.	do.
Yellow and white.	do.

SERPENTINES.

Light and dark green. Melbourne, lot 22, range 6.

Brecciated green. Melbourne, lot 20, range 5.

Green and white. St. Joseph, Beauce.

Similar serpentines are also found at Orford and several other places in the Eastern Townships.

Roofing Slates. Walton's Quarry, Melbourne, lot 22, range 6.

Orford, lot 2, range 5.

Tring.

Kingsey, lot 4, range 1.

Cleveland, lot 6, range 15.

Gypsum. Oneida.

York.

Ochres. Cap de la Madeleine.

Pointe du Lac.

The ochres of the latter place are prepared for the New York market. Large deposits of similar ochres are met with at Ste. Anne de Montmorenci and elsewhere.

Sulphate of Barytes. Landsdowne, lot 2, range 7.

Lithographic Stone. Marmora, lot 7, range 4.

Oxbow, Saugeen River.

Jasper Conglomerate. Bruce Mines, Lake Huron.

Sandstone for Glass. Williamstown, Beauharnois.

Similar material occurs in many other places among the sandstones of the Potsdam formation.

* Owing to the short time allowed for the preparation of this collection it is necessarily incomplete. It will, however, be found to include examples of most of the more important economic mineral products of the province.

APPENDIX B.*Designation of Grains, Products and Implements
of the Collection of the Upper Canada Board
of Agriculture.*

No. 4, of the Catalogue.

PRODUCTS :

Flax Seed, Black Oats, Marrow-fat Peas, Bald club
Wheat, White winter Wheat, White Oats, Morton.
spring Wheat, White bush Beans, Alsine Clover
White Oats, Winter Rye, Oil Cake, White marrow-
fat Peas, Red bush Beans, Blue imperial Peas, Cham-
pion of England Peas, Black butter Beans, Fife
spring Wheat, Tares, Two rowed Barley, Six rowed
Barley, White and yellow Indian Corn, Yellow Dut-
ton indian Corn, Scutched Flax, Phosphate of Lime,
Early China bush Beans, Red winter Wheat, Case
Knife Beans, Hungarian grass Seed, Timothy grass
Seed, Asparagus Beans, Soules winter Wheat, Golden
vine Peas, Flax Straw, Tobacco Leaf.

IMPLEMENTS :

Cradle Scythe, Grass Scythe, Scythe Snaith, 2 prong
boy's Fork, 2 prong steel hay Fork, 3 prong steel
hay Fork 3 prong steel straw fork, 12 prong steel
manure Fork, 3 prong steel spading fork, steel
manure Drag, Solid neck cast steel Hoe, Solid socket
Hoe, Solid neck turnip Hoe, Solid neck garden Hoe,
four teeth weeding Hoe, Steel garden Rake.

APPENDIX C.

Description of Grain and Products of the two collections of the Lower Canada Board of Agriculture.

No. 5, of the Catalogue.

Spring Fife, Black sea, and White fall wheat.
 Spring Rye.
 Two rowed and four rowed Barley.
 Potatoe and common Oats.
 Early field, common field, marrow-fat and black-eyed Peas.
 Red Randon and white Canadian Clover Seed.
 Flax Seed.
 Timothy Seed.
 Horse, early clime bush, white, yellow, spotted kidney, scarlet running and horticultural running Beans.
 Black Tares.
 Yellow, White and early sweet Indian Corn.
 Buckwheat.
 Maple Sugar.
 Tobacco.

APPENDIX D.

Classification of Woods, Abbé BRUNET'S collection.

No. 6, of the Catalogue.

White Wood, Tulip Wood.

French. Tulipier.

Liriodendron tulipifera, Linn.

This wood is extensively used as a substitute for pine, for building and cabinet purposes. It is easily wrought, durable. Called erroneously "Yellow poplar."

Price at Quebec, 1s. per cubic foot.

Basswood.*French.* **Bois blanc, Tilleul.***Tilia Americana, Linn.*

The wood is soft, close-grained and not liable to warp or split; much used in cabinet work and furniture, in piano-fortes and musical instruments, &c.

Cost at Quebec, 7½d. per cubic foot.

Hard Maple.*French.* **Erable.***Acer saccharinum, Linn.*

The most ornamental portions of the wood are used in the form of veneers for furniture, picture frames, &c. The plain timber is used for house carpentry and furniture, carriage and wagon.

Price at Quebec, 1s. per cubic foot:

Soft Maple.*French.* **Pleine.***Acer rubrum, Linn.*

The wood is white and often handsomely curled. It is extensively used in the form of veneers for furniture, &c. This wood is also used by wood engravers in place of Box-wood.

Price at Quebec, 1s. per cubic foot.

Black Cherry.*French.* **Cerisier noir.***Prunus serotina, Ehrhart.*

The timber is compact, fine, close-grained, receives a high polish, and is extensively used in cabinet work.

Price at Quebec, 1s. 6d. per cubic foot.

White Oak.*French.* **Frene blanc, Franc frene.***Fraxinus Americana, Linn.*

The timber is much valued for its toughness and elasticity ; excellent for works exposed to sudden shocks, as the frames of machines, wheel carriages, agricultural implements.

Price at Quebec, 10d. per cubic foot.

White Elm.

French. **Orme blanc.**

Ulmus Americana, Linn.

The wood is tough and strong, used for the naves of wheels and preferred by wheelwrights to the English Elm.

Price, at Quebec, 1s. per cubic foot.

Buttonwood.

French. **Platane.**

Platanus occidentalis, Linn.

The wood is softer than Beech, very difficult to split. It is sometimes handsomely motled, used in furniture, chiefly for bedsteads, piano-fortes, for screws, presses, &c., also exported for tobacco boxes.

Price at Quebec, 1s. 2d. per cubic foot.

Black Walnut.

French. **Noyer noir.**

Juglans nigra, Linn.

One of the most valuable woods of our Canadian forests. The wood is compact, strong and tough. much used for building, for furniture, and in the form of veneers.

Price at Quebec, 1s. 8d. per cubic foot.

Butternut.

French. **Noyer tendre.**

Juglans cinerea, Linn.

The wood is lighter than the "Black Walnut," and is used in paneling, in ornamental works and for furniture, &c.

Price at Quebec, 10d. per cubic foot.

White Oak.*French.* **Chêne blanc.***Quercus alba*, Linn.

The most valuable of the different varieties of American oaks. The wood is of a great strength and durability, used in ship-building, for staves of casks, railway ties, &c.

Price at Quebec, 1s. 6d. per cubic foot.

Red Oak.*French.* **Chêne rouge.***Quercus rubra*, Linn.

The wood makes best casks for oils and molasses, but is too little sought after, on account of the great abundance and greater value of white oak.

Price at Quebec, 1s. per cubic foot.

American Beech.*French.* **Hêtre.***Fagus ferruginea*, Ait.

The wood is of a very difficult cleavage, of great compactness and strength, much used for planes and other tools of carpenters, &c., in architecture for interior works; common bedsteads and furniture, &c.

Black Birch.*French.* **Merisier rouge.***Betula lenta* Linn.

The wood is strong, compact and receives a high polish; much used in furniture; when varnished, resembles the "Honduras Mahogany;" used in frames of ship and parts under water.

Price at Quebec, 1s. per cubic foot.

White Birch.*French.* **Merisier blanc***Betula excelsa*, Ait.

The wood is of a fine compact texture, tough but not durable and is used in turning and furniture.

Large Poplar.*French.* **Grand Tremble.***Populus grandidentata*, Michaux.

The wood is white, soft and quite durable.

White Pine.*French.* **Pin blanc.***Pinus Strobus*, Linn.

One of the most valuable trees of our Canadian forest. The wood is soft grained, easily wrought and durable; used in immense quantities in architecture.

Price, at Quebec, 7½d. per cubic foot.

Red Pine.*French.* **Pin rouge.***Pinus resinosa*, Ait.

This tree affords a fine grained, resinous timber of much strength and durability; it is highly valued in architecture.

Price at Quebec, 1s. per cubic foot.

Canada Balsam.*French.* **Sapin.***Abies balsamea*, Marshall.**Hemlock Spruce.***French.* **Pruche.***Abies Canadensis*, Michaux.

The timber is soft elastic, of a coarse, loose texture, resists well the effects of moisture, and for this reason is used for railway ties, fences, &c.

Price at Quebec, 6d. per cubic foot.

White Spruce.*French.* **Epinette blanche.***Picea alba*, Linn.

The timber is light, strong and elastic, though inferior to "White Pine," it is still valuable, used in architecture.

Price at Quebec, 6d. per cubic foot.

Black Spruce.*French.* **Epinette grise***Picea nigra* Link.Var. *grisea*. Brunet.

This tree attains a height of 40 to 50 feet, Trunk from 12 to 18 inches in diameter. The timber is light, strong and elastic and used in architecture.

Price at Quebec, 6d. per cubic foot.

Tamarac, American Larch.*French.* **Epinette rouge.***Larix Americana*, Michaux.

This wood is considered very valuable, being heavy, strong and durable; used in ship building and for railway ties. For knees, bends, garlands, &c. of a ship, no wood is better.

Price at Quebec, 9d. per cubic foot.

Red Cedar.*French.* **Cedre rouge.***Juniperus Virginiana*, Linn.

The wood is fine grained, compact, very light and durable; used for fences, tubs and pails and as cases for drawing pencils.

White Cedar.*French.* **Cedre blanc.***Thuja occidentalis*, Linn.

It is one of the most durable of our Canadian woods. This

wood is light, soft, used in frame work of building and for the upper timber of ship.

Price at Quebec, 9d. per cubic foot.

Specimens of Veneers.

2.	Black walnut	(Bird's eye.)
3.	" "	(Blistered.)
2.	" "	(Shady.)
1.	" "	(Exerescence.)
1.	" "	(Knot.)
3.	" "	(Crotches.)
1.	" "	(Plain.)
1.	" "	(Cloudy.)
1.	" "	(Mottled.)
	Maple.	(Blistered.)
	" "	(Bird's eye.)
	" "	(Curled.)
	White oak.	(Crotches.)
	" "	(Exerescence.)
	Ash.	(Exerescence.)
	" "	(Plain.)

APPENDIX E.

Description of Instruments, Apparatus, &c., contributed by the Department of Public Instruction of Upper Canada.

No. 14, of the Catalogue.

Departmental Map of British North America.

Tellurian with brass Sun.

Six inch Globe, semi-frame.

Planctarium, low stand.

Air Pump.

Brown's Geometrical Diagram.

Macallum's Chart.

Box of Geometrical Solids.

Frame with samples of Merit-cards.

Three inch Globe.

Plan of Building of "The Educational Department."

Natural History Obj. Lesson "The Squirrel."

One set of "Journal of Education" from 1850 to 1864 inclusive.

One set of "Chief Superintendent's Reports."

APPENDIX F.

Description of the collection of Book-binding of MR. BROUSSEAU, giving also the names of the authors of the works.

No. 31, of the Catalogue.

1 large *quarto* volume: "Lagacé's Chants d'Eglise," full morocco, relief bound with gold and ivory worked edge.

1 *Folio* Album, covering Livernois Historical Photographs, full morocco, relief bound.

3 volumes large 8vo: "Relations des Jésuites," full morocco relief bound, gold worked edge.

- 2 large 8vo volumes : J. C. Taché's *Le Canada et l'Exposition de Paris*, full morocco bound, gold edge.
- 1 large 8vo volume : *La Revue Canadienne*, full morocco bound, gold edge.
- 12 volumes 8vo. *Les Soirées Canadiennes*, full calf, gold edge.
- 4 volumes 8vo : McGee's History of Ireland, full calf, gold edge.
- 1 volume 8vo. Bibaud's *Commentaires*, full calf, gold edge.
- 2 volumes 8vo : Chauveau's *Charles Guérin*, full calf, gold edge.
- 2 volumes 8vo ; Drapeau's *Colonisation*, full calf, gold edge.
- 2 volumes 8vo : *Université Laval*, full calf, gold edge.
- 2 volumes 8vo : Ferland's *Histoire du Canada*, full calf, gold edge.
- 1 volume 8vo : *Missions de la Nouvelle France*, full calf, gold edge.
- 1 volume 8vo : Lemoine's *Maples Leaves*, full calf, gold edge.
- 2 volumes 8vo : Fréchette's *Mes Loisirs*, full calf, gold edge.
- 3 volumes 8vo : McGee's Canadian ballads, full *basane*, red edge.
- 1 volume 8vo : Langevin's, *Archives de Beauport*, *basane*, red edge.
- 1 volume 8vo : Lemoine's *Ornithologie*, *basane*, red edge.
- 2 volumes 8vo : Latour's, *Annuaire de Ville Marie*, *basane*, red edge.

- 1 volume 8vo: *Conseiller du Peuple*, *basane*, red edge.
- 1 volume 8vo: Suzor's *Exercices d'Infanterie*, *basane*, red edge.
- 1 volume 8vo: Morgan's Celebrated Canadians, *basane*, red edge.
- 1 volume 8vo: DeWart's Canadian Poetries, *basane*, red edge.
- 4 volumes 8vo: J. C. Taché, Confederation, *basane*, red edge.
- 1 volume 8vo. Etienne Parent's, *Etudes*, full bound *basane*, red edge.

APPENDIX G.

*Description of the collection of Book-binding of
MR. DESBARATS, giving also the names of
the authors of the works.*

No. 32, of the Catalogue.

- 1 volume 4o: "Art illustration in the International Exhibition," extra rich fancy binding.
- 1 Folio volume: "Way's Scenery photographed by Notman," full morocco, gold edge.
- volumes 8vo: Garneau's *Histoire du Canada*, full morocco, gold edge.
- volume 8vo: Drapeau, *Colonisation du Bas Canada*, full morocco, gold edge.
- 1 volume 8vo: Ferland's *Histoire du Canada*, full morocco, gold edge.

- 1 volume 8vo : Casgrain's *Légendes Canadiennes*, full morocco, gold edge.
- 1 volume 8vo : DeGaspé, *Les Anciens Canadiens*, half bound morocco, gold edge.
- 2 volumes 8vo , J. C. Taché, *Le Canada et l'Exposition*, half-bound, morocco, gold edge.
- 1 volume 12vo : Mrs. Leprohon, "Antoinette de Mirecourt," full calf extra, marbled edge.
- 1 volume 8vo : Lemoine's, *Ornithologie du Canada*, full calf gold edge.
- 1 volume 8vo : *Les Ursulines de Québec*, full calf gold edge.
- 2 volumes 8vo : McGee's History of Ireland, full calf extra, gold edge.
- 2 volumes 8vo : J. C. Taché, *L'Union Fédérale*, full calf extra, gold edge.
- 1 volume 8vo : Casgrain, *Histoire de la mère Marie de l'Incarnation*, full calf extra, gold edge.
- 2 volumes 8vo : Provencher, *Flore Canadienne*, full calf extra, marbled edge.
- 1 volume 12mo : McGee's Canadian Ballads, half bound calf, red edge.
- 1 volume 8vo : Lemoine's, "Maple Leaves," half bound calf, gold edge.
- 1 volume 8vo : DeGaspé "Canadians of Old," translated from the French by Mrs. Pennée, full bound calf, red edge.
- 1 large 8vo volume : "Geology of Canada," full bound calf extra, red edge.
- 1 volume 8vo : Canadian Pamphlets, half bound morocco extra, red edge.

- 2 volumes 8vo : *Le Foyer Canadien*, half bound morocco extra, red edge.
- 2 volumes 8vo : *La Littérature Canadienne*, half bound morocco extra, red edge.
- 4 volumes 8vo : *Les Soirées Canadiennes*, ^{ha}lf bound calf plain, marbled edge.

APPENDIX II.

LOVELL'S collection of School Books.

No. 35, of the Catalogue.

Half a dozen of Lovell's General Geography.

- | | | |
|-----|-----|---|
| Do. | do. | Easy Lessons on Geography. |
| Do. | do. | Sangster's National Arithmetic. |
| Do. | do. | Key to National Arithmetic. |
| Do. | do. | Sangster's Natural Philosophy, 1st edition. |
| Do. | do. | Do. do. do. 2nd edition. |
| Do. | do. | Student's note book of inorganic Chemistry. |
| Do. | do. | Dawson's Lessons on Scientific Agriculture. |
| Do. | do. | Robertson, Philosophy of Grammar. |
| Do. | do. | Student's Guide to English Grammar. |
| Do. | do. | English Grammar Made Easy. |
| Do. | do. | Rudiments of Latin Grammar. |
| Do. | do. | Elements of Elocution. |

- Do. do. Classic Reader.
 Do. do. British American Reader.
 Do. do. Outlines of Chronology.
 Do. do. Elements of Algebra.
 Do. do. Key to do. do.
 Do. do. English Spelling Book.
 Do. do. Comprehensive system of Book-keeping.

APPENDIX I.

*Description of OLIVIER CÔTE'S collection of Furs and
 Indian curiosities.*

No. 39 of the Catalogue.

- 1 *Descente-de-lit*, plucked Beaver with embroidery in
 moose-deer hairs.
- 3 Mosaic of furs, *descentes-de-lit*,
- 1 Set of embroidered seal's skin Indian-chief capot, cap and
 leggings.
- 1 White seal's skin embroidered waistcoat.
- 2 Caribou capot.
- 1 Prairie fox lady's muff.
- 1 do gentleman's cap.
- 1 Embroidered hawk Indian chief cap.
- 1 Bear, wolf and dog's sleigh robe.

- 1 Piano stool cover, porcupine quills embroidery.
- 4 Pairs Parlor stools, moose-deer hair embroidery.
- 2 do do porcupine quill embroidery.
- 3 Ermine porte monnaie.
- 4 Tobacco seal's skin pouch.
- 1 do do large.
- 2 Porcupine embroidered little cases.
- 4 Bouquet holders, porcupine quill embroidery.
- 1 Indian fire pouch.
- 1 Pair Indian gaiters.
- 1 Martin fire pouch.
- 3 Feather fans.
- 3 do larger.
- 1 do larger.
- 6 Cigar cases embroidered bark.
- 6 Card cases do do
- 3 do moose hair, on-cloth.
- 3 Cigar cases do do
- 1 Portfolio porcupine quills embroidery.
- 1 do moose-deer hair embroidery.
- 5 Boxes of bark embroidered with porcupine.
- 1 Box for needles, fancy Indian embroidery.
- 4 Card receiving basket, moose-hair embroidery.
- 2 do porcupine quills embroidery.

- 6 Boxes porcupine quills embroidery.
 2 Watch-holders embroidered.
 2 Pairs white caribou embroidered indian shoes.
 4 Pairs children's caribou shoes embroidered.
 2 Pairs of moose-hair embroidered slippers.
 2 do do do small do.

APPENDIX J.

J. B. LIVERNOIS' Canadian collection of Photographic Reproductions of Historical Engravings and Views of Historical Places.

No. 31 and No. 57 of the Catalogue.

-
- 1—Manor of Jacques Cartier at Limoilou, near St. Malo.
 - 2—The same, view of the interior of the yard walls.
 - 3—Voyage of Jacques Cartier,—the St. Lawrence.
 - 4—The arrival of Jacques Cartier at Quebec.
 - 5—Conference between Jacques Cartier and the Stadacona (Quebec) Indians.
 - 6—Martyrdom of Jesuit Missionaries by the Indians.
 - 7—First Plan of Quebec, 1660.
 - 8—First Monastery of the Quebec Ursulines Convent.
 - 9—Residence of M. de Champlain at Quebec.
 - 10—Defence of Quebec by M. de Frontenac.

- 11—Battle near Lake George.
- 12—Plan of Quebec attacked by the English, 1691.
- 13—Plan of Montreal or Ville-Marie and fortifications, 1758.
- 14—A general view of Quebec from Point-Lévis, 1759.
- 15—A general view of Quebec from St. Charles River, 1759.
- 16—A view of the Cathedral, Jesuits' College and Recollets friars' Church as seen after the siege, 1759.
- 17—A view of the Ursulines Nunnery, 1759.
- 18—View of the Jesuits' College and Church, 1759.
- 19—View of the Notre-Dame-de-la-Victoire Church, 1759.
- 20—View of the Palais des Intendants, 1759.
- 21—View of the Treasury and ruins of the Cathedral, 1759.
- 22—View of ruins and of the Bishop's Palace, 1759.
- 23—View of the ruins from Mountain Hill, 1759.
- 24—View of the interior of the Jesuits' Church, 1759.
- 25—View of the interior of the Recollets' Church, 1759.
- 26—Plan of the St. Lawrence, Quebec, and operations of the Siege, 1759.
- 27—Plan of Quebec at the time of the Siege, 1759.
- 28—View of the taking of Quebec, 1759.
- 29—Death of Montcalm.
- 30—Death of Wolfe
- 31—Tadoussac Jesuits' Chapel (still existing.)
- 32—Plan of the battle of Chateauguay.
- 33—Monument of Wolfe and Montcalm, at Quebec.

- 34—View of the Quebec Seminary and Laval University.
 35—View of the Ste. Foye's Monument, Quebec.
 36—The Fathers and Theologians of the last Provincial Council of Quebec.
 37—A view of Quebec, modern, from Point Lévis.
 38—A view of St. Roch and the valley of the St. Charles.
 39—Winter view of the fall of Montmorency with the sugar loaf cone.
 40—View of Tadoussac.
 41—First landing of H. R. H. the Prince of Wales in Canada, at the River Ste. Marguerite, Saguenay.
 42--The Delegates of the Provinces at the Quebec Confederation Conferences.
 43—The Codification Commission of Lower Canada.
 44—Spencer Wood, near Quebec, residence of the Governor General.*

APPENDIX K.

Designation of the collection of Photographs of
 ELISSON AND COMPANY.

No. 60, of the Catalogue.

A large Framed Card containing the portraits of the Delegates of the Provinces to the Quebec Confederation

* NOTE. This very interesting collection is cased in a rich binding it is styled :—*Photographies, Album historique Livernois*, and exposed in Mr. Brousseau's exhibition of Book-Binding.

Convention, held in October 1864. To which card the following list is the key :

CANADA DELEGATES.

1. Hon. Sir E. P. Taché, M. L. C., President of the Conference, Receiver General and Minister of Militia, and A. D. C. to Her Most Gracious Majesty.
2. Hon. J. A. Macdonald, M. P. P., Attorney-General, C. W.
3. Hon. George E. Cartier, M. P. P., Attorney-General, C. E.
4. Hon. George Brown, M. P. P., President of Executive Council.
5. Hon. Oliver Mowat, M. P. P., Postmaster General.
6. Hon. A. T. Galt, M. P. P., Minister of Finance.
7. Hon. J. C. Chapais, M. P. P., Commissioner of Public Works,
8. Hon. H. L. Langevin, M. P. P., Solicitor-General. C. E.
9. Hon. J. Cockburn, M. P. P., Solicitor-General. C. W.
10. Hon. A. Campbell, M. L. C., Commissioner of Crown Lands.
11. Hon. T. D'Arcy McGee, M. P. P., Minister of Agriculture.
12. Hon. Wm. McDougall, M. P. P., Provincial Secretary.

NEW BRUNSWICK DELEGATES.

13. Hon. S. L. Tilly, Provincial and Financial Secretary.
14. Hon. W. H. Steeves, M. L. C., Member of the Executive Council.

15. Hon. J. M. Johnson, Attorney General.
16. Hon. E. B. Chandler, M. L. C.
17. Lt. Col. Hon. J. H. Gray, M. P. P.
18. Hon. C. Fisher, M. P. P.
19. Hon. T. C. Mitchell, M. P. P.

NOVA SCOTIA DELEGATES.

20. Hon. C. Tupper, Provincial Secretary.
21. Hon. W. A. Henry, Attorney General.
22. Hon. J. McCully, M. L. C. Leader of the Opposition.
23. Hon. R. B. Dickey, M. P. P.
24. Hon. A. G. Archibald, M. P. P.

NEWFOUNDLAND DELEGATES.

25. F. B. T. Carter, Speaker of the Legislative Assembly.
26. Hon. J. A. Shea, Leader of the Opposition.

PRINCE EDWARDS ISLAND DELEGATES.

27. Col. the Hon. J. H. Gray, Leader of the Government.
28. Hon. E. Palmer, Attorney-General.
29. Hon. W. H. Pope, Provincial Secretary.
30. Hon. A. A. McDonald, M. L. C.
31. Hon. G. Coles, M. P. P. Leader of the Opposition.
32. Hon. J. H. Haviland, M. P. P.
33. Hon. E. Whelan, M. P. P.

Twelves large coloured landscape phothographs in frames,

taken after oil paintings or nature, of which follows the titles referring to numbers.

1. Montmorenci Fall and Cove, Winter scene.
2. Tandem sleigh on the ice between Quebec and Montmorenci from, (Krieghoff.)
3. Race by Wood sleighs between Quebec and Montmorenci. (Krieghoff.)
4. Winter crossing of the St. Lawrence at Quebec. (Krieghoff.)
5. Winter camp in the bush. (Krieghoff.)
6. Running the Toll, Quebec, Winter scene. (Krieghoff.)
7. Winter scene, Habitans and Wood sleigh. (Krieghoff.)
8. Chippewas returning from hunting, Summer scene. (Krieghoff.)
9. Indian descending a Rapid. (Krieghoff.)
10. Autumnal foliage View on Lake St. Charles. (Krieghoff)
11. Rideau Falls.
12. View among the Thousand Isles.

The following are the titles of 37 small coloured landscape carte de visite photographs.

1. Indian hunter on Snow-shoes. (Krieghoff.)
2. Squaw on Snow-shoes. (Krieghoff.)
- 3 & 4. Views on Lake St. Charles, shewing Autumnal Foliage. (Krieghoff.)
5. Group of Indians with Traineau. (Krieghoff.)
6. Winter scene. Habitant and wood sleigh. (Krieghoff.)

7. Lorette Falls.
8. St Ann's Falls.
9. Le Portage. (Krieghoff.)
10. Montmorenci Falls and Cove. (Krieghoff.)
11. View among Thousand Isles.
12. St. Ann's Rapids.
13. The Indian Pedlar.
14. Winter Camp in bush. (Krieghoff.)
15. Drawing wood, Winter scene. (Krieghoff.)
- 16 & 17. Running the Toll. (Krieghoff.)
18. Tandem Sleigh crossing ice between Quebec and Montmorency. (Krieghoff.)
- 19 & 20. Chippewas returned from hunting. (Krieghoff.)
21. Winter sunset on Lake St. Charles. (Krieghoff.)
22. St. Féréole Falls. (Krieghoff.)
23. Race by wood-sleighs between Quebec and Montmorenci. (Krieghoff.)
24. Lake Bonhomme. (Krieghoff.)
25. Lake Beauport.
26. The Narrows, Lake St. Charles.
27. Lake St. Charles, Summer scene.
28. Indian descending a Rapid. (Krieghoff.)
29. Natural Steps.
- 30 & 31. Falls of Shaouinigan. (Krieghoff.)

- 32 & 33. Summer scenes. (Krieghoff.)
 34. Montmorenci Falls, summer scene.
 35. Rapids above St. Ann's.
 36. Niagara.
 37. Four horse sleigh on ice, near Montreal. (Krieghoff.)

ADDENDUM.

The hurried way in which every thing connected with the preparing of the Canadian contributions to the Dublin Exhibition, has had, of necessity, to be carried on, has been the cause of several little *contretemps*, not easily avoided, even when there is plenty of time for organisation.

The catalogue was in pages and half printed when the following addition to the former list was received from the Board of Arts of Upper Canada.

SLINGSBY AND KITCHEN, Canning C. W., woolen blankets.
 W. MARSTON, Toronto : A rifle with new attachment.

