







EDWARD THEODORE NEWELL



TELEGRAPHIC ADDRESS—  
"TANAGRA, EDINBURGH"  
TELEPHONE N<sup>o</sup> 345

77 George Street  
Edinburgh 18<sup>th</sup> Aug. 1896

Dear Sir

I was duly favoured with  
Your note, but did not reply till after  
ascertaining if our friend Frank Whelan  
was back in London - I have never  
got back the medallion - And have en-  
closed him your letter to day, asking  
if he will be kind enough to send you  
a Cast - I suppose there can be little  
doubt but that it is false, although  
although very fine work - I got it a  
number of years ago at Lord Murray

Sale here, he had inherited it from  
his relation General Paucay who had  
the fine Collection of Roman Coins -

The Sale was a great success on the  
whole, The Kings were the only big loss,  
was that the result of our democratic  
age? The sum total was about  
fourteen hundred (£1400) Pounds more  
than I counted upon, and a few hundred  
pounds more than the coins cost me -

When I began collecting quantity  
rather than quality was gone in for, now  
it is quality & art, fortunately I had  
taken to the latter way - The same thing  
holds good in every thing, Books, pictures,  
Porcelains, Marbles etc, buy the best if  
you wish to get your money back, in fact  
I gained most on some of the dearest  
coins, for the buying of which some



of my brother collectors laughed at  
the prices I paid - for you know  
a few are marked on other side -

The parting with the Coins, as you  
may guess caused me great regret,  
I have however still all the Greek  
Copper, all my Roman & few Scottish  
and some a brace of the and having  
now got to the Three score and ten  
I may content myself with what  
is left -

Yours very truly  
Robert Curzon

R. Hobart Smith Esq:  
New York

P.S. If you should at any time  
visit Scotland, do not forget to look  
me up - R.C.

Lot 34 Pandora cost £114.0.0  
 68 Sycamore — — £ 9.10.0  
 74 Cu — — £ 37.10.0  
 82 do Hicis — — £ 47.10.0  
 145 Pyrene — — £ 54.0.0

The whole Hoards of Mytiline  
 did not cost half what they  
 brought at the Sale

Sotleby 18940523



From .....

.....





GREER (COLLECTIONS) - R

Mr. Edward T. Newell  
Malotta  
New York









SOTHEBY, WILKINSON & HODGE,  
WELLINGTON STREET, STRAND, LONDON.

CATALOGUE  
OF THE COLLECTION OF  
**GREEK COINS**

In Gold, Silver and Electrum,

THE PROPERTY OF

ROBERT CARFRAE, ESQ. F.S.A. SCOT.

(Of Edinburgh).

Days of Sale.

FIRST DAY.....	Wednesday, 23rd May .....	LOTS 1 to 124
SECOND DAY .....	Thursday, 24th May .....	LOTS 125 to 241
THIRD DAY .....	Friday, 25th May .....	LOTS 245 to 363

1891

A LIMITED NUMBER OF CATALOGUES WITH ELEVEN COLLOTYPE PLATES  
MAY BE HAD, PRICE THREE SHILLINGS EACH





CATALOGUE  
OF THE COLLECTION OF  
**GREEK COINS**

In Gold, Silver and Electrum,

THE PROPERTY OF

ROBERT CARFRAE, ESQ. F.S.A. SCOT.

(*Of Edinburgh.*)

Formed during the past thirty-five years ; and selected chiefly for their fine preservation and high artistic merit from the following well-known Collections, : WIGAN, SAN GEORGIO, DUPRÉ, LORD HASTINGS, SPARKES, II. DE LA SALLE, PARAVEY, SAMBON, BOMPOIS, DE QUELEN, COMTE DE DUCHASTEL, SIM, SPRATT, &c. &c.

WHICH WILL BE SOLD BY AUCTION,

BY MESSRS.

**SOTHEBY, WILKINSON & HODGE,**

Auctioneers of Literary Property & Works illustrative of the fine Arts,

AT THEIR HOUSE, No. 13, WELLINGTON STREET, STRAND, W.C.

On WEDNESDAY, 23rd of MAY, 1894, and Two following Days,

AT ONE O'CLOCK PRECISELY.

May be Viewed Two Days prior. Catalogues may be had.

## CONDITIONS OF SALE.

- I. The highest bidder to be the buyer; and if any dispute arise between bidders, the lot so disputed shall be immediately put up again, provided the auctioneer cannot decide the said dispute.
- II. No person to advance less than 1*s.*: above five pounds, 2*s.* 6*d.* and so on in proportion.
- III. In the case of lots upon which there is a reserve, the auctioneer shall have the right to bid on behalf of the seller.
- IV. The purchasers to give in their names and places of abode and to pay down 5*s.* in the pound, if required, in part payment of the purchase-money; in default of which the lot or lots purchased to be immediately put up again and re-sold.
- V. The Sale of any lot is not to be set aside on account of any error in the enumeration of the numbers stated, or errors of description.
- VI. The lots to be taken away, at the buyer's expense, immediately after the conclusion of the sale; in default of which Messrs. SOTHEBY, WILKINSON, and HODGE will not hold themselves responsible if lost, stolen, damaged, or otherwise destroyed, but they will be left at the sole risk of the purchaser. If, at the expiration of Two Days after the conclusion of the sale, the lots are not cleared or paid for, they will then be catalogued for immediate sale, and the expense, the same as if re-sold, will be added to the amount at which they were bought. Messrs. SOTHEBY, WILKINSON and HODGE will have the option of re-selling the lots uncleared either by public or private sale, without any notice being given to the defaulter.
- VII. Upon failure of complying with the above conditions, the money required and deposited in part of payment shall be forfeited, and if any loss is sustained in the re-selling of such lots as are not cleared or paid for, all charges on such re-sale shall be made good by the defaulters at this sale.

*Gentlemen, who cannot attend this Sale, may have their Commissions faithfully executed by their humble Servants,*

SOTHEBY, WILKINSON & HODGE,

13, Wellington Street, Strand, London.



CATALOGUE  
 OF  
 THE CARFRAE COLLECTION  
 OF  
 GREEK COINS.

FIRST DAY'S SALE.

GALLIA AND CAMPANIA.

LOT

*Gallia*

1 **Gallia.** R Tetradrachm, debased copy of Philip II of Macedon. Campania. **Neapolis.** R Drachm. Female head to left with simpulum behind.

R Man-headed bull being crowned by flying victory. Neapolis. R Drachm. Head of Persephone (?) wearing earring and necklace, around, three dolphins. R Man-headed bull to right, &c., *fine.* 3

*Cumae*

2 **Cumae.** B.C. 480-423. R Didrachm. Female head to right, hair rolled. 1/18

R **KYMAION.** (retrograde), Mussell-shell with corn-grain above, *wt. 116 grs., very fine and scarce.* 1

*Cumae*

3 **Cumae.** B.C. 480-423. R Didrachm. Female head as before, slightly varying in style. 1/2

R no legend. Mussell-shell and corn-grain, *wt. 116 grs., fine.* 1



- 1 1 13 **Posidonia.** B.C. 180-100. AR Stater. ΠΟΣΕΙΔΑ. Posidon naked but for chlamys, which hangs across his shoulders, wielding trident, behind Θ.  
 R ΠΟΜΕΣΔΑΝ. Bull to left on a beaded line, *wt.* 120 *grs.*, *very fine.* 1  
*Plate I, No. 8.*
- 12 10 14 **Siris and Pyxus.** B.C. 560-500. AR Stater. ΚΟΛΛΗΝ  
 ΜΟΝΩΡΩΜ (Σαρῖνος), Bull with head turned back  
 R ΠΥΧΟΕΜ (Πεξόες), same type incuse, *wt.* 122 *grs.*,  
*fine and very rare.* 1  
*Plate I, No. 9.*
- 2 2 15 **Sybaris.** B.C. 560-500. AR Stater. VM. (in  
 exergue) Bull with head turned back, within dotted  
 and corded border.  
 R Same type incuse, *wt.* 117 *grs.*; and a Stater of Posi-  
 donia of similar type to the piece in lot 13. 2
- 1 1 16 **Thurium.** B.C. 390-350. AR Distater. Head  
 of Pallas, wearing crested Athenian helmet, on which,  
 Scylla, dogs' heads springing from her waist.  
 R ΘΟΥΡΙΩΝ. Butting bull, *wt.* 242.1 *grs.*, *fine.* 1  
*Plate I, no. 10.*
- 17 **Thurium.** B.C. 390-350. AR Stater. Head of  
 Pallas to right in crested Athenian helmet adorned  
 with Scylla.  
 R ΘΟΥΡΙΩΝ. Bull butting to right; in exergue, a  
 fish, *wt.* 122 *grs.*, *a piece of fine style and in the most  
 beautiful condition.* 1  
*Plate I, No. 11.*
- 3 2 6 18 **Thurium.** B.C. 398-340. AR Stater. Head of  
 Pallas in Athenian helmet ornamented with Scylla.  
 R ΘΟΥΡΙΩΝ. Bull to left, in exergue a fish,  
*wt.* 121 *grs.*, *of very fine style and in fine condition.* 1  
*Plate I, No. 12.*
- 18 5 19 **Velia.** B.C. 500-450. AR Didrachm. Female head,  
 of fine transitional style, wearing diadem of pearls.  
 R ΒΕΛΗΤΕΩΝ. Lion, above which, owl flying,  
*wt.* 117 *grs.*, *very fine and scarce.* 1  
*Plate I, No. 13.*

- V. Hagen* 20 **Velia.** B.C. 500-450. R Didrachm. **VEΛH.** 1 10  
Female head of early style, the hair turned up at back.  
R Lion to right on dotted exergual line, below, an owl,  
*wt. 114 grs., in very good condition and scarce* 1
- Rollin* 21 **Velia.** B.C. 400-268. Head of Pallas, nearly facing, 2 1  
in winged helmet, the front of which is inscribed  
**ΚΛΕΥΔΟΡΟΥ.**  
R Lion devouring prey, in exergue **ΥΕΛΗΤΩΝ.** *wt.*  
*116 grs., in very excellent condition and scarce.*  
Another. The Head of Pallas to right, the helmet  
ornamented with a Griffin.  
R **ΥΕΛΗΤΩΝ.** (in exergue) Lion to right above I.Φ  
and a dolphin, *wt. 112 grs., very fine.*  
Thurium. B.C. 350-300. R Stater. Head of Pallas.  
R **ΘΟΥΡΙΩΝ.** Bull rushing to right, in exergue, torch,  
*wt. 122 grs., fine.* 3
- do* 22 **Velia.** B.C. 400-268, R Didrachm. Head of Pallas 3 5  
to left, the helmet decorated with a griffin.  
R **ΥΕΛΗΤΩΝ.** | Lion pulling down stag, *wt. 117 grs.,*  
*in extremely fine condition. Plate I, No. 14.*  
**Velia.** Didrachm. Head of Pallas to left, the helmet  
decorated with a dolphin, the neck piece bears the  
letter Φ.  
R **ΥΕΛΗΤΩΝ.**, Lion to right, above Φ. I. and a trident,  
*wt. 114 grs., very fine.* 2  
*Plate I, No. 15.*
- BRUTTIUM.
- Money* 23 **Bruttii.** N, B.C. 280-190. Head of Poseidon, 4 1  
with trident behind and bucranium beneath.  
R **ΒΡΕΤΤΙΩΝ.** Amphitrite, veiled, seated on sea-  
horse; before her stands an Eros, drawing a bow, in  
field cornucopia, *wt. 65 grs., very fine and very rare.* 1  
\* \* \* From the Duchastel Collection.  
*Plate I, No. 16.*
- Mason* 24 **Caulonia.** B.C. 550-480. R Stater. **ΚΑΥΛ.** 2 4  
Apollo, naked, holding in his raised right hand a  
branch, and on his outstretched left arm a small  
running figure with winged feet, which also holds a  
branch; in front a stag, looking back.  
R Same type incuse, *wt. 129.2 grs., very fine.* 1  
*Plate I, No. 17.*

- 2 25 **Caulonia.** B.C. 480-338. .R Stater. ΚΑΥΛΑ., nude figure holding branch, advancing to right, in front, a stag looking back. *Rollin*
- ℞ ΚΑΥΛΑ. (retrograde), stag to right, in front a tree, *wt.* 125 grs., *very fine.* 1
- Plate I, No. 18.*
- / 10 26 **Bruttii.** B.C. 282-203, .R. Head of Thetis, veiled. *Stegan*
- ℞ ΒΡΕΤΤΙΩΝ. Poseidon standing, resting on sceptre, one foot on capital of column, *wt.* 86 grs., *very fine* (*B. M. Guide, pl. XLV, 22*).
- Croton. B.C. 550-480. .R Stater. ♀ ΠΟ., Tripod.
- ℞ Eagle flying to right, incuse, *wt.* 120 grs., *very fine.* 2
- 2 5 27 **Croton.** B.C. 550-480. .R Stater. ♀ ΠΟ., Tripod, crab to right, the whole within dotted border. *Spink*
- ℞ Type incuse, excepting the legend and crab, which are in relief, *wt.* 121 grs., *very fine.*
- Croton. B.C. 480-420. .R Stater. Eagle to right on capital of column; in front stag's head.
- ℞ ♀ ΠΟ., Tripod, to left olive spray, *wt.* 125.5 grs., *fine.* 2
- 10 28 **Croton and Sybaris.** Before B.C. 510. *Rollin*
- .R Stater. ♀ ΠΟ., Tripod in plain border.
- ℞ Bull looking back, incuse, with details in relief, *wt.* 120 grs., *fine and very rare.* 1
- Plate I, No. 19.*
- 10 29 **Croton.** B.C. 420-390. .R Stater. Head of Hera *d*
- Lakinia, nearly facing, wearing stephanos, to right B.
- ℞ ΚΡΟΤΩΝΙΤΑΣ.. Herakles seated on rock covered with lion's skin, holding wine cup, &c., *wt.* 120 grs., *very fine and rare.* 1
- Plate I, No. 20.*
- 10 30 **Croton.** B.C. 390. .R Stater. ΚΡΟΤΩΝΙΑ- *Spink*
- ΤΑΣ.. laureate head of Apollo to right.
- ℞ The Infant Herakles strangling two serpents, *wt.* 120 grs., *very fine and scarce.* 1
- Plate II, No. 1.*



- Stobart 31 **Croton.** B.C. 370-330. AR Stater. Laureate head of Apollo with flowing hair. 1 2  
 ↳ **ΚΡΟ.** Tripod, filleted branch in field to right, *wt.* 119 *grs.*, *very fine.* (*B. M. Guide, pl. XXXIV, 25*). 1  
*Plate II, No. 2.*
- Rollin 32 **Locri Epizephyrii.** B.C. 300-280. AR Stater. Eagle devouring hare. 2 8  
 ↳ **ΛΟΚΡΩΝ.** Fulmen; caduceus below, *wt.* 92.5 *grs.*, *very fine and rare (fourrd).* 1  
*Plate II, No. 3.*
- Ready 33 **Locri Epizephyrii.** B.C. 280-268. AR Stater. Head of Zeus, monogram beneath. 23  
 ↳ **ΛΟΚΡΩΝ.** Roma (**ΡΩΜΑ**), seated, with sword and shield, crowned by Fides (**ΠΙΣΤΙΣ**), who stands before her, *wt.* 114 *grs.*, *very fine and very rare.* 1  
*Plate II, No. 4.*
- do 34 **Pandosia.** B.C. 400. AR Stater. Head of Hera Lakinia, wearing lofty stephanos, adorned with foreparts of griffins and honeysuckles; she wears earrings and necklace. 185  
 ↳ **ΠΑΝΔΟΣΙΝ.** Pan the Hunter, with hound at his feet; he is seated on a rock; in front, a bearded terminal figure, to which is affixed a caduceus. In field, **Φ**, engraver's signature, *wt.* 124 *grs.*, *very fine and of the highest rarity.* 1  
 \* \* From the Wigan Collection.  
*Plate II, No. 5.*
- Rollin 35 **Rhegium.** B.C. 466-415. AR Tetradrachm. Lion's scalp, facing. 33 10  
 ↳ **RECINOS.** Bearded figure, naked to waist, seated, his right hand resting on staff; beneath his seat, balaustium bud. The whole in laurel-wreath, *wt.* 270 *grs.*, *very fine and rare in this state.* 1  
*Plate II, No. 6.*

311.17

3 5

36 **Rhegium.** B.C. 415-387. .R Tetradrachm. [PHΓI  
NOΣ]. Laureate head of Apollo to right, sprig of  
laurel behind.

Ready

R Lion's scalp, *wt.* 257 *grs.*, in fair condition 1

6

37 **Rhegium.** B.C. 415-387. .R Tetradrachm. PHΓINON.  
Laureate head of Apollo to left, sprig  
of olive behind.

Sprink

R Lion's scalp within a dotted border, *wt.* 264.2 *grs.*, very  
*fine.* 1

*Plate II, No. 7.*

3 7 6

38 **Terina.** B.C. 400-388. .R Stater. [TEPINA]Ω[N].  
Head of Terina richly ornate with curly hair.

Rollin

R Nike, or winged Eirene, seated on a square cippus, a  
bird perched on her hand, *wt.* 117 *grs.*, very *fine.* 1

*Plate II, No. 8.*

20 10

39 **Terina.** B.C. 440-400. .R Stater. [T]EPINA-  
Ω[N]. Head of the Nymph Terina of charming  
style, she wears sphenelone, the back of which is de-  
corated with crosses, having dots in the angles, the  
whole within dotted border.

d

R Winged figure seated on square cippus, holding wreath,  
*wt.* 123 *grs.* in the most beautiful condition, nearly  
*F.D.C.* 1

*Plate II, No. 9.*

## SICILY.

1 2

40 **Agrigentum.** B.C. 472-415. .R Tetradrachm.  
AKRACANTOS. Eagle to left.

Hagan

R Crab, *wt.* 265 *grs.*, *fine*

Agrigentum. .R Didrachm. Eagle to left.

R Crab; below, a Corinthian helmet. *wt.* 138 *grs.* very  
*fine.* 2

11

41 **Camarina.** B.C. 461-405. .R Tetradrachm.  
KAMAPINAION. Head of the young Herakles  
wearing lion's skin, to left.

Rollin

R Quadriga to right, driven by Pallas, wearing crested  
helmet and chiton; above, victory; on line of exergue,  
ΕΞΑΚΕΣΤΙΑΔΑΣ, in exergue two amphore, *wt.* 259  
*grs.*, *fine and rare.* 1

\*\*\* From the Paravey Collection.

*Plate II, No. 10.*

327 11

Rollin

- 42 **Catana.** B.C. 461-415. AR Tetradrachm. **ΚΑΤΑ** 1, 14  
**ΝΙΟ.** Laureate head of Apollo, of fine transitional  
 style, the hair turned up at back.  
 R Quadriga to right, driven by male figure; exergue line  
 dotted, *wt.* 266 *grs.*, *very fine and scarce.* 1  
*Plate II, No. 11.*

Money

- 43 **Catana.** B.C. 461-415. AR Tetradrachm. **ΚΑΤΑ** 17 10  
**ΝΑΙΩΝ.** Laureate head of Apollo, of fine style, to  
 right.  
 R **ΚΑΤΑΝΑΙΩΝ** (in exergue), Quadriga going to left;  
 above, flying victory crowning charioteer; in exergue,  
 fish, *wt.* 265 *grs.* (*B. M. Cat. no. 31*), *very fine and rare.* 1  
*Plate II, No. 12.*

Rollin

- 44 **Catana.** B.C. 415-403. AR Tetradrachm. Head of 16 10  
 Apollo three-quarter face to left, at right side signature  
 of the artist, **ΗΡΑΚΛΕΙΔΑΣ.**, within dotted border.  
 R Quadriga, Victory erect, crowning charioteer, in exergue  
**ΚΑΤΑΝΑΙΩΝ.** and below a fish (*B. M. Cat. no. 32*),  
*wt.* 265 *grs.*, *very fine and rare.* 1  
*Plate II, No. 13.*

Money

- 45 **Gela.** B.C. 415-405. A. Female head to left wear- 9  
 ing necklace and sphenone.  
 R **ΓΕΛΑΣ.** Forepart of man-headed bull to left, *wt.*  
 17.2 *grs.*, *very fine and rare.* 1  
*Plate II, No. 14.*

Seltman

- 46 **Gela.** B.C. 466-415. AR Tetradrachm. **ΓΕΛΑΣ.** 2 19  
 around forepart of man-headed bull (river Gelas).  
 R Quadriga, the horses crowned by flying Nike; in  
 exergue, stork feeding, *wt.* 266 *grs.*, *very fine and*  
*scarce.* 1  
*Plate II, No. 15.*

Money

- 47 **Gela.** B.C. 466-415. AR Tetradrachm. **ΓΕΛΑΣ.** 5 5  
 in a line above, fore-part of man-headed bull (river  
 Gelas).  
 R Quadriga, horses crowned by Nike; in exergue, a stork,  
*wt.* 266 *grs.*, *very fine.* 1  
*Plate II, No. 16.*

- 2 5 48 **Heraclea Minoa.** B.C. 409-241.  $\overline{\text{R}}$  Tetradrachm. Head of Persephone, copied from the coin of Syracuse, wearing necklace and earring, and crowned with corn leaves, around, four dolphins. *Money*
- $\overline{\text{R}}$  Quadriga, the horses galloping to right, the charioteer crowned by flying Victory; in exergue, Punic legend, (as piece engraved in *B. M. Catalogue, Sicily*, p. 251, no. 6), *wt.* 263 grs., *very fine and rare.* 1
- Plate II, No. 17.*
- 2 15 49 **Heraclea Minoa.** B.C. 409-241.  $\overline{\text{R}}$  Tetradrachm. Head of Persephone as on the preceding coin, but of somewhat larger and finer style. *Spink*
- $\overline{\text{R}}$  similar to last, but the legend not quite so well defined, *wt.* 263 grs., *very fine and rare.* 1
- 6 10 50 **Himera.** B.C. 472-415.  $\overline{\text{R}}$  Tetradrachm. Nymph Himera, sacrificing at altar; behind her, Silenus bathing under a fountain, which issues from a lion's head; above, a grain of corn. *Rollin.*
- $\overline{\text{R}}$   $\overline{\text{IMEPAION}}$  (retrograde) in exergue; Quadriga; charioteer crowned by Nike, *wt.* 263 grs., *fine and rare.* 1
- Plate II, No. 18.*
- 7 7 51 **Leontini.** B.C. 500-466.  $\overline{\text{R}}$  Tetradrachm. Quadriga, the horses crowned by Nike. *de*
- $\overline{\text{R}}$   $\overline{\text{AEONTINON.}}$  Lion's head with open jaws; around, four barleycorns, *wt.* 264 grs., *very fine.* 1
- Plate III, No. 1.*
- 1 6 52 **Leontini.** B.C. 466-422.  $\overline{\text{R}}$  Tetradrachm. Head of Apollo, laureate. *O'Hagan*
- $\overline{\text{R}}$   $\overline{\text{AEONTINON.}}$  Lion's head; around, four grains of corn, *wt.* 264 grs., *very fine.* 1
- 2 16 53 **Zanele.** B.C. 193.  $\overline{\text{R}}$  Drachm.  $\overline{\text{DANKLE}}$ . Dolphin within a curved object representing the harbour of Zanele. *Money*
- $\overline{\text{R}}$  Shallow incuse, divided into several compartments; in the centre, a shell, *wt.* 82 grs., *very fine*; and a  $\overline{\text{R}}$  Didrachm of Himera. B.C. 482. Cock to left.
- $\overline{\text{R}}$  Mill sail incuse, *wt.* 84 grs. 2



- Seltman 54 **Messana.** B.C. 480-420.  $\overline{\text{R}}$  Tetradrachm. **ΜΕΣ** 2 2  
**ΣΑΝΙΟΝ.** Hare beneath which, dolphin.  
 $\overline{\text{R}}$  Biga drawn by mules; Nike crowning mules, in exergue,  
olive leaf and two berries, *wt. 265 grs., very fine.* 1  
*Plate III, No. 2.*
- Ready 55 **Messana.** B.C. 420-396.  $\overline{\text{R}}$  Tetradrachm. **ΜΕΣ** 2 1  
**ΣΑΝΑ** (retrograde). Messana in mule ear to right,  
in exergue, two dolphins facing, dotted border.  
 $\overline{\text{R}}$  **ΜΕΣΣΑΝΙΟΝ** (retrograde), Hare to right; below  
dolphin, *wt. 263.7 grs., very fine, scarce in this condition.* 1  
*Plate III, No. 3.*
- Money 56 **Naxos.** B.C. 461-415.  $\overline{\text{R}}$  Tetradrachm. Head of 2 8  
bearded Dionysus, crowned with ivy of early style.  
 $\overline{\text{R}}$  **NΑΧΙΟΝ.** Naked Silenus with pointed ears and  
horse's tail, seated on the ground with a wine-cup in his  
hand, *wt. 258 grs., rare and in almost perfect condition.* 1  
*Plate III, No. 4.*
- Lincoln 57 **Selinus.** B.C. 466.  $\overline{\text{R}}$  Didrachm. Selinon-leaf. 1 8  
 $\overline{\text{R}}$  Incuse square of twelve divisions, *wt. 135 grs., fine.* 1
- Rollin 58 **Selinus.** B.C. 466.  $\overline{\text{R}}$  Didrachm. Selinon-leaf. 7 15  
 $\overline{\text{R}}$  **Σ. Ε. Α. Ι.** in the four corners of an incuse square; in  
centre, selinon-leaf, *wt. 126 grs., very fine and very rare.* 1  
*Plate III, No. 5.*
- do 59 **Selinus.** B.C. 466-415.  $\overline{\text{R}}$  Tetradrachm. **ΣΕΛΙ-** 3  
**ΝΟΝΤΙΟΝ.** Young river-god Selinus sacrificing at  
altar, before which is a cock, indicating it as sacred  
to Asklepius, in the left hand of Selinus is the lustral  
branch, behind him, a selinon-leaf and an image of a  
bull standing on a base.  
 $\overline{\text{R}}$  Apollo and Artemis in quadriga, Apollo discharging  
arrows, in exergue grain of corn, *wt. 266 grs., very fine.* 1  
*Plate III, No. 6.*
- Stobart 60 **Syracuse.** B.C. 479-466.  $\overline{\text{R}}$  Tetradrachm. 1 2  
**ΣΥΡΑΚΟΣΙΟΝ.** Female head to left wearing  
earring and necklace, hair waved and turned up behind,  
under pearl diadem, over which the ends fall, around,  
four dolphins.  
 $\overline{\text{R}}$  Quadriga to right, above Nike to right crowning  
horses, in exergue pistrinx, dotted border (*B. M. Cata-*  
*logue, p. 154, no. 72).* *wt. 266 grs., fine.* 1

682 17

3

- 61 **Syracuse.** B.C. 479-466. **R** Tetradrachm.  
**ΣΥΡΑΚΟΣΙΟΝ.** Female head to right, wearing  
 earring and necklace, the hair waved, in a bunch  
 behind and bound with string of beads, around, four  
 dolphins.

Money

**R** Quadriga to right, above Victory crowning horses, in  
 exergue pistrix (*Head, plate II. no. 9*), *wt. 265.5 grs.,*  
*very fine and rare.* 1

*Plate III, No. 7.*

6-126

- 62 **Syracuse.** B.C. 472-415. **R** Tetradrachm.  
**ΣΥΡΑΚΟΣΙΟΝ.** Female head to right, wearing  
 earring and necklace, the hair in clusters on forehead  
 and temples, confined by a broad band probably of  
 metal, which is held in position by a double cord, hair  
 knotted at back.

Rollin

**R** Male charioteer driving Quadriga slowly to right,  
 flying Nike crowning horses, *wt. 265.5 grs., very fine and*  
*rare.* 1

*Plate III, No. 8.*

23 10

- 63 **Syracuse.** B.C. 479-466. **R** Tetradrachm.  
**ΣΥΡΑΚΟΣΙΟΝ.** Female head to right, wearing  
 earring and broad necklet, the hair waved and confined  
 by a double fillet crossed at side, the ends hanging  
 down behind knot of hair at back of head; around,  
 four dolphins.

do

**R** Quadriga going slowly to left; Nike crowning horses;  
 Pistrix in exergue, *wt. 266 grs., an extremely beautiful*  
*coin, in very fine condition.* 1

*Plate III, No. 9.*

2 17

- 64 **Syracuse.** B.C. 480-400. **A.** Head of Herakles.  
**ΣΥΡΑ.** Incuse square, divided into four parts; in the  
 centre of which, a female head, *wt. 17.9 grs., very fine.* 1

Rollin

2 18

- 65 **Syracuse.** B.C. 466-406. **R** Tetradrachm by  
 Eumenes. **ΣΥΡΑΚΟΣΙΟΝ.** Female head to left  
 bound twice with a cord; above and below, loose tresses  
 fly out from the whole crown of the head; around,  
 four dolphins.

Money

**R** Quadriga to left; horses in high action; beneath them  
 a crane; in exergue, a fish followed by a dolphin,  
*wt. 267 grs., very fine, and a scarce type.* 1

\*\* Compare Evans' *Nouv. Chron.*, 1891, p. 244.

*Plate III, No. 10.*

723.3 (

703 3 6  
7 10

66 **Syracuse.** B.C. 405-345. AR Medallion or Dekadrachm, by Euainetos, traces of legend. Head of Persephone to left, wearing earring and necklace, hair turned up and bound with wreath of corn leaves; four dolphins around head, and  $\Delta$  under chin.

R Quadriga, horses galloping to left; above, victory crowning charioteer; in exergue, suit of defensive armour, *wt.* 665 grs. (*Head, plate IV, no. 3*), a good example of this beautiful piece. 1

67 **Syracuse.** B.C. 405-345. AR Medallion or Dekadrachm, by Euainetos, [ $\Sigma$ Y]PAKOΣIΩN. Head of Persephone to left, wearing earring and necklace, the hair turned up at back, and bound with wreath of corn leaves; around four dolphins: under the chin, a dot.

R Quadriga, &c., as on the preceding coin, *wt.* 665 grs., a very fine example, the head in high relief, and the flan of good size. 1

*Plate III, No. 11.*

68 **Syracuse.** B.C. 405-345. AR Tetradrachm, by Euainetos. Head of Persephone to left wearing earring and necklace, the hair turned up at back and bound by wreath of corn leaves; around head, four dolphins; under chin, a dot.

R Quadriga, horses galloping to right; above, Nike flying, about to crown charioteer; in the exergue [ $\Sigma$ ]YPAKOΣI[ΩN]. *wt.* 259.9 grs., fine and very rare. 1

\* \* This rare and apparently unpublished tetradrachm by Euainetos is particularly interesting as being an exact reproduction on a reduced scale of his well-known Medallion.

*Plate III, No. 12.*

69 **Syracuse.** B.C. 405-345. AR Tetradrachm, by Eukleides. [ $\Sigma$ YPAK]IOΣIΩN. Female head to left wearing earring and necklace, the hair bound with sphendone; over which several tresses fly back; around, four dolphins.

R Quadriga driven by male figure; above, Nike about to crown the charioteer; in exergue dolphin. *wt.* 266 grs., G fine, the R not well struck. (*Head, pl. IV, No. 5*). 1

*Plate III, No. 13.*

709.1

70 **Syracuse.** B.C. 405-345. .R Tetradrachm, by Eukleides. Female head to left with flaming hair as on the preceding piece, type and treatment very similar to the last but from a different die.

*Spink*

R Quadriga, as before, *wt. 267 grs., very fine, (compare Head, pl. IV, no. 5).* 1

*Plate III, No. 14.*

71 **Syracuse.** B.C. 405-345. Medallion by Kimon, probably of his second period. ΣΥΡΑΚΟΣΙΩΝ in small lettering: Head of Arethusa to left wearing necklace and earring, the hair in net, and over the forehead broad band or diadem, on which ΚΙ.: around, four dolphins, the one under neck bearing the artist's signature ΚΙΜΩΝ.

*with drawn*

R Quadriga, horses galloping to right: above, flying Victory about to crown charioteer: in the exergue, suit of defensive armour and traces of ΑΘΛΑ, *wt. 663 grs.* 1

\* \* This valuable and beautiful medallion, which is in splendid preservation, and apparently unpublished, differs entirely in style from the other medallions by this artist.

*Plate II, No. 1.*

72 **Syracuse.** B.C. 400-336. .R Tetradrachm, by Kimon. ΑΡΕΘΟΥΣΑ. Head of Arethusa, facing: dolphins darting in and out among her flowing locks.

*Rollin*

R ΣΥΡΑΚΟΣΙΩΝ somewhat indistinct, Quadriga, horses prancing; Nike, alighting on their heads, is about to crown the charioteer; the horses have overturned the meta, and the driver looks back as if at a rival chariot close behind him, in exergue, ear of corn. *wt. 262.9 grs., fine and exceedingly rare.*

*Plate III, No. 15.*

73 **Syracuse.** B.C. 405-345. .R Drachm. ΣΥΡΑΚΟΣΙΩΝ. Head of Pallas, three-quarter face to left, in crested helmet, around, four dolphins.

*do*

R Σ[ΥΡ]ΑΚΟΣΙΩΝ. Leukaspis armed with lance and shield in attitude of attack, behind a square altar garlanded, in front a ram lying on his back, in exergue ΛΕΥΚΑΣΠΙ[Σ]. *wt. 64 grs. (Head, pl. V, 6), fine and scarce.* 1

*Plate III, No. 17.*

- 74 *Golden* **Syracuse.** B.C. 315-317. *El.* ΣΥΡΑΚΟΣΙΩΝ. 34.10  
 Head of Apollo, laureate to left, hair long, dotted border.  
 R Σ]ΩΤΕΙΡΑ. Head of Artemis to right, wearing  
 earring and necklace, hair turned up behind over  
 diadem, behind neck, quiver. *wt. 106 grs., very fine and  
 rare.* 1  
*Plate III, No. 16.*
- 75 *Lead* **Syracuse.** B.C. 315-317. *El.* Head of Apollo 14  
 to left, hair long.  
 R ΣΥΡΑΚΟ—ΣΙΩΝ. Lyre with four cords, *wt. 28 grs.,  
 very fine.* 1  
*Plate III, No. 18.*
- 76 *Silver* **Syracuse.** B.C. 317-310. *N.* Head of young 3 15  
 Herakles, laureate to left.  
 R ΣΥΡΑΚΟΣΙΩΝ. Biga, beneath which, triskelion.  
*wt. 64 grs., in very good state.* 1  
*Plate III, No. 19.*
- 77 *Golden* **Syracuse.** B.C. 317-310. R Tetradrachm. Head 4  
 of Persephone, beneath, NK.  
 R ΣΥΡΑΚΟΣΙΩΝ. Quadriga, above, triskelion, in  
 exergue, AI., *wt. 269 grs., very fine.* 1  
*Plate IV, No. 2.*
- 78 *Col. Pentagon* **Syracuse.** B.C. 317-310. R Tetradrachm. Head 2 3  
 of Persephone, beneath, NI.  
 R ΣΥΡΑΚΟΣΙΩΝ. Quadriga, above, triskelion: in  
 exergue, AI., *wt. 268 grs., similar to last but not quite  
 so fine.* 1
- 79 *Silver* **Syracuse. Agathocles.** B.C. 307-389. 11 5  
*N.* Head of Pallas to right.  
 R ΑΓΑΘΟΚΛΕΟΣ ΒΑΣΙΛΕΟΣ. Thunderbolt be-  
 low TP., *wt. 88 grs., very fine and rare.* 1  
*Plate IV, No. 3.*
- 80 *Lead* **Syracuse.** B.C. 307-289. R Didrachm. Head 2 4  
 of Pallas to left.  
 R Pegasus, beneath, triskelion, *wt. 105 grs., very fine.* 1
- 81 *Golden* **Syracuse. Hiero II.** B.C. 275-216. *N.* 5 7 6  
 Head of Persephone to left wearing necklace and ear  
 ring, hair bound with wreath of barley, behind, cres-  
 cent.  
 R ΙΕΡΩΝΟΣ. Biga to left driven by female charioteer.  
 above ΑΦ. mon., *wt. 66 grs., very fine and scarce.* 1  
*Plate IV, No. 4.*



190

82 **Syracuse. Hiero II.** B.C. 275-216. **AR**  
 Piece of 32 Litra. Head of Hiero, wearing royal  
 diadem to left.

Whitehead

R **ΒΑΣΙΛΕΟΣ ΙΕΡΩΝΟΣ.** Nike in quadriga, above  
 a star, under foreleg of nearest horse κ., *fine, a piece of  
 high rarity, wt. 427 grs.*

\* \* From the Wigan Collection.

Plate IV, No. 5.

2 18

83 **Syracuse. Gelon II.** B.C. 275-216. **AR**  
 Piece of 8 Litra. Diademed head of Gelon to left  
 within dotted border.

Rollin

R **ΣΥΡΑΚΑΣΙΟΙ. ΓΕΛΩΝΟΣ.** Biga driven by  
 winged Nike to right, *wt. 103 grs. (Head, pl. XI, 4), very  
 fine.*

Plate IV, No. 6.

10 15

84 **Syracuse. Philistis.** B.C. 280-190. Tetra-  
 drachm. Head of Philistis, veiled.

do

R **ΒΑΣΙΛΙΣΣΑΣ ΦΙΛΙΣΤΙΔΟΣ.** Nike in quad-  
 riga, horses galloping to right, underneath Ε, *wt. 210  
 grs., in the most beautiful condition.*

Plate IV, No. 7.

6

85 **Syracuse. Philistis.** B.C. 280-190. **AR**  
 Tetradrachm. Head of Philistis, veiled.

do

R **ΒΑΣΙΛΙΣΣΑΣ ΦΙΛΙΣΤΙΔΟΣ.** Nike, in quadriga,  
 the horses going slowly to right, above Φ., *wt. 209  
 grs., very fine.*

Plate IV, No. 8.

4 4

86 **Syracuse. Hieronymus.** B.C. 216-215.  
**AR.** Head of Hieronymus, diademed, to left.

Money

R **ΒΑΣΙΛΕΟΣ ΙΕΡΩΝΥΜΟΥ.** Thunderbolt, and  
 ΚΙ. in field, *wt. 126.6 grs., very fine and rare.*

Plate IV, No. 9.

4 1 6

87 **Syracuse.** B.C. 215-212. **AR.** Head of Pallas.

ck

R **ΣΥΡΑΚΟΣΙΩΝ.** Artemis huntress, with bow  
 and arrow, quiver, and hound, in field Σ. and ΥΑ.,  
*wt. 157 grs., very fine and well spread.*

Plate IV, No. 10.

- Rollin* 88 **Syracuse.** B.C. 215-212. AR, similar to the preceding. Head of Pallas. 3 3  
 ⚭ ΣΥΡΑΚΟΣΙΩΝ., Artemis huntress, with bow and arrow, quiver, and hound, advancing towards the left, in the field Α Α, *wt. 156 grs., very fine.* 1  
*Plate IV, No. 11.*
- Frank* 89 **Syracuse.** B.C. 215-212. AR. Head of Pallas, helmeted to the left as on the preceding coins, behind head ΑΓ (*mon.*) 4 6  
 ⚭ ΣΥΡΑΚΟΣΙΩΝ., Winged thunderbolt, below Σ. Ω., *wt. 105 grs., in extremely fine condition and rare.* 1  
*Plate IV, No. 12.*
- Rollin* 90 **Syracuse.** *El. (fourc.)* Head of Persephone, wearing earring and necklace to left, as on the Carthaginian staters, within dotted border. 6  
 ⚭ CYPAKOYC (partly in exergue). Horse to right looking back, border of dots, *wt. 42 grs., very fine and apparently unpublished.* 1  
*Plate IV, No. 13.*
- MACEDONIA.
- Ready* 91 **Orrescii.** Before B.C. 480. AR Stater. Centaur, kneeling on one knee to right, carrying in his arms a female clad in long chiton. 9  
 ⚭ Quadripartite incuse, *wt. 148.5 grs., very fine and rare.* 1  
*Plate IV, No. 14.*
- d* 92 **Neapolis.** B.C. 500-411. Gorgon head facing. 1 11  
 ⚭ Quadripartite incuse square, *wt. 153 grs., very fine.* 1
- d* 93 **Lete.** B.C. 500-480. AR Stater. Naked ithyphallic Satyr with horse's feet, seizing by her wrists a nymph, behind Satyr a pellet, and another above the figures. 2 6  
 ⚭ Incuse square diagonally divided into four parts, *wt. 150 grs., very fine and rare.* 1
- Rollin* 94 **Acanthus.** B.C. 500-424. AR Tetradrachm. Lion attacking bull, above Θ., in exergue a floral ornament, border of dots. 1 5  
 ⚭ Quadripartite incuse square, *wt. 245 grs., very fine and rare.* 1  
*Plate IV, No. 15.*

1152.13

18

- 8 95 **Acanthus.** After B.C. 424. .R Tetradrachm. *Spink*  
Lion attacking bull, beneath **EYK.** border of dots.  
R **AKANΘION.** a square, the four quarters of which  
are granulated, *wt.* 220.1 *grs., very fine.* 1  
*Plate II, No. 16.*
- 21 10 96 **Olynthus.** B.C. 479-332. .R Tetradrachm. Male *Rollin*  
Charioteer driving quadriga slowly to right, above  
a large pellet.  
R Eagle flying, in incuse square, within an outer incuse  
square, *wt.* 256.1 *grs., fine and rare.* 1  
*Plate II, No. 17.*
- 9 5 97 **Chalcidice.** Epoch of the league, B.C. 392-379. *Spink*  
.R Tetradrachm. Laureate Head of Apollo, of bold  
fine style to right.  
R **ΧΑΛΚΙΔΕΩΝ.** Lyre with seven cords, *wt.* 217.1  
*grs., very fine.* 1  
*Plate IV, No. 18.*
- 39 98 **Mende.** B.C. 450-400. .R Tetradrachm. Dionysus *Rollin*  
reclining on ass, holding kantharos, in front, crow  
seated in a vine.  
R **MΕΝΔΑΙΟΝ.** Vine with grapes, within shallow  
incuse, *wt.* 255.5 *grs., fine but pierced.* 1  
\* \* \* From the Bompis collection.  
*Plate V, No. 1.*
- 7 7 99 **Potidaea.** B.C. 500. .R Tetradrachm. Poseidon *Ready*  
Hippios carrying trident, a six pointed star below horse.  
R Incuse square diagonally divided, *wt.* 264 *grs., fine and*  
*very rare.* 1  
\* \* \* From the collection of Dr. H. Weber.  
*Plate V, No. 2.*
- 32 10 100 **Amphipolis.** B.C. 424-358. .R Tetradrachm. *Rollin*  
Laureate Head of Apollo, three-quarter face to right,  
with lion on shoulder.  
R **ΑΜΦΙΠΟΛΙΤΕΩΝ.** Racing torch within a frame,  
A. to left, the whole in incuse square, *wt.* 212.6 *grs.,*  
*very fine.* 1  
*Plate V, No. 3.*

1270 5

- Ready 101 **Amphipolis.** B.C. 424-358. AR Tetradrachm. 30  
 Laureate head of Apollo, three-quarter face, to left.  
 R AMΦΙΠΟΛΙΤΕΩΝ., on a raised framework; in  
 centre, racing torch; to left, cicada; the whole within  
 an incuse square, wt. 213 grs., very fine and rare. 1  
*Plate V, No. 4.*
- Money 102 **Amphipolis.** B.C. 424-358. AR Tetradrachm. 56  
 Laureate head of Apollo, three-quarter face, to left.  
 R AMΦΙΠΟΛΙΤΕΩΝ., on raised framework; in  
 centre, racing torch; the whole within incuse square,  
 wt. 219 grs., of fine style and fine condition. 1  
*Plate V, No. 5.*
- Ready 103 **Perdiccas II (?)** B.C. 454-413. AR Tetradrachm. 24  
 Horseman going to left, carrying two spears; border  
 of dots.  
 R Head of goat in linear square, with dotted inner line,  
 wt. 183.5 grs., fine. 1  
 \* \* \* From the Bompois Collection.  
*Plate V, No. 6.*
- Money 104 **Archelaus I.** B.C. 413-399. AR Stater. Young 12  
 male head to right, wearing taenia, border of dots.  
 R [A]ΡΧΕΛΑΟ., Horse walking to right with trailing  
 rein, in incuse square, wt. 163.7 grs., fine and scarce. 1  
*Plate V, No. 7.*
- do 105 **Amyntas III.** First reign, B.C. 389-383. AR 2 8  
 Stater. Head of bearded Herakles to right.  
 R AMYNTA., Horse standing to right in square  
 incuse, wt. 135 grs., fine and scarce. 1  
*Plate V, No. 8.*
- Ready 106 **Philip II.** B.C. 359-336. A Stater. Laureate 2 6  
 head of Apollo of fine bold style to right. 1  
 R Biga, under horses ΜΩ. (mon), in exergue, ΦΙΛΙΠ-  
 ΠΟΥ, wt. 132.9 grs., in beautiful condition. 1  
*Plate V, No. 9.*
- Weltman 107 **Philip II.** B.C. 359-336. AR Tetradrachm. 1 15  
 Laureate head of Zeus to right  
 R ΦΙΛΙΠ—ΠΟΥ., Naked boy rider carrying palm  
 branch; in exergue, Ν., wt. 223 grs., very fine. 1

Hos 108

1 25

108 **Alexander the Great.** B.C. 334. *AV*  
Double Stater. Head of Pallas in Corinthian helmet  
adorned with serpent.

Frank

℞ **ΑΛΕΞΑΝΔΡΟΥ.** Winged Nike holding trophy  
stand and wreath, in field, thunderbolt and **ΑΟ.**  
*wt. 264 grs., fine.* 1

1 5

109 **Alexander the Great.** B.C. 334. *AV*  
Stater. Head of Pallas, in crested Corinthian helmet,  
adorned with serpent, to right, behind **Α.**

Realy

℞ **ΒΑΣΙΛΕΩΣ ΑΛΕΞΑΝΔΡΟΥ.** Winged Nike to  
left, holding trophy stand and wreath, in field **ΑΡ.**  
(*mon.*), Aradus, *wt. 132.8 grs., in brilliant condition.* 1  
*Plate V, No. 10.*

5 10

110 **Alexander the Great.** B.C. 334. *AV*  
Stater. Head of Pallas, helmet adorned with serpent.

Rollin

℞ **ΑΛΕΞΑΝΔΡΟΥ.** Victory to left holding wreath,  
in field **ΣΙ.** (Sidon) and palm branch, *wt. 132.8 grs., in  
brilliant condition and scarce.* 1  
*Plate V, No. 11.*

1 1

111 **Alexander the Great.** B.C. 336-323.  
*AR* Tetradrachm. Head of Herakles to right.

Lincoln

℞ **ΑΛΕΞΑΝΔΡΟΥ.** Jupiter seated to left, in field  
Sphinx (Chios) and **Κ.**, *fine and scarce.*

Philip III. B.C. 323-316. *AR* Tetradrachm. Head of  
Herakles.

℞ **ΦΙΛΙΠΠΟΥ ΒΑΣΙΛΕΩΣ.** Jupiter seated, under  
chair **ΙΩ.** in front **Δ.**, *fine* 2

1 10

112 **Alexander the Great.** B.C. 336-323.  
*AR* Tetradrachm. Head of Herakles to right.

Seltman

℞ **ΑΛΕΞΑΝΔΡΟΥ.** Jupiter seated to left, under  
chair **ΡΟ.** (Rhodes), in front balaustrum flower, and  
above, monogram, *very fine and scarce.* 1

1 7

113 **Alexander the Great.** B.C. 336-323.  
*AR* Tetradrachm. Head of Herakles to right.

Hollon

℞ **ΑΛΕΞΑΝΔΡΟΥ.** Jupiter seated, in field **ΑΣ.**  
(Asealon), below **ΙΒ.**, *very fine and a scarce mint.* 1

1 10

114 **Alexander the Great.** B.C. 336-323.  
*AR* Tetradrachm. Head of Herakles to right.

Rach

℞ **ΑΛΕΞΑΝΔΡΟΥ.** Jupiter seated, under chair **Λ.**  
and **ΔΑ.** (Damascus) in front, forepart of ram, *fine and  
of neat work, rare.* 1

Hos 114



- Spink* 115 **Demetrius Poliorcetes.** B.C. 306-283. *AR* Nike, or Fame, carrying a trophy stand, and blowing a trumpet, standing on the prow of a galley. 12 5  
 ⚔ ΔΗΜΗΤΡΙΟΥ ΒΑΣΙΛΕΩΣ. Poseidon, naked, wielding trident, his chlamys wrapped round his left arm, *wt.* 264 *grs.*, *very fine.* 1  
*Plate V, No. 12.*
- Lincoln* 116 **Antigonus Gonatas.** B.C. 277-239. *AR* Tetradrachm. Macedonian shield, in the centre of which a head of Pan, horned; behind his head, a pedum. 1 11  
 ⚔ ΒΑΣΙΛΕΩΣ ΑΝΤΙΓΟΝΟΥ., Athena Alkis hurling thunderbolt; in field to left a helmet, to right mon., *wt.* 263 *grs.*, *fine.* 1  
*Plate V, No. 13.*
- Smith* 117 **Antigonus Doson.** (?) B.C. 229-220. Head of Poseidon to right with flowing hair bound with marine plant. 7  
 ⚔ ΒΑΣΙΛΕΩΣ ΑΝΤΙΓΟΝΟΥ. on prow, on which is seated Apollo naked holding bow, in field below, mon., *wt.* 263 *grs.*, *fine and scarce.* 1  
*Plate V, No. 14.*
- Ready* 118 **Philip V.** B.C. 220-178. *AR* Tetradrachm. Macedonian shield; in the centre of which head of Perseus to left, wearing winged helmet surmounted by griffin's head; at his shoulder, harpa. 18 15  
 ⚔ ΒΑΣΙΛΕΩΣ ΦΙΛΙΠΠΟΥ., Club in oak wreath; outside wreath, harpa, *wt.* 257 *grs.*, *in brilliant condition.* 1  
*Plate V, No. 15.*
- Seltman* 119 **Perseus.** B.C. 179-168. *AR* Tetradrachm. Head of king to right. 4 6  
 ⚔ ΒΑΣΙΛΕΩΣ ΠΕΡΣΕΩΣ., Eagle on thunder-bolt; the whole in oak-wreath, *wt.* 257 *grs.*, *fine.* 1
- Ready* 120 **Paeonia. Patraus.** B.C. 340-315. *AR* Tetradrachm. Head of Apollo. 16  
 ⚔ ΠΑΤΡΑΟΥ. (retrograde). Horseman spearing prostrate foe, *wt.* 193 *grs.*, *fine.* 1

1471.166

14

121 **Audoleon.** B.C. 315-286. R Tetradrachm.  
Head of Pallas, facing.

Köllin

R AYΔΩΛΕΟΝΤΟΣ. Free horse, *wt.* 193 *grs.*, *very fine.*

Plate V, No. 16.

1

26

122 **Macedonia.** Under the Romans, B.C. 158-146.  
R Tetradrachm. Head of Artemis in centre of Macedonian shield.

Money

R ΜΑΚΕΔΟΝΩΝ. ΠΡΩΤΗΣ. : above P mon., the whole within wreath of oak, *of good style and in good condition, wt.* 263 *grs.*

1

110

123 **Macedonia.** Under the Romans after B.C. 146.  
R Tetradrachm. Head of Alexander the Great with flowing hair and horn of Ammon.

Hagan

R AESILLAS, Quaestoreal insigna, the whole within wreath, *wt.* 257 *grs.*, *very fine.*

1

5126

124 **Macedonia.** Under the Romans after B.C. 146.  
Bust of Artemis in high relief in centre of Macedonian shield

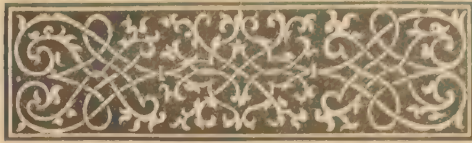
Spink

R ΛΕΓ. ΜΑΚΕΔΟΝΩΝ. : above, head with sprig of olive ; the whole within wreath of oak with acorns, *wt.* 260 *grs.*, *very fine and very rare.*

1

Plate V, No. 17.

£ 1485.5.0



SECOND DAY'S SALE.

THRACE.

- Rollon*
- LOT  
125 **Aenus.** Circa B.C. 450-400. AR Tetradrachm. Head *19*  
of Mercury to right wearing petasos ornamented with  
beads, the hair in curls.  
⊗ **AIN.**, goat walking to right, in front upright caduceus;  
the whole within shallow incuse, *wt. 248 grs., very fine*  
*and scarce.* 1  
*Plate V, No. 18.*
- d*
- 126 **Aenus.** Circa B.C. 450-400. AR Tetradrachm. *10*  
Head of Mercury as on the preceding.  
⊗ **AIN.**, Goat with caduceus in front, *wt. 250 grs., very*  
*fine.* 1
- d*
- 127 **Aenus.** B.C. 400-350. AR Tetradrachm. Head of *37*  
Hermes nearly facing, inclined to left, wearing petasos.  
⊗ **AINION.**, Goat; in field, a small tree, *wt. 243 grs.,*  
*very fine.* 1  
*Plate VI, No. 2.*
- Ready*
- 128 **Aenus.** B.C. 400-350. AR Tetradrachm. Head *9 2 6*  
of Hermes nearly facing.  
⊗ **AINION.**, Goat to right, in shallow incuse square,  
*wt. 249 grs., fine and rare.* 1
- Money*
- 129 **Maronea.** B.C. 400-350. AR Tetradrachm. Prancing *2*  
horse to left, above a wheel.  
⊗ **ΜΗΤΡΟΦΩΝ**; around shallow incuse; in centre  
within linear square, grape vine, *wt. 214 grs., fine.* 1
- 70 2 6*

16

130 **Abdera.** B.C. 500. .R Tetradrachm. Griffin with pointed wings, rearing to left, ΕΠΙ-ΙΔ. beneath the griffin a kylix.

℞ Shallow incuse divided into four compartments, *wt.* 232 *grs.*, *very fine and rare.* 1

*Plate V, No. 19.*

10

131 **Abdera.** B.C. 400. .R Tetradrachm. Griffin with rounded wing, seated to left on a tunny fish, around ΚΑΛΛΙΔΑΜΑΣ

℞ ΑΒΔΗΡΙΤΕΩΝ. around the sides of shallow incuse square, within which, a quadripartite square with raised lines, *wt.* 230 *grs.*, *very fine.* 1

*Plate VI, No. 1.*

27

132 **Thasos.** B.C. 411-350. .R Tetradrachm. Head of bearded Bacchus, wearing wreath of ivy.

℞ ΘΑΣΙΟΝ., Herakles kneeling, clad in lion's skin, drawing bow, in field an amphora, the whole in shallow incuse, *wt.* 226 *grs.*, *very fine and very rare.* 1

*Plate VI, No. 3.*

1 12

133 **Thasos.** B.C. 550-465. .R Stater. Satyr carrying Nymph.

℞ Incuse square, *fine.*

Thasos. B.C. 411-350. .R Drachm. Head of bearded Bacchus crowned with ivy.

℞ ΘΑΣΙΟΝ., Herakles kneeling, shooting with bow, in field, young head of river god, *fair*

Thasos. B.C. 146. .R Tetradrachm. Head of young Bacchus.

℞ Herakles standing with club. 3

4 4

134 **Istrus.** Circa B.C. 300. .R Drachm. Two Male heads nearly facing, the one to the right hand, inverted

℞ ΙΣΤΡΗ., Sea Eagle on dolphin, in field Α., *wt.* 107.5 *grs.*, *very fine* 1

3 2

135 **Lysimachus.** B.C. 323-281. .R Tetradrachm. Head of Alexander the Great with horn of Ammon; below neck Δ.

℞ ΒΑΣΙΛΕΩΣ. ΛΥΣΙΜΑΧΟΥ., Pallas seated, in front Δ and crescent; below seat, monogram, *wt.* 262.5 *grs.*, *fine style and in fine condition.* 1

*Plate VI, No. 4.*

132.1 6

Rollin

Feltman

Money

Cash

Rollin

C.

Money

- 136 **Lysimachus.** B.C. 323-281. *AR* Tetradrachm. Head of Alexander the Great, with horn of Ammon.

17

℞ **ΒΑΣΙΛΩΣΩ. ΛΥΣΙΜΑΧΟΥ.**, Pallas Nicephoros seated, holding spear; behind her throne, a shield, *wt.* 260 *grs.* 1

## THESSALY.

Money

- 137 **Larissa.** B.C. 480-430. *AR* Drachm. Youth seizing bull by the horns; in exergue, **TO**.

5 10

℞ **ΛΑΡΙΣΑΙ.**, Horse galloping; the whole in incuse square, *wt.* 93.6 *grs.*, in very fine condition. 1

*Plate VI, No. 5.*

Roller

- 138 **Larissa.** B.C. 400-334. *AR* Didrachm. Head of Fountain Nymph Larissa, nearly facing, with flowing hair.

7

℞ **ΛΑΡΙΣΙΑΩΝ.**, bridled horse trotting to right, *wt.* 182.7 *grs.*, in fair condition though pierced, and very rare. (*B. M. Catalogue, "Thessaly," pl. v, No. 14.*) 1

Money

- 139 **Larissa.** B.C. 400-334. *AR* Drachm. Head of the fountain nymph Larissa, nearly facing, of fine style.

7

℞ **ΛΑΡΙ.** (in exergue) **ΣΑΙΩΝ.**, Mare with foal walking to left, *wt.* 90 *grs.*, very fine. 1

\* \* From the Paravey Collection.

*Plate VI, No. 6.*

Ready

- 140 **Phalanna.** B.C. 400-334. *AR* Drachm. Young male head to right, with short curly hair.

2 12 6

℞ **ΦΑΛΑΝΝΑΙΩΝ.**, Bridled horse to right; in field, monogram and a flower, *wt.* 77 *grs.*, fine and rare 1

Thessaly. B.C. 196-146. *AR* Drachm. Head of Apollo.

℞ **ΘΕΣΣΑΛΩΝ.**, The Thessalian Pallas Itona fighting in field **ΠΟΛΥ**, very fine, *wt.* 66 *grs.* 2

*Plate VI, Nos. 7 and 8.*

110

141 **Pheroe. Alexander Tyrant.** B.C. 369-357 (?) .R Didrachm. Head of Hecate, three-quarter, to right, wearing earrings and necklace, the head adorned with myrtle wreath.

Rollin

R ΑΛΕΞΑΝΔΡΟΥ. Warrior wearing petasos and cuirass, on prancing horse to right; beneath horse, a bipennis, and a similar weapon is depicted on the horse's flank, *wt. 183 grs., very fine, and of the highest rarity.* 1

Plate VI, No. 9.

16

142 **Dyrrhachii.** B.C. 400-300. .R Staters (2). Cow suckling calf.

Ready

R Δ. Y. Double stellate square, *both fine* 2

16

143 **Damastium.** Fourth century B.C. .R Stater. Head of Apollo, laureate, to left.

d

R ΔΑΜΑΣΤΙΝΩ. Tripod-lebes in incuse square, *wt. 202.5 grs., fine and scarce.* 1

## KINGS OF EPIRUS.

16 10

144 **Alexander.** B.C. 342-326. R Diobol. Head of Helios, nearly facing, on a radiate disc.

Rollin

R [ΑΛΕ]ΞΑΝ[ΔΡΟΥ] ΤΟΥ ΝΕΟΠΤΟΑ[ΕΜΟΥ]. A thunderbolt, *wt. 17 grs., very fine, and of the highest rarity.* 1

Plate VI, No. 10.

120

145 **Pyrrhus.** B.C. 295-272. .R Tetradrachm. Head of Zeus Dodonaeus to left, crowned with oak leaves; beneath, A.

d

R ΒΑΣΙΛΕΩΣ ΠΥΡΡΟΥ. Dione, seated left on throne, wearing stephanos, holding long sceptre, and raising peplos with left hand, *wt. 261 grs., of the highest rarity, and in brilliant condition.* 1

Plate VI, No. 11.

1 10

146 **Pyrrhus.** B.C. 295-272. .R Head of Persephone, with flowing hair and corn wreath, to left; behind the head, torch and the letter A.

Ready

R ΒΑΣΙΛΕΩΣ ΠΥΡΡΟΥ. Pallas, left, in fighting attitude, holding spear and shield, *wt. 87 grs., fine and scarce.* 1

1 5 3



- 147 **Epirote Republic.** B.C. 238. AR Didrachm. 22  
Jugate heads of Zeus Dodonaeus and Dione; behind,  
KE.

℞ ΑΡΕΙΡΩΤΑΝ., Bull rushing to right, the whole  
within wreath of oak, *wt. 154 grs., extremely fine, and  
very rare in this condition.* 1

*Plate VI, No. 12.*

ACARNANIA.

- 148 **Leucas.** After B.C. 167. AR Didrachm. Statue / 10  
of goddess with attributes, a plume, staff, and sceptre  
surmounted by a dove, the whole within a wreath.

℞ [ΛΕ]ΥΚΑΔΙΩΝ. [ΔΑ]ΜΥΛΟΣ., Prow of galley;  
in front, N.K. monogram, *very well preserved, wt.  
123.5 grs.* 1

- 149 **Leucas (?)** Circa B.C. 350. AR Drachm. Head of // 11  
Aphrodite wearing necklace, nearly full face; to right Σ.  
℞ Pegasus to right, with Λ beneath, *wt. 41 grs., very fine,  
and of considerable rarity, apparently unpublished.* 1

*Plate VI, No. 13.*

- 150 **Federal Coinage of Acarnania.** / 12  
B.C. 250-167. AR Stater. Head of man-headed bull  
to right.

℞ ΑΚΑΡΝΑΝΩΝ., Apollo Actios, naked, seated left  
on throne, holding in right hand a strung bow; in  
front, ΘΕ (mon.), *wt. 148.6 grs., fine and rare.* 1

AETOLIA.

- 151 **Aetolian League.** B.C. 279-168. AR Tetra- 24 10  
drachm. Head of young Herakles in lion's skin, to right.  
℞ ΑΙΤΩΛΩΝ., Aetolia represented as a female figure  
holding spear, wearing causia, short chiton, &c., seated  
on a pile of shields, whereof the upper one is Mace-  
donian, the remainder Gaulish; below, the Gaulish  
trumpet; in front of figure ΤΑ (mon.), and ΙΝ. *wt.  
260.1 grs., very fine and very rare.* 1

*Plate VI, No. 14.*

466.6

10 10

152 **Aetolian League.** B.C. 279-168. AR Tetradrachm. Head of young Herakles in lion's skin to left, somewhat smaller than the preceding and having  $\Lambda$  under neck.

R  $\Lambda\text{IT}\Omega\Lambda\Omega\text{N.}$  Aetolia represented as a female figure holding spear, etc., seated on a Gaulish shield which is supported on a Macedonian shield, beneath, a Gaulish trumpet ending in a dragon's head, in field to left  $\Lambda.$ , to right  $\Sigma\text{E.}$  with monogram above, *wt. 260 grs., very fine and very rare* 1

Plate VI, No. 15.

Spink

LOCURIS.

5

153 **Locri Opuntii.** Circa B.C. 369-338. AR Stater. Head of Peisephone wearing earring and necklace, hair bound with wreath of corn leaves, to right.

R  $\text{O}\Pi\text{O}\text{N}\text{T}\text{I}\Omega\text{N.}$  Ajax naked, armed with sword and shield and crested Corinthian helmet, in fighting attitude, to right, inside shield, a griffin, in field a bunch of grapes and broken lance, *wt. 197 grs., very fine and rare.* 1

Plate VI, No. 16.

Rollin

BOEOTIA.

4

154 **Tanagra.** B.C. 387-374. AR Stater. Boeotian shield

R  $\text{TA.}$  Forepart of springing horse to left, the whole within incuse square, *wt. 187 grs., very fine and rare.* 1

For reverse see Plate VI, No. 17.

d

1 5

155 **Thebes.** B.C. 540-480. AR Staters. Boeotian shield.

R  $\text{+}$  in centre of mill-sail incuse, *wt. 187 grs., fine.* And a Stater of later issue. Boeotian shield.

R  $\Theta. \text{E.}$ , an amphora, with club above, *fine, wt. 187 grs.* 2

Lincol.

2 4

156 **Thebes.** B.C. 379-338. AR Staters. Boeotian shield, upon which a club.

R  $\Theta. \text{E.}$ , an amphora, *wt. 190 grs., fine.* Another, Boeotian shield.

R  $\text{FA}\Sigma\text{T.}$ , an Amphora, with corn grain above, *wt. 186 grs., fine.* 2

Reade

Money

157 **Thebes.** B.C. 466-426. AR Stater. Boeotian shield. 3 15

℞ **†EB.** Herakles kneeling to right, stringing his bow, at his feet a club, the whole within incuse square, *wt.* 183.5 *grs.*, in good state and rare.

do

158 **Thebes.** B.C. 426-387. AR Stater. Boeotian shield, upon which a club. 9 13

℞ **Θ.**, bearded head of Dionysos crowned with ivy, within shallow incuse, *wt.* 187 *grs.*, very fine and rare. 1  
*Plate VI, No. 18.*

Rollin

159 **Thebes.** B.C. 288-244. AR Tetradrachm. Laureate head of Zeus to right. 70 10

℞ **ΒΟΙΩΤΩΝ.** Poseidon naked to waist, holding dolphin and trident, seated to left on throne, on the side of which, Boeotian shield, *wt.* 260 *grs.*, very fine and excessively rare. 1

*Plate VI, No. 19.*

## EUBOEA.

Spink

160 **Eretria.** (after) B.C. 500. AR Tetradrachm. Gorgon's head. 10 10

℞ Lion's head, with two fore paws, facing, the whole within incuse square, *wt.* 250.7 *grs.*, in excellent condition and very rare. 1

*Plate VI, No. 20.*

## ATTICA.

do

161 **Athens.** B.C. 525-430. A Hecta. Head of Pallas in crested helmet, which is adorned with spray and olive leaves, hair in lines on forehead. 22 10

℞ **ΑΘΕ.**, two owls opposed, the heads facing, between them branch of olive, the whole in incuse square, *wt.* 21 *grs.*, very fine, of the highest interest and rarity, and presumably unique. 1

\* \* \* From the Collection of Photiades Pacha.

*Plate VII, No. 1.*

Nicolle

162 **Athens.** B.C. 590-525. AR Tetradrachms (3), of early style, of globular fabric (as *B. M. Catalogue*, *plate I, figures 1, 2, 3, 4*). Head of Athena, of very archaic style. 1 8

℞ Incuse square, within which, owl, facing, *scarce.* 3

600.13

- 2 163 **Athens.** B.C. 527-430. .R Tetradrachms (2).  
Head of Athena to right, usual type.  
R ΛΘΕ. Owl to right, head facing, in field olive spray  
with bud. Compare classes A and B (*B. M. Catalogue*,  
*date III*), both very fine. 2
- 1 12 164 **Athens.** B.C. 527-430. .R Tetradrachms (2) of  
similar style to the preceding. Compare Class Y,  
*B. M. Catalogue*, plate, IV-1, 2, 3. Both very fine. 2
- 2 1 165 **Athens.** B.C. 186-147. .R Tetradrachm. Head  
of Athena Parthenos to right, wearing close fitting  
helmet with triple crests, adorned in front with the  
foreparts of four horses: on the side, a flying Pegasus.  
R ΛΘΕ. Owl on an Amphora, on which Θ. below  
ΣΩ ΕΥΡΥΚΛΕΙ. ΑΡΙΑΡΑ. ΗΡΑΚΛΕΙ. and in  
field to right, the three Charities (4 *wt.* 256 *grs.*, very  
*fine*). 1  
*Plate VII, No. 2.*
- 1 2 166 **Athens.** B.C. 196-187. .R Tetradrachm. Head  
of Pallas, similar to preceding.  
R ΛΘΕ. ΑΠΕΛΛΙΚΩΝ. ΠΟΡΓΙΑΣ. ΑΡΙΟΝΟΥΣ.  
on Amphora Γ: in the field, Griffin running, and below  
ΕΠΙ. *wt.* 250 *grs.*, *fine*: and a barbarous Imitation of  
an Athenian Tetradrachm of early style. 2

## AEGINA.

- 4 4 167 **Aegina.** B.C. 550-480. .R Staters. Tortoise with  
smooth shell, down the middle of the back of which is  
a row of dots, three at the top of the shell.  
R Incuse square, divided into five compartments by broad  
bars, *wt.* 188 *grs.*, (*B. M. Catalogue*, plate 24.1.)  
Another. B.C. 480-431, of which the structure of the shell  
is shown divided into thirteen plates.  
R Incuse square, divided into five compartments by  
bands, *wt.* 175 *grs.*, (*B. M. Catalogue*, plate 24.12).  
And a third example. B.C. 404. .Tortoise.  
R Incuse, divided into five compartments, in two of  
which ΑΙΓΙ, and in another compartment a dolphin,  
*wt.* 187 *grs.*, (*B. M. Catalogue* plate, 25-3), all *fine*. 3

621.11

## CORINTHIA.

Niccolò

- 168 **Corinth.** B.C. 350-338.  $\overline{\text{R}}$  Stater, usual type. *1 6*  
 Adjunct, winged figure.  
 $\overline{\text{R}}$  Pegasus.  
 Leucas. B.C. 400-330. Head of Pallas to the left;  
 behind, bunch of grapes, and below  $\Sigma$ .  
 $\overline{\text{R}}$  Pegasus to right.  
 Leucas. B.C. 330-250. Head of Pallas to left; behind,  
**API** and anchor.  
 $\overline{\text{R}}$  Pegasus, with  $\Lambda$  beneath. (*B. M. Catalogue, plate*  
*36-20,)* *fine.* 3

## PELOPONNESUS.

Rollen

- 169 **Sicyon.** B.C. 400-300.  $\overline{\text{R}}$  Stater.  $\Sigma\text{E}$ , Chimera *2 12*  
 to left.  
 $\overline{\text{R}}$  Dove flying, within a wreath of olive, *wt. 189 grs., very*  
*fine, (B.M. Catalogue, plate 7-16.)* 1

do

- 170 **Sicyon.** B.C. 400-300.  $\overline{\text{R}}$  Stater.  $\Sigma\text{E}$ , Chimera *3*  
 going to right.  
 $\overline{\text{R}}$  Dove within olive wreath. *wt. 189 grs., very fine.* 1

Money

- 171 **Elis.** B.C. 471-370.  $\overline{\text{R}}$  Stater. Eagle standing *4 8*  
 tearing a hare.  
 $\overline{\text{R}}$  **FA.** (retrograde), winged thunderbolt with acanthus  
 ornament at upper end, all within circular incuse, *wt.*  
*180 grs., in very good condition and scarce, a variety of*  
*B.M. Catalogue, plate 11, no. 7.* 1

Rollen

- 172 **Elis.** B.C. 471-370.  $\overline{\text{R}}$  Stater. Head of an eagle, *11*  
 of fine work, to left, below which a leaf, on which are  
 traces of lettering.  
 $\overline{\text{R}}$  Winged thunderbolt, *wt. 185 grs., very fine and rare.*  
 \* \* \* From Lady Ruthven's collection.  
*Plate VII, No. 3.*

Ready

- 173 **Elis.** B.C. 370-362.  $\overline{\text{R}}$  Stater. Head of Zeus to left. *10 12 6*  
 $\overline{\text{R}}$  **FA.** Eagle with closed wings standing on capital of an  
 Ionic column, *wt. 183 grs., very fine.* 1  
*Plate VII, No. 4.*

Money

- 174 **Elis.** B.C. 370-362.  $\overline{\text{R}}$  Stater. **FA.** Head of Hera *14*  
 wearing stephanos, with hair turned up at back.  
 $\overline{\text{R}}$  Eagle with closed wings, looking back, with a wreath  
 of olive, *wt. 183 grs., very fine and rare.* 1  
*Plate VII, No. 5.*

673.9.6

20

175 **Elis.** B.C. 362-312. .R Stater, **FA.** Head of Hera to right wearing a stephanos adorned with flowers.

⊕ Eagle with open wings, looking back, all within a wreath of olive, *wt. 188 grs., very fine and rare.* 1

*Plate VII, No. 6.*

Honey

## ARGOLIS.

16 10

176 **Argos.** B.C. 421-350. .R Stater. Head of Hera to right, wearing necklace and stephanos, the latter adorned with floral ornaments.

⊕ **ΑΡΓΕΙΩΝΙΕ.** two dolphins inverted, between them a pomegranate, *wt. 185.1 grs., fine and very rare.* 1

\*\*\* From the Wigan and Bompois Collections.

*Plate VII, No. 7.*

do

## ARCADIA.

20 10

177 **Pheneus.** B.C. 362. .R Stater. Head of Demeter crowned with corn leaves, wearing necklace and earring with five pendants.

⊕ **ΦΕΝΕΩΝ.** Hermes naked running to left and carrying on his arm the infants Arkas, in his right hand he holds caduceus, *wt. 185 grs., obverse very fine, the reverse, unfortunately not well struck.* 1

*Plate VII, No. 8.*

Rollin

## CRETE.

40

178 **Chersonesus.** B.C. 350-300. .R Stater. Head of Artemis Britomartis, laureate, her hair tied up in a knot behind, the ends flying loose.

⊕ **ΧΕΡΣΟΝΑΣ[ΙΟΝ].** Apollo naked, seated to right on Omphalos, holding plectrum and lyre, in field right, thymiaterion, *wt. 171 grs., very fine and very rare.* 1

*Plate VII, No. 9.*

do

6 17 6

179 **Cnossus.** B.C. 350-220. .R Stater. Head of Hera, wearing stephanos adorned with flowers.

⊕ **ΚΝΩΣΙΩΝ.** Square labyrinth: in field, **ΑΡ.** spear-head, and thunderbolt, within border of dots, *wt. 167 grs., fine and rare.* 1

*Plate VII, No. 10.*

Seltman

1 12

180 **Cnossus.** B.C. 350-220. .R Stater. Another example, similar to the last, but not so fine, *wt. 162 grs.* 1

Stobart

770.17



778.14

Money

181 **Lyttus.** B.C. 450-330. AR Stater. Eagle flying to left. 3146

℞ ΛΥΤΤΙΟΝ., Boar's head to left, within dotted border in square incuse, *wt.* 160 *grs.* *fine and rare* 1

Rollin

182 **Phaestus.** B.C. 431-300. AR Stater. Herakles to right, striking with club held in right hand at Hydra, which rears up before him, and whose nearest head he grasps with his left hand, over his left arm lion's skin. 1818

℞ ΦΑΙΣΤΙΩΝ. (retrograde), bull to right, *wt.* 179 *grs.* *very fine and very rare* 1

*Plate VII, No. 11.*

de

183 **Phaestus.** B.C. 431-300. AR Stater. ΦΑΙΣΣΤΙΟΝ., Youthful Herakles seated, facing, on lion's skin, holding club before him with his left hand; in the back-ground to left, column, from which hangs bow and quiver, the whole within border of dots. 51

℞ Bull rushing to right, within wreath, *wt.* 178.7 *grs.* *very fine and of the highest rarity.* 1

*Plate VII, No. 12.*

de

184 **Phaestus.** B.C. 431-300. AR Stater. ΤΑΛΩΝ. 3910  
Talos as a winged youth, hurling a stone.

℞ Bull butting to right, *wt.* 176 *grs.*, *very fine and very rare.* 1

\* \* \* From the Spratt Collection.

*Plate VII, No. 13.*

de

185 **Polyrhenum.** B.C. 330-280. AR Stater. 31  
Head of Zeus to right, in front of forehead signature of artist ΠΥΘΟ[ΔΩΡΟΥ.]

℞ ΠΟΛΥΡΗΝΙΟΝ. ΕΝΗΣ., Bull's head bound with fillet, facing, beneath arrow head, *wt.* 178 *grs.*, *very fine, and extremely rare.* 1

*Plate VII, No. 14.*

de

186 **Paros, Insula.** Circa B.C. 200. AR Stater. 4110  
Female head, Artemis (?) bound thrice round with a riband.

℞ ΠΑΡΙ., Magistrate's name ΑΝΑΞΙΚ., Goat to right, *wt.* 120 *grs.*, *extremely fine and very rare* 1

*Plate VII, No. 15.*

F

964.14.6

064 1/2 6

ASIA.

KINGS OF PONTUS, WITH BOSPORUS.

80 10

187 **Mithradates IV.** B.C. 250-190. AR Tetradrachm. Portrait of king, of bold style, in high relief, to right.

*Rollin*

℞ ΒΑΣΙΛΕΩΣ ΜΙΘΡΑΔΑΤΟΥ., Zeus Aëtophoros, seated; in front, a star and crescent, *wt.* 265 grs., *very fine and very rare.* 1

*Plate VII, No. 16.*

30

188 **Mithradates VI, the Great.** B.C. 297. AR Tetradrachm. Head of Mithradates Eupator diademed to right.

*Frank*

℞ ΒΑΣΙΛΕΩΣ ΜΙΘΡΑΔΑΤΟΥ. ΕΥΠΑΤΟΡΟΣ., Pegasus to left drinking, in field star and crescent, to right □Σ. with monogram below, and under legend Γ.; the whole within ivy wreath, *wt.* 260 grs., *in very fine condition and of very fine style.* 1

*Plate VII, No. 17.*

16 10

189 **Mithradates VI, the Great.** B.C. 297. AR Tetradrachm. Head similar to that on preceding coin.

*d.*

℞ Type as last, but without date, *wt.* 256 grs., *very fine and rare* 1

PAPHLAGONIA.

14 10

190 **Amastris.** B.C. 302. AR Stater. Head of Mithras in Persian head-dress, laureate and ornamented at side with a star.

*d.*

℞ ΑΜΑΣΤΡΙΕΩΝ., seated female figure wearing modius and holding Nike and sceptre, in field a rose, *wt.* 146.2 grs., *fine and very rare.* 1

*Plate VII, No. 18.*

\* \* \* From the Bonpois collection.

2 6

191 **Cromna.** Circa B.C. 330-300. AR Tetrobol. Bearded head laureate to left.

*d.*

℞ ΚΡΩΜΝΑ., Head of Amazon to left, wearing ear-ring, necklace and turreted stephanos, in front Ν., above ⚡, *wt.* 55 grs., *very fine and scarce.* 1

1108-10 6

Spink

192 **Sinope.** B.C. 364-363. *R* Drachm. Head of 2 2  
Sinope, wearing sphenone, in front, aplustre.

↳ ΣΙΝΩ., Sea eagle on dolphin, above ΚΡΗ., *wt.*  
121 grs., *very fine.* 1

do

193 **Sinope.** B.C. 290-250 (?). *R* Didrachm. 1 / 12  
Turreted head of Sinope to left, countermarked by means  
of a circular punch, with full-faced bust of Helios  
radiate, having between radiations Σ. Ι. Ν. Ω. Π. Ε.  
Ω. Ν.

↳ Poseidon seated, holding dolphin and trident, behind  
ΝΩ., below Β., in front the countermark, head of Zeus,  
*wt.* 92.5 grs., *fine and interesting.* 1

## BITHYNIA.

Money

194 **Timotheus and Dionysius.** B.C. 1 / 12  
347-338. *R* Stater. Head of young Dionysos crowned  
with ivy, thyrsus at shoulder.

↳ ΤΙΜΟΘΕΟΥ. ΔΙΟΝΥΣΙΟΥ., Herakles wearing  
lion's skin, erecting trophy, *wt.* 153 grs., *fine and rare.* 1  
*Plate VII, No. 19.*

## MYSIA.

do

195 **Cyzicus.** B.C. 540-480. *El.* Stater. Youthful 1 / 4 10  
figure to right, wearing himation over the back, the  
breast and arms bare, holding two plants of corn in  
left hand, and carried in chariot drawn by two winged  
serpents; beneath tunny to right. 1

↳ Mill sail incuse, *wt.* 246.3 grs., *fine* (*Greenwell, p. 53*).  
*Plate VIII, No. 1.*

do

196 **Cyzicus.** B.C. 540-480. *El.* Stater. Head of 1 / 4  
Apollo, laureate, nearly full-face, but inclining to the  
right; beneath tunny to right. 1

↳ Mill sail incuse, *wt.* 247.2, grs., *fine* (*Greenwell, p. 54*).  
*Plate VIII, No. 2.*

do

197 **Cyzicus.** B.C. 540-480. *El.* Stater. Bearded 1 / 5  
Satyr, with tail and animal's ears, kneeling to right on  
tunny; he holds kantharos in his right hand, into  
which he is pouring wine from an amphora, which he  
holds on his left knee. 1

↳ Mill sail incuse, *wt.* 247.8 grs., *fine* (*Greenwell, p. 70*).  
*Plate VIII, No. 3.*

115<sup>6</sup> 6  
18

198 **Cyzicus.** B.C. 540-480. Stater. Winged female figure of fine style, wearing peplos over knees, kneeling to left, and holding an aplustre in the right hand in front of her face; her left arm, which is wrapped in the peplos, rests on her hips; beneath tunny to left. *Money* 1

℞ Mill sail incuse, wt. 246.6 grs. (*Greenwell*, p. 74).

*Plate VIII, No. 4.*

7 199 **Cyzicus.** B.C. 540-488. *El* Stater. Head of Goat to left; behind, tunny upwards. *Rollin*

℞ Mill sail incuse, wt. 250 grs., fine and scarce, (*Greenwell*, page 113). 1

*Plate VIII, No. 5.*

3 7 6 200 **Cyzicus.** B.C. 540-480. *El* Hecta. Bearded head of Poseidon, bound with marine plants; behind the neck, the head of trident; beneath, tunny to left. *Ready*

℞ Incuse, wt. 40.2 grs., very fine and rare, (*Greenwell*, page 48). 1

*Plate VIII, No. 6.*

7 17 6 201 **Cyzicus.** B.C. 540-480. *El* Hecta. Bearded human figure, naked, the lower part ending in the tail of a fish, reclining to left, holding in raised left hand a wreath or ring; beneath, tunny to left. *do*

℞ Incuse, wt. 41 grs., very fine and rare. (*Greenwell*, page 50). 1

*Plate VIII, No. 7.*

3 8 202 **Cyzicus.** B.C. 540-480. *El* Hecta. Nude male figure, kneeling to right, on extended left hand he supports a tunny, and in right hand he holds a knife. *Rollin*

℞ Incuse, wt. 40.5, very fine and rare. (*Greenwell*, page 95). 1

*Plate VIII, No. 8.*

2 14 203 **Cyzicus.** B.C. 540-480. *El* Hecta. Lion standing on tunny to left, paw raised, mouth open. *Hagan*

℞ Incuse, wt. 40.1 grs., very fine and rare. (*Greenwell*, page 104). 1

*Plate VIII, No. 9.*

115<sup>6</sup> 12

Hagan

204 **Cyzicus.** B.C. 540-480. *El* Hecta. Head of  
Lioness, mouth closed, to left; behind, tunny, head  
upwards.

℞ Incuse, *wt.* 41.2 *grs.*, *fine and rare.* (*Greenwell*, page  
107). 1

*Plate VIII, No. 10.*

Spink

205 **Cyzicus.** B.C. 540-480. *El* Hecta. Dog on  
tunny to left, right fore paw raised.

℞ Incuse, *wt.* 41 *grs.*, *very fine and rare.* (*Greenwell*,  
page 115). 1

*Plate VIII, No. 11.*

Rollin

206 **Cyzicus.** B.C. 400-330. *AR* Stater. ΣΩΤΕΙΡΑ., 2  
Head of Persephone, veiled and crowned with corn.

℞ ΚΥΙΙ., Lion's head to right; beneath, tunny; in field  
right, a bee, *wt.* 227.2 *grs.*, *very fine and rare.* 1

*Plate VIII, No. 12.*

de

207 **Lampsacus.** B.C. 450-412. *El* Stater. Fore-  
part of winged horse to left; in front, vine tendril with  
bunch of grapes; below, horse Ξ; above floral orna-  
ment.

℞ Incuse square quartered, *wt.* 230.5 *grs.*, *very fine and  
scarce.* 1

*Plate VIII, No. 13.*

## UNATTRIBUTED.

de

208 Stater of pale Electrum. Head of lion (?) facing.

℞ Deep incuse divided into four parts by broad bands,  
*wt.* 126 *grs.*, *fine and rare.* 1

*Plate VIII, No. 14.*

Spink

209 Hecta. Head of Herakles in lion's skin to right.

℞ Incuse square quartered, two deep and two shallow  
depressions, *wt.* 38 *grs.*, *very fine and scarce.* 1

## KINGS OF PERGAMUM.

Rollin

210 **Eumenes I.** B.C. 263-241. *AR* Tetradrachm. 8  
Diademed head of the King to right. 10

℞ ΦΙΛΕΤΑΙΡΟΥ., Pallas enthroned, holding shield in  
front; in exergue AO. mon., ivy leaf in field, and bow;  
behind, king's name, *wt.* 260 *grs.*, *fine and scarce.* 1

*Plate VIII, No. 15.*

- 1 8 211 **Attalus I.** B.C. 241-197. AR Tetradrachm. Diademed head of the King to right.  
 R ΦΙΛΕΤΑΙΡΟΥ., Pallas enthroned holding shield in front, on throne A; behind name, a bow, *wt.* 260.5 *grs.*, *fine and scarce.* 1
- 1 10 212 **Eumenes II.** B.C. 197-159. AR Tetradrachm. Diademed head of the King to right.  
 R ΦΙΛΕΤΑΙΡΟΥ (in front), Pallas enthroned, crowning name; behind, shield and bow; in field, ivy leaf and A., *wt.* 260 *grs.*, *very fine and scarce.* 1

Nicolle

Stobart

## TROAS.

- 2 10 213 **Abydos.** B.C. 190 (?) AR Tetradrachm. Bust of Artemis, with bow and quiver at her shoulder.  
 R ΑΒΥΔΗΝΩΝ., Eagle with spread wings to right; in field, a wreath; below ΔΙΟΔΩΡΟΥ., *wt.* 250 *grs.*, *fine and rare.* 1

*Plate VIII, No. 16.*

Rollin

## ÆOLIS.

- 3 214 **Cyme.** Circa B.C. 190. AR Tetradrachm. Head of Cyme to right.  
 R ΚΥΜΑΙΩΝ., Horse with off-side fore-leg raised; in field, one-handled vase; in exergue, ΚΑΛΛΙΑΣ.; the whole within a wreath, *wt.* 249.7 *grs.*, *fine and scarce.* (*B. M. Guide*, XLIX, 14.) 1
- 10 10 215 **Myrina.** B.C. 197. AR Tetradrachm. Head of Apollo, laureate to right.  
 R ΜΥΡΙΝΑΙΩΝ., Statue of Apollo Gryneus, standing with lustral branch and patera; at his feet, omphalos and amphora; the whole within wreath, *wt.* 252.7 *grs.*, *very fine and scarce.* 1

Lincoln

Rollin

*Plate VIII, No. 17.*

## LESBOS.

## ELECTRUM COINAGE OF MYTILENE.

(Weight averaging about 40 grs.)

HECTE. B.C. 450-400.

Rollin	216	Head of lion, with open mouth to right.	3 5
	℞	Cock's head, incuse, <i>very fine</i> .	1
		Plate VIII, No. 18.	
Spink	217	Head of lion, with open mouth, to right.	4 1
	℞	Calf's head, incuse, <i>very fine</i>	1
		Plate VIII, No. 19.	
Ready	218	Winged boar, to right.	
	℞	Lion's head, with open mouth, to right, incuse, <i>very fine</i> .	5 3
		Plate VIII, No. 20.	
Spink	219	Forepart of winged lion, to left.	7
	℞	Cock's head, incuse, to left, <i>very fine</i> .	1
		Plate VIII, No. 21.	
Rollin	220	Forepart of winged boar, to right.	4
	℞	Lion's head, incuse, to left, <i>very fine</i> .	1
		Plate VIII, No. 22.	
Spink	221	Forepart of bull, to left; <b>M</b> below.	8
	℞	Lion's head, incuse, <i>very fine</i> .	1
		Plate VIII, No. 23.	
Ready	222	Gorgon head facing.	
	℞	Head of Herakles, incuse, <i>very fine</i> .	5 7 6
		Plate VIII, No. 24.	
		B.C. 400-387.	
Rollin	223	Female head, wearing sphendone.	4
	℞	Terminal statuette of female, facing a similar statuette of Priapus, within linear square in shallow incuse, <i>very fine and rare</i> .	1
		Plate VIII, No. 25.	
Spink	224	Forepart of winged lion to left.	9 12
	℞	Sphinx, seated in linear square, within incuse, <i>very fine</i> .	1
		Plate VIII, No. 26.	
d	225	Head of Sappho ? in sphendone.	7
	℞	Lyre in linear square, <i>very fine</i> .	1
		Plate VIII, No. 27.	



1337. 17

6 2 1

- 226 Head of Poseidon  $\uparrow$  to right.  
 R Trident in linear square, *very fine*. 1  
*Plate VIII, No. 28.*

Rollin

8 10

- 227 Head of Pallas in close fitting crested helmet.  
 R Owl in linear square, *very fine*. 1  
*Plate VIII, No. 29.*

Frank

3 17 1

- 228 Youthful male head, wearing kausia, with cord passing under chin.  
 R Leopard in linear square, *very fine*. 1  
*Plate VIII, No. 30.*

d

2 2

- 229 Youthful male head, with horn of Ammon to right.  
 R Eagle looking back, *very fine*. 1  
*Plate VIII, No. 31.*

d

3 3

- 230 Head of Demeter, wearing earring and wreath of corn.  
 R Bull, butting to left, in linear square, *very fine*. 1  
*Plate VIII, No. 32.*

Rady

10

- 231 Head of Demeter, veiled, and wearing wreath of corn  
 R Tripod with pendant fillet, in linear square, *very fine*. 1  
*Plate VIII, No. 33.*

Frank

5 7 1

- 232 Head of Demeter, similar to last but from a different die.  
 R Tripod as before, *very fine*. 1  
*Plate VIII, No. 34.*

Rollin

11

- 233 Female bust (Atalanta  $\uparrow$ ) partially draped, and wearing sphendone; the hair blown back.  
 R Race torch in linear square, *very fine and rare*. 1  
*Plate VIII, No. 35.*

Frank

3 3

- 234 Head of one of the Dioskuri, wearing conical pileus bound with wreath; on either side, a star.  
 R Female head in linear square, *fine*. 1  
*Plate VIII, No. 36.*

Hagan

5 2 6

- 235 Head of Apollo, of fine style.  
 R Head to right with flowing hair, in linear square, *fine*. 1  
*Plate VIII, No. 37.*

Rollin

3 12 6

- 236 Helmeted head of Pallas to right.  
 R Small head in linear square, *well preserved*.  
*Plate VIII, No. 38.*

Hagan

And another with ram's head, cock beneath.  
 R Lion's head with open mouth, incuse. (*Hist. Num.*,  
*fig. 293*). *fair*. 2

14 11 17.6  
1

- Ready 237 Laureate head of Apollo to right.  
 ♀ Female head, wearing sphendone, to right; behind, a coiled serpent, *very fine*. 1 14  
*Plate VIII, No. 39.*
- Spink 238 Head of Pallas, nearly facing, in triple-crested helmet, wearing earring and necklace. 8 5  
 ♀ Male head with curly hair; the kausia behind, in linear square, *very fine*. 1  
*Plate VIII, No. 40.*
- Rollin 239 Head of young Dionysos, wearing crown of ivy, to right. 6 17 6  
 ♀ Mask of Pan, facing, in linear square, *very fine* 1  
*Plate VIII, No. 41.*
- Robert 240 Female head to right.  
 ♀ Small head of young Dionysos, ivy crowned, in linear square, *fine*. 2 3  
*Plate VIII, No. 42.*
- Rollin 241 Male head, the hair short, bound with plain diadem. 5 15  
 ♀ Female head, wearing sphendone, in linear square, *very fine*. 1  
*Plate VIII, No. 43.*
- Hagan 242 Laureate head of Apollo to right.  
 ♀ Small female head, wearing sphendone, to right, in linear square, *very fine*. 2 12  
*Plate VIII, No. 44.*
- Rollin 243 Head of young Dionysos, ivy crowned.  
 ♀ Female head, hair in korymbos, in linear square, *very fine*. 2 10  
*Plate VIII, No. 45.*
- Seltman 244 **Methymna.** B.C. 500. AR Stater. Head of Pallas, of Archaic style, wearing helmet, with plain crest and simple projection in front, the side ornamented with a scroll, within dotted linear square, in incuse.  
 ♀ **MAΦYMNAIO[Σ]**, Boar to right, *wt. 130 grs., very fine and rare*. 20 10  
*Plate VIII, No. 46.*



THIRD DAY'S SALE.

- |        |     |     |   |               |
|--------|-----|-----|---|---------------|
| //     | LOT | 245 | <b>Mytilene.</b> B.C. 500-400 Por. Two calves' heads face to face, with an olive tree between them.   | <i>Rader</i>  |
|        |     |     | ⊗ Incuse square, <i>wt.</i> 171 <i>grs.</i> ( <i>B. M. Guide, plate XI, no. 28, fine.</i> )   | 1             |
| 28 10  |     | 246 | <b>Mytilene.</b> B.C. 400-300. AR Stater. Head of Apollo, of fine style, laureate to right.   | <i>Rollin</i> |
|        |     |     | ⊗ <b>MY.T.I.</b> Lyre in linear square, <i>wt.</i> 167 <i>grs.</i> , <i>very fine, a piece of the highest rarity.</i>                           | 1             |
|        |     |     | <i>Plate VIII, No. 47.</i>  |               |
| IONIA. |     |     |   |               |
| 6      |     | 247 | <b>Clazomenæ.</b> B.C. 500-394. AR Didrachm. Forepart of winged boar to right.  | <i>do</i>     |
|        |     |     | ⊗ Incuse square, quartered, <i>wt.</i> 106.2 <i>grs.</i> ( <i>B. M. Guide, plate II, no. 29, very fine and scarce.</i> )                        | 1             |
| 23     |     | 248 | <b>Clazomenæ.</b> B.C. 387-300. AR Drachm. Head of Apollo, three-quarter face, towards left, chlamys fastened round neck.                       | <i>Frank</i>  |
|        |     |     | ⊗ <b>ΚΛ. ΑΡΟΛΛΑΣ.</b> Swan standing to left, with open wings, <i>wt.</i> 63 <i>grs.</i> , <i>a very charming piece, in beautiful condition.</i> |               |
|        |     |     | ** From Major-General Yorke Moore's collection.   |               |
|        |     |     | <i>Plate VIII, No. 48.</i>  |               |
| 27     |     | 249 | <b>Ephesus.</b> B.C. 394-295. AR Tetradrachm. ΕΦΑ. Bee.   | <i>Mason</i>  |
|        |     |     | ⊗ <b>ΜΑΝΤΙΚΡΑΤΗΣ.</b> Forepart of a stag looking back; behind, a palm tree, <i>wt.</i> 231 <i>grs.</i> , <i>very fine and rare.</i>             | 1             |

- Ready 250 **Ephesus.** B.C. 258-202. AR Didrachm. Bust 21  
of Greek Artemis to right.  
R ΕΦ. ΠΥΘΑΓΟΡΑΣ., Forepart of stag looking  
back; in field, a bee, *wt. 101 grs., very fine and scarce* 1
- Stobart 251 **Ephesus.** B.C. 133-67. AR Tetradrachm. Cisto- /  
phorus, usual type, in field to left.  
R ΕΦΕ. above ΝΓ. to left, a long torch, *wt. 194 grs.,  
very fine.* 1
- Rollin 252 **Heraclea.** B.C. 190. AR Tetradrachm. Head 41  
of Pallas, wearing helmet richly ornamented with  
forepart of horses, as on contemporary coins of  
Athens.  
R ΗΡΑΚΛΕΩΤΩΝ., Club in oak wreath, symbol,  
an owl, and two monograms, *wt. 253.6 grs., very fine and  
very rare* 1  
*Plate VIII, No. 49.*
- d. 253 **Lebedus.** B.C. 190. AR Tetradrachm. Head 82  
of Pallas in triple crested helmet.  
R ΛΕΒΕΔΙΩΝ., Owl on club, between cornucopiae,  
the whole in laurel wreath; Magistrate's name,  
ΑΘΗΝΑΙΟΣ., *wt. 243 grs., extremely fine and very  
rare.* 1  
*Plate IX, No. 1.*
- d. 254 **Magnesia.** After circa B.C. 190. AR Tetra- 22  
drachm. Head of Artemis to right.  
R ΜΑΓΝΗΤΩΝ., Apollo beside tripod, on maander  
pattern; Magistrate's name, ΕΥΦΗΜΟΣ ΠΑΥΣΑ-  
ΝΙΟΥ.; the whole in laurel wreath, *wt. 245.5 grs., fine  
and rare.* 1  
*Plate IX, No. 2.*
- Ready 255 **Miletus.** B.C. 250-190. AR Drachm. Head of 1 8  
Apollo laureate to left.  
R ΜΙ. (mon.), lion to left looking back, above a star,  
and below ΠΙΤΟΙΣ., *wt. 101 grs., very fine* 1
- Spink 256 **Phocæa.** B.C. 480-400. El. Hæcta. Head in 6 10  
close fitting helmet, with plain crest and cheek piece,  
the side decorated with scroll, below seal.  
R Inuse, *wt. 39.7 grs., very fine.* 1  
*Plate IX, No. 3.*

229 18

77

257 **Phocæa.** B.C. 480-400. *El.* Hecta. Head of Omphale wearing earring and lion's skin, club behind neck, below seal.

Ready

℞ Mill sail incuse, *wt.* 39.8 *grs.*, *very fine.* 1  
*Plate IX, No. 4.*

2

258 **Phocæa.** B.C. 480-400. *El.* Hecta. Head of Pallas in helmet with crest, decorated at side with recumbent griffin with rounded wing, below seal.

Stobart

℞ Incuse, *wt.* 39.8 *grs.*, *very fine.* 1  
*Plate IX, No. 5.*

12 10

259 **Smyrna.** B.C. 190-133. *AR* Tetradrachm. Head of Kybele wearing turreted crown.

Kollen

℞ **ΙΜΥΡ-ΝΑΙΩΝ. ΗΡΑΚΛΕΙΔΗΣ.** Lion to right, the whole within a wreath, *wt.* 253 *grs.*, *very fine,* a *scarce type.* 1

22 10

260 **Smyrna.** B.C. 190-133. *AR* Tetradrachm. Head of Kybele wearing turreted crown.

d

℞ **ΙΜΥΡ-ΝΑΙΩΝ.** below a monogram, the whole within a wreath, *wt.* 247 *grs.*, *very fine.* 1  
*Plate IX, No. 6.*

ISLANDS OF IONIA.

20

261 **Chios.** Circa B.C. 600-490. *El.* Stater. Sphinx seated to right.

d

℞ Rough incuse square, *wt.* 217 *grs.*, *fine and very rare.* 1  
*Plate IX, No. 7.*

\*\* From the Simpson Collection.

10

262 **Chios.** B.C. 412-350. *AR* Tetradrachm. Sphinx seated to left, in front a pointed Amphora.

d

℞ Incuse square divided by two broad bands, on one of which the name of the Magistrate **ΗΡΙΑΝΟΣ,** *wt.* 206.5 *grs.*, *very fine and scarce.* 1

*Plate IX, No. 8.*

9 9

263 **Samos.** B.C. 439-394. *AR* Tetradrachm. Lion's scalp facing.

Ready

℞ **ΣΑ.** forepart of bull to right, with branch of olive behind, the whole within incuse square, *wt.* 201 *grs.*, *very fine and scarce.* 1

*Plate IX, No. 9.*

313 14

- Rollin* 264 **Samos.** B.C. 394-365. *R* Tetradrachm. Lion's scalp facing. 5 15  
*R* ΣΑ., forepart of bull to right, ΑΗΣΙΑΝΑ. above, and olive branch behind, *wt.* 253 *grs.*, *fine and scarce.* 1
- CARIA.
- Stobart* 265 **Cnidus.** B.C. 600-480. *R* Drachm, Forepart of lion 2 2  
*R* Head of Aphrodite of Archaic style, in incuse square; another, similar, but with legend ΚΝΙ., *both extremely fine* 2
- Rollin* 266 **Hidrieus. Dynast of Caria.** B.C. 351-344. *R* Tetradrachm. Head of Apollo nearly full face. 4 1  
*R* ΔΡΙΕΩΣ., Zeus Stratios, *wt.* 236 *grs.*, *very fine and of great rarity in this condition.* 1  
*Plate IX, No. 10.*
- ISLANDS OFF CARIA.
- Stobart* 267 **Calymna.** B.C. 350-335. *R* Didrachm. Young male head in crested helmet with cheek pieces. 2 11  
*R* ΚΑΛΥΜΝΙΟΝ., a Lyre, the whole in dotted square, *wt.* 100 *grs.*, *very fine and rare.* 1
- Rollin* 268 **Poseidon Carpathi.** B.C. 550-450. *R* Stater. Two dolphins in opposite directions, in top left corner, floral ornament, the whole within a dotted and linear square. 6 6  
*R* Two oblong depressions divided by a broad band, *wt.* 217 *grs.*, *very fine and rare (Imhoof, Zeit. F. Num. 1, 153).* 1  
*Plate IX, No. 11.*
- Money* 269 **Cos.** B.C. 480-400. *R* Tetradrachm. Naked Athlete preparing to hurl the discus, behind him the prize tripod. ΚΟΣ., 16  
*R* Mill sail incuse, with crab in relief, in centre, *wt.* 253 *grs.*, *fine and rare.* 1  
*Plate IX, No. 12.*
- Ready* 270 **Cos.** B.C. 300-200. *R* Didrachm. Head of youthful Herakles, three-quarter face to right. 4 6  
*R* ΚΩΙΟΝ. ΜΙΚΩΝ., a Crab and club, the whole within dotted square, *wt.* 100.2 *grs.*, *very fine and rare.* 1  
*Plate IX, No. 13.*

- 271 **Camirus Rhodi.** B.C. 500. AR Stater. Money  
Fig leaf  
R Two oblong incuse depressions, separated by a broad  
band, *wt. 186 grs., very fine and rare* 1  
*Plate IX, No. 14.*
- 272 **Rhodes.** B.C. 400-304. AR Tetradrachm. Head Ready  
of Helios facing, of fine bold style.  
R **POΔION.**, a Rose with bud to right and Grapes to  
left, in field E., *wt. 230 grs., very fine and rare* 1  
*Plate IX, No. 15.*
- 273 **Rhodes.** B.C. 400-304. AR Tetradrachm. Similar  
to the preceding, but the bud is to the left of the  
rose on the reverse, and in the field Φ., *wt. 236 grs.,  
fine and rare.* 1
- 274 **Rhodes.** B.C. 304-168. AR Tetradrachm. Head Sellman  
of Helios surrounded by rays.  
R **POΔION.**, a rose with bud to right, **ΑΡΣΤΟΚΡΙ-  
ΤΟΣ.**, *wt. 206 grs., very fine and scarce.* 1
- LYDIA.
- 275 **Sardes.** B.C. 568-554. A Stater (Euboic Stand- Money  
ard). Foreparts of a lion and bull facing one another.  
R Incuse square divided into two parts, *wt. 123 grs., very  
fine and rare.* 1  
*Plate IX, No. 16.*
- 276 **Sardes.** B.C. 568-554. AR Hemistater. Foreparts Spunk  
of a lion and bull facing each other.  
R Oblong incuse divided into two parts, *wt. 82 grs., fine* 1
- LYCIA.
- 277 **Lycia.** B.C. 480. AR Stater. Forepart of boar Kollin  
to right.  
R Irregular incuse, *wt. 138 grs., fine and rare.* 1
- 278 **Lycia.** B.C. 480-450. AR Stater. Boar to right. Ready  
R A tortoise within dotted line in incuse square, *wt.  
138 grs., fine and rare.* 1
- 279 **Lycia.** B.C. 480-450. AR Stater. Boar to right. Spunk  
R A triskelis formed of three cocks' heads, *wt. 139.2 grs.,  
fine and rare (B. M. Guide, plate 3-35.)* 1



## PAMPHYLIA.

Rollin

280 **Perga.** B.C. circa 190. AR Tetradrachm. Head of Artemis. *L L*

⊗ **ΑΡΤΕΜΙΔΟΣ ΠΕΡΓΑΙΑΣ.**, Artemis Pergaea, with wreath and sceptre, at her feet stag, *wt. 260 grs., fine and rare.* 1

*Plate IX, No. 17.*

O'Hagan

281 **Side.** B.C. 190-36. AR Tetradrachm, Head of Pallas. */ 8*

⊗ Nike holding wreath, magistrate's name, **ΚΑΕΥΧ.**, in the field a pomegranate *wt. 246 grs., very fine;* Another of similar type with **ΔΕ.** on the reverse. 2

## PISIDIA.

Money

282 **Selge.** B.C. 400-300. AR Stater. Two Wrestlers engaged. *6 10*

⊗ **ΣΤΑΕΓΙΥΣ.**, a Slinger, in field Astragalos and dagger, the whole within beaded square, *wt. 168 grs., very fine.* 1

*Plate IX, No. 18.*

## CILICIA.

Spink

283 **Celendris.** B.C. 400-350. AR Stater, Naked horseman with whip riding sideways on prancing horse. *L L*

⊗ **ΚΕΑΕΝ.**, a Goat kneeling on one knee looking back, in exergue **ΙΔ.** (mon.), *wt. 167.5 grs., very fine and rare.* 1

*Plate IX, No. 19.*

Rollin

284 **Nagidus.** B.C. 400-380. AR Stater. Head of bearded Dionysos, crowned with ivy. */ 6*

⊗ [**N**] **ΑΓΙΔΙΚΟΝ.** Head of Aphrodite, with hair in sphendone, *wt. 153.6 grs., very fine and very rare.* 1

*Plate IX, No. 20.*

## KINGS, &amp;c. OF CILICIA.

Spink

285 **Datames.** B.C. 378-372. Diademed head of the Nymph Arethusa, facing inclined to left, wearing earring and necklace with pendants. *7 7*

⊗ **תרד [מנ]**. Head of Ares to left, wearing crested helmet, *wt. 166.3 grs., very fine and rare (Babelon, pl. 25, no. 183).* 1

*Plate IX, No. 21.*

3 2 6 286 **Mazaïos.** B.C. 361-333. AR Stater. בעלתרך.  
Baaltars, seated on throne to the left, the chlamys  
around lower part of body; holding in right hand a  
houquet composed of a vine tendril, with bunch of  
grapes and an ear of corn, and holding long sceptre.

Ready

⊕ lion attacking stag to left; in field, Ⓞ (ϵ),  
*wt. 166 grs., very fine and rare (see Babelon, pp. 28, 29).* 1

Plate IX, No. 22.

10 287 **Mazaïos.** B.C. 361-333. AR Stater. Legend  
similar to last; Baaltars, seated on throne, holding lotus  
headed sceptre; in field to left a bunch of grapes, and  
wheat ear; under throne, כ.

6

⊕ Long legend, name and titles: lion devouring bull  
over city walls, *wt. 165 grs., in moderate condition, but  
has received three chisel cuts (compare Babelon, pl. v, figs.  
18, 19, 20.)* 1

3 14 288 **Mazaïos.** B.C. 361-333. AR Stater. Draped bust  
of Athena, with necklace and earring, wearing triple  
crested helmet; the head nearly facing to left I, and  
to right Σ (Issus).

Money

⊕ Baaltars, seated on throne, holding lotus headed  
sceptre; in front, bunch of grapes to right, a helmet,  
and the letter B; under throne, Σ (Soli), *wt. 165 grs.,  
very fine and rare (Babelon, pl. vi, figs. 1, 2, and 3).* 1

Plate X, No 1.

7 5 289 **Mazaïos.** B.C. 361. AR Stater. בעלתרך.  
Baaltars, seated to left, holding sceptre.

Roller

⊕ lion walking left, over rocky ground, *wt. 164 grs.,  
very fine and rare (Babelon, pl. vi, 17, 18).* 1

Plate X, No. 2.

#### KINGS OF CYPRUS.

1 3 290 **Pamiathon.** Circa B.C. 361-312. A<sup>7</sup> Hemí  
Stater. Herakles bearded, wearing lion's skin, ad-  
vancing right with uplifted club, and holding in left  
hand a bow; in field, crux ansata.

Money

⊕ נסלופמיון, lion pulling down stag; in field to  
right, date ΜΜΙΙ-ΙΙ=25, *wt. 64 grs., very fine and scarce  
(compare Babelon, pl. xix, figs. 11, 12, 13, 14.* 1

Plate X, No. 3.

Ready

- 291 **Uncertain King of Cyprus (Pny-**  
**tos 1) circa B.C. 480.** Bull to right. 3 1  
 ⚔ Head of an eagle within dotted square; in the left  
 upper angle a floreate ornament; the whole within  
 incuse, *wt.* 164.2 *grs.*, in good condition and very rare  
 (compare *Babelon*, *pl.* xx, *fig.* 13.) 1

## KINGS OF GALATIA.

Lincoln

- 292 **Amyntas.** B.C. 36-25. ⚔ Tetradrachm. Head 1  
 of Pallas.  
 ⚔ **ΒΑΣΙΛΕΩΣ ΑΜΥΝΤΟΥ**, Nike advancing left,  
 carrying sceptre bound with diadem, *wt.* 243.5 *grs.*, *unc*  
 (*B. M. Guide*, *pl.* lx, *no.* VII). 1

Stobart

- 293 **Amyntas.** B.C. 36-25. ⚔. Head of Pallas in 5  
 crested helmet to right.  
 ⚔ **ΒΑΣΙΛΕΩΣ ΑΜΥΝΤΟΥ**, Nike advancing to  
 left, carrying sceptre bound with diadem, *wt.* 21 *grs.*,  
*very fine and rare.* 1  
*Plate X, No. 4.*

## KING OF CAPPADOCIA.

Rollin

- 294 **Ariarathes.** B.C. 94-84. ⚔ Tetradrachm. 60  
 Head of Ariarathes with diadem to right.  
 ⚔ **ΒΑΣΙΛΕΩΣ ΑΡΙΑΡΑΘΟΥ**. Pegasus drinking;  
 in field to left, crescent and star; to right, monogram,  
 under Pegasus, **ΕΥΣΕΒΟΥΣ ΦΙΛΟΠΑΤΟΡΟΣ**,  
 the whole within wreath of oak, *wt.* 258.5 *grs.*, *very fine*  
*and very rare.* *Plate X, No. 5.* 1

## KINGS OF SYRIA.

do

- 295 **Seleucus I.** B.C. 312-280. ⚔ Tetradrachm. 14  
 Head of Zeus to right.  
 ⚔ **ΒΑΣΙΛΕΩΣ ΣΕΛΕΥΚΟΥ**, Pallas in biga drawn  
 by horned elephants, above the anchor of the Seleuci-  
 diae, and under the tusks of the elephants **M** and a  
 bee, *wt.* 260 *grs.*, *fine and very rare.* 1  
*Plate X, No. 6.*

Mony

- 296 **Seleucus I.** ⚔ Tetradrachm. Head of Seleucus 26  
 in helmet adorned with horn and ear of bull, round  
 his neck lion's skin.  
 ⚔ **ΒΑΣΙΛΕΩΣ ΣΕΛΕΥΚΟΥ**, Nike crowning a  
 trophy, *wt.* 258.1 *grs.*, *fine and very rare.* 1  
*Plate X, No. 7.*

Squad

- 18 297 **Antiochus I. Soter.** B.C. 281-261. AR Tetradrachm. Diademed head of Antiochus I. in high relief to right. *-eltman*
- ⊕ ΒΑΣΙΛΕΩΣ ΑΝΤΙΟΧΟΥ., Apollo seated left, on omphalos, holding an arrow in right hand, the left hand resting on a bow; to right, HP (mon.), and in exergue AP. (mon.), *wt.* 261 grs., *very fine.* 1
- 18 298 **Antiochus I (Theos).** B.C. 261-246. AR Tetradrachm. Diademed head of Antiochus Theos., strongly resembling the portrait of his father, in dotted border. *Ready*
- ⊕ ΒΑΣΙΛΕΩΣ ΑΝΤΙΟΧΟΥ., Apollo seated on omphalos, holding in right hand three arrows, the left hand resting on a bow near omphalos; to right, ΘΕ. (mon.), and in exergue ΤΑΡ. (mon.) (*Babylon, Rois de Syrie, page 27, no. 202*), *wt.* 261 grs., *very fine and scarce.* 1
- 14 299 **Antiochus II (Theos.)** B.C. 261-246. AR Tetradrachm. Head of Antiochus II to right, wearing diadem ornamented with a wing at side. *Money*
- ⊕ ΒΑΣΙΛΕΩΣ ΑΝΤΙΟΧΟΥ., Apollo seated on omphalos holding arrow in right hand, the left hand resting on bow, in field to left K and monogram, in exergue horse grazing, (*struck at Alexandria Trous*). (*See Babylon, Rois de Syrie, page 29*), *wt.* 260 grs., *very fine and rare.* 1
- Plate X, No. 8.*
- 15 300 **Seleucus II (Callinicus).** B.C. 246-226. AR Tetradrachm. Youthful diademed head of Seleucus II to right. *Rollin*
- ⊕ ΒΑΣΙΛΕΩΣ ΣΕΛΕΥΚΟΥ., Apollo, the left arm resting on a tripod, holding an arrow in right hand, monogram in field, *wt.* 260.5 grs., *in fair condition and rare.* 1
- 18 301 **Antiochus Hierax.** B.C. 227. AR Tetradrachm. Diademed head of Antiochus to right. *Lincoln*
- ⊕ ΒΑΣΙΛΕΩΣ ΑΝΤΙΟΧΟΥ., Apollo seated on omphalos, holding arrow in right hand, the left hand resting on a bow, in field to left AK. (mon.), to the right another monogram, *wt.* 263 grs., *fine and rare.* 1

608.10.6

- Lincoln 302 **Antiochus III (the Great).** B.C. 222-187. *AR* Tetradrachm. Young head of Antiochus III diademed, to right. 1 8  
 ⚭ **ΒΑΣΙΛΕΩΣ ΑΝΤΙΟΧΟΥ.** Apollo seated on omphalos, *wt.* 260 *grs.*, *very fine and scarce.* 1
- Stobart 303 **Antiochus III (the Great).** B.C. 222-187. *AR* Tetradrachm. Diademed head of Antiochus the Third within filleted border. 1 17  
 ⚭ **ΒΑΣΙΛΕΩΣ ΑΝΤΙΟΧΟΥ.** Apollo seated on omphalos, holding arrow and resting on bow, in exergue, two monograms, *wt.* 255 *grs.*, *the obverse extremely fine, the Apollo on reverse slightly double struck.* 1
- Lincoln 304 **Antiochus III (the Great).** B.C. 222-187. *AR* Tetradrachm. Diademed head of Antiochus III to right within filleted border. 1 10  
 ⚭ **ΒΑΣΙΛΕΩΣ ΑΝΤΙΟΧΟΥ.** Apollo seated on omphalos, in field to left a tripod, *wt.* 257.3 *grs.*, *very fine and scarce.* 1
- Stobart 305 **Antiochus III (the Great).** B.C. 222-187. *AR* Tetradrachm. Diademed head of Antiochus III to right, **ΔΙ.** behind head, within dotted border. 2 8  
 ⚭ **ΒΑΣΙΛΕΩΣ ΑΝΤΙΟΧΟΥ.** Apollo seated on omphalos, in exergue **ΔΙ.**, *wt.* 263 *grs.*, *very fine, and a rare type.* 1
- Lincoln 306 **Seleucus IV. (Philopator).** B.C. 187-175. *AR* Tetradrachm. Diademed head of Seleucus to right within filleted border. 3 10  
 ⚭ **ΒΑΣΙΛΕΩΣ ΣΕΛΕΥΚΟΥ.** Apollo seated on omphalos, holding arrow and resting on bow, in field a palm branch with pendant fillet, *wt.* 259.9 *grs.*, *very fine and scarce.* 1
- Lincoln 307 **Seleucus IV. (Philopator).** B.C. 187-175. *AR* Tetradrachm. Similar in types to last, *but not quite so fine,* *wt.* 260 *grs.* 1 5
- d. 308 **Antiochus IV. (Epiphanes).** B.C. 175-164. *AR* Tetradrachm. Diademed head of Antiochus to right, within filleted border. 2 2  
 ⚭ **ΒΑΣΙΛΕΩΣ ΑΝΤΙΟΧΟΥ.** Apollo seated on Omphalos to left, in exergue **ΠΑΡ.** (mon.), *wt.* 260.1 *grs.* *fine and rare* 1

622.19.

622 19.

1/12

309 **Antiochus V (Eupator)**. B.C. 164-162.  
 Ⓐ Tetradrachm. Youthful head of Antiochus V, diademed within filleted border.

Struck

Ⓡ ΒΑΣΙΛΕΩΣ ΑΝΤΙΟΧΟΥ ΕΥΠΑΤΟΡΟΣ., Zeus semi-draped, seated to right, holding small Statuette of Victory, and resting on spear, in field to left **μ**. (struck at Ptolemais), *wt.* 247 *grs.*, *fine and rare* 1

1/5

310 **Demetrius I. Soter**. B.C. 162-150. Ⓐ Tetradrachm. Diademed bust of Demetrius to right within laurel border.

Lincoln

Ⓡ ΒΑΣΙΛΕΩΣ ΔΗΜΗΤΡΙΟΥ ΣΩΤΗΡΟΣ., Figure of Fortune seated to left holding arrow and cornucopia, in exergue ΑΞΡ = 161 in field to left, two monograms, struck at Antioch, *wt.* 256.5 *grs.*, *very fine and scarce* 1

1/14

311 **Alexander. Bala**. B.C. 150-145. Ⓐ Tetradrachm. Bust of Alexander Bala draped, to right.

Rollin

Ⓡ ΒΑΣΙΛΕΩΣ ΑΛΕΞΑΝΔΡΟΥ., Eagle on prow and galley to right, in field ΗΡ. (mon.), and the date ΓΞΡ. = 163, *wt.* 219.5 *grs.*, *very fine and scarce* 1

1/2

312 **Demetrius II (Nicator)**. B.C. 130-125. Ⓐ Tetradrachm. Diademed bust of Demetrius II to right 1

Stobart

Ⓡ ΒΑΣΙΛΕΩΣ ΔΗΜΗΤΡΙΟΥ., Eagle on prow of galley, in field ΑΡΕ., to right monogram, and the date ΔΠΡ = 184, *wt.* 220 *grs.*, *very fine and scarce* 1

2/10

313 **Demetrius II (Nicator)**. B.C. 130-125. Ⓐ Tetradrachm. Diademed and bearded bust of Demetrius II, to right, within filleted border

Morel Bey

Ⓡ ΒΑΣΙΛΕΩΣ ΔΗΜΗΤΡΙΟΥ ΘΕΟΥ ΝΙΚΑΤΟΡΟΣ., Jupiter, semi-draped, seated on throne, holding figure of Victory and long sceptre, to left monogram; and another under throne, in exergue ΣΠΡ. = 186, *wt.* 253 *grs.*, *very fine and rare* 1

7/20

314 **Antiochus VI (Dionysos)**. B.C. 145-142. Ⓐ Tetradrachm. Diademed and radiate head of Antiochus VI to right, within filleted border

Rollin

Ⓡ ΒΑΣΙΛΕΩΣ ΑΝΤΙΟΧΟΥ ΕΠΙΦΑΝΥΣ ΔΙΟΝΥΣΟΥ., the Dioskuri on horseback with couched lances to left, in field ΤΡΥ., and below the horses ΗΞΡ. = 168, *wt.* 253.3 *grs.*, *very fine and rare* 1  
 Plate X, No. 9.

100 grs

Lincoln

- 315 **Antiochus VII (Evergetes).** B.C. 138-129. *R* Tetradrachm, draped and diademed bust of Antiochus VII to right within dotted border. 1/1
- ⊕ ΒΑΣΙΛΕΩΣ ΑΝΤΙΟΧΟΥ., Eagle on prow of galley, to left club surmounted by monogram above ΑΡΕ., to right monogram ΑΣ and date, ΙΟΡ. = 178, *wt.* 217 grs., *very fine and scarce* 1

Morel Bey

- 316 **Alexander II (Zebina).** B.C. 128-123. 1/10
- R* Tetradrachm. Diademed head of Alexander Zebina to right within filleted border.
- ⊕ ΒΑΣΙΛΕΩΣ ΑΛΕΞΑΝΔΡΟΥ., Zeus semi-draped seated on throne with back, holding in the right hand a Statuette of Victory, and in left hand a long sceptre, in field to left monogram, and under the throne Δ., *wt.* 255.7 grs., *fine and scarce.* 1

Kollon

- 317 **Cleopatra (Thea), and Antiochus VIII (Grypus).** B.C. 125-121. *R* Tetradrachm, Jugate busts of Cleopatra diademed and veiled, and Antiochus diademed to right, within filleted border. 1/5 10
- ⊕ ΒΑΣΙΛΙΣΣΗΣ ΚΛΕΟΠΑΤΡΑΣ ΘΕΑΣ ΚΑΙ ΒΑΣΙΛΕΩΣ ΑΝΤΙΟΧΟΥ., Zeus semi-draped, seated, holding figure of Victory and long sceptre, monogram to left, in exergue ΘΠΡ. = 189, *wt.* 256 grs., *very fine and rare* 1

Plate X, No. 10.

Morel Bey

- 318 **Antiochus VIII (Grypus).** B.C. 125-96. *R* Tetradrachm. Diademed head of Antiochus Grypus to right, within filleted border. 9 10
- ⊕ ΒΑΣΙΛΕΩΣ ΑΝΤΙΟΧΟΥ ΕΠΙΦΑΝΟΥΣ., Altar of Zeus, Dolichenus, termed the Tomb of Sardana-palus; monogram and ΔΙ in field to left; struck at Tarsus, *wt.* 247 grs., *very fine and very rare.* 1

Sellman

- 319 **Antiochus VIII (Grypus).** B.C. 125-96. *R* Tetradrachm. Diademed head of Antiochus Grypus to right, within filleted border. 1/14
- ⊕ ΒΑΣΙΛΕΩΣ ΑΝΤΙΟΧΟΥ ΕΠΙΦΑΝΟΥΣ., Nude figure of Zeus standing to left, his head surmounted by a crescent, holding in extended right hand a star, the left hand grasping long sceptre; in field to left, Μ., the whole within a laurel border, *wt.* 254 grs., *very fine and scarce.* 1



667 15.6

1 5

320 **Antiochus VIII (Grypus).** B.C. 125-96. .R Tetradrachm. Diademed head of Antiochus Grypus to right, within filleted border.

⋈ ΒΑΣΙΛΕΩΣ ΑΝΤΙΟΧΟΥ ΕΠΙΦΑΝΟΥΣ., Semi-draped figure of Zeus standing to left, head surmounted by a star, the left hand holding a long sceptre; in field, to left, ΙΕΑ., the whole within laurel border, *wt. 254 grs., very fine and scarce.* 1

321 **Antiochus VIII (Grypus).** B.C. 125-96. .R Tetradrachm. Diademed head of Antiochus; Grypus to right, within filleted border.

⋈ ΒΑΣΙΛΕΩΣ ΑΝΤΙΟΧΟΥ ΕΠΙΦΑΝΟΥΣ. Semi-draped figure of Zeus seated on throne, holding figure of victory and long sceptre; in field, to left, ΡΕΑ; under throne (monogram), the whole within laurel border, *wt. 246 grs., very fine and scarce.* 1

1 13

322 **Antiochus IX (Cyzicenus).** B.C. 116-95. .R Tetradrachm. Diademed head of Antiochus IX with slight beard to right, within filleted border.

⋈ ΒΑΣΙΛΕΩΣ ΑΝΤΙΟΧΟΥ ΦΙΛΟΠΑΤΟΡΟΣ., Pallas standing to right, with shield and spear; to left, Π, the whole within laurel border, *wt. 255 grs., A, very fine and rare.* 1

16

323 **Antiochus IX (Cyzicenus).** B.C. 116-95. .R Tetradrachm. Beardless diademed head of Antiochus IX to right, within filleted border.

⋈ ΒΑΣΙΛΕΩΣ ΑΝΤΙΟΧΟΥ ΦΙΛΟΠΑΤΟΡΟΣ., Zeus, semi-draped, seated to left, holding long sceptre and statuette of victory; in field, to left, ΕΛΛ, &c., *wt. 240 grs., very fine and rare.* 1

17

324 **Seleucus VI (Epiphanes Nicator).** B.C. 96-95. Diademed head of Seleucus to right, within filleted border.

⋈ ΒΑΣΙΛΕΩΣ ΣΕΛΕΥΚΟΥ ΕΠΙΦΑΝΟΥΣ ΝΙΚΑΤΟΡΟΣ., Pallas standing with lance and shield, holding a statuette of victory, who is presenting a wreath; in field, ΑΝΤΡ (mon.) and ΙΣΙ. and outside legend a branch with five leaves, *wt. 245 grs., very fine and very rare.* 1

23676

Moral B...

do

Hobart

Moral B...

Ready

261 1-15  
English

1874  
English  
1874

1874



Rollin

325 **Antiochus X (Eusebes)**. B.C. 94-83. *R* Tetradrachm. Diademed head of Antiochus to right, within filleted border.

12

⊕ **ΒΑΣΙΛΕΩΣ ΑΝΤΙΟΧΟΥ ΕΥΣΕΒΟΥΣ ΦΙΛΟΠΑΤΟΡΟΣ**. Zeus, semi-draped, holding long sceptre and a statue of victory, who is presenting him with a wreath; in field, to left, monogram and **Α**; under throne monogram, the whole within wreath of laurel, *wt.* 246.1 *grs.*, *fine and rare*. 1

## KING OF ARMENIA.

d

326 **Tigranes I the Great**. B.C. 97-56. *R* Tetradrachm. Bust of Tigranes I to right, wearing Armenian tiara and diadem, the tiara ornamented with two eagles, between them a star.

526

⊕ **ΒΑΣΙΛΕΩΣ ΤΙΓΡΑΝΟΥ**. Tyche of Antioch, seated, holding palm, the river Orontes swimming at her feet; in the field, monogram, the whole within laurel border, *wt.* 244 *grs.*, *fine and rare*. 1

Plate X, No. 11.

## SELEUCIS.

d

327 **Seleucia**. B.C. 104-82. *R* Tetradrachm. Head of Tyche, turreted within filleted border.

310

⊕ **ΣΕΛΕΥΚΕΩΝ ΤΗΣ ΙΕΡΑΣ ΚΑΙ ΑΥΤΟΝΟΜΟΥ**. Fulmen on throne, *wt.* 230 *grs.*, *very fine and very rare*. 1

Plate X, No. 12.

## PHOENICIA.

Hands

328 **Aradus**. B.C. 136-46. *R* Tetradrachm. Veiled and turreted head of the Tyche of Aradus.

1

⊕ **ΑΡΑΔΙΩΝ**. Nike standing, holding aplustre and palm, *wt.* 229.6 *grs.*, *fine*. 1

Rollin

329 **Sidon**. B.C. 111-117. *R* Tetradrachm. Head of the city turreted and veiled.

42

⊕ **ΣΙΔΩΝΙΩΝ**. Eagle with palm standing on rudder; in field, monogram and date, *wt.* 219.7 *grs.*, *very fine and of the highest rarity*. 1

Plate X, No. 13.

\*\* Wigan Collection.

779

707 2  
15

330 **Tripolis.** R Tetradrachm. Bust of the Dioskuri, surmounted by stars. *Rollin*

⊕ ΤΡΙΠΟΛΙΤΩΝ. ΤΗΣ. ΙΕΡΑΣ. ΚΑΙ. ΑΥΤΟΝΟΜΟΥ.. City resting on short sceptre holding cornucopiae; in exergue, ΑΣ; the whole within wreath, *wt.* 229.8 grs., *very fine and rare.* 1

*Plate X, No. 14.*

1 16

331 **Tyre.** B.C. 126, A.D. 57. R Tetradrachm. Laureate head of Herakles. *Hands*

⊕ ΤΥΡΟΥ. ΙΕΡΑΣ. ΚΑΙ. ΑΣΥΛΟΥ., year ΔΚ = 24.. Eagle on rudder: in field, club, *wt.* 221 grs., *very fine.* 1

KINGS OF SIDON.

8 8

332 **Straton I** (Abdiastart). B.C. 374-362. Galley before a fortress with four towers; in exergue, two lions back to back. *Ready*

⊕ The King Artaxerxes II seizing by the mane a lion who stands erect before him (*the King holds an object in his right hand resembling a baton, the examples described by M. Babelon give the king as "holding a poignard," in this example the poignard is still in the girdle confining the candies with which the king is clothed*), *wt.* 97 grs., *very fine and very rare.* 1

*Plate X, No. 15.*

1 16

333 **Straton II** (?). B.C. 346-332. R Octodrachm. Galley going to left; above, letter. *Hands*

⊕ King in quadriga, with his charioteer followed by an attendant carrying vase and sceptre, within cable border, *wt.* 420 grs., *in very good condition and scarce.* 1

KING OF PARTHIA.

22 10

334 **Arsaces VI** (Mithradates I.) B.C. 174-136. R Tetradrachm. Diademed bust of Mithradates I, wearing torque round neck. *Rollin*

⊕ ΒΑΣΙΛΕΩΣ. ΜΕΓΑΛΟΥ. ΑΡΣΑΚΟΥ. ΕΠΙΦΑΝΟΥΣ.. Arsaces seated right on omphalos, holding bow, *wt.* 237 grs., *very fine, of fine style, and very rare.* 1

*Plate X, No. 16.*

778.1  
11

770 1

## KING OF PERSIA.

- Robert 335 **Darius I.** B.C. 521-485. *N* Daric. The King 3 3  
Darius I, half kneeling to right, holding bow and long  
javelin.  
R Incuse, wt. 128 grs., *very fine.* 1

## KINGS OF BACTRIA.

- Robert 336 **Euthydemus.** Successor of Diolotus II. /6  
Circa B.C. 220. *R* Tetradrachm. Head of the king  
wearing diadem, to right, within dotted border.  
R ΒΑΣΙΛΕΩΣ ΕΥΘΥΔΗΜΟΥ. Herakles bearded,  
naked, seated left on rock; holding in right hand a  
club which also rests on rock; behind, monogram,  
wt. 225.7 grs., *very fine and rare.* 1  
*Plate X, No. 17.*

\* \* \* From the collection of the Vicomte de Quelen.

- Lincoln 337 **Antimachus.** *R* Tetradrachm. Head of 22  
Antimachus, to right, wearing Macedonian kausia.  
R ΒΑΣΙΛΕΩΣ ΘΕΟΥ ΑΝΤΙΜΑΧΟΥ. Poseidon  
standing, holding a trident and palm branch, wt. 260 grs.,  
*fine and very rare.* 1  
*Plate X, No. 18.*

\* \* \* From the York Moore collection.

- Robert 338 **Eucratides.** B.C. 200-150. *R* Tetradrachm. 21  
Bust of king, to right, wearing helmet decorated with  
bull's horn and ear, within border.  
R ΒΑΣΙΛΕΩΣ ΜΕΓΑΛΟΥ ΕΥΚΡΑΤΙΔΟΥ.  
The Dioscuri on horseback; in field, mon., wt. 260 grs.,  
*extremely fine.* 1  
*Plate XI, No. 1.*

\* \* \* From the Sim collection.

- de 339 **Eucratides.** B.C. 200-150. *R* Tetradrachm. 6 2  
Bust of King as on the preceding coin.  
R Similar to the last, but with different monogram,  
wt. 257 grs., *fine, pierced, (but the perforation does not  
in any way injure the type).* 1

770 1

22

340 **Heliocles.** B.C. 150-125.  $\overline{\text{R}}$  Tetradrachm  
Draped and diademed bust of Heliocles to right, within  
border.

Rollin

⊕ **ΒΑΣΙΛΕΩΣ ΗΛΙΟΚΛΕΟΥΣ ΔΙΚΑΙΟΥ,** Zeus  
standing, holding fulmen and sceptre, in field mono-  
gram, *wt.* 260 *grs.*, *an exceedingly fine specimen.*

\* \* \* From the Sim collection.

*Plate XI, No. 2.*

## EGYPT.

23

341 **Alexander IV.** B.C. 323-311 (struck under  
Ptolemy I).  $\overline{\text{R}}$  Tetradrachm. Youthful head of  
Alexander to right, wearing diadem, and covered with  
the elephant's skin.

Ready

⊕ **ΑΛΕΞΑΝΔΡΟ[Υ].** Athena Alkis to right with  
shield, hurling a thunderbolt, in front Ptolemaic eagle  
on thunderbolt, in the field two monograms, *wt.* 243 *grs.*,  
*a charming piece in the most magnificent condition, F. D. C.*

*Plate XI, No. 3.*

\* \* \* From the Sim collection.

13

342 **Alexander IV.** Tetradrachm as the preceding  
types, and monograms as before, *wt.* 241 *grs.*, *a brilliant  
example, nearly as fine as the last.*

d.

1 10

343 **Alexander IV.** Tetradrachm as before, legend  
on *rev.* not quite complete and varying in style from  
the preceding examples, one monogram only in field,  
and beneath the shield of Pallas a helmet, *wt.* 241 *grs.*,  
*fine*

Rollin

1 2

344 **Ptolemy, Epiphanes.** B.C. 204-181.  
 $\overline{\text{R}}$  Tetradrachm. Bust of King to right wearing  
diadem.

Cash

⊕ **ΠΤΟΛΕΜΑΙΟΥ ΒΑΣΙΛΕΩΣ,** Eagle on thun-  
derbolt to right, in field on either side the caps of the  
Dioscuri and the date **ΑΔ.** and mint mark **ΣΑ.**  
(Salamis). (*B. M. Catalogue, page 69, no. 17*), *wt.* 220 *grs.*,  
*very fine.*

1

1777. 11. 6

Rollin

345 **Ptolemy, Epiphanes.** B.C. 204-181.  $\overline{\text{R}}$  Tetradrachm. Bust of King to right wearing diadem and chlamys.

$\overline{\text{R}}$  ΠΤΟΛΕΜΑΙΟΥ ΒΑΣΙΛΕΩΣ, Eagle on thunderbolt to right, in front Δ, between the legs of eagle NI., wt. 219.5 grs., very fine and rare. 1

Plate XI, No. 4.

CYRENAICA.

de

346 **Cyrene.** B.C. 480-431.  $\overline{\text{R}}$  Tetradrachm. ΚΥΡΑ 19  
Head of Zeus Ammon of early transitional style to right, within broad knurled border.

$\overline{\text{R}}$  Silphium plant, wt. 265 grs., very fine and rare. 1

Plate XI, No. 5.

Frank

347 **Cyrene.** B.C. 431-321.  $\overline{\text{R}}$  Tetradrachm. Bearded head of Zeus Ammon to left. 4 15

$\overline{\text{R}}$  Κ-Υ-Ρ-Α., Silphium plant, wt. 197 grs., fine and rare. 1

Reilly

348 **Cyrene.** B.C. 320-308.  $\overline{\text{R}}$  Didrachm. Young male head with ram's horn to left.

$\overline{\text{R}}$  ΚΥ-Ρ-Α., Silphium plant, wt. 120 grs., fine and scarce. 1 2

Patten

349 **Barce.** Circa B.C. 431-321.  $\overline{\text{R}}$  Tetradrachm. Head of Zeus Ammon facing, with ΑΚΕ-ΣΙΟΣ, the whole within dotted border. 63

$\overline{\text{R}}$  ΒΑΡΚΑΙ. on either side of Silphium plant, wt. 200.1 grs., very fine and very rare. 1

Plate XI, No. 6.

ZEVGITANA.

de

350 **Carthage.** B.C. 410-310.  $\overline{\text{R}}$  Tetradrachm. 5 3  
Forepart of bridled horse, to right, crowned by Victory flying above; in front, grain of corn; and below, forepart of horse; punic legend.

$\overline{\text{R}}$  Date palm tree, with punic inscription, wt. 273 grs., very fine and rare. 1

Plate XI, No. 7.



- 22 351 **Carthage.** B.C. 410-310. AR Tetradrachm. *Rollin*  
 Free horse galloping to right, crowned by flying  
 Victory.  
 R Date palm, *wt.* 266 *grs.* 1  
 \*\* A very fine piece of exceedingly fine style; from the  
 Wigan and Bompois Collections.  
*Plate XI, No. 8.*
- 13 352 **Carthage.** B.C. 400-336. AR Tetradrachm. Head *Falting*  
 of Persephone to left, wearing earring and necklace,  
 and wearing wreath of corn-leaves; and around, four  
 dolphins.  
 R Bust of horse, with palm tree behind; below, puni-  
 c legend, *wt.* 260 *grs.*, *very fine and rare.* 1  
*Plate XI, No. 9.*
- 3 7 6 353 **Carthage.** B.C. 400-336. AR Tetradrachm. *Stobart*  
 Head of Persephone, as before; but in somewhat  
 higher relief.  
 R Bust of horse, with large palm tree behind, *wt.* 263 *grs.*,  
*fine and rare.* 1
- 7 354 **Carthage.** B.C. 336-280. AR Tetradrachm. *Spink*  
 Head of Persephone, to left, wearing three ears of corn  
 in hair, which is drawn back from forehead and ar-  
 ranged in three rolls at back of head, she wears ear-  
 ring and necklace; behind head, a dolphin.  
 R Horse standing to right, in front of palm tree; above,  
 crescent, *wt.* 267 *grs.*, *very fine and rare.* 1  
*Plate XI, No. 10.*
- 6 355 **Carthage.** B.C. 336-280. AR Tetradrachm. *Rollin*  
 Head of Persephone, to left, wearing earring and neck-  
 lace and wreath of corn; around, four dolphins.  
 R Free horse, to left, in front of palm tree, *wt.* 263 *grs.*,  
*very fine and rare.* 1  
*Plate XI, No. 11.*
- 2 2 356 **Carthage.** B.C. 336-280. AR Tetradrachm. *do*  
 similar in style and treatment to the last, and *very fine*,  
*wt.* 263 *grs.* 1

- Rollin 357 **Carthage.** B.C. 336-280.  $\mathcal{R}$  Tetradrachm. 10 5  
Head of the Tyrian Herakles, Melkarth, in lion's skin to right.  
 $\mathcal{R}$  Bust of horse, to left, with date palm behind, *wt.* 260 grs., a very fine piece of fine style. 1  
*Plate XI, No. 12.*
- do 358 **Carthage.** B.C. 336-280.  $\mathcal{R}$  Tetradrachm. 1 6  
Head of Herakles as on preceding coin.  
 $\mathcal{R}$  Bust of horse and palm tree, as before, with punic legend below, *wt.* 263.1 grs., very fine. 1
- Stobart 359 **Carthage.** B.C. 340-242. *El.* Stater. Head of 4 10  
Persephone, to left, wearing earring and necklace, with pendants and corn wreath in hair.  
 $\mathcal{R}$  Horse standing, to right, *wt.* 116 grs., very fine. 1  
*Plate XI, No. 13.*
- Lincoln 360 **Carthage.** B.C. 340-242. *El.* Stater. Head of 1 7  
Persephone, as on preceding piece.  
 $\mathcal{R}$  Horse to right, *wt.* 116.2 grs., in excellent state 1
- Rollin 361 **Carthage.** B.C. 241-218.  $\mathcal{R}$  Dekadrachm. 3 8  
Head of Persephone to left.  
 $\mathcal{R}$  Pegasus to right, with punic inscription, *wt.* 540 grs., very fine and of great rarity. 1  
*Plate XI, No. 14.*
- do 362 **Carthage.** B.C. 218-246. *N.* Head of Persephone, wearing earring and necklace, corn wreath in hair, to right. 5 5  
 $\mathcal{R}$  Horse, to right, *wt.* 30 grs., very fine, *Plate XI, No. 15;* and a small *N.* of Carthage. B.C. 410-310. Date palm tree.  
 $\mathcal{R}$  Bust of horse with  $\therefore$  in front, *wt.* 12 grs., very fine. 2
- Spink 363 **Numidia.** B.C. 118-106.  $\mathcal{R}$  Drachm. Male 5 5  
head with diadem to left.  
 $\mathcal{R}$  Elephant to right, in exergue, punic character, *wt.* 54 grs., very fine and rare. 1  
*Plate XI, No. 16.*

END OF SALE.

Total £4069.7.0





1



3



2



5



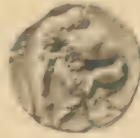
4



8



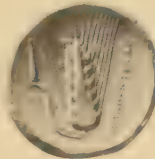
6



9



7



9



11



12



10



13



15



16



14



18



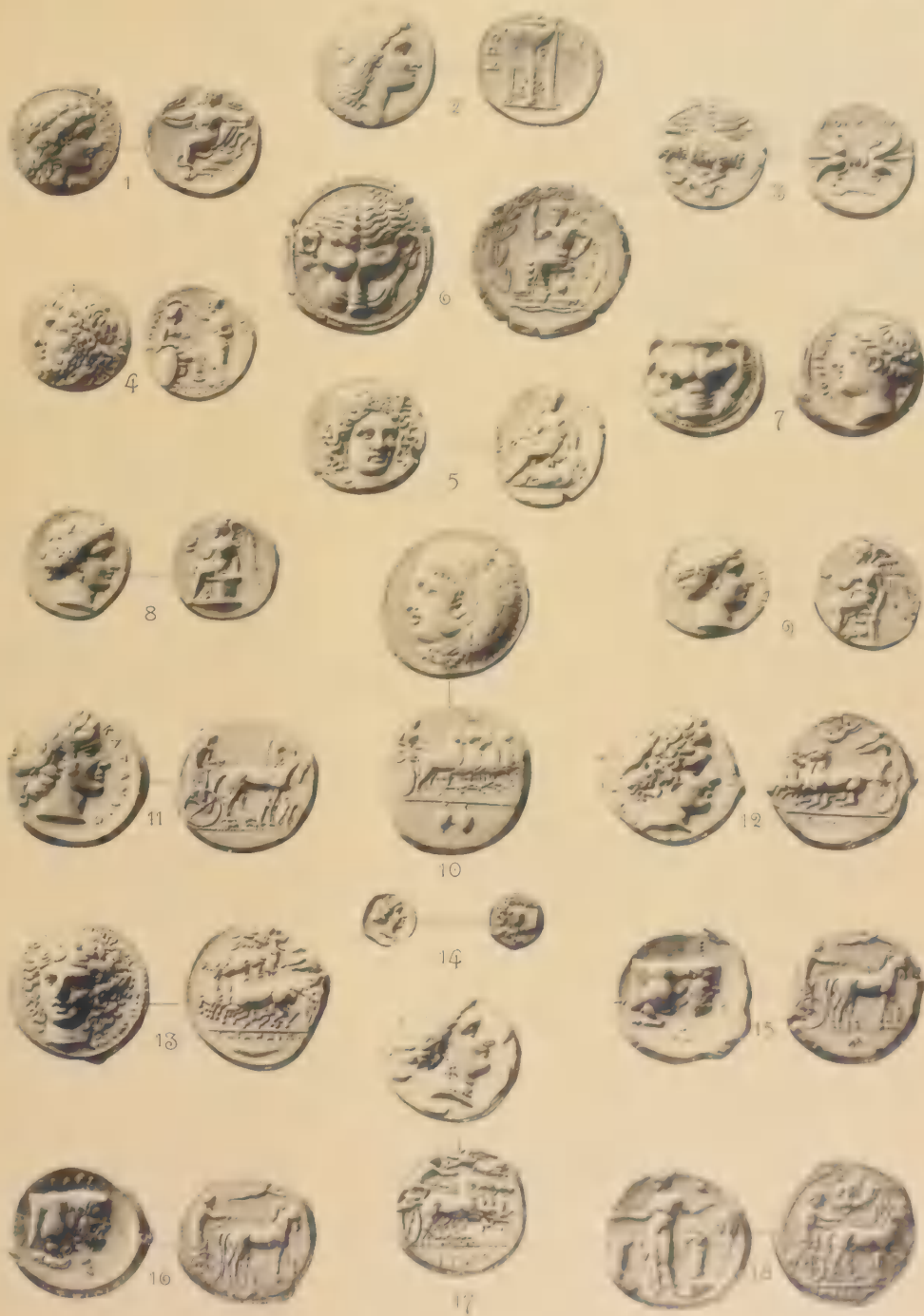
19



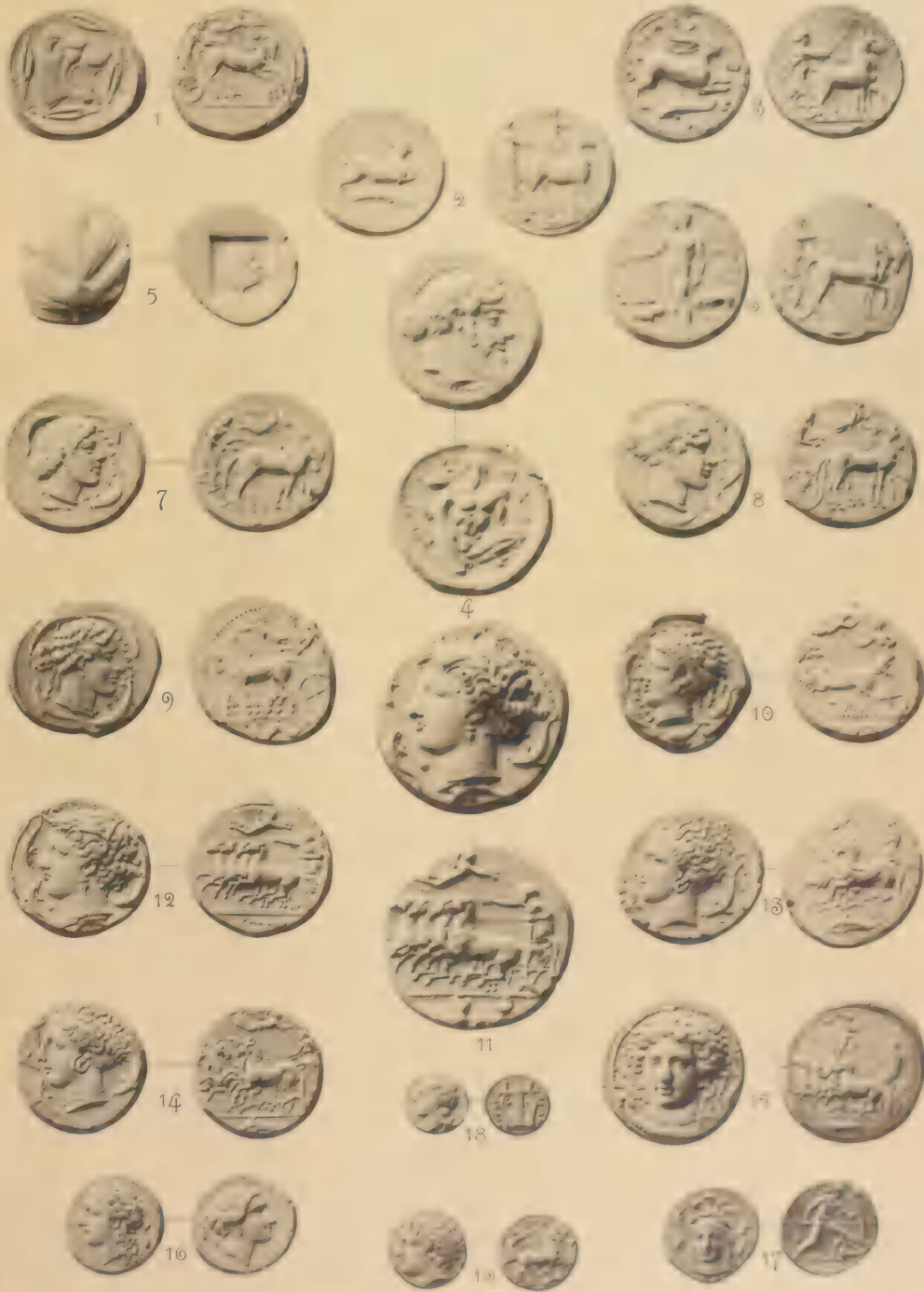
17





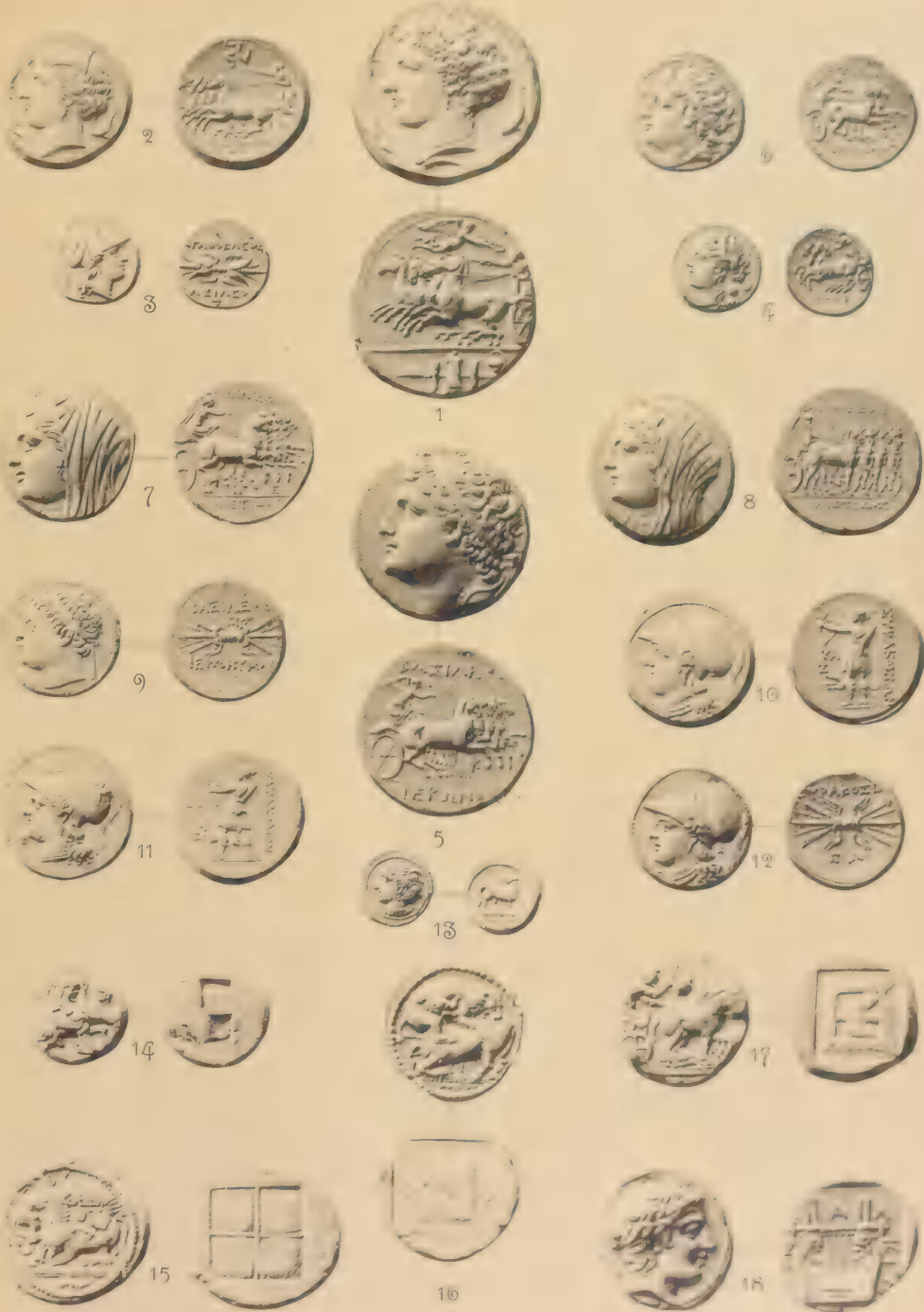




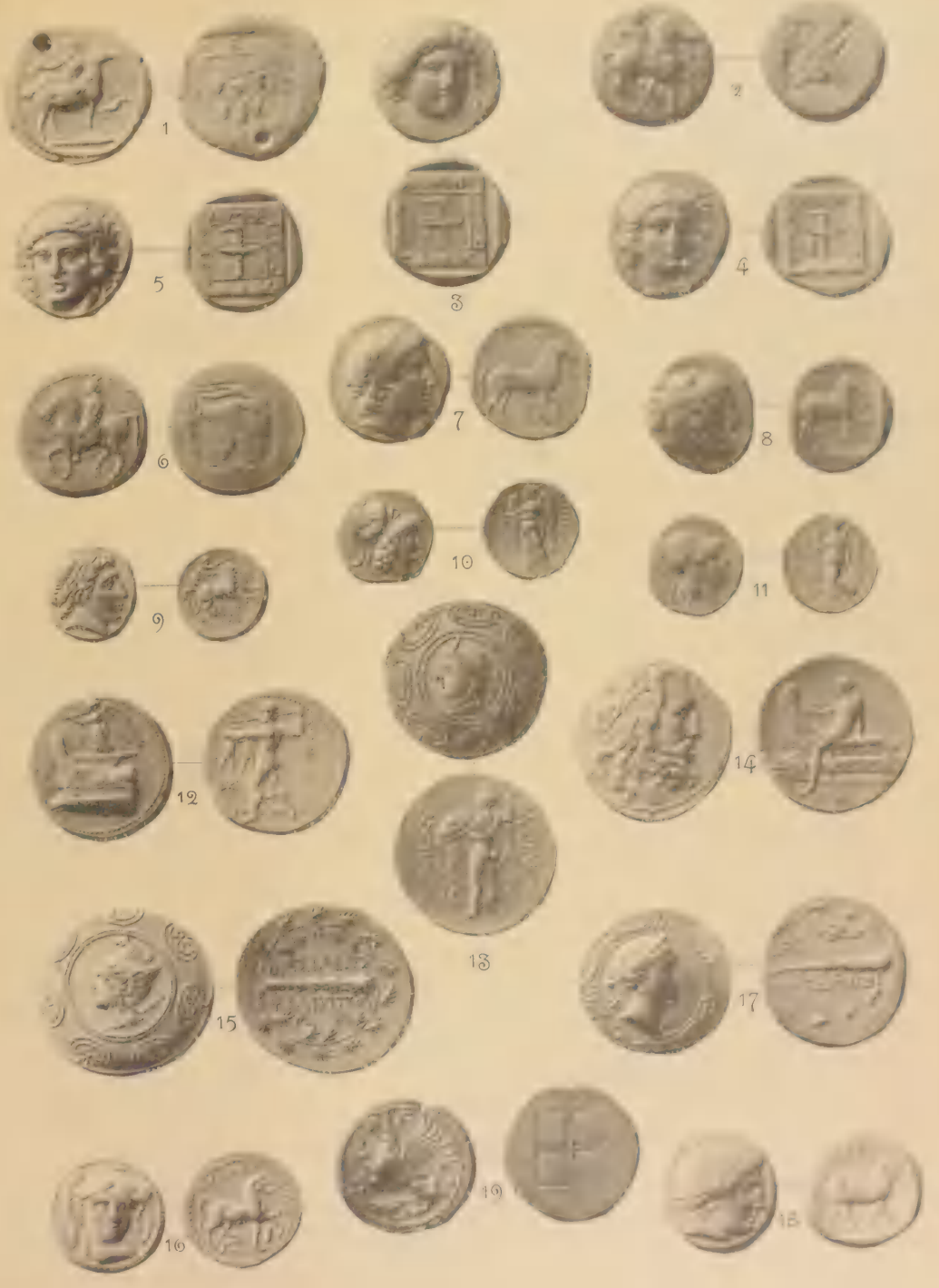
















1



3



5



2



6



4



7



9



8



12



11



13



10



15



14



16



20



19



17

























BAKER, LEIGH & SOTHEBY.

THE MESS COMMENCING WITH SAMUEL BAKER IN

1744.

SOTHEBY, WILKINSON & HODGE,

1894.















American Numismatic Society



3 8060 00055 8262



