



ESTUDIO CASERO APERTURA PEÓN DAMA

VARIANTE (D00) CON 2.Ag5!?

ESTUDIO DE MF JOB SEPÚLVEDA



1.d4 d5 2.Ag5!?

ESTADÍSTICAS CHESSBASE

Informe de aperturas

1.d4 d5 2.Ag5



D00, 2.Ag5

5169 Partidas en 'Mega Database 2007'

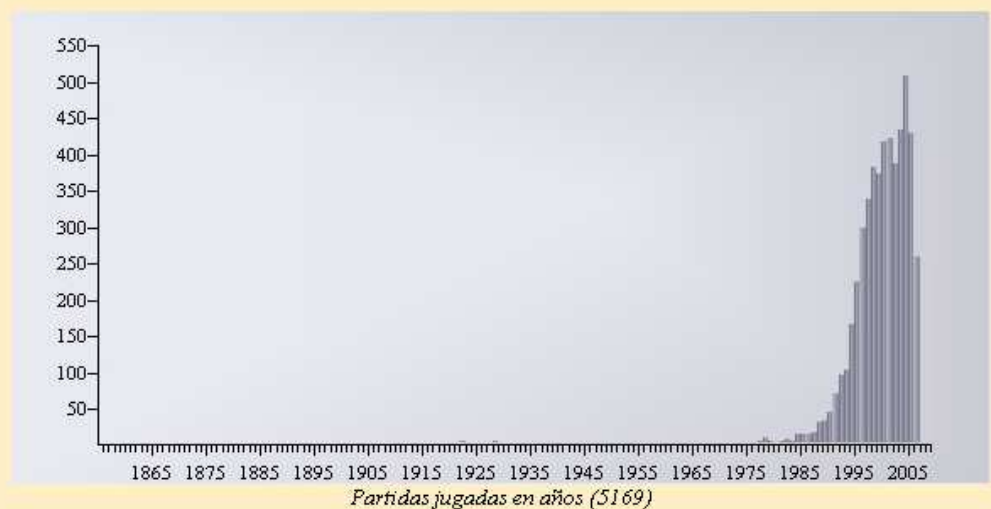
1. Historia

Primera partida:

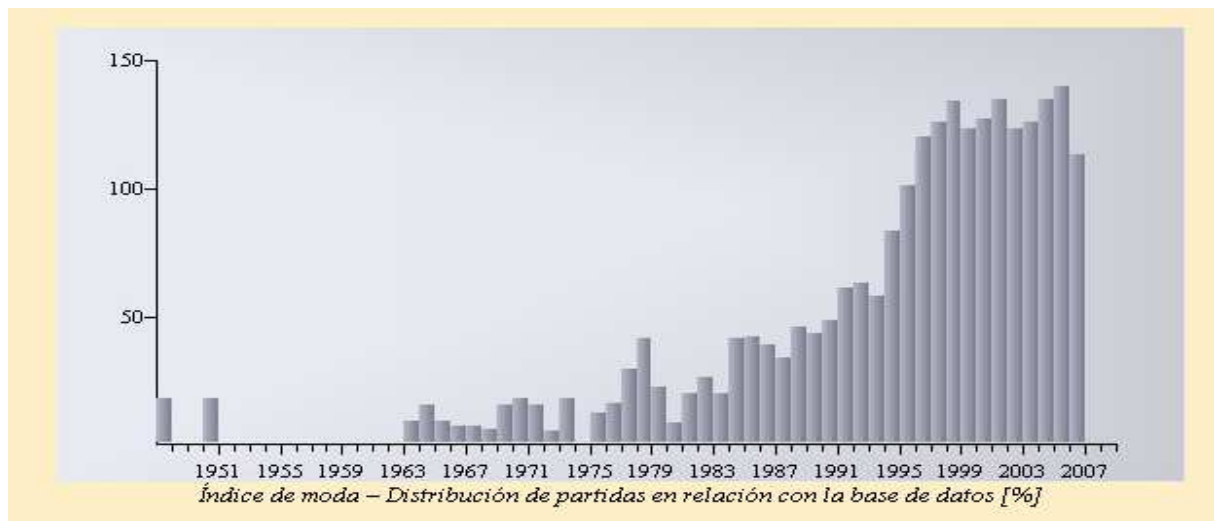
Somacarana - Cochrane,J 0-1

Última partida de gran maestro:

Rodriguez,A - Felgaer,R ½-½



Estudio Casero Apertura Peón Dama (D00) - Por el MF Job Sepúlveda



a) Fuertes grandes maestros que usaron esta línea como Blancas:

Anthony J Miles	Resultado=19.5/28	1994-1998	Elo-Ø: 2601	Partidas: 28
Michael Adams	Resultado=15.5/20	1992-2005	Elo-Ø: 2664	Partidas: 20
Simen Agdestein	Resultado=3/3	2000-2005	Elo-Ø: 2591	Partidas: 3
Alexander Chernin	Resultado=3/4	1995-1998	Elo-Ø: 2611	Partidas: 4
Joel Benjamin	Resultado=1.5/2	1994-1995	Elo-Ø: 2595	Partidas: 2
Jonathan S Speelman	Resultado=1.5/3	1994-2003	Elo-Ø: 2606	Partidas: 3
Veselin Topalov	Resultado=1/1	1997	Elo-Ø: 2725	Partidas: 1
Alexander Morozevich	Resultado=1/2	2001-2005	Elo-Ø: 2745	Partidas: 2
Lazaro Bruzon Bautista	Resultado=1/1	2002	Elo-Ø: 2595	Partidas: 1
Ivan Sokolov	Resultado=1/1	1996	Elo-Ø: 2665	Partidas: 1

b) Otros jugadores notables:

Julian M Hodgson	Resultado=61/89	1986-2004	Elo-Ø: 2576	Partidas: 89
Igor Miladinovic	Resultado=51/71	1993-2006	Elo-Ø: 2562	Partidas: 71
Genrikh Chepukaitis	Resultado=31.5/55	1992-2004	Elo-Ø: 2389	Partidas: 55
Eduard Meduna	Resultado=21/27	1982-2002	Elo-Ø: 2464	Partidas: 27
Juan Manuel Bellon Lopez	Resultado=21/25	1986-2006	Elo-Ø: 2436	Partidas: 25
Tri Hoang	Resultado=20.5/35	2002-2006	Elo-Ø: 2101	Partidas: 35
Evgenij Piankov	Resultado=18/22	2002-2006	Elo-Ø: 2343	Partidas: 22

3. Estadísticas

Blancas puntúa por encima de la media (59%).

Blancas rinde Elo 2268 contra una oposición de Elo 2205 (+63).

Negras rinde Elo 2172 contra una oposición de Elo 2236 (-64).

Ganan blancas: 2237 (=43%), Tablas: 1575 (=30%), Ganan negras: 1355 (=26%)

La tasa de tablas es menores que la media. (7% tablas rápidas, < 20 Jugadas)

Las victorias con blancas son de longitud media (39).

Las victorias con negras son de longitud media (41).

Las tablas son más cortas que la media (36).

Estudio Casero Apertura Peón Dama (D00) - Por el MF Job Sepúlveda

TEORÍA (*)

1.d4 d5 2.Ag5 h6



Diagrama 1, Posición después de 2...h6

[2...c6 3.e3 Db6 4.Dc1 Af5 5.Cf3 Cd7 6.Cbd2 e6 7.c4 Cgf6 8.Ae2 h6 9.Af4 Ae7 10.c5 Dd8 11.b4 Ce4 12.h3 g5 13.Ah2 h5 14.Ce5 Cxe5 15.Axe5 f6 16.Ah2 Cxd2 17.Dxd2 Rf7∞ Adams – Sveshnikov, Tilburg 1992 – 56/393;

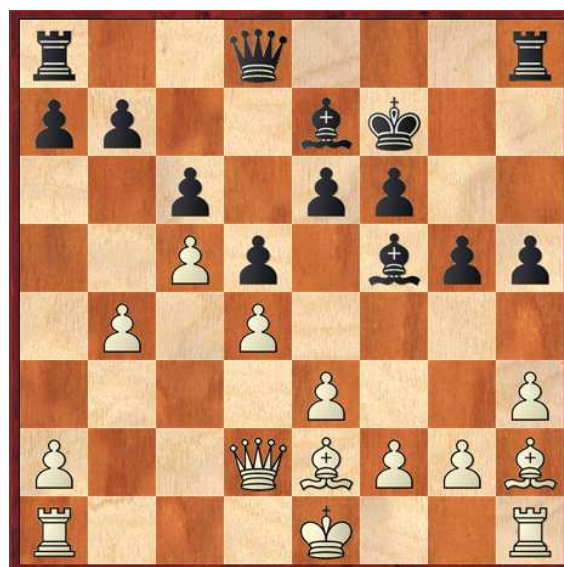


Diagrama A, Posición final Adams – Sveshnikov

Estudio Casero Apertura Peón Dama (D00) - Por el MF Job Sepúlveda

2...Cf6 3.Axf6 exf6 4.e3 Ad6 5.c4 dxc4 6.Axc4 0-0 7.Cc3 c6 8.Cf3 f5 9.Ce5 Cd7 10.Cd3 De7 11.0-0 Cf6= [Krasenkow – Schmidt, Polska 2001]



Diagrama B, Posición final Krasenkow – Schmidt

3.Ah4 c6 [3...c5 4.dxc5 Cc6 5.c3 g5 6.Ag3 e6 7.Cd2 Axc5 8.h4 g4 9.e4 Cf6 10.e5 Ch5 11.Dxg4 Cxg3 12.Dxg3 Dc7= Conquest – Grischuk, Reykjavik 2000 – 78/360]

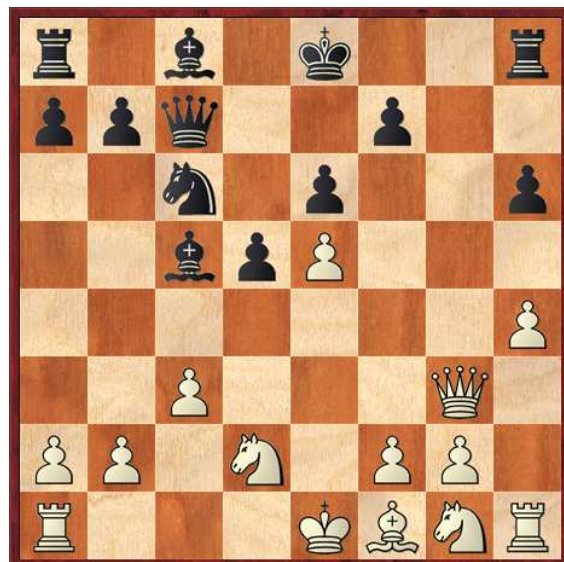


Diagrama C, Posición final Conquest – Grischuk

4.e3 [4.Cf3 Db6 5.Dc1 Af5 6.c4 e6 7.Cc3 Cd7 8.c5 Da5 9.a3 Cgf6 10.e3 g5 11.Ag3 Ch5 12.b4 Dd8= Adgestein – Skembris, Cappelle la Grande 2001 – 81/292]

Estudio Casero Apertura Peón Dama (D00) - Por el MF Job Sepúlveda

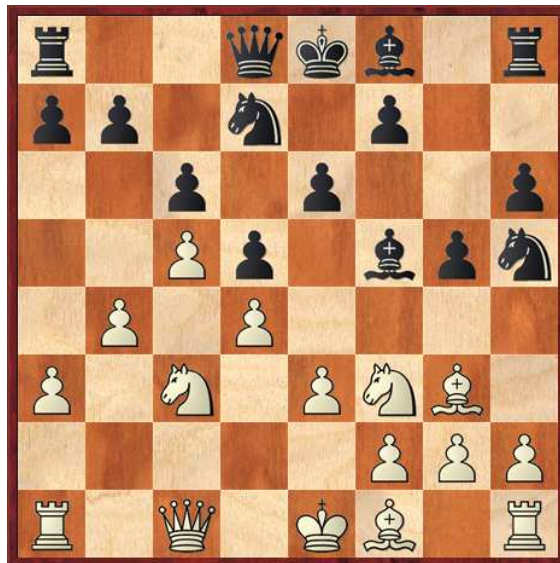


Diagrama D, Posición final Adgestein – Skembris

4...Db6 5.b3



Diagrama 2, Posición después de 5.b3

[5.Dc1 e5 6.Cf3 e4 7.Cfd2 Ae7 8.Ag3 h5 (8...Cf6!? 9.c4 0-0 10.Cc3∞) 9.c4 h4 10.Af4 g5 11.Ae5 f6 12.Axb8 Txb8 13.Cc3 Ae6 14.Dc2 f5 15.f3 Cf6 16.0-0-0 Milov – A.Mikhalevski, Biel 1999 – 76/339 16...Rf7 17.Ae2 Rg7∞ Milov]

Estudio Casero Apertura Peón Dama (D00) - Por el MF Job Sepúlveda



Diagrama E, Posición final Milov – Mikhalevski

5...Af5 [5...e5 6.Cf3 e4 7.Cfd2 Ce7 8.c4 Cf5 9.Ag3 Cxg3 10.hxg3 Ae6 11.Ae2 Cd7 12.a3 Ae7 13.Cc3 Cf6 14.b4 0-0 15.Tc1 Dd8 16.Cb3 b6= Adams – Gelfand, Beograd 1995 – 65/352]



Diagrama F, Posición final Adams – Gelfand

6.Cf3 e6 7.Ad3 Axd3 8.Dxd3 Cd7 9.0-0 [9.c4 Ce7 Anand – Karpov, Lausanne (m/8) 1998 – 71/377 10.Ag3 Cf5 11.Af4 dxc4 12.Dxc4 Db4+ 13.Cbd2 g5=]

Estudio Casero Apertura Peón Dama (D00) - Por el MF Job Sepúlveda



Diagrama G, Posición final Anand – Karpov



Diagrama 3, Posición después de 9.0-0

9...Ae7 10.Axe7 Cxe7 11.c4 c5 [11...0-0 12.Cc3 Da6 13.Tfc1 Tfd8 14.Df1 dxc4 15.bxc4 c5 16.a4 Dc6 17.a5 Tac8 18.Tab1 a6 19.Dd1 cxd4 20.Cxd4 Dc7= Hodgson – Akopian, Groningen 1996 – 68/326]

Estudio Casero Apertura Peón Dama (D00) - Por el MF Job Sepúlveda



Diagrama H, Posición final Hodgson – Akopian

12.Cc3 cxd4! 13.exd4 Da6!



Diagrama 4, Posición después de 13...Da6!

14.Cb5 Tc8 15.c5 0-0 16.Tfd1 Cc6 (Hodgson – Mikhalevski, Las Vegas 2000 – 80/382) 17.a4!? b6
18.Dc3!∞ Mikhalevski

Estudio Casero Apertura Peón Dama (D00) - Por el MF Job Sepúlveda



Diagrama 5, Posición final Hodgson - Mikhalevski

(*) Fuente: Pequeña Enciclopedia de Aperturas (Beograd 2003)

Estudio Casero Apertura Peón Dama (D00) - Por el MF Job Sepúlveda

PARTIDAS MODELOS

Hodgson, Julian M (2625) – McElligott, Gerry (2260) [D00]

BCF-ch Dundee (1), 1993

[Hodgson, Ju]

1.d4 d5 2.Ag5 c6 3.Cf3 h6 4.Ah4 Af5 5.c4 Da5+!? [5...dxc4!? 6.Cc3 b5 7.e4 Ag4♞]



Diagrama 1, Posición después de 5...Da5+!?

6.Cc3 e6 7.e3 Cd7 [7...Ab4 8.Db3 Cd7 9.a3] 8.a3 Cgf6 9.b4 Dd8 [9...Dc7 10.Ag3] 10.Ad3 Axd3 11.Dxd3 dxc4 [11...Ae7 12.c5 Ch5 13.Axe7 Dxe7 14.Ce5 Cxe5 15.dxe5 Dg5 16.f4 Dxc2 17.0-0-0] 12.Dxc4 a5 13.0-0 Ae7 14.b5 0-0 15.bxc6 bxc6 16.Ca4 c5? 17.dxc5 g5 [17...Cxc5 18.Axf6 Cxa4 19.Axe7+-] 18.Ag3 Cxc5? 19.Tfd1! [19.Cxc5 Tc8 20.Cxe6 Txc4 21.Cxd8 Txd8] 19...De8 [19...Ccd7] 20.Cxc5 Dc6 [20...Tc8 21.Ad6] 21.Tac1 Tac8 22.Ae5 Cd5 23.Ad4 e5 24.Cxe5 1-0



Diagrama 2, Posición final

Estudio Casero Apertura Peón Dama (D00) - Por el MF Job Sepúlveda

Adams, Michael (2660) – Gelfand, Boris (2730) [D00]

Belgrade Investbank (6), 1995

[Gelfand]

1.d4 d5 2.Ag5 c6 3.e3 h6 4.Ah4 Db6 5.b3 e5 6.Cf3 e4 7.Cfd2N [7.Ce5 Adams, M – Gelfand, B, Chalkidiki 1993]



Diagrama 1, Posición después de 7.Cfd2N

7...Ce7 8.c4 Cf5 9.Ag3 Cxg3 10.hxg3 Ae6 [10...Dd8!?] 11.Ae2 Cd7 [11...Dd8!?] 12.a3 [12.Cc3] 12...Ae7 [12...a5 13.Cc3 Ae7 14.c5 Dd8 15.b4; 12...Dd8!? 13.b4 Ad6] 13.Cc3 Cf6 14.b4 0-0 15.Tc1 Dd8 16.Cb3 b6 [16...Ad6!?] 17.c5 a5?! [17...b5 18.a4 a6=] 18.bxa5 bxc5 19.dxc5 Cd7 20.Cd4! [20.Ca4 Txa5! 21.Cxa5 Dxa5+ 22.Rf1 Ta8 23.Cb6 Cxb6 24.cxb6 Dxb6≠] 20...Dc7 21.a6 Cxc5 [21...Axc5 22.Da4!? (22.Ca4 Da5+ 23.Tc3 Tfc8!? (23...Axd4 24.Dxd4 c5 25.Cxc5 Tfc8 26.Ca4) 24.0-0 (24.Cxe6 fxe6 25.Ag4 Te8 26.0-0 Txa6) 24...Axd4 25.exd4 c5 26.dxc5 Cxc5 27.Txc5 Txc5 28.Cxc5 Dxc5 29.Dc1∞) 22...Axd4 23.exd4 Cb8] 22.0-0 Tfc8 23.Ca2! [23.Ca4 Cxa4 24.Dxa4 c5≠] 23...Ad7 [23...Cxa6 24.Txc6 Db7=] 24.Cb4 Dd6 25.Dc2 [25.Ag4 Cxa6 26.Axd7 Dxd7 27.Cdxc6=; 25.Tc3!? Δ♔c2, ♖c1 25...Cd3!? 26.Cxd3 exd3 27.Dxd3 (27.Axd3 c5 28.Cb5 (28.Cf5 Axf5 29.Axf5 Td8=) 28...Db6 29.a4 Txa6) 27...c5 28.Cf5 Axf5 29.Dxf5 c4 (29...Af6 30.Tb3 (30.Tc2 c4 31.Af3 -29...c4) 30...c4 31.Tb7 Td8 32.Ah5!) 30.Af3 Af6 (30...Tc5 31.Td1) 31.Tc2 (Δ31.Axd5 Axc3 32.Dxf7+ Rh8 33.Axa8 Txa8 34.Dxc4∞) 31...Dxa6 (31...Tc5 32.Td1 d4 33.Dxc5 (33.De4 Txa6 34.exd4 Tc8=) 33...Dxc5 34.Axa8+- d3 35.Txd3 Da7 36.Txc4 Dxa8∞) 32.Axd5 Ta7±] 25...Af8 [25...Cd3 26.Cxd3 exd3 27.Dxd3 Dxa3± (27...c5 28.Cf5 Axf5 29.Dxf5 c4 30.Af3 Dxa6 31.Axd5±)] 26.Tfd1 g6 27.Td2 h5 28.Cb3 [28.Dd1 Ce6] 28...Cxb3 29.Dxb3 De6 30.Dd1 Ae7 31.Cc2 Df6 32.Tb1 Ta7⊕ 33.Cb4 Tca8 34.Dc1 Dd6 35.Tb3 Tc8 36.Tc3 Tcc7 37.Ad1 Af6 38.Tc4 [38.Tc5!?] 38...Ae6 39.Ae2?⊕ [39.Txe4 c5 (39...Df8! 40.Tf4 Ag5 (40...Ae5 41.Th4) 41.Tfd4 (41.Tf3 Ag4 42.Cxc6 Txa6 43.Tc2 Dxa3-+) 41...c5 (41...Af6) 42.Cxd5 cxd4 43.Cxc7 dxe3-+) 40.Cxd5 Axd5 41.Ab3 Dxa6= a) 41...c4 42.Txc4 (42.Axc4 Dc6); b) 41...Ad4 42.Axd5 Dxd5 43.Te8+ Rg7 44.exd4 cxd4 45.Db2±; 39.Tc5!? ΔAe7 40.Txc6 Txc6 41.Dxc6; 39.Txc6 Txc6 40.Dxc6 Dxc6 41.Cxc6 Txa6=] 39...c5!≠ 40.Cxd5 [40.Ca2 d4! (40...Dxa6 41.Txc5 Txc5 42.Dxc5 Dxa3≠)] 40...Axd5 41.Dd1 Td7-+ 42.Txe4 Dc6 43.Te8+ Rg7 44.Tb8 c4! 45.Tb7 c3! 46.Ab5 [46.Txa7 Txa7 47.Txd5 c2] 46...Dxb5! 47.Txb5 cxd2 48.Dxd2 Ac4 49.Db4 Axb5 50.Dxb5 Td6 51.e4 Te6 52.Dd3 Texa6 53.Rh2 Txa3 54.Dd6 T3a6 55.Dd3 Ta1 56.f4 Tc1 57.g4 hxg4 58.De2 Taa1 59.Rg3 Ta3+ 0-1

Estudio Casero Apertura Peón Dama (D00) - Por el MF Job Sepúlveda



Diagrama 2, Posición final

Djurhuus,Rune (2505) – Borge,Nikolaj (2455) [D00]

Reykjavik op (7), 1996

[Tisdall]

1.d4 d5 2.Ag5 c6 3.Cf3 [3.e3] 3...h6 4.Ah4 Db6! 5.Dc1?! [5.b3 looks more prudent. According to Borge, the game continuation is a sacrifice of Hodgson's. Borge's assessment is that it used to be a sacrifice, now it is the loss of a pawn]



Diagrama 1, Posición después de 5.Dc1?!

5...g5 [5...Af5 6.e3 (6.c4 e6 (6...Cd7 7.Cc3 Cgf6 (7...dxc4 8.e4 Ag4 9.De3 Axf3 10.Dxf3 Dxd4 11.Td1 Dc5 12.Txd7 Rxd7 13.Dxf7 b5 14.Ae2 Td8 15.0-0 Rc7 16.Ag3+ Rb7 17.e5 1-0 Hodgson,J-Andonov,B/Sochi/1987/ (26)) 8.c5 Dd8 9.b4 g5 10.Ag3 Ch5 11.e3 Ag7 12.Dd1 Cxg3 13.hxg3 e5 14.dxe5 Cxe5 15.Cd4 Ag6 16.g4 0-0 17.Tc1 f5 18.Ce6 Df6 19.Cxf8 Txf8 20.Ae2 fxc4 21.0-0 h5 22.f4 gxf4 23.Txf4 1-0 Hodgson,J-Van der Wal,J/Leeuwarden op (05)/1993/ (41)) 7.Cc3 Ae7 8.Ag3 Cf6 9.c5 Dd8 10.e3 0-0 11.Ae2 b6 12.b4 a5 13.a3 Dc8 14.Ca4 Cbd7 15.Ce5 Db7 16.Cxc6 Dxc6 17.b5 Db7 18.c6 Da7 19.cxd7 Cxd7 20.Db2 ½-½ Hodgson,J-Chernin,A/Pardubice (02)/1993/ (6...e6 (6...Cd7 7.Cbd2 Cgf6 8.c4 e6 9.c5 Dd8 10.h3 Ae7 11.Ag3 0-0 12.b4 a6 13.a4 Te8 14.Ae2 Ce4 15.Ah2 Af6 16.Cb3 e5 17.0-0 g5 18.Ta2 Rh7 19.dxe5 Cxe5 20.Cfd4 Ag6 21.f3 1-0 Ochs,H-Ottstadt,R/BL2-O 9495/1995/ (40)) 7.c4 g5 8.Ag3 Ag7 9.Cc3 Cd7 10.Ae2 Dd8 11.Dd1 Cgf6 12.Ce5 0-0 13.h4 Cxe5 14.Axe5 Cd7 15.Axg7 Rxg7 16.Ad3 Df6 17.Axf5 Dxf5 18.cxd5 cxd5 19.Df3 Dc2 0-1 Foldi,I-Varga,Zo/HUN-chT1 9495 (02)/1995/ (31)]

Estudio Casero Apertura Peón Dama (D00) - Por el MF Job Sepúlveda

6.Ag3 g4 7.Ce5 [7.Ae5 f6 8.Axb8 gxf3 (8...Txb8 9.Ch4 Dxd4 10.e3 Db6 11.Ad3 h5!?) 9.Ag3 fxg2 10.Axg2 Dxd4 are two creative attempts that also fail to net compensation for a healthy center pawn] **7...Dxd4 8.Cd2** [8.c4 Cf6 9.Cc3 Ae6 10.e3 Db6 11.cxd5 cxd5 12.Ab5+ Cc6 13.a4 a5 14.Ce2 Ad7 15.Cxd7 Cxd7 16.0-0 Ag7 17.Cf4 Cf6 18.Ah4 e6 19.Dc3 Ch5 20.Da3 Af6 21.Axf6 Cxf6 22.Tac1 1-0 Hodgson,J-Ziatdinov,R/Guernsey op (04)/1991/ (39)] **8...Cd7!?** Borge felt that he could have chosen a more materialistic approach, since White's compensation is flimsy in the extreme after something like [8...Ag7 9.e3 Db6 10.c4 Cd7 On the other hand, returning the material for a huge center and lasting initiative has its practical advantages] **9.c3** [9.e3 Db6 10.Cxg4 Ag7 11.c3 h5+] **9...Db6 10.Cxg4 h5 11.Ce5** [11.Ce3? h4 12.Af4 e5 13.Ag5 f6+] **11...Cxe5 12.Axe5 f6 13.Af4** [13.Ag3 h4 14.Af4 e5 15.Ae3 c5] **13...e5 14.Ae3 c5 15.f3** It is difficult to "correct" white's position after this, but it is not a pretty job trying to find improvements. [15.b4 looks like a naturally desperate way to solve the twin problems of a massive black center and white's horribly misplaced dark-squared bishop. After the straightforward 15...d4 16.bxc5 Axc5 17.cxd4 exd4 18.Af4 Af5 19.Cc4 Perhaps white should try the hysterical (19.g4!? hxg4 20.Ag2 with chances of generating confusion) 19...De6 disaster looms on the c-line, and white is still a long way from completing development. Djurhuus' choice is more rational, and he still has chances to neutralize black's initiative.] **15...Ae6 16.Af2 0-0-0 17.Dc2 Rb8 18.0-0-0** [18.e4 d4] **18...Ce7 19.Rb1 Ah6 20.e4** [20.e3 c4+ (20...Cf5)] **20...d4 21.c4?** [21.Cc4 must be the only way to resist, when white has chances of getting some pieces into play. 21...Dc7 22.Ca3! makes the possibility of trades on c4 and d4 feasible and leaves the result open.(22.Ad3 Thg8 23.g3)] **21...Thg8 22.Tg1** [22.g3 Ae3] **22...Cc6 23.a3** Black's advantage is terrifyingly clear now, and Borge puts the ball cleanly in the net [23.Cb3 Cb4 24.De2 d3 25.De1 Da6 26.a3 Dxc4+] **23...Ae3! 24.Axe3** [24.Cb3 Axf2 25.Dxf2 Dxb3+] **24...dxe3 25.Cb3 Txd1+ 26.Dxd1 Td8 27.Dc2 Cd4 28.Cxd4 Txd4!** [28...exd4 29.Ad3] **29.Dc3** [29.Ad3 Dd6 (29...Dd6 30.Ae2 Td2 31.Td1 Txd1+ 32.Axd1 Axc4+); 29.Rc1 Dd6] **29...Td1+** [29...Td1+ 30.Ra2 e2+] **0-1**



Diagrama 2, Posición final

Estudio Casero Apertura Peón Dama (D00) - Por el MF Job Sepúlveda

Kuporosov, Viktor (2500) – Skomorokhin, Roman (2475) [D00]

RUS-Cup7 Kstovo (5), 1997

[Tyomkin, D]

1.d4 d5 2.Ag5 c6 3.Cf3 Db6 4.b3 Ag4 5.e3N [5.c4?! Tyomkin, D 5...Cd7 6.Cc3 e6 7.c5 Da5 8.Ad2 Dc7 9.e4 dxe4 10.Cxe4 Cgf6 11.Cg3? (11.Ad3⚡) 11...g6? (11...Axf3 12.Dxf3 Axc5!) 12.h3? Both sides were missing this tactical blow in the game Hodgson, J-San Segundo, P/Ubeda op 1996 and here they agreed a draw 12...Axf3 13.gxf3 (13.Dxf3 Axc5!⚡ Δ14.dxc5 De5+) 13...Ag7⚡]



Diagrama 1, Posición después de 5.e3N

5...e6 6.Ae2 Cd7 7.0-0 f5?! [after 7...Cgf6 black equalizes without problems] 8.Cbd2 Cgf6 9.Axf6! gxf6 [9...Cxf6 10.Cg5! Axe2 11.Dxe2 c5 12.c4! h6 13.Cgf3↑] 10.c4± Dd8 11.Ce1 Axe2 12.Dxe2 Ad6 13.Cd3 Re7 14.c5 Ac7 15.b4 ○ 15...Db8 16.Rh1 h5 17.h3 [17.-- ΔAxh2 18.g3 h4] 17...e5? [⊠17...a6±] 18.b5 Dc8 19.Tab1 a5?! 20.f3! Dg8 21.b6! Ab8 22.e4 Rd8 [22...dxe4 23.fxe4 exd4 24.exf5+ Ae5 25.Cf3± /+–] 23.dxe5 fxe5 [23...Cxe5 24.exd5 (24.Tbd1?! Dg3) 24...Dxd5 25.Cb3 Cxd3 26.Tbd1 Rc8 27.Txd3 De5 28.Dxe5 fxe5 29.a4± /+–] 24.a4+– h4 25.Tbd1 Rc8 26.Tfe1 Df8 27.Tc1 Df7 28.Cf1! decisive manoeuvre of the knight 28...Tg8 29.Ce3 fxe4 30.fxe4 dxe4 31.Cf2 Cf6 32.Ceg4 e3 [32...Dg6 33.Dc4 Cd5 34.Cxe4+–] 33.Dxe3 Dg6 34.Df3 Cd5 [34...Cd7 35.Ce4+– and black can't move] 35.Cxe5 Dg5 [35...Axe5 36.Txe5 Cf4 37.Tce1+– ΔCxc2 38.Te6] 36.Cfd3 Ce7?? 37.Cf7 1-0



Diagrama 2, Posición final

Estudio Casero Apertura Peón Dama (D00) - Por el MF Job Sepúlveda

Degraeve, Jean Marc (2540) – Neiman, Emmanuel (2315) [D00]

FRA–ch Narbonne (6), 21.08.1997

[Avrukh, B]

1.d4 d5 2.Ag5 c6 3.e3 Db6 4.b3 Af5 5.Cf3 e6 6.Ad3 Axd3 7.Dxd3 Da6 [7...Cd7 8.0-0 (8.Cbd2 h6 9.Af4 Cgf6 10.h3 Ae7 11.c4 c5! (11...0-0 12.c5±) 12.0-0 0-0 13.Tad1 Tfd8 14.dxc5 Cxc5 15.Db1 Cfe4= Hodgson, J–Beliavsky, A/Sochi 1986/½-½ (42)) 8...Ae7 9.Axe7 (9.c4 Axc5 10.Cxc5 h6 (10...Cgf6) 11.Cf3 Cgf6 12.Cc3 0-0 13.Tfe1 Tfd8?! (Δ13...Tad8 14.Tad1 Tfe8) 14.Tad1 Tab8 15.h3 Da6 16.Te2 Cb6 17.Ce5 Cfd7 18.c5 Dxd3 19.Cxd3 Cc8 20.b4± Schoof, M–Gazic, J/Hamburg op 1992/1-0 (65)) 9...Cxe7 10.c4 0-0 11.Cc3 a5 12.Ca4 Da6 13.Tac1 Tfc8 14.Cg5 g6 (14...Cg6 15.f4→) 15.e4 h6 16.Cf3 b5 17.cxb5 cxb5 18.Cc5 Cxc5 19.dxc5 Tc7± 1-0 Hodgson, J–Lesiege, A/Mermaid Beach Club 1997/CBM 58 (33); 7...c5 8.0-0 Cc6 9.c4 cxd4 10.exd4 Ae7 11.Cc3!? (11.cxd5 Cb4) 11...dxc4 12.bxc4 Axc5 13.Cxc5 Dxd4 14.Dg3 De5 15.f4± 1-0 Hodgson, J–Brunner, L/Horgen SKA 1994 (37)]



Diagrama 1, Posición después de 7...Da6

8.c4 Ab4+?!N [8...f5 9.0-0 Cd7 10.Cbd2 Cgf6 11.Axf6 gxf6 (11...Cxf6 12.Cg5!C) 12.a3 Ae7 13.b4 Da4 14.Tfc1 Rf7 15.Cb3± 1-0 Meduna, E–Krivoshay, S/Decin op 1995/EXT 95op (33); Δ8...Cd7 9.0-0 Cgf6 10.Cc3 Ab4] **9.Cbd2 Cd7 10.0-0 f5?** [10...Cgf6 11.e4 Axd2 12.Cxd2 dxe4 13.Cxe4 Cxe4 14.Dxe4 h6 15.Ah4 0-0±] **11.a3 Ad6** [11...Axd2 12.Cxd2 Cgf6 13.f3 0-0 14.e4±] **12.Af4! Ae7** [12...Axf4 13.exf4 Cgf6 14.Cg5! c5 15.De3 (15.Tfe1 Ce4) 15...Ce4 16.cxd5 (16.Cgxe4 fxe4 17.dxc5±) 16...exd5 17.dxc5 0-0 18.Cdxe4 fxe4 (18...dxe4 19.Tad1+-) 19.Cxh7!+-] **13.b4 Cb6** [13...Cgf6 14.Cg5! (14.b5 cxb5 15.cxb5 Da4 16.Tfc1 0-0 (16...Ce4 17.Tc7±) 17.Cg5 Tfc8!±) 14...Cf8 15.b5 cxb5 16.cxb5 Da4 17.Tfc1 h6 18.Cgf3±] **14.b5C cxb5** [14...Da4 15.bxc6 bxc6 (15...dxc4 16.Cxc4!; 15...Dxc6 16.Ce5+-) 16.c5 Cd7 17.Tab1 Cgf6 18.Ac7! (18.Cg5 Cf8) 18...a5 19.Cg5+-] **15.cxb5 Da4 16.Tfc1 Tc8** [16...Cf6 17.Tc7+-; 16...Ad8 17.Ae5 (17.Ac7!?) 17...Cf6 18.Cg5 Re7 19.Cb3 Cfd7 20.Cc5 Cxc5 21.dxc5 Cc4 22.Dd4+-] **17.Txc8+ Cxc8 18.Dc3 Cb6 19.Dc7 Dxb5□ 20.Db8+ Ad8 21.Ac7 Dd7 22.Tc1** [=22.Axd8 Dxd8 23.Dxb7 Ce7 24.Dxa7 0-0 25.Ce5+-] **22...Dc8 23.Dxc8 Cxc8 24.Axd8 Rxd8 25.Cg5! Cd6 26.Cxe6+ Rd7 27.Cxc7 Cf6?** [Δ27...Ce7 28.Ch5 (28.Cf3 Cc4) 28...Tc8 29.Txc8 Rxc8 and white has some difficulties with realization] **28.Cf3 Tb8** [28...Tg8 29.Ce5+ Rd8 30.Ce6+ Re7 31.Cf4 Tc8 32.Txc8 Cxc8 33.Rf1+-] **29.h3 a5** [29...Cfe4 30.Ce5+ Rd8 31.f3 Cf6 32.Rf2+-] **30.Ce5+ Rd8 31.Tc5 Cde4 32.Txa5+- Tc8 33.f3 Cg3 34.Rf2 Ch1+ 35.Re1 Cg3 36.Tc5 Ta8 37.Tc3 Ta6 38.Tb3 b5 39.Cd3 Re7 40.Cc5 Ta8 41.Cge6 b4 42.a4 Tb8 43.Cf4 Rd6 44.Cfd3 Te8 45.Txb4 Txe3+ 46.Rf2 f4 47.Cxf4 1-0**

Estudio Casero Apertura Peón Dama (D00) - Por el MF Job Sepúlveda



Diagrama 2, Posición final

Elbilia, Jacques (2360) – Skripchenko, Almira (2400) [D00]

Czerniak mem 14th Tel Aviv (5), 13.04.1998

[Avrukh, B]

1.d4 d5 2.Ag5 c6 3.e3 h6 4.Ah4 Db6 5.b3 e5 6.Cf3 [6...c3 exd4 7.exd4 Ae7 8.Ag3 Af5 9.Ad3 Axd3 10.Dxd3 Cf6 11.Cd2 0-0 12.Ce2 Da6= ½-½ Hausrath, D–Thesing, M/BL9596 1996] 6...Ag4 [6...e4!? 7.Cfd2 Ce7 8.c4 Cf5 9.Ag3 Ae6 (9...Cxc3!? 10.hxc3 Ae6 11.Ae2 Cd7 12.a3 Ae7 13.Cc3 Cf6⇒ Adams, M–Gelfand, B/Belgrade Invest 1995/0-1 (59)) 10.Ae2? Cxd4!≠ Kosonen, M–Koskinen, H/Jyvaskyla op2 1996 (21); 6...Cd7!? 7.Ag3 e4 8.Cfd2 a5 9.a3 Ce7 10.c4 Cf5 11.Cc3 Cxc3 12.hxc3 Cf6⇒ Dunnington, A–Sahu, S/Owens Corning 1996 (51); 6...exd4 7.exd4 Ae7 8.Axe7 Cxe7 9.Ad3 Ag4 10.Cbd2 0-0 11.0-0 Cd7 12.c3 Af5 13.Dc2 Axd3= Timman, J–Gelfand, B/Amsterdam VSB 1996 (23)]



Diagrama 1, Posición después de 6...Ag4

7.Ae2 Axf3!? [7...e4 8.Cfd2 Axe2 9.Dxe2 Cd7 10.0-0 Cgf6 11.c4 Da5 12.Tc1 Ab4 13.a3 0-0 14.c5± Jordan, D–Schiffer, K/BL9697 1997 (48)] 8.Axf3 g6!? Interesting possibility promising black good chances in forthcoming struggle. 9.Ag3 Cd7 10.0-0 [10.dxe5?! Ag7 11.Dd4 Dc7!] 10...Ag7 11.c3 Ce7 12.Cd2 0-0 The opening is over and we already can make some conclusions: black has successfully solved opening problems and will try to seize the initiative. 13.b4 [13.Tc1!? c5 14.dxe5 Cxe5 15.Axe5 Axe5 16.c4=] 13...f5!? 14.dxe5 Cxe5 15.Axe5 Axe5 16.Db3 Rh7 17.h4?! Creating to himself another weakness. [17.Tac1!? Dc7 18.h3 b5 19.a4 a6 20.Dc2 Cg8 21.Cb3 Cf6 with slightly better chances for black] 17...Cg8!? 18.Ae2 Cf6 19.Cf3 Ad6 20.Cd4 [20.b5!? c5 (20...f4 21.bxc6 bxc6 22.exf4 Axf4 23.Tab1=) 21.c4 d4 22.exd4 cxd4 23.Tad1 Ac5≠]

Estudio Casero Apertura Peón Dama (D00) - Por el MF Job Sepúlveda

20...Ce4 21.h5?! gxf5 [Another option were 21...g5!? 22.Tad1 Tae8†; 21...Cd2?! 22.hxg6+ Rxc6 23.Ah5+! (23.Dc2 Cxf1 24.Cxf5 Txf5 25.g4 Cxe3+) 23...Rh7 24.Dc2 Cxf1 25.Txf1 Tf6 26.Cxf5] 22.f4 [22.Dc2] 22...h4!? 23.Tf3 Tae8 24.Dc2 Dd8 25.c4?! dxc4 [25...Axb4!? 26.cxd5 Dxd5 27.Tb1 c5 28.a3 Cc3!? 29.axb4 cxd4!+] 26.Axc4 Df6 27.Td1 Te7 [27...Axb4!?] 28.a3 Ac7 29.a4 Ab6 30.a5 Axd4 31.Txd4 Cg3 32.Dd2 Tfe8 33.Rh2 Dg7 34.Rg1 h3! 35.Rh2 Ce4 36.Dc2 hxg2 37.Dxg2 Df6 38.Th3 Tg7 39.Df1 Cd6!? 40.Df2 [40.Ab3? Txe3+] 40...Cxc4 41.Txc4 Teg8 42.Td4 De6 43.Td2 Tg6 44.Td4 T8g7 45.Dc2 b6 46.Td2 Df6 47.Db2 De7 48.Dd4 [48.axb6!? axb6 49.Dd4 Tg4 50.Dd3 Df6 51.De2 Th4 52.Df3 Txb3+ 53.Dxb3 Tg4 54.Df3] 48...bxa5! 49.bxa5 Db7 50.e4 c5!+ 51.Dd5 [51.Dxc5 Dxe4+] 51...Db1 52.Dxc5 Dxe4 53.Df2 Tg4 54.Tf3 Tg1 [54...De7!? 55.Th3 Db4!+] 55.Td7!? Txd7 56.Rxc1 Db4 57.Dh4 Dxa5 58.Rh2 Tg7 59.Tg3 Dd2+ 60.Rh3 De2 61.Txg7+ Rxc7 62.Df2 Dh5+ [62...Dg4+!? 63.Rh2 a5 64.Dd4+ Rg6 65.Db6+ Rh5+] 63.Rg3 Dg6+ 64.Rh2 Db6 65.Dd2 Rg6 66.Da2 Rf6?! 67.Da1+ Rf7 68.Da2+ Re7 69.De2+ De6 70.Db5 a6 71.Dc5+ Re8?! 72.Dc7 Rf8 73.Rh1 Dd5+ 74.Rh2 a5 75.Rg3 De4? 76.Dxa5 De3+ 77.Rg2 Dxf4 78.Dd8+ Rf7 79.Dd7+ Rg6 80.De8+ Rg5 [80...Rf6 81.Dd8+ Re6 82.De8+ Rd5 83.Db5+ Rd4 84.Db4+ Re3 85.Dc3+=] 81.De7+ Rh5 82.De8+ Rh4 83.De1+ Rg4 84.De2+ Rg5 85.De7+ Rg6 86.De6+ ½-½



Diagrama 2, Posición final

McDonald,Neil R (2490) – Wells,Peter K (2515) [D00]

Oxford GM-A (3), 16.12.1998

[Avrukh,B]

1.d4 d5 2.Ag5 c6 3.e3 h6 4.Ah4 Db6 5.b3 e5 6.Cf3 Ag4 [6...exd4 7.exd4 Ae7 I think the easiest way for black to equalize in this variation. 8.Axe7 Cxe7 9.Ad3 Ag4 10.Cbd2 0-0 11.0-0 Cd7 and black equalized comfortably ½-½ Timman,J-Gelfand,B/Amsterdam 1996/CBM 52 (23)] 7.Ae2 Axf3 [7...e4 8.Cfd2 Axe2 9.Dxe2 Cd7 10.0-0 Cgf6 11.c4 Da5 12.Tc1 Ab4 13.a3 0-0 14.c5 Axd2 15.Cxd2 b6 16.b4 (16.cxb6! Dxb6 17.Ta2±) 16...Da4± ½-½ Jordan,D-Schiffer,K/GER 1997/BL9697 (48)] 8.Axf3 Cd7 [8...g6 9.Ag3 (9.0-0 Ag7 10.c3 Cd7 11.Cd2 Cgf6=) 9...Cd7 10.0-0 Ag7 11.c3 Ce7 12.Cd2 0-0 13.b4 f5 14.dxe5 Cxe5 15.Axe5 Axe5 with comfortable play for black. ½-½ Elbilija,J-Skripchenko,A/Tel Aviv 1998/CBM 65_03 (86)] 9.0-0 g6? [9...Ae7 10.Ag3 (10.Ag4 Axh4 11.Axd7+ Rxd7 12.Dg4+ f5! 13.Dxh4 exd4 14.exd4 g5 (14...Te8!?) 15.Dh3 Ce7=) 10...e4 (10...Af6 11.Cc3 exd4 12.Ca4±) 11.Ae2 Cgf6 12.c4 0-0 13.Cc3±]

Estudio Casero Apertura Peón Dama (D00) - Por el MF Job Sepúlveda



Diagrama 1, Posición después de 9...g6?

10.c4 e4 11.Ag4 Ae7 [11...Cgf6 12.Axd7+ Cxd7 13.f3 Ag7 14.fxe4 g5 (14...dxe4 15.Dg4!+-) 15.Ag3 dxe4 16.Cc3+-; 11...Cdf6 12.Ah3 Ag7 13.Cc3 Ce7 14.f3! g5 15.Ag3±] 12.Axd7+ Rxd7 13.Dg4+± Re8 14.Cc3 Baburin 14...g5 [14...Td8 15.Tac1 (15.Axe7!? Cxe7 16.Df4 f5 17.Ca4! Db4 18.Cc5↑) 15...g5 16.Ag3 h5 17.Df5 h4 18.cxd5 hxg3 19.fxg3→ ΔCf6 20.Cxe4 Th6 21.d6+-] 15.Ag3 h5 16.Df5! [16.De2 h4 17.Ae5 f6 18.cxd5 fxe5 19.dxe5♞ Da5 20.Dc4 Ab4 21.dxc6 Axc3 22.cxb7 Td8 23.Tad1→] 16...h4 17.cxd5 hxg3 18.fxg3♞ Ch6 [18...Cf6 19.d6!+-] 19.De5 [19.Dxe4!?] 19...f6 20.Dxe4 Db4 [20...f5 21.De5 Th7 22.d6 (22.g4 c5!; 22.Tac1 Td8∞) 22...Db4 23.dxe7 Dxc3 24.De6 Th8□ 25.Tae1→] 21.Tac1 f5 22.De5 Tf8 [22...Th7 23.dxc6 bxc6 24.Ce4! fxe4 25.Dxe4+-] 23.dxc6 bxc6 24.Ce4! [24.Cd5!? cxd5 25.Dxd5 Td8 26.Dc6+ Td7 27.Dxh6 Dd6 28.Tc8+ Td8 29.Dh5+ Rd7 30.Tc5] 24...Td8 [24...Cg4 25.De6+-; 24...fxe4 Baburin 25.Txf8+ Rxf8 26.Dh8+ Rf7 27.Tf1+ Re6 28.Dxa8 Dc3 29.Rh1+-] 25.De6 Db5 [△25...fxe4 26.Dxc6+ (26.Txf8+ Rxf8 27.Dxh6+ (27.Dg6? Cg8♯) 27...Rg8 (27...Re8 28.Dg6+) 28.Dg6+ Rh8 29.Dxe4 Tf8 30.Dxc6 Dd2 31.Dh6+ Rg8 32.De6+ Rh8⇝) 26...Td7 27.Dxh6 Txf1+ 28.Txf1 Td6 29.Dh8+ Rd7 30.Da8!→] 26.Dg6+ [26.Cc3!? Tf6 27.Cxb5 Txe6 28.Cc7+ Rd7 29.Cxe6 Rxe6 30.Txc6+ Ad6±; 26.Tc5 Dd3 (26...Dxf1+ 27.Rxf1 fxe4+ 28.Re2 Tf6 29.Dxe4±) 27.Te5 Cg8 28.Cc5+-] 26...Tf7 27.Dxh6 fxe4 28.Dg6+- Dd5 29.Txf7 Dxf7 30.Dxc6+ Td7 [30...Rf8 31.Tf1] 31.Dxe4 Dd5 32.Tc8+ Rf7 33.Dh7+ Rf6 34.Tc6+! Ad6 [34...Dxc6 35.Dh6+; 34...Td5 35.Tc5 Db7 36.Tf5+ Re6 37.Tf7 (37.Te5+ Rf6 38.h4 gxh4 39.g4) 37...Td5 38.Dg6+ Rd7 39.Txe7+ Rxe7 40.Dg7+] 35.Dxd7 1-0



Diagrama 2, Posición final

Estudio Casero Apertura Peón Dama (D00) - Por el MF Job Sepúlveda

Miladinovic,Igor (2563) – Tyomkin,Dimitri (2522) [D00]

Quebec op Montreal (3), 23.07.2000

[Tyomkin,D]

1.d4 d5 2.Ag5 c6 3.c3 Db6 4.Db3 Af5 5.Cf3 h6 [5...Cd7 6.Cbd2 h6 7.Ah4 Cgf6 8.e3 e6 9.Ae2 Ad6 10.0-0 0-0 11.Ag3 Ae7= ½-½ Willemze,J–Ernst,S/Leiden 1997/EXT 98 (22)]



Diagrama 1, Posición después de 5...h6

6.Ah4 Cd7 7.e3 Cgf6 8.Ae2 e6 9.0-0 Ad6 10.c4 dxc4?! [10...Dxb3 11.axb3 g5 (11...Axb1!? 12.Tfxb1 g5 13.Ag3 Axb3 14.hxg3 Ce4 15.Ad3 f5) 12.Ag3 Axb3 13.hxg3 Ce4; 10...0-0 11.c5 Dxb3 12.axb3 Ac7=] 11.Axc4 Dxb3 12.Axb3 Ce4 13.Cc3 g5 14.Cxe4 Axe4 15.Ag3 Axb3 16.hxg3 Re7 17.Cd2 Ad3?! [17...Ad5 18.Tfc1 (18.Aa4 b5 19.Ac2 c5=; 18.Ac2 c5=) 18...Axb3 19.Cxb3] 18.Tfc1 h5 19.Tc3 Ag6 [19...Aa6] 20.a4 Cf6 21.f3 h4 22.g4 Cd5 [22...Thd8 23.a5 Tac8 24.Tc5 Cd5 25.Axd5±] 23.Axd5 exd5 24.Cb3± Tac8 25.e4 dxe4 26.fxe4 Thd8 27.Rf2 Td6 28.Te1 Rf8 29.g3 hxg3+ 30.Rxg3 Te8 31.Tce3 [31.e5 Td5 32.a5 Tb5=] 31...b6 32.e5 Td7 33.Tc1 Te6 34.Tc4 f6! 35.a5 fxe5 36.axb6 axb6 37.Tb4 Af7 38.Txb6 [38.dxe5 c5±] 38...exd4 39.Txe6 Axe6 40.Cc5 Td6 41.Tb8+ Rf7 [41...Re7 42.Tb7+ Rd8 43.Tg7 Rc8 44.Ce4=; 41...Rg7? 42.Td8!+-] 42.Tb7+ Rg6 43.Cxe6 Txe6 44.Td7 c5 45.Td5 Te3+ 46.Rf2 Te4 47.Txc5 Txb4 48.b4 Tf4+ 49.Rg3 Rh5 50.Tc8 Tg4+ 51.Rf3 Tf4+ 52.Rg3 ½-½



Diagrama 2, Posición final

Estudio Casero Apertura Peón Dama (D00) - Por el MF Job Sepúlveda

Agdestein, Simen (2590) – Olafsson, Helgi (2478) [D00]

Reykjavik zt 1.3 (1.1), 05.09.2000

[Gershon]

1.d4 d5 2.Ag5 c6 3.Cf3 h6 4.Ah4 Db6 5.b3 [5.Dc1 g5 a) 5...Af5 6.c4 e6 7.Cc3 Ae7 8.Ag3 Cf6 9.e3 (9.c5 Dd8 10.e3 0-0 11.h3 Cbd7 12.b4 Ce4 13.Cxe4 Axe4 14.Cd2 Ag6 15.Dc3 Ah4 16.Ad6 Te8 17.Ad3 Axd3 18.Dxd3 e5 19.0-0 a6 20.a4 e4 21.De2 Te6=) 9...Cbd7 (9...0-0 10.Ae2 Ce4 11.Cxe4 Axe4 12.0-0 Cd7 13.Cd2 Ag6 14.c5 Dd8 15.b4 a6 16.Cb3 Af6 17.Ca5 Ta7 18.Ad6 Ae7 19.Axe7 Dxe7 20.Db2 e5 21.dxe5 Cxe5 22.Tad1 Cd7 23.Td4 Cf6 24.Tc1 Ce4 25.Ad3 f5!) 10.c5 Dd8 11.Ae2 Ce4 12.Cxe4 Axe4 13.b4 Axf3 14.gxf3 Ah4 15.f4 Axf3 16.hxf3 b6 17.g4 bxc5 18.bxc5 Da5+ 19.Dd2 Dxd2+ 20.Rxd2 Re7 21.Thb1 Thb8 22.Tb3 Rd8 23.Aa6 Rc7 24.Tab1±; b) 5...Ag4 6.Cbd2 Cd7 7.e3 e6 8.c4 Ae7 9.Ag3 Cgf6 10.Ad3 Axf3 11.Cxf3 Da5+ 12.Cd2 Ch5 13.a3 Cxg3 14.hxg3 dxc4 15.Dxc4 0-0 16.b4 Dd5 17.Ae4 Dd6 18.Cb3 e5 19.Td1 Af6? (19...Tad8 Δ20.d5 Cf6) 20.d5 Cb6 21.Dc5 Tad8 22.Dxd6 Txd6 23.dxc6 Txd1+ 24.Rxd1 bxc6 25.Ca5± ; 6.Ag3 g4 7.Ce5 Dxd4 8.c4 Ag7 9.e3 Dc5 10.Cd2 Cd7 11.Cd3 Db6 12.a4 Cc5 13.cxd5 Cxd3+ 14.Axd3 cxd5 (14...Axb2 15.a5 Db4 16.Db1 Cf6 17.Ta4 Dxa4 18.Dxb2 Dxa5 19.d6 Af5 20.e4 Axe4 21.Axe4 Cxe4 22.0-0 (22.Dxh8+ Rd7 23.Dd4 Dxd2+ 24.Dxd2 Cxd2 25.Rxd2 exd6) 22...Cvg3 23.Dxh8+ Rd7 24.Dxa8 Ce2+ 25.Rh1 Dxd2 26.dxe7±) 15.Ab5+ Rf8 16.0-0 Af5!N (16...a6 17.e4! Ae6 (17...axb5? 18.axb5 Axb2□ 19.Dxb2 Txa1 20.Txa1±) 18.exd5 Axd5 19.Ac4) 17.Ac7 (17.e4!? Axe4 (≤17...dxe4 18.Cc4 Dg6 (18...De6? 19.Td1 Cf6 20.Ce3 ΔTc8 21.Dc7!!±) 19.Td1 h5 20.Dd2 Af6) 17...Dvg6 18.Dc5 Cf6 19.a5 a6 20.Aa4 Ce8 21.Af4?! (□21.Axe8 Txe8 22.Dxd5 Axb2 23.Ta2! Ae6 24.Dxb7 Af6) 21...Axb2 22.Tab1? (22.Ta2 Ag7 23.Dxd5 De6 24.Dxe6 Axe6) 22...Tc8 23.Dxd5 Axb1 24.Dxb7 Tc1?! (24...Af5 25.Dxb2 Cf6+) 25.Txc1 Axc1 26.Cxb1 Rg7 27.Ae5+ Cf6 28.Dxe7 Ab2! 29.Ac2 (29.Axb2 Dxb1+-; 29.Cd2 Axe5 30.Dxe5 Tc8+) 29...Tc8! (29...Dxc2?? 30.Dxf6+ Rf8 31.Dd8#) 30.Cc3 (30.Axb2 Txc2+) 30...Dxc2 31.Dxf6+ Rf8 32.Dxh6+ (32.Dh8+ Re7 33.Df6+ Re8 34.Dh8+ Rd7+) 32...Re8 33.h4 Axc3 34.Af4 Dg6] **5...Af5 6.e3 e6** [6...Cd7 7.Ad3 Axd3 8.Dxd3 Cgf6 9.0-0 e6 10.Cbd2 Ae7 11.c4 0-0 12.c5 Dd8 13.b4 Ch5 14.Ag3 Cxg3 15.hxg3 Dc7 16.Dc3 Af6 17.Tab1 b5 18.a4 a6 19.Ta1 e5 20.Ta3 exd4 21.exd4 Tfe8 22.axb5? (22.Tfa1±) 22...axb5 23.Tfa1 Txa3 24.Dxa3 Cf8; 6...Da5+ 7.Dd2 Dxd2+ 8.Rxd2 g5 9.Ag3 Cf6 10.Ad3 Ce4+ 11.Axe4 Axe4 12.Ce1 Cd7 13.f3 Ah7 14.Cd3 e6 15.Cc3 Tg8 16.e4 f6=] **7.Ad3 Axd3 8.Dxd3 Ae7 9.Axe7 Cxe7 10.c4 0-0 11.Cc3** [11.c5 Dc7 12.b4 a6 13.Cc3 Cd7=] **11...Cd7 12.0-0 Tad8 13.Tfd1 dxc4 14.bxc4 e5**



Diagrama 1, Posición después de 14...e5

15.a4?! [Δ15.Tab1 Da6 16.d5 Cc5 17.Dc2 Cg6± (17...cxd5 18.cxd5±; 17...Dxc4 18.Cxe5±)] 15...exd4 16.exd4 Cg6 [16...Cc5 17.dxc5 Txd3 18.cxb6 Txc3 19.Td7±] 17.Ce4 Da6 [17...Cde5 18.Cxe5 Cxe5=] 18.Db3 b6 19.a5!? bxa5 20.c5 Cf4 21.Cd6 Tb8 22.Da3 a4?! [Δ22...De2 23.Te1 Dc2] 23.Te1! [23.Dxa4?? Dxa4 24.Txa4 Ce2+ 25.Rf1 Cc3] 23...Cd3 24.Te3! [24.Te7? Cf6 25.Ce5 (25.Txf7 Txf7 26.Cxf7 Rxf7 27.Dxd3 Dxd3 28.Ce5+ Re6 29.Cxd3 Rd5) 25...Cxe5 26.dxe5 Cd5]

Estudio Casero Apertura Peón Dama (D00) - Por el MF Job Sepúlveda

24...Cb4 25.Tc3 Cf6 26.Tc4 Cfd5 [26...Da5 27.Ce5±] 27.Ce5± f6 28.Cd7 Tfd8 [28...Tbd8 29.Cxf8 Txd6 30.cxd6 Dxc4 31.d7+–] 29.Cxb8 Txb8 30.h4 Da5 31.Dxa4 Dxa4 32.Txa4 Cd3 33.Tc2 Tb1+ 34.Rh2 Tf1 35.Ce4 Te1 36.Cg3 g6 37.Txa7 f5 38.Td2 C5b4 39.Ta3 f4 40.Ch1 [40.Tdxd3 Cxd3 41.Txd3 fxd3+ 42.Rxd3] 40...Cc1 41.Tb2 Ccd3 42.Tbb3 Td1 43.Ta4 Cd5 44.Tb7 1-0



Diagrama 2, Posición final

Bellon Lopez, Juan Manuel (2430) – Aberg, Anton (2300) [D00]

Gothenburg Cup (7), 2001

[Rabinovich, A]

1.d4 d5 2.Ag5 c6 [2...c5 3.e4 dxe4 4.d5 Db6 5.Cc3 Dxb2 6.Ab5+ Ad7 7.Ad2 Db4 8.Tb1 Da5 9.Axd7+ Cxd7 10.Txb7 Da6 11.Db1 Cgf6 12.Cge2 1-0 Lobron, E–Nadarian, A/Saint Vincent ITA 2000/The Week in Chess 297 (30); 2...h6 3.Ah4 c6 4.Cf3 Db6 5.Dc1 Ag4 6.Cbd2 Cd7 7.e3 e6 8.c4 Ae7 9.Ag3 Cgf6 10.Ad3 Axf3 11.Cxf3 Da5+ 12.Cd2 Ch5 13.a3 Cxg3 14.hxg3 dxc4 15.Dxc4 0-0 16.b4± 1-0 Hodgson, J–Gurevich, M/Delmenhorst GER 2000/The Week in Chess 276 (48)] 3.e3 h6 4.Ah4 [4.Af4] 4...Db6 5.Dc1 [5.Cd2 Af5 6.Ad3 Axd3 7.cxd3 6] 5...e5 [5...Af5 6.Cf3 e6 7.c4 Ae7 8.Axe7 Cxe7 9.Cc3 Cd7=] 6.Cf3 e4 [6...exd4 7.exd4±] 7.Cfd2 Ce7 [7...Ae7!? 8.Ag3 h5 (8...Cf6 9.c4 0-0 10.Cc3 Ae6 11.Ae2) 9.c4 h4 10.Af4 g5 11.Ae5 f6 12.Axb8 Txb8 13.Cc3 Ae6 14.Dc2 f5 8] 8.f3?!N [8.c4 Cf5 9.Ag3 Cxg3 10.hxg3 Ae6 11.Cc3 Cd7 12.cxd5 cxd5 13.Cb5 Rd8 14.Dc2 Tc8 15.Cc3 Ad6 16.Ae2 6]



Diagrama 1, Posición después de 8.f3?!N

Estudio Casero Apertura Peón Dama (D00) - Por el MF Job Sepúlveda

8...f5? [8...Cf5!? 9.Af2 exf3 10.gxf3 c5=] 9.fxe4 fxe4 10.Ae2 g6 11.c4 [11.0-0 Cf5] 11...Ae6 [11...Cf5 12.Af2 Ae6 13.0-0 Ag7 14.g4 Ce7 15.Ag3↑] 12.Cc3 Cd7 13.0-0± Ag7 14.Cdxe4?! [14.c5 Dc7 15.Ag3 Dd8 16.Cdxe4 dxe4 17.Cxe4 Cf5 18.Cd6+ Cxd6 19.Axd6 Dg5 20.Af4 De7 21.Ad6=; 14.Axe7!? Rxe7 15.b3 Taf8 16.Da3+ Re8 17.c5?! (17.Dd6! c5 18.Dg3↑) 17...Dd8] 14...dxe4 15.c5 Cxc5!? [15...Dc7!? 16.Cxe4 Cf5 17.Ag3 (17.Txf5! gxf5 (17...Axf5 18.Cd6+ Rf8 19.Dc4 Cf6 20.Tf1 De7 21.e4 Ae6 22.d5 cxd5 (22...Ag3 23.Dc3 g5 24.e5+-) 23.Dd4 g5 24.e5 gxh4 25.exf6 Rg8 26.De5!!+-) 18.Cd6+ Rf8 19.Ac4 Axc4 20.Dxc4 Cb6 21.Dd3 Rg8 22.Tf1 Tf8 23.Txf5 Cd5 (23...Txf5 24.Dxf5 Cd5 25.Rh1 b6 26.e4 Ce3 27.Dg6 Dd7 28.e5) 24.Txf8+ Axf8 25.e4 Axd6 26.cxd6 Dxd6 27.exd5 cxd5=) 17...Cxc3 18.Cxc3 0-0-0 19.b4] 16.dxc5 Dxc5 17.Cxe4 Dxc1 18.Taxc1 Cf5 19.Cf6+?! [19.Ag4 0-0 20.Cd6 (20.b3 Tae8) 20...Axb2 21.Tb1 Ae5 22.Cxb7 Axa2; 19.Af6 0-0 20.Axg7 Rxg7 21.Ag4 Axa2 22.Axf5 Txf5 23.Txf5 gxf5 24.Cd6 Td8 25.Cxf5+ (25.Cxb7 Td2 26.Txc6 Ad5 27.Tc7+ Rf6) 25...Rf6] 19...Re7? [19...Axf6! 20.Axf6 0-0 21.Ac3 Cxe3 22.Txf8+ Rxf8 (22...Txf8 23.Ad4 Cf5 24.Af2 (24.Axa7 Ta8) 24...Td8) 23.Ad2 Cf5 24.g4=] 20.Ch5+□ Cxh4 21.Cxg7 Cf5? [21...Axa2 22.Ac4 Axc4 23.Txc4 Cf5 (23...g5?? 24.Te4+ Rd7 25.g3 Cg6 26.Tf7+ Rc8 27.Ce8+-) 24.Cxf5+ gxf5 25.Txf5=] 22.Cxe6 Rxe6 23.Ag4! Re5 24.Axf5 gxf5 25.Tc5+ Rd6?! [25...Re4 26.Tcxf5 (26.Rf2 Tad8 27.Re2 Td5) 26...Rxe3] 26.Tcxf5± a5 27.a4 Ta6 28.Td1+ Rc7 29.Rf2 Tb6 30.Td2 Td8 [30...Tb4 31.Tf4] 31.Tc2 [31.Txd8 Rxd8 32.Txa5 Txb2+ 33.Rf3±] 31...Tb4?! [31...Tb3 32.Txa5?! Tf8+ 33.Re2 Te8±] 32.Txa5 [32.Tf4 Txf4+ 33.exf4 Td4 34.Rf3 Txa4 35.g4±] 32...Tf8+ 33.Re2 Tg8 34.Rf2 Tf8+ 35.Re1 Te8 36.Te2 Te6 37.Ta8 Rb6 38.Rd1 Rc5 39.a5 Rb5 [39...Ta4!? 40.Ta7 Te7 41.Td2 Rb5 (41...Txe3 42.Txb7 Txa5?? 43.b4+) 42.Td6 h5 43.Th6 h4 44.a6 Txa6 45.Txa6 bxa6 46.Txh4 Txe3+-] 40.Ta7 Rc5 41.a6+- bxa6 42.Txa6 Rb5 43.Ta8 Tbe4 44.Rd2 c5 45.Tb8+ Rc6 46.Td8 Tb4 47.Rc2 Tbe4 48.Td3 h5 49.Rd2 h4 50.Tf2 Tg4 51.Re2 Teg6 52.Rf1 Tb4 53.Tc3 Tg5 54.b3 Tb8 55.Tf6+ Rb5 56.Tf4 Ta8 57.Tc2 Ta3 58.Tb2 Th5 59.Rf2 Th8 60.Rf3 Ta1 61.Tc2 1-0



Diagrama 2, Posición final

Estudio Casero Apertura Peón Dama (D00) - Por el MF Job Sepúlveda

Morozevich,Alexander (2749) – Kramnik,Vladimir (2797) [D00]

Astana (5), 25.05.2001

[Finkel,A]

1.d4 d5 2.Ag5 c6 3.Cf3 h6 4.Ah4 Db6 5.b3 [5.Dc1 g5 a) 5...Af5 6.c4 e6 7.Cc3 Ae7 8.Ag3 Cf6 9.e3 (9.c5 Dd8 10.e3 0-0 11.h3 Cbd7 12.b4 Ce4 13.Cxe4 Axe4 14.Cd2 Ag6 15.Dc3 Ah4 16.Ad6 Te8 17.Ad3 Axd3 18.Dxd3 e5 19.0-0 a6 20.a4 e4 21.De2 Te6=) 9...Cbd7 (9...0-0 10.Ae2 Ce4 11.Cxe4 Axe4 12.0-0 Cd7 13.Cd2 Ag6 14.c5 Dd8 15.b4 a6 16.Cb3 Af6 17.Ca5±) 10.c5 Dd8 11.Ae2 Ce4 12.Cxe4 Axe4 13.b4 Axf3 14.gxf3 Ah4 15.f4 Axf3 16.hxf3 b6 17.g4 bxc5 18.bxc5 Da5+ 19.Dd2 Dxd2+ 20.Rxd2 Re7 21.Thb1 Thb8 22.Tb3 Rd8 23.Aa6 Rc7 24.Tab1±; b) 5...Ag4 6.Cbd2 Cd7 7.e3 e6 8.c4 Ae7 9.Ag3 Cgf6 10.Ad3 Axf3 11.Cxf3 Da5+ 12.Cd2±; 6.Ag3 g4 7.Ce5 Dxd4 8.c4 Ag7 9.e3 Dc5 10.Cd2 Cd7 11.Cd3±] **5...Af5 6.e3 e6** [6...Da5+ 7.Dd2 Dxd2+ 8.Rxd2 g5 9.Ag3 Cf6 10.Ad3 Ce4+ 11.Axe4 Axe4 12.Ce1 Cd7 13.f3 Ah7 14.Cd3 e6 15.Cc3 Tg8 16.e4 f6=; 6...Cd7 7.Ad3 Axd3 8.Dxd3 Cgf6 9.0-0 e6 10.Cbd2 Ae7 11.c4 0-0±] **7.Ad3 Axd3 8.Dxd3 Ae7 9.Axe7 Cxe7 10.c4 Cd7** [10...0-0 11.c5 Dc7 12.b4 a6 13.Cc3 Cd7=] **11.Cc3 0-0 12.0-0 Da6** [12...Tad8 13.Tfd1 dxc4 14.bxc4 e5 15.a4?! exd4 16.exd4 Cg6 (16...Cc5 17.dxc5 Txd3 18.cxb6 Txc3 19.Td7±) 17.Ce4 Da6 (17...Cde5 18.Cxe5 Cxe5=) 18.Db3 b6 19.a5!?!± Agdestein,S–Olafsson,H/Reykjavik 2000/CBM 79; 12...Tfd8 13.Tfd1 Cf6 14.Tac1 Cg6 15.h3 Db4 16.Db1 De7= Adams,M–Dautov,R/Pula 1997/CBM 57] **13.Tfd1** [13.a4 Tfd8 14.Tfd1 Tac8 15.a5 c5 16.Cb5 Cc6 17.Dc3 cxd4 18.exd4 Cf6 19.De1 Ce4± Rozenalis,E–Sulypa,A/Bad Wiessee 1999/EXT 2001] **13...Tfd8** [13...Tac8 14.Tac1 Tfd8 15.cxd5 Dxd3 16.Txd3 cxd5 17.Tdd1 Cf5= Gerber,R–Tukmakov,V/Geneve 1999/CBM 68; 13...Cb6 14.Tdc1 dxc4 15.Df1 Cd7 16.bxc4 c5 17.d5 Tad8 18.Tab1± Hodgson,J–Adianto,U/Amsterdam 1996/CBM 55] **14.Tab1?!** Of course this move is not a mistake, but rook has nothing to do b1 that's why deserves attention 14.♖ac1 with ♖b1 on the next move as was played by Hodgson. [14.Tac1 Cf5 15.Db1 Ce7 16.e4 dxe4 17.Cxe4 Da5 18.c5 Dc7 19.Cd6 b6 20.b4± Hodgson,J–Sergejev,R/Pula 1997/CBM 57]



Diagrama 1, Posición después de 14.Tab1?!

14...b6 15.Df1 [15.e4!? dxe4 16.Dxe4 Cf6 17.De2 Cf5=] **15...Tac8 16.Td2?!** White starts to play without plan and suddenly finds himself in inferior position. Morozevich can't admit that there is no chance to get an opening advantage and the draw is the most logical result after such opening variation. **16...Cf6 17.Ce5?!** [17.cxd5 Dxf1+ 18.Rxf1 Cexd5 19.Cxd5 (19.Tc2 Cb4 20.Td2 c5±) 19...cxd5 20.Tbb2 Tc1+ (20...Ce4 21.Tdc2=) 21.Ce1 Tdc8 22.Tbc2=] **17...dxc4 18.Cxc4?!** [18.bxc4!? c5] **18...Ced5±** White pieces lack coordination and black siezes the initiative. **19.Tc2?** Missing 21th move of black. It was time to simplify a position with [19.Cxd5 cxd5 20.Ce5 Dxf1+ 21.Txf1 Ce4± and although black's chances are preferable the player of Morozevich's level should hold this endgame without too many problems]

Estudio Casero Apertura Peón Dama (D00) - Por el MF Job Sepúlveda

19...Cxc3 20.Txc3 c5 21.dxc5 b5!-+ There is no satisfactory defense against Ne4-d2 22.Ce5 [22.Cd6 Txd6 23.cxd6 Txc3-+] 22...Ce4 23.Td3 Cd2 24.Txd8+ [24.Txd2 Txd2 25.b4 Dxa2-+; 24.Dd1 Txd3 25.Cxd3 Cxb1 26.Dxb1 Dc6-+] 24...Txd8 25.Td1 [25.Dd1 Dxa2 26.Tc1 (26.Cc6 Cf3+! 27.gxf3 Txd1+ 28.Txd1 Dxb3 29.Td8+ Rh7 30.Cxa7 Da3 (30...Da4!?) 31.Cxb5 Dxc5 32.Tb8 Dg5+-) 26...Db2! 27.c6 Cf3+ 28.Cxf3 Txd1+ 29.Txd1 Dc2-+] 25...Cxf1 26.Txd8+ Rh7 27.c6 [27.Rxf1 Dxa2 28.Cxf7 Db1+ 29.Re2 Dc2+-] 27...Da5! 0-1



Diagrama 2, Posición final

Romero Holmes, Alfonso (2524) – Del Rio Angelis, Salvador Gabriel (2494) [D00]

ESP-chA Ayamonte (2), 05.10.2002

[Finkel,A]

1.d4 d5 2.Ag5 c6 3.e3 Db6 4.Dc1 Af5 5.Cf3 Cd7 6.c4 [6.Cbd2 e6 7.c4 Cgf6 8.Ae2 h6 9.Af4 Ae7 10.c5 Dd8 11.b4 Ce4 12.h3 g5 13.Ah2 h5 14.Ce5 Cxe5 15.Axe5 f6 16.Ah2±] 6...Cgf6 [6...h6 7.Ah4 Cgf6 8.Cc3 e6 9.c5 Dd8 10.b4 g5 11.Ag3 Ch5 12.Ae5 f6 13.Ag3 Cxg3 14.hxg3 Ag7 15.Dd2 e5 16.Ae2±; 6...dxc4 7.Axc4 e6 8.Cc3 h6 9.Ah4 Ae7 10.Ag3 Cgf6 11.0-0 0-0 12.a3 a5 13.h3 Tac8 14.Dd2 Ce4 15.Cxe4 Axe4 16.De2 c5=; 6...e6 7.Cc3 h6 (7...Ae7 8.Af4 Cgf6 9.c5 Dd8 10.h3 b5 11.Ae2 a5 12.0-0 0-0 13.Ch4±) 8.c5 Da5 9.Af4 Cgf6 10.h3 g5 11.Ah2 Ag7 12.a3 0-0 13.Ae2 Dd8 14.0-0 Ce4 15.b4 Te8=] 7.Cc3 Ce4 8.Af4 Cxc3?! [8...e6]



Diagrama 1, Posición después de 8...Cc3?!

Estudio Casero Apertura Peón Dama (D00) - Por el MF Job Sepúlveda

9.bxc3 h6 10.a4 Da5 11.Cd2 e6 12.Ae2 Ae7 13.0-0 0-0 14.Db2 Db6 [14...b6? 15.Cb3 Da6 16.cxd5+-] 15.Da2 Da5 [15...Cf6] 16.cxd5 cxd5 17.c4 Ab4? [17...Cf6; 17...dxc4 18.Cxc4 Dd5 19.Cd6 Axd6 20.Dxd5 exd5 21.Axd6 Tfc8±] 18.Cb3 Dd8 19.c5 a5 [19...Tc8 20.a5 e5 21.Ag3 exd4 22.exd4 Cf6 23.f3 Te8 24.Tfc1±] 20.Ad6 Te8 21.Ab5 Rh8!? 22.De2 Tg8 23.f3 Ag6 24.Cc1 e5 25.Ca2 exd4 26.exd4 Cb8± [26...Cb8 27.De5 (27.Cxb4 axb4 28.Db2 Cc6 29.Tfd1 Df6 30.Axc6 bxc6 31.Dxb4±) 27...Cc6 28.Dxd5 Ad2 29.Tad1 Ae3+ 30.Rh1 Df6±] 1-0



Diagrama 2, Posición final

Miladinovic,Igor (2611) – Rocha,Sergio (2400) [D00]

Nancy (6), 17.02.2005

[Finkel,A]

1.d4 d5 2.Ag5 c6 3.Cf3 h6 4.Ah4 Db6 5.Dc1 Af5 [5...c5 6.c3 Cc6 7.e3 Ag4 8.Cbd2 cxd4 9.exd4 e6 10.Ad3 Ad6 11.Ag3 Axd3 12.hxg3 Cge7= Klemancic,E-Koutsin,S/Slovakia 1998; 5...Ag4 6.Cbd2 e6 7.e3 Ae7 8.Axe7 Cxe7 9.Ad3 Cd7 10.0-0 0-0 11.c4 Tac8 12.b4 a5 13.c5 Da7 14.a3 b6= Hurtado Oldridge,F-Galvan Huaraca,J/Valencia 2004] 6.e3 e6 [6...Cd7 7.Ae2 e6 8.0-0 Cgf6 9.c4 dxc4 10.Cbd2 Dc7 11.Ag3 Ad6 12.Axd6 Dxd6 13.Cxc4± Maki Uuro,M-Simola,T/Salo 1998] 7.c4 Ae7 8.Ag3 Cf6 9.Cc3 dxc4?! [9...0-0 10.Ae2 Cbd7 11.c5 Dd8 12.h3 b5! (12...b6?! 13.b4 a5 14.a3 axb4 15.axb4 bxc5 16.bxc5±) 13.0-0 a5=]



Diagrama 1, Posición después de 9...dxc4?!

Estudio Casero Apertura Peón Dama (D00) - Por el MF Job Sepúlveda



Diagrama 1, Posición después de 5...Ag4!?

6.Cbd2 e6 7.e3 Ae7 8.Ag3 [8.Axe7 Cxe7 9.Ad3 Cd7 10.0-0 0-0 11.c4 Tac8 12.b4 a5 13.c5 Da7 14.a3 b6= Hurtado Oldridge,F-Galvan Huaraca,J/Valencia 2004] 8...Cf6 9.c4 Axf3!? [9...Cbd7 10.Ad3 0-0 11.0-0 c5 12.cxd5 exd5=] 10.c5 [10.gxf3 c5! 11.cxd5 Cxd5 12.dxc5 Axc5 13.Ag2 Cc6 14.0-0 Tc8=] 10...Dd8 11.gxf3 Cbd7 12.f4 [12.b4!?] 12...a5! 13.Ad3 Ch5 [13...b6! 14.cxb6 Dxb6 15.f5 exf5 16.Axf5 c5±] 14.Dd1 Cxg3 15.hxg3 b6 16.cxb6 Dxb6 17.Tc1 c5 18.Da4 c4! [18...cxd4 19.Ab5 Dd6 20.Cf3! Db4+ (20...dxe3? 21.Ce5 exf2+ 22.Rxf2; 20...Af6?! 21.Ce5 Axe5 22.fxe5 Db4+ 23.Dxb4 axb4 24.Tc7+-) 21.Dxb4 Axb4+ 22.Re2 Ad6 23.Cxd4±] 19.Ac2 Tc8?! [19...Dxb2! 20.Tb1 Da3 21.Tb7 (21.Dc6 Td8 22.f5 (22.Tb7 Dc1+ 23.Ad1 Ab4-+) 22...Dd6±) 21...Dxa4 22.Axa4 0-0-0! 23.Ta7 Ab4±] 20.f5 Ab4 21.fxe6 fxe6 22.Ag6+ Re7 23.Dd1 Axd2+?! [23...e5! 24.Af5 (24.Dh5 Axd2+ 25.Rxd2 Thf8 26.Dh4+ Rd6±) 24...exd4 25.Dg4 g6! 26.Axd7 dxe3±] 24.Dxd2 Db4 [24...e5 25.Af5 exd4 26.exd4 Tce8 27.0-0±] 25.Tc3 Tb8 26.0-0!? [26.b3 cxb3 27.axb3 Thc8 28.Txc8 Txc8 29.Dxb4+ axb4 30.Rd2=] 26...Dxb2 27.Tc2 Db4 28.De2 Thf8?! [28...Cf6?! 29.e4 dxe4 30.Txc4↑; 28...Thc8!±] 29.e4 dxe4 30.Txc4 Dd6 31.Tfc1± Tb4 [31...e3 32.Dxe3 Tb2 33.T1c2 Txc2 34.Axc2 Tb8 35.a3!±] 32.Axe4 Txc4 33.Txc4 Cf6 34.Ag2 Te8 [34...Td8] 35.De5 Db6?? [35...Dxe5 36.dxe5 Cd7 37.Tc7 Rd8 38.Ta7 Cxe5 39.Txa5±] 36.Tc7+- Rf8 37.Tb7 Dd8 [37...Da6 38.Dc7] 38.Ac6 Dc8 39.Tc7 1-0



Diagrama 2, Posición final

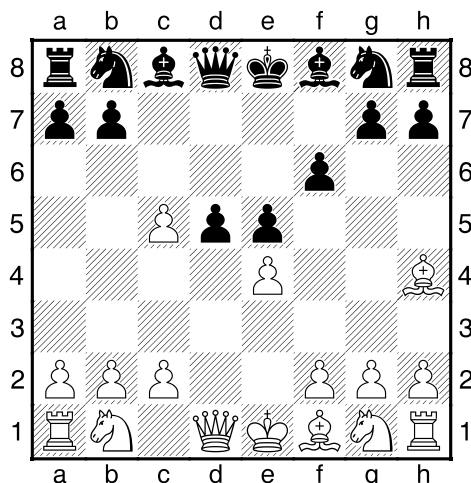
Estudio Casero Apertura Peón Dama (D00) - Por el MF Job Sepúlveda

Hodgson, Julian M (2550) – Sokolov, Ivan (2670) [D00]

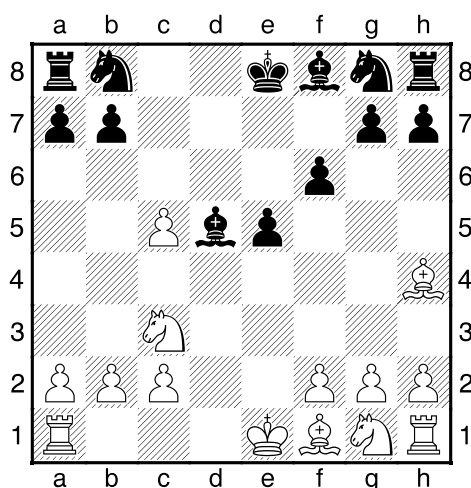
Koop Tjuchem Groningen (3), 1996

[Psakhis]

1.d4 d5 2.Ag5 c5 3.dxc5 f6 4.Ah4 e5 [4...e6 5.e4 Axc5 6.Cc3 Ce7 7.Dh5+ g6 8.Dh6 d4 9.0-0-0 Cd7 10.Ca4↑ 1-0 Hodgson,J–Strijbos,M/NLD t–ch 1996 (48)] 5.e4 Diagrama

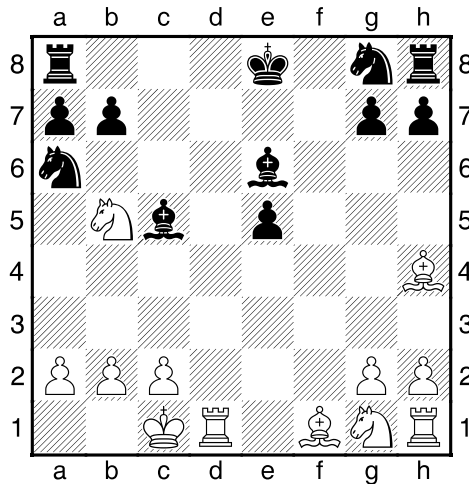


[5.Cf3] 5...Ae6 N/ New move, but I am not sure, that it stronger than 4...d4. [5...d4 6.Ac4 Axc5 7.Ce2 Db6 8.Cd2 Ae6 9.Axe6 Dxe6 10.Cb3 Ab6 11.f4 Ce7 12.fxe5 fxe5 13.Tf1 Cbc6 14.Dd3 0-0-0= 1/2-1/2 Mohrlok,D–Beikert,G/BL 1993 (22); 5...dxe4 6.Dxd8+ Rxd8 7.Cc3 Axc5 8.0-0-0+ Cd7 9.Cxe4 Ae7 10.f4! exf4 11.Cf3 Rc7 12.Cc3! Cb6 13.a4 Ab4 14.a5! Axa5 15.Cb5+↑ 1-0 Hodgson,Ju–Van Wely,L/Horgen II 65/350 1995 (78)] **6.exd5 Dxd5 7.Dxd5 Axd5 8.Cc3** Diagrama

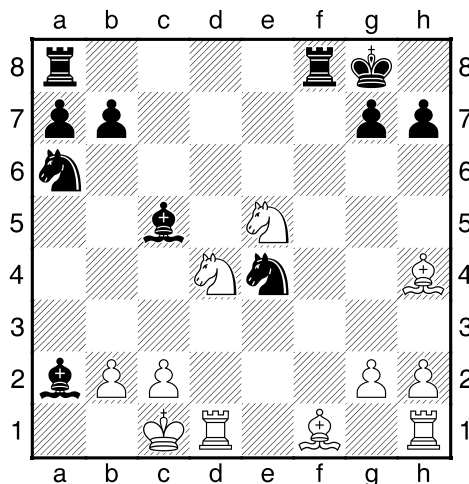


White getting now advantage in development and Black,s defencenot easy. **8...Ae6** [8...Ac6 9.b4 Δa5 10.b5 Ad7 11.Cd5 Rd8 12.f4↑ (12.Cf3!? g5 13.Cxg5 fxg5 14.Axg5+ Ae7 15.Cxe7 Cxe7 16.Af6 Te8 17.0-0-0)] **9.Cb5 Ca6 [9...Rd7 10.Cd6] 10.f4 [10.Cd6+!? Axd6 11.cxd6 Cb4 12.0-0-0 looks very strong] 10...Axc5 11.fxe5 fxe5 12.0-0-0** Diagrama

Estudio Casero Apertura Peón Dama (D00) - Por el MF Job Sepúlveda

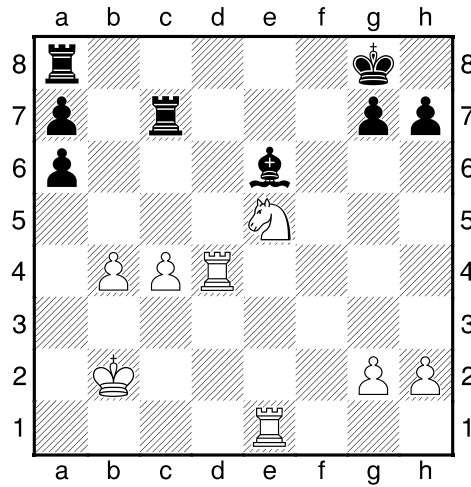


Active position of all white's pieces+ terrible knight on a6 guarantee clear advantage of Hodgson. **12...Cf6**
13.Cf3 [13.Cd6+ Axd6 14.Txd6 Re7∞] **13...0-0** [13...Axa2? 14.b3 e4 15.Ce5±; 13...e4 14.Cfd4 Td8 15.Ae2±]
14.Cxe5 Ce4 Ivan lost pawn and his only chance now exist in activation of his pieces. **15.Cd4** Keeps
 advantage, but stronger [15.Ac4!? Tae8 (15...Axc4 16.Cxc4 Cf2 17.Axf2 Txf2 18.Td2 Taf8 19.Te1±)
 16.The1±] **15...Axa2!** Diagrama

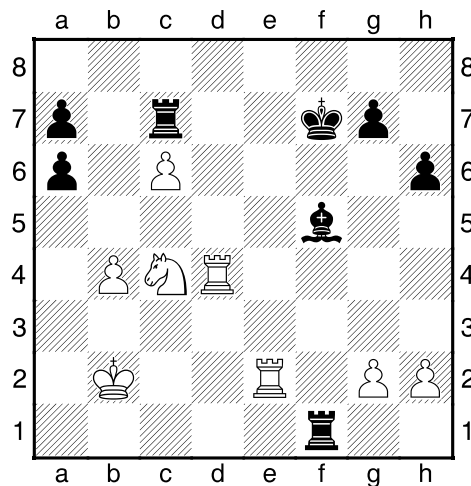


16.Axa6 bxa6 **17.The1 Cf6** [17...Tf4 18.Cdf3] **18.Axf6! Txf6** **19.Cd7 Axd4** **20.Txd4 Tc6** [20...Tf2 21.b3
 (21.Td2 Txd2 22.Rxd2 Td8 23.Te7 Ad5±) 21...Txc7 (21...Tc8 22.Td2 Txd2 23.Rxd2 Td8 24.Te7+-) 22.Td2
 Txd2 23.Rxd2 Td8 24.Te7 a5 25.Rc3 a4 26.Rb2±] **21.Ce5 Tc5** [21...Tc7!?] **22.b4! Tc7** [22...Tb5 23.Cc6 Tb6
 24.Cd8!?] **23.Rb2 Ae6** **24.c4±** Diagrama

Estudio Casero Apertura Peón Dama (D00) - Por el MF Job Sepúlveda

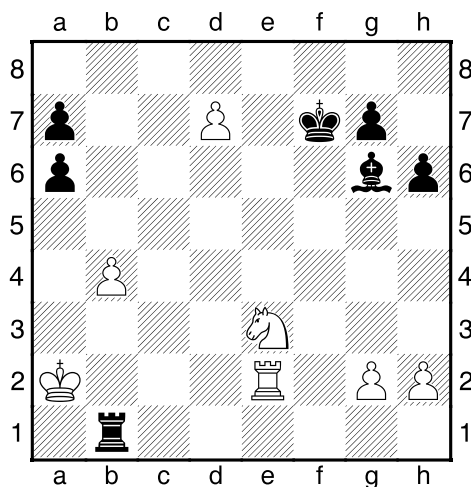


24...Tf8 25.Rc3 Ac8 26.Ted1 Te7 27.Cc6 Tc7 [27...Te2 28.T4d2 Te3+ 29.Td3 Te2 30.T1d2±] 28.Ca5 Tf2 29.T1d2 Tf1 30.c5 h6 31.c6 Rf7 32.Rb2 Re7 33.Te2+ Rf7 [33...Ae6!?] 34.Cc4 Af5?!⊕ Diagrama



[34...Ae6!? 35.Cd6+ (35.Ce5+!?) 35...Re7 36.Tde4 Rxd6 37.Txe6+ Rd5 38.T2e5+ Rc4 39.Td6±] 35.Ce3 Te7 [35...Tb1+?! 36.Ra2 Ag6 37.Td7+ Txd7 38.cxd7 Re7 39.Cc2+--] 36.Tdd2+- Tb1+ [36...Tf4 37.Cxf5 (37.Tf2 Txf2 38.Txf2 Txe3 39.Txf5+ Re8 40.c7 Rd7 41.Tf7+) 37...Txf5 (37...Txe2 38.Txe2 Txf5 39.c7+-) 38.Txe7+ Rxe7 39.Td7+ Re6 40.Txg7+-] 37.Ra2 Ag6 [37...Ae4 38.Td7 Tc1 39.Cf5!+-] 38.Td7 Txd7 39.cxd7 Diagrama

Estudio Casero Apertura Peón Dama (D00) - Por el MF Job Sepúlveda

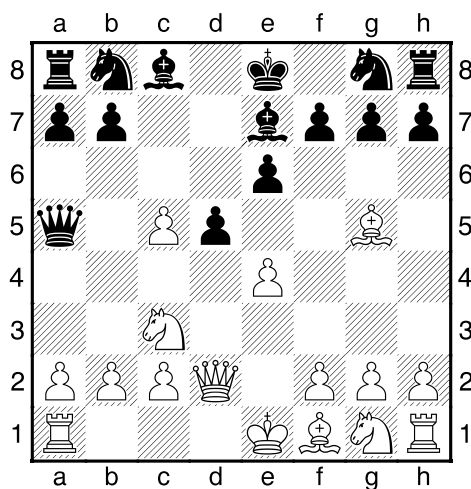


[39.cxd7 Re7 40.Cc2+] 1-0

Castro Rojas, Oscar Humberto (2359) – Garcia, Gildardo (2446) [D00]

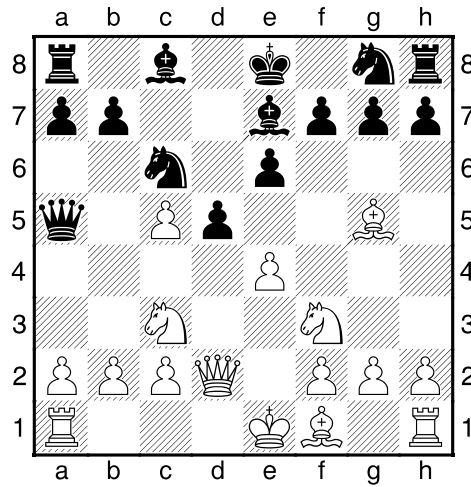
Barranquilla Carnival Cup 10th (6), 1999

1.d4 d5 2.Ag5 c5 3.dxc5 Da5+ 4.Cc3 e6 5.e4! Ae7 6.Dd2 Diagrama

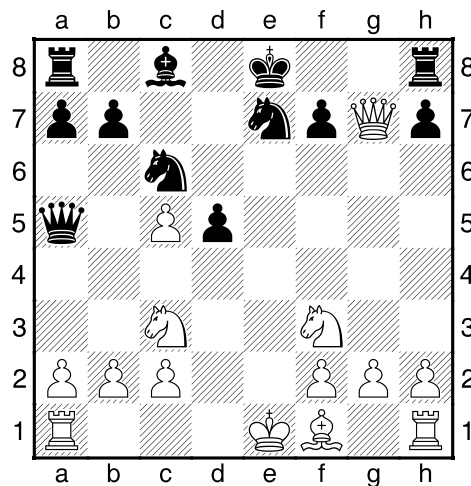


[RR 6.Ad2 Dxc5 7.exd5 exd5 8.Ae3 Db4 9.a3 Dxb2 10.Cb5 De5 11.Cf3 1-0 Clijsen, M–Coenen, A/Tilburg 2006/CBM 113 ext] 6...Cc6N [RR 6...Cf6 7.exd5 exd5 8.Axf6 Axf6 9.Cxd5 Dxd2+ 10.Rxd2 Ad8 11.Te1+ Rf8 12.Cf3 g6 13.Ab5 Ae6 14.Cf4 Ad7 15.Axd7 Cxd7 16.b4 Rg7 17.Cd5 Cf6 18.Cxf6 Axf6 19.Rd3 a5 20.b5 Tac8 21.Rc4 Dunworth, C–May, F/Gwbert on Sea 2001/EXT 2004/1-0 (38)] 7.Cf3!? Diagrama

Estudio Casero Apertura Peón Dama (D00) - Por el MF Job Sepúlveda

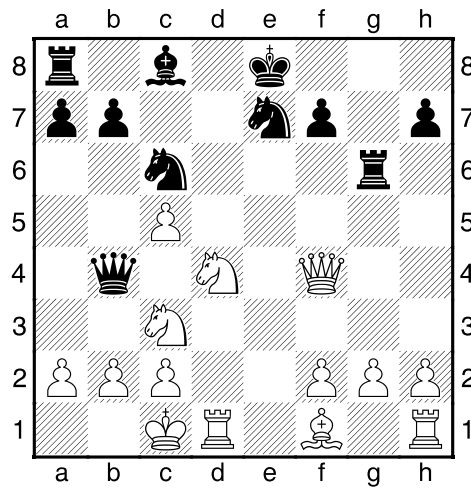


[Fritz 9: 7.exd5 exd5 8.Cxd5 Dxc5 9.0-0-0 Axc5 10.Dxc5 Rf8 11.Cf3 Cge7 12.Cxe7 Dxc5+ 13.Cxc5 Rxe7 14.Ac4 Ae6 15.Cxe6+- 2.16/9] 7...Axc5 8.Dxc5 Cge7 9.exd5 exd5 10.Dxc5 Diagrama

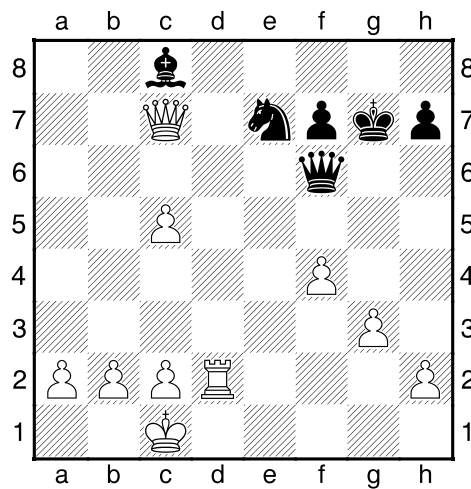


[10.Ab5 0-0 11.0-0-0 f6 12.Dh5 Db4 13.The1 Df4+ 14.Rb1 d4 15.Ac4+±] 10...Tg8 11.Df6 Tg6 12.Dh8+ Tg8 13.Df6 Tg6 14.Df4 d4?! [14...Dxc5 15.0-0-0 Af5 16.g3 0-0-0 17.Ad3 Axd3 18.Txd3 Dxf2 19.Thd1 Tgd6 20.Dxf7±] 15.Cxd4+- Db4 16.0-0-0! Diagrama

Estudio Casero Apertura Peón Dama (D00) - Por el MF Job Sepúlveda



16...Tg4 17.Df6 Txd4 [17...Tg6 18.Cxc6 bxc6 19.Dh8+ Tg8 20.De5 Ae6 21.a3 Dh4 22.Ce4+-] 18.Ab5!
 Txd1+ 19.Txd1 Dg4 20.Cd5 Cxd5 21.Axc6+ bxc6 22.Dxc6+ Rf8 23.Dxa8 Ce7 24.Dxa7 Dg5+ 25.Td2 Rg7
 26.f4 Dh4 27.g3 Df6 28.Dc7+- Diagrama



1-0

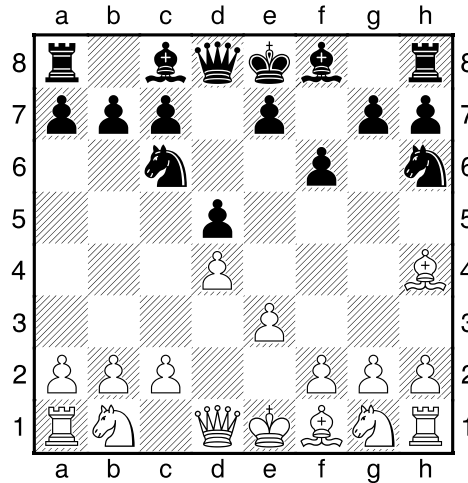
Estudio Casero Apertura Peón Dama (D00) - Por el MF Job Sepúlveda

Adams, Michael (2680) – Van Wely, Loek (2655) [D00]

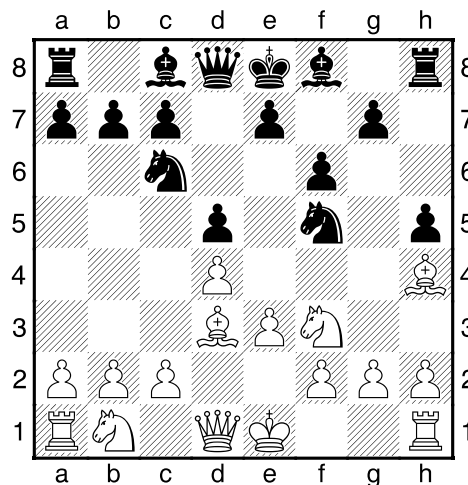
FIDE–Wch k.o. Groningen (5.4), 22.12.1997

[Avrukh, B]

1.d4 d5 2.Ag5 f6 3.Ah4 Cc6 4.e3 Ch6 Diagrama

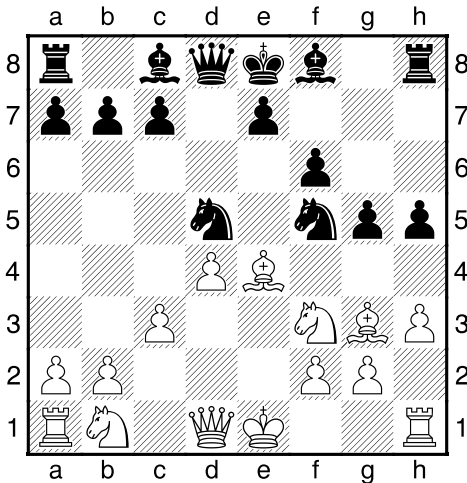


[4...e5 5.Ab5 exd4 6.exd4 Cge7 (6...a6 7.Ad3?! Cxd4 8.Cc3 Ce7 9.Cge2 Ce6 (9...Cdf5! 10.Ag3 c6 $\bar{7}$) 10.0-0 c6 11.Te1 Db6 12.Ag3 Rf7 13.Ca4 Da5 14.c4 \uparrow Miladinovic–Shabalov/Moscow ol 1994/1-0 (46)) 7.Cf3 a6 8.Aa4 b5 9.Ab3 Ag4 10.c3 Cf5 11.Ag3 Cxg3 (11...De7+?! 12.De2 (12.Rd2?! Cxg3 13.hxg3 Dd7 $\bar{7}$) 12...Dxe2+ 13.Rxe2 Cxg3+ 14.hxg3 \pm) 12.hxg3 Dd7 13.Cbd2 Ae7 14.Cf1! 0-0 15.Ce3 Ae6 16.Dd3 g6 17.0-0 \pm 1/2-1/2 Benjamin, J–Chessmaster 4000 Turbo/Fifth Harvard Cup G/25 1994 (46)] **5.Ad3** [5.c4 Cf5 (5...e6 6.f3 Ce7 (6...Cf5! 7.Af2 Ab4+ 8.Cc3 0-0 ∞) 7.e4 c6 8.Cc3 Cf7 9.Af2 g6 10.Ad3 Ag7 11.Cge2 \pm Pedersen, J–Rewitz, P/Aarhus–ch 1995/1-0 (69)) 6.cxd5 Dxd5 (6...Ccx4? 7.exd4 Cxh4 8.Dh5+ Cg6 9.Ad3 \pm) 7.Cc3 Df7 8.Ag3 Cxg3 9.hxg3 e5 10.d5 Cb8 11.Tc1 a6 12.Ad3 g6 13.Dc2 f5 14.g4!C Ad6 15.gxf5 Axf5 (15...gxf5 16.g4!→) 16.Cf3 \pm Vehi Bach, V–Alberdi, J/San Sebastian op 1995/1-0 (40)] **5...Cf5 6.Cf3 h5?! Diagrama**

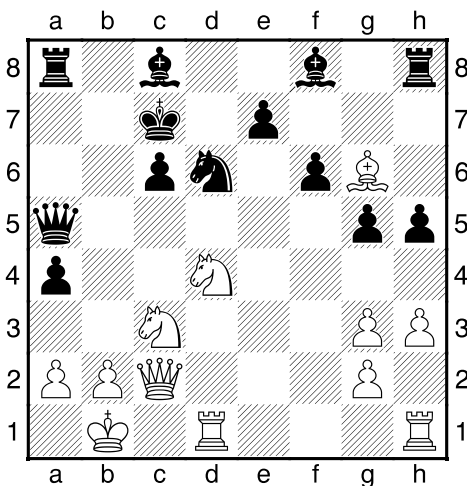


Estudio Casero Apertura Peón Dama (D00) - Por el MF Job Sepúlveda

[Deserved attention 6...Cb4!? 7.Af1!? a) 7.Ae2 e5! 8.Ag3 (8.dxe5?! Cxh4 9.Cxh4 fxe5 10.Cf3 (10.Ab5+ c6 11.Dh5+ g6 12.Cxg6 (12.Dxe5+ De7 13.Dxh8 Cxc2+-) 12...hxg6 13.Dxg6+ Rd7-+) 10...Af5 11.Ca3 Cc6) 8...Cxb3 9.hxg3 Af5 10.Ca3 Cc6; b) 7.e4 Cxd3+ 8.cxd3 Cxh4 9.Cxh4 g6 10.Cc3 e6 11.0-0 Ag7 12.exd5?! exd5 13.Te1+ Rf7 14.f4 c6; 7...e5 8.dxe5 Cxh4 9.Cxh4 fxe5 10.Dh5+ Rd7 11.Ca3 De8 with unclear position] **7.Ag3 Cb4** [7...g5!? 8.h3 (8.c4 dxc4 9.Axc4 h4 10.Db3 e6; 8.h4 g4 9.Cfd2 Ah6 10.Cf1 e5) 8...Cb4 9.Ah2 Cxd3+ 10.Dxd3 e6 11.e4] **8.e4 dxe4 9.Axe4 g5 10.c3 Cd5 11.h3** Diagrama

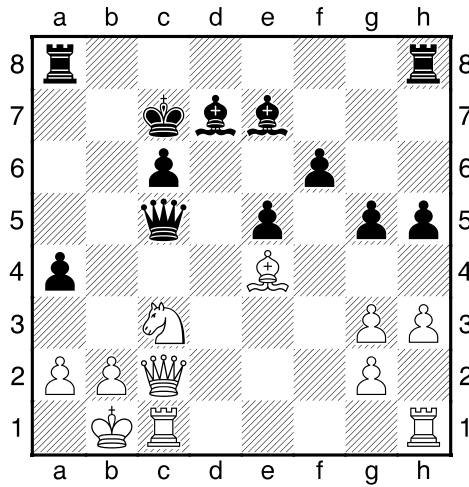


11...Cxb3 12.Ag6+ Rd7 13.fxb3 c6 14.c4 Cb6 15.De2 Dc7 16.Df2 [16.0-0?! g4] **16...Cxc4 17.Cc3 Db6 18.0-0-0 Rc7** [18...e6 19.The1 Rc7 20.Af7 g4 21.Ch4 Ah6+ 22.Rb1 Ag5 23.Axe6 Axe6 24.Txe6 Tad8 25.Cf5] **19.De2 Cd6 20.Rb1 a5** [20...Th6!? 21.Ac2 (21.Dc2 Cc4) 21...Ad7 22.d5 Td8] **21.d5 a4** [21...c5? 22.Ca4 Db4 23.Cxc5] **22.dxc6 bxc6 23.Dc2 Da5 24.Cd4!** Diagrama

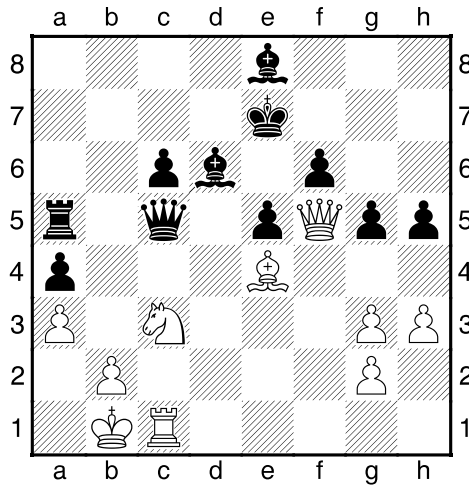


Centralized position of the pieces and huge advantage in development make white's chances much better in forthcoming struggle. **24...Ad7 25.Ce4 e5 26.Ce2 Cxe4 27.Axe4 Dc5 28.Cc3 Ae7 29.Tc1!** Diagrama

Estudio Casero Apertura Peón Dama (D00) - Por el MF Job Sepúlveda

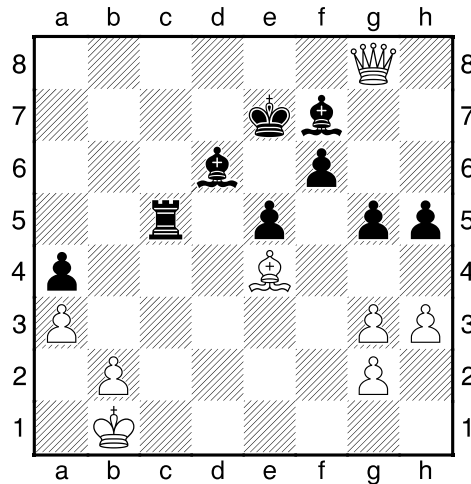


[29.Af5 Thd8 30.Axd7 Txd7 31.Txd7+ Rxd7 32.Df5+ Rc7 33.Tc1 a3!±] 29...Ta5 [29...Thd8 30.De2 Rb8 31.Cd5 Dd6 32.Cb6±] 30.Thd1 Td8 31.De2 Ae8 32.Txd8 Rxd8 33.a3 [33.Cxa4!? Db4 34.Cc3±] 33...Ad6 34.Df3 Re7 35.Df5?! Diagrama



Missing faster way to finish the game. [35.Tf1!+-] 35...Dc4 [35...Db6 36.Tf1 Axa3 37.Dxf6+ Rd7 38.Tf2±] 36.Cd5+ cxd5 37.Txc4 dxc4 38.Dh7+ Rd8 39.Dg8+- Re7 40.Dxc4 Tc5 41.Dg8 Af7 Diagrama

Estudio Casero Apertura Peón Dama (D00) - Por el MF Job Sepúlveda



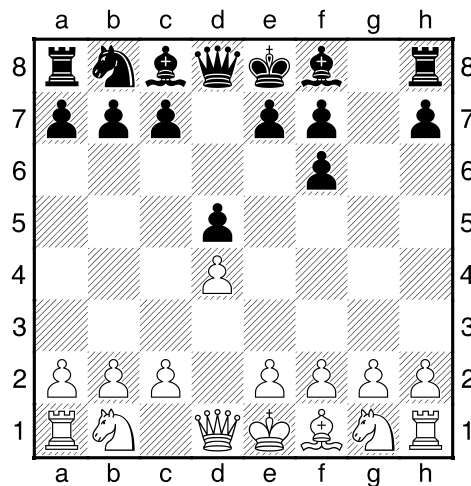
[41...Af7 42.Dh7 Rf8 43.Ag6+-] 1-0

Lombardy, William James (2520) – Ivkov, Borislav (2530) [D00]

IBM Amsterdam (11), 1974

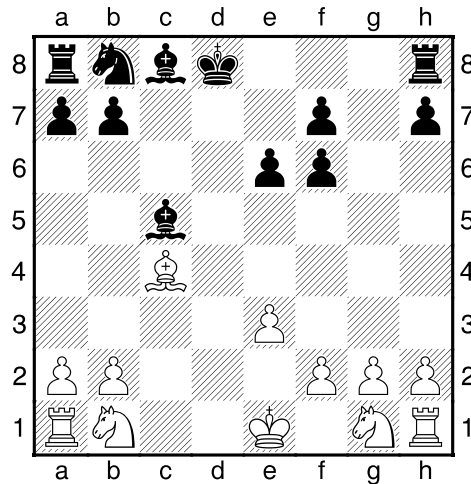
[Kharitonov]

1.d4 Cf6 2.Ag5 d5 3.Axf6 [3.Cd2!?] 3...gxf6 Diagrama

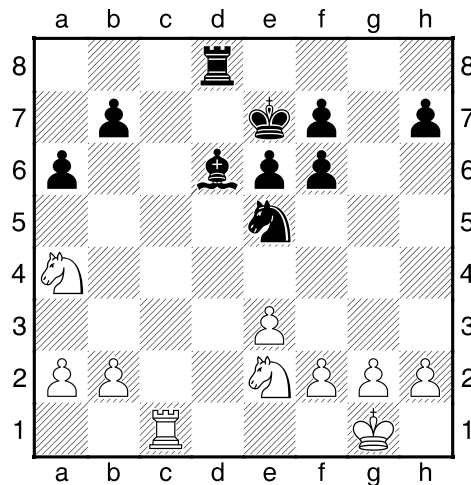


[3...exf6!? 4.e3 c6 5.Ad3 Ad6 6.Cd2 0-0 7.Df3 Te8 8.Ce2 Cd7 9.0-0-0 b5! 10.g4 Cb6 11.h4 Cc4∞
 Psakhis,L-Podgaets,M/Kharkov/URS-FL/1985/0:1/38/] 4.e3 c5 5.dxc5 [5.Cc3 e6 6.Df3 Ad7 7.0-0-0 Cc6
 8.Cge2 f5 9.Cf4 Da5 10.Rb1 0-0-0∞ Tukmakov,V-Cseshkovsky,V/Kishinev/URS-FL/1975/0:1/36/] 5...e6
 6.c4 dxc4! 7.Dxd8+ [7.Da4+ Cc6 8.Dxc4 Da5+] 7...Rxd8 8.Axc4 Axc5= Diagrama

Estudio Casero Apertura Peón Dama (D00) - Por el MF Job Sepúlveda

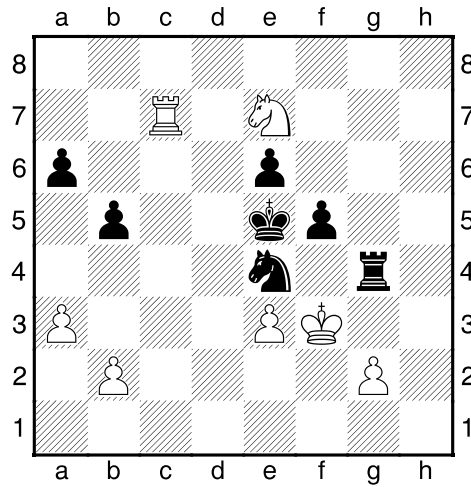


9.Cc3 Re7 10.Tc1 Ad7 11.Ab5! Tc8 [11...Cc6 12.Cd5+!? exd5 13.Txc5 Rd6 14.Tc3=] 12.Axd7 Cxd7 13.Cge2 [13.Cf3 Ab4 (13...Cb6!?) 14.Re2 Axc3 15.Txc3 Txc3 16.bxc3 Tc8≠] 13...Ce5 14.0-0 a6 15.Ca4 Ad6 [15...Aa7 16.Txc8 Txc8 17.Tc1 Txc1+ 18.Cxc1 b5 19.Cc3 f5≠] 16.Txc8?! [16.Cb6! Txc1 17.Txc1 Td8 18.Cc8+ Re8 19.Cxd6+ Txd6 20.Cd4=] 16...Txc8 17.Tc1 Td8!≠ Diagrama

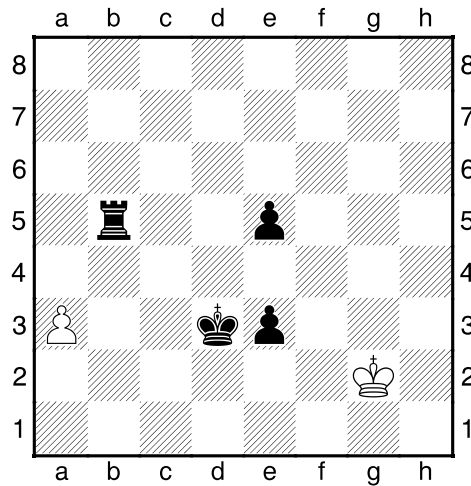


18.Cd4 [18.Cb6 Cd3 19.Tb1 (19.Cc8+ Rf8≠) 19...Ac5 20.Ca4 Aa7 &21...b5] 18...Cd3 19.Tc3 Cb4 20.a3 Cd5 21.Tc1 f5 22.Cf3?! [22.g3 & f1-e2 /] 22...b5!≠ 23.Cc5 [23.Cc3 Cxc3 24.Txc3 Axa3-+] 23...Axc5! 24.Txc5 Cf4! 25.Tc7+ [25.Cd4 Ce2+!≠] 25...Rf6 26.h4 [26.h3 Td1+ 27.Rh2 Cd3 28.Tc2 Tb1 29.b4 Ta1-+] 26...Td1+ 27.Rh2 Cd3 28.Cg5 [28.Tc2 Tb1-+] 28...h6! 29.Cxf7 [29.Txf7+ Rg6-+] 29...Cxf2 30.Cxh6 Th1+ 31.Rg3 Ce4+ 32.Rf3 Txh4 33.Cg8+ Re5 34.Ce7 Tg4!-+ Diagrama

Estudio Casero Apertura Peón Dama (D00) - Por el MF Job Sepúlveda



35.Ta7 Tg3+ 36.Re2 Txc2+ 37.Rf1 Txb2 38.Cc6+ [38.Txa6 Cg5 ♠ e4-+] **38...Rd6 39.Cb4 Cc5!? 40.Cxa6 Cxa6 41.Txa6+ Rd5 42.e4+ [42.Tb6 e5 43.a4 b4 44.a5 Re4 45.Tb5 Rf3 46.Rg1 (46.Re1 Te2+ 47.Rd1 Txe3 48.a6 Ta3 49.Txe5 f4 50.Te6 Ta2 51.Rc1 b3 52.Rb1 Rf2-+) 46...b3! 47.a6 (47.Txe5 Ta2 48.Txf5+ Rxe3 ♠b2-+)] 47...Ta2 48.Txb3 Txa6 49.Tb5 Ta1+ 50.Rh2 Re4 51.Rg2 Td1! 52.Rf2 Td2+ 53.Rf1 (53.Rg3 Te2-+) 53...Td5! 54.Tb3 Td3-+] **42...fxe4 43.Re1 [43.Tb6 e3 44.Re1 (44.a4 Tf2+) 44...e5 45.a4 b4 46.a5 Re4 47.a6 Ta2! 48.Txb4+ Rf3-+] 43...e5 44.Tb6 Rc5 45.Te6 Rd4 46.Tb6 Rd3 47.Rf1 [47.Td6+ Re3 48.Rf1 Tb3 49.Tb6 (49.Td5 Rf3) 49...Rd2-+] 47...Tb1+ 48.Rg2 e3 49.Txb5? [49.Td6+ Re4 ♠e2/]** **49...Txb5** Diagrama**



0-1

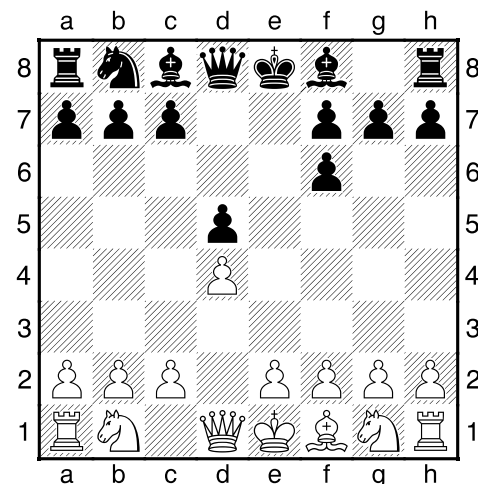
Estudio Casero Apertura Peón Dama (D00) - Por el MF Job Sepúlveda

Gurevich, Mikhail (2640) – Wolff, Patrick G (2505) [D00]

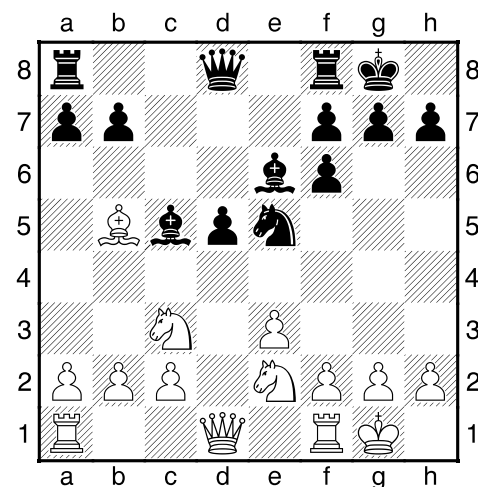
GMA Baleares op Palma de Mallorca (2), 1989

[ChessBase]

1.d4 Cf6 2.Ag5 d5 3.Axf6 exf6 Diagrama

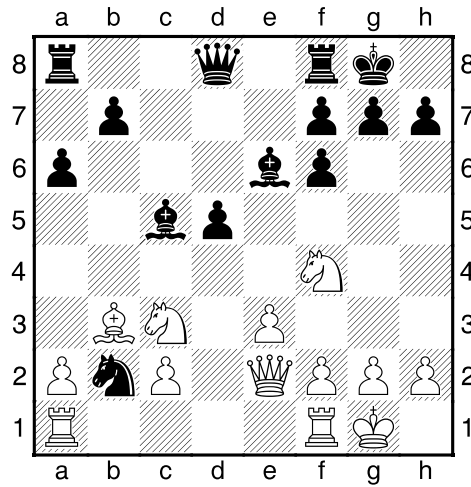


4.e3 c5 5.dxc5 Axc5 6.Cc3 Ae6 7.Ab5+ Cc6 8.Cge2 0-0 9.0-0 Ce5N Diagrama

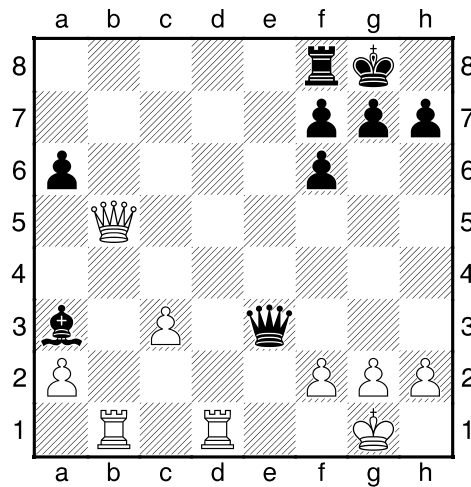


[9...a6 RR 10.Aa4 Ad6 11.Rh1 Ce7 12.Cd4 Ac8 13.Dh5 g6 14.Df3 Ae5 15.Tad1 b5 16.Ab3 Ab7 17.Cce2 Dc7 18.Td2 Tad8 19.Tfd1 f5 20.Cf4 Axf4 21.Dxf4 Dxf4 22.exf4 Tfe8 23.h3 Cc8 24.Cf3 Cb6 Altamirano, B–Mosconi, A/Buenos Aires 1999/EXT 2001/0-1; RR 9...Ab6 10.Aa4 d4 11.exd4 Cxd4 12.Cxd4 Axd4 13.Df3 Da5 14.Ab3 Axc3 15.bxc3 b6 16.Tfe1 Tac8 17.Te3 Ac4 18.Tae1 h6 19.h3 Tc5 20.Te8 Ad5 21.Dd3 Ae6 1-0 Wright, S–Southam, T/London, Canada 1996/EXT 2001] **10.Cf4 a6 11.Aa4** [11.Ae2 d4 12.Ca4 Aa7] **11...Cc4?!** [11...d4 12.Ce4 Aa7 13.Cxe6 fxe6 14.exd4 Dxd4 15.Dxd4 Axd4 16.c3 Aa7 17.Ab3; Fritz 9: 11...d4 12.Ce4 Ab6 13.Cxe6 fxe6± 0.25/9] **12.Ab3 Cxb2 13.De2±** Diagrama

Estudio Casero Apertura Peón Dama (D00) - Por el MF Job Sepúlveda



13...Tc8 14.Ccxd5 Axd5 15.Cxd5 b5 16.c3 Aa3 17.Tab1 Cc4 [17...Ca4 18.Tfd1 Da5 19.Cxf6+! gxf6 20.Dg4+ Rh8 21.Ac2=] 18.Tfd1 Dd6? [18...Da5 19.Td4±] 19.Axc4! Txc4 20.Cb6 Dxb6 21.Dxc4 Dxe3 22.Dxb5 Diagrama



1-0

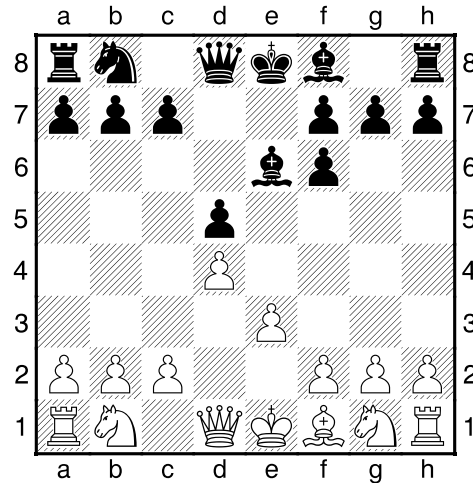
Estudio Casero Apertura Peón Dama (D00) - Por el MF Job Sepúlveda

Hodgson, Julian M (2540) – Frías Pablaza, Victor J (2500) [D00]

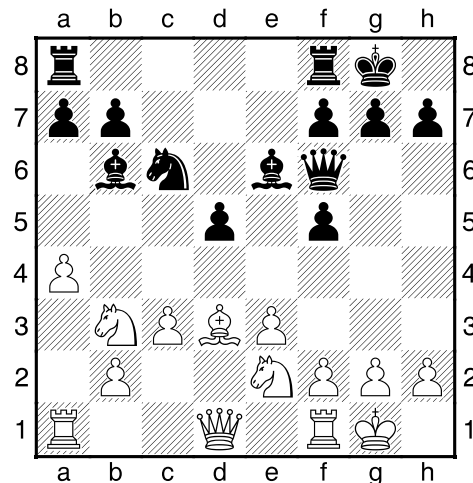
London WFW, 1990

[Ftacnik]

1.d4 Cf6 2.Ag5 d5 3.Axf6 exf6 4.e3 Ae6 Diagrama

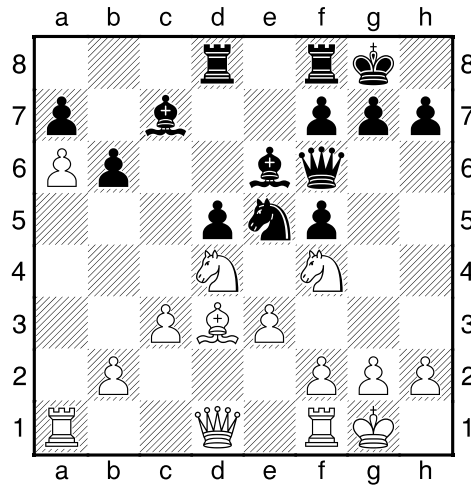


[4...c5 5.dxc5 Axc5 6.Cc3 Ae6 7.Ab5+ Cc6 8.Cge2 0-0 9.0-0 Ce5 10.Cf4± Gurevich,M-Wolff,P/Palma GMA-op/1989/→TD89_13] 5.Ad3 c5 6.dxc5 Axc5 7.Ce2 Cc6 8.0-0 0-0 9.Cd2 [9.Cbc3 d4 10.Ca4 b6=] 9...f5 10.Cb3 Ab6 11.c3N [RR 11.Cbd4 Df6 12.c3 g6 13.Tc1 Tac8 14.Tc2 Ce5 15.b3 Tfd8 16.Cc1 Ac7 17.Ae2 Dh4 18.f4 Cd7 19.Cd3 Aa5 20.b4 Ab6 21.Tf3 De7 22.De1 Te8 23.Th3 a5 24.a3 axb4 25.axb4 Ta8 Reiss,T-Gyurkovics,M/Hungary 2000/EXT 2002/1-0 (79)] 11...Df6 12.a4= Diagrama

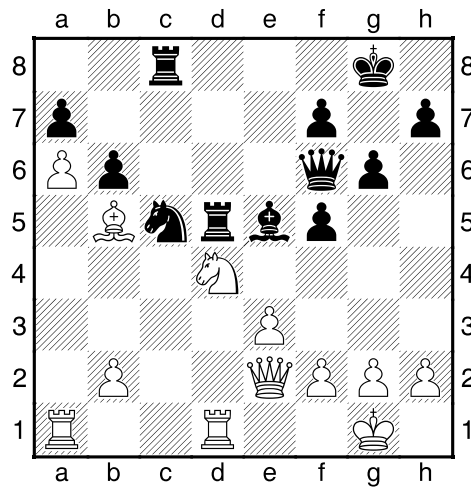


12...Tad8 13.a5 Ac7 14.a6 [14.Cc5 Ac8 15.a6 b6∞] 14...b6 15.Cbd4 Ce5 16.Cf4± Diagrama

Estudio Casero Apertura Peón Dama (D00) - Por el MF Job Sepúlveda

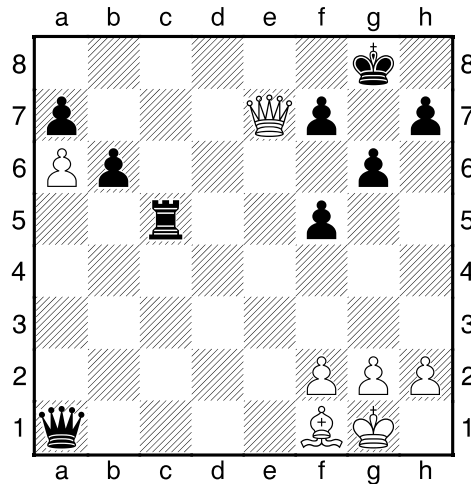


16...Ab8 17.Ab5 Td6! x c6 18.De2 [Fritz 9: 18.Dh5 Tc8 19.Tac1 Tdd8 20.b3 Cg4 21.Cc6 Axf4 22.exf4 Td7± 1.18/9] 18...Tc8 19.Tfd1 g6 20.Ta4 Cd7 21.c4!? [21.Df3!?!; 21.Tb4!?!] 21...Cc5 [21...dxc4 22.Cfxe6 fxe6 23.Axc4↑] 22.cxd5 [22.Taa1 dxc4 23.Cfxe6 Cxe6=] 22...Axd5 23.Cxd5 Txd5 24.Taa1?! [24.Tc4] 24...Ae5!=
Diagrama



25.Tac1 [25.b4 Ce4 x c3] 25...Axd4 26.exd4 Txd4 27.Txd4 Dxd4 28.De7? [28.Td1 Df6≠] 28...Dxb2 29.Txc5 Txc5 30.Af1 Da1 Diagrama

Estudio Casero Apertura Peón Dama (D00) - Por el MF Job Sepúlveda



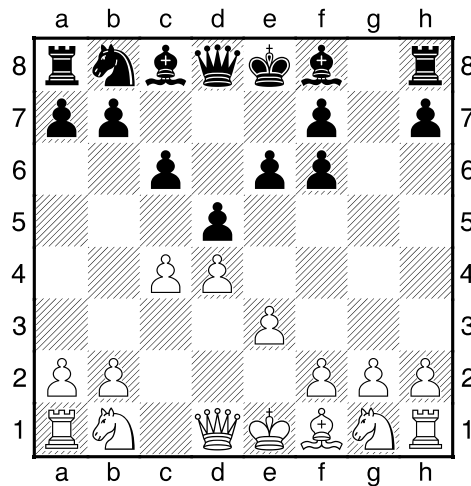
0-1

Hodgson, Julian M (2535) – Martin, Andrew D (2420) [D00]

BCF–ch 79th Plymouth (6), 1992

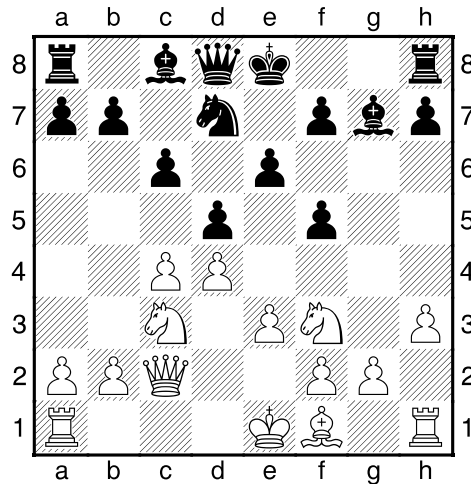
[Bulletin]

1.d4 Cf6 2.Ag5 d5 3.Axf6 gxf6 [A challenging move that Karpov played against Julian in a blitz game recently, 3..exf6 4.e3 and 5.c4 gives White a slight edge] 4.c4 c6 5.e3 e6?! Diagrama

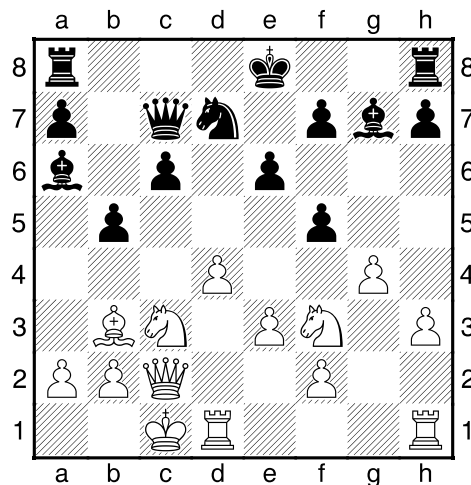


[Karpov played 5..Bf5 first and then Bd6 and this seems like a better scheme of development] 6.Cc3 f5 7.Cf3 Ag7 8.Dc2 Cd7 9.h3!? Diagrama

Estudio Casero Apertura Peón Dama (D00) - Por el MF Job Sepúlveda

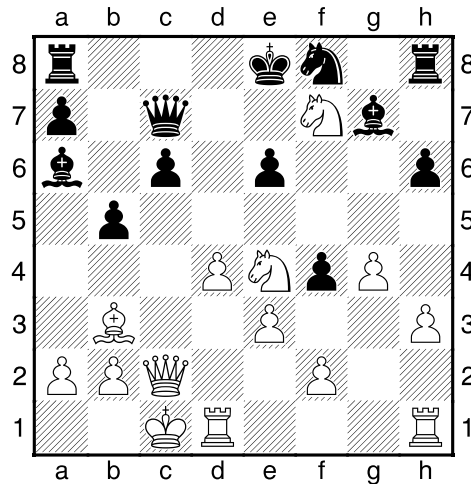


[Very aggressive, 9.cxd5 was good for a clear edge since Black must recapture with the c6 pawn. Now White can play g4 with strong kingside play] **9...dxc4** [9..Qa5 to anticipate 0-0-0 looks better or even 9..a6] **10.Axc4 Dc7?!** [With the idea of .f4 but this is never practical. The ♔c7 now becomes one of many tactical weaknesses in the black position] **11.0-0-0 b5?** [Andrew is unrecognisable in this game and this move is almost the losing one since after the bishop retreat ♗xb5 is a threat and one more tempo lost is enough to make the White initiative too strong] **12.Ab3 Aa6?** [12..Qb6 ♠] **13.g4±** Diagrama

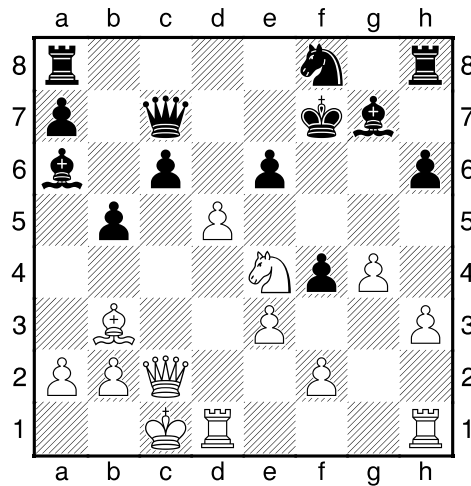


13...f4 14.Cg5! [White had now seen the coming sacrifice] **14...Cf8** [Forced to prevent 15.♗xe6] **15.Cce4 h6 16.Cxf7!** Diagrama

Estudio Casero Apertura Peón Dama (D00) - Por el MF Job Sepúlveda

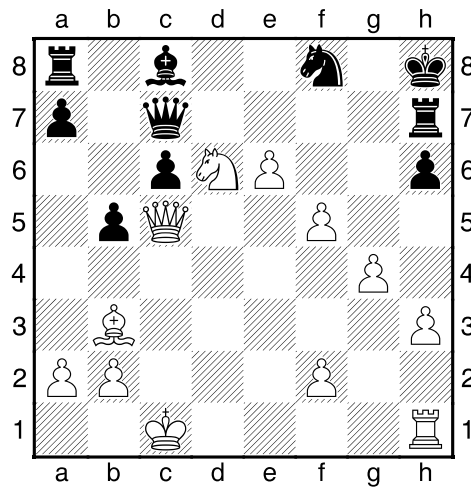


16...Rxf7 17.d5

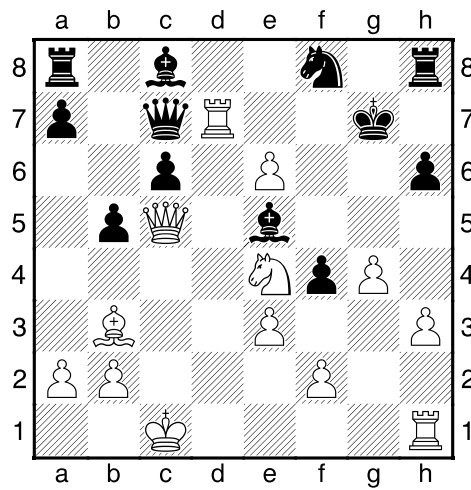


17...Ae5 [17...Ac8 18.d6 Dd8 19.exf4 [With a completely overwhelming position]; 17...exd5 18.Txd5+- Ce6 19.Tf5+] **18.dxe6+ Rg7 19.Dc5!?** [Threatening 20.♖d7+ followed by 21.♙e7+ and 22.♙f7 mate but this might have allowed Black to resist albeit with a horrible position. 20.Nc5 was being analysed in the commentary room as completely overwhelming] [19.Cc5 Ac8 20.Df5 Af6 21.exf4+-] **19...Ac8?** [19...Th7 20.Td6!! Axd6 21.Cxd6 [Δ ♙e5+] 21...Rh8 22.exf4!+- (22.De5+ Dg7 (22...Tg7 23.Cf7+ [Wins the queen])) 22...Td8 (22...Ac8 23.f5+-) 23.De5+ Dg7 24.Cf7+-]

Estudio Casero Apertura Peón Dama (D00) - Por el MF Job Sepúlveda



20.Td7+ Diagrama



1-0

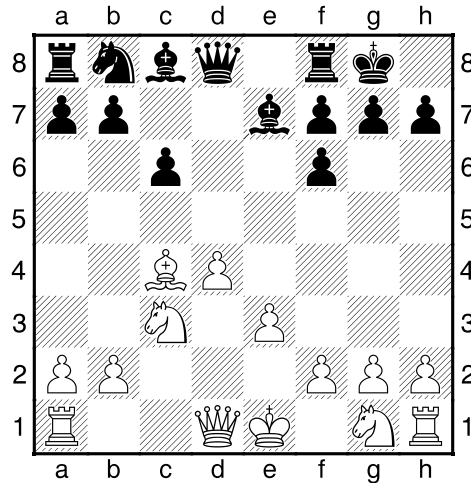
Estudio Casero Apertura Peón Dama (D00) - Por el MF Job Sepúlveda

Hodgson, Julian M (2625) – Gokhale, Jayant Suresh (2330) [D00]

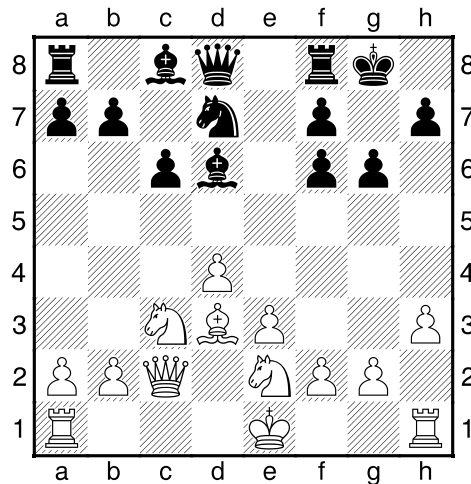
BCF–ch Dundee (9), 1993

[Hodgson, Ju]

1.d4 Cf6 2.Ag5 d5 3.Axf6 exf6 4.e3 Ae7 5.c4 dxc4 6.Axc4 0-0 7.Cc3 c6 Diagrama

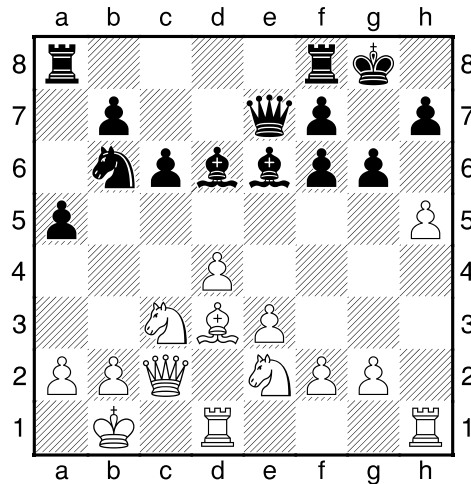


[7...c5] 8.Cge2 Cd7 9.Dc2 Ad6 Δ 10...f5 11.♔xf5? ♞e5! 10.Ad3 g6 11.h3!± Diagrama

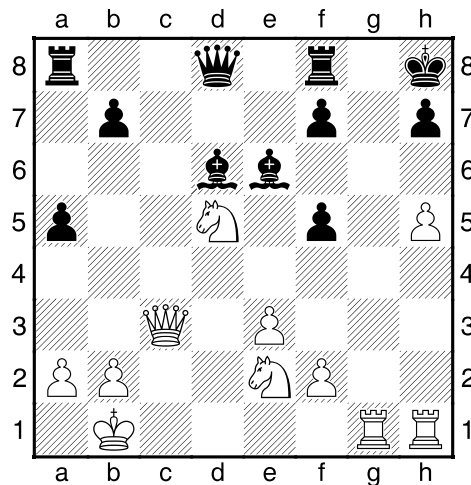


[11.h4 f5 12.h5 Cf6 13.hxg6 hxg6 Δ...♔g7, ♖h8] 11...De7 [11...f5 12.g4] 12.0-0 a5 13.Rb1 Cb6 14.h4 Ae6 15.h5± Diagrama

Estudio Casero Apertura Peón Dama (D00) - Por el MF Job Sepúlveda

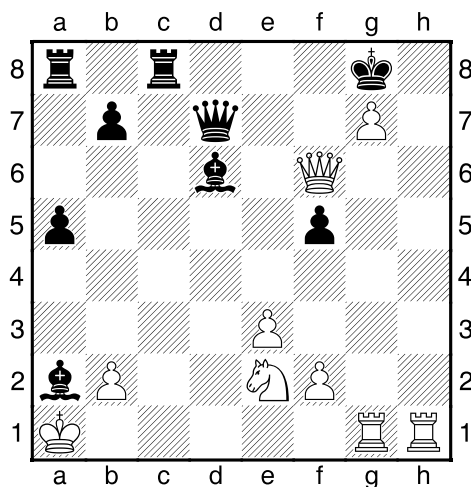


15...f5 16.g4 Cd5!□ [16...fxg4 17.hxg6 fvg6 18.Axg6 hxg6 19.Dxg6+ Dg7 20.Dxe6+] 17.gxf5 [17.Cxd5 Axd5 18.gxf5 Axh1 19.Txh1] 17...Cb4 18.Dd2 Cxd3 [18...gxf5 19.f3 Δ e4±(19.Cg3 Axg3 20.Tdg1)] 19.Dxd3 gxf5 [19...Axf5 20.e4 Ae6 21.e5 Af5 22.Ce4 Ac7 23.C2g3±] 20.d5! cxd5 21.Cxd5 Dd8 [21...Axd5 22.Dxd5 Ae5 23.f4 Af6 24.Dxf5±] 22.Tdg1+ Rh8 23.Dc3+! Diagrama



23...f6 24.Cdf4 Dd7 [24...Ag8 25.Cg6+ hxg6 26.hxg6+ Rg7 27.Cd4 Dd7 28.Dc2+-; 24...Axf4 25.Cxf4 Ad5 26.f3!! Axf3 27.Cg6+ hxg6 28.hxg6+ Axh1 (28...Rg8 29.Dc4+ Dd5 (29...Ad5 30.Dh4) 30.Th8+ Rxh8 (30...Rg7 31.Dc7+ Tf7 32.Th7+) 31.Dh4+ Rg7 32.Dh7#) 29.g7+ Rh7 (29...Rg8 30.gxf8D+ Rxf8 31.Txh1+- Tc8 (31...Rg7 32.Tg1+ Rf7 33.Dc4+) 32.Dxc8 Dxc8 33.Th8+) 30.gxf8D Ae4+ 31.Ra1 Dxf8 32.Dc7+ Rh8 33.Dh2+; 24...Tc8 25.Cxe6 Txc3 26.Cxd8+-; 24...Axf4 25.Cxf4 Ad5 26.f3 Tc8 27.Dd4 Axf3 28.Cg6+ hxg6 29.hxg6+ Axh1 (29...Rg7 30.Th7+ Rg8 31.Dh4) 30.Dh4+] 25.Cg6+!+- hxg6 26.hxg6+ Rg8 27.g7 Tfc8 28.Dxf6 Axa2+ 29.Ra1 Diagrama

Estudio Casero Apertura Peón Dama (D00) - Por el MF Job Sepúlveda



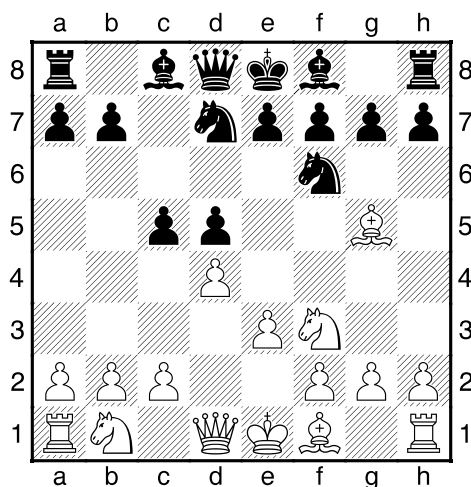
1-0

Skembris, Spyridon (2464) – Ivanisevic, Ivan (2540) [D03]

Skopje op 18th (7), 21.01.2002

[Finkel, A]

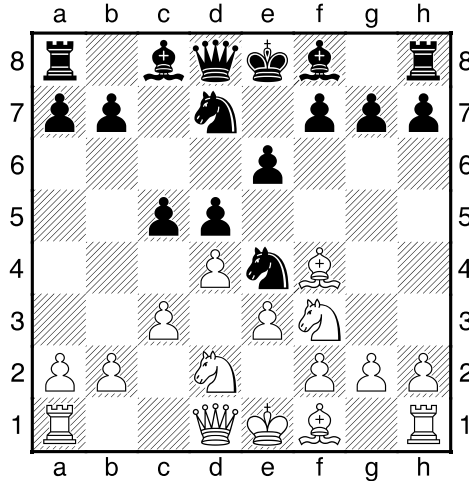
1.d4 d5 2.Ag5 Cd7 3.Cf3 Cgf6 4.e3 c5 Diagrama



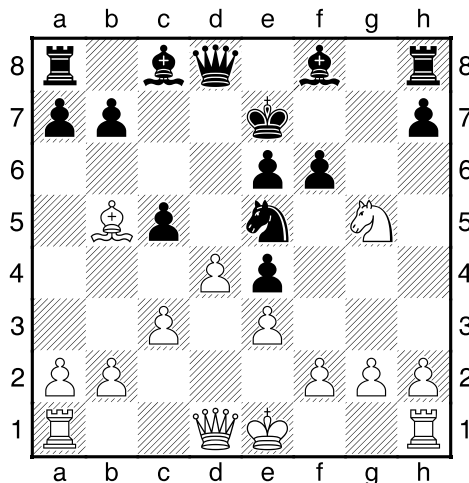
[4...g6 5.c4 c6 6.cxd5 (6.Cc3 Ag7 7.Db3 e6 8.Ad3 h6 ½-½ Turci, S–Wagman, S/Reggio Emilia 1987/EXT 97 (8) 6...cxd5 7.Cc3 Ce4 8.Cxe4 dxe4 9.Cd2 Da5 10.Ah4 e5 11.dxe5 Ag7 12.Ae2 0-0 13.0-0 Dxe5= Govedarica, R–Marjanovic, S/Belgrade 1982/MCD; 4...h6 5.Ah4 c5 (5...Ce4 6.c4 c6 7.Cc3 Da5 8.cxd5 cxd5 9.Db3 Cxc3 10.bxc3 a6 11.Ad3± Zlotnik, B–Bello Bello, P/Ponferrada 1992) 6.Cbd2 Db6 7.Dc1 cxd4 8.exd4 g5 9.Ag3 g4 10.Ce5 Dxd4 11.c3 Db6 12.Ae2 h5+ Daniel, J–Taskovits, I/Kecskemet 1990/EXT 2000] **5.c3 Ce4** [5...Db6 6.Dc2 (6.Db3 e6 7.Dxb6 Cxb6 8.Cbd2 Cbd7 9.Af4 Ae7 10.Ad3 0-0 11.0-0 b6= Will, M–Heinl, A/Dresden 2000/EXT 2001) 6...g6 7.Cbd2 Ag7 8.Ae2 0-0 9.0-0 Te8 10.b3 e5 11.dxe5 Cxe5 12.Cxe5= Molnar, V–Fominyh, A/Rimavska Sobota 1991/CBM 24; 5...g6!? 6.dxc5 Ag7 7.Axf6 Cxf6 8.Ab5+ Ad7 9.Axd7+ Dxd7 10.Ce5 Db5∞ Dragiev, V–Spasov, L/BUL 1995/EXT 97]

Estudio Casero Apertura Peón Dama (D00) - Por el MF Job Sepúlveda

6.Af4 [6.Ah4 g6 7.Cbd2 f5 8.Cxe4 fxe4 9.Cg5 Cf6 10.Ab5+ Ad7 11.Ce6 Db6 12.Axd7+ Cxd7 13.Cxc5 Cxc5 14.dxc5 Dxc5 15.Db3± Delis Ramos,F–Sasot Samplon,E/ESP 1999/EXT 2000] **6...e6 7.Cbd2?** Diagrama

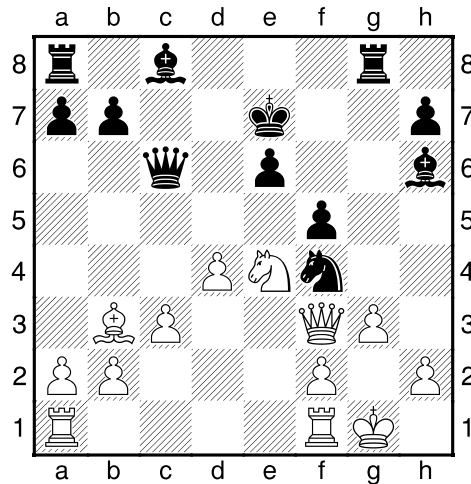


It's very hard to believe, but after this natural developing move white is in troubles! [7.h3!?] **7...g5!** Bishop is kind of trapped and the only way not to lose it is to agree on the position with weak pawns on e3 and g3.
8.Ae5 [8.Ag3 h5! 9.h4 (9.Cxe4 dxe4 10.Ce5 h4 11.Cxd7 Axd7 12.Ae5 f6) 9...Cxc3 10.fxc3 g4 11.Cg1 Ah6±] **8...f6 9.Cxe4!?** An attempt to get some counter-play for a piece. [9.Ag3 h5 10.dxc5 Cdxc5 11.Cxe4 Cxe4 12.h4 Cxc3 13.fxc3 Dc7±] **9...dxe4 10.Cxc3 Cxe4!** [10...fxe4? 11.Dh5+ Re7 12.Df7+ Rd6 13.dxc5+ Cxc5 14.Td1++-] **11.Ab5+** [11.Dh5+ Cg6 12.Ab5+ Re7 13.Cxh7 Rf7!-+] **11...Re7±** Diagrama

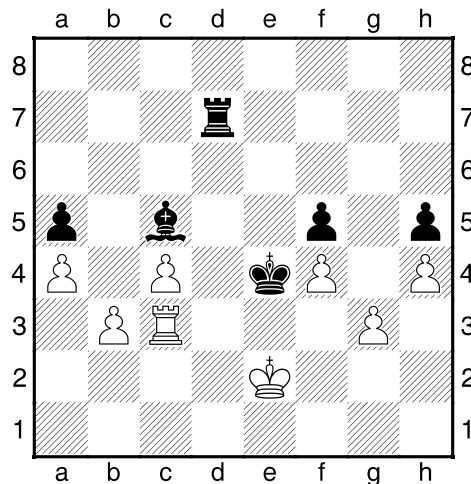


12.Cxe4 cxd4 13.exd4 Dd5!? **14.De2 Cg6 15.Ac4 Dc6 16.0-0 Cf4 17.Df3 Ah6! 18.Ab3 Tg8 19.g3 f5!?-+** Diagrama

Estudio Casero Apertura Peón Dama (D00) - Por el MF Job Sepúlveda



After an exchange of queens the game enters it's technical part and it turns out that it's still not so easy for black to transform his material advantage into the point! **20.Cd2** [20...d5 Ch3+! (20...fxe4 21.Dxf4 Axf4 22.dxc6 bxc6 23.Tfe1 e3 24.fxe3 Ac7+) 21.Rg2 fxe4+] **20...Ch3+** **21.Rg2 Axd2 22.Dxc6 bxc6 23.Rxh3 Ag5 24.f4! Af6 25.Tae1 Rd6 26.Tf3 Ad7 27.Tfe3 Tge8 28.Ac4 a5 29.a4 Te7!** [29...c5 30.dxc5+ Rxc5 31.Axe6 Tad8 32.Axd7 Txe3 33.Txe3 Txd7+] **30.Rg2 c5 31.dxc5+ Rxc5 32.b3** [32.Axe6 Tae8+] **32...Td8 33.Rf2 Ac6** [33...Ac8!?] **34.Axe6 Td2+ 35.T1e2 Txe2+ 36.Rxe2 Ae4 37.Ac4 h5 38.Rd2 Tb7 39.Rc1 Td7 40.h4** [40.Ae2! Ad5 41.Rb2 Af7+] **40...Te7 41.Ae2 Tb7 42.Ac4?!** [42.Rb2 Ad5 43.Ad1 Af7+] **42...Ad5 43.Axd5 Rxd5 44.Rc2 Te7 45.Td3+** [45.Txe7 Axe7 46.Rd3 Ac5 47.Re2 Re4+] **45...Re4 46.Rd2 Tb7 47.Te3+ Rd5 48.Rc2 Te7 49.Td3+ Rc6 50.Rd2 Te6 51.Tf3 Ae7! 52.Rd1 Ac5** Now king is heading back to e4 and this time white is helpless. **53.Rd2 Rd5 54.Td3+ Re4 55.Re2 Tb6 56.c4 Td6 57.Tc3 Td7**⊙ Diagrama

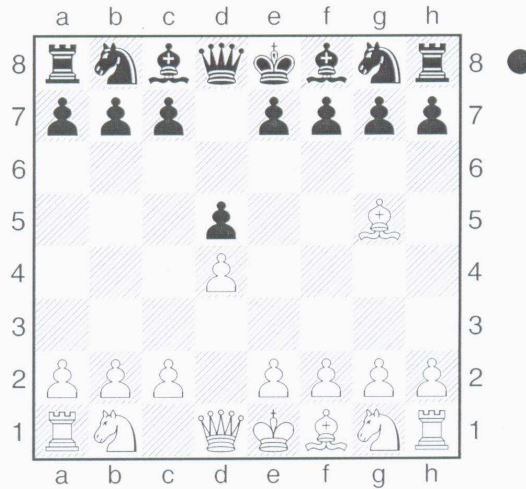


0-1

Estudio Casero Apertura Peón Dama (D00) - Por el MF Job Sepúlveda

ChessBase 9.0 Impresión, Job Sepulveda, 21/02/2008

1



D00

1.d4 d5 2.Ag5

	2	3	4	5	6	7	8	9	10	11	12	13	14	
1	... Cf6	Axf6 exf6	e3 Ad6	c4 dxc4	Axc4 0-0	Cc3 c6	Cf3 f5	Ce5 Cd7	Cd3 De7	0-0 Cf6=1				=
2	... c6	e3 Db6	Dc1 Af5	Cf3 Cd7	Cbd2 e6	c4 Cgf6	Ae2 h6	Af4 Ae7	c5 Dd8	b4 Ce4	h3 g5	Ah2 h5	Ce5 Cxe5 ²	∞
3	... h6	Ah4 c5	dxc5 Cc6	c3 g5	Ag3 e6	Cd2 Axc5	h4 g4	e4 Cf6	e5 Ch5	Dxg4 Cxg3	Dxg3 Dc7 ^{∞3}			∞
4 c6	Cf3 Db6	Dc1 Af5	c4 e6	Cc3 Cd7	c5 Da5	a3 Cgf6	e3 g5	Ag3 Ch5	b4 Dd8 ^{∞4}			∞
5	e3 Db6	Dc1 e5	Cf3 e4	Cfd2 Ae7	Ag3 h5 ⁵	c4 h4	Af4 g5	Ae5 f6	Axb8 Txb8	Cc3 Ae6	Dc2 f5 ⁶	∞
6	b3 e5	Cf3 e4	Cfd2 Ce7	c4 Cf5	Ag3 Cxg3	hxg3 Ae6	Ae2 Cd7	a3 Ae7	Cc3 Cf6	b4 0-0 ⁷	=
7 Af5	Cf3 e6	Ad3 Axd3	Dxd3 Cd7	c4 Ce7	Ag3 Cf5	Af4 dxc4	Dxc4 Db4+	Cbd2 g5 [∞]		∞
8	0-0 Ae7	Axe7 Cxe7	c4 0-0	Cc3 Da6	Tfc1 Tfd8	Df1 dxc4 ⁸	=
9 c5	Cc3 cxd4!	exd4 Da6!	Cb5 Tc8 ⁹	

Estudio Casero Apertura Peón Dama (D00) - Por el MF Job Sepúlveda

ChessBase 9.0 Impresión, Job Sepúlveda, 21/02/2008

2

- 1 Krasenkow - Schmidt, Polska 2001
- 2 15.Axe5 f6 16.Ah2 Cxd2 17.Dxd2 Rf7[∞]
Adams - Sveshnikov, Tilburg 1992 - 56/393
- 3 Conquest - Grischuk, Reykjavik 2000 - 78/
360
- 4 Adgestein - Skembris, Cappelle la Grande
2001 - 81/292
- 5 8...Cf6!? 9.c4 0-0 10.Cc3[∞]
- 6 15.f3 Cf6 16.0-0-0 Milov - A.Mikhalevski,
Biel 1999 - 76/339 Rf7 17.Ae2 Rg7[∞] Milov
- 7 15.Tc1 Dd8 16.Cb3 b6=
Adams - Gelfand, Beograd 1995 - 65/352
- 8 15.bxc4 c5 16.a4 Dc6 17.a5 Tac8
18.Tab1 a6 19.Dd1 cxd4 20.Cxd4 Dc7=
Hodgson - Akopian, Groningen 1996 - 68/326
- 9 15.c5 0-0 16.Tfd1 Cc6 Hodgson -
Mikhalevski, Las Vegas 2000 - 80/382 17.a4!?
b6 18.Dc3![∞] !? Estudio D00 con 2.Ag5!?-
Mikhalevski