



SECRET

370.2

CINCFE OPERATION PLAN 202

Binder # 1

1 JAN. 50 Thru Nov 50

G-4 Adm File

SECRET

2587-80-55

Secret

GENERAL HEADQUARTERS
 FAR EAST COMMAND
 20 November 1950

ANNEX C
 RYCOM Troop List

370.2

OPERATION PLAN
 CINCPAC No. 202

1. The following troop list is intended for general planning purposes only and is subject to future modification to meet the specific requirements of the command concerned and future availability of forces.

2. RYCOM Troop List

G-4 ROUTING	
A C/S G-4	
DA C/S G-4	
EXECUTIVE	<i>[initials]</i>
P+O	<i>[initials]</i>
C+RE	
SUPPLY	
PETROLEUM	
KEA	
ADMIN	<i>[initials]</i>

PART I - COMBAT

No.	Type Unit	Approximate Authorized Strength
1	Hq & Hq Co	505
1	RCT	5,400
1	Tank Bn (Med)	690
1	AAA Gp Hq & Hq Btry	105
2	AAA Bns (AW)	1,580
2	AAA Bns (Gun)	1,450
Total		9,730

PART II - SERVICE

A. Military Government

Bulk Allotment	Total	178 ¹
----------------	-------	------------------

1 From G-3, TC Troop Basis, FEC 31 Dec 50.

B. Special Service

T/D's approved or augmentation to be submitted	43
Total	43

C. Troop Information and Education

<u>Proposed T/D's to be submitted</u>	<u>Strength</u>
AFRS	9
AEP	9
Total	18

D. Military Police

No.	Type Unit	Approximate Authorized Strength
1	MP Bn Hq & Hq Det (AD)	21
2	MP Co (Service)	298
1	MP Guard Co.	110
1	MP CID	12
Total		441

Secret

Secret

E. Finance.

<u>No.</u>	<u>Type Unit</u>	<u>Approximate Authorized strength</u>
1	FD Sec	<u>41</u>
Total		41

F. Adjutant General

<u>No.</u>	<u>Type Unit</u>	<u>Approximate Authorized Strength</u>
1	BPO (Type A)	48
2	AFU (Type D)	<u>16</u>
Total		64

G. Counter Intelligence Corps 1

<u>No.</u>	<u>Type Unit</u>	<u>Approximate Authorized Strength</u>
1	CIC Det	<u>66</u>
Total		66

1 No change in CIC strength for Okinawa required.

H. Military Intelligence

<u>No.</u>	<u>Type Unit</u>	<u>Approximate Authorized Strength</u>
1	MI (Ling) Det, RCT (Sep)(2BB)	<u>12</u>
Total		12

I. Psychological Warfare

None

J. ASAPIC

Require logistic support although not chargeable to theater strength.

K. Chemical

<u>No.</u>	<u>Type of Unit</u>	<u>Approximate Authorized Strength</u>
1	Cml Sec Hq	2
1	Cml Svc Co	<u>77</u>
Total		79

2
Secret

Secret

L. Engineer

<u>No.</u>	<u>Type Unit</u>	<u>Approximate Authorized Strength</u>
1	Hq & Hq Co Base Depot	77
1	Petrol Dist Co	217
2	Base Depot Co	336
1	Util Co (RPE)	352
1	Engr Maint Co	191
1	Supply Detachment	76
1	Maint Detachment	58
1	Composite Svc Co (Engr Sect)	33
1	Engr Dump Truck Co	130
1	Engr Combat Bn	724
1	Engr Lt Equip Co	185
Total		2,379

M. Medical.

<u>No.</u>	<u>Type Unit</u>	<u>Approximate Authorized Strength</u>
1	Mil Govt	2
1	Army Hosp (500 bed)	330
1	Med Svc Det	219
1	Fld Hosp (400 bed)	250
1	Mbl Surg Hosp (60 bed)	126
1	Med Amb Co (Sep)	90
Total		1,017

N. Ordnance

<u>No.</u>	<u>Type Unit</u>	<u>Approximate Authorized Strength</u>
1	Ord Sect, Hqs	8
1	Ord Sect, Gen Depot	34
1	Ord Sect, Motor Comd	2
1	Ord School	26
2	Ord MM Co	390
1	Ord Ammo Co	256
2	Ord Depot Co	332
1	Ord Bn Hq & Hq Det	46
1	Ord M.M Co	134
1	Ord HAM Co	188
1	Ord AA Maint Det (Aug)	40
1	Expl Ord Disp Sqd	8
Total		1,464

O. Quartermaster

<u>No.</u>	<u>Type Unit</u>	<u>Approximate Authorized Strength</u>
1	QM Recl & Maint Plat	100
2	QM Refrig Platoons (Mbl)	56
2	QM Clothing & GS Dep. Plat	90
2	QM Subs Depot Co	90
1	QM Petrol Sup Plat	54
1	QM Service Co	186

Secret

Secret

O. Quartermaster Continued:

<u>No.</u>	<u>Type Unit</u>	<u>Approximate Authorized Strength</u>
1	QM Laundry Platoon (SM)	56
1	QM Bakery Plat	39
1	QM Hq & Hq Det Bn	41
1	QM Detachment	152
Total		864

P. Signal

<u>No.</u>	<u>Type Unit</u>	<u>Approximate Authorized Strength</u>
1	Hq Signal Section	27
1	Signal Operation Company	435
1	Signal Depot Company	189
2	Signal Radar Maint Unit	8
1	Signal Construction Co	—
Total		659

Q. Transportation

<u>No.</u>	<u>Type Unit</u>	<u>Approximate Authorized Strength</u>
1	Port Command	172
1	Motor Command	344
1	Base Depot Co	127
1	Harborcraft Co	96
1	Marine Maint Det	85
1	Port Co Type A	296
1	Port Bn Hq & Hq Co	189
4	Truck Cos Hv	532
2	Truck Cos Lt	264
Total		2,105
Total Service		9,430
Total Combat		9,730
Total		19,160

BY COMMAND OF GENERAL MacARTHUR:

DOYLE O. HICKEY
Major General, General Staff Corps
Acting Chief of Staff

OFFICIAL:

for P.P. Trojau
E. K. WRIGHT
Brigadier General, General Staff Corps
Assistant Chief of Staff, G-3

Distribution:
Same as OP Plan 202

Secret
4

2587-80-54

Secret

GENERAL HEADQUARTERS
 FAR EAST COMMAND
 20 November 1950

ANNEX C
 RYCOM Troop List

OPERATION PLAN
 CINCPAC No. 202

1. The following troop list is intended for general planning purposes only and is subject to future modification to meet the specific requirements of the command concerned and future availability of forces.

2. RYCOM Troop List

G-4 BOMBING	
AC/SG	
DAC/SG-4	
EXECUTIVE	
P+O	
C+RE	
SUPPLY	
PETROLEUM	
KEA	
ADMIN	

PART I - COMBAT

No.	Type Unit	Approximate Authorized Strength
1	Hq & Hq Co	505
1	RCT	5,400
1	Tank Bn (Med)	690
1	AAA Gp Hq & Hq Btry	105
2	AAA Bns (AW)	1,580
2	AAA Bns (Gun)	1,450
Total		9,730

PART II - SERVICE

A. Military Government

Bulk Allotment	Total	178 ¹
----------------	-------	------------------

1 From G-3, TC Troop Basis, FEC 31 Dec 50.

B. Special Service

T/D's approved or augmentation to be submitted	43
Total	43

C. Troop Information and Education

Proposed T/D's to be submitted	Strength
AFRS	9
AEP	9
Total	18

D. Military Police

No.	Type Unit	Approximate Authorized Strength
1	MP Bn Hq & Hq Det (AD)	21
2	MP Co (Service)	298
1	MP Guard Co	110
1	MP CID	12
Total		441

Secret

Secret

E. Finance.

<u>No.</u>	<u>Type Unit</u>	<u>Approximate Authorized strength</u>
1	FD Sec	<u>41</u>
Total		41

F. Adjutant General

<u>No.</u>	<u>Type Unit</u>	<u>Approximate Authorized Strength</u>
1	BPO (Type A)	48
2	AFU (Type D)	<u>16</u>
Total		64

G. Counter Intelligence Corps 1

<u>No.</u>	<u>Type Unit</u>	<u>Approximate Authorized Strength</u>
1	CIC Det	<u>66</u>
Total		66

1 No change in CIC strength for Okinawa required.

H. Military Intelligence

<u>No.</u>	<u>Type Unit</u>	<u>Approximate Authorized Strength</u>
1	MI (Ling) Det, RCT (Sep)(2BB)	<u>12</u>
Total		12

I. Psychological Warfare

None

J. ASAPAC

Require logistic support although not chargeable to theater strength.

K. Chemical

<u>No.</u>	<u>Type of Unit</u>	<u>Approximate Authorized Strength</u>
1	Cml Sec Hq	2
1	Cml Svc Co	<u>77</u>
Total		79

2
Secret

Secret

L. Engineer

<u>No.</u>	<u>Type Unit</u>	<u>Approximate Authorized Strength</u>
1	Hq & Hq Co Base Depot	77
1	Petrol Dist Co	217
2	Base Depot Co	336
1	Util Co (RPE)	352
1	Engr Maint Co	191
1	Supply Detachment	76
1	Maint Detachment	58
1	Composite Svc Co (Engr Sect)	33
1	Engr Dump Truck Co	130
1	Engr Combat Bn	724
1	Engr Lt Equip Co	185
Total		2,379

M. Medical.

<u>No.</u>	<u>Type Unit</u>	<u>Approximate Authorized Strength</u>
1	Mil Govt	2
1	Army Hosp (500 bed)	330
1	Med Svc Det	219
1	Fld Hosp (400 bed)	250
1	Mbl Surg Hosp (60 bed)	126
1	Med Amb Co (Sep)	90
Total		1,017

N. Ordnance

<u>No.</u>	<u>Type Unit</u>	<u>Approximate Authorized Strength</u>
1	Ord Sect, Hqs	8
1	Ord Sect, Gen Depot	34
1	Ord Sect, Motor Comd	2
1	Ord School	26
2	Ord MM Co	390
1	Ord Ammo Co	256
2	Ord Depot Co	332
1	Ord Bn Hq & Hq Det	46
1	Ord MM Co	134
1	Ord HAM Co	188
1	Ord AA Maint Det (Aug)	40
1	Expl Ord Disp Sqd	8
Total		1,464

O. Quartermaster

<u>No.</u>	<u>Type Unit</u>	<u>Approximate Authorized Strength</u>
1	QM Recl & Maint Plat	100
2	QM Refrig Platoons (Mbl)	56
2	QM Clothing & GS Dept Plat	90
2	QM Subs Depot Co	90
1	QM Petrol Sup Plat	54
1	QM Service Co	186

Secret

Secret

O. Quartermaster Continued:

<u>No.</u>	<u>Type Unit</u>	<u>Approximate Authorized Strength</u>
1	QM Laundry Platoon (SM)	56
1	QM Bakery Plat	39
1	QM Hq & Hq Det Bn	41
1	QM Detachment	<u>152</u>
	Total	864

P. Signal

<u>No.</u>	<u>Type Unit</u>	<u>Approximate Authorized Strength</u>
1	Hq Signal Section	27
1	Signal Operation Company	435
1	Signal Depot Company	189
2	Signal Radar Maint Unit	8
1	Signal Construction Co	—
	Total	659

Q. Transportation

<u>No.</u>	<u>Type Unit</u>	<u>Approximate Authorized Strength</u>
1	Port Command	172
1	Motor Command	344
1	Base Depot Co	127
1	Harborcraft Co	96
1	Marine Maint Det	85
1	Port Co Type A	296
1	Port Bn Hq & Hq Co	189
4	Truck Cos Hv	532
2	Truck Cos Lt	<u>264</u>
	Total	2,105
	Total Service	9,430
	Total Combat	<u>9,730</u>
	Total	19,160

BY COMMAND OF GENERAL MacARTHUR:

DOYLE O. HICKEY
Major General, General Staff Corps
Acting Chief of Staff

OFFICIAL:

for P.P. Trozier
E. K. WRIGHT
Brigadier General, General Staff Corps
Assistant Chief of Staff, G-3

Distribution:
Same as OP Plan 202

Secret
4

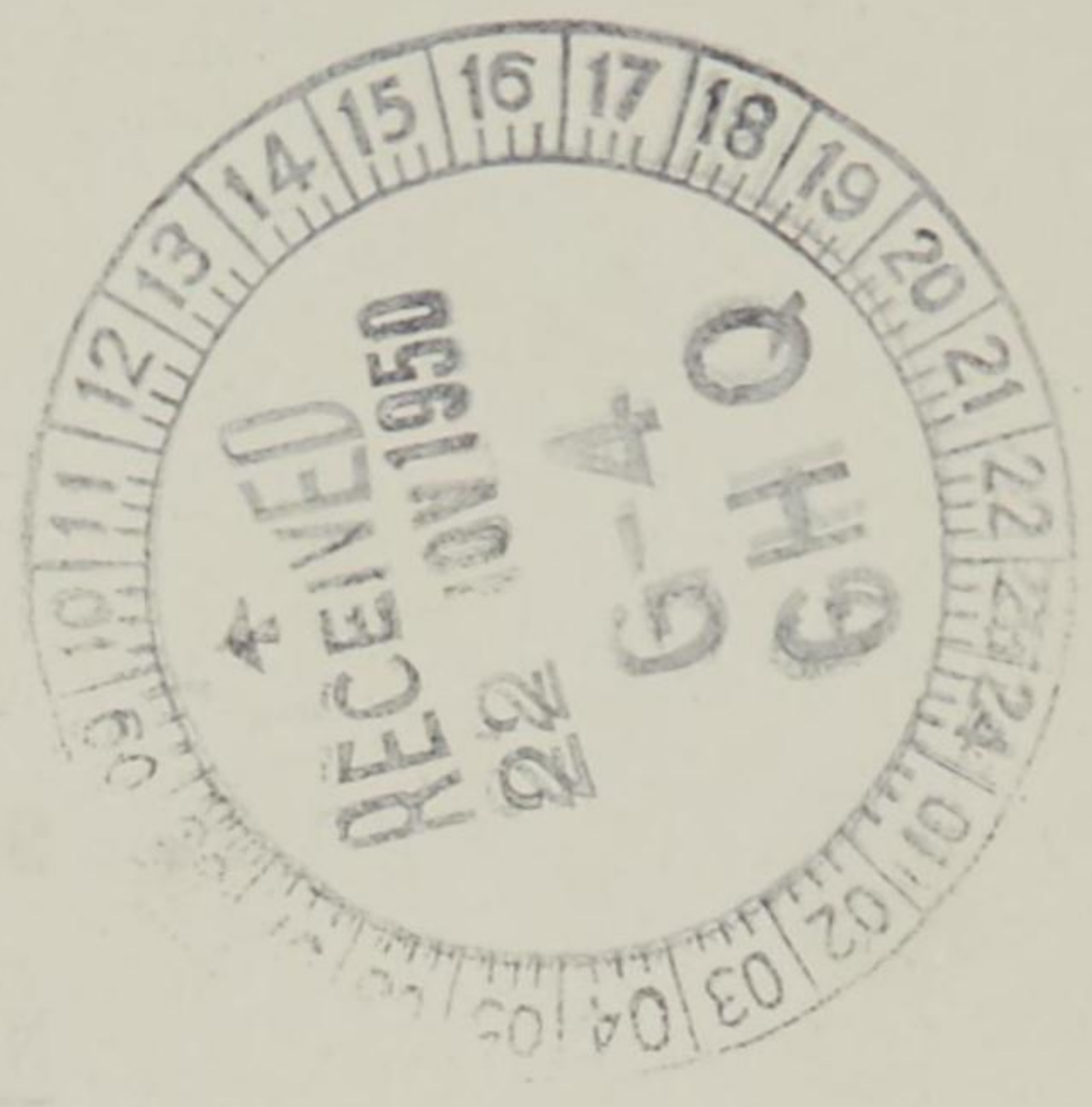


Sheet

Approved by [illegible]

Type Unit

Signal Station (S)
Signal Station (S)
Signal Station (S)
Signal Station (S)



Approved by [illegible]

Type Unit

Signal Station (S)
Signal Station (S)
Signal Station (S)
Signal Station (S)

Approved by [illegible]

Type Unit

Signal Station (S)
Signal Station (S)
Signal Station (S)
Signal Station (S)

Approved by [illegible]

Type Unit

Signal Station (S)
Signal Station (S)
Signal Station (S)
Signal Station (S)

Approved by [illegible]

Type Unit

Signal Station (S)
Signal Station (S)
Signal Station (S)
Signal Station (S)

Approved by [illegible]

Type Unit

Signal Station (S)
Signal Station (S)
Signal Station (S)
Signal Station (S)

but

2586-80-54

Secret

GENERAL HEADQUARTERS
 FAR EAST COMMAND
 20 November 1950

ANNEX B
 X Corps Troop List

OPERATION PLAN
 CINCFE No. 202

1. The following troop list is intended for general planning purposes only and is subject to future modification to meet the specific requirements of the command concerned and future availability of forces.

G-4 ROUTING
A C S G.
DAC/S
EXECUTIVE
P+O
C+RE
SUPPLY
PETROLEUM
KEA
ADM I

Handwritten initials and marks are present in the routing slip.

2. X Corps Troop List

PART I - COMBAT

No.	Type Unit	Approximate Authorized Strength
1	Occupation Force (Corps type) Hq & Hq Co	500
1	Inf Div	19,006 ¹ / ₂
Total Combat		19,506

(Note: In addition to the above United States Forces, it is anticipated that the equivalent of approximately 2-6 ROK divisions and 1 1/2 divisions of other UN troops will remain in Korea on occupation duty.)

1 Includes Ranger Co of 112.

PART II - SERVICE

A. Military Government.

No.	Type Unit	Approximate Authorized Strength
1	MG Group (RA)	115
1	MG Co (RA)	127
1	MG Co (RA)	127
1	MG Group (Res)	115
1	MG Co (Res)	127
Total		611

B. Special Service.

No.	Type Unit	Approximate Authorized Strength
	T/D's approved or augmentation to be submitted	184
1	Special Service Co (less 2d Plat)	89
1	Special Service Platoon	25
Total		298

Secret

Secret

C. Troop Information and Education

<u>Proposed T/D's to be submitted</u>	<u>Approximate Authorized Strength</u>
AFRS	19
AEP	<u>10</u>
Total	29

D. Military Police.

<u>No.</u>	<u>Type Unit</u>	<u>Approximate Authorized Strength</u>
1	PW Escort Guard & Proc Co	196
1	PW Processing Co	116
6	MP Company	1,092
1	MP Co Corps	213
2	MP Bn Hq (AD)	42
1	MP Bn	793
2	MP CID (MF)	50
1	MP CID	20
1	MP CI Det, Lab, Mobile (MG)	7
1	MP Escort Guard Co	<u>135</u>
Total		2,664

E. Finance

<u>No.</u>	<u>Type Unit</u>	<u>Approximate Authorized Strength</u>
1	FDO (Division) Augmentation AE, BC, CB, DD	49
1	FDO (Corps) AB, BD, CA, DA	14
2	FDO AD, BK, CE, DD	<u>80</u>
Total		143

F. Adjutant General

<u>No.</u>	<u>Type Unit</u>	<u>Approximate Authorized Strength</u>
1	Repl Bn (HHD)	31
2	Repl Co	210
1	BPO (Type G)	<u>338</u>
Total		579

G. Counter Intelligence Corps 1

<u>No.</u>	<u>Type Unit</u>	<u>Approximate Authorized Strength</u>
1	Occupation Hq CIC Det (AC, BC, CA, DA, DB)	71
1	Div CIC Det (AA, BA)	17
1	Port CIC Det (AA, BA)	17
1	MI Sv Co (Ling) (4 BA, 4BB, 4BI) 2	36
1	Area CIC Det 3 (AC, BB less certain personnel)	<u>28</u>
Total		169

Secret
 2

Secret

1. Based upon use of indigenous personnel to perform duties normally assigned Branch Immaterial personnel.
2. Listed here as part of the CIC mission, rather than with MI, par.
3. Performs highly classified intelligence gathering activities in occupied Korea.

H. Military Intelligence

<u>No.</u>	<u>Type Unit</u>	<u>Approximate Authorized Strength</u>
1	Occupational Hq (Corps Type) MI (Ling)(BA, 2BE, BC, BE, BF)	18
1	Part Linguist Det (2BJ)	6
1	MI Sv Unit (CJ) Occupation Hq Corp Type 2	3
1	MI Sv Unit (CC, 3CE, 3CG) Corps Type 3	<u>15</u>
Total		42

- 1 Actual strength used instead of T/O&E on account of experience needs.
- 2 Technical Intelligence Coordination.
- 3 OB, FI, and Editorial.

I. Psychological Warfare.

None.

J. ASAPAC

Require logistic support although not chargeable to theater strength.

K. Chemical.

<u>No.</u>	<u>Type Unit</u>	<u>Approximate Authorized Strength</u>
1	Cml Sec, Corps Hq	5
1	Cml Sec (B)	8
1	Cml Svc Co Composed of:	<u>161</u>
	1 AC Str 9	
	1 CA Str 5	
	3 CB Str 3	
	1 DA Str 2	
	2 DE Str 2	
	1 EA Str 12	
	1 FD Str 37	
	1 FD Str 49	
	1 HC Str 42	
	<u>161</u>	
Total		174

3
Secret

L. Engineer.

Secret

<u>No.</u>	<u>Type Unit</u>	<u>Approximate Authorized Strength</u>
1	Hq & Hq Co, Engr Combat Gp	112
2	Engr Combat Bn (Army)	1,448
1	Engr Lt Equip Co	185
2	Engr Tdwy Br Co	278
1	Engr Water Sup Co	136
1	Hq & Hq Co, Engr Const Gp	120
2	Engr Const Bn	1,826
3	Engr Dp Trk Co	390
1	Engr Pet Dist Det	85
1	Engr Maint Co	191
1	Engr Depot Plat	36
2	Engr Fire Fftg Tm	54
1	Engr Util Tm	34
1	Engr Map Dep Det	22
1	Engr Topo Det	24
1	Engr Tech Intell Tm (Research)	9
Total		4,950

M. Medical.

<u>No.</u>	<u>Type Unit</u>	<u>Approximate Authorized Strength</u>
1	Med Sec, Corps	24
1	Med Det, Hq Co, Corps	9
1	Med Sec	15
3	Field Hosp	750
2	Army Mbl Surg Hosp	252
1	Evac Hosp (SM)	335
1	Med Bn, Hq & Hq Det	32
1	Med Clr Co (Sep)	137
2	Med Amb Co (Sep)	180
1	Prov Med Co	66
1	Med Base Depot Co	44
1	Med Eqpt Maint Det	9
1	Opt Rep Det	7
1	Opt Rep Det (Aug)	2
2	Vet Food Insp Det	10
1	Dent Pres Det (Mbl)	4
1	Hosp Train	49
1	Army Unit Mbl Med Lab	11
4	Dispensary	68
	Swedish Red Cross Hosp	
	Danish Hosp Ship	
Aggregate Total		2,004

N. Ordnance

<u>No.</u>	<u>Type Unit</u>	<u>Approximate Authorized Strength</u>
1	Hq & Hq Co Ord Gp	99
3	Hq & Hq Det Ord Bn	138
2	Ord MM Co	390
3	Ord MAM Co	402
1	Ord Recovery Co	167
2	Ord Depot Co	332
1	Ord HM Co	212
1	Ord HAM Co	188
2	Ord Ammo Co	512
1	Ord HAM Det	8
1	Ord EOD Sqd	8
<i>Secret</i> Total		2,456

O. Quartermaster.

Secret

<u>No.</u>	<u>Type Unit</u>	<u>Approximate Authorized Strength</u>
1✓	Hq & Hq Co QM Group	63✓
(1) 2	QM Service Co	372✓
1✓	QM Petrol Sup Co (M)	191
1-	QM Bakery Co (M) (-1 Plat)	103
1✓	QM Laundry Co (SM)	254
1✓	QM Salvage Co (-1 Plat)	97
1	Plat, QM Subsistence Sup Co	84
1	Plat, QM Clo & Gen Sup Dep Co	45
1	QM Recl & Maint Co (SM) (-1 Plat)	135
2	Plat, QM Refrig Co (M)	56
2	QM Bath Co	216✓
3	QM Graves Reg Co	375
1	Plat, QM Subs Dep Co	45
2	QM Co Hqs (AC)	20
2	QM Sales Det (BD)	30
4	QM Mess Det (AC)	32
2	QM Supply Det (BC)	76
4	Laundry Det (M) (EA)	56
7	Dry Cleaning Det (EM)	56
1	Petrol Products Lab (Base)(FA)	12
1	Petrol Products Lab (M) (FB)	6
1	Field Operating Sec (GRS)	99
1	Central Identification Unit (GRS)	31
1	Graves Reg Service Hqs	55
1	Hq & Hq Co, QM Base Depot	155
2	Hq & Hq Det QM Bn	102✓
Total		2,766 *

* This figure includes total of 575 spaces for AGRS.

P. Signal.

<u>No.</u>	<u>Type Unit</u>	<u>Approximate Authorized Strength</u>
1	Signal Bn, Corps	846
1	Signal Svc Co	141
2	Signal Rad Relay Co	345
2	Signal Const Co	264
1	Signal Depot Co	113
2	Sig Svc Co, 8226th Army Unit	395
1	Sig Svc Det, 8226th Army Unit	80
Total		2,187 *

* Units will be maintained at present actual strengths.

Q. Transportation.

<u>No.</u>	<u>Type Unit</u>	<u>Approximate Authorized Strength</u>
1	Medium Port	307
2	Port Co, Type B	534
1	Harborcraft Co	148*
1	Rwy Operating Bn	112*
1	Car Co	129
1	Rwy Shop Bn	57*
2	Truck Bn, Hq & Hq Co	154
6	Truck Co, Light	792
1	Amphib Trk Co	189

Continued on next page

5
Secret

Secret

Q. Transportation Continued.

<u>No.</u>	<u>Type Unit</u>	<u>Approximate Authorized Strength</u>
1	Corps Hq Trans Sect	8
1	Rail Regulating Team FO	<u>50</u>
	Total	2,480

* Indicates present actual strength of units which is considered adequate for mission.

Total Service	21,552
Total Combat	<u>19,506</u>
Total	41,058

BY COMMAND OF GENERAL MacARTHUR:

DOYLE O. HICKEY
Major General, General Staff Corps
Acting Chief of Staff

OFFICIAL:

for D.P. Frozier
E. K. WRIGHT
Brigadier General, General Staff Corps
Assistant Chief of Staff, G-3

Distribution:
Same as OP Plan 202

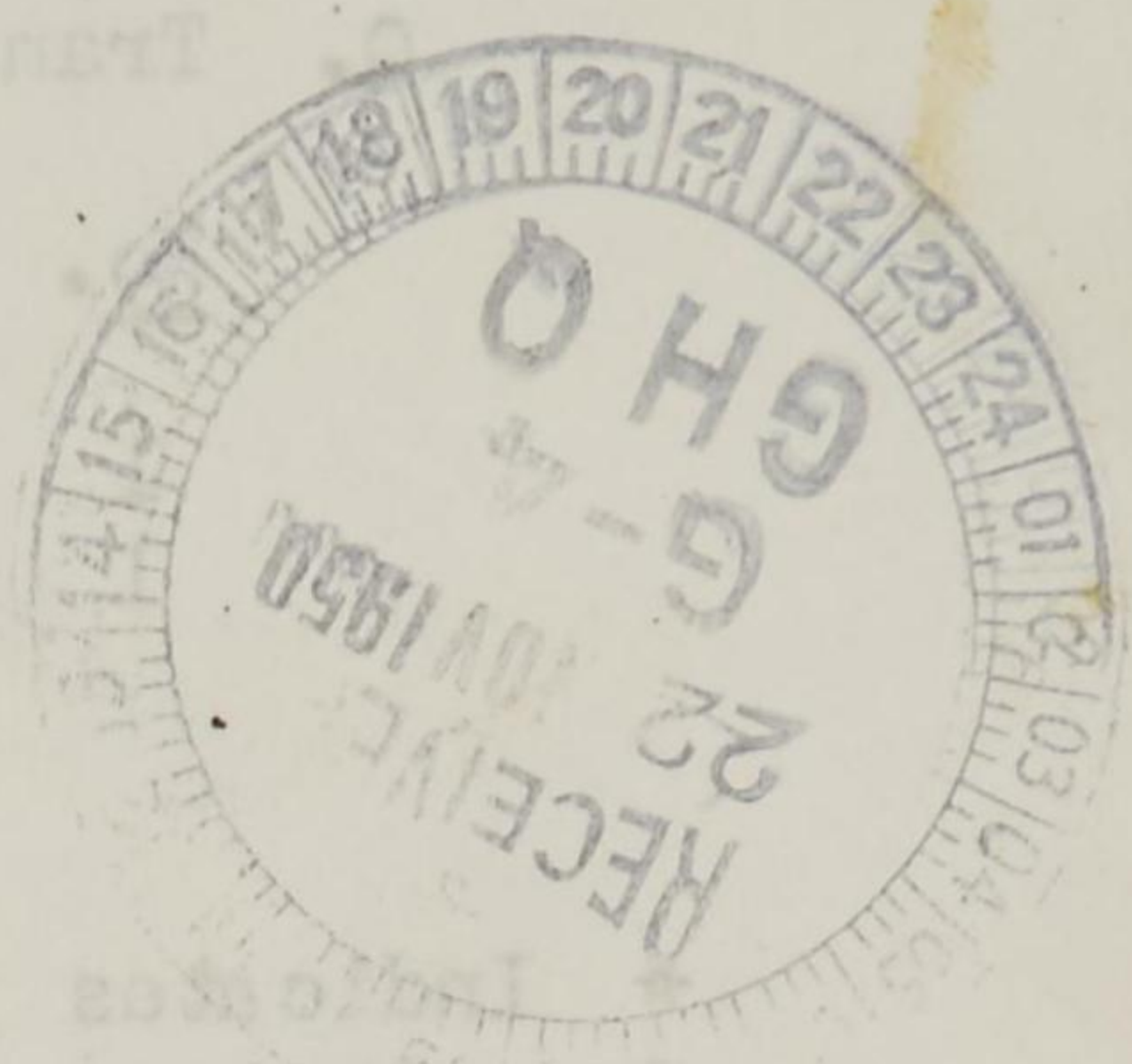
Secret



Secret

Transportation Continued.

Approximate Authorized Strength	Type Unit
3	Corps Hd Trans Sect
50	Half transporting Team TC
2,180	Total



Figures present actual strength of units which is considered adequate for mission.

21,222	Total Service
19,200	Total Combat
41,428	Total

BY COMMAND OF GENERAL MACARTHUR

BOYLE O. HICKER
Major General, General Staff Corps
Acting Chief of Staff

OFFICIAL:

E. K. Wright
E. K. WRIGHT
Brigadier General, General Staff Corps
Assistant Chief of Staff, G-3

Distribution:
Same as OP Plan 502

Secret

2585-80-54

Secret

GENERAL HEADQUARTERS
 FAR EAST COMMAND
 20 November 1950

ANNEX A
 Eighth Army Troop List

OPERATION PLAN
 CINCFFE NO. 202

1. The following troop list is intended for general planning purposes only and is subject to future modification to meet the specific requirements of the command concerned and future availability of forces.

2. Eighth Army Troop List

PART I - COMBAT

	No.	Type Unit	Approximate Authorized Strength
EXECUTIVE	1	Army Hq & Hq Co (w/o augmentation)	778
P+O	2	Corps Hq & Hq Co	676
C+RE	4	Inf Divs	76,024 ¹
SUPPLY	1	Abn RCT	4,367
PETROLEUM	2	Corps Arty Hq & Hq Btry	189
KEA	4	FA Gp Hq & Hq Btry	524
ADMIN	2	FA Obsn Bn	1,680
	4	FA Bn (105mm How)	1,280
	4	FA Bn (155mm How)	2,740
	4	FA Bn (155mm Gun)	2,200
	4	FA Bn (8" How)	2,340
	2	FA Bn (240mm How)	1,024
	2	Cml Mort Bn (4.2")	1,464
	1	Tank Gp Hq & Hq Co	76
	3	Tank Bn	2,052
	1	Amph Tk & Trac Bn	934
	1	Engr Sp Brig	1,444
Total			99,792

¹ Includes one Ranger Company per division of 112.

PART II - SERVICE

A. Military Government

None.

B. Special Service

None.

C. Troop Information and Education

None.

Secret

G-4

Secret

D. Military Police

<u>No.</u>	<u>Type Unit</u>	<u>Approximate Authorized Strength</u>
1	MP Co	170
1	MP Co Corps (N)	114
5	MP Co Corps	1,065
2	MP Co (Service)	264
1	MP Co (Service)(N)	179
1	MP Bn (Army)	720
1	MP Bn Hq (Cell AD)	21
Total		2,533

E. Finance

<u>No.</u>	<u>Type Unit</u>	<u>Approximate Authorized Strength</u>
2	FDO (Corps) AB, BH, CE, DC	50
4	FDO (Division) augmentation, AE, BO, CB, DD	196
Total		246

F. Adjutant General

<u>No.</u>	<u>Type Unit</u>	<u>Approximate Authorized Strength</u>
8	APU (Type F)	120
1	APU (Type G)	17
1	APU (Type M)	34
1	MRU	68
Total		239

G. Counter Intelligence Corps *

<u>No.</u>	<u>Type Unit</u>	<u>Approximate Authorized Strength</u>
1	Field Army CIC Det (AB, BB, CA, DA)	44
2	Corps CIC Det (AA, BA)	34
4	Div CIC Det (AA, BA)	68
Total		146

* Units at zero strength. Personnel and equipment authorized to 441st CIC Det operating under G-2, GHQ.

H. Military Intelligence

<u>No.</u>	<u>Type Unit</u>	<u>Approximate Authorized Strength</u> ¹
1	MI (Ling) Army Hq (1 BA, 2BB, 1BC, 1BE, 1BF)	18
2	MI (Ling) Corps Hq (1BA, 2BB, 1BC, 1BE, 1BF)	36
1	MI (Ling) RCT (Sep)	12
5	ADVATIS, ARMY (4D, 4F, 4J, 4BA, 6BB, 6BF, 6M, 2BN, 4CM, CN)	93
1	MI Sv Unit (CJ, CK) ARMY Hq ²	6
2	MI Sv Unit (CJ) Corps Hq ²	6
1	MI Sv Unit, Army JOC (10 CB, 2CC, CD, 9CF) ³	107
2	MI Sv Unit Corps Hq (CC, 3CE, 3CG) ³	30
<i>Secret</i> 2 Total		308

Secret

- 1 Actual strength used instead of T/O&E on account of experience needs.
- 2 Technical Intelligence Coordination.
- 3 OB, PI and Editorial.

I. Psychological Warfare.

<u>No.</u>	<u>Type Unit</u>	<u>Approximate Authorized Strength</u>
1	Leaflet and Loudspeaker Co	72
Total		72

J. ASATAC

Require logistic support although not chargeable to theater strength.

K. Chemical

<u>No.</u>	<u>Type Unit</u>	<u>Approximate Authorized Strength</u>
1	Cml Sec Army Hq	26
2	Cml Sec Corps Hq	10
1	Cml Gp Hq	31
1	Hq & Hq Det Cml Smk Gen Bn	19
2	Cml Smk Gen Co	296
2	Cml Svc Co	388
2	Cml Tech Svc Intel Team	16
Total		786

L. Engineer

<u>No.</u>	<u>Type Unit</u>	<u>Approximate Authorized Strength</u>
2	Engr Combat Gp	224
8	Engr Combat Bn	5,792
1	Engr Const Gp	120
3	Engr Const Bn	2,739
4	Engr Treadway Br Co	768
2	Engr Ponton Cos	360
1	Engr Panel Bridge	134
3	Engr Maint Co	573
2	Engr Light Equip Co	370
6	Engr Dump Truck Co	780
1	Engr Hvy Equip Co	221
2	Engr Topo Cos Corps	270
2	Engr Water Sup Co	272
1	Engr Cam Co	76
1	Engr Util Team EB	22
1	Engr Depot Co	218
1	Fort Const Co	261
Total		13,200

³
Secret

M. Medical

Secret

<u>No.</u>	<u>Type Units</u>	<u>Approximate Authorized Strength</u>
1	Med Sec-Army	61
1	Med Det-Army	14
2	Med Sec-Corps	18
2	Med Det, Hq Co-Cps	18
4	Mbl Army Surg Hosp	504
4	Evac Hosp (SM)	1,340
4	Field Hosp	1,000
4	Med Clr Co (Sep)	548
2	Med Coll Co (Sep)	414
4	Med Amb Co (Sep)	360
1	Med Depot (Army)	217
1	Preventive Med Co	66
1	Med Fld Lab (Army)	61
3	Med Holding Co	309
1	Opt Repair Det	7
1	Opt Repair Det (Aug)	2
1	Opt Repair Det (Aug)	2
2	Med Eqpt Maint Det	18
4	Vet Food Insp Det	20
4	Dent Tros (Mbl)	16
1	Central Dental Lab	28
2	Gen Disp	42
2	Dispensary	34
1	Med Intel Det	4
	Total	5,103

N. Ordnance

<u>No.</u>	<u>Type Unit</u>	<u>Approximate Authorized Strength</u>
1	Ord Sect, Army Hqs	55
2	Ord Sect, Corps Hqs	42
5	Ord MM Co	975
3	Ord HM Co	636
2	Ord Gp, Hq & Hq Co	198
4	Ord Ammo Co	1,024
4	Ord Depot Co	664
4	Ord Bn, Hq & Hq Det	184
2	Ord Bn, Hq & Hq Det (Ammo)	92
3	Ord MAM Co	402
1	Ord Arty & Veh Pk Co	176
1	Ord LAM Co	86
2	Ord Recl & Class Co	298
2	Ord Recovery Co	334
2	Ord HAM Co	376
1	Ord Ammo & Renov Flat	86
2	Expl Crd Disp Sqd	16
3	Ord AA Maint Det	60
2	Ord Tech Intell Det	6
	Total	5,710

O. Quartermaster

<u>No.</u>	<u>Type Unit</u>	<u>Approximate Authorized Strength</u>
1	QM Base Depot Hq & Hq Co	154
1	QM Gp Hq & Hq Co	63

Secret

Secret

C. Quartermaster (Continued)

<u>No.</u>	<u>Type Unit</u>	<u>Approximate Authorized Strength</u>
2	QM Bn Hq & Hq Co	102
3	QM Bath Co (SM)	324
1	QM Bakery Co	142
1	QM Bakery Flat	39
1	QM Base Depot Co	76
1	QM Clo & GS Depot Co	193
1	QM Gr Reg Co	125
1	QM Gr Reg Flat	23
4	QM Laundry Co (SM)	1,016
1	QM Petrol Depot Co	174
1	QM Petrol Sup Co (M)	191
1	QM Petrol Sup Flat (M)	54
1	QM Refrig Co (M)	107
1	QM Refrig Flat C/Sto (F)	60
3	QM Recl & Maint Co (SM)	705
1	QM Sales Co (M)	101
2	QM Salvage Co	243
6	QM Service Co	1,116
1	QM Subs Depot Co (-1 Flat)	149
2	QM Subs Sup Co	402
1	QM Dry Cleaning Det	32
3	QM Laundry Det	46
1	QM Petrol Prod Lab, Base	12
1	QM Petrol Prod Lab (M)	6
1	QM Tech Intel Det	3
1	QM Abn Air Sup & Pak Co	94
1	QM Sec Army	29
2	QM Sec Corps	18
1	QM Parts Co	136
Total		5,935

P. Signal

<u>No.</u>	<u>Type Unit</u>	<u>Approximate Authorized Strength</u>
1	Army Signal Section	73
2	Corps Signal Section	24
2	Signal Group Hqs	27
1	Signal Operation Bn	767
2	Signal Bn, Corps	1,116
1	Signal Construction Bn	711
1	Signal Repair Company	159
1	Signal Depot Company	146
1	Signal Photo Company	109
1	Signal Air-Ground Liaison Co	180
Total		3,312

Q. Transportation

<u>No.</u>	<u>Type Unit</u>	<u>Approximate Authorized Strength</u>
1	Army (Trans Sec)	36
2	Corps (Trans Sec)	16
4	Division (Trans Dec)	4
1	Hq & Hq Co Hwy T Gp	85
7	Trk Bn, Hq & Hq Co	539
24	Trk Cos Light	3,168
4	Trk Cos Heavy	532

⁵
Secret

Secret

Q. Transportation (Continued)

<u>No.</u>	<u>Type Unit</u>	<u>Approximate Authorized Strength</u>
2	Trans Amph Trk Co	378
1	Port Co Type A	296
1	Port Co Type B	242
1	Medium Port	307
1	Port Bn Hq & Hq & Svc Co	189
1	Harborcraft Co	253
1	Hq & Hq Co, Railway Grand Division	82
1	Ry Operating Bn	816
1	Ry Shop Bn	644
1	Car Company	129
1	Hq & Hq Aerial Fort	<u>151</u>
	Total	7,867
	Total Service	45,457
	Total Combat	<u>99,792</u>
	Total	145,249

3. Current planning estimates indicate that the total Army strength in Japan under the concept of OP Plan 202 (and including GHQ, Hq and Service Command, Eighth Army and JLCOM) will approximate 196,000. At the present time it is contemplated that non-divisional antiaircraft artillery required for the defense of Japan will be assigned to JLCOM and placed under the operational control of FEAF.

BY COMMAND OF GENERAL MacARTHUR:

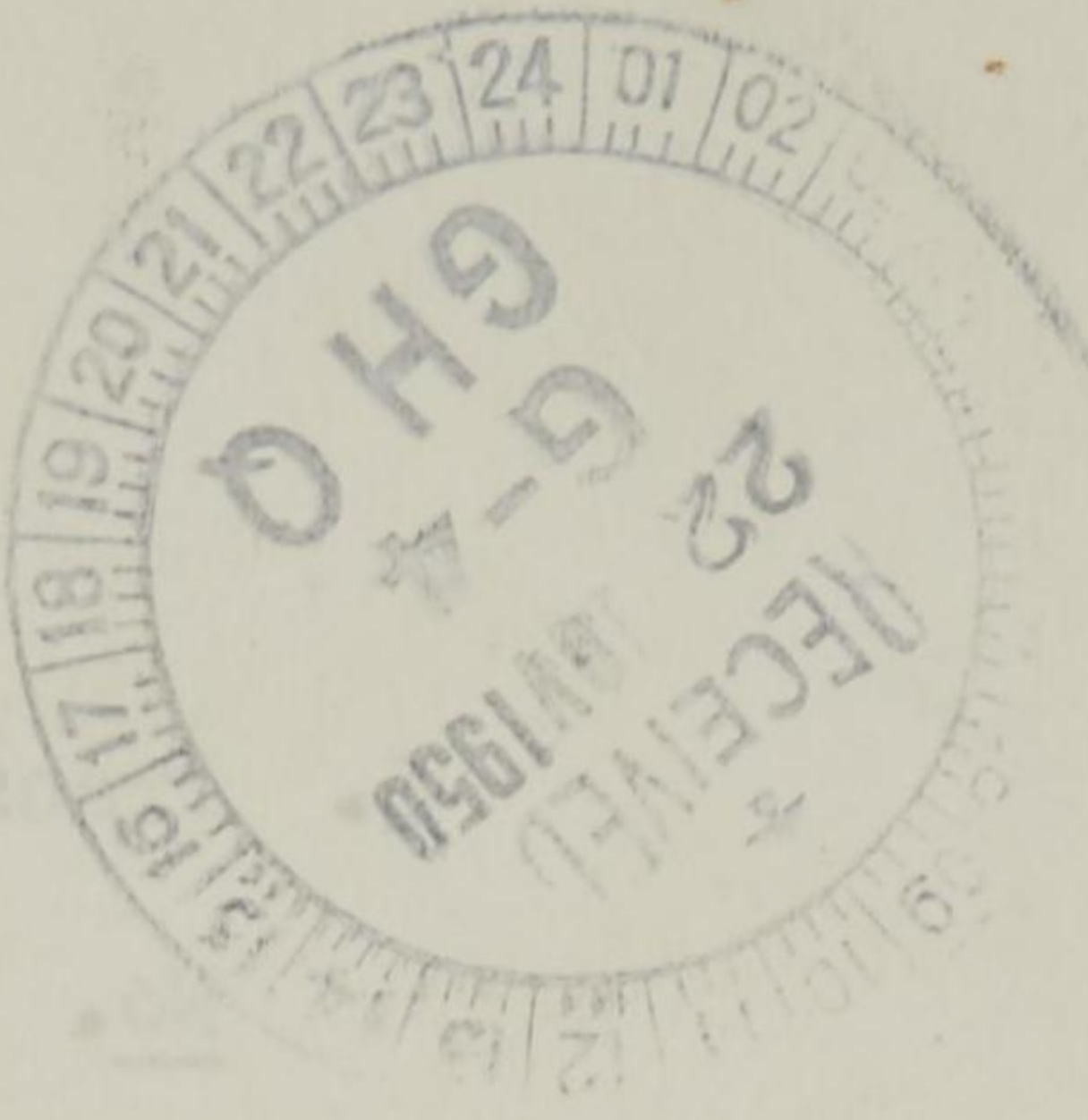
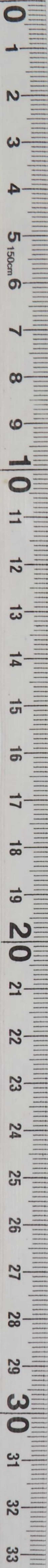
DOYLE O. HICKEY
Major General, General Staff Corps
Acting Chief of Staff

OFFICIAL:

for D.P. Franjer
E. K. WRIGHT
Brigadier General, General Staff Corps
Assistant Chief of Staff, G-3

Distribution:
Same as OP Plan 202

Secret



Sheet

Type Unit	Approximate Authorized Strength
Trans. Equip. Co.	378
Fort Co. Type A	286
Fort Co. Type B	202
Infantry	207
Fort Bn. M. & Svc Co.	188
Artillery Co.	22
M. & S. Co., Railway Grand Division	82
By Operating Bn.	812
By Shop Bn.	611
Car Company	122
M. & S. Bn. (Total)	122
Total	1,967
Total Service	15,127
Total Combat	22,412
Total	125,219

Current planning estimates indicate that the total Army strength in Japan under the concept of 44 Man 202 (and including GIC, B and Services Command, Fifth Army and JCS) will amount to 125,000. At the present time it is contemplated that non-divisional units will be required for the defense of Japan will be assigned to JCS and placed under the operation control of JCS.

BY ORDER OF GENERAL BRIGHT

DAVID C. NICKY
 Major General, General Staff Corps
 Acting Chief of Staff

OFFICIAL:

W. P. Bright
 W. P. BRIGHT
 Brigadier General, General Staff Corps
 Assistant Chief of Staff, G-3

Distribution:
 Based on 01 for 22

Sheet

Confidential

Annex "F" - FEC Base Improvement Program

General Headquarters
Far East Command
Tokyo, Japan
18 November 1950

Operation Plan
CINCFE No. 202

ROUTING

G-4

A C/S G-4

DA C/S G-4

EXECUTIVE

P+O

C+RE

SUPPLY

PETROLEUM

KEA

ADMIN

370.2

1. References:

- a. Operations Plan, CINCFE No. 202, 20 October 1950.
- b. War Department Technical Manual TM 5-280, Construction in the Theater of Operations, December 1944. (Request for this publication should be made to AG Publications Branch, GHQ, FEC APO 500).

2. Purpose of Plan:

This Annex, setting forth a plan for base improvement in the FEC delineates responsibilities during the redeployment, subsequent occupation of Japan, deployment in Korea, and reconstitution of the defenses of the Ryukyus. This Annex is a guide for planning purposes only.

3. Organization of Plan:

For the purpose of clearness this Annex is subdivided into three parts. Each part outlines responsibilities, standards, and procedures within the following geographical areas:

Part I	Japan
Part II	Korea
Part III	Ryukyus

PART I - JAPAN

4. Responsibilities:

- a. GHQ FEC will be responsible for provision of funds for the Army Base Improvement Program and for review and approval of the Army, Navy and Air Force base improvement programs.
- b. JICOM will be responsible for planning and execution of the Army base improvement program in Japan in conformance with standards set forth in paragraph 6 below.
- c. NAVFE and FEAF will be responsible for provision of funds, planning and execution of Navy and Air Force base improvement programs,

Confidential

Confidential (2565-80-35)

respectively, in conformance with standards set forth in paragraph 6 below.

5. Real Estate:

Acquisition of minimum essential additional real property will be authorized to carry out the provisions of reference 1a above.

6. Standards for Troop Housing:

a. In order to conserve construction time and materials to the maximum degree consistent with provision of satisfactory shelter for the expected period of occupancy, rehabilitation and construction of troop housing in Japan will conform to theater of operations standards, reference 1b above, modified as set forth herein or as indicated on standard plans to be furnished by GHQ FEC.

b. Space criteria will be as prescribed in Circular 30, GHQ FEC, 8 June 1949.

c. Construction will be "frigid climate" type in all areas. Concrete floors will be built except where terrain conditions make the cost prohibitive.

d. Standard framed doors will be used instead of the "shed" type doors prescribed in reference 1b above.

e. Either glass or clear plastic will be used in windows with preference given to whichever material is more readily available.

f. Flush toilets and waterborne sewerage will be provided at all installations. Individual lavatories will be provided instead of the wash benches prescribed in reference 1b.

7. GHQ FEC will be responsible for:

a. Allotting to JLCOM Army funds to initiate rehabilitation of existing structures now under Army control, and to make surveys and plans for new construction.

b. Allotting to JLCOM Army funds as required, in addition to those cited in paragraph a above, based on reports submitted in accord with paragraph 8a and 8c below.

Confidential

Confidential

(2565-80-55)

c. Designating Army unit locations and approving unit locations recommended by NAVFE and FEMF, based on reports submitted in accord with paragraph 8a and 8c below.

d. Approving acquisition of additional real estate based on reports submitted in accord with paragraph 8c below.

e. Providing standard plans for buildings suitable for similar use by all services (Army, Navy, Air Force).

8. JLCOM, NAVFE, and FEMF will be responsible for:

a. Surveying sites now under their respective control and submitting to GHQ, FEC a report for each site. Reports will be submitted as each site-survey is completed. The reports will contain the data set forth below:

- (1) Per capita capacity of existing structures suitable for immediate occupancy.
- (2) Per capita capacity of existing structures suitable for occupancy upon rehabilitation, and estimate of cost of rehabilitation expressed in dollars.
- (3) Per capita capacity that can be provided by new construction on available ground, and estimate of cost of new construction expressed in dollars.
- (4) Available ground suitable for training areas expressed in acres.
- (5) Recommendation as to types and number of each type of units to be located at each site.

b. Initiating rehabilitation of existing structures now under their respective control which are needed for planned redeployment upon funds becoming available, using every suitable and available means to complete the work in as short a time as possible.

c. Surveying and recommending acquisition of any new areas required in addition to areas now under FEC control and submitting reports thereon containing data specified in paragraphs 8a (1), (2), (3), (4) and

Confidential

Confidential (2565-80-55)

(5) above and also a description or plot plan of each area and estimated cost of acquisition.

d. Initiating new construction on sites under their respective control with all suitable and available forces upon receipt of unit location designations or approvals (paragraph 7c above).

e. Upon receipt of approval for acquisition of additional areas (paragraph 6d above):

(1) Taking real estate acquisition action.

(2) Initiating rehabilitation and construction on newly-acquired property with all suitable and available forces.

f. Furnishing to GHQ FEC for record purposes plot plans showing building, road, and utility layouts and training areas for projects involving new construction.

9. JLCOM will be responsible for:

Preparing individual project cost estimate (DA AGO Form 5-25) covering Army rehabilitation and new construction, and submitting to GHQ FEC for approval.

PART II - KOREA

10. Responsibilities:

a. GHQ FEC will be responsible for provision of funds for the Army base improvement program, and for review and approval of the Army, Navy and Air Force base improvement programs.

b. X Corps will be responsible for planning and execution of Army base improvement program in Korea to provide essential facilities for troops listed in paragraph 3a (2) (a), basic plan, in conformance with standards set forth in paragraph 12 below. Construction will be limited to minimum needs essential to military employment and to the health and morale of troops and civilians employed in direct support of military forces. Construction for civilian relief will not be accomplished from military funds nor by Army Forces troops or employees except as necessary

Confidential

Confidential

to prevent disease, starvation, and unrest in conformance with the CINCFE mission in this field.

c. NAVFE and FEAF will be responsible for provision of funds, planning and execution of Navy and Air Force base improvement programs, respectively, in conformance with standards set forth in paragraph 12 below. Construction will be limited to minimum needs essential to military employment and to the health and morale of air and naval personnel including civilians employed in direct support of military forces.

11. Real Estate:

Acquisition of minimum essential additional real property will be authorized to carry out the provisions of reference 1a above.

12. Standards for Troop Housing:

a. Housing, hospitals, storage, shop, supply and other miscellaneous buildings and structures, including necessary utilities, will not be built to exceed theater of operations standards. Designs will be based on the principles of simplicity of construction and conservation of materials in order to utilize unskilled troops and indigenous labor and to save critical shipping space for materials. Concrete floors will be built except where terrain conditions make the cost prohibitive. Pit or bucket latrines will be used initially in lieu of flush toilets as required. As water borne sewage is developed, latrines may be equipped with flush toilets at the discretion of the major force commander concerned. The following sources of buildings and structures will be exploited in the priority listed:

- (1) Existing buildings and structures, to the extent that will not cause undue hardships or create disturbance among the civilian population.
- (2) Winterized tentage insofar as available and feasible until they can be replaced by structures in (3) and (4) below.
- (3) Prefabricated buildings and structures to the extent

Confidential
5

Confidential

available from existing stocks or procurable by the time needed.

(4) Construction on-the-site of theater of operations type buildings and utilities.

b. Routes of communication will be improved, restored, or built as necessary to carry the following limiting loads (Figs. 23 & 24, TM 5-286):

(1) Highways: Class 50.

(2) Railways: Cooper's E 45.

13. GHQ FEC will be responsible for:

a. Allotting to CG X Corps Army funds (1) to initiate rehabilitation of existing structures now under Army control, and (2) to make surveys and plans for new construction.

b. Allotting to CG X Corps Army funds as required, in addition to those cited in paragraph a above, based on reports submitted in accord with paragraph 14a and 14c below.

c. Approving acquisition of additional real estate based on reports submitted in accord with paragraph 14c below.

d. Providing standard plans for buildings suitable for similar use by all services (Army, Navy, Air Force).

14. X Corps, NIVFE and FEAF will be responsible for:

a. Surveying sites to be used for deployment of forces, submitting to GHQ FEC a report on each site. For this purpose the CG X Corps will coordinate with the CG Eighth Army when proposed sites are within the areas of responsibility of the latter. Reports will be submitted as each site-survey is completed. The reports will contain the data set forth below:

(1) Per capita capacity of existing facilities suitable for immediate occupancy.

(2) Per capita capacity of existing facilities suitable for occupancy upon rehabilitation, and estimate of

Confidential
6

Confidential (2565-80- 53-)

cost of rehabilitation expressed in dollars.

(3) Per capita capacity that can be provided by new construction on available ground, and estimate of cost of new construction expressed in dollars.

(4) Available ground suitable for training areas expressed in acres.

(5) Plans as to types and number of each type of units to be located at each site.

b. Initiating rehabilitation of existing facilities now under their respective control which are needed for planned redeployment upon funds becoming available, using every suitable and available means to complete the work in as short a time as possible.

c. Surveying and recommending acquisition of any new areas required in addition to areas under U.N. control and submitting reports thereon containing data specified in paragraphs 14a (1), (2), (3), (4) and (5) above, and also a description or plot plan of each area and estimated cost of acquisition.

d. Initiating new construction on sites under their control with all suitable and available forces upon receipt of funds.

e. Upon receipt of approval for acquisition of additional areas (paragraph 13c above):

(1) Taking real estate acquisition action.

(2) Initiating rehabilitation and construction on newly-acquired property with all suitable and available forces.

f. Furnishing to GHQ FEC for record purposes plot plans showing building, road, and utility layouts and training areas for projects involving new construction.

15. CG X Corps will be responsible for:

Preparing individual project cost estimate (DA AGO Form 5-25) covering Army rehabilitation and new construction, and submitting to GHQ FEC for record purposes.

Confidential
7

Confidential (2565-80-55)

PART III - RYUKYUS

16. Responsibilities:

- a. GHQ FEC will be responsible for provision of funds for the Army base improvement program and for review and approval of the Army and Air Force base improvement programs.
- b. RYCOM will be responsible for planning and execution of the Army base improvement program in the Ryukyus in conformance with standards set forth in paragraph 18 below.
- c. FEAF will be responsible for provision of funds, planning and execution of the Air Force base improvement program, in conformance with standards set forth in paragraph 18 below.

17. Real Estate:

Acquisition of minimum essential additional real property will be authorized to carry out the provisions of reference 1a above.

18. Standards for Troop Housing:

- a. In order to conserve construction time and materials to the maximum degree consistent with provision of satisfactory shelter for the expected period of occupancy, rehabilitation and construction of troop housing in the Ryukyus will conform to theater of operations standards, reference 1b above, modified as set forth herein or as indicated on standard plans to be furnished by GHQ FEC.
- b. The following sources of buildings and structures will be exploited in the priority listed:
 - (1) Existing buildings and structures for barracks, administrative and operational facilities to the extent available.
 - (2) Winterized tentage to provide housing for personnel not covered in paragraph 18b (1) above.
 - (3) Construction on-the-site of theater of operations type buildings for essential, administrative and operational facilities and necessary utilities.
- c. In siting planned interim construction care will be exercised to avoid encroaching on areas required for construction of facilities covered by the Master Plan and Integrated Construction Development Program.

*Confidential*⁸

(2565-80-55)

Confidential

d. Space criteria will be as prescribed in Circular 35, GHQ FEC, 25 July 1949.

e. Construction will be "temperate climate" type in all areas. Concrete floors will be built except where terrain conditions make the cost prohibitive.

f. Standard framed doors will be used instead of the "shed" type doors prescribed in reference 1b above.

g. Either glass or clear plastic will be used in windows with preference given to whichever material is more readily available.

h. Flush toilets and waterborne sewerage will be provided at all installations. Individual lavatories will be provided instead of the wash benches prescribed in reference 1b.

19. GHQ FEC will be responsible for:

a. Allotting to RYCOM Army funds to initiate rehabilitation of existing structures now under Army control, and to make surveys and plans for new construction.

b. Allotting to RYCOM Army funds as required, in addition to those cited in paragraph a above, based on reports submitted in accord with paragraph 20a and 20c below.

c. Approving unit locations recommended by RYCOM and FELF, based on reports submitted in accord with paragraphs 20a and 20c below.

d. Approving acquisition of additional real estate based on reports submitted in accord with paragraph 20c below.

e. Providing standard plans for buildings suitable for similar use by Army and Air Force.

20. RYCOM and FELF will be responsible for:

a. Surveying sites now under their respective control and submitting to GHQ FEC a report for each site. Reports will be submitted as each site-survey is completed. The reports will contain the data set forth below:

Confidential

Confidential (2565-80-55)

- (1) Per capita capacity of existing structures suitable for immediate occupancy.
 - (2) Per capita capacity of existing structures suitable for occupancy upon rehabilitation, and estimate of cost of rehabilitation expressed in dollars.
 - (3) Per capita capacity that can be provided by new construction on available ground, and estimate of cost of new construction expressed in dollars.
 - (4) Available ground suitable for training areas expressed in acres.
 - (5) Recommendation as to types and number of each type of units to be located at each site.
- b. Initiating rehabilitation of existing structures now under their respective control which are needed for planned redeployment upon funds becoming available, using every suitable and available means to complete the work in as short a time as possible.
- c. Surveying and recommending acquisition of any new areas required in addition to areas now under FEC control and submitting reports thereon containing data specified in paragraph 20a (1), (2), (3), (4) and (5) above and also a description or plot plan of each area and estimated cost of acquisition.
- d. Initiating new construction on sites under their respective control with all suitable and available forces upon receipt of unit location designations or approvals (paragraph 19c above).
- e. Upon receipt of approval for acquisition of additional areas (paragraph 19d above):
- (1) Taking real estate acquisition action.
 - (2) Initiating rehabilitation and construction on newly-acquired property with all suitable and available forces.
- f. Furnishing to GHQ FEC for record purposes plot plans showing building, road, and utility layouts and training areas for projects involving new construction.

Confidential

Confidential (2565-80-55)

21. RYCOM will be responsible for:

Preparing individual project cost estimate (DA AGO Form 5-25) covering Army rehabilitation and new construction, and submitting to GHQ FEC for approval.

BY COMMAND OF GENERAL MacARTHUR:

DOYLE O. HICKEY
Major General, General Staff Corps
Acting Chief of Staff

OFFICIAL:

G. L. Eberle
G. L. EBERLE
Major General, General Staff Corps
Assistant Chief of Staff, G-4

Confidential (2565-80-)

21. RYCOM will be responsible for:

Preparing individual project cost estimate (DA AGO Form 5-25) covering Army rehabilitation and new construction, and submitting to GHQ FEC for approval.

BY COMMAND OF GENERAL MacARTHUR:

DOYLE O. HICKEY
Major General, General Staff Corps
Acting Chief of Staff

OFFICIAL:

G. L. Eberle
G. L. EBERLE
Major General, General Staff Corps
Assistant Chief of Staff, G-4

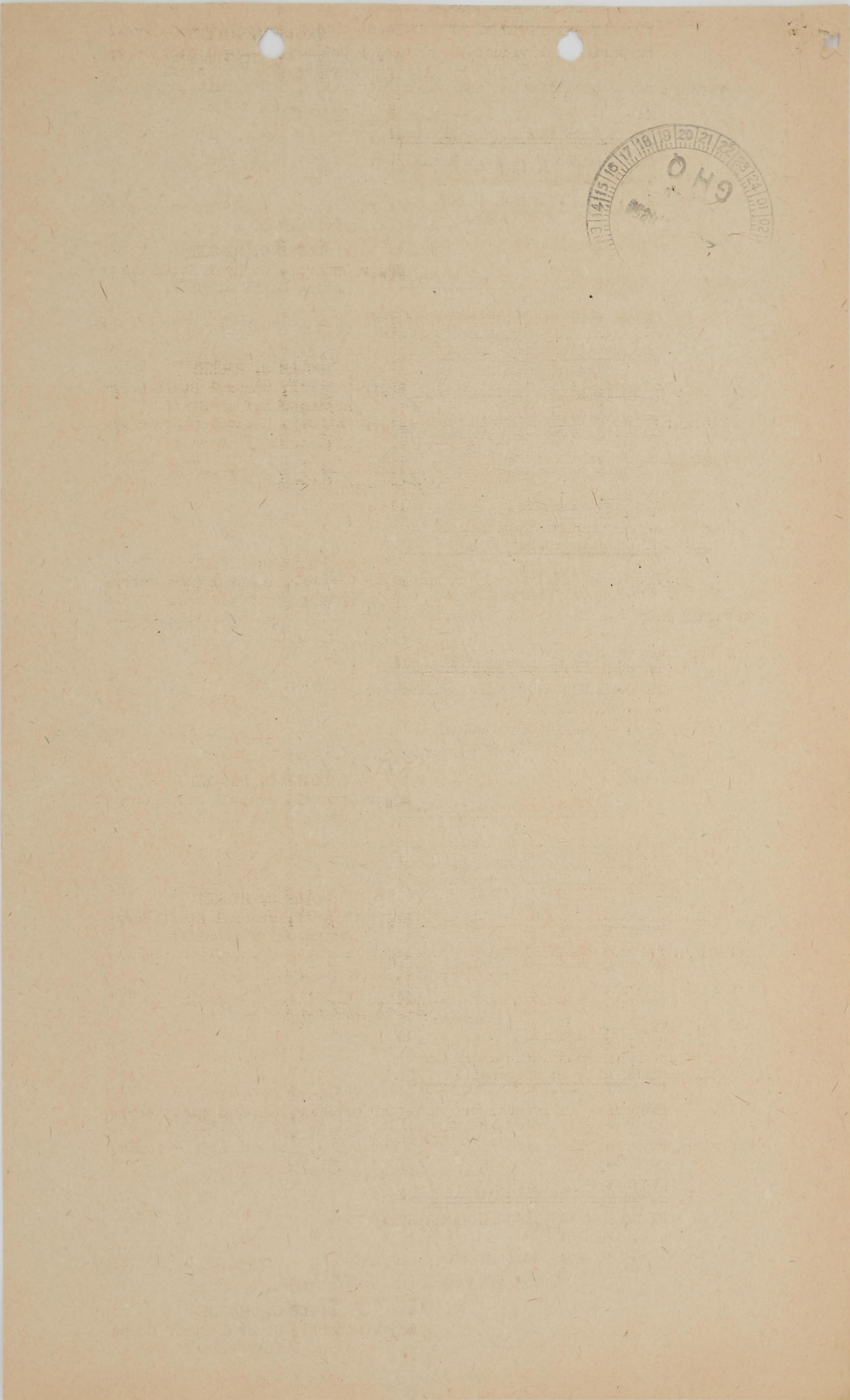
Confidential (2565-80-)

21. RYCOM will be responsible for:

Preparing individual project cost estimate (DA AGO Form 5-25) covering Army rehabilitation and new construction, and submitting to GHQ FEC for approval.

Confidential
11

BY COMMAND OF GENERAL MacARTHUR:



2565-80-54

Confidential

Annex "F" - FEC Base Improvement Program

General Headquarters
Far East Command
Tokyo, Japan
18 November 1950

G-4 ROUTING

- A C, S G.
- D A C 'S G.
- EXECUTIVE
- P + O
- C + R E
- S U P P L Y
- P E T R O L E U M
- K E A
- A D M I N

Operation Plan
CINCFE No. 202

370.2
Chief OP. Plan
202 (new)

1. References:

- a. Operations Plan, CINCFE No. 202, 20 October 1950.
- b. War Department Technical Manual TM 5-280, Construction in the Theater of Operations, December 1944. (Request for this publication should be made to AG Publications Branch, GLQ, FEC APO 500).

2. Purpose of Plan:

This Annex, setting forth a plan for base improvement in the FEC delineates responsibilities during the redeployment, subsequent occupation of Japan, deployment in Korea, and reconstitution of the defenses of the Ryukyus. This Annex is a guide for planning purposes only.

3. Organization of Plan:

For the purpose of clearness this Annex is subdivided into three parts. Each part outlines responsibilities, standards, and procedures within the following geographical areas:

- Part I Japan
- Part II Korea
- Part III Ryukyus

PART I - JAPAN

4. Responsibilities:

- a. CHQ FEC will be responsible for provision of funds for the Army Base Improvement Program and for review and approval of the Army, Navy and Air Force base improvement programs.
- b. JICOM will be responsible for planning and execution of the Army base improvement program in Japan in conformance with standards set forth in paragraph 6 below.
- c. NAVFE and FEAF will be responsible for provision of funds, planning and execution of Navy and Air Force base improvement programs,

Confidential

G-4

Confidential (2565-80-54)

respectively, in conformance with standards set forth in paragraph 6 below.

5. Real Estate:

Acquisition of minimum essential additional real property will be authorized to carry out the provisions of reference 1a above.

6. Standards for Troop Housing:

a. In order to conserve construction time and materials to the maximum degree consistent with provision of satisfactory shelter for the expected period of occupancy, rehabilitation and construction of troop housing in Japan will conform to theater of operations standards, reference 1b above, modified as set forth herein or as indicated on standard plans to be furnished by GHQ FEC.

b. Space criteria will be as prescribed in Circular 30, GHQ FEC, 8 June 1949.

c. Construction will be "frigid climate" type in all areas. Concrete floors will be built except where terrain conditions make the cost prohibitive.

d. Standard framed doors will be used instead of the "shed" type doors prescribed in reference 1b above.

e. Either glass or clear plastic will be used in windows with preference given to whichever material is more readily available.

f. Flush toilets and waterborne sewerage will be provided at all installations. Individual lavatories will be provided instead of the wash benches prescribed in reference 1b.

7. GHQ FEC will be responsible for:

a. Allotting to JLCOM Army funds to initiate rehabilitation of existing structures now under Army control, and to make surveys and plans for new construction.

b. Allotting to JLCOM Army funds as required, in addition to those cited in paragraph a above, based on reports submitted in accord with paragraph 8a and 8c below.

Confidential

Confidential

(2565-80-54)

c. Designating Army unit locations and approving unit locations recommended by NAVFE and FEMF, based on reports submitted in accord with paragraph 8a and 8c below.

d. Approving acquisition of additional real estate based on reports submitted in accord with paragraph 8c below.

e. Providing standard plans for buildings suitable for similar use by all services (Army, Navy, Air Force).

8. JLCOM, NAVFE, and FEMF will be responsible for:

a. Surveying sites now under their respective control and submitting to GHQ, FEC a report for each site. Reports will be submitted as each site-survey is completed. The reports will contain the data set forth below:

- (1) Per capita capacity of existing structures suitable for immediate occupancy.
- (2) Per capita capacity of existing structures suitable for occupancy upon rehabilitation, and estimate of cost of rehabilitation expressed in dollars.
- (3) Per capita capacity that can be provided by new construction on available ground, and estimate of cost of new construction expressed in dollars.
- (4) Available ground suitable for training areas expressed in acres.
- (5) Recommendation as to types and number of each type of units to be located at each site.

b. Initiating rehabilitation of existing structures now under their respective control which are needed for planned redeployment upon funds becoming available, using every suitable and available means to complete the work in as short a time as possible.

c. Surveying and recommending acquisition of any new areas required in addition to areas now under FEC control and submitting reports thereon containing data specified in paragraphs 8a (1), (2), (3), (4) and

Confidential

Confidential (2565-80-54)

(5) above and also a description or plot plan of each area and estimated cost of acquisition.

d. Initiating new construction on sites under their respective control with all suitable and available forces upon receipt of unit location designations or approvals (paragraph 7c above).

e. Upon receipt of approval for acquisition of additional areas (paragraph 6d above):

(1) Taking real estate acquisition action.

(2) Initiating rehabilitation and construction on newly-acquired property with all suitable and available forces.

f. Furnishing to GHQ FEC for record purposes plot plans showing building, road, and utility layouts and training areas for projects involving new construction.

9. JLCOM will be responsible for:

Preparing individual project cost estimate (DA AGO Form 5-25) covering Army rehabilitation and new construction, and submitting to GHQ FEC for approval.

PART II - KOREA

10. Responsibilities:

a. GHQ FEC will be responsible for provision of funds for the Army base improvement program, and for review and approval of the Army, Navy and Air Force base improvement programs.

b. X Corps will be responsible for planning and execution of Army base improvement program in Korea to provide essential facilities for troops listed in paragraph 3a (2) (a), basic plan, in conformance with standards set forth in paragraph 12 below. Construction will be limited to minimum needs essential to military employment and to the health and morale of troops and civilians employed in direct support of military forces. Construction for civilian relief will not be accomplished from military funds nor by Army Forces troops or employees except as necessary

Confidential

(2565-80-54)

Confidential

to prevent disease, starvation, and unrest in conformance with the CINCFE mission in this field.

c. NAVFE and FEAF will be responsible for provision of funds, planning and execution of Navy and Air Force base improvement programs, respectively, in conformance with standards set forth in paragraph 12 below. Construction will be limited to minimum needs essential to military employment and to the health and morale of air and naval personnel including civilians employed in direct support of military forces.

11. Real Estate:

Acquisition of minimum essential additional real property will be authorized to carry out the provisions of reference 1a above.

12. Standards for Troop Housing:

a. Housing, hospitals, storage, shop, supply and other miscellaneous buildings and structures, including necessary utilities, will not be built to exceed theater of operations standards. Designs will be based on the principles of simplicity of construction and conservation of materials in order to utilize unskilled troops and indigenous labor and to save critical shipping space for materials. Concrete floors will be built except where terrain conditions make the cost prohibitive. Pit or bucket latrines will be used initially in lieu of flush toilets as required. As water borne sewage is developed, latrines may be equipped with flush toilets at the discretion of the major force commander concerned. The following sources of buildings and structures will be exploited in the priority listed:

- (1) Existing buildings and structures, to the extent that will not cause undue hardships or create disturbance among the civilian population.
- (2) Winterized tentage insofar as available and feasible until they can be replaced by structures in (3) and (4) below.
- (3) Prefabricated buildings and structures to the extent

Confidential
5

(2565-80-54)

Confidential

available from existing stocks or procurable by the time needed.

(4) Construction on-the-site of theater of operations type buildings and utilities.

b. Routes of communication will be improved, restored, or built as necessary to carry the following limiting loads (Figs. 23 & 24, TM 5-286):

(1) Highways: Class 50.

(2) Railways: Cooper's E 45.

13. GHQ FEC will be responsible for:

a. Allotting to CG X Corps Army funds (1) to initiate rehabilitation of existing structures now under Army control, and (2) to make surveys and plans for new construction.

b. Allotting to CG X Corps Army funds as required, in addition to those cited in paragraph a above, based on reports submitted in accord with paragraph 14a and 14c below.

c. Approving acquisition of additional real estate based on reports submitted in accord with paragraph 14c below.

d. Providing standard plans for buildings suitable for similar use by all services (Army, Navy, Air Force).

14. X Corps, NIVFE and FEAF will be responsible for:

a. Surveying sites to be used for deployment of forces, submitting to GHQ FEC a report on each site. For this purpose the CG X Corps will coordinate with the CG Eighth Army when proposed sites are within the areas of responsibility of the latter. Reports will be submitted as each site-survey is completed. The reports will contain the data set forth below:

(1) Per capita capacity of existing facilities suitable for immediate occupancy.

(2) Per capita capacity of existing facilities suitable for occupancy upon rehabilitation, and estimate of

Confidential
6

Confidential (2565-80-54)

cost of rehabilitation expressed in dollars.

(3) Per capita capacity that can be provided by new construction on available ground, and estimate of cost of new construction expressed in dollars.

(4) Available ground suitable for training areas expressed in acres.

(5) Plans as to types and number of each type of units to be located at each site.

b. Initiating rehabilitation of existing facilities now under their respective control which are needed for planned redeployment upon funds becoming available, using every suitable and available means to complete the work in as short a time as possible.

c. Surveying and recommending acquisition of any new areas required in addition to areas under U.N. control and submitting reports thereon containing data specified in paragraphs 14a (1), (2), (3), (4) and (5) above, and also a description or plot plan of each area and estimated cost of acquisition.

d. Initiating new construction on sites under their control with all suitable and available forces upon receipt of funds.

e. Upon receipt of approval for acquisition of additional areas (paragraph 13c above):

(1) Taking real estate acquisition action.

(2) Initiating rehabilitation and construction on newly-acquired property with all suitable and available forces.

f. Furnishing to GHQ FEC for record purposes plot plans showing building, road, and utility layouts and training areas for projects involving new construction.

15. CG X Corps will be responsible for:

Preparing individual project cost estimate (DA AGO Form 5-25) covering Army rehabilitation and new construction, and submitting to GHQ FEC for record purposes.

Confidential
7

Confidential (2565-EO-54)

PART III - RYUKYUS

16. Responsibilities:

a. GHQ FEC will be responsible for provision of funds for the Army base improvement program and for review and approval of the Army and Air Force base improvement programs.

b. RYCOM will be responsible for planning and execution of the Army base improvement program in the Ryukyus in conformance with standards set forth in paragraph 18 below.

c. FEAF will be responsible for provision of funds, planning and execution of the Air Force base improvement program, in conformance with standards set forth in paragraph 18 below.

17. Real Estate:

Acquisition of minimum essential additional real property will be authorized to carry out the provisions of reference 1a above.

18. Standards for Troop Housing:

a. In order to conserve construction time and materials to the maximum degree consistent with provision of satisfactory shelter for the expected period of occupancy, rehabilitation and construction of troop housing in the Ryukyus will conform to theater of operations standards, reference 1b above, modified as set forth herein or as indicated on standard plans to be furnished by GHQ FEC.

b. The following sources of buildings and structures will be exploited in the priority listed:

- (1) Existing buildings and structures for barracks, administrative and operational facilities to the extent available.
- (2) Winterized tentage to provide housing for personnel not covered in paragraph 18b (1) above.
- (3) Construction on-the-site of theater of operations type buildings for essential, administrative and operational facilities and necessary utilities.

c. In siting planned interim construction care will be exercised to avoid encroaching on areas required for construction of facilities covered by the Master Plan and Integrated Construction Development Program.

*Confidential*⁸

(2565-80-54)

Confidential

d. Space criteria will be as proscribed in Circular 35, GHQ FEC, 25 July 1949.

e. Construction will be "temperate climate" type in all areas. Concrete floors will be built except where terrain conditions make the cost prohibitive.

f. Standard framed doors will be used instead of the "shed" type doors proscribed in reference 1b above.

g. Either glass or clear plastic will be used in windows with preference given to whichever material is more readily available.

h. Flush toilets and waterborne sewerage will be provided at all installations. Individual lavatories will be provided instead of the wash benches proscribed in reference 1b.

19. GHQ FEC will be responsible for:

a. Allotting to RYCOM Army funds to initiate rehabilitation of existing structures now under Army control, and to make surveys and plans for new construction.

b. Allotting to RYCOM Army funds as required, in addition to those cited in paragraph a above, based on reports submitted in accord with paragraph 20a and 20c below.

c. Approving unit locations recommended by RYCOM and F.E.L.F., based on reports submitted in accord with paragraphs 20a and 20c below.

d. Approving acquisition of additional real estate based on reports submitted in accord with paragraph 20c below.

e. Providing standard plans for buildings suitable for similar use by Army and Air Force.

20. RYCOM and F.E.L.F will be responsible for:

a. Surveying sites now under their respective control and submitting to GHQ FEC a report for each site. Reports will be submitted as each site-survey is completed. The reports will contain the data set forth below:

Confidential

Confidential (2565-80-54)

- (1) Per capita capacity of existing structures suitable for immediate occupancy.
 - (2) Per capita capacity of existing structures suitable for occupancy upon rehabilitation, and estimate of cost of rehabilitation expressed in dollars.
 - (3) Per capita capacity that can be provided by new construction on available ground, and estimate of cost of new construction expressed in dollars.
 - (4) Available ground suitable for training areas expressed in acres.
 - (5) Recommendation as to types and number of each type of units to be located at each site.
- b. Initiating rehabilitation of existing structures now under their respective control which are needed for planned redeployment upon funds becoming available, using every suitable and available means to complete the work in as short a time as possible.
- c. Surveying and recommending acquisition of any new areas required in addition to areas now under FEC control and submitting reports thereon containing data specified in paragraph 20a (1), (2), (3), (4) and (5) above and also a description or plot plan of each area and estimated cost of acquisition.
- d. Initiating new construction on sites under their respective control with all suitable and available forces upon receipt of unit location designations or approvals (paragraph 19c above).
- e. Upon receipt of approval for acquisition of additional areas (paragraph 19d above):
- (1) Taking real estate acquisition action.
 - (2) Initiating rehabilitation and construction on newly-acquired property with all suitable and available forces.
- f. Furnishing to GHQ FEC for record purposes plot plans showing building, road, and utility layouts and training areas for projects involving new construction.

Confidential
10

Confidential (2565-80-54)

21. RYCOM will be responsible for:

Preparing individual project cost estimate (DA AGO Form 5-25) covering Army rehabilitation and new construction, and submitting to GHQ FEC for approval.

BY COMMAND OF GENERAL MacARTHUR:

DOYLE O. HICKEY
Major General, General Staff Corps
Acting Chief of Staff

OFFICIAL:

G. L. Eberle

G. L. EBERLE
Major General, General Staff Corps
Assistant Chief of Staff, G-4

Confidential (2565-80-54)

21. RYCOM will be responsible for:

Preparing individual project cost estimate (DA AGO Form 5-25) covering Army rehabilitation and new construction, and submitting to GHQ FEC for approval.

BY COMMAND OF GENERAL MacARTHUR:

DOYLE O. HICKEY
Major General, General Staff Corps
Acting Chief of Staff

OFFICIAL:

G. L. Eberle

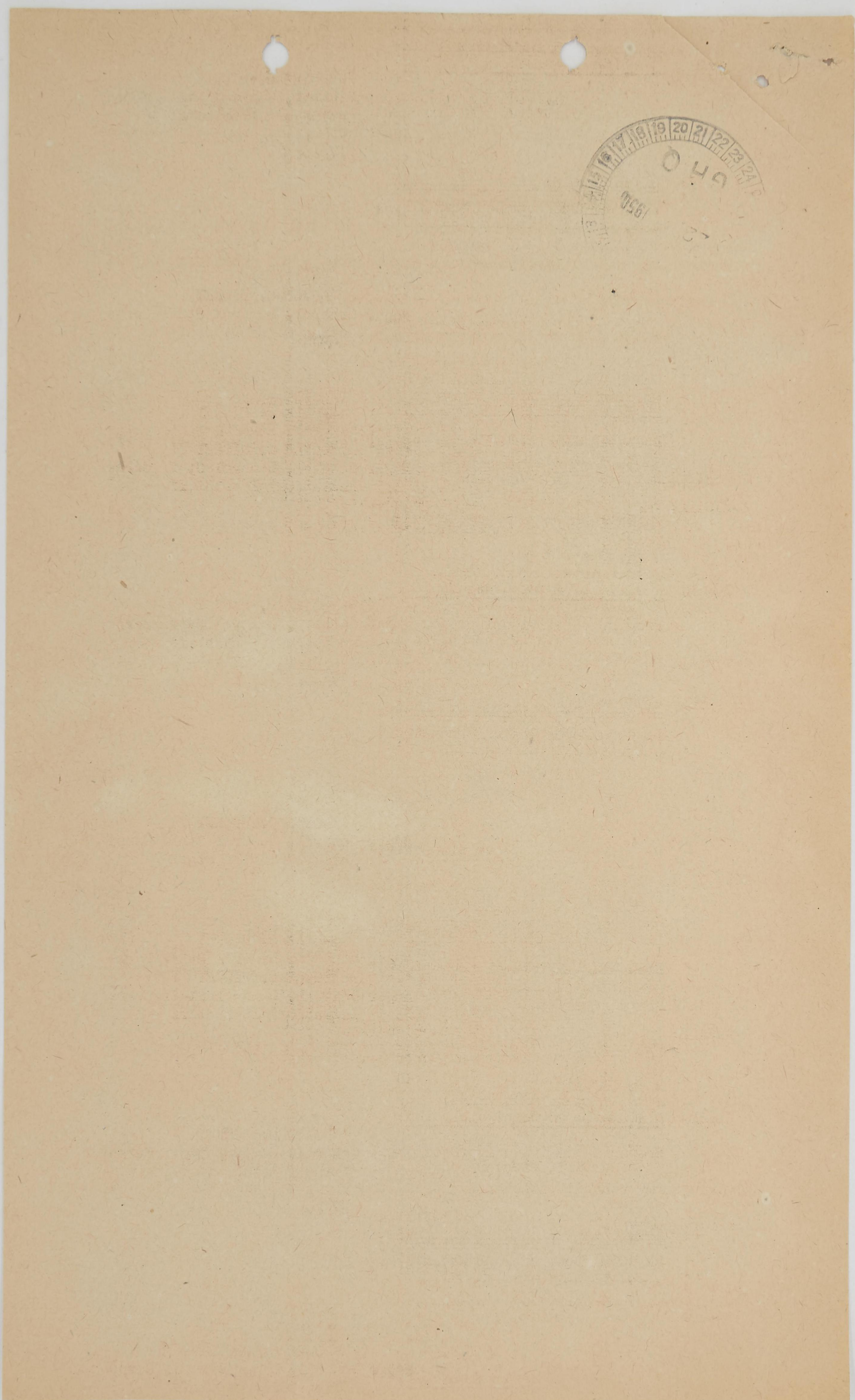
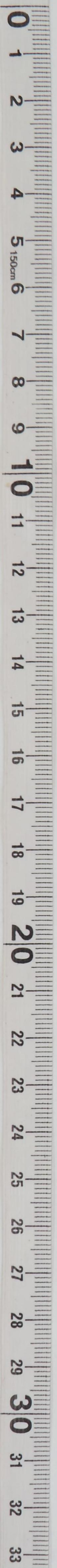
G. L. EBERLE
Major General, General Staff Corps
Assistant Chief of Staff, G-4

Confidential (2565-80-54)

21. RYCOM will be responsible for:

Preparing individual project cost estimate (DA AGO Form 5-25) covering Army rehabilitation and new construction, and submitting to GHQ FEC for approval.

Confidential
11



1950
O H O
16 17 18 19 20 21 22 23 24

2403-74-57

Top Secret
Downgraded 270 per CX 67643
Operation Plan
CINCFE No. 202

General Headquarters
Far East Command
Tokyo, Japan
20 October 1950

1. a. General. This plan is published as a basis for further planning on the future action that will be required when the combat operations in pursuance of missions assigned to CINCUNC have progressed to the point where some UN Forces may be withdrawn from Korea.

b. Assumptions.

- (1) The operations now in progress and planned for UN Forces operating in Korea will destroy the NK Forces. Scattered NK guerrillas will exist in mountainous areas in KOREA.
- (2) The Soviets and the Chinese Communists will not engage in any open military operations in North Korea nor any open or major covert operations south of the 38th parallel.
- (3) The U.S.-Soviet international relations will remain basically as they exist today.

2. Mission.

a. CINCUNC will execute residual UN military missions in KOREA and supervise the close-out operations, retaining a major subordinate United Nations Command in KOREA.

b. CINCFE will:

- (1) Redeploy U.S. Forces to reconstitute the defenses of the FEC.
- (2) Redeploy all available construction forces and materials for the build-up of bases in the FEC.

3. Tasks.

a. Army Forces.

- (1) Eighth Army will:
 - (a) Move from KOREA to JAPAN and reestablish the Army defense of Japan with an organization to include:

Top Secret

2403-74- 57

Top Secret

Eighth Army Headquarters
I Corps Headquarters
IX Corps Headquarters
1st Cavalry Division (Infantry)
7th Infantry Division
24th Infantry Division
25th Infantry Division
187th Airborne RCT
6 AAA AW Battalions
6 AAA Gun Battalions
Supporting Combat and Service Units

Total Army Force - about 200,000

Preliminary Troop List is contained in Annex A.

(b) Release ROK Army units to the occupation commander as provided in the occupation plan to be issued later.

(c) Transfer to X Corps, Eighth Army units listed in Annex "B".

(d) Receive from and take command of X Corps units not listed in Annex "B".

(e) Release KMAC to the control of X Corps.

(f) Prepare for shipment to RYCOM of Eighth Army units listed in Annex "C".

(g) Release the 5th RCT for return to Hawaii as one of the earliest units to be shipped from FEC.

(h) Prepare for shipment of Eighth Army and X Corps units not listed in Annexes "A", "B" and "C" to the ZI.

(2) X Corps (may later be given an additional Korean Occupation title) will:

(a) Remain in Korea as a major command of CINCUNC organized to include:

X Corps Headquarters
3rd U.S. Infantry Division
Supporting U.S. Service Units (about 27,000 initially)
29th British Infantry Brigade Group
1 Canadian Infantry Brigade
1 French Infantry Battalion
10th Philippine Battalion Combat Team
1 New Zealand FA Battalion
1 Turkish RCT
1 Australian Infantry Battalion
1 Netherlands Infantry Battalion
2 Uruguayan Infantry Battalions
1 Belgian Infantry Battalion

Top Secret

2403-74-57

Top Secret

Preliminary Troop List is contained in Annex "B". The above listed foreign units will be phased out progressively with first priority for the return of European units and last priority for return of Asiatic units.

(b) Transfer to Eighth Army all X Corps units not listed in Annex "B" except the 1st Marine Division which will be transferred to COMNAVFE.

(c) Deploy UN Forces for occupation of North Korea. Insofar as practical no UN combat forces except ROK forces will be deployed south of the 38th parallel.

(d) Perform the residual United Nations military functions in KOREA as directed by CINCUNC.

(e) Supervise the close-out of UN Forces, supplies and materials.

(f) Assist the ROK Army as necessary in clearing KOREA of NK guerrillas.

(g) Provide assistance to KMAG as directed in the development of the ROK Army.

(3) JICOM will:

(a) Prepare plans for the reception and housing of Eighth Army and one Marine RCT with air component in JAPAN.

(b) Dissolve the Northern Command and Southwestern Command and transfer their field army type functions to Eighth Army with personnel funds and records.

(c) Continue to perform all Army logistic functions in Japan of above field Army level to include operation of ports, depots, bases, rail transportation, rest areas, etc.

(4) RYCOM will reconstitute the defenses of the Ryukyus.

Forces assigned will consist of:

29th Infantry Regiment augmented to 1 RCT
2 AAA AW Battalions
2 AAA Gun Battalions
1 Tank Battalion
Supporting Combat and Service Units

Top Secret

2403-74-57

Top Secret

b. NAVFET will:

- (1) Maintain naval facilities and personnel for port direction, operation of MSTB and naval liaison required to support UN Forces in Korea.
- (2) Redeploy naval units as required to reconstitute the naval defenses of FEC with emphasis on ASW capabilities.
- (3) Provide water lift for the movements directed for other commands.
- (4) Assist KMAC as directed in the development of ROK Naval Forces to be specified.
- (5) Move the 1st Marine Div to Japan for reorganization and further deployment. One Marine RCT with air component will be retained in occupied Japan as a part of the U.S. forces.

c. FEAF will:

- (1) Operate KIMPO Airfield and other airfields as required.
- (2) Provide air transport required in support of UN Forces in KOREA.
- (3) Base in KOREA one composite wing to consist of:
 - 1 U.S. F-80 Squadron
 - 1 RAAF F-51 Squadron
 - 1 SAAF F-51 Squadron
 - Comp. Troop Carrier Squadron
- (4) Redeploy all combat air units other than those in para (3) above to bases in the FEC, or to the U.S. as directed.
- (5) Resume missions of 24 June 50.
- (6) Assist KMAC as directed in the development of ROK Air Forces to be specified.
- (7) In event of a general emergency provide for aid defense of UN Forces evacuating KOREA.
- (8) Support UN ground and naval operations in KOREA.

- x. (1) This plan is effective for planning upon receipt.
- (2) Priority for movement of units from KOREA to JAPAN will go to units that have been in KOREA for the longest period of time.

Top Secret

2403-74-57

Top Secret

(3) Prepare plans for withdrawal and evacuation of UN Forces upon order and in event of an emergency.

4. Administration and Logistics - See Annexes "D" and "E".

5. Command and Communications

Command Posts

CINCUNC	-	Tokyo
Eighth Army	-	Korea to Osaka-Kyoto Area
JLCOM	-	Yokohama
X Corps	-	Pyongyang
Other	-	No change

BY COMMAND OF GENERAL MacARTHUR:

Doyle O. Hickey
 DOYLE O. HICKEY
 Major General, CSC
 Acting Chief of Staff

ANNEXES:

- A - Eighth Army Troop List (to be issued later)
- B - X Corps Troop List (to be issued later)
- C - RYCOM Troop Basis (to be issued later)
- D - Personnel and Administration (to be issued later)
- E - Logistics (to be issued later)
- F - FEC Base Improvement Program (to be issued later)
- G - Staff Study Containing Background Information

DISTRIBUTION:

CINCPAC	Copy 1
CofS, FEC	Copies 2-4
DCofS, FEC	Copy 5
DCofS, SCAP	Copy 6
CG Eighth Army	Copies 7-11
CG X Corps	Copies 12-16
CG IX Corps	Copies 17-21
CG RYCOM	Copies 22-23
COMNAVFE	Copies 24-28
CG FEAF	Copies 29-33
CG JLCOM	Copies 34-38
G-1	Copies 39-43
G-2	Copies 44-48
G-3	Copies 49-53
G-4	Copies 54-58
JSFCG	Copies 59-67
Engr	Copies 68-69
Ord S	Copy 70
Sig	Copy 71
QM	Copy 72
Trans	Copy 73
Med	Copy 74

Top Secret

2403-74-56

Downgraded

Top Secret
per CX 67643

General Headquarters
Far East Command
Tokyo, Japan
20 October 1950

Operation Plan
CINCFE No. 202

1. a. General. This plan is published as a basis for further planning on the future action that will be required when the combat operations in pursuance of missions assigned to CINCUNC have progressed to the point where some UN Forces may be withdrawn from Korea.

b. Assumptions.

- (1) The operations now in progress and planned for UN Forces operating in Korea will destroy the NK Forces. Scattered NK guerrillas will exist in mountainous areas in KOREA.
- (2) The Soviets and the Chinese Communists will not engage in any open military operations in North Korea nor any open or major covert operations south of the 38th parallel.
- (3) The U.S.-Soviet international relations will remain basically as they exist today.

2. Mission.

a. CINCUNC will execute residual UN military missions in KOREA and supervise the close-out operations, retaining a major subordinate United Nations Command in KOREA.

b. CINCFE will:

- (1) Redeploy U.S. Forces to reconstitute the defenses of the FEC.
- (2) Redeploy all available construction forces and materials for the build-up of bases in the FEC.

3. Tasks.

a. Army Forces.

- (1) Eighth Army will:
 - (a) Move from KOREA to JAPAN and reestablish the Army defense of Japan with an organization to include:

Top Secret
per CX 67643

2403-74-56

~~Top Secret~~

Eighth Army Headquarters
I Corps Headquarters
IX Corps Headquarters
1st Cavalry Division (Infantry)
7th Infantry Division
24th Infantry Division
25th Infantry Division
187th Airborne RCT
6 AAA AW Battalions
6 AAA Gun Battalions
Supporting Combat and Service Units

Total Army Force - about 200,000

Preliminary Troop List is contained in Annex A.

(b) Release ROK Army units to the occupation commander as provided in the occupation plan to be issued later.

(c) Transfer to X Corps, Eighth Army units listed in Annex "B".

(d) Receive from and take command of X Corps units not listed in Annex "B".

(e) Release KMAG to the control of X Corps.

(f) Prepare for shipment to RYCOM of Eighth Army units listed in Annex "C".

(g) Release the 5th RCT for return to Hawaii as one of the earliest units to be shipped from FEC.

(h) Prepare for shipment of Eighth Army and X Corps units not listed in Annexes "A", "B" and "C" to the ZI.

(2) X Corps (may later be given an additional Korean Occupation title) will:

(a) Remain in Korea as a major command of CINCUNC organized to include:

X Corps Headquarters
3rd U.S. Infantry Division
Supporting U.S. Service Units (about 27,000 initially)
29th British Infantry Brigade Group
1 Canadian Infantry Brigade
1 French Infantry Battalion
10th Philippine Battalion Combat Team
1 New Zealand FA Battalion
1 Turkish RCT
1 Australian Infantry Battalion
1 Netherlands Infantry Battalion
2 Uruguayan Infantry Battalions
1 Belgian Infantry Battalion

~~Top Secret~~

2403-74-56

~~Top Secret~~

Preliminary Troop List is contained in Annex "B". The above listed foreign units will be phased out progressively with first priority for the return of European units and last priority for return of Asiatic units.

(b) Transfer to Eighth Army all X Corps units not listed in Annex "B" except the 1st Marine Division which will be transferred to COMNAVFE.

(c) Deploy UN Forces for occupation of North Korea. Insofar as practical no UN combat forces except ROK forces will be deployed south of the 38th parallel.

(d) Perform the residual United Nations military functions in KOREA as directed by CINCUNC.

(e) Supervise the close-out of UN Forces, supplies and materials.

(f) Assist the ROK Army as necessary in clearing KOREA of NK guerrillas.

(g) Provide assistance to KMAG as directed in the development of the ROK Army.

(3) JICOM will:

(a) Prepare plans for the reception and housing of Eighth Army and one Marine RCT with air component in JAPAN.

(b) Dissolve the Northern Command and Southwestern Command and transfer their field army type functions to Eighth Army with personnel funds and records.

(c) Continue to perform all Army logistic functions in Japan of above field Army level to include operation of ports, depots, bases, rail transportation, rest areas, etc.

(4) RYCOM will reconstitute the defenses of the Ryukyus.

Forces assigned will consist of:

29th Infantry Regiment augmented to 1 RCT
2 AAA AW Battalions
2 AAA Gun Battalions
1 Tank Battalion
Supporting Combat and Service Units

~~Top Secret~~
3

2403-74-26

~~Top Secret~~

b. NAVFE will:

- (1) Maintain naval facilities and personnel for port direction, operation of MSTs and naval liaison required to support UN Forces in Korea.
- (2) Redeploy naval units as required to reconstitute the naval defenses of FEC with emphasis on ASW capabilities.
- (3) Provide water lift for the movements directed for other commands.
- (4) Assist KMAC as directed in the development of ROK Naval Forces to be specified.
- (5) Move the 1st Marine Div to Japan for reorganization and further deployment. One Marine RCT with air component will be retained in occupied Japan as a part of the U.S. forces.

c. FEAF will:

- (1) Operate KIMPO Airfield and other airfields as required.
- (2) Provide air transport required in support of UN Forces in KOREA.
- (3) Base in KOREA one composite wing to consist of:
 - 1 U.S. F-80 Squadron
 - 1 RAAF F-51 Squadron
 - 1 SAAF F-51 Squadron
 - Comp. Troop Carrier Squadron
- (4) Redeploy all combat air units other than those in para (3) above to bases in the FEC, or to the U.S. as directed.
- (5) Resume missions of 24 June 50.
- (6) Assist KMAC as directed in the development of ROK Air Forces to be specified.
- (7) In event of a general emergency provide for aid defense of UN Forces evacuating KOREA.
- (8) Support UN ground and naval operations in KOREA.

- x. (1) This plan is effective for planning upon receipt.
- (2) Priority for movement of units from KOREA to JAPAN will go to units that have been in KOREA for the longest period of time.

~~Top Secret~~

Top Secret

2403-74- 56

(3) Prepare plans for withdrawal and evacuation of UN Forces upon order and in event of an emergency.

- 4. Administration and Logistics - See Annexes "D" and "E".
- 5. Command and Communications

Command Posts

CINCUNC	- Tokyo
Eighth Army	- Korea to Osaka-Kyoto Area
JLCOM	- Yokohama
X Corps	- Pyongyang
Other	- No change

BY COMMAND OF GENERAL MacARTHUR:

Doyle O. Hickey
 DOYLE O. HICKEY
 Major General, GSC
 Acting Chief of Staff

ANNEXES:

- A - Eighth Army Troop List (to be issued later)
- B - X Corps Troop List (to be issued later)
- C - RYCOM Troop Basis (to be issued later)
- D - Personnel and Administration (to be issued later)
- E - Logistics (to be issued later)
- F - FEC Base Improvement Program (to be issued later)
- G - Staff Study Containing Background Information

DISTRIBUTION:

CINCPAC	Copy 1
CofS, FEC	Copies 2-4
DCofS, FEC	Copy 5
DCofS, SCAP	Copy 6
CG Eighth Army	Copies 7-11
CG X Corps	Copies 12-16
CG IX Corps	Copies 17-21
CG RYCOM	Copies 22-23
COMNAVFE	Copies 24-28
CG FEAF	Copies 29-33
CG JLCOM	Copies 34-38
G-1	Copies 39-43
G-2	Copies 44-48
G-3	Copies 49-53
G-4	Copies 54-58
JSPOG	Copies 59-67
Engr	Copies 68-69
Ord S	Copy 70
Sig	Copy 71
QM	Copy 72
Trans	Copy 73
Med	Copy 74

Top Secret

DECLASSIFIED
Authority NND 975029

