

## **Historic, archived document**

Do not assume content reflects current scientific knowledge, policies, or practices.



62, 01  
RECEIVED  
JAN 16 1925  
U.S. Department of Agriculture

ANNUAL WHOLESALE PRICE LIST  
FALL 1924 - SPRING 1925

---

**FRASER  
NURSERY  
COMPANY**  
(INCORPORATED)



HUNTSVILLE, ALABAMA



FOR NURSERYMEN, FLORISTS, SEEDSMEN  
AND DEALERS ONLY



Fall 1924

Spring 1925

ANNUAL WHOLESALE PRICE LIST

OF THE

**FRASER NURSERY  
COMPANY**

(INCORPORATED)

HUNTSVILLE, ALABAMA



---

**IMPORTANT!**

This list is intended to reach only those entitled to Wholesale Trade Prices. Errors are sometimes made, and in order that our mailing list may be corrected, we will thank any one in the trade to advise us should they have knowledge of our list reaching parties not so entitled.

---

**For Nurserymen, Florists, Seedmen and  
Dealers Only**

## CUSTOMS OF THE TRADE

**PRICES** quoted herein are not good after April 1, 1925 and are subject to cancellation without notice any time unless previously agreed upon.

**CASH** or satisfactory reference, with sufficient time to investigate before shipment, is invariably required of parties unknown to us. To responsible, prompt paying parties, we will extend usual time for payment.

**REMITTANCES** should be made by Draft on New York, Chicago, or St. Louis, or by Express or Postal Money Order.

**CLAIMS** for damages or deficiencies to receive consideration must be made promptly upon receipt of goods.

**RATES** apply as follows: When 10 trees and not over 50 are ordered, the price will be 2½ cents per tree more than the price per 100. Orders for 50 trees or more up to 300, when not less than 10 trees of each variety, will be charged at the price per 100. Orders for 300 trees or more, when not less than 10 trees of each variety, will be charged for at the price per 1000.

**TELEGRAMS**—Use Nurseryman's Telegraphic Code, copy of which we will mail upon request. In connection with this we give a cipher word for each grade. When this cipher word is used either in mail or telegraphic orders no other description of the stock is necessary.

**PACKING**—We believe we excel others in the manner of handling stock. This is due largely to personal experience and supervision. We pack to insure contents from drying or freezing, even though the shipment be delayed in transit.

The cost of new boxes, well made, to be added, as follows:

30x30x7½ to 10 feet.....	\$4.00	18x24x7½ to 10 feet.....	\$2.50
24x30x7½ to 10 feet.....	3.50	18x18x7½ to 10 feet.....	2.25
24x24x7½ to 10 feet.....	3.00	15x15x7½ to 10 feet.....	1.75

Bales 50 cents and up, according to size.

**SHIPMENTS**—When ordering, please state plainly whether freight or express shipment is desired, and give route if by freight. In the absence of this information we will use our best judgment without assuming any responsibility as to delivery. Goods are at purchaser's risk and cost after delivery to the forwarding company. Under the Parcel Post system we are often able to forward small packages for less than the rates charged by the express companies. Parties desiring to secure the benefits of Parcel Post should include sufficient for postage in their remittances; the difference, if any, will be refunded promptly.

**GUARANTEE**—We are very careful to keep each variety true to name as labeled, and are ready at any time to replace, on proper proof, any that may prove otherwise, free of charge, or refund the amount paid, but it is mutually agreed between the purchaser and ourselves that we shall at no time be liable for an amount larger than the original purchase price.

**CAUTION**—All orders are accepted upon the condition that they shall be void should any injury befall the stock from frost, hail, fire or other causes beyond our control.

**REFERENCES**—Any Bank or Business House in Huntsville, Alabama, or either of the Mercantile Agencies.

LONG DISTANCE TELEPHONE IN OUR OFFICES.



## FRUIT TREES

### APPLE—One Year, Budded

	Cipher	Per 100
5 to 6 feet, whips.....	Gander	\$25.00
4 to 5 feet, whips.....	Gang	20.00
3 to 4 feet, whips.....	Garb	15.00
2 to 3 feet, whips.....	Gash	12.50
<b>Delicious</b>	<b>Yates</b>	
<b>Early Harvest</b>	<b>Yellow Horse</b>	
<b>Kinnaid</b>	<b>Yellow Transparent</b>	
<b>Livland (Liveland Raspberry)</b>		
<b>Red June</b>	<b>Crabs</b>	
<b>Stayman Winesap</b>	<b>Hyslop</b>	
<b>Winesap</b>	<b>Transcendent</b>	

### BARTLETT PEAR—Two Year, Budded on French

5 to 6 feet, 11/16 and up, well branched.....	Habit	50.00
5 to 6 feet, 5/8 to 11/16, well branched.....	Hail	40.00
4 to 5 feet, 9/16 to 5/8, well branched.....	Hair	35.00
3½ to 5 feet, 1/2 to 9/16, branched.....	Hall	30.00
3 to 4 feet, 7/16 to 1/2, mostly branched.....	Hand	25.00

### KIEFFER PEAR—Two Year, Budded on Japan

6 to 8 feet, 1 inch and up, well branched.....	Health	40.00
5 to 6 feet, 11/16 to 1 inch, well branched.....	Hedge	35.00
5 to 6 feet, 5/8 to 11/16, well branched.....	Heel	25.00
4 to 5 feet, 9/16 to 5/8, well branched.....	Helmet	22.50
3½ to 5 feet, 1/2 to 9/16, branched.....	Hope	18.00

### BARTLETT PEAR—One Year, Budded on Japan

5 to 6 feet, whips and few branches.....	Hopper	40.00
4 to 5 feet, whips and few branches.....	Hornet	30.00
3 to 4 feet, whips and few branches.....	Horse	25.00
2 to 3 feet, whips .....	Horrid	20.00

### KIEFFER PEAR—One Year, Budded on Japan

5 to 6 feet, whips and few branches.....	House	25.00
4 to 5 feet, whips and few branches.....	Hovel	20.00
3 to 4 feet, whips and few branches.....	Hull	15.00
2 to 3 feet, whips .....	Hurt	10.00

### SOUR CHERRY—Two Years, on Mahaleb

5 to 6 feet, 1 inch and up, well branched.....	Idol	60.00
5 to 6 feet, 11/16 to 1 inch, well branched.....	Ignore	50.00
4 to 6 feet, 5/8 to 11/16, well branched.....	Image	45.00
3½ to 5 feet, 9/16 to 5/8, well branched.....	Impair	40.00
3 to 5 feet, 1/2 to 9/16, well branched.....	Imply	30.00
<b>Large Montmorency</b>	<b>Richmond (Early Richmond)</b>	

## SWEET CHERRY—One Year, on Mahaleb

	Cipher	Per 100
5 to 6 feet, whips and branched.....	Impost	\$50.00
4 to 5 feet, whips and branched.....	Impress	40.00
3 to 4 feet, mostly whips .....	Imprint	30.00
Black Tartarian	Governor Wood	

## SOUR CHERRY—One Year, on Mahaleb

3 to 4½ feet, 9/16 and up, well branched.....	Indorse	35.00
2½ to 3½ feet, 7/16 to 9/16, well branched.....	Indurate	25.00
2 to 3 feet, 5/16 to 7/16, well branched.....	Industry	17.50
Large Montmorency	May Duke	Richmond (Early Richmond)

## PEACH—One Year

		Per 1000
5 to 7 feet, 11/16 and up, well branched.....	Jaquar	\$225.00
5 to 6 feet, 5/8 to 11/16, well branched.....	Javelin	225.00
4 to 5 feet, 9/16 to 5/8, well branched.....	Jersey	209.00
3½ to 5 feet, 1/2 to 9/16, well branched.....	Jewel	175.00
3 to 4 feet, 7/16 to 1/2, branched.....	Jobber	150.00
3 to 4 feet, under 7/16, whips and few branches.....	Join	125.00
2 to 3 feet, partly branched .....	Joy	100.00
Alexander	Greensboro	
Arp Beauty	Heath Cling	
Belle of Georgia	Hiley	
Carman	J. H. Hale	
Champion	Krummel	
Chinese Cling	Mayflower	
Crawford's Early	Rochester	
Crawford's Late	Salway	
Elberta	Wonderful	
Fitzgerald		

## APRICOT—One Year, on Apricot

		Per 100
5 to 6 feet, 5/8 to 11/16, well branched.....	Lace	\$35.00
4 to 6 feet, 9/16 to 5/8, well branched.....	Lair	30.00
3½ to 5 feet, 1/2 to 9/16, branched.....	Lamp	25.00
3 to 4 feet, under 1/2, whips and branched.....	Lance	20.00
2 to 3 feet, mostly whips .....	Lap	15.00
Early Golden	Wilson	
Royal		

## QUINCE—Two Year

3 to 4 feet, 7/16 to 1/2, well branched.....	Quart	40.00
Champion	Orange	



**PLUM—One Year, on Peach**

	Cipher	Per 100
5 to 6 feet, 11/16 and up, well branched.....	Kick	\$45.00
4 to 6 feet, 5/8 to 11/16, well branched.....	Kilt	35.00
4 to 5 feet, 9/16 to 5/8, well branched.....	Kink	30.00
3½ to 5 feet, 1/2 to 9/16, branched.....	Kirk	25.00
3 to 4 feet, 7/16 to 1/2, branched.....	Kite	20.00
3 to 4 feet, under 7/16, whips and branched.....	Klick	15.00
Abundance	Wickson	
Burbank	Shropshire Damson	
Red June		

**FIGS—One Year**

3 to 4 feet, whips and branched.....	Fib	35.00
2 to 3 feet, whips and branched.....	Fiber	30.00
18 to 24 inches, whips .....	Finch	25.00
Brown Turkey	Celestial	

**MULBERRY—One Year**

5 to 6 feet, whips.....	Muddy	30.00
4 to 5 feet, whips.....	Mull	25.00
3 to 4 feet, whips.....	Multiple	20.00
2 to 3 feet, whips.....	Mush	15.00
Abundance (Barnes)	Hicks	
American (New American)	Monarch	
Downing		

**JAPANESE PERSIMMON—One Year, Grafted**

3 to 4 feet, whips.....	Myriad	40.00
2 to 3 feet, whips.....	Mystery	35.00
Hacheya	Triumph	
Hyakume	Yemon	
Okame	Zengi	
Tane Nashi		

**NUT TREES**

PECANS, Standard Varieties	Cipher	Per 100
4 to 5 feet.....	Peck	\$70.00
3 to 4 feet.....	Pencil	60.00
2 to 3 feet.....	Pend	50.00
Delmas	Pabst	
Frotscher	Schley	
Moneymaker	Stuart	

**WALNUT, English**

4 to 5 feet.....	Waddle	75.00
3 to 4 feet.....	Wade	60.00
2 to 3 feet.....	Wag	50.00
18 to 24 inches.....	Wait	40.00
12 to 18 inches.....	Waive	25.00

WALNUT, Japan	Cipher	Per 100
6 to 8 feet.....	Wall	\$70.00
5 to 6 feet.....	War	60.00
4 to 5 feet.....	Wax	50.00
3 to 4 feet.....	Well	40.00
2 to 3 feet.....	Work	30.00

## SMALL FRUITS

		Per 1000
BLACKBERRY—One Year, No. 1.....		\$ 35.00
Early Harvest	Mersereau	
Eldorado	Snyder	
DEWBERRY—One Year, Tips.....		25.00
Austin	Lucretia	
RASPBERRY—One Year, No. 1		
Cumberland (Black).....		25.00
Cuthbert (Red).....		25.00
Gregg (Black).....		25.00
St. Regis (Everbearing).....		20.00
St. Regis (Everbearing) Transplanted.....		35.00
CURRANTS—Two Year, Medium.....		100.00
Cherry	Wilder	
GOOSEBERRY—Two Year, Medium.....		100.00
Downing	Houghton	

## GARDEN ROOTS

		Per 1000
ASPARAGUS—Two Year crowns, all standard varieties.....		\$12.50
HORSE RADISH—Common, 6 to 8 inch sets.....		15.00
RHUBARB—One Year, selected.....		40.00
Linnaeus	Victoria	

## GRAPES

Two Year, No. 1

	Per 100
Campbell's Early.....	\$10.00
Concord .....	6.00
Delaware .....	10.00
Diamond (Moore's Diamond).....	7.50
Ives .....	6.00
Lutie .....	10.00
Moore (Moore's Early).....	7.50
Niagara .....	10.00
Worden .....	6.00
Woodruff Red .....	10.00
James (Black Scuppernong) .....	20.00
Scuppernong (White) .....	20.00

## VINES

<b>AMPELOPSIS tricuspidata veitchi (Boston Ivy)</b>	Cipher	Per 100
2 years, No. 1.....	Vicar	\$25.00
<b>CLEMATIS henryi, white, 2 years, No. 1.....</b>	Vicious	50.00
<b>jackmanii, purple, 2 years, No. 1.....</b>	Victim	50.00
<b>Mme. Edouard Andre, red, 2 years, No. 1.....</b>	Victor	50.00
<b>paniculata, 2 years, No. 1.....</b>	View	18.00
<b>HEDERA helix (English Ivy)</b>		
2 years, No. 1 field grown.....	Village	30.00
1 year, from 2½ inch pots.....	Villian	20.00
<b>PUERARIA thunbergiana (Kudzu Vine)</b>		
2 years, No. 1.....	Violin	12.00

## PRIVET

<b>LIGUSTRUM AMURENSE (Amour River Hardy)</b>	Cipher	Per 1000
2 to 3 feet, 4 branches and up.....	Prairie	\$ 75.00
2 to 3 feet, 2 and 3 branches.....	Prance	60.00
18 to 24 inches, 4 branches and up.....	Prank	50.00
18 to 24 inches, 2 and 3 branches.....	Prate	40.00
12 to 18 inches, 3 branches and up.....	Prattle	35.00
12 to 18 inches, 2 branches.....	Prayer	30.00
6 to 12 inches, 3 branches and up.....	Preach	25.00
<b>IBOTA</b>		
2 to 3 feet, well branched.....	Preamble	60.00
18 to 24 inches, branched.....	Prebend	40.00
12 to 18 inches, branched.....	Precede	25.00
<b>JAPONICUM (Japanese Privet) (See Broad Leaved Evergreens)</b>		
<b>OVALIFOLIUM (California Privet)</b>		
2 to 3 feet, 4 branches and up.....	Precept	35.00
2 to 3 feet, 2 and 3 branches.....	Precious	25.00
18 to 24 inches, 4 branches and up.....	Precise	25.00
18 to 24 inches, 2 and 3 branches.....	Preclude	20.00
12 to 18 inches, 3 branches and up.....	Predicate	15.00
12 to 18 inches, 2 branches.....	Predict	12.50
6 to 12 inches, 3 branches and up.....	Preface	10.00
Good transplanting grade, suitable also for grafting.....	Prefer	8.00
<b>REGELIANUM (Regels or Prostrate Privet)</b>		
18 to 24 inches, well branched.....	Prejudice	150.00
12 to 18 inches, well branched.....	Prelude	120.00
<b>SINENSE (Amour River—Southern Type)</b>		
3 to 4 feet, well branched.....	Prelate	60.00
2 to 3 feet, well branched.....	Premium	50.00
18 to 24 inches, well branched.....	Prepare	35.00
12 to 18 inches, branched.....	Prescribe	25.00

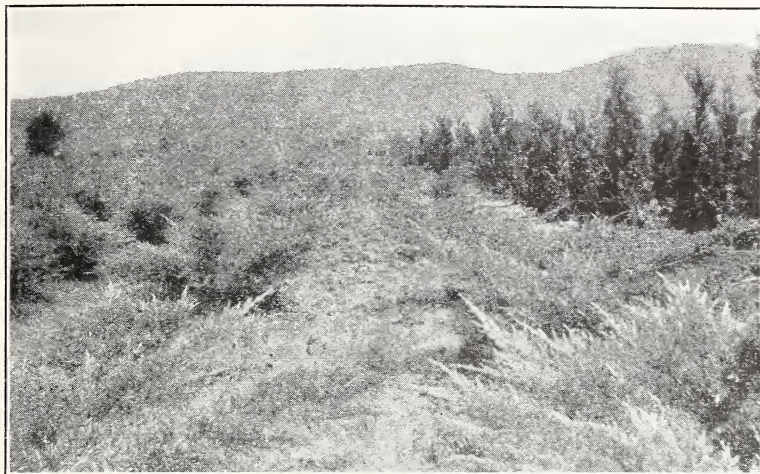


YOUNG EVERGREENS

## ORNAMENTAL TREES

	Cipher	Per 10	Per 100
<b>CORNUS florida rubra</b> (Red Flowering Dogwood)			
2 to 3 feet.....	Object	\$10.00	
18 to 24 inches.....	Oblige	7.50	
<b>MALUS ioensis bechteli</b> (Bechtel's Double Flowering Crab)			
3 to 4 feet, well branched.....	Ob'ong	7.50	
2 to 3 feet, branched .....	Obscure		\$50.00
18 to 24 inches, branched .....	Observe		40.00
<b>MELIA azedarach umbraculiformis</b> (Texas Umbrella)			
6 to 8 feet.....	Obtrude		60.00
5 to 6 feet.....	Occasion		50.00
4 to 5 feet.....	Occupy		40.00
3 to 4 feet.....	Occur		30.00
2 to 3 feet.....	Ocean		20.00
<b>MIMOSA julibrissin</b> (Acacia)			
3 to 4 feet, 2 year transplanted.....	Octagon		40.00
2 to 3 feet, 2 year transplanted.....	Odd		30.00
18 to 24 inches, 2 year transplanted....	Offal		20.00
<b>PRUNUS triloba</b> (Double Flowering Plum)			
3 to 4 feet, well branched.....	Offend		60.00
2 to 3 feet, well branched.....	Offset		50.00
18 to 24 inches, branched .....	Olden		40.00





JUNIPERUS PFITZERIANA

## CONIFEROUS EVERGREENS

Prices include balling and burlapping where necessary.

### CHAMAECYPARIS (Retinospora) Japan Cypress

		Per 10	Per 100
<b>obtusa</b>	<b>Cipher</b>		
3 to 4 feet .....	Earl	\$35.00	
30 to 36 inches .....	Earn	25.00	
24 to 30 inches .....	Earnst	20.00	
<b>pisifera</b>			
4 to 5 feet .....	Earth	35.00	
3 to 4 feet .....	Earthly		\$250.00
30 to 36 inches .....	Earthquake		200.00
24 to 30 inches .....	Ease		150.00
18 to 24 inches .....	East		100.00
<b>pisifera aurea</b>			
4 to 5 feet.....	Easter	35.00	
3 to 4 feet.....	Easy		250.00
30 to 36 inches.....	Eaves		200.00
24 to 30 inches.....	Ebb		150.00
18 to 24 inches.....	Ebony		100.00
<b>pisifera plumosa (Green)</b>			
30 to 36 inches.....	Eccentric	25.00	
24 to 30 inches.....	Echo		200.00
18 to 24 inches.....	Eclipse		150.00
15 to 18 inches.....	Economy		125.00
12 to 15 inches.....	Effort		100.00



BIOTA AUREA NANA; JUNIPERUS VIRG. GLAUCA ON RIGHT

CONIFEROUS EVERGREENS—(Continued)

<b>CHAMAECYPARIS pisifera</b>			
<b>squarrosa veitchi</b> (Veitch's Silver Cypress)	<b>Cipher</b>	<b>Per 10</b>	<b>Per 100</b>
30 to 36 inches.....	<b>Either</b>	<b>\$25.00</b>	
24 to 30 inches.....	<b>Elaborate</b>		<b>\$200.00</b>
18 to 24 inches.....	<b>Elan</b>		<b>150.00</b>
15 to 18 inches.....	<b>Elapse</b>		<b>125.00</b>
12 to 15 inches.....	<b>Elect</b>		<b>100.00</b>
<b>JUNIPERUS chinensis pfitzeriana</b> (Pfitzer's Chinese Juniper)			
30 to 36 inches.....	<b>Election</b>	<b>35.00</b>	
24 to 30 inches.....	<b>Elective</b>		<b>250.00</b>
18 to 24 inches.....	<b>Electrify</b>		<b>200.00</b>
15 to 18 inches.....	<b>Elegy</b>		<b>150.00</b>
<b>communis</b> (Common Juniper)			
30 to 36 inches.....	<b>Element</b>		<b>125.00</b>
24 to 30 inches.....	<b>Elephant</b>		<b>100.00</b>
18 to 24 inches.....	<b>Elevator</b>		<b>75.00</b>
<b>communis hibernica</b> (Irish Juniper)			
18 to 24 inches, well filled.....	<b>Elfin</b>		<b>75.00</b>
<b>excelsa stricta</b> (Greek Juniper)			
24 to 30 inches, well formed.....	<b>Elicit</b>	<b>30.00</b>	
18 to 24 inches, well formed.....	<b>Elite</b>		<b>200.00</b>
15 to 18 inches, well formed.....	<b>Elixir</b>		<b>150.00</b>
12 to 15 inches.....	<b>Elk</b>		<b>125.00</b>
<b>JUNIPERUS virginiana</b> (Red Cedar)			
30 to 36 inches.....	<b>Elm</b>	<b>20.00</b>	
24 to 30 inches.....	<b>Elope</b>		<b>150.00</b>
18 to 24 inches.....	<b>Elude</b>		<b>100.00</b>



CONIFEROUS EVERGREENS—(Continued)

<b>JUNIPERUS virginiana</b>				
<i>glauca</i> (Virginia Blue Cedar)		Cipher	Per 10	Per 100
3 to 4 feet.....	Elusive		\$45.00	
30 to 36 inches.....	Embark		35.00	
24 to 30 inches.....	Embassy			\$300.00
18 to 24 inches.....	Embers			200.00
<b>sabina tamariscifolia</b>				
24 to 30 inches, spread.....	Embody		30.00	
18 to 24 inches, spread.....	Emboss		25.00	
15 to 18 inches, spread.....	Embower		20.00	
<b>PINUS montana mughus (Dwarf Mugho Pine)</b>				
18 to 24 inches, spread.....	Embrace		22.50	
15 to 18 inches, spread.....	Embroider		17.50	
12 to 15 inches, spread.....	Emerald		13.50	
<b>THUYA occidentalis Tom Thumb</b>				
18 to 24 inches, spread.....	Emergency			200.00
15 to 18 inches, spread.....	Emery			150.00
12 to 15 inches, spread.....	Emigrate			125.00
<b>occidentalis globosa (Globe Arborvitae)</b>				
18 to 24 inches.....	Emit			150.00
15 to 18 inches.....	Emotion			125.00
12 to 15 inches.....	Emperor			100.00
<b>occidentalis hoveyi (Hovey's Golden Arborvitae)</b>				
18 to 24 inches.....	Emphasis			150.00
15 to 18 inches.....	Emphatic			125.00
12 to 15 inches.....	Empire			100.00
<b>occidentalis pyramidalis (Pyramidal Arborvitae)</b>				
30 to 36 inches.....	Employ		20.00	
24 to 30 inches.....	Empower			150.00
18 to 24 inches.....	Empress			125.00
15 to 18 inches.....	Emulate			100.00
<b>THUYA orientalis (Biota) (Chinese Arborvitae)</b>				
4 to 5 feet, selected well formed.....	Emulating			200.00
3 to 4 feet, selected well formed.....	Emulation			150.00
30 to 36 inches, well formed.....	Emulator			100.00
24 to 30 inches, well formed.....	Emulsion			75.00
18 to 24 inches.....	Enact			50.00
<b>orientalis aurea conspicua</b>				
24 to 30 inches.....	Enamel		25.00	
18 to 24 inches.....	Encamp		20.00	
<b>orientalis aurea nana (Berckman's Golden Arborvitae)</b>				
18 to 24 inches.....	Encroach			250.00
15 to 18 inches.....	Encumber			175.00
12 to 15 inches.....	Endanger			125.00
<b>TSUGA canadensis (Hemlock Spruce)</b>				
24 to 30 inches, well filled.....	Endorse		22.50	
18 to 24 inches, well filled.....	Endow		17.50	



PHOTINIA SERRULATA

## BROAD LEAVED EVERGREENS

Prices include balling and burlapping where necessary

<b>ABELIA grandiflora (Rupestris)</b>	<b>Cipher</b>	<b>Per 10</b>	<b>Per 100</b>
2 to 3 feet, well branched.....	Encourage		\$ 40.00
18 to 24 inches, well branched.....	Enchant		25.00
12 to 18 inches, well branched.....	Encore		15.00
<b>AZALEA hinodegiri</b>			
18 to 24 inches, with bloom buds.....	Endure	\$30.00	
15 to 18 inches, with bloom buds.....	Enemy	25.00	
12 to 15 inches, with bloom buds.....	Energy	20.00	
10 to 12 inches, with bloom buds.....	Enervate	15.00	
<b>EUONYMUS japonica (Evergreen Euonymus)</b>			
24 to 30 inches, well branched.....	Enforce		90.00
18 to 24 inches, well branched.....	Engage		65.00
<b>carrierei</b>			
24 to 30 inches, well branched.....	Engine		45.00
18 to 24 inches, branched.....	Engross		35.00
12 to 18 inches, branched.....	Engulf		25.00
<b>LIGUSTRUM japonicum (Japanese Privet)</b>			
4 to 5 feet, well branched .....	Enhance		100.00
3 to 4 feet, well branched .....	Enliven		85.00
2 to 3 feet, well branched .....	Enlist		60.00
2 to 3 feet, well branched, roots puddled .....	Enormous		40.00

**BROAD LEAVED EVERGREENS—(Continued)**

<b>LIGUSTRUM lucidum</b> (Wax Leaf Privet)	<b>Cipher</b>	<b>Per 10</b>	<b>Per 100</b>
24 to 30 inches, well branched.....	<b>Enrobe</b>		\$150.00
18 to 24 inches, well branched.....	<b>Enroll</b>		125.00
<b>nepalense</b> (Nepaul Privet)			
24 to 30 inches, well branched.....	<b>Ensnare</b>		125.00
18 to 24 inches, well branched.....	<b>Ensue</b>		100.00
<b>MAHONIA japonica</b> (Holly Leaf Mahonia)			
24 to 30 inches.....	<b>Entail</b>	\$20.00	
18 to 24 inches.....	<b>Enter</b>	15.00	
15 to 18 inches.....	<b>Entrap</b>	12.50	
12 to 15 inches.....	<b>Entrust</b>	10.00	
<b>PHOTINIA serrulata</b>			
2 to 3 feet, well branched.....	<b>Envious</b>		150.00
18 to 24 inches, well branched .....	<b>Envoy</b>		125.00
12 to 18 inches, branched .....	<b>Envy</b>		100.00

**DECIDUOUS SHRUBS**

**ALTHEA—Bush Form**

**Two Years**

	<b>Cipher</b>	<b>Per 100</b>
3 to 4 feet, well branched.....	<b>Sardonic</b>	\$25.00
2 to 3 feet, well branched.....	<b>Satonic</b>	17.50
18 to 24 inches, well branched.....	<b>Satire</b>	12.50

**Ardens**—double violet.

**Anemoneoflora**—large double red.

**Boule de Feu**—very double, bright red.

**Compte de Hainaut**—double, pinkish white.

**Duc de Brabant**—very double, dark red.

**Jeanne d'Arc**—double, pure white.

**Lady Stanley**—semi-double, rosy white.

**Poenoefflora**—very double, rosy pink.

**Purpurea semi plena**—double purple.

**Rubis**—single red.

**Snowdrift**—single, pure white.

**Totus Albus**—single, pure white.

**AMYGDALUS nana alba** (White Flowering Almond)

3 to 4 feet, well branched.....	<b>Satisfy</b>	60.00
2 to 3 feet, well branched.....	<b>Saucy</b>	50.00
18 to 24 inches, well branched.....	<b>Sausage</b>	40.00

**nana rosea** (Pink Flowering Almond)

2 to 3 feet, well branched.....	<b>Savage</b>	50.00
18 to 24 inches, well branched.....	<b>Saving</b>	40.00



CREPE MYRTLE

## DECIDUOUS SHRUBS—(Continued)

<b>BERBERIS thunbergi</b> (Japanese Barberry)	Cipher	Per 100
18 to 24 inches, well branched.....	Saxon	\$20.00
15 to 18 inches, well branched.....	Scale	15.00
12 to 15 inches, well branched.....	Scalp	10.00
<b>BUDDLEIA davidii magnifica</b> (Butterfly Bush)		
2 years, No. 1.....	Scarf	22.50
<b>lindleyana</b>		
2 years, No. 1.....	Scarlet	22.50
<b>CALYCANTHUS florida</b> (Sweet Shrub)		
2 to 3 feet, well branched.....	Scatter	30.00
18 to 24 inches, well branched.....	Scholar	25.00
<b>CARYOPTERIS incana</b> (Mastacanthus) Blue Spirea		
24 to 30 inches, well branched.....	School	25.00
18 to 24 inches, well branched.....	Schooner	20.00
<b>DEUTZIA crenata</b> and <b>Pride of Rochester</b>		
3 to 4 feet, well branched.....	Scorn	20.00
2 to 3 feet, well branched.....	Scout	15.00
18 to 24 inches .....	Scrap	10.00
12 to 18 inches .....	Scribe	7.50
<b>EXOCHORDA grandiflora</b> (Pearl Bush)		
3 to 4 feet, well branched.....	Seal	40.00
2 to 3 feet, well branched.....	Season	30.00
18 to 24 inches .....	Sector	20.00



## DECIDUOUS SHRUBS—(Continued)

	Cipher	Per 100
<b>FORSYTHIA, Assorted</b>		
3 to 4 feet, well branched.....	Secure	\$20.00
2 to 3 feet, well branched.....	Sedan	15.00
Varieties: Fortunei Intermedia Viridissima Suspensa		
<b>HYDRANGEA arborescens grandiflora alba (Hills of Snow)</b>		
2 to 3 feet, well branched.....	Sedate	35.00
18 to 24 inches, well branched.....	Segment	25.00
<b>paniculata grandiflora</b>		
2 to 3 feet, well branched.....	Seldom	35.00
18 to 24 inches, well branched.....	Select	25.00
<b>paniculata grandiflora, Tree Form</b>		
3 to 4 feet, well branched.....	Selfish	75.00
<b>quercifolia (Oak Leaved Hydrangea)</b>		
3 to 4 feet, well branched.....	Senate	70.00
2 to 3 feet, well branched.....	Sensible	60.00
18 to 24 inches, well branched.....	Sentence	50.00
<b>HYPERICUM moserianum (Gold Flower)</b>		
2 to 3 feet, heavy .....	Sentinel	35.00
18 to 24 inches, well branched.....	Sentry	25.00
12 to 18 inches, branched .....	Serge	20.00
<b>JASMINUM humile (Nearly evergreen and everblooming)</b>		
2 years, well branched.....	Serial	35.00
<b>nudiflorum (Yellow Jasmine)</b>		
3 years, extra heavy .....	Sermon	30.00
2 years, well branched .....	Serpent	25.00
<b>LAGERSTROEMIA indica (Crepe Myrtle)</b>		
3 to 4 feet, well branched.....	Servant	40.00
2 to 3 feet, well branched.....	Servile	30.00
18 to 24 inches, well branched.....	Settle	20.00
Colors: Lavender Pink Red White Crimson		
Dwarf Crimson 10c. per plant extra.		
<b>LONICERA, Assorted</b>		
3 to 4 feet, well branched.....	Shad	25.00
2 to 3 feet, well branched.....	Shaft	20.00
18 to 24 inches, well branched.....	Shallow	15.00
Varieties: Fragrantissima Morrowi Pink Tartarian		
<b>PHILADELPHUS, Assorted</b>		
3 to 4 feet, well branched.....	Shamble	20.00
2 to 3 feet, well branched.....	Shame	15.00
18 to 24 inches .....	Shark	10.00
Varieties: Coronarius Lewisi (Gordonianus)		
<b>RHODOTYPUS kerrioides (White Kerria)</b>		
2 to 3 feet, well branched.....	Shatter	30.00
18 to 24 inches, well branched.....	Shaver	25.00



## SPIREA PRUNIFOLIA

## DECIDUOUS SHRUBS—(Continued)

		Per 100
<b>SPIREA bumalda Anthony Waterer</b>	<b>Cipher</b>	
24 to 30 inches, well branched.....	<b>Shawl</b>	\$35.00
18 to 24 inches, well branched.....	<b>Shear</b>	25.00
15 to 18 inches, well branched.....	<b>Sheaf</b>	20.00
<b>callosa rosea</b>		
2 to 3 feet, well branched.....	<b>Shed</b>	20.00
18 to 24 inches, well branched.....	<b>Shelf</b>	15.00
<b>prunifolia flore plena (Bridal Wreath)</b>		
4 to 5 feet, well branched.....	<b>Shelter</b>	40.00
3 to 4 feet, well branched.....	<b>Shelve</b>	35.00
2 to 3 feet, well branched.....	<b>Sherbert</b>	30.00
18 to 24 inches, well branched.....	<b>Sheriff</b>	22.50
<b>reevesiana flore plena</b>		
3 to 4 feet, well branched.....	<b>Sherry</b>	30.00
2 to 3 feet, well branched.....	<b>Shield</b>	20.00
18 to 24 inches, well branched.....	<b>Shift</b>	15.00
<b>thunbergi</b>		
24 to 30 inches, well branched.....	<b>Shilling</b>	30.00
18 to 24 inches, well branched.....	<b>Shimmer</b>	25.00
<b>van Houttei</b>		
3 to 4 feet, well branched.....	<b>Shiny</b>	17.50
2 to 3 feet, well branched.....	<b>Shirk</b>	12.50
18 to 24 inches, well branched.....	<b>Shiver</b>	8.00
12 to 18 inches, branched.....	<b>Shock</b>	5.00





ASSORTED SHRUBS

DECIDUOUS SHRUBS—(Continued)

<b>SYMPHORICARPOS racemosus</b> (Snowberry)	Cipher	Per 100
3 to 4 feet, well branched.....	Shoot	\$30.00
2 to 3 feet, well branched.....	Shop	20.00
18 to 24 inches, well branched.....	Shout	15.00
<b>vulgaris</b> (Red Snowberry or Indian Currant)		
24 to 30 inches, well branched.....	Shovel	20.00
18 to 24 inches, well branched.....	Shower	15.00
<b>TAMARIX hispida aestivalis</b>		
2 to 3 feet, well branched.....	Shrill	25.00
18 to 24 inches, well branched.....	Shrine	20.00
<b>WEIGELA hendersonia</b>		
3 to 4 feet, well branched.....	Shroud	30.00
2 to 3 feet, well branched.....	Shuck	25.00
<b>rosea</b>		
3 to 4 feet, well branched.....	Shudder	30.00
2 to 3 feet, well branched.....	Shuffle	25.00
18 to 24 inches, well branched.....	Shutter	18.00



ROSES

## ROSES—Field Grown, Budded and On Own Roots

(H. P.) Hybrid Perpetual, (H. W.) Hybrid Wichuriana, (H. C.) Hardy Climbing, (Mtf.) Multiflora. (S.) Setigera, (C. P.) Climbing Polyantha, (C. T.) Climbing Tea and Ramblers, No. 1, graded 3 or more branches 24 to 30 inches in length; No. 2, graded 2 and 3 branches 18 to 24 inches in length.

(T.) Tea and (H. T.) Hybrid Tea, No. 1, graded 3 or more branches 18 to 24 inches in length; No. 2, graded 2 and 3 branches 12 to 18 inches in length.

(B.) Budded. (O. R.) Own Roots.

	No. 1 Per 100	No. 2 Per 100
American Pillar—CP—large bunches of pink (O.R.).....	\$25.00	\$15.00
Bessie Brown—HT—creamy white (B).....	35.00	25.00
Climbing American Beauty—HC—rich red (O.R.).....	25.00	15.00
Conrad F. Meyer—HR—bright pink (B).....	30.00	20.00
Crimson Rambler—rich crimson (O.R.).....	25.00	15.00
Dorothy Perkins—HW—bright pink (O.R.).....	20.00	12.50
Empress of China—HC—bright red (O.R.).....	20.00	12.50
Etoile de Lyon—T—bright sulphur yellow (B).....	35.00	25.00
Excelsa—HW—Red Dorothy Perkins (O.R.).....	20.00	12.50

## ROSES—(Continued)

	No. 1 Per 100	No. 2 Per 100
Frau Karl Druschki—HP—pure white (B).....	\$30.00	\$20.00
General Jacqueminot—HP—bright red (B).....	30.00	20.00
Gruss an Teplitz—HT—fiery crimson (B).....	35.00	25.00
Heinrich Munch—HP—a true pink Druschki (B).....	30.00	20.00
Hiawatha—HW—single crimson (O.R.).....	25.00	15.00
Jonkherr J. L. Mock—HT—clear pink (B).....	35.00	25.00
K. A. Victoria—HT—pure white (B).....	35.00	25.00
Madam Plantier—HP—pure white (O.R.).....	25.00	15.00
Maman Cochet—T—rosy pink (B).....	35.00	25.00
Ophelia—HT—brilliant Salmon-flesh (B).....	35.00	25.00
Paul Neyron—HP—deep rose (B).....	30.00	20.00
Pink Roamer—HW—single pink (O.R.).....	20.00	12.50
President Taft—HT—deep pink (B).....	35.00	25.00
Queen of Prairie—S—rosy red (O.R.).....	25.00	15.00
Radiance—HT—brilliant rosy carmine (B).....	35.00	25.00
Red Radiance—HT—bright pure red (B).....	35.00	25.00
Red Letter Day—HT—glowing scarlet-crimson (B).....	35.00	25.00
Rhea Reid—HT—rich, velvety red (B).....	35.00	25.00
Seven Sisters—Mtf.—crimson to white (O.R.).....	25.00	15.00
Tausendschon—Rambler—deep pink (O.R.).....	20.00	12.50
Ulrich Brunner—HP—Hardy American Beauty (B)....	30.00	20.00
White Dorothy Perkins—HW (O.R.).....	20.00	12.50

## HARDY PERENNIALS

	Per 100
Cannas, King Humbert, Yellow King	
Humbert and Eureka (White), strong roots.....	\$ 6.00
Coreopsis lanceolata grandiflora (Tickseed).....	6.00
Phlox, assorted varieties .....	15.00
Tuberose, Excelsior Pearl .....	5.00
Tuberose, Mexican .....	4.00

## LINING OUT STOCK

	Per 1000
Buxus sempervirens suffruticosa (Dwarf Box) 2 to 4 inches.....	\$ 60.00
Deutzia crenata and Pride of Rochester, 18 to 24 inches.....	50.00
12 to 18 inches.....	35.00
Euonymus carrierei, 2 year transplanted.....	40.00
Jasminum nudiflorum, 2 year transplanted.....	45.00
Ligustrum amurense (Amour River Hardy Privet)	
1 year from open ground.....	25.00
rooted cuttings .....	15.00
ovalifolium (California Privet)	
good transplanting grade.....	8.00
sinense (Southern Evergreen Privet)	
1 year seedlings, 12 to 18 inches.....	17.50
6 to 12 inches.....	10.00
Lonicera fragrantissima (Upright Fragrant Honeysuckle)	
1 year, 12 to 18 inches.....	50.00
6 to 12 inches.....	35.00
Mimosa julibrissin (Acacia) 1 year seedlings, 2 to 3 feet.....	150.00
Spirea Anthony Waterer, 2 year transplanted.....	45.00
prunifolia, 2 year transplanted.....	50.00
thunbergi, 2 year transplanted.....	50.00
van Houttei, 1 year, 12 to 18 inches.....	25.00
transplanting grade .....	17.50
Weigela hendersonia, 1 year transplanting grade.....	45.00
rosea, 1 year transplanting grade.....	45.00







IT PAYS  TO PLANT

TRADE

MARK