

EU RESPONSE + **IFRC**

DG ECHO supported the Red Cross National societies of Equatorial Guinea (**EUR 200 000**), Cameroon (**EUR 100 000**) and Gabon (**EUR 100 000**) via the IFRC's Disaster Response Emergency Fund ([DREF](#)).

IMPACT OVERVIEW IN EQUATORIAL GUINEA		IMPACT OVERVIEW IN TANZANIA	
	7 Fatalities		5 Fatalities
	9 Confirmed cases		8 Confirmed cases
	20 Probable cases		n.a
	459 Person in contact with infected people		161 Person in contact with infected people

Source: Equatorial Guinea – [Guinea Salud](#), [WHO](#), [ECDC](#) as of 21 March, Tanzania – [MoH Tanzania](#), [ECDC](#) as of 21 March

Name Affected region
Source: [Guinea Salud](#), [MoH Tanzania](#)

Health facility
Source: [HDX Humanitarian data](#)

Built-up area
Source: [JRC-GHSL](#)

Main roads
Source: [OSM](#)

Administrative boundary*

District (Tanzania)

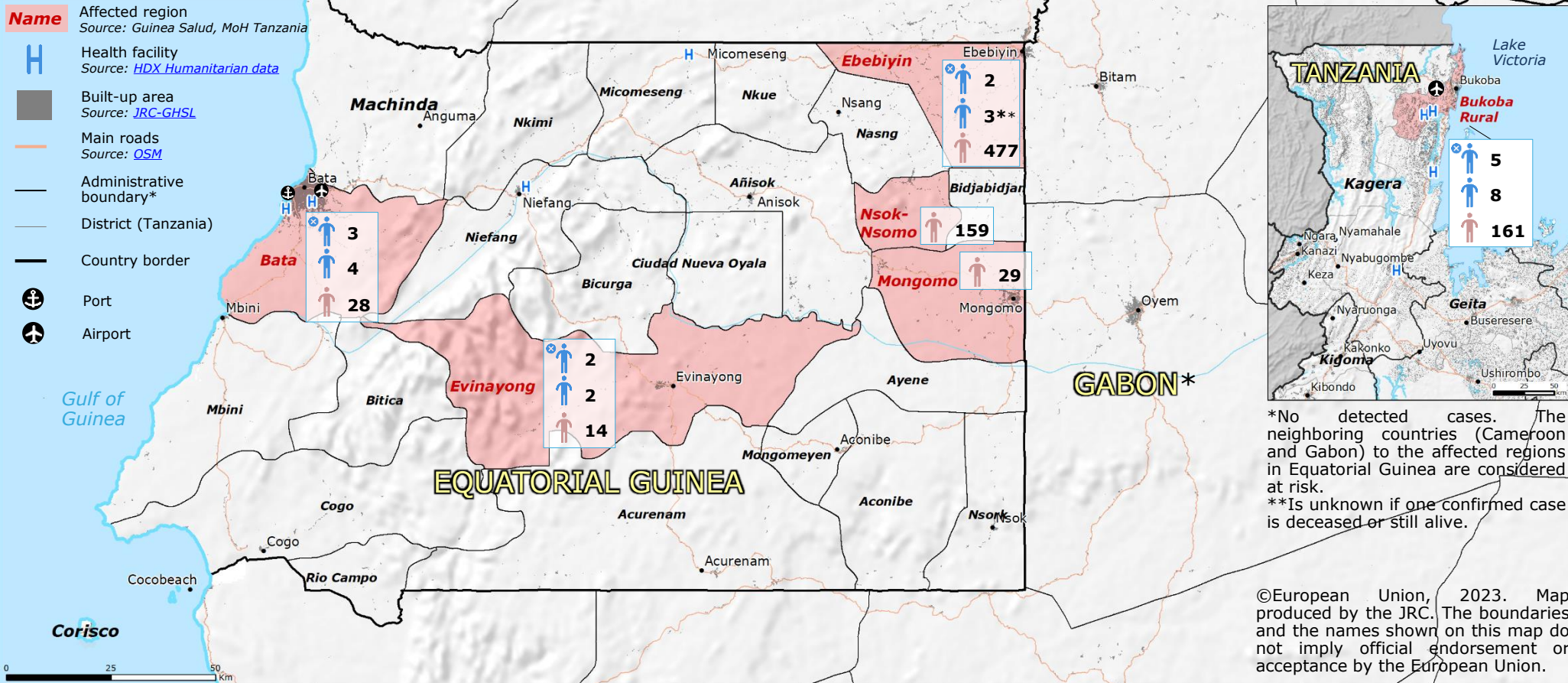
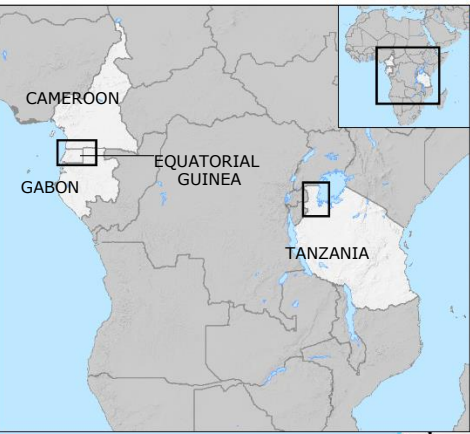
Country border

Port

Airport

Gulf of Guinea

Corisco



*No detected cases. The neighboring countries (Cameroon and Gabon) to the affected regions in Equatorial Guinea are considered at risk.
**Is unknown if one confirmed case is deceased or still alive.