

595.79
C461n
(atlas)

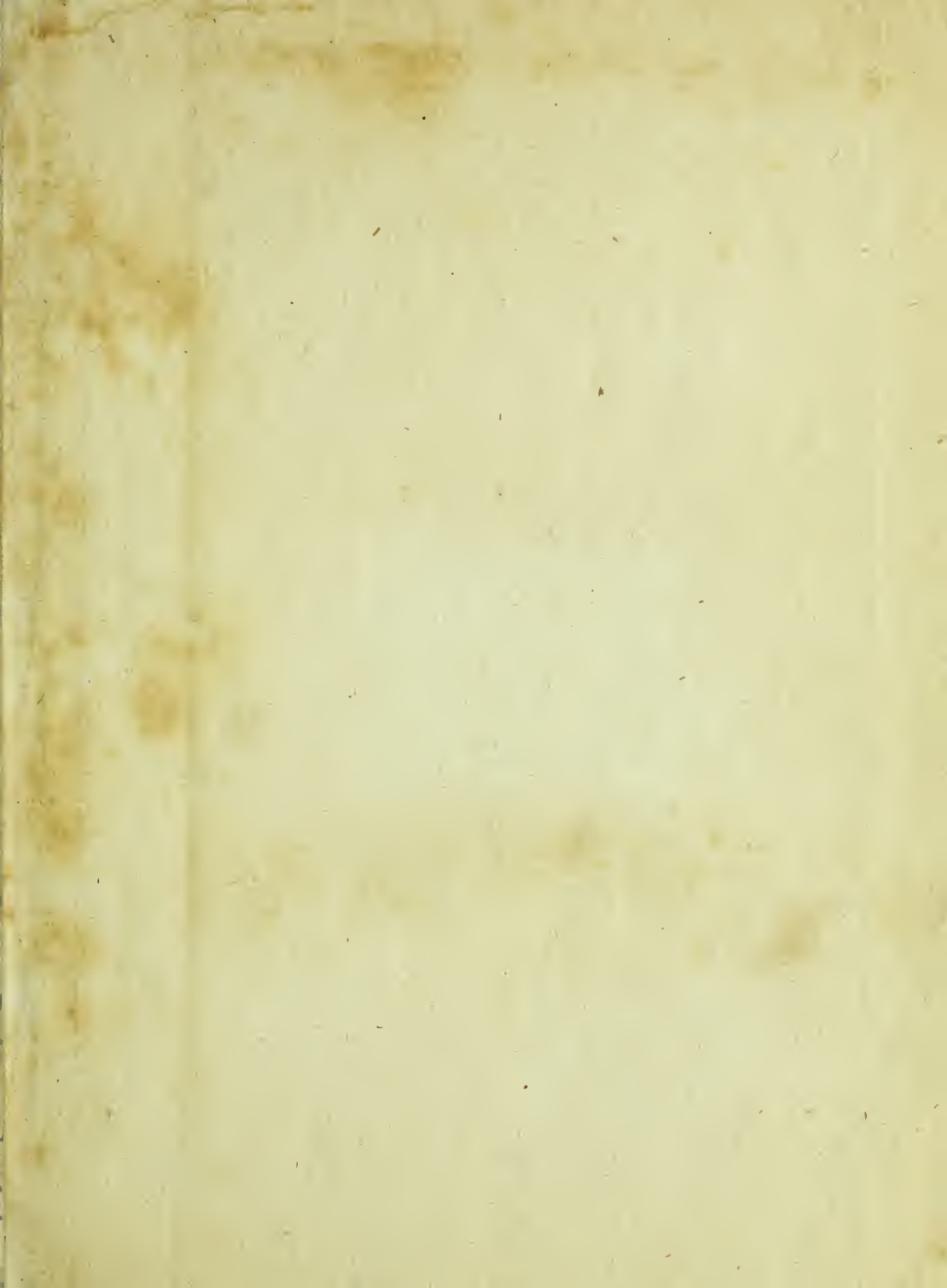
Uu. Cat. Ti. Cat.

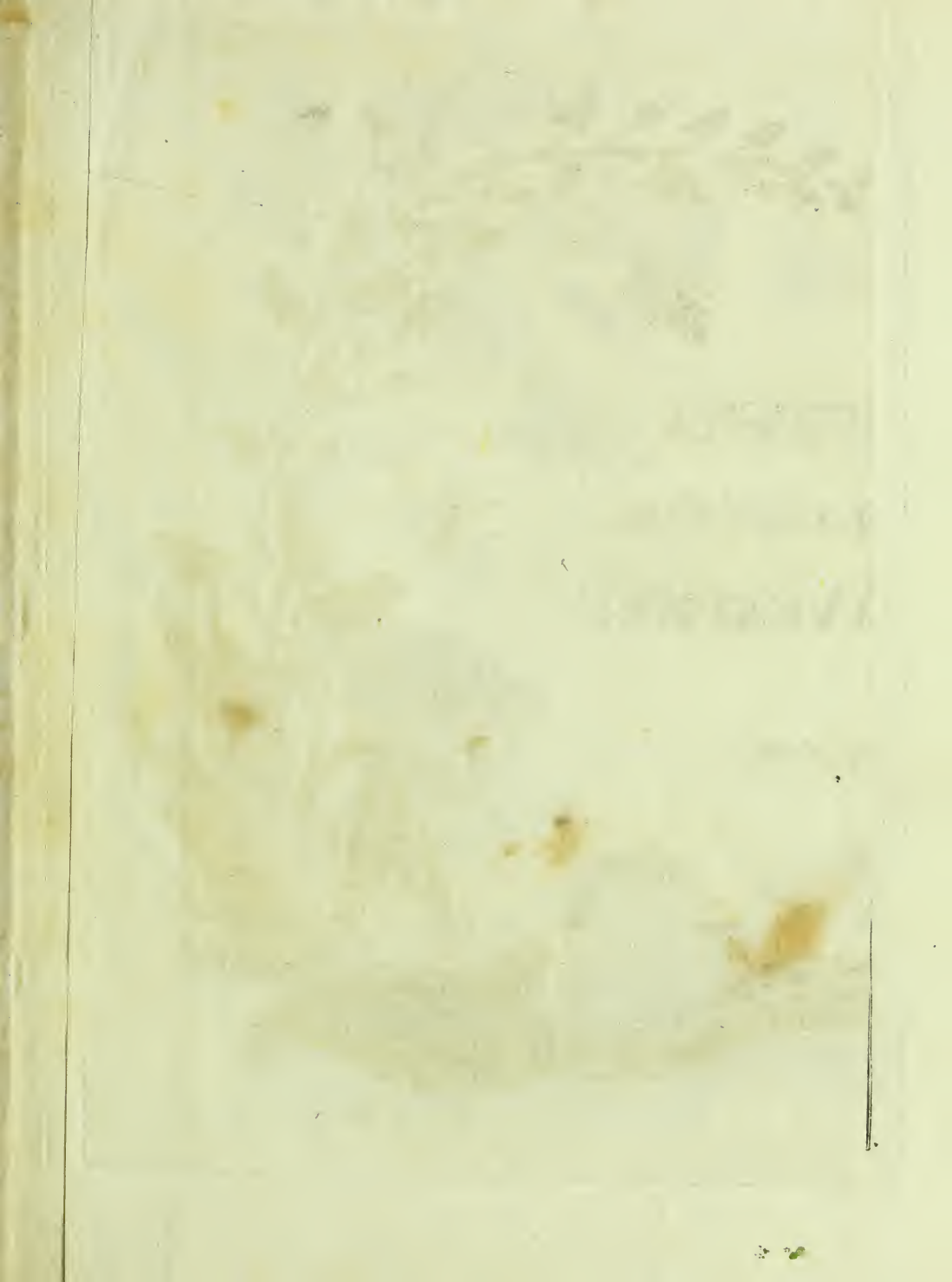


LIBRARY OF
Illinois State
Laboratory of Natural History
CHAMPAIGN, ILLINOIS.

ANTAGRAPH, BLOOMINGTON

University of Illinois
Library at Urbana-
Champaign
Prairie Research
Institute





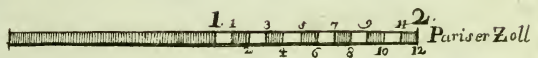
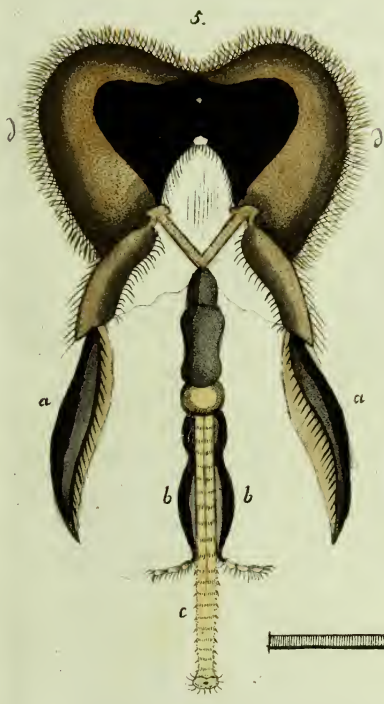
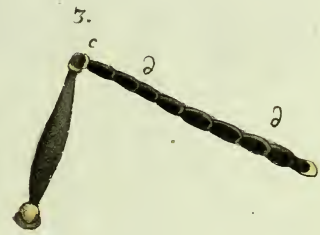
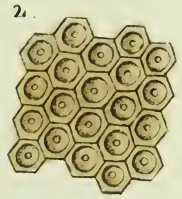


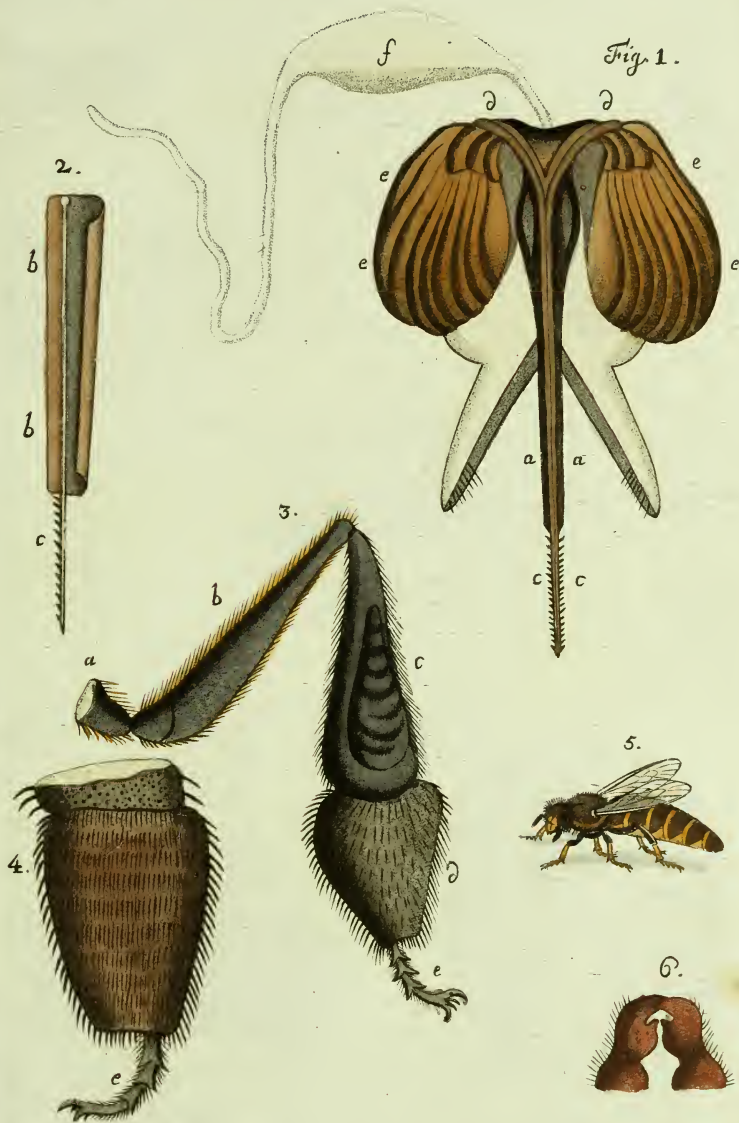
HYMENOPTERA
LINN. S.N.V. CLASS. V. ORD.
BIENEN, WESPEN,
UND
AMEISEN.

I. L. Christ, del.

J. Müller, pinx. & Sculp. Hanov.

Fig. 1.







Digitized by the Internet Archive
in 2014

F. 1.



2.



4.



3.



7.



6.



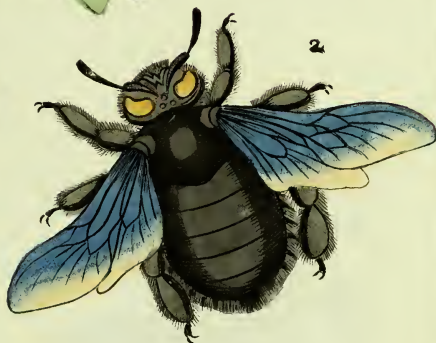
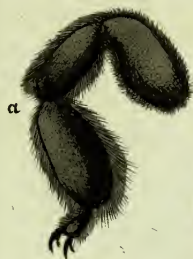
5.



8.



9.



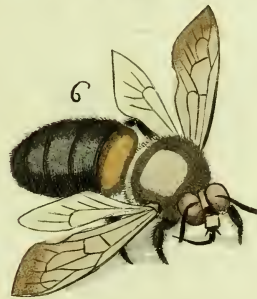
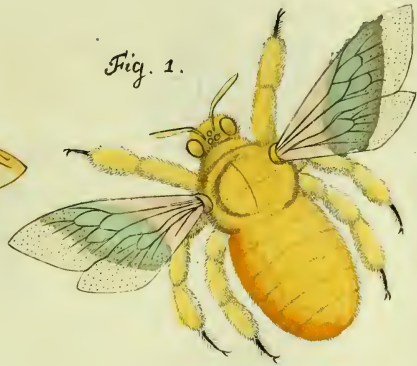
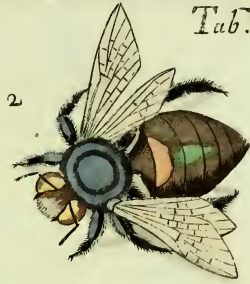


Fig. 1



2



a



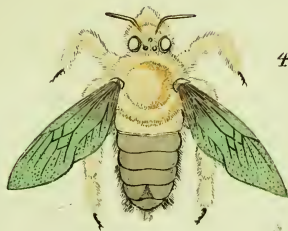
5



3



4



7



6





Fig. 1.



4.



2.



6.



5.



3.





Fig. 1



2



3



5



4



6



7



8



9



Fig. 1.



2



3



6



4



5



7



8



Fig. 1.







Tab. XII.







Tab. XIV.



Tab. XV.



1



3



4



5



6



8



7



9



10



12



11







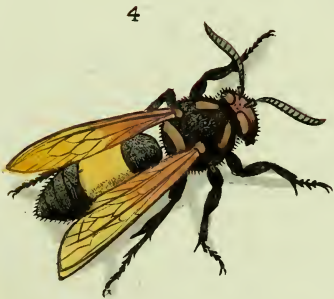
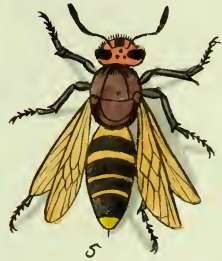
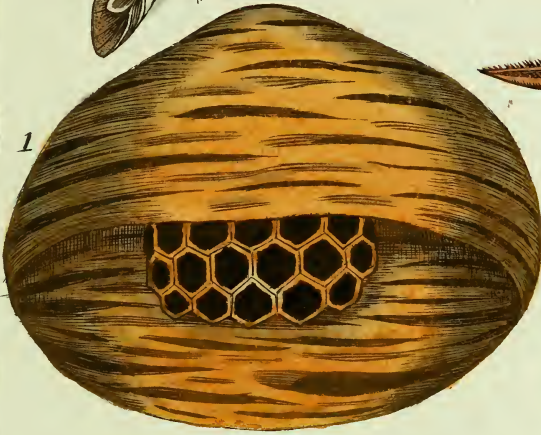
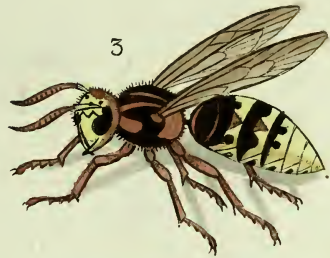


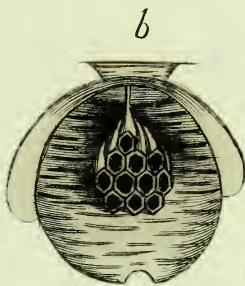
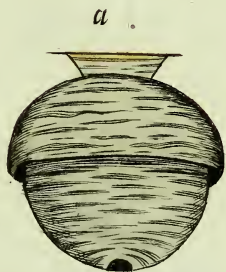
PLATE 1





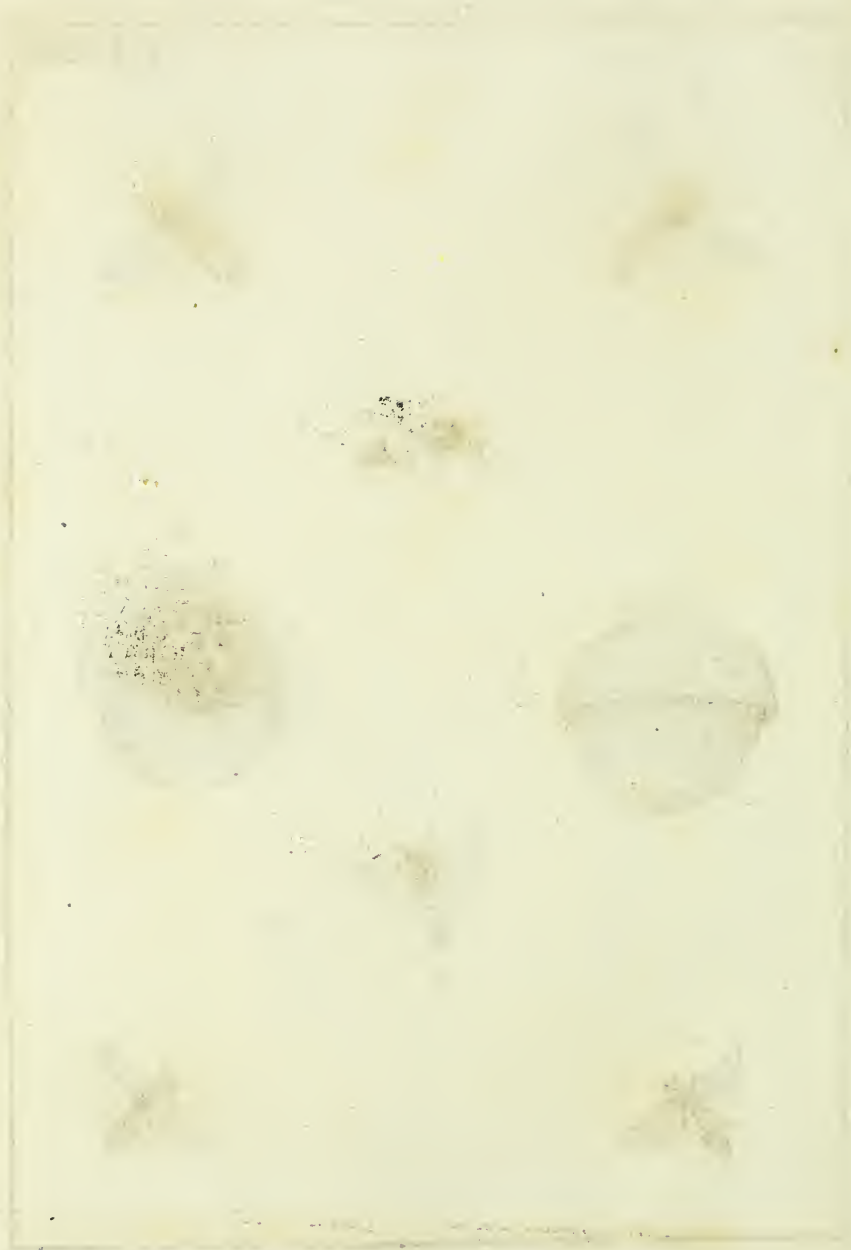






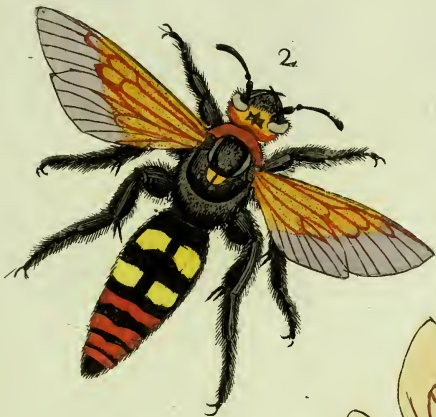
4





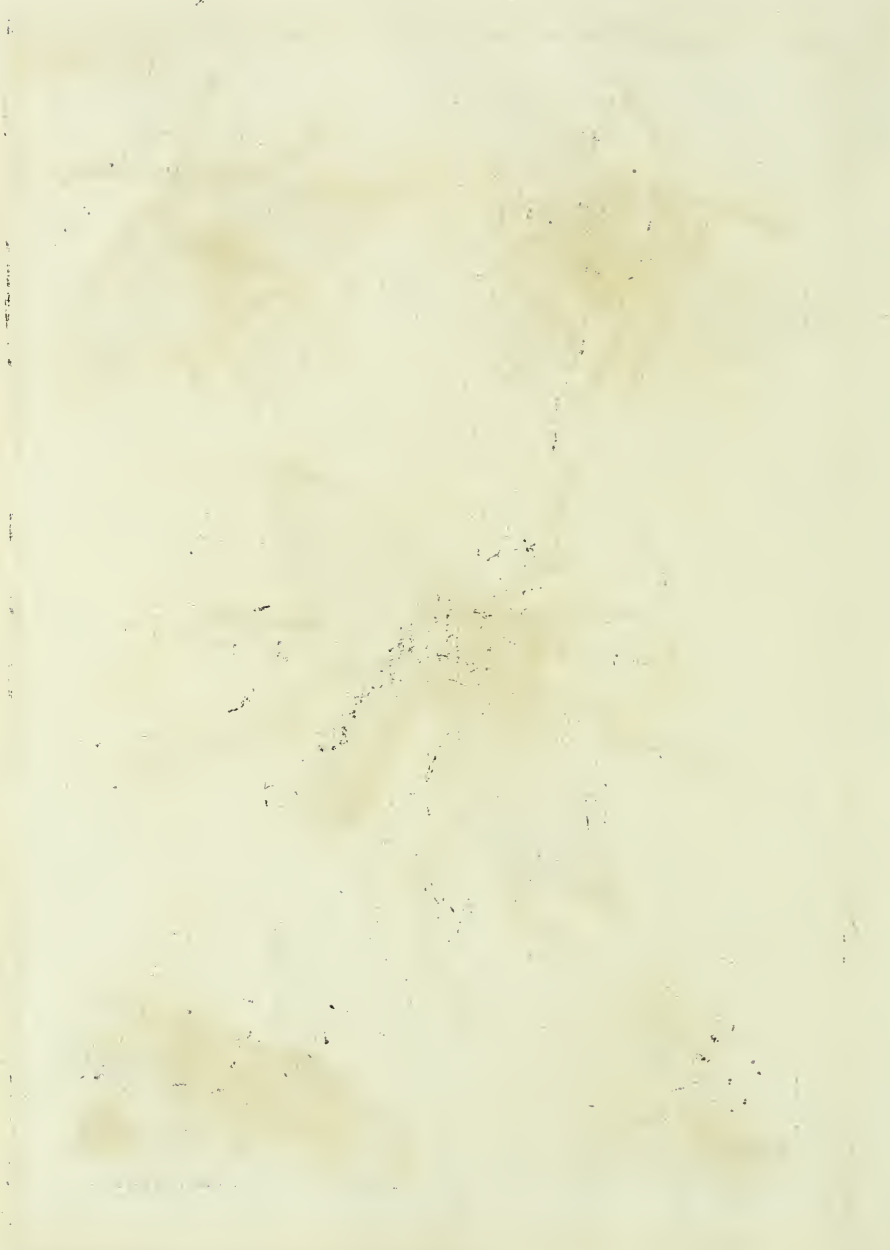














6



a



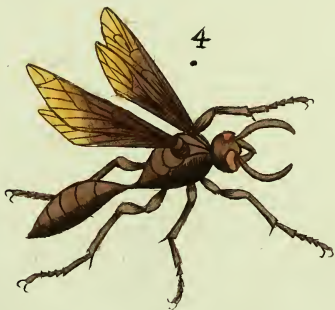
9



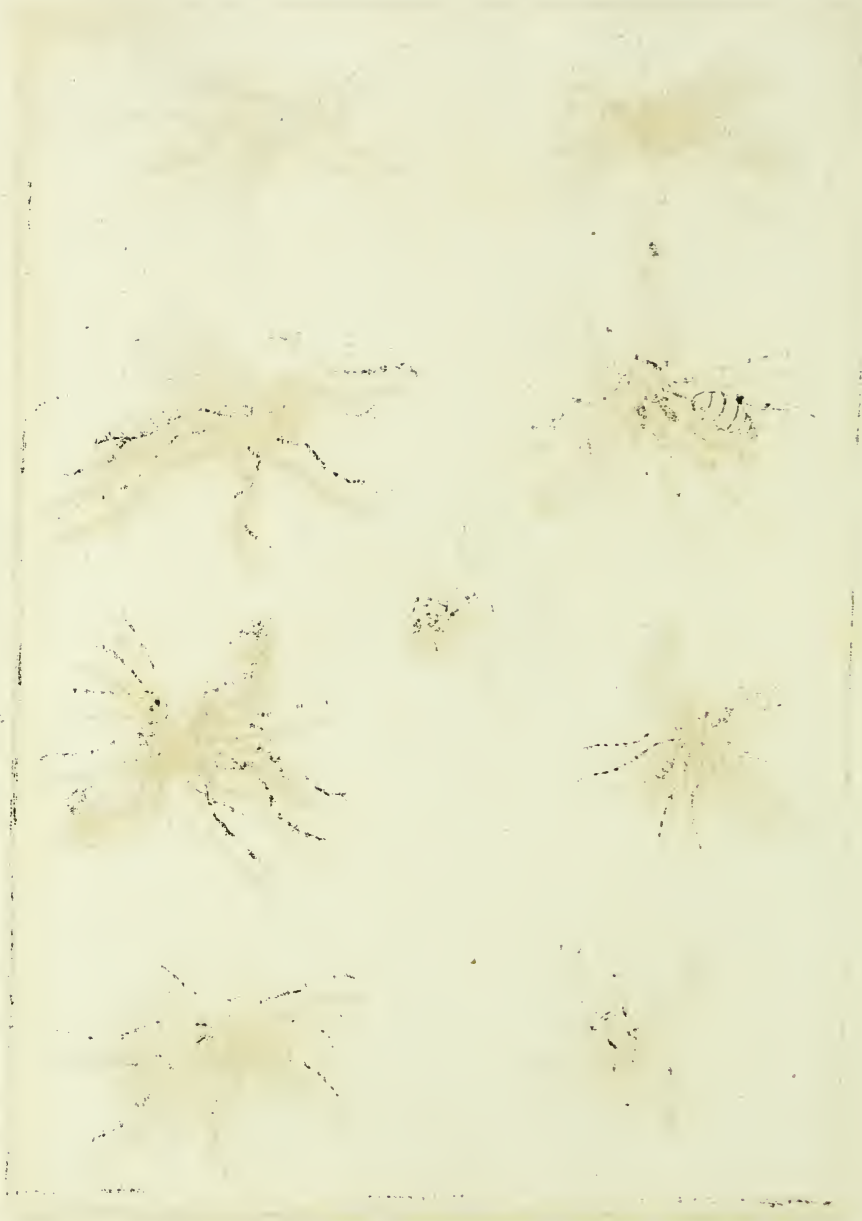
Chalcid





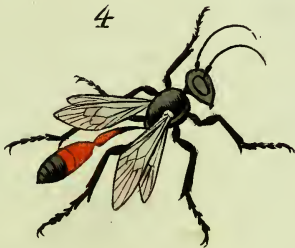
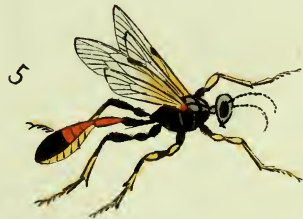


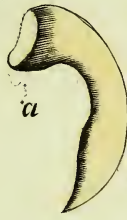


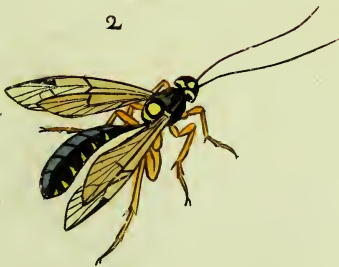


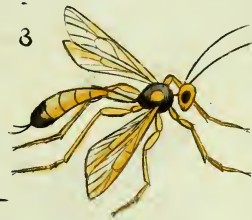












1880











1800



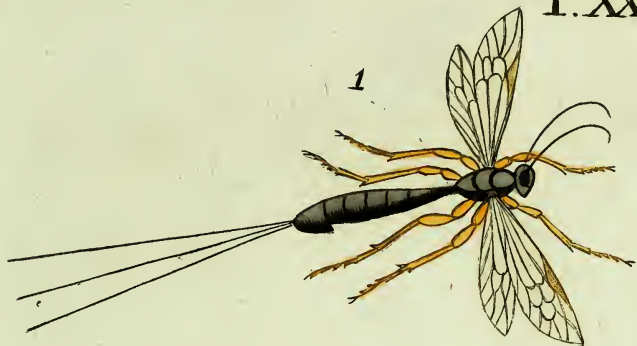
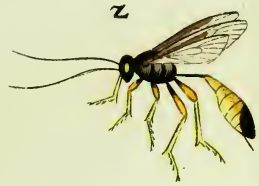
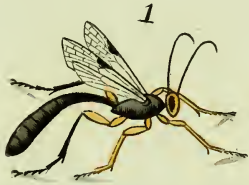


PLATE I





Handwritten text, possibly bleed-through from the reverse side of the page. The text is extremely faint and illegible.

1
*

2
*



b
d



3
*

3
*

a



b
*

a
*

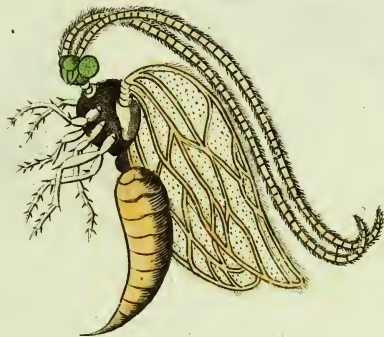








6*



7



7*

3*



2*

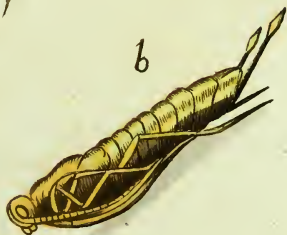
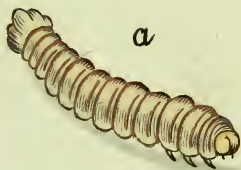












a

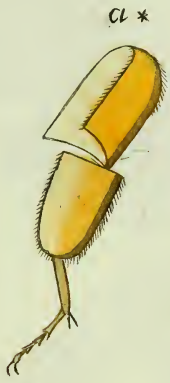














c



b



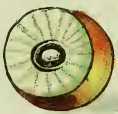
1



a







1 *



1





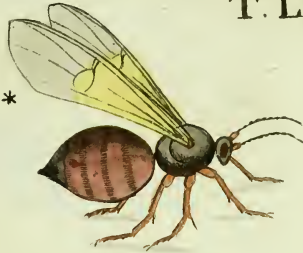




a *



2 *



1



3



2



3 *







5**



2

1



3



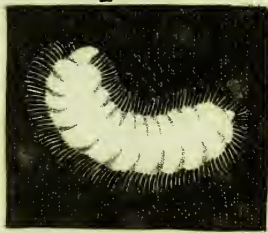
3*



1*



4*

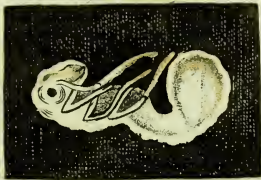


5



4

5*





2



2 *



3 *



3







2



10









UNIVERSITY OF ILLINOIS-URBANA



3 0112 114655985