

## **Historic, Archive Document**

Do not assume content reflects current scientific knowledge, policies, or practices.



# Stark Bro's Fruits

REPUTED BY

SCHOOL OF AGRICULTURE

Announcing Their

## 100<sup>th</sup> Year

6247

1916

"Stark Delicious"  
Apples  
Photographed  
Actual Size

1816 to 1916

## Stark Bro's

at

## Louisiana, Mo.

Grimes

Louisiana Is in Northern  
Missouri, Near the Iowa Line  
"The Home of Hardy Trees"

# The Circle of a Century

1816 ————— 1916

When in 1816 Judge James Stark laid aside the musket with which he had helped defend America in the War of 1812 and took up his hobby, the growing of *better* fruit trees, he "buildded better than he knew."

Today—one hundred years later—the business that old Judge James Stark founded, has grown until it is *the* institution of nurserydom—until it is internationally known as *the* source of reliable fruit trees—until today the fruit growers of the world unite in the declaration, born of experience, "Stark Trees Bear Fruit."

The same century that has seen this broad continent won by the genius and pluck of American pioneers has seen the growth of Stark Bro's Nurseries at Louisiana, Mo. For 100 years the best informed fruit growers have looked on Louisiana, Mo., as the fountain head of fruit tree integrity.

JUDGE JAMES STARK  
Founder—1816

E. W. STARK  
President—1916

## The Centennial Anniversary

The Centennial Anniversary which Stark Bro's celebrate this year covers the span of progress in the great middle West. It rounds out the first hundred years of that vast, younger section of America bounded by the two mighty ranges of mountains that rib the two coasts of our nation.

One hundred years ago the trees of old Judge James Stark became famous far and near all over this section. For decades before the Civil War planters made journeys of days and weeks by wagon train just to get "those sure growth trees Judge Stark raises up in Pike County." "Stark Trees Bear Fruit" became an axiom with men wherever fruit was grown.

Years went by and the old Judge "passed on." But the ideals that he cherished lived. With truth it has been said of the early founders of Stark Bro's that they regarded the work not merely as a business—not only as an industry—but as a public service. So it has been that ever since 1816 the name of Stark Bro's has stood for all that grew best in Nature for the good of mankind.

This is our heritage—we of the fourth generation of the family of Stark, who now are intrusted with the century old Stark Bro's reputation.

And *this* is our task—our *duty*: The preservation of this good

repute, the continuation of the public faith in the integrity of every promise, every claim, every tree that Stark Bro's offer.

We enter this the 101st year of the history of Stark Bro's realizing that nursery products are bought on Faith—and must be sold on Honor. It is with a deep sense of obligation to the public that we acknowledge that it is this public Faith—now spread wide over all the earth—which has made possible the celebration of this one hundreth Anniversary year of Honor Service.

We believe with you that *quality* is the prime essential in nursery products. Things *must grow*—the tree must bring forth fruit—or, money and priceless time are wasted.

We believe with you that you must buy your trees only from those in whom you have utmost confidence—unshaken faith.

The confidence and faith Stark Bro's have earned by one hundred years of successful results, born of scientific "know how," infinite care of every detail of fruit tree development and honorable dealing—that confidence and faith shall be maintained. The famous "Bear" Seal of Stark Bro's shall *never* be found affixed to any other than trees of unquestioned worth. Fruit growers all over the globe shall continue to say and to *know* and to **SEE**—

## "Stark Trees Bear Fruit"

# Stark Bro's at Louisiana, Mo., Since 1816

### Hon. Champ Clark

Speaker of the House of Representatives

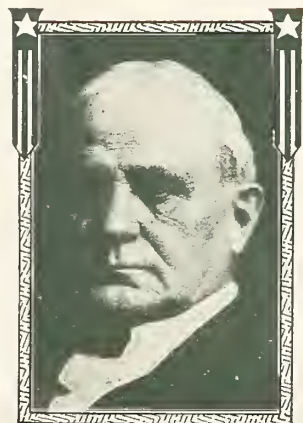
In the introduction to that famous book "The Story of An Apple," Champ Clark writes:

"Most of the early settlers of Missouri were soldiers or sons of soldiers. Among these was Judge James Stark of Bourbon County, Kentucky, who served under Gen. William Henry Harrison at Tippecanoe, and under Col. Richard M. Johnson, 'Old Dick,' as he was popularly called, at the battle of the River Thames.

"Judge Stark came in the prime of his manhood from Bourbon, one of the finest counties in Kentucky, to Pike, one of the richest in Missouri, reared a family, which is still numerous and powerful, and laid the foundation for the largest nursery in the world—now conducted by the third and fourth generations of his descendants. We sometimes build more wisely than we know. He little dreamed, while riding horseback from the far-

famed Kentucky blue grass region to the rich Missouri blue grass region, carrying in his old-fashioned saddle bags the scions with which to start a nursery and from which grew the first fruit trees ever propagated on the sunset side of the Mississippi, that he was beginning a business which would render the name Stark honorably familiar not only throughout America, but beyond; and that one hundred years after he planted his trees, his grandchildren and great grandchildren would be shipping trees beyond the seas; but such is the truth of history. It's really a pity that he cannot return to earth long enough to witness the magnitude of the business which he started there at Louisiana, Mo. Verily, his works do follow him."

*A Few Trees This Year—A Few Next Year—Soon You Have an Orchard*



HON. CHAMP CLARK

# Stark Bro's Achieve Another Triumph

## DOUBLE-LIFE Grimes Golden

Stark Bros Trade Mark

The Accumulated "Know-How" of 100 Years

Conquers The Only Weakness of One of the World's Great Apples



**PROF. J. C. WHITTEN**  
Dean of Horticulture  
University of Missouri and Agricultural Experiment Station

"I am glad that you contemplate featuring double-working of Grimes Golden on Delicious, for Delicious grows so vigorously as to get virtually on its own root system regardless of the stock on which it was grafted."

Of all the blessings to orchardists and to the world in the century of Stark experience, perhaps nothing will be hailed with such joy as the final development and complete success of the Stark Bro's method which frees that splendid apple, "Grimes Golden," from blighting "Collar Rot." This dreaded ailment attacked them as they began to bear heaviest—just as they should have been in their richest prime (from 12 to 15 years old).

And so the appeal came to Stark Brothers to save the "Grimes Golden"—"Make Grimes Golden as sturdy, as long lived as Stark Delicious Trees." Fruit Growers, Editors of Farm Journals—Orchardists all over the country joined in recognition of the seriousness of the situation and in the faith that Stark Bro's could save it.

As an illustration of the importance of this discovery, we are glad to quote so high an authority as the Hon. Silas Wilson, the famous pomologist of Iowa and Idaho, and a practical orchardist owning 750 acres of fruit trees: "I don't know how you could produce a more valuable tree than by double-working Grimes Golden. Double worked on such a stock as Stark Delicious doubles the value of the tree for orchard planting. It will have the effect of placing you at the head of benefactors of the fruit interests of the United States. Stark Delicious, Jonathan and Grimes Golden succeed almost any place between the two oceans."

And we set to work. Inspired by the need and the confidence of fruit growers everywhere—aided by counsel of the scientific pomologists of America, we spent years in an effort to free this favorite from its pest.

### The "DOUBLE-LIFE" Grimes Golden is Stark Bro's Answer

#### Horticultural Authorities Advise and Commend Our "Double-Life," Double-Working Process

**E. H. SHEPARD** Editor, "Better Fruit," Hood River, Oregon.—"I believe this is one of the greatest steps that has been taken towards the improvement of orchards."

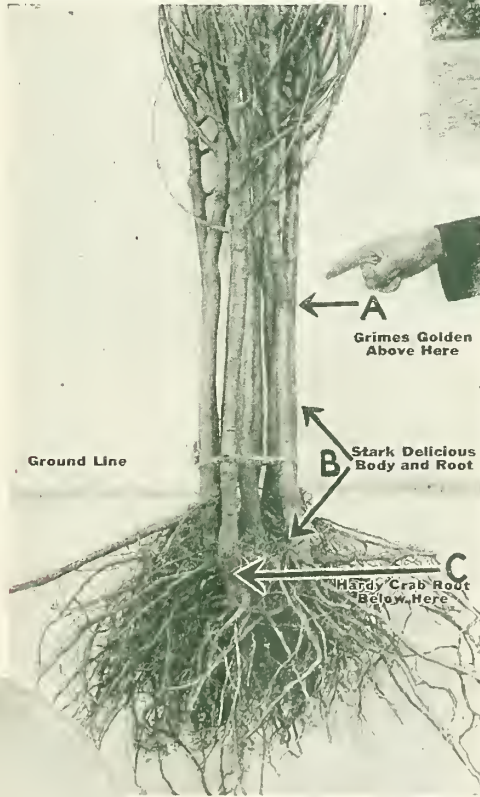
**PROF. E. J. WICKSON** Director Calif. Agri. Experiment Sta.—"We need here particularly double-working on woolly aphids resistant roots. The principle you are employing will avoid many troubles."

**PROF. L. H. BAILEY** Editor Encyclopedia of Horticulture and Director N. Y. Agri. Experiment Sta.—"I like double working. This practice now has sufficient history behind it to give it standing."

**JOE A. BURTON** "J. A." of "Farmer's Guide", Mitchell, Indiana.—"As to Double-worked Grimes Golden, you are surely doing the right thing. Thousands of Grimes trees in Indiana have been lost from collar rot that might have been doing good work now had the Grimes bark been kept from contact with the ground. I advise people in Indiana to plant only double-worked Grimes Golden."



Stark "Double-Life" Grimes Bear Fruit



Study This Photograph. It Shows Why "Stark Trees Bear Fruit."

### The How and Why of Stark Bro's Double-Working Process

The wonderful method which gives "Double Life" to Grimes Golden Trees is the result of Stark Bro's trade-marked process—a carefully combined and expertly timed method of grafting and budding.

We start with carefully selected, hardy French Crab Roots. (See C in photo.) To each is grafted a long scion of sturdy Stark Delicious, which forms the main mass of lusty root growth and the trunk. (See B in photo.) High up on this sturdy body is added the Grimes Golden bud. (See A in photo.) Result—a "Double-Life" Grimes Golden tree. The wood of the Grimes Golden starts well above the ground surface. There can be no collar rot—and the trunk becomes stronger at the union than any other point.

This is an expensive process for us—requiring two full years here in our nurseries to produce a one-year "Double-Life" Grimes Golden Tree. But we have double reward in giving orchardists and lovers of the apple one of the world's rarest treats and we have justified the faith put in us. To give the justly famous "Grimes Golden" the added value of the sturdiness of the Stark Delicious—this is a triumph of which we are justly proud.

This "Double-Working" Process, as conceived and completed here in Louisiana, Mo., injects into Grimes Golden Trees the blood of long life—the stamina of the Stark Delicious tree. It actually results in a Grimes Golden tree that will bear more apples, bigger apples and better apples. And—because it doubles the life of the tree, it more than doubles the profit to the fruit grower, for it adds years to the life of Grimes Golden Tree at the heaviest bearing period.

### An Example of Stark Bro's Service

We have described at some length our system of producing "Double-Life" Grimes Golden, because it is our latest exclusive achievement. But, after all, it is only a recent example of the Stark Bro's principles, the determination to produce the best thing of its kind in all fruits. Back of each Stark Bro's variety is the same high standard of service, the same skill, experience and effort that we trust will give you unbounded confidence in every article listed in this book.

**PROF. E. P. TAYLOR** Horticulturist, Utah Fruit Growers' Assn., Salt Lake City, Utah.—"You're making stronger trees of Golden Grimes by double-working them upon Stark Delicious. I have never seen a diseased Stark Delicious in the whole Intermountain section. Buyers of nursery trees will appreciate what you are doing."

**HENRY C. CUPP** Pres. Miss. Valley Apple Growers' Assn., Fall Creek, Ill.—"In double-working Grimes Golden on Stark Delicious you are doing the world a wonderful favor. I congratulate you. May you live long to improve the apple and its length of life as a tree."

**PROF. J. P. STEWART** Ex. Pomologist, Penn. State College.—"I am glad to note that you are to furnish Grimes Golden, double-worked. As you know, I have been recommending this."

**PARKE A. JACOB** Orchardist, Wellsburg, W. Va.—"You are doing your duty by sending out Grimes Golden double-worked to stock immune from trunk blight or collar rot. Just as ordinary Grimes Golden reach a good, profitable bearing age, the collar rot takes them."



Grimes

Golden

# "Stark Delicious"— "The Finest Apple in All the World"

—Says Luther Burbank, "The Wizard of Horticulture"

This great, big, flashing red apple, with its exquisite flavor, and its crisp, fine grained, juicy flesh, is proclaimed and recognized as peer of all apples by the greatest Horticulturists, Pomologists, and the most successful fruit growers in America. (Color photos on Front Cover and opposite page.) It was discovered, first propagated, trade-marked and exclusively introduced by Stark Bro's.

The fruit growers of America have made "Stark Delicious" their favorite orchard tree.

Their experience with genuine "Stark Delicious" trees has shown them how unusually hardy and disease-resistant these trees are. It has demonstrated their strong growing habits, and habits of bearing young and bearing heavy crops of fancy fruit every year. That experience has given them one more proof that "Stark Trees Bear Fruit."

The profits their "Stark Delicious" crops enable them to bank yearly, due to the incomparable quality of this apple and its excellent keeping and shipping characteristics, clinches their long-cherished faith in all the offerings of this, the oldest nursery in America—the largest in the world.

The first "Stark Delicious" tree (a photograph of which is shown on this page) was brought to our attention in 1894.



Photograph of Original "Stark Delicious" Tree—Now 45 Years Old, Still Standing—Still Bearing Splendid Annual Crops

## Statement of Owner of the Original "Stark Delicious" Tree

The Originator, Jesse Hiatt, of Peru, Madison County, Iowa, wrote us:

"If it is not a better apple than any in your large list, it will cost you nothing. I have never seen a man taste it but who says it is the best apple he ever saw.

"The original tree of 'Stark Delicious' is now (1895) thirteen inches in diameter at ground. Makes strong, vigorous growth, branches are strong and need little or no pruning. Does not succumb to blight. Has never shown any signs of tenderness. During the last eight years drought and cold have killed three-fifths of my orchard, but 'Stark Delicious' withstood it. Bears annually, yields large quantities of luscious fruit, both beautiful and delicious."

That same tree—now 45 years old—is still

standing—still bearing crops of glorious "Stark Delicious" apples, on the farm of the late Jesse Hiatt, at Peru, Madison County, Iowa. Since 1895 that tree has been the property of Stark Bro's. In that year C. M. Stark saved the "Stark Delicious" to horticulture and bought the exclusive, perpetual right to propagate from the original tree. Since 1895 this original tree has been the parent of all "Stark Delicious" trees, the genuine, grown only by Stark Bro's.

### Read These Enthusiastic Letters

from men who have seen the sturdy, graceful form of the growing "Stark Delicious" tree—men who have tasted of the tender, juicy flesh of the triumph of apples—men who have enjoyed the wonderful profits that "Stark Delicious" orchards yield year after year. Men who, like W. S. Mygrant, Owner and Leader of

the famous Mygrant's New York Orchestra, have written:

"I bought a few hundred trees from you nearly 5 years ago: 'Stark Delicious,' Stayman Winesap, Black Ben, King David, etc. All have made wonderful headway and fruited. Many are 10 to 12 feet high, with good full tops, after being cut back. You assured me that they would grow and I must say that the trees that I bought from Stark Bro's at Louisiana, Mo., surely had the right 'backbone' in them to grow as they have. The 'Stark Delicious' apples my trees bore were of wonderful flavor."

The same mail on the same day brought us this letter from a big commercial orchardist:

"I have this year the best crop of 'Stark Delicious' I have ever had, although all my Stark Bro's trees have been true to their reputation from the start. Many of my young 'Stark Delicious' trees are bending under the most perfect fruit I have ever seen. Every tree in my orchard is a Stark Bro's tree and I was told by the Department at Washington, D. C., that my orchard was 95 per cent perfect."—J. C. Bushnell, Saluda, N. C.

## Famous American Apple Authorities Praise "Stark Delicious"

**COL. G. B. BRACKETT**  
Pomologist of the  
U. S. Department  
of Agriculture,  
Washington, D. C.

"Years ago I told Stark Bro's, 'Push "Stark Delicious".' They did. Today it is successfully grown from Maine to Georgia and from the Atlantic to the Pacific. No other apple has ever received such a wide distribution and reputation for excellence."

**LUTHER BURBANK**  
"The Wizard of  
Horticulture"

"Stark Delicious" trees have been growing on my place for years and never failed to produce a crop. As they grow older they bear more, larger, better fruit. Many apples have rather a spicy fragrance and flavor, but none has the delicious combination of 'Stark Delicious.' It is a gem—the finest apple in all the world."

**PROF. H. E. VAN DEMAN**  
Ex-United States  
Pomologist

"Stark Bro's trees bear everywhere. Stark Bro's, who bought outright the exclusive right to propagate 'Stark Delicious' have sent it all over the world—America, Europe, Korea, Australia, New Zealand and elsewhere. The tree has endured very cold climates safely. It is very productive as well. It certainly has a great record for reliability and quality."

**E. P. POWELL**  
Horticultural Author  
and Orchardist of  
International Fame

"Burbanks are wizards; Stark Bro's are saviours. I have known a large number of Burbanks in my life—but I have never found a satisfactory predecessor for Stark Bro's. The firm that saved 'Stark Delicious,' the noblest apple in the world today—and made it known to the world, is a benefactor equal to Luther Burbank."

**E. P. TAYLOR**  
Horticulturist,  
University of Idaho

"Stark Delicious" stands at the very head in hardiness, strength of wood, resistance to disease. In quality it is unsurpassed. Just sweet enough to be delicious. Fruit growers everywhere are receiving more for their 'Stark Delicious' than for any other apple. 'Stark Delicious' is the Klondyke of the apple world."

**THOS. F. RIGG**  
Iowa Horticultural  
Editor and Owner  
Horticultural Ex-  
perimental Grounds

"Except for Stark Bro's the apple now known as 'Stark Delicious' might never have been known. The 'Stark Delicious' is as hardy as an oak. I have seen it loaded with beautiful fruit in Quebec, Canada, where every winter it must withstand a temperature of 50 below zero."



# The Dollar Maker of the Orchard

Surely and steadily "Stark Delicious" has grown in the favor of consumers who know *fruit quality*, and in the esteem of fruit growers who work for *fruit profits*.

This has tempted some other nurserymen to unauthorized use of the name "Stark Delicious" on inferior varieties of trees. To protect you from disappointment, we print on the opposite page, the proof that Stark Bro's alone own the exclusive right of propagating genuine Stark Delicious Trees from the original tree.

But, everyone knows that spring water is purest at its source. They know that Stark Bro's, Louisiana, Mo., are the only authorized propagators of *genuine* "Stark Delicious" trees. They realize that the *home* of "Stark Delicious" is the place to obtain true "Stark Delicious" trees.

They know that, otherwise, they cannot be *sure* of the results—the profits, that *true* "Stark Delicious" trees alone yield. By sad experience they know the heavy money, time and labor losses that follow the planting of inferior, so-called "Stark Delicious" trees.

Such men have learned to look for the Stark Bro's "Bear" Seal (the mark of the *genuine* "Stark Delicious"), knowing that a century of honorable dealing has made this seal, with which we mark *every* tree we sell, a sign of highest tree excellence—an unquestioned pledge of positive quality.

The rewards that follow this care in tree buying are proven by the contents of the letters that come from thousands of fruit growers everywhere.



**A 3-Year Old "Stark Delicious" Tree**  
"Stark Trees Bear Fruit"

**Sell for \$12.00 a Barrel.**—Ed. Mollatt, at Port Murray, has your trees in bearing. Sold "Stark Delicious" at \$12.00 per barrel and Baldwins \$2.50 to \$3.00 per barrel.—L. W. Gardner, Warren Co., N. J.

**Thrives in Maine's Severe Climate.**—"I planted 100 'Stark Delicious' last year and they all lived and thrived. Send me as many more as \$10.00 will buy."—J. H. Mayers, Dresden, Me.

**Fountains of Perfect Fruit.**—"My 'Stark Delicious' trees bore their fourth consecutive crop this season—averaged ten boxes a tree, practically all number ones. We thinned heavily, still the trees looked like fountains of apples. 'Stark Delicious' sells for double other choice varieties and I never had enough to supply the demand."—Charles O. Garrett, Des Moines, Ia.

**Sold Seven Barrels for \$34.00.**—"I have 800 Stark Bro's trees growing and doing well. My 'Stark Delicious' are in Cold Storage and are keeping fine. Repacked my 'Stark Delicious' in boxes—not a rotten apple in the barrel. I sold seven barrels of these 'Stark Delicious' for \$34.00."—Louis E. Swank, Linville Depot, Va.

**Ohio's Favorite.**—"Stark Delicious' is included in nearly all plantings in this state. The trees are coming into bearing well."—N. Shaw, Chief, Bureau Orchard Inspection for Ohio.



**"Stark Delicious" Tree**  
4 Years Old  
"Stark Trees Bear Fruit"



**"Stark Delicious" 6 Years After Planting**  
"Stark Trees Bear Fruit"—Bumper Crops

**"Stark Delicious" Keeps Best.**—"John McCoy, of Morgantown, won first prize on plate and box of 'Stark Delicious' at the Indiana Apple Show. These apples are holding up in storage better than anything we have and will remain in perfect condition till May at least."—Benjamin Douglass, ex-State Entomologist and Orchardist, Trevlac, Ind.

**Ordered 200 Trees—All Lived**  
"I want to compliment you on the fine growth of the 'Stark Delicious' trees you sent us—not a tree of the 200 died, and the average growth was from 18 inches to two feet. We never had trees grow like your 'Stark Delicious' did. I do not know any nursery that keeps such a splendid variety of fruit or one whose trees are so satisfactory."—H. P. Demarest, Warwick, N. Y.

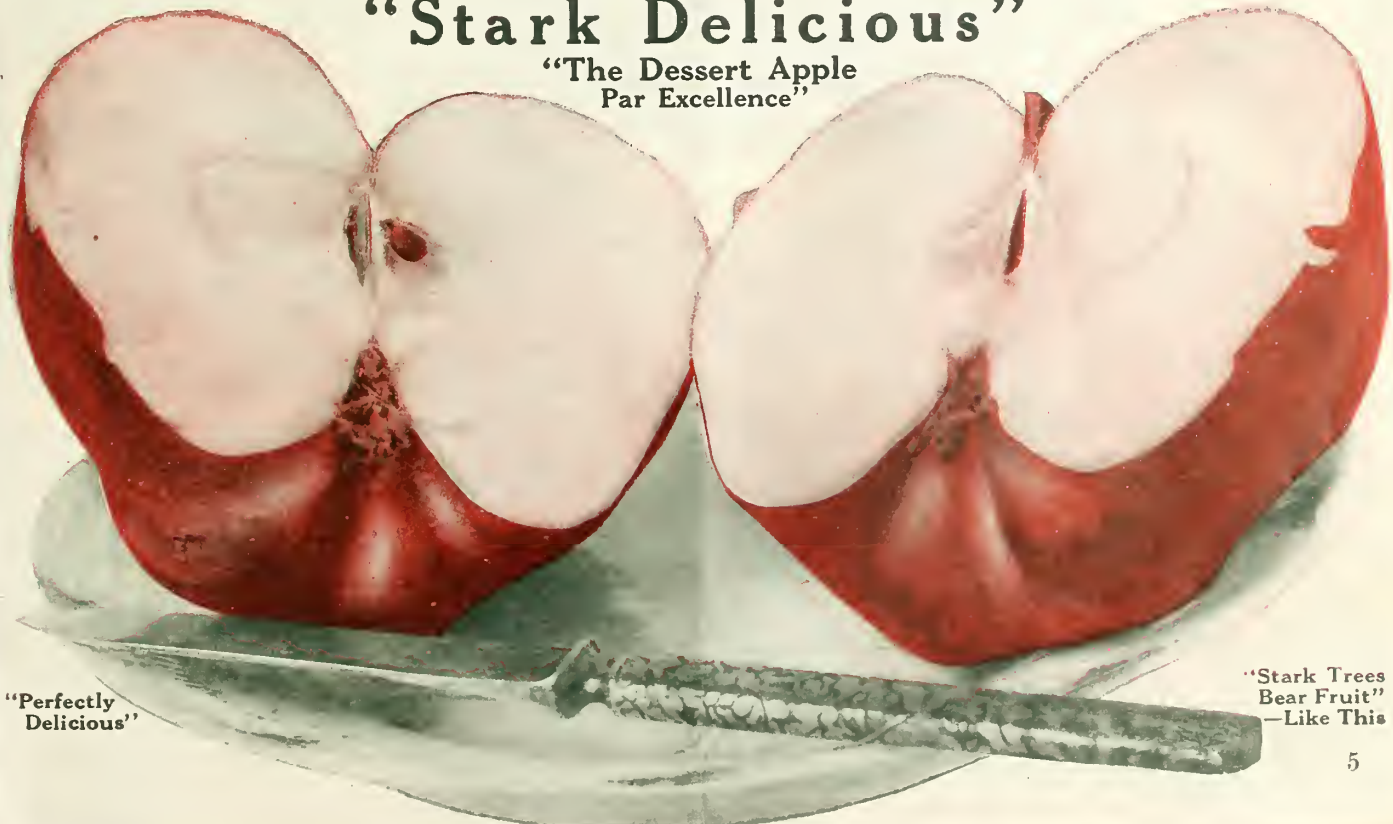
(Note.—"The Demarest Orchards are famous for fine fruit throughout the U. S."—Stark Bro's.)

**Trees stand 50 below Zero and Bear.**—"My 'Stark Delicious' bore a lot of fine apples—wonderful in fruit and tree. And to think that such a tree thrives and bears in this rugged climate, where the mercury drops to 50 below zero. Wind can't blow them off. 'Stark Delicious' orchardists will have few wind falls and no trouble with blight. I must not forget the Stark King David, which is extremely hardy here."—R. J. Wiggins, Mayland, Quebec.

**"Stark Delicious" Bears Every Year.**—"I have sold all my 'Stark Delicious' apples by the box for from \$3.00 to \$5.00 per bushel. I sold three boxes of 'Stark Delicious' out by the plate at 25c per single apple. 'Stark Delicious' trees bear apples on every twig; have had apples every year since started to bear—five years ago."—H. C. Cupp, Pres't Miss. Val Apple Growers' Assn., Payson, Ill.

## "Stark Delicious"

"The Dessert Apple  
Par Excellence"



"Perfectly Delicious"

"Stark Trees Bear Fruit"  
—Like This

## Stark King David's Latest Triumph

That great authority, Prof. U. P. Hedrick, in the Official Bulletin N. Y. Agr. Exper. Station, says: "King David proved superior to either Jonathan or Ark. Black. Hardy. Larger than Jonathan; better colored. This makes King David one of the orchard beauties. Added to its deep, solid red color are rotundity in shape, and uniformity in size. These three qualities give the variety almost perfection. Fruit hangs long and well. Flesh is firm, fine, crisp, tender, spicy and juicy."

Photograph  
One-fourth  
Size

"Stark Trees  
Bear Fruit"  
Grown on Stark  
Trees



Stark King David

## Stark Bro's Special Centennial Apples

**Henry Clay:** The earliest apple. Far better than Maiden Blush and ripe two months earlier. R. M. Love, New Mexico, says: "It is a model in habit of growth." Has stood 32° below zero and bore a good crop. Fine grower, no blight, late bloomer, heavy cropper. It is a large yellow apple with a bright blush; fine flavor. NNCS.

**Liveland Raspberry.** Extremely early, better than Yellow Transparent or any other early kind. Succeeds all over the country and always tops early apple markets; clear, waxen-white striped and marbled with crimson, with white, crisp flesh that is rich and delightful. Tree hardy as an oak, vigorous, long lived, productive, blight resistant and a late bloomer. Joseph Gerardi, Illinois authority, says: "Far ahead of Yellow Transparent—grows faster, fruit larger, ships as well, keeps as well, eats as well, and is resistant to disease." See photograph. NNNCS.

**Wilson Red June.** Most beautiful Summer red, about the shape and averaging almost as large as Black Ben; ships better than any other summer apple. The markets pay big prices for them; Kansas City markets have paid as high as \$16.00 per barrel. Hardiness makes it a favorite even in Wisconsin, where only the most rugged can survive. Wilson Red June and Liveland Raspberry are our favorite early apples. NNCS.

In following descriptions capital letters show region where varieties should be planted. N—North; C—Central; S—South; NN—Extreme North; thus NCS means a variety may be planted either North Central, or South. CS means Central or South. NNC means Central to far North, etc.

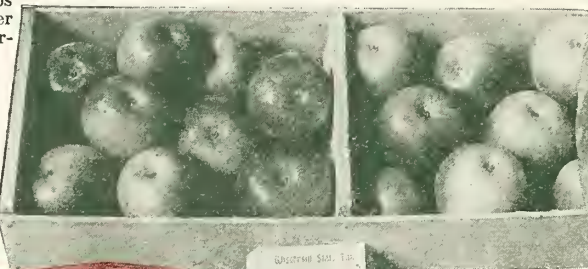
**Yellow Transparent.** A widely known Russian variety; good cooker, good quality. Dwarfish grower, splendid filler. Fine, but Liveland Raspberry better. NNCS.

**Summer Champion.** Brilliant, red striped, a good shipper and popular on the Summer markets. Tree a good grower, with heat and drought-resisting foliage. Nets \$2.50 to \$4.00 per bushel. NCS.

**Duchess (Oldenburg).** Handsome, early, red striped; well known everywhere. The best cooker, and its rich acidity makes it popular for eating fresh. The tree is a natural dwarf. NNCS.

**Early Melon.** Much resembles Wealthy and better; good quality; just tart enough to cook well. The tree is hardy, healthy and an unfailing annual bearer. NNCS.

**Grimes Golden.** A golden yellow apple that for nearly a century has been prized by American apple lovers because of its quality and beauty. Its only fault is its susceptibility to collar rot; this we have overcome by our special double-working process. This ("Double-Life") operation is explained on the second page of this booklet. NCS.

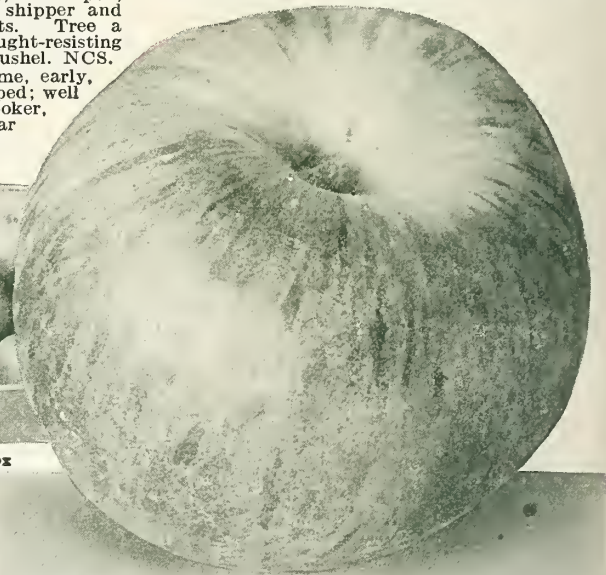


Wealthy—Prize Box

### Wealthy

A large, red apple distinctly marked with narrow stripes and splashes of deeper red. Popular for eating raw and cooking—the equal of Jonathan for those who prefer an acid apple. The tree bears young and many are used for fillers; the tree however, is long-lived. Bears heavily and every year. The best Fall apple. Extremely hardy. NNNCS.

**McIntosh.** Popular because of hardiness and quality. It is bright red in color; has tender, white flesh and is excellent baked. All sections are planting more McIntosh, especially where hardiness is a consideration. NNCS.



Liveland

Raspberry

**Liveland Raspberry—Best Early Apple.** Surpassingly beautiful, crimson striped, splendid quality. Hardy, good shipper. Resists blight. Succeeds everywhere. Early apples bring \$6 to \$9 a barrel.

In this book, descriptions are arranged approximately in *Order of Ripening*; earliest sorts first, latest ripening sorts last.

**Jonathan** Planted all over America. A bright, flashing, red apple with a brisk, spicy, rich acidity that has made it one of the most popular of all varieties. We have never known Jonathan to disappoint and we advise planting. The tree is adapted to many sections; orchards of them are found in the East, South, North and West, and they always pay. It has every good point; strong growing tree; bears big crops every year and the tree is long-lived. It is a young bearer and is largely planted as a filler. Solid orchards of Jonathan are not advised; Rome Beauty, Stark Delicious, Black Ben, Stayman Winesap and Grimes Golden are ideal to plant with it. See color photo. NCS.

Jonathan



**Stark King David** (Trade mark). In many respects, the most beautiful apple grown. A solid, deep, rich red with markings of darkest crimson. Always commands instant attention. Brings top prices. Resembles Jonathan, but larger and better quality—not quite so much acid. The tree is one of the most dependable. Bears abundantly, East, West, North and South. In New Mexico it is even darker than Arkansas Black. In the Central-West—Iowa, Missouri, Illinois, Indiana, Ohio, Pennsylvania, etc., King David grows to perfection. Tree healthy, hardy, vigorous and bears remarkably young. The youngest bearer of any apple we have ever tested. Bears full every year. Fruit hangs firmly. Even heavy winds fail to dislodge them. A strong Jonathan competitor. Just the right size and color for hotel and fancy trade. Col. G. B. Brackett, U. S. Pomologist, considers it one of the greatest apples and says it should be planted largely in all sections. New York Exp. Station, the most conservative in the U. S., reports: "Superior to Jonathan, larger and even better color. Firm, crisp, spicy, of best quality." See color photos. NCS.

**Rome Beauty.** Large, uniform, smooth, well colored, plenty of juice, good quality—cooks well and is especially fine baked. Planted everywhere and is standard on all markets. Keeps well in cold storage and in common cellar. Blooms late and bears every year. See photo. NCS.



**3-Year-Old Stark King David.** Youngest and Heaviest Annual Cropper. Larger and Richer Quality than Jonathan. "Flavor of Old Wine." Blight Resistant. Hardy. Successful from Coast to Coast.

**Senator** (Trade mark). No apple is more beautiful—bright, rich red, smooth, uniform, superb quality—an agreeable blending of acid and sweet, with an intense apple flavor. Its hardiness makes it popular far North and its planting is increasing. Senator has never been exploited, but has won its way on merit alone. NNCS.

**Mammoth Grimes Golden.** Much larger than Grimes Golden, but similar in shape and color, and has a trifle more acid. It is a good cooker and keeps well. NCS.

**Newtown Pippin (Albemarle).** Has done much to build up Virginia's reputation as an apple state. Bright yellow with a distinct pink blush. Rich flavor; firm, crisp. NCS.

**Stayman Winesap.** The best of the Winesap type. Dark, rich red, with distinct stripes; flesh firm, fine grained, crisp, tender, with an abundance of juice. Tree produces big crops, successfully resists drought and is profitable on thin soils where Winesap would starve. Grown successfully much farther north than Winesap. Virginia, West Virginia and Pennsylvania are planting hundreds of acres of them. Ohio, Indiana, Illinois, Missouri, Kansas and all the Central-West are planting more and more Stayman Winesap. In the Far West



**A Loaded Rome Beauty Tree.** "Stark Trees Bear Fruit" like this.

and in the South it is fast supplanting old favorites. We popularized the variety and have watched the success it has made for a quarter of a century. Heavy bearer—see photo below. NCS.

**Champion** (Trade mark). Throughout the Central-West and South, making a great record; beautiful, bright red with distinct striping and is of good quality; the skin is strong, making it one of the best handlers, and it will keep until early Summer. One of the youngest bearers and requires less moisture than any kind we know. NCS.

**Mammoth Black Twig.** Large, red and green; fairly good quality. Shy bearer; but our improved "Stark Strain" bears well. NCS.

**Winesap.** The old favorite red apple that has made money for growers in all apple sections. Good quality, good keeper, good seller. Not so large as Stayman Winesap. NCS.

**Paragon Winesap.** Resembles Mammoth Black Twig, but is better in quality and better color. The tree bears younger and more heavily. NCS.

**Two-Thirds Size**



**Black Ben.**

**Black Ben.** Big Cash Cropper—Bears Young—Bears Every Year. Wonderful Shipper and Keeper. So "Showy" and Good that it sells in Chicago and New York for \$3.00 per Box.

**Black Ben.** This great, handsome, solid, dark red apple, shown above, is more popular every season. Wherever an apple of the Ben Davis type is wanted, plant Black Ben. It is far better than Ben Davis, Gano, Red Ben Davis or any other kindred apple. Every money-making quality is combined in Black Ben. It is hardy, rugged, bears young, every year and produces tremendous crops. Good quality—far better than any other apple of its class. The tree growth is of the Ben Davis character, but even stronger, hardier, thriftier and a better resister of drought and canker. Wonderful beauty makes it a profit-earner. We know of no variety that will bear more bushels of No. 1 fruit than Black Ben. On Chicago and New York markets, Black Ben, raised on Stark Trees, sold for \$3.00 per box, while Jonathan was selling at \$2.00. In cold storage or in common cellar, it is an unexcelled keeper, and no apple will stand hard handling or long distance shipping better. We have watched this apple in the orchard for 20 years and have never discovered a fault in either tree or fruit. Remember, Black Ben is entirely distinct from Gano and Red Ben Davis. The variety is a trade-mark of ours—come to the hundred-year-old headquarters, Louisiana, Mo., for genuine STARK Black Ben. NNCS.

**"Stark Trees Bear Fruit"**



**One-Twentieth Size**  
**A Branch of Stayman Winesap—Best of Winesap Family**

Grown on  
Stark Trees

# The Two Peach Sensations

## STARK EARLY ELBERTA

### The Ideal Orchard Tree



Stark Early Elberta

Specimen from Stark Early Elberta Trees in Orchard of Dr. E. L. Morris, Fayette Co., Tenn. Photographed actual size

#### Stark Early Elberta Praised by All

##### ¾-pound Stark Early Elbertas

"My Stark Early Elberta peaches, which I send, show the splendid record your trees made in my orchard after hard, late frosts. These peaches weighed ¾ of a pound each, despite the severe drought."

"Stark Bro's have done more in fruit growing than all other men on this continent. I know your history during the days of father, grandfather and great grandfather up to the present time. What you have done will go down on the pages of history."

Dr. E. L. Morris,  
(Orchardist—Fayette Co., Tennessee).

##### Bears Big at Four Years

"Our Stark Early Elbertas bought from you grow large. Flavor far better than old Elberta, and a superior canner. At four years they averaged 5 crates to the tree. This year they will average 7 to 8."

J. R. Hunter, Frozen Dog Ranch, Emmett, Idaho.

##### Sold for \$6.00 a Bushel

"Stark Early Elberta sold in Mt. Sterling, Ill., for \$6.00 per bushel."

C. E. Barnett, Brown Co., Ill.

##### Best Commercial Peach

"I consider this the very best commercial peach that has ever been introduced into the trade. Coming at a season preceding the standard Elberta, by a week or ten days, often making a difference of a hundred per cent increase in the returns."

L. D. Batchelor, State Horticulturist.

##### A Perfect Shipper

"A crate of Stark Early Elbertas shipped all the way from Utah to Florida without a flaw. Think of it! 8 days on the road! Every peach looking as if it had been just picked. The value of a first rate yellow peach ripening at this season can hardly be overestimated."

E. P. Powell, Orchardist and Horticulturist,  
Writer of New York and Florida.

"Gee!

Don't

you

WISH

you had

some?"



##### Resists Winter Killing

"Stark Early Elberta Peach was in full bloom on the 8th. It displays no winter killing whatever, while the ordinary Elberta shows throughout Long Island practically total destruction of the buds."

H. B. Fullerton,  
Editor Long Island (N. Y.)  
Agronomist.

This peach that James Handy, Secretary of The Mississippi Valley Growers' Assn., has named "Queen of All Peaches"—the greatest yellow peach ever produced, is really no kin to the old Elberta. It was given its name simply because it resembles Elberta and ripens 2 weeks ahead of old Elberta—and comes on the market just at the time when peaches are scarcest and prices are highest.

Stark Early Elberta and J. H. Hale (which follows Stark Early Elberta about 2 weeks) make the Ideal Orchard Team for Profits because they out orchardist's expense by doubling the length of the picking and shipping season. J. H. Hale is the yellow peach to plant to follow Stark Early Elberta.

#### B. Carine The Largest Peach Grower in a Great Peach State

Landed in South Glastonbury, Conn., 25 years ago with \$22 in his pocket. Today he is one of the largest, most successful peach growers in all America. He says:

"I would rather have an orchard of genuine Stark Early Elberta from Stark Bro's at Louisiana, Mo., than any other variety of peach. It brings me more money than anything else I grow. I have received at the rate of \$2.70 per crate when the old Elbertas were averaging the same season only \$1.50. The Stark Early Elberta is about a week or ten days ahead of the J. H. Hale peach, which comes on the market with Elberta."

"Of all the varieties I have grown I consider Stark Early Elberta, Aiton, Krummel October, Red Bird and June Elberta, that I obtained from your nurseries the most valuable—the biggest money-makers."

#### Be Sure You Get Genuine Stark Early Elberta

The claims made on this page refer only to genuine Stark Early Elberta trees, coming only from Stark Bro's at Louisiana, Mo. Genuine Stark Early Elberta trees carry individual labels with the autograph signature—shown below—of Dr. Sumner Gleason, who planted the original Stark Early Elberta tree, sent to him by Stark Bro's:—

Kaysville, Utah, Feb. 16, 1914.

"This is to inform you that I have never supplied buds from the original Early Elberta tree or other trees of the same variety to any nursery except Stark Bro's, Louisiana, Mo."

*Sumner Gleason.*

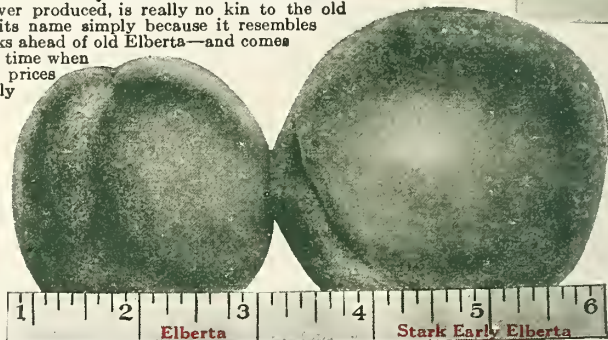
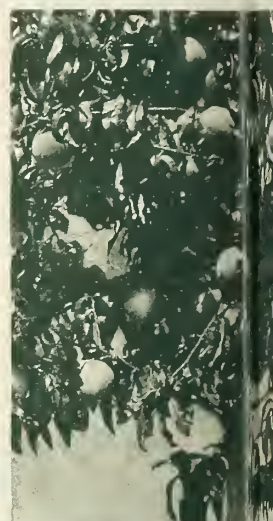
Stark Early Elberta—as developed by Stark Bro's nurseries—is the yellow Peach of the Century.

The huge globes of fruit that it bears in such astonishing abundance are now famous wherever peaches are grown. Flesh of exquisite tenderness and surpassing flavor—not a trace of the bitter tang of the old Elberta—firm and smooth—wonderful shippers and canners. Bring top notch market prices every time everywhere. And, equally pleasing are the habits of genuine Stark Early Elberta of early bearing and successfully resisting late frosts in every peach growing section of America.

From every standpoint of consumer and little and big fruit grower, the genuine Stark Early Elberta is to all other peaches what the genuine Stark Delicious is to all other apples. The discovery and development of both mark two giant strides toward the betterment of orchards and fruit growers' profits during our Century of Success.

#### Best of 4,000,000 Tested Trees

Stark Early Elberta was selected as best by us after over 30 years of experiment with nearly 4,000,000 peach seedlings. The original Stark Early Elberta was developed from a Stark Bro's seedling tested out in the orchard of Dr. Sumner Gleason of Kaysville, Utah. From his orchard—from genuine Stark Early Elberta trees that bear extra quality fruit, we receive our Stark Early Elberta buds every season. From these original, true-to-name buds are grown the hundreds of thousands of Stark Early Elberta trees that go forth every year from Louisiana, Mo., to bring delight to all peach lovers—and marvellous profits to fruit growers.



Average Specimens grown in the same orchard under identical conditions. Stark Early Elbertas brought 86% more than old Elberta same season.

#### Stark Early Elberta Brings Record Prices

Chicago and St. Louis fruit markets were flooded with peaches during the week of August 9 to 15, 1915. Despite this, genuine Stark Early Elberta from the orchards of Louis Siebert, of Hollister, Mo., were eagerly bought at from \$3.00 to \$3.60 per crate. Old Elbertas could not be sold for more than \$.25 to \$1.45 per crate in these markets this season.



A Loaded 3-Year-Old Stark Early Elberta Tree

J. H. Hale F...  
3-Year-Old  
their Lov...

Burbank...  
Gentlemen...

Stark Bro's...  
Gentlemen...  
one of the...  
and beautif...  
The quality...  
pearance. A...  
ulations!

# ations of the Century

# ELBERTA—J. H. HALE

## Team for Profits

Grown in  
Mr. Hale's  
Own  
Orchard



J. H. Hale

**J. H. Hale—The Second in Stark Bro's Centennial Peach  
Combination—Infinitely Superior to  
Old-Fashioned Elberta**

**J. H. Hale is Larger than Old Elberta**

The J. H. Hale is a globular, freestone peach—larger than old Elberta—beautiful yellow color—covered with bright red, thick skin—practically no fuzz. Because its flesh is solid, it is an excellent shipper—has been successfully shipped from Georgia to Missouri in barrels, like apples. Next to Stark Early Elberta, it is unquestionably the most profitable yellow peach grown.

**Guarantee**—We absolutely guarantee our J. H. Hale trees to be true to name and fully up to the high standard of Stark Bro's Quality. Our record of 100 years of successful tree growing is back of every Stark Tree.

**Stark Bro's J. H. Hales Keep Wonderfully**

"You will be interested in knowing that the specimen of J. H. Hale grown in Louisiana, Mo., which you sent me some time ago, has remained here on my desk 16 days. It is in first-class condition in every way. Its flavor was just as good as ever."—Fruit Grower and Farmer, St. Joseph, Mo.—E. H. Favor, Managing Editor.

**Bring \$2.50 per Bushel**

"My J. H. Hale peaches are bearing for the first time. Many samples 10½-11 inches circumference—a magnificent peach. Superior in flavor and vastly harder than old Elberta. I was the first one here to plant Hale peaches. This variety sold in my orchard for \$2.50 per bushel."—Charles Manor, Stanley, Va.

This variety sold in my orchard for \$2.50 per bushel."—Charles Manor, Stanley, Va.

**Famous Pomologist says "Just Right"**

"The specimens of J. H. Hale as grown at Louisiana, Mo., are certainly a beautiful yellow and red color and large enough in size to be just right for market or for any use at home. The flavor is good and ought to please anyone. They came in good condition."—H. E. Van Deman, Ex. U. S. Pomologist, Washington, D. C.

**Best for the Home Fruit Garden**

"Genuine Stark Early Elberta are the most satisfactory peaches we have ever grown in our thirty years of home fruit gardening. They are very fine and have an excellent color."—J. W. Murphy, Editor Saturday Evening Post, Des Moines Co., Iowa.

**2-Year Trees Bear Great Peaches**

"The Stark Early Elberta is 'some' peach. I grew six half-pound peaches on two-year-old genuine Stark Early Elberta Trees (from Louisiana, Mo.), planted two years ago last April—big beauties, certainly."—D. J. McCracken, Contributing Editor Live Stock World, Paxton, Ill.

**"Stark Trees Bear Fruit"**

Because all Stark Trees have strong, healthy, disease-resistant bodies—perfect root system and are in every way perfect. We reject tens of thousands of trees grown in our nurseries every year—and burn them if they are found crooked or imperfect. We sell only first quality stock, all culls and "seconds" go to the bonfire. Furthermore, the Stark Bro's system of expert inspection and selection makes certain that every genuine Stark Tree will prove "True-to-Name" and true to the saying that the experience of fruit growers the world over has built into an axiom—"Stark Trees Bear Fruit."

**More Fruit Than Any Other Variety**

"My Stark Early Elbertas bought from you are the best early peach I have. More fruit this year than any other variety. Late frost killed a good portion of my other peaches, but Stark Early Elbertas have good crop."—J. N. Hildreth, Pawnee Co., Okla.

**The Princess of Peaches**

"Stark Early Elberta, while somewhat of the Elberta type, is rounder and I like it better for both ease in packing and attractive appearance in the box. Old Elberta looks coarse beside it. Stark Elberta Early has a much finer texture, sweeter and more satisfying. The genuine Stark Early Elberta is the Princess Royal of peaches."—Frank Femmons, Madera Co., Cal.



J. H. Hale is the thoroughly tested yellow peach that we can sincerely recommend as the team-mate of Stark Early Elberta.

J. H. Hale is far superior to the old-fashioned Elberta in size of fruit, color and flavor—none of the bitter tang. The shrewdest fruit growers of America are planting J. H. Hale trees from Louisiana, Mo., to follow Stark Early Elberta in the ripening season. It ripens just at the same time as old Elberta (two weeks after Stark Early Elberta has ripened and sold) but is much better than old Elberta in every way.

We were the first nurserymen to prove out the J. H. Hale tree, the first to fruit it in a nursery.

**First Nursery to Fruit J. H. Hale**

We grew our first 13,000 crop of J. H. Hale trees in 1911-12—years ago, before J. H. Hale trees were generally known. All of these trees we sold to Mr. J. H. Hale.

Prof. P. F. Williams wrote, in "The Southern Fruit Grower" (Aug., 1912):—

"The J. H. Hale peach I received is one of the most beautiful examples of perfection in peach growing I have seen. The rather thick, firm, tenacious skin is another fine point in its favor. Its quality is excellent.

"I understand that Stark Bro's, of Louisiana, Mo., are propagating this new peach."



J. H. Hale Trees, Grown by the Hundreds of Thousands by Stark Bro's at Louisiana, Mo.

**U. S. Pomologist Praises J. H. Hale**

Mr. P. C. Stark, Stark Bro's, Louisiana, Mo.

Dear Friend Stark:

"In regard to J. H. Hale peach, it is the consensus of opinion of this office that it is better than Elberta. A longer keeper. Better quality.

Thanking you for submitting your specimens, I remain,

Yours very truly, G. B. Brackett, Pomologist



Photo by L. D. Batchelor, State Horticulturist

Grown on Stark Trees From Louisiana, Mo.



Red Bird—"F. W. Boardman, of St. Louis, sold 16 carloads of Red Bird for \$12,689.60"—Kansas City Packer. Earliest good peach. Larger, better shipper than Elberta.

# Stark Bro's Centennial Peaches

The reason why Stark Bro's is the oldest nursery in America and the largest in the world today is because "Stark Trees Bear Fruit."

That also accounts for the complete confidence with which peach growers in particular—and fruit growers in general—look upon Stark Bro's at Louisiana, Mo., as their tree headquarters.

There are scores of reasons why "Stark Trees Bear Fruit." Each one of these reasons emphasize the advisability of your preference for Stark Trees.

"Stark Trees Bear Fruit!" because

Notice.—All Freestone Peaches have (F) after names.

## Red Bird Cling

(See illustration to left.) Extreme earliness, glorious color and splendid quality make it the greatest of all very early peaches. Practically all early peaches meet the market bruised and partly rotted, but Red Bird, grown on Stark Trees, arrives firm as the day it was picked. The Stark Red Bird Cling Tree is a strong grower, holds foliage well and the bloom is hardy. We have never seen more beautiful peaches than Red Bird—larger than Elberta and red as fire. Commercial orchards of Red Bird are making their owners wealthy because this enormous red peach comes on the market when only inferior peaches are ripe.

100 years of scientific tree-growing experience is concentrated on the production of one high standard of fruit trees. "Stark Trees Bear Fruit" because all Stark Trees shipped from Louisiana, Mo.—without a single exception—have strong, thrifty roots and healthy bodies.

"Stark Trees Bear Fruit" because every Stark tree is subjected to careful inspection before we will sell it to you. The most minute defect will cause a Stark Tree to be discarded. Every Stark Tree must live up to the reputation that the century of success has built up.

"Stark Trees Bear Fruit" true to name because Stark Trees are never mis-labeled.

The season ahead of Elberta is well filled by Red Bird, June Elberta, Alton, Stark Early Elberta and J. H. Hale.

The profits to growers of Red Bird have been simply astounding. Their summary is "Red Bird Cling brought \$4.00 to \$5.00 per bushel. Great seller, best shipper, biggest money-maker"—"Now selling at from \$4.00 to \$6.00 per bushel by the carload." Red Bird opens a great field. NNCS.

**Mayflower** (F.) Gloriously beautiful—"red all over." Perfectly hardy, and the earliest ripening sort; better quality than most early peaches; commands fancy prices, but not as good a shipper as Red Bird Cling, which is the most satisfactory of all early peaches. NNCS.

**June Elberta** (S-C.) Rich golden yellow with bright red cheek. Ripens with Red Bird—the earliest ripening good yellow peach. High quality; juicy and quite firm. Enormously productive, young bearer, vigorous and hardy. Thrives wherever peaches grow; resistant to rot, thus displacing the old Triumph, etc. On account of extreme earliness, beautiful red and gold color and good shipping qualities, commands top prices. Plant it to precede Stark Early Elberta. NNCS.

**Eureka** (F.) The great "ironclad" hardy peach; delicious quality and large size. Gloriously beautiful; whitish cream color, blushed red. No other so hardy; stood 32° below zero in our test orchards—was only one to show bloom. A peach that you can depend on; bears when all others fail. NNCS.

**Alton** (F.) (See big peach illustrated at right.) The white peach par excellence. Many years a proven success in commercial and home orchards from coast to coast. B. Carine, the largest Connecticut peach orchardist, says Alton is "far superior to Carman and peaches of that class; hardier, better quality, better shipper; less subject to rot, a better bearer and more vigorous. Brings better prices on the market." A great, handsome, red-cheeked peach with luscious, firm, creamy white flesh—a splendid shipper. The experience of orchardists throughout the country, after years of trial, has shown that Alton is the best and most profitable white peach for commercial purposes or home use. Succeeds everywhere, a late bloomer and exceptionally hardy; a heavy and young bearer. Blossoms resistant to frost. NNCS.

**Carman** (F.) Large, creamy white, blushed red. Hardy; good quality. Alton is far superior, hardier and less subject to rot. NNCS.

**Stark Early Elberta** (F.) Has revolutionized peach growing, ripening 10 days ahead of Elberta; highest quality; best shipper; biggest money-maker. Fully described on page 8. NNCS.

**Champion** (F.) A large white, pink blushed peach that for years has been popular because of extreme hardiness and fine quality. Good everywhere; be sure you plant the genuine; there are some inferior strains. Our propagation is from select bearing trees. NNCS.

## Crawford Early Improved

(F.) Better than old Crawford Early—much hardier. Deep yellow, bright cheek; good quality. CS.

## Belle of Georgia

(F.) A rich creamy white peach, brightly blushed; large, handsome, delicious quality; ships well and sells well. Years ago we advertised it as a "red and white" Elberta and it has proven as dependable and much hardier in

bud and wood than that old favorite. NNCS.

## Stark Summer Heath

(Cling.) For preserving and canning, none can compare with this creamy white peach. One of the hardiest, most prolific and surest bearers. Luscious and sweet. Requires little sugar for canning. Snowy white clear to the pit. Bears when others fail. NNCS.

## Engle Mammoth

(F.) A yellow peach of great size; beautiful, good quality, fine for canning. Popular in Michigan and the North—one of the hardiest. We advise it along with Stark Early Elberta, J. H. Hale, Alton and Red Bird Cling. NNCS.

Grown on Stark Trees



Alton—Highest quality, most profitable and dependable white peach. This year, in Northern orchards, Alton and Eureka bore full crops where 30 other sorts failed.

**Elberta Cling** A golden yellow clingstone of great size, splendid beauty and as round as an orange. The best yellow cling we know. Successful in all Elberta sections and farther North. A fine market peach; good shipper, good quality, sure and dependable. Too few clingstone peaches are grown and we urge the planting of this sort. See photograph on opposite page. NCS.

**Capt. Ede** (F.) A handsome yellow peach much resembling Elberta, but better quality, and because of hardness often bears when Elberta fails. Should be planted commercially. NNCS.

**Elberta** (F.) The best known yellow peach and the standard market sort. Known wherever peaches grow. Quality is not of the best, but it is tender and good. Stark Early Elberta and J. H. Hale are fast taking its place. NCS.



A Peach Orchard of 11,000 Trees Brought \$30,000 in One Season. Orchards of Stark Bro's Improved Varieties Pay Quick Returns. Note Inter-Crops.

"Superior to all Other Yellow Cling Peaches."

"Stark Trees Bear Fruit"—Like This

"Best of All Late Yellow Peaches"



Elberta Cling



Krummel October

**J. H. Hale** (F.) A peach of nation-wide fame originated by J. H. Hale. Ripens 2 weeks after Stark Early Elberta and ideal to plant with it for big profits. Stark Bro's were the first nursery to fruit J. H. Hale. We grew our first block of 13,000 J. H. Hale Trees in 1911-12. All these trees were sold to J. H. Hale. Now offered by us at planters' prices. Fully described on page nine of this catalog. NNCS.

**Illinois** (F.) A large beautiful white peach resembling Champion, but ripening later. Handsome, delicious quality; regarded as superior to any peach of its season. NNCS.

**Crawford Late Improved** (F.) Delicious and juicy. A large, handsome yellow peach. This strain far superior to old Crawford Late. A standard variety and popular, but only fairly hardy. CS.

**Golden Sweet Cling** One of the juiciest, sweetest, best clings we know. Excels Lemon and Orange Cling. Originated in Arkansas. Dependable. Thoroughly hardy. NCS.

**Late Elberta** (F.) Just what the name implies. Identical with Elberta in size, color and shape, but much better quality, and ripens a month later. Fills the gap between Elberta and Krummel October. NCS.

**Mammoth Heath Cling** The old-time favorite creamy white clingstone peach for canning and preserving and for sweet pickles. One of the tenderest, juiciest and most luscious sorts. NCS.

**Stark Heath Cling** A strain of Heath Cling propagated by us for many years. Best peach known for peach pickles, therefore a favorite with all housewives. NCS.

**October Elberta** (F.) Resembles Elberta, but slightly larger and ripens very late. Quality is superb. We advise the planting of more late peaches, such as October Elberta, Krummel October. NCS.

**Krummel October** (F.) Enormous size, splendid beauty, ideal quality and perfect tree characteristics have made Krummel October the most popular late peach. Very large, almost round, deep yellow with a blush of dark carmine; the flesh is firm, of fine texture and free from the bitterness of Elberta. Tree hardy, bears young; fruit hangs long after ripe without rotting. It is far superior to Salway, ripens two weeks later, and on the St. Louis markets always commands a much higher price. Orchardists should plant more late peaches; the late markets are never crowded; profits are sure. (See photo.) NNCS.

## The Plum Successes of 100 Years

**Mammoth Gold** Photo below. The fruit is of enormous size, extremely beautiful, somewhat translucent and overspread with a beautiful blush. The quality is simply superb—one of the finest, if not the finest, hybrid plum we have ever tested. No tint of bitterness, but sweet clear to the seed. Fine for canning, preserving and eating.

Ripens extremely early—gone by the 4th of July, while other good plums are still green. Specimens shown below were picked June 28th.

Not only does this early ripening habit make it extremely valuable for the early markets, where good plums always bring top prices, but it almost eliminates "plum rot." It is a cross between Spalding (Domestica) and Abundance (Japan) and has undoubtedly inherited all the good qualities of both parents, retaining the high quality of the Domestica and the best points of the Jap—tree being an upright grower, very thrifty, somewhat resembling Abundance, but better. It is also extremely hardy. Mammoth Gold is undoubtedly the greatest of all of Mr.

Endicott's plum breeding achievements. Shortly before he died, Mr. Endicott himself said: "Mammoth Gold excels any plum on my place and I have 20 varieties; it is larger than Abundance and a very heavy fruiter; it has given me 3 to 5 bu. of plums for at least 4 or 5 years, when all other plums were killed by frost." NNCS.

**Duarte** Beautiful, enormous new blood plum. Luther Burbank, originator, says: "A fine grower; hardy, never failing—bears abundant crops." Very promising—try it. NCS.

**Early Gold** (Shiro.) Pure, transparent yellow—a huge honeydrop. Always sells well for eating and canning. NNCS.

**Red June** Named and introduced by us. Dark red; showy, excellent quality; a good shipper. Most valuable, very resistant to rot; ripens early. NNCS.

**America** Large, glossy coral red, beautiful as a plum can be. Quality is unsurpassed. Tree is ideal; free from rot. NNCS.

**Abundance** A large cherry red plum that is firm, sugary and of excellent quality. Hardy; bears heavily every year. NC.

**Gold** (Trade-mark) Bright, transparent, golden yellow, beautifully blushed. Burbank's choice creation from twenty million seedlings. Has fruited in practically every state. Stark Bro's paid Burbank \$3,000.00 for it. NNCS.

**Omaha** The late Theodore Williams of Nebraska produced Omaha and became a benefactor to mankind. It gives the North a plum equal to Japanese sorts and hardy as Native varieties. Succeeds everywhere. A large coral red plum with small seed; flesh bright yellow, juicy, richly flavored. The Stark Omaha tree bears young, a late bloomer, resists frost—extremely hardy. NNCS.

**German Prune** The prune of commerce—grown the world over; dark blue with dense bloom. NC.

"Stark Bro's Most Valuable New Plum."



Mammoth Gold Plum

# Stark Bro's 20th

# Century Pears

Stark Bro's grow trees for the world. Nevertheless, they grow them for each locality. We have propagating grounds North, East, South and West. The trees are grown where they will thrive best.

We are extremely careful to send to each Stark Bro's customer sorts that have been grown to thrive and "Bear Fruit" in greatest abundance and finest quality in that customer's section.

## Lincoln

The True Lincoln of Illinois. *Early Summer.* In each kind of fruit, Stark Bro's have found one variety that has merited its especial approval.

In pears, that variety is the True Lincoln of Illinois. When grown on Stark Trees this famous pear proves both a delight to the consumer and a wondrous money maker for the fruit grower, especially in the Central West. It bears fruit of the highest quality—the tree resists blight, is a heavy cropper and has a habit of living and bearing long after other pear trees have died. This great high quality pear has stood the test of time. Today it is the pear sensation of the fruit world.

The Lincoln is a clear beautiful yellow pear with a blush of red. The handsomest pear that ever grew. In size and quality it is even better than Bartlett—the pear that marked the apex of pear quality for many generations.

In Lincoln the pear grower has every good point that is desired in a commercial pear. The fruit ships well and its quality and beauty commands top prices.

Naturally, buyers should be sure they get the genuine. That means "Look for the Stark Bear Seal." Moreover, it should not be confused with Lincoln Coreless, which is worthless. Plant the true Lincoln of Illinois for satisfactory results. Stark Bro's propagation came direct from the original tree—hence the planter takes no risk. Eighteen years ago A. H. Gaston of the Illinois Horticultural Society wrote us: "Grow Lincoln by the millions so they can be planted for yard, street and park tree. Lincoln should become a national fruit." NNCS.

**Kieffer.** Planted everywhere and bears more bushels of fruit than any other variety. Large, handsome. Big money maker. NCS.

## Grapes

**Stark Eclipse.** (Trade-Mark.) Originated with E. A. Riehl of the Ill. Exp. Sta. The finest early black grape; sweetest, most highly flavored and best in quality. Ripens a week to ten days ahead of Moore Early. Like other grapes, plant with different varieties for proper pollination. NCS.

**Concord.** Most widely known and largely planted of all black grapes. Large bunch; good shipper; sells well. Concord and its seedlings are the leading grapes of American commerce. NCS.

### Campbell Early.

Ripens a few days ahead of Moore Early, and is larger, a better shipper.

Very productive, vigorous and hardy; blossoms self-fertile. NNCS.

**Diamond.** (Moore's Diamond.) Seedling of Concord; the most dependable of all white grapes. Handsome bunch; high in quality; early, hardy, productive, vigorous. NCS.

**Hicks** Observing vineyardists and Hicks a better grower and a better bearer, and averages larger than Concord. NCS.

**Moore Early.** Seedling of Concord; similar in appearance and quality, but two weeks earlier. Probably the most widely planted grape with the exception of Concord. NCS.

**Niagara.** A magnificent white grape—as vigorous and productive as Concord. Bunch large and handsome. NCS.

**Worden.** A seedling of Concord, but larger, better quality and 10 days earlier. Thoroughly tested and growers of black grapes are planting them in preference to all others. Best grape for making grape-juice. NCS.

Lincoln—Centennial Pear Leader

## Blackberries

**Early Harvest.** An old variety that is known everywhere; firm, good quality. Best known early sort. CS.

**Mersereau.** One of the hardiest varieties. Always bears big crops; berries are large and quality excellent. Good shipper; one of the surest profit-earners. NNCS.

**Snyder.** One of the most dependable blackberries; good size, good quality, ships well. NCS.

**Eldorado.** Large, jet black, and keeps well after picking. Vine hardy, dependable, and almost free from rust. NNCS.

**Blowers.** A popular everbearing sort; hardest, large size, jet black, sweet and good. NCS.

**Lucretia Dewberry.** The best known, most popular and most dependable dewberry. Good size, good quality. NCS.

## Raspberries

**St. Regis.** (Everbearing.) Ripens through the entire season. The fruit is bright crimson, firm and delicious and the vine is of ironclad hardness. NNCS.

**Cuthbert.** The favorite red sort; bears big crops and the berry is of finest quality. NC.

**Cardinal.** The best purple raspberry. Extremely hardy and wonderfully productive. Fruit is of excellent quality. NCS.

**Cumberland.** The best blackcap raspberry; perfectly hardy; widely planted. NNCS.

**Hoosier.** A good blackcap, largely planted in Central West. Resembles Cumberland. NCS.

## Currants

**White Imperial.** Best white kind; fine for jelly. NNCS. dessert. Makes superior

**Diploma.** Strong grower, productive, exceptionally large berries and bunches; widely adapted; rich red; high quality. See color photograph, page 14. NNCS.

**Wilder.** A magnificent red sort; fruit large, fine flavor, juicy, ideal for jelly. NNCS.

**Lees Black.** Good grower, hardy, good quality. The best black sort. NCS.

**London Market.** Best known and most widely planted red currant. Strong grower, rugged, seldom injured by leaf diseases. Valuable. NNCS.

## Gooseberries

**Downing.** Fruit of great size; vine vigorous and produces big crops. We advise the planting of Downing and Houghton everywhere. NNCS.

**Houghton.** The best known, most popular and most profitable gooseberry. Dark red, thin skin; successful everywhere; splendid shipper; in strong demand. NNCS.

## Ornamentals

See Back Cover Page, also Page 15, for information on Ornamental Trees and Shrubs, Vines and Roses.

Write for free copy of our new book—"Secrets of Ornamental Planting," including three complete books, Landscaping Simplified, Ornamental Shrubs and Trees, and The Rose Garden.

## GOLD NUGGET

**Latest Winter Keeper.** A new pear of such splendid promise that it has been found deserving of Stark Bro's recommendation—and propagation. Gold Nugget has a thick protective skin—juicy, fine-grained, honey-sweet flesh. Larger than Bartlett, but more round in shape—nearly apple shape, making it ideal for packing and shipping. Now offered for the first time.

The originator, Mr. F. H. Davis, of Esmeralda, Calif., writes: "The Gold Nugget tree is blight resistant. Two other trees not over 30 feet from the original Gold Nugget tree are practically dead from blight. But Gold Nugget is absolutely free from it, and now 40 years old.

Have never known it to fail to bear; will keep as long and perfectly as any winter apple. Tree a late bloomer, blooming after all other varieties are out. It will ship to Europe and back to Frisco and still be in fine shape to sell. I have shipped them to France and they arrived in perfect condition."

Luther Burbank, the Master-mind of American Horticulture: "Certainly very fine in quality and in appearance. Well worthy of propagating."

G. B. Brackett, U. S. Pomologist: "Gold Nugget is certainly near the head of the list of fine pears. Very seldom have I tasted one so good. It is a wonder to me that you have never brought this excellent pear to notice before."

### Bartlett.

**Summer.** A long-time favorite. Golden yellow with soft blush; large, buttery, rich flavor. Tree bears young and abundantly. NNCS.

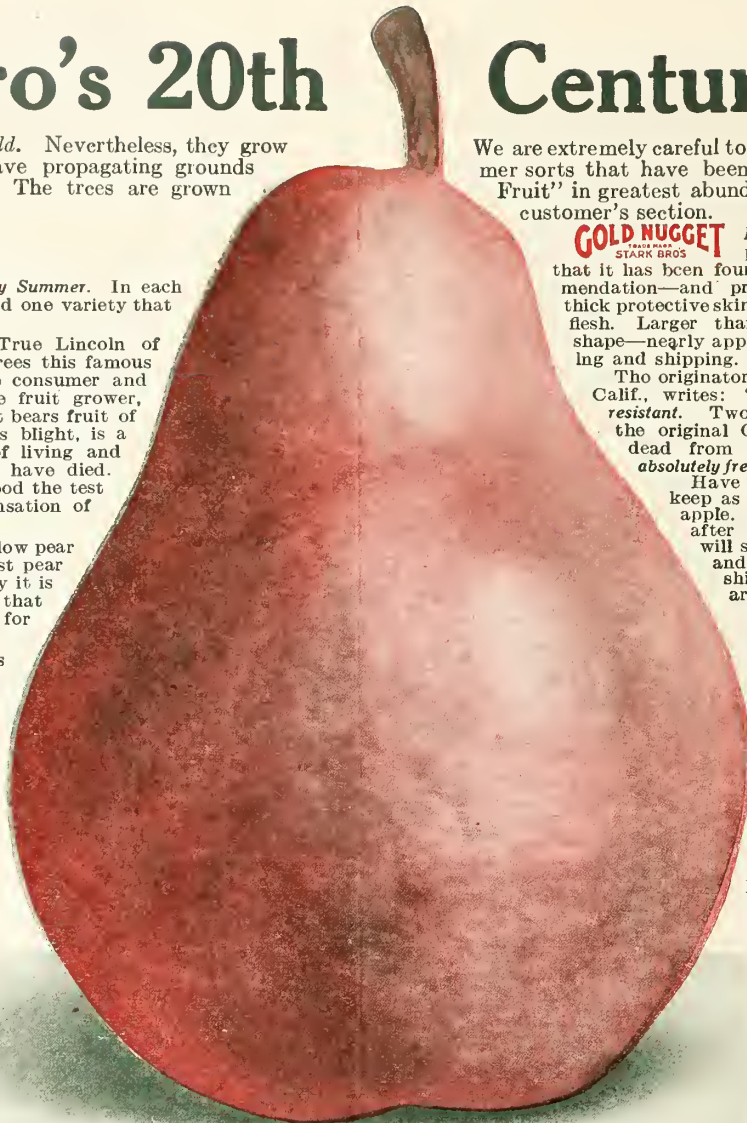
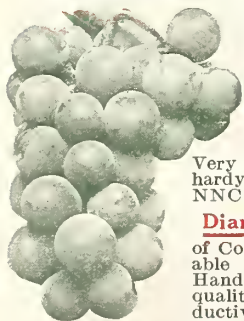
**Stark Seckel.** *Late Summer.* (Sugar Pear.) A select strain from E. A. Riehl of Ill. Its spicy, honeyed flavor has made it the standard of pear quality. NNCS.

**Comice.** Sure and dependable; should be more extensively planted. Good shipper; long keeper. NCS.

**Anjou.** Large, greenish yellow blushed and russeted. A delicious late Fall pear; seldom injured by blight. NNCS.

### Dwarf Pear

We can furnish all leading varieties; see page 14. Dwarf Pears bear younger and can be planted closer than standards



V  
e  
L  
c  
i  
s  
o  
  
S  
P  
r  
i  
n  
g  
e  
s  
t  
r  
e  
e  
s

( Wholesale List )

# SPECIAL CENTENNIAL PRICE OFFER

## Big Apple Trees At Small-Tree Prices

As a special celebration of our One Hundredth Birthday and an extra inducement to large planting this year, we offer *4-foot trees at 2-foot prices* on all varieties of apples. Therefore, order your apple trees from this *special* price list—not from the regular list printed on page to which this is attached. We will have a very small stock of small trees this year anyway, and these will be culled out or held over, according to quality. Stark Bro's extra large seedlings, Stark Bro's soil, Stark Bro's methods of propagation and an extra good growing season, this year, produced trees never before equaled. You are given the benefit in this opportunity of

### DOUBLE-SIZED TREES AT ORDINARY PRICES

#### APPLE

Usual Varieties		Each	10	100	1000
ONE-YEAR,	3 to 4 <del>2 to 3</del> ft.	18c	\$1.60	\$12	\$100
"	4 to 6 <del>3 to 5</del> ft.	25	2.10	18	140
TWO-YEAR,	X, 3 to 4 ft.	20	1.70	13	110
"	XX, 4 to 5 ft.	25	2.10	18	150
"	XXX, 5 to 7 ft.	35	3.00	25	180

Commercial Varieties		Each	10	100	1000
ONE-YEAR,	3 to 4 <del>2 to 3</del> ft.	20c	\$1.70	\$13	\$110
"	4 to 6 <del>3 to 5</del> ft.	27	2.20	19	160
TWO-YEAR,	X, 3 to 4 ft.	22	1.80	14	120
"	XX, 4 to 5 ft.	27	2.20	19	160
"	XXX, 5 to 7 ft.	37	3.10	26	200

Akin	Longfield
American G. Russet	Lowry (Dixie of Va.)
Baldwin	Maiden Blush
Bellflower, Yellow	McMahon White
Bonum	Ortley (White Bellflower)
Charlamof (Ey. Duchess)	Pennsylvania Red S.
Chenango Strawberry	Pryor Red
Cox Orange	Rambo
Early Harvest	Red Astrachan
Early Colton	Rhode I. Greening
Fall Cheese	Roman Stem
Famouse (Snow)	Salome
Fanny	Smokehouse
Gravenstein	Stark
Hubbardston Non'h.	Virginia Beauty
King Tompkins Co.	Wolf River
Lady Sweet	Yellow Horse
Albemarle Pippin	Minkler
Arkansas Black	Nero
Banata (Winter)	Newtown Pippin
Benoni	Northern Spy
<b>Black Ben (T.-M.)</b>	Northwestern Greening
Carolina Red June	Paradise Winter Sweet
<b>Champion (T.-M.)</b>	Paragon Winesap
<b>Delicious (T.-M.)</b>	<b>Rome Beauty</b>
Duchess (Oldenburg)	<b>Senator (T.-M.)</b>
Early Melon	Spitzenburg
Early Ripe	<b>Stark Delicious (T. M.)</b>
Gilbert Winesap	<b>Stark King David (T.-M.)</b>
Grimes Golden	<b>Stayman Winesap</b>
<b>Grimes Golden "Double-Life"—8c extra</b>	Steele Red (R. Canada)
Ingram	<b>Summer Champion</b>
Jefferis	Sweet Rough
Jonathon	Tolman Sweet
Kinnaird Choice	Wagner
King David (T.-M.)	<b>Wealthy</b>
<b>Liveland Raspberry</b>	White W. Pearmain
Lowell (Orange Pippin)	Williams Early Red
Magnat (Magnate)	Willow Twig
Mammoth B. Twig	<b>Wilson Red June</b>
McIntosh Red	<b>Winesap</b>
	<b>Yellow Transparent</b>
	<b>York Imperial</b>

#### APPLE—Continued

Special Varieties		Each	10	100	1000
ONE-YEAR,	3 to 4 <del>2 to 3</del> ft.	24c	\$2.10	\$19	\$160
"	4 to 6 <del>3 to 5</del> ft.	30	2.70	23	200
TWO-YEAR,	X, 3 to 4 ft.	25	2.20	20	170
"	XX, 4 to 5 ft.	30	2.70	24	210
"	XXX, 5 to 7 ft.	35	3.10	27	240

Am. S. Pearmain	Mother (A Fall Delicious)
Bellflower Improved	Okabena
Buckingham Imp.	Old Wife Pippin
(Stark Strain)	Primate
Chicago	Patten Greening
Colorado Orange	Red Jefferis
Eastman	Red R. Bty. Illinois
<b>Ensee</b>	Red Rome Bty. O. Bright
Estelline (Imp. Duchess)	<b>Red R. Bty., Ohio Dark</b>
Fall Pippin	Red R. Bty., Washington
Giant Jeniton (T.-M.)	Scarlet Pippin
Gravenstein, Banks Red	<b>Stark-Star (T.-M.)</b>
Gravenstein, Red	Stark Summer Queen
Hackworth	Vandiver Improved
<b>Henry Clay (T.-M.)</b>	White Pippin
Imperial Rambo	Windsor
Lansingburg (Rock P.)	Winter Maiden Blush
Magoon	Wismer Dessert
Mammoth G. Golden	

#### APPLE—Double-Worked

(Including "Double-Life" Grimes)

Double-worked trees on Stark Delicious body—hardy, disease and aphid resistant—better stock for double-working than Northern Spy.

		Each	10	100	1000
ONE-YEAR,	3 to 4 <del>2 to 3</del> ft.	28c	\$2.50	\$21	\$190
"	4 to 6 <del>3 to 5</del> ft.	35	3.00	27	240
TWO-YEAR,	X, 3 to 4 ft.	30	2.60	22	200
"	XX, 4 to 5 ft.	35	3.00	27	240
"	XXX, 5 to 7 ft.	45	3.90	34	280
Duchess (Oldenburg)	<b>Liveland Raspberry</b>				
Early Melon	Mother				
<b>Grimes Golden—"Double-Life"</b>	Paradise Winter Sweet				
Imperial Rambo	Tolman Sweet				
Jefferis	<b>Wealthy</b>				
King Tompkins Co.	Winesap				
Lady Sweet	<b>Yellow Transparent</b>				

IMPORTANT—Most desirable varieties are printed in extra heavy *Black* type.

INDIANAPOLIS OFFICE

600 AMERICAN CENTRAL LIFE BUILDING

## HICKORY HILL ORCHARD PRODUCTS COMPANY

BENJAMIN W. DOUGLASS, MANAGER

TREVLAC, INDIANA.

Stark Brothers,  
Lousiana, Mo.,  
Gentlemen:-

In regard to the trees which I bought from you three years ago last spring I wish to say that they are now the "Show Block" of the entire Hickory Hill property.

These trees join a block of trees that were planted two years earlier. The earlier planting was made before I became connected with Hickory Hill and the cheapest trees that could be obtained were used.

Remember, now, this planting was two years old when the Stark trees were set out, but today the Stark trees are larger, finer, more uniform and more healthy in every way.

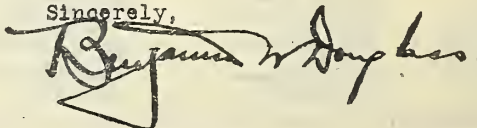
The soil, slope and other conditions are the same in the two blocks. The treatment has been the same -- except that we have had to give extra care to the five year old "cheap" trees.

It's mighty poor business, this planting of scrubs and then spending much more than the price of a good tree just nursing the scrubs along. No matter how much you nurse them you can not grow a good orchard out of scrub nursery stock.

If you know of any one "from Missouri" who has a hankering for "cheap trees" just shoo him around this way. I wont have to talk -- the trees can do that better than I can. As for myself, it will be hereafter as formerly -- Stark trees for results.

October 21 1915

Sincerely,





# Stark Bro's at Louisiana, Mo., since 1816

## Centennial Cash Price List

Fall 1915—Spring 1916

**Wholesale Prices Herewith** are for first-class stock, packed free and delivered f. o. b. our local freight and express office.

**Terms** Cash with order, or we will ship if one-fourth cash is remitted with order, balance to be paid on arrival.

**Small Orders** No order too small to receive our most careful attention—none too large for our capacity.

**We Box and Pack Free** These cash prices pay for everything delivered on board the cars at Louisiana, Mo. There are no further uncertain charges for service, packing, drayage, etc., as some nurseries charge.

**Special Quotations—Estimates** We make special prices on large orders and car lots. Write for estimate, give list of requirements, varieties, grades, etc.

**Louisiana, Mo.** is on St. Louis basis and rates prevail. Located on thru line railroads, north and south, east and west, we can make quick shipment to all parts of the United States.

**Parcel Post Orders** We can ship 2 to 3 by parcel post. Add three (3) cents to the 2 to 3 ft. or X price and this stock will come to you by mail post paid. We can also ship grape-

vines, berry plants and small size Ornamentals in the same manner—prices are 3 cents more than listed. However, we prefer express and freight shipments, but make this offer for those far removed from railroads.

All stock damaged in transit, we will replace without charge—claim must be made to us within one week after arrival of stock. We use the utmost care to avoid all mistakes and Stark Trees may be depended upon to bear fruit true to label, but if through error or otherwise, any should prove untrue, we will replace the trees of same size as originally ordered, but are liable in no further manner. Our just and liberal dealing with the public for 100 years—since 1816—is our strongest guarantee to customers.

**Special Notice** When buying apple, pear, peach, quince, cherry, crab apple, plum, apricot, dwarf pear, dwarf apple, shade trees, shrubs and roses, the following explanation of Price List should be read carefully:

1000 Rate—300, (or more) of a kind (as 300 apple, 300 pear), but not less than 10 of a variety.

100 Rate—30 (or more) trees of a kind (as 30 apple, 30 cherry), but not less than 10 of a variety.

## How To Order

**Write Plainly** On the order blank enclosed, fill in your name, address, and the place to which you want the stock shipped; use pen and ink whenever possible. State specifically the number of each variety or kind wanted, and mark the ages and sizes of each. Carry out the prices, and extend the totals correctly.

Upon receipt of your order we will mail you a postal card of acknowledgment, which also

gives you a number under which your order is entered on our books.

When writing us regarding your order, always give your order number. Regardless of how often you may have written us, be sure to sign your full name and address, and if replying to any letter from us, give the date of same.

**Inspection** The Certificate of our State Entomologist is attached to all

The Great "Stark Seal," on all genuine Stark Trees—The Mark of Positive Quality

10 Rate—10 or more of a variety, but if as many as 30 or more, customer is entitled to 100 rate.

Each Rate—Less than 10 of any variety at each rate.

In buying grape vines, raspberries, blackberries, gooseberries, currants, dewberries, bedge plants, climbing vines and peonies, 25 of one variety go at the 100 rate, 500 at the 1000 rate.

shipments. No diseased or infested trees are permitted in our nurseries.

**Order Now** Orders are handled here, as they are received. All orders are especially selected and reserved in customer's name for shipment at the proper time. We always advise prompt, early orders—better for our customers, better for ourselves. Order today—now!

**Important**—To aid customers, most desirable sorts are printed in red in price list.

## PRICE LIST

### APPLE

Usual Varieties	Each	10	100	1000
ONE-YEAR, 3 to 5 ft. . . . .	25c	\$2.10	\$18	\$140
" 2 to 3 ft. . . . .	18	1.60	12	100
TWO-YEAR, XXX, 5 to 7 ft. . . . .	35	3.00	25	180
" XX, 4 to 5 ft. . . . .	25	2.10	18	150
" X, 3 to 4 ft. . . . .	20	1.70	13	110

Akin	Longfield
American G. Russet	Lowry (Dixie of Va.)
Baldwin	Maiden Blush
Bellflower, Yellow	McMahon White
Bonum	Ortley (White Bellflower)
Charlamof (Ey. Duchess)	Pennsylvania Red S.
Chenango Strawberry	Pryor Red
Cox Orange	Rambo
Early Harvest	Red Astrachan
Early Colton	Rhode I. Greening
Fall Cheese	Roman Stem
Fameuse (Snow)	Salome
Fanny	Smokehouse
Gravenstein	Stark
Hubbardston Non'h	Virginia Beauty
King Tompkins Co.	Wolf River
Lady Sweet	Yellow Horse

Commercial Varieties	Each	10	100	1000
ONE-YEAR, 3 to 5 ft. . . . .	27c	\$2.20	\$19	\$160
" 2 to 3 ft. . . . .	20	1.70	13	110
TWO-YEAR, XXX, 5 to 7 ft. . . . .	37	3.10	26	200
" XX, 4 to 5 ft. . . . .	27	2.20	19	160
" X, 3 to 4 ft. . . . .	22	1.80	14	120

Albemarle Pippin	Minkler
Arkansas Black	Nero
Banana (Winter)	Newtown Pippin
Benoni	Northern Spy
Black Ben (T.-M.)	Northwestern Greening
Carolina Red June	Paradise Winter Sweet
Champion (T.-M.)	Paragon Winesap
Delicious (T.-M.)	Rome Beauty
Duchess (Oldenburg)	Senator (T.-M.)
Early Melon	Spitzenberg
Early Ripe	Stark Delicious (T.-M.)
Gilbert Winesap	Stark King David (T.-M.)
Grimes Golden	Steylan Winesap
Grimes Golden "Double-Life"—8c extra	Steele Red (R. Canada)
Ingram	Summer Champion
Jefferis	Sweet Bough
Jeniton	Tolman Sweet
Jonathan	Wagner
Kinnaird Choice	Wealthy
King David (T.-M.)	White W. Pearmain
Liveland Raspberry	Williams Early Red
Lowell (Orange Pippin)	Willow Twig
Magnet (Magnet)	Wilson Red June
Mammoth B. Twig	Winesap
McIntosh Red	Yellow Transparent
	York Imperial

### Stark Trees—The Foundation

No fruit tree is any better than its roots. "Stark Trees Bear Fruit" because they are grown to develop a strong, thrifty root system before they are dug. Because they are dug by our patented tree digger that never can by any chance disturb the root mass of each tree. Because they are sent to you in Stark Bro's famous "3000-Mile Pack" that preserves the vitality of the roots.

### APPLE—Continued

Special Varieties	Each	10	100	1000
ONE-YEAR, 3 to 5 ft. . . . .	30c	\$2.70	\$23	\$200
" 2 to 3 ft. . . . .	24	2.10	19	160
TWO-YEAR, XXX, 5 to 7 ft. . . . .	35	3.10	27	240
" XX, 4 to 5 ft. . . . .	30	2.70	24	210
" X, 3 to 4 ft. . . . .	25	2.20	20	170

Am. S. Pearmain	Mother (A Fall Delicious)
Bellflower Improved	Okabena
Buckingham Imp. (Stark Strain)	Old Wife Pippin
Chicago	Primate
Colorado Orange	Patten Greening
Eastman	Red Jefferis
Ensee	Red R. Bty. Illinois
Estelline (Imp. Duchess)	Red Rome Bty. O. Bright
Fall Pippin	Red R. Bty., Ohio Dark
Giant Jeniton (T.-M.)	Red R. Bty., Washington
Gravenstein, Banks Red	Scarlet Pippin
Gravenstein, Red	Stark-Star (T.-M.)
Hackworth	Stark Summer Queen
Henry Clay (T.-M.)	Vandiver Improved
Imperial Rambo	White Pippin
Lansburg (Rock P.)	Windsor
Magoon	Winter Maiden Blush
Mammoth G. Golden	Wismer Dessert

### APPLE—Double-Worked

(Including "Double-Life" Grimes) Double-worked trees on Stark Delicious body—hardy, disease and aphid resistant—better stock for double-working than Northern Spy.

	Each	10	100	1000
ONE-YEAR, 3 to 5 ft. . . . .	35c	\$3.00	\$27	\$240
" 2 to 3 ft. . . . .	28	2.50	21	190
TWO-YEAR, XXX, 5 to 7 ft. . . . .	45	3.90	34	280
" XX, 4 to 5 ft. . . . .	35	3.00	27	240
" X, 3 to 4 ft. . . . .	30	2.60	22	200

Duchess (Oldenburg)	Liveland Raspberry
Early Melon	Mother
Grimes Golden—"Double-Life"	Paradise Winter Sweet
Imperial Rambo	Tolman Sweet
Jefferis	Wealthy
King Tompkins Co.	Winesap
Lady Sweet	Yellow Transparent



### DWARF APPLE

	Each	10	100	1000
TWO-YEAR, XXX, 5 to 7 ft. . . . .	75c	\$6.50	\$60	\$500
" XX, 4 to 5 ft. . . . .	65	5.50	50	400
" X, 3 to 4 ft. . . . .	55	4.50	40	300

Banana (Winter)	Stark Delicious (T.-M.)
Black Ben	Stark King David (T.-M.)
Henry Clay	Stayman Winesap
Jonathan	Senator
Lady	Stark Star (T.-M.)
Liveland Raspberry	Wealthy
Red R. Bty. (O. Dark)	Wilson Red June

### CRAB APPLE

	Each	10	100	1000
TWO-YEAR, XXX, 5 to 7 ft. . . . .	40c	\$3.50	\$30	\$250
" XX, 4 to 5 ft. . . . .	35	3.00	25	200
" X, 3 to 4 ft. . . . .	30	2.50	20	150

Hyslop	Stark Florence (4c extra)
Martha	Stark Gold (4c extra)

### PEAR

Lincoln—"Our Centennial Leader"	Each	10	100	1000
ONE-YEAR, 3 to 5 ft. . . . .	50c	\$4.30	\$38	\$320
" 2 to 3 ft. . . . .	45	4.00	33	250
TWO-YEAR, XXX, 5 to 7 ft. . . . .	55	5.00	45	400
" XX, 4 to 5 ft. . . . .	50	4.50	40	350
" X, 3 to 4 ft. . . . .	45	4.00	35	300

### Kieffer—"Big Bearer Everywhere"

	Each	10	100	1000
ONE-YEAR, 3 to 5 ft. . . . .	32c	\$2.80	\$24	\$190
" 2 to 3 ft. . . . .	27	2.30	17	130
TWO-YEAR, XXX, 5 to 7 ft. . . . .	45	4.10	35	250
" XX, 4 to 5 ft. . . . .	35	3.00	25	200
" X, 3 to 4 ft. . . . .	30	2.50	20	150

### Leading Varieties

	Each	10	100	1000
ONE-YEAR, 3 to 5 ft. . . . .	40c	\$3.60	\$32	\$270
" 2 to 3 ft. . . . .	35	3.10	27	220
TWO-YEAR, XXX, 5 to 7 ft. . . . .	45	4.10	37	320
" XX, 4 to 5 ft. . . . .	40	3.60	32	260
" X, 3 to 4 ft. . . . .	35	3.10	27	200

Anjou	Riehl Best
Bartlett	Snyder
Bartlett Hybrid	Stark Seckel (Riehl Strain)
Beurre Bosc	Stark Tyson (Wallis Strain)
Colorado Seedless	Theodore Williams (Stella)
Comice	Triumph
Crocker W. Bartlett	Wallis Kieffer
Fame (Trade-Mark)	Winter Bartlett
Gold Nugget (20c Extra)	Winter Nelis
King Karl	Worden Seckel



# ORNAMENTAL DEPARTMENT

## ORNAMENTAL SHRUBS

If any ornamentals not on this list are wanted, write for prices. We carry a complete line.

	Each	10	100
Althea.....	2 to 3 ft.	\$0.24	\$1.60
.....	3 to 4 ft.	.32	2.58
.....	4 to 5 ft.	.32	2.32
<i>Aratia Pentaphylla</i> .....	2 to 3 ft.	.32	2.32
.....	3 to 4 ft.	.40	3.28
.....	4 to 5 ft.	.32	2.58
<i>Calycanthus Floridus</i> .....	2 to 3 ft.	.40	3.28
.....	3 to 4 ft.	.48	3.92
.....	4 to 5 ft.	.56	4.80
<i>Cercis Canadensis</i> .....	2 to 3 ft.	.36	2.88
.....	3 to 4 ft.	.48	3.92
.....	4 to 5 ft.	.56	4.80
<i>Chionanthus Vir</i> .....	2 to 3 ft.	.36	2.88
.....	3 to 4 ft.	.48	3.92
.....	4 to 5 ft.	.56	4.80
<i>Cornus Florida</i> .....	2 to 3 ft.	.40	3.20
.....	3 to 4 ft.	.48	3.84
.....	4 to 5 ft.	.56	4.80
<i>Cydonia Japonica</i> .....	2 to 3 ft.	.28	2.08
.....	3 to 4 ft.	.36	2.88
.....	4 to 5 ft.	.44	3.52
<i>Forsythia Suspensa</i> .....	2 to 3 ft.	.36	2.88
.....	3 to 4 ft.	.40	3.20
.....	4 to 5 ft.	.48	3.92
<i>Hamamelis Virginia</i> .....	2 to 3 ft.	.36	2.88
.....	3 to 4 ft.	.48	3.92
.....	4 to 5 ft.	.56	4.80
<i>Hibiscus Totus Alha</i> .....	2 to 3 ft.	.36	2.88
.....	3 to 4 ft.	.40	3.20
.....	4 to 5 ft.	.48	3.84
<i>Hydrangea Ar. Ster.</i> 18 to 24 inch	.....	.40	3.20
.....	24 to 30 inch	.48	4.00
<i>Hydrangea Pan. Grand</i> .....	2 to 3 ft.	.28	2.08
.....	3 to 4 ft.	.36	2.88
.....	4 to 5 ft.	.44	3.52
.....	Tree Form.....	.52	4.40
<i>Lilac, Common Purple</i> .....	2 to 3 ft.	.28	2.08
.....	3 to 4 ft.	.32	2.40
.....	4 to 5 ft.	.36	2.88
.....	Budded Bell de Nancy.....	.28	2.08
.....	.....	.32	2.40
.....	.....	.36	2.88
.....	.....	.40	3.20
.....	.....	.44	3.52
.....	.....	.48	3.84
.....	.....	.52	4.16
.....	.....	.56	4.48
.....	.....	.60	4.80
.....	.....	.64	5.12
.....	.....	.68	5.44
.....	.....	.72	5.76
.....	.....	.76	6.08
.....	.....	.80	6.40
.....	.....	.84	6.72
.....	.....	.88	7.04
.....	.....	.92	7.36
.....	.....	.96	7.68
.....	.....	1.00	8.00
.....	.....	1.04	8.32
.....	.....	1.08	8.64
.....	.....	1.12	8.96
.....	.....	1.16	9.28
.....	.....	1.20	9.60
.....	.....	1.24	9.92
.....	.....	1.28	10.24
.....	.....	1.32	10.56
.....	.....	1.36	10.88
.....	.....	1.40	11.20
.....	.....	1.44	11.52
.....	.....	1.48	11.84
.....	.....	1.52	12.16
.....	.....	1.56	12.48
.....	.....	1.60	12.80
.....	.....	1.64	13.12
.....	.....	1.68	13.44
.....	.....	1.72	13.76
.....	.....	1.76	14.08
.....	.....	1.80	14.40
.....	.....	1.84	14.72
.....	.....	1.88	15.04
.....	.....	1.92	15.36
.....	.....	1.96	15.68
.....	.....	2.00	16.00
.....	.....	2.04	16.32
.....	.....	2.08	16.64
.....	.....	2.12	16.96
.....	.....	2.16	17.28
.....	.....	2.20	17.60
.....	.....	2.24	17.92
.....	.....	2.28	18.24
.....	.....	2.32	18.56
.....	.....	2.36	18.88
.....	.....	2.40	19.20
.....	.....	2.44	19.52
.....	.....	2.48	19.84
.....	.....	2.52	20.16
.....	.....	2.56	20.48
.....	.....	2.60	20.80
.....	.....	2.64	21.12
.....	.....	2.68	21.44
.....	.....	2.72	21.76
.....	.....	2.76	22.08
.....	.....	2.80	22.40
.....	.....	2.84	22.72
.....	.....	2.88	23.04
.....	.....	2.92	23.36
.....	.....	2.96	23.68
.....	.....	3.00	24.00
.....	.....	3.04	24.32
.....	.....	3.08	24.64
.....	.....	3.12	24.96
.....	.....	3.16	25.28
.....	.....	3.20	25.60
.....	.....	3.24	25.92
.....	.....	3.28	26.24
.....	.....	3.32	26.56
.....	.....	3.36	26.88
.....	.....	3.40	27.20
.....	.....	3.44	27.52
.....	.....	3.48	27.84
.....	.....	3.52	28.16
.....	.....	3.56	28.48
.....	.....	3.60	28.80
.....	.....	3.64	29.12
.....	.....	3.68	29.44
.....	.....	3.72	29.76
.....	.....	3.76	30.08
.....	.....	3.80	30.40
.....	.....	3.84	30.72
.....	.....	3.88	31.04
.....	.....	3.92	31.36
.....	.....	3.96	31.68
.....	.....	4.00	32.00
.....	.....	4.04	32.32
.....	.....	4.08	32.64
.....	.....	4.12	32.96
.....	.....	4.16	33.28
.....	.....	4.20	33.60
.....	.....	4.24	33.92
.....	.....	4.28	34.24
.....	.....	4.32	34.56
.....	.....	4.36	34.88
.....	.....	4.40	35.20
.....	.....	4.44	35.52
.....	.....	4.48	35.84
.....	.....	4.52	36.16
.....	.....	4.56	36.48
.....	.....	4.60	36.80
.....	.....	4.64	37.12
.....	.....	4.68	37.44
.....	.....	4.72	37.76
.....	.....	4.76	38.08
.....	.....	4.80	38.40
.....	.....	4.84	38.72
.....	.....	4.88	39.04
.....	.....	4.92	39.36
.....	.....	4.96	39.68
.....	.....	5.00	40.00
.....	.....	5.04	40.32
.....	.....	5.08	40.64
.....	.....	5.12	40.96
.....	.....	5.16	41.28
.....	.....	5.20	41.60
.....	.....	5.24	41.92
.....	.....	5.28	42.24
.....	.....	5.32	42.56
.....	.....	5.36	42.88
.....	.....	5.40	43.20
.....	.....	5.44	43.52
.....	.....	5.48	43.84
.....	.....	5.52	44.16
.....	.....	5.56	44.48
.....	.....	5.60	44.80
.....	.....	5.64	45.12
.....	.....	5.68	45.44
.....	.....	5.72	45.76
.....	.....	5.76	46.08
.....	.....	5.80	46.40
.....	.....	5.84	46.72
.....	.....	5.88	47.04
.....	.....	5.92	47.36
.....	.....	5.96	47.68
.....	.....	6.00	48.00
.....	.....	6.04	48.32
.....	.....	6.08	48.64
.....	.....	6.12	48.96
.....	.....	6.16	49.28
.....	.....	6.20	49.60
.....	.....	6.24	49.92
.....	.....	6.28	50.24
.....	.....	6.32	50.56
.....	.....	6.36	50.88
.....	.....	6.40	51.20
.....	.....	6.44	51.52
.....	.....	6.48	51.84
.....	.....	6.52	52.16
.....	.....	6.56	52.48
.....	.....	6.60	52.80
.....	.....	6.64	53.12
.....	.....	6.68	53.44
.....	.....	6.72	53.76
.....	.....	6.76	54.08
.....	.....	6.80	54.40
.....	.....	6.84	54.72
.....	.....	6.88	55.04
.....	.....	6.92	55.36
.....	.....	6.96	55.68
.....	.....	7.00	56.00
.....	.....	7.04	56.32
.....	.....	7.08	56.64
.....	.....	7.12	56.96
.....	.....	7.16	57.28
.....	.....	7.20	57.60
.....	.....	7.24	57.92
.....	.....	7.28	58.24
.....	.....	7.32	58.56
.....	.....	7.36	58.88
.....	.....	7.40	59.20
.....	.....	7.44	59.52
.....	.....	7.48	59.84
.....	.....	7.52	60.16
.....	.....	7.56	60.48
.....	.....	7.60	60.80
.....	.....	7.64	61.12
.....	.....	7.68	61.44
.....	.....	7.72	61.76
.....	.....	7.76	62.08
.....	.....	7.80	62.40
.....	.....	7.84	62.72
.....	.....	7.88	63.04
.....	.....	7.92	63.36
.....	.....	7.96	63.68
.....	.....	8.00	64.00
.....	.....	8.04	64.32
.....	.....	8.08	64.64
.....	.....	8.12	64.96
.....	.....	8.16	65.28
.....	.....	8.20	65.60
.....	.....	8.24	65.92
.....	.....	8.28	66.24
.....	.....	8.32	66.56
.....	.....	8.36	66.88
.....	.....	8.40	67.20
.....	.....	8.44	67.52
.....	.....	8.48	67.84
.....	.....	8.52	68.16
.....	.....	8.56	68.48
.....	.....	8.60	68.80
.....	.....	8.64	69.12
.....	.....	8.68	69.44
.....	.....	8.72	69.76
.....	.....	8.76	70.08
.....	.....	8.80	70.40
.....	.....	8.84	70.72
.....	.....	8.88	71.04
.....	.....	8.92	71.36
.....	.....	8.96	71.68
.....	.....	9.00	72.00
.....	.....	9.04	72.32
.....	.....	9.08	72.64
.....	.....	9.12	72.96
.....	.....	9.16	73.28
.....	.....	9.20	73.60
.....	.....	9.24	73.92
.....	.....	9.28	74.24
.....	.....	9.32	74.56
.....	.....	9.36	74.88
.....	.....	9.40	75.20
.....	.....	9.44	75.52
.....	.....	9.48	75.84
.....	.....	9.52	76.16
.....	.....	9.56	76.48
.....	.....	9.60	76.80
.....	.....	9.64	77.12
.....	.....	9.68	77.44
.....	.....	9.72	77.76
.....	.....	9.76	78.08
.....	.....	9.80	78.40
.....	.....	9.84	78.72
.....	.....	9.88	79.04
.....	.....	9.92	79.36
.....	.....	9.96	79.68
.....	.....	10.00	80.00
.....	.....	10.04	80.32
.....	.....	10.08	80.64
.....	.....	10.12	80.96
.....	.....	10.16	



Grown on "Stark Trees"  
Photo by Mr. Stark

## Montmorency Cherries

**Montmorency Stark** This is the leading Montmorency—the best sour cherry grown. It originated on our grounds, where, for years, it uniformly bore large fruit—larger than any other Montmorency. Three-fourths of all sour cherries planted should be of this variety. It is thoroughly hardy, a heavy bearer, a good shipper, ideal sour cherry quality, fine for eating fresh, preserving and canning; sells better than any other. We grow several other strains of this great cherry: Montmorency Monarch from Iowa; Montmorency Large from Missouri; Montmorency King (Ordinaire), which is the strain in general propagation throughout the country, and Montmorency Sweet, which, while a true Montmorency, bears sweeter fruit than any other cherry of this type. Our strains are kept pure and growers should be careful, especially in buying Montmorency

Large, as there are some strains, notably one from New York, which have proven valueless. NNCS.  
Notice—See price list for complete list of all cherries, including many not here described.

**Dyehouse.** Our choice of all early sour cherries—large, handsome, best quality, ripens one week before Early Richmond, and the tree is superior. This is the ideal sort to plant with Montmorency Stark and Suda Hardy, thus covering a long ripening season. NNCS.

better quality and has a much smaller pit. It is a well-known standard variety, however, and is profitable. NNCS.

**Early Richmond.** A good early sort. Dyehouse ripening one week earlier, is larger, finer,

**Suda Hardy.** An improved English Morello and the most valuable late sour cherry. Planted in all cherry sections, and has proven superior to Wragg, which is largely planted in Colorado and other points. NNCS.

**Royal Duke.** Best of all the Dukes. Large, light red; rich, juicy and tender. Semi-sweet. NCS.

**Napoleon. (Royal Ann).** A large pale yellow flushed bright red. Well known in all cherry regions and popular on all markets. NCS.

**Lambert.** Large, dark purplish red, turning almost jet black when fully ripe. Sweet, good, strong grower. NCS.

**Black Tartarian Improved.** Large, black, sweet, heart-shaped and of surpassing quality. One of the most satisfactory and hardest cherries. NCS.

**Bing.** A delicious black sweet sort, originating in Oregon. It succeeds East better than most sweets. NCS.

**Wragg.** Of the English Morello type. Very similar, slightly larger and with more acidity. Plant more Montmorency. NNCS.

# "Secrets of Ornamental Planting"

Three NEW Books in One

Landscaping Simplified  
Hardy Ornamental Shrubs and Trees } **FREE**  
The Rose Garden

Book  
Free

This book will delight the heart of you who love a home nestling amongst a natural setting of graceful ornamental trees and luxuriant shrubbery—harmoniously grouped clusters of flowering plants—the home grounds with a hedge blending into the whole scheme of the ornamentation.

It will keenly interest owners of modest homes as well as those who own the most beautiful estates. This Book is published by the

**Oldest Nursery in America — The Largest in the World**

Stark Bro's—at Louisiana, Mo., since 1816. We are ready and willing to have our corps of Landscape Architects draw

**Landscape Plans—Free**

for your home. Remember this service and these Free Plans do not obligate you to buy anything from us.

You will find a partial list of Stark Bro's Ornamental Shrubs, Shade Trees and Rose Bushes listed on Page 15. Select your immediate needs from this list.

# Stark Bro's

At

## Louisiana, Mo.

Since 1816

Ask for Free Copy of the "Secrets of Ornamental Planting" on post card. Mail it today.



Climbing  
American Beauty

Actual Size