

# Australia, Queensland | Dam Emergency and Floods

## IMPACT OVERVIEW

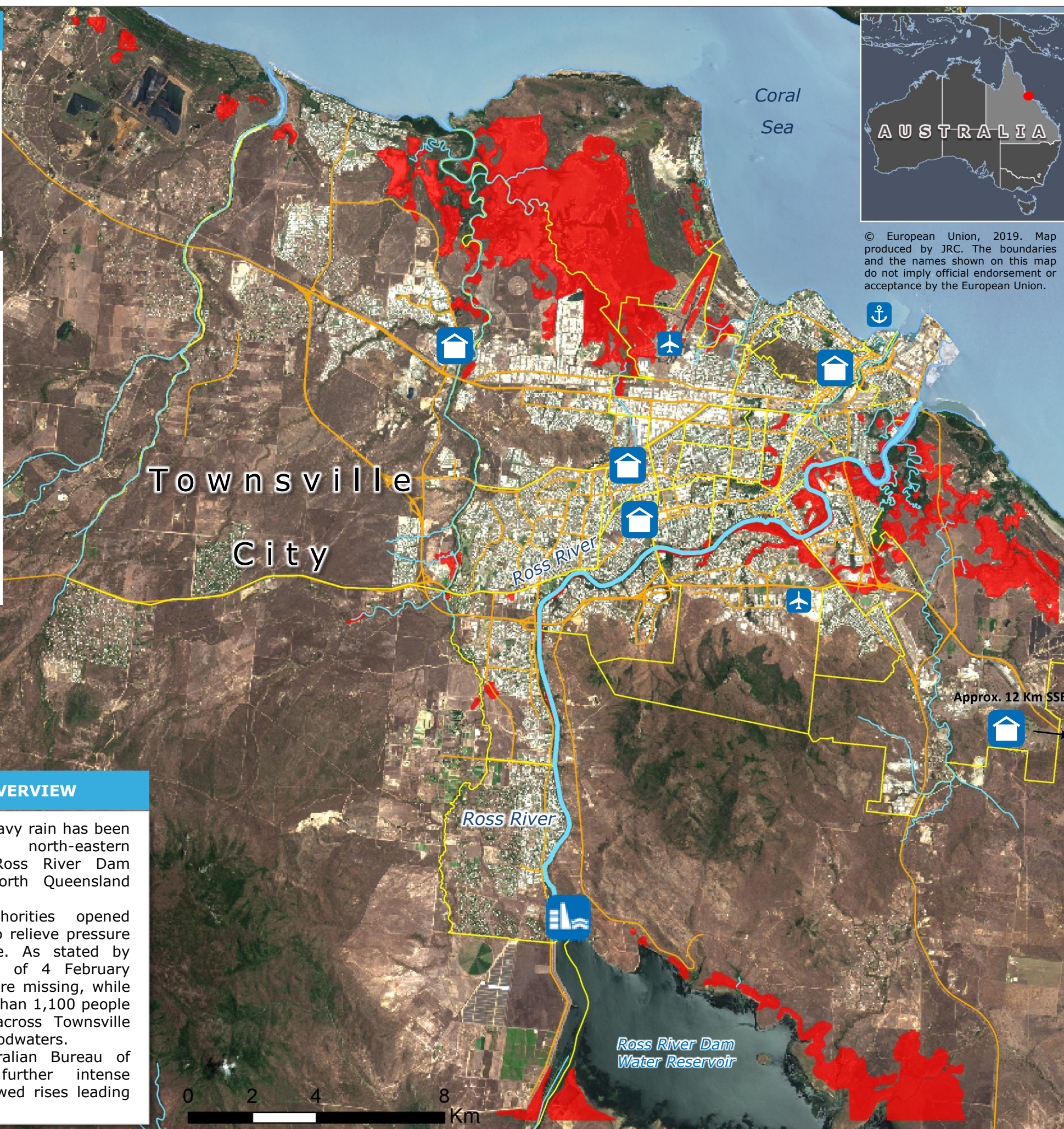
- 4 261 HA
- 2
- 1 100
- 5
- 3 308
- ~ 20 000

Source: Copernicus, Media

## FLOODED AREA

Flooded area extent as of 4 Feb 2019 (Copernicus Activation EMSR 342)

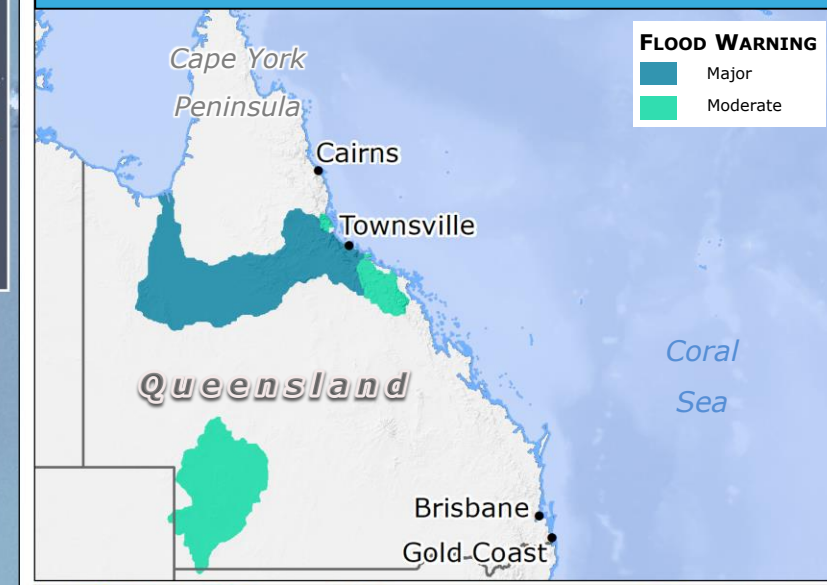
- Ross River Dam
- Suburb boundary
- Roads
- Airport Port
- Missing People
- Evacuated people
- Evacuation Center
- Affected people
- Homes at risk of flooding



© European Union, 2019. Map produced by JRC. The boundaries and the names shown on this map do not imply official endorsement or acceptance by the European Union.

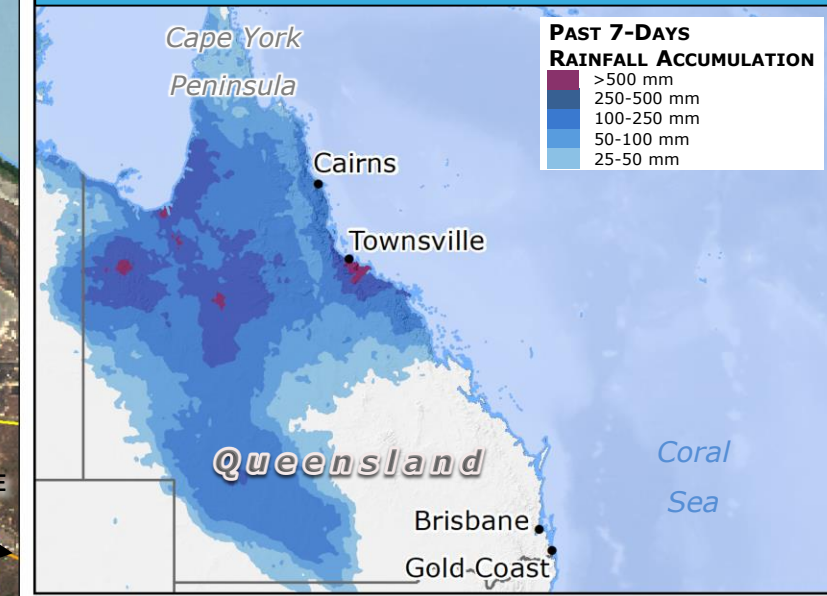
## QUEENSLAND: FLOOD WARNINGS

AS OF 4 FEBRUARY Source: BOM



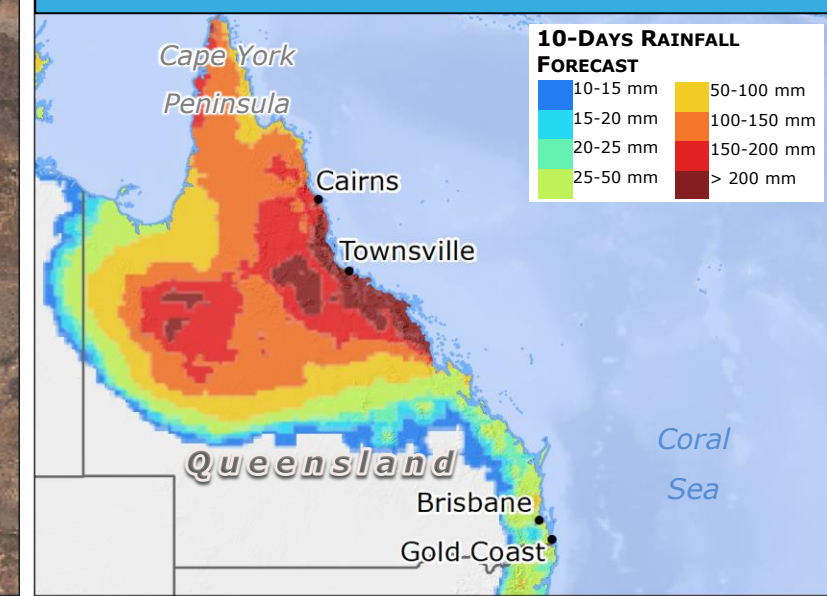
## LAST 7 DAYS RAINFALL ACCUMULATION

Source: NASA-GPM



## 10-DAYS RAINFALL FORECAST

Source: JRC GloFAS-ECMWF



## SITUATION OVERVIEW

- In the past few days, heavy rain has been affecting parts of north-eastern Queensland, swelling Ross River Dam (City of Townsville, North Queensland Region) beyond capacity.
- On 3 February, authorities opened floodgates of the dam to relieve pressure and prevent a collapse. As stated by national authorities, as of 4 February 14.00 UTC two people are missing, while media report that more than 1,100 people have been evacuated across Townsville suburbs inundated by floodwaters.
- According to the Australian Bureau of Meteorology (BOM), further intense rainfall may cause renewed rises leading to major flood levels.

