





K-C





ISPAHAN, 16th CENTURY

Key
(XR) Sub-catalogue *Carpeting* 1920

XR
241

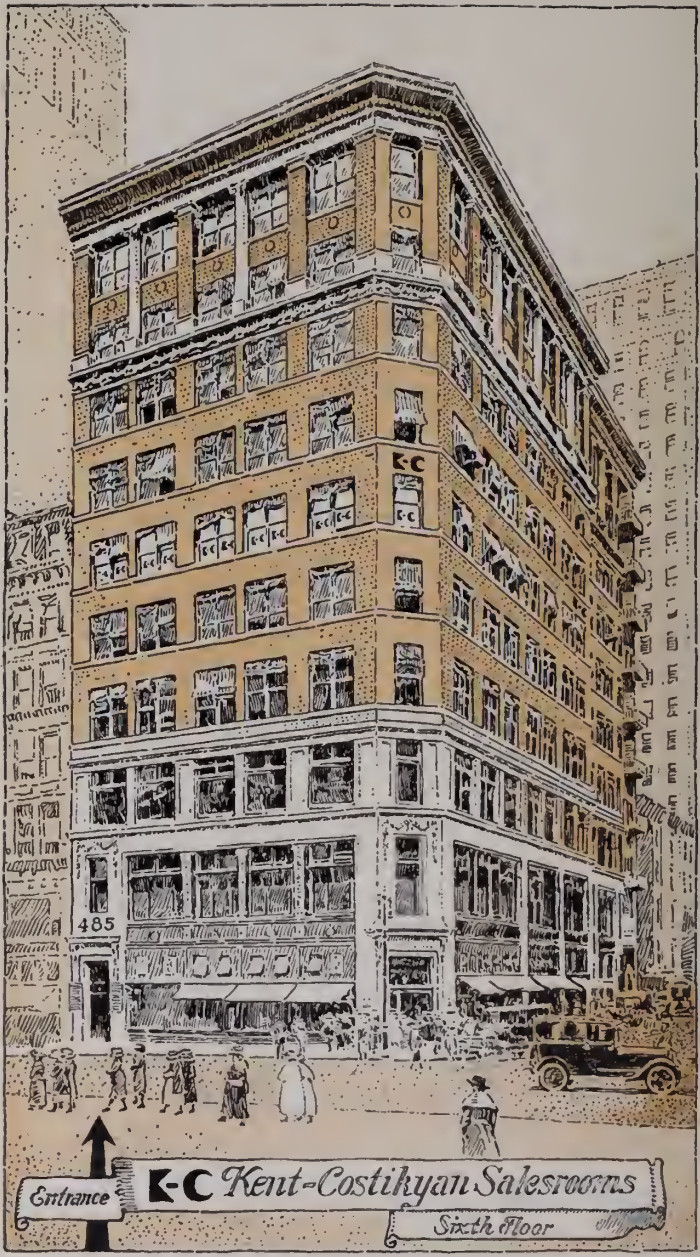
RUGS

Oriental and
Occidental



Season 1920





Entrance

K-C Kent-Costikyan Salesrooms

Sixth floor


KENT-COSTIKYAN
 TRADING COMPANY INC.
Founded 1886

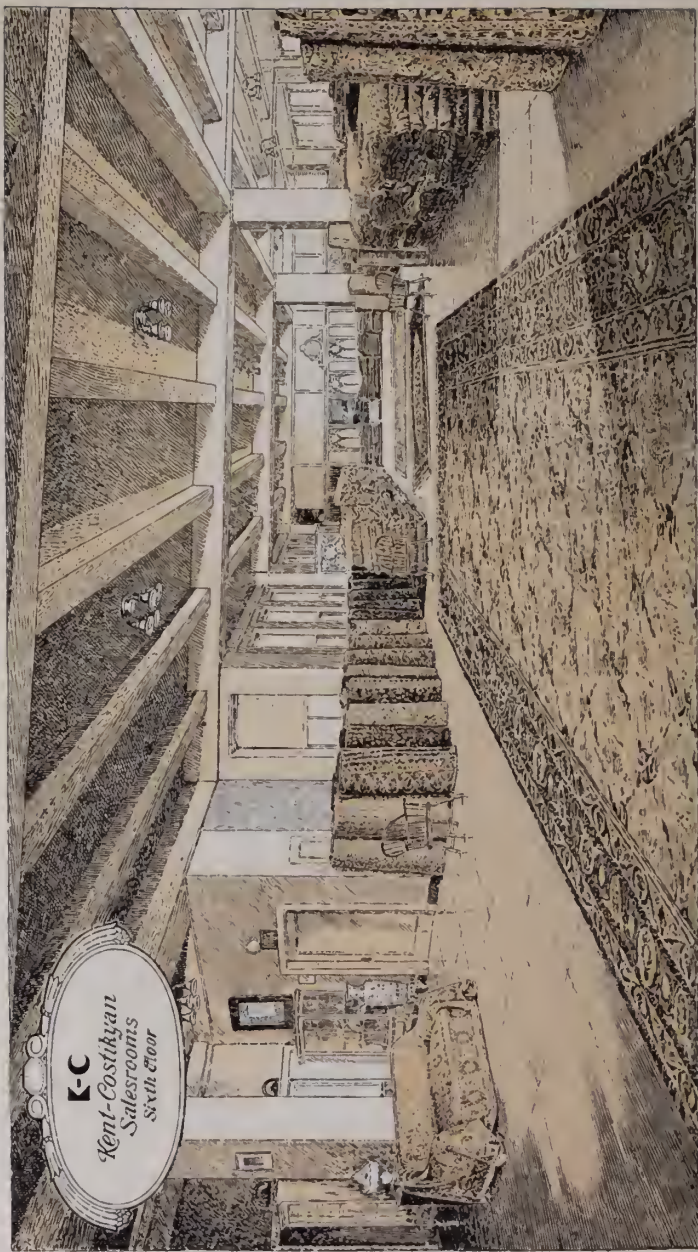
PRESENTING AN UNUSUAL COLLECTION
 OF ANCIENT AND MODERN RUGS
 — — — ORIENTAL & EUROPEAN — — —

SPECIAL DESIGNS, SIZES & COLORINGS
 RUGS IN PLAIN COLORS
 REPAIRING, CLEANING & STORING
 ANTIQUE OBJECTS
 OF ART



Only One Address
 485 FIFTH AVENUE · · · NEAR 42ND STREET
 THE DAYLIGHT SALESROOMS
 ENTIRE SIXTH FLOOR · · ROGERS PEET BUILDING
 OPPOSITE PUBLIC LIBRARY
 NEW YORK



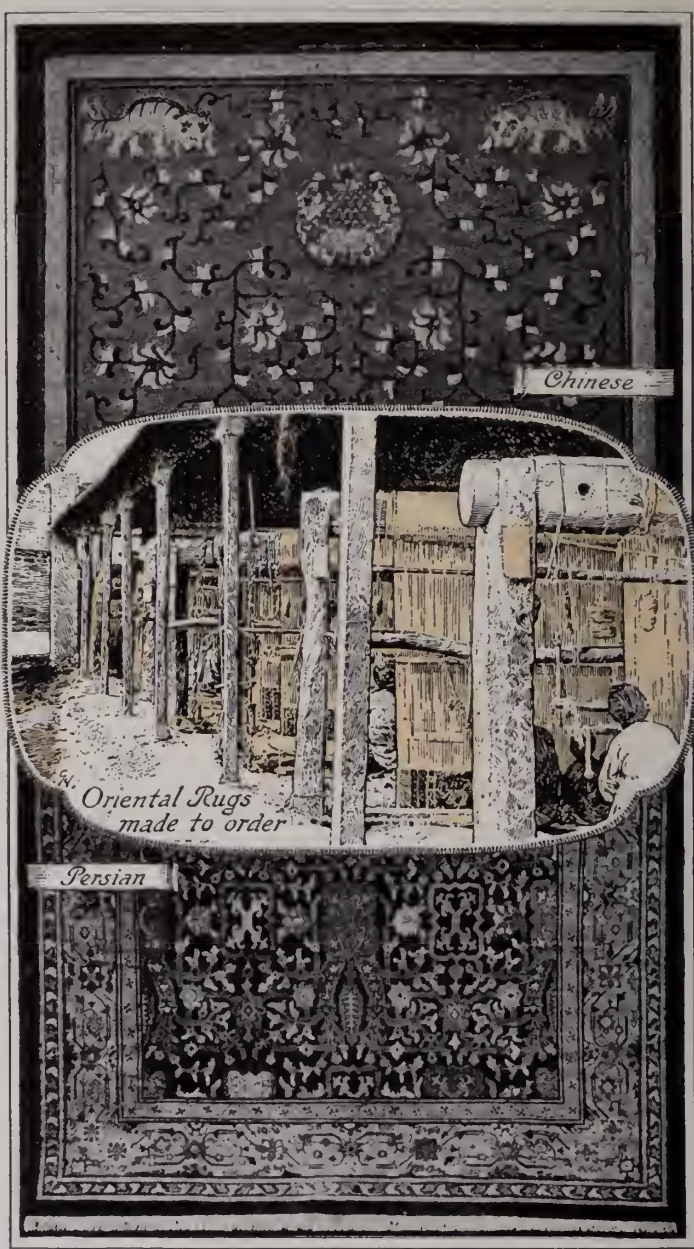


K-C
Kent-Costhyan
Salesrooms
Sixth Floor

The House of KENT-COSTIKYAN

had its inception in the year 1885, when Mr. Costikyan, then a student at Colgate University, sold several bales of Oriental Rugs, among the professors of that institution. ¶ In the Fall of 1886, Mr. Costikyan established the business of Costikyan Freres in the City of Rochester. In those days, the disposal of choice Rugs at private sale to any extent was out of the question. Costikyan Freres forwarded important collections of Rugs semi-annually to New York, for disposal at the then leading Ortgies Art Galleries on Broadway below Fourteenth Street. Many of the rare antiques now in the homes of New York and other cities were acquired at those sales, which contributed more than anything else toward the introduction of Oriental Rugs on a large scale. ¶ In 1888 a branch was opened in Chicago, where the business was conducted until 1893. The Rochester store was discontinued and a wholesale branch opened in New York. ¶ During this period, Marshall Field & Co. realized the great opportunities for developing a business in the line and arranged a partnership with Costikyan Freres, the business being conducted for a time in their retail establishment in Chicago. ¶ Early in 1894 the Chicago house was discontinued and the wholesale business was carried on exclusively in New York City, at 47-49 Liberty St. and at 128 Broadway (the Old American Exchange National Bank Bldg.) It was removed in 1898 to the extensive and modern Gallatin Bldg., at 19th St. and Broadway. ¶ In 1900 the name was changed from Costikyan Freres to Kent-Costikyan. ¶ The trend of business uptown necessitated another removal in 1908 to the Knabe Bldg. on Fifth Ave. at 39th St. The need for larger quarters resulted in a lease in 1910 of two entire floors at 8-14 West 38th St. ¶ Early in 1916 the present location was secured,—the entire sixth floor of the Rogers-Peet Bldg, 485 Fifth Ave., opposite the Public Library, near 42nd St., New York. ¶ These salesrooms afford perfect daylight and every convenience for the careful selection of rugs.





Chinese



*Oriental Rugs
made to order*

Persian



. . .

ORIENTAL RUGS MADE TO ORDER IN PERSIA, INDIA, CHINA & ASIA MINOR

. .

SPECIAL DESIGNS

Genuine Oriental Rugs for special requirements, in any design, color scheme, shape and size, are woven to order under our direct supervision, in the Orient. These Rugs are the finest specimens of modern Orientals shown in this country, both in quality and design. They are made from our own specifications, the sketches showing the designs and color combinations being produced in our salesrooms here.

. .

SOLID COLORS

We are showing a new floor covering, the result of our recent exploitations in the Orient,—Oriental Rugs in Solid Colors, and with quaint, simple borders, in distinctive tones of taupe, gray, and other beautiful colors. They are extra heavy, durable, may be had in any size and are decidedly practical where a rich effect and soft, quiet elegance are desired. The fabric is carried in stock in rolls, from which any size or shape may be cut and finished for immediate delivery.



French Aubusson



Hand Tufted





. . .

RUGS FOR SPECIAL REQUIREMENTS

. .

FRENCH AUBUSSON & SAVONNERIE

French Rugs have been noted for centuries for their artistic elaborateness of design. Aubussons and Savonneries were, until recent years, woven exclusively for the use of French royalty. These exquisite floor coverings are now available in any design, size and color combination for American homes. They are woven by hand, of the finest, pure water-spun wool and may be had in period and other desirable effects.

. .

HAND TUFTED RUGS

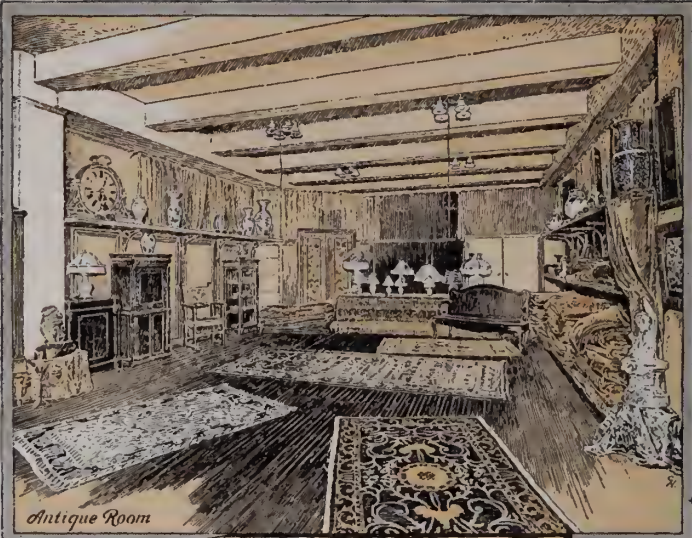
The range of qualities, in which Hand Tufted Rugs are produced, permit a wide range of choice in texture, from the coarse knotting to a superfine weave. They are made in any size, shape, design or color scheme (seamless up to 33 feet wide). They are especially suited to Drawing Rooms, Library, Dining Room, Halls and Stairs.

. .

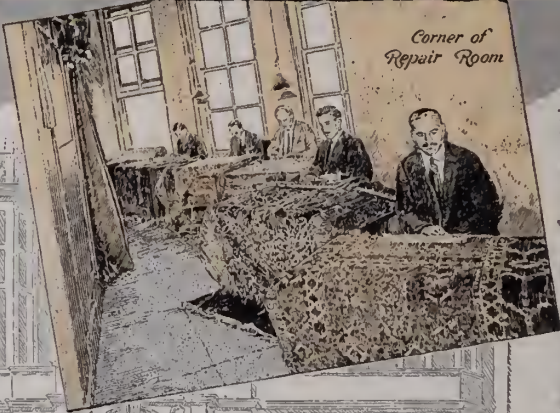
PLAIN COLORS

We carry the "Kentico" and other Fine Scotch Axminsters in stock (9-12-15-18 feet wide, seamless) in rolls, in eight exclusive plain colors. Rugs from this thick, soft, durable fabric are cut to any size and finished ready for immediate delivery.





Antique Room



Corner of
Repair Room





KENT-COSTIKYAN
TRADING COMPANY INC.
Founded 1886

• • •

ANTIQUES & OBJECTS
OF ART

A special department is devoted exclusively to Antiques and Ancient Objects of Art. The antique room, which is apart from the main showroom, contains a collection of noteworthy rugs of a character seldom seen outside of private collections. Collectors and others who desire to acquire choice specimens should avail themselves of the opportunity to view this unusual gathering of rare works. In addition to the rugs and tapestries are shown a group of Potteries, Plaques, Lamps, etc. of high decorative value.

• •

THE CARE OF ORIENTAL RUGS

Good floor coverings are among the most important of all artistic furnishings; yet, they are subjected to the hardest wear. The condition of the rugs often makes or destroys the appearance of an entire room.

The proper care of good rugs has much to do with their life and value. A thorough renovating once every year will retain the attractiveness and prolong the life of a rug almost indefinitely.

If a rug is torn or otherwise injured, it should be repaired at once.

Our facilities for cleaning, repairing by native weavers, and cold air storage during summer months are unsurpassed. The charges are moderate and include full insurance against loss by fire, theft or moths. Rugs are transported to and from residences by our own auto delivery, in the care of responsible messengers, without charge.





ANTIQUE MALEZ



. . .

AN UNUSUAL COLLECTION OF ORIENTAL RUGS

. .

Probably no collection of Oriental Rugs in this country affords greater latitude in its range of sizes, color schemes and fine weaves, than that shown in the Kent-Costikyan salesrooms at the present time. It has long been known that large sizes and rugs to meet particular requirements are often found here when they are unobtainable elsewhere.

The entire collection has recently been augmented by the addition of direct purchases in the Orient, which include many exceptional specimens from private collections which have never been accessible to buyers before.

A large group of fine pieces from China, a number of fine Lavehr Kermans in wonderful colorings and many exceptional pieces, in large sizes, are predominating factors at this time.

The list which follows is so arranged that any size may readily be found. Those who desire rugs of a certain size and proportion will find a variety of choice, conveniently grouped for ready reference. Those rugs approximating the desired size and colors will be sent on approval if requested. Or, they may be viewed first in our salesrooms at any time.





OLD KERMAN



RUGS OF SPECIAL INTEREST

• • •

- 10.1 x 4.5 **KERMAN.** Medium blue ground; all-over design in deep rose, browns and greens. Border rose and brown. No. 11-81
- 10.4 x 4.5 **CAMEL'S HAIR.** Camel's hair brown ground; all-over small design in light blue, golden yellow and ecru. Border ecru and blue with outside band in camel's hair. No. 1-2395
- 10.5 x 4.5 **KURDISTAN.** Brown ground; medallion in medium blue, soft yellow, old red and ivory surrounded by a plain field. Border red and ivory. No. 945
- 10.9 x 4.9 **CABISTAN.** Blue ground; medallions in brownish red and green. Border blue and green. No. 161
- 10.10 x 4.10 **CAMEL'S HAIR.** Brown ground; medallion in old rose. Corners brown. Border rose and brown. No. 1-1943
- 10.10 x 5.0 **HAMADAN.** Blue ground; medallion black with soft shades of mulberry and brown. Corners blue-black. Border mulberry and camel's hair. No. 732
- 10.1 x 5.1 **ANT. SPANISH.** Apricot ground; all-over scroll design in dark blue. Border dark blue and apricot. No. 40-22
- 10.6 x 5.4 **BESHIR.** Old red ground; all-over panel design in two tone blue, dark brown and yellow. Border red and yellow. No. 859
- 10.2 x 5.5 **SEREBEND.** Dark blue ground; all-over herati design in old red, ivory and sage-green. Border red, ivory and blue-black. No. 738
- 10.3 x 5.5 **ANT. CHINESE.** Ecru ground; medallion in circular form of light blue. Border dark blue with fret design in salmon pink. No. 6-773
- 10.5 x 5.5 **ANT. SAMARCAND SILK.** Orange red ground; medallion in gold thread with a well-covered field. Corners seal color. Border orange, olive-green and blue. No. 6-721
- 10.2 x 5.6 **ANT. BIDJAR.** Red ground; medallions in sage-green and blue on a plain field. Corners green. Border dark blue, ivory and gold. No. 1-2186
- 10.7 x 5.9 **SAMARCAND.** Deep red ground; all-over design in blue and tan. Border yellow and blue. No. 1-2047

- 10.10 x 5.9 **IRAN.** Blue ground; all-over design in small joshaghan figures of brown; old red and light blue. Border red and soft yellow. No. 1-1957
- 10.9 x 5.10 **CABISTAN.** Dark blue ground; all-over design in gold, light blue and brown. Border gold and blue. No. 752
- 10.4 x 6.3 **BOKHARA.** Copper tone ground; all-over panel design in two tone blue and soft old rose. Border tan and copper. No. 1-2353
- 10.0 x 6.6 **BOKHARA.** Red ground; all-over repeat design in ecru, blue-black and buck red. Border red and ivory with unusual woven selvedge. No. 179
- 10.6 x 6.8 **KERMAN.** Ivory ground; all-over floral design in soft rose, brown and blue. Border tan and rose. No. 931
- 10.0 x 7.0 **BOKHARA.** Red ground; all-over panel design in ivory, light blue and burnt orange. Border same coloring. No. 432
- 10.8 x 7.1 **KURD HAMADAN.** Red ground; medallion dark blue and ivory surrounded by a plain field. Corners dark blue. Border yellow, brown and red. No. 1-1893
- 10.0 x 7.3 **ANT. OUSHAK.** Blue ground; medallion in old red, tan and two tone blue. Border blue and old red. No. 1-2254
- 10.2 x 7.10 **KERMAN.** Dark blue ground; all-over floral design in browns, rose, blues and copper tones. Border ecru and dark blue. No. 1-2363
- 10.0 x 8.6 **LAVEHR (Fragment).** Medium blue ground; all-over design in copper tones and rose. Border blue and brown. No. 1-2168
- 10.4 x 8.7 **KERMAN.** Camel's hair ground; all-over design in mulberry-rose, light blue and brown. Border blue and mulberry. No. 149
- 10.10 x 8.7 **ISPAHAN TABRIZ.** Rose-red ground; all-over design in two tone blue, soft green and tan. Corners tan and blue. Urns in deep green. Border rose and tan. No. 749
- 10.7 x 8.10 **KERMAN.** Chocolate brown ground; all-over design in light blue, tan and soft green. Border tan, dark blue and rose. No. 1-2305
- 10.3 x 9.0 **ISPAHAN TABRIZ.** Mulberry ground; all-over design in deep green and blue. Border rose and green. No. 151
- 10.1 x 9.4 **HERIZ.** Red ground; medallion blue. Border blue and red. No. 6-561

- 10.7 x 9.7 **KERMAN.** Mulberry ground; medallion dark blue and brown. Corners mulberry and rose. Border dark blue and tan. No. 178
- 11.0 x 4.4 **CABISTAN.** Deep red ground; all-over design in dark blue and brown. Border two tone blue and brown. No. 746
- 11.7 x 4.6 **CABISTAN.** Blue-black ground; medallion light grey-blue on a well-covered field. Border brown and blue-black. No. 181
- 11.0 x 4.10 **CABISTAN.** Dark blue ground; medallion in ivory, rose and blue. Border tan, old rose and blue. No. 420
- 11.0 x 5.0 **OUSHAK.** Blue ground; medallion old red and tan. Border tan, blue and soft red. No. 1-1892
- 11.6 x 5.2 **KURDISTAN.** Brown ground; medallion in dark blue and old red surrounded by a plain field. Border blue and brown. No. 205
- 11.2 x 5.3 **SAMARCAND.** Rose ground; all-over design in small figures of blues and yellows. Border golden-brown and blue. No. 1-2118
- 11.4 x 5.4 **KARABAGH.** Purple-rose ground; medallion dark blue pendants on a plain field. Border soft green, blue and brown. No. 1-2253
- 11.4 x 5.5 **HAMADAN.** Camel's hair ground; medallion in blue-black. Border blue-green with wide band in Camel's hair. No. 240
- 11.0 x 5.7 **ANT. SAMARCAND SILK.** Gold ground; all-over design on a golden metal warp with rosette figures in old blue, soft pink, olive-green and brown. Border gold thread and medium blue. No. 40-31
- 11.0 x 5.8 **KILM.** Red ground; all-over design in ivory, soft yellow, blue and green, (couch cover). No. 1-1221
- 11.0 x 6.7 **KURDISTAN.** Red ground; medallion dark blue on a well-covered field. Border blue. No. 1-52
- 11.9 x 6.7 **ANT. OUSHAK.** Red ground; medallion in three designs of dark blue, pink, red and yellow. Border dark blue, old red and Ispahan green. No. 40-32
- 11.9 x 7.4 **BOKHARA.** Deep wine-red ground; all-over design in blue, cream and buff. Border copper tones and blue. No. 434
- 11.0 x 7.5 **ANT. FEREGHAN.** Dark blue ground; all-over small fish design in old red, soft yellow, blue and green. Corners ecru. Border sage-green and golden-yellow. No. 370

- 11.0 x 7.8 **BOKHARA.** Pink-rose ground; all-over design in old purple, red and ivory. Border red and blue-black. No. 421
- 11.4 x 7.8 **TABRIZ.** Ecreu ground; all-over design in gold. Border same color woven of cotton. No. 1-1989
- 11.9 x 8.1 **LAVEHR.** Copper tone ground; all-over floral and tree design in blue and brown. Border small narrow band in brown and blue. No. 18-23
- 11.4 x 8.2 **TABRIZ.** Dark blue ground; medallion old red and blue on a plain field. Corners tan. Border red and brown. No. 221
- 11.4 x 8.4 **MAHAL.** Red ground; all-over design in light and dark blue, green, brown and yellow. Border dark blue, soft yellow and red. No. 11-115
- 11.6 x 8.7 **KERMAN.** Copper ground; medallion dark blue. Corners deep old rose. Border copper and blue. No. 222
- 11.6 x 8.7 **PERSIAN.** Dark blue ground; all-over design in brown, blue-green, soft gold; rose and mulberry. Border brown and blue. No. 6-916
- 11.0 x 8.8 **ANT. ISPAHAN.** Red ground; all-over design in dark blue, orange, ivory, green and soft yellow. Border dark blue-green and rose. No. 40-15
- 11.2 x 8.8 **HERIZ.** Burgundy ground; medallion dark blue and gold on a plain field. Corners gold and light blue. Border dark blue. No. 11-105
- 11.4 x 8.9 **CHINESE.** Brownish red ground; medallion blue and brown cartouche design. Border red and golden yellow. No. 1-2343
- 11.9 x 8.9 **CHINESE.** Brown ground; medallion blue on a plain field. Corners blue. Border tan and blue. No. 15-16
- 11.10 x 8.10 **CHINESE.** Tan ground; medallion dark blue swastika design surrounded by a well-covered field in coral and blue. Corners blue. Border tan, blue and coral. No. 1-2339
- 11.9 x 8.8 **SAMARCAND SILK.** Red ground; all-over design in green. Border blue, brown and gold. No. 203
- 11.8 x 8.11 **CHINESE.** Persian blue ground; plain center. Border brown and blue. No. 6-911
- 11.9 x 8.11 **CHINESE.** Tan ground; medallion circular design in blue. Corners blue. Border tan and blue. No. 15-17
- 11.9 x 8.11 **CHINESE.** Blue ground; medallion brown on a plain field. Corners blue and brown. Border blue and brown. No. 15-20

- 11.10 x 8.11 **CHINESE.** Blue ground; medallion brown on a plain field. Border blue and brown. No. 15-18
- 11.2 x 9.0 **HEREKE.** Pink-rose ground; all-over design in light blue, gold and deep green. Border deep green and gold. No. 223
- 11.8 x 9.0 **SAMARCAND SILK.** Red ground; all-over design in two tone blue, brown and sage-green. Border blue and gold. No. 156
- 11.0 x 9.0 **KERMAN.** Rose ground; all-over design in large figures of brown and blue. Border tan, rose and brown. No. 756
- 11.8 x 9.0 **LAVEHR.** Persian blue ground; all-over design in ecru, rose, dark blue and brown. Border dark blue and rose. No. 1-2187
- 11.9 x 9.0 **CHINESE.** Blue ground; medallion brown on a plain field. Border blue and brown. No. 15-19
- 11.10 x 9.0 **CHINESE.** Camel's hair brown ground; medallion blue on a plain field. Corners blue. Border brown and blue. No. 15-15
- 11.10 x 9.0 **CHINESE.** Tan ground; all-over design with circular medallions in blue. Border brown and blue. No. 15-69
- 11.10 x 9.0 **CHINESE.** Old gold ground; medallion cartouche design in tans, blues, and sage-green. Corners lotus flower in blue. Border brown, tan and blue. No. 6-914
- 11.6 x 9.2 **ISPAHAN TABRIZ.** Deep rose ground; plain center. Border green and brown. No. 759
- 11.5 x 9.3 **KHIVA.** Mahogany ground; all-over panel design in browns, blues and green. Border mahogany and blue. No. 1-1863
- 11.7 x 9.3 **CHINESE.** Brown ground; medallion cartouche design in mulberry, blue and black on a well-covered design. Corners mulberry. Border tan and blue-black. No. 1-2344
- 11.9 x 9.3 **KERMAN.** Old rose ground; medallion ecru and dark blue. Corners ecru. Border cream, blue and golden yellow. No. 220
- 11.10 x 9.4 **ISPAHAN TABRIZ.** Burgundy ground; plain center. Border Burgundy brown and blue. No. 763
- 11.0 x 9.6 **KERMAN.** Tan ground; series of panel designs in Persian blue, rose, brown and light blue. Border ecru and rose. No. 1-1037
- 11.9 x 10.1 **CHINESE.** Brown ground; all-over design with circular figures in blue. Border brown and blue. No. 15-70

- 11.⁰ x 11.⁰ **HAMADAN.** Blue ground; all-over design in small figures of brown. Border black, tan and red with wide outside band in blue. No. 4-5
- 11.⁵ x 11.² **HEREKE.** Plain blue ground. Border same coloring. No. 1-2027
- 11.⁶ x 11.⁴ **KULTAR.** Dark blue ground; all-over design in old red, golden-yellow, light blue and green. Border deep red and gold. No. 642
- 12.² x 4.¹ **HAMADAN SEREBEND.** Dark blue ground; all-over herati design in ivory, soft green and yellow. Border ivory, red and light blue. No. 58
- 12.² x 4.⁴ **BIDJAR.** Gold ground; all-over design in small figures of red and blue. Border cream and deep green. No. 198
- 12.⁰ x 5.¹ **SHIRAZ.** Deep red ground; all-over palm leaf design in dark blue, ivory and yellow. Border dark blue and brown. No. 1-1929
- 12.⁶ x 5.¹ **ANTIQUÉ SPANISH.** Sage-green ground; all-over design in soft yellow, seal brown, ecru, blue and old red. Border tan, brown and soft yellow. No. 40-17
- 12.⁰ x 5.² **CAMEL'S HAIR HAMADAN.** Copper ground; medallion ecru surrounded by a well-covered field in blue, pink and ecru. Corners ecru. Border same with wide outside band in camel's hair. No. 1-2324
- 12.⁸ x 5.² **SEREBEND.** Red ground; all-over design in small palm leaf figures. Border brown and red. No. 159
- 12.³ x 5.⁴ **ANT. ISPAHAN.** Pink-red ground; all-over Ispahan design in blue-green, ivory, orange, taupe and soft yellow. Border baby blue and brownish yellow. No. 40-2
- 12.⁵ x 5.⁸ **ANT. SPANISH.** Dark blue ground; medallion golden-yellow on a well-covered field with animals in gold and soft yellow. Border dark blue, taupe and ecru. No. 40-19
- 12.⁶ x 5.⁹ **SEREBEND.** Ivory ground; all-over design in small herati figures of red and blue. Border orange red and sky blue. No. 690
- 12.⁶ x 6.⁰ **ANT. HERAT.** Blue-green ground; all-over small herati design in old red, ivory and dark blue. Border rose, dark blue and soft yellow. No. 6-159
- 12.⁸ x 6.⁰ **KERMAN.** Tan ground; all-over animal design in green, mulberry, gold and brown. Border of unusual width in dark blue and green. No. 11-73
- 12.⁹ x 6.² **FEREGHAN.** Brown ground; medallion in rose-red with pendants on a plain field. Corners red. Border green, red and brown. No. 1-2023

- 12.⁹ x 6.¹¹ **ANT. PERSIAN.** Old red ground; all-over floral and tree design in soft green, tan, light blue and soft yellow. Border blue-green, and ecru. No. 6-158
- 12.⁵ x 7.⁰ **JOSHAGHAN.** Red ground; all-over design in golden-brown, ecru, dark blue and green. Border golden-brown and blue-green. No. 1-1944
- 12.² x 7.⁶ **BIDJAR.** Rose ground; medallion dark blue surrounded by a plain field. Corners blue-green. Border dark blue and old rose. No. 545
- 12.⁵ x 7.⁶ **TABRIZ.** Rose ground; medallion golden-yellow surrounded by a plain field. Corners golden-yellow. Border dark blue and rose. No. 267
- 12.³ x 8.⁰ **BIDJAR.** Red ground; medallion dark blue on a plain field. Corners dark blue. Border medium blue and brown. No. 6-933
- 12.¹⁰ x 8.⁰ **TABRIZ.** Gold ground; medallion black and gold on a plain field. Corners black. Border cream and black. No. 484
- 12.⁰ x 8.⁴ **KURDISTAN.** Camel's hair brown ground; medallion dark blue on a plain field. Corners medium blue. Border red and blue with band of brown on outside. No. 204
- 12.² x 8.⁴ **ISPAHAN TABRIZ.** Dull rose ground; medallion cream surrounded by a floral design throughout entire center. Corners olive-green. Border rose, tan and blue. No. 711
- 12.¹ x 8.⁸ **KERMAN.** Chinese blue ground; all-over design in panels of rose covered by a floral design. Border light and dark blue and rose. No. 720
- 12.⁰ x 8.⁹ **KERMAN.** Rose ground; series of panels in tans, and dark blue. Border black and tan. No. 269
- 12.² x 8.⁹ **KERMAN.** Cream ground; all-over design in sky-blue, rose and brown. Border ivory rose and dark blue. No. 715
- 12.¹ x 8.¹⁰ **ISPAHAN TABRIZ.** Red ground; medallion olive-green and gold surrounded by a well-covered field in soft shades of ecru, orange, blue-black and green. Border purple-rose, tan and blue. No. 1-2314
- 12.⁰ x 9.⁰ **LAVEHR.** Rose ground; medallion brown with dark blue, rose and green. Corners brown with animals in gold. Border brown, rose and dark blue. No. 270
- 12.⁰ x 9.⁰ **ISPAHAN TABRIZ.** Mulberry ground; medallion blue, surrounded by a small design in field. Corners blue. Border mulberry and blue. No. 933
- 12.⁰ x 9.⁰ **CHINESE.** Camel's hair brown ground; medallion two tone blue on a well-covered field. Corners dark blue. Border brown with swastika band in dark blue. No. 16-16

- 12.⁸ x 9.¹ **GOEREVAN.** Red ground; medallion dark blue and red on a well-covered field. Corners brown. Border dark blue. No. 1-2405
- 12.⁰ x 9.² **ISPAHAN TABRIZ.** Mulberry ground; medallion blue-green and tan on a well-covered field. Border mulberry and blue. No. 707
- 12.⁰ x 9.² **ISPAHAN TABRIZ.** Burgundy ground; medallion in grey-blue surrounded by a covered field in scroll figures. Corners grey-blue. Border burgundy and tan. No. 710
- 12.⁰ x 9.³ **TABRIZ.** Mouse color ground; medallion in dark blue and green. Corners dark blue. Border dark blue outlined by burgundy. No. 271
- 12.¹⁰ x 9.⁷ **KERMAN.** Dark tan ground; medallion dark blue and brown on a plain field. Corners rose and blue. Border rose and dark blue. No. 712
- 12.¹¹ x 9.⁷ **LAVEHR.** Dark blue ground; all-over design in small figures of cypress tree and vases in blue-green, two tone blue and old rose. Border brown and blue with Persian inscriptions. No.4-47
- 12.¹¹ x 9.⁷ **KERMAN.** Blue-green ground; all-over design in panels of dark blue surrounded by a floral field in soft rose, tan and copper tones. Border blue-green and ecru. No. 717
- 12.² x 9.⁸ **KERMAN.** Rose ground; all-over design in light blue and brown. Border dark blue, rose and tan. No. 4-32
- 12.⁹ x 9.⁸ **MESCHED.** Rose ground; medallion dark blue and brown on a well-covered field. Corners dark blue and rose. Border green and tan. No. 520
- 12.¹⁰ x 9.⁸ **ISPAHAN TABRIZ.** Burgundy ground; all-over Ispahan design in sage-green—two tone blue, brown and gold. Border burgundy and medium blue. No. 801
- 12.⁰ x 9.¹⁰ **HEREKE.** Rose ground; all-over serebend design in sage-green and dark blue. Border cream and soft orange. No. 275
- 12.⁹ x 9.¹⁰ **MESCHED.** Plain rose ground. Border in dark blue and golden brown. No. 546
- 12.⁰ x 10.⁰ **LAVEHR.** Heavy rose ground; all-over Ispahan design in dark blue, brown, gold and blue-green. Border light sky-blue and mulberry, No. 4-13
- 12.¹¹ x 10.¹ **KHORASSAN.** Copper ground; medallion dark blue on a plain field. Corners light blue. Border copper tones and blue. No. 278
- 12.⁰ x 10.⁴ **MAHAL.** Dark blue ground; all-over design in tans, mulberry, green and two tone blue. Border burgundy and golden-yellow. No. 1-2210

- 12.⁶ x 10.⁵ **HAMADAN.** Dark blue ground; all-over fereghan design in mulberry-blue and tan. Border brown and blue. No. 1-2214
- 12.⁹ x 10.⁷ **LAVEHR.** Dark blue ground; all-over floral and cypress tree design in blue and copper tones. Border brown, blue and copper tones. No. 4-43
- 13.³ x 4.⁵ **ANT. KOULA.** Purple-red ground; medallion in pale olive-green, tete-de-negre and soft yellow. Border of unusual stripes in old red, ivory, orange and soft yellow. No. 1-1742
- 13.² x 4.⁶ **HAMADAN.** Ivory ground; all-over small design in light blue, burnt orange and brown. Border ivory and old rose. No. 227
- 13.⁰ x 4.⁹ **KHORASSAN.** Blue-black ground; all-over design in red, light blue, soft yellow and green. Border red, yellow and light blue. No. 418
- 13.² x 5.⁸ **MIR SEREBEND.** Rose ground; all-over design in small palm leaf figures in two tone blue, orange, sage-green and ivory. Border ivory, dark blue and rose. No. 422
- 13.⁷ x 5.¹⁰ **ANT. ISPAHAN.** Pink old Ispahan red ground; all-over design in olive-green, blue, pink, brown and golden-yellow. Border bluish green and pink-rose. No. 40-12
- 13.¹¹ x 5.¹¹ **ANT. ISPAHAN.** Red ground; all-over Ispahan design in old red, sage-green, soft pale blue and tan. Border red and soft blue. No. 40-4
- 13.² x 6.⁰ **MIR SEREBEND.** Red ground; all-over small herati design in light baby blue, olive-green and ecru. Border dark blue, black and ecru. No. 423
- 13.⁶ x 6.⁰ **KURD JIJIM.** Red ground; all-over design in blue, green and ivory; cashmere weaving. Border unusually wide in same coloring. No. 6-835
- 13.¹ x 6.⁴ **ANT. CHINESE SILK.** Soft yellow ground; all-over design with old rose, blue-green and copper tones. Border brownish yellow with narrow swastika band in pink and dark blue. No. 1-2189
- 13.² x 6.⁴ **ANT. KUBA.** Lemon yellow ground; all-over design in mauve, two tone blue, red, ivory, green and pink. Border red and ivory. No. 40-45
- 13.¹ x 6.⁵ **ANT. FEREGHAN.** Dark blue-black ground; all-over fish design in blues, rose red gold, mauve, ecru and soft green. Border green, red and gold. No. 1-2286
- 13.⁰ x 6.⁶ **SAMARCAND.** Red ground; all-over design in two-tone blues, soft yellow and dark brown. Border red and blue. No. 1-2024

- 13.⁹ x 6.⁹ **KHORASSAN.** Rose ground; unusual stripes in old green, ivory and blue. Border red and blue. No. 405
- 13.³ x 6.¹⁰ **HAMADAN.** Tan ground; medallion black and mulberry with pendants surrounded by a well-covered field in light blue and brown. Corners dark brown. Border blue, tan and rose. No. 697
- 13.⁶ x 7.⁴ **HERAT.** Dark blue ground; all-over fish design in red, soft yellow, blues and green. Border red, dark blue and gold. No. 6-894
- 13.¹ x 7.¹¹ **LAVEHR.** Ivory ground; all-over design in soft green, rose and gold. Corners rose. Borders tan and dark blue. No. 6-854
- 13.² x 8.⁷ **KERMAN.** Copper tone ground; medallion in browns and blues. Border copper tones, old rose and green. No. 870
- 13.² x 8.⁸ **MAHAL.** Burgundy ground; all-over design in light blue, tan and brown. Border brown, light blue and mulberry. No. 924
- 13.⁰ x 8.⁹ **LAVEHR.** Rose ground; medallion blue on a well-covered field. Corners dark blue. Border ecru and rose. No. 555
- 13.¹⁰ x 8.¹¹ **KERMAN.** Mulberry ground; all-over panel design in light blue and brown. Border brown and blue. No. 721
- 13.⁷ x 9.⁵ **HEREKE.** Purple ground; medallion light blue and deep green on a plain field. Corners blue and brown. Border deep green, brown and purple. No. 1-233
- 13.⁵ x 9.⁶ **KERMAN.** Tan ground; all-over scroll design in mulberry, rose, brown and light blue. Corners mulberry. Border tan, rose and mulberry. No. 709
- 13.⁰ x 9.⁹ **ANT. CHINESE.** Tan ground; all-over floral fret design in dark shades of tan. Border tan and black. No. 1-2322
- 13.³ x 9.⁹ **TEHERAN.** Brown ground; all-over persian rose design in wine-red and brown. Border brown, old red and blue. No. 1-2409
- 13.⁴ x 9.⁹ **KERMAN.** Ecru ground; medallion blue-black and old rose on a well-covered floral field. Corners old rose. Border ecru, and blue-black. No. 683
- 13.⁸ x 9.⁹ **ISPAHAN TABRIZ.** Brown ground; medallion rose with browns, two tone blue and green surrounded by a floral design. Corners rose and blue. Border rose with bands in tans and dark blue. No. 537

- 13.⁶ x 9.¹⁰ **TABRIZ.** Burgundy ground; medallion green and tan on a plain field. Corners blue. Border sage-green and tan. No. 6-719
- 13.¹⁰ x 9.¹¹ **HEREKE.** Italian-red ground; medallion blue and brown on a plain field. Corners mulberry, brown and blue. Border brown and mulberry. No. 688
- 13.² x 10.⁰ **ANT. FEREGHAN.** Dark blue ground; all-over fish design in two tone blue, dark brown and old red. Border light green, dark blue and brown.
- 13.³ x 10.⁰ **ANT. FEREGHAN.** Dark blue ground; all-over fish design in old red, soft yellow, brown, ecru, greenish blue and sky-blue. Border olive-green, old red and dark blue. No. 1-2329
- 13.³ x 10.² **ISPAHAN TABRIZ.** Burgundy ground; all-over Ispahan design in light and dark blue, olive-green, orange and brown. Border dark blue and old red. Rare old design. No. 259
- 13.⁹ x 10.² **ANT. AGRA.** Mulberry rose ground; all-over design in large figures of beige, taupe, black and old gold. Border black and rose. No. 1-2161
- 13.¹ x 10.⁷ **HAMADAN.** Mulberry red ground; medallion dark blue on a plain field. Corners dark blue. Border sky-blue and brown. No. 1-2307
- 13.⁸ x 10.⁸ **HAMADAN.** Copper red ground; all-over fereghan design in light blue, green and brown. Border blue with bands in copper tone. No. 10-83
- 13.¹⁰ x 10.⁹ **TABRIZ.** Deep wine-red ground; medallion tan and blue on a floral field. Corners blue and tan. Border tan and blue. No. 699
- 13.⁰ x 10.¹⁰ **SHIRAZ.** Blue-green ground; all-over design in panels of brown and old red. Border blue-green, old red and brown. No. 260
- 13.³ x 10.¹⁰ **KERMAN.** Rose ground; all-over panel design with cypress and floral field in dark blue, sage-green-brown, and rose. Border tan and dark blue. No. 713
- 13.⁶ x 10.¹⁰ **MUSKABAD.** Mulberry red ground; all-over design in browns, two tone blue and tan. Border dark blue, brown and old red. No. 700
- 13.⁶ x 11.² **LAVEHR.** Tan ground; all-over design in blues and copper tones. Border copper, blue and tan. No. 14-17
- 13.² x 12.³ **MAHAL.** Dark blue ground; all-over design in burgundy, blue, brown and golden-yellow. Border burgundy blue and tan. No. 714
- 13.⁰ x 12.⁹ **ANT. CHINESE.** Cream ground; all-over lotus flower design in two tone blue. Border cream with swastika band in blue. No. 1-2150

- 14.8 x 4.6 **IRAN.** Rose ground; all-over design in green, yellow and blue. Border ecru and blue. No. 750
- 14.0 x 5.0 **BIDJAR.** Rose-red ground; all-over minikhani design in deep wine-red, sage-green, two tone blue and ecru. Border dark blue and ivory. No. 172
- 14.4 x 5.8 **KHORASSAN.** Dark blue ground; all-over small design in red, brown and blue. Border red, brown and blue. No. 196
- 14.9 x 6.1 **KHIVA AFGHAN.** Deep red ground; all-over octagonal design in orange, ecru and blue. Border same colors. No. 190
- 14.5 x 6.2 **ANT. HERAT.** Blue-black ground; all-over small fish design in blue, ecru, old red and sage-green. Border dark blue, tan and soft red. No. 407
- 14.11 x 6.10 **IRAN.** Red ground; medallion dark blue on a plain field. Corners dark blue. Border wine-red and blue. No. 698
- 14.3 x 8.5 **LARISTAN.** Blue ground; all-over floral design in browns, burnt orange, red and light blue. Border blue and chocolate red. No. 687
- 14.1 x 8.8 **LAVEHR.** Persian blue ground; all-over design in copper, brown and blue. Border blue and brown. No. 11-54
- 14.5 x 9.2 **BIDJAR.** Red ground; medallion mulberry and blue-black on a plain field. Corners blue-black. Border black and mulberry. No. 247
- 14.9 x 9.4 **KERMAN.** Rose ground; medallion ecru and dark blue on a well-covered field with olive green and rose. Border ecru, green and rose. No. 245
- 14.6 x 9.5 **KURD.** Dark red ground; all-over minikhani design in green, light blue, brown and soft yellow. Border dark blue and brown. No. 9-19
- 14.4 x 9.9 **ANT. CHINESE MOSQUE.** Old gold ground; Chinese dragon design in blue, old red, and green. Border in swastika fret of blue, yellow and deep green with wide band on outside in copper tones. (Companion 14.9 x 10.9). No. 6-781
- 14.11 x 9.10 **TABRIZ SILK.** Black ground; all-over scroll design in soft mulberry and green. Border black and mulberry. No. 532
- 14.0 x 10.0 **ANT. CHINESE MOSQUE.** Old gold ground; Chinese dragon design in blue, old red and green. Border in swastika fret of blue, yellow and deep green, with wide band on outside in copper tones. (Companion 14.4 x 9.9). No. 6-780
- 14.6 x 10.4 **KURDISTAN.** Dark blue ground; all-over design in browns, two tone blue, olive-green, rose and deep red. Border brown and blue. No. 1-2244

- 14.0 x 10.7 **ELVEND.** Brown ground; all-over design in small figures of deep red, tan and green. Border brown, dark blue and old red. No. 1-1357
- 14.0 x 10.7 **KERMAN.** Dark blue ground; all-over panel design in browns, mulberry and light blue. Border light blue and brown. No. 1-2410
- 14.8 x 10.8 **KERMAN.** Copper tone ground; medallion dark blue on a well-covered floral field with blue-green and black. Border dark blue and copper. No. 1-2022
- 14.11 x 10.8 **KERMAN.** Rose ground; all-over scroll design in sky-blue, tan, brown and rose. Border rose, blue and brown. (Companion 15.3 x 10.9). No. 4-16
- 14.3 x 10.9 **SAROUK.** Mulberry-red ground; medallion ecru and dark blue surrounded by a well-covered field in tans, browns, sky-blue and mulberry. Corners mulberry. Border, dark blue. No. 1-1924
- 14.3 x 11.0 **LAVEHR SILK.** Cream ground; medallion dark blue and old rose on a well-covered field. Corners deep rose and baby blue. Border ecru, brownish red and blue. No. 849
- 14.0 x 12.0 **CHINESE.** Taupe ground; all-over design in tan and blue. Border tan and blue. No. 15-9
- 14.6 x 12.0 **CHINESE.** Gold ground; center medallion two tone blue and brown on a plain field. Corners blue. Border gold and dark blue. No. 15-11
- 14.9 x 12.1 **CHINESE.** Gold ground; all-over flower and lotos design in coral, blue, brown and copper tone. Border gold, light and dark blue. No. 16-29
- 14.3 x 12.9 **KURDISTAN.** Brown ground; all-over design in red, light blue and soft shades of green. Border dark blue and brown. No. 10-150
- 14.4 x 13.3 **ANT. CHINESE.** Camel's hair brown ground; all-over design in blue. Border brown, blue and copper tones. No. 1-2149
- 14.3 x 14.5 **LAVEHR.** Cream ground; all-over floral designs in soft shades of rose, blue and green. Border cream, dark blue and rose. No. 1-2183
- 15.0 x 4.5 **LAVEHR.** Old rose ground; all-over design in two stripes of tan, soft sage-green and dark blue. Border dark blue and tan. No. 693
- 15.2 x 5.4 **HAMADAN.** Dark blue ground; all-over herati design in old red, blue and green. Border ecru, blue and old red. No. 371
- 15.1 x 6.1 **BIDJAR.** Ivory ground; all-over floral and bird design with Persian roses in soft green, golden-brown, rose and two tone blue. Border dark blue, ecru and light baby blue. No. 854

- 15.⁰ x 6.³ **KAYEN.** Dark blue ground; all-over large herati design in red, ivory and blue. Border ivory, red and blue. No. 197
- 15.⁴ x 6.⁴ **ANT. ISPAHAN.** Pink-rose ground; all-over design in pale olive green, blue, ecru, soft yellow and brown. Border green and old rose. No. 40-1
- 15.¹⁰ x 6.⁵ **KARABAGH.** Blue ground; all-over design in tan, soft sage-green, orange and old red. Inscriptions in tan. Border tan and brown. No. 233
- 15.¹⁰ x 6.⁸ **SEREBEND.** Dark blue ground; all-over herati design in copper red. Border cream and dark brown. No. 695
- 15.⁶ x 7.⁴ **KHORASSAN.** Dark blue ground; all-over herati design in red, light blue, ecru and yellow. Border red, dark blue and yellow. No. 6-894
- 15.⁵ x 7.⁶ **HERAT.** Dark blue ground; all-over fish design in soft yellow, red, blue and green. Border red, dark blue and soft gold. No. 538
- 15.⁰ x 8.⁶ **ANT. OUSHAK.** Old red ground; medallion blue and green. Corners deep green and soft yellow. Border seal brown and old red. No. 40-33
- 15.² x 8.⁹ **LAVEHR.** Dark blue ground; all-over panel design in browns and blues. Border dark blue, tan and brown. No. 4-24
- 15.³ x 8.¹⁰ **BIDJAR.** Dark blue ground; all-over design in browns, light blue, olive-green and chocolate color. Border burgundy, blue and brown. No. 9-14
- 15.⁷ x 8.¹⁰ **LAVEHR.** Dark blue ground; all-over floral design in browns, green and copper tones. Border copper brown and blue. (Companion 15.⁹ x 8.¹⁰) No. 1-2213
- 15.⁷ x 9.¹ **HEREKE.** Red ground; plain center. Border soft green and red. No. 1-2030
- 15.⁰ x 9.³ **LAVEHR.** Purple-rose ground; medallion blue-black, rose and light blue, surrounded by a plain field. Corners mulberry. Border purple-rose, and dark blue. No. 404
- 15.⁰ x 9.⁴ **LAVEHR.** Fawn ground; all-over floral design in rose, light blue, sage-green, taupe and brown. Border beige and rose. No. 958
- 15.³ x 9.⁸ **LAVEHR.** Copper brown ground; medallion blue and tan on a plain field. Corners blue and copper. Border blue and old rose. No. 672
- 15.¹ x 9.⁹ **LAVEHR.** Dark blue ground; medallion rose and light blue on a well-covered field. Corners grey-blue and rose. Border dark blue, rose and grey-blue. No. 951

- 15.⁰ x 9.¹⁰ **BIDJAR.** Rose ground; medallion blue-black and brown on a plain field. Corners blue-black. Border two tone blue and brown. No. 544
- 15.⁵ x 9.¹⁰ **LAVEHR.** Dark blue ground; all-over design in old rose, brown and blue. Border rose, brown and blue. No. 4-25
- 15.⁶ x 9.¹⁰ **JOSHAGHAN.** Dark blue ground; medallion brown and two tone blue surrounded by a floral design in soft green, tan and blue. Corners and border in light brown and blue. No. 482
- 15.³ x 10.⁰ **BIDJAR.** Red ground; all-over minikhani design in light blue, green and brown. Border narrow band in blue. No. 629
- 15.² x 10.⁶ **LAVEHR.** Dark blue ground; all-over panel design in tans, light blue, mulberry and green. Border cream, dark blue and rose. No. 944
- 15.³ x 10.⁶ **KERMAN.** Blue ground; medallion dark blue and copper tones. Corners copper tone. Border light blue and brown. No. 725
- 15.¹⁰ x 10.⁶ **ISPAHAN TABRIZ.** Dark blue ground; all-over Ispahan design in two tone blue, soft yellow, brown, old red and light green. Border blue and tan. No. 249
- 15.¹⁰ x 10.⁶ **LAVEHR.** Blue ground; all-over design in blue and brown. Border dark blue and copper tones. (Companion 16.⁰ x 10.⁷). No. 4-10
- 15.² x 10.⁷ **LAVEHR.** Copper tone ground; medallions in panel design of dark blue, gold and medium blue. Border blue-brown and copper. No. 2-225
- 15.³ x 10.⁹ **KERMAN.** Rose ground; all-over scroll design in sky-blue, tan, brown and rose. Border rose, blue and brown. (Companion 14.¹¹ x 10.⁸). No. 4-15
- 15.⁹ x 10.⁹ **BOKHARA.** Ruby red ground; all-over panel design in purple-rose and ivory. Border purple-rose and dark blue. Unusual selvedge woven at either end. No. 410
- 15.⁹ x 11.⁰ **LAVEHR.** Brown ground; all-over floral design in medium blue and chocolate rose. Border ecru, and copper tones. No. 675
- 15.⁸ x 11.¹ **TABRIZ.** Rose ground; medallion light blue on a plain field. Corners light blue. Borders brown and old red. No. 254
- 15.⁰ x 11.² **OUSHAK.** Green ground; Corners golden-yellow and old red. Border olive-green and rose. No. 1-818
- 15.³ x 11.³ **KERMAN.** Copper tone ground; plain center. European design in blue and brown. Border blue and brown. (Companion 15.³ x 11.³). No. 11-60

- 15.3 x 11.3 **KERMAN.** Copper tone ground; plain center. European design in blue and brown. Border blue and brown. (Companion 15.3 x 11.3). No. 11-57
- 15.4 x 11.4 **BIDJAR.** Mahogany-red ground; all-over minikhani design in brown, blue, mulberry and pink. Border dark blue and gold. No. 9-17
- 15.10 x 11.4 **KHORASSAN.** Red ground; medallion in brown and sage green covered with herati design in light blue and tan. Border green and tan. No. 253
- 15.1 x 11.6 **CHINESE.** Blue ground; plain center with vases in lighter blue. Border pale blue. No. 15-72
- 15.6 x 11.7 **GOEREVAN.** Golden-brown ground; with medallion and pendants in dark blue. Corners dark blue. Panel border with Persian writing. Main border red and light blue. No. 1-496
- 15.9 x 11.8 **CHINESE.** Brown ground; medallion blue on a plain field. Border brown and blue. No. 15-65
- 15.2 x 11.11 **CHINESE.** Dark blue ground; all-over floral design in brown, ecru and copper tones. Border blue and brown. No. 15-12
- 15.10 x 12.0 **CHINESE.** Mulberry ground; medallions in taupe and gold on a field of fret design. Border gold and sky-blue. No. 15-6
- 15.1 x 12.1 **LAVEHR.** Dark blue ground; all-over floral design in grey-blue, and copper tones. Border copper brown and blue. No. 4-34
- 15.6 x 12.1 **MESCHED.** Red ground; medallion brown on a well-covered field. Corners dark and light blue. Border dark blue and red. No. 541
- 15.7 x 12.2 **CHINESE.** Brown ground; all-over design in two tone blue. Border gold with bands in dark blue. No. 16-27
- 15.10 x 12.2 **CHINESE.** Tan ground; all-over repeat design in blue. Border brown and blue. No. 15-64
- 15.7 x 12.3 **CHINESE.** Blue and brown ground; all-over fret design in brown and blue. Border blue and brown. No. 16-9
- 15.11 x 12.3 **CHINESE.** Gold ground; all-over animal and bird design in blue and taupe. Border gold and blue. No. 16-28
- 15.1 x 12.4 **GOEREVAN.** Chocolate red ground; large all-over design in light blue, blue-black and tan. Border chocolate red and blue. No. 674
- 15.10 x 12.8 **HEREKE.** Red ground; plain center. Border olive-green. No. 1-2028

- 15.1 x 12.10 **ISPAHAN TABRIZ.** Old red ground; medallion brown with scroll design in tan and old red surrounded by a well-covered fish design. Corners brown. Border medium blue with bands in tan and soft green. No. 252
- 15.8 x 12.10 **KERMAN.** Brown ground; medallion medium blue on a well-covered floral field. Corners mulberry-rose. Border blue, brown and mulberry. No. 726
- 15.1 x 13.0 **LAVEHR.** Blue-green ground; medallion dark blue, old rose and brown. Corners old rose. Border blue-green, rose and blue. No. 558
- 15.9 x 13.2 **LAVEHR.** Rose ground; medallion dark blue and brown. Corners ecru. Border cream with blues and brown. No. 1-1880
- 15.10 x 13.3 **HERIZ.** Red ground; medallion dark blue and camel's hair. Corners dark blue and gold. Border blue, brown and red. No. 529
- 15.10 x 13.5 **OLD LAVEHR.** Cream ground; all-over Ispah design in browns, rose, green, blues and gold. Border cream, rose and blue. No. 1-2157
- 15.5 x 13.10 **ANT. AGRA.** Cream ground; all-over design in mulberry, black, brown, soft blue, and blue-green. Border black, golden-brown and mulberry. No. 6-932
- 15.6 x 14.0 **ANT. FEREGHAN.** Dark blue ground; all-over fish and herati design in red, light blue and golden-yellow. Border ecru, gold and red. No. 671
- 16.5 x 6.3 **SEREBEND.** Red ground; all-over palm leaf design in ecru, blue and yellow. Border ecru, dark and light blue and red. No. 557
- 16.2 x 6.7 **LAVEHR.** Tan ground; medallion in two tone blue; mulberry, deep green and brown. Border tan and rose. No. 1-1747
- 16.9 x 6.10 **SEREBEND.** Blue-black ground; all-over palm leaf design in olive-green, medium blue and old red. Corners red. Border ivory, black and red. No. 234
- 16.9 x 7.1 **MIR SEREBEND.** Red ground; all-over design in blue, sage-green and brown. Border ivory, blue and burnt orange. No. 6-43
- 16.4 x 7.2 **KHORASSAN.** Dark blue ground; all-over large palm leaf design in blue, green, old red and yellow. Border red. No. 232
- 16.8 x 7.4 **SENEH.** Blue-black ground; all-over small design in mulberry, sage-green, blue, brown and seal. Border chocolate brown, blue and old red. No. 1-2245
- 16.2 x 7.8 **HERAT.** Old gold ground; all-over palm leaf design in old rose, soft yellow, ivory and blue-green. Border dark blue, ivory and old rose. No. 1-1849

- 16.³ x 8.⁰ **ANT. SPANISH CARPET.** Soft yellow ground; all-over design in faded blue and olive-green. Border same coloring. No. 6-874
- 16.⁹ x 8.⁰ **KERMAN.** Camel's hair ground; all-over Is-pahan design in mulberry, rose, green and blue. Border light blue, rose and tan. No. 730
- 16.⁴ x 8.¹⁰ **TABRIZ.** Blue ground; all-over small figured design in burnt orange and light blue. Border blue and brown. No. 401
- 16.⁰ x 8.¹¹ **KURDISTAN.** Mahogany-red ground; all-over minikhani design in light blue, golden-yellow, green and pink. Border blue and golden-yellow. No. 10-27
- 16.⁵ x 9.⁰ **CHINESE.** Beige ground; medallion tan, blue, sage-green on a plain field with vases and flower pots in dark blue and gold. Corners two tone blue. Border beige with outside band in dark blue. No. 50-23
- 16.⁶ x 9.² **KURDISTAN.** Deep rose-red ground; medallion dark blue with small fereghan design in tans, old blue and soft green; pendants in blue surrounded by a plain field. Corners dark blue. Border dark blue and brown. No. 327
- 16.⁹ x 9.⁸ **(ANT. DAMASCUS MOSQUE CARPET).** Red ground; medallion sapphire-blue and yellow on a well-covered field. Border red and blue. No. 1-2364
- 16.⁰ x 10.¹ **MAHAL.** Burgundy ground; medallion blue-black with shades of green and light blue. Border blue-black, mulberry and old red. No. 1-2195
- 16.² x 10.² **CHINESE.** Brown ground; all-over repeat design in blues and pinks. Border brown and taupe. No. 16-10
- 16.¹⁰ x 10.⁵ **FEREGHAN.** Dark blue ground; all-over design in light blue, soft yellow and old gold. Border wine-red, green and golden-yellow. No. 1-697
- 16.⁰ x 10.⁶ **GOEREVAN.** Black ground; medallion well-covered in two tone blue, camel's hair and brown. Border black with bands in light blue. No. 317
- 16.² x 10.⁶ **OLD TABRIZ.** Rose ground; medallion blue and rose. Corners blue. Border rose and tan. No. 661
- 16.⁰ x 10.⁷ **LAVEHR.** Blue ground; all-over design in blue and brown. Border dark blue and copper tones. (Companion 15.¹⁰ x 10.⁶) No. 4-11
- 16.² x 10.¹¹ **FANTAZIA.** Deep red ground; medallion dark blue surrounded by a well-covered design in field of light blues, pinks, golden-yellow, brown and deep green. Border dark blue and brown. No. 1-2109
- 16.¹⁰ x 11.⁰ **HAMADAN.** Red ground with rosettes in light blues, green and ecru. Border brown and green. No. 323

- 16.¹⁰ x 11.² **BAKSHAISH.** Rose ground; medallion greenish tan and dark blue surrounded by a well-covered field. Corners dark blue. Border dark blue and brown. No. 657
- 16.⁸ x 11.⁴ **LAVEHR.** Copper brown ground; all-over design in blue. Border copper tones and blue with outside border in blue-black. No. 722
- 16.⁵ x 11.⁸ **HAMADAN.** Brown ground; all-over design in soft reds and blues. Border red with yellow, green and ecru. No. 10-76
- 16.² x 12.⁰ **MESCHED.** Peacock blue ground; medallion in brown and green. Border pink, rose, blue and green. No. 536
- 16.⁴ x 12.⁰ **HEREKE.** Ispahan rose-red ground covered with all-over polonaise scroll design in soft golden-brown, black and old blue. Border same coloring. No. 658
- 16.⁶ x 12.⁰ **MUSKABAD.** Dark blue ground; all-over small design in deep green, brown, old red and light blue. Border burgundy, blue and tan. No. 655
- 16.⁰ x 12.² **CHINESE.** Taupe ground; medallion in beige on a plain field. Border brown and blue. No. 15-39
- 16.⁰ x 12.³ **CHINESE.** Beige ground; fish bowls throughout center on a plain field. Border taupe. No. 15-59
- 16.⁰ x 12.³ **CHINESE.** Brown ground; all-over circular design in blue, brown and coral. Border brown with bands in dark blue. No. 16-12
- 16.³ x 12.³ **HAMADAN.** Dark blue ground; all-over fereghan design in light blue and mahogany-red. Border cream. No. 1-1928
- 16.⁰ x 12.⁶ **BIDJAR.** Dark blue ground; all-over small design in olive-green, old red and tan. Border red, golden-yellow, and light blue. No. 9-12
- 16.¹ x 12.⁸ **TEHERAN.** Deep green ground; all-over panel design in red, sage-green, brown and light blue. Border green, light blue and red. No. 10-136
- 16.³ x 12.⁸ **CHINESE.** Camel's hair brown ground; six fish bowls through center on a plain field. Border plain with one vase design in blue. No. 15-58
- 16.⁸ x 13.⁰ **PERSIAN.** Golden tan ground; all-over design with floral and cypress trees in blue-green seal, taupe, and blue-black. Border golden tan, blue and taupe. No. 15-1
- 16.⁴ x 13.³ **KHORASSAN.** Light blue ground; medallion in copper red and dark brown on a plain field. Border dark brown, ecru and light blue. No. 326

- 16.⁰ x 13.⁴ **MESCHED.** Rose-red ground; medallion brown surrounded by an all-over field in browns, dark blue and light green. Border Persian blue and tan. No. 325
- 16.⁰ x 14.⁰ **MIR SEREBEND.** Blue-black ground; all-over design in medium blue, sage-green and soft red. Border ivory and dark blue; on either side of main part of rug are runners making a three panel rug.
No. 1-1890
- 16.⁸ x 14.⁹ **KERACHI HAMADAN.** Dark blue ground; all-over designs in reds, brown and sage-green. Border red, green and soft yellow with wide outside band in dark blue.
No. 1-2389
- 16.⁴ x 14.¹⁰ **HEREKE.** Wine-red ground; small all-over design in soft sage-green and blues. Border sage-green, blue and old red.
No. 320
- 16.¹⁰ x 16.¹⁰ **KHORASSAN.** Brown ground; all-over design in small figures of tan, sage-green and pink. Border dark brown and tan.
No. 329
- 17.¹ x 5.⁹ **BIDJAR.** Dark blue ground; all-over Persian rose design in old red, blue and brown. Border golden-brown and old red.
No. 1-1922
- 17.⁴ x 6.⁰ **BIDJAR.** Cream ground; all-over herati design in old green, golden-yellow and old red. Corners green. Border red, ecru and golden yellow. Very fine texture.
No. 285
- 17.⁸ x 7.⁴ **BESHIR.** Antique turkoman carpet. Red ground; all-over design in ivory, gold, old rose, blues and black in rosette design. Border golden-yellow and black.
No. 481
- 17.⁵ x 7.⁵ **SEREBEND.** Golden ground; all-over palm leaf design in light green and dark blue. Border red and brown.
No. 284
- 17.¹⁰ x 7.⁹ **HERAT.** Dark blue ground; medallion pink-rose and tan on a well covered field. Border rose and dark blue.
No. 193
- 17.⁶ x 8.⁰ **FEREGHAN.** Dark blue ground; all-over small figures in old red, ivory and blue. Border red and tan.
No. 1-50
- 17.⁴ x 9.¹ **ANT. SPANISH NEEDLE WORK.** Beige ground; all-over design in green, orange, blues, and soft yellow. Border taupe with narrow bands in lemon-yellow and seal brown.
No. 6-796
- 17.¹ x 9.⁹ **LAVEHR.** Ecru ground; all-over panel design in mauve, green, black, dark blue and mulberry. Border dark blue, mulberry, and greenish-blue. No. 4-26
- 17.⁶ x 9.¹¹ **GOEREVAN.** Medium blue and red ground; medallion in gold and blue. Main border brown with adjoining border in red and blue.
No. 296

- 17.6 x 10.1 **FINE MAHAL.** Brown ground; all-over fish design in two tone blue, soft green and shades of mulberry. Main border mulberry with small band borders in light blue and brown. No. 11-28
- 17.7 x 10.1 **FEREGHAN.** Dark blue ground; all-over fish design in soft red, golden-yellow and green. Corners red. Main border red with bands in light Persian blue and yellow. No. 11-26
- 17.10 x 10.4 **ELVEND.** Golden-yellow ground; all-over flower and vase design in mulberry, blue and deep green. Border blue with wide outside band in golden-yellow. No. 9-33
- 17.10 x 10.7 **LAVEHR.** Black ground; all-over panel design in mulberry, tan and soft green. Border mulberry, black, tan and green. No. 708
- 17.4 x 10.8 **LAVEHR.** Dark blue ground; all-over well-covered design in copper, brown and blue. Border tan with adjoining band borders in copper and blue. No. 4-38
- 17.10 x 10.9 **TABRIZ.** Red ground; medallion in light brown and dull olive-green, covered by a floral design. Border in panels of red and deep olive-green. No. 307
- 17.5 x 11.2 **GOEREVAN.** Red ground; medallion dark blue and brown surrounded by a well-covered field in light blue and soft green. Corners brown and blue. Border red and brown. No. 663
- 17.4 x 11.4 **GOEREVAN.** Burgundy ground; all-over floral design in light blue, brown, green, gold and blue-black. Border dark blue and brown. No. 318
- 17.8 x 11.6 **KURDISTAN.** Dark blue ground; all-over design in green, brown, blue and red. Border Camel's hair brown, red and blue. No. 9-21
- 17.10 x 11.7 **LAVEHR.** Dark blue ground; all-over small floral design in ivory, blue, olive-green, rose and taupe. Border Persian blue and rose. No. 1-2154
- 17.5 x 11.10 **LAVEHR.** Dark blue ground; all-over floral design in brown and blue-green. Border dark blue and brown. No. 4-31
- 17.5 x 11.10 **TURKEY.** Green ground. Corners old red and brown. Border green and red. No. 1-817
- 17.0 x 12.0 **LAVEHR.** Rose ground; medallion dark blue with mulberry, blue-green, and brown on a well-covered scroll design. Corners rose. Border blue-black and rose. No. 14-81
- 17.3 x 12.0 **LAVEHR.** Blue-green ground; all-over panel design in dark blue, plum and brown. Corners dark blue. Border plum, dark blue and antique green. No. 554

- 17.⁴ x 12.⁰ **KURD TABRIZ.** Italian red ground; all-over small floral design in light blue, mouse and tan. Border dark blue, Persian blue with shades of mulberry and deep green. No. 668
- 17.⁴ x 12.⁰ **PERSIAN.** Dark blue ground; all-over design in brown, blue-green, soft yellow, rose and old red. Corners blue-green. Border brown, rose and blue. No. 6-918
- 17.¹¹ x 12.¹ **CHINESE.** Brown ground; all-over design with circular medallions in blue. Border brown and blue. No. 15-56
- 17.⁷ x 12.² **LAVEHR.** Rose ground; medallion dark blue and tan surrounded by a well-covered field with animals and cypress trees in brown and blue. Corners dark blue. Border dark blue, tan and rose. No. 1-2310
- 17.⁶ x 12.⁴ **LAVEHR.** Dark blue ground; medallion brown surrounded by a well-covered field with animals and cypress trees in copper and blue. Border brown and blue. No. 1-2309
- 17.⁰ x 12.⁵ **LAVEHR.** Brown ground; all-over panel design in dark blue, rose, soft green and brown. Border Persian blue, rose and tan. No. 4-46
- 17.¹ x 12.⁵ **CHINESE.** Blue ground; medallion tan and blue. Border brown and blue. No. 15-3
- 17.¹¹ x 12.⁶ **KASHAN.** Chocolate red ground; all-over design in light blue, brown, olive-green, blue-black, pink and mouse color. Border dark blue and brown. No. 1-2153
- 17.⁰ x 12.⁸ **CHINESE.** Tan ground; all-over repeat design in brown and tan. Border tan and blue with outside band in taupe. No. 15-57
- 17.⁶ x 12.⁸ **CHINESE.** Brown ground; all-over circular design in blue, ecru, and coral. Corners dragons in blue. Border brown with narrow bands in dark blue. No. 15-5
- 17.⁰ x 12.⁹ **LAVEHR.** Rose ground; medallion dark blue and tan surrounded by a plain field. Corners brown and ecru. Border dark blue, rose and gold. No. 6-920
- 17.⁶ x 12.¹⁰ **CHINESE.** Goblin blue ground; circular medallion in blue and ecru on a field with small figures in old rose, blue-black and cream. Border blue and gold. No. 15-22
- 17.⁸ x 12.¹¹ **CHINESE.** Blue and brown fret design on a blue ground with four circular medallions in brown. Corners brown. Border dark blue and brown. No. 16-2
- 17.⁶ x 13.⁰ **CHINESE.** Mulberry ground; all-over circular animal design in brown on a mulberry fret field. Border gold and blue. No. 15-8

- 17.⁷ x 13.⁰ **CHINESE.** Gold ground; five small flower pots throughout center on a plain field. Border plain gold. No. 15-71
- 17.⁶ x 13.¹ **CHINESE.** Gold ground; all-over repeat design in blue and brown. Border salmon with band in taupe. No. 15-7
- 17.⁹ x 13.⁴ **SAROUK.** Italian red ground; all-over design in light Persian blue, brown, olive-green, dark blue and ecru. Border dark blue and brown. No. 1-2202
- 17.⁰ x 13.¹⁰ **ISPAHAN MESCHED.** Blue and copper ground; all-over repeat design in pastel shades of blue and copper. Border pale blue and copper. No. 1-2194
- 17.⁴ x 14.⁰ **HEREKE.** Deep red ground; plain center. Border red, gold and blue. No. 1-1942
- 17.⁰ x 14.³ **CHINESE.** Camel's hair ground; medallions in beige, taupe and blue on a plain field. Border ecru with outside band in dark blue. No. 15-63
- 17.⁹ x 14.⁶ **LAVEHR.** Cream ground; medallion dark blue on a plain field. Corners rose. Border ecru, rose and dark blue. No. 6-850
- 17.⁰ x 17.⁰ **OUSHAK.** Purple-black ground; medallion blue and brown on a plain field. Corners blue, brown and purple. Border sky-blue, brown and olive-green with outside band in purple-black. No. 6-782
- 17.⁰ x 17.⁰ **ANT. CHINESE.** Ecru ground; medallion dark blue and brown in swastika design surrounded by a well-covered field. Corners swastika blue. Border dark blue, fret and brown. No. 1-2148
- 18.⁸ x 6.⁸ **KARABAGH.** Chocolate rose ground; medallion in dark blue with tan, brown and red. Border blue and brown. No. 669
- 18.⁰ x 6.¹⁰ **KARABAGH.** Rose ground; medallion blue-green, brown, rose and olive-green. Birds in tan on a plain field. Corners dark blue. Border dark blue and rose. No. 6-137
- 18.⁰ x 6.¹⁰ **ANT. ASIA MINOR BERGAMA.** Unusual stripes of dark blue, ivory and blue-green; medallion blue and green on a well-covered field. Corners dark blue. Border golden-yellow and old red. No. 512
- 18.⁰ x 6.¹¹ **BIDJAR.** Blue ground; all-over fereghan design in two tone blue, soft yellow and old red. Border light blue and brown. No. 286
- 18.⁸ x 7.⁰ **KARABAGH.** Blue-black ground; medallion purple-rose and tan surrounded by a well-covered minikhani design in sage-green and brown. Border old red, soft yellow and olive-green. No. 173

- 18.0 x 7.5 **ANT. HERAT.** Blue ground; all-over design in light blue, old red, soft yellow and ecru. Border rose, medium blue and yellow. No. 413
- 18.1 x 7.5 **SEREBEND.** Rose ground; all-over design in palm leaf figures in blue and brown. Border light brown, dark blue and rose. No. 288
- 18.0 x 8.2 **ANT. PERSIAN TRICLINIUM FEREGHAN.** Dark blue ground; all-over fish design in baby blue, old red, gold, grey-blue and green; on either side a panel of dark blue ground serebend design with a companion piece in same design and coloring at the lower end. Border old green and gold making a most unique rug. No. 1-2034
- 18.6 x 8.9 **HERAT.** Persian blue ground; all-over design in small figures of light blue, old red, tan and brown. Border rose and blue. No. 528
- 18.0 x 9.6 **LAVEHR.** Rose ground; medallion antique blue-green and brown surrounded by a well-covered field. Corners antique green, rose and brown. Border blue-green, brown and rose. No. 14-33
- 18.10 x 9.8 **HEREKE.** Red ground; medallion green and brown on a plain field. Corners dark blue and rose. Border rose and blue. No. 304
- 18.9 x 9.9 **LAVEHR.** Italian red ground; all-over small design in ecru, blue and brown. Border light blue and tan. No. 653
- 18.4 x 10.0 **LAVEHR.** Rose ground; medallion green and brown surrounded by a plain field. Corners grey-blue. Border brown, rose and light blue. No. 654
- 18.5 x 10.0 **FINE MAHAL.** Mulberry ground; medallion green and red surrounded by a well-covered field. Border blue, black, tan and green. No. 11-22
- 18.3 x 11.0 **KURDISTAN.** Rose ground; medallion dark blue and sage-green surrounded by a plain field. Border rose and ivory. No. 621
- 18.4 x 11.6 **LAVEHR.** Ivory ground; all-over design with birds and flowers in olive-green, dark blue, pink, brown, rose and taupe. Border ecru, dark blue and rose. No. 1-2182
- 18.8 x 11.8 **SAMARCAND.** Blue ground; all-over design in shades of purple, lavender and burnt orange. Border light blue and orange. No. 311
- 18.1 x 11.9 **HERIZ.** Olive-green ground; all-over design in greenish blues, dull red and black. Border same coloring. No. 539
- 18.2 x 11.9 **HERIZ.** Tan ground; all-over design in blue-mauve, mulberry, black and blue-green. Border tan mauve, mulberry and blue. No. 310

- 18.⁰ x 12.¹ **CHINESE.** Blue ground; medallion brown.
Border brown and blue. No. 50-23
- 18.⁹ x 12.² **ELVEND.** Seal brown ground; all-over design
in grey-blue, black, copper and mulberry. Border
dark blue, copper and mulberry. No. 14-67
- 18.² x 12.³ **CHINESE.** Salmon ground; all-over design
with clouds and butterflies in blue, rose and taupe.
Border plain taupe color. No. 15-33
- 18.² x 12.⁷ **ISPAHAN TABRIZ.** Italian red ground; all-
over design in greens, light blue, brown and ecru.
Border Italian red with bands in ecru and dark blue.
No. 299
- 18.⁸ x 12.⁸ **TABRIZ.** Mahogany-red ground; all-over de-
sign in browns and deep purple. Border sage-green
and browns. No. 302
- 18.⁸ x 12.⁹ **CHINESE.** Taupe ground; medallion blue on
a plain field. Corners blue and ivory. Border taupe,
blue and ivory. No. 16-21
- 18.⁰ x 13.⁰ **LAVEHR.** Tan ground; all-over panel design
in mauve, light and dark blue, soft green, copper and
brown. Border tan, mulberry and blue. No. 1-2295
- 18.¹ x 13.⁰ **KERMAN.** Deep rose ground; all-over design
in panels of blue-black, Persian blue and rose. Bor-
der rose, blue and brown. No. 14-35
- 18.¹ x 13.¹ **CHINESE.** Camel ground; all-over repeat de-
sign in blue and brown. Border camel with bands
in brown and dark blue. No. 16-20
- 18.⁰ x 13.² **CHINESE.** Gold ground; medallion dark blue
on a plain field. Corners blue. Border camel with
band in dark blue. No. 15-37
- 18.⁶ x 13.² **BIDJAR.** Burgundy ground; all-over small
feraghan design in Persian blue, deep green and
brown. Border dark blue, brown and Persian blue.
No. 615
- 18.⁹ x 13.³ **CHINESE.** Gold ground; medallion blue on a
well-covered field. Border gold, ecru and blue.
No. 16-22
- 18.² x 13.⁴ **CHINESE.** Beige ground; medallion seal
brown and blue with butterflies in blue, ecru and
brown. Border brown and dark blue. No. 16-14
- 18.³ x 13.⁴ **ISPAHAN TABRIZ.** Red ground; medallion
in dark blue with soft greens and yellows. Corners
sage-green. Border dark blue and red. No. 518
- 18.¹ x 13.⁶ **LAVEHR.** Taupe ground; medallion blue and
deep burgundy on a plain field. Corners blue. Bor-
der deep wine color and rose, made of Kashan wool.
No. 14-36

- 18.6 x 13.6 **CHINESE.** Camel's hair brown ground; all-over repeat design in seal brown and Camel's hair. Border baby blue and brown with outside band in taupe. No. 16-7
- 18.4 x 13.8 **KURDISTAN.** Red ground; all-over fereghan design in sage-green, tan and Persian blue. Border dark blue, brown and green. No. 610
- 18.7 x 14.0 **KERMAN.** Tan ground; all-over scroll design in rose, mulberry, blue and gold. Border tan, rose and mulberry. No. 2-261
- 18.7 x 14.2 **BOKHARA.** Wine-red ground; all-over design in sage-green, dark blue and pink. Border in stripes of green and dark blue. No. 640
- 18.6 x 14.5 **KASHAN HEREKE.** Mulberry-rose ground; medallion dark blue and brown surrounded by a floral design. Border dark blue, gold and red. No. 6-638
- 18.7 x 15.1 **SAROUK.** Dark blue ground; medallion dark brown and blue with stripes in mahogany, blue, brown and green. Corners Burgundy. Border brown. No. 565
- 18.1 x 15.5 **SAROUK.** Dark blue ground; medallion chocolate-brown and green on a well-covered field with unusual stripes in browns, blue, olive-green and Burgundy. Corners olive-green. Border brown. No. 566
- 18.8 x 15.6 **CHINESE.** Brown ground; all-over scroll design in dark brown and Persian blue. Border brown and blue. No. 1-1874
- 18.6 x 16.8 **HEREKE SAROUK.** Italian red ground; all-over floral design in greens and tan. Border red and green. No. 530
- 19.1 x 6.1 **JOSHAGHAN.** Red ground; all-over design in two tone blue, soft yellow and ecru. Border dark blue, soft yellow and light blue. No. 524
- 19.7 x 7.0 **KARABAGH.** Blue-black ground; all-over large medallions in purple, brown, rose and tan. Border black and purple-rose. No. 1-2315
- 19.0 x 11.2 **HERIZ.** Red ground; medallion Persian blue and brown surrounded by a well-covered field in small rosettes of light blue, deep green and brown. Border brown and blue. No. 339
- 19.3 x 7.10 **SEREBEND.** Brown ground; all-over small design. Border brown and green. No. 293
- 19.5 x 12.4 **KERMAN.** Tan ground; all-over design in panels of dark blue, rose, mulberry brown and light blue. Border brown, rose and dark blue. No. 957

- 19.¹⁰ x 12.⁴ **MESCHED.** Rose ground; medallion tan, blue and rose on a plain field. Corners blue and brown. Border rose, dark and Persian blue. No. 947
- 19.⁰ x 12.⁶ **LAVEHR.** Blue-black ground; all-over panel design in ecru, mulberry, grey-blue, brown and soft green. Border grey-blue, mulberry and blue-black. No. 4-18
- 19.⁶ x 12.⁶ **LAVEHR.** Dark blue ground; all-over panel design in light blue, sage-green and copper tones. Border tan, brown, copper and light blue. No. 704
- 19.⁴ x 13.⁵ **JOSHAGHAN.** Rug of seven panels; large central panel, sage-green ground, flanked on either end by three smaller panels all bearing tree forms in dark blue. Border sage-green, mauve and tan. No. 535
- 19.¹ x 13.⁷ **CHINESE.** Blue-black ground; all-over floral design in rose, gold, beige, brown, blue and copper tones. Corners floral design in brown. Border dark brown and two tone blue. No. 15-13
- 19.⁴ x 13.⁷ **MAHAL.** Red ground; medallion dark blue and pale green surrounded by a plain field. Border green and tan. No. 543
- 19.⁷ x 13.⁷ **PERSIAN.** Rose ground; all-over design in soft colors of green, tan and blues. Border dark blue and rose. No. 15-52
- 19.⁴ x 13.⁹ **CHINESE.** Gold ground; all-over fret design with medallions in animal figures. Border gold and blue. No. 16-11
- 19.⁰ x 13.⁸ **CHINESE.** Camel's hair brown ground; six fish bowls throughout center on a plain field. Border plain with one vase design in blue. No. 15-60
- 19.⁷ x 14.⁰ **CHINESE.** Blue ground; all-over fret design in brown with four circular medallions. Corners brown. Border dark blue and brown. No. 16-8
- 19.⁸ x 14.⁰ **CHINESE.** Taupe ground; plain center with fish bowls in blue on a plain field. Border plain dark taupe with vase in blue. No. 15-62
- 19.¹⁰ x 14.¹ **CHINESE.** Pale blue ground; plain center with fish bowls in tan and blue. Border plain dark blue with vase design in light blue. No. 15-36
- 19.⁹ x 14.² **CHINESE.** Gold ground; all-over repeat design in blues and browns. Border pink salmon and black with wide outside band in dark taupe. No. 16-5
- 19.⁴ x 14.⁰ **HERIZ.** Golden brown ground; plain center. Corners tete-de-negre, blue and brown. Border black, and blue and gold. No. 1-1894

- 19.² x 16.⁶ **FEREGHAN.** Dark blue ground; all-over small fish design in mulberry, tan, blue and burnt orange. Corners blue. Border antique green, mulberry and brown. No. 300
- 19.⁷ x 17.¹⁰ **INDOOSTAN.** Rose ground; medallion golden-brown on a well-covered field. Corners gold. Border golden brown, rose and blue. No. 618
- 20.⁹ x 5.⁰ **LAVEHR.** Tan ground; all-over design in blues and brown. Border tan and blue. No. 1-1604
- 20.³ x 7.⁴ **SEREBEND.** Rose ground; all-over small palm leaf design in two tone blue. Border ivory and medium blue. No. 556
- 20.¹ x 7.⁵ **KARABAGH.** Blue-black ground; all-over design in grey-blue, mulberry, ecru, golden-yellow, old red and green. Border blue-black and light blue. No. 291
- 20.⁶ x 8.¹⁰ **CHINESE.** Salmon ground; medallion dark blue surrounded by a lotos design in light blue, pink and soft yellow. Corners swastika design in dark blue. Border salmon, two tone blue with inside band in golden-yellow. No. 1-2340
- 20.⁸ x 9.² **LAVEHR.** Dark blue ground; all-over design in mulberry, golden-yellow and blue-green. Border copper and tan. No. 1-2346
- 20.⁶ x 10.⁰ **LAVEHR.** Brown ground; all-over floral and rosette design in copper, light and dark blue, soft green and gold. Border dark blue, tan and copper. No. 14-45
- 20.⁹ x 10.⁰ **HEREKE KASHAN.** Black ground; medallion deep mulberry surrounded by a well-covered field with birds and flowers in grey-blue, soft yellow and mulberry. Border mulberry and black. No. 1-1910
- 20.¹⁰ x 11.¹ **ISPAHAN TABRIZ.** Blue-black ground; medallion mulberry and blue on a well-covered floral field. Corners blue and mulberry. Border Persian blue, mulberry and tan. No. 1-1876
- 20.⁰ x 11.³ **ANT. SPANISH.** Old rose ground; all-over design in green, blue, ecru and soft yellow. Border same coloring. No. 1-2188
- 20.⁵ x 12.⁰ **KURDISTAN.** Red ground; all-over design with rosettes and flowers in Persian blue, brown and deep green. Border dark blue, brown and sky-blue. No. 614
- 20.⁰ x 12.² **HEREKE.** Black ground; all-over design in old red and tan. Border red, black and tan. No. 1-2121
- 20.⁰ x 12.⁸ **LAVEHR.** Medium blue ground; all-over small floral design in copper, brown and light blue. Border dark blue and copper. No. 635

- 20.² x 12.¹¹ **ELVEND.** Blue and brown ground; all-over panel design in tan, two tone blue and sage-green. Border medium blue and tan. No. 14-71
- 20.⁶ x 13.⁰ **HAMADAN.** Red ground; all-over design with cypress trees in black. Border red and tan. No. 333
- 20.⁰ x 13.⁶ **HAMADAN.** Dark blue ground; medallion tan and medium blue. Corners soft green and tan. Border medium blue and tan. No. 949
- 20.² x 13.⁶ **SAROUK.** Red ground; medallion dark blue and tan surrounded by a well-covered field. Corners green. Border dark blue, red and ecru. No. 563
- 20.⁶ x 13.⁹ **KERMAN.** Tan ground; all-over design in mulberry, rose, blue and green. Border ivory, blue and rose. No. 646
- 20.⁸ x 13.¹⁰ **ELVEND.** Mulberry-rose ground; all-over tree design in browns and blues. Border mulberry, rose and blue. No. 14-72
- 20.⁸ x 14.⁰ **HERIZ.** Purple-red ground; medallion dark blue and camel color. Corners tapestry blue and brown with inscriptions around entire field. Border black and rose. No. 6-42
- 20.² x 14.² **CHINESE.** Tan ground; all-over repeat design in blue. Border brown and blue. No. 16-34
- 20.⁵ x 14.⁶ **CHINESE.** Camel's hair brown ground; medallion blue and rose on a well-covered circular design in grey-blue, ecru and taupe. Corners floral design in blue. Border gold and blue. No. 15-2
- 20.⁹ x 14.⁷ **CHINESE.** Camel ground; center plain with fish bowls in blue. Border plain camel with vase in blue. No. 15-61
- 20.⁴ x 14.⁸ **LAVEHR.** Golden copper ground; all-over panel design in blue-black, Persian blue, browns, soft green and dark orange. Border blue-black, rose, blue and copper tones. No. 632
- 20.⁴ x 14.¹¹ **KURDISTAN.** Dark blue ground; all-over large minikhani design in deep green, brown, two tone blue, soft yellow and tan. Border mulberry and tan and purple-black. No. 601
- 20.¹⁰ x 15.² **LAVEHR.** Gold ground; all-over panel design in dark blue, soft green, brown and sky blue and copper tones. Border gold, two tone blue and copper. No. 6-902
- 20.⁶ x 17.³ **HEREKE.** Red ground; all-over design in dull greens and brown. Border blue, red and brown. No. 297

- 21.⁹ x 8.⁰ **BIDJAR.** Indigo blue ground; all-over small fereghan design in soft golden-yellow, mauve, sage-green, blue and brown. Border seal brown, blue and tan. No. 560
- 21.⁰ x 8.³ **KERMAN.** Brown ground; all-over design in dark and light blue, mulberry rose, soft green and brown. Border sky-blue and rose. No. 636
- 21.⁰ x 10.⁰ **KERMAN.** Copper ground; all-over large palm leaf design in two tone blue, soft green, ecru and deep wine-red. Border tan, blue and deep wine-red. No. 332
- 21.⁰ x 12.⁰ **LAVEHR.** Tan ground; all-over Ispahan design in mulberry, blue, burnt orange, soft green and brown. Border tan and mulberry. No. 643
- 21.¹⁰ x 12.⁰ **HAMADAN.** Buff ground; all-over panel design in dark and grey-blue burgundy and deep green. Border dark blue and tan. No. 637
- 21.⁸ x 12.⁵ **HAMADAN.** Brown ground; all-over small design in sage-green, dark blue and old red. Border dark blue and old red. No. 619
- 21.⁵ x 12.⁷ **LAVEHR.** Rose and brown ground; all-over design in rose, brown, soft green, blue and copper tones. Border rose and blue. No. 6-934
- 21.⁶ x 14.⁰ **INDOOSTAN.** Buff ground; medallion tan brown and mulberry. Corners tan. Border tan, mulberry and cream. No. 609
- 21.³ x 14.¹ **KERMAN.** Rose ground; medallion dark blue and ecru on a well-covered field in soft olive-green, blue and ecru. Corners ecru and dark blue. Border ecru, rose, soft green and blue-black. No. 954
- 21.⁰ x 14.³ **PERSIAN.** Dark blue ground; all-over Persian Ispahan design in blues, taupe and brown. Border brown with bands in dark blue. No. 15-29
- 21.⁰ x 14.⁶ **FEREGHAN.** Dark blue ground; all-over small herati design in old red, soft green, light blue and brown. Border old red, black and blue-green. No. 362
- 21.⁹ x 14.⁷ **KERACHI.** Brownish tan ground; all-over repeat design in dark brown, ivory and blue. Border ivory and medium blue. No. 6-824
- 21.⁶ x 15.⁰ **CHINESE.** Pale blue ground; all-over fish bowl design on a plain field. Border plain blue in deeper tone. No. 15-4
- 21.⁸ x 15.⁰ **PERSIAN.** Blue ground; all-over Persian design in blues, taupe, rose and brown. Border tan, with bands in dark blue. No. 15-40
- 21.⁰ x 16.⁰ **CHINESE.** Black ground; large dragons in brown and blue surrounded by a lattice design. Border tan and blue. No. 1-2146

- 21.⁸ x 16.¹¹ **LAVEHR.** Dark blue ground; medallion in brown and copper tones covered by a scroll design. Corners old blue, brown and greenish blue. Border dark blue and copper tones. No. 355
- 22.⁰ x 7.⁴ **KARABAGH.** Brown and blue ground; all-over floral design in browns, ecru and blue. Border brown. No. 6-860
- 22.⁴ x 11.⁸ **HAMADAN.** Camel's hair ground; medallion in soft red and brown. Border blue with pink, yellow, two tone blue and brown. No. 553
- 22.⁹ x 12.⁰ **LAVEHR.** Camel color ground; all-over design in blues, rose and brown. Border tan and blue. No. 1-2393
- 22.⁶ x 12.⁶ **ISPAHAN TABRIZ.** Red ground; all-over Is-pahan design in soft green, dark and light blue and olive-green. Border dark blue. No. 519
- 22.¹¹ x 13.⁶ **HERIZ.** Camel's hair brown ground; all-over design in light blue, wine-red and soft yellow. Border dark brown, light blue and soft yellow. No. 559
- 22.⁰ x 13.⁷ **ELVEND.** Mulberry and blue ground; all-over design in blues, mulberry, brown, golden-yellow and green. Border mulberry, blue and tan. No. 14-66
- 22.⁹ x 14.⁰ **GOEREVAN.** Red ground; medallion dark blue and pink surrounded by a well-covered field in tans, two tone blue, soft yellow, sage and olive-green. Corners light brown. Border dark blue. No. 552
- 22.¹⁰ x 14.⁸ **LAVEHR.** Blue-black ground; all-over design in brown, light blue, mouse, coral and grey. The entire field is covered with forest and hunting scenes, also wonderful detail work. Border consists of animal design with figures in same general tones as the center which makes the rug in harmony throughout. Extremely fine texture. (Companion 22.⁶ x 15.⁴). No. 14-54
- 22.⁶ x 15.⁴ **LAVEHR.** Blue-black ground; all-over design in brown, light blue, mouse, coral and grey. The entire field is covered with forest and hunting scenes, also wonderful detail work. Border consists of animal design with figures in same general tones as the center, which makes the rug in harmony throughout. Extremely fine texture. (Companion 22.¹⁰ x 14.⁸) No. 14-53
- 22.⁴ x 15.⁶ **GOEREVAN.** Red ground; medallion dark blue, rose, brown and light blue, surrounded by a well-covered field. Corners light blue and brown. Border dark blue, ivory and mulberry rose. No. 604
- 22.¹ x 15.⁷ **TURKEY.** Brownish red ground; plain center. Border olive-green with deep red. No. 1-2029

- 22.7 x 16.0 **CHINESE.** Golden-brown ground; seven small rosette medallions in blue-black on a plain field. Corners dark blue. Border gold with blue-black outside band. No. 15-53
- 22.8 x 16.6 **MESCHED.** Gold ground; medallion brown and blue surrounded by a plain field. Corners brown. Border blue-green, gold and dark blue. No. 1-1951
- 22.0 x 18.9 **SOUTCH BULUK.** Dark blue ground; medallion soft red and light blue surrounded by a well-covered floral design in two tone blue, sage and olive-green, brown and rose-red. Border red, blue and soft yellow. No. 351
- 23.2 x 4.6 **KERMAN.** Brown ground; all-over design in light blue and mulberry. Border brown and dark blue. No. 1-1951
- 23.1 x 8.10 **HERAT.** Dark blue ground; all-over fish design in soft green, old red, ivory and brown. Border rose, tan, green and soft yellow. No. 542
- 23.0 x 11.2 **BIDJAR.** Dark blue ground; all-over fereghan design in two tone blue, soft yellow and old red. Border ecru with olive and sage-green and soft yellow. No. 398
- 23.5 x 11.3 **FRENCH SAVONNERIE.** Black ground; plain center with flower and vases in beige, taupe, green, purple, mauve and rose. Border tan, with floral French design. No. 1-1782
- 23.0 x 12.0 **INDO-ISPAHAN.** Italian red; all-over design in Persian sky-blue, brown, rose-mulberry and deep green. Border blue-green, light blue and rose-mulberry. No. 344
- 23.3 x 13.5 **PUSHMINA.** Tan ground; medallion in purple and brown surrounded by a well-covered floral field. Corners purple, pink and brown. Border panel design in purple mauve, deep green and tan. No. 955
- 23.6 x 13.7 **HAMADAN.** Sage-green ground; medallion red. Border dark blue with wide outside band in deep red. No. 613
- 23.3 x 13.9 **HAMADAN.** Dark tan ground; all-over design in brown, blue, red and green. Border green and tan. No. 10-74
- 23.3 x 13.9 **SULTANABAD.** Purple-black ground; all-over scroll design in blue-green, tan, goblin blue and brown. Border brown, black and copper tones. No. 356
- 23.0 x 14.0 **MAHAL.** Dark blue ground; all-over floral design in brown, sage-green and burnt orange. Border unusual herati design in red. No. 369
- 23.3 x 14.0 **LAVEHR.** Copper tone ground; all-over design in blues, ecru and browns. Border copper, blue and brown. No. 4-29

- 23.² x 14.⁷ **HAMADAN.** Italian red ground; medallion sea-green and mulberry surrounded by a plain field. Border red, green and tan. No. 10-66
- 23.⁰ x 14.⁸ **TABRIZ.** Red ground; medallion gold and blue on a well-covered field. Corners gold and blue. Border red and gold. No. 7-525
- 23.¹⁰ x 14.⁸ **MAHAL.** Red ground; all-over floral design in two tone blue, soft yellow, olive and sea-green, tan and brown. Border unusual floral design in red. No. 367
- 23.⁸ x 15.² **LAVEHR.** Copper rose ground; all-over panel design in tan and dark blue. Border brownish copper, tan and blue. No. 932
- 23.² x 15.³ **KERMAN.** Copper tone ground; medallion ecru and dark blue surrounded by a well-covered floral field in soft rose, blue and beige. Corners dark blue and rose. Border rose, blue and ecru. No. 368
- 23.⁰ x 15.⁹ **AGRA.** Tan ground; medallion represents coronation scene in rose, blue, green and deep red. Lower border corners portrait of Maharajas and animals. Border light blue-green. Panels and bands in dark blue. No. 606
- 23.⁶ x 16.⁰ **TABRIZ.** Seal brown ground; all-over design in small fish and herati pattern in mulberry, grey-blue, black and brown. Border seal brown, mulberry and grey-blue. No. 346
- 24.¹ x 11.⁸ **HEREKE.** Black ground; medallion seal brown surrounded by a well-covered field. Corners brown. Border black and tan. No. 341
- 24.³ x 11.⁸ **CAMEL'S HAIR HAMADAN.** Brown ground; medallion in dark blue with tans, greens and burnt red. Corners dark blue and ecru. Border soft green with wide outside band in camel's hair brown. No. 361
- 24.⁰ x 12.⁰ **ANT. CHINESE.** Old rose gold ground; series of circular medallions in copper and blue tones. Border soft yellow, baby blue and ecru with wide outside band in tete-de-negre. No. 6-596
- 24.⁶ x 12.³ **BIDJAR.** Dark blue ground; all-over design in small fereghan figures of two tone blue, tan, burnt orange and old red. Border brownish-red, light blue and sage-green. No. 397
- 24.⁷ x 12.³ **HAMADAN.** Dark blue ground; series of five medallions in Persian sky-blue and brown on a plain field. Corners golden-brown. Border golden-brown and blue. No. 9-61
- 24.⁰ x 13.⁰ **HAMADAN.** Light Persian blue ground; all-over diamond shape design in light blue, dark blue and mulberry. Border dark blue and brown. No. 10-62

- 24.⁶ x 14.³ **SULTANABAD.** Dark blue ground; all-over large floral design in mulberry, sky-blue, olive-green, brown and gold. Border burgundy and tan. No. 357
- 24.⁸ x 14.⁷ **SAROUK.** Dark blue ground; medallion well covered in chocolate-red, with soft green and blue. Border chocolate-red. No. 348
- 24.⁹ x 15.⁵ **SHIRAZ.** Dark blue ground; Tryclinium well-covered medallion on a sage-green ground with reds, light and dark blue and ecru. Either side and at the upper end are woven separate rugs, which makes this a most unusual piece. Border red and ecru. No. 1-1936
- 24.⁶ x 16.⁶ **LAVEHR.** Blue and copper ground; all-over panel design in browns and dark blue. Border blue, brown and copper. No. 14-77
- 24.⁹ x 16.⁶ **SULTANABAD.** Red ground; medallion blue-green and brown on a plain field; unusual figures in pale green surround the entire rug. Border plain design in red. No. 12-1
- 24.⁴ x 17.² **SAROUK.** Dark blue ground; medallion in medium blue and mulberry surrounded by panels and animals in brown, sage-green and old red. Corners green. Border red and brown. No. 378
- 24.⁴ x 18.⁰ **LAVEHR.** Baby blue ground; all-over floral design in rose, taupe, brown and beige. Border blue-black, rose, brown and baby blue. No. 1-2349
- 25.⁰ x 12.⁸ **LAVEHR.** Ecru ground; all-over design in greenish-blue, mulberry, dark blue, brown and rose. Border ecru, blue-black and mulberry. No. 14-57
- 25.⁶ x 13.² **LAVEHR.** Old gold ground; all-over Ispahan design in two tone blue, copper-brown and soft green. Border dark blue, rose and sky-blue. No. 14-58
- 25.⁷ x 13.⁹ **MUSKABAD.** Italian red ground; all-over large rosette design in blue-green, brown and dark blue. Border dark blue and old red. No. 364
- 25.³ x 15.⁰ **HAMADAN FEREGHAN.** Dark blue ground; all-over small design in sage-green, tan and soft red. Border medium blue. No. 540
- 25.⁶ x 16.² **GOEREVAN.** Red ground; medallion dark blue and green surrounded by a well-covered field in browns, blue and green. Corners in light brown. Border dark blue and soft yellow. No. 620
- 25.⁰ x 17.⁰ **GOEREVAN.** Blue-green ground; medallion brownish red on a floral field. Corners brown. Border brownish-red, blue and brown. No. 384
- 25.¹⁰ x 18.⁰ **KERMAN.** Ecru ground; medallion rose and blue on a well-covered floral field in sky-blue, copper, rose and brown tones. Corners blue and rose. Border rose with adjoining bands in blue-black and tan. No. 1-2217

- 25.⁰ x 18.¹⁰ **ELVEND.** Brown ground; all-over design in mulberry, sea-green, pink, blues and old red. Border brown, mulberry and dark blue. No. 14-68
- 26.⁰ x 9.⁰ **ANT. JOSHAGHAN.** Italian red ground; all-over small rosette design in baby blue, blue-black, mauve, soft gold and yellow. Border dark blue and gold. No. 6-872
- 26.⁴ x 10.¹¹ **ANT. HERAT.** Dark blue ground; medallion rose and grey-blue pendants on a well-covered herati field in olive-green, old red, brown, soft yellow and ecru. Border olive-green, rose and tan. No. 1-2331
- 26.⁶ x 14.⁰ **LAVEHR.** Dark blue ground; series of floral medallions in mulberry browns and ecru on a plain field. Border tan and blue. No. 1-2142
- 26.⁰ x 14.⁹ **BIDJAR.** Dark blue ground; all-over design in large figures of Persian roses in mulberry, Persian blue, olive-green, and red. Border red with band border in old blue. No. 400
- 26.⁰ x 14.⁹ **FEREGHAN.** Soft old green ground; all-over small herati design in dull reds, greens and brown. Border dull red, greens and tan. No. 379
- 26.⁸ x 17.⁰ **BIDJAR.** Dark blue ground; all-over design in panels of sage-green, medium blue, brown tan and dark wine-red. Border deep red, soft yellow and brown. No. 600
- 26.² x 17.¹ **LAVEHR.** Ecru ground; all-over design in small figures of Ispahan, light and dark blue, copper, rose and soft yellow. Border dark blue, copper and sky-blue. No. 1-2043
- 26.¹⁰ x 17.⁴ **SAROUK.** Red ground; all-over small minik-hani design in dark blue, ecru, sky-blue, gold, green and soft yellow. Border dark blue, gold and light blue. No. 6-929
- 26.⁶ x 19.² **ISPAHAN TABRIZ.** Dark blue ground; medallion brown and old rose surrounded by a floral design in old rose, soft yellow, sage green and medium blue. Border old rose and brown. No. 349
- 26.¹ x 20.³ **LAVEHR.** Rose ground; all-over Ispahan design in light and dark Persian blue, browns, pink and copper tones. Border rose with adjoining bands in dark blue-black, copper and light blue. No. 19-82
- 27.² x 13.¹¹ **BIDJAR.** Dark blue ground; all-over design in Persian blue, ecru, soft yellow, old red, pink and sea-green. Border rose, Persian blue and golden yellow. No. 1-2115
- 27.⁸ x 17.⁸ **LAVEHR.** Cream ground; all-over floral design in pale baby blue, burnt orange, copper and brown. Border baby blue, cream and copper tones. No. 1-2360

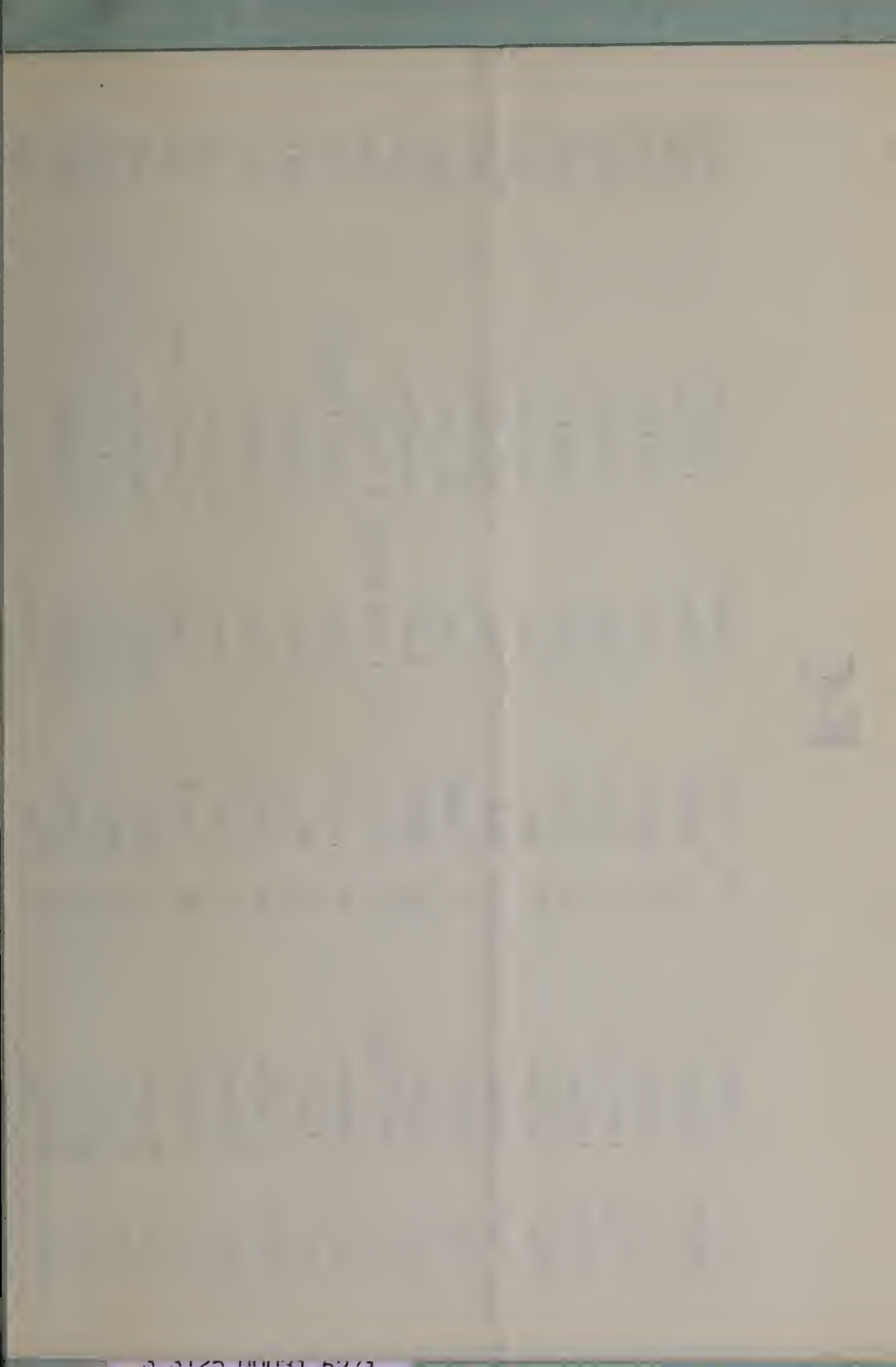
- 28.¹⁰ x 17.⁸ **CHINESE.** Golden-brown ground; seven rosette medallions in blue-black on a plain field. Corners blue-black. Border gold with wide outside band in dark blue. No. 15-54
- 28.¹ x 17.⁷ **PERSIAN.** Dark blue ground; all-over design in taupe, soft green, blue and rose. Border tan with band border in dark blue. No. 15-67
- 28.⁷ x 19.⁹ **KHORASSAN.** Rose ground; medallion soft green and medium blue surrounded by a well-covered design. Corners blue. Border green and blue. No. 562
- 28.⁸ x 20.⁰ **MESCHED.** Rose ground; all-over Ispahan design in Camel's hair brown, dark blue and deep green. Border Persian blue and rose. No. 377
- 28.⁵ x 21.⁰ **LAVEHR.** Tan ground; all-over floral design in two tone blue, copper and brown. Border copper, tan and blue. No. 389
- 29.⁰ x 9.³ **KASHAN.** Persian blue ground; all-over design in tan, brown, light blue, wine-red and soft olive-green. Border tan, old red and light blue. No. 360
- 29.⁸ x 15.⁵ **GOEREVAN.** Golden-brown ground; medallion dark blue, green, brown and wine-red. Border dark blue and brown. No. 561
- 29.⁰ x 16.³ **PERSIAN.** Rose ground; medallion blue surrounded by a plain field. Corners dark blue. Border taupe, tan and rose. No. 15-10
- 29.⁷ x 17.¹⁰ **INDOOSTAN.** Blue ground; medallion tan on a plain field. Border blue-black, ecru and gold. No. 1-2394
- 29.⁵ x 19.⁰ **TABRIZ.** Deep wine-red ground; medallion Ispahan green, golden-yellow and red surrounded by a plain field. Corners in same coloring. Border golden-tan, black, seal and pistachio-green. No. 385
- 30.⁰ x 10.⁰ **LAVEHR.** Copper tone ground; all-over design with Persian inscriptions in dark blue, copper red and brown. Border small narrow band in golden-brown and blue. No. 18-9
- 30.⁴ x 11.¹⁰ **HERIZ.** Gold ground; all-over design in soft red, blue, tan and green. Border seal brown, blue and tan. No. 1-2412
- 30.² x 11.¹⁰ **SHIRAZ.** Dark blue ground; all-over design in copper brown and tan. Border red and dark blue. No. 1-1870
- 30.⁶ x 15.² **YEZDT.** Tan ground; all-over tree and animal design in soft yellow, tan, brown, medium blue and rose. Border deep rose and tan. No. 402

- 31.⁶ x 7.⁴ **LAVEHR.** Tan ground; all-over panel design in two tone blue and copper tones. Border dark blue, old rose and tan. No. 14-78
- 32.⁶ x 20.⁶ **MAHAL.** Dark blue ground; all-over design in old red, soft yellow, deep green, brown and two tone blue. Border red, deep green and dark blue. No. 387
- 32.¹⁰ x 18.¹⁰ **HAMADAN.** Blue-black ground; all-over fereghan design in ivory, medium blue and copper tones. Corners copper. Border tan, black and blue; low tones. No. 386
- 33.⁸ x 10.¹⁰ **LAVEHR.** Tan ground; all-over design in panels of blue, mulberry and rose. Border tan, mulberry and rose. No. 603
- 33.⁴ x 12.⁶ **KASHAN.** Persian blue ground; all-over design in tan, brown, light blue, wine-red and light green. Border tan, old red, and light blue. No. 531
- 33.³ x 17.³ **BIDJAR.** Dark blue ground; all-over floral design in brown, medium blue, old red and sea-green. Border brown and blue. No. 399
- 33.⁷ x 18.⁰ **LAVEHR.** Dark blue ground; medallion brown surrounded by a panel design in two tone blue, old rose, copper and brown. Border brown, dark blue and copper tones. No. 376
- 33.⁴ x 24.² **LAVEHR.** Tan ground; all-over scroll design in two tone blue, sea-green, old rose and brown. Panels on either side with Persian inscriptions in light rose. Border two tone blue, old rose and sage-green. No. 391
- 36.¹⁰ x 18.⁸ **BOKHARA.** Rare Yomud weave; brownish red ground with all-over pattern in geometric forms in blue and ivory. Border in same coloring. Exceptional coloring and size. From the Court of the Khan of Bokhara. No. 392
- 37.³ x 11.⁹ **ANT. HERAT.** Red ground; all-over small herati design in ecru, olive-green, grey-blue and blue-black. Border blue-black with Persian roses in pink, rose, olive-green and grey-blue with narrow bands in ecru and red. No. 1-2326
- 38.⁰ x 14.⁸ **LAVEHR.** Beige ground; all-over design in browns and blues. Border beige, brown and blue. No. 602
- 38.⁹ x 16.⁸ **INDO-ISPAHAN.** Red ground; all-over minik-hani design in ivory brown, soft yellow, taupe and two tone blue. Border ecru and dark brown. No. 388
- 39.⁴ x 9.² **MESCHED.** Rose ground; plain center with oval green corners. Border tan, rose and green. No. 394

- 39.⁴ x 20.³ **MESCHED.** Copper tone ground; medallion deep blue and old blue and brown. Corners deep blue, brown and old blue; field covered with an interlacing floral design in brown, old blue and dull green. Border dark blue, brown and copper tones. No. 608
- 39.⁰ x 21.⁶ **LAVEHR.** Ecu ground; all-over panel design in copper, burnt orange, two tone blue and mulberry. Border ecru, dark blue, brown and copper tones. No. 607

INDEX

	PAGES
COLOR INSERT, Ispahan, 16th Century	2
LOCATION of Kent-Costikyan	4-5
THE HOUSE of Kent-Costikyan	6-7
ORIENTAL RUGS Made to Order	8-9
RUGS for Special Requirements	10-11
ANTIQUES & OBJECTS of Art	12-13
CARE of ORIENTAL RUGS	12-13
ILLUSTRATION, Antique Malez	14
AN UNUSUAL COLLECTION of Oriental Rugs	15
ILLUSTRATION, An Old Kerman	16
RUGS OF SPECIAL INTEREST	17-54





FOUNDED 1886

KENT - COSTIKYAN

485 FIFTH AVENUE—SIXTH FLOOR
OPPOSITE PUBLIC LIBRARY

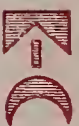
NEW YORK

Fall, 1922

List of Oriental Rugs from 10 to 40 feet in length, including many Large Sized Rugs Suitable for Living Rooms, Dining Rooms, Halls, Club Lounges, Bank Floors, Hotels, etc.

At Special Prices Subject to Revision

Size	Kind	No.	Field	Border	Design	Price
45°x28°	Scotch Chenille (Seamless)	1	Copper Red		Ant. Shiraz	3,000.
44°x9°	“ “ “	2	Grey		Plain	950.
30°x10°	Lavehr Kerman	3	Rose	Rose	All Over	1,200.
29°x17°	Indo-Persian	4	Blue Black	Blue & Tan	Plain Centre, Gothic	2,800.
26°x13°	Aubusson	5	Old Gray	Rose	Floral Medallion	920.
26°x18°	Yaprak	6	Crimson	Green	Medallion	750.
25°x12°	Meshed	7	Dark Blue	Red	Medallion	2,400.
25°x16°	Goerevan	8	Red	Dark Blue	All Over	1,400.
25°x 9°	Chinese	9	Tete de Negre	Blue Black	Panels	1,400.



FOUNDED 1886

KENT-COSTIKYAN

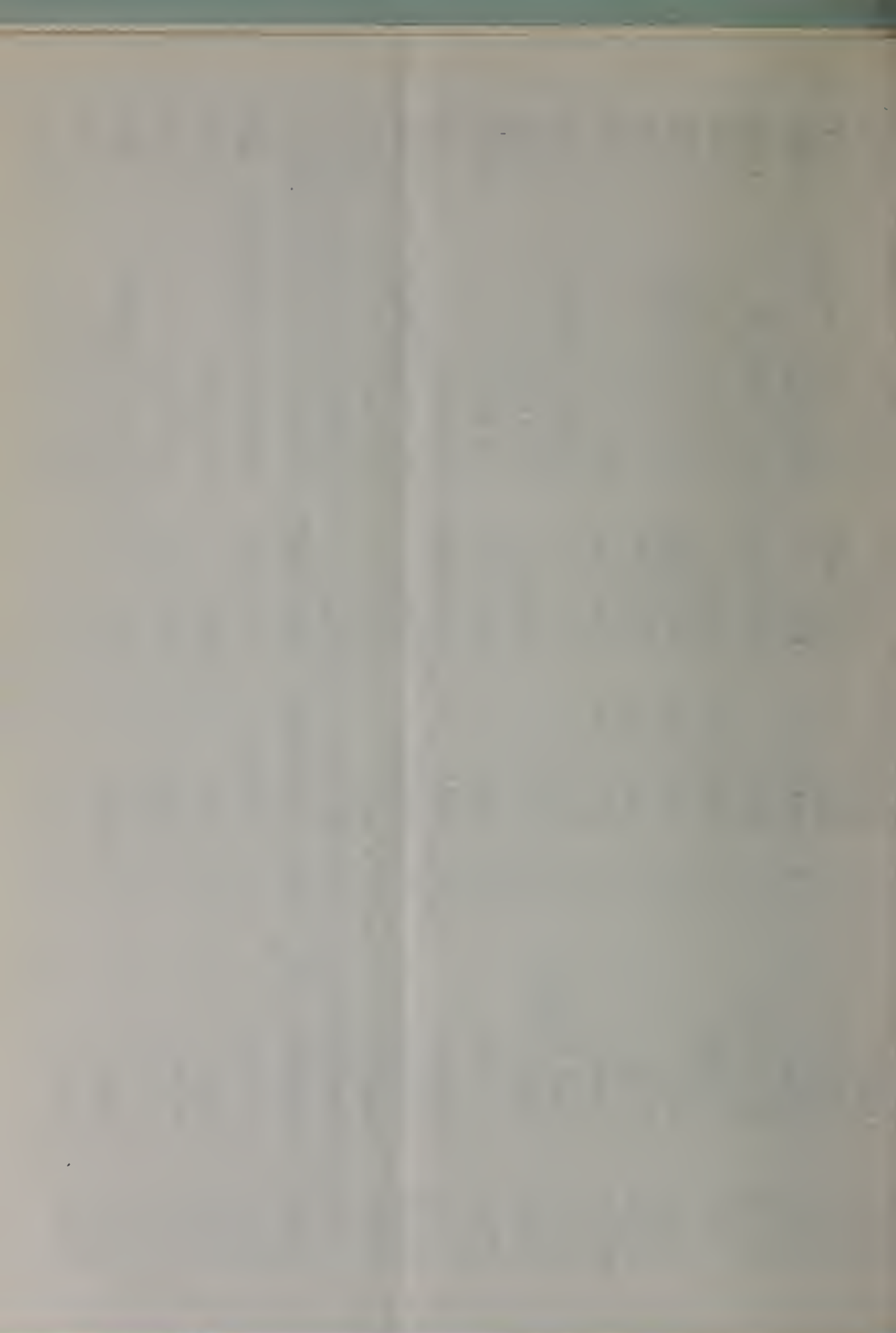
485 FIFTH AVENUE—SIXTH FLOOR
OPPOSITE PUBLIC LIBRARY
NEW YORK

Fall, 1922

List of Oriental Rugs from 10 to 40 feet in length, including many Large Sized Rugs Suitable for Living Rooms, Dining Rooms, Halls, Club Lounges, Bank Floors, Hotels, etc.

At Special Prices Subject to Revision

Size	Kind	No.	Field	Border	Design	Price
45°x28°	Scotch Chenille (Seamless)	1	Copper Red		Ant. Shiraz	3,000.
44°x9°	“ “ “	2	Grey		Plain	950.
30°x10 ¹	Lavehr Kerman	3	Rose	Rose	All Over	1,200.
29 ¹ x17 ¹⁰	Indo-Persian	4	Blue Black	Blue & Tan	Plain Centre, Gothic	2,800.
26 ¹⁰ x13°	Aubusson	5	Old Gray	Rose	Floral Medallion	920.
26°x18 ²	Y aprak	6	Crimson	Green	Medallion	750.
25 ⁸ x12°	Meshed	7	Dark Blue	Red	Medallion	2,400.
25°x16 ²	Goerevan	8	Red	Dark Blue	All Over	1,400.
25°x 9°	Chinese	9	Tete de Negre	Blue Black	Panels	1,400.
23 ⁵ x11 ³	Savonnerie	10	Black	Camel	Plain Centre Medallion	865.
23°x13°	Mahal	11	Brown	Ivory	All Over	735.
22°x14°	Goerevan	12	Rose	Dark Blue	Covered Medallion	650.
22°x12°	Chinese	13	Blue	Blue	Medallion	695.
21°x16°	Ant. Chinese	14	Rose	Rose & Gold	Plain Medallion	1,420.
21°x14°	Fereghan	15	Dark Blue	Brown	All Over	1,500.
21°x13 ²	Arak	16	Dark Blue	Dark Blue	Covered Medallion	1,200.
20°x16°	Mongol	17	Dark Blue	Light Blue	All Over	1,280.
20°x14°	Chinese	18	Dark Blue	Dark Blue	All Over	1,200.
20°x12°	Hand Tufted	19	Camel	Rose	Covered Medallion	335.
19°x11 ²	Sarouk	20	Tan	Dark Blue	All Over	1,400.
19°x14 ²	Mongol	21	Gold	Rose	All Over	1,600.
19°x14 ⁸	Goerevan	22	Red	Ant. Green	Medallion	650.
19°x12 ¹	Chinese	23	Camel	Camel	Embossed Dragon	850.
19°x15 ¹	Kentshab	24	Blue	Camel	All Over	1,050.
19°x7°	Karabagh	25	Black	Black	All Over	850.
19°x13°	Mongol	26	Dark Blue	Dark Blue	All Over	1,200.
18°x10°	Fereghan	27	Mulberry	Dark Blue	Medallion All Over	820.
18 ¹ x13°	Lavehr	28	Blue	Rose	All Over	1,820.
18 ¹ x7 ⁵	Serebend	29	Rose	Ivory	All Over	650.
18°x12 ¹	Chinese	30	Blue	Blue	Covered Medallion	800.
18°x12°	Chinese	31	Blue	Gold	Plain Centre	565.
18°x9°	Lavehr	32	Rose	Green	Plain Medallion	1,420.





Size	Kind	No.	Field	Border	Design	Price
17 ¹ x12 ¹	Kentshah	33	Black	Ivory	All Over	1,100.
17 ⁰ x12 ¹	Mahal	34	Red	Blue	Medallion	550.
17 ⁵ x11 ⁰	Heriz	35	Camel	Black	All Over	620.
17 ⁴ x10 ¹	Kentshah	36	Dark Blue	Dark Blue	All Over	735.
17 ⁴ x9 ⁰	Kentshah	37	Cream	Black	Plain Medallion Panels.	920.
17 ² x10 ⁸	Kentshah	38	Blue	Tan	All Over	670.
17 ¹ x5 ⁹	Kurd	39	Black	Gold	All Over	200.
17 ⁰ x13 ⁸	Kentshah	40	Dark Blue	Dark Blue	All Over	990.
17 ⁴ x13 ⁸	Oushak	41	Burnt Orange	Blue	All Over	500.
17 ⁰ x12 ⁰	Mongol	42	Ivory	Ivory	All Over	610.
17 ⁰ x12 ⁰	Chinese	43	Taupe	Blue	All Over	560.
17 ⁰ x17 ⁰	Turkish	44	Black	Blue & Brown	Plain Medallion	280.
16 ¹⁰ x16 ¹⁰	Khorassan	45	Camel	Camel	All Over	1,000.
16 ⁰ x6 ¹⁰	Serebend	46	Black	Ivory	All Over	450.
16 ¹⁰ x10 ⁵	Mahal	47	Blue	Rose	All Over Fereghen.....	375.
16 ⁰ x12 ⁸	Kerman	48	Mulberry	Mulberry	All Over	1,200.
16 ⁰ x12 ⁰	Hamadan	49	Black	Black	All Over	785.
16 ⁰ x11 ¹	Hamadan	50	Black	Rose	All Over	800.
16 ⁵ x11 ⁸	Hamadan	51	Camel	Camel	All Over	650.
16 ⁰ x6 ³	Ant. Serebend	52	Rose	Ivory	All Over	480.
16 ² x15 ²	Chinese	53	Blue	Blue	Plain Center	480.
16 ² x12 ⁰	Khorassan	54	Blue	Rose	Medallion	560.
16 ⁰ x10 ⁰	Gorevan	55	Black	Black	Covered Medallion	385.
16 ⁰ x10 ⁸	Gorevan	56	Brown	Brown	Covered Medallion	485.
15 ⁸ x11 ¹	Tabriz	57	Rose	Brown	Medallion	850.
15 ⁸ x8 ⁷	Hereke	58	Gold	Ivory	Plain Medallion	600.
15 ⁷ x9 ¹	Hereke	59	Red	Green	Plain Center	200.
15 ⁴ x11 ⁴	Bidjar	60	Red	Dark Blue	Mini Khani All Over...	1,050.
15 ⁴ x9 ¹⁰	Kerman	61	Rose	Ivory	Medallion	720.
15 ³ x11 ⁸	Kerman	62	Copper	Tan & Blue	Plain Medallion (Pair).	850.
15 ³ x11 ⁸	Kerman	63	Copper	Tan & Blue	Plain Medallion (Pair).	620.
15 ³ x8 ¹⁰	Bidjar	64	Dark Blue	Red	All Over	950.
15 ⁰ x12 ⁰	Chinese	65	Tan	Blue	All Over	550.
15 ⁰ x12 ⁰	Chinese	66	Ivory	Blue Green	Floral All Over.....	550.
15 ⁰ x9 ³	Heriz	67	Ivory	Rose	All Over	850.
15 ⁰ x9 ⁰	Chinese	68	Blue	Ivory	All Over	390.
15 ⁰ x6 ³	Ant. Kayan	69	Blue	Ivory	All Over	220.
14 ⁰ x6 ¹	Afghan	70	Red	Red	All Over	240.
14 ⁰ x10	Kentshah	71	Tan/Blue	Tan/Blue	Spanish Design	620.
14 ⁰ x10	Kentshah	72	Tan/Mulberry	Tan/Mulberry	Spanish Design	620.
14 ⁰ x13 ⁸	India	73	Green	Red	Plain Medallion	450.



14 ^s x13 ^z	Mongol	74	Camel	Camel	All Over	720.
14 ^o x14 ^o	Mongol	75	Taupe	Taupe	All Over	785.
14 ^o x11 ^o	Chinese	76	Blue	Ivory	All Over	450.
13 ¹⁰ x10 ^o	Hamadan	77	Black	Blue	All Over	585.
13 ³ x10 ^z	Mahal	78	Blue	Red	All Over	420.
13 ⁵ x6 ^z	Serebend	79	Red	Red	All Over	285.
13 ⁴ x10 ^z	Mahal	80	Red	Blue	All Over	485.
13 ⁴ x8 ^o	Mahal	81	Camel	Red	All Over	265.
13 ³ x9 ^o	Sarouk	82	Black	Rose	Medallion	820.
13 ³ x4 ^z	Ant. Koula	83	Rose	Green & Gold	All Over	240.
13 ² x10 ^o	Kerman	84	Rose	Ivory	Plain Medallion	450.
13 ² x8 ^o	Mahal	85	Blue	Red	All Over	245.
12 ^o x6 ^z	Fereghan	86	Camel	Rose	Medallion	250.
12 ⁸ x5 ^z	Serebend	87	Rose	Rose	All Over	350.
12 ⁸ x5 ^o	Hamadan	88	Camel	Camel	Panels All Over	265.
12 ^o x8 ^z	Sarouk	89	Red	Blue	Medallion	485.
12 ² x8 ^z	Mahal	90	Blue	Tan	All Over	220.
12 ² x7 ^o	Bidjar	91	Rose	Blue	Medallion	265.
12 ¹ x8 ^z	Kerman	92	Blue	Mulberry	All Over	620.
12 ¹ x7 ^o	Mahal	93	Tan	Red	All Over	210.
12 ^o x12 ^o	Mongol	94	Taupe	Taupe	All Over	575.
12 ^o x12 ^o	Chinese	95	Cream	Cream	All Over	400.
12x9	Mongolian	96	Taupe	Taupe	Floral Chinese	450.
12 ^o x9 ^o	Chinese Silk	97	Purple	Purple	All Over	360.
12 ^o x9 ^o	Kentshah	98	Blue	Tan	All Over	385.
12 ^o x9 ^o	Chinese	99	Cream	Brown	All Over	235.
12 ^o x9 ^o	Chinese	100	Tan	Blue	Medallion	240.
12 ^o x8 ^o	Kerman	101	Rose	Blue & Tan	All Over	480.
12 ^o x8 ^z	Mahal	102	Blue	Red	All Over	230.
12 ^o x8 ^z	Mahal	103	Blue	Red	All Over	230.
12 ^o x6 ^o	India Serebend	104	Black	Ivory	All Over	220.
11 ¹⁰ x9 ^z	Ispahan	105	Mulberry	Green	Plain Center	685.
11 ⁸ x9 ^z	Samarkand	106	Rose	Rose	Minikhani	650.
11 ⁶ x9 ^z	Chinese	107	Brown	Camel	Plain Center	240.
11 ⁴ x9 ^z	Kerman	108	Dark Blue	Rose	Medallion	385.
11 ³ x6 ^z	Mahal	109	Camel	Blue & Rose	All Over	150.
11 ² x5 ^z	Samarkand	110	Red	Gold	All Over	185.
11 ^o x9 ^o	Kerman	111	Rose	Rose	All Over	390.
11 ^o x4 ^z	Cabistan	112	Red	Blue	All Over	190.
10 ^o x7 ^z	Kentshah	113	Tan & Blue	Tan & Blue	Spanish Design	385.
10 ^o x8 ^o	Kentshah	114	Tan & Mauve	Tan & Mauve	Spanish Design	450.
10 ^o x8 ^o	Chinese	115	Tan	Tan	All Over	195.
10 ^o x5 ^z	Ant. Chinese	116	Tan	Tan	All Over	150.

1. 2000
2. 1000
3. 500
4. 250
5. 125
6. 62.5
7. 31.25
8. 15.625
9. 7.8125
10. 3.90625
11. 1.953125
12. 0.9765625
13. 0.48828125
14. 0.244140625
15. 0.1220703125
16. 0.06103515625
17. 0.030517578125
18. 0.0152587890625
19. 0.00762939453125
20. 0.003814697265625

1. 1000
2. 500
3. 250
4. 125
5. 62.5
6. 31.25
7. 15.625
8. 7.8125
9. 3.90625
10. 1.953125
11. 0.9765625
12. 0.48828125
13. 0.244140625
14. 0.1220703125
15. 0.06103515625
16. 0.030517578125
17. 0.0152587890625
18. 0.00762939453125
19. 0.003814697265625
20. 0.0019073486328125

GETTY CENTER LIBRARY



3 3125 00031 5271

