

Historic, archived document

Do not assume content reflects current scientific knowledge, policies, or practices.

LIBRARY
RECEIVED

★ FEB 27 1937 ★

U. S. Department of Agriculture.



CHAMPION

Fairbury Nurseries

C. M. HURLBURT and SON
PROPRIETORS

1937
PRICE LIST

FAIRBURY NEBRASKA

What We Do

We cultivate our trees in the most thorough manner and dig with the best improved tree digger, thus getting good length of roots.

We guarantee all trees, vines and plants to be in good, healthy and growing condition when they leave our packing rooms.

In packing we use paper lined boxes or bales, using plenty of wet moss and straw, thus preventing our stock from becoming dry in transit; we make no charge for bales or boxes.

While we take the best care, in filling orders with stock true to name, should a mistake occur we will be responsible only for the original cost of the stock.

We usually commence shipping in the fall, October 15th, and in the spring, about March 10th. We can, however, ship a greater portion of our stock any time during the winter from our frost-proof cellars; by this plan we can accommodate our customers who live in the South.

On receipt of an order we notify the customer at once by card; if after a reasonable length of time you do not hear from us, write again; sometimes letters go astray.

What You Should Do

In ordering always give age or size and price of stock wanted; please be very particular in writing your name and address plainly. Send cash with order; if you wish stock sent C. O. D. send one-fourth cash with order; we will then ship it and you can pay balance due to your express agent on receipt of stock. **Please do not ask us to ship C. O. D. unless you have sent a remittance to apply on the order.**

All remittances should be made payable to C. M. Hurlburt and Son. Send by Post-office or express Money Order, Bank Draft, Check or Registered Letter. For amounts less than one dollar you may send one and two cent stamps. Orders for less than fifty cents are not advisable.

Our references are R. G. Dun & Co., the First National Bank, or any business man in Fairbury, Nebraska.

Special Offers

We sell 5 trees at 10 rates, 50 trees at 100 rates, 500 at 1,000 rates.

SPECIAL OFFERS POSTPAID

25 Concord Grape Vines.....	\$1.00
200 Dunlap Strawberry Plants.....	1.00
100 Chinese Elm	1.00

Above Special Offer is the same as the one you will find advertised in the Newspapers. If you have only a small amount to invest in nursery stock you cannot go wrong by sending us a trial order.

Shipping Information

We ship over the St. Joseph & Grand Island, the C. R. I. & P., and the B. & M. railroads; over the American Express Company and by parcel post.

We prepay the freight to any railroad station in the United States, on single or club orders, for plants or trees amounting to \$10.00 or more, provided the full amount of the order is sent before shipment is made; should you prefer to have a \$10.00 order or more sent by express we will prepay one-half the expressage.

Sometimes our railroad agents here fail to collect enough freight charges from us on prepaid shipments; should your agent require you to pay additional charges in such a case, send us the receipt he gave you and we will return the money to you.

If you desire stock sent by Parcel Post, be sure and send the correct parcel post price which you will find plainly stated after each size or variety desired. We cannot send trees larger than 4 to 6 feet by mail. As a rule express is cheaper than parcel post prices where the distance to be carried is short as the parcel post prices specified in catalog are for any point in the United States. Where stock is to be sent a long distance, parcel post prices on small bundles would probably be cheaper than express.

The cost of packing stock to go by mail is much more than to go by freight or express, it takes better and more expensive material and more labor. Remember the additional cost by parcel post is not all for postage. We must fix prices so that the customer in the sixth zone can buy at the same prices as the one in the first zone.

Suggestions to Planters

Never buy trees from a traveling tree agent. As a rule they are not trustworthy, and will charge from two to ten times what the tree is worth. Buy direct from some reliable nursery or from a local nursery agent whom you know to be reliable. By this plan you will save money and have a source of redress in case there is anything wrong with your order.

It is a good plan to send in your order early, while the nursery's list of varieties is complete. Another thing, if you wait until late in the season, chances are that you will be so rushed with work that you will neglect to order at all, and thus lose a year's growth on your orchard.

As soon as trees are received the boxes and bundles should be unpacked and the roots of the trees soaked in a barrel or tank of water for twenty-four hours before planting; don't leave them in the water longer than this. If you are not ready to plant at once they may be heeled in moist earth well packed around the roots.

In preparing ground plow deep and pulverize the soil well before planting. Dig holes large enough so that roots of trees will have plenty of room; in planting fill holes two-thirds full of loose soil, working it well among the roots as put in, then firm as solid as you can with the foot, fill remainder of hole with water, after it has soaked away fill up the holes with more earth and do not firm it.



The above cut shows a well arranged group of shrubs for foundation or entrance planting.

Our Latest Price List

WE are presenting you with our new catalog for 1937, which describes our general assortment of high grade, hardy fruit and shade trees, small fruits, ornamental shrubs and vines. We have been in the nursery business for fifty-three consecutive years, thoroughly understanding all the details and conduct our business on the basis of "a square deal to all." In addition to the growing of young trees and plants, we have orchards and vineyards and grow an abundance of fruit, such as Cherries, Plums, Peaches, Grapes, Pears, Strawberries, etc.

You can raise fruit, too, for it has been proven that good fruit and plenty of it can be grown in any locality where other crops are grown and with very little time and labor.

Compare Prices—If you will compare our prices with those of other reliable nurseries, we believe you will find that you can save money by ordering your nursery stock from us.

Owing to the very hot weather and lack of rainfall during the growing season last year, many orchards were badly damaged and in some cases entirely destroyed, also small fruits and shade trees. As one extreme usually follows another, 1937 should be a good growing year with plenty of moisture. Do not be discouraged, replace the damaged and dead stock. Prices will not be lower for some time.

Apples and Crabs

The first fruit in importance is the apple. Its period of ripening, unlike that of other fruit, extends nearly or quite through the year. By making judicious selections of summer, autumn and winter sorts, a constant succession can easily be obtained of this indispensable fruit for family use.

PRICES BY FREIGHT OR EXPRESS

	Per 1	Per 10	Per 50
4 to 6 feet, 2 years.....	\$0.65	\$6.00	\$25.00
3 to 5 feet, 2 years.....	.40	3.75	17.50
2 to 4 feet, 2 years32	3.00	13.00

PARCEL POST PRICES

2 to 5 feet, 2 years.....	\$0.45	\$4.00
2 to 4 feet, 2 years.....	.35	3.20
18 to 24 inches, 1 year.....	.20	1.60

One year varieties only: Delicious, Gano and Jonathan.



Duchess

Summer Varieties

DUCHESS OF OLDENBURG. Tree rather poor in nursery, but has proven one of the best for the North; fruit large, surface smooth, waxy yellow ground with bright, carmine stripes; sour; one of best for cooking; very productive. August.

YELLOW TRANSPARENT. One of the earliest apples. Fruit is medium large, smooth, transparent. Skin is clear white, turning pale yellow when ripe. Flesh white, fine grained, aromatic, and of splendid quality. Two-year-old trees frequently produce fruit. Succeeds well in all eastern states, and should be planted in all cold climates. Succeeds well on thin soils. Ripens in early August. Its hardiness and early bearing commends it to planters.

Fall Apples

WEALTHY. A variety highly valuable for its extreme hardiness at the far North. Tree is a thrifty grower and a good bearer. Fruit medium, roundish, skin is smooth, mostly covered with dark red, flesh white, fine grained, juicy, sub-acid, good quality. Will keep until January. Extra good sort and splendid dessert and cooking apple. This is one of the few most desirable varieties for Minnesota, Wisconsin, Iowa and Nebraska, as well as the eastern and middle states.

GRIMES GOLDEN. Almost sweet, contains practically no acid. People who cannot eat apples on account of the acid they contain can eat Grimes Golden without any bad effect. Combines the rich aromatic flavor with an attractive golden-yellow color, and a long season of usefulness. Grimes Golden was first propagated in 1804, and its fine qualities have kept it on the top of the list. In fruit markets, large or small, you find Grimes Golden—at top prices. The tree is healthy, good grower, bears well, needs considerable pruning as it is inclined to grow bushy.

**Plant Plenty of Fruit Trees
This Year**

Winter Apples

WINESAP. Too well known to require a description. Tree hardy almost wherever planted, early bearer and profitable; tree inclined to overbear causing fruit to be undersized. Color red, sometimes almost black; flesh almost yellow, firm and crisp; one of the best. November to May.



Red Delicious

RED DELICIOUS. Fruit is large, with the surface almost covered with a most beautiful brilliant dark red, blending to golden yellow at the blossom end.

In quality it is unsurpassed, in flavor it is sweet, slightly touched with acid, but only enough so as to make it all the more pleasing, with an aroma delightfully fragrant. The flesh is fine grained, crisp, juicy, melting and withal delicious. In keeping quality it ranks with the best, coming out of storage in March and April in perfect condition. Tree is very hardy. Delicious originated twenty years ago at Peru, Madison County, Iowa, by the late Jesse Hiatt, and on his farm the original tree still flourishes, bearing annual crops of beautiful fruit.

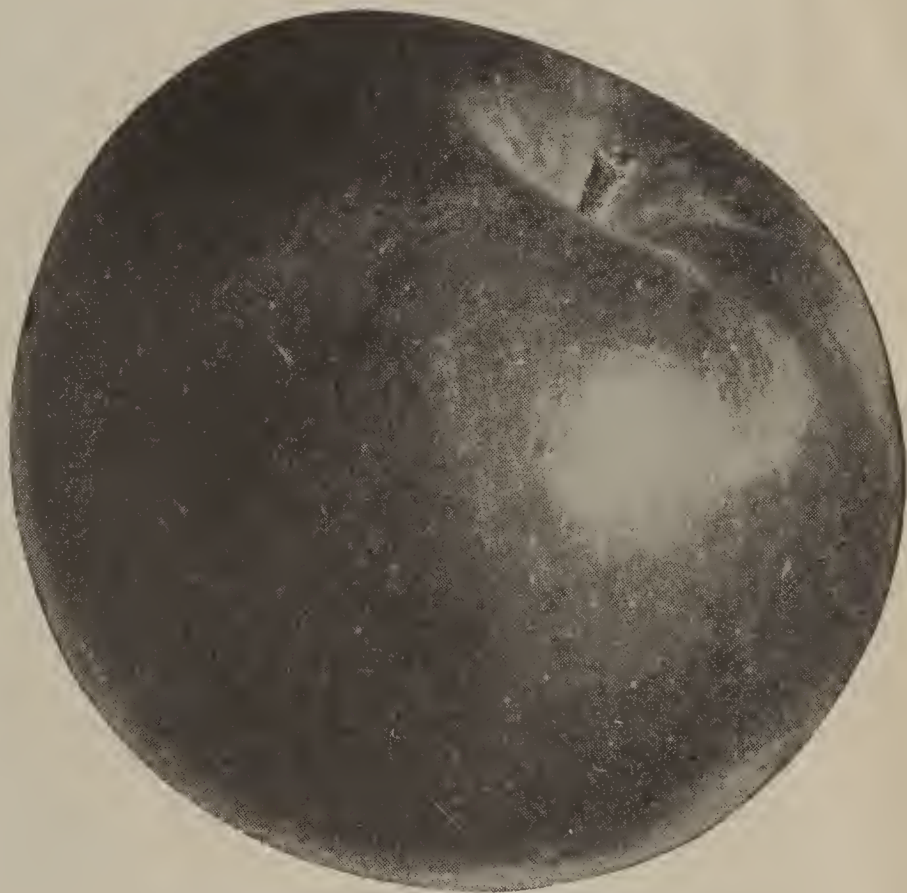
GANO. The fruit is bright red on yellow ground (no stripes); large, oblong, tapering to the eye; surface smooth, polished; dots minute; basin shallow, sometimes deep; eye large, cavity deep, brown in color; stem medium to long; core medium. Season, January to April. Tree healthy, vigorous, hardy; an early annual and prolific bearer.

YELLOW DELICIOUS. A fine apple, of medium size, golden yellow, the flavor is good, resembles that of pears, sweet. Perfectly hardy here, and most anywhere in the Middle West. It bears young. Ripens first week in October.

BEN DAVIS (New York Pippin). Fruit medium to large, round, skin yellowish, splashed and striped and almost covered with red, flesh white, tender, moderately juicy, sub-acid; an excellent variety; tree very hardy, a free grower, coming into bearing early and very productive; it blooms late in the spring, thereby often escaping late frosts; very popular in the West and Southwest, December to March.

MAMMOTH BLACK TWIG. One of the best for the Middle West. Fruit large, dark red, firm sub-acid and juicy. Keeps as long as any apple in a common cellar; tree a strong grower; resembles Winesap, but is superior in many ways and fully one-third larger. January to April.

JONATHAN. Beautiful tree, good grower, fruit full medium, fair producer, color dark shaded to almost black in the sun, fruit drops in dry season. November and December, but can be kept until April.



Mammoth Black Twig

CRABS

WHITNEY No. 20. A large crab, 1½ to 2 inches in diameter. Skin smooth, glossy green, striped with red. Flesh firm, juicy and flavor very pleasant. A fair dessert apple and one of the best for cider and vinegar. Tree a great bearer and hardy. Really deserves a place in our apple list. There are few early varieties of so much merit. One of the best for northern states. Ripens in August.

HYSLOP. Season, September and October. Fruit large, very brilliant color, dark red or purplish, overspread with thick blue bloom; borne in clusters. The tree is a good grower, very hardy and a reliable cropper, yielding good crops annually. It is desirable for both home use and for market.

Pears—Standard

Pears being upright growers, may be planted twenty feet apart each way. They should be trained to branch as near the ground as possible. The first four years' planting, the top leaders should be cut out and thus compel them to form a bushy top. Dwarf pears come into bearing four years after transplanting and standards not until the eighth year.

PRICES BY FREIGHT OR EXPRESS

	Per 1	Per 10	Per 50
4 to 6 feet, 3 years.....	\$0.65	\$6.00
3 to 5 feet, 2 years.....	.50	4.50	\$21.00
2 to 4 feet, 2 years.....	.45	4.00	18.00

PARCEL POST PRICES

	Per 1	Per 10	
3 to 5 feet, 2 years.....	\$0.55	\$5.00
2 to 4 feet, 2 years.....	.50	4.25

BARTLETT. Large size with often a beautiful blush to the sun; buttery, very juicy and highly flavored; bears early and abundantly; very popular. August.

DUCHESS d'ANGOULEME. Very large, dull greenish yellow streaked and spotted with russet, flesh white, buttery and very juicy, with rich and very excellent flavor, on the quince, to which stock this variety seems well adapted; it is always fine, the large and fine appearance of the fruit makes it a great favorite. September and October.

SECKEL. Small, skin rich yellowish brown when ripe, with a dull brownish red cheek, flesh very fine grained, sweet, is exceedingly juicy, melting, buttery, the richest, highest flavored pear known. August and September.

KIEFFER'S HYBRID. The pear was raised from seed from Chinese Sand Pear accidentally crossed with the Bartlett or some other kind grown near it. Tree has large, dark green, glossy leaves and is of itself very ornamental; is an early and very prolific bearer; the fruit is of good quality, wonderfully showy and is valuable for the table and market; it never rots at the core,



Bartlett Pear

and is as nearly blight proof as it is possible for any pear to be. September and October.

DWARF PEARS

In the Dwarf Pears we have the following varieties: Bartlett, Duchess and Seckel.

PARCEL POST PRICES

	Per 1	Per 10
3 to 4 feet.....	\$0.75	\$7.00
2 to 3 feet.....	.65	6.00

PRICES, BY FREIGHT OR EXPRESS

	Per 1	Per 10
3 to 4 feet.....	\$0.70	\$6.00
2 to 3 feet.....	.60	5.00

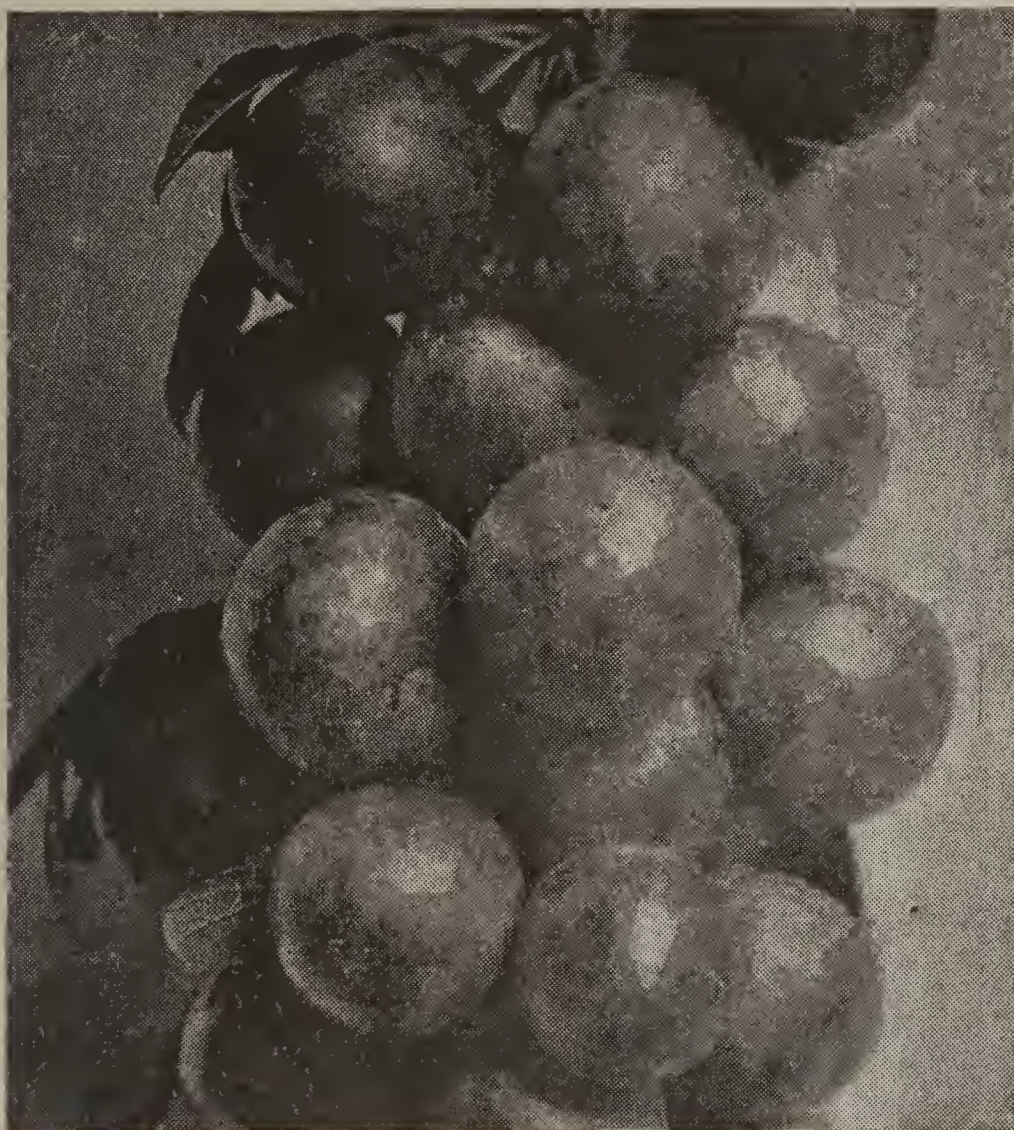
Plums

The Plum does best on a rich, well drained soil. The trees should be planted 16 feet apart, and it is well to plant several varieties together, for they seem to produce larger crops in that way than where a single variety is planted alone. Prune them so they will be low headed, and thus protect the fruit from the wind storms which sometimes play sad havoc with the fruit when commencing to ripen.

	Per 10	Per 10	Per 50
4 to 6 feet, 2 years.....	\$0.50	\$4.50	\$20.00
3 to 4 feet, 2 years.....	.40	3.50	15.00
2 to 3 feet, 2 years.....	.30	2.50	12.00

PARCEL POST PRICES

4 to 6 feet, 2 years.....	\$0.55	\$5.00
3 to 4 feet, 2 years.....	.45	4.00
2 to 3 feet, 2 years.....	.35	3.00



Sapa Plums

LOMBARD. Medium, round, oval, violet red, juicy, pleasant and good, adheres to the stone, productive. A valuable market variety, one of the most hardy and popular. Last of August.

OPATA. Middle of July. Fruit is purplish red; green flesh, thin skin and small pit. Extremely early. Pleasant flavor, sweetly acid. Plant Sapa and Opata together in order to cross-pollinate, thus producing a larger fruit crop.

OMAHA. A very large plum, round, dark red, with a very small stone. Flesh is juicy, somewhat meaty, sweet and of fine flavor. Tree very hardy with large crown and exceedingly productive. Does well south or north and especially in the Middle West. Probably the best of the native type clingstone.

BURBANK. Most profitable market variety. When properly thinned, the fruit of this plum is very large, 5 to 6 inches in circumference, nearly round, bright cherry-red, with lilac bloom, making it very tempting in appearance. Its deep yellow flesh is sweet, meaty and quite firm, keeping and shipping finely. Almost curculio proof. Tree vigorous and spreading.

UNDERWOOD. Tree extremely vigorous and attains a large size. Very hardy and productive. Fruit is large, roundish-oval, attractive red in color. Flesh is juicy, fairly firm; hangs well to tree. Ripens very early and continues over a long season. Stone is small, cling. Quality excellent. Many growers consider Underwood as combining most

of the good points required for a hardy plum of large size and excellent quality. Hardy everywhere.

SAPA. Late July. Sapa is a sister plum of Opata, of smaller size. Purple skin and rich purple meat. Rich with juice. Fine for cooking and preserving.

WANETA. Middle of August. Early bearer. Large size, 2 inches in diameter. Dark red plum, excellent quality. Good for eating from the tree.

Cherries

Our cherry trees are budded on Mahaleb cherry stocks, which do not sprout from the roots. Care must be taken in planting that the trees are not planted too deep; one inch deeper than were budded is deep enough; should they be planted deeper than this the tree will be liable to throw out roots above where budded, and these roots, if broken, will throw up sprouts or suckers.

Plant trees twenty feet apart, keep the main leaders headed back the first two or three years after transplanting. By so doing you will have fine bushy tops near the ground, which will be of great advantage in picking the fruit.

Sour Varieties: Early Richmond, Montmorency and English Morello.

Sour Varieties

	Per 1	Per 10	Per 50
4 to 5 feet, 2 years.....	\$0.45	\$ 4.00	\$17.50
3 to 4 feet, 1 year.....	.32	3.00	15.00
2 to 3 feet, 1 year.....	.25	2.30	11.00

English Morello furnished only in 2 to 3 ft. and 3 to 4 ft. grades.

PARCEL POST PRICES

	Per 1	Per 10	Per 50
4 to 5 feet.....	\$0.50	\$4.50
3 to 4 feet.....	.34	3.20
2 to 3 feet.....	.27	2.50



LARGE MONTMORENCY. The best of Montmorency family and equaled in value only by Early Richmond. The Montmorency has all the good quality of the Early Richmond, but ripens two weeks later. The fruit is identical with the Early Richmond. Some firms have put the Large Montmorency out under different names, but there is only one Large Montmorency and we have the true strain.

EARLY RICHMOND. The oldest and most reliable cherry tree grown today. It has proven its excellence for generations for home and local consumption. There is nothing to take its place. Light red in color. Very juicy and acid flavor. It ripens about the first of June. It bears very heavy and will produce a crop oftener than any other variety known. When in doubt, plant the Early Richmond, as it does best in all climates or on any soil.

ENGLISH MORELLO. Fruit large, very dark red, nearly black; tender, juicy, acid, rich, of good quality. Owing to its rich, red color, looks much better when canned than Early Richmond. Tree dwarf, slender and spreading, bears young. I would not advise planting this variety farther north than the middle of Nebraska. Ripens July.

Sweet Cherries



Napoleon

NAPOLEON BIGARREAU (Royal Ann). Magnificent cherry of largest size; pale yellow, amber in the shade, richly dotted deep red. Very firm, juicy and sweet. Rapid grower and immense bearer. Most popular for canning, preserving and shipping. Is hardiest and best yellow sweet sort. Immense market for the fresh fruit at top prices. Ripens end of June.

BLACK TARTARIAN. The genuine, old-fashioned Sweet Cherry. The fruit is very large, and very sweet, and almost black in color. Ripens in late June or early July.

PRICES OF SWEET VARIETIES BY FREIGHT OR EXPRESS

	Per 1	Per 10
3 to 4 feet.....	\$0.40	\$3.70
2 to 3 feet.....	.35	3.00

PARCEL POST PRICES

	Per 1	Per 10
3 to 4 feet.....	\$0.45	\$4.20
2 to 3 feet.....	.40	3.30

Apricots

A most delicious fruit of the plum species. It has a distinct flavor and one of our best and most profitable market fruits. The tree bears very young and most profusely. Ripening as it does between the cherries and peaches, the apricot is a most welcome fruit. In very sunny localities it is apt to bloom too early in the spring and get caught by the frost. The tree is slender in form, has beautiful dark foliage, pretty pink blossoms and will give very satisfactory results as an ornamental tree in any garden or house lot.

MOORPARK. One of the largest; orange with red cheek; firm, juicy with rich flavor; very productive. July.

SUPERB. One of the largest; orange with red cheek; firm, juicy, with rich flavor; very productive. August.

PRICES BY FREIGHT OR EXPRESS

	Per 1	Per 10
4 to 5 feet.....	\$0.50	\$4.50
3 to 4 feet.....	.35	3.00
2 to 3 feet.....	.30	2.50

PARCEL POST PRICES

	Per 1	Per 10
4 to 5 feet.....	\$0.55	\$5.00
3 to 4 feet.....	.40	3.25
2 to 3 feet.....	.35	3.00



Superb Apricots

Hybrid Cherry, Oka

Introduced in the fall of 1924. This is not really a cherry, it is a Sand Cherry Hybrid, dark red flesh like Sapa plum, very prolific and comes into bearing the second year after planting.

TOM THUMB. Another production of Prof. Hansen and one which is meeting with unusual favor in Canada. It is a cherry growing on a bush, and may be planted like currants and gooseberries. Begins to bear the second year and produces tremendous crops of cherries about the size of Compass but black in color and with dark red flesh like the Sapa.

ZUMBRA CHERRY. Originated in Minnesota, is a cross of the Pin Cherry, the large Sweet Cherry of the west coast and the wild Sand Cherry of the Dakotas. It seems to be a happy combination as Zumbra is as hardy as the Sand Cherry, grows like the Pin Cherry and the fruit is as large and as good quality as the California Sweet Cherry. Comes into bearing the next year after planting, very prolific, maturing large annual crops. Zumbra is placed on the Minnesota recommended fruit list as "leading variety." It ripens after the sour varieties are gone.

Compass Cherry Plum

There should be some Compass Cherry Plums on every farm in the middle west. This fruit is hardy and is especially fine for preserving and canning. Fruit is bright red, juicy, tart flavor. When it is fully ripe it is a dark wine color and looks more like a plum than a cherry. It was originated by crossing the Sand Cherry with the Miner Plum.

Rocky Mountain Cherry

A native cherry of dwarfish habit, perfectly hardy everywhere in the Northwest and stands coldest winters without protection. Fruit about as large as Early Richmond, color dark brown to black. Somewhat astringent to eat from the hand, but cooks well and makes fine preserves and jellies. Very early and an abundant bearer. Can be planted about as close as currants. Very desirable in the Northwest, where better cherries cannot be grown. Ripens in July, after other cherries are gone. Bush very ornamental, leaves turn a bright scarlet before falling.

PRICES ZUMBRA, TOM THUMB, COMPASS, AM. ROCKY MT. CHERRY

	Per 1	Per 10
3 to 4 feet.....	\$0.35	\$3.00
2 to 3 feet.....	.25	2.25

PARCEL POST PRICES

	Per 1	Per 10
3 to 4 feet.....	\$0.40	\$3.50
2 to 3 feet.....	.30	2.50

Russian Mulberry

This tree has been planted very extensively in the western states for the past fifteen years, and we know of no other tree that will stand as much drought and neglect and yet make a good growth each year.

It makes a good shade tree, holding its leaves late into the fall; and for a hedge, without thorns, it has no superior. Trees commence to bear at two years old; fruit resembles the blackberry and will ripen from July 1st to September.

	Per 1	Per 10	Per 100
5 to 6 feet.....	\$0.35	\$3.00	\$25.00
4 to 5 feet.....	.25	1.80	15.00
3 to 4 feet.....	.20	1.20	10.00
2 to 3 feet.....	.15	1.00	8.00

PARCEL POST PRICES

3 to 4 feet.....	\$0.25	\$2.00	\$15.00
2 to 3 feet.....	.20	1.50	12.00

Quince



Champion Quince

CHAMPION. Noticeable for its early bearing and superb appearance. Very large, mostly oval; deep yellow; excellent quality. Tree very prolific and vigorous. A good keeper.

APPLE OR ORANGE. This popular old Quince is one of the most reliable varieties for market. Large to very large, roundish, with short neck; golden flesh; firm and of fine flavor. October.

PRICES BY FREIGHT OR EXPRESS

	Per 1	Per 10
3 to 4 feet.....	\$0.60	\$5.50

PARCEL POST PRICES

3 to 4 feet.....	\$0.65	\$6.00
------------------	--------	--------

Budded Peaches

The Peach tree requires a moderately rich, well drained soil, and in order to preserve the continued healthy growth of the tree and thus cause it to produce well matured fruit, its branches should be headed in each year.

Peach trees when planted alone should be set twenty feet apart, or they may be planted between apple trees. Plant them deep enough so that the crooks in tree where budded is covered over with earth.

In Nebraska we cannot expect a full crop of peaches each year, owing to our cold winters, which kill the bloom buds; but if you can only get a full crop once in three years they will pay you better than any other crop that can be raised in Nebraska, cherries and strawberries excepted.

Below we give a short description of those varieties which we consider among the best, the greater number of which we have fruited in our own grounds.

SALWAY (Free). Large, roundish, deep yellow with rich red cheek; flesh yellow, firm and juicy, and sugary, a late market sort.

CHAMPION. Many specimens have measured 10 inches in circumference. The flavor is delicious, rich, sweet and juicy; surpasses all other varieties; skin creamy white with red cheek; strikingly handsome. It is hardy, productive, the largest size, highest flavor and best shipper of the early peaches. Ripens in early August.

ELBERTA. A Georgia cross between Crawford and Chinese Cling; very large, well colored; all things considered, the finest yellow freestone in cultivation; no one can go amiss by planting it; fruit perfectly free from rot, and one of the most successful shipping varieties. August 20.

RED BIRD. A fine early peach; bright glowing red. A good shipper. Flesh juicy, firm and most delicious peach flavor imaginable. Tree hardy and vigorous.

MAYFLOWER. Earliest peach known, semi-cling, medium size, color bright red; ripens well to the seed. Young and prolific bearer. Tree an upright good grower.

PRICES OF BUDDED PEACHES BY FREIGHT OR EXPRESS

	Per 1	Per 10	Per 50
5 to 6 feet.....	\$0.40	\$3.50	\$16.50
4 to 5 feet.....	.35	3.00	13.50
3 to 4 feet.....	.30	2.50	11.00
2 to 3 feet.....	.25	2.00	9.00

PARCEL POST PRICES

	Per 1	Per 10
4 to 5 feet.....	\$0.40	\$3.50
3 to 4 feet.....	.35	3.00
2 to 3 feet.....	.27	2.25



Champion

Seedling Peaches

These trees are all from freestone fruit and will produce a good quality of fruit.

PRICES BY FREIGHT OR EXPRESS

	Per 1	Per 10	Per 50
3 to 4 feet.....	\$0.15	\$1.25	\$5.00
2 to 3 feet.....	.10	.85	4.00
18 to 24 inches.....	.06	.50	2.00
12 to 18 inches.....	.05	.40	1.40

PARCEL POST PRICES

	Per 1	Per 10	Per 50
3 to 4 feet.....	\$0.18	\$1.55	\$7.00
2 to 3 feet.....	.12	1.05	5.00
18 to 24 inches.....	.08	.65	3.50



Elberta

Grapes



Prices on Grapes

If sent by parcel post, add 2 cents to each vine ordered.

	Per 1	Per 10	Per 100
Agawam, strong vines.....	\$0.12	\$1.00	\$ 8.00
Concord, two-year10	.80	6.00
Concord, strong vines08	.60	4.00
Moore's Early, strong vines.....	.15	1.25	10.00
Niagara, strong vines.....	.12	1.00	8.00
Worden, strong vines.....	.12	1.00	8.00
Beta, strong vines.....	.12	1.00	8.00
Caco, strong vines.....	.25	2.20	20.00

Work the ground deep and plant a little deeper than they were in nursery. Make rows 8 feet apart and 6 to 8 feet in the rows. Some of them, the tender varieties, would be benefited by laying the vines flat on the ground during the winter, with a light covering of earth or litter.

CONCORD. Bunches large, berries large, round, skin thick and covered with bloom; flesh juicy, sweet. Very hardy, vigorous and productive. At present the most popular of all our native sorts.

AGAWAM. Large, round, early and of great vigor of growth, rich, high, peculiar aromatic flavor, much subjected to disease and too highly flavored, where all its aroma is developed, to be desirable. Red.

MOORE'S EARLY. A large, black grape of the Concord type, the entire crop ripening before the Concord; bunch medium; berries large with blue bloom; flesh pulpy, of medium quality. Vine hardy, moderately productive, better as it attains age. Planted extensively as a market sort.

CACO. A perfectly hardy grape that has been pronounced by America's most expert grower of hothouse grapes, to equal in high quality and melting texture, the finest va-

rieties grown under glass. When one considers the price of the greenhouse product and realizes that the wonderful Caco can be grown in the back yard, almost without attention, the force of the above statement is apparent.

NIAGARA. A magnificent white grape and very valuable for both garden and vineyard; a rank grower and very productive of beautiful bunches of the largest size; berries large, with tough skin; quality good; ripens with the Concord.

WORDEN. This variety is a seedling of Concord which it greatly resembles in appearance and flavor, but the berries are larger, the fruit is better flavored and ripens several days earlier. Black.

BETA. A small to medium sized black grape, quite acid, but of good quality and fine flavor. Very early, prolific and healthy. It is valuable chiefly for its hardiness. It is hardy without protection far into Minnesota and on this account it is especially valuable for arbors where the large varieties are a little too tender. They are fine for jelly, better than other varieties and make excellent grape juice.

Gooseberries

Should be planted in good, rich soil, and well manured once a year. They will do well on any variety of soil if well drained and fertile. Prune regularly and thoroughly; cutting out all dead wood and all surplus branches. Do not let the bushes grow too thick; the fruit will be larger and more plentiful. Plant in rows four to six feet apart and four feet apart in the rows. Gooseberries should be planted in every garden, no matter how small; they are hardy, rugged and easily grown, and the fruit is sought for by every housewife for culinary purposes and sells well in all markets.

HOUGHTON. An enormously productive and always reliable old variety. Of vigorous growth, slender and spreading, not subject to mildew. Fruit of medium size, smooth, pale red, tender and of good quality.

DOWNING. A well known American sort, which has given the best results everywhere; large and handsome, pale green berry; of splendid quality for dessert and cooking. Bush vigorous, a strong upright grower and exceedingly productive. An excellent sort for family use and suitable for market. This variety is seldom affected by mildew.

	Per 1	Per 10	Per 100
Houghton	\$0.15	\$1.25	\$10.00
Downing20	1.50	12.00
Oregon Champion..	.20	1.50	12.00
Poorman's Sweet..	.25	2.00	17.00

By parcel post add 3 cents for each vine.

POORMAN'S. It is so called from the fact that when ripe it is perfectly sweet, like a sweet cherry, and requires little, if any, sugar for culinary purposes. This most remarkable gooseberry is a seedling from Houghton and is as hardy as its parent. It is a strong grower, the bushes being inclined to grow in tree shape. It is red when ripe, very large and has a shape and flavor like a plum.

OREGON CHAMPION. Berries very large, brownish red color, very sweet and fine for table use and pies. Bush a strong grower, healthy and not very thorny and a very prolific bearer. I recommend this variety to my customers, especially for large plantations. It will bring good returns. Best berry for the market.

Currants

A cool, moist location is best for this fruit and for this reason it succeeds admirably when planted by a stone wall or fence, being benefited by partial shade. Plant in rows four feet apart, and the plants three feet apart in the rows. They should be pruned each year, and all dead wood cut from them. Keep them thinned out so that air can freely pass through them. Currant worms can be destroyed by the use of hellebore. Dissolve an ounce in three gallons of water, and apply with a syringe or small sprinkling can. This can be done with a very little expense if performed at the right time.

CHERRY. Red. Bunches very large, berries sometimes measuring one-half inch in diameter. A strong grower and must have good cultivation to do well.

WHITE DUTCH. Cluster 2 to 3 inches long, berries medium, translucent, a little

darker than white grape; quality excellent and ripens early, vigorous and productive.

Per 1	Per 10	Per 100
\$0.20	\$1.70	\$15.00

By parcel post add 3 cents to each vine ordered.



Poorman's Gooseberry

Blackberries

SNYDER. Very popular for North and Northwest on account of the extreme hardiness. Wonderfully productive, size medium, fruit juicy and sweet, without the hard core of many sorts; cane remarkably strong and thrifty; more largely planted than any other of the ironclad varieties. We have a heavy demand for them every year. Season early.

OREGON EVERGREEN. The Oregon Evergreen blackberry is one of the good things that have come to stay with us and will prove a great boon to all lovers of the wholesome and luscious fruit. Everyone who has a dooryard or a piece of ground, however small, can now have plenty of the sweetest and best blackberries at little trouble or cost, as this valuable new variety will thrive and bear immense crops of the most luscious fruit wherever it can get a foothold in the soil, and any kind of trellis, arbor or support for the magnificent, grape-like vines to run over. The Oregon Evergreen blackberry differs from all other blackberries in form of its foliage and manner of growth. The canes do not die in winter like other blackberries, but continue to grow and bear year after year like a grapevine. The foliage somewhat

resembles that of the fern and forms a remarkably handsome covering for arbors. The berries are borne in clusters of four or five on a stem, are good sized, fine flavored, sweet and delicious, either to eat from the hand, canning or cooking. They are immensely productive. No other blackberry will bear such heavy crops and continue fruiting so long in the season.

ELDORADO. This is the leading commercial variety under cultivation today, and long has been considered the most profitable variety. Eldorado is a strong, upright grower, and perfectly hardy, as it produces big crops regularly, even throughout the northern states, without winter protection. The canes are stocky and free from disease. It is one of the most productive Blackberries ever grown. Berries large, jet black; flavor and quality excellent. Fine commercial variety, as it is a fine looking berry and stands up well after picking.

	Per 1	Per 10	Per 100
Snyder	\$0.05	\$0.40	\$2.75
Eldorado05	.40	2.75
Oregon08	.60	4.00

By parcel post add 1 cent to each plant ordered.

ELDERBERRIES

A well known bush which bears a fine fruit for pies or wine.

Price—15 cents each; 10 for \$1.00. By parcel post, 20 cents each.



Himalaya Berry

DEWBERRIES

LUCRETIA. This is the leading and most popular Dewberry yet discovered; it succeeds everywhere and is not particular about the kind of soil. Berries very large, black and fine flavor. It should not be picked oftener than twice a week, when it is very sweet and rich. It ripens with the last strawberries.

Price—4 cents each; 35 cents per 10; \$3.00 per 100. By parcel post add 1 cent per plant.

AUSTIN'S THORNLESS. A new variety just introduced, entirely without thorns, which makes it much easier to pick them than the common sorts; it is a good grower, hardy and fruit is of fine quality and should be planted in every garden.

Price—10 cents each; 80c for 10; \$7.00 for 100. For parcel post, add 1 cent each.

HIMALAYA BERRY

The vine is a vigorous grower making a growth from 20 to 30 feet in a season, which can be trained upon a fence or arbor similar to grape vines. Fruit is black, very sweet with no core, fine for pies and jellies. The vines should have some protection in winter, which can be done late in the fall by pruning the plants and leaving only two canes to each plant. Lay them on the ground and cover with 4 inches of earth which should be removed in early spring.

Each, 15c; 8 for \$1.00; \$8.00 per hundred. By parcel post, prepaid, add 2 cents for each vine ordered.

Raspberries

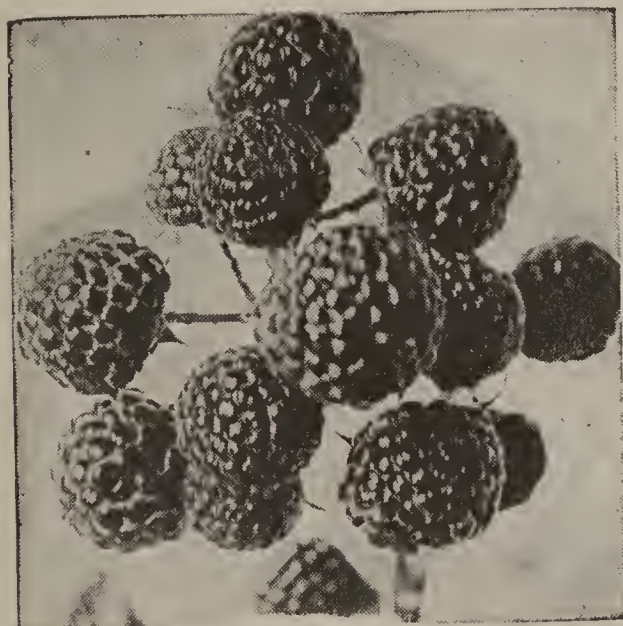
Raspberries should be set in the spring, plants three and a half feet apart in the row and rows four feet apart. Set plants three or four inches deep, depending on the soil (in heavy clay do not set as deep as in light soil); roots spread out and dirt pressed firmly among them. Give thorough shallow cultivation until the last of July, or if you prefer, mulch in with coarse manure or something of that kind, and keep the ground well stirred, between the rows. When the new canes are about two feet high, pinch off the top; this will make the plant throw out side branches and do away with the necessity of tying up. In the spring cut these side branches back to 16 or 18 inches in length. Four or five good canes in a hill are enough. Cut out old canes as soon as through fruiting and burn them.

	Per 1	Per 10	Per 100
Cumberland and Black...	\$0.05	\$0.35	\$2.50
Kansas, Black05	.35	2.50
St. Regis Everbearing, Red05	.35	2.50
Latham, Red06	.40	3.00
Cardinal, Red06	.40	3.00

Parcel Post price, add 1 cent for each plant ordered.

CHIEF. Extra large, bright red, high quality, hardy Raspberry. Planted very extensively for market and home use. This is one of the standard sorts for the Northwest.

CUMBERLAND. A mammoth mid-season Black Cap that loads its stalk canes with handsome fruit. The great glossy berries out-sell all others of their season, and are firm enough to ship well. Excellent quality. Many berries are seven-eighths of an inch in diameter. Hardiness, productiveness, size and quality make it desirable. Ripens a few days before the Gregg.



Latham

KANSAS. This is the earliest of all Black Raspberries. A very strong grower and produces its crops of top quality fruit in a very short time. Berries medium size, firm, handsome and of the best quality. Kansas is perfectly hardy, drought resistant; in fact, a good all purpose variety that will give both pleasure and profit.

CARDINAL (Red). The most remarkable plant of cane growth yet introduced; canes not injured by temperature of 26 degrees below zero; color dark red, almost purple; very productive; berries large and round. The best of its kind.

LATHAM. Although this is a comparatively new variety it is entirely past the experimental stage, and we unhesitatingly recommend Latham as one of the very best Red Raspberries ever grown. This variety originated at the Minnesota State Fruit Breeding Farm and is being grown extensively in Minnesota, the Dakotas, also in Canada, and has never been known to winterkill, even though exposed to 45 degrees below zero. Latham is a tall, vigorous grower, canes extra heavy, foliage dark green, entirely free from disease. Ripens with Cuthbert and is enormously productive. Berries much larger than any other Red Raspberry, many of them one inch in diameter. Color good, quality of the best, full Raspberry flavor. Excellent for shipping or home use.

ST. REGIS EVERBEARING RASPBERRY. An excellent novelty. Raspberries for four months! That's what you get when you plant the St. Regis, the new everbearing variety. Moreover, they are not only raspberries, but raspberries of the highest grade—in size, in brilliant crimson color, in firmness, in flavor. The variety has been aptly termed "the early till late" variety; for it is the first red raspberry to give ripe fruit, while it continues to produce berries without intermission until late October. The St. Regis is of pure American blood, and of ironclad hardiness. In addition to the brightest crimson color, and large size of the fruit, it is so firm and rich in sugar that it will stand shipping two hundred miles, arriving at market in first class order; and it can readily be kept in perfect condition for several days after being gathered. Unlike any other raspberry, the St. Regis yields a crop of fruit the season it is planted. Plants of it planted in early April gave ripe berries on June 20th of the same year. For four weeks thereafter the berries were large and beautiful, firm and full flavored to the very last.

Strawberries

The ground should be worked ten or fifteen inches deep and be properly enriched as for any garden crop. Drainage is necessary in very wet soil. For family use plant fifteen to eighteen inches apart each way, and after a few, strong plants have been set from runners, then pinch off all runners as fast as they appear. Keep the ground free from weeds and frequently stirred with a hoe or fork. Plants treated in this manner will produce more crowns and therefore double the amount of well developed fruit than when runners are left to grow.

CAUTION: Be sure and cut off all fruit-stems the first year. This will cause the plants to make new runners and is what you want for next season's crop.

SENATOR DUNLAP (Per). A well tested, wonderfully productive variety, one of the safe sorts to plant everywhere and sure to take a high place among the prominent standard sorts. Plant resembles Warfield, rampant runner, should be restricted in its production of plants; fully equal to Crescent and Warfield in its ability to succeed under all circumstances. Fruit good size, regular form, beautiful bright red, glossy, firm, splendid keeper and shipper; excellent quality. One of the best for canning. Ripens early and continues a long time.

AROMA (P.)—Strong growing, vigorous plants. Berries very large, smooth, round, light colored and produced in great quantity. The favorite in Missouri and the Southwest. Does well everywhere. It seems to be as popular as a late strawberry as the Dunlap is an early one. It was by far the best looking strawberry shipped into our market from the South the past spring.

BLAKEMORE. This variety is a new introduction originated by Prof. Beatty of the U. S. Department of Agriculture at Washington, D. C. The berries are large, solid, finely flavored, good keepers and wonderful plant makers. Of high quality, and another fine feature about it is that it stems so easily. Stands dry weather, and plants grow large, holding up the berries off the ground and enabling them to grow large.

GIBSON

This variety has long been a favorite with commercial growers throughout the country. It is a heavy and sure cropper—in fact, during our many years acquaintance with Gibson we have never known it to fail to produce a profitable crop. The plants are large and healthy, foliage strong, upright and abundant.

Prices for Dunlap, Aroma and Gibson:

Prices—25 plants, 15c; 100, 50c; 1000, \$4.00.

Parcel Post—25 plants, 20c; 100, 60c.

Prices for Premier, Gandy, Fairfax and Dorsett:

Prices—25 plants, 20c; 100, 60c; 1000, \$5.00.

Parcel Post—25 plants, 25c; 100, 70c.

PREMIER (Per). This is the most popular early strawberry of the day. The berries are very large, long pointed, light red in color and present a good appearance in the basket and in market. It produces such a quantity, that growers are simply carried away with it; no other early strawberry is anything near equal to it in productiveness.

GANDY (Per). This is one of the most reliable, large late berries that is grown. It is one of the old standard varieties that you can depend upon. It is a strong grower and a good plant-maker. The large, handsome appearance of the fruit always commands for it a high price in market. The fruit always grows large and is one of the best shipping varieties known.

THE FAIRFAX. Origin and selection: Although its parentage is not definitely known, the Fairfax (U. S. D. A. No. 613) strawberry is probably the result of a cross of Royal Sovereign and Howard 17 (Premier). The cross was made in 1923 at Glenn Dale, Md., and the Fairfax was among the selections made in 1925. In 1928 its characteristic fine appearance, exceptional firmness, and high dessert quality were outstanding throughout the whole season. In 1930 in southern New Jersey, where a large number of United States Department of Agriculture seedlings were being tested, it, together with the Dorsett, again had these qualities, as well as vigor and productiveness.

THE DORSETT. Origin and Selection: The Dorsett (U. S. D. A. No. 633) originated from a cross of Royal Sovereign and Howard 17 (Premier), made in 1923 at the United States Plant Field Station near Glenn Dale, Md. It was among the selections made from this cross in 1925. In 1930 it appeared very promising where tested in southern New Jersey. Its vigor, productiveness and dessert quality were outstanding. In 1932 trials made at different points in Maryland, Delaware and New Jersey indicated that it was worthy of introduction as a variety for home gardens and local markets in sections having conditions similar to those in the States mentioned.

Everbearing Prices and Description on Last Page of Cover.



A Shrubby Border around a terrace.

Shrub Special

- 2 Snowballs
- 2 Spirea Van Houtti.
- 2 Purple Lilacs
- 6 Shrubs for \$1.00, postpaid.

Ornamental Shrubs

THE judicious planting of shrubs adds greatly to the beauty and value of property, and contributes a wealth of pleasure and interest to the home. There are a few principles governing the artistic arrangement of these beautiful ornamentals that should be more strictly observed. In general, individual specimens should rarely be isolated from the body of the design. Irregular groups or masses arranged against buildings, fences or property lines, or as border plantations, along walks or drives, are much more effective. A good arrangement of shrubs invariably provides wide open stretches near the center of the lawn.

We have reduced our shrub list somewhat, omitting varieties for which, although very desirable in themselves, there is but little demand.

MOSS ACACIA. An elegant shrub; 5 to 6 feet tall with light green pinnate leaves and long, graceful clusters of pea-shaped, rose colored flowers in June, often throughout the summer. The branches are covered with a moss-like growth similar to Moss Roses. The shrub is hardy here, is beautiful when in full bloom and should be in every garden. Can be raised in tree form if desired. It is easily raised and really a good shrub for any garden. 2 to 3 feet, 40c each. Postpaid, 50c.

ALMOND, DOUBLE FLOWERING PINK. The Flowering Almonds are pretty dwarf bushes that bloom quite early and are very showy in spring. Their slender, leafless, upright branches are entirely hidden by stemless very double flowers of pink color resembling small roses. Grows to a height of 4 to 5 feet and blooms in May. One of the best flowering shrubs and highly recommended for the western states. 2 to 3 feet, 40c each; postpaid, 50c.

ALTHEA or ROSE OF SHARON. These are fine shrubs and especially valuable because of their flowering in the fall when nearly all other shrubs are out of blossom. Hardy and easy of cultivation. Red, white and pink. Each 35c; by parcel post, 40c each.

BECHTEL'S DOUBLE FLOWERING CRAB. A medium sized hardy ornamental tree of great beauty. When in bloom this tree presents the appearance of being covered with roses, fragrant flowers of immense size, sure to give satisfaction to those who plant this beautiful tree.

	Prices Each
2 to 3 feet.....	\$0.35
Mailing45
3 to 4 feet.....	.50
Mailing55



Althea

WEIGELIA ROSEA. An elegant shrub with beautiful rose-colored flowers. Blooms very profusely. June. It is erect in habit with good foliage. The height is five feet. Very hardy. I find this to be really hardy in Nebraska and does not need winter protection. **Each, 20c; by mail, 25c.**

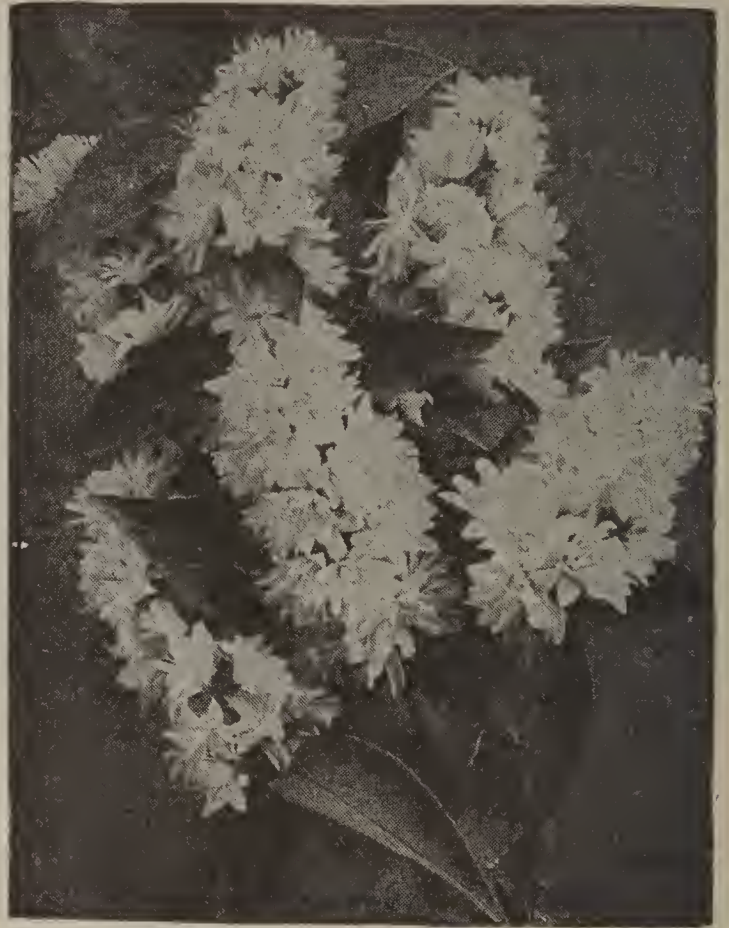
WEIGELIA, EVA RATHKE. A new variety from Germany and probably the best and finest of all Weigelias. Flowers are of brilliant crimson color, a beautiful and distinct shade. Blooms nearly all summer and when in full bloom the whole plant fairly glows with color. Grows 5 feet tall. **Each, 30c; by mail, 35c.**

SNOWBERRY, RED (Coralberry). A beautiful, low-growing shrub. Slender, drooping branches, covered with small red berries in thick clusters along the stems. 2 to 3 feet, 20c each. **Postpaid, 25c each.**

TAMARIX AFRICANA. Has, like all Tamarix, very pretty feathery leaves of a bright green color, and pink flowers. This variety is not hardy here in Nebraska, freezes to the ground every winter, but always comes up again in the spring and generally gets to be 6 to 8 feet high by fall. **Each, 20c; by mail, 25c.**

NEW RED LEAVED JAPANESE BARBERRY. It is similar in all respects to the green-leaved Japanese Barberry which is so popular for mixing in the shrubbery border, as single specimens, or for planting in clumps on the lawn, as well as for foundation plantings and for hedges, but the foliage of this new variety is of a rich, lustrous, bronzy red, similar to the richest red-leaved Japanese Maples. However, unlike these and other colored shrubs in which the coloring fades or disappears entirely as the season advances, this new Barberry becomes more brilliant and gorgeous throughout the summer, and in the fall its foliage changes to vivid orange, scarlet, and red shades, more brilliant and more effective than in the ordinary Japanese Barberry. In this coloring it is unequaled by any other shrub and is followed by the same brilliant scarlet berries common to the type, which remain on the plant the entire winter. **20c; by mail, 25c each.**

DEUTZIA. A small dwarf shrub with spreading branches, usually growing about 3 feet tall. Leaves bright green, 2 to 3 inches long, flowers pure white, in large clusters or panicles. Of vigorous growth, very free flowering and of easy culture. **Each, 30c; by mail, 35c.**



Deutzia

EVERBLOOMING BUTTERFLY BUSH. This shrub from a young plant set out either in the spring or fall, will mature to full size the first summer, producing a handsome bush, which the first year often attains a height of four feet. It produces long, graceful stems, which terminate in tapering panicles of beautiful lilac-colored flowers that are of miniature size and borne by the hundreds on a flower head which is frequently 10 inches long. A single plant the first season will throw out as many as 50 flower spikes, which increases greatly in number during the succeeding years. **Each, 20c; by mail, 25c.**

BUSH HONEYSUCKLE, PINK TARTARIAN. The best known of all Bush Honeysuckles, and in our estimation, the finest variety of all. Grows to a height of 8 to 10 feet, with upright, somewhat spreading branches and bright green foliage. The flowers are borne freely in May and June, are of bright pink color, followed by showy, red berries, which ripen in midsummer, and cling to the bush for several weeks. **Each, 25c; by mail, 30c.**

SIBERIAN or RED DOGWOOD. Free growing, 6 to 10 feet tall and very hardy; forms a small, handsome tree in some situations; its clusters of small, white flowers in early summer are very dainty, and its bark is a showy dark red in winter. All the Siberian Dogwoods bear in early fall a profusion of whitish-blue berries, making them distinctly ornamental after the flowers have gone. A very brilliant shrub in the winter and early spring when the bark is intensely colored. 2 to 3 foot trees. **Each, 30c; by mail, 35c.**

ORNAMENTAL SHRUBS—Continued



Persian Lilac

PERSIAN LILAC (Purple). Blooms a good deal more than the common, and has smaller leaves. Does not sprout as much from the roots. I prefer the Persian for the flowers, but the leaves of the common are decidedly prettier all summer. 2 to 3 feet, 35 cents each; by mail, 40 cents.

LILAC, PURPLE. With glossy green foliage and beautiful, fragrant flowers. A good plant for the lawn and one of the best for fancy hedge. Hardy everywhere. Flowers purple.

LILAC, WHITE. Same as above, with white flowers

PRICES ON PURPLE AND WHITE LILAC

	Per 1	Per 10
2 to 3 feet.....	\$0.20	\$ 1.50
Parcel Post25	2.00
3 to 4 feet.....	.25	2.25
Parcel post35	2.75
4 to 5 feet.....	.40	3.00
Parcel post50	4.00

SUMAC, FERN-LEAVED STAGHORN. Grows about 8 to 12 feet high. Deep green, fern-like foliage and scarlet fruit.

	Each
18 to 24 inch.....	\$0.30
Parcel Post.....	.35

GOLDEN ELDER. Eight to 10 feet tall. In a sunny place the leaves get yellow. Blooms in July, followed by dark, red, edible berries. Hardy, does well on most any soil. A good tall shrub. 25c each; postpaid, 30c.

Beauty Bush

BEAUTY BUSH (Kolkwitzia amabilis). A new Chinese shrub, covered in June with a mass of arching sprays of pink, tubular flowers, almost an inch long and 3/4-inch in diameter. 35 cents each, by mail 40 cents.

Japanese Flowering Quince

(Cydonia Japonica.) A very popular shrub often called "Fire-bush." When in full bloom the flaming red flowers make it look just like a blaze of fire. Very hardy. Blooms early and young. Has little thorns on it and grows about six feet tall. 25c each, 30c postpaid.

FORSYTHIA (Golden Bell). Few, if any, of the spring flowering hardy shrubs can surpass the splendor and brilliancy of the Forsythia. Both the grace and beauty give them a prominent place in all shrub plantation. Of upright, vigorous growth, foliage rich, dark green and lustrous. Flowers brilliant golden yellow, borne in great profusion early in April before the leaves appear. 2 to 3 feet, 30c each; by mail, 35c.

HYDRANGEA. A fine shrub of recent introduction, blooming from July to November. Large, showy panicles of white flowers in the greatest profusion. It is quite hardy and altogether a most admirable shrub for planting singly on the lawn or in the margin of masses. To produce largest flowers it should be pruned severely in the spring and the ground enriched. 2 foot plant, 35c each; by mail, 40c.

SNOWBALL. A well known and favorite bush of large size. Bears balls of pure white flowers in June. We have a bush on our farm on which we counted over 100 blossoms at one time. Hardy everywhere. Each, 25c; by mail, 35c.

MOCK ORANGE, CORONARIUS. One of the very best of the old, well-known shrubs. It seldom or never fails to bloom. Fragrant and beautiful waxy white flowers appear in great profusion in June. Here, most years they bloom by Decoration Day and mixed with Peonies, make a wonderful and fragrant bouquet. In shape and fragrance, they resemble the orange blossoms, therefore the name. The shrub grows to a height of 10 feet, can be kept lower, though, by pruning. Often used for ornamental hedge. Hardy everywhere and valuable for immediate effect in landscape planting. This is one of the most satisfactory shrubs for the Middle West, hardy and it never fails to bloom and needs little care. Each, 25c; by mail, 35c.



Spirea Van Houtti

KOREAN SPIREA. A handsome species from Korea and introduced by the Arnold Arboretum. Abundant, large, white flowers produced in graceful racemes. We are pleased to offer this beautiful new novelty at a very reasonable price. 35c each, 40c postpaid.

SPIREA (Van Houttei or Bridal Wreath). The best white spirea. The annual growth is long and abundant, and covered in June with a wealth of pure white blossoms. Perfectly hardy. Should be in every collection.

PRICES

	Per 1	Per 10
18 to 24 inch.....	\$0.10	\$0.80
Postpaid12	1.00
2 to 3 feet.....	.12	1.00
Postpaid15	1.30
3 to 4 feet.....	.15	1.30
Postpaid20	1.50

SPIREA (Anthony Waterer). A small, dwarfish grower, 15 to 18 inches high, and covered the entire season with large umbels of deep, pink flowers. Quite hardy here and very desirable...Each, 25c; by mail, 30c.

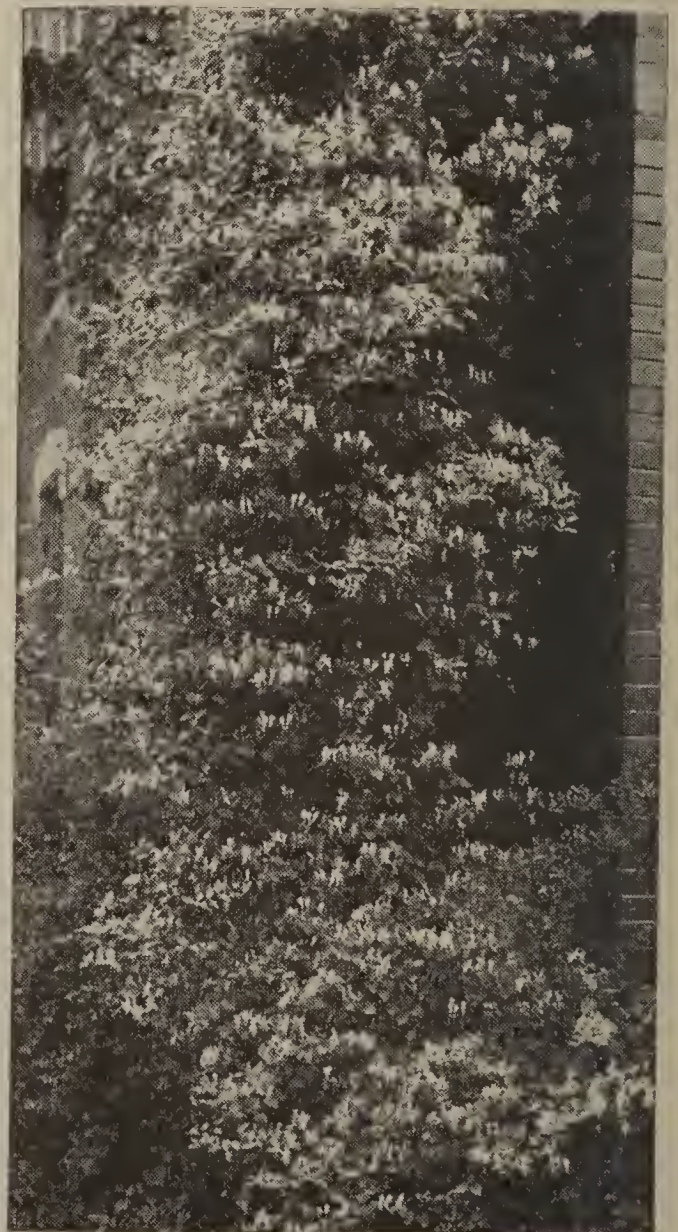
SPIREA THUNBERGII (Snow Garland). A Japanese variety of medium size, narrow, delicate leaves and a profusion of small, white flowers in early summer. One of the best. Leaves narrow, bright green, turning in autumn to brilliant shades of orange and scarlet. Each, 25c; by mail, 30c.

Climbing Vines

BITTER SWEET (Celastrus Scandens). A native climber with handsome, glossy foliage and large clusters of beautiful orange-crimson berries, remaining all winter. Very bright in effect and charming for winter house decorations. Very hardy. Each, 20c; by mail, 25c.

BIGNONIA or TRUMPET FLOWERS (Scarlet Radicans). A splendid climber, vigorous and hardy, with clusters of large trumpet-shaped scarlet flowers in August. Each, 20c; by mail, 25c.

JAPANESE KUDZU VINE—Jack and the Bean Stalk Vine (Pueraria). The most remarkable, rapid growing, hardy perennial extant. In rich soil the plant will grow 70 feet in one season. Starts into growth slowly, but after three or four weeks it grows almost beyond belief. Leaves in shape like Lima Beans; dark green, soft and woolly. For porches, arbors, old trees, etc., I know of nothing its equal. Here in November it freezes to the ground over winter, but always comes up again in the spring, and soon it is as large as it was in the fall. Each, 20c; by mail, 25c.



Hall's Honeysuckle

Every home should have vines—they bring charm, beauty, color and provide shade.

BOSTON IVY. A beautiful, hardy climbing plant. This is one of the finest climbers we have for covering walls, as it clings firmly to the smoothest surface, covering it smoothly with overlapping foliage, giving it the appearance of being shingled with green leaves. The color is a fresh deep green in summer, changing to the brightest shade of crimson and yellow in the autumn. It is quite hardy and becomes more popular every year. **Strong plants, 30c each; by mail, 35c.**

MADEIRA VINE. Also called Mignonette Vine and Mexican Vine. A beautiful tuberous rooted climber, with glossy green leaves and handsome racemes of fragrant white flowers. The vines make a rapid growth, and a few plants will cover a trellis or cottage wall in a single season. Will grow anywhere without care. **Each, 6c; 12 for 60c, postpaid.**

VIRGINIA CREEPER. A luxuriant vine of rapid growth, with large, luxuriant foliage which in the autumn assumes the most gorgeous magnificent coloring. The blossoms, which are inconspicuous, are succeeded by handsome dark blue berries. The vine is the best calculated to take place in this country of the celebrated English Ivy, and is really in summer not inferior to it. **Each, 15c; by mail, 25c.**

CLEMATIS PANICULATA (New Sweet Scented Japan Clematis). No introduction of recent years has met with such ready sale, and given so perfect satisfaction wherever planted. It grows and thrives anywhere and is a very rapid grower and profuse bloomer. The flowers are pure white. Its extreme hardiness, bright green foliage and delightfully fragrant flowers serve to make this one of the finest hardy climbing plants in cultivation. **Strong 2 year plants, 20c each; by mail, 25c.**



Clematis Paniculata



Grafted Wisteria

PURPLE WISTERIA A rare and charming variety, with perfect double flowers, deeper in color than the single, and the racemes of remarkable length. The plant is perfectly hardy, resembling the single Wisteria, so well known as one of our best climbing plants. **Each, 40c; by mail, 50c.**

SILVER LACE VINE (Polygonum Auberti). Fastest growing of all hardy climbing vines. Many customers report thirty feet growth the first season. Covered with masses of foamy white flowers in late summer. Seems to do equally well on any side of the building. **40c each, 50c postpaid.**

CLEMATIS (Jackmanii). A beautiful blooming variety, with flowers from four to six inches in diameter, of an intense violet purple color, borne successfully in continuous masses on the summer shoots. **Each, 50c; by mail, 60c.**

HALL'S JAPAN HONEYSUCKLE. This beautiful honeysuckle is almost evergreen, very strong and hardy in growth. The flowers are delightfully fragrant, and blooms profusely from May until frost. A handsome and valuable vine. **Each, 15c; by mail, 25c.**

HONEYSUCKLE (Monthly Fragrant, or Dutch). Blooms all summer. Very sweet. Red and yellow flowers. **Each, 15c; by mail, 25c.**

Monthly Blooming Roses

ALL 2-YEAR PLANTS



AMERICAN BEAUTY.

This rose has become as famous as the Marechal Neil. It is a hardy rose of the largest size, having the everblooming qualities of the Tea Rose, with the delicious odor of the Damask or Moss Rose. It is sweetest of all roses. Color a deep, brilliant red, shading to a rich carmine crimson. A valuable rose for the garden or indoor culture, flowering freely during the winter.



American Beauty

PAUL NEYRON.

Deep rose color, splendid foliage and habit, with large flower.

ULRICH BRUNNER.

The flowers are very large, of beautiful form and very double; color deep rich rose.

GENERAL JACQUEMINOT.

Brilliant crimson scarlet. Very showy and effective.

FRAU KARL DRUSCHKI or White American Beauty.

A pure paper white, free flowering, large size Hybrid Perpetual. It is a remarkably handsome plant, with bright, heavy foliage filled with strong, upright growth. Two-year-old field grown.

ALBERT BARBIER.

A continuous bloomer of color seldom seen in monthly roses; salmon, tinted yellow.

Prices—35c each; by mail, 40c; 6 plants, postpaid, \$2.00.

Climbing Roses

Our Roses are all first class, number one plants and not to be compared with plants sent out by department stores and Radio stations that usually send out a number two, or number three grade.



Crimson Rambler

DOROTHY PERKINS. Red. Intense crimson scarlet; double flowers in brilliant clusters set in glossy, shining foliage which never mildews or spots.

PAUL'S SCARLET CLIMBER. Vivid scarlet shaded crimson; large. A grand new climber, awarded gold medal and cup by the American Rose Society.

CRIMSON RAMBLER. The famous crimson clustered climber, so extremely effective when grown on pillars and trellises. The plant is a vigorous grower, making shoots 8 to 10 feet in a season. The foliage is large and glossy, the plant looks like a mass of double crimson flowers when in bloom. The panicles are large and remain perfect for several weeks. Perfectly hardy anywhere.

WHITE RAMBLER. Resembles Crimson Rambler in foliage and habit; flowers pure white.

YELLOW RAMBLER. It is related to the Crimson Rambler and like it, blooms in large trusses.

DOROTHY PERKINS. Pink, in general habit closely resembling the Crimson Rambler, but of a beautiful shell pink, full and double, of an unusually large size for a Cluster Rose. The trusses are made up of from 20 to 40 flowers.

Prices on Climbing Roses—Each 25c, 5 for \$1.00; by mail, 30c each, 4 for \$1.00.

BUSH HYBRID TEA ROSES

GRUSS AN TEPLITZ. Bright scarlet crimson. One of the finest bedders. Always full of bloom from spring until frost.

K. A. VICTORIA. This beautiful snowy white Rose is vigorous, hardy, and very fragrant. It is one of the old varieties and should be planted in every Rose bed where you want a white garden.

PRESIDENT HOOVER (H. T.) The rose of wonderful colors. It is remarkable for its vigorous growth and beautiful colorings. A happy blend of orange and pink, varying in tone from coppery-red in the bud, to glowing orange-yellow at the base of the petals, suffused with vivid rose pink.

PINK RADIANCE. Here is another Rose that is very beautiful, intensely fragrant; cameo pink. Blooms all summer and in all climates.

Prices 35c each, postpaid 40c.

MEMORIAL

A rose of trailing habit, a very hardy and rapid grower, with a glossy foliage which remains on until late in the fall. Its flowers are pure white and very fragrant. It is especially adapted to cemetery planting, hence its name; or it may be trained as a screen to hide some unsightly root stump or rock.

Price 25 cents, by mail 30 cents.

BUSH BABY RAMBLERS

CRIMSON BABY RAMBLER. The first red Baby Rambler introduced is of highest value because of compact habit. Very free bloomer.

GOLDEN SALMON. New and beautiful. The color is a beautiful red-salmon, overlaid with a color of orange and gold. The flowers are double, thickly clustered; one of the surest bloomers.

Prices 35c each, postpaid 40c.

Ornamental and Shade Trees

Trees larger than 4 to 5 feet cannot be sent by parcel post.

CAROLINA POPLAR. One of the most rapid growing trees, with large, handsome, glossy, deep green leaves. Succeeds everywhere; especially adapted to cities where it makes unusually fast growth and resists smoke and gas. Pyramidal in form, making a spreading head and dense shade when properly trimmed. It is unexcelled for quick growth and effect; makes a splendid wind break or screen. It is used in larger numbers for street planting than any other tree.

VOLGA POPLAR. A new hardy poplar from Russia, the tree is an upright grower, similar to the Lombardy Poplar. The branches are much stronger, however, and the leaves are larger, of better form and deeper green. Perfectly hardy, of strong, vigorous growth.

NORWAY POPLAR. Sudden Saw Log. A very distinct tree in habit of growing and making a straight, upright, somewhat pyramidal head. The foliage is large, thickly borne, bright and glossy. It grows rapidly in almost every soil and yet it possesses strength and durability which most poplars lack. For city planting it is superior to most of the other poplars, as it withstands the effect of smoke and dust much better.

PRICES FOR POPLAR

	Per 1	Per 10	Per 100
4 to 5 feet, whips	\$0.15	\$1.25	\$10.00
5 to 6 feet, branched	.20	1.75	15.00
6 to 8 feet, branched	.30	2.50	22.00

MAPLE, SUGAR or HARD. A popular American tree of pyramidal form. The foliage is large and handsome, and of rich, pleasing green, turning to orange yellow and red in summer. Its upright habit of growth, dense shade and adaptability to different soils has rendered it one of the most extensively used. Valuable for sugar and timber.

PRICES BY FREIGHT OR EXPRESS

	Per 1	Per 10
5 to 6 feet.....	\$1.00	\$ 9.00

RED BUD, Judas Tree. A very ornamental native tree of medium size, with perfect heart shaped leaves and hardy even in Canada. Blooms early in the spring, before the leaves appear, covering the branches with small reddish purple flowers. Hardy; does well also on wet land. Price 5 to 6 feet trees.....\$1.00

PIN OAK (Quercus Palustris). An upright vigorous growing variety forming a stately round topped tree, with long, slightly pendulous branches. The dark green, deeply cut foliage turns to brilliant yellow and crimson shades in autumn, forming one of the best of our fall colored trees. Grows faster than other Oak, often making shoots of 2 feet or more in one season. 5 to 6 feet, each, \$1.50; 10 for \$14.00.



Hard Maple

GOLDEN WILLOW (Salix Aurea). An exceedingly showy and pretty variety, with bark of bright golden color, making it very conspicuous during the winter. The catkins also are of yellow color. A handsome tree at all seasons will make lots of wood in a short time. Very hardy, even in the Dakotas.

PUSSY WILLOW. The catkins which come out early in the spring before the leaves start to grow are large, very silky. Very useful for early effects.

LAUREL-LEAVED WILLOW. A beautiful, distinct, medium-sized tree, 8 to 20 feet high, with shining laurel-like leaves that make it very conspicuous in sunshine. It can be clipped into form like a bay tree; has bright green bark; is beautiful the year round. The tree does well in Nebraska; stood our severe winter a few years ago at 23 degrees below zero without being injured.

PRICES ON WILLOWS

	Per 1	Per 10
2 to 3 feet.....	\$0.15	\$1.25
3 to 4 feet.....	.20	1.50

SHADE TREES—Continued



Chinese Elm

CHINESE ELM. (*Ulmus Pumila.*) A native of China. A noble, rapid-growing tree. Forming a very dense head, with smaller, darker leaves than the American Elm. Leaves stay on the tree much longer in the autumn. The branches project from the trunk almost at right angles. In some localities this Elm grows better than our native. In my nursery they grow fast and seem to stand the cold and dry weather well. Really a beautiful shade tree for lawn and street planting.

PRICES BY FREIGHT OR EXPRESS

	Per 1	Per 10
2 to 3 feet.....	\$0.20	\$ 1.50
3 to 4 feet.....	.30	2.10
4 to 5 feet.....	.40	3.50
5 to 6 feet.....	.50	4.50
6 to 8 feet.....	.85	8.00
8 to 10 feet.....	1.20	11.00

PARCEL POST

	Per 1	Per 10
2 to 3 feet.....	\$0.25	\$ 2.00
3 to 4 feet.....	.35	2.50
4 to 5 feet.....	.50	4.00

LINDEN or BASSWOOD. A very pretty pyramidal tree with large leaves and fragrant flowers. A valuable tree for street or lawn planting, developing into beautiful specimens. Extensively planted for ornamental purposes and for bee culture. Rapid growth, not particular as to soil, and perfectly hardy. 5 to 6 feet, each, \$1.00; 10 for \$9.00.

BLACK WALNUT. A native of Nebraska. Of large size and majestic form, with beautiful foliage. Grows best on low ground, bears very freely. The most valuable of all trees for timber, which enters largely into the manufacture of furniture and cabinet work and brings the very highest price in the market. Tree is a fairly rapid grower, and also makes a fine shade tree. The large, oily nuts are of fine flavor and marketable at a fair price.

Black walnuts are getting very scarce. Our government has bought up thousands of walnut logs, using them for gun stocks and in the manufacture of aeroplanes. The price of walnut logs is very high now.

PRICES BY FREIGHT OR EXPRESS

	Per 1	Per 10
4 to 5 feet.....	\$0.60	\$5.00

HACKBERRY (*Celtis Occidentalis*). American Nettle Tree. A native tree with slender branches spreading horizontally, apple-like foliage, bright shiny-green. Owing to the fact that it is extremely hardy, deep-rooted and very drought resisting it is a most desirable tree for general street and park planting. This tree is clean, I have never seen it attacked by an insect or a disease. In every respect an excellent tree.

PRICES BY FREIGHT OR EXPRESS

	Per 1	Per 10
6 to 8 feet.....	\$1.00	\$9.00

THE ORNAMENTAL PLUMS

PRUNUS TRILOBA. (Double Flowered Plum.) Early in the spring before its leaves appear, the whole tree is decked in a fleecy cloud of double light pink blossoms, on long slender branches. These are very useful for bouquets. Hardy most everywhere. I recommend to grow these in bush form, especially if wanted for cut flowers. One of the prettiest of the early flowering shrubs or trees.

HANSEN PURPLE-LEAVED PLUM. A new, very hardy variety. Has prettier reddish-purple leaves; more red than any other of the purple-leaved plum I know. Really a wonderfully pretty tree.

Prices on Hansen and Purple-Leaved Plum —2 to 3 feet, each, 25c; postpaid, 30c. 3 to 4 feet, each, 30c; postpaid, 35c.

ASH. American White (*Fraxinus Americana*). A medium grower and valuable for planting in the streets or in parks; may be extensively planted for timber.

PRICES BY FREIGHT OR EXPRESS

	Per 1	Per 10	Per 100
4 to 5 feet	\$0.25	\$2.20	\$20.00
5 to 6 feet45	4.00	37.00
6 to 8 feet70	6.00	

MAPLE, SOFT or SILVER. A native tree of very rapid growth. Hardy everywhere and easily transplanted. Leaves are finely cut, bright green on the upper and whitish on the lower side. When you order a Silver Maple, you will get what is called a Soft Maple. When quick effect or shade is desired, the Soft Maple is one of the best trees to plant. Largely used for street or park planting.

PRICES BY FREIGHT OR EXPRESS

	Per 1	Per 10	Per 100
6 to 8 feet.....	\$0.75	\$7.00	\$70.00

ELM. American White. A noble native tree of large size, wide spreading head, and graceful drooping branches. Easy to transplant; a hardy grower. One of the best park and street trees. Hardy everywhere.

PRICES BY FREIGHT OR EXPRESS

	Per 1	Per 10	Per 100
4 to 5 feet	\$0.25	\$2.20	\$20.00
5 to 7 feet35	3.00	27.00
6 to 8 feet50	4.50	
8 to 10 feet75	6.50	

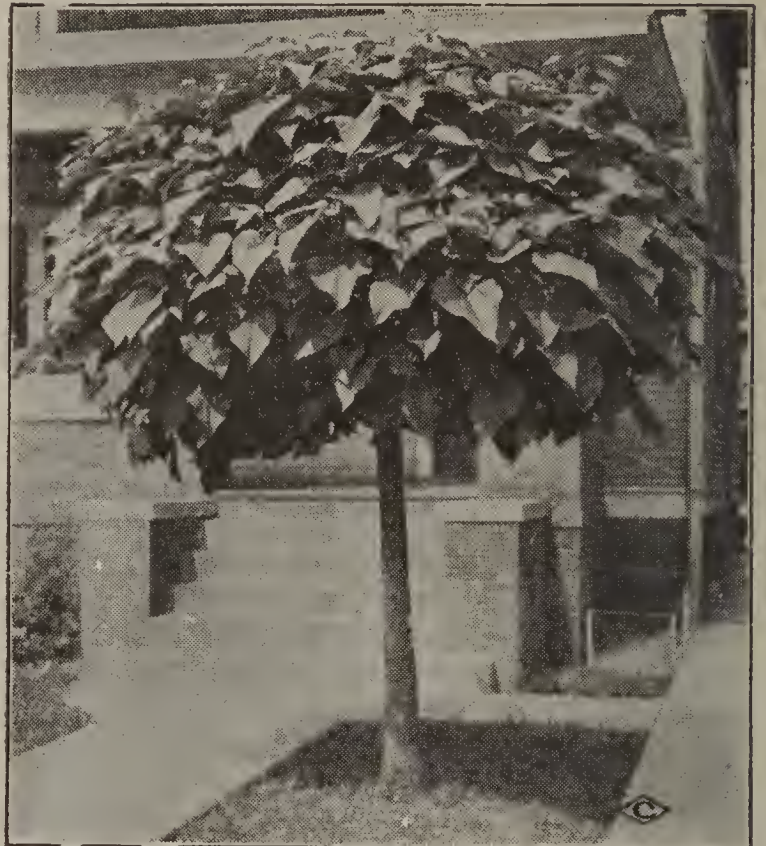
RUSSIAN OLIVE. A beautiful lawn tree, with spreading top; nearly black shining bark and silvery-white, long, narrow foliage. The small yellow blossoms have a wonderful appearance. The exquisite perfumes are carried long distances in the air. Fine if planted in a group with green leaved trees, among shrubbery, or as a lawn tree. Hardy as far north as Canada. It deserves a place in every park or garden. Should be much more largely planted. Can also be used as a hedge or screen, as it stands pruning or shearing well.

PRICES BY FREIGHT OR EXPRESS

	Per 1	Per 10
3 to 4 feet.....	\$0.40	\$3.50
4 to 5 feet.....	.50	4.50

PARCEL POST PRICES

	Per 1	Per 10
3 to 4 feet.....	\$0.50	\$4.50
4 to 5 feet.....	.60	5.50



CATALPA BUNGEII or UMBRELLA TREE. One of the finest ornamental trees we have; it is perfectly hardy; you will be pleased with this tree on your lawn. Trees grafted, 6 feet high. Each, \$1.00.

WEEPING TREES

Trees larger than 4 to 5 feet cannot be sent by parcel post.

CUT-LEAF WEEPING BIRCH. This magnificent tree is, without question, the most popular and the most planted of all pendulous or so-called weeping trees. It is a tall, slender tree, yet with vigorous growth. It has an erect central trunk, somewhat pyramidal in shape with graceful, drooping branches and glistening, silvery-white bark. The foliage is fine, thin, deeply and delicately cut, and of a beautiful shade of green. The whole tree presents a soft and delightful effect not found in any other hardy ornamental tree.

PRICES BY FREIGHT OR EXPRESS

	Each
5 to 6 feet.....	\$1.50

NIOBE WEEPING WILLOW. This is the grandest of all of the weeping trees. It is a rapid grower and will grow on almost any quality of ground. With the lightest breeze the whole tree is in motion. The bark of the tree is golden yellow, the underside of the leaves silver, and the top of the leaves a glossy dark green. This is a specially valuable tree for hedges, single specimen and cemeteries.

BY FREIGHT AND EXPRESS

	Per 1	Per 10
3 to 4 feet.....	\$0.30	\$2.50
4 to 5 feet.....	.40	3.50

PARCEL POST PRICES

	Per 1	Per 10
3 to 4 feet.....	\$0.40	\$3.25
4 to 5 feet.....	.50	4.50

Evergreens



Evergreens cannot be sent by parcel post.

The evergreen which we offer this season will be taken up with a ball of earth and burlapped and every one should grow. When planting do not remove the burlap. On account of the weight it is not advisable to ship by express.

	Each
Red Cedar, 2 to 3 feet.....	\$1.50
Red Cedar, 18 to 24 inches.....	1.25
Red Cedar, 12 to 18 inches.....	1.00
Irish Juniper, 12 to 18 inches.....	1.25
Bull Pine, 12 to 18 inches.....	1.25
Colo. Green Spruce, 12 to 18 inches...	1.25
Colo. Green Spruce, 18 to 24 inches....	1.75
Colo. Green Spruce, 2 to 3 ft.....	2.50

HEDGE PLANTS

	Per 10	Per 100
Barberry, 8 to 12 in.....	\$0.40	\$ 3.50
Mailing price.....	.50	4.00
Barberry, 12 to 18 inch.....	.50	4.00
Mailing price.....	.60	5.00
Hardy Privet, 12 to 18 inch..	.45	4.00
Mailing price.....	.50	4.75
Hardy Privet, 18 to 24 inch...	.75	7.00
Mailing price85	7.50
Russian Olive, 12 to 18 inch...	.35	3.00
Mailing price40	3.25

HEDGE PLANTS

	Per 100
Russian Mulberry, 6 to 12 inch.....	\$0.75
Mailing price80
Russian Mulberry, 12 to 18 inch.....	1.00
Mailing price	1.20
Russian Mulberry, 18 to 24 inch.....	1.50
Mailing price	1.70
Osage, 6 to 12 inch.....	.50
Mailing price60
Osage, 12 to 18 inch.....	.75
Mailing price90

TREE SEEDLINGS

	Per 100
White Elm, 12 to 18 inch.....	\$0.75
Mailing price90
Hardy Catalpa, 12 to 18 inch.....	1.00
Mailing price	1.20
Black Locust, 12 to 18 inch.....	1.00
Mailing price	1.15
Chinese Elm, 6 to 12 inch.....	1.00
Mailing price	1.20
Chinese Elm, 12 to 18 inch.....	1.40
Mailing price	1.60
White Ash, 6 to 12 inch.....	.50
Mailing price65
White Ash, 12 to 18 inch.....	.85
Mailing price	1.00
Apple Seedlings, No. 1.....	1.50
Mailing price	1.70

Cuttings and Scions

	Per 100	Per 1000
Cottonwood	\$0.35	\$
Mailing price40	
Carolina Poplar35	3.00
Mailing price40	3.50
Golden Willow35	3.00
Mailing price40	3.50
Hardy Privet60	5.00
Mailing price65	6.00

ASPARAGUS

CONOVER'S COLOSSAL. A remarkably strong growing and very valuable variety. It has such vigor that it gives shoots large enough for cutting in one year from planting, if planted in good soil and well cultivated. The shoots are of a decidedly purple color and are produced in great numbers over a season of 2 to 3 months. Valuable for market as well as table.

MARTHA WASHINGTON. A new rust-resistant asparagus. This new pedigreed rust-resistant variety was bred up by the U. S. Bureau of Plant Industry co-operating with the Massachusetts Agricultural Station covering a period of 14 years. Stalks

extra large in size, purple color, very tender, crisp, and extra fine flavored. Grows fast and thick, making it the most productive variety in existence. The heads stay very compact, solid and always bring a premium over any other variety.

Prices of Asparagus—10 plants, 20c; 100, \$1.50; 1000, \$10.00.

Parcel Post—10 plants, 30c; 100, \$2.00.

RHUBARB or PIE PLANT

This deserves to be ranked among the best early vegetables in the garden. It affords the earliest material for pies and tarts, continues long in use, and is valuable for canning. Make the border very rich and deep.

Price—10c each; 80c for 10; \$6.00 per 100. By parcel post, 15c each; 10 plants for \$1.30.

LINNEAUS. Large, early, tender and fine, the very best of all.

VICTORIA. The best for market because of its giant growth.

HORSERADISH

Price—3c each; 25c per 10; \$2.00 per 100. By parcel post, 5c each.

Summer Flowering Bulbs

CANNAS

One of the most popular of bedding plants with their green and bronze foliage and bright flowers; we grow six of the best varieties. Each, 10c; per dozen, 90c, postpaid.

KING HUMBERT. 4 to 5 feet. Giant flowered, orange scarlet, bronze leaf. The flowers are very large and very free blooming. The handsome leathery foliage is of strong habit.

YELLOW KING HUMBERT. Same as above except that the flowers are yellow.

PRAIRIE GOLD. A very fine variety; flowers clear yellow.

THE PRESIDENT. The most sensational introduction of recent years. The largest flowered, most vigorous-growing red Canna. The immense trusses of giant flor-ets are produced in great profusion. Green foliage. This variety introduced only a few years ago, has proved itself worthy of a place in every collection and every place where bold, effective performance can be appreciated; 5 feet.

CONRAD. Fine pink, green foliage.

Mixed Cannas—By express, dozen, 60c; 100, \$4.00.

Mailing price, dozen, 75 cents.

GLADIOLUS

One of the most attractive summer flowering bulbs. Very ornamental for the lawn. To obtain a succession of bloom there should be several plantings made at intervals of about a week. Set bulbs 6 to 9 inches apart and about 4 inches deep. If the soil is poor see that it is carefully enriched. The flowers are excellent for cutting, and last a week in water, the bulbs opening well. The bulbs should be

taken up in the fall before heavy freezing weather sets in and allowed to dry off in the sun. Cut off the stem close to the bulb, put in paper bags, and place where they will not freeze. A cold, dry atmosphere is best. We have a fine collection of the large flowering sorts.

Good Bulbs—10 for 25c; 100, \$2.00. Parcel Post, 10 for 30c; 100, \$2.25.

Extra Large Bulbs—10 for 35c; 100, \$3.00. Parcel Post, 10 for 40c; 100, \$3.50.

CALADIUM

ELEPHANT'S EAR. A splendid tropical appearing plant usually growing 4 to 5 feet high. Very showy leaves, often growing 3 feet long. Of easy culture. They are used to a great extent for large beds, together with Cannas, also as single specimens or as groups on the lawn. For obtaining tropical effects in lawn and garden, this beautiful plant takes a prominent place. Will grow in any soil, but to get the best results, they should have plenty of water and good, rich soil. When at its best, stands 6 to 7 feet high, with bright green leaves, 3 to 4 feet long and 2½ feet wide. Bulbs, 25c each; 5 for \$1.00, postpaid.

DAHLIA

No garden is complete without a show of these brilliant and steady autumn flowers, and nothing gives greater return for so little money and care. We have a fine assortment of the best varieties. Price, 20c each; 6 for \$1.00, postpaid.

TUBEROSES

A beautiful wax-like, very sweet-scented, double flower growing on tall stems.

Price—6 for 25c; by mail, 7c each.

BLEEDING HEART

DICENTRA. Bleeding Heart, the popular name of the Dicentra, is derived from the curious heart-shaped blossoms, with the drop of blood below; were great favorites in the old gardens. Fine for the border or margins of shrubbery. In the spring these plants bear beautiful heart-shaped flowers of a light red color. The stems grow 18 to 24 inches high, with abundant deeply cut leaves of light green color. Price 35c each, 10 for \$2.50, postpaid.

PEONIES

(**Edulis Superba.**) Best dark pink variety; early.

(**Festiva Maxima.**) Best white, very large.

(**Modeste Guerin.**) Color of American Beauty rose; strong grower.

(**June Bride.**) Latest large white, extra fine, very fragrant.

Postpaid, each, 25c; 5 for \$1.00.

By freight or express, 20c each; 8 for \$1.00.

Mixed plants, postpaid, 20c each, 7 for \$1.00.

By freight or express, 15c each, 10 for \$1.00.

HARDY CHRYSANTHEMUMS

We offer an assortment of the hardy varieties. They flower profusely in October, after everything else has been killed. They are excellent for cut flowers and bouquets. Sure bloomers and satisfactory growers should be included in all orders. Even after several light falls of snow, in sheltered positions, it is sometimes possible to cut uninjured clusters of beautiful flowers. The fine, thick foliage makes a good screen or background.

Price of each 25c; 5 for \$1.00, postpaid.

OLD HOMESTEAD. Large, double flowers, light pink in color, with white stripes; strong growers, profuse in blooming in September and October. Four feet high.

SNOW CLAD. Large double flowers of pure white color in September and October. Four feet high.

YELLOW NORMANDY. Very fine.

INDIAN. Brownish red.

FRENCH EARLY BLOOMING CHRYSANTHEMUMS. Blooms in September; 6 varieties mixed. Price 25c each; 5 for \$1.00, postpaid.

PHLOX

No class of hardy plants is more desirable than the Perennial Phloxes. They will thrive in any position and can be used to advantage in the hardy border, in large groups on the lawn, or planted in front of belts of shrubbery, where, by judicious pinching back and removing faded flowers, a constant succession of bloom may be had until frost.

Mixed Phlox, 20c each; 6 for \$1.00.
Named Varieties of Phlox, 25c each; 5 for \$1.00, postpaid.

B. COMPTE. Rich purple, admired by all.

MISS LINGARD. Earliest white.

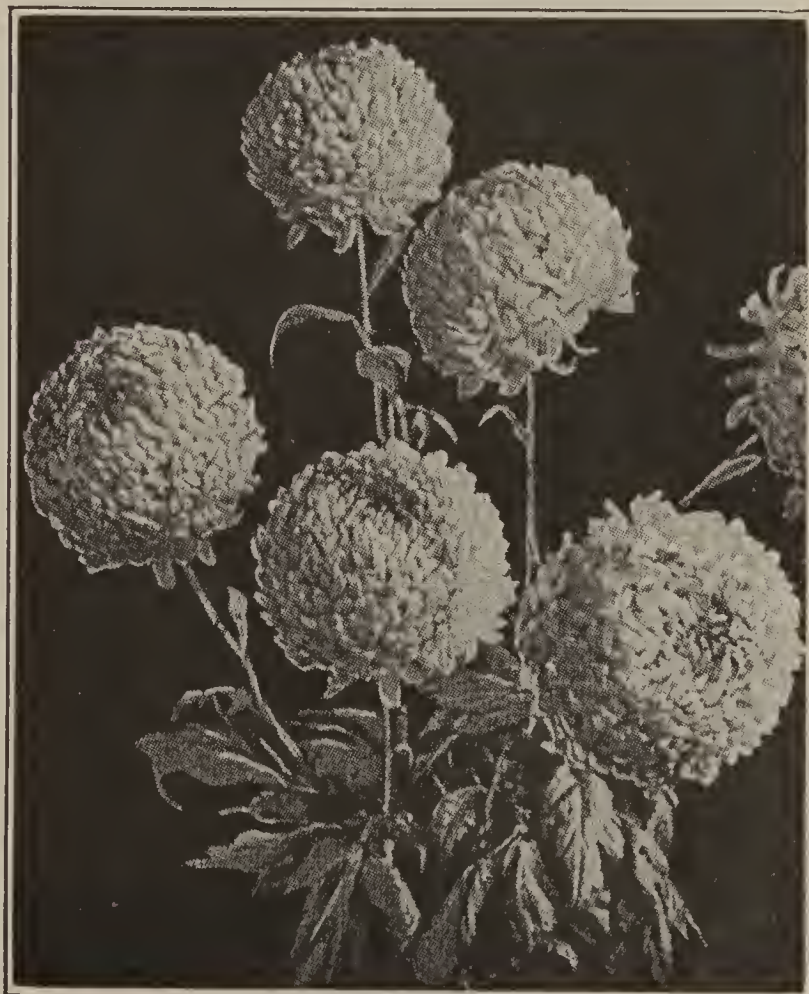
MRS. JENKINS. Very beautiful, pure white.

R. P. STRUTHERS. Salmon-red.

PANTHEON. Rose pink.

IRIS

The true "Fleur-de-Lis," the National flower of France. They are perfectly hardy, thrive anywhere, grow and bloom luxuriantly, particularly if plentifully supplied with water. In beauty the flowers rival the finest of orchids. The plant grows 18 to 24 inches high. Six assorted colors. 10c each; 3 for 20c; 20 for \$1.00, postpaid. By freight or express, 25 for \$1.00.



Chrysanthemums

LILIES

With a well selected collection, Lilliums may be had in bloom from June to October. They should be planted in the fall, from October 1 as long as the soil can be worked, and in spring until the first of May. Plant about 5 inches deep.

NEW SENSATIONAL PHILIPPINE LILY (Philippinense Formosanum). A new, hardy lily which blooms from the middle of summer well into the fall. The flowers are very large, very fragrant, and look much like Easter lilies except the outside is shaded lightly with copper. Grows 2 to 3 feet tall. Our bulbs will bloom this summer. Don't fail to plant some of this wonderful new lily. You will enjoy them for many weeks. **Each, 25c; 5 for \$1.00, postpaid.**

DOUBLE TIGER LILY. Perfectly hardy, easily grown Lily, with very large double flowers of rich orange color, spotted with black. Exceedingly pretty. **Each, 15c; 10 for \$1.25, postpaid.**

REGAL LILY. Single. June-July. New variety from western China. Hardy in all localities. Flowers are ivory-white striped on the outside with pink and splashed with canary-yellow at the base of the petals. Delightfully perfumed; stems 3 to 5 feet. **20c each; 6 for \$1.00.**

HEMEROCALLIS FLAVA (Lemon Lily). These are among the oldest and best loved of garden plants. Very hardy and persisting; they need no winter protection and thrive in any good soil, preferring, however, a rich, moist loam. For garden borders and waterside planting, few perennials are more satisfactory. A good clump of this fine old lily, when blooming in June and July, lights up the border superbly with many tall stems of fragrant, waxy, clear yellow blooms, grows about 2 feet high. **Each, 15c; 10 for \$1.20, by parcel post.**



Philippine Lily

GOLDEN GLOW

The most prolific and satisfactory of all yellow-flowered sorts. Grows 5 to 7 feet and blooms from early summer until frost. Flowers are produced on long stems in enormous quantities and resemble golden yellow Cactus Dahlias. **20c each; by mail, 25 cents each.**

MALLOW MARVELS

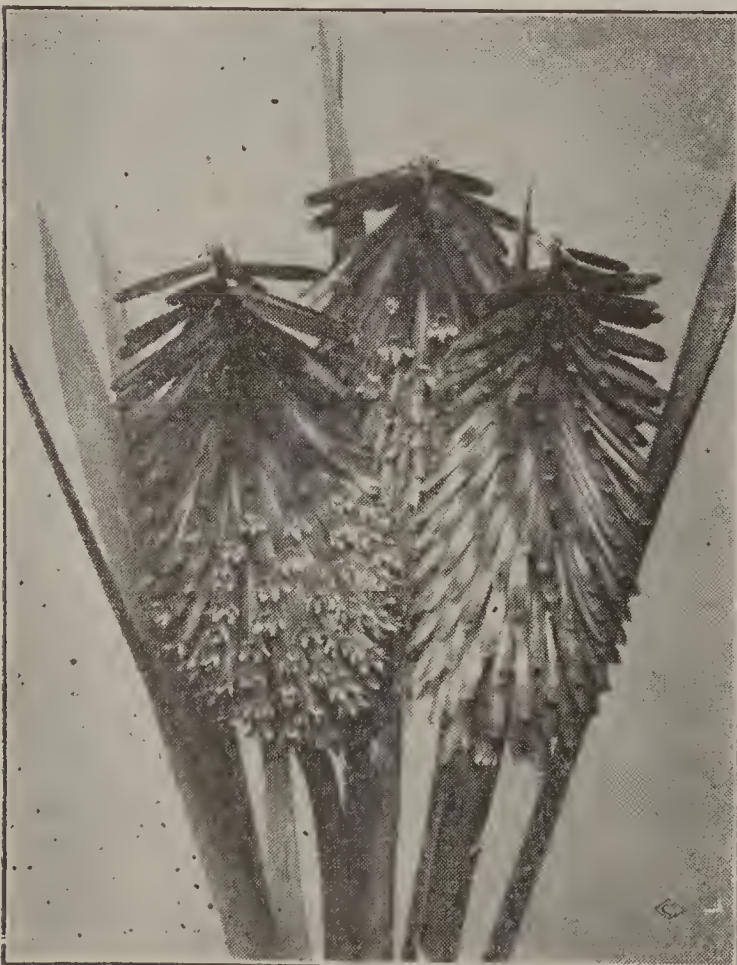
Most gorgeous perennial creation of the twentieth century. The plants are perfectly hardy and grow from strong, fleshy roots to a height of 6 to 8 feet in one season. They seem to thrive in almost any soil, having a preference, however, for a moist rather than a dry situation. In the last days of July the blooms appear and continue until late in fall. The huge flowers, some of them measuring over 10 inches in diameter, come in the most gorgeous and brilliant shades. Red, white and pink. **Price, 25c each, postpaid.**

ORIENTAL POPPY

We recommend August or September planting for this is the time when Poppies are in their dormant state. However, we have a limited supply of potted Poppies for spring planting. Plant with dirt left on them. **Price, 25c each; 5 for \$1.00, postpaid.**

TRITOMA

Red Hot Poker, Flame Flower, or Sky Rocket Plant. An old favorite. Sends up fine spikes of scarlet-orange flowers which look well in masses or alone. They are not absolutely hardy and must be mulched well. **Each, 25c; 5 for \$1.00, postpaid.**



Tritoma

Hardy Perennials

Variety descriptions give the colors, time of blooming, height of plants and their favorite locations. Plants especially desirable for the rock gardens are marked R. G.

Prices Postpaid, all alike or assorted: 20c each, 6 for \$1.00; 15 for \$2.00.

All pot grown or field grown, no seedlings.

HARDY ASTERS

These are among the showiest of our late flowering hardy plants, giving a wealth of bloom at a season when most other hardy flowers are past, and for best effect, should be planted in masses of one color. They grow freely in any soil. We have red and white and blue.

ACHILLEA, THE PEARL. Pure white double flowers. July-August. Full sun, 10 inches.

ARTEMISIA, SILVER KING. Entire plant silvery gray. Prized for winter bouquets as it dries the same color. Sun. 2 to 3 feet. R. G.

CANTERBURY BELLS (Cup and Saucer), Handsome blue and pink cup-shaped flowers. June-July. Sun or semi-shade. 24 in.

CARNATION, HARDY. Hardy garden variety. We can furnish in red. June to frost. Full sun. 12 inches.

GAILLARDIA (Blanket Flower or Pin Cushion Plant). Blending of red, yellow and henna. May to frost. For hot, sunny locations. 18 inches.

GYPSOPHILA PANICULATA (Baby's Breath). White, mist-like flowers to dry for winter bouquets. June-July. Full sun. 3 feet.

EVER-BLOOMING HARDY PINKS. Also known as button-hole pinks. Give a rich, spicy, clove-like odor. We have a splendid assortment of all colors—rose, pink and crimson mixed.

LINARIA (Butter and Egg Plant). Small flowers shaped something like the Snapdragon. July-September. Full sun or semi-shade.

VIOLA ODORATA (Sweet Russian Violet). Flowers large, dark and very fragrant. R. G.

PYRETHRUM (Painted Daisy). White to deep rose. Foliage fern-like. May-June. Full sun. 18 inches.

PLATYCODON (Chinese Balloon Flower). Blue and white. July-September. Sun or semi-shade. 2 to 3 feet.

LYTHRUM SUPERBUM (Purple Loosestrife). Purplish lavender. Blooms all summer. Shade. 2 to 3 feet.

SCARLET SAGE

(*Monarda Didyma*)

Two feet. This is a perennial sage, perfectly hardy here. Flowers come on well-branched stems, about two feet high. Very pretty red and blooms a long time. Flowers are about as large as carnations.

HARDY AGERATUM

(*Eupatorium*)

This hardy, blue-flowered plant blooms in August and September. Grows about 2 feet high and will bloom in dense shade. A fine cutting flower.

DIGITALIS—Fox Glove

An old fashioned garden flower that should be in every garden. Our plants contain many of the finest colors.

SHASTA DAISIES

Remarkably large, semi-double daisies, 3 to 4 inches across and pure white, with petals in two or more rows about a golden center. The plant is extra vigorous and maintains a fine show of great flowers throughout the summer and autumn. A splendid border plant and of great value for cutting. My plants are strong, field grown and will bloom abundantly the first season.

HARTJE DAISY. This is an improved Shasta Daisy, much larger flowers, longer stems and earlier.

DELPHINIUM

(Larkspur)

One of the finest sights of modern gardens is a fine collection of blooming Larkspurs. They give us the greatest abundance of flowers and utmost variety in tints and shades of blue during June and July. The Delphiniums make good border backgrounds. Although plants thrive in any good garden soil, a deep, rich, loamy one, with sunny exposure is best.

PERENNIAL SPECIAL

One each of above 19 Hardy Perennials,
\$2.50, postpaid.



Hardy Perennials

Prices postpaid, all alike or assorted: 15c each; 8 for \$1.00.

All pot grown or field grown, no seedlings.

ALLIUM

(Burbank's Hybrids)

Pink and purple flowers, blooming all summer. Foliage grass-like. R. G.

TEUCIUM

(Pigmy Boxwood)

A dwarf evergreen perennial with red flowers in the fall. R. G.

SANTOLINA

(Lavender Cotton—Ground Cypress)

WEAVER'S SILVERY BLUE. Fragrant. Fine for cemetery, bedding, borders, rockeries.

DIANTHUS

(Sweet William)

One foot tall. Flowers in great profusion and in many brilliant colors, several times during the summer.

SEDUM

(The Famous Live-Forever Plant)

For rock gardens and borders there is no plant equal to this one. Our eight best varieties:

GOLDMOSS STONECROP (Acre). Bright yellow flowers. Dwarf.

PINK (Spectabilis). Broad, light green foliage, bearing large heads of rose colored flowers. August and September. 18 inches.

WHITE (Album). Dwarf and spreading. Thick, waxy, round foliage. White flowers. Good rock plant.

SARMENTOSUM. A strong, rapid grower for shade. The best for filling seams between rocks in the rock wall.

SEXANGULARE. Very dark green foliage. Yellow flowers.

STOLONIFERUM (Common Trailing). Small, waxy leaves. Multiplies rapidly. Sun or shade.

COCCINEUM. Reddish leaves. Small crimson flowers. Spreads rapidly.

KAMTSCHATICUM. Orange-yellow flowers with prostrate green foliage turning golden in autumn.

Sedum Special

Twenty different pot-grown Sedums, \$2.00, postpaid. We have about thirty kinds of choice Sedums that we will select you 20 different kinds from.

PANSIES

Our Giant Flowering Pansies comprise a marvelous number of new shades and varieties as well as improved types. All are of wonderful form, richest coloring and marvelous in size. Petals crimped, curled, ruffled and blotched. Price, 50 cents per dozen, postpaid.

FLOWER GARDEN SEEDLINGS

Transplanted plants grown from choice seed—ready May 1st: Aster, Snapdragon, Verbena and Salvia. 30c per dozen, or four dozen for \$1.00, postpaid.

See Vegetable Plants, Back Cover.



Canterbury Bells

CANTERBURY BELLS

(Campanula)

An old time favorite, growing 2 to 3 feet high and bearing in great profusion very pretty bellshaped flowers. The Campanulas give to our gardens exceedingly pretty flowers for almost every location, moist or dry, sunny or shaded, and the flowers are produced even in summer drought. Valued for cut flowers. Each, postpaid, 15 cents; 10 for \$1.25.

AQUILEGIA

(Columbine)

The Columbines have established a place in all old-fashioned gardens. Their curious forms and many pleasing shades of color and the readiness with which they adapt themselves to all localities, have made them prime favorites. Price, postpaid, 15 cents each; 10 for \$1.25.

TREE PROTECTORS

PRICE—2½ cents each; \$2.00 per 100. Mailing price, 3 cents each.

Same are made of veneer and are the best and easiest applied of anything ever used. Two men can wrap 1,000 trees a day. They are 18 to 24 inches long, 9 to 12 inches wide and one-twelfth inch thick, and are fastened with a small wire around the center, and will last from three to five years.

Will protect your trees from rabbits, mice and bores; will also protect the stems from sunscald and can be left on all summer and will not injure the tree. They are furnished green, tied in bundles of 100 each, and are ready for use. Soak in water before applying.

FROM

Fairbury Nurseries

Fairbury,

Nebraska



Plants

In early spring of each year we grow large quantities of vegetable plants, such as Sweet Potato, Tomato, Cabbage, Peppers, Egg Plant. We ship either by mail postpaid or express, when sent by express the customer pays the expressage. It is not advisable to ship vegetable plants west of the Rocky Mountains or east of the Mississippi on account of their perishable nature.

TOMATOES

Earliana, Stone, Dwarf Champion and Ponderosa.	Per 10	Per 100
By Mail	\$0.15	\$1.00
By express10	.80

EGG PLANT

Per dozen, postpaid, 35 cents.

LATE CABBAGE

Danish Ball Head and Enkenheizen. Ready for shipment May 15th.

	Per 100	Per 1000
By mail	\$0.50	\$4.00
By express40	3.50

EARLY CABBAGE

Early Wakefield and Copenhagen Market

	Per 100	Per 1000
By mail	\$0.60	\$5.00
By express50	4.50

SWEET POTATOES

Plants cannot be set with safety until danger of frost is past. No orders accepted for less than 50 plants.

	Per 100	Per 1000
By mail, postpaid	\$0.60	\$5.00
By express50	4.00

Varieties: Nancy Hall, Nansemond, Yellow Jersey, Red Jersey, Red Bermuda, Vineless, and Big Stem Jersey and Priestly.

PEPPERS

Giant Sweet Mango, Cayenne and Neapolitan.	Per 10	Per 100
By mail	\$0.25	\$1.50
By express15	1.00

CELERY, GOLD SELF BLANCHING

	Per 100	Per 1000
By mail	\$0.60	\$5.00
By express50	4.50

SEED SWEET POTATOES

We have a fine lot of sweet potatoes in storage for spring shipment.

Send us your order for sweet potato seed and let us know when you want shipment made as sweet potatoes do not keep well out of storage. They should not be sent until you are ready to put them in the hot bed.

We have Nancy Hall, Red Jersey, Red Bermuda, Vineless, Big Stem Jersey and Priestly. Price, 6c per lb.; 100 lbs., \$4.50.

We also have Yellow Jersey and Nansemond at 5 cents per lb.; 100 lbs. for \$3.50.

Six pounds of any variety for 50 cents, postpaid. We do not pay express charges on them and they should not be sent by freight.

NOTICE—If you want seed by the 100 pounds to bed down, better let us have your order early and we will hold seed in storage until you are ready for it.

INDEX

	Page		Page		Page
Ageratum	29	Clematis	19	Horseradish	26
Almonds	15	Climbing Roses....	21	Hydrangea	17
Althea	15	Climbing Vines....	18	Iris	27
Apples	2	Compass Cherry..	8	Japanese Quince..	17
Apples, Crab.....	3	Currants	11	Kudzu Vine.....	18
Apricots	7	Cuttings	26	Lilac	17
Aquilegia	30	Dahlia	26	Lilies	28
Ash	23	Daisy	29	Linden	23
Asparagus	26	Delphinium	29	Madeira Vine....	19
Asters	29	Deutzia	16	Mallow Marvels..	28
Barberry	16	Dewberry	12	Maples	22-24
Bignonia	18	Digitalis	29	Mock Orange....	17
Bitter Sweet....	18	Dogwood	16	Moss Acacia....	15
Blackberry	12	Elderberry	12	Mulberry	8
Black Walnut....	23	Elder, Golden....	17	Norway Poplar..	22
Bleeding Heart..	27	Elms	24	Ornamental Shrubs	15
Boston Ivy.....	19	Evergreens	25	Pansies	30
Beauty Bush....	17	Flowering Crab....	15	Peaches	9
Butterfly Bush..	16	Forsythia	17	Pears	4
Caladium	26	Gaillardia	29	Peonies	27
Cannas	26	Gladiolus	26	Phlox	27
Carnations	29	Gooseberry	11	Pin Oak.....	22
Canterbury Bells	30	Golden Glow....	28	Plants	33
Carolina Poplar..	22	Grapes	10	Platycodon	29
Catalpa Bungeii..	24	Gypsophila	29	Plums	5
Cherries	6	Hackberry	23	Plums, Orna-	
Chinese Elm....	23	Hedge Plants....	25	mental	23
Chrysanthemum..	27	Himalaya Berry..	12	Poppy	28
		Honeysuckle ..	16-19		
				Pyrethrum	29
				Quince	8
				Raspberry	13
				Red Bud.....	22
				Rhubarb	26
				Rocky Mt. Cherry.	8
				Roses	20
				Russian Olive....	24
				Sage	29
				Shade Trees....	22
				Snowball	17
				Spirea	18
				Strawberry	14
				Sumac	17
				Sweet Potatoes..	33
				Tamarix	16
				Tree Protectors..	30
				Tree Seedlings....	25
				Tritoma	28
				Tuberose	26
				Virginia Creeper..	19
				Volga Poplar....	22
				Weigela	16
				Weeping Birch...	24
				Weeping Willow..	24
				Wisteria	19
				Willows	22
				Zumbra Cherry...	8

Everbearing Strawberries

Strawberries that yield fruit continually from May until frost have been known for a long time. We have tested on our own grounds many varieties which have been discarded and now offer the three varieties we consider best. Plant and care for them the same as the common summer sorts. When

plants are set they will commence to bloom and bear fruit at once. You should not allow them to do this for it will check the growth of the plants, so for the first six weeks after planting keep all bloom stems cut off, then allow them to bear and have fruit until cold weather.



MASTODON. This is a new variety of strawberry introduced a few years ago and we have the genuine stock. Up to this time prices have been rather high for this variety, but we now have a good stock of the plants and will make prices so reasonable you can afford to buy them. The plant is very thrifty, grows large, has a fine root system and fruit is at least twice as large as other varieties of everbearing strawberries. The leaves are very large which protects the fruit from the sun.

Prices, by Express, Mastodon and Gem—25 plants, 35c; 100, \$1.00; 1,000, \$7.50. Parcel Post, 25 plants, 50c; 50, 85c; 100, \$1.25.

MASTODON

GEM. This selected strain of Gem will amaze you with the number of berries you get off of each plant. Gem produces equally as many berries as the old-fashioned Progressive, but berries much larger, firmer, plumper and more uniform. Just as large at the end of the season as they are when they first start to come on. We believe Gem stands the hot, dry weather better than any other strawberry and is a great one for the Farm Belt.

CHAMPION. By far the best fall bearing strawberry ever introduced. It prolongs the season of this most delightful of all fruits — strawberries — from the one short month of June to cover the entire summer and fall season. When you plant Champion you are certain of success because three months after planting every mother plant and many runner plants will commence bearing and will continue all summer and fall.

Prices of Champion — 25 plants, 30c; 100, 75c; 1,000, \$6.00. Parcel Post—25 plants, 35c; 100, \$1.00; 1,000, \$7.50.