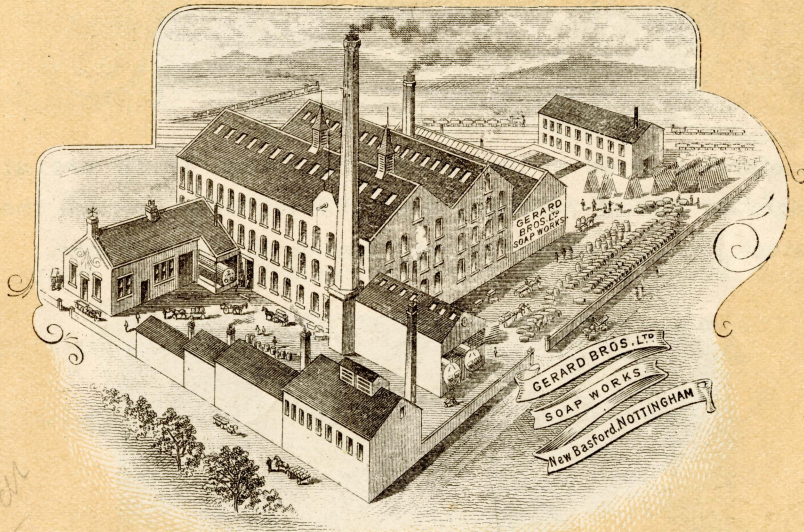


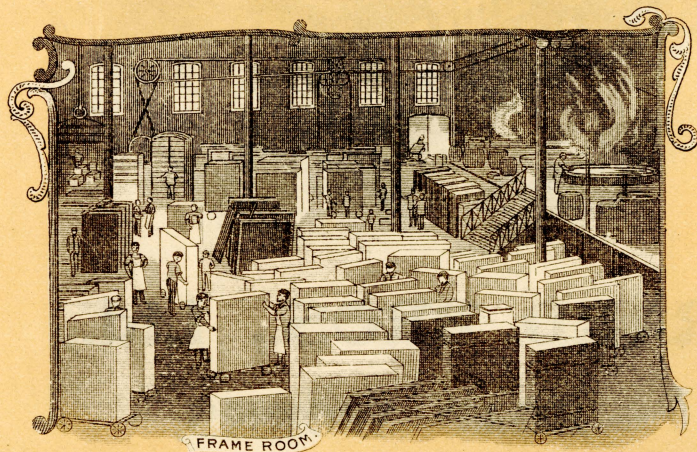
A Growing
Nottingham Industry.



GERARD BROS., Ltd.,
SOAP WORKS,
NOTTINGHAM.



View showing three of the ten Boiling Pans. These are at a height of 30-feet from the ground level, and work on the latest gravity system, thereby saving all hand labour.



Part of ground floor used for cooling the soap in steel frames of about 15-cwt. capacity.

JUNE, 1876, saw the commencement of Soap-making in Nottingham. Mr. T. B. GERARD (Chairman of the present Company) established the business on that date with a plant capable of manufacturing 10-tons of soap per week.

The present capacity is upwards of ten times that amount, with further increases in progress.

The manufacture of Caustic Soda, and the recovery and distillation of pure glycerine are departments since added, but are now much larger than the whole of the original business.

The manufacture of Milled Toilet Soap commenced in 1898. The latest and best plant was installed, but has since been trebled in capacity. The demand for Toilet Soap being continually increasing.



2^D EACH.

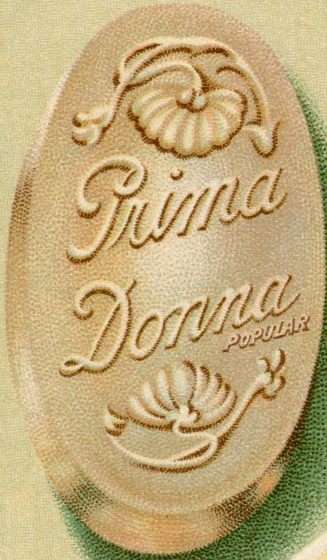


2^D 1/2 EACH.



2^D EACH.





2^D EACH.



2^D EACH.



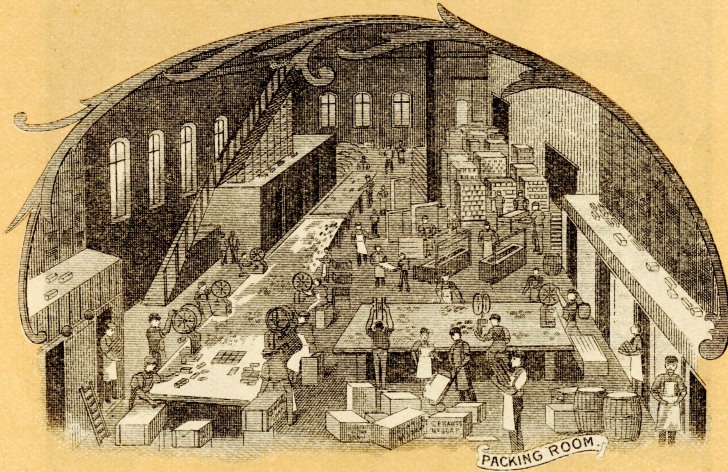
2^D EACH.



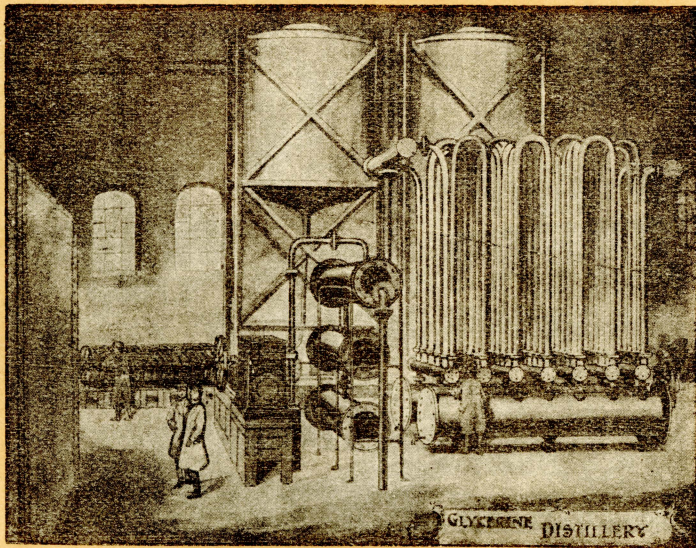
A great feature of the business is the attention given to the quality and purity of materials used in all departments. This has necessitated the employment of highly skilled technical men under the careful supervision of the younger members of the firm.

The Chemical Laboratory is fitted with all the latest apparatus, including many unique arrangements for rapidly performing special tests in the various stages of manufacture.

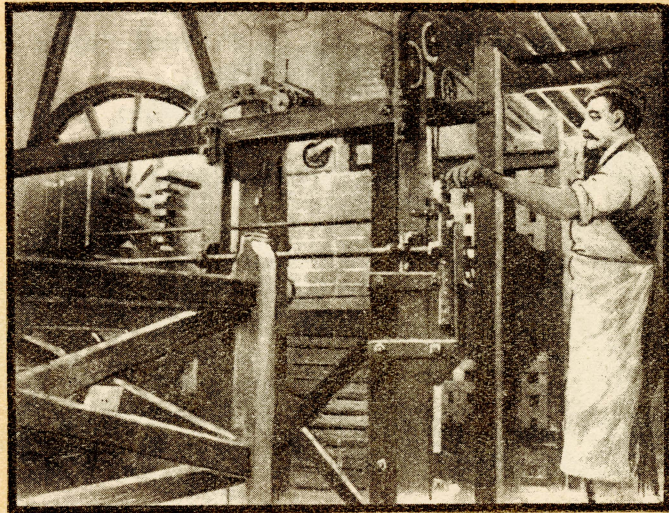
The portion of the Company's products destined for sale in this district is carefully adapted to the composition of the water in which it is to be used. By so doing it is found to be at least 10 per cent. more economical than any other, and in the case of Toilet Soap to leave the skin in a much healthier condition.



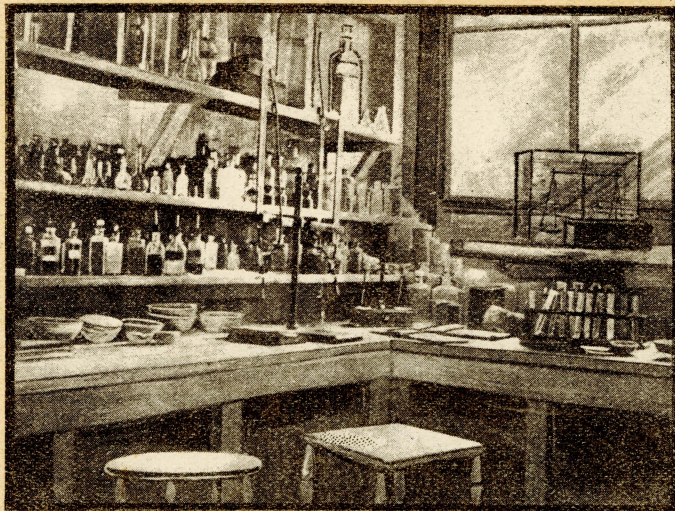
Main Packing Room for Household Soap.



Plant for the Recovery and Distillation of Pure Glycerine.



**Steam Cutting Machine which will accurately cut to guage
20-tons of soap per hour.**



**Corner of Chemical Laboratory in which all material for
Soap-Making is tested, and the composition of the
finished soap checked.**