

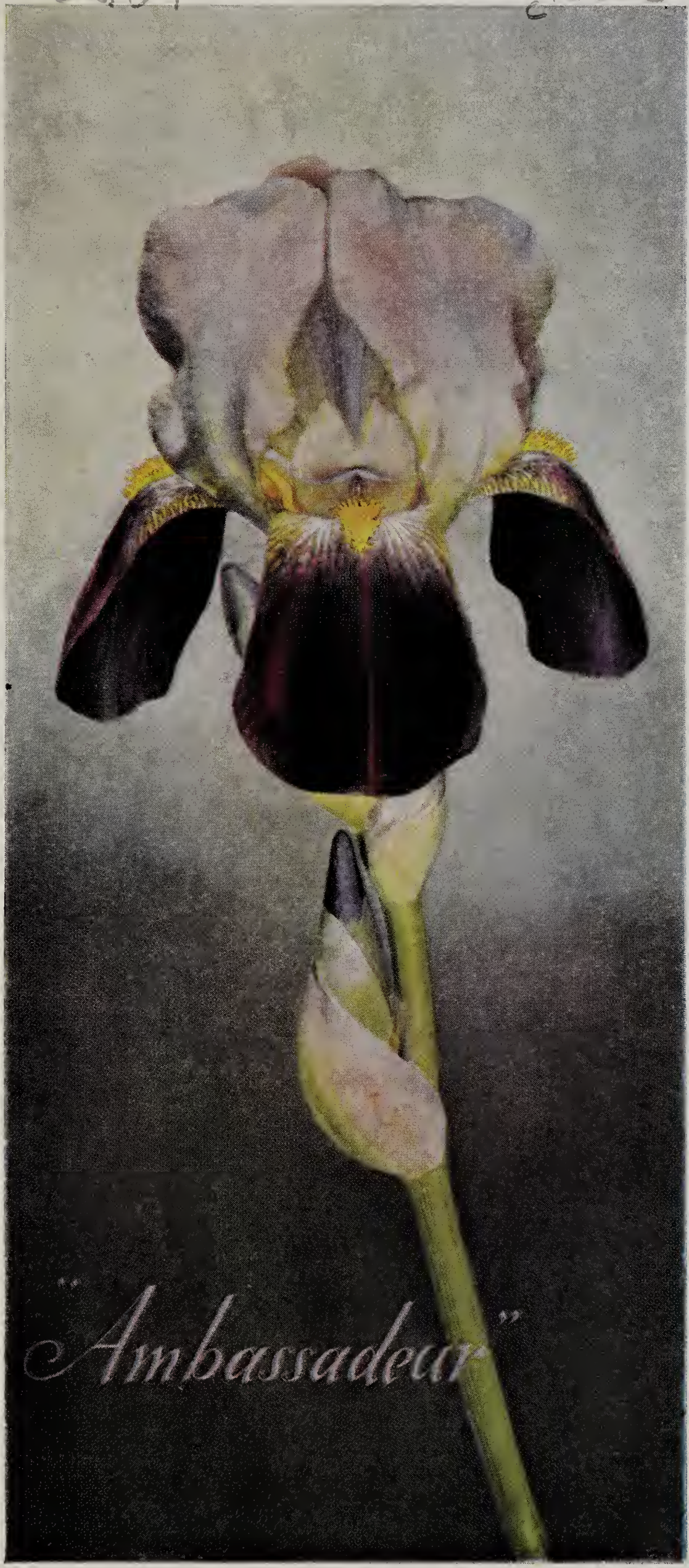
Historic, archived document

Do not assume content reflects current scientific knowledge, policies, or practices.

600.09

1933

LIBRARY
RECEIVED
★ FEB 6 1933 ★
U. S. Department of Agriculture



"Ambassadeur"

Elizabeth

Hardee

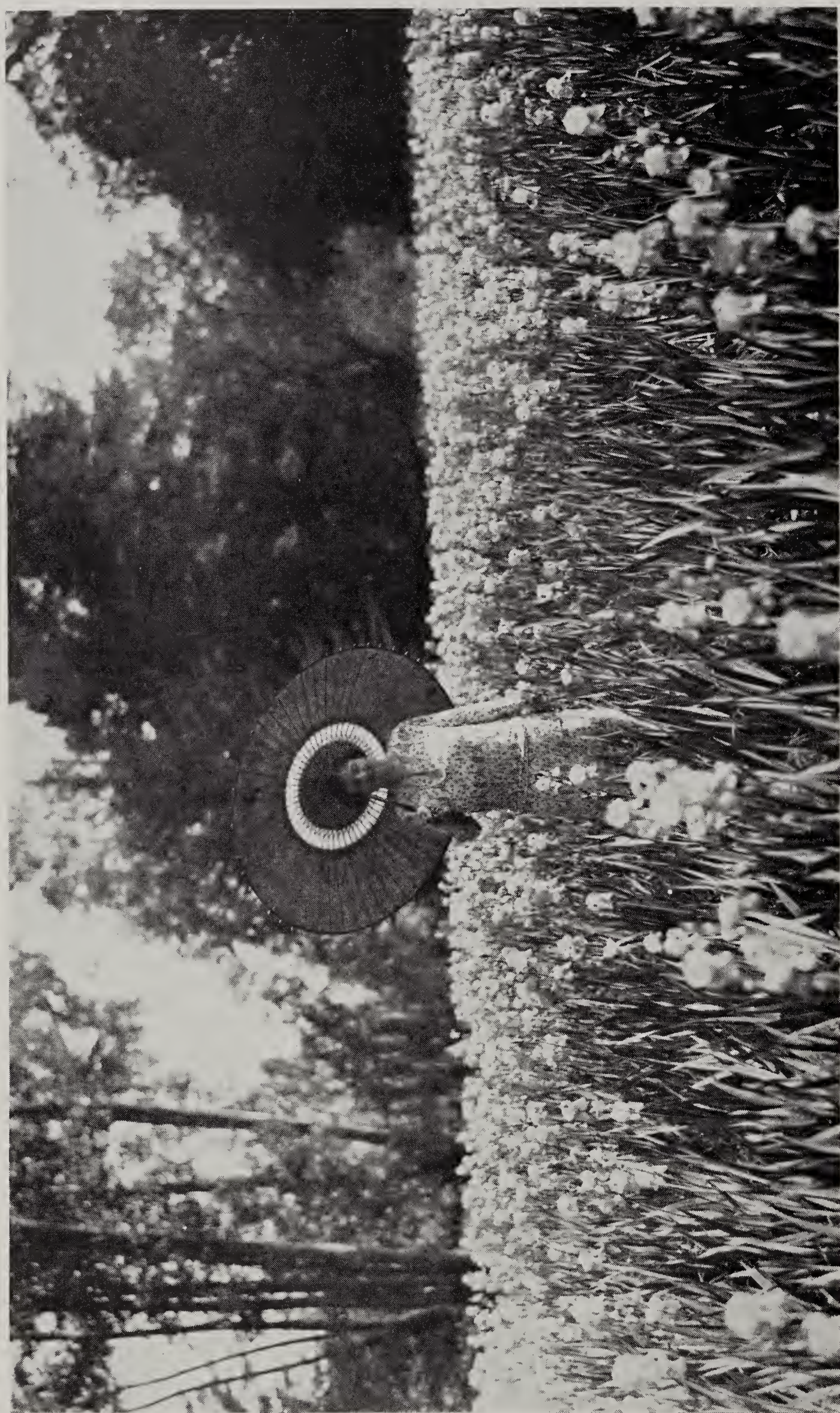
Iris

Gardens

KENTFIELD

MARIN COUNTY

CALIFORNIA



Massed Planting of light blue Iris Pallida ("Gloire de Hillegom")

ELIZABETH HARDEE
IRIS GARDENS

“Where the Iris Grows in All the Tints of Dawn”

GROWER AND IMPORTER OF

RARE IRISES

KENTFIELD, MARIN COUNTY
CALIFORNIA

Telephone: SAN ANSELMO 2423-J



Garden Path

Irises for Lasting Beauty

MAKE YOUR SPRING GARDEN A RAINBOW OF COLOR

Greek mythology tells us that Iris was a virgin, the personification of the rainbow and messenger of the gods to men.

No greater appreciation of the flower can be given today than that which the ancient Greeks gave when they bestowed this name. The colors of the iris are iridescent, liquid; all efforts to describe their beauty seem futile. One might as well try to describe the silken sheen of the poppy.

Although the iris has been named for a virgin, its regal beauty suggests rather a royal leader, a king or emperor, garbed in robes of satin and velvet with lacings of gold. There is something bold and vigorous about the iris and while one may find varieties blooming in the Summer, Autumn or Winter, it generally flowers at a time when it can be most appreciated, in the months of March, April, May and June—a veritable “Lord of the Spring.”

The new irises are the result of careful selection and breeding by the world's best hybridists. An iris usually blooms the second year from seed and out of hundreds of seedlings no two will be precisely alike. The stock of a new iris may be limited to one bulb, and the increase is naturally slow from the propagator's point of view. This accounts for the high price of new introductions. As the stock increases the price falls. Some of our finest irises are reasonable in price because they are older introductions.

I can say quite honestly, however, that I feel that all the higher priced novelties listed in my catalog are well worth the price.

ELIZABETH HARDEE,

Member American Iris Society.

Member Commercial Peony and Iris Growers Association.

VISITORS ARE WELCOME
AT ANY TIME

Terms

My terms are cash with order. Money will be refunded for any variety which I cannot furnish. No substitutions will be made without consent of the buyer. While I have a large stock of most of the standard varieties my supply of the latest importations is necessarily limited.

I use great care in keeping my stock true to name but should any prove untrue I will, on proper proof, replace it.

Delivery free throughout the United States.

PLEASE NOTE—So that my prices may always be up to date, I have decided to keep my price list distinct from my descriptive catalog. This plan enables me to get out a better booklet and to meet any unlooked for reduction in price. To those customers who know the different varieties by name, it also obviates the need of searching through an elaborated list for the price.

PRICE LIST—Information regarding prices will therefore be found on separate enclosed list. Extra copies furnished on request.

1 1 1

“I shall plant Iris, when I have a garden,
Upon a terraced hill that climbs so high
You'll never, never guess, unless you question
Which blue my garden is, which blue the sky.”

1 1 1



Corner of the Garden

Cultural Directions



Irises are all sun-lovers and should never be planted in dense shade. Some varieties keep their color best in partial shade but all must have sun at least part of the day.

Always select a well drained soil, preferably heavy. Work it well and top dress with wood ashes, lime or bone meal. Never use fresh manure.

The bearded irises can stand a long period of drought, but appreciate plenty of water as they approach the blooming season. Occasional deep watering during the summer is helpful in keeping the bulb in good condition and the foliage green.

Never allow irises to stand in water. Root rot is usually due to a cold, soggy soil or a soil in which there is decaying vegetable matter. If new soil is used for an iris planting be sure that the sod or weeds are thoroughly disintegrated.

Plant about a foot to eighteen inches apart and transplant when crowded. Some varieties give best results when they have formed a clump. *Isolene* is one of these. Others bloom well from a single rhizome. In replanting use the young, vigorous offshoots, discarding the old root. Barely cover the rhizomes or fleshy roots and be sure that no

manure comes in contact with them. Always water a new planting until root growth is established, but exercise care at this time not to overdo the watering and cause the roots to rot. Do not plant irises between heavy shrubbery; always permit them to have air and sunshine.

The above directions are for irises of the Germanica or bearded type. The beardless iris requires water and different care. Directions appear on page 15, Miscellaneous Iris.

In planting the bearded iris remember that the upper surface of the rhizome must be exposed to the sun and air. Deep planting will keep the iris from blooming satisfactorily. Bone meal is a safe fertilizer and dehydrated lime will keep the soil sweet and the foliage clean.

Standard Varieties

American Iris
Society Rating

(Bearded)

- 79 **ALBERT VICTOR** (Barr). Perhaps no iris is more satisfactory than this beautiful Pallida. Large flowers of wonderful sheen borne upon 40-inch stems. Fragrant. S and F a rich lavender blue.
- 89 **ALCAZAR** (Vilmorin). Enormous flowers of great substance; tall and vigorous, a giant in flower and growth. S light bluish violet with bronze reflections. F red violet with glowing bronze-veined throat.
- 78 **AMAS**. A large flowered species from Asia Minor. Broad standards of iridescent blue; falls smooth violet. Branched stems thirty inches high. Early.
- 83 **ARCHEVEQUE**. S light hortense violet; F velvety raisin purple. A flower of rich coloring.
- 71 **BLUE JAY** (Farr). A rich bluet blue. Late and distinct.
- CANDELABRA**. Standards lavender suffused lilac, falls dark purple with white reticulation.
- 75 **CAPRICE** (Vilmorin 1904). Rosy red purple flowers of broad segments and fine form. A thrifty grower and dependable bloomer. Two feet.
- 84 **CATERINA** (Foster). A light violet self, fragrant, lovely; stem 4 feet.
- CLARISSIMA**. S soft pink lavender. F violet purple netted on snow white, giving a peculiar tigered effect; falls held horizontally. Charming in mass.
- 78 **COL. CANDELOT** (Millet). Light rosy bronze standards, with rich velvety-maroon falls. Orange beard.
- 74 **DALMARIUS** (Goos & Koenemann). S satiny grey. F velvety soft purple lilac. Attractive.
- 75 **DAWN** (Yeld). 33 in. Early. Very pale yellow; almost white—reticulated brown at base. Bright yellow beard.
- 70 **DOROTHEA**. S white. F white shaded blue, very early and dainty.
- 81 **EDOUARD MICHEL** (Verdier). 36 in. Late. One of the finest irises in cultivation. Broad frilled standards and wide falls of deep wine red.
- 76 **ELDORADO** (Vilmorin 1910). A very distinct and striking blend of bronze, heliotrope and violet purple. Low growing and very floriferous.
- 78 **FAIRY** (Kennicott). Delicately beautiful. S incurving, F recurving, producing a globular form. S white with soft blue at base. F creamy white. Translucent. 30 inches.
- 73 **FLAVESCENS** (De Candolle). A very useful pale sulphur yellow.
- 75 **FLORENTINA ALBA**. The early May-flowering white, flushed lavender, that blooms along with Kochi. Free blooming. 24 inches.
- FREDERICK**. S pale lavender blue. F lavender blue, veined brown at throat. Heavy bloomer, one of the best for massing; large flowers; medium tall.
- 67 **GLOIRE DE HILLEGOM**. Tall, of vigorous growth; fragrant flower, clear light blue; excellent for cutting. The first tall light blue Pallida to bloom.
- 74 **HER MAJESTY** (Perry). Pale rose with deeper colored veins on falls. 20 inches.
- 68 **HIAWATHA** (Farr). S pale rosy lavender. F royal purple, bordered lavender. 28 inches.
- 80 **IRIS KING** (Goos & Koenemann). Late. A combination of old gold and maroon that makes this iris very showy. It is one of the richest in coloring among the moderately priced irises.

Irises that are planted too deep will not bloom. Keep all the foliage above the surface of the soil.

Rating

- 84 **ISOLENE** (Vilmorin). S pale lilac, flushed yellow. F old rose with shadings of Chinese violet. Large pinkish buff flower of delicate texture and unusual beauty; one of the finest. 3 feet.
- 71 **JEANNE D'ARC** (Verdier). A delicately frilled white, with tinting of lavender blue; very lovely. 2½ feet.
- 78 **JACQUESIANA** (Lemon). 30 in. Mid-season. Rich coloring and exceedingly beautiful flower. S coppery rose, deepening to a bronze throat. F rich velvety crimson-maroon. Golden beard.
- 81 **KASHMIR WHITE** (Foster). The best tall pure white. Flowers of good substance on well branched stems.
- 74 **KHARPUT**. This variety is collected in and named for a town in Mesopotamia. The large violet purple velvety flower is regal in its beauty; one of the first to bloom. 30 inches.
- 80 **KOCHII**. Rich claret purple of silky texture; free bloomer. Early.
- 88 **LENT A. WILLIAMSON** (Williamson). S hyssop violet. F velvety mulberry purple. Large flowers of great beauty and richness. A new hybrid that has been referred to by Mr. Bliss as the finest of the American seedlings. 3 feet.
- 70 **LEONIDAS**. Soft rosy mauve. Globular flower of great charm. 40 inches.
- 69 **LEWIS TROWBRIDGE** (Farr). S bright violet. F blue violet, shaded rose. 33 in. Large flower, wide standards and falls.
- 79 **LOHENGRIN** (Goos & Koenemann). Light mauve shading into pink. Flowers of good texture inclined to be frilled. 33 inches.
- 79 **LORELEY** (Goos & Koenemann). S clear light yellow, often splashed with the raisin purple of the falls. F raisin purple, bordered cream. Very showy and free.
- MADAME CHOBOUT** (Denis 1916). A lovely plicata, its yellow ground flushed red and veined brown, suggesting apricot tints. 32 in.
- 81 **MA MIE** (Cayeux 1906). Standards and falls clear white frilled violet blue. Of better form than Mme. Chereau. Three feet.
- 72 **MARY GARDEN** (Farr). 28 in. Late. S pale yellow flushed pale lavender, minutely dotted brown at haft. F cream ground, minutely dotted and striped with lavender violet and maroon. Unique.
- 76 **MAUVINE** (Dean). A pink mauve of uniform shade, tall and very effective in the garden; useful for cutting.
- 73 **MESOPOTAMICA**. A wild species, very tall and early. Useful in hybridizing. Blended shades of blue and light violet. Silky ruffled flower; branching flexile stem.
- 72 **MISS WILLMOTT** (Foster). It is a fine white, sometimes pure, sometimes variably washed with lavender. Branching spikes carrying four flowers. 3-3½ feet.
- 75 **MITHRAS** (Goos & Koenemann). 24 in. Midseason. S bright clear canary yellow. F rich wine-red with a narrow golden border. Throat beautifully marked with wine-red over a white ground. Bright orange beard.
- 70 **MME. CHEREAU**. White, elegantly frilled with a wide border of clear blue. An old favorite. 30 in.
- 77 **MONSIGNOR** (Vilmorin 1907). S pale unveined violet, F mauve overlaid velvety purple deepening in shade to the center. Makes a rich and floriferous clump. 24 in.
- 79 **MT. PENN** (Farr). Standards and falls deep reddish pink. Distinct orange beard. Pallida habit.
- 81 **NANCY ORNE** (Sturtevant 1921). A large rose purple flower suffused with yellow, giving the effect of a lovely fawn pink. Stalk low and well branched. Growth vigorous. 40 in.

PRICE LIST

**Information regarding prices will be found on separate enclosed list.
Extra copies furnished on request.**

Rating

- 71 **NAVAHO** (Farr). 20 in. Mid-season. S beautiful old gold with slight lavender tints. F dark crimson-maroon stripes over a white and yellow ground. Rich golden beard. A free bloomer. Very beautiful and much admired.
- 65 **NIBELUNGEN** (Goos & Koenemann). S fawn yellow. F violet purple with fawn margin. 30 inches.
- 74 **NIRVANA** (Sturtevant). S smooth vinaceous buff underlaid with lavender; F lobelia violet deepening to a band of vinaceous purple at the beard; smooth tones; growth strong but graceful.
- 75 **NOTHUNG** (Goos & Koenemann). A pale yellow flower suffused with delicate blue; tall, exquisite, charming in mass.
- 77 **ORIFLAMME** (Vilmorin 1904). Large. S dark lavender, F hortense violet. Stalk well branched. 30 in. Fine for massing.
- OTHELLO**. Delicately graceful flower of deep violet tones. Velvety. All divisions long and narrow. Effective near water.
- 74 **PARISIANA** (Vilmorin). White standards heavily netted and the falls fringed with Chinese violet. 30 inches.
- 79 **PERFECTION** (Barr). Rich coloring. Prolific bloomer. S light lavender violet. F flaring. Velvety deep violet purple. Bright orange beard.
- 90 **PRINCESS BEATRICE**. 48 in. Mid-season. Rated as the second best iris by the American Iris Society. Stock limited, as the genuine stock is scarce. Delicate blue of silky texture.
- 74 **PRINCESS VICTORIA LOUISE** (Goos & Koenemann). S pinard yellow. F roods violet with yellow border. Vigorous and showy. 30 inches.
- 84 **PROSPER LAUGIER** (Verdier). 32 in. Mid-season. S iridescent bronze. F velvety ruby-purple. Orange beard. Very rich flower. One of the best of the bronze irises.
- 75 **QUAKER LADY** (Farr 1909). S smoky lavender, F same overlaid orange buff. A beautiful blend. Vigorous.
- 88 **QUEEN CATERINA** (Sturtevant 1917). Large pale lavender violet with smooth iridescent surface and exceptional substance. Stalk low and widely branched. Vigorous. 36 in.
- 74 **QUEEN OF MAY** (Salter). Soft rose pink of Pallida habit. 30 inches.
- 83 **RHEIN NIXIE** (Goos & Koenemann). 36 in. Mid-season. S pure snow white. F red-purple with white border. Strikingly beautiful.
- 67 **RHODA**. Large flower of moderate height. Lovely soft shell pink. Stock limited.
- 76 **RINGDOVE** (Foster). S and F a soft mauve lavender; height 4 feet; most desirable as a cut-flower.
- 69 **ROSE UNIQUE** (Farr 1910). An early deep pink.
- 73 **SARABANDE** (Sturtevant). A most pleasing fawn and violet bi-color.
- 76 **SHERBERT** (Sturtevant 1918). S. ecru-drab, deepening through cinnamon to purplish vinaceous; F. dahlia purple, lighter at edges. Very effective. Stalks well branched. 4 feet.
- 76 **SHERWIN WRIGHT** (Koh. 1915). A bright golden yellow self. Vigorous, 24 in.
- THORBECK**. S white, F rich velvety purple. The flower is not large but the contrast in coloring makes a very effective garden clump.
- 83 **TOREADOR**. S brilliant orange, shot with bronze; F rich, glowing red.
- 77 **TROJANA**. 36 in. A giant flower. Very beautiful. Pale blue standards with rich purple falls and orange beard. The true variety.
- 71 **WINDHAM** (Farr). Rose pink, veined darker rose; foliage rather small and delicate; flower large. About 20 inches. Fine for borders.

Bearded Irises need sunshine and good drainage.

Iris Collections

In order to balance the surplus of certain overstocked varieties I will send you **ten** fine standard irises of my selection, all different and each labeled:

Collection No. 1: Catalog value \$2.50; Collection price \$1.50

Collection No. 2: Catalog value 5.00; Collection price 2.50

Collection No. 3: Catalog value 10.00; Collection price 5.00

These will all be rhizomes of good size, in wide range of color, shipped to you postpaid in California only.

Collections for Mass Planting

For those wishing a large planting of *standard* varieties I offer the following groups. Good color range, popular varieties, my selection.

100 IRISES—10 varieties, each variety labeled. By express collect.....**\$10.00**

300 IRISES—10 varieties. By express collect..... **20.00**

For landscaping and open sunbaked vistas nothing is so satisfactory as a planting of the light blue Pallidas. The effect at a distance is that of a shimmering sheet of water. When the flowers have gone the foliage will hold its own under the most trying conditions.

MIXED IRIS SEEDLINGS

For mass planting nothing is better than a collection of seedlings. The stock I offer is very fine, as all commonplace seedlings are discarded when they first bloom. Many among them are superior to some of the best standard varieties but because they are similar to ones already in commerce cannot be named. All are fine, well-grown plants. Sold for delivery in *July* only.

100 MIXED IRIS SEEDLINGS, including a wide range of beautiful shades. By express collect**\$10.00**

Where irises occupy a prominent place that is likely to look bare during the summer plant perennial Phlox between the bulbs. These will give a mass of bloom during the season when the iris is dormant and will not crowd the bulbs. A background of Delphinium will add to this charming effect. A planting of Zinnias will not injure the iris but will give color during the summer. In planting between irises use care not to overcrowd or shade them too much.

No flower is more satisfying than the iris for home decoration. If cut in the bud when about to open the flowers will expand in the house in their full richness of color and last a long time. Every bud will blossom, replacing with a fresh flower those which fade.

Ratings by American Iris Society

The figures preceding the names of the varieties herein are the ratings given in the recent symposium of the American Iris Society which has checked on many of the Bearded Iris and this checking has been indicated by numbers—100 being a perfect iris, 90 and over very fine, 85 fine, 80 very good, 70 good. While everyone may not agree with these decisions, and they are not final, yet in general they are a good guide to follow.

Please note the high ratings of irises in this catalog.

The name of the originator is, where known, given in parentheses.

S signifies "Standards" or upright petals; F the "Falls" or drooping petals.

Every iris lover is invited to join the American Iris Society. Every new member receives "Iris for the Beginner," and four other bulletins during the year. Annual dues are \$3.00. Checks payable to The American Iris Society, Science Press Printing Co., Lancaster, Penn.

Irises of Later Introduction

American Iris
Society Rating

(Bearded)

- 82 **AFTERGLOW** (Sturtevant). 36 in. Mid-season. Soft grayish lavender, shaded with yellow at the center.
- 91 **AVALON** (Sturtevant). An exceptionally large satiny pinkish lavender of fine shape and substance. Very vigorous, well branched and tall. Blooms over a long period. 40 in.
- 79 **AMBIGU**. Clear reddish purple, quite distinct and charming.
- 91 **AMBASSADEUR** (Vilmorin). 42 in. Third highest rating by the American Iris Society. A monster flower of striking richness and beauty. S glistening smoky-lavender with an amber cast. Flower of fine form and texture. F rich brown maroon. Bright orange beard.
- 77 **ANNA FARR** (Farr 1913). S white, lightly bordered pale blue; F pure white, with pale blue markings at the base. A large flower with broad petals of good substance. The horizontal falls produce an orchid-like effect. 36 inches. This variety is very beautiful.
- 88 **ASIA** (Yeld). 54 in. One of the most wonderful irises in cultivation. Free flowering, large blooms of pale lavender and violet purple. Large golden beard.
89. **BALLERINE** (Vilmorin). 48 in. Early. Large, very fragrant violet blue flowers. Given the second highest rating by the A. I. S. One of the very finest Pallidas.
- CLARIDAD** (Mohr 1926). A beautiful clear lavender blue of great purity, horizontal falls, good substance and pleasing garden effect. Early flowering, medium height and size, the closest to true blue of any iris in the garden. Stock limited.
- 79 **CLEMENT DESORMES** (Denis). A Ricardi—Her Majesty cross of deep red pink coloring. Large bright flowers, conspicuous orange beard. Very showy. Blooms over a long period.
- 89 **CONQUISTADOR** (Mohr). A gigantic iris, magnificent in the garden; huge flowers on stout stems 5 to 6 feet tall. No collection should be without this iris. Deep lavender self.



Rating

- 85 **CRUSADER** (Foster). 42 in. Mid-season. A mammoth flower and very beautiful. S uniform light blue. F deeper bluish-violet, with a white throat that is lined with brown. Orange beard. One of the most striking of all.
- 78 **DEJAZET**. Velvety red, overlaid gold; medium tall.
- 80 **DELICATISSIMA**. A tall late Pallida of heavy texture. Lavender with a distinctly pink tone. Excellent.
- DEUIL DE VALERY MAYET** (Denis 1919). S coppery rose, F deep bronzy red. Not large but of unusual coloring. 24 in.
- 85 **DREAM** (Sturtevant). A very lovely tall pink Pallida. Of good form and texture.
- FORTUNA** (Mohr-Mitchell 1927). Clear amber yellow standards 2½ inches across, and the somewhat narrower wax yellow falls, lined red brown, a broad rounded flower of Alcazar shape, something we have never seen before in this color scheme. Its growth is not that of a variegata but a modified Alcazar with very strong branched stem which measured 29 inches last season.
- 83 **GEORGIA** (Farr). A good deep pink; prolific. Splendid garden variety, early. Inclined to bloom in the Fall as well as Spring.
- 87 **GOLD IMPERIAL** (Sturtevant 1924). Chrome yellow throughout except for the orange beard, it has rare finish of texture and form. Richer in color than Shekinah. H. M. A. I. S. 1922. 33 in.
- J. B. DUMAS** (Denis). Tall stems, large pink flowers, with underlying tone of buff, haft creamy yellow, orange beard. Of exotic beauty. Outstanding. 44 in.
- 76 **KNYSNA** (Bliss). 33 in. S deep old gold. F velvety crimson-maroon, very distinct. Golden beard.
- 85 **LADY FOSTER** (Foster 1913). One of the noblest lavender blue irises. The flowers are unusually large, of smooth texture and excellent substance. Fragrant and very floriferous, sometimes blooming in the winter in California. 42 in.
- 86 **LEVERRIER** (Denis 1917). Large early fragrant. S Chinese violet, F pansy violet, general effect light rose red. Long blooming. Stalks tall, widely branched, growth vigorous. A lovely iris. 48 in.
- 87 **MAGNIFICA** (Vilmorin). Huge flowers, very showy. S light pink violet, F red violet. A handsome novelty.
- 85 **MEDRANO**. Rich shade of bronzy claret. Fine flower of unusual coloring on rather dwarfed stems.
- 79 **MERLIN** (Sturtevant). 30 in. A large lavender-violet flower, with buff styles.
- 88 **Mlle. SCHWARTZ** (Denis). 48 in. A wonderful pale mauve flower of large size and Pallida form. Free flowering.
- 84 **MADAME CHERI** (Sturtevant 1918). Ageratum violet tinted with pink and warmed by a yellow undertone. Beautiful. Fine form and substance. 42 in.
- 92 **MME. DURRAND** (Denis). 42 in. Large flowers of an unusual shade of tawny buff and creamy yellow, overlaid with mauve.
- 84 **MOTHER OF PEARL** (Sturtevant 1921). A beautiful and outstanding iris. Standards and falls pale bluish lavender with a faint creamy undertone. Large flowers of exceptional substance and perfect form on well branched stems forty inches high. Vigorous in growth and producing its wonderful flowers freely.
- 83 **OPERA** (Vilmorin). 28 in. Early. One of the richest colored irises in existence. Standards of rich violet rose with falls of rich velvety violet purple. Orange beard.
- 82 **PROSPERO** (Hort). Large flowers on branching stems. S pale lavender. F deep violet purple with a lighter margin. 4 feet.
- 79 **REGAN** (Hort). A new bi-color. Large flower of deep violet coloring.

Plant *Linum Perenne* amongst your Irises.

Rating

- 78 **ROSEWAY** (Bliss). 36 in. Early. Bright red Pallida with orange beard.
- 83 **SEMINOLE** (Farr 1920). Standards lilac red, falls velvety crimson; the whole flower brightened by a coppery suffusion. Orange beard. Two feet. One of the very finest.
- 84 **SHEKINAH** (Sturtevant). 36 in. Mid-season. A very beautiful pale yellow, much deeper at the throat. Bright lemon beard. The first yellow of Pallida growth.
- 91 **SOUVENIR DE MME. GAUDICHAU** (Millet). 42 in. One of the most striking and remarkable of all irises. Tall and early. Large, perfectly formed flowers of the richest Bradley's violet. Velvety. Prolific bloomer.
- 83 **SUNSET** (Denis). The standards of this lovely iris are like cloth of gold, the falls of the same but suffused blue violet. A strong grower, free flowering, late and scented. Stock limited.
- 86 **SUSAN BLISS** (Bliss 1922). The finest rose pink iris. Considered one of the outstanding varieties. A beautiful novelty.
- 86 **VALENCIA** (Mohr 1926). A beautiful bright orange buff self. The flowers are of good form and excellent substance. The plants are very hardy and prolific. Medium height. Stock limited.
- 77 **VIRGINIA MOORE** (Shull). Bright yellow. Falls only slightly veined. 2½ feet.
- 80 **YELLOW HAMMER** (Denis). 24 in. Early. Pure bright amber yellow. Sweetly scented.
- 82 **ZWANENBURG** (Denis 1909). An iris of peculiar coloring; standards dull lavender gray; falls bronzy yellow flushed maroon. Early and very free blooming.



Elizabeth Hardee Iris Seedling Number Two. Vigorous Growth

This seedling has attracted a great deal of attention in my garden. The flowers are of good size, with flaring falls borne on 40-inch stems and are of an intense lupin blue that does not fade in the sun.

Rare Varieties

(Bearded)

American Iris
Society Rating

- 88 **APHRODITE** (Dykes). S and F bright violet pink. The falls have a white flush from the center of the blade to the haft. This variety is recognized as the world's best pink iris. The general effect is a decided pink tone. Its good size and perfect form, with its prolific blooming habit, increase its popularity.
- AURELLE** (Denis). S light purplish blue; F rich glowing crimson-purple with a golden beard. Its habit and shape of flowers are very much like Mme. Gaudichau, from which it is a seedling, but it far surpasses its parent by virtue of the beautiful luminous effect of its fine falls. One of the new varieties, still very scarce.
- 85 **CITRONELLA** (Bliss). This is the very best yellow iris from England. Its carriage is perfect, and so are its standards, but the falls are smaller and of a dark shade. It is in very great demand among breeders and collectors.
- 88 **DOMINION** (Bliss). S of Dauphin's blue or light bluish violet, large, erectly held, well developed and richly veined; F of exceptional substance, expanding at the base to a deep rich indigo purple velvet. There is a little veining in the throat, violet purple on white ground. Beard orange, very pronounced. Quality of entire bloom is the very best. The plant, however, needs extra care, perfect drainage and probably some protection from Winter and Spring rains. Stock limited.
- 85 **FRIEDA MOHR** (Mohr 1926). A vigorous plant with tall high branched stalks averaging 42 inches and bearing proudly erect its really huge flowers of heavy substance with fine dome-shaped standards of a lovely lilac pink and broad somewhat flaring falls of glowing lilac rose. Blooming time from midseason till very late. The flower substance is heavy, the branching rather high but well spaced, the growth vigorous and the increase very rapid. The luminosity of the flowers makes this variety especially desirable.
- 84 **IMPERATOR** (Cayeux). S clear violet tinted buff; F reddish violet, throat reticulated with red brown. This is one of the most promising of the new irises from France.
- 88 **LEONATO** (Hort). Unquestionably the finest bi-color in the world. From the tip of the standard to the tip of the fall it measures over 6 inches. Larger than any other iris in existence with the exception of Ricardi Blanc, Bleute and Peerless. This ought to rate at least 95. 4 ft. John C. Wister in Bulletin No. 7 of American Society, page 10, says of this iris: "Nothing more beautiful than this flower can be imagined."
- 91 **MORNING SPLENDOR** (Shull 1922). A larger and taller Opera with the same deep rich purple tones. Very fine habit, form and substance. 36 in.
- 90 **PIONEER** (Bliss 1924). A magnificent new iris, the best red purple in cultivation. S large and incurved, colored bright red purple. F very broad and strong, in color, a deep glowing red.
- PURISSIMA** (Mohr-Mitchell 1927). A pure white of great size, full form and heavy substance. Tall and vigorous.
- 89 **SANTA BARBARA** (Mohr 1925). This is the finest of the pure lavender blues. The size, substance, spreading horizontal falls, well branched stalks and the vigor of growth, entitle this beautiful iris to be rated with the highest. 40 in.
- SAN FRANCISCO** (Mohr-Mitchell 1927). Tall stems, branching low and wide like a candelabra, carry the large white flowers, of which both standards and falls are distinctly edged lavender. In size, shape and substance, there is nothing to approach it among the older plicatas. Awarded Dykes Memorial Medal as best American introduction of 1927.
- 85 **SAN GABRIEL** (Dean 1921). A very large pinkish lavender of high excellence adding to its other merits the virtue of early flowering. Branching, very graceful. 48 in.
- 92 **SOUV. DE LOETITIA MICHAUD** (Millet). The strong stems grow about 4 feet high, bearing enormous flowers of a fine texture. S lobelia blue, shading toward the edge to pale blue; F the same color beautifully veined yellow on the white ground of the haft. It is one of the finest irises yet introduced.
- 85 **SWEET LAVENDER** (Bliss 1919). An iris of distinct and pleasing character. Standards lavender; the flaring falls a deeper rose lavender. Three feet.

Miscellaneous Iris

(Beardless)

The following varieties require some water during the dry season. In the case of Iris Siberica the best results are obtained by planting in a moist location or where they can have the regular watering given flower beds. The lovely green grass-like foliage will repay one for this care.

OCHROLEUCA

(Apogon)

Syn. "ORIENTALIS GIGANTEA." White with yellow blotch on falls; tall and handsome; very decorative as a cut-flower.

IRIS SIBERICA

(Most elegant of all the small flowered irises. Narrow grassy foliage with tall, slender stems. Extremely effective planted near pools.)

ORIENTALIS. Intensely brilliant flowers of gentian blue; stems 3 feet.

UNGUICULARIS

(Native of Algeria)

Midwinter flowering, blooming from Fall to Spring

STYLOSA. Lilac blue with grassy evergreen foliage. The leaves of Iris Stylosa form clumps like the wild iris. The flower stems are often 8 to 10 inches and the flower, though small, is unusually effective because of its clear coloring and horizontal falls.

JAPONICA

Slender stalks carrying many pale lilac-blue flowers touched with orange at center; beautiful foliage; long flowering period.

YELLOW WATER IRIS

Bright yellow flowers, 3-foot stems. Will thrive in water and damp localities.

DOROTHEA K. WILLIAMSON

Large flowers of velvety dark madder violet. 2½ feet.

FOETIDISSIMA

The Gladwyn iris; an exceptionally fine strain with handsome deep green leaves, and flowers varying from greenish and light yellow tones to bright red-purple; ornamental pods of bright scarlet seeds in Fall.

Irises of the types offered above are very desirable in landscaping because of the beauty of the foliage. This is especially true of Pseudacorus, whose tall swordlike leaves of rich green are a welcome accent in almost any planting whether border, rock garden, or pool. I have small stocks of many species and varieties in my garden not listed in my catalog. If there is something you wish that you do not find listed write to me.

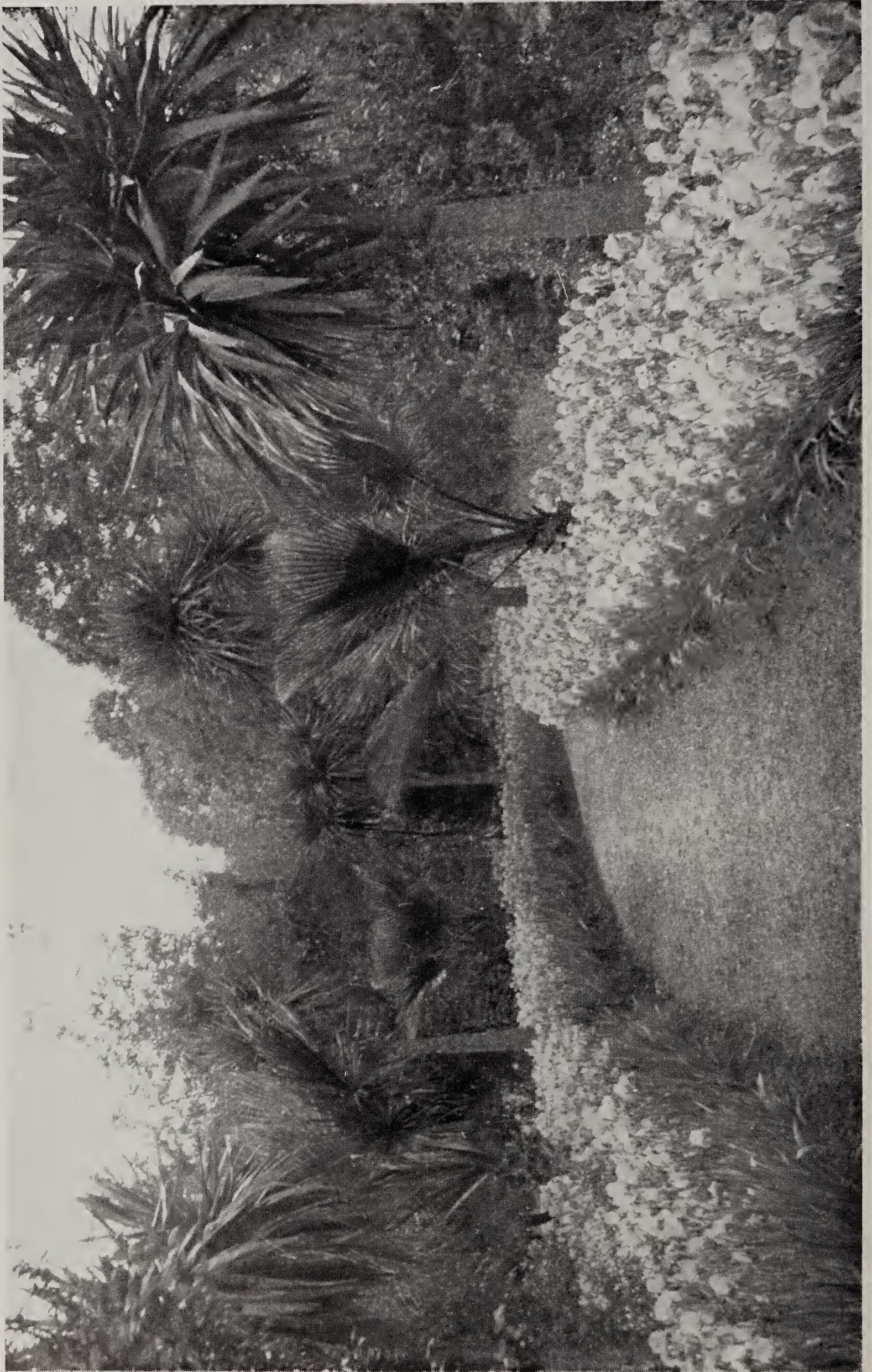
Irises that are planted too deep will not bloom. Keep all the foliage above the surface of the soil.

Leaf Spot Control

Irises are subject to few diseases but sometimes, due to certain weather conditions, the foliage will be made unsightly by what is known as "leaf-spot," a parasitic fungi. This can be controlled by the use of a light lime-sulphur spray, or a spray made by the following Dykes formula: 3 ounces sulphate of copper, 3 ounces sodium carbonate, dissolved in one quart concentrated ammonia. Keep this as a stock solution and dilute for use in the proportion of this quantity in 22 gallons of water. Spraying should be thorough and repeated at three-day intervals until control is effected.

PRICE LIST

Information regarding prices will be found on separate enclosed list.
Extra copies furnished on request.



Path in Elizabeth Hardee Iris Gardens