

Historic, Archive Document

Do not assume content reflects current scientific knowledge, policies, or practices.

62.67

LIBRARY
RECEIVED
★ JUL 23 1923 ★
U. S. Department of Agriculture.

No. 5



FLORISTS'
WHOLESALE
PRICE LIST

OF

Bulbs and Plants

FOR FALL, 1900

THE STORRS & HARRISON CO.,
PAINESVILLE, LAKE COUNTY, OHIO.

TERMS OF SALE.

Orders from unknown correspondents must be accompanied by cash or satisfactory reference.

Three will be furnished at dozen rates, and 5 at 100 rates, if order amounts to \$3.00 or more. All goods delivered at Express Office or Depot here. No charge for packing or packages.

Orders to be sent C. O. D. must be accompanied by cash to one-fourth of the value of goods ordered, to guarantee acceptance.

For wholesale rates of Fruit Trees, Vines, etc., and Hardy Ornamentals of all classes, see our Trade List No. 4.

CATALOGUES.

We issue the following catalogues (send for copy if you do not receive them) free to the trade:

No. 1. Descriptive Catalogue—Fruit and Ornamental, Deciduous and Evergreen Trees and Shrubs, Small Fruits, Grape Vines, Roses, Hardy Plants, etc.

No. 2. Spring Retail Catalogue—Full line Flower and Vegetable Seeds, Greenhouse Bedding and Hardy Plants, Roses, Shrubs, Vines, Trees, etc. Issued in January.

No. 3. Fall Retail Catalogue—Bulbs, Winter-Blooming and Hardy Plants, Shrubs, Trees, etc. Issued in August

No. 4. Wholesale Trade List for Nurserymen, Dealers and Florists—Fruit and Ornamental Trees, Shrubs, Vines, etc. Issued semi-annually, January and August.

No. 5. Special Florists' Trade List (this one).

Bulb Department—The Bulbs we offer are supplied by the best and most reliable growers in this country and abroad; thus insuring bulbs true to name and color, and at prices as low as is consistent with first-class stock.

Plant Department—Our stock of greenhouse plants is acknowledged to be one of the most complete in this country, while we devote more ground to hardy perennial plants, shrubs and hardy roses than any other nursery in the United States.

BULBS ESPECIALLY SELECTED FOR FLORISTS.

HYACINTHS.

Named Varieties Dutch Hyacinths.



Gertrude, clear pink.....	6 50
Gigantea, pink, large bells.....	6 50
*Goethe, light yellow.....	7 00
Grand Vedette, pure white.....	8 00
Grand Maitre, deep porcelain blue.....	7 00
La Peyrouse, light blue.....	7 00
La Grandesse, pure white, extra fine.....	11 00
*La Tour d'Auvergne, pure white.....	8 00
Norma, delicate pink.....	7 00
Robert Stieger, deep crimson.....	7 00

Note.—We are pleased to state that reports from Holland indicate that Hyacinths this year are much superior in quality to those of '98 and '99.

UNNAMED HYACINTHS.

(In separate colors.)

Used largely for both forcing and bedding.

Single.	Per 100.
Red, all shades.....	\$4 25
Rose	4 25
Blue	4 25
Light Blue.....	4 25
White	4 25
Blush White	4 25
Yellow	4 25
Double.	Per 100.
Red	4 25
Rose	4 25
Blue	4 25
Light Blue.....	4 25
White	4 25
Blush White	4 25
Yellow	4 25

The above in fair proportion of each color \$41.00 per 1000.

ROMN HYACINTHS.

	Per 100	Per 1000
White, 11 to 12 centimeters.....	\$1 50	\$13 00
" 12 to 15 "	2 00	17 00
Blue, 12 to 15 "	2 00	
Pink, 12 to 15 "	2 00	

SINGLE EARLY TULIPS.

A list of the best forcing varieties.

	Per 100
Artus, scarlet, fine for forcing.....	\$ 85
Belle Alliance, bright scarlet.....	1 20
Chrysolora, deep yellow, very early.....	1 30

Those marked with an asterisk (*) are double.

	Per 100
Baron Von Thuyll, pure white.....	\$7 00
*Bouquet Tendre, dark red.....	6 50
*Blocksberg, porcelain.....	7 00
*Bouquet Royal, rosy salmon.....	6 50
Charles Dickens, light blue.....	6 50

No. 5 FLORISTS' WHOLESALE.

PLEASE TAKE THIS OUT AND USE IN ORDERING. ADDRESS :

The Storrs & Harrison Company, PAINESVILLE, LAKE COUNTY, OHIO.

Your Name,

Post-Office,

Express Office, (If different from P. O.)

County of State of Date 1900

Amount enclosed, \$

Quantity

NAMES OF BULBS, PLANTS OR SEEDS WANTED.

Price

Amount carried over.

Quantity

NAMES OF BULBS, PLANTS OR SEEDS WANTED.

Price

Amount brought over,



SINGLE TULIPS.

	Per 100
Cottage Maid, white bordered pink.....	1 25
Crimson King, bright crimson.....	1 00
Duc Van Thol, scarlet.....	1 00
" " white.....	1 65
" " crimson.....	90
" " yellow.....	1 75
Kaiserkroon, red and yellow.....	1 25
La Reine, white.....	1 25
L'Immaculee, pure white, extra fine.....	1 00
Mon. Tresor.....	2 00
Pottebakker, white.....	1 50
Pottebakker, yellow.....	1 60
Proserpine, rich crimson rose.....	2 00
Rosa Mundi, rose.....	1 00
Rose Tendre, light rose.....	1 00
Yellow Prine, golden yellow.....	1 35

DOUBLE TULIPS.

	Per 100
Duke of York, red and white.....	\$1 00
Imperator Rubrorum, scarlet.....	1 80
La Candeur, pure white.....	1 10
Le Blason, rose.....	1 50
Murillo, light rose, early.....	2 50
Rex Rubrorum, bright scarlet.....	1 60
Tournesol, yellow.....	3 00
" red and yellow.....	1 60
Yellow Rose, golden yellow.....	1 00

For varieties not described above, see our retail catalogue.

MIXED TULIPS.

(Finest quality; great variety of colors.)

	Per 100	Per 1000
Single Early, superfine mixture.....	\$1 00	\$8 00
Double Early, 1st Quality.....	1 00	8 50
Double Late, mixed.....	1 00	9 00

PARROTT TULIPS.

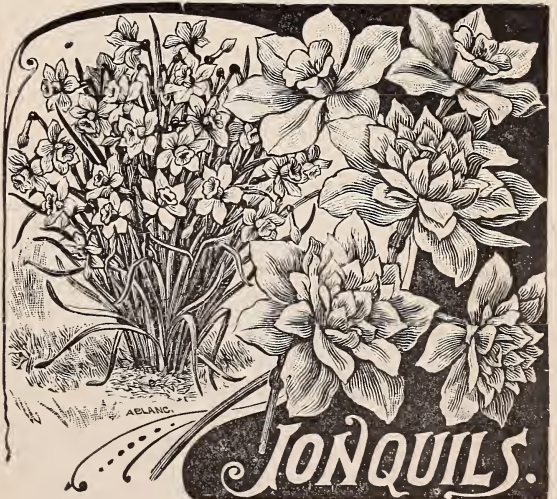
	Per 100
Admiral de Constantinople, red.....	\$1 10
Coleur Cafe, brown.....	1 10
Gloriosa, striped.....	1 10
Lutea Major, yellow.....	1 10
Fine mixture of above sorts.....	90



DOUBLE TULIPS.

LATE FLOWERING SINGLE TULIPS.

	Per 100
Bizarres.....	1 25
Byblooms.....	1 25
Darwin.....	1 50
Gesneriana.....	1 35
Golden Crown, yellow bordered red.....	1 25



	Per 100
Single.....	\$. 50
Double.....	2.50
Campernelle.....	.65
Campernelle Rugulos.....	.90

NARCISSUS OR DAFFODILS.
POLYANTHUS NARCISSUS.

	Per 100	Per 1000
Paper White, selected bulbs.....	.75c.	\$6 00
Paper White Grandiflora (large flowering), selected bulbs.....	.90c.	8 00



- Grand Soleil d'Or. Rich yellow with deep reddish cup..... 1.75
- Gloriosa Superba. Pure white with primrose colored cups..... 1.75
- Grand Primo. White, citron cup..... 1.75
- Staten General. Large white, with citron yellow cups, changing to white 1.75

DOUBLE NARCISSUS.

	Per 100	Per 1000
Alba Plena Odorata.....	\$.80	
Incomparable75	
Orange Phoenix	1.75	
Van Zion, double yellow Daffodil, one of the best for forcing.....	1.60	\$14.00

SINGLE NARCISSUS.

	Per 100
Biflorus (Two Flowered Poeticus).....	\$.60
Bulbocodium, "Hoop Petticoat," yellow.....	4.50
Golden Spur, extra large rich yellow.....	4.00
Horsfieldii, outside pure white, center yellow...	3.75
Poeticus, pure white, small yellow cup.....	.40
Poeticus Ornatus, large, pure white flowers, saffron cup	1.00
Princeps, cup deep yellow, outside white.....	1.00
Trumpet Major, deep golden yellow.....	1.25
Stella, white, star-shaped.....	.75

CHINESE NARCISSUS.
(Chinese Sacred Lily.)

Grand sellers. Everybody knows what they are and wants them. Per basket of 30 bulbs, \$1.60. Per bundle of 4 baskets (120 bulbs), \$6.00.

SCILLA SIBERICA.

Intense bright blue. 60c. per 100.

CALLA LILLIES—Dry Bulbs.

Extra large, 2 to 2½ inches.....	\$9.00
First size, 1½ to 2 inches.....	7.00
Spotted Leaf (Richardia Maculata).....	4.00

IRIS.

	Per 100
English, mixed	\$1.00
Spanish, mixed50

(For other Iris, see list of herbaceous plants).



CHINESE NARCISSUS.



FREESIA REFRACTA ALBA.

	Per 100	Per 1000
First size	\$.50	\$4.00
Extra Strong Selected.....	.65	5.00
Mammoth Bulbs	1.00	8.00

MIXED CROCUS.

Blue	\$.30	\$2.50
White30	2.50
Yellow30	2.50
Striped30	2.50



CROCUS.

CROCUS.

Named, Large Flowering.

	Per 100	Per 1000
Mont Blanc — Pure white, large.....	\$.50	\$4.50
Prince Albert — Large, brilliant purple.	.50	4.50
Grootvorst — White50	4.50
Sir Walter Scott — Striped blue and white50	4.50
Baron Bruinow — Deep blue.....	.50	4.50
Mammoth Yellow70	6.00
Cloth of Gold — Yellow.....	.50	4.50



LILY OF THE VALLEY.

LILY OF THE VALLEY.

Fine 3 year old Berlin pips, best for early forcing. \$1.50 per 100; \$11.00 per 1,000; \$25.00 per case of 2,500.

Three year old Hamburg pips, best for later forcing. \$1.25 per 100; \$10.00 per 1,000; \$22.00 per case of 2,500.

OXALIS.

	Per 100
Bermuda Buttercup. Good sized bulbs. Flowers bright buttercup yellow.....	\$1.00
Cernua Lutea. Splendid large canary yellow..	.80
Alba. Pure white.....	1.50
Bowei. Rosy crimson; good size flower.....	1.00

CHIONODOXA.

	Per 100
Lucilliae (Glory of the Snow). Bright blue large white center.....	\$.75
Gigantea. Extremely large, lilac blue, with conspicuous white center.....	1.00

ALLIUM NEAPOLITANUM.



An excellent variety for winter flowering; pure white. 60c. per 100.

SNOWDROPS.

- Single\$.70
- Double 1.50
- Elwesii. Fully three times the size of ordinary single snowdrops75

ANEMONES.

- Single, all colors mixed.....\$.50
- Double, all colors mixed..... 1.00

SPIREA.

- Japonica.** Strong forcing clumps. \$3.50 per 100.
- Astilboides Floribunda.** Large, feathery panicles of white flowers; fine for forcing. \$4.00 per 100.
- Nana Compacta.** A variety with much larger flowers, blooming much more freely than S. Japonica. Strong clumps, \$5.00 per 100.

LILIES.

- Candidum**— Per 100
- First Quality, imported.....\$4 50



ARAUCARIA.

Harrisii —	Per 100	Per 1000
First size, 5 to 7 inches in circumference	5 00	
Extra selected, 7 to 9 inches circumference	12 00	
Largest size, 9 to 11 inches in circumference	20 00	
Longiflorum Japan Grown		
First size, 6 to 8 inches in circumference	3 75	\$35 00
Extra selected, 7 to 9 inches in circumference	6 00	55 00
Auratum —		
Imported, in November, 1st size,		
8 to 9 inches.....	5 00	
9 to 11 inches.....	7 00	
Speciosum Rubrum	5 00	
Speciosum Album	6 00	
Ugrinum, fl. pl.	3 00	20 00

Harrisii and Candidum and Longiflorum can be sent at any time; other varieties after Oct. 15th.

ORNITHOGALUM ARABICUM,

(Arabian Star of Bethlehem.)



Pure white flowers with black center, borne in clusters, \$1.75 per 100.

SEASONABLE PLANTS FOR FLORISTS.

We supply everything in the plant line, from well grown specimens of Palms, Ferns, Ficus, Araucarias, etc., down to hardy herbaceous plants, field-grown roses and shrubbery.

ARAUCARIA.

- Excelsa.** Our stock of this was never better; well graded as to sizes and of perfect color. Each.
- 8 to 10 inches high.....\$.60
- 10 to 12 inches high..... .75
- 12 to 15 inches high..... 1.00
- Compacta Robusta.** Beautiful plants, short jointed, with broad graceful foliage. Each.
- 12 inches high.....\$1.50
- 15 to 18 inches high..... 2.00
- Excelsa Glauca.** 12 inches high..... 1.00

ALLAMANDA WILLIAMSII.

Handsome, compact plants with beautiful golden yellow flowers at the tip of each branch. The flowers, when fully developed, are from 2½ to 4 inches in diameter and very fragrant. \$8.00 per 100.

ASPARAGUS.



PLUMOSUS.

Plumosus. More popular every year. Almost indispensable in floral work. Strong, thrifty plants.

	Per 100
2½-inch pots	\$5.00
3-inch pots	8.00
4-inch pots	15.00

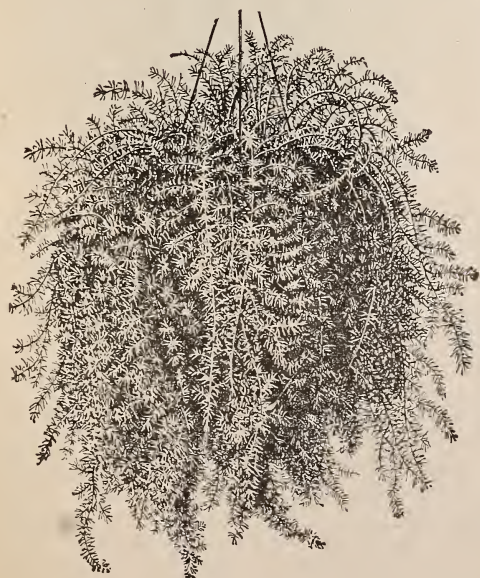
AZALEAS.



CHINESE AZALEA.

We can save you money on Azaleas, for we buy only the best varieties, unpack, regrade and sort them so that all poorly shaped or poorly budded plants are taken out. Thus our stock gives you advantage over your competitor who buys assorted case lots, and gets everything, good, bad and indifferent. Order early when plants may be sent by freight, and avoid express rates. They will arrive in October. We are now booking orders for early shipments.

	Per 100
10 to 12-inch crowns	\$35 00
12 to 14-inch crowns	45 00
14 to 16-inch crowns	55 00
16 to 18-inch crowns	\$12.00 per doz.



SPRENGERI.

Sprengeri—Has proven to be most valuable for pots or cut sprays.

	Per 100
2½-inch pots	\$ 5.00
3-inch pots	7.00
4-inch pots	12.00



BEGONIA PURITY.

BEGONIAS.

(Flowering Varieties.)

Vesuve. A new variety; very effective for bedding or pot culture. Strong growing variety, and at most times completely covered with large clusters of bright coral red flowers. \$1.00 per dozen.

Profusion. Habit very free; plant a splendid grower, at all times enveloped in trusses of bright pink bloom. \$1.00 per dozen.

Fournaise. Fine compact habit, producing large panicles of flowers that droop slightly and are supported by long red stems. Flowers bright red, twice the size of Begonia Fuchoides, which it resembles somewhat. \$1.00 per dozen.

GENERAL COLLECTION.

Purity. The most prolific bloomer of all the white Begonias, being a mass of bloom both summer and winter. It is an excellent plant for pot culture, making a neat compact plant, that is nearly as broad as high, and completely covered with glistening, pearly white flowers. \$4.00 per 100.

Viandii. Charming new Begonia; cross between Duchartrei and Pictaviensis. Leaves large, dark green on upper side, purplish beneath. Flowers delicate rose, set off with reddish hairs, forming immense clusters. \$1.25 per dozen.



OTTO HACKER.

Otto Hacker. Flowers bright coral red in large pendant clusters 8 to 10 inches long. Foliage dark green with a satiny lustre. Nothing approaches it for habit of growth and size of flowers. \$6.00 per 100.

Metallica. Leaves metallic bronze, veined darker, flowers white. \$4.00 per 100.

Manicata Aurea. Large, glossy leaves, beautifully blotched with creamy white, with carmine etchings in the mature leaves. Flowers delicate blush white on long stems. \$6.00 per 100.

Rubra Still a prime favorite; flowers red, hanging in good-sized clusters. Leaves brightest green. \$5.00 per 100.

Argentea Guttata	Per 100	\$4.00
Erford a		4.00
President Carnot		5.00

Incarnata Rosea	5.00
Sandersonii	4.00
Vulcan	4.00
Wettsteinei	4.00

CROTONS.

Eight varieties in good assortment.
2-in. pots, \$4.00 per 100.
3-in. pots, \$6.00 per 100.

CLERODENDRON BALFOURI.

3-inch pot plants, \$5.00 per 100.

FICUS ELASTICA.

4-inch pot plants, 10 to 12 inches high, per doz., \$3.50; \$25.00 per 100.



FERNS.



BOSTON FERN.

Nephrolepis Bostoniensis (Boston Fern). One of the most profitable plants for the florist. Makes up into specimens rapidly and sells on sight.

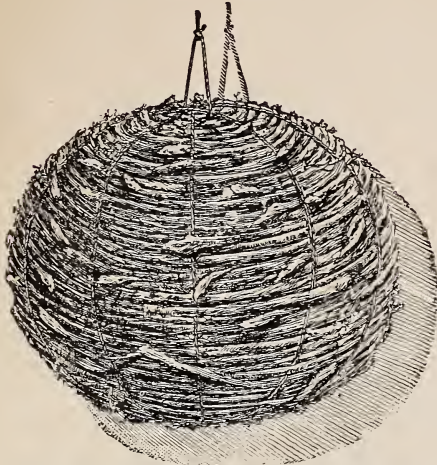
	Per 100	Per 1000
2½-inch pots	\$ 5 00	\$40 00
4-inch pots	15 00	
5-inch pots	35 00	
6-inch pots	50 00	
7-inch pots	9 00 per dozen.	

Nephrolepis Cordata Compacta. One of the finest ferns for house culture.

	Per 100
2½-inch pot plants.....	\$ 4.00
3-inch pot plants.....	6.00
4-inch pot plants.....	12.00

Adiantum Cuneatum.....	3.50
“ Pubescens	3.00
Blechnum Braziliensis	3 50
Lastrea Aristata.....	3.00
Pteris Serrulata.....	3.00
“ Adiantoides.....	3.00
“ Argyrea	3.50
“ Critica Alba Lineata	4.00
“ Ouvrardii	3.50
Polystichium Proliferum.....	5.00

JAPANESE FERN BALLS.



FERN BALL BEFORE WATERING (dormant.)



JAPANESE FERN BALL—IN LEAF.

Imported from Japan each year. They are easily handled and make grand ornaments for house or conservatory. When received in dormant state, place in water for ten minutes a day every other day until growth is started, after which suspend in desired location and sprinkle as required. If leaved out fully they form regular globes of bright green foliage. \$4.00 per dozen.

HIBISCUS PEACHBLOW.

Flowers double, of a rich shade of clear pink with small crimson center. From 4 to 5 inches in diameter when well grown. The most free flowering Hibiscus we have ever grown, blooming when small plants, in 2½-inch pots, \$8.00 per 100.

PANDANUS UTILIS.

Per 100
2½-inch pots\$5.00
3-inch pots 8.00

OTAHEITE ORANGE.

3-inch pots, strong\$6.00 per 100.
4-inch pots 2.00 per doz.
5-inch pots 3.50 "



OTAHEITE ORANGE.



MARANTA SANGEANA.

A dwarf growing variety with beautifully marbled foliage. 2½-inch pots, \$5.00 per 100.

PALMS.

We make a specialty of this class of plants. The stock we offer this year is clean, healthy and well-grown; in fact, the largest and best we ever offered. All measurements are taken from top of pots.

CYCAS REVOLUTA.

(Sago Palm.)

A nice lot of medium-sized plants, in fine condition.
With 6 to 8 leaves.....each, \$1.00
With 8 to 12 leaves..... " 1.50

KENTEA FORSTERIANA.

Per 100
2½-inch pots\$10 00
3-inch pots, 3 to 4 leaves, 12 inches high..... 18 00
4-inch pots, 4 to 5 leaves, 15 inches high..... 35 00
5-inch pots, 4 to 5 leaves, 15 to 18 inches high. 50 00
5-inch pots, 5 leaves, 24 to 26 inches high..... 75 00

Per doz.

6-inch pots, 5 leaves, 26 to 28 inches high..... 12 00
6-inch pots, 5 to 6 leaves, 30 inches high..... 15 00
6-inch pots, 5 to 6 leaves, 30 to 32 inches high 18 00
6 and 7-inch pots, 6 leaves, 32 to 36 inches high 24 00

each

8-inch pots, 6 to 7 leaves, 40 to 48 inches high, \$3.00

ARECA LUTESCENS.

Per 100
2½-inch pots\$6.00
3-inch pots 8.00

KENTIA BALMOREANA.



- 2½-inch pots, 6 to 8 inches high..... \$10 00
- 3-inch pots, 4 to 5 leaves, 10 to 12 inches high 18 00
- 4-inch pots, 5 to 6 leaves, 15 inches high..... 35 00
- 5-inch pots, 5 to 6 leaves, 18 inches high..... 60 00
- 5-inch pots, 5 to 6 leaves, 18 to 20 inches high.
heavy 75 00
- Per doz.
- 6-inch pots, 6 leaves, 20 to 24 inches high..... 12 00
- 6-inch pots, 6 leaves, 24 inches high..... 15 00
- 6-inch pots, 6 to 7 leaves, 26 to 28 inches high 18 00
- 6 and 7-inch pots, 6 to 7 leaves, 28 to 32 inches
high 24 00



LATANIA BORBONICA.

- 2½-inch pots \$ 5 00
- 3-inch pots 8 00
- 4-inch pots, 4 to 5 leaves, 15 inches high..... 25 00

- 6-inch pots, 5 to 6 leaves, 18 inches high..... 50 00
- Per doz.
- 6 and 7-inch pots, 5 to 6 leaves, 18 to 24 inches
high 9 00
- 6 and 7-inch pots, 6 leaves, 24 inches high.... 12 00
- 7-inch pots, 6 leaves, 24 to 28 inches high.... 15 00
- 8-inch pots, 6 to 7 leaves, 30 inches high..... 18 00
- 8-inch pots, 6 to 7 leaves, 30 to 34 inches high 24 00

LIVISTONIA ROTUNDIFOLIA.

- 5-inch potseach \$.75
- 6-inch pots " 1.50

FIELD GROWN ROSES.



Our "low-budded field-grown Roses" have gained an enviable reputation. They make the finest forcing stock obtainable, in every way superior to imported plants. Plants are especially fine this year; strong and bushy. The following varieties are grown in largest quantity:

- | | |
|--------------------------|------------------------|
| Alfred Colomb. | Jubilee. |
| Anna de Diesbach. | John Hopper. |
| Baroness Rothschilds. | M. P. Wilder. |
| Baron Bonstetten. | Magna Charter. |
| Coquette des Blancches. | Mrs. J. H. Laing. |
| Coquette des Alps. | Mad. Gabriel Luizet. |
| Clio. | Margaret Dickson. |
| Countess of Londonderry. | Mrs. Sherman Crawford. |
| Duke of Edinburgh. | Paul Neyron. |
| Eugene Furst. | Prince Camille de Ro- |
| Francois Levat. | han. |
| Fisher Holmes. | Rhodoconachi. |
| Gen. Jacqueminot. | Ulrich Brunner. |
| Gen. Washington. | Tom Wood. |
| | Vick's Caprice. |

\$10.00 per 100. \$90.00 per 1,000.

ONE YEAR FIELD GROWN MONTHLY ROSES.

- (Suitable for 4 and 5-inch pots.)
- | | |
|------------------------|------------------------|
| Clotilde Soupert. | Pink Souper. |
| Champion of the World. | Queen's Scarlet. |
| Hermosa. | Souv. du Pres. Carnot. |
| Mosella. | Mary Washington. |
| Mrs. Degraw. | \$8.00 per 100. |

HARDY CLIMBING ROSES.

- Strong 2-year-old own root plants, Balt. Belle,
Anna Marie, Seven Sisters, Tennessee Belle
and Prairie Queen. \$6.00 per 100.

MOSS ROSES.

Blanche Moreau. Dueil de Paul Fontaine.
 Countess of Murinaise. Luxemburg.
 Henry Martin. Glory of Mosses.
 Salet.
 Crested.

Per 100, \$10.00.

CRIMSON RAMBLER.



Is easily forced and finds ready sale whenever in bloom. Our stock is strong and thrifty, with long, stout canes. Anyone not already forcing this should at least try a few. Nothing pays better for retail sales, as high as \$5 to \$8 each frequently being paid for good specimens. Extra strong 2 year, \$12.00 per 100. \$100.00 per 1,000.

ROSA WICHURIANA.

Japanese Creeping Rose. \$6.00 per 100.

WICHURIANA HYBRIDS.

Manda's Triumph. Pure white, very double.
Pink Roamer. Bright rich pink with silvery white center.
South Orange Perfection. Soft blush pink, changing to white.
Universal Favorite. Bright, clear rose.
 \$6.00 per 100.

HYBRID RUGOSA ROSES.

Mad. G. Bruant. A valuable perpetual flowering hardy white rose, semi-double; flowers in clusters.
Agnes Emily Carman. Color, rich deep crimson. Flowers large, semi-double; very free flowering. \$10.00 per 100.

HARDY YELLOW.

Persian and Harrison's. \$10.00 per 100.

SANSEVERIA ZEALANICA.

Strong plants from 2½-inch pots. \$3.00 per 100.

SWAINSONIA GALEGIFOLIA ALBA.

\$4.00 per 100.

TUBEROSES.

For November and December delivery.

Pearl. 4 inches and up in circumference. \$7.00 per 1,000.
Tall Double. 4 inches and up in circumference. \$7.00 per 1,000.

SELAGINELLA EMILIANA.

Grand in fern-dishes or single specimen pots. \$3.00 per 100.

VINCA MAJOR VARIEGATA.

A fine lot of plants from open ground. Large enough for 4 or 5-inch pots. \$6.00 per 100.

HARDY PERENNIAL PLANTS.

We devote a large area to culture of hardy herbaceous plants, and are continually adding to our collection.

AQUILEGIA.

Cerulea. \$6.00 per 100.
Chrysantha. \$5.00 per 100.
Alba Plena. (Double White). \$5.00 per 100.

ASCLEPIAS TUBEROSA.

A beautiful hardy native plant. Flowers brilliant orange red, on stems 2 feet high. \$5.00 per 100.

ANTHEMIS TINCTORIA.

(Hardy Golden Marguerite.)

One of the best yellow-flowered perennials; a continuous bloomer the entire summer. Strong clumps. \$6.00 per 100.

HARDY ASTERS.

Fine border plants of easy cultivation. Strong clumps.
Grandiflora. Flowers extra large, purple. \$1.50 per doz.
Lævis. A splendid light blue variety, flowering early in the season. \$8.00 per 100.
Novæ Anglæ. Very large, bluish purple with yellow eye. \$8.00 per 100.

COREOPSIS LANCEOLATA.

Strong plants. \$5.00 per 100.

DELPHINEUM.

Formosum. \$6.00 per 100.
Ranunculiflora. \$8.00 per 100.
Lemoinei. \$10.00 per 100.

CARYOPTARIS MASTOCANTHUS.

(Blue Spirea.)

Field-grown plants, 18 to 24 inches, \$7.00 per 100.

CAMPANULA. (Bell Flower.)

	Per 100
Persicifolia Alba	\$6.00
Persicifolia Blue	6.00
Medea White	6.00
Medea Blue	6.00

DICTAMNUS FRAXINELLA.

Rubra. \$8.00 per 100.

DORONICUM PLANTAGINEUM.

One of the earliest spring flowering hardy herbaceous plants. Flowers bright golden yellow, two to three inches across. \$6.00 per 100.

DICENTRA SPECTABILIS.

(Bleeding Heart.)

Strong plants, home grown. \$8.00 per 100.

EULALIAS.

Japonica Variegata. \$5.00 per 100.
Japonica Zebrina. \$5.00 per 100.
Gracilis Univitata. \$5.00 per 100.

FUNKIA SUBCORDATA.

(White Day Lily.)

Strong roots. \$5.00 per 100.

FUNKIA UNDULATA VARIEGATA.

Beautiful foliage and lavender blue flowers. \$7.00 per 100.

GAILLARDIA GRANDIFLORA.

Field-grown plants. \$6.00 per 100.

HEMEROCALLIS.

Dumorteri. Dwarf, compact grower, bright orange flowers. \$5.00 per 100.
Kwamso, fl. pl. Large double copper-colored flowers. \$5.00 per 100.

HYACINTHUS CANDICANS.

\$2.00 per 100.

HELIANTHUS.

Multiflorus Plenus. Strong clumps. \$6.00 per 100.
Laetiflorus. \$6.00 per 100.
Soleil d'Or. \$6.00 per 100.

HOLLYHOCKS.

As a background in large borders or beds of the lower growing herbaceous plants there is nothing better. For planting in rows or groups on the lawn, or interspersing among shrubbery they are invaluable. Double white, pink, crimson and yellow in separate colors. \$5.00 per 100.

IRIS KAEMPFERI.

Fine assortment, named. \$8.00 per 100.
 Mixed. \$5.00 per 100.

IRIS GERMANICA.

We offer eight named varieties. \$3.00 per 100.

HARDY HIBISCUS.

Crimson Eye. Strong flowering roots. \$4.00 per 100.

IBERIS SEMPERVIRENS.

(Hardy Candy Tuft). \$8.00 per 100.

LYCHNIS.

Chalcedonica. \$8.00 per 100.
Viscaria Splendens. \$8.00 per 100.

HARDY PINKS.

Field-grown clumps. \$5.00 per 100.



**RUDEBECKIA
 GOLDEN GLOW**

RUDEBECKIA GOLDEN GLOW.

Strong divisions, \$3.00 per 100. Strong clumps, \$8.00 per 100.

PAPAVER. (Poppy.)

Nudicaule (Iceland Poppy). White, orange, yellow. \$8.00 per 100.

Bracteata. \$10.00 per 100.

Oriental. \$10.00 per 100.

PHLOX HARDY PERENNIAL.

Fine collection of named varieties. \$8.00 per 100.

PHLOX SUBULATA.

White and Pink. \$5.00 per 100.

HARDY WHITE MARGUERITE.

(*Pyrethrum Uligenosum*).

Large white flowers, with yellow center. Fine for late summer and fall flowers. \$8.00 per 100.

PAEONIES—HERBACEOUS.

We have an excellent assortment in twenty choicest varieties. \$8.00 per 100.

PAEONIA—OFFICINALIS, RUBRA, PLENA.

Rich deep crimson. Very early. \$7.00 per 100.

PLATYCODON GRANDIFLORUM.

(*Chinese Bell Flower.*)

\$6.00 per 100.

TRITOMA UVARIA.

(*Flame Flower.*)

Large flowering roots. \$5.00 per 100.

YUCCA FILAMENTOSA.

Strong flowering plants. \$6.00 per 100.

HARDY SHRUBS and VINES.

Altheas. Double, in variety; 3 to 4 feet. \$12.00 per 100.

Ampelopsis Veitchii. Strong, 4-inch pots; 3 to 4 feet tops. \$8.00 per 100. Strong, field-grown: \$10.00 per 100.

Berberry. Green and purple-leaved, 2 to 3 feet. \$8.00 per 100.

Cydonia Japonica. 18 to 24 inches. \$6.00 per 100.

Deutzias. In 3 varieties; 3 to 4 feet. \$8.00 per 100.

Deutzias Gracilis. Fine forcing stock, 10 to 12 inches high; suitable for 4 and 5-inch pots. \$6.00 per 100.

Deutzias Gracilis. 15 inches and over; suitable for 6 and 7-inch pots. \$8.00 per 100.

Clematis. Large flowered, in variety, 2 years Jackmanii, Henryii, Duchess of Edinburgh, Ramona, etc. \$25.00 per 100.

Clematis Coccinea. Strong, 2-year nursery-grown plants. \$10.00 per 100.

Clematis Paniculata. Field-grown plants. \$8.00 per 100.

Fringe Purple. 3 to 4 feet. \$10.00 per 100.

Honeysuckle Tartarian. Red and white; 3 to 4 feet. \$10.00 per 100.

Honeysuckle Halleana. Chinese Twining, Aurea Reticulata. \$8.00 per 100.

Enonymous Radicans Variegata. Strong stocky plants. \$8.00 per 100.

Hydrangea Paniculata Grandiflora. 18 to 24 inches. \$10.00 per 100. 2 to 3 feet, \$12.00 per 100.

Lilacs. White and purple; 3 to 4 feet; \$10.00 per 100.

Lilacs. New Double Flowered, in 8 varieties. \$15.00 per 100.

Snowball. 3 to 4 feet. \$12.00 per 100.

Spireas. In variety; 2 to 3 feet. \$10.00 per 100.

Spirea A. Waterer. Bushy plants 12 to 15 inches, right size for potting. \$12.00 per 100.

Wisteria Purple. 2 years; strong. \$10.00 per 100.

HARDY SHRUBS and VINES SUITABLE FOR MAILING.

	Per 100
Altheas, 4 varieties.....	\$5 00
Ampelopsis Quinquefolia	3 00
Berberry Thunbergii	3 00
Deutzias, in 4 varieties.....	2 00
Forsythia Viridissima and Fortunii.....	3 00
High Bush Cranberry.....	2 50
Philadelphus, in 3 varieties.....	3 00
Spireas, in variety.....	3 00
Tartarian Honeysuckle, red and white.....	3 00
White Fringe	4 00
Honeysuckle, Halleana, Chinese Twining and Aurea Reticulata	2 50