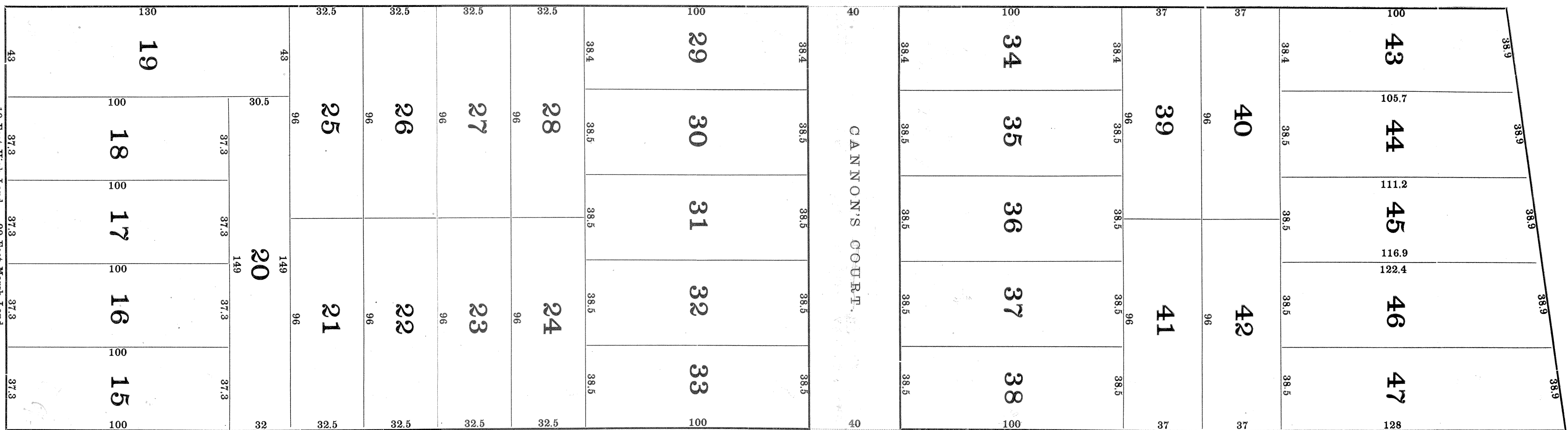
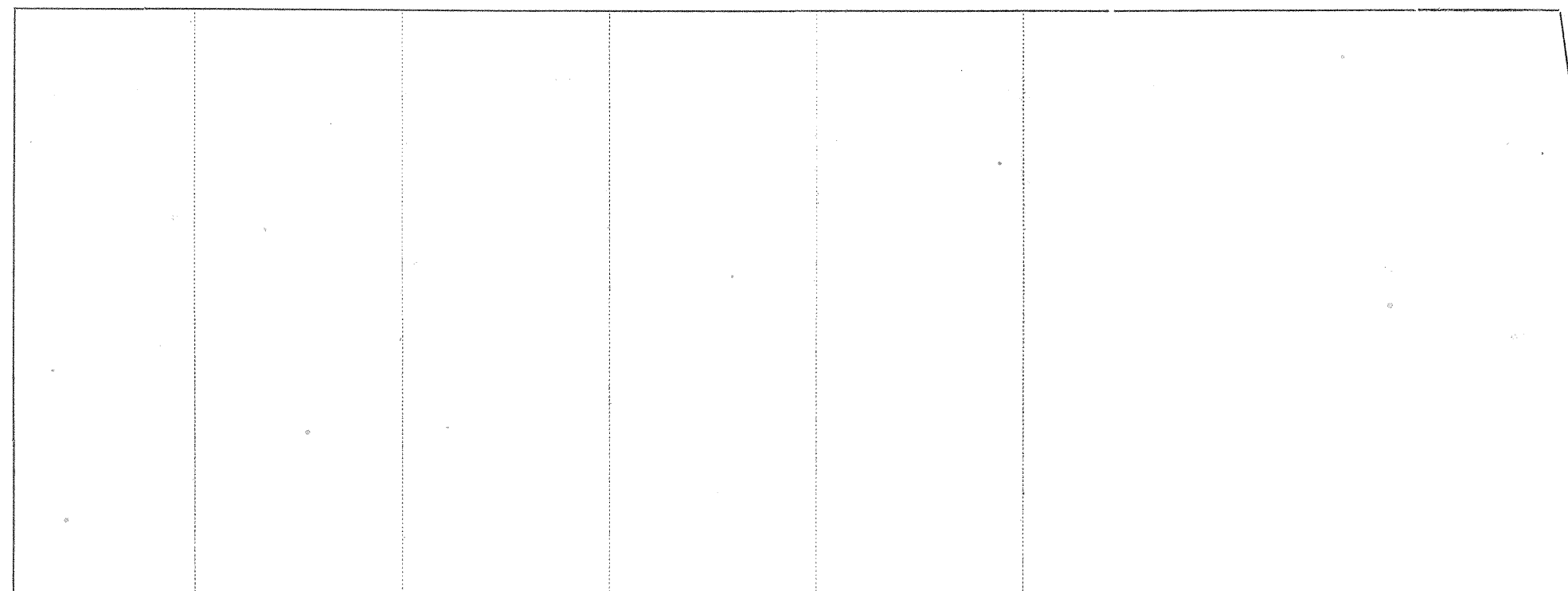


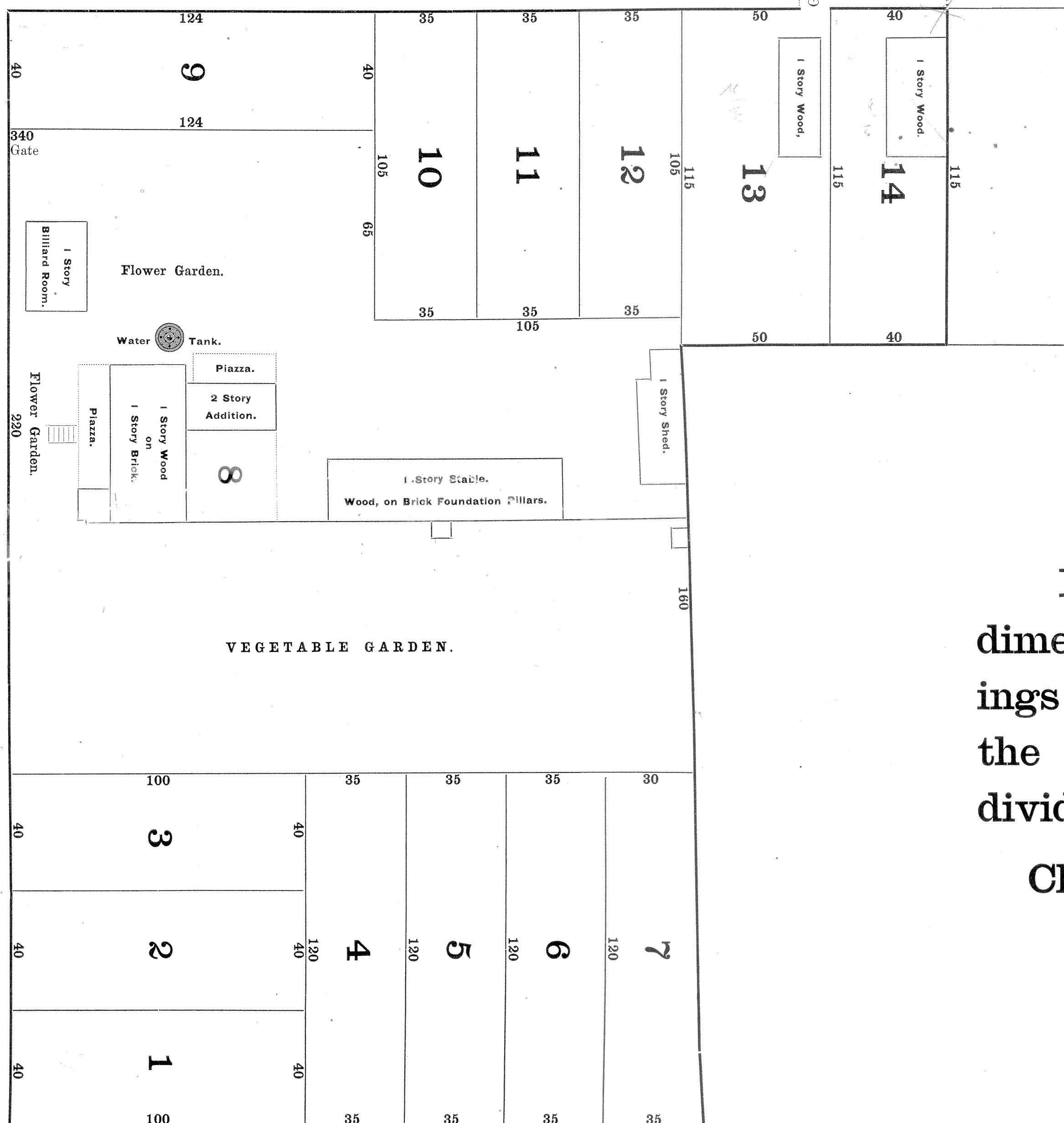
CHINQUAPIN STREET, 40 Feet Wide.



COURT, 20 Feet Wide.



SPRING STREET, 50 Feet Wide.



BELT STREET, 50 Feet Wide.

PRESIDENT STREET, 50 Feet Wide.

PLAN, Showing the location, form, and dimensions of a Tract of Land, and the Buildings thereon, with its buttings and boundings, the property of H. F. W. BREUER, subdivided into Forty-seven Building Lots.

Charleston, S. C., January, 1885.