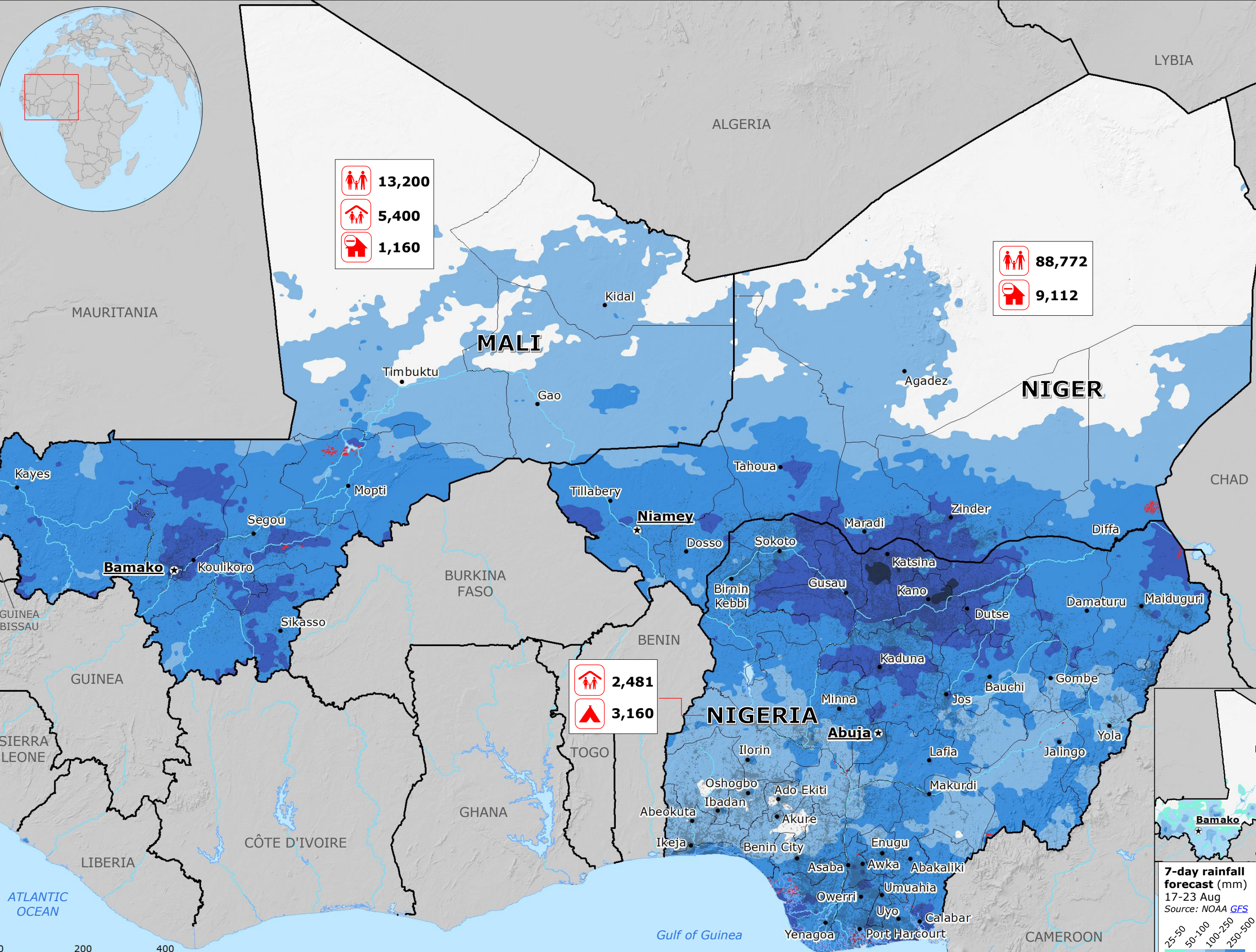


# Niger, Nigeria, Mali | Floods



**Impact**  
 since late June  
 Source: [ACAPS](#), [UN OCHA](#)  
 as of [28 July](#), [4 Aug](#), [11 Aug](#).

- Affected people
- Affected IDPs\*
- Destroyed houses
- Destroyed shelters

**Past rainfall accumulation** (mm)  
 26 June – 17 Aug  
 Source: [NASA GPM](#)

- >1,000
- 500-1,000
- 250-500
- 100-250

Flooded area  
 as of 16 Aug  
 Source: [NASA MODIS](#)

- Settlements  
 Source: [JRC GHSL](#)
- Administrative division\*\*
- Country border

\*Internally Displaced People.  
 \*\*Nigeria, Niger, and Mali are divided in different types of administrative subdivisions, being Regions in Mali and Niger, States in Nigeria.

**13,200**  
**5,400**  
**1,160**

**88,772**  
**9,112**

**2,481**  
**3,160**

