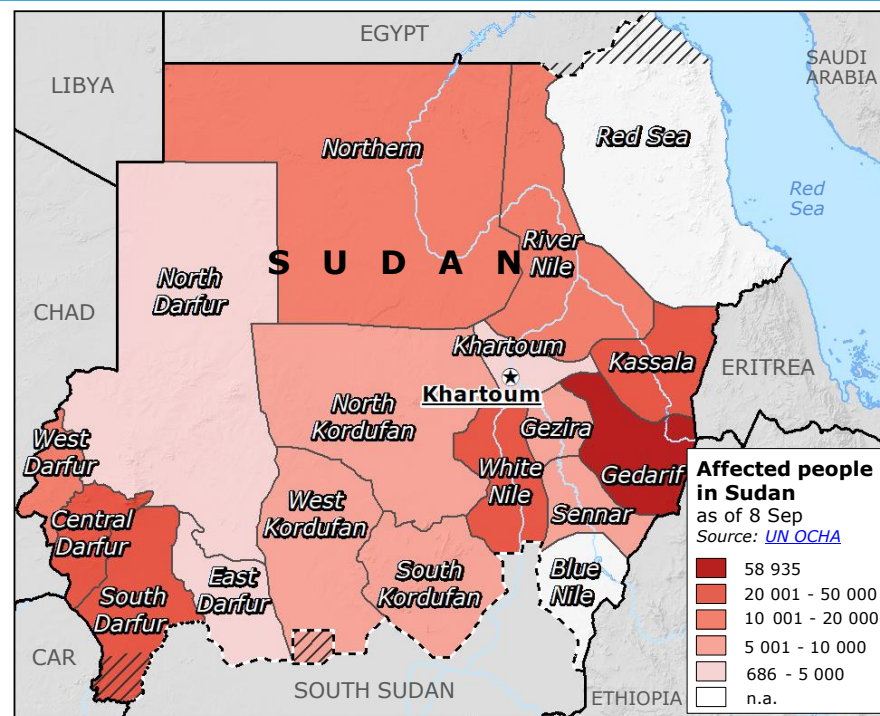
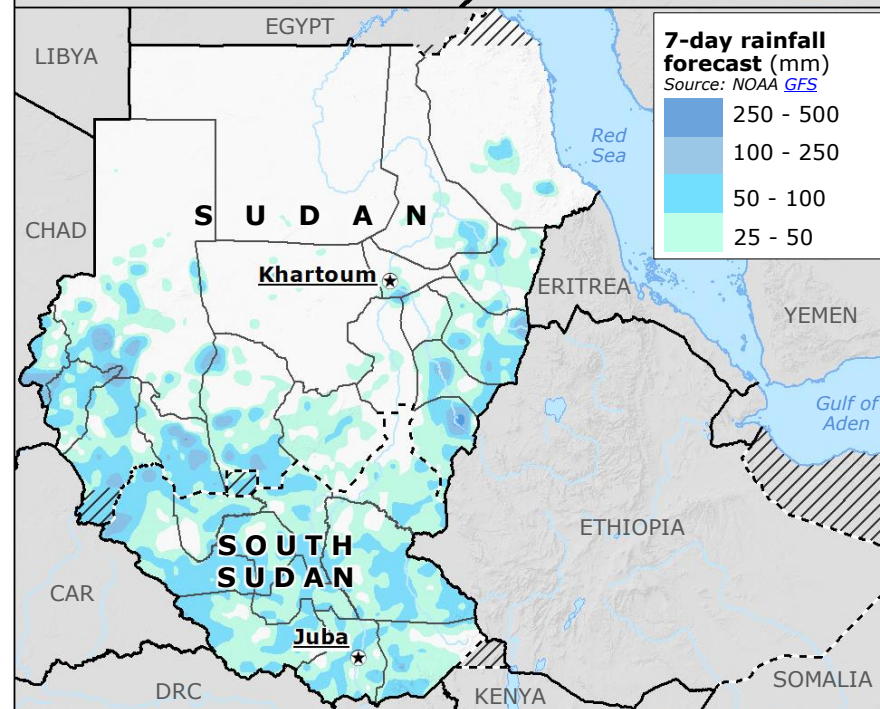


Sudan, South Sudan | Floods during the 2022 rainy season



IMPACT OVERVIEW IN SUDAN as of 8 Sep
Source: UN OCHA #1, #2

- 112** Fatalities
- 115** Injuries
- 278 559** Affected people
- 16 394** Destroyed houses
- 42 207** Damaged houses



PAST RAINFALL ACCUMULATION (mm)
1 Jun – 8 Sep
Source: NASA GPM

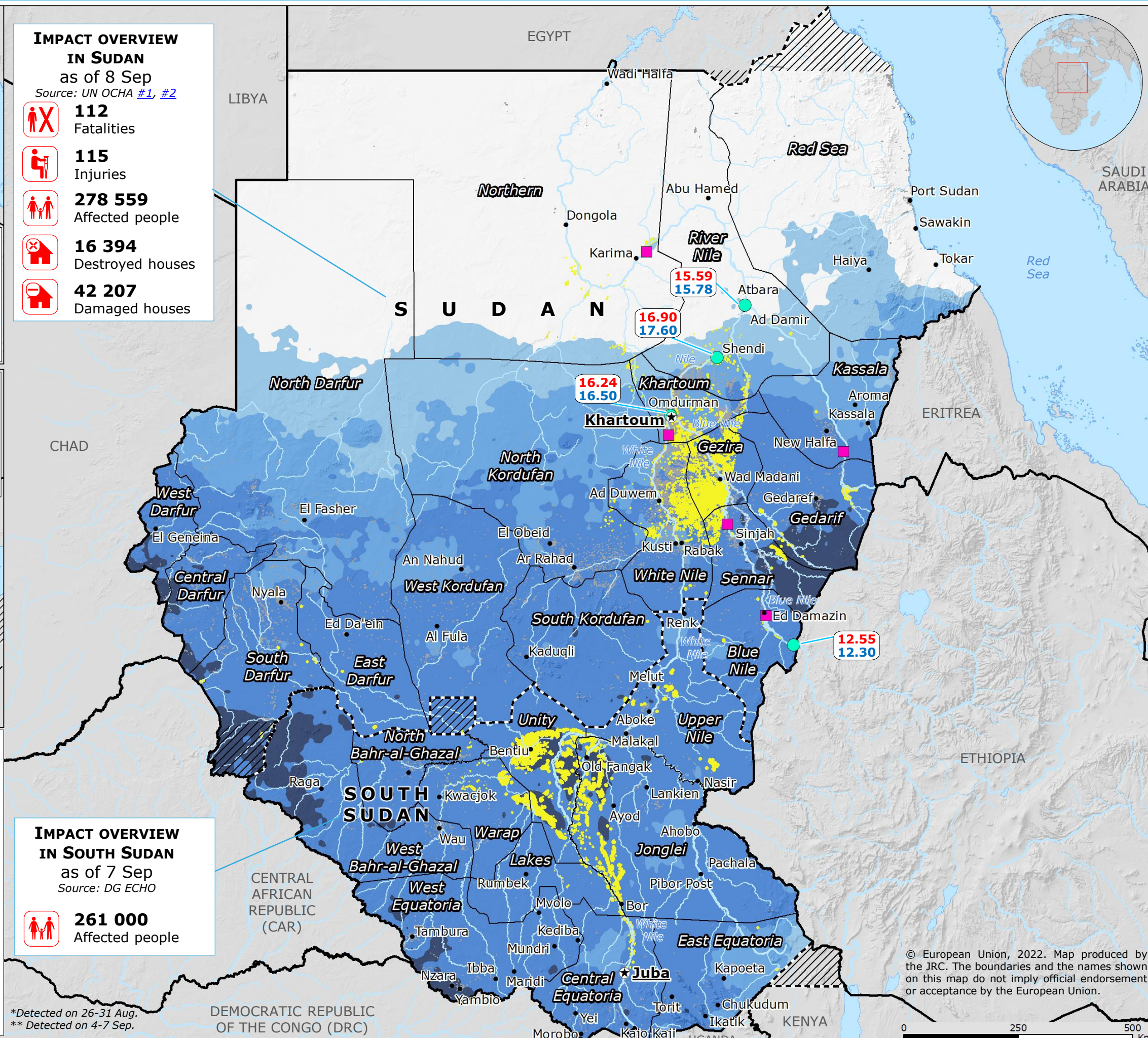
- 1 000 - 3 000
- 500 - 1 000
- 250 - 500
- 100 - 250

Legend:

- Dam
- River
- Built-up area
Source: JRC-GHSL, OSM
- Disputed area
- State boundary
- Country border
- Undetermined/Disputed country border
- Flood detection
Source: GLOFAS CEMS*, NASA MODIS**
- River Nile water level station
Source: UN OCHA
- River Nile **flooding** level threshold and **measured** level (m) on 7 Sep
Source: UN OCHA

IMPACT OVERVIEW IN SOUTH SUDAN as of 7 Sep
Source: DG ECHO

- 261 000** Affected people



*Detected on 26-31 Aug.
** Detected on 4-7 Sep.

