

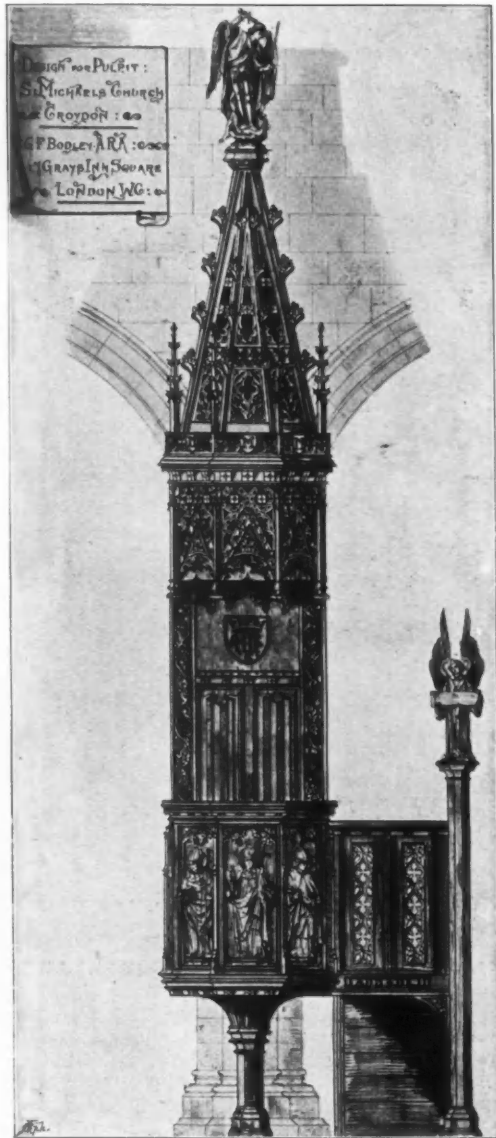


Menu, ÉMILE LAMBOT, Architect, Lacken, Brussels.

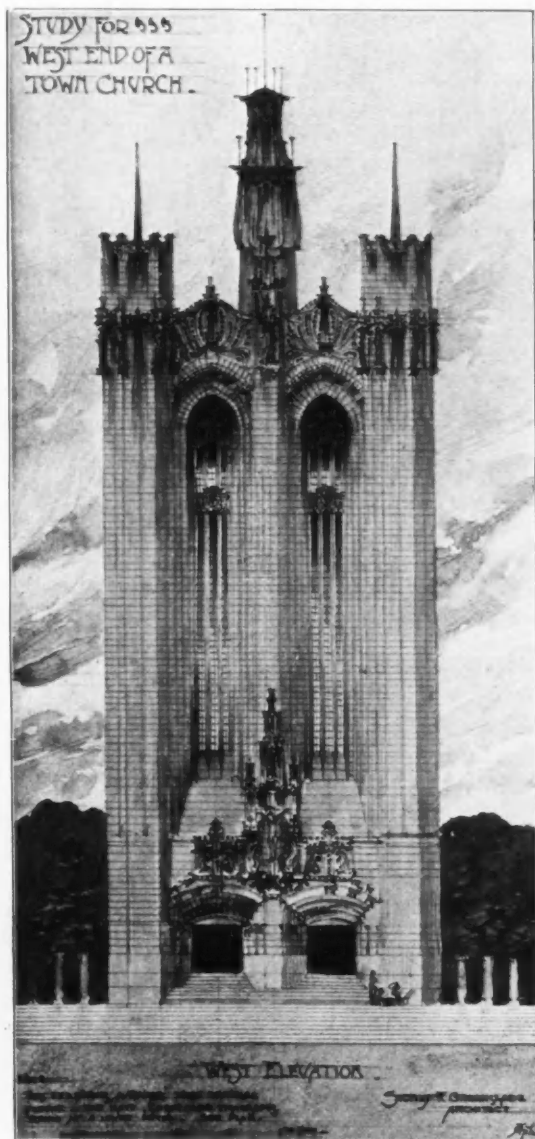
HARRISON AND SONS,
PRINTERS IN ORDINARY TO HER MAJESTY,
ST. MARTIN'S LANE, LONDON.



1667. *George and Dragon Inn, Castleton*, EDGAR WOOD, A.R.I.B.A., Architect.
(For plans, see p. 119.)



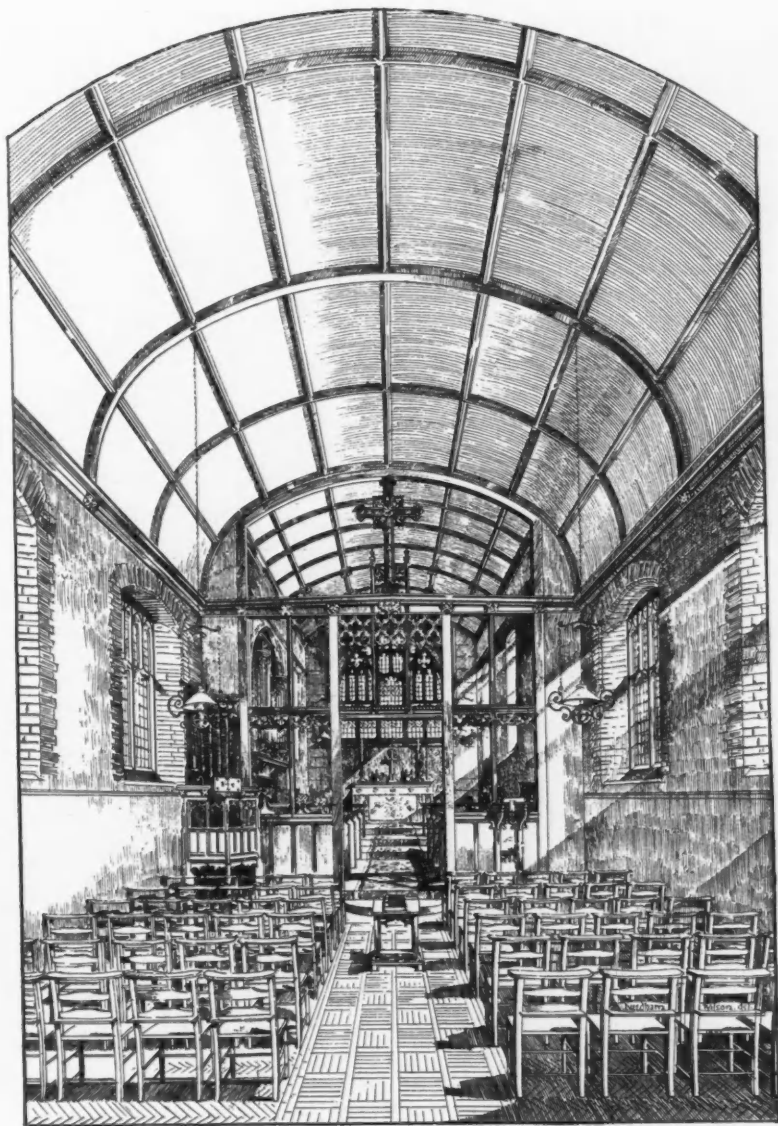
1714. Design for Pulpit, St. Michael's, Croydon,
 GEORGE F. BODLEY, A.R.A., Architect.



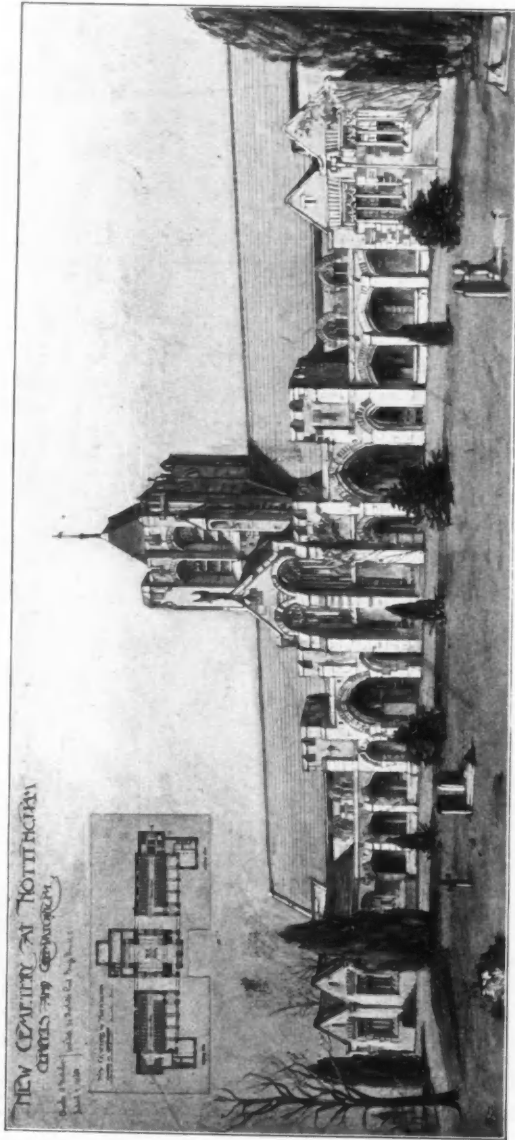
1723. Study for West End of a Town Church,
SIDNEY K. GREENSLADE, A.R.I.B.A., Architect.



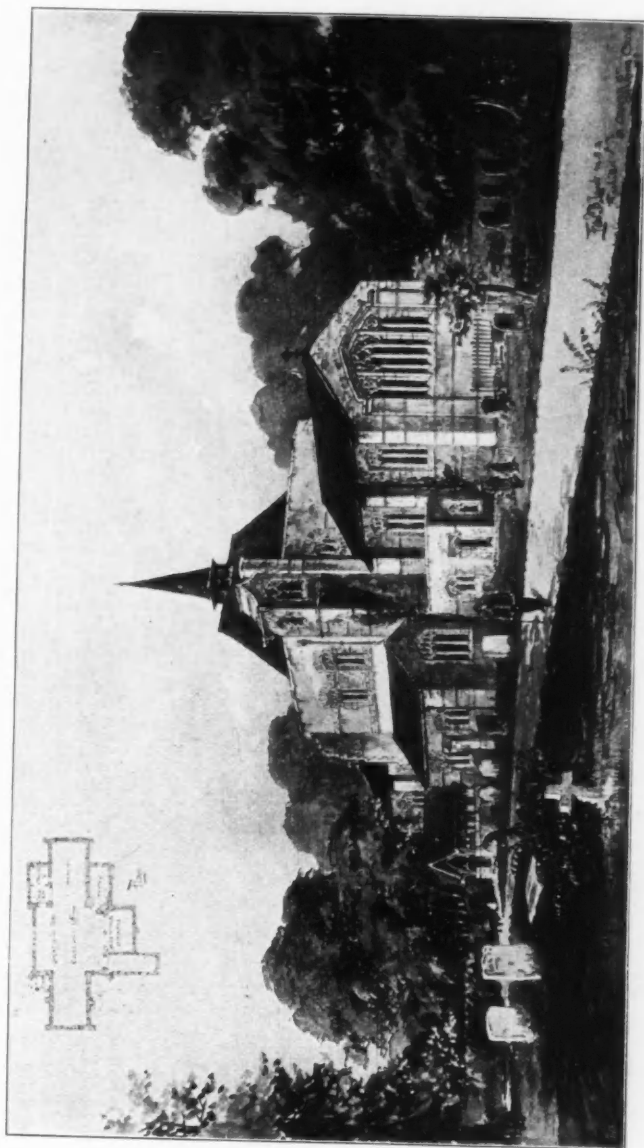
1702. *Malvern College, New Chapel*, SIR ARTHUR W. BLOMFIELD, A.R.A., Architect.



1652. *New Church of St. John the Divine, Ford, Wilts*, CHARLES E. PONTING, F.S.A., Architect.
(For Exterior, see p. 17.)



1701. *Chapels and Crematorium, Nottingham Cemetery, Second Premiated Design, NICHOLSON AND CORLETTE, Architects.*



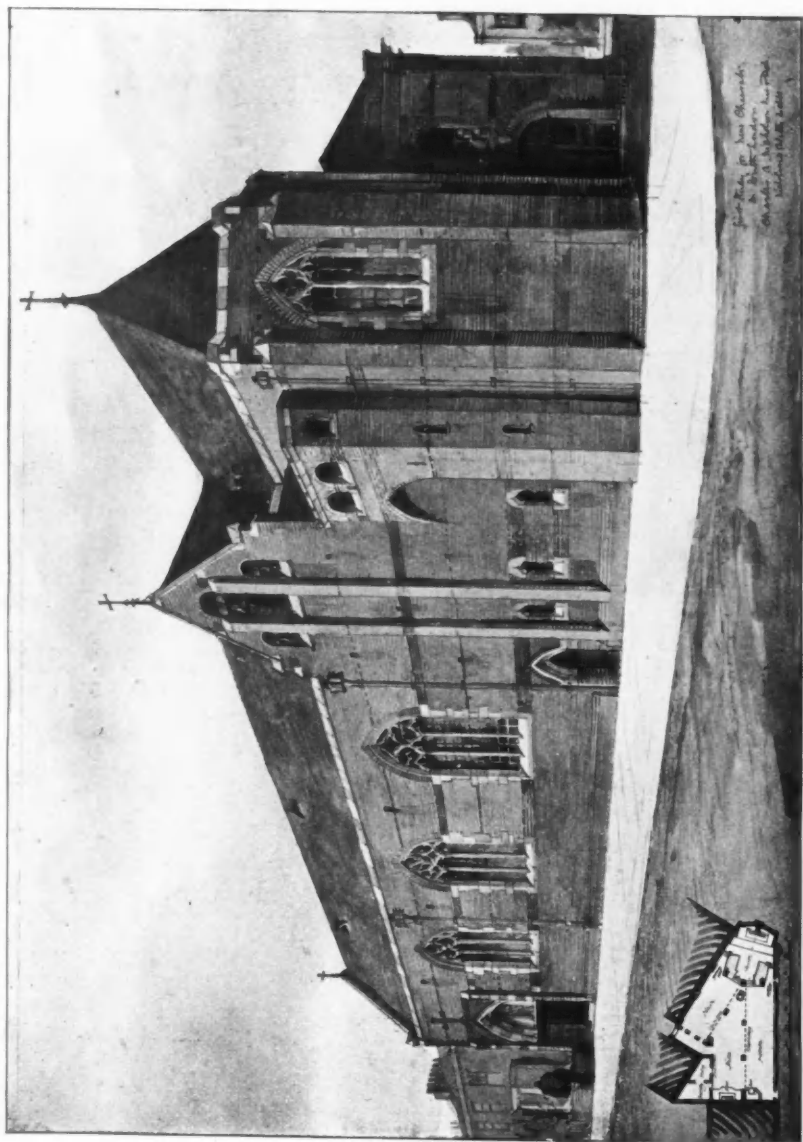
1793. *Design for a Country Church, EDWARD B. LAMB, M.S.A., Architect.*



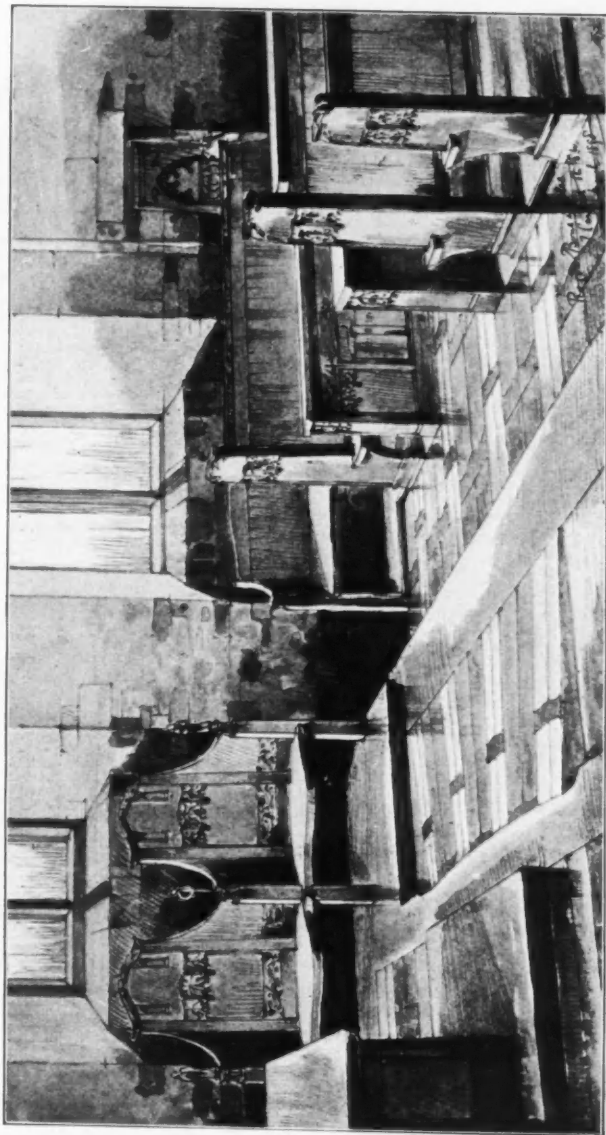
1670. *The Great Corridor, Queen's College, Harley Street, W.*, PERCY E. NEWTON, Architect.



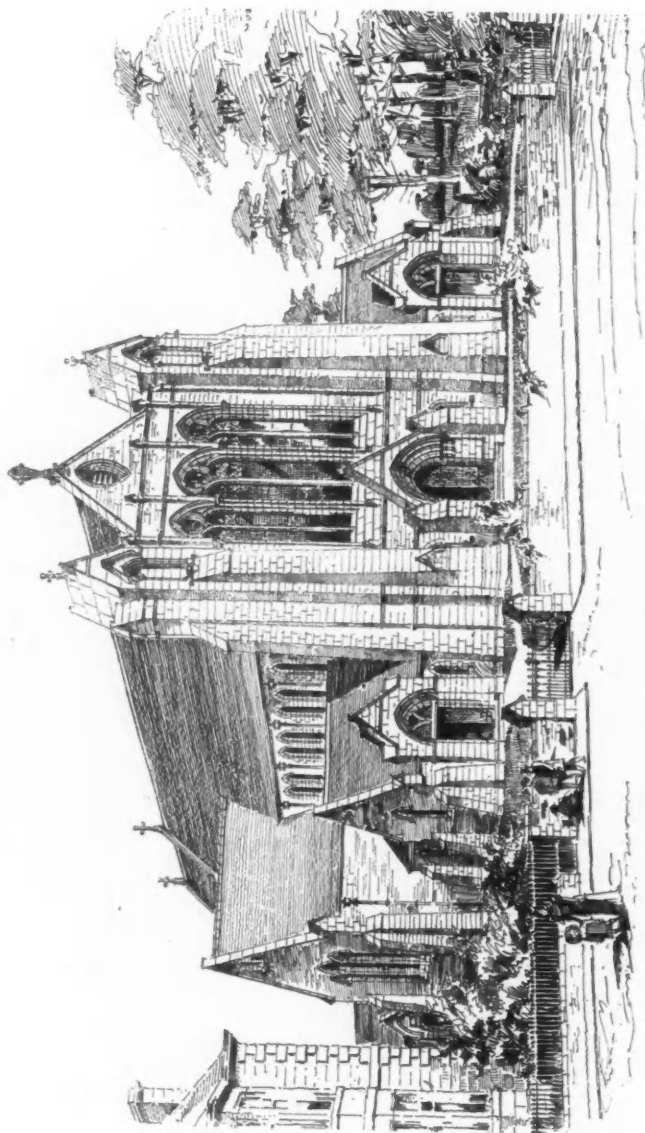
1696. *Study for a New Church in South London, Interior*, CHARLES A. NICHOLSON, M.A., Architect.
(For Exterior, see p. 12.)



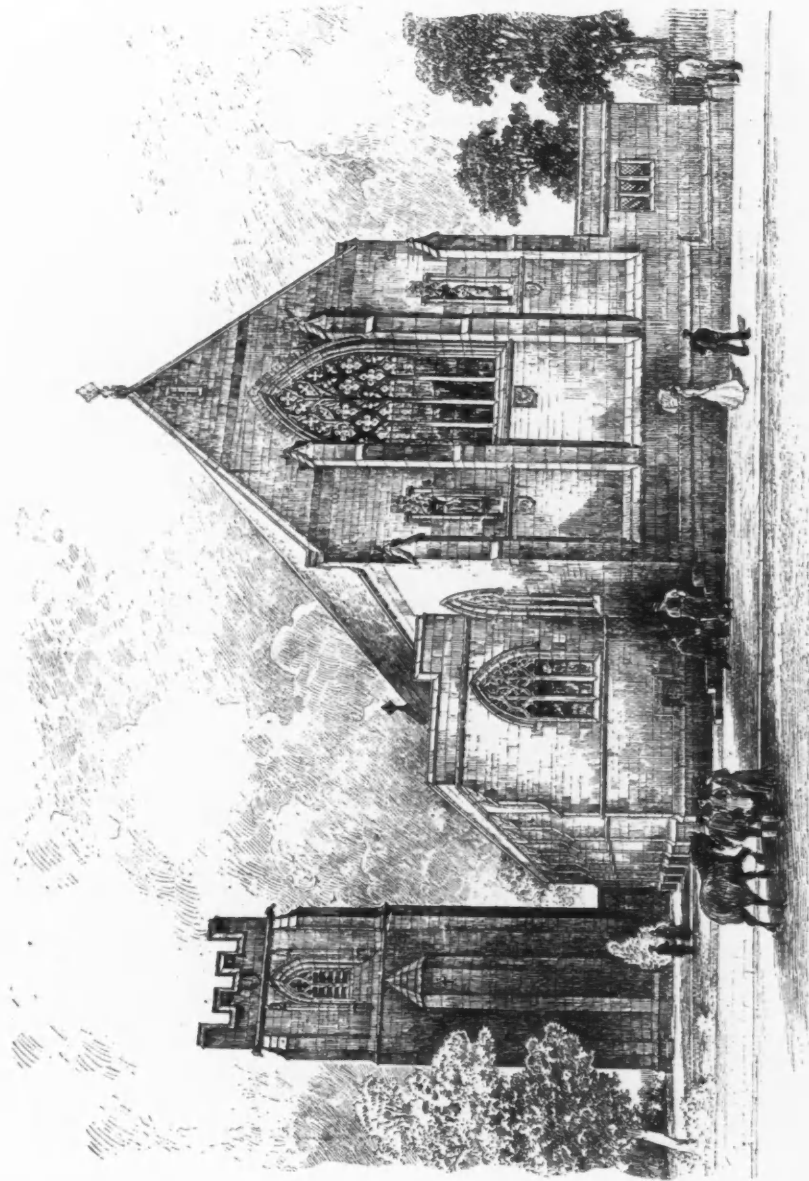
1700. *Study for a New Church in South London, Exterior, CHARLES A. NICHOLSON, M.A., Architect.*
 (For Interior, see p. 11.)



1661. *St. Brelade's Church, Jersey, New Sedilia, Choir Stalls and Granite Pavement,*
ROGERS, BONE AND COLES, Architects.



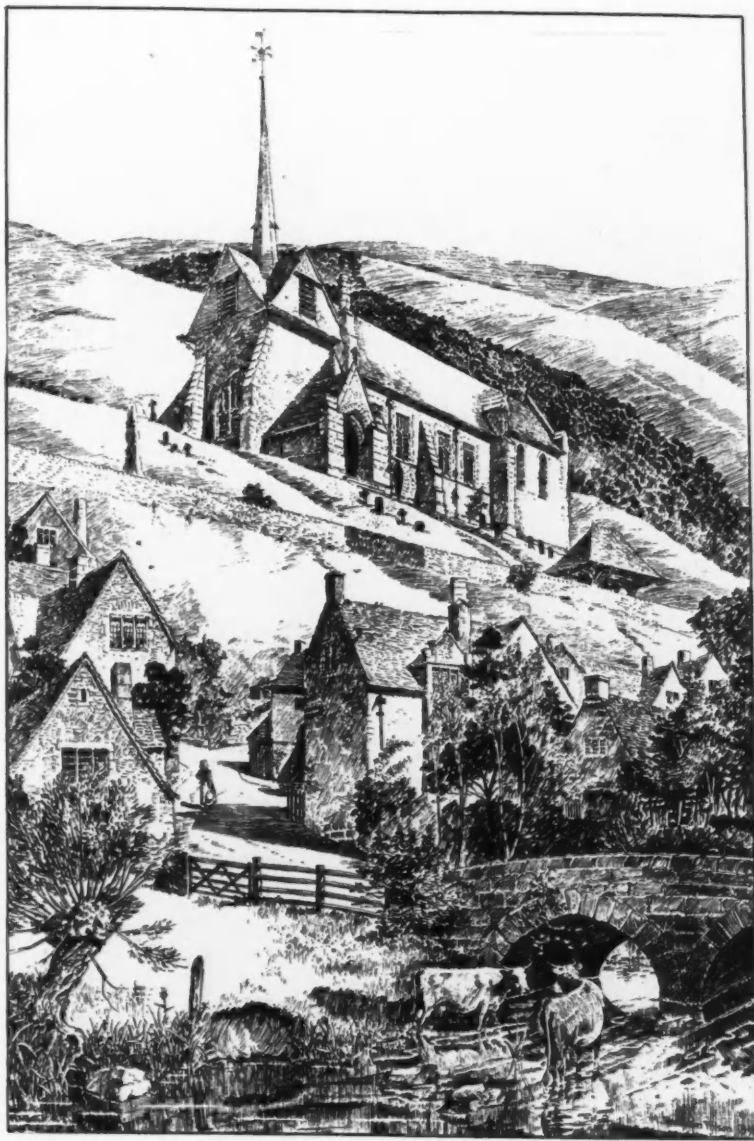
*Mayfield Church, Edinburgh, J. GRAHAM FAIRLEY, F.R.I.B.A., Architect.
R.S.A. Ex., 1898.*



1712. Chapel, Allerton Church, Leeds, GEORGE F BODLEY, A.R.A., Architect.



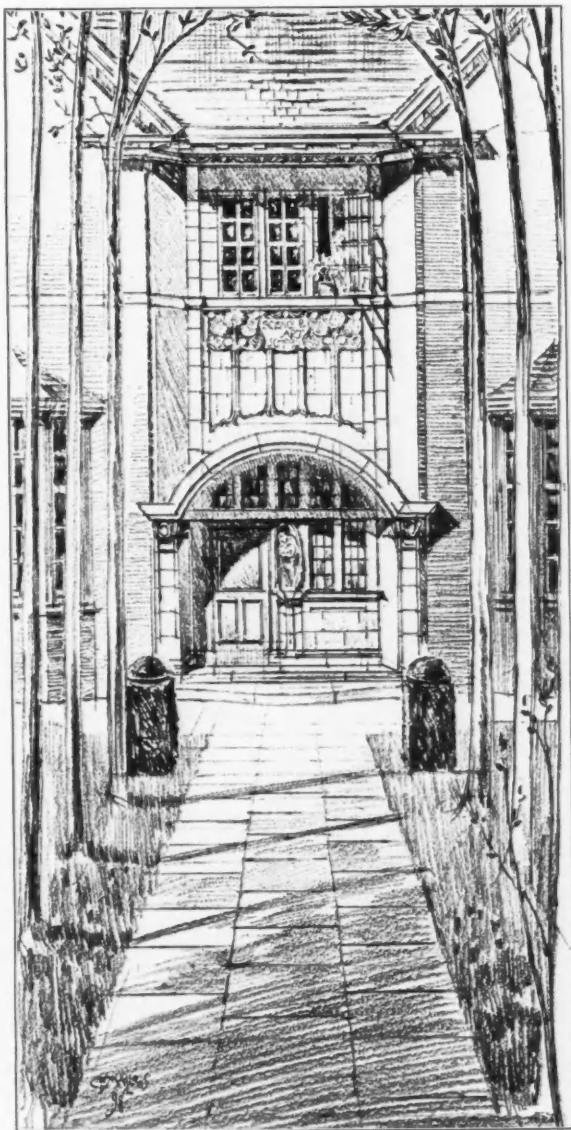
Proposed New Church of St. John's, Sidcup, G. H. FELLOWES PRYNNE, F.R.I.B.A., Architect.



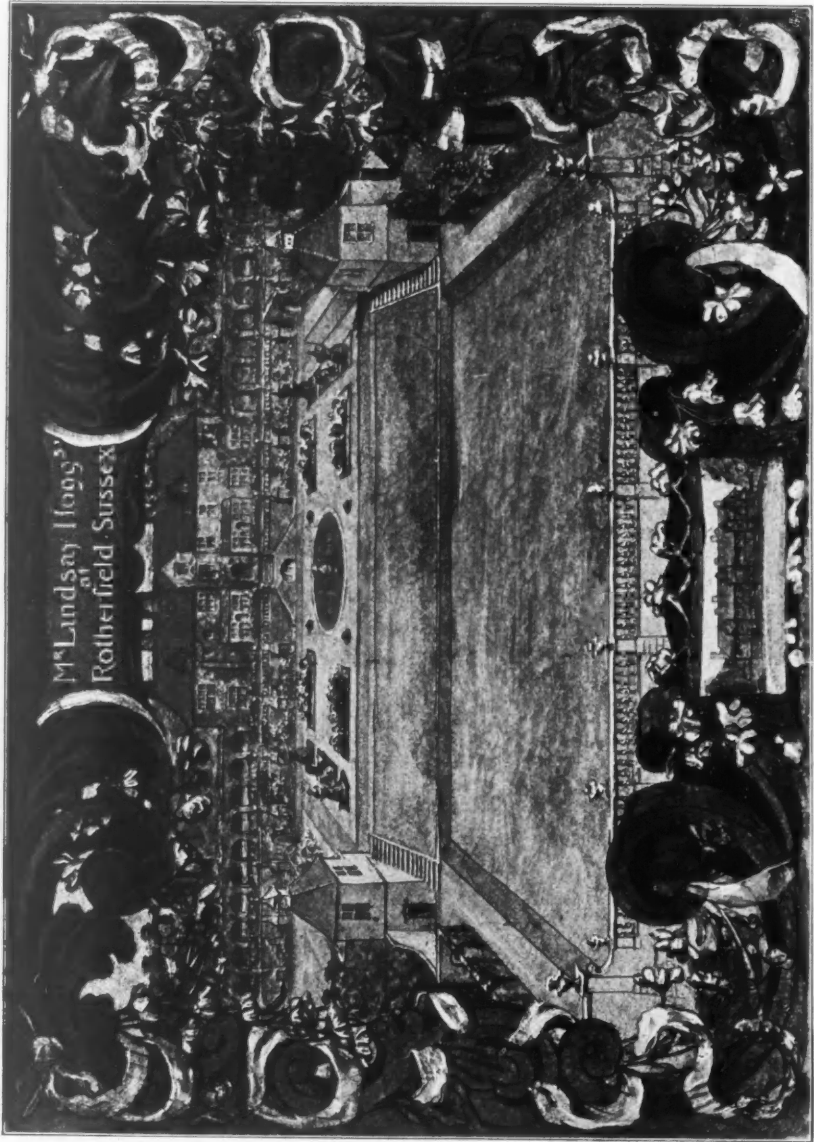
1686. *New Church of St. John the Divine, Ford, Wilts*, CHARLES E. PONTING, F.S.A., Architect.
(For Interior, see p. 7.)

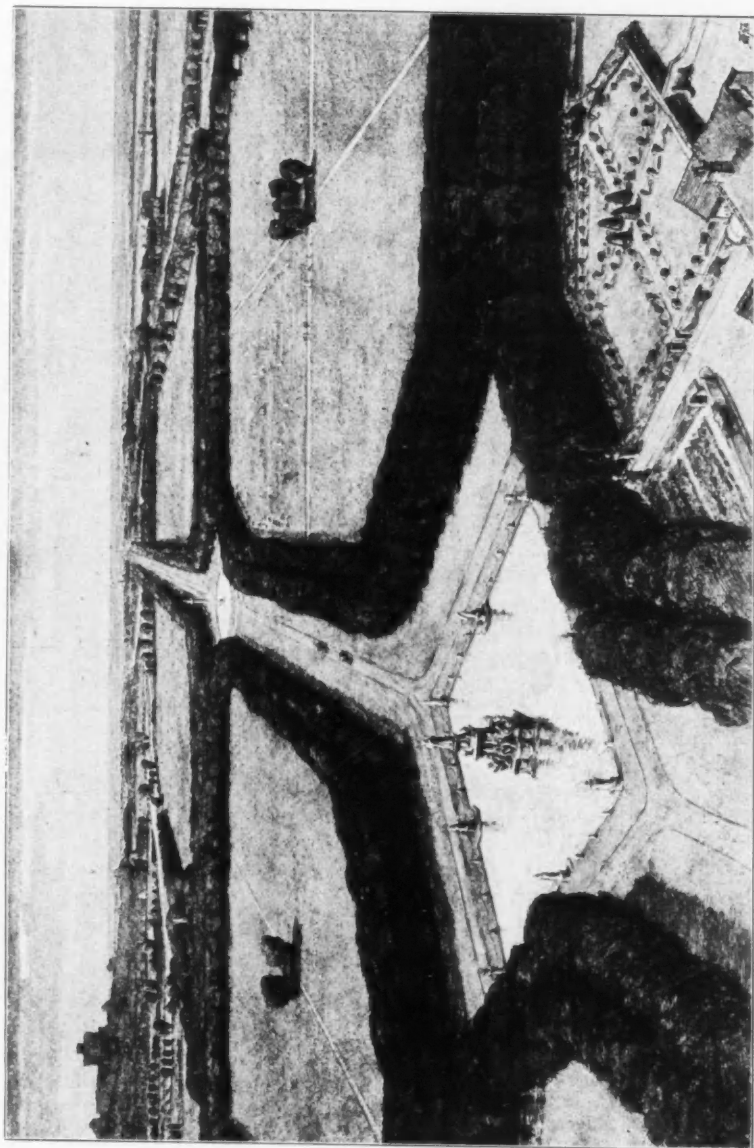


1761. *Interior of Mausoleum for the late H. Nichols, Esq., J. LEONARD WILLIAMS, Architect.*

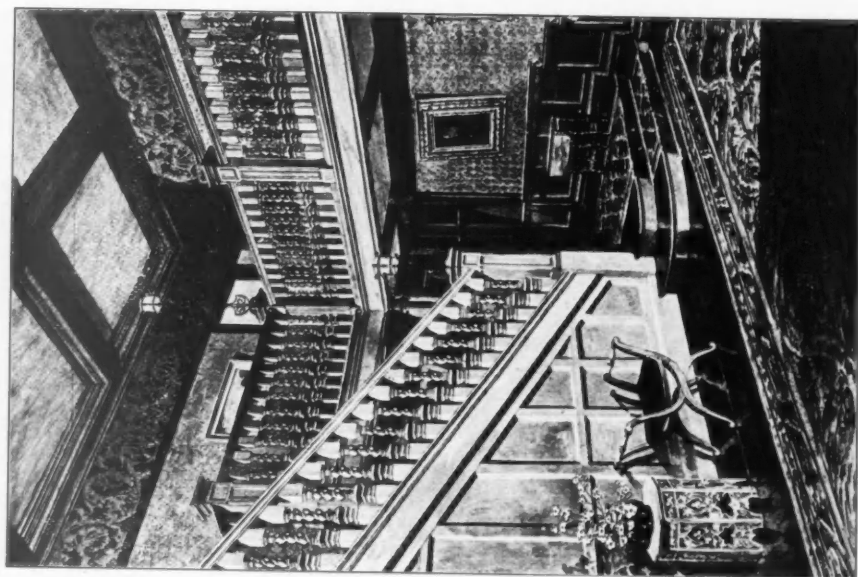


1766. *Entrance to the Science and Art Schools, Newark-on-Trent, GEORGE H. GROCOCK, Architect.*

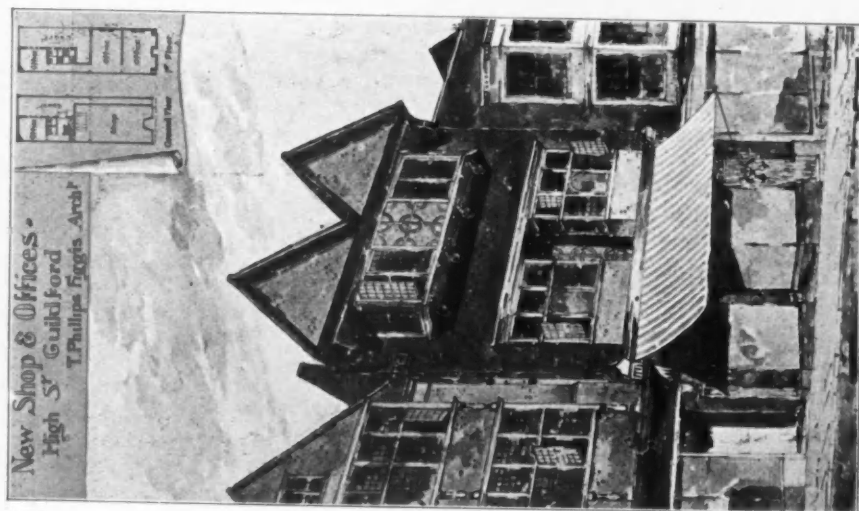
1649. *Rotherfield Hall, Sussex, F. INIGO THOMAS, Architect.*



1641. *The New Playing Fields, Eton College, F. INIGO THOMAS, Architect.*



Staircase, "The Vines," Hobart,
MURRAY AND FOSTER, Architects.



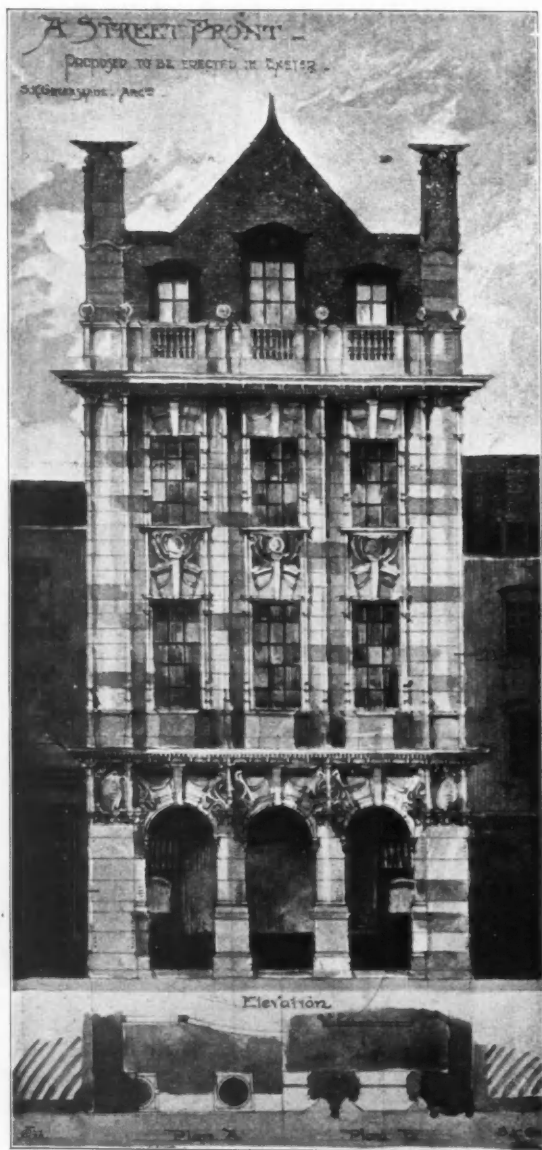
1659. Shop and Offices, Guildford,
T. PHILLIPS FIGGIS, A.R.I.B.A., Architect.



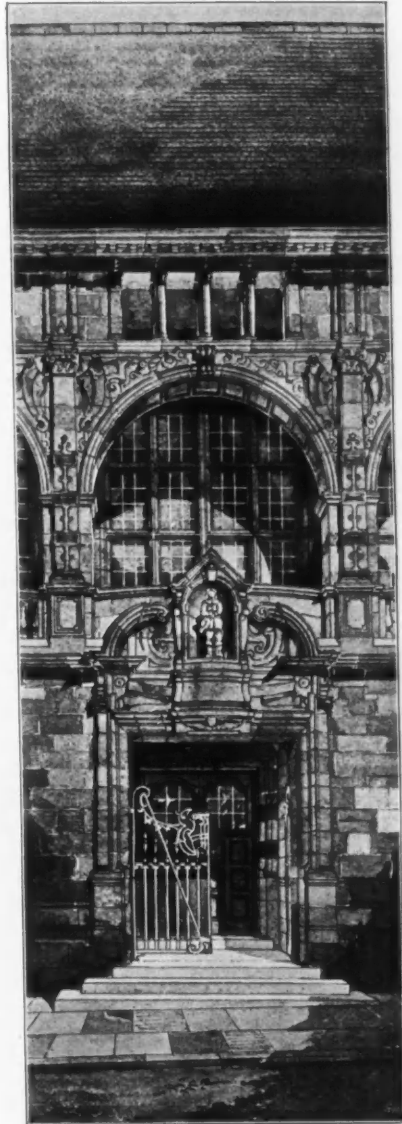
1770. *Design for Frieze*, ARTHUR L. GWATKIN, Artist.



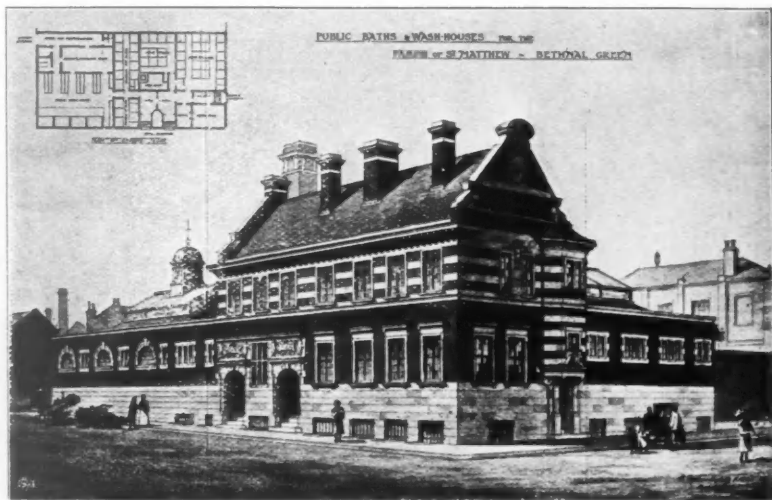
1672. *Design for Wrought-iron Staircase Balustrade*, G. EDWARD TUCKER, Artist.



1722. *A Street Front, proposed to be erected in Exeter,*
 SIDNEY K. GREENSLADE, A.R.I.B.A., Architect.



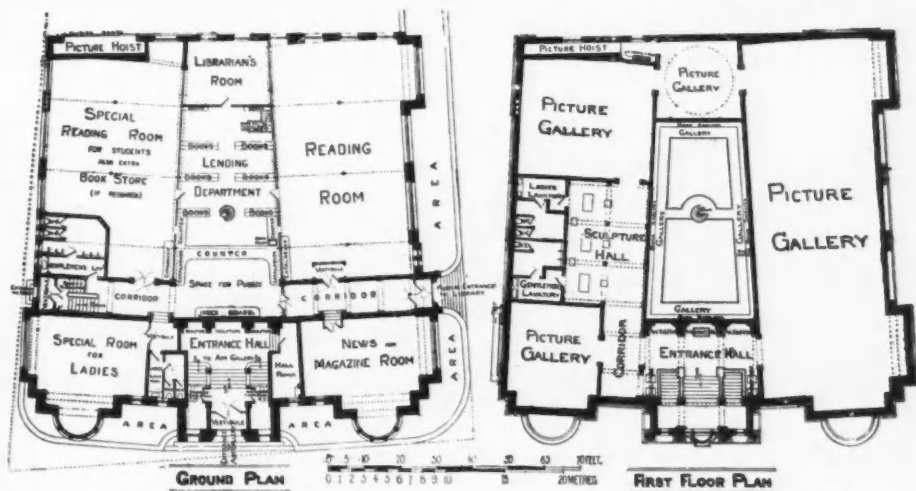
1682. *Portion of a Design for Municipal Buildings,*
THOMAS DAVISON, A.R.I.B.A., Architect.



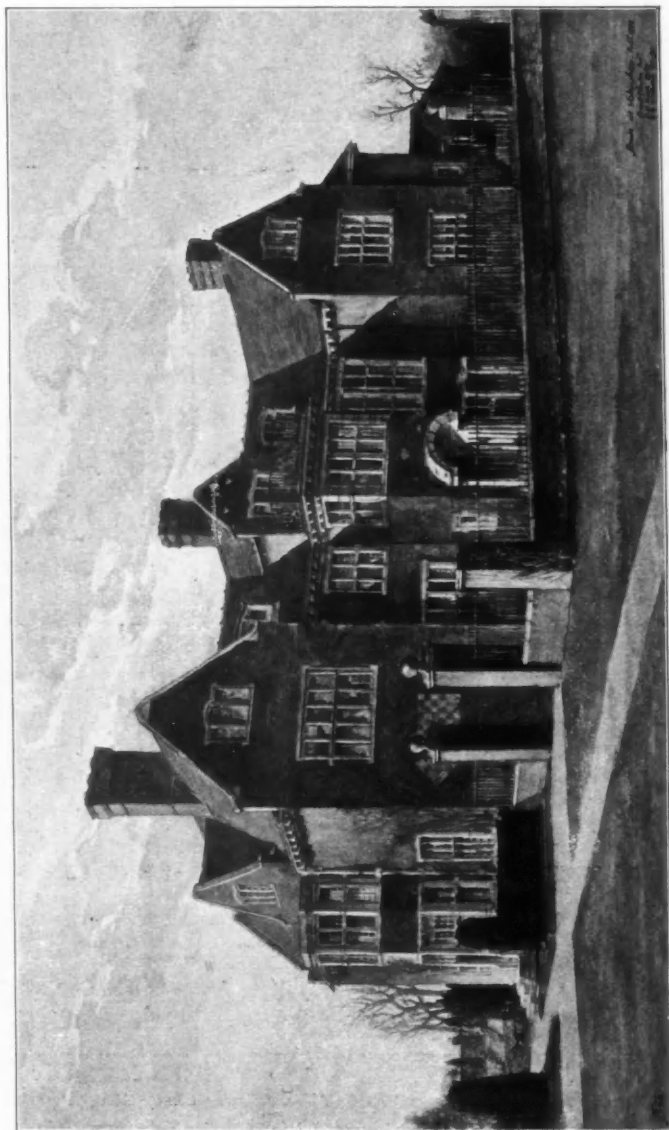
1703. Public Baths and Wash-Houses for the Parish of St. Matthew, Bethnal Green, R. STEPHEN AVLING, A.R.I.B.A., Architect.

PLAN OF GROUND FLOOR.

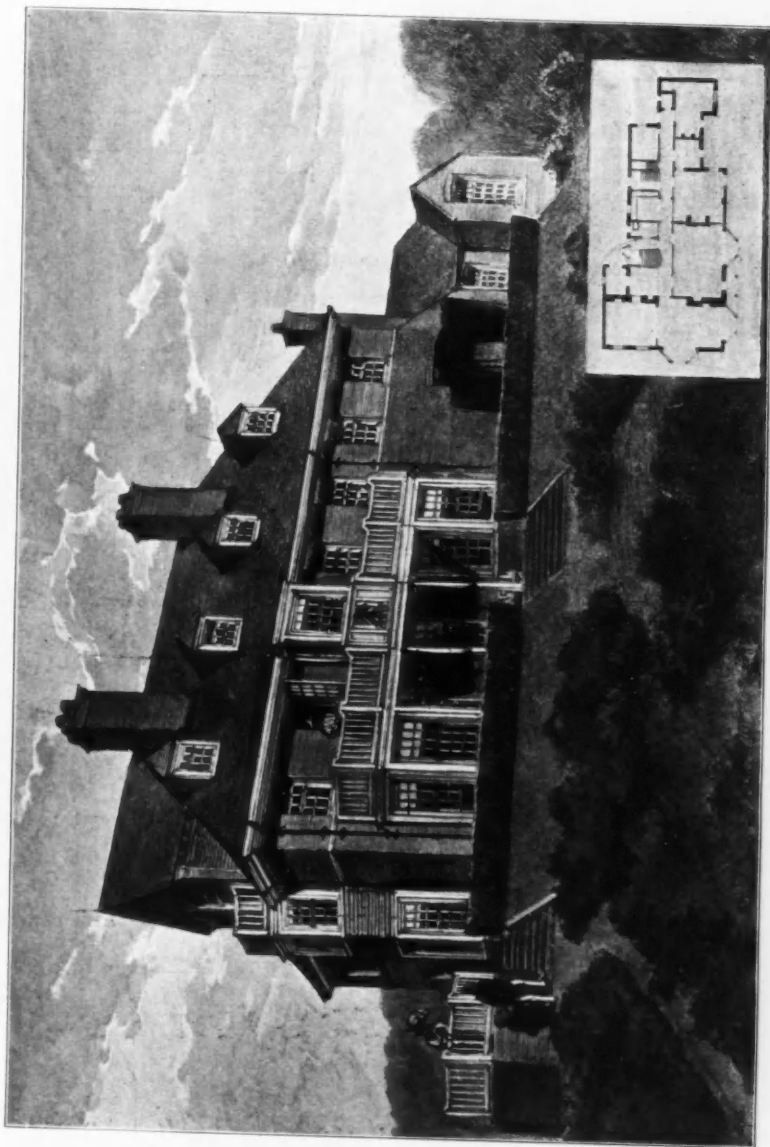




1645. Design for Fine Art Gallery and Public Library for the County Borough of Bury, J. D. AND S. J. MOULD, Architects.

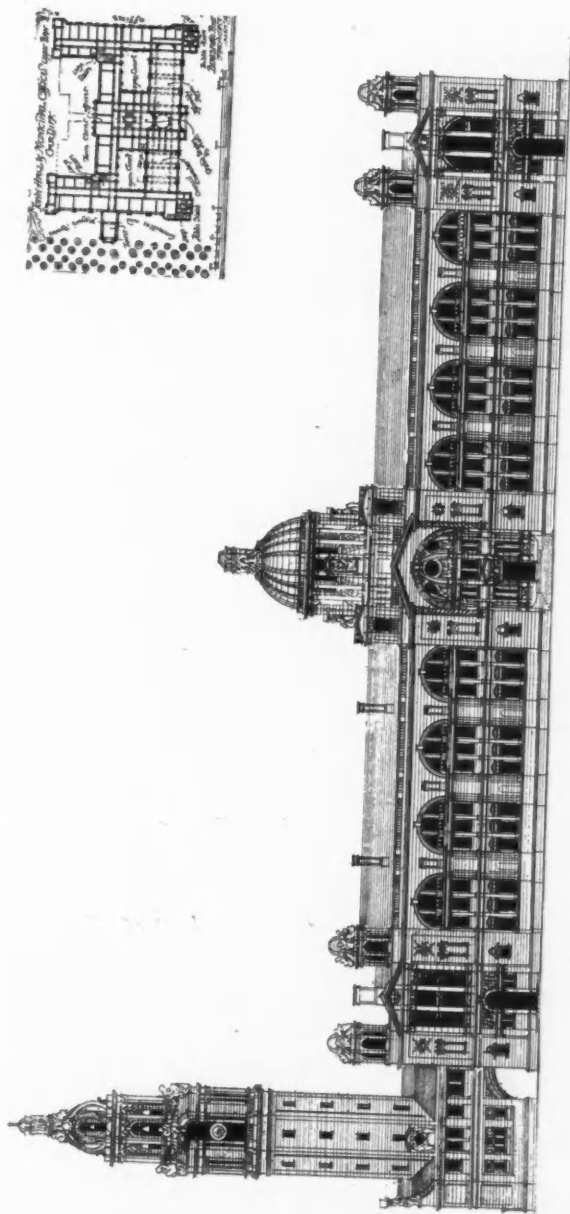


1637. *House at Wokingham, ERNEST NEWTON, Architect.*
(For Plans, see p. 30.)



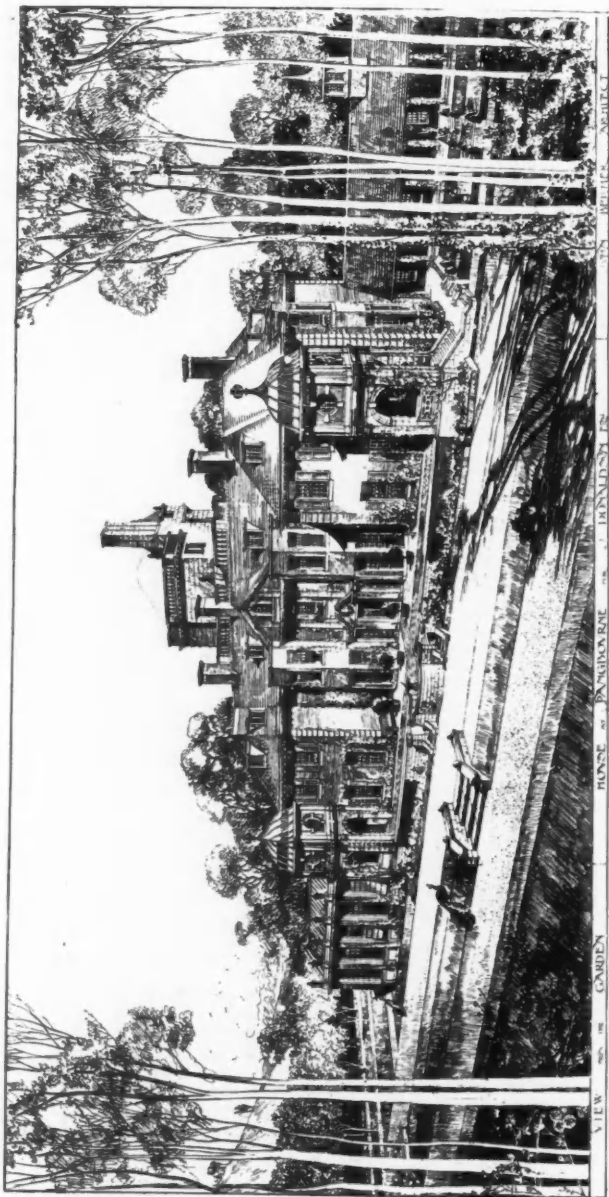
1673. *House at Fleet*, HOWARD INCE, Architect.





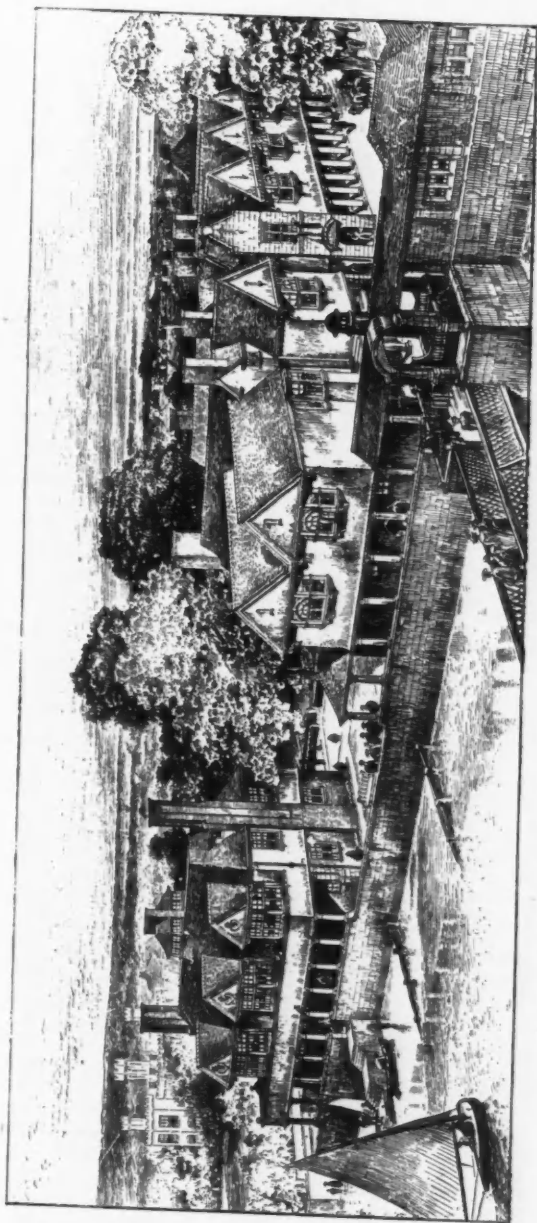
1784. Design for Cardiff Town Hall, BERESFORD PITE, F.R.I.B.A., Architect.

Pliny & Co.

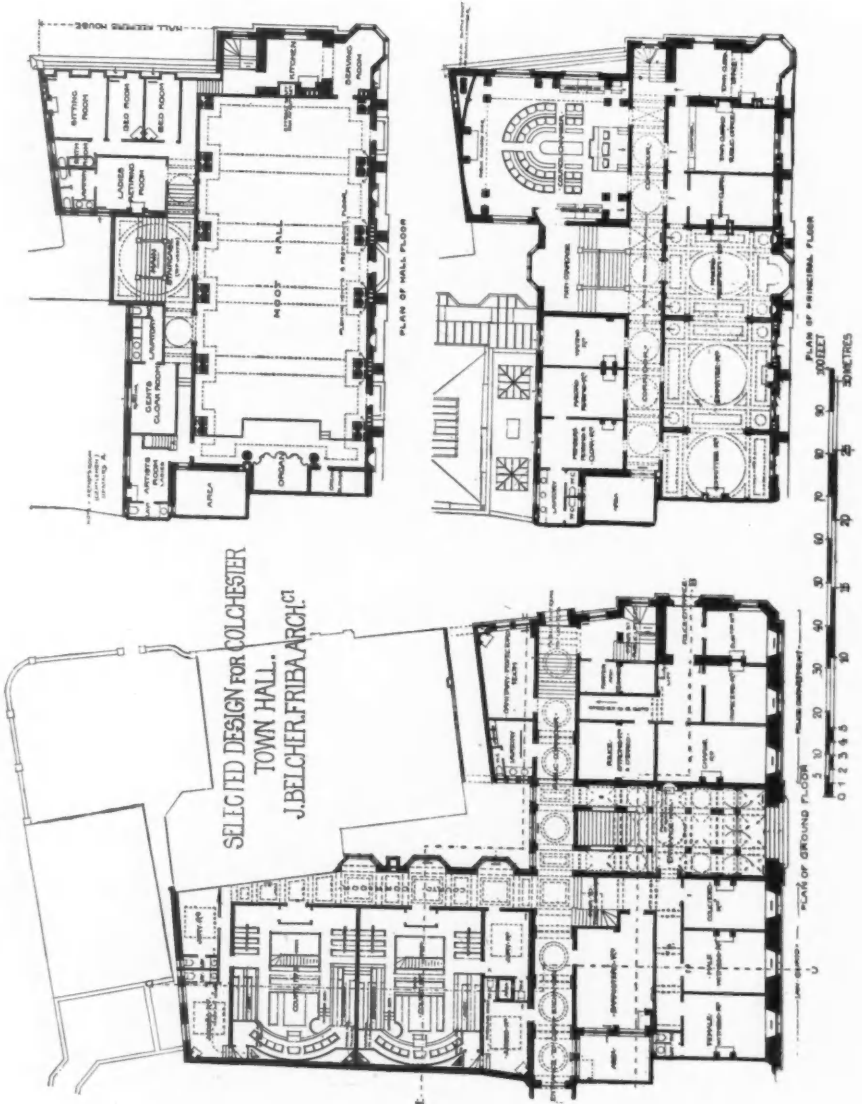


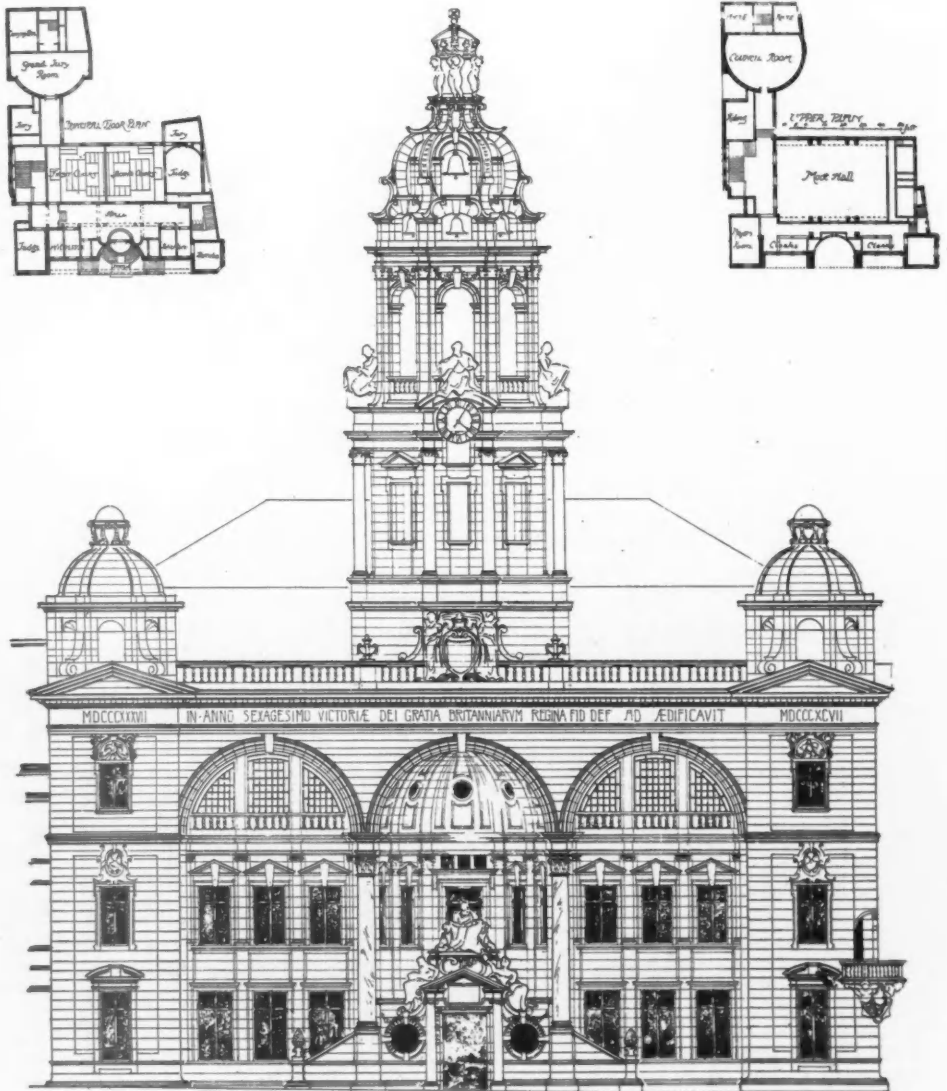
1753. *House at Pangbourne, Garden Front, JOHN BELCHER, F.R.I.B.A., Architect.*
 (For Plans, see p. 35.)

For Views of Entrance Tower and Entrance Hall, see Vol. 13, pp. 27, 39.



1762. Yacht Club, Village Shops, &c., Yarmouth, Isle of Wight, ASTON WEBB, F.S.A., Architect.
(For Plan, see p. 30.)





1751. Design for Colchester Town Hall, BERESFORD PITE, F.R.I.B.A., Architect.

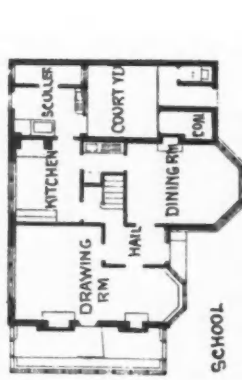
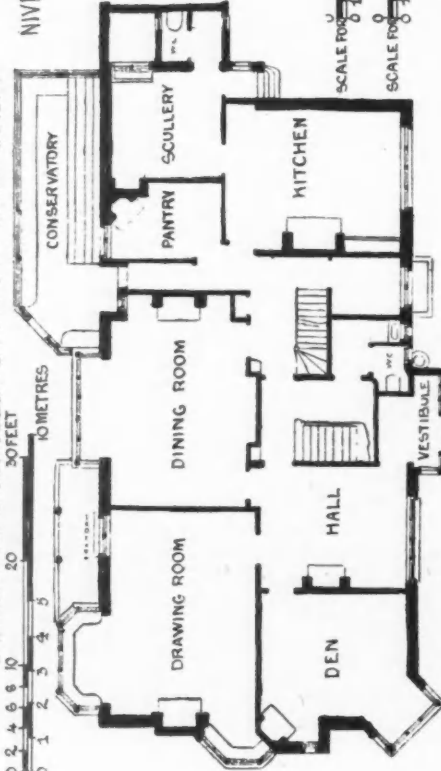


1756. *New Town Hall, Colchester*, JOHN BELCHER, F.R.I.B.A., Architect.
(For Plans, see p. 34.)

CHARLWOOD, EPSOM. J. HATCHARD SMITH, FRIBA, ARCHT.
ST MONANS, WALTON-ON-THAMES.
NIVEN AND WIGGLESWORTH, ARCHITECTS.

CONSERVATORY
PANTRY
SCULLERY
KITCHEN
DINING ROOM
DRAWING ROOM
DEN
HALL
VESTIBULE

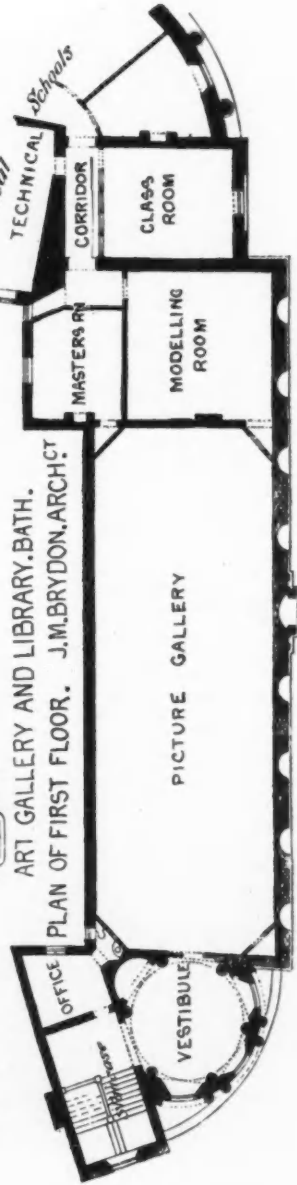
30 FEET
20
10 METRES
0 1 2 3 4 5



SCHOOL

SCALE FOR 30 FEET 15 METRES
0 1 2 3 4 5
SCALE FOR 50 FEET 15 METRES
0 1 2 3 4 5

ART GALLERY AND LIBRARY, BATH.
PLAN OF FIRST FLOOR. J. M. BRYDON, ARCHT.



Technical Schools
TECHNICAL CORRIDOR
MASTERS RM
MODELLING ROOM
CLASS ROOM

OFFICE

VESTIBULE

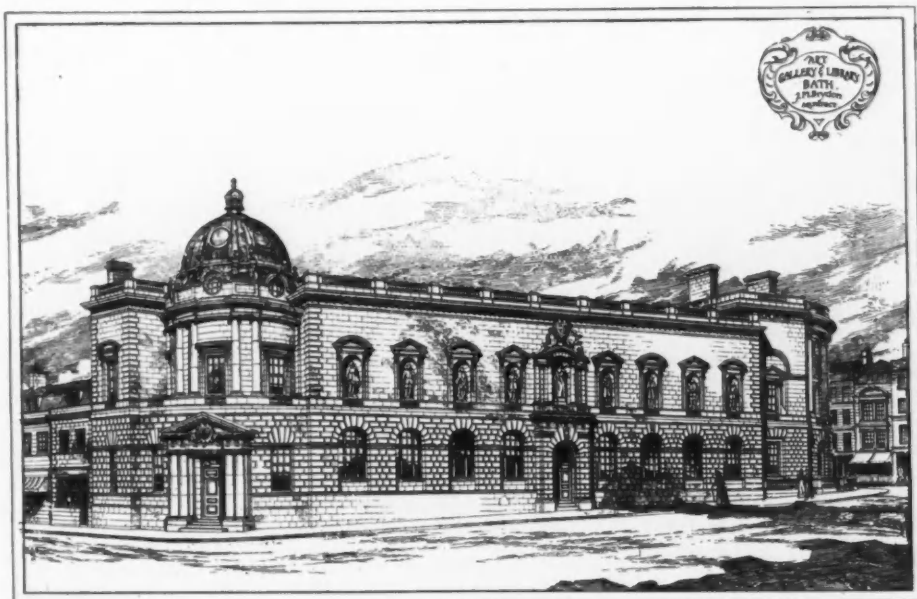
PICTURE GALLERY

MODELLING ROOM

CLASS ROOM



1693. *An Hotel in the Isle of Wight*, FRANK S. TAYLOR, A.R.I.B.A., Architect.



1625. *Art Gallery and Library, Bath*, J. M. BRYDON, F.R.I.B.A., Architect.
(For Plan, see p. 38.)

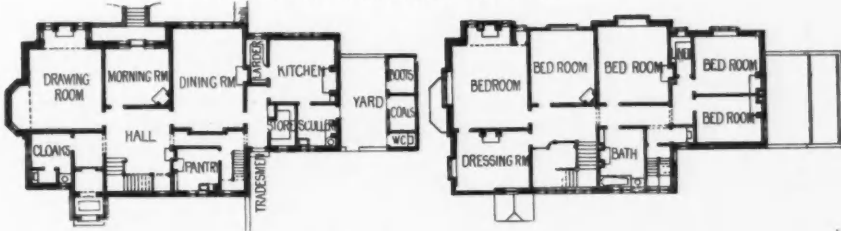


New Hotel, Crutown, Scotland, GEORGE W. WEBB, F.R.I.B.A., Architect.
(For Plans, see p. 41.)

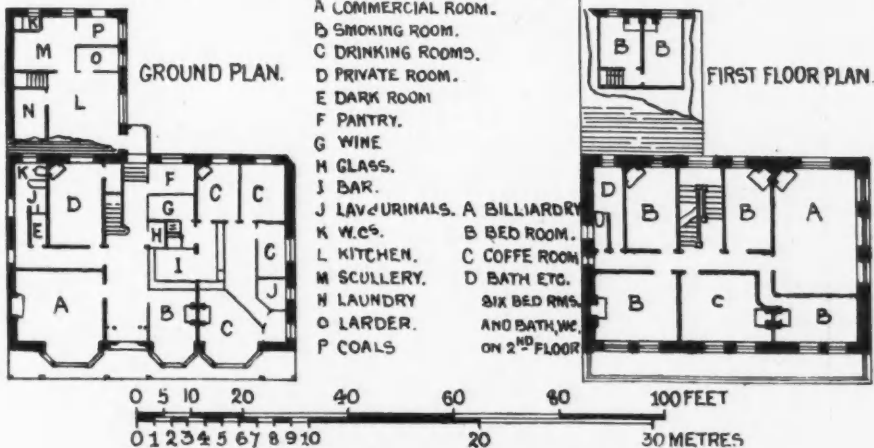


1610. *St. Monans, Walton-on-Thames, NIVEN AND WIGGLESWORTH, Architects.*
(For Plan, see p. 38.)

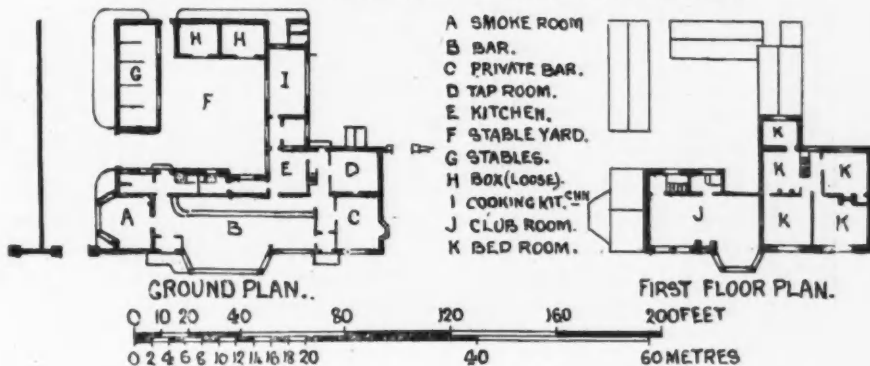
PROPOSED HOUSE. G.H. GROCOCK. ARCHITECT

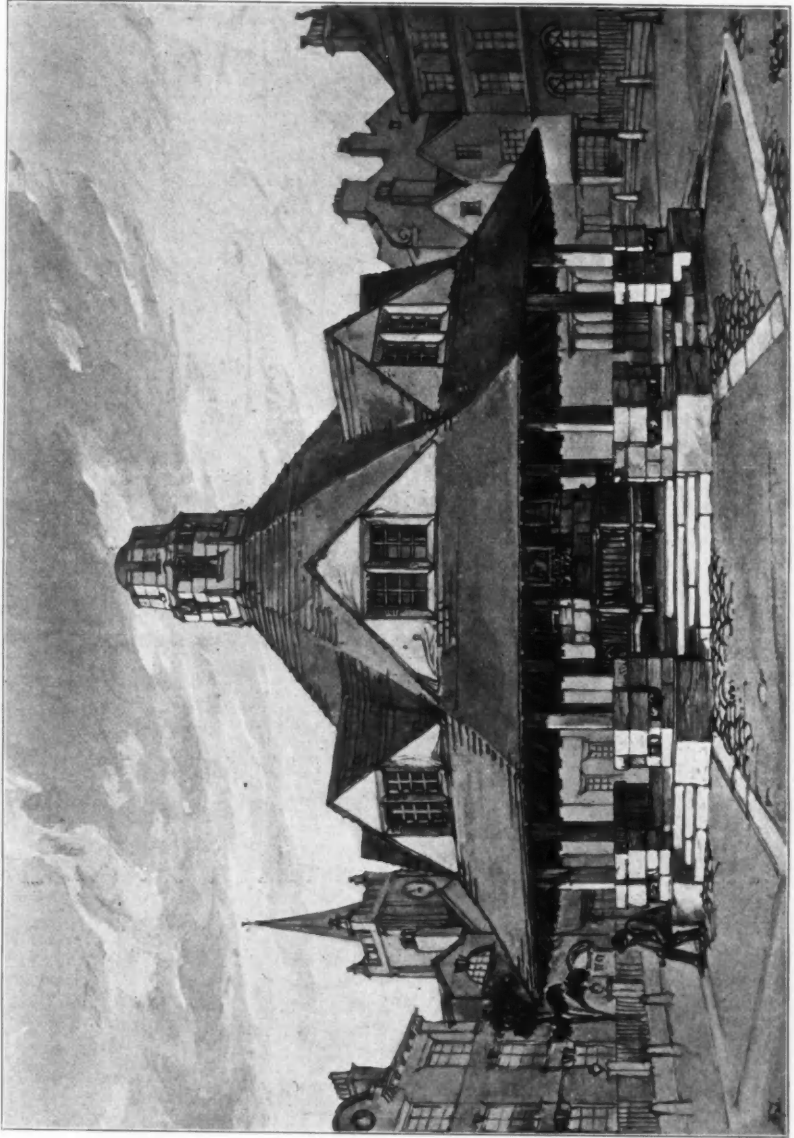


NEW HOTEL. CRUTOWN, SCOTLAND. G.W. WEBB, F.R.I.B.A. ARCHITECT.

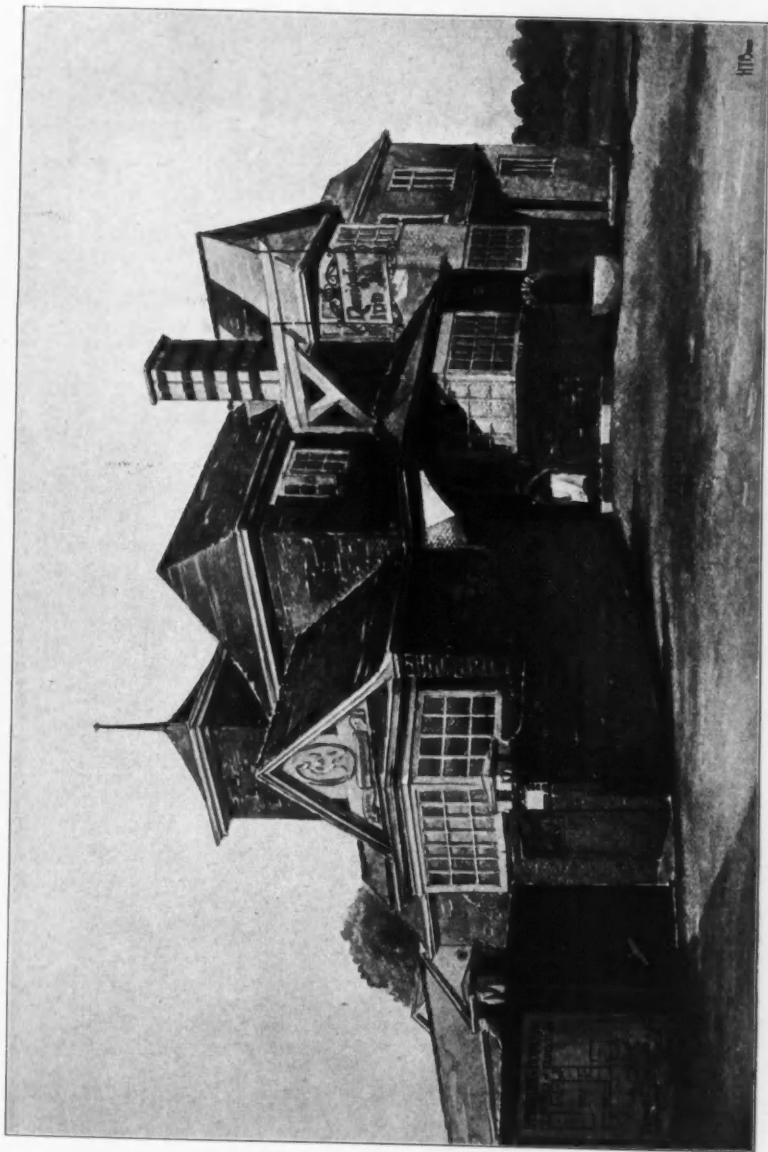


A ROADSIDE INN BROMFORD. H.T. BUCKLAND ARCHITECT





1658. *Proposed Memorial, Hornucastle, Lincoln, G. CHRISTOPHER CARTER, Architect.*



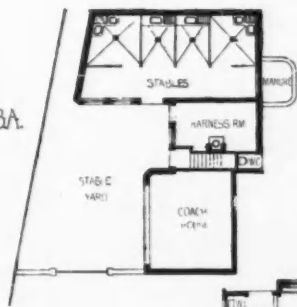
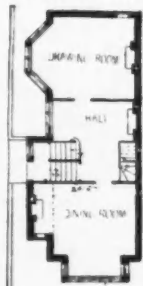
1684. *A Roadside Inn at Bromford, Ervington, HERBERT T. BUCKLAND, Architect.*
(For Plans, see p. 41.)



1644. *Corner of House, Edgbaston, Birmingham, BATEMAN AND BATEMAN, Architects.*
(For Plans, see p. 45.)

HOUSE
AT
TODMORDEN.
JESSE HORSFALL, ER.I.B.A.
ARCHITECT.

GROUND FLOOR PLAN.



THE FIRS, EPSOM.
J. HATCHARD SMITH, ER.I.B.A.
ARCHITECT.
MOORGATE STATION BUILDINGS, E.C.

GROUND FLOOR PLAN.



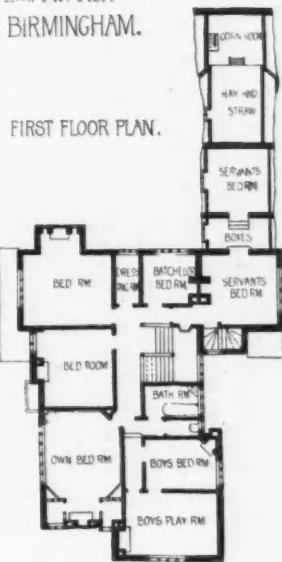
0 5 10 20 30 40 FEET
0 1 2 3 4 5 10 METRES
SCALE FOR ALL PLANS
ON THIS PAGE.

HOUSE, WOODBOURNE ROAD, EDGBASTON, BATEMAN AND BATEMAN, ARCHTS

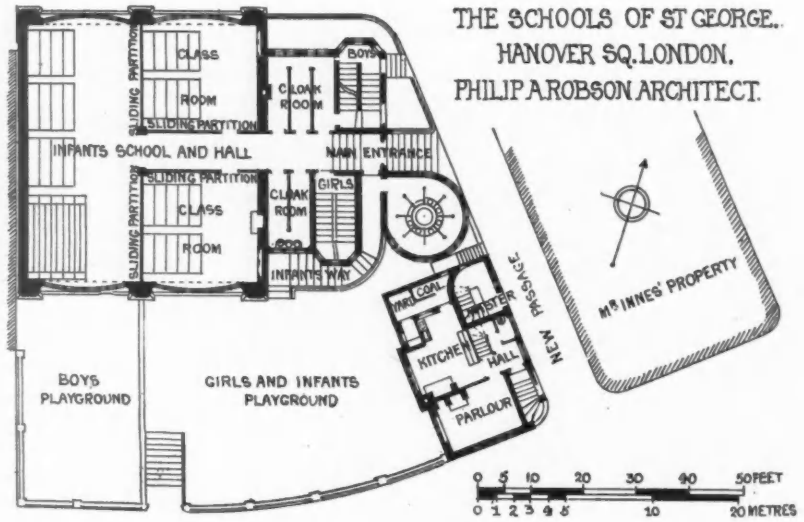
BIRMINGHAM.



GROUND FLOOR PLAN.

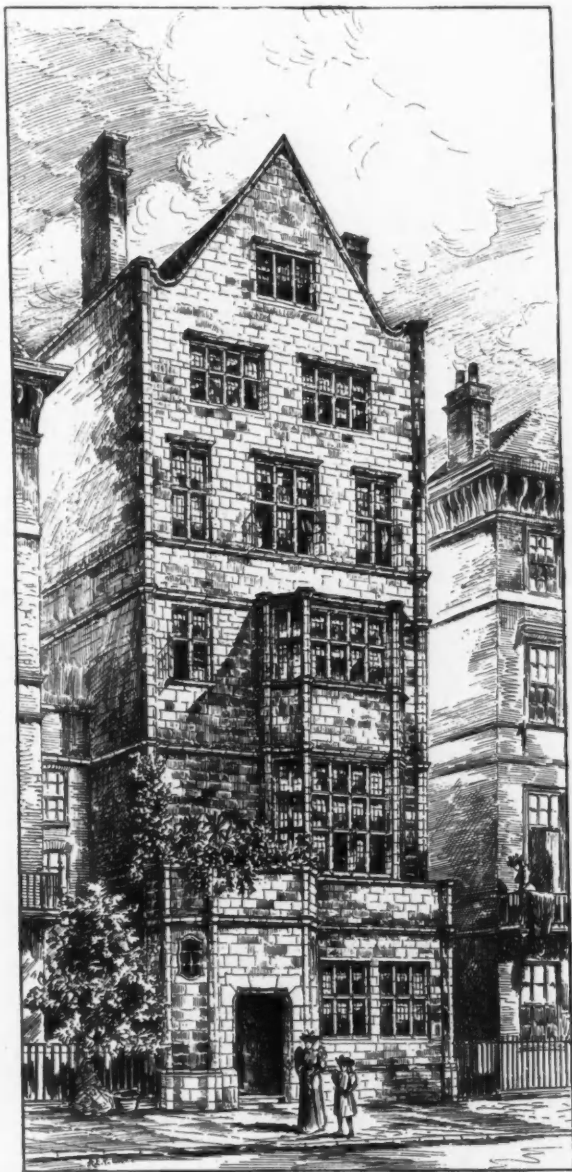


FIRST FLOOR PLAN.



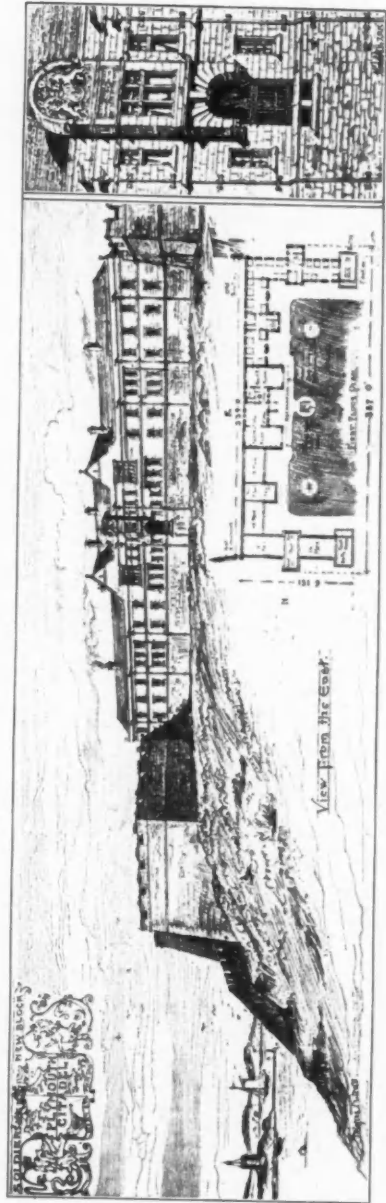
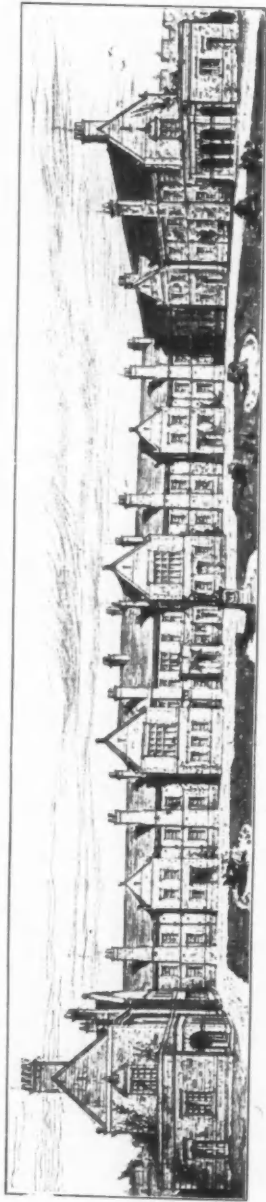
PALACE GATE HOUSE, KENSINGTON, G. J. HAROLD COOPER, ARCHT.





1707. *Exterior of Palace Gate House, Kensington, W.*, C. J. HAROLD COOPER, Architect.

(For Plans, see p. 46.)

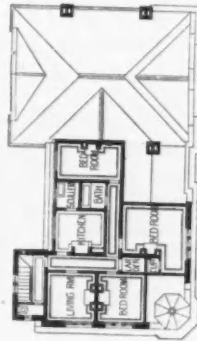
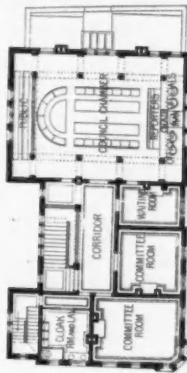
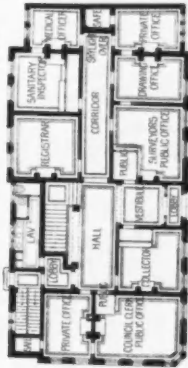
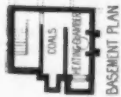


1791. *Plymouth Citadel, New Recreation and Soldiers' Block*, T. ROGERS KITSELL, A.R.I.B.A., Architect.
 (For Plans, see p. 49.)

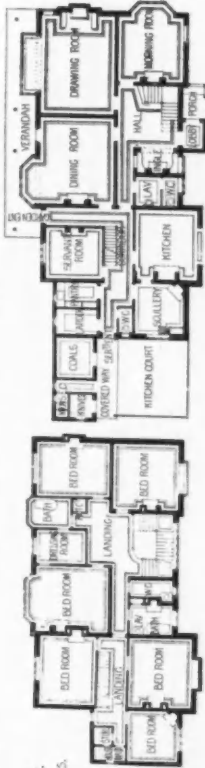
DESIGN FOR COUNCIL OFFICES, SURBITON.

HACK AND SCORER, ARCHTS.

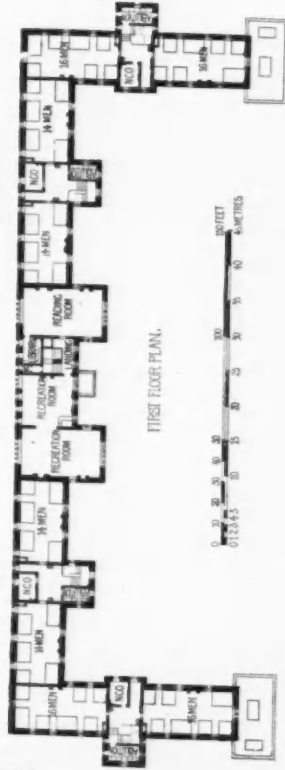
SCALE FOR USE AND COUNCIL OFFICES
 0 5 10 20 30 40 FEET.
 0 1 2 3 4 5 6 7 8 9 10 METRES.



HOUSE, KETTLEWELL, HILL, HORSSELL, SURREY. ROBT CLAMP, ARCHT



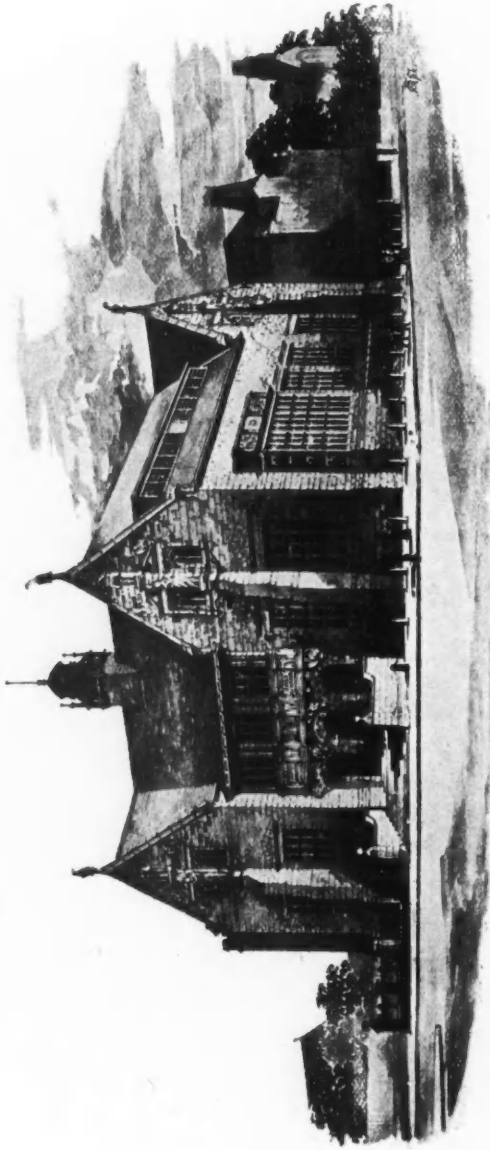
FIRST FLOOR PLAN



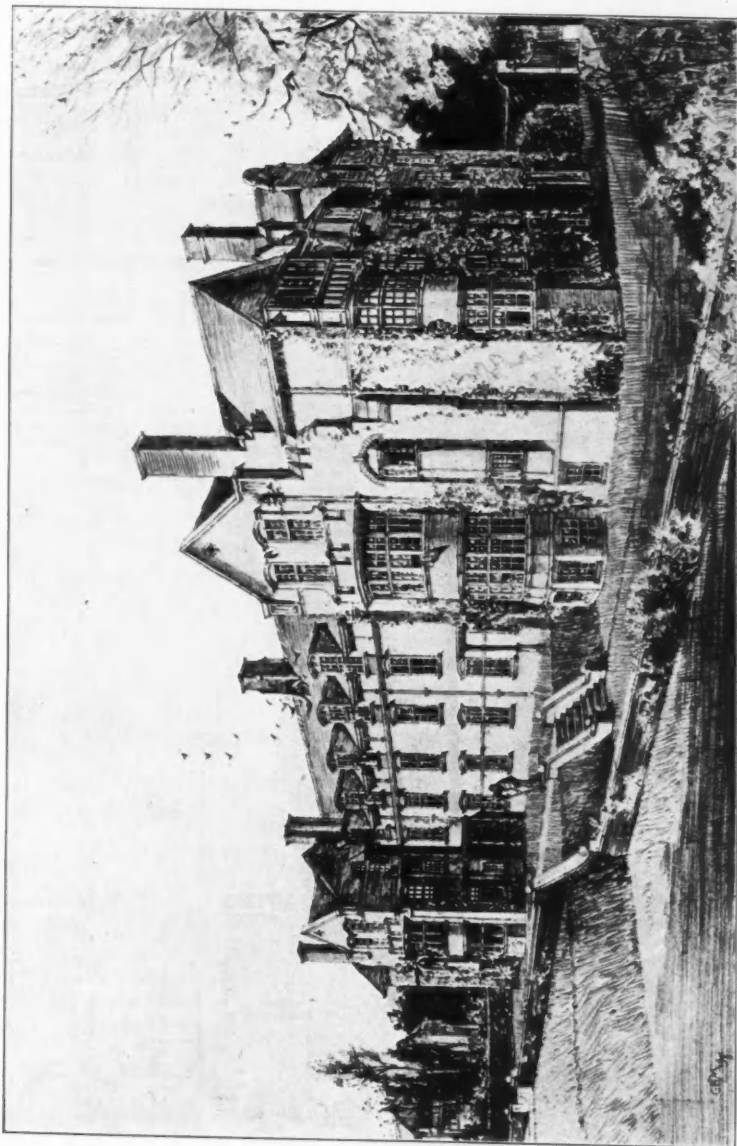
SCALE FOR USE AND RECREATION BLOCK
 0 5 10 20 30 40 FEET.
 0 1 2 3 4 5 6 7 8 9 10 METRES.



PLYMOUTH CITADEL.
 PROPOSED BARACK AND RECREATION BLOCK.
 TO ACCOMMODATE 200 MEN AND BOYS.

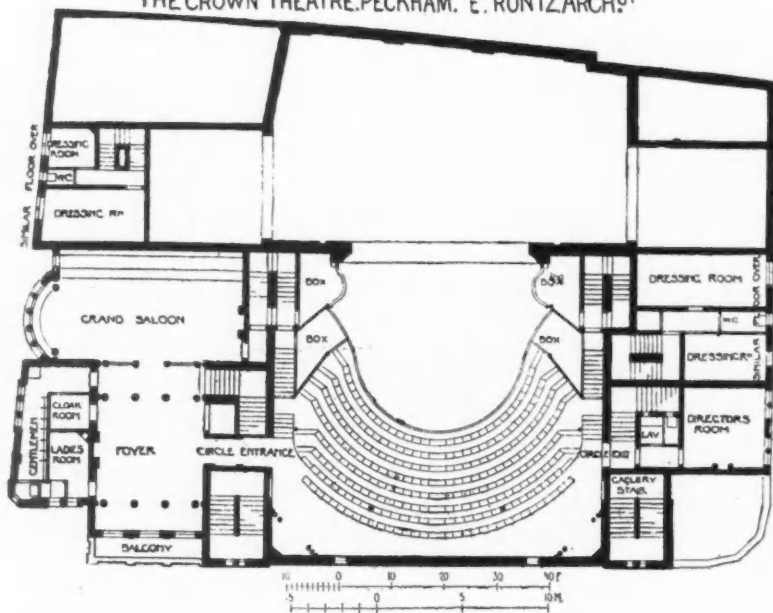


1717. *Design for the Bury Free Library and Art Gallery, BATEMAN AND BATEMAN, Architects.*
(For Plans, see p. 52.)

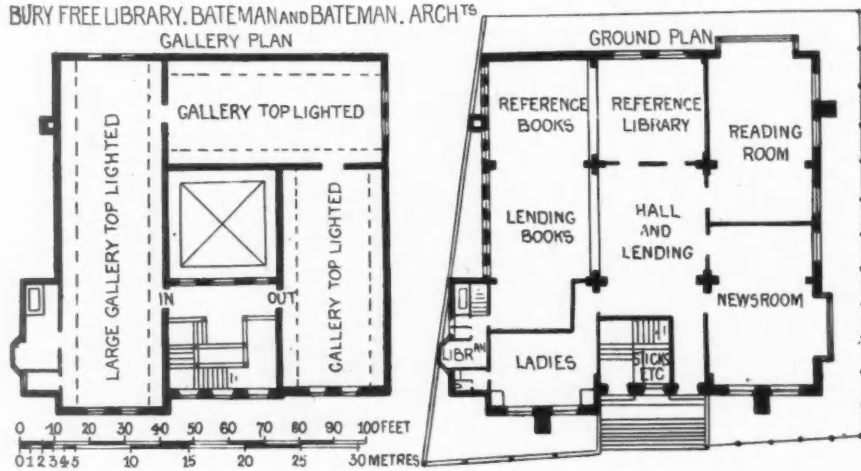


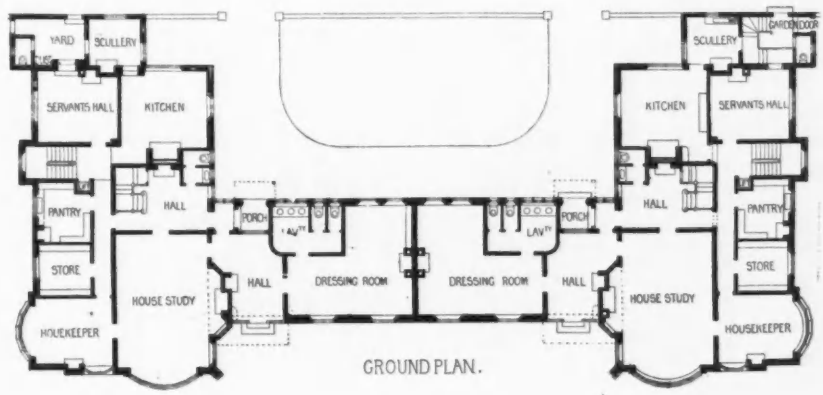
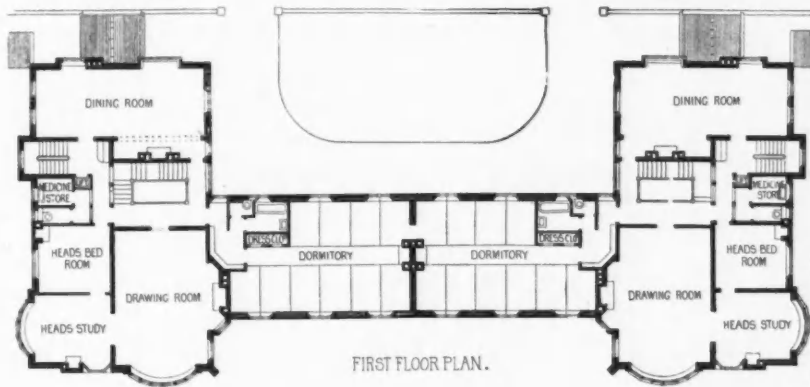
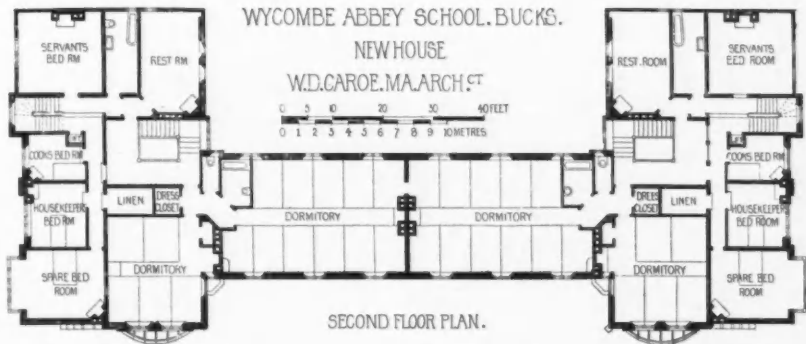
1599. *New Dames' Houses, Wycombe Abbey School, Bucks.*, W. D. CARÖE, M.A., Architect.
(For Plans, see p. 53.)

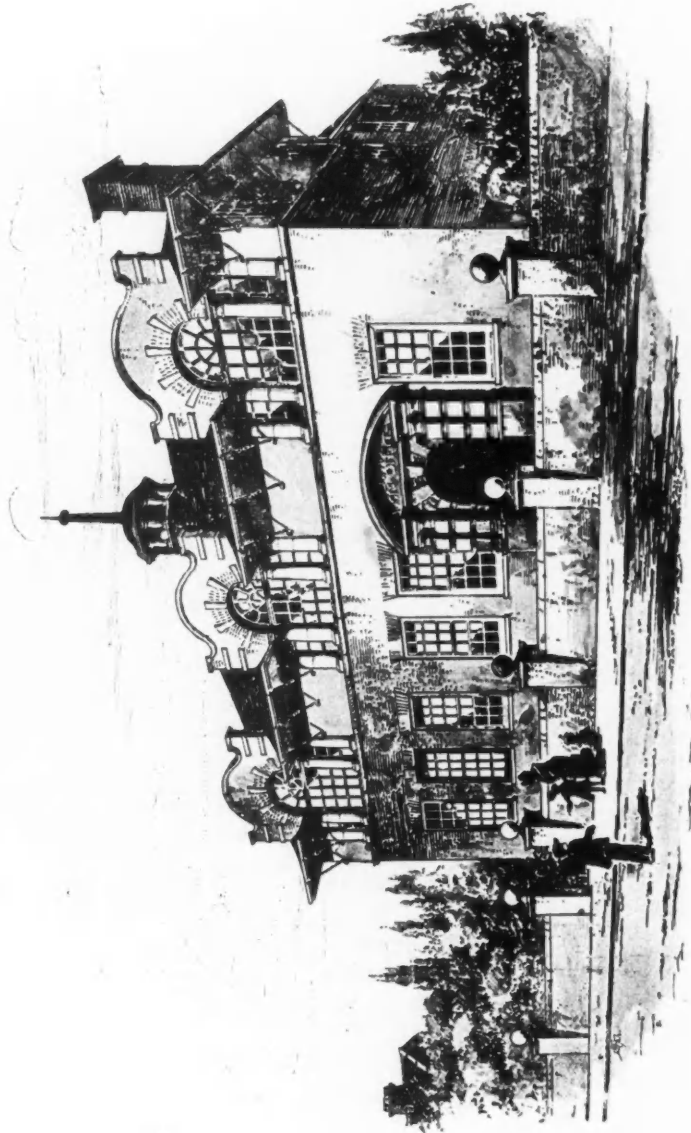
THE CROWN THEATRE. PECKHAM. E. RUNTZ ARCH^T



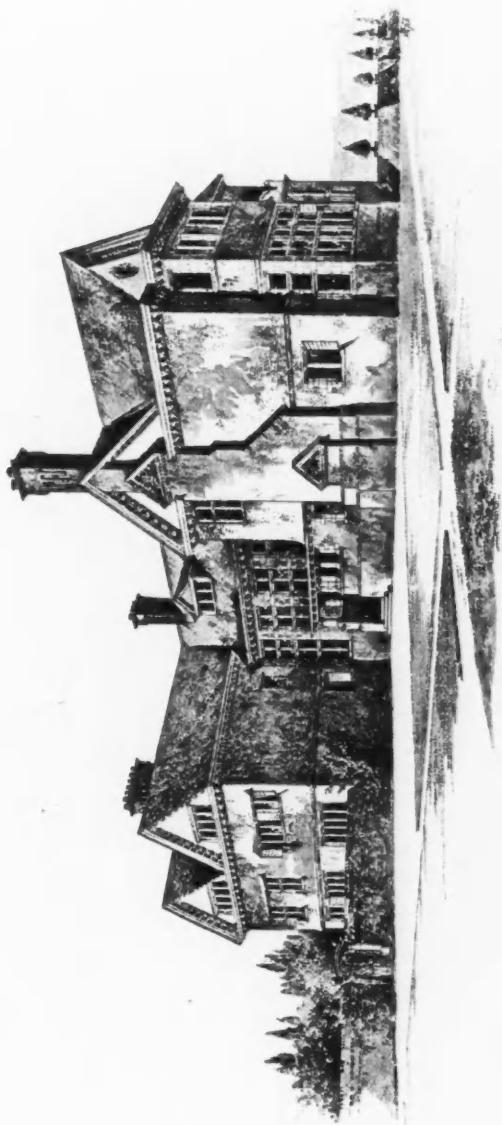
BURY FREE LIBRARY. BATEMAN AND BATEMAN, ARCH^TS
GALLERY PLAN







1800. *Design for New Board Offices, Ormskirke, ARNOLD MITCHELL, F.R.I.B.A., Architect.*



1597. *House at Milford-on-Sea, Hants, ARNOLD MITCHELL, F.R.I.B.A., Architect.*



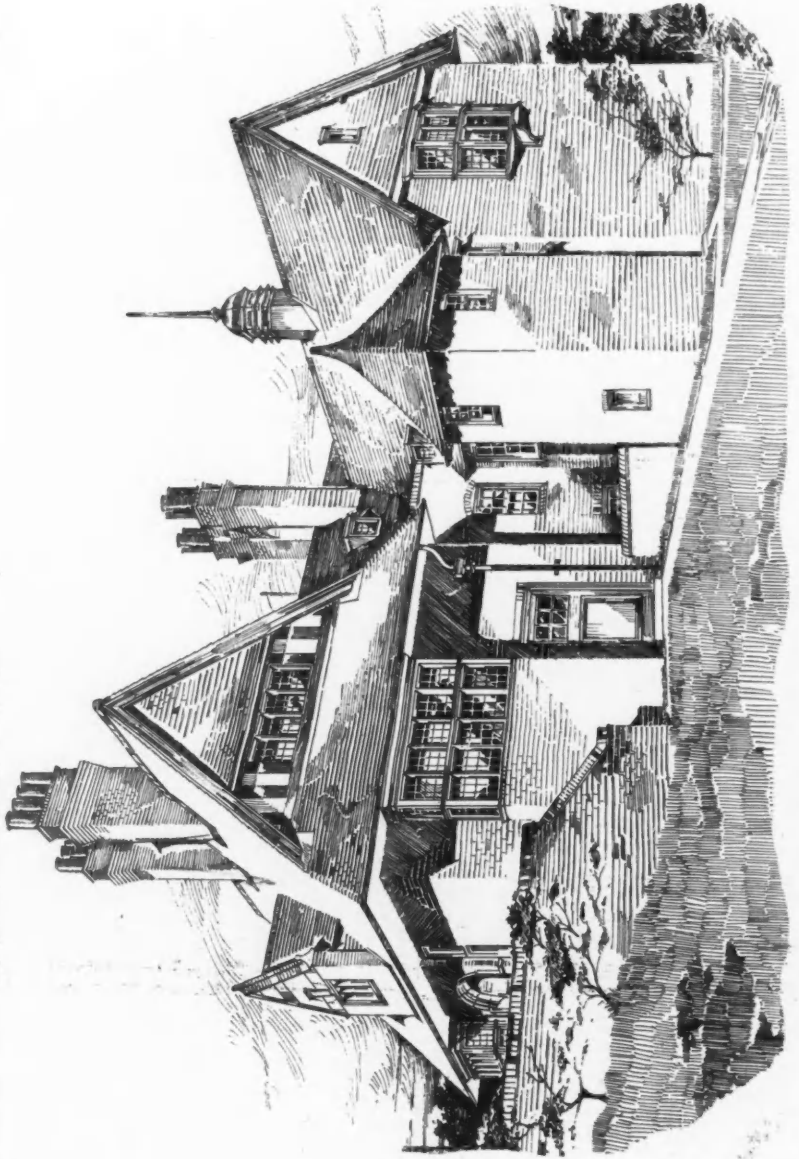
1603. *Country House, Fittleworth, Sussex*, ROBERT S. BALFOUR, A.R.I.B.A., Architect.



1616. *House at Bognor, Sussex*, W. H. ATKIN BERRY, A.R.I.B.A., Architect.



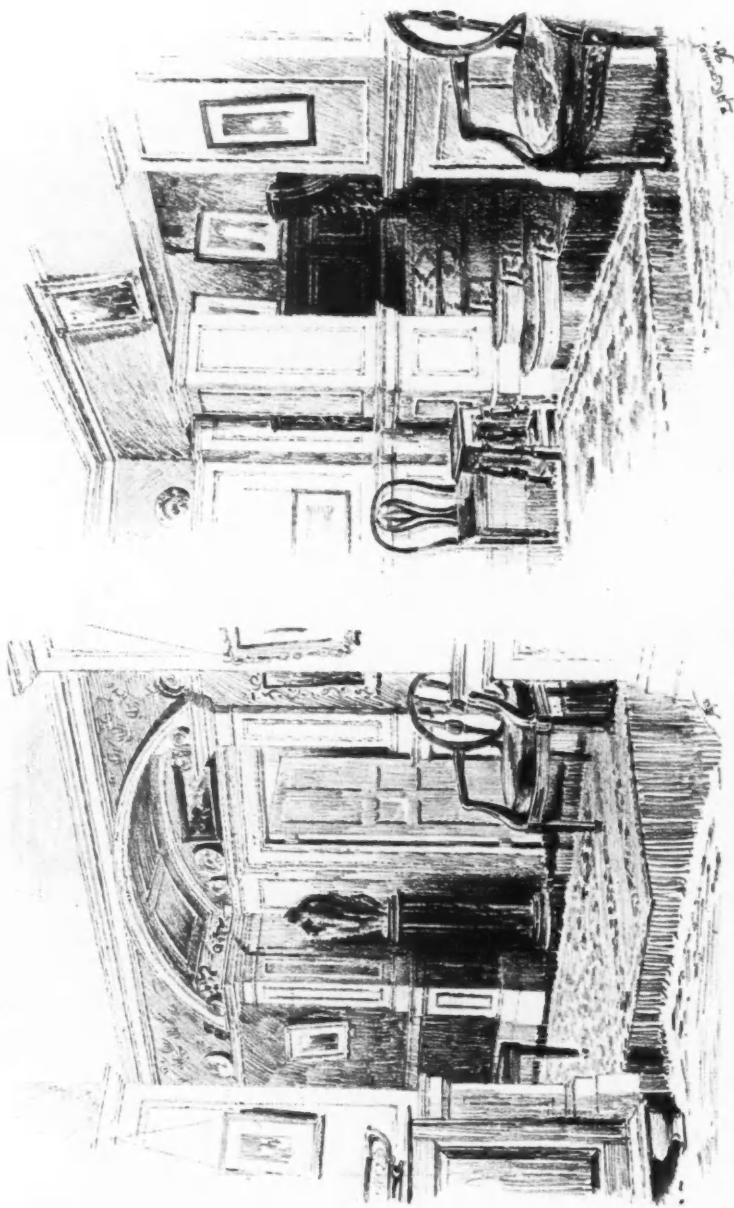
1704. *Stables, Matfield, Kent*, EDGAR S. UNDERWOOD, Architect.



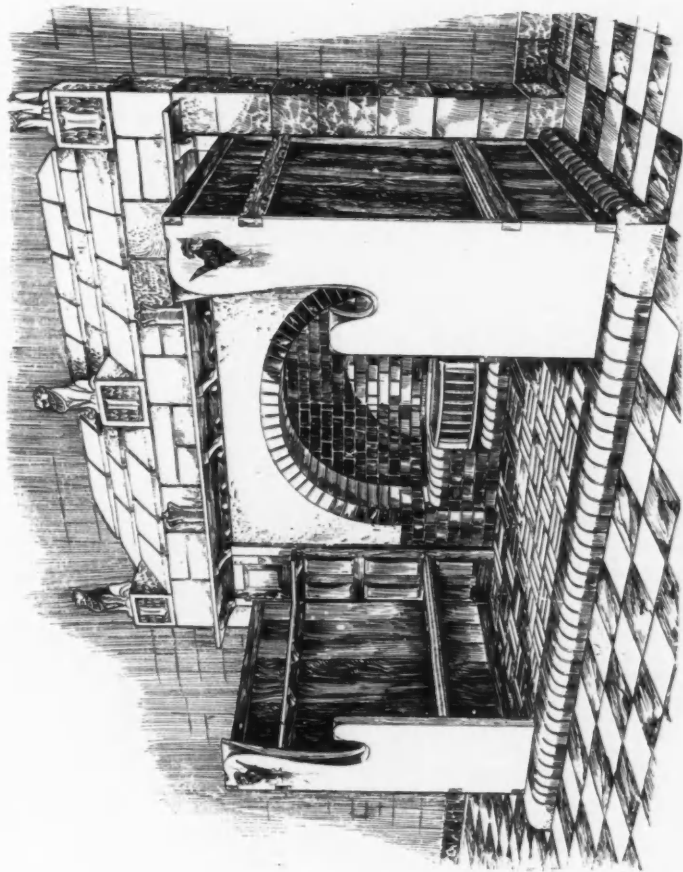
1621. Cottage Hospital, Aldershot, THOMAS DAVISON, A.R.I.B.A., Architect.



1685. *The Roxelean School*, JOHN W. SIMPSON, A.R.I.B.A., Architect.



1730. *Highcombe Edge, Hindhead, Sketches in Hall, WILLIAM A. PITTE, F.R.I.B.A., Architect.*



Design for a Fire-place, by JOHN P. WHITE.



The Firs, Epsom, J. HATCHARD SMITH, F.R.I.B.A., Architect.
(For Plans, see p. 45.)



Charlwood, Epsom, J. HATCHARD SMITH, F.R.I.B.A., Architect.
(For Plan, see p. 38.)



1633. *House at Todmorden*, JESSE HORSFALL, F.R.I.B.A., Architect.
(For Plan, see p. 45.)



1926. *Design for a Frieze*, HELEN LANGLEY, Sculptor.

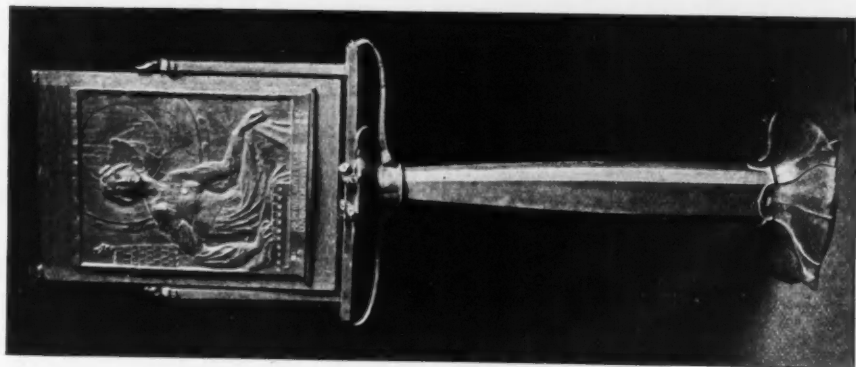
SCULPTURES

1898¹¹



1945. *Orpheus, Relief*, CHARLES BEACON, Sculptor.





1941. *A Low Relief, Bronze, W. REYNOLDS-STEPHENS, Sculptor*



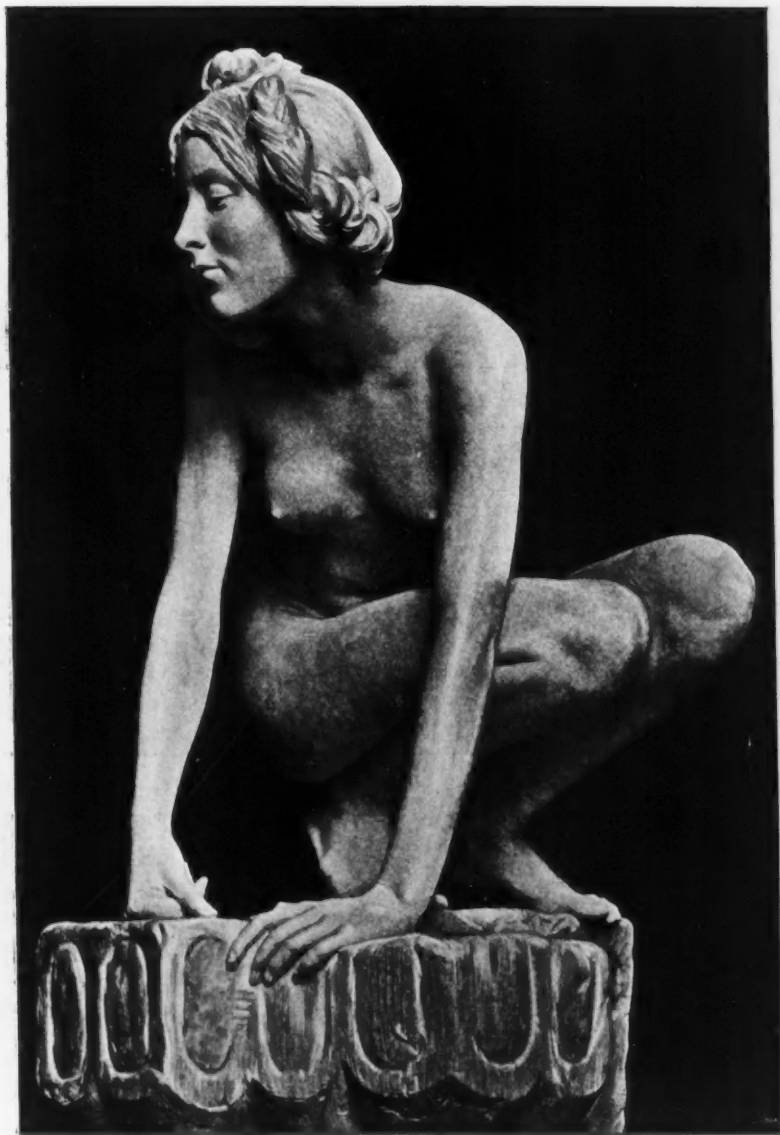
1863. *A Bronze Memorial*, GEORGE J. FRAMPTON, A.R.A., Sculptor.



1915. *A Favourite of the Gods*, PAUL R. MONTFORD, Sculptor.



1841. *Grief*, Statuette, Marble, BERTRAM MACKENNA, Sculptor.



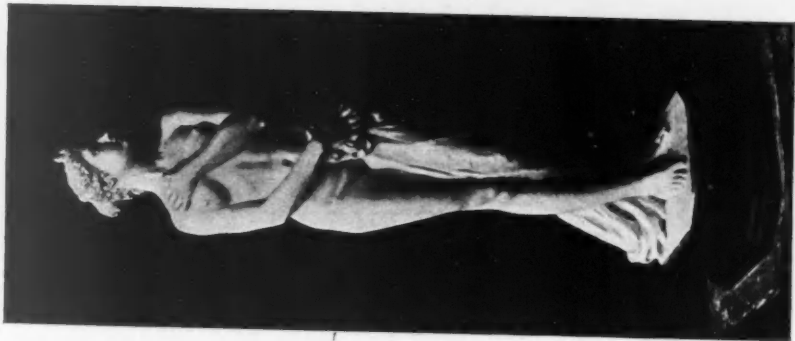
1960. *The Elf, Statue*, W. GOSCOMBE JOHN, Sculptor.



Samson Slaying the Philistines,
MORTIMER J. BROWN, Sculptor.



1819. *Charity, Grouse,*
MORTIMER J. BROWN, Sculptor.



1807. *Diana, Statue,*
GUSTAV NATROP, Sculptor.



1901. *Elsie Jenner, Head,*
ARTHUR C. WHITE,
Sculptor.



1860. *Innocence Bust Marble* ANDREA C. LUCCIESI, Sculptor.



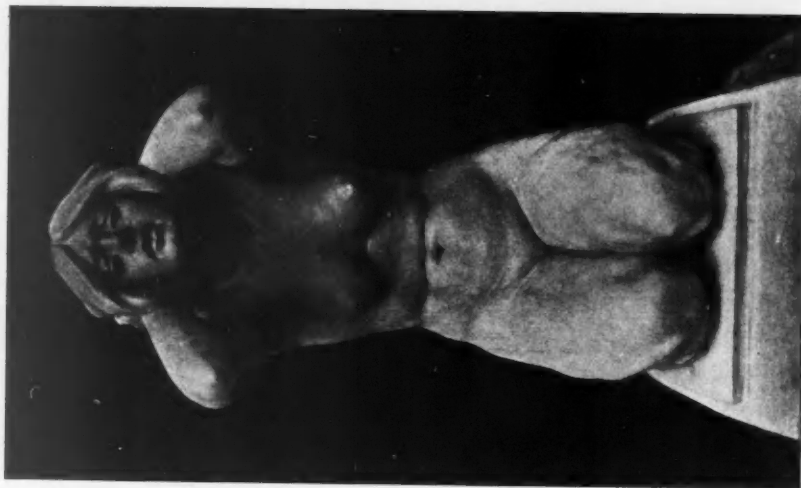
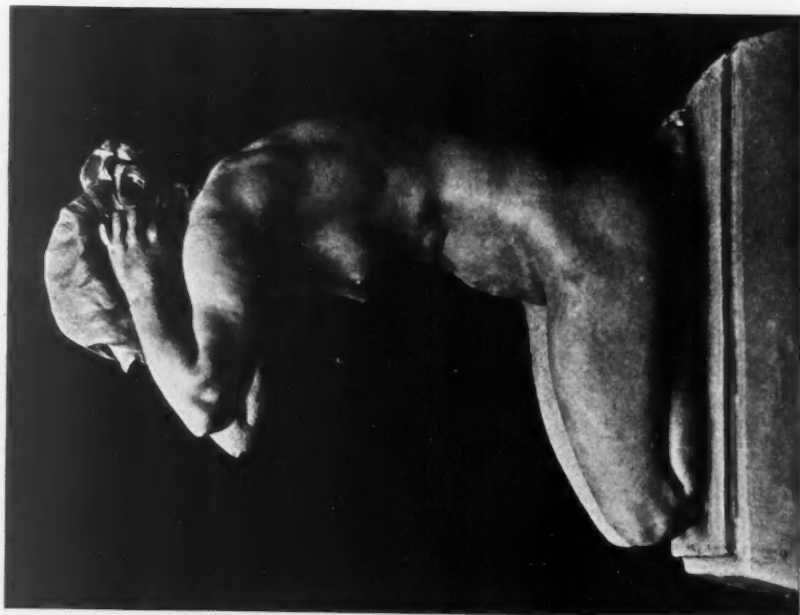
1835. *Bacchante, Head,*
CLARISSA BARKER,
Sculptor.



1861. *Justice, Statue.* Part of the Monument to the late Maharajah of Mysore,
E. ONSLOW FORD, R.A., Sculptor.



1866. *Knowledge, Statue. Part of the Monument to the late Maharajah of Mysore,*
E. ONSLOW FORD, R.A., Sculptor.



1837. *Hagar, Statuette*, ALBERT TOFT, Sculptor.



1822. "He shall give His Angels charge over thee," Group,
MARGARET M. GILES, Sculptor.



1809. *Mother's Love*, Group, Marble, EMIL FUCHS, Sculptor.



1942. *Prometheus, Relief*, OLIVER WHEATLEY, Sculptor.
R.A. Ex., 1897.



1897. *The Death of Ahab, Relief*, STANLEY BABB, Sculptor.



1891. *A Triton.* *A Water Nymph.*
Terra-Cotta Panels for the Shoreditch Public Baths, FREDERICK E. E. SCHENCK, Sculptor.



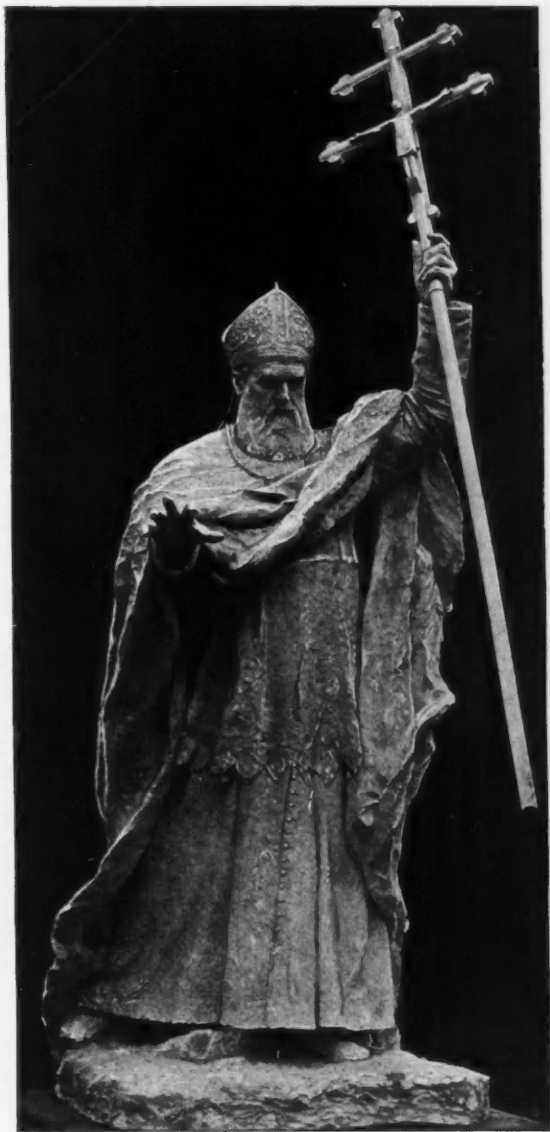
1851. *Design for a Door Knocker, Bronze,*
HELEN LANGLEY, Sculptor.



1910. *A Drinking Horn and Stand, Silver-gilt,*
W. GOSCOMBE JOHN Sculptor.



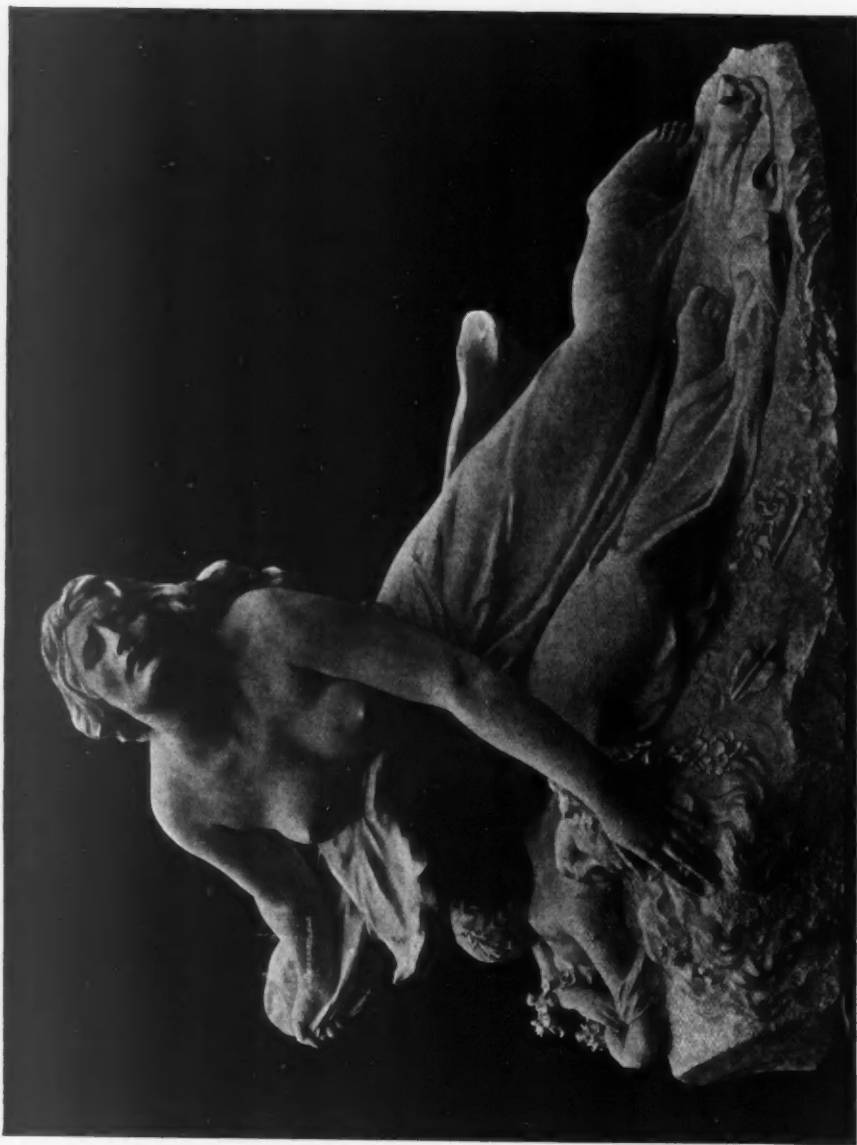
1967. *The Crash of Doom, Statue,*
ANDREA C. LUCCHESI, Sculptor.



3392. *Le Cardinal Lavigerie*, A. FALGUIÈRE, Membre de l'Institut, Sculptor, Paris.
Paris Salon, 1898.



3907. *Sous l'œil du dompteur*, C. VALTON, Sculptor, Paris.
Paris Salon, 1898.



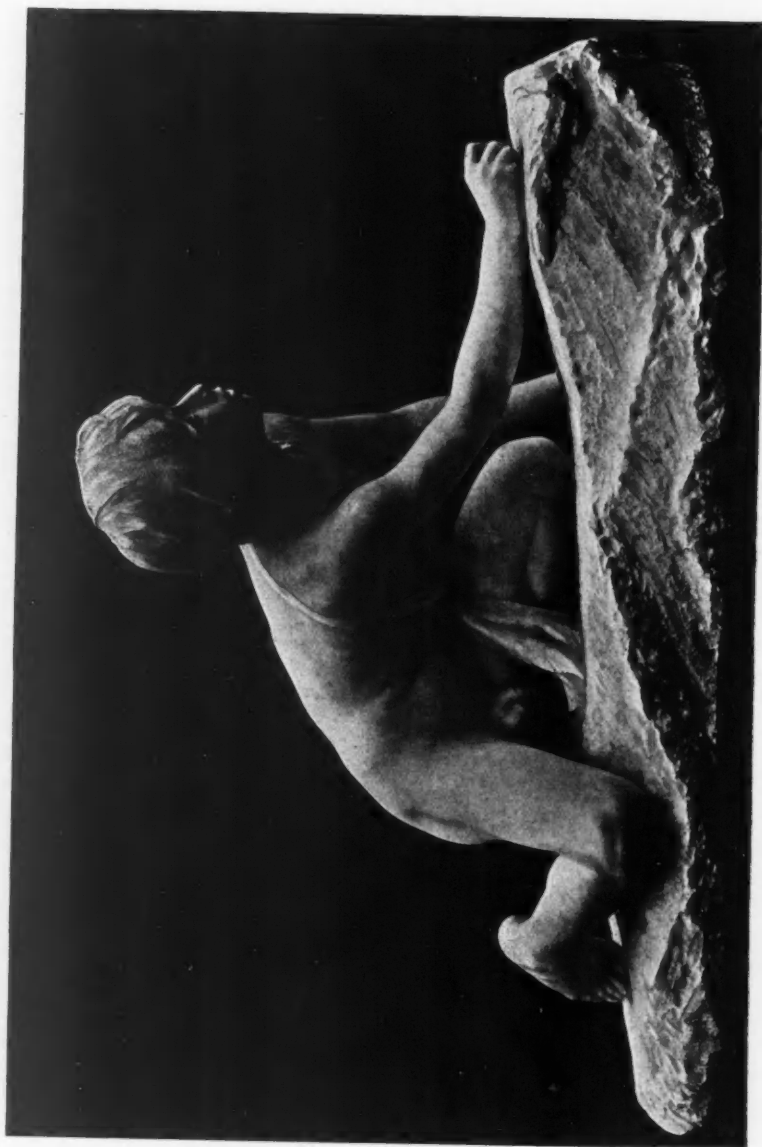
3580. *Niobé*, H. LEFÈVRE, Sculptor, Paris.
1^{re} Médaille.
Paris Salon, 1898.



3432. *Tigres*, G. GARDET, Sculptor Paris
Médaille d'honneur.
Paris Salon, 1898.



3432. *Lions*, G. GARDET, Sculptor, Paris
Médaille d'honneur
Paris Salon, 1898.



3916. *La Gioia*, A. C. VERMARE Sculptor, Paris.
Paris. Salon, 1898.



3635. *Châta d'Icare*, A. MAILLARD, Sculptor, Paris.
Paris Salon, 1898.



3127. *La Sabine emportant ses affluents*, F. A. BARTHOLDI, Sculptor, Paris.
Paris Salon, 1898.



3415. *Cocher Romain*, E. FRÉMIET, Membre de l'Institut, Sculptor, Paris.
Paris Salons, 1898.



3868. *Tombeau de J. H.*, F. SOULÈS, Sculptor, Paris.
Paris Salon, 1908.



3654. *Inondation*, L. D. MATHET, Sculptor, Paris.
Paris Salon, 1898.



Feuilles d'Automne, HENRI SCHMID, Sculptor, Paris
3^e Médaille.
Paris Salon, 1897.



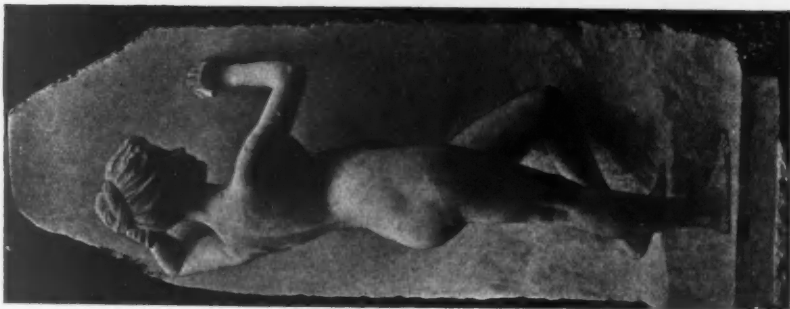
3338. *Daphné changée en laurier*, J. DERCHEU, Sculptor, Paris.
Paris Salon, 1898.



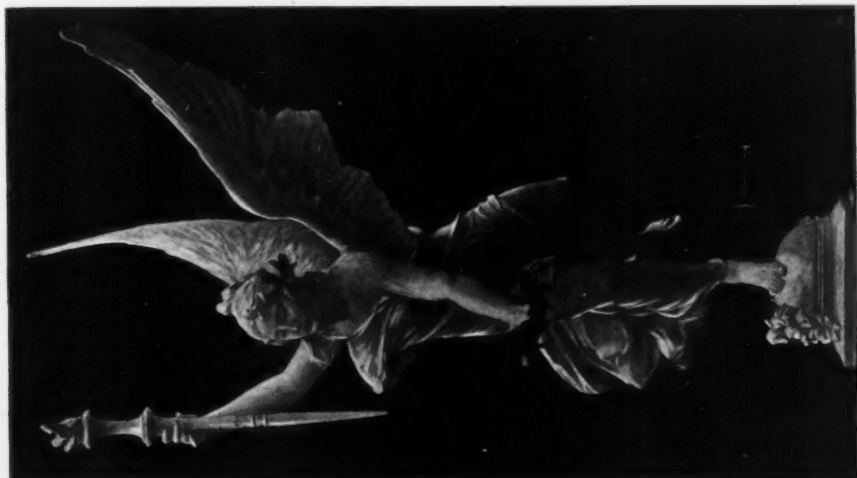
*Dans le rêve (acquis par l'Etat),
G. MICHEL, Sculptor, Paris,
Paris Salon, 1898.*



3290. *Le grand Ferré,
J. COULON, Sculptor, Paris,
Paris Salon, 1898.*



3197. *Philosophie de l'histoire,
A. BOUCHER Sculptor, Paris,
Paris Salon, 1898.*



4222. *Hommage à l'agriculture moderne*,
J. E. ROINÉ, Sculptor, Allortville (Seine).
Paris Salon, 1898.



3914. *Gallia*, R. C. VERLET, Sculptor, Paris.
Paris Salon, 1898.



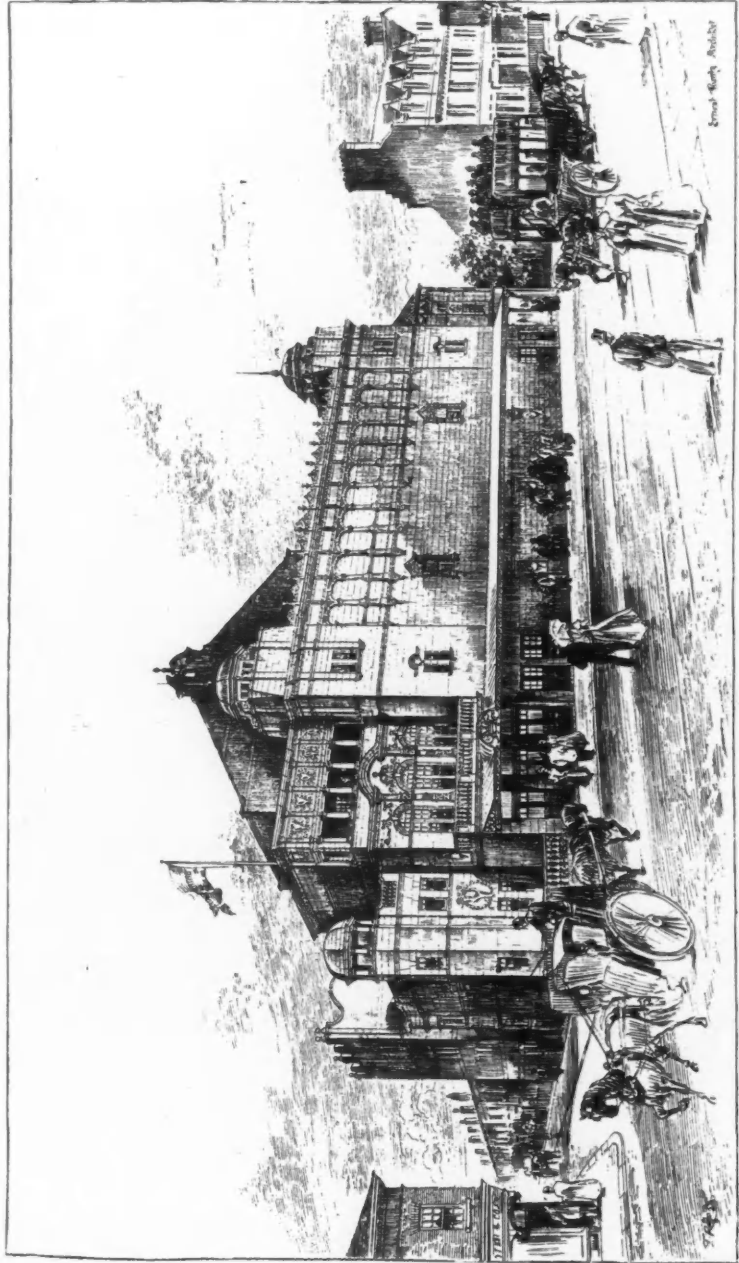
3260. *Vision de la Vierge, I*; CASTEX, Sculptor, Issy (Seine).
3^e Médaille.
Paris Salon, 1898

ARCHITECTURAL REVIEW.

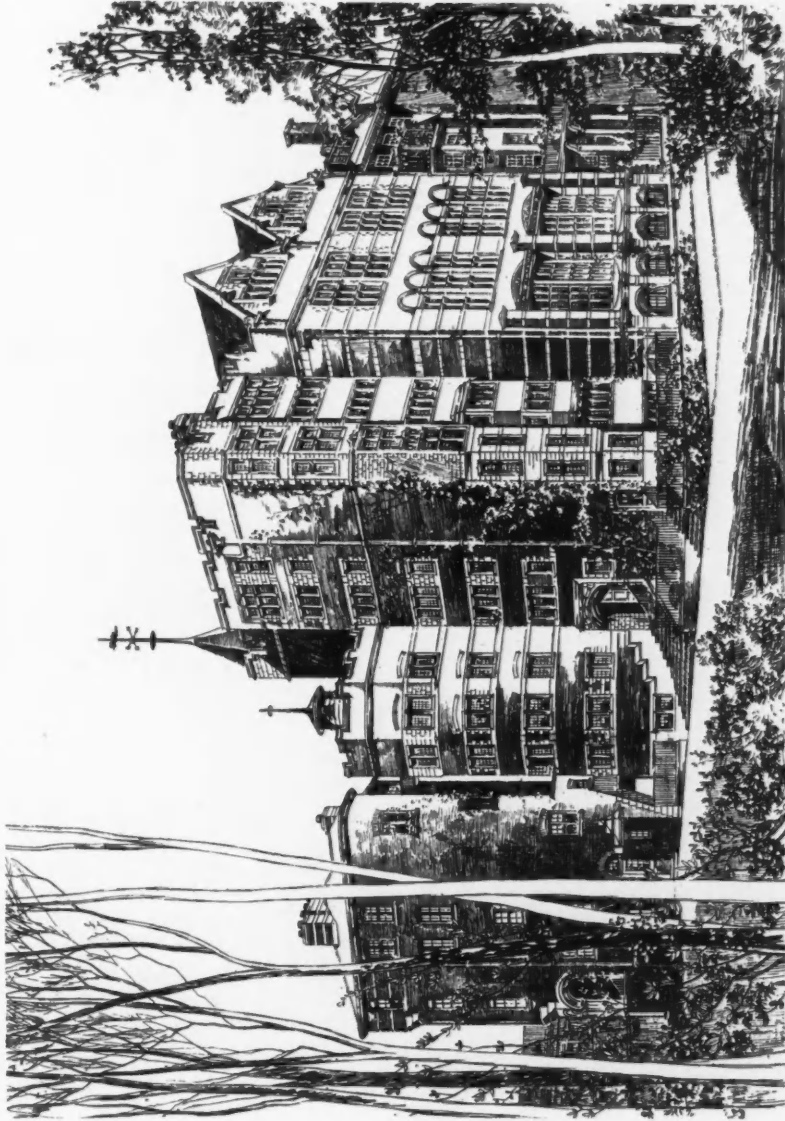
1898^{II}.



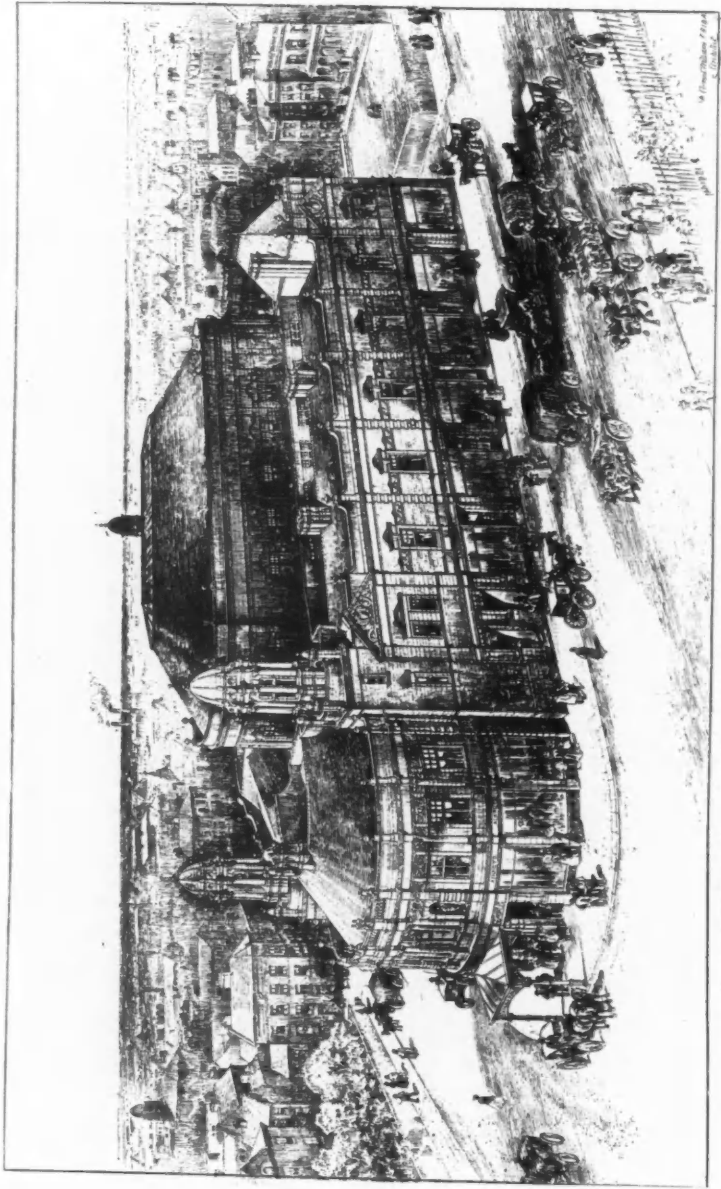
Denkmal, ROBERT RITTMAYER, Architect, Cöln.



The Crown Theatre, Peckham, ERNEST RUNTZ, Architect.
(For Plan, see p. 52.)

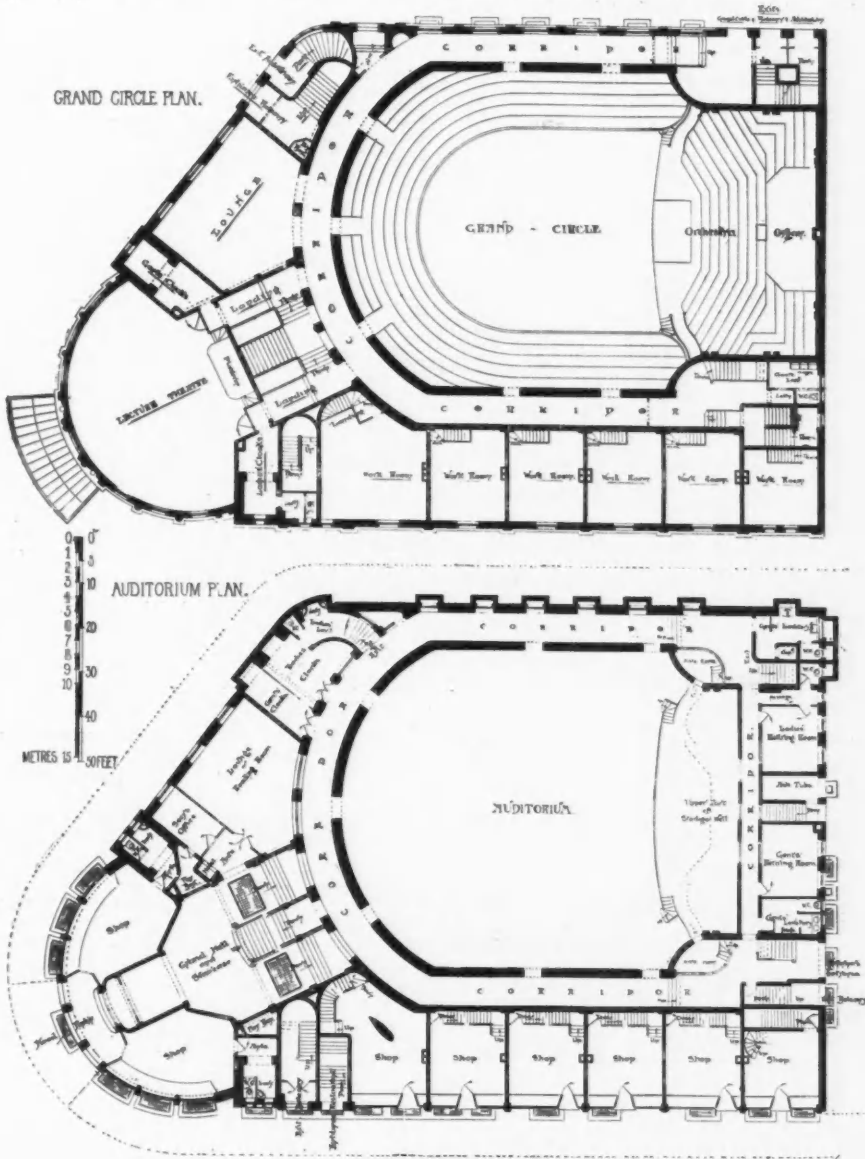


*St. George's School, Hanover Square, W., Perspective View from Vestry Gardens, PHILIP A. ROBSON, A.R.I.B.A., Architect.
(For Plan, see p. 46.)*



Proposed Victoria Concert Hall, Halifax, W. CLEMENT WILLIAMS, F.R.I.B.A., Architect.
(For Plans, see p. 101.)

PROPOSED CONCERT HALL HALIFAX. W.C.WILLIAMS, FRIBA, ARCHTST

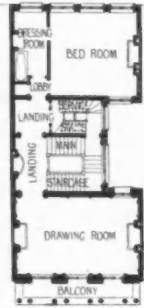


A TOWN HOUSE. W.R.JAGGARD. ARCH^{CT} THEATRE ROYAL.SOUTHAMPTON. HOPE AND MAXWELL.ARCH^{TS}

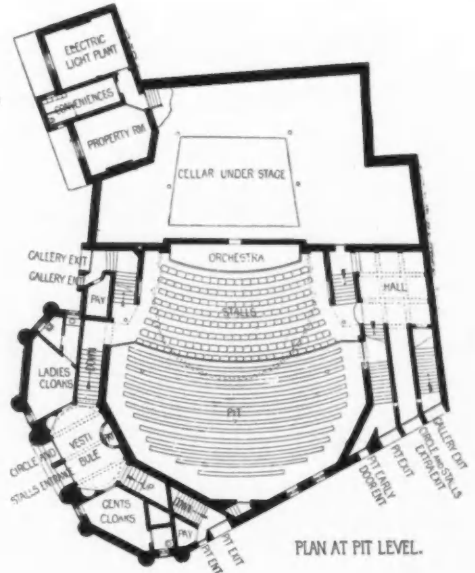


GROUND PLAN.

0 5 10 20 30 40 FEET
0 1 2 3 4 5 6 7 8 9 10 METRES
SCALE FOR PAGE.



FIRST FLOOR PLAN.



PLAN AT PIT LEVEL.

THE RED HOUSE.HARPENDEN. MAURICE B.ADAMS. FRIBA. ARCH^{CT}



GROUND PLAN.



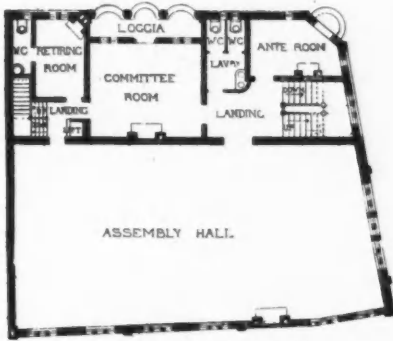
FIRST FLOOR PLAN.



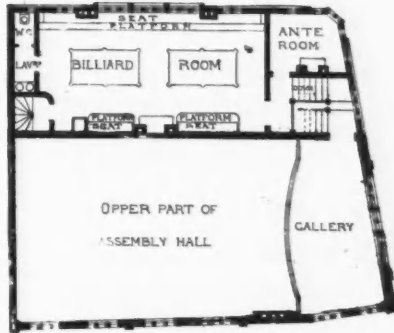
Theatre Royal, Southampton, W. HOPE AND J. C. MAXWELL, Architects.
(For Plan, see p. 102.)



Accepted Design for New Conservative Club, Nuneaton, CHARLES W. SMITH, M.S.A., Architect.
(For Plans, see p. 105.)

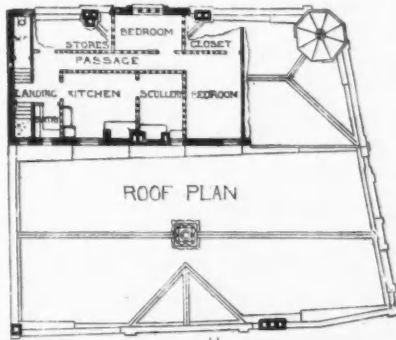


FIRST FLOOR PLAN

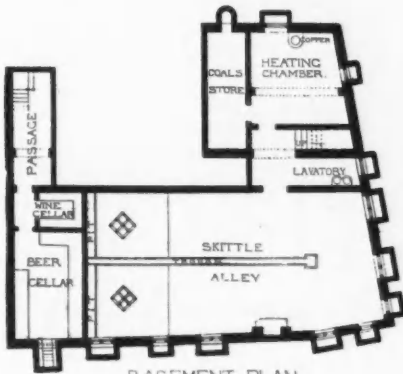


SECOND FLOOR PLAN

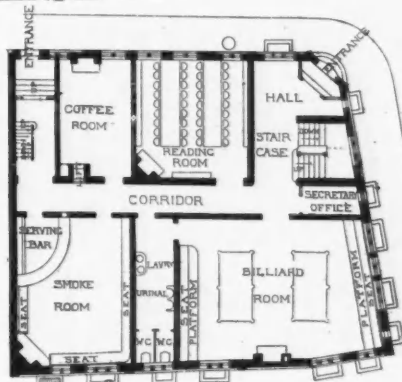
NEW CONSERVATIVE
CLUB NUNEATON
CHAS W SMITH MSA
ARCHITECT



ROOF PLAN



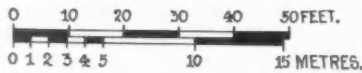
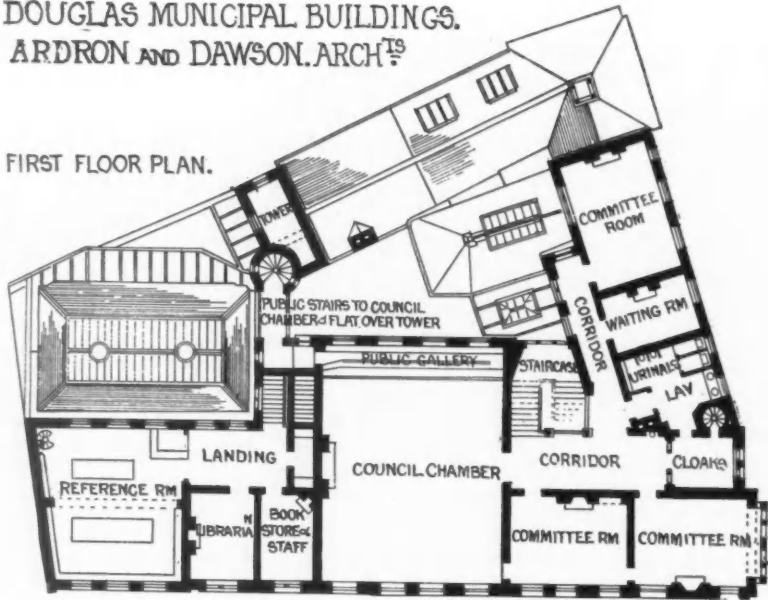
BASEMENT PLAN



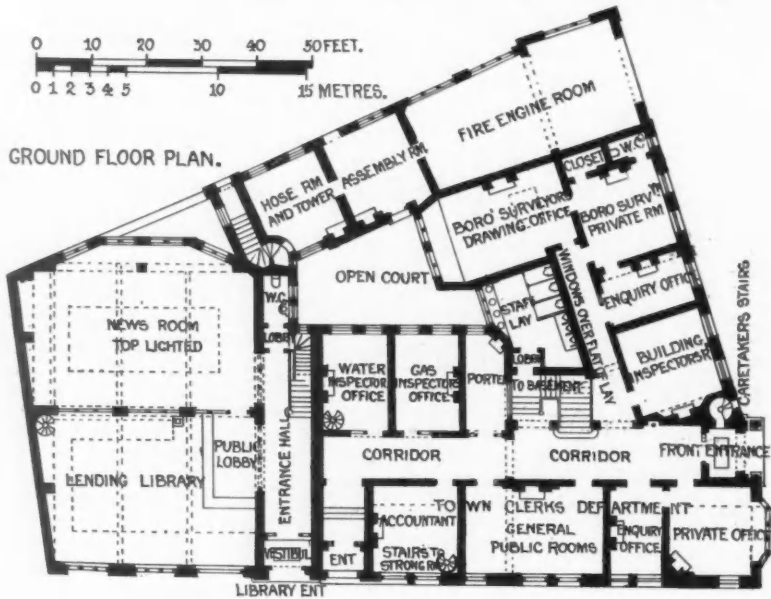
GROUND FLOOR PLAN.

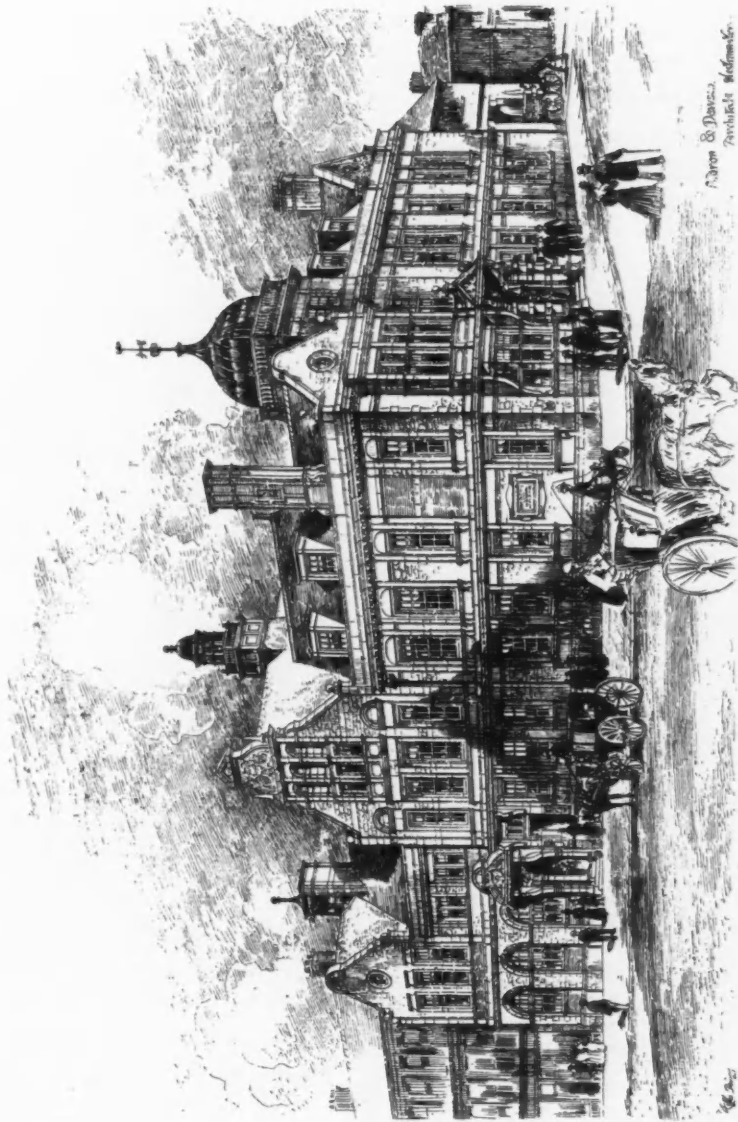
DOUGLAS MUNICIPAL BUILDINGS.
ARDRON AND DAWSON. ARCH^{TS}

FIRST FLOOR PLAN.



GROUND FLOOR PLAN.



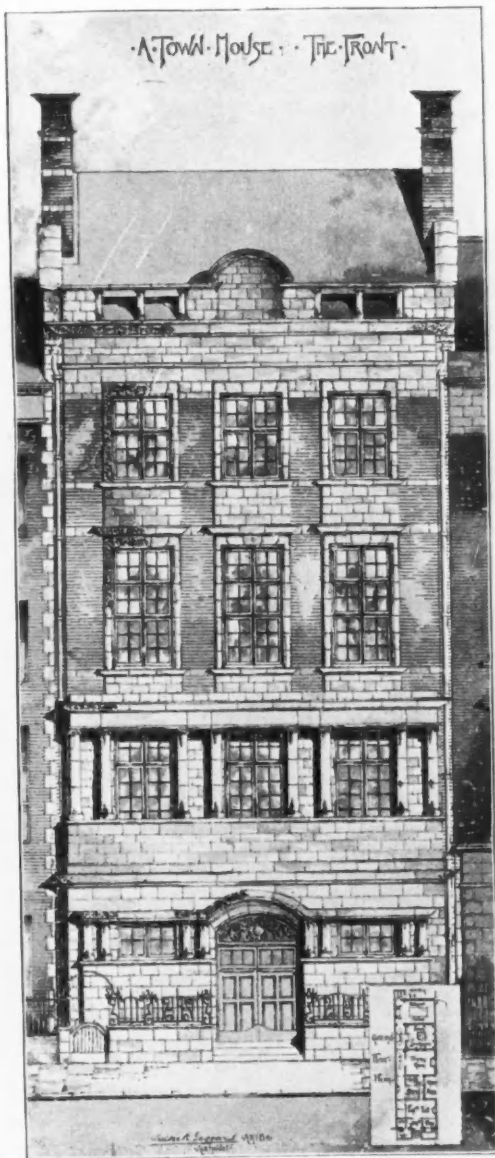


Ardron & Dawson
Architects Wellington

*Douglas Municipal Buildings, ARDRON AND DAWSON, Architects.
(For Plans, see p. 106.)*



Religious Institute, Deansgate, Manchester, WOODHOUSE AND WILLOUGHBY, Architects.



A Town House, WALTER R. JAGGARD, A.R.I.B.A., Architect.
(For Plans, see p. 102.)



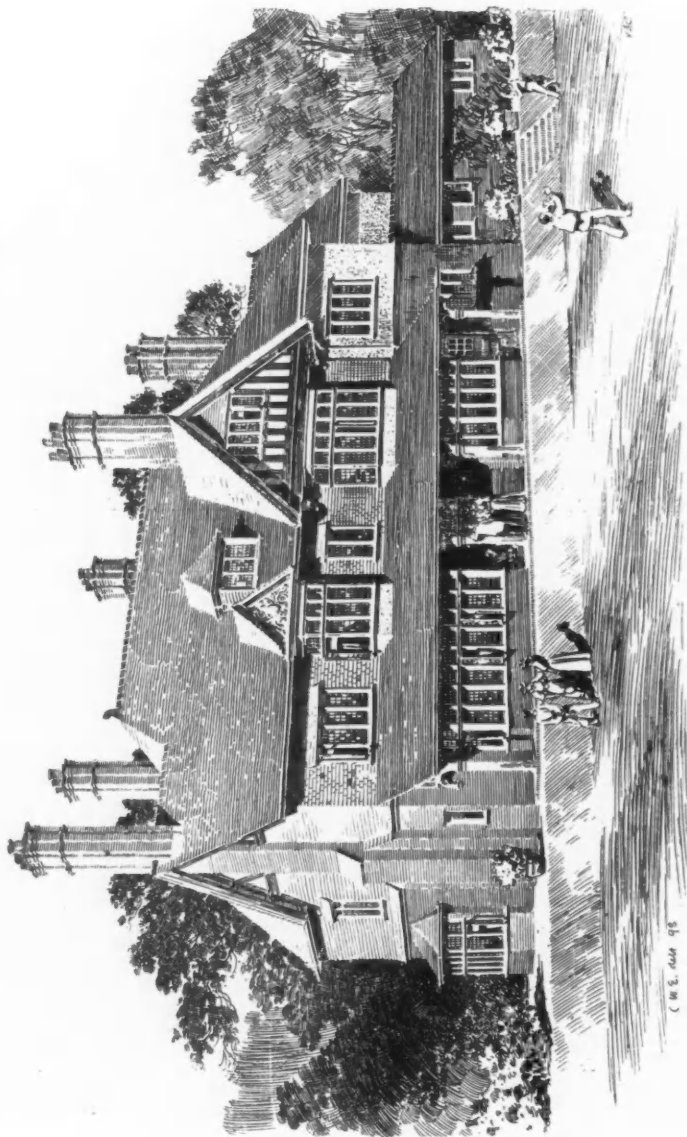
(1) Cottages at Epsom ; (2) Lodge at Newigate Place ; (3) Cottage at D'Abernon Chase,
J. HATCHARD SMITH, F.R.I.B.A., Architect.



Design for Council Offices, Surbiton,
M. S. HACK, A.R.I.B.A., AND GEORGE O. SCORER, A.R.I.B.A., Architects.
(For Plans, see p. 49.)



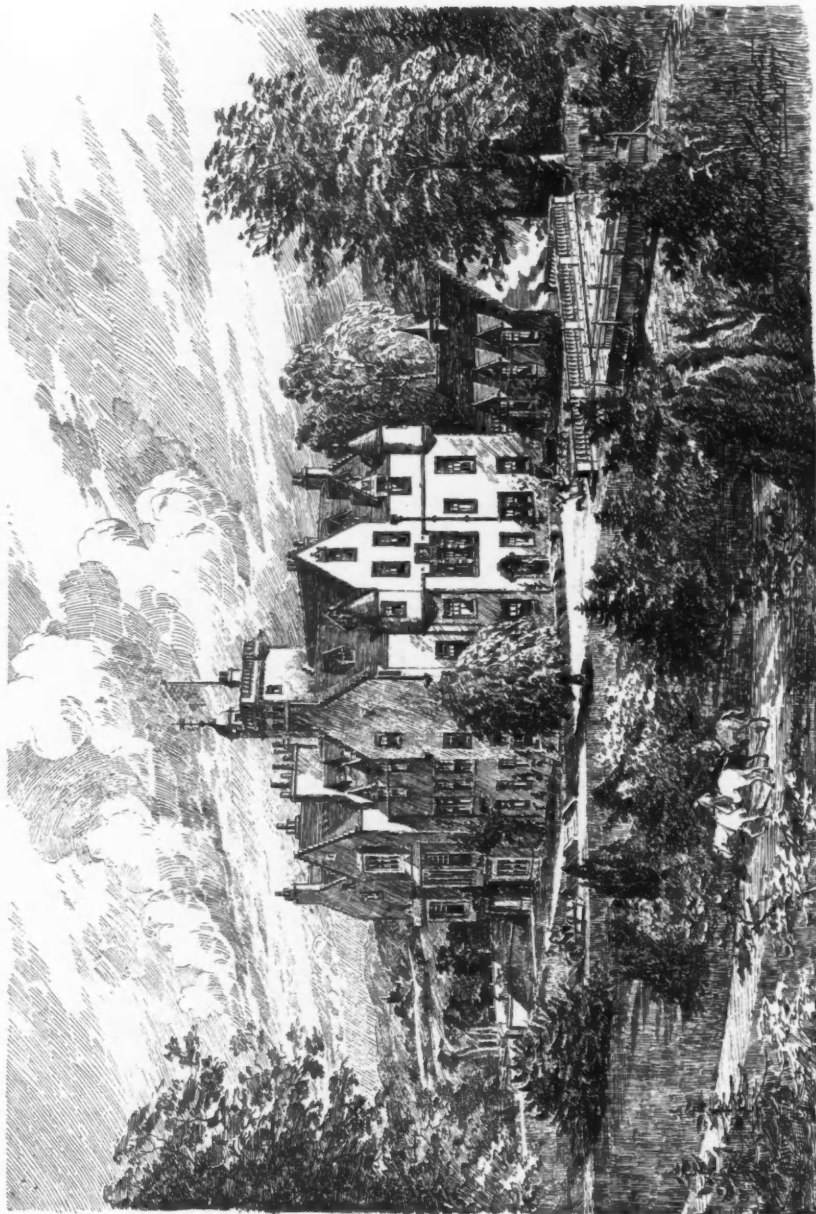
Proposed House, Lynton, G. H. GROCOCK, Architect.
(For Plans, see p. 41.)



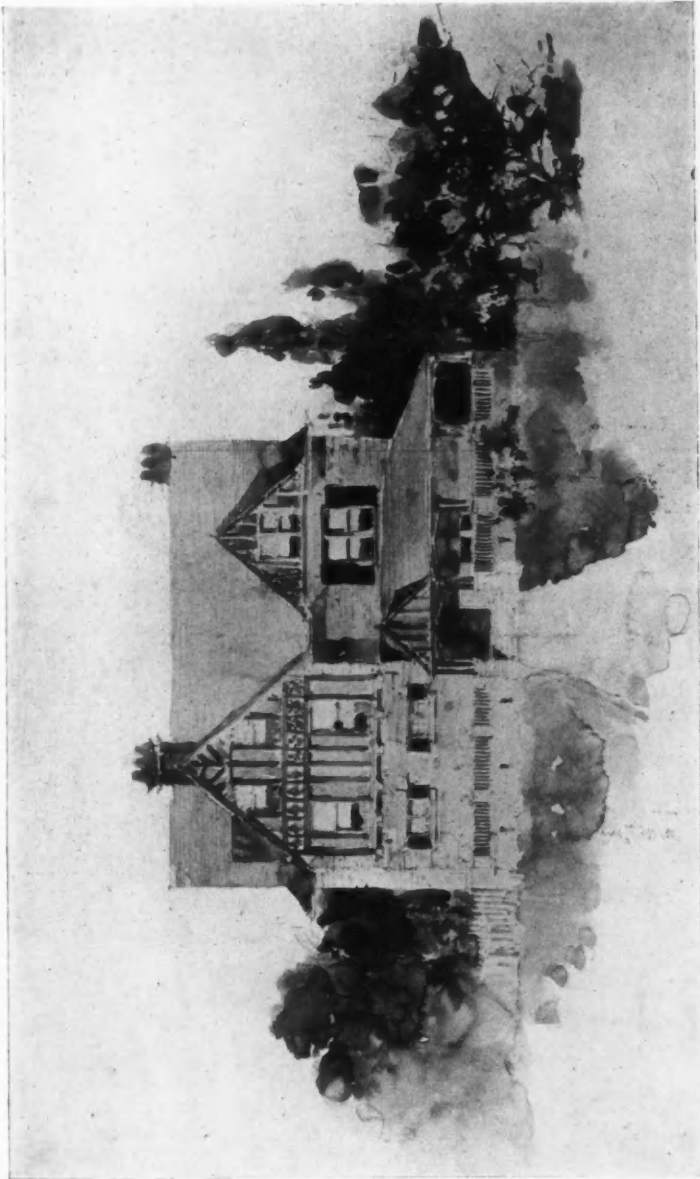
House, Kettlewell Hill, Horsell, Surrey, R. CLAMP, A.R.I.B.A., Architect.
(For Plans, see p. 49.)



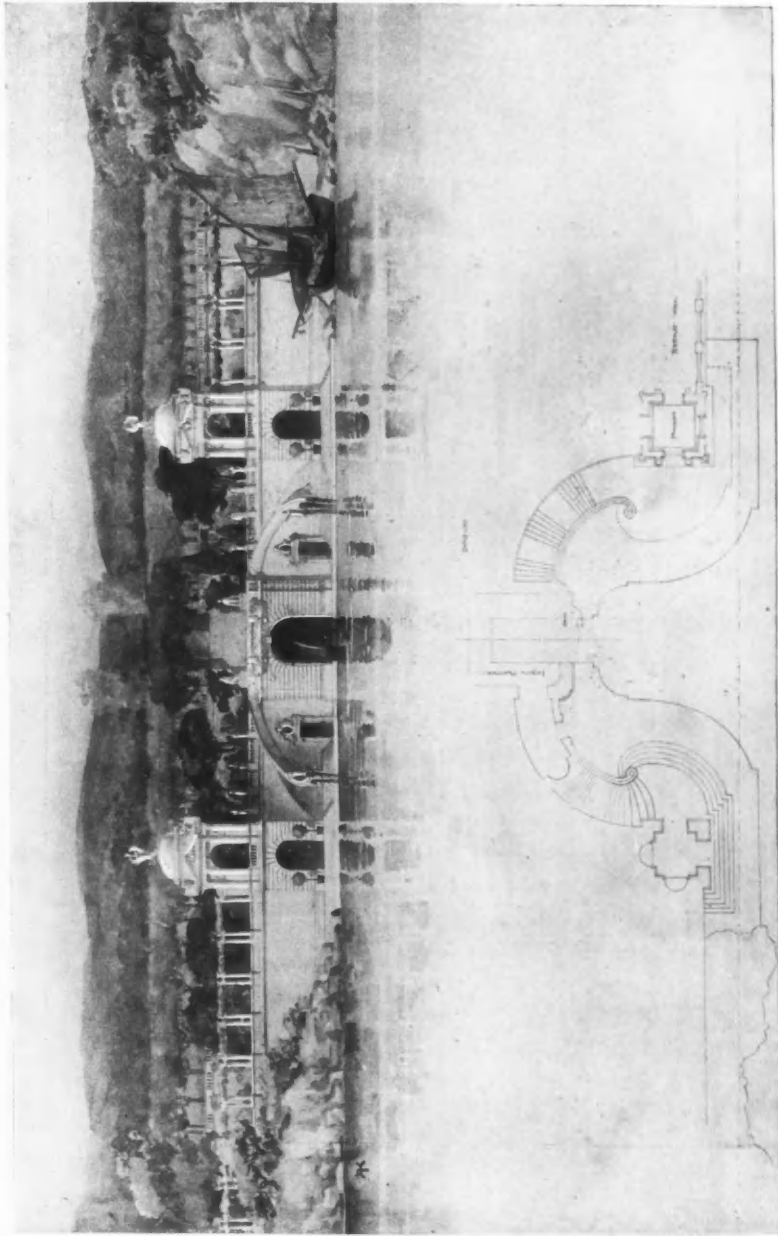
*The Red House, Harpenden, Herts, for A. Vaughan Stevens, Esq., Maurice B. Adams, F.R.I.B.A., Architect.
(For Plans, see p. 102.)*



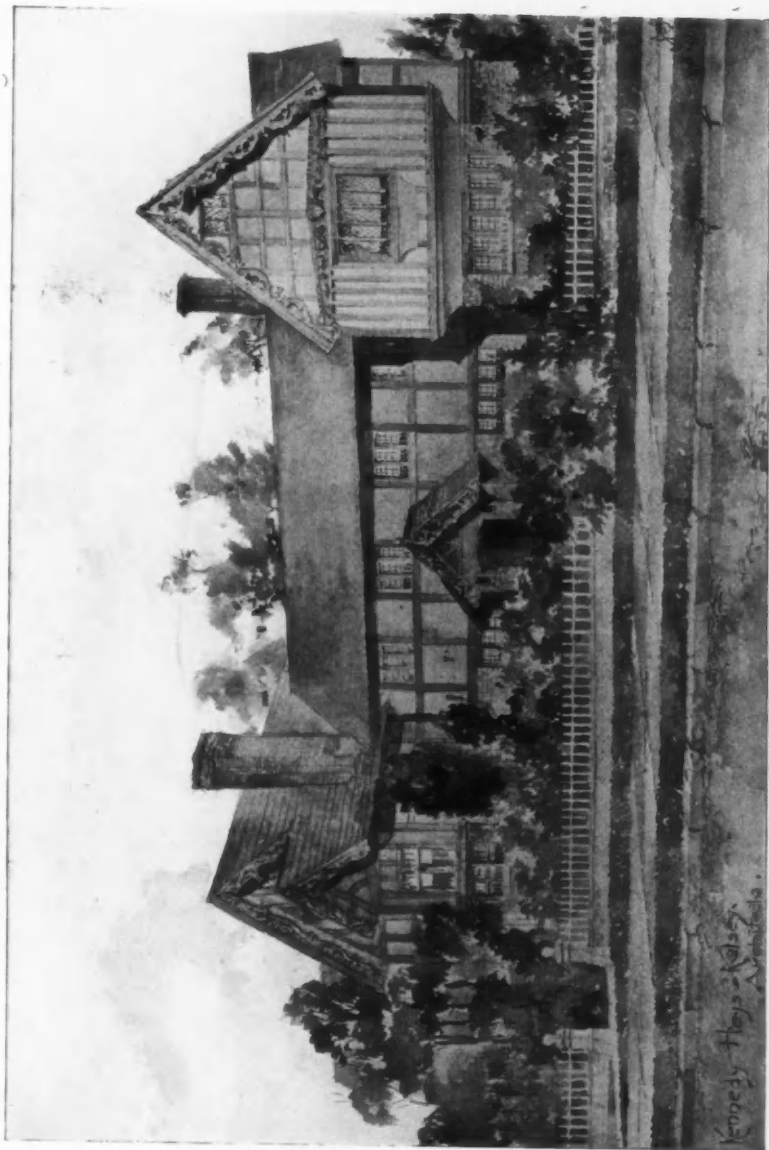
*Additions to Barochan House, Kentfrewshire, for C. Bine Kenchate, Esq., M.P., CHARLES S. S. JOHNSTON, Architect,
(For Plan, see p. 119.)*



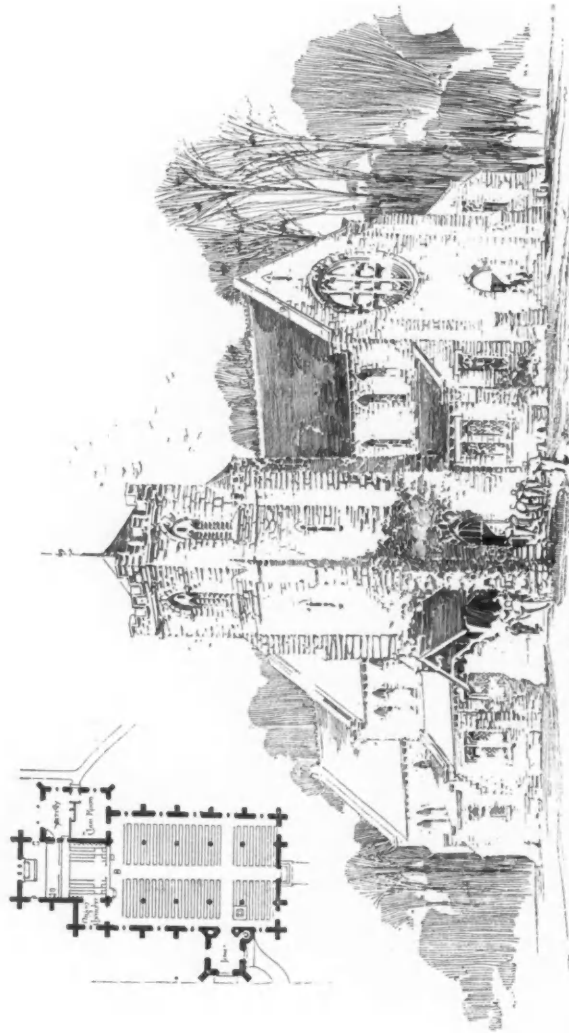
Sketch of House for Mr. John Atkinson, KENNEDY, HAYS AND KELSEY, Architects, Philadelphia.
(For Plan, see p. 119.)



The Water Approach to a Gentleman's Estate, and Mention, T. Square Club Competition, by ALBERT KELSEY, Architect, Philadelphia.

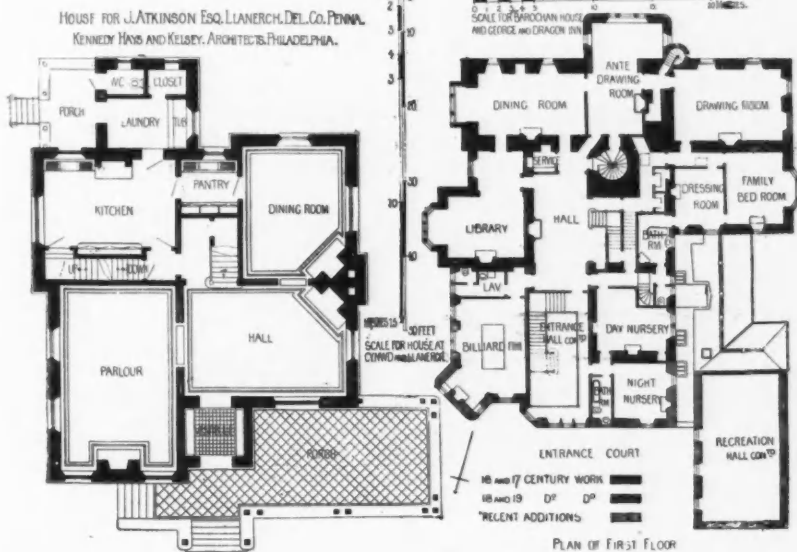
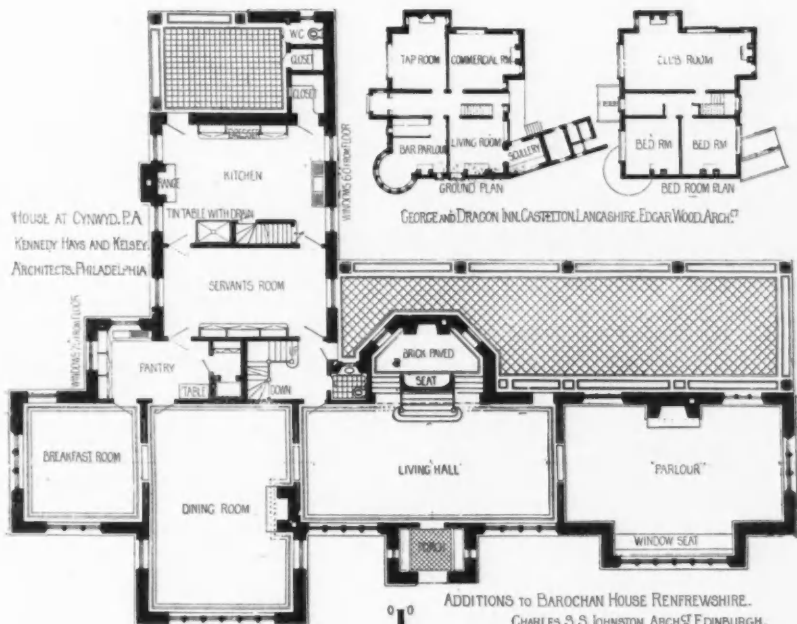


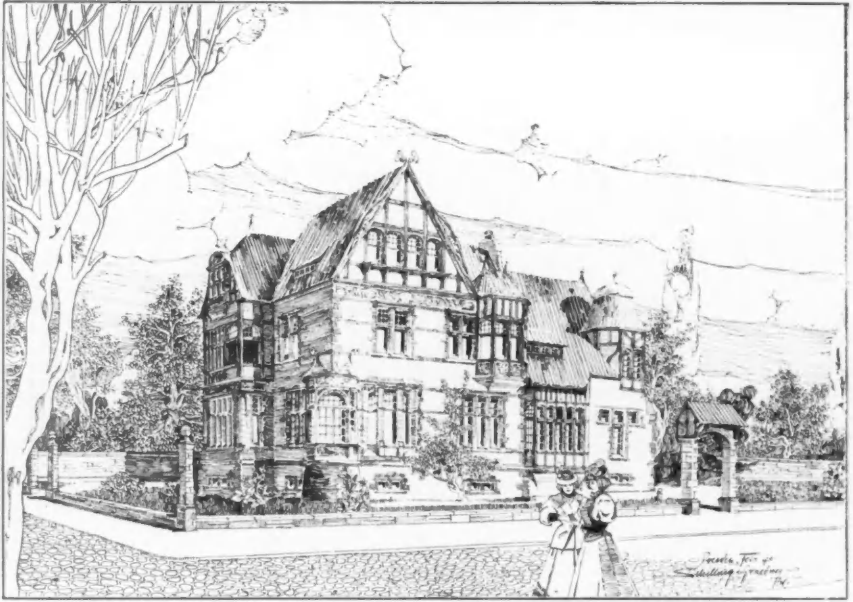
Sketch for a House at Cynwyd, Pa., KENNEDY, HAYS AND KELSEY, Architects, Philadelphia.
(For Plan, see p. 119.)



Church of The Good Shepherd · Rosemont · Penna.

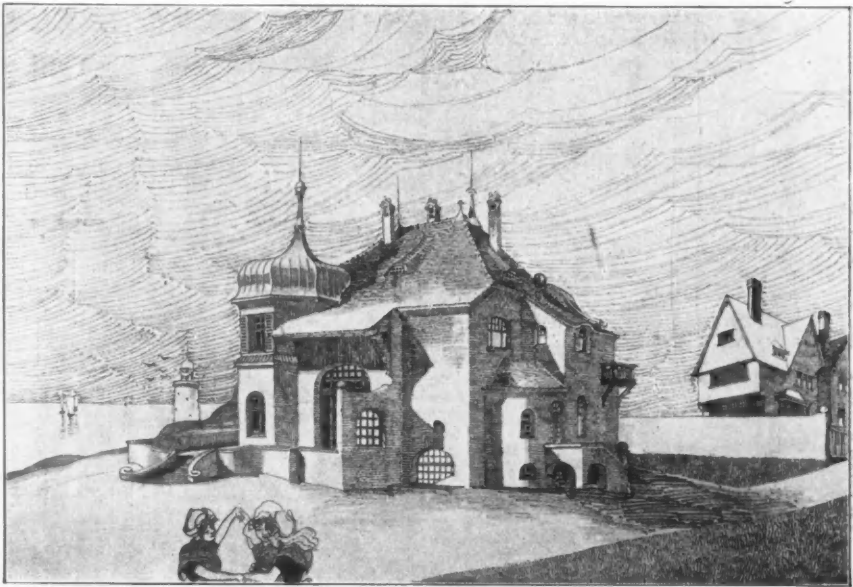
Dooly and Truescott · Architects · Philadelphia





Landhaus für den Gemeindevorsteher Herrn G. H. Friedrich, Lobsau bei Dresden,
 SCHILLING AND GRAEBNER, Architects, Dresden.

(For Plans, see p. 126.)

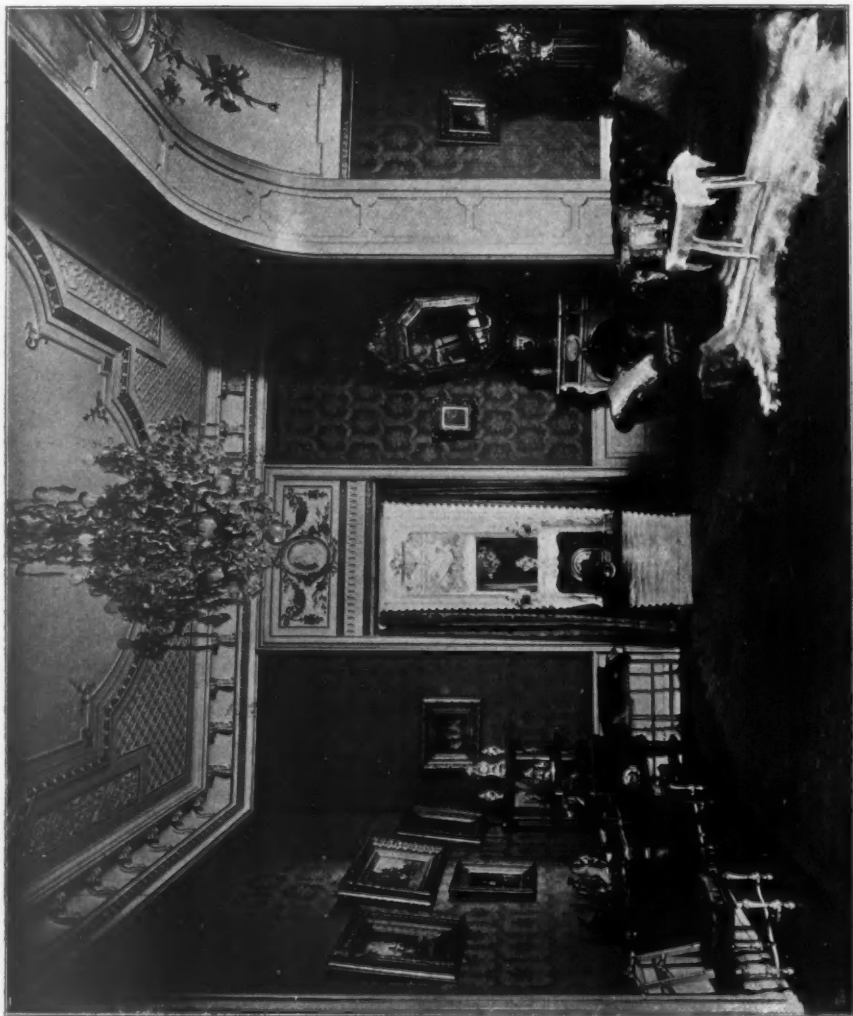


Landhaus für Herrn Major Wolf auf Norderney, SCHILLING AND GRAEBNER, Architects, Dresden.

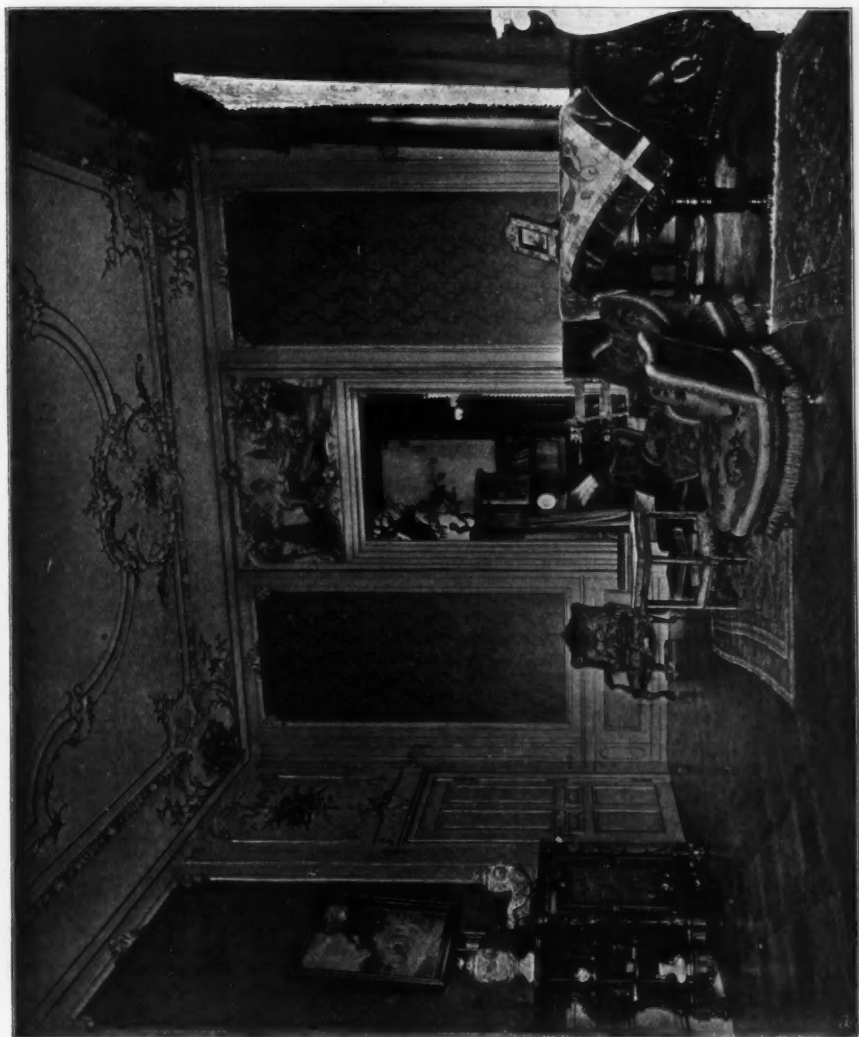
(For Plans, see p. 125.)



Villa E. Sulzbach, 57, *Friedrichstrasse*, *Frankfurt a/M.*, FRANZ VON HOVEN, Architect, *Frankfurt a/M.*
(For Plans, see p. 125.)



Living Room, Villa E. Salsbach, 57, Friedrichstrasse, Frankfurt a./M., Franz von Hoven, Architect, Frankfurt a./M.
(For Plans, see p. 125.)

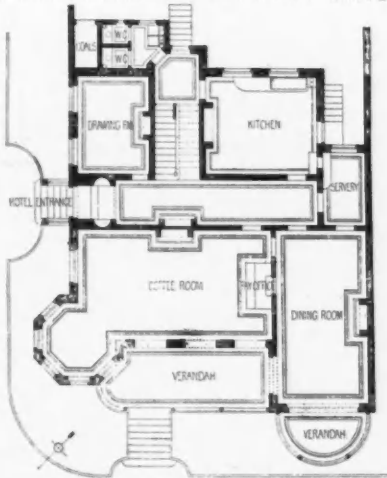


Drawing Room, Villa E. Sutzbach, 57, Friedrichstrasse, Frankfurt a/M., FRANZ VON HOVEN, Architect, Frankfurt a/M.
(For Plans, see p. 125.)

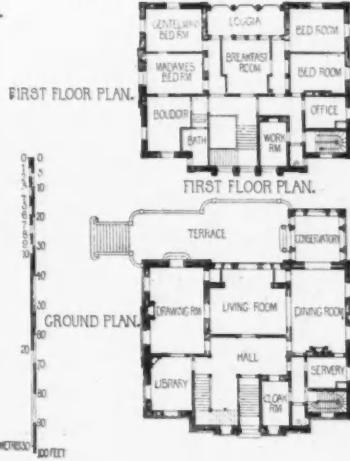


Hall, Villa E. Sulzbach, 57: Friedrichstrasse, Frankfurt a/M. FRANZ VON HOVEN Architect, Frankfurt a/M.
(For Plans, see p. 125.)

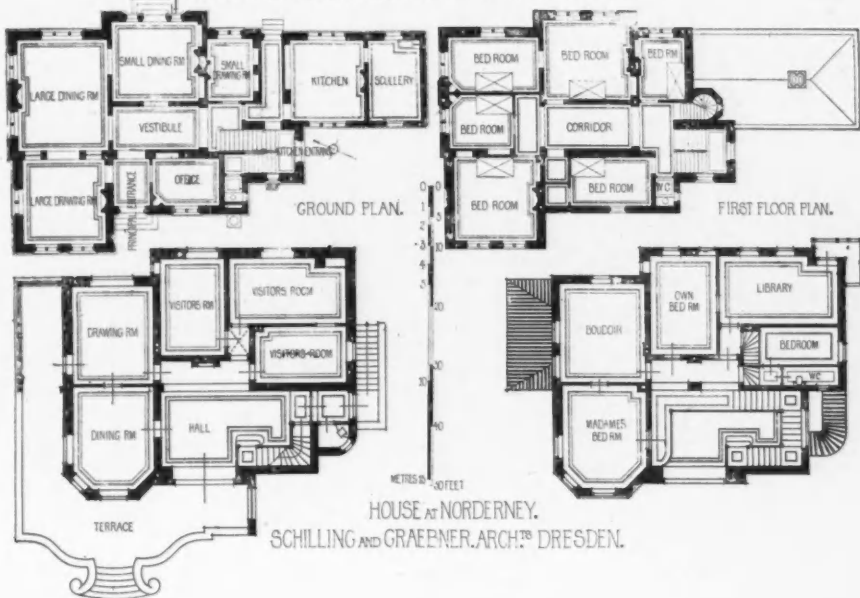
HOTEL AT OOSTDUINKERKE. R. BUJCK. ARCH.^T BRUGES.



VILLA FRANKFURT.
FRANZ VON HOVEN. ARCH.^T FRANKFURT A. M.

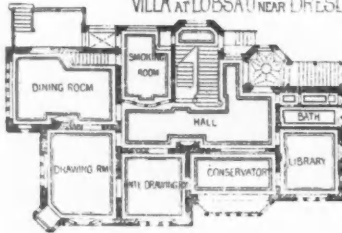


HOUSE ON LAG D'AMOUR. BRUGES. C. DE WULF. ARCH.^T BRUGES.

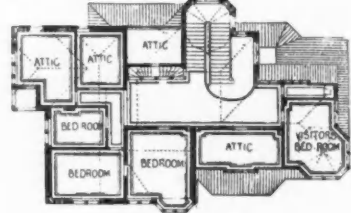


HOUSE AT NORDERNEY.
SCHILLING AND GRAEPNER. ARCH.^T DRESDEN.

VILLA AT LOBSAU NEAR DRESDEN. SCHILLING AND GRAEBNER ARCHT.

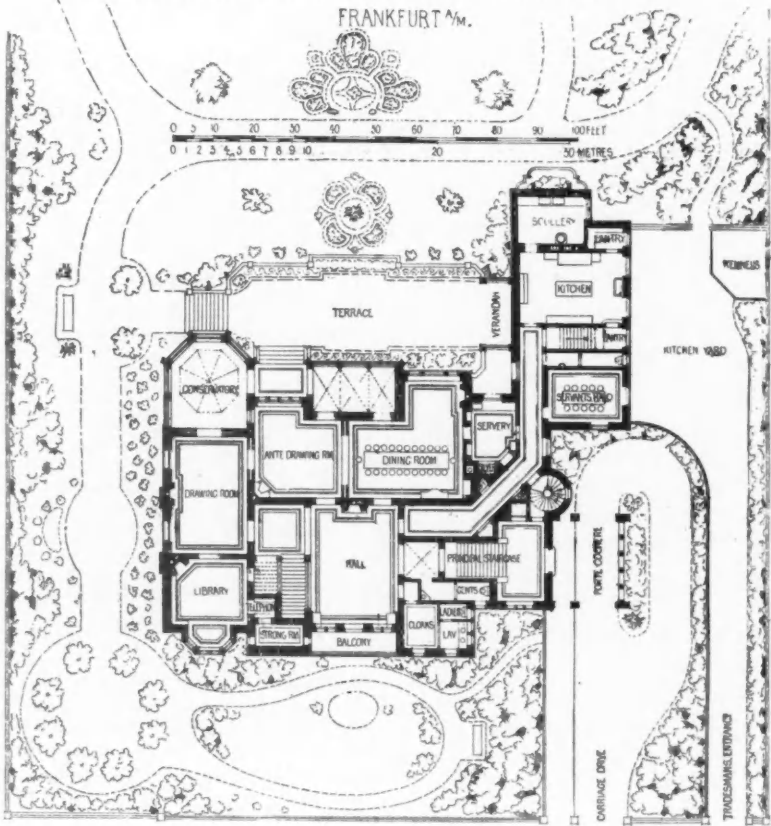


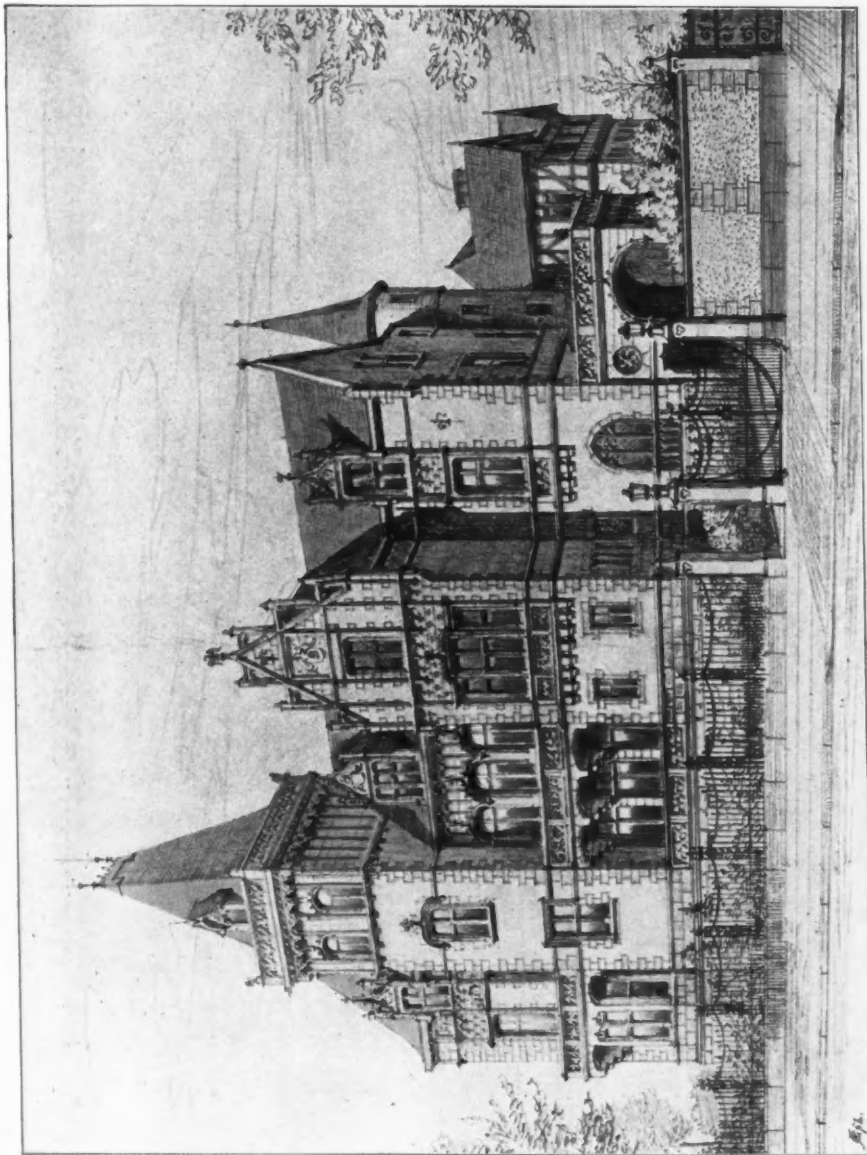
GROUND PLAN.



FIRST FLOOR PLAN.

VILLA IN KONIGSTEIN IM TAUNUS. FRANZ VON HOVEN. ARCHT.
FRANKFURT a.M.

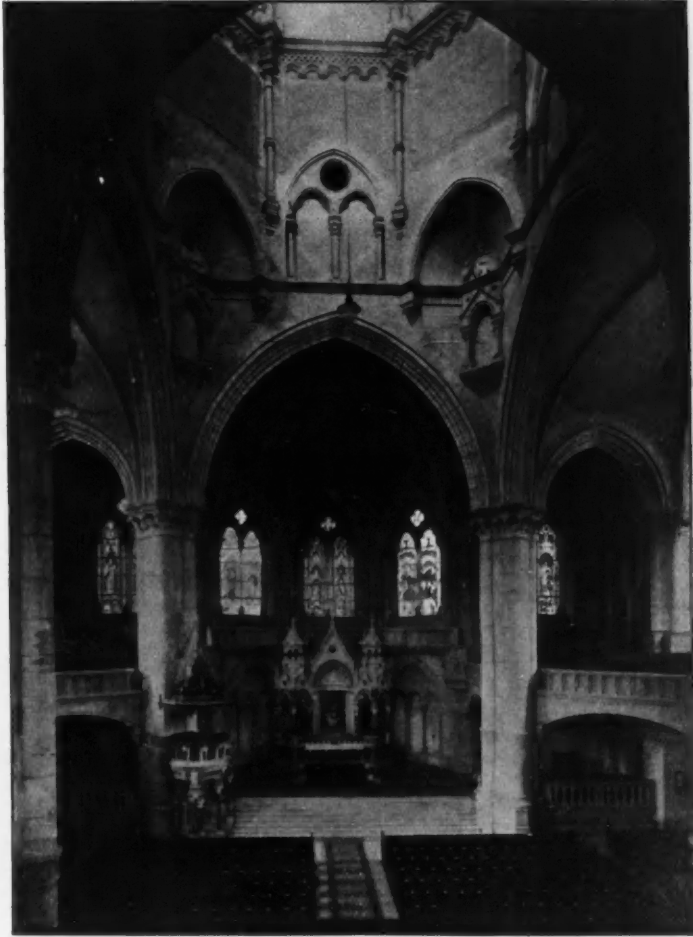




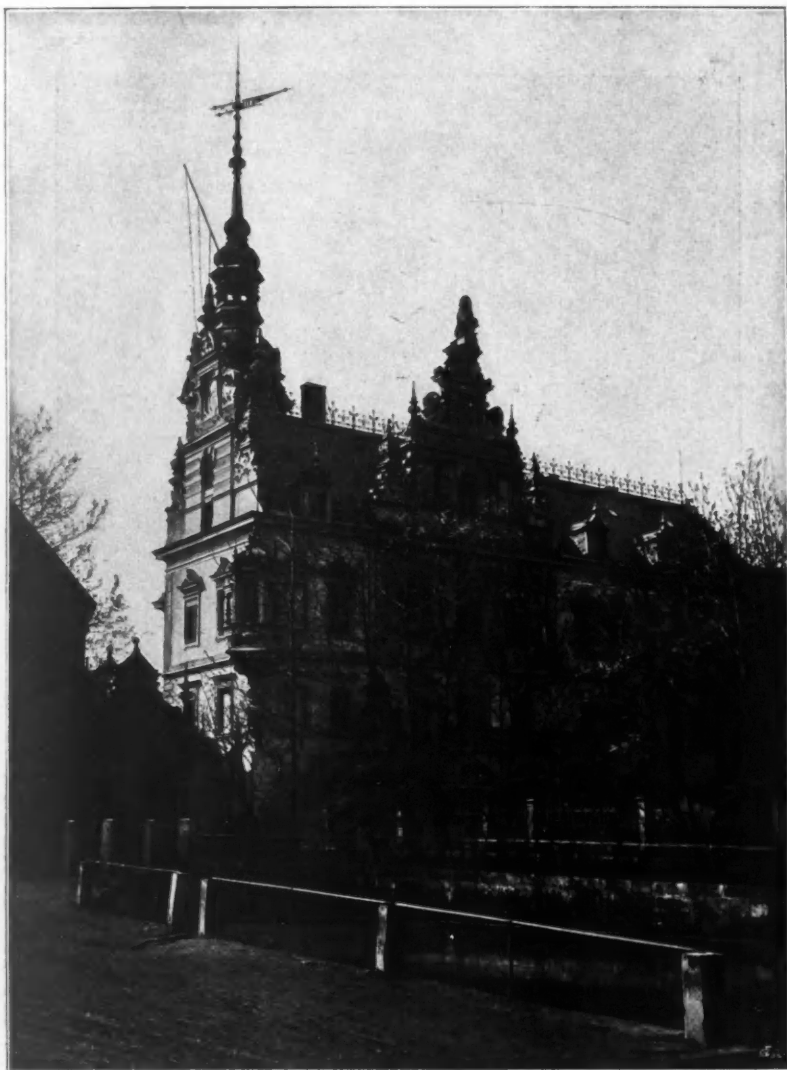
Villa, FRANZ VON HOVEN, Architect, Frankfurt a/M.
(For Plan, see p. 126.)



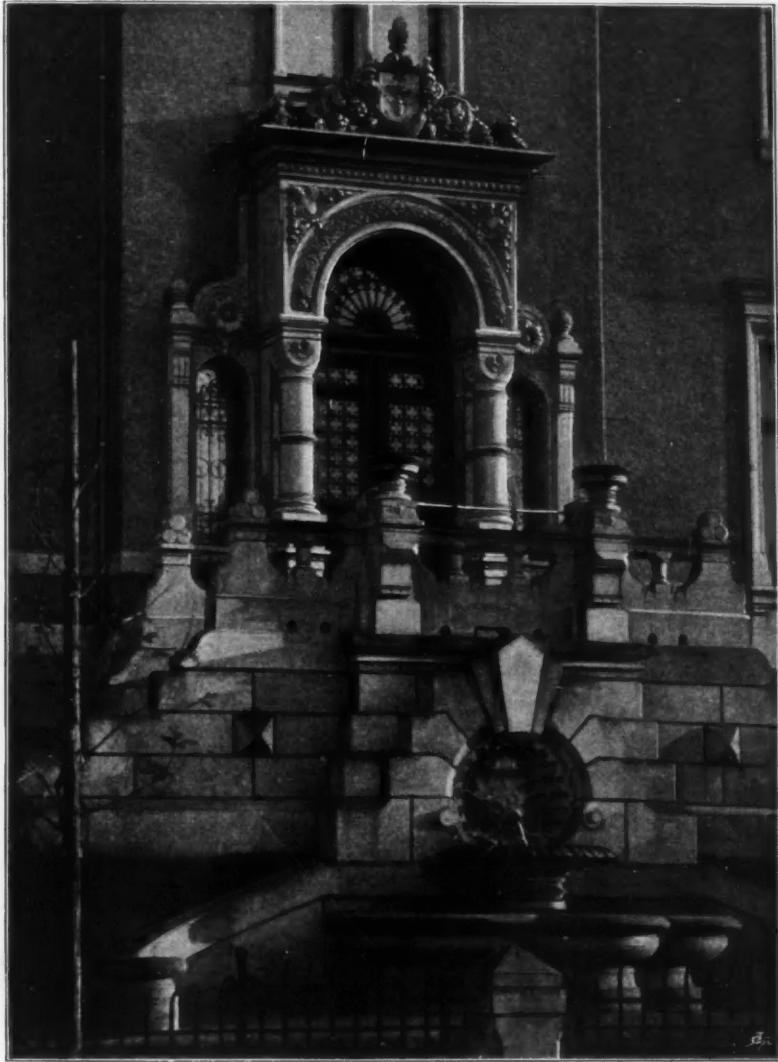
New Protestant Church of St. Luke, Munich, PROFESSOR ALBERT SCHMID, Architect, Munich.



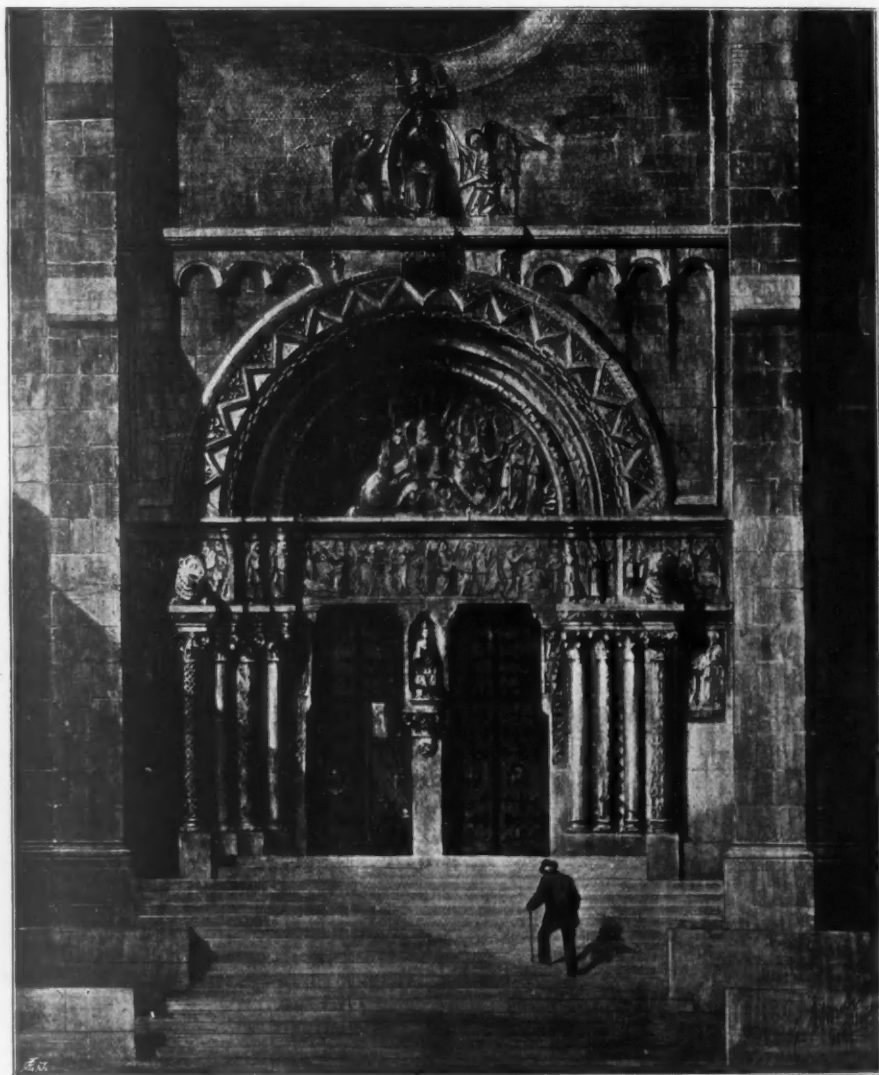
New Protestant Church of St. Luke, Munich, PROFESSOR ALBERT SCHMID, Architect, Munich.



Schloss Prohlis near Dresden, RICHARD MICHEL, Architect, Höxter.



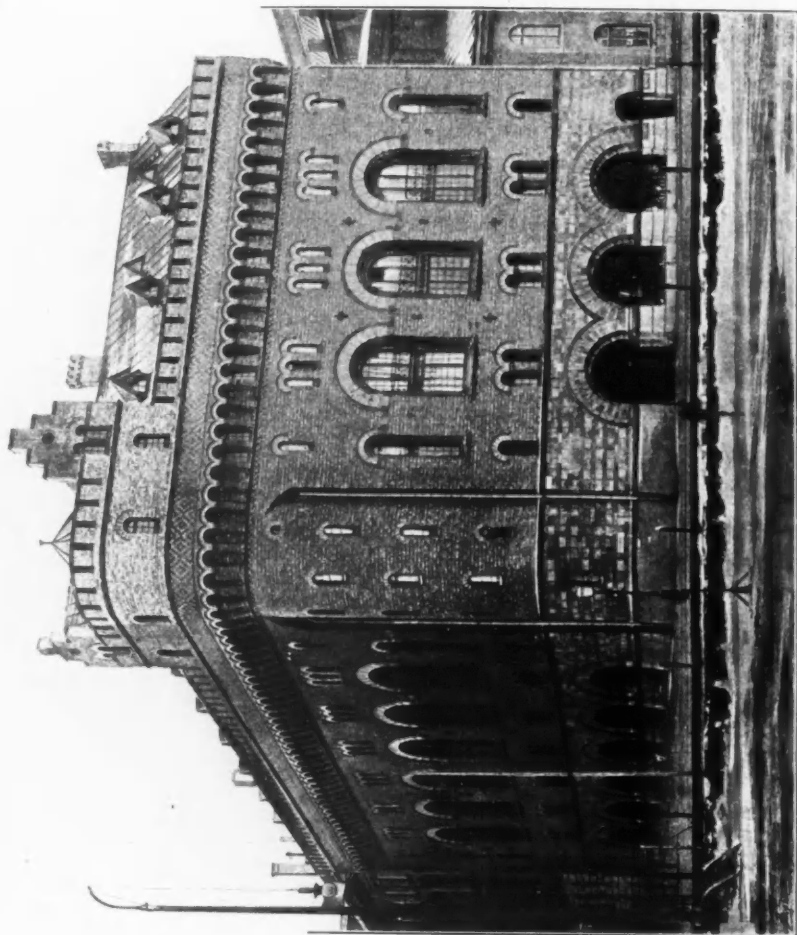
Detail, Principal Entrance, Villa Schmid, Dresden, RICHARD MICHEL, Architect, Höxter.



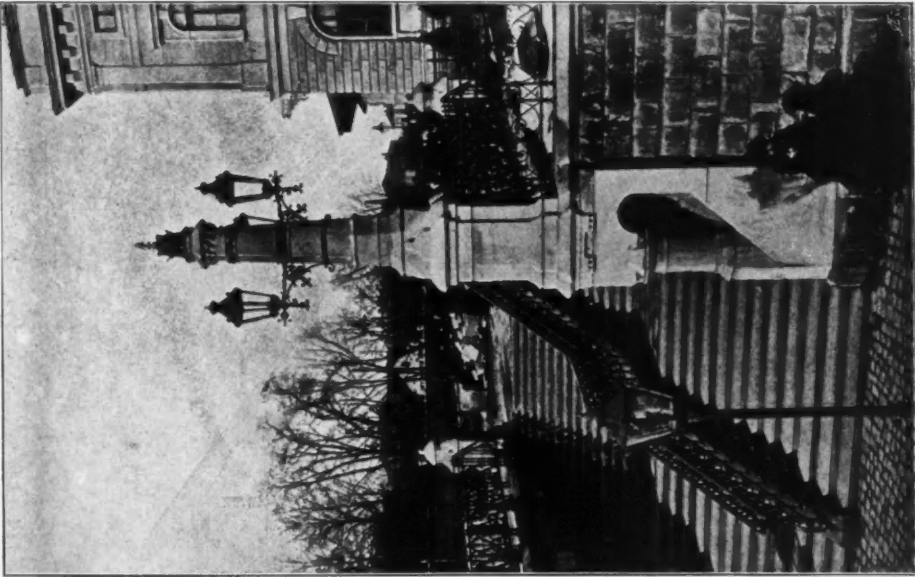
[West Portal der Neuen Kathol.-Kirche in der Sanderau, Würzburg, JOSEF SCHMITZ, Architect, Nürnberg.



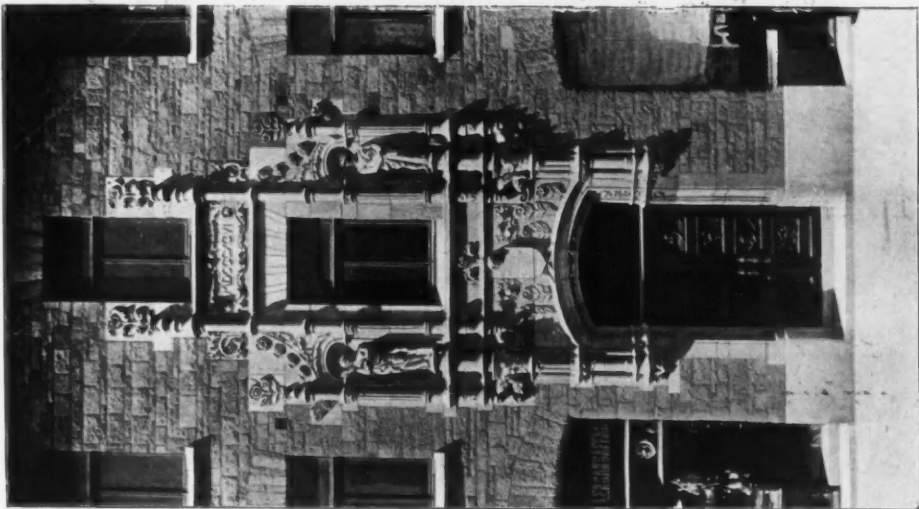
*Kaschauer Dom, New Pulpit, PROFESSOR IMRE STEINDL, Architect, Budapest.
(For View of Restoration of the South Transept, see Vol. 13, p. 109.)*



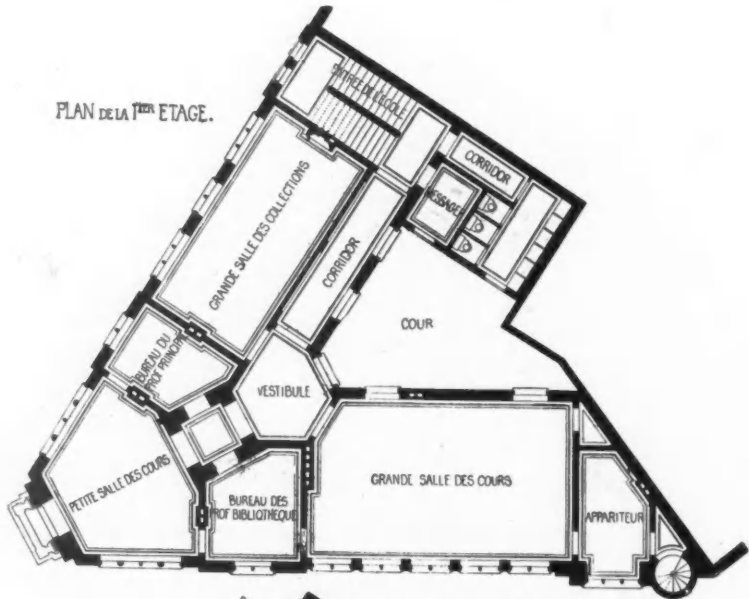
A Warehouse in Stockholm, LUDY. PETERSON, Architect, Stockholm.



Frühst d. k. k. Staatsbahn zu Krakau,
THEODOR TALOWSKI, Architect, Krakau.



The Olsson House, Stockholm,
ERIK JOSEPHSON, Architect, Stockholm.





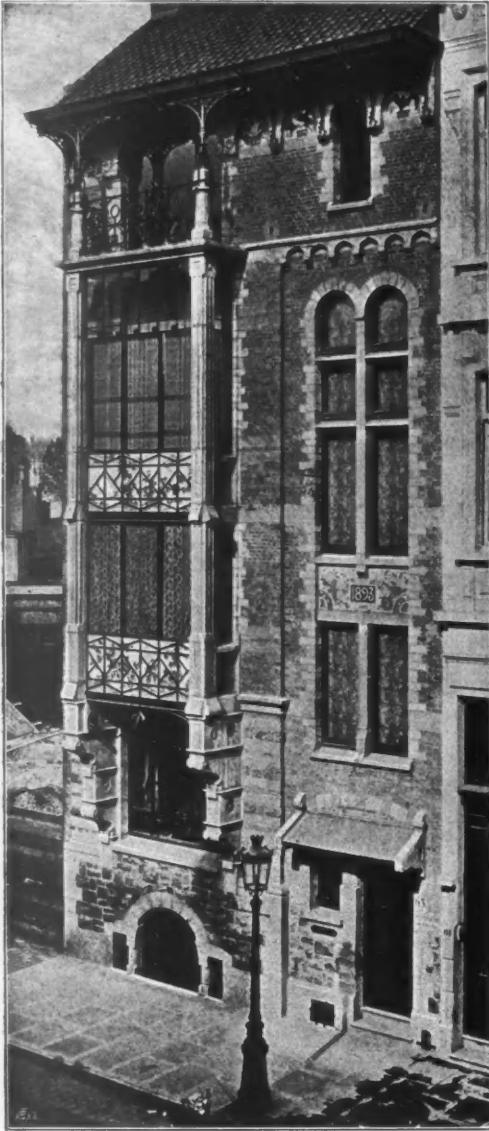
*Bâtiment pour les Services de la Marine à Ostende (Pilotage, Commissariat Maritime et École de Navigation),
CH. DE WULF, Architect, Bruges.
(For Plans, see p. 136.)*



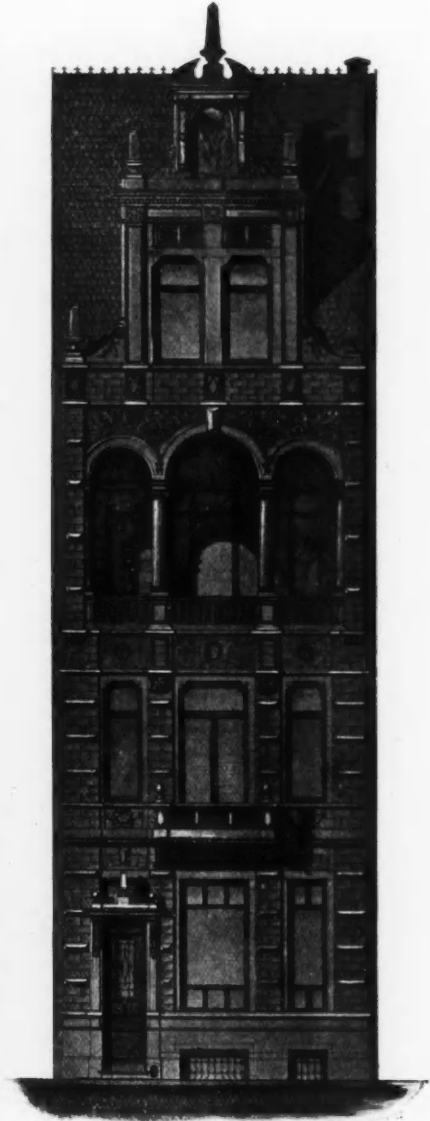
Maison au bord du "Minnewater" (Lac d'Amour), Bruges, CH. DE WULF, Architect, Bruges.
(For Plans see p. 125.)



*Stone Spire added to the Tower of the Church of Saint Pierre, Anderlecht,
J. J. VAN YSENDYCK, Hon. Corr. Mem. R. I. B. A., Architect, Brussels.*



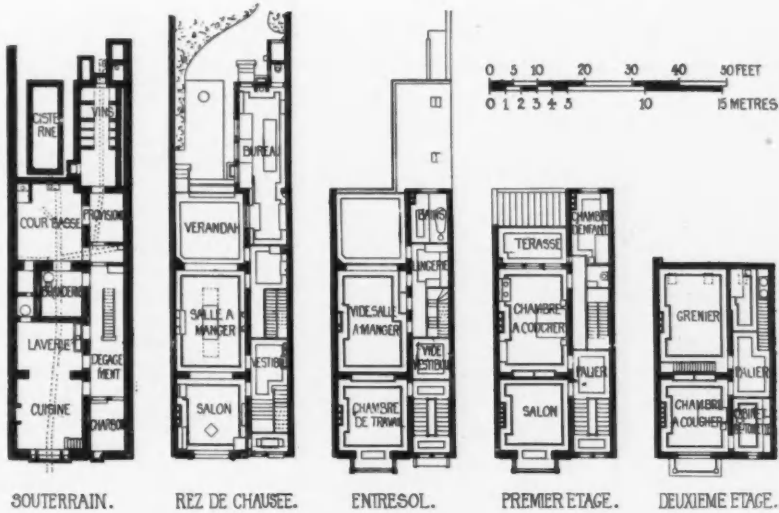
Rue de Faqz, 63, Brussels.
P. HANKAR, Architect, Brussels.



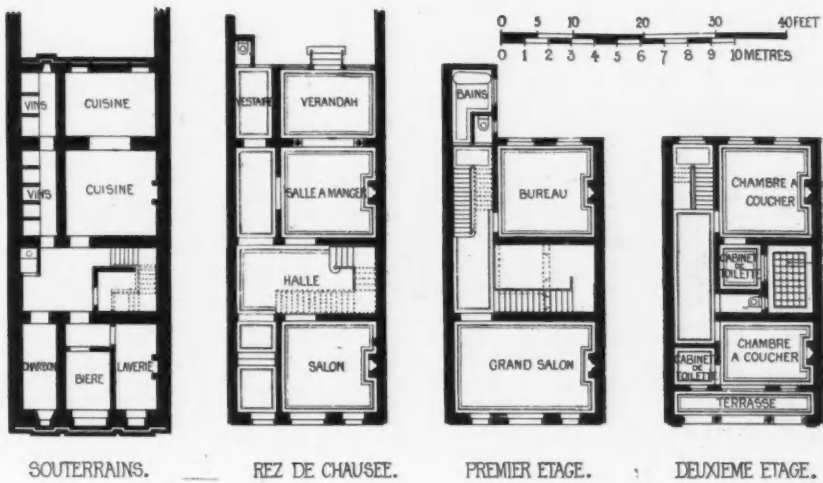
*Projet de Maison à exécuter au nouveau Quartier-Sud
à St. Gilles, LOUIS MASURE, Architect, Brussels.*

(For Plans, see p. 141.)

63 RUE DE FACQZ. BRUXELLES. P. HANKAR. ARCH.^{CT} BRUXELLES.

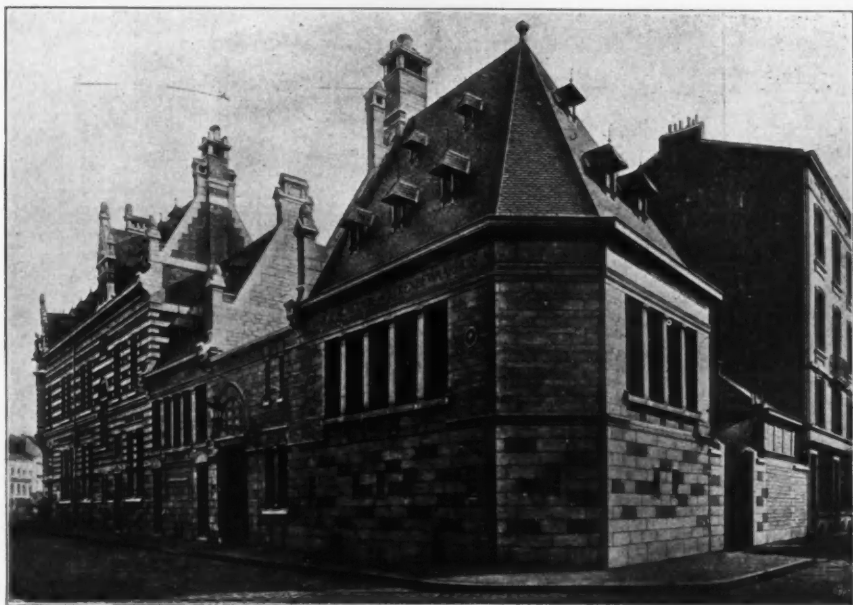
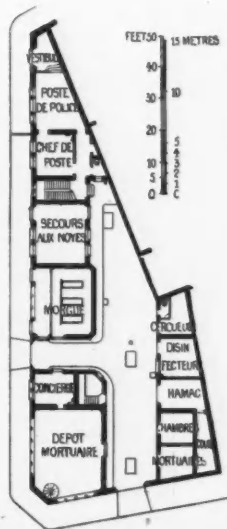
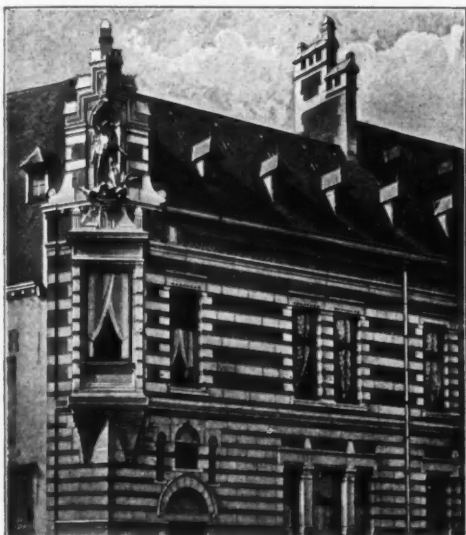


PROJET DE MAISON A EXÉCUTE AU NOUVEAU QUARTIER-SUD A ST GILLES BRUXELLES. LOUIS MASURE. ARCH.^{CT} BRUXELLES.





Warehouse at Dordrecht, ANTON VAN DE SANDT, Architect, Rotterdam.



Morgue, Dépot Mortuaire et Poste de Police à Bruxelles, ERNEST ACKER, Architect, Bruxelles.



New Hotel at Oostduinberke, Belgium, RENÉ BUÛCK, Architect, Bruges.
(For Plan, see p. 125.)

