

1902

USNM

EX LIBRIS

William Healey Dall

Division of Mollusks
Sectional Library



WILLIAM H. DALL
SECTIONAL LIBRARY
DIVISION OF MOLLUSKS

PH
175
EHE
10/11

I FORSK

118

ICONES
RERUM
NATURALIUM,

QUAS

IN ITINERE ORIENTALI

DEPINGI CURAVIT

PETRUS FORSKÅL,

PROF. HAUN.

Division of Mollusks
Sectional Library

POST MORTEM AUCTORIS

AD REGIS MANDATUM

ÆRI INCISAS EDIDIT

CARSTEN NIEBUHR.

HAUNIÆ,

EX OFFICINA MÖLLERI, AULÆ TYPOGRAPHI.

PROSTAT APUD CL. PHILIBERT.

MDCCLXXVI.



349670

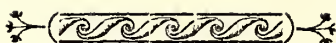
CRH
195
E4
F73
17766
SCNHRB





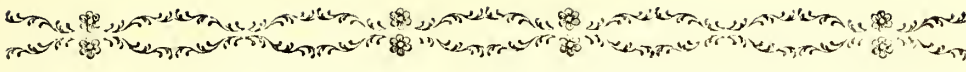
MONITUM.

Hisce tabulis, numero XLIII, exhibentur figurae rerum naturalium, quas in itinere orientali per *Bawrenfeindium* depingi curavit Cl. *Forskål*. Earum in prooemio ad descriptiones animalium in eodem itinere observatorum jam facta est mentio, & quod de manuscriptis Auctoris ibi monitum est, valet etiam de his figuris. Hoc praesertim curae habitum est, ut sub sculptoris manu nec mutiletur figura ulla, nec dubio supplemento augeatur, si quam non perfecerat pictoris penicillus; & ne scientiae naturali detrahatur fructus aliquis ex Auctoris labore indefesso hauriendus, imperfectae una cum perfectis sistuntur.



Explicatio figurarum vel nulla, vel incompleta inter schedulas *Forskâlianas* reperta est. Hinc quæ tabulis præmittitur, facta est instituta comparatione inter figuras & descriptiones, ut defectus ille, quousque fieri potuit, suppleatur, quod consultius ductum est, quam lectori hunc laborem relinquere.

Ut repetitio superflua evitetur, nominibus *Forskâlianis* apposita tantum est pagina & numerus speciei in ejus operibus, nempe Flora Ægyptiaco-Arabica, Tab. I--XX, & descriptionibus Animalium, Tab. XXI--XLIII.



EXPLICATIO TABULARUM.

TAB. I.

SALICORNIA perfoliata. Pag. 3. n. 4.

TAB. II.

SÆLANTHUS quadragonus. Pag. 33. n. 11.

Cissus quadrangularis Linn. S. N. Edit. XII. Tom. II. pag. 124. n. 6.

TAB. III.

SÆLANTHUS digitatus. Pag. 35. n. 13.

TAB. IV.

SÆLANTHUS rotundifolius. Pag. 35. n. 14.

Cissus cordifolia. L. S. N. Tom. II. pag. 124. n. 2.

TAB. V.

A. HYOSCYAMUS Datura. Pag. 45. n. 47.

Hyoscyamus muticus. L. S. N. Tom. II. pag. 170. n. 6.

B. PARNASSIA polynectaria. Pag. 207. n. 34.

TAB. VI.

STAPELIA quadrangula. Pag. 52. n. 76.

TAB. VII.

STAPELIA subulata. Pag. CVIII. n. 193.

TAB. VIII.

A. SALSOLA articulata. Pag. 55. n. 87.

B. SALSOLA inermis. Pag. 57. n. 89.

C. SALSOLA imbricata. Pag. 57. n. 90.

TAB. IX.

SUEDA fruticosa? Pag. 70. n. 19.

Salsola altissima. L. S. N. Tom. II. pag. 196. n. 10.



TAB. X.

GYMNOCARPUS decandrum. Pag. 65. n. 8.

TAB. XI.

ZYGOPHYLLUM desertorum. Pag. 87. n. 65.

Zygophyllum coccineum. L. S. N. Tom. II. pag. 295. n. 2.

TAB. XII.

A. ZYGOPHYLLUM proliferum. Pag. 87. n. 65.

Zygophyllum album. L. S. N. Tom. II. pag. 295. n. 3.

B. ZYGOPHYLLUM portulacoides. Pag. 88. n. 67.

Zygophyllum simplex. L. S. N. Tom. II. pag. 295. n. 9.

TAB. XIII.

EUPHORBIA refusa. Pag. 93. n. 84.

An *Euphorbia ferrata.* L. S. N. Tom. II. pag. 333. n. 47.

TAB. XIV.

GLINUS crystallinus. Pag. 95. n. 97.

Aizoon canariense. L. S. N. Tom. II. pag. 347. n. 1.

TAB. XV.

ANNONA glabra. Pag. 102. n. 16.

An *Annona reticulata* L. S. N. Tom. II. pag. 374. n. 3.

TAB. XVI.

A. LUNARIA scabra. Pag. 117. n. 60.

Cheiranthus farsetia. L. S. N. Tom. II. pag. 442. n. 17.

B. SILIQUARIA glandulosa. Pag. 78. n. 46.

Cleome arabica. L. S. N. Tom. II. pag. 448. n. 11.

TAB. XVII.

A. ZILLA Myagroides. Pag. 121. n. 74.

Bumias spinosa. L. S. N. Tom. II. pag. 446. n. 5.

B. ERACLISSA hexagyna. Pag. 208. n. 35.

Andrachne Telephioides. L. S. N. Tom. II. pag. 641. n. 1.

TAB. XVIII.



TAB. XVIII.

- A. ZILLA. Pag. 121. n. 75.
 B. SUEDA vermiculata. Pag. 70. n. 18.

TAB. XIX.

- SENECIO hadiensis. Pag. 149. n. 79.

TAB. XX.

- KOSARIA. Pag. 164. n. 34.
Ad genus Dorstenia L. referenda videtur.

TAB. XXI.

- An *Lari* species. cfr. Pag. VII. n. 7. 8.

TAB. XXII.

- CHEODON Teira. Pag. 60. n. 82.

TAB. XXIII.

- CHEODON unicornis. Pag. 63. n. 88.

TAB. XXIV.

- A. CICINDELA littorea. Pag. 77. n. 3.
 B. TENEBRIO arundinaceus. Pag. 78. n. 7.
 C. CYNIPS Sycomori. Pag. 83. n. 18. Flora. Ægypt. Ar. pag. 181.
 D. ARANEA citricola. Pag. 86. n. 27.
 d. Situs oculorum.
 E. ARANEA trifasciata. Pag. 86. n. 30.
 e. Situs oculorum & longitudo pedum.
 F. ARANEA rivulata. Pag. 86. n. 28.
 G. ARANEA infidiatrix? Pag. 86. n. 29.
 H. ARANEA.

TAB. XXV.

- A. a. 1. a. 2. TERMES Arda, *cum tubulo*. Pag. 96. n. 61.
 B. b. Ejusdem varietas major, l. c. descripta.
 C. ARANEA fector. Pag. 85. n. 26.
 D. ARANEA.
 E. PANORPA halterata. Pag. 97.

TAB. XXVI.



TAB. XXVI.

- A. a. SERTULARIA rigida. Pag. 130. n. 85.
 B. b. HYDRA multicornis. Pag. 131. n. 87.
 C. c. HYDRA scyphifera. Pag. 130. n. 86.
 D. d. MADREPORA verrucaria. L. S. N. Tom. I. pars. II. pag. 1272. n. 5.
 E. LIMAX tergipes. Pag. 99. n. 4.
 e. 1. *Dorso incumbens.*
 e. 2. *Ventri incumbens.*
 F. f. Ejusdem varietas, corpore ovali postice obtusiore.
 G. LIMAX marinus. Pag. 99. n. 3.
 g. 1. *Papilla dorsalis, per lentem visa.*
 g. 2. *Foramen lateris dextri pone tentacula.*
 H. LIMAX minimus. Pag. 100. n. 5.
 h. 1. *Dorso incumbens,*
 h. 2. *Ventri incumbens.*
 I. TEREDO arenaria. Pag. 99. n. 1.
 An *Nereis cirrosa.* L. S. N. Tom. I, Pars. II. pag. 1085. n. 3?
 at defunt cirri laterales,
 i. 1. *Eadem, magnitudine aucta.*
 i. 2. *Pars corporis anterior, inferne visus, setarum fasciculos monstrans.*
 K. HOLOTHURIO spirans. Pag. 104. n. 15.
 Medusa Veella. L. S. N. Tom. I. P. II. pag. 1098. n. 12.
 k. 1. *Eadem visa a parte inferiore.*
 k. 2. *Os, quod in centro figuræ k. 1. videtur, extensum.*
 k. 3. 4. 5. *Specimina minora, vario situ visa.*
 L. HOLOTHURIO denudata. Pag. 103. n. 14.
 l. *Eadem, a parte inferiore visa.*

TAB. XXVII.

- A. PRIAPUS ruber. Pag. 102. n. 10.
 B. b. PRIAPUS viridis. Pag. 102. n. 11.
 C. PRIAPUS polypus. Pag. 102. n. 12.
 Priapi Equiti a Linné quondam dicti nunc Actiniae nomine in ejus
 S. N. insiguntur.

D. AL-



D. ALCYONIUM Phusca. Pag. 129. n. 82.

An Ascidia gelatinosum. L. S. N. Tom. I. P. II. pag. 1087. n. 2.

E. *An Ascidia quadrideniata. L. S. N. Tom. I. P. II. pag. 1087. n. 4.*

F. MADREPORA turbinata? Pag. XXIX. b.

G. MADREPORA Acetabulum? Pag. XXVIII. a.

TAB. XXVIII.

A. *Lepus Marinus. Arab. Arneb bachri. Avicenna. Libr. II. pag. 63.*

B. MEDUSA non descripta. Color coerulefcens.

TAB. XXIX.

MEDUSA Cephea. Pag. 108. n. 22.

TAB. XXX.

MEDUSA octostyla. Pag. 106. n. 18.

TAB. XXXI.

MEDUSA Andromeda. Pag. 107. n. 19.

TAB. XXXII.

MEDUSA æquorea. Pag. 110. n. 28.

1. *Margo oris versatilis.*

2. *Radii membranacei undulati inter ventriculum disci & marginem circumsum.*

3. *Radius longitudinaliter extensus ut crispatura evanescat, in quo videtur membrana alba longitudinalis media, connectens membranas laterales violaceas.*

TAB. XXXIII.

A. MEDUSA cruciata. Pag. 110. n. 27.

a. 1. *A parte inferiore visa.*

a. 2. *A latere visa.*

B. MEDUSA Persea. Pag. 107. n. 21.

b. *A parte inferiore visa.*

B

C. ME-



- C. MEDUSA mollicina. Pag. 109. n. 25. *Latus inferius.*
 c. *Situ horizontali, margine deflexo.*
- D. MEDUSA pilcata. Pag. 110. n. 26. *In specimine depictio integumenta remota sunt, ut nucleus lobatus undulatus, cujus in descriptione 1. e mentio facta est, appareat.*
- E. PHYSSOPHORA hydrostatica. Pag. 119. n. 45.
 e. 1. *Vesiculæ laterales trilobæ, oppositæ.*
 e. 2. *Pars inferior pone ventriculum & os, in qua videntur tentacula, cirri, & vesiculæ globosæ unius lateris quinque, alterius tres.*
- F. PHYSSOPHORA filiformis. Pag. 120. n. 47.

TAB. XXXIV.

- A. PTEROTRACHEA coronata. Pag. 117. n. 41.
 1. *Proboscis.* 2. *Frontis coronula spinis constans.* 3. *Oculus dextri lateris.* 4. 4. *Saccus vel gula duplex.* 5. *Pinna.* 6. *Pinnula campanulata pinne affixa.* 7. *Anus.* 8. *Cauda.* 9. *Ejus pinnula.*
- B. PTEROTRACHEA hyalina. Pag. 118. n. 42.
 1. *Caput.* 2. *Oculi ad basin capitis.*
- C. PTEROTRACHEA aculeata. Pag. 118. n. 44.
 1. *Nucleus.* 2. *Caput?* 3. *Trunci plica in latere dextro.* 4. *Cylinder in medio trunco pellucens.* 5. *Lobus cristatus ad nuclei latus sinistrum.* 6. *Cauda.* 7. *Pinnulæ caudæ.*
 c. *Cauda cum Tania.*
- D. PTEROTRACHEA, cujus icon, non vero descriptionem reliquit defunctus *Forskål.* Differt a præcedente nucleo 1. non ovato acuto, sed obtusissimo & fere orbiculato; corpusculo falcato, 2. pene nucleum, cujus loco præcedenti est corpusculum pluma cristatum ante nucleum; Pinnula caudæ 3. triplici; & defectu capitis, quod in præcedente figura *Ziphæra* 2. denotatur. At pars ibi depicta, quamvis in explicatione figuræ ab ipso descriptore exhibita capitis nomine insignitur, potius videtur gelatinosæ substantiæ pars abrupta, quam
 e de-



e descriptione l. c. pateat, specimen descriptum fuisse mortuum, nec ibi Capitis a trunco distincti mentio fit, os vero in gelatina, qua cylinder trunci translucens terminatur, esse dicitur. 4. Pars anterior, in qua oculus,

TAB. XXXV.

A. SALPA maxima. Pag. 112. n. 30.

a. 1. *Varietas, appendicibus corporis longitudine.*

a. 2. *Plures dorsibus cohærentes.*

1. *Os.* 2. *Nucleus.* 3. *Anus.* 4. *Appendix posterior vel analis.*
5. *Appendix anterior.* 6. *Intestinum obliquum transverse striatum.*

B. SALPA pinnata. Pag. 113. n. 31.

b. 1. *Varietas, lineis abdominis longioribus interruptis.*

b. 2. *Plures in associatione, junctis appendicum apicibus cohærentes.*

1. *Os.* 2. *Anus.* 3. *Appendix dorsalis in speciminibus, B. & b. 2.*
3. *In Specimine b. 1. linea abdominis intermedia.* 4. *Linæ laterales interruptæ.*

C. SALPA punctata. P. 114. n. 34.

1. *Os.* 2. *Nucleus.* 3. *Anus.*

TAB. XXXVI.

A. SALPA confoederata. Pag. 115. n. 35.

1. *Os.* 2. *Nucleus & in eadem extremitate anus.*

a. *Associatio plurium.*

B. SALPA fasciata. Pag. 115. n. 36.

1. *Os.* 2. *Nucleus.* 3. *Anus.* 4. *Intestinum curvatum, striatum.*

C. SALPA africana. Pag. 116. n. 38.

1. *Os.* 2. *Nucleus.* 3. *Anus.* 4. *Nucleus albus ad apicem pinnae, quæ a regione oris ultra medium dorsi longitudinaliter extenditur.* 5. *Nucleus alter albus, retortæ forma.*



- D. SALPA mucronata. Pag. 114. n. 33.
 1. *Os.* 2. *Mucro ad oris latus.* 3. *Mucro ad ani latus.*
- E. SALPA, quæ non descripta est.
Ad 1. nucleus huic generi proprius videtur.
- F. SALPA polycratica. Pag. 116. n. 40.
 1. *Os.* 2. *Nucleus.* 3. *Anus.*
- G. SALPA democratica. Pag. 113. n. 32.
 1. *Os.* 2. *Nucleus cinctus circulo multiradiato.* 3. *Setæ caudales.*
 4. *Aculei inter setas caudales.* 5. *Setæ vel aculei laterales.*
 g. *Extremitas, in qua os.*
- H. SALPA maxima (cfr. Tab. XXXV. A.) monstruosa, intestino maximo obtusissimo per anum protruso.
 1. *Os.* 2. *Nucleus.* 3. *Appendix analis.* 4. *Appendix anterior.*
- I. MEDUSA proboscidalis. Pag. 108. n. 23.
 1. *Proboscis.* 2. *Ejus membrana terminalis plicata.* 3. *Folia petiolata.*

TAB. XXXVII.

- A. MADREPORA.
 B. MADREPORA dædalea? Pag. 133. n. 7.
 C. MADREPORA incrustans? Pag. 135. n. 16.
 D. MADREPORA.
 E. FISTULARIA vittata. Pag. 121. n. 48.
 F. Ejusdem varietas, *vittis albis interruptis*, 1. c. descripta.

TAB. XXXVIII.

- A. FISTULARIA reciprocans. Pag. 121. n. 49.
 B. FISTULARIA maxima. Pag. 121. n. 50.
 b. *Os linguarum retractarum peltis orbiculatis cinctum.*

TAB. XXXIX.

- A. FISTULARIÆ species, non descripta.
Tentacula terminata in umbellam e ramis ramulisque clavatis distinguunt speciem hanc, quæ ceterum precedenti maximi affinis est.



- B. FISTULARIA impatiens. Pag. 121. n. 51.
 b. *Pelta tentaculi l. Linguae septemfida denticulata.*
- C. LITOPHYTON fuluum? pag. 139. n. 33.
 c. *Idem dissectum, ut interna structura appareat.*
Ad ALCYONIA L. referri debet.

TAB. XL.

- A. BUCCINUM quod ad B. Arcularia L. accedit.
- B. ANOMIA tridentata. Pag. 124. n. 63. *testa longiore minus convexa ob-*
versa.
 b. 1. *Eadem testa altera convexiore & brevior obversa, alis expansis te-*
stae longioris parti prominenti incumbentibus, & membranula undiqua-
que exserta.
 b. 2. *Animal, post observationem in spiritu vini exemtum.*
- C. HELIX janthina, natans ope vesicularum. Pag. 127. n. 75.
L. S. N. Tom. I. P. II. pag. 1246. n. 689.
 e. 1. *Ejus Caput, l. pars anterior, tentaculis quatuor recurvatis.*
 e. 2. *Eadem, exsertis partibus nonnullis praeter vesicularum massam.*
 e. 3. *Eadem pluribus partibus exsertis.*
 e. 4. *Intestinum e Proboscidis labiis protrusum, apice umbilicatum, quod*
matrix putatur.
- D. CONI species, monstrans animalis inhabitantis proboscidem cylindricam
 truncatam & oculos tentaculatos, vel tentacula cylindrica oculifera
 pone apicem appendiculata.
- E. CYPREÆ species, monstrans partem animalis anteriorem & velum murica-
 tum vel aculeatum, supra testam ab utroque latere revolutum.
- F. VOLUTÆ species, in qua velum ab utroque latere supra testam revolutum
 visu est.

TAB. XLI.

- A. a. MADREPORÆ species, incrustans, colore coeruleo.
 B. b. ALCYONI? species, colore incarnato.



C. c. MADREPORA.

D. d. CANCER sedentarius. Pag. 95. n. 59.

E. SALPA solitaria. Pag. 116. n. 39.

TAB. XLII.

MADREPORA Fungites. Pag. 134. n. 10. Obtecta membrana vesiculifera.

1. *Centrum oblongum, in quo radii confluunt.*
2. *Pars membranae radios obtegens.*
3. *Radii nudi denticulati.*

TAB. XLIII.

A. PTEROTRACHEA pulmonata. Pag. 118. n. 43.

1. *Caput.* 2. *Oculi.* 3. *Gula duplex.* 4. *Pinnae.* 5. *Membrum papillis plumosis instructum.* 6. *Cauda.*

B. b. PHYSSOPHORA rosacea. Pag. 120. n. 46.

1. *Vesica.* 2. *Cirri.*

C. SALPA Siphon. Pag. 115. n. 37.

D. GLEBA cordata.

E. GLEBA Hippopus.

Hæc animalcula non descripta, sed modo delineata hisque nominibus insignita tradidit Cl. Forskål. Color est aqueus & substantia gelatinosa.

F. Animal molluscum generis ignoti non descriptum, visum a latere.

f. *Idem visum a parte inferiore.*

Apex tubi erecti in F. & Centrum baseos obversæ in f. puncto rubro notatum. Color ceterum albus, & substantia magis solida, quam præcedentium D. & E.





Appendicis loco SYNONYMA aliquot Plantarum, ex observatis
in horto botanico, heic subjungimus.

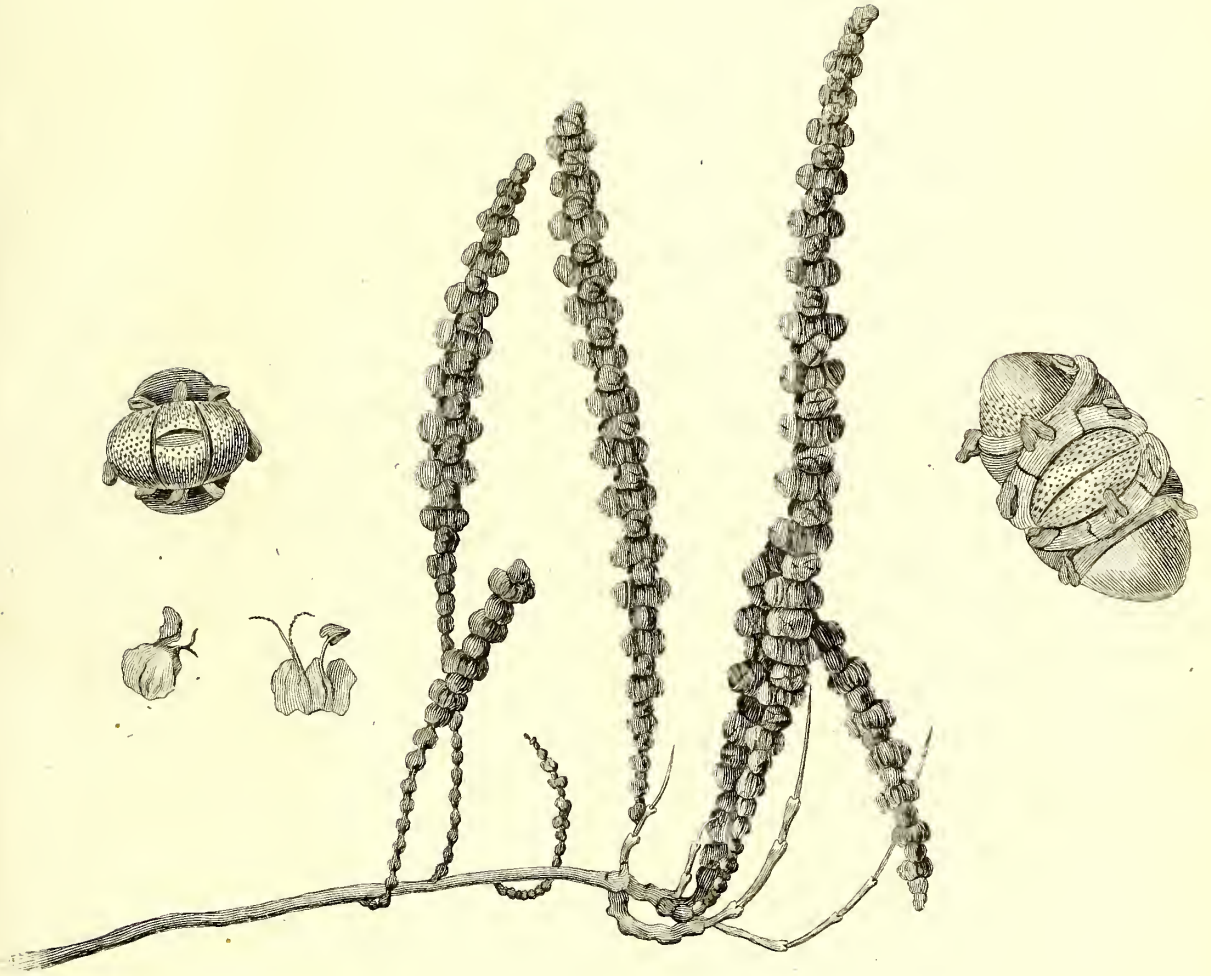
Nomina *Forskäliana* in flora
Ægyptiaco-Arabica.

Verbena capitata. Pag. 10.
Salvia bifida. Pag. 202.
Pentaglossum linifolium. Pag. 11.
Phalaris muricata. Pag. 202.
Crucianella herbacea. Pag. 30.
Plantago decumbens. Pag. 30.
Scoparia ternata. Pag. 31.
Preyanthus. Pag. 36.
Pharnaceum umbellatum. Pag. 58.
Pharnaceum occultum. Pag. 58.
Papularia crystallina. Pag. 69.
Racoma. Pag. 71.
Portulaca linifolia. Pag. 92.
Corchorus astuans. Pag. 101.
Mnemofilla ægyptiaca. Pag. 122.
Lotus rosea. Pag. 140.
Erigeron ferratum. Pag. 148.
Polycephalos. Pag. 154.

Nomina *Linnaæana* in Systematis na-
turæ Editione duodecima.

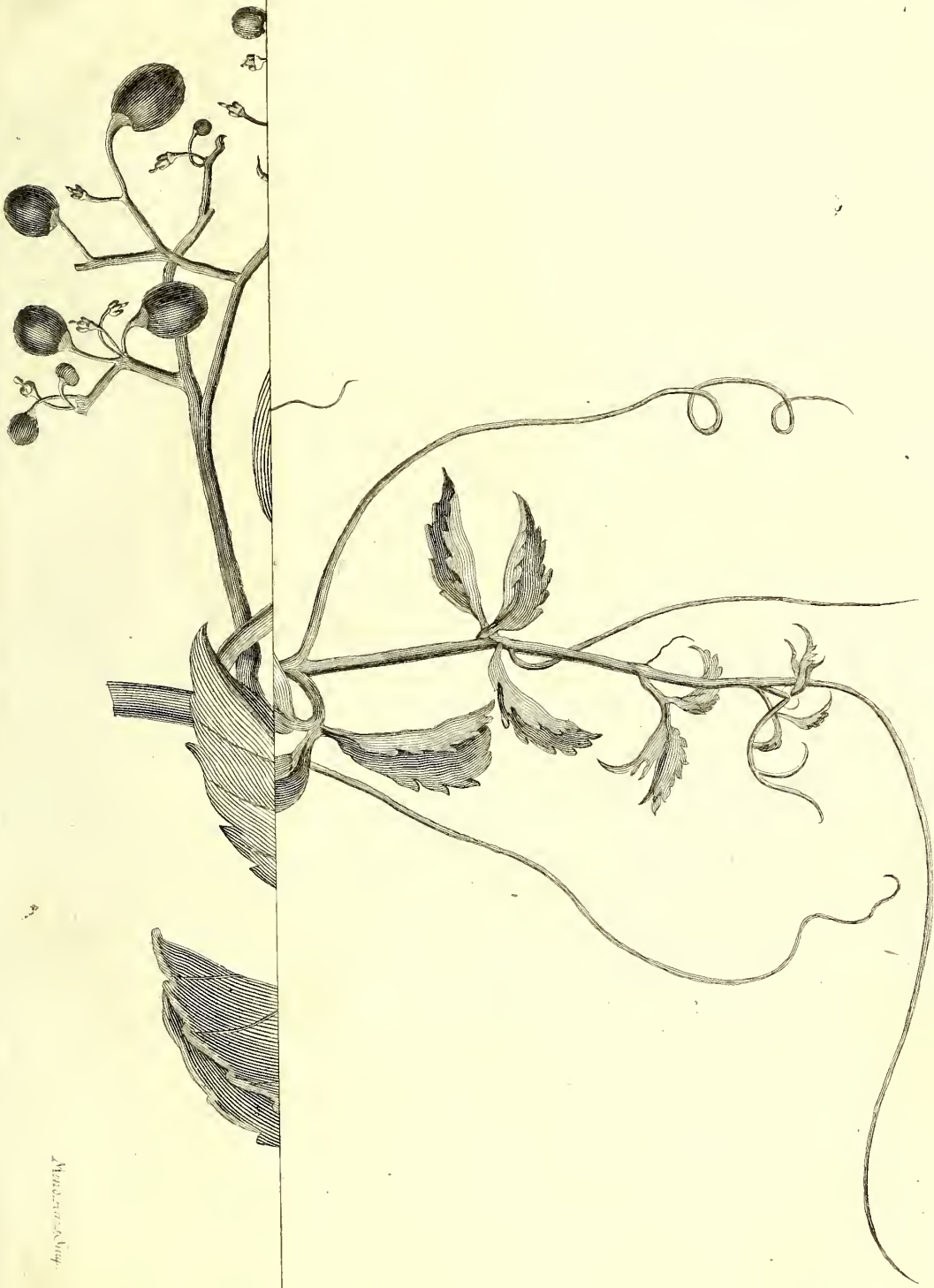
Verbena nodiflora.
Salvia *Forskälii*.
Lythrum Thymifolia.
Cenchrus racemosus.
Crucianella ægyptiaca.
Plantago cretica.
Scoparia dulcis.
Campborosma Pteranthus.
Pharnaceum Cerviana.
Mollugo verticillata.
Trianthema monogyna.
Trianthema pentandra.
Portulaca quadrifida.
Corchorus trilocularis.
Hypecoum erectum.
Lotus arabica.
Erigeron ægyptiacum.
Spharantbus indicus.













M. J. Smith del.













Tab. VI.



Petr. Hauss. sculp.





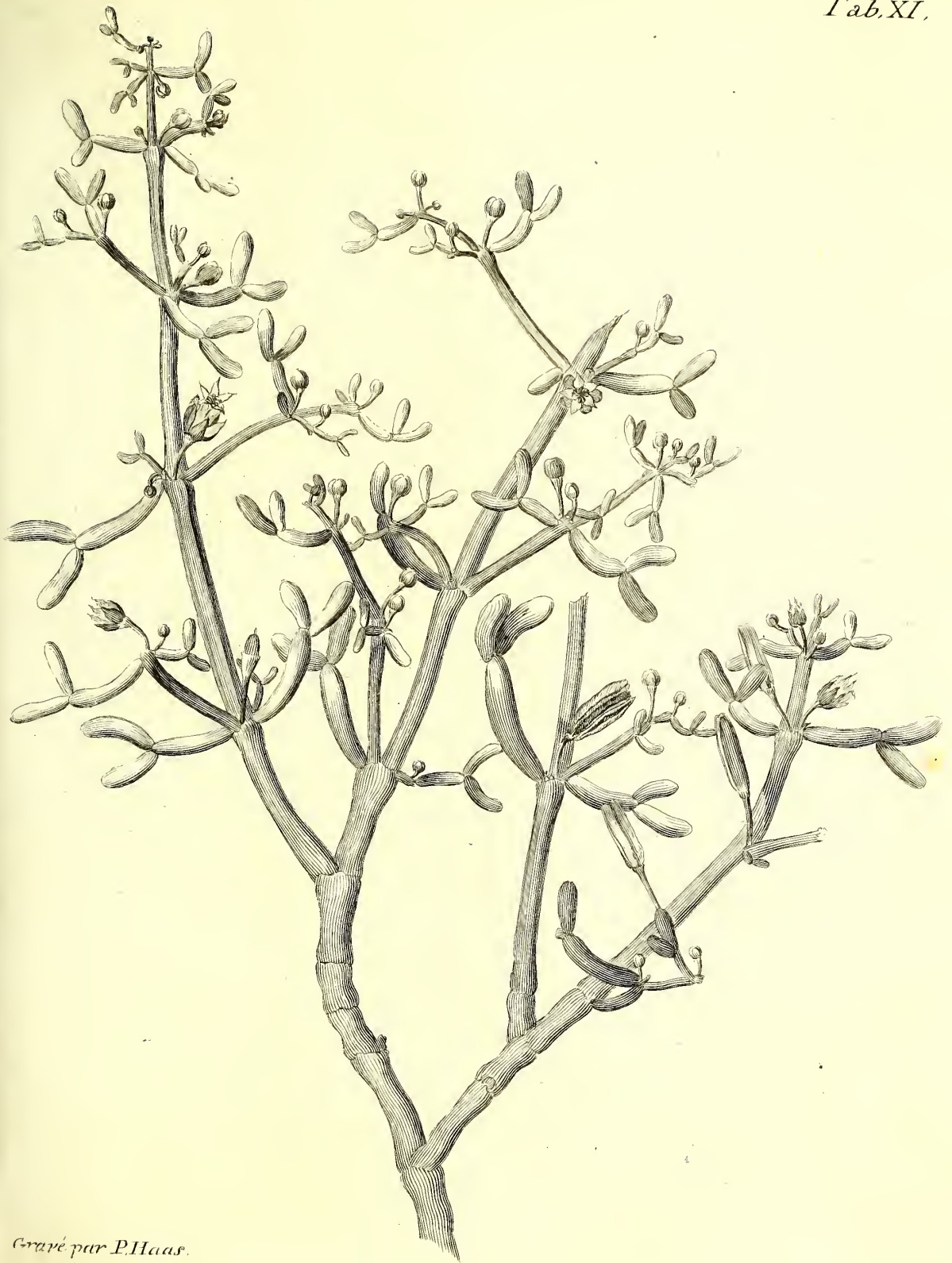




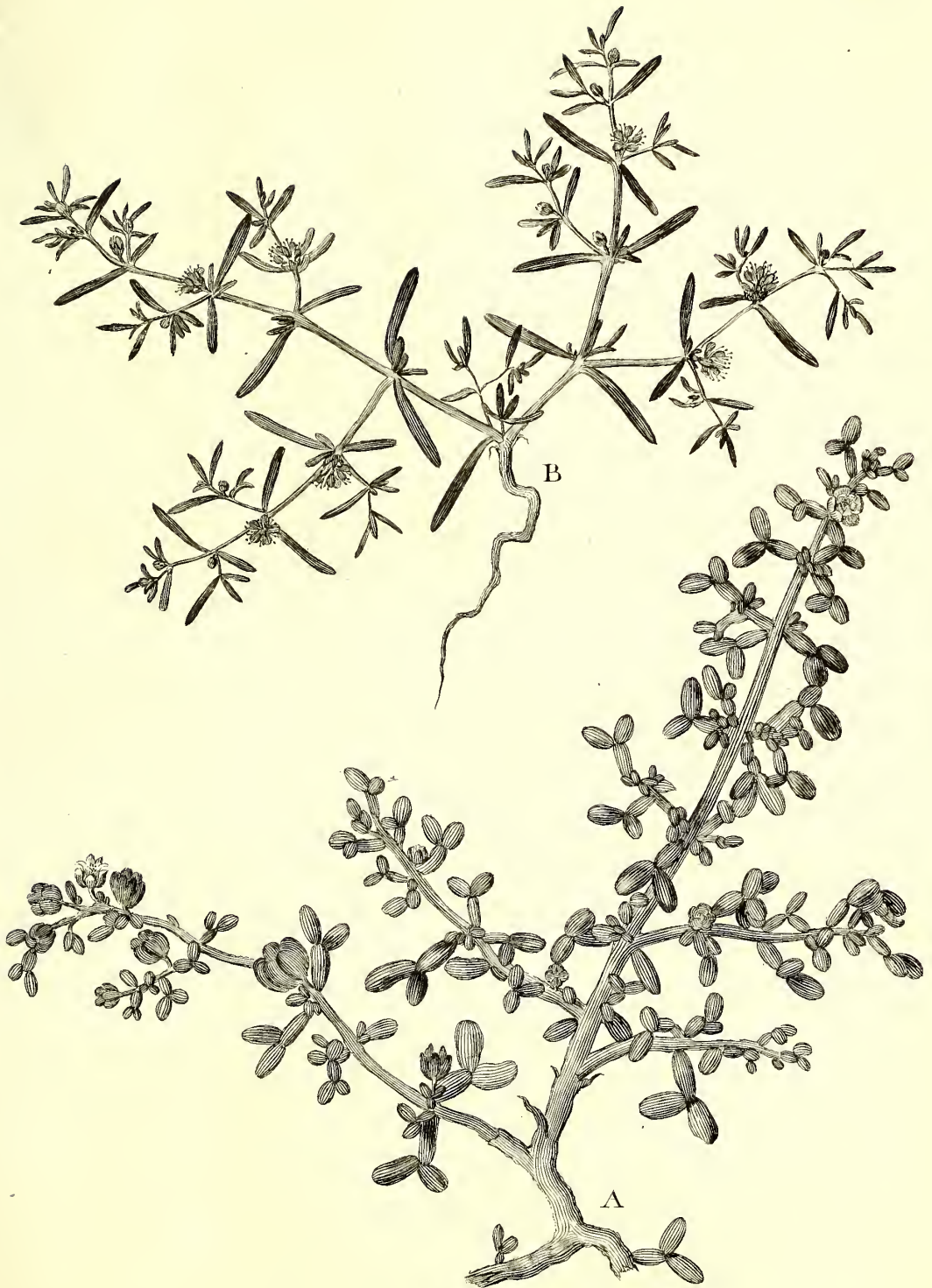






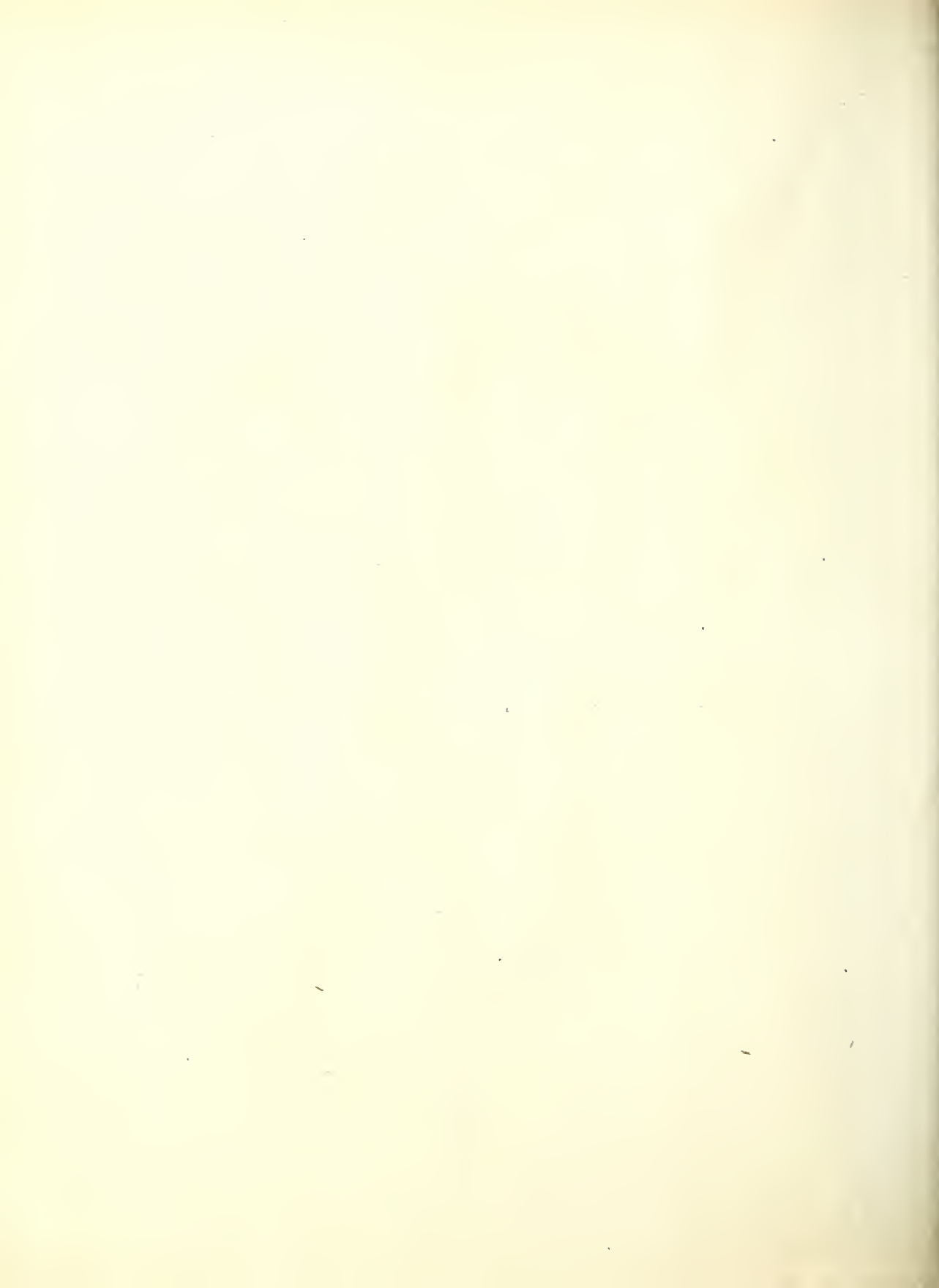






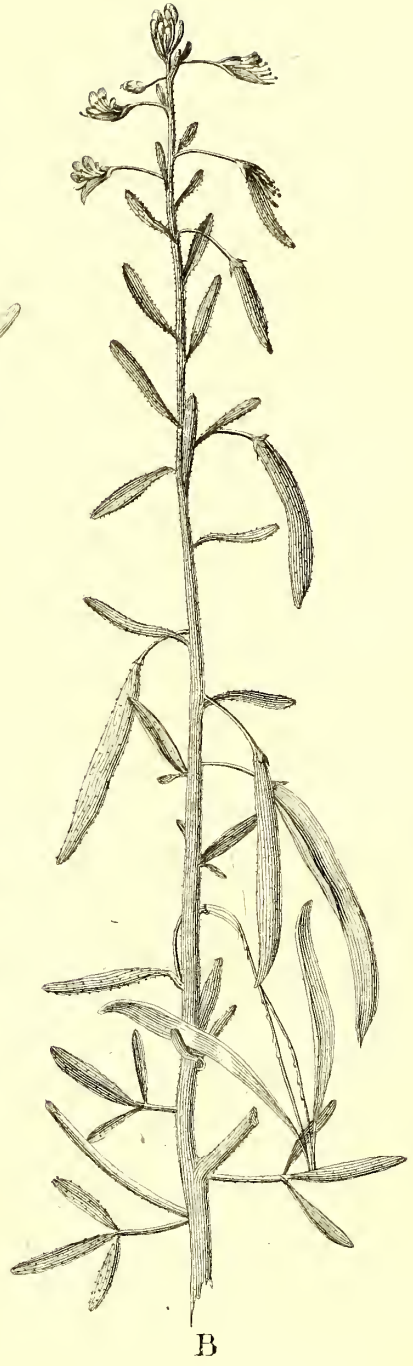


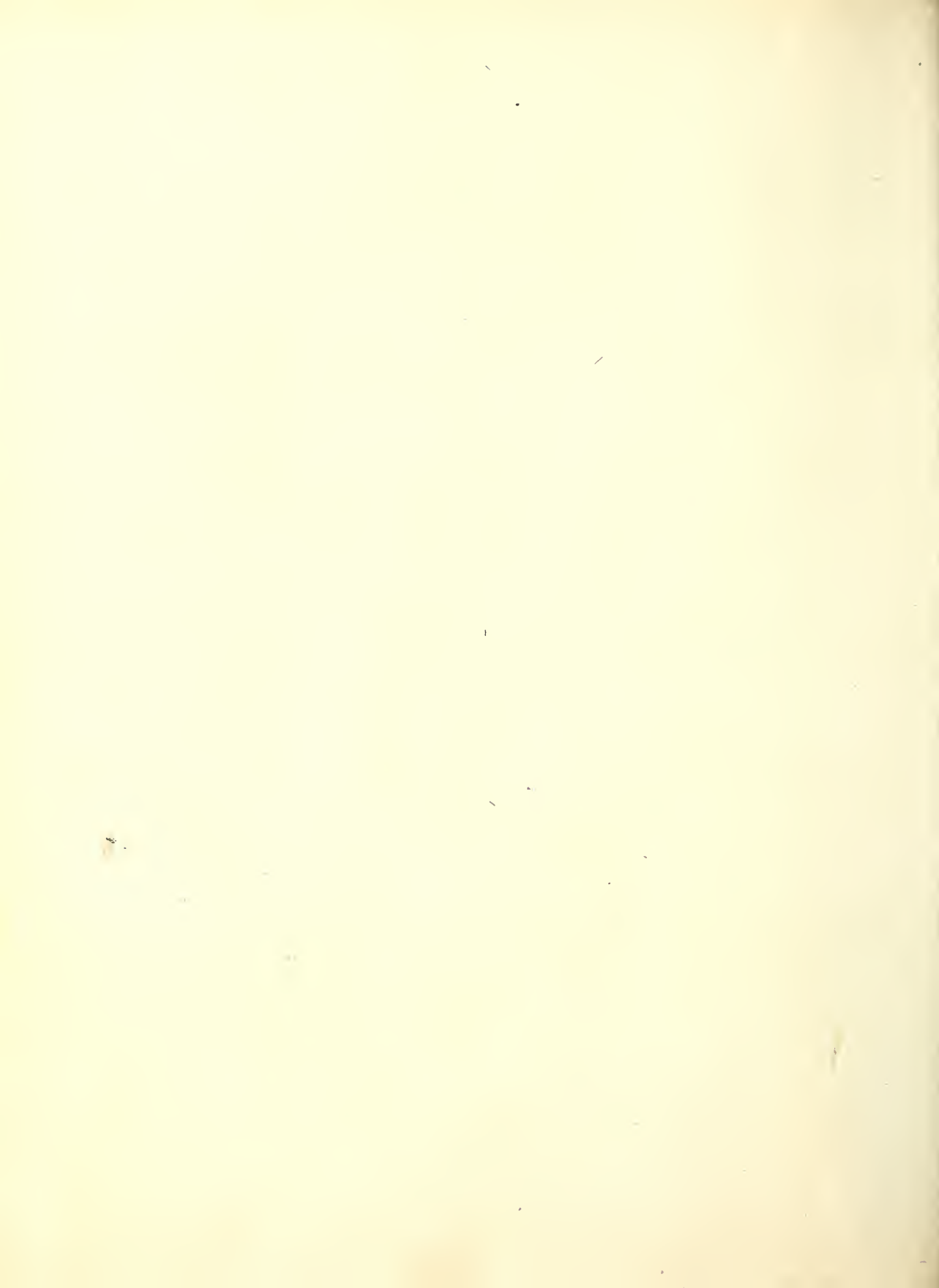




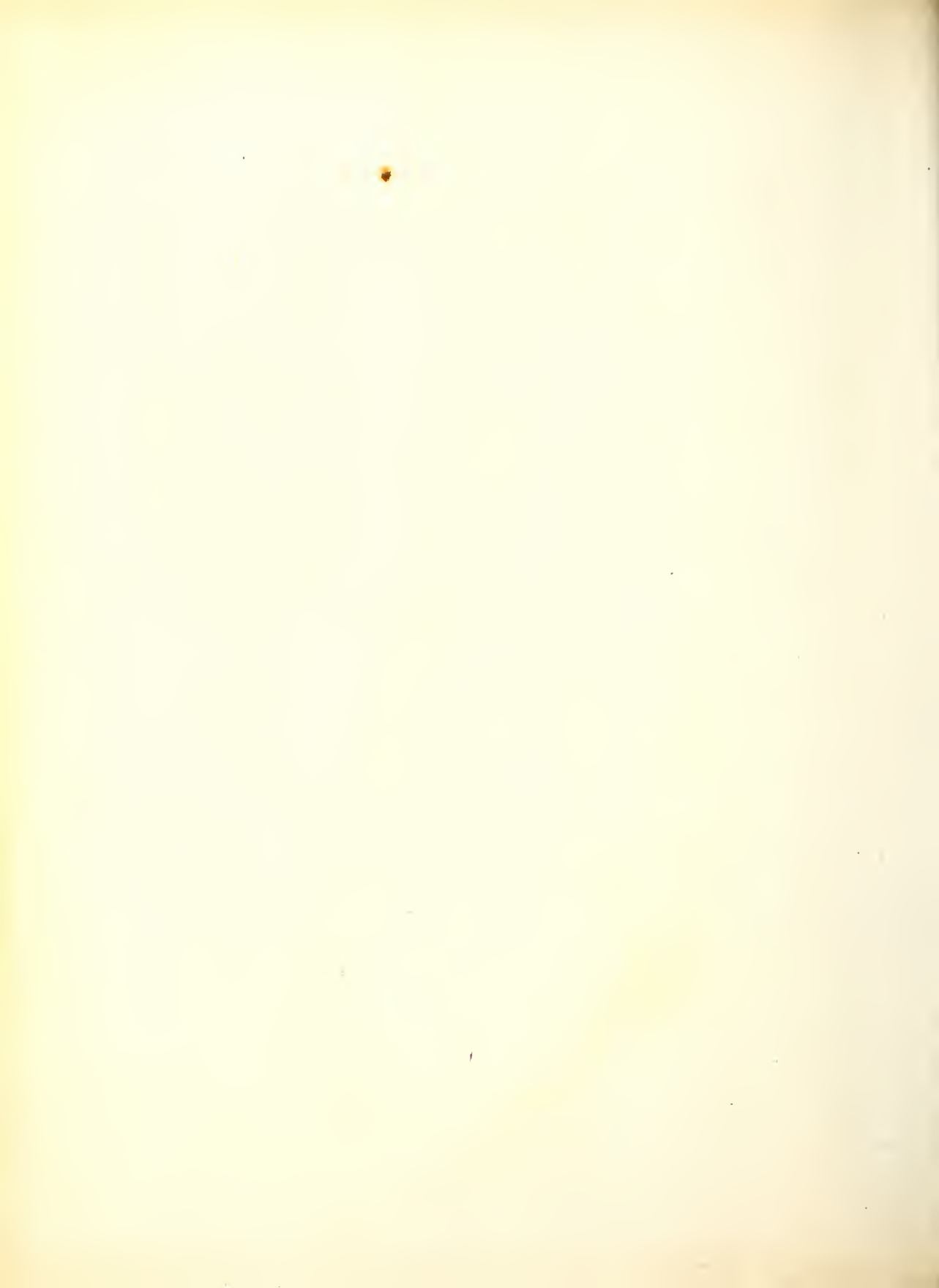










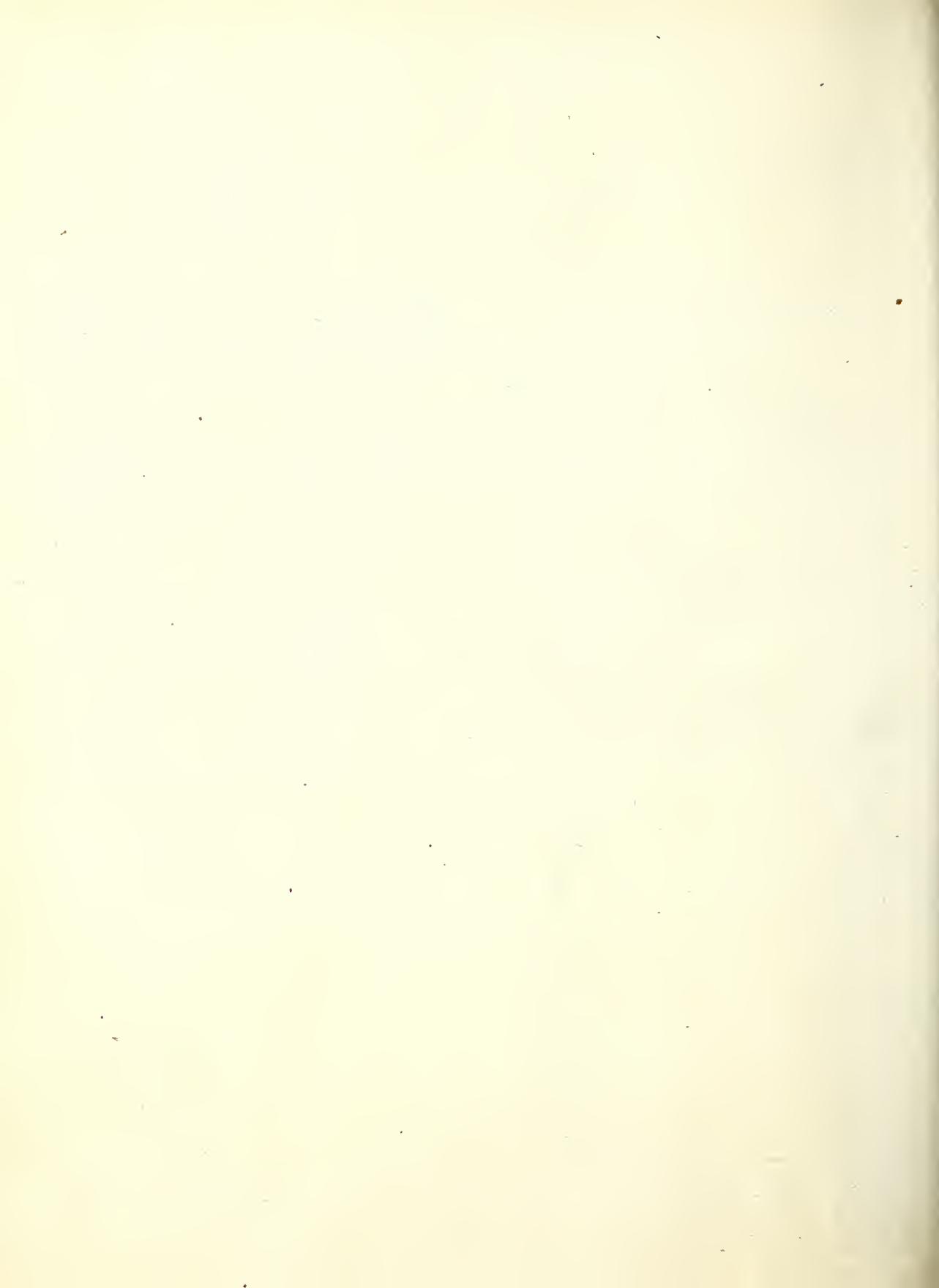






A

B

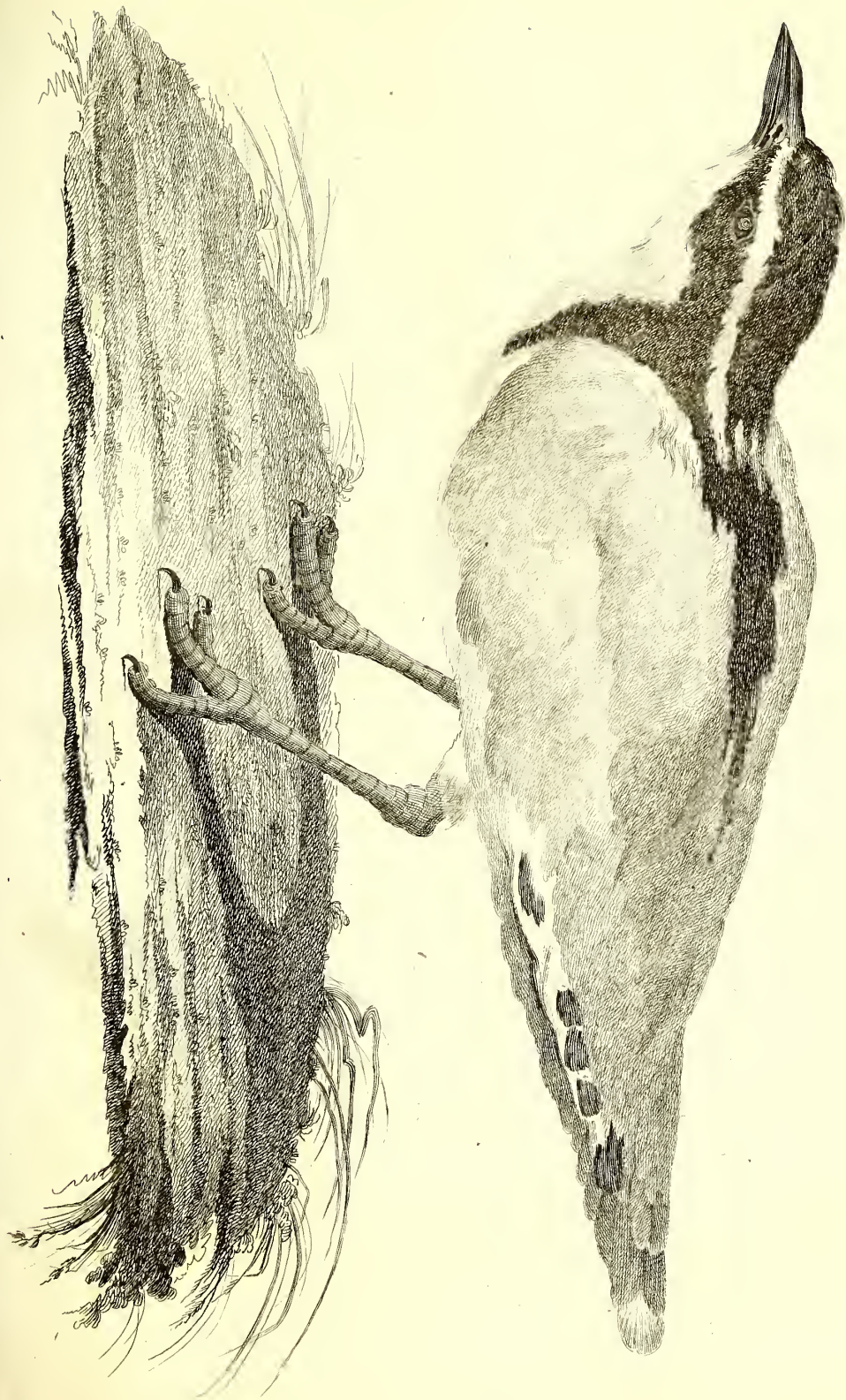


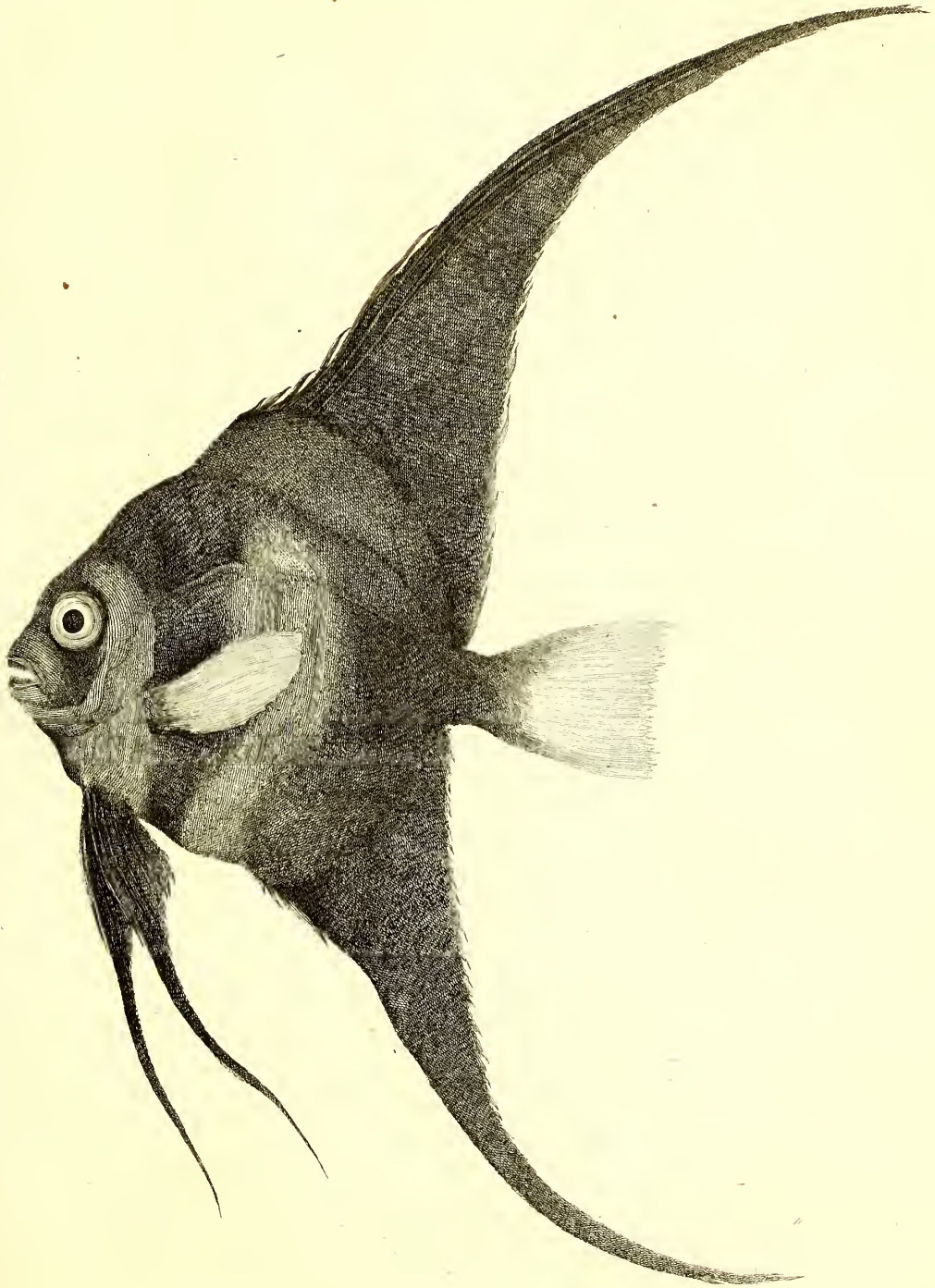


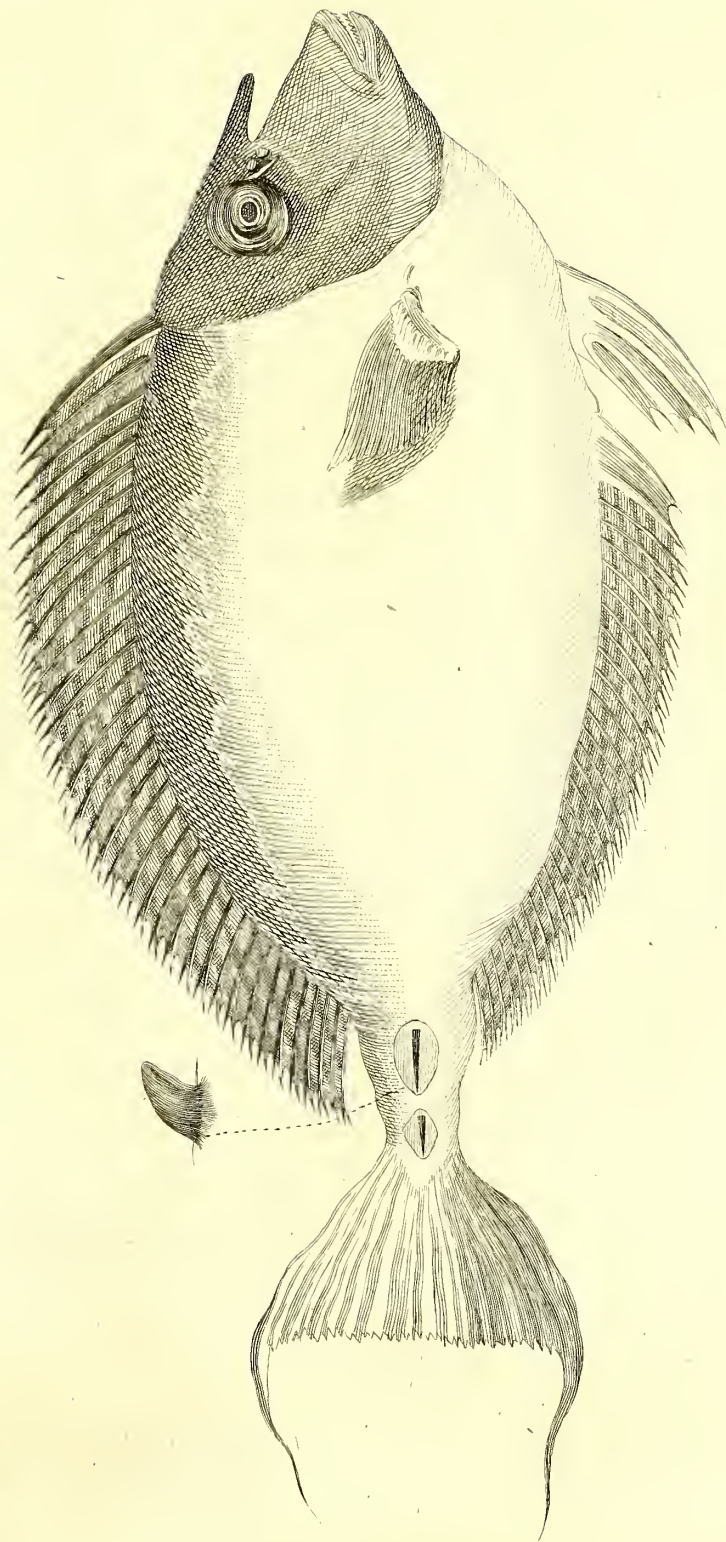


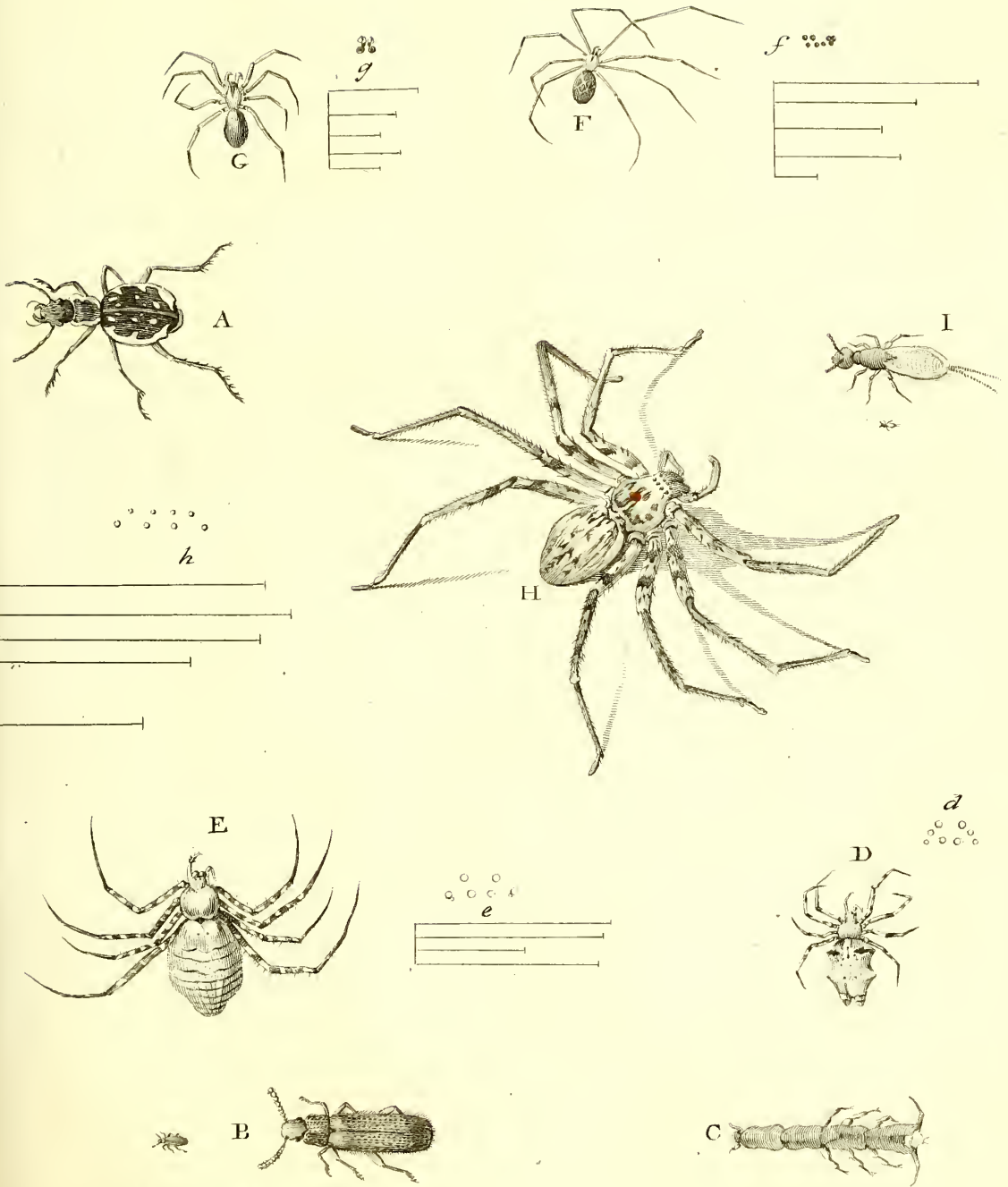








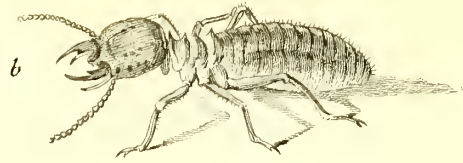
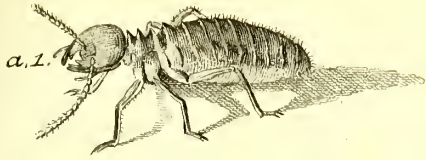




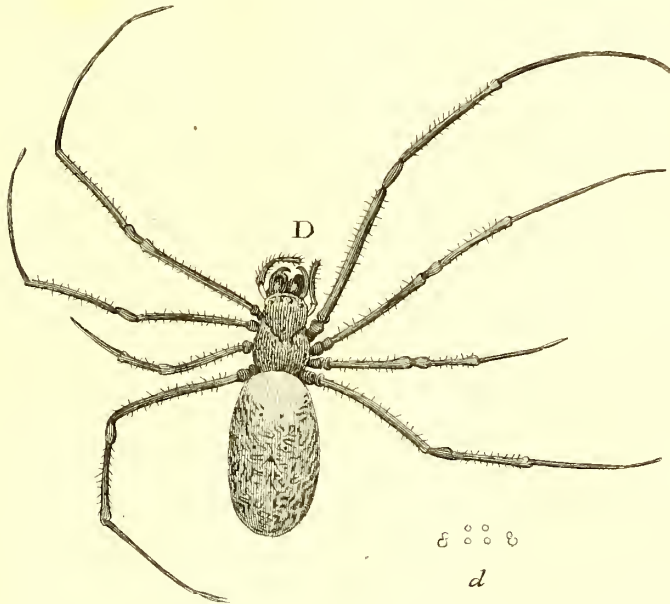


A 

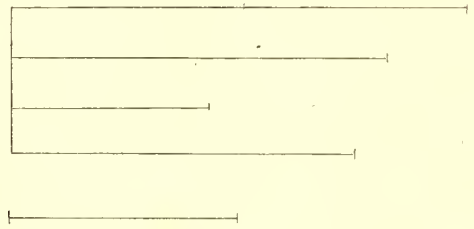
B 



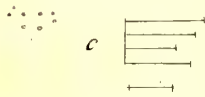

A


d

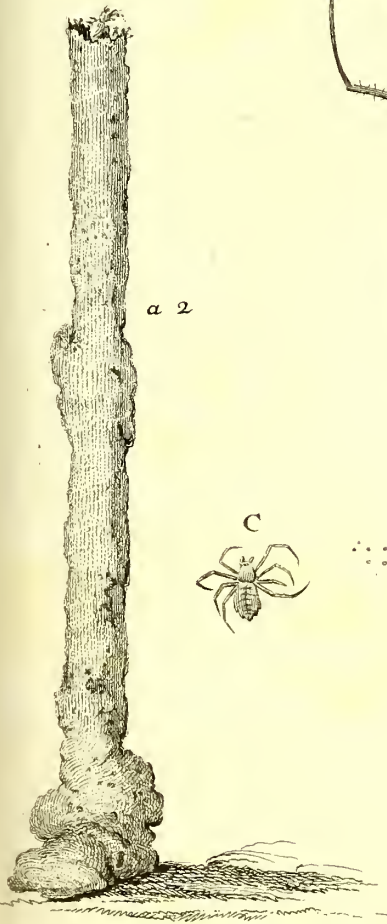
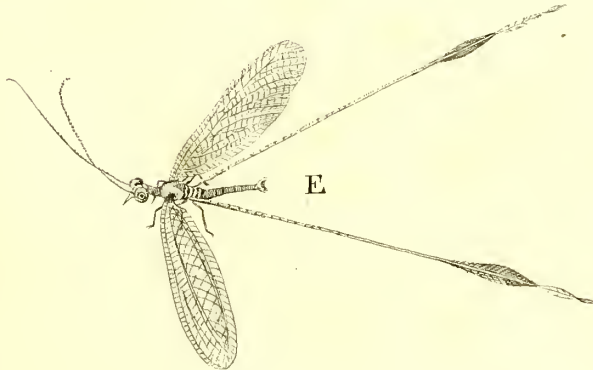


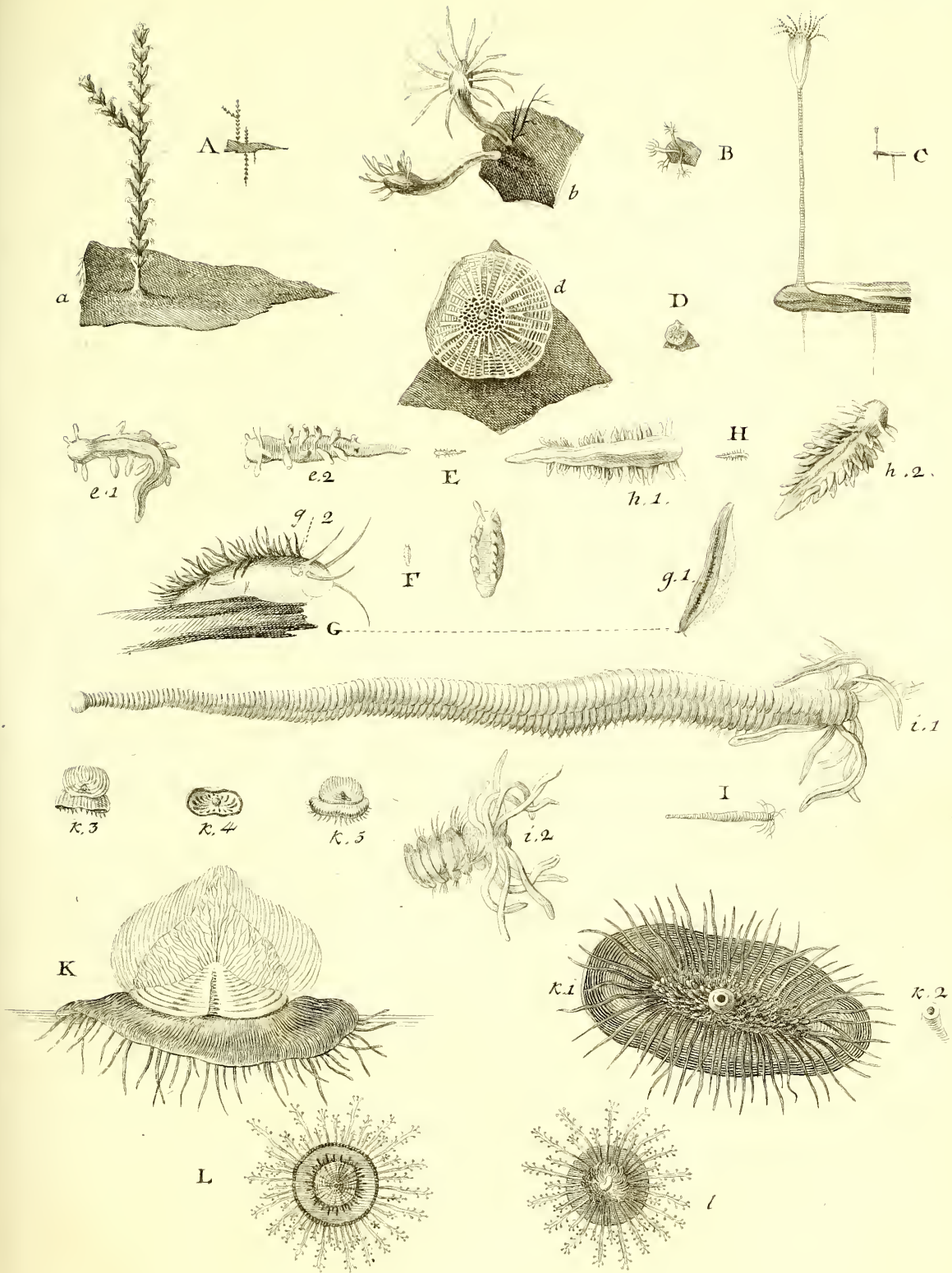
a 2

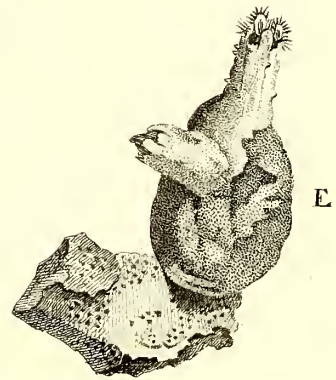
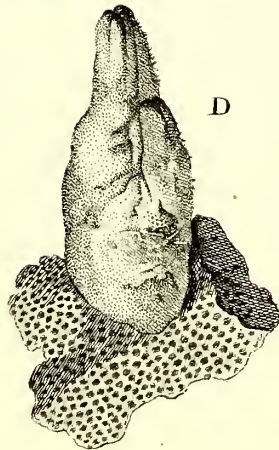
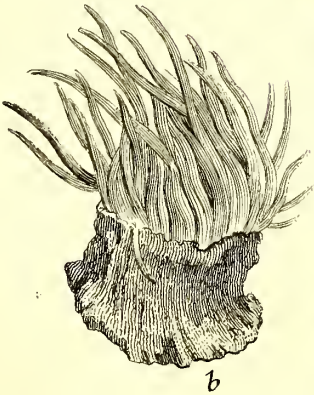
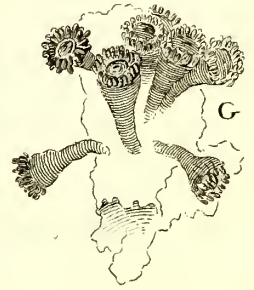
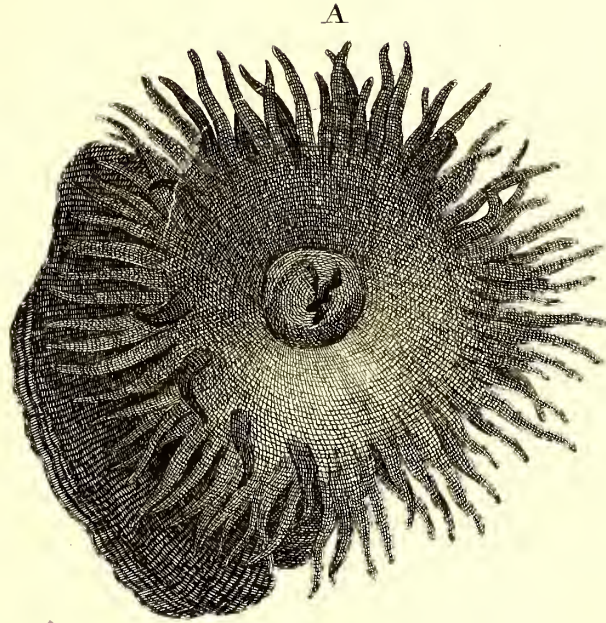
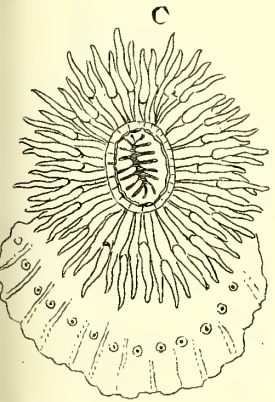
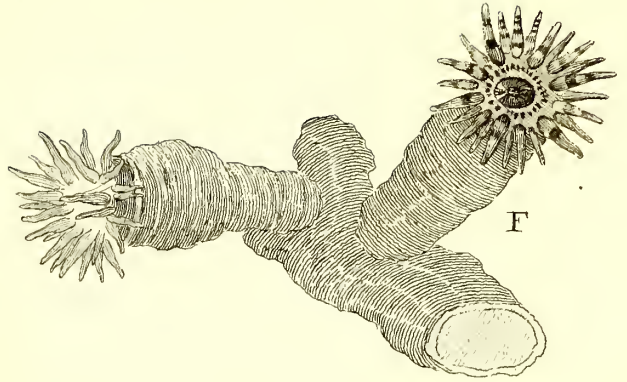
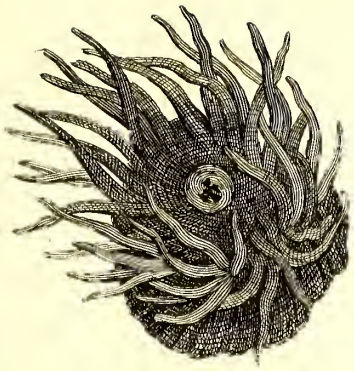


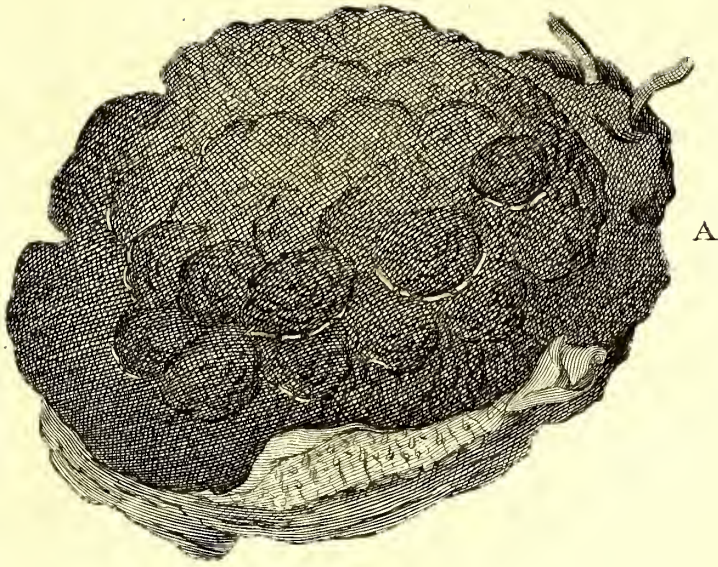
c

E

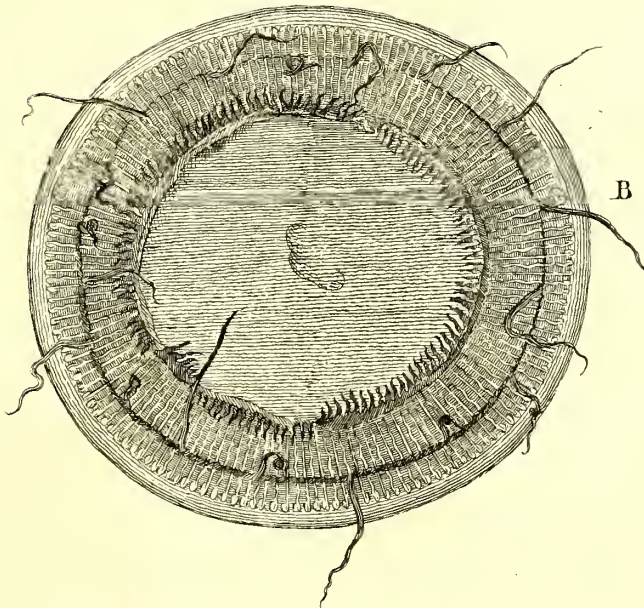




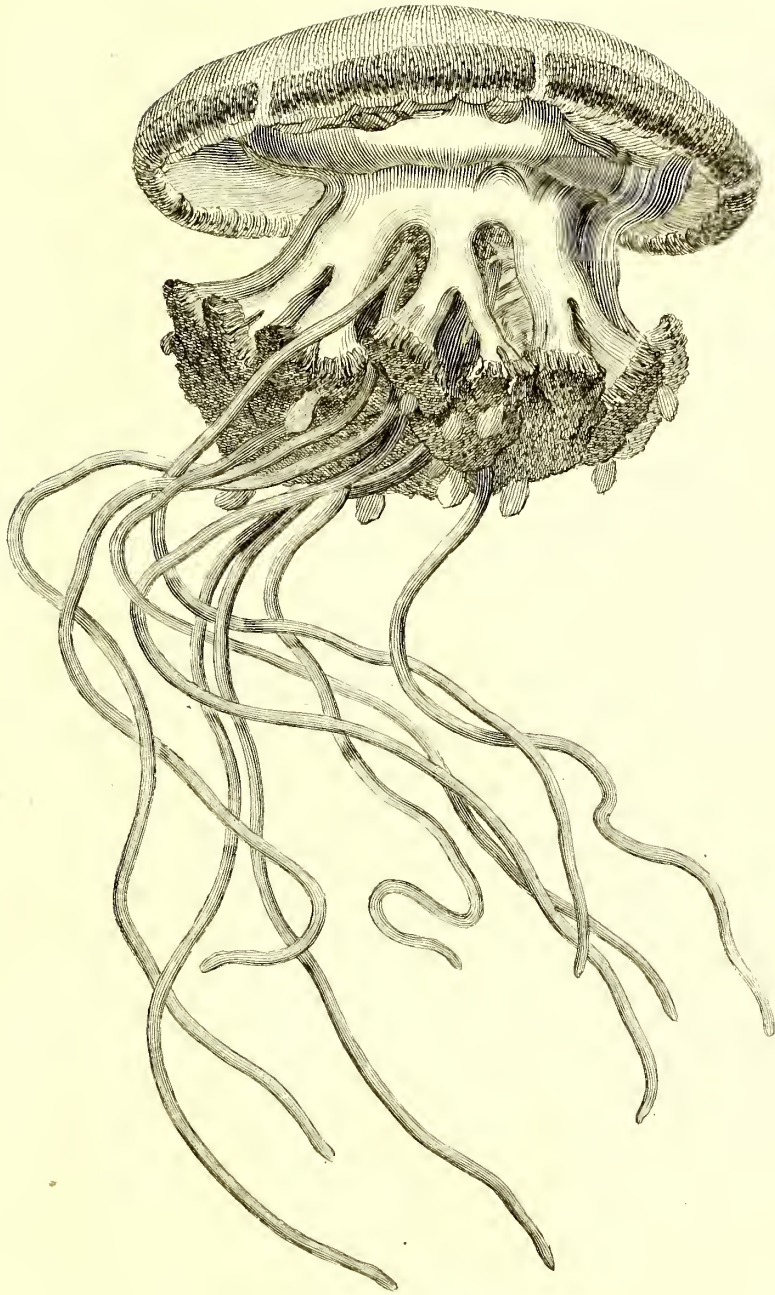


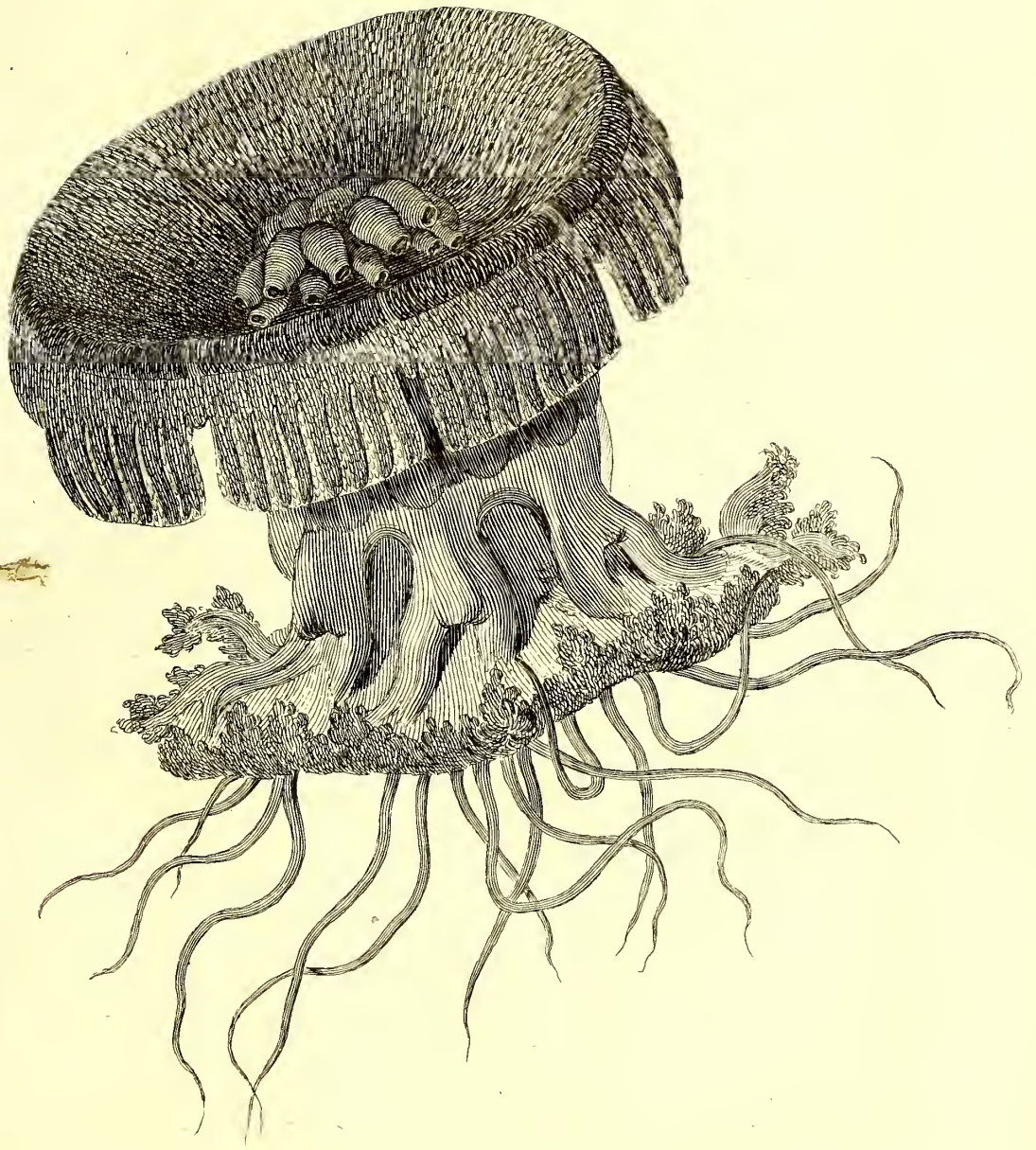


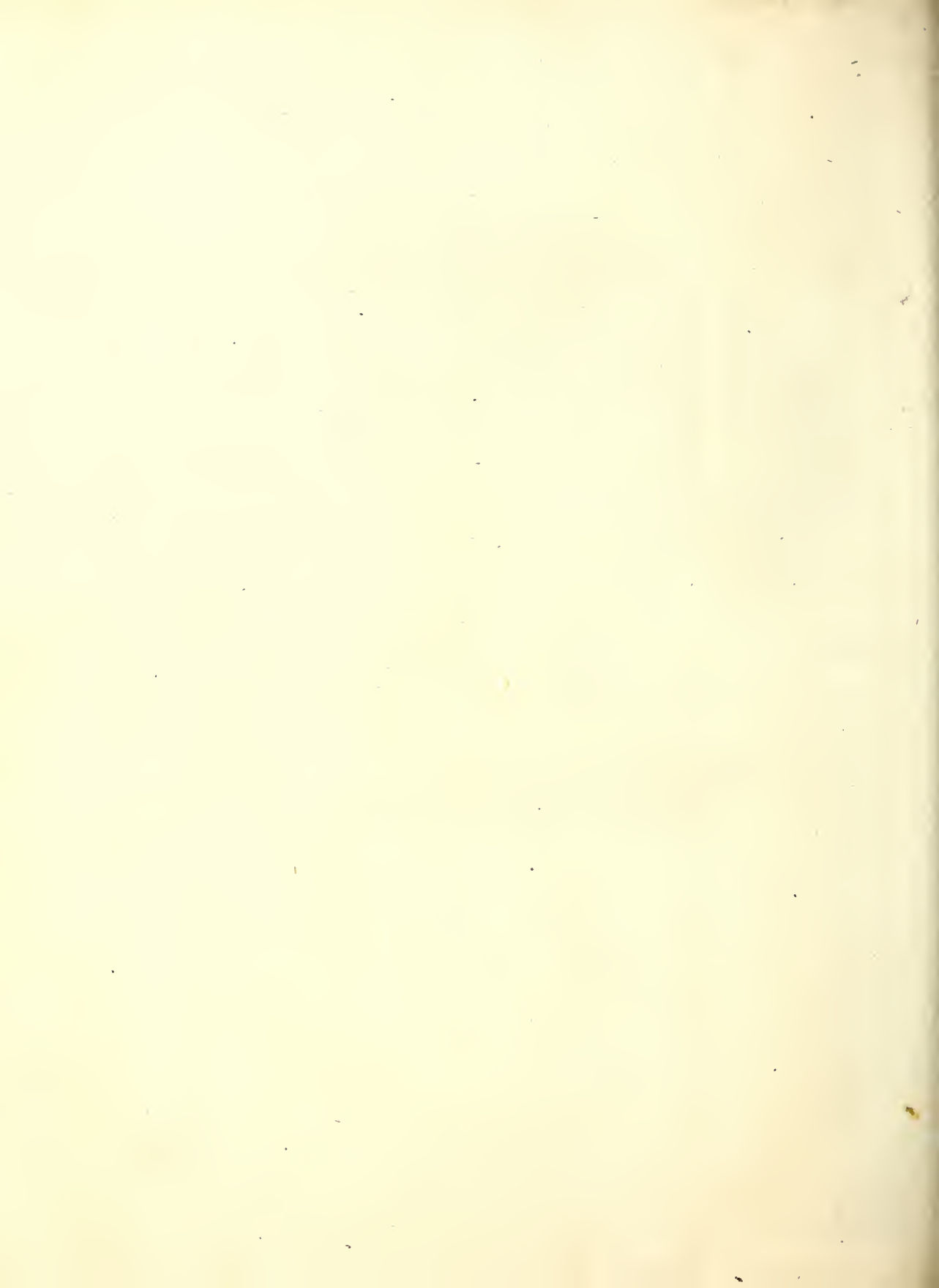
A



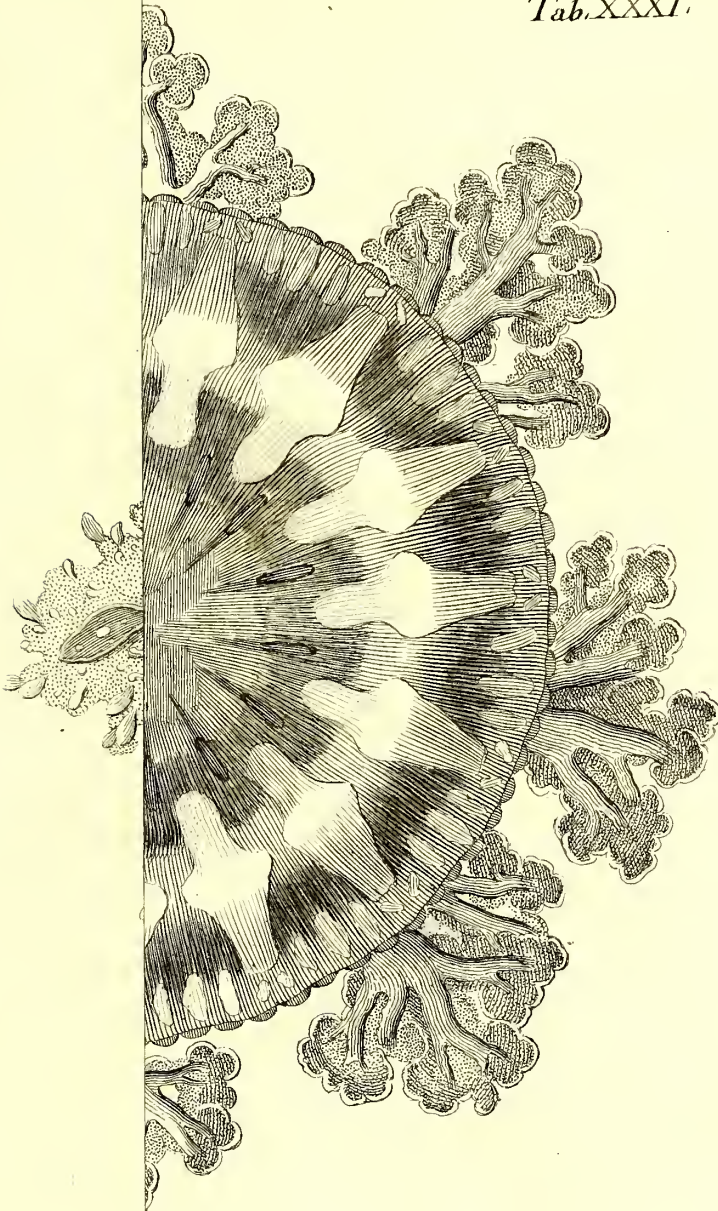
B

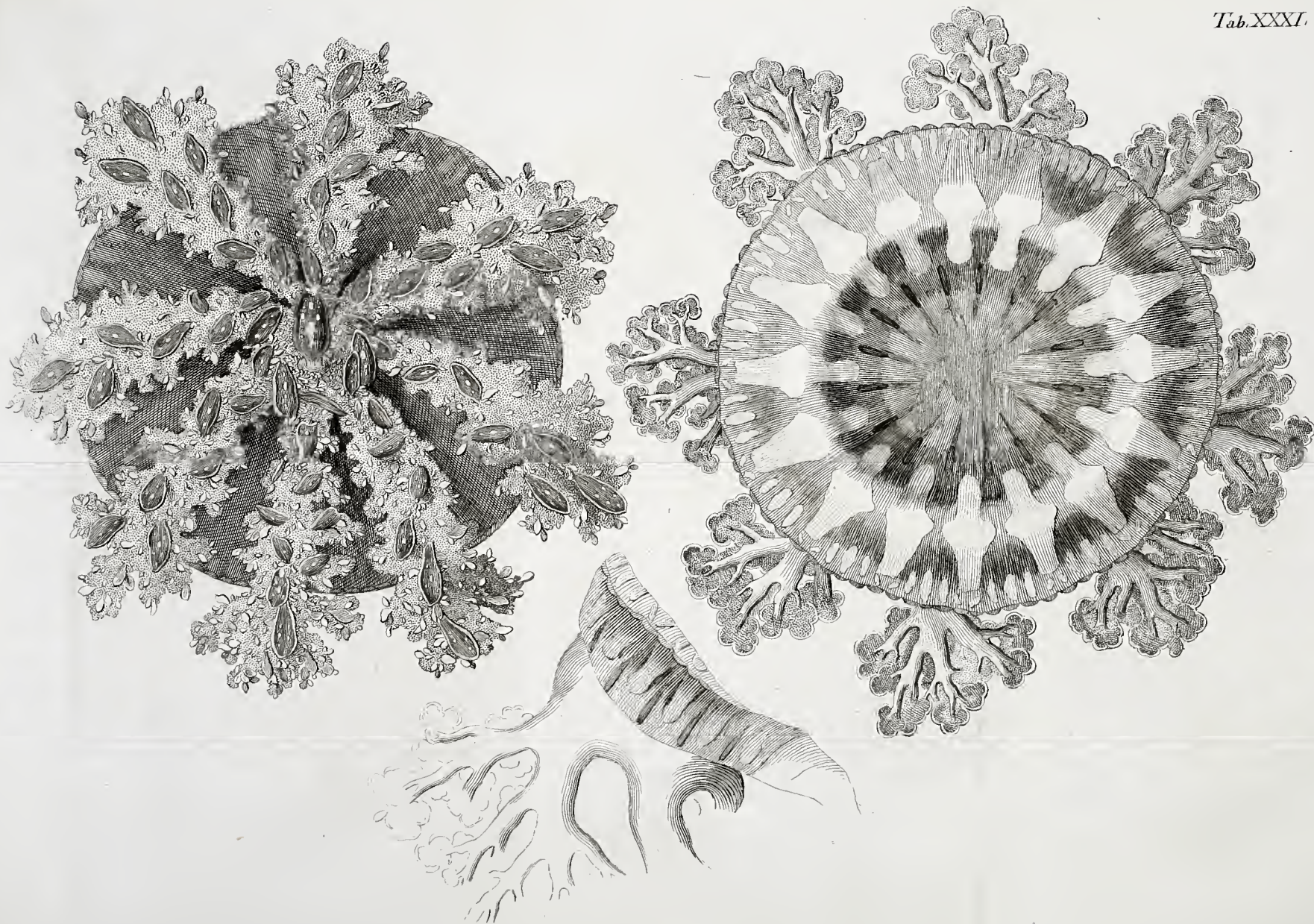




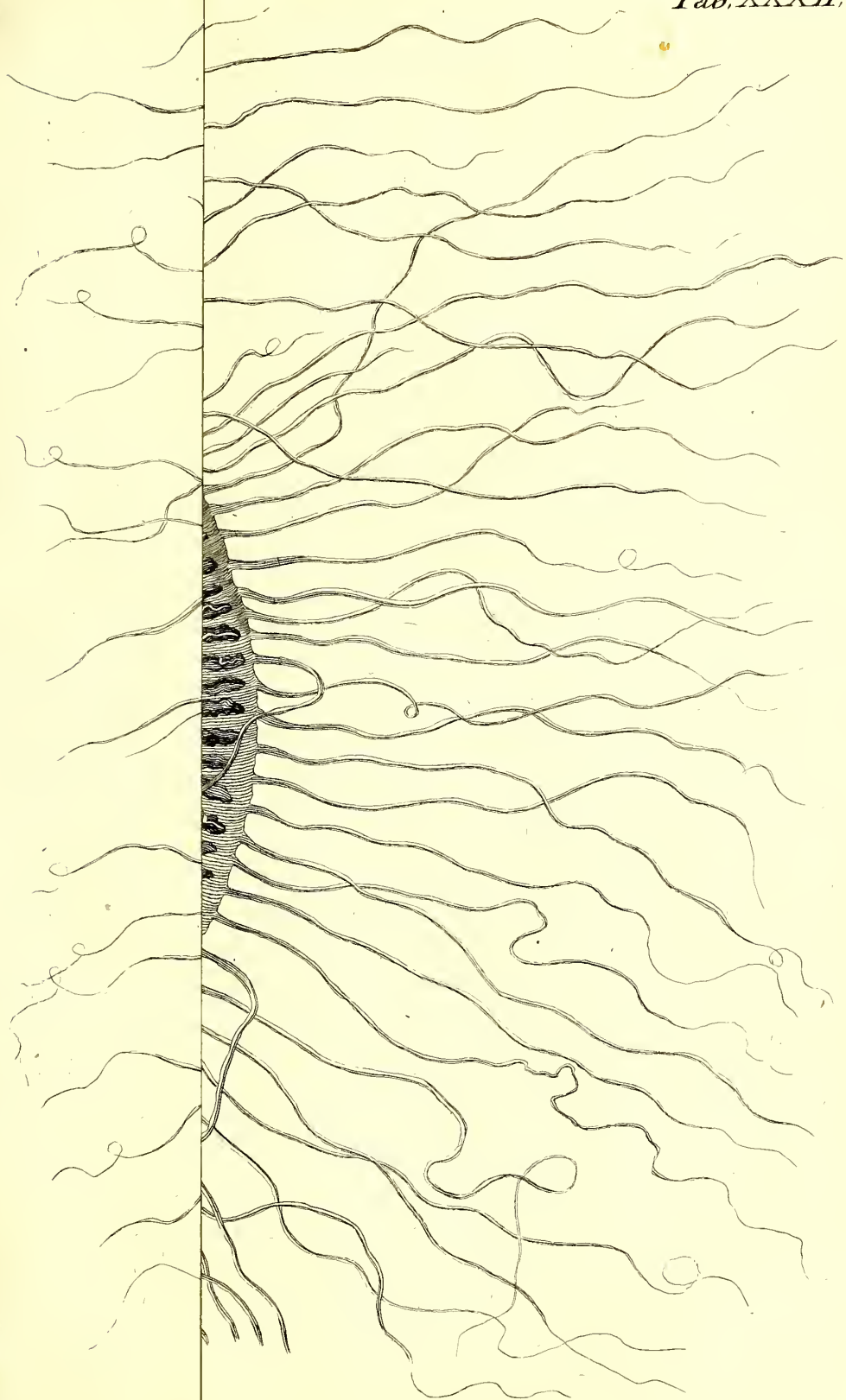


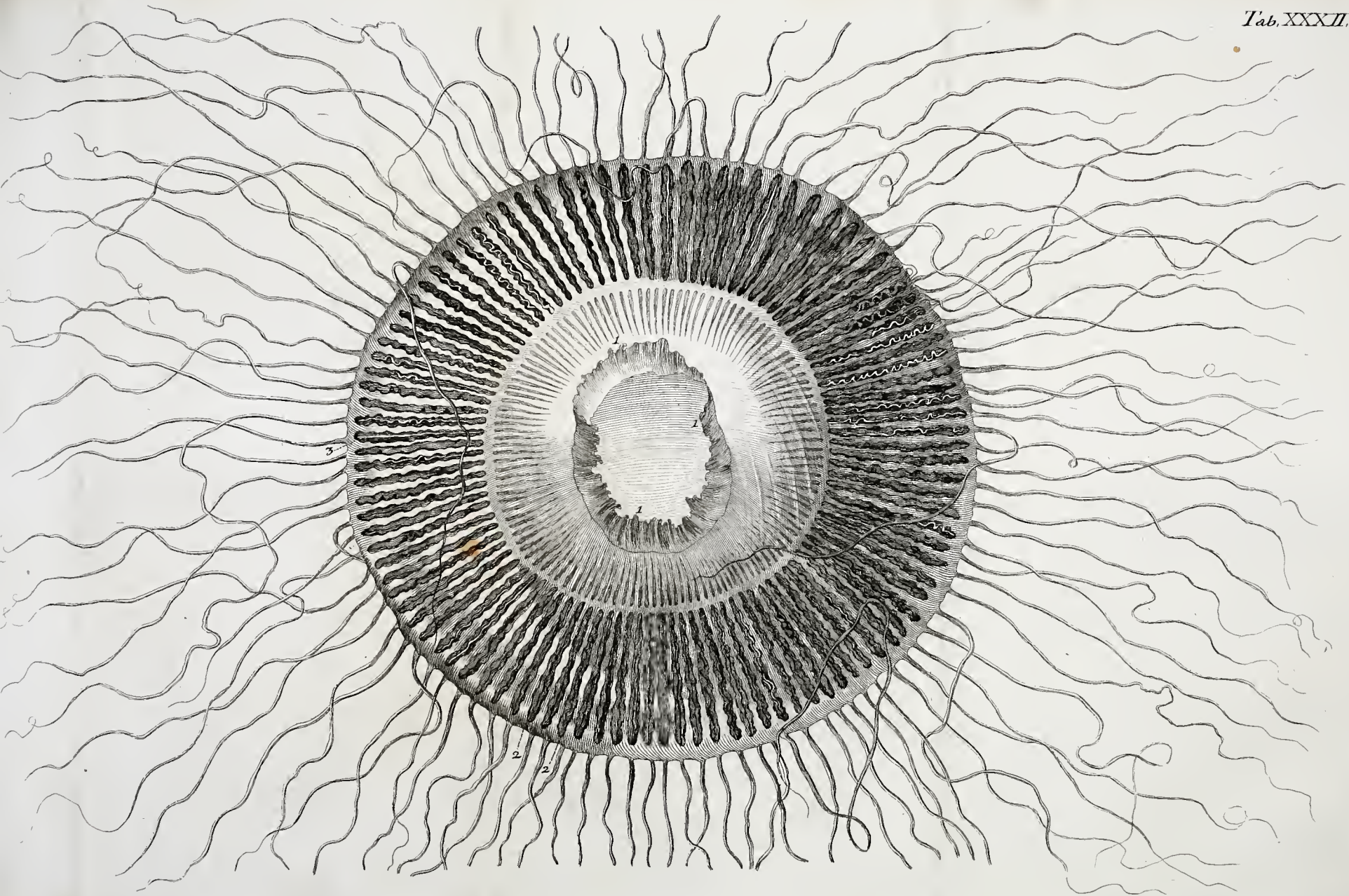




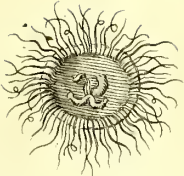




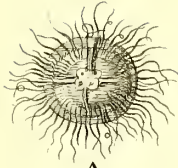








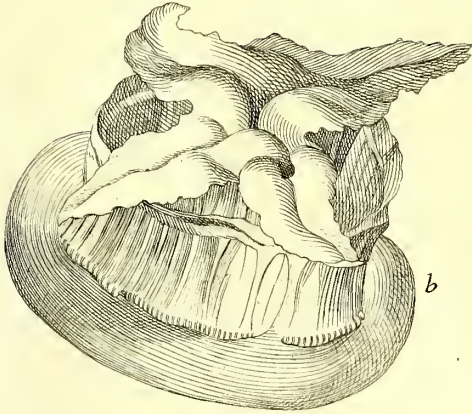
a.1.



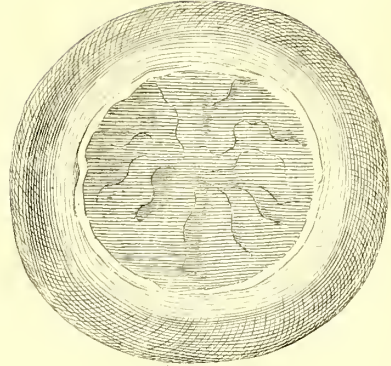
A



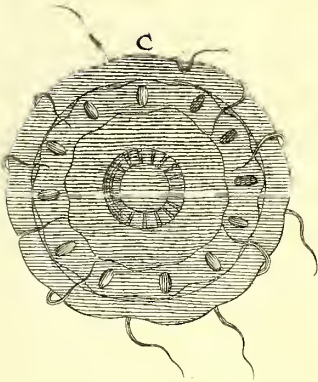
a.2.



b

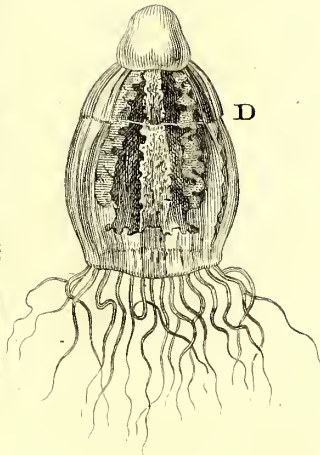


B

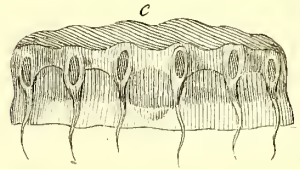


c

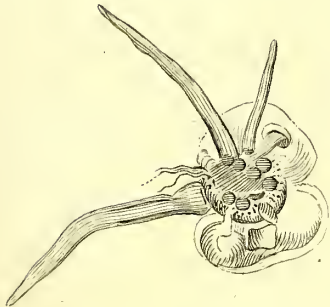
F



D



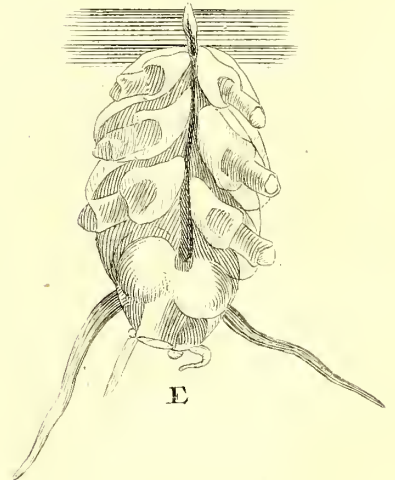
c



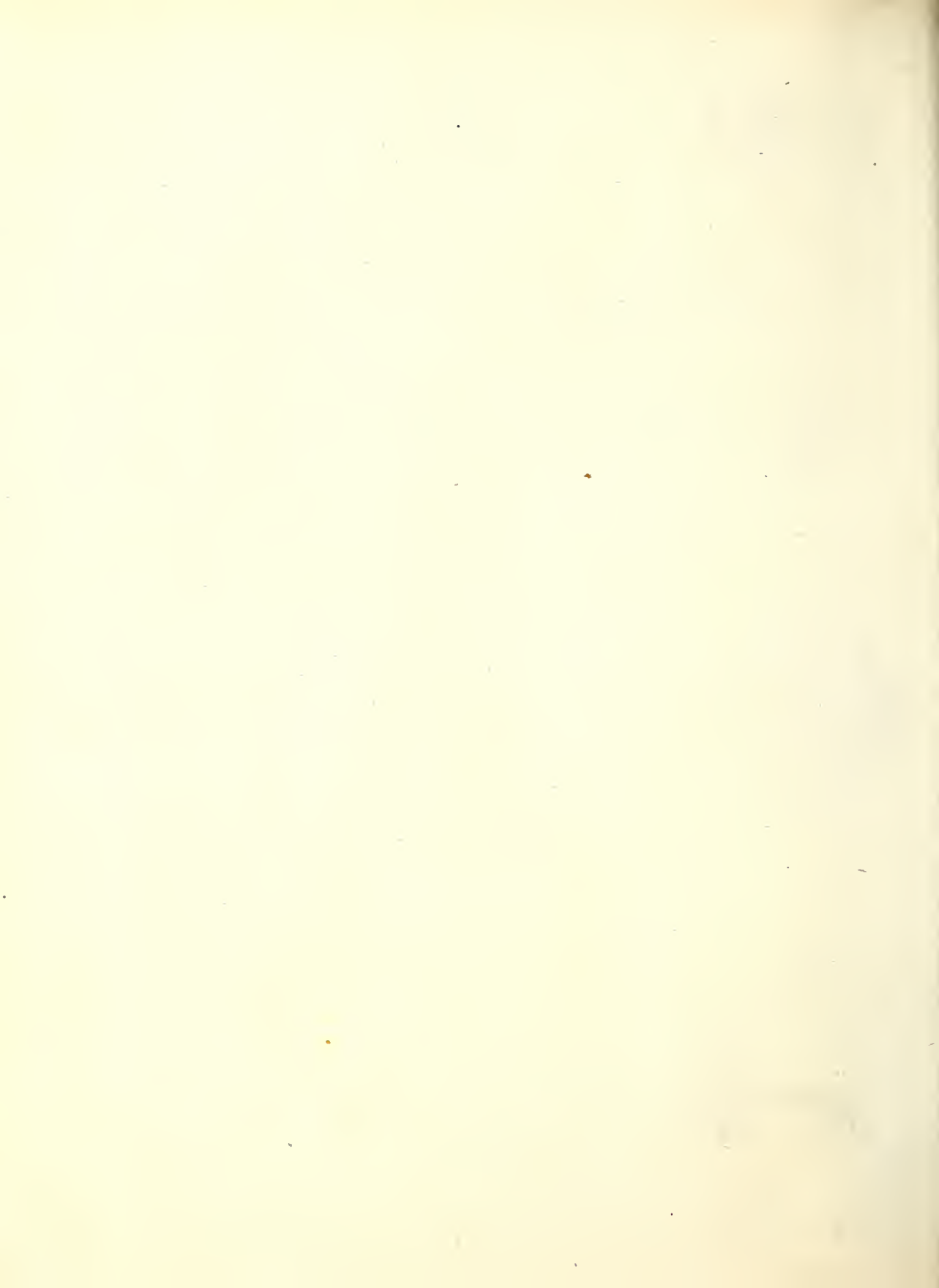
e.2.



e.1.

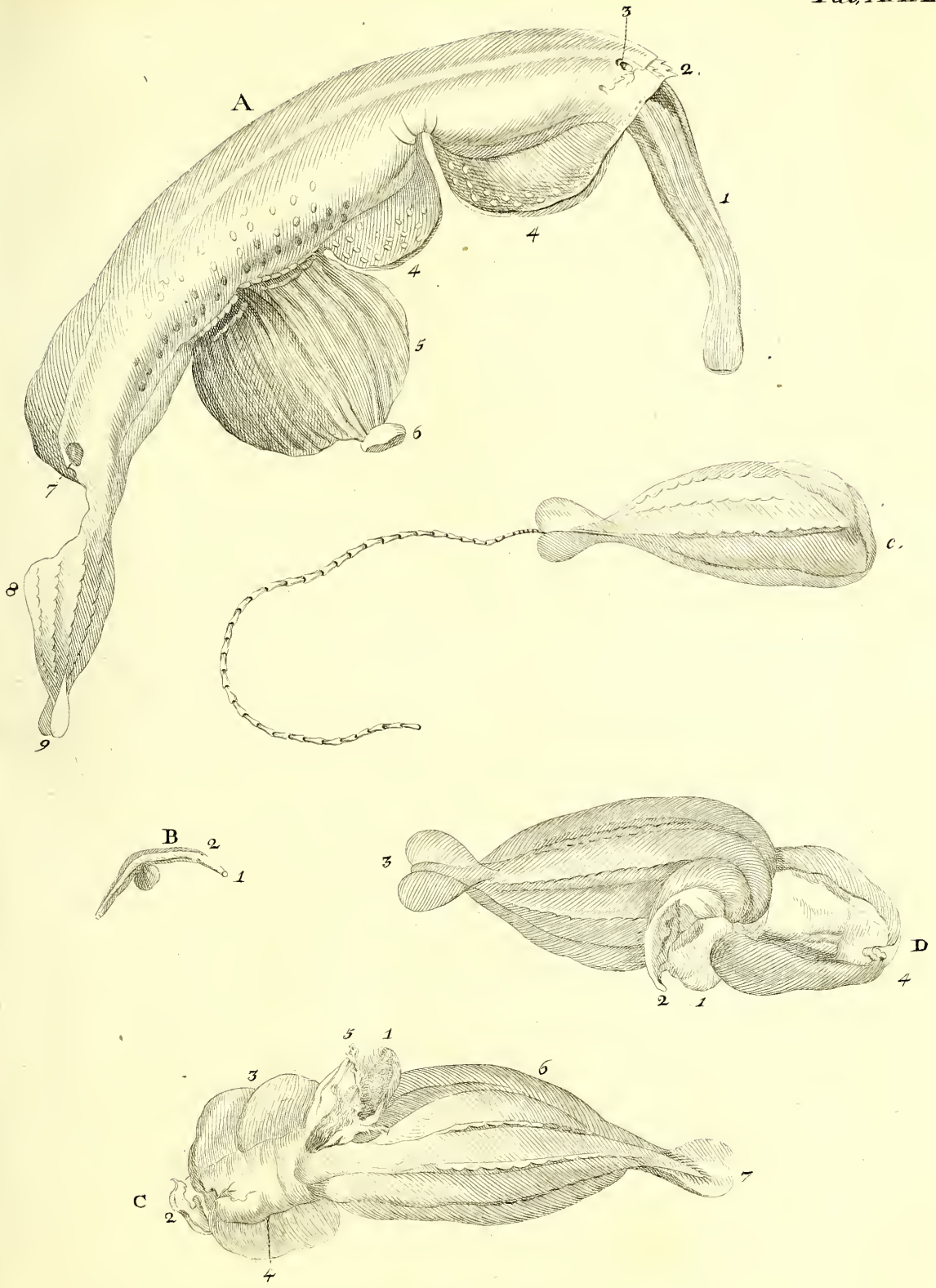


E

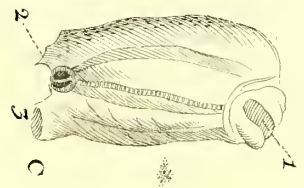
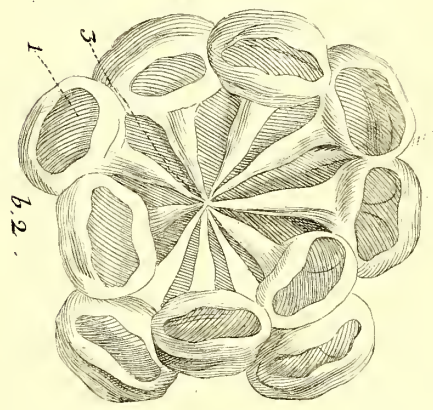
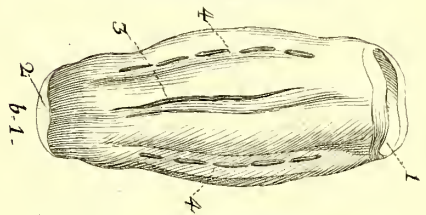
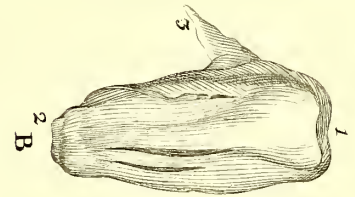
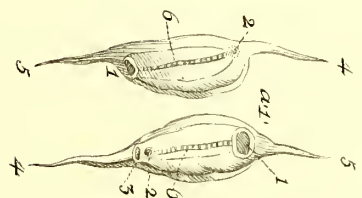
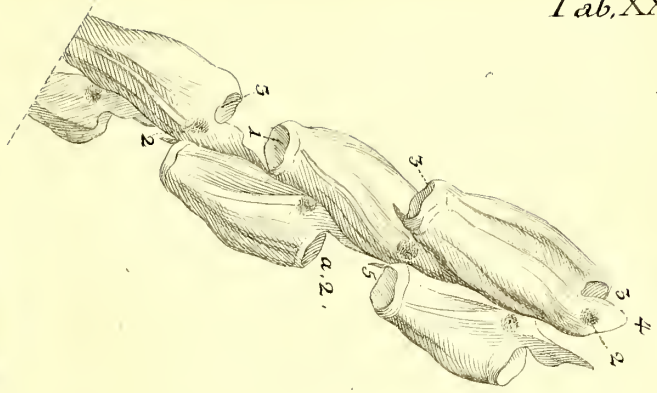
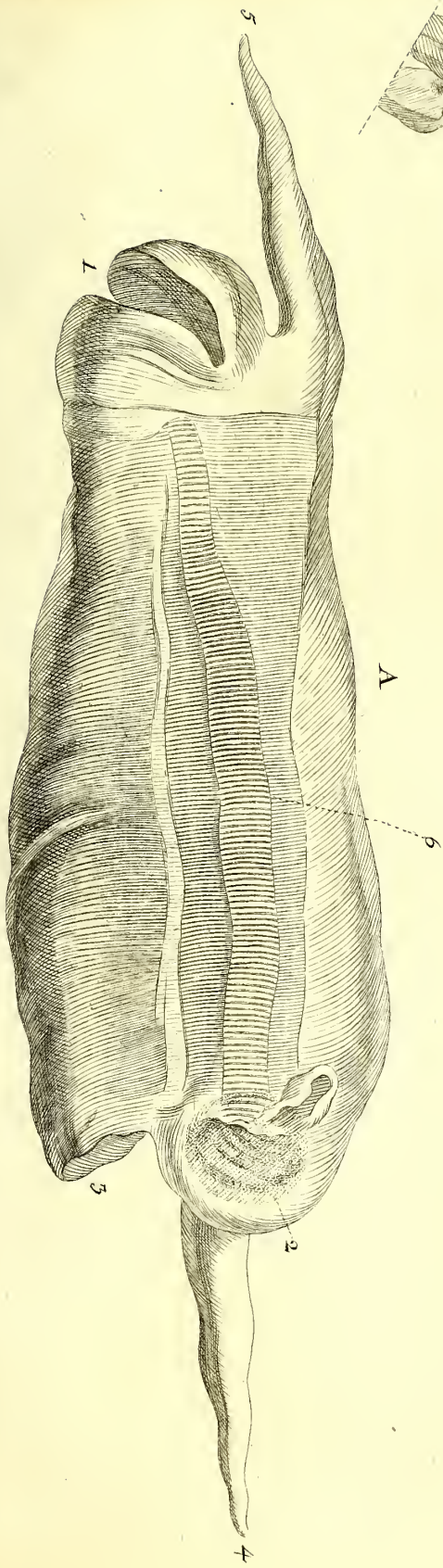


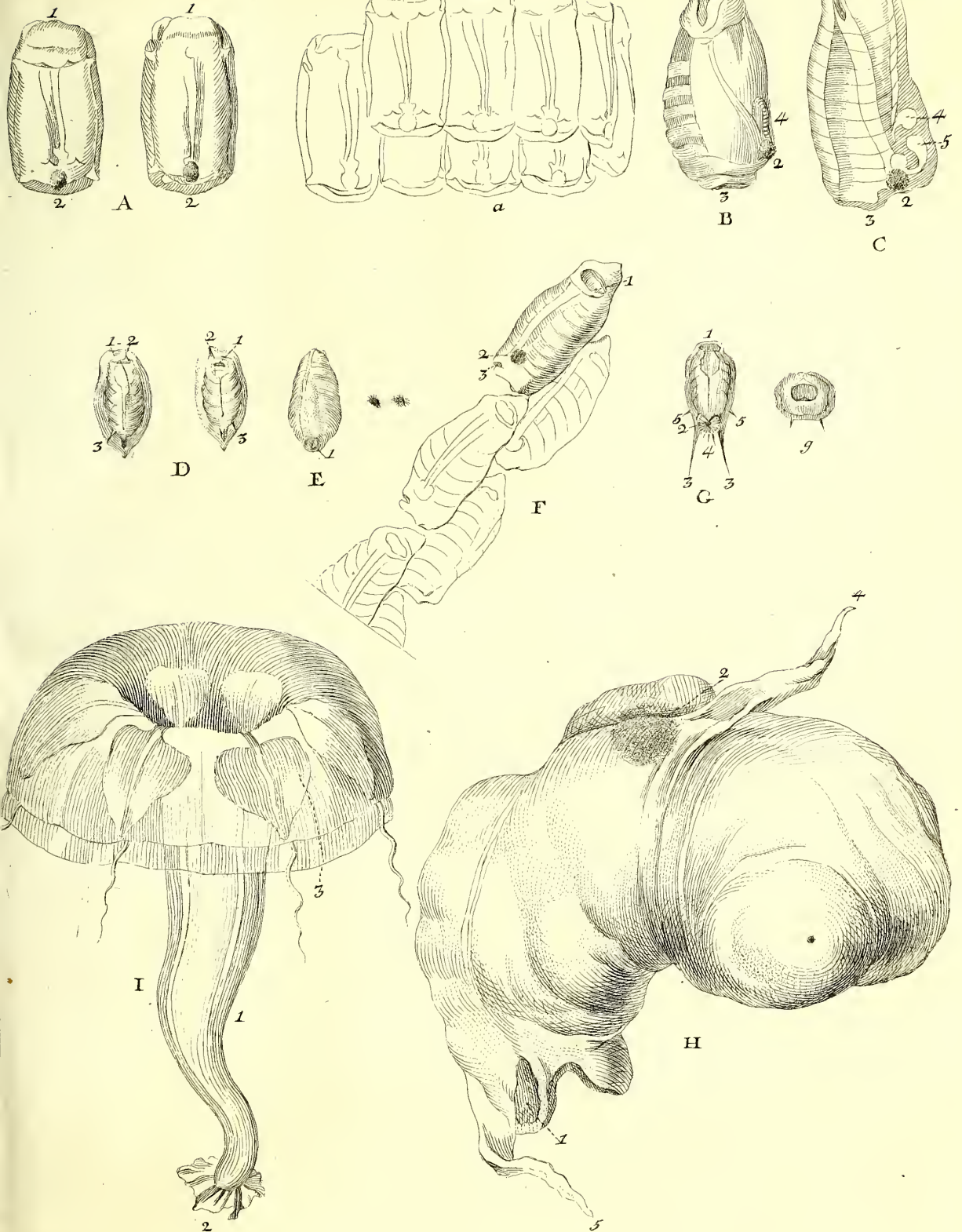


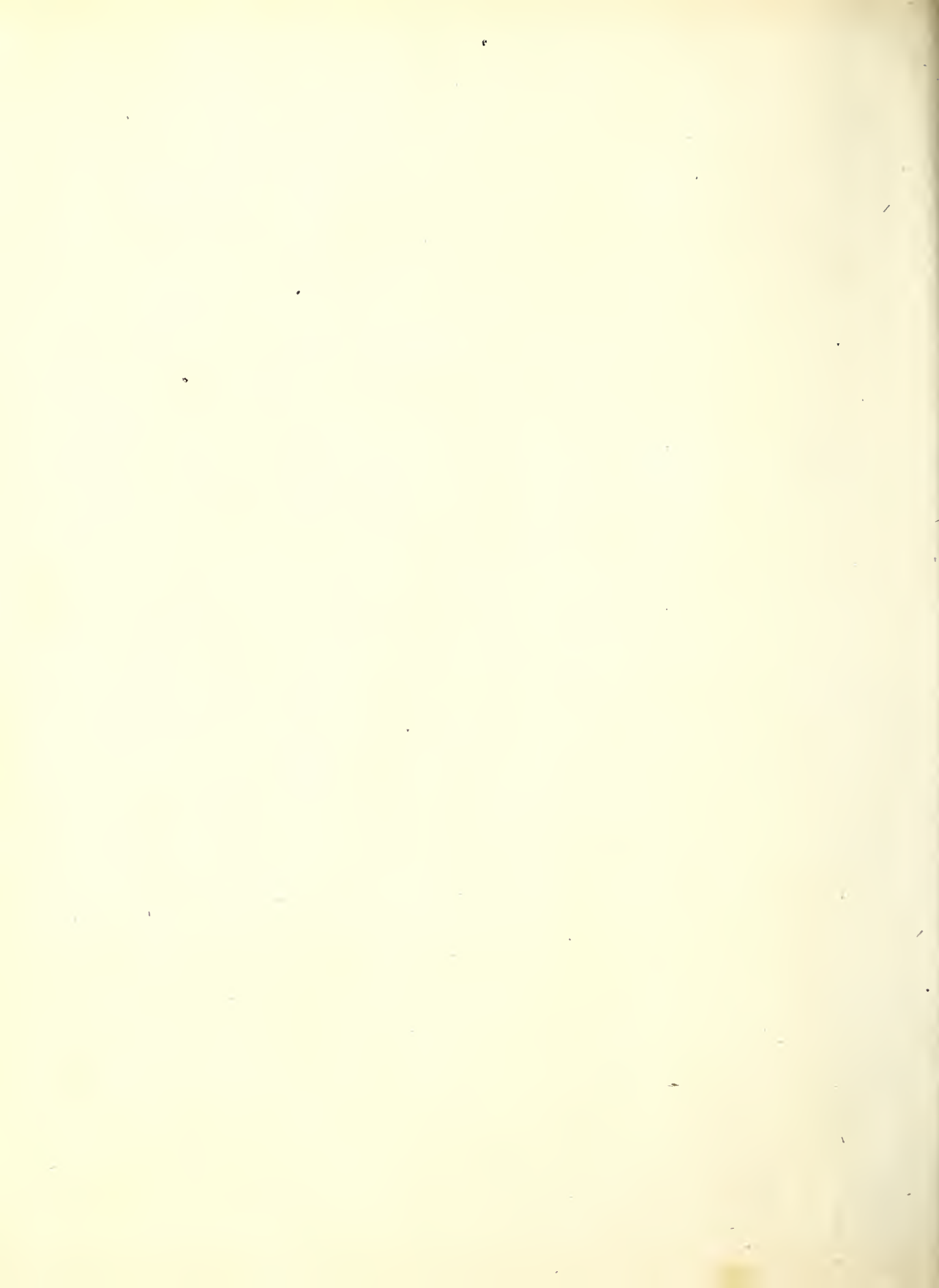










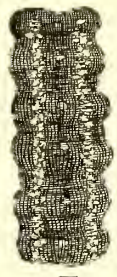




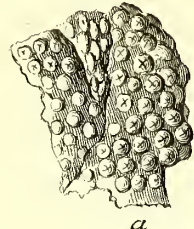




A



F



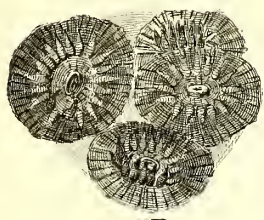
a



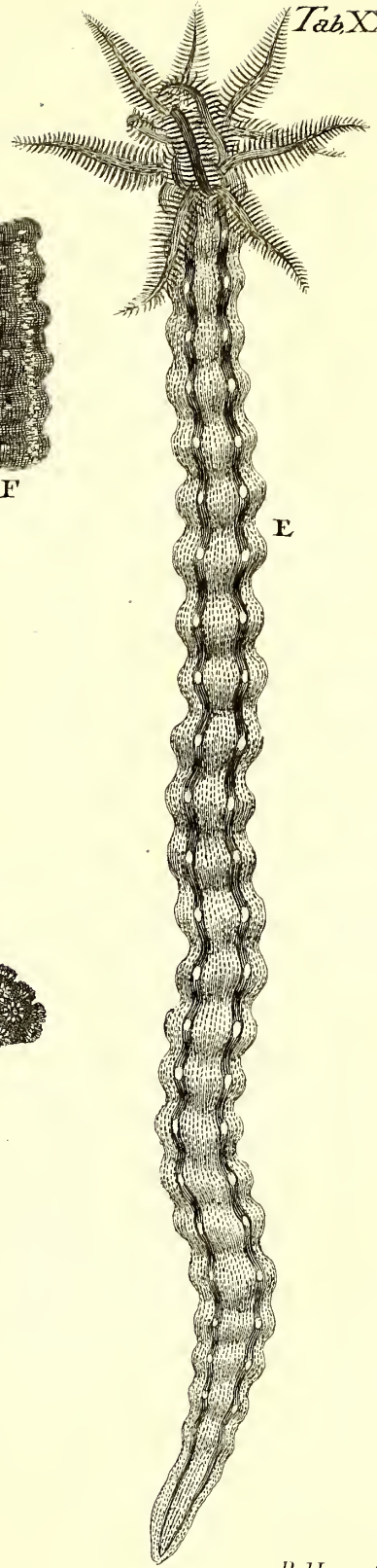
B



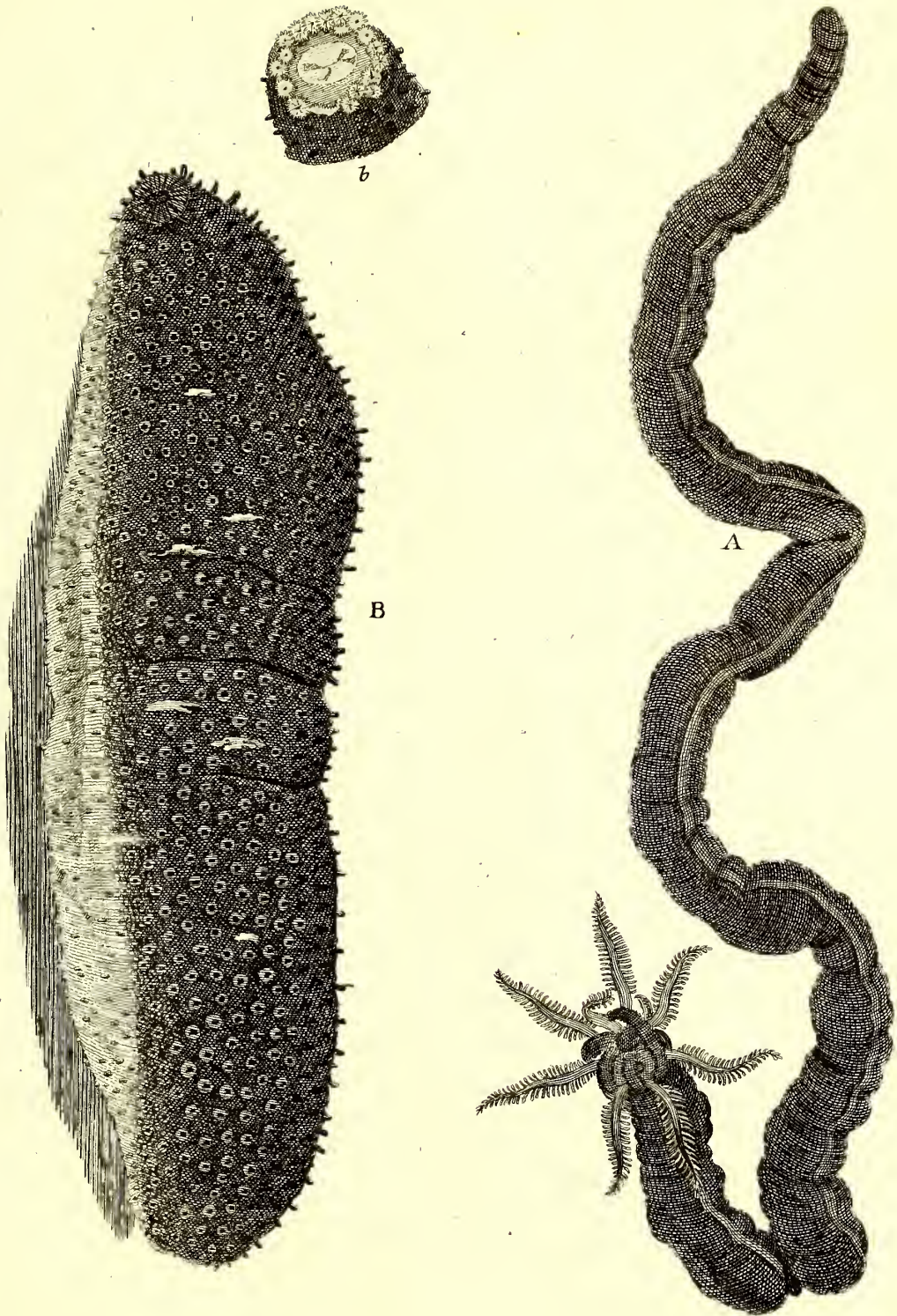
C

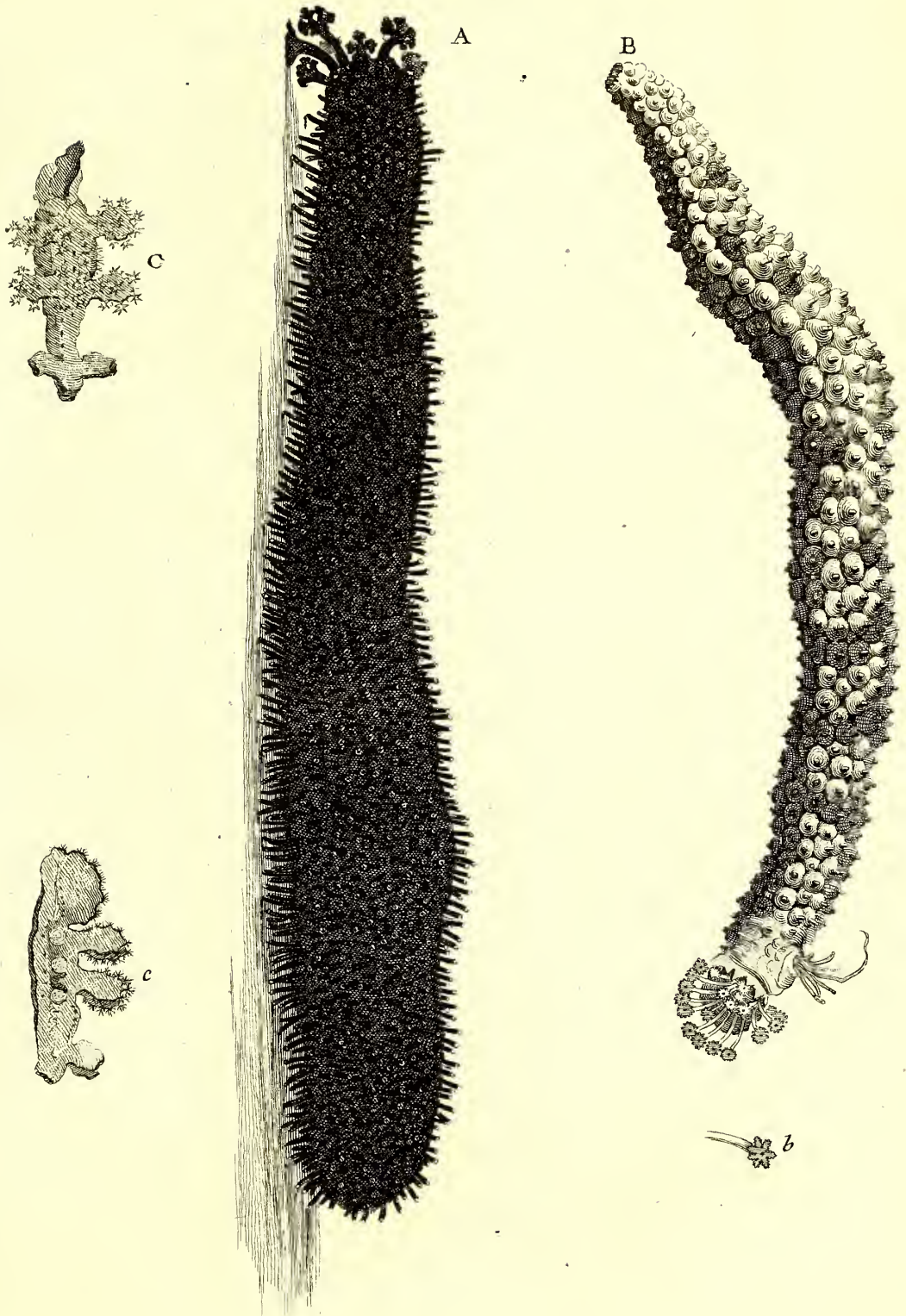


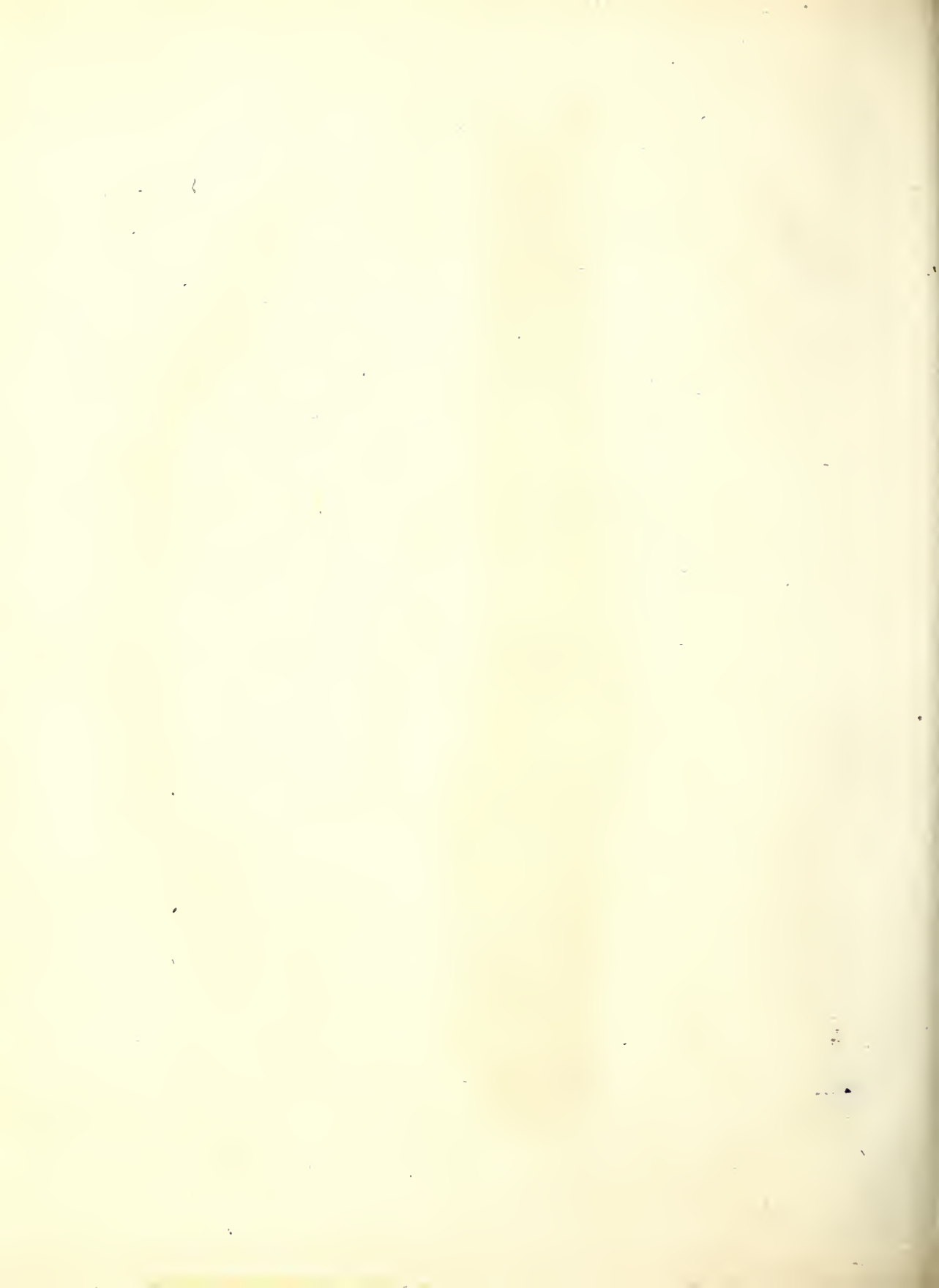
D

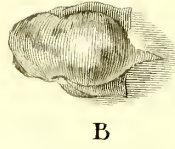
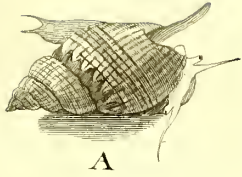


E

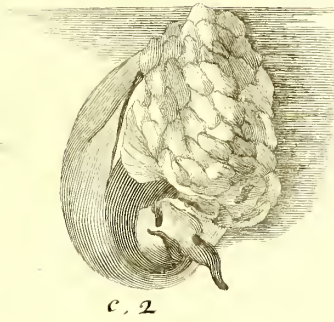
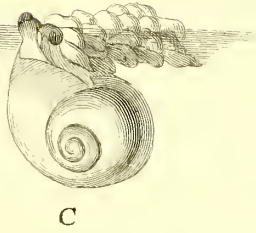
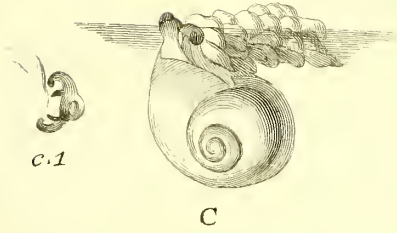




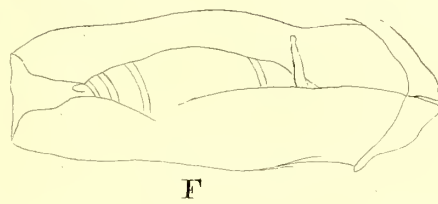
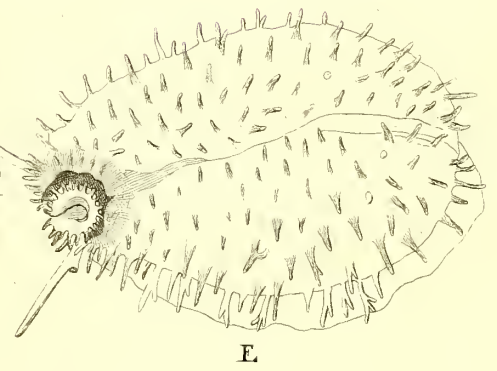
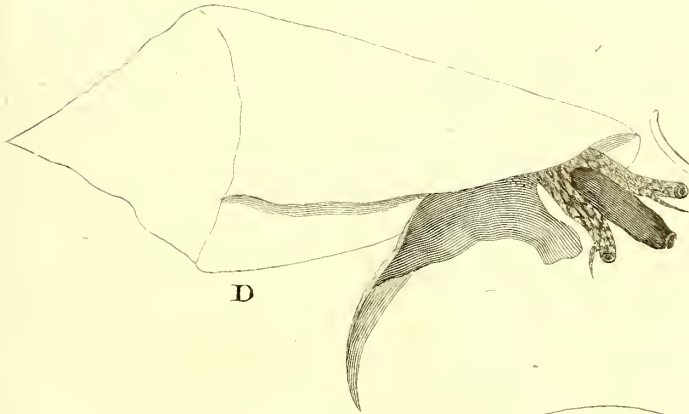




c.5 :: c.6

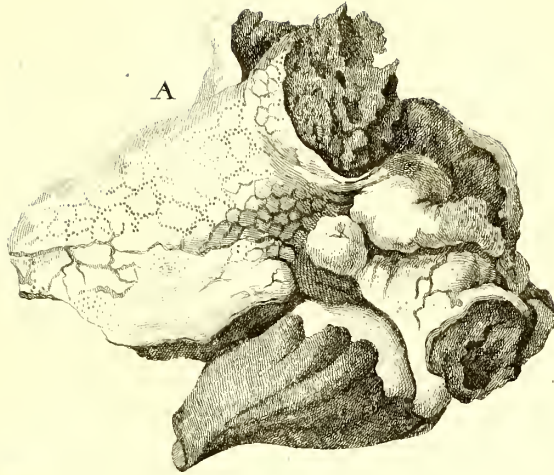


4.

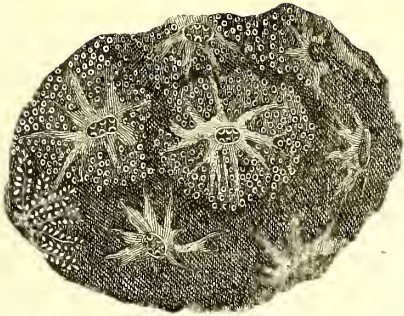




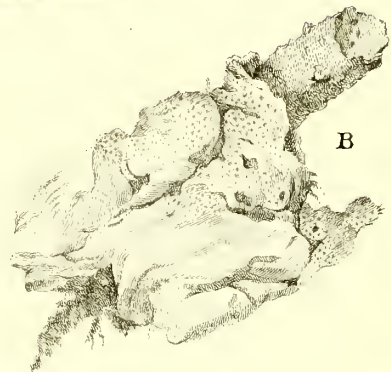
a



A



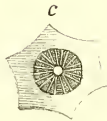
C



B



b



c



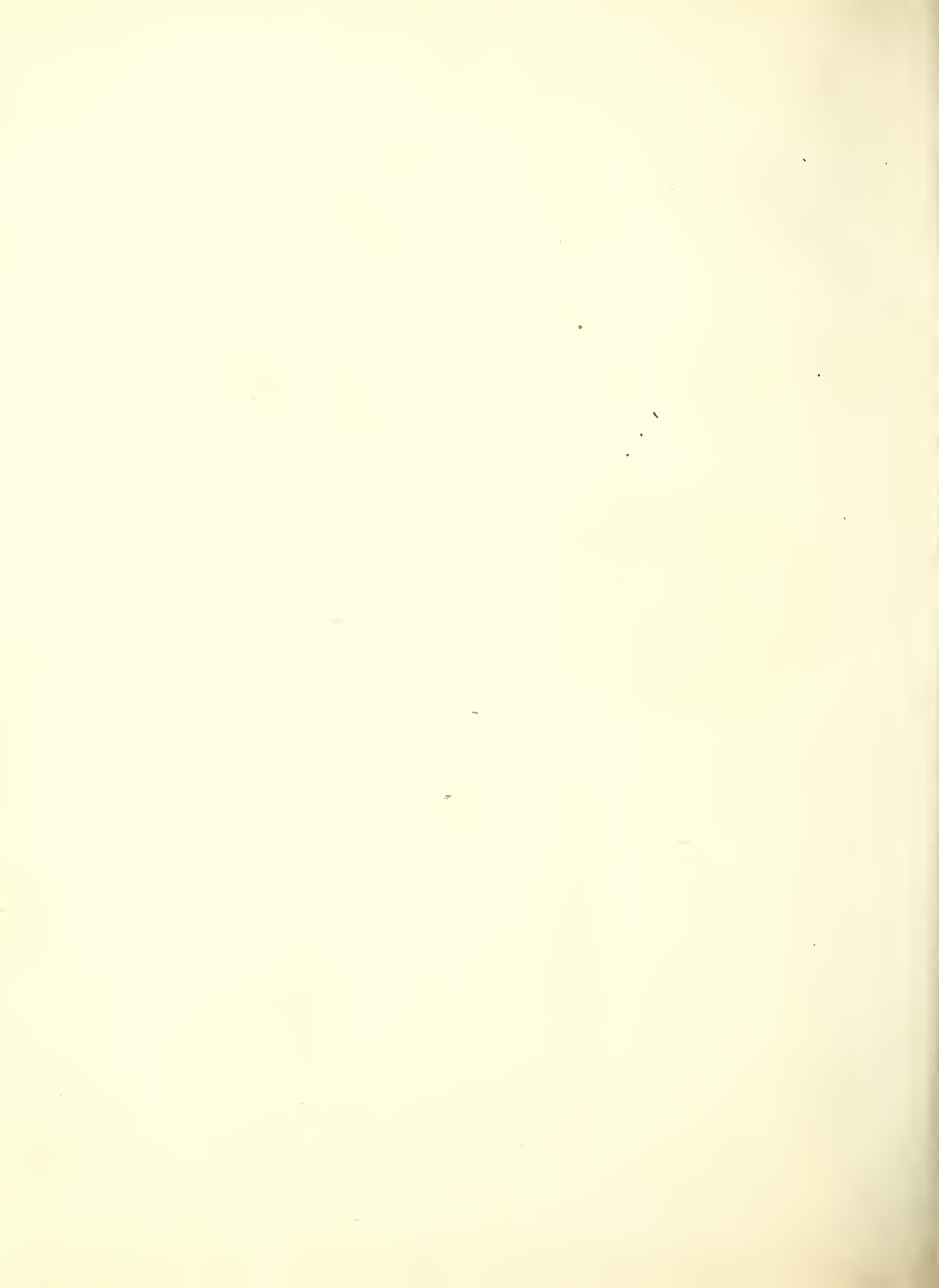
d



D

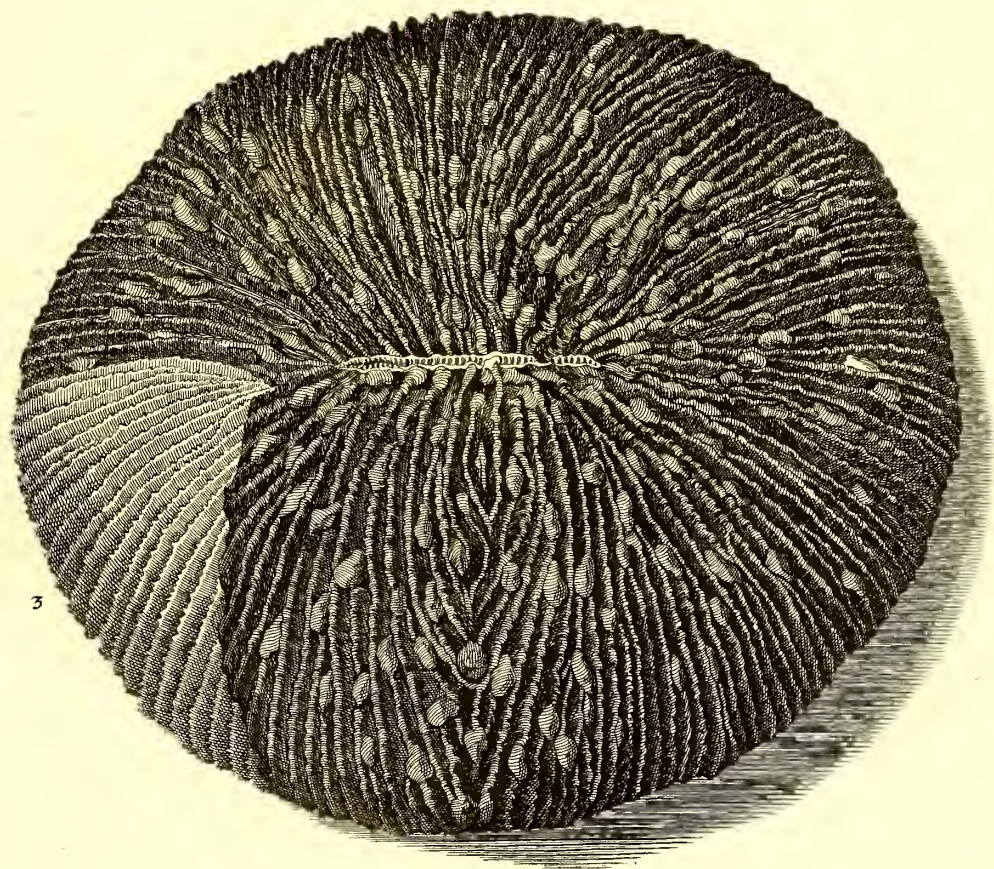


E





1

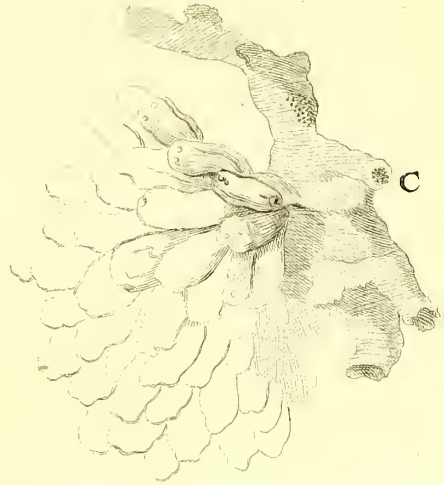
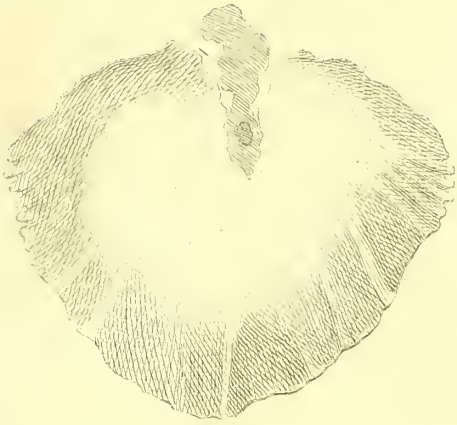


3

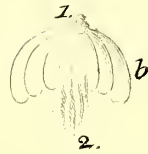
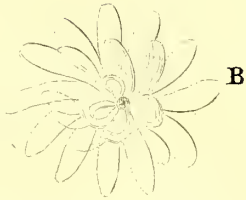
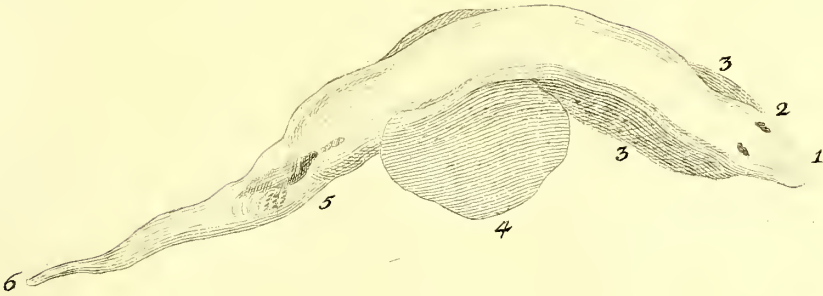


2

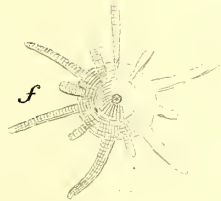
D



A



E



F





SMITHSONIAN INSTITUTION LIBRARIES



3 9088 00276815 8

nhmoll QH195.E4F73
Icones rerum naturalium,