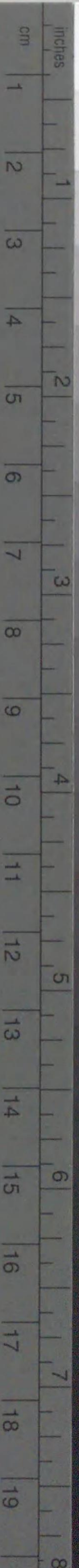


Kodak Gray Scale



© Kodak, 2007 TM: Kodak

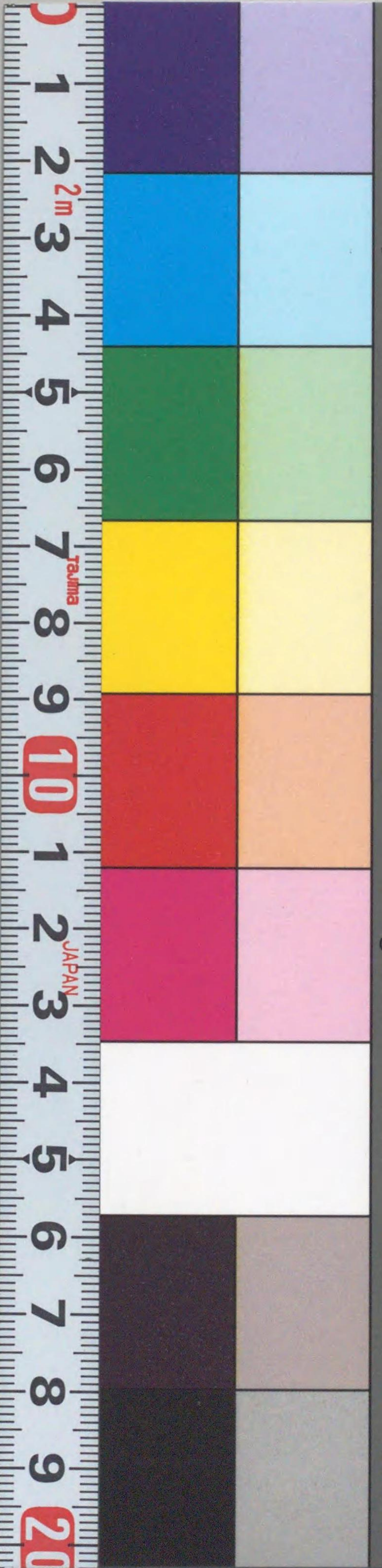
A 1 2 3 4 5 6 M 8 9 10 11 12 13 14 15 B 17 18 19



Kodak Color Control Patches

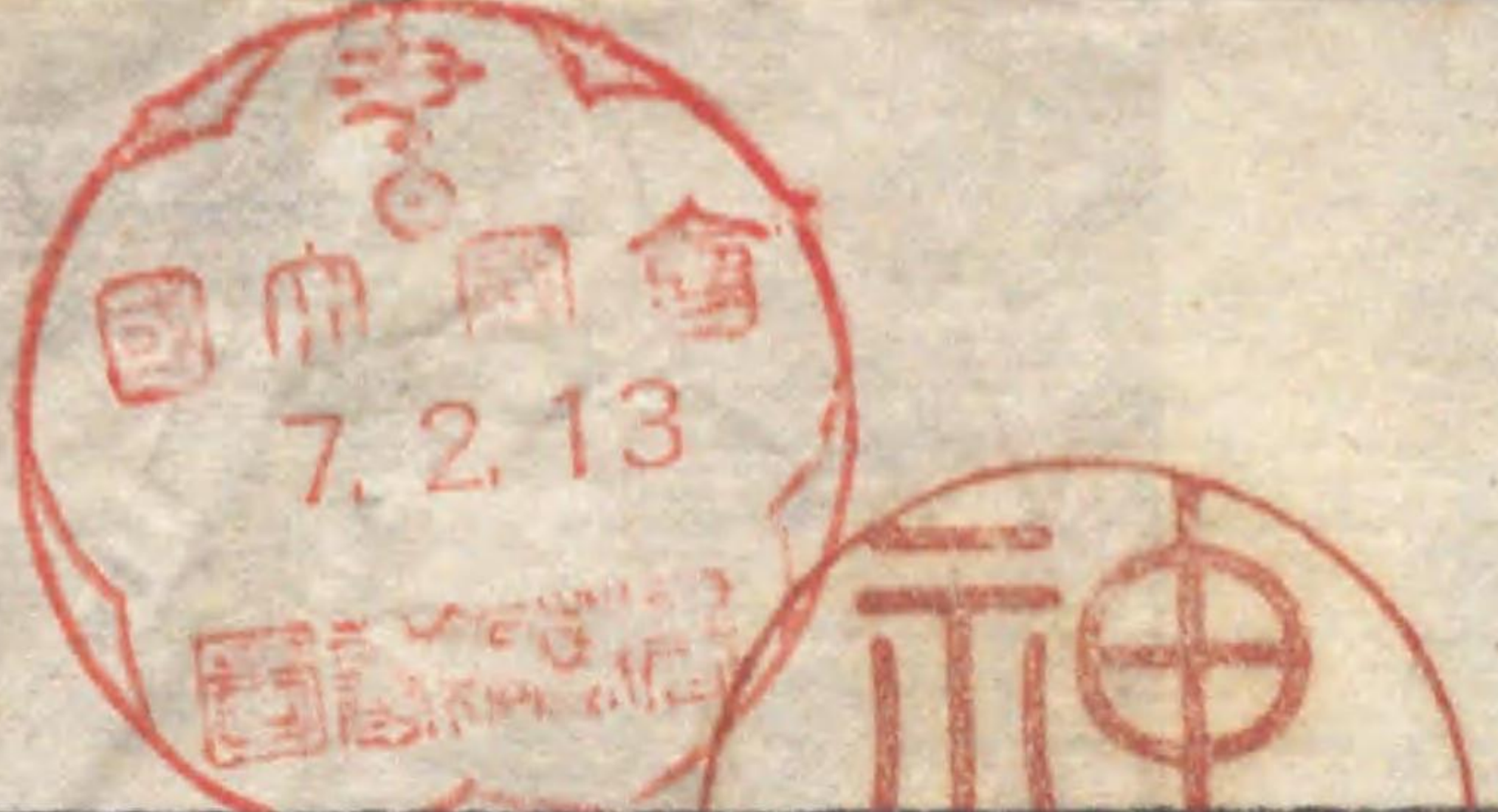
© Kodak, 2007 TM: Kodak

Blue Cyan Green Yellow Red Magenta White 3/Color Black



明治四十年略本曆





神武天皇即位紀元  
二千五百六十七年  
明治四十年曆平三百六十五日

四方拜 一月一日  
元始祭 一月三日

孝明天皇祭 一月三日

紀元節 二月十日

春季皇靈祭 三月廿日

神武天皇祭 四月三日

秋季皇靈祭 九月廿日

神嘗祭 十月十日

天長節 十月三日

新嘗祭 十月廿日

一月大三十日 舊曆

Table with columns for month, day, and festival names. Includes '日帶食五分', '月食七分', and '舊曆'.

月出月入

小寒後八時十二分 日十月廿  
日出六時五十一分  
夜間十一時五十分

大寒後一時三十一分 日十月廿  
日出六時四十九分  
夜間十一時三十分

二月平二十八日

月出月入

立春前七時五十九分 日正月廿  
日出六時三十九分  
夜間十一時二十二分

雨水前三時五十八分 日正月廿  
日出六時二十六分  
夜間十一時八分

三月大三十一日

月出月入

Various festival details and dates for the first half of the year, including '神宮祈年祭奉幣' and '賀菅生石部祭'.



三月大三十日

月出月入

Table for March 31st, listing various festivals (e.g., 駿河神部祭, 啓蟄前二時二十七分), their times, and moon phases (月出, 月入).

四月小三十日

月出月入

Table for April 30th, listing festivals (e.g., 大和春, 清明前七時五十五分), their times, and moon phases (月出, 月入).

五月大三十一日

月出月入

Table for May 31st, listing festivals (e.g., 穀雨後三時十七分, 立夏前一時五十四分), their times, and moon phases (月出, 月入).

小滿後三時三分 旧四月中

日出

Table for Minor Full Moon (小滿) and Old Fourth Month (旧四月中), listing moon phases and sunrise times (日出).



六月小三十日

Table for June 30th (Small Month) with columns for day, time, and festival details.

芒種前六時三十三分 旧五月廿

Table for芒種前六時三十三分 (Mangoshu) with columns for day, time, and festival details.

新月前八時五十分 五月大

Table for新月前八時五十分 (New Moon) with columns for day, time, and festival details.

夏至後八時四十九分 旧五月中

Table for夏至後八時四十九分 (Summer Solstice) with columns for day, time, and festival details.

七月大三十日

Table for July 30th (Large Month) with columns for day, time, and festival details.

小暑後四時五十九分 旧六月廿

Table for小暑後四時五十九分 (Minor Heat) with columns for day, time, and festival details.

大暑前十時十八分 旧六月中

Table for大暑前十時十八分 (Great Heat) with columns for day, time, and festival details.

八月大三十一日

Table for August 31st (Large Month) with columns for day, time, and festival details.

立秋前二時三十六分 旧七月廿

Table for立秋前二時三十六分 (Autumn Equinox) with columns for day, time, and festival details.

新月後三時三十分 七月大

Table for新月後三時三十分 (New Moon) with columns for day, time, and festival details.

滿月後九時十五分 旧七月中

Table for滿月後九時十五分 (Full Moon) with columns for day, time, and festival details.

處暑後五時四分 旧七月中

Table for處暑後五時四分 (Dusky Heat) with columns for day, time, and festival details.

月出月入

Table for moon rise and set times (月出月入) with columns for day, time, and festival details.

月出月入

Table for moon rise and set times (月出月入) with columns for day, time, and festival details.

月出月入

Table for moon rise and set times (月出月入) with columns for day, time, and festival details.

月出月入

Table for moon rise and set times (月出月入) with columns for day, time, and festival details.



處暑後五時。四分 旧七月中

Table with 12 columns (days 1-12) and 2 rows (time intervals). Includes festival names like '常鹿島祭' and '常陸大洗磯前祭'.

九月小三十日

Table with 12 columns (days 1-12) and 2 rows (time intervals). Includes festival names like '常鹿島祭' and '常陸大洗磯前祭'.

白露前五時。二分 旧月廿九

Table with 12 columns (days 1-12) and 2 rows (time intervals). Includes festival names like '常鹿島祭' and '常陸大洗磯前祭'.

秋分後二時。九分 旧八月中

Table with 12 columns (days 1-12) and 2 rows (time intervals). Includes festival names like '常鹿島祭' and '常陸大洗磯前祭'.

十月大三十日

Table with 12 columns (days 1-12) and 2 rows (time intervals). Includes festival names like '常鹿島祭' and '常陸大洗磯前祭'.

寒露後八時。三分 旧九月廿九

Table with 12 columns (days 1-12) and 2 rows (time intervals). Includes festival names like '常鹿島祭' and '常陸大洗磯前祭'.

霜降後十時五十二分 旧九月中

Table with 12 columns (days 1-12) and 2 rows (time intervals). Includes festival names like '常鹿島祭' and '常陸大洗磯前祭'.

十一月小三十日

Table with 12 columns (days 1-12) and 2 rows (time intervals). Includes festival names like '常鹿島祭' and '常陸大洗磯前祭'.

立冬後十時三十分 旧十月廿九

Table with 12 columns (days 1-12) and 2 rows (time intervals). Includes festival names like '常鹿島祭' and '常陸大洗磯前祭'.

十月大三十日

Table with 12 columns (days 1-12) and 2 rows (time intervals). Includes festival names like '常鹿島祭' and '常陸大洗磯前祭'.











