

移入品價額類別

Table showing the Total Value of Classified Commodities

	(1) 植物及動物 Plants & animals.	(2) 穀物及種子 Grains & seeds.	(3) 飲食物 Beverages & comestibles.	(4) 砂糖及糖果類 Sugar, confectioneries & sweetmeats.
	¥ Yen	¥ Yen	¥ Yen	¥ Yen
三十年 1897	315	548,689	108,995	.....
三十一年 1898	.....	391,536	295,533	.....
三十二年 1899	6,725	897,263	726,685	3,659
三十三年 1900	8,418	624,993	717,030	12,631
三十四年 1901	4,527	606,074	972,314	36,425
三十五年 1902	13,356	574,776	909,003	67,071
三十六年 1903	14,576	543,988	1,102,184	174,116
三十七年 1904	20,048	408,835	1,119,656	189,082
三十八年 1905	17,882	372,043	1,547,983	351,082
三十九年 1906	30,362	444,624	2,047,106	318,249
四十年 1907	43,533	1,146,618	2,671,989	477,226
四十一年 1908	87,726	835,183	3,285,320	484,530
四十二年 1909	78,068	744,956	4,088,335	570,463
四十三年 1910	157,352	995,866	4,749,552	709,763

十四年對照表

Imported into Taiwan during Fourteen years from 1897 to 1910.

(5) 酒類及酒精 Alcoholic liquors & alcohol,	(6) 皮毛、骨角、 齒牙、甲殼類 Skins, hairs, bones, teeth, tusks, shells, etc.	(7) 藥材、化學藥、製藥、調劑藥及染料、彩料、塗料 Drugs, chemicals, medicines, medicinal preparations & dyes, colours, paints.	(8) 油、脂及蠟 Oils, fats & waxes.	(9) 布帛、絲綢及同材料 Tissues, yarns, threads, & raw materials thereof.
¥ Yen	¥ Yen	¥ Yen	¥ Yen	¥ Yen
249,747	.....	26,729	900	59,737
619,044	.....	387,987	6,214	122,541
775,684	.....	283,832	56,005	230,317
859,549	.....	100,341	110,335	370,849
986,680	.....	125,792	103,709	883,966
914,247	.....	108,547	59,348	1,178,356
899,155	.....	117,761	202,533	1,709,069
796,426	.....	223,975	130,776	1,538,195
861,800	6,744	215,040	181,751	2,727,343
929,503	5,519	282,682	351,194	2,583,248
942,164	11,158	423,934	373,459	2,643,870
1,033,621	13,298	525,418	636,231	2,736,699
1,095,545	14,094	447,556	553,011	3,010,681
1,297,400	36,243	671,943	746,940	4,155,655



## 移入品價額類別

Table showing the Total Value of Classified Commodities

	(10) 衣服及附屬品 Clothing & accessories.	(11) 紙及文具 Paper & stationery.	(12) 金屬及金屬製品 Metals & metal manufactures.	(13) 陶磁器、玻璃及玻璃製品 Earthenware, porcelain, glass & glass manufactures.	(14) 車輛、船舶、學術器、時計及機械類 Vehicles, vessels, scientific instruments, clocks, watches & machinery.
	円 Yen	円 Yen	円 Yen	円 Yen	円 Yen
30	.....	15,765	52,762	16,850	97,163
31	13,373	66,690	16,427	14,020	23,383
32	22,347	63,930	167,190	209,569	134,549
33	44,627	128,803	208,597	201,308	168,991
34	135,210	194,078	414,763	166,263	183,745
35	96,257	228,656	471,558	93,339	268,256
36	145,008	200,912	414,741	116,343	403,153
37	162,673	301,794	457,966	100,652	268,349
38	244,845	365,308	663,734	127,999	393,338
39	247,403	445,983	908,684	191,013	476,927
40	337,476	555,512	1,877,610	312,992	794,044
41	386,795	542,215	1,499,308	344,016	733,049
42	445,317	620,325	1,753,709	336,729	801,098
43	793,675	772,575	2,408,600	523,532	1,500,588

## 十四年對照表

Imported into Taiwan during Fourteen years from 1897 to 1910.

(15) 煙草 Tobacco.	(16) 雜品 Miscellaneous articles.	(1-16) 通計 Total.	(17) 再移入品價 Re-imports.	(1-17) 移入全計 Total imports.
円 Yen	円 Yen	円 Yen	円 Yen	円 Yen
52,360	2,493,650	3,723,722	.....	3,723,722
95,617	2,214,403	4,266,768	.....	4,266,768
252,218	4,131,889	8,011,826	.....	8,011,826
512,586	4,370,576	8,439,033	.....	8,439,033
614,848	3,347,804	8,782,258	.....	8,782,258
633,522	3,613,938	9,235,290	.....	9,235,290
847,373	4,303,826	11,194,788	.....	11,194,788
537,554	3,775,330	10,156,311	.....	10,156,311
973,654	4,433,287	13,483,833	.....	13,483,833
770,421	5,601,423	15,634,341	.....	15,634,341
452,610	6,686,250	19,750,445	.....	19,750,445
428,222	7,355,228	20,926,859	.....	20,926,859
475,630	8,956,227	24,006,803	.....	24,006,803
557,748	8,969,448	29,051,830	18,265	29,070,095











移出 品 十  
Exports during the Fourteen

	(29) 鯊 鰭 Shark's fins.		(30) 石 花 菜 Sekikasai (gelidium corneum)		(31) 其他ノ海産物 All other seaproduced provisions.		(32) 乾 筍 Splouts dried bamboo.	
	斤 Kin	円 Yen	斤 Kin	円 Yen	斤 Kin	円 Yen	斤 Kin	円 Yen
30	.....	.....	.....	13,968	.....	481	.....	.....
31	.....	.....	.....	27,247	.....	.....	.....	.....
32	.....	40	.....	28,998	.....	.....	.....	.....
33	177	89	427,429	32,275	.....	.....	.....	.....
34	425	205	389,182	36,609	.....	365	.....	.....
35	130	78	398,351	36,021	.....	.....	.....	.....
36	75	38	324,384	20,256	.....	.....	.....	.....
37	.....	.....	230,529	12,125	.....	.....	.....	.....
38	740	409	342,778	22,696	.....	.....	.....	.....
39	762	377	286,929	22,092	.....	.....	.....	.....
40	808	387	311,500	35,795	.....	932	.....	.....
41	886	402	325,825	30,632	.....	2,078	15	2
42	290	121	296,950	26,812	.....	1,698	100	11
43	100	35	247,660	28,933	.....	2,140	350	30
	(33) 其他ノ蔬菜 All other vegetables.		(34) 乾 龍 眼 Lung-ngans dried.		(35) 肉 龍 眼 Lung-ngans, without the stone.		(36) 蜜 柑 Oranges, sweet.	
	斤 Kin	円 Yen	斤 Kin	円 Yen	斤 Kin	円 Yen	斤 Kin	円 Yen
30	.....	200	.....	.....	.....	.....	.....	.....
31	.....	.....	.....	.....	.....	.....	.....	.....
32	.....	.....	.....	.....	.....	.....	.....	.....
33	.....	591	.....	.....	641	71	.....	.....
34	.....	585	330	30	1,540	210	.....	.....
35	.....	143	.....	.....	5,397	543	25,054	1,552
36	.....	136	1,588	129	1,080	162	14,131	574
37	.....	158	.....	.....	.....	.....	950	29
38	.....	25	.....	.....	1,894	399	.....	.....
39	.....	19	.....	.....	13,213	1,941	1,085	53
40	.....	5,871	2,200	122	8,804	1,089	55,480	2,341
41	.....	1,697	664	53	7,204	916	27,930	1,165
42	.....	1,352	.....	.....	2,525	291	1,880	940
43	.....	6,032	7,057	385	18,180	2,237	38,400	1,554

四年 對 照 表  
years from 1897 to 1910.

	(37) 風 梨 Pin-apples.		(38) 鳳梨罐詰 Pine-apple canned.		(39) 芭 蕉 實 Banana.		(40) 其他ノ果實及核子 All other fruits & nuts.	
	斤 Kin	円 Yen	打 Dozen	円 Yen	斤 Kin	円 Yen	斤 Kin	円 Yen
.....	.....	.....	.....	.....	.....	.....	.....	1,222
.....	.....	.....	.....	.....	.....	.....	.....	.....
.....	.....	.....	.....	.....	.....	.....	.....	.....
.....	.....	.....	.....	.....	.....	.....	.....	485
.....	.....	.....	.....	760	.....	.....	.....	905
.....	.....	.....	.....	.....	.....	.....	.....	1,558
.....	.....	.....	.....	.....	.....	.....	.....	2,888
.....	.....	.....	.....	.....	.....	.....	.....	205
.....	.....	.....	352	1,144	.....	.....	.....	285
.....	.....	.....	.....	14	.....	.....	.....	13,948
8,750	362	6,229	18,639	816,235	43,146	.....	.....	2,794
66,900	2,472	22,256	66,512	2,478,235	104,515	.....	.....	5,829
32,550	1,056	19,750	59,906	4,448,150	155,879	.....	.....	3,706
38,650	1,799	13,785	37,779	8,555,150	345,030	.....	.....	4,339
	(41) 其他ノ飲食物 All other beverages & comestibles.		(16-41) 類 計 Total.		(42) 砂 糖 Sugar.		(43) 糖 蜜 Molasses.	
	斤 Kin	円 Yen	斤 Kin	円 Yen	斤 Kin	円 Yen	斤 Kin	円 Yen
.....	.....	.....	34,638	34,457,046	1,194,000	.....	.....	.....
.....	.....	.....	105,204	37,807,156	1,602,265	.....	.....	.....
.....	.....	.....	304,592	35,501,220	1,748,879	.....	.....	.....
.....	.....	.....	576,624	29,143,685	1,537,838	.....	.....	.....
.....	.....	.....	837,847	43,212,145	2,292,598	.....	.....	.....
.....	.....	.....	404,031	53,070,004	3,172,407	31,060	1,242	.....
.....	.....	.....	390,860	37,540,237	2,170,918	14,250	427	.....
.....	.....	.....	341,498	57,139,736	3,791,347	.....	.....	.....
.....	.....	.....	246,905	70,772,257	5,803,330	138,950	6,897	.....
.....	.....	.....	8,716	283,766	109,007,946	8,506,117	21,417	846
.....	.....	.....	3,734	500,177	94,228,144	7,455,918	268,724	13,848
.....	.....	.....	773	566,930	103,535,640	9,440,500	190,349	7,777
.....	.....	.....	2,501	736,690	209,746,616	23,001,769	2,828,199	75,716
.....	.....	.....	3,788	1,299,860	306,738,842	34,771,495	4,219,317	110,427



















移出品十  
Exports during the Fourteen

	(99) 磁器及陶器 Porcelain & earthenware.		(100) 化粧石鹼 Soap, toilet.		(101) 木製品 Wood manufactures.		(102) 竹製品 Bamboo manufactures.	
	円 Yen	打 Dozen	円 Yen	円 Yen	円 Yen	円 Yen	円 Yen	円 Yen
30	.....	.....	.....	.....	.....	.....	.....	.....
31	.....	.....	.....	.....	.....	.....	.....	.....
32	.....	.....	.....	.....	.....	.....	.....	.....
33	.....	.....	.....	.....	.....	.....	.....	.....
34	.....	.....	.....	.....	.....	.....	.....	.....
35	.....	.....	.....	.....	.....	.....	.....	.....
36	.....	.....	.....	.....	.....	.....	.....	.....
37	.....	.....	.....	.....	.....	.....	.....	.....
38	.....	.....	.....	.....	.....	.....	.....	.....
39	.....	.....	.....	.....	.....	.....	.....	.....
40	.....	533	.....	.....	.....	108	.....	411
41	.....	.....	.....	.....	.....	5	.....	.....
42	.....	.....	.....	.....	.....	.....	.....	.....
43	.....	592	80	40	.....	.....	.....	.....
	(103) 其他ノ雜品 All other articles.		(78-103) 類計 Total.		(1-103) 通計 Total.		(104) 再移出品價 Re-exports.	
	円 Yen	円 Yen	円 Yen	円 Yen	円 Yen	円 Yen	円 Yen	円 Yen
30	.....	148,926	153,254	2,098,560	.....	6,088		
31	.....	386,879	386,879	4,138,879	.....	3,939		
32	.....	114,453	116,001	3,631,125	.....	19,350		
33	.....	15,977	17,425	4,248,595	.....	153,515		
34	.....	19,711	20,524	7,163,173	.....	182,778		
35	.....	76,961	78,453	7,196,307	.....	211,191		
36	.....	105,062	107,730	9,473,986	.....	250,473		
37	.....	75,877	76,317	10,180,257	.....	301,050		
38	.....	42,828	44,847	13,435,140	.....	226,360		
39	.....	56,759	57,503	18,016,058	.....	243,470		
40	.....	76,433	117,702	17,361,744	.....	272,929		
41	.....	47,978	551,515	24,166,155	.....	257,232		
42	.....	147,617	681,007	36,153,997	.....	155,503		
43	.....	205,334	815,389	47,832,449	.....	104,803		

四年對照表  
years from 1897 to 1910.

(1-104) 移出全計 Total exports.	
円 Yen	
2,104,648	
4,142,778	
3,650,475	
4,402,110	
7,345,956	
7,407,498	
9,729,459	
10,431,307	
13,661,500	
18,259,528	
17,634,673	
24,423,387	
36,309,500	
47,937,252	



移入品十

Imports during the Fourteen

		(1) 植物及苗根 Plants, roots & bulbs.		(2) 牛 Bulls, oxen & cows.		(3) 豚 Pigs & hogs.	
		Yen	Number	Yen	Number	Yen	Number
三十年	1897	.....	.....	.....	315	.....	.....
三十一年	1898	.....	.....	.....	.....	.....	.....
三十二年	1899	.....	.....	.....	1,800	.....	4,925
三十三年	1900	.....	.....	.....	5,510	.....	2,908
三十四年	1901	.....	.....	.....	2,980	.....	1,547
三十五年	1902	.....	.....	121	9,712	166	3,644
三十六年	1903	.....	220	78	9,770	322	4,586
三十七年	1904	.....	902	47	4,854	1,024	14,292
三十八年	1905	.....	844	44	8,299	678	8,519
三十九年	1906	.....	1,260	93	16,830	982	11,225
四十年	1907	.....	5,467	79	12,060	1,139	25,781
四十一年	1908	.....	10,759	53	6,720	2,654	61,382
四十二年	1909	.....	6,860	46	8,870	2,144	61,205
四十三年	1910	.....	8,566	209	36,428	4,113	104,300
		(4) 家禽類 Poultry.		(5) 其他動物 All other animals.		(1-5) 類計 Total.	
		Yen	Number	Yen	Number	Yen	Number
三十年	1897	.....	.....	.....	.....	315	.....
三十一年	1898	.....	.....	.....	.....	.....	.....
三十二年	1899	.....	.....	.....	.....	6,725	.....
三十三年	1900	.....	.....	.....	.....	8,418	.....
三十四年	1901	.....	.....	.....	.....	4,527	.....
三十五年	1902	.....	.....	.....	.....	13,356	.....
三十六年	1903	.....	.....	.....	.....	14,576	.....
三十七年	1904	.....	.....	.....	.....	20,048	.....
三十八年	1905	.....	.....	.....	220	17,882	.....
三十九年	1906	.....	.....	.....	1,047	30,362	.....
四十年	1907	.....	50	.....	175	43,533	.....
四十一年	1908	.....	195	.....	8,670	87,726	.....
四十二年	1909	.....	333	.....	800	78,068	.....
四十三年	1910	.....	304	.....	7,754	157,352	.....

四年對照表

years from 1897 to 1910.

	(6) 米 Rice.		(7) 麥 Wheat & barley.		(8) 豆類 Beans, peas & pulse.		(9) 其他穀物及種子 All other grains & seeds.	
	Koku	Yen	Koku	Yen	Koku	Yen	Koku	Yen
.....	.....	286,773	.....	.....	.....	.....	.....	261,916
.....	.....	335,673	.....	.....	.....	.....	.....	55,863
.....	.....	868,714	.....	.....	.....	.....	.....	28,549
.....	.....	545,410	.....	.....	.....	35,248	.....	44,335
33,028	506,653	.....	.....	6,932	50,506	.....	.....	48,915
33,628	488,794	.....	350	2,433	28,363	.....	.....	57,269
35,678	453,552	2,166	29,036	2,611	35,322	.....	.....	26,078
20,003	339,989	2,337	30,841	1,758	25,379	.....	.....	12,626
18,084	302,713	1,059	12,138	3,554	46,550	.....	.....	10,642
18,498	318,392	818	7,551	9,039	97,932	.....	.....	20,749
57,578	876,735	1,837	19,421	15,242	206,151	.....	.....	44,311
31,698	585,070	1,594	18,112	17,721	214,696	.....	.....	17,305
29,762	492,002	1,001	10,406	22,410	236,932	.....	.....	5,616
49,568	656,125	1,591	18,611	26,544	313,477	.....	.....	7,653
	(10) 木耳 Kikurage(fungus)		(11) 椎茸 Mushrooms, dried.		(12) 其他蔬菜 All other vegetables.			
	Yen	Kin	Yen	Kin	Yen	Yen		
.....	.....	.....	.....	.....	.....	216		
.....	548,689	.....	.....	.....	.....	54,392		
.....	391,536	.....	.....	.....	.....	104,177		
.....	897,263	.....	.....	.....	.....	103,744		
.....	624,993	.....	.....	.....	59	88,782		
.....	606,074	.....	.....	.....	10,846	59,392		
.....	574,776	.....	.....	.....	9,645	71,464		
.....	543,988	.....	.....	.....	12,757	55,534		
.....	408,835	.....	.....	.....	40,779	59,498		
.....	372,043	5,591	3,500	49,987	27,158	121,034		
.....	444,624	3,027	1,760	70,660	41,695	74,184		
.....	1,146,618	4,198	2,265	74,833	39,477	62,061		
.....	835,183	7,150	3,440	66,693	47,397	99,704		
.....	744,956	17,055	7,280	60,009	52,178	108,925		
.....	995,866	14,900	6,148	118,011	91,211	.....		



移入品十

Imports during the Fourteen

	(13) 生果乾果及核子 Fruits, fresh or dried & nuts.		(14) 生果 Fresh fruits.		(15) 乾果 Dried fruits.		(16) 其他ノ果實及核子 All other fruits & nuts.	
	斤 Kin	円 Yen	斤 Kin	円 Yen	斤 Kin	円 Yen	斤 Kin	円 Yen
30	.....	.....	.....	.....	.....	.....	.....	.....
31	.....	.....	.....	.....	.....	.....	.....	.....
32	.....	.....	.....	.....	.....	.....	.....	.....
33	.....	.....	.....	.....	.....	.....	.....	.....
34	.....	6,506	.....	.....	.....	.....	.....	.....
35	.....	2,695	.....	.....	.....	.....	.....	.....
36	.....	4,258	.....	.....	.....	.....	.....	.....
37	.....	4,742	.....	.....	.....	.....	.....	.....
38	.....	10,418	.....	.....	.....	.....	.....	.....
39	.....	9,694	.....	.....	.....	.....	.....	.....
40	.....	.....	.....	9,529	.....	1,196	.....	2,533
41	.....	.....	.....	21,836	.....	428	.....	760
42	.....	.....	.....	14,847	.....	426	.....	1,830
43	.....	.....	.....	26,136	.....	2,010	.....	5,865
	(17) 茶 Tea.		(18) 小麦粉 Wheat flour		(19) 其他ノ穀粉及澱粉 All other flours, meals, groats of grains & starches.		(20) 食酢 Vinegar.	
	斤 Kin	円 Yen	斤 Kin	円 Yen	斤 Kin	円 Yen	石 Koku	円 Yen
30	.....	.....	.....	.....	.....	.....	.....	.....
31	.....	3,999	.....	.....	.....	.....	.....	665
32	.....	14,716	.....	30	.....	.....	.....	.....
33	.....	20,252	.....	.....	.....	.....	.....	2,141
34	.....	35,270	.....	.....	.....	.....	724	9,590
35	.....	23,768	.....	.....	.....	.....	593	7,461
36	48,086	27,359	733,296	43,558	.....	.....	545	7,598
37	47,988	27,801	847,741	55,264	.....	.....	450	5,281
38	57,666	32,989	2,939,737	196,387	147,317	11,273	632	8,207
39	74,088	32,566	6,846,101	444,576	151,702	12,923	590	8,485
40	50,464	36,206	7,780,961	553,246	155,206	18,970	786	7,385
41	45,841	34,389	3,804,807	257,519	543,664	43,475	735	9,574
42	51,167	43,759	8,763,023	586,693	625,047	62,142	867	12,595
43	75,688	62,445	9,178,460	649,861	398,448	37,388	1,103	17,577

四年對照表

years from 1897 to 1910.

	(21) 醬油及味噌 Soy & pea-chese.		(22) 醬油 Soy.		(23) 味噌 Pea-chese.		(24) 素麵 Vermicelli.	
	斤 Kin	円 Yen	石 Koku	円 Yen	斤 Kin	円 Yen	斤 Kin	円 Yen
.....	.....	35,832	.....	.....	.....	.....	.....	.....
.....	.....	.....	.....	97,875	.....	30,200	.....	.....
.....	.....	162,778	.....	.....	.....	.....	.....	.....
.....	.....	.....	.....	132,943	.....	58,673	.....	1,275
.....	.....	.....	8,803	187,955	.....	75,778	.....	6,487
.....	.....	.....	9,275	163,853	1,969,816	75,536	.....	7,776
.....	.....	.....	8,653	159,733	1,521,946	64,001	57,973	7,905
.....	.....	.....	7,106	149,441	845,217	52,359	53,295	5,549
.....	.....	.....	8,917	193,456	638,497	35,696	70,914	6,312
.....	.....	.....	7,812	173,391	284,994	14,921	116,671	10,171
.....	.....	.....	8,868	219,154	198,954	11,613	285,281	30,042
.....	.....	.....	8,574	252,887	129,207	6,678	429,989	35,842
.....	.....	.....	9,193	270,655	120,218	6,176	257,130	24,988
.....	.....	.....	10,262	309,990	180,517	8,285	290,415	26,187
	(25) 乾魚及鹹魚 Fish, dried & salted.		(26) 鰯 Cuttle, dried.		(27) 鰻節 Katsuo-bushi.		(28) 乾蝦 & prawns, dried.	
	斤 Kin	円 Yen	斤 Kin	円 Yen	斤 Kin	円 Yen	斤 Kin	円 Yen
.....	.....	.....	.....	.....	.....	.....	.....	.....
.....	.....	3,965	.....	1,978	.....	.....	.....	.....
.....	.....	.....	.....	.....	.....	.....	.....	.....
.....	.....	125,405	.....	47,835	.....	19,928	.....	.....
.....	.....	163,912	.....	74,172	.....	29,093	.....	.....
.....	.....	98,494	.....	74,065	.....	18,950	.....	.....
.....	.....	192,927	284,677	108,935	43,862	22,270	.....	.....
.....	.....	239,194	377,772	138,432	33,716	19,612	.....	.....
.....	.....	176,988	296,864	131,946	36,506	25,083	.....	62,142
.....	.....	324,820	270,026	123,698	35,031	21,969	260,944	82,164
.....	5,288,252	639,797	406,921	180,630	61,211	30,734	422,443	107,201
.....	13,228,387	1,335,718	570,587	180,493	41,532	29,746	633,738	170,442
.....	18,237,713	1,567,937	823,517	272,114	41,811	33,219	852,962	229,996
.....	17,041,325	1,616,196	1,051,063	345,661	49,063	36,646	1,090,322	303,510



輸入品十

Imports during the Fourteen

	(29) 各種ノ貝類 Shell-fish, other.		(30) 其他ノ海産物 All other sea-produced provisions.		(31) コンアンスド、ミルク Condensed, milk.		(32) 漬物類 Provisions, sa'ted.	
	円 Yen	円 Yen	打 Dozen	円 Yen	打 Dozen	円 Yen	円 Yen	円 Yen
30				1,709				4,797
31				7,251				18,807
32				102,256				36,927
33				2,118				75,525
34				74,372				64,733
35				149,446				57,386
36				204,772				63,458
37				152,967				46,615
38	20,779			211,098	6,855	12,541		61,953
39	17,745			287,256	8,296	22,879		45,431
40	20,219			276,161	19,824	54,722		62,727
41	35,663			260,098	25,030	77,271		79,461
42	60,319			168,414	37,750	119,869		94,376
43	160,349			121,236	38,021	115,371		89,278
	(33) 罐詰食物 Provisions, canned.		(34) 礦水其他諸飲料 Mineral water & all other beverages.		(35) 其他ノ食物 All other comestibles.		(10-35) 類計 Total.	
	円 Yen	円 Yen	打 Dozen	円 Yen	打 Dozen	円 Yen	円 Yen	円 Yen
30	64,636			1,805				108,995
31	76,398							295,533
32	305,506			25				726,685
33	123,240					3,892		717,030
34	100,464					44,354		972,314
35	68,331			2,826		26,613		909,003
36	80,183			4,840		27,912		1,102,184
37	94,501			3,950		41,256		1,119,657
38	107,901			8,522		138,651		1,547,983
39	134,310			16,084		99,534		2,047,106
40	150,206			25,539		118,253		2,671,989
41	146,588			42,168		151,386		3,285,320
42	181,264			62,095		115,609		4,088,385
43	305,694			102,878		200,655		4,749,502

四年對照表

years from 1897 to 1910.

	(36) 砂糖 Sugar.		(37) 精糖 Sugar, refined.		(38) 氷砂糖 Sugar, rock candy.		(39) 菓子及糖果諸類 Confectioneris & swee meats.	
	斤 Kin	円 Yen	斤 Kin	円 Yen	斤 Kin	円 Yen	斤 Kin	円 Yen
				1,696				1,937
				8,541				3,489
				11,976				24,449
				385,497	52,136			14,935
				1,388,829	155,626			18,490
				1,211,203	169,407			19,675
				1,755,125	296,718	136,040	28,188	26,176
				1,533,990	261,475	197,678	32,973	23,801
				2,292,995	374,199	252,692	57,000	46,027
	12,100	1,211	1,855,588	324,223	454,372	105,306		53,790
	8,240	1,274	2,341,027	401,288	386,140	95,908		71,993
	300	25	2,456,403	457,796	490,618	118,796		133,146
	(36-39) 類計 Total.		(40) 清酒 Sake.		(41) 清酒(罐詰) Sake(in bottle)		(42) 清酒(樽入) Sake(in cask)	
	円 Yen	円 Yen	打 Dozen	円 Yen	打 Dozen	円 Yen	石 Koku	円 Yen
				163,494				
				478,329				
				586,510				
				625,805				
					19,640	58,840	15,009	661,429
					46,170	116,042	12,008	541,745
					31,673	85,931	13,200	597,089
					25,373	76,752	11,424	540,747
					38,813	121,641	11,403	467,034
					48,935	144,752	9,687	487,166
					57,188	184,439	7,705	428,617
					67,622	239,273	7,969	460,490
					84,045	280,765	9,016	478,384
					99,851	341,351	9,637	552,283



移入品十  
Imports during the Fourteen

	(43) 麥酒 Beer.		(44) 葡萄酒 Wines.		(45) 其他ノ洋酒 All other European liquors.		(46) 其他ノ酒類 All other liquors.	
	打 Dozen	円 Yen	打 Dozen	円 Yen		円 Yen		円 Yen
30	.....	19,828	.....	300	.....	65,963	.....	162
31	.....	123,561	.....	.....	.....	17,154	.....	.....
32	.....	165,212	.....	.....	.....	23,962	.....	.....
33	.....	212,470	.....	15,572	.....	.....	.....	5,702
34	82,552	213,755	.....	16,657	.....	20,168	.....	15,881
35	74,577	201,544	.....	9,581	.....	15,884	.....	29,451
36	59,657	159,093	.....	12,850	.....	19,152	.....	25,040
37	55,919	148,451	2,700	13,575	.....	13,714	.....	3,187
38	71,580	184,679	2,305	15,437	.....	45,666	.....	27,343
39	87,513	217,168	4,012	20,742	.....	47,690	.....	11,357
40	99,516	257,390	2,833	22,321	.....	39,381	.....	9,307
41	93,374	260,715	5,405	28,812	.....	32,175	.....	11,566
42	86,270	236,839	6,602	37,777	.....	40,799	.....	20,274
43	107,151	283,090	8,114	41,753	.....	60,464	.....	15,806
	(47) 酒精 Alcohol.		(40-47) 類計 Total.		(48) 革類 Leather.		(49) 獸骨(肥料用共) Bones, animal. (includes manure)	
	利 Litre	円 Yen		円 Yen		円 Yen	斤 Kin	円 Yen
30	.....	.....		249,747	.....	.....	.....	.....
31	.....	.....		619,044	.....	.....	.....	.....
32	.....	.....		775,684	.....	.....	.....	.....
33	.....	.....		859,549	.....	.....	.....	.....
34	.....	.....		986,680	.....	.....	.....	.....
35	.....	.....		914,247	.....	.....	.....	.....
36	.....	.....		899,155	.....	.....	.....	.....
37	.....	.....		796,426	.....	.....	.....	.....
38	.....	.....		861,800	.....	6,744	.....	.....
39	.....	628		929,503	.....	5,519	.....	.....
40	505	209		942,164	.....	11,098	2,000	48
41	1,155	590		1,033,621	.....	12,996	.....	.....
42	1,208	707		1,095,545	.....	13,946	7,300	148
43	4,057	2,653		1,297,400	.....	23,643	309,500	7,600

四年對照表  
years from 1897 to 1910.

	(50) 其他ノ皮毛、骨角、 齒牙、甲殼類 All other skins, hairs, bones, horns, teeth, tusks, shells, etc.		(48-50) 類計 Total.		(51) 諸藥材、化學藥、 製藥及調劑藥 All kind drugs, chemicals, medicines medicinal preparations.		(52) 諸染料、彩料及塗料 All kind dyes, colours & paints.	
	円 Yen	円 Yen		円 Yen		円 Yen		円 Yen
.....	.....	.....	.....	26,729	.....	.....	.....	.....
.....	.....	.....	.....	387,987	.....	.....	.....	.....
.....	.....	.....	.....	283,832	.....	.....	.....	.....
.....	.....	.....	.....	100,341	.....	.....	.....	.....
.....	.....	.....	.....	111,474	.....	.....	.....	14,318
.....	.....	.....	.....	96,891	.....	.....	.....	11,656
.....	.....	.....	.....	103,036	.....	.....	.....	14,725
.....	.....	.....	.....	207,698	.....	.....	.....	21,277
.....	.....	.....	.....	6,744	.....	.....	.....	38,596
.....	.....	.....	.....	5,519	.....	.....	.....	54,573
.....	12	.....	.....	11,158	.....	.....	.....	62,031
.....	302	.....	.....	13,298	.....	.....	.....	83,739
.....	.....	.....	.....	14,094	.....	.....	.....	85,069
.....	.....	.....	.....	36,243	.....	.....	.....	140,827
	(51-52) 類計 Total.		(53) 石油類 Oil, kerosene.		(54) 菜種油 Oil, colza.		(55) 獸脂 Fat, animal.	
	円 Yen	円 Yen	加倫 Gallon	円 Yen	石 Koku	円 Yen	斤 Kin	円 Yen
.....	.....	26,729	.....	900	.....	.....	.....	.....
.....	.....	387,987	.....	5,839	.....	.....	.....	.....
.....	.....	283,832	.....	.....	.....	.....	.....	.....
.....	.....	100,341	.....	27,480	.....	.....	.....	.....
.....	.....	125,792	.....	49,860	.....	.....	.....	.....
.....	.....	108,547	.....	10,890	.....	.....	.....	.....
.....	.....	117,761	.....	79,043	.....	.....	.....	.....
.....	.....	228,975	.....	42,042	.....	.....	.....	.....
.....	.....	215,040	.....	31,042	.....	.....	.....	.....
.....	.....	282,682	892,942	235,459	.....	.....	.....	.....
.....	.....	423,934	581,871	188,830	1,212	51,361	.....	.....
.....	.....	525,418	561,614	170,783	992	50,445	18,160	2,286
.....	.....	447,556	297,024	90,829	662	32,607	36,365	4,196
.....	.....	671,943	400,930	130,672	824	33,882	39,232	5,310



移入品十

Imports during the Fourteen

	(56) 蠟 燭 Candles.		(57) 其他ノ油、脂及蠟 All other oils, fat. & waxes.		(58-57) 類 計 Total.	(58) 綿 絲 Cotton ginned.		
	斤 Kin	円 Yen	斤 Kin	円 Yen		斤 Kin	円 Yen	
30	.....	.....	.....	.....	900	.....	.....	
31	.....	.....	.....	375	6,214	.....	.....	
32	.....	.....	.....	56,005	56,005	.....	.....	
33	.....	.....	.....	82,355	110,335	.....	.....	
34	.....	.....	.....	53,849	103,709	.....	1,200	
35	.....	.....	.....	48,458	59,348	.....	.....	
36	.....	.....	.....	123,540	202,583	.....	.....	
37	.....	.....	.....	148,734	190,776	.....	24,408	
38	.....	.....	.....	150,709	181,751	.....	16,173	
39	.....	.....	.....	115,735	351,194	.....	14,236	
40	40,984	11,606	.....	121,662	373,459	222,299	45,630	
41	53,193	11,979	.....	400,738	636,231	413,606	126,080	
42	79,747	17,380	.....	413,999	559,011	231,965	76,736	
43	137,305	27,548	.....	549,528	746,940	467,027	139,297	
	(59) 綿 絲 Cotton yarns & threads.		(60) 毛 絲 Woollen yarns.		(61) 其他ノ絲 All other yarns & threads.		(62) 金 巾 Shirting.	
	斤 Kin	円 Yen	斤 Kin	円 Yen	斤 Kin	円 Yen	碼 Yard	円 Yen
30	.....	.....	.....	.....	.....	.....	.....	.....
31	.....	7,175	.....	.....	.....	.....	.....	.....
32	.....	.....	.....	1,220	.....	.....	.....	.....
33	.....	.....	.....	.....	.....	.....	.....	.....
34	.....	30,647	.....	4,618	.....	.....	.....	4,685
35	.....	15,910	.....	5,860	.....	.....	.....	3,120
36	.....	92,597	.....	7,318	.....	.....	.....	6,876
37	.....	101,459	.....	11,756	.....	.....	.....	6,245
38	244,979	88,764	.....	23,593	.....	.....	.....	18,500
39	192,986	67,545	19,738	19,385	.....	.....	.....	31,055
40	266,027	86,591	17,047	19,415	.....	.....	.....	13,470
41	167,995	71,942	16,303	19,642	.....	.....	.....	1,078
42	217,914	91,816	14,584	19,397	.....	.....	.....	1,540
43	335,285	134,394	13,399	17,218	.....	.....	.....	19,306

四年對照表

years from 1897 to 1910.

	(63) 綿フランネル Cotton flannels.		(64) 綿 縮 Cotton crapes.		(65) 其他ノ綿布 All other cotton tissues.		(66) 毛織物 Woollen & worsted tissues.	
	碼 Yard	円 Yen	碼 Yard	円 Yen	碼 Yard	円 Yen	碼 Yard	円 Yen
.....	.....	.....	.....	.....	.....	.....	.....	.....
.....	.....	.....	.....	.....	.....	.....	.....	.....
.....	.....	.....	.....	.....	.....	.....	.....	.....
.....	.....	.....	.....	.....	.....	.....	.....	.....
.....	.....	.....	.....	.....	.....	717,356	.....	36,419
.....	.....	.....	.....	.....	.....	1,036,221	.....	16,321
.....	.....	.....	.....	.....	.....	1,354,574	.....	37,070
.....	.....	.....	.....	.....	.....	1,211,395	.....	52,400
.....	44,215	.....	.....	.....	.....	2,147,121	.....	59,011
.....	41,560	.....	.....	.....	.....	1,996,562	.....	80,920
102,510	14,771	2,500	250	.....	.....	1,985,908	.....	128,822
31,295	5,968	1,800	245	.....	.....	2,009,740	.....	95,629
80,715	18,678	8,100	1,390	.....	.....	2,415,823	.....	97,530
182,481	53,801	3,350	630	.....	.....	2,937,578	.....	138,929
	(67) 諸絹布及綿綿布 Silk tissues & cotton mixtured.		(68) ゴーンニー囊及麻袋 Gunny bags & jute bags.		(69) 其他ノ布帛及同材料 All other tissues & raw materials.		(70) 其他ノ布帛製品 All other tissu s manufactures.	
	碼 Yard	円 Yen	個 Number	円 Yen	碼 Yard	円 Yen	碼 Yard	円 Yen
.....	.....	.....	.....	.....	59,797	.....	.....	
.....	.....	.....	.....	670	114,696	.....	.....	
.....	.....	.....	.....	.....	279,097	.....	.....	
.....	.....	.....	.....	.....	367,998	.....	2,851	
.....	36,665	.....	1,881	.....	41,958	.....	14,537	
.....	26,156	.....	1,580	.....	41,862	.....	10,785	
.....	49,730	134,680	31,405	.....	82,812	.....	40,207	
.....	37,620	137,610	35,415	.....	69,731	.....	34,181	
.....	35,125	372,431	71,427	.....	170,796	.....	39,404	
.....	51,932	573,541	94,809	.....	118,836	.....	52,032	
.....	127,140	591,220	53,607	.....	73,945	.....	59,753	
.....	172,808	653,406	77,357	.....	53,503	.....	76,364	
.....	148,873	151,920	19,147	.....	49,259	.....	35,993	
.....	406,283	511,385	63,629	.....	62,742	.....	157,174	







移入品十  
Imports during the Fourteen

	(84) 軌條 Rails.		(85) 軌條附屬品 Rail fittings thereof.		(86) 條鐵及竿鐵 Iron, bars & rods.		(87) 鐵管 Iron, tubes.	
	斤 Kin	円 Yen	斤 Kin	円 Yen	斤 Kin	円 Yen	斤 Kin	円 Yen
30	.....	.....	.....	.....	.....	.....	.....	.....
31	.....	.....	.....	.....	.....	.....	.....	.....
32	.....	.....	.....	.....	.....	.....	.....	.....
33	.....	.....	.....	.....	.....	.....	.....	.....
34	.....	37,980	.....	.....	.....	.....	.....	3,035
35	.....	64,554	.....	.....	.....	.....	.....	1,924
36	.....	14,576	.....	.....	.....	.....	.....	6,840
37	.....	47,195	.....	.....	.....	.....	.....	25,334
38	.....	46,310	.....	.....	.....	.....	.....	7,381
39	.....	31,401	.....	.....	.....	.....	.....	30,079
40	8,490,337	337,529	840,267	71,277	3,144,400	126,212	480,409	89,745
41	3,526,891	165,918	424,140	40,710	587,307	41,874	694,260	45,758
42	3,396,704	173,070	2,015,650	106,276	32,600	1,860	1,144,751	74,160
43	1,300,624	80,468	80,956	4,605	1,082,672	54,535	1,843,514	106,182
	(88) 鐵釘 Iron, nails.		(89) 其他ノ鐵及鋼 All other iron & steel.		(90) 銅 Copper.		(91) 鉛 Lead.	
	斤 Kin	円 Yen	斤 Kin	円 Yen	斤 Kin	円 Yen	斤 Kin	円 Yen
30	.....	.....	.....	615	.....	.....	.....	.....
31	.....	1,307	.....	.....	.....	.....	.....	.....
32	.....	.....	.....	2,023	.....	.....	.....	.....
33	.....	20,032	.....	39,853	.....	.....	.....	.....
34	.....	19,711	.....	89,869	.....	.....	.....	.....
35	.....	17,669	.....	163,791	.....	.....	.....	.....
36	.....	16,554	.....	84,978	.....	.....	.....	.....
37	.....	24,017	.....	87,296	.....	.....	.....	.....
38	.....	27,763	.....	108,868	.....	.....	.....	.....
39	631,653	58,165	.....	212,286	.....	.....	.....	.....
40	609,564	57,131	4,342,373	345,425	41,182	17,863	210,716	20,257
41	770,966	67,600	5,215,523	341,222	74,016	30,515	229,434	26,160
42	702,002	62,855	4,781,872	283,297	42,433	21,721	453,430	41,580
43	892,073	79,742	6,475,316	381,488	112,999	44,740	507,897	53,385

四年對照表  
years from 1896 to 1910.

	(92) 真鍮及黃銅 Brass & yellow metal.		(93) 其他ノ金屬 All other metals.		(94) 銅貨及白銅貨 Coin copper, & nickel.		(95) 鐵及鋼製品 Iron & steel manufactures.	
	斤 Kin	円 Yen	斤 Kin	円 Yen	斤 Kin	円 Yen	斤 Kin	円 Yen
.....	.....	.....	.....	.....	.....	.....	.....	9,068
.....	.....	.....	.....	.....	.....	.....	.....	1,745
.....	.....	.....	.....	.....	.....	.....	.....	165,167
.....	.....	.....	.....	.....	.....	.....	.....	120,793
.....	.....	.....	.....	38,902	.....	.....	.....	115,674
.....	.....	.....	.....	62,890	.....	.....	.....	42,775
.....	.....	.....	.....	57,248	.....	42,000	.....	87,421
.....	.....	.....	.....	91,551	.....	25,000	.....	58,592
.....	.....	.....	.....	108,730	.....	101,160	.....	66,442
.....	.....	.....	.....	116,323	.....	70,000	.....	106,156
.....	9,822	4,408	.....	134,023	.....	70,000	.....	291,763
.....	23,462	10,190	.....	228,453	.....	.....	.....	230,946
.....	14,814	5,707	.....	277,914	.....	3,800	.....	329,065
.....	29,049	10,836	.....	118,901	.....	53,000	.....	832,743
	(96) 銅製品 Copper manufactures.		(97) 真鍮及黃銅製品 Brass & yellow metal manufactures.		(98) 其他ノ金屬製品 All other metal manufactures.		(84-98) 類計 Total.	
	斤 Kin	円 Yen	斤 Kin	円 Yen	斤 Kin	円 Yen	斤 Kin	円 Yen
.....	.....	.....	.....	.....	.....	43,079	.....	52,762
.....	.....	.....	.....	.....	.....	13,375	.....	16,427
.....	.....	.....	.....	.....	.....	.....	.....	167,190
.....	.....	.....	.....	.....	.....	24,884	.....	208,597
.....	.....	.....	.....	.....	.....	110,703	.....	414,763
.....	.....	.....	.....	.....	.....	113,039	.....	471,558
.....	.....	.....	.....	.....	.....	86,630	.....	414,741
.....	.....	.....	.....	.....	.....	116,713	.....	457,966
.....	.....	.....	.....	.....	.....	174,382	.....	663,734
.....	.....	.....	.....	.....	.....	223,543	.....	908,684
.....	.....	3,923	.....	535	.....	327,147	.....	1,877,610
.....	.....	7,078	.....	9,090	.....	254,394	.....	1,499,308
.....	.....	17,490	.....	3,328	.....	351,596	.....	1,753,709
.....	.....	22,539	.....	19,166	.....	546,270	.....	2,408,600



移入品十  
Imports during the Fourteen

	(99) 瓦類 Bricks & tiles.		(100) 陶器及磁器 Earthenware & porcelain.		(101) 土管 Pipes, earthen.		(102) 玻璃板 Glass, plates & sheets.	
	円 Yen	円 Yen	円 Yen	円 Yen	円 Yen	円 Yen	円 Yen	円 Yen
30	8,448	6,522						
31	780	3,275						
32	160,988	22,104						
33	86,686	40,867						
34	35,302	44,602			18,293		27,782	
35	7,778	39,360			6,790		29,161	
36	8,783	53,515			5,978		27,586	
37	5,257	30,714			1,070		29,593	
38	9,398	44,259			3,383		39,692	
39	19,591	64,101			6,138		46,611	
40	85,151	81,216			10,298		67,261	
41	44,044	135,774			9,958		73,946	
42	22,000	146,293			10,551		67,354	
43	87,380	207,343			7,395		74,047	
	(103) 其他ノ玻璃及玻璃製品 All other glass & glass manufactures.		(99-103) 類計 Total.		(104) 鐵道客車、貨車及同部分品 Railway passenger cars & freight wagons & parts thereof.		(105) 自轉車及同部分品 Bicycles & tricycles & parts thereof.	
	円 Yen	円 Yen	円 Yen	円 Yen	円 Yen	円 Yen	円 Yen	円 Yen
30	1,880	16,850						
31	9,965	14,020						
32	26,477	209,569						
33	53,108	201,308						
34	40,284	166,263						
35	10,250	93,339			49,000			
36	20,481	116,343			65,750			
37	34,018	100,652			47,970			
38	31,267	127,999			24,800		15,619	
39	54,572	191,013			66,200		23,554	
40	69,066	312,992			64,204		28,527	
41	80,294	344,016			145,168		25,565	
42	90,531	336,729			37,525		40,161	
43	152,362	528,532			36,859		96,072	

四年對照表  
years from 1896 to 1910.

	(106) 鐵道機關車及同部分品 Locomotives & parts thereof.		(107) 車類 All kinds of carts.		(108) 人力車 Jinrikisha.		(109) 其他ノ乘車 All other carriages.	
	円 Yen	円 Yen	円 Yen	円 Yen	輛 Number	円 Yen	輛 Number	円 Yen
.....	.....	.....	2,615	.....	.....	.....	.....	.....
.....	.....	.....	3,622	.....	.....	.....	.....	.....
.....	.....	.....	18,540	.....	.....	.....	.....	.....
.....	.....	.....	18,657	.....	.....	.....	.....	.....
.....	2,500	.....	18,712	.....	.....	.....	.....	.....
.....	15,000	.....	30,130	.....	.....	.....	.....	.....
.....	2,300	.....	44,329	.....	.....	.....	.....	.....
.....	.....	.....	42,732	.....	.....	.....	.....	.....
.....	45,000	.....	45,648	.....	.....	.....	.....	.....
.....	.....	.....	76,951	.....	.....	.....	.....	.....
.....	178,451	.....	.....	506	16,548	347	2,109	.....
.....	62,000	.....	.....	1,239	36,649	65	2,579	.....
.....	27,400	.....	.....	600	21,140	183	2,353	.....
.....	102,330	.....	.....	1,005	38,143	168	4,605	.....
	(110) 荷車 Carts.		(111) 船舶 Vessels.		(112) 汽船 Steam vessels.		(113) 帆船及舟艇 Sailing vessels & boats.	
	輛 Number	円 Yen	輛 Number	円 Yen	輛 Number	円 Yen	輛 Number	円 Yen
.....	.....	.....	.....	.....	.....	.....	.....	.....
.....	.....	.....	.....	.....	.....	.....	.....	.....
.....	.....	.....	.....	.....	.....	.....	.....	.....
.....	.....	.....	3,810	.....	.....	.....	.....	.....
.....	.....	.....	4,079	.....	.....	.....	.....	.....
.....	.....	.....	1,665	.....	.....	.....	.....	.....
.....	.....	.....	53	5,980	.....	.....	.....	.....
.....	.....	.....	.....	.....	.....	.....	.....	.....
.....	.....	.....	.....	.....	.....	.....	.....	.....
.....	1,940	47,752	.....	.....	2	5,000	46	3,790
.....	2,892	59,222	.....	.....	.....	.....	15	1,876
.....	3,361	118,824	.....	.....	.....	.....	24	3,650
.....	9,895	331,694	.....	.....	.....	.....	518	19,263



移入品十  
Imports during the Fourteen

	(114) 諸學術器 Scientific instruments of all kinds.		(115) 各種ノ時計及同部分品 All kinds of clocks, watches & parts thereof.		(116) 權衡及尺度 Balances, steel-yards & measuring scales.		(117) 樂器、同部分品及附屬品 Musical instruments & parts thereof.	
	円 Yen	円 Yen	円 Yen	円 Yen	円 Yen	円 Yen	円 Yen	円 Yen
30			210		1,267			
31			3,040					
32			1,450					
33			2,420					
34			18,496					
35			15,196					
36			14,780					
37			22,770		89,281			
38	5,874		21,968		25,835			
39	2,481		22,930		42,337		2,277	
40	1,984		29,567		34,376		4,553	
41	3,801		25,841		22,403		6,158	
42	3,531		36,634		52,101		4,779	
43	26,790		44,979		49,021		12,407	
	(118) 寫真器及同部分品 Photographic instruments & parts thereof.		(119) 蓄音器及同部分品 Phonographic instruments & parts thereof.		(120) 縫衣機及同部分品 Sewing machines & parts thereof.		(121) 電信機、電話機及同部分品 Telegraphic or telephonic instruments & parts thereof.	
	円 Yen	円 Yen	円 Yen	円 Yen	円 Yen	円 Yen	円 Yen	円 Yen
30								
31								
32								
33								
34							9,925	
35							45,293	
36							6,729	
37							4,482	
38							17,731	
39			1,840		1,944		5,162	
40	2,623		820		4,127		16,930	
41	4,095		538		3,327		43,380	
42	1,351		5,597		8,500		82,392	
43	2,070		2,920		13,692		94,441	

四年對照表  
years from 1897 to 1910.

	(122) 汽 罐 Steam boilers.		(123) 各種ノ機關、汽機及同部分品 Other steam boilers, engines & parts thereof.		(124) 其他ノ機械及同部分品 All other machinery & parts thereof.		(104-124) 類 計 Total.
	円 Yen	円 Yen	円 Yen	円 Yen	円 Yen	円 Yen	円 Yen
					93,071		97,163
					16,721		23,383
					114,559		134,549
					144,104		168,991
					130,023		183,745
					111,972		268,256
					263,285		403,153
					61,114		268,349
					190,863		393,338
	12,626				218,625		476,927
	700		27,981		324,002		794,044
	6,170		13,542		270,735		733,049
	21,210		4,649		329,310		801,098
	93,840				531,462		1,500,588
	(125) 紙卷煙草 Cigarettes.		(126) 刻 煙 草 Tobacco, cut.		(127) 其他ノ製造煙草 All other tobacco, manufactured.		(125-127) 類 計 Total.
	千圓 Mille	円 Yen	斤 Kin	円 Yen	円 Yen	円 Yen	円 Yen
					52,360		52,360
					95,617		95,617
					252,208		252,208
					512,586		512,586
		490,993		121,135	2,720		614,848
		496,614		141,498	410		638,522
	421,295	755,108	142,764	89,506	2,759		847,373
	147,995	442,574	144,560	94,980			537,554
	224,504	830,653	228,553	143,001			973,654
	326,421	635,573	179,720	134,848			770,421
	289,454	400,082	77,164	52,528			452,610
	277,978	348,692	128,543	79,530			428,222
	336,012	406,391	114,119	69,243			475,639
	396,715	496,271	99,237	61,477			557,748



移入品十  
Imports during the Fourteen

	(128) 木材及板 Timbers & boards.		(129) 杉材 Timbers, sugi.		(130) 松材 Timbers, matsu.		(131) 檜材 Timbers, hinoki.	
	円 Yen	立方尺 C. shaku	円 Yen	立方尺 C. shaku	円 Yen	立方尺 C. shaku	円 Yen	立方尺 C. shaku
30	67,642							
31	255,557							
32	578,709							
33	1,220,449							
34	785,968							
35	705,637							
36	858,377							
37		554,923	318,047	208,201	93,701	14,949	12,752	
38		657,370	367,872	261,044	157,857	20,641	15,449	
39		812,037	578,709	365,248	161,017	7,513	8,164	
40		1,228,365	829,820	393,761	225,762	14,825	17,141	
41		1,004,944	776,033	229,788	154,160	6,193	6,062	
42		1,211,100	883,570	317,612	147,526	5,761	8,659	
43		1,788,129	1,064,995	470,749	229,607	9,137	8,112	
	(132) 其他ノ木材 Other timbers.		(133) 杉板 Boards, sugi.		(134) 松板 Boards, matsu.		(135) 檜板 Boards, hinoki.	
	円 Yen	平方尺 S. shaku	円 Yen	平方尺 S. shaku	円 Yen	平方尺 S. shaku	円 Yen	平方尺 S. shaku
30								
31								
32								
33								
34								
35								
36								
37	143,346	130,012	3,601,857	153,584	1,267,763	36,782	31,352	1,748
38	75,477	56,433	5,132,950	174,258	1,802,502	61,245	69,898	2,626
39	201,443	91,104	9,033,330	316,229	2,135,445	69,778	13,464	1,035
40	366,971	205,780	4,734,764	310,096	1,270,270	58,363	80,188	7,193
41	489,172	266,150	3,924,943	308,498	1,217,538	90,052	1,720	250
42	298,213	175,409	4,375,435	353,732	773,274	54,269	1,150	275
43	844,592	440,119	3,377,124	289,173	1,185,433	85,309	7,445	1,113

四年對照表  
years from 1897 to 1910.

	(136) 其他ノ板 Other boards.		(137) 電柱 Poles telegraph.		(138) 枕木 Sleepers railway.		(139) 木炭 Charcoal.	
	平方尺 S. shaku	円 Yen	個 Number	円 Yen	個 Number	円 Yen	斤 Kin	円 Yen
								200
								1,512
								3,792
						178,417		7,913
						31,513		8,663
			5,054	22,217	286,993	121,986	500,905	7,919
	158,213	12,229	9,248	68,978	80,459	88,340	511,505	5,974
	44,837	2,161	2,894	18,486	366,051	299,013	609,867	4,176
	56,390	5,928	3,499	28,100	130,717	123,140	312,643	4,094
	327,777	23,853	4,696	40,498	363,570	365,421	424,746	4,817
	475,573	35,364	3,693	55,270	637,952	475,020	732,835	7,113
	787,047	64,165	7,913	89,658	549,540	425,265	635,730	6,048
	1,415,156	89,648	7,432	69,860	633,495	581,908	1,016,530	9,366
	(140) セメント Portland cement.		(141) 石炭 Coal.		(142) 石灰 Lime.		(143) 各種ノ肥料 Manures.	
	斤 Kin	円 Yen	噸 Ton	円 Yen	斤 Kin	円 Yen		円 Yen
		8,300						
		10,755		4,368				
		67,790		40				
		242,523		16,805		7,726		
		98,878		63,186				834
		215,328		47,951				8,373
		275,347		118,504		7,491		4,495
		245,344		75,238		6,502		4,676
		169,387		117,160		5,259		28,252
	12,316,848	211,938	19,421	154,527		5,825		59,777
	26,602,874	478,203	17,496	106,939	177,623	5,255		130,662
	43,675,159	825,907	27,345	163,644	739,678	13,689		328,198
	47,044,240	893,697	31,861	307,242	2,630,950	31,488		1,060,318
	49,542,120	928,618	42,506	422,745	2,815,750	31,177		1,261,725



移入品十

Imports during the Fourteen

	(144) 繩、帆布 Ropes, bags of mat.		(145) 火藥及爆發藥 Gunpowder & explosive compounds.		(146) 銃砲及同部分品 Sporting guns & parts thereof.		(147) ランプ及同部分品 Lamps & parts thereof.	
	円 Yen	円 Yen	円 Yen	円 Yen	円 Kin	円 Yen	円 Yen	円 Yen
30	.....	436	.....	.....	.....	10,000	.....	.....
31	.....	8,961	.....	.....	.....	5,157	.....	.....
32	.....	.....	.....	.....	.....	11,672	.....	.....
33	.....	.....	.....	27,556	.....	.....	.....	.....
34	.....	26,447	.....	13,882	.....	2,849	.....	.....
35	.....	10,845	.....	23,171	.....	255	.....	.....
36	.....	12,166	.....	43,415	.....	139	.....	.....
37	.....	8,851	.....	46,868	.....	3,422	.....	.....
38	.....	10,069	.....	36,114	.....	2,123	.....	8,566
39	.....	5,775	.....	41,372	.....	2,774	.....	9,874
40	.....	24,778	.....	72,365	.....	3,975	.....	5,925
41	.....	24,860	.....	38,470	.....	3,420	.....	14,275
42	.....	29,192	.....	19,701	.....	858	.....	7,600
43	.....	44,911	.....	43,497	.....	1,271	.....	33,964
	(148) 機械用帶及管 Beltings & hoses for machinery.		(149) 漆器 Lacquered wares.		(150) 家具及旅具 Furnitures & trunks.		(151) 家具 Furnitures.	
	円 Yen	円 Yen	円 Yen	円 Yen	円 Yen	円 Yen	円 Yen	円 Yen
30	.....	.....	.....	.....	.....	1,880	.....	.....
31	.....	.....	.....	.....	.....	989	.....	.....
32	.....	.....	.....	4,154	.....	680	.....	.....
33	.....	.....	.....	21,307	.....	1,765	.....	.....
34	.....	.....	.....	24,918	.....	39,543	.....	.....
35	.....	.....	.....	17,185	.....	10,369	.....	.....
36	.....	.....	.....	26,639	.....	23,579	.....	.....
37	.....	.....	.....	11,421	.....	23,113	.....	.....
38	.....	.....	.....	17,079	.....	23,692	.....	.....
39	.....	6,023	.....	25,713	.....	30,856	.....	.....
40	.....	15,565	.....	25,972	.....	.....	.....	36,778
41	.....	2,090	.....	31,172	.....	.....	.....	32,714
42	.....	3,750	.....	28,507	.....	.....	.....	19,134
43	.....	14,124	.....	51,600	.....	.....	.....	20,549

四年對照表

years from 1897 to 1910.

	(152) 旅具 Trunks.		(153) 皮革製品 Leather manufactures.		(154) 各種ノ遊戯具 Games, all articles of.		(155) マッチ Matches.	
	円 Yen	円 Yen	円 Yen	円 Yen	円 Yen	円 Yen	円 Yen	円 Yen
.....	.....	.....	.....	.....	.....	.....	.....	260
.....	.....	.....	.....	.....	.....	.....	.....	4,078
.....	.....	.....	.....	.....	.....	.....	.....	20,412
.....	.....	.....	.....	.....	.....	.....	.....	210,121
.....	.....	.....	.....	.....	.....	.....	.....	198,486
.....	.....	.....	.....	.....	.....	.....	.....	243,489
.....	.....	.....	.....	.....	.....	.....	.....	320,054
.....	.....	.....	.....	.....	.....	.....	494,241	232,552
.....	.....	.....	1,960	.....	1,100	705,066	.....	258,032
.....	.....	.....	4,245	.....	1,926	880,447	.....	357,895
.....	20,870	.....	775	.....	3,851	903,372	.....	364,227
.....	15,049	.....	1,967	.....	4,936	743,784	.....	297,225
.....	21,648	.....	7,362	.....	6,478	896,283	.....	341,950
.....	43,243	.....	31,318	.....	4,804	806,872	.....	297,143
	(156) 畳、畳表及花滞 Mats, rush.		(157) 扇及團扇 Fans & round-fans.		(158) 玩具 Toys.		(159) 石鹼 Soap.	
	円 Yen	円 Yen	円 Yen	円 Yen	円 Yen	円 Yen	円 Kin	円 Yen
.....	.....	959	.....	.....	.....	.....	.....	619
.....	.....	.....	.....	.....	.....	.....	.....	551
.....	.....	150	.....	.....	.....	.....	.....	190
.....	.....	3,157	.....	.....	.....	.....	.....	2,178
.....	.....	7,689	.....	.....	.....	.....	.....	23,483
.....	.....	7,113	.....	.....	.....	.....	.....	16,898
.....	.....	13,163	.....	.....	.....	.....	122,075	10,228
.....	.....	17,275	.....	.....	.....	.....	104,190	21,870
.....	.....	18,693	.....	4,881	.....	5,527	172,005	28,565
.....	.....	23,599	.....	8,638	.....	10,070	162,095	41,115
.....	.....	24,358	.....	14,619	.....	15,192	.....	.....
.....	.....	27,191	.....	13,790	.....	30,128	.....	.....
.....	.....	34,134	.....	10,144	.....	34,262	.....	.....
.....	.....	62,349	.....	16,197	.....	53,856	.....	.....



移入品  
Imports during the Fourteen

	(160) 化粧石鹼 Soap, toilet.		(161) 洗濯石鹼 Soap, washing.		(162) 香水、香油及各種ノ蒸香類 Toilet or perfumed water, hair oil & all other cosmetics & perfumery.		(163) 傘類 Umbrellas.	
	打 Dozen	円 Yen	斤 Kin	円 Yen		円 Yen		円 Yen
30	.....	.....	.....	.....	.....	.....	.....	.....
31	.....	.....	.....	.....	.....	.....	.....	.....
32	.....	.....	.....	.....	.....	.....	.....	1,750
33	.....	.....	.....	.....	.....	.....	.....	2,180
34	.....	.....	.....	.....	.....	.....	.....	12,609
35	.....	.....	.....	.....	.....	.....	.....	8,649
36	.....	.....	.....	.....	.....	.....	.....	.....
37	.....	.....	.....	.....	.....	.....	.....	.....
38	.....	.....	.....	.....	.....	6,454	.....	.....
39	.....	.....	.....	.....	.....	7,211	.....	.....
40	27,571	37,293	126,692	15,277	.....	19,732	.....	.....
41	37,066	50,211	135,786	13,586	.....	13,186	.....	.....
42	36,396	46,921	210,300	18,729	.....	27,761	.....	.....
43	56,192	79,227	256,976	15,507	.....	87,791	.....	.....
	(164) 洋傘 Umbrellas, European.		(165) 紙傘 Umbrellas, paper.		(166) 木製品 Wood manufactures.		(167) 竹製品 Bamboo manufactures.	
	打 Dozen	円 Yen	Number	円 Yen		円 Yen		円 Yen
30	.....	.....	.....	.....	.....	.....	.....	.....
31	.....	.....	.....	.....	.....	.....	.....	.....
32	.....	.....	.....	.....	.....	.....	.....	.....
33	.....	.....	.....	.....	.....	.....	.....	.....
34	.....	.....	.....	.....	.....	.....	.....	.....
35	.....	.....	.....	.....	.....	.....	.....	.....
36	560	6,291	6,707	4,286	.....	.....	.....	.....
37	1,273	25,429	6,710	3,905	.....	.....	.....	.....
38	5,593	47,443	11,304	5,919	.....	12,481	.....	1,038
39	3,221	46,439	6,215	3,972	.....	14,763	.....	955
40	6,788	71,535	14,334	7,317	.....	16,591	.....	1,037
41	2,843	46,848	14,856	7,327	.....	35,860	.....	3,596
42	3,874	73,313	11,778	6,813	.....	33,322	.....	1,415
43	5,089	76,549	17,781	11,222	.....	112,284	.....	9,200

四年對照表  
years from 1869 to 1910.

	(168) 其他ノ雜品 All other articles.		(128-168) 類計 Total.		(1-168) 通計 Total.		(169) 再移入品價 Re-imports.	
		円 Yen		円 Yen		円 Yen		円 Yen
.....	2,403,584	2,493,650	.....	3,723,722	.....	.....	.....	.....
.....	1,923,787	2,214,403	.....	4,266,768	.....	.....	.....	.....
.....	3,444,830	4,131,889	.....	8,011,826	.....	.....	.....	.....
.....	2,611,417	4,370,576	.....	8,439,033	.....	.....	.....	.....
.....	1,862,762	3,347,864	.....	8,782,258	.....	.....	.....	.....
.....	2,258,559	3,613,998	.....	9,235,290	.....	.....	.....	.....
.....	2,427,530	4,303,826	.....	11,194,788	.....	.....	.....	.....
.....	2,121,717	3,775,330	.....	10,156,311	.....	.....	.....	.....
.....	2,463,917	4,433,287	.....	13,483,833	.....	.....	.....	.....
.....	3,138,843	5,601,423	.....	15,634,341	.....	.....	.....	.....
.....	3,078,415	6,686,250	.....	19,750,445	.....	.....	.....	.....
.....	3,142,017	7,355,228	.....	20,926,859	.....	.....	.....	.....
.....	3,676,912	8,956,227	.....	24,006,803	.....	.....	.....	.....
.....	2,336,364	8,969,448	.....	29,051,830	.....	.....	.....	18,265
(1-169) 移入全計 Total imports.								
.....	円 Yen	3,723,722						
.....	円 Yen	4,266,768						
.....	円 Yen	8,011,826						
.....	円 Yen	8,439,033						
.....	円 Yen	8,782,258						
.....	円 Yen	9,235,290						
.....	円 Yen	11,194,788						
.....	円 Yen	10,156,311						
.....	円 Yen	13,483,833						
.....	円 Yen	15,634,341						
.....	円 Yen	19,750,445						
.....	円 Yen	20,926,859						
.....	円 Yen	24,006,803						
.....	円 Yen	29,070,095						



入港船舶

Merchant Vessels entered during the

汽船及帆船 Steamers & Sailing Vessels.	(1) 基隆 Kürun, (Keelung)		(2) 淡水 Tansui, (Tamsui)		(3) 安平 Anpin, (Anping)	
	Number	Ton	Number	Ton	Number	Ton
三十年 1897	102	176,008	12	8,865	?	?
三十一年 1898	122	189,151	13	9,135	103	152,756
三十二年 1899	129	279,650	15	10,263	84	143,166
三十三年 1900	170	249,504	16	9,531	74	91,182
三十四年 1901	152	235,795	4	2,852	81	112,097
三十五年 1902	149	221,644	2	1,521	91	140,078
三十六年 1903	* 166 <sup>9</sup>	* 217,368 <sup>731</sup>	* ..... <sup>2</sup>	* ..... <sup>304</sup>	118	182,277
三十七年 1904	* 123 <sup>6</sup>	* 153,316 <sup>61</sup>	.....	.....	63	86,595
三十八年 1905	* 160 <sup>8</sup>	* 199,444 <sup>93</sup>	2	1,312	117	145,750
三十九年 1906	* 272 <sup>6</sup>	* 396,530 <sup>59</sup>	12	10,149	128	206,158
四十年 1907	300	455,040	7	5,426	201	321,402
四十一年 1908	* 359 <sup>1</sup>	* 553,222 <sup>10</sup>	1	1,006	194	311,104
四十二年 1909	368	606,492	3	2,106	208	357,221
四十三年 1910	413	789,120	1	1,171	242	425,949

四年對照表

Fourteen years from 1897 to 1910.

\* 帆船 Sailing Vessels.

(4) 打狗 Takao, (Takow)		(5) 媽宮 Makyü, (Makung)		(6) 東港 Tokō, (Tonkong)		(7) 布袋嘴 Hcteishi, (Pcteitsu)	
Number	Ton	Number	Ton	Number	Ton	Number	Ton
?	?	?	?	.....	.....	.....	.....
?	?	?	?	.....	.....	.....	.....
?	?	?	?	.....	.....	.....	.....
48	58,239	42	53,173	.....	.....	.....	.....
44	61,621	55	78,636	.....	.....	.....	.....
55	81,489	40	65,014	.....	.....	.....	.....
73	112,212	36	55,859	.....	.....	.....	.....
39	53,186	13	15,845	.....	.....	.....	.....
70	86,933	9	12,932	.....	.....	.....	.....
100	156,262	37	64,225	.....	.....	.....	.....
123	190,663	51	86,627	.....	.....	.....	.....
142	219,265	51	83,855	.....	.....	3	4,590
152	244,218	48	84,238	.....	.....	7	12,721
* 181 <sup>1</sup>	* 299,580 <sup>137</sup>	51	89,371	* ..... <sup>1</sup>	* ..... <sup>101</sup>	8	13,908



\* 帆船 - Sailing Vessels.

入港船舶十四年對照表

57 Merchant Vessels entered during the Fourteen years fom 1897 to 1910.

(8) 北門嶼 Hokumonsho. (Famunsu)		(1-8) 合計 Total	
隻 Number	噸 Ton	隻 Number	噸 Ton
30	.....	114	184,873
31	.....	238	351,042
32	.....	228	433,079
33	.....	350	461,629
34	.....	336	491,001
35	.....	337	509,746
36	.....	* <sup>11</sup> 393	* <sup>1,015</sup> 567,716
37	.....	* <sup>6</sup> 236	* <sup>61</sup> 308,942
38	.....	* <sup>8</sup> 358	* <sup>103</sup> 446,371
39	.....	* <sup>6</sup> 549	* <sup>59</sup> 832,324
40	.....	632	1,059,158
41	4	* <sup>1</sup> 754	* <sup>10</sup> 1,179,945
42	6	792	1,317,965
43	8	* <sup>2</sup> 904	* <sup>238</sup> 1,635,029



出港船舶十

Merchant Vessls cleared during the

汽船及帆船 Steamers & Sailing Vessels.	(1) 基隆 Keelung (Keelung)		(2) 淡水 Tamsui (Tamsui)		(3) 安平 Anpin (Anpin)	
	Number	Ton	Number	Ton	Number	Ton
三十一年 1897	93	176,006	11	7,457	?	?
三十二年 1898	133	205,268	9	6,294	104	165,801
三十三年 1899	125	280,027	11	6,920	84	143,166
三十四年 1900	141	215,208	7	5,234	70	84,060
三十五年 1901	130	208,996	2	1,349	84	116,380
三十六年 1902	132	199,312	* 1	* 884	93	143,014
三十七年 1903	* 137 <sup>6</sup>	* 180,840 <sup>411</sup>	* 2	* 856 <sup>304</sup>	119	185,730
三十八年 1904	* 107 <sup>8</sup>	* 130,726 <sup>85</sup>	* 1	* 900 <sup>16</sup>	63	86,074
三十九年 1905	* 121 <sup>7</sup>	* 151,637 <sup>77</sup>	2	1,312	113	141,417
四十年 1906	* 268 <sup>5</sup>	* 389,720 <sup>54</sup>	12	10,137	124	200,830
四十一年 1907	288	437,564	8	6,432	204	326,338
四十二年 1908	* 364 <sup>1</sup>	* 560,587 <sup>10</sup>	1	1,006	194	311,264
四十三年 1909	367	607,244	3	2,106	207	354,618
四十四年 1910	411	783,683	3	2,644	247	435,544

四年對照表

Fourteen years from 1897 to 1910.

\* 帆船 Sailing Vessels.

(4) 打狗 Takao (Takow)		(5) 媽宮 Makyū (Makung)		(6) 東港 Tokō (Tokong)		(7) 布袋嘴 Hoteishi (Poteitsu)	
Number	Ton	Number	Ton	Number	Ton	Number	Ton
?	?	?	?	.....	.....	.....	.....
?	?	?	?	.....	.....	.....	.....
?	?	?	?	.....	.....	.....	.....
49	58,879	39	49,884	.....	.....	.....	.....
47	65,521	54	77,543	.....	.....	.....	.....
57	86,191	40	65,014	.....	.....	.....	.....
73	113,044	36	55,859	.....	.....	.....	.....
42	58,205	13	15,845	.....	.....	.....	.....
68	93,251	8	11,400	.....	.....	.....	.....
92	144,167	37	64,683	.....	.....	.....	.....
120	186,162	50	84,970	.....	.....	.....	.....
140	219,195	51	83,855	.....	.....	3	4,590
162	268,241	48	84,238	.....	.....	7	12,721
* 1	* 351,484 <sup>137</sup>	51	89,371	* 1	* 101	8	13,908



出港船舶十四年對照表 \* 帆船 Sailing Vessels.

61 Merchant Vessel cleared during the Fourteen years from 1897 to 1910.

(S.) 北門嶼 Hokumansho. (Pamansu)		(1-8) 合計 Total.	
號 Number	噸 Ton	號 Number	噸 Ton
30	.....	104	183,463
31	.....	246	377,363
32	.....	220	430,113
33	.....	306	413,265
34	.....	317	469,789
35	.....	* 322 <sup>1</sup>	* 493,531 <sup>84</sup>
36	.....	* 366 <sup>8</sup>	* 536,329 <sup>75</sup>
37	.....	* 226 <sup>9</sup>	* 291,750 <sup>101</sup>
38	.....	* 312 <sup>7</sup>	* 388,987 <sup>77</sup>
39	.....	* 533 <sup>5</sup>	* 809,537 <sup>51</sup>
40	.....	670	1,041,466
41	4	* 757 <sup>1</sup>	* 1,187,400 <sup>10</sup>
42	6	800	1,340,137
43	8	* 931 <sup>2</sup>	* 1,692,564 <sup>238</sup>

明治四十四年七月三日印刷  
 明治四十四年七月五日發行

臺灣總督府民政部財務局金融課

臺北北門街三丁目九番戶

印刷人 村田孝光

臺北北門街三丁目九番戶

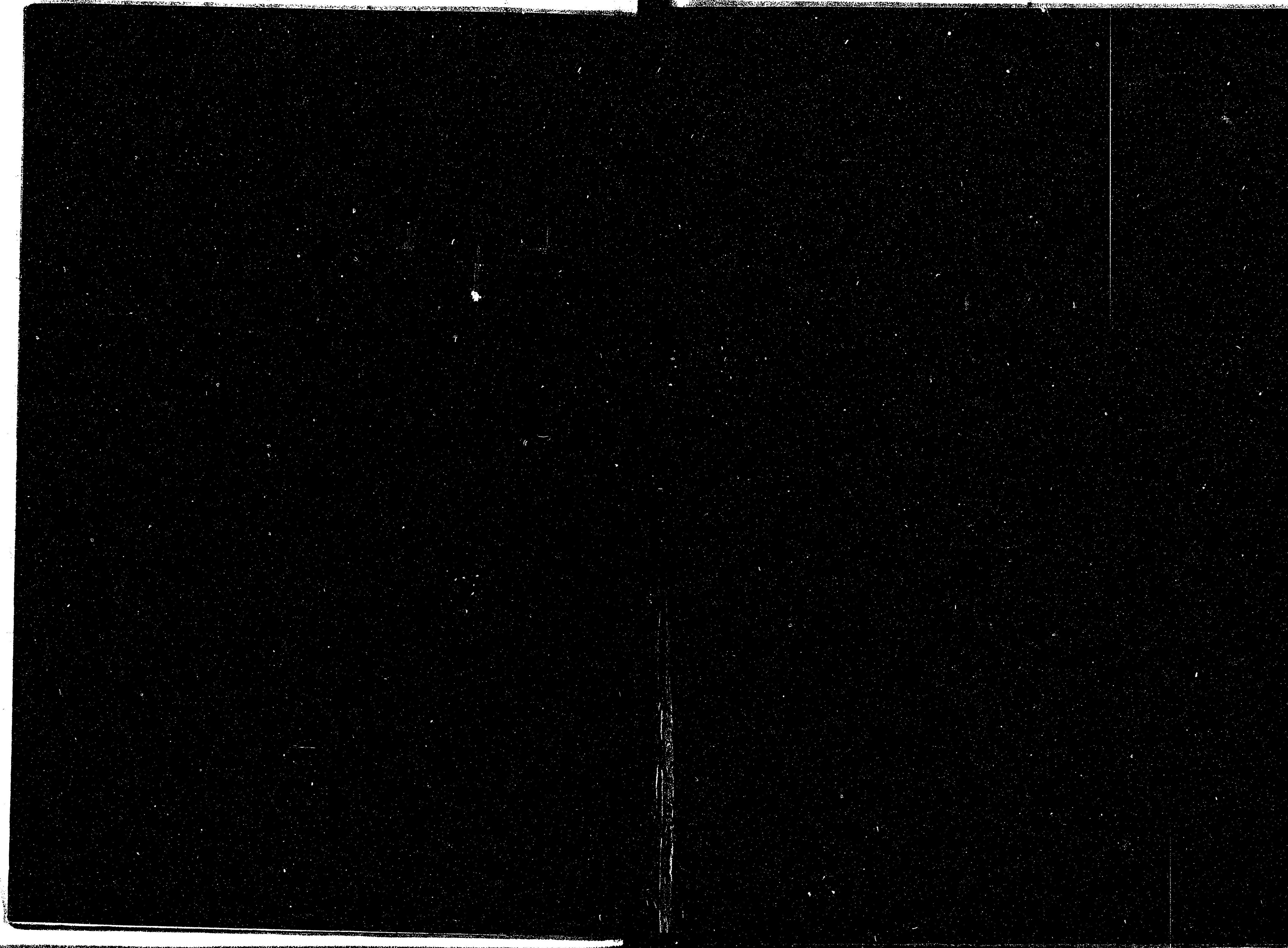
印刷所 日本物產商會活版部



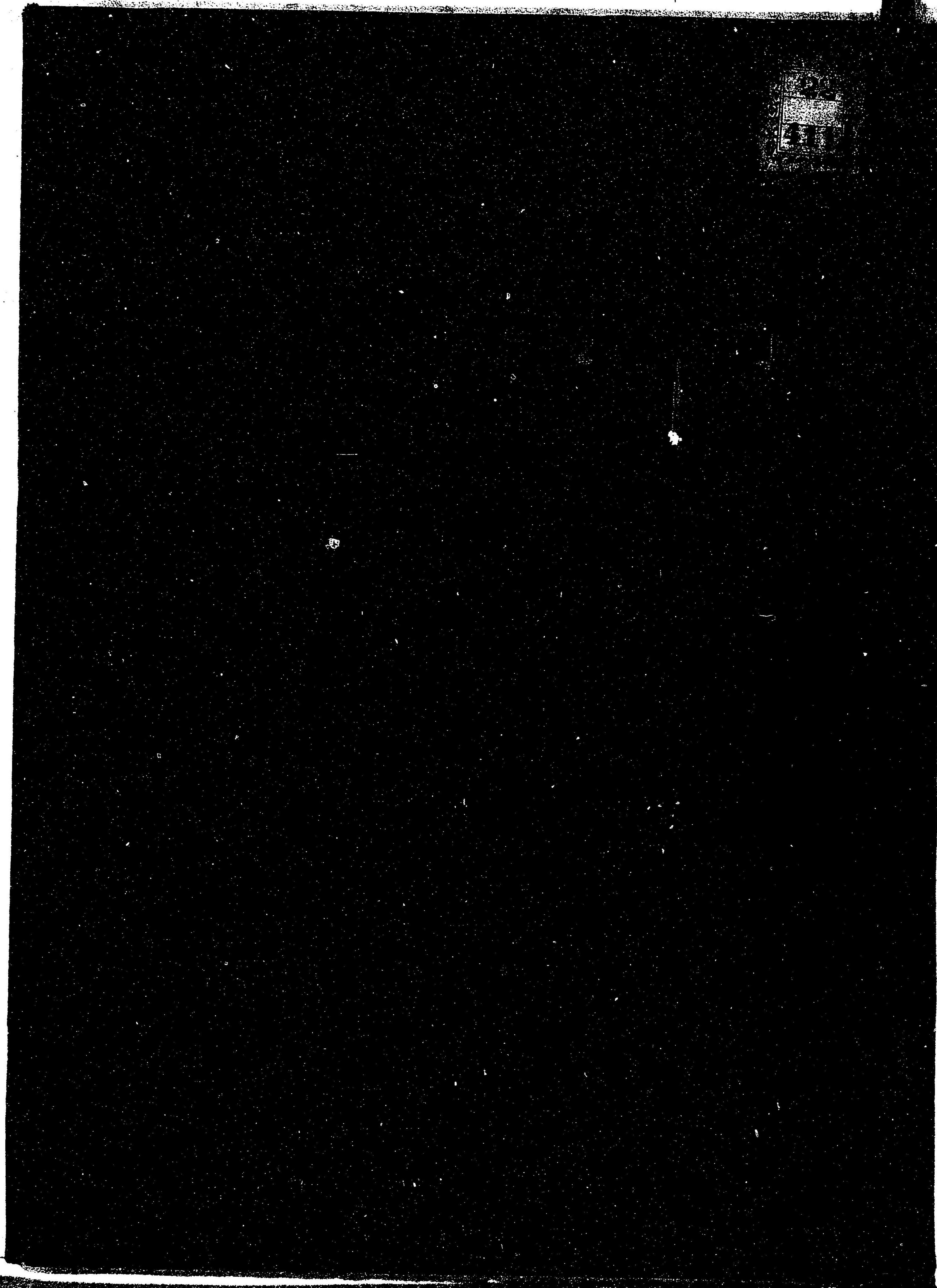
8.5. 8

8.











044290-000-7

22-411

台湾外国貿易十五年对照表

台湾總督府民政部財務局

M44

BDN-0341

