

F
159
G3R52



Class F159

Book G3 N52

Copyright N^o _____

COPYRIGHT DEPOSIT.

Quaint Old Germantown
in Pennsylvania

411
651

A PAPER READ BEFORE
THE PENNSYLVANIA-GERMAN SOCIETY
AT THE ANNUAL MEETING
RIEGELSVILLE, BUCKS COUNTY, PENNSYLVANIA
OCTOBER 4TH, 1912

BY

JULIUS FRIEDRICH SACHSE

ILLUSTRATED WITH SIXTY COPIES OF
THE ORIGINAL SKETCHES

Richardson
"



LANCASTER, PA.

1915

F-159
.G3R52

Publication Committee

JULIUS F. SACHSE, LITT.D.

DANIEL W. NEAD, M.D.

J. E. B. BUCKENHAM, M.D.

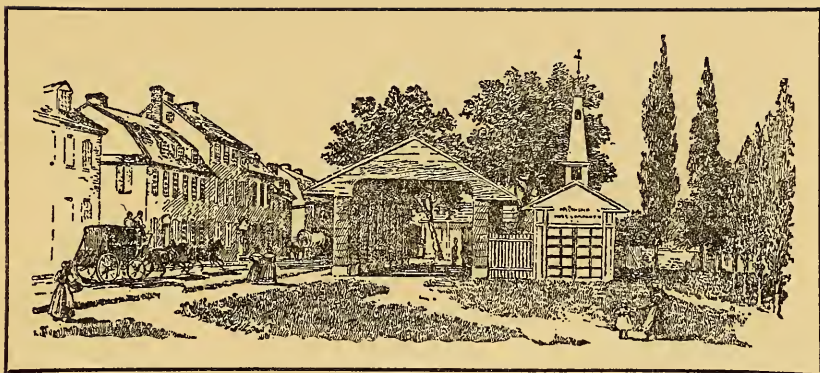
COPYRIGHTED 1915

BY

THE PENNSYLVANIA-GERMAN SOCIETY

PRESS OF
THE NEW ERA PRINTING COMPANY
LANCASTER, PA.

7. B. N. 1706 - 7-19



QUAINT OLD GERMANTOWN.

BY JULIUS F. SACHSE.



THE following paper was read before the Pennsylvania-German Society at the Twenty-second Annual Meeting, held at Riegelsville, Bucks County, Pennsylvania, Friday, October 4, 1912, and was illustrated by sixty lantern slides of the old landmarks, as sketched by John Richard. These views are here reproduced

upon a somewhat smaller scale than the original drawings.

Quaint, historic, old Germantown, was the earliest organized German community in Pennsylvania, if not in the western world. The settlement was made under a grant to William Penn, founded more than two and a quarter centuries ago, and renowned for almost all these years for

its quaint buildings scattered along its single main street, its curious characters, singular customs of its early inhabitants, superstitions and folk-lore. Many of these traditions and habits are still kept alive in some of the old families of the original German stock, who are now in the seventh and eighth generations from the early immigrants.

This quaint townstead, when laid out by Pastorius for the Frankfort Company, was far away from Penn's projected sylvan city on the Delaware, and for many years was a community in itself. But now, after the lapse of two centuries, it is one of the most fashionable sections of the great consolidated city of Philadelphia, and is officially known as the Twenty-second Ward.

The peculiar straggling homes of the early settlers on the single street have given place to modern stores and houses, a network of streets has been opened through adjoining gardens and fields, and the whole plot of the old German township is now covered by an almost solidly built-up city—of homes, business houses and industrial establishments.

Many of the humble, unpretentious structures, portrayed in this work, have given place to the pretentious mansions and palatial residences of some of Philadelphia's wealthy citizens.

From the very beginning of the Germantown settlement, there have been curious characters who flourished within the townstead, or in the immediate vicinity. As early as 1694 we have the arrival of the mystical community of German Pietists, under the leadership of the gentle Magister Johannes Kelpius and his follower Johannes Seelig, and later Dr. Christopher Witt and his Famulus, Daniel Geissler, both buried upon "Spook hill." Now, after two centuries, their graves are enclosed within the

chancel of St. Michael's P. E. Church on High Street, which is built on the old Warner graveyard. A proper memorial tablet has within late years been placed upon the walls of the sacred edifice. The incentive for this act was the published history of these "German Pietists" by the present writer.

Then there was Conrad Matthäi, mystic and recluse, the last of these "Hermits on the Wissahickon," who died at the end of August, 1748. He was said to have been of noble birth, but his identity has never been solved.

Later in the century we have Christian Lehman, a scholar of Dr. Witt, who cast nativities and horoscopes.

Mention must also be made of the founders of the Dunker Church in America—Alexander Mack and his followers—who founded the First-Day (Sunday) Brethren, and Conrad Beissel and his converts, who started the Seventh-Day congregation of the Brethren.

The names of the Eckerlin brothers, the Gorgas family and others of the Ephrata Community, are also identified more or less with Germantown: the former especially so by their close connection with Christopher Sauer the elder, the erratic printer of Germantown.

Count Zinzendorf, Bechtel and the early Moravians who, during the middle of the eighteenth century, were active factors in the German Township, must not be forgotten.

Benjamin Lay, the Pythagorean hermit, whose cave was on the York Road, was also in close communion with the Quakers of Germantown. During the Revolutionary period, the name of Christopher Ludwick, as Baker-general of the Continental Army, stands out in bold relief.

Coming down to our own day, there came to Germantown, about sixty years ago, a young Swede, John Rich-

ards, as he was known, who worked as a gardener and day laborer. At the outbreak of the Civil War, John Richards enlisted, May, 1861, in Company K, 59th Regiment, New York Volunteers. Private Richards was wounded, August, 1862, at the battle of Bull Run, also at Antietam, September, 1862. He died August 26, 1889. It was while Private Richards was convalescent at the Chestnut Hill Hospital that he began sketching some of the old landmarks and buildings of Germantown. From these crude sketches he later made drawings on zinc plates, from which an impression could be taken by the lithographic process. Richards's drawings were often somewhat out of perspective, more or less harsh and lacking in detail, especially where he attempted to introduce figures or animals. At the same time, considering the fact that he never had any instruction in art, these sketches have a merit and individuality of their own. Their chief value, however, consists in the fact that they have preserved to us and generations to come the views and landmarks of historic and quaint Germantown of days gone by.

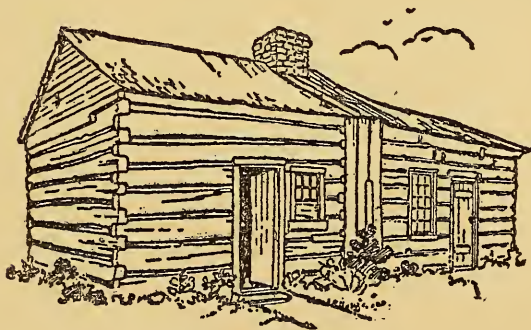
John Richards, after his discharge from the army, remained in Germantown, and was given the position of sexton of Calvary P. E. Church on Manheim Street; and during his spare time made many of the sketches aforesaid. Some of these views were printed many years ago by a local lithographer, and sold to residents and visitors. No attempt, however, was made at uniformity, or a proper description and location of the subjects. Some fifteen years ago, a number of these original zinc plates, together with impressions of some views previously issued, came into the possession of the present writer who, realizing their great historic value, for the present as well as future generations, has issued this edition. Thirty-three of these

views are reductions from the identical zinc plates made by John Richards; eight are reproductions of original sketches now first published; while the remainder are from transfers made of prints from the original plates.

The various views have been arranged and grouped according to their location: each side of the Main street has been taken separately, with a short legend, giving the present system of street numeration, so that the sites of these historic landmarks may be easily identified. This important feature was made possible by the researches and aid given to the writer by Messrs. Edwin C. Jellett and Dr. Naaman H. Keyser of Germantown.

JULIUS FRIEDRICH SACHSE.

PHILADELPHIA,
January, 1913.

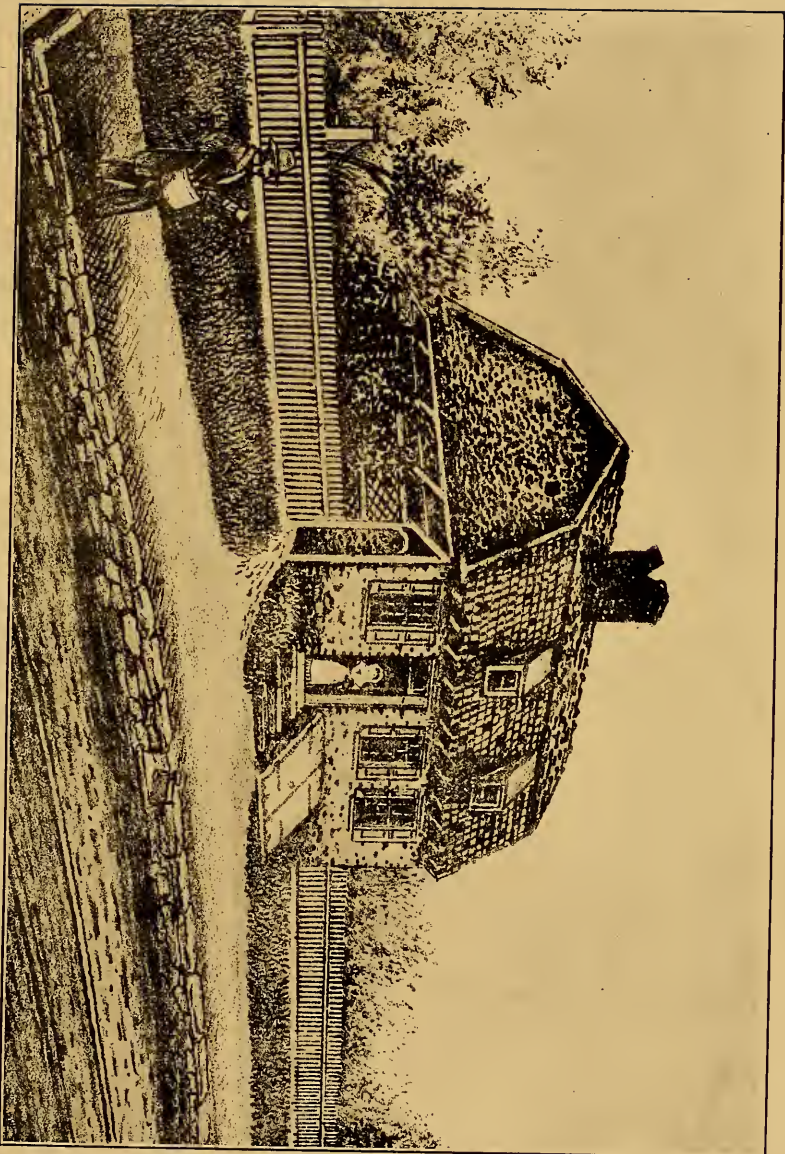


HOME OF AN EARLY SETTLER.

THE PENNSYLVANIA-GERMAN SOCIETY.

QUAINT OLD GERMANTOWN—MAIN STREET—EAST SIDE.

PLATE I.



DRAWN ON THE ZINC BY J. RICHARDS.

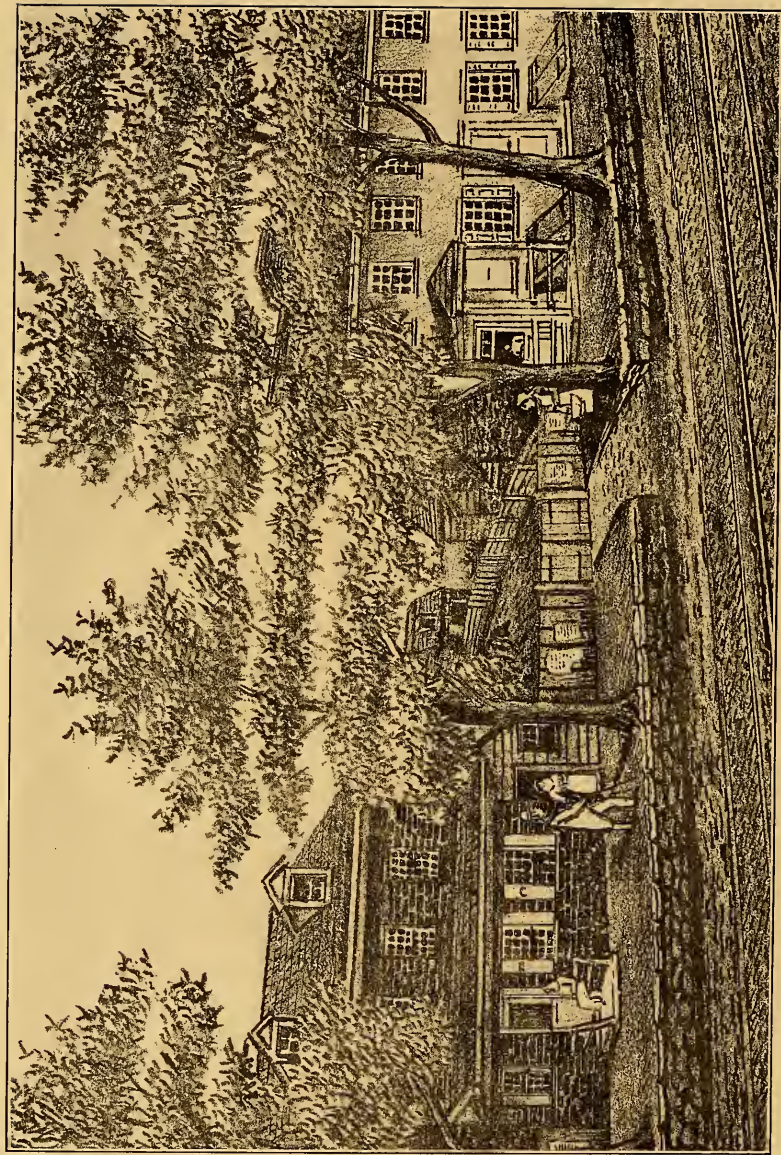
THE DEDIER HOUSE.

FORMERLY AT THE SOUTHEAST CORNER OF GERMANTOWN AVENUE AND FISHER'S LANE. SITE OF No. 4839. BUILT 1733.

THE PENNSYLVANIA-GERMAN SOCIETY.

QUAINT OLD GERMANTOWN—MAIN STREET—EAST SIDE.

PLATE II.



DRAWN ON THE ZINC BY J. RICHARDS.

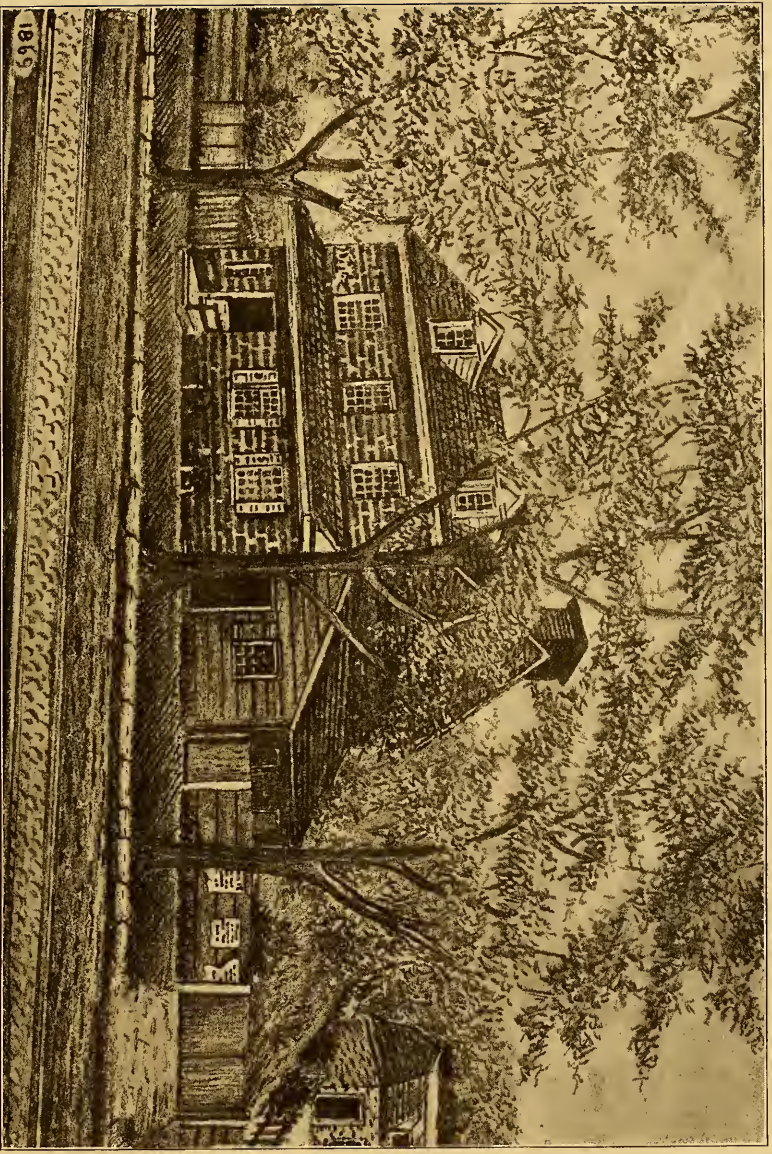
GERMANTOWN AVENUE BELOW MECHLIN STREET.

SHOWING THE MECHLIN-SORBER (ON SITE OF No. 4935), McGUIRE (No. 4931), DEDIER (Nos. 4923-29) AND
SHERMAN HOUSE (No. 4921).

THE PENNSYLVANIA-GERMAN SOCIETY.

QUAINT OLD GERMANTOWN—MAIN STREET—EAST SIDE.

PLATE III.



DRAWN ON THE ZINC BY J. RICHARDS.

THE OLD MECHLIN-SORBER HOUSE.

ON SITE. OF NO. 4935.

THE PENNSYLVANIA-GERMAN SOCIETY.

QUAINT OLD GERMANTOWN—MAIN STREET—EAST SIDE.

PLATE IV.



DRAWN ON THE ZINC BY J. RICHARDS.

THE MÜLLER AND DANNENHOWER HOUSES.

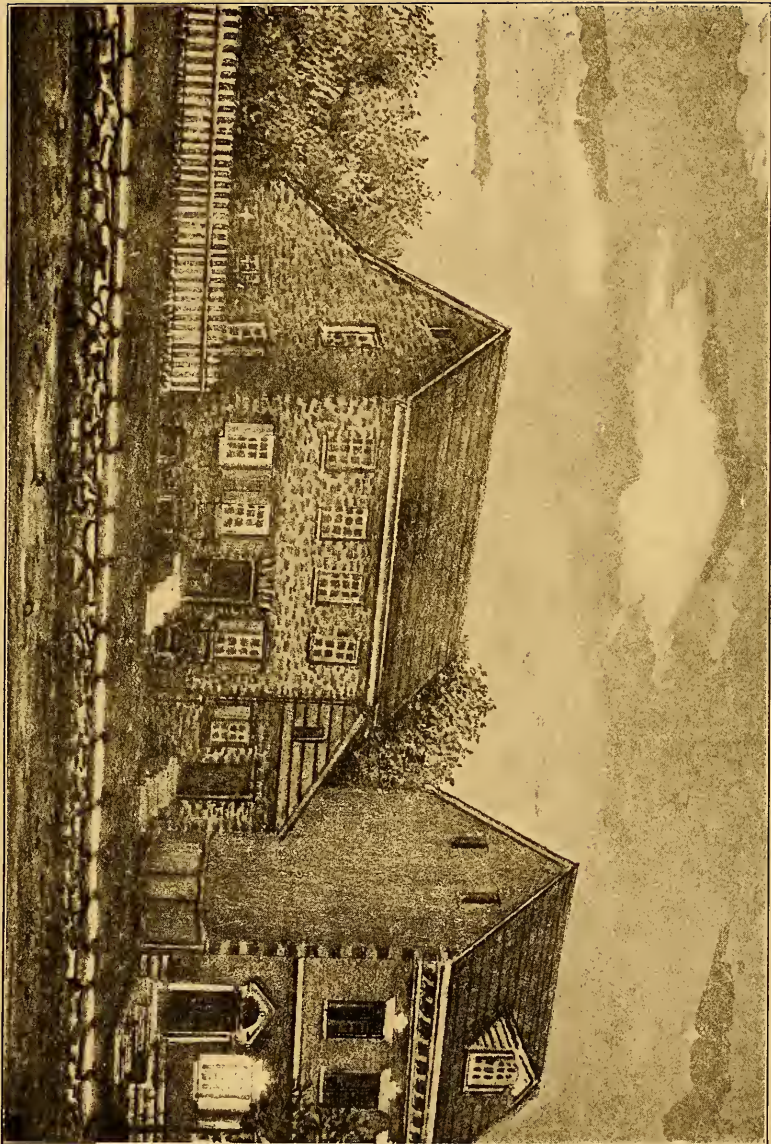
THE MÜLLER HOUSE, SITE OF No. 4939.

DANNENHOWER HOUSE, SITE OF No. 4937. BUILT A. D. 1745.

THE PENNSYLVANIA-GERMAN SOCIETY.

QUAINT OLD GERMANTOWN—MAIN STREET—EAST SIDE.

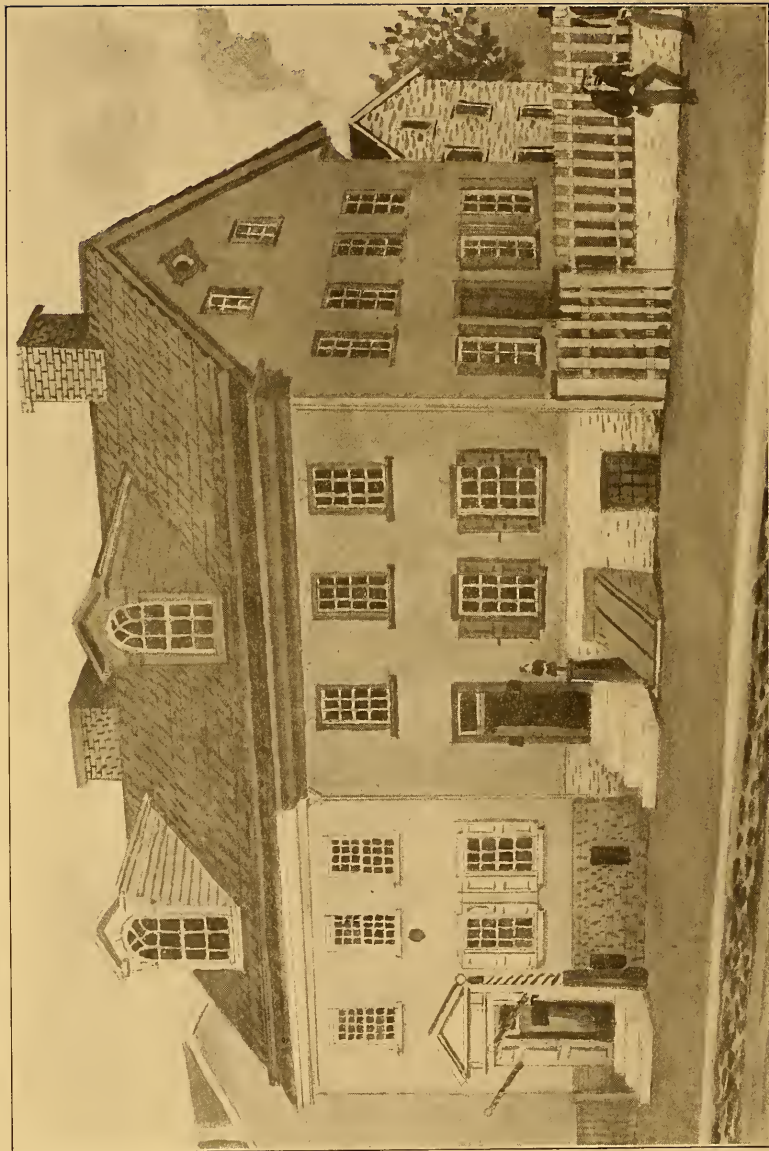
PLATE V.



DRAWN ON THE ZINC BY J. RICHARDS.

THE DUY OR GEORGE ROYAL'S HOUSE.

ON SITE OF NO. 5015-19.



DRAWN ON THE ZINC BY J. RICHARDS.

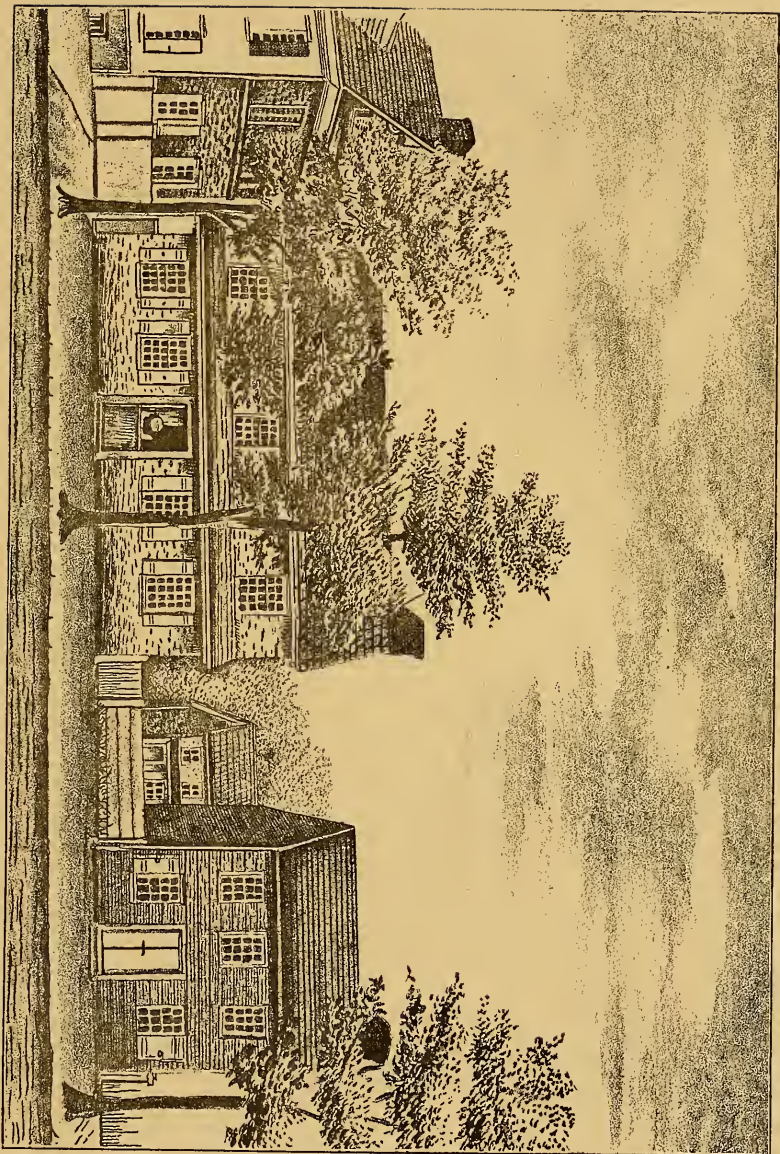
SITE OF THONES KUNDER'S HOUSE.

GERMANTOWN AVENUE OPPOSITE MANHEIM STREET. THONES KUNDER'S HOUSE OCCUPIED THE SITE OF THE BARBER SHOP (No. 5109). ONLY A PART OF THE OLD WALL REMAINS. THE FIRST FRIEND'S MEETING IN GERMANTOWN WAS HELD IN KUNDER'S HOUSE IN 1683.

THE PENNSYLVANIA-GERMAN SOCIETY.

QUAINT OLD GERMANTOWN—MAIN STREET—EAST SIDE.

PLATE VII.



DRAWN ON THE ZINC BY J. RICHARDS

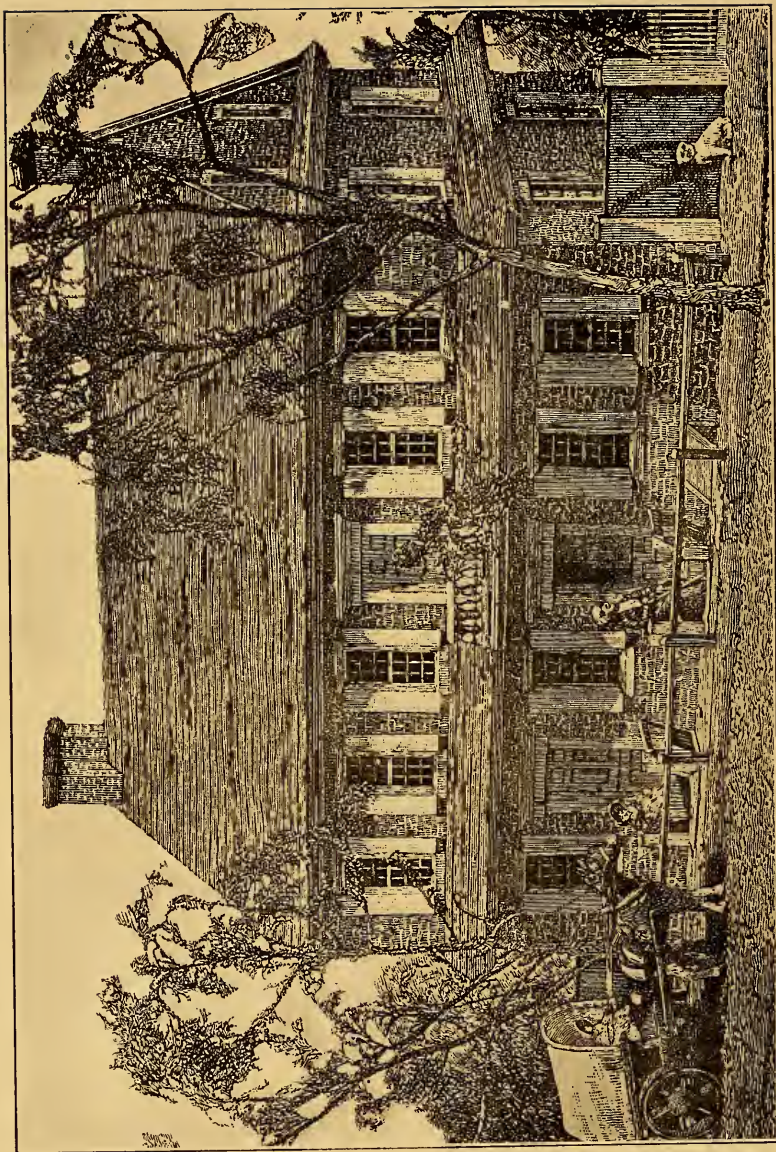
CHRISTOPHER SAUER'S HOUSE.

GERMANTOWN AVENUE OPPOSITE QUEEN LANE, SHOWING THE HOME OF CHRISTOPHER SAUER (1ST), CHRISTOPHER SAUER (2ND),
SITE OF No. 5253-55, ALSO CABINET AND CLOCK SHOP AND PRINTING OFFICE.

THE PENNSYLVANIA-GERMAN SOCIETY.

QUAINT OLD GERMANTOWN—MAIN STREET—EAST SIDE.

PLATE VIII.



DRAWN ON THE ZINC BY J. RICHARDS.

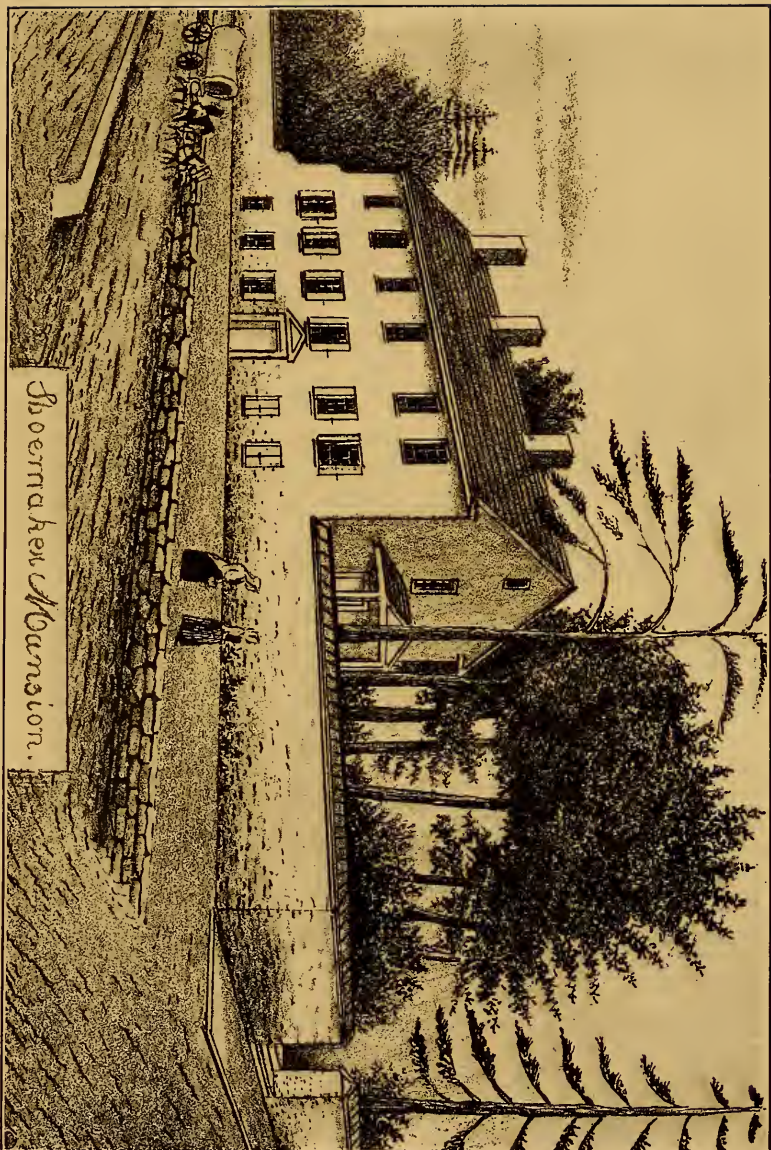
THE WISTER HOMESTEAD (GRUMBLETHORPE).

OPPOSITE QUEEN LANE, BUILT BY JOHANNES WÜSTER IN 1744. No. 5261. STILL STANDING.

THE PENNSYLVANIA-GERMAN SOCIETY.

QUAINT OLD GERMANTOWN—MAIN STREET—EAST SIDE.

PLATE IX.



DRAWN ON THE ZINC BY J. RICHARDS.

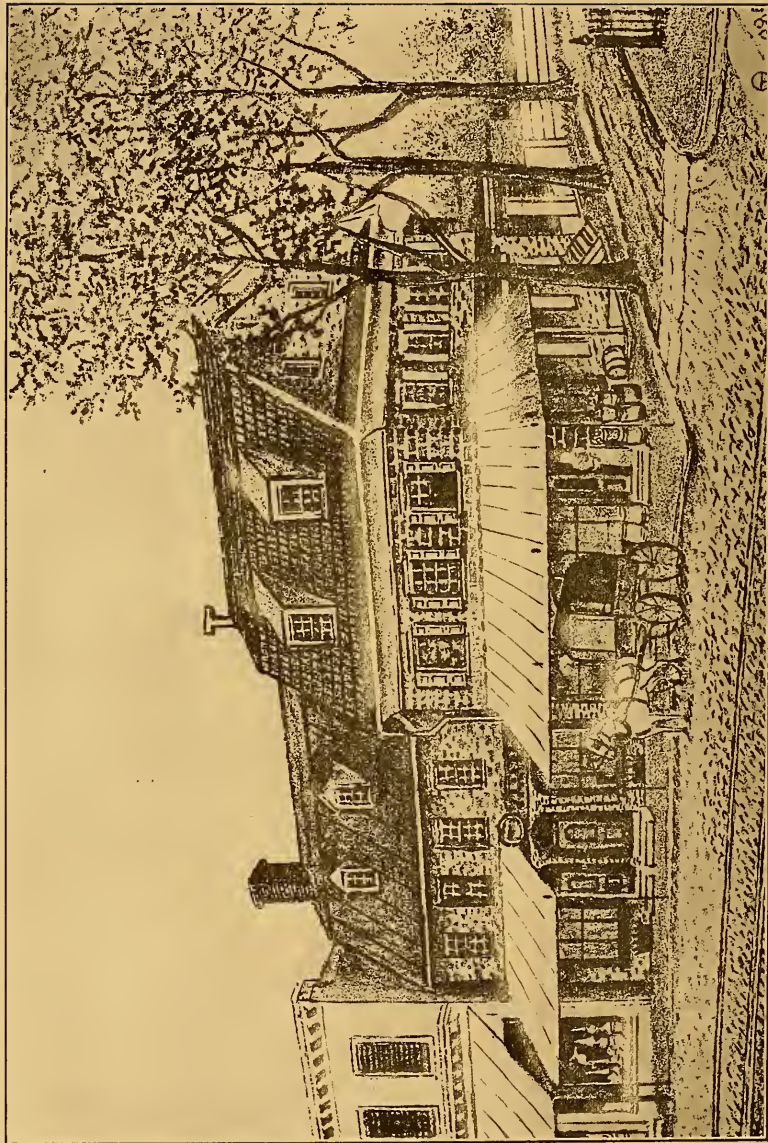
THE SHOEMAKER HOUSE.

ON GERMANTOWN AVENUE CORNER OF SHOEMAKER'S LANE (PENN STREET), BUILT EARLY IN THE XVIII CENTURY.
DEMOLISHED 1838-1840. SITE OCCUPIED BY Nos. 5301-5313. "COTTAGE ROW."

THE PENNSYLVANIA-GERMAN SOCIETY.

QUAINT OLD GERMANTOWN—MAIN STREET—EAST SIDE.

PLATE X.



DRAWN ON THE ZINC BY J. RICHARDS.

THE DE LA PLAINE HOUSE.

AT THE NORTHEAST CORNER OF GERMANTOWN AVENUE AND SCHOOL LANE. BUILT EARLY IN THE XVIII CENTURY. DEMOLISHED 1885. SITE NOW OCCUPIED BY THE MUTUAL FIRE INSURANCE COMPANY OF GERMANTOWN. GEORGE WHITEFIELD PREACHED FROM THE BALCONY.

THE PENNSYLVANIA-GERMAN SOCIETY.

QUAINT OLD GERMANTOWN—MAIN STREET—EAST SIDE.

PLATE XI.



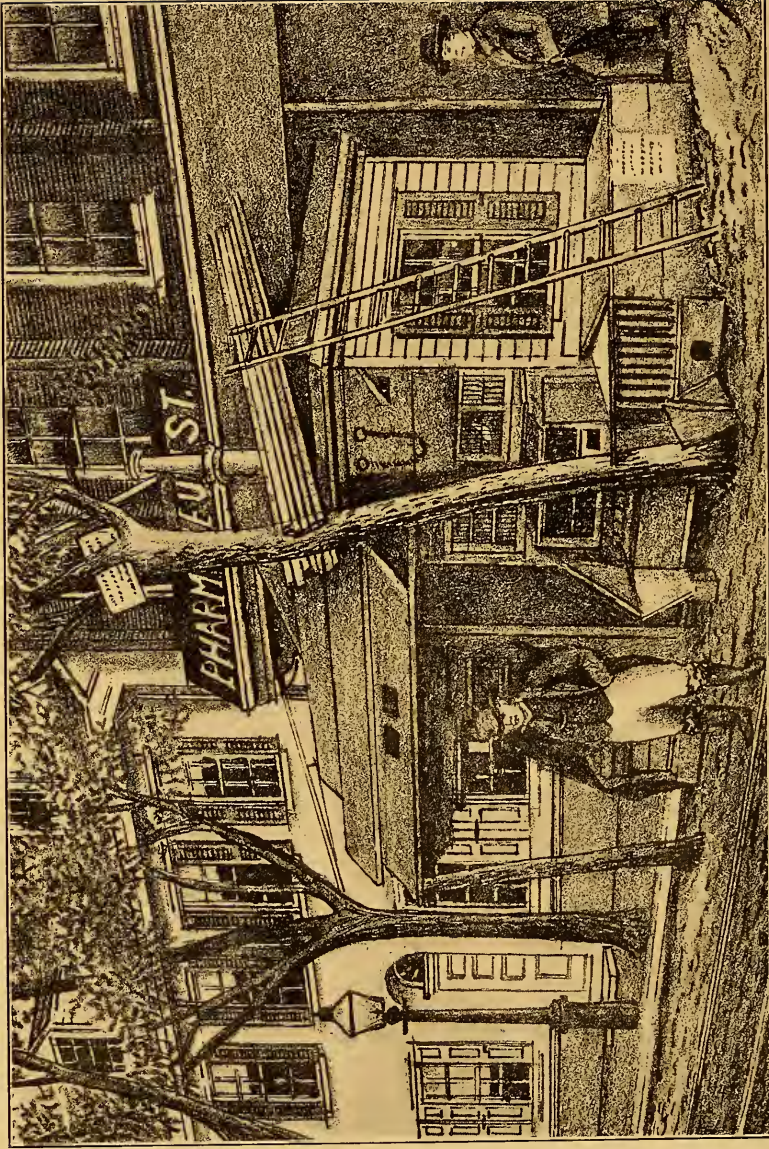
THE OLD LOG PRISON OF GERMANTOWN.

FROM SKETCH SAID TO HAVE BEEN MADE IN 1702. THIS ORIGINALLY STOOD IN MARKET SQUARE.

THE PENNSYLVANIA-GERMAN SOCIETY.

QUAINT OLD GERMANTOWN—MAIN STREET—EAST SIDE.

PLATE XII.



DRAWN ON THE ZING BY J. RICHARDS.

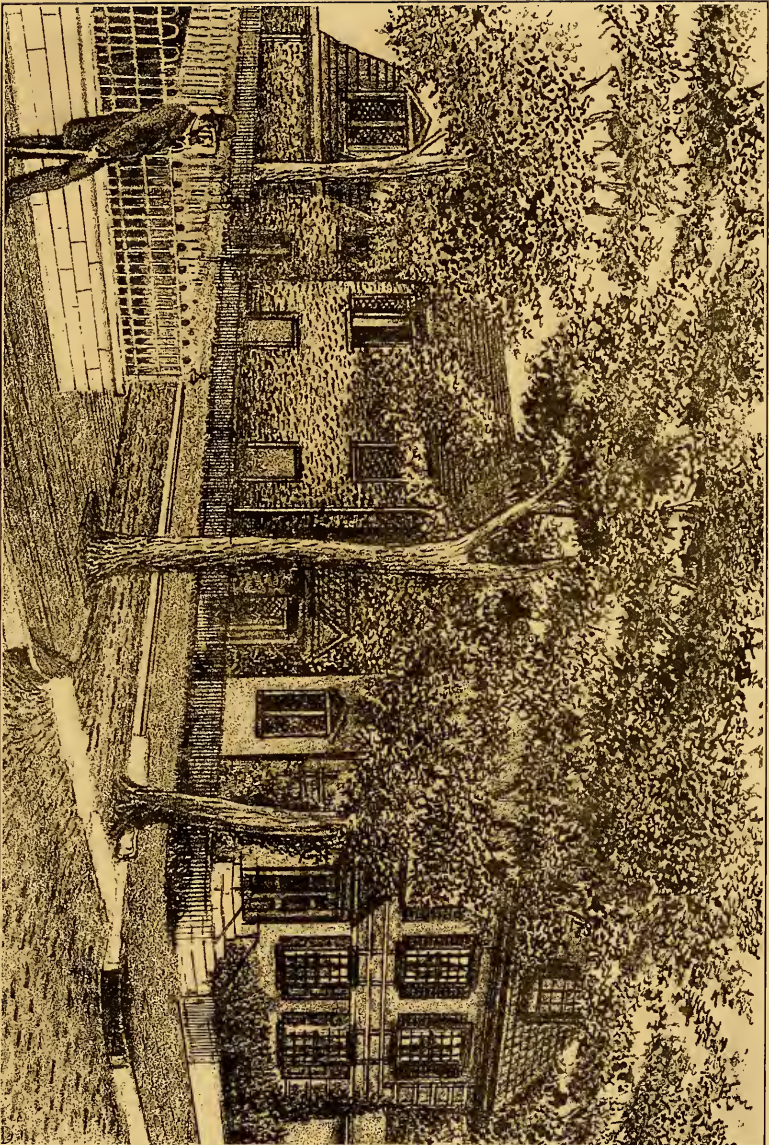
THE OLD TOLL BOOTH.

ON THE GERMANTOWN TURNPIKE, WHICH IN 1874 STOOD OPPOSITE RITTENHOUSE STREET—KNOWN AS "ENOS SPRINGER'S TOLL GATE. HE WAS THE LAST KEEPER, AND IS SHOWN IN CENTER OF PICTURE.

THE PENNSYLVANIA-GERMAN SOCIETY.

QUAINT OLD GERMANTOWN—MAIN STREET—EAST SIDE.

PLATE XIII.



DRAWN ON THE ZINC BY J. RICHARDS.

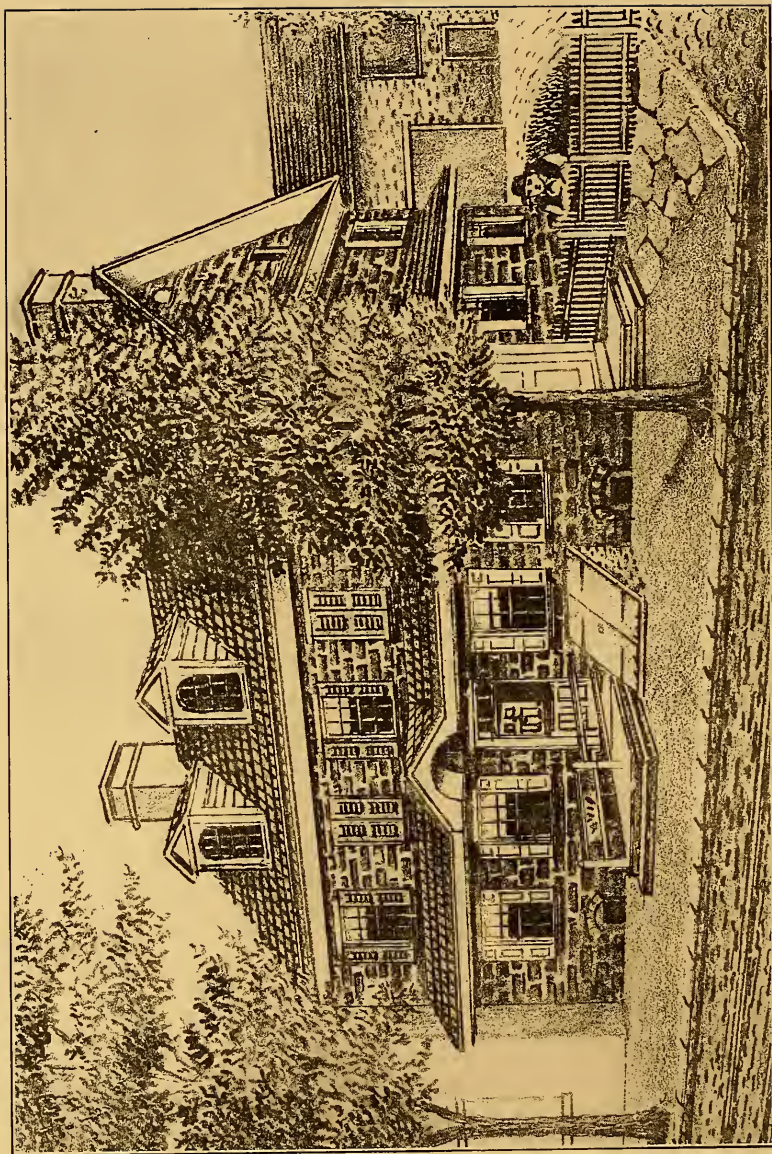
THE MORRIS-LITTELL HOUSE.

AT THE SOUTHEAST CORNER OF GERMANTOWN AVENUE AND HIGH STREET. BUILT ON THE SIGHT OF THE HOME OF DR. CHRISTOPHER WITT AND DANIEL GEISSLER.

THE PENNSYLVANIA-GERMAN SOCIETY.

QUAINT OLD GERMANTOWN—MAIN STREET—EAST SIDE.

PLATE XIV.



DRAWN ON THE ZINC BY J. RICHARDS.

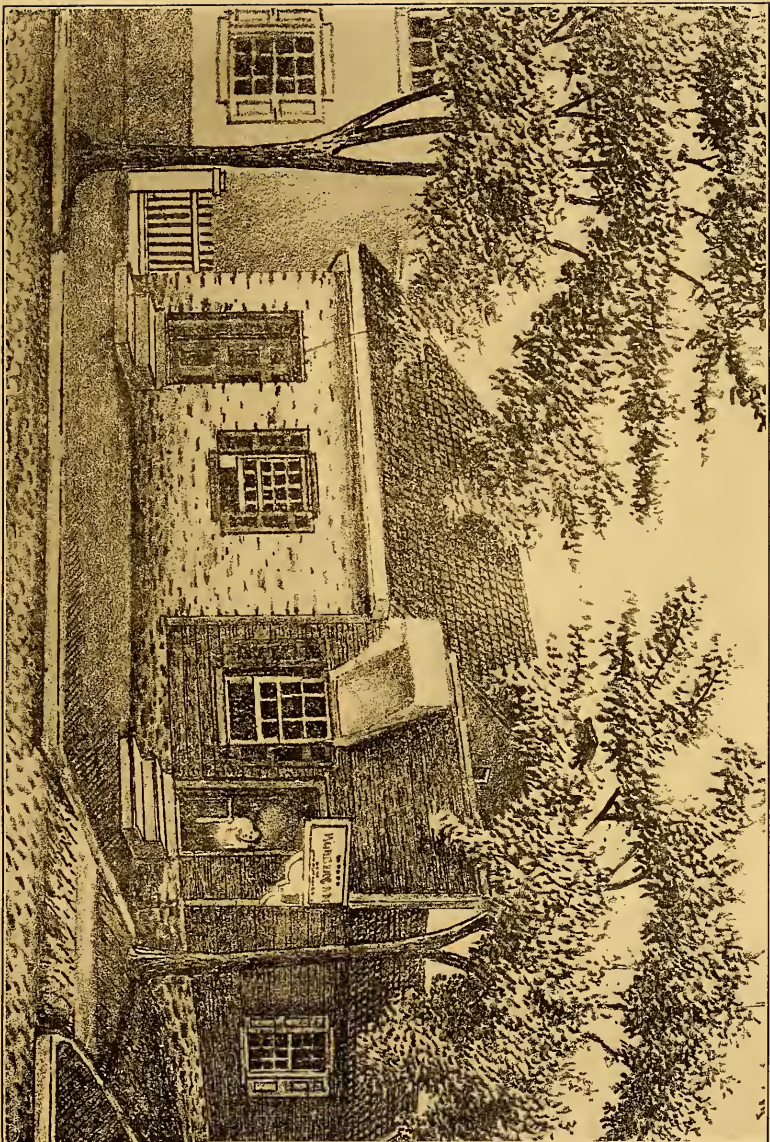
THE PASTORIUS HOUSE.

BUILT BY DANIEL PASTORIUS IN 1748. NOW No. 6019. FORMERLY USED AS A PUBLIC HOUSE AND KNOWN SUCCESSIVELY AS "THE SADLER'S ARMS," "THE GREEN TREE INN" AND "THE WIDOW MACKINETS'S."

THE PENNSYLVANIA-GERMAN SOCIETY.

QUAINT OLD GERMANTOWN—MAIN STREET—EAST SIDE.

PLATE XV.



DRAWN ON THE ZINC BY J. RICHARDS.

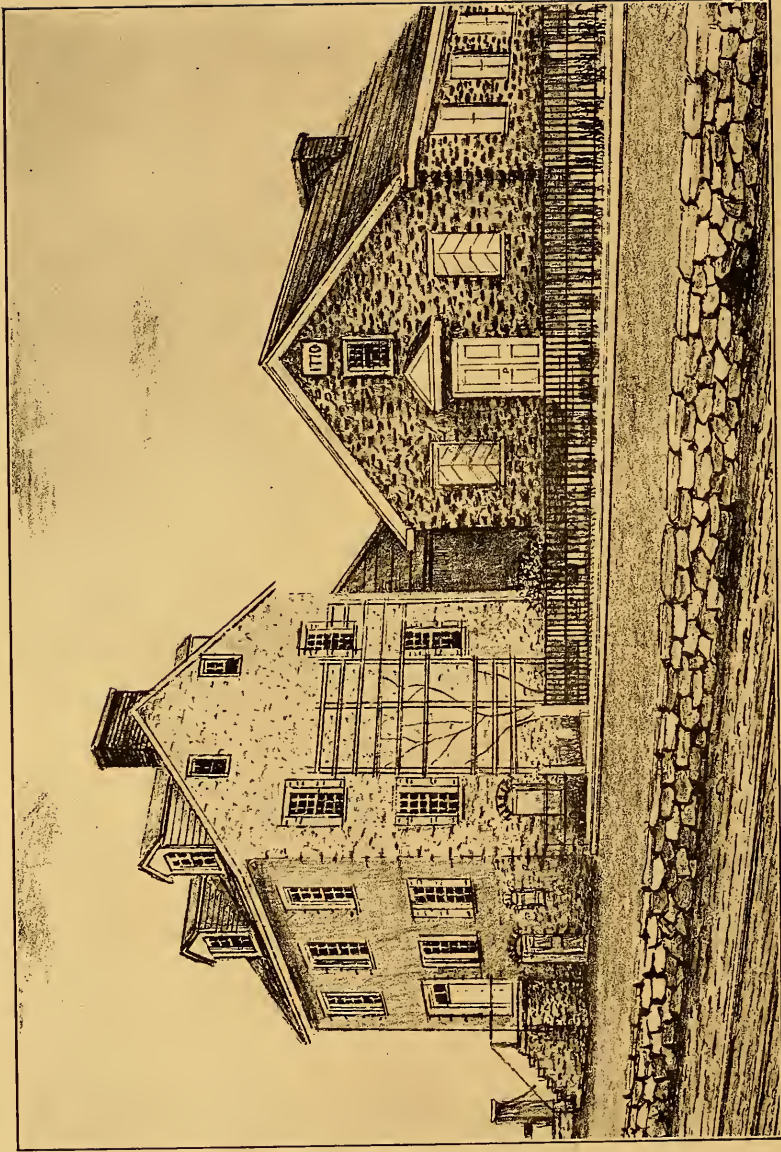
DR. DEEVER'S HOUSE AND FIRST POST-OFFICE.

GERMANTOWN AVENUE BELOW WALNUT LANE. DR. DEEVER'S (No. 6033) HOUSE AND AN OLD BUILDING ALLEGED TO HAVE BEEN USED BY DR. WITT AND THE FIRST GERMANTOWN POST-OFFICE (No. 6027).

THE PENNSYLVANIA-GERMAN SOCIETY.

QUAINT OLD GERMANTOWN—MAIN STREET—EAST SIDE.

PLATE XVI.



DRAWN ON THE ZINC BY J. RICHARDS.

THE MENNONITE CHURCH AND SAMUEL KEYSER'S.

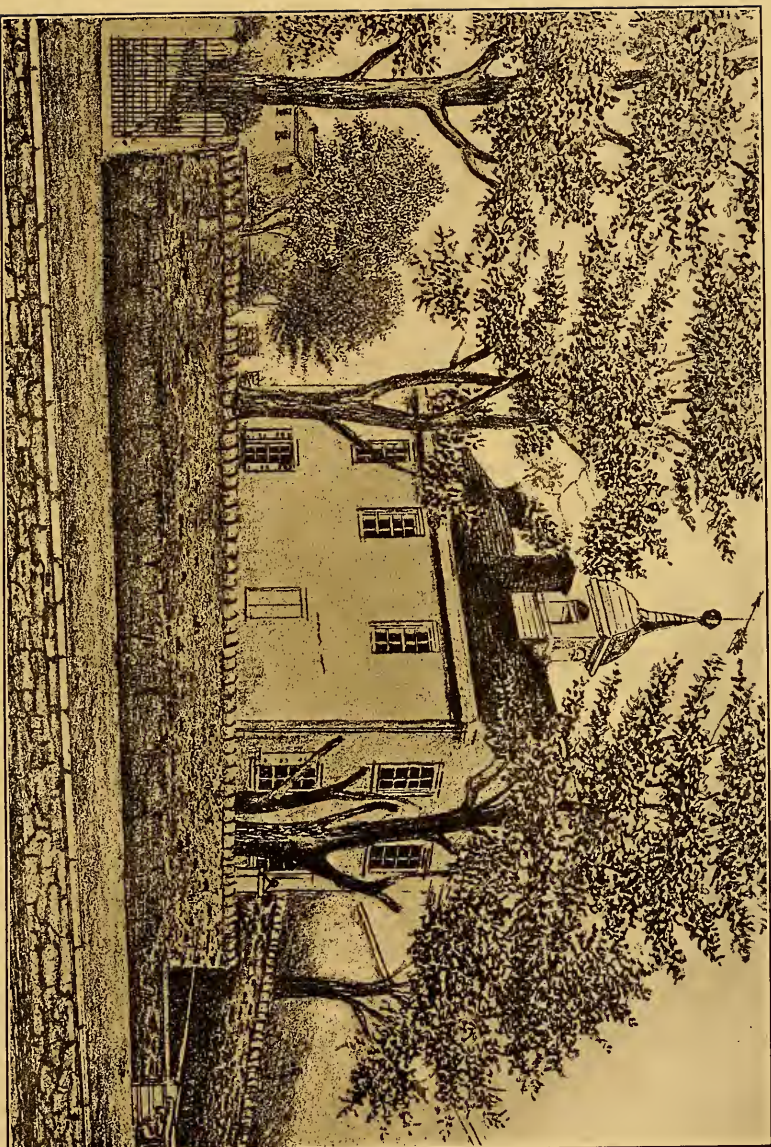
BUILT A. D. 1770 (No. 6121-31), AND THE SAMUEL KEYSER HOUSE WITH ITS OLD PUMP (SITE OF No. 6133-35.)

DEMOLISHED ABOUT 1871.

THE PENNSYLVANIA-GERMAN SOCIETY.

QUAINT OLD GERMANTOWN—MAIN STREET—EAST SIDE.

PLATE XVII.



DRAWN ON THE ZINC BY J. RICHARDS.

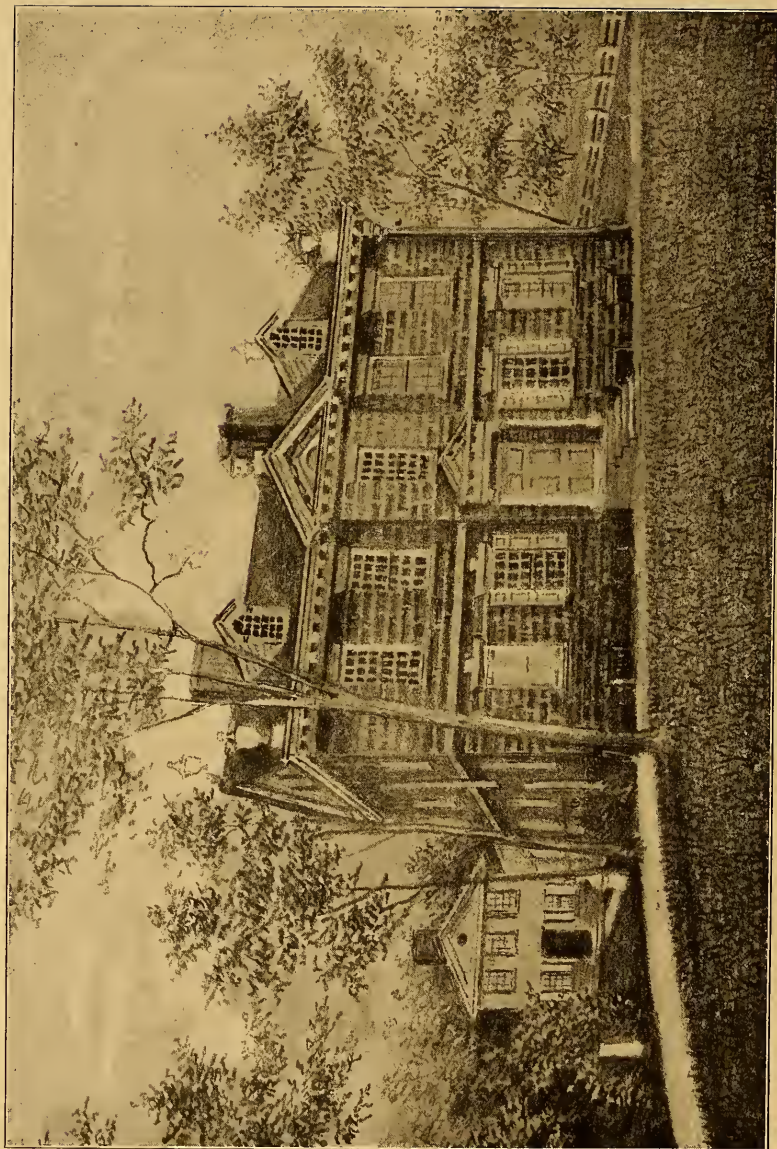
THE CONCORD SCHOOL-HOUSE.

(No. 6309) BUILT A. D. 1776. THE GRAVEYARD ADJOINING IT IS KNOWN AS THE "UPPER OR AXE'S" BURYING GROUND.
THE BURIAL PLACE OF MANY OF THE OLDEST SETTLERS OF GERMANTOWN.

THE PENNSYLVANIA-GERMAN SOCIETY.

QUAINT OLD GERMANTOWN—MAIN STREET—EAST SIDE.

PLATE XVIII.



DRAWN ON THE ZINC BY J. RICHARDS.

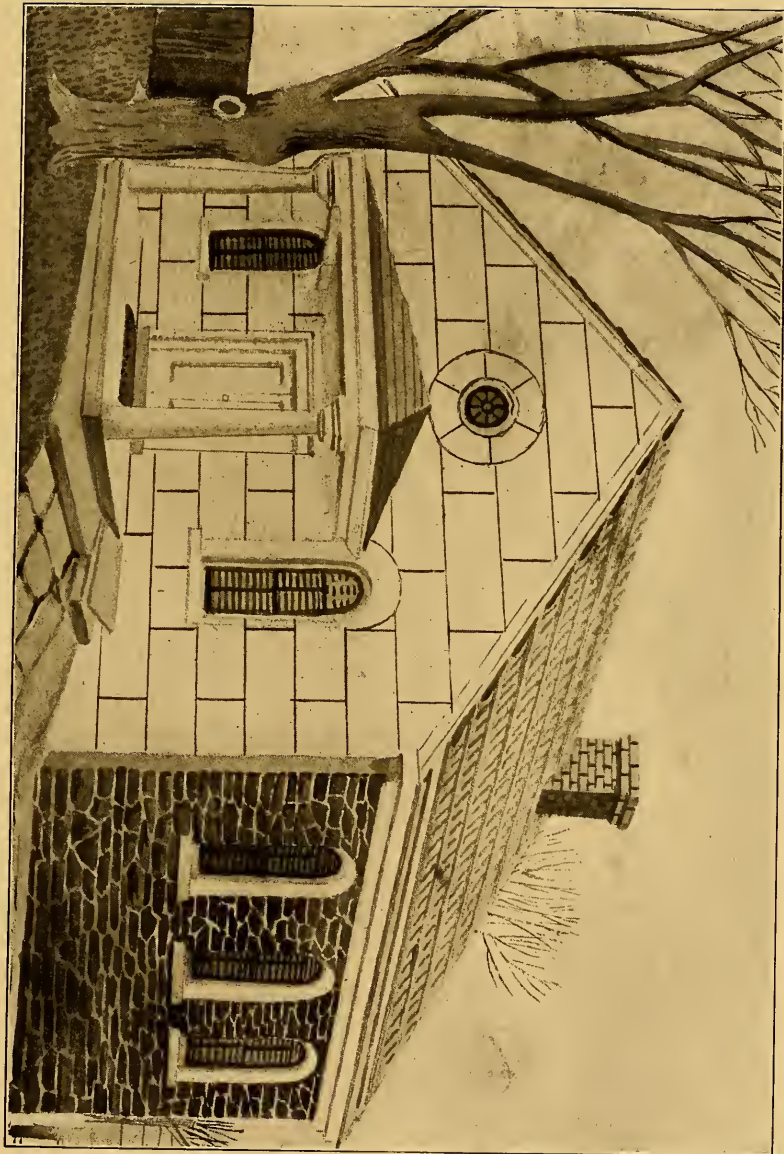
THE HISTORIC "CHEW" MANSION—"CLIVEDEN".

IT WAS AROUND THIS HOUSE THAT THE BATTLE OF GERMANTOWN SURGED OCTOBER 4, 1777.

THE PENNSYLVANIA-GERMAN SOCIETY.

QUAINT OLD GERMANTOWN—MAIN STREET—EAST SIDE.

PLATE XIX.



DRAWN BY J. RICHARDS.

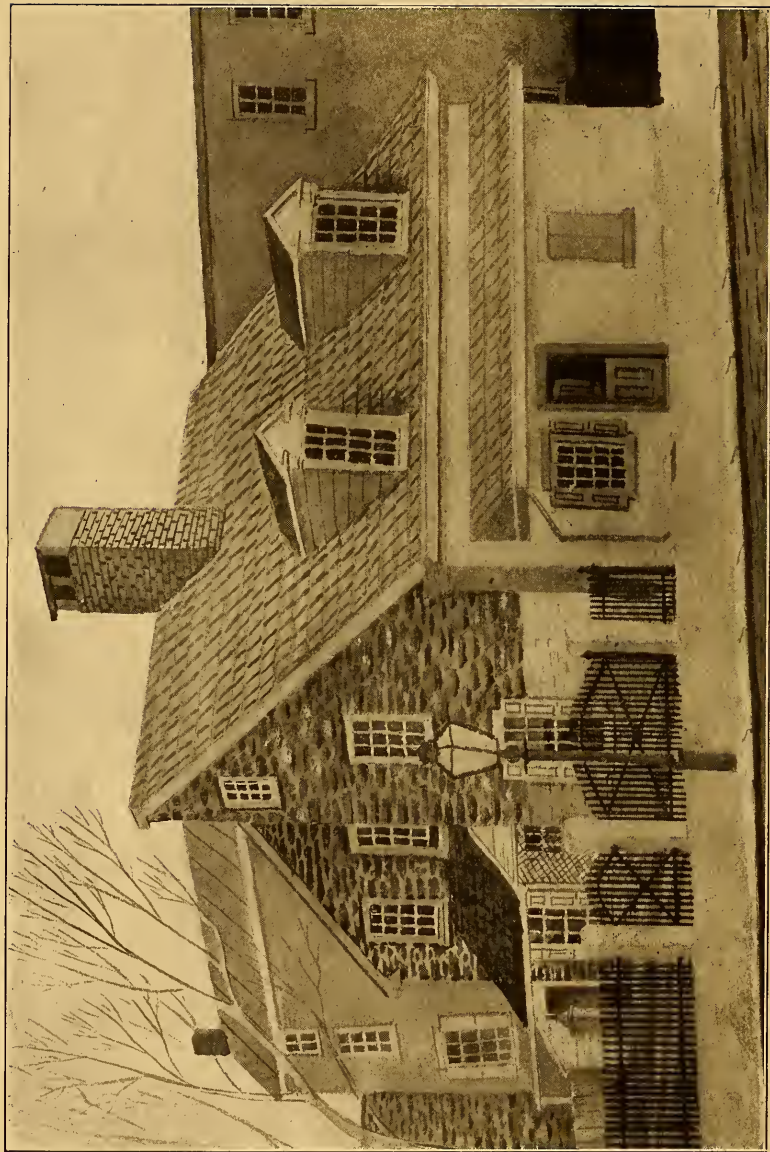
THE DUNKER MEETING HOUSE.

GERMANTOWN AVENUE AND SHARPNAK STREET (No. 6617). BUILT A. D. 1770.

THE PENNSYLVANIA-GERMAN SOCIETY.

QUAINT OLD GERMANTOWN—MAIN STREET—EAST SIDE.

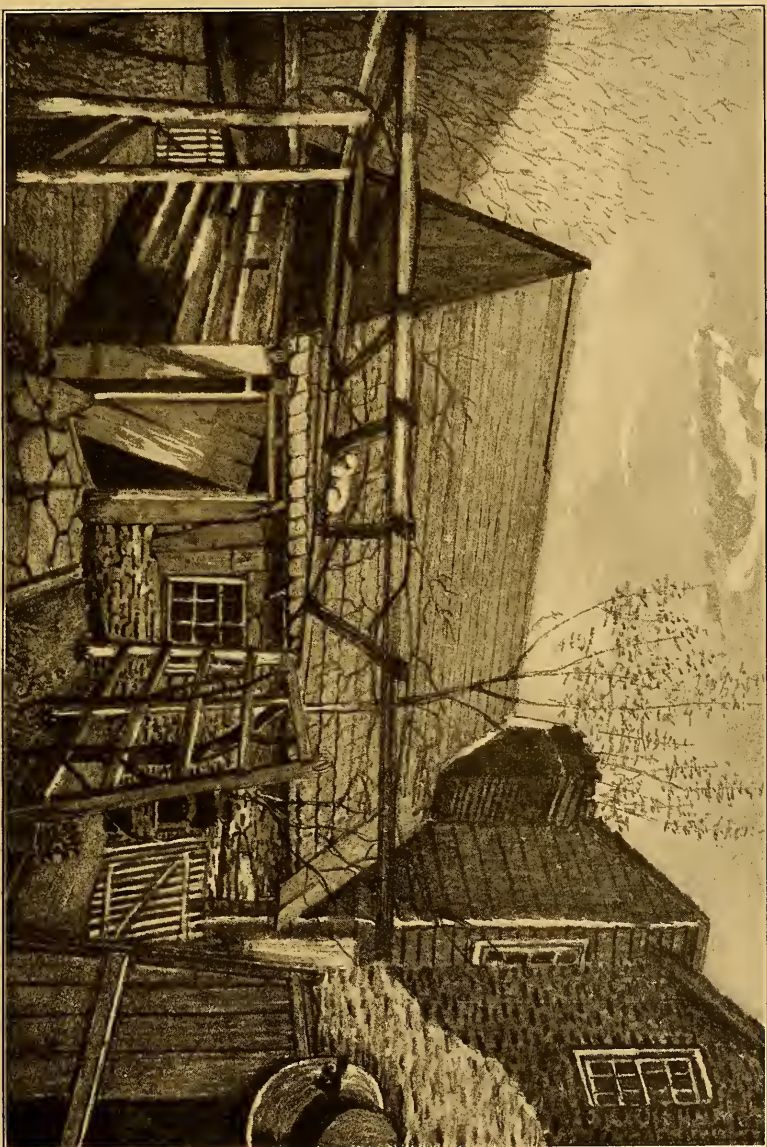
PLATE XX.



DRAWN ON THE ZINC BY J. RICHARDS.

THE OLD DUNKER PARSONAGE.

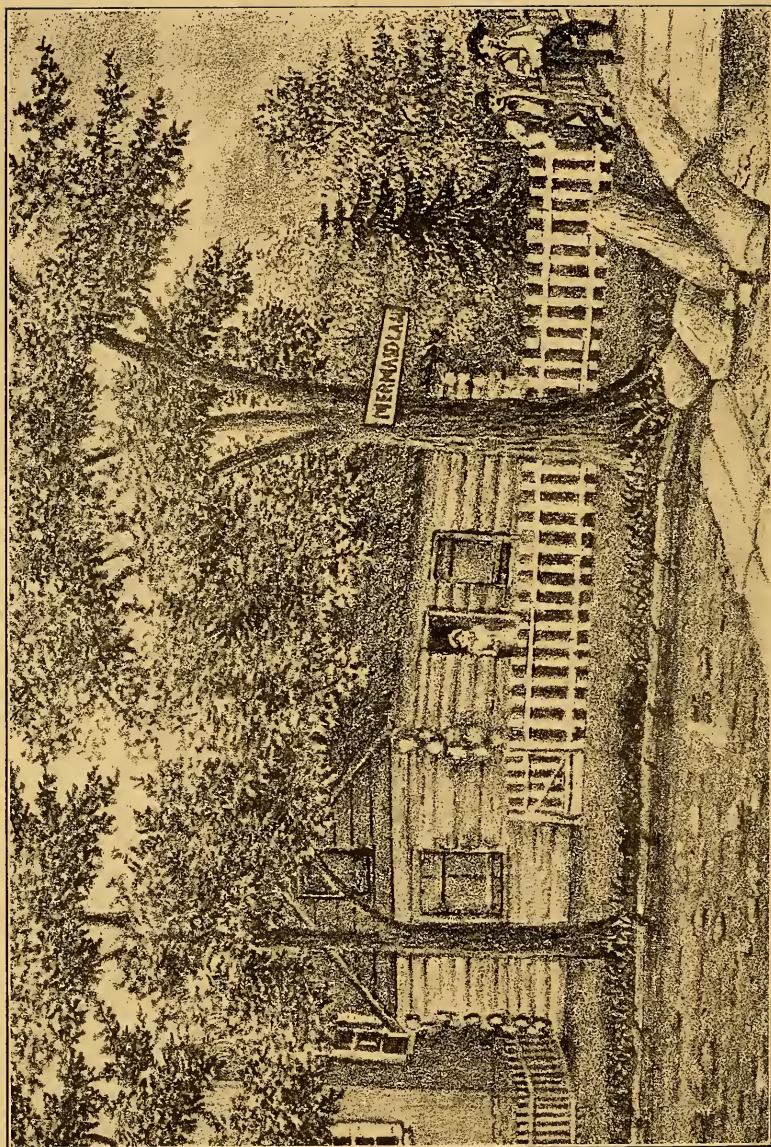
GERMANTOWN AVENUE AND SHARPKNACK STREET, ADJOINING THE CHURCH. SITE OF No. 6613. IT WAS BUILT OVER TWO HUNDRED YEARS AGO, DEMOLISHED IN 1907.



DRAWN ON THE ZINC BY J. RICHARDS.

THE OLD WEAVER HOUSE.

SITE OF No. 6611. BUILT ABOUT 1731 FOR THE USE OF ALEXANDER MACK, THE FOUNDER OF THE GERMAN BRETHREN OR DUNKERS. AFTER HIS DEATH IT CAME INTO POSSESSION OF HIS SON, JOHANNES MACK, A STOCKING WEAVER—HENCE THE NAME.



DRAWN ON THE ZINC BY J. RICHARDS

THE YEAKLE LOG CABIN.

NORTHEAST CORNER OF GERMANTOWN AVENUE AND MERMAID LANE. BUILT IN 1748 BY CHRISTOPHER YEAKLE,
A SCHWENKFELDER IMMIGRANT. DEMOLISHED MARCH 29, 1906.

THE PENNSYLVANIA-GERMAN SOCIETY.

QUAINT OLD GERMANTOWN—MAIN STREET—WEST SIDE.

PLATE XXIII.



DRAWN ON THE ZINC BY J. RICHARDS.

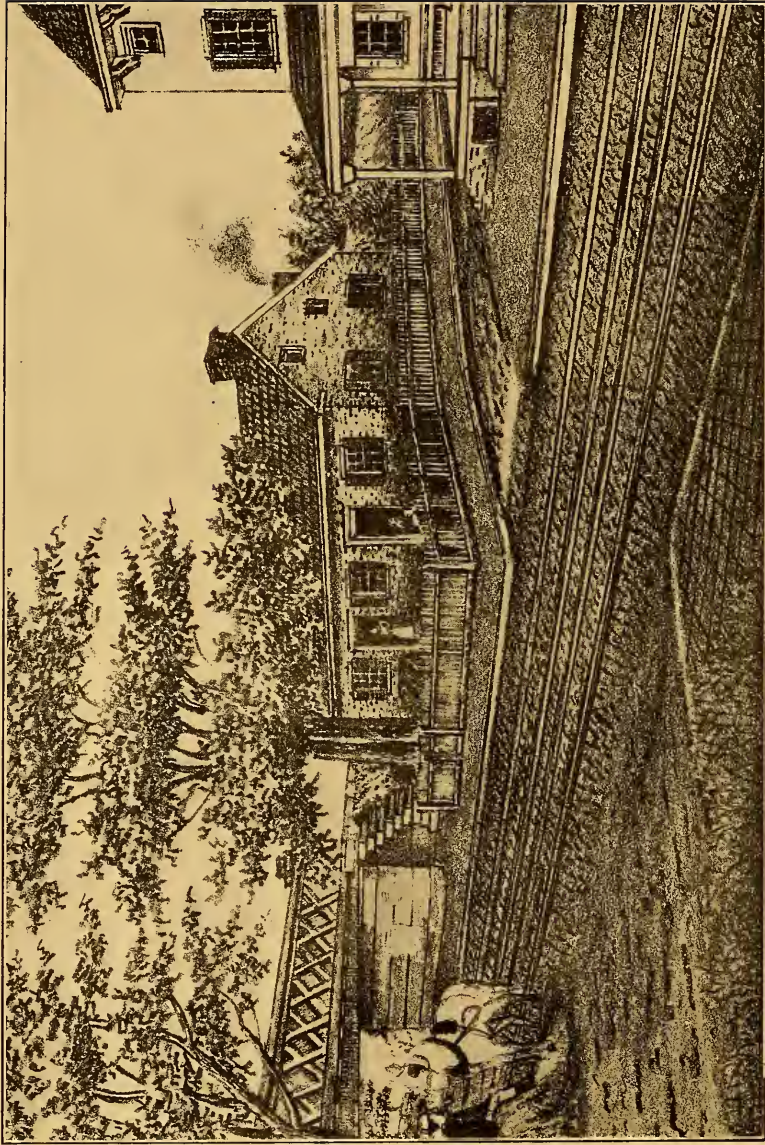
THE ROBERTS MANSION "WILLOW GLEN".

FORMERLY ON THE WEST SIDE OF GERMANTOWN AVENUE SOUTH OF THE RAILROAD STATION AT WAYNE JUNCTION.
NOT KNOWN WHEN BUILT. DEMOLISHED 1902. REAR OF NO. 4450.

THE PENNSYLVANIA-GERMAN SOCIETY.

QUAINT OLD GERMANTOWN—MAIN STREET—WEST SIDE.

PLATE XXIV.



DRAWN ON THE ZINC BY J. RICHARDS.

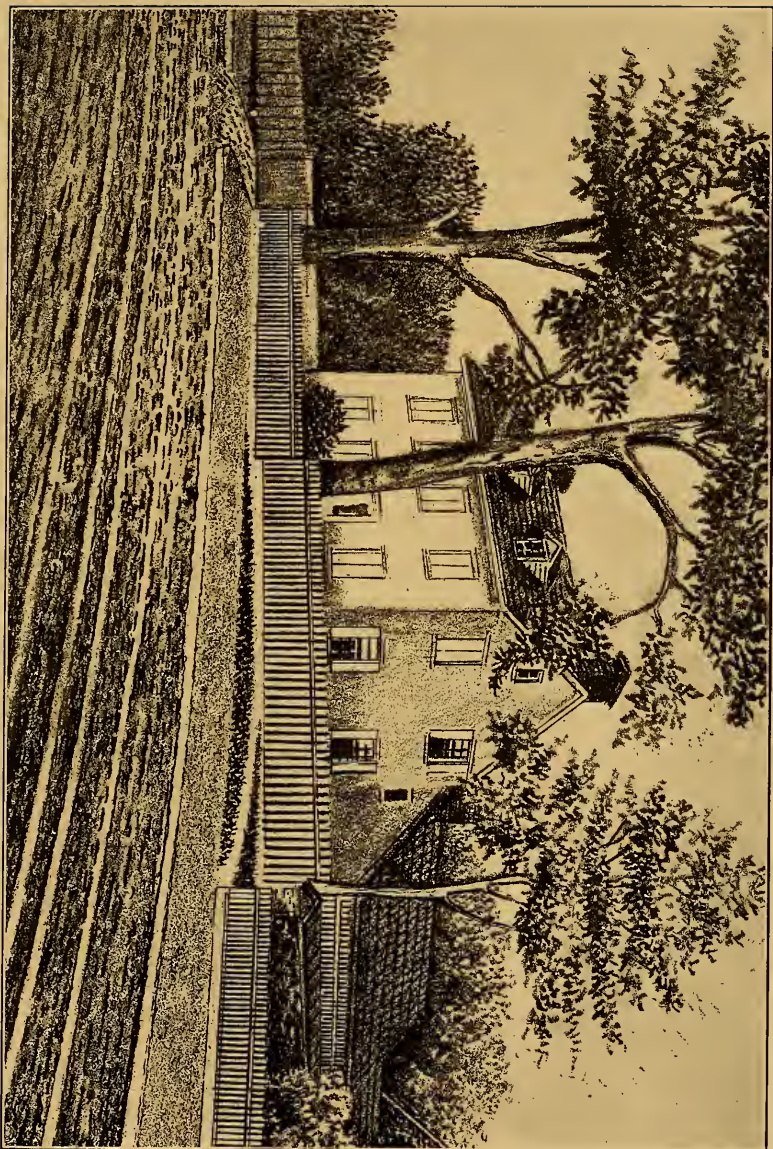
THE OLD NAGLEE HOUSE.

WEST SIDE OF GERMANTOWN AVENUE (Nos. 4518-4520). ONE OF THE OLDEST BUILDINGS IN GERMANTOWN. BUILT LATE IN THE XVII OR EARLY IN THE XVIII CENTURY.

THE PENNSYLVANIA-GERMAN SOCIETY.

QUAINT OLD GERMANTOWN—MAIN STREET—WEST SIDE.

PLATE XXV.



DRAWN ON THE ZINC BY J. RICHARDS.

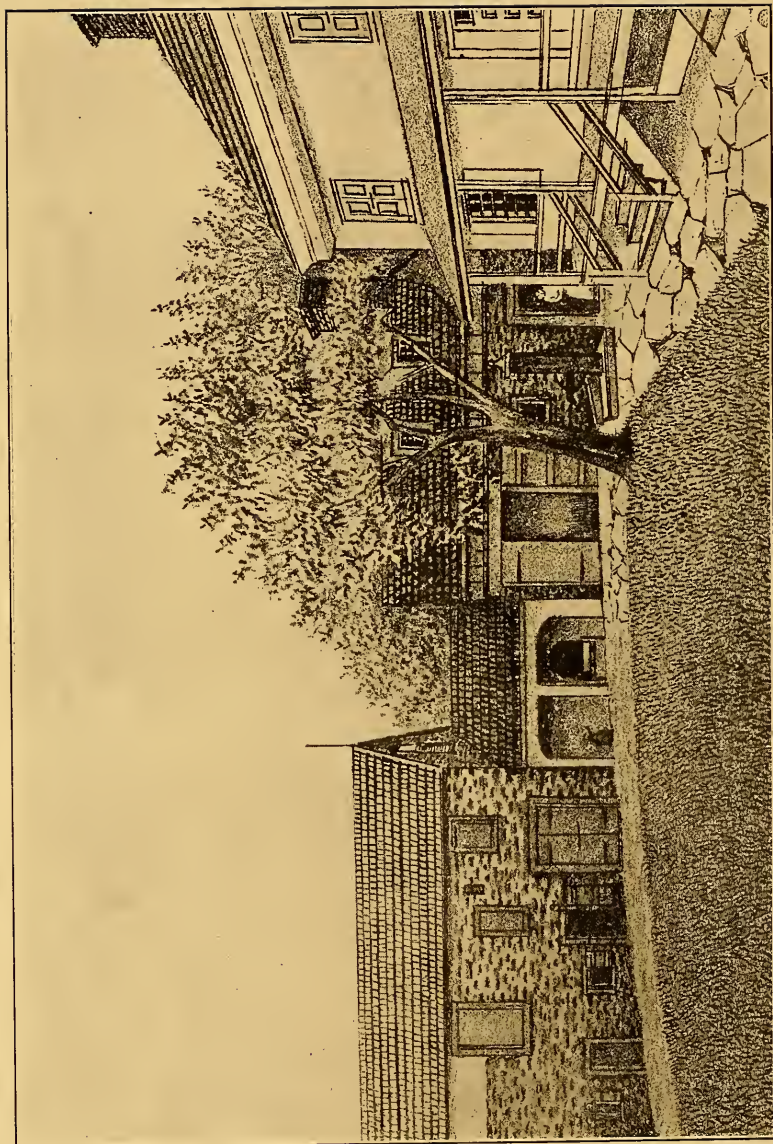
THE MECHLIN-WAGNER HOUSE.

(No. 4840), BUILT A. D. 1747. USED AS A HOSPITAL BY THE BRITISH AFTER THE BATTLE, OCTOBER 4, 1777.

THE PENNSYLVANIA-GERMAN SOCIETY.

QUAINT OLD GERMANTOWN—MAIN STREET—WEST SIDE.

PLATE XXVI.



DRAWN ON THE ZINC BY J. RICHARDS.

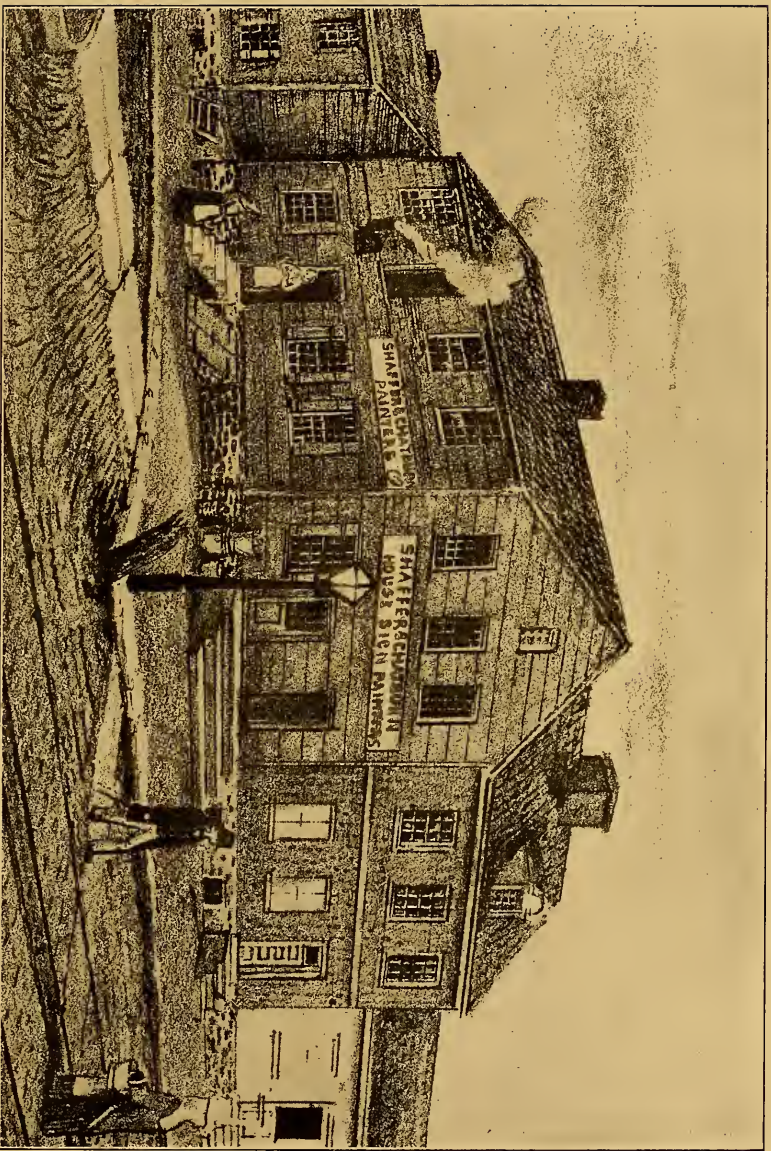
REAR OF THE MECHLIN-WAGNER PROPERTY.

SHOWING THE BARN DOORS USED BY THE BRITISH FOR OPERATING TABLES AFTER THE BATTLE OF GERMANTOWN.

THE PENNSYLVANIA-GERMAN SOCIETY.

QUAINT OLD GERMANTOWN—MAIN STREET—WEST SIDE.

PLATE XXVII.



DRAWN ON THE ZINC BY J. RICHARDS.

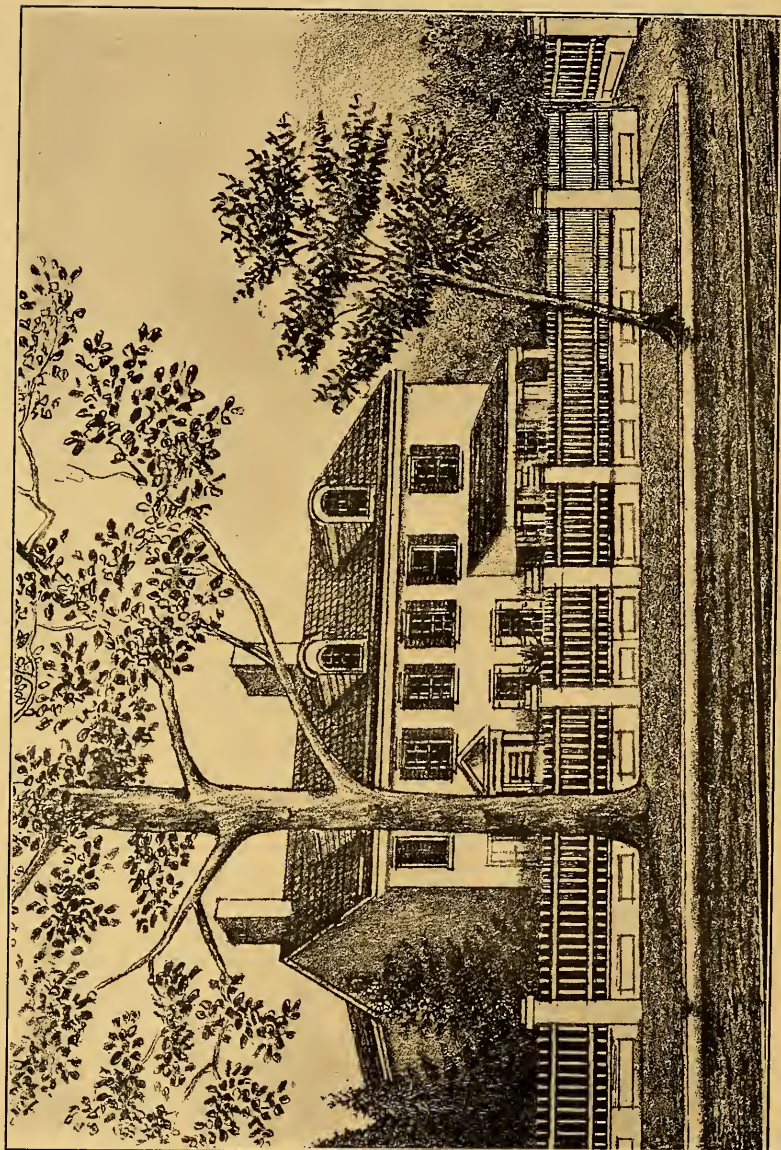
OLD HOUSES CORNER OF MANHEIM STREET IN 1866.

SITE OF No. 5100.

THE PENNSYLVANIA-GERMAN SOCIETY.

QUAINT OLD GERMANTOWN—MAIN STREET—WEST SIDE.

PLATE XXVIII.



DRAWN ON THE ZINC BY J. RICHARDS.

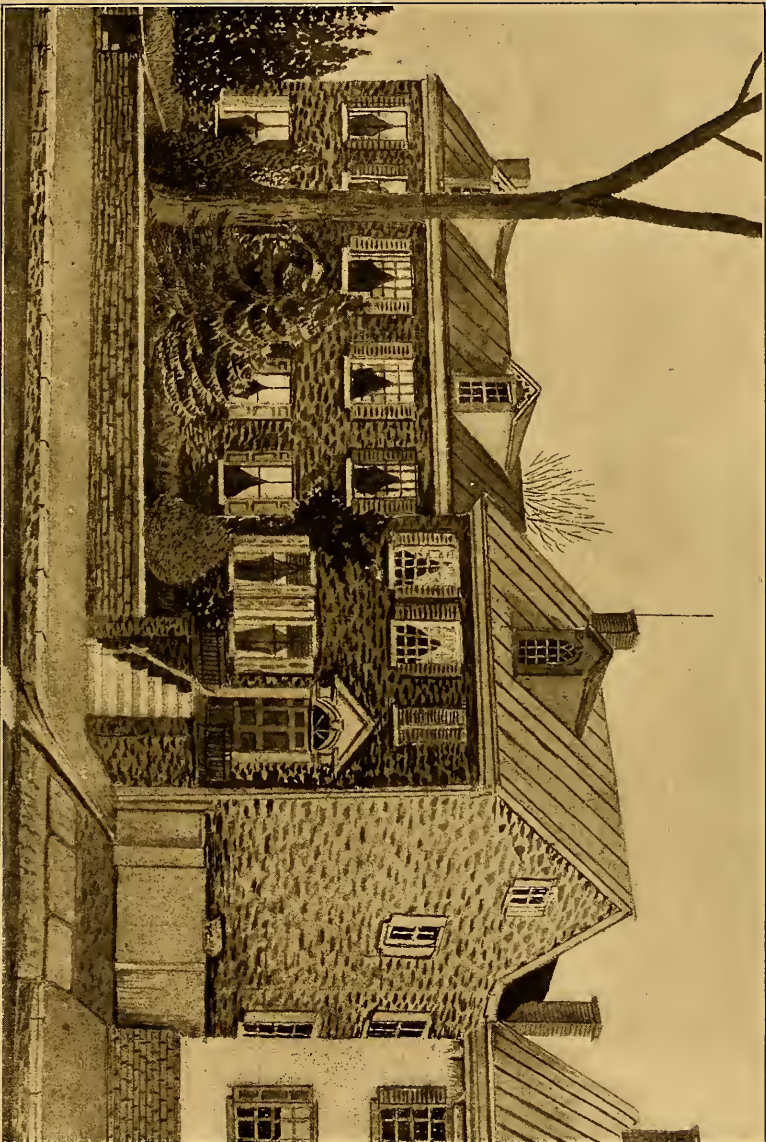
HISTORIC ROEBUCK INN.

(No. 5122), BUILT BY JOSEPH SHIPPEN ABOUT 1716. FIRST KNOWN AS THE SHIPPEN HOUSE, LATER AS THE ROEBUCK, AND BECAME A NOTED COLONIAL INN. IN LATER YEARS IT CAME INTO POSSESSION OF THE HEFT FAMILY, WHO FOR YEARS KEPT IT AS THE "BUTTONWOOD" TAVERN. LOCALLY IT WAS KNOWN AS "HEFT'S".

THE PENNSYLVANIA-GERMAN SOCIETY.

QUAINT OLD GERMANTOWN—MAIN STREET—WEST SIDE.

PLATE XXIX.



DRAWN BY J. RICHARDS.

MAIN STREET OPPOSITE BRINGHURST.

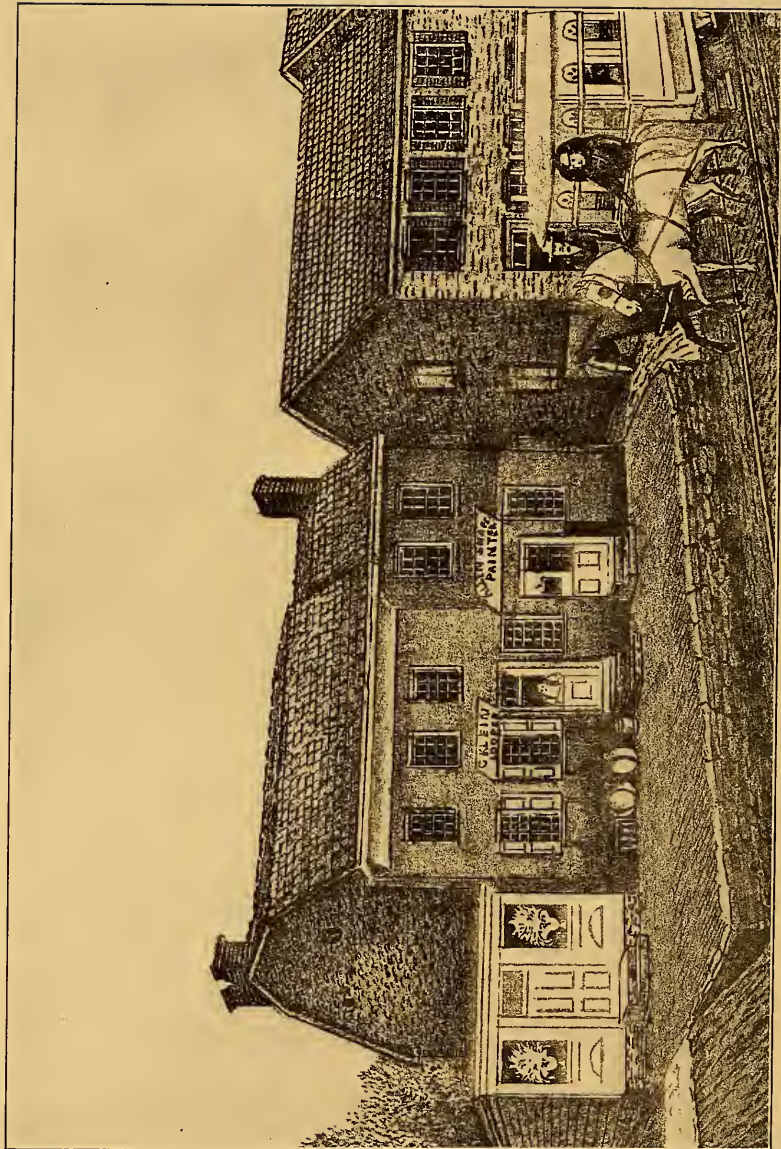
SHOWING THE D. H. CONYNGHAM HOUSE (No. 5214) BUILT ABOUT 1780. LATER OCCUPIED FOR MANY YEARS BY

ISAIAH HACKER, ALSO THE HOWELL HOUSE (No. 5218).

THE PENNSYLVANIA-GERMAN SOCIETY.

QUAINT OLD GERMANTOWN—MAIN STREET—WEST SIDE.

PLATE XXX.



DRAWN ON THE ZINC BY J. RICHARDS.

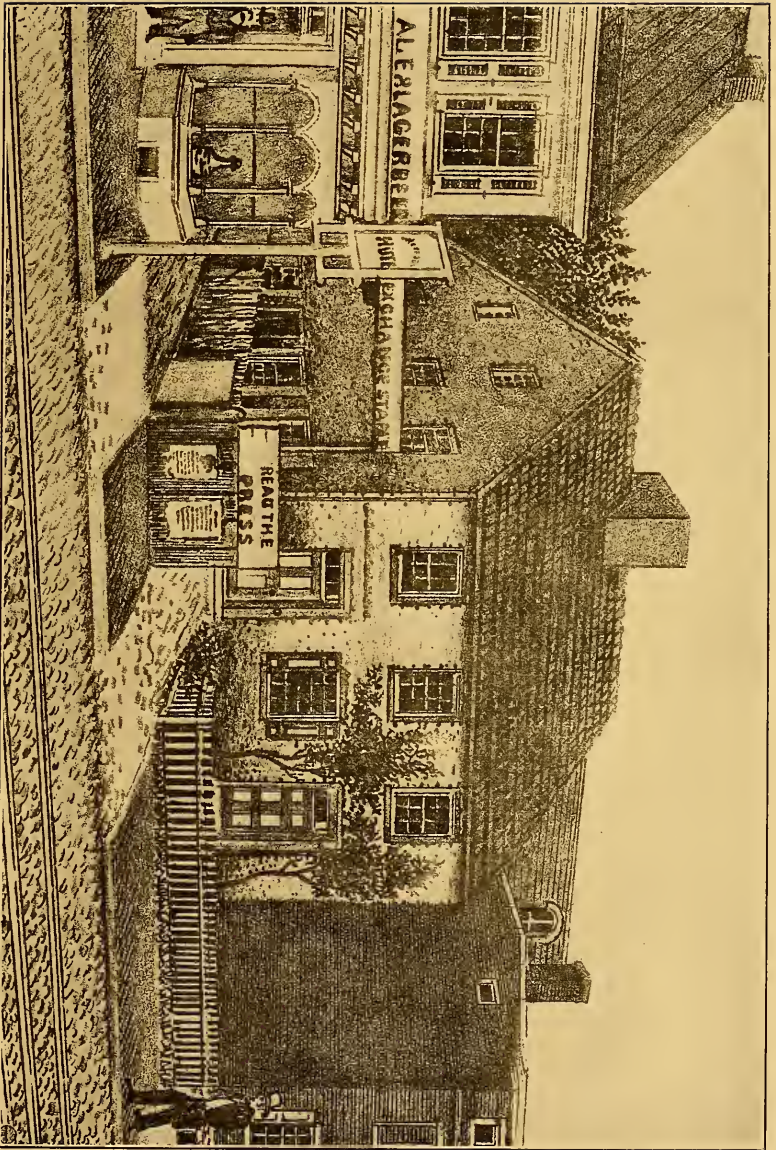
THE OLD (VAN LAUCHET) WEGGANDT HOUSE.

(SITE OF Nos. 5230-5232) AND "KALCKGLASER HOUSE" (SITE OF Nos. 5234-5236).

THE PENNSYLVANIA-GERMAN SOCIETY.

QUAINT OLD GERMANTOWN—MAIN STREET—WEST SIDE.

PLATE XXXI.



DRAWN ON THE ZING BY J. RICHARDS.

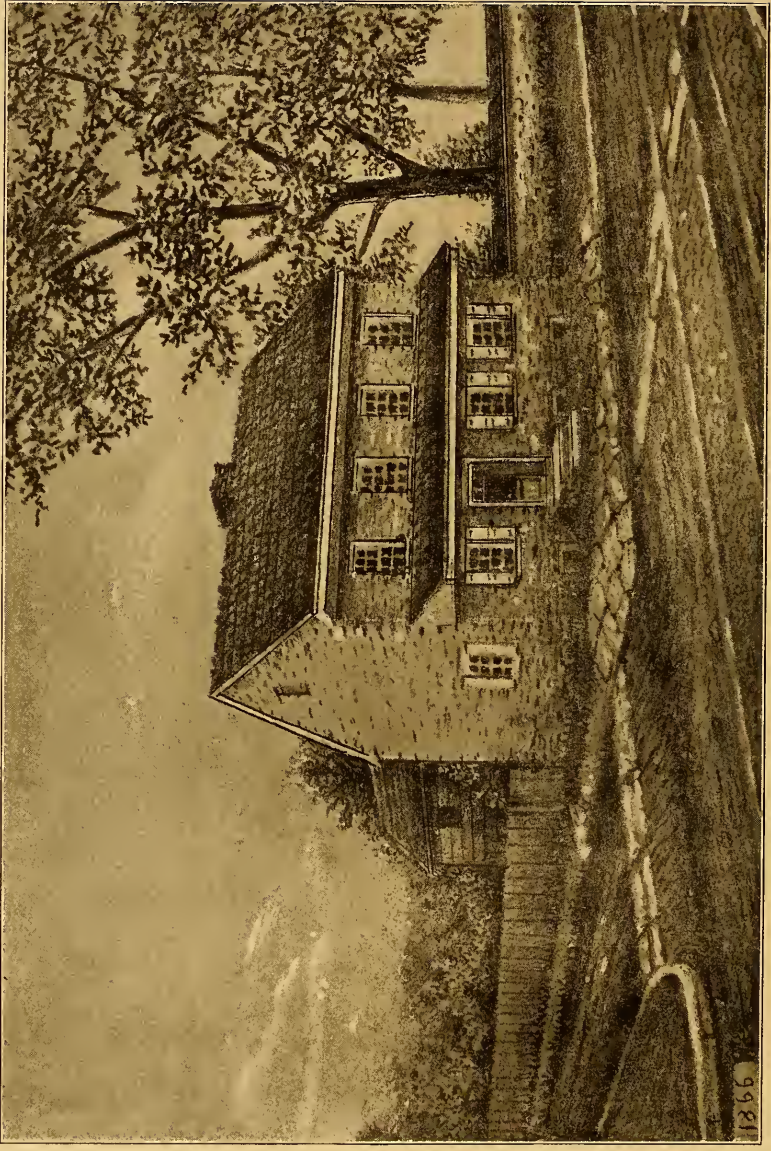
GERMANTOWN AVENUE ABOVE PENN STREET.

SHOWING JOHN MUSHLEK'S BAKERY (No. 5838).

THE PENNSYLVANIA-GERMAN SOCIETY.

QUAINT OLD GERMANTOWN—MAIN STREET—WEST SIDE.

PLATE XXXII.



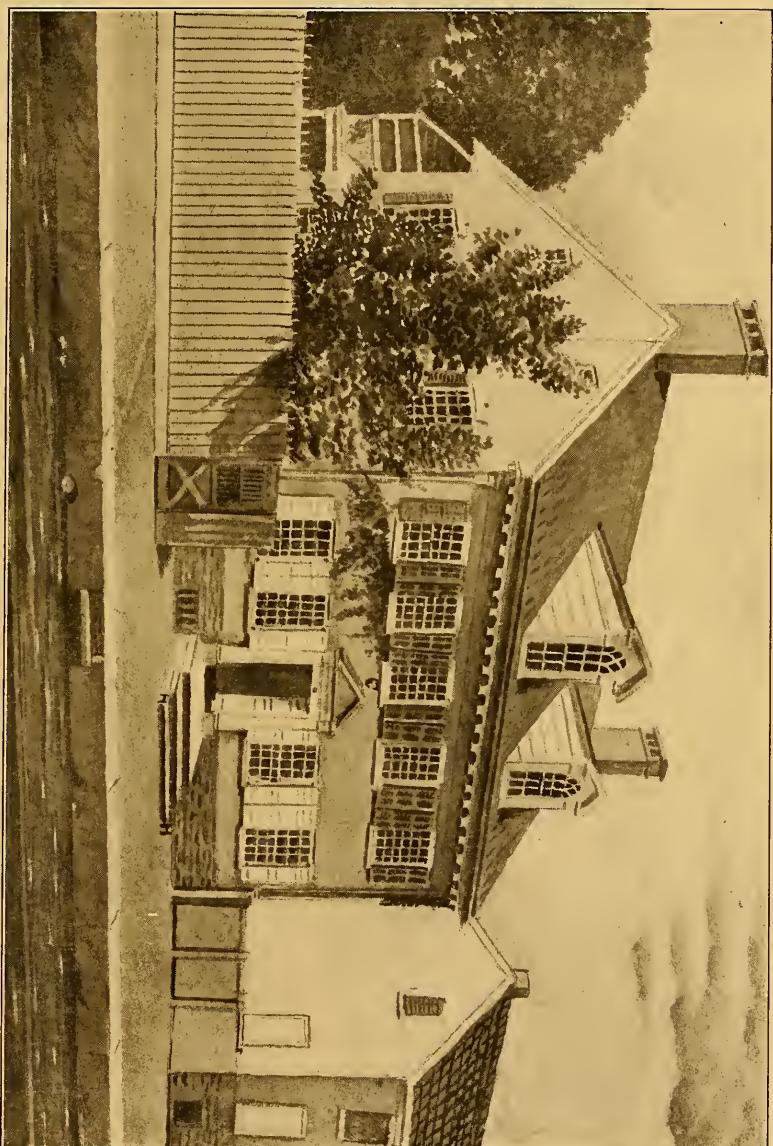
DRAWN ON THE ZINC BY J. RICHARDS.

CHRISTOPHER BOCKIUS' HOUSE.
CORNER OF MAIN AND COULTER STREETS (No. 5400).

THE PENNSYLVANIA-GERMAN SOCIETY.

QUAINT OLD GERMANTOWN—MAIN STREET—WEST SIDE.

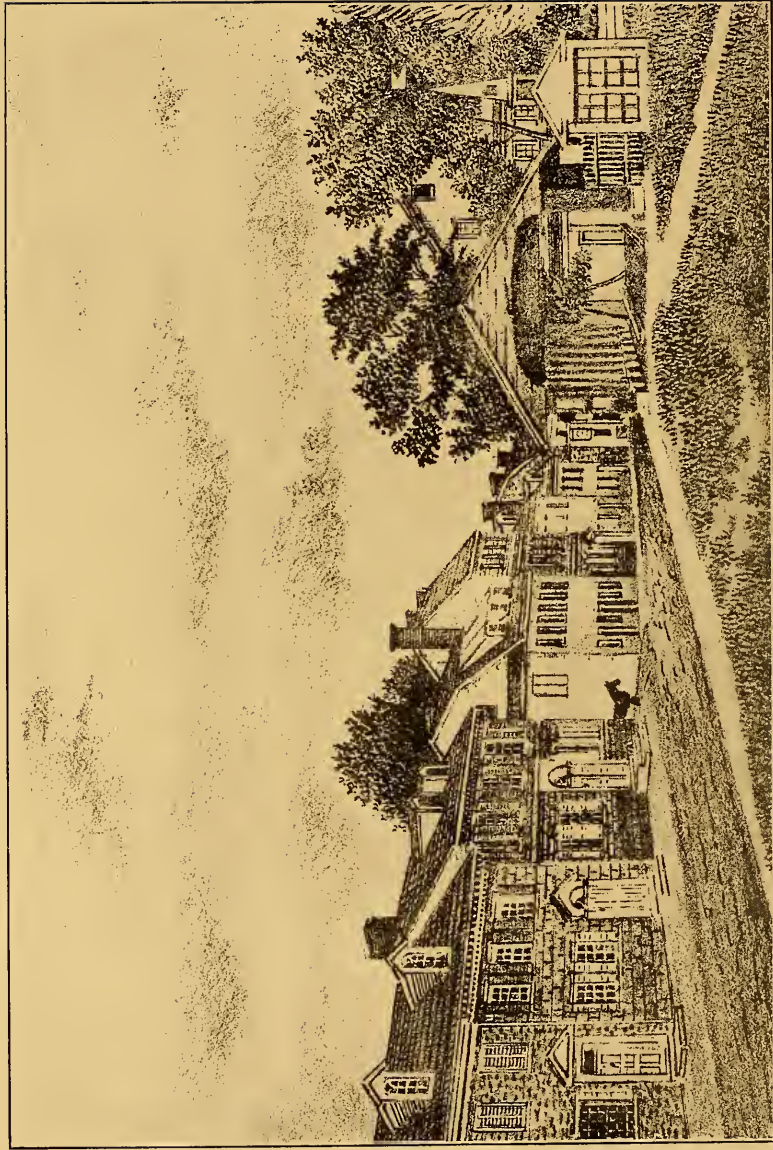
PLATE XXXIII.



DRAWN BY J. RICHARDS.

THE MORRIS-DESHLER HOUSE.

GERMANTOWN AVENUE OPPOSITE CHURCH LANE (No. 5442).
BUILT A.D. 1772. OCCUPIED UPON TWO OCCASIONS BY GENERAL WASHINGTON WHILE PRESIDENT.



DRAWN ON THE ZINC BY J. RICHARDS.

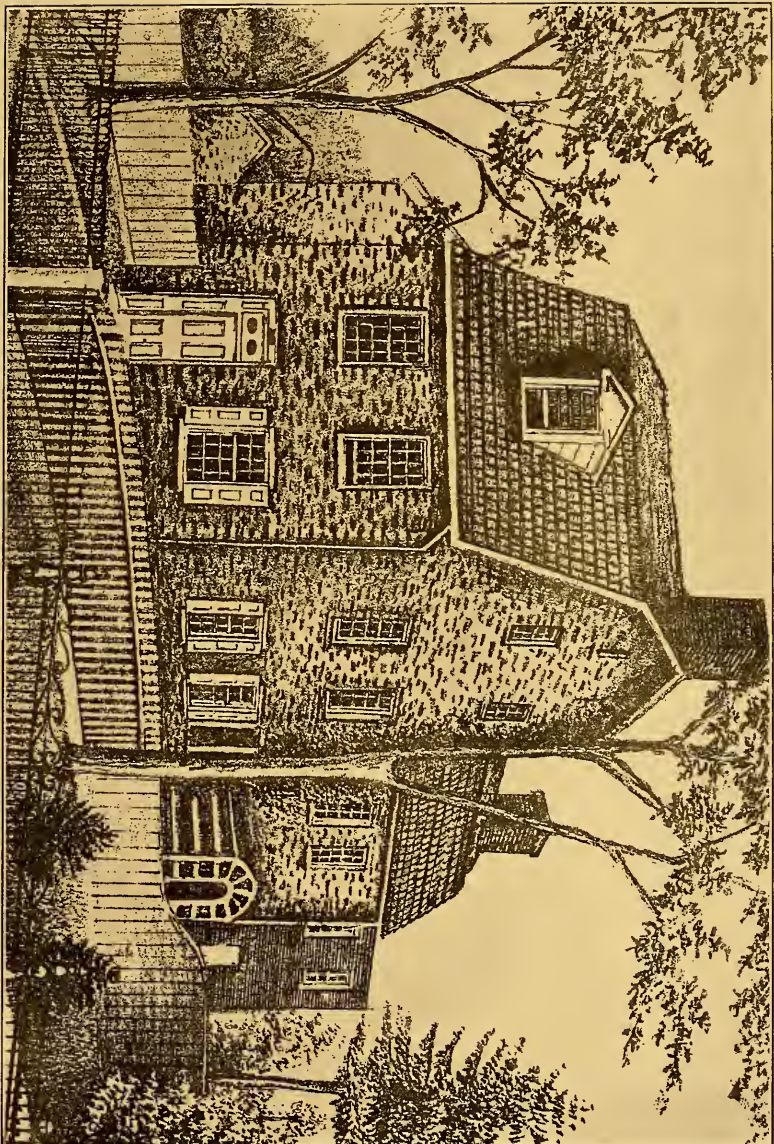
MARKET SQUARE OR "THE GREEN".

ON THE EAST SIDE SHOWING THE WEST SIDE OF GERMANTOWN AVENUE, WITH THE HOUSES OF THE ASHMEADS AND BENZELLS. GOVERNOR MIFFLIN LIVED IN THE THREE STORY HOUSE. THE HIP ROOF HOUSE IS THE "KING OF PRUSSIA" INN WHERE JEFFERSON AND MADISON LODGED. THE MARKET HOUSE WAS BUILT 1741. THE FIRE ENGINE SHELTER IN 1819.

THE PENNSYLVANIA-GERMAN SOCIETY.

QUAINT OLD GERMANTOWN—MAIN STREET—WEST SIDE.

PLATE XXXV.



DRAWN ON THE ZINC BY J. RICHARDS

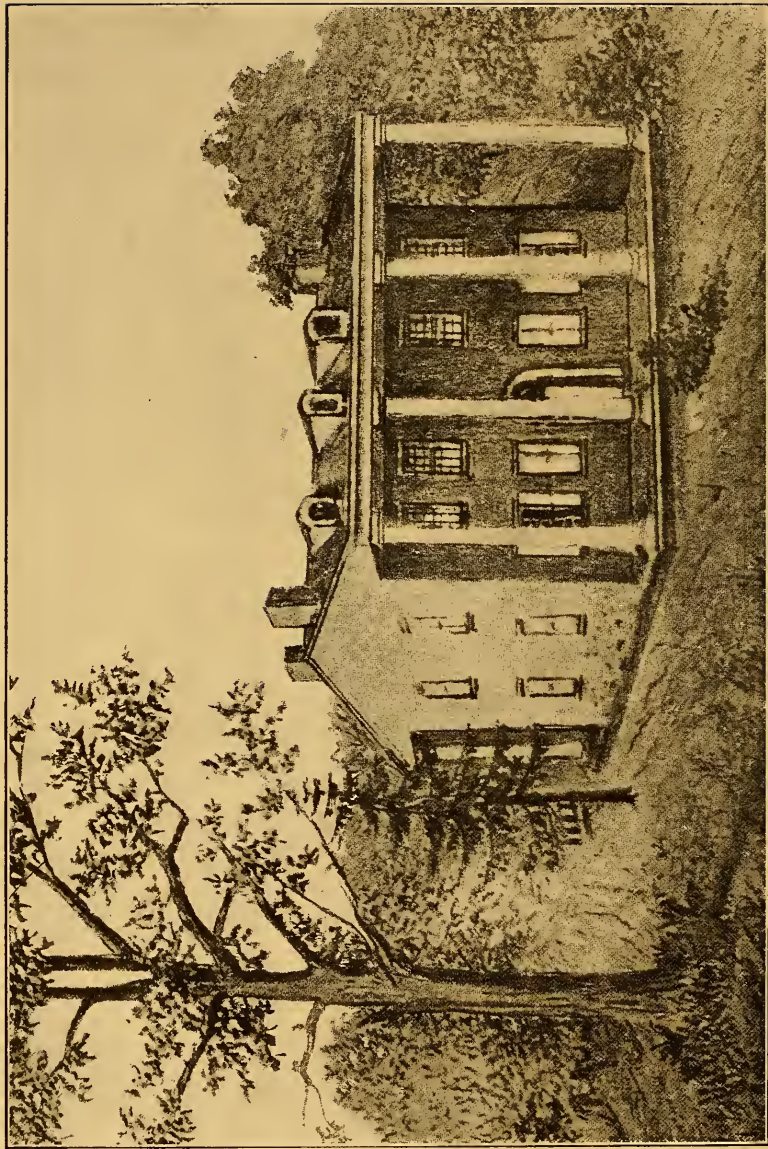
THE HOME OF CHRISTIAN LEHMAN.

(No. 5524) THE STUDENT OF DR. CHRISTOPHER WITT.

THE PENNSYLVANIA-GERMAN SOCIETY.

QUAINT OLD GERMANTOWN—MAIN STREET—WEST SIDE.

PLATE XXXVI.



DRAWN BY J. RICHARDS.

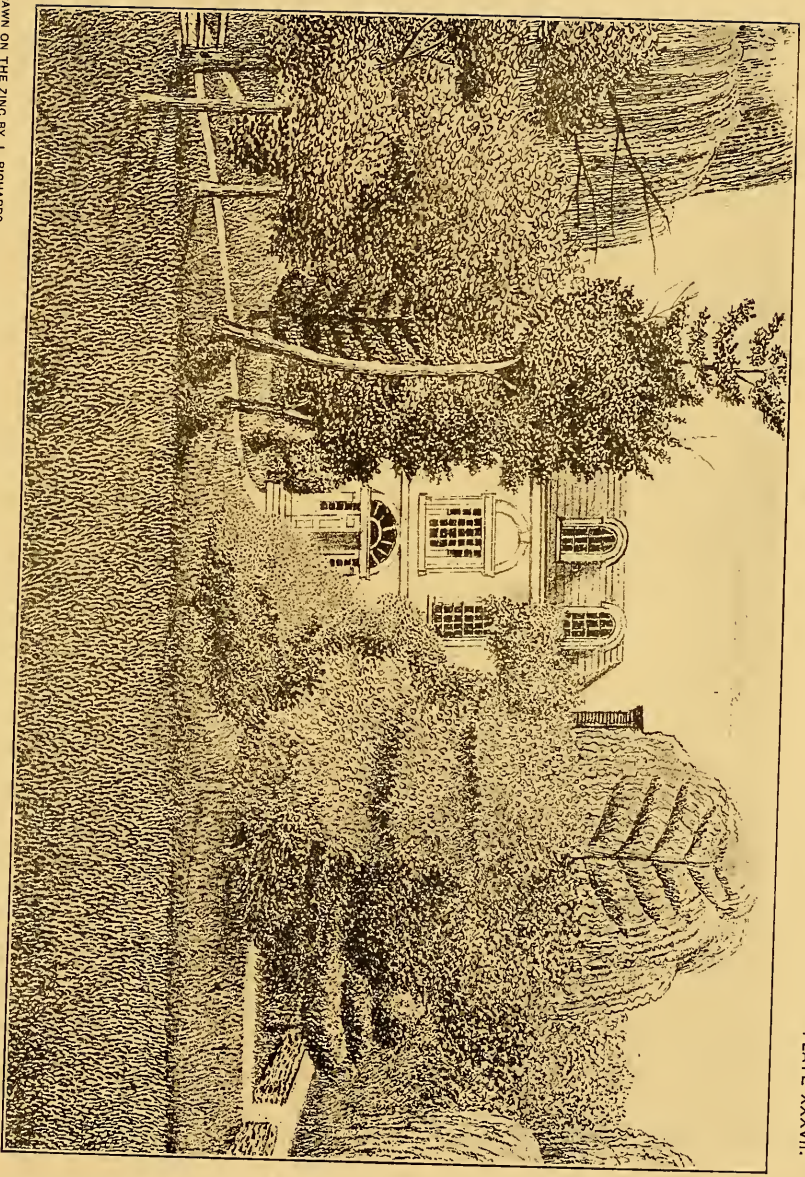
THE HOME OF WYNDHAM H. STOKES.

FORMERLY ON GERMANTOWN AVENUE ABOVE MAPLEWOOD. (ON SITE OF Nos. 5600-12.)

THE PENNSYLVANIA-GERMAN SOCIETY.

QUAINT OLD GERMANTOWN—MAIN STREET—WEST SIDE.

PLATE XXXVII.



DRAWN ON THE ZINC BY J. RICHARDS.

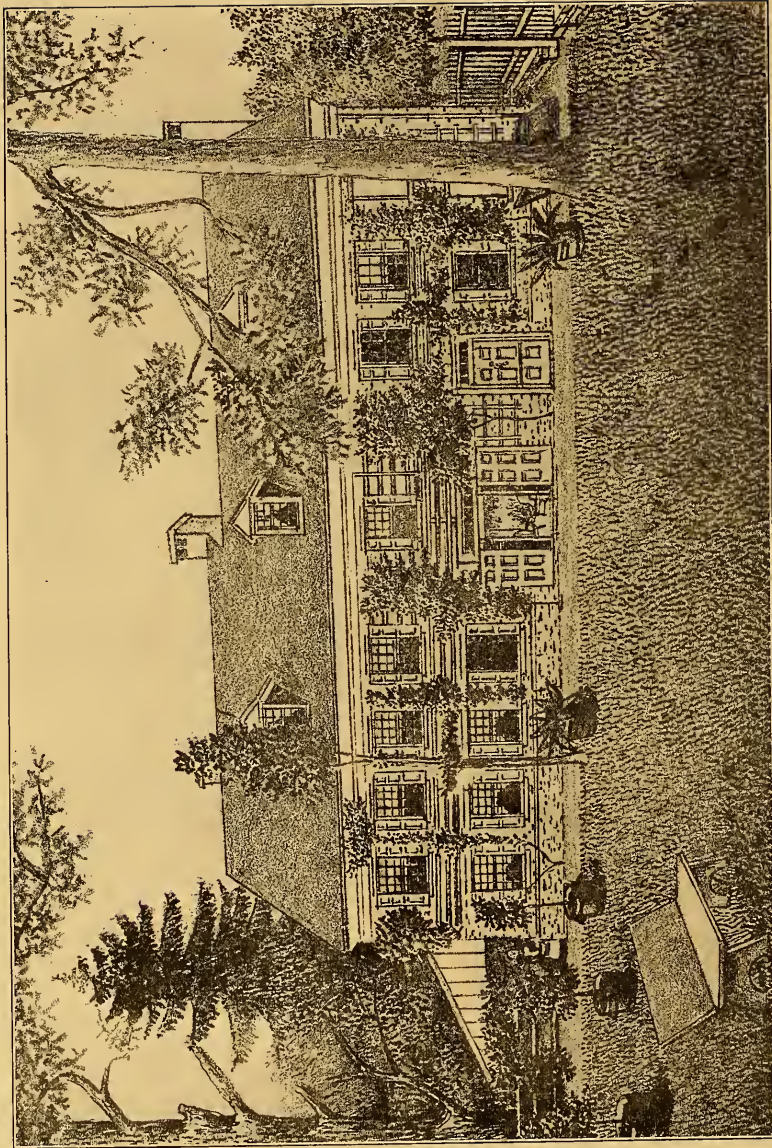
“ROSE COTTAGE.”

HOME OF SAMUEL HARVEY (NO. 5930), REPLACED BY THE TOWN HALL.

THE PENNSYLVANIA-GERMAN SOCIETY.

QUAINT OLD GERMANTOWN—MAIN STREET—WEST SIDE.

PLATE XXXVIII.



DRAWN ON THE ZINC BY J. RICHARDS.

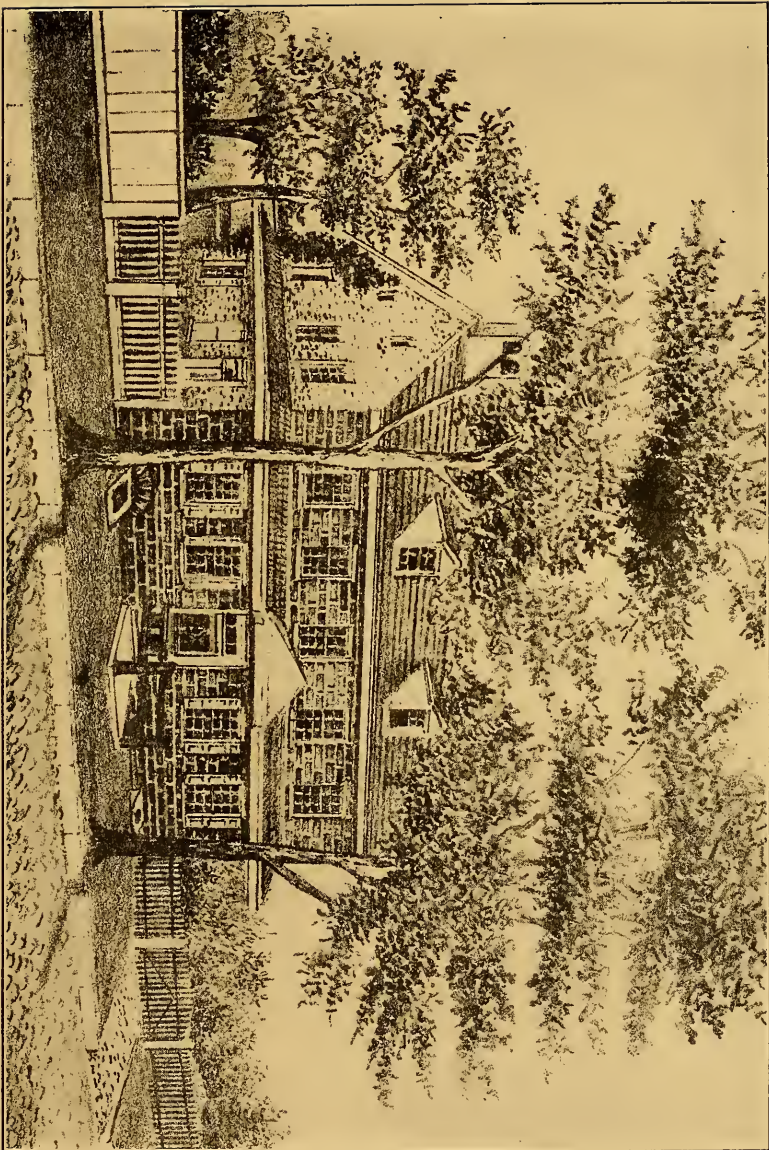
“WYCK,” OR THE HAINES HOUSE.

(No. 6026) AT THE CORNER OF WALNUT LANE. THE WEST END, THE OLDEST HOUSE IN GERMANTOWN, WAS BUILT BY HANS MILAN ABOUT 1690. IT WAS USED AS A HOSPITAL IN 1777. THIS PROPERTY HAS NEVER BEEN OUT OF THE FAMILY.

THE PENNSYLVANIA-GERMAN SOCIETY.

QUAINT OLD GERMANTOWN—MAIN STREET—WEST SIDE.

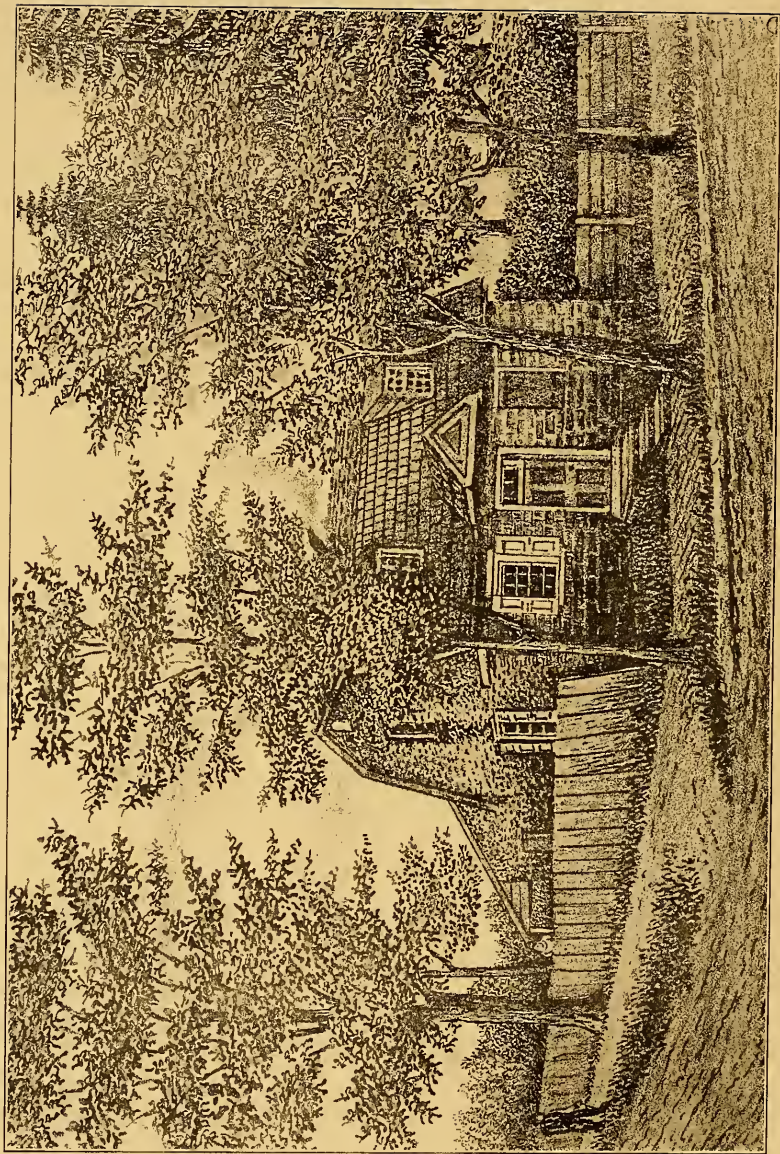
PLATE XXXIX.



DRAWN ON THE ZINC BY J. RICHARDS.

THE JOHNSON HOMESTEAD.

GERMANTOWN AVENUE AND WASHINGTON LANE. BUILT A. D. 1760.

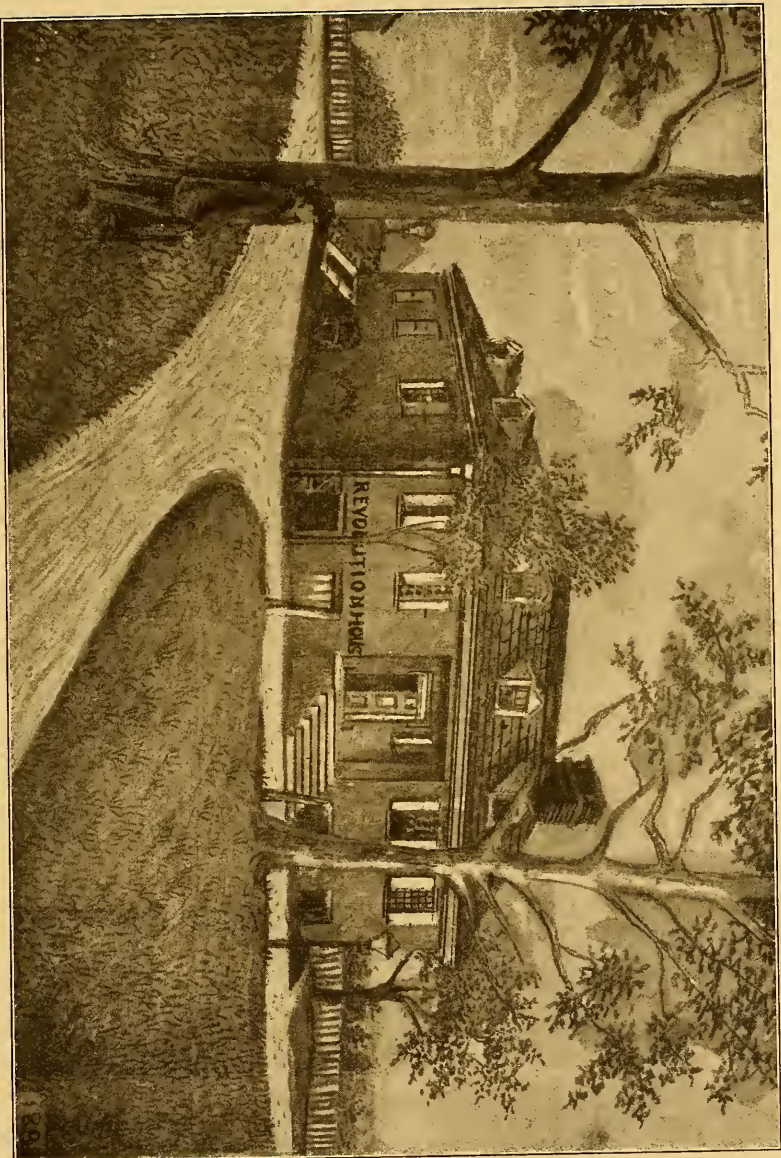


DRAWN ON THE ZINC BY J. RICHARDS.

THE OLD JOHNSON HOUSE.

FORMERLY AT NORTHWEST CORNER OF GERMANTOWN AVENUE AND JOHNSON STREET. BUILT BY HEWERT PAPER

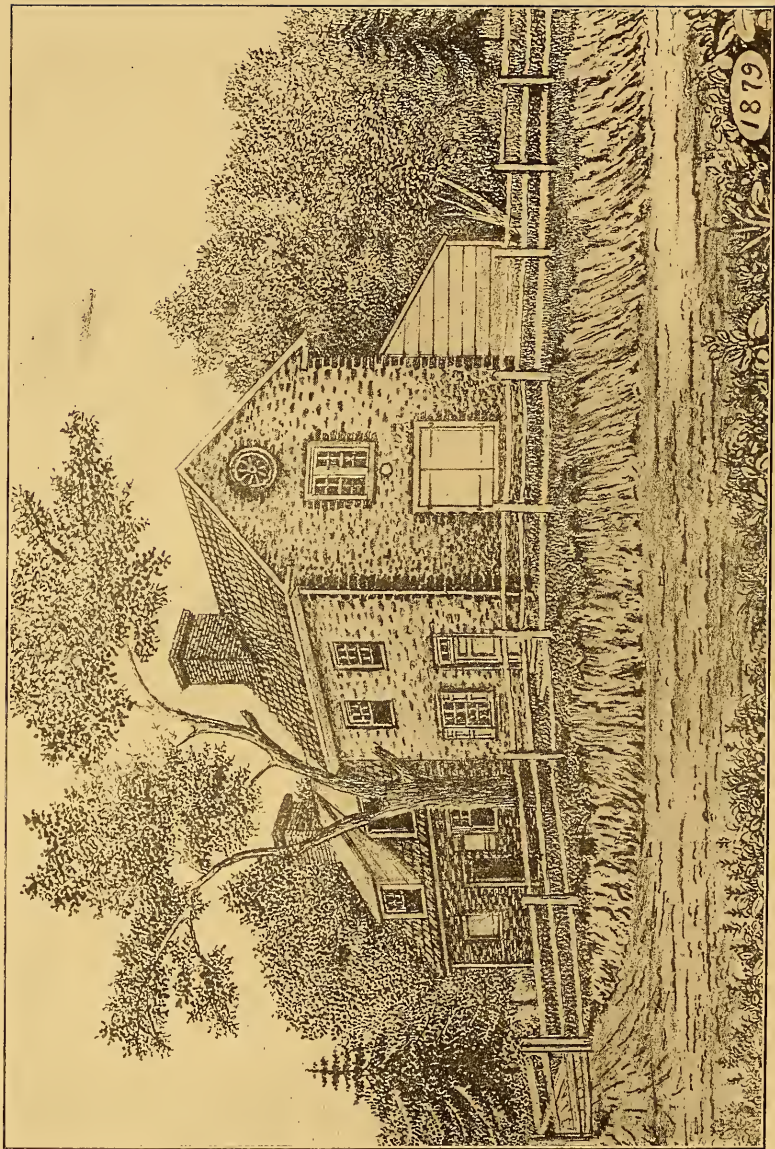
IN 1698. DEMOLISHED IN 1883.



DRAWN ON THE ZINC BY J. RICHARDS.

“FAIR HILL”

THE HOME OF THE NORRIS FAMILY. BUILT BY ISAAC NORRIS (3RD) ABOUT 1800, REPLACING THE ORIGINAL HOUSE BUILT 1717, AND BURNED BY THE BRITISH AFTER THE BATTLE OF GERMANTOWN IN 1777. WHEREIN JOHN DICKINSON WROTE HIS CELEBRATED “FARMER’S LETTERS”.



DRAWN ON THE ZINC BY J. RICHARDS

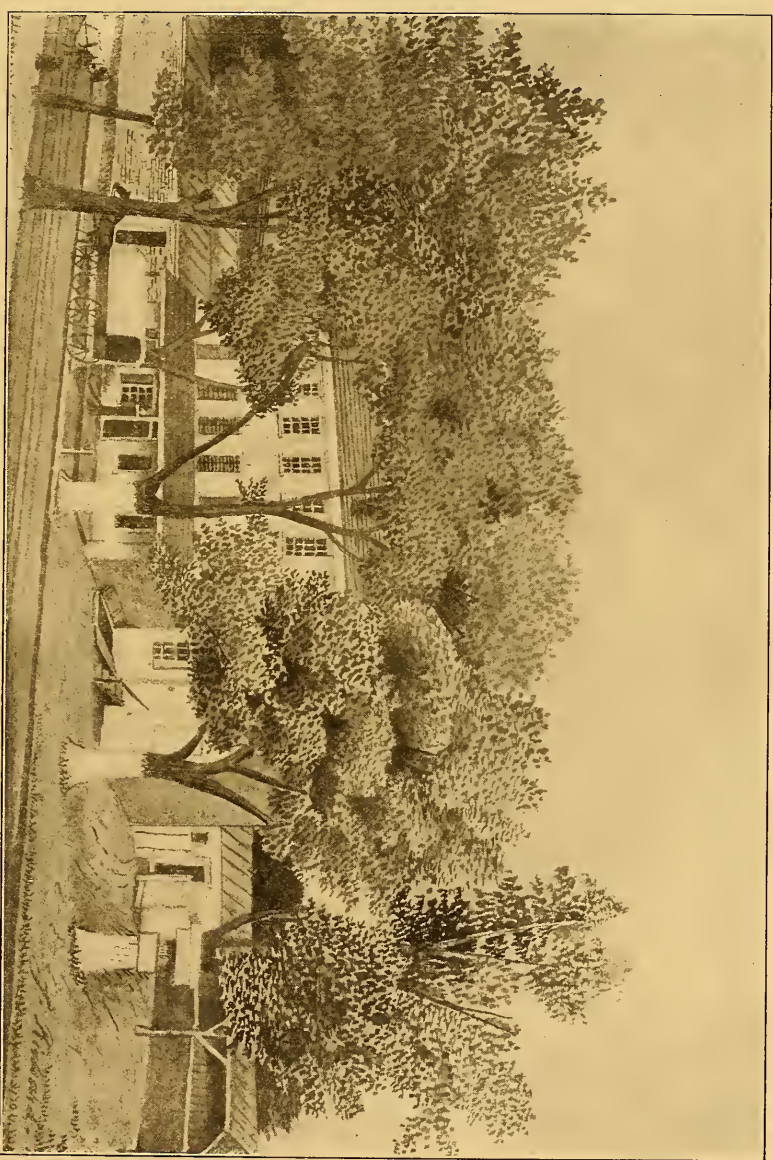
“FAIR HILL,” FRIENDS’ MEETING,

BUILT A. D. 1706-07. REMOVED ABOUT THE YEAR 1888. LUCRETIA MOTT IS BURIED IN THE ADJOINING GROUND.

THE PENNSYLVANIA-GERMAN SOCIETY.

QUANT OLD GERMANTOWN—FAIR HILL.

PLATE XLIII.



DRAWN BY J. RICHARDS.

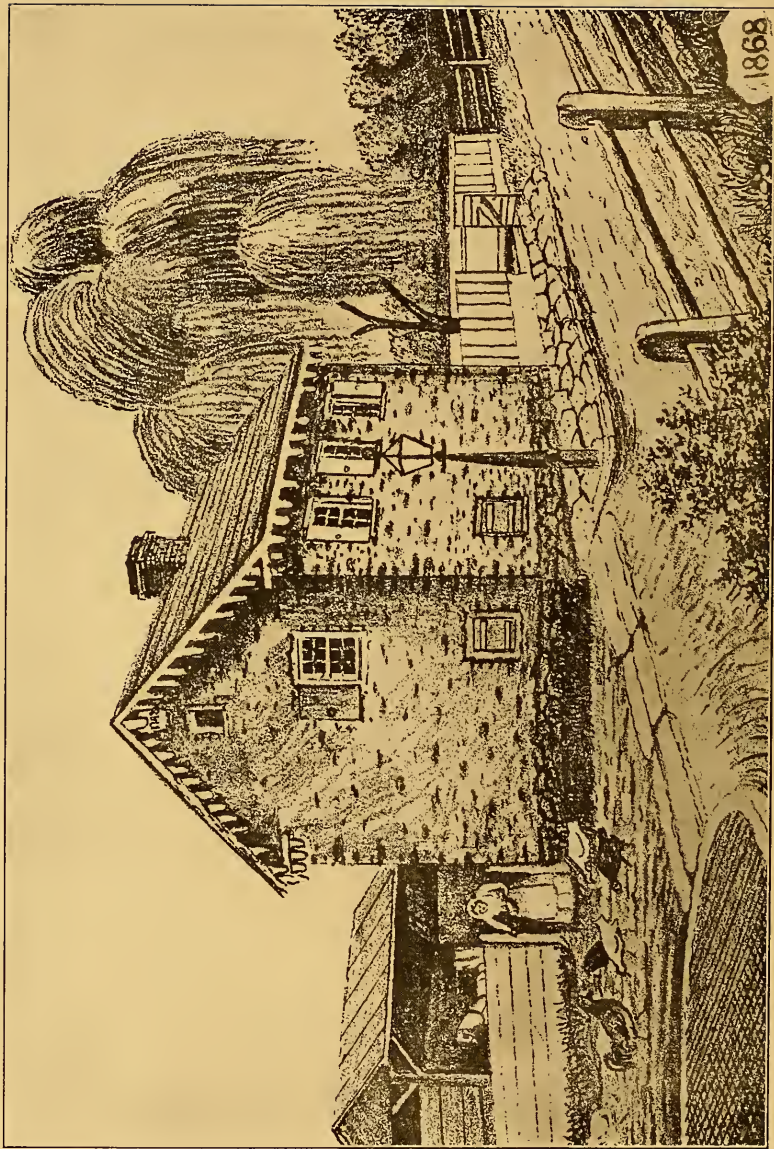
THE FOXCHASE TAVERN

NEAR FAIR HILL, AT THREE MILE RUN, SITE OF SOUTHEAST CORNER OF GERMANTOWN ROAD AND
GLENWOOD AVENUE. REMOVED ABOUT 1868.

THE PENNSYLVANIA-GERMAN SOCIETY.

QUAINT OLD GERMANTOWN AND VICINITY.

PLATE XLIV.



DRAWN ON THE ZINC BY J. RICHARDS

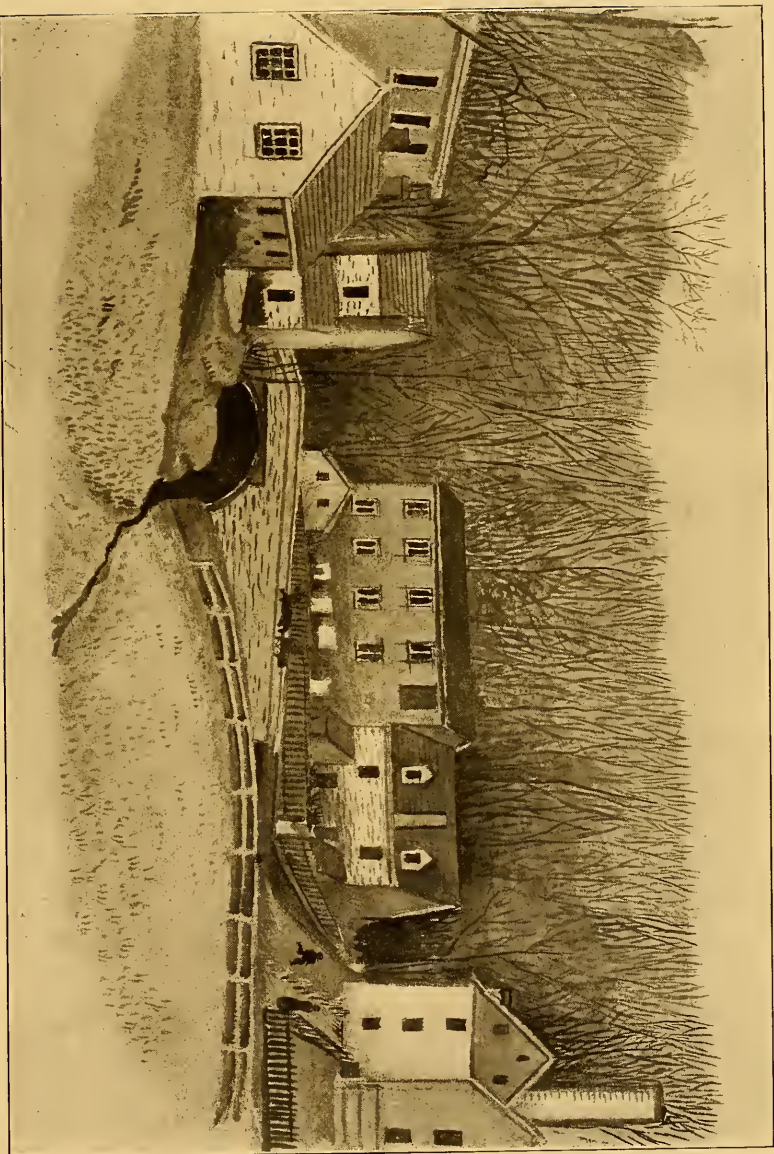
“CASTLE OF ROSENHEIM”

FORMERLY AT THE NORTHEAST CORNER OF WAKEFIELD STREET AND FISHER'S LANE. BUILT BY JOHANNES WUSTER A. D. 1743.

THE PENNSYLVANIA-GERMAN SOCIETY.

QUAINT OLD GERMANTOWN AND VICINITY.

PLATE XLV.



DRAWN BY J. RICHARDS.

WAKEFIELD OR FISHER'S MILLS

BUILT ABOUT 1755 BY WILLIAM LOGAN FISHER. THE OLD REVOLUTIONARY POWDER MILL IS ALSO SHOWN.



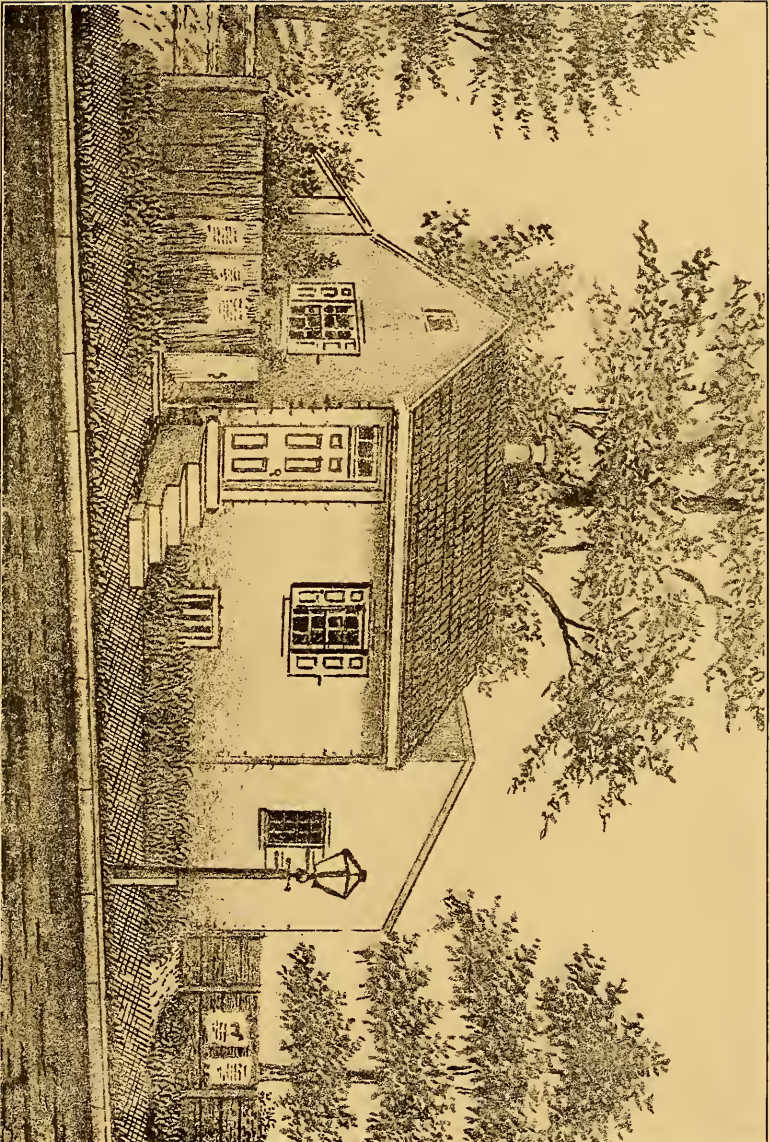
DRAWN ON THE ZINC BY J. RICHARDS.

HARPER'S HOLLOW,
SITE OF THE WEBER AND THORP MILLS ON THORP'S LANE, NEAR OLD YORK ROAD.

THE PENNSYLVANIA-GERMAN SOCIETY.

QUAINT OLD GERMANTOWN AND VICINITY.

PLATE XLVII.



DRAWN ON THE ZINC BY J. RICHARDS.

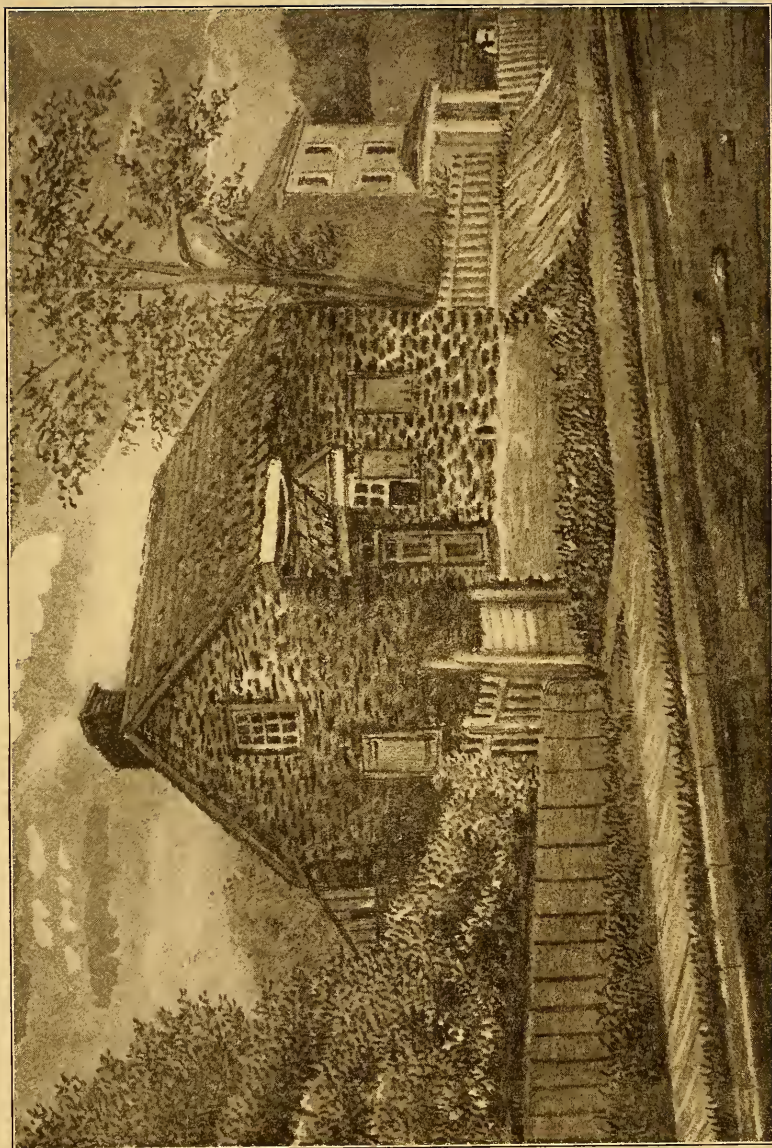
JOHN BRIGG'S HOUSE,

SOUTH SIDE OF QUEEN LANE, IMMEDIATELY WEST OF WAYNE AVENUE.

THE PENNSYLVANIA-GERMAN SOCIETY.

QUAINT OLD GERMANTOWN AND VICINITY.

PLATE XLVIII.



DRAWN ON THE ZINC BY J. RICHARDS.

THE OLD TILLMAN HOUSE
ON QUEEN LANE JUST WEST OF THE BRIGG'S HOUSE.

THE PENNSYLVANIA-GERMAN SOCIETY.

QUAINT OLD GERMANTOWN AND VICINITY.

PLATE XLIX.



DRAWN ON THE ZINC BY J. RICHARDS.

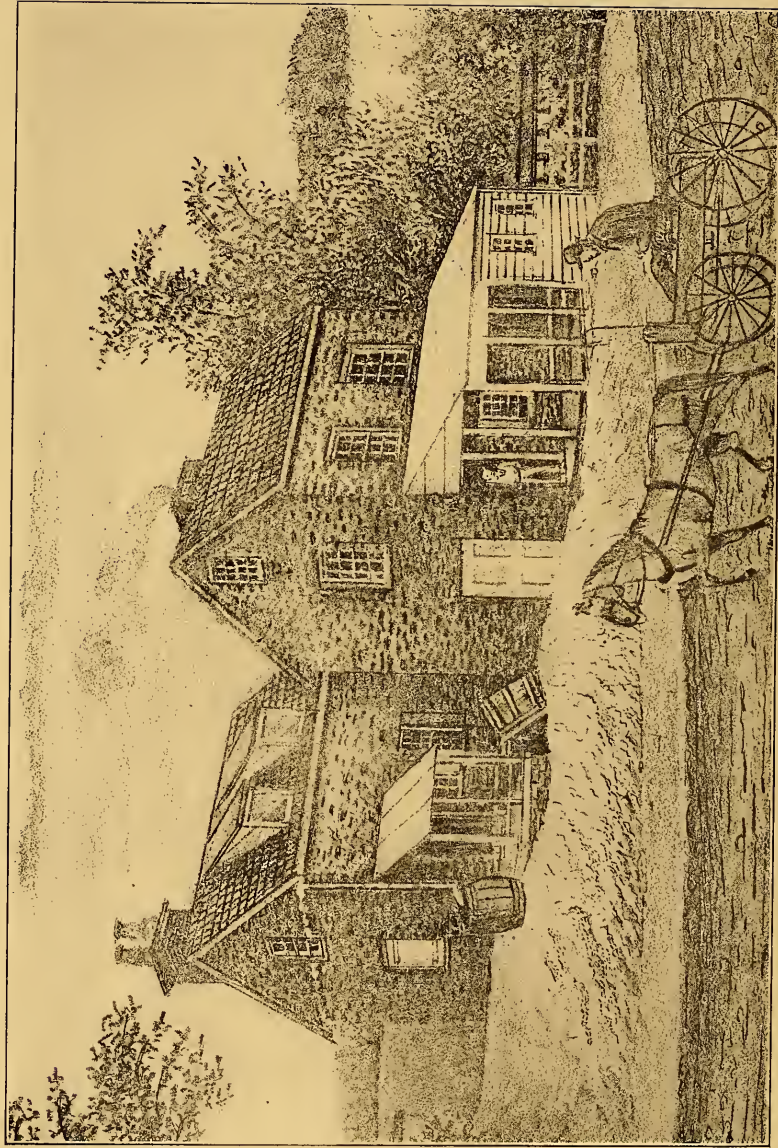
THE COULTER FARM HOUSE.

AT NORTHEAST CORNER OF WISSAHICKON AVENUE AND INDIAN QUEEN LANE. QUEEN LANE STATION OF THE PENNSYLVANIA RAILROAD IS NOW ON THE GROUNDS.

THE PENNSYLVANIA-GERMAN SOCIETY

QUAINT OLD GERMANTOWN AND VICINITY

PLATE L.



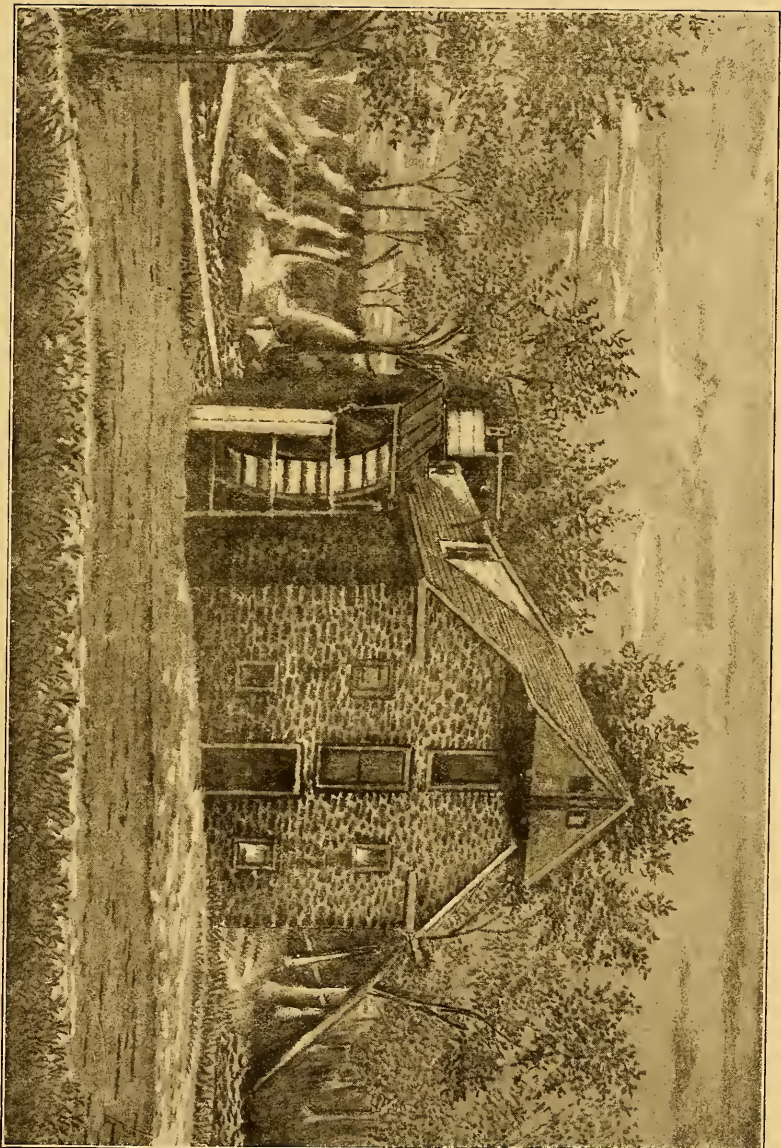
DRAWN ON THE ZINC BY J. RICHARDS.

THE ROCK HOUSE.

ON THE NORTH SIDE OF EAST PENN STREET, JUST EAST OF THE READING R. R. BRIDGE. BUILT ABOUT 1690.
THE HOUSE IN WHICH IT IS SAID THAT WILLIAM PENN PREACHED.

THE PENNSYLVANIA-GERMAN SOCIETY.
QUAINT OLD GERMANTOWN AND VICINITY.

PLATE LI.



DRAWN ON THE ZINC BY J. RICHARDS.

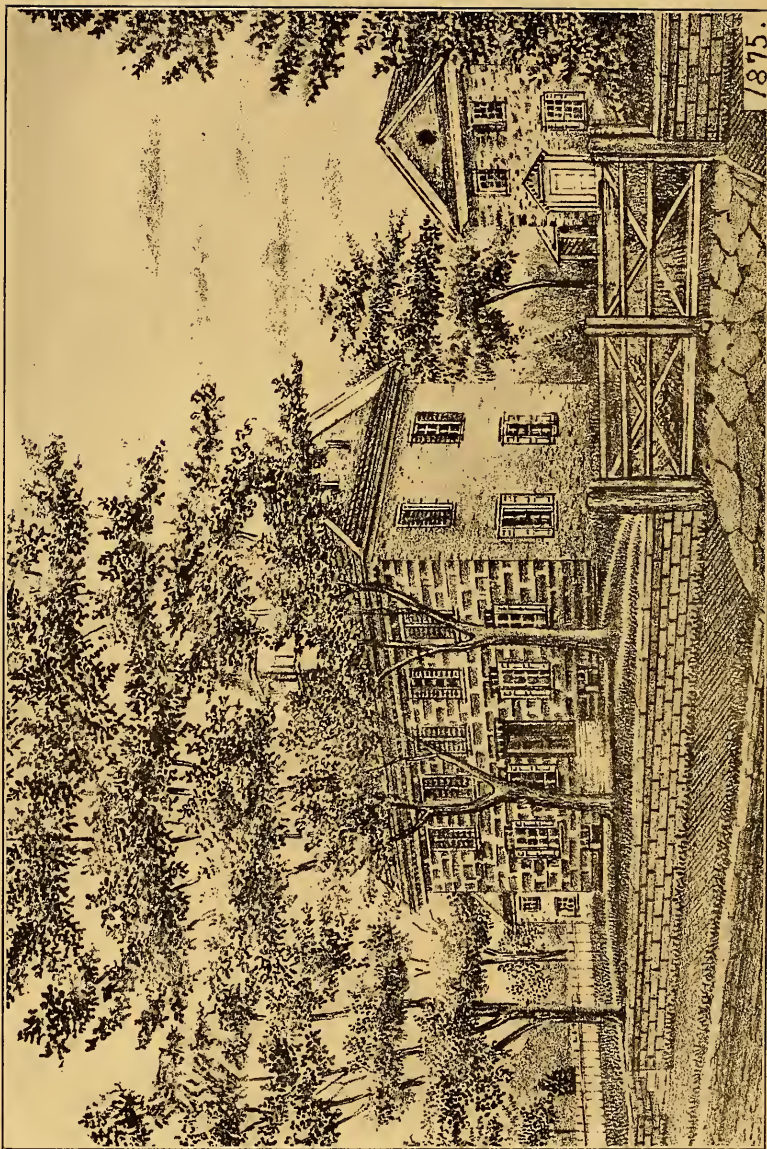
ROBERTS MILL

ON THE NORTH SIDE OF CHURCH LANE, EAST OF STENTON AVENUE. BUILT 1683. REMOVED ABOUT 1879. THE SECOND MILL IN PHILADELPHIA COUNTY BUILT (THE YEAR WHEN GERMANTOWN WAS LAID OUT) BY RICHARD TOWNSEND.

THE PENNSYLVANIA-GERMAN SOCIETY.

QUAINT OLD GERMANTOWN AND VICINITY.

PLATE LII.



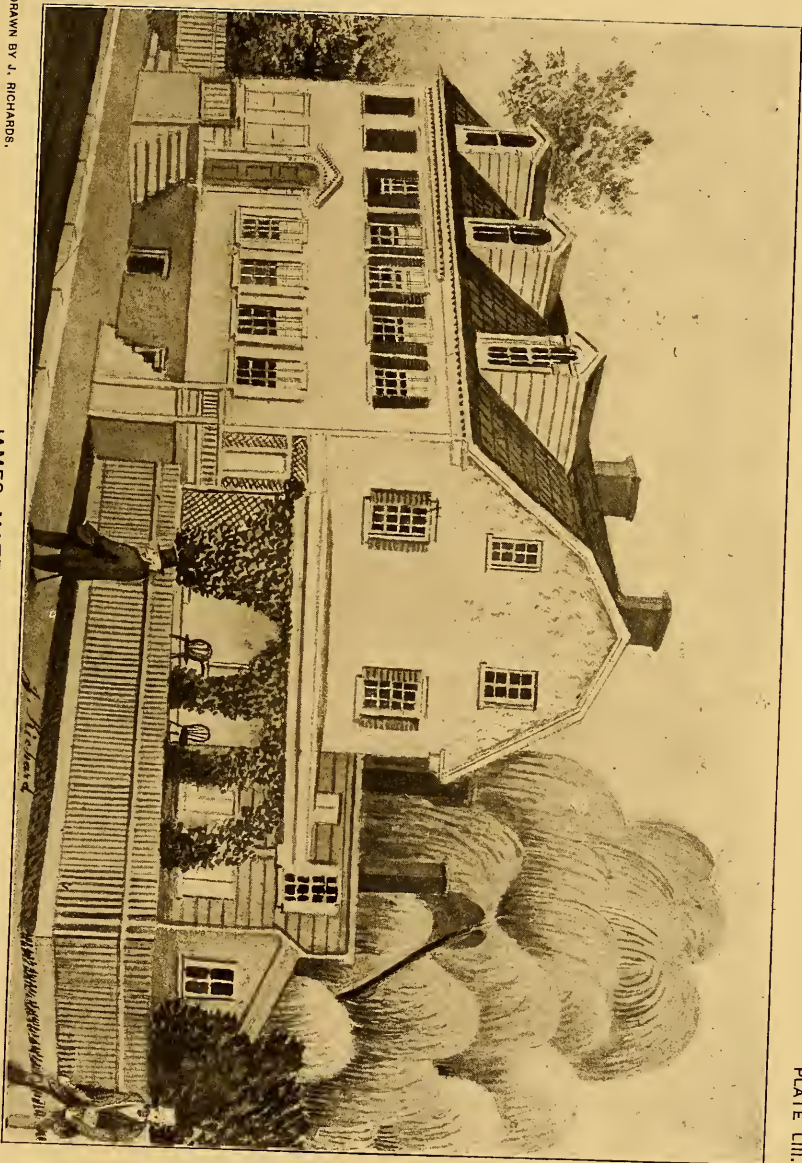
DRAWN ON THE ZINC BY J. RICHARDS.

THE GERMANTOWN ACADEMY.

ON THE SOUTHWEST CORNER OF GREENE STREET AND SCHOOL HOUSE LANE. BUILT A. D. 1760-61. FAR FAMED
FOR MANY OF ITS TEACHERS AND PUPILS.

THE PENNSYLVANIA-GERMAN SOCIETY.
QUAINT OLD GERMANTOWN AND VICINITY.

PLATE LIII.



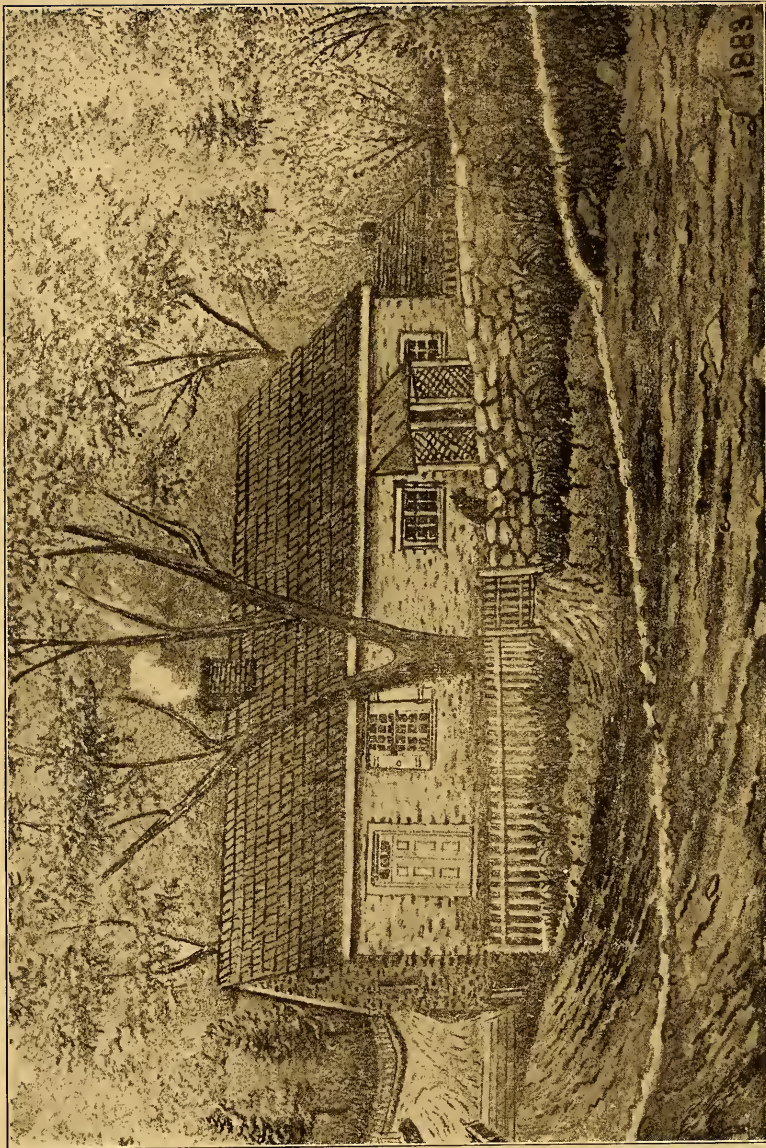
DRAWN BY J. RICHARDS.

JAMES MATTHEW'S HOUSE
WHERE JAMES DAVID DOVE KEPT SCHOOL, PURCHASED BY THE GERMANTOWN ACADEMY IN 1810
FOR THE USE OF THE HEAD-MASTER.

THE PENNSYLVANIA-GERMAN SOCIETY

QUAINT OLD GERMANTOWN AND VICINITY

PLATE LIV.



DRAWN ON THE ZINC BY J. RICHARDS.

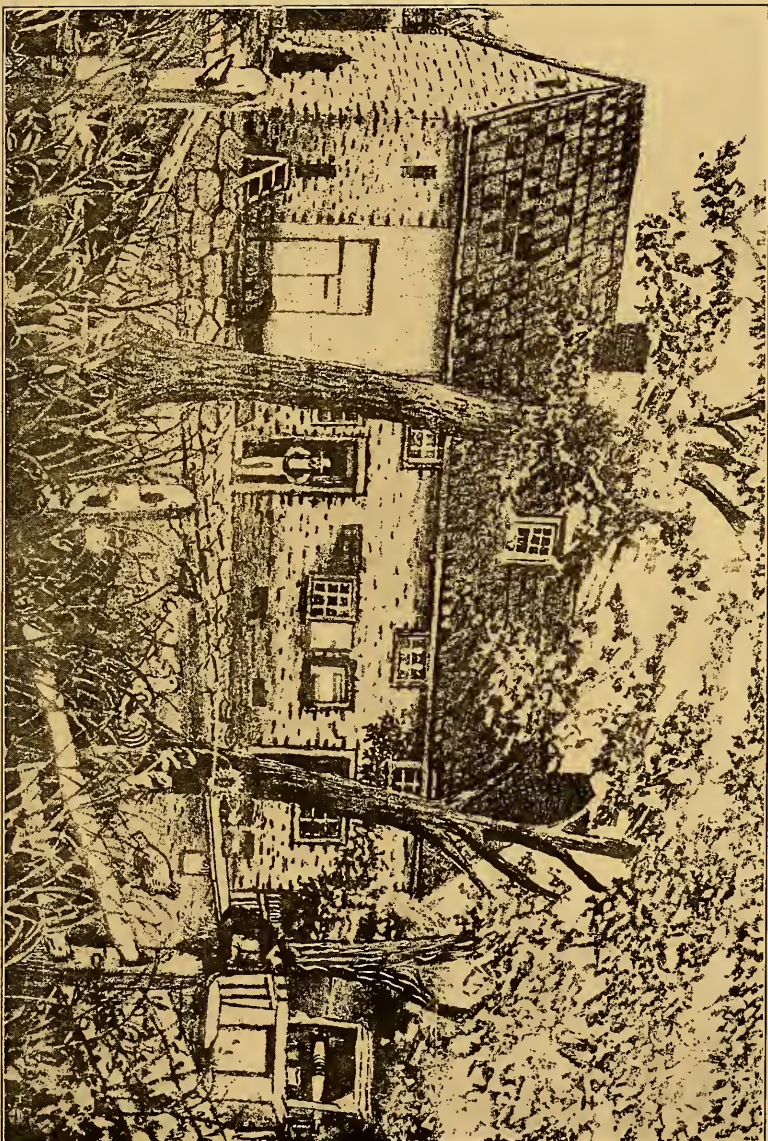
BIRTHPLACE OF DAVID RITTENHOUSE.

SHOWING THE SITE OF THE RITTENHOUSE PAPER MILL (BUILT 1708) ON LINCOLN DRIVE, WEST OF WISSAHICKON AVENUE,
FAIRMOUNT PARK.

THE PENNSYLVANIA-GERMAN SOCIETY.

QUAINT OLD GERMANTOWN AND VICINITY.

PLATE LV.



DRAWN ON THE ZINC BY J. RICHARDS.

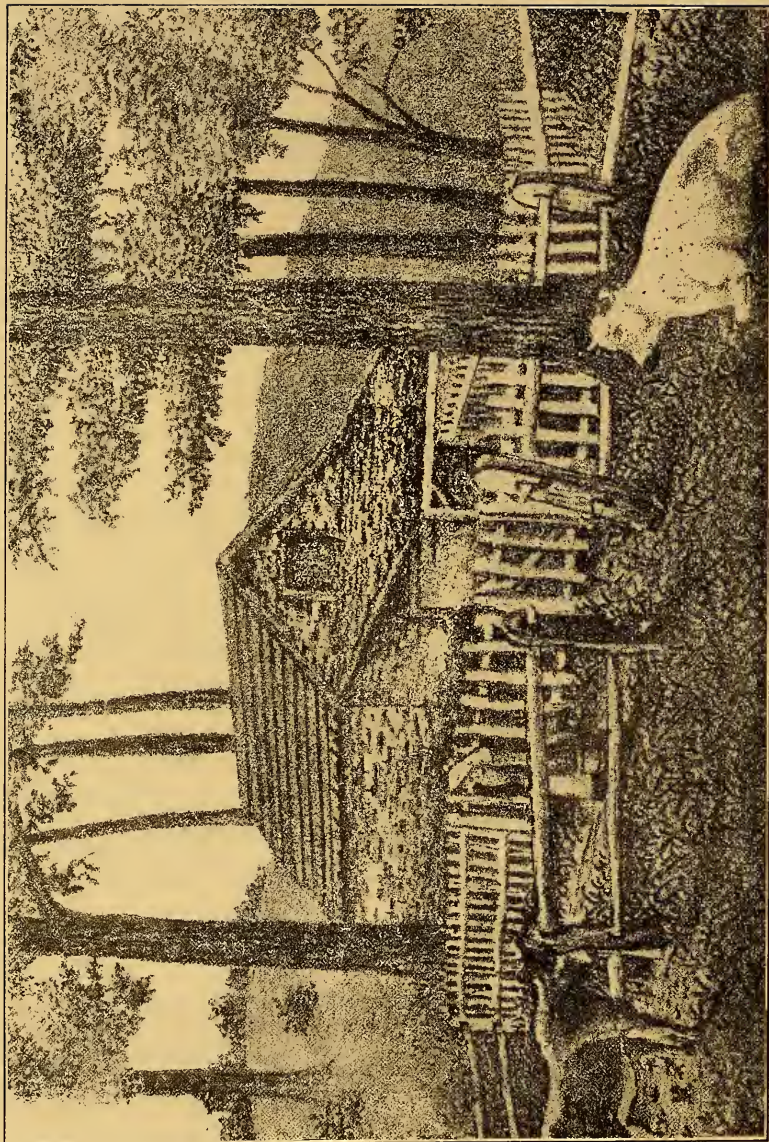
THE "UNRUH" HOMESTEAD.

SOUTH OF GORGAS LANE, WEST OF READING RAILROAD. BUILT A. D. 1701.

THE PENNSYLVANIA-GERMAN SOCIETY.

QUAINT OLD GERMANTOWN AND VICINITY.

PLATE LVI.



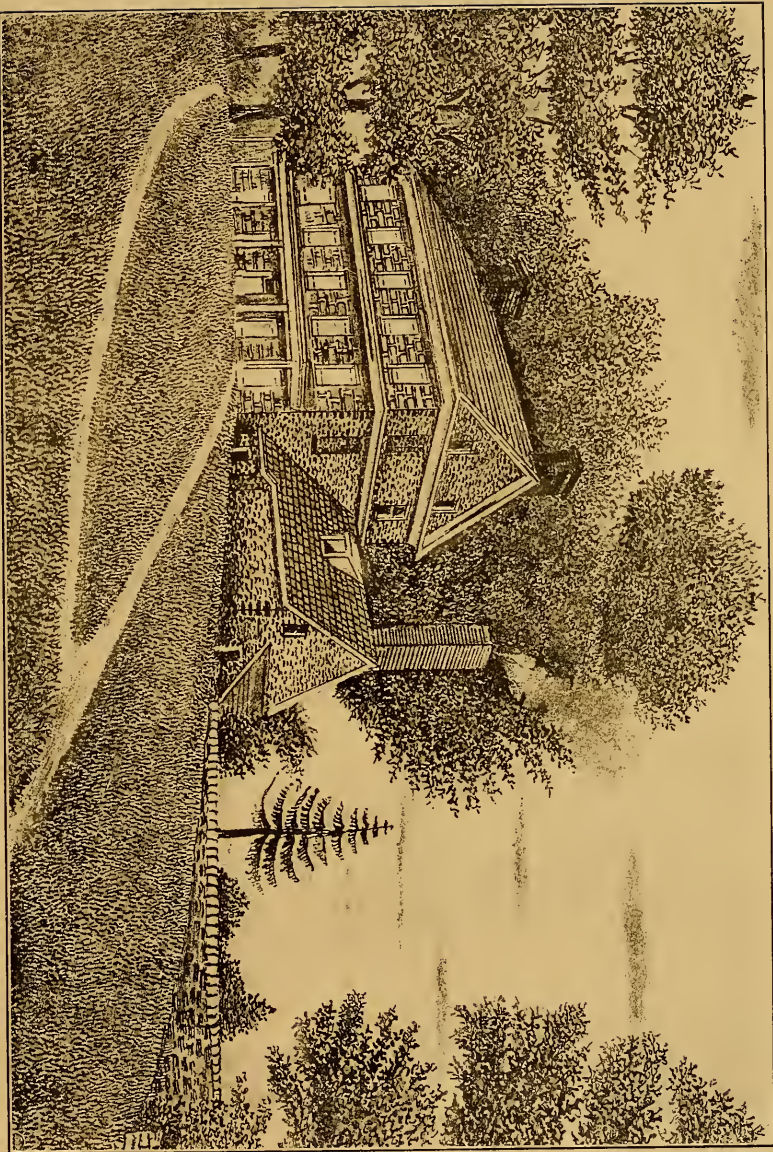
DRAWN ON THE ZINC BY J. RICHARDS.

THE OLD SPRING HOUSE ON THE UNRUH FARM.

THE PENNSYLVANIA-GERMAN SOCIETY.

QUAINT OLD GERMANTOWN AND VICINITY.

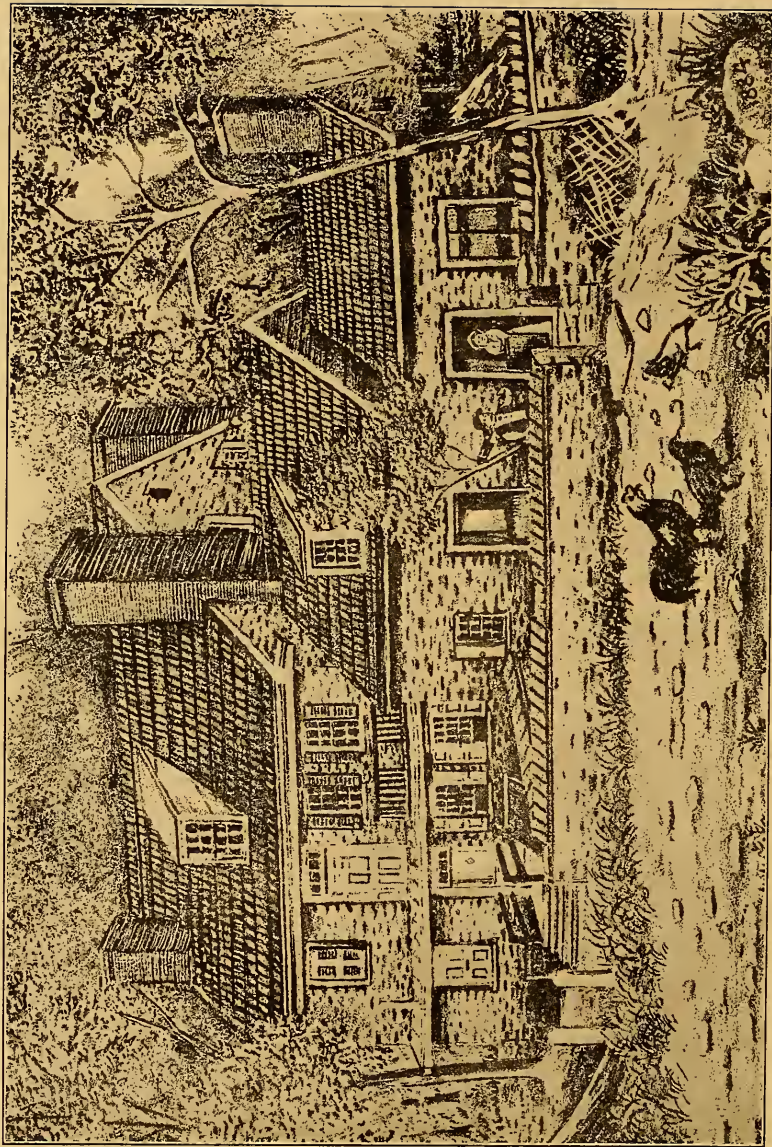
PLATE LVIII.



DRAWN ON THE ZINC BY J. RICHARDS.

THE "MONASTERY" ON THE WISSAHICKON

BUILT 1746-47 BY JOSEPH GORGAS. (VIDE SACHSE'S GERMAN SECTARIANS, VOL. I, P. 274, ET SEQ.).



DRAWN ON THE ZINC BY J. RICHARDS.

GLEN FERN, OR LIVEZEY MANSION,

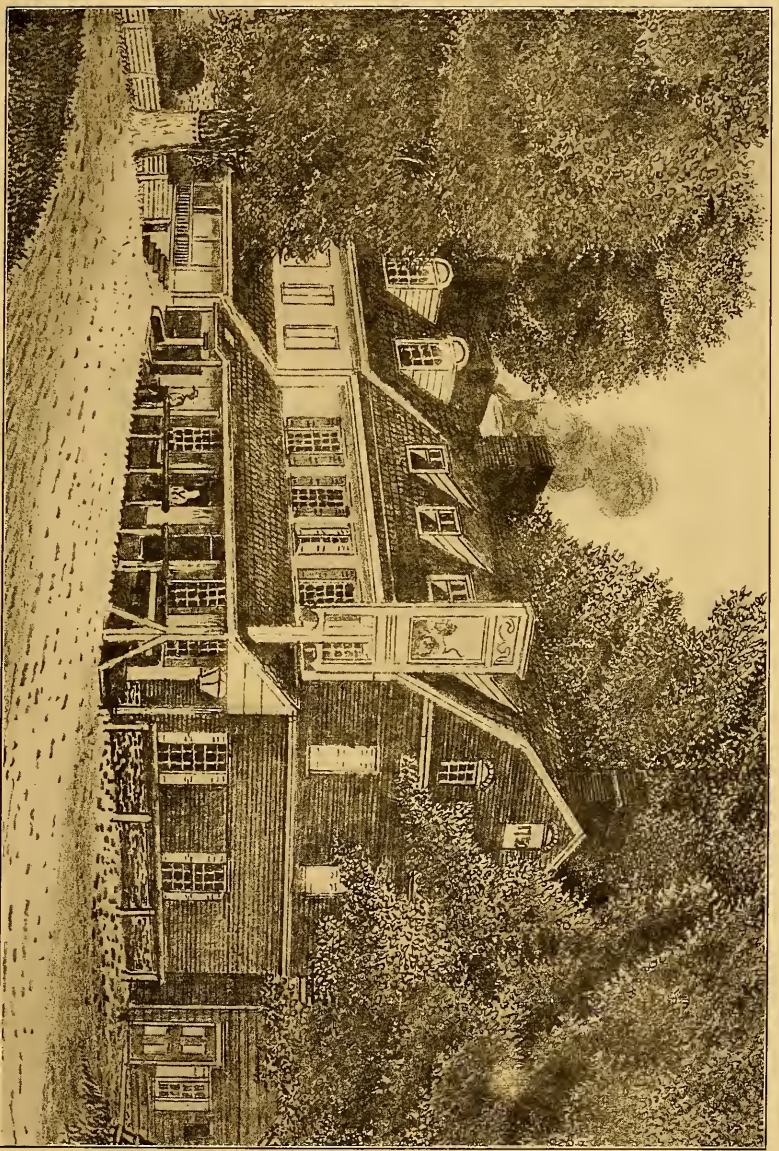
ON THE WISSAHICKON CREEK AT THE FOOT OF LIVEZEY'S LANE. BUILT ABOUT 1745. THE SCENE OF STIRRING

EVENTS IN PETERSON'S "PEMBERTON."

THE PENNSYLVANIA-GERMAN SOCIETY.

QUAINT OLD GERMANTOWN AND VICINITY.

PLATE LIX.



DRAWN ON THE ZINC BY J. RICHARDS.

THE RED LION TAVERN

ON THE BRISTOL TURNPIKE, ABOVE HOLMESBURG. BUILT A. D. 1750.

THE PENNSYLVANIA-GERMAN SOCIETY.

QUAINT OLD GERMANTOWN AND VICINITY.

PLATE LX.



DRAWN ON THE ZINC BY J. RICHARDS.

THE GWYNEDD FRIENDS MEETING HOUSE.

LIBRARY OF CONGRESS



0 014 314 743 5

