

**Kasuksman**  
Pusat Dokumentasi  
Dinas Kebudayaan Provinsi Bali ~ Indonesia



KASUKSMAN  
Panjang 43 Cm  
Jumlah 36 lempir  
Milik: Ida Pt Ngr Asmara,  
Gria Banjar, Buleleng

4307  
KORUPSI DAN SUKSES BALI

1  
A



KORUPSI DAN SUKSES BALI  
PUSAT DOKUMENTASI

**Kasuksman**  
Pusat Dokumentasi  
Dinas Kebudayaan Provinsi Bali ~ Indonesia

1
B

Handwritten text on a palm leaf manuscript strip, likely in Balinese script. The text is arranged in several lines across the length of the leaf. There are two circular holes punched through the leaf for binding.

2
A

Handwritten text on a second palm leaf manuscript strip, continuing the Balinese script. The text is arranged in several lines. There are two circular holes punched through the leaf for binding.

**Kasuksman**  
Pusat Dokumentasi  
Dinas Kebudayaan Provinsi Bali ~ Indonesia

2  
B

Handwritten Balinese script on a palm leaf, consisting of approximately 12 lines of text. The script is finely etched and runs horizontally across the length of the leaf. There are two circular holes visible, used for binding multiple leaves together.

3  
A

Handwritten Balinese script on a palm leaf, consisting of approximately 12 lines of text. The script is finely etched and runs horizontally across the length of the leaf. There are two circular holes visible, used for binding multiple leaves together.

**Kasuksman**  
Pusat Dokumentasi  
Dinas Kebudayaan Provinsi Bali ~ Indonesia

၅၅

3

B

Handwritten text in Balinese script on a palm leaf, consisting of approximately 12 lines of text.

၅၆

4

A

Handwritten text in Balinese script on a palm leaf, consisting of approximately 12 lines of text.

**Kasuksman**  
Pusat Dokumentasi  
Dinas Kebudayaan Provinsi Bali ~ Indonesia

8  
4  
B

Handwritten text in Balinese script on a palm leaf. The text is arranged in several lines across the length of the leaf. There are two circular holes on the leaf, one near the left end and one near the right end. The script is finely etched into the surface of the leaf.

9  
5  
A

Handwritten text in Balinese script on a palm leaf. The text is arranged in several lines across the length of the leaf. There are two circular holes on the leaf, one near the left end and one near the right end. The script is finely etched into the surface of the leaf.

**Kasuksman**  
Pusat Dokumentasi  
Dinas Kebudayaan Provinsi Bali ~ Indonesia

5  
B

Handwritten Balinese script on a palm leaf, consisting of approximately 15 lines of text. The script is finely etched and runs horizontally across the length of the leaf. There are two circular holes punched through the leaf, one near the left end and one near the right end. A small, illegible mark is visible on the right side of the leaf.

6  
A

Handwritten Balinese script on a palm leaf, consisting of approximately 15 lines of text. The script is finely etched and runs horizontally across the length of the leaf. There are two circular holes punched through the leaf, one near the left end and one near the right end.

Kasuksman  
Pusat Dokumentasi  
Dinas Kebudayaan Provinsi Bali ~ Indonesia

6  
B

Handwritten text in Balinese script on a palm leaf. The text is arranged in approximately four horizontal lines. The script is finely etched into the surface of the leaf. There are three circular holes along the length of the leaf, which were traditionally used for threading a cord to bind multiple leaves together into a book format.

7  
A

Handwritten text in Balinese script on a palm leaf. The text is arranged in approximately four horizontal lines. The script is finely etched into the surface of the leaf. There are three circular holes along the length of the leaf, which were traditionally used for threading a cord to bind multiple leaves together into a book format.





**Kasuksman**  
Pusat Dokumentasi  
Dinas Kebudayaan Provinsi Bali ~ Indonesia

8

B

Handwritten Balinese script on a palm leaf, consisting of approximately 12 lines of text. The script is finely etched and includes several circular symbols interspersed within the lines.

9

A

Handwritten Balinese script on a palm leaf, consisting of approximately 12 lines of text. The script is finely etched and includes several circular symbols interspersed within the lines. A blue circular stamp is visible on the right side of the leaf.



Kasuksman  
Pusat Dokumentasi  
Dinas Kebudayaan Provinsi Bali ~ Indonesia

9  
B

Handwritten Balinese script on a palm leaf, consisting of approximately 15 lines of text. The script is finely etched into the surface of the leaf. There are two circular holes on the left side, likely for binding.

10  
A

Handwritten Balinese script on a palm leaf, consisting of approximately 15 lines of text. The script is finely etched into the surface of the leaf. There are two circular holes on the left side, likely for binding.

Kasuksman  
Pusat Dokumentasi  
Dinas Kebudayaan Provinsi Bali ~ Indonesia

Handwritten text in Balinese script on a palm leaf manuscript strip. The text is arranged in approximately four horizontal lines. There are two circular holes on the strip, one near the left end and one near the right end.

10  
B

Handwritten text in Balinese script on a palm leaf manuscript strip. The text is arranged in approximately four horizontal lines. There is a circular hole on the strip, located towards the left side.

11  
A

Kasuksman  
Pusat Dokumentasi  
Dinas Kebudayaan Provinsi Bali ~ Indonesia

11

B

Handwritten Balinese script on a palm leaf. The text is arranged in approximately three lines, starting with a small mark at the top left. The script is finely etched into the surface of the leaf.

12

A

Handwritten Balinese script on a palm leaf. The text is arranged in approximately three lines, starting with a small mark at the top left. The script is finely etched into the surface of the leaf.

**Kasuksman**  
 Pusat Dokumentasi  
 Dinas Kebudayaan Provinsi Bali ~ Indonesia

12  
B

Handwritten Balinese script on a palm leaf, featuring several circular decorative stamps. The text is arranged in approximately four horizontal lines across the length of the leaf.

13  
A

Handwritten Balinese script on a palm leaf, featuring several circular decorative stamps. The text is arranged in approximately four horizontal lines across the length of the leaf.

**Kasuksman**  
 Pusat Dokumentasi  
 Dinas Kebudayaan Provinsi Bali ~ Indonesia

၁၅

13  
B

၁၅  
 စတိုရီအပြစ်တို့ကိုအောင်မြင်စွာအောင်မြင်စွာ  
 ခြုံငုံပေးသောအခါမှစ၍ ကျွန်ုပ်တို့အား အောင်မြင်စွာ  
 အောင်မြင်စွာ အောင်မြင်စွာ အောင်မြင်စွာ  
 အောင်မြင်စွာ အောင်မြင်စွာ အောင်မြင်စွာ  
 အောင်မြင်စွာ အောင်မြင်စွာ အောင်မြင်စွာ

၁၆

14  
A

၁၆  
 ကျွန်ုပ်တို့အား အောင်မြင်စွာ အောင်မြင်စွာ  
 အောင်မြင်စွာ အောင်မြင်စွာ အောင်မြင်စွာ  
 အောင်မြင်စွာ အောင်မြင်စွာ အောင်မြင်စွာ  
 အောင်မြင်စွာ အောင်မြင်စွာ အောင်မြင်စွာ

Kasuksman  
Pusat Dokumentasi  
Dinas Kebudayaan Provinsi Bali ~ Indonesia

Handwritten text on a palm leaf manuscript strip, likely in Balinese script. The text is arranged in a single line across the length of the leaf. There are two circular holes visible on the left side of the leaf, used for binding.

14  
B

Handwritten text on a palm leaf manuscript strip, likely in Balinese script. The text is arranged in a single line across the length of the leaf. There are two circular holes visible on the left side of the leaf, used for binding.

15  
A

**Kasuksman**  
Pusat Dokumentasi  
Dinas Kebudayaan Provinsi Bali ~ Indonesia

15  
B

Handwritten Balinese script on a palm leaf. The text is arranged in approximately three horizontal lines. A circular symbol is visible on the right side of the leaf. There are three holes along the length of the leaf.

16  
A

Handwritten Balinese script on a palm leaf. The text is arranged in approximately three horizontal lines. On the right side, there is a detailed illustration of a figure, possibly a deity or a person in traditional attire, with a crown and a halo. There are three holes along the length of the leaf.



Kasuksman  
 Pusat Dokumentasi  
 Dinas Kebudayaan Provinsi Bali ~ Indonesia

16  
 B

Handwritten Balinese script on palm leaf 16B, featuring two circular holes for binding. The script is arranged in several lines across the length of the leaf.

17  
 A

Handwritten Balinese script on palm leaf 17A, featuring two circular holes for binding. The script is arranged in several lines across the length of the leaf.

Kasuksman  
Pusat Dokumentasi  
Dinas Kebudayaan Provinsi Bali ~ Indonesia

17  
B

Handwritten Balinese script on a palm leaf, likely a calendar or record. The text is arranged in several lines across the length of the leaf. The script is a traditional form of Balinese writing.

18  
A

Handwritten Balinese script on a palm leaf, similar to the one above. It contains several lines of text, including some circular symbols or decorative elements interspersed with the characters.

Kasuksman  
Pusat Dokumentasi  
Dinas Kebudayaan Provinsi Bali ~ Indonesia

Handwritten Balinese script on palm leaf 18, consisting of approximately 12 lines of text.

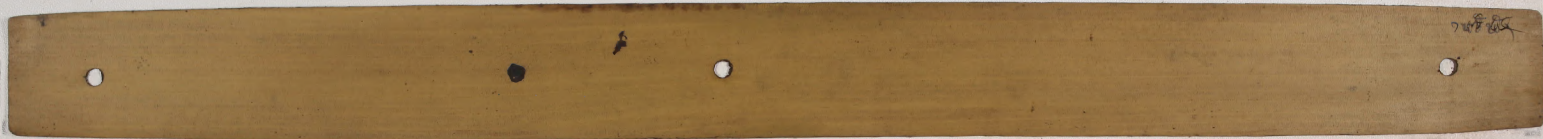
18  
B

Handwritten Balinese script on palm leaf 19, consisting of approximately 3 lines of text.

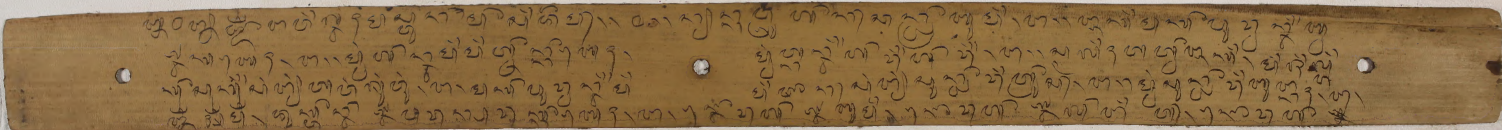
19  
A

**Kasuksman**  
Pusat Dokumentasi  
Dinas Kebudayaan Provinsi Bali ~ Indonesia

19  
B



20  
A



Kasuksman  
Pusat Dokumentasi  
Dinas Kebudayaan Provinsi Bali ~ Indonesia

20  
B

Handwritten Balinese script on a palm leaf, featuring three circular holes for binding. The text is arranged in approximately 12 horizontal lines. A small number '0007' is visible at the right end of the leaf.

21  
A

Handwritten Balinese script on a palm leaf, featuring three circular holes for binding. The text is arranged in approximately 12 horizontal lines.

**Kasuksman**  
Pusat Dokumentasi  
Dinas Kebudayaan Provinsi Bali ~ Indonesia

21  
B

Handwritten text in Balinese script on a palm leaf. The text is arranged in approximately 10 horizontal lines across the length of the leaf. There are three circular holes punched along the top edge of the leaf, which were used for binding multiple leaves together.

22  
A

A blank palm leaf with three circular holes punched along its top edge, similar to the one above. It is positioned horizontally below the first leaf.

Kasuksman  
Pusat Dokumentasi  
Dinas Kebudayaan Provinsi Bali ~ Indonesia

Handwritten text on a palm leaf manuscript strip, featuring Balinese script and three circular holes for binding.

22  
B

Handwritten text on a palm leaf manuscript strip, featuring Balinese script and three circular holes for binding.

23  
A

Kasuksman  
Pusat Dokumentasi  
Dinas Kebudayaan Provinsi Bali ~ Indonesia

23  
B

Handwritten Balinese script on a palm leaf, consisting of approximately 15 lines of text.

24  
A

Handwritten Balinese script on a palm leaf, consisting of approximately 15 lines of text.



Kasuksman  
Pusat Dokumentasi  
Dinas Kebudayaan Provinsi Bali ~ Indonesia

24  
B

Handwritten Balinese script on a palm leaf, featuring two circular holes for binding. The text is arranged in a single line across the length of the leaf.

25  
A

Handwritten Balinese script on a palm leaf, featuring two circular holes for binding. The text is arranged in a single line across the length of the leaf.

Kasuksman  
Pusat Dokumentasi  
Dinas Kebudayaan Provinsi Bali ~ Indonesia

25  
B

Handwritten text in Balinese script on a palm leaf. The text is arranged in approximately four horizontal lines. The script is finely etched into the surface of the leaf. There are two circular holes visible on the leaf, one near the left end and one near the right end, which were traditionally used for threading a cord to bind multiple leaves together into a book format.

26  
A

Handwritten text in Balinese script on a palm leaf. The text is arranged in approximately four horizontal lines. The script is finely etched into the surface of the leaf. There are two circular holes visible on the leaf, one near the left end and one near the right end, which were traditionally used for threading a cord to bind multiple leaves together into a book format.

Kasuksman  
Pusat Dokumentasi  
Dinas Kebudayaan Provinsi Bali ~ Indonesia

26  
B

Handwritten Balinese script on a palm leaf, consisting of approximately 12 lines of text.

27  
A

Handwritten Balinese script on a palm leaf, consisting of approximately 12 lines of text.

Kasuksman  
Pusat Dokumentasi  
Dinas Kebudayaan Provinsi Bali ~ Indonesia

27  
B

Handwritten Balinese script on a palm leaf, consisting of approximately 15 lines of text.

28  
A

Handwritten Balinese script on a palm leaf, consisting of approximately 15 lines of text.

28  
B

Handwritten text in Balinese script on a palm leaf, consisting of approximately 12 lines of text.

29  
A

Handwritten text in Balinese script on a palm leaf, consisting of approximately 12 lines of text.

Kasuksman  
Pusat Dokumentasi  
Dinas Kebudayaan Provinsi Bali ~ Indonesia

29  
B

Handwritten Balinese script on a palm leaf, consisting of approximately 12 lines of text.

30  
A

Handwritten Balinese script on a palm leaf, consisting of approximately 12 lines of text.

Kasuksman  
Pusat Dokumentasi  
Dinas Kebudayaan Provinsi Bali ~ Indonesia

30  
B

Handwritten Balinese script on a palm leaf, featuring two circular holes for binding. The text is arranged in approximately four horizontal lines.

31  
A

Handwritten Balinese script on a palm leaf, featuring two circular holes for binding. The text is arranged in approximately four horizontal lines.

**Kasuksman**  
Pusat Dokumentasi  
Dinas Kebudayaan Provinsi Bali ~ Indonesia

31  
B

Handwritten Balinese script on a palm leaf, consisting of approximately 15 lines of text. The script is finely etched and runs horizontally across the length of the leaf. There are two circular holes visible, one near the left end and one near the right end, used for binding multiple leaves together.

32  
A

Handwritten Balinese script on a palm leaf, consisting of approximately 15 lines of text. The script is finely etched and runs horizontally across the length of the leaf. There are two circular holes visible, one near the left end and one near the right end, used for binding multiple leaves together.



Kasuksman  
Pusat Dokumentasi  
Dinas Kebudayaan Provinsi Bali ~ Indonesia

၂၄

32

B

၂၄  
၂၅  
၂၆  
၂၇  
၂၈  
၂၉  
၃၀  
၃၁  
၃၂  
၃၃  
၃၄  
၃၅  
၃၆  
၃၇  
၃၈  
၃၉  
၄၀  
၄၁  
၄၂  
၄၃  
၄၄  
၄၅  
၄၆  
၄၇  
၄၈  
၄၉  
၅၀  
၅၁  
၅၂  
၅၃  
၅၄  
၅၅  
၅၆  
၅၇  
၅၈  
၅၉  
၆၀  
၆၁  
၆၂  
၆၃  
၆၄  
၆၅  
၆၆  
၆၇  
၆၈  
၆၉  
၇၀  
၇၁  
၇၂  
၇၃  
၇၄  
၇၅  
၇၆  
၇၇  
၇၈  
၇၉  
၈၀  
၈၁  
၈၂  
၈၃  
၈၄  
၈၅  
၈၆  
၈၇  
၈၈  
၈၉  
၉၀  
၉၁  
၉၂  
၉၃  
၉၄  
၉၅  
၉၆  
၉၇  
၉၈  
၉၉  
၁၀၀

၂၅

33

A

၂၅  
၂၆  
၂၇  
၂၈  
၂၉  
၃၀  
၃၁  
၃၂  
၃၃  
၃၄  
၃၅  
၃၆  
၃၇  
၃၈  
၃၉  
၄၀  
၄၁  
၄၂  
၄၃  
၄၄  
၄၅  
၄၆  
၄၇  
၄၈  
၄၉  
၅၀  
၅၁  
၅၂  
၅၃  
၅၄  
၅၅  
၅၆  
၅၇  
၅၈  
၅၉  
၆၀  
၆၁  
၆၂  
၆၃  
၆၄  
၆၅  
၆၆  
၆၇  
၆၈  
၆၉  
၇၀  
၇၁  
၇၂  
၇၃  
၇၄  
၇၅  
၇၆  
၇၇  
၇၈  
၇၉  
၈၀  
၈၁  
၈၂  
၈၃  
၈၄  
၈၅  
၈၆  
၈၇  
၈၈  
၈၉  
၉၀  
၉၁  
၉၂  
၉၃  
၉၄  
၉၅  
၉၆  
၉၇  
၉၈  
၉၉  
၁၀၀



Kasuksman  
Pusat Dokumentasi  
Dinas Kebudayaan Provinsi Bali ~ Indonesia

34  
B

Handwritten Balinese script on a palm leaf. The text is arranged in approximately 10 horizontal lines. A small number '1931' is written in the upper right corner of the leaf. There are three circular holes along the length of the leaf.

35  
A

Handwritten Balinese script on a palm leaf. The text is arranged in approximately 10 horizontal lines. There are three circular holes along the length of the leaf.

Kasuksman  
Pusat Dokumentasi  
Dinas Kebudayaan Provinsi Bali ~ Indonesia

35  
B

Handwritten Balinese script on a palm leaf, featuring two circular holes for binding. The text is arranged in approximately four horizontal lines.

36  
A

Handwritten Balinese script on a palm leaf, featuring two circular holes for binding. The text is arranged in approximately four horizontal lines.

**Kasuksman**  
Pusat Dokumentasi  
Dinas Kebudayaan Provinsi Bali ~ Indonesia

၅၄

36

B

Handwritten text in Balinese script on a palm leaf manuscript strip. The text is arranged in approximately four horizontal lines. The script is finely etched into the surface of the dried leaf. There are two circular holes visible on the strip, which were traditionally used for threading a cord to bind multiple leaves together into a book format. The text appears to be a form of Balinese literature or a record, possibly related to the 'Kasuksman' collection mentioned in the header.

၅၅


37

A

Handwritten text in Balinese script on a palm leaf manuscript strip. The text is arranged in approximately two horizontal lines. The script is finely etched into the surface of the dried leaf. There are two circular holes visible on the strip, which were traditionally used for threading a cord to bind multiple leaves together into a book format. The text appears to be a form of Balinese literature or a record, possibly related to the 'Kasuksman' collection mentioned in the header.

**Kasuksman**  
Pusat Dokumentasi  
Dinas Kebudayaan Provinsi Bali ~ Indonesia

Handwritten Balinese script on a palm leaf fragment. The text is arranged in several lines across the length of the leaf. A circular stamp is visible on the right side of the fragment.



PROVINSI BALI  
KANTOR  
DOKUMENTASI  
BUDAYA BALI  
BALI

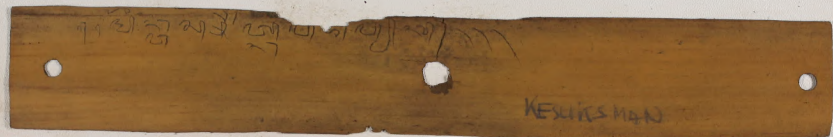
37  
B

Handwritten Balinese script on a palm leaf fragment. The text is arranged in several lines across the length of the leaf.

38  
A

**Kasuksman**  
Pusat Dokumentasi  
Dinas Kebudayaan Provinsi Bali ~ Indonesia

38  
B



**Kasuksman**  
Pusat Dokumentasi  
Dinas Kebudayaan Provinsi Bali ~ Indonesia

