

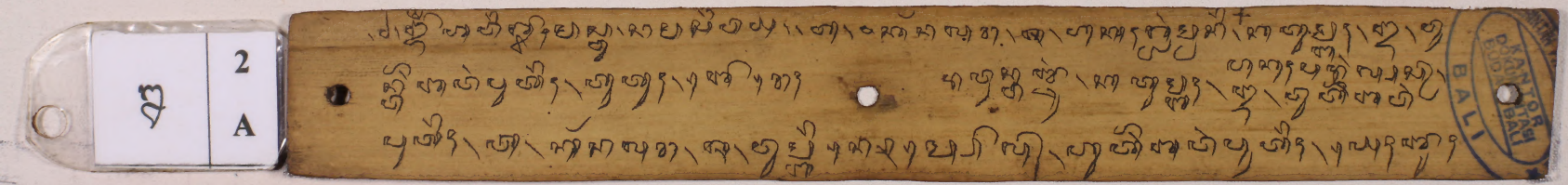
TETAMBAN RARE~22

*Pusat Dokumentasi
Dinas Kebudayaan Provinsi Bali*



TETAMBAN RARE~22

*Pusat Dokumentasi
Dinas Kebudayaan Provinsi Bali*



TETAMBAN RARE~22

*Pusat Dokumentasi
Dinas Kebudayaan Provinsi Bali*

23
2
B

Handwritten Balinese script on a palm leaf, consisting of three lines of text.

23
3
A

Handwritten Balinese script on a palm leaf, consisting of three lines of text.

TETAMBAN RARE~22

*Pusat Dokumentasi
Dinas Kebudayaan Provinsi Bali*

9	5
	B

Handwritten text on a palm leaf slip, consisting of two columns of characters in Balinese script.

6	6
	A

Handwritten text on a palm leaf slip, consisting of two columns of characters in Balinese script.

TETAMBAN RARE~22

*Pusat Dokumentasi
Dinas Kebudayaan Provinsi Bali*

၆

7

B

၆
မာၤပျီၤ နာၤတၢ်တၢ်တၢ်တၢ်တၢ်တၢ်
နာၤတၢ်တၢ်တၢ်တၢ်တၢ်တၢ်
ပျီၤတၢ်တၢ်တၢ်တၢ်တၢ်တၢ်

မာၤတၢ်တၢ်တၢ်တၢ်တၢ်တၢ်
ပျီၤတၢ်တၢ်တၢ်တၢ်တၢ်တၢ်
မာၤတၢ်တၢ်တၢ်တၢ်တၢ်တၢ်

၆

8

A

တၢ်တၢ်တၢ်တၢ်တၢ်တၢ်
တၢ်တၢ်တၢ်တၢ်တၢ်တၢ်
တၢ်တၢ်တၢ်တၢ်တၢ်တၢ်

တၢ်တၢ်တၢ်တၢ်တၢ်တၢ်
တၢ်တၢ်တၢ်တၢ်တၢ်တၢ်
တၢ်တၢ်တၢ်တၢ်တၢ်တၢ်

TETAMBAN RARE~22

*Pusat Dokumentasi
Dinas Kebudayaan Provinsi Bali*

၁

8

B

တၢ်လၢၤတၢ်ပၤတၢ်တၢ်
တၢ်ပၤတၢ်တၢ်တၢ်
တၢ်ပၤတၢ်တၢ်တၢ်

တၢ်ပၤတၢ်တၢ်တၢ်
တၢ်ပၤတၢ်တၢ်တၢ်
တၢ်ပၤတၢ်တၢ်တၢ်

၁

9

A

တၢ်ပၤတၢ်တၢ်တၢ်
တၢ်ပၤတၢ်တၢ်တၢ်
တၢ်ပၤတၢ်တၢ်တၢ်

တၢ်ပၤတၢ်တၢ်တၢ်
တၢ်ပၤတၢ်တၢ်တၢ်
တၢ်ပၤတၢ်တၢ်တၢ်

TETAMBAN RARE~22

*Pusat Dokumentasi
Dinas Kebudayaan Provinsi Bali*

10 B	10	10	10
	10	10	10

Handwritten text in Balinese script on a palm leaf strip. The text is arranged in two columns. On the right side of the strip, there is a circular stamp that reads "KEMENTERIAN BUDHAYA BALI".

11 A	11	11	11
	11	11	11

Handwritten text in Balinese script on a palm leaf strip. The text is arranged in two columns.

TETAMBAN RARE~22

*Pusat Dokumentasi
Dinas Kebudayaan Provinsi Bali*

12
B

Handwritten text in Balinese script on a palm leaf, divided into two columns by a central hole. The script is finely etched and appears to be a form of traditional Balinese literature or record.

13
A

Handwritten text in Balinese script on a palm leaf, divided into two columns by a central hole. The script is finely etched and appears to be a form of traditional Balinese literature or record.

TETAMBAN RARE~22

*Pusat Dokumentasi
Dinas Kebudayaan Provinsi Bali*

15	B
----	---

Handwritten text on palm leaf 15, split into two columns. The script is Balinese. The left column contains three lines of text, and the right column contains three lines of text. There are circular holes on the leaf for binding.

16	A
----	---

Handwritten text on palm leaf 16, split into two columns. The script is Balinese. The left column contains three lines of text, and the right column contains three lines of text. There are circular holes on the leaf for binding.

TETAMBAN RARE~22

Pusat Dokumentasi
Dinas Kebudayaan Provinsi Bali

ꦏꦱ	18 B
----	---------

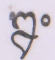




Handwritten text in Balinese script on a palm leaf, consisting of two columns of text.


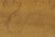

ꦏꦱ	19 A
----	---------

Handwritten text in Balinese script on a palm leaf, consisting of two columns of text.

TETAMBAN RARE~22

Pusat Dokumentasi
Dinas Kebudayaan Provinsi Bali

20	B	<p>  </p> <p>  </p>	<p>  </p>
		<p>  </p>	<p>  </p>

21	A	<p>  </p>	<p>  </p>
		<p>  </p>	<p>  </p>

TETAMBAN RARE~22

*Pusat Dokumentasi
Dinas Kebudayaan Provinsi Bali*

22
B

Handwritten text in Balinese script on a palm leaf strip, divided into two columns by a central hole. The script is finely etched and appears to be a form of traditional Balinese writing.

23
A

Handwritten text in Balinese script on a palm leaf strip, divided into two columns by a central hole. The script is finely etched and appears to be a form of traditional Balinese writing.

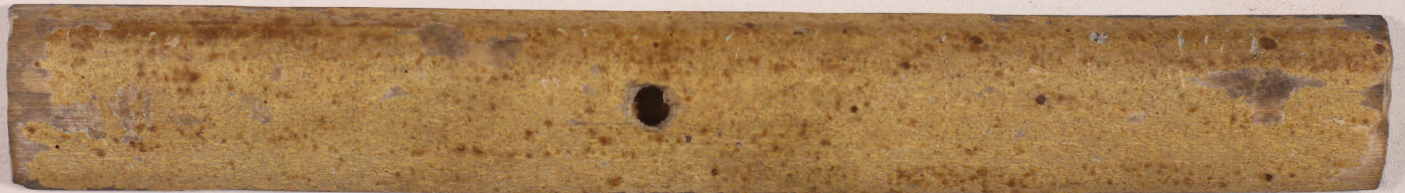
TETAMBAN RARE~22

*Pusat Dokumentasi
Dinas Kebudayaan Provinsi Bali*

23

23

B





TETAMBAN RARE~22
Pusat Dokumentasi
Dinas Kebudayaan Provinsi Bali

