

OREGON STATE LIBRARY
DOCUMENTS SECTION

STATE OF OREGON 1966

Voters' Pamphlet

DOCUMENT
COLLECTION
OREGON
COLLECTION



General Election

November 8, 1966

Compiled and Distributed by

TOM McCALL

Secretary of State

INFORMATION FOR VOTERS

- (1) Requirements for a citizen to qualify as a voter:

Citizen of the United States.
Twenty-one or more years of age.
Resided in the state at least six months.
Able to read and write English.
Registered as an elector with the County Clerk or official registrar at least 30 days before election.

- (2) Voting by absentee ballot.
You may apply for an absentee ballot if:

You are a registered voter. ("Service voters" are automatically registered by following the service voting procedure.)

You have reason to believe you will be absent from your county on election day.

You live more than 15 miles from your polling place.

You are unable by reason of physical disability to go to the polls.

You are a "service voter".
You are a "service voter" if you are:

In the Armed Forces or Merchant Marine of the United States.

A civilian employee of the United States, serving outside the country.

A member of a religious group or welfare agency assisting members of the Armed Forces.

A spouse and dependents of a "service voter" who have been Oregon residents and are temporarily living outside the county in which the last home residence in this state of the "service voter" is located.

How a voter may obtain and use an absentee ballot.

You may apply for an absentee ballot if:

You will be temporarily absent from your county on election day.

You live more than 15 miles from your polling place.

You are physically unable to go to the polls.

Application for the ballot may be filed with, or mailed to the County Clerk at any time within 60 days before the General election, September 9—November 7 (Service voters, after January 1 of election year).

Application includes:

Your signature.

Address or precinct number.

Statement of reason for application.

Applications filed less than five days before election, November 3-7, require additional statement that:

Voter is physically unable to get to the polls, or

Voter was unexpectedly called out of the county in the five-day period.

Emergencies on Election Day:

Physical disability must be certified by licensed practitioner of healing arts or authorized Christian Science practitioner. Involuntary public services such as fire-fighting to be certified by person in charge.

Ballot, when voted by elector, must be returned to County Clerk not later than 8 p.m. on election day.

- (3) A voter may obtain from his County Clerk a certificate of registration if he:

Changes residence within his precinct, county or to another county within 60 days prior to the ensuing election and has not reregistered. (Certificate is presented to his election board.)

Is absent from his county on election day. (Certificate may be presented to the election board in any county in the state. Elector may vote only for state and district offices.)

- (4) A voter is required to reregister if he:

Changes address by moving within his precinct or moving to another precinct or county.

Changes party registration.

Changes name.

(See back of book for list of candidates)

At the General Election of 1966 the electors of Salem in Marion County will cast their votes on the equipment illustrated below. This page is inserted into the Voters' Pamphlet as an aid to those of you who will be using this equipment for the first time.

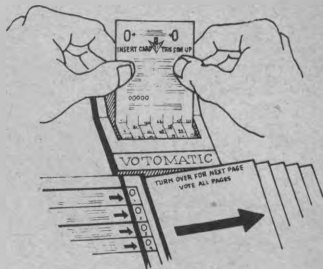
HOW TO VOTE ON THE VOTOMATIC VOTE RECORDER

SPECIAL NOTE

IF YOU MAKE A MISTAKE, RETURN YOUR CARD AND GET ANOTHER

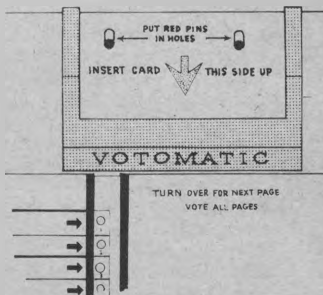
STEP 1

INSERT THE BALLOT CARD ALL THE WAY INTO THE VOTOMATIC.



STEP 2

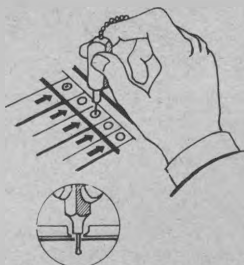
BE SURE THE TWO SLOTS IN THE STUB OF YOUR CARD FIT DOWN OVER THE TWO RED PINS.



STEP 3

TAKE THE PUNCH ATTACHED TO THE VOTOMATIC AND PUNCH THROUGH THE BALLOT CARD FOR CANDIDATES OF YOUR CHOICE. HOLD PUNCH VERTICAL (STRAIGHT UP); DO NOT USE PEN OR PENCIL.

THE BLACK SPOT IN THE VOTING CIRCLE SHOWS YOU HAVE RECORDED YOUR VOTE.



STEP 4

AFTER VOTING, WITHDRAW THE BALLOT CARD AND PLACE IT INSIDE THE ENVELOPE, WITH THE STUB SHOWING

THERE IS A PLACE FOR WRITE-IN VOTES ON THE BALLOT ENVELOPE

THIS PAGE IS BLANK

THIS PAGE IS BLANK

Measure No. 1

Public Transportation System Employees Constitutional Amendment

Proposed by the Fifty-third Legislative Assembly by House Joint Resolution No. 13, filed in the office of the Secretary of State on May 18, 1965, and referred to the people as provided by Section 1, Article XVII of the Constitution.

Explanation

By Committee Designated Pursuant to ORS 254.210

Under present Oregon Law certain rights and benefits, particularly those falling in the area of pensions, earned by employes working for private transit systems, would be jeopardized or destroyed by transfer of that system to public ownership or control. In some circumstances the public agency would be without authority to protect those rights.

Measure No. 1 requires public agencies to "make fair and equitable arrangements to protect the interests of employes and retired employes" affected by the assumption of responsibility for operation of a public transportation system by a governmental agency or subdivision. The measure authorizes the governmental body to make such arrangements as "may be necessary for the preservation of rights, privileges and benefits" which were in existence at the time of the take-over by the governmental agency.

The measure would make possible the acquisition or assumption of responsibility for operation of public transportation systems by public agencies or municipal corporations without penalty to current employes or retired employes receiving pensions from those systems.

The measure would also bring the State of Oregon into compliance with a requirement of the Federal Mass Transportation Act of 1964 which provides as a condition of federal assistance to cities, counties and states for modernization, expansion, or other improvements in their mass transportation facilities and services, that "It shall be a condition of any assistance under this Act that fair and equitable arrangements are made . . . to protect the interests of employes affected by such assistance."

Such federal assistance may amount to two-thirds of the financing required to underwrite a transportation improvement program. Federal aid is available to governmental agencies, not only for transportation systems operated by those agencies, but also when applying for such funds on behalf of a private carrier.

Measure No. 1 does not transfer or require the transfer of ownership or control of private transportation systems to public agencies. It provides that, should such a transfer become necessary or advisable to meet the needs of the future, employes of affected transportation systems will be protected.

GEORGE J. ANNALA, Hood River
WILLIAM F. LUBERSKY, Portland
MELVIN W. SCHOPPERT, Portland

Measure No. 1**Public Transportation System Employees
Constitutional Amendment****Argument in Favor**

**Submitted by Legislative Committee provided by Subsection (3)
of ORS 255.421**

The constitution of Oregon does not presently provide for the continuation of pension plans, job benefits, etc. of transit employees whose transportation systems may be taken over by public agencies. Unless its statutes are amended, the rights of deserving employees and pensioners in such cases would be put in jeopardy, and the ability of our state to develop its metropolitan and inter-city transit systems to meet the needs of the future will be hampered.

Recognizing this situation, the 1965 Legislature passed a bill (by a 25-0 vote in the Senate and a 50-7 margin in the House) to refer to the people this constitutional amendment. It will require that public bodies taking over any public transportation system protect the pension rights and job benefits of all existing and retired employees of the old system.

THIS MEASURE DOES NOT PROVIDE NEW BENEFITS FOR TRANSIT EMPLOYEES, NOR DOES IT TRANSFER THE OPERATIONS OF PRIVATE CARRIERS TO PUBLIC AGENCIES.

The purpose of the measure is simply to make it possible for such a changeover to be effected should it be in the public interest to do so. With the population growth and mounting complexity of urban areas, it has become increasingly more difficult for private carriers to expand their services and still maintain economical rate structures. The trend in most American metropolises is toward public subsidization or outright assumption of the responsibility to provide economical, efficient mass transportation service. Oregon should be prepared to meet this trend, without, at the same time, penalizing private carriers which can meet the demands of the future.

PASSAGE OF MEASURE NO. 1 IS ESSENTIAL IF OREGON IS TO QUALIFY FOR FEDERAL MASS TRANSPORTATION AID FUNDS.

The Federal Mass Transportation Act of 1964 provides for millions of dollars in federal aid funds to help cities, counties and states modernize and improve their mass transportation facilities and services. However, a key provision of this Act is that "fair and equitable arrangements are made . . . to protect the interests of employees affected by such assistance." This means that—if local or state government is to qualify for such federal aid—it must insure that existing employee pension rights, etc. are not jeopardized by the changeover from private to public control. The same applies for a public agency or political sub-division that requests aid on behalf of a PRIVATE CARRIER.

Since Oregon taxpayers contribute to this federal aid program, they should have an interest in seeing that our state can share in its benefits—up to two-thirds of the cost of a modernization or improvement program. **MEASURE NO. 1 PAVES THE WAY FOR SUCH ASSISTANCE—AND ITS RESULTING SAVINGS TO OREGON TAXPAYERS.**

VOTE #1 YES TO:

- PROTECT THE EXISTING RIGHTS OF TRANSIT EMPLOYEES
- PROVIDE IMPROVED PUBLIC TRANSPORTATION SERVICE FOR THE FUTURE
- PERMIT OREGON TO SHARE IN FEDERAL AID FUNDS

SENATOR VICTOR G. ATIYEH
REPRESENTATIVE ROBERT F. SMITH
REPRESENTATIVE EDWARD J. WHELAN

Measure No. 1**Public Transportation System Employees
Constitutional Amendment****Argument in Favor****Submitted by the Citizens Committee for Improved Transportation****VOTE NO. 1 YES TO PROTECT TRANSIT EMPLOYEES' PENSIONS**

The 1965 Legislature voted overwhelmingly to refer to the people this measure to assure transit employees and deserving pensioners fair treatment in regard to pension rights, job benefits, etc. should their transportation systems be taken over by public agencies.

THIS MEASURE DOES NOT TRANSFER THE OWNERSHIP OR CONTROL OF PRIVATE CARRIERS TO PUBLIC AGENCIES—NOW OR IN THE FUTURE.

It simply provides that where such a change becomes necessary—in order to provide efficient public service—the rights of active and retired employees will be protected.

It should be emphasized that this measure gives NOTHING to a transit employee that he has not already earned. It merely amends certain statutes that could prohibit public agencies from continuing existing pension plans, etc.—even though these agencies were ready and willing to do so.

THE NATIONAL TREND IS TOWARD THE PUBLIC OPERATION OF MASS TRANSPORTATION SYSTEMS.

Generally speaking, as cities grow, their need for expanded service overwhelms the ability of the private carriers to provide it without a prohibitive increase in fares. For example, Portland is the only major city on the West Coast whose public transit service remains in private hands.

As this trend continues, it becomes increasingly necessary for local government to subsidize or assume outright responsibility for providing economic, efficient service to the public. Measure No. 1 paves the way for this WITHOUT penalizing existing transportation services that are privately operated.

PASSAGE OF THIS MEASURE CAN MEAN SUBSTANTIAL SAVINGS TO OREGON TAXPAYERS.

Millions of dollars in federal aid are now available to help urban areas solve their present and future transportation problems. However, under the terms of the Federal Mass Transportation Act of 1964, many Oregon transit systems could not qualify for such assistance.

The Federal Act provides that any public agency that applies for federal aid—up to two-thirds of the cost of an improvement or expansion program—must first insure that employees of transit systems in question do not suffer because of the transfer from private to public control. The same applies should a city or county ask for federal funds ON BEHALF OF a private carrier.

PASSAGE OF MEASURE NO. 1 ENTAILS NO INCREASE IN YOUR LOCAL OR STATE TAXES. Unless it is passed, however, we could be denied federal aid for transportation improvements. IN SUCH CASES, OREGONIANS WOULD HAVE TO FINANCE SUCH IMPROVEMENTS ENTIRELY OUT OF THEIR OWN POCKETS.

THE FOLLOWING ORGANIZATIONS AND PUBLICATIONS HAVE PUBLICLY ENDORSED A "YES" VOTE ON MEASURE NO. 1:

Republican Party of Oregon
Democratic Party of Oregon
Oregon AFL-CIO

CITIZENS COMMITTEE FOR IMPROVED TRANSPORTATION
Ward H. Cook, Chairman
3715 N.E. Klickitat St., Portland, Oregon

Measure No. 1

CONSTITUTIONAL AMENDMENT

Be It Resolved by the Legislative Assembly of the State of Oregon:

(1) The Constitution of the State of Oregon is amended by creating a new section, to be added to and made a part of Article XI, and to read:

Section 13. Notwithstanding the provisions of section 20, Article I, section 10, Article VI, and sections 2 and 9, Article XI, of this Constitution, when any city, county, political subdivision, public agency or municipal corporation assumes responsibility for the operation of a public transportation system, the city, county, political subdivision, public agency or municipal corporation shall make fair and equitable arrangements to protect the interests of employes and retired employes affected. Such protective arrangements may include, without being limited to, such provisions as may be necessary for the preservation of rights, privileges and benefits (including continuation of pension rights and payment of benefits) under existing collective bargaining agreements, or otherwise.

BALLOT TITLE

PUBLIC TRANSPORTATION SYSTEM EMPLOYES CONSTITUTIONAL AMENDMENT—Purpose: Requires public bodies taking over any public transportation system to protect pension rights, job benefits, etc., of all existing and retired employes of old system.

YES NO

THIS PAGE IS BLANK

THIS PAGE IS BLANK

Measure No. 2
State Bonds for Education Facilities

Proposed by the Fifty-third Legislative Assembly by House Joint Resolution No. 61, filed in the office of the Secretary of State on May 25, 1962 and referred to the people as provided by Section 1, Article XVII of the Constitution.

Explanation

By Committee Designated Pursuant to ORS 254.210

Measure No. 2 would provide one single authority for the state to issue general obligation bonds to help finance building projects both at institutions of higher education and at community colleges.

It would abolish the distinction which now exists in the Oregon Constitution between bonds issued under Article XI-F(1), for building projects at state institutions of higher education only, and bonds issued under Article XI-G to finance building projects at both institutions of higher education and community colleges. Article XI-F(1) bonds are retired out of student fees and building revenues; Article XI-G bonds are retired out of general revenues.

Revenues such as room rents and parking fees, and building fees collected from all students, which presently are used to pay debt only on dormitories, student centers and other non-academic projects, could, at the discretion of the State Board of Higher Education, be made available as well to help finance projects such as classroom buildings, laboratories and libraries.

Measure No. 2 would repeal Article XI-G, reducing the total present limit on state bonds for higher education and community colleges by \$30 million. Bonds which already have been issued or authorized under Article XI-G would become an obligation of the newly combined bond fund.

The limit on the amount of bonds which could be outstanding at any time for these purposes would be the same limit which now applies only to bonds under Article XI-F(1): Three-fourths of one percent of the true cash value of all the taxable property in the state. This limit now is approximately \$104,748,000. In the future, it will increase or decrease with the value of taxable property.

At present, this is the situation (figures in millions):

	Under Article XI-F(1) Higher Education Only	Higher Education	Community Colleges	Totals
Constitutional Limit	\$104.7	\$25.0	\$5.0	\$134.7
Bonds Authorized	54.5	18.2	1.4	74.1
Remaining Capacity	\$ 50.2	\$ 6.8	\$3.6	\$ 60.6

If Measure No. 2 passes, this will be the situation:

	Under Article XI-F(1) All Higher Education and Community College Buildings
Constitutional Limit	\$104.7
Bonds Authorized	74.1
Remaining Capacity	\$ 30.6

The cost in interest and principal of the \$74,068,000 in bonds now outstanding or authorized will be about \$3,750,000 in each of the next three years. It is estimated that each year net income of about \$3,000,000 could be made available from dormitories and other revenue-producing projects, and about \$1,500,000 will be available from student building fees. If income is insufficient to meet the total cost of all the bonds under the proposed amended Article XI-F(1), other state revenues would have to be used to pay the difference.

Measure No. 2 does not specify what agency would decide which projects would be built with bond funds. Current practice is for the Legislature to make this decision, within constitutional limits.

CHARLES R. HOLLOWAY, JR., Portland
JOHN D. MOSSER, Beaverton
DONALD J. STERLING, JR., Portland

Measure No. 2

State Bonds for Education Facilities

Argument in Favor

**Submitted by Legislative Committee provided by Subsection (3)
of ORS 255.421**

**VOTE YES ON MEASURE NO. 2
TO USE SELF-LIQUIDATING BONDS
FOR NEEDED CLASSROOMS, LIBRARIES**

This measure will make possible the construction of more academic buildings such as classrooms, laboratories and libraries for community colleges, colleges, universities and OTI.

At the same time it will reduce the total amount of bonds that can be issued by \$30,000,000.

These seemingly contradictory results will be possible by using bond authority differently than the Board of Higher Education has been willing to do under the present Article XI-F(1). The Board's policy has been to use this authority only for non-academic buildings such as athletic facilities, dormitories, health centers, parking lots and student centers.

That is not where the needs are greatest. Requests of the Board of Higher Education itself and of community colleges for academic buildings in the next two years are nearly four times as high as are their requests for non-academic buildings.

**A YES VOTE ON MEASURE NO. 2
WILL NOT RAISE YOUR TAXES**

Under this measure, bonds will only be issued if it appears they can be retired from non-tax sources. Most of the money will come from building revenues. Even laboratory, library and office buildings produce some revenue from provision made for space in research grants. The next biggest source of bond retirement funds are student fees. Additional funds come from other gifts and grants and earnings from investments.

BETTER USE OF STUDENT FEES

All students pay a building fee of \$10 each term. These amount to about \$1,500,000 a year. The Board of Higher Education has used these fees to pay interest and principal on Article XI-F(1) Bonds which were issued to construct non-revenue-producing student health centers. It has also used them to help service bonds for dormitories and parking facilities used by only some students.

A "yes" vote will tell the Board you expect these bonds and student fees to be used for the educational buildings the students need and not just for more dormitories and student centers.

**SENATOR GLEN M. STADLER
REPRESENTATIVE RICHARD E. GROENER
REPRESENTATIVE JOHN D. MOSSER**

Measure No. 2
State Bonds for Education Facilities
Arguments in Opposition

Submitted by Senator Ben Musa and Representative Don Wilson

Measure No. 2 would in effect reverse the vote of the people in 1960 which raised the constitutional limit on total bonds which could be issued to construct self-supporting and self-liquidating buildings (dormitories, student centers, etc.). Taxpayers then were told emphatically that debt service on bonds would be met from non-tax funds and that construction would not be an additional burden to taxpayers.

Originally, this Measure was intended to encourage the Board of Higher Education to use these bonds to build classrooms, laboratories, libraries, faculty offices, etc., debt service to be met from general tax funds. The argument that student tuition, not general tax funds, would retire the bonds begs the question. Diverting student tuition from the operating budget to debt service would increase the amount of tax funds needed for the operating budget!

The legislative Ways and Means Committee may have had good intentions to promote this proposition, but its introduction in the closing days of the session did not permit hearings and discussion such an important, profound matter should have received! This measure does not keep faith with the proposition sold to the voters in 1960. Vote NO on Ballot Measure No. 2.

Submitted by State Board of Higher Education

The Board of Higher Education unanimously encourages all voters to vote NO on Ballot Measure No. 2. The objectives of those who prepared the Measure are not accomplished and consequences of its passage would be detrimental to orderly financing of educational buildings.

The principal objective leading to this Measure was to satisfy the Board that it is not unethical to use money obtained from sale of bonds under Article XI-F(1) of the Constitution for classrooms, libraries and laboratories, as well as for self-supporting buildings such as dormitories, student centers, etc.

The Board has been unwilling to use Article XI-F(1) bonds for classrooms, libraries and laboratories because the Constitution requires the Board to declare a building "self-supporting and self-liquidating" before it is built from such money. Nothing in the Measure changes that requirement. The Measure authorizes the Board to claim a building to be self-supporting although the building produces no revenue at all!

There is no reason to believe that this amendment as specified in the Measure, which seems to authorize the Board to declare that black is white, will modify the Board's ethical judgement.

A second objective leading to Ballot Measure No. 2 was to combine the two bonding authorities, Articles XI-G and XI-F(1). The fact is that the Measure would not accomplish that objective. Rather, it would repeal Article XI-G and eliminate the \$30 million bonding capacity which voters approved at urging of the Legislature and the Board in May, 1964. This means Measure No. 2, unfortunately, would actually remove the distinction in building bonds which voters decisively established only two years ago. With this reduced bonding capacity, current taxpayers would need to pay a disproportionately higher share of long-range building costs for future generations of students.

The Resolution authorizing this Measure was passed during closing days of the 1965 Legislature. In the late rush, no public hearing was held; if it had, defects of Measure No. 2 could have been corrected.

Your NO vote will help Oregon's colleges, universities and students.

CHAS. R. HOLLOWAY, JR., President, State Board of Higher Education

Measure No. 2

CONSTITUTIONAL AMENDMENT

Be It Resolved by the Legislative Assembly of the State of Oregon:

(1) Article XI-G of the Constitution of the State of Oregon is repealed; sections 1, 2 and 4, Article XI-F(1) of the Constitution of the State of Oregon are amended; and the Constitution of the State of Oregon is amended by creating a new section 6 to be added to and made a part of Article XI-F(1) and to read:

Sec. 1. The credit of the state may be loaned and indebtedness incurred in an amount which shall not exceed at any one time three-fourths of one percent of the true cash value of all the taxable property in the state, as determined by law to provide funds with which to redeem and refund outstanding revenue bonds issued to finance the cost of buildings and other projects for higher education *and community colleges*, and to construct, improve, repair, equip, and furnish buildings and other structures for such purpose, and to purchase or improve sites therefor.

Sec. 2. The buildings and structures hereafter constructed ~~{for higher education}~~ pursuant to this ~~{amendment}~~ article shall be such only as conservatively shall appear to the constructing authority to be wholly self-liquidating and self-supporting from revenues, gifts, grants, or building fees. All unpledged net revenues of buildings and other projects, *together with any other revenues, gifts, grants or building fees, and the net revenues, if any, of new buildings and projects* may be pooled ~~{with the net revenues of new buildings or projects}~~ in order to render the new buildings or projects self-liquidating and self-supporting.

Sec. 4. Bonds issued pursuant to this article shall be the direct general obligations of the state, and be in such form, run for such periods of time, and bear such rates of interest, as shall be provided by statute. Such bonds may be refunded with bonds of like obligation. Unless provided by statute, no bonds shall be issued pursuant to this article for the construction of buildings or other structures for higher education *or community colleges* until after all of the aforesaid outstanding revenue bonds shall have been redeemed or refunded.

Section 6. All bonds issued, or authorized to be issued by the Legislative Assembly, pursuant to Article XI-G of this Constitution prior to its repeal, shall be deemed to be issued pursuant to this article and, together with other bonds issued pursuant to this article, shall not exceed the limitation on the

loaning of the credit of the state and the incurring of indebtedness as set forth in section 1 of this article.

NOTE: Matter in *italics* in an amended section is new; matter ~~lined out and bracketed~~ is existing law to be omitted.

BALLOT TITLE

STATE BONDS FOR EDUCATION FACILITIES—Purpose:

2 Constitutional amendment authorizing general obligation bonds for constructing self-supporting facilities for community colleges. Permits use of revenues from other state education facilities in financing projects.

YES

Estimate of Financial Effects: This amendment to Article XI-F(1) and repeal of Article XI-G would reduce the bonding limit for Higher Education and community college building projects from \$134,750,000 to \$104,750,000. It would also remove the present \$5,000,000 limitaiton on indebtedness for community colleges within the total bonding capacity. The potential average annual cost for principal and interest on bonded indebtedness would be reduced by approximately \$1,750,000. The indebtedness under both articles now totals \$68,000,000.

NO

THIS PAGE IS BLANK

THIS PAGE IS BLANK

STATEMENT OF THE DEMOCRATIC PARTY OF OREGON

We believe in PEOPLE, PROGRESS and ACTION.

Government at all levels belongs to people. It is or should be, always their servant.

What you as an American want to be done—what you need, in relation to the wants and needs of other Americans—is what your government exists to do, to help you in doing, or to protect you in your right to do.

Food for the hungry, drink for the thirsty, help for the heavy laden and oppressed—jobs for the worker, education for the young, and a good quality to the living environment of all—these things Democrats will once again see to if chosen as your representatives in our democracy.

But progress for the people and peace for the world cannot be won without action. Here is where Democrats excell—here is where their hearts and hands join to redoubled efforts to help, to make our government work well for us.

Breatheable air and useable water can only come from the action of all of us through OUR government.

Lower interest rates and even fuller employment take action—both by individuals, business and all of us through government. As our incomes and buying power have increased we have created the need for action to curb the inflation of financiers and the market place. But this must be done while maintaining our economy in prosperity.

The answer of the other party in the past has been to produce depression not prosperity, platitudes not performance, poverty not plenty, scandal not honesty, shame not peace.

(Concluded on following page)

(This information furnished by Democratic Party of Oregon;
Senator Edward N. Fadeley, Chairman; Don Orton, Secretary)

Action is needed. Only carping criticism is offered.

Social Security and Medical Care, bank deposit insurance, unemployment compensation, minimum wage guarantees, hydroelectric power at low cost for both private and public use—leadership in the world, conservation of our resources, freedom for individuals, the strength to achieve and maintain peace, dignity and respect for each creature of God subject to man's system of law and order—all these have come through action in the American nation spearheaded by the Democratic Party.

The other party as a party, has satisfied itself with belittling and criticizing while the work of progress was afoot and then, perhaps, to saying "Me-too" after the controversies of change had been blurred by the acceptance of the programs for progress by the people.

Even now the candidates of the other party prate about the high rates of interest at the bank, or of inflating costs of commodities. Yet all the while they criticize efforts of others to cure and lessen these ills. They attack the ideas for action. But they do not suggest alternatives. They will not cooperate in efforts to solve the problems of the housing and lumber industry.

Criticism without alternatives for action is sterile. It produces confusion and weakens the will of the country—from the local level to the international scene. Carping provides no solutions. Prating of Gloom and Doom do not produce the greatness, needed in these times.

The other party will not act for progress. Democrats have and will.

Submitted by
Senator Ed Fadeley, Chairman
Democratic Party of Oregon

THIS PAGE IS BLANK

THIS PAGE IS BLANK

STATEMENT OF THE REPUBLICAN STATE CENTRAL COMMITTEE VOTERS' PAMPHLET

Republican State Committee

Candidates offered to Oregon voters in this election by the Republican Party are among the most able, experienced and personally attractive it has been our privilege to recommend.

REPUBLICAN RECORD

They each share a genuine concern for the future of Oregon, our Nation and the fate of the free world. Republican candidates work for time-honored principles—for HUMAN VALUES, which emphasize the rights, freedoms and opportunities of the individual, and for fiscal responsibility, which recognizes that no dollar can be spent by government which has not first been taken from the citizens. They demonstrate a COMPASSION FOR THE PEOPLE, which expresses its concern through programs which provide help and rehabilitation for those unable to care for themselves.

Under Republican leadership in the executive and legislative branches of our state government, Oregon advanced far beyond other states in civil rights legislation, education, fair employment practices, park and highway development, workmen's compensation benefits, property tax relief and a host of other areas.

FAILURE OF THE DEMOCRATIC LEADERSHIP

In its Congressional delegation, Oregon in the last few years has seen representation dwindle to a single Republican among the six. During these same years, Oregon has seen its allocations of federal defense funds dwindle. We have witnessed the shameful feuding of our Democratic Senators with exchanges of vitriolic letters made public. It took three years to confirm the U.S. Attorney for Oregon, and after 10 months a federal judgeship remains vacant, while court congestion increases.

The strength and benefits of this nation's two-party system can best be attained by electing more Republicans to represent us in Washington, D. C.

There is ample reason to elect Republicans. This administration has miscalculated the Viet Nam engagement time and again; issuing falsely optimistic statements, that the war was soon to be won. Inflation and tight-money policies have struck hard, shutting down lumber mills and other forest products plants.

The damage to Oregon's economy in jobs lost, personal suffering and housing cutbacks will be felt for a long time to come, and the full effect is not yet here. The timidity, on the one hand, in moving into the air line strike and the hypocrisy, on the other, in waiving guidelines does no credit to the national administration, nor does the unseemly rush to television cameras to announce a strike settlement before participating parties could reach their people.

(Continued on following page)

(This information furnished by Republican State Central Committee;
Don Hodel, Chairman; Mrs. Theodore L. Shay, Secretary)

REPUBLICAN CANDIDATES

In these difficult times, times of critical decisions, state and national governments should be in the hands of those most concerned with the best and most efficient use of the tax dollar: clearly the candidates offered by the Republican Party. As everyone is hurt by inflation, Congress and our state legislature should be in the hands of those who will not tolerate waste, or duplication, or maladministration: clearly the candidates offered by the Republican Party.

MARK HATFIELD, TOM McCALL, and (depending upon your Congressional District), WENDELL WYATT, or EVERETT THOREN, or LYLE DEAN, or JOHN DELLENBACK—are the candidates at the top of your ballot; but their competence, convictions, vigor, and experience are symbolic of Republicans on every line of your ballot.

YOU CAN VOTE FOR REPUBLICANS WITH CONFIDENCE

REPUBLICAN PLATFORM

The 1966 Republican State Convention at Coos Bay, July 23, detailed our position on principles and issues:

INFLATION—On this critical issue the delegates pointed out that inflation “seriously affects ALL Americans, particularly those living on fixed incomes and pensions.” In July, Republicans had the foresight to prophesy, “It (inflation) threatens a serious recession in Oregon’s basic lumber and plywood industry.” The cause?—“in large part . . . the present national administration’s irresponsible economic policies.” The cure?—“an immediate, material cut in federal non-defense spending.”

VIET NAM—UNLIKE the platform on Viet Nam adopted by the Democratic Party leadership, the 1966 Republican Convention delegates stated:

“We urge the administration to be candid with the American people, avoiding the false statements of optimism which have characterized progress reports during the past five years.”

“We say to Hanoi, Peking, and Moscow. that the American people will not stand still for a barbaric miscarriage of justice in the trial and execution of Americans.”

“We do not endorse global commitments in blank-check fashion, but insist that congressional consultation and action be a part of this nation’s principles.”

FEDERAL TAXATION—The delegates to the REPUBLICAN Convention objected to a level of federal over-taxation which makes it difficult or impossible for the individual states and counties to levy sufficient taxes to meet their normal needs.

(Concluded on following page)

(This information furnished by Republican State Central Committee; Don Hodel, Chairman; Mrs. Theodore L. Shay, Secretary)

RESPECT FOR LAW AND ORDER—This resolution included these essential statements:

“The attempt to gain objectives by riot, violent demonstrations and mob rule is still unlawful and can only result in the breakdown of our democratic society and give aid and comfort to those who would destroy it.”

“We believe that freedom can be maintained only under law and that irresponsible defiance of authority leads to anarchy and the eventual loss of all freedom.”

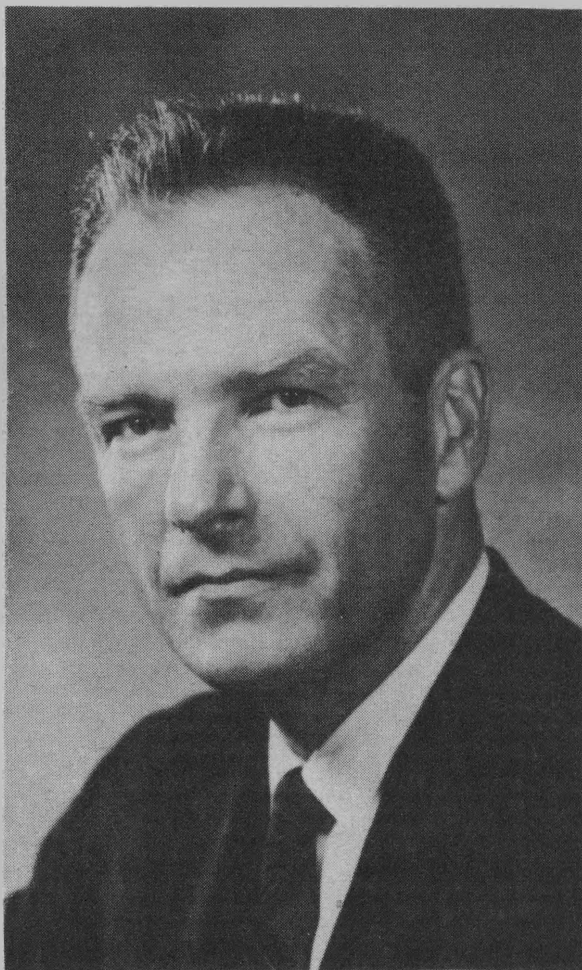
OTHER ISSUES—The 1966 REPUBLICAN Convention also called for—“a thorough revision of the Oregon Corrupt Practices Act, particularly to permit full and free participation by teachers, public board members and public employees” in the political process; State Constitutional revision; ratification of the Presidential Continuity Constitutional Amendment; “full and orderly development of Oregon’s outdoor recreational resources”; and conferring upon the State Sanitary Authority “greater and more definitive powers to effect both air and water pollution controls throughout the state.”; and enactment of “an administratively sound, comprehensive apprenticeship bill.”

READ ABOUT EACH CANDIDATE

To voters of both parties, as well as independents, we as your friends and fellow Oregonians, recommend those Republican candidates appearing on your ballots. The future of Oregon and our Nation rests on your votes. We invite you, in the days which remain, to study the issues and get to know the candidates. There are stormy days ahead, internationally and domestically. We know you will want to weigh fully your choice of those who will shape your destiny.

THIS PAGE IS BLANK

THIS PAGE IS BLANK

Democrat**ROBERT B. DUNCAN**
For United States Senator**ROBERT B. DUNCAN IS**

- The only candidate for the Senate with both State and National Experience.
- A constant exponent of American foreign policy, set forth by four Presidents, representing both political parties, of containing Communist aggression on three continents, while providing economic assistance to build the economies of both war-shattered and developing nations.

(Concluded on following page)

(This information furnished by Democratic Party of Oregon;
Senator Edward N. Fadeley, Chairman; Don Orton, Secretary)

Bob Duncan is running for the Senate, not to satisfy personal ambition or as a stepping stone to higher office. He left a reasonably secure Congressional seat because he feels that this is a critical period in the history of the United States and of the free world. With voices in both parties raised in opposition to our position in Vietnam, Duncan spoke out vigorously in support of our commitment to halt the Communist aggression in Southeast Asia. He has visited South Vietnam. He knows and supports the social, economic, and political reforms necessary to success in that area.

Bob Duncan has behind him ten years of solid legislative achievement and public service. Elected three times to the Oregon House of Representatives, he was Speaker for two consecutive terms, an honor that has come to no other man. President Kennedy appointed Duncan to the Advisory Committee on Inter-Governmental Relations and as a Congressional advisor to the Food and Agriculture Organization of the United Nations. He serves on the United States-Canadian Interparliamentary Council.

Elected first to Congress in 1962 and overwhelmingly re-elected in 1964, he distinguished himself by being chosen as one of four outstanding freshman Congressmen by a poll of newsmen, and by serving on the Agriculture and Interior Committees. Last year he was named to a coveted seat on the powerful Appropriations Committee.

Congressman Duncan has been a strong supporter of flood control, reclamation and conservation measures, and there has been more activity in his district than in almost any other. He has fought to preserve the integrity of the O & C forest and the distribution of revenues therefrom. From his position on the Appropriations Committee, he has exercised leadership in solving the nation's health problems; in securing funds to combat water and air pollution; strongly supported Medicare and education; was instrumental in preserving Camp White and in the passage of box-car legislation.

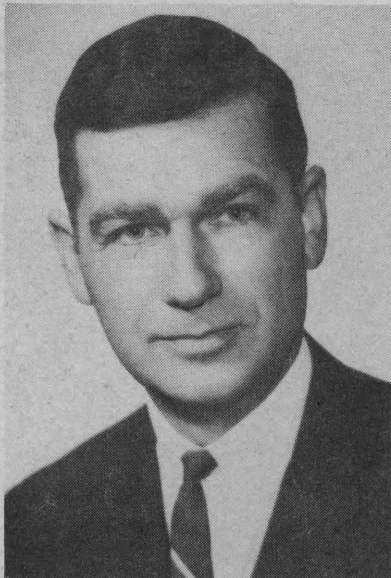
He has earned a reputation for economy and efficiency in government and for fairness and effectiveness. He commands respect from the Administration and from Congressmen and Senators from both parties because he stands up for what he believes without forgetting that cooperation, not disagreement, gets things done for Oregon.

Along with his attention to national and international problems, Duncan has been a real representative in Washington for each individual constituent. He can easily be reached and no problem is too small to receive his attention.

Congressman Duncan is a resident of Medford. He and his wife, Marijane, have seven children. He has worked all his life—in the corn fields of Illinois, the gold mines of Alaska, as a seaman in the Merchant Marine, in a bank in Chicago, as an insurance adjuster, and as a lawyer and public servant. He was a Naval aviator during World War II and is still a member of the Naval Reserve. He was educated at Illinois Wesleyan University, the University of Alaska, took correspondence courses from California, and has a law degree from Michigan.

Congressman Duncan believes the government should do for the people only what they cannot so well do for themselves; that government should function efficiently and economically. He believes that the greatest virtue in a public servant is to work untiringly and with integrity to accomplish the most good for the most number. Duncan's public service is a testament to this belief. He has continued his record of "Getting things done."

(This information furnished by Democratic Party of Oregon;
Senator Edward N. Fadeley, Chairman; Don Orton, Secretary)

Republican**MARK HATFIELD**
For United States Senator

DEMOCRATS, REPUBLICANS, INDEPENDENTS—
PUT OREGON'S MARK ON CAPITOL HILL

President Dwight D. Eisenhower said:

"During my last two years in the Presidency I had the opportunity to appraise Governor Hatfield's ability as an administrator, and to watch his rise in public esteem among citizens of this nation far beyond the borders of Oregon. He has been courageous and immensely competent, and I believe his election would bring to the Senate of the United States the kind of character, intelligence, youthful vigor, and selfless dedication from which all Americans would benefit."

COURAGE and CONVICTION

Mark Hatfield has proved he will fight for what he believes. Whether under fire at Iwo Jima, or dealing with the 1962 Columbus Day storm, or the 1964 Christmas Week floods, or in standing firm on current issues, Governor Hatfield has shown himself a man of action, courage and sincere conviction.

(Concluded on following page)

(This information furnished by Republican State Central Committee;
Don Hodel, Chairman; Mrs. Theodore L. Shay, Secretary)

Governor Hatfield, despite tremendous pressures from all sides, has shown firmness in taking a forthright stand on American policy in Southeast Asia. He believes that the Administration has not been candid with the American people in conducting an undeclared war in Vietnam and yet the Administration seeks "blank check" authority.

He believes that we must give full and unqualified support to our fighting men in Viet Nam. It is not in our history to fail and we cannot do so now. There can be no unilateral withdrawal of American troops. As United States Senator Mark Hatfield will do his utmost to bring about an honorable and early peace.

A MAN WHO WILL STAND ON HIS RECORD

During Governor Hatfield's eight years in office Oregon's economy has boomed:

- 180,000 NEW JOBS
- 640 NEW INDUSTRIES AND EXPANSIONS
- 88% MORE EXPORTS
- TOURIST REVENUES UP \$74,000,000

The record also shows Oregon has become a better place to live:

- 10 COMMUNITY COLLEGES—A NEW SYSTEM
- 74% FEWER SCHOOL DROPOUTS
- 24 NEW STATE PARKS
- NATION'S FINEST HIGHWAY SYSTEM

The JOHNSON RECESSION has started in Oregon NOW. To combat it Mark Hatfield pledges to:

- FIGHT INFLATION BY REDUCING UNNECESSARY FEDERAL SPENDING
- REVERSE THE FEDERAL ADMINISTRATION'S TIGHT MONEY—HIGH INTEREST RATE POLICIES
- CONTINUE TO ATTRACT NEW INDUSTRY TO OREGON
- FIGHT TO SAVE OREGON'S WATER
- FIGHT TO PROTECT OREGON'S TIMBER INDUSTRY
- FIGHT TO PROTECT OREGON'S FISHING RESOURCE

Elect Mark Hatfield United States Senator

(This information furnished by Republican State Central Committee; Don Hodel, Chairman; Mrs. Theodore L. Shay, Secretary)

Republican**TOM McCALL****For Governor****TOM McCALL: A GREAT GOVERNOR FOR A GREAT STATE**

TOM McCALL will bring to Oregon's highest office valuable experience in state and local affairs, business and labor. Only two incoming governors in this century have possessed an equally extensive background in state government administration.

Tom McCall has distinguished himself through more than two decades of public and community service.

(Concluded on following page)

(This information furnished by Republican State Central Committee;
Don Hodel, Chairman; Mrs. Theodore L. Shay, Secretary)

TOM McCALL: A GREAT SECRETARY OF STATE

As Oregon's State Auditor, encouraged reforms adding millions of dollars to state revenues.

- As Oregon's Chief Elections Officer, supervised modernization of voting procedures and laid groundwork for the overhaul of state election laws to protect voters from legal technicalities and corrupt practices.
- As Chief Accountant, spearheaded preparation of a central accounting system for all state agencies and improvement of data processing operations.
- As Custodian of Oregon's buildings and grounds, enabled state to acquire land worth nearly \$1 million without one cent of acquisition cost to taxpayers.

TOM McCALL: TRUSTED, INDEPENDENT LEADERSHIP

His support of education, civil rights and good government won him an honorary Doctor of Laws degree from Linfield College (1965).

He played an important role in the hard-hitting documentary on air and water contamination, "Pollution in Paradise"—picked as 1962's outstanding TV documentary in the United States.

Winning the Golden Beaver award in 1959, Tom McCall was honored by the Izaak Walton League as one of Oregon's foremost conservationists.

The Oregon Regional Conference of Christians and Jews presented Tom McCall the 1964 Brotherhood Award for service to mankind.

TOM McCALL: ACTION AND ACCOMPLISHMENT

Tom McCall was administrative assistant to Governor Douglas McKay . . . State Civil Defense Public Information Chief . . . member of the Governor's Committees on Air Pollution Control, Government Reorganization and Indian Affairs . . . Executive Secretary of five legislative interim committees . . . co-author of the 1960 Interim Committee report on Labor-Management Problems.

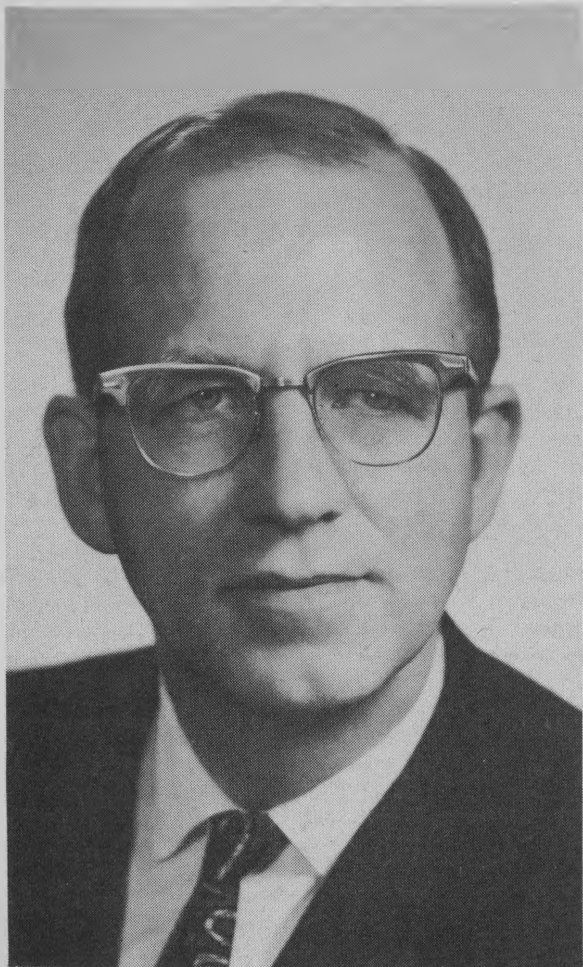
TOM McCALL: EXPERIENCED AND RESPECTED

Tom McCall's extensive background includes: Membership on the Oregon Council on Crime and Delinquency, State Advisory Board on Mental Health, Portland School District No. 1's Committee on Race and Education; Presidency of the Oregon Prison Association and Oregon Society of Crippled Children and Adults; Chairmanship of the Metropolitan Youth Commission; more than 20 other civic activities.

A top professional in radio and television for many years, Tom was reared on the family ranch near Prineville, attended Central Oregon schools and graduated from the University of Oregon. He served overseas in World War II as an enlisted Navy correspondent. A union member for more than 20 years, he was elected board member and president of the American Federation of Radio and Television Artists (AFL-CIO). In 1955 he co-founded the public relations firm of Goodrich, McCall and Snyder, now active in four states. He and his wife, Audrey, have two sons, Tad, 22 and Sam, 17. The McCalls belong to the Episcopal Church.

TOM McCALL FOR GOVERNOR COMMITTEE

(This information furnished by Republican State Central Committee; Don Hodel, Chairman; Mrs. Theodore L. Shay, Secretary)

Democrat**ROBERT W. (BOB) STRAUB****For Governor**

**KEEP OREGON THE BEST PLACE TO LIVE
ELECT BOB STRAUB GOVERNOR**

(Concluded on following page)

(This information furnished by Democratic Party of Oregon;
Senator Edward N. Fadeley, Chairman; Don Orton, Secretary)

Let's face it.

We are about to HIRE a new Governor of Oregon.

And pay him over \$30,000.00 a year for the next four years.

That's a lot of money—but we don't pay a Governor just to make speeches or cut ribbons at grand openings.

We're going to hire a man to manage a big Multi-Million-Dollar concern—**THE STATE OF OREGON.**

There are two candidates for this job. On November the 8th, we will select one, or the other.

HERE'S WHY BOB STRAUB IS THE BETTER CHOICE:

- He knows business, and he knows government—and it takes both kinds of knowledge to really run a Governor's office. Straub has a 20-year background as a successful businessman and rancher. He is a graduate of Dartmouth College with a master's degree in business administration. He has served as an Oregon State Senator and as a Lane County Commissioner. In 1964, we hired Bob Straub as Oregon State Treasurer.

- He knows how to handle big jobs. He said he would get Oregon's money "out of the mattress" and into action—and he did! Since taking office as State Treasurer, Bob Straub has increased earnings on State funds by more than \$1,500,000.00—a 1½-Million-Dollar saving to Oregon taxpayers!

- Oregon is the best place to live—Bob Straub believes it, and backs up his belief with action to KEEP Oregon the best place to live. He's not satisfied with talk about pollution—he's doing something about it! And he's doing something about saving the natural beauty of Oregon's beaches, rivers, and other priceless recreational resources.

BOB STRAUB HAS WHAT IT TAKES. LET'S HIRE HIM.

ELECT BOB STRAUB, DEMOCRAT, GOVERNOR.

Bob Straub is 46 years old, married, has six children, and is a veteran of World War II.

Democrat**NORMAN O. NILSEN****For Commissioner of the Bureau of Labor**

Your Labor Commissioner since 1955
 ... re-elected by 100,000 votes in 1958
 ... re-elected by 150,000 votes in 1962
 NORMAN O. NILSEN asks re-election
 on his record of dedicated, fair and
 honest public service.

- Construction Worker, 1926-40
- Vocational Teacher, 1940-42
- Navy War Veteran, 1943-45
- Businessman, 1952-55
- Public Official

U. S. Department of Labor, 1945-47
 State Director of Apprenticeship,
 1947-52
 Commission of Labor since 1955

NORMAN O. NILSEN was born in Norway and came to Oregon as a child. He worked his way up from an apprentice to a journeyman plumber, and later became a partner in a plumbing and heating business. He taught vocational training at Benson Tech in Portland, and volunteered for Navy duty in the South Pacific in World War II.

UNDER NORMAN O. NILSEN, THE BUREAU OF LABOR HAS:

- Extended civil rights protection with new laws and firm, fair administration without fanfare
- Improved the living and working conditions of migrant farm workers
- Taught job hunting and job training techniques to thousands of the unemployed
- Worked courageously to expand and modernize apprenticeship training

NORMAN O. NILSEN: RECOGNIZED LEADER

- United States Delegate to International Labor Conference, Geneva, 1966
- President, International Association of Governmental Labor Officials, 1959
- State Executive Board, Oregon United Appeal, since 1964
- Guildsman Award, Oregon Building Congress, 1947
- Freedom Award, American Veterans Committee, 1958
- Brotherhood Award, B'Nai B'rith, 1962

(This information furnished by Democratic Party of Oregon;
 Senator Edward N. Fadeley, Chairman; Don Orton, Secretary)

Republican

EVERETT J. THOREN

For Representative in Congress, Second Congressional District



1. THOREN is dedicated to develop and stimulate the lagging growth of Oregon's District No. 2 with a full development resources program which will put Oregon and this District first.
2. THOREN has experience in government and with government in business. Knows first hand how and when government should act for you.
3. THOREN believes the powerful Ways and Means Committee should write a belated tax law taking the Corporate excess profit out of war, and foreign aid giveaways should stop.
4. THOREN believes American technology and food production should be stimulated to fill the world demand and that farm income should be raised to the world market price.
5. THOREN is for stopping the consistent foreign giveaways of our past, present and future wealth; bringing back fiscal responsibility which will stop the spiral of inflation now hurting all fixed income citizens. It can be done with your help.
6. THOREN will work for a debate in Congress to bring an honorable peace in the Viet Nam war.

Everett Thoren, his wife, eight children (six sons and two daughters) reside in Elgin, Oregon. Thoren is local Cub Scout Chairman, a Boy Scout Scoutmaster, on the Nazarene Church Board, a combat war veteran, is member of the American Legion, has been member of NAM, Chamber of Commerce, Columbia River Development, recognized by Marquis Who's Who in the West.

THOREN was born in Gresham, Oregon, January 10, 1921, of Swedish parents. He attended Gresham Public Schools and later Northwestern College of Law. Experienced in Civil Service with Government and business and as a laborer and employer.

THOREN entered the Army Air Force in 1942, serving in the American, European, African and Middle Eastern Theaters of Operations as a bomber crew chief, was discharged as a sergeant, November, 1945.

The Committee urges every citizen to work with his friends for the replacement of the liberal spenders, the "LBJ all the way" creators of waste and inflation, which is now reducing our living standards with higher living costs.

EVERETT THOREN FOR CONGRESS COMMITTEE

Ken Presler, Chairman

1408 Adams St., La Grande, Oregon

(This information furnished by Republican State Central Committee; Don Hodel, Chairman; Mrs. Theodore L. Shay, Secretary)

Democrat**AL ULLMAN****For Representative in Congress, Second Congressional District**

"As your Congressman, I pledge my continued dedication to serving you, the people of Oregon, and the Nation. I ask your support, your advice, and your assistance in the tasks ahead."—AL ULLMAN

During his ten years of service in Congress Al Ullman has quietly and effectively built new influence for Oregon in national affairs. He has a distinguished record of achievement for the State and his Congressional District.

Al Ullman's colleagues in the House have honored him by election to the powerful Ways and Means Committee, where he has made significant contributions to national policies in the fields of taxes, social security, economic growth and fiscal responsibility. As a member of the Democratic Committee on Committees, he is responsible for the committee assignments of his fellow members.

Al Ullman's stature in Congress is important to Oregon's future. He knows our problems and knows how to get things done for Oregon.

(Concluded on following page)

(This information furnished by Democratic Party of Oregon;
Senator Edward N. Fadeley, Chairman; Don Orton, Secretary)

AL ULLMAN EARNS THE CONFIDENCE OF NATIONAL LEADERS . . .

The late PRESIDENT JOHN F. KENNEDY: "Your legislative ability, personal popularity, and influential position on the important House Ways and Means Committee make you one of the most valuable Representatives in Congress."

SPEAKER JOHN McCORMACK: "I thank you for your loyalty and support . . . and for the constructive, courageous, conscientious and effective service you render to your constituents and to our country."

MAJORITY LEADER CARL ALBERT: "Al Ullman is one of our most admired, respected and able Members. He is a Congressman of courage." AL ULLMAN IS AN EFFECTIVE SPOKESMAN FOR OREGON . . .

HIGH INTEREST RATES, TIGHT MONEY: Al Ullman has led the struggle in Congress against high interest rates and the tight money policies which jeopardize the homebuilding and lumber industries. He is the author of a comprehensive tax package to strike at the roots of inflation. Ullman has received wide praise from his colleagues for his broad range of monetary and fiscal proposals to restore balanced growth to the economy of Oregon and the nation.

RESOURCES: Al Ullman, in opposing river diversion schemes, is fighting to preserve our Columbia River resources for future Northwest development. He has promoted new and dynamic programs of public land and timber management to bring new wealth and jobs to Oregon.

COMMUNITY DEVELOPMENT: Al Ullman works closely with civic leaders and local government officials on programs of federal assistance for community improvement and industrial development.

FOREIGN AFFAIRS: Al Ullman supports the vital effort to achieve world peace by honoring the integrity of our commitments to resist communist aggression and by encouraging the development of sound economic institutions and free political systems in the emerging nations.

AL ULLMAN WORKS FOR BETTER EDUCATION AND INCREASED OPPORTUNITIES FOR OUR YOUNG PEOPLE, MORE EFFECTIVE SOCIAL SECURITY AND MEDICAL CARE FOR OUR OLDER CITIZENS.

Born and raised in the Northwest, Al Ullman earned his degree in political science from Whitman College and a Masters Degree in Public Law from Columbia University. He is a former school teacher and successful businessman. He is a World War II veteran, having served in the Navy in the South Pacific, and is presently a Captain in the Naval Reserves. FAMILY: Al and Anita Ullman have three children. Anita Jo, a graduate of Wells College, recently became Mrs. William Gazda. Kenneth is a student in engineering at Rensselaer Polytechnic Institute where he is President of the student body. Wayne is a high school freshman.

**AL ULLMAN HAS THE ABILITY, INTEGRITY AND EXPERIENCE
TO GIVE US CONTINUED OUTSTANDING SERVICE IN CONGRESS.**

(This information furnished by Democratic Party of Oregon;
Senator Edward N. Fadeley, Chairman; Don Orton, Secretary)

Republican

ROBERT L. (BOB) ELFSTROM**For State Senator, First District
Marion County, Position No. 1**

Few men in the legislature command the respect and have the influence of Marion County's Bob Elfstrom.

It is a position he has earned through six sessions in the House and has continued through his service in the Senate.

In his announcement of candidacy for re-election, Elfstrom stated: "The 1967 Legislative session will face some of the most difficult problems ever faced by any session. Heading the list is how we are to achieve property tax relief without upsetting basic government services or undermining the economic progress that is producing new growth and new opportunities for the people of our state. Legislative and business experience will be of special importance in finding the right answers."

Typically, he added that "in finding the right answers, I shall, as always, be guided by the firm conviction that my first obligation is to represent the wishes of the people of Marion County."

Bob Elfstrom has had a major part in legislation of the past fifteen years—particularly legislation affecting taxes, highways, fish and game, liquor control, and financial institutions. He was chairman of the financial affairs committee in the last legislative session. He has been a consistent and effective foe of big taxes and big spending. He has served continuously on the Committee on Highways in both the House and Senate and is presently an influential member of the Legislative Interim Committee on Highways. Backed by his experience as Chairman of the Oregon Liquor Control Commission, he has worked persistently to preserve the integrity and effectiveness of liquor control. An ardent sportsman himself he has taken a special interest in fish and game development.

In Republican party leadership he has served as Republican Minority Leader of the House (1959) and as an Oregon delegate to three Republican national conventions.

Named Salem's "First Citizen" (1950), Bob Elfstrom's distinguished public service has included, among others, two terms as mayor of Salem, Director of the Y.M.C.A. and Salem Community Chest, Chairman of the 1952 Marion County March of Dimes, President of the Rotary Club, President of the Cascade Area Boy Scouts, Trustee of Willamette University, Elder and Trustee of the Presbyterian Church. He is a director of the Transpacific Life Insurance Company, the Commercial Bank of Salem and Commercial Properties, Inc. A successful businessman for 32 years, he heads the contracting firm of Elfstrom and Eyre, Inc. A Mason, Shriner and Elk.

ELFSTROM FOR SENATOR COMMITTEE

Roy Harland, Chairman

(This information furnished by Republican State Central Committee;
Don Hodel, Chairman; Mrs. Theodore L. Shay, Secretary)

Democrat

SPENCER GREW

**For State Senator, First District
Marion County, Position No. 1**

**ELECT**

Youth . . .

Ability . . .

SPENCER GREW is serious about Marion County and Oregon.

SPENCER GREW has been a resident of Salem for the past eleven years, is 25 years of age and is a radio and television announcer-salesman.

SPENCER GREW has served as a precinct committeeman and was active in electing President Kennedy and in past campaigns. He served as Senate Page the past two sessions gaining a knowledge of the legislative process.

SPENCER GREW has stated that he will work for every man, woman and child in the State of Oregon to the best of his ability. As a laborer's candidate—

- He will press for a better wage in all areas of employment.
- He will work for better retirement benefits.

- He will work for a stable price system for the farmers and pickers against the processor's policy of increase or decrease depending on how fruitful the harvest.
- He believes that we must lower the garnishment law, preferably eliminate it completely.
- He will work for a Community College in Marion County to compete with other areas of the state, also offer a program of skills for those students not attending the higher institutions.
- He will oppose the proposed minimum wage bill which will keep our kids out of the fields when they are needed so much.
- He will oppose the 1½% property limitation because it will put business property on the same level of homeowners large and small.
- He will oppose a state sales tax as it will again only help business in general respects, not the taxpayers.
- He will work for revisions in the welfare laws to meet present needs.
- He will work for changes in the Civil Service procedures, also in the medical, real estate and consumer credit fields.
- He will stress for a needed annual session due to the fact that this State is growing by leaps and bounds.

If you want better government, **ELECT SPENCER GREW AS YOUR SENATOR.**

VOTE SPENCER GREW STATE SENATOR NOVEMBER 8

(This information furnished by Democratic Party of Oregon;
Senator Edward N. Fadeley, Chairman; Don Orton, Secretary)

Republican

EDDIE AHRENS

**For State Senator, First District
Marion County, Position No. 2**



EDDIE AHRENS, veteran legislator, is a man who gets things done! During the 1965 session of the Legislature he introduced or co-sponsored 68 bills, of which 65% became law. Although he was a member of the minority party in the Senate, EDDIE AHRENS was selected by the majority party to serve as Chairman of the Planning and Development Committee; Vice Chairman of Elections Committee; Chairman of Governor's Appointments; as well as serving on the Agriculture, Financial Affairs and Alcoholic Control Committees. Few men of either party were given such important roles of leadership.

EDDIE AHRENS is concerned about both rural and urban problems. He has worked and will continue to work for a more equitable tax structure that will give relief to home owners and real property taxpayers.

EDDIE AHRENS is often called a conservative. He defines his brand of conservatism: "Conservatism, in my view, provides for orderly change and progress within a framework of law and morality

guided by experience and good judgment. It is not in any way opposed to needed social reform or economic progress. I believe conservatism is a necessary ingredient in any age of upheaval or rapid change such as we are experiencing today."

EDDIE AHRENS, a mature man in his early sixties, has the know-how and maturity to successfully work for his constituents. It takes a season or two for a legislator to become effective, especially in the senate.

EDDIE AHRENS is interested in youth. He spends many hours working actively with 4-H and FFA. He is an honorary lifetime member of FFA.

EDDIE AHRENS is known internationally as a breeder of Romney sheep, a judge and class instructor.

EDDIE AHRENS has served as chairman of the Marion County Fair Board; member of Salem Chamber of Commerce, Marion County AAA, Western Livestock Assoc.; Past President of American Romney Breeder Assoc.; and Regional Director of National Farm Bureau Federation.

The 1967 Legislature will be concerned with pressing tax problems, especially if the voters pass the property tax limitation. It will be up to the Legislature to find a means of keeping county and city governments solvent. This crucial time in Oregon's economic growth needs the most experienced, mature legislators available to "provide for orderly change and progress in our age of upheaval and rapid change."

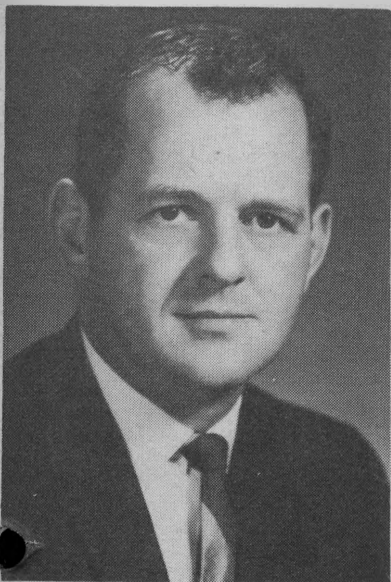
RE-ELECT A SEASONED SENATOR—EDDIE AHRENS

(This information furnished by Republican State Central Committee
Don Hodel, Chairman; Mrs. Theodore L. Shay, Secretary)

Democrat

CORNELIUS C. BATESON

**For State Senator, First District
Marion County, Position No. 2**



Cornelius Bateson will take to the Senate his reputation as one of the most promising and effective members of the legislature—a reputation he earned in six years of outstanding service in the House of Representatives.

A keen student of government, a persuasive speaker and debater, possessed of untiring energy and vitality, he has well earned recognition as one of the hardest working and most dedicated legislators. People of Marion County who have taken their problems to him have found him informed, interested and effective in helping them.

Bateson's wide interest and broad experience in legislative problems is evidenced by his appointment and long service on these important committees: Agriculture, Taxation, Labor and Management, Public Health and Welfare, and Financial Affairs. He has served as Chairman of the powerful Legislative Fiscal Committee and as Chairman of the Committee on Local Government.

A successful farmer, Bateson has been particularly active in efforts to relieve the heavy burden and unfair distribution of property taxes. He had an important part in passage of the Real Property Relief Act and the Inventory Tax Relief Act of 1965. "Both of these acts are steps in the right direction," Bateson says, "but much remains to be done before we make our tax system fair to the homeowner, farmer and businessman alike."

As the father of three children, ages 14, 11 and 10, Bateson is deeply concerned about the problems of education and the safety of citizens of all ages from crime, juvenile delinquency and vandalism.

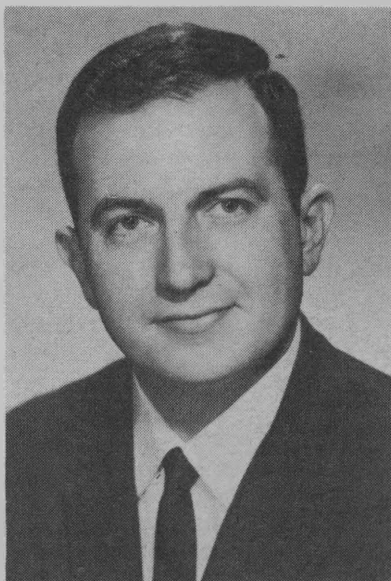
In addition to operating his own fruit, vegetable, and grain farm in the Salem area, Bateson is active in a wide range of business and community affairs. He is President of Blue Lake Packers, a director of the Oregon-Washington Vegetable and Fruit Growers' Assn., trustee and past president of the Oregon Horticultural Society, past president of his Rotary Club and a trustee of the First Congregational Church of Salem, where he is also a long-time Sunday School teacher.

A graduate of Salem High and Stanford University and a veteran of the Korean War, in which he served as a Marine officer, Bateson is also a volunteer fireman, a member of the Farmers' Union, a Boy Scout troop Commissioner, a member of the Farm Bureau, American Legion, Elks, Macleay Grange, past president of the Salem Active Club and a member of the Salem Area Chamber of Commerce.

As an active and concerned member of his community, as an informed and effective legislator, Bateson has a record of service to the people's interest of which Marion County can be proud.

(This information furnished by Democratic Party of Oregon;
Senator Edward N. Fadeley, Chairman; Don Orton, Secretary)

Republican

WALLACE P. CARSON, JR.**For State Representative, Eleventh District
Marion County, Position No. 1****"THE MAN TO MEET THE CHALLENGE"**

WALLACE CARSON, JR., a native of Marion County and of an Oregon pioneer family, attended Salem Public Schools, Stanford University and Willamette University College of Law. He was a jet pilot in the Air Force and served in Korea and the Far East.

A lawyer, married, and father of three children, WALLACE CARSON, JR., actively serves his county and has had wide experience in state and community affairs: He is the Co-chairman of the Marion County Mental Health Planning Committee, a member of the Marion-Polk County Traffic Safety Committee, the Salem Planning Commission, the Standards and Admissions Committee of the Oregon State Bar, former Vice-chairman of the pilot committee to study Salem human relations, and is the Secretary-Treasurer of the Marion County Bar Association. He received a 1966 Distinguished Service Award presented by the Salem Junior Chamber of Commerce. He is an active member of St. Paul's Episcopal Church.

WALLACE CARSON, JR., has a background in grass-roots politics, an education in political science, experience with Oregon legislation, and a desire to see his community served by a philosophy of government that preserves the dignity of the individual and a strong local voice in government. Active, energetic, dedicated—WALLACE CARSON, JR., is well qualified to serve Marion County in the House.

COMMITTEE FOR WALLACE CARSON, JR., FOR REPRESENTATIVE
David A. Rhoten, Chairman

(This information furnished by Republican State Central Committee;
Don Hodel, Chairman; Mrs. Theodore L. Shay, Secretary)

Democrat

GAYLE W. GILMOUR

**For State Representative, Eleventh District
Marion County, Position No. 1**



Experience makes a difference. Gayle Gilmour has had a wide range of experience; from a work exchange trip to Brazil to running his own farm business to serving in leadership roles in professional and civic groups and working for good legislation.

As a husband and father, Gayle Gilmour understands the value of strong communities. This is why he has worked in many ways to try to serve his community.

Oregon needs men who can attract co-operation from other men. Gayle Gilmour is such a leader. He has the foresight to work effectively toward our common goals.

Over ten years of successful operation of his own business have taught Mr. Gilmour valuable lessons. He is even-tempered in the face of opposition. He listens carefully. He is willing to

admit his mistakes. He is not dogmatic but believes in an approach backed by sound reasoning.

In short, he has a mature outlook on life; the kind of philosophy that you want to see in Oregon's legislature.

Activities in which Gayle has been involved include:

- School district budget committee
- Charter member Community Action Council
- Marion County Farm Bureau
- City-County Building Study Committee
- Grange
- Church Council

He is now active in:

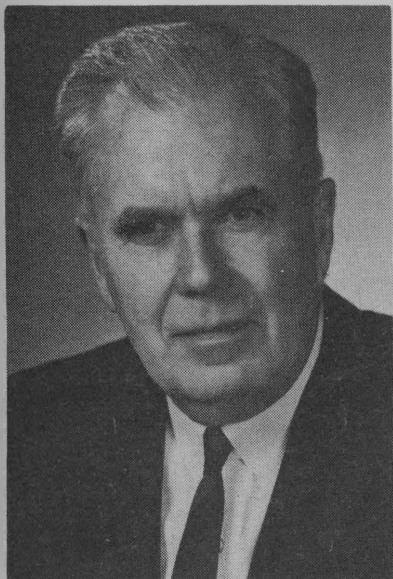
- Salem Area Family Counseling Service Board
- Toastmasters
- Oregon Horticultural Society
- Sunday School Teacher

Both Gayle and his wife Leona are native to Marion County and both graduated from Oregon State University. Their son Brett is nine and daughters Holly and Kerry are seven and two.

Al Randall
Citizens for Gilmour

(This information furnished by Democratic Party of Oregon;
Senator Edward N. Fadeley, Chairman; Don Orton, Secretary)

Republican

MORRIS K. CROTHERS**For State Representative, Eleventh District
Marion County, Position No. 2**

In 1963 and 1965 I had the privilege of serving the people of Marion County as a member of the Oregon House of Representatives. The experience was always interesting, sometimes frustrating, often rewarding, and surprisingly hard work. I hope to use the knowledge gained and the modest seniority acquired in these years in again working in the House for good government.

The problems and responsibilities of state government are heavy and varied. The actions of the Oregon Legislature affect the lives and pocketbooks of each citizen very materially. I will endeavor to bring to the consideration of those actions a knowledge of people and their needs and problems gained in many years of medical practice and a familiarity with the legislative process.

Among the committee assignments given me have been Public Health in two sessions, and in 1965 Labor and Management and the Judiciary Committee, where I was the only member not a lawyer. The Interim Committee on Insurance on which I served in 1963-1964, produced some valuable changes in insurance laws designed to protect the insurance-buying public. Nearly every proposal of that Committee was adopted by the Legislature.

I am presently serving as Chairman of the Interim Committee on Public Health, which will present to the 1967 session some significant proposals in the field of public health service, water and air pollution, mental health clinics, and licensure of medical laboratories.

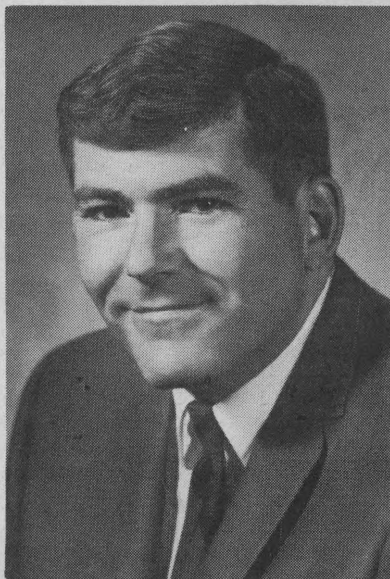
BIOGRAPHICAL FACTS: Born 1906 in Colorado. Graduated from Medical School in 1931. Served in the U.S. Navy in World War II. Lived and practiced medicine in Salem since 1946.

(This information furnished by Republican State Central Committee;
Don Hodel, Chairman; Mrs. Theodore L. Shay, Secretary)

Republican

JACK ANUNSEN

**For State Representative, Eleventh District
Marion County, Position No. 3**



RE-ELECT ANUNSEN. CAPABLE, HARD WORKING

Jack Anunsen, native Oregonian born in Salem thirty-four years ago, was picked for Salem's First Citizen Award in 1966 in recognition of the many hours of work on civic projects designed to make Salem and Marion County a better place in which to live.

Jack sees four areas of concern to Oregonians in which he has pledged to work for fair and equitable solutions. These are property taxes, air and water pollution, more vocational training opportunities for our young people and safety on our highways.

Jack will work for reduction of reliance on property taxes as the basic source of revenue for cities and counties. He will work toward a change in tax structures aimed at reduction of property taxes.

Jack is pledged to work toward a FAIR and EQUITABLE solution to the growing problem of air and water pollution.

Jack believes in enlargement of vocational training programs, recognizing that not all young people are going to be able to go to college and should have adequate training to earn a living.

Jack believes the time has come to take the necessary measures to curb traffic accidents on our highways.

**RE-ELECT JACK ANUNSEN. A CAPABLE AND RESPONSIVE
LEGISLATOR**

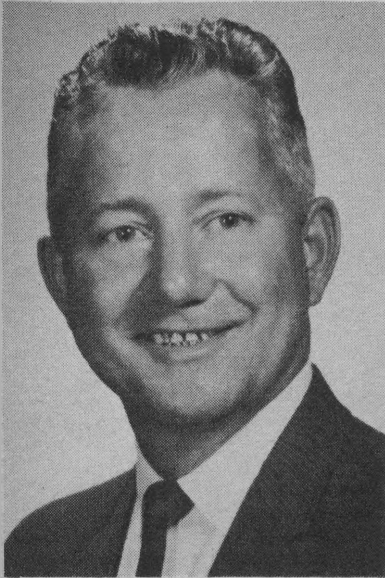
**RE-ELECT JACK ANUNSEN COMMITTEE
Robert Hamilton, Chairman**

(This information furnished by Republican State Central Committee;
Don Hodel, Chairman; Mrs. Theodore L. Shay, Secretary)

Democrat

KEITH A. BURBIDGE

**For State Representative, Eleventh District
Marion County, Position No. 3**



Keith A. Burbidge will bring to the House of Representatives the energetic drive and initiative of a dedicated representative of working people in every walk of our society. His previous experience at the legislature as a full time representative of railroad workers has equipped Burbidge with a keen understanding of the legislative process and the problems of our state. His diligent efforts while directing the affairs for his group during the past two sessions were marked with success, and his capacity for hard work and his ability to get a job done were recognized by his associates and legislators alike.

Keith A. Burbidge, 46, was born in Ogden, Utah, where he attended public schools and Weber State College. As a Staff Sergeant with the 96th Infantry Division he saw combat in the Philippines and on Okinawa during World War II. He is married to Nita Chand Burbidge, also of Ogden, has four children, and has been a home owner in Salem for fifteen years.

Burbidge is a Locomotive Engineer with Southern Pacific. He started railroading in Utah, but war-time exposure to beautiful Oregon at Camp Adair and Camp White caused him to transfer here when opportunity came in 1951.

Burbidge believes in fair and just treatment for ALL Oregon people; that the interests of the small farmer, the state worker or the worker in private industry are equally important, as well as the business man and the retired. He will work hard for all.

Burbidge favors tax adjustment for home-owners and small farmers, but he opposes a one and one-half percent tax limitation. He is also opposed to a general sales tax.

Burbidge feels that adjustment of automobile insurance laws is necessary to force auto insurance companies to prove a driver is a poor risk before his insurance can be cancelled, or he can be placed into a higher rate group. He believes a driver is entitled to a fair hearing before the Insurance Commission to insure equal treatment for all. He believes the laws relative to driving license requirements should be reviewed and updated. He believes that some plan for state motor vehicle inspection is feasible and necessary to make our highways safer. He pledges to introduce and work for legislation to correct these ills.

BURBIDGE WILL BE A HARD WORKING LEGISLATOR REPRESENTING YOU ELECT KEITH A. BURBIDGE

(This information furnished by Democratic Party of Oregon;
Senator Edward N. Fadeley, Chairman; Don Orton, Secretary)

Republican

AGNES C. BOOTH

For State Representative, Eleventh District
Marion County, Position No. 4



AGNES C. BOOTH is affectionately known throughout Marion County as "Boss-Lady". She gave leadership for more than twenty-five years as Superintendent of the Marion County Schools—a sincere public servant, a woman of honor and integrity. She was first appointed to this key position in 1939 and then elected five times by the voters of Marion County. When this position became no longer an elective one, she was appointed by the Marion County Education Board to continue to serve.

AGNES C. BOOTH'S twenty-five years of public service have given her an excellent background in business and administration on the local, county and state level. In this career, she demonstrated professional and personal qualities and ideals that are needed in our state legislature. She distinguished herself by her competence in the areas of finance and taxation, by her courteous and impartial handling of public hearings, by her knowledge and keen interpretation of the law and by her genuine interest in the youth and the citizens of Marion County.

She believes Oregon must continue to encourage its present business and industry and to invite and to develop new opportunities in the state—thus increasing jobs and payrolls.

She is interested in the problems and growth of agriculture and, since the death of her husband, Carl, a few months ago, continues to live on the farm. She is interested in the development and protection of the state's natural resources—the rivers, lakes, fish, wildlife and forests.

She believes that the state must continue to study, investigate and evaluate the problems of public education, administration of local districts and school construction.

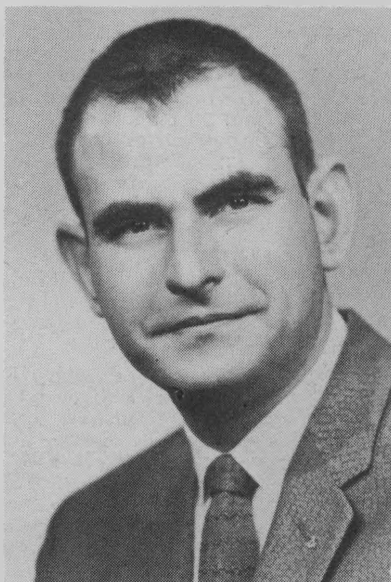
Her son, Herbert, and his wife, Betty, are both educators. She has two grandchildren, Michael and Karla.

AGNES C. BOOTH was selected by Zonta (1959) as one of the ten career women internationally and by Delta Kappa Gamma in the Oregon "Lamp-lighter" as an outstanding educator.

She has served in educational groups, both state and national, PTA, Salem Chamber of Commerce, Juvenile Court Advisory Committee, Salem Area Community Council, YWCA, Farm Bureau, 4-H Leaders, County Health Association, Cancer Board, Polio Foundation, Women's Club, Business and Professional Women, Legion Auxiliary, Eastern Star, Salem First Presbyterian Church.

This information furnished by Republican State Central Committee;
Don Hodel, Chairman; Mrs. Theodore L. Shay, Secretary)

Democrat

L. B. DAY**For State Representative, Eleventh District
Marion County, Position No. 4**

**AGAINST
FURTHER
PROPERTY TAX
INCREASES**

DAY, married, parent and home owner, is a Korean War Veteran, Mason and former Chairman of the Marion County Civil Service Commission.

DAY opposes any increase in taxes for homes and farms and has worked effectively to produce relief in this area.

DAY knows the problems of the salary earner, the businessman, the veteran, the retired and will always work effectively for all.

DAY, a graduate of Willamette University, was cited in the Oregon press as one of the six outstanding freshmen Legislators. He is the first representative to establish office hours all day Saturday for the convenience of Marion County constituents and also first legislator to offer a Legislative newsletter not only during the 53rd Assembly but throughout his entire term of office.

DAY was instrumental in providing construction of the KEIZER DIKE along the Willamette River, which was the only flood control project in Oregon that has become an accomplished fact since the 1964-1965 floods.

DAY PLEDGES: Vigorous support for further safety legislation aimed at reducing the slaughter of life on Oregon's highways and to produce more financial support for our law enforcement agencies which were faced with a 19% increase in crime in 1965.

DAY'S RECORD in the area of consumer protection is unquestioned; he was instrumental in putting curbs on the use of debt consolidation as a device which was luring many people into steeper credit problems.

DAY will continue to be an aggressive, articulate servant of the people.

RE-ELECT DAY—A VOTE FOR DAY WILL AGAIN PAY.

COMMITTEE FOR DAY:

Mrs. Elmer Berg, Chairman
Miss Mary E. Eyre, Vice Chairman

(This information furnished by Democratic Party of Oregon;
Senator Edward N. Fadeley, Chairman; Don Orton, Secretary)

Nonpartisan

DOUGLAS L. HAY

**For Judge of the Circuit Court, Third Judicial District
Marion County, Position No. 1**



PROFESSIONAL QUALIFICATIONS: Present Municipal Judge of Salem (14 years); also actively practiced law since 1949, with extensive experience as trial lawyer; past president of Oregon Association of Municipal Judges, Marion County Bar Association; member of National Association of Municipal Judges, American Judicature Society, Oregon State Bar, American Bar Association.

EDUCATION: Lakeview Public Schools; Graduate of University of Oregon (BA 1947), including College of Law (LLB 1949); Alpha Tau Omega; Phi Delta Phi legal fraternity.

FAMILY BACKGROUND: Judge Hay, 46, born in Lakeview, is from a family well indoctrinated in the traditions and ethics of the Bench and Bar, being the son of the late Justice Arthur D. Hay, Oregon Supreme Court; brother, John, practicing lawyer in Portland. Judge Hay resides at 2565 Alvarado Terrace, Salem, with his wife, Josephine, and daughters, Catherine, 10, and Leslie Ann, 6.

CIVIC ACTIVITIES: Judge Hay is a civic leader; Boy Scouts, YMCA (former member Board of Directors), Red Cross, United Good Neighbors, 6 years member of Board Salem General Hospital, Salem Rotary Club (Past President), Salem Knife and Fork Club (Past President), Salem Jaycees (Past President) and active in his church, St. Paul's Episcopal (former member of vestry). Judge Hay, son of naturalized American parents and husband of naturalized American wife, has keen interest in assisting and encouraging aliens to become American citizens, as evidenced by 7 years gratuitously teaching naturalization classes sponsored by Salem YMCA.

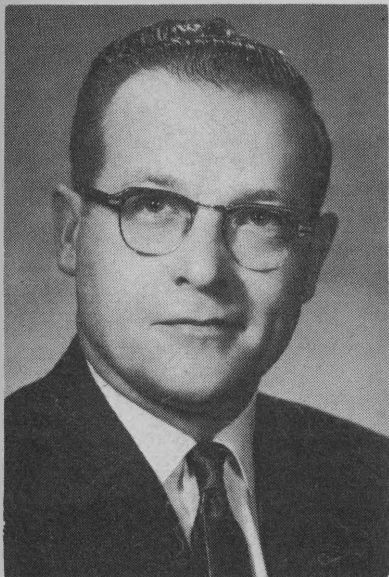
Judge Hay, during 14 years on the Bench, has earned a reputation for fairness, independence, impartiality and compassion in dispensing justice to the thousands who have appeared before him. His continued re-election to his office demonstrates the earned respect and admiration of the legal profession and the general public who recognize his demonstrated ability and integrity. Judge Hay's long, combined experience as Judge and practicing lawyer admirably qualifies him for election to the Circuit Court. The lawyers and thousands of citizens with whom he has had contact as a Judge and Lawyer know he is deserving of elevation to the Circuit Court, and that he will continue to serve the public and the Bar with honor and distinction.

**BALLOT SLOGAN: EXPERIENCE MAKES THE DIFFERENCE. 14 YEARS
JUDICIAL EXPERIENCE.**

Richard D. Denton, Chairman

(This information furnished by Hay for Judge Committee)

Republican

HARRY CARSON, JR.**For County Commissioner, Marion County, Position No. 1**

ACTIVE COOPERATION ON THE COUNTY-CITY LEVEL WILL SAVE YOUR TAX DOLLARS.

Born Silverton, Oregon, December 30, 1919. Graduated from Salem High School in 1937 and from Oregon State College in 1941 with a B.S. in Pharmacy. Passed the State Board and became a registered pharmacist. Received 2nd Lieutenant Commission in Army Infantry Reserve. Received call to active army duty August 1941. Spent four years with the 32nd Infantry Regiment, 7th Infantry Division, two and a half years of which were overseas. Participated in four invasions: battle for Attu, Kwajalein invasion, Leyte invasion and Okinawa invasion. Awarded the Combat Infantry Badge, Purple Heart, Bronze Star and four campaign medals. Discharged from active duty September, 1945, as Major.

Owned and operated Steelhammer Drug Store in Silverton, Oregon for several years. Moved to Salem in 1962 and was part owner and manager

Travelodge Motel until 1965. Presently manager of Tindall's Englewood Pharmacy.

Ten years as volunteer fireman, Silverton Fire Department. Four years as Silverton Planning Commission member, two years as president. Four years as Silverton City Councilman. Charter member of Silverton Toastmasters Club. Past president of Silverton Rotary Club. Member of Elks Club. Area leader of Republican Party.

Served as director on State Pharmaceutical Association, Board of Directors. Member East Salem Rotary Club, Salem Golf Club, member of Board of Directors of Oregon Small Business Investment Company.

Married Bobbe J. Shinn, daughter of Robert E. and Leona Kerr Shinn, May 29, 1941, at Salem, Oregon. One daughter, Letty Diane "Kit" Heater, married to John M. Heater, son of Maurice and Lucille Heater, two grandchildren. One son, William R. Carson, attending Oregon State University.

Democrat

CLAIR (SLIM) HARVEY
For County Commissioner, Marion County, Position No. 1



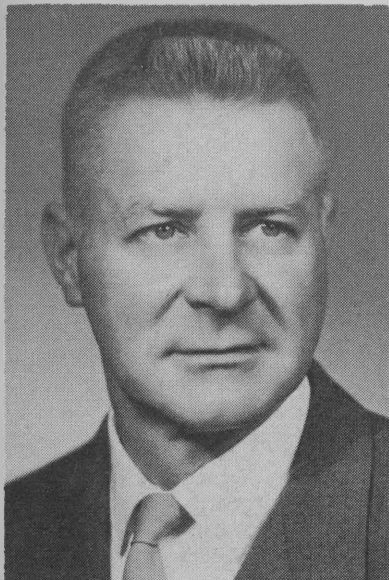
Clair Harvey believes:

- Marion County needs to reinstate a full time veterans service officer to help care for the needs of the ever increasing number of veterans.
- Safety should be stressed. Walkways for school children should be provided where practical.
- We need more boat ramps and water recreation facilities for the ever increasing number of people who are turning to the rivers and lakes for both sport and pleasure.
- In better public relations on the part of county employees who deal with taxpayers.
- In efficiency and economy in government.

Harvey, 48, is a World War II veteran, a member of Veterans of Foreign Wars and Disabled American Veterans. He was Gervais City Marshal for two years and has been employed by Marion County for the last sixteen years. Clair is the son of a pioneer Oregon family. A young and capable candidate who is conscious of the needs of the people and their desire to keep government costs in line.

(This information furnished by Democratic Party of Oregon;
Senator Edward N. Fadeley, Chairman; Don Orton, Secretary)

Democrat

WALTER J. BREITENSTEIN**For County Commissioner, Marion County, Position No. 2**

Walter J. Breitenstein is a 48 year old native citizen of Marion County. His education was received in Sublimity schools and U.S. Army programs. Walter, his wife Virginia and seven children reside at Rt. 1, Sublimity. He is a member of St. Boniface Church, Knights of Columbus and Farmers Union. He has been an official on the School Board, PTA, Church Trustee and Bentgrass Association. Breitenstein gained business experience as a partner in the Breitenstein Bros Lbr Co., that operated successfully for 12 years. His lifetime occupation has been the farming and lumbering industries.

He is a veteran of World War II, serving in the South Pacific and Philippine areas as a combat infantryman in the plans and operations section of the Army. He was cited by the Commanding General VIII Army and awarded the Bronze Star decoration.

Walter Breitenstein advocates:

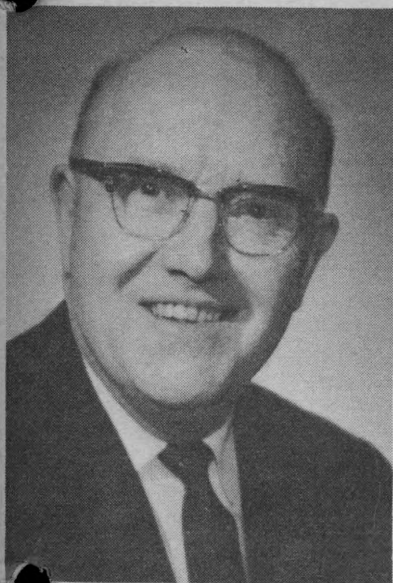
1. Harmonious cooperation between county departments which is essential.
2. A close relationship between state-county-city governing bodies.
3. That taxes should be levied in line with the economic situation in the county in order to achieve intended goals and provide necessary services.
4. A master plan for the future to reduce air and water pollution, to provide flood control, to designate water use, roads, districts and designation of areas which will eventually become metropolitan or remain rural or agricultural.
5. That Marion County's forests, fields and waters be preserved and developed for posterity.
6. Acceptance of new concepts and new ideas of county government to benefit the public.

Walter J. Breitenstein firmly believes in the dignity of man—that goals of government should ever be: to benefit citizens and to uphold their rights.

Walter J. Breitenstein believes county government officials should strive zealously and be constantly mindful of their duty—**TO KEEP MARION COUNTY A GOOD PLACE IN WHICH TO LIVE.**

(This information furnished by Democratic Party of Oregon;
Senator Edward N. Fadeley, Chairman; Don Orton, Secretary)

Republican

HENRY C. MATTSON**For County Commissioner, Marion County, Position No. 2**

During the fifteen years as County Clerk of Marion County, he devoted his full time and considerable experience to the performance of the varied duties of his office. He instituted procedures that kept the cost of operation to a minimum. Prior to holding this office, he was in charge of the audit department, served as deputy clerk in the various courts, and in the capacity of Chief Clerk of the Registration and Election Department of the Clerk's Office, gaining for himself a solid background of the working details of County Government. He has also done right-of-way buying and appraisal work for the County.

Mr. Mattson attended Marion County public schools and graduated from Salem Senior High School. He holds a law degree from Northwestern College of Law, is admitted to the practice of

law in Oregon, and holds a considerable number of higher accounting credits.

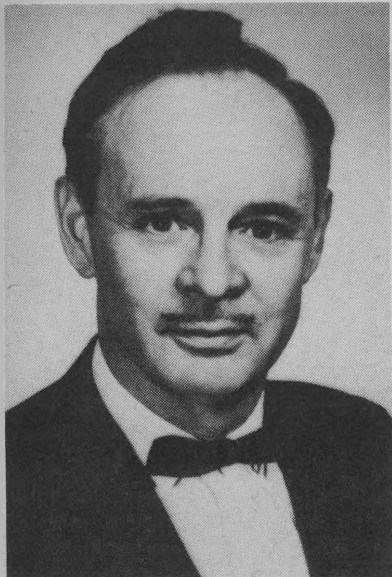
Mr. Mattson is married and owns his own home and other real and personal property in Marion County. He is 57 years of age, a member of the First Baptist Church, Downtown Lions Club and active in Masonic and Eastern Star Orders. He resigned as County Clerk in 1963 to devote his time to the operation of his motel which he sold in the spring of 1965 and is presently employed by the Union Title Insurance Company of Salem, Oregon.

In his duties with the County he has prepared several of the complete budgets. He also has prepared many of the documents signed by the Board of Commissioners and thus has a complete knowledge of the details and problems of the office of County Commissioner.

Each Legislature passes new laws affecting the business of the County and the many duties of the Commissioners and other officers of the County. Marion County needs a Commissioner with practical business experience. It is imperative that he be an honest and responsible person with knowledge of the law and possess good business judgment. Mr. Mattson has demonstrated his ability while faithfully and efficiently performing the many duties during the many years of service to Marion County. His past record and his proven ability recommend him for election to the important office of County Commissioner for Marion County, Oregon.

(This information furnished by Republican State Central Committee;
Don Hodel, Chairman; Mrs. Theodore L. Shay, Secretary)

Republican

HERMAN WM. LANKE**For County Recorder, Marion County**

Herman Wm. Lanke is your present Marion County Recorder and a very dedicated county official. He has actual experience recording and guarding the County's valuable records. He is on the job full time and has recorded and guarded your valuable records in the County's greatest growth period during the last 25 years. The Recorder must be one to command faith and trust, who must be relied upon implicitly as the officer who guards and perpetuates the record of so many acts, events and transactions that are of such prime importance in our daily lives and modern civilization.

Mr. Lanke knows of no more important function of government than the keeping of the valuable property records of its people and the various other records kept in the Recorder's office. The official ownership records of your home and the title to all land in Marion County from the beginning are held in this office and often times the life savings of its citizens are represented in the records.

Herman Wm. Lanke has done an outstanding job—the records are up to date and perfectly kept and guarded in strict accordance with the law. Herman is a student of government and keeps up with the very latest and best methods of procedure. He operates the office in a very courteous, efficient and economical manner, the way you would want your business to be run. He has made the office more than self-supporting each year since he has been in office.

Herman Wm. Lanke has held all the offices in the Clerks and Recorder's Assn. of Oregon. He has been a Boy Scout leader, holds an honorable discharge and has held offices in Service Clubs and many other organizations.

Herman Wm. Lanke has lived in Marion County nearly all his life. He attended its public schools and Willamette University School of Liberal Arts & Law. He also took various business courses. He raised his family here and has been a landowner and taxpayer for a long time and is very anxious that you get full value for your tax dollar. Before becoming Marion County Recorder, he worked as an auditor.

Herman has a storehouse of knowledge to offer which he has gained over the years of taking care of the County's records. He likes the records, likes people and likes to work for you. His slogan is: "EXPERIENCE ASSURES THE PUBLIC OF EFFICIENT, HONEST AND CAPABLE SERVICE." Keep him on the job by re-electing him.

(This information furnished by Republican State Central Committee:
Don Hodel, Chairman; Mrs. Theodore L. Shay, Secretary)

Democrat

PATRICIA J. (PAT) WAHL

For County Recorder, Marion County



AN EXPERIENCED BUSINESS MIND
FOR AN
IMPORTANT PHASE OF COUNTY
GOVERNMENT

STRETCH YOUR TAX DOLLARS

DUPLICATE COUNTY SERVICES
SHOULD BE CONSOLIDATED

PATRICIA J. (PAT) WAHL . . . is a native Oregonian, born in Ashland, 36 years old, member of Christian Church, Royal Neighbors, South Salem Boosters Club and lives in Salem with her husband, Donald and their three children.

MRS. WAHL has held secretarial and executive positions with such firms as Tektronix, Omark Industries, General Motors, American Motors and Deschutes County. She is Vice President of Wahl's

Far-Go, Inc. and has worked four legislative sessions. MRS. WAHL's bid for elective office is motivated by her desire to use her experience and knowledge to make Marion County government the best and most efficient in the state. Her two watchwords will be . . . MODERNIZE and ECONOMIZE.

MRS. WAHL has visited and studied the recording methods used in other counties and title companies throughout the state and feels that more effective use of existing county equipment and space can be accomplished by modernizing, economizing and coordinating with other county offices without the necessity for courthouse expansion.

MRS. WAHL feels that Marion County officials have been failing the taxpayers by using antiquated methods and procedures, an example of which is shown in the current budget for the Recorder's Office. It costs Marion County taxpayers as much to operate the Recorder's Office alone as it costs Multnomah County for all the record keeping services for all Multnomah County Departments.

MRS. WAHL feels that the Recorder's Office has shown little progress or modernization during the past 25 years and now is the time to correct this and bring county government operation up to the standards of today's business world.

BE WISE . . .

MODERNIZE and ECONOMIZE . . .

With a BUSINESS LEADER . . .

ELECT MRS. PATRICIA J. (PAT) WAHL as COUNTY RECORDER.

(This information furnished by Democratic Party of Oregon;
Senator Edward N. Fadeley, Chairman; Don Orton, Secretary)

LIST OF MEASURES, PARTY STATEMENTS AND CANDIDATES MEASURES

No. 1 Public Transportation System Employes Constitutional Amendment	6
No. 2 State Bonds for Education Facilities	12

PARTY STATEMENTS

Democratic Party	19
Republican Party	23

CANDIDATES

UNITED STATES SENATOR—(Vote for One)—Robert B. Duncan (D); Mark Hatfield (R).

REPRESENTATIVE IN CONGRESS, 2nd DISTRICT—(Vote for One)—Everett J. Thoren (R); Al Ullman (D).

GOVERNOR—(Vote for One)—Tom McCall (R); Robert W. (Bob) Straub (D).

COMMISSIONER OF THE BUREAU OF LABOR—(Vote for One)—Norman O. Nilsen (D).

STATE SENATOR, 1st DISTRICT, POSITION NO. 1, Marion County—(Vote for One)—Robert L. (Bob) Elfstrom (R); Spencer Grew (D).

STATE SENATOR, 1st DISTRICT, POSITION NO. 2, Marion County—(Vote for One)—Eddie Ahrens (R); Cornelius C. Bateson (D).

STATE REPRESENTATIVE, 11th DISTRICT, POSITION NO. 1, Marion County—(Vote for One)—Wallace P. Carson, Jr. (R); Gayle W. Gilmour (D).

STATE REPRESENTATIVE, 11th DISTRICT, POSITION NO. 2, Marion County—(Vote for One)—Charles L. Champ (D); Morris K. Crothers (R).

STATE REPRESENTATIVE, 11th DISTRICT, POSITION NO. 3, Marion County—(Vote for One)—Jack Anunsen (R); Keith A. Burbidge (D).

STATE REPRESENTATIVE, 11th DISTRICT, POSITION NO. 4, Marion County—(Vote for One)—Agnes C. Booth (R); L. B. Day (D).

NONPARTISAN

SUPERINTENDENT OF PUBLIC INSTRUCTION—(Vote for One)—Leon P. Minear.

JUDGE OF THE SUPREME COURT, POSITION NO. 4—(Vote for One)—William C. Perry.

JUDGE OF THE SUPREME COURT, POSITION NO. 5—(Vote for One)—Alfred T. Goodwin.

JUDGE OF THE OREGON TAX COURT—(Vote for One)—Edward H. Howell.

JUDGE OF THE CIRCUIT COURT, 3rd DISTRICT, POSITION NO. 1, Marion County—(Vote for One)—Douglas L. Hay.

JUDGE OF THE CIRCUIT COURT, 3rd DISTRICT, POSITION NO. 2, Marion County—(Vote for One)—Val D. Sloper.

JUDGE OF THE CIRCUIT COURT, 3rd DISTRICT, POSITION NO. 4, Marion County—(Vote for One)—George A. Jones.

INDEX

	Page
Ammons, Eddie	42
Anunsen, Jack	47
Bateson, Cornelius C.	43
Booth, Agnes C.	49
Breitenstein, Walter J.	54
Burbidge, Keith A.	48
Carson, Harry, Jr.	52
Carson, Wallace P., Jr.	44
Crothers, Morris K.	46
Day, L. B.	50
Duncan, Robert B.	28, 29
Elfstrom, Robert L. (Bob)	40
Gilmour, Gayle W.	45
Gross, Spencer	41
Harvey, Clair (Slim)	53
Hatfield, Mark	30, 31
Hay, Douglas L.	51
Lanke, Herman Wm.	56
Mattson, Henry C.	55
McCall, Tom	32, 33
Nilsen, Norman O.	36
Straub, Robert W. (Bob)	34, 35
Thoren, Everett J.	37
Ullman, Al	38, 39
Wahl, Patricia J. (Pat)	57

Precinct Number Follows Voter's Name

12

Marion

50 B 001K4

BULK MAILING
U. S. Postage
PAID
Portland, Oregon
Permit No. 815