



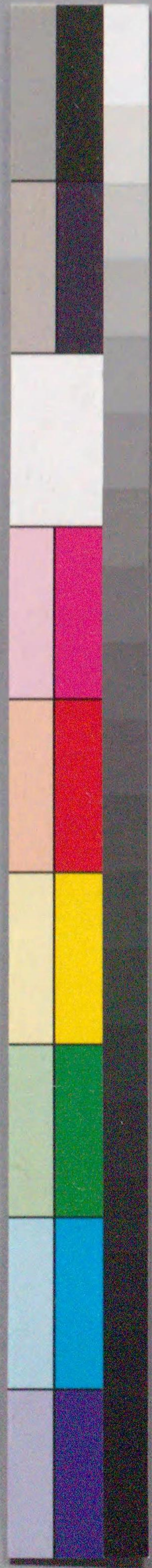
207
880

天人羽衣松
助風語



国立国会図書館 天人羽衣松 2巻 207-880

ガラス使用



207
880

天人羽衣松

豆由はあし



国立国会図書館 天人羽衣松 2巻 207-880

ガラス使用

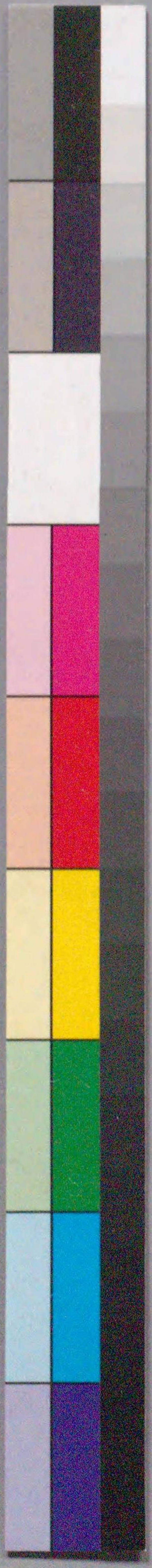
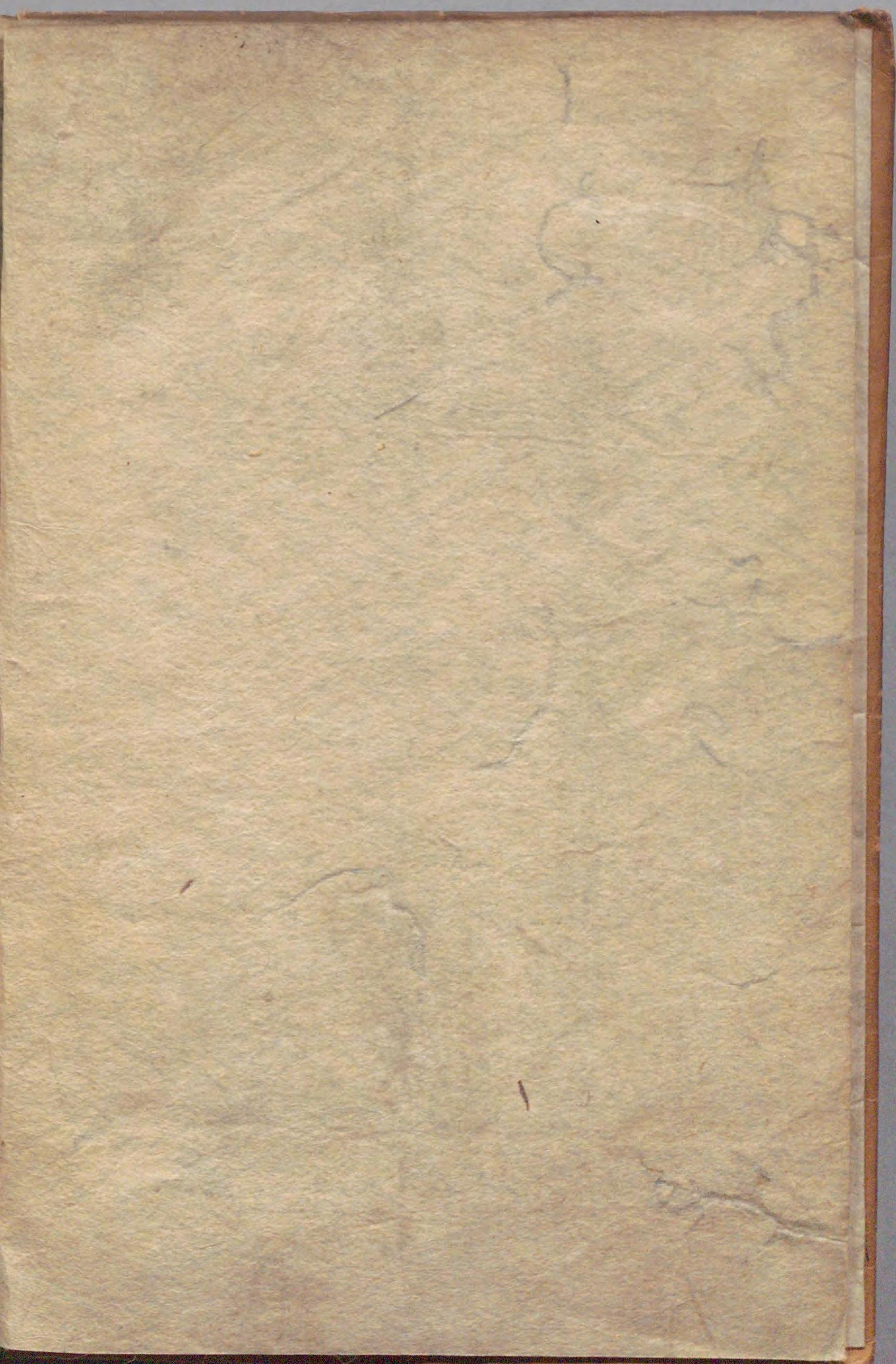




羽衣松

春信画

版



天人羽衣松

搜神記云際章が新喻縣に鳥有化て養女と成て後其間
脱置所の毛衣を人取て寢おひて飛事あり故に其人

と伴ひ家を行て夫婦と成る終に女子三人を生む其後以てその子
己が毛衣を得て飛去と云亦宗祇法師の説云曰三穗の浦

に漁ありある時壹人の女來りて宿を求む漁父は之を
是を留む丈夫より女淨むして終に夫婦と成る三年を過く女一人

髪を乞別れのどんで女一人無事と教由是駿河舞の初なるしと
云云
文化十四丁丑孟春新會集
陽壽南山著



清見
判皮
忠
知

昔
茶
を
く
ら
い
の
身

廣寒
宮
仙
女

天乙女
寛裳
月夜
の
身
を
く
ら
い
の
身

巻の下



あまの女をいふ
まことの女をいふ
ついでに女をいふ
あまの女をいふ
まことの女をいふ
ついでに女をいふ
あまの女をいふ
まことの女をいふ
ついでに女をいふ

あまの女をいふ
まことの女をいふ
ついでに女をいふ
あまの女をいふ
まことの女をいふ
ついでに女をいふ
あまの女をいふ
まことの女をいふ
ついでに女をいふ



あまの女をいふ
まことの女をいふ
ついでに女をいふ
あまの女をいふ
まことの女をいふ
ついでに女をいふ
あまの女をいふ
まことの女をいふ
ついでに女をいふ

あまの女をいふ
まことの女をいふ
ついでに女をいふ
あまの女をいふ
まことの女をいふ
ついでに女をいふ
あまの女をいふ
まことの女をいふ
ついでに女をいふ





国立国会図書館 天人羽衣松 2巻 207-880

ガラス使用



Handwritten text in a cursive style, likely a transcription of a story or dialogue, located at the top of the left page.



Handwritten text at the bottom of the left page, continuing the narrative or providing commentary.

Handwritten text in a cursive style, likely a transcription of a story or dialogue, located at the top of the right page.



Handwritten text at the bottom of the right page, continuing the narrative or providing commentary.



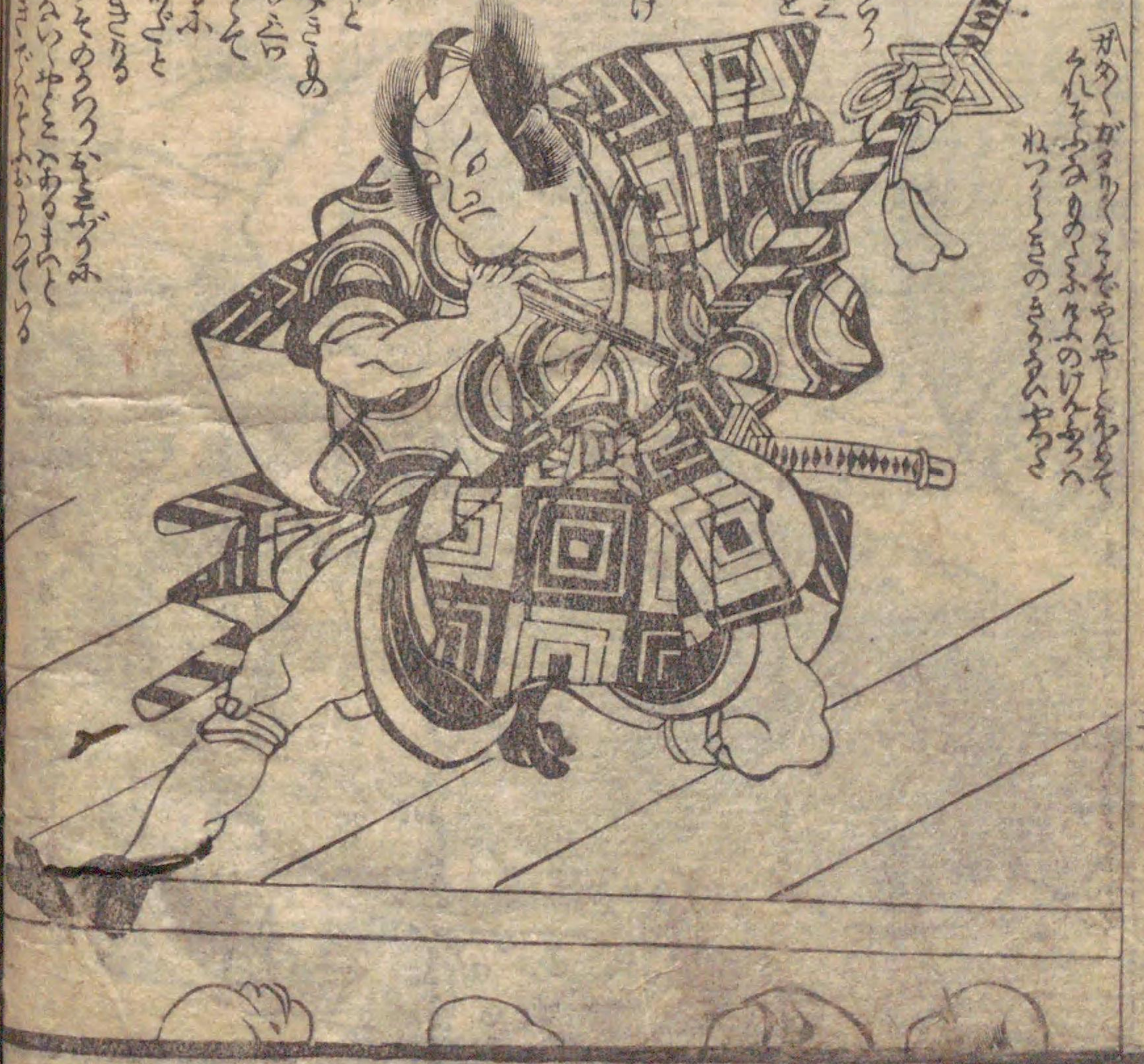


Handwritten text in a cursive script, likely a form of Japanese kana or a related historical script, located at the top of the left page.



Handwritten text in a cursive script, located at the bottom of the left page.

Handwritten text in a cursive script, located at the top of the right page.



Handwritten text in a cursive script, located at the bottom of the right page.



Handwritten text in a cursive script, likely Japanese, located at the top of the left page.



Handwritten text in a cursive script, likely Japanese, located at the top of the right page.



Handwritten text in a cursive Japanese style (sōsho) on the left page, surrounding the illustration. The text is arranged in vertical columns, with some lines written horizontally above the figure.



Handwritten text in a cursive Japanese style (sōsho) on the right page, surrounding the illustration. The text is arranged in vertical columns, with some lines written horizontally above the figures.





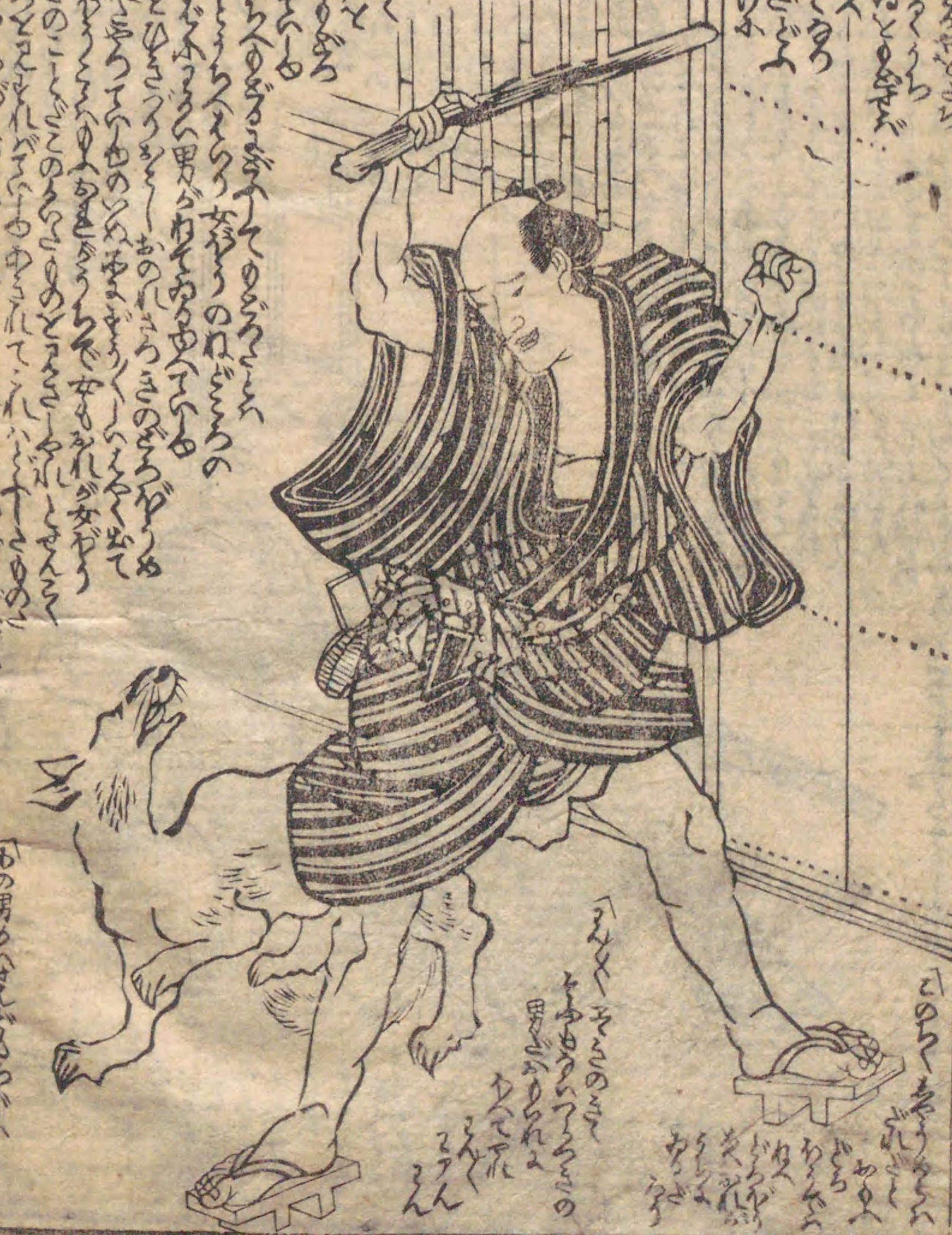
Handwritten text in the upper left corner of the left page, including a small box with the characters '天衣'.

Large block of handwritten text in the center of the left page, written in a vertical column.



Handwritten text in the lower left corner of the left page, below the illustration of the man and dog.

Large block of handwritten text in the upper half of the right page, written in a vertical column.



Handwritten text in the lower left corner of the right page, below the illustration of the man with the staff.



Handwritten text in vertical columns on the left page, likely a narrative or commentary related to the illustration.



Handwritten text in vertical columns on the right page, continuing the narrative or commentary.



Handwritten text in vertical columns at the top of the left page, likely serving as a title or introductory text for the illustration below.



Handwritten text in vertical columns at the bottom of the left page, providing commentary or a narrative related to the illustration above.

Handwritten text in vertical columns at the top of the right page, continuing the text from the left page.



Handwritten text in vertical columns at the bottom of the right page, providing commentary or a narrative related to the illustration above.





Handwritten Japanese text in vertical columns, located above the illustration on the left page.

Handwritten Japanese text in vertical columns, located below the illustration on the left page.



Handwritten Japanese text in vertical columns, located above the illustration on the right page.

Handwritten Japanese text in vertical columns, located below the illustration on the right page.





Handwritten text in a cursive script, likely a form of Japanese kana or a specific dialect, arranged in vertical columns on the left page.



Handwritten text in a cursive script, continuing from the left page, located below the main illustration.



Handwritten text in a cursive script, arranged in vertical columns on the right page, above the main illustration.



Handwritten text in a cursive script, arranged in vertical columns on the right page, below the main illustration.



207
880



豆助後日噺 全冊近刻 作者十返舎一九 貞
画師一圓齋國九

文化十四丁丑春新版稗史目錄 本問屋 江戸通油町 鶴屋喜右衛門

醒齋山東京傳隨筆

○骨董集 上編 前帙二冊 去九戌ノ冬出来

同 上編 後帙二冊 去九亥ノ冬出来

同 中編四冊 同 下編四冊 毎年二冊ツゞ發行

○雜劇考 初編二冊 古馬古圖とあつり考とかけり

紅葉齊川 文治高尾 達模様判官負全冊 歌川豊国画
振鷺亭作
打掛蠻療治 全二冊 勝川春亭画

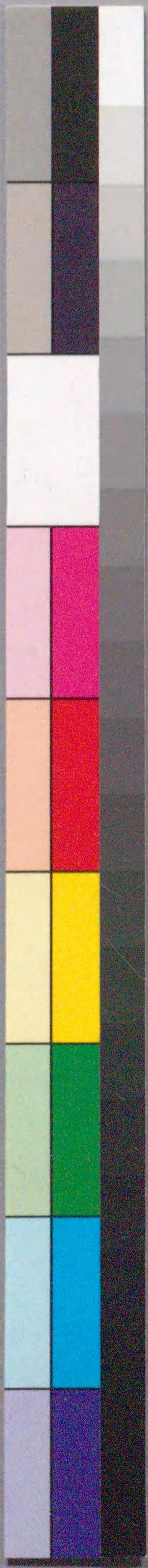
五色潮来艶合奏全六冊 式亭三馬作 歌川國貞画
世事第一口輕業 全三冊 歌川國九馬

207
880

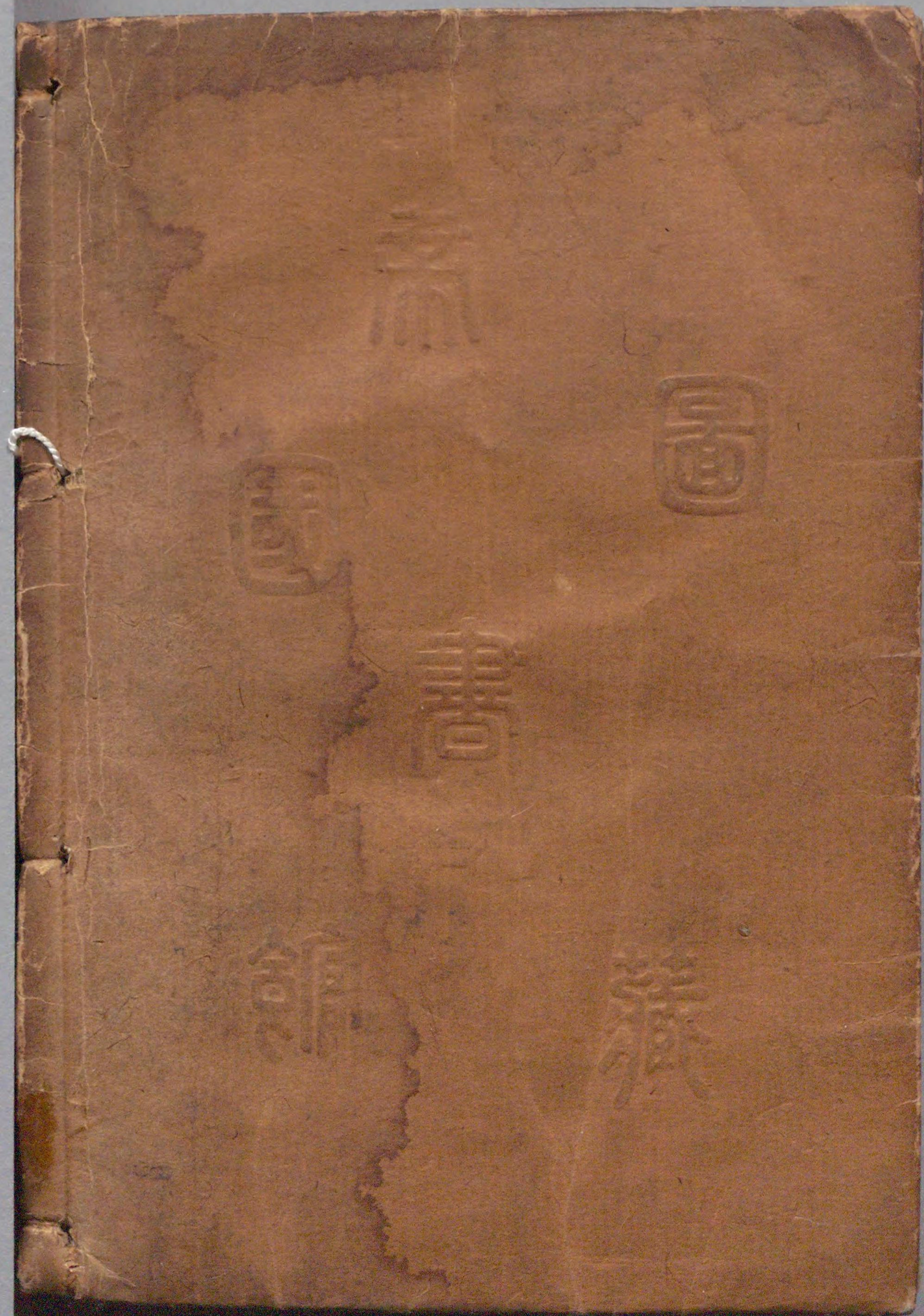
国立国会図書館 天人羽衣松 2巻 207-880

ガラス使用





国立国会図書館 天人羽衣松 2巻 207-880



ガラス使用

