

**SIERRA MADRE NEWS**

Published by  
**THE SIERRA MADRE PRESS, Incorporated**  
 Telephone Black 42  
 GEORGE B. MORGRIDGE, Managing Editor

Entered as second class matter at the post office at Sierra Madre, Calif., under the act of March 3, 1879.

Subscription Rates	
Three months	.75
Six months	1.25
One year	\$2.00
Outside Los Angeles Co.	3.00
Three Year	5.00

Subscriptions payable in advance. All new subscriptions will be delivered at once and be entered as of the first of the month following the date on which the subscription was made. Old subscriptions will expire on the first of the month following the present expiration date.  
 Copy for change of advertisement must be in the office by 10 a. m. Wednesday morning. New advertising copy must be in the office by noon on Tuesday

**Cooperative Marketing AUTOS ARRIVE Given A Boost IN BIG BUNCHES**

On his return from the Annual Fall Conference of Farm Advisers held at Berkeley during the early part of September, Farm Advisor Hodgson reported to the Board of Directors of the Farm Bureau that a considerable part of the three-day session was devoted to a discussion of agricultural economics. The relation of the extension service to cooperative marketing and agricultural credits was given considerable attention. As a result the farm advisers were requested by the director of extension to devote more time during the coming year to a study of these questions.

It was pointed out that both the college of Agriculture and the United States Department of Agriculture are definitely committed to the general policy of favoring cooperative marketing of farm products. The farm advisers were urged to study the principles of cooperative marketing and were authorized to give as much assistance as possible to farmers desiring help along these lines. It is expected as a result of this conference the extension service throughout the state generally will devote considerable more time to this phase of agricultural during the coming year than has been the case in the past.

Startling figures in regard to the number of auto parties visiting the southern part of California from the east and northwest have just been issued by the Auto Club of Southern California, showing that approximately 234,000 autos carrying 326,000 persons will arrive here this year.

During the peak of transcontinental motor car travel, which is in July, it is estimated that more than 20,000 automobiles arrived in a period of 30 days in the southern part of the state.

This makes an average of 59,500 motor cars carrying about 75,000 people arriving in the southern counties of California every month.

It is estimated by the auto club that more than 1,000,000 people will arrive in Southern California next year by motor car. Transcontinental auto travel is one hundred per cent higher this year than it was last year. Improved conditions on the transcontinental highways accounts for this ever-increasing flood of travel, says the club.

An actual check of transcontinental travel taken at Blythe by the quarantine station there operated by the United States department of agriculture, shows that 1,146 autos carrying 4,692 persons passed through that point during thirty days of August.

Heavy travel is also reported on the Bankhead highway, on the National Old Trails, on the Lincoln highway, on the Arrowhead Trail, and on the Midland trail. Over the Pacific highway, leading down the coast from Canada, Washington and Oregon, there have been 212 cars a day arrive in Southern California points during August, making a total of 6,572 cars for the month.

Actual testimony secured from thousands of these auto parties shows that they are determined to see all points of interest in the southern part of the state before making their final decision as to settling down, or before returning to their homes.

It is shown by the Auto club check that where a few years ago every automobile carried an average of two persons, the cars arriving at this time carry an average of four individuals. These parties report that so-called "dangers" of traveling over the long, long trails are mythical and that with proper care no trouble should be had.

**Various Kinds of Ice.**

Experiments have shown that water can be made to solidify into five different kinds of ice, each of which at certain temperatures and pressures changes from one into another with explosive violence. One kind, "ice 2," requires a very low temperature and great pressure to keep it from exploding into ordinary ice. Another kind will stay frozen at summer heat, provided it is kept under a pressure of 20,000 atmospheres. In nature such great pressures exist only in company with very high temperatures, and it is, entirely possible that some of these kinds of ice never existed until they were created in the experimenters' hydraulic press.

**Real Estate**

We buy, sell and exchange Real Estate in Sierra Madre, Arcadia, and Monrovia.

See us for residence property, poultry ranches, orange and walnut groves, acreage and business lots.

**The Hauser-Warden Company**  
 Double Drive, Arcadia

List your Sierra Madre property with me for sale or exchange.

THOMAS WARDEN  
 269 E. Laurel Ave.  
 Phone Green 18.



H-O Oats, large	35c
Milo Wheat	25c
Champion Brand Mission Variety Large Ripe Olives No. 2 1/2 can	33c
Burnt Peanuts, a delicious confection, made fresh for this sale, lb.	27c
Braden's Pickled Fruits, Apricots, Peaches, Figs, Plums, Watermelon and Grapefruit, 20-oz Jar While they last	33c
Monmouth Fancy Maine Succotash, No. 2 can	15c
New Year Eastern Pumpkin, No. 3 can	17 1/2c
New Year Eastern Sauer Kraut, No. 2 can	12 1/2c
Libby's Fruit Salad, No. 2 1/2 can	45c
Iris Sliced Pineapple, No. 2 1/2 can	35c
Dunbar Shrimps, small 17 1/2c, large	35c
Snowflake Crackers, 18c lb. No. 50 Caddy	49c
<b>I. X. L. PRODUCTS—</b>	
Beef Tamales	12c
Boneless Chicken Tamales	15c
Not Boneless Chicken Tamales	12c
Have You Tried Chaffee's Pancake Flour?	
Chaffee's Marmalade—14-oz. Jar	25c
33-oz. Jar	40c
You will be delighted with its wonderful flavor.	

A Satisfied Customer Is Our Greatest Delight. We Appreciate Suggestions That Will Help Us to Better Our Service

**MEATS**

Hamburg	15c
Boiling Beef	10c-12 1/2c
Pot Roast	15c-17c
Veal Stew	12 1/2c
Veal Roast	25c
Bacon in Piece	30c
Salt Pork	25c
Spare Ribs	20c
Pork Roast	20c-25c-30c
Shoulders Lamb	25c
Legs Lamb	35c
Pure Lard	18c 2 for 35c
Compound	15c

NEWS WANT ADS PAY

**Paint Preserves**

and helps to keep up appearances



**ACME QUALITY.**

is made to formulae by the most expert chemists in the paint manufacturing business, has been in use for many years and is guaranteed absolutely satisfactory.

Preserve your peace of mind by buying paint that is dependable.

**Sierra Madre Hardware Co.**  
 Main 98

**While they Last**

- 25 lb. box 60-70 Prunes ..... \$2.75
- 4 large cakes Toilet Soap, made by the Palmolive Co. .... 25c
- Avocados, each ..... 10c, 15c and 20c

Store Open All Day Wednesdays

FREE DELIVERY

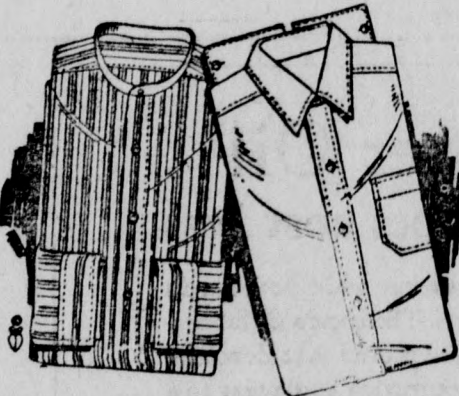
**WELSHER'S**

CENTRAL MARKET

Meats Main 97; Gro. Main 6. Central and Baldwin

**Men's Wear**

Dress Shirts for Fall, Work and Outing Shirts, Men's and Boys' Under wear and Hosiery



HIKING CLOTHES  
 FOR MEN, WOMEN  
 AND CHILDREN  
 PORTRAITS  
 FREE

to Our Customers

**Sierra Madre Bargain Store**

MAX SILVERMAN, Proprietor

Phone Blue 184

20 W. Central Avenue

**Clean Linen for Summer Comfort**

Send yours to the TROY LAUNDRY  
 ROY EDWARDS, Agent

Red 42 Langley's Barber Shop 11 Kersting Ct.

**C. M. COOPER**

Real Estate  
 Red 22

Insurance  
 14 N. Baldwin



**PRICES AGAIN REDUCED!**

Effective Oct. 2nd

The Ford Motor Company announces a reduction in all models of its Ford cars, making the new list prices f. o. b. Detroit as follows:

CHASSIS, standard	\$230
RUNABOUT, standard	265
TOURING, standard	295
TRUCK CHASSIS, standard	370
COUPE, starter and demountable rims	525
FOUR DOOR SEDAN, starter and dem. rims	685

Starter \$65.00, Demountable Rims \$20.00 additional when supplied on open models.

**Prices Lowest in History of FORD MOTOR CO.**

The FORDSON TRACTOR is now \$420.00  
 F. O. B. DETROIT

**J. Milton Steinberger**

Authorized Dealer



**CARS TRUCKS TRACTORS**





**There's Another Season**

in that suit, overcoat or winter wrap. Just let us put on a new collar, re-line, clean and press it to look like new!

Ladies' alterations a specialty, changing to the new styles.

Fall and Winter suitings now on display.

All work called for and delivered

**Sierra Madre Tailors and Dry Cleaners**

P. ZETTAS, The Tailor  
W. E. CRAIG  
Blue 194 14 W. Central

**CALEY WRITES PARIS ALMOST WINS HIS HEART**

Dear Friend Morgridge:

I promised I would write you a letter when I left Sierra Madre. Well, I am just about through with my trip at this end. Have enjoyed it immensely.

In Scotland I caught a little cold as the weather was cold and damp, but when I arrived in London it was fine. I think I wrote you and told you the route I took coming this way—from Cleveland to Buffalo by boat, then by rail to Montreal, then by steamer to Liverpool.

From Liverpool I crossed the channel to the Isle of Man, 81 miles, on the Monas Isle, a beautiful boat. It had 2500 passengers for Douglas, Isle of Man, a great summer resort. I stopped 15 days on the island, on which my father was born. He left there in 1825. The old home has passed out of the hands of the Caley family after over 500 years. The buildings are still on the place, all built of stone, but when father was a boy there were thatched roofs. I am bringing home some good oil paintings of the old place.

**Two Weeks in Scotland**

From there I went to Glasgow in Scotland, spent a few days there and then went to Edinburgh which is a beautiful city. Damaged somewhat by the war, but not badly. I spent a week there as the old home of Mrs. Caley's folks is just 10 miles out at a place called Roslyn. I could have spent a month at Edinburgh, a very old city with much to see.

There I took the steamer Royal Scot, 400 miles to London. Spent four days there—too big a place for me.

Will spend the balance of my time here in Paris, the most beautiful city I have visited. Have been going in the sight-seeing coaches every day. It is the only way to get about these cities.

**Meets Home Friends**

Coming from London to Paris I was much surprised to find on the trip Dr. and Mrs. Barlow, their son and two daughters. It surely made me feel happy to meet them. We had a nice visit all the way over. They will go on to Italy. The girls will attend school in Florence. The Doctor will return in a couple of months but the rest will be gone a year.

I have had a most delightful trip—felt a little lonesome at times, and will be glad to get back to sunny California again. The folks are anxiously awaiting my return. I will leave from Cherbourg, France, Sept. 15 on the Steamer Berengeria. Expect to arrive in New York City about the 25th. Will leave Cleveland about the 25th of October, stop in Denver or Salt Lake City a day or so, then hit for home. Can't get there too quick when we get started.

Your friend,  
W. P. CALEY

**Dr. Goodenow's Office Is Burglarized**

With the intention, probably, of looking for cocaine, morphine, or some similar drug, a thief or thieves broke into the office Sunday night of Drs. E. H. Kelly, C. D. Gaylord and N. H. Goodenow in the American National Bank building, Orange and Myrtle avenues, Monrovia, and scattered drawers, private papers, surgical instruments and office furniture about the rooms in a furious and desperate effort to locate the "loot" that the victim evidently craved.

All three doors to the offices were neatly "jimmied" and as far as is

**Everlasting Flowers**

**Statice Arborea**

Attractive lavender flowers on long stems; will last for months when cut and dried.

Plant blooms almost continuously. Strong plants in gallon containers, 50c each



**Ward Nursery**  
Mt. Trail & Laurel Aves  
Phone Blue 29

**Biederman Installs Automatic System**

What is declared to be the only automatic equipped municipal generation and pumping station west of the Mississippi is being installed at Florence, Ariz., under direction of Franklin Biederman, formerly water superintendent of Sierra Madre.

The following interesting account of the plans is reprinted from the Arizona Building & Contractor:

Plans by Franklin Biederman, consulting municipal and city engineer of Florence, Arizona, are being prepared on the completion of the contemplated high voltage electric current transmission line from the Salt River valley, via Sacaton, through Casa Grande valley for power purposes.

The City of Florence is contemplating the purchase of electric current as an auxiliary to its present oil engine equipped municipal electric light, power and water plant. A new up-to-date high tension out door sub station will be erected, about 720 square feet of new floor space will be added to the present building. The new building to be of brick construction to house the new 150 KVA frequency changer set and equipment; an automatic voltage regulator will be installed, which will maintain constant voltage and regulation on the transmission and distributing system without the aid of an attendant; the two deep well pumps, including the two fire and booster pumps will be under automatic control, thus requiring one attendant for the 24 hours service, standing watch from 11 o'clock p. m. to 7 o'clock a. m., primarily to maintain cleanliness in the station, keeping the station records and see that the oil equipment is ready to start at a moment's notice.

As water and fire protection is of primary importance the automatic control of the pumps maintains a constant supply of water at all times and may be started by any person by pressing a button. In case of failure of the current supply the oil equipment can be started, thereby maintaining constant service, at the minimum expense.

As the city has always maintained a 24-hour service, the frequency changer set will be shut down by the attendant once in 24 hours, and thoroughly cleaned and inspected, maintaining service with the present 20 KVA oil engine set. The present efficient street lighting system will then include all-night service under automatic control.

This is the first, as far as known, to be the only automatic equipped municipal generation and pumping station west of the Mississippi river.

**NEWSPAPER PROPAGANDA**

Douglas McPhee, in Santa Paula Chronicle: Will Irwin is running a series in a popular magazine in which he tells of the widespread prevalence of "propaganda" in the newspapers of the present day. The ultra modern method of putting over publicity stuff, says Mr. Irwin, is to make it look like news, sound like news, have some news in it, but be in fact, advertising for some commodity, service or idea. He says:

"The experience of the war had shown the practical method. Get at the sources of the news—and slant it: It is much cheaper and more effective.

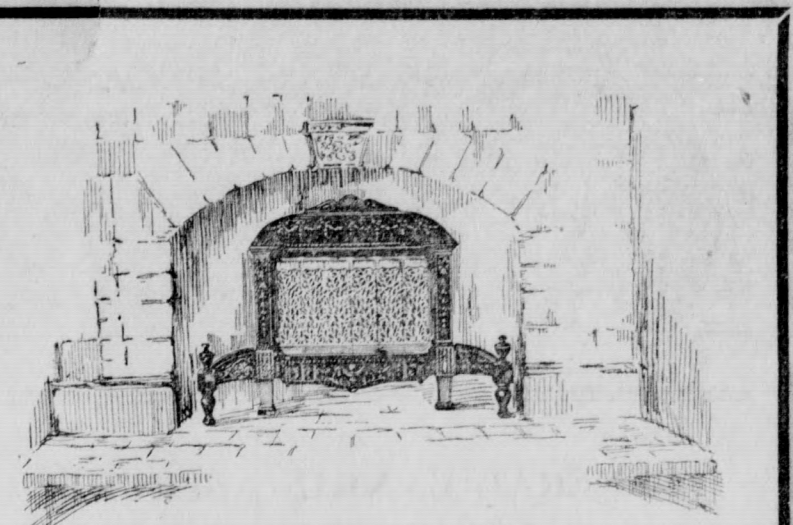
"By 1920 nearly a thousand bureaus of propaganda had established headquarters in Washington alone. Their mimeographed 'mail stuff' filled the editorial wastebaskets of our great metropolitan dailies."

The Santa Paula Chronicle is not yet a great metropolitan daily. And yet it has its editorial wastebasket pretty well filled every day with the kind of material of which the writer speaks. But after several months spent in culling this kind of stuff, we are inclined to think that Mr. Irwin overestimates the ability of these publicity agents. It doesn't fool the editor. Most of it goes into the waste basket as Irwin infers, and what gets printed is used because of some interesting slant it may have taken, or for lack of better material, and reaches the reading public for what it is—recognized as such—and not intended to deceive nor with the power to do so.

known, nothing of value was taken from the office. No other offices in the building were entered, although there are a number of suites occupied by attorneys and other professional men.

The forcible entry took place between 8 o'clock at night and the same hour in the morning, the last person having left the building at the former hour.

When the three medical men came down to their offices Monday morning they were in no amiable frame of mind when they saw the havoc that the would-be burglar had effected. Thorough search, however, failed to find any valuable article missing.



**Compare the**



**RADIANT GAS HEATER**

**with any other heater, and, test for test, it stands superior.**

1. In appearance it is genuinely classic.
2. It consumes every particle of gas. No gas escapes. It produces no odor.
3. It burns with a beautiful even glow clear to the top.
4. It operates economically. It requires less gas for the same amount of heat other heaters produce.
5. The obstinate trouble of flashbacks is absolutely eliminated in the Kennedy.
6. It is the latest improvement in radiant heater construction. It should be superior.

Write for further details or see it demonstrated at our store.

Exclusive Dealers

**Birch-Smith Furniture Co.**  
737 So. Hill St. 874-121  
Member of American Homes Bureau  
"Better American Homes"

Convenient Investment Terms

No interest on deferred Payments

**Cool Evenings and Cold Mornings**

**The Ironton Bensen Gas Heater**

Takes Care of That.

THE MOST HEATER FOR THE LEAST MONEY

**LAND ADAMS**  
Furniture and House Furnishings  
Phone Black 8 12 N. Baldwin

Watch for the **OPENING** of the New **Sierra Madre CAFE**  
At 10 West Central Avenue  
Peter Becronis Peter Petro

**Hoegge's Camp**  
In the heart of the hills. Always Open Splendid Dance Floor and Music. Radio and Other Entertainment Features.  
The Best Week-End Trip in the Mountains  
MEALS AT ALL HOURS  
WM. MURPHY, Proprietor  
Phone 214-3 bells Sierra Madre P. O.

**Save \$45**

BARGAINS IN BURNHAM PHONOGRAPHS

\$125 Instrument \$80.00  
95 Instrument 65.00

Wonderful Tone---Beautiful Cabinets

**Sierra Madre Gem and Jewelry Shop**

Red 184 L. C. TUCKER 18 W. Central



**CAKES**

OH, BOY! THEY'RE GOOD!  
LOAF CAKES, LAYER CAKES, CUP CAKES AND ALL THE REST

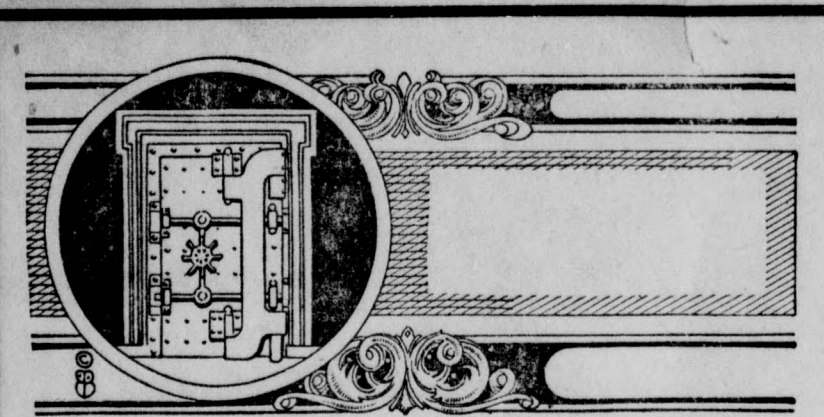
**Sierra Madre Bakery**  
C. W. MILLARD

30 Windsor Lane

Black 125

Try Our WANT ADS for Results





**GENERAL BANKING SERVICE**

**Commercial and Savings**

**A. B. A. Travellers' Checks**

Capital \$40,000

Surplus \$15,000

**The Sierra Madre Savings Bank**

Commercial

Savings

**OFFICERS AND DIRECTORS**

- |                         |                            |
|-------------------------|----------------------------|
| H. E. ALLEN, Pres.      | C. S. KERSTING, Vice Pres. |
| W. H. INGRAHAM, Cashier |                            |
| C. W. YERXA             | C. W. FORMAN               |
| CHAS. S. KERSTING       | F. H. HARTMAN              |
|                         | H. E. ALLEN                |

Mrs. Mary G. Clarkson has announced that she will do public stenographic and notary public work in connection with her duties as secretary of the Sierra Madre Civic association. She will also handle book keeping accounts for private individuals. Mrs. Clarkson has had ten years experience in commercial work in the Los Angeles business world. Her desk will be at the Civic association quarters in the News building, 25 Kersting block.

The Girls of St. Catherine are planning a Halloween party to be given in the Parish House on the night of October 31st. The affair is to be in the nature of a "Hard Times Party."

Mr. and Mrs. Ivan Buie, of 95 E. Laurel, had as dinner guests Thursday, Mrs. Gladys Brown and Miss Ethel DeFord of Pasadena, Mr. Harold Stover of Arcadia, and Mr. Cedric Tarr of Sierra Madre.

**HOTEL MIRA MONTE**  
Under New Management  
Rooms by day or week—also housekeeping apartments  
Special rates to permanent guests  
Phone Green 19 426 Auburn, Cor. Mira Monte

**WOMAN'S CLUB**

(Correspondence)  
Outstanding features of the first club affair of the season, the Spanish fete at the Lawless gardens, were the lovely shawls loaned by Mrs. Boradale and the remarkable exhibit of dahlias from Mr. Moote's collection.  
Interesting Mexican baskets filled with fruit and flowers were on sale, and the display of wisteria greeting cards, charmingly decorated by Mrs. Tuttle are for sale, and will evidently be very popular for Holiday use, as indicated by the orders already received. Attendance at the fete and the financial returns were gratifying.

**Hallowe'en Party**

A Hallowe'en masquerade party is planned for Friday evening, Oct. 27.

**Opening Luncheon**

An unusually large number of new members will be welcomed into the club by Mrs. J. A. Osgood next Wednesday, when at 12:30 the club season will open with a social half hour followed by luncheon and a program of unusual interest. Under "Club Relationship" to existing agencies, Mr. Dennis Stovall, author and local head of the Boy Scouts, and Mrs. Griebenow, president of the Parent-Teacher association, will outline ways in which effective co-operation may be secured.

Mrs. Lorbeer, district vice-president, with Mrs. Pinegar, will help in the organization of a Junior Auxiliary for little girls, and Dr. Margaret Clark, a veteran apostle of Child Welfare, will speak on "Better Babies."

The presence of Miss McPherson, district music chairman, who will bring an accomplished violinist, Miss Pickrell, assures an enthusiastic rally to the support of the Community Singers, which begin Thursday evening, under Mr. Kirchofer's direction.

**Dancing Class**

Mrs. Dingman with an excellent committee has done fine work in creating interest in Miss McCune's dancing classes, which will meet at 3 o'clock on Tuesday afternoon at the club house, and at 7, Wednesday evenings.

With the Federated clubs demonstrating their power for creative work in art, music and the drama by such concrete examples as the Hollywood bowl, the Pilgrimage play and Community Players movement, the rapidly increasing memberships are partly accountable to the desire to support these efforts.

Appeals from the State's organiza-

tions of educators and welfare workers for assistance from the State Federation of Clubs in the emergency created by the budget cuts, should receive a vigorous response from our administration, dedicated at Eureka to "Love of God and man and every living thing." The crippling of practically every welfare institution in the State and the loss by elimination of the Division of Rehabilitation, the Pacific Colony for Defective Children, the Migratory schools and the Sonoma Prison farm, as well as efficient library service for the blind, creates a problem demanding the best efforts of organized womanhood to assist in its solution. The question as to whether retrenchment is economy when the welfare of the helpless is at stake will bring into the clubs many women willing to help our slogan, "Strength united is stronger" to be effective.

A happier reason why all Sierra Madre women should join our local club is that the Biennial convention will bring more than one hundred thousand women and many men as delegates, speakers and guests to Los Angeles in June, representing every State and foreign country, and every phase of creative, educational and welfare work. The suggestion that California invite this great meeting, originated in a Los Angeles presidents' council, and Mrs. Milton Steinberger was among its first advocates. Mrs. Robert J. Budette, now personally identified with Sierra Madre and our club, is the State director, and expects our support.

The appeal to increase the membership of our club to 300, every member wearing the emblem, before next June, should receive a joyous response. Those women unable to attend programs can help by their memberships. Mrs. Jensen, Green 32, is membership chairman.

Dues should be sent by mail to Miss Bayne before Wednesday, and dishes and other articles belonging to the club house should be returned at once. They are needed.

Mr. and Mrs. Adolph Peterson, Mrs. Victor Peterson and Mr. Roy Peterson left Wednesday for Portland, Ore., after spending several weeks visiting at the home of Mrs. Howard Hill and other relatives in Southern California. Last week they drove to San Diego and Tia Juana, Mrs. Hill accompanying them.

**CARD OF THANKS**

We wish to thank our many friends for kind assistance and expressions of sympathy in connection with the illness and death of our wife, mother and sister, Mrs. Ella Lindeman.  
John, H. Lindeman, Husband  
Helen Marshall, Daughter  
Frank G. Loessler, Brother

**STATEMENT OF THE OWNERSHIP, MANAGEMENT, CIRCULATION, ETC., AUTHORIZED BY THE ACT OF CONGRESS OF AUGUST 24, 1912.**

Of Sierra Madre News, published weekly at Sierra Madre, Cal., for Oct. 1, 1923. State of California, County of Los Angeles—ss.

Before me, a notary public in and for the State and county aforesaid, personally appeared George B. Morgridge, who, having been duly sworn according to law, deposes and says that he is the managing editor of the Sierra Madre News and that the foregoing is, to the best of his knowledge and belief, a true statement of the ownership, management, etc., of the aforesaid publication for the date shown in the above caption, required by section 4433, Postal Laws and Regulations, printed on the reverse of this form, to-wit:

1. That the names and addresses of the publisher, editor, managing editor, and business managers are: Sierra Madre Press, Inc., Sierra Madre, Cal.; publisher, Editor, Managing Editor and Business Manager, George B. Morgridge, Sierra Madre, Cal.
2. That the owner is: Sierra Madre Press, Inc.; stockholders owning one per cent or more of total stock: George B. Morgridge, J. D. Mackerras, M. C. Rodgers, George L. Mitchell, A. W. Wolkyns.
3. That the known bondholders, mortgagees and other security holders owning or holding 1 per cent or more of total amount of bonds, mortgages, or other securities are: First National Bank, Sierra Madre, Cal.; C. S. Kersting, Los Angeles, Cal.; C. Gernert, Los Angeles, Cal.
4. That the two paragraphs next above, giving the names of the owners, stockholders and security holders, if any, contain not only the list of stockholders and security holders as they appear upon the books of the company but also, in cases where the stockholder or security holder appears upon the books of the company as trustee or in any other fiduciary relation, the name of the person or corporation for whom such trustee is acting, is given; also that the said two paragraphs contain statements embracing affiant's full knowledge and belief as to the circumstances and conditions under which stockholders and security holders who do not appear upon the books of the company as trustees, hid stock and securities in a capacity other than that of a bona fide owner; and this affiant has no reason to believe that any other person, association, or corporation has any interest direct or indirect in said stock, bonds, or other securities than as so stated by him.

Sworn and subscribed before me this 29th day of Sept., 1923.  
(Seal) W. S. ANDREWS, Notary Public.  
(My commission expires Sept. 23, 1925.)

**NEW BIG PACKAGE**  
**111 Cigarettes**  
**24 for 15¢**

**Professional Directory**

**PASADENA GLEN SCHOOL FOR BOYS**  
A boarding and day school for boys (non-military and non-sectarian). Grammar, high and junior college courses. A class for boys of superior mental ability. Special facilities for out-door physical development. A one year course in business administration.  
DR. RALPH L. POWER, Director  
Phone Red 67 225 N. Lima St.

**LLOYD L. KREBS, M. D.**  
Sierra Madre Office, 90 E. Central 11 to 1:00 Phone Main 60  
Pasadena Office, 461 E. Colorado Phone Colo. 630

**LESSONS**  
in Piano, Violin and Mandolin, including Theory, Harmony and Technic. Call on Sisters of Loretto, 29 W. Highland.

**F. P. MILLER, M. D.**  
Practice limited to diseases of the lungs and throat  
Appointments made at any time.  
Call Phone Blue 37

**Private Kindergarten**  
(Along Montessori Lines)  
MISS VINVELA CUMMIN  
A. A., of London University, Eng.  
Terms \$7.00 a Month  
Visitors are welcome  
Red 202 94 E. Laurel

**N. H. GOODENOW, M. D.**  
General Practice and Diseases of Throat and Chest, including Tuberculosis  
Office, 71 North Baldwin Ave.  
Phone Main 151

**SCHOOL OF AESTHETIC DANCING**  
MISS MARY McCUNE  
Woman's Club House  
Fridays 2:30 to 4:30

**Physician and Surgeon**  
**E. L. JACKSON, M. D.**  
161 N. Auburn St. Phone Green 3  
Office hours: 10 to 12, 2 to 4  
Residence, 89 N. Auburn  
Phone Green 76

**Mary G. Clarkson**  
PUBLIC STEGOGRAPHER and NOTARY PUBLIC  
Press Building  
Red 183 25 Kersting Blk.

**Gilbert S. Bovard, M. D.**  
Hours 10-12:30  
Office 8 N. Baldwin phone Main 160  
Residence 159 W. Montecito Ave  
Phone Black 47  
Secretary's residence phone Blue 26

**BRICK AND COBBLESTONE WORK**  
Chimneys, Fireplaces, Cesspools  
L. D. CORNUELLE  
Phone Black 101  
461 East Grand View

**GEO. W. GROTH, D.O., D. D.**  
Also MARY GROTH, D. O.  
Office: Sierra Madre Hospital  
122 N. Baldwin Avenue  
Calls answered day or night  
Phones: Blue 144; (Res.) Blue 73

**Robert M. Finlayson**  
Architect  
Green 24 31 Suffolk

**DR. N. S. SALTZMAN**  
Eyes Examined Lenses Duplicated  
616 Brockman Bldg., Los Angeles  
Phone Pico 5625  
Sierra Madre Office 18 W. Central  
Phone Red 184

**Cement and Rock Work, Cesspools**  
Art Cement Work, Fish Ponds etc.  
D. & J. BUCHAN  
Green 24 31 Suffolk

**MAY CULBERTSON LAIDLAW**  
Osteopathic Physician  
Hours by Appointment  
Office and Res., 83 N. Sunnyside  
Phone Green 43

**Expressing**  
Trips to and from Los Angeles. Reasonable rates.  
I. B. GOLDBERG  
Phone Black 142 171 Adams

**SAINT-CYR SANITARIUM**  
Treatment consists of the Fast Cure and Milk Diet. No tubercular cases received.  
140 So. Hermosa. Phone Green 166

**JESSIE WARD**  
Landscape Gardener  
Plans furnished—Work Superintended or taken by contract  
Call Ward Nursery, Mt. Trail and Laurel. Phone Blue 29

**FRANKLIN BIEDERMAN**  
Registered Professional-Civil Engineer in Municipal Engineering, City Planning, Management, Investigations, Surveys, Reports, Cost Accounting for Economics, Water Works, Light and Power Plants, Sewage, Roads, Streets.  
Florence, Arizona

**OSCAR RASBACH**  
Piano Pupils Accepted  
Leschetizky Method  
MONDAY AND THURSDAY  
Phone Green 168  
Res. 363 Sycamore Place

Wanted in the News are a good invest.

**CURTIS H. GOODENOW**  
Special Agent  
New York Life Insurance Company  
Phone Main 151. Sierra Madre, Cal  
Residence, 65 N. Baldwin

**BERGIEN & CABOT**  
**UNDERTAKERS**  
Lady Attendant Phone Main 27  
Ambulance Service 304 W. Central

**Allen T. Gay Funeral Parlors**  
Established 1911  
**RAY A. GRANT, Manager**  
Licensed Embalmers—Ambulance Service  
Lady Attendant  
Main 93 201 W. Central

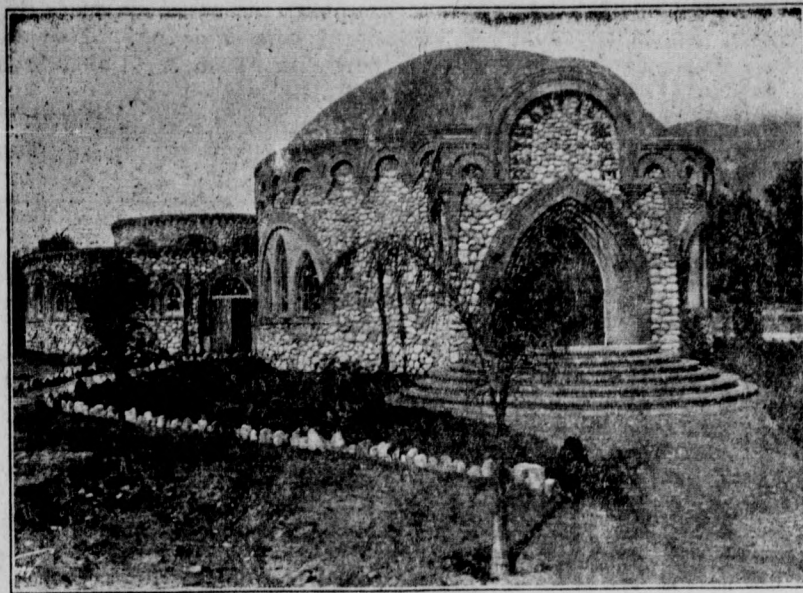
**THE L. W. BLINN LUMBER CO.**  
Sash, Doors, Wallboard, Roofing, Cement, Brick, Lime and  
**LUMBER**  
Phone Main 23 East Montecito Ave.

**Call Black 42 for News Wantads**  
One time rate 10c a line.  
Three times ordered in advance 20c a line.  
Copy must be in by 5 p.m. Thursdays.

**Try Our WANT - ADS for RESULTS!**

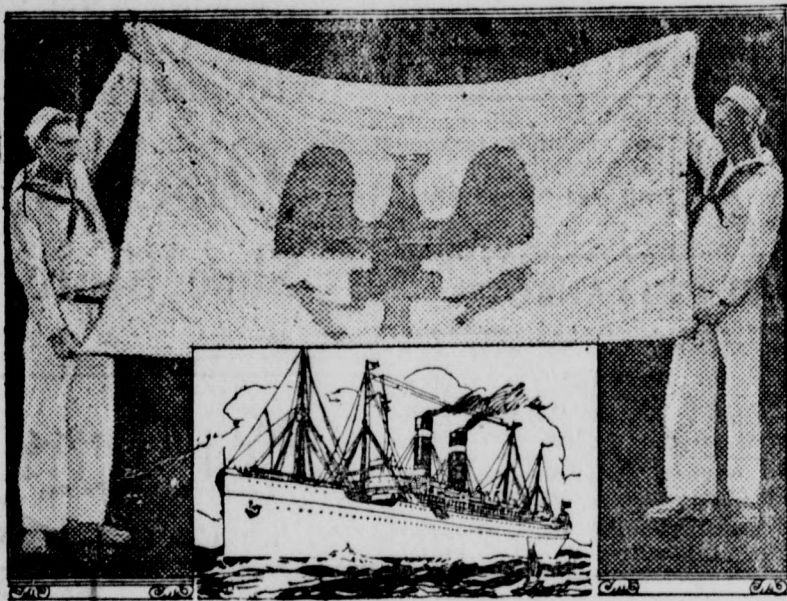


BETHANY TEMPLE CHURCH



The Rev. W. H. Rawlings, LL. D., the Pastor, preaches both morning and evening on Sunday.

PACIFIC COAST TO SEE FAMOUS ENSIGN



Oldest American Steamship Flag in the Atlantic, to be Flown by Panama Pacific Line Ships

HOUSE flags are valued by shipping companies as symbols of business identity, and their sentimental association of the house flags flown on clipper ships in the days of the now treasured in Eastern seas or museums as souvenirs of the American shipping era now passed. Flags of steamship lines have taken their place. One of the most famous steamship house flags is that of the American Line, pictured here. It was first flown on the original steamers of that line when they began operations between Philadelphia and Liverpool in 1871, and is the only house flag of an American steamship line that has been continuously in transatlantic service for more than half a century. In a few weeks this famous ensign of trade and travel will be seen in the Pacific, on the ships of the Panama Pacific Line, which in November reopens a service between California ports and New York, the way of the Panama Canal, which was interrupted by the great war.

Three large ocean liners—the Manchuria, Kronland and Finland—have been assigned to the new service by the International Mercantile Marine Company, which operates the Panama Pacific Line, and also several transatlantic lines. As the Manchuria has flown the American Line house flag in transatlantic passenger service since the war, it has been decided to adopt that flag for the Panama Pacific Line. Its roughly outlined blue spread eagle on a white ground, familiar to hosts of Atlantic travelers, will fly over all three of the line's passenger ships, and also over its freighters, the Montauk and Montana. All five ships are of American build, and are worthy of the honored flag they will bring into the Pacific. The first sailing of the new service from San Francisco will be that of the Kronland November 5. The Finland will sail November 19, and the Manchuria December 10. First, second, intermediate and third class passengers will be carried, and all three ships have large freight capacity for California products.

The Covered Wagon

More than 700,000 people have seen the "Covered Wagon," now playing at Grauman's Egyptian Theater in Hollywood. It is estimated that there will be 700,000 more to see it before it is replaced by another picture. This is a very interesting statement in view of the fact that when the "Covered Wagon" completes its record run it will be available for hundreds of exhibitors throughout Southern California. Most of those who have stood in line for hours for tickets paid unheard of prices for their seats, or travelled miles to Hollywood, would have been able to see the same picture if they had cared to wait until it came to their local show house. Most every one will admit that there is no reason for haste in seeing the great picture, however enjoyable the occasion may be, but Sid Grauman packs the house day after day with picture lovers from all over Southern California.

Many a motion picture show manager in Southern California has watched his townspeople going in crowds to Hollywood and perhaps swore softly (or loudly according to his temperament) about their disloyalty to home institutions, but he might have noticed that Sid Grauman was busy with the local paper weeks before the Covered Wagon came to Hollywood and is still at it, while, he perhaps ignored the advertising value in the medium which had been placed at his disposal. The manager of the Egyptian Theater is not spending money for advertising because he is benevolent, but because he knows that it is an investment which pays dividends. The success of the Covered Wagon and Grauman's Egyptian theater is not due to luck but to a carefully thought out business policy, with advertising as the principal means of getting business and an exhibition which lives up to the advertising in every detail. Something to sell and a means of selling it at a profit is a very simple business combination but one that is sure to wear out the bell on the cash register.

Gotham Finds Ad Necessity During Strike

Continued lack of advertising space in New York's strike-hampered newspapers was reflected in all branches of finance, commerce and industry, in the opinion of business executives who have observed the effect of the walkout.

In competent financial quarters the fear had been expressed that unemployment might result from longer crippling of the daily liaison between merchant and buyer.

Department store heads, even those catering to permanent customers, said the inability to promote sales through the newspaper columns had provided a serious handicap at the opening of the fall season.

Wall Street, always dubious as to the real values of the small amount of space it uses in the dailies, was convinced its clients had learned to depend on newspaper advertising for their information on financial offerings. Several big offerings of bonds were postponed because of lack of advertising space.

Stores depending on special sales were most seriously affected. Nearly all the leading department stores began printing circulars for distribution among persons entering their

Community Sings Begin Season Next Thursday, Oct. 11

Fall sessions of the Community Sing will begin next Tuesday night, Oct. 11, in the club house. Hugo Kirchhofer, the greatest song leader in Southern California, will return as conductor. For those who do not know his work, it should be sufficient to mention his leadership of the Wayfarer chorus, the Orpheus club, the Shrine Chanters and many other prominent organizations.

Mr. Kirchhofer has given Sierra Madre the preference over other communities as he cannot fill the demands upon his time. Full details of the method of organizing and carrying on the work of the sing will be announced Thursday night. It is expected that some serious chorus work will begin soon, in addition to the singing of folk songs and the like.

Mr. and Mrs. C. N. Barker of 232 Mariposa have as house guests Mrs. Barker's daughter-in-law, Mrs. Elliott Freeman and two children, of Dickinson, N. Dak.

Establishments and for their mailing lists. Their executives, however, said the handbills lacked anything like the pulling power of space in the newspapers.

Bernard F. Gimbel, vice-president of Gimbel Brothers, Inc., was quoted in published statements as saying he thought the strike would be injurious to both large and small stores.

"We depend upon newspaper advertising for much of our selling power," he added. "It is the newspaper advertising combined with the standing of the store doing the advertising, which makes the buyer realize his need of some article which otherwise he might have neglected to purchase."

Others were quoted as follows: Harold M. Bonwit, secretary of Bonwit, Teller and Co.:

"Newspaper advertising is doubtless the most valuable advertising in the world, and when the retail stores are deprived of this medium they will feel the loss. The discontinuance of full news about events in this country and abroad had a most disturbing effect on the minds of customers and caused uncertainty and unrest, which is reflected in their buying."

P. A. Conne, vice-president Saks & Co. "The loss of newspaper advertising was especially important at the beginning of the season."

James McCreery & Co.: "Newspaper advertising is the corner post of sales promotions, and we are glad the newspapers have returned to normal."

Hearn W. Street, one of the executives of Blair & Co., a leading Wall Street banking house:

"Investment bankers were not certain until the pressmen's strike began that newspaper advertising played a big part in their business. We know now what invaluable service the newspapers render us. It is next to impossible to put over a big bond issue without advertising. Our clients expect advertising and will not bother to read circulars."

Colonial Theatre MONROVIA

Sunday, Monday, Tuesday, Oct. 7, 8 and 9

POLA NEGRI in "THE CHEAT" A GEORGE FITZMAURICE production with JACK HOLT supported by CHARLES de ROCHE.

Also INTERNATIONAL NEWS.

Wednesday and Thursday October 10 and 11 "THE MAN NEXT DOOR"

by EMERSON HOUGH Author of "THE COVERED WAGON" and "NORTH OF 36," etc.

Romance of a girl reared as "Tomboy" on great ranch in Wyoming, who seeks happiness with father's millions in society, and finds her heart's desire in a little grey home in the West.

Also A MONTE BANKS COMEDY.

Friday and Saturday October 12 and 13 "THE MIDNIGHT ALARM"

With ALICE CALHOUN, PERCY MARMONT and CULLEN LANDIS. The most sensational, thrilling fire picture ever screened.

Also AN "OUR GANG" COMEDY

Pasadena Amusements

THEATRE RAYMOND The Secret's Out! First Year Married and It's a Boy! Starting Monday with Jane Urban and Dudley Ayres and the Smith-King Players. Hundreds from this city are enjoying the best in spoken drama. Why not join in the fun. Nights at 8:20, 35c, 50c, 75c, \$1.00. Mats. Wed., Sat., Sun., 2:20, 25c and 50c. Always ample parking space. PASADENA'S PALATIAL PLAYHOUSE

AT THE THEATRES STRAND

ENDING SATURDAY RICHARD BARTHELMESS in "The Fighting Blade" and pictures of the Japanese Disaster and the Berkeley Fire. Starting Sunday, "HOLLYWOOD."

FLORENCE

ENDING SATURDAY POLA NEGRI and Jack Holt, in "THE CHEAT" Starting Sunday, GLORIA SWANSON, in "ZAZA"

PASADENA

Pasadena Vaudeville Saturday and Sunday. Starting Monday, "STRANGERS OF THE NIGHT." Last times Sunday, "Madeline and the Movies."

SHOW HOW TO HEAT ORCHARDS

In accordance with announcements previously made, plans are being completed by the Agricultural Extension service and Citrus Growers' department to be held in the citrus districts of Los Angeles county early in November. At these demonstrations different types of

heaters will be in operation, and the important factors of successful frost protection will be discussed by experienced operators in this work. The following afternoon meetings have been planned: November 5—East Whittier. November 6—Lamanda Park. November 7—Covina. November 8—North Pomona.

NEWS WANTADS PAY

The Line of Convenience For Business or Pleasure

The lines of the PACIFIC ELECTRIC are the links of the chain of transportation that binds the communities of Southern California together for business, social and industrial growth.

FREQUENT, DEPENDABLE and ECONOMICAL service is operated between practically all of the Southland's important cities.

Ask our agents for time-tables and rates of fares. Information gladly given.

Apply at ticket offices and information bureaus or write for illustrated folders giving details regarding sight-seeing trips.

Pacific Electric Railway

Phone Red 38

G. E. MESECAR, Local Agent

YOSEMITE National Park

(Open All Year Round)

California's picturesque and incomparable wonderland is open every DAY IN THE YEAR, and is more beautiful in the fall and winter than in the summer. INDIAN SUMMER AND AUTUMN is a desirable time to visit Yosemite

EASILY ACCESSIBLE COMFORTABLE ACCOMMODATIONS

For literature and information Address W. L. WHITE, Merced, Calif. General Manager

Yosemite Valley Railroad Company

Pasadena Transfer and Storage Company

55 S. MARENGO

Fire Proof Warehouse. Best of Van and Transfer Service. We Charge Baggage at Your Home



# NORRIS

ESTABLISHED 1887

Your Nearest Spartan Store

## Just Received Hallow'en Decorations A NICE VARIETY IN HALLOW- E'EN COLORS

In arranging your Hallow'en party come in and make a selection of Invitations and Place Cards, Favors, Witch, Cat and Owl Hats, Snapping Mottos and Orange and Black Decorations.

### RY-KRISP

The Swedish Health Bread

Better than meat; over 1600 calories to pound; good for constipation, indigestion, the sick or well.

50c pkg.

## Zed

Healthful, Nutritious, Laxative

Contains mineral salts that nourish the nerves, provide iron for the blood, and furnish phosphates for the teeth and bones.

Crumbled "Zeds" make a delicious breakfast cereal when served with cream and sugar.

35c pkg., 3 for \$1.00

### THE ARROW HAND MADE HUMAN HAIR NET

Invisible, Durable, Sanitary; each Net guaranteed

One Week Special Price 8c

### BLEACHED HUCK TOWELS

19x39 1/2 inches, firm 2-thread, novelty 2-stripe jacquard white dobby border.

A very special price

for one week sale.....22c

### HANDY HOUSEHOLD SPECIALS

Steel Fry Pans, 8 inches, smooth gunmetal finish, each.....15c

Egg Beater, Dover pattern, revolving wood handle, each.....15c

Muffin Pans, 6 cups, bright tin, eyelet for hanging, each.....15c

Aluminum Pie Plate, 10 inch, our special popular price.....15c

Garden Trowels, each.....15c

Garden Spading Forks, each.....15c

## S. R. NORRIS

SIERRA MADRE DEPARTMENT STORE

Phone Black 12

291 West Central

Object of Greatest Administration. There are nine or thirteen million things in this well-known republic that elicit our admiration; none, however, more than the woman who loes her own work and still has time to keep her oldest daughter at her piano lesson!—Buffalo Evening Times.

For Tapestry Furniture. The arms of tapestry furniture are the first to show soil and wear. If you cover them with pieces of linen or Inene made about 15 inches square t will save your furniture considerably. These squares can be neatly tinned and pinned on the furniture, and are easily removed for washing. They are not unsightly and are nice o use in the absence of slip covers.

## IF

You would rather iron the dainty things yourself—Our Rough Dry service will return your bundle with every other duty of washday cared for.

It will wash all your things sweetly clean and dry them in clean fresh air. It will iron all the heavy tedious pieces of flat work and fluff woolens, stockings and underwear soft and ready to use. Only the dainty house dresses and intimate garments that you love to care for yourself will be left for you to dampen and iron at your convenience.

The cost? So low as to be a saving you cannot afford to overlook.

Just phone Green 85—our salesman will call.

### MONROVIA LAUNDRY

Laundry & Dry Cleaning  
Green 85 17 Kersting Court

## WANTADS

### WORK WANTED

Sierra Madre Tailors, Cleaners and Dyers. Blue 194, 14 West Central. tf

TRACTOR WORK—Cultivating orchards, plowing, etc. Orval Kellogg, 297 Mariposa, Phone Black 12. 25ctf

HEMSTITCHING—8c and 10c yd. Sadler's, or 674 Woodland Drive, at Pool. Blue 127. Mrs. House 44ctf

WANTED—Nursing by experienced practical nurse; 181 East Montecito. 1\*

WANTED—Fine laundry work. Mrs. Guinness, 300 W. Laurel. c1,2,3

### FOR SALE

ALMONDS for the holidays. Now is the time to order. 20c lb. Phone Black 155. c52-1

FOR SALE: Promissory note for \$6,000, bearing date of July 24, '22, payable 3 years after date with interest at 7 per cent payable quarterly, and secured by first mortgage upon improved business property in Sierra Madre. Apply to Robert Mitchell, Attorney at Law, 4 North Baldwin Ave. c1

FOR SALE: 4-burner New Process gas range, fine baker, very cheap. 27 N. Auburn. \*1\*2

BUILDINGS FOR SALE—All buildings on El Reposo Ranch (Snyder Sanitarium) will be sold for removal. The buildings are 2 to 3 room cottages with plumbing. Agent on grounds, Monday, Oct. 8; El Reposo Ranch. c1

\$500 DOWN—Balance \$50 per month will buy new 5-room modern home with garage, lot 50x150, paved street, good location. See Geo. A. Oswald, 6 N. Baldwin avenue. c1

FOR ROOM AND BOARD Phone Green 67. 1\*

FOR SALE—A neat, new 4-room bungalow on big lot, \$3500; terms; see 271 N. Grove. \*1

Is everybody blind? Here's a big two-story house, six rooms, 3 bedrooms, cellar, garage, lot 50x150, fine location, \$4700; only \$1200 cash, balance \$50 per month. Why, the rent would pay out the balance. See 271 N. Grove. 1\*2\*3\*

FOR SALE—Young corn-fed turkey, 25 lbs., fine roast, 55 cents pound, dressed; 65 E. Laurel. 1\*2\*3\*

FOR SALE—One bed and springs, \$15.00; one day couch \$8.00; 71 N. Lima; Red 26. 1\*

SACRIFIC SALE—of beautiful 9x12 French Wilton rug, \$100; 251 Santa Anita court. 1\*

JUST THE THING—For a big family; six rooms, 3 bedrooms, cellar, garage, fruit, \$4700; \$1200 cash, bal. \$50 per month. It's worth the money. See 271 N. Grove. 51-52\*

### FOR RENT

FOR RENT: 82 Victoria Lane, furnished 3-rm., \*cottage with sleeping porch and bath. F. L. C. Roess. \*52

FOR RENT—3 rooms and sleeping porch furnished; 71 N. Lima; Red 26. 1\*

### REALTY WANTS

WANTED—Unfurnished houses to rent; have two desirable tenants; will lease for year Nov. 1st. T. W. Neale, Mt. Trail and Laurel Ave; Black 29. \*1

### MISCELLANEOUS

WANTED—All kinds of junk. I. B. Goldberg. Black 142. 17c-tf

STORAGE by the month for all kinds of goods. Roland Adams. 8c-tf

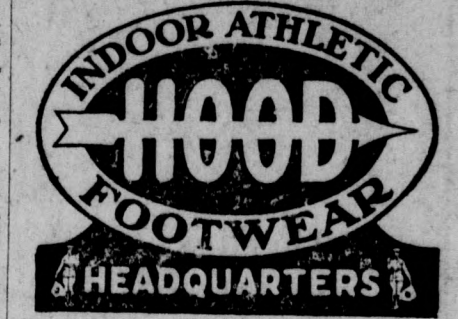
CARS washed and VelvORIZED; day and night service; Henkle's Garage; Pasadena; 161 W. Colo.; Col. 1\*2\*3\*

PERSONAL: The Benoit Institute for rheumatism, lumbago, goiter, heart trouble, bladder, kidneys, consumption and obstinate pains. Guaranteed cure or no pay. First treatment free. Room 2, Union Savings Bank Bldg., Pasadena. c1

FOR QUICK RENTALS—List your houses with D. N. Alcorn, Realtor, 178 E. Central; phone Green 63. ctf

LIST your property with NEALE, Mt. Trail and Laurel; Black 29. 1\*

IT'S A PLEASURE to have your work done at Langley's Barber shop; 15 Kersting Court.



"Gym" Shoes for Boys and Girls High and Low

Growing Girls' Patent One-Straps with grey saddle

## Olsen's Shoe Store

Green 38 34 N. Baldwin

MAH-JONGG

F. H. HARTMAN & SON

**Get into the game**

The season is here for a big fall business. Nothing will help you reach your business goal like first-class PRINTING.

Black 42  
Sierra Madre Press  
Press Bldg.



... or repair  
... there are p  
... way of carry  
... of this ordinance  
... spirit of the ordinance  
... with, the public safety secured  
... and substantial justice done; but no  
... such deviation shall be allowed except  
... a record of the same be kept by said  
... Building Inspector, and a permit issued  
... to the party applying for the same,  
... and provided further, that in  
... Fire District No. 1 no wooden building  
... shall be repaired, altered, raised  
... or built upon so that the size of the  
... same, or the fire risk on account  
... thereof is increased; nor shall any re-  
... pairs of any such building be allowed  
... to be made in any one year exceeding  
... fifty (50) per cent of its value.

**Chimneys, Tents, etc.**

**SECTION 24.** It is hereby declared to be unlawful for any person, firm or corporation, within the limits of the City of Sierra Madre, except upon a written permit granted by the Board of Trustees of the City of Sierra Madre, and then only at the place specified in such permit to build, construct or erect any tent, tent-house, cloth or shake shack, or structure, or repair the same or to construct any addition thereto, or to remove any such tent, tent-house, cloth or shake shack, building or other structure, to any location in said City of Sierra Madre, or to cloth or paper, in whole or in part, any room except such room be first ceiled with board and such cloth be tightly stretched thereon; or to construct or extend through the walls, windows or roofs of any building or structure, a stovepipe or tiling, for use as a chimney or flue.

In all frame buildings chimneys must be constructed of brick, stone or concrete. Chimneys shall not be supported by or upon any floor or beam of wood, but shall be constructed from the ground up and shall not increase in size from the foundation, except that when 6 inches thick it may be increased to 8 inches and when 8 inches thick it may be increased to 12 inches above the roof. No chimney shall be corbelled out more than 8 inches from a wall, provided that no corbelling shall be more than 4 inches in 12 inch walls. No chimneys or flues shall be offset or drawn over for any purpose, more than 1-3 of its exterior width or thickness, except where carried on masonry, iron-work or steel extending down to the foundation. No joists or girders shall be supported on the wall of any chimney or flue, no structural part, except masonry, of a building shall come in contact with any chimney or flue, except sheathing, shingles of roof, wall sheathing, siding, or other outside covering, and the same shall not have more than 1 inch contact with the chimney. All space between the chimney, floor and ceiling shall be closed with tin or other sheet metal to stop the draught.

**Use of Streets.**

**SECTION 25.** The occupation of the street for the storage of building materials shall never exceed, in front of one building one-quarter of the width of the roadway of the same, and no sidewalk or street, or part thereof shall be used other than that immediately in front of the premises of the building in course of construction.

**Storage of Earth on Streets Prohibited and Handling of Rubbish Regulated.**

**SECTION 26.** Earth taken from excavations and rubbish taken from buildings must not be stored either upon the sidewalks or roadways of streets, but must be removed from day to day as rapidly as produced. When dry rubbish, apt to produce dust, is being handled, it must be kept so as to prevent its being blown about by the wind. The permit to occupy streets and sidewalks for the purpose of building is for actual erection, alteration, repair or removal of buildings and must terminate with the completion of such operation. It shall be unlawful to occupy any sidewalk or street at the completion of the operation for which a permit has been issued by the Building Inspector. It shall also be unlawful to occupy a sidewalk or street under authority of such permit for the storage of articles not intended for immediate use in connection with the operation for which such permit has been issued.

Red lanterns shall be displayed and maintained during the whole of every night at each end of every pile of material in any street or alley, and at each end of every excavation. Any violation of the provisions of this section shall be deemed a misdemeanor and punishable as hereinafter provided.

**Hay, Straw, Lumber Yard.**

**SECTION 27.** It is hereby declared to be unlawful for any person, firm or corporation to store, keep or permit the storage or keeping of, on premises occupied, controlled or owned by such person, firm or corporation, or keep for sale any quantity of straw or hay of any kind within the limits of Fire District No. 1, unless the same be stored or kept in a properly enclosed building, and then only in quantities not exceeding five tons of loose hay or twenty tons of baled hay or straw.

**SECTION 28.** It shall be unlawful for any person, firm or corporation to keep or store within the limits of Fire District No. 1, of the City of Sierra Madre, benzene or naphtha in excess of twenty (20) gallons, or case gasoline in excess of two hundred (200) gallons, or bulk gasoline in excess of one hundred fifty (150) gallons, or case

... of two hundred  
... then only in all  
... tight, and it shall  
... be unaltered  
... any such naphtha, gasoline,  
... distillate or kerosene is stored or kept,  
... or to pour or draw the same, with or  
... by any artificial light other than in-  
... candescent. Provided that gasoline  
... may be stored in underground tanks  
... for garages and filling stations in pro-  
... perly vented and approved tanks of  
... not over 600 gallon capacity, which  
... must be buried, preferably outside of  
... building and shall have at least four  
... feet of dirt cover over same. At  
... least three feet of dirt must separate  
... one tank from another and all vents  
... must be carried up the side of  
... building to a point at least five feet  
... above the roof of such building.

In no case shall more than 1600 gallons in the aggregate, of gasoline or distillate be stored at or in connection with any such garage or filling station.

Every public garage or filling station having less than 750 square feet floor space shall have two chemical fire extinguishers each containing not less than three gallons of chemical and there shall be maintained at all times at least one additional fire extinguisher for every additional 1000 square feet floor area or fraction thereof in excess of the first 750 square feet area.

**Gunpowder.**

**SECTION 29.** It shall be unlawful for any person, firm or corporation to keep or store within the limits of Fire Districts No. 1 or No. 2, gunpowder, explosives, Greek fire or fireworks in excess of ten (10) pounds, except upon written permission of the Board of Trustees of the City of Sierra Madre, and then only for the time specified in such permit.

**Gates and Doors.**

**SECTION 30.** It shall be unlawful for any person, firm or corporation to erect, construct or maintain any door or gate that when such door or gate is open or while swinging open extends upon or over any sidewalk or part thereof, or over any public street. All such doors or gates of any kind must swing clear of all sidewalks.

**Tents and Movable Houses.**

**SECTION 31.** It shall be unlawful for any person, firm or corporation to erect, maintain or occupy any tent, tent-house, or movable structure of any kind whatsoever within Fire District No. 1, except tents for temporary use only may be erected in case of emergency upon first obtaining a permit so to do from the Building Inspector, which he may grant or refuse in his discretion, and which shall specify the time or period during which such tent or movable structure may be maintained, and which shall in no case exceed thirty (30) days from the date of issuance thereof.

**Mixture of Oils.**

**SECTION 32.** It shall be unlawful for any person, firm or corporation engaged in selling oils to mix or adulterate any oil used for illuminating purposes or combustion, with benzene, naphtha, gasoline, or any other substance, and all oils from petroleum or its products before being used for combustion or illumination, shall stand a fire test of 110 degrees Fahrenheit, and it shall be unlawful for any person, firm or corporation to sell, keep for sale or offer for sale any oils from petroleum or its products for combustion or illumination below such standard.

**Fire Escapes.**

**SECTION 33.** All three-story buildings used in whole or in part, for manufacturing or lodging house purposes, all other buildings now in course of erection, construction or alteration, to be hereafter constructed, erected or altered (except such as are used for private residences exclusively) of three or more stories in height shall be provided with one or more metallic ladders or fire-escapes, with balconies and railings extended in front of, and communicating with one window or door in each story of said building.

**PART II.**

**Plumbing**

**SECTION 34.** The office of Plumbing Inspector of the City of Sierra Madre is hereby created and the appointment to such office shall be made by resolution duly passed by said Board of Trustees, and which said resolution shall also fix the salary or compensation to be paid the appointee therein named, and such appointee shall hold office during the pleasure of said Board.

The duties of such Plumbing Inspector shall be to enforce the provisions of this Ordinance and generally to do and perform such duties as the Board of Trustees shall by ordinance or otherwise direct.

**SECTION 35.** It shall be unlawful for any person, firm or corporation to do or cause to be done, or to construct or cause to be constructed, any plumbing or house drainage affecting the sanitary condition of any house or building in the City of Sierra Madre unless a permit has first been obtained from the Plumbing Inspector of the City of Sierra Madre so to do.

Any person, firm or corporation desiring a permit to do any plumbing, or to construct any house drainage affecting the sanitary condition of any house or building in the City of Sierra Madre, shall make application in writing to the Plumbing Inspector for a permit so to do; such application shall set forth the number of outlets and fixtures to be installed, and the amount and the character of the work to be done, and such other information as said Plumbing Inspector may require; and if it appears therefrom that the work proposed to be done is

... in accordance with the  
... provisions contained in this  
... ordinance, and that the Building  
... Inspector has issued, for the building  
... where such work is proposed to  
... be done, a permit (when such  
... permit is required by the ordi-  
... nances of said City), then and  
... not otherwise, the Plumbing Inspector  
... must issue a permit for such work,  
... upon the payment of the following  
... fees, to-wit:

A fee of fifty (50) cents for such permit; and in addition thereto, fifteen (15) cents for each outlet, not exceeding twenty outlets, proposed to be roughed in or provided for in the work to be done under said permit; and ten (10) cents additional for each outlet in excess of twenty outlets. Permit for cesspool fifty (50) cents. No permit will be deemed necessary in the case of any repair defined as follows:

The stopping of leaks in drains, soil, waste or vent pipes; provided, however, should any trap, drain pipe, soil, waste or vent pipe be or become defective, and it be necessary to remove and replace the same with new material in any part or parts the same shall be considered as new work, and a permit must be procured as above required, and inspection made as hereinafter provided.

When more than two inspections are required on either the rough work or fixtures such inspections shall be charged for at the rate of one dollar per hour for the time spent on such work by the Building Inspector, provided that the minimum charge shall in no case be less than one dollar.

The Plumbing Inspector shall keep in proper books for that purpose, account of all fees paid, giving the name of the party, date and amount of said fee or fees, which said book shall be kept open for public inspection, and the Plumbing Inspector shall, on the first day of each month, render a report, to the Board of Trustees of the number of permits issued, the value and character of the work to be done thereunder, with the amounts collected for the same during the month preceding. He shall also deposit with the City Treasurer the amount collected by him during the said month, taking duplicate receipts for the same, and file one of such receipts with his said report.

**SECTION 36.** As soon as said work is ready for inspection, notice shall be given for both the rough and finish work, and the contractor shall secure a final Certificate of Inspection, and deliver the same to the owner or agent.

All work must be left uncovered and convenient for examination until inspected and approved by said Plumbing Inspector. In houses with 3 feet clearances under floor joists the floor can be laid before inspection is made provided all parts of plumbing are accessible.

Such inspection shall be made within forty-eight hours of such notice being received at the office of the inspector, and no plans shall be changed after inspection by said Plumbing Inspector.

The Inspecting Officer shall apply the water test or peppermint or smoke test, and all necessary tools, labor and assistance for such test shall be furnished by the person or persons assuming control of the work and such person or persons shall remove or repair any defective material or work when so ordered by the inspecting officer.

Any soil pipe, drain pipe, trap, water closet, urinal, sink, or other fixture set up, or fitting or fittings laid, used or constructed otherwise than in accordance with these regulations, or shall in the opinion of the Plumbing Inspector be or become of bad or defective quality, shall upon notice either verbal or in writing from the Inspector, be removed or repaired in the manner determined and within the time specified by the Inspecting Officer.

The issuance of a permit shall not be considered as an adoption by said Plumbing Inspector of the manifest technical construction contained in the plans, drawings and descriptions, if hereafter it can be shown that any portion of said plans, drawings and descriptions, are in conflict with any portion of this ordinance.

**SECTION 37.** The Plumbing Inspector shall not issue a permit to any person or persons to do any plumbing or house drainage work until said person or persons have registered his or her name and address in a book kept for that purpose in the office of the Plumbing Inspector.

And it shall be unlawful for any person or persons to occupy or to make use of any house or building where plumbing work has been constructed, unless the owner, agent or lessee of said building shall have first procured a final certificate of acceptance from the Plumbing Inspector.

**SECTION 38.** Every house or building in or for which any house drainage or plumbing arrangements are hereafter constructed shall be separately and independently connected with an accepted sanitary sewer, or in the event no such sanitary sewer is available, then with such other system of sewage disposal as may be approved by the Building Inspector.

**SECTION 39.** All soil and waste pipes to a point two feet outside of the exterior wall of the building shall be cast-iron not less than 2 inches in diameter, except in the case of water closets, which shall be not less than four inches in diameter, and shall be carried undiminished in size vertically to the attic when it will follow under the roof at same pitch to a point one foot from the ridge thence to the open

... height level with the highest  
... point of the roof. Provided that  
... where a roof is not over a sixth pitch  
... and the span of the roof is not over  
... fifteen feet from plate to plate same  
... shall be considered as a flat roof and  
... extended six (6) inches above. Pro-  
... vided further that in case the building  
... wherein such pipe is installed is con-  
... structed with fire walls such vent  
... shall be carried at least six (6) inches  
... above the level of such fire walls, and  
... in old buildings to a point satisfac-  
... tory to the Plumbing Inspector, and  
... shall not terminate within eight feet  
... of any window, air-shaft or opening  
... of any house or building or fifteen  
... feet of the ground, and the same shall  
... be farther removed if the Inspecting  
... Officer considers it necessary.

**SECTION 40.** The Plumbing Inspector, in approving plans or in accepting work of any and all persons carrying on, conducting or causing to be constructed, any plumbing or house drainage affecting the sanitary condition of said City, shall be governed by the following regulations, and it shall be unlawful for any person to fail, neglect or refuse to comply with same, upon notice so to do.

First. Every water closet, sink, slop hopper, bath tub, and each laundry tray or set of trays or other fixtures connecting with the drain pipes directly or indirectly must be separately trapped and vented. The trap must be placed as near the fixture as possible and in no case farther away than two feet from the fixture.

Second. No water closet shall be put into, or upon any property, house or building except those flushed by a tank containing not less than four gallons of water or automatic flusher of approved design.

Third. A fixture that is a top fixture on a vertical stack and not more than two feet from the inlet to the stack need not have its trap revented, provided that it does not discharge into the stack below the level of its seal; except water closets which shall be allowed a three-foot limit below the floor.

All soil and waste pipes 2 inches and over in diameter shall be of cast iron coated inside and out with tar.

Except that iron pipe dipped inside and out with tar may be used for 1 1/2 and 2 inch wastes. Cast iron recessed, dipped, drainage fittings being used on same.

Before the fixtures are placed in connection with any plumbing or any of the drainage system is covered or concealed from view, all of the openings into it below the top shall be hermetically sealed. The pipe there shall be filled with water to the highest point in the system.

All pipe must be water-tight, defective pipe and fittings of their different kinds must be removed and replaced with sound material.

Cement work of all kinds is prohibited, and every part of the work shall conform to these rules and regulations.

All joints in cast iron soil pipe shall be made with pig lead and oakum and thoroughly caulked.

All vents within a radius of twelve feet may converge into one pipe, the size to be governed by the following rule:

For bath tubs, wash basins, laundry trays, sinks or urinals.

For one and not exceeding two fixtures, one and one-half inch. For more than two and not exceeding six, two-inch.

For more than six and not exceeding twelve, two and one-half inches.

For water closets and slop sinks for one and not exceeding two fixtures, two inch.

For more than two and not exceeding eight, two and one-half inch.

For more than eight and not exceeding fourteen, three-inch.

All vent pipes must be cast iron coated inside and out with tar, provided that vents less than three (3) inches inside diameter may be screwed pipe provided same is galvanized inside and out and fittings used with same are galvanized.

Provided further that only cast iron pipe shall be used where ventilating pipe is buried in the ground.

It shall be unlawful to cause, suffer or permit the disposal of water from any lavatory, bath tub, sink, slop sink, wash tray, water closet, or other plumbing fixture in any other place or manner than into a public sewer or into an approved cess-pool.

All closet connections to soil pipe shall be made up of cast iron or brass closet flange.

All vertical stacks and all branch runs over five feet shall have an accessible brass clean-out plug the same size as the run or stack, and if cleanout is within eighteen inches of a wall same must be carried through such wall.

All turns in horizontal runs of soil pipe shall be made with a "Y" and one-eighth bend.

Sanitary tees shall not be used except in a vertical stack.

All vents shall rise perpendicular to six inches above the fixture.

Crown venting is prohibited.

Every safe waste or drain from an ice box shall not run into the sewer, but into the top of a water supplied fixture, or 2 feet outside of the house.

Every fixture maintained in any house that is of bad and defective quality and is removed and replaced with other fixtures of their respective class, shall have their traps vented in accordance with this ordinance.

**SECTION 41.** All soil or waste pipes leading out of any building shall be of cast iron for a distance of not less than two (2) feet outside of the exterior wall of the building, and shall be of such internal diameters as

... are prescribed by this ordinance; pro-  
... vided that, in no case shall their in-  
... ternal diameter be less than four (4)  
... inches, or less than the diameter of  
... the vertical stacks within the building  
... to which they are connected and of  
... which they receive the discharge.

All exterior house drains, from the point of their connection with the cast iron leading out pipes, two (2) feet or more outside of the exterior wall of the building, to their junction point with a Sewer, or cesspool where there is no sewer, shall be of cast iron or of first grade vitrified stoneware pipe. The internal diameter of such drain pipes shall be the same as those of the cast iron pipes leading out of the building, to which pipes they connect, and of which they form a continuation; provided that in no case shall their diameter be less than four (4) inches as hereinbefore provided.

Said outside drains shall be laid with a fall of not less than one-fourth (1/4) of an inch per foot, toward the sewer or cesspool.

The joint of each section of vitrified piping shall be completely and uniformly filled with cement composed of one part Portland Cement of the American Society of Civil Engineers Standard quality and one part sand.

Every such joint shall be thoroughly cleaned on the inside so as to permit a smooth surface, and not form any obstruction to flow. The sections must be laid true to line and grade.

All change in direction in outside drains shall be made with curves and "Y" branches, and provided with cleanouts, and all connections made with "Y" branches and one-eighth bends.

All such piping must be made water-tight, and shall not be covered or concealed in any way until it has been tested and approved by the Plumbing Inspector or by the City Engineer.

The internal diameter of house drains connecting with a sewer or cesspool shall be as follows, to-wit:

For a house or building containing not exceeding twelve plumbing fixtures, four (4) inches internal diameter.

For a house or building with more than twelve but not exceeding 20 plumbing fixtures, five (5) inches internal diameter.

For a house or building containing more than twenty plumbing fixtures, six (6) inches internal diameter.

**SECTION 42.** Every house or building in or for which any house drainage or plumbing arrangements are constructed shall be separately and independently connected with an accepted city sewer, when such sewer is constructed on the street or alley upon which the property abuts, and in case there is no sewer constructed on such street or alley, said house or building may be connected with a cesspool to be constructed to the satisfaction of the Plumbing Inspector.

Said Cesspool must not be located at a less distance than five (5) feet from any property line or less than fifteen (15) feet from any dwelling without special permission so to do from the Plumbing Inspector and shall be lined with masonry (brick, stone or concrete) leaving a clear diameter of four feet; must be not less than fifteen (15) feet deep under the roof and must have the top of roof at least two (2) feet under the ordinary level of the ground. The drain-pipe must enter cesspool through center of arch or top.

Where dry masonry is used an overlap of at least two inches at each end of a brick or stone is necessary to provide a firm bearing, every tenth course should be laid with close joints to serve as a bond and the cover should be arched and laid solid in a stout lime or cement mortar.

In the event that it is impossible to get the full depth as specified above then the diameter shall be increased so that the cubic capacity of finished cesspool shall not be less than one hundred and fifty (150) cubic feet. But in no case shall the depth under the arch be less than eight (8) feet.

Where two houses are located on the same lot they may be connected to the same cesspool provided the cesspool is dug to a depth of twenty (20) feet below the arch.

**PART III.**  
**Gas Plumbing**

**SECTION 43.** It shall be unlawful for any person to commence the construction of any gas plumbing or the laying or insertion of any gas pipes or doing any gas fitting in any house or building in the City of Sierra Madre, without first consulting with, and receiving the permission of the Gas Plumbing Inspector of said City, before proceeding to do such work.

**SECTION 44.** The Plumbing Inspector of the City of Sierra Madre is hereby made ex-officio the Inspector of Gas Piping.

**SECTION 45.** The Plumbing Inspector shall make no charge on issuing gas permits, providing the same is in conjunction with plumbing permit, except as follows:

The Plumbing Inspector shall charge and collect from persons, firms, or corporations to whom any permit for doing any gas piping work is issued, the following rates:

Minimum charge for inspection of 10 outlets, or less, 50 cents.

For each additional outlet, the sum of 5 cents each.

When gas plumbing is installed not in conjunction with plumbing permit the Plumbing Inspector shall charge fifty (50) cents for issuing permit in addition to the above charges for inspection.

**SECTION 46.**

Table Showing Size of Gas Pipes

Size	Vertical
3/4-inch	vertical only
1-inch	vertical only
1 1/4-inch	vertical only
1 1/2-inch	vertical only
2-inch	vertical only

**SUB 1.** All gas pipes shall be soldered to the pipes, the joint, or drops made, if preferred. Bracket also be so secured and with finish.

**SUB 2.** All gas pipes shall be soldered to the pipes, the joint, or drops made, if preferred. Bracket also be so secured and with finish.

**SUB 3.** The size of be one-half inch, and the tend through the plaster and all be alike in length openings must extend to one inch, and all be closed with iron caps.

**SUB 4.** For hotels, caterers or public buildings, amount of gas is to be pipes must be of increased plans of same shall be the Plumbing Inspector's recommendation of work.

**SUB 5.** In making extensions in a building an old building, the same must be observed as in

**SUB 6.** The gas fitter all plans of work with sizes marked with figures same to the Plumbing Inspector before testing is asked for.

**SUB 7.** All gas pipes inspected in one hour or less of time in

**SUB 8.** All good workman secured and

There must be pages of used in con

Split or paired by

by

will be done at

pounds per square

twenty minutes

drop of pressure

**PART IV.**  
**Electric**

**SECTION 47.** The City Electrician of the City of Sierra Madre is hereby created and the City shall be appointed by the Board of Trustees of said City, at the office during the pleasure of the Board. He must qualify within (10) days from the time of his appointment by taking and subscribing the constitutional oath of office and file the same with the City Clerk.

**SECTION 48.** Said City Electrician shall have the supervision over installing, connecting, wiring, otherwise putting in place, and maintenance and use of all electric wiring connections, appliances, apparatus and equipment in or about any building or structure in the City of Sierra Madre. He is hereby authorized with all the power and authority shall perform all the duties of him, now or hereafter provided by any ordinance, rule, regulation or order of said City. He shall be as his salary or compensation amount fixed in the resolution of appointment, and he shall keep proper books for that purpose, and count of all fees paid, giving the name of the party, date and amount of fee, which books shall be open to public inspection, and he shall report to the Board of Trustees the number of permits issued during the preceding month with the amount of fees collected therefrom. He also deposit with the City Engineer the amount collected by him during the said month, taking duplicate receipts for the same, and file one of such receipts with his said report.

**SECTION 49.** No person or corporation shall equip any building with wiring or apparatus, or any alteration of, change or repair of, or any electric wiring apparatus, without first receiving a permit to do the work, and such permit shall be issued in accordance with the rules and regulations herein, the City Electrician shall issue a Certificate that the same ordinance have been complied with, to conform to the rules prescribed herein; and it shall be the duty of the City Electrician to furnish any such certificate until said certificate is issued in accordance with the provisions of this ordinance.

The provisions of this ordinance shall not apply to Central

**SECTION 50.** The provisions of the National



are hereby regulations electrical and ap... together with... adopted by the... and must meet the Company sup-...  
 n arranging cir-... Code Rule 23 (d)... outlets shall be... than the number... specified below:  
 watt lamps  
 lamps  
 lamps  
 wiring  
 sep-  
 wire.  
 ed as

Your Near

Just  
Halls

A Ne a conductive coat-  
switches shall be in-  
ron box and operated  
All cutouts shall be in

service switch is located  
building the wireman shall  
from the weather in an  
ner.  
In an four (4) circuits are  
Wee wire feed shall be re-  
use of cord work where  
Moig is required is prohibi-  
of canopies less than  
rat is prohibited unless  
ction with outlet box at  
deep.

shall be No. 10 B. and  
arger, and wireman shall  
sized fuses in place.  
mud bushings are re-  
ust be taped in place.  
knobs where tapping off  
and use knob within  
Of of bushing where strain  
it such bushing.  
es must test with magneto  
completion of same.  
ing knobs to one-inch  
must be used.

at either be run  
rafters. If raf-  
must be protect-  
m rafters down  
rees" are pro-

Heah...  
Contain...  
ish the ne...  
blood, and...  
the teeth and...  
Cryp...  
bre...  
crea...

of Sierra Madre  
the City Electrician  
and power, and  
to notify the own-  
or equipment, to  
urrent in such  
and to have the  
Thpment repaired  
me, not exceed-  
e of notice. The  
ian is also authorized  
to notice to the company  
he electric current to any  
ous equipment to cease to  
da...  
the same until the defects are  
paired. In a prosecution for a viola-  
on of the provisions of this section,  
h day's neglect to comply there-  
h shall be considered and taken as  
eparate violation.

SECTION 54. The City Electrician  
charge and collect from the per-  
firm or corporation to whom any  
nit for doing any electrical work  
under the terms of this or-  
the following fees, to-wit:  
ing permit ..... \$ .....50  
um inspection of ten or  
ures or outlets at which  
urre is used or controlled... 1.00  
For each fixture or outlet over ten  
fixures or outlets at which cur-  
rent is issued or controlled... .05  
For each arc lamp and switch... .25  
For wiring or installing of motors  
generators:  
Each motor of not more than  
horsepower ..... 1.00  
Each motor of more than 3, and  
not more than 8-horsepower ..... 1.50  
Each motor of more than 8, and  
not more than 15-horsepower... 2.00  
Each motor of more than 15-  
horsepower and not more than 50-  
horsepower ..... 2.50  
Each motor of more than 50-  
horsepower ..... 5.00  
Each generator of not more \*  
kilowatts ..... 3.00  
Each generator of more than 5  
kilowatts and not more than 15  
kilowatts ..... 5.00  
Each generator of more than 15  
kilowatts and not more than 100  
kilowatts ..... 10.00  
For each rectifier charg-  
ing each rectifier charg-  
ing each ceiling fan ..... .25  
For each electrical  
work governed by this ordi-  
nance for which no fee is hereby  
provided ..... 1.00  
For more than two inspections of  
equipment or part thereof are  
made, an additional fee or charge  
of one dollar and a half per hour for  
consumed for each addition  
made shall be made and  
provided that the minimum  
charge in no case be less than  
one dollar, firm or corporation

SECTION 55. The City Electrician  
shall keep, in proper books for that  
purpose, account of all fees paid, giv-  
ing the name of the party, date and  
amount of said fee or fees, which said  
books shall be kept open for public  
inspection and the City Electrician  
shall, on the first day of each mon-  
th, render report to the Board of Trus-  
tees, of the number of permits issued,  
the value and character of the work  
to be done thereunder, with the  
amounts collected for the same during  
the preceding month, and he shall also  
deposit with the City Treasurer the  
amount collected by him during said  
month and file receipt for the same  
with his report.

SECTION 56. Any person, firm or  
corporation who shall do, or attempt  
to do, electrical construction work,  
whether original work or alterations,  
without first obtaining from said City  
Electrician a permit to do such work,  
shall be guilty of a misdemeanor, and  
punishable as hereinafter provided.

SECTION 57. This ordinance shall  
not be construed to relieve from, or  
lessen the responsibility of any party  
owning, operating, controlling or in-  
stalling any electrical equipment for  
damages to any one injured by any  
defect therein, nor shall the City be  
held as assuming any such liability by  
reason of the inspection authorized  
herein or certificates issued hereun-  
der.

SECTION 58. Any person, firm or  
corporation who shall either violate,  
neglect or refuse to comply with any  
of the provisions of this ordinance  
shall be guilty of a misdemeanor and  
upon conviction thereof shall be pun-  
ished by a fine of not more than  
Three Hundred (\$300.00) Dollars, or  
by imprisonment in the City Jail of  
the City of Sierra Madre, for not  
more than ninety (90) days, or by  
both such fine and imprisonment; and  
every day which any violation of this  
ordinance continues shall be deemed  
and considered as constituting a new  
offense and be punished as in this  
section provided.

SECTION 59. Ordinance No. 189,  
entitled "An Ordinance of the Board  
of Trustees of the City of Sierra Ma-  
dre Amending Section 15 of Ordinance  
No. 14, Containing Cesspool Specifica-  
tions and by Adding Two New Sec-  
tions to be Known as Section 15A Re-  
quiring a Permit; 15B Providing for  
Inspection and 15C Providing for Pen-  
alty for Violation of the Provisions of  
This Ordinance," adopted the thir-  
teenth day of August 1914, and all  
other Ordinances or parts of Ordin-  
ances in conflict herewith shall be and  
the same are hereby repealed.

SECTION 60. This Ordinance is  
urgently required for the immediate  
preservation of the public peace,  
health and safety. The following is a  
specific statement showing the urgen-  
cy of this Ordinance:  
That said City of Sierra Madre has  
no ordinance regulating building,  
plumbing, electric wiring or the con-  
struction of gas plumbing or gas pipes  
in the City of Sierra Madre, and such  
an Ordinance is now immediately re-  
quired.

SECTION 61. The City Clerk shall  
certify to the passage of this ordi-  
nance by a vote of four-fifths of all the  
members of the Board of Trustees of  
said City of Sierra Madre, and its ap-  
proval by the President of said Board,  
and shall cause the same to be printed  
and published once in the Sierra Ma-  
dre News, a weekly newspaper of gen-  
eral circulation published and circu-  
lated in the City of Sierra Madre and

making application for any permit to  
do electrical work under the terms of  
this ordinance, shall at the time of  
such application, file with the City  
Electrician a plan or statement, show-  
ing the character and amount of such  
work, and shall at the same time de-  
posit with said City Electrician the  
amount of the permit fee and of the  
fees of inspection of all work, shown  
on said plan or statement in accor-  
dance with the above schedule. If any  
additions shall be made to such work  
or any extra inspections of the same  
shall be necessary, the person, firm  
or corporation to whom the permit is  
issued, shall pay the City Electrician  
the inspection fees therefor, accord-  
ing to the above schedule, within ten  
days after demand therefor by said  
City Electrician, and if said person,  
firm or corporation shall fail or refuse  
to pay said fees within said period of  
ten days, the City Electrician shall not  
thereafter issue to such person, firm  
or corporation any permit for the do-  
ing of any electrical work until such  
fees are paid.

The City Electrician shall not issue  
the certificate provided for herein for  
any electrical installations or equip-  
ment until all fees for the inspection  
thereof have been paid.

In cases where a building permit is  
necessary, the electrical permit will  
not be issued until after the building  
permit has been issued.

All plumbing and other piping or  
tube work must be in place on work to  
be concealed before the electrical  
wiring is inspected, and no such wiring  
will be considered as complete un-  
til such piping is in place. Upon mak-  
ing inspection of any electrical equip-  
ment the inspector shall leave a notice  
on the service switch or other  
suitable place, stating the work has  
been inspected by the Department of  
Electricity; and it shall be unlawful  
to lath, plaster, seal or in any manner  
conceal any electrical wiring or other  
electrical work until the same has  
been inspected as herein required.

Report of Inspector.

SECTION 55. The City Electrician  
shall keep, in proper books for that  
purpose, account of all fees paid, giv-  
ing the name of the party, date and  
amount of said fee or fees, which said  
books shall be kept open for public  
inspection and the City Electrician  
shall, on the first day of each mon-  
th, render report to the Board of Trus-  
tees, of the number of permits issued,  
the value and character of the work  
to be done thereunder, with the  
amounts collected for the same during  
the preceding month, and he shall also  
deposit with the City Treasurer the  
amount collected by him during said  
month and file receipt for the same  
with his report.

SECTION 56. Any person, firm or  
corporation who shall do, or attempt  
to do, electrical construction work,  
whether original work or alterations,  
without first obtaining from said City  
Electrician a permit to do such work,  
shall be guilty of a misdemeanor, and  
punishable as hereinafter provided.

SECTION 57. This ordinance shall  
not be construed to relieve from, or  
lessen the responsibility of any party  
owning, operating, controlling or in-  
stalling any electrical equipment for  
damages to any one injured by any  
defect therein, nor shall the City be  
held as assuming any such liability by  
reason of the inspection authorized  
herein or certificates issued hereun-  
der.

SECTION 58. Any person, firm or  
corporation who shall either violate,  
neglect or refuse to comply with any  
of the provisions of this ordinance  
shall be guilty of a misdemeanor and  
upon conviction thereof shall be pun-  
ished by a fine of not more than  
Three Hundred (\$300.00) Dollars, or  
by imprisonment in the City Jail of  
the City of Sierra Madre, for not  
more than ninety (90) days, or by  
both such fine and imprisonment; and  
every day which any violation of this  
ordinance continues shall be deemed  
and considered as constituting a new  
offense and be punished as in this  
section provided.

SECTION 59. Ordinance No. 189,  
entitled "An Ordinance of the Board  
of Trustees of the City of Sierra Ma-  
dre Amending Section 15 of Ordinance  
No. 14, Containing Cesspool Specifica-  
tions and by Adding Two New Sec-  
tions to be Known as Section 15A Re-  
quiring a Permit; 15B Providing for  
Inspection and 15C Providing for Pen-  
alty for Violation of the Provisions of  
This Ordinance," adopted the thir-  
teenth day of August 1914, and all  
other Ordinances or parts of Ordin-  
ances in conflict herewith shall be and  
the same are hereby repealed.

SECTION 60. This Ordinance is  
urgently required for the immediate  
preservation of the public peace,  
health and safety. The following is a  
specific statement showing the urgen-  
cy of this Ordinance:

That said City of Sierra Madre has  
no ordinance regulating building,  
plumbing, electric wiring or the con-  
struction of gas plumbing or gas pipes  
in the City of Sierra Madre, and such  
an Ordinance is now immediately re-  
quired.

SECTION 61. The City Clerk shall  
certify to the passage of this ordi-  
nance by a vote of four-fifths of all the  
members of the Board of Trustees of  
said City of Sierra Madre, and its ap-  
proval by the President of said Board,  
and shall cause the same to be printed  
and published once in the Sierra Ma-  
dre News, a weekly newspaper of gen-  
eral circulation published and circu-  
lated in the City of Sierra Madre and

thereupon and thereafter the same  
shall be in full force and effect.

Adopted and approved this 22nd  
day of December, 1921.

ROBERT MITCHELL,  
President of the Board of Trustees of  
the City of Sierra Madre.

Attest:  
L. DIETZ, City Clerk.  
State of California,  
County of Los Angeles,--ss.

I, L. Dietz, City Clerk of the  
City of Sierra Madre, Cali-  
fornia, do hereby certify that  
the whole number of the Board of  
Trustees of the City of Sierra Madre  
is five, and that the foregoing Ordinance,  
being Ordinance No. 257, was  
duly passed and adopted by a vote of  
four-fifths of all its members and ap-  
proved by the President of said  
Board, and attested by the City Clerk,  
all at a regular meeting of said Board,  
held on the 22nd day of December,  
1921, and that the same was passed  
and adopted by the following vote, to-  
wit:

Ayes: Trustees Alley, Karicofe,  
Webster and Mitchell.

Noes: None.

Absent: Trustee Richards.

(Seal) L. DIETZ,  
City Clerk of the City of  
Sierra Madre.

FOUR YOUNG WOMEN PLEAD  
FOR NEAR EAST RELIEF FUND

Four young women, returned Near  
East Relief workers in Palestine, Tur-  
key and Southern Russia, have issued  
an appeal for funds from philanthrop-  
ic persons throughout Southern Cali-  
fornia.

The appeal is signed by the  
Misses Mabel Farrington, Evelyn  
Trostle, Irene Eldred and Elise Tru-  
ran, each of whom has, according to  
relief officials, an enviable and heroic  
record in orphan relief activities over-  
seas, working often in the midst of  
battles, deportations and massacres.

"We helped gather into the orphan-  
ages of the Near East Relief (char-  
tered by Congress) the little orphan-  
ed children who soon would have per-  
ished, and now over 100,000 of them  
are safe within the gates. But out-  
side still clamor for admission thou-  
sands upon thousands of others.

"As America's, as your representa-  
tives, we were compelled--oh, so often--  
just for the lack of a little mon-  
ey--to send dear little children away  
from our orphanages to slow death.  
Not knowing how great was the need,  
big-hearted America had not sent us  
enough money!"

"It is for these hopeless little ones  
who for lack of food and funds can-  
not as yet taken in, that we have  
returned to rich, happy America for  
a while, to ask for help--your help!"

Sixty dollars, or \$5 a month, will  
save the life of a child for one year.  
Contributions may be made to Near  
East Relief, 517 Wright & Callender  
Bldg., Los Angeles, or through any  
local bank.

LEADING PRODUCER  
OF VEGETABLES

California is the leading state in the  
Union in the production of vegetables  
according to a report by the Univer-  
sity of California College of Agricul-  
ture. During the year 1920, Califor-  
nia lead all other states in the amount  
of shipments of asparagus, celery,  
cantaloupes, lettuce, onions and spin-  
ach; third in green peas and tomatoes  
and fifth in green beans, seventh in  
water melons, tenth in cucumbers  
and thirteenth in green corn. Aver-  
aging all these vegetables outputs  
totals with the production of the  
Country, California ranks first.

The methods of culture, harvesting  
and marketing as practiced in the  
districts of the State where vegeta-  
bles are grown on a commercial  
scale will be discussed by D. H. Car-  
vey of the Division of Clericulture, dur-  
ing the Short Course from January  
2 to 7th.

GIVE NAVAL ORANGE  
PRUNING DEMONSTRATION

During January a series of nine  
naval orange pruning demonstrations  
has been arranged by the Agriculture  
Extension Service as follows:

Wednesday, January 25, 10 a. m.,  
Pasadena; 2 p. m., Monrovia.

Thursday, January 26, 10 a. m.,  
Azusa; 2 p. m., La Verne.

Friday, January 27, 10 a. m., Co-  
vina; 2 p. m., Pomona.

Monday, January 30, 2 p. m., San  
Fernando.

Tuesday, January 31, 10 a. m.,  
Whittier; 2 p. m., San Dimas.

These demonstrations will be con-  
ducted by Farm Advisor Hodgson and  
Assistant Farm Advisor Blanchard.  
Specific locations will be announced  
later.

NEWS WANT ADS

The rate for all want ads is two cents  
a word, payable in advance. Only  
copy furnished by regular adver-  
tisers or people carrying accounts  
with us will be printed without ad-  
vance payment, as the amounts are  
as a rule not of sufficient size to  
warrant accounting and collection  
costs.

FOR SALE—Quantity flat sheet pa-  
per 22x30 inches. Fine for laying un-  
der carpets, rugs, etc. News Office. tf

FOR SALE—Stamps, war tax, West  
Indian and others, below catalog  
prices. Rev. N. Inwood, 92 E. Grand.  
View. \*14

WANTED Hand Laundry work. Will  
call and deliver. Phone Green 134.  
ctf

CHRISTMAS T. ADS  
Breaks ADS

The staff of the local post office are  
quite convinced that the general pub-  
lic gave plenty of Christmas gifts this  
year, however much the business ex-  
perts of the country may have doubt-  
ed. Packages, packages, and then  
some more packages!

S. R. G. Twycross who is the town  
Santa Claus when it comes to hauling  
in the train mail, has been working  
day and night and the office staff  
placed eating and sleeping in the list  
of luxuries which they had given up in  
to.

An element which added a sort of  
juggling-three-balls-in-the-air at once  
flavor to the grand rush was that all  
the eastern trains were delayed by  
washouts and that this line of the  
Santa Fe was not in use beyond Du-  
arte. The L. A. Post Office sent out  
stub mail trains to Duarte when it  
seemed good to them and there was  
no way in which this office could plan  
in advance for the rush of mail.

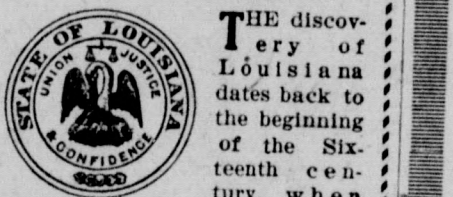
Saturday morning sixty sacks were  
hauled up from Santa Anita—a record  
load. When the contents of those had  
been distributed and Tuesday morning  
brought only a fair amount, post-  
master Morgridge felt the peak of the  
Christmas rush had been passed, but  
Tuesday evening seventy more sacks  
made their appearance and again the  
post office was piled to the roof.

Owing to the systematic and efficient  
handling of the record breaking  
mail which came through this office,  
it was distributed with the minimum  
of delay. If any body here was dis-  
appointed over the non-arrival of ex-  
pected packages, it could be charged  
up to the service en route and not to  
the method of distribution here.

Mr. Twycross said he realized for  
the first time how many new citizens  
were gathered in the city in the past  
twelve months. He had on the aver-  
age of fifty special deliveries a day  
and a large proportion of them were  
to new comers. He added that he found  
most of them were mighty nice people  
and so he enjoyed the opportunity of  
making their acquaintance even if he  
was kept on the jump.

The Story of  
Our States

By JONATHAN BRACE  
XVIII.—LOUISIANA



THE discov-  
ery of  
Louisiana  
dates back to  
the beginning  
of the Six-  
teenth cen-  
tury, when  
the Spanish explorers, Alvarez  
de Pineda and De Soto sailed up  
the Mississippi. In 1682 La  
Salle descended the Mississippi  
and took possession of the en-  
tire valley in the name of the  
French King, Louis XIV. In his  
honor this region was named  
Louisiana. French colonies soon  
sprang up, including New Or-  
leans, which was founded in  
1718.

An interesting chapter of  
Louisiana was the formation of  
the Company of the West by  
a financial schemer named John  
Law. This company ostensibly  
was to exploit the new colony  
and held out to speculators an  
alluring get-rich-quick scheme.

In 1763 France ceded Louisi-  
ana east of the Mississippi to  
England, and, by secret treaty,  
New Orleans and the western  
territory went to Spain. Spanish  
rule proved unendurable to the  
inhabitants and the restrictions  
over the navigation of the Mis-  
sissippi led to hostilities be-  
tween the northern American  
settlements and Spain. This  
situation, however, was brought  
to a peaceful termination by  
Spain relinquishing her rights  
to this territory to France and  
the purchase in 1803 by the United  
States from France of the  
entire Louisiana territory.

The southern portion of this  
acquisition was organized as the  
territory of Orleans and in 1812  
was admitted as the eighteenth  
state of the Union, with an area  
of 48,506 square miles. As the  
Louisiana coat-of-arms has a  
pelican in its center, the state  
is often called the Pelican State.  
(© by McClure Newspaper Syndicate.)

SECOND ANNUAL  
JANUARY  
White Sale

THIS, our Second Annual  
White Sale, will continue for  
four weeks during January, chang-  
ing our specials each week, with  
big savings for you. Let's go---  
to make it the biggest year we  
ever had.

Specials for First Week  
Starting January 3

SNOW WHITE SODA CRACKERS  
We want you to try our nice fresh crisp and flaky  
Soda Crackers, which we offer at a bargain  
price for this first week January White Sale, lb. 14c

FIRST AMERICAN CORN  
is an exceptionally nice Country Gentleman sweet  
sugar corn, at 16c can  
A special cut price for this first week January  
White Sale \$1.80 doz.

MACARONI—SPAGHETTI—NOODLES  
Buy these in bulk and save one-half, either cut or  
long, the quality is high—the price is cut way  
down during this first week January White Sale  
lb. 9c

SMALL WHITE NAVY BEANS  
This is the new crop of best Northern quality,  
marked at a sacrifice price for this first week of  
our big January White Sale—

TWO POUNDS FOR 15 CENTS  
TEN POUNDS FOR SEVENTY CENTS

QUAKER PUFFED WHEAT  
Like nut-meats puffed, this popular breakfast food  
at a bargain price for this first week of our  
White Sale, pkg. 13c

PEPPERMINT LOZENGES  
This popular candy specially priced for first week  
of our White Sale, lb. 27c

WHITE LAWN FINISH TABLETS  
Your chance to get these lawn finish tablets, either  
ruled or plain, in note and letter size, at a special  
reduction during this first week of our January  
White Sale 2 FOR 25c

UNITY BREAD  
The large 24-oz. loaf in white, whole wheat, Gram-  
ham, bran and cracked wheat, reduced during  
our January White Sale, loaf 10c

FRESH MEAT DEPARTMENT  
Specials every day during January

Our Motto: "Quality, Cleanliness, Service"

We extend our best wishes for  
your good Health and Hap-  
piness during the coming  
year.

S. R. NORRIS  
SIERRA MADRE DEPARTMENT STORE  
Phone Black 12 291 West Central