



201



HUNTINGTON FREE LIBRARY
AND READING ROOM

THE AMERICAN NUMISMATIC SOCIETY

Scott Stamp & Coin Co. Ltd.

.....✕ 84th ✕.....

AUCTION SALE.

LINDERMAN COLLECTION

— OF —

COINS.

Tuesday, February 28, 1888.

CATALOGUE
— OF A —
VALUABLE COLLECTION
OF
United States Coins,

EMBRACING DOLLARS OF
EIGHTEEN HUNDRED AND FOUR,

1836, (BOTH VARIETIES), 1838, 1839, 1851, 1852, ETC., THE
QUARTER DOLLAR OF 1827, HALF CENTS
OF 1831, 1836, 1840-48, AND 1852,

TOGETHER WITH
EXPERIMENTAL PIECES AND ASSAY MEDALS,

FORMED BY THE LATE

DR. HENRY R. LINDERMAN,

Director of the United States Mints and Assay Offices.

TO BE SOLD

AT PUBLIC AUCTION, WITHOUT RESERVE,

BY

BANGS & CO.,

739 BROADWAY, NEW YORK CITY,

BET. WAVERLEY PLACE AND EIGHTH STREET.

ON

Tuesday, February 28, 1888,

COMMENCING AT 2 O'CLOCK, P.M.

THE COINS, ETC., WILL BE ON EXHIBITION IN THE AUCTION ROOM
ON THE DAY OF SALE, FROM HALF-PAST 9 A.M. TO 1 P.M.

CATALOGUED BY

The Scott Stamp & Coin Co., L'd.

1888.

ABBREVIATIONS.

℞ reverse; obv., obverse; r., right; l., left; laur., leaureated; *m.m.*, mint mark; w. m., white metal; ex., exergue; mon., monogram; *res.*, restrike.

Copies of this Catalogue, neatly priced in red ink after the Sale, 25 cents.

NOTE.

AFTER mature consideration of all the questions of law and equity involved in the sale of trial and experimental pieces formerly classed as "pattern" pieces, made at the United States mint, the government has allowed us to sell the celebrated Linderman collection. The decision of the government can be summed up as follows :

"The sale of Experimental pieces made in 1888 or thereafter, and of pieces struck from dies of accepted designs, unless in the metal in which the coins were issued for circulation is prohibited." The latter portion of the decision is retroactive and covers the period prior to 1888, as well as that subsequent to it.

Under this decision we have been constrained to withdraw the following lots from the Linderman collection : Nos. 55, 76, 90, 96, 116, 117, 126, 127, 128, 162, 163, 171, and to reduce the number of pieces in the following lots : Nos. 80, 135, 136. With the above named exceptions, the catalogue is an exact reprint of the catalogue prepared by the late firm of Lyman H. Low & Co., in June, 1887.

Although the collection offered in the following pages embraces but 176 lots, we are confident that an inspection of the Catalogue will show that the sale which it announces challenges all previous American Sales in the point of average quality and high value,—by whatever standard it may be measured. The pieces described cannot fail to elicit a lively interest among American collectors, for, aside from the extreme rarity of many of the experimental and trial pieces, etc., the entire collection has a character so marked, and so peculiarly its own, that it may fairly be regarded as without a compeer in its special line.

It is hardly necessary to mention the fact, well known to most American collectors, that Dr. Linderman's cabinet contained what is universally admitted to be the finest specimen in existence of that issue of the U. S. Mint, whose adventitious value far exceeds that of any other American coin.

*"Micat inter omnes
Sicut Luna inter ignes minores."*

Many other pieces are worthy of special reference here, but we prefer to leave them to speak for themselves.

SCOTT STAMP & COIN CO. L^{TD}.

New York, Feb. 1, 1888.

CATALOGUE.



MISCELLANEOUS FOREIGN COINS, ETC.

- 70 1 **Bavaria.** Louis II. Thaler, 1871. Fine portrait r. R
Virgin and Child seated on clouds, crescent at feet. Uncirc.
- 30 2 **Brazil.** Pedro II. 1000 Reis, 1866. Crowned arms. Fine.
- 420 3 **Bolivia.** Pattern set, 1868; 5, 10, 20 Centavos, 1 Boliviano.
State arms. R Condor standing (except on latter, which
has value in wreath instead.) Silver; fine proofs. 4 pcs.
Struck at Phila. mint.
- 450 4 **Chili.** Pattern set, 1868; 10, 5, 2, 1 Peso (for gold), Peso,
50, 20 Centavos. 1867. Decimo and Medio Decimo.
Copper; fine proofs; edges of the silver series milled,
except 20c. 9 pcs. Struck at Phila. mint.
- 12 5 **Canada.** 5 (2), 10, 25c., 1870-72; New Brunswick, 20c., 1864.
Good to fine. 5 pcs.
- 65 6 **Prussia.** William I. Peace Thaler, 1871. Profile r. R Ger-
mania seated on pedestal. Very fine.
- 10 7 **France, Belgium, Austria, Tuscany.** 5c. to Franc sizes. Sil-
ver, billon, nickel; fair to very fine. 7 pcs.
- 30 8 **Cards.** JOHNSON MATTHEY & CO. | REFINERS | HATTON GARDEN.
Obvs. English Farthing and Straits Settlements ½c. *Alum-*
inum; proofs. 2 pcs.
- 3 9 **Monaco, Spain, France, etc.** Various coppers. Fair to uncirc.
17 pcs.
- 60 10 **Pennsylvania.** TVRCVPELLERIVS. R HISPANIOLA. Copper;
good. Low 188.
- 30 11 **Postage Stamps.** Honduras, 1878, 2 sets complete. *Uncir-*
14 stps.

UNITED STATES COINS.

As so few of the coins and experimental pieces following are common, the constant repetition of "rare," "extremely rare," etc., would appear monotonous, occurring on almost every line. Therefore such terms will be omitted, as the pieces speak so well for themselves, that no intelligent collectors will need the reminder as to the scarcity of each piece.

HALF CENTS.

- 15 12 1828, (12 stars). 1835. Very good. Also cents, 1858 (2) '68. Uncirc. 5 pcs.
- 725 13 1831 Date and stars perfectly sharp; upper part of head and centre of rev. not well struck up, owing to the die having, cracked across rev., otherwise a fine proof.
- 500 14 1831 Same obv. R Like that used 1849-57. Fine sharp proof; restrike mule.
- 425 15 1831 Duplicate of last. Stars on r. not so sharp. Fine proof; restrike.
- 875 16 1836 Fine sharp proof. R Type of 1849-57; restrike.
- 825 17 1836 Duplicate. Fine proof, but small nick before face, and upper portion within wreath not sharp.
- 525 18 1840 Fine sharp proof; restrike.
- 525 19 — Duplicate, equally perfect.
- 500 20 1841 Fine sharp proof; restrike.
- 500 21 The same. Duplicate, equally perfect.
- 1025 22 1842 Fine sharp proof; restrike.
- 1000 23 — Duplicate, equally perfect.
- 825 24 1843 Fine sharp proof; restrike.
- 625 25 — Duplicate, equally perfect.
- 775 26 1844 Fine sharp proof; restrike.
- 725 27 — Duplicate, equally perfect.
- 800 28 1845 Fine sharp proof; restrike.
- 850 29 — Duplicate, equally fine, but not quite so sharp.
- 800 30 1846 Fine, sharp proof; restrike.
- 650 31 — Duplicate, equally perfect.

- 750³² 1847 Fine, sharp proof ; restrike.
 72³³ — Duplicate, equally perfect.
 7³⁴ 1848 Fine proof, sharp except centre of rev.; restrike.
 57³⁵ — Duplicate, equally perfect.
 550³⁶ 1852 Fine, sharp proof; restrike.
 55³⁷ — Duplicate. Three stars flat, otherwise perfect as last.

UNITED STATES SILVER COINS.

- 81⁰⁰ 38 **Quarter Dollar, 1827.** Proof, struck from rusted dies ; the lack of polish on portions of the dies prevented the brilliancy customary with proofs of more recent date. That in the Foster Ely sale (Nov. '86) brought \$210.
 88⁰⁰ 39 — 1827. Proof; equally perfect and desirable.
 47⁰⁰ 40 **Dollar, 1804.** A beautiful sharp proof; evenly centred, edge lettered. The finest known specimen of this valuable coin. This piece has the advantage over the few existing specimens, in being the property of the late Director of the Mint, Dr. Lindermann, which alone is a guarantee of its being struck in the U. S. Mint; it is from the same dies as that in the Mint Cabinet. The edge lettering on this is distinct; ★ ★ ★ HUNDRED CENTS ★ ★ ONE ★ ★ DOLLAR ★ ★ OR ★ ★ UNIT. The latest impressions are said to have plain edges, and others have muddled inscriptions, but this is of neither sort. At previous sales, inferior specimens have sold for \$1,000 and \$1,200. The perfection of the one now offered should command a large advance on all preceding prices.
 11⁰⁰ 41 — 1836 Flying eagle; c. GOBRECHT . F on base; edge plain. Beautiful proof ; sharp.
 107⁵ 42 — 1836 Duplicate; equally perfect and desirable.
 41⁵⁰ 43 — 1836 Same type, but c. GOBRECHT . F, *in field* over date; edge plain. Splendid, sharp proof; seldom offered.
 50⁰⁰ 44 — 1836 Duplicate of last; equally perfect and desirable.
 82⁵⁰ 45 — 1838 Liberty seated, stars surrounding. R Flying eagle; edge plain. Sharp, beautiful proof.
 72⁰⁰ 46 — 1838 Duplicate; few stars l. not quite so perfect as on preceding, otherwise equally sharp. Fine and desirable.

- 4⁰⁰ 47 — 1839 Same type; *plain* edge; four stars r. a trifle flat in centre, otherwise a sharp, perfect proof.
- 4²⁰⁰ 48 — 1839 Duplicate; equally perfect and desirable.
- 5⁰⁰ 49 — 1851 Beautiful sharp proof.
- 5⁰⁰ 50 — 1851 Duplicate; not quite so boldly struck; the stars on l. and top of hair lack sharpness, otherwise a perfect proof.
- 5³⁰ 51 — 1852 Sharp, perfect proof.
- 5⁶⁰ 52 — 1852 Duplicate; equally perfect.
- 1²⁵ 53 — 1874 Trade. Fine, sharp proof; slight nick on rev.
- 1²⁵ 54 — 1874 Duplicate. Fine proof, sharp.

U. S. EXPERIMENTAL AND TRIAL PIECES.

Arranged according to denomination, except the set in case.

All are fine proofs unless otherwise described.

Reference is made to Dr. R. Coulton Davis's list in the *Coin Collector's Journal*, when his numbers are quoted.

- 11⁰⁰ 56 1877 Set 10c., 25c (D. No. 391, 392), 50c., \$1.00 (D. 409). Profile Liberty l. with jewelled coronet, hair tied with ribbons, two ends of which depend; stars surround; IN GOD WE TRUST above (except on 10c). R of Dime and Quar. Dol. regular issue. Half Dol. with National Arms, motto (like D. 402). Dol., wreath of corn, cotton and wheat encloses 1 DOLLAR; motto below; 2 specimens to show both sides. Dollars with same rev. but obv. profiles l. with plain and jewelled coronets, hair bound with additional fillet, end droops at back in broad loop, portion of hair extends below neck; two dies slightly differing. Half Dolls., profile l. jewelled coronet with wheat and cotton decorations (D. 402). R National arms like first mentioned (2 specimens to show both sides). Also one with helmeted head l. R Eagle standing on ground, motto incused on base (D. 405). Another; milled dies of obv. D. 405 with rev. D. 402; four not in D. Copper; mounted on raised discs, satin and velvet lined case. 11 pcs.

(CENTS, TWO CENTS, THREE CENTS.

- 4⁵ 57 1850 "Ring Cents,"; circle between value and date. R ONE | CENT in olive wreath (D. 66); also one blank. R (D. 67a.) Nickel; uncirc. 2 pcs.
- 4⁵ 58 — Duplicate pair. Equally fine. 2 pcs.

- 40 59 The same. Duplicate of D. 66. Also, ONE TENTH SILVER. R̄
Circle in laurel wreath. (D. 65.) *Nickel*; uncirc. 2 pcs.
- 55 60 Duplicate of D. 65, in *nickel*. Also one, 1851, Liberty seated
l. R̄ 1 | CENT in oak wreath. (D. 70.) *Copper*; weak;
uncir. 2 pcs.
- 55 61 1851 Duplicate of D. 70. Also one 1854, profile l. R̄ Value
in olive wreath. (D. 80.) *Copper*; uncirc. 2 pcs.
- 65 62 1854 Flying eagle l., and profile l. R̄ Same as last. (D. 80,
81.) *Copper*; dull proofs; former very thick planchet. 2
pcs.
- 65 63 — Duplicate pair; surface more polished; one slight spot.
2 pcs.
- 62 64 1855 Flying eagle l. type of preceding. (D. 86.) *Copper*,
bronze; uncirc. 2 pcs.
- 140 65 (1856) Flying eagle l. no date or legend. R̄ Value in wreath
regular type. (D. 90.) *Copper*; uncirc.
- 375 66 — Similar, but date and legend added. (D. 88.) *Copper*;
uncirc.
- 50 67 1858 Small eagles, olive and oak wreaths. Also Indian heads
with the same rev. (D. 100, 101, 108, 109.) *Copper-nickel*
alloy, 4 pcs.
- 53 68 Duplicate small eagle. (D. 100.) Equally fine. *Copper-*
nickel.
- 180 69 1868 Type of large cent 1850-7. (D. 262.) Uncirc; slight
stain.
- 25 70 — Type of nickel 3c. (D. 260, 261.) *Nickel, copper*. 3 pcs.
- 32 71 — Duplicate of D. 261; also, 1869 same type. (D. 289.)
Nickel. 2 pcs.
- 80 72 **Two Cents**, 1863; similar to regular issue; but motto, GOD
OUR TRUST. (D. 164.) *Copper*; dull proof.
- 170 73 **Three Cents**, 1850; radiated Liberty cap over date. R̄ III
in palm wreath. (D. 69.) *Silver*; thin planchet.
- 150 74 — Duplicate; thick planchet. *Silver*.
- 160 75 — Duplicates of last. *Silver*. 2 pcs.
- 30 77 — Similar type, larger date and planchet. R̄ III in olive
wreath, long ribbon ends. (D. 267.) *Nickel, copper*. 2 pcs.
- 40 78 — Similar to regular type obv., but raised border and
broader planchet. R̄ III in wheat, corn, cotton and to-
bacco wreath. (D. 266.) *Nickel*.
- 30 79 — 1869. Same as lot 77, except date. (D. 290.) *Nickel*.

FIVE CENTS.

- 60 80 1866 Washington and shield obvs. R Dif. sizes and forms of figure representing value. *Nickel*. 2 pcs.
- 50 81 — Similar types and mules, one duplicate of preceding. 3 *cop.*, 1 *nickel*. 4 pcs.
- 100 82 1867 Longacre's design. Profile l. with long plumes. R V on garnished shield. (D. 247.) *Aluminum*.
- 70 83 — Same, in *copper*.
- 70 84 — Duplicate in *aluminum* (D. 247); also heads like current 3c. R CENTS curved and in straight lines beneath large 5. (D. 244, 246); latter uncirc. *Nickel*. 3 pcs.
- 60 85 — Type of regular issue. R Value in wreath. CENTS straight as on D. 246. *Copper*.
- 60 86 — Head like current 3c. R Value in olive wreath; CENTS in curved line, broad and regular planchets. (D. 272.) *Nickel*. 2 pcs.
- 60 87 — Duplicate of preceding broad planchet. Also same obv. R Large V in wreath. (D. 269, 272.) *Nickel*. 2 pcs.
- 40 88 — Duplicates of last, but 269 in *copper*; the *nickel* slightly spotted. 2 pcs.
- 40 89 — Similar obv. R Smaller V. Dif. wreath. (D. 270.) *Copper*.
- 60 91 1869 Type of lot 87. Profile and large V. (D. 293.) *Nickel*

TEN CENTS OR DIMES.

- 20 92 1863 Shield beneath laurel sprays; EXCHANGED FOR | U. S. NOTES. R POSTAGE CURRENCY, etc.; plain and milled edges. (D. 167.) *Aluminum*. 2 pcs.
- 42 93 — Duplicates, milled edges; few spots. 2 pcs.
- 30 94 (1868) Same obv. R Same as Dime of regular issue. *Aluminum*; few spots. (Not in Davis's list.)
- 62 95 — Same obv. R * | ONE | DIME | 1868 in regular issue wreath. (D. 276.) *Aluminum*; few spots.
- 210 97 — Type of large Cent 1850-7. R TEN | CENTS in olive wreath. (D. 275.) *Copper*; uncirc.

- ²⁵⁰98 — Same in *nickel*; stars not sharp. (D. 275.) Uncirc.
- ⁵⁵99 1869 Type of regular Dime, without date in ex. R SIL. | NIC. |
cop. | 1869. (D. 294.) Set in *silver, nickel, copper*, and
alloy of the three. 4 pcs.
- ⁵⁵100 — Duplicate set; equally desirable. 4 pcs.

TWENTY CENTS OR FIFTH DOLLARS.

- ⁴⁵⁰101 1874 Liberty seated l. on globe; wheat sheaf behind; tobacco
and cotton l. R Type of adopted design, olive branch
differs slightly. (D. 377.) *Silver*.
- ¹⁰⁰⁰102 — Duplicate, equally perfect.
- ⁵⁷⁰103 1875 Profile Liberty l. R 20 incused on shield. (D. 379.)
Silver, copper. 2 pcs.
- ⁴⁵⁰104 1875 Duplicate pair, equally desirable except for small spot
on rev. of copper. 2 pcs.
- ⁴²⁵105 — Another. *Silver*; tarnished.
- ⁴²⁵106 — Another. *Silver*; tarnished.
- ⁶⁰⁰107 — Liberty seated on globe at sea-side, steamship distant.
R Same as that of lot 101. (D. 381.) *Silver*.
- ⁶²⁵108 The same. Duplicate, equally desirable.
- ⁴²⁵109 — Two more, one tarnished. 2 pcs.
- ¹⁵⁰110 — Same obv. R 20 | CENTS in olive wreath. (D. 382.)
Silver, copper, white metal. 3 pcs.
- ¹²⁰111 — Duplicate in *copper*.
- ²⁶⁰112 — Liberty seated; adopted type. R $\frac{1}{5}$ | OF A | DOLLAR in
olive wreath; TWENTY CENTS below, (D. 383.) *Silver*.
- ²⁶⁰113 — Duplicate; equally fine.
- ²¹¹114 — Another; equally fine.
- ²³⁵115 — Two more; same condition. 2 pcs.
- ⁵¹⁰118 — Duplicates in *silver* of D. 379, 381, 383; slightly tar-
nished. 3 pcs.
- ²⁵119 — Trial piece from reverse hub die of Quarter Dollar about
1828. Lead; very good, unique.

HALF DOLLARS.

- ^{3.00} 120 1838 Bust Liberty l. draped slightly. R Flying eagle l.; cracked die. (D. 42.) *Silver*.
- ^{3.00} 121 — Duplicate; equally perfect.
- ^{17.50} 122 1839 Liberty seated; adopted type. R Eagle standing holds olive branch and four arrows. *Silver* (not in Davis's list); obv. die lightly rusted; plain edge.
- ^{17.50} 123 — Duplicate; equally fine and desirable.
- ^{10.50} 124 1859 Longacre and Paquet's designs. Bust Liberty r. with oak and ivy wreath. Revs. HALF | DOLLAR; $\frac{1}{2}$ | DOLLAR; 50 | CENTS in wreaths of corn and oak. Paquet's seated figure, with shield and fasces; same revs. as others. *Silver*; uncirc. 6 pcs.
- ^{9.00} 125 — Duplicate set. Equally fine, but one damaged by acid. 6 pcs.

DOLLARS.

- ^{26.00} 129 1872 Liberty seated r. (regular type of Dol.) R COMMERCIAL | DOLLAR | 420 GRS | 900 FINE | GOD OUR TRUST, on ribbon across stems of olive wreath; two small cornucopiae above centre; (D. 356.) *Silver*.
- ^{31.00} 130 — Indian Princess seated l. on globe; two flags in rear. R Same as the preceding. (D. 355.) *Silver*. Although a sharp impression, the file-marks on planchet were not obliterated in the striking.
- ^{22.00} 131 1873 **Trade set.** Female head l. with curl on neck; pearl coronet and hair band. R In olive wreath, TRADE | DOLLAR | 420 GRAINS | 900 FINE.—IN GOD WE TRUST, on ribbon below. (D. 369.) Female head l. with hair braided, tied back and decorated with vine-like cotton plant. R Eagle standing erect holds shield and arrows; E PLURIBUS UNUM in field above. (D. 370.) Indian Princess seated l. on globe; flags and rock behind. R Small displayed eagle with arrows and olive branch; mottoes above and below on ribbons. (D. 371.) Liberty seated l. on globe; sheaf of

wheat behind; cotton bales and tobacco plant at side. R Small defiant eagle walks on shield r. (D. 372.) Liberty seated l. on globe; short plow handles, and sheaf of wheat behind; bales and sea in front. R Same as D. 370, but motto on ribbon behind eagle's beak. (D. 373.) Liberty seated l. on bales at seashore; adopted type. R Small erect eagle looking l., large olive branch in his r. talon, motto on ribbon behind head. (D. 375.) *Silver*. A fine set. 6 pcs.

- 67⁵/₁₃₂ — Another set in *Copper*. 6 pcs.
- 50⁰/₁₃₃ — Duplicate set in *Copper*; few small spots. 6 pcs.
- 30⁰/₁₃₄ — Set in *White metal* lacking one. (D. 370.) Few slight defects; plain edges. 5 pcs.
- 30⁰/₁₃₅ The same Set in *White Metal*, mules, etc.; plain edges, except one; few defects, 5 pcs.
- 50⁰/₁₃₆ — Duplicates of last. *White Metal*; very good to proof. 2 pcs.
- 140⁰/₁₃₇ 1875 Liberty seated on globe at seashore, flags and wheat sheaf behind; steamship distant; motto in ex. on ribbon. R Same as regular type of Trade Dol. (D. 386.) *White Metal*.
- 80⁰/₁₃₈ 1878 Morgan and Barber Dollars; beautifully struck specimens. (D. 414, 415.) *Silver*. 2 pcs.
- 80⁰/₁₃₉ — Duplicate pair; equally desirable.
- 118⁰/₁₄₀ — Barber's design. (D. 415.) Equally perfect.
- 115⁰/₁₄₁ — Duplicate of last; equally perfect.
- 20⁰/₁₄₂ — Profile Liberty left, with cap decorated with cotton and wheat. Barber's design. R In olive wreath, GOLOID | I GOLD. | 24 SILVER | .9 FINE | 258 GRS. (D. 417.) *Copper*.
- 320⁰/₁₄₃ — Same obv. R In circle of stars, GOLOID. | I-G. | 24-S. | .9 FINE. | 258 GRS. (D. 416.) *Goloid*.
- 320⁰/₁₄₄ — Duplicate; equally desirable.
- 315⁰/₁₄₅ — Another; equally perfect.
- 310⁰/₁₄₆ — Another; same condition.
- 350⁰/₁₄₇ — Another, struck in standard *silver*; scarcer than preceding.
- 75⁰/₁₄₈ Blank *silver* planchet; envelope marked "To be used as gauge for manufacture of Seyss Assorting Machine for Dollars."

DESIGNS FOR GOLD COINS.

- ⁵⁶⁰ 149 **Dollar**, 1836. Liberty cap in radiant circle. R̄ I | D in palm wreath over date. (D. 37.) *Gold*.
- ^{1.00} 150 — Ring. 1852 | U S A R̄ Olive twigs. (D. 75.) *Nickel*. fine.
- ⁷⁵ 151 The same. 1852. UNITED STATES OF AMERICA: circle of braces. R̄ DOLLAR above; olive wreath below perforation. (D. 74.) *Copper*; uncirculated.
- ⁶⁰ 152 — — 1852 Duplicate of last; equally fine.
- ⁵⁰ 153 **Five Dollars**, 1860. Bust of Liberty r. with Phrygian cap and diadem of stars. R̄ Small flying eagle r.; FIVE (*sic.*) (D. 145) *Cop.*, bronzed; uncirc.; thin planchet.
- ⁴⁰ 154 — — Duplicates unbronzed; thick and thin planchets; trifle stained. 2 pcs.
- ⁴⁵ 155 — 1868. Profile l., star on fillet. R̄ In oak and olive wreath, 5 | DOLLARS | 25 | FRANCS. (D. 285.) *Aluminum*, *copper*; milled edges. 2 pcs.
- ⁴⁰ 156 — — Duplicates in *aluminum*.
- ⁴⁰ 157 — 1875. Profile l., hair bound by ribbon (same as 20c D. 379.) R̄ Small eagle standing, mottoes above and below, (D. 387.) Also Ten Dollars same type. (D. 388.) *Cop.* 2 pcs.
- ⁴⁰ 158 — — Same in *white metal*; both values, small scratches. 2 pcs.
- ⁵⁰ 159 — 1878. Barber's design. Beautiful profile with Phrygian cap; IN GOD WE TRUST at top. R̄ Eagle displayed; motto above in two lines. (D. 427.) Also Ten Dollars of same type, but motto in single line. (D. 428.) *Copper*. 2 pcs.
- ⁷⁵ 160 — Duplicate pair; equally desirable. 2 pcs.
- ⁶⁰ 161 — Another pair; slightly stained. 2 pcs.
- ⁶⁰ 164 **Ten Dollars**, — 1868. Large head l. (Type of 3c. nickel.) R̄ Small heraldic eagle; motto on ribbon above. (D. 287.) *Aluminum*, *copper*. 2 pcs.
- ⁵⁵ 165 — — Duplicate pair. *Cop.*; trifle finger-marked. 2 pcs.

- 80 166 The same. 1869. Type of preceding obv. R Same as regular issue. (Not in D.) *Copper*.
- 85 167 ——— Duplicate; equally desirable.
- 90 168 ——— Dana Bickford's "International Coinage"; 1874; peculiar female head l. with starry coronet, and hair tied in bunch; olive branch for necklace. R 16.72 | GRAMS | 900 FINE | UBIQUE.; surrounded by six cord frames joined, inscribed respectively—DOLLARS | 10—Sterling | £2. 1. 1 | —MARKEN | 41.99 — KRONEN | 37.31 — GULDEN | 20.73 — FRANCS | 51.81. (D. 378.) *Copper*.
- 110 169 ——— 1874 Duplicate; trifle finger-marked.
- 130 170 ——— Another; slight defects on edge, tarnished.

ASSAY MEDALS.

- 250 172 1867 Female bust r. with oak and ivy wreath. R In olive wreath; ANNUAL | ASSAY | 1867. *Silver*; very fine.
- 150 173 1868 Peace with torch burns munitions of war. R Inscrip. in oak and olive wreath, *Aluminum*; very fine.
- 100 174 1869 Liberty seated with shield and heavy drapery. R Inscrip. in oak and olive wreath; motto on ribbon above. *Copper*; very fine.
- 200 175 1875 Archimedes rests against mantel near fountain. R Inscrip. in olive wreath. Bronzed; very fine.

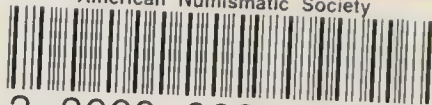
MISCELLANEOUS MEDALS.

- 650 176 **Andrew Johnson.** Bust r. by *Barber*. R WITH | COURAGE AND FIDELITY | HE DEFENDED | THE | CONSTITUTION, etc., in oak and olive wreath. Bronze; very fine. Size 48. In splendid morocco case, velvet and satin lined.
- 550 177 **Cyrus W. Field.** Fine portrait on clouds, being crowned by hand from above, vessels laying cable at sea below. R Shield, star, and globe amid lightning and various emblems; BY RESOLUTION OF THE CONGRESS, etc. March 2 | 1867; etc. *Aluminum*. Perfect; size 64. We believe this is the largest medal ever struck in this metal.
- 150 178 Duplicate of Prize medal awarded Mr. Field at Paris Exposition, 1867. Profile Napoleon III. Copper gilt. Very fine. 43. Presentation specimen, in morocco case.

- ^{3.50} 179 **Medical.** Dr. N. S. Davis. Fine portrait r. by *W. & C. Barber.* ⚔ AMERICAN MEDICAL ASSOCIATION | 1846 in wreath. Bronzed; very fine. 40. In velvet frame.
- ^{1.65} 180 — Prof. Agassiz. Fine portrait r. by *W. Barber.* ⚔ Mortuary emblems and inscriptions. Bronzed; very fine. 40. In fine composition case, velvet lined.
- ^{1.00} 181 — Sanitary Fair. Phila., 1864. Surgeon attends wounded soldier. Bronzed; very fine. 36.
- ^{2.00} 182 **U. S. Life-Saving Medal,** 1st Class. Sailors rescue drowning man. ⚔ Fame ready to record name on tablet surmounted by eagle. W.m.; very fine. 48.
- ^{1.75} 183 — 2d Class. Female floating above sea; tows a man by a long sash. ⚔ Olive wreath. W.m.; very fine. 40. In neat case.
- ^{1.00} 184 **Mecklenburg Centennial,** 1875. Boston **Masonic.** Bronze, w.m. 20. Fine. 2 pcs.
- ⁵ 185 **Lead Medals.** Also small Washington (brass). Fair to fine. 11 to 19. 3 pcs.
- ^{1.00} 186 **Hamburg.** Turreted female head l. by *Loos.* ⚔ Within RUMPF | DER | SENAT | VON HAMBURG | D 10 FEBRUAR | 1860. a heavy wreath of oak and olive bound by national colors, city arms on shield below; IN | DANKBARER, etc. VINCENT Bronze; very fine. 34.
- ⁴² 187 **Russia.** Commemorates liberation of the Serfs, 1861. Bronzed electrotype; very fine. 43.
- ^{2.50} 188 **England.** Thomas Carlyle. Magnificently executed bust of the eminent Scotchman, designed by Boehm, dies by *Geo. Morgan.* ⚔ IN COMMEMORATION | 1875 | .DECEMBER 4. Br.; very fine and rare. 36. In neat case.

— *Amk Sale 1845.28* —

American Numismatic Society



3 8060 00047 6168

