

775 013

*in reply to 775 013*

近畿地方工業局管内企業部に提出(21.8.9.)  
賠償除の申請

(控)

NITTO SEIYO KABUSHIKI KAISHA  
(NITTO PRECISION MACHINERY CO., LTD.)

20 Umegahata, Inokura, Ayabe-cho,  
Kyoto Prefecture

Date: 9 Aug, 46

Subject: Petition For The Removal Of Factory From The Restricted List For Reparation Program, Issued On May 28, 1946, By The Headquarters Of 8th Army.

To: 103rd Military Government Headquarters And Headquarter Co.

Att: Industry And Resource Section.

We take the liberty to submit this application giving the reasons and reference as per attached for your consideration, that our plant, at least the 1st plant, being not a leading aircraft factory to be included in the Restricted List based on the Operational Directive No.5, but an essential factory for the reconstruction of Japan's peacetime economy.

1. The first plant was opened with the establishment of the corporation and in the manufacture of various kinds of metres and telegraphic and electric instruments as well as navigation fittings the plant had been engaged until the outbreak of war, when, having been pressed by the military authorities, small parts and instruments for aircraft were added to its manufacturing list.

But the fact is that, even in the wartime, the production of civilian articles were still predominant when compared with the aircraft machines; the ratio of the production of the latter to that of the former was only 30%. Moreover, the period engaged in manufacturing the parts and instruments for aircraft was covering only the last some two years in wartime. These facts will clearly show how insignificant a role in our country's aircraft industry the 1st plant acted during the wartime, and we are quite anxious to insist on again that the 1st plant ought to be considered discriminatively from the 2nd plant which was chiefly engaged in manufacturing aircraft engine pumps from its beginning till the end of the war.

2. The raw silk industry, occupying an essential position in Japan's peacetime industry requires so much production of silk reeling machines.



And it has been planned as a first program to complete 20,000 sets of silk reeling machine throughout the country by the end of this year, and 20% of which, namely 4,000 sets have been scheduled to be manufactured by Gunze Silk Mfg. Co., Ltd., closely connected with our company in capitalization; these 4,000 sets are to be used by the following six companies.

- o Gunze Silk Mfg. Co., Ltd.
- Ishibashi Kogyo Kabushiki Kaisha
- Shinko Kogyo Kabushiki Kaisha
- Shinei Seishi Kabushiki Kaisha
- Tsutsui Sangyo Kabushiki Kaisha
- Shoei Kogyo Kabushiki Kaisha

With these in view, our 1st plant has been leased by Gunze Silk Mfg. Co., Ltd. since January this year, scheduling to accomplish the parts for the 20% aforementioned.

3. By the explanation mentioned above and the datas annexed, it will clearly be seen that our 1st plant was in reality not one of the essential aircraft factory but is now indispensable for the peacetime industry in our country. And it is most earnestly hoped that our 1st plant should be removed from the Restricted List For Reparation Program with your honoured judgement.

If, however, the 1st plant were not to be granted the removal as a whole, then our last petition would be that the minimum machines indispensable for the peacetime industry, as showed in annex No.6 should be taken up into consideration for the exclusion from the List for the sake of our raw silk industry

With regard to our 2nd plant, we should like to refrain from the petition for the removal from the Restricted List, considering from the fact that it was mainly engaged in the aircraft machine works from the beginning as mentioned above.

Submitting this application, we shall be waiting for your prompt reply at your earliest convenience.

Nitto Precision Machinery Co.,

.....*R. Hatano*.....  
President.



Index of Inclosures:

- Annex No.1 Copy of reconversion permit
- Annex No.2 Production scheme (1st Plant)
- Annex No.3 Order list (1st plant)
- Annex No.4 Present machine equipment (1st Plant)
- Annex No.5 Present machine equipment (2nd Plant)
- Annex No.6 List of machine indispensable for our  
peacetime production scheme (1st Plant)
- Annex No.7 Machines installed after the end of war (1st Plant)
- Annex No.8 Ratio, output and use of the production (1st Plant)
- Annex No.9 Ratio, output and use of the production  
*during wartime*  
during wartime(2nd Plant)
- Annex No.10 List of machines used during wartime (1st Plant)
- Annex No.11 List of machines used during wartime (2nd Plant)



Annex No.1 Copy of Reconversion Permit

Headquarters Sixth Army  
Military Government Section

APC 442

File: MG 115

Date: 26 November 1945

Subject: Permit For Reconversion From War Production And For Resumption Of Production Of Essential Civilian Commodities.

To: Nitto Seiko Kabushiki Kaisha Ltd.-1st plant and 2nd plant  
20 Umegahata Inokura Ayabe-cho, Ikaruga-gun, Kyoto Pref.

1. In accordance with the provision of paragraphs 3 a and 3 b of Directive No.3 from the Supreme Commander for the Allied Powers, dated 22 September 1945; Memorandum for the Imperial Japanese Government, Subject: Reconversion of War Production plants to peacetime Production, dated 28 October 1945; and under authority granted this Headquarters by CINGAFPAC Radio Za 6197 dated 3 October 1945, you are authorized to commence operation of your plant, and to manufacture the essential civilian commodities listed in Annex No.1 to this permit.

2. This permit grants authority only to operate, the acquisition of materials, parts, and sub-assemblies, as well as the disposition of finished products and establishment of sales prices, will be in accord with the regulation of the Imperial Japanese Government.

3. At the end of the first month of operation, and at the end of each three-month period thereafter, until notified to the contrary by this Headquarters a report will be made to the Commanding General 1 Corps, Headquarters Osaka, Attention: Military Government Section. This report will be written in English and will list each item, by name, type, and quantity produced by each factory, subsidiary, or sub-contractor operating under the provisions of this permit. This report will be delivered to Corps Headquarters not later than fifteen (15) days after the conclusion of the period to which the report pertains.

GEORGE D. SEARS.

Colonel, Infantry

Info Copies To: Military Government Officer  
GH<sup>n</sup>, SCAP (Attn: E. & S. Sec)  
Cg 1 Corps, (Attn: MG Sec)  
Imperial Japanese Gov't.  
(6th Army Jap. Liaison Office, Kyoto)

1 Incl;  
Annex No.1



Annex No. 1 (cont'd)

Headquarter Sixth Army  
Military Government Section  
APC 442

26 November 1945

Annex No. 1,

Permission is granted to Nitto Seiko Kabushiki Kaisha Ltd.-1st plant and 2nd plant, 20 Umegahata Inokura Ayabecho Ikarugagun Kyoto Prefecture to produce the following items listed below

- a, Auto-rearcars,
  - b, Meters
  - c, Silk reeling machines,
  - d, Waste cocoon treating machines,
  - e, Cocoon boiling machines
  - f, Kitchen utensils,
  - g, Farm tools,
  - h, Farm product machines,
  - i, Small bakelite tools for manufacturing raw silk.
- (Nothing follows;)

D. S. LOCKIE  
1st St. F. D.



Annex No.1 (cont'd)

AG. 319, 1-BA

Headquarters 1 Corps  
APO 301 (Osaka Honshu)

GMP/mw  
6 Dec. 45

Subject: Report of Resumption of production of Essential  
Civilian Commodities.

To: Nitto Seiko Kabushiki Kaisha Ltd. 1st plant and 2nd  
plant, 20 Umegahata Inokura Ayabe-cho Ikarugagun,  
Kyoto Prefecture

1, Under date 26 Nov., a permit was issued to you by  
the Sixth Army to produce in your plant at 20 Umegahata  
Inokura Ayabe-cho Ikarugagun Kyoto Prefecture, the items  
specified in annex No. 1 to that permit:

- a, Auto-rearcars.
- b, Metres.
- c, Silk reeling machines.
- d, Waste cocoon treating machines.
- e, Cocoon boiling machines.
- f, Kitchen utensils.
- g, Farm tools.
- h, Farm product machines.
- i, Small bakelite tools for manufacturing raw  
silk.

2, Whenever production has begun on any one of the per-  
mitted items, you will immediately report in triplicate  
the date on which such production began. The report will  
be furnished to the Commanding General, Headquarters 1  
Corps, attention: Military Government Section.

By Command of Major General Woodruff;

Peter Calza  
Col., AGD  
Adjutant General

Info copies;  
MGO, 33 INF Div. (1)



Annex No.2 Production Scheme (1st plant)

Articles	Jan.-June (Produced)		July		Au
	Quantity	Amount	Quantity	Amount	
(Silk reeling)					
Power apparatus	144 sets	¥112,320	48 sets	¥ 37,400	64 sets
Seriplane	5 "	25,000	3 "	15,000	5 "
Cocoon beating brush	934 "	135,100	240 "	36,000	240 "
Reeling machine accessories & parts	1,152 "	207,360	240 "	46,400	240 "
Power transmission apparatus	1,173 "	46,920	240 "	9,600	240 "
Total		¥526,700		¥144,400	
(Metre)					
Dial gauge	279 sets	¥ 55,800	50 sets	¥ 10,000	50 sets
Barometre	29 "	14,500	10 "	5,000	10 "
Total		¥ 70,300		¥ 15,000	
(Others)					
Farm tools		¥153,000		¥ 5,000	
Motor car parts		330,000		5,000	
Total		¥483,000		¥ 10,000	
Grand total		¥1,080,000		¥169,400	



775 013

July		August	
Quantity	Amount	Quantity	Amount
48 sets	¥ 37,400	64 sets	¥52,200
3 "	15,000	5 "	25,000
240 "	36,000	240 "	36,000
240 "	46,400	240 "	46,400
240 "	9,600	240 "	9,600
	¥144,400		¥169,200
50 sets	¥ 10,000	50 sets	¥ 10,000
10 "	5,000	10 "	5,000
	¥ 15,000		¥ 15,000
	¥ 5,000		¥ 5,000
	5,000		5,000
	¥ 10,000		¥ 10,000
	¥169,400		¥194,200

September		October		November
Quantity	Amount	Quantity	Amount	Quantity
64 sets	¥ 52,200	64 sets	¥ 52,200	64 sets
5 "	25,000	5 "	25,000	5 "
240 "	36,000	240 "	36,000	320 "
320 "	56,800	320 "	56,800	320 "
240 "	9,600	320 "	12,800	320 "
	¥179,600		¥182,800	
50 sets	¥ 10,000	50 sets	¥ 10,000	50 sets
40 "	20,000	50 "	25,000	80 "
	¥ 30,000		¥ 35,000	
	¥ 5,000		¥ 5,000	
	5,000		5,000	
	¥ 10,000		¥ 10,000	
	¥219,600		¥227,800	



775 013

er	October		November		December	
	Quantity	Amount	Quantity	Amount	Quantity	Amount
52,200	64 sets	¥ 52,200	64 sets	¥ 52,200	64 sets	¥ 52,200
25,000	5 "	25,000	5 "	25,000	5 "	25,000
36,000	240 "	36,000	320 "	48,000	320 "	48,000
56,800	320 "	56,800	320 "	56,800	320 "	56,800
9,600	320 "	12,800	320 "	12,800	320 "	12,800
179,600		¥182,800		¥194,800		¥194,800
10,000	50 sets	¥ 10,000	50 sets	¥ 10,000	50 sets	¥ 10,000
20,000	50 "	25,000	80 "	40,000	80 "	40,000
30,000		¥ 35,000		¥ 50,000		¥ 50,000
5,000		¥ 5,000		¥ 5,000		¥ 5,000
5,000		5,000		5,000		5,000
10,000		¥ 10,000		¥ 10,000		¥ 10,000
219,600		¥227,800		¥254,800		¥ 254,800



775 013

Annex No. 3

Order List (1st plant)

( as of the end of Jan., 1916 )

Article		Name of orderer	Quantity
Silk reeling machine	Power apparatus	Association of sericultu- ral machinery	680 set
	Thread traverse Speed change		680 "
"	Seriplane	"	50 "
"	Cocoon beating brush	"	3,400 "
"	Other parts	"	
	Roter of heating brush		3,400 "
	Holder of reel wheel		3,400 "
	Stop motion device roller		3,400 "
	Small pulleys		3,400 "
	Guide pulley		3,400 "
	Ballance weight		3,400 "
	Set screw of beating brush		3,400 "
	Beam and angles		3,400 "
	Power transmi- ssion apparatus	"	
	Bebal gear		3,400 "
	Spracket wheel		3,400 "
	Spiral gear		3,400 "
	Others		3,400 "
Others	Motor car parts and others	O <sup>3</sup> kawa Sangyo Co., Ltd.	28,000 "



Annex No. 4

## Present machine equipment (1st plant)

## (1) Machine tool

## A. Company's own machines

Name of machine	Quantity	No. of machine indispensable for peacetime production.
Horizontal lathe without lead screw	37	19
Horizontal lathe with lead screw up to 1000 mm center distance	84	35
Turret lathe with horizontal turret axis	3	2
Gear cutting and hobbing machine	27	12
Shaping machine	7	4
Horizontal cylindrical grinding machine	4	3
Tool grinding machine	10	8
Plain milling machine	7	5
Vertical spindle milling machine	14	8
Universal milling machine with horizontal spindle up to 80 mm (in front bearing)	6	4
Universal milling machine with horizontal spindle above 80 mm (in front bearing)	1	1
Shearing and punching machine	10	6
Spindle press	4	4
Hammers operated mechanically	3	3
Hack sawing machine	2	2
Internal grinding machine	1	1
Surface grinding machine	4	2
Bearing grinding machine	1	0



Annex No. 4 (cont'd)

Name of machine	Quantity	No. of machine indis- pensable for peace- time production
Grinder cutt-off machine	1	1
Tapping and threading machine	3	1
Graduating machine	2	2
Carving machine	1	1
Vertical drilling machine	23	11
Slotting machine	1	1
Gear lapping machine	2	0
Total	258	136
B. Other Company's machine		
Horizontal lathe with lead screw up to 1000 mm center distance	(A) 1	0
Gear cutting and hobbing machine	(B) 1	0
Plain milling machine	(C) 1	0
Universal milling with horizontal spindle above 80 mm (in front bearing)	1	0
Total	4	0
Grand total	262	136

Remarks: (A) Being borrowed from Aichi Kōkū K.K.  
 (B) " " " Nakashima Hikōki K.K.  
 (C) " " " Aichi Kōkū K.K.



775 013

Annex No. 4 (cont'd)

C. Machines lent to our subcontractor.

Name of machine	Quantity	Name & location
Horizontal lathe without lead screw	3	Todo plant, Kyoto
Horizontal lathe with lead screw up to 1000 mm center distance	16 ( 5 10 1	Hikari plant, Ayabe-cho, Kyoto Pref Todo plant, Kyoto Mabuchi plant Ayabe-cho, Kyoto Pref
Vertical drilling machine	7 ( 3 4	Hikari plant, Ayabe-cho, Kyoto Pref Gunze Seishi K.K. Ayabe-cho, Kyoto Pref
Gear cutting and hobbing machine	1	Hikari plant, Ayabe-cho, Kyoto Pref
Shaping machine	1	"
Universal cylindrical grinding machine	1	"
Tool grinding machine	2	Mabuchi plant Ayabe-cho, Kyoto Pref
Vertical spindle milling machine	2	Hikari plant Ayabe-cho, Kyoto Pref Todo plant, Kyoto
Universal milling machine with horizontal spindle up to 80 mm (in front bearing)	1	Hikari plant, Ayabe-cho, Kyoto Pref
Universal Milling machine with horizontal spindle above 80 mm (in front bearing)	1	"
<b>Total</b>	<b>35</b>	



775 013

Annex No. 4 (cont'd)

(2) Industrial machines

A. Company's own machines.

Name of machine	Quantity	No. of machines indispensable for peacetime production
Gass welder	1	1
Circular sawing machine	2	1
Mixer	1	1
Crusher	1	1
Hand press	5	5
Hydropress	2	2
Total	12	12
B. Other Company's machines		
Wood turning machine	(A) 1	0
Band sawing machine	(B) 1	0
Total	2	0
Grand total	14	12

Remarks: (A) Being borrowed from Maizuru Arsenal.

(B)



Annex No.4 (cont'd)

(3) Electric machines

A. Company's own machines

Name of machine	Quantity	No. of machine indispensable for peacetime production
Motor	58	50
Transformer	11	3
Electric welder	2	1
Electric furnace	5	5
Others	27	5
Total	103	64

B. Other Company's machines

Motor (A)	14	0
Electric welder (B)	1	0
Switch board (C)	2	0
Total	17	0
Grand total	120	64

C. Machines lent to subcontractor.

<u>Name of machine</u>	<u>Quantity</u>	<u>Name &amp; location</u>
Motor	1	Hikari plant, Ayabe-cho, Kyoto Pref.

Remarks: (A) Being borrowed from Maizuru Arsenal.

(B) " " " The 3rd Powder Mill

(C) " " " The 31st Air Arsenal



775 013

Reports Control  
Symbol NG-P

Reparations Check Sheet

Aircraft                      Maritime

(Cross out one)

1. Name Nitto Precision Machinery Co. Ltd. No 1 Plant Code # 22 - 14

2. Prefecture: Kyoto Year Built 1938

3. Reparations Status.

(a) Listed by SCAPIN No. 987

(b) Deleted by SCAPIN No. \_\_\_\_\_

(c) Rec. for Deletion \_\_\_\_\_

(d) Rec. for Addition \_\_\_\_\_  
(Not yet Listed)

4. Products.

	Items	Percent
Pre-war:	Seri - plane	30 %
	Raw silk conditioning and testing machine	30 %
	Parts of meters	40 %
During War:	Seri-plane	10 %
	Raw silk conditioning and testing machine	10 %
	Parts of meter	50 %
	Link of apparatus for ladder & Elev.	30 %
Post war:	Seri-plane	20 %
	Raw silk conditioning and testing machine	60 %
	Electric mater	10 %
	Farm tools	10 %

5. Year War Production Pegan? 1943

6. Is Plant Now in Operation? Yes

7. Size of Company:

	No. Machines	No. of Employees
Pre-war:	203	250
During War:	385	850
Post War:	394	214



775 013

c. Condition of Plant None Percent Damaged.

d. Remarks: There are six (6) different silk manufacturing companies which are dependent upon this company's production of the GUNZE SILK MACHINE. This company made application for release from reparations in August 1946 but was denied because of new data from higher headquarters.

Signed Enos L. Commons Jr., Capt. USAF

Economics Division Officer

This is No 18 of 28 reviews to be submitted



775 013

*File Copy  
Economics  
Section  
22-14*

KYOTO MILITARY GOVERNMENT TEAM  
APO 713 (Kyoto, Honshu)

004 BA

ELC/JI/ct  
29 Nov 1947

SUBJECT: Corrected Inventory Sheets

TO : General Headquarters, Supreme Commander for the Allied Powers  
(Attn: Reparations Section)  
APO 500

1. In compliance with Section IV, Inclosure 1 to Operational Directive 5/4, dated 22 August 1946, submitted herewith are three (3) corrected inventory sheets, the code numbers of which are 22-14-20, 22-14-39, and 22-14-223.

2. The corrected sheets above amend the originals by deleting "SP" from line "B" thereof. The machines concerned do not come within the purview of 6a, B, Section III, Inclosure 1 to Operational Directive 5/4.

FOR THE COMMANDING OFFICER:

THOMAS R. HARBIN  
1st Lt. Inf  
Adjutant

1 Incl:  
As indicated

DEC 1 1947  
*TH*



775 013

*Economics  
File Copy*

Nitto Precision Machinery Co., Ltd.  
(Nitto Seiko Kabushiki Kaisha)  
No.20 Umegahata, Inokura, Ayabe-cho, Kyoto-fu

7 Nov. 1947

Subject: Application for deletion of inscription of "SP" on inventory sheet.

To : Kyoto Military Government Team.

From : Nitto Precision Machinery Co., Ltd.

Machines and Code Number of inventory sheet with inscription of "SP"

Date of Inventory	Code Number	Name of Machine	Manufacturer	Remarks
Oct. 1, 1946	22-14-20 SP	Lathe-engine-standard	Mitsubishi Kosakuki K. K.	Weight: 1.5 ton Length: 1.9 m. Width: 1.1 m. Height: 1.2 m.
Oct. 1, 1946	22-14-39 SP	Lathe-bench-type-standard	Nippon Seisaku-kiki K.K.	Weight: 0.06 ton Length: 0.75 m. Width: 0.3 m. Height: 0.35 m.
Oct. 1, 1946	22-14-223 SP	Milling machine-bench and hand	Nitto Kogu K. K.	Weight: 0.14 ton Length: 0.65 m. Width: 0.7 m. Height: 0.7 m.

Reason for deletion:

The above mentioned three machines were inventoried as "SP" by misinterpretation of the definition of "SP" machines when we made inventory sheets on 1 October last Year by the directive of SCAP.

As for the machine with code number 14-20, we inscribed "SP" on the sheet only because of the fact that the machine is mentioned "Senjigata" (war-type) on a catalogue. We never used this machine during the war. This is very simple lathe and operated by anybody.

The machine of Code number 14-39 was entered as "SP" on inventory sheet owing to misinterpretation that it was not used for the purpose of its original purpose. We used and are now using it in the manufacture of racks of dial indicators by adding a simple attachment (jig). If we remove the attachment, it returns back to its original state very easily.



The last machine was also reported as "SP" on inventory sheet because of the misunderstanding described in the preceding paragraph. We used it to manufacture worm-gears by equipping attachments (jig) as a simple thread miller. This machine could be brought easily to its former style just by taking away the attachments.

We hope you will surely understand and recognize our fault and that the machines are by no means "SP" machines by the above mentioned reasons. We are very sorry to trouble you but please kindly take adequate steps to score out "SP" on the three inventory sheets.

We earnestly want that you would pay your kind and special considerations to the matter and give us a prompt permit for the deletion.

Yours truly,

*S. Shirahase*

President,

Nitto Precision Machinery Co., Ltd.



775 013

## Factory Information

30 Nov. 1947

15  
14

1. Name of Company
  - A. Present Name: Nitto Seiko Kabushiki Kaisha.  
(Nitto Precision Machinery Co., Ltd.)
  - B. Former Name : Same as present
2. Name of Plant
  - A. Present Name: Nitto Seiko Kabushiki Kaisha, Dai-ni Koba  
(Nitto Precision Machinery Co., Ltd. 2nd Plant)
  - B. Former Name : Same as present
3. Location of Company and Plant
  - A. Location of Company: 20 Umegahata, Inokura, Ayabe-cho,  
Kyoto-fu.
  - B. Location of Plant : 62 Aono, Ayabe-cho, Kyoto-fu.
4. Representative of Company and plant
  - A. Rep. of Company: S. Shirahase
  - B. Rep. of Plant : T. Morita
5. Date Incorporated and Commenced Operation of Company and plant
  - A. Date Incorporated of Company: 11 Feb. 1938
  - B. Date Incorporated Operation of Plant: 1 Jan. 1944
6. History of Plant

In compliance with the demand of military authorities, this plant was opened in Jan. 1944 to manufacture the parts of the air-craft, but this plant could by no means meet the demand of military authorities by the bottlenecks of raw materials, labour and technical difficulties.

With the completion of the war, this shop has been closed.
7. Area and Floor space of Plant
  - A. Area 23,602 sq.m.
  - B. Floor Space 8,600 sq.m.
8. Yearly production from 1934 to 1936

There was nothing, because our plant did not exist during the period.



775 013

9. Yearly production from 1937 to 1945

Article	parts of air-craft
1944	250 pcs
1945	240 pcs

10. Post-war Production

A. Date and Authorities Permitted to reconvert to produce Civilian Commodities

Date : 26 Nov. 1945

Authority: Sixth Army

B. Items and Quantity produced after the grant of permission (list all)

Nothing

C. Production object in the Future (Monthly)

Nothing

D. Attach copies of Procurement Demand

There are none

11. Outline of Reparations Machinery and Equipment

A. Total Number of Machines and Equipment Inventoried:

73

B. Classification of Machinery and Equipment

Grade	Amount
Class 1	49
Class 2	15
Class 3	9
Total	73

C. Number of Machines and Equipment

Number Inventoried and Number Necessary for Continuing Civilian Production

Description	Number	Necessary No:	Remarks: No. of machines now in operation
Machine tool	69	12	3
Industrial Mach.	2	2	0
Electric Mach.	2	2	1
Total	73	16	4



775 013

D. Attach Complete List of Machinery and Equipment.

Classification	Name of Machine	Total	Requires	Code No. of Requires	No. of machines no oper. at present
Machine tools	Lathe	44	3	35, 72, 73	42
	Drilling Mach.	9	1	66	8
	Milling Mach.	3	0		3
	Horizontal boring Mach.	1	0		1
	Grinding Mach.	8	7	55, 56, 58, 59, 60, 61, 65	8
	Plainer	1	0		1
	Slotting Mach.	1	1	54	1
	Shaping Mach.	1	0		1
	Others	1	0		1
Industrial Machine	Compressor	2	2	67, 68	2
Electric Machine	Motor	2	2	69, 70	1
Grand Total		73	16		69

Remarks: The abovementioned required machines are to be used in the 1st Plant of our company.

12. General Condition concerning Maintenance of Reparations Machinery and Equipment.

- A. Machines of Class 1 & 2 un-operated: 60
- B. Machines of Class 3 un-operated : 9
- C. Operated machine : 4
- D. Machines dispersed and lent : 4
- E. Protecting measure

At present, three men are engaged in keeping the machines in good condition. All machines (excluding dispersed 4 machines) in this plant are out of use, but they are well cared for by greasing and covering with paper.



775 013

13. Purchases of Production

None

14. Condition of Operation

A. No. of Employees

	Administrative	Technical	Labourers	Others	Total
Male	0	0	3	0	3
Female	0	0	0	0	0
Total	0	0	3	0	3

B. Condition of Production.

No productive operation is going on because this plant has been closed.

*S. Shirakase*  
President,

Nitto Precision Machinery Co., Ltd.



775 013

Nitto Precision Machinery Co., Ltd.  
(Nitto Seiko Kabushiki Kaisha)

20 Umegahata, Inokura, Ayabe-cho, Kyoto-fu.

Copy

14

18 August 1947

Subject: Application for a permit of an addition to the list of the articles to be manufactured by the reconverted company authorized by the SCAP.

To : The General Headquarters for the Allied Powers.

Attention: Kyoto Military Government Team, Kyoto

From : Nitto Precision Machinery Co., Ltd.  
(Nitto Seiko Kabushiki Kaisha)

Reason for application:

Since 6th December 1945 when we were favoured a reconversion permit by the I Corps, we have been engaged in the production of the articles authorized by the permit but so far as the silk reeling machines are concerned, we have nearly completed its manufacturing schedule for the time being, leaving some room of producing capacity for some other items of articles. Accordingly we want to manufacture parts of photographing apparatus and automobile parts as a subcontractor of the companies mentioned in par. 10.

We earnestly desire to begin production of those parts as soon as possible upon obtaining of your permit to which we are looking forward with much thanks.

1. Name of Plant: 1st Plant of Nitto Precision Machinery Co., Ltd.

2. Location of Plant: 20 Umegahata, Inokura, Ayabe-cho, Kyoto-fu.

3. Name of Products planned:

- a) Parts of camera
- b) Small parts of automobile

4. Experience of the Products Planned:

We have no experience in the production of camera parts but we have been manufacturing similar articles to those in the manufacturing of precise tool machines for the last ten years. We have never manufactured automobile parts in the past but we have been engaged in the production of auto-rear cars since the surrender in accordance with the permit. The parts of the motor-car which we are going to make are utterly similar to those of the auto-rear cars in shape and other points and so there is no unfamiliar processes for us in the new production. We have ten years' experience in the similar articles production.



5. An annual record of production from 1939 to 1947:  
As per annex No.1.

6. Monthly scale of production planned for period on this application:

Name of Products	Number of parts per one unit	Monthly Output	
		This year('47)	Next year('48)
Parts of Camera	30 pieces	300 units	500 units
Small parts of Automobile	40 pieces	50 units	50 units

7. Period of desired permit:

6 months (six months) after granted permit.

8. Scale of changes in physical facilities for production of desired articles upon receipt of permit:

The present facilities in the plant are good enough for the production of the desired articles and therefore there is no need to change them in the least.

9. Intended Expenses for use of designated facilities in production of desired articles:

None

10. Name and Location to which products are to be delivered.

a) Parts of Camera.

Chiyoda Optical Precision Machinery Co., Ltd.  
(Chiyoda Kogaku Seiko Kabushiki Kaisha)  
26 Kitakyutaro-machi 3-chome, Higashi-ku, Osaka-shi.

b) Small parts of automobile

Kyoto Engineering Works, Mitsubishi Heavy Industries, Ltd.  
(Kyoto Kiki Seisakusho, Mitsubishi Jukogyo Kabushiki Kaisha)  
1 Kawashima-mie-cho, Ukyo-ku, Kyoto-shi.

11. Whether or not reconversion permit is granted:

Permit is granted as per annex No.2.

12. Description of estimated machines and facilities to be used in the production of desired camera and automobile parts.

a) For parts of camera.

Code No.	Name of Machine
22-14 - 9	Lathe-bench type-hand screw
" 10	"
" 11	"
" 12	"
" 22	"
" 23	"
" 133	Drilling machine-bench type
" 136	"
" 202	Milling machine-bench and hand
" 203	"
Total	10



b) For small parts of auto-mobile.

Code No.	Name of Machine
22-14- 62	Lathe-engine-standard
" 63	"
" 64	"
" 65	"
" 66	"
" 212	Milling machine-knee type vertical standard size No.1
" 213	"
Total	7

*S. Shirahase*

President

Nitto Precision Machinery Co., Ltd.



775 013

Annex No.1

Record of Actual Production (1939 - 1947)

Article	Seriplane	Denier balance, Humidity conditioning machine, Dial gauge	Nitto watch Barometer	Brush of sending & receiving set, Exciting stater, Receiving yoke	12 cont Anem
Used for	Raw silk conditioning	Raw silk conditioning and testing	Barometer	Parts for electric machine	Part navi
1939	14 sets	152 pieces	198 pieces	11,230 pieces	
1940	14	124	297	11,230	
1941	7	142	248	20,214	
1942	6	124	198	25,876	
1943	4	142	198	16,845	
1944	4	89	198	16,845	
1945	0	99	150	5,615	
1946	19	369	0	0	
1947	70	535	0	0	



775 013

tion (1939 - 1947)

ush of sending receiving set, aiting stater, ceiving yoke	12 notches controller. Anemometer	Link of apparatus for ladder and elevator	Volt meter and ammeter	Farm t
rts for electric machine	Parts for navigation	Parts for air navigation (term: 2years and 3 months)		
11,230 pieces	5,460 <sup>pieces</sup>	0	0	0
11,230	4,550	0	0	0
20,214	4,550	0	0	0
25,876	7,280	0	0	0
16,845	9,050	0	0	0
16,845	6,825	1,310 pieces	0	0
5,615	5,460	2,620	0	0
0	0	0	8,800 sets	4,000
0	0	0	8,800 sets	2,100



775 013

Volt meter and ammeter	Farm tool	Small bakelite tool	Bolt, nut, gear, shaft etc.
		Part of silk reeling machine	Part of silk reeling machine
0	0	0	0
0	0	0	0
0	0	0	0
0	0	0	0
0	0	0	0
0	0	0	0
0	0	0	0
0	0	0	0
8,300 sets	4,000 pieces	100,000 pieces	100,000 pieces
8,800 sets	2,100 pieces	50,000 pieces	70,000 pieces



775 013

Small tool	Small bakelite tool	Bolt, nut, gear, shaft etc.	Bolt, nut, gear, shaft etc.
	Part of silk reeling machine	Part of silk reeling machine	Part of auto-rear cars
0	0	0	0
0	0	0	0
0	0	0	0
0	0	0	0
0	0	0	0
0	0	0	0
0	0	0	0
1000 pieces	100,000 pieces	100,000 pieces	12,000 pieces
100 pieces	50,000 pieces	70,000 pieces	7,000 pieces



Annex No.2

Headquarters I Corps  
APO 301 (Osaka Honshu)GMP/mw  
6 Dec. 45

AG. 319, 1-BA

Subject: Report of Resumption of production of Essential  
Civilian Commodities.To : Nitto Seiko Kabushiki Kaisha Ltd. 1st plant and 2nd  
plant, 20 Umegahata Inokura Ayabe-cho Ikaruga-gun,  
Kyoto Prefecture.

1. Under date 26 Nov., a permit was issued to you by the Sixth Army to produce in your plant at 20 Umegahata Inokura Ayabe-cho Ikaruga-gun Kyoto Prefecture, the items specified in annex No.1 to that permit:

- a, Auto-rearcars.
- b, Metres.
- c, Silk reeling machines.
- d, Waste cocoon treating machines.
- e, Cocoon boiling machines.
- f, Kitchen utensils.
- g, Farm tools.
- h, Farm product machines.
- i, Small bakelite tools for manufacturing raw silk.

2, Whenever production has begun on any one of the permitted items, you will immediately report in triplicate the date on which such production began. The report will be furnished to the Commanding General, Headquarters I Corps, attention: Military Government Section.

By Command of Major General Woodruff;

Peter Calza  
Col., AGD  
Adjutant GeneralInfo copies;  
MGO, 33 INF Div. (1)



775 013

091.422  
Econ Emps -

14-2

LIST OF MAINTENANCE STAFFS FOR REPARATION MACHINES

<u>POSITION</u>	<u>STATUS</u>	<u>NAME</u>	<u>REMARKS</u>
Superintendent	Director Plant, Manage	Saizo Saito	
Assistant (Clerks)	Office Staffs	Tomio Tanada	
" (Technicians)	"	Usaburo Ujimoto	
" "	"	Heizo Inoue	
" "	"	Kazuo Miyake	
"	Mechanician	Thuyoshi Nakajima	
"	"	Tamothu Nakamura	
"	"	Mithuo Ohara	
"	"	Yashuo Tabushi	
"	"	Yashuo Kitano	
" (Clerks)	Auxiliary Employees	Kiyoko Yoshida	
Maintenance Work-man	Office Staffe	Yashuji Tanaka	
"	Mechanician	Shiyochi Iwagami	
"	"	Masao Tathumi	
"	"	Nobuo Morohashi	Labor Union Representativ
"	"	Kiyochi Shugishima	
"	"	Minoru Ueda	
"	"	Yoshiaki Morinishi	
"	"	Tathuo Nagai	
"	"	Umeji Sakagami	
"	"	Chiyoze Kondo	
"	"	Hidenori Katayama	
"	"	Inochuke Mathuda	



775 013

<u>POSITION</u>	<u>STATUS</u>	<u>NAME</u>	<u>REMARKS</u>
Maintenance Work-man	Mechanician	Tomezo Horiguchi	
"	"	Hajime Ikuta	
Watchmen	Office Staffe	Yashuhiko Hirawa	
Watchmen	"	Masaji Sakajiri	Labor Union Representative
"	"	yaichiro Hitomi	"
"	"	Kaichi Ishizu	
"	"	Kisaboro Sasaki	
"	"	Hidekichi Yamanaka	
"	"	Usaburo Tanaka	
"	"	Hideji Sasaki	
"	"	Sintaro Ibaraki	
"	"	Siyoze Komori	
"	"	Tokutaro Kitazawa	
"	"	Mithutaro Maegawa	
"	"	Kazuo Nishida	
"	"	Narao Horai	
"	"	Shiyusai Chigami	
"	"	Yoshiji Hukuzumi	
"	"	Kuichiro Banda	
"	"	Yoshimasa Hukuoka	
"	"	Goichiro Ogawa	
"	"	Riyokichi Shimizu	
"	"	Kichitaro Horiguchi	



775 013

<u>POSITION</u>	<u>STATUS</u>	<u>NAME</u>	<u>REMARKS</u>
Watchmen	Auxiliary Employees	Yathuo Segawa	
"	"	Sojiro Kojima	
"	"	Keizo Takahashi	
"	"	Nobore Ishikawa	
"	"	Saburo Tani	
"	"	Toshimasa Yamaji	
<u>TOTAL</u>		52	



775 013

00  
3

Nitto Precision Machinery Co., Ltd.  
20 Umegahata, Inokura, Ayabe-cho, Kyoto-fu

June 25, 1948

Subject: Report on Name, Position and Kind of work of Superintendent, assistant superintendent etc.

From : Nitto Precision Machinery Co., Ltd., 1st Plant.  
(Nitto Seiko Kabushiki Kaisha, Dai-ichi Koba)

Name	Position	Kind of work	Remarks
S. Shirahase	President	Superintendent	None Union Member
Y. Fukui	Technician	Assistant Superintendent	"
T. Kato	Clerk	ditto	"
A. Oshima	Technician	Clerk	Partner of union
I. Watanabe	Technician	Clerk	Member of union
H. Nishimura	Technician	Keeper	ditto
S. Otsuki	Technician	ditto	Partner of union
T. Kitamura	Technician	ditto	ditto
K. Yoshizaki	Technician	ditto	Member of union
A. Murata	Technician	ditto	Partner of union
H. Takeshita	Technician	ditto	Member of union
K. Maruoka	Technician	ditto	ditto
Y. Otsuki	Technician	ditto	ditto
K. Ogino	Clerk	Protector	Partner of union
K. Asakura	Clerk	ditto	ditto
M. Noda	Clerk	ditto	Member of union
T. Fujii	Clerk	ditto	Partner of union
M. Shikata	Clerk	ditto	ditto
K. Murakami	Worker	ditto	ditto
S. Saeki	Worker	ditto	ditto



Nitto Precision Machinery Co., Ltd.  
20 Umegahata, Inokura, Ayabe-cho, Kyoto-fu

June 25, 1948

Subject: Report on Name, Position and kind of work of  
superintendent, etc.

From : Nitto Precision Machinery Co., Ltd., 2nd Plant.  
(Nitto Seiko Kabushiki Kaisha, Dai-ni Koba)

Name	Position	Kind of work	Remarks
T. Morita	Clerk	Superintendent	None Union Member
Tokuji Nishiyama	Clerk	Assistant Superin- tendent	"
Takeji Nishiyama	Technician	ditto	Chairman of union
M. Seki	Clerk	Clerk	Partner of union
T. Watanabe	Technician	Clerk	ditto
T. Kawane	Worker	Keeper	ditto
S. Deguchi	worker	ditto	ditto
S. Obata	worker	ditto	ditto
H. Yamashita	Clerk	Protector	ditto
M. Okamoto	worker	ditto	ditto
K. Shimizu	worker	ditto	ditto
Y. Umehara	Clerk	ditto	ditto
T. Yamashita	Clerk	ditto	ditto
T. Okada	<del>Technician</del> Clerk	ditto	ditto



775 013

14

Form A-5


1. Name of Firm

Romaji: Nitto Seiko K. K. Kanji: 日東精工株式会社

2. Address.

Romaji: Kyoto-fu Ikaruga-gun Ayabe-do  
Inokura Unegahata 20-banchi.

Kanji: 京都府何鹿郡綾部町井倉梅畑二十番地

3. Name of Plant.

Romaji: Dai Ichi Koba: Kanji: 第一工場

4. Address.

Romaji: Kyoto-fu Ikaruga-gun Ayabe-sho  
Inokura Unegahata 20-banchi

Kanji: 京都府何鹿郡綾部町井倉梅畑二十番地

5 (e) Matters on reconversion permit

I Items permitted:

- (a) Auto-rear cars
- (b) Meters
- (c) Silk reeling machines
- (d) Waste cocoon treating machine
- (e) Cocoon boiling machines
- (f) Kitchen utensils
- (g) Farm tools
- (h) Farm product machines.
- (i) Small bakelite tool for manufacturing raw silk.

Date of permit: 25. Nov. 1945

The Name of Army which issued reconversion permit: The 6th Army.

F Date of re-start by the permit: 25. Nov. 1945



775 013

## Form A-5

## 6 Products at capacity production with present workable equipment

(a) at the end of war

Description	Quantity per month	Value in yen
Measuring instruments	3 set	4.500.
Meteorological machines	10 set	25.000
Parts of telegraphic & electric instruments	250 pieces	5.000
Parts of navigation machine	2.070 pieces	45.000
Aircraft parts	250 pieces	71.000
	Total	152.500

(d) Actual production in May 1946

Description	Quantity per month	Value in yen
Parts of meters	25 set	3,783.22
Parts of silk reeling <sup>raw</sup> machine	3,9414 pieces	69,260.00
Part of auto-rearcar	11,009 pieces	40,804.19
Farming tool	600 pieces	22,922.05
Others	2,095 pieces	4,832.83
	Total	141,602.29

89) Main production, if any, before the war and date established of Firm and this plant:

Seriplane ( Rawsilk conditioning machine)

Denier balance ( Testing denier of a raw silk thread)

Dial gauge

Chronometer

Barometer

Date of establishment.

Feb.11,1938



775 013

Form A-5

## 7 Equipment in Plant

## A Production equipment

Description	No. of Units
Machine tools	262
Welding machines	4
Gilding equipment	6
Industrial machines	12
Others	3

## B Auxiliary equipment

Description	No. of Units
Electric motors	72
Electric transformers	7
Electric generator	7
Electric furnaces	5
Testing machines	17
Others	37

*J. Marita*

## Remarks:

The red circles in the column of "Remark" means the machinery to be used in future production.



775 013

Form A-5

Name of Firm. Romaji: Nitto Seiko K. K. Kanji: 日東精工株式会社  
 Address. Romaji: Kyoto-fu Ikaruga-gun Ayabe-cho Kanji: 京都府何鹿郡  
 Inokura Umegahata 20 井倉梅夕畑 20 綾部町  
 Name of Plant. Romaji: Dai-ichi Kaba Kanji: 第一工場  
 Address. Romaji: Kyoto-fu Ikaruga-gun Ayabe-cho Kanji: 京都府何鹿郡  
 Inokura Umegahata 20 井倉梅夕畑 20 綾部町

7. A Production equipment.

Description	Capacity	Type	No. of unit	Mark	Remarks
Bench lathe without lead screw	swing 350m/m Max. center distance 500m/m	belt drive	3	1-3	
"	swing 1000m/m Max. center distance 1000m/m	"	10	4-13	5.7.8.9. 11.12.13
"	swing 1000m/m Max. center distance 2000m/m	"	8	14-21	21. 17.18.19
"	swing 1300m/m Max. center distance 2200m/m	"	2	22-23	23
"	swing 800m/m Max. center distance 1000m/m	belt drive floor type	1	24	
"	swing 2000m/m Max. center distance 3500m/m	belt drive	1	25	
"	swing 2000m/m Max. center distance 3500m/m	"	7	26-32	
"	swing 1400m/m Max. center distance 1800m/m	"	1	33	
"	swing 1600m/m Max. center distance 1800m/m	"	5	34-38	
<i>Screw cutting bench lathe with lead screw</i>	swing 1700m/m Max. center distance 2500m/m	"	1	39	
Screw cutting bench lathe with lead screw	swing 750m/m Max. center distance 1100m/m	"	2	40-41	
Bench lathes with lead screw	swing 2400m/m Max. center distance 2500m/m	"	2	42-43	
Horizontal lathes with lead screw	swing 2000m/m Max. center distance 3400m/m	belt drive floor	6	44-49	
"	swing 2300m/m Max. center distance 4000m/m	"	6	50-55	
"	swing 3200m/m Max. center distance 5000m/m	"	14	56-69	57.58.59. 60.61.62. 63.64.65. 66.68.67. 69.
"	swing 3700m/m Max. center distance 7200m/m	"	17	70-78	86. 70. 74



775 013

Form A-5

Name of Firm. Romaji: Nitto Seiko K. K. Kanji: 日東精工株式会社  
 Address. Romaji: Kyoto-fu Ikaruga-gun Ayabe-cho Kanji: 京都府伊賀郡  
 Inokura Umegahata 20 井倉梅ヶ畑 20 鹿部町

Name of Plant. Romaji: Dai Ichi-Koba Kanji: 第一工場

Address. Romaji: Kyoto-fu Ikaruga-gun Ayabe-cho Kanji: 京都府伊賀郡  
 Inokura Umegahata 20 鹿部町井倉梅ヶ畑 20

7. A Production equipment (cont'd)

Description	Capacity	Type	No. of Unit	Mark	Remarks
Horizontal lathes with lead screw	swing 240m/m Max. center distance 500m/m	Belt drive	3	87-89	
"	swing 280m/m Max. center distance 500m/m	"	4	90-93	92, 91
"	swing 260m/m Max. center distance 550m/m	meter drive	1	94	
"	swing 430m/m Max. center distance 550m/m	"	1	95	
"	swing 270m/m Max. center distance 720m/m	"	2	96-97	
"	swing 350m/m Max. center distance 560m/m	"	1	98	
"	swing 270m/m Max. center distance —	belt drive	4	99-102	
"	swing 340m/m Max. center distance 450m/m	"	1	103	
"	swing 200m/m Max. center distance 747m/m	meter drive	13	104-116	109, 110, 111, 112, 113, 114, 115
"	swing 440m/m Max. center distance 950m/m	"	1	117	
"	swing 440m/m Max. center distance 850m/m	belt drive	6	118-123	119, 120, 121, 122, 123
Turret lathes with hor. turret axis	swing 57m/m Max. center distance 685m/m	"	1	124	
"	swing 360m/m Max. center distance 1000m/m	"	1	125	
"	swing 150m/m Max. center distance 250m/m	meter drive	1	126	
Vertical radial drilling machine	swing 900m/m Max. center distance 1200m/m to column	"	1	127	
"	swing 900m/m Max. center distance to column 1150m/m	"	1	128	



775 013

Form A-5

Name of Firm. Romaji: Nitto Seiko K. K. Kanji: 日東精工株式会社  
 Address. Romaji: Kyoto-fu Ikaruga-gun Ayabe-cho Inokura Umegahata 20

Kanji: 京都府何鹿郡綾部町井倉梅夕畑20  
 Name of Plant. Romaji: Dai Ichi Kobe. Kanji: 第一工場

Address. Romaji: Kyoto-fu Ikaruga-gun Ayabe-cho Inokura Umegahata 20

Kanji: 京都府何鹿郡綾部町井倉梅夕畑20

7, A Production equipment (cont'd)

Description	Capacity	Type	No. Of unit	Mark	Remarks
Sensitive drilling machine	swing 500m/m Max. distance to column 180m/m	belt drive	2	129-130	
"	swing 400m/m Max distance to column 160m/m	"	1	131	
Bench drilling machine with three spindle	swing 60m/m Max distance to column 60m/m	"	1	132	
Vertical drilling machine	swing 100m/m Max. distance column 150m/m	meter drive	1	133	
Bench drilling machine	swing 100m/m Max. distance column 220m/m	"	10	134-136, 137-143	
"	swing 200m/m Max. distance to column 200m/m	"	1	144	
"	swing 180m/m Max. distance to column 205m/m	"	2	145-146	
Sensitive drilling machine	swing 120m/m Max. distance to column 160m/m	belt drive	1	147	
"	swing 120m/m Max. distance to column 160m/m	"	1	148	
"	swing 150m/m Max. distance to column 170m/m	"	1	149	
Vertical tapping machine	Max. Dia. of thread 10m/m pitch 20%	meter drive	1	150	
Thread milling machine	Max. dia. of thread 30m/m pitch 1.5%	"	2	151-152	
Gear hobbing machine	Max. dia. of gear 600m/m Max width of gear 125m/m	"	1	153	
Gear hobbing machine	Max. dia. of gear 500m/m Max. width of gear 120m/m	belt drive	1	154	
"	Max. dia. of gear 150m/m Max. width of gear 150m/m	meter drive	15	155-169	155.156. 157.160. 161.162. 163.164
Gear cutting machine with three spindle	Max. dia. of gear 55m/m Max. width of gear 3m/m	belt drive	6	170-175	



775 013

Form A-5

Name of Firm. Romaji: Nitte Seiko K. K. Kanji: 日東精工株式会社  
 Address. Romaji: Kyoto-fu Ikaruga-gun Ayabe-cho Inokura Umegahata 20

Kanji: 京都府何鹿郡綾部町井倉梅ヶ畑20  
 Name of Plant. Romaji: Dai-Ichi Koba. Kanji: 第一工場

Address. Romaji: Kyoto-fu Ikaruga-gun Ayabe-cho Inokura Umegahata 20

Kanji: 京都府何鹿郡綾部町井倉梅ヶ畑20

7. A(continued) Production equipment (Cont'd)

Description	Capacity	Type	No. of unit	Mark	Remarks
Bevel gear generating machine	Max. dia. of gear 350m/m Min. dia of gear drive 250m/m	belt drive	1	176	○
"	Max. dia of gear 80m/m	"	1	177	○
Fellow gear shaper	Max. dia of gear 350m/m Max. width of gear 100m/m	Meter drive	1	178	
"	Max. dia of gear 350m/m Max. <del>dia</del> Width of gear 100m/m	"	1	179	
Shaping machine	Max. stroke 8 inch	belt drive	3	182 } 180-}	182 } ○
"	Max. stroke 14 inch	Meter drive	2	183- 184	○
"	Max. stroke 18 inch	Belt drive	1	185	○
"	Max. stroke 350m/m	m	1	186	
Slotting machine	Max. stroke 120m/m	meter drive	1	187	
Horizontal cylindrical grinding machine	Swing 180m/m Max. center distance 300m/m	"	1	188	○
"	swing 150m/m Max. center distance 750m/m	"	1	189	○
"	swing 130m/m Max. center distance 150m/m	"	1	190	○
"	swing 130m/m Max. center distance 150m/m	belt drive	1	191	
Tool grinding machine	swing Max. center distance	meter drive	1	192	○
"	Max. dia of wheel 10 inch	"	1	193	○
"	Max. dia of wheel 12 inch	belt drive	1	194	○



775 013

Form A-5

Name of Firm. Romaji: Nitto Seiko K. K. Kanji: 日東精工株式会社

Address. Romaji. Kyoto-fu Ikaruga-gun Ayabe-cho Inokura Umegahata 20

京都府何鹿郡綾部町井倉梅ヶ畑20

Name of Plant. Romaji: Dai Ichi Koba. Kanji: 第一工場

Address. Romaji: Kyoto-fu Ikaruga-gun Ayabe-cho Inokura Umegahata 20

Kanji: 京都府何鹿郡綾部町井倉梅ヶ畑20

7. A Production equipment (cont'd)

Description	Capacity	Type	No. of unit	Mark	Remarks
Tool grinding machine	Max. dia of wheel 12 inch	belt drive	1	195	○
"	Max. dia of wheel 8 inch	motor drive	1	196	○
"	Max. dia of wheel 8 inch	"	1	197	○
"	"	"	1	198	○
"	"	"	1	199	○
Buff grinding machine	Max. dia of wheel 12 inch	belt drive	1	200	○
"	"	"	1	201	○
"	"	"		202-	
Plain milling machine	Table size 100X540	motor drive	2	203	○
"	Table size 130X160	belt drive	1	204	
"	Table size 220X1000	"	1	205	
"	Table size 220X1000	"	1	206	○
"	Table size	motor drive	2	207-208	○ 207. 208.
"	Table size	"	2	209-	
Vertical spindle milling machine	Table size 180X500	"		210	
"	Table size 250X800	"	5	211-215	○
"	"	"	4	216-219	○ 216. 217
"	Table size 250X800	"	2	220-221	○ 221



775 013

Form A-5

Name of Firm. Romaji: Nitto Seiko K. K. Kanji: 日東精工株式会社

Address. Romaji: Kyoto-fu Ikaruga-gun Ayabe-cho Inokura

Kanji: 京都府何鹿郡綾部町井倉梅ヶ畑20  
Umegahata 20

Name of Plant. Romaji: Dai Ichi Kobe. Kanji: 第一工場

Address. Romaji: Kyoto-fu Ikaruga-gun Ayabe-cho Inokura

Kanji: 京都府何鹿郡綾部町井倉梅ヶ畑20  
Umegahata 20

7. A Production equipment (cont'd)

Description	Capacity	Type	No. of unit	Mark	Remarks
Vertical spindle milling machine	swing 60m/m Max. distance to column 150m/m	belt drive	1	222	
Bench universal milling machine	swing 100m/m max. center distance 350m/m	"	6	223, 228	225, 226 228
Universal milling machine	table size ———	"	1	229	⊙
Shearing machine	thickness of cutting 3m/m length of cutting 1300m/m	motor drive	1	230	⊙
Shearing machine operated by hand	thickness of cutting 2, 3m/m length of cutting 152m/m	"	1	231	
Punching machine operated by hand		H type screw			
"		hand	1	232	⊙
"		"	1	233	⊙
"		"	1	234	⊙
"		single arm screw hand eccentric hand press	1	235	
Punching machine operated by machine mechanically		eccentric press	1	236	⊙
Punching machine operated by hand		"	1	237	⊙
"		"	1	238	
Punching machine operated mechanically		motor drive	1	239	
"		belt drive	1	240	⊙
"		"	1	241	⊙
"		"	1	242	⊙



775 013

Form A-5

Name of firm. Romaji: Nitte Seike K. K. Kanji: 日東精工株式会社

Address. Romaji: Kyoto-fu Ikaruga-gun Ayabe-cho Inokura  
Unegahata 20

Kanji: 京都府何鹿郡綾部町井倉梅ヶ畑20

Name of Plant. Romaji: Dai Ichi Koba. Kanji: 第一工場

Address. Romaji: Kyoto-fu Ikaruga-gun Ayabe-cho Inokura  
Unegahata 20

Kanji: 京都府何鹿郡綾部町井倉梅ヶ畑20

7, A Production equipment (cont'd)

Description	Capacity	Type	No. Of Unit	Mark	Remarks
Friction press. operated mechanically	1	Meter drive	1	243	○
Hammers operated mechanically		Belt drive	3	244-246	○
Hack sawing machine	length of saw 15 inch	motor drive	2	247-248	○
Horizontal spindle surface grinding machine			3	249-251	○ 249-250
"			1	252	
Garning machine		meter drive floor type	1	253	○
Straight graduating machine			1	254	○
Circular graduating machine			1	255	○
Grinder cutting-off machine		motor drive floor type	1	256	○
Bearing grinding machine		meter drive	1	257	
Gear lapping machine		Belt drive	2	258-259	
Internal grinding machine		meter drive	1	260	○
Horizontal lathe with lead screw		"	1	261	○ borrowing from Aichi Koku K.K.
Universal milling machine		belt drive	1	262	○ "
Fellow gear shaping machine		meter drive	1	263	○ borrowing from Nakajima Koku K.K.
Plain milling machine		belt drive	1	264	○ borrowing from Aichi Koku K.K.



775 013

Form A-5

Name of Firm. Romaji: Nitte Seiko K. K. Kanji: 日興精工株式会社

Address. Romaji: Kyoto-fu Ikaruga-gun Ayabe-cho Inokura  
Umegahata 20

Kanji: 京都府何鹿郡綾部町井倉村久野20

Name of Plant. Romaji: Dai Ichi Koba. Kanji: 第一工場

Address. Romaji: Kyoto-fu Ikaruga-gun Ayabe-cho Inokura  
Umegahata 20

Kanji: 京都府何鹿郡綾部町井倉村久野20

7.A Production equipment (cont'd)

Description	Capacity	Type	No. of unit	Mark	Remarks
Gas welder		oxy-acetylene welding type	1	265	○
Electric welder		arc-welding type	1	266	○
"		resistance welding Type	1	267	
Hydraulic press		By hand	2	284-285	○
Press operated by hand			4	286-289	286, 287, 288
Electric welder			1	333	
Gilding barrel		static type	1	295-300	○
Circular sawing machine		belt drive	1	406	○
"		"	1	407	○
Mixture		"	1	408	○
Crusher		"	2	409-410	○
Press operated by hand			1	411	○
Marking off plate			1	292	
"			2	293-294	
Wood turning lathe			1	1-B	
Band sawing lathe			1	2-B	



775 013

Form A-5

Name of Firm. Romaji: Nitte Seiko K. K. Kanji: 日東精工株式会社

Address. Romaji: Kyoto-fu Ikaruga-gun Ayabe-cho Inokura  
Umegahata 20  
京都府何鹿郡綾部町井倉池ノ端20

Name of Plant. Romaji: Dai Ichi Koba. Kanji: 第一工場

Address. Romaji: Kyoto-fu Ikaruga-gun Ayabe-cho Inokura  
Umegahata 20

Kanji: 京都府何鹿郡綾部町井倉池ノ端20

7,B Auxiliary equipment

Description	Capacity	Type	No. of Unit	Mark	Remarks
Transformer	single phase 100KVA 60ac		2	268-269	○
"	3 phase 75KVA 60A.c		1	270	○
"	single phase 10KVA 60A.c		1	271	
"	single phase 3KVA <sup>50</sup> 60A.c		1	272	
"	single phase 2KVA 60A.c		1	273	
High Voltage testin transformer	single phase 100000 KVA		1	274	
Induction regulator	3 phase 30 KVA 60A.c	B.R.H.	2	275-276	
"	single phase 4KVA 60A.c	E.R.H. type	1	278	
R.E.C. Induction reg ulator	single phase 1KVA 60A.c	I.A.R. type	1	277	
Receiving board	200KVA		1	279	○
Switth board	100KVA		2	280-281	○
Marble electric switch board			1	283	
Air compreser		portab- le	2	290-291	○
<del>C Gilding barrel</del>	<del>about 0,3m</del>	<del>wooden box</del>	<del>1</del>	<del>295</del>	<del>○</del>
Ag- gilding barrel	"	"	1	296	○
Zn-gilding barrel	"	"	1	297	○



775 013

Form A-5

Name of Firm. Romaji: Nitto Seiko K. K. Kanji: 日東精工株式會社

Address. Romaji: Kyoto-fu Ikaruga-gun Ayabe-cho Inokura  
Umegahata 20

Kanji: 京都府何鹿郡綾部町并倉梅ヶ畑20  
Name of Plant. Romaji: Dai Ichi Koba. Kanji: 第一工場

Address. Romaji: Kyoto-fu Ikaruga-gun Ayabe-cho Inokura  
Umegahata 20

Kanji: 京都府何鹿郡綾部町并倉梅ヶ畑20

7. B Auxiliary equipment (cont'd)

Description	Capacity	Type	No. of unit	Mark	Remarks
<del>Cu gilding barrel</del>	<del>about 0.8m</del>	<del>wooden box</del>	<del>1</del>	<del>298</del>	
<del>Ni gilding barrel</del>	<del>"</del>	<del>"</del>	<del>1</del>	<del>299</del>	
<del>Rumbling and buffing machine</del>	<del>Dia of buff 200m/m</del>	<del>"</del>	<del>1</del>	<del>300</del>	
Shore hardness tester		Portable	1	301	
Vickers hardness tester			1	302	
Rockwell hardness tester			1	303	
Magnetic flaw searcher			1	304	
Screw tester with three wire method			1	305	
"			1	306	
Gear tooth tester	Dia of gear 100m/m		1	307	
Optical measuring machine			1	308	
Teel microscope			1	309	
Optical measuring machine			1	310	
Gear testing machine		Geneveir type	1	311	
Gear testing machine			1	312	
Recording machine			1	313	



775 013

Form A-5

Name of Firm. Romaji: Nitte Seiko K. K. Kanji: 日東精工株式会社

Address. Romaji: Kyoto-fu Ikaruga-gun Ayabe-cho Inakura  
Umagahata 20  
Kanji: 京都府何鹿郡綾部町井倉ヶ畑20

Name of Plant. Romaji: Dai Ichi Kobe. Kanji: 第一工場

Address. Romaji: Kyoto-fu Ikaruga-gun Ayabe-cho Inakura  
Umagahata 20  
Kanji: 京都府何鹿郡綾部町井倉ヶ畑20

7.3 Auxiliary equipment (cont'd)

Description	Capacity	Type	No. of unit	Mark	Remarks
Photo-enlarger		vertical	1	314	○
Metal-microphoto		horizontal	1	315	○
Single phase induction meter	1/16 H.P		1	316	
"	"		1	317	
"	"		1	318	
"	"		1	319	
"	1/4 H.P	Repulsion type	1	320	○
"	"	"	1	321	○
"	"	"	1	322	○
"	"	"	1	323	○
"	"	"	1	324	○
"	"	"	1	325	○
"	"	"	1	326	○
"	"	"	1	327	○
Direct current generator with meter			1	328	○
Single phase induction meter	1/4 H.P		1	329	○



775 013

Form A-5

Name of Firm. Romaji: Nitto Seiko K. K. Kanji: 日東精工株式会社

Address. Romaji: Kyoto-fu Ikaruga-gun Ayabe-cho Inokura  
Umegahata 20  
Kanji: 京都府何鹿郡綾部町井倉梅ヶ畑 20

Name of Plant. Romaji: Dai Ichi Kobo. Kanji: 第一工場

Address. Romaji: Kyoto-fu Ikaruga-gun Ayabe-cho Inokura  
Umegahata 20  
Kanji: 京都府何鹿郡綾部町井倉梅ヶ畑 20

7.3 Auxiliary equipment (cont'd)

Description	Capacity	Type	No. of Unit	Mark	Remarks
3 phase induction motor	1 1/2 H.P		1	330	○
1 phase induction motor	1/2 H.P		1	331	○
"	1/3 H.P		1	332	○ <i>Mistake</i>
3 phase induction motor	1/2 H.P		1	333	○
"	"		1	334	○
"	"		1	335	○
"	"		1	336	○
"	"		1	337	○
"	"		1	338	○
"	1 H.P		1	339	○
"	"		1	340	○
"	"		1	341	○
"	"		1	342	○
"	"		1	343	○
"	"		1	344	○
"	"		1	345	○
"	"		1	346	○



## Form A-5

Name of Firm. Romaji: Nitte Seiko K. K. Kanji: 日東精工株式会社

Address. Romaji: Kyoto-fu Ikaruga-gun Ayabe-cho Inokura

Umegahata 20

Kanji: 京都府何鹿郡綾部町井倉梅ヶ畑 20

Name of Plant. Romaji: Dai Ichi Koba. Kanji: 第一工場

Address. Romaji: Kyoto-fu Ikaruga-gun Ayabe-cho Inokura

Umegahata 20

Kanji: 京都府何鹿郡綾部町井倉梅ヶ畑 20

## 7.B Auxiliary equipment (cont'd)

Description	Capacity	Type	No. of Unit	Mark	Remark
3 phase induction motor	1 H.P.		1	347	○
"	"		1	348	○
"	1/2 H.P.		1	349	○
"	3 H.P.		1	350	○
"	"		1	351	○
"	"		1	352	○
"	5 H.P.		1	353	○
"	"		1	354	○
"	2.2 K W		1	355	○
"	5 H.P.		1	356	○
"	"		1	357	○
"	"		1	358	○
"	7 1/2 H.P.		1	359	○
"	"		1	360	○
"	"	Star-delta type	1	361	○
"	15 H.P.		1	362	○



775 013

Form A-5

Name of Firm. Romaji: Nitte Seiko K. K. Kanji: 日東精工株式会社

Address. Romaji: Kyoto-fu Ikaruga-gun Ayabe-cho Inokura  
Umegahata 20

Kanji: 京都府何鹿郡綾部町井倉梅ヶ畑 20

Name of Plant. Romaji: Dai Ichi koba. Kanji: 第一工場

Address. Romaji: Kyoto-fu Ikaruga-gun Ayabe-cho Inokura  
Umegahata 20

Kanji: 京都府何鹿郡綾部町井倉梅ヶ畑 20

7.3 Auxiliary equipment (cont'd)

Description	Capacity	Type	No. of Unit	Mark
3 phase induction motor	15 H.P.		1	363
Meter D.C. generator	400 Watt Volt 500/300	Enclosed self-ven- tirated	1	364
3 phase induction motor	3 H.P.		1	365
"	"		1	366
D.C meter	2 5 H.P	shunt wou- nd type	1	367
3 phase induction motor	5 H.P.		1	368
Direct current generator	1 K W	belt drive	1	369
Direct current generator with D. C meter		Enclosed self-venti- rated	1	370
1 phase alternating cur- rent generator with D.C meter	11 KVA	Frequeng 50 Volt 55	1	371
3 phase induction motor	1 H.P		1	372
"	3 H.P		1	373
Direct current generator with engine	1. 2 KW		1	374
"	1. 0 KW		1	375
Electric furnace	12 kw Max. tem. 1.000 C	1 phase	2	376-377
"	10 KW Max. Tem 1.400 C		1	378
Salt bath operated by electricity	42 KW Max. tem 1.350 C	1 phase	2	379-380



Form A-5

Name of Firm. Romaji: Nitto Seiko K. K. Kanji: 日東精工株式会社

Address. Romaji: Kyoto-fu Ikaruga-gun Ayabe-cho Inokura  
Umegahata 20

Kanji: 京都府何鹿郡綾部町井倉梅ヶ畑 20

Name of Plant. Romaji: Dai Ichi Kobe. Kanji: 第一工場

Address. Romaji: Kyoto-fu Ikaruga-gun Ayabe-cho Inokura  
Umegahata 20

Kanji: 京都府何鹿郡綾部町井倉梅ヶ畑 20

## 7.3 Auxiliary equipment (cont'd)

Description	Capacity	Type	No. Of Unit	Mark	Remarks
Electric pencil			1	381	
Heating furnace operated by electricity	Max. tem 120 °C Volt 240 cur rent 20A	1 phase	1	382	
<del>Electric welder</del>	<del>60 KVA</del>		<del>1</del>	<del>384</del>	
Marble distributed board	2000 KVA		2	384-385	
Switch board	12KW		2	386-387	
"			12	388-399	
Controller			5	400-404	
"			1	405	
Transformer for electric furnace	40 KW 60cycle	R T type	2	412-413	
Air-bomb with engine	125 liter 45 kg/cm <sup>2</sup>		1	414	
Saw sharpener		belt drive	1	415	
Polishing machine		operated	2	416-417	
Tension tester	500Kg	by hand	1	418	
Brinell hardness tester	300 Kg	Oil press type	1	419	
Tool grinding machine	Max. dia. of wheel 10 inch	Belt drive	1	420	



775 013

Form A-5

Name of Firm. Romaji: Nitte Seiko K. K. Kanji: 日東精工株式会社

Address. Romaji: Kyoto-fu Ikaruga-gun Ayabe-sho Inokura  
Umegahata 20

Kanji: 京都府何鹿郡綾部町井倉梅ヶ畑 20

Name of Plant. Romaji: Dai Ichi Koba. Kanji: 第一工場

Address. Romaji: Kyoto-fu Ikaruga-gun Ayabe-sho Inokura  
Umegahata 20

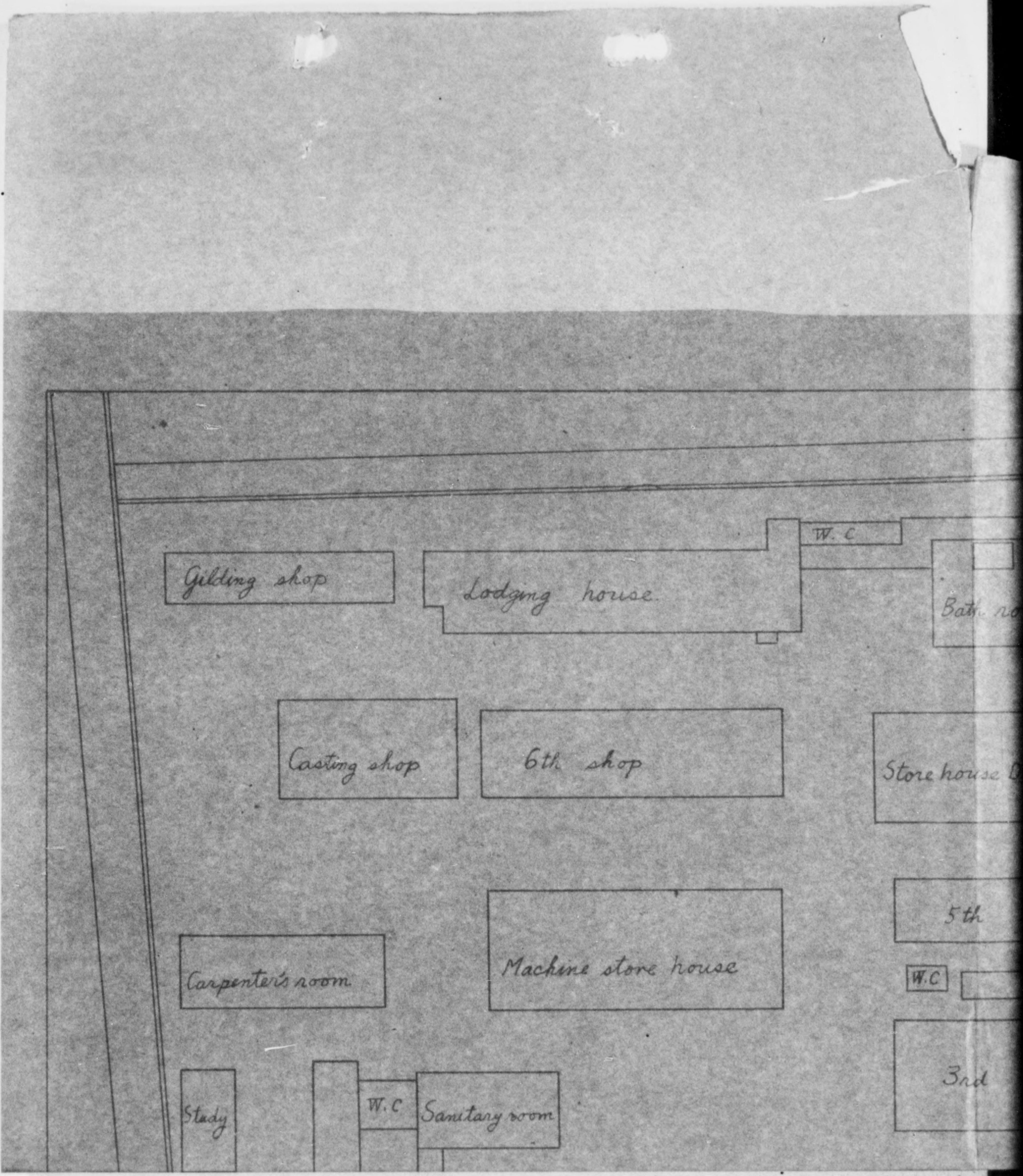
Kanji: 京都府何鹿郡綾部町井倉梅ヶ畑 20

7.3 Auxiliary equipment (cont'd)

Description	Capacity	Type	No. Of Unit	Mark	Remarks
Buffing machine	Max. dia of wheel 12 inch	belt drive	2	421-422	
D.C motor	1 H.P		1	10-D	
"	2 H.P.		1	11-D	
"	3 H.P		1	12-D	
"	"		1	13-D	
"	"		1	14-D	
"	"		1	15-D	
"	"		1	16-D	
3 phase induction motor	3 KW		1	17-D	
"	"		1	18-D	
"	"		1	19-D	
"	10 KW		1	20-D	
"	"		1	21-D	
"	"		1	22-D	
D.C motor	obscurity		1	23-D	

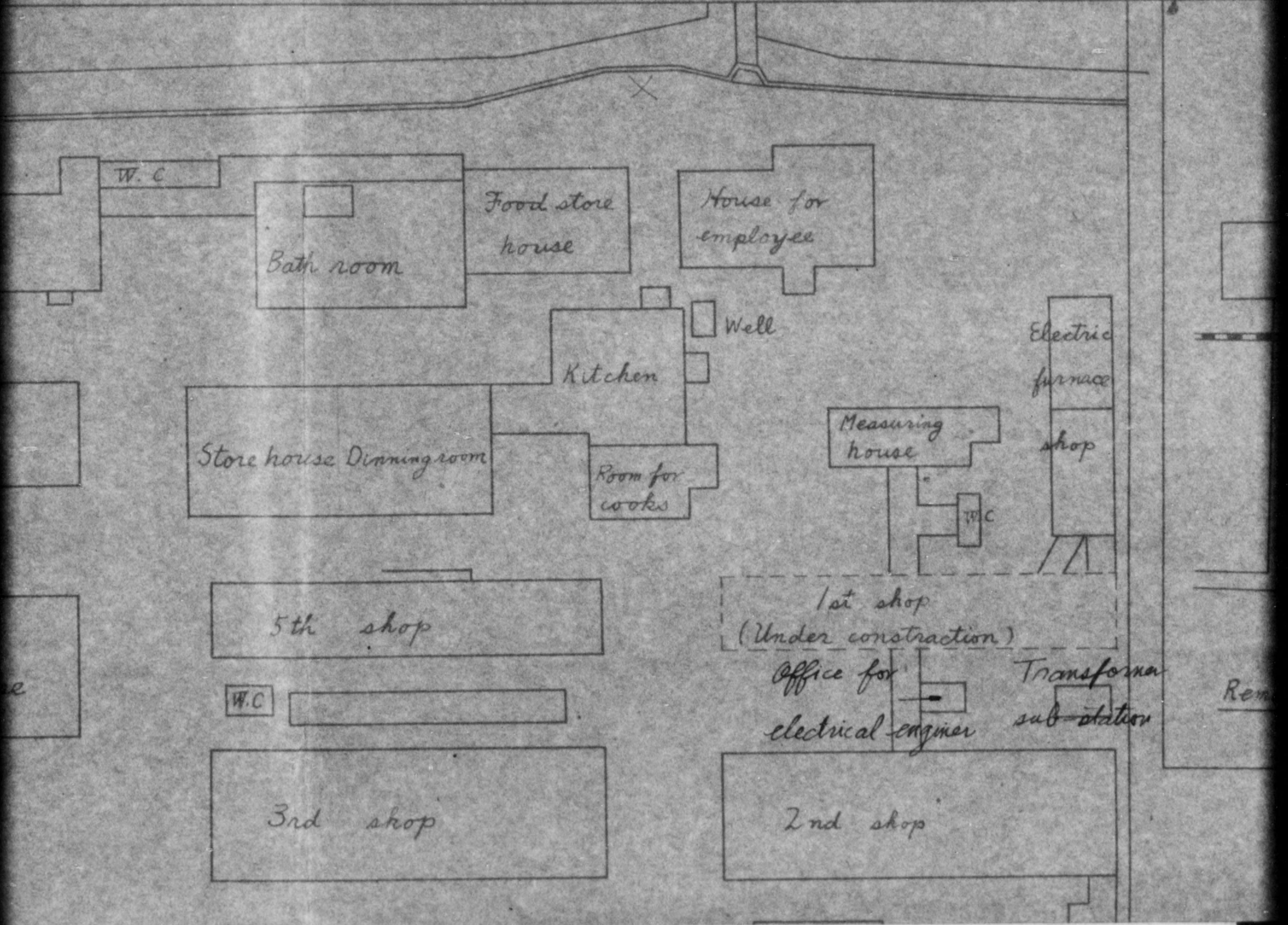


775 013



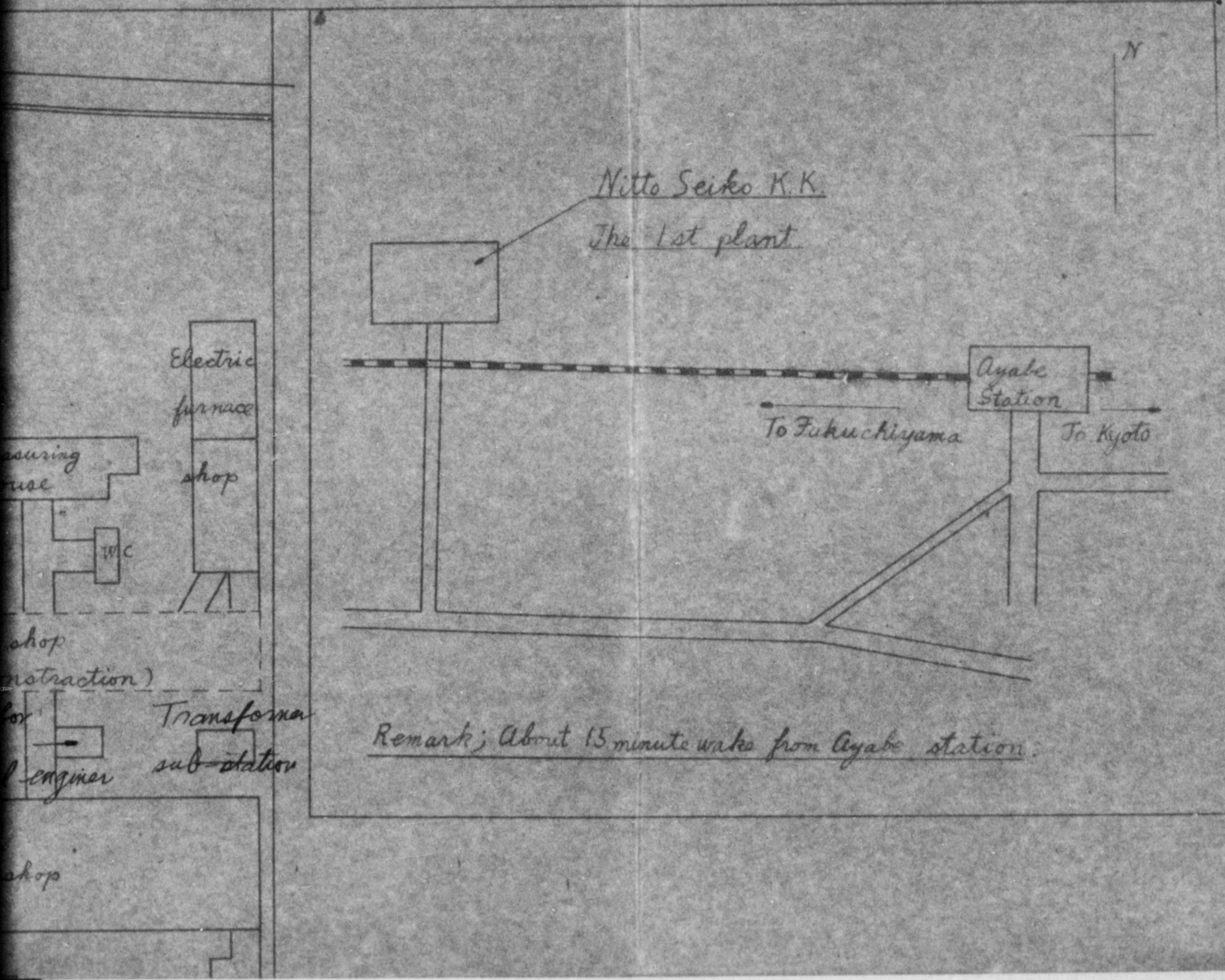


775 013



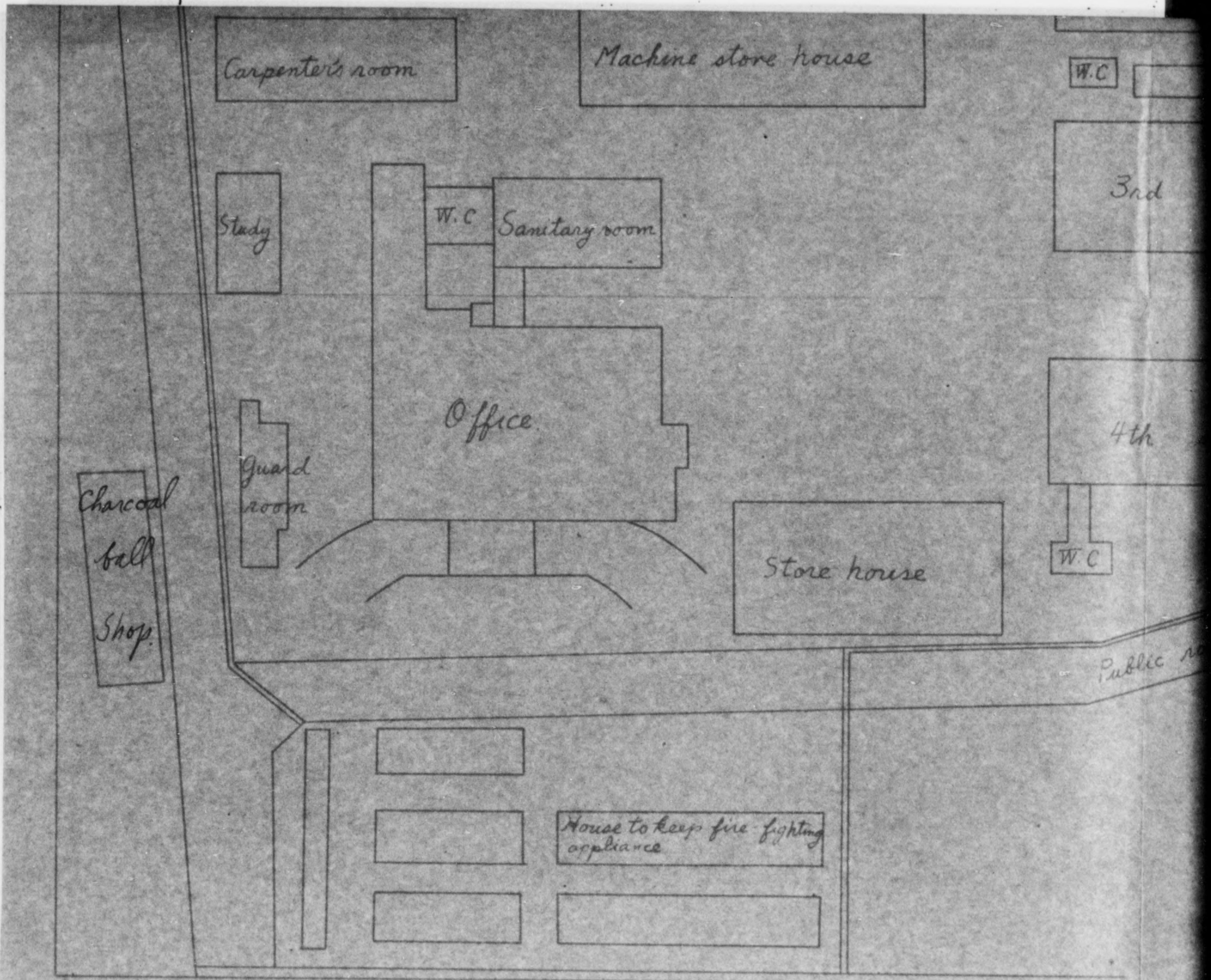


775 013



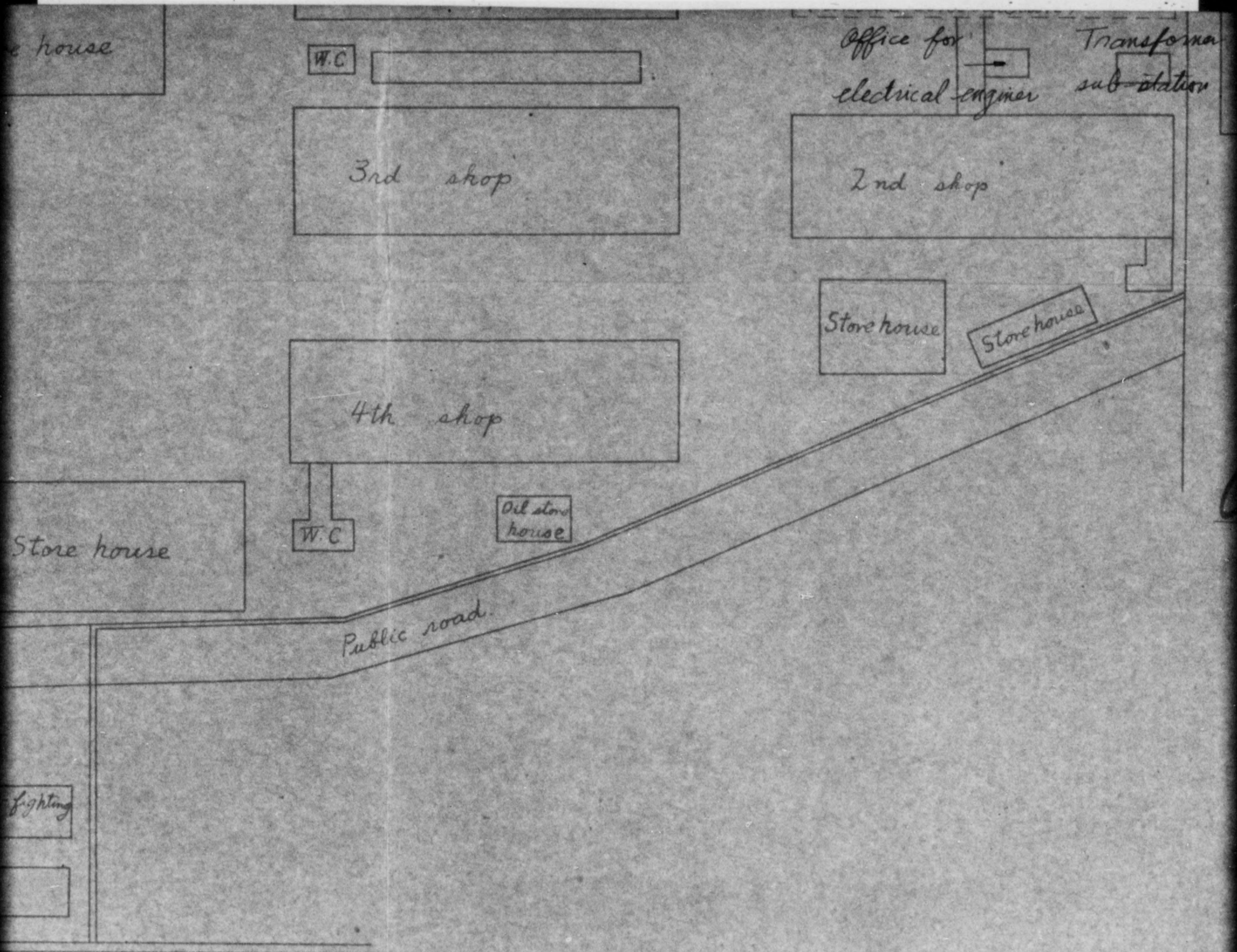


775 013



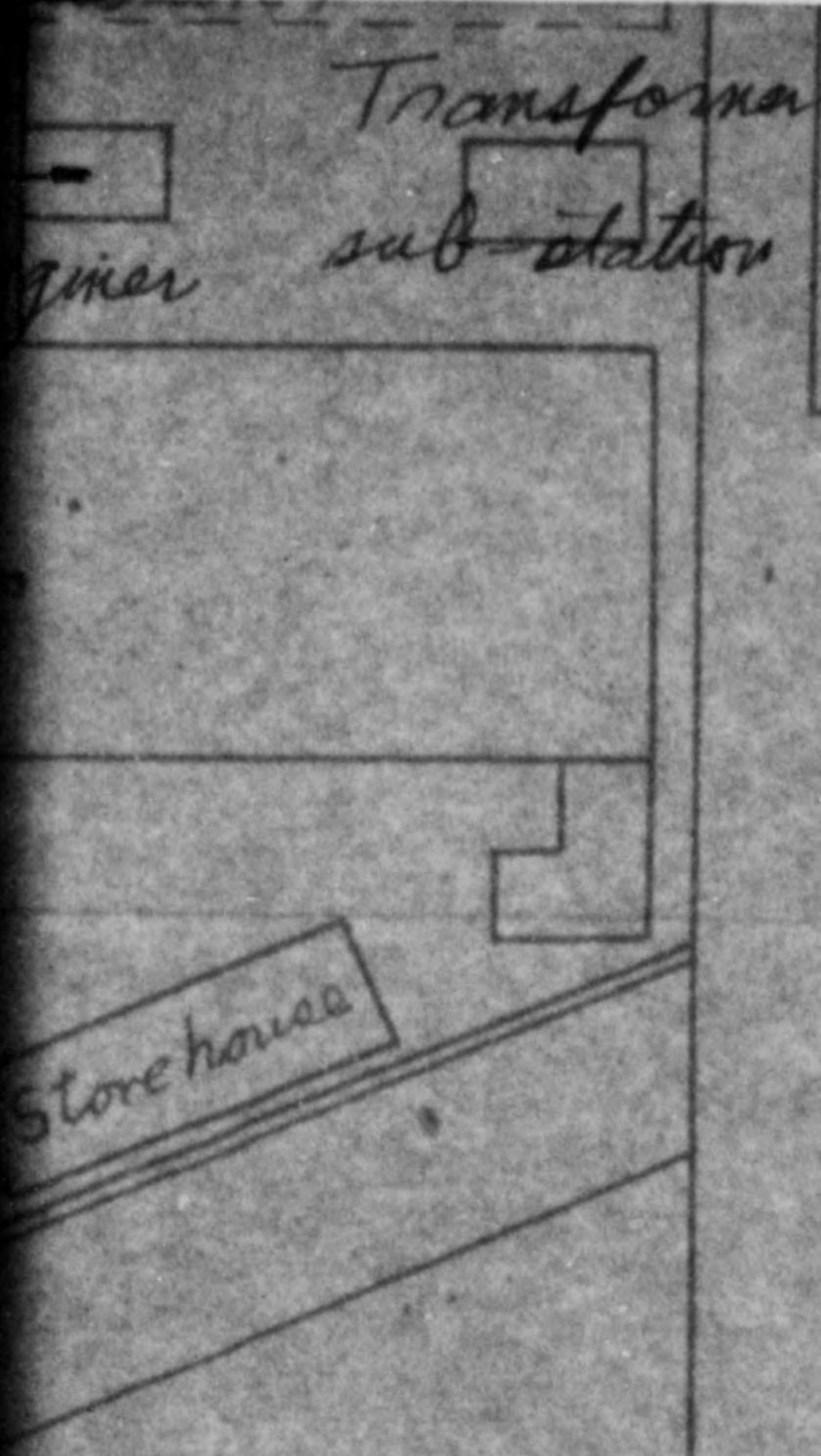


775 013





775 013



Remark; About 15 minute walk from Ayabe station.

Arrangement of Office, Shop, etc.

Nitto Seiko K.K. 1st Plant

(Scale  $\frac{1}{400}$ )



775 013

THE 2<sup>ND</sup> SH

○ 266

○ 265

292



775 013

E 2<sub>ND</sub> SHOP OF THE 1<sub>ST</sub> PLA

265

193

194

131

359

56

350



775 013

# PLANT

342

223

177

170

134

224

225

226

227

56

159

158

157

156

155

350



775 013

○244

○245

FURANCE

FURANCE



775 013

174

131

56

359

350

245

246

FURANCE

FURANCE



775 013

56

159

158

157

156

155

350

154

164

163

162

161

160

6

176

153

166

165

343



775 013

# THE 3<sup>TH</sup> SHO

129

130

117

120

118

62

61

60

59

70

63

71

72

73

74

75



775 013

# TH SHOP OF THE 1ST PLAN

		360				
20	121	195	185	122	123	

		180	181	182		
70					102	101
			387			
74	64	65	66	75	67	



775 013

# ST PLANT

122

123

262

128

102

101

100

99

88

87

75

67

76

77

68



775 013

○ 62

○ 61

○ 60

○ 59

○ 70

○ 63

71

72

73

○ 74

○ 211

○ 212

○ 213

○ 214

○ 215

○ 216



775 013

59	70				102	10
				387		
73	74	64	65	66	75	6

	215	216		207	220	
			192			196



775 013

102 101 100 99 58 57

75 67 76 77 68

220

293

115

114

196



775 013

# THE 4<sup>th</sup> SHO

O/113

O/112

O/111

O/110

O/109

135

294

O/127



773 013

# 4th SHOP OF THE 1st PL

0110

0109

108

107

106

294

0127

0183

0184

091

090

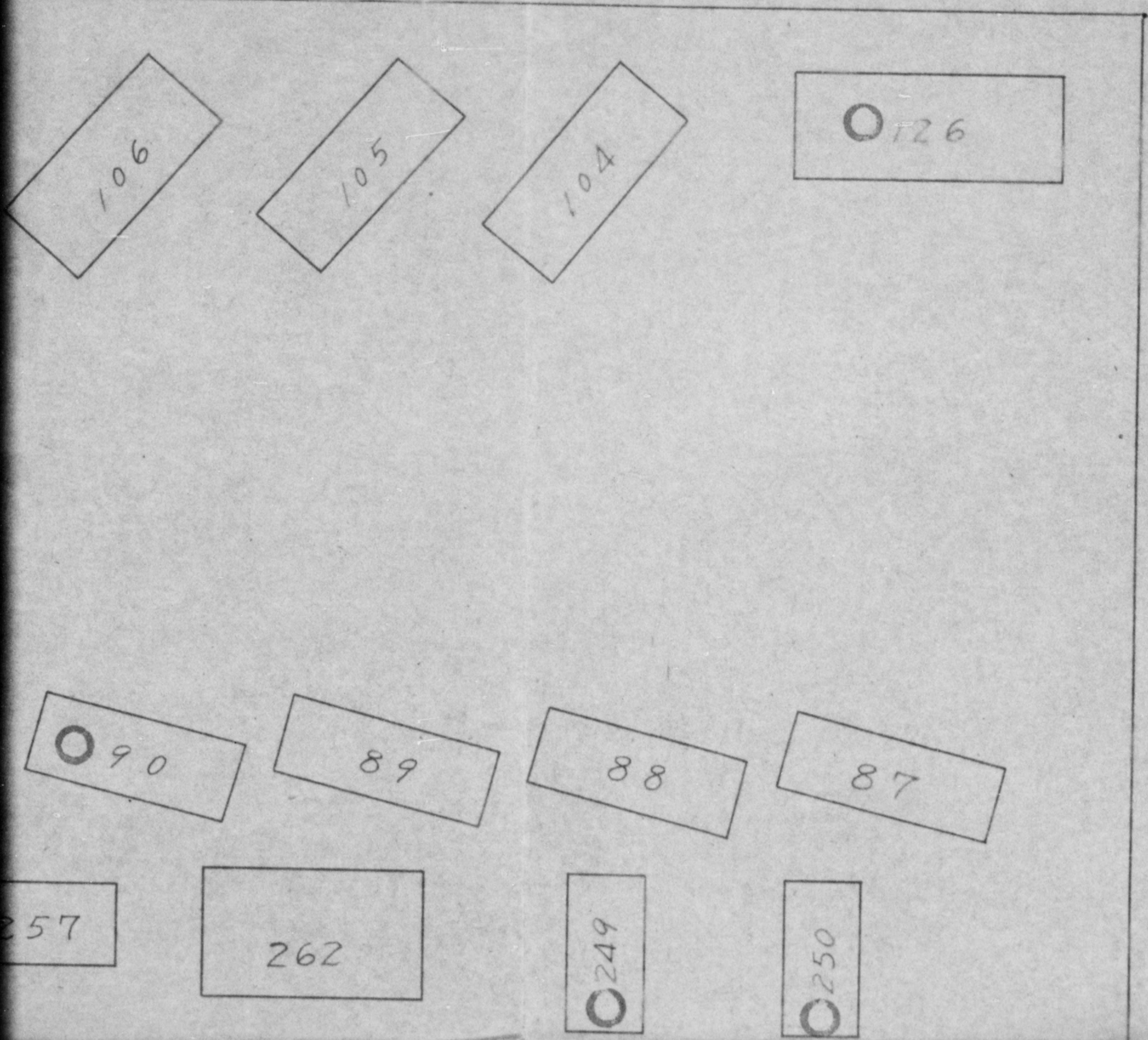
187

257



775 013

st PLANT.





775 013

135

294

0127

Office

4

3

088



775 013

4

0127

0183

0184

0191

0190

187

257

20

0188

0217

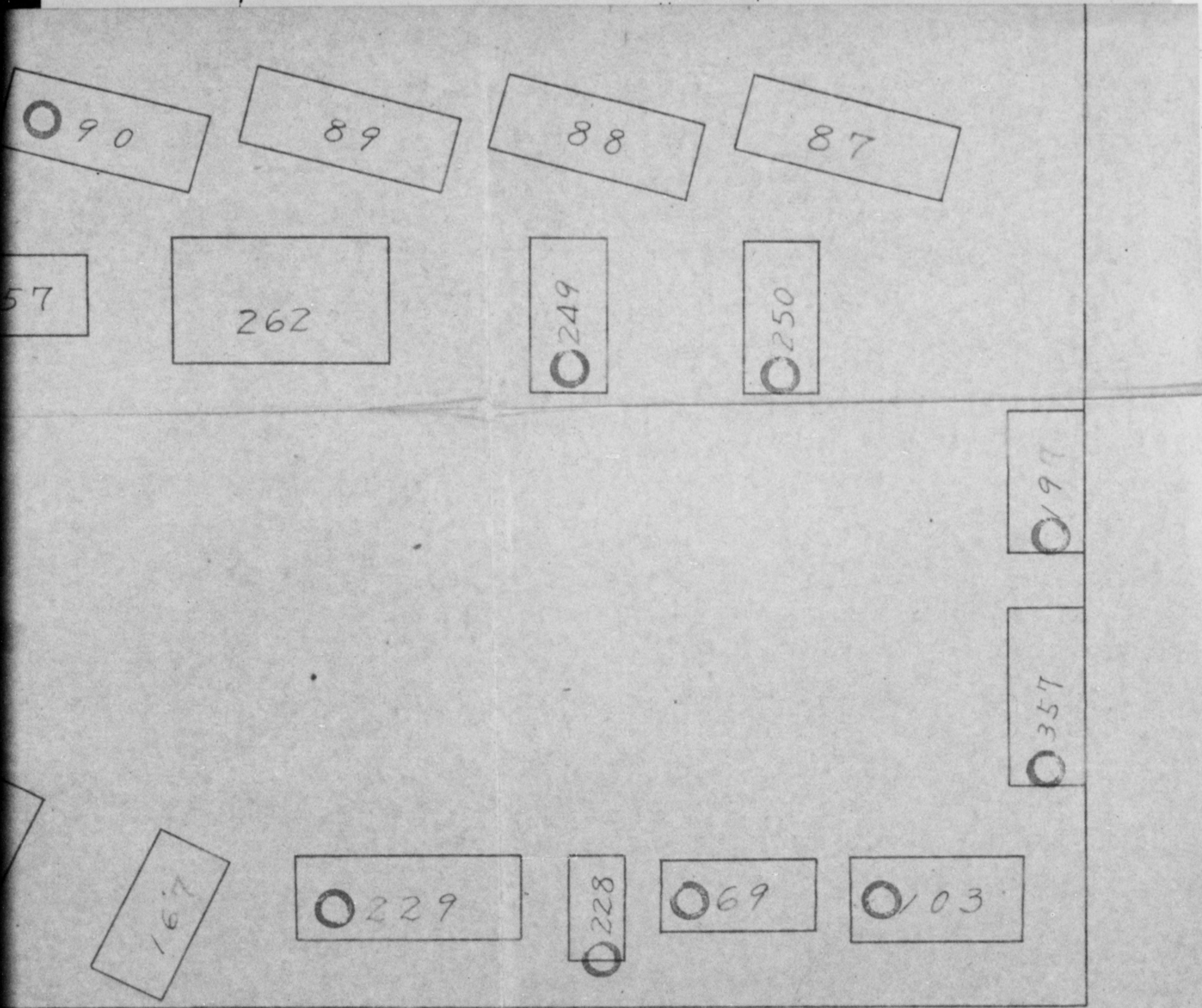
0221

0208

167



775 013





775 013

# THE 5TH S

○23

○5

○18

○13

○19

○

○335

○336

15

16

10

○39

2.



775 013

# E 5TH SHOP OF THE 1ST P

3	○19	○12	○11	○24	○17	○9
---	-----	-----	-----	-----	-----	----

6	10	6	○7	○8
---	----	---	----	----

○150
------

2.	132	222	○202	○203
----	-----	-----	------	------



775 013

# E 1<sup>ST</sup> PLANT

17	09	21	198	144	136
----	----	----	-----	-----	-----

143	238
-----	-----

150
-----

133
-----



775 013

39

2

344

44

45

46

47

124



775 013

2.

132

222

○202

○203

○124

○92

94

○  
290

○34

○35



775 013

0345

034

035 .

036

037

038



775 013

THE 6TH SH

201

331

200

218

331



775 013

6<sup>TH</sup> SHOP OF THE 1<sup>ST</sup> PL

218

○ 237

○ 242

○ 241



775 013

# THE 1<sup>ST</sup> PLANT

○ 241

○ 240

○ 230

○  
358

231

*mistake*  
~~○~~ 243



775 013

○284

○285

○286

○287

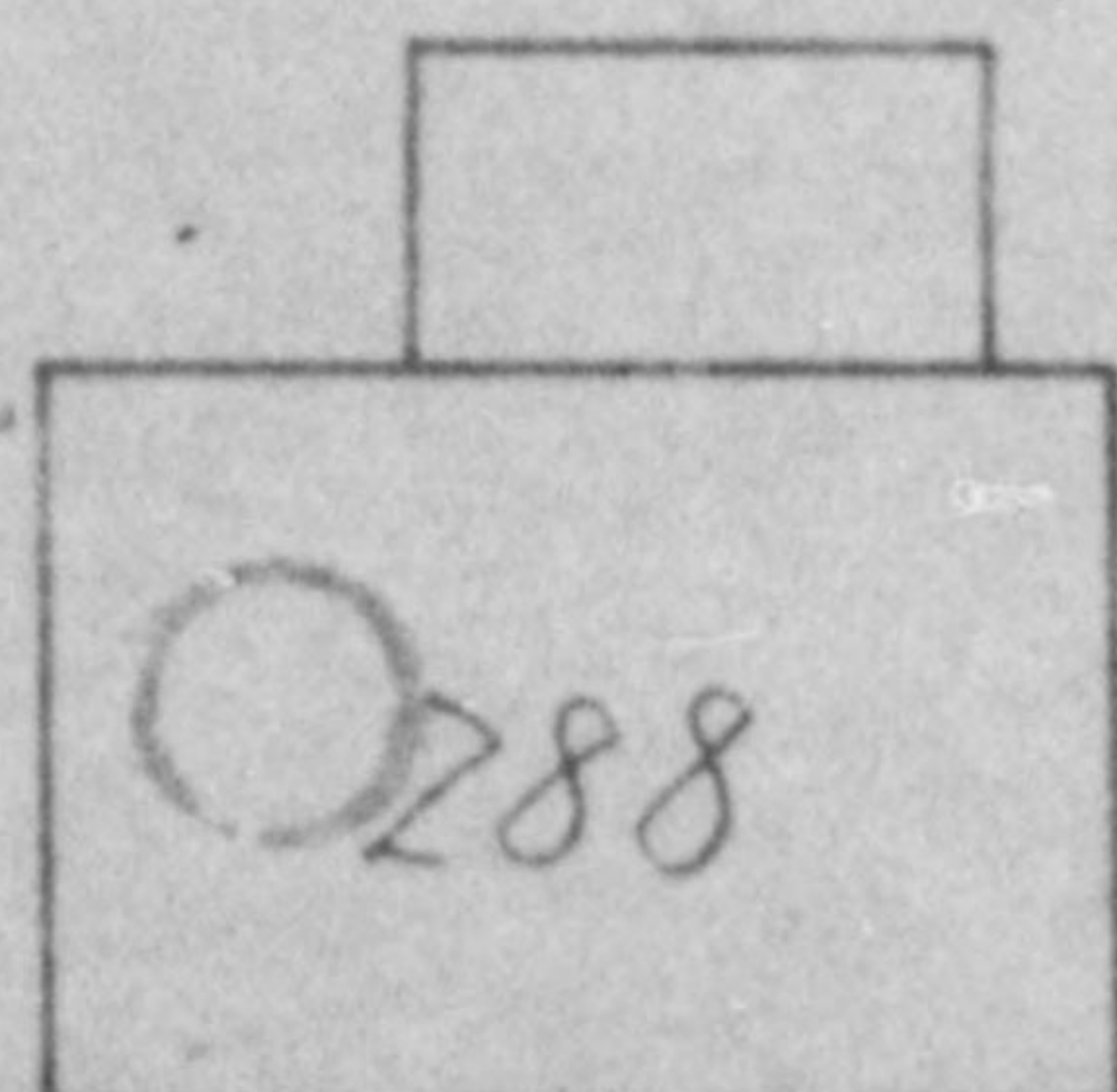
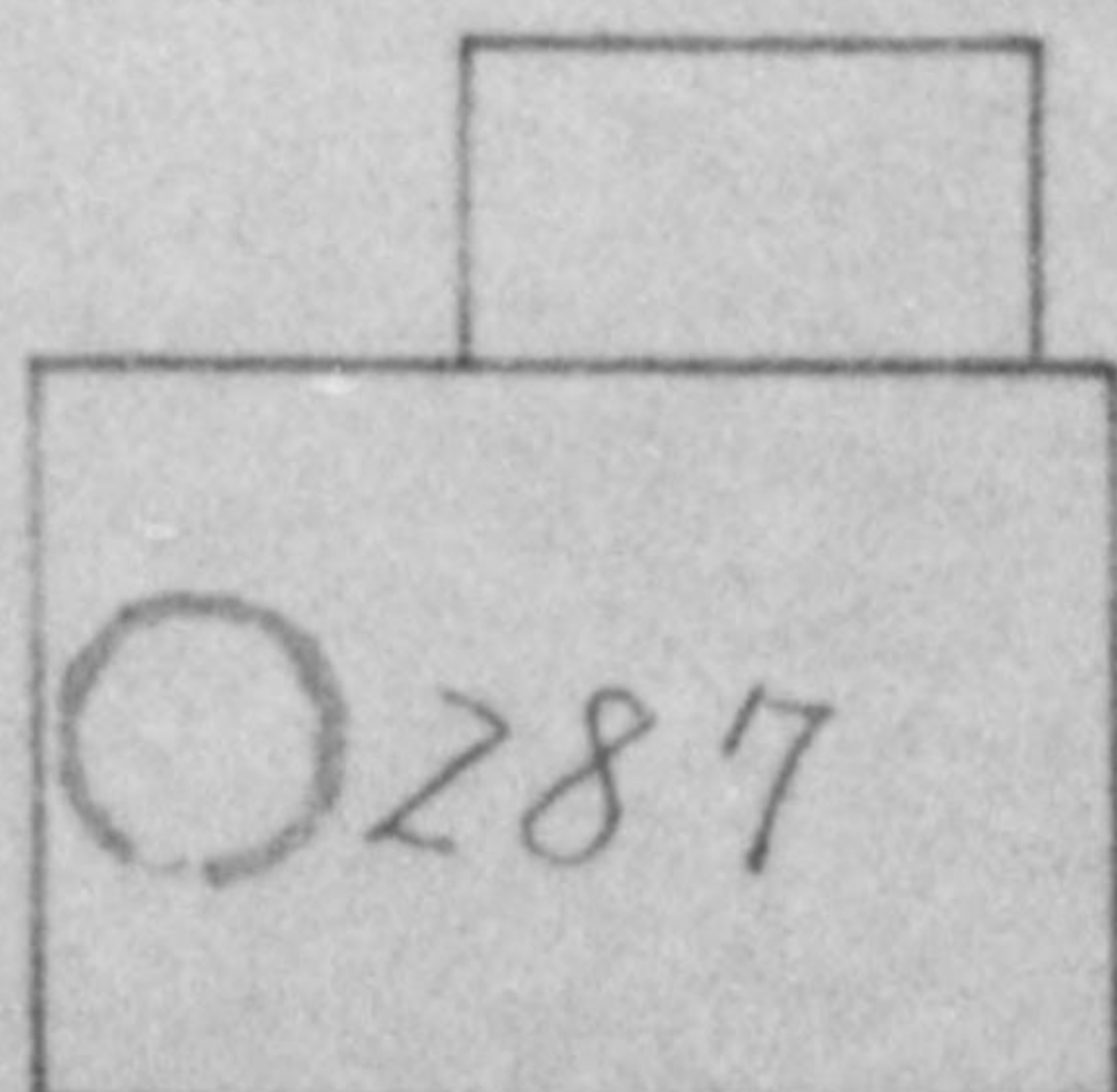
289

142

141



775 013



141

Q99 Q36

140

Q139

143



775 013

*mistake*  
~~0~~ 243

140

139

143

138

137

0234

0233

0232

236



775 013

# THE 7<sup>TH</sup> SHO

261

151

171

172

173

174

175

48

49

41  
39  
mistake

40

118

125

43

42

93

55

78

95

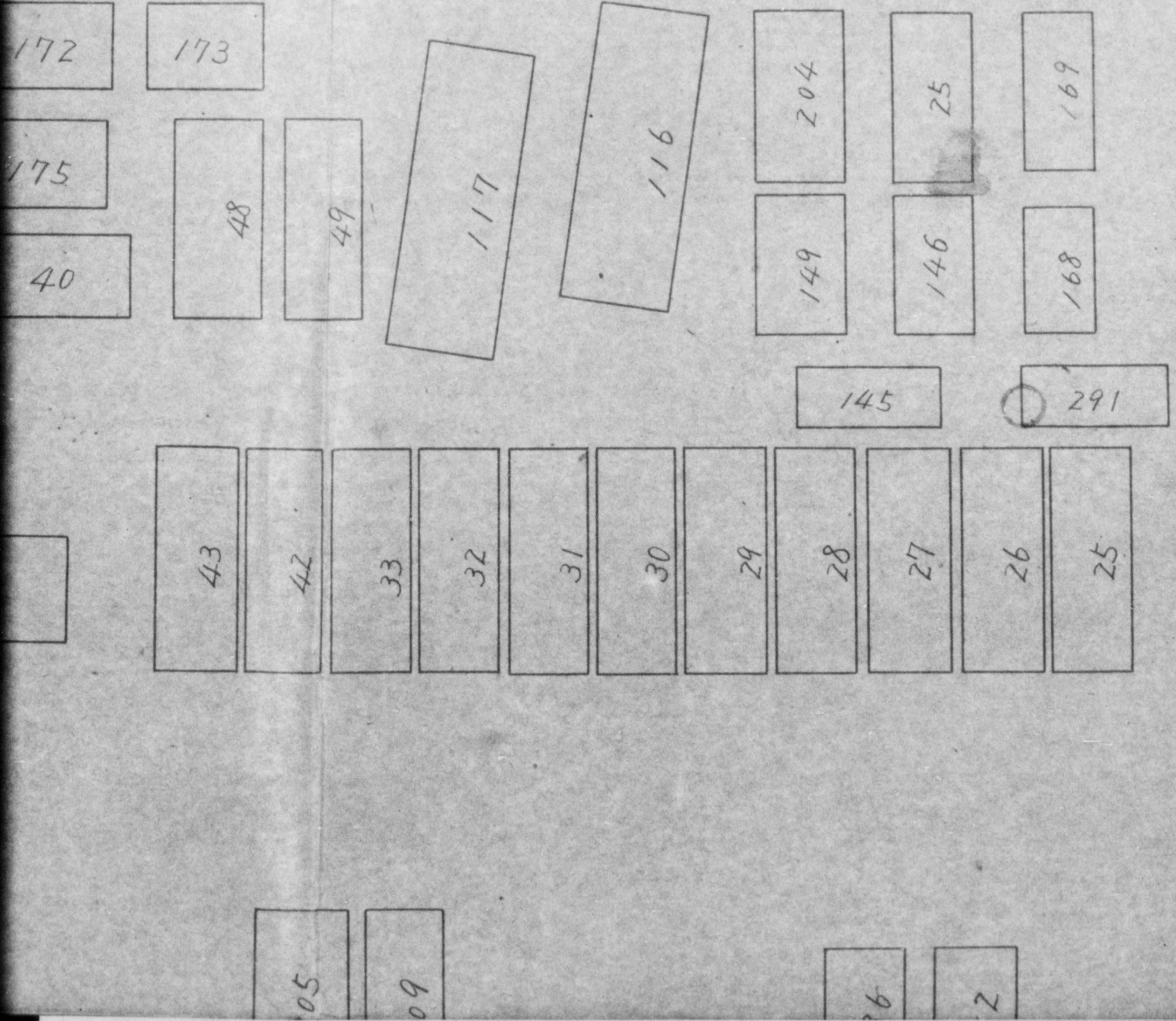
97

05



175 013

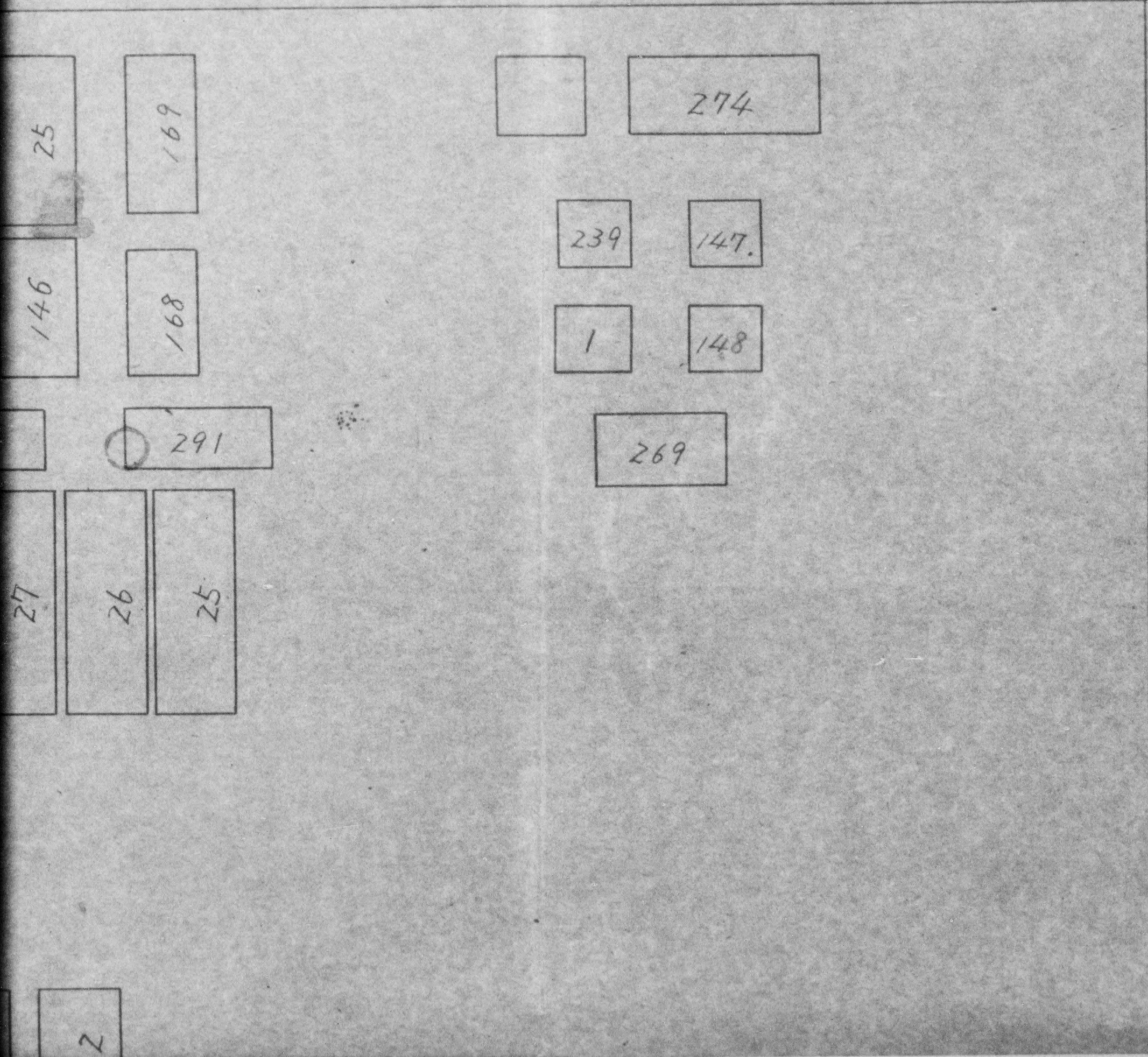
# 7<sup>TH</sup> SHOP OF THE 1<sup>ST</sup> PL





775 013

# 1st PLANT





775 013

93

55

78

95

97

79

96

54

205

80

98

53

206

81

86

52

82

85

51

264

83

84

50

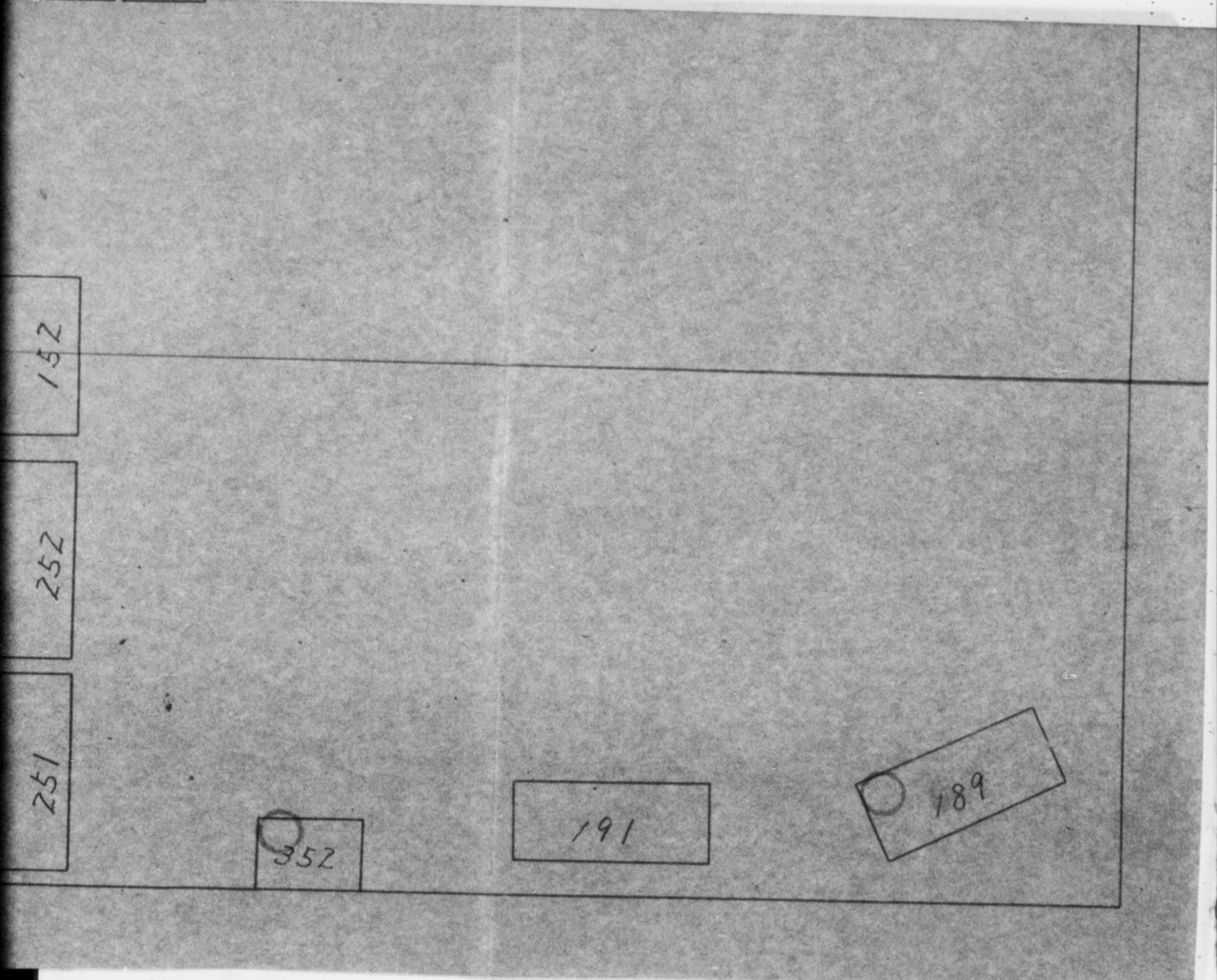


775 013

54	205	209		186	152
53	206	210	258	178	252
52	206	210	259	179	251
51	264	219	260		
50			190		



775 013



152

252

251

352

191

189



775 013

# CHARCOAL BALL SHOP

409	○
410	○

411	○
408	○




775 013

GILDING SHOP

365

420

421

  
mistake

TRANSFORMER SUB-STA