

Historic, archived document

Do not assume content reflects current scientific knowledge, policies, or practices.



Washington, D.C.
January 2, 1918.

1358 B St., S.W.,
Telephone - Main 4550, Br. 277.

HONEY - No. 14

HONEY ARRIVALS SINCE LAST REPORT:

MEDINA, OHIO: 150 pounds Tennessee, 17,045 pounds New York, 33,900 pounds Ohio, 72,636 pounds Wisconsin.
HAMILTON, ILL.: 11,230 pounds Iowa.

TELEGRAPHIC REPORTS FROM TODAY'S MARKETS - JOBBING PRICES

(In many markets in the honey trade the term "jobber" is commonly applied to the original receiver who buys direct from the grower in carlot quantities. However, in these reports we use the term "wholesale carlot receiver" to designate the carlot purchaser, while the term "jobber" refers to the dealer who buys in less than carlot quantities from the carlot receiver and who sells direct to retailers. The prices quoted in this report represent the prices at which the "wholesale carlot receivers" sell to the "jobbers".)

NOTE: Arrivals include receipts during preceding two weeks. Prices represent current quotations:

KANSAS CITY: No fresh arrivals. Demand limited, movement slow, market firm; few sales, all sales in small lots. Comb Honey: 24-section case, No. 1 Kansas, \$4.50; Missouri, \$5.00-5.50. Extracted honey: California, Iowa and Colorado, light amber 16½-18½¢ per pound. Beeswax: Receipts light, buyers paying 38¢ pound.

MINNEAPOLIS: No rail arrivals; local receipts very light, supplies light. Demand moderate, market very firm. Comb Honey: 24-section cases: Minnesota; white clover, mostly 19-20¢ per pound; Colorado, white, mostly \$5.00 per case. Extracted honey: Minnesota, white, 10-lb. pails and cans, mostly around 20¢ per pound. Beeswax: No sales.

ST. PAUL: No rail arrivals; local receipts very light, supplies light. Demand slow, market firm. Comb honey: 24-section cases, Minnesota, fancy white, mostly \$5.00 per case; No. 1, mostly \$4.50; few Colorado, white, mostly \$5.00. Extracted honey: Minnesota, 5 and 10-lb. pails, white, mostly 19-20¢ per pound.

NEW YORK: Arrivals by boat: 13 barrels Texas, 2 barrels Haiti, 257 barrels South America, 30 barrels San Domingo, 164 barrels Porto Rico, 1 barrel Florida, 403 barrels Cuba; freight, 1 car Ohio. Domestic: no sales reported. West Indian: supplies moderate, market strong, 15-17½¢ per pound. Beeswax: boat arrivals: 33 cases South America, 2 bags, 2 packages San Domingo, 390 bags Cuba. Demand moderate, market steady. Yellow, 38-40¢; dark, 35-37¢ per pound.

ST. LOUIS: Supplies very light, insufficient to meet demand. All sales in small lots. Extracted honey: light amber, in cans, 15-15½¢; in barrels, 15-16¢ per lb.

DENVER: Less than 100 cases comb and approximately 15,000 pounds extracted arrived. Supplies cleaning up. Demand and movement good, market strong. Quality and condition good. Comb Honey: 24-section cases, fancy white \$5.00, No. 1 \$4.50, No. 2 \$4.05. Extracted honey; white to light amber, 15-17¢ per pound. Beeswax: receipts light. Cash to producer 38¢ per pound.

CINCINNATI: No fresh carlot arrivals; local receipts light. Demand moderate, movement slow account high prices, market firm. Extracted honey, domestic, light amber 17-18¢ per pound, orange and white sage 21¢ per pound. Comb Honey: demand and movement good, market strong; 24-section cases, fancy white heavy \$5.25 per case; No. 1, white heavy \$5.00 per case. Beeswax: demand good, market strong. Average yellow 40-42¢ per pound.

PHILADELPHIA: Arrivals, extracted honey: 7 barrels Porto Rico, 10 barrels Haiti, 4 barrels Florida, 13 cases New York, 468 cases Idaho; Comb; 185 cases New York. Demand good, market strong, very few sales. Extracted honey: Porto Rico and Haiti 17¢ per pound. Comb honey: dark amber 20-24¢ per pound. Beeswax: 1 bag, 27 lbs. net, arrived. Very few sales, 35-37¢ per pound.

CHICAGO: Unreported.

Charles J. Brand,
Chief of Bureau,

INVEST IN WAR SAVINGS STAMPS

IF YOU DON'T COME ACROSS THE KAISER WILL.

Washington, D. C.
January 15, 1918.

HONEY - NO. 15.

HONEY ARRIVALS SINCE LAST REPORT:

MEDINA, OHIO: 2,246 pounds Illinois, 468 pounds Michigan, 3,618 pounds New York, 1,200 pounds New Hampshire, 1,050 pounds Misc., 400 pounds Ohio.

KEOSAUQUON, IOWA: No fresh arrivals.

LAFAYETTE, ILL.: No fresh arrivals.

TELEGRAPHIC REPORTS FROM TODAY'S MARKETS - JOBBING PRICES

(In many markets in the honey trade the term "jobber" is commonly applied to the original receiver who buys direct from the grower in carlot quantities. However, in these reports we use the term "wholesale carlot receiver" to designate the carlot purchaser, while the term "jobber" refers to the dealer who buys in less than carlot quantities from the carlot receiver and who sells direct to retailers. The prices quoted in this report represent the prices at which the "wholesale carlot receivers" sell to the "jobbers".)

NOTE: Arrivals include receipts during preceding two weeks. Prices represent current quotations.

KANSAS CITY: Comb Honey: No fresh arrivals; extracted: 3,000 pounds California, 3,000 pounds Colorado arrived; no carlot shipments arriving. Demand limited, movement moderate, market firm; few sales, all sales in small lots. Comb honey: no sales reported. Extracted honey: California and Colorado, light amber and white 17-17½¢ per pound. Beeswax: receipts light; buyers paying 38-40¢ per pound.

MINNEAPOLIS: No arrivals. Supplies very light. Demand slow, market strong. Comb honey: 24-section cases, Minnesota, best white, mostly 20¢ per pound, dark colored, mostly 16-17¢; Colorado: white, mostly \$5.00 per case. Extracted honey: Minnesota, 5 and 10 pound cans, best, mostly 18-19¢ per pound, dark colored mostly 17¢. Beeswax: No sales.

ST. PAUL: No rail arrivals; local receipts very light. Supplies light. Demand moderate, market firm. Comb honey: 24-section cases, Minnesota, fancy white \$5.00; No. 1, mostly \$4.50; few Colorado, white, mostly \$4.50-5.00. Extracted honey: Minnesota, 5 and 10 pound pails, best white mostly 19-20¢ per pound. Beeswax: No sales.

NEW YORK: Arrivals by boat: 1,033 barrels, 8 casks Cuba, 11 barrels Haiti, 10 barrels Santo Domingo, 75 barrels, 15 half barrels Texas. Domestic supplies very light. Export demand good, local demand moderate, market steady. Export space on ships hard to secure. Extracted honey: domestic, light color 18-19¢ per pound; West Indian: export sales 17-17½¢ per pound, local sales 16-18¢ per pound. Beeswax: 81 bags Cuba, 25 bags, 1 bale Santo Domingo, 10 bags Texas arrived. Demand brisk, market strengthening. Dark 36-36½¢, light 37-37½¢ per pound. Arrived enroute to Cincinnati, 200 barrels honey from Cuba.

DENVER: Receipts light. 25 cases white comb, approximately 2,400 pounds extracted arrived. Supplies light. Demand and movement good. Comb honey: No. 1 white \$4.50 per case, No. 2, \$4.05; white to light amber 14-16¢ per pound. Beeswax: receipts very light; price to producer 40¢ per pound.

CINCINNATI: 3 Colorado, 1 Michigan arrived. Local receipts light. Demand moderate, movement slow account high prices, market firm. Extracted honey: domestic, light amber, 17-18¢ per pound; orange and white sage 22¢ per pound. Comb honey: demand and movement moderate, market strong; fancy white heavy \$5.50 per 24-section case; No. 1 white heavy \$5.25. Beeswax: demand good, market steady; average yellow 40-42¢ per pound.

PHILADELPHIA: Arrivals, Comb: 26 cases New York; extracted: 10 barrels Porto Rico. Demand good, market firm. very few sales. Comb honey: white medium 23¢ per pound. Extracted honey: no sales reported. Beeswax: no sales reported.

CHICAGO: No fresh carlot arrivals. Comb honey: practically no supplies; no sales reported. Extracted honey: supplies very light; nearby stock, small lots, 17-18¢ per pound. Beeswax: no sales reported.

ST. LOUIS: No fresh carlot arrivals. Supplies light. All sales in small lots. Extracted honey: amber, in barrels, 15½-16¢, in cans 16-17¢ per pound. Beeswax: supplies very light. Best 40¢ per pound.

Charles J. Brand,
Chief of Bureau.

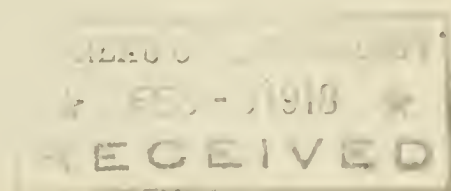
Washington, D. C.
January 31, 1918.

1358 B St., S. W.
Telephone-Main 4650,
Br. 277.

HONEY - NO. 16

HONEY ARRIVALS SINCE LAST REPORT:

MEDINA, OHIO: 1,780 pounds Michigan.
KEOKUK, IOWA: No fresh arrivals.
HAMILTON, ILL: No fresh arrivals.



TELEGRAPHIC REPORTS FROM TODAY'S MARKETS - JOBBING PRICES.

(In many markets in the honey trade the term "jobber" is commonly applied to the original receiver who buys direct from the grower in carlot quantities. However, in these reports we use the term "wholesale carlot receiver" to designate the carlot purchaser, while the term "jobber" refers to the dealer who buys in less than carlot quantities from the carlot receiver and who sells direct to retailers. The prices quoted in this report represent the prices at which the "wholesale carlot receivers" sell to the "jobbers").

NOTE: Arrivals include receipts during preceding two weeks. Prices represent current quotations.

- ST. LOUIS: Comb Honey: no supplies; Extracted, supplies light. Cans, bright amber 16-18¢ per pound; dark amber 15¢. Beeswax: no sales reported.
- DENVER: Comb Honey: receipts very light; Extracted, approximately 27,000 pounds arrived. Comb Honey: supplies practically exhausted; no sales reported. Extracted honey: demand and movement good, white to light amber 16-17¢ per pound. Beeswax: receipts light; price to producer, yellow, 38¢ per pound.
- NEW YORK: Arrivals: 30 barrels, 25 casks Porto Rico, 3 barrels Santo Domingo, 675 barrels Cuba, 177 barrels Chile, report probably incomplete. Local demand moderate, market steady: export demand good but hard to secure ship space. Extracted honey: domestic, light, best 20-22¢ per pound; West Indian, light, 19-20¢, dark 17-18¢ per pound. Beeswax: 104 bags, 12 boxes Porto Rico, 5 bags South America arrived. Demand good, market strengthening. West Indian, yellow, 39-40¢ per pound, dark, 37½-38½¢.
- CINCINNATI: Extracted honey: 1 California arrived; local receipts very light; demand good, market firm, movement moderate account high prices; domestic, light amber, 17-18¢; orange and white sage, 22¢. Comb honey: supplies practically exhausted; demand and movement good, market strong, fancy white heavy, \$5.50. No. 1 white heavy, \$5.25 per 24-section case. Beeswax: demand and movement good, market strong; average yellow, 43-45¢ per pound.
- CHICAGO: No fresh carlot arrivals. Receipts very light. Supplies very light. Stock from nearby states: comb honey, best 23-25¢ per pound. Extracted honey, best 17-18¢ per pound.
- PHILADELPHIA: 360 cases comb from Vermont arrived. Practically no demand or movement, market very strong, very few sales. Comb honey: Vermont, amber \$5.00 per 24-section case, dark amber \$4.75. Extracted honey: no arrivals, no sales reported. Beeswax: no arrivals, no sales.
- KANSAS CITY: No carlot shipments arriving. Demand limited, movement slow, market strong. Few sales, all sales in small lots. Extracted honey: jobbing prices, California and Colorado, white and light amber, 17-18¢; dark, 14½-15½¢. Comb honey: sales direct to retailers, Californias, 24-section cases, No. 1 \$5.50; native 24-section flat cases, No. 1 mostly \$6.00. Beeswax: no fresh arrivals. Buyers paying 35-40¢ per pound.
- MINNEAPOLIS: No arrivals. Supplies very light. Demand moderate, market firm. Comb honey: 24-section cases, Minnesota, white, best, few sales, 18-19¢, mostly 18¢ per pound; Colorado, white, mostly \$5.50. Extracted honey: Minnesota, 60-lb. cans, best, mostly 19¢ per pound. Beeswax: no sales.
- ST. PAUL: No arrivals reported. Supplies very light. Demand moderate, market firm. Comb honey: Minnesota, 24-section cases, fancy white, \$5.50, No. 1, mostly \$5.00. Extracted honey: no sales reported. Beeswax: no sales.

Charles J. Brand,
Chief of Bureau.

TURN YOUR PENNIES INTO BULLETS ---- INVEST IN WAR SAVINGS STAMPS.

★ FEBRUARY 15 1918
RECEIVED
UNITED STATES DEPARTMENT OF AGRICULTURE
Bureau of Markets

Semi-Monthly Market News Bulletin

Washington, D. C.
February 15, 1918.

1358 B St., S. W.
Telephone-Main 4650,
Br. 277

HONEY - NO. 17

HONEY ARRIVALS SINCE LAST REPORT:

KEOKUK, IOWA: 420 pounds Iowa.
HAMILTON, ILLINOIS: No arrivals.
MEDINA, OHIO: No arrivals.

TELEGRAPHIC REPORTS FROM TODAY'S MARKETS - JOBBING PRICES.

(In many markets in the honey trade the term "jobber" is commonly applied to the original receiver who buys direct from the grower in carlot quantities. However, in these reports we use the term "wholesale carlot receiver" to designate the carlot purchaser, while the term "jobber" refers to the dealer who buys in less than carlot quantities from the carlot receiver and who sells direct to retailers. The prices quoted in this report represent the prices at which the "wholesale carlot receivers" sell to the "jobbers").

NOTE: Arrivals include receipts during preceding two weeks. Prices represent current quotations.

ST. LOUIS: Supplies light. Extracted honey, in cans 15½-17¢ per pound according to color. Beeswax: no supplies; no sales reported.

NEW YORK: Arrivals: 472 barrels Cuba, 16 barrels Panama, 628 barrels Mexico, 456 barrels South America. Supplies light. Local demand strong, market steady; export demand good but difficult to secure ship space. Extracted honey: Domestic, light, 20-22¢ per pound; West Indian, light, best 19-20¢ per pound, dark, 17-18¢ per pound. Beeswax: no fresh arrivals. Supplies very light. Demand good, market very strong. West Indian: yellow, 39-40¢ per pound, dark 37½-38½¢ per pound; domestic: yellow, 40-42¢ per pound.

CINCINNATI: 1 California extracted arrived. Local receipts very light. Extracted honey: demand and movement good, market strong; domestic light amber, 17-19¢ per pound, orange and white sage, 22¢. Comb honey: demand good, supplies exhausted. Beeswax: demand and movement good, market firm. Average yellow, 43-45¢ per pound.

DENVER: Receipts very light; approximately 2,000 lbs. extracted and no comb honey arrived. Demand and movement good, market firm. No comb honey on market. Extracted: white to light amber 16-17¢ per pound. Beeswax: receipts light; price to producer 38¢ per pound.

KANSAS CITY: No arrivals. Demand limited, movement moderate, market firm, few sales, all sales in small lots. Comb honey: no sales reported. Extracted honey: California and Colorado, light amber to white, 16-18¢ per pound; dark 15-16¢. Beeswax: receipts very light; buyers paying 35-40¢ per pound.

PHILADELPHIA: 150 pounds extracted honey from Delaware arrived; no fresh comb arrivals. Demand slow, market strong. Extracted and comb honey: no sales reported. Beeswax: no arrivals; no sales.

MINNEAPOLIS: No arrivals. Supplies very light. Demand and movement moderate, market strong. Comb honey: Minnesota, 24-section cases, white, best 18-20¢, mostly 19¢ per pound. Extracted honey: Minnesota, cans, best mostly 19¢ per pound. Beeswax: no sales.

ST. PAUL: No arrivals reported. Demand and movement moderate, market strong. Comb honey: Minnesota, 24-section cases, white, best 19¢ per pound. Extracted honey, Minnesota, cans, best 18-19¢ per pound. Beeswax: no sales.

CHICAGO: Unreported.

Charles J. Brand,
Chief of Bureau.

RECEIVED

UNITED STATES DEPARTMENT OF AGRICULTURE
Bureau of Markets

Semi-Monthly Market News Bulletin

Washington, D. C.
February 23, 1918.

1358 B St., S. W.
Telephone-Main 4650,
Br. 277.

HONEY - NO. 18

HONEY ARRIVALS SINCE LAST REPORT:

KEOKUK, IOWA: No arrivals.
HAMILTON, ILL: No arrivals.
MEDINA, OHIO: 50,900 pounds from Minnesota.

TELEGRAPHIC REPORTS FROM TODAY'S MARKETS - JOBBING PRICES.

(In many markets in the honey trade the term "jobber" is commonly applied to the original receiver who buys direct from the grower in carlot quantities. However, in these reports we use the term "wholesale carlot receiver" to designate the carlot purchaser, while the term "jobber" refers to the dealer who buys in less than carlot quantities from the carlot receiver and who sells direct to retailers. The prices quoted in this report represent the prices at which the "wholesale carlot receivers" sell to the "jobbers").

NOTE: Arrivals include receipts during preceding two weeks. Prices represent current quotations.

PHILADELPHIA: No fresh arrivals. Practically no demand or movement, market strong, very few sales. Extracted: no sales. Comb honey: very few sales, light amber, No. 2, 22¢ per pound. Beeswax: no fresh arrivals, no sales.

MINNEAPOLIS: No fresh arrivals. Supplies very light. Demand good, market strong. Comb Honey: 24-section cases Minnesota best white 20¢ per pound, Colorado white, supplies cleaned up, \$5.75-6.00 per case. Extracted; no sales reported. Beeswax: no sales reported.

ST. PAUL: No fresh arrivals. Demand moderate, but exceeds supply, market very strong. Comb honey: Minnesota and Wisconsin: No. 1, light, 24-section cases, few sales 25¢ per pound. Beeswax: no sales reported.

KANSAS CITY: No fresh arrivals. Demand limited, movement moderate, market firm; very few sales, all sales in small lots. Comb honey: no sales reported. Extracted honey: Colorado and California white to light amber 16-18¢ per pound. Beeswax: no sales reported.

DENVER: No fresh arrivals. Demand moderate, market strong. Jobbing, no sales reported. Sales direct to retailers: few sales, comb honey \$5.50 per 24-section case. Beeswax: receipts light; price to producer 38¢ per pound.

CINCINNATI: No fresh arrivals. Extracted honey: demand good, movement fair, market firm; domestic, light amber, 17-19¢ per pound; orange and white sage, 22¢ per pound. Comb honey: supplies cleaned up. Beeswax: demand good, market steady. Average yellow 43-45¢ per pound.

NEW YORK: Arrivals, 1019 barrels Cuba. Demand good, market strong. Extracted honey: domestic, yellow, supplies light, 20-22¢ per pound; West Indian, light 18-19¢, dark 17-18¢ per pound. Beeswax: 279 bags Cuba arrived. Supplies very light. Demand good, market strong. Yellow, 40-41½¢ per pound; dark 37½-38½¢ per pound.

ST. LOUIS: No fresh arrivals. Comb honey: no sales reported. Extracted honey in cans, supplies light, bright, 17-18¢ per pound; dark, 16-16½¢ per pound. Beeswax: prime, 59¢ per pound.

CHICAGO: Unreported.

Charles J. Brand,
Chief of Bureau.

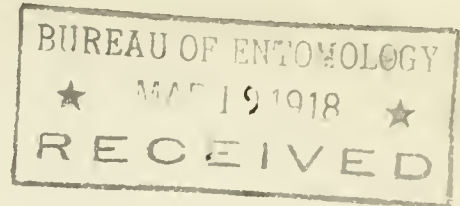
OUR BOYS ARE DIGGING IN OVER THERE - IT'S TIME TO DIG UP OVER HERE.

HOW ABOUT WAR SAVINGS STAMPS?

Washington, D. C.
March 15, 1918.

1358 B St., S. W.
Telephone-Main 4650,
Br. 277.

HONEY - NO. 19



HONEY ARRIVALS SINCE LAST REPORT:

KEOKUK, IOWA: 1,570 pounds Montana.
HAMILTON, ILL: No arrivals.
MEDINA, OHIO: 45 pounds Ohio.

TELEGRAPHIC REPORTS FROM TODAY'S MARKETS - JOBBING PRICES.

(In many markets in the honey trade the term "jobber" is commonly applied to the original receiver who buys direct from the grower in carlot quantities. However, in these reports we use the term "wholesale carlot receiver" to designate the carlot purchaser, while the term "jobber" refers to the dealer who buys in less than carlot quantities from the carlot receiver and who sells direct to retailers. The prices quoted in this report represent the prices at which the "wholesale carlot receivers" sell to the "jobbers").

NOTE: Arrivals include receipts during preceding two weeks. Prices represent current quotations.

ST. LOUIS: No arrivals. Supplies very light. No sales reported.

NEW YORK: 1120 barrels Cuba and 44 barrels South America arrived. Demand good, market stronger. Extracted honey: domestic yellow, supplies very light, 21-23¢ per pound; West Indian light, 19-20¢, dark 18-19¢ per pound. Beeswax: 121 boxes, 92 bags, 70 crates from Cuba and 38 bags South America arrived. Supplies light. Demand good, market strong. Yellow, 40-42¢, dark 38-40¢ per pound.

PHILADELPHIA: No arrivals, no demand. Comb and extracted honey, and beeswax, no sales.

CINCINNATI: No fresh arrivals. Extracted honey: demand good, movement brisk, market strong; domestic dark amber 17¢, light amber 19¢, orange and white sage 23¢ per pound. Comb honey: supplies exhausted. Beeswax: demand good, market firm, average yellow 43-45¢ per pound.

KANSAS CITY: No fresh arrivals. Practically no demand or movement, market firm. Comb and extracted honey and beeswax, no sales reported.

DENVER: No fresh arrivals. Demand good, market strong, no jobbing sales. Sales direct to retailers: comb honey: Colorado, white, 24-section cases, extra fancy \$6.00; Beeswax: receipts moderate, price to producers 38¢ per pound.

CHICAGO: Receipts and supplies very light. Demand good, market firm. Best northern stock, comb honey, mostly 26-27¢, extracted, mostly 18¢ per pound. Beeswax: no sales reported.

MINNEAPOLIS: No arrivals. Supplies very light. Demand good, market firm. Comb honey: supplies practically exhausted. No sales reported. Extracted strained honey, few sales direct to retailers, 20¢ per pound. Beeswax: no sales reported

ST. PAUL: No arrivals. Supplies light. Demand and movement moderate, market steady. Comb honey: Minnesota 24-section cases, No. 1 white, best 22¢ per pound. Extracted, no sales reported. Beeswax: no sales reported.

Charles J. Brand,
Chief of Bureau.

This honey report will be discontinued
with this issue until the new crop be-
gins to move, about June 1.

1100

110

1100

1100

1100

1100

1100

1100

1100

1100

1100

1100

1100

1100

1100

1100

1100

1100

1100

1100