

# AERODROME CHART

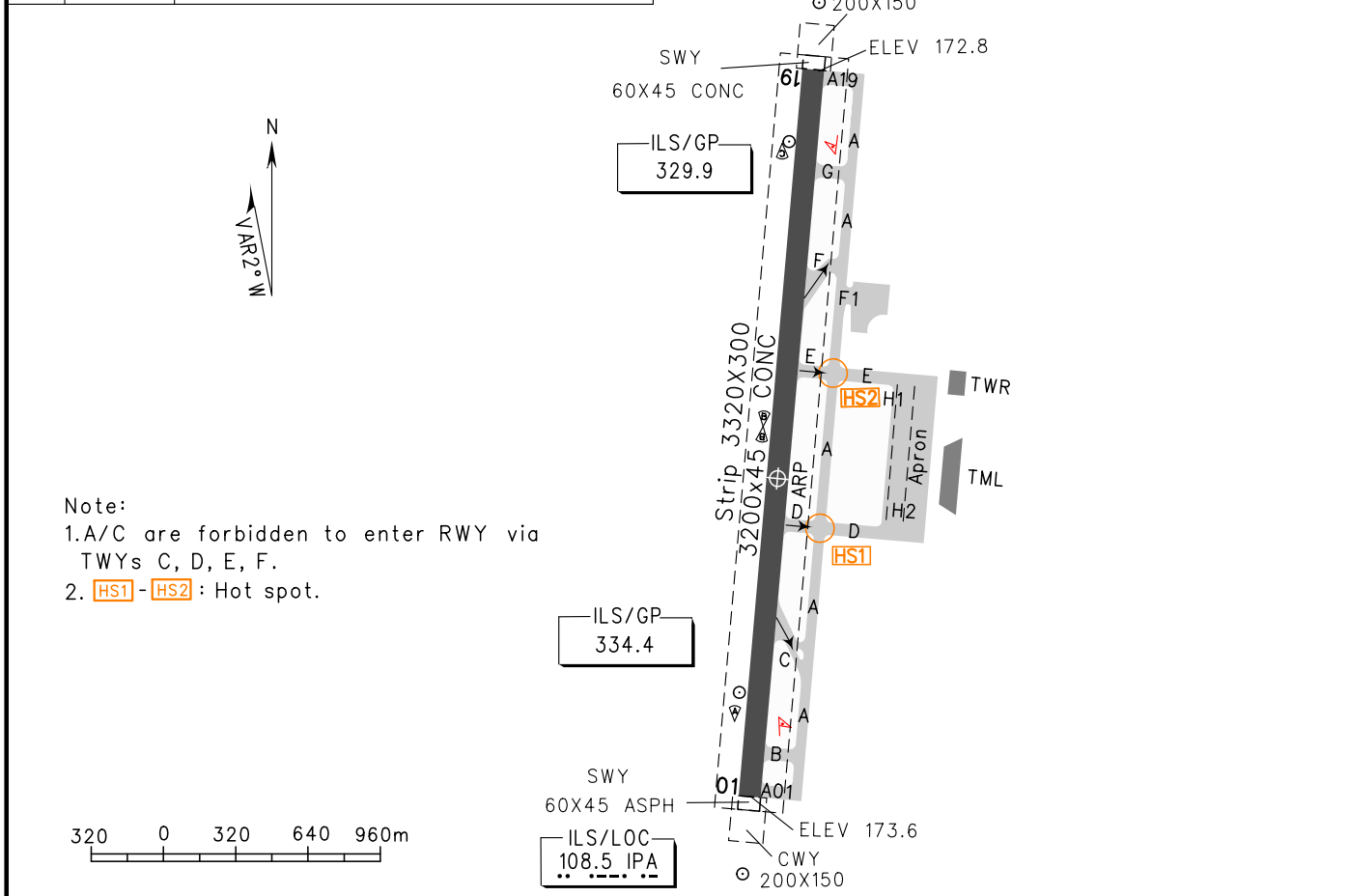
ATIS 126.45  
TWR 118.0 (118.7)  
GND 121.65

## ZGKL GUILIN/Liangjiang

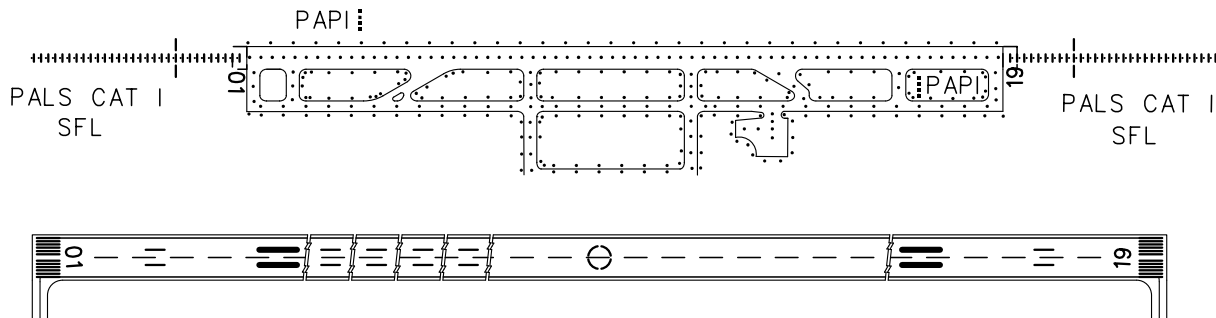
N25°13.0'E110°02.3' ELEV 174m

RWY	Direction	Bearing strength(PCN)
01	007°	TWY(others), RWY, APRON: 86/R/B/X/T
19	187°	TWY(C, D, E, F) : 72/R/B/X/T

BEARINGS ARE MAGNETIC  
ALTITUDES, DISTANCES,  
ELEVATIONS AND HEIGHTS  
IN METERS



Note:  
1. A/C are forbidden to enter RWY via TWYs C, D, E, F.  
2. HS1 - HS2 : Hot spot.



TAKE-OFF MINIMA(WITH RELIABLE ALTN)(m)				LIGHTS	
RWY	ACFT Type	REDL	NIL(Day only)	RWY01	RWY19
01/ 19	2 TURB ENG or 3&4 ENG	RVR400	RVR500	PALS CAT I SFL PAPI REDL RCLL	PALS CAT I SFL PAPI REDL RCLL
	Other	VIS1600			

Changes: WDI.