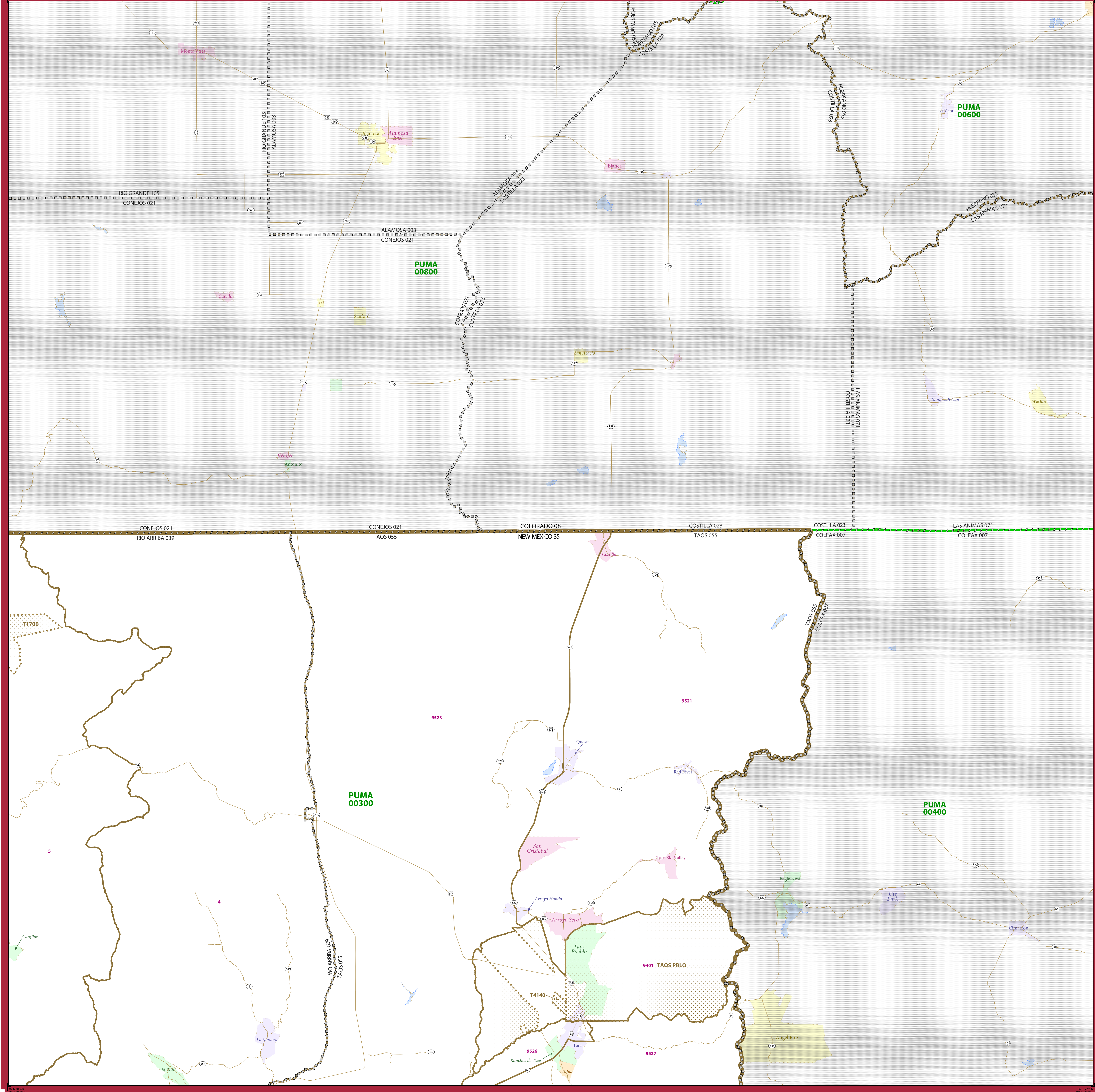


2010 CENSUS - PUMA REFERENCE MAP: North Central New Mexico



LEGEND

SYMBOL DESCRIPTION	SYMBOL	LABEL STYLE
International	☆☆☆☆☆	CANADA
Federal American Indian Reservation	L'ANSE RES
Off-Reservation Trust Land	T1880
Alaska Native Regional Corporation	▲▲▲▲▲▲▲	NANA ANRC
Public Use Microdata Area (PUMA)	PUMA 00300
Census Tract	183.01
State (or statistically equivalent entity)	NEW YORK 36
County (or statistically equivalent entity)	ERIE 029
Minor Civil Division (MCD)	Bristol town
Consolidated City	MILFORD
Incorporated Place ²	Davis
Census Designated Place (CDP) ²	Incline Village

DESCRIPTION	SYMBOL	DESCRIPTION	SYMBOL
Interstate	Water Body
U.S. Highway	Outside Subject Area
State Highway		
Nonvisible Boundary or Feature Not Elsewhere Classified		

Where international, state, and/or county boundaries coincide, the map shows the boundary symbol for only the highest-ranking of these boundaries.
 Geographic areas outside the subject PUMA are labeled only as space allows.

1 MCD boundaries are shown in the following states in which some or all MCDs function as general-purpose governmental units: Connecticut, Illinois, Indiana, Kansas, Maine, Massachusetts, Michigan, Minnesota, Missouri, Nebraska, New Hampshire, New Jersey, New York, North Dakota, Ohio, Pennsylvania, Rhode Island, South Dakota, Vermont, and Wisconsin. Only governmental MCDs in the subject PUMA are labeled.

2 Place label color corresponds to the place fill color.
 Label colors: Davis Davis Davis Davis Davis

SUBJECT AREA COUNTIES ON MAP SHEET
 35039 Rio Arriba
 35055 Taos

OFF-RESERVATION TRUST LAND NAMES
 T1700 Jicarilla Apache Nation
 T4140 Taos

Public Use Microdata Areas (PUMAs) are delineated based on the results of the 2010 Decennial Census; all other legal boundaries and names are as of January 1, 2010. The boundaries shown on this map are for Census Bureau statistical data collection and tabulation purposes only; their depiction and designation for statistical purposes does not constitute a determination of jurisdictional authority or rights of ownership or entitlement.

Geographic Vintage: 2010 Census (reference date: January 1, 2010)
 Data Source: U.S. Census Bureau's MAI/TIGER database (ACS13)
 Map Created by Geography Division: December 12, 2013

U.S. DEPARTMENT OF COMMERCE Economics and Statistics Administration U.S. Census Bureau

Projection: Albers Equal Area Conic
 Datum: NAD 83
 Spheroid: GRS 80
 1st Standard Parallel: 32 16 36
 2nd Standard Parallel: 36 03 20
 Central Meridian: -106 01 31
 Latitude of Projection's Origin: 31 19 55
 False Easting: 0
 False Northing: 0

The plotted map scale is 1:200,000

Key to Sheets

1	2	3	4	5
---	---	---	---	---

PARENT SHEET 2
 Total Sheets: 6
 Index Sheets: 1
 Parent Sheets: 5
 Inset Sheets: 0

United States Census Bureau

PUMA NAME: North Central New Mexico
 PUMA CODE: 00300
 STATE: New Mexico (35)

Sheet Location within Entity

PUMA REF MAP (PARENT)
 236530030002