

Historic, Archive Document

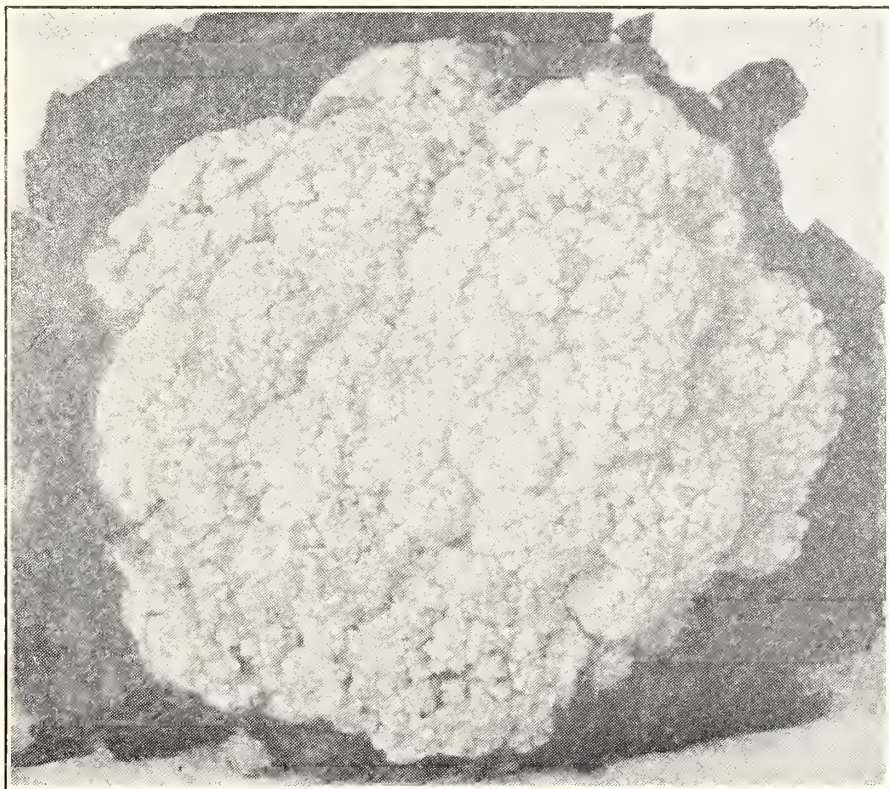
Do not assume content reflects current scientific knowledge, policies, or practices.

MAR 29 1927

1873—1927

Annual Catalog

STERLING'S
SEED AND PLANT FARM



ERFURT CAULIFLOWER

RALPH W. STERLING
CUTCHOGUE, LONG ISLAND, NEW YORK

—
TELEPHONE PECONIC 55

Sterling's Annual Catalog

Cutchogue, L. I., N. Y.

January 6th, 1927.

TO MY FRIENDS AND CUSTOMERS :

In handing you this, my annual catalog for 1927, I wish to extend to you my sincere thanks for past favors and my heartiest wish to you all for a very Happy and Prosperous New Year.

Nineteen twenty-six is past history now but everything considered it was one of the best years our Long Island farmers ever saw, coming, as it did after a previous good year. About every crop paid last year with only a few exceptions and I want to again caution prospective planters not to trust to a one crop schedule. Peas paid well last year and what a fine cover crop they make for Brussels Sprouts and Cauliflower. I have an extra fine stock this year of Gradus, Thomas Laxton, Laxtonian and the new kind, Laxton's Progress or Early Bird. The price and quality are right.

Have a larger stock than ever of Fordhook Bush Limas and the price is reasonable too. The price for 1928 is lower yet. Place your orders now for the next season and get the lowest price on Fordhooks that we ever had.

Sterling Strain Brussels Sprouts made a fine record last year. I have only the two year old seed in this strain this year so it is tested seed. We know it is good. I put in extra weight to make up for any loss in germination. The Blue Ribbon Strain of Brussels Sprouts is something extra fine. This seed comes from fifty plants selected by Mr. O. S. Case himself or his son and is the pick of one of the finest crops of Sprouts Mr. Case ever raised, and he has raised great Sprouts. We raised this seed on shares with Mr. Case, owner of Blue Ribbon Farm, and he stated that he would not take \$500 for his 2¼ pounds of seed when I took it to him.

Kroemer's Erfurt Cauliflower Seed also made good last year. It headed up freely, was large, pure white and solid. We had many fine reports from local growers.

Brussels Sprout, Cauliflower and Cabbage Seed are all Hot Water treated.

My Seed Potatoes did well for my customers last season and I sold more seed for this year than ever before. Have a fine lot of Prince Edward Island Irish Cobblers and Green Mountains for Spring demand. This is certified seed and very handsome stock. Order early and secure this fine seed.

My shrubs, trees, Perennials, Evergreens, Peonies, Phlox, Iris and Narcissus, also Strawberry and Asparagus fields and plant beds are open to inspection. A cordial invitation is extended to all to look my stock over before purchasing.

Fertilizer is another big item with us now. Sunrise Brand gave such good satisfaction last year that we have a 400% increase in our orders for this season in our locality.

Vreeland's Electro Brand Insecticides are the best there are. We keep them in stock as well as Niagara brand.

Hoping you will give this catalog a careful inspection, note our reasonable prices, the high quality of our seeds and seed stocks and take into consideration our efforts to please, prompt attention to your orders and readiness to adjust all complaints. Then make out your order and send it along, the earlier the better. If you get it off before April first, we will put in from one to five packets of seeds well worth trying.

Thanking you again for the business of past years and wishing you every success, I remain

Yours for service,

RALPH W. STERLING



If you need an extra copy or two for your neighbors and friends let me know and I will be glad to send them to you or to their addresses if you will be kind enough to send them to me .

NO BUSINESS TRANSACTED ON SUNDAY

SEED DEPARTMENT

By carefully reading and observing the following directions, mistakes will be largely avoided.

Please use the enclosed Order Sheet and self addressed envelope if possible. If you need more let me know and I will be glad to send more to you.

Write your name, address and shipping directions plainly.

Always send the cash with your order, unless otherwise agreed upon. Money may be sent by P. O. Money Order, Bank Draft or Registered Letter. Stamps may be sent for amounts under \$1.00, but be sure to put in two-cent stamps, wrapped in waxed paper.

We pay the postage on all seeds sold by the pkt., oz., and $\frac{1}{4}$ lb. Quantities over that are priced net, to be shipped by parcel post, freight or express, at purchaser's expense, unless otherwise stated.

If you desire your seed sent by Parcel Post, add 7c for the first lb. and 1c for each additional lb. of your order, allowing 2 lbs. extra for package. For amount of postage on plants see Plant Department.

By pricing my seeds net, postage extra, you get your seeds delivered for less money than if I quoted a Post-paid price as the 7c per lb. extra would have to be counted in and added to each single lb. priced.

$\frac{1}{2}$ lbs. will be sold at lb. rates; $\frac{1}{2}$ bu. at bushel rates.

No charge is made for packing or packages, except in selling Grass Seed, Peas, Beans, etc. in bulk. Then a charge of 35c each has to be made for the 2 bushel seamless bags. These may be returned if in good condition, charges prepaid and the amount will be credited to your account.

Remember, we sell Burpee's Seeds for less money than you can purchase them elsewhere. Burpee's Seeds are renowned for their purity and quality. We have been handling Burpee's Seeds for a number of years and know that they are quite dependable and trustworthy, more so than any other grower's that we have been able to find. Where we do find seeds of merit elsewhere, we carry a full stock of them. Such are the following:—

Fordhook Bush Lima Beans, Black Valentine, Bountiful and Burpee Stringless Green Pod Beans, Gradus, Thomas Laxton and Laxtonian Peas, Kroemer's Erfurt Cauliflower, Sterling Strain, Leslie Strain and Blue Ribbon Strain Brussel Sprout Seed, Japanese Onion Sets, Globe Brand Timothy, Clover and Alfalfa Seed, Dreer's Special Flower and Vegetable seeds and many other items that you will find carefully and truthfully described in the following pages.



ASPARAGUS SEED

MARY WASHINGTON. Re-selected, Pedigreed Seed. The only kind of asparagus to raise. Blight proof, of highest quality and heaviest yield. Prof. Norton's very finest production in Asparagus Breeding. Pkt. 30c; 10z., 50c; ¼ lb., \$1.75; ½ lb., \$3.25; lb., \$5.50.

We have 50,000 or more Mary Washington, 1 year old roots, for sale this Spring, and very large, strong 3 year old roots in the Washington nad Martha Washington.

See page 52 for prices on Asparagus Roots.

*Mary Washington
Asparagus*

BUSH BEANS—GREEN POD

2 lbs. make 1 qt. 1 lb. will plant 100 ft. of drill.
1 bu. will plant 1 acre in hills.

No.		Pkt.	Lb.	2 Lbs.	10 Lbs.	Bu.
10	BURPEE STRINGLESS GREEN POD. The most popular and best green pod bean. It stays tender the longest, is absolutely stringless and of high quality. Very productive, early, pods round	\$.10	\$.35	\$.60	\$ 2.70	\$ 12.00
13	BOUNTIFUL. Early, prolific and one of the best for market.....	.10	.35	.60	2.80	12.50
	BOUNTIFUL. From Conn. Choice stock10	.30	.50	2.25	11.50
14	RED VALENTINE. Extra early ..	.10	.30	.55	2.60	11.50
15	BLACK VALENTINE. Very early, round, straight pods. One of the best for market. Comes quick....	.10	.30	.55	2.60	11.50

BUSH BEANS—*Continued*

No.		Pkt.	Lb.	2 Lbs.	10 Lbs.	Bu.
	BLACK VALENTINE. Extra fine for market. From Conn.10	.30	.50	2.20	10.50
19	LATE REFUGEE or 1000 to 110	.30	.55	2.70	12.00
23	GIANT STRINGLESS GREEN POD. Late and large10	.35	.60	2.80	
26	DWARF HORTICULTURAL. Best for shelling and succotash. Pods are streaked with red when ready to ship. Stringless10	.30	.55	2.70	12.00
25	NEW ROBUST PEA. Smallest for baking10	.30	.50	2.25	
29	WHITE MARROWFAT. Medium sized, for baking10	.30	.55	2.50	
28	RED KIDNEY. Very rich10	.30	.55	2.50	
	WHITE KIDNEY. Long10	.30	.55	2.50	

All the above prices by the lb. are net, postage extra. See page 3 as to postal rates. Pkts. are postpaid.

BUSH BEANS—WAX POD

No.		Pkt.	Lb.	2 Lbs.	10 Lbs.	Bu.
	BURPEE'S BRITTLE WAX. The finest of all wax beans. Stringless and tender, pencil pod, Conn.	\$.15	\$.35	\$.65	\$ 3.00	\$ 13.00
41	RUST PROOF GOLDEN WAX. Flat pods, tender, stringless; very prolific10	.30	.55	2.70	13.00
	RUST PROOF GOLDEN WAX. from Conn.10	.30	.50	2.30	11.50
	CURRIE'S RUST PROOF BLACK WAX. Extra early, flat pods. Sure-crop type. One of the best for market10	.30	.50	2.30	12.00
44	BURPEE'S KIDNEY WAX. Free from any diseases; very prolific; flat pods; high quality15	.40	.75	3.40	
49	SURECROP STRINGLESS WAX. One of the best. Black seed10	.35	.60	2.70	

All the above prices by the lb. are net, postage extra. See page 3 as to postal rates. Pkts. are postpaid.

POLE BEANS

1 Lb. will plant 100 poles.

No.		Pkt.	Lb.	2 Lbs.	10 Lbs.
72	KENTUCKY WONDER or OLD HOME-STEAD. Long, tender, stringless.....	\$.10	\$.30	\$.55	\$ 2.60

POLE BEANS—*Continued*

	Pkt.	Lb.	2 Lbs.	10 Lbs.
83 HORTICULTURAL or POLE CRAN- BERRY. Very fine for green or shell	.10	.30	.55	2.70
73 BURGER'S GREEN POD STRINGLESS. White seeded10	.30	.55	2.60
79 GOLDEN CLUSTER WAX. Sweet, tasty, brittle10	.30	.55	2.60

POLE-LIMA BEANS

1 Lb. will plant 50 poles.

No.		Pkt.	Lb.	2 Lbs.
95	BURPEE'S NEW SUNNYBROOK POLE LIMA. Extremely early and very productive. Fine quality	\$.15	\$.40	\$.75
96	EARLY LEVIATHAN. The earliest large pod- ded Lima. Large beans of fine quality10	.35	.60
98	GIANT PODDED POLE LIMA. Very large pods and beans of fine quality. Matures late for main crop15	.45	.85

BUSH LIMA BEANS

1 Lb. will plant 100 ft. in hills or 50 ft. in drill
1¼ bu. to the acre.

Fordhook Bush Limas are the one and only
kind for market. They yield heavy, vines are
upright in growth, pods are large and thick and
the beans are of fine quality, especially when
picked young.

Place your order now for 1928 delivery. You
may save money. Price very low. The prices
quoted below are net cash.

*Fordhooks*

No.		Pkt.	Lb.	2 Lbs.	10 Lbs.	Bu.
65	FORDHOOKS. From Burpee	\$.15	\$.40	\$.75	\$3.00	\$15.00
	FORDHOOKS. From Conn. Very choice15	.35	.65	2.80	14.00
63	BURPEE IMPROVED BUSH LIMA. The best flat podded Lima; very large, prolific and delicious in flavor10	.35	.65	3.10	

BEETS—TABLE

1 oz. will sow 50 ft. of drill.

No.		Pkt.	Oz.	¼ Lb.	Lb.
111	CROSBY EGYPTIAN. An early beet of fine quality. One of the best	\$.05	\$.15	\$.40	\$.95
128	BURPEE'S IMPROVED BLOOD. Dark Red, quick growing and very sweet05	.15	.40	.95
	IDEAL. Something new. Try a little of it. It is claimed to be very fine10	.20	.50	
119	SUNNYBROOK. New, quick. Fine quality	.05	.15	.40	1.20
	DREER'S EXCELSIOR BLOOD BEET. Rich dark color, extra early and fine quality, even when fully matured10	.20	.50	
	EARLY WONDER. This seed comes from Connecticut where it was developed to suit the Market Gardeners in that section. It matures very early and uniform, has a good dark color and of fine quality. Small tops05	.15	.40	1.00
115	DETROIT DARK RED. Quality. Good for canning or table. Main crop.....	.05	.15	.40	.90
117	BURPEE'S COLUMBIA. Quality05	.15	.40	.95
121	BURPEE'S BLACK RED BALL. For a small canning beet this is unsurpassed. Very dark05	.15	.45	1.40
	SWISS CHARD. See page 23.				

BEETS—STOCK

No.		Oz.	¼ Lb.	Lb.
145	GIANT HALF SUGAR. Rose skinned. One of the best for cattle and fowl. Grows large, smooth, and full of sugar	\$.10	\$.25	\$.60
147	GOLDEN TANKARD. Yellow fleshed, large, solid10	.25	.60
151	MAMMOTH PRIZE LONG RED. Largest, heaviest cropping mangel of all10	.25	.60
	Seed by the Pkt., Oz. and ¼ lb. postpaid. Lb. prices are priced net, postage extra. See page 3 for postal rates.			

BRUSSELS SPROUT SEED

2 to 3 ozs. will produce enough plants for 1 acre.

STERLING STRAIN. This is a very choice strain of seed selected and grown by the same careful grower that I have had grow this strain for me for a number of years. See page 2 for more about this strain. The plants grow medium tall and this insures a very large crop of choice Sprouts.

BRUSSELS SPROUT SEED—*Continued*

The above seed is two years old, grown in 1925, same seed as I sold last year and that was second best in the Sprout test held on my farm by the Farm Bureau.

It has been treated with hot water and been tested for germination and enough extra seed put in each package to make up any loss.

Mr. O. S. Case of Peconic stated to me in Dec. 1926 that Sterling Strain Sprouts were the best he had on his farm.

Brussels Sprouts

Per pkt., 25c; Oz., \$2.00; $\frac{1}{4}$ lb., \$7.00; lb. \$27.00.

Leslie Strain. A very choice strain grown by G. R. Leslie of Peconic. Ask C. H. Billard about this strain of seed. He uses it and gets highest prices for his Sprouts. New Seed. Per pkt., 25c; Oz., \$2.00; $\frac{1}{4}$ lb., \$7.50.

Blue Ribbon Strain. This is seed grown from 50 plants grown and selected by Mr. O. S. Case, owner of Blue Ribbon Farm. See page 2 for more about this strain. Pkt., 50c; Oz., \$3.00; $\frac{1}{4}$ lb., \$10.50.

All the above seed will be treated with the Hot-Water treatment. We will have a fine lot of plants from the above strains of seed in season. If in need of any place your orders with us.

CAULIFLOWER SEED

2 to 3 oz. will produce enough plants for 1 acre.

KROEMER'S LARGE EARLY ERFURT. Large white heads, heading up quite freely.

In the Cauliflower test run on my farm last year there were over 20 kinds and this kind showed up as one of the very best suited for this section.

Ask S. W. Horton or P. H. Drum of this place or H. K. Dawson of Shelter Island about this strain. Per pkt., 25c; Oz., \$2.00; $\frac{1}{4}$ lb., \$7.00; lb., \$27.50.

BERLIN FORCING. The quickest heading sort in the test. Heads fair sized, white and solid. One of the best kinds for extra early or for very late setting, as it gets there. Per pkt., 25c; per $\frac{1}{4}$ oz., 75c; per oz., \$2.00.

LUKULLUS. Another very promising kind in the test. Heads almost as quick as Berlin Forcing, frames and heads a little larger. Both kinds are from the same grower in Germany and show much care in selection for uniformity of type and very quick heading. Neither kind showed any trace of the Alger type but were quite solid. They are both worthy of trial on a small scale, say an oz. of each kind.

CAULIFLOWER SEED—*Continued*

Lukullus seed, Per pkt., 25c; ¼ oz., \$1.00; oz., \$3.00.

All Cauliflower seed will be treated with the Hot-water treatment.

Will have a large bed of Cauliflower Plants raised from the above strains of seed. Will be pleased to book your orders at any time. Prices always reasonable and ready to adjust them if changes occur.

Spray your Cauliflower and Brussels Sprout Plants with Nicotine Sulphate or dust with Nicotine Dust. They control Thrip and Lice.

CABBAGE SEED—LONG ISLAND GROWN

1 oz. will produce from 2 to 3 thousand plants.

No.		Pkt.	Oz.	¼ lb.
175	GOLDEN ACRE. New. Earliest of all. Round solid heads of fine quality. Danish grown ..	\$.20	\$.75	\$2.20
	EXTRA EARLY JERSEY WAKEFIELD. Earliest, pointed. Allen's special strain.....	.10	.25	\$.75
	LARGE EARLY CHARLESTON WAKEFIELD. Large, pointed. Allen's special strain	.10	.25	.75
178	COPENHAGEN MARKET. From Burpee. Extra early, round head10	.35	1.10
	STERLING ALL SEASON. Large, 2nd early, one of the surest heading kinds for Spring and Fall10	.30	1.00
	EARLY SUMMER. Large flat heads10	.25	.75
	PREMIUM FLAT DUTCH. Large, late10	.25	.75
	LARGE LATE DRUMHEAD. Standard late	.10	.25	.75
205	DANISH ROUND HEAD. Burpee's true strain. Short stem. Very solid heads of fine quality10	.30	.95
	SAVOY. Long Island Special. Large heads, crinkled, best quality10	.50	1.50
	RED. Allen's Special. Sure heading, large....	.10	.50	1.50
212	PE TSAI. Long head, large Chinese10	.25	.90
211	WOM BOK. Earliest, short hard head, Chinese	.10	.25	.90

My Cabbage Seed is treated with the Hot-water treatment to control Black Leg and Black Stem.

CORN—SWEET

One lb. will plant from 100 to 200 hills.

No.		Pkt.	Lb.	² Lbs.	¹⁰ Lbs.
301	GOLDEN BANTAM. From Burpee. Sweetest corn there is. Medium early, small ears. Can be planted quite early. Some plant every week through the season. Best for market	\$.10	\$.35	\$.60	\$2.60

CORN—SWEET—*Continued*

No.		Pkt.	Lb.	² Lbs.	¹⁰ Lbs.
	GOLDEN BANTAM. From Conn. and Long Island. Good pure seed of high germination10	.25	.45	2.20
	EARLY MAYFLOWER. Extra early. Large ears. Best for early market. A money maker. From Conn.10	.25	.45	2.20
305	FORDHOOK. Burpee's best extra early. Large ears. Very sweet and prolific....	.10	.35	.60	2.60
310	HOWLING MOB. Burpee's best second early. Large ears, very fine quality and prolific10	.30	.50	2.40
306	BURPEE. A new extra early Yellow Sweet corn50			
327	DREER'S INDEPENDENCE. A new extra early white Sweet corn of fine quality15	.50		
316	BURPEE'S DELICIOUS. Very sweet, 2nd early15	.40	.75	
325	BURPEE'S SUNNYBROOK. Yellow, early, sweet15	.40	.75	
329	GOLDEN GIANT. Cross between Golden Bantam and Howling Mob. Large ears. Early10	.30	.55	2.50
	METROPOLITAN. Large ears. Sweet, 2nd early, finest quality10	.30	.50	2.30
	SQUANTAM. One of the best 2nd earlies. Ask anyone in Orient about Squantam if you are not sure as to quality10	.30	.55	2.60
	LONG ISLAND BEAUTY. Very large ears and a great favorite for market. ..	.10	.30	.50	2.40
314	SWEET ORANGE. A mid-season yellow corn of fine quality. Large ears.10	.30	.50	2.40
	BANTAM EVERGREEN. A large eared yellow corn of fine quality. Just what your city customers will go wild over....	.10	.30	.55	2.50
333	WHITE EVERGREEN. A few days earlier than Stowell's, pure white kernels, which makes it excellent for canning. quality10	.30	.55	2.60
335	STOWELL'S EVERGREEN. Standard Stays tender a long time. Very fine for late. Large ears10	.30	.55	2.60
337	COUNTRY GENTLEMAN, or SHOE PEG. Considered by many the sweetest of all White Sweet Corn. Ziz zag kernels10	.30	.55	2.60

CORN—FIELD, POP AND FODDER

1 peck of Field Corn will plant 1 acre in hills 4 ft. x 4 ft.

1 bushel of Fodder Corn will plant 1 acre in drills.

LUCE'S FAVORITE FIELD CORN. A yellow hybrid, makes a leafy stalk and a very fine large ear.

Selectde ears, each, 5c; per 100, \$4.50.

Shelled, per lb., 10c; 10 lbs., 80c; per bushel of 56 lbs., \$3.25.

L. I. RED COB. A reddish colored dent corn of good yielding quality. One of the best for this section. Same price as LUCE'S FAVORITE.

353 QUEEN'S GOLDEN POPCORN. Largest and best. Buy a lb. for popping. Per pkt. 10c; per lb. 30c.

6073 SORGHUM or EARLY ORANGE SUGAR CANE. Succulent and sweet. Per lb., 20c; per 10 lbs., \$1.50.

6077 TEOSINTE. One of the best plants for fodder; grows up again after cutting. Use only 6 lbs. to acre. Pkt., 10c; per lb., 60c;

6045 SWEET CORN FOR FODDER. Per lb., 20c.; 10 lbs., \$1.80.

CARROT SEED

1 oz. will sow 200 ft. of drill.

2 lbs. to the acre.

No.		Pkt.	Oz.	¼ Lb.	Lb.
218	AMSTERDAM FORCING. One of the best for table use. Early, small	\$.05	\$.20	\$.70	\$2.00
223	BURPEE'S OXHEART. Quality	.05	.15	.45	1.10
221	CHANTENAY or MODEL. The leading kind for early market, tender	.05	.15	.45	1.10
226	HALF LONG NANTES. Cylindrical, about 6 inches long, quality, coreless	.05	.15	.50	1.20
225	DANVERS HALF LONG. The standard kind for field and garden. Burpee's strain, very select. Heavy yielding	.05	.15	.45	1.10

CELERY SEED

No.		Pkt.	Oz.	¼ lb.
266	WHITE PLUME. Earliest, self blanching	\$.10	\$.25	\$.90
272	FORDHOOK. Burpee's Best. Dwarf, Crisp, nutty flavor. Stalks thick, solid and easily blanched for Fall or Winter storage	.15	1.00	3.00
260	GOLDEN SELF BLANCHING. Best American grown seed. Dwarf. Delicious flavor	.15	.60	2.00
	GOLDEN PLUME. Livingston's Strain. New Fine for Fall or Winter. One of the best kinds yet produced	.25	2.75	
	EASY BLANCHING. Blanches white and grows on any soil	.15	.60	2.00
282	GIANT PASCAL. Tall, crisp and nutty. Late	.10	.30	.90
275	WINTER QUEEN. Dwarf, heavy stalks	.10	.30	.90

Will have an extra large bed of plants this year. Place your orders early. All kinds listed. See page 56.

Seed by the Pkt., Oz. and ¼ lb. are postpaid.

Seeds by the lb. are net. Postage extra. See page 3 as to postal rates.

CUCUMBER SEED



DAVIS PERFECT

1 oz. will plant 100 hills. 1 to 5 lbs. to the acre.

No.		Pkt.	Oz.	¼ Lb.	Lb.
371	EARLY GREEN CLUSTER. Small, prolific, a good pickling sort	\$.05	\$.15	\$.45	\$ 1.00
375	EVERBEARING. Very early and prolific, one of the best for small pickles05	.15	.45	1.10
377	EXTRA EARLY GREEN PROLIFIC, or BOSTON PICKLING. Keep the fruit picked and the vines will bear until frost; a medium sized good quality pickle cucumber05	.15	.45	1.00
395	BURPEE'S FORDHOOK PICKLING. One of the best pickling sorts. Thin skinned and very prolific10	.20	.60	1.40
	CHICAGO PICKLING. A fine pickling sort of good color and preferred by some to the Boston Pickling05	.15	.45	1.00
381	ARLINGTON WHITE SPINE. One of the best for market. Very productive ..	.05	.15	.45	1.00
379	BURPEE'S EXTRA EARLY WHITE SPINE. The very best in quality. Good for very early or very late plantings05	.15	.50	1.25
383	BURPEE'S FORDHOOK WHITE SPINE. This is one of the best for home garden, market, or if picked young, for pickles..	.05	.15	.50	1.25
400	DAVIS PERFECT. The most popular kind for market. A large green cucumber, free from disease and very prolific05	.15	.50	1.40
399	LONDON or IMPROVED LONG GREEN. Good for home garden, market, or if picked small makes fine pickles05	.15	.45	1.45
401	EARLY FORTUNE. A select strain of DAVIS PERFECT. Good quality and fine for market. Early05	.15	.50	1.25
393	FORDHOOK FAMOUS. The best flavored and largest of the White Spine type. Very prolific05	.15	.50	1.50

CUCUMBERS—Continued

No.		Pkt.	Oz.	¼ Lb.	Lb.
	WOODRUFF'S HYBRID. A wonderful, fine shipping cucumber of perfect shape and color. Very productive and a great favorite05	.15	.50	1.60
	KIRBY'S STAY GREEN. Claimed to be perfect in shape, color and shipping qualities. Early and productive05	.15	.50	1.25
	CLARK SPECIAL. A fine large Cucumber quite free from disease. Good shape and productive. One of the best.....	.05	.15	.50	1.25

Have a large supply of Cucumber Seed always on hand. Special prices on 5 lb. lots.

EGG PLANT SEED

No.		Pkt.	Oz.
420	BURPEE'S BLACK BEAUTY. Early and best....	\$.15	\$.45
422	NEW YORK SPINELESS IMPROVED. Late, large Will have a fine lot of Egg Plants in season, well hardened.	.10	.40

ENDIVE

No.		Pkt.	Oz.
430	GREEN CURLED or GIANT FRINGED OYSTER. Best in Summer and Fall	\$.10	\$.20
297	FRENCH ENDIVE or WHITLOOF CHICORY. Sow in June for winter salads. Store in your cellar and sprout them as wanted10	.20

KALE

No.		Pkt.	Oz.	¼ Lb.	Lb.
446	DWARF GREEN CURLED. One of the best for greens	\$.05	\$.15	\$.40	\$.95

KOHL RABI

No.		Pkt.	Oz.	¼ lb.
456	EARLY WHITE VIENNA. Best quality, extra early, short topped. The young roots resemble Cauliflower in flavor	\$.10	\$.25	\$.80

LEEK

No.		Pkt.	Oz.	¼ lb.
465	LONG MEZIERES. Burpee's best. Should be blanched white for best quality	\$.10	\$.30	\$.80

LETTUCE

1 oz. will plant 250 ft. of drill.

No.		Pkt.	Oz.	¼ Lb.	Lb.
475	BIG BOSTON. One of the best for early sowing or late Summer. Heads best in cool weather. Burpee's select stock	\$.10	\$.20	\$.60	1.65

LETTUCE—*Continued*

No.		Pkt.	Oz.	¼ Lb.	Lb.
524	NEW YORK IMPROVED. Some consider this the very best lettuce there is. Leaves curled nicely; heart crisp and sweet; large size; quality. Leaves green	.10	.20	.70	2.00
493	EARLY CURLED SIMPSON for cutting. Black seeded. Best loose leaved	.05	.15	.50	1.40
497	EARLY PRIZE HEAD. Outside leaves brown, well blanched heart. Does not head up	.05	.15	.50	1.40
440	DREER'S ALL HEART. The best kind that Dreer has	.10	.40		
474	MAY KING. Quite early, heads nicely in early Spring, quality fine and crisp	.05	.15	.50	1.40
476	BURPEE'S WAYAHEAD. One of the earliest heading varieties, fine flavor and a sure heading kind	.10	.20	.60	1.65
469	BLACK SEEDED TENNIS BALL or SALAMANDA. A great favorite. Quality is there; a sure header	.10	.20	.60	1.65
473	WHEELER'S TOM THUMB. Heart and outside leaves tender and juicy. Keeps from shooting to seed longer than any other kind, even in hot weather	.05	.15	.50	1.45
504	DEACON. One of the best Butterhead sorts, quality. Fine for Summer and Fall	.05	.15	.50	1.40
528	BURPEE'S BRITTLE ICE. Very crisp and sweet; stands hot weather well	.10	.25	.75	2.75
530	BURPEE'S ICEBERG. Very crisp and juicy. Outside leaves fringed and tinged with brown, waxy and crisp white solid heart	.10	.20	.65	1.90
522	HANSON. One of the largest and surest heading sorts. Crisp, mild and tender	.05	.15	.50	1.40
537	COS. or ROMAIN. Dwarf White Heart. Burpee's best Cos. Crisp, juicy. Does not have to be tied up as leaves curl over	.05	.15	.50	1.40

Greens and Salads are rightly called "Nature's Tonics." The American people are too much inclined to eat pastries and highly seasoned and concentrated meat-foods, which are rich in proteins and fats, but are almost entirely lacking in mineral salts. The importance of these mineral salts in the diet, although it has been only recently recognized, cannot be overestimated. The natural source of these essential salts is the Greens and Salads. They should constitute a considerable portion of our food. The majority of the salad plants are easily grown. They are free from insect pests and are adapted to a wide range of soil and climate. They should be grown extensively in every garden. Most varieties can be sown as succession crops, and there is no month during the entire garden season that will not produce one or the other of these useful Greens and Salads. Plant to have Greens and Salads for two meals every day.—Burpee's Annual.

MUSK MELON

1 oz. will plant about 50 hills.

BURPEE'S Musk Melons are the standard for quality.

No.		Pkt.	Oz.	¼ Lb.	Lb.
544*	BURPEE'S NETTED GEM or ROCKY FORD. One of the best table melons...	\$.05	\$.15	\$.45	\$ 1.10
554*	EXTRA EARLY HACKENSACK. Early and sweet. Heavily ribbed and netted..	.05	.15	.45	1.10
550*	OLD FASHIONED JENNY LIND. One of the sweetest of the green fleshed sorts	.05	.15	.45	1.10
	BENDER'S SURPRISE. Quality the best. Grey skin. Orange flesh. Luscious. Large size. Seed from Conn.05	.15	.50	1.60
557*	HONEY BALL. New. A cross between a Cantaloupe and a Honey Dew. Really an early maturing Honey Dew Melon retaining the wonderful Honey Dew flavor	.10	.25	.70	1.90
562*	MONTREAL GREEN NUTMEG. Very large and of good quality05	.15	.45	1.10
546*	BURPEE'S MATCHLESS. Large oval fruits of rich sugary flavor10	.20	.70	1.90
571	HEARTS OF GOLD, or HOODOO. Blight resisting, Midseason. Medium sized melon of delicious flavor05	.15	.50	1.25
574	BURPEE'S FORDHOOK. Flesh very thick and rich, orange yellow. Luscious flavor05	.15	.45	1.30
576	BURRELL GEM. A long slim melon of fine flavor05	.15	.45	1.10
493	DREER'S DELICIOUS GOLD LINED. Very prolific, fine quality and early. New	.10	.25	.90	
575	BURPEE'S EMERALD GEM. The most delicious of all small melons. Salmon or orange flesh, luscious. Green skin, early05	.15	.45	1.10
577	OSAGE or MILLER'S CREAM. A large Emerald Gem, slightly netted05	.15	.50	1.40
578	BURPEE'S SPICY. Bright yellow skin with a deep rich salmon flesh of extreme lusciousness. Large, thick flesh10	.20	.70	1.90
585	GOLDEN EAGLE. Large and very fine quality. Good for heavy soil10	.20	.70	1.90

* Those marked with an asterisk (*) are Green Fleshed.

WATER MELON

1 oz. will plant 25 hills.

No.		Pkt.	Oz.	¼ Lb.	Lb.
588	BURPEE'S FORDHOOK EARLY. A large extra early melon of good quality	\$.05	\$.15	\$.45	\$.90

WATER MELON—*Continued*

No.		Pkt.	Oz.	¼ Lb.	Lb.
590	COLES EARLY. A small early melon, sure to ripen. Of good quality05	.15	.40	.75
	FLORIDA FAVORITE. One of the finest flavored melons there is. White seeded, flesh deep pink. Seed from Livingston	.05	.15	.45	.90
608	KLECKLY SWEETS. Burpee's. One of the best for home garden. Good in quality, size and yield, long melons05	.15	.40	.90
611	HALBERT HONEY. Burpee's selection as the best for home gardens. Sweet...	.05	.15	.40	.90
621	PERFECTION. New, extra large melon, fine quality. Good for market or home	.10	.15	.45	1.10
596	BURPEE'S CUBAN QUEEN. Striped, weighty and dark green; large, juicy and good quality05	.15	.40	.90
634	ICE CREAM. True White Seeded. The most popular kind that we carry. Does well for everybody. Sweet05	.15	.40	.90
613	TOM WATSON. Very large and good quality. One of the best for market05	.15	.40	.80
601	SUGAR STICK. Large, light skinned, Bright red flesh. Fine in quality05	.15	.40	.90
645	COLORADO PRESERVING or CITRON	.05	.15	.45	1.00

MUSTARD

No.		Pkt.	Oz.
647	FORDHOOK FANCY. Very large. One of the best and largest of greens	\$.05	\$.15

OKRA OR GUMBO

No.		Pkt.	Oz.	¼ Lb.
667	PERFECTED PERKINS. Long pod. Very prolific. Used for soups or as a separate dish	\$.05	\$.15	\$.40

ONION SEED

(1 oz. will plant 200 feet)

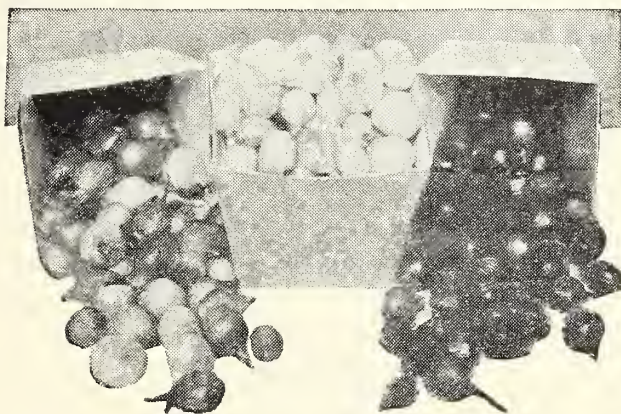
No.		Pkt.	Oz.	¼ Lb.	Lb.
680	SOUTHPORT YELLOW GLOBE. Burpee's Special Stock	\$.10	\$.30	\$1.00	\$3.00
696	SOUTHPORT WHITE GLOBE. Burpee's Special Stock10	.30	1.00	3.25
690	SOUTHPORT RED GLOBE. Burpee's Special Stock10	.30	.90	2.65
	JAPANESE YELLOW or EZENEZER. Very mild, long keeper; flat10	.30	1.00	3.00

ONION SEED—*Continued*

No.		Pkt.	Oz.	¼ Lb.	Lb.
68I	PRIZETAKER. American grown. Large yellow. Very heavy yielding, mild flavor. Burpee's selected strain10	.25	.80	2.40
67I	YELLOW GLOBE DANVERS. Standard for Winter use. A great keeper. Mild	.10	.25	.80	2.40
687	RED WETHERSFIELD. The most popular of all red onions. Flat, large and a heavy yielder10	.25	.75	2.20
697	WHITE PORTUGAL or WHITE SILVERSKIN. Flat, large, if sown thin. Sow thick for pickles. Mild10	.30	1.00	3.25
7II	BURPEE'S GIGANTIC GIBRALTAR. Largest yellow, globe shape. Mild and very sweet10	.30	1.00	3.00
707	BURPEE'S MAMMOTH SILVER KING. The largest white onion. Sweet and tender. Matures early10	.25	.80	2.50

Eat Onions for Health!

Scientists have found in onions some very valuable ingredients. They claim that onions promote digestion to a marked degree.



ONION SETS

Small, hard, fancy sets.

1 lb. makes a quart. 32 lbs. to the bushel.

	Pkt.	Lb.	5 Bu. of lbs. 32 lbs.
WHITE SILVER SKIN. Fancy	\$.10	\$.25	\$1.10 \$5.00
RED. Fancy Rd Globe10	.25	1.00 4.75
YELLOW. Nice hard sets. Globe10	.25	1.00 4.75
JAPANESE YELLOW. A selected strain that grows better and keeps longer than any other sort. Does not shoot to seed10	.25	1.00 5.00

Spray your onions with Hall's Nicotine Sulphate and insure your crop. It is the Thrip that turns the onion tops brown.

PARSLEY

1 oz. will sow a 50 ft. row.

No.		Pkt.	Oz.	¼ lb.
717	EXTRA CURLED DWARF or EMERALD. Very fine moss-like leaves	\$.05	\$.15	\$.40
600	DREER'S DWARF PERFECTION10	.20	.60

PARSNIP

1 oz. will sow 150 ft. of row.

No.		Pkt.	Oz.	¼ lb.
725	GUERNSEY. Broad shoulder, tapering to a point. The best and most productive	\$.05	\$.15	\$.35
727	HOLLOW CROWN. Long smooth. The old stand-by05	.15	.35

PEPPERS

No.		Pkt.	Oz.
818	NEAPOLITAN. Earliest of all, large and mild.....	\$.10	\$.40
819	CHINESE GIANT. Largest of all, mild.20	.90
	HARRIS EARLY GIANT. Very large and early....	.20	1.50
820	SWEET MEAT GLORY. Burpee's Pimento, sweet..	.15	.50
823	LARGE BELL or BULL NOSE. Hot, large10	.40
821	RUBY KING. Large, prolific, mild10	.35
843	GOLDEN QUEEN. Large, sweet, yellow10	.40
837	LONG CAYENNE. Hot, small10	.40
833	BURPEE'S NEW SUNNYBROOK. A small, very sweet Pimento Pepper. Thick fleshed, fine quality, and productive20	.75

Will have a fine lot of Pepper Plants in season. All kinds.

PUMPKIN

1 oz. will plant 25 hills.

No.		Pkt.	Oz.	¼ Lb.	Lb.
861	EARLY SUGAR. A very fine Pie Pump- kin. Yellow skin and flesh	\$.05	\$.15	\$.40	\$.90
867	BURPEE'S GOLDEN OBLONG. Large, good quality. 10 to 20 inches long05	.15	.40	1.10
875	GENUINE MAMMOTH. Largest of all	.05	.15	.50	1.25
872	STRIPED CUSHAW. A long-necked squash-like pumpkin of fine quality. Very meaty. Rich yellow flesh05	.15	.40	.90
1048	WINTER LUXURY or PIE SQUASH. Fine. Light skin, yellow flesh05	.15	.40	.90
865	LARGE CHEESE. Flattened, skin creamy buff, orange flesh. Fine keeper05	.15	.40	.90

PEAS



Gradus

Burpee's Peas are considered the best money can buy, and my stock from Connecticut gave wonderful crops and fine satisfaction the last 4 years. Last year the price was good but even though they only pay expenses the vines are of great manurial value. Plow under a heavy crop of pea vines for your late crops and be convinced of their value.

My GRADUS, THOMAS LAXTON and LAXTONIAN PEAS from Connecticut are considered the best for market. Advise planting as early as possible. The early prices seem to be the best and there is not so much trouble with the Aphis.

GRADUS and THOMAS LAXTON grow tall vines and very large pods. The LAXTONIAN is dwarf in vine and has large pods and lots of them.

The RADIO, BLUE BANTAM, LITTLE MARVEL, BRITISH WONDER, CARTER'S DAISY and ALDERMAN or TELEPHONE are the gardener's favorites for table use and for canning.

I have over 125 bushels of choice new crop pea seed this season. The prices quoted below for bushel lots are cash prices. Add \$1.00 per bushel for time.

1 lb. of peas will plant 100 ft. of row.
1 to 2 bu. to the acre.

No.		Pkt.	Lb.	2 Lbs.	10 Lbs.	Bu.
730	MARKET SURPRISE. Very early, prolific, and of good quality. 2 ft.	\$.10	\$.35	\$.65	\$3.00	\$12.00
731	BURPEE'S BEST EXTRA EARLY. One of the best of the smooth-seeded sorts. 2 ft.10	.35	.65	3.00	12.00
732	RADIO. Burpee's latest introduction. Dwarf, extra early and fine quality. Good for planting in August for Fall crop. 1¼ ft.10	.35	.65	3.00	13.00
	LAXTONS PROGRESS or Early Bird. Very large pods. Prolific..	.10	.40	.75	3.50	13.00
	LAXTON'S SUPERB. Early and very large pods10	.30	.55	2.50	11.00

PEAS—Continued

No.		Pkt.	Lb.	2 Lbs.	10 Lbs.	Bu.
739	ALASKA or EARLIEST OF ALL. Have found no kind as early as this yet. Picked when the peas are small they are fine quality and somehow the birds do not seem to bother them like they do later kinds. 2 ft.10	.30	.55	2.50	11.50
742	EXTRA EARLY PILOT. A large, smooth-seeded kind. Ripens a little earlier than Gradus. Fine for first planting for market. 2½ ft.10	.30	.55	2.50	11.50
745	GRADUS or PROSPERITY. Earliest wrinkled seeded kind. One of the best for home garden or market. 2 to 3 ft.10	.35	.65	2.60	11.50
	GRADUS. From Conn. Fine stock World Record strain10	.30	.55	2.20	10.00
746	THOMAS LAXTON. About the same as Gradus. 3 or 4 days later, perhaps, a little more prolific and equally fine quality. 2 to 3 ft.10	.35	.65	2.80	12.00
	THOMAS LAXTON. From Conn. Fine stock10	.30	.55	2.20	10.00
	LAXTONIAN. From Conn. This kind grows only 15 to 18 inches high and is preferred by many on that account. Very prolific and about as early as Gradus. Very popular for market. Large pods..	.10	.30	.55	2.50	11.00
749	PREMIUM GEM. Very dwarf vines, prolific and fine flavor. 2nd early, 1 ft.10	.35	.60	2.70	12.00
751	AMERICAN WONDER. Even more dwarf than Premium Gem. 2nd early, prolific10	.35	.60	2.70	12.00
753	LITTLE MARVEL. One of the best for home gardens. Sweet, prolific, 15 in.10	.35	.65	3.00	13.00
754	BLUE BANTAM. A fine strain of Laxtonian. Burpee's special stock	.15	.40	.75	3.50	15.00
755	NOTT'S EXCELSIOR. Standard for 2nd early. Large pods, prolific. 15 in.10	.35	.60	2.70	12.00
786	BRITISH WONDER. Early mid-season. Very prolific, large sweet peas. 18 in.10	.35	.60	2.70	12.00
793	CARTER'S DAISY or DWARF TELEPHONE. Only grows 18 inches high and has pods as large as Telephone. Superb quality10	.35	.65	2.80	

PEAS—Continued

No.		Pkt.	Lb.	2 Lbs.	10 Lbs.	Bu.
789	STRATAGEM or POTLATCH. One of the best for late dwarf. Very sweet, prolific and large. 2 ft.	.10	.35	.65	2.80	
800	JUNO or DWARF CHAMPION. This is the latest Dwarf Pea, of fine quality10	.30	.55	2.70	
772	TELEPHONE. The standard Tall Pea. If you do not plant these peas too late they will make an enormous crop, and are fine in quality and very large. 4 ft.10	.35	.65	2.90	
783	BOSTON UNRIVALED. Called an Improved Telephone. 5 ft.10	.35	.65	2.90	
785	ALDERMAN. A week later than Telephone. Large and sweet. 4 ft.	.10	.35	.65	2.90	
815	MAMMOTH MELTING SUGAR. The best edible podded pea. Pick when peas are small and cook as you would string beans. 6 ft.10	.45	.85		

All the foregoing prices by the lb. and over are net, postage extra.
See page 3 as to postal rates. Pkts. postpaid.

The above is as fine a collection of peas as you can find anywhere I am sure, and I have tried to list them in order of ripening. I advise you to select four or five kinds, plant the extra early ones as soon as you can work the ground and then when ground is a little warmer plant the whole succession. That will keep you supplied with peas as long as they will develop properly.

RADISH

1 oz. will sow 50 ft. of drill.

No.		Pkt.	Oz.	¼ Lb.	Lb.
	LIVINGSTON'S SAXA. One of the best and quickest growing Radishes. Red, tur- nip shaped, crisp and sweet. 25 days...	\$.05	\$.15	\$.45	\$ 1.15
877	BURPEE'S EARLIEST or SCARLET BUTTON. 25 days. Fine, crisp, juicy and tender05	.15	.45	1.15
878	RAPILL RED. Fine. 25 days05	.15	.45	1.10
	NON PLUS ULTRA. (Fireball). One the earliest Scarlet Turnips. Fine05	.15	.45	1.20
893	COOPER'S SPARKLER or SCARLET TURNIP WHITE TIPPED. Fine. 28 days05	.15	.40	.90
907	FRENCH BREAKFAST. Olive shaped, very fine, quick growing, snappy05	.15	.40	.95
883	VICK'S SCARLET GLOBE. Long season	.05	.15	.40	.90
886	CRIMSON GIANT, GLOBE. Large, does not get pithy. Very mild and crisp....	.05	.15	.40	.90
938	WHITE ICICLE. Long, very crisp, sweet and tender. Best long05	.15	.40	.90
963	WHITE CHINESE or CELESTIAL. Best for Winter use05	.15	.40	1.00

SALSIFY or VEGETABLE OYSTER

No.		Pkt.	Oz.	¼ lb.	
983	MAMMOTH SANDWICH ISLAND. Use like parsnip, for Fall, Winter and Spring	\$.10	\$.25	\$.80	

SORREL

987	Broad leaved Improved. Sour grass for Greens..	.10	.20		
-----	------------------------------------------------	-----	-----	--	--

SQUASH

1 oz. will plant from 25 to 50 hills.

No.		Pkt.	Oz.	¼ Lb.	Lb.
1010	EARLY WHITE BUSH. Scalloped, earliest Patty Pan	\$.05	\$.15	\$.45	\$ 1.25
1018	EARLY GOLDEN CROOKNECK. Bush, fine quality. Use when young05	.15	.45	1.20
1020	GIANT GOLDEN CROOKNECK. Very large. Use when the squashes are young and tender. Fine quality05	.15	.45	1.10
1031	LONG WHITE MARROW or VEGE- TABLE MARROW. 12 in. long and 4 to 5 in. thick. Bush. White flesh05	.15	.45	1.10
1030	COCOZELLE BUSH. A long, green squash. Does not send out long vines..	.05	.15	.45	1.20
1032	BURPEE'S FORDHOOK. A delicious squash of fine flavor; good for Summer and Fall. Vining type05	.15	.45	1.10
1034	BUSH FORDHOOK. Of the same fine quality as 1032, but in bush form....	.05	.15	.45	1.10
1036	BOSTON MARROW. Fine grained, dry and sweet; golden skin. Fall and Winter. Makes fine pies05	.15	.45	1.10
1038	BURPEE'S TRUE WARTED HUB- BARD. Best for pies. Green05	.15	.45	1.20
1040	CHICAGO WARTED HUBBARD. Larger and more heavily warted than No. 1038; fine keeper. Dark green....	.05	.15	.45	1.20
1042	RED or GOLDEN HUBBARD. One of the best for pies. Golden flesh05	.15	.45	1.20
1052	DELICIOUS. The squashes weigh from 5 to 10 lbs. and vary in shape and size, but are uniform in delicious quality and splendid winter keepers05	.15	.45	1.20

The Squash has been found to be one of the vegetables that contain a quantity of those valuable vitamins. Plant squash for your children, and serve it like potatoes, every day.

SWISS CHARD or SILVER BEET

Swiss Chard is one of the best greens there is. Cut outside leaves and it will grow out again and again. One oz. will sow 50 ft. of drill.

No.		Pkt.	Oz.	¼ Lb.	Lb.
137	LUCULLUS. Large stalks and leaves, heavily crumpled05	.15	.45	1.10
136	LARGE RIBBED WHITE. Smooth leaves that wash easily05	.15	.45	1.10
135	FORDHOOK GIANT. Largest and of finest quality10	.30	.90	2.75

SPINACH

1 oz. will sow 50 ft. of drill.

No.		Pkt.	Oz.	¼ Lb.	Lb.
979	KING OF DENMARK. This new Spinach stands longer than any other kind excepting the New Zealand. The leaf is large, dark green and nicely crumpled. Comes early and stays late	\$.05	\$.10	\$.25	\$.60
990	HENDERSON'S LONG SEASON. Thick, crumpled, dark green leaves. One of the best05	.10	.25	.50
991	BURPEE'S VICTORIA. Good quality..	.05	.10	.25	.50
993	THICK LEAVED ROUND. Very productive. Quality05	.10	.25	.50
999	SAVOY LEAVED. Best for Fall sowing	.05	.10	.25	.50
1005	NEW ZEALAND. The hot weather Spinach. Spreading. Use the tips or new sprouts. Will last till Fall05	.15	.40	.90

TOMATO SEED

No.		Pkt.	Oz.	¼ Lb.	Lb.
1097	BURPEE'S SUNNYBROOK EARLIANA. The earliest of all Red Tomatoes.	\$.10	\$.40	\$ 1.25	
	RICE'S SELECTED EARLIANA. A distinct new strain of this early tomato	.15	1.25		
	RED HEAD. Early, deep red. Livingston's. Does well on Long Island	.10	.40	1.30	4.25
1101	CHALK'S EARLY JEWEL. One of the largest, smoothest and finest flavored extra early bright red tomato10	.35	1.10	3.50
	BONNY BEST. Early, very productive, firm, medium size. Livingston's10	.35	1.20	4.25
	JOHN BAER. From Livingston. Early. Very prolific, smooth and firm. Fine quality10	.35	1.20	4.25
1114	PONDEROSA. Large, meaty, fine quality. One of the best for home use.15	.50	1.75	6.00

TOMATO SEED—*Continued*

No.		Pkt.	Oz.	¼ Lb.	Lb.
1074	STONE. Standard for home use and for market. Firm, good color and a heavy yielder. Best for canning10	.35	1.10	3.75
	CLARK SPECIAL B. A selected Stone of unusual merit. One of the best for market. From Conn.10	.35	1.20	4.00
	STONE. Livingston's Selected Seed. Very choice. Originator's stock10	.40	1.30	5.00
	LIVINGSTON'S OXHEART. A new sort.25			
	GOLDEN PONDEROSA. Large yellow fruit of finest quality. No acid10			
1108	BURPEE'S MATCHLESS. Burpee claims this to be the best for home gardens, and for market. Large, smooth, bright cardinal red. Even colored10	.35	1.10	3.90
	LIVINGSTON'S GLOBE. Fine for market. Almost Blight-proof; delicious flavor. Color purple, firm10	.40	1.40	

Will have a fine lot of plants from the above strains of seed in season. Would appreciate your early orders if you want plants by the thousand.

TURNIP and RUTA BAGA SEED

No.		Pkt.	Oz.	¼ Lb.	Lb.
1159	EXTRA EARLY WHITE MILAN. Best for early	\$.05	\$.15	\$.40	\$.90
1157	EARLY RED or PURPLE TOP STRAP LEAF. A flat, early turnip, of fine quality. Good for Fall and Winter...	.05	.10	.30	.65
1169	WHITE EGG. Early globe-shaped. Fine quality, free from stringiness05	.15	.35	.80
1183	GOLDEN BALL, or ORANGE JELLY. Sweet and delicious05	.10	.30	.65
1191	BURPEE'S PURPLE TOP YELLOW RUTA BAGA. The standard for winter storing. Fine quality05	.10	.30	.70
	NEYLON'S PURPLE TOP RUTA BAGA. A special strain developed by the West End truckers. Extra in quality, size and smoothness10	.20	.60	1.50

PEANUTS

- 6062 MAMMOTH BUSH. Plant these in your lightest soil as soon as oak buds have swelled out and be surprised at the crop that you will get. A secret of peanut culture is to cover the whole plant with Hydrated Lime when the nuts are setting.
Per pkt. \$.10; per lb. \$.45; per 10 lbs. \$3.50.
- 6064 WHITE SPANISH. A small peanut of extra fine quality. The surest cropper for this section.
Per pkt. \$.10; per lb. \$.30; per 10 lbs, \$2.50.

HERBS

No.		Pkt.	Oz.
1304	ANISE. Annual, for garnishing and flavoring	\$.10	\$.30
1315	CATNIP. Perennial. For seasoning and cats10	.50
1319	DILL. Annual. For dill pickles, soup and sauce....	.05	.15
1321	FENNEL, SWEET. Perennial. For flavoring and salad10	.25
1326	TRUE LAVENDER. Perennial. Use flowers for imparting perfume to linen10	.40
1327	MARJORAM, SWEET. Annual. For seasoning..	.10	.35
1329	ROSEMARY. Perennial. Use leaves for seasoning	.10	.45
1333	SAGE. Perennial. For seasoning10	.40
1335	SAVORY, SUMMER. Annual. For flavoring10	.40
1341	THYME. Perennial. For flavoring your turkey dressing, also for soups, stews, etc.10	.60

Can get any other kind of Herb you might want at short notice.

FARM AND FIELD SEEDS

SEED POTATOES

Use 4 to 5 sacks to the acre.

My Seed Potatoes gave very good results last season. They did so well that we bought over 4,000 sacks of seed to fill our requirements last fall. We have a nice lot of Prince Edward Island Seed for Spring demand, both Cobblers and Green Mountains. All certified Association Seed. Handsome stock.

	Pkt.	Bu.	Sack of 150 lbs.
IRISH COBBLERS, Prince Edward Island	\$1.00	\$3.00	\$6.75
GREEN MOUNTAIN, Prince Edward Island.....	1.00	3.00	6.75
GREEN MOUNTAIN, Home Grown, from new seed80	2.50	5.50

The above prices are net cash when you get the goods. Time prices are a matter of adjustment. Prices liable to change.

SEED OATS

Use 2 to 4 bushels to the acre.

My Seed Oats are very heavy and therefore it takes a few more pounds to sow an acre than it does of the lighter kinds, but the returns are so much more that it pays well.

SCOTTISH CHIEF. The best Oat that we have ever been able to purchase for this section. Very heavy and prolific. Per pk. of 8 lbs., \$.60; per bu. of 32 lbs., \$1.95.

WOLVERINE. A new kind. Excellent variety for a cheaper oat. Pk., \$.50; Bu. of 32 lbs., \$1.75.

SEED OATS—*Continued*

SEED OATS by the bag. A very heavy Seed Oat packed in 80-lb. bags. Per bag, \$3.00.

If anyone wants to sow Oats for pasture or for plowing under, Seed Oats by the bag are the kind to use, but if you expect to thresh your crop use Scottish Chief or Wolverine. 2 or 3 extra bushels will pay for the extra cost of the seed.

SEED WHEAT

SPRING WHEAT. Marquis, the best Spring Wheat. Very prolific, early. Per pk. of 15 lbs., \$1.00; per bu. of 60 lbs., \$3.30.

WINTER WHEAT, for Fall Seeding. Leap's Prolific. The most prolific, hardy and satisfactory Wheat ever grown in this section. Red kernel, stiff straw, bald. This seed will be grown on our own farm from new stock seed last Fall. Carefully rogued and cleaned. Price on application.

SEED RYE

SPRING RYE, more suitable to sow in the Spring than the Rosen Rye. Fine seed. Per pk. of 14 lbs., \$.85; per bu. of 56 lbs., \$3.10.

SEED RYE FOR FALL SOWING. ROSEN RYE. This is the best and the cheapest in the end as it is re-cleaned and of high germination. Get my prices before ordering elsewhere.

VETCH and CANADA FIELD PEAS

WINTER VETCH. For Fall Sowing. Mix a little in with your Rye for a cover crop. We find that it pays. Price on application.

SPRING VETCH. For Sowing in the Spring for a cover crop to plow under for a late crop. Per lb., \$.12; 10 lbs. or more at \$.09 per lb. Mix with oats.

CANADA FIELD PEAS. For Sowing in Spring and early Summer for a cover crop to plow under for Cauliflower, Brussels Sprouts, etc. Both the Canada Field Peas and the Vetches are Legumes and add fertility to the soil. Inoculate the seed with Mulford Cultures if you are not sure they do well on your farm. Per 10 lbs., \$1.00; per bu. of 60 lbs., \$4.20. Use 1 bu. Peas and 1 bu. Oats to the acre.

SOJA or SOY BEANS

Have the best kind of Soy Beans for this section. Used for plowing under green to build up your soil, or for hay. Sow in May or June.

EARLY YELLOW. Quick maturing, very productive. Per 10 lbs., \$1.00; per bu. of 60 lbs., \$3.60.

COW PEAS

Used to improve the soil. Sow in May or June.

WHIP-POOR-WILL. The best kind for this section. Per 10 lbs., \$1.20; per bu. of 60 lbs., \$4.20.

Warning. Do not sow your Cow Peas, Soy Beans or Spring Vetch until your ground is warmed up a little. If sown too early they will fail to germinate, or if they do sprout, they will not thrive. They are also helped by inoculation. Use Mulford Cultures.

SUDAN GRASS

If you have lost out on your Summer's Hay crop sow an acre of this and get a heavy crop of succulent, valuable fodder.

We find this the best Grass for Pasture that we have ever tried. Use 15 to 20 lbs. with 1 bu. of Oats, on one acre of ground. Sow after ground warms up on good soil and this acre will keep one cow in good condition all Summer. 2 acres will keep 2 cows and so on.

For Hay use 20 to 25 lbs. to the acre, broadcast, or 10 lbs. in drills and cultivate. Crops of 5 tons to the acre have been grown. Northern seed. Per lb., \$.15; 10 lbs. or more, at \$.12 per lb.; 50 lbs. for \$5.50.

COSSACK ALFALFA

The surest and best kind of Alfalfa to grow. Here are a few reasons:

"It is the hardiest Alfalfa known."

"A better soil builder than other Alfalfa."

"More drought resistant on account of the long tap root."

"Has a double root system, both branched and deep."

"Makes a finer quality hay."

"Will yield more hay per acre no matter what the weather conditions are."

"Freezing does not kill young plants. The branched roots keep them from heaving."

Use 10 to 15 lbs. to the acre. Inoculate the seed with Mulford Culture and sow on sweet soil. Lime will make your soil sweet. All our Alfalfa Seed is Northern grown. Per lb., \$.48; per 10 lbs. or more at \$.45 per lb.

GRIMM ALFALFA

This has been tried around here for the last few years and found to stand the Winter better than our Northwestern Alfalfa, but not quite so drought resistant. This seed comes from the Northwest, is over 99% pure and is Dodder free. 90% germinatoin. Same can be said of the Cossack.

Per lb., \$.40; per 10 lbs. or more, at \$.37 per lb.

Inoculate your Alfalfa Seed with Mulford Culture.

A good plan is to take 5 lbs. of each kind of Alfalfa that we have and mix together using 20 lbs. to the acre.

BUCKWHEAT

The best thing to sow on stump land, does well in sour soil. Fine for bees and to smother out bad weeds and quack grass.

JAPANESE BUCKWHEAT. The best kind to use in this section. Very prolific. Very large grain. Per 10 lbs., \$.75; per bu. of 48 lbs., \$2.50.

RAPE SEED

DWARF ESSEX RAPE. Makes a wonderful growth for seeding down hen yards, hog or sheep pastures. Per lb., \$.18; per 10 lbs. or more, at \$.14 per lb.; 50 lbs. for \$6.00.

Mix 10 lbs. Rape and 1 lb. Kale for your Duck Greens.

BARLEY

FANCY SIX ROW. Makes good pasture. Per 10 lbs., \$.50; per bu., \$2.30. Does not rust like oats.

GRASS, CLOVER and ALFALFA SEED

Prices liable to change without notice.

Terms strictly cash.

The Globe Brand is the very best grade of Grass, Clover and Alfalfa Seed on the market. I make my prices just as reasonable as is possible consistent with the quality. It is the very last fraction of 1% in purity that costs money. The best is what I am always looking for. I believe that it pays big returns, too, as it is truer in seeds than in anything else that "the best is none too good."

My Hay Mixture for one acre is 10 to 12 lbs. of Timothy, mixed with 6 to 8 lbs. Clover, part Red and part Alsike, or all Alsike if you prefer, and sow early in the Spring, alone, or with Oats, or in August and September. If sown in wheat, sow the Timothy in the Fall with the wheat, and the Clover in March or April following.

In sowing Timothy alone without Clover use 15 to 20 lbs. to the acre. If your land is sour and Grass and Clover does not do well as a rule, a little lime sown on top of the ground and harrowed in before sowing the seed would be a great help.

We do not handle foreign grown Clover Seed. All our Clover and Alfalfa Seed is grown in the U. S. A.

Special prices on 100 lbs. and over. Ask us about them.

	5 Lbs.	& Over 1 Lb. to Per Lb. 4 Lbs.
TIMOTHY. The brightest and purest seed on the market	\$.11	\$.14
RED CLOVER. Domestic, best grade. Northern grown47	.50
ALSIKE CLOVER. Does well where Red Clover sometimes fails. Best grade; domestic45	.48
ALFALFA. Finest Dakota grown27	.30

GRASS, CLOVER SEED—Continued

	5 Lbs. & Over 1 Lb. to Per Lb. 4 Lbs	
ALFALFA, COSSACK. See page 27.45	.48
ALFALFA GRIMM. Genuine. See page 27.37	.40
ALFALFA, Canadian Variagated. Very hardy and productive33	.37
SWEET CLOVER. White blooming, hulled19	.22
CRIMSON CLOVER. Sow in July and August. Price on application.		
WHITE CLOVER. Fine for lawn or pasture48	.53
RED TOP. Fancy re-cleaned. Fine for Lawns, stump ground, or anywhere the ground is sour. Best grade	.34	.37
KENTUCKY BLUE GRASS. Does best on sweet soil. Best grade. Fine for lawns28	.31
ORCHARD GRASS. Earliest pasture22	.25
GOLDEN MILLET. Sow in June for pasture or hay..	.09	.11
HUNGARIAN GRASS. Easier to cure than the Golden	.09	.11
JAPANESE MILLET. Considered the best kind of all	.10	.12
SUDAN GRASS. Grows something like Sorghum. See page 27.12	.15
STERLING PASTURE MIXTURE. My blend of the best kind of Grass and Clover Seed, suitable for growing for pasture. State if you do not want Or- chard Grass in it as some do not like this grass. Con- tains some White Clover. Use 20 lbs. to the acre...	.32	.35

Jan. 15th, 1926.

Mr. Ralph W. Sterling,
Cutchogue, L. I.

Dear Sir:

We have had good results from the Cossack Alfalfa seed we obtained from you for the past two years. We drilled it in on oat stubble about August 15th and had a stand 6 to 8 inches high with tap root 4 to 5 before killing frost, (samples of which were sent you). We have planned to seed another piece the coming season.

Yours truly,

MILLER P. DAVIS

Germantown, Ohio
Nov. 14, 1925

Mr. Ralph W. Sterling,
Cutchogue, L. I., New York.

Dear Sir:

We had fine growing weather in this part of the country this last summer and some of those roots I received from you produced as many as 20 shoots to one root and I have seen smaller asparagus sell on market than what they were. They have suited me so well that I think I will place my order with you in the spring for about 7,000 more roots. I won't plant any other kind.

Yours truly,

FRANK C. ROHRER

I planted all your seed this year and had the best crop of Potatoes that I ever had.

Yours truly,

BERT STEP NOSKI



LAWN MAKING

Lawn making has been reduced to a science by the Department of Agriculture. Experiments have demonstrated that the stand-by of lawns in this country, where lawns can be made, is Kentucky Blue Grass; and that the best method of obtaining a Blue Grass lawn is to sow a mixture containing Red Top. The latter germinates more quickly, and helps make a thick lawn the first few years, but gradually gives way to the spreading blue grass. White clover is usually mixed in, where clover is not objectionable, because it helps thicken the early turf, and secretes nitrogen from the air, which helps the grass. Our grass seed is exactly what we represent, recleaned and free from weeds.

Loosen the soil in which a new lawn is to be made to a depth of at least five inches, and lighten it with humus or several inches of sand, compost or manure if it is heavy and inclined to bake. Apply fertilizer liberally, either Sheep Manure, Bone Meal, Vigoro or a commercial fertilizer.

Sow in the early spring when cool weather and ample rainfall will insure complete germination and a good start for the seedlings before hot dry weather comes. If seeding must be delayed, special precautions must be taken to prevent the ground drying out. Early fall is a very desirable time to plant.

See that the seed is well covered. Rake it into a new seed bed and roll so that the soil is firmed over the seed. Where seed is sown on an old lawn always cover it with a top dressing of sand or soil and fertilizer. Seed thrown on the top of hard ground has no chance to grow and will merely wash off.

Use lime if you think soil is inclined to be sour. If sorrel comes in natural it is a sign of a lack of lime.

LAWN GRASS SEED

No.		5 Lbs. & Over 1 Lb. to Per Lb. 4 Lbs.	
	STERLING MIXED LAWN GRASS. I prepare this mixture myself from the highest grade Kentucky Blue Grass, Fancy Red Top and White Clover. This mixture has given the very best satisfaction throughout Long Island. Quick growing and permanent. 25 lb. lots at 36c per lb.	\$.38	\$.43
6145	FORDHOOK FINEST LAWN GRASS. Burpee's best. A mixture of many fine Grasses suitable for lawns and contains none that makes bunches and clumps. 25 lbs. or more at 38c per lb.40	.45
	CREEPING BENTGRASS. <i>Agrostis Stolonifera</i> True. This is the very finest grade of the Bents and produces a weedless lawn, as it thrives on sour soil where weeds and other grasses will not grow68	.75
6149	SHADY NOOK. Where there is only partial shade the other Lawn Grasses are all right but where the shade is quite dense use this special mixture	.46	.48
	WHITE CLOVER. Very best grade48	.53
	FANCY RED TOP. Re-cleaned. Fancy34	.37
	KENTUCKY BLUE GRASS. Best grade28	.31

For a good, permanent lawn, use 1 lb. lawn seed to 400 sq. feet., 80 to 100 lbs. to the acre. For reseeding an old or poor catch, use half that amount.

VIGORO

For lawns, shrubs, trees and gardens. A large illustrated pamphlet, "The Home Beautiful" comes packed in every bag.

25 lb. Bag, paper lined	\$1.75
50 lb. Bag, paper lined	3.00
100 lb. Bag, paper lined	5.00

HUMUS

This is one of the best Lawn Makers, especially for poor soils.

Mix 100 lbs. of this Dry Humus to a plot 20 by 20 and see the wonderful way the grass will grow where it is used. Also fine for spading in your flower beds, only use it in a larger proportion than above.

100 lb. Bag	\$ 2.00
Per ton of 2000 lbs. (20 Bags)	30.00

All the above prices are net cash. Time prices are a matter for correspondence.

SHEEP AND GOAT MANURE

Fine for Lawns, Gardens and Flower Beds. Also the best thing to top-dress seed beds to insure a good crop of Cauliflower and Brussels Sprout plants.

SHEEP AND GOAT MANURE—*Continued*

Sheep and Goat Manure is of better mechanical condition and of higher quality than plain Sheep Manure.

10 lb. Bag	\$.50
25 lb. Bag	1.00
100 lb. Bag	3.00
500 lbs. (5 bags)	12.50
2000 lbs. (20 bags)	42.00

All the above prices are net cash.

BONE MEAL

One of the best fertilizers for Lawns, Roses, Trees, Flower Gardens and also for top-dressing Grass lots. V-C Brand. One of the best.

10 lb. Bag	\$.60
25 lb. Bag	1.25
100 lb. Bag	3.75
500 lbs. (5 bags)	15.00
2000 lbs. (20 bags)	48.00

The above prices are net cash.

TIP-TOP TOP DRESSER

A high grade fertilizer for top dressing grass.

Analysis 7% Ammonia; 6% Phosphoric Acid; 5% Potash.

167 lb. Bag	\$ 4.00
500 lbs. (3 bags)	11.00
2000 lbs. (12 bags)	42.00

NITRATE OF SODA

Use 1 to 2 bags to the acre on your hay ground, in May, and for your Cauliflower and Sprouts in Sept.

167 lb. Bag	\$ 6.00
500 lbs. (3 bags)	17.00
2000 lbs. (12 Bags)	Price on Application

The above prices are net cash.

LIME

Hydrated Lime is the most easily assimilated Lime there is. This is very fine for lawns and Gardens. Also for seeding down grass, preparing a seed bed for your Cauliflower field, only do not use it where you will plant Potatoes within a few years.

10 lb. Bag	\$.25
50 lb. Bag75
500 lbs. (10 Bags)	6.00
2000 lbs. (40 Bags)	18.00

The above prices are for net cash.

GARDEN FERTILIZER

A Sun-Rise Brand formula analysing 6% Ammonia, 9% Phos. Acid and 5% Potash, suitable for any growing crop and most especially your Garden.

10 lb. Bag	\$.50
50 lb. Bag	2.00
143 lb. Bag	4.50

FLOWER SEEDS

BURPEE'S AND DREER'S ANNUALS

No.		Pkt.	¼ Oz.	Oz.
1505	AGERATUM. Blue, fine for borders and beds	\$.10	\$.30	
1689	ASTER. Queen of the Market. Earliest.			
	Mixed10	.40	\$1.25
1614	ASTER. Crego Giant Mixture. Very large flowers. Petals curled. 8 colors10	.40	1.25
1735	ASTER. Fordhook Favorite Mixture. Finest American types. Mixed10	.40	1.25
7788	ASTER. Burpee's American Beauty Collection. One of the largest and finest types. 1 pkt. each of six colors. The collection, \$.50	.15		
1674	ASTER. California Giants. Newest kind. Very large, beautiful flowers. Mixed20	.40	
1470	ASTER. Dreer's Superb Late Branching. Dreer's finest mixture of 8 colors10		
1524	SWEET ALYSSUM. Little Gem. White. Free blooming. One of the best for beds and borders10	.20	.60
1549	ANTIRRHINUM or SNAPDRAGON. Half Dwarf. Fancy mixed colors. Fine10		
1719	ANTIRRHINUM. Giant Mixed. Burpee's 13 new Giants in mixture15		
1158	ANTIRRHINUM. Dreer's Super-Giant Snapdragon. 6 newest shades. Mixed20		
1719	BALSAM. Old fashioned Lady Slipper. Defiance Mixture of 9 shades and colors10	.30	
1805	CALENDULA or SCOTCH MARIGOLD. Double flowers. A complete mixture10	.15	
1809	CALLIOPSIS. Golden Wave. Bright Yellow with a dark brown center10	.25	
1816	CANDYTUFT. Giant Hyacinth Flowered. Finest white. Fine for borders10	.25	
1830	CARNATION. Dreer's Giant Marguerites. Early flowering, sweet, mixed15	.50	
1864	CELOSIA. Magnificent Plumed Cockscomb. Burpee's best mixed10	.30	
1852	COCKSCOMB. Dreer's Glasgow Prize. The old-fashioned flat, deep, red comb10		
1887	CENTAURIA. Double Cornflower. Blue10	.30	

ANNUAL FLOWER SEEDS—*Continued*

No.		Pkt.	¼ Oz.	Oz.
1885	CENTAURIA. Double mixed. 6 colors, fine	.10	.25	
1900	CENTAURIA. Imperialis. Dreer's Royal Sweet Sultans. Sow early. Fine for cutting..	.10		
1942	COSMOS. Early Large Flowering. Mixed...	.10	.20	.60
1963	COSMOS. Early Double Flowering. White, Pink and Rose, mixed. Will throw a good proportion of double flowers and will bloom early. Very beautiful20		
1930	CHRYSANTHEMUM. Dreer's Coronarium. Single mixed. A fine Annual for cutting. Sometimes called Painted Daisies10		
1994	DIANTHUS or CHINESE PINK. Hedde- wigii. Fine, large double mixed10	.35	
2055	ESCHSCHOLTZIA or CALIFORNIA POP- PY. Sunset Mixture. All the best kinds...	.10	.20	
2054	ESCHSCHOLTZIA. Vesuvianus. Bright scar- let or coppery red10	.20	
2049	ESCHSCHOLTZIA. Golden West. Deep orange base. Large10	.20	
2139	LARKSPUR. Tall, double, dark blue10	.30	
2124	LARKSPUR. Burpee's Best Mixture. Tall...	.10	.25	
2940	LARKSPUR. Dreer's 6 lovely colors. In mix- ture. Tall, beautiful spikes10	.25	
2200	FOUR O'CLOCK. Tom Thumb. All colors10	.15	.30
2086	GAILLARDIA. Double Mixed. Blanket Flower10	.25	
2846	STRAWFLOWER. Mixed colors. Makes a beautiful Winter bouquet10	.35	
2469	DREER'S EVERLASTING FLOWERS. 1 pkt. each of the 8 best varieties. The 8 pkts. \$.50, single pkts,10		
2118	KOCHIA or BURNING BUSH. Green bushes turning red in the Fall10	.20	

DREER'S MARIGOLDS

3084	ORANGE PRINCE. Dreer's Magnificent Deep Orange. Large free bloomer. Seed of this and of 3085 grown by a Specialist. Both are Tall African. 2½ ft. high15	.50	
3085	LEMON QUEEN. Immense double flowers of a lighter color than 3084, 2½ ft.15	.50	
3093	GOLDEN BALL. Double Dwarf French Mari- gold. Rich Golden Yellow, 1½ ft.10	.40	
3094	LEMON BALL. Same as 3093 only Light Lemon Yellow. Both Densely double, 1½ ft.10	.40	
2170	AFRICAN. Double mixed, from Burpee, 2½ ft.10	.25	.75
2190	FRENCH BURPEE'S. Double, mixed, 1½ ft.10	.25	.60
2226	MIGNONETTE. White Pearl. The best White. Large sweet scented trusses10	.40	
3154	MIGNONETTE. Dreer's Red Goliath. Dreer's finest and largest Red15		

ANNUAL FLOWER SEEDS—*Continued*

No.		Pkt.	¼ Oz.	Oz.
2354	NASTURTIUM. Tom Thumb, Gorgeous Mixture. Burpee's Best. All colors. ¼ lb., \$.45	.05	.05	.15
3110	NASTURTIUM. Tall Fordhook Favorites. Burpee's Best Giant Flowering. All colors.. ¼ lb., \$.40. Lb. lot of either kind, \$1.40, (Post-Paid). Can get you the separate kinds of Burpee's Nasturtiums if you prefer. Any color.	.05	.05	.15
2513	PANSY. Burpee's Blend of Giant and Fancy types. Unsurpassed25	2.05	
3510	PANSY. Dreer's Royal Exhibition mixture. This is Dreer's finest mixture as to size, texture and colorings. Pkt.50		
2556	PETUNIA. Enchantress Mixture. Dwarf, all colors. One of the best mixtures for bedding	.10		
2567	PETUNIA. Burpee's Defiance. The largest flowering kind. Beautiful mixed colors25		
2539	PETUNIA. Elk's Purple. This is something special. Deep purple flowers of extra large size30		
2574	DOUBLE PETUNIA. Fordhook Fancy Fringed. One of the most beautiful mixtures of Petunias. All shades and colors. Seed very valuable. Small pkt.30		
3566	PETUNIA. Dreer's Rosy Morn. The most popular kind for Window Boxes, Hanging Baskets or bedding15		
3559	PETUNIA. Dreer's Balcony Petunias. 1 pkt. each of Dreer's 4 best kinds, Blue, Rose, White, Crimson, 6c, single pkts.....	.20		
2581	PHLOX DRUMMONDI. Fordhook Finest Mixed. All of Burpee's finest in mixture. One of the finest flowers for Bed or Border ..	.10	.30	
3620	PHLOX DRUMMONDI. Dreer's finest mixed. Very beautiful.10		
3696	POPPY. Dreer's Select Shirley. The very finest mixture of Single Poppies. Sow the seed very early in the Spring where you want them to grow. Not too deep10		
2644	POPPY. Burpee's Mixture of large Double Peony Flowered. Beautiful shades and colors	.10	.20	
2642	POPPY. Double Carnation Flowered. Burpee's mixture of this most popular and beautiful sort. A wide range of colors10	.20	
2659	PORTULACA. Double mixed. Brilliant mixture of many bright colors10		
2652	PORTULACA. Single mixed. Burpee's finest	.10		
3867	RICINUS or CASTOR OIL BEAN. Red Spire. Dreer's most ornamental. Plant a few of these in your lawn and garden and they claim that the Grond Moles will disappear.10	.15	
2707	SCABIOSA. Pin cushion Flower. Large Flowered Double Mixed. One of the best sorts for cut flowers10	.30	

ANNUAL FLOWER SEEDS—*Continued*

No.		Pkt.	¼Oz.	Oz.
3936	SALVIA. America. Dreer's finest. Early flowering, very profuse blooming and about 2 ft. in height25		
3932	SALVIA. Bonfire. Brilliant scarlet spikes stand clear from the dark green foliage and just cover the plant which grows 2 ft. high .. Will have a fine lot of plants from both these kinds of seed. See page 42.	.15	.75	

BURPEE'S SWEET PEAS

None Better

No.		Pkt.	¼Oz.	Oz.
3599	SWEET PEAS. The Burpee Blend. This is Burpee's finest mixture of all the best Orchid-flowered varieties. All colors and shades. ¼ lb., \$.75, 1 lb., \$2.00 Postpaid05	.10	.20
3600	SWEET PEAS. Mixture of Light Shades. For one who prefers all the light shades and none of the darker ones. Beautiful, large blossoms ¼ lb., \$.80, 1 lb. \$2.50 Postpaid.	.05	.10	.25
3601	SWEET PEAS. Burpee Novelty Mixture. Contains all the newest large Orchid flowering sorts. All shades and colors. ¼ lb., \$1.00...	.10	.10	.30
7321	SWEET PEA COLLECTION. One pkt. each of the six newest Orchid flowered Sweet Peas Pink, Orange, Blue, Red and Rose. Enough for 10 or 15 ft. of row. Collection \$.75.	.15		
7330	SWEET PEA COLLECTION. One pkt. each of Burpee's six best Sweet Peas. You should try one of these collections and have the finest there is. This will plant 20 ft. of row. Collection \$.50.10		
7340	SWEET PEA COLLECTION. Burpee's Best 12. One pkt. each of 12 of their best kinds. All different and all very beautiful. \$1.00 Post Paid. Will plant 40 ft.10		
7310	SWEET PEA COLLECTION. Burpee's Sweet Sixteen Collection. One pkt. each of the most popular kinds. 16 pkts. in all. All different shades. This collection will plant a row 35 ft. long. \$1.00 Post Paid.			
4020	STOCKS. Improved large flowering 10 weeks. Mixed colors. Fine for bedding, Dreer's. ..	.10		
2765	SUNFLOWER. Double Chrysanthemum flowered. Fine for border, or hedge10	.20	.50
2762	SUNFLOWER. Red. One of the best fancy..	.05	.15	.40

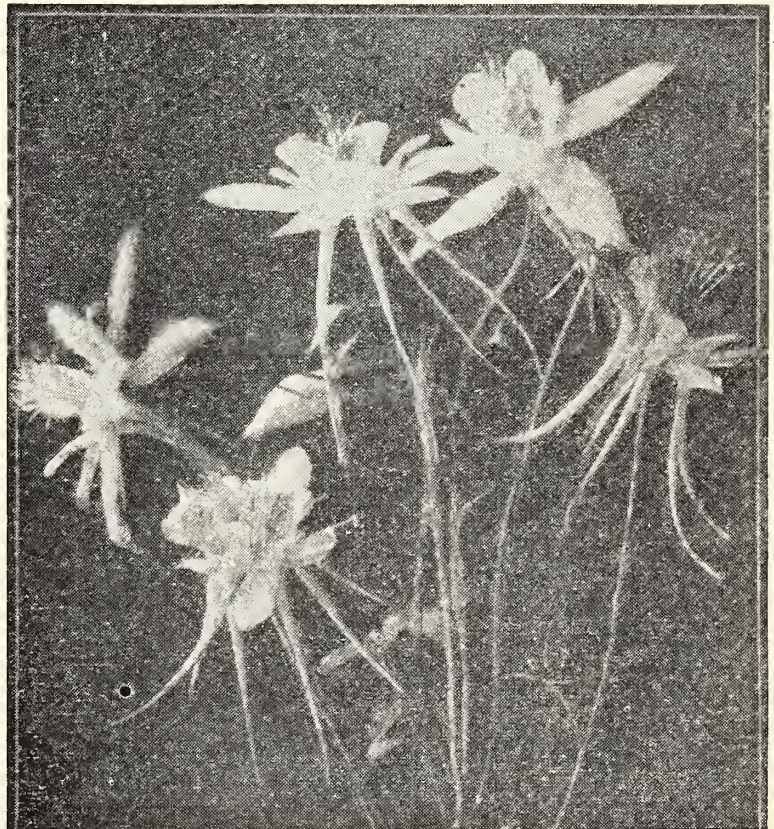
BURPEE'S SWEET PEAS—*Continued*

No.		Pkt. ¼Oz.	Oz.
6075	SUNFLOWER. Large Russian. The largest of all. Per ¼ lb., \$.20; per lb., \$.3505	.05 .10
2776	VERBENA. Fordhook Famous. Mammoth, mixed. All colors. Fine for borders and Boxes10	.50
2813	ZINNIA. Burpee's Giant Mammoth Mixture. Includes ten of the newest and best kinds...	.10	.30
2812	ZINNIA. Burpee's New Cactus Flowered. Like a Cactus flowered Dahlia. All colors15	.60
3834	ZINNIA. Burpee's Dahlia Flowered Mixture. Illustrated in color in Burpee's catalog15	.50

All the above Flower Seeds are priced Post Paid. Burpee and Dreer puts out many other kinds and varieties that I have not listed. Also many collections of flower seeds. If in need of any kind that I have not listed let me know and I will get it for you and may be able to save you time and money. See following pages for Perennial and Vine Seeds, and Plants.

PERENNIAL FLOWERS

Perennial Flower Seeds may be sown in February or March indoors and transplanted or may be sown where you want them later and thinned out. They will bloom the following year. If you want them to bloom this year buy your Perennial Plants listed on page 43.



PERENNIAL FLOWERS (Continued)

No.		Pkt. ¼ Oz.
1206	AQUILEGIA or COLUMBINE. Dreer's Long Spurred Hybrids. Beautiful15
3726	BELLIS or ENGLISH DAISY. A small double flowering daisy. Blooms early. Double mixed10
3768	COREOPSIS. Large yellow, free blooming. Fine for cutting. Blooms in late Spring and Summer...	.10 .30
1734	CAMPANULA. Cup and Saucer Canterbury Bells. Dreer's Newest Mixed. Beautiful Double.25
3733	CAMPANULA. Bellflowers. Burpee's Best Single Mixed10
3734	CAMPANULA. Burpee's Double Mixed Bellflowers	.10
1948	DAISY. Dreer's Alaska Shasta Daisy. Large blooms 5 inches across, pure glistening white25
2240	DELPHINIUM. Dreer's Gold Medal Hybrids. One of the finest mixtures ever offered. 2 ft. spikes. Different shades of blue15 (60)
2221	DELPHINIUM BELLAMOSUM. Rich deep blue. Free blooming25
2334	DIANTHUS or HARDY GARDEN PINK. Allwoodii. Dreer's new race of Hardy Pinks. Blossoms continuously. Very sweet and beautiful. Seed comes from England. 25 seeds35
3756	CARNATION. Burpee's Chabaud Mixture. One of the most beautiful of all Hardy Pinks15
3805	GAILLARDIA. Grandiflora Superb Mixed. Grows 2 ft. high. Fine for cutting10
3807	BABY'S BREATH. Single. Fine for bouquets ..	.10
3799	BABY'S BREATH. Double. Very beautiful, and one of the best for cutting25
3812	HIBISCUS or MARSHMALLOW. Burpee's Giant Mallow Marvels. Blooms enormous, 4 to 6 ft. high	.10
3822	HOLLYHOCKS. Double Mixed. Very beautiful	.10 .45
3828	HOLLYHOCKS. Single, mixed. Very free blooming	\$.10 \$.35
3787	FOXGLOVE or DIGITALIS. Mixed colors. Beautiful tall spikes of white, pink, rose, yellow and purple10 .45
3845	LUPINES. Blue. The best color10 .25
3060	LUPINES. Dreer's New Hybrid Mixed. All colors, some of them new and unusual25
3231	MYOSOTIS or FORGET-ME-NOT. Dreer's Alpestris Royal Blue. The finest dark blue. 9 inches	.10
3851	ORIENTAL POPPY. Orientale Japonica. Large scarlet flowers. The most showy of all10
3942	SCABIOSA. Dreer's best. Fine for cutting and for border. 3 ft.25
4296	SWEET WILLIAM. Dreer's Giant Double Mixed.	.15

PERENNIAL FLOWERS—*Continued*

No.		Pkt. ¼ Oz.
4282	SWEET WILLIAM. Dreer's Newport Pink. The newest shade of pink. Fine for cutting or bedding	.15

Can get any other Perennial that you might want at very short notice.

Climbing Flowers and Vines

No.		Pkt. ¼ Oz.	Oz.
3021	MORNING GLORIES. Burpee's Best Mixture. A quick growing vine and free blooming. ..	\$.05	\$.10 \$.20
3028	MORNING GLORIES. Mixed Imperial Japanese. Largest and finest of all. All colors..	.05	.10 .30
2989	MOONFLOWER. Burpee's Mixture of all kinds and colors. They bloom at night and on dull days10	.20 .40
2160	CYPRESS VINE. Fern-like foliage and masses of beautiful, star-shaped flowers. Dreer's mixed10	
2158	CARDINAL CLIMBER. Dreer's best Annual climber. Brilliant Cardinal flowers15	
2974	KUDZU VINE. A Perennial Climber of very rapid growth. Purple flowers10	
2927	DOLICHUS or HYACINTH BEAN. Darkness. Stems and leaves are purplish red. Flowers like Wisteria10	
3708	BOSTON IVY (<i>Ampelopsis Veitchii</i>). The best Perennial climber for chimneys, walls or sides of houses10	
8922	CINNAMON VINE. Grows from bulbs. Nice green foliage and small white flowers. Delicate fragrance. Each10	

The 8 doz. Pansy Plants that I bought of you were the finest plants that I ever saw.

Yours truly,

EDWARD E. FOSTER

Plants received in fine shape. Thanks for promptness and the extra good plants.

Sincerely,

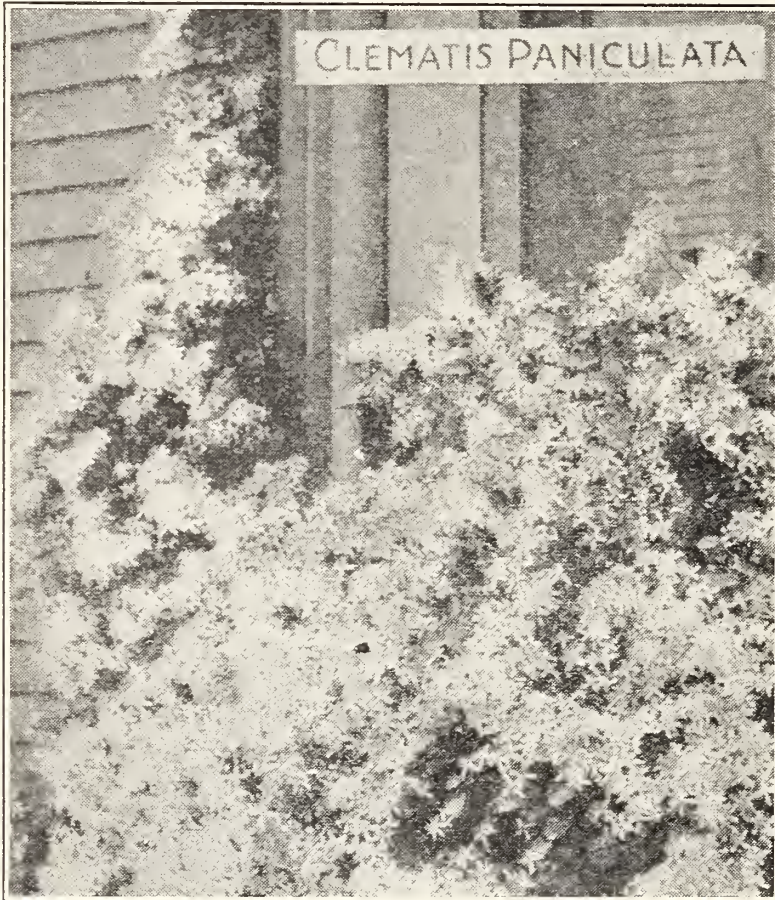
A. S. CARTWRIGHT

The 300 Aster Plants purchased of you last Spring grew the finest flowers I ever saw. They were admired from Orient to Riverhead.

E. W. BEDELL

NURSERY DEPARTMENT

Climbing Plants and Vines



AMPELOPSIS VEITCHI or Boston Ivy. Best for Chimneys and walls. Large 2 year old plants. Each	\$.50
BIGNONIA RADICANS or Trumpet Vine. Large 2 year plants. Each40
CLEMATIS PANICULATA. Blooms freely in August and Sept. Pure white blossoms. Strong plants. Each35
CLEMATIS JACKMANI. Beautiful Purple blossoms. Each ..	.70
HONEYSUCKLE, Halls Japanese. Very fragrant. Each50
HONEYSUCKLE. Winter Evergreen. Very large plants60
WISTERIA. Purple. Large grafted plants. Each70

POTTED VINES FOR WINDOW BOXES

ENGLISH IVY. Greenish purple leaves. Hardy. Each25
GERMAN IVY. Bright green leaves. Quick growing. Each..	.25
VARIAGATED VINCA. Green and white leaves. One of the best. Each25

CLIMBING ROSES

AMERICAN BEAUTY. Rich rosy crimson60
PAUL'S SCARLET CLIMBER. One of the best75
DOROTHY PERKINS. Large cluster of beautiful pink flowers	.50
CRIMSON RAMBLER. The most popular of all50
DR. VAN FLEET. Long pointed buds. Flesh pink. Beautiful	.70
SILVER MOON. Pure white. Large flowers70
TAUSENSCHON. Large flowers. Soft pink60
YELLOW RAMBLER. Free bloomer, small yellow flowers ..	.60
EMILY GRAY. The largest and best yellow90

EVERBLOOMING OR PERPETUAL ROSES

FRAU KARL DRUSKI. Best white65
GRUSS an TEPLITZ. Rich scarlet, free blooming50
MRS. JOHN LAING. Soft pink of beautiful form75
SOUV. de CLAUDIOUS PERNET. Beautiful yellow. Large flowers	1.00
RADIANCE. Brilliant Carmine Pink. One of the best90
RED RADIANCE. Bright cerise-red90
DUCHESS of WELLINGTON. Intense saffron yellow. Very fragrant90
Mme. ALBERT BARBIER. New. Very beautiful white suf- fused with soft flesh pink and golden apricot centre and base..	1.50
BETTY. Coppery-rose. Beautiful, especially in the autumn....	.90
ETOILE de FRANCE. Vivid crimson. Long lasting, sweet....	.75

Can get you any kind that you might want not listed above at reasonable prices, in hardy, Hybrid-teas, Everbloomingers and Climbers. Roses by Parcel Post. Postage will be 10c per rose extra.

GERANIUMS

Will have a fine assortment of Potted Geraniums. Large strong plants in blossom. Potted in 4-inch pots.

These are the five best kinds:

- S. A. NUTT. Rich dark crimson.
- BEAUTE POITEVINE. Finest salmon pink.
- BUCHNER. Pure white.
- ALPHONSE RICCARD. Bright vermilion scarlet.
25c each, \$2.50 per doz. Postage extra.
- RADIO RED. A very bright red. 35c each.

FLOWERING PLANTS—ANNUAL

Grown from Burpee's and Dreer's Seed. The Best Seed obtainable. See Flower Seeds for further descriptions.

	Doz.	3 Doz.	100
ASTER. Queen of the Market. Mixed colors. Earliest	\$.40	\$1.00	\$2.50
ASTER. Dreer's Superb Late Branching40	1.00	2.50
ASTER. Crego Giants. Curled petals. All colors	.40	1.00	2.50
ASTER. California Giants. Fine40	1.00	2.50
ASTER. Fordhook Favorites. Burpee's mixture of all kinds and colors. Fine40	1.00	2.50

FLOWERING PLANTS—ANNUAL—*Continued*

	Doz.	3 Doz.	100
COSMOS. Early. Double Flowered or Crested. Crimson, Pink and White. Mixed. One of the prettiest of the Fall Flowers50	1.25	3.00
COSMOS. Single. Large Early Flowering. Mixed.	.30	.75	2.00
CENTAURIA or DOUBLE CORNFLOWER. Either blue or mixed colors40	1.00	2.50
CARNATION and DIANTHUS. Best mixtures from Burpee and Dreer50	1.25	3.00
LARKSPUR. Tall Double Stock Flowered. Rose, White, Sky-blue and Dark blue, mixed.....	.40	1.00	2.50
MARIGOLD. Tall African. Orange Prince. Large, fine. A free bloomer. Dreer's Special40	1.00	2.50
MARIGOLD. Dwarf French. (Golden Ball). Fine for borders. Dreer's Special40	1.00	2.50
MARIGOLD. Tall African. Lemon Queen. A lighter shade than the Orange Prince. Dreer's....	.40	1.00	2.50
MARIGOLD. Dwarf French. Lemon Ball. Lighter than the Golden Ball, but equally as fine40	1.00	2.50
PANSY. Steele's Miracle. Mixed. Best mixture in America50	1.25	3.00
POTTED PANSY PLANTS. 2 plants in a pot. Per pot, \$.10.			
PETUNIA. Will have a fine lot of all sorts listed under the Seed Department. Fine for Window Boxes, Hanging Baskets or for bedding. Order whatever kind that you want40	1.00	2.50
PHLOX DRUMMONDII. Best mixed colors. Very free in blooming. Fine for bedding40	1.00	2.50
SNAPDRAGONS. Dreer's Super Giant Mixture...	.50		
SNAPDRAGONS. Burpee's finest mixtures. Half dwarf and giants40	1.00	2.50
STRAWFLOWERS or EVERLASTINGS. Finest Mixed. Pick before fully opened and keep for Winter40	1.00	2.50
SALVIA. America. The freest blooming sort. Very fine for bed or border50	1.30	3.00
SALVIA. Bonfire. Makes a compact bush 2 ft. high and 2 ft. across. The brilliant scarlet flowers completely cover the plant50	1.30	3.00
SALVIA. Farinacia. The best Blue Salvia. Fine light blue flowers borne on long spikes. Perennial	.50		
SALVIA PLANTS. All kinds. Potted extra large plants. Each 10c	1.00		
STOCKS. Dreer's Imp. Large Flowering 10 weeks. All colors. Most popular for bedding...	.40	1.00	
ZINNIA. Best Dahlia, Cactus and Giant Flowered sorts. Order whichever you want40	1.00	2.50

Flower Plants by Parcel Post: Add 8 cents per doz., 15 cents per 3 doz., to above prices, if you want your plants sent by Parcel Post.

PERENNIAL PLANTS

These plants are grown from seed sown last Summer and Fall in the field and in frames. They are grown from the best seed procurable, Dreer's and Burpee's, and the most popular sorts. They should bloom this year if set in good season. Take care of them and they will bloom for many years. Dig the bed deep, enrich with well rotted manure, keep clean and give protection in the Winter. That is all that is necessary. Nice plants.

Each Doz.

AQUILEGIA or COLUMBINE. Long-spurred Hybrids. Beautiful in color and variety. Blossoms in June	\$.10	\$1.00
CAMPANULA or BELLFLOWER. These are really a Biennial but will seed themselves if kept clean. One of the most beautiful of garden flowers. All colors, single	.10	1.00
CAMPANULA. Double Bellflower, mixed colors10	1.00
CANTERBURY BELLS. True Cup and Saucer. Blue..	.10	1.00
BELLIS or DOUBLE ENGLISH DAISY. A pretty little flower in different shades of Rose and Red. Also white	.05	.50
FOXGLOVE or DIGITALIS. Large spikes of beautiful bell-like flowers. Large plants10	1.00
FOXGLOVE. Extra large plants20	1.75
DIANTHUS, or Hardy Pinks. Different kinds10	1.00
DEPHINIUM. Grown from the famous Wrexham Strain. Seed imported from England. Monarch of Wales and Wembly, the 2 best kinds25	2.50
DELPHINIUM or HARDY LARKSPUR. Deep Blue or different shades of blue mixed as you prefer. Nice plants. Gold Medal mixture. Belmosum, etc.10	1.00
GOLDEN GLOW. Large clumps25	
HOLLYHOCK or ALTHEA. Single mixed colors. Free blooming10	.75
HOLLYHOCK. Double mixed. Very beautiful, double	.10	.75
HOLLYHOCK. Allegheny and Newport Pink15	1.50
HIBISCUS or MALLOW. Large blossoms10	1.00
PYRETHRUM or Painted Daisies. Fine10	1.00
LUPINES. Imported seed. Harkness Regal Lupines. Trophy collection. 12 varieties. Wonderful25	2.50
LUPINES. Beautiful spikes of white, rose and blue. One of the best for cut flowers. Field grown10	1.00
SWEET WILLIAMS. Either Single or Double mixed. Fine10	.75
ORIENTAL POPPY. The most showy of all Perennials. Large deep red flowers. Nice plants also orange and pink	.10	1.00
GAILLARDIA or BLANKET FLOWER. Beautiful large flowers with yellow tips and crimson centers10	.75
PANSY PLANTS. All colors. With protection these have been kept 2 and 3 years. Per 100, \$3.0005	.50
WALLFLOWER. Half hardy. Potted plants10	.80

Have other kinds of Perennials growing in my beds. Sweet Rocket, Boltana, Coreopsis and other kinds. Come and look them over. Postage on Perennials, 12c per dozen extra.

CHRYSANTHEMUMS

Will have a nice lot of potted plants for Spring setting. White, Yellow, Pink and Golden Bronze. Each, 20c; \$2.00 per doz.

HARDY PHLOX

We have a fine assortment of Hardy Phlox and Phlox Sublata. 12 varieties, different shades and colors. Each, 25c; \$2.50 per doz.

IRIS

Edward Michael, Prosper Laugier, bronze and brown, Jean D'Arc, light blue, Lohengrin, very large, deep blue, Sherwin-Wright, best yellow, Royal Purple, deep purple, Japanese, mixed.

Nice clumps, 25c per clump.

Also 12 new kinds from the finest Iris collection in America, set in last Fall. Hope to have some nice flowers to show you in May and June.

PEONIES

Festiva Maxima, best white, Edulis Superba, early pink, Albert Crousse, rosy white, flecked with crimson, Louis Van Houtti, deep red. Old Fashioned Red, the kind your mother used to raise.

Any of the above, 3 to 5 eyes, at 75c each.

The Old Fashioned Red, large clumps, 50c each.

Have 8 new kinds set in last Fall and hope to have some nice flowers from them in May and June.

BULBS FOR SPRING, SUMMER AND FALL BLOOMING

GLADIOLA BULBS. Choice Mixed. Large sized bulbs. All the most popular kinds in mixture. 3 for 15c, 50c per doz., \$3.75 per 100. Postpaid.

GLADIOLA BULBS. Dreer's Gold Medal Mixture. A wonderful diversity of color. By far the finest mixture ever offered at this price. 6c each, 65c per doz, \$5.00 per 100. Postpaid.

GLADIOLA BULBS. Burpee's Fordhook Hybrids, Mixed. A wonderful assortment of the leading colors. 3 for 25c, 6 for 40, 75c per doz., \$5.00 per 100. Postpaid.

GLADIOLA BULBS by name. Send us a list of what you want and we will gladly get them for you and save you money in the bargain.

DAHLIA BULBS. Fine mixed. All shades and colors. 3 for 40c, Collection of 12 bulbs for \$1.25. Postpaid.

DAHLIA BULBS. Named varieties. Send us a list of what you want and we can get them for you. I can save you money on your orders.

CANNA BULBS. King Humbert. The most popular of all Cannas. Orange Scarlet flowers and large Bronze foliage. 20c each, \$2.00 per doz. Postpaid. Potted plants, 25c each.

CANNA BULBS. Yellow King Humbert. Yellow Blossoms, Green. Leaves with once in a while a revert to the Bronze-leaved parent. 4½ ft. 20c each, \$2.00 per doz. Postpaid. Potted plants, 25c each.

HYACINTHS, CROCUS, NARCISSUS AND TULIS

Price on application. 1st size bulbs. Set them in October and November.

Have 60,000 Narcissus Bulbs set for Spring blooming. You are cordially invited to come look our fields over in the Spring.

FLOWERING SHRUBS

- AZALIA. Different kinds and sizes. Prices on application.
- FORSYTHIA. Earliest, yellow blossoms. Large bushes, each.. \$.50
- HYDRANGEA PANICULATA. Large white blossoms. Nice plants, each50
- LILAC. Common purple. Nice large plants. Each50
- LILAC, White. Very beautiful and sweet. Each50
- LILAC. Mme. Marie Lemoine. Best Double White. Beautiful. Each 1.00
- SPIREA. Van Houtti. Finest of all Spireas. White. Each50
- SPIREA THUNBERGI. Early blooming. White. Each50
- SNOWBALL. Viburnum Sterile. Nice plants, 2 to 3 ft. Each.. .60
- SNOWBALL. Viburnum Plicatum or Japanese. Beautiful in flower and foliage. Plants 2 to 2½ ft. Each90
- RHODODENDRONS. Beautiful Evergreen Shrubs, different kinds and sizes. Balled and baled. Prices on application.
- RHODOGRO. An acid humus to make your Rhododendrons and Azalias thrive. 10 lb. bag, 75c; 25 lb. bag, \$1.50; 100 lb. bag, \$5.00.
- Can get you any other kind of shrub that you might want. Send us your requirements and let us figure on them.

HEDGE AND ORNAMENTAL SHRUBS AND BUSHES

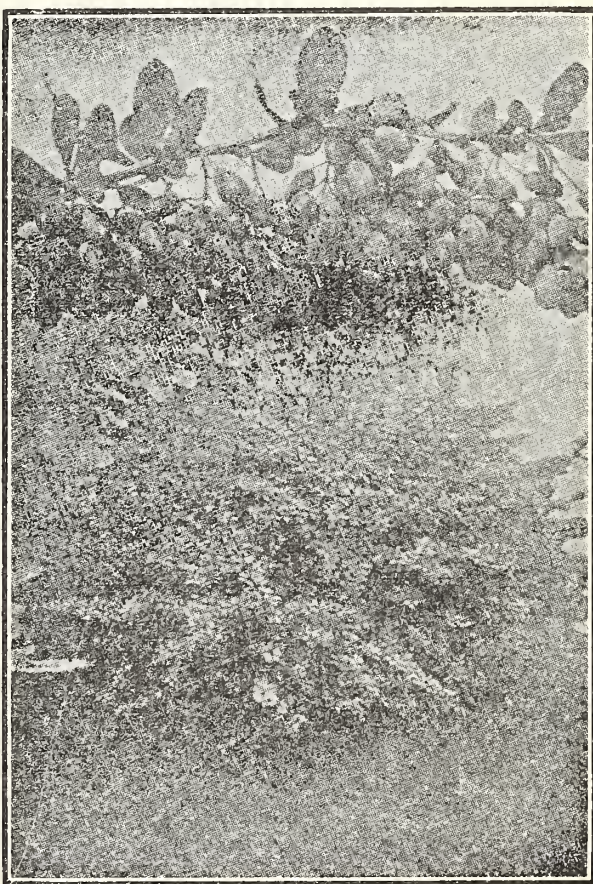
BARBERRY. New Red Leaved Japanese. A real Novelty and a beautiful addition to our list. Rich, lustrous, bronzy-red all summer changing to vivid Orange, scarlet and red shades in the Fall. Must be set in full exposure to the sun.

Strong one-year old plants, each 60c; per doz., \$6.00; per 100, \$47.50.

Strong two-year old plants, each, 85c; per doz., \$8.50.

Strong three-year old plants, each, \$1.50; per doz., \$6.00.

The above prices are net at the Farm. Can be sent by Express, collect.



Japanese Barberry

HEDGE AND ORNAMENTAL SHRUBS AND BUSHES—

Continued

JAPANESE BARBERRY makes a beautiful hedge or single specimen plants.

Strong one-year old plants, each, 10c; per doz., \$1.00; per 100, \$8.00.

Strong two-year old plants, each, 15c; per doz., \$1.50; per 100, \$12.00.

Strong, three-year old plants, each 20c; per doz., \$2.00.

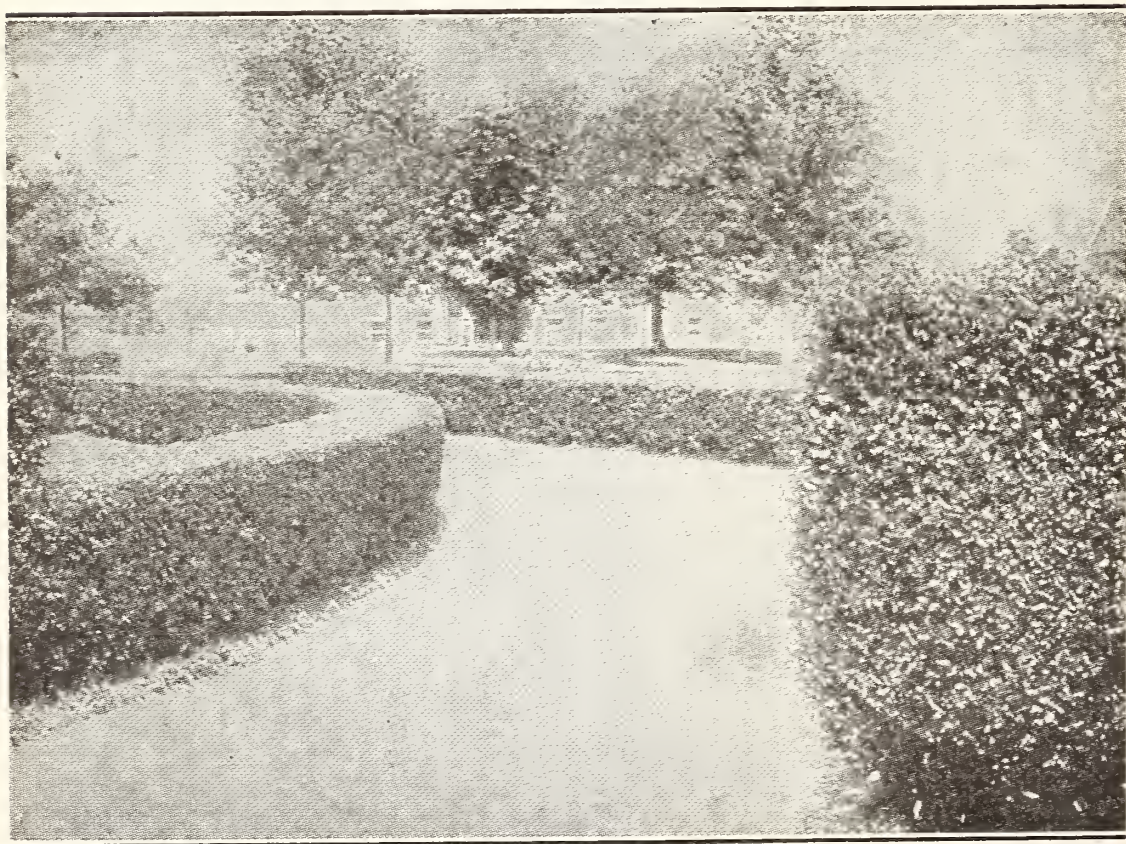
PRIVET, AUREAM. Yellow leaved. Very pretty for a hedge or for specimen plants. Nice well branched plant, 12 to 15 inches. Each, 25c; per doz., \$2.75; per 100, \$22.00.

PRIVET, CALIFORNIA. The standard for hedges. Can be trimmed any desired shape or height. We have a large stock of two year old plants. 2 to 3 ft.

One-year old plants, each 8c; per doz., 75c; per 100, \$6.00.

Two-year old plants, each, 10c; per doz., \$1.00; per 100, \$7.50.

Three-year old plants, very large, each, 12c; per doz., \$1.25; per 100, \$10.00.



California Privet

ORNAMENTAL TREES

JAPANESE MAPLE. Beautiful red leaves all summer. A low spreading tree, very ornamental. 2 year old trees, each, \$4.50. Larger trees, each, \$10.00.

NORWAY MAPLE. The best shade tree there is. 3 to 4 ft. trees, each, \$1.00; 5 to 6 ft., each, \$1.40.

CATALPA BUNGEII or Umbrella trees. Will have a nice lot of these very ornamental trees in the Spring.

Also will have a nice lot of Mountain Ash, Magnolia Trees, Tulip-Trees, Coral Dog-wood, White-flowered Dog-wood and can get you any kind that you might want if not too late in the season, when you order them.



EVERGREENS

JAPANESE YEW, Taxus Cuspidata. Grows medium in height, spreading and of a beautiful dark green color. Can be planted in partial shade. Fine for Rock Gardens. Dwarf type. 1½ to 2 ft. Balled and burlapped, each, \$4.50.

PLUMED CYPRESS, Retinispora Plumosa. A beautiful, fine leaved, pointed tree that can be kept trimmed to any shape or size. Bright green, 2 to 3 ft. B. & B. Each, \$4.00 to \$5.00.

EVERGREENS (Continued)

- ARBORVITEA, Globe shaped. Dark green. These can be kept trimmed to a perfect ball. Very ornamental. 2 ft. high by 2 ft. through. B. & B., each, \$5.00.
- ARBORVITEA, Pyramidal Rosenthalis. Dense, compact growth. Fine form and color. Can be trimmed to any width. 1½ to 2 ft. B. & B., each, \$4.50.
- ARBORVITEA, Pyramidal. Tall, narrow, good color. 3½ to 4 ft. B. & B., each, \$5.50.
- ARBORVITEA, Douglas Golden. Nice light green foliage tinted with yellow. Very ornamental. 8 to 10 inches. Each, 50c; per doz. \$5.00.
- ARBORVIA, American. The common White Cedar. Fine for hedge or wind-break. 10 to 12 inches. Each, 40c; per doz., \$4.00.
- RED CEDAR, Juniperus Virginiana. One of the finest trees for this section. 2 to 3 ft. B. & B. Each, \$2.00.
- COLORADO BLUE SPRUCE, Picea Pungens Glauca. These are small five-year-old trees, twice transplanted. Each, 90c.
- Will have some larger trees of the Colorado Blue Spruce in the Spring.
- BLACK HILL SPRUCE, Picea Canadensis. Makes a symmetrical, compact bushy tree of good color. Small trees, 10 to 12 inches high, five years old, twice transplanted. B. & B. Each, 80c.
- CONCOLOR or WHITE FIR, Abies Concolor. One of the best. Nearly blue in color. 10 to 12 inch trees, three times transplanted. B. & B. Each, 80c.
- MUGHO PINE, Pinus Mugho Compacta. True dwarf type. Dense, compact growth. Unexcelled for porch or foundation cover. Small trees, 6 to 10 inches. B. & B. Each, 90c.
- JAPANESE SPURGE. Best ground cover. Per clump, 30c.

FRUIT TREES

- APPLE TREES. Nice large trees, 9/16 to 11/16 inch caliper. Baldwin, standard Red; McIntosh, highest quality red; Cortland, the new late McIntosh; Delicious, for winter, sweet, red; Fall Pippin, large green; Red Astrachan, earliest red, and Yellow Transparent, earliest. Per single tree, 85c; per 5 trees, assorted if you wish, \$4.00, at the Farm.
- PEAR TREES. Clapp's Favorite, early, juicy; Bartlett, standard; Seckle, small, very sweet; Buerre Bosc, one of the best. All good sized trees, 9/16 inch caliper, each, 75c; 5 for \$3.50.
- PEACH TREES. We have a nice block of Peach trees growing on well branched stocky trees in the following varieties: Belle of Georgia, Early Crawford, Champion, Bokara, J. H. Hale, Elberta, Crawford late and Beer's Smock. These are all yellow Free stone but Belle and Champion. 2-year-old trees, large, each, 70c; per 5, \$3.25; per 10, \$6.00.
- PLUM TREES. Abundance, large, fine fruit. Burbank, medium red; Wickson, late red, each, 60c; per 5 trees, \$2.75.
- CHERRY TREES. Early Richmond, the best sour cherry. Bing, large sweet; Windsor, best sweet yellow. Large trees, each, \$1.00.
- Can get you any kind of fruit tree that you might want, not listed above. Price are all net at the farm.

GRAPE-VINES

The best kinds, according to Mr. E. S. Miller, the Grape Wizard of Wading River. Good two and three year old vines.

CONCORD. Most popular purple	\$.25
NIAGARA. Best White30
CATAWBA. Late, pink, sweet50
WORDEN. Early, purple25
LINDLEY. The sweetest of all. Red40
DELAWARE. Light Red. Very fine40
McKINLEY. Large White. Very sweet60
BRIGHTON. Reddish Purple. Early65
CAMPBELL'S EARLY. The best early grape50

Add 10 cents extra if you want one vine sent by parcel post. 15 cents for three.

STRAWBERRY PLANTS

Sterling Quality



My Strawberry Plants are raised on fresh ground, well fertilized and carefully taken care of. They are well rooted, healthy and true to name. We have tried out many, many kinds and find that only a few kinds seem to do well in this section. Such a kind is the Premier. This kind comes early and stays late, yields heavy and keeps its size well. The Corsican and Rykeman are both very popular for mid-season, being large, sweet and very prolific. We have yet to find an extra good late berry for this section. Gandy is good, but has its faults. Chesapeake is a very shy bearer with us, but extra inquality. All plants are from a new bed. No old plants are ever sold by me.

Price List of Sterling's Strawberry Plants

	25	100	300	1000
CAMPBELL'S EARLY. Matures its crop very early. The best extra early kind we have found	\$.25	\$.80	\$2.10	\$6.00
PREMIER or HOWARD, NO. 17. The best kind I have ever tried for table use or for market. Begins to ripen early; large, long red berries and keeps right on through the longest season of any berry found yet, and keeps its size and color well, right up to the end of the season. Everybody is praising Premier and there's a reason. If you can only have one kind this is the kind to have..	.30	.80	2.10	6.00

STRAWBERRY PLANTS—*Continued*

	25	100	300	1000
DR. BURRILL. An Improved Senator Dunlap—dark red, large, good flavored berries. Makes plenty of plants and always yields well30	.80	2.10	6.00
RYKEMAN. Considered by some the same as Corsican, and by others even better than that fine stand-by. This is true stock that I secured from an enthusiastic Rykeman grower	.30	.90	2.40	7.00
CORSICAN. One of the sweetest berries grown. Large plants, leaves and berries, fruit stems long and stiff. Very productive	.30	.90	2.40	7.00
JUDITH. Fine quality, almost equal to Marshall30	.90	2.40	7.00
BIG JOE. Mid-season, large berries, firm and productive. Runs small towards the end of the season30	.80	2.10	6.00
COOPER. A good sort in some sections. Large and fairly good flavor30	.90	2.40	
WILLIAM BELT. High quality. Where it does well it certainly is fine, but it sometimes blights, rusts and gets knotty30	.90	2.40	7.00
MONROE. An improved Brandywine. Very dark red40	1.00		
RED GOLD. Called by the originator a week earlier than Premier and equally as good. Something new.	1.00	3.00		
PEARL. Another new kind, said to be the best late kind yet found80	2.50		..
MARSHAL. This is the straight Hope Farm Strain, direct from Mr. Collingwood. They are considered the best quality berry there is, but not a real heavy yielding berry. Dark red. Keep in hills for best results40	1.25	3.00	9.00
CHESAPEAKE. One of the best for late where it will do well. We never had it do well for us yet40	1.25	3.00	9.00
GANDY. The standard for late. Sour and firm. One of the best for shipping. Does not yield heavy30	1.00	2.90	8.00

Have tried to list the 15 kinds named above about in their order of ripening, except the Red Gold.

All kinds have perfect blossoms and can be set alone if desired.

Have made the descriptions for these varieties as truthful as it is possible to do with such a variable fruit as the Strawberry. You have to try out the varieties for yourself to find what does well in your soil. The Premier is the only kind that I have found yet that does well for everybody.

EVERBEARING STRAWBERRY PLANTS

CHAMPION. Perfect blossom, very sweet berry and the best Everbearer that has been produced so far. Set the plants this Spring, keep all blossoms pinched off until July and then thin the blossoms out from 40% to 60% right through the rest of the season. You will then have good-sized berries of fine flavor right up to freezing weather and another crop the following Spring. Plants per doz., \$.40; per 3 doz., \$1.00; per 100, \$2.00.

All prices quoted above are net at the farm. If you want your Strawberry Plants sent by Parcel Post add 8c per 25, 15c per 100, 20c per 200, 25c per 300; quantities over that should be sent Postage C. O. D.

Strawberry Plants in August, September and October

We will have about all the kinds listed and some new kinds as well for Summer and Fall setting, from our new bed. New plants, well rooted and true to name.

The price for Summer and Fall is higher than Spring prices, but I try to make the price as reasonable as possible and I think you will grant that, when you consider that one, two or sometimes three smaller plants have to be thrown away and wasted in order to get one good, strong, well-rooted plant.

Write for prices.

RASPBERRY PLANTS

CUTHBERT. One of the best for this section. Prolific, large, sweet berries. Makes plenty of plants. Per doz., \$1.00; per 2 doz., \$1.75; per 3 doz., \$2.25; \$5.00 per 100.

ST. REGIS. Everbearing. The best everbearer yet found. Price same as Cuthbert.

VICTORY. An improved Cuthbert. Very fine. Per doz., \$1.00.

CUMBERLAND. The best Black Cap Raspberry. Large, firm, delicious. Nice plants, per doz., \$1.00; per 3 doz., \$2.50.

MERSEREAU. The best Blackberry for this section. Large, fine flavor, and quite free from rust and disease. Per doz., \$1.00; per 3 doz., \$2.50.

HORSE RADISH

MALINER KREN. Best kind, per doz., 25c; per 100, \$1.50.

RHUBARB ROOTS

OLD FASHIONED PIE PLANT. Large stalks with reddish tinge. Per root, \$.10; per doz., \$1.00; per 2 doz., \$1.75.

If you want Raspberry Plants and Rhubarb Roots sent by Parcel Post add 15c per doz. to above prices.

ASPARAGUS ROOTS

One year old Roots. Grown from High-Priced, Pedigree Seed, the best there is. These roots are large, healthy and ready to grow.

	Doz.	100	1000
MARY WASHINGTON. From Pedigree Seed. originator's stock. Prof. Norton claims that this kind is the largest, most productive and finest flavored Asparagus yet developed. Very high branching which makes it the best for cutting green. Rust-resistant20	1.25	10.00
MARY WASHINGTON. From Re-selected Pedigree Seed. The originator charged \$5.00 per lb. more for this seed than for the Pedigree Mary.. It takes about 5,000 roots to set 1 acre. \$1.00 per 1,000 less on 5,000 lots or more.	.25	1.50	12.00

3-YEAR-OLD ASPARAGUS ROOTS

You can set these roots out and cut asparagus this year.

	Doz.	100	1000
WASHINGTON. From a Pedigreed strain of seed. Very large roots	\$.25	\$1.50	\$14.00
MARTHA WASHINGTON. The most Blight Resistant of any kind yet developed. This seed came from Prescott of Concord, Mass. He raises over 30 acres of Grass for the Boston market and considers the Martha as his best kind, but he has no Mary. Very large roots30	2.00	17.50

All expert gardeners and farmers will tell you that one year old Asparagus Roots are the best kind to set out for field culture. One year old roots recover quickly from the shock of transplanting and are not badly cut and broken. Set out Sterling Grown Roots this year, about six inches below the surface of the ground, cover with two inches of soil. As the plants grow up fill trench with well rotted manure and more soil, and some good garden fertilizer on top of that. Do not put fertilizer next to any kind of root or plant if you want them to live.

If properly taken care of you can cut your bed the following Spring until June 1st, letting it grow up after that and giving it more manure and fertilizer. The second year from setting cut till July 1st, always feeding it well after letting it grow up.

COLD FRAME PLANTS

Hardy, Well-Rooted Plants from Best Strains of Seed.

CABBAGE PLANTS

	Doz.	100	1000
GOLDEN ACRE. New, earliest flat head, fine.....	\$.20	\$1.00	
EXTRA EARLY JERSEY WAKEFIELD. Earliest pointed heads15	.60	\$5.00
EARLY CHARLESTON WAKEFIELD. Very large pointed heads15	.60	5.00
EARLY SUMMER. Large flat heads. These three make a fine succession15	.60	5.00

MAGGOT CONTROL

You can raise fine Cabbage without damage from Maggots if you will follow the directions given below:

To 5 gallons of water add ½ oz. Formaldehyde. After mixing thoroughly, pour about a tablespoonful around each plant once a week. Begin to do this by the last of May or as soon as you see the Maggot Fly.

OR

Add 1 oz. Corrosive Sublimate to 8 gallons water. Put ½ cupful to each plant once a week at the same time as above.

The poisons may be purchased at any drug store.

LETTUCE PLANTS

	Doz.	25	100
BURPEE'S WAYAHEAD. Quick heading. Good quality	\$.15	\$.25	\$.75
NEW YORK or WONDERFUL. Large heads of finest quality15	.25	.75
BIG BOSTON. Sure heading. Fine15	.25	.75

HOT BED PLANTS

Ready in May and June.

TOMATO PLANTS

Transplanted, well-hardened, stocky plants. Grown from Livingston's and Burpee's Selected Seed

	Doz.	3 Doz.	100
SUNNYBROOK EARLIANNA. Burpee's best strain	\$.25	\$.75	\$1.50
RICE'S SELECTED EARLIANNA. A special strain	.40	1.00	2.50
CHALK'S EARLY JEWEL. Large, smooth25	.70	1.50
JOHN BAER. The most popular early sort. Large	.25	.70	1.50
BONNY BEST. Very productive, early25	.70	1.50
PONDEROSA. Very large. Fine flavored, meaty..	.25	.70	1.70
LIVINGSTON'S STONE. One of the best for table, canning or market. Very solid, smooth and fine	.25	.70	1.50
LIVINGSTON'S GLOBE. Prolific and blight-resistant. Firm. A good shipper25	.70	1.50
RED HEAD. Bright Scarlet fruit. Early; firm25	.70	1.50
OXHEART, from Livingston. Large; firm40		
CLARK SPECIAL. Type B. The kind that has given such fine satisfaction. An improved Stone..	.25	.70	1.50
TRUCKERS FAVORITE. The best purple fleshed	.25	.70	1.50
BURPEE'S MATCHLESS. Large, smooth. Bright red. Fine shipper25	.70	1.50
NEW SELF PRUNING TOMATO. Burpee's40		
BURPEE'S DWARF GIANT. Stocky, tree-shaped	.25	.70	1.75
GOLDEN PONDEROSA. Large yellow. Dreer's..	.40		
YELLOW PEAR SHAPED. Small fruit fine for preserves. Very prolific30		

TOMATO PLANTS—*Continued*

Potted Plants in the early sorts. Large, stocky plants. Earliana, Chalk's Early Jewel, John Baer and Red Head. 5c each straight. Rice's Earliana 10c each.

Tomato Plants in Pansy Baskets. We will have about all of the above kinds in baskets, 25 plants to the basket, for 50c per basket at the farm. Wet the basket down thoroughly and you can cut each plant out just like potted plants.

Any of the Main-Crop, Early and Mid-season kinds at \$10.00 per 1,000. Order early. All transplanted once.

Special price for late sown plants, not transplanted, for the late settings, \$4.00 per 1000.

Add 9 cents per dozen, 15 cents per 3 dozen and 25 cents per 100 to your order if you want them by Parcel Post.

PEPPER PLANTS

Well Hardened. Strong Plants.

	Doz.	100
HARRIS' EARLY GIANT. Very large, productive, sweet and early. Earlier and larger than Ruby King.....	\$.25	\$1.75
NEAPOLITAN. Earliest large sweet Pepper. Prolific	.20	1.50
BURPEE'S RUBY KING. One of the sweetest. Large	.20	1.50
SWEETMEAT GLORY. Pointed, sweet. Thick fleshed	.20	1.50
CHINESE GIANT. Largest of all, most popular20	1.50
BURPEE'S NEW SUNNYBROOK. The sweetest Pepper of them all. Small but very thick fleshed. Very popular	.25	1.75
LARGE BELL or BULL NOSE. Rather warm20	1.50
LONG RED CAYENNE. Hot. Very prolific20	1.50
CORAL GEM BOUQUET. Small, hot. Very ornamental	.25	

Add 8 cents per dozen, 15 cents per 100 to the above prices if you want them sent by Parcel Post.

EGG PLANTS

Transplanted, Well Rooted and Hardened

	Doz.	3	Doz.
IMPROVED NEW YORK SPINELESS. Large purple..	\$.50	\$1.25	
BURPEE'S BLACK BEAUTY. Large, early, prolific....	.50	1.25	

Add 9 cents per dozen, 15 cents per 3 dozen, if you want these plants sent by Parcel Post.

POTTED EGG PLANTS at 10c each. Large plants.

SWEET POTATO PLANTS

	Doz.	100	300	1000
YELLOW JERSEY. Productive	\$.15	\$.70	\$1.80	\$5.00
RED JERSEY. Extra quality15	.70	1.80	5.00
PORTO RICO YAM. Large, fine for baking..	.15	.70	1.80	5.00

Add 8 cents per doz., 15 cents per 100, 20 cents per 300, 40 cents per 1,000 if you want these sent by Parcel Post.

FIELD GROWN PLANTS

Ready from June 20th to August 20th approximately.

All my plants are raised on fresh ground and the very best strains of seed are always used. In fact the same seed as I use in my own fields.

BRUSSELS SPROUT PLANTS

The seed is treated for Black Stem, Blackleg, etc. and you are thus assured of strong, healthy plants free from disease. Plants are raised on fresh ground free from disease.

	Doz.	100	1000
STERLING STRAIN. From seed raised especially for my own critical trade. See testimonials.	\$.15	\$.60	\$4.00
BLUE RIBBON STRAIN. The very best20	.80	5.00
LESLIE STRAIN. Stands severe cold well15	.60	4.00

Price by the thousand is liable to change, depending on the season.

CAULIFLOWER PLANTS

My seed is treated with the hot-water treatment, insuring against Black Stem, Blackleg and some say, against Blight. Plants raised on fresh, disease-free ground.

	Doz.	100	1000
KROEMER'S LARGE EARLY ERFURT. Large, snow-white heads. One of the best for main crop	\$.15	\$.60	\$4.00
BERLIN FORCING. The quickest heading kind. Solid heads20	.80	5.00
LUKULLUS. Almost as quick and a little larger than Berlin Forcing20	1.00	6.00

Price by the thousand liable to change without notice.

CABBAGE PLANTS

This seed is treated for Black Stem.

Plants are all grown from choice Long Island grown seed excepting the Danish Ball Head.

	Doz.	100	1000
ALL SEASON. Sure heading. Large, flat heads..	\$.10	\$.50	\$3.00
EARLY FLAT DUTCH. Best for late setting.....	.10	.50	3.00
SAVOY. Long Island Special. Curled or crumpled leaves. Best quality10	.60	4.00
LARGE LATE DRUMHEAD. Largest heads....	.10	.50	3.00
LATE FLAT DUTCH. Solid, large heads10	.50	3.00
DANISH ROUNDHEAD. Short stems, very solid	.10	.50	3.00
ALLEN'S MAMMOTH ROCK RED. Sure heading	.15	.60	4.00

If you want any of the Brussels Sprout, Cauliflower or Cabbage Plants listed above sent by Parcel Post add 8 cents per doz., 15 cents per 100, and 8 cents for each additional 100, to above prices.

CELERY PLANTS

Ready in July and August. Grown on fresh ground from the best seed.

	Doz.	100	1000
FORDHOOK or EMPEROR. Burpee's Seed. Dwarf type, stocky, crisp and of the finest nutty flavor. Large heart15	.60	5.00
GOLDEN PLUME. Livingston's Strain. A new variety, one of the finest for second early or for late storing. Grows strong, healthy, large plants of extra quality. Blight proof15	.60	5.00
WHITE PLUME. Self blanching. Extra early15	.50	4.00
GOLDEN SELF-BLANCHING. Burpee's American Grown Seed. Fine. Dwarf type. Second early ..	.15	.50	4.00
HENDERSON'S EASY BLANCHING. Does well where other kinds will not grow. Good quality..	.15	.50	4.00
GIANT PASCAL. Tall Winter. Fine nutty flavor. One of the best for storing15	.50	4.00
WINTER QUEEN. Stocky, very large, crisp15	.50	4.00

Add 8 cents per doz., 12 cents per 100 and 8 cents for each additional 100 if you want these plants sent by Parcel Post.

GRAIN, POULTRY FEEDS AND SUPPLIES

I keep in stock:

BABY CHICK FEED, Best Kinds	DRY MASH
SCRATCH FEED, Best Kinds	OYSTER SHELL, Two Sizes
BEEF SCRAP, 55% Protein	CHARCOAL, Fine
GROUND OATS	POULTRY GRIT
BUTTERMILK MASH	DRINKING FOUNTS
WHOLE CORN	SHELL AND FEED HOPPERS
CRACKED CORN	CARBOLA, the Efficient White-
OATS	wash and Disinfectant. See
MIDLINGS	page 60
CORN MEAL	INCUBATOR THERMOM-
ALFALFA MEAL	ETERS
DAIRY FEED	BROODER THERMOMETERS
HORSE FEED	LAMP WICKS
COTTON SEED MEAL	BLUE FLAME LAMP WICKS
BONE MEAL	

STERLING MIXED DRY MASH

A nicely balanced Dry Mash containing the very best grade of Beef Scrap, Middlings, Corn Meal and other grains. Has given excellent results wherever tried. Makes hens lay. Per 10 lb. pkg., 50c; per 100 lb. bag, price varies, write for prices.

Can get you any kind of grain that you might want.

LEG BANDS

Spirals. Any color and size. Per doz. 15c, per 25 25c, per 100 75c Postpaid.

INSECTICIDES, SPRAYING MATERIAL AND SUPPLIES

ARSENATE OF LEAD

Vreeland's Arsenate of Lead packed in 5 lb. bags, 6 to a case. 5 lbs. or more at 18c per lb.

Vreeland's Arsenate of Lead, 1 to 4 lbs., at 22c per lb.

Niagara Arsenate of Lead. A fine brand of lead, fluffy and fine ground. 5 lb. pkgs., 10 to a case, per lb., 18c. Prices liable to change.

CALCIUM ARSENATE

A light, fluffy powder, stronger than the Arsenate of Lead, and keeps in solution better.

Vreeland's "Electro" brand. Arsenic Oxide not less than 40%. 5 lb. pkgs. at 11c per lb., 6 to a case.

Niagara Calcium Arsenate. A fine brand of Calcium packed in 5 lb. pkgs., 10 to a case or in 100 lb. drums at 10c per lb.

Use Calcium with your Bordeaux Mixture and save money on your Poison.

VREELAND'S "ELECTRO" DRY POWDERED BORDO MIXTURE

This mixture contains not less than 18% copper and is very finely ground. Use 5 to 10 lbs. to 50 gals. water, for control of Blight and Fungus. Packed in 5 lb. bags, 6 to a case, 5 lbs. or more at 16c per lb. 1 to 4 lbs. at 20c per lb., 100 lbs., \$15.00.

VREELAND'S "ELECTRO" DRY POWDERED BORDO-LEAD MIXTURE

This is a mixture of Dry Arsenate of Lead and Powdered Bordo. It controls Blight and kills the bugs at the same time. Also good for dusting Tomatoes and other plants for Fleas and Lice. They cannot live in a heavy dusting of this.

Packed in 25 lb. pkgs. 5 lbs. or more at 20c per lb.; 1 to 4 lbs. at 22c per lb.; 100 lbs. \$18.00.

VREELAND'S "ELECTRO" DRY POWDERED LIME-SULPHUR

Finely powdered. Mix about 15 to 25 lbs. with 45 gals. water and use it as a Dormant Spray. Use 5 to 8 lbs. for a Summer Spray.

Packed in a 100 lb. drum, per 100 lbs. \$15.00. Packed in a 25 lb. drum, 25 lbs. at 17c per lb. 5 lb. pkgs. at 22c per lb. 1 to 4 lbs. at 25c per lb.

TOBACCO DUST

Fine ground. Used for dusting plants for Aphis and Fleas, hens' nests, etc. Per lb. 10c; per 10 lbs. 70c; per 100 lb. bag \$5.50.

2 lbs. packed in a can for dusting, 40c.

KAYSO

Use KAYSO in All Your Sprays for All Spraying



KAYSO makes the spray spread in an even, unbroken coat over every surface, thereby giving better control of pests and diseases—makes the spray mixture or solution apply easily and cover quickly—causes the spray to set instantly and dry rapidly without excessive run-off waste—gives increased coverage. The surface wets instantly—the film becomes fixed the moment it forms—it does not drain or continue to spread, or get thinner.

Try a small amount in some of your spray work, and prove its worth in an actual test. Use it in your dormant spray as well as in the Summer Spray. In the Field as well as in the Orchard. Not necessary in Scalecide.

Packed in the following sizes—I keep the small pkgs. in stock:

100 lb. Sacks	per lb.	\$.20
50 lb. Sacks	per lb.	.21
10 lb. Sacks (12 to case or separately)	per lb.	.25
2 lb. Packages (36 to case or separately)	per pkg.	.60
8 oz. Package (tin container; 24 to case or separately) ..	per pkg.	.30

Always have the smaller size pkgs. in stock.

HALL'S NICOTINE SULPHATE

Same as Black Leaf 40. 40% Nicotine.

The Liquid Spray that controls Plant Lice or Aphis. Put $\frac{1}{2}$ lb. to 50 gals. water, add 6 or 8 ozs. of Kayso and you have one of the best controls there is for sucking insects.

Per 1 oz. Bottle; for garden use	\$.35
Per $\frac{1}{2}$ lb. Tin, makes 50 gals.	1.25
Per 2 lb. Tin	3.50
Per 10 lb. Tin	13.50

Special price on larger quantities.

NICOTINE DUST

The dry powdered Nicotine Sulphate. Dust it on in the heat of the day and it forms a gas and will kill all insects, if thoroughly applied. Per lb. 25c; 10 lbs. at 22c per lb., 100 lb. drums at 19c per lb. Price liable to change.

FINE GROUND SULPHUR

For dusting Potatoes, Spraying and spreading on the land for Potato Scab.

Sublime Sulphur. The finest and purest. 100% pure. 1 to 4 lbs. at 10c per lb.; 5 to 99 lbs. at 7c per lb.; 100 lb. bags at $5\frac{1}{2}$ c per lb.

Commercial Sulphur. 99 $\frac{1}{2}$ % pure. Use one lb. of this or $\frac{1}{2}$ lb. of the Sublime to 1 bu. of seed as you cut your potatoes and you will gradually work out of the Scab. 1 to 4 lbs. at 7c per lb.; 5 to 99 lbs. at 4c per lb.; 100 lb. bag at 3c per lb.

BLUE VITRIOL

For making Bordeaux Mixture. Use 5 lbs. Blue Vitriol, 5 lbs. Lime to 50 gals. water. Dissolve the Vitriol in water over night. Price on application.



**Best for Mites,
Lice and Germs**

Carbola is a white paint and powerful disinfectant combined in powder form. Just mix with water and you have a smooth-flowing disinfecting paint. No waiting or straining. Does not flake or peel off. One pound covers 100 square feet.

Apply Carbola to the interiors of your poultry houses, dairy barns, hog pens and outbuildings. Apply it to every surface that might harbor lice, mites and disease germs. It is live stock insurance against tuberculosis, foot and mouth, hog flue and other destructive diseases. Try it. Satisfaction guaranteed.

5 lbs.	\$.75	25 lbs.	\$ 2.75
10 lbs.	1.25	50 lbs.	5.00

SULFOCID
A Better Summer Spray

1 5-gal. can in case	8.75
1 gal. can in case	2.25
1 qt. can in case	.75
1 pint can in case	.50

Freight paid to any R. R. station on Long Island on orders of 5 gallons. or over.

SPRAYING LIME
Powhattan Brand. Find this brand is superior to others. Packed in 50 lb. bags, 85c per bag; \$7.50 per 10 bags; \$22.00 per 40 bags or ton.

SPRAY PUMPS

Have a stock of these handy Sprayers listed below on hand and can get you any kind or size you might want on very short notice. Send for catalog.

CARBOLA SPRAYERS

Galvanized Sprayers. Nicely made. Long hose, good nozzle. Holds 3 gals. Each \$6.50.

BRASS SPRAYER

One of the best on the market. Easily filled. Full brass. Long hose, good nozzle. Holds 3 gals. Each, \$9.00.

CARBOLA DUSTERS

The handiest duster for Garden or Flower-bed. Each \$1.25.

Sulfocide is a powerful summer fungicide—at low cost—for fruits, vegetables and flowers. When sprayed, it quickly decomposes leaving a film of sulfur so fine as to be almost invisible except where drops accumulate.

1 qt. makes 50 gals. of spray
1 gal. makes 200 gals. of spray
Add 1/2 lb. Kayso to each 50 gals. of spray, putting it in the tank first.



SCALECID

THE COMPLETE DORMANT SPRAY

"Makes a Tree Outgrow Its Troubles"

Fall spraying with Scalecide controls psylla and peach leaf curl. Spring application controls aphids, pear thrips, leaf miner, case bearer and leaf roller. Either fall or spring spraying with Scalecide controls scale, bud moth, European red mite, fungus or blight cankers from which are spread fire blight, collar rot and root rot. And in addition, year after year use of Scalecide invigorates the trees.

Ask for Booklet

50-gal. bbl. (freight paid to any R. R. station on Long Island)\$38.00

15-gal. drums, freight paid to any R. R. station on Long Island \$13.50

Drums \$2.00 extra but returnable at same price. F. O. B., Hackensack, N. J.

2 5-gal. cans in case, freight paid to any R. R. station on Long Island.....\$10.60

1 5-gal. can in case, freight paid to any R. R. station on Long Island..... 6.25

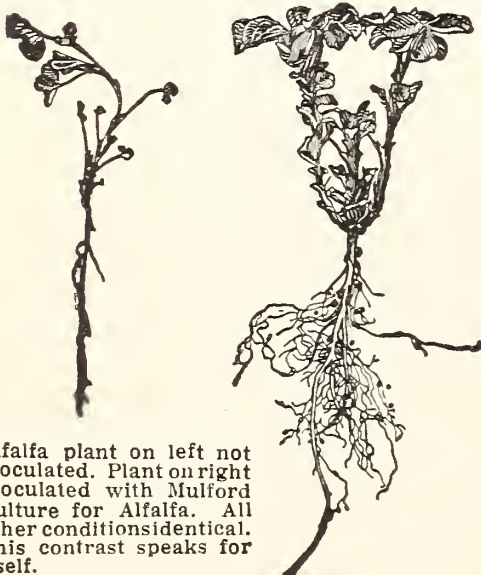
1 gal. can, at the Farm 1.40

1 qt. can, at the Farm90

Per Gal. at the Farm; bring your own containers 1.00



MULFORD CULTURES



Alfalfa plant on left not inoculated. Plant on right inoculated with Mulford Culture for Alfalfa. All other conditions identical. This contrast speaks for itself.

If your crops of Clover, Alfalfa, Lima Beans, Garden Beans, Peas, Sweet Peas and other Legumes do not thrive, it indicates that your soil is lacking in Bacteria. Mulford Cultures used on the seed will supply these very necessary Bacteria.

If you use a little lime on your soil and Mulford Cultures on your seed there is no kind of Legume that you cannot grow.

These Cultures are the best that science can produce as the Mulford Co. manufactures vaccines, etc., for the U. S. Government.

MULFORD CULTURES—*Continued*

There is a different Culture for each of the different kinds of Legumes, so be sure to state what crop you wish to inoculate.

Cultures for Garden, Field and Cow Peas, Garden Beans, Lima Beans, Clovers, Alfalfa, Soy Beans, Vetches and Sweet Peas always on hand. Other kinds can be gotten on very short notice.

Clover and Alfalfa Seed	Peas, Beans, Etc.
1 bu. size \$1.00	5 bu. size \$2.25
1/2 " .60	2 " 1.00
	1 " .60
Garden size for all kinds	.35

FERTILIZER DEPARTMENT

"SUNRISE BRAND"

We are the Authorized Agents for the Long Island Produce and Fertilizer Co. of Riverhead and Southold, L. I., for this section.

They manufacture the "Sunrise Brand" of Fertilizer which has given such good satisfaction in Suffolk County.

The different analyses that they manufacture are as follows:

4% Ammonia, 8% Phos. Acid, 4% Potash.

5% Ammonia, 8% Phos. Acid, 4% Potash.

5% Ammonia, 8% Phos. Acid, 5% Potash.

4% Ammonia, 8% Phos. Acid, 7% Potash.

6% Ammonia, 9% Phos. Acid, 5% Potash.

The prices vary as to analysis and the time that you pay for the fertilizer. They have Fish Scrap in their different mixtures which improves the mechanical mixture of it and the Plant Food value. I will take your general order to be delivered from Riverhead or Southold or you can get a few ton from my own storage at any time if in need, at short notice. They also make a Special Cauliflower Mixture which has been tried in this section and found very satisfactory. Would be pleased to receive your orders.

Gaylordsville, Conn., April 29th, 1924.

Mr. Ralph W. Sterling,

Dear Sir:—The Strawberry Plants received April 28th in fine condition many thanks for prompt delivery.

MRS. JENNIE F. DURYEA

Sag Harbor, N. Y.,
Feb. 14, 1925.

Mr. Ralph W. Sterling,
Cutchogue, N. Y.

My Dear Sir:

Your seeds have always given me very good satisfaction. Also the potted tomato plants you sold me did wonderfully well. Will you have any for sale this season?

Sincerely yours,

CHARLES F. HALLOCK



REAL ESTATE

At the time of writing this I have nine very desirable building lots and two 12-acre farms to sell.

Three of the lots that I own are situated on one of the best corners in the village of Cutchogue, that of Pequash Avenue and the King's Highway.

Lot No. 1 has 100 feet frontage on the Main Road and 125 feet on Pequash Avenue. A very desirable corner.

Lot No. 2 has 108 feet front on the Main Road with 115 to 122½ feet depth. Stands clear from any other house. Very desirable.

Lot No. 3 has a frontage of 75 ft. on Pequash Avenue and a depth of 200 feet. This is a very deep lot, about 60 feet in width at the back.

This section of the Village has grown faster in the last 5 years than any other part. Six new houses in the last 15 months and it looks like four more in the very near future. These are about the last lots to be had in this section on or near the Main Road.

Lot No. 1	\$40.00 per front foot
Lot No. 2	\$30.00 per front foot
Lot No. 3	\$30.00 per front foot

Would sell the whole corner in one block if desired.

CARRINGTON PARK

Four lots on Nassau Point. These are very large, high lots covered with large oak trees, carefully trimmed out to make a fine Park-like effect. Each lot has over 100 feet frontage on Little Peconic Bay Road, and they are only a few steps from the Cove, the deepest water near the Point.

These lots are Nos. 421, 422, 423, 424, situated just south of where Vanston Road turns west and Little Peconic Road begins.

This Block would make a fine Estate if one wanted a big place, or I will sell the lots separately.

Price of single lots \$25.00 per front foot.

Price for the Block of four lots, \$22.00 per front foot.

Terms reasonable.

TURTLE POND

Two lots, Nos. 225 and 226, extending from Wunneweta Road on the east to Wunneweta Pond on the west.

These lots are very near the Nassau Point Hotel and each one has a frontage of about 100 ft. on the water. There is good high frontage on the water, with a very pretty view and suitable for two Bungalows. Large oak trees cover the whole tract.

A 15-foot Right of Way bounds lot No. 226 on the north and there is a small fresh water pond which I am planting to all kinds of water plants. These lots are very suitable for a Rock and Water Garden and could be made one of the beauty spots of the Point.

Price of these lots, \$25.00 per front foot, on the water.

Nassau Point Club Properties have been wise enough to reserve a 15-foot strip all around Nassau Point above high-water mark. This makes the whole water-front available to any one living anywhere on the Point. The Club also has large Bathing Houses on the East Bay and on the West Bay and a 320-ft. dock on the East Bay.

FARMS

I have two 12-acre farms at this time in a high state of cultivation. One adjoins the Railroad with a 14-ft. road leading to the Middle Road. As fine a Potato Farm as lays outdoors.

The othr lays just above my own farm and has a nice two-family house, good out-buildings and fine fruit trees. Most of this farm is good Potato land.

Remember that I own these pieces of property. I am not a Real Estate Broker.

TESTIMONIALS

So. Coventry, Conn., Dec. 20th, 1925.

Mr. Ralph W. Sterling,
Cutchogue, N. Y.

Dear Sir:

Your Sterling Strain Bussels Sprouts were the best that I ever had. They were so good that I want you to save me 1 pound for next year.

Sincerely,

CARL FRANZ

Cutchogue, N. Y.,
Dec. 1st, 1925.

Mr. Ralph W. Sterling,

Dear Sir:

Am picking Sterling Strain Sprouts now and find them very good. In fact, I have three good strains this year and find yours the best that I have.

Sincerely,

CARLTON E. DICKERSON

From the 500 Stone Tomato plants bought of you last May I shipped 220 crates of extra No. 1 tomatoes and received top price for them.

Yours truly,

JOSEPH DIETZ

Arkville, N. Y., Sept. 19th, 1926.

Sterling Strain Brussels Sprouts is the best Strain that I can find for this section. Last year I picked three baskets to the row from your strain and 1 basket to the row from the other strains that I had.

Sincerely,

DEMAS MEADE

June 1st, 1926.

Everything arrived in good shape and seems to be doing nicely. Weather conditions have been bad but promise better.

Thanks for former courtesy.

Yours truly,

C. S. ROBINSON, Supt.

Dear Sir:

Plants look fine. Every root lived, but all your stuff is just so good. I had another big crop from your strawberries. Best I ever saw. You have got a wonderful strain of berries. Thank you for your good treatment.

Yours truly,

L. R. EDWARDS

From 3 Oz. of Kroemer's Erfurt Cauliflower seed purchased of you, I set a little over an acre of ground and sold nearly 5,000 plants. I shipped 450 crates of flowers from the piece, practically no culls all fine large heads.

Sincerely,

PAT DRUMM

I used three oz. of your Kroemer's Erfurt Cauliflower seed and set one acre of ground from about one third of the plants that I had. This acre yielded 447 crates of fine No. 1 flowers which averaged home better than a dollar a crate.

Sincerely,

STEWART W. HORTON



Premier—Our Best Kind

INDEX

A

Alfalfa	27-28
Annuals, Plants	41-42
Apple Trees	48
Annuals, Seed	33-34-35-36
Arsenate of Lead	57
Asparagus Seed	4
Asparagus Roots	52

B

Barley	26-28
Beans, Green Pod Bush	4-5
Beans, Wax	5
Beans, Pole	5-6
Beans, Pole, Lima	6
Beans, Bush, Lima	6
Beets, Table	7
Beets, Stock	7
Blue Vitriol	59
Bone Meal	32
Bordo-Lead Mixture	57
Bordo Mixture	57
Brussels Sprout, Seed	7-8
Brussels Sprout, Plant	55
Buckwheat	28
Bulbs	44

C

Cabbage Plants	52-55
Cabbage Seed	9
Calcium Arsenate	57
Canada Field Peas	26
Cannas	44
Carrots	11
Carbola	59
Cauliflower, Seed	8-9
Cauliflower, Plants	55
Celery, Seed	11
Celery, Plants	56
Cherry Trees	48
Chicory	13
Chrysanthemums	44
Citron	16
Climbing Flower and Vine Seeds	39
Climbing Plants and Vines	40
Climbing Roses	41
Clovers	28-29
Corn, Field	11
Corn, Pop	11
Corn, Sweet	9-10-11
Cow Peas	27
Cold Frame Plants	52
Cucumber	12-13

D

Dahlia Bulbs	44
Dusters	59

E

Egg Plant, Seed	13
Egg Plant, Plants	54
Endive	13
Evergreens	47-48
Everblooming Roses	41
Everbearing Strawberries	51

F

Farm and Field Seeds	25
Fertilizer	61
Feed	56
Feed Hoppers	56
Field Corn	11
Field Peas	19-20-21
Field Grown Plants	55
Flowering Shrubs	45
Flowering Plants	41-42
Flower Seed, Annual	33-34-35-36
Flower Seed, Perennial	37-38-39
Flower Seed, Vine	39

G

Garden Fertilizer	33
Geraniums	41
Gladiola	44
Grain	51-56
Grape Vines	49
Grass Seed	27-28-29

H

Hardy Roses	41
Hardy Phlox	44
Hardy Vines	36
Hedge Plants	45-46
Herbs	23-25
Hoppers, Feed	56
Horse Radish	51
Humus	31

I

Insecticides	57
Iris	44

J

Japanese Barberry	45-46
Japanese Buckwheat	28

INDEX---Continued

K	
Kale	13
Kayso	58
Kohl Rabi	13

L	
Lawn Grass	29-31
Lawn Making	30
Leek	13
Leg Bands	56
Lettuce	13-14-53
Lime	32
Lime Sulphur	57

M	
Melon, Musk	15
Melon, Water	15-16
Millets	29
Mulford Cultures	60-61
Mustard	16

N	
Nicotine, Dust	58
Nicotine Sulphate	58
Nitrate of Soda	32
Nursery Department	40

O	
Oats	25-26
Okra	16
Ornamental Shrubs	45
Ornamental Trees	47
Onions	16-17
Oyster Plant	22

P	
Pansies	35-42-43
Parsley	18
Parsnips	18
Peach Trees	48
Peanuts	24
Pear Trees	48
Peas, Field	26-27
Peas, Garden	19-20-21
Peonies	44
Pepper, Seed	18
Pepper, Plants	54
Perennials, Seed	37-38-39
Perennial Plants	43
Phlox, Hardy	44
Plum Trees	48
Potatoes, Seed	25
Pop Corn	11
Poultry Feeds	56
Privet	46
Pumpkins	18
Pumps, Spray	59

R	
Radish	21
Rape	28
Raspberries	51
Real Estate	62
Rhubarb	51
Roses	41
Ruta Baga	24
Rye Seed	26

S	
Salsify	22
Scalecide	60
Seed Potatoes	25
Sheep Manure	31-32
Shrubs	45
Sorghum	11
Soy Beans	26
Spinach	23
Spraying Lime	59
Spray Pumps	59
Spraying Material	59
Squash	22
Strawberry Plants	49-50
Sudan Grass	27
Sulfocide	59
Sulphur	58
Sweet Corn	9-10-11
Swiss Chard	23

T	
Teosinte	11
Timothy	28
Tip-Top Top Dresser	32
Tobacco Dust	58
Tomato Seed	23-24
Tomato Plants	53-54
Tools and Implements	59-60
Turnips	24

V	
Vetch	26
Vigoro	31
Vitriol	59

W	
Water Melons	15-16
Wheat Seed	26



Field of MARY and MARTHA WASHINGTON ASPARAGUS ROOTS. Grown on Sterling Farm—First year from seed.

“BURPEE GUARANTEE”

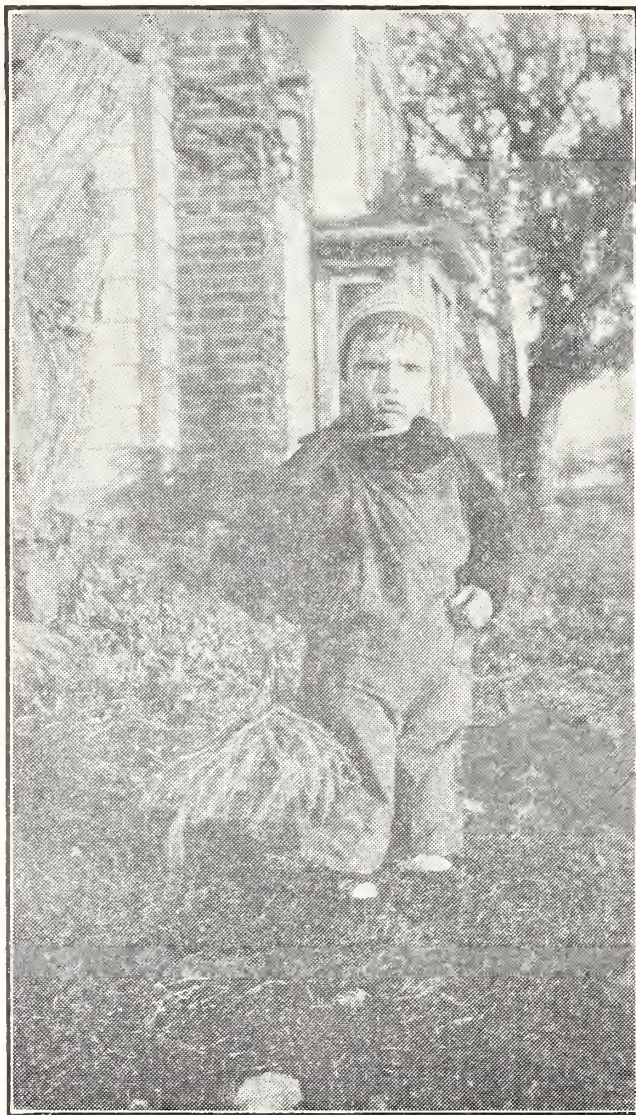
“We guarantee the vitality and purity of our seeds to the full amount of the purchase price. You can have your money back any time within the year if you are not satisfied with the results from Burpee’s Seeds. Even with Burpee quality Seeds success in gardening or farming depends largely upon cultivation, soil, and weather conditions. It is therefore agreed that in no case shall we be liable for more than the amount actually paid for the Seeds.

“We guarantee the safe arrival of your seeds, and we guarantee their quality to the full amount of the purchase price.”

The above is Burpee’s Guarantee, which we try to live up to. In other words, “We strive to please.”

Sincerely,
RALPH W. STERLING.

Billy Sterling says:—



*“That’s a fine sample of Mary
Washington Asparagus”*

Address all Communications and make
all Checks and Money Orders payable to

RALPH W. STERLING
CUTCHOGUE, L. I., (*Suffolk County*) N. Y.

Telephone Peconic 55