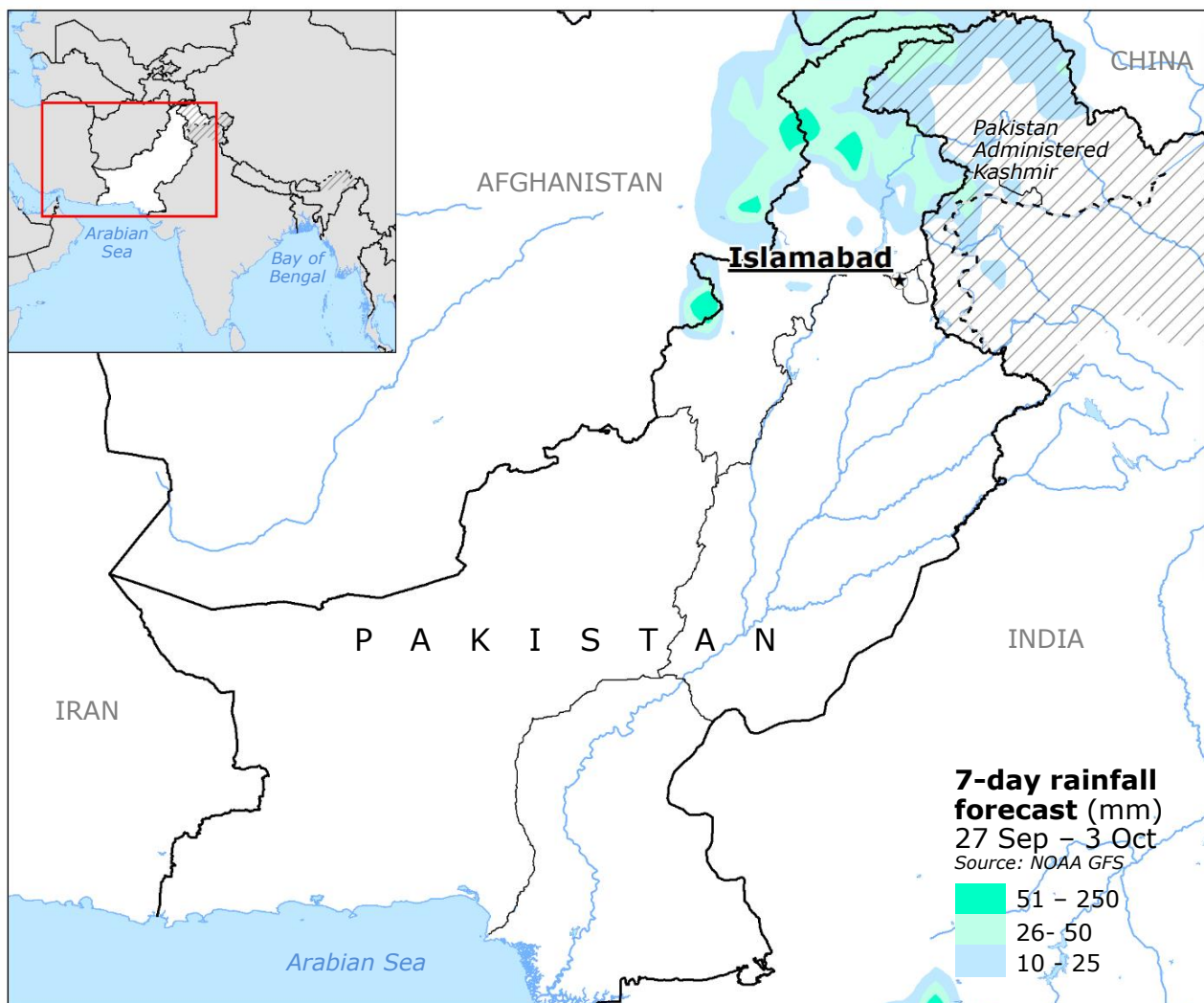
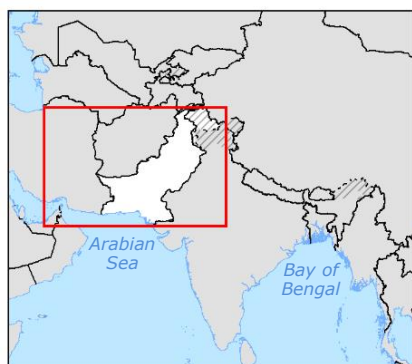


Pakistan | Monsoon season and EU humanitarian response



EUR 1 MILLION FOR MULTI-SECTORAL HUMANITARIAN ASSISTANCE
in addition to [EUR 16.5 millions](#) earlier in 2023

IMPACT OVERVIEW 25 Jun – 26 Sep
Source: NDMA

224 Fatalities	5 788 Damaged houses 2 026 fully, 3 760 partially
342 Injured people	329 Relief camps
547 442 Evacuated/rescued people	249 Medical camps

Flood detection
25 Jun – 26 Sep
Source: JRC GloFAS GFM

Maximum flood extent

Past rainfall accumulation (mm)
25 Jun – 26 Sep
Source: NASA GPM

- > 1 500
- 1 001 – 1 500
- 501 – 1 000
- 251 – 500
- 50 - 250

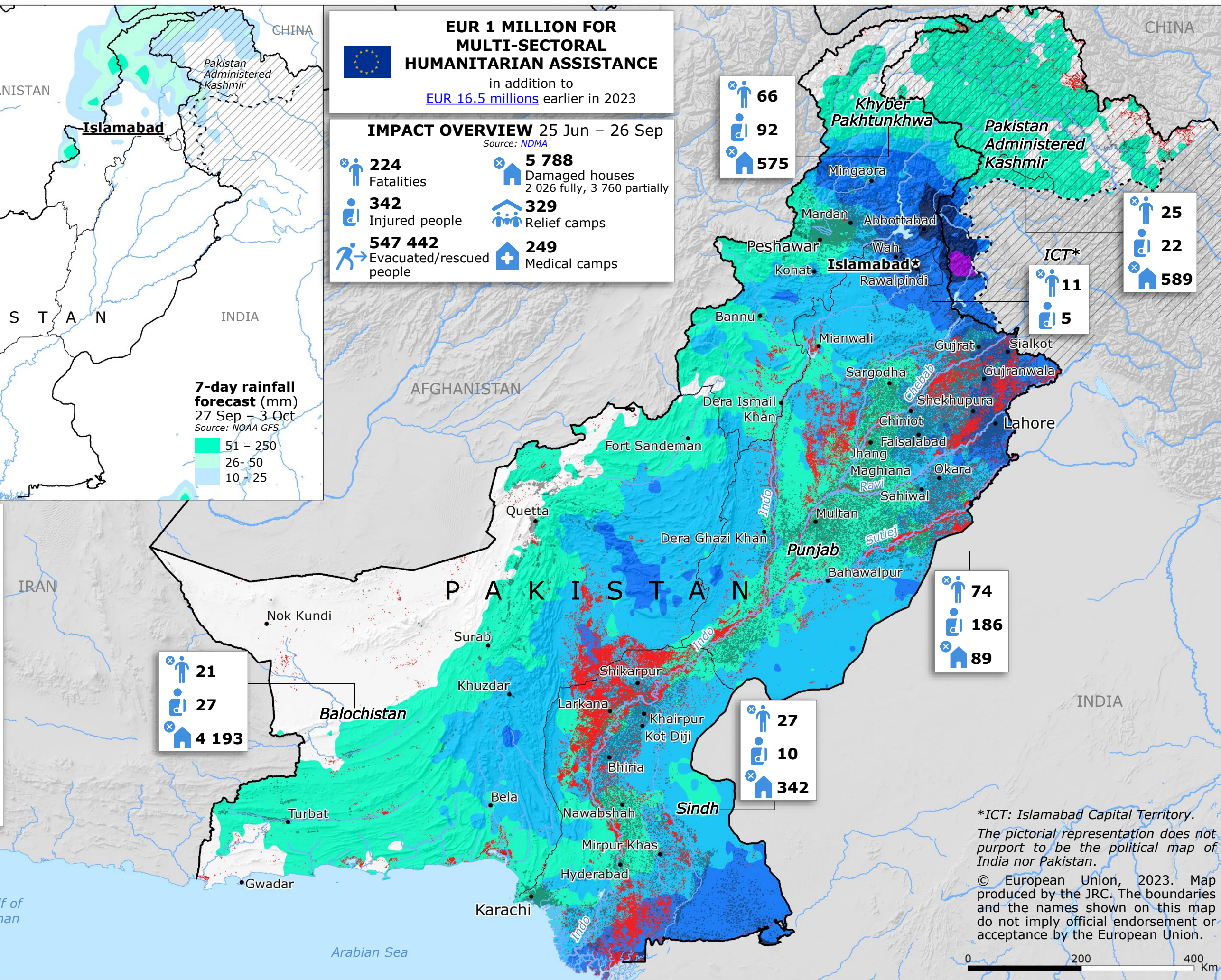
Densely populated area
Source: JRC GHSL

Administrative division

Country boundary

Disputed country boundary

Disputed area



*ICT: Islamabad Capital Territory.
The pictorial representation does not purport to be the political map of India nor Pakistan.
© European Union, 2023. Map produced by the JRC. The boundaries and the names shown on this map do not imply official endorsement or acceptance by the European Union.

